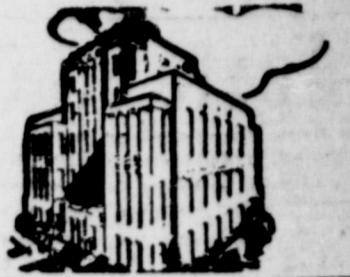




# Eastland Telegram

"COVERING EASTLAND COUNTY"



VOLUME TWENTY-NINE

EASTLAND, TEXAS, THURSDAY, JULY 31, 1958

NO. 40

## Burleson Asks Southwest Growers Get Fair Treatment

Rep. Omar Burleson has called for a showdown on the disagreement between the treatment applied to Southwest peanut growers as opposed to growers in the Southeast.

### MOORE about... EASTLAND by Virgil E. Moore

Eastland County is a lot more important county than many of us who live in it seem to realize.

The county is strong in many ways. It provides much of the leadership for the state, it is one of the largest peanut and pecan producing counties in Texas, and it is strong politically and financially.

No one will question our statement about leadership. Not when they know Virgil T. Seaberry, immediate past president of the State Bar of Texas; Mrs. Joseph M. Perkins, officer in the National Federation of Women; H. R. (Pop) Garrett, immediate past district Lion's governor; E. L. (Stone wall) Jackson, past state commander of the Texas American Legion. And that is just mentioning a few.

What about agriculture? With 33,000 acres of peanuts planted, the county ranks second in the state in total acreage. Prospects this year are termed wonderful. Of course, our county farmers, who have borne the blunt of the seven year drought, won't really admit it's a good crop until the money is in the bank. You can't blame them for that, but things are certainly looking wonderful.

Pecans are the coming thing in Eastland County. The county has a large number of native trees, and more and more varieties are being planted each year. We are among the first counties to come up with a county pecan growers association and the county was THE FIRST to hold a county pecan show. In the state show each year, Eastland County growers always return home with numerous awards.

Have we forgotten turkeys? Certainly not. Probably nothing has gained as much recognition as the county's turkey industry. Some of the meat up to date farmer in the state live right here in our county, and many of them are turkey producers. Eastland County is regarded as one of the leaders among the turkey producing counties.

In addition we are well balanced with cattle, sheep and goats playing a key part in our economy.

When it comes to politics the county is much stronger than it even should be, population-wise. Eastland County folks believe in voting. That's why citizens of Eastland County cast almost 6,000 votes in the primary election (Continued on Page Two)

will determine its new formula of price support and grade standards for the various types of peanuts.

The Department is well aware of the views of the growers and shellers of peanuts in the Southwest. This disagreement between the treatment applied to the Southwest as opposed to the Southeast is of long standing.

The unequal treatment of the Southwest growers and shellers is even admitted by some of the opponent of their views. The most substantial argument of those who wish to maintain the status quo is that to disturb the present arrangement would create dissension between the areas, giving the opponent of the Peanut Program the opportunity to "divide and conquer."

We of the Southwest have recognized this fact and have carried the burden. We are to the point, however, of not being willing to carry it longer and to suffer the obvious disadvantage now imposed upon us.

We believe and strongly recommend that the grade standards and definitions established by the Government, either on a basis of voluntary or mandatory use, for peanuts shall be uniform among the various types of peanuts, except for variation as to size of kernels.

We believe the same price support should apply to each 1 percent sound mature kernels for all types, with premiums to be determined by the Department for the extra large Virginia and Valencia-type which are suitable for cleaning and roasting.

We do not believe our position in this matter can be successfully and reasonably opposed. It is a matter of fairness and equal treatment. It simply does not make sense that a so-called number one grade of any commodity should have a lower standard in one area than in another.

This unequal treatment is clearly costing our farmers and shellers in the Southwest; for no other reason than an application of an arbitrary formula. There is no reason to believe that the growers and shellers of the Southeast will agree to giving up this advantage which they enjoy. There seemingly can be no agreement between the areas and therefore, it rests no the Department to resolve this issue of long standing.

We believe the Department should take immediate action to remedy the situation and not continue a program which penalizes competition between types and prices of peanuts. Thanking you for your earnest and immediate consideration, I remain,

Member one grade of any commodity should have a lower standard in one area than in another.

This unequal treatment is clearly costing our farmers and shellers in the Southwest; for no other reason than an application of an arbitrary formula. There is no reason to believe that the growers and shellers of the Southeast will agree to giving up this advantage which they enjoy.

There seemingly can be no agreement between the areas and therefore, it rests no the Department to resolve this issue of long standing.

We believe the Department should take immediate action to remedy the situation and not continue a program which penalizes competition between types and prices of peanuts.

Thanking you for your earnest and immediate consideration, I remain,



NATURALLY—Take a pretty girl like Mary Ann Webb, add some beautiful Miami Beach, Fla., weather, and what have you got? Another title, naturally. Mary Ann is the resort city's Summer Fishing Queen.

## New Postal Rates Will Be Effective Friday

A last-minute warning that new postal rates will go into effect tomorrow, (August 1) was issued today by Postmaster Marene Johnson of Eastland.

Mrs. Johnson pointed out to local patrons that any mail placed in downtown letter boxes after the final pickup time Friday would have to apply under the new rate schedule.

Notes have been placed on all boxes urging patrons to observe the pick-up times.

Mrs. Johnson cautioned that a regular first-class letter will require four cents postage an ounce; air mail letters seven cents an ounce; air mail postal cards five cents each, and regular postal cards three cents each.

Where mail users still have on hand supplies of three cent stamps, two cent postal cards, four cent air mail postal cards and six cent air mail stamps, they may be used by the addition of an ordinary one cent stamp.

Plenty of these are on hand at the local post office, plus large supplies of new four cent stamps, seven cent air mail stamps, five cent air mail postal cards and three cent regular postal cards.

Stamped envelopes are also in good supply in the needed denominations of four cents for regular first-class letters and seven cent air mail letters.

New three-cent post cards, bearing the likeness of the Statue of Liberty, are now on sale of the Post Office. New four-cent stamps and booklets for first class letters were expected to arrive, here, by Friday.

Old postage stamps may be used on envelopes and postage cards, but additional postage must be added.

New domestic postage rates became effective at 1:01 a. m. Friday, but all mail must be deposited in time for the last collection Thursday.

First class letter will be four-cents an ounce, and postal cards will be three cents each.

Airmail letters (not exceeding eight ounces) will be seven cents an ounce. Air post and postal card will be five-cents each.

Second class transient rates will be two cents for the first two ounces and one cent for each additional ounce.

Publications will be mailed at 12 cents per pound, with a minimum of one cent per copy. Bulk, third-class rates will not change until Jan. 1, 1959. The minimum (Continued on Page Two)

## Democrats to Hold Convention Saturday

### Conservatives Have Larger Bloc of Votes

Eastland County Democrats will hold their county convention Saturday in the district courtroom at the courthouse at Eastland. The curtain will rise sharply at 2 p. m.

And just as sharply as ever, there will be two groups on hand to fight for control. The Conservative group, which supported President Eisenhower in the last two presidential elections, will probably be in control, but the liberal-loyalists will be on hand to voice their protests.

Actually Eastland County voted liberal in the Democratic primary election Saturday. They gave Sen. Ralph Yarborough a booming majority. In the Governor's race they stayed with the conservative candidate, however. In fact, conservatives, Gov. Daniel and W. Lee O'Daniel, placed one and two.

The liberal candidate, however, was a Latin American, and from the beginning he was not rated a chance in this county.

Eastland's two precincts are definitely controlled by conservatives. In Precinct 1, the courthouse box, Dr. James Whittington is chairman and his wife is secretary. A large majority of delegates elected are known conservatives. The precinct convention minutes show the precinct will vote as a unit, but no resolutions were passed.

Precinct 2, City Hall, is also controlled by conservatives. Cyrus Frost is chairman and Frank Sparks is secretary. This precinct will also vote under the unit rule.

Precinct 1 has 24 votes in the county convention and Precinct 2 claims 17. Votes are based on the number of votes cast for the Democratic candidate for Governor (Continued on Page Two)



NEWEST PLANE KILLER—Publicly triggered with deadly effect at White Sands Missile Range recently, the Army's Nike-Hercules has already, as of early July, begun to replace the Ajax at sites in the Chicago, New York, and Washington-Baltimore areas. Unlike Ajax, it can carry a nuclear warhead.

## Mrs. Jack Lewis Buried Today In Local Cemetery

Funeral services were held this morning at 8:30 a. m. in the Ellett's Chapel of Memories in Abilene for Mrs. Jack E. Lewis Jr. with graveside services at 10:30 a. m. in Eastland Cemetery.

Mrs. Lewis died Thursday. Officiating at the service was Dr. John Donahoe, pastor of St. Paul Methodist Church in Abilene.

Mrs. Lewis husband bought a neon sign company in Abilene in 1956 and the Lewises moved to Abilene from Eastland at that time.

Survivors include her husband one sister, Mrs. C. A. Ranney of Arlington; two brothers, William Rutledge of Abilene and Fred Rutledge Jr. of Weatherford; her mother-in-law, Mrs. J. E. Lewis Sr. of Abilene; and brother-in-law, James Blair Lewis of Abilene.

Complete funeral and instructions can be found in the Safeway ad today, and on every "Cross-Out" game card.

## Safeway Reveals New 'Cross-Out' Game to Public

Safeway, in an advertisement in today's Telegram, has announced their new "Cross-Out" game.

Each Thursday, in this newspaper, Safeway will print 30 new "Cross-Out" cards can be picked up each time a shopper visits Safeway for the next twelve weeks.

If a person can "x-out" five numbers in a row in any direction on his card, he is a winner. Prizes, such as TV sets, dryers, watches and mink scarfs are shown on the back of the card. You know immediately what you win if you are a winner.

Complete rules and instructions can be found in the Safeway ad today, and on every "Cross-Out" game card.

In all, more than 9500 prizes worth over \$95,000 will be awarded.

## Shriner's New Imperial Potentate



CHICAGO—Harold Lloyd, (right) former movie comedian and a Past Imperial Potentate of the Shrine, admires the jewel of office presented to George E. Stringfellow, who was elected Imperial Potentate during the 84th Imperial Council Session here. Stringfellow is vice president of Thomas A. Edison Industries of the McGraw-Edison Company, West Orange, N.J. He will direct the 1958-59 affairs of the Shrines' more than 300,000 members in 165 temples throughout the United States, Alaska, Hawaii, Canada, Mexico and the Panama Canal Zone.

## Farmers Can File for Gas Tax Refunds

Local farmers can file a claim for refunds of the Federal excise tax on gasoline, according to A. E. Fogie, Jr., Administrative Officer of the Abilene office.

Under the law enacted on April 2, 1956, farmers are entitled to claim refund each year for the three cents a gallon Federal excise tax on gasoline used on a farm for farming purposes. Farmers can obtain Publication No. 308 from their local Internal Revenue Service office or from their County Agent. His 15-page pamphlet explains in detail how to file the claim for refund.

Forms 2240, the farmers' gas tax refund claim form, is also available at County Agent's office as well as Internal Revenue Service offices.

September 30 is the deadline for filing a claim for refund on the taxes covering the fiscal year from July 1, 1957 through June 30, 1958.

The Eastland County Democratic Executive Committee, meeting Tuesday in Eastland, made official the unofficial results of Saturday's Democratic primary election.

## County Will Vote On 9 Amendments Nov. 4

When Eastland County voters go to the polls, again, on Nov. 4 to participate in the general election, they will be faced with nine amendments to the state constitution.

Most important amendment, to most area people, will be the proposal setting up annual sessions of the state legislature. This will mean more compensation for members of the House of Representatives and Senate.

Another amendment states that vacancies occurring in the office of County Judge and Justices of the Peace shall be filled by the Commissioners Court until the next general election.

Here is a summary of the nine different amendments:

Number One On The Ballot (HJR 1)—Provides for annual sessions of the legislature, changing the compensation, per diem and travel expenses of members of the legislature and authorizing temporary residence of the Lieutenant Governor and Speaker of the House in the Capitol Building.

Number Two On The Ballot (SJR 6)—Authorizes each county to establish, after approval by its voters, a retirement, disability and death compensation fund covering the elective officers of the county or precinct, as well as the appointive officers and employees of the county or precinct.

Number Three On The Ballot (HJR 30)—Provides that vacancies in the office of County Judge and Justices of the Peace shall be filled by the Commissioners Court only until the next General Election.

Number Four On The Ballot (HJR 31)—Provides that any District, County, or Precinct official serving a four-year term must resign before announcing for a different office if there remains unexpired more than one (1) year of the term for which he was elected.

Number Five On The Ballot (HJR 48)—Provides that a Home Rule City may provide by Charter Provision, and a City operating under the general laws may provide by majority vote, for a longer term of its officers, either elective or appointive, or both not to exceed four years.

Number Six On The Ballot (HJR 17)—Provides for pension to retired Texas Rangers who are ineligible to participate in the Employees Retirement System of Texas, and their widows. (Continued on Page Two)

Number Seven On The Ballot (HJR 17)—Provides for pension to retired Texas Rangers who are ineligible to participate in the Employees Retirement System of Texas, and their widows. (Continued on Page Two)

Number Eight On The Ballot (HJR 17)—Provides for pension to retired Texas Rangers who are ineligible to participate in the Employees Retirement System of Texas, and their widows. (Continued on Page Two)

Number Nine On The Ballot (HJR 17)—Provides for pension to retired Texas Rangers who are ineligible to participate in the Employees Retirement System of Texas, and their widows. (Continued on Page Two)

Number Ten On The Ballot (HJR 17)—Provides for pension to retired Texas Rangers who are ineligible to participate in the Employees Retirement System of Texas, and their widows. (Continued on Page Two)

Number Eleven On The Ballot (HJR 17)—Provides for pension to retired Texas Rangers who are ineligible to participate in the Employees Retirement System of Texas, and their widows. (Continued on Page Two)



MIDEAST POWDER KEG — Newsmag spots the boiling Middle East where Iraq's military coup overthrowing the pro-Western regime of King Faisal—and subsequent defection to President Gamal Abdel Nasser—threatens a major supply of Western oil. The coup subverted a scheduled meeting of Baghdad Pact member nations in Istanbul, Turkey, and may have destroyed the Pact entirely. Iraq's putsch leaves her impoverished partner in the Arab Federation—Jordan—in a precarious position.

**FREYSCHLAG INSURANCE AGENCY** presents the **WEATHER NEWS**

High	100
Low	78
Rain	0
Total Rain for July	4.08
Total Rain for Year	19.27
12 Months Avg. Rain	25.83
Lake Leon Level	75'
Forecast	Cloudy and Hot

**EASTLAND NATIONAL BANK**  
"On The Square"  
Member F. D. I. C.

# Eastland Telegram

Eastland County Record established in 1931, consolidated August 31, 1951. Chronicle established 1887, Telegram established 1923. Entered as second class matter at the Post Office at Eastland, Texas under the act of Congress of March 3, 1879.

**TIMES PUBLISHING COMPANY**  
Published Tri-Weekly—Tuesdays - Thursdays - Sundays  
DINOUS DICK and JOE DENNIS, Publishers  
VIRGIL E. MOORE, Editor  
CAROLYN COLLINS, Society Editor

Two weeks by carrier in city . . . . .16  
One month by carrier in city . . . . .48  
One year by mail in County . . . . .2.75  
One year by mail in state . . . . .4.75  
One year by mail out of state . . . . .6.75

**NOTICE TO PUBLIC**—Any erroneous reflection upon the character, standing or reputation of any person, firm or corporation which may appear in the columns of this newspaper will be gladly corrected upon being brought to the attention of the publishers.

## WANT ADS

Cards of Thanks charged for at rate of \$2.00 Each

### SPECIAL NOTICE

**24-HOUR FILM DEVELOPING.** Arrow Foto Service. Located over Eastland Telegram Office.

**POWER SPRAYING.** Trees, shrubs and under your house. This is a wet year. There are lots of worms and insects. For appointment, Phone 886—today.

**Notice to the Creditors of the Estate of T. J. Gilbreath, Deceased.** Notice is hereby given that original letters of administration upon the estate of T. J. Gilbreath, deceased, were granted to me on the 17th day of June, 1958, by the County Court of Lubbock County, Texas. All persons having claims against said estate are hereby required to present the same to me within the time prescribed by law. My residence and Post Office address are Box 248, Big Lake, Eastland County, Texas.

**OLIN LUSBY**  
Independent Executor of the Estate of T. J. Gilbreath, Deceased.

**NOTICE:** See our new Fall samples of suit materials. Select now and we will ship at any time. Six months to pay. C. L. Fields, Phone 571.

**LICENSED State-Wide Maternity Home-Hospital.** Confidential, complete care. Phone JE-6-2855 Fort Worth, or write "Volunteers of America," 407 Majestic Bldg., Fort Worth.

### MISC FOR SALE

SIX months to pay for an Ed V. Price tailored suit. Made to your individual measurements. NO interest, NO carrying charges. C. L. FIELDS, 103 W. Valley, Phone 571

**FOR SALE:** Gas refrigerator, making ice. Only \$20. Phone 515

**FOR SALE:** 9-foot G. E. refrigerator, perfect condition, \$75. Phone 1162 after 5 p.m.

**FOR SALE:** Chippewa Hunting Boots. Regular boot 6-inch top, \$16.95; insulated boot, 6-inch top, \$27.50. Sport Center, Eastland, Phone 525.

**FOR SALE:** Duroc gilts, farrow in August. See Crawford Thurman, Rt. 3, Gorman, Texas.

**FOR SALE** — 1958 trailer house. Low down payment and take up payments. Six months old. Call 444 for appointments.

**FOR SALE**—Used evaporative coolers, 4,000 CFM, one speed, \$45. 4,000 CFM two speed, like new, \$95. Phone 745—J.

CALL 601 FOR CLASSIFIED ADVERTISEMENT

### TOP PAID POSITION

**STAUFFER HOME PLAN**  
Will employ three women whose standard of living requires income of \$500 per month or more. Car necessary. No experience required as we have complete training program. For appointment write Stauffer Home Plan, 877 North Mockingbird, Abilene.

### SAVE MONEY

**Clean Retreaded**  
6.70 x 15 . . . \$9.95  
Exchange  
7.50 x 14 . . . \$12.95  
Exchange

**Jim Houston TIRE SERVICE**  
East Main St., — Eastland — Phone 258

## Moore About—

(Continued From Page One)  
last Saturday. Compare that to other counties in this part of the state. Such counties as Taylor, which are considered to be very powerful, failed to double the Eastland County vote.

Financially there can be little doubt that Eastland County is stronger than the average man on the street believes. How else could we find that Eastland County's buying power, according to "Sales Management Magazine," is ranked at \$23, 253.

### HELP WANTED Male

HELP WANTED—Wash, grease polish man. Experienced. No others need apply. Early Tire Service.

WANTED — Mechanic. Early Tire Service.

### BUSINESS OPPORTUNITY

**RELIABLE PARTY MALE OR FEMALE**  
Wanted to service and collect from a route of CIGARETTE machines. No selling. Route is fully established for operator. Full or part time. Up to \$300 per month to start. \$1,000 to \$2,000 cash required which is secured. Write, giving full particulars and phone number to P. O. Box 9552, Dallas 6, Texas.

### OPPORTUNITY MAN OR WOMAN

Responsible person from this area, to service and collect from cigarette dispensers. No selling. Car, references, and \$600.00 to \$1800.00 investment necessary. 7 to 12 hours weekly nets up to \$350.00 monthly income. Possibility full-time work. For local interview give phone and particulars. Write International Distributing Co., P. O. Box 865, Okla. City, Okla.

On paper our county looks extremely good. Why doesn't it to the naked eye?

### IF IT'S METAL

**Decor Metal Products**  
306 E. Main Phone 288  
SHOP WELDING  
PAINTING REPAIR

**ALEX RAWLINS & SONS**  
MONUMENTS  
WEATHERFORD, TEX.  
Serving This Community Since 1884  
Phone LY4-2726

**TERMITE CONTROL** and all other types PEST EXTERMINATION  
**MODERN EXTERMINATING CO.**  
Box 312 Ranger  
PHONE RANGER  
Day 919—Night 911

**Overseas Veterans Welcome**  
Karl and Boyd Tanner  
Post No. 4136  
VETERANS OF FOREIGN WARS  
Meets 2nd and 4th Thursday 8:00 p.m.

**B. and W. Clinic**  
announces the association of  
**DR. B. BOB ALEXANDER**  
Office: 310-30 Petroleum Building  
Eastland, Texas  
Home Phone: 415 Office Phone 1096

**NOTICE... Come To Kendrick Drive-In Dairy**  
(Serving This Territory Since 1940)  
FOR  
**Good, Clean JERSEY Sweet Milk**  
Price — 70c Gal.  
Phone 896-J-2 — Located Halfway between Eastland and Cisco

## Darleson

(Continued From Page One)  
odd size or shape will be increased charge for laid class pieces of to x cents each, Friday.

Third class rates on books, catalogs and unopened greeting cards will be three cents for the first two ounces.

Fourth class book rates will be nine cents for the first pound and five cents for each additional pound.

A new seven cent airmail stamp and stamped envelope will go on sale Friday. The seven cent airmail booklet, selling for 85 cents will be first released through the San Antonio Post office.

Weight limit for third class mail is increased up to but not including 16 ounces.

## Conservatives

(Continued From Page One)  
in the November, 1956 general election. One delegate vote is allowed for every 20 votes cast for the Democratic governor. In all, Eastland has 41 votes.

Two years ago the county convention was a heated affair. Conservatives quickly showed their majority by electing the precinct chairman. Then the credentials committee refused to seat a number of liberal delegates, particularly from Rising Star, because they failed to comply with the law in filing minutes of their precinct meeting. It also refused to seat delegates from one Cisco precinct, however, for the same reason, and that precinct's delegates were conservative.

This year both Cisco precincts are bound under the unit rule and both are controlled by conservatives.

Conservatives also control the Ranger Young School precinct. Liberals won a majority vote in the City Hall precinct, there, however. Rising Star's two precincts are believed to be controlled by liberals, and conservatives believe most of the smaller precincts will vote as loyalists. However, the big five precincts controlled by the conservatives will be enough to give them complete control in the county.

Eastland County this year can send 15 delegates to the state convention, based on the fact that 448 votes were cast for Gov. Daniels in the 1956 general election. (The county get one delegate for each 300 votes cast.)

## NOTICE

**Leon Sand & Gravel Co.**  
Washed Sand and Gravel Class A Material  
DELIVERED  
BOB CARROLL  
Phone Eastland 1131  
Phone Ranger 3235

## USED GUNS

12-Gauge Winchester . . . . .32.50  
8-MM Mautser . . . . .50.00  
300-Remington Savage Cariben . . . . .65.00  
Jap 31-Cal. . . . .12.50  
Golf Clubs . . . . .1/3 off

## Sport Center

304 E. Main - Phone 525  
Eastland

## County

(Continued From Page One)  
Number Seven On The Ballot (SJR 4)—Authorizes the Legislature to make appropriations and establish procedure for advertising the historical, natural, agricultural, industrial, educational, recreational and other resources of Texas.

Number Eight On The Ballot (HJR 36)—Gives the Legislature the power to authorize vendor payments for medical care in addition to the amount paid in the form of direct public assistance to and on behalf of needy recipients of Old Age Assistance, Aid to the Blind, Aid to Dependent Children or Aid to the Permanently and Totally Disabled; providing for the acceptance of funds from the Federal Government for the purpose of paying such assistance.

Number Nine On The Ballot (SJR 3)—Authorizes the Legislature to create a Hospital District extensive with the incorporated limits to the City of Amarillo, Texas and a county wide Hospital District in Wichita County, Texas, and Hospital Districts in Jefferson County, Texas.

## VISITS PARENTS

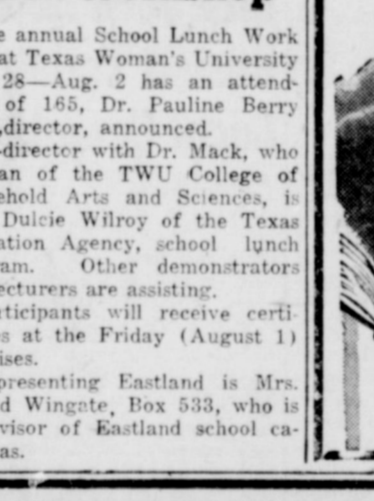
Jack Teatsorth of Hawthorne, California, while enroute to CAA School in Oklahoma City, Oklahoma, visited with his parents Mr. and Mrs. W. A. Teatsorth, over the weekend.

## INGROWN NAIL HURTING YOU?

Immediate Relief!  
A few drops of OUTGROW, being blessed relief from tormenting pain of ingrown nail. OUTGROW softens the skin underneath the nail, allows the nail to be cut and thus prevents further pain and discomfort. OUTGROW is available at all drug counters.

## JOY

DRIVE-IN THEATRE  
Eastland - Cisco Hwy.  
Thursday - Friday  
WARNER BROS. PRESENTS  
**"Marjorie Morningstar"**  
- WARNERCOLOR  
The picture that is the story of every young girl who ever had to choose between decency and desire!



## RANGER DRIVE-IN

HIGHWAY 80 EAST ON RANGER HILL PHONE 13  
Adults 40c Kiddies Under 11 Free  
TUESDAY—BARGAIN NITE  
50c CAR LOAD  
LAST TIMES THURSDAY

**TODAY'S THRILL-HUNGRY TEEN-AGERS!**  
They Don't Care Who Gets Shamed . . . Or Who Gets Scared!  
**"THE CARELESS YEARS"**  
Starring DEAN STOCKWELL, NATALIE TRINITY  
THE MOST DANGEROUS TIME OF ALL!  
FRIDAY - SATURDAY

**GEORGE MONTGOMERY**  
...They call him  
**BLACK PATCH**  
Presented by WARNER BROS. DIANE BREWSTER and SEBASTIAN CABOT  
PREVIEW SATURDAY NITE

## County

(Continued From Page One)  
Number Seven On The Ballot (SJR 4)—Authorizes the Legislature to make appropriations and establish procedure for advertising the historical, natural, agricultural, industrial, educational, recreational and other resources of Texas.

Number Eight On The Ballot (HJR 36)—Gives the Legislature the power to authorize vendor payments for medical care in addition to the amount paid in the form of direct public assistance to and on behalf of needy recipients of Old Age Assistance, Aid to the Blind, Aid to Dependent Children or Aid to the Permanently and Totally Disabled; providing for the acceptance of funds from the Federal Government for the purpose of paying such assistance.

Number Nine On The Ballot (SJR 3)—Authorizes the Legislature to create a Hospital District extensive with the incorporated limits to the City of Amarillo, Texas and a county wide Hospital District in Wichita County, Texas, and Hospital Districts in Jefferson County, Texas.

## VISITS PARENTS

Jack Teatsorth of Hawthorne, California, while enroute to CAA School in Oklahoma City, Oklahoma, visited with his parents Mr. and Mrs. W. A. Teatsorth, over the weekend.

## INGROWN NAIL HURTING YOU?

Immediate Relief!  
A few drops of OUTGROW, being blessed relief from tormenting pain of ingrown nail. OUTGROW softens the skin underneath the nail, allows the nail to be cut and thus prevents further pain and discomfort. OUTGROW is available at all drug counters.

## JOY

DRIVE-IN THEATRE  
Eastland - Cisco Hwy.  
Thursday - Friday  
WARNER BROS. PRESENTS  
**"Marjorie Morningstar"**  
- WARNERCOLOR  
The picture that is the story of every young girl who ever had to choose between decency and desire!



## RANGER DRIVE-IN

HIGHWAY 80 EAST ON RANGER HILL PHONE 13  
Adults 40c Kiddies Under 11 Free  
TUESDAY—BARGAIN NITE  
50c CAR LOAD  
LAST TIMES THURSDAY

**TODAY'S THRILL-HUNGRY TEEN-AGERS!**  
They Don't Care Who Gets Shamed . . . Or Who Gets Scared!  
**"THE CARELESS YEARS"**  
Starring DEAN STOCKWELL, NATALIE TRINITY  
THE MOST DANGEROUS TIME OF ALL!  
FRIDAY - SATURDAY

**GEORGE MONTGOMERY**  
...They call him  
**BLACK PATCH**  
Presented by WARNER BROS. DIANE BREWSTER and SEBASTIAN CABOT  
PREVIEW SATURDAY NITE

## Patio Dinner and Fishing Party Is Held at MacMoys

A delightful evening was reported by all the members of the Eastland Art Club and their husbands, who were guests, that attended the fishing party and patio dinner at the ranch home of Mr. and Mrs. Benford MacMoys, eight miles south of Eastland.

Several fish were caught by the group, preceding the lovely dinner which was cooked by the host in the outdoor patio kitchen. Later in the evening cold watermelon was served.

Attending the dinner were Mr. and Mrs. Homer White, Mr. and Mrs. Frances Urban, Tena and Melinda, Mr. and Mrs. Joe Tow, and Mr. and Mrs. Benford MacMoys and Carol.

## BABIES LIKE IT LIKES THEM



Test STANBACK against any preparation you've ever used

**Quick Relief of HEADACHE**  
Ease PAINS OF HEADACHE, NEURALGIA, NEURITIS with STANBACK TABLETS or POWDERS. STANBACK combines several medically proven pain relievers. The added effectiveness of these MULTIPLE ingredients brings faster, more complete relief, easing anxiety and tension usually accompanying pain.

**Shrinks Hemorrhoids Without Surgery**  
Stops Itch—Relieves Pain  
For the first time science has found a new healing substance with the astonishing ability to shrink hemorrhoids and to relieve pain—without surgery. In case after case, while gently relieving pain, actual reduction (shrinkage) took place. Most amazing of all—results were so thorough that sufferers made astonishing statements like "Piles have ceased to be a problem!" The secret is a new healing substance (Bio-Dyne)—discovery of a world-famous research institute. This substance is now available in suppository or ointment form called Preparation H.\* At all drug counters—money back guarantee. \*NS

## IN APPRECIATION



The display of loyalty and confidence of my friends throughout the District, as evidenced last Saturday, fills me with gratitude and humility. I want to thank each of you and shall endeavor to merit this fine expression.

You may be sure that I will spare no time, energy, or effort in representing you in the important office to the very best of my ability.

**PAUL BRASHEAR**  
STATE REPRESENTATIVE  
76th District

## DIXIE Drive-In

EASTLAND RANGER HIGHWAY  
Box Office Opens 7:45 Show Starts 8:00  
Box Office Closes 10:00  
ADMISSION NEVER OVER 50c  
WEDNESDAY - THURSDAY, JULY 30 - 31  
FRAMING PASSIONS! WEIRD AT VENTURE!  
**SWAMP WOMEN**  
A WARNER BROS. PRODUCTION  
Starring MARY WINDSOR - GAIL MATHews - BEVERLY GARLAND  
COLOR!  
WIDE VIEW

PLUS: Two Color Cartoons  
FRIDAY - SATURDAY, AUG. 1 - 2

## SADDLE TRAMP and HELLCAT!

They matched each other sin for sin!

**GUY MADISON**  
**RHONDA FLEMING**  
AN ALLIED ARTISTS PICTURE  
**BULLWHIP**  
CINEMA SCOPE COLOR  
Hear FRANKIE LAINE sing that "BULLWHIP"  
Exclusive Product Produced by Directed by  
WILLIAM F. BRODY • HELEN AINSWORTH • HARMON JONES • ADELE BUFFINGTON  
PLUS: Color Cartoon & Sports Reel

"EXTRA-SPECIALS" CELEBRATING OUR

# 23<sup>rd.</sup> Anniversary Sale



**BIGGEST STORE-WIDE SAVINGS OF THE YEAR!**

Prices Effective thru Saturday, Aug. 2—We Reserve Rights to Limit!

**WORTH FOOD MART**

**CANE SUGAR**

IMPERIAL PURE CANE

10 <sup>-Lb. Bag</sup> **75¢** WITH COUPON BELOW!

**PULLET EGGS**

3 Doz. Only **\$1.00**

**COFFEE**

WHITE SWAN (Limit 2)

Save An Extra 10c With Coupon In Star-Telegram

Lb. Can **69¢**

**COUPON**

23rd Anniversary Sale "Extra Special" THIS COUPON GOOD FOR 24c

**SUGAR** IMPERIAL (With This Coupon) 10 <sup>-Lb. Bag</sup> **75¢**

Valid only at WORTH FOOD MART—Expires Saturday, August 2, 1958  
Limit 1 Coupon per Family. (Cash Value 1 Mill)

**OLEO**  
PANTRY MAIDE



LIMIT 4 LBS.

2 <sup>1-LB. PKGS.</sup> **25¢**

U. S. NO. 1

**RED POTATOES** 10 <sup>-Lb. Cello</sup> **39¢**

**TOMATOES** Selected, Red-Ripe, Carton's 3's, 4's **11¢** <sup>Carton Only</sup>

**CALAVOS** California Haas Summer Variety **10¢** <sup>Each Only</sup>

*Libby's FROZEN FOOD Jamboree!*

LIBBY'S CONCENTRATE **LEMONADE** SAVE 26c **6** <sup>6-Oz. Cans</sup> **59¢**

**Sliced Strawberries** SAVE 26c **5** <sup>10-Oz. Pkgs.</sup> **99¢**

**Libby's Sliced Peaches** SAVE 26c **5** <sup>10-Oz. Pkgs.</sup> **99¢**

**Orange Drink** SAVE 16c **6** <sup>6-Oz. Cans</sup> **89¢**

**English Peas** SAVE 15c **6** <sup>10-Oz. Pkgs.</sup> **99¢**

**Rasberries** LIBBY'S RED **4** <sup>10-Oz. Pkgs.</sup> **99¢**

Libby's Corn <sup>Cut or Cream Style</sup> **6** <sup>Pkgs.</sup> **99¢**  
Fr. Fried Potatoes  
Spinach <sup>Leaf or Chopped</sup>  
Peas & Carrots

**SUCCOTASH** SAVE 26c **5** <sup>10-Oz. Pkgs.</sup> **99¢**  
**CAULIFLOWER BROCCOLI SPEARS** **4** <sup>10-Oz. Pkgs.</sup> **99¢**  
**LIMA BEANS** <sup>By or, Forhook</sup>

**Meat Pies**

Libby's-Save 19c  
★ Tuna ★ Beef  
★ Chicken  
★ Turkey **4** <sup>8-Oz. Pkgs.</sup> **89¢**

LIBBY'S FROZEN **Whole Baby Okra** SAVE 26c **5** <sup>10-Oz. Pkgs.</sup> **99¢**

LIBBY'S FROZEN **Blackeyed Peas** SAVE 26c **5** <sup>10-Oz. Pkgs.</sup> **99¢**

SAVE 15c—LIBBY'S **Pineapple-Grapefruit Drink** **6** <sup>6-Oz. Cans</sup> **99¢**

**Green Beans** <sup>Cut or Fresh Style</sup>  
**Broccoli Cuts**  
**Garden Vegetables**  
**Juices** <sup>Libby's Blended or Grapefruit</sup> **5** <sup>Pkgs.</sup> **99¢**

MAVIS **TALCUM** Powder <sup>Plus Tax</sup> **49c**  
BOYER'S **H-A** HAIR ARRANGER, Med. Size <sup>Plus Tax</sup> **47c**

**"Thrifty-Cut" BABY BEEF**

**STEAKS**

**SIRLOIN** **79¢** <sup>Lb.</sup> **ROUND or T-BONE** **89¢** <sup>Lb.</sup>

**CHUCK ROAST** THRIFTY CUT **49¢** <sup>Lb.</sup>

**Round Bone Roast** **55¢** <sup>Lb.</sup>

**SHORT RIBS** THRIFTY CUT **33¢** <sup>Lb.</sup>

**Fresh Ground Beef** **49¢** <sup>Lb.</sup>

**WORTH FOOD MART**

**SLICED BACON** SWIFT'S ORIOLE **63¢** <sup>Lb. Pkg.</sup>

**Breaded Shrimp** GULF PRINCESS **59¢** <sup>10-Oz. Pkg.</sup>



**VALUES TO SHOUT ABOUT!**

**Light Crust FLOUR**  
10-lb. bag  
**89¢**

**FLUFFO**  
3-lb. can  
**89¢**

**Mayfield CREAM CORN**  
5 No. 300 cans  
**49¢**

**Clover Farm SALT**  
26-oz. pkg.  
**10¢**

**WHITE SWAN TEA** Absolutely Guaranteed To Please WITH COUPON 19c **1/4-Lb. Pkg. 29¢**

**CLOVER FARM COFFEE** Drip or Regular **Lb. Can 79¢**

**GLENDALE EARLY JUNE PEAS** **2 No. 303 Cans 25¢**

**NORTHERN BATHROOM Tissue** **3 Rolls 25¢**

**CLOVER FARM Pork & Beans** **2 No. 300 Tall 25¢**

**BALLARD OR PILLSBURY Biscuits** **Reg. Can 10¢**

**KRAFT'S Miracle Whip** **Pt. Jar 36¢**

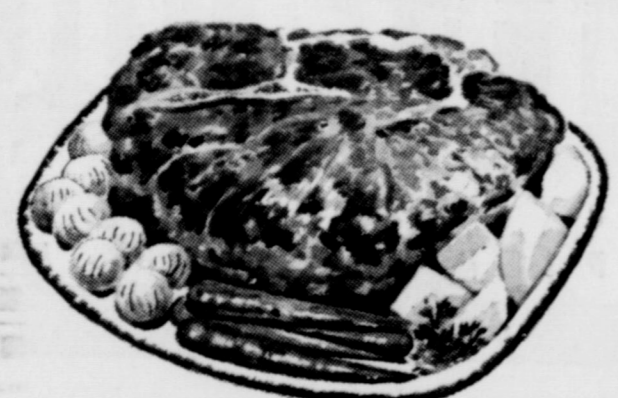
**TIDE** **Large Size 28¢**

**U. S. NO. 1 CALIFORNIA WHITE POTATOES** **10 Lb. Bag 49¢**

**THOMPSON SEEDLESS Grapes** **Lb. 19¢**

**CALIFORNIA FRESH CRISP LETTUCE** **Giant Size 15¢**

**SUNKIST FANCY Lemons** **Lb. 15¢**



**SWIFT'S PREMIUM SLICED BACON**  
**Lb. 75¢**

**Wilson's Cheese Spread** **2 Lb. Box 69¢**

**GOOCH'S FRANKS** **3 Lbs. 1.05**

**Smoked Picnics** **Lb. 39¢**

**LOIN Steak** Good Quality **Lb. 85¢** **CLUB Steak** Good Quality **Lb. 75¢**

**ender Pork Chops** **POUND 75¢**



**BACON ENDS**  
**5 Lb. Box 1.59**

H. B. MacMoy, Owner  
7:30 a.m. to 8:00 p.m. Weekdays  
7:30 a.m. to 9:00 p.m. Saturdays

**NEWS FROM DESDEMONA**

The clipping sent me by a daughter in West Texas is typical of our town and other small towns around. It goes something like this: "There is not much to see in a small town, but what you hear makes up for it."

The H. H. Williams and Jessi Sparkmas were in Goldthwait Sunday afternoon visiting with the Charles Skipping family.

Mr. and Mrs. Thomas May and sons of Humble, Texas, were here one week with her parents, the John Arnolds. Also visiting with the Arnolds was their daughter, Mrs. Frank Leazar. Two of the May boys stayed over for a longer visit with their grandparents.

The T. R. Wilcoxson family of Odessa are on vacation with their parents, the J. M. Wilcoxson and Ethel Keith.

The B. M. Keiths of Cisco and her sister, Miss Arvilla Cameron of Abilene, were Sunday visitors with Ethel Keith.

Jimmie Cassell who had been a patient in Gorman Hospital returned home and is reported to be improving.

Mrs. Ethel Patterson sold her home here to Mrs. Mollie Emde and will leave for Wilson, Okla., where she had previously purchased her home.

Mr. and Mrs. Bobbie J. Ragland and son spent the week-end here with his parents, Mr. and Mrs. C. E. Ragland. Mary and the baby stayed here to spend the week with relatives.

Mr. and Mrs. Melvin Abernathy of San Angelo were here one day last week and visited a while with his parents enroute to Stephenville on a business trip.

Mr. and Mrs. Bill Riddle and daughters and his mother, Mrs. Robbie Riddle were in Abilene on business.

Mr. and Mrs. R. G. (Skinny) Lewis and children, Vicki and

Philip Stan; Mr. and Mrs. Bill Good and children, Robbie, Bol and Mackie spent Saturday night on a fishing trip to the Colorado River and reported a good catch.

The newest business here is the Sinclair Station that Bill Greenaw, owner and operator sold to Bill Thomas of Wink. Thomas is open for business. Come in and see the new boss. He is the brother-in-law of Rim Pack.

The Thomases will make their home here.

Welcome Mr. and Mrs. Bill Thomas.

Mr. and Mrs. Rob Guthery and children, Mr. and Mrs. Chubbie Foreman of Irvin were here for the past weekend.

The Ferrell Lewis children, Mr. and Mrs. Blackie Foreman, Mr. and Mrs. James Riggs and Buckshot of Fort Worth, were home for the week-end.

**ROUSE FAMILY HOLDS REUNION**

The annual Rouse family reunion was held at the home of Mrs. Effie Rouse in Desdemona July 13 through 20.

Attending the reunion were Mr. and Mrs. Henry Short and son, Vernon, of Fayetteville, Arkansas, Mr. and Mrs. Jessie Clark and Beverly Jean Clark of Electra, Mr. and Mrs. Ellis Rouse, of Alice, Mr. and Mrs. Clifton Short, Sammie, Dorothy, Patricia Ann and Denny Ray of Brady, Mr. and Mrs. Pearl Petty of Brownwood, Mrs. Desse Alsin of San Angelo, Mrs. Fannie Miller of Colorado City, Mrs. Lloyd Rouse of Freer, Mrs. Ann Russell of Winchell and Mrs. Rouse of the home.

**Helps Heal And Clear Itchy Skin Rash!**

Zemo—liquid or ointment—a doctor's antiseptic, promptly relieves itching, stops scratching and so helps heal and clear surface skin rashes. Buy Extra Strength Zemo for stubborn cases!

**Funeral Directors**  
**HAMNER FUNERAL HOMES**  
Ben E. Hamner  
Oxygen Equipped - Air Conditioned  
Eastland Phone 17 Cisco Phone Hillcrest 21211  
**AMBULANCE SERVICE ANY WHERE ANY TIME**  
Nominal Cost Burial Insurance  
For The Entire Family

**REPAIR AND REMODEL**

NO DOWN PAYMENT...  
36 MONTHS TO PAY

- ★ PAINT
- ★ WALLPAPER
- ★ LUMBER
- ★ HARDWARE
- ★ ALL BUILDING MATERIALS

**HIGGINBOTHAM-BARTLETT CO.**  
Jack Elliott, Mgr.  
301 W. Main Phone 112 or 1014



**For the best service you ever had**

... Stop for service under your neighbor's Humble sign.

Station salesmen are specially trained to give your car the care it needs, and they take a personal interest in each job you give them. Whatever you order—washing, lubrica-

tion, an oil change, battery service, or whatever—you can be sure that the work will be well done.

Shift the care of your car to the shoulders of your neighbor in a Humble uniform. You'll be proud of the way it looks, you'll be pleased with the way it runs.

HUMBLE OIL & REFINING COMPANY



**RETURNS FROM VACATION**  
Mr. and Mrs. Jeff Laughlin have returned after spending a "wonderful" six days vacation at Lake Dallas.

Dallas; Mrs. Smith's parents, Mr. and Mrs. Earnest Hall of Dallas; Mrs. Smith's sisters and brothers-in-law Mr. and Mrs. J. D. Marsh-

all and children of Dallas and Mr. and Mrs. Frank DeMay and children of San Francisco, California at Lake Dallas. The group enjoyed fishing, swimming, boating and skiing during their vacation. Mrs. Laughlin caught the largest amount of fish.

WHATEVER THE SEASON — WHATEVER YOUR FOOD NEEDS

When you want to save money  
**A&P IS THE PLACE TO SHOP**

**SALE! A&P INSTANT COFFEE**  
6-OZ. IAR **99¢**



Jane Parker  
**Apple Pie 39¢**

**NO LIMITS!**  
Closed all day every Sunday.

**ANGEL FOOD CAKE** Jane Parker Large King ea. **39¢**  
**GIANT JELLY ROLL** Jane Parker ea. **49¢**  
**RAISIN BREAD** Jane Parker 1-lb. Loaf **17¢**

**ANN PAGE SPECIAL!**  
**Ketchup 2** 14-OZ. BOTTLES **35¢**

ANN PAGE GELATIN  
**SPARKLE** 4 Pkg. **27¢**

DEODORANT BAR  
**ZEST SOAP** 2 Reg. Bars **29¢**

DEODORANT BAR  
**ZEST SOAP** 2 Bath Bars **39¢**

SWEETNER  
**SWEETNER** 8-oz. Btl. **59¢**

REYNOLDS WRAP  
**ALUM. FOIL** HEAVY DUTY 25-ft. Roll **59¢**

KRAFT FRENCH  
**DRESSING** 8-oz. Btl. **25¢**

KRAFT  
**CHEEZ-WHIZ** 16-oz. Jar **53¢**

"QUICK-ACTION"  
**GULF SPRAY** Pt. Can **35¢**

**FRESH BUTTER** SILVER-BROOK 1/2-Lb. Ctn. **35¢**

**Orange Drink** SOUTHERN SUN FROZEN 2 6-oz. Cans **25¢**

**A&P MELLORINE** 1/2-gal. Ctn. **39¢**

**A&P GRAPE JUICE** 24-oz. Btl. **29¢**

**FLOUR** SUNNYFIELD 25 Lb. Sack **1.69**

JANE PARKER SLICED  
**WHITE BREAD** 1 1/2-Lb. Loaf **23¢**

"SUPER-RIGHT" ROAST BEEF 12-oz. Can **39¢**  
"SUPER-RIGHT" CORNED BEEF 12-oz. Can **39¢**  
"SUPER-RIGHT" LUNCHEON MEAT 12-oz. Can **43¢**  
ALL PURPOSE dexo SHORTENING 3 1/2-lb. Cans **75¢**

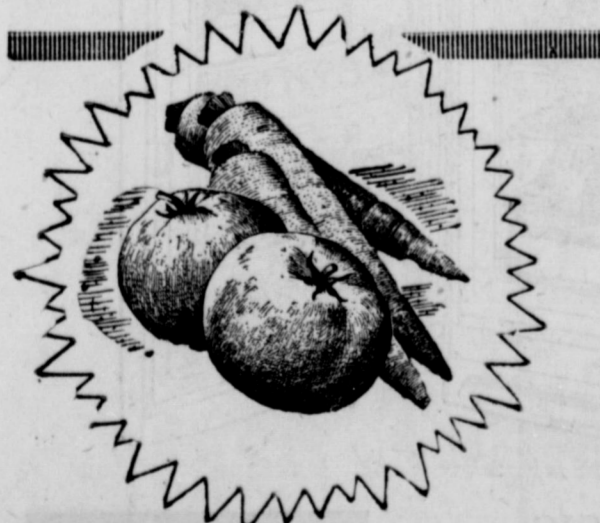
WEBSTER'S Section 2-15 and 2-Pt. Binder with any purchase **89¢**  
DIETIC MAYONETTE 13-oz. Jar **65¢**  
ANN PAGE Ice Cream Toppings 2 8-oz. Jars **35¢**  
SUNNY FIELD Flour .... 50-lb. sack **3.25**

Dependable "Super-Right" Meats!  
**FRYERS** "Super-Right" Whole .... lb. **35¢**

For a Better Tasting and More Complete Meal Serve Chicken with  
**OCEAN SPRAY CRANBERRY SAUCE** 16-oz. Can **25¢**

"SUPER RIGHT" THICK  
**SLICED BACON** 2 Lb. Pkg. **1.29**

"Super-Right" Heavy Calf Chuck Capn. John's Frozen Breaded  
**Roast** Lb. **55¢** **Shrimp** 10-oz. Pkg. **59¢**



CALIFORNIA THOMPSON SEEDLESS  
**Grapes** Lb. **15¢**

RED RIPE  
**Watermelons** Each **49¢**

CALIFORNIA VINE RIPENED FRESH  
**Tomatoes** Lb. **19¢**

ARKANSAS ELBERTA  
**PEACHES**  
2 Lbs. **15¢**

LARGE SIZE  
**IVORY SOAP** Lg. Bar **15¢**

MED. SIZE  
**IVORY SOAP** 2 Med. Bars **19¢**

PERSONAL SIZE  
**IVORY SOAP** 4 Reg. Bars **25¢**

REGULAR SIZE  
**IVORY SNOW** Pkg. **33¢**

SOAP FLAKES  
**IVORY FLAKES** Lg. Pkg. **33¢**

GRANULATED SOAP  
**DUZ** Gt. Pkg. **77¢**

DETERGENT  
**OXYDOL** Gt. Pkg. **77¢**

DETERGENT  
**TIDE** Gt. Pkg. **75¢**



**SOCIAL CALENDAR**

**Monday, August 4**  
7:30 p.m. — Pythian Sisters will meet at Castle Hall, 106 Commerce, for their regular meeting.  
8 p.m. — Oddfellow Lodge No. 129 will meet at the IOOF Hall for their regular meeting.

**Tuesday, August 5**  
7 p.m. — A "Round-Up Party" will be held in the home of Mrs. Ed Lorenz, 302 South Conneller by Zeta Pi Chapter of Beta Sigma Phi. The called meeting will be in the form of a covered dish dinner.  
8 p.m. — Rebekah Lodge No. 177 will meet for their weekly meeting in the IOOF Hall.

**Thursday, August 5**  
2 p.m. — The Flatwood Home Demonstration Club will meet in the home of Mrs. L. L. Vines for their regular meeting.

**Slumber Party Is Planned by Socialite Club**

Members of the Socialite Club planned a "slumber party" at their regular meeting held Tuesday afternoon in the home of Barbara McCullough.

The slumber party has been set for August 1. The party was planned during the business with Susan Johnston, president, presiding. They also voted to compile a scrapbook. The reporter will be in charge of the book.

Judy McMillen was honored at the meeting, because it was her birthday. She received a "spanking" from each member.

Refreshments of olives, crackers and Cokes were served to Susan Johnston, Joyce Robertson, Judy McMillen, Linda Eidson, Beverly Kline, Dorothy Ann Jumper, Kay Poe and Mrs. Clyde Moore, sponsor, by Barbara McCullough.

The next meeting will be held August 12.



**Hospital News**

Patients in the Eastland Memorial Hospital are:

Jerry Dukes, medical.  
Mrs. W. M. Culver, medical.  
Mrs. Charlie Jackson, medical.  
J. N. Niver, medical.  
Fred Burfiend, medical.  
Mrs. R. A. Brim, medical.  
Mrs. Edwin Aaron and baby boy.  
Morte McIntire, surgical, Breckenridge.  
Mrs. Tom Loelace Sr. medical.  
Mrs. Wesley Walker, medical.  
Mrs. Mary Brown, medical.  
Mrs. M. O. Hazard, medical.  
Dismissed were:  
Joe Petree, Charles Lee, Mrs. Myrtle Garner, Mrs. O. L. Box, Mrs. Charles Wylie and baby boy, Mrs. H. S. Lewis, and John L. Petree.

Patients in the Renger General Hospital from Eastland and Olden are:

B. J. Elliott, medical, Olden.  
Patricia Slaughter, surgical.  
Mrs. W. E. Brockman, medical, Olden.  
J. A. Flourney, medical.

**LACASA LINES**  
Mrs. D. B. Raney.

Mary Carol and Sheryl Mitchell of Strawn spent last week with their aunt, Mrs. G. V. McGowen. Jackie Lou Basham and Sue Nickell are visiting their grandparents, Mr. and Mrs. K. E. Miller.

The GA's of New Hope Baptist Church attended the associational GA picnic at Possum Kingdom Lake Thursday, July 24th. Those making the trip were Frances and Nancy Veale, Ann Raney, Peggy Leonard, Mrs. Frank Brooks and Mrs. D. B. Raney.

Friday night Albert Bradford Jr. and wife entertained their friends and relatives with moving pictures of their recent tour of Europe. This included the countries of Switzerland, Germany, France, Spain, Holland, Belgium, England, Scotland and Ireland.

Sunday Mr. and Mrs. A. N. Bradford took Albert Jr., and wife to Houston where they will catch a plane for Borota, Columbia, S. A.

Robert Jackson is still in Stephens Memorial Hospital but is reported better.

Mrs. N. E. (Granny) Stanford is ill in the Ranger General Hospital.

Mrs. Myrtle Templeton has been in the Ranger General Hospital for a physical check-up.

**Letters To Editor**

Dear Sir:

The members of the Charles Crawford Chapter of the Daughters of the American Revolution wish to express their appreciation to you for the publicity given in your paper to the Chapter's activities during the past two years. You were most liberal and the Chapter thanks you.

Mrs. T. C. Williams.

TRADE WITH YOUR HOMETOWN MERCHANTS

**PULL THE PLUG ON STOMACH UPSET**  
without interrupting sleep or work!  
When constipation soars your stomach, you feel lousy, headachy. Taken at bedtime, Black-Draught\* is "timed" to relieve constipation first thing in morning — without harsh gripping or urgency! This amazing "overnight" laxative helps sweeten sour stomach too. Then life looks sunny again! Made from pure vegetable herbs, thorough but gentle. Get Black-Draught. \*In Powder or Granulated form — and now in new, easy-to-take Tablets, too.

**CHILDREN** When constipation soars round drearily, get 8yrup of Black-Draught! Tastes honey-sweet!

**Insurance AND Real Estate**  
**D. L. KINNAIRD**  
Life - Fire - Auto - Farm  
Polio - Bonds  
39 years in the Insurance Business in Eastland

**Summer Special**  
From now thru the month of July we will give three 8x10 photos for the price of 2. No appointment necessary, but come early and avoid a last minute rush. Be seeing you!  
**Shy Osborn Studio**  
Cisco, Texas  
Phone Hillcrest 2-2565

**SPECIAL**

**Picnic Table Set**

3-Piece Picnic Table Set ... Unfinished pine, 5-foot long.

In the box **Easy to Assemble** **12.95**

Coats Furniture Ltd.  
305 So. Seaman Phone 585

SERVING THE INDUSTRY

32 Years

Yes, 32 Years Ago This Month We Became Your **SCRAP IRON DEALER**

THIS MONTH EASTLAND IRON & METAL CO. IS YOUR BEST MARKET FOR ALL KINDS OF SCRAP IRON & METAL! SQUARE DEALING THE YEAR ROUND

SINCE 1926

TOURS VARIOUS STATES

Dr. and Mrs. M. A. Treadwell Jr., and children, Terry, Marsha and Randall, returned home Sunday from a two weeks vacation during which they tour various states. While on vacation they visited the Mammoth Cave in Kentucky, toured Ohio, and Washington D. C. and returned home through the Smoky Mountains.

CALL 601 FOR CLASSIFIED ADVERTISEMENT

Jana Weaver, Bride-Elect, Is Feted with Evening Gift Tea

One of the pretty pre-nuptial courtesies to Miss Jana Weaver, who weds Doug King Saturday, August 9, in the First Baptist Church, was a gift tea Monday evening in the Woman's Club.

Cain, Waverly Massengale and Hubert Westfall of Frederick, Oklahoma. Mrs. I. C. Inzer, Julia Lynn Inzer, Helen Taylor, Mrs. Elton Ables and Mrs. Earlene Vincent were included in the house party.

A flower arrangement with Croft lilies featured added a bright note to the club house where the hostesses with Miss Weaver, Mrs. Herbert Weaver, mother of the honoree; Mrs. H. L. King, mother of the prospective bridegroom; and Mrs. Bob King, sister of the future bridegroom; received.

The register table, containing the white bride's book, featured an arrangement of turquoise and white carnations and pom-poms. The hostesses alternated at the register table, the tea table and saying the good-byes.

An arrangement of turquoise carnations and white pom-poms flanked with white tapers in crystal candelabra formed the centerpiece of the tea table spread with a white cutwork cloth over turquoise. Appointments were of crystal and silver. White cake squares topped with turquoise rosebuds were served with the fruit punch and salted nuts.

Miss Weaver favored a dress of green, embroidered, cotton satin and wore a corsage of turquoise carnations. White carnations formed the corsages of Mrs. Weaver, Mrs. H. L. King and Mrs. Bob King.

Appropriate tea music was furnished throughout the evening by Jan Robertson and Linda Huckabay.

The bridal gifts were displayed on long tables centering the room.

Ice Cream Social Is Held by Class Of Bethel Church

An ice cream social was held in the Eastland Park Tuesday evening by Group II of the Adult Training Union Department of the Bethel Baptist Church.

Member of the class furnished the cake and ice cream for the supper. Following the supper the group enjoyed fellowship.

Attending the supper were Mr. and Mrs. J. D. Earley, Larry and Billy Wayne, Mr. and Mrs. J. T. Gregory, Mr. and Mrs. L. C. McCullough, Tommy and Jerry, Mr. and Mrs. Luce Pittman and Lana, Mr. and Mrs. Marcus O' Doll and Mike, Mr. and Mrs. Gene Boney, Carla and Rex, Mrs. James Flaming and Dee.

Mrs. Jess Northcutt and Ann Northcutt of Fort Worth were guests at the supper.

VISITING GRANDPARENTS

Wayne Moore and Ray Hallford of Bay City are visiting with their grandparents, Mr. and Mrs. E. W. Hufstetter, in Stephenville. Mrs. Willis Moore accompanied the boys to Stephenville and spent Monday there.



THE POWER OF SUGGESTION—Andi Stein is a gal who can't help giving her impression of a painting by Sandre Benamison called "Reborn." The work was on display at a Greenwich Village outdoor art show in New York.

NEW RESIDENT

Mr. and Mrs. M. A. Treadwell Sr. are now residing in Eastland after moving recently from Austin. They are residing at 510 South Dixie.

VISITS IN ABILENE

Mrs. C. C. Street has returned home after visiting with her daughter and son-in-law, Mr. and Mrs. Cecil Cope, in Abilene. Mr. and Mrs. Cope accompanied Mrs. Street home for the weekend.

Carolyn's MOVIE Comments By Carolyn Collins

Debbie Reynolds (that "Tammy" gal) stars again in a wonderful movie of "This Happy Feeling" and sings the song which bears the same title.

Starring with Debbie is Curt Jurgens, as the good-looking boy next door, and John Saxon, as a continental lover. "The Happy Feeling" is a story of love and is filled with comedy as Debbie plays a sly, saucy delightful role.

"Desire Under the Elms"—the title is enough to make you ask yourself if you should see this show or should your children see it—stars the lovely Sophia Loren, Anthony Perkins and Burl Ives.

In frank and shocking motion picture of "Desire Under the Elms," three characters are portrayed—Miss Loren is the beautiful young wife of an old man; Anthony Perkins—is scorned by his father as a weakling but is

strong enough to take his father's wife; and Burl Ives as a rock-hewn patriarch with a young man's vigor.

Jerry Lewis stars again as a bachelor caddy of three babies in the movie of "Rock-a-Bye Baby" at the Majestic Theatre this week. Starring with Lewis is Marilyn Maxwell and Connie Stevens.

Miss Maxwell leaves Jerry the babies to take care of while she makes a movie in Egypt but in her absence the judge awards a wealthy lady the custody of the babies, being that Jerry is a bachelor. To keep the babies Miss Maxwell announces over TV that the babies are her's and Jerry is their father. At the same time Connie Stevens claims they are hers. You will want to see this comedy.

VISITS IN AUSTIN

Mr. and Mrs. Willis Moore, Wayne and Ray Hallford, who spent last week with the Moores, visited in Austin Sunday with Mr. Moore's brother and sister-in-law, Mr. and Mrs. Aubrey Moore. Ray resides in Bay City and is a nephew of the Mrs. Moore.

FORT WORTH VISITORS Mrs. Jess Northcutt and Miss Ann Northcutt of Fort Worth are here visiting in the home of Rev. and Mrs. Flaming, Dee and Dave. Mrs. Flaming is the daughter of Mrs. Northcutt. They plan to return home Sunday afternoon.

T. L. FAGG REAL ESTATE Property Management Home and Farm Loans



Don't fail to include a wedding portrait in your plans for this once in a life-time occasion.

For Appointment Phone 46 CANARIS STUDIO

DUBLIN RODEO

Preview of the MADISON SQUARE GARDEN RODEO

- Same acts and livestock used in Madison Square Garden Rodeo. Parades daily at 5 p.m.; Performances nightly at 8 p.m.

E. E. COLBORN Arena Director

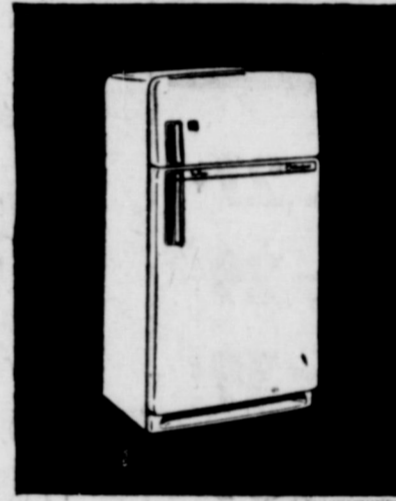
Adults \$2; Children \$1 Reserved Boxes \$2.50

Aug. 6, 7, 8 & 9

L. R. KELLER TICKET CHAIRMAN

DUBLIN RODEO ENTERPRISES DUBLIN, TEXAS

THE ONE MODERN REFRIGERATOR



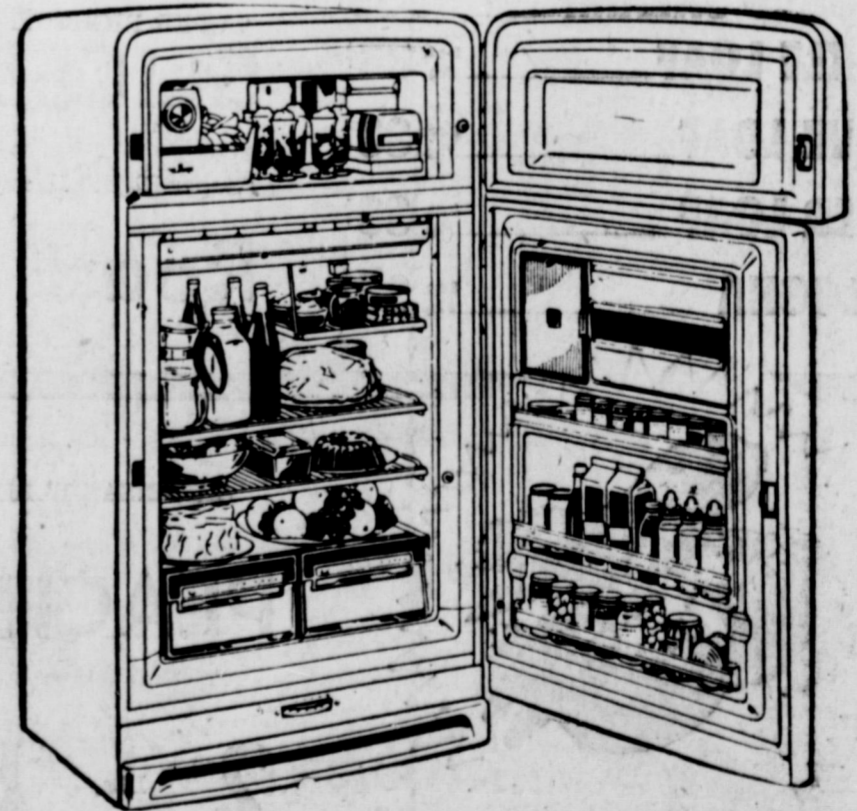
new from RCA Whirlpool

Here it is... today's newest and most modern refrigerator. Quiet... trouble-free... no moving parts in the freezing system to wear out or cause costly repairs. Vibration-free, too. So superior in operation it dates old-fashioned, motor-compressor-driven types. A tiny and dependable blue flame does all the cooling, freezing!

ten year guarantee on freezing system! no old-fashioned pulleys, pistons, compressors!

GAS

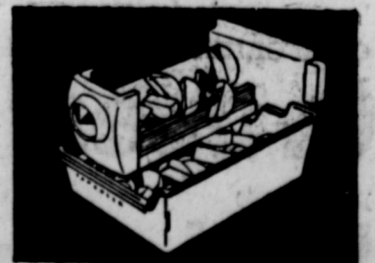
ICE MAKER REFRIGERATOR



Huge 11 cubic foot refrigerator automatically defrosts itself. Separate freezer stores 70 pounds of frozen foods. Color-keyed interior has glide-out shelves; convenience door holds 2 dozen eggs, 3 pounds butter, scores of other small items right at finger tip. Ten year warranty of gas freezing system... twice as long as any other... more proof that GAS gives you the world's finest refrigerator.

ICE MAGIC

Ice circles - one or a basketful - automatically replaced as you use them... no more trays to fill, spill, or refill. You can't run short because the GAS RCA Whirlpool never forgets!



As low as \$3.49 a week... payable monthly \$100 trade-in on your old refrigerator - BUY NOW AND SAVE! LONE STAR GAS COMPANY

Our Thanks To You!

We are grateful to you, our customers, for the fine cooperation you have shown, and for the acceptance you have given the new account numbering system. Your use of the free personalized checks and identification cards have made the installation of our new electronic bookkeeping much easier and more effective.

We will appreciate your continued cooperation so that we may give you faster, more accurate service. We want to give you the best in modern banking service.

If you have not received them, please come by the bank for your free personalized checks and identification cards.

EASTLAND NATIONAL BANK

"ON THE SQUARE"

Member FDIC

Member Federal Reserve

# Play SAFEWAY'S "CROSS-OUT" GAME!

More Than 9,500 Prizes ... Worth Over \$95,000!

It's Free! It's Easy! It's Fun!



NOTHING TO BUY — JUST COME IN AND GET YOUR CARDS AT SAFEWAY

### FOLLOW THESE SIMPLE RULES

1. Pick up your Safeway "Cross-Out" Card today at your Safeway Store — and each time you stop thereafter for the next 12 weeks.
2. Match the numbers on your card against the master numbers. Pencil an X over those numbers on your card that match these numbers.
3. If you can "X-OUT" on your card, five numbers in a row, either down, across or diagonally, you have WON A PRIZE! Just turn over your card and you'll know what you have won.
4. IF YOU HAVE A WINNER — Fill out the required information on the back of the card and mail it to: Cross-Out, Box 551, St. Louis, Missouri. You'll receive your prize in about 15 days.
5. IF YOU HAVEN'T A WINNER THIS WEEK — Erase the X's from your card and save it to play against Safeway's ads next week-end in this paper, and each succeeding ad of the contest.
6. Save this "Cross-Out" ad and every "Cross-Out" ad for the next 11 weeks — a previous "Cross-Out" may have winning numbers for a new card.
7. Any one card and any one ad can be matched to claim a winner but numbers from more than one ad cannot be combined to form a winning card.
8. Cards will be given to adults only.
9. Complete rules and instructions on every "Cross-Out" card.



Free! Prizes Like These

### HERE'S YOUR FIRST "CROSS-OUT" GAME!

MATCH THESE NUMBERS AGAINST YOUR CROSS-OUT CARD NOW AVAILABLE AT SAFEWAY

If you have 5 numbers in a row — down, across, or diagonally on your card you have a winning card. Turn card over to see what you have won and mail card as directed. You will receive your prize in a few days.



Copyright © U.S. Patent Pending—U.S. © 1957, 1954, 1955, 1956, 1957 & 1958. Canada © 1954, 1957 & 1958 by "Cross-Out" Adm. Co., Box 551, St. Louis, Mo., U.S.A.



Check These Special Buys!

## Kitchen Craft Flour

Wonderful for All Your Cooking and Baking, Guaranteed to Give You Perfect Results!

5-Lb. Bag 39¢ 10-Lb. Bag 75¢

## Edwards Coffee

Regular, Drip or Fine Grind ... Finest Quality, Lower in Price

2-Lb. Can \$1.65 1-Lb. Can 83¢

## Busy Baker Crackers

Perfect for Snacks, Just the Thing to Serve as a Complement to Soup

1-Lb. Box 19¢

## Cherub Milk

Evaporated, for Cooking, Cream in Coffee, and of course in Baby's Formula

3 1/2-Oz. Cans 39¢

## White Magic Detergent

Now Power Protected in Foil! Buy ... Compare ... Finest Quality Detergent at a Savings

Giant Box 59¢

Safeway's Farm-Fresh Vegetables!

## LETTUCE

Crisp, Firm, Solid Heads at a Real Savings Price. Summer Time Means Salads, Salads Means Safeway Lettuce

Large Head 10¢



Armour's Star Sliced

## BACON

Thursday, Friday and Saturday Only!

Wonderful Smoked Flavor 1-Lb. Cello

65¢

## Fresh Tomatoes

Firm, Solid Red-Ripe Tomatoes, Carefully Selected

2 1/3-Oz. Ctns. 25¢

## Canned Picnics

Armour's Star No Bone, No Waste

3 Lb. Can \$1.99

### CRAGMONT Beverages

Flavors Only Plus Deposit Full Quart Bottle 10¢

Lux Soap White or Colored 2 Reg. Bars 19¢

Liquid Wisk Detergent 16-Oz. Can 39¢

Extra-Fluffy All Detergent Large Box 32¢

All Detergent Low Sudsing Large Box 39¢

Bug Proof Paper Shelf and Lining Paper Roll 39¢

Breeze Detergent Gets Clothes Clean Large Box 33¢

Rinso Blue Detergent Large Box 32¢

Liquid Lux Detergent 12-Oz. Can 39¢

Prices effective Thursday, Friday and Saturday, July 31 - Aug. 1-2, In Eastland. We reserve the right to limit quantities. No sales to dealers.



# SAFEWAY

### Cinnamon Rolls

Curry — 8 Count, Thursday, Friday and Saturday Only — Regular 23¢ 11 1/2-Oz. Pkg. 19¢

White Bread Mrs. Wright's — Regular or Sandwich Sliced 24-Oz. Loaf 24¢

Cracked Wheat Bread 1-Lb. Loaf 19¢

### Gonzales Warm Springs Foundation May Close in Next Few Months

Gonzales, July 30—In the next 60 to 90 days, Texas' largest special reorganization center, the Gonzales Warm Springs Foundation, must either make the great financial or close its doors to handicapped Texas citizens. Approximately 4,500 patients have received comprehensive treatment since the center opened in 1941.

Faced with a deficit of \$100,000 as the result of a dramatic shift from polio care to the treatment of numerous other handicapping injuries and diseases, the Foundation's statewide board of directors was called into emergency session Monday. While polio care has been extensively financed by the National Foundation for Infantile Paralysis, few funds are available for patients suffering from brain damage, spinal cord injury, strokes, and such diseases as cerebral palsy, muscular dystrophy, and multiple sclerosis.

The new program of the National Foundation will not provide patient care help for patients other than polio in the immediate future, according to the Foundation's board of directors.

No child whose conditions could have never been turned away for lack of funds, and the welfare program has also been extended to adults.

"It is our fervent hope that the Foundation's many friends, apprised of this need for additional funds, will come to the aid of this truly outstanding work," R. L. Payne of Dallas, president said.

Stringent economies in the center's operation, special efforts to raise funds for immediate needs, an emergency public information and fund-raising campaign and the establishment of a long-range fund raising program were ordered by the board.

The name of the 110 bed center, Texas' only complete medical facility for the rehabilitation of the severely handicapped, was officially changed to the Texas Rehabilitation Center of the Gonzales Warm Springs Foundation.



**CHOPPER JOHN**—The world's largest production helicopter, the Army's Mojave, carries an Honest John rocket and special launcher in a sling in a mobility experiment. As publicly demonstrated at Fort Bliss, Tex., recently, the Honest John is normally fired from a truck.

### Dublin Ready For 19th Annual Rodeo, Aug. 6

Dublin, Texas (Special)—Final preparations are underway in Dublin for raising the curtain in the 19th Annual Dublin World Championship rodeo. It opens for a four night stand on Wednesday, Aug. 6.

Everett E. Colborn, nationally known rodeo producer who annually stages the Dublin Rodeo for Dublin Enterprises, Inc., has promised some of the toughest and wildest rodeo stock to match wits and drawn with some of the leading rodeo performers in the country.

The Dublin Rodeo annually attracts scores of contestants in the various events, many of them leading contenders for the Rodeo Cowboy Association championships. Top performers, plus top quality rodeo animals have won the Dublin Rodeo wide acclaim for this world-championship event.

In addition to top-ranking rodeo contestants, specialty acts will be presented between contest in bull riding, bareback bronc riding, saddle bronc riding, steer wrestling, calf roping and wild cow milking.

One of the top-light specialty acts will be presented on each of the four nights, of the Freddis, a father and son team direct from Germany who have performed all over the world with their teeter board and trampoline act.

The pair, Alfred Reiff and Gino Reiff, formerly were engaged with Ringling Brother Circus for a period of three years. Since that time they have performed in Canada and Mexico, as well as throughout the United States, with Shrine Circuses, state fairs and leading rodeos.

Other attractions include Buck LeGrand as rodeo clown, girl's trick riding events and a junior horse show for entrants up to 12 years of age.

Tickets may be secured in advance by writing L. R. Keller, ticket chairman.

### Gorman Gatherings

By Mrs. R. E. Boucher

Mr. and Mrs. Marvin Nix left Saturday for Dangerfield where they will attend the Nix family reunion. They plan to have a short visit there and then head for the Ozarks for a few days vacation.

Mr. and Mrs. Gene Ellison, Pat and Jeanne, of Abilene, are visiting with their parents, Mr. and Mrs. J. N. Ellison and Mrs. Fannye Burkett.

Little Dee Plyler of Austin is here for an extended visit with her grandmother, Mrs. Fannye Burkett.

Mr. and Mrs. T. E. Hogan had as their guests over the weekend, their daughters and grandchildren, Mrs. Bob Newton and boys, and Mr. and Mrs. LeRoy Nabors and baby of Fort Worth.

Mrs. Ella Logan of Corpus Christi was a weekend guest in the home of her mother and sister, Mrs. Angie Pritchard and Ethel.

Claytie Miller spent the weekend with his family and Mr. and Mrs. S. E. Linder. Mrs. Miller accompanied him to Graham where he is employed. She will be with him several days. We are glad to report he is able to take up his duties again. He is with the news press in Graham.

Mrs. C. H. McCroan, Mr. and Mrs. Frank Roberts, of Dallas, were weekend visitors in the home of Mrs. McCroan's sister and brother, Mr. and Mrs. J. N. Ellison and Mr. and Mrs. T. H. Bennett and other relatives.

Mrs. Mose Roach and Warren Bailey of Rising Star were Sunday visitors with Tom Cox who is a patient in the Blackwell Hospital. They also spent a few hours in our home. Grandma Roach will celebrate her 92nd birthday August 7. We feel highly honored having her and Warren visit.

in our home. My husband boarded with her two-years and taught school at Old Macedonia, and here is where Warren first went to school.

Mrs. Caroline Bennett is home from a few weeks visit with her daughters and son-in-law, Mrs. W. C. Pallard and Mr. and Mrs. O. B. Shero in Abilene. The daughters brought her home Friday.

**Brick - Concrete Rock Work**

Free Estimates

Phone 1149

**Ed Lorenz**

**Dollar Day Special 60-Gauge NYLONS**

Guaranteed perfect, full fashioned 59c pr.

**MODE O' DAY**

East Side Square Eastland

**NOTICE**

For Reliable TV SERVICE

Call **DAVE DUNCAN**

Phone 2761 in Olden

**DR. R. G. VERHETSEL**

CHIROPRACTOR

announces the removal of his office to

**709 South Seaman**

**EFFECTIVE AUGUST 1**

Open Weekdays from 9 a.m. to 5 p.m.

Closed Thursday and Saturday afternoons

Phone 536

### Agriculture In Changing State

College Station, July 30—Agriculture has a highly shifting nature—big changes are in store and many had already occurred, according to Alvin B. Wooten, extension economist.

For example, U. S. farm population dropped nearly two million persons in 1956—an all-time record drop for any single year, says Wooten. But while numbers are decreasing, farm size is increasing. Since 1940, average farm size has increased 40 percent and investment per farm has increased 300 percent (when inflation is allowed for.) Farm land values have risen 40 percent in the last seven years.

Only 12 percent of the population is engaged in farming, says the economist. This means 12 percent of the population now provides the raw material to feed itself and the remaining 88 percent in Colonial times, more than 58

### Court of Civil Appeals Eleventh District

**Application for Writ of Mandamus Refused:**

3413 F. M. Wheeler vs. Hon. W. J. Oxford, District Judge, et al. Palo Pinto. (Opinion Per Curiam)

**Motions Submitted:**

3386 Texas Employer's Insurance Association vs. Ida Cleo Metz et vir. (Bexar) Appellant's second motion for rehearing.

3416 J. S. Garlington vs. N. H. Reed et al. (Howard) Appellant's motion for further extension of time to file the record.

3417 Ernest L. Briggs vs. Richard Henley. (Taylor) Agreed motion to file Appellee's briefs.

341 Fireman's Fund Insurance Company vs. D. C. Bybee. (Comanche.) Agreed motion for extension of time to file briefs.

3422 Wesco Production Company et al vs. Birdwell & Son Drilling Company. (Coleman) Appellant's motion for extension of time to file the record.

**Motion Granted:**

3416 J. S. Garlington et al vs. N. H. Reed et al. (Howard) Appellant's motion for further extension of time to file the record. Motion is granted and time extended to August 13, 1958.

3417 Ernest L. Briggs vs. Richard Henley. (Taylor) Agreed motion to file appellee's briefs.

3421 Fireman's Fund Insurance

### Oil and Gas Book Available

TULSA (Spl.) — Oil and natural gas industry activities in 29 states are discussed in a free booklet published by the Independent Petroleum Association of America.

IPAA's 1958 edition of "The Oil Producing Industry in Your State" answers 50 basic questions about the economy and natural resources of the 29 states with established oil and gas production. The new edition of the popular reference book points out that consumption of oil and gas in the United States averages more than 1,000 gallons per year for each man, woman and child.

Among other facts and statistics, the book points out that at the end of 1957 there were 563,543 wells producing oil from 23,496,975 acres that had been proven productive in this country. It was estimated that almost 350 million acres of non-productive land was under lease.

The association distributes about 5,000 copies of the publication each year. It is available free, on request, from IPAA's Information Service, P. O. Box 1019, Tulsa, Okla.

**MONTH END...**

**DISCOUNT**

SHOP EARLY WHILE QUANTITIES LAST — ALL SALES FINAL

**All Summer DRESSES AND SPORTS WEAR Reduced To Clear**

**1/3 AND 1/2 OFF**

**One Group Dresses, Skirts, Blouses and Boy's Coats**

Reg. 5.98 to 17.95 **NOW 3.00**

**All Summer BAGS**

**1/2 OFF**

Plus Tax

**One Group Odds and Ends**

Children's Wear, Hose, Boy's Shirts, Lingerie

Regular 1.00 to 3.55 **NOW 1.00**

**Accessories**

To Clear Flowers

Gloves, Hats, 1-3 to 1-2 off

**SUMMER LINGERIE**

One Group ..... **One-Half off**

One Group ..... **One-Third off**

One Group Jewelry 50c plus tax

**One-Third Off On All JEWELRY**

**Anderson's**

North Side of Square

**Look Who's New**

Mr. and Mrs. Jerry Lee Johnston of Midway Park, North Carolina, have announced the arrival of their baby daughter who was born July 25. She was named Ieta Kaye.

Mrs. Johnston is the former Miss Kay Burkett and the granddaughter of Mrs. C. C. Street and Mr. and Mrs. Omar Burkett.

**NOTICE**

**FRESH DRESSED FRYERS and Fresh Dressed Hens**

At The Plant

PHONE 110

**WALKER Dressing Plant**

**M. H. PERRY**

Representing

**Southland Life**

Life - Retirement Income Partnership

Mortgage Cancellation

Educational - Annuities

Accident - Sickness

Hospitalization - Group

Call 173 or 713-J

107 W. Main \* Eastland

**CALL 601 FOR CLASSIFIED ADVERTISEMENT**

Company vs. D. C. Bybee. (Comanche.) Agreed motion for extension of time to file briefs.

3422 Wesco Production Company et al vs. Birdwell & Son Drilling Company. (Coleman.) Appellant's motion for extension of time to file the record.

**Motion Overruled:**

3386 Texas Employer's Insurance Association vs. Ida Cleo Metz et vir. Appellant's second motion

**WHEN'S THE TIME TO BUY A CAR?**

**"WHEN I CAN AFFORD IT!"**

Task, task! Too bad he hasn't checked up on car prices lately. He'd find that Ford is the lowest priced\* of the best-selling three!

**"WHEN THEY INVENT A CAR THAT DOESN'T NEED GAS!"**

Gracious! The gentleman obviously hasn't heard about Ford's Mileage Maker Six—the modern short-stroke Six that delivered the most miles per gallon in Class A in the last two Mobilgas Economy Runs!

**"WHEN THE OLD CAR'S HAD IT!"**

But it has... and so has his budget. If he could only have back all the money he's been paying out (and is going to pay out) in repair bills... he could be the proud owner of a 58 Ford!

**"WHEN MY PRESENT CAR IS WORTH MORE!"**

Poor man. He's not only missing out on summer driving in a Thunderbird-inspired Ford... he's missing out on money! Doesn't he know that his present car will NEVER be worth more in trade than right NOW!

**"WHEN FORD DEALERS ARE GIVING THE YEAR'S BEST DEALS DURING FORD'S SUMMER TRADING PICNIC!"**

Smart fellow! He's buying NOW while Ford Dealers are holding their Summer Trading Picnic and giving the longest deals and the highest trades ever... and while the selection of models and colors is best. What's more, he'll find that Ford is the lowest priced\* of the best-selling three! Why not join him at your Ford Dealers?

\*Based on manufacturers' suggested retail delivered prices

See the only first run western on TV— "Buckskin," Thursday, 8:30 CST, Chan. 9, and for thrills, see Destiny, Friday, 7:30 CST, Chan. 4

**NOW'S THE TIME TO BUY A FORD!**

**King Motor Company**

100 E. Main EASTLAND Phone 42

FOR A BETTER BUY IN A USED CAR OR TRUCK, BE SURE TO SEE OUR OR OTHER SELECTIONS