



MOORE
about...
EASTLAND
E. Moore

...to be census time
...as it is in the rest
...We hope that
...citizen gets his
...in this census, he
...certainly want to get
...every individual who

...some doubt as to what
...population now is.
...hear just about any-
...want to. Guesses
...the way from 3,500,
...would mean a drop in
...since 1950, to as
...5,500. Our prediction
...new signs on the edge
...will read 4,200. A while
...said we would rig up
...of prize for the per-
...guesses the nearest to
...city population. That
...if you care to take a
...and us a postcard with
...address and your

...-vem-
...become the policy of
...groups in Texas to
...questionnaires to pros-
...members of the Texas
...These questionnaires
...interest us, because they
...reflect just what the
...expectations from a
...return for help from that
...the polls.

...interested in the seven
...each candidate for
...Senate by the Tex-
...Teachers Association,
...one of the strongest
...of the state. The questions
...

...you agree that a strong
...program must be pro-
...Texas children?
...you favor enactment of
...taken program into law?
...you give active sup-
...to improve the State
...teacher salary schedule
...ended by the Hale-
...Aiken?

...do you support increased
...for maintenance and
...of schools?
...do you support increased
...for school transporta-
...?

...do you believe the State of
...to finance a public school
...to meet the needs of
...?

...do you vote for the
...for this purpose?
...answers from candi-
...TSTA says that most
...have "cast a loud yes
...of the Hale-Aiken
...for education

...see where almost all
...would answer the first
...with a firm yes.
...however, that most
...the seventh with an
...such as this, "I would
...what taxes were pro-
...regulators to agree to
...taxes even before
...what these new taxes

...-vem-
...of education, here
...the latest jokes mak-
...younger circles:
...Dad, I put a stick of
...under the teacher's
...What! Well, you go
...to school and apologize
...to me.

...What school?
...-vem-
...day's bright sunshine
...thoughts to fishing.
...with our usual lazy out-
...many of our neighbors
...up their garden
...are busy getting ready
...about the only thing we
...successfully is garlic.
...have any use for it, but
...to come up each year
...help from us, and
...nothing.

YSCHLAG
INSURANCE AGENCY
presents the
WARM NEWS

...70
...45
...Trace
...02
...1.59
...4.64
...25.83
...Warm and Windy

NATIONAL BANK
"On The Square"
MEMBER F. D. I. C.

Safety Meet Is Held In Eastland Monday

Employees of the Ranger Connection Crew, the Ranger and Grayford Pump Stations of the Service Pipe Line Company, Mineral Wells district held their eighth week safety meeting in the White Elephant Cafe in Eastland Monday, March 7, at 7 p.m.

The theme of "Safety is Everybody's Business" was given by W. F. Leonard Jr., vice president of Traffic of Texas Safety Association in Austin. He is also Director of Safety and Insurance of Oak Farms Dairies of Texas.

Leonard gives approximately 100 safety lectures per year, outside of his job duties. He is also General Chairman of the 21st annual Texas Safety Conference to be held in Dallas March 27-30 at the Hotel Adolphus.

Leonard emphasized courtesy, good attitude and alertness in driving. He paid tribute to the employees and wives of Service Pipe Line Company for their fine safety record. He closed out his speech with a brief formula for safe driving: "When you drive watch everything you can see! Keep the picture right and check the rear view mirror every ten seconds."

Service Pipe Line Company's safety record showed that the Mineral Wells District hadn't had a lost-time accident since December 9, 1958, and the East Texas Division's last lost-time accident was December 15, 1958. A total of 1,532,192 man hours have been worked since a lost-time accident in the Division.

Guests at the meeting and dinner were: E. M. Willingburg, manager of the East Texas Division of Service Pipe Line Company, P. F. Clark, safety director of Ft. Worth, Theo Bell, division chief gauger and Charlie Pince, safety chairman of Humble Pipe Line Company of Cisco.

Safety committee chairman was C. B. White of Grayford, co-chairman S. R. Burger and J. C. Swinney of Ranger. C. G. Prayfer will replace S. R. Burger as safety meeting chairman at the June 27 meeting.

Employees present at the meeting were: Mr. and Mrs. R. D. Roff, Mr. and Mrs. L. A. Hinds and son Ronnie, Mr. and Mrs. Carrol, J. J. Green and S. R. Burger, all of Ranger. Mr. and Mrs. C. B. White and Abbie Polston and son of Grayford; C. L. Wilson, Dist. Supt., from Mineral Wells and Emmitt McMahan, Dist. Clerk, also of Mineral Wells.



SAFETY IS EVERYBODY'S BUSINESS—Was the topic of safety program presented to the Service Pipe Line Company employees at the White Elephant Cafe in Eastland Monday night by W. F. Leonard Jr., center. Others in the picture are left to right, C. L. Wilson of Mineral Wells, C. B. White of Grayford, R. D. Roff of Ranger and F. M. Willingburg of Fort Worth, manager of the East Texas Division. (Photo by Early Studio).

Bobby Cartwright Earns Eagle Rank

Scouting's highest rank was awarded to Bobby Cartwright, son of Mr. and Mrs. M. G. Cartwright, a member of Troop 6, was the Scout receiving the Eagle award. Bobby's father is scoutmaster of the troop.

A total of 14 promotions and 39 merit badges were awarded at the court, under the direction of James Reid.

Four Scouts received their Life ranks. They are Larry Ross, Ted Martin, Bill Garner and Bob O'Steen.

The Star rank went to Tony Lisenbee.

First Class ranks were awarded Daniel Millican and James Fullen.

Clifton Stedham, Gary Lookingbill, Bill Mannke, Ricky Mannke and Charles Mosley received their Second Class ranks.

The rank of Tenderfoot went to Layne Gregory.

Senior Patrol leader Bill Garner made the Tenderfoot presentation. Virgil Moore presented First Class promotions. Willard Griffin made First Class presentation, Jim Horn gave Star promotions and Bob Slaughter made the Life Scout presentations. Merit badges were awarded by Reid.

Mayor Proclaims This Girl Scout Week In Eastland

Mayor Cyrus B. Frost has proclaimed this week as Girl Scout Week in Eastland.

Here is the Mayor's proclamation:

"Whereas the Girl Scouts of the United States of America have rendered continuous service to their country and communities since their founding on March 12, 1912; and

"Whereas we the People of Eastland are aware of the important contribution to community welfare being made by Girl Scout leaders through their work with the youth of the nation; and

"Whereas the Girl Scout organization has grown to more than 1 1/2 million girl members and more than 700,000 adult leaders, who are each day living up to their promise to do their duty to God and country, to help other people at all times, and to live by the Girl Scout laws of loyalty, honesty, courtesy, cheerfulness, usefulness, kindness, and helpfulness to others;

"Now Therefore, I, Cyrus B. Frost, Jr., by the virtue of the authority vested in me as mayor of Eastland do hereby proclaim March 7 to 14 of this year 1860 as Girl Scout Week and March 12 as the 48th anniversary of the founding of Girl Scouting in the United States of America. I therefore call upon all citizens to give the Girl Scouts now and in the coming years the fullest cooperation and support so that increasing numbers of girls may benefit from the splendid program of training in citizenship which the Girl Scout organization offers."

Local Students To All District Band Meeting

Eight Eastland High band students will attend the All-District Band meeting Saturday in Comanche.

A concert Friday night at 7 will highlight the meeting.

Those attending will be Dick Whittington, George Kimbler, Raymond Lusk, Gracie Tankersley, Carole McCleskey, Becky McAllister, Buddy Moser and Wayne Harris.

Game Preserve Meeting Tuesday

The Sabanno Valley Game Preserve Association will hold a regular meeting Tuesday night at the Center Point community house, five miles south of Carbon.

A business meeting will be held, followed by refreshments and games.

HOLLYWOOD HAPPENINGS

news from the
HOLLYWOOD V-ETTE VASSARETTE FACTORY
By GEORGIA GOSNELL

Happy birthdays this week to the following employees: Jane Rogers, Anna Watson, Grace Trigg, Inez Fox, Altha McCormick, Jessie Hamilton, Wanda Blackwell, Willie Hickey and Burma Bradford.

Visiting in our plant Tuesday were Dale Posey and Chuck Paulsey from Paris, while Buster Nelson was with us last week on business.

Noticed Ethel Daniels back at her machine this morning after another trip to the hospital.

Jean Jurnigan reports that she is "Aunt Jean" again. Little Tim Henry arrived in the Breckenridge Hospital last Sunday afternoon about 4 p.m. The proud parents are Mr. and Mrs. S. E. Carter.

In the Gorman Hospital are Glenda Rodgers, daughter of Lavelle Rodgers, and Mrs. Ona Rogers, an inspector on line one.

Six Families Are Welcomed To Eastland

Six new families were welcomed to Eastland during the month of February by the city receptionist.

New residents include: Mr. and Mrs. P. D. Connell and two year old daughter of 505 East Conner. The Connells are former residents of Altus, Okla., and he is an employee of Fullen Motor Co.

Mr. and Mrs. G. R. Loudemilk are at home at 702 West Patterson. Loudemilk is employed by Dunn and Bradstreet. The couple moved here from Fort Worth.

Also moving here from Fort Worth were Mr. and Mrs. John Megason, 607 South Mulberry. Megason is manager of Safeway.

Still another former Fort Worth family, Mr. and Mrs. E. R. Peacock and two children, a three year old boy and a two year old girl, are now living at 207 South Hillcrest. He is an inspector with the Texas State Animal Health Commission.

Mr. and Mrs. D. L. Cook moved here from Abilene, and are now at home at 309 East Valley. He is employed by Victor Cornelius.

Mr. and Mrs. George Van Roeder, new owners of the White Elephant restaurant, moved here from Bryan. They are living at 607 West Plummer.

IN LIVESTOCK SHOW

Approximately 225 F.F.A. and 4-H Club members, representing every community in the county, will compete for ribbons and \$1,500 prize money at the Eastland County Livestock Show March 25 and 26.

Exhibitors will show fat lambs, breeding sheep, goats, fat hogs, breeding hogs, fat steers, breeding beef cattle and dairy animals. Approximately one half of the entries for this year's show will be in the fat lamb and fat hog divisions.

Additional pens had to be added to the facilities at the show grounds to take care of the record number of entries for this year's show. The additional pens were put on the northwest side of the show barn. Members of the Livestock Raisers Association have worked nights getting the additional pens and facilities ready for this year's show.

The show, sponsored by the Eastland County Livestock Raisers Association, is held on the east side of Lake Eastland. George Steele, Rising Star rancher and businessman, is president. Waverly Massengale, Eastland utility company employee and rancher, is general superintendent. His assistant are Keith McDonald, Ranger, and Johnny Aaron, Eastland.

Park Flambeck, Pleasant Hill, and Charles Veale, Ranger, are swine superintendents.

Walter Kurklin and Bob Leveidge, Cisco, are superintendents of the sheep and goat division.

Brandy Humphrey and Jerry

Every County Town Has Representation

D. B. Warren, Southwest Peanut Growers Assoc., director and Glen Justice, County Farm Bureau president, have announced that an "important" peanut growers meeting will be held at the Nimrod community center March 14 at 7:30 p.m.

Several items of vital interest to peanut producers will be discussed. Plans for increasing planted peanut allotment in Eastland County will be one of the featured items.

Emmett Powell, ASC office manager, will explain new peanut acreage allotment provisions.

"Eastland County has lost hundreds of thousands of dollars in the past two years due to the lack of planted peanut acres," a spokesman said.

Justice stated that the Eastland County Farm Bureau is extremely concerned over the lack of planting allotment acres in the County. His organization is co-sponsoring this meeting.

B. C. Langley, superintendent of the West Cross Timbers Experiment Station, Stephenville, will explain to growers the latest practices relative to the prevention and control of Southern Blight and other plant diseases.

Ross Wilson, SWPGA manager, will answer grower questions relating to the 1960 peanut price support program.

Crew Leaders In Area Training To Take Census

Appointment of crew leaders for the 1960 Census of Population and Housing in this area was announced today by Supervisor Max V. Mossholder of the Census Bureau's temporary district office in Abilene.

Each crew leader will supervise about 20 enumerators in the big nationwide census which begins April 1. Crew leader training began March 7. Topics to be covered in the training sessions include procedures for recruiting of census takers, how to train their census takers, canvassing methods, preparation and submission of reports, and the supervision of census takers to insure a complete and accurate count.

"The crew leader is one of the key people in the field operations of the 1960 Census of Population and Housing," Mossholder said. It is his responsibility to recruit and train the census takers; plan and allocate work assignments; review the work of the census takers and take remedial action where necessary, and handle problems of difficult enumeration."

Mrs. Nell McAnnally of Cisco is Eastland County crew leader.

See and Drive the New TURBINE DRIVE BUICK WITH THE WILDCAT ENGINE MUIRHEAD MOTOR CO.

Theft Charges Face California Negroes

Five Negroes from California were being retained today by the Eastland County Sheriff's department after theft of more than \$500 was reported Wednesday by Kelley's Food Store in Eastland.

Sheriff J. B. Williams said he would file charges of theft over

\$50 against at least one of the Negroes today. Being held are two men and three women.

Archie Kelley, owner of the store, described the alleged theft this way. A red, late model Cadillac with a California license plate stopped in front of his store on West Main (Highway 80). One Negro man got out, came into the store and bought a cold drink.

Later the second man came into the store and asked to buy some lunch meat. Kelley went with him to the back of the store. While he was serving the second Negro the

first walked out. Kelley became suspicious because the man he was serving tried to stall him when he started to the front of the store.

The store owner finished serving the second Negro, who left, then checked a bank bag he had underneath the counter which contained \$688.80. The bag was empty. He ran out in time to see the red Cadillac drive off.

An alert was sounded and the car was spotted between Eastland and Baird and the Negroes were returned.

The theft occurred at about 4:30 p.m.

H. F. Hodges Dies Thursday; Rites Friday

H. F. (Frank) Hodges, a former longtime resident of Eastland, died this morning at 5 in a Seymour hospital.

Mr. Hodges has been a resident of Eastland until May of last year. He was living with a son at the time of his death.

Burial will be held Friday in DeLeon with Rev. Harvey Kimbler pastor of the Eastland First Baptist Church, officiating.

Survivors include a son, John T. of Seymour, two daughters, Mrs. Modessa Bell of Stamford and Mrs. Dudley Pittman of Fort Benning, Ga.; and three grandsons.

John L. Sims Dies Suddenly Here Wednesday

Funeral services will be held Saturday at 3 p.m. in the Hamner Funeral Home Chapel for John Lewis Sims, 61, who died Wednesday morning at his home.

Mr. Sims was born Nov. 28, 1899 in Belton in Bell County. He had lived in Eastland since 1926. He was a member of the Baptist Church.

Survivors include three sons, Jerry of Hico, Linnie J. of Odessa and John T. of LaPaneta, Calif., two daughters, Mrs. Wendell Wooster of Beloit, Kan. and Mrs. K. D. Webb of Houston; five brothers, Ollie of Fort Worth, Arnold of Brownfield, Earl of Odessa, Tommy of Hemet, Calif., and Ed of Proctor; one sister, Mrs. Pearl Reed of Fort Worth, and 13 grandchildren.

Burial will be in Eastland Cemetery.

Peanut Meeting Will Be Held at Nimrod March 14

D. B. Warren, Southwest Peanut Growers Assoc., director and Glen Justice, County Farm Bureau president, have announced that an "important" peanut growers meeting will be held at the Nimrod community center March 14 at 7:30 p.m.

Several items of vital interest to peanut producers will be discussed. Plans for increasing planted peanut allotment in Eastland County will be one of the featured items.

Emmett Powell, ASC office manager, will explain new peanut acreage allotment provisions.

"Eastland County has lost hundreds of thousands of dollars in the past two years due to the lack of planted peanut acres," a spokesman said.

Justice stated that the Eastland County Farm Bureau is extremely concerned over the lack of planting allotment acres in the County. His organization is co-sponsoring this meeting.

B. C. Langley, superintendent of the West Cross Timbers Experiment Station, Stephenville, will explain to growers the latest practices relative to the prevention and control of Southern Blight and other plant diseases.

Ross Wilson, SWPGA manager, will answer grower questions relating to the 1960 peanut price support program.

Junior Class Play Set for March 18

The Junior Class will present "The Girl Next Door" in the Eastland High School Auditorium on March 18, at 7:30 p.m.

The action revolves around the Irving family of father, mother, daughter, and high-school son.

Andy, played by Mickey Garner, is terribly interested in the girl next door, June Miller, played by Carrol Garrett. Henry, the father, played by Tony Jordan, is a druggist whose business is about to go on the rocks. Henry must have \$1000 as a down payment and is finding it exceptionally hard to find.

Mrs. Irving, Karen Taylor, doesn't know her husband's difficulties, and is preoccupied by her daughter's home-coming. Alice, the daughter, Alice Frazer, has been in New York, where she has written a novel everyone is talking about. Before going to New York, Alice was engaged to Clark Kent, Roger Taylor, a cashier at the bank. Clark had been going around with Carol Brewster, Suzanne Butler, daughter of the bank president.

Clark doesn't love her, but Carol has determined to marry him, and she usually gets what she wants. Carol is furious when she finds Alice is coming home and she has never ceased to care for Clark and now she wants him back.

Henry tries to get money from everyone, even from Tom, Bill Moylan, his bachelor brother, who has lived with the Irvings for 10 years. Tom is a photographer by profession, but a practical joker by choice. Clark offers Henry the money, but suddenly discovers he is short on an account at the bank. To give the rest of the

Olden Woman's Mother Dies In Germany

Mrs. Marlin McMinn of Olden received word Wednesday that her mother, Mrs. Maria Clochberger of Munchen-Alleeh, Germany, passed away Monday.

Mrs. Clochberger was 70 and had been in ill health for some time. She is survived by one sister in Germany.

Scranton Man Is Stationed In Germany

Army Pvt. Jerry L. Blackwell, son of Robert E. Blackwell, Route 4, Cisco, recently participated with other personnel from the Seventh Army Transportation Section in Exercise Winter Shield at the Grafenwohr-Hohenfels training areas in southern Germany.

Winter Shield, an annual Seventh Army winter maneuver, involved 60,000 troops.

Blackwell, a clerk-typist in the section in Vaihingen, entered the Army in May 1959, completed basic training at Fort Carson, Colo., and arrived overseas the following November.

The 18-year-old soldier is a 1959 graduate of Scranton High School.

Rhodes' Roundup

Hello Again!

Everything has quieted down around high school hill, or at least will after the holiday tomorrow. There have been several exciting little incidents happening around the campus the past week. Last Tuesday school turned out for 30 minutes in order to watch an Eastland girl on the television show "About Faces." We are certainly proud of Ina Hunt, not only for being on television and gaining material wealth, but also for her fine work in Eastland.

Miss Johnson, our dear, sweet English teacher, had a very exciting day last Friday. Friday morning Miss Johnson saw a red pig running around in front of high school. Being a very humane lady, she sent Marvin Agnew and John Stroud to rescue it from a gathering group of dogs. They did this kind deed and found that the pig belonged to Harold Griffin. So began Miss Johnson's day. After noon, Miss Johnson was in class and she just happened to look out of the window toward her home when she saw a tall boy go upon the front porch. I went on inside and Miss Johnson began to worry. She sent her class to studyhall and ran to her car. On the way she saw Mrs. Whitley and told her.

Miss Johnson went on to her house and a long time passed without her return. Mrs. Whitley became frightened and got Marvin Agnew and Linda Huckabay and they went to Miss Johnson's home. Before they could reach the residence, they met Miss Johnson returning. She had caught the culprit herself! It was

the young lady who cleans Miss Johnson's house. Thus ended a wild and woolly Friday for Miss Johnson.

Last Thursday night the Senior Class of E.H.S. was entertained by a banquet given by the W.M.U. of the First Baptist Church. And entertained they were. First, Mrs. Sims welcomed the seniors and Phillip Lewis gave the return message acting as spokesman. R. B. Hall was the master of ceremonies and he and Dick Spalding sang a duet and Mrs. Harvey Kimbler accompanied them.

Harvey Kimbler spoke and then Mr. Spalding sang a very beautiful solo. The speaker, Dr. Wm. Beasley of Hardin-Simmons University, was thought by everyone to be one of the best speakers they had ever heard. Everyone enjoyed it very much and the Seniors wish to thank those responsible for it. By the way, the food was very good also.

On ending my column for this week, I would like to say this. This column is to report the news around our fine high school. It has never been used to degrade or do some ill to anyone and it shall not ever be used as such. It is only my duty to give my comments on certain matters, but that is not a reflection on anyone. This is not a gossip column, personal column, or advice column. If anyone has taken anything I have ever said in this column as to mean anything but what it read, I certainly apologize. See you around.

EASTLAND NATIONAL BANK
"On The Square"
MEMBER F. D. I. C.

Eastland Telegram

Eastland County Record established in 1931, consolidated August 31, 1951. Chronicle established 1887, Telegram established 1923. Entered as second class matter at the Post Office in Eastland, Texas under the act of Congress of March 3, 1879.

TIMES PUBLISHING COMPANY
Published Tri-Weekly—Tuesdays - Thursdays - Sundays
Onous Dick and Joe Dennis, Publishers
Virgil E. Moore, Editor

One week by carrier in city 15
One month by carrier in city 65
One year by mail in County 2.95
One year by mail in state 4.95
One year by mail out of state 6.95

NOTICE TO PUBLIC—Any erroneous reflection upon the character, standing or reputation of any person, firm or corporation which may appear in the columns of this newspaper will be gladly corrected upon being brought to the attention of the publishers.

WANT ADS!

Cards of Thanks charged for at rate of \$2.00 Each

MISC FOR SALE

FOR SALE: New secretarial desk with typewriter storage. Beautiful No. 1 light oak finish. Bargain priced. Eastland Telegram.

FOR SALE: G. I. Equity. Small down low monthly payment. Best location. 2 bedrooms, pretty yard, pavement. M. A. Treadwell, Sr. Call Main 9-2017.

FOR SALE: Choice of 2 and 3 bedroom homes. Priced right. All in good locations. Let me show you these. M. A. Treadwell, Sr. Call MA 9-2017.

OVER 1,000 records for sale. All popular artists. Stereo, Hi-Fi, long-play albums. 45 RPM. Latest releases. Vinson Radio and TV Service. Ranger.

FOR SALE: Small four room house with bath to be moved from Gorman. See Shorty Lawrence, Gorman.

ELECTROLUX (R) Cleaners factory rebuilt and guaranteed. Authorized Sales & Service. 1392 Sayles, Abilene. Ph. OR 3-1136.

FOR SALE OR LEASE: Three acres, well improved. All modern. Close in on highway. Jack Chamberlain. Phone MA 9-1742.

FOR SALE: Nice rooms and apartments with tile baths. \$5.00 up. Bill paid. 70 Apartments. Paramount Hotel, Ranger, phone 9503.

FOR SALE: Antenna and pole, three-quarter Hollywood bed. Dick Yielding.

Credit Department has one very nice slightly used spinet piano at a real bargain price, and one refinished/reconditioned spinet type upright piano (full price only \$189.50 with bench). For information as to terms and where to see write or call Credit manager ED 2-6276, 3320 W. 7th St. Fort Worth 2, Texas for full details.

MISC. WANTED

HELP WANTED: Eastland Steam Laundry. Phone MA 9-2613.

DIRT CONTRACTING crane and dragline, earth tank cleaning my speciality. 20 years experience. All work guaranteed. Temporary quarters Lilley Courts Room 7, 309 East Main. Call MA 9-1522, Lawrence Rollwitz.

WANT TO BUY: A general purpose heavy duty farm feed mill. Must be in good condition and a real bargain. Write or call description to H. C. Jordan, Phone MA 9-2768.

MAN WANTED: Good Rawleigh business now open in W. Eastland Co. If willing to conduct Home Service business with good profits, see C. S. Eldridge, Box 67, Desdemona or write immediately. Rawleigh's Dept., TXC-1020-45, Memphis, Tenn.

WANTED ACREAGE: Have customers who want to buy acreage. If you have land for sale call M. A. Treadwell Sr. MA 9-2017.

WANT EQUITY: Individual desires to buy equity in FHA or QI home in Eastland. Phone MA 9-1392 after five, or MA 9-1707 before five.

WANTED: "Correspondent to represent Dun & Bradstreet, Inc. in the Eastland area on a part-time basis. Job will require direct interview with business men in the area. Applicant should have general knowledge of business in this area. Retired persons acceptable. Apply by letter in your own hand writing briefly stating work experience, educational background, and present occupation. Send our letter to Dun & Bradstreet, Inc., Correspondent Department, P. O. Box 997, Fort Worth 1, Texas."

Want To Lease

WANT TO LEASE: 200 - 300 acres land. Must have well, shade and good drainage. Phone MA 9-2667.

For Lease

FOR LEASE: 500 acres (100 farm land and 400 grassland). Small, new house. Good water. 3 1/2 miles west of Carbon. Phone 7-3337, Cherokee, Texas.

Political Announcements

The Eastland Telegram has been authorized to announce candidates for public office in the Democratic first primary election May 7 as follows:

FOR SHERIFF:
J. B. Williams, re-election
Lee Horn
W. E. (Bill) Reid
Oscar M. (Hop) White

FOR TAX ASSESSOR-COLLECTOR:
J. C. Allison (re-election)

FOR STATE REPRESENTATIVE 76TH DISTRICT:
Paul Brashear (re-election)
Don Kincaid
Scott Bailey

FOR COUNTY COMMISSIONER PRECINCT NO. 1:
J. B. (Tip) Arther
E. W. (Bud) Griffin
O. R. (Ott) Ervin

FOR STATE SENATOR, DISTRICT 22:
Tom Creighton, Palo Pinto Co.
Floyd Bradshaw, Parker County

FOR CONGRESS, 17TH CONGRESSIONAL DISTRICT:
Roy Skaggs of Abilene
R. M. Wagstaff

FOR CONSTABLE PRECINCT 1:
J. H. (Hoover) Pittman
Porter O. Woods

ATTEND THE CHURCH OF YOUR CHOICE EACH SUNDAY

★ ★ ★
ATTEND THE CHURCH OF YOUR CHOICE EACH SUNDAY
★ ★ ★

Funeral Directors
HAMNER FUNERAL HOME
Ben E. Hamner
Oxygen Equipped - Air Conditioned

Eastland Phone MA 9-2611
Cisco Phone Hillcrest 2-1211
AMBULANCE SERVICE ANY WHERE ANY TIME
Nominal Cost Burial Insurance
For The Entire Family

WHY SETTLE FOR LESS

CONSULT **SCOTT Paint & Body Works**
300 W. Commerce
FINEST complete automobile and truck repairing available. Finest equipped shop in this area.

★ 22 YEARS IN EASTLAND
★ ALL WORK GUARANTEED
★ FREE ESTIMATES ON . . .
Paint, Body, Frame Straightening, and Glass Replacement.

We specialize in Wreck Rebuilding and Glass Replacement.

HOW TO GET MORE MILES PER GALLON

AS PROVED IN THE MOBILGAS ECONOMY RUN

Avoid high speeds and jack rabbit starts. Practice safe driving, pacing your speed to traffic lights to avoid unnecessary stops.

Use long mileage Mobilgas R or Mobilgas Special, performance proved in stock cars competing in the Annual Mobilgas Economy Runs.

Bring your car to us for regular Mobil maintenance to make certain it's in shape to deliver maximum mileage.

EARLEY TIRE SERVICE
302 W. Main Ph. MA 9-2355



Dear Sirs,
A few months ago I had occasion to observe the main street of one of Eastland County's towns and I marveled at the unkept appearance of the whole section. Only one building had enjoyed a coat of paint in years, and it was most unattractively done. So much so that no paint would have been better (when in doubt, use white paint.) The citizens too mainly wore slovenly clothes or faded blue jeans and the whole town gave the appearance of caring nothing about appearances, as the dust swirled in gusts against the dirty cars parked at the curbs.

Now I know that there are some fine folks living in this small town, but they've become so accustomed to their "seedy" condition that they accept it. I left feeling gratified that I live in a town that has more civic pride.

Later I had an opportunity to sit on our square for about 15 minutes and I observed our overall appearance. I was dismayed to see so many unpainted store fronts and several tattered shades in the upper windows. One store possessed and awning that was actually in shreds and the upper windows hadn't seen a coat of paint in years. Some steps leading to the basement were filled to a height

of two or more feet with rubbish and paper.
The Old Lyric Theater is an eyesore, as anyone can see. I wondered what impression a potential investor would have after a survey of our square. Personally I wouldn't be favorably impressed with a town so down-at-the-heels in appearance.
Can't something be done to remedy this situation? Eastland is really a fine place to live and our citizens are friendly and much above the average. It seems to me that a small group of three or four interested and informed citizens could serve as a consulting board (without pay) and advise the public and businessmen, when requested, as to ways to improve the appearance of our town. This would pay off in dollars and cents.
Cleo Seaberry.

Card of Thanks
May we express our sincere thanks and appreciation to our neighbors and friends for the acts of kindness and sympathy shown us during the illness and death of our loved-one.
To Doctor Treadwell and all the hospital staff who worked so patiently.
To the ladies who brought food, to the men who prepared the grave.
To the ministers, and those who furnished the music for the service.
May God's richest blessing be with each and every one who had a part in trying to help us bear our sorrow.
Hallie J. Lane
Jessie M. Lane and family
Lena Lane Black and family
Roy L. Lane and family

Fish and Game Are Value As A Rich Crop

"It is difficult to assess an over all value to fish and game," writes T. D. Carroll in his interesting article "Assay on Texas Game and Fish." "The aesthetic, recreational, and biological values are often neglected or considered intangible when the economist views this natural resource."

Carroll, acting director of information and education, Texas Game and Fish Commission, points out that according to the Crossley Survey, 1,625,000 Texans spent over \$165 million for hunting and fishing in the State in 1955. This is over \$27 million more than the value of 2,883,574 tons of sulphur, 3,583,242 tons common salt, 584,855 tons of lime, 1,349,434 tons of crude gypsum, 3,103,359 tons of clay, 139,396,188 cubic feet of helium, and \$115,000 worth of gem stones produced in the State that same year.

By using the Llano County Deer Count as an example, the author shows that landowners through leases possibly took in some \$346,740 through deer harvests in that county alone. Local businesses in the county took in a possible \$66,850.

"This coupled with the value of deer to the landowners, would give a total of \$1,213,590 realized from the deer harvest in 1959 during the 45-day hunting season in that county," writes the director.

"To consider wildlife as a by-product of the land instead of a valuable crop is a wasteful indulgence enjoyed by those who have no conception of true values of our wildlife resources."

★ ★ ★ ★
ATTEND THE CHURCH OF YOUR CHOICE EACH SUNDAY
★ ★ ★ ★



ALL'S WELL THAT ENDS WELL—Hostess Sharon Loren is helped from a Martin 404 passenger plane in Okla. Naval Air Station, Kansas. She, two other crew members and six passengers were safe after their plane made a belly-landing on a snowy runway. The craft lost its port wheel on Chicago take-off.

RANGE CUBES

Your livestock will like our Range Cubes. The made in our own plant by a formula that will give your livestock of a balanced winter diet. See us for custom grinding, feeds of all kinds, and minerals, stock and poultry remedies, seed, tilizer and dog food.

Thornton Feed Mill

'Home of Circle T Feeds'
Phone HI 2-1122 CISCO 1200 Avenue

T. L. FAGG

REAL ESTATE
Property Management
Home and Farm Loans

Low Priced VALUES

1953 DeSoto 4-dr. Sed. Extra nice inside and out. Runs like new. Only \$385.00.
1954 Chevrolet Bel Air. Fully equipped. Like new. See to appreciate.

Norman Guess

Phone MA 9-2636
after 5 p.m. Ph. MA 9-1545

MONUMENT

Located across street from Coats Furniture Co.
Willard Griffin, Dealer
Ph. MA 9-1091 — Eastland
Built by: Riley-Gardner Memorial Co., Hamilton, Texas

USED CARS

A real good buy-off an extra clean car. 1956 Chevrolet 4-door hard-top sedan, V8 Powerglide, radio, heater and air conditioning.

A 1953 Ford Ranchwagon, 6 cyl. Priced to sell.
EXTRA SPECIAL
1959 Custom 300 Ford six cyl. 4-door sedan. Radio, heater, automatic transmission. Actual miles: 5,220.
1958 Ford, six cyl. Custom 300, 2-door sedan. Radio, heater and overdrive.

1957 Ford Fairlane 500 sport 2-door sedan. Radio, heater, aut. transmission.

We've Got The Cleanest Cars In Eastland
Many others to pick from
Hood King Motor Co.
100 East Main
Phone MA 9-1786

KEEP YOUR TELEPHONE BY YOUR SIDE

LIVING IS SO MUCH MORE FUN for the whole family when you have a handy extension telephone where you eat, work and play. Dad can take an early morning call without getting up from the breakfast table. Later, Mom can enjoy a "telephone break." Choice of nine beautiful colors. Color phones are \$10, a one-time charge, plus installation; extensions, only \$1 a month. Order yours today.

SOUTHWESTERN BELL TELEPHONE COMPANY
Call by number . . . it's twice as fast

SCRAP IS OUR BUSINESS

ESTABLISHED 1926

EASTLAND IRON & METAL CO.
OWNED AND OPERATED BY HENRY PULLMAN



Shop Where You SAVE TWICE!

Lowest Prices PLUS "S&H" Green Stamps!

WORTH FOOD MART

Prices Effective Thru Saturday

LARGE EGGS Jeff Laughlin Country Doz. **35¢**

WOLF CHILI Plain, No Beans Big No. 2 Can Just **55¢**

Cheese Spread 2 -Lb. Loaf **59¢**

Renown—Tall Can Serves Six
Tomato Juice 2 29-Oz. Cans **25¢**

Kounty Kist Whole Kernel
Golden Corn 3 12-Oz. Cans **35¢**

Bleach New "Worth" Food Mart" 1/2-Gal. Jug **25¢**

Cherries Morgan's Red, Sour, Pitted 2 No. 303 Cans **35¢**

Bama Delicious (SAVE 47c)
PEANUT BUTTER 3 Big 18-oz. Refr. Jars **1⁰⁰**

Stockton - Tomato
CATSUP
2 12-oz. Bottls. **25¢**

WE GIVE
S&H GREEN STAMPS
Etiquet
New Pink Cream
Scented 1/2 Price
Sole, Reg. 98c Size
Price Tax **37¢**

CANNED PICNICS Armour's Star 3 -Lb. Can **1⁷⁹**

Controlled Quality Heavy Beef
Round Steak Lb. **79¢** Bologna Swift's Premium Freshly-Sliced Lb. **45¢**

Blackhawk Bacon Lb. **45¢** Cheese Kraft's Sliced American Lb. **59¢**

Controlled Quality
Beef Rump Roast Lb. **69¢** Fish Sticks Taste O'Sea 3 8-Oz. Pkgs. **1.00**

NAVEL ORANGES California Sweet Lb. **15¢** Rainbow Trout Taste O'Sea 10-Oz. Pkg. **49¢**

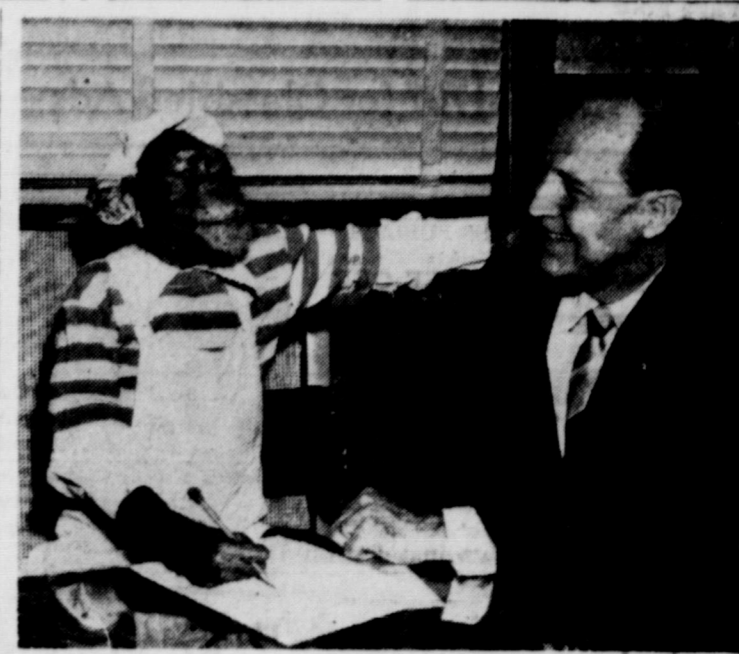
LEMONS California, Large, Juicy Lb. **15¢** PASCAL CELERY Crisp, Crunchy Large Stalk **15¢**

FANCY AVOCADOS Medium Size 4 for **25¢**
WORTH FOOD MART

114 W. Olive EASTLAND

Lone Cedar Club Holds Monthly Luncheon Friday

The Lone Cedar Luncheon Club met Friday for their monthly luncheon. The hostess committee of Ranner consisted of Mmes. Roscoe Jopper, chairman, C. I. Wolford, T. C. Wylie, W. J. Van Bibber, and Jim Morris. Mrs. George Ruston, one of the new members, won the door prize. Mrs. E. E. Crawford won the high score at bridge and the bingo prize went to Mrs. Morris Newnam.



Regular Meeting Of Rebekahs Is Held Tuesday

The Eastland Rebekah Lodge 177 met in regular session Tuesday. Lodge was opened in form with old and new business being discussed. Mrs. Florence Crabb was escorted to the altar by Mrs. Mitchell, conductor pro-tem, to receive a certificate of perfection from Mrs. Genoa Brown. Mrs. Lena Smith read a short sketch on the life of a subordinate officer, Shelir Colfax, whose birthday was recognized. Two candidates were balloted and were duly elected to become members by initiation. Mrs. Vivian Fox and Mrs. Edna Bellew were welcomed back into the lodge. The meeting was closed in form with the next meeting to be held March 22. All members are urged to attend.

FRIENDLY CHAT—Actor and theatre executive met recently in the headquarters of Interstate Circuit, Dallas, and a precedent shattering conference where not a word of understanding was uttered, mutually agreeable arrangements were made for the opening of Walt Disney's "Toby Tyler" in Eastland at the Majestic Theatre Thursday. Actor Stubbs, who came to Hollywood from Africa, is pictured above with W. E. Mitchell, vice president and general manager of Texas Consolidated Theatres. "Goliath II," a special 16 minute super-cartoon will also be featured.

— Call MA 9-1707 for Classified Ads —

REPAIRS!
FREE ESTIMATES
Insurance Claim Service
"We've seen plenty of wrecks drive through our doors, but we have yet to see one drive out."
★
Lindley Paint & Body Shop
110 S. Bassett
Ph. MA 9-2240

Youth Fellowship Holds Regular Meeting Sunday

The United Christian Fellowship met Sunday evening at the First Christian Church for a short business meeting. Martin Day presented the group with a devotion. The program was a film of the Texas Christian Universities football highlights shown by Rev. Ray Heckendorn. Following the film a discussion was held on what it takes to be a good football player in relation to being a full-time Christian. The next youth meeting will be held at the First Christian Church at 5:30 p.m. March 20th.

"EFFICIENT EXTERMINATION"
OF
• Roaches • Silver Fish • Ants
• Mice • Fleas • Ticks
• Scorpions and other Pests
Member National Pest Control Ass'n.
Lester Humphrey
PEST CONTROL SERVICE
Surity Bonded Termite Control—

ATTEND THE CHURCH OF YOUR CHOICE EACH SUNDAY

1960 Motor Vehicle LICENSE TAGS
DEADLINE APRIL 1, 1960
GET YOUR LICENSE PLATES NOW
Be Early - Avoid the Rush!
Please Bring Texas Certificate of Title and 1959 Registration Receipt
Tax Assessor Collector
J. C. ALLISON

— Call MA 9-1707 for Classified Ads —

Virginia Garrett Seelig Among Musicians to Present Concert

The Eastland Music Study Club will present "artists of music" in the annual concert Tuesday at 8 p.m. in the First Methodist Church of Eastland with the public invited.

Mrs. Virginia Garrett Seelig will present a program of songs with Mrs. Elizabeth McKinney accompanying.

Also Robert E. Poer, organists, and Ben Karnes, pianist, will be presented in a program of music.

Virginia Garrett Seelig, the daughter of Mrs. Clyde L. Garrett and the late congressman, Mr. Garrett, is a graduate of Hardin-Simmons University, Abilene, where she was active in many music organizations. She continued her training at Southern Methodist University and with outstanding vocal coaches in Washington, D. C., Nashville and Dallas. In 1956 she was a finalist in the Southwest Metropolitan Opera auditions.

A busy homemaker, the mother of two sons, Steven 2 and Timothy 9, the wife of the Assistant to President, Southwestern Baptist Theological Seminary, Fr. Worth, Virginia Seelig finds time to be a church choir member and soloist, conduct camps, church and associational music schools, sing in local opera productions, direct the children's choir, solo in various oratorios each year and present sacred and secular concerts.

For the past two years she has been a resident voice teacher in the School of Church Music at Southwestern Baptist Theological Seminary. She is a recording artist with World Records Incorporated, Waco. Her latest entitled, "When God Speaks" which is an album of sacred selections in which she is accompanied by the 75 voice Baylor Choir under direction of Dr. Euell Proter.

Robert E. Poer received his Bachelor of Music degree from Texas Christian University and studied the organ under the direction of Emmet G. Smith. Mr. Poer is organist and choir director of the First Christian Church of Breckenridge. He is a member of the American Guild of Organists.

Pianist Ben Karnes received his Bachelor of Music degree from North Texas State College and has studied with Robert Rogers and Isabel and Silvio Sciolti. He is organist and choir director of the First Presbyterian Church of Breckenridge. He is an instructor of piano and a member of the National Guild of Piano Teachers.

Zeta Pi Chapter Meets Tuesday In Young Home

The Zeta Pi Chapter of Beta Sigma Phi met in the home of Mrs. Clyde Young, 300 S. Oak, Tuesday for their regular meeting.

Three guests were present where Mrs. Donald Kinnaird, Jr., Mrs. Elton Ables, and Mrs. Young's mother, Mrs. Frank Lupton of Colorado City.

Mrs. J. D. Earley presented the program for the day, Story of Beta Sigma Phi.

Refreshments of orange date nut cake, peanut bars, date bars, coffee and cokes were served to the following members present: Mmes. E. M. Watts, Pete Agnew, Norman Watson, Earley, James Smith and the hostess, Mrs. Clyde Young.

★ ★ ★
ATTEND THE CHURCH OF YOUR CHOICE EACH SUNDAY
★ ★ ★

Kokomo News

Mr. and Mrs. W. M. James, Billy and Jo of Shamrock spent Saturday night with her sister, Mrs. Victor Pack and family.

Visiting with the Packs last week was her brother, Mr. Glenn Alexander of Lincoln, Nebraska.

Mr. and Mrs. Wayne Eaves, Johnny and Bobby, Linda Eaves, Larry Morrow, Dwayne Snider and Glenda Jordan attended the Youth Rally at the Baptist Church in Albany on Saturday night.

Sylvia Hendricks was confined to her home several days with a throat virus.

Mr. W. T. Henderson and sons, of Rising Star visited with Mr. and Mrs. John W. Henderson on Friday night.

Mr. and Mrs. Glenn Jordan and Teddy visited with the Claude Fullers on Saturday night.

Mr. and Mrs. Wayne Eaves and children were guests of the Claude Fullers on Sunday.

Mr. and Mrs. George Eppler and children of San Angelo spent the weekend visiting with Mr. and Mrs. W. A. O'Neal and Mr. and Mrs. Albert Hendricks and Sylvia.

Mr. and Mrs. M. M. Logan and Joe Charles of Dublin visited with her brother, Mr. and Mrs. J. L. Morrow and Larry on Sunday.

Mr. and Mrs. Lonnie Rush of Lubbock spent the weekend with

their cousins, Mr. and Mrs. John Lasater.

Rev. and Mrs. Jackie Heath and children were guests of Mr. and Mrs. Calvin Brown on Sunday.

Mr. and Mrs. Tidy Eaves were dinner guests of Mr. and Mrs. O. N. Justice on Sunday.

Mrs. Mary Timmons and Mrs. J. A. McNeely were able to be back in church on Sunday morning after lengthy illnesses.

Mr. and Mrs. Bill Eaves and children of Cisco were visiting with Mr. and Mrs. A. B. Eaves on Saturday night.

On Sunday Mr. and Mrs. A. B. Eaves visited in Rising Star,

with his sister and family, Mr. and Mrs. Jim Smith.

Mr. and Mrs. Delman Eaves, Mark and Deliah were dinner guests, on Sunday, of Mr. and Mrs. R. Q. Graham.

Mr. John Scitern and niece, Margaret Reeves, went to Houston on Sunday to visit with Mr. Henry Scitern. They report that he wasn't feeling as well on Sunday as he had earlier in the week.

He has been able to sit up some and is doing as well as could be expected. Mrs. John Scitern and children were unable to make the trip due to the children being sick with a virus.

Mr. and Mrs. Jim Jordan, Mrs.

Glenn Jordan and Glenda, Mrs. H. C. Wharton of Carbon tending the funeral of Mrs. Lane in Eastland Sunday noon.

Mrs. Nancy Hendricks and via visited with Mrs. W. F. B. on Sunday afternoon.



INGROWN NAIL
WURTING YOU
Immediately
Relief!

A few drops of OUTGRO® bring relief from tormenting pain of ingrown nail. OUTGRO® softens the skin underneath, allows the nail to be cut and thus prevents further pain and discomfort. OUTGRO® is available at all drug centers.

COME IN AND SEE OUR COMPLETE SELECTION OF FINE CARPET'S



★ Prices to fit every budget
★ We do our own installation

Ranger Furniture Exchange

"BRASHIER'S"
123 N. Rusk RANGER Phone 242

THIS WEEK'S SPECIALS

Good For One Week Only

BOYS 13-OZ. JEANS Sanforized—6 to 14 Original Price . . . 2.29 Special 1.87	LADIES NYLON HOSE 51 Ga. — First Quality Reg. . . . 69c Special 2 pr. 97¢
MEN'S WORK SHIRTS Blue Chambray—Sanforized Reg. 1.59 Special 1.17	Cannon Bath Towel Extra Heavy — Extra Large Reg. . . . 98c Special 87¢
Unbleached Domestic 36" Wide . . . Heavy Grade Reg. . . . 29c Special 4 yds. 97¢	WASH CLOTHS Good Quality . . . 6 Colors Reg. . . . 10c Special 15 for 97¢

HARELIKS INC.
BETTER VALUES . . . ALWAYS

Phone Now!



RE-MODEL — REPAIR

UP TO 60 MONTHS TO PAY — \$3500 IS THE LIMIT

Well, if money is all you need, don't delay a minute more. It's easy and quick . . . obtaining one of our low-cost home loans. Like rent monthly payments and tailored to suit your budget and needs. Call or come in!

Higginbotham - Bartlett Co.
Jack Elliott, Mgr.
301 W. Main Ph. MA 9-1311 or MA 9-1533
ASK FOR FREE ESTIMATE! NO OBLIGATION!

Western Auto's First Big Annual Clearance Sale

FREE HANDY SERVE DECANTERS

The first 30 customers making a \$1 purchase or more will receive one of these beautiful decanters FREE.

ONLY 24—Stock No. K 9114 HOUSEHOLD BROOMS 1.45 Value	Each 91¢
ONLY 24—Stock No. K 9040 PINKING SHEARS 2.98 Value	Each 88¢
ONLY 4—Model C-9 G. E. VACUUM CLEANERS 49.95 Value Exchange	39⁹⁵
12-OZ. PRESSURIZED CAN SPRAY PAINT 1.39 Value	Each 98¢

10 ONLY—Stock No. 7G5462 PORTABLE
CHARCOAL GRILLS 3.19 Value

STOCK NO. 3P7142 TURTLE WAX 1.98 Value	Pints	Each 1.29
STOCK NO. 3P7115 DuPont No. 7 POLISH 1.49 Value		Each 1.10
STOCK NO. 3P7113—SIMONIZ BODY SHEEN 1.89 Value		Each 1.19
STOCK NO. 3P7175 SIMONIZ KLEENER .93c Value		Each 75¢

5 ONLY—Stock No. F 50
G.E. Steam Irons 17.95 Value


ONLY 10 BROOM STYLE—Stock No. X 1623 Leaf Rakes 1.15 Value	Each 88¢
--	-----------------

ONLY 8—Stock No. 9008
Juice Set 48-oz. Decanter & 4 Tumblers .98c Value

ONLY 4—Stock No. K2640 Dinnerware SET, Service for 4 3.49 Value	2.50
ONLY 12—2 1/2 Qt. Covered Casseroles WITH STAND 2.98 Value	1.98
ONLY 25—Stock No. K2632 Cereal or Soup Bowl 15c value	2 For 18c

ONLY 1—Sanbeam Dual Control
Electric Sheet 17.95 Value

3 ONLY—CRAFTED BY INTERNATIONAL Salad Pair 9.00 Value	4.95
6 ONLY—Stock No. K1646 HOMESTED Snack Set 1.72 Value	1.39
ONLY 7—Stock No. K9003—LEFT OVER Refrg. Sets 59c Value	39c



"Hey, Sweetie, how'd you like a new Chevy?"

"Oh, Freddie" (sigh)

"The dealer's got just the model we want, Sweetie. Right color, right everything."

"Oh, Freddie" (sigh)

"In fact he's got the biggest selection I ever saw. No problem at all to find what you want."

"Oh, Freddie" (sigh)

"It's got that V8 in it I've been talking about too. What an engine that is."

"Oh, Freddie" (sigh)

"And deal! Sweetie, wait'll I tell you the deal they've offered me. This is the time to buy all right."

"Well, don't just stand there, Freddie. Go ahead and buy it."

Impala Sport Sedan

Drive it—it's fun-tastic! See your local authorized Chevrolet dealer for economical transportation

FULLEN MOTOR COMPANY, INC.
EASTLAND
305 E. MAIN PHONE MA 9-2676

Western Auto Associate Store
East Side of Square "Everything For The Home and Automobile"
J. L. "Luce" PITTMAN Phone MA in 9-2011

Hospital News
 Eastland Memorial
 Westfall Jr., Cisco,
 Butler, medical, East-
 Bell Littlefield, me-
 Butler, Eastland, sur-
 Wilkerson, medical

Mrs. Vernie Holder, medical
 Mrs. Mary Paul, medical
 Henry Pullman, Eastland, me-
 Mrs. Frances Daffern, Eastland
 medical
 Mrs. Mary Thompson, Eastland,
 medical
 J. Z. Phillips, Carbon, surgical
 Mrs. Margaret East, Eastland,
 medical
 Mrs. Dell Baker, Eastland, me-
 medical
 Mrs. Clyde Hall, Carbon, acci-

dent
 Mrs. Mary Stark, Olden, medic-
 al
 Mrs. H. M. Williams and baby
 girl, Abilene
 Mrs. Nora Wood, Eastland, ac-
 cident
 J. W. Sparks, Eastland, medical
 Mrs. Thelma Kuhn, Olden, me-
 dical
 Truman Brown, Eastland, me-
 dical
 Miss Cecelia Haas, Eastland, me-
 dical
 O. H. Mangum, Carbon, medical
 Mrs. Bam White, Eastland, me-
 dical
 Mrs. Mary Couch, Carbon, sur-
 gical
 T. H. Landon, Eastland, surgic-
 al
 Nina Hall, medical, Brownwood
 Pat Armstrong, Eastland, medic-
 al
 Mrs. Ida Smitham, Eastland, me-
 dical
 Mrs. W. W. Walters, Eastland,
 medical
 Dismissed were:
 J. H. Followwell, Mrs. Lois
 Copeland, Mrs. Lucy Shirley,
 Brooks Herring and Mrs. Lue Ann
 Gossett.

Mrs. Cummins Is Hostess to Cub Scout Meeting

The regular Tuesday evening meeting of the Cub Scout Den 4 was held at 3 p.m. in the home of Mrs. M. J. Cummins, 602 S. Daugherty.

After checking advancements, the group went on a field trip to the high school science laboratory. Mr. Marshall held the group's attention by showing them types of bones and one-cell animals. He explained fuel and its effect on the various vehicles such as cars, trains and airplanes. The group also visited the telephone company where they were shown the new dial system with its thousands of tiny wires, city connections, toll connections, testing equipment and where individual numbers were located. Appreciation was expressed for the time taken in showing these boys around.

After returning to the original meeting place, refreshments of cold drinks and doughnuts were served to the following boys: Eddie Gallagher, Jimmy Marsh, Jimmy Wright, Bill Hoffmann, Stanley Cummins, David Cox, Steve Lund, Chris Pryor, James Campbell and Walter Scott.

Assisting Mrs. Cummins were Mrs. R. E. Marsh, Mrs. J. E. Wright and Mrs. Eddie Gallagher.



NIKE ZEUS REHEARSING—for its vital role in National Security. Modern Army's ZEUS, test fired in early February at White Sands Missile Range, New Mexico, is the only anti-intercontinental ballistic missile system presently under development.

ATTEND THE CHURCH OF YOUR CHOICE EACH SUNDAY

Insurance AND Real Estate
D. L. KINNAIRD
 Life - Fire - Auto - Farm
 Polio - Bonds
 40 years in the Insurance Business in Eastland

Let Family Walk on Carpets

Yes your new carpet is beautiful but your family "can't get there from here" without leaving a beaten down path. Remove the soiled areas without cleaning wall to wall with Blue Lustre, a proven cleaner. Nothing finer for retaining carpet beauty and easy on the budget too.

Apply Blue Lustre with long handle brush or any shampoo applicator. One half gallon cleans three 9 x 12 rugs.

Coats Furniture & Carpet Co.
 EASTLAND, TEXAS

WE FOUND THE CAREFREE WAY



TO HOME-OWNERSHIP

Your family, too, can have the pleasure of living your own home, with monthly payments like rent. After a reasonable down payment, finance is taken care of in easy-to-meet monthly payments that may include principal, interest, and insurance. You'll like the friendly and service and good advice you receive here.

First Federal Savings & Loan Association of Ranger
 ONLY 3% DOWN ON FHA LOANS
 RANGER, TEXAS Phone 820

Helps Heal And Clear Itchy Skin Rash!

Zemo—liquid or ointment—a doctor's antiseptic, promptly relieves itching, stops scratching and so helps heal and clear surface skin rashes. Buy Extra Strength Zemo for stubborn cases!

— READ THE CLASSIFIEDS —

M. H. PERRY
 Representing Southland Life
 Life - Retirement Income Partnership
 Mortgage Cancellation
 Educational - Annuities
 Accident - Sickness
 Hospitalization - Group
 Call MA 9-2275 or MA 9-1095
 107 W. Main — Eastland

ALEX RAWLINS & SONS
 MONUMENTS
 WEATHERFORD, TEX.
 Serving This Community Since 1884
 Phone LY4-2726

NOTICE
 FRESH DRESSED FRYERS and Fresh Dressed Hens
 At The Plant
 PHONE MA 9-1200
WALKER Dressing Plant



Bring Your BATTERY TROUBLES To Us!
 Group One Fits Most 6 Volt Cars
8.95
 Exchange
JIM HORTON
 East Main St. - MA 9-1420
 Eastland, Texas

Have You Heard?



Yep, we're in business at 108 East Commerce
 (Next door to Texas Electric Service Co.)

The Eastland National Bank



Has Moved Off the Square



Our Facilities may not be fancy, but they are adequate.
COME SEE FOR YOURSELF!

Workmen are busy now remodeling our permanent building. Before long we will be asking you to be our guests at our open house.



Eastland National Bank
 "OFF THE SQUARE TEMPORARILY"

— Call MA 9-1707 for Classified Ads —

Prices Good Through Saturday

IT'S YOUR TOTAL FOOD BILL THAT COUNTS... COMPARE!
 Day in and Day out... You'll Save More at Your **SUPER SAVE MARKET!**

...The Talk of the Town!

SNOWDRIFT All-vegetable THE Premium SHORTENING
 3 Pound Can **69¢**

PILLSBURY or BALLARD BISCUITS 3 10-Ct. Cans **25¢**
 EVERYONE LOVES SWEETHEART FLOUR 5 Pound Bag **39¢**

SILVER BRAND MARGARINE 2 Pound Cartons **25¢** LOWEST PRICE YET

CHEF'S DELIGHT CHEESE FOOD 2-Lb. Ctn. **69¢**

HONEY BOY CHUM SALMON Tall Can **59¢**

CORN KOUNTY KIST Whole Kernel 2 12-Oz. Cans **25¢**

GRANULATED W-P DETERGENT Giant Box **59¢**
 LIQUID W-P DETERGENT 22-Oz. Can **49¢**
FAB Large Box **59¢**

U.S. No. 1 RUSSET POTATOES 10 Lbs. **59¢**
 TEXAS RUBY RED GRAPEFRUIT ... Lb. **6¢**
 FANCY RED DELICIOUS APPLES CELLO ... Lb. **19¢**
 CELLO CARROTS ... 2 For **15¢**

FLEISCHMAN'S MARGARINE Lb. Ctn. **39¢**
 SUNSHINE KRISPY CRACKERS Lb. Box **29¢**
 RI-C PINEAPPLE GRAPEFRUIT JUICE 46-Oz. Can **25¢**
 LIBBY'S STEWED TOMATOES 303 Can **23¢**
 DEL MONTE FRUIT COCKTAIL 303 Can **23¢**

Folger's COFFEE 69¢

GOCHES FRANKS 3 Lbs. **98¢**
 GOOCH'S THICK SLICED BACON ... 2 Lbs. **79¢**
 GOOCH'S SMOKED PICNICS Lb. **29¢**
 CHUCK ROAST GOOD QUALITY ... Lb. **49¢**
 CLUB STEAK GOOD QUALITY ... Lb. **75¢**

We Reserve reserve right to limit quantities

MacMOY'S Super Save
 400 S. Seaman Home Owned, Home Operated

SAFEWAY'S BIG SHOW!



Safeway Carnival of Values!

Leaf Kale Bel-Air frozen—Fresh garden flavor 10-Oz. Pkgs. 2 25¢	Trout Captain's Choice. Frozen. 10-Oz. Rainbow. Pkg. 49¢
---	--

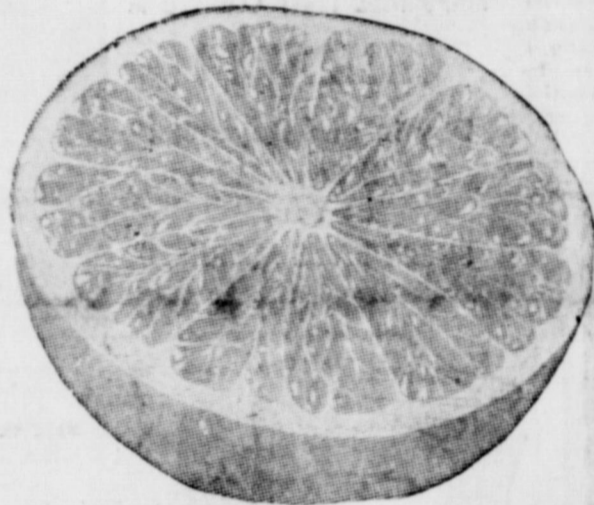
- Bel-air Green Peas Or French fried potatoes. Frozen. 2 16-Oz. Pkgs. **55¢**
- Holsum "On-A-Tree" Olives A real treat. 3-Oz. Jar **29¢**
- Bel-air Chopped Collards Frozen—Garden fresh flavor. 2 12-Oz. Pkgs. **25¢**

Safeway Produce

Grapefruit

Texas finest — Ruby red
Tartly sweet, juicy and rich
in vitamin C.

Each **5¢**



- Fresh Cabbage** Solid, firm heads. For vitamins, minerals and flavor. **3¢** Lb.
- Texas Oranges** Valencia—Juicy, fresh flavor. Rich in nutrients. **5 35¢** 5-Lb. Bag
- Anjou Pears** For easy salads. Aristocrat of the menu. **15¢** Lb.

- Sliced Peaches** Highway — Delicately rich and appetizing. **23¢** No. 2 1/2 Can
- Pork & Beans** Highway — Economical — Full of nutrition. **3 25¢** No. 300 Cans

KITCHEN CRAFT FLOUR
The flour milled for home baking. (10-Lb. Bag 79¢) **5 43¢** 5-Lb. Bag

ZIPPY PICKLES
Whole Sweet. Wonderful in salads or for snacks. 22-Oz. Jar **35¢**

- Preserves** Empress — Grape, Peach or Boysenberry. **4 100¢** 10-Oz. Jars
- Margarine** Coldbrook — An economical spread. **2 27¢** 1-Lb. Ctns.
- Biscuits** Mrs. Wright's — Sweetmilk or buttermilk. **2 15¢** 8-Oz. Cans
- Tomatoes** Gardenside — Wonderful for casseroles. **2 23¢** No. 303 Cans

- Zee Toilet Tissue** Assorted colors. **4 33¢** Roll Pack
- Zee Paper Napkins** White or assorted colors. **10¢** 80-Ct. Pkg.
- Zee Paper Towels** White, pink or yellow. **2 35¢** Reg. Rolls
- Zee Paper Towels** Pink or yellow. **23¢** Giant Roll
- Sea Trader Tuna** Chunk light meat. **2 43¢** 6 1/2-Oz. Cans
- Corned Beef Hash** Libby **3 100¢** 15 1/2-Oz. Cans

- Cut-Rite Wax Paper** Does more jobs and does them better. **27¢** 125' Roll
- Scotties Facial Tissue** White or assorted colors. **27¢** 400-Ct. Box
- Waldorf Toilet Tissue** White or assorted colors. **3 29¢** Rolls
- Soft-Weve Toilet Tissue** Assorted colors. **2 27¢** Roll Pack
- Scott Toilet Tissue** White or assorted colors. **2 27¢** Rolls
- Northern Toilet Tissue** White or assorted colors. **4 37¢** Roll Pack
- Charmin Toilet Tissue** Assorted colors. **4 37¢** Roll Pack
- Scott Paper Towels** White, pink or yellow. **19¢** Reg. Roll
- Northern Paper Towels** White or assorted colors. **2 37¢** Rolls

Safeway Meats

PICNICS
SMOKED — Delicately pink and fine textured. Hurried to you from the smokehouse at the peak of flavor. **25¢** Lb. 6 to 10-Lb. Avg. Whole.

- Pork Roast** Boston Butt — A delicious dinner treat anytime. **33¢** Lb.
- Round Steak** Or Round Roast. U.S.D.A. Choice grade heavy beef. **89¢** Lb.
- Safeway Chili** Brick — Just right for these cold days. **49¢** 1-Lb. Pkg.
- Dainties** Rath Black Hawk Cottage Roll. Boneless — No waste. **59¢** Lb.
- Smoked Beef** Buddig's Sliced. Ready-to-eat. **37¢** 3 1/2-Oz. Pkg.

PINEAPPLE-GRAPEFRUIT JUICE
La Lani. Rich in vitamin C. 46-Oz. Can **25¢**

PARTY PRIDE SHERBET
Lucerne — Assorted flavors. A wonderful dessert. 1/2-Gal. Ctn. **59¢**

MANOR HOUSE FROZEN MEAT PIES
★ Beef ★ Chicken ★ Turkey **2 45¢** 8-Oz. Pkgs.

Bakery Special of the Week
19¢ 1-Lb. Loaf

RYE Skylark Brand

2¢ OFF Bakery Special!
TWIN ROLLS Skylark Brown and Serve. (Reg. price 23¢) **21¢** 13-Oz. Pkg.

- 100% Butter Bread** Skylark — (New at Safeway) **23¢** 1-Lb. Loaf
- Hot Cross Buns** Curtesy, 8-Count. **25¢** 12-Oz. Pkg.
- Sliced White Bread** Cook Book regular. **27¢** 1 1/2-Lb. Loaf
- Lemon Cream Pie** Morton's frozen **69¢** 1-Lb. Pie
- FLOUR** Kitchen Craft — Guaranteed to work wonders. **25 169¢** 25-Lb. Bag



- Scotkins Napkins** Luncheon Size. **2 35¢** 50-Ct. Pkgs.
- Scotkins Napkins** Dinner size. **25¢** 50-Ct. Pkg.
- Charmin Napkins** Handy and economical. **2 29¢** 80-Ct. Pkgs.
- Bondware Paper Plates** White — 9-inch. **49¢** 40-Ct. Pkg.

SAFEWAY
Conveniently Located to Serve you at 504 E. Main

- Simoniz Floor Wax** Liquid **98¢** Quart Can
- Nestles' Morsels** Semi-sweet **25¢** 8-Oz. Pkg.
- Ballard Biscuits** Sweetmilk or Pillsbury buttermilk. **29¢** 3 8-Oz. Cans
- Alcoa Wrap** Heavy Duty Aluminum Foil **45¢**

Prices Effective Thurs., Fri. and Sat., March 10, 11 and 12 in Eastland
We Reserve the Right to Limit Quantities. No Sales to Dealers.

MA 9-1707 for Classified Ads

NOTICE

FRESH EGGS DAILY
 (WHOLESALE PRICE TO EVERYONE)

GOOD, CLEAN JERSEY SWEET MILK
 (From Blood-Tested Cows)
 PRICE 70c GAL.

ANDRICK DRIVE-IN DAIRY

Located On Eastland-Cisco Highway
 Phone MA 9-2732 — Eastland

Julie Frost Is Hostess to Meet Of Double Seven

The Double Seven Club held their regular meeting Monday in the home of Julie Frost.

The president, Judy Seaberry, called the meeting to order and the secretary called the roll and read the minutes. Ann Frey-schlag gave the devotional for the day.

Final plans for the dance to be held Friday were then discussed. The meeting was adjourned and refreshments were served to the following members present: Carol Walter, Wanda Arther, Billie Brooks, Carole McClesky, Kay Morton, Shirley Smith, Judy Seaberry, Becky McAllister, Ann Frey-schlag and the hostess, Julie Frost.

RUBBER STAMPS
 "24 HOUR SERVICE IF DESIRED"
EDDIE'S
 RUBBER STAMP SERVICE
 407 SO. DAUGHERTY P. O. BOX 646
 EASTLAND, TEXAS

SOCIAL CALENDAR

Monday, March 14
 7:30 p.m. — The regular meeting of the Oddfellow Lodge will be held in the IOOF Hall.
 7:30 p.m. — The American Legion Auxiliary will be held in the Legion Hall.
 7:30 p.m. — Mrs. Georgia Strawn will be hostess to the regular meeting of the Xi Alpha Zeta chapter. The program, "Colorful Hawaii" will be given by Mrs. Grady Pipkin.
 3 p.m. — The Circles of the First Baptist church will meet.
Tuesday, March 15
 2 p.m. — Mrs. J. C. Hudson will be hostess to the members of the Eastland Art Club at their regular meeting.
 7:30 p.m. — Mmes. Carpenter, Johnson, Grisham, Coats, Taylor and Miss Van House will be hostesses at the Spring Concert of the Music Study Club.
 9:30 p.m. — "Walking in the Light" will be given by Mrs. Cecil Collings and "World Federation of Methodist Women News" by Mrs. Frank Castleberry at the regular meeting of the WSCS which will be held in the Methodist Church.
Wednesday, March 16
 7:30 p.m. — The Wesleyan Service Guild will hold their monthly meeting in the Methodist Church.
 7 p.m. — The 50 Year Pioneer Club will meet with their little mascot, Becky Hannah, 109 N. Connellee. All members are urged to attend and are asked to bring their own place settings.

Lone Star Shines Theme of Las Leales Meeting

"The Lone Star Shines" was the theme for the evening when Las Leales Club met at the Club House Monday, March 7. Mrs. Thura Taylor, President, called the meeting to order and introduced Mrs. L. E. Huckabay as hostess for the evening. Mrs. Huckabay welcomed two visitors, Mrs. W. M. Jones and Mrs. C. B. Chaney, then called on Mrs. D. E. Frazer who had planned the program. Mrs. Frazer spoke for several minutes on the glories of Texas and recommended four new books recently published about our much-loved state.

In preparing her program, Mrs. Frazer came to the natural conclusion that the continued progress along educational, cultural, political and spiritual lines depended on the correct training of our youth along these lines. To show how Eastland was moving in that direction she had requested six representatives of the Tri-Hi-Y to appear as a panel, with Mrs. Huckabay acting as moderator. Mrs. Huckabay had been sponsor of the group who had gone to Abilene to a pre-legislative conference, and later of the group who went to Austin to be a part of the Thirteenth Hi-Y Legislature.

Miss Alice Frazer had been elected at the Abilene meeting to the office of Chaplain of the House of Representatives and Miss Linda Huckabay had been her campaign manager for that event. Both Miss Frazer and Miss Huckabay were among the students composing the panel.

Others taking part were Marvin Agnew, Bill Jones, Jerry Chaney and Eddie Dry. Mrs. Huckabay's questioning and the replies from these high school students certainly showed that our youngsters are being pointed in the right direction to maintain our progress.

Miss Judy Hassell gave an excellent rendition of a difficult piano selection. Following the program, Mrs. Taylor conducted a brief business session. Members present were: Mmes. Wayne Caton, J. M. Cooper, Opal Cross, Maurice Dry, Frazer H. L. Hassell, Huckabay, W. A. Leslie, Rudolph Little, C. R. Shelton, Wendell Siebert, Homer Smith, Taylor, J. C. Wmately, James Horton, Floyd Robertson, Donald Kinniard, Jr., W. T. Dykes, and Misses Gladys Green and Verna Johnson.

RETURNS HOME

Mrs. W. E. Cooper has returned to her home in Eastland from a three months visit in Dallas with relatives and friends. She returned home the early part of the week.

READ THE CLASSIFIEDS

Need Your TV Antenna Fixed? Have A Leaky Faucet? Air Conditioner Need Servicing?

SEE US FOR ODD JOBS AROUND THE HOUSE
PHONE MAIN 9-2205

Helps Heal And Clear Itchy Skin Rash!

Zemo—liquid or ointment—a doctor's antiseptic, promptly relieves itching, stops scratching and so helps heal and clear surface skin rashes. Buy Extra Strength Zemo for stubborn cases!

NO COMPROMISE

No need to sacrifice big car quality for economy! One compact gives both.

THE LARK has luxurious interiors, tasteful appointments, big-car quality construction.

THE LARK, of all compacts, gives you a choice in all models of either a 90 hp. six-cylinder engine (as economical as any) or the doubly powerful V-8. And The Lark eight is comparable to the six in economy.

THE LARK, of all six passenger compacts, is less than 15 feet in length (it is shorter outside than all other compacts); but inside it is a true six-passengers-in-comfort car.

THE LARK, of all compacts, offers all these: automatic transmission, power steering, power brakes, Twin Traction differential, 4-barrel carburetor, Hill-Holder, air conditioning, reclining seats, padded dash and many other mechanical, comfort and safety features.

THE LARK, of all compacts, offers you a full line choice of compact models... convertible (the only one in the field and the lowest price U.S. made), hardtop, 2-door sedan, 4-door sedan, 2-door wagon, 4-door wagon.

Why compromise? Visit your Studebaker Dealer and look at...



The Compact Without Compromise!

THE LARK BY STUDEBAKER

McGraw Motor Company 416 So. Seaman

SAVE AND BE SURE WITH ABC—ALWAYS BUY CERTIFIED USED CARS—SOLD ONLY AT YOUR STUDEBAKER DEALER

McGraw Motor Co.

DODGE—STUDEBAKER TRUCKS
 Parts and Service

Phone MA 9-1244

Seaman

THURSDAY	FRIDAY	SATURDAY
3:00 Comedy Pk-see 4:00 Adv. in Music 4:30 Com. Pres. 5:30 3 Stooges 6:00 News 6:10 Weather 6:15 Huntley Rept. 6:30 Law of Plains 7:00 Shotgun Slade 7:30 J. Staccato 8:00 Back. Father 8:30 Ernie Ford 9:00 Bet Yr. Life 9:30 State Trooper 10:00 News 10:10 Weather 10:15 Com. Pres.	6:30 Cont. Class 7:00 Today 8:00 Today 9:00 Dough Re Mi 9:30 Play Yr. Hunch 10:00 Price Is Right 10:30 Concentration 11:00 Truth or Con. 11:30 Could Be You 12:00 News, Withr. 12:15 Devotions 12:20 3 Stooges 1:00 Queen for Day 1:30 Lore'tia Young 2:00 Dr. Malone 2:30 From Roots	3:00 Comedy Pk-see 4:00 Adv. in Music 4:30 Com. Pres. 5:30 3 Stooges 6:00 News 6:10 Weather 6:15 Huntley Rept. 6:30 People Funny 7:00 Kit Carson 7:30 Tel. Hour 8:00 Favorite Story 9:00 Cav. of Sports 9:45 Bowling 10:00 News 10:10 Weather 10:15 Com. Pres.

THURSDAY	FRIDAY	SATURDAY
4:30 Popeye 5:00 Susie 5:30 Amos 'N Andy 6:00 H. Hound 6:30 Three Stooges 7:00 Rescue 8 8:00 Man Dawson 8:30 Trackdown 9:00 Phil Silvers 9:30 Paul Coates 10:00 Theatre	8:29 Sign On 8:30 Mickey & A. 9:00 Little Rascals 9:30 Jack La Lanne 10:00 Trib'l w. Fthr. 10:30 Rendezvous 12:15 Ann Alden 12:30 Runger Jim 1:00 Matinee 3:30 I Married Joan	4:30 Popeye 5:00 Susie 5:30 Amos & Andy 6:00 Soldier Fortune 6:30 Three Stooges 7:30 Divorce Court 8:30 Sheriff Cochise 9:30 Johnny Ringo 9:30 Paul Coates 10:00 Theatre

THURSDAY	FRIDAY	SATURDAY
3:15 Secret Storm 3:30 Edge of Night 4:00 Movie 5:15 Party Time 6:00 News 6:15 Weather 6:15 News 6:30 Tell Truth 7:00 Betty Hutton 7:30 Pay Express 8:00 Zone Grey 8:30 Markham 9:00 Reunion Revue 10:00 News 10:15 Weather 10:20 People & Pics. 10:30 TBA 10:45 Movie/Time	7:29 Sign On 7:30 Cartoons 8:00 News 8:15 Cop. Kangaroo 9:00 Red Raws 9:30 On the Go 10:00 I Love Lucy 10:30 Dec. Bride 11:00 Love of Life 11:30 Search for Tm. 11:45 Guiding Light 12:00 News 12:15 Fashions in Fcs. 12:30 As Wild Turas 1:00 Better or Worse 1:30 House Pkty. 2:00 Millionaire 2:30 Verdict is Yrs.	3:00 Bright Day 3:15 Secret Storm 3:30 Edge of Nite 4:00 Movie 5:15 Party Time 6:00 News 6:10 Weather 6:15 News 6:30 Rowkide 7:30 Hotel Paree 8:00 TBA 9:00 Twite. Zone 9:30 Eyewitness 10:00 News 10:15 Weather 10:20 Pic & Pics. 10:30 TBA 10:45 Movie/Time

THURSDAY	FRIDAY	SATURDAY
5:30 Cartoon Strip 6:00 Newsreel 6:10 News 6:15 Weather 6:22 Sports 6:30 Gale Storm 7:00 Donna Reed 7:30 Real McCoys 8:00 Pat Boone 8:30 Untouchables 9:30 Ernie Kovac 10:00 Newsreel 10:10 News 10:15 Weather 10:22 Sports 10:30 Mankunt 11:00 Theatre 12:30 News	7:25 Devotional 7:30 Cartoons 8:00 Margie 8:30 Ramper Rm. 9:30 Life of Riley 10:00 Julie Benell 11:00 Hour of Stars 11:55 News 12:00 Restless Gun 12:30 Love that Bob 1:00 About Faces 1:30 Medic 2:00 Day in Court 2:30 Gale Storm 3:00 Beat Clock 3:30 Who Do Yu 4:00 Amer. Band.	5:00 Robin Hood 5:30 Cartoon Strip 6:00 Newsreel 6:10 News 6:15 Weather 6:22 Sports 6:30 Walt Disney 7:30 Black Hawk 8:00 77 Sunset Strip 9:00 The Detectives 9:30 Black Saddle 10:00 Newsreel 10:10 News 10:15 Weather 10:22 Sports 10:30 Hwy. Patrol 11:00 Theatre

THURSDAY	FRIDAY	SATURDAY
5:30 Dawsbeat 5:55 Newsreel 6:00 News 6:10 Weather 6:15 Huntley Rept. 6:30 Law of Plains 7:00 Bot Masterson 7:30 J. Staccato 8:00 Back. Father 8:30 Ernie Ford 9:00 Graucha Marx 9:30 Lawless Years 10:00 Texas News 10:15 Weather 10:25 News Final 10:30 Sports 10:35 Jack Paar 12:00 Midnite News 12:05 Newsreel 12:10 Late Show	5:55 Newsreel 6:00 Cont. Cl'srm 7:00 Today 7:25 Weather 8:25 News 9:00 Dough Re Mi 9:30 Play Yr. Hunch 10:00 Price Is Right 10:30 Concentration 11:00 Truth or Con. 11:30 Could Be You 12:00 News 12:30 Great Life 1:00 Queen for Day 1:30 Lore'tia Young 2:00 Dr. Malone 2:30 From Roots 3:00 Com. Theatre 3:30 Adv. Theatre 4:00 Pam. Theatre	5:00 Showcase 6:30 Bonanza 7:30 The Challenge 8:00 The Deputy 8:30 World Wide 60 9:30 Man Interpal 10:00 News 10:15 Weather 10:25 News 10:30 Sports 10:35 Theatre

TELEVISION AT ITS BEST

You'll Enjoy The Best Programs From Five Channels
 With a Cable Antenna Connection. See Us Today.
Community Television, Inc.

Phone MA 9-1716



Electric READY LITE

The modern yard light that combines charm and beauty with fully automatic dusk-to-dawn operation.

Available in many attractive styles to harmonize with any type of home.

See any authorized Ready-Lite dealer or telephone Texas Electric Service Company for information.

Westex Packing Co.

Formerly Earnest Food Locker

RETAIL DIVISION

Friday & Saturday Only

Specials

Seven Roast CHOICE	Lb.	49¢
Shoulder Roast CHOICE	Lb.	59¢
Pork Roast LEAN	l b.	32¢
7-Roast ECONOMY	Lb.	39¢
Rump Roast BONELESS HEAVY BEEF	Lb.	65¢
Loin Tip Roast BONELESS HEAVY BEEF	Lb.	65¢
Top Sirloin Steak BONELESS HEAVY BEEF	Lb.	79¢
T-Bone Steak ECONOMY BEEF	l b.	59¢
Round Steak ECONOMY	l b.	79¢
Liver Beef	Lb.	39¢
Bacon Thick SLICED	2 Lbs.	69¢
Short Ribs CHOICE CUT	Lb.	29¢

SPRING SALE OF QUALITY FURNITURE

- Foam Rubber Throw Pillows Assorted Colors \$ 00 Ea.
- Extra Heavy T. V. Trays Values to \$2.40
- Scatter Rugs 2 ft by 3 ft. Washable Cotton Assorted Colors

ENGLANDER... the finest name in sleep!



We bought these fine quality, "Smooth Sleep" innerspring mattresses and box spring sets because they were the outstanding value of the 1960 furniture market. You'll find it the best bedding bargain we've offered in years! Here's your opportunity to save — and enjoy heavenly all-night comfort for years to come—and SAVE!

BY ENGLANDER

29.88 MATTRESS or BOX SPRING FULL OR TWIN SIZE

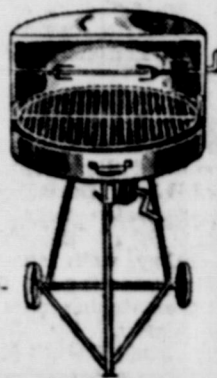
DOUBLE Round-Up STAMPS

WITH CASH SALES AND DOWN PAYMENTS

FREE BAR-B-Q GRILL

WITH HOOD AND MOTORIZED SPIT

Nothing to buy. You do not have to be present to win. Just register in our store.



7-PIECE SOFA BED GROUP

- 1 Sofa Bed
- 1 Platform Rocker
- 2 Step Tables
- 1 Coffee Table
- 2 Pillows

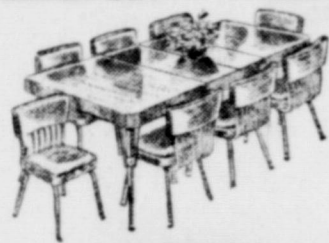
119.50 With Trade

Extra good material in Nylon Freize. Solid hardwood frames. Oak arms. Assorted colors.

LARGE ASSORTMENT PLATFORM ROCKERS

Nice selection of colors and styles Double Stamps

19.88



9-PIECE DINETTE

- * 72-Inch Table
- * 8 Large Chairs
- * 2 12-inch Leaves
- * Self Leveling Glides

With Trade **89.95**

UNFINISHED CHEST

All White Pine. Ready To Finish.

4-Drawer Regular 16.95 **12.88**

7-Drawer 42-inches long. Reg. 27.50 **19.88**

9-Drawer 36-inches long. Reg. 27.50 **19.88**

SOLID MAPLE BEDROOM GROUP

Single Dresser	79.50
Double Dresser	109.50
Tripple Dresser	124.50
Poster Bed	59.50
Book Case Bed	54.50
Cannon Ball Bed	54.50
Spindle Bed	54.50
Nite Stand	27.50
Chest On Chest	69.50
Large Desk	69.50
Chair To Match	14.50
Bunk Beds, complete with Bunkie Mattress	149.50



BRAIDED RUGS

REVERSIBLE OVALS Composed of durable wool with viscose rayon.

9 x 12 **38.88**
6 x 9 **22.88**

Recliner Chair

Three-way position. Extends to include full-length foot - rest. Plastic and a fine fabric. Foam rubber cushions.



Deluxe Recliner King Size... at a real savings. Beige and Brown.

Reg. 99.50 While They Last—**59.95**

DOUBLE DOOR UTILITY CABINET

12.88



Free Delivery

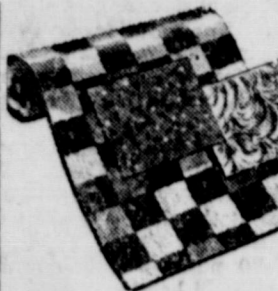
COATS FURNITURE AND CARPETS, LTD.

305 S. SEAMAN — EASTLAND

Easy Terms

COATS FURNITURE & CARPETS, LTD. Eastland

SPRINGTIME VALUES FOR HOME DRESS-UP



Armstrong Linoleum

36" Wide Good in halls and scatter rugs **15¢ ft.**



9 x 12 Rugs Linoleum

3.99

9 x 12 Armstrong Deltax Rugs

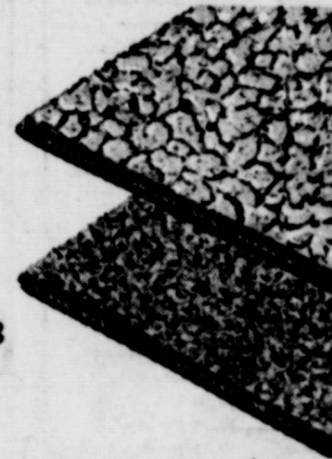
Values to 27.50 Green and Grey

11.88

9 x 12 RUGS

Sale! **48.88**

Lowest Price Ever



Alexander Smith Wool Carpet

Rayon-Nylon Pile With Pad 3 Colors

48.88

Gorman Gatherings
By Mrs. R. E. Boucher

Mr. and Mrs. Fred Yonkers of Sequine were weekend guests in the home of her aunt and uncle, Miss Dora Baskin and Hugh.

Mr. and Mrs. Lounie Rush of Lubbock were weekend guests in the home of Mr. and Mrs. John Lasater. They also called to see the Baskins.

Mr. and Mrs. Marvin Nix had as their guest over the weekend their son and family, Mr. and Mrs. Ben Nix and daughters of Odessa.

Mrs. Gene Marshall left Thursday for San Francisco, Calif. She has been at the bedside of her mother, Mrs. W. L. Andrus since the 16th of December, 1959. She was due to leave Ft. Worth around 5 p.m. by jet due in San Francisco around 9 p.m.

Mrs. Barbara Wood of Eastland was visiting friends down town Thursday.

Mr. and Mrs. L. N. Koen and son of Abilene were weekend visitors in the home of her parents, Mr. and Mrs. Jack Mauney.

Gene Ellison of Abilene visited with his parents Sunday afternoon.

Mrs. Jerry Clark and Jimmy of Abilene were weekend guest in the home of Mr. and Mrs. Marvin Nix and Mrs. Collie Clark and Lorena.

MAJESTY IN EASTLAND
TODAY - FRI. & SAT. 8:00
WALT DISNEY PRESENTS
TOBY TYL
with a CIRCUS
CIRCOHAN - CALVIN - SHELDON
EASTMAN - MISTER STUBBS
Adults 60c

STARTS SUNDAY
1001 ARABIAN NIGHTS
The Flying Fontaines
Adults 60c

DIXIE Drive-In
EASTLAND RANGER HIGHWAY

Box Office Opens 6:45 Show Starts 9:15
Box Office Closes 9:15
Admission 50c—Children Under 12 FREE
Each Wednesday Is Bargain Night—Adults 25c
THURSDAY - FRIDAY - SATURDAY, MARCH 10-11-12

ROBERT MITCHUM JULIE LONDON THE WONDERFUL COUNTRY
TECHNICOLOR
PLUS: Two Color Cartoons

SUNDAY - MONDAY - TUESDAY, MARCH 13-14-15

FIVE GATES TO HELL
DOLORES MICHAELS PATRICIA OWENS NEVILLE BRAND
CINEMASCOPE
PLUS: Two Color Cartoons

RANGER DRIVE-IN
HIGHWAY 80 EAST ON RANGER HILL

Box Office Opens 6:30 — Show Starts 7:00
Adults 50c—Kiddies Under 11 Free
Only Eastland County Drive-In Open All Year
THURSDAY - FRIDAY - SATURDAY

THE WILD AND THE INNOCENT
CINEMASCOPE COLOR
AUDIE MURPHY JOANNE DOLAN GILBERT ROLES JIM BACKUS SANDRA DE BONO
HEAR THE SONG HIT, "A TOUCH OF PINK"
A UNIVERSAL INTERNATIONAL PICTURE

FREEVUE EVERY SATURDAY NIGHT
SUNDAY - MONDAY - TUESDAY

GREGORY PECK DEBORAH KERR
JERRY WALD'S PRODUCTION OF
BELOVED INFIDEL
CO-STARRING Eddie Albert
DIRECTED BY HENRY KING
SCREENPLAY BY SY BARTLETT
CINEMASCOPE COLOR by DE LUXE STEREOPHONIC SOUND

The bitter-sweet affair of F. Scott Fitzgerald and Zelda Sayre...
"Let every lover be the last."
S.