



County Easter Seal Drive Dates Are Set

The 1960 Easter Seal campaign in Eastland and the nation will be conducted March 17 through Easter Sunday, April 17. Mrs. Les Strawn, county Easter Seal chairman, said that more than 3,000 homes will be reached in the year's mailing.

Bad Weather Has Cut Visiting at Local Schools

Bad weather has cut the number of visitors at local schools during Public Schools Week to a small number, but J. B. (Tip) Arther, chairman, urged citizens to visit their schools if at all possible during the remainder of the week.

World Day of Prayer Service Friday Morning

The 74th annual World Day of Prayer will be observed Friday at 9:30 a.m. at the First Presbyterian Church.

Most Common Questions Asked Income Tax Problems Are Listed

Questions are not new to taxpayers of the Internal Revenue Service. The well-trained employees who answer the questions and talk to the taxpayers at the IRS offices in Eastland answer more than 100 questions every year.

ing 1,655 Easter Seal affiliates in the 50 states, District of Columbia and Puerto Rico. Founded in 1921, it is the largest voluntary agency serving the physically handicapped. It operates and co-sponsors a network of more than a thousand centers and programs offering direct services to crippled children and adults through treatment and rehabilitation centers, itinerant mobile and home therapy programs, sheltered workshops, equipment loan pools, summer therapy services, and resident and day camps.

4-H Club Week in Texas Is Set March 5-12

College Station, Governor Price Daniel has by official proclamation designated the week of March 5-12 as 4-H Club Week in Texas and has asked all citizens to participate in the observance being planned by 4-H members in the counties of Texas.

I GIVE YOU TEXAS

By Boyce House

Can you remember when, to keep his straw hat from sailing away—they were called "sailors" by the way—a man had a little black cord, one end of which was attached to the hat and the other end was hitched in the button-hole of the coat lapel? That's one fashion that should never have been abandoned as far as West Texas is concerned.

Eastland Alumni Association Sets Planning Meet

The Eastland High School Alumni Association will hold a planning session for 1960 Homecoming this Sunday, at 2 p.m. The meeting will be held in the High School Auditorium and is for the purpose of putting the finishing touches to Homecoming plans.

Nancy Owen Is On Dean's Honor Roll at Texas U.

The University of Texas College of Fine Arts listed 138 students on the 1959-60 first semester honor roll, Dean E. Williams Doty, announced Thursday.



WINDSOR'S THE NAME—The Duke and Duchess of Windsor, arriving for a stay in New York, extend glad-hands simultaneously to newcomers.

4-H Club Week in Texas Is Set March 5-12

College Station, Governor Price Daniel has by official proclamation designated the week of March 5-12 as 4-H Club Week in Texas and has asked all citizens to participate in the observance being planned by 4-H members in the counties of Texas.

Drugs Available To Wipe Out TB, Expert Declares

Drugs that fight tuberculosis in the individual patient can wipe out the disease in Texas—if every person with active disease is treated adequately with drugs now available.

Eastland Alumni Association Sets Planning Meet

The Eastland High School Alumni Association will hold a planning session for 1960 Homecoming this Sunday, at 2 p.m. The meeting will be held in the High School Auditorium and is for the purpose of putting the finishing touches to Homecoming plans.

Nancy Owen Is On Dean's Honor Roll at Texas U.

The University of Texas College of Fine Arts listed 138 students on the 1959-60 first semester honor roll, Dean E. Williams Doty, announced Thursday.

THROUGH UP

You Don't Have to Give Now, You Have

Texas has benefitted during the past year from distribution of blood derivatives totaling an estimated \$119,424 in value, given without charge to the people of the state by the American National Red Cross.

Drugs Available To Wipe Out TB, Expert Declares

Drugs that fight tuberculosis in the individual patient can wipe out the disease in Texas—if every person with active disease is treated adequately with drugs now available.

Eastland Alumni Association Sets Planning Meet

The Eastland High School Alumni Association will hold a planning session for 1960 Homecoming this Sunday, at 2 p.m. The meeting will be held in the High School Auditorium and is for the purpose of putting the finishing touches to Homecoming plans.

Nancy Owen Is On Dean's Honor Roll at Texas U.

The University of Texas College of Fine Arts listed 138 students on the 1959-60 first semester honor roll, Dean E. Williams Doty, announced Thursday.

Hoffmann Resigns Hospital Position

W. H. (Bill) Hoffmann, president and director of Eastland Memorial Hospital, tendered his letter of resignation to the Hospital Board recently. A copy of which letter appears below, at the request of Mr. Hoffmann:

Only Two File In Eastland School Election

The Eastland School Board should have plenty of advice on the care of the eyes and teeth during the coming two years.

Trio Is Charged With Theft of Tools In Area

Charges of theft of over \$50 were filed against three youths with Ruby Springer in Precinct No. 2 Justice Court Wednesday, reported Don Butler, Chief of Police and Ralph Veal, Constable of Precinct No. 2.

Pipkin's Sport Center to Hold Big Boat Show

Bruce Pipkin's Sport Center will hold their annual all family boat show Friday through March 13.

R. C. Students End Favorite Elections

Ranger College students held their last elections for favorites for The Ranger Monday, February 29.

Kenneth Flaherty Graduates from Naval School

Kenneth D. Flaherty, airman USN, son of Mr. and Mrs. R. D. Flaherty of 203 S. High St., Eastland, graduated Jan. 29, from the Aviation Electronics Technician School at the Naval Air Technical Training Center, Memphis, Tenn.

Members of the Board of Directors of the Eastland Memorial Hospital effective as of February 6, 1960.

Members of the Board of Directors of the Eastland Memorial Hospital effective as of February 6, 1960.

Members of the Board of Directors of the Eastland Memorial Hospital effective as of February 6, 1960.

Members of the Board of Directors of the Eastland Memorial Hospital effective as of February 6, 1960.

Members of the Board of Directors of the Eastland Memorial Hospital effective as of February 6, 1960.

Members of the Board of Directors of the Eastland Memorial Hospital effective as of February 6, 1960.

Members of the Board of Directors of the Eastland Memorial Hospital effective as of February 6, 1960.

Members of the Board of Directors of the Eastland Memorial Hospital effective as of February 6, 1960.

Members of the Board of Directors of the Eastland Memorial Hospital effective as of February 6, 1960.

Members of the Board of Directors of the Eastland Memorial Hospital effective as of February 6, 1960.

Members of the Board of Directors of the Eastland Memorial Hospital effective as of February 6, 1960.

Members of the Board of Directors of the Eastland Memorial Hospital effective as of February 6, 1960.

Members of the Board of Directors of the Eastland Memorial Hospital effective as of February 6, 1960.

Members of the Board of Directors of the Eastland Memorial Hospital effective as of February 6, 1960.

Eastland Telegram

Eastland County Record established in 1931, consolidated August 31, 1951. Chronicle established 1887, Telegram established 1923. Entered as second class matter at the Post Office in Eastland, Texas under the act of Congress of March 3, 1879.

TIMES PUBLISHING COMPANY
 Published Tri-Weekly—Tuesdays - Thursdays - Sundays
 Onous Dick and Joe Dennis, Publishers
 Virgil E. Moore, Editor

One week by carrier in city	.16
One month by carrier in city	.65
One year by mail in County	2.95
One year by mail in state	4.95
One year by mail out of state	6.95

NOTICE TO PUBLIC—Any erroneous reflection upon the character, standing or reputation of any person, firm or corporation which may appear in the columns of this newspaper will be gladly corrected upon being brought to the attention of the publishers.

WANT ADS!

Cards of Thanks charged for at rate of \$2.00 Each

MISC FOR SALE SPECIAL NOTICE

FOR SALE: 1956 Allstate motor scooter, 1400 West Commerce. Phone MAin 9-2216, Eastland.

FOR SALE: New secretarial desk with typewriter storage. Beautiful No. 1 light oak finish. Bargain priced. Eastland Telegram.

FOR SALE: G. I. Equity. Small down-low monthly payment. Best location. 2 bedrooms, pretty yard, pavement. M. A. Treadwell, Sr. Call MAin 9-2017.

FOR SALE: Choice of 2 and 3 bedroom homes. Priced right. All in good locations. Let me show you these. M. A. Treadwell, Sr. Call MAin 9-2017.

OVER 1,000 records for sale. All popular artists. Stereo, Hi-fi, long-play albums. 45 RPM. Latest releases—Vinson Radio and TV Service—Ranger.

FOR SALE: Small four room house with bath to be moved from Gorman. See Shorty Lawrence, Gorman.

ELECTROLUX (R) Cleaners factory rebuilt and guaranteed. Authorized Sales & Service. 1392 Sayles, Abilene. Ph. OR 3-1135.

FOR SALE OR LEASE: Three acres, well improved. All modern. Close in on highway. Jack Chamberlain. Phone MA 9-1742.

FOR SALE: Nice rooms and apartments with tile baths. \$5.00 up. Bill paid. 70 Apartments. Paramount Hotel, Ranger, phone 9503.

FOR SALE OR TRADE FOR FARM: House, double garage, corner Neblett and Plummer. See Truman Brown, MAin 9-1736 or MAin 9-1047.

FOR SALE: Used corrugated iron and lumber for shed. C. C. Cornelius—Phone MAin 9-2171.

FOR SALE: 14 foot aluminum boat motor and trailer. Good condition. Roy Lawson, North Side Barber Shop.

FOR SALE OR TRADE: Will trade 170 acres of sandy land 4 1/2 miles West of Carbon for property in Eastland. 60 acres in cultivation and no improvements. Will Sell. Call MAin 9-2155.

FOR SALE: Radio console with record player. Roll-a-way bed and mattress. Phone MAin 9-1690.

FOR SALE: One 8' x 10' wood frame sheet iron clad office building, one 24' x 36' steel frame sheet iron clad pump house building; one 8' x 8' wood frame outhouse building, located at Humble Pipe Line Company's Gorman Pump Station approximately 5 miles West of Gorman, Eastland County, Texas. These buildings are to be sold as a group and are to be moved from Company property. Sealed bids will be received only through U. S. Mail address to Humble Pipe Line Company, Attention: Mr. L. F. Keelan, Box 712, Cisco, Texas. All bids must be received in Cisco Office Pipe Line Company on or before 10:00 A.M., March 14, 1960. Rights reserved to reject any or all bids. Inspection of property can be made by applying to Humble's Representative at Humble's Gorman Station between the hours of 10:00 A. M. and 12 A. M., Noon, March 7, 1960. Prepared bid sheets will be available at Humble's Gorman Station and detailed instructions will be attached to the bid sheets. HUMBLE PIPE LINE COMPANY Box 712 Cisco, Texas

Want To Lease
 WANT TO LEASE: 200 — 300 acres land. Must have well, shade and good drainage. Phone MA 9-2667.

LOST & FOUND
 LOST SATURDAY: Half Cocker Spaniel dog. White with black feet, black speckles. Answers to Specks. Red collar. Children's pet. 407 S. Connellee. Call MAin 9-1386.

LOST: Samsonite overnight bag. Reward upon return. Call MAin 9-1060 or MAin 9-1090.

DOLLAR DAY SPECIAL: One group blouses 39c at Mode O'Day East Side of the Square.

NOTICE: I will not be responsible for any debts incurred by anyone other than myself. Billy T. Anderson.

NOTICE: Will bake homemade pies and cakes. Phone MAin 9-2208. Mildred Sherrill.

DON'T merely brighten your carpets... Blue Lustre them... eliminate rapid resoiling. Coats Furniture and Carpet Co.

DANCE: Dance every Saturday at American Legion Hall, Eastland. 8:30 until... by Western Rhythm Ramblers.

Eastland Masonic Lodge No. 467
 Reg. Stated meetings 2nd Thursday of each month, at 7:30 p.m.
 H. G. Weathersby, W. M.
 L. E. Hunkaby, Secretary

A LOVEABLE HOME for the aged... with a family atmosphere. 24-hour nursing, special diet. GOLDEN AGE NURSING HOME Mrs. Witt Springer Phone HI 2-2370 Cisco

HEAR R. L. WALL
 Over Station KERC
 Gospel of Christ Program
 Sunday, 8:30 a.m.

REAL ESTATE FOR SALE

FOR SALE: My home 4 miles N. W. Eastland. App. 28 acres open-land net wire fenced, large 2 bedroom house with 2 baths, 2 car garage, 32 x 66 metal shed, 2 smaller out buildings, concrete storm cellar, pressure water system from earthen tank. Yard nicely landscaped with plenty shade trees. Electricity, butane, school bus route. Consider some trade. Contact B. H. Courtney, Rt. 2 Eastland. Phone MA 9-1817.

FOR SALE: House, 608 S. Bassett.

MUST SELL: 4 room house with cistern and well on 12 acres. T. M. Burlison, Rt. 2, Eastland.

FOR SALE: Three bedroom house. Good location. Call MAin 9-1485.

MISC. WANTED

WANTED: Musicians to form western band. See Joe Marsh, 506 East 7th Street, Cisco, after 5 p.m.

DIRT CONTRACTING crane and dragline, earth tank cleaning my speciality. 20 years experience. All work guaranteed. Temporary quarters Lilley Courts Room 7, 309 East Main. Call MAin 9-1522, Lawrence Rollwitz.

WANTED: Ironing call MAin 9-1561.

FOR RENT

FOR RENT: Five room unfurnished house, 104 E. Hill.

FOR RENT: Four room house, two bedrooms, playpen. Phone MA 9-1263.

FOR RENT: Three bedroom unfurnished house. 302 S. Connellee. Phone MA 9-1522 or MA 9-1238.

FOR RENT: Newly decorated apartments. Hillside. Phone MA 9-8847.

ENJOY LIFE DOWNTOWN, close to everything. 100 lovely redecorated rooms with 100 private baths, all with ceiling fans and heated with warm steam heat, for only \$39.50 per month, which includes maid service. Delicious Coffee Shop. Also apartments custom made to any size for permanent guests. Contact Mrs. Robinson, manager, the friendly Village Hotel (formerly the Connellee, Eastland, Texas.

FOR RENT: 4 room furnished apartment. Call MAin 9-2186.



OUR Quality LUMBER MAKES THE DIFFERENCE!

When you look around for lumber and building needs, don't settle for second best! Insist on top-quality and top-service! See us first! Our know-how and experience is yours for the asking! Whatever your building plans, give us a call!

Higginbotham-Bartlett Co.
 Jack Elliott, Mgr.
 301 W. Main Ph. MA 9-1311 or MA 9-1533
 ASK FOR FREE ESTIMATE! NO OBLIGATION!

COME IN AND SEE OUR COMPLETE SELECTION OF FINE CARPET'S

★ Prices to fit every budget
 ★ We do our own installation

Ranger Furniture Exchange
 "BRASHIER'S"
 123 N. Rusk RANGER Phone 242

WHY SETTLE FOR LESS

CONSULT SCOTT Paint & Body Works
 300 W. Commerce

Finest complete automobile and truck repairing available. Finest equipped shop in this area.

★ 22 YEARS IN EASTLAND
 ★ ALL WORK GUARANTEED
 ★ FREE ESTIMATES ON...
 Paint, Body, Frame Straightening, and Glass Replacement.

We specialize In Wreck Rebuilding and Glass Replacement.

HOW TO GET MORE MILES PER GALLON

AS PROVED IN THE MOBILGAS ECONOMY RUN

Avoid high speeds and jack rabbit starts. Practice safe driving, pacing your speed to traffic lights to avoid unnecessary stops.

Use long mileage Mobilgas R or Mobilgas Special, performance proved in stock cars competing in the Annual Mobilgas Economy Runs.

Bring your car to us for regular Mobil maintenance to make certain it's in shape to deliver maximum mileage.

EARLEY TIRE SERVICE
 302 W. Main Ph. MA 9-2355

Ten Most-

(Continued from Page One)
 (clude the amount that your company reimbursed to you as income. Keep your records...)

Does Your Car Drive Like An Antique?

IF IT DOES... YOU SHOULD COME BY TODAY and look over our Big Selection of USED CARS (and trucks, too) Hood King Motor Co. 100 East Main Phone MA 9-1726

NOTICE FRESH DRESSED FRYERS and Fresh Dressed Hens At The Plant PHONE MA 9-1200 WALKER Dressing Plant

Visit Our Display Yard In EASTLAND before you choose your MONUMENT
 Located across street from Coats Furniture Co.
 Willard Griffin, Dealer Ph. MA 9-1091 — Eastland
 Built by: Riley-Gardner Memorial Co., Hamilton, Texas

carefully on business and travel expenses since you may not be required to report either the travel expense or the reimbursement in your case.

7. I lost a \$2,000 diamond ring during 1959. Can I claim a "tax deduction? Answer: You can not deduct your losses of cash or other personal property. You can deduct their theft or embezzlement losses in the year of discovery.

8. Can I claim cigarette tax in Texas? Answer: No. Cigarette tax is not deductible in Texas. It is in some other states, but not in Texas. Other state taxes are deductible, though, such as personal and real property taxes, gasoline tax, poll tax and automobile licenses.

9. I work for my self. I didn't file an estimate and pay my income taxes during the year. Can I avoid a penalty by filing my tax return before January 31. Answer: No. If your income taxes are not withheld or if you have income outside of your salary, you are required to file an estimated return on April 15 during the tax year or on June 15, September 15, or January 15, depending upon when you earned the money during the year. If you had income in January 1959, filing an estimated tax or a Form 1040 in January 1960 will not avoid a penalty. The penalty is imposed on taxpayers who do not file and pay timely. Be sure to file our estimate for 1960 on or before April 15.

10. Can I claim depreciation on my car which I drive back and forth to work? Answer: No. This is a commuting expense, like bus fare. You can claim depreciation on a car used in your business for that percentage of the car used for business purposes. However, if a business automobile is used to commute to your place of business, the cost must be determined and eliminated from business expenses. Read your instructions carefully on depreciation. If necessary seek professional tax help.

The tax folks are always willing to answer your questions but advise a careful reading of the tax instructions. Taxpayers having more complex individual problems can purchase a 144-page booklet called "Your Federal Income Tax" for 40c through any Internal Revenue Service office. Businessmen may also purchase a copy of the "Tax Guide for Small Business", covering business problems, for 40c.

Keep New Carpet New Looking

The new carpet of which you are so proud will lend beauty and dignity to your home for many years if you give it gentle but regular care with Blue Lustre.

Junior's Indian expeditions and family spills present no problem if Blue Lustre is at hand. Swish on Blue Lustre foam with a long handle brush or any shampoo applicator. One half gallon cleans three 9 x 12 rugs.

Coats Furniture & Carpet Co. EASTLAND, TEXAS

instructions. Taxpayers having more complex individual problems can purchase a 144-page booklet called "Your Federal Income Tax" for 40c through any Internal Revenue Service office. Businessmen may also purchase a copy of the "Tax Guide for Small Business", covering business problems, for 40c.

Lark Pushes Studebaker Sales Upward

Studebaker-Packard Corporation today announced a 10.2 per cent increase in retail deliveries of 1960 Larks during the last ten days of January over the previous ten days. This compares with a total industry gain of 5.8 per cent in the same two periods—from 163,591 to 173,019 units.

S. A. Skillman, vice president and general sales manager, said the proportionately larger increase of Lark sales during the last ten days reflects, in part, the company's continued level production and sales without spurts to fill back orders caused by earlier shortages.

Skillman pointed out that production and retail delivery figures to date do not include the Hawk, which last year accounted for 5.4 per cent of total Studebaker-Packard sales.

Production of the new 1960 Studebaker Hawk, which was delayed earlier as all available steel was concentrated in the fast-selling Lark program, will begin this week, Skillman said. The Hawk's new 289-cubic inch displacement V-8 engine will develop 210 horsepower with regular gasoline at 4500 rpm. A four-barrel carburetor, increasing horsepower to 225 is optional. Dual exhausts and finned brakes are standard equipment on the 1960 Hawk, Skillman said.

ATTEND THE CHURCH OF YOUR CHOICE EACH SUNDAY

REPAIRS!

CARS POLISHED 12.50 to 15.00
 We Know Our Business

FREE ESTIMATE Insurance Claim Service
 "We've seen plenty of drive through our doors we have yet to see one out."
Lindley Pain Body Shop
 110 S. Bassett Ph. MA 9-2124

T. L. FAGG REAL ESTATE
 Property Managers Home and Farm

Bring Your BATTERY TROUBLE To Us!
 Group One Fits 6 Volt Cars
8.95 Exchange
JIM HORTON
 East Main St. - MA Eastland, Texas

ALL FAMILY BOAT SHOW

STARRING

- ★ The Mighty Johnson V-75—fastest moving Sea-Horse ever launched!
- ★ A complete new line of Sea-Horse motors for 1960—3-75 h.p.!
- ★ Beautiful new boats—easy to operate and easy to care for!
- ★ Fascinating new ideas to make boating more fun than ever!

WIN ONE OF SIX SEA-HORSES 3-75 h.p. GIVEN AWAY NATIONALLY

Win This! SUPER SEA-HORSE V-75
 Johnson's 2,000,001st Motor and 5 other Sea-Horses
 Come in and Register

FREE FUN FOR ALL THE FAMILY MARCH 4-13
SEE YOU THERE... AT Bruce Pipkin Sport Center
 PHONE MA 9-1640



BEST BUY DAYS

It's "Stock Your Pantry Time" Again! Don't Miss The Exciting Savings This Weekend At

WORTH FOOD MART

Prices Effective Thursday, Friday and Saturday — We Reserve the Right to Limit

"WORTH-more" VALUES!

FRYERS

ARMOUR'S STAR Tender and Plump Fresh-Dressed, Whole

Lb.	33¢
Cut-Up Fryers	1 lb. 37¢
SWIFT'S ORIOLE Sliced Bacon	1 lb. Pkg. 35¢
THICK-SLICED Bacon Tennessee Farm Style	2 -Lb. Pkg. 89¢
SWIFT'S PREMIUM FRANKS	1 lb. Pkg. 49¢
TENNESSEE FARM STYLE, Hot or Mild Pork Sausage	2 -Lb. Pkg. 119
CREAM CHEESE Philadelphia	8-Oz. Pkg. 25¢

LIBBY'S FINEST FRUIT COCKTAIL	SAVE 25c	5	No. 303 Cans	100
LIBBY'S HALVES, IN HEAVY SYRUP BARTLETT PEARS	SAVE 16c	4	No. 303 Cans	100
YELLOW CLING, SLICED OR HALVES LIBBY'S PEACHES	SAVE 24c	4	Big No. 2 1/2 Cans	100
LIBBY'S FINEST CUT GREEN BEANS	SAVE 14c	6	No. 303 Cans	100
VIENNA SAUSAGE	LIBBY'S SAVE 21c	4	4-Oz. Cans	69¢
CREAM STYLE CORN	LIBBY'S GOLDEN	6	No. 303 Cans	\$100
GRAPEFRUIT JUICE	LIBBY'S SAVE 11c	3	46-Oz. Cans	89¢
Chili-Spaghetti	LIBBY'S SAVE 4c		Big 24-Oz. Can Just	45¢



MEAT DELICIOUS Beef Stew	24-Oz. Can	45¢
MEAT TANGY Tomato Juice	46-Oz. Can	29¢
MEAT HAMBURGER-SLICED Pickles	Pint Jar	25¢

GARDEN SWEET

PEAS

Libby's, Save 17c

6 No. 303 Cans **100**

New! SHORTENING

"Worth Food Mart" Brand: We Guarantee the Quality of This Fine All-Vegetable Shortening

3 -Lb. Can **59¢**

OLD SOUTH FROZEN ORANGE JUICE	5	6-Oz. Cans	89¢
JEAN'S DELICIOUS FROZEN ROLLS	2	24-Cnt. Pkgs.	49¢

AYER Aspirin 100-Tablet Bottle Reg. 57¢ 69c

Serve a Delicious Salad Tonight

TOMATOES	Select 3's, 4's	Cello Carton	19¢
LETTUCE	Firm, Crisp	Large Head	15¢
GREEN ONIONS	2 For	15c	
EXTRA FANCY DELSAP APPLES	lb.	17c	
FANCY AVOCADOS	4 For	25c	
CALIFORNIA JUICY, NAVAL ORANGES	lb.	15c	

Taste O'Sea Lenten

Frozen Fish Sale!

Fish Sticks	TASTE O'SEA SAVE 17c	3	8-Oz. Pkgs.	100
Perch Fillets	TASTE O'SEA OCEAN PERCH		Lb. Pkg.	39¢
Catfish Fillets	TASTE O'SEA OCEAN CATFISH		Lb. Pkg.	49¢

FISH STICKS FAMILY SIZE 16-Oz. Pkg.

FLOUNDER FILLETS Lb. Pkg.

HADDOCK RAW, PORTIONS 12-Oz. Pkg.

SCALLOPS BREADED 10-Oz. Pkg.

YOUR CHOICE **59¢** PER PACKAGE

- CATFISH STICKS 8-Oz. Pkg.
- FISH STEAKS 10-Oz. Pkg.
- COD PORTIONS Row, 12-Oz. Pkg.

MIX OR MATCH 2 Pkgs. **79¢**

WORTH FOOD MART

SWANSDOWN — White, Yellow, Devil's Food, Lemon-Flake, Orange-Cocoanut

CAKE MIX

New! ... 3 Pkgs. **100**

READ THE CLASSIFIEDS



DAVIS DRUG COMPANY
114 West Commerce

NEWS FROM DESEMONA

The flu bug is still with us since several of the school children were absent Monday.
Mrs. Joe Murrel spent a day or two in the Gorman hospital last week.
Mrs. Ollie Fuqua is reported quite improved at the hospital in Gorman.

Mr. and Mrs. H. O. Fein and son, David, and their friends, Mr. and Mrs. Woods of Ft. Worth, visited with Mrs. Ollie Fein Sunday afternoon.

Mr. and Mrs. Jerry Dutton of Ft. Worth spent the weekend here with her parents, Mr. and Mrs. Joda Lewis.

Mr. and Mrs. Harold Dean Newton of DeLeon were here for the weekend with her parents, the Sam Yanceys.
Rev. David Dequire filled the

pulpit Sunday night at the First Baptist Church in the absence of the new pastor, Rev. Moody Smith. Coleman Wier and Mr. and Mrs. Bob Koonce were in Comanche Sunday to attend the funeral of a cousin, Mr. Barn Reid. Mr. Reid was the brother of the late Ford Reid.

Harold Candle of Ft. Stockton spent a few days last week with his mother, Mrs. Margie Caudle and Sherrel.

Mr. and Mrs. Charlie Worden of Kermit spent a while Sunday with his parents, Mr. and Mrs. Willis Worden and Frances.



Roscoe Marsh, Mgr.
525 E. Conner
Ph. MA 9-1140

"EFFICIENT EXTERMINATION" OF

- Roaches • Silver Fish • Ants
- Mice • Fleas • Ticks
- Scorpions and other Pests

Member National Pest Control Ass'n.
Lester Humphrey
PEST CONTROL SERVICE

Surity Bonded Termite Control—

Political Announcements

The Eastland Telegram has been authorized to announce candidates for public office in the Democratic first primary election May 7 as follows:

FOR SHERIFF:
J. B. Williams, re-election
Lee Horn
W. E. (Bill) Reid
Oscar M. (Hop) White

FOR TAX ASSESSOR-COLLECTOR:
J. C. Allison (re-election)
FOR STATE REPRESENTATIVE 76TH DISTRICT:
Paul Brashear (re-election)
Don Kincaid
Scott Bailey

FOR COUNTY COMMISSIONER PRECINCT NO. 1:
J. B. (Tip) Arther
E. W. (Bud) Griffin
O. R. (Ott) Ervin

FOR STATE SENATOR, DISTRICT 22:
Tom Creighton, Yalo Pinto Co.
Floyd Bradshaw, Parker County

FOR CONGRESS, 17TH CONGRESSIONAL DISTRICT:
Roy Skaggs of Abilene
R. M. Wagstaff

FOR CONSTABLE PRECINCT 1:
J. H. (Hoover) Pittman
Porter O. Woods

Helps Heal And Clear Itchy Skin Rash!

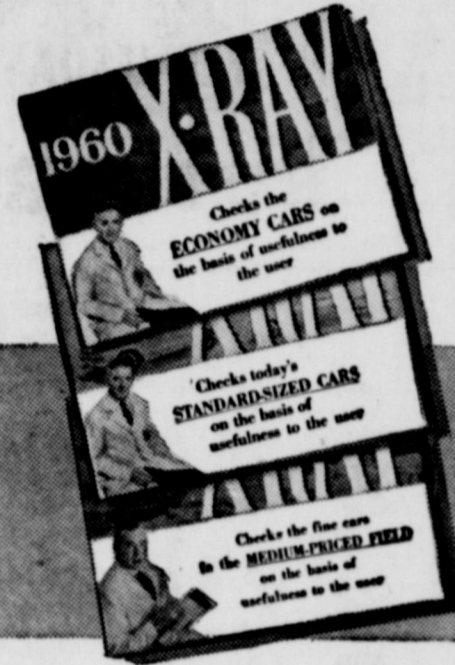
Zemo—liquid or ointment—a doctor's antiseptic, promptly relieves itching, stops scratching and so helps heal and clear surface skin rashes. Buy Extra Strength Zemo for stubborn cases!

To Help You Save Hundreds of Dollars!

FREE 1960 AUTOMOTIVE X-RAY

- ★ Compares The 1960 Economy Cars
- ★ Compares The 1960 Standard-Size Cars
- ★ Compares The 1960 Medium-Priced Cars

PUTS ALL THE FACTS AT YOUR FINGERTIPS!
FULLY ILLUSTRATED! AUTHENTIC IN EVERY DETAIL!



Don't buy any new car till you read the new 1960 Automotive X-Ray booklets. Get honest, factual answers to your questions in easy-to-read, easy-to-understand form:
Which car is lowest priced? Highest in resale value? Economy, fact or fiction? Get official results! Six-passenger room—which compact cars have it? Just a few minutes separating facts from exaggerated claims may save you hundreds of dollars. X-Rays are free at your Rambler dealer's. Hurry. Supply limited.

LOWEST-PRICED U.S. CAR RAMBLER AMERICAN



Yes, lowest-priced on every model. Lowest-priced 2-door sedan. Lowest-priced 4-door sedan. Lowest-priced station wagon.

Get Rambler's FREE Automotive X-Ray NOW
PIPKIN MOTOR COMPANY
314 W. MAIN

WEATHER FORECAST:

Warm and Humid

FASHION FORECAST:

Cool and Comfortable
in SPECTACULAR 2/80's

'BOTANY' 500®
tailored by DAROFF



Staying cool and comfortable, even in the most humid weather, is no problem when you're wearing the 'Botany' 500 Spectacular 2/80's. The reason is the fabric, a blend of the world's rarest worsted yarns and Dacron woven by a very special process that provides you with a built-in air conditioning system. But lightweight coolness is only half the story. Fit and fashion is the other half. For this exclusive 'Botany' 500 fabric is perfection-tailored by the deft hand of Daroff into a suit of distinction and elegance. Come in and see it today, and enjoy a long, cool summer. \$65.00



Westex Packing Co.

Formerly Earnest Food Locker
RETAIL DIVISION
Friday & Saturday Only

Specials

Seven Roast CHOICE	Lb.	49¢
Shoulder Roast CHOICE	Lb.	59¢
Loin Steak CHOICE	1 b.	79¢
Cured Ham SHANKLESS SKINLESS Half or Whole	Lb.	43¢
Bacon Thick SLICED	2 Lbs.	69¢
Sausage PURE PORK	4 Lbs.	1.00
Pork Roast LEAN SHOULDER	1 b.	32¢
Pork Chops CENTER CUT	Lb.	49¢
Ground Meat ECONOMY	Lb.	39¢
Short Ribs CHOICE CUT	Lb.	29¢
Sausage WHOLE HOG	2 Lb. Sack	89¢
Pork Liver	Lb.	29¢



Libby's CANNED FOOD SALE

STOCK UP & SAVE

Safeway Gives DOUBLE GOLD BOND STAMPS ON WEDNESDAY!
(With Purchase of \$2.50 or More)

WAFFLES
Bel-air frozen — Ready in a jiffy. No mess — no fuss.
5-Oz. Pkg. **10¢**

BUTTER
Shady Lane — Enjoy high quality. Try on Bel-air waffles.
1-Lb. Pkg. **71¢**

Green Beans
Cut — have summer garden beans on your table in minutes.
3 No. 303 Cans **49¢**

Golden Corn
Cream Style — next best thing to "country fresh" corn.
3 No. 303 Cans **49¢**

Sweet Peas
Garden sweet — garden fresh — packed as soon as picked.
3 No. 303 Cans **49¢**

Spinach
Nature's own health food. Rich in iron.
4 No. 303 Cans **49¢**

Fruit Cocktail
It's bright, ripe, nourishing... and so easy to serve.
3 No. 303 Cans **69¢**

Bartlett Pears
Delicious with cottage cheese and lettuce.
2 No. 2 1/2 Cans **69¢**

Pineapple
Crushed — Makes wonderful up-side-down cake.
4 No. 1 Cans **59¢**

Tomato Juice
Twice rich — rich in vitamins and flavor.
2 46-Oz. Cans **59¢**

Vienna Sausage
Richer in proteins — bigger in value.
2 No. 1/2 Cans **39¢**

Safeway Calf Sale!

Calf Sirloin Steak
Calf Chuck Roast
Calf Round Steak
Calf T-Bone Steak

U.S.D.A. Good grade calf. Lb. **75¢**
U.S.D.A. Good grade calf. Lb. **43¢**
or Swiss Steak. U.S.D.A. Good grade calf. Lb. **79¢**
U.S.D.A. Good grade calf. Lb. **85¢**

Calf Arm Roast
Calf Short Ribs
Calf Rump Roast
Alcoa Aluminum Foil

U.S.D.A. Good grade calf. Lb. **49¢**
U.S.D.A. Good grade calf. Lb. **25¢**
U.S.D.A. Good grade calf. Lb. **75¢**
Heavy duty wrap. 25'x12" Roll **45¢**

For Home Freezers!
CUT AND FREEZER WRAPPED
Side of Calf
Calf Hindquarter
Calf Forequarter

U.S.D.A. Good grade calf. 125 to 200 pound average. Lb. **45¢**
Untrimmed — U.S.D.A. Good grade calf. 65 to 75-Lb. avg. Lb. **55¢**
U.S.D.A. Good grade calf. 65 to 75-Lb. avg. Lb. **39¢**

Safeway Produce



Crisp and Tender

Lettuce

Crisp and crackling fresh. Delicious on sandwiches or try lettuce and tomato salad.
2 Heads **29¢**

Tomatoes
Vine-ripe, firm and flavorful. Lb. **19¢**

Grapefruit
Ruby Red — Texas finest. Full of juice. Each **5¢**

Anjou Pears
Delicate flavor. Lb. **15¢**

Mushrooms
Fresh — Nutritious. 8-Oz. Pkg. **29¢**

LIBBY PINEAPPLE Juice
All the good flavor of fresh pineapple. Quick packed in Hawaii.
2 46-Oz. Cans **59¢**

Wolf Chili
Plain. Wonderful delight on cool nights... ummm delicious.
No. 300 Can **49¢**

Scotties
Facial tissue. White or assorted colors. Wet strength.
400 Ct. Box **27¢**

Values Galore!

Tempest Tuna
Melrose Crackers
Maple Syrup
Pancake Mix

Light meat grated — Delicious in casseroles or in salads. 3 6-Oz. Cans **49¢**
Soda crackers — Try with salads, soups or for snacks. 1-Lb. Pkg. **19¢**
Pack Train Imitation — Delicious with pancakes. 24-Oz. Bottle **29¢**
Kitchen Craft Sweet Cream Buttermilk. 1-Lb. Box **15¢**

Bakery Feature of the Week!

Slenderway Bread
Skylark. Regular price 24¢. 1-Lb. Loaf **19¢**

2¢ OFF Bakery Special!
DANISH WHIRLS
Mrs. Wright's — Curv — Regular price 39¢. 12 1/2-Oz. Pkg. **37¢**

Slenderway Rolls
Skylark Brown 'n' Serve. 13-Oz. Pkg. **29¢**

Bread
Ballarina. 1-Lb. Loaf **25¢**

Boysenberry Pie
Bel-air frozen. Large 8-inch. 24-Oz. Pie **55¢**

CAPTAIN'S CHOICE FROZEN Ocean Perch
Here's a real seafood value. Perfect for Friday dinner.
1-Lb. Pkg. **39¢**

SAFEGWAY GUARANTEED EGGS!
Grade 'A' Eggs Breakfast Gems. Grade "A" quality, large size. Doz. **43¢**
Large 'AA' Eggs Cream 'O' the Crop. Grade "AA" Quality, large size. Doz. **45¢**

Potato Patties
Bel-air frozen... or turnip greens. 3 12-Oz. Pkgs. **49¢**

Leaf Kale
Bel-air frozen — Garden fresh flavor. 2 10-Oz. Pkgs. **25¢**

Collards
Bel-air frozen. 2 12-Oz. Pkgs. **25¢**

Tamales
Wolf — Real South of the Border flavor.
No. 300 Cans **49¢**

La Choy Soy Sauce Serve with Chow Mein. 3-Oz. Bottle 11¢	Lipton Tea Bags Orange Pekoe. For a better cup of tea. 16-Ct. Pkg. 25¢
Armour's Potted Meat Nutritious easy to prepare. 2 No. 1/2 Cans 25¢	Lipton Tea Orange Pekoe — A refreshing start — brisk Lipton tea. 1/2-Lb. Pkg. 43¢
Barbecue Beef Ireland... Sliced or chipped. 300 Can 69¢	Banquet Dinners Frozen chicken, turkey or beef. 11-Oz. Pkg. 55¢
Breast-O-Chicken Tuna Chunk light meat — Green Label. 8 1/2-Oz. Can 31¢	Nabisco Cookies Pecan Drop — Wonderful for lunches or snacks. 1-Lb. Pkg. 49¢
Hunts Tomato Catsup Delicious on french fries. 2 14-Oz. Bottles 39¢	Sunshine Hi-Ho Crackers Taste the difference. 1-Lb. Pkg. 35¢
Hunts Tomato Sauce Wonderful in casseroles. 3 8-Oz. Cans 29¢	Vigo Dog Food Blue Label — A beef product. 2 1-Lb. Cans 21¢
Morton's Salt Plain or Iodized. 2 26-Oz. Boxes 25¢	Purex Liquid Bleach Removes stubborn stains. Quart Bottle 19¢
Pillsbury Best Flour 5-Lb. Bag 51¢	Pet Non-Fat Milk Instant — Makes 12 quarts. 39-Oz. Box 95¢
Sugarine Liquid Sweetner 4-Oz. Bottle 65¢	Hunts Sliced Peaches or halves. Yellow Cling... No. 1/2 Can 33¢

Prices Effective Thurs., Fri. and Sat., March 3, 4 and 5 in Eastland. We Reserve the Right to Limit Quantities. No Sales to Dealers.

SAFEGWAY
Conveniently Located to Serve you at 504 E. Main

READ THE CLASSIFIEDS

Funeral Directors
HAMNER FUNERAL HOME
 Ben E. Hamner
 Oxygen Equipped - Air Conditioned

Eastland Phone MA 9-2611
Cisco Phone Hillcrest 2-1211

AMBULANCE SERVICE ANY WHERE ANY TIME
 Nominal Cost Burial Insurance
 For The Entire Family



"Pipe Dreams" Take Shape
 with **REGULAR SAVING**

That home of your own . . . a start in business . . . or some other "pipe dream" can become a reality when you open an insured savings account here and add to it regularly. Our good earnings, added twice yearly, and compounded, help you get the things you want. Start saving now with a convenient amount.

First Federal Savings & Loan Association of Ranger

ONLY 3% DOWN ON FHA LOANS
 204 Main RANGER, TEXAS Phone 820



MISS NANCY DeBUSK

Nancy DeBusk and J. H. Shamrock to Wed in Germany

Mr. and Mrs. F. O. DeBusk of 1402 Bullard, Cisco announce the engagement and approaching marriage of their daughter, Nancy Delores to A 2C Jerome H. Shamrock.

A 2C Shamrock is the son of Mrs. Alice Shamrock of Fond Du Lac, Wisconsin.

The marriage will be held April 23 in the St. Sebastian's Chapel in Frankfurt, Germany.

The couple will reside in Frankfurt until July of 1961. Both are presently assigned to the 690th Security Wing, Miss DeBusk is a graduate of Eastland High School and has attended Draughons Business College in Abilene and Durham College in San Antonio. Airman Shamrock is a graduate of Fond Du Lac High School in Wisconsin.

ATTEND THE CHURCH OF YOUR CHOICE EACH SUNDAY

SOCIAL CALENDAR

Thursday, March 3

3 p.m. — Mrs. Fred Davenport will give a book review of "I'll Take Texas" by Mary Laswell at the regular meeting of the Thursday Afternoon Club.

3 p.m. — The Flatwood Home Demonstration Club will meet in the home of Mrs. Wiley Harbin.

Monday, March 7

7:30 p.m. — The regular meeting of the Oddfellow Lodge will be held in the IOOF Hall.

7:30 p.m. — The Pythian Sisters will meet in Castle Hall, 106 Commerce.

7:30 p.m. — The monthly meeting of the Posse Anns will be held in the Court House.

7:30 p.m. — Mrs. Hucklabay will host the members of Las Leales Club when the program will be Texas on Parade by Mrs. Frazier.

Tuesday, March 8

9:30 p.m. — WSCS will present Missionary Study by Mmes. Collings, Horton, Burton and Harlow.

Wednesday, March 9

2 p.m. — The clubhouse will be the meeting place of the Morton Valley Home Demonstration Club.

3 p.m. — Mr. Andrew Hogue, graduate of the New York School of Interior Design, will be the speaker at the meeting of Civic League.

7:30 p.m. — The Rebekah Lodge will hold its regular meeting in the IOOF Hall.

Ricky Moore Is Honored On Fifth Birthday Monday

Ricky Moore celebrated his fifth birthday Monday when his parents and brother, Mr. and Mrs. Virgil E. Moore and Trippy, honored him with a party in their home.

The 13 children present listened to stories read by Mrs. Moore and played games before the honoree opened his birthday gifts.

The refreshments included a pale yellow birthday cake centered with a clown's face, the words "Happy Birthday" and five yellow candles. The cake was served with lemonade and butter mints. Favors were balloons and books.

Attending were Delaine and Deniece Kincaid, Janet, Maria and Susan Guess, Paula and Craig Lund, Stevie and Mike Sims, Cynthia and Kenneth Smith, Mrs. Jerry Sims, the hostess and the honoree.

ATTEND THE CHURCH OF YOUR CHOICE EACH SUNDAY

Hospital News

Patients in Eastland Memorial Hospital are:

Mrs. Nora Wood, Eastland, accident

J. W. Sparks, Eastland, medical

Billy Matthews, Eastland, medical

Mrs. Thelma Cuhn, Olden, medical

Truman Brown, Eastland, medical

T. A. Weaver, Comanche, medical

Miss Cecelia Haas, Eastland, medical

L. Gosnell, Cisco, accident

Mrs. Ada Jackson, medical

Mrs. Amanda Rodgers, Eastland, medical

Mrs. Myrtle Cannon, Rising Star, surgical

Charlie Petree, Eastland, medical

S. N. Poe, Cisco, medical

Brooks Herring, Eastland, medical

Mrs. Lue Ann Gossett, Cisco, medical

O. H. Mangum, Carbon, medical

Mrs. Bam White, Eastland, medical

Mrs. Mary Couch, Carbon, surgical

T. H. Landon, Eastland, surgical

Mrs. H. J. Lame, Eastland, medical

Nina Hall, medical, Brownwood

Mrs. Nancy Polston and baby girl, Olden

Mrs. Willis Rainwater, Ranger, surgical

Pat Armstrong, Eastland, medical

Mrs. Louise Wilman, Eastland, medical

Ardie Thompson, Ranger, medical

Mrs. Ida Smitham, Eastland, medical

L. E. Sublett, Cisco, medical

Mrs. W. W. Walters, Eastland, medical

Dismissed were:

T. A. Weaver, Darrell Gosnell, Mrs. Ada Jackson, Mrs. Willis Rainwater.

Patients in the Ranger General Hospital from Eastland are Mrs. vuida Connell, medical and Mrs. Jewel Hendricks, medical.

INGROWN NAIL HURTING YOU?
Immediate Relief!

A few drops of OUTGRO® bring blessed relief from tormenting pain of ingrown nail. OUTGRO® loosens the skin underneath the nail, allows the nail to be cut and thus prevents further pain and discomfort. OUTGRO® is available at all drug counters.

WE'RE MODERN

WE HAVE A NEW DIAL PHONE! OUR NEW NUMBER

MAin 9-1344

Have Your Clothes Sanitone Cleaned . . . See The Difference

SCRAP IS OUR BUSINESS

ESTABLISHED 1926

EASTLAND IRON & METAL CO.

OWNED AND OPERATED BY HENRY PULLMAN

MAin 9 1522



RE-MODEL — REPAIR

UP TO 60 MONTHS TO PAY — \$3500 IS THE LIMIT

Well, if money is all you need, don't delay a minute more. It's easy and quick . . . obtaining one of our low-cost home loans. Like rent monthly payments and tailored to suit your budget and needs. Call or come in!

Higginbotham - Bartlett Co.

Jack Elliott, Mgr.
 301 W. Main Ph. MA 9-1311 or MA 9-1533
 ASK FOR FREE ESTIMATE! NO OBLIGATION!

Prove it to yourself! Dramatic test proves Plymouth gives you more miles per gallon!

Others talk gas savings . . . but Plymouth lets you see it. At your dealer's now—the PLYMOUTH PROVE-IT-YOURSELF ECONOMY DRIVE lets you take the wheel and see exactly the mileage you get! Thousands have taken this convincing drive. Don't miss it!

No special test track . . . no special test conditions . . . no special test driver! Just you at the wheel of a regular full-size Plymouth. Here's how it works:

Mounted on one side of a Plymouth is a jar which feeds a measured amount of gas directly to the car. You turn a control and the car is powered by the gas from this ECONOMY METER.

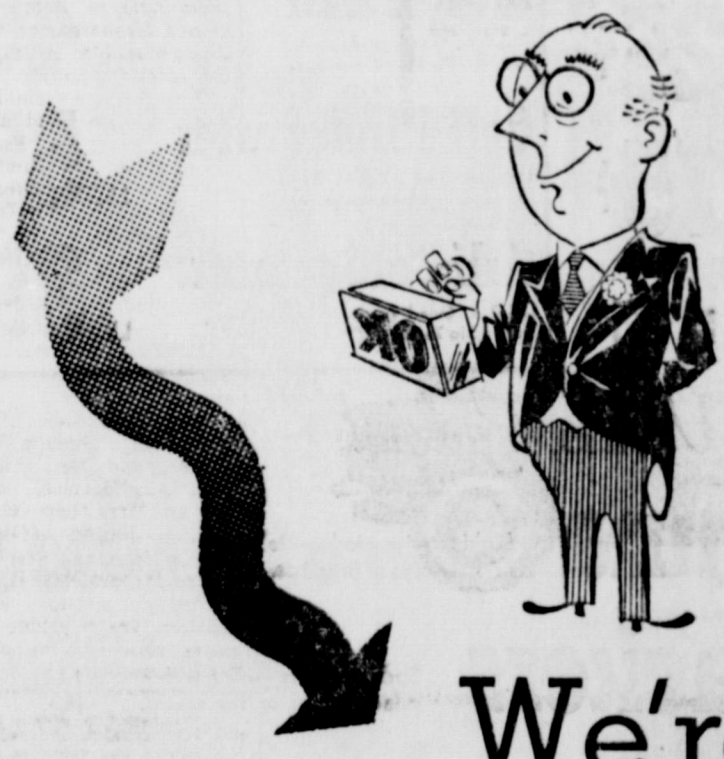
Then you drive in your usual fashion, through normal traffic. When the gas in the jar has been used, check the mileage reading on the speedometer. See for yourself the mileage you got on just a small amount of fuel. Simple, fair—and dramatic proof, we think, of the solid gas economy engineered into the Solid Plymouth for 1960. See your Plymouth dealer.



A Chrysler-engineered product, built a new solid way to give you solid satisfaction.
SOLID PLYMOUTH 1960
 See "THE STEVE ALLEN PLYMOUTH SHOW," Monday nights, NBC-TV. Solid!



Our Stockholders Said O



Remodeling to Beg

A complete remodeling has been approved for Eastland National B a building. We're going have a new front and a interior real soon, but first

We're Moving

ACROSS THE STREET TO

108 East Commerce

(Next door to Texas Electric Service Co.)

Complete banking service as usual

(Well, Not Quite as Usual)

Our banking facilities may not be the most modern during the next few months, but we can assure you that we will continue to offer all of the services you need and expect. Please do not hesitate to come by with any of your banking problems.

We think that Eastland will be proud of the improved appearance of the Eastland National Bank in the near future, and we think all of you will agree that our remodeled building was worth the efforts.

And remember, it will be banking as usual. So if you need a loan, safe deposit box, a new supply of checks, or anything else, please call on us.

P. S.—Mr. Businessman: Our night deposit box will be in use as always.

Your Friendly Eastland National Bank

MA 9-1707 for Classified Ads—

NEW Flavor Delight!

Scotch Toffee ICE CREAM

from **Boswell's**

REAL BUTTER TOFFEE AND PECANS IN BUTTERSCOTCH ICE CREAM

Kokomo News

Charles Bryant was in the hospital at Gorman from Thursday till Saturday with the flu.

Mr. and Mrs. George Bennett were visiting the W. A. O'Neals on Saturday.

Mrs. Vera Stewart of Big Spring spent last week with her nephew, Rev. Jackie Heath and family.

Mr. and Mrs. Drayton Lenz and Kenneth of Brady spent Saturday night with her brother, Mr. and Mrs. Wayne Eaves.

Mr. and Mrs. George Bennett accompanied Mr. and Mrs. Elbert Bennett to Abilene on Saturday night to visit with Dwight Bennett.

Mr. and Mrs. A. B. Eaves and Linda spent the weekend in Abilene visiting with Mr. and Mrs. Emmett Woodard and Janet Lynn and Mr. and Mrs. Tommy Webb.

Mr. and Mrs. Vern Garrett spent the weekend in Big Spring visiting with the Jim Bennetts.

Mrs. Amos Jumper spent from Tuesday til Thursday with Mr. and Mrs. Pete Snider. Mr. and Mrs. Lon Snider were visiting with the Pete Sniders on Sunday.

Mr. and Mrs. Odis Rodgers were

visiting with Mr. and Mrs. J. A. McNeely one night last week.

Mrs. Dorothy Mosier and Kathy of Carbon visited with Mrs. Nancy Hendricks on Friday.

Mr. and Mrs. A. B. Eaves were visiting with her uncle Mr. Tom Fope at Merriman on Friday.

Mr. and Mrs. Albert Hendricks were visiting with Mr. and Mrs. John Scitern and children of Gorman on Saturday night.

Mr. and Mrs. John Scitern and Mr. and Mrs. Alvis Scitern left on Monday to be with their Dad, Mr. Henry Scitern who underwent surgery in a Houston Hospital on Tuesday. Mrs. Henry Scitern and a daughter, Mrs. Rollo Tinkler accompanied Mr. Scitern to Houston last week.

Mr. and Mrs. Tidy Eaves visited in Fort Worth with Mr. and Mrs. Paul Norris and children on Sunday. Mr. Eaves was in Dallas on Monday on business.

Mr. and Mrs. Neal Eaves and children of Carbon were dinner guests of Mr. and Mrs. Delman Eaves on Sunday.

Rev. and Mrs. Jackie Heath and children were guests of Mr. and Mrs. Wayne Eaves on Sunday.

Mr. and Mrs. Albert were dinner guests of Mr. and Mrs. Claude Fuller on Sunday.

Mr. and Mrs. Jim Jordan were visiting with Mr. and Mrs. Clifford Nelson and children on Sunday.

LETTERS TO EDITOR

Please say our apology if this appears to be a boast; however there is a definite place for the small school. Since a large percentage of our greatest men in history have come from small beginnings, what will be the source of such rich supply when we have all moved to town?

We, the Junior High School Basketball teams, both girls and boys, have enjoyed being in the Gorman Grade School Tournament, no student above the eighth grade. Therein is our source of his report, Desdemona was one of the smallest grade schools in that journey; and yet we tied DeLeon with one first place trophy, and one Consolation award for each school. Our girls team eliminated the Gorman girls from their own tournament, and our boys team took the Gorman boys out, like wise. The boys' second place went to Eastland when our boys eliminated them; and the girls' second place honor went to Carbon when they were eliminated by the DeLeon girls team.

Therefore and nevertheless; though the enemies of the Desdemona School System have craven long years to move us to A BETTER SCHOOL, we by the way of summary, beat Gorman, the better school, we beat Eastland, a school over seven times as many students with-

out counting her 37 Negro students, as our little school, and we tied with DeLeon, another school six or seven times our size. Why move to the "better school" until the "better school" comes up to the level of work we do out here?

Our music program, pipe organ lesson included, is in a class to itself being one of five or six such programs in any school in the State of Texas. We have through a cooperative effort of the Board of Education, the Equalization Board and the Superintendent accomplished the NO. 1 SCHOOL ADMINISTRATIVE JOB IN TEXAS. It has been years since the Desdemona Schools operated without borrowing funds; up to this payroll time, we have not borrowed funds; we have paid cash with our own tax money. This has been done, too, with some foiling the school by withholding the payment of their just school tax, and/or, by sending students to some "better school."

A good two-thirds of the new tax program has been collected, and we feel that most of those who have not paid school tax for 1959 will do so soon.

Neighbor, there is a great need to keep the school "man sized"; when they are too big, for greater evil befalls our people. This needs to be said to the "Gilmers-Aikn" enthusiasts. Children are not of the same "mold"; therefore, they need to be educated in small units for individual instruction

★ ★ ★
TRADE WITH YOUR
HOMETOWN MERCHANTS
★ ★ ★

ATTEND THE CHURCH OF YOUR CHOICE EACH SUNDAY

Need Your TV Antenna Fixed? Have A Leaky Faucet? Air Conditioner Need Servicing?

SEE US FOR ODD JOBS AROUND THE HOUSE
PHONE Main 9-2205

Down on the Farm—

... insurance is the farmer's most dependable hired hand. You farmers know best how Mother Nature can play havoc with your home and other farm buildings, machinery, live stock and crops. Fire, lightning, windstorm and hail cause tremendous farm property losses every year. Sufficient insurance coverage can give you all the financial protection you will need. Then, when disaster hits, the hired hand—your insurance—will relieve you of your financial worries. Drop in soon for estimates and costs. No obligation.

EARL BENDER & COMPANY
Eastland. (Insurance since 1924) Texas

See The Dinah Shore Chevy Show in color Sundays, NBC-TV—The Pat Boone Chevy Showroom weekly, ABC-TV.

HOW MUCH IS A 10-YEAR EDGE IN A COMPACT CAR DESIGN WORTH?

YOU DECIDE HOW MUCH MORE CORVAIR GIVES YOU IN COMFORT, CONVENIENCE AND CONTROLLABILITY... WITH THESE EXCLUSIVE FEATURES. THEY DON'T COST ONE PENNY EXTRA!

REAR ENGINE TRACTION—You climb right out of snow, sand and mud where other compact cars bog down.

FOLD-DOWN REAR SEAT—One quick flip and you increase cargo space to 28.9 cubic feet. And it's standard equipment!

FOUR-WHEEL INDEPENDENT SUSPENSION—Each wheel "walks" independently over bumps... and how that smooths the ride!

corvair BY CHEVROLET



... it's fun-tastic! See your local authorized Chevrolet dealer for fast delivery, favorable deals.

FULLEN MOTOR COMPANY, INC.

EASTLAND PHONE MA 9-2676

305 E. MAIN

Another reason I like Texas!

MRS. BAIRD'S ENRICHED BREAD

STAYS FRESH LONGER

It is reported that there was good singing in the community building on Sunday. Remember that there is singing here at Kokomo each fourth Sunday of each month. You are cordially invited to attend.

Mr. Marion Fonville and Mr. Lyndall Morrow of Howard Payne spent the weekend here with Lyndall's parents, Mr. and Mrs. J. L. Morrow.

★ ★ ★
Kindergarten News
★ ★ ★

The Friday group of the Green Kindergarten has worked hard to try to put all they could possibly in one day of what the other group do in three days. They have worked hard cutting and coloring projects to put in their scrap book, weaving mats, making vases of flowers, coloring and cutting a beautiful red cardinal, colorful valentine page, silhouettes of Lincoln and Washington, shield of the United States, a touch of spring an old hen and her little chicks, picture of President Dwight D. Eisenhower.

They had a Valentine party with exchange of valentines with their friends. This group was interested in the new bird-number domino game Mrs. A. E. Cushman and Mrs. Howard Upchurch directed.

The children take turns in being host and hostess and saying the blessing each day at refreshment time. They too take turns in kindergarten band and all activities. They love to sing and say their nursery rhymes and play games. Kindergarten will close for this group March 25th, ending of the second semester.

The following children will receive diplomas and attend public school next year. Kathy Jones, daughter of Mr. and Mrs. Wm. M. Jones; Corby Brown, son of Mr. and Mrs. Brown, Olden; Jimmy Sayre, son of Mr. and Mrs. Frank Sayre; Rodney Dale Reynolds, son of Mr. and Mrs. L. B. Reynolds.

The younger children in this group are Mike Dale Trout, son of Mr. and Mrs. Dale Trout; Mark Surface, son of Rev. and Mrs. Eugene H. Surface.

Allen Jolly, son of Dr. and Mrs. J. O. Jolly; Sammy Thomas, son of Mr. and Mrs. Earl Thomas; Toni Ann Harmes, daughter of Mr. and Mrs. Glen Harmes; Kim Collins, daughter of Mr. and Mrs. Bill Collins; and Stephen Brewer, son of Mr. and Mrs. Billy Brewer.

Friday group kindergarten children are to bring this news paper article to be pasted into their scrap book.

— RUBBER STAMPS —
"24 HOUR SERVICE IF DESIRED"
EDDIE'S
RUBBER STAMP SERVICE
407 SO. DAUGHERTY - P. O. BOX 444
EASTLAND, TEXAS

GEE WHIZ!

MOM SURE SAVES ON GROCERIES...

SHE'S REALLY A SUPER SAVER!

\$UPER DAVE MARKETS

PRICES GOOD THROUGH SATURDAY

You'll **SAVE** A Handfull of **CASH** when You Shop **SUPER SAVE** IT'S YOUR TOTAL FOOD BILL THAT COUNTS... **COMPARE!**

LIBBY'S TOMATO JUICE No. 2 Can **15¢**

LIBBY'S BEEF STEW 24-Oz. Can **49¢**

KOUNTY KIST PEAS 2 303 Cans **25¢**

APPIAN WAY PIZZA PIE MIX 12-Oz. Pkg. **39¢**

Box of 12's KOTEX Regular Box **33¢**

NABISCO PREMIUM CRACKERS Lb. Box **29¢**

CHEER with FREE Steak knife Giant Box **75¢**

ZEST SOAP with FREE Steak knife 3 Bath Bars **59¢**

LIQUID IVORY 22-Oz. Can **65¢**

W-P DETERGENT 22-Oz. Can **49¢**

W-P DETERGENT Powdered Giant Box **59¢**

MARGARINE

SILVER BRAND 2 Pound Cartons **25¢**

GOOCH'S THICK SLICED BACON 2 Lb. **79¢**

GOOCH'S FRANKS 3 Lb. **89¢**

ROUND STEAK GOOD QUALITY Lb. **79¢**

FIRM, CRISP Cabbage Lb. **5¢**

U. S. NO. 1 RUSSET Potatoes 10 Lb. **59¢**

SUNNIST Lemons Lb. **17¢**

Avocados 4 For **29¢**

WHITE SWAN COFFEE 2-Lb. Can **\$1.29**

JELL-O All Flavors 3 Reg. Boxes **25¢**

DOG FOOD BIG MIKE 3 300 Cans **19¢**

KLEENEX FACIAL TISSUE 2 200-Ct. Boxes **25¢**

SWEETHEART FLOUR Always 'Mighty Sweet' Savings 5-Lb. Bag **39¢**

IMPERIAL or DOMINO SUGAR Pure Cane 5-Lb. Bag **49¢**

MacMOY'S Super Save

400 S. Seaman Home Owned, Home Operated

Call MA 9-1707 for Classified Ads

ATTEND THE CHURCH OF YOUR CHOICE EACH SUNDAY

FORWARD MARCH---INTO A.P.I.

MARCH with BIG CASH SAVINGS



JANE PARKER 8-INCH Apple Pie JANE PARKER LARGE Angel Food

Choice Your Each 39¢

JANE PARKER HOT CROSS BUNS Pkg. of 8 35¢

JANE PARKER Potato Chips 8-oz. Pkg. 37¢ JANE PARKER SWEET ROLLS Pkg. 29¢

JANE PARKER French Bread 16-oz. Loaf 20¢ JANE PARKER ASSORTED Cookies 1-Lb. 8-Oz. Pkg. 49¢

Big Cash Savings with A&P's Thrifty Groceries!

SULTANA TUNA Chunks 4 6 1/2-oz. Cans 85¢

PRESERVES Ann Page Pure Strawberry 24-oz. Jar 59¢

OUR OWN TEA Buy 48 Tea Bags at the Regular Price, Get 16 More for 1¢ 64 Tea Bags 49¢

JAM OR JELLY Ann Page Pure Blackberry 12-oz. Jar 25¢

FACIAL TISSUE Scotties White or Colored 3 Pkgs. of 400 65¢

HERSHEY'S Choc. Syrup 2 16-oz. Cans 39¢ TARTAR SAUCE 2 8-oz. Bks. 45¢

STOKELY'S FINEST "HONEY-POD" Sweet Peas 2 17-oz. Cans 29¢ FIG BARS 2 1-lb. Pkgs. 45¢

STARKIST LIGHT MEAT SOLID Tuna Fish 3 6 1/2-oz. Cans 59¢ VELVEETA 2 1-lb. Pkg. 79¢

NABISCO FIG NEWTON Cookies 1-lb. Pkg. 37¢ GRAPE JELLY 2 1-lb. Jar 43¢

Shortening 3-lb. Can 59¢ GRAPE JELLY 14-oz. Jar 39¢

FLEISCHMANN'S Margarine 1-lb. Pkg. 39¢ ENCYCLOPEDIA Vol. 7 Ea. 99¢

MUTLEY Margarine 2 1-lb. Cns. 27¢ TOOLS 2 For 99¢

MINUTE MASHED Potatoes 7 1/2-oz. Pkg. 28¢ SAIL King Size Pkg. 89¢

Cash Savings with "Super-Right" Meat Values.

"SUPER-RIGHT" HEAVY CALF BLADE CUT CHUCK ROAST lb. 55¢

"SUPER-RIGHT" HEAVY CALF SHOULDER ROAST lb. 65¢

"SUPER-RIGHT" HEAVY CALF SHORT RIBS lb. 39¢

"SUPER-RIGHT" OLD-FASHION THICK-SLICED SLICED BACON 2-lb. Pkg. 69¢

"SUPER-RIGHT" SMOKED PICNICS lb. 29¢

"SUPER-RIGHT" PURE PORK Sausage 5 Lb. Bag 1.49

SMITH PRIDE WHOLE Chicken Legs 2 1/2-lb. Box 1.19

SMITH PRIDE WHOLE Chicken Breasts 1.49

"SUPER-RIGHT" Ground Beef lb. 49¢

"SUPER-RIGHT" Frankfurters 1-lb. Pkg. 49¢

TENNESSEE FARM FRESH Sausage 2-lb. Bag \$1.19

Fresh Produce

Winesap Apples 2-lbs. 25c Bananas lb. 10c Texas Ruby Red Grapefruit 4 for 29c Lemons 6 for 19c Yams 3 lbs. 25c Calif. Avccados 4 for 29c Yellow Onions 5-lb. bag 19c

Fertile Eggs More Nutritious Than Infertile Eggs

College Station, Are fertile eggs more nutritious than infertile ones? No, says F. Z. Beanblossom, extension poultry marketing specialist, as he discussed facts relating to eggs. Since nothing of nutritional value is added by fertility, there would be no difference in the nutritional value of fertile and infertile eggs. Nutrients in the feed are largely responsible

for nutritional value in the egg, he adds. "Egg albumen doesn't contain any food value." That is not true, says the specialist. Research shows that the albumen (egg white) contains over 50 percent of the protein in the egg and about 75 percent of the riboflavin. Don't waste the albumen.

"A prominent chalaza (thick twisted portion of albumen) indicates poor quality." Not true, says Beanblossom for prominent chalazas usually are associated with eggs of highest quality. They are composed of high quality protein and they help keep the egg yolk centered in the shell and anchor the yolk to the remainder of the thick albumen. All eggs have chalaza and they are no indicator of either fertility or infertility.

Beanblossom says he often hears the comment that all eggs of AA quality are extra large in size. Most eggs in retail outlets marked AA quality are large-24 ounces to the dozen-but some will weigh 26, 28 or even 30 ounces per dozen. This does not mean, he points out, that extra large eggs are the only AA quality eggs. It's a fact that there is a much higher percentage of AA quality in eggs from small, medium and large size eggs than from large and jumbo sizes.

And finally, the specialist says he is often asked if eggs are not an expensive food item. Here's his answer. Large eggs weigh a minimum of one and a half pounds per dozen. Thus a dozen of large

MAJESTIC TODAY - FRI. & SAT.

91 MINUTES OF THE MOST INTENSE SUSPENSE! THE LAST VOYAGE IN METECOCOL

STARTS SUNDAY

ALAN LADD JEANNE CRAIN GUNS OF TIMBERLAND

DIXIE Drive-In EASTLAND RANGER HIGHWAY

Box Office Opens 6:45 Show Starts 7:15 Box Office Closes 9:15 Admission 50c - Children Under 12 FREE Each Wednesday Is Bargain Night - Adults 25c THURSDAY - FRIDAY - SATURDAY, MARCH 3, 4, 5

The word spread like gunfire... "HE'S BACK IN LAREDO!"



PLUS: Two Color Cartoons

SUNDAY - MONDAY - TUESDAY, MARCH 6, 7, 8



P. U. S: Two Color Cartoons

RANGER DRIVE-IN HIGHWAY 80 EAST ON RANGER HILL

Box Office Opens 6:30 - Show Starts 7:00 Adults 50c - Kiddies Under 11 Free Only Eastland County Drive-In Open All Year THURSDAY - FRIDAY - SATURDAY



plus



FREEVUE EVERY SATURDAY NITE SUNDAY - MONDAY - TUESDAY



eggs selling for 60 cents would figure only 40 cents per pound. Compare this with the cost per pound of such foods as beef, pork, chicken or turkey since they are also high protein foods. Eggs, concludes the specialist are a best food buy under present selling prices.

ATTEND THE CHURCH OF YOUR CHOICE EACH SUNDAY



ALEX RAWLINS & SONS MONUMENTS WEATHERFORD, TEX. Serving This Community Since 1884 Phone LY4-2728

Call MA 9-1707 for Classified

NOTICE

FRESH EGGS DAILY (WHOLESALE PRICE TO EVERYONE)

GOOD, CLEAN JERSEY SWEET MILK

(From Blood-Tested Cows) PRICE 70c GAL.

KENDRICK DRIVE-IN DAIRY

Located On Eastland-Cisco Highway Phone MA 9-2732 - Eastland

McGraw Motor Co.

CARS DODGE-STUDEBAKER Parts and Service

461 South Seaman

Television schedule for Channel 9 (KRBC, Abilene) showing programs like 6:30 Cont. Class, 7:00 Today, 8:00 Today, etc.

Television schedule for Channel 11 (KFJZ, Fort worth) showing programs like 8:29 Sign On, 9:00 Mickey & A., etc.

Television schedule for Channel 4 (KRLD, Dallas) showing programs like 7:30 Cartoons, 8:00 News, etc.

Television schedule for Channel 8 (WFAA, Dallas) showing programs like 7:25 Devotional, 8:00 Cartoons, etc.

Television schedule for Channel 5 (WBAP, Fort Worth) showing programs like 5:55 Newsreel, 6:00 Cont. Cls'm, etc.

TELEVISION AT ITS BEST

You'll Enjoy The Best Programs From Five Channels With a Cable Antenna Connection. See Us Today.

Community Television, Inc.

Village Hotel

Phone M