



Eastland Telegram

"COVERING EASTLAND COUNTY"



VOLUME TWENTY-NINE

EASTLAND, TEXAS, THURSDAY, OCTOBER 16, 1958

No. 73

MOORE about... EASTLAND

by Virgil E. Moore

The old predicting average rose from .714 to .727 last week on the strength of two correct guesses out of two games. Cisco downed Haskell and Winters upset Colorado City to give us a perfect week. For the year we have hit 17 right and six wrong. Things may be different this week, however. Key game in District 7-AA play will be at Cisco. Ballinger invades Loboland and Cisco will finally face a stern test. If the Lobos can get by this one in convincing fashion, they will be an easy choice to win district. At the beginning of the year we picked Ballinger to win the crown, but we will have to switch our rankings and go with Cisco, 22-14, in a closer game than Cisco fans look for.

Much as we hate it, we will have to pick Coleman over Eastland, 20-14, (if the Mavs can hold the Cats to two touchdowns we can win). For our upset of the week we see Winters dumping Ranger, 16-14.

Drove by the cemetery the other day to take a look and was impressed with what we saw. Our journey was prompted by a statement made by Mayor Cyrus Frost the other day. Cyrus said the cemetery was in the best shape it has been in his lifetime. We don't date back that far as a resident of Eastland, but it certainly is in good shape.

By the way Mavericks... Eastland is going to get beat by 20 points this week, according to Ronald Waters, Ranger Times editor. (That boys sounds just like all the other editors they have had over there.)

See that Marene Johnson-Johnson has again been getting publicity for Eastland. Marene was the subject of two front page columns in the Fort Worth Star-Telegram. They were written by George Dolan, who has a fond spot for Eastland County in his heart.

The big three—Chevrolet, Plymouth and Ford—go on display this week. Eastland is one of the few towns in the state which can boast that it has five dealers selling the top three low-priced cars in America.

See you in Coleman Friday.

FREYSCHLAG INSURANCE AGENCY
presents the

WEATHER NEWS

High	73
Low	48
Rain	.10
Rain in Oct.	.99
Avg. Rain in Oct.	2.74
Total Rain for Year	26.40
12 Months Avg. Rain	25.83
Lake Leon Level	75'
Forecast	Fair

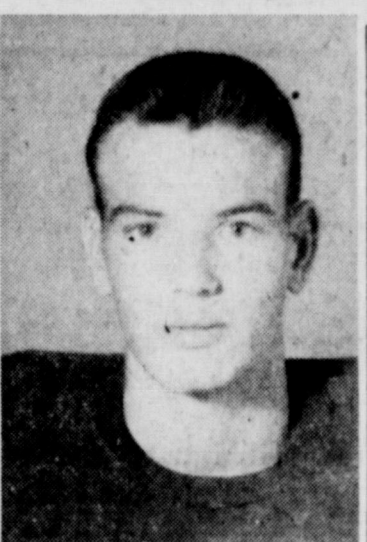
L. C. PHAGAN, FRENEL JOSEPH
1206 W. Bliss — Phone Cisco HI 2-1440
All types of oils and greases for farm, industrial and commercial users.
Only local oil (no imported oil) used in making Premier Products.



PHILIP LEWIS



DENNY DUKES



STANLEY REED

EHS PERSONALITIES

Ends Play Important Part on Mav Team

BY SANDY TAYLOR
Telegraph School Reporter
This week we are presenting to you the players who are to hold down the position of end on team. They are Denny Dukes, Philip Lewis, and Stanley Reed.

Denny Dukes, number 36, is a senior and has played football for the past three years. He played basketball his freshman year and ran track his sophomore year. He has been a member of the Hi-Y for four years and is also a member of the "E" Association.

Philip Lewis, number 23, is a junior and lettered last year in football and basketball. During his freshman year, he was quarterback on the "B" team. Phil is a member of the Hi-Y and "E" Association and has been president of his class for the past three years.

Stanley Reed, number 15, is a senior and lettered last year in football and basketball. He is also a member of the Hi-Y and "E" Association.

These boys all do a fine job on defense and offense and will see a lot more action this year. Keep watching for more articles on the Mavericks which will be published once or twice a week for the next few weeks.

Eastland ex-students of Ranger College have been given a special invitation to attend the college's homecoming Saturday.

An annual business meeting of the Ex-Students Association will be held Sunday morning, Oct. 18, with a coffee to be given in the banquet hall of Ranger Hall (College Cafeteria) from 9 until 11 a.m.

Norman Huffman, president of the ex-students, urges all exes to attend the coffee and the business session for the election of new officers.

Present officers of the association are Richard Cox, vice president; Mrs. O. C. Warden, secretary; treasurer; and Miss Marjorie Maddocks, publicity director.

The coffee will climax ex-student's activities, which will also include open house at the Theta Tau House (Girls' Dormitory) from 3 to 5 p.m., Saturday. The game between Ranger College and Henderson County Junior College at 8 p.m., with the crowning of the Homecoming Queen—Miss Joyce Beal, and the Homecoming dance from 10:30 to 12 p.m. in the Student Union Building will (Continued on Page 2)

Eastland actually has the best record, with three wins and two losses, but Coleman has met tougher competition. The Cats have won two, lost two and tied one. The two losses were at the hands of highly ranked Brady, 32-0, and Class AAA Stephenville, 20-16. Coleman holds wins over Anson, 24-12 and Comanche, 22-14. The Cats tied Haskell, 14-14, in their last outing.

Eastland holds victories over Dublin, 39-12, DeLeon, 8-0, and Cross Plains, 28-6. The losses were to Hamlin, 20-14 and Albany, 37-14.

Mav coaches who have seen the Bluecats in action rank Jerry Harris, Coleman quarterback, as one of the best running men-under in the business. Harris, at 140 pounds, is fast and can pass well. Pat DeBusk is the most talked about Coleman back, however. DeBusk is the third leading scorer in the district with 38 points. He plays fullback for the Cats and was a senior last year on the Coleman track relay team which earned a spot in the state meet.

Both teams will be near perfect strength physically. Both had an open date last week. Eastland has scouted Coleman twice and Coleman scouts were spotted at the Albany game. Coleman Halfback Thomas Casey was lost for the year against Haskell when he suffered a broken bone in his foot.

The two teams are playing for the first time in the same district, although they have met many times in non-district play and play-off action.

Coach Charles Jetton uses a straight-T attack, but on occasions uses flankers. The Cats use a tight defensive line, usually a five-four set-up.

Coleman will sport a 13 pound per man weight advantage. That is greatly aided by a 215 pound tackle and two 180 pound guards.

PAGE ONE MUST

Eastland football fans have received an invitation to drive to Coleman early and enjoy a turkey supper. The Coleman South Ward P-TA is holding the supper at the Junior High School Mrs. Buddy Simpson said fans could park their cars, eat and then walk to the game. Serving will begin at 5:30. Tickets are \$1.25 for adults and 60 cents for children.

Eastland Legionnaires will hold their regular meeting here tonight.

Eastland United Fund volunteer workers were urged today by Steve Potts to turn in their cards as soon as possible.

Absentee voting for the November general election got underway Tuesday. That is the ballots arrived. County Clerk Johnson Smith said no voting had taken place as late as this morning.

Fullen to Show New Chevrolet Here Thursday

A complete styling transformation, along with more safety, comfort and performance, was announced today for the 1959 Chevrolet passenger car line.

The cars, which will be displayed at Fullen Motor Co. today represents one of the most imaginative designs ever to come from the automobile industry.

In shape, and in detail, the new styling reflects the influence of a space-conscious age. Lines sweep rearward in a virtually level plane. Tops are flatter and visibility is dramatically increased.

Appreciably lower, the overall appearance of fleetness is further conveyed by an adroitly sculptured frontal area. At the rear, horizontal wings branch out from the center of the deck in a simulation of mobility that might have been conceived on the sands of Cape Canaveral.

While the unusual appearance will draw instant admiration, Chevrolet has not neglected other phases of engineering in its bid to continue the sales popularity registered by the company in 1958.

Here are some of the 1959 mechanical highlights:
A new six-cylinder engine, named the Hi-Thrift because of its (Continued on Page 2)

Mavericks Swing Into District Play Friday

Coleman Bluecats to Host Eastland Team

Sporting one of the fastest backfields in Class AA football, the Coleman Bluecats will be ranked as a two touchdown favorite when the Mavericks of Eastland invade their lair Friday night in the first District 7-AA game of the year for both teams.

Coleman, co-champions of the district last year with Ranger and outright victors of the crown the year before, always has a powerful team, and scouting reports this year indicate they will be hard to handle again.

Eastland actually has the best record, with three wins and two losses, but Coleman has met tougher competition. The Cats have won two, lost two and tied one. The two losses were at the hands of highly ranked Brady, 32-0, and Class AAA Stephenville, 20-16. Coleman holds wins over Anson, 24-12 and Comanche, 22-14. The Cats tied Haskell, 14-14, in their last outing.

Eastland holds victories over Dublin, 39-12, DeLeon, 8-0, and Cross Plains, 28-6. The losses were to Hamlin, 20-14 and Albany, 37-14.

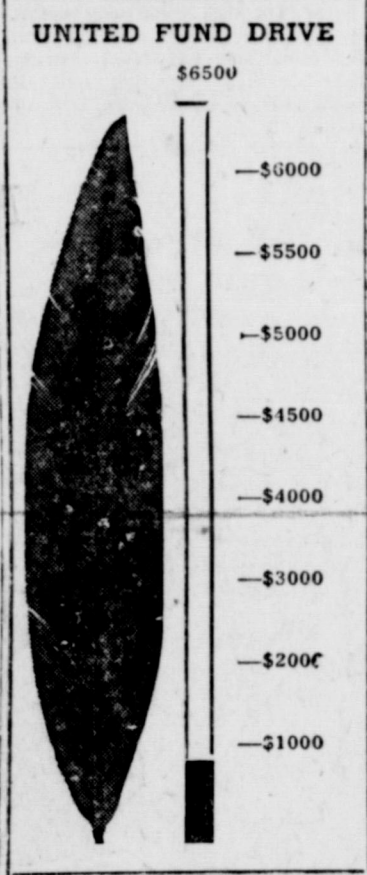
Mav coaches who have seen the Bluecats in action rank Jerry Harris, Coleman quarterback, as one of the best running men-under in the business. Harris, at 140 pounds, is fast and can pass well. Pat DeBusk is the most talked about Coleman back, however. DeBusk is the third leading scorer in the district with 38 points. He plays fullback for the Cats and was a senior last year on the Coleman track relay team which earned a spot in the state meet.

Both teams will be near perfect strength physically. Both had an open date last week. Eastland has scouted Coleman twice and Coleman scouts were spotted at the Albany game. Coleman Halfback Thomas Casey was lost for the year against Haskell when he suffered a broken bone in his foot.

The two teams are playing for the first time in the same district, although they have met many times in non-district play and play-off action.

Coach Charles Jetton uses a straight-T attack, but on occasions uses flankers. The Cats use a tight defensive line, usually a five-four set-up.

Coleman will sport a 13 pound per man weight advantage. That is greatly aided by a 215 pound tackle and two 180 pound guards.



SANDY'S SCHOOL SCOOPS

By SANDY TAYLOR
Telegraph School Reporter

Hi!
Well, here it is almost time for another football game and it will begin to tell the tale of how we wind up in the district. We play our first conference game at Coleman Friday night and everyone has his fingers crossed in hope that we will win.

Last Thursday night our "B" team scrimmaged the Ranger "B" team and we beat them by one touchdown. I only hope that our real game with them turns out that well or even better than that. I

also think that we can win all of our remaining games if we try. Friday night about half of Eastland went to Cisco to see the Lobos and Haskell play. Of course, Cisco won and it was a good game in spite of the rainy weather.

This Saturday night, the "B" team will journey to Albany and take on the Albany "Bees". We beat them once before and we hope to do it again.

Now that the World Series is over, people are speaking to one another again. Last week it seemed as if everybody was mad at everyone else as no one spoke to anyone unless it was to argue about the ballgames or something pertaining to them. Actually, I am exaggerating a little as it (Continued on Page Six)

Probable Line Ups

EASTLAND	Wt.	Pos.	Wt.	COLEMAN
Stanley Reed	160	End	165	George Jarvis
Charles Martin	168	Tackle	215	Donnie Calhoon
Mike Liscombe	146	Guard	180	James Calhoon
Don Hazard	150	Center	165	Gary Ryan
Koicky Arthur	165	Guard	180	Douglas Kolb
Marvin Agnew	175	Tackle	150	Steve Smith
Philip Lewis	170	End	165	Jerry Forbess
Clint Humphreys	138	QB	140	Jerry Harris
Billy Don Turner	135	FB	155	Pat DeBusk
Jimmy McElreath	145	HB	145	Jim Marrs
Larry Hollis	148	HB	155	Mickey Casey

King Motor Co. To Reveal Ford For '59 Friday

The 1959 Ford car line, which already has received an award at the Brussels World's Fair for styling elegance, will go on display at King Motor Co. here Friday.

"The 1959 Ford car is new in concept and new in style," Hood King said. "The 1959 styling theme is good taste, a result of consumer demand for more elegance and dignity in automotive styling as opposed to gaudiness or extremism," he added.

In addition to Ford engines that have been engineered for greater fuel economy, Ford offers quality-designed construction and a new, lighter Fordomatic transmission with 105 fewer parts than in 1958, King said.

"Every piece of body sheet metal in the 1959 Ford has been changed to reflect the good taste of the Thunderbird—America's most successfully-styled car. The Thunderbird's crisp, taut lines have given the Ford a formal quality and the impression of a bigger, heavier car without the addition of bulk," he added.

Ford's 1959 styling earned the plaudits of the noted fashion authority, the Comite de l'Elegance, which, for the first time in history, bestowed a gold medal for styling on an American automobile at the close of the Brussels international exposition.

The 1959 Ford engines offer greater operating economy and improved engine performance in the normal driving ranges, 30 to 70 m.p.h. Ford recommends regular grade gasoline in all standard engines, which can result in a saving of up to one dollar a tank full. These benefits have been achieved in part by a slight horsepower reduction.

King said every 1959 Ford is "quality-designed," a term Ford engineers use to define the emphasis placed on quality in the basic design of the car, starting from the drawing board stage.

The result is a simplified design where possible, elimination of unnecessary parts as in the case of the new transmission, and more durable parts, such as Ford's new extended-life muffler and Diamond Lustre finish, an enamel that requires no waxing for the lifetime of the car.

Supporting the "quality design" (Continued on Page Two)

FACTS ABOUT YOUR UNITED FUND

J. C. Poe is one of the team captains appointed by UF drive Chairman Steve Potts, to see that the \$6,500 quota is reached in record time.

Poe has been a constant worker in the projects this town has undertaken.

He, with his wife, is owner and operator of Poe Floral Co. located in a newly redecorated location on West Main Street. They have been in the floral business in Eastland for 12 years.

Born in Carbon, Eastland County, Poe has lived all of his life in Eastland. He is a member of the Chamber of Commerce, the First Baptist Church and the Knights of Pythias Lodge.

newcomers of the week

By Frances Moore
Although Robert and Carmen Verhetstel have both worked in Eastland several years they have just recently moved here from Cisco.

Since moving here in August, Dr. and Mrs. Verhetstel have made their home at 709 South Seaman. Bob is a chiropractor and has his office in his home. He is a member of the Knights of Columbus.

A stenographer in the Court of Civil Appeals, Carmen is a member of the Zeta Pi chapter of Beta Sigma Phi sorority in Eastland.

The Verhetstels are the parents of a 20 month old daughter, Merry Elizabeth, and are members of the St. Francis Catholic Church.

EASTLAND NATIONAL BANK
"On The Square"
Member F. D. I. C.
HOT? SAVE \$91 FROM LIST!
Be cold in 40 seconds with the largest and best refrigerated auto air conditioner. Installed in 2 hours, any make or model car or truck — ONLY \$259.95.
DON PETERSON
Olds - Cad/Jac, Eastland



PLYMOUTH GOES ON DISPLAY—Eastland's three Plymouth dealers—McGraw Motors, Blevins Motors and Rushing Motors—will put the new 1959 Plymouth on display here today. This new Sport Fury two-door hardtop has styling innovations from the massive front bumper and new grille all the way to the new, outward-canted tail fins. The Sport Fury models introduce swivel front seats as standard equipment.



THE NEW CHEVY—One angle cannot show the complete styling changes which have been made in the 1959 Chevrolet, which goes on display here today at Fullen Motor Co. Lowered headlamps set into the freshly styled grille, and functional air intakes accent the beauty of the front view of the Impala convertible (below). Smart and original is the bold sculptured treatment given the rear quarters and trunk deck of the Impala Sport sedan (above).



FORD FOR 1959—King Motor Co. in Eastland will show the new 1959 Ford Friday. Shown in a picturesque Brussels World's Fair setting is the Ford Sunliner convertible. Ford's styling theme in 1959 is a result of "consumer demand for more elegance and dignity, as opposed to gaudiness or extremism." In the background is the Atomium, prominent landmark at the Brussels World's Fair.

Eastland Telegram

Eastland County Record established in 1931, consolidated August 31, 1951. Chronicle established 1887, Telegram established 1923. Entered as second class matter of the Post Office at Eastland, Texas under the act of Congress of March 3, 1879.

TIMES PUBLISHING COMPANY
Published Tri-Weekly—Tuesdays - Thursdays - Sundays
DINOUS DICK and JOE DENNIS, Publishers
VIRGIL E. MOORE, Editor
CAROLYN COLLINS, Society Editor

One year by carrier in city	1.18
One month by carrier in city	.48
One year by mail in County	2.98
One year by mail in state	4.98
One year by mail out of state	6.98

NOTICE TO PUBLIC—Any erroneous reflection upon the character, standing or reputation of any person, firm or corporation which may appear in the columns of this newspaper will be gladly corrected upon being brought to the attention of the publishers.

WANT ADS

Cards of Thanks charged for at rate of \$2.00 Each

FOR RENT

FOR RENT: Newly decorated apartment. Hillside Apartments Phone 9520.

FOR RENT: Modern four room house. Two bedrooms, Nice and clean. Call 457-J.

FOR RENT: Furnished two bedroom apartment in duplex. 611 West Plummer.

FOR RENT: Two bed room house unfurnished good repair, 504 South Dixie street. Call J. A. Icard, phone 960.

FOR RENT: Unfurnished house, five rooms, glassed in service porch, 209 South College Street. Phone 80.

FOR RENT: Four room unfurnished house. Central heating and cooling system. Apply 500 South Bassett.

FOR RENT: Newly decorated 4 room furnished apartment. Phone 90.

FOR RENT: 2-bedroom house. Apply 507 South Madera.

FOR RENT: Four room house in Olden, newly decorated inside and out, city water. Phone 795-J-1, Eastland.

MISC. WANTED

WANTED: Will keep children in my home day or night. Mrs. Don McClendon, 400 East Valley.

LEGAL NOTICE

THE STATE OF TEXAS COUNTY OF EASTLAND
To Those Indebted To, or Holding Claims Against the Estate of Mrs. O. G. Phillips, Deceased, No. 5965, in the County Court of Eastland County, Texas, Probate Matters:

The undersigned, having been duly appointed independent executor of the estate of Mrs. O. G. Phillips, deceased, late of Eastland County, Texas, by the Judge of the County Court of said County on the 14th day of July, 1958, hereby notifies all persons indebted to said estate to come forward and make settlement, and those having claims against said estate to present them to him within the time prescribed by law at his residence at 1001 Ainslee Street, in the City of Midland, Midland County, Texas, where he receives his mail.

REAL ESTATE FOR SALE

FOR SALE: Small house to be moved. 311 E. Valley.

M. H. PERRY
Representing
Southland Life
Life - Retirement Income Partnership
Mortgage Cancellation
Educational - Annuities
Accident - Sickness
Hospitalization - Group
Call 173 or 128
107 W. Main * Eastland

SPECIAL NOTICE

HAVE TAX PROBLEMS? Now you can get a "Personal Tax Secretary" for just \$1. This is a simple system for keeping personal and small business earnings and deductions to enable you to claim and prove your maximum deductions. Get yours today at the Eastland Telegram.

MISC FOR SALE

FOR SALE or Rent: 5 room house. Close in. Modern Call 826.

SIX months to pay for an Ed V. Price tailored suit. Made to your individual measurements. NO interest, NO carrying charges.
C. L. FIELDS
103 W. Valley Phone 571

FOR SALE: Homemade cakes and pies. Call 423.

FOR SALE: One 5-room house, close in, \$3500 cash. Nice home in Hill Crest, \$16,000. Will take smaller home as part payment. D. L. Kinnard, Real Estate and Insurance.

FOR SALE: Three new beautiful quilts, Sunbeam vacuum coffee-maker and automatic Sunbeam toaster reasonable. Nellie V. Gooden phone 392 or see 404 West Plummer.

FOR SALE: L. C. Smith 12 gauge double barrel shotgun. E. Woody.

FOR SALE: New check protectors, \$25. Stephens Typewriter Company. Phone 639.

FOR SALE: Quick sacrifice Zenith 21" TV-wrought iron stand, 50-ft crank up tower, CDR Rotor and Yagi antennas. Priced \$125.00. Also Underwood typewriter \$20.00 and Hallcrafters shortwave set \$40.00. 305 Dixie.

FOR SALE: Used doors, windows and lumber. Calvin Lipkin, Phone 50, Ranger.

FOR SALE: Nine foot Westinghouse refrigerator. Has deep freeze in top. Late model, in perfect condition. Eastland Telegram Office.

FOR SALE: Piano, furniture, kitchen cabinet, seats, tin roofing, gutter. See at 700 South Seaman. Mrs. A. F. Taylor, phone 320 or 817-J.

ELECTROLUX (R) Cleaners factory rebuilt and guaranteed. Authorized Sales & Service. 1392 Sayles, Abilene. Ph. OR 3-1135.

HELP WANTED

HELP WANTED: See J. D. Early at Early Tire Service.

BUSINESS OPPORTUNITY

OPPORTUNITY MAN OR WOMAN
Responsible person from this area, to service and collect from cigarette dispensers. No selling. Car, references, and \$600.00 to \$1800.00 investment necessary. 7 to 12 hours weekly nets up to \$350.00 monthly income. Possibility full-time work. For local interview give phone and particulars. Write International Distributing Co., P. O. Box 865, Okla. City, Okla.

King Motor—

(Continued From Page One)

program is a "quality built" philosophy, that centers on Ford's recently-dedicated Quality Control Center at Allen Park, Mich., where 1959 models were assembled on a pilot line months before introduction to be sure that each part met all engineering specifications and assembly requirements.

The 1959 Ford line includes 17 models ranging from the Custom 390's, which are six inches longer than in 1958, through the six station wagon models, to the Fairlane and Fairlan 500's. Station wagon length has been increased more than five inches; cargo area is eight inches longer, and cargo space is 11 cubic feet more than in last year's models. All 1959 Fords will be on a 118-inch wheel base and will have an overall length of 208 inches.

Windshield area has been increased 280 square inches, or 29 per cent, over 1958 Ford models. With its refined engines, Ford is introducing a new version of the Fordomatic transmission. The 1959 Fordomatic, a two-speed automatic transmission, has eliminated the need for 105 parts, which, with the use of aluminum for the transmission case and bell housing, has reduced the total Fordomatic transmission weight by 50 pounds, or 22.8 per cent.

Ford's four modern engines combine efficiency, durability and economy with the added customer savings resulting from quick and easy servicing. The full-flow oil filter, standard equipment on all 1959 engines, permits Ford to recommend an oil change only every 4,000 miles, resulting in further savings to the customer.

Eastland—

(Continued from Page One)

economy of operation. There is a new 3-stage carburetor, standard on all V-8's, which with new manifolding reduces gas consumption in the middle speed ranges, where most driving is done. A new rear axle gear ratio of 2.93:1 is available at no extra cost with the Torque-Flite transmission. Exhaustive tests of cars with this gear ratio resulted in gasoline savings as high as six percent. Oil consumption in the Powerflow six engine is reduced with new tappet chamber baffles.

Although the improvements have reduced operating costs, they have at the same time increased performance.

The new Golden Commando 395 V-8 engine, with 305 horsepower, has been increased in displacement from 350 to 361 cubic inches, and in tests has shown exceptional "getaway" ability in traffic. It is an optional engine for all Plymouth models. Additional torque in normal driving ranges is a feature of all engines.

Plymouth's proven Torsion-Aire ride, which professional test drivers have termed "the most road-able suspension on any American passenger car," retains its non-sway, non-dip characteristics and is standard equipment on all models. In addition, as optional equipment, air springs are used in conjunction with the regular rear leaf springs. They provide "self-leveling action", which assures that the rear of the car will remain at the same height regardless of weight of load. When the car is empty, the air springs support approximately 300 pounds of the weight on the rear axle, with the remaining weight supported by the leaf springs. As the car is loaded with passengers or luggage, the additional weight is carried by the air springs, which automatically add or decrease air pressure in response to load changes. The Oriflow shock absorber is continued on all Plymouth cars.

Eastland Exes—

(Continued from Page One)

round out the activities. Ladies of the First Methodist

Fullen—

(Continued from Page One)

ded economy through re-design in valving and carburetion, gives up to 10 per cent more mileage, plus more usable horsepower at normal driving speeds.

Fundamental improvements in coil spring suspension, incorporating specialized controls. Refinements in the optional Level Air suspension to acquire softer, quieter operation.

Larger breaking surfaces, benefiting further by flanged drums and 27 per cent more lining area provide surer stops, longer life. Tires improved for durability and reduced in rolling resistance through newly developed cords, which run cooler, offer a softer ride and last longer.

A Turboglide transmission of advanced design. One of two automatic transmissions in the 1959 line, the quality of Turboglide has been raised to a new peak.

Easier steering and the inclusion of a second, shock-resistant universal joint. A radiator increased in cooling area. A simplified, more productive electrical system.

In addition to a bold, fresh design, Chevrolet bodies for 1959 excel in comfort and structural unity. An impressive increase in passenger room is exemplified by almost five inches more width in the five and one-half ft. front seat. With 20 per cent greater capacity, the trunk has been increased up to 32 cubic feet. Still another example of general commodiousness can be found in station wagons. The cargo space has been lengthened to almost eight feet.

Sedans have been reduced in height one inch; sport models two inches. Through lower body mountings and a new roof configuration, the advantage has been accomplished without sacrifice, and in some cases an actual gain, in headroom.

Church will host college students and faculty members with a barbecue and ice cream supper, slated Thursday in the Student Union Building at 6 p.m.

A program of entertainment is to be presented by members of Mrs. Price Ashton's education class at 7 p.m.

Jimmie May Miller of Ranger and Drayton Headen of Carrollton will sing several popular numbers and "Sweet Hour of Prayer". Headen and James Knickerbocker

of Dallas and Jesse Prestidge, Seagraves, will sing "Hang Down Your Head, Tom Dooley".

Maxine Vandergriff of Ranger will accompany all songs on the chaplain's organ and will present several selections on the accordion.

A sing-song will also be conducted by Headen.

Following the program, a decorating party in preparation for the Homecoming dance will follow, with members of the Student Council decorating the Union

Building.

Students and Ranger football fans have been extended an invitation to attend the bon fire and pep rally set behind Newall Hall tonight at 8:30.

SPECIAL!

WHILE THEY LAST

BEAUTIFUL TV SNACK TRAYS

Complete With Stand

97¢

Buy Several Now At

PERRY'S

WHAT A VALUE!

The colors are beautiful and you can choose from four different designs.

HURRY!

Get Yours Before They Are Gone

Buy Your Tires on Easy Payments

During month of October your old tires will make the down payment on two or more new ...

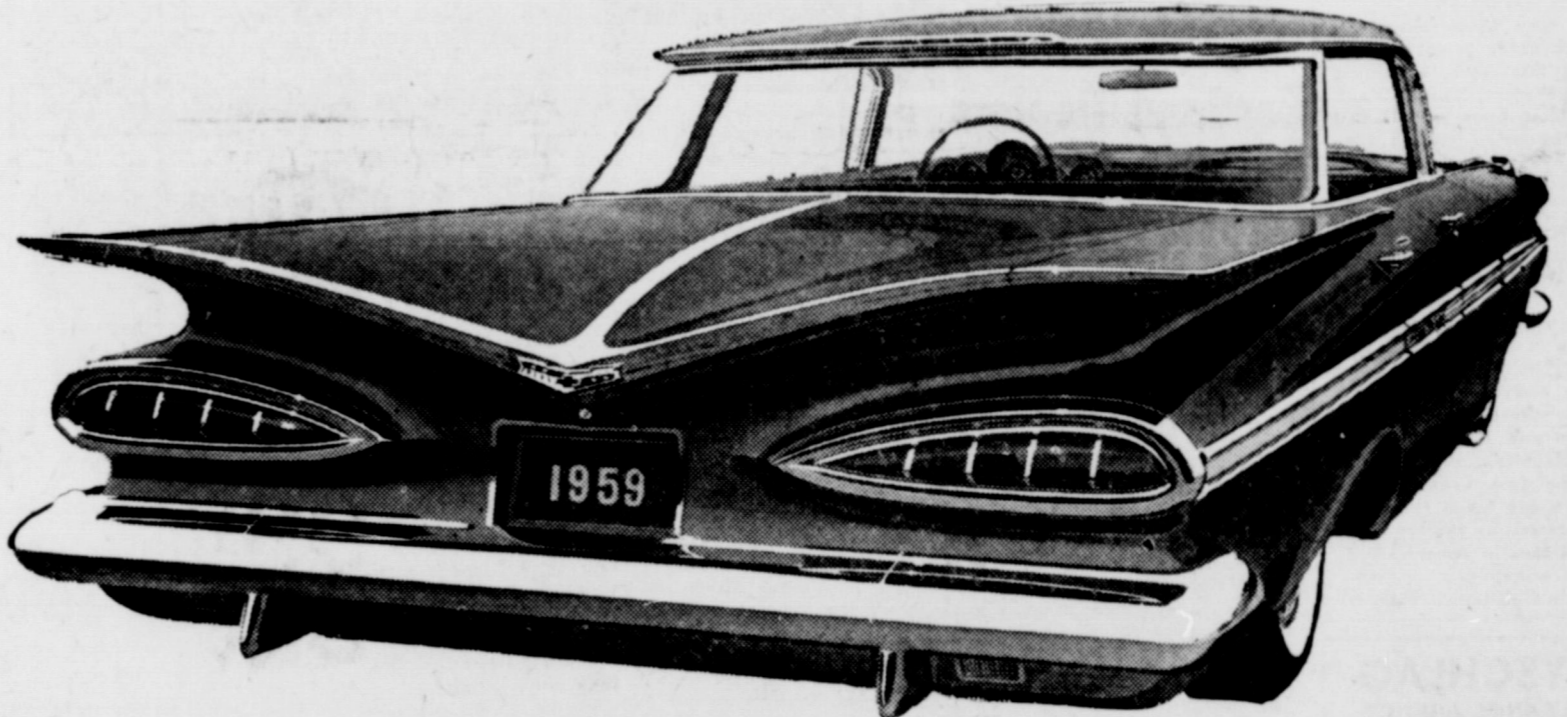
SEIBERLING TIRES

Easy payments arranged on balance.

JIM HORTON

TIRE SERVICE
East Main St. Phone 238
Eastland, Texas

Now... all America sees the one that's truly new!



Like all '59 Chevie, the Impala Sport Sedan has Safety Plate Glass all around.

'59 CHEVROLET

what America wants, America gets in a Chevy!



It's shaped to the new American taste with a lean, clean silhouette, crisp new contours, beautifully restrained accents. It brings you more spaciousness and comfort with a new Body by Fisher. It has a bright new sheen—a new kind of finish that keeps its luster without waxing for up to three years. New bigger brakes. Vast new areas of visibility. New Hi-Thrift 6. New handling ease and road steadiness. It's new right down to the tires!

Never before has an automobile manufacturer made such sweeping changes two years in a row. And never before has any car been new like this one.

The 1959 Chevrolet is more than a restyled car—more, even, than a completely new car. It's your kind of car. Shaped to reward your new taste in style with a fresh Slimline design that brings entirely new poise and proportion to automobile styling. Inside the new and room-

ier Body by Fisher you'll find truly tasteful elegance. And you'll have clear seeing from every seat. The new Vista-Panoramic windshield curves overhead—and there are new bigger windows, too.

When you take the wheel, you find Chevy's newness goes down deep. A new steering ratio makes handling easier. New suspension engineering gives you a more stable ride. There's a sweet new edition of Turboglide*. A new Hi-Thrift 6 that

goes and goes on a gallon. Vim-packed V8's. New and bigger brakes. Even tougher, safer Tyrex cord tires.

There's still more! A new finish that keeps its shine without waxing or polishing for up to three years. New Impala models. New wagons—including one with a rear-facing rear seat. And, with all that's new, you'll find those fine Chevrolet virtues—economy and practicality. Stop in now and see the '59 Chevrolet. *Extra-cool option.

ALL NEW ALL OVER AGAIN!

see your local authorized Chevrolet dealer

FULLEN MOTOR COMPANY

305 EAST MAIN

EASTLAND, TEXAS

PHONE 44

ANNIVERSARY SALE

Begins Wed., Oct. 1 Thru Oct. 31

Large new supply of discontinued items in Pottery and Wrought Iron. — Tropical Plants and Succulents. New supply of Seconds in FABULOUS ODDS AND ENDS AT REDUCED PRICES.

Use this Excellent Opportunity to Buy Bargain-Priced Gifts for Weddings, Birthdays, Showers, and Christmas. (Items for all members of the family—from grandfather mugs to Purple Penny Eaters (banks) for baby.

Open 8 a.m. to 6 p.m. Daily—Sunday 1 to 6 p.m.

HORTON CERAMICS

FACTORY SALES ROOM
Highway 80 East Eastland, Texas

HARVEST OF VALUES



SAVE 2 WAYS - LOWER PRICES
PLUS "S & H" GREEN STAMPS!

**WORTH
FOOD MART**

Prices Effective Thursday, Friday
and Saturday - We Reserve the
Right to Limit Quantities.

Whole Green Beans	LIBBY'S	3	No. 303 Cans	69¢
Bartlett Pears	LIBBY'S	3	No. 303 Cans	79¢
Fruit Cocktail	LIBBY'S	3	No. 303 Cans	69¢
Cut Green Beans	LIBBY'S	4	No. 303 Cans	69¢
Libby's Tomato Juice		4	No. 2 Cans	59¢
Custard Pumpkin	LIBBY'S	4	No. 303 Cans	49¢
Libby's Beef Stew	DELICIOUS!		24-Oz. Can	47¢
Kosher Dill Pickles	LIBBY'S		22-Oz. Jar	29¢

FOLGER'S	All Grinds	1-Lb. Can	69¢
VIENNAS	Libby's SAVE 11c	4 No. 1/2 Cans	79¢
CORN	Libby's Cream Style Golden-SAVE 16c	6 No. 303 Cans	89¢
PEAS	Libby's Garden Sweet Tender-SAVE 17c	6 No. 303 Cans	1.00

Your Choice!

- ENGLISH PEAS, 10-oz. Pkg.
- PEAS & CARROTS, 10-oz. Pkg.
- FRENCH FRIED POTATOES, 9-oz.
- LEAF CHOPPED SPINACH, 10-oz.

MIX OR MATCH **5** Pkgs. Only **89¢**



LIBBY'S FROZEN SLICED STRAWBERRIES	SAVE 26c	5	10-Oz. Pkgs.	99¢
LIBBY'S FROZEN SLICED PEACHES	SAVE 26c	5	10-Oz. Pkgs.	99¢

YOUR CHOICE!

• Broccoli Spears	• Succotash
• Cauliflower	• Lima Beans

3 10-oz. Pkgs. **69¢**

ANY ASSORTMENT

• Garden Vegetables	• Grape Juice
• Chopped Broccoli	• Green Beans (Cut or French Style)

5 Pkgs. Only **99¢**

COLGATE TOOTH PASTE DEAL-PACK 2 53c Tubes 69c • LISTERINE ANTISEPTIC 7-Oz. Bott. 43c

ROME BEAUTY - Crisp, Red All-Purpose

APPLES Lb. Only **10¢**

CRANBERRIES Ocean Spray Fresh 1-Lb. Pkg. **25¢**

Coconuts Large Honduras 2 for **25¢**

Meat Pies	Libby's - Chicken, Beef, Turkey, Tuna - SAVE 19c	4 8-Oz. Pkgs.	89¢
Orange Drink	Libby's Frozen SAVE 16c	6 6-Oz. Cans	89¢
Libby's Corn	Frozen - Cut or Cream Style SAVE 16c	5 10-Oz. Pkgs.	89¢
Baby Okra	Libby's Whole Frozen SAVE 26c	5 10-Oz. Pkgs.	99¢

Steak

Worth Controlled Quality Heavy Beef

ROUND Lb. Only **79¢**

HORMEL "DAIRY" Bacon Lb. Pkg. **59¢**

Fresh Ground Beef Guaranteed Fresh Lb. **49¢**

SAVE 10c With Coupon From Fort Worth Star-Telegram on Rath Frozen Meats Beef, Pork, Veal

CHOP-ETTES	8-Oz. Pkg.	55c
MEAT BALLS	10-Oz. Pkg.	59c
BEEF STEAKS	8-Oz. Pkg.	55c

SAUSAGE
RATH BLACKHAWK PURE PORK 1-Lb. Roll **39¢**

**WORTH
FOOD MART**

RETURNS HOME
Mrs. Dick Yielding has returned home after visiting with her daughter and son-in-law, Mr. and Mrs. Jimmy Colburn, and baby son, Scotty, for a week in Lubbock.

Mr. Yielding, who has been employed at Sweetwater, spent the weekend in Lubbock. Mr. and Mrs. Yielding returned home Sunday.

HERE ON BUSINESS
Mrs. Grace Burk, Freda Nash and John Charles Burk, all of Midland, were here over the weekend on business.

Mr. and Mrs. Herman Smith and Mr. and Mrs. L. D. Lewis, all of Cumby, were guests in the home of Mr. and Mrs. James Smith over the weekend.

'Muslim Religion' Is Mission Study Topic for WSCS Tuesday

"Muslim Religion" was the topic of the second mission study led by Mrs. Cecil Collins as the member of the Woman's Society of Christian Service of the First Methodist Church Tuesday morning in the church parlor.

The meeting was opened as the group sang "In Christ There Is No East or West."

Mrs. Taylor Smith discussed "The Founder, Birth and Practice of Muslim Religion; Mrs. L. C. Brown told the story of "Abdul Ghafur Shiekh's Pilgrimage to Mecca." Mrs. Ronald Burton told the biography of Mansur Sang.

Mrs. Turner Collie arranged a colorful scene for the worship scene.

During the business session Mrs. Collins announced that the

Van Geem Circle would served dinner to the Methodist Men's Sunday School Class Thursday evening.

Mrs. Collins closed the meeting with prayer.

Attending were Meses. L. W. Lewis, R. D. Burton, Frank Castellberry, T. M. Collie, Cecil Collings, Tom Haley, Etta Harlow, B. O. Harrell, W. P. Leslie, Rudolph Little, Allie Looney, L. C. Brown, Gay Quinn, R. E. Sikes, Taylor Smith, M. B. Tisworth, Harold White O. M. White, James Campbell, Frank Crowell, W. A. Martin and O. O. Mickle.

VISITS IN GRANDBURY
Mr. and Mrs. J. G. Biggs and children spent the weekend recently in Grandbury visiting Mr. Biggs' parents, Mr. and Mrs. B. G. Biggs.

JOY DRIVE-IN THURS. - FRI. - SAT. Open 6:30 Start 6:45
Cisco - Eastland Highway

"A GI's Prize of War: Ask Any G. I. About Her."
FRAULEIN
(Deluxe Color)
DANA WYNTER — MEL FERRER

—plus—
"The Flaming Terror-Torn Day the Apaches Tomahawked 'Fort Bowie.'"
FORT BOWIE
BEN JOHNSON — JAN HARRISON

Coming - "The Fly"
"Once It Was Human As You And I"

School Menu

- MONDAY**
Fried Chicken
Mac & Cheese
Eng. Peas
Carrot Curls
Hot Rolls
Fruit Cobbler
- TUESDAY**
Home-Made Chili
Finto Beans
Greens
Pot. Salad
Corn Bread
Cin. Rolls
- WEDNESDAY**
Steak & Gravy
Baked Pot.
Green Beans
Cold Slaw
Hot Rolls
Jello with Fruit
- THURSDAY**
Roast Turkey and Dressing
Whipped Pot.
Eng. Peas
Stuffed Celery
SI Bread
White Cake
- FRIDAY**
Salmon Croq
Scalloped pot.
Bl. I. Peas
Harvard Beets
SI Bread
Fudge Cake

TERMITE CONTROL
and all other types
PEST EXTERMINATION
MODERN EXTERMINATING CO.
Box 312 Ranger
PHONE RANGER
Day 919—Night 911

FOR YOUR CONVENIENCE
LORISE'S PET PARLOR
Featuring complete line supplies for your pet's needs—Also Aquarium supplies. Quality at a minimum. Take advantage of our free bulletin board if you have a pet for sale or placement. Pups or kittens available.
PHONE 5491—TWO STORY BRICK OLD GORMAN ROAD DELEON, TEXAS

SINGER SEWING MACHINES and VACUUM CLEANERS
New and Used
Call
Dois Morton
Phone 985-W-1 after 5 p.m.
Service All Makes

Sunshine Laundry
Has installed
SPEED QUEEN COIN OPERATED AUTOMATIC WASHERS... top loading with gyrators and three dryers for your convenience to dry clothes.
20c LOAD WASH
TWO LOADS DRIED, 25c
Sunshine Laundry
106 East Plummer St.

Carolyn's MOVIE Comments
By Carolyn Collins

The adventure filled drama of a life and death struggle between a determined hunter and a man-eating tiger is told in "Harry Black and The Tiger."

Stewart Granger, Barbara Rush and Antony Steel star in the movie. Granger plays the role of Harry Black, the restless hunter; Miss Rush portrays the role of the young wife who stays with her husband, Steel.

"Gunman's Walk" is another of the common western movies telling the story of a gunman who meets his father in a gun battle. Kathryn Grant, and James Darren stars in "Gunman's Walk."

ALEX RAWLINS & SONS MONUMENTS WEATHERFORD, TEX.
Serving This Community Since 1884
Phone LY4-2726

26th anniversary at Mode O'Day



wool jumper fashion news for fall **7.99**

The fabulous jumper returns... newly interpreted with empire detailing. It may be worn with a variety of blouses or by itself for more dress-up occasions. Soft wool flannel, sizes 10 to 16.

biggest array of cottons in town 3.99 to 8.99

MODE O'DAY
East Side of Square Eastland

RANGER DRIVE-IN
HIGHWAY 80 EAST ON RANGER HILL
Adults 50c—Kiddies Under 11 Free
Box Office Opens 6:30 - Show Starts 7:00

LAST TIMES THURSDAY
DEAN MARTIN SKY-HIGH HILARITY!
JERSEY LEWIS **Jumping Jacks**
with MONA FREEMAN

RAY MILLAND in **THE SAFECRACKER**
with BARRY JONES
with JEANETTE STERKE-ERNEST CLARK
MELISSA STRIBLING - VICTOR MADDERN
RAY WARD

FRIDAY - SATURDAY
The West's Bloodiest Double-Cross!
GUN BATTLE AT MONTEREY
Starring **STERLING HAYDEN**
PAMELA DUNCAN
AN ELIOT ARTISTS PICTURE
FREEVUE SATURDAY NITE

DIXIE Drive-In
EASTLAND RANGER HIGHWAY

Box Office Opens 6:45 First Show 7:00
Box Office Closes 9:00

—HEATED PATIO NOW OPEN—
Don't Let the Rain and Cold Keep You Home
Admission Never Over 50c
Adults 50c—Child Under 12 FREE
WEDNESDAY & THURSDAY, OCTOBER 15 - 16

THE FIEND WHO WALKED THE WEST
PLUS: Two Color Cartoons
FRIDAY - SATURDAY, OCTOBER 17 - 18

FLAMING FRONTIER
A REGALSCOPE PICTURE
PLUS: Two Color Cartoons

Food Discovery Days

MARYLAND CLUB COFFEE
Drip or Reg. **83¢**
Lb. Can

WHITE SWAN RED PLUM Preserves
10-Oz. Jar **16¢**

WOLF Tamales No. 1 1/2 Can **25¢**

LILT HOME Permanent Crackers Reg. 2.00 Tax Plus Tax Incl. **1.49**

PREMIUM SALTINE Dog Food Lb. Box **27¢**

BIG MIKE Dog Food No. 300 Tall **19¢**

NEW AD Detergent Dinner Ware In Each Pkg. Lg. Size **33¢**

CLOVER FARM Margarine Lb. **19¢**

BETTY CROCKER Cake Mix Yellow, Choc., White, 24-Oz. Pkg. Choc. Malt **29¢**

Washington Red DELICIOUS APPLES
Lb. **15¢**

YELLOW ONIONS
Lb. **5¢**

Cello CARROTS
Lb. Bag ... **10¢**

U. S. No. 1 Red POTATOES
10-Lb. Bag ... **39¢**

BLEACH Fleecy White Quart Bottle **15c**

TISSUE Delsey Toilet 1000 sheet roll **2 for 23c**

OIL Mazola Salad Quart **65c**

WILSON'S THICK Sliced Bacon 2 Lbs. **1.19**

GOOCH'S FRANKS
3 Lbs. **1.05**

Pork ROAST
Pound **49¢**

KRAFT VELVEETA Cheese 2 Lb. Box **79¢**

SMOKED Picnics Lb. **39¢**

Rib Steak Good Quality Lb. **75¢**

Kraft PHILADELPHIA CREAM CHEESE 8-Oz. Pkg. **35¢**

Canned Hams 4 Lb. Can **3⁸⁹**

It's QUALITY plus PRICE that counts when you buy Food gives you BOTH

CLOVER FARM

H. B. MacMoy, Owner
7:30 a.m. to 8:00 p.m. Weekdays
7:30 a.m. to 9:00 p.m. Saturdays

WEEKEND GUESTS

Mr. and Mrs. George Fox had as their weekend guests their son and

daughter-in-law, Mr. and Mrs. George Fox Jr., Patsy Singleton, and Mr. and Mrs. Charles Whitehead, all of Austin.

RETURNS HOME

Mrs. Samuel Butler has returned home after spending a week's

visit with her sister and brother-law, Mr. and Mrs. Eugene Whitehurst, in San Angelo.

★ ★ ★ ★
Trade With Your
Hometown Merchants
★ ★ ★ ★

Miss Martha Freese Is Honored With Twilight Gift Tea Friday

Miss Martha Freese, bride-elect of Melvin Crabtree, was honored with a twilight gift tea Friday evening in the home of Mr. and Mrs. Carey Hightower, Lake Leon road.

Miss Freese, daughter of Mr. and Mrs. Jerry Freese of Sweetwater, and Mr. Crabtree, son of Mr. and Mrs. Preston Crabtree of Eastland, plan to be married in the First Christian Church Friday evening at 8 o'clock.

Hostesses for the tea were Meses. Hightower, E. E. McAllister, Everett H. Everett, Clifton Beck, Benny Skinner, Guy Robinson, Johnson Smith, Russell Norwood and Emmitt Powell.

Mrs. Hightower and Mrs. McAllister presented them to the honoree. Others in the receiving line were Mrs. Freese, mother of the bride-elect, Mrs. Crabtree, mother of the future bridegroom, and Mrs. W. B. Crabtree, grandmother of

the bridegroom.

The guests were registered in a white bride's book placed on a table with an arrangement of gold and orchid dahlias. Jan Robertson, Jerry Haynes, Linda Huckabay and Charlotte Vaught presided at the register and over the gift display.

Mrs. Hightower made the bride's book of white satin with a small, outlined lace heart and bearing the inscription of "My Bride's Book." Small pink rosebuds were embroidered at various points on the book.

Pink carnations and white pom-pom mums formed the centerpiece, flanked with pink tapers in crystal candelabra of the bride's table, covered with a pink linen cloth. Crystal appointments were used. Fruit punch was served with white cake squares topped with small pink rosebuds. Meses. Beck, Smith, and Norwood presided at the serving table.

A lovely arrangement of orchid dahlias and pink rosebuds in a crystal bowl were noted on the mantel with pink tapers on each side.

Approximately 60 guests called during the evening.

Friendship Class Hears Comedy Program at Luncheon Tuesday

Mrs. Dave Fiensy was program leader for the afternoon as the Friendship Sunday School Class of the First Christian Church met for a covered dish luncheon Tuesday in the church annex.

Mrs. Lon Horn, chairman, assisted by Mrs. Winnie Wynne, co-chairman, arranged the luncheon tables, centered with a garden flower arrangement.

Preceding the luncheon Mr. Ray Heckendorn presented the invocation.

The opening of the program consisted of various songs being sung in union with Mrs. N. L. Smitham accompanist.

Mrs. Dave Fiensy introduced Meses. Horn, Wynne, Smitham, Heckendorn, Eugene Day, T. L. Cooper and L. C. McNatt who presented a comedy skit entitled "Airplanes and Automobiles."

Mrs. McNatt also presented a reading on the program. Mrs. Smitham participated on the program by presenting a reading on "A Culture Daughter of a Grocerman" which was the story of a country store owner and his daughter who went to college. She returned from college with several refined ideas that her father did not understand.

The Friendship Class will meet in November for their next luncheon to observe Thanksgiving Day.

Attending were Meses. Eugene Day, Dave Fiensy, Henry Ferrell, Winnie Wynne, Ray Heckendorn and daughter, Kathy and Cristy, N. L. Smitham, Lon Horn, Mattie Miller, T. L. Cooper, Margaret East, L. C. McNatt, T. A. Bendy and Miss Sally Day.

A lovely arrangement of orchid dahlias and pink rosebuds in a crystal bowl were noted on the mantel with pink tapers on each side.

Approximately 60 guests called during the evening.

October 1958
3rd Big Week!
A&P's 99th ANNIVERSARY EVENT THANKS OUR CUSTOMERS WITH...
VALUES to cheer MILLIONS
CLOSED ON SUNDAY - NO LIMITS! NO LIMITS! CLOSED SUNDAY!



99th ANNIVERSARY

ANN PAGE
CAKE MIX
Assorted Flavors
20-oz. Box 25c

KRAFT
SALAD OIL
Qt. 55c

KRAFT
MAYONNAISE
Qt. 77c

ANN PAGE PEACH OR PINEAPPLE
PRESERVES SPECIAL! 2 LB. JAR 49c
ANN PAGE ELBOW
MACARONI SPECIAL! 1-LB. PKG. 15c
ANN PAGE ELBOW
SPAGHETTI SPECIAL! 1-LB. PKG. 15c

APPLESAUCE A&P FANCY..... 2 16-oz. Cans 27c
GREEN BEANS A&P WHOLE..... 2 16-oz. Cans 43c
ENGLISH PEAS A&P..... 2 16-oz. Cans 41c
ASPARAGUS A&P ALL GREEN CUT..... 2 14-oz. Cans 37c
GOLDEN CORN A&P WHOLE KERNEL..... 2 16-oz. Cans 27c
RED CHERRIES A&P SOUR PITTED..... 2 16-oz. Cans 43c

LIBBY'S—3 1/2-Oz. Can
POTTED MEAT 10c
VICK'S SALVE 3 1/2-oz. Jar 85c
VAPORUB 85c
VICK'S COUGH SYRUP 4-oz. Btl. 59c

VICK'S COLD TABLETS Pkg. 63c
WORTHMORE GUM DROPS Pkg. 25c
WORTHMORE ORANGE SLICES Pkg. 25c

Dependable "Super-Right" Quality Meats!

"SUPER-RIGHT" HEAVY CALF

Chuck Roast

Lb. 55c



"SUPER-RIGHT" HEAVY CALF

Rib Steak

Lb. 89c

CAP'N JOHN'S FROZEN—Lb. Pkg.
PERCH FILLETS 39c

"SUPER-RIGHT" HEAVY CALF
STEW MEAT Boneless.....lb. 69c

"SUPER-RIGHT" FRESHLY
GROUND BEEF.....lb. 49c

RATH'S PICKLED
PIG'S FEET 14-oz. Jar 39c

RATH'S HICKORY SMOKED
CANNED HAMS 3-lb. Size \$2.95

CAP'N JOHN'S
BREADED SHRIMP 10-oz. Pkg. 59c

TENNESSEE FARM—MILD
NEUHOFF'S Sausage 1-lb. Pkg. 75c

TENNESSEE FARM—HOT
NEUHOFF'S Sausage 1-lb. Pkg. 75c

TENNESSEE FARM—MILD
NEUHOFF'S Sausage 2-lb. Roll \$1.45

TENNESSEE FARM—HOT
NEUHOFF'S Sausage 2-lb. Roll \$1.45

CHICKEN—BEEF—TURKEY
BANQUET PIES 2 for 39c

ALLGOOD BRAND
SLICED BACON 1-lb. Pkg. 53c

Jane Parker Specials!

CHERRY PIE

SPECIAL

Ea. 43c



JANE PARKER—THREE KINDS
Cake Donuts Pkg. 20c

JANE PARKER SLICED
Cinnamon Loaf Loaf 25c

Exquisite Sliced Freestone—2 1/2 Can
Peaches 25c



Jane Parker
ANGEL FOOD CAKE
Regular Price 49c ...ea. 39c

ANN PAGE
Salad Dressing Pkg. 29c

ANN PAGE CREAMY SMOOTH
Peanut Butter 12-oz. Jar 39c

ANN PAGE
Sandwich Spread Pkg. 37c

SPARKLE
GELATIN 4 3-oz. Pkg. 27c

ANN PAGE—WITH CHEESE SAUCE
MACARONI 2 15 1/2-oz. Cans 37c

EIGHT O'CLOCK
COFFEE 1-lb. Bag 65c

COOKING OIL
dexula Qt. Btl. 49c



EXTRA FANCY WASHINGTON STATE JONATHAN
Apples Lb. 10c

CALIFORNIA
Pitted Dates 16-Oz. Pkg. 35c

COLORADO U. S. NO. 1
Red Potatoes 25 Lb. 69c

MINNESOTA
Rutabagas Lb. 5c

NORTH WEST FANCY RED DELICIOUS
Apples Lb. 10c

Mrs. R. M. Sneed Entertains with Coffee Friday

Mrs. R. M. Sneed entertained members and guests of the Xi Alpha Zeta Chapter with a coffee Friday in her home.

Mrs. Sneed's home was beautifully decorated with bronz mums. The table was laid with a green cloth and centered with a lovely arrangement of fruit in a brass cornucopia.

Coffee, coffee cake and iced doughnuts were served to Meses. William Leslie, Bernice Pettit, M. H. Perry, Bill Walters, W. H. Hoffmann, Ferhman Lund, Don Doyle, Bill Collins, Truman Brown, Bob King, Bob Alexander, Tom Stamey, A. G. Crosby and W. M. Colver.

Eva Ann Paul, Buster Graham Wed In Lubbock

Marriage vows were exchanged Tuesday evening, September 30, in Lubbock by Miss Eva Ann Paul, daughter of Mrs. Edna Paul of Neosha, Missouri, and Robert Lon (Buster) Graham, son of Mr. and Mrs. F. W. Graham, 408 Foch Street.

Rev. V. A. Miller, pastor of the First Christian Church in Lubbock, officiated for the double ring rites.

Mr. and Mrs. John Payne of Lubbock were honor attendants.

Mrs. Graham is a 1954 graduate of Neosha High School, in Neosha, Missouri. She will receive her degree in home economics in January at Texas Tech.

Her husband is now stationed for six months training in the Battery A 648th Armored Field Artillery Battalion Texas Army National Guard in Fort Chaffy, Arkansas.

WEEK END SPECIALS

FRIDAY AND SATURDAY ONLY

ONE GROUP FALL
Dresses
Regular 5.98 to 14.95 NOW 5.00

ONE GROUP
Dresses
Regular 10.98 to 19.95 NOW 10.00

ONE GROUP
Coats and Suits
1/4 and more Off

ALL FALL
Hats 1/4 Off

SPECIAL PRICES ON ALL CHILDREN'S
Can Cans
anderson's
North Side of Square

HATS—CLEANED AND BLOCKED

★ Plain or Fancy Dry Cleaning
★ Bonded Fur Storage
★ Furs Cleaned and Glazed
★ Fancy Re-Waving
★ Repair & Alterations

★ Tailored To Measure Clothing
★ PHONE 132
★ FREE Pickup, Delivery
★ Your clothes are insured while in our possession.
★ 210 South Seaman

modern dry cleaners
James Wright, Owner

Mrs. R. P. Haun Speaks on 'Poise And Charm' to Zeta Pi Chapter

"Poise and Charm" was the program topic presented by Mrs. R. P. Haun at the meeting of the Zeta Pi Chapter of Beta Sigma Phi Tuesday evening.

Mrs. Robert Verhetael was hostess to the sorority in her home at 709 South Seaman at 7:30 o'clock.

Mrs. Haun in presenting the program explained the different traits which form a person's "Poise and Charm." Poise is a quality based on personality, man-

neress, good grooming and other points of one's self, says Mrs. Haun.

Plans were discussed to attend the Beta Sigma Phi West Texas Area Convention in Abilene on October 25 and 26.

The members also discussed the Culinary Art Show to be held in the annex of the First Christian Church Nov. 3, 4, and 5. Mrs. Virgil Moore, president, presided over the meeting.

Refreshments of cream-puffs, mints, Cokes and coffee were served to Meses. Kerman Bond, J. D. Earley, R. P. Haun, Art Johnson, Don Kincaid, Virgil Moore, Willis Moore, James Smith, Les Strawn and Celynn Hedges by the hostess, Mrs. Verhetael.

Hospital News



Patients in the Eastland Memorial Hospital are:

D. G. Hunt, medical
Mrs. Mary Watkins, medical
Oscar Parr, medical
Mrs. Ruth Chancellor, surgical
Mrs. Lela Stone, medical
E. Dunn, medical, Carbon
Mrs. Minnie Thomas, medical
Mrs. Mona Price, surgical
Mrs. J. D. Hitt, medical, Cisco
Mrs. Viola Webb, surgical

Danny Martinez, medical
J. L. O'Shields, medical
Lillian Sparr, medical
Minnie Williams, surgical
A. M. Hearn, surgical

Mrs. W. T. Powers, medical
Dismissed were: Mrs. Darrell Basham and baby girl, and Mrs. A. C. Lebrado.

Patients in the Ranger General Hospital are:
J. A. Mathews, medical
Jim Lovell, medical
D. F. Harden, surgical

CALL 601 FOR CLASSIFIED ADVERTISEMENT

NOTICE!
For Reliable
TV SERVICE
Call DAVE DUNCAN
Phone 2761 in Olden

Mrs. Jack Horn Speaks to Xi Alpha Zeta Chapter Monday Eve

Mrs. Jack Horn was guest speaker to the Xi Alpha Zeta Chapter of Beta Sigma Phi as the members were hosted in the home of Mrs. Don Doyle Monday evening at 7:30 o'clock.

Mrs. R. M. Sneed, president, conducted the business meeting and announced that the Beta Sigma Phi West Texas Area Council meeting would be held in Abilene Oct. 25 and 26.

Mrs. Doyle introduced the guest speaker, Mrs. Horn, who gave a most interesting talk on India and English brass. Mrs. Horn had several beautiful brass pieces on display.

The hostess served delicious refreshments of pecan pie and coffee to Meses. Ferhman Lund, Truman Brown, R. M. Sneed, Bill Collings, Bernice Pettit, F. W. Graham, W. H. Hoffmann, Bill Walters, M. H. Perry and Jack Horn.

The next meeting will be Oct. 27 in the home of Mrs. W. H. Hoffmann.

SOCIAL CALENDAR

Thursday, October 16

7:30 p.m.—Mrs. Marlene Johnson-Johnson will be guest speaker at the Olden PTA meeting in the Remaking Cottage.

7:30 p.m.—Mrs. Winnie Wynne will be hostess in her home, 111 North Connellee, for the opening meeting of the Past Matrons Association of the Order of the Eastern Star.

Monday, October 20

9 a.m.—Priscilla Group of the CWF of the First Christian Church will meet with Mrs. L. E. Huckabay, 707 S. Daugherty.

3 p.m.—The Esther Group of the CWF of the First Christian Church will meet with Mrs. J. B. Meeks for their regular meeting.

3 p.m.—Mrs. Guy Robertson will be hostess to the Lydia Group of the CWF of the First Christian Church in her home, 1308 South Green.

7:30 p.m.—Oddfellow Lodge No. 120 will hold their regular meeting in the IOOF Hall.

7:30 p.m.—Mrs. Opal Cross will present the program for Las Leales Club in the Woman's Club. Miss Gladys Green will be hostess.

7:30 p.m.—Mrs. Vernon Humphreys will be hostess to the Ruth Group of CWF of the First Christian Church.

Tuesday, October 21
9:30 a.m.—Mrs. Cecil Collins will be leader for the third in a series of Mission Study on "The Middle East" for the Woman's Society of Christian Service of the First Methodist Church.

7:30 p.m.—The Rebekah Lodge No. 177 will meet in the IOOF Hall for their regular meeting.

Carbon School News

By MAXINE STACY
Telegram School Reporter

Well—here I am with another gosh session. Since neither high school nor grade school has a football game this week I don't have any football news for this week; however, we do have a game next week. High School will play Star at Carbon. I'll have more information about that next week.

The annual staff met Tuesday morning and started plans for the 1958-59 Yearbook, "The Sandstorm." We hope to have the best yearbook that Carbon has ever had. We want to remind everyone to make his deposit. The deposit is only \$1.00. See Pat

Guy, Gene Woods, Maxine Stacy Kay McDaniel or Mr. Browder.

The faculty met Monday morning to make plans for a Halloween Carnival to be held October 31. Each class is to be represented by two candidates for the carnival king and queen.

Votes will be 1c each with the candidates of the class receiving the most money being crowned king and queen at the carnival. The carnival will be an annual affair.

Those representing each class are as follows: Zelma Hendricks and Don Underwood, senior class; Annie Mae Stephenson and Jimmy Sandlin, junior class; Mary Sibly and Billy Sandlin, sophomore class; Lavell Garret and Gary Norris, freshmen class; Claudette Guy and Jimmy Warren, eighth grade; Nita Tucker and Duane McDaniel, seventh grade; Linda Jackson and Duane Clower, sixth grade; Sharon Harbin and Kelly Wyatt, fourth grade; Deborah Jackson and Stevie Services, third grade; and Ruth O'Conner and Larry Stublefield, first and second grade.

The sophomore class has a new pupil now. She is Leta Rae Ellison

from Whitney. Her father is employed with the railroad section gang. We students here at CHS want to welcome Leta Rae and we hope she likes school here.

Guess that's all for this week. See you next week!

Sandy's—

(Continued from Page One)

really was not that bad and everyone had a lot of fun teasing one another about the team of their choice. Especially the Yankee fans when it was all over.

The school was also a scene of confusion last week when we didn't think we were going to receive annuals, but now everything is straightened out and the 1959 Maverick will be issued next spring to the students of E.H.S.

Since six-weeks tests are over, everyone is holding his breath to see the final results on the report cards which will be issued this week. Next week I will list the honor students in high school for the first six weeks.

That's all for now but we hope to see you in Coleman Friday night.

BABIES LIKE IT LIKE THEM

NEW LOCATION
Tobby and Haps Sewing Shop
Alterations
Alhambra Hotel - Phone 761

NOTICE... Come To Kendrick Drive-In Dairy
(Serving This Territory Since 1940)
FOR
Good, Clean JERSEY Sweet Milk
Price - 70c Gal.
Phone 896-J-2 - Located Halfway between Eastland and Cisco

NOTICE!
For Reliable
TV SERVICE
Call DAVE DUNCAN
Phone 2761 in Olden

OUR LOW PRICES PUT **MORE MEAT ON YOUR TABLE**

GOOCH'S RANCH STYLE SLICED

Bacon	2 Lbs.	1.05
Golden Oleo	Lb.	15¢
HOME KILLED Pork Roast	Lean Cuts Lb.	45¢
FRESH Side Pork	Sliced Lb.	49¢
Sausage	Country Style 3 Lbs.	\$1
Sausage	Whole Hog Lb.	49¢
PIT COOKED Bar-B-Q	Lb.	89¢
Chili	READY TO EAT Lb.	59¢
Potato Salad	Lb.	25¢
Chicken Salad	Lb.	69¢
CHOICE CATT Seven Roast	Lb.	49¢
Loin Steak	Lb.	79¢

EARNEST Frozen Food Center
210 South Lamar Phone 11

Homemakers Sunday School
Class of the First Baptist Church selected Mrs. Artie Liles as president. She was elected president Tuesday evening in the home of Mrs. L. D. Harris at Leon Plant.

Other officers elected at the business session and social were Mrs. Victor Cornelius vice-president; Mrs. Bruce Butler, secretary; and Meses. O. L. Hooper, H. M. Hart, C. C. Timmons, A. W. Cartledge, L. D. Harris, Don Parker and J. M. Mitchell, group captains.

Preceding the business session the members enjoyed a covered dish dinner served buffet style. The serving table, laid with a white cut-work cloth, was decorated with the Halloween theme.

Mrs. T. L. Amis presented the invocation with Mrs. I. C. Inzer giving the devotion.

Members present included Meses. C. T. Lucas, Bruce Butler, O. L. Hooper, Victor Cornelius, H. M. Hart, J. M. Mitchell, C. C. Cornelius, T. L. Amis, C. P. Hastings, Carl Timmons, Artie Liles, I. C. Irzer, a guest, Mrs. O. M. White, and the hostess, Mrs. Harris.

CALL 601 FOR CLASSIFIED ADVERTISEMENT

IF IT'S METAL, Decorate Metal Products

306 E. Main Phone 288
SHOP WELDING PAINTING REPAIR

Here, There and Everywhere—

... people are moving in and moving out all trying to get located for one reason or another. Those who have moved to Eastland recently, and there are quite a number of families, should align themselves with our worthwhile institutions as quickly as possible. The connection with an old established insurance agency is a step in the right direction. In the Bender Agency one will find such an institution fully equipped and ready to serve. So drop in and let's get acquainted!

EARL BENDER & COMPANY
Eastland, (Insurance since 1924) Texas

Don't fail to include a wedding portrait in your plans for this once in a life-time occasion.

For Appointment
Phone 46
CANARIS STUDIO

HERE TOMORROW!
Ford brings Thunderbird elegance to the low-price field with

THE WORLD'S MOST BEAUTIFULLY PROPORTIONED CARS

AWARDED THE GOLD MEDAL for beautiful proportions by the Comité Français de l'Elegance at the Brussels World's Fair

Styled, powered and priced for today's driving! There never was a Ford like this before! Its classic new design was awarded the Gold Medal of the Comité Français de l'Elegance at the Brussels World's Fair! With new Thunderbird flavor in each lively line and tastefully new interiors, these '59 Fords are beautifully proportioned for elegant driving.

Power, performance and economy are served up in new proportions, too. All standard Ford engines—Six or Thunderbird V-8—thrive on regular gasoline at regular prices. You save up to 5 cents on each gallon! There's a new aluminum muffler that normally will last twice as long as conventional mufflers used on other cars... full-flow oil filtration that lets you change oil at 4000 miles instead of the 1000 often recommended... new Tyrex cord tires for greater economy and safety... a brilliant new Diamond Lustre Baked Enamel Finish that's so durable you won't have to wax it ever... and two new economy power-transmission teams that will bring you savings automatically. That's why we say, for '59, Ford is truly a masterpiece of underpricing!

NEW economy team Number One! Get all the high performance of a completely new Fordomatic Drive teamed with a Six or Thunderbird V-8—at a price that puts automatic driving within everyone's car budget. It's a simplified Fordomatic with nearly 1/3 fewer parts.

NEW economy team Number Two! Take Ford's versatile new Cruise-O-Matic Drive, add the responsiveness of Thunderbird Special V-8 power and you have the last word in automatic driving plus the "built-in" overdrive savings of an economy-g geared axle.

Altogether NEW in everything you can see feel or touch!

59 FORDS

Come in and get that NEW FORD FEELING in the cars with Thunderbird elegance

King Motor Company
100 E. Main EASTLAND Phone 42

We went right to Pork Country to bring you finest meat for this sale...



SAFEWAY PORK SALE

Pork Picnics 33¢ Lb.

Fresh — Half or Whole, Shank on

Capitol Sliced Bacon Better Than an Alarm Clock at Breakfast Time 1-Lb. Pkg. **55¢**

Pork Roast Boston Butt — Perfect for Your Sunday Dinner or Anytime Lb. **45¢**

Pork Steak Butt Cut — Thursday, Friday And Saturday Special Buy Lb. **49¢**

Fresh Pork
SPARERIBS
Buy, Try, Compare, Why Pay More, Small and Lean — Lb. **49¢**

Sliced Apples
Comstock — Zestful and Tangy — Ideal for Pies
2 No. 2 Cans **35¢**

Hen Turkeys
Manor House — USDA Inspected and Graded — Ready to Cook — 8 to 12 Pound Average — Delicious with Ocean Spray Cranberry Sauce.
Lb. **45¢**

Crisco Shortening Better for All Your Baking 3-Lb. Can **86¢**

Edwards Coffee All Grinds — Buy, Try, Compare — Why Pay More? 1-Lb. Can **79¢**

Airway Instant Coffee Finest Quality for Less 6-Oz. Jar **79¢**

Empress Apple Jelly Truly a Breakfast Treat! 20-Oz. Jar **25¢**

Bayer Aspirin Tablets — For Quick Relief of Headaches 100-Ct. Bottle **49¢**

Peanut Butter Real Roast — Perfect for Those After-School Snacks 18-Oz. Jar **43¢**

Hydrox Cookies Sunshine 12-Oz. Cello **37¢**

Potato Chips Morton's 4-Oz. Pkg. **25¢**

Lucerne Buttermilk Ideal for Weight-Watchers 1/2-Gal. Ctn. **41¢**

Kraft Caramels Built — Have You Tried a Delicious Caramel Apple? Lb. **29¢**

Chunk Style Tuna Chicken of Sea Green Label No. 1/2 Can **33¢**

Beans Pinto — Nutritious, Delicious, Economical Tool 10-Lb. Bag **84¢**

Pure Lard Armour's Star — Perfect for All Your Frying Needs 3-Lb. Ctn. **49¢**

Flour Kitchen Craft — For Better Baking Every Time! 25-Lb. Bag **\$1.59**

Sweet Potatoes Town House — Whole No. 3 Cello Can **29¢**

Ritz Crackers Nabisco 12-Oz. Box **29¢**

Show Boat Rice Short Grain 2-Lb. Cello **31¢**

Van Zee Cheese Spreads So Easy! 2-Lb. Box **69¢**

Caramel Nut Roll Pillsbury 11-Oz. Pkg. **39¢**

Bakery Feature of the Week!

CLOVERLEAF ROLLS

Skylark — Brown and Serve — 6 and 6 — Regular 23c 13-Oz. Pkg. **19¢**

Butter & Egg Bread Skylark 1-Lb. Loaf **19¢**

Slenderway Bread Skylark 1-Lb. Loaf **24¢**

Here's "CROSS-OUT" Game No. TWELVE!

If you have 5 numbers in a row down, across or diagonally on your card you have a winning card. Turn card over to see what you have won and mail card as directed. You will receive your prize soon!

0	2	4	6	8
10	12	14	16	22
26	28	30	32	34
40	46	48	50	52
54	66	70	72	74
82	86	88	90	92

Canada and U.S. Patent Pending—U.S. © 1937, 1954, 1955, 1956 and 1957, Canada © 1956 and 1957 by "Cross-Out" Advertising Co., Inc., Box 531, St. Louis, Mo., U.S.A.
THIS IS THE LAST "CROSS-OUT" GAME!

Applesauce Highway — A Delicious Blend of Mellow Apples 2 300 Cans **25¢**

White Hominy Highway — Extra Tender Delicious Any Time 2 303 Cans **15¢**

Giant Tide Detergent — Thursday, Friday, Saturday Only Giant Box **73¢**

Wolf Plain Chili Plain — Delicious Cool Weather Treat No. 2 Can **53¢**

Wolf Tamales Perfect with Chili for a One-Dish Meal in Seconds 2 No. 1 1/2 Cans **35¢**

Everybody Loves Her!
Sweet Judy Doll 25" Tall, All Vinyl Body, With Jointed Legs, arms, and Torso, Vinyl Head. Each **\$4.99**

Lime Sherbet Party Pride Perfect Dessert 1/2-Gal. Ctn. **59¢**

Finest Produce In Town!

Jonathan Apples Crisp, Gleaming Red and Full of Flavor... Take Advantage of this Special Week-End Buy! 4-Lb. Cello **39¢**

Texas Yams Special Buy! Perfect for Baking 3 Lbs. **25¢**

Fresh Cranberries Ideal for Cranberry Sauce 1-Lb. Cello **25¢**

Vel Beauty Bar Toilet Soap 2 Reg. Bars **39¢**

Dash Dog Food Armour's 2 1-Lb. Cans **31¢**

Fab Detergent For a Whiter Wash Giant Box **75¢**

Vel Detergent Ideal for Dishes Tool Large Box **32¢**

Vel Liquid Detergent Pink — 22 Oz. Can **69¢**

LIPTON SOUP MIXES
* Chicken Noodle — 2 1/2-Oz. Pkg. **3 Pkg. 42¢**
* Tomato Vegetable — 2 1/2-Oz. Box **2 Pkg. 35¢**
Beef Vegetable 2 1 1/2-Oz. Pkg. **35¢**
Onion Soup 2 1 1/2-Oz. Pkg. **35¢**
Green Pea 4-Oz. Box **15¢**

Top Quality Values!

White Cake Mix Swansdown — Yellow or Devils Food 20-Oz. Box **33¢**

Angel Food Cake Mix Swansdown — Lemon Chip 16-Oz. Pkg. **55¢**

Swansdown Cake Mix Angel Food 17-Oz. Box **51¢**

Cake Mixes Swansdown — Apple Chip, Lemon Flute, Banana, or Orange Cocomat 19-Oz. Box **39¢**

Frozen-Rite Rolls Parker House or Cloverleaf 27-Oz. Pkg. **29¢**

Ajax Cleanser Gate Dirt Fast 2 14-Oz. Cans **31¢**

Town House Sauerkraut 303 Can **14¢**

Ranch Style Beans Real Western Flavor 2 300 Cans **27¢**

Barbecue Beef Ireland's Chipped or Sliced 300 Can **73¢**

Iced Tea Blend Canterbury 1/2-Lb. Pkg. **59¢**

Supreme Club Crackers Salted Just Right 1-Lb. Pkg. **37¢**

Muffin Mix Betty Crocker — Date, Orange or Raisin Bran 14-Oz. Pkg. **33¢**

Beef Tacos Morenos — Frozen 13 1/2-Oz. Pkg. **53¢**



SAFEWAY

Prices effective Thursday, Friday and Saturday, Oct. 16-17-18, in Eastland.
We reserve the right to limit quantities. No sales to dealers.

Texas Crude Oil Production Over One Billion Barrels

For the past eight years, Texas crude oil production has averaged more than one billion barrels a year, but signs are that production will fall below that mark in 1958, Texas Mid-Continent Oil & Gas Association reported today in an industry review for Oil Progress Week.

The production record thus far this year indicates about 940 million barrels will come from Texas

wells in 1958, or about 14 per cent below the yield for 1957, some 1,085,000,000 barrels. The only other time since 1951 that Texas produced under a billion barrels was in the recession year of 1934 when 974 million barrels flowed.

To meet the slackened demand for Texas oil caused by surpluses of crude and oil products which piled up in 1957, State conservation authorities reduced production schedules to as low as eight days a month in April, May and June. In May, production averaged 2.2 million barrels a day, or about one million barrels under the daily rate of the previous May. It appears, however, that

1958 production will average a little more than 2.5 million barrels daily, compared to 2.9 million in 1957.

To prevent waste, the Texas Railroad Commission limits production to the demands for Texas oil, as provided by state laws. It is estimated that the state's wells have a total reserve capacity to produce more than 1.5 million barrels a day above current rates. This is a substantial portion of the nation's oil producing reserve in case of an emergency which demanded a sudden upsurge in production.

Texas has more than 185,000 producing oil wells, but the rate of increase in number of wells dropped off substantially this year. In 1956 and 1957 the well population gained at an average rate of about 850 wells per month, but in the first nine months of 1958, only about 450 wells per month were added.

The effect of so many wells sharing in the state oil output has been to gradually reduce the average output per well. In 1956 Texas wells averaged about 18.5 bar-

rels per day; in 1957, about 16.5 barrels. This year the figure will reach a low of about 14 barrels per day. If, however, additional wells had been put on schedule at the rate of previous years, the average might have dropped to around 13 barrels daily.

Texas in 1957 was still the Western Hemisphere's leading oil producing region, but sizable shifts are taking place in international petroleum statistics. Texas is affected in the world markets for oil.

Between 1952 and 1957, world oil production expanded about 30 per cent to about 6.5 billion barrels annually. In 1952 Texas alone produced 23 per cent of the world's oil, but in 1957 its share was 16 per cent. Venezuela increased its share of the growing world production from 14 to 15 per cent with a 1957 output of about 1,014,000,000 barrels. The Middle East which produced 17 per cent in 1952 now shares in 21 per cent of the production.

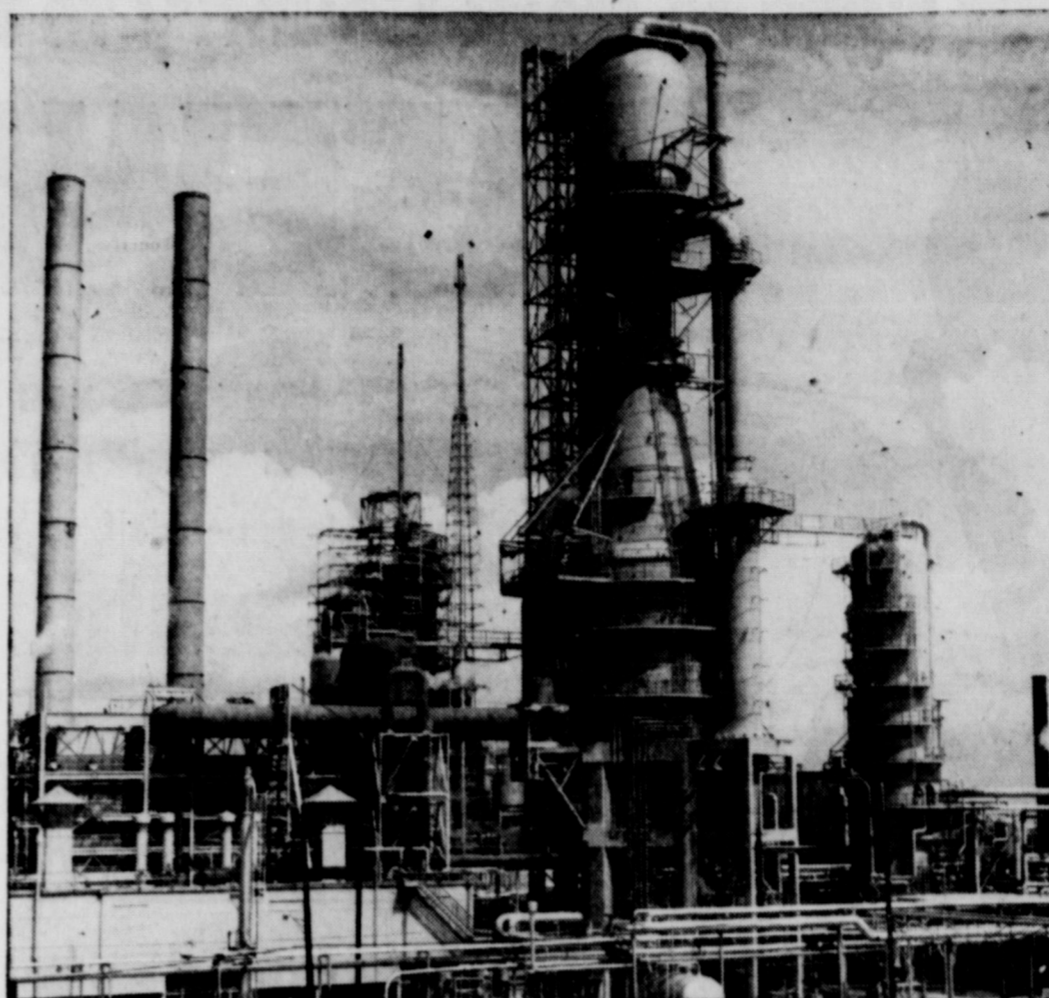
One of the largest gains by a major producing country has been Russia, which was credited with only 7 per cent of world production in 1952 but now has an estimated 12 per cent with an output about 26 per cent under that of Texas.

Within the United States, Texas remains, by far, the leading oil producing state accounting for 41 per cent of the domestic production in 1957. At the time of the deepest cutbacks in production this spring, Texas was producing only about 35 per cent of the nation's oil. For the year, the Texas share may drop below 40 per cent.

The crude oil reserves which underlie Texas 6,300 oil fields are estimated to total 14.5 billion barrels, or 48 per cent of the oil in the United States which can be recovered by current methods. By adding the 3.2 billion barrels of liquid fuels which can be extracted from natural gas, however, the state's "liquid hydrocarbon" reserves total some 17.8 billion barrels, or 49.5 per cent of the U. S.

Every section of Texas has oil regions and there is recorded production in 195 of the 254 counties. The heaviest production, however, is in the big Permian Basin district of West Texas which turns out more than a million barrels a day, or more than a third of the state's output.

READ THE CLASSIFIEDS



HUMBLE'S NEW CAT CRACKER—Towering 265 feet in the air, Humble Oil & Refining Company's new Fluid Catalytic Cracking Unit No. 3 is the tallest unit at Baytown Refinery. With new units, such as "cat" No. 3, Humble can increase its refinery efficiency and at the same time increase its capacity in the fast-growing petrochemicals field. The new unit's rated capacity is 55,000 barrels daily.

filet mignon." So I took that.

Seeing tiny turtles with painted backs for sales at several stands made me wonder what happens to all these creatures—for you see them on sale as souvenirs in every city. And can you think of a more useless gift?

A bellboy, confronted by five suitcases, sized up the situation, then grasped the handles of two in his left hand and, after much grapping, succeeded in grasping all three handles in his right hand and lifted all five. I broke into spontaneous applause.

CALL 601 FOR CLASSIFIED ADVERTISEMENT

TERMITE CONTROL and all other types **PEST EXTERMINATING CO.** MODERN EXTERMINATING CO. Box 312 Ranger PHONE RANGER Day 919—Night 911

T. L. FAGG REAL ESTATE Property Management Home and Farm Loans

NOTICE FRESH DRESSED **FRYERS** and Fresh Dressed Hens At The Plant PHONE 110 **WALKER** Dressing Plant

Insurance AND Real Estate D. L. KINNAIRD Life - Fire - Auto - Farm Pollo - Bonds 39 years in the Insurance Business in Eastland

Overseas Veterans Welcome Karl and Boyd Tanner Post No. 4136 VETERANS OF FOREIGN WARS Meets 2nd and 4th Thursday 8:00 p.m.

BE WISE send it to ... ROY'S REPAIR

LET US REPAIR YOUR APPLIANCES

- | | |
|---------------------|-------------------|
| Refrigerators | Percolators |
| Deep Freezers | Coffee Makers |
| Milk Coolers | Electric Irons |
| Window Coolers | Food Mixers |
| Evaporative Coolers | Food Blenders |
| Automatic Washers | Electric Sweepers |
| Clothes Dryers | Electric Fry Pans |
| Dish Washers | Electric Roasters |
| Disposals | Electric Ranges |
- Reasonable Rates — Work Guaranteed — Call 785
Located at Brown Plumbing 1806 W. Main St. **ROY GANN** Eastland, Texas



I GIVE YOU TEXAS

By BOYCE HOUSE

New York Jottings:

Prices are sometimes surprisingly reasonable in the big town. For instance, at a cafeteria across the street from Madison Square Garden, oatmeal with milk is 20 cents.

Along the sidewalks are litter baskets. Intended to keep the streets free of trash, these baskets

also serve as the source of free reading material. You will see, every now and then, a man salvaging a discarded newspaper.

The lobbies of the Astor, the Algonquin and several other hotels did not look especially hospitable—the chairs must have been out for re-upholstering; but the Piccadilly presented a small jewel-like lobby with, to one side and up a few steps, the parlor; it was a scene of subdued splendor, silver-encrusted beams, paneling in reddish wood, three paintings in the Gainsborough tradition.

An old-time hearse, horse-drawn, stood in front of a movie man in a long dark cloak accompanied by a brunette in full black dress that almost swept the sidewalk. Their eyes were sinister. The attraction at the movie house, "The Bride of Dracula."

"Tony Canzoneri's Bar"—and the sign brought back memories of the once-great boxer—light-weight champion of the world, wasn't he?

And there is Mickey Walker's Bar. "The toy bulldog," he was called and he held the welter and middle-weight titles. He used to fight Harry Greb on even terms—and Greb once defeated Gene Tunney. Legend has it that both Walker and Greb trained in unorthodox fashion and that after they had fought each other, they met that same night in a bar, had an argument as to who had won, went into the alley and resumed the

fight where they had left off.

And Jack Dempsey's Cafe—the Manassa Mauler, still "the Champ". Touches of Texas: Spindletop Cafe, with an oil derrick painted on the door; and opposite Madison Square Garden, a cowboy shop. Quaint expression: A waitress turning in an order for a hamburger plain called, "Hamburger! Cancel the mustard!"

And a waiter with the features of a bar-room bouncer and a growling voice said, when this visitor ordered a sirloin, "It's big—but it's tough; I'd rather bring you the

Winter Boat Storage

Store your boat for the winter months inside dry, heated building. Storage for the months of November through March. Space limited—Make reservations now.

DECORE METAL PRODUCTS

306 East Main Phone 288 —Next Door to Pipkin's Sport Center—

Winterize Your Outboard Motor

Special—Wash and Grease, replace lower unit grease, clean carburetor \$5.95
Complete Tune-Up—Three to 10 horsepower motor, \$8.95. Ten to 50 horsepower motor, \$10.95.

BRUCE PIPKIN'S SPORT CENTER

—Next Door to Decore Metal Co.—

IF IT'S NEW PLYMOUTH'S GOT IT!



NEW SPORT DETX standard on SPORT FURY models shown above...available at slight extra cost in every Plymouth price range.

ANNOUNCING THE '59 PLYMOUTH

that brings you new beauty...new features...and new FURY models at a new low price!

YOU OWN SUPER SEEPS that make the '59 Plymouth the easiest car in the world to get in and out of. Seat belts come with you. Standard car Sport Fury, optional on several other models. A smooth ride in the highway field!

YOU AVOID GLARE as new Mirror-Matic rear-view mirror* electronically dims dazzle from the cars behind. Also new the courteous Automatic Beam Changer*.

YOU GET INSTANT HEAT* at finger-tip touch with new Push-Button Heating and Ventilation Controls. No waiting for warmth in those frosty mornings. You get warm air within 30 seconds! Teams with Plymouth's magic Push-Button Drive*. The buttons are now grouped conveniently in a new Master Control Center.

YOU DISCOVER GREAT NEW PERFORMANCE with Plymouth's advanced design New Golden Commando 395 Engine*. Other '59 power options include Fury V-800 and PowerFlow "6" engines.

*Optional, extra cost.

AT YOUR DEALER'S NOW... **'59 Plymouth**
Today's best buy...tomorrow's best trade

a reputation built on SERVICE

HENRY PULLMAN

1926 - 1958
32 YEARS SQUARE DEALING the YEAR ROUND

IRON and STEEL SCRAP

STAINLESS STEEL and NON-FERROUS SCRAP

EASTLAND IRON & METAL CO.
OWNED AND OPERATED BY HENRY PULLMAN

COURTHOUSE NEWS AND RECORDS

Real Estate Transfers, Marriages, Suits Filed
Court Judgments, Orders, Etc.

INSTRUMENTS FILED

County Clerk's Office
Arkansas Fuel Oil Corp. to H. L. Bilhartz & Associates, amend. oil and gas lease.
J. B. Brandon to Veterans Land Board, oil and gas lease.
Breckenridge Tool & Supply v. Elmo Evans dba Eavns Transport, abstract of judgment.
Breckenridge Tool & Supply vs. W. B. Norton, abstract of judgment.
George Brodgon to The Public, affidavit.
G. V. Cunningham to Fred Er-

win, warranty deed.
City of Ranger to C. L. Densmore, warranty deed.
J. A. Chapman to Haley Cade, release of oil and gas lease.
Lottie Castleberry to C. W. Newnam, warranty deed.
Dewey Cox, Jr. to H. L. Bilhartz & Associates, oil and gas lease.
City of Eastland to L. P. Laird, cemetery deed.
Henry Cohen to Great Expectations Oil Co., assignment of oil and gas lease.
Leila Clark to Robert Kamon, rat. of oil and gas lease.

City of Eastland to T. B. Warden, cemetery deed.
J. E. Davis to R. L. McKinney, deed of trust.
Eva H. Davenport to H. L. Bilhartz & Associates, oil and gas lease.
E. F. Davis to The Public, affidavit.
Fred Erwin to J. E. Davis, warranty deed.
R. H. England to H. L. Bilhartz & Associates, warranty deed.
J. H. Erwin to Geneva McCain, warranty deed.
Floyd A. Eison to Magnolia Petroleum Co., oil and gas lease.
O. M. Evans to Hallie H. Pickett, assignment of oil and gas lease.
O. M. Evans to H. H. Pickett, assignment of oil and gas lease.
O. M. Evans to Margaret A. Winkel, assignment of oil and gas lease.
Farm & Home S & L Assn. to Charlotte E. Castleberry, quit claim deed.
First National Bank, Ft. Worth to H. L. Bilhartz & Associates, oil and gas lease.
Wilma Ethel Farley to Marvin Keltner, warranty deed.
Paul Fonville to Sir Bella Roberts, warranty deed.

Gulf Oil Corporation to M. L. Keasler, quit claim deed.
Howard R. Gholson to H. L. Bilhartz & Associates, oil and gas lease.
W. K. Gordon, Jr. to H. L. Bilhartz & Associates, oil and gas lease.
Howard R. Gholson to H. L. Bilhartz & Associates, oil and gas lease.
Fred T. Grist to Billy Joe Taylor, warranty deed.
Fred Hagaman to H. L. Bilhartz & Associates, oil and gas lease.
Charles E. Hatton to H. T. Bilhartz & Associates, oil and gas lease.
Fred W. Hagaman to H. L. Bilhartz & Associates, oil and gas lease.
M. S. Holt to H. C. Thames, warranty deed.
Richard E. Henderson to Ranger Lib. & Supply, MML.
Mrs. Ida Henderson to Helen K. Crawford, warranty deed.
A. B. Head to C. F. Smith, assignment of oil and gas lease.
A. B. Head to C. F. Smith, assignment of oil and gas lease.
H. A. Hedberg to G. M. Gillespie, assignment of oil and gas lease.
W. C. Howard to Higginbotham Bartlett Co., MML.
Violet Hickman to Standard Oil Company of Texas, oil and gas lease.
Joe B. Hunt to Robert Kamon, oil and gas lease.
Irish Drilling Co. to State of Texas, notice of Franchise Tax lien.
Thoy Johnson to Magnolia Petroleum Co., oil and gas lease.
Lilah Lee to H. L. Bilhartz & Associates, oil and gas lease.

R. S. Lee to H. L. Bilhartz & Associates, oil and gas lease.
Edward A. Lee to H. L. Bilhartz & Associates, oil and gas lease.
Lucie Lee Langford to Dr. E. L. Graham, quit claim deed.
J. W. Mathena to H. L. Bilhartz & Associates, oil and gas lease.
Victoria H. May to H. L. Bilhartz & Associates, oil and gas lease.
Annie Mitchell to G. M. Turner, warranty deed.
Dan E. McCleskey to H. L. Bilhartz & Associates, oil and gas lease.
Mrs. Bertha McCleskey to H. L. Bilhartz & Associates, oil and gas lease.
Ola McCleskey to H. L. Bilhartz & Associates, oil and gas lease.
E. B. McKamy to R. W. Nixon, Jr., warranty deed.
Cory McCollum to Nola Reynolds, MD.
C. W. Newnam to Mrs. Lottie Castleberry, deed of trust.
W. B. Notgrass to Magnolia Petroleum Co., rat. of oil and gas lease.
T. D. Norton to Franklin O. Jackson, warranty deed.
H. M. Oehler to H. L. Bilhartz & Associates, oil and gas lease.
Mrs. Leone O'Donnell, oil and gas lease.
L. R. Pearson to H. L. Bilhartz & Associates, oil and gas lease.
Guy Parker to H. L. Bilhartz & Associates, oil and gas lease.
H. P. Pentecost to The Public, affidavit.
Pauline Roberts to F. D. Eakin, release of oil and gas lease.
Sir Velia Roberts to J. L. McCalt, warranty deed.
Joe S. Reed to The Public, affidavit.
L. R. Stringer to H. L. Bilhartz & Associates, oil and gas lease.

Nina L. Simpson to W. M. Jarrell, oil and gas lease.
L. G. Simon to H. L. Bilhartz & Associates, oil and gas lease.
W. G. Swenson to H. L. Bilhartz & Associates, oil and gas lease.
Herman D. Sessum to Bobby Shtman, MML.
P. A. Sheets to Daya Oil Co., assignment of oil and gas lease.
W. C. Spoon to Magnolia Petroleum Co., rat. of oil and gas lease.
May Speer to Kingdon R. Hughes, oil and gas lease.
William Ray Todd to H. L. Bilhartz & Associates, oil and gas lease.
C. H. Tood to H. L. Bilhartz & Associates, oil and gas lease.
Veterans Land Board to Truman C. Brown contract of sale.
Mrs. Turner Van Winkle to H. L. Bilhartz & Associates, oil and gas lease.
Mrs. Turner Van Winkle to H. L. Bilhartz & Associates, oil and gas lease.
Bob Waggoner & Associates to Valley Steel Prod. Co., affidavit.
J. W. Wooten to H. L. Bilhartz & Associates, oil and gas lease.
James T. Wright to C. W. Hoffmann, deed of trust.
Bob Waggoner Associates, Inc. to Dow Chemical Co., affidavit.
James Walton to Paramount Oil, Inc., assignment of oil and gas lease.
James Walton to Paramount Oil, Inc., assignment of oil and gas lease.
Woodson Oil Company to Trigood Oil Company, assignment of oil and gas lease.
Mrs. Vera Hytt Wood to Clifton T. Hyatt, conveyance.
J. E. Weaver to Kingdon R. Hughes, oil and gas lease.
Rachel Williams to The Public, affidavit.
Ben Williams to The Public, affidavit.

Texas Ranks First With 54 Refineries

State, Number of Plants	Capacity (bbls. daily)
1. Texas (54)	2,445,200
2. California (36)	1,244,030
3. Louisiana (13)	790,930
4. Pennsylvania (13)	645,250
5. Illinois (13)	542,400
6. Indiana (10)	465,800
7. New Jersey (6)	442,300
8. Ohio (12)	397,400
9. Oklahoma (14)	380,995
10. Kansas (14)	307,000
All other states	1,468,131
Total	9,130,436

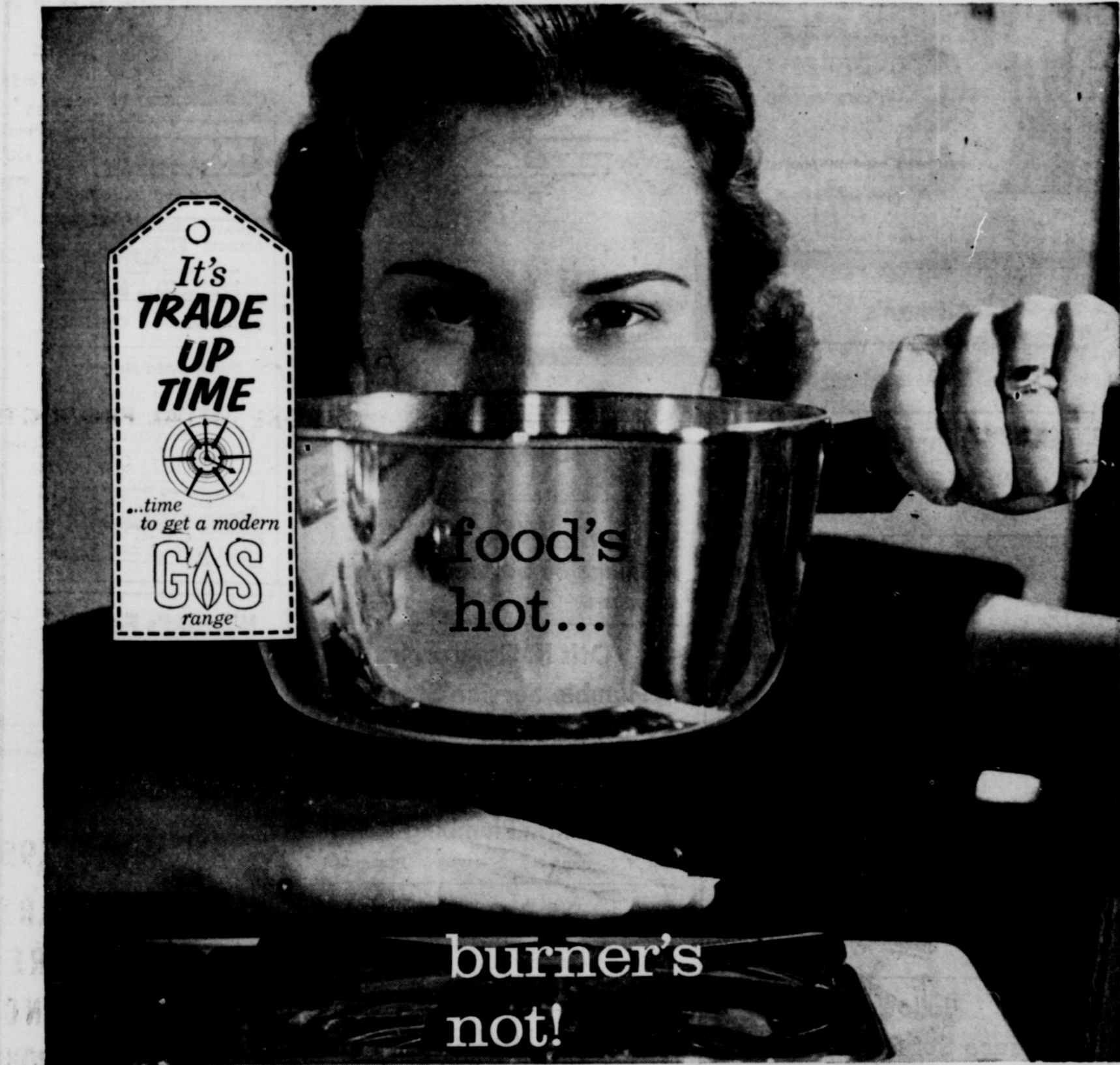
LACASA LINES

Mrs. D. B. Raney.
Several from this community attended the funeral of the infant child of Mr. and Mrs. Wallace Johnson at Ranger. Mrs. Johnson is the sister of Mrs. Vinton Jones and the daughter of Mr. and Mrs. Ketchersid, former residents of this community.
Madison Bargeley and family of Crane were weekend visitors of his parents, Mr. and Mrs. Frank Bargeley.
After several days visiting in the home of their parents, Mr. and Mrs. Johnnie Gray and son Robbie of Garland, returned to their home Wednesday, leaving their tiny son Randall Scott, to spend the balance of the week with his grandparents, Mr. and Mrs. John Gray.
Mr. and Mrs. Perry Pittman of Archer City visited her father, Mr. I. Lassiter Sunday.
Mrs. Ella McGowan of Ranger was a visitor to New Hope Baptist Church Sunday morning.
Mr. and Mrs. R. K. Carr of New

London returned to their home Sunday after visiting their daughter, Mrs. Frank Brooks, for two weeks.
J. D. Stanford is a surgical patient in Ranger General Hospital.
The Brotherhood of New Hope Baptist Church started the new year of work under the leadership of the new president, Gail Mc-Gowen, with a supper and Rev. Henry Littleton as the guest speaker and the RA's as other guests.
ADVERTISEMENT
CALL 601 FOR CLASSIFIED

Funeral Directors
HAMNER FUNERAL HOMES
Ben E. Hamner
Oxygen Equipped - Air Conditioned
Eastland Phone 17 Cisco Phone Hillcrest 21211
AMBULANCE SERVICE ANY WHERE ANY TIME
Nominal Cost Burial Insurance
For The Entire Family

FOR CRUSHED MATERIALS
Filler Sand, Drive Way Materials, Crushed Concrete Rock
PHONE 215
After 6 p.m. telephone 575
Edwin Aaron
AARON MATERIALS



only with **GAS**...no hangover heat when it's off...it's off!

Only the instant response of the magic GAS flame gives you the precise control you want over cooking temperatures. Turn it up... it goes up immediately... turn it down... it goes down the same way. There's no lingering heat from the burner... or in your kitchen. Enjoy the cooler, cleaner benefits of a modern, low cost GAS range in your home now. Come in during our special **TRADE-UP TIME** gas range sale. You'll find low, low prices on new ranges... big, big trade-up allowances for your old range.



And ultra-modern gas built-ins give you all these flame-fast features in addition to more spacious working areas.

another miracle of modern **GAS**
See Your Gas Range Dealer or **LONE STAR GAS COMPANY**

PROBATE
H. L. Capers, deceased, application to probate will.
MARRIAGE LICENSE
Eilly Jack Carter and Mary Jane Maddux.
Ivan Campell and Mary Catherine Allday.
Paul Reed Douglas and Ann Clara Gillay.
SUITS FILED
91st District Court
J. L. Dickey, individual & as next friend of Ruby Lee Dickey, a minor, v. W. C. Arledge and Charles Wayne Arledge, damages.
Donald J. Freeman v. Ruth Freeman, divorce.
Franklin L. Ingram v. The Fidelity & Casualty Company of New York, compensation.
Gene Royce Davis v. Nora Jean Davis, divorce.
Eastland National Bank v. Marion C. Watson, suit on promissory note.

ORDERS AND JUDGEMENTS
91st District Court
Consumers Acceptance Co. of Texas v. Joe L. Fischer, judgement.
Mary Elizabeth Peery v. George McLynn Peery, order.
Toledo Society for Crippled Children, et al v. G. Kirkbride, et al, order.
J. L. Dickey, individually and as next friend of Ruby Lee Dickey v. W. C. Arledge & Charles Arledge, order appointing guardian ad litem.
J. L. Dickey, individually and as next friend of Ruby Lee Dickey v. W. C. Arledge & Charles Arledge, judgement.
Ralph D. Baker, Trustee v. E. W. Griffin, et al, order.
H. L. Bilhartz & Associates, et al v. Consolidated Oil Investment Co., et al, order.
B. B. Hickman et al v. Robert L. Dean, et al, order.
B. B. Hickman, et al v. Robert L. Dean, et al order.
B. B. Hickman, et al v. Robert L. Dean, et al, order discharging receiver.
T. L. Brown, et al v. George Bonon, et al, order appointing receiver.

Trade With Your Hometown Merchants

ARTHRTIS?
I have been wonderfully blessed in being restored to active life after being crippled in nearly every joint in my body and with muscular soreness from head to foot. According to medical diagnosis I had Rheumatoid Arthritis and other forms of Rheumatism. For FREE information on how I obtained this wonderful relief write:
MRS. LELA S. WIER
2805 Arbor Hills Drive—516
P. O. Box 2695
Jackson, Mississippi

Inviting You to Visit
MILDRED'S BEAUTY SHOP
One-Half Block West of Seaman on Burkett St.
POPULAR PRICES
Phone 7 Mildred Cockrell, Operator

TOUGH! DURABLE!
for Interiors
WALLHIDE
RUBBERIZED Wall Paint
Dries in less than 1 hour
Easy to wash
CROWELL LUMBER CO.
"Everything to Build Anything"
722 W. Main Phone 300
PITTSBURGH PAINTS keep that WALL PAINTED look longer!

FALL FIX-UP Headquarters
LUMBER AND BUILDING MATERIALS
WE HAVE WHAT YOU NEED!
Yes, we have a large selection of all types of top-grade lumber and building materials... and at reasonable prices. You'll find what you want here, or we will help you find it! We invite you to just come in and browse around our yard and store if you like.
We have many interesting millwork pieces... finest hand and power tools... paints... roofing — and you can buy what you need on easy credit terms. Delivery is free in a 50-mile radius.
HIGGINBOTHAM - BARTLETT CO.
Jack Elliott, Mgr.
301 W. Main Phone 112 or 1014



**TIME FOR THE BIG
KICK-OFF!**

**Friday Night
8:00 O'clock**

**COLEMAN
VS.
MAVERICKS**

—GAME TO BE PLAYED THERE—

Mavericks 1958 Football Schedule

Date	Opponent	Location	Date	Opponent	Location
Sept. 5	Hamlin 20, Mavs 14		Oct. 17	Coleman	There
Sept. 12	Mavs 39, Dublin 12		Oct. 24	Winters	Home
Sept. 19	Mavs 8, DeLeon 0		Oct. 31	Cisco	Home
Sept. 26	Mavs 28, Cross Plains 6		Nov. 7	Ballinger	There
Oct. 3	Albany 37, Mavs 14		Nov. 14	Ranger	There
Oct. 10		Open			



MAJESTIC
IN EASTLAND

Friday and Saturday

STEWART GRANGER HARRY BLACK AND THE TIGER

Adults 60c Child 25c

Sunday and Monday
The Biggest Stage Hit
Of Our Time Now
On The Screen . . . Just
Two Days Only!

WHAT LOLA WANTS LOLA GETS!
Lola
DORIS MEREDITH
"LOLA WANTS LOLA GETS!"

Anderson's
Ladies' Apparel and Children's Wear
Gifts - Millinery - Accessories
North Side Square Eastland

Texas Electric Service Co.
F. N. Sayre, Mgr. Phone 18

R. M. Sneed
General Oil Field Construction
Office Phone 684 Residence Phone 889

King Motor Company
Ford Sales and Service
On The Square Phone 42

The Men's Shop
Correct Styles for Men and Boys

Gregory
Milk Distributing Company
Borden's Dairy Products
Serving: Eastland, Stephens, Brown,
Comanche Counties
P. O. Box 390 Eastland Tel. 36

Sunshine Laundry
Automatic - Conventional and Drying
Machines
Wet Wash - Rough Dry - Finish Work
Mr. and Mrs. J. B. Kendrick
106 E. Plummer Phone 155

City Garage
J. J. Finley, Proprietor
Engine, Starter and Generator Work
103 White St. Phone 995

Foremost Dairy Products
Clyde Manning, Mgr.
Eastland Phone 10

Eastland National Bank
"On the Square" Member F.D.I.C.

Eastland Iron & Metal Co.
East Main Street Phone 270

Brown Plumbing Shop
Mr. and Mrs. Truman Brown
214 E. Neblett Phone 785

Freyschlag Insurance Agency
Phone 173

Koen Salvage
Your Scrap Metal Dealer
Highway 80 West Phone 680

Geneva Petroleum Co.
Chemical Division
Mfg. GEPCO Chemical Products
Phone 833 or 332 Eastland

OBIE & DOC
Humble Service Station
802 W. Main Phone 9535

Doc Davis Drug
Prescriptions Filled Accurately
South Side of Square Phone 696

Lovelace
Transfer & Storage
Local and Long Distance Moving
Since 1929
Eastland, Texas

Reed Oil Company
13 Major Brands Oil—Quart 35c
501 E. Main Phone 9550

Scott
Paint & Body Works
"We Make 'Em New Again"
300 W. Commerce Phone 977

Don Pierson
Olds - Cadillac
310 W. Main Phone 802

Quality Shoe Shop
For Extra Wear—from Good Shoe Repair
West Side of Square

McGraw Motor Co.
Dodge - Plymouth
416 S. Seaman Phone 80

Altman's
"Smart Womens Wear"
North Side of Square

Connellee
Coffee Shop
Mr. and Mrs. E. R. Overstreet

Muirhead Motor Co.
Buick - Pontiac
Sales and Service Phone 692

Eastland Chamber of Commerce

Dairy Kreem
Highway 80—East
Harry Jordan Lawton Thompson

Texas Lightweight
Aggregate Company
Producers of Concrete Aggregates
C. W. Martin Phone 51

Holloway
Texaco Service Station
503 W. Main Phone 9545

Ruby Lee's
Beauty Shop
Lucille Taylor, Owner
• All Types Beauty Work •
403 S. Lamar Phone 66

Eastland
Steam Laundry
210 N. Lamar Phone 584

White Elephant
Cafe
724 W. Main Phone 9540

Graham's Trim Shop
708 W. Main Phone 170

Bruce Pipkin's
Sport Center
304 E. Main Phone 525

Miller's
Phillips 66 Service Station
513 W. Main Phone 565

Otis K. Coleman's
Humble Service Station
400 E. Main Phone 826

PLUMBING & HEATING
AIR CONDITIONING
J. M. Smith Plumbing & Tin
114 N. Seaman Phone 304

B & B Garage
Bob Sellers — Earnest Hood
COMPLETE AUTO REPAIRS
307 W. Commerce Phone 603

Modern
Dry Cleaners
Approved Sanitone Service
210 S. Seaman Phone 132

Dr. F. H. Lund
Optometrist
Exchange Bldg. Phone 30

Kincaid's Feed & Turkey Hatchery
Eastland, Texas
Full-O-Pep Feeds

If It's Metal
Decore Metal
Products
306 E. Main Phone 288
Shop Welding
Painting Repair

Earley
Tire Service
Mobil Gas — Mobil Oil
302 W. Main Phone 208

"Old Rip
Cafe"
Mr. and Mrs. L. B. Culpepper Jr.
412 E. Main Phone 9511

Eastland Mavericks 1958

No.	Name	Pos.	Wt.	No.	Name	Pos.	Wt.
10	*Larry Hollis	B	148	29	*Clint Humphreys	B	138
11	Bill Turner	B	135	30	Charles Chaney	G	180
12	John Stroud	B	157	31	Don Hull	T	165
13	Charles Martin	T	168	33	Marvin Agnew	T	175
14	Mikey Garner	C	152	34	Mike Lisenbee	G	146
15	Stanley Reed	E	160	36	Denny Dukes	E	155
18	Jerry Chaney	G	170	38	Gary Lusk	T	160
19	*Knicky Arther	G	165	Coaches: Carrol Shelton, Jon Tate and Bennett Ragsdale			
20	Roger Taylor	B	140	Managers: Clarence Mayers and Perry Miller			
22	Mike Manning	B	155	* Tri Captains			
23	Phillip Lewis	E	170				
25	James McElreath	B	145				
27	Don Hazard	C	150				