



Highway Dept. Completes Study Of Eastland Traffic

Ever wonder what the busiest block in town is? If you are considering traffic it is the block between Daughtery and Walnut streets on West Main. In average



DR. RICHARD C. VON ENDE
McMurry Chanters director

of 9,240 vehicles use that section of Highway 80 every 24 hours. That gem of knowledge was gleaned from an origin-destination survey which was completed last month by the Texas Highway Dept. just released an attractive 28 page booklet showing results of the Sept. 30 survey.

The study revealed that a total of 14,200 vehicles passed through four interview stations set up near the city limits in the 24 hour period. The stations were set up east and west on Highway 80 and north and south on Highway 6.

Results of the survey indicate that Highway 80 east is the city's busiest section of highway. A total of 7,170 vehicles passed that check point in the 24 hour test, while 5,080 passed the check station on west Highway 80. A total of 1,160 vehicles were counted on Highway 6 south and 790 cars and trucks passed the Highway 6 north check station. Traffic on Highway 80 picked

up from a low of 5,080 at the west city limits to 6,520 at the corner of Main and College streets. It continued to climb until it reached the 8,170 mark at the corner of Main and Oak and at the corner of Daughtery and Main the count was 9,240. From that point on east it dropped off.

On Highway 6 the traffic count at the north city limits check stations was 700. That count increased to 2,180 at the intersection of Main and Seaman and reached a high count of 3,000 at the corner of Valley and Seaman. The count then dropped off to 1,160 at the south city limits.

And to the people who think nothing but trucks come through Eastland, the survey showed that 12,457 of the 14,200 vehicles were passenger cars, pickups or panel trucks. That's 87.7 percent of the traffic load. The other 12.3 percent were trucks.

The peak traffic hour was between 5 p.m. and 6 p.m. when 1,056 vehicles were counted. Of the 14,200 vehicles recorded at the interview stations 3,088 passed through the city without stopping.

Of the total number of vehicles recorded, 8,024 (56.5 percent) had origins or destinations in Eastland.

It is interesting to note where the traffic flow goes. The charts below indicate major traffic movement in all four directions:

HIGHWAY 80 EAST		
Destination	Number of Vehicles	Or Origin
0-2 Miles East	1,124	
Olden	1,020	
Ranger	1,060	
Strawn	47	
North Worth	75	
Dallas	33	
Desdemona	85	
Lake Leon	210	
HIGHWAY 80 WEST		
Destination	Number of Vehicles	Or Origin
0-8 Miles West	420	
Cisco	1,958	
Rising Star	33	
Abilene	95	
Brownwood	32	
HIGHWAY 6 NORTH		
Destination	Number of Vehicles	Or Origin
0-5 Miles North	44	
Morton Valley	286	
Breckenridge	132	
Ranger	40	
HIGHWAY 6 SOUTH		
Destination	Number of Vehicles	Or Origin
0-5 Miles South	282	
Punkin Center	37	
Carbon	234	
Gorman	92	
DeLeon	35	
Rising Star	21	

Sunday Program Will Be Given by Chanters

The McMurry College Chanters will be in Eastland Sunday for the morning worship service of the First Methodist Church.

The 36-voice group, under the direction of Dr. Richard C. von Ende, chairman of the Fine Arts Department, will sing a varied program of sacred and secular music ranging from an eighth century plain song to a contemporary number for speaking choruses.

The first group of sacred numbers opens with "Venite," a plain song from the eighth century, followed by "The Voice of Joy and Health," by Jannaconi, an eighteenth century composer. The choir will sing four sixteenth century sacred songs: "Adoramus Te" by Corsi, an Italian composer; "Exultate Deo" by Paestrina, considered by many authorities to be the greatest pre-Bach composer; "Ave Maria" by Vittoria,

based on a Gregorian chant melody; and "Psalm 100," a double chorus number by Heinrich Schutz. All of these will be sung in English, with the exception of the "Ave Maria," which will be done in the original Latin.

Comprising the second group of songs are "Os Justi," by the nineteenth-century composer, Anton Bruckner; "O Lord God," written to be sung in the Russian Orthodox Church, by Tchesnokov; and "Glory be To God," by Jean Berge, a contemporary composer.

The third group of numbers is made up of contemporary secular songs with a travel theme. Included are "The Stars Are With the Voyager," a romantic number written by Houston Bright, choral director at West Texas State College; "Geographical Fugue," for speaking chorus, by Ernest Toch; and "Where Are Y' Goin'," written by Livingston Gearhart for the Fred Waring Organization and based on an American folk song.

The choir will also sing a group of Canzonettes by Berger. The men of the group will sing "Jesus, I Live To Thee," a Welsh hymn, and the women will sing "Be My Love," a popular romantic number.

Featured soloist with the Chanters is Peggy Ater, soprano from Pecos. Singing incidental solos will be Clifford Pitt Sweetwater junior, and Jury Spurlin, Fabens soprano.

Singing Sunday Set at Gorman

The regular third Sunday singing will be held Nov. 20 at 2 p.m. in the Congregational Methodist Church in Gorman.

Pete Tyrone urged all interested persons to attend the singing.

Community Thanksgiving Service Set

The Eastland Ministerial Association will again sponsor a service of Thanksgiving Wednesday evening. This service will be open to the public, with ministers from each of the churches belonging to the Ministerial Association participating in the service.

This year the service will be held at the First Methodist Church, with the Rev. Eugene H. Surface, pastor of the First Presbyterian Church as the preacher. Music will be under the direction of Phillip Hewitt, choir director.

The hour of the service will be 7:30 p.m.

Mavericks to Open Cage Season Friday

A short-handed Eastland Maverick team will kick off the 1960-61 basketball team Friday night in Ranger beginning at 7 p.m. Coach Joe Ed Ingram, at the helm of the Mavs for the first time, will have his hands more than full. He has only nine boys out for the team and doesn't have a single starter back from last year's starting five.

With just nine boys on the squad it seems that the Mavs will not be able to field a B team this year.

The starting unit will probably have Tommy Beck, Raymond Lusk, Ray Dendy, Bobby O'Steen and either James Lewis or Red McCleskey. Joe Russell, J. B. Tankersley and Clark Conner, the other three men on the team, will naturally be called on a lot for support.

Here is this year's schedule:
Eastland Mavericks
Non-District
Nov. 18—Ranger at Ranger
Nov. 22—Comanche at Eastland
Nov. 29—Olden at Olden
Dec. 1-5—Carbon Tournament
Dec. 9—Gorman at Eastland
Dec. 12-17—Stephenville Tournament

- Dec. 22—Carbon at Carbon
- Dec. 29—Carbon at Eastland
- Jan. 3—Gorman at Gorman
- Jan. 4-7—DeLeon Tournament
- Jan. 6—Olden at Eastland
- Jan. 10—Comanche at Comanche
- District 10-A
- Jan. 13—Early at Eastland
- Jan. 17—Albany at Eastland
- Jan. 20—Eastland at Cross Plains
- Jan. 24—Santa Anna at Eastland
- Jan. 27—Eastland at Clyde
- Jan. 31—Eastland at Early
- Feb. 3—Eastland at Albany
- Feb. 7—Cross Plains at Eastland
- Feb. 10—Eastland at Santa Anna
- Feb. 14—Clyde at Eastland

Eastland Woman's Father Dies In Andrews Wed.

Funeral services are pending for J. H. White of Andrews, who died at 1:15 p.m. in an Andrews Hospital following a heart attack. Surviving are his wife; one son, Wayne White of Odessa and one daughter, Mrs. C. W. Campbell Jr. of Eastland.



VIRGIL T. SEABERRY
... a great American

PAGE ONE MUST

Quarterback Club members and others interested in the Maverick football team will meet tonight at 7 in the high school cafeteria to work out plans for this year's football banquet.

The Eastland High Band will be in San Angelo Saturday to compete in the regional band contests.

LOCAL AND STATE LEADER DIES

Funeral Services for Virgil Seaberry Today

Final rites for Virgil T. Seaberry Sr., one of the best known of all Eastland County citizens, will be held this afternoon at 2 in the First Methodist Church of Eastland. Mr. Seaberry died in his sleep at his home, 292 West Burkett, Wednesday.

A former president of the State Bar of Texas, Mr. Seaberry was listed in this year's Who's Who in America. He was the chairman of the committee which first made application to the state for the original Eastland Chamber of Commerce charter.

Services will be conducted by the Rev. Eugene Surface, Presbyterian minister. He will be assisted by Rev. James Campbell, pastor of the Methodist Church.

Born March 3, 1892, in Poolville, near Weatherford, Mr. Seaberry was 68 at the time of his death.

He married the former Cleo Slaughter at Dallas Jan. 10, 1922. His wife and two children, a son, Virgil T. Seaberry Jr., and a daughter, Mrs. Cyrus Frost, all of Eastland, survive. He is also sur-

vived by two sisters, Mrs. Hubert Toombs of Eastland and Mrs. Effie Wilkins' four brothers, Lloyd Seaberry and Emmett Seaberry, both of Poolville, and Warren and D. O., both of Weatherford; and six grandchildren.

Burial will be in Eastland Cemetery under direction of Hamner's Funeral Home. Pallbearers will be Horace Horton, Dr. James Whitington, Jack W. Frost, Billy C. Frost, Jack Germany, H. T. Wilson, Bruce Pipkin, and Charles Freyschlag.

Mr. Seaberry first came to Eastland in January 1919. He had just been discharged as a second lieutenant in the field artillery following World War I. With him was John Turner, an Army comrade.

The two young attorneys opened the law office Turner and Seaberry, which has since become one of the best known law firms in West Texas. Mr. Turner died in 1952 but the name of the firm was unchanged.

Mr. Seaberry was admitted to the bar by examination in 1918 and received his LL.B. degree from the University of Texas in 1915. He was also a graduate of Southwest Texas Normal at San Marcos.

He practiced law for a short while in Paint Rock and Fort Worth prior to his entry into the Army.

During his 41 years of active service in Eastland, Mr. Seaberry served as mayor in 1923, as commander of the American Legion and as chairman of the Red Cross. Other than his position as city commissioner and mayor he did not ever seek public office. For 10 years he taught the Men's 9-49 Bible Class at the First Methodist Church.

Mr. Seaberry was elected president of the State Bar of Texas for the 1957-58 term. The year before he served as vice president of the organization. He was admitted to practice

BY EMPLOYMENT COMMISSION

Fraudulent Claims Charged Against 15

Fifteen complaints involving fraudulent claims for unemployment compensation were filed this week in Eastland County. These cases were filed with County Attorney Earl Conner, by Edgar R. Dabney, manager of the Mineral Wells Texas Employment Commission Office, according to E. W. Krizan, district director.

These cases were disclosed under the continuous audit program maintained by the Commission to weed out all illegal payment of unemployment insurance. Although the total of fraudulent claims received is an infinitesimal sum of all the claims processed, a full audit program is maintained by trained investigators to detect all such fraudulent claims. Various checks are used in the detection of fraudulent claims and the odds of a claimant being able to secure payments without detection weighs heavily against him.

After a fraudulent claim is detected, the claimant is so notified at which time he is given an opportunity for a hearing before the representative. Under the penalty provisions of the Law, each week wherein a fraudulent claim is filed is considered as a separate offense and

a person in violation of the provisions may be both fined and jailed on each offense.

At the time a claim for unemployment insurance is filed, the person is carefully questioned regarding any work that may have been performed during the week covered by the claim. In the event the claimant has worked all or part of the week, the amount earned during the period is to be reported. An adjusted payment is made to those working only part of the period and no payment is made if a person earns \$35 or more during the seven days covered by the claim.

The 15 complaints filed resulted from unreported earnings by 15 employees of a drilling contractor in Cisco, the TES said. The audit disclosed in most cases the workers were working full time, and some of the workers earned as high as \$90 a week while the claims filed and signed by the workers certified that they had not worked, he Commission asserts.

Complaints were filed on Estes E. Agnew, Loyd E. Bisbee, Cecil D. Bostick, Joe S. Day, W. L. Gary, Clifford B. Leard, Clyde R. Maynard, T. L. Maynard, Bennie A. Nichols, Donnie L. Nichols, Harold D. Nichols, Floyd S. Smith, Oscar M. White, Joe W. Whitehead and Frank V. Young.

In addition to the penalty provisions mentioned above, anyone in violation also forfeits his rights or further benefits for the benefit year and for any future period until the full penalties are covered and the overpayment set up as the result of a fraudulent claim is repaid. (Continued on page two)

Four More to Participate In Yule Program

Four more business firms have announced their intentions of participating in this year's Christmas shopping program sponsored by the chamber of commerce.

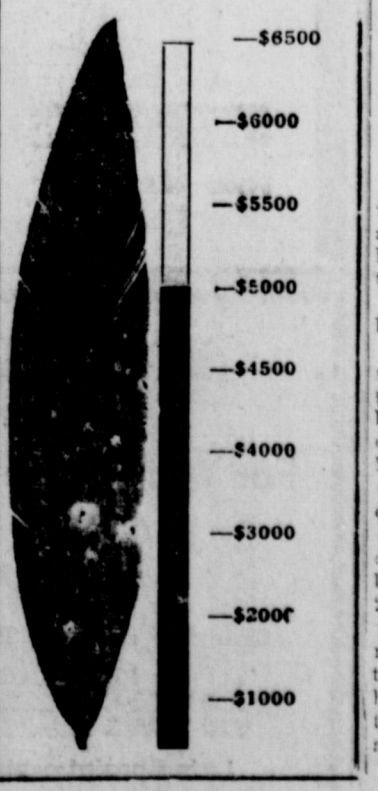
Latest participants are Coats Furniture, Harelik's, MacMoy Super Save and Smith's Store.



IN GERMANY—Donald G. Lawrence, son of Mr. and Mrs. Homer Lawrence of Olden and the grandson of Mr. and Mrs. Joe Lawrence of Eastland, is now stationed in Munich, Germany with the Army. He has been in Germany since January.

EASTLAND NATIONAL BANK
"On The Square"
MEMBER F. D. I. C.

UNITED FUND DRIVE



Denton Minister To Preach at Bethel Baptist

Rev. James N. Roberts, pastor of the College View Baptist Church in Denton, will preach Sunday at both the morning and evening services of the Bethel Baptist Church.

Rev. Roberts is in his fifth year at Denton. He is a graduate of the University of Tennessee and Southwestern Seminary at Fort Worth. He is 39 years old, married and the father of a six year old daughter.

Freyschlag Gets Two Deer As Season Opens

Charles Freyschlag of Eastland topped Eastland hunters on opening day of deer season.

Freyschlag returned early with two bucks. Others getting kills on the first day were Jack Frost, Joe Pool, George A. Johnson and James Johnson.

If you get a deer report it to the Telegram so records of local kills can be kept.

in the courts of New Mexico, California, Oklahoma, Arkansas, Indiana, Ohio and the Supreme Court of the United States during his long career.

Before becoming president of the State Bar Mr. Seaberry served on the resolutions committee, was a director from the 17th District from 1952 until 1955, served as chairman of the board of directors in 1954-55 and was chairman of the rules committee. During this time he took an active part in the trials of Judge Woodrow Laughlin of Alice.

In July, 1958 Mr. Seaberry was elected a fellow in the American College of Trial Lawyers. Only one percent of the lawyers licensed in each state are so honored. In Texas there are only 31.

In 1948 Mr. Seaberry was appointed chairman of a committee to investigate and study the need for a revision of the Texas Constitution. The committee died for want of financial support.

In 1957 the Legislature created a Citizens Advisory Committee on the Constitution with 18 members appointed and Mr. Seaberry was named on that committee.

He was a delegate to the Federal Judicial Council for the Fifth Circuit at New Orleans and a member of the Supreme Court Advisory Board of the state.

Ex-Mavs Are Prominent As RC Tests Aggies

The Ranger College Rangers, Texas Junior College Conference Champions, will be gunning for another big one this week as they travel to Lawton, Oklahoma to tangle with the top Junior College in the North as they meet the Cameron Aggies Saturday night.

Cameron, who is undefeated through nine games, has been selected to represent the Northern Zone in the National Junior College Athletic Association, co-champions with Tyler Junior College, the number one team in the South, as the other National co-champion.

The Rangers will be shooting for the national recognition that a win over Cameron would give them. They almost upset the top ranked Tyler Apaches this season when they played them a 25 to 29 game.

The Cameron Aggies will probably be one of the toughest teams the Rangers will face this season. Tyler, who is rated first in the South, probably had more individual stars in their number one team, but Cameron has 41 players on their roster and will probably be deeper in each position than Tyler.

This is the type of competition the Rangers have been facing all season. And in all cases except one, the Rangers have rose to the occasion. Lacking only four points in the Tyler game indicates the type of ball the Rangers have played all year. In seven out of nine games, only one touchdown and less have separated the scores. (Continued on page two)

SEE and DRIVE the 1960 PONTIAC... fresh point of view and wide track too! MUIRHEAD MOTOR CO

Muscular Dystrophy Drive Monday Night

Eastland Volunteer firemen, who will stage the annual muscular dystrophy fund raising drive here Monday night beginning at 7 today issued a plea for support.

Here is the statement released by firemen:

"One of the greatest challenges encountered in medical history is presented to doctors and scientists by the baffling disease, muscular dystrophy. Many forward steps have been made, but there are others to make—namely, the exact cause and the cure.

"The exact number of victims of muscular dystrophy is not known, but it is estimated to be 200,000. In certain areas, the state of Utah for example, as many as one in every 500 is said to have muscular dystrophy. It has been found in every part of the world. It may occur at any age.

"The Muscular Dystrophy Association of America, to which the funds raised Monday night will go, gives financial support through research grants to scientists and doctors in the United States and abroad to try to find the cause and cure.

"The strongest experimental project of all is in an institute for muscle disease."

"American teamwork is responsible for these forward steps. It has helped victims of muscular dystrophy and their families to hope that in the not too distant future, a remedy will be found for this crippling disease. Through this continued teamwork—a determined public working hand in hand with equally determined men of science—victory over muscular dystrophy must come."

EASTLAND NATIONAL BANK
"On The Square"
MEMBER F. D. I. C.

Eastland... Leon and... Rip... Home of Lake Leon and Old Rip... VOL. 31... EASTLAND, TEXAS, THURSDAY, NOVEMBER 17, 1960... No. 86... Highway Dept. Completes Study Of Eastland Traffic... Sunday Program Will Be Given by Chanters... Community Thanksgiving Service Set... Mavericks to Open Cage Season Friday... Eastland Woman's Father Dies In Andrews Wed... Mavettes Off To Good Start With Cisco Win... Four More to Participate In Yule Program... Freyschlag Gets Two Deer As Season Opens... Muscular Dystrophy Drive Monday Night... SEE and DRIVE the 1960 PONTIAC... fresh point of view and wide track too! MUIRHEAD MOTOR CO... EASTLAND NATIONAL BANK "On The Square" MEMBER F. D. I. C.

Eastland Telegram

Eastland County Record established in 1931, consolidated August 31, 1951. Chronicle established 1887, Telegram established 1928. Entered a second class matter at the Post Office in Eastland, Texas under the act of Congress of March 3, 1879.

TIMES PUBLISHING COMPANY

Published Tri-Weekly—Tuesdays - Thursdays - Sundays
Onous Dick and Joe Dennis, Publishers
Virgil E. Moore, Editor

One week by carrier in city 15¢
One month by carrier in city 45¢
One year by mail in County 2.95
One year by mail in state 4.95
One year by mail out of state 6.95

NOTICE TO PUBLIC—Any erroneous reflection upon the character standing or reputation of any person, firm or corporation which may appear in the columns of this newspaper will be gladly corrected upon being brought to the attention of the publishers.

WANT ADS!

Cards of Thanks charged for at rate of \$2.00 Each

FOR RENT

FOR RENT OR SALE: Six room house, carport and garage, fenced back yard. Call MAIN 9-1286.

SPOTS before your eyes—on your new carpet—remove them with Blue Lustre. Coats Furniture and Carpet Co.

FOR RENT: Three bedroom house. Unfurnished. Call Rodgers Grocery.

FOR RENT: Acreage 2 bedroom house. Double garage. Wash room. Jack Chamberlain. Phone MAin 9-1742.

FOR RENT: Large bedroom. Extra nice for men or couple only. 203 N. Dixie. Phone MA 9-1193.

FOR RENT: Nice four room house. See anytime. Alice Speer, 410 East Sadosa.

FOR RENT: Lovely apartment furnished or unfurnished. Living room with dining area, bedrooms and kitchen. Includes maid service and utilities. Mrs. Robinson, Village Hotel.

FOR RENT: Three room furnished apartment. Two blocks from square. Bills paid. Ideal for single person or couple. Call Main 9-2613.

FOR RENT: Nice unfurnished two bedroom house. Close in. Apply 230 E. Valley.

MISC FOR SALE

FOR SALE: Pure barn yard fertilizer. Free from vegetation, seed and odor. Three years old. Deliver. Phone MAin 9-1096.

FOR SALE: Feeder pigs. Phone MAin 9-2775.

FOR SALE: Muskrat coat. Good condition. See at Modern Dry Cleaners.

FOR SALE: Five room house on pavement. 175 foot lot. \$3,200. Ben Hamner.

Come to the Army Surplus in Cisco, 1201 E. D. 303 Deer rifles \$15.95; overshoes, \$2.50; rain coat, \$4.00; 50% wool GI underwear, 2.00 pair; hose all sizes; nylon webbing straps all sizes; new tents 12 foot across.

FOR SALE: 1959 Chevrolet pickup; 1951 Chevrolet; 1954 Buick, 1950 Chevrolet, convertible. See J. B. Kendrick at Ice House.

FOR SALE: New six room, two bath home. Beautiful location. Easy terms. See by appointment only. MAin 9-2518.

FOR SALE: 90 acrea farm south of Olden. Phone MAin 9-1809.

FOR SALE: 1959 Ford four door ranch wagon, heater, automatic drive, 8,000 miles. Like new. Geneva Petroleum, 214 S. Seaman, phone MAin 9-1742.

FOR SALE: Heater, crystal, china cabinet, bed and vanity. Call MA 9-2164, Luther Adams, 712 W. Main.

REAL ESTATE FOR SALE

FLOYD BREWER PLACE FOR SALE: 814 W. Patterson. Furnished or unfurnished. Must sell to settle estate. Phone MA 9-1061.

FOR SALE: Two bath, two bedroom house on Oaklawn. Central heating, large lot, double garage. Call after 5 p.m. MAin 9-2321.

FOR SALE: House 305 South Neblett.

SINGER

Reposessed Santomatic Vacuum Cleaners
Floor Polishers
Just take up payments!
D. L. MORTON
Phone MAin 9-2084
Before 9 a.m. or after 6 p.m.

ATTEND THE CHURCH OF YOUR CHOICE EACH SUNDAY

Helps Heal And Clear Itchy Skin Rash!

Zemo—liquid or ointment—a doctor's antiseptic, promptly relieves itching, stops scratching and so helps heal and clear surface skin rashes. Buy Extra Strength Zemo for stubborn cases!

Insurance AND Real Estate
D. L. KINNAIRD
Life - Fire - Auto - Farm
Polio - Bonds
40 years in the Insurance Business in Eastland

NOTICE
FRESH DRESSED FRYERS and Fresh Dressed Hens At The Plant
PHONE MA 9-1200
WALKER Dressing Plant

COMPLETE AIR CONDITIONING SALES and SERVICE
SMITH PLUMBING AND TIN
PHONE MA 9-2422
114 N. Seaman

LUMBER FOR SALE
ALL KINDS
Flooring — hardwood flooring — 2x4; 2x6; 2x8; 2x12; shiplap; steel beams; all types of plumbing; brick; building tile.
Tearing down old school building on Church of God Camp Grounds west of City — starts Monday — see salesman on job — bargain prices.

GET YOUR... Christmas Cards
at
STEPHEN'S PRINTING CO.
Phone MA 9-2682 Eastland

KORA'S KUT & KURL
1003 West Plummer
For Your Complete Beauty Needs
CORA FRANKLIN
Owner and Operator
Phone MA 9-2256
Graduate Scoggins Beauty Academy, Abilene
PERMANENT SPECIALS:
\$10 WAVE \$7.50
\$20 WAVE \$12.50
Late Appointments Thursday and Friday

Fraudulent—

(Continued from Page One)
Although each element is advised on his rights and the provisions of the act that must be followed in an effort to forestall all fraudulent claims, a relatively small number of claimants have been encountered who knowingly give false information, and it is these cases that every effort is being made to ferret out and turn over to the proper authorities for remedial action, the TEC declared.

Ex Mavs—

(Continued from Page One)
The two exceptions were the 32 to 8 defeat at the hand of Del Mar, who is undefeated and rated number two in the South and the 13 to 0 win over Cisco. The Rangers rallied in the last half and tied Wharton 9 to 9, and came from behind to down Navarro 9 to 7 and Blinn 19 to 13. They were edged by Murry State 20 to 12 and Eastern Oklahoma 13 to 7.
The Ranger defense is probably the most vital factor in their ability to play the big teams such as close ball games. The tough Ranger defense stopped Wharton, the largest team they played this season, time and again inside the 20 yard line. In the first half of the Tyler game, the Rangers held the big geared Apaches to only 57 yards gained rushing. Against Del Mar they held a team that applied three top notch units to only one score and that was in the closing minutes of the second quarter.
The Rangers will still be missing the services of one of their starting tackles, Horst Krause, who is still ailing with a broken foot. Carroll Richardson, who missed last week's game against Blinn, will be able to go this week against Cameron. Printiss Gidney has been out most of the season with a shoulder injury but saw limited

duty against Blinn last week and is expected to be able to play the whole game this week.
Offensively the Rangers went two deep in almost every position. At quarterback, will be Leonard Hart and Printiss Gidney. At fullback Printiss Gidney, Mike Leonard and Butch Scott and at halfback Printiss Gidney, Tony House, Leon Hart and Don Lambert.

in the line Clyde Smith and Don Hazard will be at the center position with Phillip Reed, Carroll Richardson, Delbert Jones, Paul Free, Dizzy Stone and Marvin Agnew at tackles. Guards are Bud Bridges, Bob Spradlin, Pat Blakely, Knicky Arthur and Warren Sheelar. At ends will be Richard Fuller, John Swinney, Dick Stephenson, Martin Day and James Potts and at Slot will be Sonny Oates, Russ Ward and James Yancy.

New! Gillette Adjustable Razor
9 Settings for Superb Shaves!
NOW \$1.95 with new Super Blue Blades

NEWS FROM STAFF

Mr. and Mrs. Slim Adams of Del Mar and her mother, Mrs. Zoan Griffin, were in this vicinity last Thursday. Mrs. Griffin is at present staying with the Adams family after spending several months with another daughter, Mr. and Mrs. Bill Mum of Andrews.

Mr. and Mrs. Jeff Woods of Olden were visiting with Mr. and Mrs. O. T. Hazard Sunday afternoon.
Mrs. Floyd Smith is visiting relatives in Loraine for the past week. Mrs. Jack Cole was an Eastland visitor last Saturday.
Mrs. Pearl Bourland visited with the O. T. Hazards Sunday afternoon.

Mr. and Mrs. Jack Griffin were in this vicinity last Thursday. Mrs. Griffin is at present staying with the Adams family after spending several months with another daughter, Mr. and Mrs. Bill Mum of Andrews.

Mr. and Mrs. Jack Griffin were in this vicinity last Thursday. Mrs. Griffin is at present staying with the Adams family after spending several months with another daughter, Mr. and Mrs. Bill Mum of Andrews.

Custom Barbequing AT THE BARBEQUE PIT
Highway 80 East in Ranger
HAVE YOUR Thanksgiving Turkeys and Hams Barbequed On Our Old Fashioned Pit.
We will also barbeque your deer and all other custom barbequing
All types Barbeque served ready to eat or to take home.
THE BARBEQUE PIT
Highway East — Ranger

ARMOUR'S STAR SLICED BACON
YOUR Thanksgiving...SAVINGS FESTIVAL

WHITE SWAN COFFEE 59¢
Good Quality Baby Beef
Loin Steak 75¢
Neuhoff Lane Star Thick
Sliced Bacon 2 Lbs. 99¢
Gooch's Ranch Pack
WEINERS 3 Lb. Bag 99¢
Valveta
CHEESE 2 Lb. Box 95¢
Fresh Pork
LIVER 29¢

QUANTITY RIGHTS RESERVED

PRICES GOOD THROUGH SATURDAY, NOVEMBER 19

DOMINO SUGAR
IMPERIAL SUGAR

GOLD MEDAL 25-Lb. Bag FLOUR 169¢

WHITE SWAN WHOLE GREEN BEANS
DEL MONTE EARLY GARDEN PEAS
SUNSHINE HI HO CRACKERS
BAMA GRAPE JAM

COUNTY KIST GOLDEN WHOLE KERNEL CORN 12-oz. Can
WHITE SWAN BISCUITS Sweetmilk or Buttermilk 6-10 Cans
CHICKEN OF THE SEA TUNA Chunk Style Reg. Can.
IMPERIAL OR DOMINO 10 Pound Bag 89¢

McCormick PUMPKIN PIE SPICE 1 1/2-oz. Can
McCormick POULTRY SEASONING 4-oz. Can
McCormick BLACK PEPPER 4-oz. Can
McCormick RUBBED SAGE 1/2-oz. Can
REYNOLD'S ALUMINUM FOIL 12-in. x 25-ft. Roll
CUT RITE WAXED PAPER 12-in. x 25-ft. Roll
WHITE SWAN INSTANT COFFEE 3-Pound Can
59¢

WHITE SWAN CRANBERRY SAUCE 16-Oz. Can 15¢
WHITE SWAN CUSTARD PUMPKIN 300 Can 10¢
3-STAR BRAND Whole SPICED PEACHES Big 2 1/2 Can 19¢
TEXSUN GRAPEFRUIT JUICE 46-Oz. Jumbo Can 25¢

BOSCO 12-Oz. Jar 35¢
FAB Giant Box 59¢

Red Delicious APPLES Lb. 15¢
MacMoy Super SAGE 400 S. Seaman Home Owned-Home
HORMEL LITTLE SIZZLERS SKINLESS PORK SAUSAGE Pkg. of 8

HOMES FOR SALE
SOLD OUT
THANK YOU!
Construction to begin immediately on SIX more beautiful 3 bedroom homes!
Why throw away rent dollars every month? Pay your rent dollars on your own home and create a savings for your family. See or call us today. We arrange all of the financing and red tape. No obligation, of course.
Village Homes
Suite 210 — Village Hotel
Don Pierson - MA 9-1033
Norman Guess - MA 9-1545

Football Players Are At Banquet Saturday

The pep squad girls of Carbon High School, their sponsor, W. H. Hall, business manager, and Mrs. J. J. Hazard, assisted with the evening with a banquet in the school cafeteria. Teachers and their wives and husbands, the football boys, the pep squad girls and the guest speaker, Dr. Paul Southern and

Mrs. Southern attended the banquet. Highlights of the evening were the presentation of the football sweetheart, Paula Norris, by Bill Sandlin; and the presentation of the football hero, Rhodney Jackson, by the Mary Rone. The guest speaker was Dr. Paul Southern, Head of Bible and Department of Religious Education of Abilene Christian College.

He outlined four essentials for a full and complete life: (1) work and then enjoyment of it; (2) recreation; (3) companionship; (4) God and religion. Kay McDaniel, a senior and head cheerleader, was toastmaster. Paula Norris, freshman cheerleader, spoke the words of welcome after the invocation, which was given by Kenneth Eaves. Weldon Cook, a junior, responded

to the welcome. Jerry Jordan played a melody of songs on the accordion. Mary Elizabeth Been gave interesting items of gossip learned while on the pep squad bus. Doris Harle and Paty Hale presented good luck pennies in small glass bottles to the football boys, coaches, Mr. Spence for driving the bus, Mr. Mosier for barbecuing the chicken and cooking the beans for the banquet,

and Dr. Southern. Following presentation of the sweetheart and hero, the sophomore girls sang "I've Got a Heart of Wolverines" and "You Gotta Be a Football Hero." Rhodney Jackson gave a toast, "The Key," to the coach and Coach Key responded. In his response, Mr. Key recognized three boys who gave valuable service this year but will not be playing next

year. Those three were Bill Sandlin, Rhodney Jackson and Gary Norris. Kay McDaniel, on behalf of the pep squad girls, presented Mrs. Willman with a necklace and matching ear clips. Superintendent Travis Spence introduced the guest speaker, Dr. Southern. After Dr. Southern's address, the group sang "Dear Carbon High," the school song, as the closing number.

The eighth grade cheerleaders and twirlers, Angela Bryant, Addie Lou Campbell, Kathryn Caraway, Suzan Griffin, Peggy Hale, Linda Jackson and Judy Johnson, served as waitresses. They were dressed in blue skirt and white blouses. The decorations carried out the school colors of white and blue and the football motif in all appointments. The pep squad girls and their sponsor wish to thank the mother who assisted with food and worked in the kitchen, Mr. and Mrs. Grover Mosier for barbecuing the chicken and cooking the beans, Mrs. Ray Norris for assistance



GET YOUR FREE MOSLAH SHRINE CIRCUS TICKETS NOW!
 Buy in our Tapes Right Away Before Supply Is Completely Exhausted. Free Ticket Offer Good Only While Tickets Last! Free Ticket for Each \$35.00 in Register Tape Dated Oct. 20, 1960 or later. Hurry! Hurry!
 These Low Prices Effective Thursday, Friday and Saturday

WORTH FOOD MART

Pre-Thanksgiving Stock-Up Sale!

TURKEYS
 Very Finest Quality Holiday Turkey NOW AT SPECIAL LOW THANKSGIVING PRICES!

Cake Mixes Duncan Hines Choose From 8 Varieties 19-Oz. Pkg. **29¢**

Niblets Corn Golden, Whole Kernel 3 12-Oz. Cans **49¢**

Wine Cocktail 2 300's Cans **39¢**

Whole Green Beans Del Monte Cut or Large, Tender 2 303's Cans **39¢**

Pickles Sour, Dill, Kosher Dill, or Hamburger Dill Chips 2 22-Oz. Jars **39¢**

Green Giant Peas 2 303's Cans **35¢**

Salad Cocktail 3 46-Oz. Cans **1.00**

Salad Dressing Morton's Quart Jar **29¢**

Round Steak Worth Controlled Quality Heavy Beef Lb. **79¢**

Chuck Roast Worth Controlled Quality Heavy Beef Lb. **49¢**

Bologna Worth Controlled Quality Heavy Beef Sliced Lb. **49¢**

Beef Arm Roast Tennessee Farm 2 Lb. **1.19**

Pork Sausage Kraft Sliced American Cheese Lb. **59¢**

Flounder Rath's Sliced Blackhawk Bacon Lb. **55¢**

Apples Crisp, Red Delicious Lb. **19¢** Golden Delicious Lb. **23¢**

Pears Crisp, Tender Pascal Celery 2 Stalks **25¢**

Dates U. S. No. 1 Red Potatoes 10 Lb. **59¢**

Nuts Select Tomatoes Carton **15¢**

Simple Simon Pies Pumpkin or Mince 24-Oz. Pkg. **39¢**

Jean's Rolls Frozen 2 24's Pkgs. **49¢**

Pepto-Bismol Soothing For Acne & Pimples Large Bott. **43¢**

CLIP AND SAVE!
 Redeem This Coupon for EXTRA 50 Free S & H Green Stamps with purchase lb. pkg., 5c off label, Baker's INSTANT COCOA MIX
 Void After Saturday, Nov. 19, 1960—Limit One

CLIP AND SAVE!
 Redeem This Coupon for EXTRA 75 Free S & H Green Stamps with Purchase, Lb. Can, With Chicory LUZIANNE COFFEE
 Void After Saturday, Nov. 19, 1960—Limit One

CLIP AND SAVE!
 Redeem This Coupon for EXTRA 100 Free S & H Green Stamps with Purchase 46-Oz. 15c off Label Texize Household Cleaner
 Void After Saturday, Nov. 19, 1960—Limit One

CLIP AND SAVE!
 Redeem This Coupon for EXTRA 50 Free S & H Green Stamps with Purchase Whole Baked or Candied Trappey's Frozen Yams
 Void After Saturday, Nov. 19, 1960—Limit One

CLIP AND SAVE!
 Redeem This Coupon for EXTRA 50 Free S & H Green Stamps with Purchase 12-Oz. Pkg. Baker's Chocolate Chips
 Void After Saturday, Nov. 19, 1960—Limit One

CLIP AND SAVE!
 Redeem This Coupon for EXTRA 50 Free S & H Green Stamps with Purchase Lb. Pkg. Mrs. Chessher's FRYER BREASTS
 Void After Saturday, Nov. 19, 1960—Limit One

RANGER DRIVE-IN
 HIGHWAY 80 EAST ON RANGER HILL
 Boxoffice Opens 6:45 — Show Starts at 7:00
 Adults 50c—Kiddies Under 11 Free
 Only Eastland County Drive-In Open All Year
THURSDAY - FRIDAY - SATURDAY
 ACADEMY AWARD WINNER
ERNEST BORGENINE
 TOPS ALL HIS PREVIOUS PERFORMANCES IN
"Pay or Die"
 Filmed So You Will Always Remember!
 FREEVUE EVERY SATURDAY NITE
 SUNDAY - MONDAY - TUESDAY
 "IF I CAN'T HAVE YOU... I'M GOING TO HURT YOU!"
 Metro-Goldwyn-Mayer presents
 Natalie WOOD · Robert WAGNER
 in AN AVON Production
"ALL THE FINE YOUNG CANNIBALS"
 with Susan KOHNER · George HAMILTON and Pearl BAILEY
 with JACK MULLANEY and GUNSLAW STEVENS

DIXIE DRIVE-IN
 EASTLAND RANGER HIGHWAY
 Box Office Opens 6:45 Show Starts 7:00
 Box Office Closes 9:00
 Admission 50c — Children Under 12 Free
THURSDAY - FRIDAY - SATURDAY, NOV. 17, 18, 19

MORE SAVAGE THAN MOST SAVAGE AFRICA!
SEE! - SINISTER ASSAULT OF THE DEADLY CROCODILES!
 • RUTHLESS TERROR OF THE SLAVE-TRADERS!
 • BULL ELEPHANT ATTACK
 FLAME-HAIRED BEAUTY!
 COLUMBIA PICTURES
 A WARWICK PRODUCTION
Robert Taylor
KILLERS OF KILIMANJARO
 with Anthony Newley · Anna Aubrey
 with Gregoire ASLAN
 Screenplay by JOHN GILLING and EARL FENTON · Screen Story by RICHARD SHARPE and CYRIL HUME
 Directed by RICHARD THORNTON · Produced by RICHARD ALLEN and JACQUELINE B. BRADDOCK
 CINEMASCOPE LUTHEAN COLOR
 PLUS: Color Cartoon and Sports Reel

SUNDAY - MONDAY - TUESDAY, NOV. 20, 21, 22
ALAN LADD MURRAY O'HERLHY
"ONE FOOT IN HELL"
 PLUS: Two Color Cartoons

YOU HAVE TO TRY IT TO BELIEVE IT!
NEW Gillette Super BLUE BLADE
 Gillette
 10 for 69¢
 FITS ALL GILLETTE RAZORS

- Call MA 9-1707 for Classified Ads -

Hamner Life Insurance Company
Ben E. Hamner, President

This company has been in operation in this section since 1942 selling policies to be used primarily for burial purposes. We write from \$100 to \$600 and our policies are paid in cash, which allows freedom in the selection of the Funeral Director of your choice. Ages from 1 month to 90 years. For further information come by to see us at Hamner Funeral Home, 301 S. Lamar, Eastland P. O. Box 431 Dial MAIn 9-2611

"DE-MAC" PIZZA-BURGER "The Greatest Taste Sensation in a Sandwich" Sold Coast-to-Coast Dairy Treet Dairy King

HAMNER FUNERAL HOME
Ben E. Hamner, Owner

Serving Eastland County since 1924 with ambulance and funeral service. Our ambulances are oxygen equipped and air conditioned. Through our nation-wide connections with other funeral directors, we can handle a funeral from any point in America. We offer this service knowing that we can relieve the family of all burdens incident to any death away from home. Eastland Dial MA 9-2611

SEE US FOR FURNITURE • APPLIANCES • CARPETS. Every Day Low Prices Means Savings For You! No carrying charges on furniture for 1 full year FREE DELIVERY. Ranger Furniture Exchange "BRASHIER'S" 123 N. Rusk RANGER Phone 242

Skillet Supper, Italian Style



Here is a suggestion for giving your favorite skillet supper an Italian accent. It's so easy to do if you use a new Italian corn oil dressing with an intriguing flavor. No need to add extra herbs or to fuss with peeling raw garlic with this recipe. Beef and Vegetables Italiano: 1/4 cup flour, 1/2 teaspoon salt, 1/2 teaspoon pepper, 2 lbs. round steak, cut in 2-inch pieces, 1/2 cup margarine or butter, 1 large onion, sliced. 1/4 cup Italian corn oil dressing, 1/4 cups water, 1 teaspoon salt, 1 4-oz. can mushrooms, 6 carrots, peeled and quartered, 6 potatoes, peeled and quartered, 1 lb. green beans, ends removed. Zesty Cole Slaw: 4 cups finely-shredded cabbage, 2 teaspoons grated onion, 1/4 cup finely chopped green pepper, 1/2 teaspoon sugar, dash of salt, 1/2 cup real mayonnaise and 1 tablespoon Italian corn oil dressing. Mix well, cover and chill. Serve in 4 to 6 individual bowls with sliced radish or other garnish.

Gorman Gatherings

Mr. and Mrs. Marvin Nix spent the weekend in Odessa visiting their son and family, Mr. and Mrs. Ben Nix. Mr. and Mrs. T. G. Gray had as their guests over the weekend one of their daughters and husband and their granddaughter and husband, Mr. and Mrs. Preston Lightfoot of Sweetwater and Mr. and Mrs. Bob Dixon of Abilene. Guests in the homes of Mrs. D. L. Ramsey, Mrs. J. M. Hunt and Mrs. Sant Leney were Mr. and Mrs. Jack Burras of Post and Mr. and Mrs. Earl Bankston and son of Albuquerque, N. M. Mrs. D. P. Holliday was released from the Hendrick Memorial Hospital Thursday. She is home recuperating from a broken leg. Mrs. Aubrey Griffin of Berger is visiting with her parents, Mr. and Mrs. W. L. Andrus. Her mother remains a berpatient at her home. Mrs. Bertie Buchan of Rangerville came Wednesday to visit with her brother and wife, Mr. and Mrs. J. N. Ellison. She will be here ten days. Mrs. Buchan is a former resident and will be seeing several of her old friends. Miss Ozella Pulley attended the annual banquet given by the

Texas Electric Service Company for employees held Tuesday night. Mrs. H. H. Pullig and Mrs. Willie Jackson were shopping in Brownwood Saturday. The Faith Class of the First Baptist Church met in the home of Mrs. Allie Sea Thursday evening for their monthly business meeting. The meeting was opened with prayer by Mrs. Vera Hamrick, teacher. Mrs. J. R. Toad read the 116 Psalm and brought the devotional. Minutes of the previous meeting were read and approved. Plans were made for the next meeting which will be the Christmas Party. The class voted to bring gifts for Mrs. Fountain Woodall, who lost all of her clothing, household goods and her home in a fire Tuesday night. They also voted to help the Orphan Home Christmas box which will consist of canned goods, fruits, and vegetables. The meeting was closed by prayer by Mrs. W. D. Harper. Refreshments were served to Mmes. Vera Hamrick, J. R. Todd, Helen Claxton, A. L. Dean, R. E. Boucher, Miss Cora Richmond and the hostess. ATTEND THE CHURCH OF YOUR CHOICE EACH SUNDAY

Court of Civil Appeals

Affirmed: 3570 Midwest Oil Corporation v. John J. Eisner. Reversed with Instruction: 3561 City of Stamford v. J. R. Ballard et al. Reversed and Remanded: 3597 Ralph Neill et al v. Robert Cook et al. Motions Submitted: 3558 George Harrelson et al v. Ernest Wright et al. Appellant's motion for rehearing. 3563 United American Insurance Company v. Thomas A. Cravett et ux. Appellant's motion for rehearing. 3567 Bituminous Casualty Corporation v. E. L. Singleton. Appellant's motion for rehearing. Motions Overruled: 3558 George Harrelson et al v. Ernest Wright et al. Appellant's motion for rehearing. 3563 United American Insurance Company v. Thomas A. Cravett et ux. Appellant's motion for rehearing. 3567 Bituminous Casualty Corporation v. E. L. Singleton. Appellant's motion for rehearing. Cases to be Submitted: 3601 City of Abilene v. Ava N. Fillmon, Taylor. 3602 James Yarbrough v. A. M. Teague, Brown. 3603 The Lamesa Co-operative Gin v. Early Peitler, Dawson. 3609 Clyde McKinley v. Knox Pittard, Jones.

USDA Announces Peanut Quotas And Allotments

Secretary of Agriculture Ezra Taft Benson recently announced a national marketing quota of 970,000 tons and a national allotment of 610,000 acres for the 1961 peanut crop. Both the marketing quota and the acreage allotments are at the levels approved by growers in a referendum held December, 1959. Legislation provides that the marketing quota must be equal to the average quantity of peanuts harvested for nuts during the five years immediately preceding the year in which the quota is proclaimed. The quota, however, must be sufficient to provide a national acreage allotment of at least 1,610,000 acres. The 1961-crop national peanut acreage allotment, less one-tenth of 1 percent reserved for new farms, is apportioned to states in accordance with provisions of the Agricultural Adjustment Act of 1938, as amended. The acreage allotment for each state will be apportioned among individual peanut-producing farms within that state. According to figures released by the USDA, Texas peanut growers will share in a state allotment of 356,037 acres in 1961, an increase of only 15 acres over the 1960 state allotment.

Farm Bureau Reaches Record Membership

The Texas Farm Bureau wound up its membership year with the largest membership in its history—80,992 farm and ranch families, according to Millard Shivers, organization director. This represents a gain of 1,578 members over last year and marks the eighth consecutive year that the state farm organization has shown an increase in membership. In the past eight years, the organization has grown from 48,650 to its present membership, a gain of 32,342. The official membership year in the TFB is from Nov. 1 to Oct. 31. A last-minute deluge of memberships in the state office delayed the official count for four days, Shivers said. The 80,922 memberships assure Texas a place in the top five states in the American Farm Bureau Federation, the organization director said. Only Illinois, Iowa, Indiana, Kentucky, in that order, ranked ahead of Texas last year. Ellis County now has the largest

County Farm Bureau in Texas, with 1,545 members. A total of 111 of the 199 organized counties in the state exceeded their quotas this year, Shivers said. The top ten counties, in terms of membership, are: McLennan, 1,540; Williams, 1,347; Lubbock, 1,231; Comal, 1,188; Ft. Bend, Hill, 1,115.

YOU WILL BE PLEASED OUR WORK OLD MATTRESSES MADE LIKE NEW \$8.50 up We Pick Up One Day... Deliver the JUST DROP US A POSTCARD "Since 1928" "We Sell Sleep" RANGER MATTRESS FACTORY RANGER, TEXAS

McGraw Motor Co

Table with TV listings for Channel 9 (KABC, Abilene) and Channel 4 (KRLD, Dallas) on Thursday and Friday.

Table with TV listings for Channel 11 (KTFT Fort Worth) on Thursday and Friday.

Table with TV listings for Channel 5 (WBAP, Fort Worth) on Thursday and Friday.

Table with TV listings for Channel 8 (WFAA, Dallas) on Thursday and Friday.

NOW! THE GREATEST SHOW ON WORTH!



Bel Air Sport Coupe. There's up to 2 inches more head room in this trim new hardtop; more leg room, too—front and rear.

NEW-SIZE YOU-SIZE SIXTY-ONEDERFUL CHEVY

This '61 is built on the principle that the place you want space is inside. We put it there, too. Actually trimmed the outer size to give you extra inches of clearance for parking and maneuvering, and still worked wonders with inner space. Door openings are as much as 6" wider. Seats as much as 14% higher. We've thought of everything. Increased rear foot room by slenderizing the driveshaft tunnel. Worked in sensible new ideas all the way back through that huge bin of storage compartment. See how thoughtful this one is! Full of good new things. Full of good old things, too, like Chevrolet's well-known thrift and dependability. See it soon.



Brookwood 9-Passenger Station Wagon. One of 6 for '61. Each features a cave-size cargo opening and a new concealed compartment.



Biscayne 4-Door Sedan—with the same sensible design you get in all the '61 Chevies.

For big-car comfort at small-car prices * * * '61 CHEVY BISCAYNE 6 * * * The lowest priced full-sized Chevy! Biscaynes—6 or V8—give you a full measure of Chevrolet quality—yet they're priced down with many cars that give you a lot less! * * *

See the new Chevrolet cars, Chevy Corvairs, and the new Corvette at your local authorized Chevrolet dealer's

FULLEN MOTOR COMPANY INC. 305 E. MAIN EASTLAND PHONE MA 9-2676

NOVEMBER SPECIAL PASSENGER RETREAD \$10.00 and your old tire Mounted, Balanced and 1 year guarantee Jim Horton Tire Service East Main St. Eastland, Texas

FOR GOOD LOOKING YOU CAN'T BEAT TV CABLE LOOKING COMMUNITY TELEVISION, INC. 'Call today and get five channels tomorrow' Village Hotel

Pre-Thanksgiving Sale

Get Ready for Christmas with a
6 1/2-Foot ALUMINUM
Christmas Tree
Only **\$9.95**
Angel Pine Silver Coated.
White supply lasts.

- Pre-Thanksgiving Values!*
- Ice Cream Snow Star — Vanilla, Chocolate, Strawberry or Neapolitan. 1/2-Gal. Ctn. **59¢**
 - Egg Nog Mix Lucerne — For the holidays. Quart Carton **59¢**
 - Pancake Mix Kitchen Craft Sweet Cream Buttermilk. (2-Lb. Pkg. - 29¢) Pkg. **17¢**
 - Kitchen Craft Flour For baking. 25-Lb. Bag **\$1.79**
 - Pancake Flour Kitchen Craft Buckwheat. 2 1-Lb. Pkgs. **33¢**
 - Chocolate Peanuts Roxbury Candy. 2 7 1/2-Oz. Pkgs. **69¢**
 - English Toffee Roxbury Candy. 2 9-Oz. Pkgs. **69¢**
 - Chocolate Drops Roxbury Candy. 2 14-Oz. Pkgs. **69¢**
 - Carnation Milk Evaporated. 6 5-Oz. Cans **47¢**
 - Coffee Chase & Sanborn. Regular or Drip. (4¢ off label) 1-Lb. Can **67¢**

- Pineapple Juice** La Lani. 2 46-Oz. Cans **49¢**
- Highway Pears** Perfect for salads. 2 No. 2 1/2 Cans **59¢**
- Green Beans** Gardenside Cut — Tender and succulent. 3 No. 303 Cans **39¢**
- Gardenside Corn** Cream Style Golden. 3 No. 303 Cans **39¢**
- Gardenside Peas** Early June. 3 No. 303 Cans **39¢**

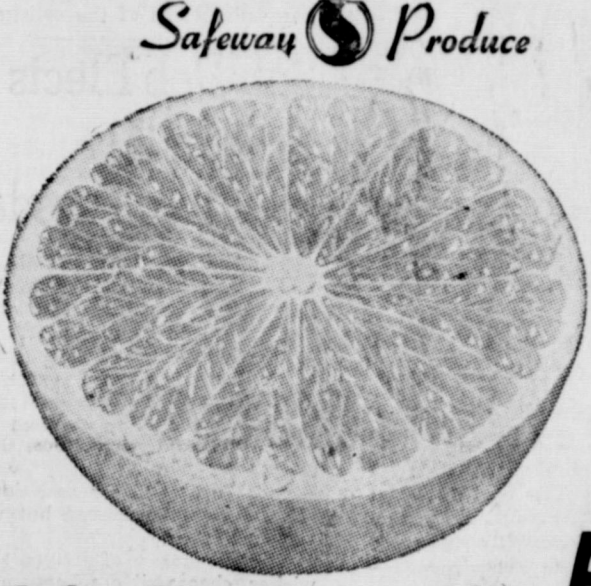
- Airway Coffee Mild mellow flavor. (2-Lb. Bag — \$1.06) 1-Lb. Bag **53¢**
- Nob Hill Coffee Whole bean form (2-Lb. Bag — 1.13) 1-Lb. Bag **57¢**
- Pack Train Syrup Waffle & Pancake. 1 1/2-Lb. Decanter **23¢**

SAFEWAY

SAFEWAY GIVES VALUABLE GOLD BOND STAMPS
with every purchase of 10¢ or more.
Your nearest Gold Bond Redemption Center
In Abilene 443 Walnut St.

- Cherub Milk** Evaporated — For coffee, cooking or for baby. 3 1 1/2 -Oz. Cans **40¢**
- Jell Well** Assorted flavored gelatin desserts. 4 3-Oz. Pkgs. **25¢**
- Beans** Town House Pinto. 2-Lb. Pkg. **21¢**
- Prunes** Town House Large. (New Crop). 1-Lb. Cello Bag **35¢**

Flour
Kitchen Craft Enriched
5-Lb. Bag **43¢**
(10-Lb. Bag ... 79¢)



Grapefruit
Texas' Finest Ruby Red. Perfect to wake up early morning appetites; tartly sweet; juicy and rich in flavor.
20-Lb. bag **89¢**

- Anjou Pears** Perfect for salads. Lb. **19¢**
- Brussel Sprouts** 8-Oz. Cup **25¢**
- Cucumbers** Add zip to your salads. Each **10¢**
- Romaine** Popular salad vegetable. Lb. **19¢**
- Apples** Winesap all-purpose apple. 4-Lb. Bag **49¢**
- Potatoes** Ideal for boiling, frying or baking. 25-Lb. Bag **\$1.19**

- Week-End Values!*
- Salad Dressing Piedmont — Made fresh! Sold fresh. Quart Jar **39¢**
 - Miracle Whip Kraft Salad Dressing. Quart Jar **55¢**
 - Powdered Milk Carnation Instant. (Makes 8 quarts.) 8-Oz. Size **73¢**
 - Palmolive Soap For your complexion. 2 Bath Bars **27¢**
- Safeway Buys!*
- Velkay Shortening For baking or frying. 3 Lb. Ctn. **53¢**
 - Snowdrift Shortening For frying foods. 3 Lb. Can **79¢**
 - Pillsbury Cake Mixes Deluxe — Assorted flavors. 18-Oz. Box **37¢**
 - Kraft Macaroni Dinner Easy to serve. 2 7 1/2-Oz. Boxes **37¢**
 - Durkee Coconut For baking. 4-Oz. Pkg. **21¢**
 - Shady Lane Butter Finest quality. 1-Lb. Ctn. **73¢**
 - Aluminum Foil Heavy duty Alcoa Wrap. 12" Roll 25' x **49¢**



New Crop Turkeys!

YOUNG TOMS 39¢
U.S.D.A. Inspected for wholesomeness and Grade 'A' 17-24 lbs., Ready-to-cook.

YOUNG HENS 43¢
U.S.D.A. Inspected for wholesomeness and Grade 'A'. Ready-to-cook, 10 lbs. and up.

- HAMS**
Smoked — Delicately flavored and fine textured. 20 to 26-pound average.
- Shank Portion Half or Whole Lb. **35¢** Lb. **43¢**
 - Center Slices Lb. **73¢**
- U. S. Good Grade Calf!*
- Chuck Roast Lb. **45¢**
 - Arm Roast Lb. **55¢**
 - Short Ribs ea. Brisket. Lb. **25¢**
- Fruit Cake Ring Mrs. Wright's. 1-Lb. 5-Oz. Ring **93¢**
 - Fruit Cakes Mrs. Wright's. 14-Oz. Loaf **67¢**
 - Lucerne Dairy Whipt For topping desserts. 8-Oz. Can **49¢**
 - Mixed Nuts Bulk — Assortment of your favorite nuts. Lb. **53¢**
 - Paper Shell Pecans Large Bulk. Lb. **65¢**
- Bakery Feature of the Week!*
- Rye Bread** 1-Lb. Loaf **19¢**
Skylark — Regular 23¢ value.
 - Protein Bread** 1-Lb. Loaf **19¢**
Skylark Power Packed. With L-Lysine — Reg 27¢.
 - Sour French Rolls** 12-Oz. Pkg. **21¢**
Skylark — 6 count. "2¢ off" — Reg. 23¢ value.
 - Stuffing Bread** Mrs. Wright's. Available Friday. 1 1/2-Lb. Pkg. **25¢**
 - Cookies** Bisc. or Van. 1-Lb. Pkg. **39¢**

- INSTANT COFFEE** Safeway. 100% pure coffee. None finer at any price. 2-Oz. Jar **33¢**
- COTTAGE CHEESE** Lucerne — Regular, Farmer Style, Chive. Low Calorie or Dry Curd. 1-Lb. Ctn. **25¢**
- GREEN PEAS** Dr. Whole Kernel Corn. Bel-air Frozen. Premium quality. 3 10-Oz. Pkgs. **59¢**
- APPLE PIE** Dr. Cherry or Peach. Bel-air Frozen. Large 8". 1 1/2-Lb. Pkg. **39¢**

PORK SPARERIBS
3 to 5-Lb. Average. Perfect for barbecuing. Lb. **33¢**

- Margarine** Coldbrook — An economical spread. 2 1-Lb. Ctns. **31¢**
- Chunk Tuna** Sea Trader Light Meat. 3 6 1/2 Oz. Cans **69¢**

SAFEWAY

Prices Effective Thurs., Fri. and Sat., Nov. 17, 18 and 19 in EASTLAND
We Reserve the Right to Limit Quantities. No Sales to Dealers.

ATTEND THE CHURCH OF YOUR CHOICE EACH SUNDAY

SOCIAL CALENDAR

Thursday, Nov. 17
2 p.m. — Mrs. Dick Yielding will host members of the Flatwood Home Demonstration Club.
3 p.m. — Las Leales Club will be guests of the Thursday Afternoon Club when Mrs. Iral Inzer will be leader for the day.
7:30 p.m. — The Eastland Past Matrons Association will meet in

Monday, Nov. 21
7:30 p.m. — The IOOF Hall will be the scene of the regular meeting of the Oddfellows Lodge No. 120.
7:30 p.m. — The regular meeting of the Pythian Sisters will be held in the Castle Hall, 106 Commerce.
7:30 p.m. — Mrs. Maurice Dry will host the members of Las Leales Club when the program will be given by Mrs. Myrtle Anderson. Her subject will be "America's Religious Roots."
Tuesday, Nov. 22
7:30 p.m. — The Rebekah Lodge No. 177 will hold their re-

gular stated meeting in the IOOF Hall.
9:30 a.m. — The Circles of the Woman's Society of Christian Service of the Methodist Church will hold their regular meetings.
Wednesday, Nov. 23
2 p.m. — The regular meeting of the Morton Valley Home Demonstration Club will be held in the Community Clubhouse.

Look Who's New



Major and Mrs. W. Ansil Owen, Jr. of Lompoc, Calif., announced the arrival of a son, William Brent, born Nov. 1 in the Eastland Memorial Hospital. At birth, William Brent weighed eight pounds.

William Brent has two sisters, Kay, aged nine and Linda, aged seven. Paternal grandparents are Mr. and Mrs. W. Ansil Owen, Sr. of Eastland and maternal grandparents are Mr. and Mrs. M. H. Wagner of Del Rio.

Olden Woman See Sister Honored With Tea Monday

The Alumni Association of the Abilene Christian College honored Mrs. Ruth Bickle Ransberger of Coleman, sister of Mrs. A. R. McFarland of Olden, with an authentic tea Monday from 3 to 5 p.m. in Nelson Hall.

Mrs. Ransberger, who is an ex-student of ACC, has recently had a book published, "Nature Poems."

Approximately 150 guests attended. Out of town guests were Mrs. A. R. McFarland of Olden, Mrs. Nell Gann of Waxahachie, and Mrs. Roy E. White of Ft. Worth, all sisters of the honoree. Serving tea were members of the Girls W Club and their sponsors, Librarians of the college.

Sub-Deb Elects Officers At Meeting Tuesday

Members of the Sub-Deb club met Tuesday in the home of Gail Mace for the election of officers for the coming year.

The following officers were elected: Janie Harris, president; Shelia Sneed, vice-president; Gail Mace, reporter; Sharon Day, parliamentarian; Georgia Bess Faircloth, chaplain.

Plans for a coffee and doughnut sale were discussed but were not completed.

Refreshments of tuna sandwiches, cheese rit crackers, potato chips, brownies and Hawaiian punch were served to the following members present: Janie Harris, Guylenn Quinn, Joy White, Linda Buler, Sharon Day, Georgia Bess Faircloth, Shelia Sneed, Jan Lewis, Jo Ann Yancey, Brenda Falk, Sue Hallmark, Cecelia Copeland, Marilyn Lusk, Sharon Wilson, Jeanne Morren, Patsy Ables, the sponsor and daughter, Kathy, and the hostess, Gail Mace. The next meeting will be held Nov. 29 at the home of Jan Lewis.

ATTEND THE CHURCH OF YOUR CHOICE EACH SUNDAY

Business girls YWA Hosted At Mexican Supper

The Business Girls YWA of the First Baptist Church met Tuesday for a Mexican supper and regular business meeting in the home of Mrs. John Megason, 611 S. Dixie.

Mrs. M. A. Treadwell Sr. presented the lesson taken from the Mission Book, Caribbean Quest. The following members were present: Misses Doris Bounds, Sarah Peel, Sarah Honea, Janie Arther and Emma Jean Walker, Mrs. T. L. Morgan, Mrs. Treadwell and the hostess, Mrs. Megason.

Hospital News

Patients in the Eastland Memorial Hospital are the following: Arthur Presslar, accident Mrs. Norman Lowrance, medical Mrs. Omar Burkett, medical Mrs. Bobby Miller, Odessa, surgical

Ike Butler, Carbon, medical H. C. Nicks, medical Mrs. Gary Lowrance, surgical Tom Stamey, medical C. T. Lucas, medical David Gaines, Cisco, accident Mrs. Thomas Sanders and baby, Cisco

E. K. Winge, medical George C. Kimbell, medical Mrs. Willie Mae Speaker, medical

Mrs. Oscar Penn, Cisco, surgical Mrs. Nancy Jones, medical Mrs. Francis Urban, surgical Mrs. Willie Harris, medical Mrs. John V. Heizer, Mesa, Arizona, surgical

Mrs. Nick Gray, Cisco, medical Mrs. T. O. Elam, Fabens, medical Mrs. J. W. Boggus, Gordon, surgical

R. S. Hollis, medical Mrs. Elon Heaves, medical Dismissed were Paul Smith, Mrs. R. J. Rylee, Mrs. Bobby Tucker and baby boy, R. F. Justice, Lon Horn, Mrs. Oralla Goerza and Robert S. Hill.

VISITS IN EASTLAND

Mr. and Mrs. W. H. McAnally and Bill of Abilene, Mr. and Mrs. Weldon Bosworth and Doug of Colorado City and Merle Collins of Abilene visited over the weekend in the home of Mrs. Frankie Collins.

INGROWN NAIL HURTING YOU? Immediate Relief! A few drops of OUTGRO bring blessed relief from tormenting pain of ingrown nail. OUTGRO loosens the skin underneath the nail, allows the nail to be cut and then prevents further pain and discomfort. OUTGRO is available at all drug counters.

Moore About-

(Continued from Page One) someone who can take the time to investigate these requests for aid. We are not against charity. We do think something needs to be done when the county is spending as much money on charity as the united and community funds in Eastland, Cisco and Ranger collect together.

Maybe all the money needs to be spent. We do not put ourself up as a judge. And we aren't trying to create a job for anyone. We just think that for the good of the county, we need a welfare officer. —vem— See you Sunday.

ATTEND THE CHURCH OF YOUR CHOICE EACH SUNDAY

MONEY GROWS FAST WHEN YOU SAVE HERE!

You can watch your savings GROW instead of GO when you open an insured savings account here and add to it regularly. And your savings will grow even faster, thanks to our better-than-average earnings. Savings here are insured to \$10,000 by an agency of the United States government. Change "go" to "grow" by opening your savings account!

First Federal Savings & Loan Association of Ranger

204 Main Ranger, Texas Phone MI 7-1611

CLOSING OUT SALE

ALL MERCHANDISE 25% OFF

BUY YOUR HOLIDAY NEEDS NOW! AT GREAT SAVINGS!

All New Merchandise—Toys, Dolls, Xmas Tree Decorations, Light Sets, Xmas Cards. All Staple merchandise on sale: Hosiery, Rayon Wear, Cosmetics, Kitchen Ware, Electrical Goods and Many, Many Other Items.

DUKE & AYRES

RANGER, TEXAS

MATTRESSES

Save up to 30% renovating choice of color and firmness. Complete bedding. Made and guaranteed by WESTERN MATTRESS CO., San Angelo. Phone MA 9-2689. Eastland and leave address.

NEW LIFE \$3.00



THE BRA WITH THE LIFE-LIFT SUPPORT

A LOVELY FLORAL ARRANGEMENT! LIFE-LIFT PETALS FOR BEAUTIFUL SUPPORT...AND

that Formfit feeling!

New Life... to help your figure stay blossom young... with the exclusive Life-Lift petals. This pretty surprise is inside the cup... delicate Life-Lift petals, nestled in pink stitching (that's inside only) to help mold you gently... firmly... comfortably.

New Life by Formfit... keeps supporting you even when you're most active. Controlled stretch elastic panels beneath and around the cups cling to give you free moving liberty... constant comfort.

New Life by Formfit... is cut low in the back and side for the perfect foundation to every fashion silhouette. And you'll know what that Formfit feeling is when you are fitted in a new Life bra with the Life-Lift petals. Come in today!

Style 584, 32A to 40C, White.

Fiber Facts: Cotton, rayon trim; elastic sections of acetate, rubber and nylon.

HARELIKS INC

FOR 37TH STRAIGHT MONTH Rambler Sales Smash Records!



Brand-new in '61! Rambler American 4-Door Wagon. Rambler outsells all 6-cylinder wagons.

Setting records because the compact Rambler offers three sizes to meet every purpose... and help every purse!

37 straight sales records over year-previous months. Compare '61 Rambler American with other economy compacts—all-new styling, 6-passenger room, 50% more luggage space in sedans, 23% more cargo space in wagons, proved economy king, 90 or 125 horsepower.

Compare '61 Rambler Classic 6 or V-8 with old "low-priced" field—get the Best of Both: Big car room, compact car economy—priced far lower. Compare '61 Ambassador V-8, the high-performance luxury compact, with other luxury cars.

PIPKIN MOTOR COMPANY 314 W. MAIN

Highest Quality at Lowest Cost! RAMBLER AMERICAN Deluxe 2-Door Sedan Drive the proved economy king... with all-new styling for '61! And more compact—easier to turn, park and handle in traffic of all U.S. cars! Go Rambler American and save!

JOY DRIVE-IN THURSDAY - FRIDAY Show Time 6:45 GINA LOLOBRIGIDA DALE ROBERTSON VICTORIO DUSICA FAST AND SEXY SATURDAY - SUNDAY YUL BRYNNER Seven who fought like Magnificent Seven

DO YOUR CAR WHEELS NEED BALANCING? 4 out of 5 do! Yes, even most NEW cars need wheel balancing jobs A good wheel balancing job with a modern Hunter Balancer pays for itself fast. That's true because unbalanced wheels pound your tires to an early death—and increase wear and tear on the front end of your car. You get more pleasure out of driving—greater comfort, smoother riding, easier steering when you get a wheel balance job done with the modern Hunter Balancer. Yours will be a safer car on the highway, too. Get your wheels checked FREE—in just 2 minutes. Stop in today.

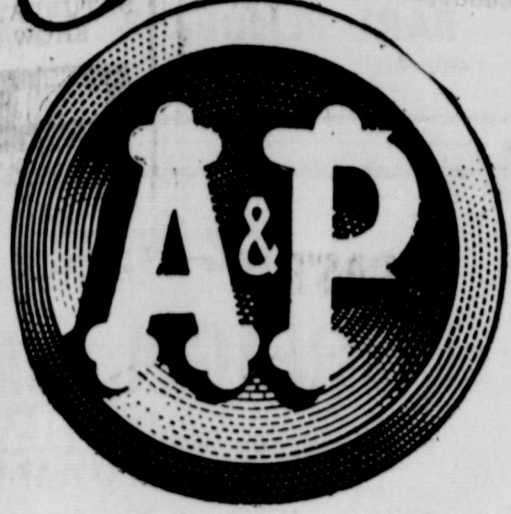
BLEVINS MOTOR CO. 514 W. Main Eastland Phone M A9-2433 ATTEND THE CHURCH OF YOUR CHOICE EACH SUNDAY

MAJESTY IN EASTLAND THURS. - FRI. Alan LADD - Sidney James DARRIN - M... ALL-THE YOUNG MEN SATURDAY NIGHT SHOW 11:30 JOHN WAYNE - GR... ERNE KOVACS - FA... NORTH TO ALAS... CAPUCINE - MICKEY... All Sects... STARTS SUN... Adults 75c - Chi...

GAS OVEN WITH A BRAIN LETS YOU COOK AN ENTIRE MEAL READY TO SERVE HOURS BEFORE SERVING TIME Amazing new gas oven control assures precision accuracy down to 140°. For the first time you have complete oven temperature accuracy from "high" to "new low"... and with absolutely no fluctuation because it's GAS! If you have to delay, you can keep foods serving-hot... no "warmed over" taste, no over-cooking, no drying. Delay serving... warm dishes... thaw frozen foods, all in the all-new gas oven! See all-new Gold Star gas ranges now! Get high trade-ins during RANGE ROUNDUP at your gas range dealers or LONE STAR GAS COMPANY more than 6,000 friendly people working together to serve our communities better.

ADDITIONAL HOLIDAY SAVINGS A-PLenty IN A&P'S HARVEST OF...

Traditional THANKSGIVING FOODS!



Jane Parker Bakery Buys

JANE PARKER 8-INCH SIZE PUMPKIN PIE Ea.	45c
JANE PARKER ICED SPANISH BAR Ea.	29c
JANE PARKER DANISH PECAN RING Ea.	35c
JANE PARKER CINNAMON SLICED LOAF	16-oz. Loaf	29c
JANE PARKER GLAZED DONUTS	Pkg. of 8	27c
JANE PARKER STUFFING MIX	8-oz. Pkg.	25c
JANE PARKER Stuffing Bread	24-oz. Loaf	25c
MORTON SALT	26-oz. Box	25c
JELLO	3 Pkgs.	29c
DREAM WHIP	4-oz. Pkg.	45c
BISCUITS	3 Pkgs.	29c
FOLGERS	1-lb. Tin	67c
MUSTARD	1-lb. Jar	19c
TEXTY	22-oz. Size	39c

TOPS WITH TURKEY - OCEAN SPRAY CRANBERRY SAUCE	2 12-oz. Cans	35c
--	---------------	-----

PICKLES	Whitfield Crispy Wafers 22-oz. Rainbo Dill Strips 16 oz. -- Rainbo Sweet Midgets, 12 oz.	3 Jars	\$1.00
GLADIOLA	Plain Flour	5-lb. Bag	39¢
COCONUT	Rajah Fancy Flake	2 7-oz. Ctns.	45¢
PARKAY	Margarine	1-lb. Ctn.	23¢
PRESERVES	Ann Page Peach, Pineapple or Apricot	2-lb. Jar	49¢
SOUP	Ann Page Tomato	3 20-oz. Cans	49¢
BISCUITS	Golden Rise Refrigerated	3 8-oz. Pkgs.	19¢
LINDSEY RIPE MED. SIZE PITTED Olives	No. 1 Cans	2 59¢	
Margarine	1-lb. Ctn.	25¢	
LE SUEUR GREEN Peas	2 16-oz. Cans	49¢	
A&P WHOLE GREEN Beans	2 16-oz. Cans	43¢	
A&P CUT GREEN Asparagus	2 16-oz. Cans	45¢	
WHOLE KERNEL CORN Niblets	2 12-oz. Cans	35¢	
PUD-N-PIE VANILLA WAFER Cookies	2 1-lb. Pkgs.	45¢	
Ann Page Angel Food Cake Mix	Pkg.	35c	
ANN PAGE CAKE MIX FOR Angel Food	17-oz. Pkg.	35¢	
MARSHMALLOW CREME Hip-o-Lite	2 16-oz. Jars	45¢	
SULTANA SMALL STUFFED Olives	6-oz. Jar	39¢	
ANN PAGE Mayonnaise	Qt. Jar	49¢	
WHITE HOUSE EVAPORATED Milk	6 Tall Can Pack	79¢	
PACIFIC BRAND GREEN Peas	2 16-oz. Cans	29¢	
A&P BRAND Pumpkin	2 16-oz. Cans	27¢	
VEGETABLE SHORTENING dexo	3 -lb. Tin	63¢	
VEGETABLE OIL dexola	Gal. Can	\$1.59	
FOR WRAPPING FOOD Saran Wrap	12" x 25-ft. Roll	29¢	

Special!

EIGHT O'CLOCK COFFEE

1 LB. BAG **53¢**

3-lb. Bag \$1.55

NABISCO PREMIUM Crackers

2-Lb. Box **53¢**

ANN PAGE—Crunchy or Smooth **Peanut Butter** 12-Oz. Jar **35c**

HEAVY DUTY REYNOLDS-WRAP **Aluminum Foil** 25-Ft. **65c**

SCOURING PADS **S.O.S.** Lge. Size **25¢**

A&P—Our Finest Quality Frozen STRAWBERRIES

Special!

2 10-oz. Pkgs. **39¢**

Dessert Shells Pkg. of 6 **21¢**

Lucky WIP Dessert Topping 5-oz. Can **43¢**

LIBBY FROZEN CUT CORN 10-oz. Pkg. **23¢**

LIBBY FROZEN CHOPPED BROCCOLI 10-oz. Pkg. **19¢**

LIBBY FROZEN WHOLE OKRA 10-oz. Pkg. **21¢**

LIBBY FROZEN YELLOW SQUASH 10-oz. Pkg. **15¢**

Storewide Savings

CAMPFIRE SALAD

Marshmallows 6 1/2-oz. Pkg. **17c**

FANCY A&P Mincemeat 9-oz. Can **25c**

SEEDLESS A&P Raisins 15-oz. Pkg. **21c**

REDDI-MAID JELLIED Cherry Sauce 12 1/4-oz. Can **25c**

CRESTMONT CHOC. WHIRL Ice Cream 1/2-gal. Ctn. **75c**

MARVEL Ice Cream 1/2-gal. Ctn. **59c**

FANCY CANNEE A&P Pumpkin 2 30-oz. Cans **39c**

EXCEL Pecan Halves 6-oz. Pkg. **69c**

NUTLEY Margarine 2 1-lb. Ctns. **31c**

LIGHT OR DARK Brown Sugar 1-lb. Fig. **15c**

A&P FANCY Mixed Nuts 6 1/4-oz. Tin **55c**

SILVERBROOK 90 SCORE Fresh Butter 1-lb. Ctn. **71c**

The Nicest Spices Come from Ann Page

ANN PAGE Ground Sage 1-oz. Tin **23c**

ANN PAGE Celery Salt 2-oz. Btl. **19c**

ANN PAGE Allspice 2-oz. Tin **29c**

ANN PAGE PURE GROUND Cinnamon 4-oz. Tin **43c**

ANN PAGE Paprika 2-oz. Tin **25c**

ANN PAGE PUMPKIN Pie Spice 1 1/4-oz. Tin **25c**

ANN PAGE GROUND Nutmeg 2-oz. Tin **49c**

JANE PARKER FRUIT CAKES

1 1/2-lb. **\$1.49** 5-lb. **\$3.99**

3-lb. **\$2.89** Cake **3**

FESCO ROASTER

13-Lb. Fowl, 13-Lb. Roast **1.75**

FESCO ROASTER

20-Lb. Fowl Size 25-Lb. Roast **1.95**

HOUSEHOLD BRUSHES

Vegetable, Bowl, Pastry, Hand, Nail & Bath Brushes in Cellophane Bag **99c**

EMPIRE SPRING PUSH BROOMS

Indoor & Outdoor **Ea. 99c**

MARVEL OVEN CLEANER

8-oz. Size **39c**

EVERYREADY FLASHLIGHT

Two Cell **59c**

EL SULLIVAN RECORDS. MUSIC OF ROBERTA

America's Great Musicals **Ea. \$1.69**

MARVEL ANTI-FREEZE

Qt. Can **49c** Gal. Can **1.79**



THANKSGIVING TURKEY

U.S.D.A. Grade A

YOUNG HEN TURKEYS

HENSlb. **43¢**

YOUNG TOMS

TOMSlb. **39¢**

YOUNG **Beltsville**lb. **49¢**

"SUPER-RIGHT" SEMI-BONELESS FULLY COOKED HAM Half or Whole **69¢**

LINK SAUSAGE SUPER-RIGHT PORK **53c**

DINNERS BANQUET FROZEN All Varieties **53c**

CANNED HAM PLUM ROSE 2-Lb. Can **2.09**

SHRIMP Frozen

CAP'N JOHN'S FROZEN PERCH FILLETS **43c**

Peeled & Devained **79c**

Breaded Shrimp **49¢**

Breaded Shrimp **1.59**

Shrimp Cocktail **39¢**

Produce Specials

OCEAN SPRAY FRESH CRANBERRIES 1-lb. Pkg. **19c**

BANANAS **10c**

TEXAS ORANGES 5 Lb. Bag **39c**

RAW PEANUTS 2 Lbs. **49c**

RED ROME APPLES **19c**

WHITE NAPHTHA SPIC & SPAN—3c OFF

P&G SOAP 3 Lge. Bars **29c** CLEANSER 16-oz. Size **26c**

PRAISE SOAP 2 Reg. Bars **29c**

PRAISE SOAP 2 Bath Bars **39c**

LUX SOAP 3 Reg. Bars **29c**

10c OFF SNOWDRIFT Vegetable Shortening 3 -lb. Tin **79c**

AIRWICK Liquid Air Freshener 5 1/2-oz. Size **57c**

MARVEL Aerosol Air Freshener 7-oz. Size **49c**

BRIGHT SAIL—BLEACH Quart Bottle **15c**

5c OFF HANDY ANDY Liquid Cleaner 16-oz. Size **34c**

4c OFF DASH "Automatic Dishwasher Det." 25-oz. Size **35c**

A&P Super Markets

THE GREAT ATLANTIC & PACIFIC TEA COMPANY, INC.

AMERICA'S DEPENDABLE FOOD MERCHANT SINCE 1859

Warwick Choc. Cov. THIN MINTS 12-oz. Pkg. 35c	Warwick Choc. Cov. CHERRIES 12-oz. Box 49c	Warwick Choc. Cov. CREAM DROPS 11-oz. Pkg. 29c	Warwick Choc. Cov. ALMONDS 5-oz. Pkg. 29c	Warwick Choc. Cov. RUM WAFERS 7 1/2-oz. Pkg. 33c	Warwick Choc. Cov. PEANUTS 7 1/2-oz. Pkg. 33c	Warwick Choc. Cov. CARAMELS 8-oz. Pkg. 29c	Warwick Choc. Cov. RAISINS 8-oz. Pkg. 29c
--	---	---	--	---	--	---	--

— READ THE CLASSIFIEDS —

Golden Age Nursing Home
 State licensed facilities, 24 hr. licensed nursing care, special diets. Call Hillcrest 2-3458, Cisco, Mrs. Whitt Springer and Mrs. Pat Pamplin.

Beta Upsilon Chapter Members Hosted By Eastland Teachers

Beta Upsilon Chapter of Delta Kappa Gamma International Society of Women Teachers met in the Eastland High School at 11

a.m. Sunday. An impressive initiation service was conducted by the president, Mrs. Olga Fay Parker, at which time Mrs. Beryle Cutting and Mrs. Merl Reed of Cisco were initiated into active membership. Initiation was conducted by the singing of "Standards of Delta Kappa Gamma."

A covered dish salad luncheon was served buffet style to 27 members in the high school cafeteria which was attractively decorated in the Oriental theme. The U-shaped table had arrangements of pyracantha berries, Chinese figurines and other art objects, life-sized figures dressed in Chinese costumes.

Eastland members who were hostesses were Miss Verna Johnson, Miss Nettie Thornton, Mrs. J. C. Whitley, Mrs. Poe Herring, Mrs. E. C. Johnson and Mrs. Charles P. Marshall.

Members answered roll call with a saying of Confucius. The program presented by Ranger teachers was a symposium, "How do the religious concepts of the Afro-Asian peoples differ from ours?" Mrs. Rose Deffouch was moderator. Mrs. Grace Hobbs spoke on Buddhism. Miss Anna McEver discussed Hinduism. Other topics were concerned with Shintoism, Mohammedanism and Confucianism. The program was reported both interesting and informative.

Church Parlor Is Scene of WSCS Meeting Tuesday

The Woman's Society of Christian Service of the Methodist Church met at 9:30 a.m. Tuesday in the church parlor for their regular meeting.

The meeting was opened with prayer by Mrs. Joseph M. Perkins, who was welcomed back after an absence of several months.

Mrs. James Horton reported on the nativity scene to be placed on the church lawn before Christmas.

Mrs. C. W. Roles, president, reminded the members of the World Day of Prayer on Feb. 17. That date will mark the 75th anniversary of this event.

A panel discussion of cooperation among different organizations and the Ecumenical Movement was given by Meses. B. O. Harrell, O. M. White, Frank Castberry, Charles Lovelace and M. A. Ciyatt.

The next meeting will be held Nov. 22 and the Society will meet in circles; the White Circle at Mrs. O. M. White's home; the Castberry Circle in the home of Mrs. Taylor Smith and the Young Womans' Circle in the church parlor.

Mrs. Gattis Hosts Esther Group In Church Annex

The Esther Group of the First Christian held their regular meeting Monday at 3 p.m. in the church annex with Mrs. Mae Gattis as hostess.

Mrs. Joe Tow, group president, called the meeting to order and presided over the business session. The opening prayer was given by Mrs. Neil Day. After the business of the day was discussed assisted by Mrs. Dave Fiensy, secretary, and Mrs. Harvey Drake, treasurer, the devotional was given by Mrs. Drake.

Mrs. Drake's chosen subject was "On Faith" from Hebrew 11. The lesson for the day, "How Can I Know What is Real" presented by Mrs. Tow followed the devotional. Mrs. R. L. Carpenter assisted Mrs. Tow by giving scriptures of the lesson.

The meeting was closed with the regular benediction after which the hostess, Mrs. Gattis, served coffee and cake to the following members present: Meses. Joe Tow, J. H. Evatt, Henry Ferrell, Dave Fiensy, R. L. Carpenter, Neil Day, Mattie Miller, Birdie Reid, R. I. Malone and Millie Drake.

Mr. and Mrs. Jimmie Horn, Jimmy Jr. and Paul spent last weekend in Kermit where they visited his sister, Mr. and Mrs. Herold Justice.

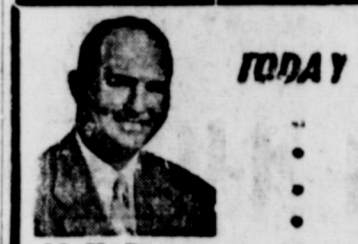
Hatcher Barrack Officers Are Installed Mon.

H. R. (Pop) Garrett, Commander of the 17th District, Department of Texas, installed officers of the V. O. Hatcher Barracks, Veterans of World War I, at the regular meeting Monday evening at the American Legion Hall in Eastland.

Visitors were present from both Cisco and Ranger. Following the business session, refreshments were served by the ladies of the Auxiliary.

Helps Heal And Clear Itchy Skin Rash!

Zemo—liquid or ointment—a doctor's antiseptic, promptly relieves itching, stops scratching and so helps heal and clear surface skin rashes. Buy Extra Strength Zemo for stubborn cases!



M. H. Perry

It is a good day to discuss your future security through life insurance.

SO LET'S MEET... TODAY!



107 W. Main
 Office Ph. MAin 9-2275
 Residence Ph. MAin 9-1095

VISITS BROTHER

Robert Higgins of Sweetwater was visiting Monday in the home of his brother and sister-in-law, Mr. and Mrs. Dick Higgins.

ATTEND THE CHOICE OF YOUR CHOICE EACH SUNDAY

Enjoy Life Downtown
 Close to everything. 100 lovely decorated rooms with 100% private baths, all with ceiling fans and cooled with steam heat, for only \$39.50 per month which includes maid service. Delicious meals in Coffee Shop. Also apartments custom made in any size for permanent guests. Contact Mrs. Robinson, manager, the friendly Village Hotel (formerly the Connelley) Eastland, Texas.

FURNITURE for the Entire Home
 * Carpet - Rugs All Prices *
 Be Sure To Check With

 Coats FURNITURE

SINCE 1884
 ... quality workmanship and efficient service, approved throughout this area.

ALEX RAWLINS & SONS
 Weatherford Phone LY 4-2726 Texas
 Designers and Builders of Monuments Since 1884

Those Famous Last Words
 ... of the family who turned and slowly walk watching helplessly their home go up in a cloud of almost sure to be "we didn't have enough insurance" tragic situation but not as bad as the family under circumstances who had no insurance at all. After the sounds it's too late to discuss insurance with your now is the time while you have time. Tomorrow, you nothing to insure.
EARL BENDER & COMPANY
 Eastland (Insurance since 1924)

WE WASH FOREIGN CARS WITH IMPORTED WATER
 P. S. Others Washed Regularly
NEED A GOOD WASH AND LUBRICATION?
 SEE US FOR YOUR NEXT CAR CLEAN UP!
 Roy Thackerson, Wash and Lubrication Dept.
Blevins Motor
 514 W. Main EASTLAND



Embroidered HIS 'N' HER PAJAMAS \$4.95 Set
 STYLED BY Enzo

A Greek key and monogram embroidered motif enrich the appearance of these Pajamas. Tailored of fine Broadcloth with contrasting piping on collar, cuffs and pockets. Handsome and so-o comfortable. Ladies' half sleeve model is tailored and sized especially for Her.

James Smith MENS SHOP
 EASTLAND

T. L. FAGG REAL ESTATE
 Property Management Home and Farm Loans

Try God's Way
 For those with sorrowing hearts, perplexing problems, unsatisfied longings... The invitation is open.
 "Him That Cometh to Me I Will In No Wise Cast Out"
 John 6:37
 9:45 Church School
 11:00 Morning Worship
 6:00 Youth Meeting
 7:00 Evening Vespers
First Christian Church
 Ray Heckendorn, Pastor



NEW TEMPEST
 AMERICA'S ONLY FRONT ENGINE ↔ REAR TRANSMISSION CAR
 155 H.P. FROM FOUR CYLINDERS*

The new-size Tempest is primed to scoot on less gas! Five hot versions of the Trophy 4 engine. 110 to 155 h.p. Any choice will move out in a hurry, sail up a steep hill in high gear, has the power for quicker, safer passing. Front engine is balanced by rear transmission. (Standard shift or extra-cost automatic.) Takes weight off the front. Easy steering. Longer tire life. Adds ballast in the rear. Improves traction and braking. No big

floor hump. Foot room and leg room for six men. Independent suspension at all 4 wheels. Most other cars only have it in front. Wide-Track, too. The Tempest wheels are set farther apart than the wheels of other new-size cars. Gives a solid stance. Secure cornering. There's a 4-door sedan and a station wagon. Prices come close—or even beat—the tags on the compacts. If you're figuring on a new car—figure on a new Tempest.



THE HOT TOPIC IS THE NEW TEMPEST BY PONTIAC



THE NEW TEMPEST IS SOLD AND SERVICED BY YOUR LOCAL AUTHORIZED PONTIAC DEALERSHIP
MUIRHEAD MOTOR COMPANY
 301 W. COMMERCE EASTLAND, TEXAS

QUALITY AND ECONOMY IN OUR MEAT BUYS!
 Friday and Saturday Only

Club Steak	Lb.	59
Country Spare Ribs	With Meat Lb.	49
Pork Neck Bones	I b.	15
Sausage	Pure Pork 3 Lbs.	1.0
Pork Steak	I b.	39
T-Bone Steak	Standard Lb.	59
Loin Steak	Good Lb.	59
Minute Steaks	I b.	69
Chuck Roast	Good Quality Lb.	39

Earnest-Sauls Packing Co
 Retail Division