



Annual Quarterback Club Minstrel Set Monday And Tuesday Nights

Moore...

ABOUT

Eastland

By VIRGIL E. MOORE

We don't consider ourself much of a poet, but sometimes it is easier to put across a point in rhyme than it is in straight writing. We hope our point is better than our verse.

Veterans' Day

We're pleased with Eastland once again, As we pick up our oft used pen. For Eastland closed its doors today. In memory of those who died far away. While nearby towns and cities tried, To make more money on the side, This city payed, in part, its debt, To those that we shall ne'er forget. Fort Worth and Abilene busily tried, For Eastland trade, but were denied. This city's stores showed that their stride, Was worthy of our every pride. Ex-service men, and women too, Proved they remembered just as you. Memorial services were held, And sincerity could be strongly felt. Yes, Eastland paused for one short day, To pay respect in her own way, To those who fought and died that we Might live here and be safe and free. The day was spent well, we believe, For those who honored not, we grieve. For as the siren filled the air, Eastland sent out a silent prayer.

Unwatched Pot Got Mighty Hot

What's that old adage about a pot not boiling if it's watched? It must be true, for it definitely worked in reverse here Thursday. An unwatched kettle of peaches sitting on a low burning fire on the third floor of the Toombs and Richardson Drug Building began to pour forth streams of smoke and Eastland firemen were called to the scene. The peaches had been left on the stove by mistake when the residents of the apartment left. Results: A lot of excitement, little damage.

College Football Sweetheart Named Saturday

Ranger Junior College's 1954 Football Sweetheart will be presented during halftime ceremonies at the Henderson-Ranger football game, it was announced today. The identity of this year's queen will be kept secret until the mid-way ceremonies. Candidates for the title, all of whom will participate in the coronation, are Mary Ann Wallace, Ranger; Delia Joiner, Austin; Rhelda Reed, Cisco; Barbara Emerson, Graham; and Beverly Cary, Vernon. Members of the college football candidates selected entries for the contest and only this week, by secret ballot, chose their favorite. The football captains will signify the winning candidate Friday night when they award her a bouquet of roses.

The Car With The Forward Look DODGE FOR '55 McGRAW MOTOR CO.

Curtain Goes Up On Show At Eight Sharp

"Mr. Interlocutor, Mr. Interlocutor... did you know that da hour is almost here?" "What's that, Flap Jack?" "I says da hour am almos on ta us, Mr. Interlocutor. It am almos time again for da annual Two-bit Back Club mistrial!" "Why, you're right, Flap Jack. It is almos time for the Quarterback Club Minstrel again. In fact the big show comes off Monday and Tuesday nights. Where in blazes are the rest of the fellows?" "Now, Mr. Middle Man, don't you go a worrien none. Da boys am all ready. Miss Ruby am done worked us nite an day ta make us member jus what ta say an when we gonna say it. Ain't dat rite Sassfrass?" "Yea man. An she done told usen jus what we best not say to."

Eastland Stock Auction Sales On State Report

Livestock auction ring sales in Eastland are a feature of a new state-wide market report now issued by the Texas Department of Agriculture at Austin. Agriculture Commissioner John C. White selected 16 auction sales in eight West Texas cities for the experimental news project. Data from the sales will be distributed by radio and newspaper. Daily bulletins are available to interested persons. West Texas points covered in the report are: Lubbock, San Angelo, Abilene, Eastland, Brownwood, Wichita Falls, Vernon and Goldthwaite. Reports will include sale information on cattle, hogs, sheep and goats. This new service resulted from a demand by the livestock trade for a more complete coverage of stock movement in auction rings. Previously, only marketing data from such major points as Fort Worth, San Antonio, Amarillo and Houston was collected by marketing agencies for state distribution. Mail bulletins are available to those persons who request the service. Inquiries should be addressed to: Market News, Texas Dept. There is no charge for the bulletins. Livestock auction reporting is only one of the many services offered by the Market News branch of the Department. Price reports are available on poultry and eggs, fruits and vegetables, rice, pecans and turkeys.

Garbage Ordinance To Be Law Dec. 1

Eastland city commissioners, holding their regular monthly meeting at City Hall, Thursday night passed an "emergency" ordinance which upped the price of garbage collections from 50 cents a month to 75 cents in residential sections of the city. The ordinance, a revised and shortened version of a previous ordinance which had been read twice, was passed by unanimous vote. It required that each owner or occupant of a residence keep a 20 gallon garbage can equipped with a lid in a convenient place at all times. The ordinance fixed fees for both residential and down town areas and states that the charge is to be added on the monthly water and sewer bill. It also gives the city manager the right to cut off any person's water who does not pay the bill. The ordinance also says that "it shall be unlawful for any person, firm or corporation to pick up garbage in the city of Eastland except where such is done in a manner approved by the city manager." Charges Set Out The ordinance sets the monthly charge for the collections of the garbage at 75 cents for each

Country Store Plans Announced

A country store will be one of the features of the Minstrel Show, which is sponsored by the Quarterback Club, Monday and Tuesday nights. Most of the merchants in the city will participate in the show.

Four Found Guilty In Court Trials

Ray Liken Cloud entered a plea of guilty to a charge of driving while intoxicated in Eastland County Court this week and was fined \$50, three days in jail and costs of court. Cloud's wife entered a plea of guilty to being drunk, in Justice Jim Boggs' court and was fined \$10 and court costs. Both are serving out their fines in jail. In other cases recently cleared from the docket, Joe Hagler of Ranger was found guilty by a jury in District Court of passing a forged instrument. He was given a five year penitentiary term on the second offense charge. He has filed a motion for new trial, which had not yet been presented to the court to act on. George Daniel Stephens was convicted in District Court of second offense D.W.I. He was fined \$100 and costs of court. Stephens' motion for a new trial was denied by Judge Turner Collie Friday morning.

Olden Drops Pair of Cage Games To Avoca

OLDEN (TNS) — Coach Billy (Hank) Green's Olden Hornets dropped a couple of cage games Friday night to the strong Avoca Mustangs to the tune of 46-34 and 81-56. The Olden girls fell 46-34, but played it close most of the way. Petty Smith led Olden scorers with 14 points and Thelma Edwards had nine. Frances O'Brien added seven. Esterling was high for the visitors with 21 points. Coach Green's boys played a hustling game all the way against the highly rated Mustangs. All-state Max Williams paced the visitors with 37 points. Bill McCotter took scoring honors for Olden with 18 points, but it would be hard to pick a standout in the Olden team.

County Resolution On Peanuts Get Okay

Three resolutions purposed by the Eastland County Farm Bureau were adopted by the Texas Farm Bureau last week during the State convention held in Galveston. All of the resolutions, which will now be forwarded to the National, concern peanuts. Following are those resolutions offered by Eastland County delegates that were approved at the state convention: (1) We recommend to the Secretary of Agriculture that as long as there is not a surplus of peanuts and we are under acreage controls, that no additional peanuts be imported. (2) We believe that if there is a shortage of peanuts then the acre should be increased. (3) We recommend that foreign material allowable in peanuts for loan purposes be not less than 12 percent. P. M. Ray of Scranton and Ray Norris represented Eastland County at the Galveston convention. In addition to the three amendments they proposed, which met with approval, another which they strongly favored was okayed. It reads: "We recommend that the Texas Farm Bureau investigate the possibilities of a representative to serve on the National Peanut Council." The convention came out in favor of 90 per cent of parity for basic and non-basic commodities "as long as supplies are in line with demand."

Eastland's Never-Say-Die Boys Score O n Final Play of Game

Mavs Fall To Buffaloes 26-13

The never-say-die Eastland Mavericks fell before a rough Cross Plains Buffaloes eleven 26-13 Friday night in a District 7-A grid clash played before an excited crowd of some 1,500. The Mavericks, playing determinedly despite the fact they faced one of the best football teams in Texas schoolboy football, fell behind early in the game and could never pull even with the Buffaloes. Despite the fact that they trailed by three touchdowns going into the final quarter, the charges of Coach Carrol Shelton and Bobby Blair never threw in the towel. They had the big Cross Plains eleven completely confused as the game drew to an end, and on the final play of the tilt Tailback Ben Cate passed to Clyde Evatt for 25 yards and a score. Penalties Mark Game The game was marked by penalties. Cross Plains — apparently mad at the world — had 95 yards marked off against them, with five roughing and clipping penalties going into the books. Heralded Bill Sipes, a converted 215 pound tackle, was hard to handle from his fullback spot, but the real hero for Cross Plains were Halfbacks Jerry Foster and David Jennings. For Eastland, the big surprise was the power running of Clyde Evatt, who for the first time pulled into the backfield in Coach Shelton's always changing spread. The Sheltonmen used three tailbacks during the night, with Billy Unchurch holding the most most of the time. Evatt and Cate both got in for their share of the one-man-backfield duty late in the game, however. Buffs Score First Cross Plains scored first in the initial period of play when Eastland's weak pass defense crumbled. Sipes was the boy who got credit for the tally as he took it over from the five, but the play that set up the touchdown was a 46 yard aerial from Quarterback

Plains' scoring at 26 points. Eastland wasn't through playing ball however. Facing a clock that wouldn't stop ticking off the final seconds of the game, the Mavericks put together a drive, that in 10 plays, gave them a hard earned tally. The score came on the last play of the game when Cate passed beautifully to Evatt in the endzone from 25 yards out. The same combination, Cate to Evatt, payed off on the extra point drive. Eastland missed the services of Larry Tankersley who was expelled from the game early in the first quarter, when he gave back what a Cross Plains lad to offer. Lupe Herrera, Neil Edwards, Leo Smith, Roy Don Harris, Evatt, Charles Cook, Cate, Jack Akers, Terry Warren, Carl Freeze, Dale Flattom, Larry Graham and Phillips were the boys who can take credit for almost all of Eastland's defensive work. The Mavs take on Dublin, who can lose the game and still win district, next Friday in Dublin. Game In Figures EASTLAND CROSS PLAINS 12 First Downs 20 65 Yards Rushing 319 15 Passes Attempted 3 4 for 58 Passes Comp. Yd. 2 for 64 0 Passes Int. By 1 0 Fumbles Lost 1 2 for 33 Punts, Avg. 1 for 38 15 for 35 Penalties, Yds. 9 for 95

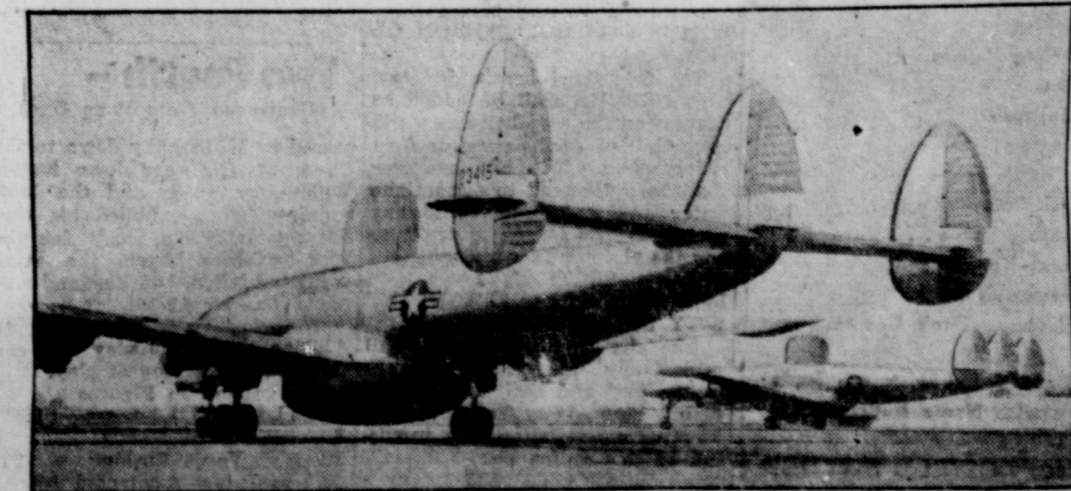
TWO FOURTH PERIOD SCORES GIVE B-MAVS 19-18 VICTORY

A second half comeback that netted the Eastland High School B-MAVS 19 points, gave the locals a one point victory over the Cisco Lobo B team Thursday afternoon in a Veterans' Day grid clash at Maverick Stadium. Eastland used the good passing arm of Quarterback J. C. Jarrett and the able receiving of End Mike Tuggle and Fullback David Willoughby to pull the game out of the loss column. Tuggle was the big surprise of the afternoon. The ball snugging end came into the game as a substitute in the third period of play and caught every toss Jarrett could get near him to set up the B-Mavs first touchdown, after the locals had fallen behind 12-0 at halftime. The Mavs drove 87 yards in nine plays to get back into the game. Left Tackle Gene Reagan jumped on a Cisco fumble on the Eastland 13 to halt a Cisco drive and set up Eastland's first scoring thrust. Jarrett passed to Willoughby out to the 20 and then to Tuggle to the 29. He then hit Stoker with a toss at the 31 and failed to convert to end Cross found Tuggle loose on the 41. Again the Jarrett-Tuggle combination paid off, this time pushing the ball to the Cisco 20. From there Jarrett hit Willoughby on the 10 with a perfect peg and the big back powered his way the final 10 yards to paydirt. Stoker's extra point try was blocked. Cisco had scored twice in the second quarter to move out front 12-0. McCannless went over from the 10 for the first tally and then raced 70 yards for the next score. The Mav-B's went out front for the first time deep in the third quarter when the middle of the Eastland line trapped the Lobo punter back on his own six yard line on fourth down. From that point, Jarrett carried to the one on a beautiful scamper after being apparently downed back on the 10, and Willoughby smashed over on next down. This time, Jarrett attempted to pass to Stoker for the extra point, but the ball bounded out of his arms into the hands of Halfback Don Lee to put the Mavs ahead 13-12. Cisco didn't stay behind long, however. Faced by McCannless, the Lobos moved the ball 76 yards in six plays into paydirt, with Butler going over from the one. Again the extra point try was no good however. Eastland was not to be denied, though. Taking over on their own 43 following the kickoff, Jarrett (Continued On Page Two)

W. H. Cooper Is Reported To Be Improved

W. H. Cooper, who was hurt in an accident North of Cisco Tuesday evening, is reported to be improving and was released from the Eastland Memorial Hospital Friday. Cooper's cattle truck got stuck in the mud, following the rain, and a wrecker was called. Meanwhile another truck stopped to try to be of assistance. When the wrecker hooked on and made the pull, the chain attached to the winch slung out hitting Cooper on the shoulder and neck. The blow also knocked down the other man but he was not injured.

Installment Loans Custom Made For Each Customer EASTLAND NATIONAL BANK Member F. D. I. C.



BUMPS OF KNOWLEDGE—They're humpbacked and potbellied, but these specially equipped Constellations have perhaps the keenest eyes in the sky. The bulges are jam-packed with radar equipment and the planes, which are designed to cruise for 24 hours at a stretch, are part of the joint U. S.-Canadian network now under construction. They'll be used in conjunction with surface units operating off the nation's coastline to guard against surprise attack.



FOOTBALL SWEETHEART—Jeannie Pittman, daughter of Mr. and Mrs. J. D. Pitman, 1007 South Daugherty, was crowned Football Sweetheart Friday night during halftime activities at the Eastland-Cross Plains football game. Jeannie was selected by the Maverick team. (Photo by Canaris)

W. H. Cooper Is Reported To Be Improved



Your New Car Financed At Low Bank Rates With Your— EASTLAND NATIONAL BANK Member F. D. I. C.

Eastland Telegram

Eastland County Record established in 1931, consolidated August 31, 1951. Chronicle established 1887. Telegram established 1923. Entered as second class matter at the Post Office at Eastland, Texas under the act of Congress of March 3, 1879.

O. H. DICK, Manager
TIMES PUBLISHING COMPANY
Published Tri-Weekly—Tuesdays—Thursdays—Sundays
O. H. Dick and Joe Dennis, Publishers

One week by carrier in city .15
One month by carrier in city .45
One year by mail in County 2.95
One year by mail in State 3.95
One year by mail out of State 5.95

NOTICE TO PUBLIC—Any erroneous reflection upon the character, standing or reputation of any person, firm or corporation which may appear in the columns of this newspaper will be gladly corrected upon being brought to the attention of the publishers.

Classified Ads..

SPECIAL NOTICES

LODGE NOTICE
Stated meeting R. A. chapter No. 403 meets on fourth Thursday of each month.
L. E. Huckabay, H. P. H. P. Pentecost, Sec.

Regular meeting Tuesday night 8 p. m.

Regular meeting each Friday 7 p. m.
Paul Taylor, Noble Grand
H. C. McAdams, Vice Grand
S. W. Howell, Secretary

Stated meeting Eastland Lodge No. 467, Second Thursday each month, 7:30 p. m.
Wayne Jackson, W. M.
H. P. Pentecost, Sec.

RENTALS
FOR RENT: Nice, clean furnished apartment with garage. 302 E. Main.

FOR RENT: Furnished apartment. Phone 9520. Hillside Apartments.

FOR RENT: Unfurnished, newly decorated, one and two bedroom apartments, garages, phone 465.

FOR RENT: Nice clean rooms. \$5.00 per week. Eastland Hotel.

FOR RENT: Four room nicely furnished apartment, private bath, garage. Phone 854-J.

FOR RENT: Furnished three room apartment with bath. 307 N. Lamar.

FOR RENT: Five room unfurnished house. 1306 S. Bassett.

FOR RENT: Downtown, upstairs apartment, furnished, \$10. week, bills paid. Phone 692.

FOR RENT: Six room unfurnished house. 304 West White, Phone 446-J.

FOR RENT: Small house close in. Ideal for couple. Unfurnished. Phone 681.

FOR RENT: Two room furnished apartment, private bath. 209 N. Lamar.

LOST & FOUND
LOST: Bucherer Yellow Gold Wrist watch with yellow gold band at ballgame Tuesday night. Call 18 Telegram 601 or 230W after 5 p. m.

**T. L. FAGG
R. L. JONES**
REAL ESTATE
Property Management
Home and Farm Loans

FARMS - RANCHES
Pentecost & Johnson
REAL ESTATE
City Property

**FREE!
\$24.95 CHEST**
if you trade in your old cleaner now on a
New LEWYT on big wheels
Handsome cedarized chest is worth every cent of \$24.95 — stores your Lewyt, woollens, toys — doubles as a TV bench! But, best of all, you get the amazing Lewyt Vacuum Cleaner that rolls everywhere you clean... Rolls with all tools! Gives you instant dust disposal. New power. Allergy-proof filter system. Plus much more! Save now!

**Hamner
Appliance Store**
205 So. Lamar Phone 623

LEGAL NOTICES

AN ORDINANCE

AN ORDINANCE REGULATING THE HAULING AND DISPOSAL OF WET GARBAGE AND DRY GARBAGE; REQUIRING ALL CITIZENS TO PLACE GARBAGE IN METAL CANS; REQUIRING ALL GARBAGE TO BE HAULED AND DISPOSED OF BY THE CITY SANITARY DEPARTMENT; PRESCRIBING RATES TO BE CHARGED FOR THE HAULING AND DISPOSAL OF GARBAGE; CONTAINING VARIOUS DEFINITIONS; PRESCRIBING A PENALTY OF NOT LESS THAN FIVE DOLLARS NOR MORE THAN TWO HUNDRED DOLLARS FOR EACH VIOLATION HEREOF; CONTAINING A SAVING CLAUSE AND DECLARING AN EMERGENCY.

BE IT ORDAINED BY THE CITY OF EASTLAND, TEXAS:

SECTION I

DEFINITIONS:
(A) The words "Wet Garbage" shall be held and construed to mean all animal or vegetable matter such as waste material from kitchens, grocery stores, butcher shops, restaurants, cafes, hotels, rooming and boarding houses, such as scraps of meats, bread, bones, peelings of fruits and vegetables.

(B) The term "Dry Garbage" as used herein shall be held and construed to mean refuse trash rubbish such as feathers, coffee grounds, tin cans, paper, boxes, glass, ashes, cinders, rocks, old clothes and shoes, broken dishes and utensils, old iron, tin, zinc and all kinds of junk and useless material and waste of every description, including grass shrubs and tree trimmings and cuttings.

SECTION II

ALL WET GARBAGE REQUIRED TO BE PLACED IN TWENTY GALLON METAL GARBAGE CANS; ALL DRY GARBAGE REQUIRED TO BE PLACED IN METAL CANS NOT LARGER THAN THIRTY GALLONS CAPACITY.

Each owner, occupant, tenant or lessee using any residence, building or other structure in Eastland shall keep and maintain at a convenient place an adequate twenty gallon garbage can or cans sufficient to hold all wet garbage coming from said residence, building or other structure, which can or cans shall be equipped with a lid and kept covered at all times.

When necessary each such person shall likewise keep and maintain sufficient cans of not more than thirty gallon capacity with lids to hold all dry garbage, the same to be kept at a convenient place for collection.

SECTION III

ALL GARBAGE TO BE COLLECTED BY CITY SANITARY DEPARTMENT; ALL PRIVATE COLLECTION FOR HIRE BEING PROHIBITED EXCEPT AS PERMITTED HEREIN.

All garbage shall be collected by the city sanitary department. It shall be unlawful for any person, firm or corporation to pick up garbage in the city of Eastland except where such is done in a manner approved by the City Manager.

SECTION IV

RATES TO BE CHARGED FOR THE HAULING AND DISPOSAL OF GARBAGE:
The monthly charge for the gathering and removal of all garbage, trash and rubbish in Eastland shall be as follows:

(1) Residential rate:
(a) Each single dwelling unit \$0.75
(b) Each duplex or apartment consisting of one unit, .75
(c) The second unit in a duplex or apartment, .50
(d) The third and all additional units in a duplex or apartment, .50

(2) Commercial rate:
The city manager shall set up three classes of commercial users based on his observation of the amount of garbage collected at each commercial location and shall assess an equitable monthly charge within the range pertaining to each class as follows:

(1) Class 1: Small amounts, not less than \$1.00 and not more than \$5.00 each month.
(2) Class 2: Medium amounts, not less than \$5.00 and not more than \$10.00 each month.
(3) Class 3: Large amounts, not less than \$10.00 and not more than \$15.00 each month.

The city manager may from time to time when the facts justify change the rate class of any particular commercial establishment.

SECTION V

MANNER OF COLLECTION OF FEE:
The fees fixed herein for garbage collection shall be added as charges on the monthly water and sewer bill of each person or firm owing same. The city manager shall be authorized to discontinue water and sewer service to any person or firm failing promptly to pay the charges so made.

SECTION VI

PERIODIC INSPECTION BY CITY SANITARY OFFICER:
The city sanitary officer shall periodically inspect all premises in the city and shall file a complaint in the city court against any person violating any provision of this ordinance.

SECTION VII

CONTROL OF HAULING BY INDIVIDUAL TO DUMP GROUND:
Citizens may haul garbage to the city dump ground by securing

SECTION VIII

PENALTY:
Any person or persons, firm or corporation who violates any of the provisions of this ordinance shall be deemed guilty of a misdemeanor and upon conviction shall be fined not less than Five Dollars (\$5.00) nor more than Two Hundred Dollars (\$200.00) for each offense, and each violation hereof shall be deemed a separate offense.

SECTION IX

SEVERABILITY:
Should any Section, Paragraph, Sentence, Clause or Phrase of this ordinance be declared unconstitutional or invalid for any reason, the remainder of said ordinance shall not be affected thereby.

SECTION X

EMERGENCY:
The fact that there is not an adequate garbage ordinance on the books of the City of Eastland whereby the collection and disposal of garbage can be properly controlled and handled, which situation is dangerous to the health and general welfare of the citizens of Eastland, creates an emergency requiring the rule making it necessary that ordinances be read at three separate meetings be suspended and the same is hereby introduced as an emergency ordinance.

PASSED AND ADOPTED ON THIS THE 11 DAY OF NOV., 1954.

Geo. L. Davenport
Mayor

ATTEST:
A. E. Taylor
City Secretary.

College Dean Will Head Knothole Gang

R. L. Willis, dean of students at Ranger Junior College will get stern loyalty test tonight when the Rangers meet Henderson Junior College.

The head coach at Henderson is also named Willis, Leland to be exact, and the two handles happen to stem from the same blood line — they are father and son.

Leland, the son, began his college coaching career only this year, after coming up from Fairfield High School.

R. L. Willis, the father, when asked which side he would be cheering, grinned and answered that he would be content with a large knothole at one of the dark ends of the stadium.

"Truthfully though," he said, "I'll be sitting on the Ranger side, however, I have two sons and a daughter who will attend the game, and they will be facing me from across the field."

Curtain -

(Continued from Page One)

for serving as chairman for costumes, and her assistants, Mmes. Curtis Koen, Vernon Humphrey and Frank Hightower. And to Jack Chamberlain for acting as manager.

"We sure am pleased with the script you write for us to, Miss Ruby, and for the work you done went and turned in to teach us all, these here directions."

"Well thank you Butch. Maybe we should tell the folks that they can get their tickets to the show from any Quarterback Club member or at the High School Auditorium where the minstrel will be held Monday and Tuesday nights. The show starts at 8 sharp, doesn't it interloctor?"

"Yes it does Miss Ruby. I've noticed a few of the readers out there don't recognize all of us, either. Maybe we should introduce ourselves."

"You're right. As I call your real name and stage names all of you take a bow, okay? Good then. I'm Miss Ruby, or Marene Johnson, and this fellow on my right is James Wright, the interloctor; next to him is Mrs. Andy Taylor, Miss Candy; then there's Wendell Siebert, Sasfrass; Milton Hunt, Flap Jack; Wayne Jackson, Pepper; Frank Hightower, Kilowatt; Jimmie Watson, Reaney; Grady Hoyle, Little Brother; Carrol Shelton, Ham Bone; Jim Ewart, Butch; Andy Taylor, Rabbit; Tom Lovelace Jr., Transport No. 2; B. J. Levins, Uncle Birgun; Marvin Nash, Pones; Jack Chamberlain Jr., Snowball; John Lively, Bogie; and James Reid, Snake Eye. What do you say gang?"

"We'll see ya Monday night!"

Two Fourth -

(Continued from Page One)

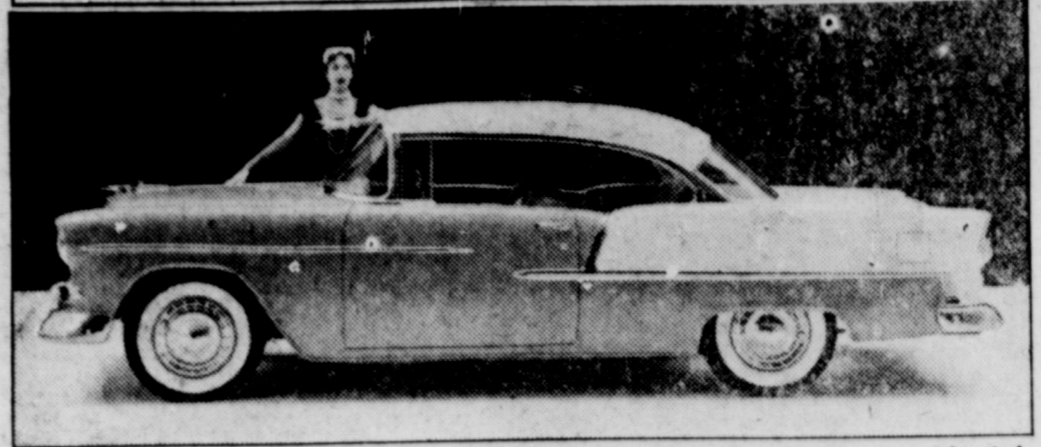
passed to Willoughby down to the Cisco 43. On next down he hit Willoughby again and the hard running fullback bulled his way the remaining 20 yards for the winning score. Again the extra point try failed, but Eastland was ahead to stay 19-18.

The Mav-B's will journey to Abilene next Thursday to end their regular season of play.

Game In Figures

EASTLAND CISCO
8 First Downs 12
32 Yards Rushing 227
26 Passes Attempted 5
10 for 162 Passes Com., 0 for 0
2 Passes Int. By 2
0 Fumbles Lost 1
4 for 22 Punts, Avg. 1 for 35
2 for 30 Penalties, Ydg. 7 for 45

Two-Tone Styling Adds Sparkle to Sport Coupe



Certain to share the beauty spotlight in Chevrolet's latest line of passenger car models is the Bel Air sport coupe, completely re-styled for 1955. Among noteworthy features in the above view are increased vision through the new sweep-sight windshield, and the effect of fleetness imparted by chrome molding strips. This special two-tone color styling will be available on Bel Air sport coupes and convertibles among the 14 models.

COURTHOUSE NEWS AND RECORDS

Real Estate Transfers, Marriages, Suits Filed, Court Judgments, Orders, Etc.

INSTRUMENTS FILED

County Clerk's Office
Frank C. Boyce to Gladys L. Barron, release of deed of trust. Allied Bldg. Credits, Inc. to James Brock, release of MML. Addie Baker to Grover C. Jennings, warranty deed.

L. D. Belyeu to Standard Oil Company of Texas, oil and gas lease. J. B. Barnes to John W. Seaton, assignment of oil and gas lease.

S. M. Bressler to Standard Carbon Company, assignment of oil and gas lease. Charles E. Beck to Abilene Savings Assn., deed of trust.

W. D. Broughton to R. L. Coffee, warranty deed. A. C. Baker to Eastland National Bank, transfer of vendor's lien.

City of Ranger to The Public, city ordinance. Mrs. Fay Coats to J. M. Nichols, warranty deed.

Helen R. Crawford to Veterans Land Board, warranty deed. Consolidated Oil Develop. Co. to Standard Carbon Co., assignment of oil and gas lease.

Clarke P. Chandler to Schlumberger Well Surveying Corp., MML. W. T. Casey to R. P. Rose, warranty deed.

Nelson Desendorf to Floyd W. Holder, assignment of oil and gas lease. Frank Diller to Max E. McCotter, assignment of oil and gas lease.

Estella Myrick Duncan to W. H. Kuykendall, release of vendor's lien. Sarah Elizabeth Doss to W. T. Casey, quit claim deed.

Franklin Life Insurance Co. to J. A. Schlueter, release of deed of trust. Anna Belle Fortune to James F. Coker, quit claim deed.

Bert Fields, Jr. to Eva C. Hilgenberg, release of oil and gas lease. Robert W. Fox to Walter Lafoon, oil and gas lease.

First Federal S & L Assn. to Eastland National Bank, transfer of deed of trust. First National Bank, Cisco to A. C. Baker, transfer of vendor's lien.

Mrs. Marie Gilman to Hugh Chief Brown, warranty deed. Welford P. Guinn to Paul Price, Jr., warranty deed.

Dora Gober to Gene A. Blackburn, warranty deed. Larry Griffith to Charles E. Beck, warranty deed.

B. F. Gilchrist to S. H. Maynard, release of oil and gas lease. Fern Gossett to Standard Oil Company of Texas, oil and gas lease.

Hickok & Reynolds, Inc. to Lucie E. Harrell, release of oil and gas lease. C. E. Higginbotham to S. H. McCannies, warranty deed.

K. M. Hendricks to Victor Cornelius, oil and gas lease. Floyd W. Holder to Rose Rudman, assignment of oil and gas lease.

Pearl Emily Harris to Eastland National Bank, assignment of VL. Joseph Schaller to Floyd W.

Welford P. Guinn to Paul Price, Jr., warranty deed. Jerry W. Sitton to Edmond C. DeMontel, oil and gas lease.

Allie Seay to Standard Oil Company of Texas, oil and gas lease. Joseph Schaller to Floyd W.

Welford P. Guinn to Paul Price, Jr., warranty deed. Jerry W. Sitton to Edmond C. DeMontel, oil and gas lease.

Allie Seay to Standard Oil Company of Texas, oil and gas lease. Joseph Schaller to Floyd W.

Welford P. Guinn to Paul Price, Jr., warranty deed. Jerry W. Sitton to Edmond C. DeMontel, oil and gas lease.

Allie Seay to Standard Oil Company of Texas, oil and gas lease. Joseph Schaller to Floyd W.

Welford P. Guinn to Paul Price, Jr., warranty deed. Jerry W. Sitton to Edmond C. DeMontel, oil and gas lease.

Allie Seay to Standard Oil Company of Texas, oil and gas lease. Joseph Schaller to Floyd W.

Welford P. Guinn to Paul Price, Jr., warranty deed. Jerry W. Sitton to Edmond C. DeMontel, oil and gas lease.

Allie Seay to Standard Oil Company of Texas, oil and gas lease. Joseph Schaller to Floyd W.

Welford P. Guinn to Paul Price, Jr., warranty deed. Jerry W. Sitton to Edmond C. DeMontel, oil and gas lease.

Allie Seay to Standard Oil Company of Texas, oil and gas lease. Joseph Schaller to Floyd W.

Welford P. Guinn to Paul Price, Jr., warranty deed. Jerry W. Sitton to Edmond C. DeMontel, oil and gas lease.

Allie Seay to Standard Oil Company of Texas, oil and gas lease. Joseph Schaller to Floyd W.

Welford P. Guinn to Paul Price, Jr., warranty deed. Jerry W. Sitton to Edmond C. DeMontel, oil and gas lease.

Allie Seay to Standard Oil Company of Texas, oil and gas lease. Joseph Schaller to Floyd W.

Joseph R. Carlisle v. Boyce Archer, for collection of debt.
Dorothy Louise Pryor v. Howard P. Pryor, divorce.
Johnnie Lou Johnson v. Wallace D. Johnson, divorce.
Charles Preston v. Linda Sue Preston, divorce.
ORDERS AND JUDGMENTS
91st District Court
Zelphia Adcock v. Jack Adcock, judgment.
Jean Bosworth, et vir v. Mrs. J. L. Scitern, order to withdraw.
The State of Texas v. George D. Stephens, order.
The State of Texas v. James C. Putnam, motion to dismiss.
James A. Bentley, et al v. R. F. Duggan, et al, order setting hearing.
Alma Mae Quinn v. Guy S. Quinn, Jr., judgment.

Seaman Pelfrey Is Injured In Auto Accident

Word has been received here of the serious injury of Duane C. Pelfrey, Seaman 1-c, in Memphis, Tenn. Pelfrey suffered a broken back and numerous cuts and bruises when the car in which he was riding went over a 30-foot embankment. He will be confined to a hospital for five or six months. Pelfrey is the son of Rev. and Mrs. J. C. Pelfrey, formerly of Staff. He is the grandson of Mrs. Rosa Bishop of Eastland. He attended Eastland High School and Cisco Jr. College.

Call 601 For Classified Ad Service

FOR SALE MINNOWS

J. O. WHISENAT
OLDEN, TEXAS

It's grand as a sauce... a salad dressing and a spread!



Made by KRAFT from the one and only MIRACLE WHIP and special pickle relishes

Miracle Sandwich Spread

There is no Such Thing... as a "bargain" in insurance. Along with every other commodity you get what you pay for and no more. John Ruskin once said "there is hardly anything in the world that some man cannot make a little worse and sell a little cheaper and the people who consider price only are this man's lawful prey." Ruskin was right. Whatever you buy, buy the best. If it's insurance you can't go wrong by buying from a local agent who is as near to you as your telephone when you need him.

EARL BENDER & COMPANY

Eastland (Insurance Since 1924) Texas

DIXIE Drive-In

EASTLAND RANGER HIGHWAY

Box Office Opens 6:30
First Show 6:45
Second Show 9:00

Each Tuesday is Bargain Night - Adults 25c
Admission 50c - Children Under 12 Free

FRIDAY & SATURDAY, NOVEMBER 12 - 13

WOMAN THEY ALMOST LYNCHED
HERBERT J. YATES PRESENTS
A REPUBLIC PICTURE
PLUS: Color Cartoon and Sports Reel

SUNDAY - MONDAY - TUESDAY, NOV. 14 - 15 - 16
Tuesday Is Bargain Day—Adults 25c
Children Under 12—FREE

GORILLA AT LARGE
A PANORAMIC PRODUCTION
Directed by 16th Century
PLUS: Color Cartoon and Sports Reel

JOY DRIVE-IN

CISCO - EASTLAND HIGHWAY

Friday - Saturday

Francis JOINS THE WACS
Donald O'CONNOR
Plus
Robert MITCHUM Jane GREER

OUT OF THE PAST

Sunday - Monday

BOB HOPE HERE COME THE GIRLS
Arlene DAHL
Tom MARTIN
Rosmary CLOONEY

DANGEROUS MISSION

PALACE

THEATRE - BY CISCO, TEXAS

Friday - Saturday

THE BOURNEN BOW MEET THE MONSTERS
Leo GORCEY
Huntz HALL

Plus
Vigilante Terror
Sun. - Mon. - Tues.

BROKEN LANCE
CINEMASCOPE

For
MONUMENTS
Of Distinction
Call
MRS. ED AYCOCK
Our years of experience enables us to give you prompt and courteous service.
See display at 206 Ave. E. or call 183 for appointment
Ciaco

Court of Civil Appeals Eleventh District

Affirmed
3117 George M. Rogers, vs. D. D. Kolp, et al. (Opinion by Judge Grissom). Eastland
Reversed and Appellant's Plea of Privilege Ordered Sustained
3114 United States Steel Corporation vs. Strong Drilling Company. (Opinion by Judge Grissom). Stephens
Reversed and Remanded
3107 Sidney A. Johnson, et ux vs. Weldon Johnson, et al. (Opinion by Judge Collins). Scurry

Motions Submitted
3105 Ailene Griffin, et vir vs. Leonard Camp, et al. Appellants' motion for rehearing. Taylor
3161 Westwood Development Company, et al vs. City of Abilene, Texas. Appellee's motion to file briefs. Taylor

3163 H. P. Allison, et al vs. R. E. Smith, et al. Appellants' motion for extension of time to file State of Facts. Scurry

3164 Texas Employers' Insurance Association vs. Luther G. Sevier. Appellant's motion for extension of time to file record. Borden

Motions Granted
3161 Westwood Development Company, Inc. et al vs. City of Abilene. Appellee's motion to file briefs. Taylor

3163 H. P. Allison, et al vs. R. E. Smith, et al. Appellants' motion for extension of time to file Statement of Facts. Scurry
3164 Texas Employers' Insurance Association vs. Luther G. Sevier. Appellant's motion for extension of time to file record.

Motions Overruled
3105 Ailene Griffin, et vir vs. Leonard Camp, et al. Appellants' motion for rehearing. Taylor

Cases Submitted
3128 Germania Mutual Aid Association vs. Henry A. Schaefer. Eastland

3129 Western Cottonoil Co. vs. Fred J. Precheen, et ux. Taylor
3130 Western Cottonoil Company vs. Bessie Alexander. Taylor

3131 Simon Terrazas vs. R. T. Carroll. Scurry
3132 W. O. Henderson, et al vs. Otto Couch, et al. Howard

Cases Set For Submission November 12, 1954
3161 Westwood Development Company, et al vs. City of Abilene, Texas. Taylor.

Cases Set For Submission November 19, 1954
3133 Monday Independent School District vs. County Board of Trustees of Knox County, Texas, et al. Knox

3134 York Supply Company, et al vs. Dunigan Tool & Supply Company. Stephens

3135 Gulf, Colorado & Santa Fe Railway Co. vs. Earl R. Deen. Brown

3136 Barney McKinney vs. Calvert Fire Ins. Co. Dawson

3141 J. M. Duhose, et ux vs. Abilene & Southern Railway Company. Jones.

BUFFALO, N. Y. — Wire pulling, with an assist from silicon carbide, is helping move mountains. High speed wire saws, with the aid of abrasive grit, cut stone in New England quarries. They cut 40 ton granite blocks twice as quickly as the old circular saw method, according to a spokesman of the Electro Refractories & Abrasives Corp.



NICE TOUCH—Jeanne Subert is "Miss Typist of 1953" in Paris, France, and to prove it she poses with a typewriter backstage at the world-famous Moulin Rouge cafe, where the beauty-1, p. 8 contest was held.

CALL 601 FOR CLASSIFIED AD SERVICE

NOW WITH NEW NYLON OFFER!



Tender, delicious
MACARONI-AND-CHEESE
home cooked in 7 minutes!

MOBIL 210
Stays 34% Stronger
Lasts 14% Longer
At the Sign of the FLYING RED HORSE
W. Q. VERNER Phone 64 Eastland



Groucho Views Another Old Relic

"What are you trying to do, ruin me," says Groucho Marx. But take it from Groucho, the new De Soto for '55 makes everything else look like a museum piece. You'll see nothing newer this year than the Styled-for-Tomorrow '55 De Soto. Remember, De Soto is coming to your De Soto dealer's November 17. Don't you miss it!

'55 DE SOTO ON DISPLAY WED., NOV. 17

Office Supplies
GET THEM AT
EASTLAND TELEGRAM OFFICE

Your Eastland Office Supply Store!

- CARBON PAPER
- PENCILS
- BOXED PAPER
- BOX FILES
- LARGE WASTE BASKETS
- STAPLERS
- STAPLES
- BUSINESS RECORDS
- CARD FILES
- DESKSIDE FILES
- TYPEWRITER TABLES
- STAMP PADS
- LISTO PENCILS
- ESTERBROOK PENS
- TYPEWRITER RIBBONS

Hundreds Of Other Items Come See!



MARY WORTH'S FAMILY

KERRY DRAKE

He restoreth your soul... Worship together this week



'The Whole Gospel' To Be First Methodist Morning Sermon Topic

"The Whole Gospel" will be Rev. Jackson C. Oglesby's morning sermon topic Sunday at the First Methodist Church. Morning worship begins at 10:50, following Church School for all ages at 9:45. C. G. Stinchcomb is superintendent. Methodist Youth Fellowship meets at 6:45. The Seniors will be led by Lou Ann Corbell using the subject "Going Steady." The Intermediates will have Glen Lively for their leader and the discussion is "Pray For What Concerns You." Mrs. W. J. Moylan and Miss Loretta Morris will be hostesses for the young people after the evening service. Evening Worship at 7:30 with sermon by the pastor on "Accepting The Challenge." Song service directed by Wendell Siebert. The Woman's Society of Christian Service will meet at the

church Monday at 2:30 to hear reports from the Conference Journal by Mrs. Clyde Young, and World Federation of Methodist Women, by Mrs. Henry Van Geem. Cisco District Youth Retreat is being held at Glen Lake this weekend. Among those attending from our church are Mrs. J. C. Oglesby, Mrs. A. E. Cushman, Emma Lee Miller, Alice Cushman, Ellen Whitley, Janis Little, Don Smith and Bill Smith. Bible Study and choir rehearsal on Wednesday at 7:30 p.m. A Fine Arts program will be given in the auditorium of the Methodist Church Friday evening at 7:30, with a reception in the church parlor immediately following. Everyone is cordially invited.

Fishing Tackle Taxes Promote Sport Projects

WASHINGTON, D. C. — A ten per cent excise tax on fishing rods and reels and artificial lures provides \$4 million annually in federal aid to the states for projects designed to improve sport fishing. Why not extend the tax to live baits as well — such common and popular fish-getters as minnows, shrimp, worms and crickets — and thereby expand the conservation program? This proposal, advanced by Charles ("Chuck") Schilling, Florida outdoor writer and conservationist, is being studied by the National Wildlife Federation and other organizations. Schilling, who doubles in journalistic brass as fishing editor of Florida Wildlife magazine and outdoor editor of the Stuart (Fla.) News, also serves as conservation director of the Florida Wildlife Federation. Last year he was awarded the Florida State Chamber of Commerce gold medal for his work in the conservation field.

Writing in the Stuart News, Schilling pointed out that the production and sale of live bait has become big business — "a full-fledged partner in the fishing tackle industry." "The artificial lure helps support the natural resources it exploits," Schilling said. "The live bait does not." "We should give the live bait industry, and the anglers who use its products, an equal opportunity to sustain the fisheries resource." The Federal aid program for sport fisheries was established by Congress in 1950 when it passed a law known as the "Dingell-Johnson Act," named for its co-sponsors, Congressmen John Dingell of Michigan and Senator Edwin C. Johnson of Colorado. The funds are apportioned on the basis of the number of fishing licenses issued and the area of each state. Dingell-Johnson projects, administered by the State game and fish departments, have included construction of lakes and ponds, stream improvements, research and other activities.

HASTINGS, Neb. — Members of a grade school class were asked by the teacher to recite their favorite mottoes. One little girl, probably speaking from experience, answered, "If at first you don't succeed, cry, cry, again."

Church of God Services For Week Announced

The Church of God's morning services are held at 11 a.m. each Sunday and Sunday School begins at 10 a.m. Rev. W. E. Hallenbeck is pastor. Youth Fellowship is held Sunday at 6:30 p.m. and evening worship begins at 7:30. Mid-week prayer service is held each Wednesday at 7:30 and the Ladies meeting is held Friday at 3 p.m. thee with singing."

Services For Week At Church Of Nazarene Told

Morning worship services at the Church of the Nazarene will begin at 11 a.m. Sunday following Sunday School at 10 a.m. Rev. Lonnie M. Voorhies is pastor. Young People's Service is held each Sunday at 6:45 p.m. and Evangelistic services begin at 7:30. Midweek prayer services are held at 7:45 p.m. on Wednesdays.

Margaret Truman, daughter of the former President, says she expects to take the stump for the Democratic Party during the fall campaign.

Peng Chen, deputy director of the Communist Party in Red China, is believed to have set the stage for a new purge. A speech, monitored in Tokyo, indicated that all is not well in the party's ranks.

Eastland Catholic Church Services Are Announced

On the first and third Sundays, Holy Mass at 9:30 at the Eastland Catholic Church. On the second, fourth and fifth Sundays, Holy Mass at 11 a.m. Benediction of the Blessed Sacrament follows each 11 o'clock Mass. Catechism instructions for children are given in church each Tuesday after school. Holy Mass every Wednesday morning at 7.

Rev. Marshall To Preach At First Christian

"When A Strong Man Discovers God" will be the morning sermon topic of Rev. Marshall Sunday at the First Christian Church. Morning worship services begin at 11 a.m. following Church School at 9:45 for all ages. Evening worship begins at 7:30. The message for the service will be a word picture of Christ given by John. The sermon will be titled "Christ The Son of Man."

Rev. Dangeau To Preach At First Baptist

Rev. Orvind Dangeau will preach Sunday at the First Baptist Church. Morning worship services begin at 11 a.m. following Sunday School at 9:45. Evening worship begins at 8 p.m. Prayer meeting is held Wednesday night at 8.

Assembly of God Services Are Announced

Morning worship at the Assembly of God begin at 11 each Sunday morning, following Sunday School at 9:45. Rev. Sam O'Toole is pastor. Evangelistic services are held at 7:30 p.m. each Sunday. Wednesday evening prayer meeting is held at 7:30 and the Ladies Prayer Meeting and Special Bible Study is held at 10 a.m. each Friday morning. Young Peoples Service is held at 6:30 p.m. Sunday.

More than 30,000 French Union troops who fought in Indo-China are still unaccounted for, according to Gen. Paul Ely, French commissioner-general in Indo-China.

Christian Science

The choice between a spiritual basis for happy and abundant living, and a limited material sense of life will be dealt with at Christian Science services Sunday. The Lesson-Sermon, "Mortals and Immortals," is keynoted by this Golden Text from John (3:6): "That which is born of the flesh is flesh; and that which is born of the Spirit is spirit."

Selections to be read on this subject include the following passage from "Science and Health with Key to the Scriptures" by Mary Baker Eddy (p. 76): "The

sinless joy — the perfect harmony and immortality of Life, possessing unlimited divine beauty and goodness without a single bodily pleasure or pain — constitutes the only veritable, indestructible man, whose being is spiritual." From the Bible will be read this verse from Romans (8:6): "For to be carnally minded is death; but to be spiritually minded is life and peace."

Overseas Veterans Welcome Post No. 4136 VETERANS OF FOREIGN WARS Meets 2nd and 4th Thursday 8:00 p.m. Karl and Boyd Tanner

Alex Rawlins & Sons
MONUMENTS WEATHERFORD, TEX.
Serving This Community For More Than 70 Years.

Fall Bargain Offer!
THE ABILENE REPORTER-NEWS
Bigger and Better in 1955!
Family Weekly to Start Jan. 2
One Year Morning and Sunday... **1195**
Daily Only... 10 95
By Mail Anywhere in West Texas
See Your Agent Today!

it's **Christmas Photo TIME!**
CANARIS STUDIO
East Side of Square Phone 46
Delight those who care with a photo of you by our photographers who are truly artists! No appointment needed.

ASTHMA COUGHS
Don't let difficult breathing, coughing and wheezing due to recurring spasms of Bronchial Asthma or simple Bronchitis ruin your sleep and energy without trying MENDACO. Works through your blood to help loosen and remove thick, strangling mucus. This usually allays coughing which permits freer breathing and sounder sleep. Get MENDACO under money back guarantee at druggists.

ANNOUNCING BASHAM ELECTRIC IS BACK ON THE JOB
IN EASTLAND... LOCATED AT 110 NORTH WALNUT — PHONE 304

Groucho Makes Triumphant Entry
Groucho Marx, world famous De Soto salesman, takes Paris by storm with the sensational news that the all-new 1955 De Soto is *ce magnifique!* Don't miss the 1955 De Soto... it's styled for tomorrow. Be sure you see it at your De Soto dealer's November 17th.
'55 DE SOTO ON DISPLAY WED., NOV. 17

The Churches Of Eastland Welcome You

FOOTSTEPS BEFORE AND AFTER PRAYER

"COME TO ME, ALL OF YOU WHO TOIL AND ARE BURDENED, AND I WILL LET YOU REST. LET MY YOKE BE PUT UPON YOU, AND LEARN FROM ME, FOR I AM GENTLE AND HUMBLE-MINDED, AND YOUR HEARTS WILL FIND REST, FOR THE YOKE I OFFER YOU IS A KINDLY ONE, AND THE LOAD I ASK YOU TO BEAR IS LIGHT."
(MATT. 11: 28-30) (GOODSPEED TRS.)

FIRST METHODIST CHURCH Rev. J. C. Oglesby, Pastor	FIRST CHRISTIAN CHURCH Otto F. Marshall, Pastor
Morning Worship 10:50	Bible School 9:45
Evening Worship 7:45	Morning Worship 11:00
Church School 9:45	Evening Worship 7:30
FIRST BAPTIST CHURCH C. Melvin Ratheal, Pastor	FIRST PRESBYTERIAN CHURCH Rev. M. P. Elder, Pastor
Sunday School 9:45	Church School 10:00
Morning Worship 11:00	Worship Service 11:00
Evening Worship 8:00	HOLY TRINITY EPISCOPAL Rev. Arthur E. Hartwell
CHURCH OF CHRIST Austin Varner, Evangelist	Sunday Services 10:00
Bible Classes 10:00	NORTH LAMAR BAPTIST CHURCH Rev. J. D. Fisher, Pastor
Morning Worship 10:50	Sunday School 9:45
Evening Worship 7:00	Morning Worship 11:00
ST. FRANCIS CATHOLIC CHURCH Father C. Boesmans, CICM	Evening Service 7:30
Holy Mass	CHURCH OF THE NAZARENE Rev. Lonnie M. Voorhies
1st and 3rd Sundays 9:30	Sunday School 10:00
2nd, 4th and 5th 11:00	Evening Worship 7:30
ASSEMBLY OF GOD Rev. Sam O'Toole, Pastor	THE CHURCH OF GOD W. E. Hallenbeck
Sunday School 9:45	Sunday School 10:00
Morning Worship 11:00	Morning Worship 11:00
Evening Worship 7:30	Evening Worship 7:45
Training Union 7:00	Mid-Week Prayer Service 7:45

This Series of Church Ads is Being Published Through the Cooperation of the Undersigned, Individuals and Business Institutions

Shultz Photo Studio Portraits - Commercial - Kodak	Smitty Jewelry 106 S. Seaman	Doc Davis Drug ★ Accuracy ★ Dependability	Anderson's Gifts, Women and Infants Wear
Altman's Style Shop 109 W. Main	Muirhead Motor Co. Buick — Pontiac	Pullman Supply Company	

Knights and Ladies Guarantee Christmas For Pythian Home

More than \$100 was contributed to make Christmas for inmates of the Pythian Home Tuesday evening when members of the Pythian Sisters and the Knights of Pythias had annual roll call at Castle Hall.

Roll call was followed by a banquet, carried out in the Thanksgiving-motif. About 90 persons, members of the organization and their families were in attendance.

Each year the organization care for the five children from the Eastland area, as well as contributing toward the Christmas for others of the home.

Porter Woods, Chancelor Commander, was master of ceremonies at the banquet, who with Roy Lane, Don Daniels, and Clyde Fisher had part of the Knight's participation in the program. Rev. Otto Marshall gave the invocation.

In the absence of Mrs. Otto Crabb, most excellent chief, Mesdames Vera Darr, A. M. Hearn and Don Daniels were in charge of the Pythian Sisters roll call and contributions.

The committee on arrangements were Mr. and Mrs. Frank Williamson, Mesdames Vera Darr and Don Daniels.

There is little, if any evidence, to indicate that cancer is hereditary, according to a report made before the annual meeting of the American Cancer Society.

Retail Sales Volume Linked To Education

DALLAS — Education is good business; the more schooling citizens have the better customers they are.

In the light of such facts, established by the U. S. Chamber of Commerce, the U. S. Labor Department's Wage-Hour Division here is urging all boys and girls who have not graduated to return to school this fall.

Furthermore, it hopes that every Texas community will conduct a back-to-school campaign of its own — in its own self-interest.

Regional Director William J. Rogers said pay checks may look good to minors who have been working during their summer vacation, "but they should look ahead — and so should the community in which they live."

Research by the U. S. Chamber of Commerce in 145 American cities shows clearly that the average educational level is directly related to total retail sales — the more schooling, the more sales.

Dallas, for instance, was ranked among the top 19 U. S. metropolitan areas of 250,000 population or more where the average adult has completed between 11 and 12 years of school. These same areas also had the highest retail sales, averaging \$100 per capita.

In other areas of the same population but with lower educational levels, retail sales were down. One area where the population averaged only eight or nine years of schooling, the per capita sales were only \$91.7.

Education, the official said, increases a person's earning power and improves his standard of living. The combination results in more retail sales for the community and more personal satisfaction for the individual.

PERSONALS

Mr. and Mrs. Charles Alford of Dallas were the guests here this week in the home of Mrs. Alford's parents and sister, Mr. and Mrs. J. L. Brashears and Mrs. W. B. Barrow, Dr. Barrow and daughters.

Mrs. Ita Parrish spent the holiday Thursday in Fort Worth with her son B. J. Parrish and family.

HARTFORD, Conn.—A survey of 280 colleges shows that the average yearly cost for students is \$1,361. The Connecticut Mutual Life Insurance Co., which made the survey, says there has been a six per cent increase since 1949.

WOMEN AND WHEELS

Saga of a Battery On a Cold Morning

By Mary Lou Chapman

This is a tale of woe. It takes place on a very cold winter morning. The snow is blowing around the house corners and drifting into the streets. Betty, a young housewife, enters her garage.



She has an appointment with a doctor downtown, in one-half hour. She shivers as she opens her car door, gets in and turns the key in the ignition.

Nothing happens. She doesn't give it a second thought, but tries again, confident that the car will serve her as usual.

After three more tries, she realizes with a sinking feeling that she is without transportation! The car will not start, not even with choking. It's absolutely "dead."

MUST BE THE BATTERY

"Must be the battery," she groans, and remembers that it was a bit hesitant yesterday afternoon. So she must call a taxi instead.

Has this ever happened to you? It has to me. I know of nothing more hopeless than a car that won't run, especially when you are counting on it to get you to an appointment on time.

In Betty's case, this situation could have been avoided. She should have had the battery carefully checked in the fall to see if it would take the strain of winter driving.

The battery of your car is less efficient in winter because the chemical action by which it generates electricity slows as the weather becomes colder. (When

the temperature is 20° F., battery efficiency is down 50 per cent.) At the same time it has to work much harder. The oil in the engine is thicker and harder to move when it's cold. Headlights are used more as days become shorter, and the heater and defroster are on almost constantly.

So the battery is in constant danger of being "over-drawn," or asked for more power than it is able to furnish. If it is in this condition where it is incapable of creating sufficient current, it is also in danger of freezing.

CHECK BATTERY

To avoid Betty's dismay on a freezing morning, be sure your battery is in good condition at the beginning of the winter. Have your garage or service station test it to see if it will take and hold a full charge, and discharge at the proper rate for a quick start. If not, replace it now, not later, after it has let you down.

If it is in good condition, be sure it is kept charged up, so that it won't freeze. Have your gas station check it every few weeks when you stop in for gasoline. If you remember to keep a careful watch over it, your battery should see you faithfully through the winter days ahead.

(Fashion writer, artist, and TV personality, Miss Chapman is a native of Detroit and has spent the last several years working with automobile stylists, designers and engineers at Chrysler Corporation.)

Past Matron's Will Have Their Christmas Party

The Past Matrons of the Order of Eastern Star have cancelled their meeting for November and have planned to meet at 7 p.m. December 9th in the home of Mrs. Claud Bales for their Christmas party and covered dish supper. "Gifts will be exchanged," Mrs. Carpenter, president, said.

DR. O. A. JONES Chiropractor

7 a.m. till 12 noon
210 Pet. Bldg. Eastland

Come in! SEE SPECIAL JUBILEE SHOWING

OF MODERN Electric RANGES



DISC HITS Presented FOR THE WEEK By The

BOP SHOP

110 E. 10th St. Cisco, Texas

1. I Need You Now
2. Hey There
3. This Ole House
4. Papa Loves Mambo
5. If I Gave My Heart To You
6. Hold My Hand
7. Shake Rattle and Roll

BEST SELLING ALBUMS

1. Voices In Modern Four Freshmen
2. The Glenn Miller Story Sound Track
3. The Pajama Game Original Broadway Cast
4. Bing Bing Crosby
5. Unforgettable Nat (King) Cole

Best Selling Country & Western

1. I Don't Hurt Anymore Hank Snow
2. More and More Webb Pierce
3. One By One Kitty Well and Red Foley
4. This Is The Thanks I Get Eddy Arnold
5. This Ole House Stuart Hamblen

Public Shoot To Be Tested In East Texas

AUSTIN — Hunting for big game will be tried this fall on Government owned land in parts of six East Texas counties, under a joint agreement by the Game and Fish Commission and the United States Forest Service.

The deer and turkey harvest will be permitted on three of the five wildlife management areas which are in operation in three of the four Texas National Forests. About 30,000 acres in all will be opened up to the public. Surplus game, besides providing hunting population on lands surrounding the management areas.

In two areas, not open to hunting for the present, protection will be given brood stock needed to maintain a harvestable population in surrounding areas.

Game and Fish laws of the county containing each area will prevail. Local game wardens as well as Forest Service personnel will aid hunters in determining the areas to be hunted, which will be marked with signs.

The three areas to be opened for hunting are:

Alabama Creek Area, 13,500 acres of the Davy Crockett National Forest, four miles southeast of Apple Springs, Trinity County; development begun in 1954.

Bannister Lake Area, 10,000 acres of the Angelina National Forest, twelve miles southwest of San Augustine; development begun in 1954.

Boykin Springs - McGee Bend

Area; 28,000 acres of the Angelina National Forest, twenty miles southwest of Jasper, in Jasper and Angelina Counties; development begun in 1954.

The two management areas not to be opened — repeat not to be opened — are:

Moore Plantation Area; 10,000 acres of the Sabine National Forest, Sabine County, ten miles south of Hemphill; development begun in 1949.

Lake Creek Area, 12,500 acres of the Davy Crockett National Forest, Houston County, twelve miles southeast of Crockett; development begun in 1952.

The Executive Secretary of the Game and Fish Commission said satisfactory results from the opening public shoot would stimulate prospects for development of additional such management areas. He emphasized public cooperation during and between hunting seasons as being the deciding factor.

"The Texas Game and Fish Commission and the United States Forest Service will do everything within their authority to provide something to hunt and a place in which to hunt it," he said, "but without the good will and cooperation of all concerned such advancements for the future will be impossible."

"It must be remembered that privately owned lands are not open to public hunting and permission to hunt thereon must be obtained from the individual landowners. Texas Game and Fish Commission markers have been installed along the outside boundaries of each cooperative development area for identification."

Extra salt added to food during hot weather is essential to health.

ATTENTION PEANUT PRODUCERS...

Reference

TOPPER BRAND PEANUT SEED

THIS IS TO CERTIFY that Durham Peanut Company will guarantee Southwest Spanish Peanut Seed of good germination and at a reasonable price to producers for 1955 planting season as follows:

To the producer who sells his peanut crop to this company, we positively guarantee as stated above, sufficient seed to plant his 1955 quota acres. This guarantee is to expire May 1, 1955.

To the producer who, due to crop failure, has no peanuts to market or the producer who has peanuts to market but does not sell his crop, we guarantee, as stated above, sufficient seed to plant his 1955 quota acres, PROVIDED he comes to our office by December 15, 1954, and makes special arrangements necessary for us to offer him this protection. This guarantee will hold good only until our supply is exhausted.

As you know, Durham Peanut Company has specialized in TOPPER BRAND PEANUT SEED for many years and we are very grateful for the splendid public acceptance of this fine product. We are again making every effort to accumulate sufficient high quality, high germination peanut seed to assure all of our customers throughout our entire trade territory of adequate good quality seed to plant their 1955 quota acreage. This company feels it has a very definite responsibility to see that our entire planting area is supplied with good quality seed and we are entering the season with a full realization of this responsibility at the same time asking the wholehearted cooperation of every producer to the end that there will be ample seed for himself and his neighbors.

To the producer who does not care to avail himself of the protection afforded him under the above outlined plan, please rest assured that this company will make every effort to furnish your 1955 seed requirements; however, we must depend upon our buying for our seed stock and hope that you will cooperate with us in our all-out effort to acquire sufficient tonnage from which to select your seed, by selling your peanuts to this company.

PAT CAGLE, President

DURHAM PEANUT COMPANY, INC.

COMANCHE, TEXAS

Look

Beginning November 11 through the 25th we will give B&B Discount Stamps on each used car sold.

'46 BUICK Super 4-Door Sedan. Good, dependable transportation \$275

'48 PONTIAC Sedan Coupe, 8 Cylinder Hydramatic. A good family car. \$299

'52 BUICK Super, 4-Door Sedan, A-1 in every way. Loaded with accessories \$1495

'50 BUICK Road Master, 4-Door Sedan, model 72. Has selectra-Radio, Power Windows, Lifts all 4 doors. A beauty. \$949

'52 PLYMOUTH 4-Door Sedan, Crum brook Low mileage car \$849

'48 BUICK Super, 4-Door Sedan. This is the nicest automobile for the model in this section. Looks and runs like new. The price is higher than the average... But it is worth it. \$599

'48 BUICK, Roadmaster, 4-Door Sedan. This is another usually nice car. \$549

'49 BUICK Special, 4-Door Sedan. A good dependable car. \$495

'47 BUICK Special, 4-Door Sedan. New paint, perfect mechanical condition. \$350

'50 BUICK Super, 4-Dr. Sedan. Fully equipped. Radio, heater and Dynaflow. \$725

'50 BUICK Super, 4-Door Sedan. Radio, heater, Dynaflow, new tires, air conditioned. Get it ready now for your vacation \$975

'50 STUDEBAKER Champion, 2-Dr. Sedan. Extra sharp, clean little car. Nice inside \$550

'49 DODGE Coronet, 4-Door Sedan. Radio and Heater \$599

'50 BUICK Super, 4-Door Sedan. Extra nice car with standard transmission \$885

'50 BUICK Special, 4-Door Sedan. Standard transmission. Looks and drives like new. 30,000 actual miles. \$750

'50 BUICK, 4-Door Special. Dynaflow. Radio, heater, beautiful Verde Green color. \$875

'51 BUICK, 4-Door Special. 27,000 actual miles. Radio, heater, Easy-Eye Glass, Dynaflow, White Tires. \$1049

'51 STUDEBAKER Land Cruiser, 4-Dr. Sedan with automatic transmission and famous V-8 motor. A beautiful lime green color. \$695

'50 CHEVROLET Club Coupe. 5 brand new tires. \$625

'50 BUICK Super 4-Door Sedan. A car you will be proud to own. Perfect in every way. Standard transmission. \$885

'52 PLYMOUTH 4-Door Sedan. Low mileage less than 29,000 actual miles. \$850

'52 STUDEBAKER Champion, 4-Door Sedan. Radio, heater and overdrive. 22,000 actual miles. \$875

'49 CHEVROLET Tudor Sedan. Nice interior, good mechanical condition. \$495

'47 BUICK Roadmaster, 4-Door Sedan. A good stout automobile. Ready for a lot of good, hard roadwork. \$350

'47 FRAZIER. If you need a car to patch up your old one, we will sell you this one for \$75

'48 BUICK Sedanette. Looks and runs good. \$399

'42 PONTIAC Sedanette. A bit rough but runs good. \$165

'48 BUICK 4-Door Special Sedan. This is a top car. A-1 condition throughout. \$385

'48 BUICK Super 4-Door Sedan. This car is in A-1 condition throughout. Way above the average. \$425

'46 PONTIAC Streamline Coupe. 4-Cylinder. Extra nice automobile. Good transportation. \$295

'39 PACKARD 4-Door Sedan. Extra good tires. The cleanest \$165 you will find anywhere

Muirhead

MOTOR CO.

"Gives More for the Money"
304 West Main Phone 692
EASTLAND

• NOW •

White Cross Hospital Insurance Plan

Your Eastland County Representative Is
A. L. ARCHER—BOX 331—CISCO, TEXAS



Groucho Advises British Empire

Minister of Mirth, Groucho Marx, is seen looking up Downing Street. He bears an important message for the designers of tomorrow's world events: "See the '55 De Soto and your work is done; it's already-styled for tomorrow!" See De Soto at your De Soto dealer's November 17th.

'55 DE SOTO ON DISPLAY WED., NOV. 17

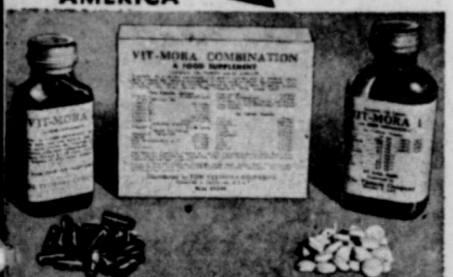
SAVE HIGHEST QUALITY SUPER POTENCY—GUARANTEED—VITAMINS & MINERALS
VITMORA'S NEW MARKETING PLAN CAN SAVE YOU MANY DOLLARS ON YOUR VITAMIN & MINERAL NEEDS

VITMORA

NOW ONLY \$10.00 FOR A FULL MONTH'S SUPPLY OF BOTH Vitamins & Minerals

VITAMIN-MINERAL FOOD SUPPLEMENT from CALIFORNIA
Now Being Used By Thousands Throughout AMERICA

HERE IS WHAT YOU GET



COMPARE VITMORA'S HIGH POTENCY, AND SOURCE OF INGREDIENTS WITH WHAT YOU ARE NOW USING!

GUARANTEED

Sold on a strict money back guarantee of complete satisfaction to new users on their first 31-day trial unit. VITMORA must please you or your money will be refunded in full upon request.

VITMORA was developed by a doctor with many years of clinical experience in human nutrition. This wonderful product was sold at a much higher price for a number of years through professional outlets under another label and brand name before being offered direct to the public at the very low price of only \$10.00 for a full 31-day adult supply. This price is made possible only through VITMORA'S own unique marketing plan and large volume production.

VITMORA is not sold in drug stores, only through independent Authorized VITMORA Distributors.

Why don't you try it? Prove to yourself and to your entire family the nutritional benefits to be derived when you use VITMORA regularly as a supplement to the foods you eat.

Note: If you are not now being served by an Authorized VITMORA Distributor you may order your trial supply direct from the Regional Wholesale Suppliers, The K. V. Products Company of Oklahoma City. Address listed below. Your check or P. O. money order for \$10.00 plus 20c State Tax in Oklahoma for each 31-day unit ordered. Sent postage paid C. O. D. if you prefer. Address all orders and inquiries to: K. V. PRODUCTS COMPANY, (Regional Wholesale Suppliers) 1227 N.W. 50th Street, Dept. 7, Oklahoma City 18, Oklahoma

ATTENTION: Would you like to get in on the ground floor in the food supplement business? Then choose the Right Product and the Right Marketing Plan. VITMORA needs both full and part time sincere sales people. No experience necessary. Write for full information. No obligation.

VITMORA is scientifically compounded in Glendale, California by the VITMORA COMPANY. Laboratory established 1934.

VITMORA'S FAMOUS Formula

Each 31 Day Unit Contains 186 Mineral Tablets and 62 Vitamin Capsules

Directions: As a dietary supplement, two gelatin capsules and six mineral tablets daily provide the following proportions of daily adults minimum requirements: Vitamin A, 625%; Vitamin B1, 2000%; Vitamin B2, 200%; Vitamin C, 666%; Vitamin D, 625%; Iron, 100%; Calcium, 133%; Phosphorus, 100%.

Two Vitamin Capsules Contain:

Vitamin A 25,000 USP Units (from fish liver oils)
Vitamin B1 20.0 Mgs.
Vitamin B2 10.0 Mgs.
Vitamin B6 4.0 Mgs.
Vitamin B12 6 Micro.
Vitamin C 200.0 Mgs.
Vitamin E 2,500 USP Units (Acetylated Ergosterol)

Vitamin B (Mixed Tocopherols)

Vitamin K (Menadiolone) 0.4 Mgs.
Inositol 20.0 Mgs.
Para Aminobenzoic Acid 20.0 Mgs.
Rutin 10 Mgs.
Folic Acid 2.0 Mgs.
Nicotinamide 15.0 Mgs.
Calcium Pantothenate 8.0 Mgs.
in a base of special concentrates made from the pure juices of organically grown ALFALFA, WATERCRESS & PARSLEY by a mechanical process. No chemicals used in the process. Plus CHLOROPHYLL (extracted from ALFALFA).

Six Mineral Tablets Contain:

Iron 10 Mgs.
Calcium 1000 Mgs.
Phosphorus 750 Mgs.
Iodine 0.4 Mgs.
Copper 0.5 Mgs.
Manganese 2.0 Mgs.
Zinc 1.0 Mgs.
Cobalt 0.2 Mgs.
Nickel 0.2 Mgs.
Fluorine 0.5 Mgs.

The need for Vitamin B, Vitamin B12, Inositol, Para-Aminobenzoic Acid, Rutin, Folic Acid, Calcium Pantothenate, Manganese, Zinc, Cobalt, Nickel and Fluorine in human nutrition has not been established. Source of Minerals: Dicalcium Phosphate, Bone Meal, Sodium Ferric Pyrophosphate, Iodides extracted from kelp, and the Suboxides of Copper, Manganese, Zinc, Cobalt, and Nickel plus excipients.

SOCIAL CALENDAR

November 23rd
Eastland County 50 year Pioneer Club, 12 noon, I. J. Killough home.

First tooth... or first party dress

have the Portrait made now...



Your child's portrait keeps the memories first in your heart.

For the priceless record of each precious age—have your child's portrait made now.

SHULTZ

PHOTO STUDIO

202 1/2 W. Main Eastland

Birthday Party Honors Mrs. Fannie Genoway

DESDEMONA (TNS) — Mrs. Fannie Genoway was honored Saturday at her home with her 84th birthday celebration. A dinner was held in her honor.

All seven of her children were home for the occasion. Mrs. Genoway, who has been a resident of Desdemona for many years, was feeling well.

Many friends called during the day. Her children who were present included Mr. and Mrs. John Shackelford, and son Eldon of Kerrville; Mr. and Mrs. Luther Harper, Pelton; Mr. and Mrs. Otis Harokh, El Reno, Okla.; Mr. and Mrs. Maurice Nance and children of Midland; Mr. and Mrs. Whit Richards and Billie of Breckenridge; Mr. and Mrs. Leo Cobb of Post; Mr. and Mrs. Ott Ragland, Desdemona; and Theo Genoway and Frank Genoway of Desdemona.

Olden Baptist SS Class Meets Thursday Evening

Members of the Willing Workers' Class of the Olden Baptist Church met Thursday evening at the Educational building, for their regular monthly meeting.

Mrs. Dee Cooper, president, presided and plans were made for the Christmas party with a date to be set later.

A covered dish supper was served from the dining table which was laid with a white linen cloth and decorated with a Cornucopia, filled with fall fruit and vegetables and flanked with candles. Mrs. Cecil Alford gave the invocation.

Mrs. Mable Matlock gave the benediction.

Those present were Meses. Alford, Archie Kelley, J. D. Herrell, Pete Rodgers, I. E. Talley, Matlock, Cooper, O. H. Dick and Charlene Rodgers.

SOCIETY

Sweetwater Dramatist Heard By Civic League and Garden Club

By STAFF WRITER

Mrs. J. S. Schooler of Sweetwater gave an interpretative sketch entitled, "The Saga of the Delta Queen" Wednesday afternoon for members of the Civic League and Garden Club, at the Woman's Club.

Mrs. Schooler delighted her hearers from the beginning, first by her attractive appearance, then by the melodious words of her most interesting story, holding her audience and carrying them with her on the journey of the Delta Queen.

Mrs. Frank Sparks was program chairman introduced Mrs. Schooler and Wendell Siebert, who sang "Old Man River" accompanied at the piano by Ima Ruth Taylor.

Mrs. Horace Horton, president, presided introduced and welcomed the new members and heard reports from officers, and committees.

The Civic Movie chairman reported a profit of \$265 in the recent drive for movie book sales. The treasurer reported a balance of \$547 on hand.

Several suggestions for the 54-55 project was considered. They were: Driver's education; Youth project, under the auspices of a YMCA set-up; Christmas decorations; and sponsorship of a Girl's Scout troop.

A tea followed the program. The tea table featured the new pink, which is the latest festive color shown at the recent Florists convention.

Mrs. Mable Matlock gave the benediction.

Those present were Meses. Alford, Archie Kelley, J. D. Herrell, Pete Rodgers, I. E. Talley, Matlock, Cooper, O. H. Dick and Charlene Rodgers.

The cloth was of pink felt and the centerpiece was a circle of white chrysanthemums on a silver lake, on which floated the replica of the Delta Queen, gift of the ship's captain to Mrs. Schooler.

Mrs. W. E. Chaney was hostess chairman. Others were Meses. Joseph M. Weaver, Johnnie Aaron, Mary L. Pargaley, B. W. Barrow, Ina Bean, R. L. Carpenter, A. W. Cartledge, Ed Castleberry, A. D. Dabney, J. O. Earnest, John L. Ernst, T. L. Fagg, H. C. Gage, Jack Gourley, Bernard Hanna, D. L. Kinnaird, George I. Lane, W. P. Leslie, and Milburn S. Long.

W. S. George Returns From Visit In Arizona

W. S. George has returned from Phoenix Ariz., where he visited with his daughter, Mrs. H. L. Vise and family. They were joined by two other daughters, Grace George of Los Angeles, and Mrs. John Roach of New Ukeah, Calif.

George stated that he enjoyed visiting with many former Eastland County residents, who now live there, among them were Mr. and Mrs. Luther Woods, Mr. and Mrs. Earl Dick, Mr. and Mrs. Earl Nabors, Sam Stoddard, Olan White and Ewell Woods.

Mr. and Mrs. R. L. Carpenter were in Abilene Friday Christmas shopping.

Hospital Report

Patients in the Eastland Memorial Hospital Saturday morning: the Kelly twin girls; Roy Skinner; Mrs. Clara Bisbee, Jimmy Everett; Fred C. Johnson; Mrs. Mary L. Mitchell, Mrs. A. F. Henderson; R. J. Cagle; Mrs. E. L. Hooks and infant son, Donald Lloyd, born November 12th; Jackie Charlton.

Mrs. Ansel Owen was dismissed Friday.

Eastland and Olden citizens in the Ranger General Hospital are: Mrs. G. L. McBee, Mrs. W. F. Creager, James C. Kiker.

Mrs. Alfred Nelson of Olden was dismissed Wednesday.

Home Makers Plan Christmas Party For Dec. 14th

The members of the Home Makers' Class of the First Baptist Church planned their Christmas party, when they met Tuesday evening in the home of Mrs. Victor Cornelius. Date of December 14th at 7 p.m. was set. Place will be the fellowship room of the First Baptist Church.

Mrs. H. M. Hart was elected president and appointed Mrs. Carl Timmons as general chairman for the party.

The meal was served buffet style. Members were seated at tables laid with white linen and decorated with Chrysanthemums. Mrs. T. L. Amis, class teacher gave the invocation.

Present were Meses. J. M. Mitchell, Don Parker, Nina Hastings, Amis, Albert Cartledge, Versie Bell, Hart, Ita Parrish, Artie Liles, C. T. Lucas, Mary Hancock, Florene Miller and son Dickie, Paula Lynn Clark and Patricia Ann Liles, Mrs. Victor Cornelius hostess and Mrs. C. C. Cornelius co-hostess.

Circles of Christian Church Meet In Members' Homes

Mrs. Millie Brittain entertained the Mary Circle of the First Christian Church on Monday November 8th in her home.

The meeting opened with prayer by Mrs. Joe Tow, Mrs. N. T. Johnson gave the devotional which was on Thanksgiving. The lesson was "Man's origin, nature, purpose and destiny," and was given by Mrs. Cyrus Miller.

Members present were Meses. Winnie Wynne, Mable Scott, L. C. McNatt, C. L. Kelly, Cyrus Miller, Henry Ferrell, Joe Tow, N. T. Johnson and guests Mrs. F. W. Graham and Mrs. Grace Moore. Refreshments of apple pie a La Mode and coffee completed the social hour.

Ruth Circle
Mrs. Homer Williams entertained members of the Ruth Circle in

her home Monday afternoon, at which time they had their regular bi-monthly meeting.

Mrs. J. W. Watson, chairman, presided and plans were made for the dinner, that the group will serve November 19th for the Music Club Convention.

Plans for the Christmas party, to be held December 13th in the home of Mrs. E. K. Henderson, were discussed.

Mrs. Pat Murphy gave the prayer and Mrs. E. K. Henderson gave the devotional.

Mrs. L. E. Huckabay was leader of the lesson study entitled, "How I Can Know God Better."

A refreshment plate was served to Meses. Pat Murphy, T. L. Cooper, Huckabay, Lon Horn, M. G. Cartwright, I. Malone, Watson, Henderson, Miss Sallie Day and Marlyn Huckabay.

Come in! SEE SPECIAL JUBILEE SHOWING OF MODERN Electric RANGES

HAMNER FUNERAL HOME

Funeral Directors

BEN E. HAMNER EASTLAND, TEXAS PHONE 17

THOMAS FUNERAL HOME

PHONE 166 CISCO, TEXAS

Nominal Cost Burial Insurance For The Entire Family

YOU BUILD CREDIT STANDING

month by month — as you repay a **BANK AUTO LOAN!**

That's a valuable asset for the future. Finance the low-cost bank way — through our bank.

YOUR EASTLAND NATIONAL BANK

Member F. D. I. C.

LOVELACE

EASTLAND TEXAS PHO. 314

Come in! SEE SPECIAL JUBILEE SHOWING OF MODERN Electric RANGES



Fishing Drives Groucho In Seine

The poor fish looking for a few new lines in the river Seine is that well known angle-angler, Groucho Marx. "Don't flounder around," he says. "Cast your eyes on the new De Soto for '55. You'll be reel-y glad you did." Coming to your De Soto dealer's November 17. Go see it!

'55 DE SOTO ON DISPLAY WED., NOV. 17

Are you a 4-door sedan buyer? Chevrolet's your buy!

Prefer a 2-door sedan? The one you want is here!

Only a sport model will do? What more could you wish for!

Did you say Station Wagon? Ah, lady—ah, sir—will you look!

Change of OWNERSHIP

Roxie Theos announces the purchase of the Chicken Shack from Pete Theos.

You are invited to dine and dance at home — at the Chicken Shack... Highway 80 West.

OPEN FROM 5 P.M. UNTIL

Call 9526 For Reservations

ROXIES

Chicken Shack

The motoramic Chevrolets for '55

From tires (they're tubeless!) to top (tots lower!), it's a whole new approach to the low-priced car! Come in and pick out the model you want... the color you want (with new harmonizing interiors)... the power you want (new V8 and two new 6's)... and the drive you want (standard, Powerglide* or Overdrive*).

Optional at extra cost.

More than a new car... a new **CONCEPT** of low-cost motoring!

FULLEN MOTOR COMPANY

Sales—CHEVROLET—Service

305 East Main EASTLAND Phone 44