



"COVERING EASTLAND COUNTY"

VOLUME TWENTY-FIVE

EASTLAND, TEXAS, THURSDAY, NOVEMBER 18, 1954

PRICE FIVE CENTS

## Santa Plans Three Pre Christmas Visits Here

Santa will make three pre-season trips to Eastland, it was announced today. Saint Nick will make his first call here Dec. 11. He will arrive again on the 18th and his final trip to Eastland will come Christmas Eve.

Carl Johnson, chairman of the Chamber of Commerce Trade Extension Committee, in announcing Santa's schedule of visits, said a special downtown parade will be held the 11th. He said there would be candy for all the kids.

On the 18th, five turkeys will be awarded.

It was also announced that work would begin this weekend to put up the Christmas lights. The lights are due to be turned on the

night of Nov. 25 for the first time. The traditional Eastland downtown decorations will be carried out.

Serving on the committee with Johnson are Van E. Allen, Willis Smith, Clyde Young, Tom Wilson, and Mrs. J. B. Johnson.

## Individual Freedom Praised By Senator

"One side of man's cry out for security and the other for freedom," State Senator Wayne Wagonseller told Eastland Lions Tuesday at the club's regular

weekly meeting held in the Fellowship Hall of the First Methodist Church.

We clamor for security, he said, failing to forget that too much security can mean the loss of our basic freedoms. "Man is a kingdom within himself," he stated, and needs no king or dictator to rule over him.

The Bowie lawmaker was introduced by Judge Long and by Homer Smith, Lion president.

Wagonseller said, "For 250,000 years most of humanity has not had enough to eat." He blamed starvation on mankind's dependence on a ruler down through the years, and said, "Mankind has made its greatest development during the brief periods of freedom."

The Senator said America's high standard of living was not gained because of more raw materials, not because Americans worked any harder or longer than others, and not because we are smarter than the rest of the world, but because each American had the freedom to work for himself.

He said Americans formed their government to serve as "his servant and not his master."

"No time before," Wagonseller said, "has such a small per cent of people come so close to complete victory over hunger as we have here in America."

## B-MAVS MEET ABILENE IN GAME TODAY

The B-Mavs of Eastland High School will take Abilene's Sophomores this afternoon in the final clash of the season in Abilene.

The locals dropped a top heavy game to the Abilene eleven when the two teams met earlier in the season, and rank as two to three touchdown underdogs in today's game.

Starting for Coach Bobby Blair's eleven, will be J. C. Jarrett, David Willoughby, Don Lee and Saul Pullman in the backfield and in the line will be Gene Reagan, left end; Gene Reagan, left tackle; Don Ward, left guard; Ken Watson, center; Wayne Durham, right guard; Ray Norris, right tackle; and Johnny McMahan, right end.

## Second New Scenicruiser Run To Start

Greyhound put its fabulous new double-deck Scenicruiser on a second daily run to Los Angeles Wednesday and begins new service to New Orleans Sunday.

J. S. Judd, general traffic and sales manager for Southwestern Greyhound Lines, Inc., Fort Worth, announced the new schedules today.

The Scenicruiser began daily service from Eastland to Los Angeles last month.

Now, two buses will leave daily for the West Coast and on to New Orleans. All three will be through coaches, with no change of bus or baggage en route.

The Scenicruiser is Greyhound's new \$50,000 coach with raised observation deck, complete wash-room, year-round air-conditioning, twin diesel engines, individual smoking vents and many other bus innovations.

## Mavs Journey To Dublin In Final Game Of Season

### LOCALS HEAVY UNDERDOGS IN TILT WITH 7-A CHAMPS

Eastland's Mavericks will journey 42-miles to the southeast Friday night for a District 7-A encounter with the Dublin Lions that will draw to a close the locals' 1954 gridiron season. Game time is 7:30.

The Mavericks will be going up against a team that has already clinched the district crown, and will find themselves a three-touchdown underdog. A victory would make the Mavs' season a success, and bluish Dublin's perfect slate in district play. But Coaches Carroll Shelton and Bobby Blair face a big problem in finding a way to down the powerful, but oft-beaten Lions.

Dublin, playing an especially rough schedule, lost their first five starts to powerful Class AA teams. They have won four in a row in District 7-A play, however.

Eastland has won only one game in nine starts, but they still shape up as a danger to Dublin.

The Mavericks starting backfield will have four of the following five players: Harvey Lewis, Bill Upchurch, Ben Cate, Duard Turner and Clyde Evatt.

The line will have Evatt and Leo Smith at ends, providing Evatt does not start in the backfield, Larry Tankersley and Carl Freeze at tackles, Roy Don Harris and Lupe Herrera at guards and Terry Warren at center.

Others who will probably see action include Neil Edwards, Henry Sims, Dick Corbell, Charles Cook, Neil Pogue, Raul Herrera, Jimmy Phillips, Larry Graham, Jack Akers and Dale Slatton.

## Thanksgiving Services Set November 24

The Eastland Community-wide Thanksgiving service will be held Wednesday evening Nov. 24, at 7:30 at the First Methodist Church. The preacher will be the Rev. W. E. Hallenbeck Jr., pastor of the Church of God.

The leadership of the music, including special numbers, will be by the Music Study Club.

The services are sponsored by all churches represented in the Ministerial Alliance.

The entire community is invited to attend, a spokesman said.



PFC. BOBBY STEDDUM ... due home from Honolulu

## Bobby Steddum Due To Arrive From Honolulu

Pfc. Bobby Joe Steddum, son of Mrs. Pearl Howie, is expected to arrive home Friday for a 30-day leave.

Steddum docked at San Francisco last Monday. He has been in Honolulu for 16 months with the Marine Corps.

After his leave, Steddum will be stationed at Camp Pendleton, Calif.

## Ranger Is Back In District 7-A

At a special meeting of the District 7-A executive committee held last night at Clyde, Ranger was reinstated into the district for the coming grid season.

The Dogs will remain in 9-AA during the basketball season.

Next year District 7-A will be composed of Eastland, Ranger, Rising Star, Wylie, and Cross Plains. Dublin is reported to be slated for Class AA.

## Shriners To Take Students To Shrine Circus

The Cross Timbers Shrine Club of Eastland County will take fifth grade students from seven area towns to the Shrine Club Circus in Fort Worth Saturday.

Fifth grade students from Eastland, Ranger, Gorman, Rising Star, Cisco, Moran and Strawn will make the trip.

The students will go on school buses. They will leave at 11 a.m. Saturday morning and will return about 8 a.m. They will be fed by the Shriners at Fort Worth.

## Carbon Junior Class Play Is Set For Friday

CARBON (TNS) — The Junior Class of Carbon High School will present its play, "That's Our Boy," Friday night at 8 p.m. in the high school auditorium.

Charles Little, Tommy Burleson, Reba Campbell, Allene Griffin, Edna Underwood, Ila Jo McAfee, Carol Sandlin, Lavonda Jordan, Charles Morgan, Peggy Snider, Dennis Clower, and Nell Park.

## DON PIERSON TO REVEAL NEW OLDSMOBILES TONIGHT

Don Pierson Olds-Cadillac will introduce the new 1955 Oldsmobile tonight at a special preview beginning at 6 p.m. Open house will be held from 6 to 9:30, with refreshments, door prizes and the new Oldsmobiles and Cadillacs as the feature attractions.

Refreshments will be served by Epley's Catering Service. Door prizes, which will be presented at 9 p.m., will include a lady's diamond watch, a silver service, electric broiler and others.

The Oldsmobile for 1955 presents a new and more advanced concept of two-tone body color, important engineering improvements and a completely restyled appearance, Pierson said.

The luxurious "98" Series and the high performance Super "88" Series both are powered by a more efficient 202-horsepower "Rocket" engine with 8.5 to 1 compression ratio, he said.

Oldsmobile's popular low silhouette and wide vision panoramic windshield are enhanced by the flying colors styling that Oldsmobile designers have incorporated in the 1955 models. Oldsmobile again presents three series of cars with a total of 10 body types. There are three Fisher body styles in the luxury "98" series — four-door sedan, deluxe Holiday coupe and Starfire (convertible). The (Continued On Page Two)

The Car With The Forward Look DODGE FOR '55 MCGRAW MOTOR CO.

## MORE THAN TWELVE THOUSAND ACRES NOW IN COVER CROPS

The application of conservation practices has increased considerably the past two weeks in that portion of the ULSCD served by the Soil Conservation Service work unit in Eastland, a spokesman said today.

Cover crop planting has been responsible for the greatest activity with approximately 12,500 acres already planted (largely vetch and rye on peanut land). Several thousand acres more will be planted when peanut harvesting is completed. In addition to its value in preventing loss of soil by wind erosion the cover crops add valuable organic matter and nutrients removed by the preceding peanut crop. Vetch and rye and

vetch and oats also provide valuable grazing for livestock. Upper Leon Soil Conservation District supervisor F. M. Spurlen of Eastland stated that he is greatly encouraged by the amount of cover crops being planted.

Terraces were completed recently on the H. A. Lovell farm southeast of Carbon and on the Mack Carr farm near Dothan. Both sets of terraces have already proved their value by holding additional water on the fields during the recent rain.

Stock ponds for storage of water to provide more uniform distribution of grazing have recently been completed on the E. H. Cook farm east of Carbon, on the H. E. Fox farm northwest of Eastland, and on the M. S. James farm at Bullock. On the Idus Echols farm near Staff a diversion terrace was constructed along with his pond in order to provide a larger watershed to insure filling of his pond. A large pond on the Joe Coats ranch northwest of Cisco completed just prior to the recent rainfall and ran around the spillway. Several other ponds are now in the process of being constructed.

## Joint Meeting Of Auxiliary, Legion Tonight

A joint meeting of the American Legion and Legion Auxiliary will be held tonight at 4:30 at Legion Hall.

Mrs. Frank Owens, Auxiliary spokesman, said refreshments would be served.

## DISPLAY OF NEW CADILLAC ANNOUNCED BY DON PIERSON

Advanced "show car" styling and major engineering refinements feature the 1955 Cadillac, it was announced today by Don Pierson, owner of Don Pierson Olds-Cadillac in Eastland. Pierson said the new Cadillac would go on display tonight.

"This year," said Pierson, "Cadillac designers and engineers present to the motoring public a line of automobiles blending new functional designs with important engineering advancements."

Further commenting on new styling features, he said, "The 1955 Cadillac is immediately identified by its distinctive front end blending refinement of a finely meshed cellular grille design with strength through the massive line of bumper, grille guards and rounded lowness of the hood. There is a whole new body side panel treatment carrying the eye to the sweeping and sharply defined fenders that are an integral part of the car and characteristically Cadillac. Lending a new touch to the distinctive Cadillac rear end, our designers have added

small chrome louvers with studied placement to the body panel just below the rear deck lid.

"To present a sleeker over-all appearance in our Series 62 Sedan and Fleetwood Series 60 Special Sedan, the Florentine curve rear window design has been adapted from the Cadillac Coupe and Coupe de Ville.

The center door pillars on our Fleetwood Series 60 Special Sedan have been made much narrower than are normally used on sedan models. Besides furnishing a finely styled open effect as on our Coupe and Coupe de Ville, they allow greater unobstructed vision without sacrificing structural strength. The over-all width of the center pillar including door frames is 2 3/8 inches compared with 5 1/4 inches last year. We feel that this is another major Cadillac design step toward giving motorists the freedom of sight they desire.

"Complementing 1955 Cadillac styling are 19 new colors, two special upper body colors and four exclusive colors for the Eldorado," said Pierson. "Innumerable two-tone effects can be derived from this selection. "Cadillac stylists have produced (Continued on Page Four)



**THE NEW BUICK**—Sleek new styling and record-high horsepower make the Buick Special four-door sedan for 1955 a standout in the lower priced field. Its V-8 power plant has been increased to an alltime high of 188 horsepower which, with Buick's new Variable Pitch Dynaflo transmission, gives the Special performance and maneuverability unequalled by any automobile in its field. The new Buick goes on display Friday at Jack Muirhead's here.

## Morris Newnham To Address Turkey Growers

The Central Texas Turkey Growers Association have scheduled their monthly meeting Thursday night in the Chamber of Commerce building at 7:30.

Morris Newnham, owner of the Ranger Frozen Food Locker, will address the group in a talk concerning the marketing and processing of turkeys.

## NEW BUICKS GO ON DISPLAY FRIDAY AT MUIRHEAD MOTOR

Muirhead Motor Co. will introduce Buick's complete new line of cars, featuring beautiful, all-new styling and more powerful V-8 engines, plus a revolutionary new variable pitch Dynaflo transmission that greatly increases performance, for the first time in their showrooms Friday.

Style-wise the new Buicks feature a new front end with a new wide-screen grille, new rear fenders that give the trunk compartment a longer, lower silhouette, new tail lights patterned after those on the experimental Wildcat II, and exquisite new interiors in many color combinations of nylon, leather and cordaveen, Jack Muirhead, owner, announced.

Many bright new exterior colors have been developed for 1955 and will be offered in attractive two-tone and three-tone combinations.

For the first time Buick is offering a two-tone combination under the sweepster moulding. On two and four-door sedans the customer will have a choice of one color underneath the sweepster, another above and a third color for the top.

Horsepower has been increased to 236 in the Roadmaster, Super and Century Series and 188 in the Special.

"We have made nearly as many engineering and design changes this year as we did last," said Ivan L. Wiles, general manager of Buick and vice president of General Motors. "Yet we have retained the outstanding styling features that made Buick the third best selling car in the nation. Our new styling, plus the spectacular increase in performance resulting from higher compression engines and our new variable pitch Dynaflo, makes the 1955 Buick the greatest value we have ever offered the car-buying public."

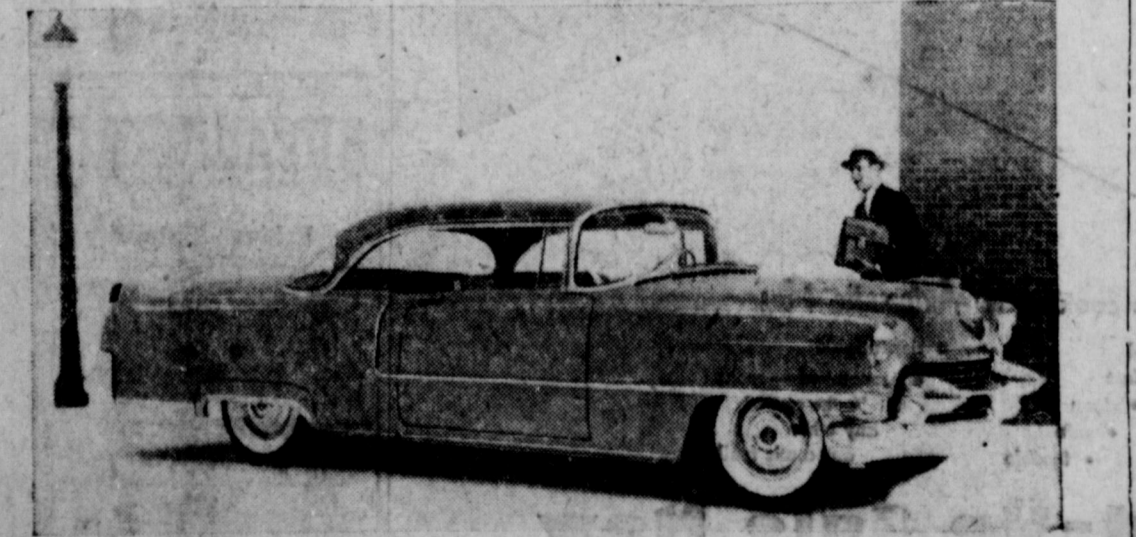
The panoramic windshield, pioneered by Buick last year, has been retained for 1955 along with the sloping doorbelt line and full rear wheel cutout on all two-door (Continued on Page Four)

DODGE HAS DONE IT Wait And See MCGRAW MOTOR CO.



**OLDS FOR '55**—Don Pierson Olds-Cadillac will introduce the new 1955 Oldsmobile tonight at a special showing. Pictured above is the "98" four-door sedan with its two-tone flying colors styling. A stainless steel moulding that dips gracefully from the rear door towards the taillights, then sweeps forward past the front wheel opening, provides the color separation. The hooded headlights and redesigned bumpers are other new features.

Installation Loans Custom Made For Each Customer EASTLAND NATIONAL BANK Member F. D. I. C.



**NEW CADILLAC**—Pictured above is the new 1955 Cadillac Series 62 Coupe de Ville, which is powered by a 250 horsepower high compression V-8 Cadillac engine, and features a new distinctive styling that includes the use of several interior-exterior color schemes. The new Cadillac goes on display at Don Pierson Olds-Cadillac here today.

Weather FREYSCHLAG INSURANCE AGENCY No. 516 Square Phone 178 Presents the Weather Bureau

CLEAR, CONTINUED MILD

Your New Car Financed At Low Bank Rates With Your— EASTLAND NATIONAL BANK Member F. D. I. C.

# Eastland Telegram

Eastland County Record established in 1931, consolidated August 31, 1951. Chronicle established 1887. Telegram established 1921. Entered as second class matter at the Post Office at Eastland, Texas under the act of Congress of March 3, 1879.

O. H. DICK, Manager  
TIMES PUBLISHING COMPANY  
Published Tri-Weekly—Tuesdays - Thursdays - Sundays  
O. H. Dick and Joe Dennis, Publishers

One week by carrier in city . . . . .15  
One month by carrier in city . . . . .45  
One year by mail in County . . . . .2.95  
One year by mail in state . . . . .3.95  
One year by mail out of state . . . . .5.95

NOTICE TO PUBLIC—Any erroneous reflection upon the character, standing or reputation of any person, firm or corporation which may appear in the columns of this newspaper will be gladly corrected upon being brought to the attention of the publishers.

## Classified Ads..

### SPECIAL NOTICES

### MISC. FOR SALE

**LODGE NOTICE**  
Stated meeting E. A. chapter No. 403 meets on fourth Thursday of each month.  
L. E. Huckabay, H. P. Pentecost, Sec.

**Regular meeting Tuesday night 8 p. m.**

**Regular meeting each Friday 8 p. m.**  
Paul Taylor, Noble Grand  
H. C. McAdams, Vice Grand  
S. W. Howell, Secretary.

**Stated meeting Eastland Lodge No. 467, Second Thursday each month, 7:30 p. m.**  
Wayne Jackson, W. M.  
H. P. Pentecost, Sec.

**ATTENTION MASONS!**  
Called meeting Friday night, November 19th. Work in the E. A. degree. Meeting called for 7 p. m.  
Wayne Jackson, W. M.  
H. P. Pentecost, Secretary

### RENTALS

**FOR RENT:** Nice, clean furnished apartment with garage. 302 E. Main.

**FOR RENT:** Furnished apartment. Phone 9520. Hillside Apartments.

**FOR RENT:** Unfurnished, newly decorated, one and two bedroom apartments, garages, phone 465.

**FOR RENT:** Nice clean rooms. \$5.00 per week. Eastland Hotel.

**FOR RENT:** Furnished four room apartment, new stove, new refrigerator. Phone 90.

**FOR RENT:** Five room unfurnished house. 1396 S. Bassett.

**FOR RENT:** Downtown, upstairs apartment, furnished, \$10. week, bills paid. Phone 692.

**FOR RENT:** Small house close in. Ideal for couple. Unfurnished. Phone 581.

**FOR RENT:** Two room furnished apartment, private bath. 209 N. Lamar.

**FOR RENT:** Three room furnished cottage. 207 S. Walnut.

**FOR RENT:** Furnished three room apartment with bath. 307 N. Lamar.

### LOST & FOUND

**LOST:** Bucherer Yellow Gold Wrist watch with yellow gold band at ballgame Tuesday night. Call Telegram 601 or 230W after 5 p. m.

**LOST:** Pair of boy's glasses, light brown rim, one nose piece missing. Phone 733.

**T. L. FAGG  
R. L. JONES  
REAL ESTATE  
Property Management  
Home and Farm Loans**

**FREE!  
\$24.95 CHEST**  
if you trade in your old cleaner now on a New LEWYT on big wheels

Handsome cedarized chest is worth every cent of \$24.95 — stores your Lewyt, woollens, toys — doubles as a TV bench! But, best of all, you get the amazing Yewyt Vacuum Cleaner that rolls everywhere you clean . . . Rolls with all tools! Gives you instant dust disposal. New power. Allergy-proof filter system. Plus much more! Save now!

**Hamner  
Appliance Store**  
205 So. Lamar Phone 623

**FOR SALE:** Thoroughbred AKC, show type Pekingese puppies. Phone 765-W.

**FOR SALE:** Just received our seventh load, Holstein springer cows and heifers. D. R. Barbee—Worth Barbee, Dublin, Texas.

**FOR SALE:** 23 stands of Bees, one 4-tray honey extractor, extra equipment. Phone 734-W.

**FOR SALE:** For the best in Bibles and Bible helps, everyday and Christmas cards. See Leslie Gregg 407 N. Daugherty, 187-W.

**FOR SALE:** Coronet in very good condition. See at Eastland Telegram office.

**FOR SALE:** The cheapest Baby Sitter on earth is a Chain Link Fence, keep your dogs in and other dogs out. No down payment and three years to pay. Marvin Hood, phone 108-J.

**FOR SALE:** Good interspring mattress. Phone 379. After six: 702-W.

**FOR SALE:** Silver-tone 17" table-model Television Set. \$125.00. 216 South Maderia.

**STUD SERVICE:** Beautiful light fawn colored, registered male pekingese. Fee — \$25.00. 711 West 9th St. Cisco — Ph. 892. Mrs. Jean Causey.

**FOR SALE:** Oats 3c per pound. Guss Hart, Cisco - Breckenridge Highway.

### REAL ESTATE

**FOR SALE:** Good 5 room house, well located, close in, priced right. Terms. Telephone 776 or see Mrs. M. M. Scott, 409 South Seaman.

**FOR SALE:** Lots 4 and 5 in Miller Addition. Contact E. F. King, 1610 Second St., Brownwood.

### Help Wanted - Female

**WANTED:** Fountain help. Apply Davis Drug.

**WANTED:** Lady office worker, room clerk and handle PBX Switch Board. Apply in person. Connellee Hotel.

### Help Wanted - Male

**WANTED:** Colored man with elevator experience. Apply in person. Connellee Hotel.

**WANTED:** Grocery store clerk. Call 9538.

### Miscellaneous Wanted

**WANTED:** Paper hanging, painting or carpenter work, general contracting. A. W. Cartledge 410 South Dixie.

**WANTED:** Listeners To The New Hi Fidelity Phonographs, come in and hear the new sound in Music! The Pop Shop — Cisco, Texas

**WANTED:** Light hauling in city or short distance. Clean garages, attics, yards. Reasonable rates. Call 85.

**FARMS - RANCHES**  
Pentecost & Johnson  
REAL ESTATE  
City Property

### Personalized Gifts

Book Matches  
Napkins  
Writing Papers  
Notes  
Informals  
Coasters  
Foil Ash Trays  
Desk Sets  
Photo Albums . . . Purse Size  
Guest Books  
Autograph Books  
Telephone Book Covers

Beautiful Christmas Cards with Name Imprinted

See: **LOWELL SNYDER**  
After 6:00 P.M.  
512 S. Daugherty St.  
Phone 561

### Don Pierson -

(Continued from Page 1)  
flashing Super "88" Series has four body types — four-door sedan, two-door sedan, Holiday coupe and convertible coupe. In the economy-priced "88" Series are the four-door sedan, Holiday coupe and two-door sedan.

Distinguishing the front end appearance of the 1955 Oldsmobile are the recessed headlights, with

### Kidney Slow-Down May Bring Restless Nights

When kidney function slows down, many folks complain of nagging backache, headaches, dizziness and loss of pep and energy. Don't suffer restless nights with these discomforts if reduced kidney function is getting you down—due to such common causes as stress and strain, over-exertion or exposure to cold. Minor bladder irritations due to cold or wrong diet may cause getting up nights or frequent passages.

Don't neglect your kidneys if these conditions bother you. Try Doan's Pills—a mild diuretic. Used successfully by millions for over 50 years. It's amazing how many times Doan's give happy relief from these discomforts—help the 15 miles of kidney tubes and filters flush out waste. Get Doan's Pills today!

chrome-lined caps that extend two inches beyond the lens at the top, the name Oldsmobile spelled out in chrome block letters across the upper bumper bar and a more ruggedly into the fender contours at each end of the grille opening. The familiar Oldsmobile world emblem on the hood has an aluminized background for the plastic ornament. The rocket ornament atop the hood is wider and two wind splits extend the length of the hood, merging with the base of the ornament.

Improvement of "Rocket" engine power, torque and performance has been achieved through newly designed combustion chambers, higher camshaft and valves, larger exhaust valves, cooler operating sparkplugs and full chrome top piston rings. Horsepower is raised to 202-h.p. in the "98" and Super "88" and to 185-h.p. in the "88" Series, with compression ratio at 8.5 to 1 in all series. Breathing properties of the "Rocket" engine have been improved through modification of the combustion chamber around the valve ports to accelerate the fuel-air mixture and increase the valve lift by .034

inches with a new high-lift camshaft. A new fuel pump more efficient in operation has been designed.

A new feature in 1955 is the offering of the 202-h.p. "Rocket" engine as optional equipment at extra cost on the "88" Series. Standard equipment on the "88" Series is the 185-h.p. "Rocket" engine, which this year is equipped with a new dual Rochester carburetor. This new two-barrel carburetor develops more power through its free flowing characteristics and is internally vented to promote equal economy in the mountains or at sea level.

### Federated Clubs To Meet In Gorman Saturday

The November meeting of the Eastland County Federated Clubs will be held in the Home Economics Cottage at the Gorman High School on Saturday afternoon at 2:30 p. m., Nov. 20.

Gorman Club women are arranging the program and will have charge of the refreshments.

All federated clubs are urged to send representatives to the meeting.

### Book Reviews Feature South Ward Programs

The Fifth Grade of South Ward School observed National Education week with a program of book reviews. The fourth grade pupils were guests.

These reviews were illustrated with posters made in art periods. After the reviews games were played. The folk game, "Jim Josie," in which the fourth graders had an opportunity to participate, was featured.

Our program was: "Lou Gehrig," the story of a famous baseball player, was told by Donnell Wheat.

The story of "Clara Barton," a great nurse and American Red Cross worker, was told by Wanda Turner.

The life of Thomas A. Edison, the inventor of the electric light bulb, was told by Scotty Allen.

The story of "Luther Burbank," a scientist, was told by Mike Graham. For a good climax, David Leach told the life of our President, Mr. Eisenhower.

### Rev. Sawdon To Preach Sunday At Holy Trinity

The Rev. Canon Glenn M. Sawdon, head of the Diocesan Department of Christian Education, will preach at the morning service of the Holy Trinity Episcopal Church next Sunday.

Rev. and Mrs. Sawdon will arrive Saturday in time for a conference with the teachers of the church school.

### Hospital Report

Patients in the Eastland Memorial Hospital Thursday morning were Mrs. Clara Bisbee, surgical; Mrs. Bruce Butler, medical; Mrs. Travis Spence and infant daughter; Mrs. Jessie Kelley, Olden, medical; Mrs. Jack Germany and infant daughter, Lisa; Miss Minnie Mae Billingsley, appendectomy; Joe Moore, surgical; O. M. White, accident; and H. S. Oakey, Wichita Falls, accident; Roy Otis Skinner, Carbon, surgical.

### Homer Glover -

(Continued from Page 1)

chain was fastened all the way around the wall and shorter chains were attached.

As high as 300 arrests were made in a day. Among the prisoners, finger-prints revealed, were men who were wanted for murder and robbery with firearms all over the country.

Kilgore's justice of the peace when the boom hit was a rather elderly man who said he wanted to resign and that he wanted Ranger Glover to be his successor. Glover however, had been in the county only 30 days and there is something in the law books about having to live in a county six months before becoming eligible for a county office. But the county attorney said that since Glover was a state officer and un-married, he could claim any county as his legal residence, so he was named justice of the peace by the commissioners' court.

He assumed the duties and often would convene court at sunrise and keep going steadily, except for lunch, until sunset. Some days he tried as many as 130 cases. Some of the men were dangerous characters and reports of threats came to Glover's ears more than once.

The nearest to trouble that he had took place one day while he was sitting at the counter in a cafe. He looked up into the mirror and saw a leader of the "tough" crowd coming up behind him, with a pistol held alongside his pants leg.

Glover spun the stool around, at the same time whipping out his own six-gun, jammed it into the other's stomach and said, "I don't think you'll be needing this," and removed the pistol from the man's grasp.

Mrs. J. F. Williams returned to Highland with her daughter, Mrs. Irene Orerand and daughter, Dana, who were here for the Golden Wedding celebration of Mr. and Mrs. Williams, Sunday.

### LEGAL NOTICES

NO. 23604  
ESTATE OF  
WILLIAM P. McLEAN,  
DECEASED  
IN THE COUNTY COURT  
TARRANT COUNTY, TEXAS  
SETTING IN PROBATE  
Notice is hereby given that I, Angelique McLean, surviving wife and heir of William P. McLean, deceased, have this day filed my application in the above entitled and numbered cause for an order of the County Judge of Tarrant County, Texas, authorizing the administrator of the estate of William P. McLean, deceased, to make an execute a mineral lease upon such terms as the court may order and direct, of the following, described real estate belonging to the estate of the said William P. McLean, deceased, to wit: an undivided interest in and to 195 acres, more or less, being the N.W. 1-4 of Sect. 2, Block 4, H & T C Ry. Co. Survey in Eastland County, Texas. Said application will be heard by the County Judge of Tarrant County, Texas, at the courthouse in the City of Fort Worth on the 29th day of November, A.D., 1954.

Angelique McLean  
STATE OF TEXAS  
COUNTY OF TARRANT  
Sworn to and subscribed before me by the said Angelique McLean, surviving wife and heir of William P. McLean, deceased, this 16th day of November, 1954.  
(Seal) Dorothy C. Cox  
Notary Public,  
Tarrant County, Texas.

## DIXIE Drive-In

EASTLAND RANGER HIGHWAY

Box Office Opens . . . . . 6:30  
First Show . . . . . 6:45  
Second Show . . . . . 9:00

Each Tuesday is Bargain Night - Adults 25c  
Admission 50c - Children Under 12 Free

WEDNESDAY - THURSDAY, NOVEMBER 17 - 18

PLUS: Color Cartoon

FRIDAY - SATURDAY, NOVEMBER 19 - 20

PLUS: Color Cartoon and Sports Reel

### Save at Old Stove Round-Up Sale Now

Trade for '55 Automatic Plus GAS Range

## "potwatcher" AND "ovenwatcher"

NEW make cooking completely automatic...

New automatic top burner control on '55 Automatic-Plus Gas Ranges controls heat . . . times food . . . then turns burner off automatically!

Set the "Potwatcher" for one to 60 minutes . . . and forget it. Simmering vegetables . . . percolating coffee . . . pressure saucepan cooking and almost any other top-burner task is completely automatic.

Load the oven . . . set the "Ovenwatcher" . . . and leave. Casseroles, cakes, or complete oven meals cook automatically while you are away. Cooking just can't be more automatic. Gas is Automatic Plus!

Ask for a demonstration of this and other modern cooking advances during the Annual Old Stove Round-Up Sale. It's just one of the reasons why — more people than ever before are cooking with gas!

modern gas cooking is Automatic Plus

- cool
- fast
- clean
- safe
- flexible
- dependable
- economical — cooks for 1/2 the cost of any other automatic fuel!

### Annual Old Stove Round-Up Sale Now

Save at GAS Range Dealers and Lone Star Gas Company

**PALACE**  
THEATRE - IN CHICO, TEXAS  
Friday - Saturday

**HIGHWAY DRAGNET**  
Plus

"MA KETTLE" NOW HAS A NEW FELLA!  
**RICOCHET ROMANCE**  
Marjorie MAIN - Chill WILLS

**JOY DRIVE-IN**  
CHICO - EASTLAND HIGHWAY

Friday - Saturday  
**3 DIMENSION**  
TECHNICOLOR  
ROBERT MITCHEM  
LINDA DARNELL  
**SECOND CHANCE**

Plus  
**WAR OF THE WORLDS**

# ★ TONIGHT ★

Don Pierson Invites You To Our Gala Open House ... Introducing The Standard of the World

THE NEW

## 1955 Cadillacs

AND THE ALL NEW POWERFUL ROCKET

## 1955 Oldsmobiles

### ★ Wonderful Door Prizes ★

- Ladies Diamond Watch •
- Beautiful Silver Service • Electric Super Broil Quick
- And Others

To Be Given Lucky Winners Who Are Present At the 9:00 Drawing

**REFRESHMENTS**

By Mac Eplens Catering Service



**MUSIC**

Be with us tonight to celebrate our fabulous new cars. Don't miss this wonderful celebration tonight.

**STORE**

Eastland

November 23

"What We Do For You"

Large Producers and men

Production

Special Egg Production

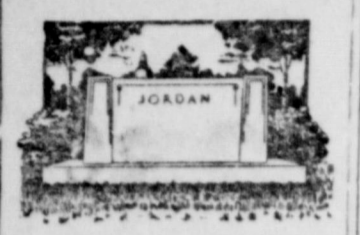
Food Store

5 Cans **Pierson** CADILLAC  
 EASTLAND  
 6 to 9:30

4 *Leaf* **SPECIAL**  
 AUNT JEM  
**Flour**  
 5 Lb. Box

**Displays —**  
(Continued From Page One)  
a wide range of upholstery color and trim options individually suited to the various models in our three series. We are presenting

**Brown Sanatorium**  
Office hours 8 to 5 p.m.  
Dr. N. A. Brown, D.C.  
in Charge  
800 W. 6th St. Cisco



**Alex Rawlins & Sons**  
MONUMENTS  
WEATHERFORD, TEX.  
Serving This Community  
For More Than 70 Years.

for the first time as an optional choice on the Coupe de Ville and the Fleetwood Series 60 Special Sedan, special "glamour" trims. These trims feature metallic thread fabrics combined with top grain leather.  
"Standard equipment on the 1955 Cadillac are such items as power steering, dual range Hydraulic Transmission, wheel discs, and automatic windshield washer and coordinator."

**New Buick —**  
(Continued from Page One)

New tubeless tires, which offer greater protection from blowouts, are standard on all models except those equipped with wire wheels.  
Power brakes, offered as optional equipment on all models, have been re-designed for smoother operation. A new air suspension principle gives fully adequate braking under all conditions.  
Improved power steering is standard equipment on the Roadmaster and Super, and optional on all other models. Previously power steering was standard on the Roadmaster only.  
Buick's distinctive front end styling for 1955 consists of a new, wide-screen grille with honeycomb design, visored headlights and a new and larger bumper. The hood has been lowered for greater visibility.

**Pioneers' Club Hosted Tuesday By Mrs. Killough**

Members of the Eastland County 50 Year Pioneer Club met Tuesday in the home of Mrs. I. J. Killough for their regular monthly covered dish dinner.

The meal was served from a large table and each guest found her place at a table centered with roses. Miss Beulah Speer gave the invocation.

A business session was held following the meal, during which the club planned their Christmas dinner, Christmas tree, and gift exchange to be held in the fellowship room of the Church with the date to be named later.

The program was opened with the singing of "Bless Be The Tie." Mrs. T. A. Bandy gave the prayer and Mrs. Millie Brittan read a poem.

The meeting closed with the hymn, "God Will take care Of You," with Mrs. O. M. White giving the closing prayer.

Others present were Meses. J. P. Hearn, M. J. Tinsworth, Mary Hancock, Ida Morris, Nora Andrews, T. M. Johnson, Hanna Lindsey, and Miss Sallie Day.

A Georgia offender can be fined as much as \$1,000 and jailed for six months.

**Mrs. Hancock Is Hostess To B.W.C. Meeting**

At 7:00 p.m. on Monday evening Nov. 15th the Business Women's Circle of the First Baptist Church met in the home of Mrs. Mary Hancock on North Daugherty Street for their monthly Royal Service meeting.

With the new president, Mrs. Ita Parish, presiding, the meeting was opened with a prayer by Mrs. Hazel Sullivan. After a short business session, program was turned over to Mrs. Mary Hood, who conducted the study of "Rhodesia" with all members participating. The study was closed by prayer by Mrs. Winnie Young.

A delicious refreshment plate of pumpkin pie, fancy sandwiches, potato chips and coffee was served to the following members: Meses. Parish, Young, Lindsey, Green, Hatcher, Hood, Anderson, Sullivan and a new member, Mrs. Lois Mosley; and Misses Lola Laney, Florence Barber, Christine Garrard and young Miss Karen Jean Green (daughter of Mrs. Green) and the hostess, Mrs. Hancock.

Accidents cost this nation about \$60 per person during 1953, according to the Association of Casualty and Surety Companies. The staggering total — \$5,000,000,700.

**Eastland Member Hosts Meeting Of Carbon Club**

Mrs. N. C. Morris was hostess to members of The Sunshine Club of Carbon, Tuesday afternoon at her home, 215 East Conner.

The house was decorated with autumn leaves carrying out the Thanksgiving theme. An arrangement of brightly colored leaves, nuts, fruits and silhouettes of turkeys centered the refreshment table. Coffee and pumpkin chiffon pie topped with whipped cream was served.

Games were played and cards directed to be sent to those sick. Announcement was made of the next meeting on December 14th, which will be the Christmas party and will be in the home of Mrs. Howard Gilbert.

Present were Meses. H. Hall, Howard Gilbert, Wade White, Maggie Sherrell, W. A. Ramsey, Will Lovell, Fannie Bridges, Hubbard Gilbert, King, W. A. Ussery, Hallie Seastrunk, W. A. Medford, Shirey, Westcox, H. R. Hall, Wadd Clark, Tandy Martin, all of Carbon.

Eastland visitors were Meses. R. F. Copland, W. A. Harris, Gene Portne, Sam Wallace, and Mrs. Smith of Lubbock, and Mrs. Morris, hostess.

**Look Who's New**

Lisa Germany is the name Mr. and Mrs. Jack Germany have given their daughter, born November 16th in Eastland Memorial Hospital. She weighed seven pounds and 15 ounces. She and her mother are reported to be doing fine.

Mr. and Mrs. Germany have one other child, a son Jeffery, who is two and one half years of age.

Grandparents are Mr. and Mrs. C. J. Germany and Mr. and Mrs. Victor Cornelius.  
Maternal great grandmothers are Mrs. C. W. Pettit and Mrs. Cornelius Taylor.

Lt. and Mrs. Donald Ray January of San Antonio are the parents of a son, born November 15th at Lackland Air Force Base hospital in San Antonio. He weighed six pounds and eight ounces and has been named, Timothy Drew.

Mrs. January is the former Miss Pat Rushing, daughter of Mr. and Mrs. J. H. Rushing, 312 South Oak Lawn. Paternal grandparents are Mr. and Mrs. A. C. January of Lampasas.

**FOR SALE MINNOWS**  
J. O. WHISENAT  
OLDEN, TEXAS

**There is no Such Thing—**  
... as a "bargain" in insurance. Along with every other commodity you get what you pay for and no more. John Ruskin once said "there is hardly anything in the world that some man cannot make a little worse and sell a little cheaper and the people who consider price only are this man's lawful prey." Ruskin was right. Whatever you buy, buy the best. If it's insurance you can't go wrong by buying from a local agent who is as near to you as your telephone when you need him.

**EARL BENDER & COMPANY**  
Eastland (Insurance Since 1924) Texas

**20 GALLON LONG-LIFE GALVANIZED REFUSE CANS**

Sanitation Approved, Leak Proof, Rust Proof.  
Only \$3.75

**PULLMAN SUPPLY CO.**

**CITY GARAGE**  
J. J. Finley, Proprietor  
Engine, Starter and Generator Work  
103 White St. Phone 995

**MODERN DRY CLEANERS**

209 So. Seaman  
Phone 132

**EASTLAND Chamber of Commerce**

**MUIRHEAD MOTOR CO.**

304 W. Main  
Phone 692

**DOC DAVIS DRUG**

FILLED ACCURATELY  
South Side of Square Phone 696

**WILSON FEED AND SEED**  
YUR PURINA DEALER  
204 N. Seaman Phone 175

**McGRAW MOTOR COMPANY**

416 So. Seaman Phone 80

**FREYSCHLAG INSURANCE AGENCY**  
North Side of Square Phone 173

**POOL'S DRY CLEANERS**  
Free Pick-Up and Delivery  
207 So. Lamar St. Phone 47

**Poe Floral**  
"When It's Mums Say It With Poes"  
200 North Green Phone 96

**STOKER TRUCK AND TRACTOR**  
International Harvester Trucks & Tractors  
Sales and Service  
Phone 657

**Dublin vs. Eastland Mavericks**

**NIGHT GAME 7:30 p.m.**

**FRIDAY, NOVEMBER 19 AT DUBLIN**

**EASTLAND MAVERICK ROSTER**

<b>ENDS</b>	<b>CENTERS</b>
Leo Smith	Terry Warren
Clyde Evatt	Neil Pogue
Richard Corbell	
Henry Sims	<b>BACKS</b>
<b>TACKLES</b>	Harvey Lewis
Carl Freeze	Jimmy Martin
Larry Tankersley	Billy Upchurch
Charles Cook	Duard Turner
<b>GUARDS</b>	Billy Cates
Lupe Herrera	Dale Slatton
Rual Herrera	Larry Graham
Jimmy Phillips	Jack Akers
Roy Don Harris	

**UNDER NEW MANAGEMENT CONNELLEE HOTEL COFFEE SHOP**  
Mrs. Fred Harrell - Warren Coffman

**WILSON'S VARIETY STORE**  
West Side of Square  
We Give S&H Green Stamps

**KING MOTOR COMPANY**

100 East Main Phone 42

**CISCO LAUNDRY SERVICE**  
IN EASTLAND  
Otis Coleman, Mgr. Phone 60

**MURRELL'S GROCERY & MARKET**  
"Pit Cooked Barbecue"  
700 West Main Phone 9538

**MOBIL-OIL AND MOBIL-GAS**

**W. Q. VERNER, Consignee**

**LUMBER**  
Estimates No Obligation  
**Higginbotham - Bartlett Co.**  
301 W. Main Phone 112

**HOLLYWOOD CORSET FACTORIES**  
Eastland, Texas

**ARTHUR PRODUCE & FEED**  
303 N. Seaman Phone 43

**HOWELL & ROGERS GROCERY & MARKET**  
111 White St. Phone 178

**Eastland Steam Laundry and Washateria**  
Pickup and Delivery  
210 N. Lamar Phone 584

**R. M. SNEED CONTRACTOR**  
Oil Field Construction - Labor Gangs - Bulldozers - Ditching Machines - Welding Machines - Back Hoe Side Booms - Pipe Line Construction  
Hwy. 80 East Phone 684

**EASTLAND TELEGRAM**

**By Means of Movie Camera**

**South Ward Fourth - Fifth Grades Enjoy Quick Trip To Honolulu**

By BERNICE DURHAM  
During the month of October our Fourth Grade Class of South Ward School went to Honolulu, and we had such a good time we want to tell about it.  
From our books we had learned that Honolulu is the capitol of the Hawaiian Islands; that these islands were formed by volcanic eruptions long ago; and that much beauty could be seen there. We were interested, but not as excited as we were when we found we could travel to Honolulu and see it ourselves by way of a travelogue

and picture show given by Mrs. Horton showing her own trip to the Hawaiian Islands.

We invited the Fifth Grade to accompany us and they joined us in the school auditorium. Books were forgotten as we prepared for the trip.

In Los Angeles, Calif., we waited impatiently for the arrival of our ship. It was worth waiting for, with its spacious decks, swimming pool and other means of entertainment.

Perhaps we would have been content to remain aboard ship longer than the four and one-half days it took us to reach Honolulu if we had not seen Diamond Head, a famous old extinct volcano as we circled coming into the harbor. When our ship neared Honolulu we were met by boats greeting us and native boys who were diving for coins which were thrown to them from the ship. Leis of flowers were placed around our necks and native girls danced to welcome us as we arrived.

After resting at the hotel a short while we were anxious to see our surroundings. The flowers

were plentiful, and we were told that we could pick all we wished. The beauty and fragrance of these flowers brightened our stay here. As we toured by automobile and plane we saw the volcanoes we had heard so much about — some active and some extinct. We enjoyed the fresh pineapple from the fields, and enjoyed visiting in native homes which are clean and comfortable though very simple. The Hawaiian people were gracious and we were reluctant to say goodbye. All of us felt a desire to visit with them again.

Although this trip actually took only an hour, we felt that we had really been there and learned much more about these people and their land than we could have learned in an hour from books. Thank you, Toni, for showing us the Hawaiian gifts which your grandmother brought back — your grass skirt, your native dress, and your monkey carved from a coconut — and thank you, Mrs. Horton, for a nice time. Please come again.

**In Appreciation**

It is with sincere gratitude that I wish to express my appreciation for the many cards and letters and especially for the Eastland Telegram sent to me during my stay in the hospital in Galveston. For your thoughtfulness I thank you more than you can ever know.  
Mrs. Minnie Ewart.

**ANTIQUES**  
My stock of antiques for sale by piece or all. Now on display at 508 South Daugherty Hours from 2:30 to 5:30 Mon., Wed., Fri  
**Mrs. Jno. Kinberg**  
Phone 268

You'll track down the year's **HOTTEST VALUES** in warranted **OK USED CARS** Right Here!

**CHEVROLET**

The red OK Tag means 6 ways better

1. Thoroughly Inspected
2. Reconditioned for Safety
3. Reconditioned for Performance
4. Reconditioned for Value
5. Honestly Described
6. Warranted in Writing

SOLD ONLY BY AN AUTHORIZED CHEVROLET DEALER  
**FULLEN MOTOR CO.**  
305 E. Main EASTLAND Phone 44

**Nutrena**  
**Cage Egg Pow Wow**  
SPAIN FEED STORE  
305 N. Seaman, Eastland  
7:30 P.M., Tuesday, November 23

- FILM—"What Laying Cages Can Do For You"
- DISCUSSION—By Successful Cage Producers and Poultry Servicemen
- LITERATURE—For Better Egg Production
- FREE REFRESHMENTS

Everyone Interested in Economical Egg Production Welcome!

**Spain Feed Store**  
Your **Nutrena** Dealer  
Phone 858 Eastland  
Headquarters for Crumblized Nutrena Cage Egg Feed

**HARVEST OF VALUES**

--the sign of savings!

**CLOVER FARM STORES**

Here's our round-up of HARVEST VALUES... you'll find those Thanksgiving dinner needs priced just right. Buy now—and avoid that "last-minute rush." If you haven't already called us for your Thanksgiving turkey—call today! You'll set a proud table for your family this coming holiday—it's November 25, you know—when you serve quality Clover Farm foods.

**4 Leaf Clover SPECIAL**

FLORIDA FANCY  
**Oranges**  
5 Lb. Bag **25¢**

**4 Leaf Clover SPECIAL**

FLORIDA FANCY  
**Grapefruit**  
5 Lb. Bag **29¢**

**4 Leaf Clover SPECIAL**

U. S. NO. 1 IDAHO RUSSETT  
**Potatoes**  
10 Lb. Mesh Bag **45¢**

**4 Leaf Clover SPECIAL**

PUFFIN ZIP OPEN  
**Biscuits**  
5 Cans **55¢**

**4 Leaf Clover SPECIAL**

AUNT JEMIMA  
**Flour**  
5 Lb. Box **49¢**

CLOVER FARM  
**Margarine** Lb. **23¢**

CLOVER FARM  
**Hominy** No. 2 Can **10¢**

TEXO MAID IN FANCY TUMBLER  
**Preserves** Peach or Apricot Large 20-oz. **35¢**

GLENDALE  
**Peas** No. 2 Cans **29¢**

GLENDALE  
**Corn** No. 2 Cans **25¢**

CLOVER FARM FRUIT  
**Cocktail** No. 303 Can **25¢**

CARNATION INSTANT  
**Dry Milk** Makes 3/4 Quarts Milk 10 1/2-oz. Pkg. **29¢**

SUNSHINE KRISPY  
**Crackers** 1 LB. BOX **25¢**

HONEY BOY  
**Salmon** NO. 1 TALL CAN **39¢**

**Fresh and Tempting MEATS**

FRESH GROUND  
**Hamburger** Lb. **25¢**

FANCY CHUCK OR SEVEN  
**ROAST** Lb. **35¢**

FANCY SHOULDER ROUND  
**ROAST** Lb. **39¢**

OUR POPULAR HOMEMADE PURE PORK  
**Sausage** 3 Lbs. **\$1.00**

FANCY LOIN  
**Steak** Lb. **49¢**

AGED LONGHORN  
**Cheese** Lb. **49¢**

SWIFTS ORIOLE SLICED  
**Bacon** Lb. **55¢**

**CLOVER FARM PUMPKIN**  
2 No. 300 TALL **23¢**  
Fine Texture—Rich Flavor

**Carolyn Farmer SUGGESTS**  
Maple Pumpkin Pie

Combine filling ingredients in order mentioned above, with exception of almonds, and beat all with a rotary egg beater to make sure they are well mixed. Pour filling into pastry-lined pie plate and bake in a hot oven, 450 degrees F., for about 30 minutes. Then reduce heat to a moderate oven, 350 degrees F., and continue baking for about 30 minutes or until a knife comes out clean when inserted into pumpkin custard. Sprinkle with chopped almonds when you remove it from oven.

**WE GIVE**  
400 South Seaman

DISCOUNT STAMPS

# Eastland Plays Host To Annual Music Convention



MRS. E. E. TRAWEEK . . . 6th District President of Texas Federation Music Clubs

## Mrs. Perkins Is General Chairman Of Convention

Mrs. Joseph M. Perkins, general chairman of the Sixth District convention of Texas Federation of Music Clubs, is well qualified to fill the many duties expected of her this week.

Mrs. Perkins is a past president of Six District as well as a past State president of the organization. She is a life member of the national Federation of Music Clubs, and at present is serving on five national boards. She is vice-president of Texas Division American Cancer Society, and a former member of the State Board of Education for five years during which time, for the first time, a complete public music program from the first grade through high school, including free music text books, was put into effect.

Mrs. Perkins will be hostess at the board dinner, Thursday evening, honoring Mrs. E. E. Traweck, of Abilene, state president of Texas Federated Music Clubs.

Visiting officers, delegates, and Music Study Club members have been invited to Mrs. Perkins' home, 1021 South Seaman, preceding the banquet at 7 p.m. at the Woman's Club.



Mrs. Joseph M. Perkins  
General Convention Chairman



Mrs. James T. Mann, Brady  
Historian of Texas Music



Mrs. Bob Tiffany, Abilene  
Dist. Chairman Home, Community, Rural, Library Extension Music



Mrs. H. Leo Tucker, Abilene  
Dist. Chrm. of Music Education

## The Program

The All District Concert to which the public is cordially invited will be given at the First Methodist Church at 7:30 p.m. Friday, Nov. 19.

Nine Senior Music Clubs will be represented on this program, which promises to be one of the most outstanding concerts of the season. Clubs presenting numbers are; Harmony Club and The Music Guild of Abilene; Damrosch Club, Brady; Music Study Club, Eastland; Philharmonic Club, San Angelo; McMurry College, Abilene; Howard Payne College, Brownwood; Cisco Junior College, Cisco; and Ranger Junior College, Ranger.

Ushers for the evening will be Gaila Walters, Sandy Taylor, Goldia Beth Skiles, Patricia Ann Fullen and Kay Culbertson.

Receiving in the lobby will be Mmes. Grady Pipkin, Roberta Grisham and Guy Patterson.

Following is the complete program for the convention of which the Eastland Music Study Club, Mrs. A. F. Taylor, president, will be host:

★ ★ ★ ★

BOARD DINNER—Honoring Mrs. E. E. Traweck, Sixth District president.

First course—Home of Mrs. Joseph M. Perkins, 1021 S. Seaman.  
Main Course—Woman's Club, West Plummer Street.

THEME . . . . . "Bells and Belles"

Invocation . . . . . Mrs. R. L. Carpenter

Chorus . . . . . Eastland Music Study Club

Mrs. Art Johnson, Director—Mrs. D. L. Kinnaird, accompanist

Travel Logue . . . . . Mrs. Grady Pipkin and Mrs. Joseph M. Perkins

★ ★ ★ ★

SENIOR DAY PROGRAM—NOVEMBER 19

Coffee at 9:00 a.m. . . . . at home of Mrs. Grady Pipkin, 201 Oaklawn

Honoring State and District officers and visitors

10:00 a.m. . . . . Opening Texas Federation of Music Clubs Convention

Sixth District—First Baptist Church

Presiding . . . . . Mrs. A. F. Taylor, President Eastland Music Study Club

The Star Spangled Banner . . . . . Key

Organ Accompanist, Mrs. D. L. Kinnaird

Pledge of Allegiance . . . . . Ensemble

Invocation . . . . . Rev. Jim Hicks

Welcome . . . . . Judge George L. Davenport, Mayor of Eastland

Official Opening . . . . . Mrs. E. E. Traweck, Abilene, presiding

Hungary . . . . . Koelling, OP 410

Julia Lynn Inzer, Junior High School Music Department

Luncheon—12 noon . . . . . Annex of the First Christian Church

Honoring Mrs. Paul Moss, T.F.M.C. state president

Theme . . . . . "Smile a Mile"

Presiding . . . . . Mrs. Art Johnson

Invocation . . . . . Mrs. Clyde Young

Vocal Soloist . . . . . Mrs. Grady Pipkin

Accompanist—Mrs. D. L. Kinnaird

Address . . . . . Mrs. Paul Moss

All District Concert, 7:30 p.m. . . . . First Methodist Church

Presiding . . . . . Mrs. Joseph M. Perkins

Invocation . . . . . Rev. Arthur Hartwell

Revolutionary Etude . . . . . Chopin

Rhelda Reed, pianist—Eastland Music Study Club

Comfort Ye My People . . . . . Bach - Aufdenberge

At Torrents In Summer . . . . . Noble Cain

They Call It America . . . . . Freddy Grant—arr. Wilson

Sixth District Massed Chorus—Director, Jack Chambliss

Cisco Junior College

Piano Accompanist . . . . . Mrs. Jack Chambliss

Organ Accompanist . . . . . Rhelda Reed

Reception . . . . . Church Parlor

Mrs. H. M. Hart, chairman

★ ★ ★ ★

JUNIOR DAY PROGRAM—SATURDAY, NOVEMBER 20

FIRST METHODIST CHURCH

An "All District Program" to which the public is invited will be given by twelve Federated Junior Clubs. Cities represented are: Abilene, Brady, Cisco, Eastland Goldthwaite, Mills and San Saba.

Registration . . . . . Church Parlor

9:30 a.m.

Texas Our Texas . . . . . Wright Marsh

National Junior Hymn . . . . . Leader, Mrs. G. E. Dendy

Organist, Mrs. D. L. Kinnaird; Pianist, Mrs. M. A. Treadwell

Members of Eastland Music Study Club

Invocation . . . . . Rev. Otto Marshall

Greetings . . . . . Jeannie Pittman

First Vice President Beethoven Junior Music Club

Prayer of Thanksgiving . . . . . Baker

Come Ye Thankful People . . . . . Elvey

A Child's Thanksgiving . . . . . Cowdrey

Fifth Grade Pupils—Director Mrs. Sue Goode

Pianist—Mrs. Bernice Durham

Luncheon honoring Mrs. Sonne Umberson . . . . . State Junior Counselor

Theme . . . . . "Buttons and Bows"

Presiding . . . . . Mrs. L. E. Corbell

Invocation . . . . . Mrs. F. L. Drago

Massed Orchestra Ensemble:

Theme I . . . . . Mozart

Sweet Betsy From Pike . . . . . American Folk Song

Swing Low Sweet Chariot . . . . . Spiritual

Crusaders Hymn

Theme from March Slav . . . . . arr. H. M. Preston - Tchaikowsky

Director, Herbert M. Preston, Violin Instructor

Hardin-Simmons University, Abilene

Pianists, Sue Stoker and Phyllis Phillips

Woodnymps Harp . . . . . Florence Rea

Patricia Ann Liles, Scale Runners Club, Eastland

Hungarian Dance No. 6 . . . . . Brahms

Piano I—Sarah Sims, Phyllis Phillips

Piano II—Sue Stoker, Julia Lynn Inzer

Beethoven Junior Music Club

Kahill . . . . . Corbman

Charlotte Vaught, Dragoo Junior Music Club

Friendliness . . . . . Bentley

Carol June Hilliard, E.G.B.D.F. Club

Praise Ye Jehovah . . . . . Lyon

Beautiful Savior . . . . . Rob Roy Perry

America The Beautiful . . . . . Bates-Ward

Massed Chorus

Director—Jack Chambliss, Cisco Junior College

Organist—Mrs. D. L. Kinnaird; Pianist—Helen Taylor

## Mrs. A. F. Taylor Music Club Prexy Is Official Host

Mrs. A. F. Taylor, president of the Music Study Club and official hostess for the Sixth District Convention has the honor of having organized the oldest Junior Club of the district, which is the Scale Runners Juvenile Club, organized in 1920 and federated in 1928. They have met monthly since that time, Mrs. Taylor states.

Mrs. Taylor has served as Junior Counselor for Sixth District two different times as well as having held other district offices. She is at present District Junior Chairman of orchestra and will present a massed orchestra, directed by Herbert M. Preston, of Hardin-Simmons University of Abilene, on the All District program Saturday afternoon at the First Methodist Church.

Mrs. Taylor is also counselor of the Beethoven Junior Music Club.



MRS. A. F. TAYLOR . . . President Music Study Club Convention Hostess



Mrs. R. E. Coleman, San Saba Dist. Chairman Junior Division



Mrs. Walter Ford, Abilene District Chairman of Endowment



Mrs. Homer Patterson, Merkel Natnl Foundation, Ntl Projects



Mrs. T. E. Richardson, Eastland District Treasurer



Mrs. J. B. Denman, Brownwood Sixth District Publicity Chairman

GAY • GLITTERING  
HOLIDAY  
*Formals*



*Missy Mode*

For the young in heart...

presents the "important occasion" dress... highlighting a flattering boat neckline and the slim-waisted Princess line. Spot resistant Chromspun Acetate Taffeta in Black, Neptune Green, Amethyst and Coppertone; young-in-heart sizes 7 to 15 . . . 14-95

WELCOME

TEXAS FEDERATED MUSIC CLUBS  
While in Eastland visit Anderson's and look at our beautiful selection of women's wear.

# ANDERSONS

Millinery North Side Children's and Misses of and Ready to Wear Square Infants Wear Gifts Eastland, Texas

FROM:  
ALTMAN'S DRESS SHOP  
A Friendly Welcome

TO:  
MUSIC CLUB MEMBERS  
WHO ARE VISITING  
EASTLAND, TEXAS

"Come Visit With Us, Won't You?"



24.95

# Paula Brooks

Autumntime stroke of luck: a Dynel acetate (sheer) that is immensely flattering, completely practical. Slim and slimming, this mink trimmed dress is beautifully detailed, will be your constant companion the season through.

ALTMAN'S STYLE SHOP  
"SMART WOMENS WEAR"

Eastland - Cisco - Abilene



Mrs. H. B. Tandy, Ozona Dist. Legislation Chairman



Mrs. Ellie H. Locks, Brownwood First Vice Pres. Sixth District

### Representatives Of Forty-one Clubs Expected

Officers of Sixth District, most of whom will be here for the convention beginning with the board dinner at the Woman's Club are: Mrs. E. E. Traweck, president; Abilene; Mrs. Ellie Locks, vice-president, Brownwood; Mrs. A. E. Prugel, recording secretary, Sonora; Mrs. T. E. Richardson, treasurer, Eastland; Mrs. R. B. Wylie, treasurer, Abilene; Mrs. Marshall Trussell, parliamentarian, San Saba; Miss Wanda Watson, auditor, Ozona; Mrs. W. M. Morrow, historian, Abilene.

Senior Clubs making up Sixth District, most of which will be represented here this week are: Abilene; Harmony Club and Music Guild of Abilene. Brady; Damrosch Club. Brownwood; Schubert Club. Cisco; Music Study Club. Eastland; Music Study Club. Ozona; Ozona Music Club. San Angelo; Philharmonic Society.

San Saba; Chaminade Club. Sonora; Sonora Music Club. Sweetwater; Music Study Club. Student Clubs of the district are: Abilene, Music Dept., McMurry College; Brownwood, Music Dept., Howard Payne College; Ranger, Music Dept. of Ranger Junior College and Cisco, Music Dept., Cisco Junior College. Junior Clubs of the district are: Abilene Eagle-ettes; Junior Music

Guild; St. Joseph's Academy Music Club, all of Abilene. Brady-MacDowell Pianist Club; Mozart Melody Club; David Guion Junior Music Club. Brownwood — Junior High String Orchestra; Treble Clef Music Club; Junior Schubert Club. Cisco — Junior Music Lovers Club.

Eastland — Beethoven Music Club; Dragoo Junior Music Club; E.G.D.F. Club; Scale Runners Club.

Goldthwaite—Bach Club; Schubert Club.

Loraine—Junior Music Club. Miles — Melody Club.

Mullen — Chopin Club. San Angelo — Hayden Club.

San Saba — Robyn Music Club; Merry Melody Makers; McDowell Club; Mozart Club.

Sweetwater — B Sharp Accordion Club.

### Eastland Group Have Pleasant Week End Trip

Marvin Grubb accompanied by his mother, Mrs. Fronia Grubb and Mrs. Carl Johnson drove to Oklahoma City last Friday, where they were the guests of Mr. and Mrs. E. R. Buchanan for a pleasant week end trip to Eureka Springs, Ark.

The group visited briefly with Mr. and Mrs. Horace Oldham, former Eastland residents, who now live in Eureka Springs.

The Eastland trio returned home Monday.

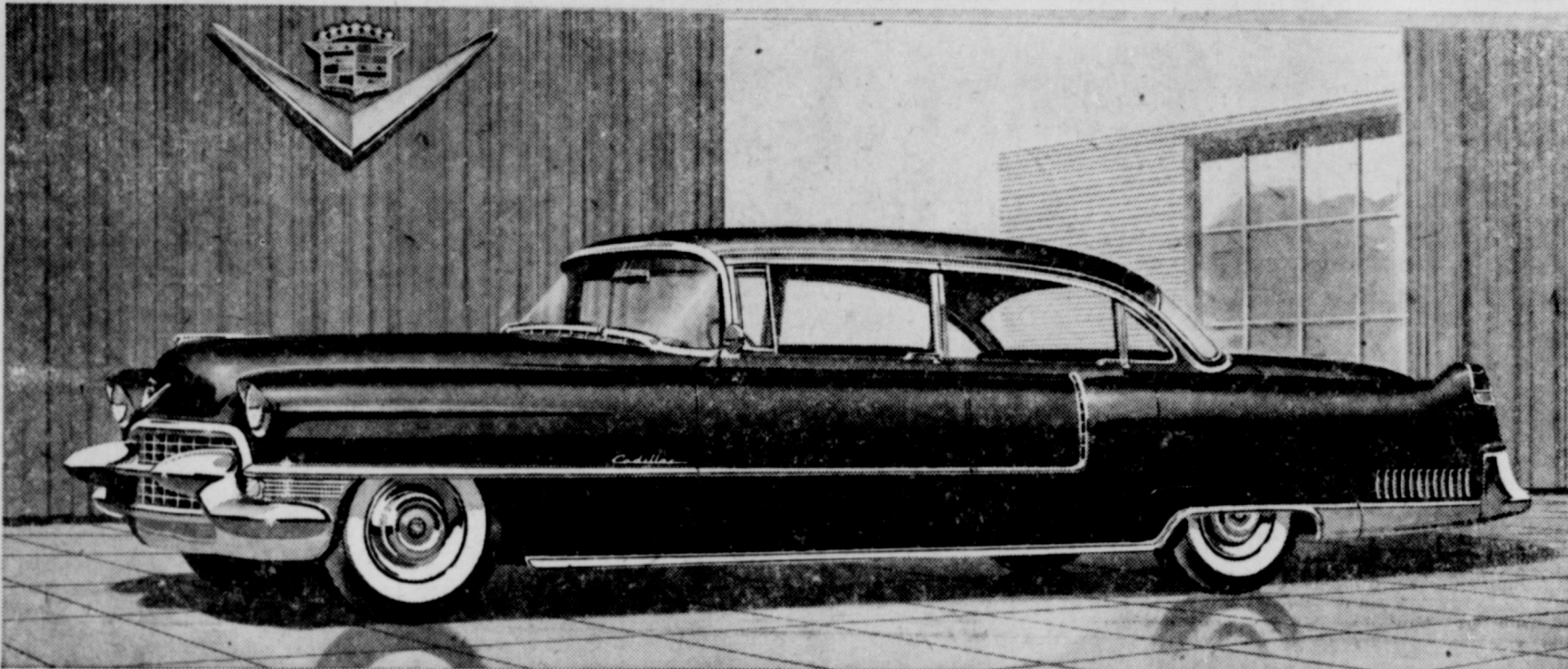
Mr. and Mrs. Joe Stephen attended the Texas-TCU football game in Fort Worth Saturday.



MRS. PAUL MOSS . . . President State Federation Music Clubs

Mrs. Minnie Ewart has returned to her home here from Galveston where she has been a patient in John Sealy hospital for the past two months.

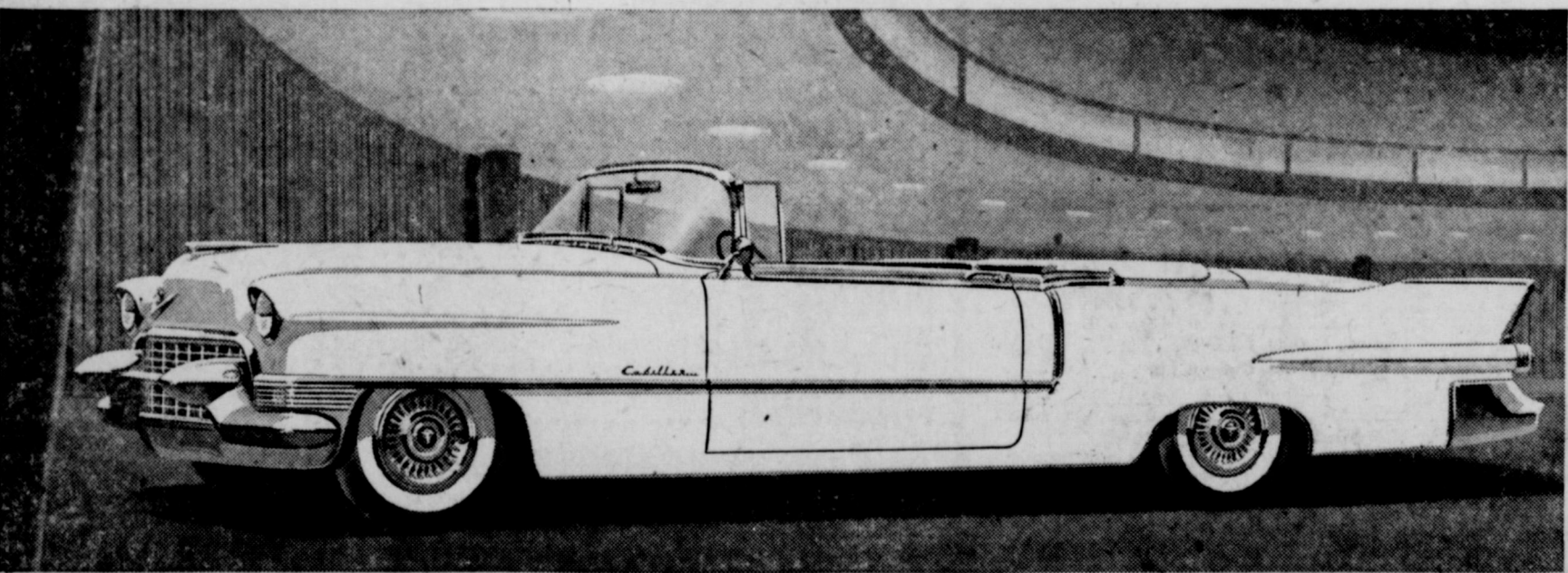
Mrs. Claud Pierce of Hobbs, N.M. was the guest Tuesday of Mrs. Marene Johnson, and Mr. Johnson.



The new Series 60 Special, representing the standard 1955 models, features a new Florentine-curved roof line, a new slender center post, and a great new 250-h.p. engine.

# CADILLAC for 1955

Presents the Most Beautiful and Finest Performing Motor Cars in Its History!



The spectacular new Eldorado, a dramatic interpretation of the new Cadillac styling, offers many unique features, including a new 270-h.p. Cadillac engine.

This is one of the most significant new-car announcements in Cadillac history.

For it introduces to the world's motorists the most magnificent creations in Cadillac's fifty-three years of motor car production.

Three new Cadillac series are offered for your consideration in 1955—the famous Series Sixty Special, the beautiful Series Sixty-Two, and the distinguished Series Seventy-Five . . . in addition to the spectacular new Eldorado.

They are, as you can readily see, magnificent

in beauty—with a new, jewel-like grille and front-end assembly . . . with dramatic and graceful new sculptured side styling . . . and with added dignity and bearing in every detail.

They are magnificent, too, in performance. There is a new Cadillac engine, the most powerful ever offered in a production motor car . . . an improved Hydra-Matic Drive . . . advanced Cadillac Power Steering . . . and, as an option at extra cost, refined Cadillac Power Braking. And they are magnificent in luxury . . . to a

degree unusual even for Cadillac. Their interiors are almost unbelievably beautiful . . . and they are offered in a remarkably wide selection of gorgeous new fabrics and leathers.

Beyond any question, these new Cadillac creations represent a new Standard of the World—and we urge you to see and inspect them today in our showroom.

You will be most welcome—and we know you will find your visit one of the most interesting experiences of your motoring life!

NOW ON DISPLAY

## Don Pierson Olds-Cadillac

314 W. Main

EASTLAND

Phone 302

SAVE WITH A&P's LOW, LOW PRICES...  
AVOID THE LAST-MINUTE RUSH

# BUY THANKSGIVING FOODS NOW!



BOURLAND'S QUALITY MEATS

BABY BEEF Loin, Club, T-Bone **Steak** Lb. **49c**

ARMOUR STAR **PICNICS** POUND **39c**

CHOICE CUT BABY BEEF **ROAST** POUND **39c**

SLICED **BACON** Lb. **45c** HOME DRESSED **FRYERS** Lb. **49c**

**ALUMINUM FOIL** WEAREVER OR REYNOLDS 25' Roll **23c**

**WAXED PAPER** CUT-RITE BRAND 125' Roll **23c**

**HEINZ SOUPS** CHICKEN NOODLE, CREAM OF CHICKEN OR MUSHROOM 11-oz. Can **15c**

WILSON'S VIENNA—Can **Sausage** 15c

A&P YELLOW CLING—No. 2 1/2 Can **Peaches** 29c

SILVER VALLEY—No. 300 Can **Blackeyed Peas** 10c

CHUM—1-lb. Can **Salmon** 39c

PINTO— **Beans** 4 lbs. 37c

ANN PAGE **Tomato Ketchup** 19c

DAILY BRAND Fish or Regular **DOG FOOD** 2 1-lb. Cans 15c

DASH, IDEAL, KAM, PARD, KEN-L-RATION **DOG FOOD** 2 1-lb. Cans 27c

ANN PAGE PURE **PRESERVES**

- Peach • Plum
- Pineapple

2-lb. Jar **45c**  
1-lb. Jar **25c**



SUNNYFIELD **Flour** 10 lbs. 79c

SULTANA—Can **Pork & Beans** 10c

SCOT—Roll **Toilet Tissue** 10c

ROBIN HOOD **Flour** 25 lbs. 1.99

CAMPBELL'S **Tomato Soup** 3 cans 35c

WOLF BRAND—Large Can **Chili** 49c

RED DELICIOUS **Apples** lb. 15c

JUICY TEXAS **Oranges** 8 lb. bag 39c

NO. 1 U. S. RUSSETT **Potatoes** 10 lb. bag 49c

CELLO **Celery Hearts** 25c

FRESH **Cucumbers** 10c

FRESH — 1-lb. Pkg. **Dates** 25c

### Bird's Eye Frozen Food Specials

**Broccoli** 10-oz. Pkg. **21c** **Spinach** 11-oz. Pkg. **15c**

**Broccoli** Chopped Pkg. **15c** **Spinach** Chopped Pkg. **15c**

**Cauliflower** 10-oz. Pkg. **21c** **Sprouts** Brussel Pkg. **23c**

JANE PARKER ANGEL FOOD BAR **CAKE** Reg. 55c Special at **39c**

JANE PARKER 8" CHERRY **PIE** Reg. 49c Special at **39c**

JANE PARKER'S FAMOUS HOLIDAY **FRUIT CAKE** 1 1/2-lb. Size **129** 3-lb. Size **249**

Luscious Jane Parker Fruit Cakes Are Over 2/3 Fruits and Nuts!

AMERICA'S FORTNIGHT FOOD RETAILER SINCE 1917

**A&P Food Stores**

THE GREAT ATLANTIC & PACIFIC TEA COMPANY

# Pre-Holiday EVENT

Select your Christmas gifts now at real savings. First reductions on many beautiful Dresses, Skirts, Sweaters, and Hats. Perfect for wear now and all winter.

## COATS AND SUITS REDUCED

VALUES TO 89.50 NOW 10% TO 50% OFF

### Special Group DRESSES

5.00 TO 7.95

We have made drastic reductions on these dresses and grouped them at

AND 10.00

### EXTRA SPECIAL

### One Group DRESSES

\$2.99

### ALTMANS STYLE SHOP

"SMART WOMENS WEAR"

North Side of Square

Phone 25

### Eastland County Farm Bureau Directors Meet

Eastland County Farm Bureau Directors met Monday evening, Nov. 15 in the Eastland County court room, with A. Z. Myrick, president, and a group of 18 attending.

How far have we come? This question may be answered by pointing out some of the sign posts to a brighter future for the farmers and ranchers of Eastland County who have helped with Farm Bureau supported legislation. This legislation began at the grass roots level in Eastland County and other counties in the state, along with other states in a concerted effort at stabilizing our agricultural economy.

Sign posts along the way include legislation on price supports, expanded markets, soil fertility, research - extension, farm credit, self-help and taxes and many others that will aid in higher incomes, sounder money, competitive enterprise and greater freedom.

The one and one-half millions of farm families have paved the way — a highway to better living by support of Farm Bureau!

### PERSONALS

Mrs. B. H. Jones of Wynert visited here with her sister, Mrs. H. W. Seay. Mrs. Seay accompanied her sister to Waco, where they are visiting with E. H. Jones Jr. who is a patient in the Veterans Hospital.

Mrs. J. H. Rushing left Tuesday for San Antonio, where she will visit for several weeks with her daughter, Mrs. Donald January, Lt. January and their infant son, born Monday.

Miss Linda Franklin became the bride of Bobby Warren in a ceremony read at 7 p.m. Saturday November 13th by Rev. Alfred Nelson, pastor of the Olden Baptist Church, in his home.

Others present were the bride's mother, Mrs. Franklin and Mrs. Nelson, the pastor's wife.

LOW! LOW! PRICES! PLUS DOUBLE S. & H. GREEN STAMPS EVERY WEDNESDAY AT YOUR PIGGLY-WIGGLY STORE

We Reserve The Right To Limit Quantities of All Purchases. None Sold To Dealers or Their Representatives!

SPECIAL PRICES EFFECTIVE FRIDAY and SATURDAY!

# PIGGLY WIGGLY

## OLEO

HOLLENDALE  
One Pound Carton Limit 2 **19c**

## Crisco

Limit 1  
3 Lb. Can **79c**

## CIGARETTES

Regular Size! Popular Brands!  
Limit 1 Carton **\$1.99**

## Canned BISCUITS

BALLARD OR PILLSBURY  
Limit 4 **2** Oven-Ready Cans **19c**

## KLEENEX Tomato Soup

**2** 200 Count Boxes **25c** Limit 2

CAMPBELL'S **2** Tall Cans **17c**

### SNOWDRIFT SHORTENING

3-LB. CAN **91c**

### WESSON OIL

QUART BOTTLE **69c**

### SKINNER'S LONG SPAGHETTI

**2** 7-OZ. PKGS. **25c**

### SMUCKER'S APPLE BUTTER

2-LB. JAR **46c**

### ZESTEE STRAWBERRY PRESERVES

20-OZ. GLASS **49c**

### SUNSHINE KRISPY CRACKERS

1-LB. BOX **27c**

### FRUIT CAKE Ingredients

ROYAL ANNE—1-Lb. **69c**  
FRUIT CAKE MIX ..... **69c**  
LIBERTY—8-Oz. Jar **37c**  
FRUIT CAKE MIX ..... **37c**  
DROMEDARY, DIXIE—16 1/2-Oz. **71c**  
FRUIT CAKE MIX ..... **71c**  
SUGARIFE—15-Oz. Box **20c**  
SEEDLESS RAISINS ..... **20c**  
SUGARIFE SEEDLESS—15-Oz. **21c**  
MUSCAT RAISINS ..... **21c**  
SUNMAID—15-Oz. **21c**  
SEEDLESS RAISINS ..... **21c**  
DROMEDARY—4-Oz. Pkg. **15c**  
PITTED DATES ..... **15c**  
DROMEDARY, LOOSE PACK—6 1/2-Oz. Pkg. **22c**  
PITTED DATES ..... **22c**  
LIBERTY—4-Oz. Pkg. **23c**  
DICED LEMON PEEL ..... **23c**  
LIBERTY—4-Oz. Pkg. **23c**  
DICED CITRON ..... **23c**  
LIBERTY—4-Oz. Pkg. **23c**  
DICED ORANGE PEEL ..... **23c**  
LIBERTY—4-Oz. Pkg. **23c**  
DICED MIXED FRUITS ..... **23c**  
LIBERTY—4-Oz. Pkg. **27c**  
PINEAPPLE TWINS ..... **27c**  
LIBERTY—4-Oz. Jar **31c**  
GLAZED CHERRIES ..... **31c**  
LIBERTY—8-Oz. Jar **59c**  
PINEAPPLE ..... **59c**  
LIBERTY—8-Oz. Jar **63c**  
GLAZED RED CHERRIES ..... **63c**  
FUNSTEN—7-Oz. Pkg. **65c**  
PECAN HALVES ..... **65c**

### SUNSHINE HI-HO CRACKERS

1 Lb. BOX **37c**

### PUREX LIQUID BLEACH

QUART BOTTLE **17c**

### GERBER'S BABY FOOD

Strained  
3 4 1/2-OZ. CANS **28c**

### CHEEZ-WHIZ

16 OZ. JAR **59c**

### CLOROX LIQUID BLEACH

1 1/2 GALLON **33c**

### ARMOUR STAR TREE T

12-OZ. CAN **49c**

### CHOICE - QUALITY - MEATS

BACON SQUARES ..... LB. **39c**

FRESH GROUND MEAT ..... LB. **29c**

BABY BEEF SEVEN ROAST ..... LB. **39c**

SUGAR CURED SLICED BACON ..... LB. **55c**

DRESSED HENS ..... LB. **39c**

ORDER YOUR THANKSGIVING TURKEY NOW!

### FRUITS and VEGETABLES

TEXAS ORANGES ..... 5 Lb. BAG **29c**

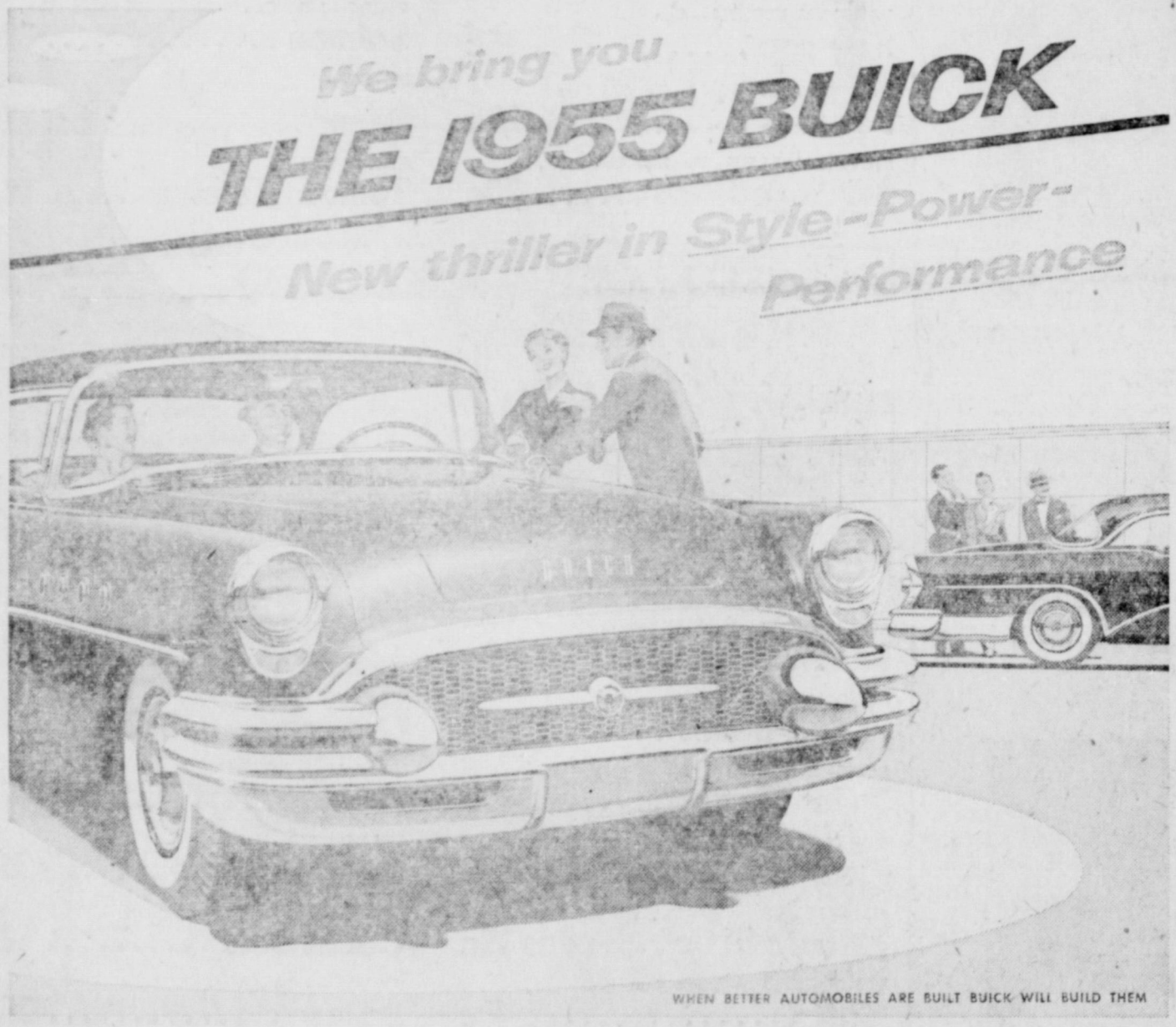
HOME GROWN MUSTARD GREENS ..... BUNCH **10c**

FRESH TOMATOES ..... CARTON **17c**

FRESH COCOANUTS ..... LARGE SIZE **15c**

RUSSET POTATOES ..... 10 Lb. BAG **49c**

FRESH CRANBERRIES ..... 1 Lb. BOX **29c**



We bring you **THE 1955 BUICK**  
New thriller in Style - Power - Performance

WHEN BETTER AUTOMOBILES ARE BUILT BUICK WILL BUILD THEM

A BRIGHT NEW FRESHNESS greets your eyes and tells you: Buick's done it again. You see it in the bold distinction of that gleaming Wide-Screen Grille. You see it in the rakish sweep of the rear-end contours. You see it in the whole fore-and-aft newness of fleet-lined grace that marks Buick the beauty thrill of 1955.

**New horsepower — up to 236**  
You learn more when you get the power story. Up to new peaks go the horsepower of every Buick V8 engine—a walloping 188 hp in the low-price SPECIAL—a mighty 236 hp in the CENTURY, SUPER and ROADMASTER.

And it's new, more responsive, far abler power you can literally feel as you go.  
But even bigger Buick news for

1955 is something more than style and power. It's what the "variable pitch propeller" now has done for Dynaflow Drive.

**Up goes performance — and gas mileage too**  
When you find it necessary to push the pedal to the floor board, you do more than call on the greatest high-compression V8 power in Buick history. You do what a pilot does when he heads his plane down a runway. You do in oil what he does in air—you cut down take-off time by using "variable pitch propellers."

In this case, the propeller blades are inside the Dynaflow unit. But they're engineered to swivel or change their "pitch" just like plane propellers—and with the same

result: one pitch for getaway, another pitch for gas-saving fuel efficiency.

**And what you get in the way of instantaneous safety-surge with absolute smoothness, you can only believe when you feel it.**

**This you have to try**  
Of course, we want you to come and see the trend-setting new Buicks—look into the betterments in gasoline mileage that add new thrills to these spectacular cars. But this year, "seeing" is only the beginning. So—while you join the crowds viewing the new Buicks this week end, make a date to get behind the wheel as soon as you possibly can. We promise you the thrill of the year.

*\*Standard on Roadmaster, optional at extra cost on other Series.*

NOW ON DISPLAY

# Muirhead Motor Co.

304 West Main Street

EASTLAND, TEXAS

Phone 692

LOW! LOW! PRICES! PLUS DOUBLE S. & H. GREEN STAMPS EVERY WEDNESDAY AT YOUR PIGGLY-WIGGLY STORE