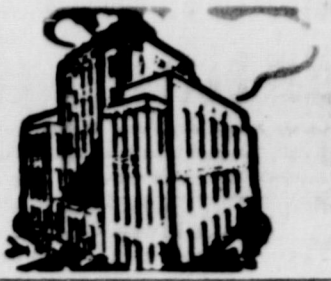




Eastland Telegram

"COVERING EASTLAND COUNTY"



VOLUME TWENTY-NINE

EASTLAND, TEXAS, THURSDAY, JANUARY 22, 1959

No. 119

MOORE about... EASTLAND by Virgil E. Moore

Anyone who never has sat through a Lions Club meeting hasn't really lived!

We have found, in more than one place, that Lions are just about the wildest group of grown men in the country. It's about as safe to visit a bear in his cave as it is to go to a Lions Club meeting, and in some cases we would much prefer to risk the treatment the bear might give to that of some 50 Lions and one tail twister.

In our day we have seen some mean tail twisters, too. But in all sincerity, we would have to say that Bill Walters is the meanest, stubbornest and most mercenary tail twister we ever knew.

However, one couldn't blame old Bill for being that way. Having to put up with the likes of guys like Norman Guess, Everett Plowman, James Wright, Willard Griffin and Jim Smith would drive anyone to the edge.

Not too long ago, Norman Guess tired of the tail twister's efforts to keep his fellow Lions in line, and fixed up a contraption to solve his problem. He fixed bailing wire from his seat at the table to Bill's. Then he brought in a car battery and wired her up.

Well, Bill hit that wire about midway between a bite of steak and a slice of bread. The steak went one way, the bread another and Bill straight up. Poor old Gordon Smith had the misfortune of sitting next to Bill, and he got some of the juice too. Gordon was busy buttering his hot roll about that time, and by the time he got through buttering, he had spread the yellow gold on both sides of his bread and on the lion president and lion sweetheart as well.

The Eastland Lions use to have a bad habit of throwing biscuits at their meetings. That came to a fast halt one day, however, when Mrs. Ina Bean and Mrs. Jess Siebert, who do the cooking for the club, walked in and announced that the next biscuit which was thrown would be the last one local Lions would see for a long time. "You boys will eat light bread from here on," they warned.

Wet napkins soon replaced biscuits as the favorite weapon. And to this day the wet napkin is still in prominent use.

There is one Lion, however, who doesn't have to worry about being hit. He is Judge Clyde Grissom.

Judge Grissom was sitting at a meeting one day, minding his own business, when James Smith wound up to throw at David Fry. Unfortunately, the judge got the full effect of the wet napkin, right in the face. And even more unfortunately was the fact that Smith was sitting just across the table from the judge.

Smith turned a deep, deep shade of red, and to this day no one dares throw in the judge's direction.

Willard Griffin is the slickest thrower of all, though. Willard can hit you, right in the eye with you looking at him, and you will never even realize he threw at you. Visitors are always warned to watch out for him. Watch that innocent looking guy," they are usually told.

But telling a story about the local Lions Club wouldn't be complete unless we mentioned the ties that Earl Labrado has had cut off of his neck. Earl has just about learned to do what the tail twister says, for too often he has refused and had one of those \$2.50 specials snipped in half.

He got his revenge a while (Continued on Page Two)

FREYSCHLAG
INSURANCE AGENCY
presents the
WEATHER NEWS

High	29
Low	10
Moisture	.02
Total Moisture In Jan.	.05
Avg. Rain In Jan.	1.37
Total Rain For Year	.27
Forecast	Slightly Warmer

PLAY WINTERS FRIDAY

Mavs Give Dogs Cellar

Eastland's A and B teams had fairly easy times in polishing off Fanger five Tuesday night in District 7-AA action. The Mavs downed the Bulldogs 51-40 and the B team knocked off the Ranger reserves 54-22.

The win kept the Mavs' hopes of a district crown alive, and the locals got some unexpected help when Winters edged past favored Coleman 59-58. Cisco, the league leader, was whipping Ballinger 55-49, in the meanwhile.

The Mavericks were held fairly close by Ranger in the first two periods of play, but broke the game wide open in the third stanza and then coasted to the win in the final period. The score was tied 8-8 at the end of the first quarter, and the Mavs were ahead 18-16 at halftime. Eastland built up a seven point lead in the third period of play, and stretched the margin to 11 points as the final whistle blew.

No Charges In Conservation Program Listed

Conservation practices, under the 1959 agricultural conservation program, will be the same as in 1958, Emmett Powell, manager of the Eastland County Agricultural Stabilization and Conservation office, announced this week.

"As in the past the county office is offering a pre-measurement service on cotton acreage," Powell stated. "The cost to the producer will be \$10 for the first plot plus \$4 for each additional plot. Final date for application is April 15. If a producer is interested, we will be glad to aid in determining approximate acreages from photographs."

Powell said the ASC office should be notified if there have been any changes in the farm operation for 1959 such as change of owners or operators.

Powell also said that now is the time to apply for new grower allotments.

"If you are not interested in an old peanut farm," he explained, "and have had two years of experience within the last five years growing peanuts and depend on the farm for a living, you may be eligible for a new grower allotment."

He also said about the same requirements are necessary for a new grower cotton allotment, except that experience is not required.

Tigers Second In Anson Tournament

The Douglas Tigers took second place in the Anson Invitational Basketball Tournament.

With Joe Jones controlling the back board and Walter Chatman as high point man, the Tigers won out over Knox City in the first round and Crowell in the semifinals.

In the finals, Abilene reserve strength proved to be too much for Douglas. Boys who helped bring home the trophy were W. Chatman, J. Jones, E. Govan, E. Webster, R. Jones, J. Lewis, J. Woodruff and F. McDonald.

EASTLAND NATIONAL BANK
"On The Square"
Member F. D. I. C.



Larry Hollis was high pointer with 19 points. Otis Green got nine, Martin Day eight, Stanley Reed seven, Clint Humphreys three, Philip Lewis three and Don Bull two.

Ernest Stephen was high for the losers with 11 points, while Jerry Beard and Dean Richey each got 10 for Ranger.

The Mav B teamers didn't have much competition. Eastland held Fanger scoreless in the first period to lead 14-0, then built their lead into a 32-7 count at halftime. Using reserves, the B teamers coasted to a 43-14 third quarter margin, then finished with an 11-point quarter to win 54-22.

John Wilson had 14 points for the Mavs, Don Wilson got 10, Mickey Garner nine, David Whitten eight, Roger Taylor seven, James Lewis four and Buddy Maser two. Charles White was high for Ranger with nine points.

District teams swing back into action Friday night with Eastland at Winters, Cisco at Coleman and Ballinger at Ranger.

7-AA STANDINGS		
Team	Wins	Losses
Cisco	3	0
Coleman	2	1
Winters	2	1
Eastland	1	2
Ballinger	1	2
Ranger	0	3

Rebecca Graham Is New Pecan Queen of Texas

Rebecca Graham, who was named earlier as Eastland County Pecan Queen, will be crowned State Pecan Queen at the state convention of Pecan Growers in Fort Worth next July.

Oscar Schaefer, president of the Eastland County Pecan Growers Association, said he was recently notified of Miss Graham's selection by C. E. Smith of Rising Star, a member of the board of directors of the state association.

Schaefer said that Miss Graham was named State Pecan Queen at the state show, last month, on the basis of points won by Eastland County pecan growers who exhibited in the show. County pecans took top honors, gaining more points than any other county. The county earned 116 points in the show. San Saba County was second with 113.

Officials at Texas A & M College notified Smith that Miss Graham would be crowned by the president of the state association during the Fort Worth convention.

An Eastland High School senior, the Pecan Queen is the daughter of Mr. and Mrs. E. L. Graham. She is the second Eastland County girl to win the honor. Anna Little of Rising Star was the 1958 State Pecan Queen. Only three queens have been selected.

Schaefer also announced that the association has raised sufficient funds for erecting a fence and two signs at the original Burkett pecan tree, located on Highway 80 near Putnam. Construction is now underway, he said, on the Callahan County project.

Pecan growers and others in the county contributed funds for the marker in a drive that started last fall with the annual field day tour. A sum of \$75 toward the project was subscribed by the association.



MISS CAROL MACMOY ... represents Eastland in Fort Worth Show

Rehab Center Director Is Lions Speaker

Shelly V. Smith, executive director of the West Texas Rehabilitation Center in Abilene, was a guest speaker Tuesday at the regular luncheon meeting of the Lions Club, held in the White Elephant restaurant.

Smith told Lions that, "We feel we (the center) are an answer to creeping socialism." He explained that the center treats patients free of charge who are unable to otherwise receive needed treatments. Only doctors can ask that patients be admitted, however.

Mrs. Matene Johnson of Eastland is area advisor of the Center, the speaker said.

The center opened in 1953 with 17 patients. It now has more than 260 patients. Jerry Clark, formerly of Gorman, is on the Center's staff of teachers.

Smith showed a film on the center following his talk.

EASTLAND NATIONAL BANK
"On The Square"
MEMBER F. D. I. C.



TO LEAD CONFERENCE—Leading the Conference which begins this Sunday at the Bethel Baptist Church will be, from left to right, Rev. James Flaming, Bible teacher; Rev. Ed Crow, Bible preacher; and Ed Wiggins, song leader. Services will continue through Jan. 28.

FORT WORTH LIVESTOCK SHOW

Local Riding Groups And Queens to Attend

Friday, Jan. 30, opening day of the 1959 Southwestern Exposition and Fat Stock Show, will be set aside to pay tribute to residents of Eastland.

Members of the Eastland Sheriff's Posse and the Posse Ann's will ride in the opening day parade in downtown Fort Worth. Riding with the Posse Ann's will be Mrs. Darrell Emfinger of Eastland who was recently elected Queen of the National Association of Sheriff's Poses and Riding Clubs. Mrs. Emfinger also will be introduced from horseback to the audience at the night performance of the rodeo on Eastland Day.

Miss Carol MacMoy, has been named the Eastland Cowgirl

Medical Society Hears Panel At Lone Cedar Meet

Members of the Five-County Medical Society heard a panel discussion concerning multiple injured persons, presented by three medical doctors from Fort Worth, at a meeting in the Lone Cedar Country Club Tuesday night.

Following the dinner at 7:30 p.m., the men attended the panel discussion while members of the women's auxiliary elected officers for the year.

Dr. W. B. Adamson of Abilene, president of the Texas Heart Association, outlined the program of the heart association before the group. Dr. W. P. Watkins of Ranger introduced the speakers.

Officers, elected in the auxiliary meeting, include Mrs. Harold Bulgerin of Eastland, president; Mrs. M. A. Trendwell, Eastland, vice president and Mrs. Bill Brogden of Gorman, secretary-treasurer. They will take office in May.

Mrs. Jim Whittington of Eastland, president, presided over the auxiliary meeting.

Members of the panel, speaking before the medical doctors, were Dr. Fred Behfeldt, Dr. John Patterson and Dr. John McBride.

A total of 38 people attended the meetings, including representatives from Ranger, Eastland, Cisco, Breckenridge, Baird and Albany.

Mrs. Milton Day, coach, announced that the district had been split into two divisions. Winners of each division will play a series for the district crown. Eastland will compete against Coleman and Cisco.

Mavette starters will be Jackie Baggett, Judy Inzer, Judy McMillan, Beverly Moser, Yvonne Green and Patsy Hollis. Misses Baggett and Inzer, only seniors on the team, are co-captains. Others expected to see action tonight are Joyce Robertson, Carol Britt and Tena Urban.

The Mavettes next game will be played Jan. 29 against Coleman in Coleman. The locals return Cisco's visit Feb. 12 and host Coleman Feb. 19.

Bible Conference At Bethel Church To Begin Sunday

A Bible Conference will begin Sunday at the Bethel Baptist Church in Eastland.

The Conference will continue through Jan. 28. Rev. Ed Crow will be Bible preacher. Rev. James Flaming will be Bible teacher and Ed Wiggins will conduct singing.

The Gospel of Mark will be covered during the Conference, Rev. Flaming said.

Services will begin at 7:30 p.m. on Monday, Tuesday and Wednesday, and at 7 p.m. on Sunday.

Three awards will be given out during the meeting "in appreciation for visitations during the Conference." There will be a Bible, a \$5 gift certificate and a \$2.50 gift certificate.

TIRE OF A GAS HOG? OF PARKING A DINOSAUR?
Try and buy the popular, smart new Rambler, truly a teeny-weeny gas burner. Famous for fun, resale, quality and economy.

Sweetheart. She will be introduced to the rodeo audience at the night performance as the city's official sweetheart.

A block of tickets has been sent to the Eastland Chamber of Commerce for sale to Eastland County citizens.

H. J. Tanner, manager of the Eastland County Chamber of Commerce, is in charge of arrangements for Eastland Day at the Fort Worth show.

A special feature at the Fort Worth rodeo this year will be

Bert S. Fuller, Humble Employee, Taken by Death

Funeral services for Bert S. Fuller, a retired telegraph operator for Humble Pipe Line Co., will be held at 2 p.m. Friday in the Hamner Funeral Home Chapel with Rev. W. E. Hallenbeck, pastor of the Church of God, officiating.

Mr. Fuller, a resident of Eastland for the past 18 years, died Tuesday night in Eastland Memorial Hospital. He made his home at 613 West Moss.

Born June 22, 1873 in Elsie, Mich., he married Alice Myrtle Morrison Oct. 24, 1910 in Wichita, Kan.

Survivors include his wife; three sons, Roland Bert Fuller of Carrollton, George Melvin Fuller of San Diego, Calif., and Jerry Ross Fuller of Decatur, Ala.; two daughters, Mrs. Mary Alice Campbell of Odessa and Karisa Taylor of Kansas City, Kan.; two sisters, Mrs. Blanche Campbell of San Diego, Calif. and Mrs. Nora Rattiban of Rockford, Mich.; seven grandchildren, and 11 great-grandchildren.

Funeral services will be held at 2 p.m. Friday at the Hamner Funeral Home.

Burial will be in Eastland Cemetery under direction of Hamner Funeral Home.

Olden Junior High Basketball Tourney Gets Underway Tonight

OLDEN — The annual Olden Junior High School girls and boys basketball tournament will get underway Thursday night in the Olden High School gymnasium.

Seven schools have entered teams in the tournament. Eastland, Olden, Desdemona, Gordon, Carbon, Lingleville and Scranton will be represented, with Eastland entering two girls teams and Olden entering two boys teams.

The Eastland and Carbon girls are ranked as the favorites in the girls bracket and the Eastland and Olden boys are top ranked in the boys division.

Action tonight will match the Desdemona and Olden girls at 5:30 and the Carbon and Lingleville girls at 7:40. Lingleville and Desdemona boys clash at 6:35 and Carbon and the Olden B team boys play at 8:45.

Friday night the Scranton and Eastland B team girls play at 5:30 p.m. and Gordon and the Eastland A team girls play at 7:40. Gordon and Scranton boys play at 6:35 and Olden and Eastland boys meet at 8:45.

Second round play in the consolation brackets begin Saturday morning at 11. Finals will be played Monday night.

The Eastland girls team is unbeaten in four games and have scored 213 points for the season, an average of 53 points a game. Mrs. Milton Day coaches the Eastland girls.

Vernon Perryman Funeral Rites Slated Friday

Funeral services will be held Friday at 11 a.m. in Dallas for Vernon C. Perryman of Dallas, a former Eastland resident.

Mr. Perryman, who was with Perry Oil and Gas Co. in Eastland, died Tuesday night. His wife preceded him in death about three months ago.

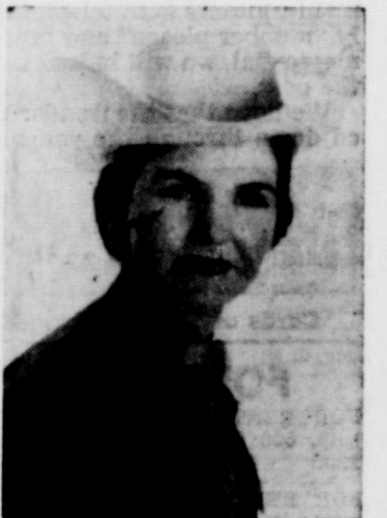
Survivors include a daughter, Mrs. Zo Ann Haynes of Richardson; a son, Phillip, of Dallas; and three grandchildren.

Burial will be in Restland Memorial Park.

Dale Robertson, star of the television series, "Tales of Wells Fargo."

Robertson recently was labeled "TV's real cowboy" by Life Magazine because of his interest in the training and racing of Quarter horses. He is a native of Oklahoma and presently raises horses on an Oklahoma ranch.

An accomplished singer, the actor has been featured on the Perry Como Show. In his rodeo appearance, he will present a musical act especially created for the Fort Worth show.



MRS. DARRELL EMFINGER ... queen of riding clubs

Ten Degrees Is Official Reading Here

The mercury took an icy dip to 10 degrees here Thursday morning and was standing at 13 degrees at 8 a.m.

The 10 degree reading was the second coldest report of the year. The temperature dropped to five degrees here earlier this month.

Not much change in temperatures, with gradually warmer weather due Friday is the local forecast.

Wednesday morning's low here was 13 degrees. That came on the heels of a 78 degree reading Tuesday afternoon.



JUPITER-C—Capped by America's first satellite, Explorer I, the Army's Jupiter-C stands poised for flight on its launching pad at Cape Canaveral, Fla., on January 31, 1958. The vehicle is a modified Army Redstone guided missile, a weapon now operational with Seventh U.S. Army forces in Europe.

L. C. PHAGAN, FURNER JOURNAL
1206 W. 5th St. — Phone G-1000
All types of oils and greases for farm, industrial and commercial uses. Only local oil (no imported oil) good in making Premium Products.

Eastland Telegram

Eastland County Record established in 1931, consolidated August 31, 1951. Chronicle established 1887, Telegram established 1923. Entered as second class matter at the Post Office at Eastland, Texas under the act of Congress of March 3, 1879.

TIME PUBLISHING COMPANY

Published Tri-Weekly—Tuesdays - Thursdays - Sundays

ONOUS DICK and JOE DENNIS, Publishers

VIRGIL E. MOORE, Editor

CAROLYN COLLINS, Society Editor

One week by carrier in city	.18
One month by carrier in city	.48
One year by mail in County	2.75
One year by mail in state	4.75
One year by mail out of state	6.75

NOTICE TO PUBLIC—Any erroneous reflection upon the character, standing or reputation of any person, firm or corporation which may appear in the columns of this newspaper will be gladly corrected upon being brought to the attention of the publishers.

The Telegram Speaks

Another Era to End Soon When... Dial Telephones Make Entry

(An Editorial)

The Telegram says thanks today to seven veteran telephone pioneers who have faithfully served Eastland for many years.

Telephone employees with as much as 21 years service recently met here to organize the West of the Brazos Telephone Co. Pioneers organization. In so doing, the telephone veterans called our attention to their many years of service.

In the near future, Eastland citizens will lose one of their main contacts with telephone employees. When the friendly "number please" and "thank you" are replaced by the magic dial, we will indeed bow our heads to another era of the past.

We hope that the wonderful service Eastland has received down through the years will not be forgotten.

WANT ADS

Cards of Thanks charged for at rate of \$2.00 Each

FOR RENT

FOR RENT: Room and private bath. 500 South Oaklawn. Phone 290.

FOR RENT: Furnished apartments. 2 rooms and bath. Bills paid. Reasonable rates. Under new management. 212 W. Patterson. Phone 188.

FOR RENT: Newly decorated apartments Hillside. Phone 9520.

FOR RENT: Four room unfurnished apartment Call 394-J.

FOR RENT: Newly decorated apartments. Adults. Phone 1085-W.

FOR RENT: Small house. Three rooms and bath. New decorated. 216 East Main.

FOR RENT: Small house. Furnished 207 South Walnut.

MISC. WANTED

WANT TO LEASE: 300 to 400 acres good grass land. Eastland or Stephens County. P. O. Box 118-A. Ranger, Texas.

BUSINESS OPPORTUNITY

OPPORTUNITY AVAILABLE FOR QUALIFIED MAN OR WOMAN

To service and collect from cigarette machines in this area. Part or full time. Excellent opportunity for qualified person. \$592.50 to \$1,975.00 cash required to enable you to begin immediately. Company finances expansion. If you have servicable car and 8 spare hours weekly write, giving particulars to National Sales & Mfg. Co., Inc., 3508 Greenville Avenue, Dallas 6, Texas.

MISC FOR SALE

CHAIRS - CHAIRS—over 500 various types of straight chairs, with and without arms. Mattresses, tarpaulins, overcoats, field jackets, work pants, gadgets, gizmos... at low prices while they last. Army Surplus Store—North East Corner of Square, Eastland.

FOR SALE: Used refrigerator, good running condition. \$30. See at Eastland Telegram office.

SIX months to pay for an Ed V. Price tailored suit. Made to your individual measurements. NO interest, NO carrying charges. C. L. FIELDS 103 W. Valley Phone 571

ELECTROLUX (R) Cleaners factory rebuilt and guaranteed. Authorized Sales & Service. 1392 Sayles, Abilene. Ph. OR 3-1135.

FOR SALE: Re-conditioned jerrycans adding machine guaranteed \$35.00. Stephens Typewriter Co. 417 South Lamar

FOR SALE: 40 penny peanut vending machines. Phone 571.

BURKETT, Comanche and West-end Schley pecan trees for sale. Phone 193 after 6 p.m. J. M. Cooper.

FOR SALE: Used Chambers cook stove. Call 588.

FOR SALE: Used antenna and pipe tower. \$20. Joe Tow.

LOST & FOUND -

LOST: Black and brown cow three year-old and small, strayed from Mickle farm West of Eastland. Call George B. Hull 750-J2

SPECIAL NOTICE

NOTICE: Call your Rawleigh dealer for delivery. Telephone 893. 509 South Daugherty, Mrs. Mallaquay Key.

MR. STORE OWNER—If you have bookkeeping problems, we suggest you take a look at The Johnson System. The new Modern Merchant simplified bookkeeping book is designed to ease the work of keeping records for the small retail store owner. It can easily be adjusted to fit your operation. EASTLAND TELEGRAM.

ANNOUNCING: Ferguson Electric Co. wishes to announce that they are now open for business, located in the Grimes Bldg. Electric motors repaired and rewound. Large or small. We make service calls. 14 years experience. All work guaranteed. Phone 94.

REFRIGERATION SERVICE — Dairy, Commercial, Auto, Household. Call collect, Bill Kendall, HI 2-1312, Cisco, Texas.

NOTICE: Refrigeration repairs, household, commercial. Phone 785. Roy Gann, Nite 976.

MR. FARMER—We recommend Garner's Farm Record, a simplified bookkeeping system and income tax record for operating on either a cash or inventory basis. So simple a school child can keep it. So economical all can afford it. So complete it meets all income tax laws. And your complete, simplified bookkeeping system costs just \$1.75. EASTLAND TELEGRAM.

MAN WANTED: for 1500 family Rawleigh Business in Stephens County. Permanent if you are a hustler. See R. F. Lewis Desdemona or write Rawleigh's Dept. TXA - 1022-129 Memphis, Tenn.

NOTICE: Would purchase 4 or 5 room house. Give street and house number. Write Box 492.

JANUARY SPECIAL: Regular \$1.00 S-T-R-E-T-C-H nylons 7½-2 pair \$1.50. 60 gauge full fashion guaranteed perfect at Mode O' Day

NOTICE: Typing offered from 4:20 p.m. to 7:30 p.m. Monday through Friday. Phone 341-J.

LEGAL NOTICE

NOTICE VETERANS' LAND BOARD SALE

The Veterans' Land Board will receive sealed bids at the General Land Office, Austin 14, Texas until 10 o'clock A. M., January 20, 1959, for approximately 107 tracts of land located in various counties of Texas.

Lists and other detail information may be obtained from Bill Alcorn, Chairman of the Veterans' Land Board, General Land Office Bldg., Austin 14, Texas.

REAL ESTATE FOR SALE

Homes for sale: Extra large two bedroom and den on three corner lots near all schools, excellent condition throughout. For information call 881 or 755-W-2.

FOR SALE: Two bedroom home. Just re-modeled inside, including new kitchen cabinets. Moderately priced. 1203 West Main. Phone 1607.

FOR SALE: Duplex at bargain. Close in. Phone 748. 209 West Patterson

SIX ROOM home for sale by owner—two corner lots. 500 Pershing, \$9500, with \$3,000 down payment. Can be seen by appointment from J. O. Earnest. For further details write L. P. Stambaugh, Box 185, Vernon, Texas.

AUTOS FOR SALE

NEW OLDSMOBILE-CADILLAC TRADE-INS

All extremely nice, and low mileage. Most with air conditioning and full power. 1953 Pontiac station wagon, 1953 Plymouth, 1957 Pontiac, 1958 Plymouth, 1956 Olds, 1955 Buick, 1958 Olds, 1956 Chevrolet. All low priced. Trade-Cash-Terms. Don Pierson Olds - Cadillac, Eastland.

MISC. WANTED

ALASKA JOBS, men and women. Earn \$500 - \$1,500 monthly. For information, send \$2.00 to Western Service, P. O. Box 162, Bellevue, Washington.

ARTHRITIS?

I have been wonderfully blessed in being restored to active life after being crippled in nearly every joint in my body and with muscular soreness from head to foot. According to medical diagnosis I had Rheumatoid Arthritis and other forms of Rheumatism. FOR FREE information on how I obtained this wonderful relief write: MRS. LELA S. WIER 2805 Arbor Hills Drive—516 P. O. Box 2695 Jackson, Mississippi

Eastland Masonic Lodge No. 467 Reg. Stated meetings 2nd Thursday of each month, at 7:30 p.m. E. A. HATTEN, W. M.

SINGER SEWING MACHINES and VACUUM CLEANERS New and Used Call Dois Morton Phone 985-W-1 after 5 p.m. Service All Makes

COURTHOUSE NEWS AND RECORDS

Real Estate Transfers, Marriages, Suits Filed Court Judgments, Orders, Etc.

INSTRUMENTS FILED County Clerk's Office

J. W. Barnes to J. L. Greer, oil and gas lease. J. W. Barnes to J. L. Greer, oil and gas lease. W. B. Cates to First National Bank, Cisco, transfer of vendor's lien. Citizens State Bank, Cross Plains to J. N. Nisbett, release of lien. Otis K. Coleman to First Federal S&L Assn., deed of trust. C. F. Coates to Mrs. Aggie M. Harrell, warranty deed. Jack Chamberlain to Frank Crowell, MML. Frank Crowell to First Federal S & L Assn., transfer of MML. Otis K. Coleman to T. E. Richards, assignment of MML. Clara B. Townsend Cockrill to Frank Sparks, warranty deed. W. B. Cates to First National Bank, Cisco, transfer of lien. W. B. Cates to First National Bank, Cisco, deed of trust. Mary E. Copeland to C. C. Copeland, warranty deed. C. C. Copeland to First National Bank, Mineral Wells, deed of trust. J. O. Earnest to Federal Land Bank, Houston, deed of trust. Eastland National Bank to M. A. Treadwell, Sr., release of lien. Haynie B. Edwards to E. J. McCurdy, Jr., mineral conveyance. Haynie B. Edwards to E. J. McCurdy, Jr., mineral conveyance. Haynie B. Edwards to E. J. McCurdy, Jr., mineral conveyance. First Federal S&L Assn. to L. Crossley, appointment. W. F. O'Connell to W. O. Pelphrey, release of lien. May E. Gamble to E. L. Hollingshead, release of vendor's lien. Higginbotham Bros. & Co. to J. O. Jackson, release of lien. Quilla Harwell to Tracy Harwell, warranty deed. John A. Hayes to County of Los Angeles Cal., deed of trust. W. H. Hall to The Public, affidavit. Bennie Lewallen to Paramount Oil, Inc., oil and gas lease. Aliff M. Lewis to George Revehouse, release of vendor's lien. C. T. Lucas to R. B. Pipkin, warranty deed. Moran National Bank to P. G. Berry, release of deed of trust. J. D. Nisbett to J. N. Nisbett, warranty deed. J. N. Nisbett to Citizens State Bank, deed of trust. A. C. Nichols to W. M. Meglasson, warranty deed. Venner Owen to J. L. Green, oil and gas lease. C. L. Rogers to Louise Griffin, deed of trust. A. E. Smith to Pan American Petroleum Corp., oil and gas lease. Guy W. Sibley to Veterans Land Board, warranty deed. Stephenville Prod. Credit Assn. to F. L. Johnson, release of lien. H. N. Thompson to A. C. Nichols, warranty deed. Veterans Land Board to Raymond E. Thompson, reinstate V. contract. Veterans Land Board to Charley M. Jackson, contract of sale. F. C. Williamson to A. G. Sander, contract of sale. Ray Wyatt to C. L. Rogers, warranty deed.

Beef Prices May Be Lower

College Station.—It appears that beef prices in 1959 may not be greatly different from those of 1958, though the average price in 1959 could be a little lower, predicts John G. McHaney, extension economist. However he adds, increases in cattle inventory are setting the stage for a price decline some time in the next few years. Any increase in cattle numbers sets the stage for a future price decline and one is very probable in some early year after 1959. But if the rate of expansion can be kept within bounds the drop will not be too severe. McHaney says the average price received for slaughter cattle in 1959 may be slightly below that of 1958, and profits from feeding cattle may average less than in 1958 when returns were the largest of recent years. The greatest price strength in 1959 will be in feeder and breeding stock, just as in 1958, the economist points out. The bumper 1958 feed harvest, the second in consecutive years, should keep the demand for feeders at a high level. The strong demand for young cattle, both for feeding and herd expansion, also will help keep the price of feeder and breeding cattle high relative to slaughter and feed cattle. Consumers will have more meat to eat in 1959 than in 1958, McHaney says. It has been estimated that about six percent more red meat will be produced in 1959. Most of the increase will be in pork and a sizeable increase in pork supplies will tend to hold down cattle prices. Higher grade beef from fed cattle will remain fairly abundant but lower grades will continue scarce. The price spread between grades will continue to be unusually narrow as cattle feeders bid for the lighter, unfinished animals.

William Lee Shires to Aleana Ruth Messimer. SUITS FILED Henry C. Berry v. Texas Employers' Insurance Assn., compensation. Elmer Berry v. J. W. Fossett, trespass to try title. Carrie Harlow v. C. A. Harlow, divorce.

ORDERS AND JUDGEMENTS 91st District Court Jacqueline L. Hooks v. Bobby Lloyd Hooks, judgement. Charles V. Brown v. H. J. Pippen & A. A. Tate, order of dismissal.

Frances Worden v. J. S. Jones, et al, order. Allen Morris v. Shirley Morris, judgement. Elbert Young v. Deah T. Young, judgement.

First National Bank, Cisco v. L. B. Beaty, et al, order.

Moore About—

(Continued from Page One) Back, however. With Walters cooperation he went by and borrowed one of his fellow Lions' tie. (Without the poor guys consent or knowledge.) Then he put it on, went to the Lions meeting, and practically begged Walters to snip the tie off. The fellow whose tie was at stake, sat on the edge of his seat leading the rooting for Bill to clip it off. Then about the time Walters did, he recognized the tie as one of his favorites.

RECENT GUESTS

Recent guests in the home of Mr. and Mrs. J. C. Allison and Miss Verne Allison were Mrs. John L. Allison and son, John Dave, of Farmington, New Mexico, Mrs. Bill Beaty and sons, David and James, of Anson, Mr. and Mrs. A. H. Swanson and Robert Swanson of Austin, Mrs. Katherine Harris of Lometa, Nelson Allison of Odessa and Miss Edith Allison of Abilene.

Funeral Directors

HAMNER FUNERAL HOMES Ben E. Hamner Oxygen Equipped - Air Conditioned Eastland Phone 17 Cisco Phone Hillcrest 2121 AMBULANCE SERVICE ANY WHERE ANY TIME Nominal Cost Burial Insurance For The Entire Family

TRUCK SEATS

• Repaired • Repadded • Reupholstered • Original Truck Leather

FIBRE-PLASTIC LUM-PUP NYLON AND ORIGINAL MATERIALS

FOAM RUBBER CARPETS, DOOR PANELS, ARM REST AND TRUCK LINING HEAD LINERS

ORIGINAL AND PLASTIC LEATHER

GRAHAM TRIM SHOP

706 W. Main Phone 170

1959

And Another Added Benefit For Our Customers S & H GREEN STAMPS

GIVEN ON ALL SERVICE AND PARTS PURCHASES

- Wash and Lubrication
- Brake Service
- Muffler and Tail Pipes
- State Safety Checks
- Many Other Services Not Listed

Also Will Give Stamps on All Tailored Seat Covers

COME OUR WAY FOR BARGAINS THAT PAY BLEVINS MOTOR CO.

514 W. Main Phone 308

if you want to save money... get a gas clothes dryer ... costs less to run by 7 to one

UNIVERSAL gas clothes dryer \$169⁹⁵

RCA WHIRLPOOL gas washer dryer combination

ROPER all automatic gas dryer \$199⁹⁵

... you name the down payment

LONE STAR GAS COMPANY

It's true... you can dry 7 loads of clothes with GAS for the cost of drying just 1 load electrically. Gas drying is so much faster—and more efficient. Now is the time to get your gas dryer—at Lone Star Gas

The Fairy Tale Comes To Life In Color! Majestic Thursday, Friday and Saturday



Richard EYER plays The Genie and Kathryn GRANT is seen in the role of Paria in Columbia's Technicolor hit "The 7th VOYAGE OF SINBAD".

SOCIAL CALENDAR

Thursday, January 22
7:30 p.m.—Mrs. Fern Green will be hostess to Adele Whitten's Sunday School Class of the First Baptist Church in her home 904 West Plummer.
7:30 p.m.—Mrs. Clyde Manning's Sunday School Class of the First Baptist Church will meet in the home of Mrs. L. C. Freeman, 505 North Dixie.
Monday, January 26
7:30 p.m.—Members of the Oddfellow Lodge No. 120 will meet in the IOOF Hall for their regular meeting.

9:30 a.m.—Mrs. James Campbell will present the "Seventeenth Annual Report" for the members of the Woman's Society of Christian Service in the church parlor.
7:30 p.m.—H. R. (Pop) Garrett will be featured as guest speaker when the South Ward P-TA meets at the school cafeteria. Mr. Garrett will speak on "Community Cooperation for Effective Action." All parents are urged to attend.

Tuesday, January 27
7:30 p.m.—The Rebekah Lodge will meet in the IOOF Hall for their regular session.

Wednesday, January 28
12 noon—The members of the Civic League and Garden Club are sponsoring a monthly luncheon for the women of the Eastland area. The luncheon will be served

in the Woman's Club. Bridge will be prior to the luncheon.
3:15 p.m.—Jan Jolly will be hostess to members of the Seaboard Junior Music Club in the home of her parents, Dr. and Mrs. J. O. Jolly, 515 South Dixie.

2 p.m.—Members of the Morton Valley Home Demonstration Club will meet in the Morton Valley Community Club House for their regular meeting.

12 noon—Mrs. R. L. Watson will be hostess to the members of the Fifty Year Pioneer Club in her home at 608 West Plummer. The club will hold a covered dish luncheon.

Thursday, January 28
2 p.m.—The Morton Valley Community Club will hold their meeting in the Morton Valley Community Club House.

3:30 p.m.—Three of Eastland's business men will present the program, "Progress Through Knowledge of Economic Security" for members of the Thursday Afternoon Club in the Woman's Club. M. H. Perry, Tom Wilson and Jack Frost will present the

program.
Saturday, January 31
7:30 p.m.—Members of the Ladies Club are sponsoring a game tournament at the Woman's Club. Bridge, forty-two, canasta and hearts will be played. Tickets are 50c.

Trade With Your Hometown Merchants
Shrinks Hemorrhoids Without Surgery

Science finds healing substance that relieves pain—Shrinks Hemorrhoids
For the first time science has found a new healing substance with the astonishing ability to shrink hemorrhoids and to relieve pain—without surgery. In case after case, while gently relieving pain, actual reduction (shrinkage) took place. Most amazing of all—results were so thorough that sufferers made astonishing statements like "Piles have ceased to be a problem!" The secret is a new healing substance (Bio-Dyne*)—discovery of a world-famous research institute. This substance is now available in suppository or ointment form called Preparation H*. At all drug counters—money back guarantee. *U.S. Patents.

MAJESTIC IN EASTLAND Thurs. Fri. & Sat.
THE 7th VOYAGE OF SINBAD
KATHY GRANT
TECHNICOLOR
The Fairy Tale Comes To Life In Color!
Adults 60c Children 35c

Lone Cedar Luncheon Club Officers Are Elected at Meeting Wednesday

The Lone Cedar Luncheon Club was organized Wednesday, January 21, at 2 p.m.
Officers for the coming year are: president, Mrs. Ben Hammer, Eastland; vice president, Mrs. A. N. Larson, Ranger; and secretary-treasurer, Mrs. Arthur McCrea, Cisco.
Mrs. Aaron Robinson was appointed chairman of the entertainment committee. The president appointed a publicity chairman from each town: Mrs. W. A. Leslie, Eastland; Mrs. Aaron Robinson, Cisco; Mrs. Glynn Kirk, Gorman;

and Mrs. Calvin Lipkin, Ranger.
The club will meet at 1 p.m. on the first Friday of each month for luncheon and games. The first meeting will be February 6. The ladies who were not at the meeting and who are eligible to join are asked to contact Mrs. A. N. Larson no later than February 1 if they desire to attend the first luncheon. All members not able to attend a luncheon must cancel by Wednesday at 5 p.m. preceding the Friday luncheon or they will be charged. Refreshments were served to the forty ladies attending.

JOY
DRIVE-IN THEATRE
Eastland - Cisco Hwy.
THURS. - FRI. - SAT.
ROCK HUDSON
WILIGHT FOR THE GODS
ARTHUR KENNEDY
In Bad Weather Movie Will Be Shown At Palace

CALL 601 FOR CLASSIFIED
Shaving Is Slicker— Blade Changing Quicker
BUY Gillette BLUE BLADES IN HANDY DISPENSER
with used-blade compartment
20 FOR 98¢ 10 FOR 49¢

RANGER DRIVE-IN
HIGHWAY 80 EAST ON RANGER HILL
Box Office Opens 6:30 - Show Starts 7:00
Adults 50c—Kiddies Under 11 Free
Only Eastland County Drive-In With All Year Operation
LAST TIMES FRIDAY

Lana's latest is the story of a woman possessed by love and fear!
LANA TURNER BARRY SULLIVAN GYLNIS JOHNS
Another Time, Another Place
SEAN CONNERY JOSEPH KAUFMAN LEWIS ALLEN STANLEY MANN LEONORE COFFEY
—Plus Our Second Feature—

LAST OF THE GREAT SHOOTING MARSHALS!
RONALD REAGAN
LAW and ORDER
COLOR BY Technicolor
CO-STARRING DOROTHY MALONE PRESTON FOSTER ALEX NICOL and introducing RUTH HAMPSON

SATURDAY
WHY DID THIS TOWN OF HONEST MEN FEAR THE LAW more than the lawless?
CINEMASCOPE
JEFF CHANDLER ORSON WELLES COLLEEN MILLER
"MAN IN THE SHADOW"
BARBARA LAWRENCE BEN ALEXANDER JOHN LARCH ROYAL DANO JAMES GLEASON
A UNIVERSAL INTERNATIONAL PICTURE
FREEVUE EVERY SATURDAY NIGHT

Another Big WORTH FOOD MART
Fresh PORK LOIN SALE!
LOIN OR RIB END
Roast Lb. 39¢
CENTER CUTS - RIB
Chops Lb. 59¢
HALF OR WHOLE LOIN lb. 49¢
Prices Effective Thursday thru Saturday—We Reserve the Right To Limit

Pork Chops CENTER CUT LOIN CHOPS Lb. 65¢
Spare Ribs SMALL, LEAN SIDES Lb. 49¢
Pork Liver FRESH SLICED Lb. 29¢

RATH'S BLACKHAWK PURE PORK
Sausage 1-Lb. Roll 39¢
Chop-Ettes Rath's Frozen 8-oz. Beef, Pork, Veal Pkg. 55¢
Bacon Rath's Blackhawk Lb. Pkg. 59¢

Apple Sauce WHITE HOUSE 2 No. 303 Cans 25¢
Tomato Soup CAMPBELL'S 3 No. 1 Cans 29¢
Crackers NABISCO, SUPREME 1-Lb. Box 25¢
LIPTON'S Tea Bags 48-Cat. Pkg. 65¢
TRAPPY or DURAND Whole Yams No. 3 Can 25¢
BEST MAID Salad Dressing Qt. Jar 35¢
FOOD MART Salt Plain or Iodized 3 26-oz. Boxes 25¢

NORWICH ASPIRINS 100-TABLET BOTTLE Reg. 49¢ 29¢

OLD SOUTH FROZEN Orange Juice 2 6-Oz. Cans 39¢
MINUTE MAID FROZEN Tangerine Juice 2 6-Oz. Cans 57¢
LIBBY'S BLENDED Orange-Grapefruit 2 6-Oz. Cans 39¢

FAMOUS TEXAS Juicy Oranges DOZEN 39¢
California Oranges LARGE NAVELS 3 Lbs. 49¢
Florida Tangerines SWEET, JUICY "ZIPPER-SKINS" 2 Lbs. 29¢

Extra Savings with "S&H" Green Stamps

WORTH FOOD MART

Balance your books...



with the *Original*
FINE POINT
Lindy
AUDITOR'S
Ball Point Pen #F-460

Long 7" perfectly balanced writing instrument designed for auditors, accountants, bookkeepers and others who need a fine ball point pen for extreme legibility.

ONLY THE AUTHENTIC NATIONALLY ADVERTISED LINDY PEN CARRIES THE LINDY UNCONDITIONAL GUARANTEE. DO NOT ACCEPT SUBSTITUTES—LOOK FOR "LINDY" ON THE PEN!

GIANT INK SUPPLY
Also available in 5" pocket purse size #A-450.

Manufactured by
LINDY PEN CO., INC.
Culver City, Calif., U.S.A.



ACTUAL SIZE LONG 7" NON-RETRACTABLE

8
BRILLIANT INK COLORS
Color of Pen is Color of Ink
BLUE - BLACK - GREEN
RED - BROWN
LAVENDER
TURQUOISE
YELLOW-GOLD

49¢
F.T.I. Fair Traded

FINE POINT

the Original.

Lindy
UTILITY
BALL POINT

"America's Finest Writing Instrument"

for only
39¢
F.T.I. Fair Traded

Perfect Balance Presents Writing Fatigue

Do Not Accept Substitutes. Look For The Name "LINDY" On The Pen!

GIANT INK SUPPLY

8
BRILLIANT INK COLORS
Color of Pen is Color of Ink
RED BLUE BROWN TURQUOISE
BLACK GREEN LAVENDER YELLOW-GOLD

• Permanent • Non-Transferable • Non-Smudging
• Ink meets Gov't. Spec. TT-1-562

• Nationally Advertised • Unconditionally Guaranteed

Manufactured by **Lindy PEN CO., INC.** Culver City, Calif., U.S.A.



EASTLAND TELEGRAM OFFICE
South Side of Square Phone 601

Mrs. W. E. Lawson Is Elected President of Eastland Art Club

Mrs. W. E. Lawson was elected president of the Eastland Art Club as the members of the club met for their first meeting of the year in the home of Mrs. Lawson, 211 North Daugherty, Tuesday afternoon.

Other officers elected were Mrs. Marvin Hood, vice-president; Mrs. H. B. MacMoy, secretary and treasurer; Mrs. Joe Tow, reporter; and Mrs. W. W. Walters and Mrs. Claud Maynard, purchasing committee.

No painting was done at the meeting due to the election of officers.

Mrs. Varge Daniel, who was an art student in California before moving to Eastland recently, was welcomed as a new member.

Refreshments of fruit cake topped with whipped cream, cheese bits and coffee were served to Mrs. Homer White, Francis Urban, H. B. MacMoy, Roy Lawson, Joe Tow and Mrs. W. E. Lawson.

Mrs. Roy Lawson will be hostess to the next meeting on February 3.

CFW to Sponsor Coffee and Bake Sale Friday

During your coffee break, the members of the Christian Woman's Fellowship of the First Christian Church have invited you to join them for coffee and pie in the annex of the church.

The sale will open at 9 a.m. Friday morning and close during the afternoon. Whole pie and cakes will also be sold.

Mrs. B. F. Hanna, chairman of the sale, announced that the proceeds of the sale would help pay for the new carpet for the church.

Gorman Gatherings

By Mrs. R. E. Boucher

Mr. and Mrs. Jim McComack of Lubbock are visiting in the home of her sister and brother-in-law, Mr. and Mrs. Marvin Nix.

Rev. and Mrs. Tom Small, Estha and Tommy of southern Rhodesia, Africa, visited with old friends Saturday and Sunday. They were honored with a reception Saturday in the educational building in the First Baptist Church.

Dinner was served to about 100 guests.

Mr. and Mrs. W. G. Kirk, Larry and Anny were special guests at the dinner. The menu consisted of fried chicken, chicken a dressing, fried ham, steak, green beans, black-eyed peas, vegetables and fruit salads, cake, pie and coffee.

Rev. Small spoke at the 11 o'clock service Sunday morning and gave a film showing of their work Sunday night.

At the morning service he stressed the need for more workers in the foreign fields. He said the doors of north Rhodesia were open but there were not workers to send.

Rev. and Mrs. Small will be in the States until September and will be busy making talks in many places before their return to their work in Africa.

Mr. and Mrs. R. E. Boucher went to Post, Slaton and Lubbock last week. They carried Miss Mattie Vaughn and Mrs. J. A. Pritchard to Post. Miss Vaughn and Mrs. Pritchard are sisters of Mrs. Boucher and her sisters.

Mrs. Boucher and her sisters visited with Mrs. Nora Baught in Eastland Sunday.

Recent guests in the home of Mrs. Boucher and her sisters.

Mr. and Mrs. G. D. Riley were his sister-in-law, Mrs. Docie Riley and her son and daughter-in-law, Mr. and Mrs. S. K. Riley of Overton.

A&P COFFEE REDUCED AGAIN!



RED CIRCLE

1-lb. Bag **63¢** 3-lb. Bag **1.83**

Bokar 1-lb. Bag **67¢** **A&P** Vacuum-Packed 1-lb. Can **71¢**

NATURALLY IT TASTES BETTER!

Paper Sale!

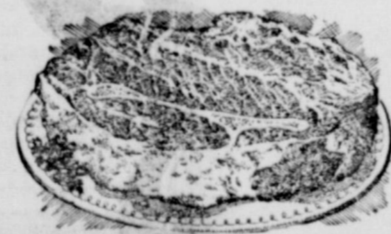
Northern Tissue	Colored or White	13 Rolls	\$1.00
Jumbo Scott Towels		2 Rolls	49¢
Cut-Rite Wax Paper		2 125-ft. Rolls	49¢
Hudson Facial Tissue		2 Boxes of 400	35¢

Soup and Crackers

Chicken Noodle Soup	CAMPBELL'S	3 10½-oz. Cans	49¢
Campbell's Vegetable Soup		3 10½-oz. Cans	40¢
Premium Saltine Crackers	NABISCO	1-lb. Pkg	25¢

LOOK AT THE VALUES A&P HAS THROUGHOUT THE STORE!

SPIC & SPAN	CLEANER	15-oz. Pkg.	29¢
APPLE BUTTER	BAMA	29-oz. Jar	25¢
WAFERS	LADY BETTY CUCUMBER	2 15-oz. Jars	35¢
TOMATO KETCHUP	DEL MONTE	14-oz. 8-oz. Cans	21¢
TOMATO SAUCE	DEL MONTE	2 8-oz. Cans	19¢
CHOCOLATE SYRUP	ROSSCO	24-oz. Can	61¢
SALAD DRESSING	Sulfana	8-oz. Pkg.	39¢
COMET	CLEANER	2 Reg. Pkgs.	31¢
LIBBY BEANS	Deep Brown	2 14-oz. Cans	25¢
TUNA FISH	STAR-KIST Green Label	3 6½-oz. Cans	\$1
SPARKLE PUDDING		1 Pkg. Free with every 4 Pkgs. of Reg.	5 Pkgs. 27¢
SALAD MUSTARD	ANN PAGE	9-oz. Pkg.	13¢
EI BOW MACARONI	ANN PAGE	8-oz. Pkg.	10¢
Maccroni	With Cheese Sauce	2 15-oz. Cans	37¢

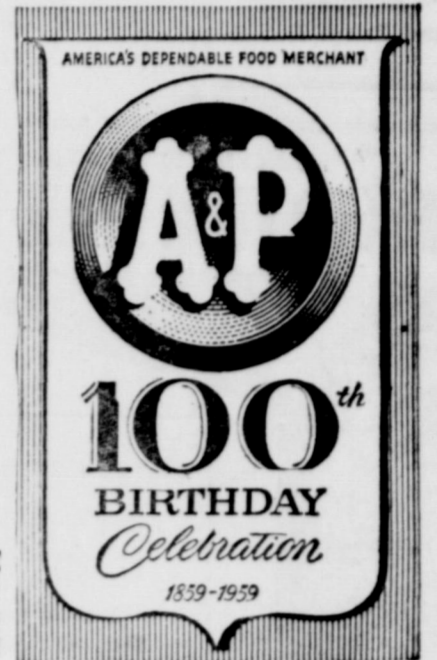


"Super-Right" Heavy Calf **Chuck Roast** 65¢

BLADE CUT LB.

Fresh Fruits & Vegetables

Texas Yams	2-lbs.	19¢
Minnesota Rutabagas	1-lb.	5¢
Texas Juicy Oranges	5-lb. bag	39¢
Ruby Red Grapefruit	3	for 25¢
California Lemons	6	for 19¢
Golden Ripe Bananas	2-lbs.	25¢



Jane Parker Specials

JANE PARKER CHERRY PIE	45¢
JANE PARKER SPANISH BAR	27¢
JANE PARKER DANISH NUT RING	37¢
JANE PARKER SOUR RYE BREAD	17¢
JANE PARKER SUGAR Cookies	45¢
HAND SOAP Lava	15¢
AUTOMATIC WASHER DETERGENT Dash	2.35
LIQUID DETERGENT Joy	69¢

Storewide Values!

DEKO Short'n	3 -lb. Cans	69¢
A&P YELLOW Popcorn	2-lb. Pkg.	10¢
AUSTEX PLAIN CHILI	24-oz. Can	65¢
PINK TOILET SOAP Camay	2 Reg. Bars	19¢
PINK TOILET SOAP Camay	2 Bath Bars	27¢

LOOK WHAT 10¢ WILL BUY

Handled Relish Dish	10¢
Handled Oblong Tray	10¢
Handled Relish Tray	10¢
Round Candy or Nut Bowl	10¢
Oval Early American Bowl	10¢
Round Early American Bowl	10¢
5" Crystal Storage Bowl	10¢
8-oz. Measuring Cup	10¢
Fire King Deep Pie Dish	10¢

DETERGENT Dreft	1-lb. Pkg.	75¢
DETERGENT Cheer	1-lb. Pkg.	75¢
DETERGENT Cascade	20-Oz. Pkg.	43¢
ANN PAGE KETCHUP	14-oz. Bl.	21¢
SUNNYFIELD CORN FLAKES	16-oz. Pkg.	27¢
A&P ALL GREEN ASPARAGUS	10½-oz. Can	31¢

COLORADO RED

POTATOES

10-lb. MESH BAG

35¢



HOW TO MAKE YOUR DREAM HOME COME TRUE SOONER...

Probably you've got a pretty clear picture in your mind's eye of the home in which you and your family will "live happily ever after." Big question is: how SOON can you build this home of your dreams? First you must accumulate the necessary cash for the down payment. We can help you do this SOONER by giving your savings greater earning power. They'll grow FASTER at our liberal rate of return . . . with INSURED safety. Then, for additional financing, investigate our

LOANS FOR HOME BUILDING Purchase, or Re-Modeling

We'll arrange a low-cost loan that you can repay just like rent with all-in-one monthly payments.

First Federal Savings and Loan Association

204 Main Street Ranger, Texas

Hospital News



Patients in the Eastland Memorial Hospital are:

J. W. Comegyn, surgical, Cisco
 Mrs. J. W. Watson, medical
 Mrs. Jessie Robinson, medical, Cisco
 James Campbell, surgical, Abilene
 Terry Gaeta, medical
 Mrs. Arthur Lehman, surgical
 James Meroney, medical
 Charlie Petree, surgical
 Edwin Aaron, medical
 Mrs. Iva Burnett, medical, Carbon
 Mrs. A. W. Cartledge, surgical
 Clifton Thomas, medical, Olden
 Miss Mildred Blair, medical, Cisco
 Mrs. N. F. Cate, medical, Cisco
 Mrs. W. E. Lewis, surgical
 Bill Blackmon, medical
 Mrs. W. A. Clark, medical, Midland
 Mrs. J. B. Hill, medical
 Mrs. Charlie Wende, medical, Cisco
 Mrs. Cecilia Haas, medical
 Dismissed were Rebecca Cooper, Billy Cooper, Caroline Cooper, Ethel Harrison and Sandra Wheeler.
 Mrs. John Ratliff of Eastland is a patient in the Ranger General Hospital.
 Mrs. Leda Day has been dismissed.

Trade With Your Hometown Merchants

Buying? Not Buying?
 Buying? Not Buying?

We're Always Buying!

- MIXED SCRAP IRON
- CLEAN CAST IRON
- OIL FIELD CABLE
- COMPLETE OLD CARS
- TIM FOR OUR PRESS
- COPPER WIRE
- LEAD, BARBITT, ZINC
- BRASS MIXED
- RADIATORS BATTERIES
- ALUMINUM MIXED

WE BUY AND SELL NEW and USED PIPE and CONSTRUCTIONAL STEEL



OWNED AND OPERATED BY HENRY PULLMAN

W. L. Fagg of Caddo Mills, a brother of T. L. Fagg, and Mr. and Mrs. O. E. Carlisle of Farmerville, nephew and niece of T. L. Fagg, were guests over the weekend in the home of Mr. and Mrs. T. L. Fagg, 606 South Seaman.

T. L. FAGG
REAL ESTATE

Property Management
Home and Farm Loans

Jo Ann Hollis' Engagement to Waymond Greenwood Is Announced

Mr. and Mrs. Roy C. Hollis have announced the engagement and approaching marriage of their daughter, Jo Ann, to Waymond E. Greenwood, son of Mr. and Mrs. T. B. Greenwood.

The exact wedding date has not been set but the couple are planning a February wedding. The vows will be exchanged in the home of the parents of the bride-elect.

Miss Hollis is a 1957 graduate of Eastland High School and attended Rutherford Metropolitan Business College.

Her fiance is a 1954 graduate of Eastland High School.

Mr. Hamner for his assistance during the memorial services. To all our friends we say, "May the Lord bless you every one."

Mrs. James A. Blackmon and Debi Jan
Mr. and Mrs. Otta Johnson
Mr. and Mrs. W. A. Blackmon,
Don and Joe
Mrs. R. M. Gee

Card of Thanks

We wish to take this means of thanking all of our friends for the many words of encouragement, personal visits, sympathy cards, telegrams and phone calls that we received because of the decease of James A. Blackmon. We also thank those that sent food and flowers and we thank Mr. Hamner for his assistance during the memorial services. To all our friends we say, "May the Lord bless you every one."

Mrs. James A. Blackmon and Debi Jan
Mr. and Mrs. Otta Johnson
Mr. and Mrs. W. A. Blackmon,
Don and Joe
Mrs. R. M. Gee

Fellowship Hall Is Scene of WSCS Covered Dish Luncheon

The Fellowship Hall of the First Methodist Church was the scene of the covered dish luncheon enjoyed by the members of the Woman's Society of Christian Service Tuesday at 12:30 p.m.

Mrs. T. M. Johnson opened the meeting with a prayer prior to the covered dish luncheon.

Hostesses for the luncheon were Mrs. O. M. White, H. J. Bulgerin, O. O. Mickle, Allie Looney and W. W. Laney.

Mrs. H. L. Hassell, vice-president, opened the business meeting by asking for the officer's reports.

Mrs. O. M. White presented the devotional after which Mrs. James Horton presented the new business before the group. Mrs. Frank Castleberry, chairman of the nomination committee, named the new slate of officers.

Attending were Mrs. H. J. Bulgerin, Frank Castleberry, T. M. Collier, Cecil Collins, W. F. Davenport, Tom Haley, Etta Harlow, H. L. Hassell, James Horton, T. M. Johnson, W. W. Laney, W. P. Leslie, W. A. Martin, O. O.

**IF IT'S METAL
Decore Metal
Products**

306 E. Main Phone 288
SHOP WELDING
PAINTING REPAIR

**NOTICE TO VEHICLE OWNERS
Title A Prerequisite To Registration**

The "Texas Title Act", which became effective on October 1, 1939, provides, with named exceptions, that a certificate of title is a prerequisite to registration. Section 63 (b) reads as follows:

"The Department or any agent thereof shall not after the 1st of January, 1942, register or renew the registration of any motor vehicle, unless and until the owner thereof shall make application for and be granted an official certificate of title for such vehicle or present satisfactory evidence that a certificate of title for such vehicle has been previously issued to such owner by the Department. Provided, however, this shall not apply to automobiles which were purchased new prior to January 1, 1936."

In order that the terms of the above law and, also instructions from the Texas Department may be complied with, it will be necessary for this office to require that the certificate of title and the 1958 license receipt be presented before the 1959 license plates can be issued. You should check now to see whether or not you have your title certificate. If it has been lost you should contact this office to secure the proper forms to be used.

This office has also been instructed to not recognize a title receipt (Form 31) as evidence that title has been issued unless such receipt has been issued within the last thirty (30) days prior to your application for plates. If title has not been issued within this period of time, there is a possibility that it has been rejected by the State Highway Department.

A Notice To All Commercial Vehicle Owners, By The State Highway Department

"We have established certain standards governing the empty weight of commercial vehicles. As the Tax Collectors Reports are received in our office, each license receipt will be checked for minimum empty weight and carrying capacity. Each registration that does not meet the minimum weight requirements will be investigated by our office or the Department of Public Safety. We will contact the owner and advise him to contact the Tax Collectors office immediately for additional weight to be issued. The law grants us the authority to cancel the owners title, if the proper registration fee is not paid. It should be remembered that empty weight cannot be lowered from the weight shown on the title and registration receipt unless supported by a scale ticket, regardless of the chart."

J. C. ALLISON
Assessor and Collector
Eastland County



MISS SANDRA SUE STOKER

Sandra Sue Stoker to Become Bride of Thomas Gray Coats

Mr. and Mrs. F. B. Stoker of 707 South Baird Street in Midland have announced the engagement and approaching marriage of their daughter, Sandra Sue, to Thomas Gray Coats, son of Mr. and Mrs. W. W. Coats of Abilene.

The wedding will take place January 29 in the home of the bride-elect's parents with Rev. Travis LaDuke of Midland officiating.

Miss Stoker and Mr. Coats both are graduates of Midland High School. The bride-elect is employed with the Western Company and her fiance is employed with the Wm. Cameron Wholesale Company of Abilene.

Miss Stoker resided in Eastland with her family until three years ago when they moved to Midland.

Willing Workers Honor Mrs. Abels With Baby Shower

Mrs. Gerald Ables was honored with a pink and blue shower by the members of the Willing Workers Sunday School Class in the home of Mrs. Jim Evatt, 514 South Bassett, Monday evening.

Appropriate games were played during the evening under the direction of Mrs. W. E. Tankersley, with Mrs. Ables being chosen as winner of the quiz games. She was presented with a lovely array of gifts in a pink container.

Delicious pie, nuts and coffee were served to the guests by the hostess. Imitation white diapers filled with mints were the plate favors.

Attending were Mrs. Vernon Humphreys, J. W. Watson, Guy Robinson, C. M. Kelley, Rufus Lightfoot, M. G. Cartwright, W. E. Tankersley, Jack Chamberlain Sr., Cyrus Miller, Bill Collins. Twenty invited guests sent gifts that were unable to attend.

Mrs. A. E. Henslee Hosts Study Club In Her New Home

Mrs. A. E. Henslee opened her attractive home to the members of the Desdemona Study Club Saturday afternoon.

Mrs. James Williams, a new member, had skillfully decorated the home with lovely mid-winter arrangements.

Mrs. J. L. Burleson, president, presided at the meeting with the "club collect" being read in unison. During the business session, the "worthy project" for January, contributions to the March of Dimes, was discussed.

Mrs. Burleson opened the program on "Alaska" by reading a poem entitled "The Flag of Alaska." Mrs. W. H. Davis directed the study, "Alaska, Our 49th State."

A picture of the design of the new American flag was shown and the proclamation of President Eisenhower when he officially welcomed Alaska as a new state was read.

An informative talk covering the area, climate, people and industries of Alaska was given by Mrs. Davis and a quiz on the subject lead to an informal discussion of the new state.

Mrs. Williams and Hall spoke on the churches and religions of Alaska and Mrs. Eldridge gave a short talk on flowers grown there. She mentioned dahlias, sweet peas and orchids.

The meeting was concluded with singing with Mrs. Henslee at the piano Mrs. Williams will be hostess for the next meeting.

DESDEMONA NEWS FROM

Jimmie Cassell has been in the Gorman Hospital suffering from an attack of pneumonia.

Little Belinda, daughter of Mr. and Mrs. Pug Guthery, spent the weekend in the hospital at Gorman with an attack of ear infection.

All the Guthery children were home on the weekend. Visiting here were Hillery Searcy of Irving, the Rob Gutherys of Irving, the Buck Gutherys of Grand Falls, the Pug Gutherys and the Clubbie Foremans of Irving.

Mr. and Mrs. Jimmy Bryan of Odessa were here the past week-end with his parents, Rev. and Mrs. Buel Bryan and Linda Beth.

Mr. and Mrs. Bobbie Burleson of San Marcus were here for the weekend with their parents, the Lonnie Williams and the Russ Burlesons.

CALL 601 FOR CLASSIFIED ADVERTISEMENT

WE ARE EQUIPPED TO DO ...

- ★ Roustabout Work
- ★ Well Hook-Ups
- ★ Spray Painting
- ★ Tank Setting

P & H Oil Field
Construction • Painting
Phone 183 Eastland

NOTICE... Come To Kendrick Drive-In Dairy
(Serving This Territory Since 1940)
FOR
Good, Clean JERSEY Sweet Milk
Price - 70c Gal.
Phone 896-J-2 - Located Halfway between Eastland and Cisco

NOW'S THE TIME TO FIX-UP YOUR HOME FOR BETTER LIVING

TURN YOUR PROBLEMS OVER TO QUALIFIED BUILDING SPECIALISTS

We are thoroughly familiar with site problems, building codes and structural limitations. We can save you time and money. Come in and talk it over.

SAVE MONEY, TIME, TEMPER... LET US DO THE JOB!

Higginbotham-Bartlett Company
Jack Elliott, Manager
301 W. Main Phone 112 or 1014

REASONABLE RATES
FREE ESTIMATES

INSULATION ROOFING PAINTING
CLEANING PLASTERING LANDSCAPING
ELECTRICAL PAIDING EXCAVATING
AIR CONDITONING PLUMBING FOUNDATIONS CABINETRY BUILDING
MASONRY

Overseas Veterans Welcome
Karl and Boyd Tanner
Post No. 4136
VETERANS OF FOREIGN WARS
Meets 2nd and 4th Thursday
8:00 p.m.

M. H. PERRY
Representing
Southland Life
Life Retirement Income Partnership
Mortgage Cancellation
Educational - Annuities
Accident - Sickness
Hospitalization - Group
Call 173 or 128
107 W. Main * Eastland

Insurance AND Real Estate
D. L. KINNAIRD
Life - Fire - Auto - Farm
Policy - Bonds
39 years in the Insurance Business in Eastland

WE ARE NOW A DIRECT Factory Dealer

SAVE! SAVE! SAVE!

HEAVY GAUGE STEEL Filing Cabinets

One Drawer Letter File	24.50
One Drawer Legal File	29.50
Two Drawer Letter File	29.95
Two Drawer Legal File	39.95
Three Drawer Letter File	39.95
Three Drawer Legal File	49.95
Four Drawer Letter File	46.50
Four Drawer Legal File	54.50

Eastland Telegram
PHONE 601

Check These Prices With Anybody's

SALT EARNEST PURE

PORK FROZEN FOOD CENTER LARD

210 S. Lamar Phone 11

PORK
Roast Lb. **39¢**

SEVEN
Roast Lb. **55¢**

COUNTRY STYLE
Sausage 3 Lbs. **\$1**

SAUSAGE WHOLE HOG Lb. **49¢**

BAR-B-Q PIT COOKED Lb. **98¢**

Turkey & Dressing 1-Lb. Turkey 1-Pan Dressing 1-Pt. Giblet Gravy **1.39**

For A Flavor Treat • Try Earnest Meat

Hail to KING SPUD!

KING for value!
KING for variety!
KING for good eating!



This week, our "best buy" spotlight falls on the wonderful, versatile potato... monarch of the vegetable kingdom! Meet King Spud in all his many forms... discover what a regal budget-stretcher he can be. Come in today... join the fun as we salute King Spud!



Potato Soup Potato Potato Chips Potato Patties

Safeway Specials!

Preserves	Empress — Pineapple, Peach or Apricot. Taste the Full Fruit Flavor!	17 Oz. Jar	25¢
New Potatoes	Highway — Whole — Convenient, economical and sure to please!	300 Can	10¢
Potatoes	Town House Whole — Golden Sweet from the South. Yummy, Candied with Marshmallows!	No. 3 Squat Can	23¢
Shoestrings	Kobay's — Potatoes for Parties and Snacks!	3 1 1/4 Oz. Cans	27¢
Detergent	White Magic — Guaranteed to Get Your Grimeiest Clothes Clean!	Giant Box	59¢
Margarine	Goldbrook — Fine Flavor, Longer-Lasting Freshness!	1-Lb. Pkg.	16¢
Mellorine	Joyett Frozen Dessert. Take Plenty Home!	1/2-Gal. Ctn.	49¢

POTATOES

U.S. GRADE NO. 1
 YOUR BEST PRODUCE BUY FOR VALUE AND QUALITY!

Red
 COLORADO'S FINEST. SO ECONOMICAL.
25 Lb. 79¢

Russets
 DELICIOUS BAKED, BOILED OR FRIED
10 Lb. 45¢

New Potatoes

Florida. A Bargain Buy. Fresh and Flavorful.

7¢

Kiln Dried Yams Lb. **9¢**

Yellow Onions Lb. **9¢**

Texas, Add Variety to Your Meals.

Adds That Just-Right Flavor.

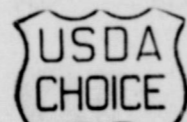
BEEF FOR YOUR FREEZER!

Cut and Wrapped Free At These Low Prices!

Side of Beef	250 to 325 Lb. Avg. U.S.D.A. Choice Grade Mature Heavy Beef	Lb.	51¢
Hindquarter	Untrimmed, U.S.D.A. Choice Grade Mature Heavy Beef	Lb.	61¢
Forequarter	Untrimmed, U.S.D.A. Choice Grade Mature Heavy Beef	Lb.	47¢
Loin	Trimmed, U.S.D.A. Choice Grade Mature Heavy Beef	Lb.	83¢
Round	Trimmed, U.S.D.A. Choice Grade Mature Heavy Beef	Lb.	65¢

U.S.D.A. CHOICE GRADE HEAVY MATURE BEEF

Pot Roast



Here's a roast that gives you an extra measure of good eating. Our trimming means a chunkier, meatier roast.

55¢
 Lb.

Round Steak Sirloin Steak

U.S.D.A. Choice Grade Heavy Mature Beef, Full-cut, Bone-in

89¢
 Lb.

U.S.D.A. Choice Grade Heavy Beef, Bone-in

99¢
 Lb.

Boneless Roast Shoulder U.S.D.A. Choice Heavy Beef, Lb. **69¢**

Pork Roast Boston Butt — Delicious with Apples and Yams! Lb. **49¢**



Lucerne MILK

The Finest Quality for Less Money!
 A Better Milk, A Better Buy!

1/2 Gal. Carton **49¢**

Liquid Starch White Magic, Quart Bottle **23¢**

Reynolds Wrap 25' x 12" Req. Roll **31¢**

Eagle Chili Powder Serve with Meals and Seafoods! 1-Oz. Bottle **15¢**

Fluffo Shortening Golden, 3 1/2-Car. **85¢**

Blue Bonnet Margarine For Flavor! 1-Lb. Pkg. **27¢**

Crisco Shortening For All Your Baking and Frying Needs! 1-Lb. Can **33¢**

Bakery Feature of the Week!

Rye Bread Skylark Regular 23c Value. Thursday, Friday and Saturday Special Only. 1-Lb. Loaf **19¢**

Cloverleaf Rolls Skylark 6 White and 6 Wheat. Brown and Serve. 13-Oz. Pkg. **23¢**

Cinnamon Rolls Curly — 8 Count 11 1/2-Oz. Pkg. **23¢**

Special Cleaning Values!

White Magic Detergent

Best for All Your Washing Needs King Size Box **99¢**

Liquid Detergent

Scampers, for Fast, Efficient Dishwashing 12-Oz. Can **29¢** 22-Oz. Can **53¢** 32-Oz. Can **79¢**

Liquid Bleach

White Magic — For Sparkling Bright Clothes 1-Quart Bottle **13¢** 1/2-Gal. Jug **25¢**

Brocade Toilet Soap

Assorted Colors, Lovely Fragrance, In Handy Package 5 Regular Bars **28¢** 5 Bath Bars **39¢**

White Magic Cleanser

With Chlorine — Foams Away Grease and Grime! 2 1/4-Oz. Cans **25¢**

Sno-White Salt Plain or Iodized 3 7/8-Oz. Boxes **25¢**

Morton Potato Chips For Parties and Snacks! 4-Oz. Pkg. **25¢**

More Potato Buys!

Instant Potatoes French. Add Boiling Water and Season! 7-Oz. Box **33¢**

McCormick Potatoes Instant — 6 1/2-Oz. Box **33¢**

Sweet Potatoes Highway Cut — 303 Can **19¢**

Trappeys Yams Premium Quality! No. 3 Squat Can **31¢**

French Fried Potatoes Bel-Air Frozen 9-Oz. Pkg. **15¢**

French Fried Potatoes Bel-Air Frozen 16-Oz. Pkg. **27¢**

Potato Soup Campbell Frozen Cream — Just Heat and Serve! 16-Oz. Can **21¢**

Recipes Available at Safeway on 16 Ways to Eat Better for Less!

Strawberry Preserves Empress — unsurpassed for Flavor! Pure. 20-Oz. Jar **39¢**

Peanut Butter Lunch Box — Creamy or Chunky! Tastes Like Fresh Roasted Peanuts! 18-Oz. Jar **49¢**

Grape Jelly Empress — Pure, Full Flavored and Low Priced! 20-Oz. Jar **33¢**

Pack Train Syrup Imitation Maple — Rich and Tasty! 24-Oz. Bottle **35¢**

Sleepy Hollow Syrup Cane or Maple 24-Oz. Bottle **45¢**

Salad Dressing Nu-Made, for Old-Fashioned Flavor! 4-Quart Jar **49¢**

Sandwich Spread Lunch Box 24-Oz. Jar **49¢**

Salad Oil Nu-Made, Brings Out the Natural Flavor! 4-Quart Bottle **45¢**

Hydrox Cookies Sunshine, For Lunches, Snacks or Parties! 12-Oz. Cello **37¢**

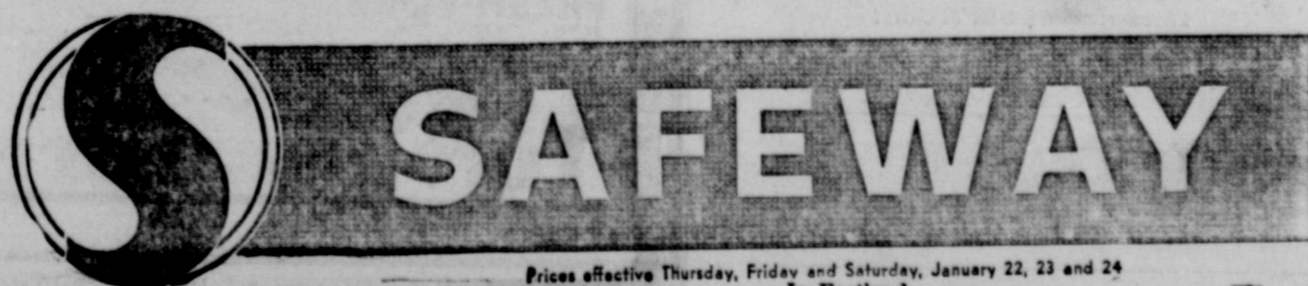
Supreme Club Crackers Out-Tastes Them All! 1-Lb. Box **37¢**

Morton Salt Plain or Iodized 2 7/8-Oz. Boxes **25¢**

Underwood Deviled Ham Best for Spreads No. 1/2 Can **21¢**

Armour Potted Meat Economical — 2 No. 1/2 Cans **25¢**

Starkist Tuna Chunk Style — In Salads and on Sandwiches! No. 1/2 Can **33¢**



Prices effective Thursday, Friday and Saturday, January 22, 23 and 24 In Eastland

We reserve the right to limit quantities. No sales to dealers.

NOTICE
FRESH DRESSED
FRYERS
 and
Fresh Dressed
Hens
 At The Plant
 PHONE 110
WALKER
Dressing Plant

Highway Death Rates Decreases in State

Governor Price Daniel said today that preliminary figures, showing a nine per cent reduction in Texas highway deaths as compared with four per cent for the entire nation, are a tribute to the tremendous efforts of Texans who have given so much time and energy to savings lies on our streets and highways.

Despite the lower death rate in Texas, however, Eastland County completed the year with the highest number of highway fatalities ever recorded.

The Governor said the tentative figures, compiled by the Statistical Services of the Department of Public Safety, indicate that more than 200 lives were saved in 1958 as compared with 1957 traffic deaths. Final figures will not be known until the holiday and hospital reports are completed, the Governor said, "but it is certain that the Statewide campaign for reducing highway fatalities in 1958 has been very successful."

Total traffic deaths for 1957 were 2,539, and up to Dec. 19, the 1958 total was 2,126. December, 1957, deaths totaled 218, and last year's Christmas-New Year's holiday exacted 102 lives. This year's nine-day holiday toll thus far reported was only 61, the lowest since 1946. If final reports verify that total, it will be one of the lowest on record.

With such comparatively small loss of life in the holiday period, this December may prove to have been one of the safest December in years, traffic-wise.

"In any event, the Governor said, "it appears that 1958 will be the second consecutive year in which Texas has reduced its traffic toll. The 1957 death list was down three per cent over 1956, and 1958 apparently will add another

nine or ten per cent reduction. "While the prospective reduction of nine per cent is great by any recent comparison and double the national improvement, we cannot overlook the stark reality that over 2,100 Texans and visitors from other States have been killed on our highways for no good or sensible reason."

Through the first 11 months of 1958, Texas tied for tenth place among the 30 States reporting reductions in traffic deaths to the National Safety Council. The Texas reduction through November was 10 per cent, the Governor's announced goal.

Four Texas cities were cited by the National Safety Council for improved traffic records during the first 11 months of 1958. Houston reported 11 per cent fewer deaths, San Antonio eight per cent. Amarillo topped the list in its population class, between 100,000 and 200,000, with a ratio of 4 deaths for each 10,000 registered vehicles. Victoria, in its class, 10,000 to 25,000, was one of only 143 American cities above 10,000 which had no traffic deaths through November.

Diseases Cost Cotton Farmers 156 Million

College Station, Texas—Diseases took a \$156 million bite out of the 1958 Texas cotton crop, report 15 cotton specialists located throughout the state.

"Cotton diseases kept at least 930,000 bales of cotton from being marketed," said Harlan Smith, extension plant pathologist, who compiled the information for the Cotton Disease Council.

Besides the \$156 million cash loss to producers there were losses of business to farm labor, railroads, trucking companies, suppliers compress companies, storage facilities and other phases of the industry. Diseases also were a major factor in grade reduction and a limiting factor in yield.

This loss occurred even though 1958 growing conditions were generally good as record yields were harvested in many areas, Smith said.

Major diseases and estimated loss due to their effect on yield were bacterial blight, 7.31 percent; root rot, 3.18 percent; verticillium wilt, 3.06 percent; seedling diseases, 3.0 percent; and boll rots, 0.92 percent. Other diseases causing losses were root knot nematodes, fusarium wilt and ascochyta blight.

These average figures don't give the true picture because in areas where diseases struck the hardest losses ran into ruinous figures, pointed out Smith. For example, root rot was estimated to have caused a 25 percent loss in the Central Blackland area. Seedling diseases were especially damaging in the Lower Rio Grande Valley and in some North Texas areas. Bacterial blight caused damage throughout most of the state.

THE ABTRACTER AND THE LANDOWNER

... are inseparable friends and naturally for we have so many interests in common. The abtracter would not exist if there were no landowners and the reverse is also true. When business is brisk we both share in the prosperity; when it is bad we suffer together. So we are yoked together for better or for worse journeying toward an unknown future, and as we trudge merrily along let us wish for ourselves and the rest of you a prosperous New Year.

EARL BENDER & COMPANY

Eastland, (Abstracts since 1923) Texas

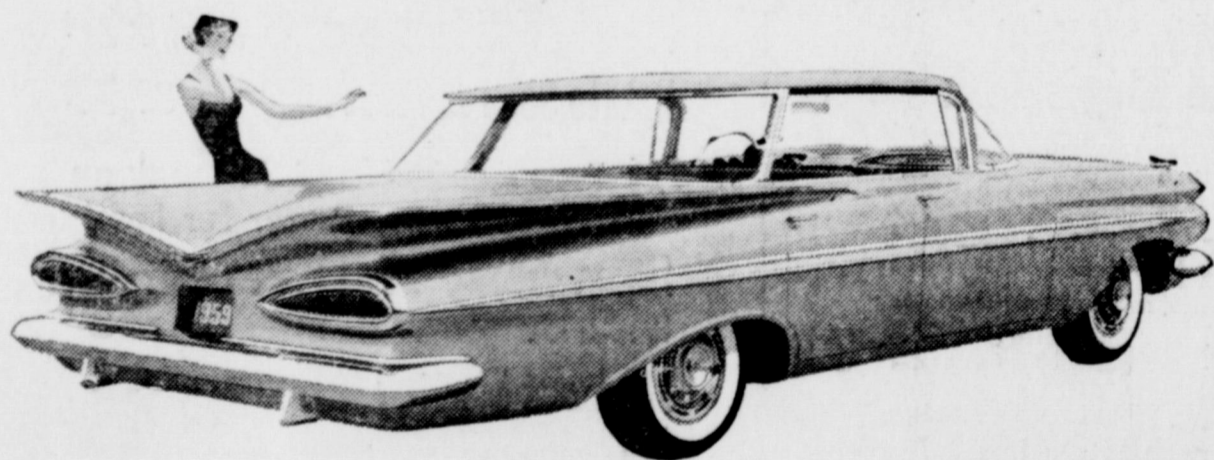
More families agree...

Mrs. Baird's Bread stays fresh longer

MRS BAIRD'S ENRICHED BREAD

MRS BAIRD'S STAYS FRESH LONGER

Visit your Chevrolet dealer's **OPEN HOUSE** (January 22 through 24)



The bright new Bel Air 4-Door Sport Sedan with the same fine, fresh body styling as the most luxurious Chevrolets.

CHEVY'S OUT WITH A NEW HARDTOP AT A NEW LOW PRICE!

Here's the latest addition you'll find at your Chevrolet dealer's Open House January 22 through 24. It's a new 4-door sport sedan in the Bel Air series—and it sports a lower price tag than any other Chevy hardtop. Bring the family and look it over. And get the full story on all the other striking models now available. Remember, production is rolling and you can count on prompt delivery!

Just wait till you see what's waiting for you—a glittering constellation of sleek-lined exciting new Chevrolets in a wide choice of colors, models, engines and drives. The spotlight will be on the new Bel Air 4-door hardtop—and you'll want to check its ultra-reasonable price against any other hardtop. When you do—and when you see how much more Chevrolet gives you in styling, in extra-roomy Bodies by Fisher, in

the super-softness of Full Coil springing, in Easy-Ratio steering—then you'll know that this is the happiest surprise of the year. Come on in; don't miss this Open House!



The smart switch is to the '59 Chevy!

now—see the wider selection of models at your local authorized Chevrolet dealer's!

FULLEN MOTOR COMPANY
 805 E. MAIN PHONE 44

EASTLAND

These Prices Effective Friday and Saturday

CLOVER FARM

COFFEE

Drip or Reg.

Pound Can

66¢

- GERBER'S **Baby Food** 3 4 3/4-Oz. Cans **25¢**
- MRS. TUCKER'S **Shortening** 3 Lb. Ctn. **65¢**
- ROYAL DRENE **Shampoo** 60c Size **39¢**
- VAN CAMP'S **Pork & Beans** Giant 27-Oz. Can **23¢**
- BORDEN'S **Mellorine** All Flavors 1/2-Gal. **49¢**
- LILT HOME **Permanent** Reg. 2.00 Plus Tax Tax Incl. **1.49**
- GRIFFIN'S NAVY **Beans** BROWN BEANS or KIDNEY BEANS No. 300 Tall Can **10¢**
- SUPREME SALAD WAFER **Crackers** Lb. Box **27¢**
- Pine-Sol** Quart **79¢**

FOOD VALUE LEADERS

- WAPCO HALVES **Pears** No. 2 1/2 Can **37¢**
- WAPCO WHOLE NEW **Potatoes** No. 303 Can **15¢**
- RED DELICIOUS **Apples** Lb. **15¢**
- TEXAS RUBY RED **Grapefruit** 3 Lbs. **25¢**
- U. S. NO. 1 IDAHO RUSSET **Potatoes** 10 Lb. Bag **43¢**

California Navel **ORANGES**

Pound **17¢**

ARMOUR'S STAR **Bacon** Sliced Lb. **59¢**

- Gooch's Smoked **Sausage** 2 Lbs. **69¢**
- PICNICS **Franks** 3 Lbs. **1.05**
- Pound **Bacon Ends** 5 Lb. Box **1.00**
- 35¢** **Pork Roast** Lb. **45¢**
- Pork Chops** Lb. **59¢**

FRESH PORK **Liver** Lb. **29¢**

H. B. MacMoy, Owner
 7:30 a.m. to 8:00 p.m. Weekdays
 7:30 a.m. to 9:00 p.m. Saturdays