

Eastland Telegram

COVERING EASTLAND COUNTY

VOL. NO. 30

EASTLAND, TEXAS, THURSDAY, JUNE 11, 1959

No. 18

MOORE about... EASTLAND

by Virgil E. Moore

Five-year-old Jerry Brim is the winner of our latest cute saying contest. Jerry is the son of Mr. and Mrs. Allen Brim. If the Brims will take Jerry by Canaris Studio, they will receive a free sitting and get an 8 x 10 portrait of the cute talking youngster.

Our contest is over, but we hope you parents will continue to let us know some of your children's cute remarks. Our readers really enjoy your passing them along.

We think there are a lot of people who would like to write a newspaper column, and since we will be going on vacation in the not too far future, we are offering just such a chance.

If you would like to submit an entry send it to us. The best three entries (and maybe more) will be published. We think your best bet is a localized column, about this area and about the people you know. If you have a grip, write about it, and if you have some complimentary remarks about someone or something send it in.

Columns submitted should be not less than one double-spaced typed page, nor more than three. If you do not type, write out your remarks on paper. All columns must be signed, but names will be withheld if requested.

It was interesting for us to note the other day that a Dallas municipal bond salesman offered to sell Eastland County \$5000 worth of City of Eastland bonds at 94c on the dollar and \$5000 worth of City of Fort Worth bonds at 90c on the dollar.

It would seem that Eastland bonds are considered a better buy these days than Fort Worth bonds. The County has money in the Permanent School Fund which cannot be spent, but which can be invested.

When we first came to Eastland, in 1953, Jimmy Don Huckabee was working for the Telegram as mailer. Jimmy was just a kid then, but he was one of the best workers we ever saw. He graduated with highest honors at E.H.S. in 1954 and headed for Texas University. He just completed his five year study there. All of which makes us realize that we "ain't" the youngster we use to be. Jimmy's mother, Mrs. L. E. Huckabee, tells us he plans to begin work on his masters degree this summer.

Rip Galloway, Ranger's friendly Chamber of Commerce manager, got to reading his own publicity stories on Lake Leon. It would appear, Galloway is selling his home in Range and moving to the Lake, having recently purchased a nice cabin there.

We read somewhere once that a gossip is one who talks to you about others. A bore is one who talks to you about himself and a conversationist is one who talks to you about yourself.

You ex-students of Eastland High will not want to forget the important meeting this Sunday at 2 p.m. in the High School. Plans for the 1960 Homecoming will be put on the drawing board, and a date for the affair is to be set.

Someone dropped the following bit of verse into the mail to us recently. Don't know who the author is or who was kind enough to submit it:

WHEN A MAN'S A MAN
When a man's a man he doesn't lie, and he will not play the cheat,
And he doesn't look with a scornful eye at the beggar on the street,
And he doesn't brag of the things he's done or talk of his lands or gold.

When a man's a man you'll find,
(Continued On Page Six.)

FREYSCHLAG

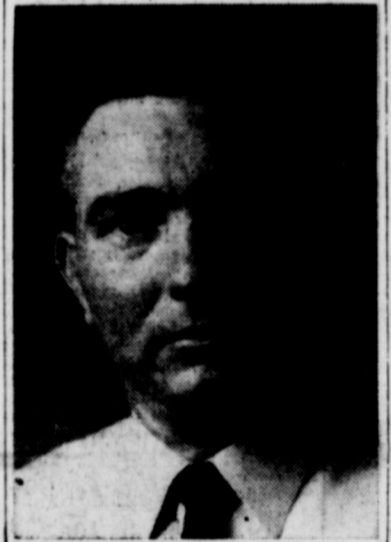
INSURANCE AGENCY
presents the

WEATHER NEWS

High	94
Low	73
Rain	0.9
Total Rain for June	2.59
Avg. Rain for June	2.56
Total Rain for Year	9.57
Forecast	Fair and Hot



EASTERN STAR OFFICERS—Newly elected officers of the Eastern Star are pictured above. From left to right, front row, are Mrs. H. O. Waldon, conductress; Mrs. Maurice Dry, Ruth; Mrs. Ima Jordan, chaplain; Mrs. Clyde Walker, Martha; Mrs. C. W. Boles, secretary; Mrs. Harlan Denny, worthy matron; and Tom Amis, worthy patron. On the second row are Mrs. J. D. Earley, Esther; Mrs. Clyde H. Young, associate conductress; Mrs. Bruce Butler, Adah; Mrs. W. E. Tankersley, warden; Mrs. Cyrus Miller, treasurer; Mrs. H. C. Pounds, associate matron; Mrs. Clyde McBee, Electra and Mrs. Wayne Jackson, marshal. On the back row is Wayne Jackson, sentinel. (Canaris Studio Photo.)



HOSPITAL HEAD—Dale E. Trout, formerly of Gladewater, is now administrator of Eastland Memorial Hospital. Trout's duties will soon be almost doubled when the new 18-room addition is opened to the public. (Canaris Photo.)

Bond Rates Proposal Asks For Improvements

Nathan Adams, of Dallas, State volunteer Savings Bonds chairman, today reminded the public that under the terms of the Treasury's proposal to Congress, improvements in rates on Series E and H Savings Bonds would be effective June 1.

"There's no reason for anyone to hold up on buying their Savings Bonds," Adams said, "in order to await Congressional action. The Treasury has announced that, if Congress approves the request, interest rates on Savings Bonds will be increased retroactive to June 1."

President Eisenhower sent a message to Congress on June 8 recommending improvements in the terms of Savings Bonds, in connection with other public debt matters. His message was accompanied by a statement from Treasury Secretary Robert B. Anderson proposing an increase in the interest rate on Series E and H Savings Bonds from the present 3-1/4 per cent to 3-3/4 per cent, when held to maturity. The proposal also provides for a rate increase of approximately one-half per cent on all outstanding bonds purchased prior to June 1, 1959.

"It's a good idea to hang onto your present Savings Bonds, too," the Bond Chairman pointed out. "If Congress accedes to the Treasury's request, the old bonds you now have will begin immediately to draw a higher interest rate, without any action on your part."

**EASTLAND NATIONAL BANK
"On The Square"
MEMBER F. D. I. C.**

Prizes For Annual Tournament Arrive

Prizes to be awarded during the Ninth Annual Lakeside Country Club golf tournament have arrived and are now on display in the Men's Shop in Eastland, Emmett Powell, tourney chairman, announced today.

Powell said that prizes this year would be valued at \$1500, \$500 more than in past years. Full sets of irons will go to winners of each flight, with runner-ups receiving sets of four matched woods. Consolation winners will win golf bags.

The tournament will be held Friday, June 26 through Sunday, June 28. There will be match play in all flights. Plans call for 96 flights. The field will be cut at 96 golfers. The tournament will be the only invitation held in the county this year, and special invitations have been sent to all county golfers.

W. Q. Verner is in charge of the Food Committee. As in the past a barbecue will be held Friday night following qualifying rounds for the championship flight. A program is slated June 26. Thirty-six holes of match play will be held June 27 with the last 36 holes of play June 28. Qualifying rounds for the tour-

I GIVE YOU TEXAS

By BOYCE HOUSE

O Henry worked in the General Land Office of the State of Texas from Jan. 12, 1887 to Jan. 21, 1891. He was an assistant compiling draftsman and his salary was \$100 a month. These four years have been called the happiest of his life.

He wrote bits of humor for newspapers and magazines. "The Final Triumph" and "A Slight Inaccuracy" he sold to "Truth" (New York) for a total of \$6. An associate (Don W. Hollis, in the Austin American Statesman) in 1925 recalled Will Porter as "a quiet young chap."

A more detailed description pictures him as being five feet, six inches in height, weighing about 130 pounds, with coal-black hair, gray eyes and a long, carefully twisted mustach, his voice soft and musical — an inveterate story-teller but never relating a vulgar joke. His narratives often were in the first person and listeners wondered if they were true or invented. He said, "Never question the validity of a joke."

He caricatured visitors in the

David Fry to Complete Bank School Friday

David Fry, vice president of the Eastland National Bank, will graduate from the School of Banking of the South in Baton Rouge, La., on the Louisiana State University campus after 3 years of schooling. This year's graduate banking school began on May 31, and will be climaxed by graduation exercises on Friday, June 12.

Fry is one of the 510 southern bank executives from 20 states who are attending every day classes for what is in effect a post-graduate study of banking problems.

The School is sponsored by bankers associations of 13 southern states in cooperation with L. S. U. It offers a two-week course, once a year, over a period of three years, with top-flight instructors in banking and related fields. Between sessions these bankers continue their study through extension problems.

Over 90 expert instructors come from all over the nation to lecture in this School of Banking. Following successful completion of their courses, banker-students are awarded diplomas. This year 134 bankers representing 13 southern states will be graduated at formal commencement exercises.

Orrin H. Swazey, director of the School and executive vice president of the First National Bank, Jackson, Mississippi, explains that the purpose of the course is to equip bankers with the knowledge they need to improve their professional ability, and thereby render better service to their institutions and communities.

During the three year period, the banker-student must complete courses in agricultural economics, agricultural credit, bank public relations and community responsibility, basic economic problems, commercial bank administration, commercial bank credit, government agencies, investments, senior banking problems, and many others.

In the 10-year history of the School of Banking of the South, 600 southern bank executives have graduated. A large majority of these now serve as the top executive officer of their respective banking institutions in the South.

Automatic Pilot Available For Farm Tractors

COLLEGE STATION — Farmers who want to make their work easier should be interested in an automatic pilot that has been developed for farm tractors, said W. L. Ulich, extension agricultural engineer.

This new device is expected to increase the effectiveness of cultivation as a means of weed control, he stated. The steering control system enables operators to guide tractors more accurately, thereby making possible finer adjustment of cultivation machinery for control of weeds without damage to the crops.

The automatic pilot was designed and laboratory tested by a USDA engineer, and is now being field tested. The main problem overcome in developing this device involved finding a way to use fairly simple equipment low enough in cost to be a profitable investment for farmers seeking to do a better job of cultivation, said Ulich.

The automatic control is intended for use in conjunction with power steering hookups which are featured on many modern tractors. Lightweight feelers, capable of sensing the position of the crop row in relation to the tractor front tires, are used in the automatic pilot to close switches when the tractor moves too close or too far from the row.

The microswitches, in turn, open valves that permit hydraulic pressure to turn the front wheels into alignment with the row. A linkage system between the front wheels and the switches automatically straightens the front wheels as soon as the tractor returns to the correct position, he added.



YOU CAN SEE IT FREE—Twenty local citizens will see this scene, and the rest of the movie, too, when a special screening of "The Young Philadelphians" is held at the Majestic Theatre in Eastland June 18. The 20 local citizens will be guests of this newspaper and the Majestic Theatre. Persons wanting to see the movie should fill out a coupon which appeared in Tuesday's issue. In the scene above Paul Newman is shown with his friend, Robert Vaughn, who faces a murder charge in Philadelphia.

Second Half Play In Little League Begins Tonight; Comets Are Champs

Second half play in Little League gets underway tonight when the Comets play the Medics and the Lions test the Bulldogs at Wright Field.

The Comets won first half honors, downing the Lions, 7-6, in a thriller Monday night. Had the Lions won the tilt the first half would have ended in a tie between the two clubs. The win by the Comets have them a record of eight wins and one loss. The Lions finished second with six wins and three losses, with the Medics in third place with four wins and five losses. The Bulldogs failed to win a game in nine starts, being downed, 16-0, Monday by the Medics.

Cy Frost of the Lions won the first half crown, ending the year with a .625 average with 10 hits in 16 at-bats. Mike Miller and Jerry McCollough, both Comets, tied for the most hits, each getting 15.

Here are the League's leading batters:

Player	AB	H	Avg.
Cy Frost (L)	10	16	.625
Tim Stacy (L)	11	18	.611
Keith Elliott (B)	7	12	.583
Mike Miller (C)	15	26	.577
Hayden Wilson (L)	13	23	.565
Mike Jones (M)	8	17	.529
Jerry Howie (C)	10	20	.500
Danny Phillips (B)	8	16	.500
Jerry McCollough (C)	15	31	.484
Doyle Stuart (C)	13	27	.481
Norman Rhodes (C)	12	26	.462
Terry Treadwell (C)	10	23	.435
Dan Washington (C)	5	12	.417
Phillip Kline (L)	9	22	.409
Jerry Dukes (L)	10	25	.400

Masons to Elect New Officers

Eastland Lodge No. 467, A. F. & A. M., will hold its stated meeting tonight. The lodge will open at 8 p.m. Members are reminded that election of officers will be held at this meeting. Several members are entitled to receive the 25-Year Emblem and these awards will be made tonight.

Dr. Kuykendall Is Honored In Resolution

A resolution in memory of Dr. P. M. Kuykendall was passed in a recent meeting of the Eastland County School Board of Trustees, of which Kuykendall was a member for 25 years, and president at the time of his death.

A copy of the resolution is given below:

**IN MEMORY OF
Dr. P. M. Kuykendall**

WHEREAS, On May 28th, Eastland County lost an esteemed citizen, a distinguished member of his profession, in the passing of Dr. P. M. Kuykendall; and

WHEREAS, He was born in Mooly, Texas, August 16, 1892, he married the former Alla Ray Elliott, December 21, 1914 at Muskogee, Oklahoma; and

WHEREAS, He served his County and devoted his life in service to others. Dr. Kuykendall operated the West Texas Clinic and Hospital since 1930, when he first began his practice in Ranger, Texas. He served twenty-five years as a member and President of the Eastland County School Board of Trustees. He was Past President of the Ranger Chamber of Commerce, Past President of the Rotary Club, Past President of the Eastland County Medical Association. He was a charter member of the Eastland County Water Board, a member of Masonic Lodge No. 1147 at Desdemons, Past Master of Ranger Lodge No. 738, a member of the Elks Club and the Fort Worth Club. A veteran of World War I, he was discharged as a Major after serving overseas for eighteen months, and

WHEREAS, He was a member of the Board of Trustees and Board of Stewards at the First Methodist Church. He attended Baylor Medical College in Waco, finished his post-graduate work at Vanderbilt University in Nashville, Tennessee and his internship at Parkland Hospital in Dallas; and

WHEREAS, He is survived by his wife, one daughter, Mrs. James P. Morris of Ranger and one sister Mrs. Fred Acres of Austin; and

WHEREAS, This public spirited citizen supported with his time, efforts and knowledge all worthwhile movements for the advancement of the spiritual, educational, civic and industrial growth of his community and county and the Eastland County School Board of Trustees wishes to recognize the great courage, wisdom and faith of this valuable citizen and to express grateful appreciation for his contributions to the County of Eastland an pay tribute to his life and devoted service to others; now therefore, be it

RESOLVED, By the members of the Board of Trustees of Eastland County that in memory of Dr. P. M. Kuykendall this resolution be entered in the Minutes and that a copy of this Resolution be sent to his family with our deep regard and sympathy.

SIGNED:
W. G. Kirk
I. C. Inzer
Jay Koonce
J. D. Lauderdale
Lloyd T. Bruce
H. R. Garrett
Mrs. Florra E. Catton



SHEER JOY—At six months of age, sniffing a clover blossom is cause for joy. Baby is Elliot Greenberg, of Nashville, Tenn.

**EASTLAND NATIONAL BANK
"On The Square"
MEMBER F. D. I. C.**

**TIRE OF A GAS MOOT?
OF PARKING A DINOSAUR?**
Try and buy the popular, smart new Rambler, truly a teeny-weeny get-burner. Famous for fun, resale, quality and economy.

See **BOB TOM'S SPORT CARS** Eastland

Don't Forget! Red Tag Days Friday and Saturday

Libby's BIG DOLLAR SALE

Mix or Match-And Save!

- LIBBY'S CUT GREEN BEANS } 6 No. 303 Cans 1⁰⁰
- GARDEN SWEET LIBBY'S PEAS
- LIBBY'S FINEST Fruit Cocktail } 4 No. 303 Cans 1⁰⁰
- LIBBY'S FANCY BARTLETT PEARS } 4 No. 303 Cans 1⁰⁰
- LIBBY'S TANGY, DELICIOUS Tomato Juice } 4 46-Oz. Cans 1⁰⁰
- LIBBY'S Vienna Sausage } 4 No. 1/2 Cans 69¢
- LIBBY'S PICKLES Kosher Dills } 4 22-Oz. Jars 1⁰⁰



EXTRA SAVINGS WITH "S & H" GREEN STAMPS!

FOLGER'S COFFEE

ALL GRINDS 7c off Label

2 ^{-Lb. Can (Net)} 1²⁵



Prices Effective Thursday, Friday & Saturday—We Reserve Right to Limit

Frozen Food Sale!

- LIBBY'S FROZEN ORANGE JUICE } 4 6-Oz. Cans 89¢
- LIBBY'S SWEET WHOLE KERNEL PEAS or CORN } 6 10-Oz. Pkgs. 99¢
- LIBBY'S FROZEN SLICED PEACHES } 5 10-Oz. Pkgs. 99¢
- LIBBY'S FROZEN LEMONADE } 8 6-Oz. Cans 99¢

EL CHICO FROZEN Enchilada Dinners 12-Oz. Pkg. 39¢

- Green Beans Libby's Cut or French Style, 9-Oz. _____
- Vegetables Libby's Mixed, Garden, 10-Oz. _____
- Chopped Broccoli Libby's, 10-Oz. _____
- Peas & Carrots Libby's, 10-Oz. _____
- Cream Style Corn Libby's, 10-Oz. _____
- Spinach Libby's Leaf or Chopped, 10-Oz. _____
- YOUR CHOICE } 5 Pkgs. 99¢
- Mix or Match!

- BROCCOLI SPEARS Libby's Frozen _____
- CAULIFLOWER Libby's Frozen _____
- LIMA BEANS Libby's Baby or Ford Hook _____
- SUCCOTASH Libby's Finest, Frozen _____
- Your Choice! } 4 10-Oz. Pkgs. 99¢
- Mix or Match!

- Asparagus Cuts Libby's Frozen _____
- Brussels Sprouts Libby's Frozen _____
- Red Raspberries Libby's Frozen _____
- Mix or Match! } 3 10-Oz. Pkgs. 89¢

FAB DETERGENT 59¢

Wrapped In Gold Foil Giant Pkg.

Large Golden-Ripe BANANAS Lb. Just 10¢

Winesap Apples Washington, Extra Fancy 2 Lbs. 29¢

K. Y. Green Beans Fancy, California Lb. 19¢

Yellow Onions Texas, No. 1 Quality Lb. 5¢

GLEEM TOOTH PASTE Large Tube 39¢

BEEF ROUND STEAK Worth Controlled Quality Heavy Beef Lb. 89¢

SWIFT'S SLICED PREMIUM BACON Lb. Pkg. 55¢

WORTH CONTROLLED QUALITY BEEF RUMP ROAST Lb. 79¢

TASTE O' SEA FISH STICKS 8-Oz. Pkg. 39¢

GRAND BAYOU DEVILED CRAB 2 3-Oz. In. Pkg. 39¢

BEEF CHUCK ROAST Worth Controlled Quality Lb. 49¢

FRESH GROUND BEEF Really Fresh! Lb. 49¢

WORTH FOOD MART

114 West Olive

Open 8 a.m. to 6 p.m.

YOU HAVE NEWS TIPS?
WHO LIKES NEWS TIPS?
WE LIKE NEWS TIPS!

VISIT McCOYS
Mrs. C. H. Turner and Charlene
from Dallas visited in the home
of Mr. and Mrs. Charlie McCoy

over the past weekend. Charlene
returned to Dallas Sunday but
Mrs. Turner remained in Eastland
for an extended visit.

Harvey Kimbler and R. B. Hall Have Key Parts In Lueders Baptist Camp

Dr. Charles McLaughlin of Fort Worth, superintendent of Baptist missions of Tarrant County, will be featured speaker for a combined District 17 program and Lueders Baptists Encampment Rally Day at Lueders Baptist Encampment grounds on Thursday, June 18.

The District Day program will open at 9:30 a.m. and continue through the morning. The Rally Day observance will start after lunch and will be concluded at the

close of the night service. Recreation, inspirational speaking, camp forecasts, tour of camp facilities, swimming periods and fellowship will be combined to make the day a pleasant outing for the entire family. Lunch and supper will be served at the camp cafeteria.

Rev. LeRay Fowler, pastor of the First Baptist Church at Sweetwater, will bring the message at 3:45 p.m. Dr. McLaughlin will speak at 11:50 a.m. and at 8:05 p.m. Rev. Calvin Bailey of Hamlin, vice president of District 17, will preside at the morning session and Dr. Frank Royal, Abilene, program chairman, for the rally day event.

Among the conference leaders from this area will be Rev. Ralph Perkins, Ranger; Rev. Harvey Kimbler, Eastland, and other district leaders. Rev. L. L. Trott of Abilene, district missions secretary, will conduct the conference for moderators and vice moderators. R. B. Hall, educational director of the First Baptist Church, Eastland, will be in charge of the music for the rally day program.

District camps that will be forecast are Intermediate GA camp, June 22-25; YWA, June 26-27; Junior GA for Cisco, Haskell, Knox, Callahan and Sweetwater associations, June 29-July 2; Junior GA camp for Aolene, Jones, Fisher and Stonewall associations, July 6-9; Sunbeam camp, July 10 (one day); Intermediate RA camp, July 20-23; Junior RA camp, July 27-30; WMLU, July 30-31; Brotherhood, August 3, and Youth camp, August 24-27.

Mildred Blair Is Given Citation By Texas Nurses

Mrs. Mildred Blair has recently returned from a meeting of the Texas Board of Tuberculosis Nurses Examination at McKnight State Tuberculosis Hospital. The purpose of the meeting was the giving of state board examinations.

Mrs. Blair also attended the Graduation Nurses Association at McKnight and was presented citation for her devotion to the treatment, cure and service to tuberculous patients in the state. This is the first time such an award has been presented.

WHO HAS NEWS TIPS?

ANNOUNCING
the opening of the
Golden Age
Nursing Home
Licensed nurses on duty
24 hours day.
MRS. JULIA LAWSON
Operator
Cisco - Ph. Hillcrest 2-2280

T. L. FAGG
REAL ESTATE
Property Management
Home and Farm Loans

NEWS FROM DESIDEMONA

Attendance was good at the vacation Bible school at the First Baptist Church and closed Friday night with a nice program.

Mrs. Lillie Wittie was laid to rest in Desdemona Cemetery following funeral services at the First Baptist Church at 2 o'clock Sunday afternoon.

Mr. and Mrs. Bobbie Burleson and son Jeri of San Marcus are here for a few days visit with their parents the Russ Burlesons and Lonnie Williams.

Mrs. Lora Abel returned home Monday after spending a week in Oil Center, N. M., with her children and at the bedside of her son-in-law, Paul Baker, who had surgery Wednesday.

Grannie Williams, 31 years old, passed away in the Gorman Hospital June 8 following a long illness. Survivors are two sons, Howard and Ben and one daughter, Mrs. Robbie Ridell and a number of grandchildren and great grandchildren and a host of other relatives and friends.

Mrs. Ina Jones and granddaughters, Mayna White, of Ft. Worth and Mrs. N. S. Partain of Dublin spent Monday and Tuesday with their sister and daughter, Mrs. Ethel Keith.

Mrs. Arden Parker and sons of Odessa are here on vacation with their parents, Mr. and Mrs. R. Joiner.

YOUR BEST MARKET

RELAX... You Bet I Am - IT PAYS TO DO BUSINESS WITH HENRY

• SCRAP IRON • BRASS WE ALSO BUY & SELL
• BATTERIES • RADIATORS NEW AND USED PIPE
• ALUMINUM • COPPER WIRE STRUCTURAL STEEL

COMPLETE LINE PLUMBING AND ELECTRICAL SUPPLIES

EASTLAND
IRON & METAL CO.
OWNED AND OPERATED BY HENRY PULLMAN

PHONE 270 • EAST OF SAFEWAY STORE

CALL 601 FOR CLASSIFIEDS

DON'T MISS THESE
EXTRA SPECIAL VALUES
PERRY'S

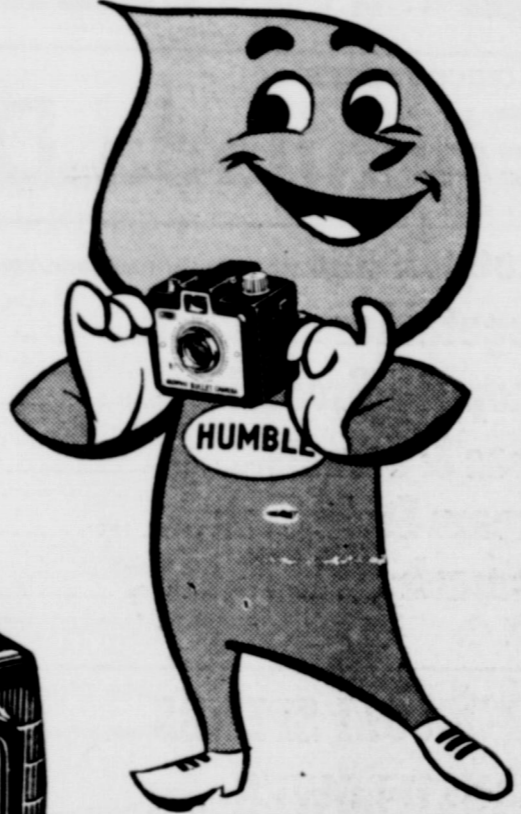
RED TAG DAYS
New Shipment
LADIES
Blouses
Sizes 32 - 38
Regular 1.00
88¢

New Shipment
LADIES
Hand Bags
Assorted Colors
1.00
plus tax

CHILDREN'S
Tennis Shoes
Sizes 5 to 12
88¢

SHOP AND SAVE AT
PERRY'S

Want a Kodak Camera?



This Happy Motoring Kodak camera plus your first roll of film is yours for only

\$2.50

plus a validated proof-of-purchase coupon from your neighbor under the Humble sign

Here's your opportunity! An individual Kodak camera plus a roll of film for every member of the family.

Stop at the Humble sign in your neighborhood and make any kind of purchase: pre-vacation travel service, gasoline, motor oil, tires, washing, lubrication—anything.

The driveway salesman will provide you with a validated proof-of-purchase coupon that entitles you to buy one Kodak-made Brownie camera plus your first roll of film for only \$2.50.

You must send a separate, validated proof-of-purchase coupon for each camera you buy at this low price, but there is no limit to the number of cameras you may purchase. Offer expires July 31, 1959.

Send your validated coupon and \$2.50 to Camera, P. O. Box 1244, Houston 1, Texas and your camera will be in your hands promptly. Humble guarantees delivery.

Take advantage of this generous offer. The children especially will appreciate an opportunity to take their own cameras on this year's vacation trip.

HUMBLE OIL & REFINING CO.

Kodak and *Brownie* are trademarks.

Happy Motoring

STOP FOR SERVICE UNDER THE HUMBLE SIGN.
3 Famous Gasolines • 2 Great Motor Oils • Lubrication
Washing • Atlas Tires (Best trade in town) • Atlas
Batteries and Accessories
Special attention to pre-vacation check-up and service for your car

HUMBLE
SIGN OF
Happy Motoring

HERRELL'S
RADIATOR
REPAIR
Complete Automotive and Industrial
Radiator Service
ALL WORK GUARANTEED
107 WHITE STREET

You Don't Need Much Advice—
... but it is valuable now and then. For example, when you go to buy a policy of insurance, don't select any kind of a policy or any kind of an agent. There is a big difference. You will likely never use your insurance any way but if you do your agent will be the key man in any settlement you make with the insurance company. It is sound advice to buy only from local agents who have long records of successful performance in adjusting insurance claims.

EARL BENDER & COMPANY
Eastland, (Insurance since 1924) Texas

Sensation of
1959
The
MODEL V
by
Variety Fair

Here's a fabulous little household improvement you're going to love. Look at all the fashion coverage you get: sleep in it; cook breakfast in it; exercise, sunbathe, garden, answer the doorbell—look absolutely marvelous in it! Carefree nylon tricort of course, with 5 yards of tie-it-your-way string sash, sizes Small, Medium. Comes in Butterfly Blue, New Grass, Ladybug Red, Sunshine Yellow, Tiger Lily and White—such wonderful colors we won't be surprised if you get all of them. Why not, at only \$5.95!

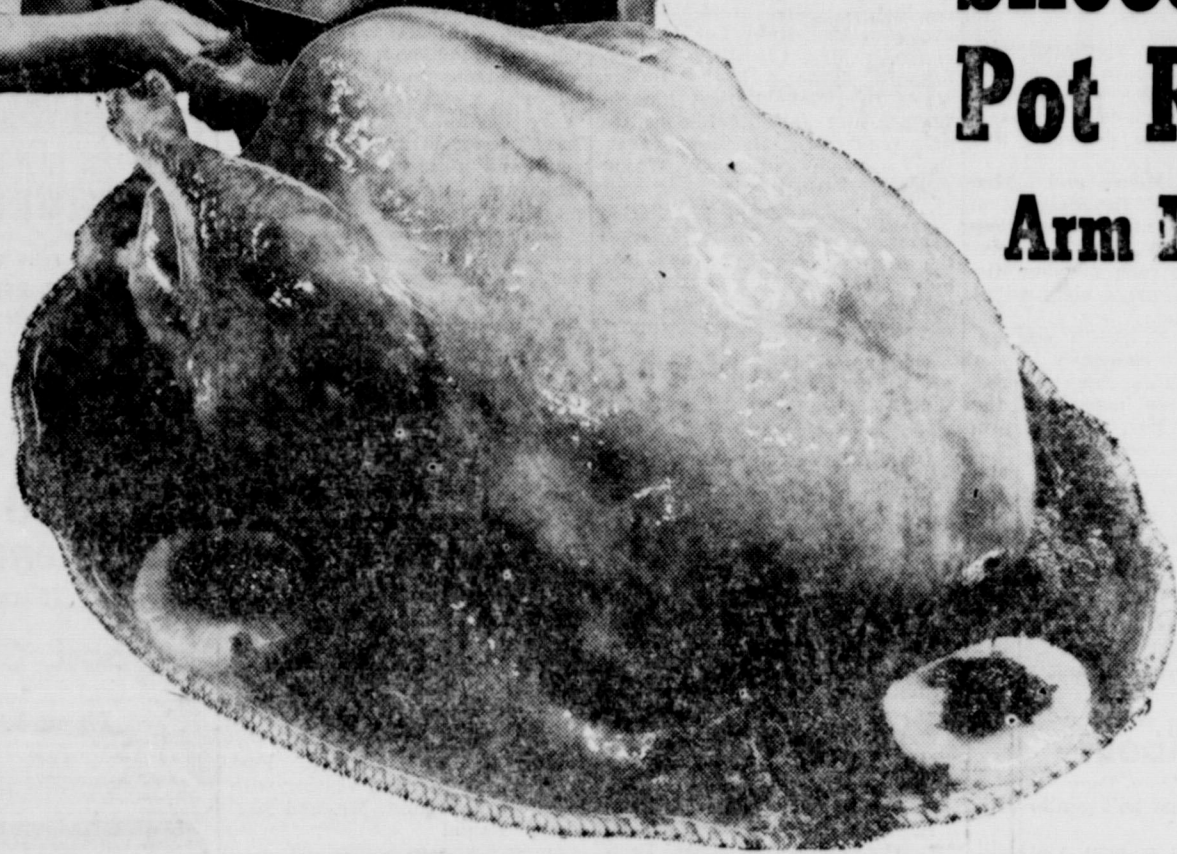
Nick Miller
The Manistota
Cisco Texas



It's **TURKEY TIME** at Your **SAFEWAY STORE... Young Fella!**

TURKEYS 37¢

U.S.D.A. Inspected and Grade A Turkey Hens.
Broad-Breast... Ready-to-Cook! 10 to 14-Lb. Average.



Aluminum Foil

Kaiser... Bake Your Tur- 25 Ft. x 12" Roll in Aluminum Foil Roll **31¢**

Cocoanut Cookies

Nabisco Bars... So Delicious. 13 1/2 Oz. Pkg. **33¢**

Hi Ho Crackers

Sunshine... Perfect for Salads. 1-Lb. Box **33¢**

Potato Chips

Morton Thrifty Pack. Six 3/4-Oz. Pkgs. in a Pack. Pkg. **43¢**

French Bread

Holsum Sunbeam... Add Old World Flavor. 1-Lb. Loaf **21¢**

Stockton Catsup

Delectable on French Fries and in Casseroles.

2 12-Oz. Bottles **25¢**

Libby Pears

Ripe and Luscious — A Real Taste Treat.

4 No. 303 Cans **\$1.00**

Orange Juice

Scotch Treat Frozen... Fresh-picked Taste of Sun-ripened Oranges.

2 6-Oz. Cans **39¢**

Asparagus

Winslow Fancy Cut... All Green for Extra Tenderness and Flavor.

2 No. 1 Cans **33¢**

Green Beans

Libby Cut... Full of Garden Fresh Flavor.

6 No. 303 Cans **\$1.00**

19¢ Bakery Special of the Week

Reg. 25c Value
Skylark Protein Bread
High in Vitamins and Low in Calories.

Hot Dog Rolls Skylark... Just Baked. 8 Count. 1-Lb. Pkg. **19¢**

Buttermilk Bread Skylark... Stays Fresh Longer. Pkg. **26¢**

Vinegar 10¢ 19¢

Piedmont White Pint Bottle Quart Bottle

Margarine 16¢

Coldbrook... Delicious Spread. 1-Lb. Pkg.

Joyett 39¢

Frozen Dessert in Vanilla, Chocolate, Strawberry, or Neapolitan. 1/2 Gal. Ctn.

Biscuits 2 15¢

Mrs. Wright's Buttermilk or Sweetmilk. 8-Oz. Cans

Shrimp 2 \$1.59

Captain's Choice — Fan Tail Breaded, Ready to Cook. 1-Lb. Pkg.

Edwards Coffee 65¢

All Grinds... Finest Quality Coffee. 1-Lb. Can

Folgers Coffee 73¢

All Grinds... Mountain Grows. 1-Lb. Can

Airway Coffee 53¢

The Coffee with the Mild Mellow Flavor. 1-Lb. Pkg.

Peanut Butter 39¢

Lunch Box... Creamy or Chunky Style. 12-Oz. Jar

Cake Mix 3 \$1.00

Duncan Hines... Fudge Marble. 19-Oz. Boxes

Instant Coffee 85¢

Safeway — All Pure Coffee and So Economical. 6-Oz. Jar

Tea Bags 59¢

Canterbury Iced Tea Blend — A Refreshing Drink Any Time! 48-Ct. Box

Every item at Safeway is sold on a money-back guarantee. This means that the full purchase price will be cheerfully refunded on any item that does not give you complete satisfaction.

Dill Pickles 49¢

Zippy Whole... Makes Most Everything Taste Better. 1/2 Gal. Jar

Chunk Style Tuna 27¢

Chicken of Sea... Green Label, Ideal for Seafood Salads. No. 1/2 Can

Salad Dressing 35¢

Piedmont... Perfect in All Salads. Adds Zesty Flavor and Goodness. Qt. Jar

Purex Bleach 37¢

Removes Hidden Dirt. 1/2 Gal. Bot.

Toilet Tissue 27¢

Northern... White or Assorted Colors. 3 Rolls

Sanitary Napkins 35¢

Modess. Regular or Super. 12-Ct. Pkg.

Arm Roast 55¢

U.S.D.A. Choice Grade Heavy Beef. Lb.

Deviled Ham 37¢

Underwood... Delicious Snack. 4 1/2 Oz. Can

Spam 49¢

Hormel... Ideal Main Dish or for Snacks. 12-Oz. Can

Chunk Style Tuna 33¢

Bread-O-Chicken... Green Label. No. 1/2 Can

Spiced Beans 27¢

Gebhardt's... Seasoned to Perfection. 2 300 Cans

Cranberry Sauce 23¢

Ocean Spray... Jellied or Whole. No. 300 Can

Poultry Seasoning 15¢

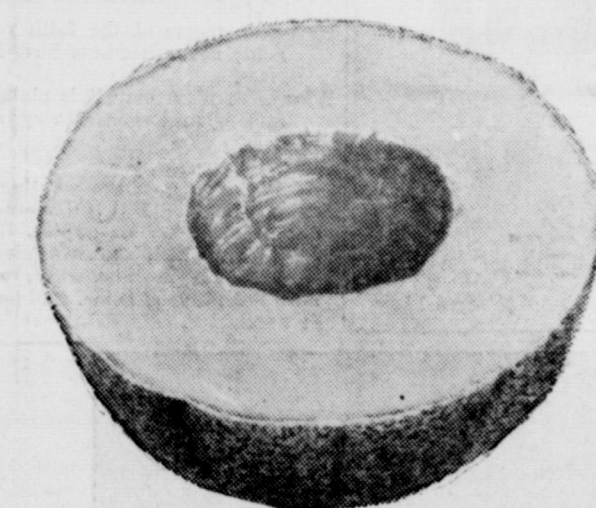
Crown Colony. 1-Oz. Can

Ballard Biscuits 10¢

Sweetmilk — Delicious for Any Meal. 8-Oz. Can

Cream Cheese 30¢

Borden's Plain... (So Off) 8-Oz. Pkg.



Sunkist Lemons 6 15¢

Delicious in Iced Tea or Lemonade. 6 For

Crisp Carrots 2 15¢

Crisp, young and Tender. Delicious in Salads. 1-Lb. Cello Pkg.

Sliced Bacon 89¢

Safeway Thick Sliced... Country Cured Flavor. 2-Lb. Pkg.

Pot Roast 49¢

Chuck Blade — U.S.D.A. Choice Grade Heavy Beef. Lb.

Franks 55¢

Safeway All Meat or Swift's Premium. 1-Lb. Pkg.

JUNE IS DAIRY MONTH!

Cheese Spread 2 69¢

Van Zee — Melts So Easy or Makes Perfect Slices. 2-Lb. Box

Cottage Cheese 27¢

Lucerne... Five Tempting Varieties from which to Choose. 16 Oz. Ctn.

Lucerne Butter 71¢

HIGHEST GOVERNMENT CERTIFIED GRADE AA. 1-Lb. Pkg.

Lucerne Milk 49¢

Homogenized, Taste Its Extra Richness. 1/2 Gal. Ctn.

Sweet and Luscious!

Cantaloupes 5¢

Vine-ripened of peak flavor, sweetness and color... "just right" to spoon into. Perfect for breakfast or dinner fruits.

Lettuce 25¢

Crisp and Crackling Fresh. 2 hds.

CELERY 9¢

Fresh, green, crisp and clean.

Stalk **9¢**

SAFEWAY EGGS ARE COUNTRY FRESH

Grade 'A' Eggs 29¢

Breakfast Gems, Small Size. Grade "A" Quality. Doz.

Large 'AA' Eggs 43¢

Cream of the Crop, Large Size. Grade "AA" Quality. Doz.

Lucerne Buttermilk 41¢

Just Churned Flavor. 1/2 Gal. Ctn.

Crown Salad Olives 25¢

Delicious in Salads. 4 1/2 Oz. Jar

Beef Tacos 55¢

Moreno's Frozen... Just Heat and Serve! 13 1/2 Oz. Pkg.

Kraft Margarine 27¢

Miracle. 1-Lb. Pkg.

Phillips "66" 80¢

Fertilizer... For Maximum Yield. 80-Lb. Bag

SAFEWAY

Conveniently Located to Serve You at 504 E. Main

ATTEND CONFERENCE

Rev. and Mrs. James Campbell, Mr. and Mrs. Ronald Burton, Mr. and Mrs. Grady Pipkin, Mr. and Mrs. W. F. Davenport, Mrs. Frank Sparbo, Mrs. Frank Castleberry and Joe Gray are attending the Central Texas Methodist Conference which is being held in the First Methodist Church in Fort Worth.

CALL 601 FOR CLASSIFIED

SOCIAL CALENDAR

Thursday, June 11 2:00 p.m.—The Morton Valley Community Club will be the scene of the regular meeting of the Morton Valley Community Club. Saturday, June 13 7:00 p.m.—The Lake Leon Boating Club will meet in the lake home of Mr. and Mrs. Hood King. The meeting was changed from Friday to Saturday. Monday, June 15 7:30 p.m.—The Pythian Sisters will meet at Castle Hall, 106 Commerce, for their regular meeting. 7:30 p.m.—The Oddfellows' Lodge No. 120 will hold its regular meeting in the I.O.O.F. Hall. Tuesday, June 16 2:00 p.m.—The Eastland Art Club will hold their regular meeting. Thursday, June 18 2:00 p.m.—The Flatwood Home Demonstration Club will meet at the home of Mrs. Mae Turner for their regular meeting. 2:00 p.m.—The regular meeting of the Morton Valley Community Club will be held at the Morton Valley Club House.

7:00 p.m.—The Lake Leon Boating Club will meet in the lake home of Mr. and Mrs. Hood King. The meeting was changed from Friday to Saturday. Monday, June 15 7:30 p.m.—The Pythian Sisters will meet at Castle Hall, 106 Commerce, for their regular meeting. 7:30 p.m.—The Oddfellows' Lodge No. 120 will hold its regular meeting in the I.O.O.F. Hall. Tuesday, June 16 2:00 p.m.—The Eastland Art Club will hold their regular meeting. Thursday, June 18 2:00 p.m.—The Flatwood Home Demonstration Club will meet at the home of Mrs. Mae Turner for their regular meeting. 2:00 p.m.—The regular meeting of the Morton Valley Community Club will be held at the Morton Valley Club House.

Mrs. Kerman Bond Is Honored With Going-Away Party

Mrs. Kerman Bond was honored with a going-away party in the home of Mrs. Don Kincaid Tuesday evening when the members of the Zeta Phi Chapter of Beta Sigma Phi met for a called meeting. Mrs. Bond was showered with various gifts prior to the serving of refreshments by Mrs. Kincaid. Refreshments included ice tea, a garnished jello dessert and crackers. Mrs. Virgil Moore and Mrs. Kincaid presented a report on the State Convention which they attended May 30 and 31. In giving her report each member displayed various items obtained at the convention. Mrs. James K. Smith was appointed as gift chairman. With committee reports being given, plans were begun for the ensuing year. Mrs. Kincaid presided over the meeting. A fried chicken dinner and swimming party will be held by the members honoring their husbands and guests at Lake Cisco Thursday, June 25. Attending the meeting were Mmes. Moore, Smith, Varge Daniel, Jerry Sims, Kerman Bond, Kincaid and Miss Carolyn Collins. Mrs. Fred Couch of Hurst was a guest at the meeting.

Moore About-

(Continued from Page One) my son, that he's gentle with the old. When a man's a man you will find his friends not all of the chosen few; He never talks of the help he lends or the good deeds he may do; He never jests with a woman's name; never sneers at the men who fail, And a dog a pat from his hand may claim if only he wags his tail. When a man's a man he will never shirk the task that his hand may find; He is never too big for the long day's work, too busy to be kind; He never sneers at the faith you hold; never needless hurt he gives. When a man's a man it is plainly told by the gentle way he lives.

If it's a pet you are wanting, check with Mrs. Bill Hoffmann. Dot says she has six puppies, 12 week old, which she will give away to anyone who will promise them a good home. Call her at 868.

Eastland Order of Eastern Star Holds Installation of Officers

Installation of Officers of the Order of the Eastern Star was held in the Masonic Hall June 5 with Mmes. Pebble Boles, Mornaine Jones installing and Mrs. Anna Barbara Kinnaird as organist and Mrs. Nell Carney as chaplain. Officers installed into respective places were Mrs. Ruby Semy, worthy matron, Tom L. Anis, worthy patron; Mrs. Belinda Pounds, associate matron; Carl Jones, associate patron; Mrs. Pebble Boles, secretary; Mrs. Vinita Miller, treasurer; Mrs. Dorothy Waldon, conductress; Mrs. Frances Young, associate conductress; Mrs. Ima Jordan, chaplain; Mrs. Ruby Lee Jackson, organist; Mmes. Ruth Butler, Merle Dry, Nelle Earley, Blanche Walker and Jesse McBee as the Star point; Mrs. Bernice Tankersley, warder; and Mrs. Wayne Jackson, sentinel. At the close of the installation a program was given in honor of the new officers. Song was led by Mrs. Fannie Carpenter "Whisper A Prayer" was dedicated to Mrs. Ruby Semy who then assumed the station as Master of Ceremonies for the program. An address by the worthy matron, Mrs. Ruby Semy was made in appreciation of the honor bestowed upon her. She then named her committees, Tom L. Anis gave his address of appreciation for the honor given him as worthy patron. The presentation of the jewels to Junior Matrons was conducted by Lillie Sebley and Worthy Matron Ruby Semy and to the past and present Patron, Tom L. Anis, by Garland Hargus. Mrs. Sibley was honored with a gift from her officers presented by Mrs. Nell Carney. An invitation was extended to her from the Past Matrons to become a member with a gift presented by Mrs. Mary Barton. The program was closed with a song and a prayer by Tom L. Anis and a beautiful retiring march by the new officers. Refreshments of home made cake and punch was served to the visitors from other chapters and Eastland members.

Hospital News

Patients in the Eastland Memorial Hospital are: Denise Seaborn, accident case, Eastland Charles Harlow, surgical, Eastland Mrs. Ina Mae Burleson, surgical Mrs. R. T. Ezzell, Rising Star Mrs. Helen Howard, surgical, Humble George Thompson, medical, Ft. Worth Mrs. D. D. Foster, medical, Ranger Mrs. C. C. Cooper, medical, Cisco Mrs. William C. Young, surgical, Eastland Delbert Biggs, medical, Eastland H. W. Sims, medical, Eastland L. C. Freeman, medical, Eastland Mrs. Ida Chandler, accident case, Eastland Rev. William Schmulz, surgical, Eastland Mrs. Lillie Gann, medical, Eastland Mrs. Charles Nerger, medical, Ranger Mrs. Helen Johnson, medical, Cisco Mrs. Eunice Lasater, accident case, Eastland Mrs. B. M. Keith, surgical, Eastland Mrs. R. N. Chalker, surgical, Breckenridge Mrs. Mittie B. Foulks, accident case, Eastland Cecil Graham, medical Mrs. Lorena Owen, medical, Eastland Patients dismissed were: Delbert Biggs, H. W. Sims, Mrs. Mozelle Martin, D. O. McClendon, Mrs. Floyd J. Smith, Mrs. Maxie Law and Tom M. Alford. Patients in the Hanger General Hospital from Eastland are: J. E. Pittman, medical, Olden Mrs. Oudia Connell, surgical, Eastland Mary Loper, medical, Eastland Patient dismissed was Mrs. Roy Lane.

FROM W. VIRGINIA

Mr. and Mrs. Kay Drago and Mr. and Mrs. Hake visited in the home of Mrs. F. L. Drago over the weekend. They are from Barckville W. V. Mr. Kay Drago is a first cousin to the late Mr. F. L. Drago.

HURST VISITORS

Mr. and Mrs. Fred Couch and Montie of Hurst are visiting in the home of Mrs. Couch's brother and sister-in-law, Mr. and Mrs. James K. Smith.

VISITING IN EASTLAND

Miss Donna Daniel of Fort Worth is in Eastland visiting with her uncle and aunt, Mr. and Mrs. Varge Daniel

HOME AFTER VACATION

Mr. and Mrs. Jimmy Johnson have returned from spending their two week vacation in Clarksville. Johnson is new Perry Bros. manager here.

ON VACATION

Mrs. Ina Bean left this week for Big Spring where she will join her son and daughter-in-law, Mr. and Mrs. Luther Bean. From there they will go to Salt Lake City to spend a week's vacation.

AT SON'S BEDSIDE

D. R. Gilbreth, son of Mr. and Mrs. J. R. Gilbreth, who recently underwent surgery in Houston is in serious condition in Houston. Both of his parents are at his bedside.

SOIL-

(Continued from Page One) the information in this bulletin, a person can compare soils in a particular location and the uses which can be made of them. A copy of the bulletin may be obtained from your local county agent.

ATTEND FUNERAL

Mrs. Hanna Lindsey, Mr. and Mrs. J. C. Allison, Nelson Allison and Miss Edith Allison attended the funeral Sunday at 4 p.m. of Lon T. Muncy in Ballenger. Mr. Muncy was a son of the late Rev. and Mrs. Samuel R. Muncy and an uncle of Mrs. Allison.

YOU KNOW SOMETHING WE DON'T KNOW. PHONE 601

UNITED FUNDS Mutual Fund Shares WADDELL & REED, INC Principal Underwriters NORRIS WILSON 301 S. Daugherty, Ph. 563 Eastland, Texas Prospectus on Request

Go To Church This Sunday

PREMIER TIPS R. J. Dick May



"Ohhhhh...my achin' motor." With purchase of 10 gallons of gas your oil changed for 33c quart, Esso, Havoline, Mobil or Amile Oils.

May Premier Truck Stop We Doze But Never Close 1512 W. Main Phone 542

NOTICE... Come To Kendrick Drive-In Dairy (Serving This Territory Since 1940) FOR Good. Clean JERSEY Sweet Milk Price - 70c Gal. Phone 896-J-2 - Located Halfway between Eastland and Cisco

YOUR TREES, SHRUBS AND FLOWERS ARE AN INVESTMENT... May we help you protect them with our sprays, spray equipment and fertilizer? Sprays and Dust Garden Sprayers Dust Guns Root Seeders Water Sprinklers Garden Tools Metal Grass Stops Wheel Barrels Push Carts Lawn Mowers Peat Moss St. Augustine Grass TENNYSON'S NURSERY 1003 West 16th Phone Hillcrest 2-1512 VISIT OUR NURSERY & GARDEN CENTER SOON

FRIDAY AND SATURDAY MEAT Specials! FRESH DRESSED FRYERS 33c Cut-Up Ready To Fry Lb. HAM CURED 45c Half or Whole Lb. STEAK LOIN 79c Baby Beef Lb. ROAST CHUCK 47c CUTLETS 98c Lb. HENS 25c Fresh Dressed Lb. EARNEST Frozen Food Center 210 South Lamar Phone 11

More car than this Impala Sport Coupe is hard to find at any price. clings to curves like a cat on a carpet! the travel-lovin' Chevrolet Nothing else but a dyed-in-the-wool sports car like the Corvette can take a turn with such solid assurance! It's easy to see where Chevrolet gets its road sense. With big coil springs at every wheel, a firm, wider stance and all of its pounds distributed with painstaking care, Chevy's born with it. The only thing that may be hard to understand is how it can offer the ride it does, along with so many other luxury-car virtues, and still compete in the low-price field. We use the word compete only in the sense of price. For with a ride as special as Chevy's, real competitors are hard to come by. There's a world of difference between Chevrolet's coil springs at all four wheels and the leaf springs that most other cars still use. Take a Chevy down a snaky back road and you'll feel the difference in the sure way it holds through curves and shoots over rough spots with hardly a ripple. This one's really made to travel and loves every minute of it. CHEVROLET Stop by your local authorized Chevrolet dealer's and sample Chevy's road sense! FULLEN MOTOR COMPANY, INC. 305 E. MAIN PHONE 44 EASTLAND

Just Received Necchi Supernova Ultra completely automatic console and portable sewing machine. See them at... W. C. Hammon Furniture Phone 703

WHEELS NEED BALANCING? SEE Muirhead Motor Co. 301 W. Commerce - Ph. 692

M. H. PERRY Representing Southland Life Life - Retirement Income Partnership Mortgage Cancellation Educational - Annuities Accident - Sickness Hospitalization - Group Call 173 or 128 107 W. Main * Eastland

Insurance AND Real Estate D. L. KINNAIRD Life - Fire - Auto - Farm Policy - Bonds 39 years in the Insurance Business in Eastland

RED TAG DAYS SHOE... Clearance! ENTIRE STOCK Nunn! Bush! Shoes! ALL SIZES VALUES TO 24.95 YOUR CHOICE... 14.99 PAIR MAKING ROOM FOR NEW STOCK THE MEN'S SHOP James Smith Owner Phone 678 Eastland This Price Effective Friday and Saturday Only

CALL 601 FOR CLASSIFIEDS

Live Better! Improve Now!

LOANS

- FOR
- REMODELING
- REBUILDING
- REPAIRING

Want to modernize your home . . . add a room . . . make needed repairs? . . . See us for low cost financing . . . See how easy it is to live better! Let's get together soon on your plans for home improvement. A low cost loan may be just what you need . . . or, refinancing your present home loan may be the answer.

MONTHLY INSTALLMENTS SIZED TO FIT YOUR INCOME

First Federal Savings and Loan Association

204 Main Street Ranger, Texas

IN EASTLAND

Mrs. C. B. Beall daughter of Mrs. F. L. Drago visited in the home of her mother over the weekend from San Angelo.

GUESTS OF FLORENCES

Mr. and Mrs. Elwood Wildman and three daughters of Tatum, N. W., spent from Friday to Monday with Mrs. Wildman's parents, Mr. and Mrs. Leonard Florence, Saturday evening the group attended the Wilson-Ewing wedding in Breckenridge.

Other guests in the Florence home Sunday were Mrs. Florence's parents, Mr. and Mrs. M. L. Lawrence of Waco; Mrs. Florence's cousins, Mr. and Mrs. Willis Allison of Fort Worth; and Mrs. Florence's brother and sister-in-law, Mr. and Mrs. Harold Lawrence, Johnny and Linda of Waco.

TRADE WITH YOUR HOMETOWN MERCHANTS

Typewriters

Adding Machines
Cash Registers
BUY SELL RENT
Electric and Manual
New Royal Typewriters
STEPHENS
TYPEWRITER CO.
417 S. Lamar St.
EASTLAND, TEX.
Phone 639

Funeral Directors

HAMNER FUNERAL HOMES

Ben E. Hamner

Oxygen Equipped - Air Conditioned

Eastland Phone 17

Cisco Phone Hillcrest 21211

AMBULANCE SERVICE ANY WHERE ANY TIME

Nominal Cost Burial Insurance

For The Entire Family



The Mother Church, The First Church of Christ, Scientist, in Boston, Massachusetts, where some 7,500 Christian Scientists from many parts of the world gathered for the Annual Meeting on Monday, June 8. The domed edifice is the Extension, dedicated in 1906. Adjoining it, with chime tower, is the Original Edifice, dedicated in 1895. The Christian Science Church was founded by Mary Baker Eddy, who discovered Christian Science in 1856 and published the Christian Science textbook "Science and Health with Key to the Scriptures" in 1875.

Scientists Hold Annual Meeting Of Mother Church

Deeper understanding of spiritual resources is vitally needed to meet the sharp challenges of our times.

This was a major theme of the annual meeting of The Mother Church, The First Church of Christ, Scientists, in Boston, Massachusetts, attended Tuesday by about 7,000 Christian Scientists from many parts of the world. Spiritual, not material, power holds a practical answer to the many social, political, and international problems perplexing humanity, the large gathering was told.

A special message from The Christian Science Board of Directors to the members said that today's growing interests in spiritual values presents a "special challenge—the challenge to represent these great values still more fully to mankind through our demonstration of them."

Named President of The Mother Church for the coming year was Kathryn F. Cook of Boston, Mass. A public practitioner of Christian Science healing for more than twenty years, Mrs. Cook succeeds Leonard T. Carney, retiring president, who is also a member of the Board of Trustees of The Christian Science Publishing Society.

The effectiveness of spiritual resources is being proved through scientific prayer in destroying fear, healing sickness, and solving human problems of every kind, Mrs. Cook said.

COMPLETE VACATION

Mr. and Mrs. Murph Slatton returned recently from a week's vacation in Colorado City, Big Spring, Lamesa and Abilene. In Lamesa they visited Mr. and Mrs. Charlie Job, Mrs. Slatton's sister; Mr. and Mrs. Burret Slatton, Mr. Slatton's brother; and Wayne Slatton, Mr. Slatton's nephew. In Abilene they visited their children, Mr. and Mrs. Tom Waring, Mr. and Mrs. John Harris, Mr. and Mrs. Jimmy Barr, Mr. and Mrs. Don Slatton, Dale Slatton and their granddaughter, Connie Slatton daughter of Mr. and Mrs. Bill Slatton. Mrs. Slatton reported they had a good scare when they came within one mile of a tornado near Trent.

MEET SATURDAY

LaRe Leon Boating Club will meet Saturday at the Lake home of Mr. and Mrs. Hood King. The meeting date was changed from Friday to Saturday.

IF IT'S METAL Decor Metal Products

306 E. Main Phone 288
SHOP WELDING
PAINTING REPAIR

TERMITE CONTROL and all other types PEST EXTERMINATION
MODERN EXTERMINATING CO.
Box 312 Ranger
PHONE RANGER
Day 919—Night 911

JUNE BRIDES

FREE

11" x 14" picture is our wedding gift to you. Let us take your wedding book pictures (minimum of 12 shots) and accept the free 11" x 14" picture.

Canaris Studio

102 S. Seaman Phone 46

UP TO
60
MONTHS TO PAY
\$3,500 IS THE LIMIT
• REMODEL
• REPAIR

Well, if money is all you need, don't delay a minute more. It's easy and quick . . . obtaining one of our low-cost home loans. Like-rent monthly payments are tailored to suit your budget and needs. Call or come in!

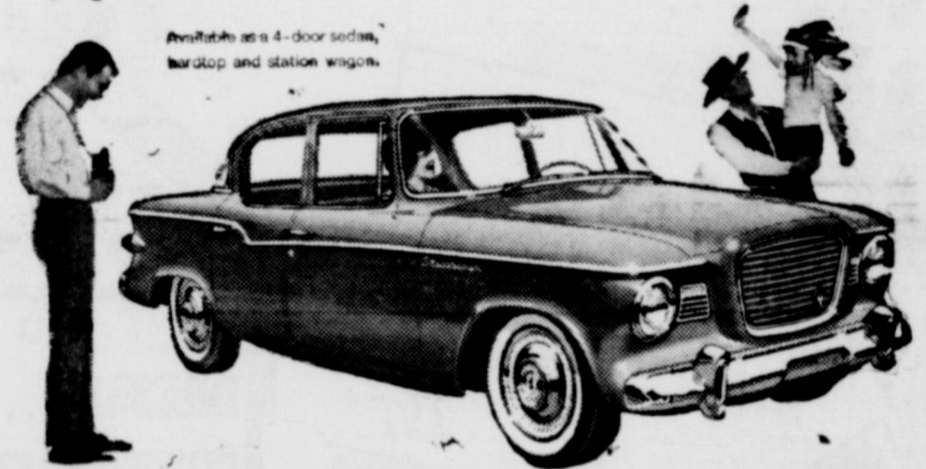
Higginbotham-Bartlett Co.

301 W. Main Jack Elliott, Mgr. Phone 112 or 1014

SPRING INTO SUMMER SAVINGS WITH THE LOWEST PRICED V-8

THE LARK BY STUDEBAKER

You save when you buy the lowest priced V-8 on the market—and then you keep right on saving! For example—economy. In the Mobilgas Economy Run, The Lark V-8 produced an outstanding 22.28 miles-per-gallon, topping all V-8's in all classes. For performance—you can go from 0 to 60 miles an hour in 9.5 seconds. Styled so tastefully, it's approved by Harper's Bazaar. See, drive, compare the car that's winning the hearts of America.



Discover what you'll save at YOUR STUDEBAKER DEALER'S—TODAY!

McGraw Motor Company 416 So. Seaman

SEE THE STUDEBAKER TRUCKS...THEY COST LESS, TOO!

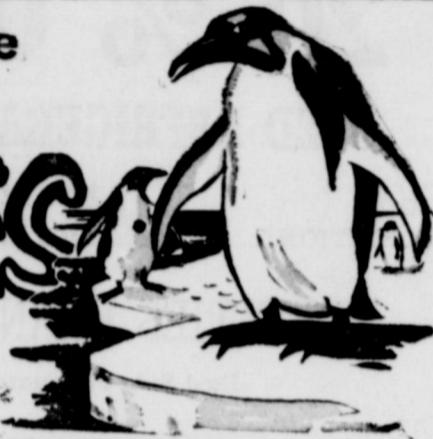
They're COOL Man... COOL! These

Budget-Pleasin'

Prices Good Through Saturday

FOOD VALUES

WE RESERVE THE RIGHT TO LIMIT QUANTITIES



BORDEN'S

MELLORINE 1/2-Gal.
Save at only 39¢

7¢ OFF SALE
SNOWDRIFT
SHORTENING 59¢
3-lb. Can

WHITE SWAN
COFFEE 59¢
LB. CAN

WHITE SWAN
CRUSHED
PINEAPPLE
4 NO. 2 CANS \$1.00

- SUNSHINE CRACKERS 1-Lb. Box 25¢
- RED HEART DOG FOOD 2 1-lb. Cans 29¢
- ZEE ASS'D. COLORS TISSUE 4 Roll Pkg. 33¢
- 100Ft. Roll WAXED PAPER 19¢
- FAB GIANT SIZE BOX 69¢
- RAFTS SALAD BOWL DRESSING Qt. Jar 39¢
- HONEY BOY SALMON Tall Can 39¢
- LIBBY 46 Oz. Can TOMATO JUICE 25¢
- BAKE-WELL FLOUR 5 Lb. Bag 29¢

- COMSTOCK PIE APPLES No. 2 Can 19¢
- RANCH STYLE BEANS 2 No. 300 Cans 25¢
- WAPCO PICKLES Sour or Dill Quart Barrel 25¢
- White Swan TEA 1/2-Lb. Box 25¢ 1/2-Lb. Box 49¢

- SWIFT'S THICK SLICED BACON 2-lbs. 95¢
- CENTER SLICES CURED HAM lb. 89¢
- FRESH GROUND MEAT lb. 45¢
- GOOCH'S FRANKS 3-lbs. 1.00

MacMOY'S Super Save

100 S. Seaman Home Owned - Home Operated

- Central American Bananas 2-lbs. 25c
- Fresh Green Blackeyed Peas . lb. 10c
- Texas Cantaloupes lb. 9c
- Home Grown Squash lb. 10c



SHOP SUPER SAVE FOR SUPER SAVINGS

BUY NOW
BIGGEST BARGAIN EVER
IN GAS REFRIGERATORS

IMPERIAL MODEL GAS RCA WHIRLPOOL ICE-MAKER

REFRIGERATOR

Save now during Lone Star's GOLDEN ANNIVERSARY SPECIAL PURCHASE SALE. Get silent operation, long-life because there are no moving parts in refrigeration system. 10-year system warranty (twice as long as any other). No more trays to fill, spill, refill with the automatic Ice-Maker. 24-hour automatic defrosting. 11-cubic foot. 70-pound freezer. \$10 Down, \$10 per month. Now at LONE STAR GAS COMPANY.

was \$649.95 SALE PRICE:



RED TAG DAYS
FRIDAY AND
SATURDAY

RED TAG DAYS

RED TAG DAYS
FRIDAY AND
SATURDAY

LOOK

IN EASTLAND

BUY!

RED TAG ITEMS ARE SENSATIONAL BUYS! SHOP FRI. AND SAT. FOR REAL SAVINGS!

YOU CAN GET
RED TAG DAYS
BARGAINS
EVERYDAY AT
COAT'S FURNITURE

PORTABLE ROOM
Air Conditioners
1800 CFM **65.00**

Air Conditioners
4000 CFM **99.95**

WESTERN AUTO
ASSOCIATE STORE

FRIDAY AND SATURDAY ONLY
21-INCH HOFFMANN
TV SETS
20 % OFF
USED REFRIGERATORS
GOOD CONDITION **25.00 Up**

TRI-CITIES FURNITURE
East Side of Square

BOY'S WEAR
20% DISCOUNT

KNIT SHIRTS
SPORT SHIRTS
All Short Sleeve

THE MEN'S SHOP
West Side of Square

LADIES GOWNS
Medium & Large
Asstd. Colors. **88c**
Reg. 1.00

LAWN CHAIRS
Regular **3.97**
4.97

12 PIECE
Hostess Service Set
Regular **1.67**
1.98

PERRY'S

RED TAG DAYS

DRESSES **1.99**
COTTON SLIPS **1.99**

VACATION BLOUSES
1.99 & 2.99

MODE O'DAY
East Side of Square

FOR FATHERS DAY
GIVE HIM
SLACKS
WASH AND WEAR
A good selection of colors.
Sizes 28 to 42
6.95 and 8.95

For Fathers Day Give Him
SPORT SHIRTS
Short sleeve, choose from a large
assortment of fabrics and styles.
1.98 - 2.98 - 3.98

YOUNG'S
DRY GOODS

52-PIECE
1847 Rogers Silverplate
and
Community Plate
20% Off

Parker Pens **1.95 up**
Pen and Pencil Sets **3.75 up**

SMITTY'S JEWELRY
East Side of Square Phone 98

ONE RACK
DRESSES **5.00**

GROUP
LINGERIE **1/2 PRICE**

DOLLAR TABLE
Consisting of
PURSES, HOSE and
One Group CHILDRENS WEAR

ANDERSON'S

Reg. 1.29 Yard
Bates **yd. 89c**
NOW

SUMMER
Voiles and Sheers
Reg. 89c Yard
Now **2-yds. 1.00**
NOW

ALL
Linen **yd. 1.00**
NOW

One Table Linens
2-yds. **1.00**

RED TAG DAYS
JEANETTE'S SHOP

HAT SALE
All Spring and Summer Hats
Reduced as much as **1/2 Price**

Special! Once A Year
Claussner Hose Sale
THIS WEEK ONLY—REAL SAVINGS ON
NEWEST SHADES

SHOP OUR COMPLETE STOCK OF
Wash 'N Wear Dresses
IDEAL FOR VACATIONS
Priced as low as **5.95**

ALTMAN'S

RED TAG SPECIAL!
LIGHT WEIGHT
WASH CLOTHS
Reg. 10c
Five Colors **15 for 1.00**

LADIES
RAYON SLIPS
1.98 Value
Broken Sizes **1.00**

HARELIK'S