

TAKING MEASUREMENTS — On the evening of May 27 members of the 1954 senior class of Pampa high school will don cap and gown for traditional graduation exercises...

'Big Day' For PHS Seniors Is Just Around The Corner

By WALT SWITZER Pampa News Staff Writer
This is the time of year when members of the senior class of Pampa high school turn their thoughts toward the "big day" — May 27 — when they will walk to the center of a stage and accept their diplomas.

Members of the senior class who received awards at Wednesday's award assembly included: Miss's Carter, Forrester, James Pippen, president of the student council; Jacquelin Robertson, council secretary; John Teed, vice president of the Texas Association of Student Councils; Beery Oates, Don Sprinkle, Norma Qualls, Sandra Burch, Mary Woolley, Shirley Wood, James Baker, Carolyn Dial, John Caruth, Billy Light, Joan Smith, and Bond.

THE MARQUEE BY DICK KLEINER
TV SINGS RADIO RECORDS PEOPLE

The Record Shop: Two singing commercials have gone legitimate. Freddie Martin (RCA) has a record of "Muriel" and Mary Mayo (Bend) has one out on "Thal Heavenly Feeling" based on the Chuck Webb of 'Nuts' coffee jingle.

Dick's Picks: "Hernando's Hideaway" (Johnny Ray, Columbia); "Spring Is Here" (Richard Haykan, Mercury); "Bahama Buggyride" (Hugo Winterhalter, RCA); "Chop Suey" (Alfredo, Rainbow); "Summer Vacation" (Vicki Bennett, MGM); "Pick Up the Pieces" (Al Grammer, Crown); "True Blue Sue" (Jack Fulton, Mercury).

Eight Generals To Visit Amarillo Armed Forces Day

Amarillo will be host to eight visiting generals including Air Force Chief of Staff Gen. Nathan F. Twining, on Armed Forces Day, May 23.

Novelist Pleads For Con's Life

HOLLISTER, Calif., May 8—UP—Niven Busch, well-known novelist and screen writer, has appealed to the governor of California to spare the life of convict-author Carl Chesman, scheduled to die in the San Quentin gas chamber next Friday.

Radioactivity May One Day Pose Problem

SACRAMENTO, Calif., May 8—UP—A noted University of California, biophysicist said Friday the increasing level of radioactivity being unleashed on the world may one day pose a health threat to millions of persons.

This Is The Year To Buy New Homes

WASHINGTON, May 8—UP—If you're planning to buy a new home, this is the year to do it, according to the U. S. Chamber of Commerce.

What Are PILES' Dangers?

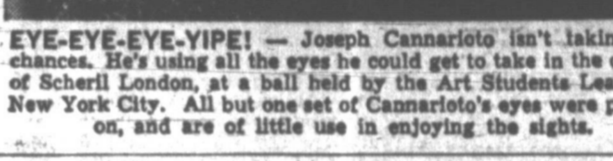
Piles—hemorrhoids and other rectal and anal disorders can always be dangerous—if neglected! But proper care is so easy to get, and can save so much trouble...

Accurate Engraver

First globes made in the United States were the work of James Wilson, in 1810. He engraved his projection maps with such accuracy that when they were cut apart and pasted on hollow wooden spheres, they fitted perfectly.

Early Artillery

In the battle of Formigny, in 1450, which marked the advent of field artillery, the French, with two small cannons, killed 2750 of an English force of 4500, according to the Encyclopedia Britannica.



EYE-EYE-EYE-YE! — Joseph Cannarito isn't taking any chances. He's using all the eyes he could get to take in the charms of Scheril London, at a ball held by the Art Students League in New York City.

Complete PEST CONTROL FREE INSPECTION ORKIN Call 4-2851

"Best Seller" for 3 good reasons
BUICK Sales are Soaring!
WHEN BETTER AUTOMOBILES ARE BUILT BUICK WILL BUILD THEM
Tex Evans Buick Co. 123 NORTH GRAY DIAL 4-4677

INTRODUCTORY OFFER YOUR CHANCE TO OWN A 1954 DETROIT JEWEL FULL-SIZE GAS RANGE AT THIS NEW LOW PRICE 129.95 Betty Crocker's Party Calendar Free TO EVERY HOUSEWIFE WHO SEES A DEMONSTRATION OF THIS SENSATIONAL RANGE ECONOMICAL... America's Finest! WHITE'S 109 S. Cuyler DIAL 4-3268

Week Rog... City Has... T... 12:30 P... 1:00 P... 1:30 P... 2:00 P... 2:30 P... 3:00 P... 3:30 P... 4:00 P... 4:30 P... 5:00 P... 5:30 P... 6:00 P... 6:30 P... 7:00 P... 7:30 P... 8:00 P... 8:30 P... 9:00 P... 9:30 P... 10:00 P... 10:15 P... 10:30 P... 10:45 P... 11:00 P... 11:15 P... 11:30 P... 11:45 P... 12:00 P...



NOT RODDERS — Shown above are members of the newly organized Texas Panhandle Timing Association...

'Hot Rod' Races Slated Here Today

The second edition of Pampa's 'Hot Rod' races will be held this afternoon on the Strip Stretcher's track...

Abilene States \$5,000 Open This Weekend

ABILENE, May 8 —UP— The first annual \$5,000 Abilene Open is expected to attract at least 20 top touring golf pros...

Church Membership Up

KANSAS CITY, May 8 —UP— Membership of the Methodist church in the 15 years since three church bodies reunited to form the present church has increased by nearly 2 million persons...

COLD COMPETITION

College golfers found the going a little rough when cold winds in the Chicago area called for storm coats...

NCAA Reprimands Plainview Border Conference

CHICAGO, May 8 —UP— Seven member colleges and one member conference were penalized by the National Collegiate Athletic Association...

Plainview Edges PHS 9 In Final Tilt

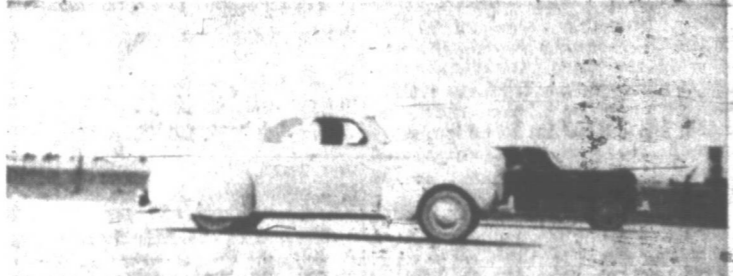
PLAINVIEW, May 8 — Tom Hefflin got the best of tight mound duel with Dale Tucker here Friday afternoon...

Oilers Cop B-Sox Opener Friday, 8-2

ABILENE, May 8 — Big Jake Henson, after losing his first two outings, hit the victory trail here Friday night when he hurled the Pampa Oilers to an 8-2 win over the Abilene Blue Sox...

Cards Obtain Scheib

PHILADELPHIA, May 8 —UP— Carl Scheib, a 10-year veteran who dropped his only decision with the Philadelphia Athletics this season...



RACING SCENE — Shown above is the scene of today's races. A souped-up Ford, foreground, is a sample of the cars that will be racing.

Advertisement for 'GONE FISHING' featuring a cartoon fisherman and a sign that says 'GONE FISHING'.

Hacker High On Chicub Chances

MILWAUKEE, May 8 —UP— Warren Hacker, the least supported pitcher in the major leagues last year, Saturday foresaw a possible pennant for his Chicago Cubs teammates...

Dancer and Determine

INGLEWOOD, Calif., May 8 —UP—Native Dancer, whose only loss in 20 starts was in the 1953 Kentucky Derby, and Determine, winner of this year's renewal of the turf's No. 1 classic, headed a list of 54 thoroughbreds nominated Saturday for the \$100,000 added Hollywood Gold Cup on July 17.

Teachers Executed

HONG KONG, May 8 —UP—The Chinese Communists have executed 30 teachers and forced 100 others into labor service for failure to teach Communist ideology, the Kung Sheung Daily News reported.

My Greatest Shot

By LAWSON LITTLE. Back in 1933 at Cincinnati's Kenwood Country Club, I was only a 22-year-old amateur, which is the reason why I made the shot which will stay in mind the rest of my life.



Doris Hart in Finals CROFTON, Eng., May 8 —UP—Doris Hart of Coral Gables, Fla., and England's Shirley Bloomer partners in the doubles championship match, first meet Saturday in the singles title round of the Shirley Park Lawn tennis tournament.



WHEN THIS HAPPENS TO YOU DON'T LOOSE YOUR TEMPER! Just call 4-7814 Ask for C. B., the 'Bicycle Man' Prompt Service. All work guaranteed to your satisfaction.

AUCTION May 18, Pampa, Texas

501 EAST TYNG The following property to be sold at Public Auction To the Highest Bidder:

- 4 Business Lots 50 by 140 feet, corner of Tyng and Stark-weather Streets; 1-40 by 40 sheet iron building; 1-Two room apartment; Tools and Equipment; 1-A frame 5 by 15 feet; 2-chain hoists; 2-Two wheel horse trailers; 1-Heavy duty emery grinder and motor; 2-Vices, 3-anvils, 20-pair of tongs; 1-Forge, 1-blower; 2-Disc rollers; 2-fifty pound trip hammers; 1-Hobart arc welder; 150 foot welding cable; 1-Complete Acetylene welding equipment with generator, torches and hose; 1-Floor drill 12 inches; 2-Twenty ton presses; 1-Two inch Toledo pipe machine with open head dies; 1-Valve refacing machine, 1/2 chuck; 2-Sets of reamers; 1 Ace compressor; 4-Electric motors 1/2 to 5 H.P.; 1-1948 Ford tractor; 1-Two row lister and planter; 1-14" breaking plow; 1-2 row cultivator; 1-6 disc one way cultivator; 1-section harrow; 1-blade for Ford tractor; 2-Gas brooders; 1-electric brooder; 100-chicken waterers and feeders; 2-sets of tractor jacks.

May 19, Mobeetie, Tex. NEW TOWN, 11:00 A. M.

- 1-50 by 150' Lot; 1-sheet iron shop building; 1- two room house; 1-8 by 8' Pump House—has new electric pressure pump; 2-two wheel horse trailers; 1-Tractor; trailer; 1-Blacksmith's forge; 1-Anvil; 1-Blower; 1-Vise; 2-Sets of hand dies; 1-A. C. Arc Welder; 1-Acetylene Welder complete; 1-pair of bolt cutters; 40-pairs of tongs, pinchers, chisels, reamers; 2-cement block machines—some new iron, bolts, rivets; 1-five-eighths bench drill; About six tons of scrap iron, scrap lumber, pipe; 16-metal rabbit hutches, 8 rabbits, bantams, guinea pheasants; 1-Pump jack and motor; Lot of barbed wire. Many other items too numerous to mention.

W. C. HAVENS, Owner Sale By CROWELL AUCTION SERVICE Oklahoma City

Thompson Hardware Co. advertisement listing various fishing and hardware items with prices. Includes 'Special Group Casting LURES', 'Casting Reels', 'Fly Lines', and 'Casting Line'.

★ EDSON IN WASHINGTON ★

By PETER EDSON
NEA Washington Correspondent

**Standardized At Last—
Hoosier Corn Sampled**

WASHINGTON — (NEA) — Department of Defense has finally standardized "The Star-Spangled Banner."

It also designated "Hail to the Chief" as the official salute to the President of the United States.

The Navy arrangement of "Oh, Say-Can You See" will be official one for all service organizations. Up to this time there have been so many arrangements of the national anthem that few blues trying to play in unison could come out together, at the end.

How the old Scotch ballad "Hail to the Chief" came to be adopted as the American President's official salute has always been something of a mystery. But some recent research by the Marine Corps dug up the fact that President John Tyler's second wife, Julia Gardiner, of New York, was responsible.

She had traveled abroad often and noticed all the flourishes and drum rolls given to foreign dignitaries. After she married Tyler in 1843, she decided that her husband should be given similar treatment.

So she arranged to have the Marine Band play "Hail to the Chief" at White House functions, just before "The Star-Spangled Banner" was played. The custom stuck, and now it's official.

House Republican Majority Leader Charles A. Halleck of Indiana gave the American Society of Newspaper Editors a good sample of Hoosier corn in defending the Eisenhower record, and they loved him for it.

"I'm like the fellow who said he couldn't make a speech and then proved it," began Halleck.

Other samples:

"We've just caught a five-pound bass and if you don't believe it I'll show you the hook."

"The most important thing about selecting a necktie is the price... I used to make an honest living—practicing law."

Radio Warsaw recently broadcast a report on how the Polish Communist government had been encouraging marriage.

Couples who wish to marry now go to the State Marriage Bureau, which gets the license and arranges with the employer for a three-hour leave of absence. In the ceremony can be performed and the honeymoon can be held.

Bride and bridegrooms are then advised on the proper wedding attire, and the bureau lends them the right clothing, if necessary. Extra portions of meat and vodka are issued. The couple then sign up to pay the bill in monthly installments, and it's all over.

Secretary of Agriculture Ezra Taft Benson has been forced to cut back this year's farm programs by about \$7 million. This is because of a law passed last year which requires every government agency to reimburse the Post Office Department for its "free" mail.

In the first 10½ months of operation under this law, Department of Agriculture sent out 177 million pieces of mail at a cost of over \$6 million. Estimates for the full year's operations are 202 million pieces of mail, an average cost of 3½ cents each.

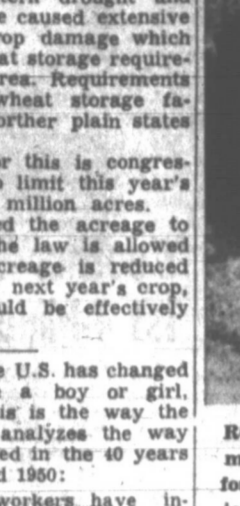
Congress appropriated no money for this postage, but told the department to take it out of other funds.

**Choral Festival
Plays To 1,300**

The annual Choral Spring festival was presented Friday night in the high school field house before a crowd of approximately 1,300, according to Robert Payne, a Capitol choir director.

The total number of students — elementary, junior high, and high school — making up the participating choirs was 600.

Dr. Gene Hemmle, Dean of the School of Music at Texas Tech, conducted a choral clinic Thursday in preparation for the festival and conducted all the mass numbers at the performance.



RODEO ANNOUNCER — Although H. B. Taylor Jr., whose farm is pictured above, is a very busy man, he still finds time to pursue his principal hobby—that of announcing at rodeos throughout a four-state area. He has been doing this for several years. The Taylor farm, which covers 640 acres, is located five miles north and one mile east of Pampa. He also owns another farm of equal size in Wheeler county.

H. B. Taylor's Area Farm Of The Week

H. B. Taylor Jr., a native Pampa, is one farmer who spends much of his time serving as a rodeo announcer during the seasons.

Taylor, who owns and operates two large farms in this area, has served as announcer at rodeos in Texas, Oklahoma, Arkansas and New Mexico during the past year.

In addition to his rodeo activities, he does quite a bit of fishing and, with the weather turning warm, he has been busy the past few days getting his tackle together.

With all this, and his farm work, he still finds time to serve as a member of the Top-o' Texas Hereford Breeders association, participating prominently in its affairs. He is also an officer in the Pampa Roping club — he is currently vice president — and is a member of the Baptist church.

Taylor's home farm is located five miles north and one mile east of Pampa. He purchased the farm from an uncle, L. R. Taylor, 17 years ago, after which he and his wife, the former Willie Lou Barrow Post, whom he had just married that year, 1937, in Dalou, moved onto the farm.

This farm, which comprises a section of land — 640 acres — has been in the Taylor family ever since it was first put under the plow nearly 90 years ago by his grandfather, W. A. Taylor.

Taylor was born in Pampa at 629 E. Browning. He is the son of Mr. and Mrs. Homer Taylor,

TCU Campus Site Of 67th Church Convention

FORT WORTH, May 8 — With an expected registration of over 5,000, the 67th annual Texas convention of the Disciples of Christ (Christian church) will open on the campus of Texas Christian university, Saturday, May 8.

The five-day meeting will draw delegates from all over the southwest and several nationally known speakers will be heard. The university and Christian churches of Fort Worth are co-hosts.

On Sunday, the dedication of TCU's new \$1,200,000 Religion Center will make up the afternoon program. Divided into two parts, the ceremony will start on the Center lawn with President M. E. Sadler presiding for the general dedication service. Honorary degrees will be presented to 13 outstanding churchmen of the south and southwest. Dr. A. Dale Fiers, president of the United Christian Missionary Society of Indianapolis, Ind., will be the main speaker.

The second half of the dedication will be held in Robert Carr Chapel, main structure of the three-building center. With Dr. D. Ray Lindley, vice-president of TCU, presiding each unit of the new center will be dedicated.

Sunday night at 7:30 o'clock, a mass rally of Christian churches will be held in Will Rogers Coliseum. Rev. Welsh will give the keynote address. Wednesday, the convention will hold day-long sessions and night meetings.

Wheeler Holds Paving Talks

WHEELER — Joe E. Ward, a Wichita Falls consultant engineer, was on hand last week to discuss Wheeler paving problems — at a specially-called town meeting.

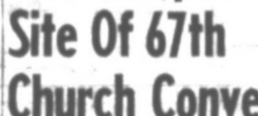
Frank Wofford, Wheeler Chamber of Commerce president, called the meeting Friday night in the district courtroom for the purpose of discussing the means, manner, methods and cost of various types of city paving.

Ward's outfit has supervised such work in Pampa, Canadian, Canyon, Dalhart, Memphis, Pertyon and Spearman.

In a phone conversation with the Wheeler mayor before the town meeting, Ward was reported to have told him he and his associates are glad to do this type of work as a matter of advertising and that the city would not be obligated in any way.

A special invitation was extended to Wheeler women — they have had to fight the blowing dust that results from unpaved streets.

Sweetie Pie



"Your father doesn't think it's funny either — so eat your cabbage and don't be cute about it!"

Negotiations With Trainmen Still Underway

CANADIAN — Negotiations were reported still underway Saturday in Amarillo between Santa Fe Railroad officials and representatives of four Railroad Brotherhoods in an effort to reach final agreement on closing Santa Fe's Canadian Freight terminal.

It would mean the movement of local Santa Fe employees to other terminals.

It has been reported — unofficially — that three of the employees' unions have already reached agreement with Santa Fe. They are the Brotherhood of Locomotive Firemen, the Order of Railroad Conductors and the Brotherhood of Locomotive Firemen and Enginemen.

The Brotherhood of Railway Trainmen, largest of the "Big Four," was reported still "holding out."

No agreements have been signed by any of the unions, it was reported, but the three named are supposed to be ready to sign when and if the agreement is reached.

Report Made On Cemetery

WHITE DEER — (Special) — J. L. Darnell, secretary of the White Deer Cemetery association, made a report from that organization through a letter which was received by approximately 200 lot owners of the cemetery.

At the present time, the fences have been torn down with plans underway to rebuild and paint them before they are used again.

The association planned to build a new fence, but did not have necessary funds.

Cattle guards, donated by one of the non-owners, have been erected and painted. All vacant lots have been resurveyed and marked so that they can be located accurately and easily. A caretaker has been employed, and a new mower was bought.

Darnell states that the need for more funds can be brought under control through the contribution of \$12 annually by lot owners, members of the association and interested individuals.

Canadian Names Honor Graduates

CANADIAN — Glenda Hill, daughter of Mr. and Mrs. Reed Hill, Canadian, is valedictorian of the Canadian high school 1954 graduation class, finishing four years of high school with a grade average of 95.65.

Salutatorian of the class is Donna Abraham, daughter of Mr. and Mrs. Tom Abraham. Her grade average is 93.92.

The honor graduates' names were announced by Principal T. R. Mobley.

Baccalaureate services will be held at the high school auditorium May 16 at 8 p.m. Rev. Billy Porterfield, pastor of the First Methodist church, will deliver the sermon.

Commencement exercises will be held May 24 at the high school auditorium.

Eighth grade class graduation exercises will be held May 21 at 8 p.m. in the high school auditorium with Trenton Davis of the Amarillo Globe-Times staff as speaker.

Blew Its Top

Mount Rainier, according to geologists, once towered to an altitude of 15,000 feet, judging by the steep inclination of lava layers on its sides. Then a great explosion, or a succession of explosions, carried off the top of the cone, and reduced it to its present level.

Bridge Title Hearing Delayed

CANADIAN — It will be no member before a hearing, a Public Service corporation's appeal from a federal district court decision, giving Hamphill county title to the old Canadian river highway bridge, is scheduled.

Jim Crow, attorney for the county, Saturday reported the receipt of a letter from the clerk of the Federal Circuit Court of Appeals, advising him of the delay.

The court refused to consider a bill passed by the recent special session of the Texas legislature, dealing the structure to the county.

AF Recruiting Quota Relaxed

The Pampa Air Force recruiting station has lifted enlistment quota restrictions, according to T-Sgt. Bill Neal, local recruiter.

A maximum number of enlistments for his station had previously been set by the Air Force, said Neal. However, applications are now being accepted without regard to quota restrictions.

T-Sgt. Ahern of T-Sgt. Neal can be contacted by the Air Force recruiting station in the Postoffice building by interested persons.

Read The News Classified Ads

We're celebrating TAPPAN time
At Texas Furniture Company

with a special showing of the space-saving Holiday Gas Range

Takes only thirty inches of floor space, yet out-shines big ranges in both capacity and features — gives world-famous Tappan performance. Hurry! Get your Holiday now and start enjoying a Holiday in your kitchen.

QUICK OVEN is a full seven inches wider than standard big-range ovens. It's chrome-lined, too, for faster heating.

WASH-HIGH CHAIR-KROME BROILER eliminates stooping... turns out delicious steaks and chops. Clean Quick Broiler washes in a jiffy!

THERE'S EVEN STORAGE SPACE in this space-saving Tappan Holiday. Keeps your pots and pans right where you use them most.

See The Holiday Now During TAPPAN TIME Liberal Old Range Allowance — Easy Terms

We Give and Redeem Pampa Progress Thrift Stamps

Texas Furniture Company
Quality Home Furnishings

Wheeler Holds Paving Talks

WHEELER — Joe E. Ward, a Wichita Falls consultant engineer, was on hand last week to discuss Wheeler paving problems — at a specially-called town meeting.

Frank Wofford, Wheeler Chamber of Commerce president, called the meeting Friday night in the district courtroom for the purpose of discussing the means, manner, methods and cost of various types of city paving.

Ward's outfit has supervised such work in Pampa, Canadian, Canyon, Dalhart, Memphis, Pertyon and Spearman.

In a phone conversation with the Wheeler mayor before the town meeting, Ward was reported to have told him he and his associates are glad to do this type of work as a matter of advertising and that the city would not be obligated in any way.

A special invitation was extended to Wheeler women — they have had to fight the blowing dust that results from unpaved streets.

Impales Prey Commonly known as the butcherbird, the North American shrike gets its nickname from the manner in which it kills prey. It captures small birds, mice, or grasshoppers in its beak, then forces them onto thorns, fence posts, or broken twigs in the manner a butcher hangs meat on hooks.

Read The News Classified Ads

SWEETIE PIE

"Your father doesn't think it's funny either — so eat your cabbage and don't be cute about it!"

TRADE TODAY Let Your Old Tires Make the Down Payment

LOW AS **75¢** A WEEK

Firestone Stores **DIAL 4-3191**

117 SOUTH CUYLER

Never Before So Great a Tire For Such a Low Price!

FAMOUS Firestone STANDARD TIRES

Sale-Priced 10 DAYS ONLY

10.95
6.00-16 PLUS TAX EXCHANGE If Your Old Tire Is Recappable

Size 6.70-15 Super-Balloon **11.95** PLUS TAX EXCHANGE If Your Old Tire Is Recappable

LIFETIME TIRE GUARANTEE

"Every tire or tube of our manufacture, bearing our name and serial number, is guaranteed to be free from defects in workmanship and material without limit as to time or mileage."

They're Sale-Priced — but You Still Get the Famous Firestone LIFETIME GUARANTEE

TRADE TODAY Let Your Old Tires Make the Down Payment

LOW AS **75¢** A WEEK

Firestone Stores **DIAL 4-3191**

117 SOUTH CUYLER

Mother's Day

The second Sunday of May is the time each year for special thoughts of Mother — for surprises and treats to show appreciation for all she does and all she means. It is also the time to review her many duties and services to her family each day of the year.

Mrs. Fred Neslage is one of Pampa's busiest mothers. Her typical day begins with getting the youngest of her nine children up and dressed and making breakfast for the family. After the six oldest children have left for school, she must do the dishes, make beds (the elder ones make their own), wash and "straighten up." Usually there is ironing to do and of course, "I do the cooking," she pointed out.

In addition to her household duties, Mrs. Neslage belongs to the Altar society of Holy Souls Catholic Church, and meets with her bridge club twice a month. She is a past president of 20th Century Club and this year holds the position of federation counsellor. She is also a committee mother for a Cub Scout den and a Girl Scout troop.

Although she states that her hobby is her children, Mrs. Neslage likes to read and can usually find time to do so in the evening after the children are in bed.

Pampans for 10 years, the Neslages live at 1341 N. Russell. Mr. Neslage is manager for the West Pampa Repressuring association. Their children are Judy, 14; Fred Jr., 13; Bill, 11; Bob, 10; John, 7; Marion, 6; Dorothy Jean, 3; Patricia, 2; and Thomas, 1.

Mrs. Neslage said her day, however, is not all drudgery, as she has ten other pairs of hands to help her.

"I end the day in prayer, thanking God for His blessings, and asking Him to help me guide my family," she said.

(News photos by T. D. Ellis)



MRS. FRED NESLAGE



PATSY'S TOILETTE



BREAKFAST FOR DOROTHY JEAN

MOTHER'S PRAYER

I thank You, God, for blessing me
With motherhood on earth,
And I adore and praise You for
The miracle of birth.
I pray I may be worthy of
Your wondrous gift to me,
And I may do my part in life
For all humanity;
That I may raise my children right
And teach them what to do
To grow in strength and character
And always honor You.
For they belong to You and they
Are only in my care.
To comfort and protect them and
To help them with a prayer.
And that is why I make this plea
For wisdom and for grace
That I may do Your holy will
And fill my humble place.
—by James J. Metcalfe.



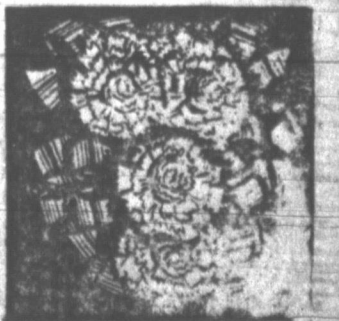
EVENING RELAXATION

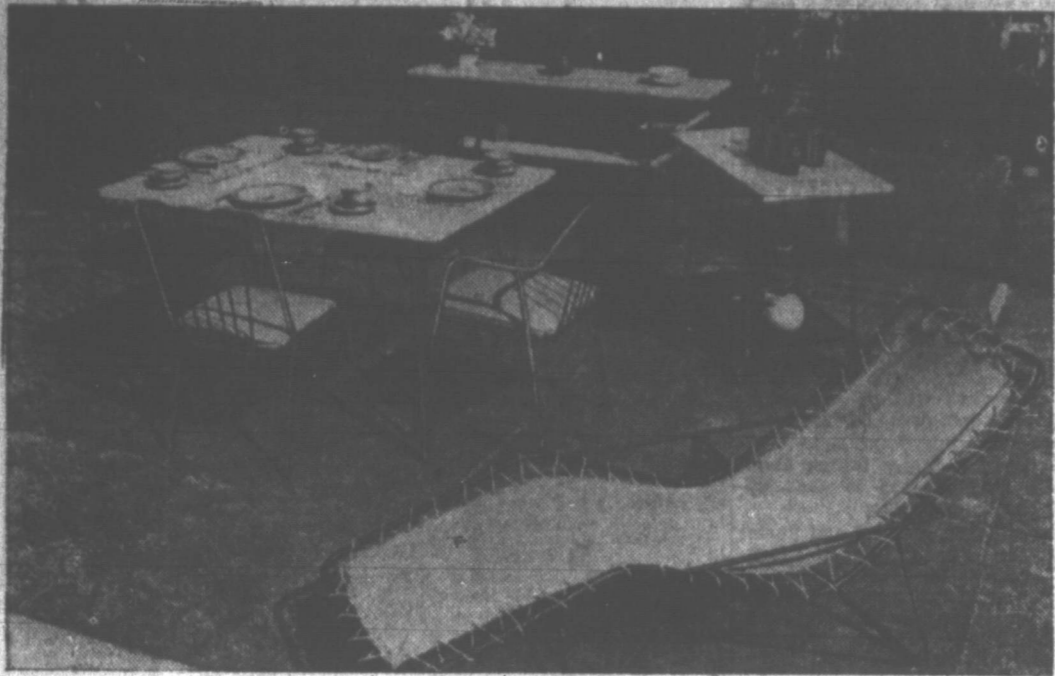


JOHN HELPS MOTHER



PREPARING FOR A PARTY





OUTDOOR-INDOOR FURNITURE CAN TRANSFORM a patio into a living room. Frames are tubular steel in ebony. Table tops are natural beech; cushions are vinyl.

Furniture Always Dresses Up Yard

The latest trend in furniture is toward pieces that can be used outdoors as well as indoors. Of course, the basic items for easy living is the chair. There are many types to choose from that are both comfortable and easy to move around.

Incidentally, when painting wrought iron the metal first should be scraped free from any rust or scale. Experts of the Martin-Senour Paint Company say a red lead chromate metal primer should be then applied and allowed to dry for 24 to 48 hours.

Snack Cart Handy
If you don't already have a table to move outdoors, look into the new line which features hardwood tops and wrought-iron legs. The tops of these fashionable tables are also stainproof so the children won't be a mealtime hazard.

Match Colors To House
If you decide to redo your present furniture, let yourself go when you paint it and use bright color accents. For you're decorating your outdoor living room, and outdoor living is gay and usually festive. The furniture should reflect that mood.

Soft Pink Good
Also, decorators say soft pink goes well in front of greenery and blends nicely with stone and brick colors. As a contrast, they suggest patterned wrought iron painted black. It stands out effectively against light concrete or crushed stone patios.

When old paint is blistered or peeling, you'll want to get it off by scraping, sanding, or with a paint remover. Plastic wood makes a good filler for cracks and gouges.

Read The News Classified Ads
Several good rules to follow on vacation schedule:
1. Keep regular sleep habits.
2. Eat meals at your usual times.
3. Plan trips to include rest breaks and early arrivals.
4. If you plan to work on house and garden, stop for a breather at the first signs of tiredness. You're probably not used to it.

Don't Go At A Killing Pace

In hurried Sunday night numbers you can see summertime weekenders returning exhausted to a restful week of work. And the usual answer from a gent just back from his annual two weeks is: "Boy! Am I tired."
Medical authorities advise that vacation and fun can be as fatiguing to the body as any occupation. They warn that vacations should break the usual routines of work, but not the routines of living.

Loose-Fitting Clothing One Of Summer's Joys

Summer brings with it a welcome change of pace — weekend gardening, swimming, tennis, golf, sailing, the outdoor barbecue supper. Just as welcome is the change from winter wear to cool, loosely-cut summer clothing. Just being cool, of course, does not answer all of our needs. There's still the problem of looking fresh and wrinkle-free — and that can be tough.

Paint Salvages Old Furniture

If your outdoor furniture looks shabby and sad after a winter in the basement, and your budget won't stretch to replacing it, there's no reason to despair. A couple of coats of paint will make it look good as new. While paint is the obvious over-all answer, it isn't the whole answer. Before you start to paint, make certain the surface is smooth, clean and dry.

Walking shorts make sense. They have been worn for decades in some parts of Europe. Men of courage who declare their independence from social pressure this summer wear flared, wrinkle-resistant tropical worsted shorts for leisure wear.

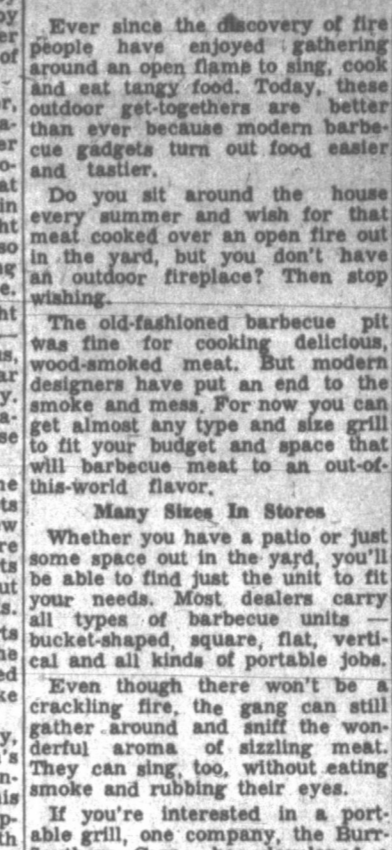
Roll Out The Grill Outdoor Cooking Is Easy

Ever since the discovery of fire people have enjoyed gathering around an open flame to sing, cook and eat tasty food. Today, these outdoor get-togethers are better than ever because modern barbecue gadgets turn out food easier and faster.

Do you sit around the house every summer and wish for that meat cooked over an open fire out in the yard, but you don't have an outdoor fireplace? Then stop wishing.

Another feature of this unit is an adjustable firebox that is easily lowered by a crank. It has a shelf area in the warming oven with more than seven square feet of space. This provides a m.p.l.e. room for utensils and other equipment.

Portable Grill turns anywhere into a cookery. Folding legs, removable spit and grate make storage easy. Charcoal embers get plenty of draft, become hot enough to sizzle steak, make coffee, toast buns, bake spuds.



PORTABLE GRILL turns anywhere into a cookery. Folding legs, removable spit and grate make storage easy. Charcoal embers get plenty of draft, become hot enough to sizzle steak, make coffee, toast buns, bake spuds.

Tasty Sauce Is Grill Cook's Master Touch

When it came to barbecue season, there used to be one special field where the novice chef could always be spotted: the making of savory sauces. This was true, however, before the perfection of versatile electric blenders. The kitchen aids, which will grind, chop, liquefy, blend and grate, have revolutionized sauce making.

Fewer Clothes Necessary When Travel Iron Used

Wherever you go on vacation, a well-supplied laundry and grooming kit is sure to make your stay more pleasant. Your kit should contain these items:
A supply of those handy new detergent capsules for washing lingerie and clothes; a good folding iron; a wash cloth in its own plastic container for repacking while still damp; a good stiff brush and folding plastic hangers.

Eating Outdoors Is Fun

Eating outdoors can be fun for everyone including the cook. That holds true whether you stage a picnic at a favorite far-from-home spot, or serve breakfast, lunch or dinner on your cool shady porch or terrace. And when it comes to the "eats," you can let your imagination go.
The lack of an outdoor fireplace shouldn't stop you from going in for back-yard picnics. If the family porch or lawn is equipped with a weatherproof electrical outlet, or you own a long extension cord, cooking outdoors becomes simple.

LUNCH OR DINNER OUTDOORS—complete with spaghetti and coffee—becomes short work with portable cookery. For instance, can cook or fry dozens of dishes. Automatic percolator brews one cup of coffee per minute.



Julia Klene, home economist for Westinghouse, stresses that your meal can be nutritious and simple at the same time. Include one hot dish, and serve it with a salad or cole slaw or a relish dish. For dessert, plenty of cookies or fresh fruit, or delicacies from your freezer.

As Seen on "The Big Payoff," CBS Network TV Show

Justin McCarty

Acapulco Dazzling Blue Coordinates
JUSTIN McCARTY dyed disciplined cotton to match the bright, vivid blue of the water at Acapulco. Then he carved it into a group of separates and brightened them with colorful yellow, coral & white ric-rac. Trim little matador pants like the Mexican bullfighters wear... a straight jacket-shirt, brief little shorts... There's a scooped-out two-piece dress, too. Sizes 8 to 18.

Matador Pants	Jacket-Shirt	Shorts	Dress
\$7.95	\$7.95	\$4.98	\$19.95

Just Arrived — Dozens of the Newest Swim Suits — Catalina, Flexees, Colfax and Many Others

"Exclusive But Not Expensive"

Mushroom Brown Sauce
(Makes 2 cups)
One dozen medium sized mushrooms (sliced), 2 tablespoons butter or fat, 3 tablespoons flour, 1 cup beef stock, 1/2 teaspoon salt, dash of pepper, few drops of Worcestershire sauce.
Sauté mushrooms in butter or fat, stir in flour, cook until brown, stirring constantly. Add remaining ingredients. Place in glass container of blender, turn blender on and off for 3 seconds, so mushrooms will not be chopped too finely. Cook in double boiler, stirring constantly until thickened.
Note: On a hot day, add 1 bouillon cube, or 2 teaspoons beef extract may be substituted for beef stock.

Tomato Hollandaise
Two egg yolks, 2 teaspoons tomato paste, 1 tablespoon tarragon vinegar, 2 tablespoons cream, 1/4 teaspoon salt, few grains of cayenne, two tablespoons butter.
Place all ingredients in glass container of blender. Blend 35 seconds. Place in top of double boiler and cook over hot water, stirring constantly until slightly thickened. Pour over filet of sole or baked or poached fish.

Steak or Fish Butter
One-half cup butter, 1/4 garlic clove, peeled; 1/2 teaspoon hickory salt, dash of pepper, 1 teaspoon lemon juice, 1 teaspoon finely minced tarragon (or basil, savory, dill or sage), 1 teaspoon finely minced chives.
Place all ingredients in blender. Blend thoroughly about 30 seconds. Do not chill. Spread on steak or fish before serving.

Curry Orange Sauce
Break 1 cup currant jelly into small pieces with fork. Place in glass container with 1/2 cup orange juice and 1/2 cup minced leaves. Blend about 35 seconds. Let stand 1 hour in refrigerator before serving.

Orange Juice Sauce
(Makes 1 1/2 cups)
Two tablespoons flour, 2 tablespoons butter or drippings, 1/2 cup water, 3 cups orange juice, 1/4 teaspoon salt, 1/2 teaspoon grated orange rind, 1 tablespoon brown sugar. Blend 30 seconds. Cook 5 minutes, stirring until thickened.

Fashions that even a budget can love!

A All White, and White and Brown Ombre \$4.95

B All White \$3.95

C All White, and All Yellow \$2.98

Don't bother your pretty head with arithmetic... the newest, cutest shoes in town are also the town's best values... dear little dollar-saving BUSKENS!

Widths AA and B — Sizes 4 to 10

Smith's Quality Shoes
207 N. Cuyler Phone 4-5321

It's Easy To Build Sturdy Picnic Table

A sturdy picnic table and bench combination that will withstand hard usage and still maintain an attractive appearance year after year may be simply constructed from standard commercial sizes of lumber.

The top is made of three pieces of 1 1/2 by 10-inch lumber, each 64 inches long. Since the actual width of 10-inch lumber is 9 1/2 inches, these boards when spaced one-half inch apart will provide a top 29 1/2 inches wide. The one-half-inch spacing between boards allows for drainage of rain water, and prevents accumulations of crumbs or other materials, as would be the case if the boards were placed flush.

These boards are bolted at their center to a 2 by 4-inch cleat running beneath the table top, and also to a 2 by 4 sill attached at the top of the legs. Bolts through the cleat are 1/2 by 4 inches. Those through the sills are 3/4 by 8 inches. The legs are four pieces of 2 by 8-inch lumber, each 27 1/2 inches long after cutting the ends on a 70-degree angle. Four such pieces can easily be produced from one piece 12 feet long.

The lower cross members of the leg frame also hold the seats. These cross members are 2 by 6-inch lumber, each 58 inches long. Two may be cut from one piece of 2 by 10 feet long. These are bolted to the legs with 1/2 by 4-inch bolts.

The seats are of 2 by 8 lumber, each 84 inches long, fastened to the lower cross members with 1/2 by 4-inch bolts.

Two 2 by 4's, 46 1/2 inches long, serve as diagonal braces and extend from the middle of the top sill to the middle of the lower

Proper Lights Give Outdoor Life At Night

Long as the summer days are, they are invariably all too short to satisfy most garden lovers. For lavish though Mother Nature is in most of her moods, she persistently "blacks out" her handiwork, and yours, when the sun sets.

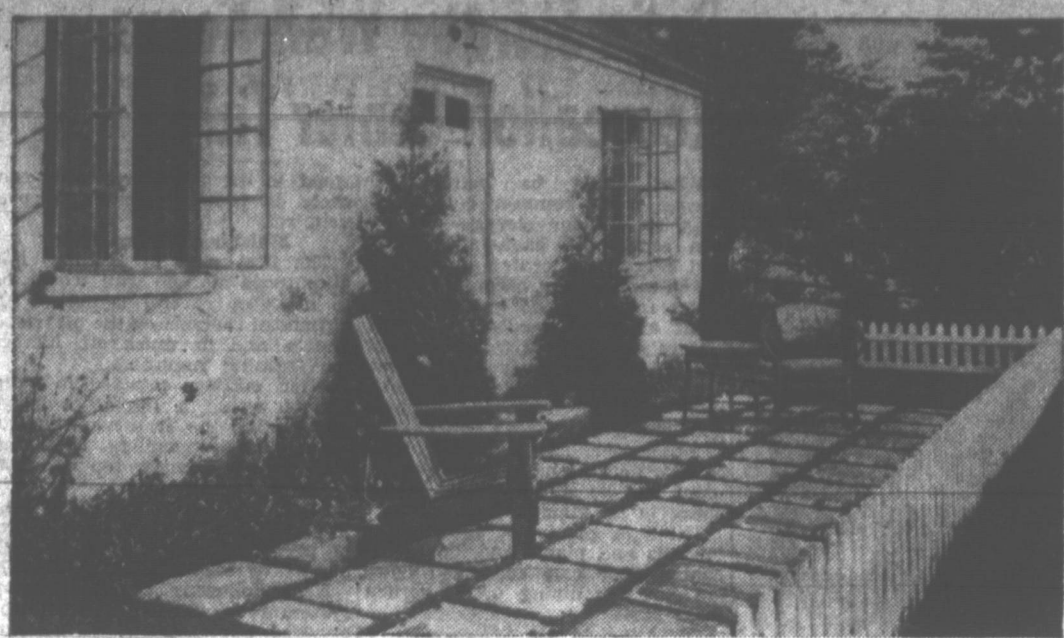
The enjoyment of a lovingly planned and planted garden can be prolonged, however, by going in for outdoor lighting. You'll find it great fun to dine and entertain outdoors on balmy summer nights.

Most people think a lighted garden is a luxury only for those whose grounds are large and formal. But Miss Myrtle Fababender, director of home lighting for Westinghouse, says any garden, be it ever so modest, can come to life in the evenings inexpensively and easily.

In fact, she says, the investment can be planned to fit your budget and still provide ample lighting. It can range from a few spots of light using temporary, outdoor-type extension cords to a well-planned, permanently installed system.

Use Light and Shading
Miss Fababender offers the following tips and suggestions for an attractively lighted garden: The night-lighted garden is not supposed to duplicate the garden by day. In fact, a skillfully lighted garden will present a completely different—and sometimes more alluring—appearance by night.

Therefore, no attempt should be made to "whitewash" the entire garden in imitation of nature's sunlight. The result may be disappointing.



ANY HOUSE CAN HAVE a patio for summer relaxation and outdoor dining. Materials: cement or cement block, gravel, sand. Home handyman can design it himself.

Quit Wishin' . . . Patios Are Easy To Make

If you've been dreaming all winter about lolling about in the warm summer sun in a backyard patio, but always wake up with the idea that they're too expensive to build, then stop sleeping and get to work. For if you have any space at all you can make one with surprisingly little cost.

Of course, in order to hold the cost down you'll have to do the job yourself.

It'll take a lot of elbow grease coupled with a few original ideas, some paint and a few odd pieces of furniture.

Unless you already have some rock slabs the cheapest and easiest way to make your flagstones is with concrete. Many interesting designs and sizes can be made with simple wooden forms.

One firm, the Sapolin Paint Co., maintains a decorating service to help you with this problem.

For example, an outdoor speed enamel will leave the surfaces of the furniture completely water- and weatherproof, smooth and able to resist alcohol, strong soaps and rough scuffing.

After the painting is done you've got yourself a patio.

You can take that nap and wake up with the happy thought that it doesn't take a millionaire to have a patio palace right in your own backyard.

Two of the most popular backyard games in America are croquet and badminton, for almost everyone can play.

Croquet has a long history, going back to 17th century France and England. The game invaded this country in the 1870's, and found especial favor among the ladies because it was a form of exercise that did not require speed and continued action.

The croquet court is 60 by 30 feet and the game is played with mallets, and one ball for each player. The players start off by hitting a stake at one end of the court and then drive through nine wire arches, hit a stake at the other end of the court and return to the home stake. The player arriving home first is the winner.

Badminton is a more strenuous game. For singles, the court is 17 by 44 feet, and the width is increased to 20 feet for doubles play. A net bisects the court and is five feet from the ground to the top. The game is played with a shuttlecock or "bird," which has 14 to 16 feathers imbedded in a flat cork base. Rackets or "bats" are used to volley the "bird."

The players serve underhanded, and this is the only time scoring is possible. You must hit the "bird" on the volley, and failure to return it over the net loses a point. Fifteen points end the men's game and 11 for the women.

Iced Coffee Favored By Many Guests

Fresh, fragrant coffee, chilled by cubes of ice, is just as refreshing as a cool ocean breeze—and much easier to get. Here are a few simple rules the homemaker should know to make this treat most enjoyable.

Most important to remember is that no summer refreshments can possibly perk up anyone's spirit when served by a tired, wilted homemaker, whose hostess chores seem too much for her. The problem of looking just as fresh and cool as the drinks you serve is answered by the automatic percolator.

With an automatic, there's nothing more for the hostess to do than put in water and coffee and plug in the cord. Newest models, such as the Farberware, make one cup of coffee a minute, and shut off automatically when the beverage reaches flavor peak.

The delicate coffee flavor that makes this iced drink a favorite is obtained when the hot, freshly-brewed coffee is poured into ice-filled glasses. Some of the richness of the brew is lost when the coffee has been allowed to cool before pouring.

Adding the right amount of coffee in proportion to water—a most important step in making coffee—requires special care when the brew is to be iced. That's because the beverage will be thinned by the melting of the ice cubes.

To allow for this, use two level tablespoons, or one coffee measuring cup, of coffee to only half a measuring cup of fresh cold water. This is a quarter cup less of water than the recommended proportion for ordinary hot coffee.

Ancient Game Still Popular

Two of the most popular backyard games in America are croquet and badminton, for almost everyone can play.

Croquet has a long history, going back to 17th century France and England. The game invaded this country in the 1870's, and found especial favor among the ladies because it was a form of exercise that did not require speed and continued action.

The croquet court is 60 by 30 feet and the game is played with mallets, and one ball for each player. The players start off by hitting a stake at one end of the court and then drive through nine wire arches, hit a stake at the other end of the court and return to the home stake. The player arriving home first is the winner.

Badminton is a more strenuous game. For singles, the court is 17 by 44 feet, and the width is increased to 20 feet for doubles play. A net bisects the court and is five feet from the ground to the top. The game is played with a shuttlecock or "bird," which has 14 to 16 feathers imbedded in a flat cork base. Rackets or "bats" are used to volley the "bird."

The players serve underhanded, and this is the only time scoring is possible. You must hit the "bird" on the volley, and failure to return it over the net loses a point. Fifteen points end the men's game and 11 for the women.

Outdoor Life Necessitates Special Skin Protection

Now that most people recognize the value of suntan oils and lotions for acquiring an even tan without discomfort, the manufacturers of these products are working both to improve their products and their scope.

Charles of the Ritz, for example, has just introduced a lotion that's said to help keep your skin moist and smooth as it filters the harmful rays of the sun.

Called Sun Bronze, its formula includes an ingredient that is found in the firm's treatment creams and lotions.

Ease of application and added protection are both featured in a new suntan oil made by Amole, incorporated. It comes in a spray can and is said to act as an insect repellent. It will also protect the skin from harsh winds as well as the sun. Name of this new summer aid is Sun Dress.

For the person whose skin is allergic to the sun's rays, J. E. Williams Company, makers of Skol, have brought out a cream called Skolex. The firm says the odorless and greaseless preparation is safe to apply to lips and ears as well as to the face and hands.

CAMERAS AND SUPPLIES

ALL MAKES - ALL SIZES - ALL PRICES



Eastman Brownie \$39.75
Movie Camera
Also in Stock Revere, Eastman, Keystone Cameras

SPECIAL!

Duoflex - 2 Reg. \$22.50 **\$14.95**

SPECIAL!

GADGET BAGS
\$9.95 up
By Perrin - Top Grain Leather

Film - Paper - Chemicals -
Telephoto Lenses - Light Meters - Flash Bulbs -
35mm, Other Still Cameras

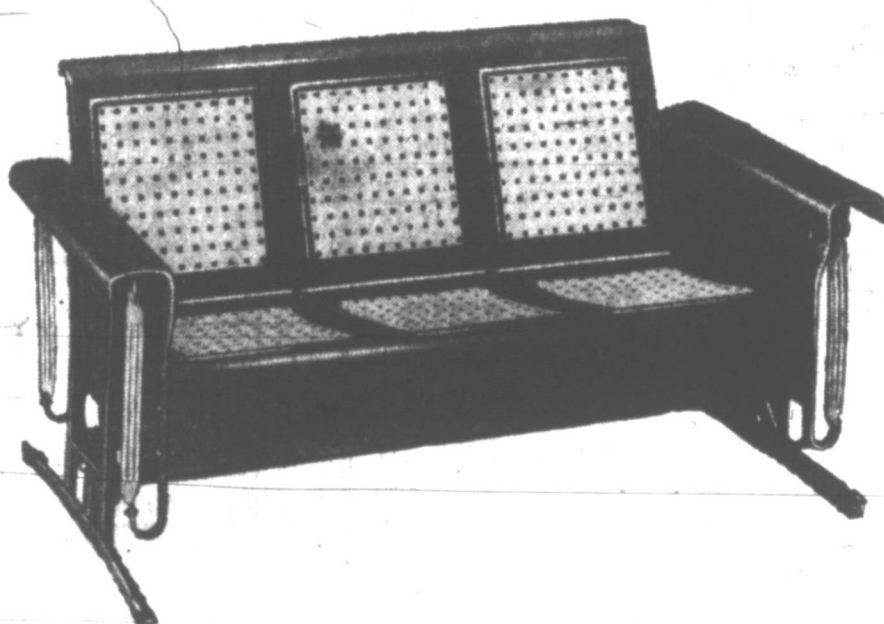
\$15,000 STOCK TO SELECT FROM

Richard Drug

PAMPA'S CAMERA Headquarters
Joe Tooley - Pampa's Synonym For Drugs
107 W. KINGSMILL DIAL 4-5748

217 N. CUYLER *Montgomery Ward* PHONE 4-3251

SUMMER FURNITURE SALE PRICED



34.95 STEEL GLIDER
27.88

Bunting all steel three-passenger Glider for relaxing, carefree lounging. Deep and roomy with basket weave design in back and seat for cooling ventilation. Smooth, noiseless gliding action. Colorful, durable baked enamel finish in attractive colors. Ask about Ward's Terms.



BUNTING STEEL CHAIR
Reg. 10.95 **8.88** Bright Colors

Deep and roomy, with basket weave design in seat and back for cooling ventilation. Baked enamel finish.
Reg. 10.95 Matching Rocker, 8.88



TUBULAR STEEL CHAIR
Reg. 4.79 **3.88** Bright Colors

Modern Chair with roomy seat and back. Turned edges protect clothing from snags. Baked enamel finish.
REG. 4.98 Matching Rocker, 4.49



REG. 37.95 SUNTAN COT
29.88

With comfortable inner-spring pad supported by link spring. Back adjusts to 4 levels without getting up—just lift arms. Water-repellent, easy-to-clean plastic cover in colorful modern design. Enameled steel frame with tubular steel arms, plastic armrests. Available on Terms.



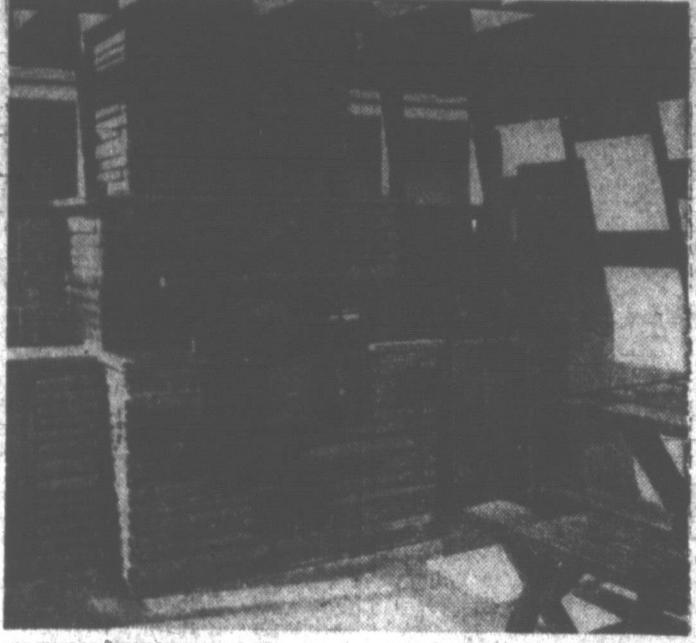
REFLEX camera has adjustable viewfinder to show you image. Accessories, camera in leather case.

For toddlers soak the infested areas thoroughly with Bordeaux mixture. It is harmless to the grass.

Backyard Activity Always Centers Around A Fireplace

Warm, sunny days and balmy evenings just naturally inspire outdoor living — and outdoor cooking over charcoal or wood goes hand-in-hand with this pleasant weather source of entertainment.

Drafting, planning, then actually building an outdoor fireplace can be fun for the whole family. For even a novice can create an attractive fireplace by fitting brick, stone, or other masonry around the ready-to-use metal parts that are available today.



PATIO FIREPLACE is chrome-steel firebox and grill built in masonry foundation. Manufacturers supply plans.

There are many designs to choose from for your fireplace. They include very simple, chimney-less, masonry-grill cookstoves to the finest outdoor counterpart of a living-room fireplace, complete with cooking facilities.

Can't you just picture your "backyard kitchen" surrounded by a congenial group of friends and with the magic of glowing embers transforming even the simplest of foods into the choicest of delicacies? Umm, real living.

Can be fun, too, for the teenagers in the family for their hangover parties and get-togethers.

There are various fireplace designs that are readily adaptable to different garden or lawn locations and landscaping.

Here are a couple of style tips that every fireplace builder should know:

First of all, select a type of fireplace that suits the surrounding area and space that is available. A low or rambling design is ideal for restricted garden areas or somewhat open spaces, while a unit with a tall chimney is better for heavily foliaged spots surrounded by trees.

Metal Parts Available

With the proper metal parts and masonry materials you can either build your own fireplace — or have it built — easily and at a surprisingly low investment.

Until recent years, a major handicap in building an outdoor fireplace was the difficulty of locating essential metal parts, such as grills, doors and grates. This is no longer a problem.

One firm, the Burr-Southern

Patio Storage Wall Keeps Recreation Center Tidy

What could be better with spring an summer coming on than an outdoor storage unit? It can serve the back-yard dining and recreation center during the sunny months and become a storehouse for yard and garden equipment all year round.

Here's a fir plywood outdoor storage wall that's just the ticket.

As handsome as it is useful, this "outdoor built-in" features both storage and work space. Garden tools, fertilizer, children's toys, outdoor games and barbecue equipment can be stored with room to spare in its spacious lockers.

There is plenty of shelf space for pots and plants and its unique center door can be folded down for summer dining or a garden work table.

Attached Or Separate

The storage wall can be built either as a free standing unit anywhere in the yard or as an incorporate part of the house or garage.

For example, if built separately, a frame roof can be extended from it to form a shaded terrace over any portion of a patio.

When built at right angles to the house, it affords a private work and play center which can be further protected by a canvas roof extended from both house and storage wall.

Or it can become an integral part of the garage either at one side or at the rear.

Use Exterior Plywood

Eight feet high by 12 feet long by four feet deep, the spacious unit is so simple and fundamental in design that it can be built easily by the "week-end" or home craftsman with a few basic tools.

Paneling, doors, shelves and roof are all exterior type fir plywood with 100 per cent waterproof glue manufactured to withstand year-round exposure without deterioration. Of course, proper finishing of the material is necessary to insure maximum performance. Framework is lumber and fittings are all standard.

To provide a permanent foundation for the unit, it either should be bolted to an already existing patio floor of stone or concrete or to a similar foundation laid expressly for it. Make certain all wood in direct contact with concrete is properly treated to prevent rot.

Finishing is important. The first step in building this all-purpose storage wall would be to make a careful layout of all structural sections on the plywood panels and to mark off lumber for framing members.

After cutting, proceed to build as you would a miniature house by erecting the framework first.

Then apply paneling beginning with the back ends, top and last of all the door fronts.

First and most important step in finishing would be edge-sealing of plywood. Seal all edges with one heavy coat of exterior primer.

Next, following the three-step system recommended for exterior plywood, apply high-grade exterior primer (most important coat) either thinned with 1 pint pure linseed oil per gallon or according to manufacturer's instructions. Next, apply two coats of high grade exterior house paint. Natural or clear finishes are not recommended for exterior use with fir plywood because such finishes lack durability.

Latest flash from the realm of potatoes: you can reduce the baking time of spuds — either in the oven or in hot embers of an open fire — by using aluminum skewer nails.

This shaft, resembling a four-inch nail, has been designed by Nichols Wire and Aluminum Co. The idea: the metal conducts heat into the potato at the same time heat is working on the outside. The result is a time-saving of almost 50 per cent.

In addition, the skewer prevents the potato from bursting and insures uniform fluffiness.

Make certain the nail is butted or pressed lightly before inserting it lengthwise in the potato, with both the head and tip protruding to conduct heat to the center.

These nails, according to kitchen tests, serve equally well as skewers for beef, poultry or fish-kabob.

Latest: Drive Nails In Spuds

These nails, according to kitchen tests, serve equally well as skewers for beef, poultry or fish-kabob.

Read The News Classified Ads



FORM-FITTING SWIMWEAR looks good and feels good. The black wool trunks at left are cut brief for the man who likes to swim. The other young man and his lady wear matched slits in a three-way knit of wool and lastex. His trunks cut to extreme briefness, fit on the hipbone.

Guests Like Fruit Punch On Balmy Summer Evening

For the hostess who suddenly wishes that she hadn't asked all of those people to spend the evening on the patio or in the garden, there's a quick way to social success.

It's all a matter of what you serve to drink.

What comes out of the pitcher can promote a good evening and cool talk in the heat of summer, or it can leave your guests wishing they'd gone to an air-cooled show.

The biggest challenge to the imagination is fruit punch. Its components are the garden variety of canned and frozen juices

but you can create wonders by your ability to mix.

Basically, grapefruit or pineapple juice starts the ball rolling. You can add frozen lemon and orange juices or orange juice to taste.

But the variations are many and wondrous if you pour in measures of tangerine juice, grape juice and even pieces of fresh fruit.

Home economists say that it's best to keep the summertime drinks on the sour, rather than the sweet side. So ladle out the sugar sparingly.

There's one twist on the fruit punch that deserves note. It's a matter of carbonation. Either club soda or ginger ale mixed into the punch just before serving will

make the sharp thirst-quencher. You can get other effects by using other flavored beverages.

Old-fashioned tea is another good summertime drink. No matter what kind of tea you use, or what extra essences you pour in, make sure you brew your tea strong and pour it hot over ice. The ice will melt quickly, cool the liquid immediately, and dilute the strong tea.

A stick of cinnamon, ginger or lemon will spice the tea to a new sweet side. So ladle out the sugar sparingly.

With the price of coffee still high, iced coffee is still a matter of "special occasion." But a little will go a long way if it, too, is poured hot over ice and allowed to dilute.

AWNING CO.
Enjoy Life in the Cool Shade of Canvas or Alumna-Kraft Awning. Please Call Us For Free Estimates. PAMPA Tent & Awning Co. "Just A Shade Better" 317 W. Brown, Dial 4-8541

A sensational new fashion in Home Decorating

APPLIKAY
Applikay adds shimmering design to freshly painted Super Kem-Tone walls. It comes ready to use and less than a quart of Applikay is enough for the average room.

Stop by today and let us show you how easily you can create lovely, personalized designs for your walls — designs that have a lustrous sheen that changes with the direction of light and angle of view.

Crowin-Williams Paint Co.
113 S. Cuyler — Ph. 4-5822

Food Markets Have Items To Cut Work Of Picnic

Included in "good old sayings" that ought to be given the boot are the many variations of this one:

"Picnics are lots of fun — for all but the woman who plans them, and has to prepare the food."

This may have been true once, but it sure doesn't hold up today. Planning a picnic outing now is a simple task indeed, and that includes preparing the food.

The woman who does the job herself can save many hours in the meantime department — by utilizing the aid of her freezer.

Most of the goodies she'll need, such as sandwiches, cakes and meats, can be frozen days in advance and taken to the picnic site in a new-style, easily-packed food basket. The foods will defrost on route.

Her other home appliances are equally helpful — especially those which are portable.

An electric roaster-oven, for instance, will prepare a full-course meal for as many as eight persons — or a one-dish meal for 40 persons — in one operation.

Food cooked in advance will keep hot for six hours if the roaster is wrapped in a blanket while you drive to the picnic area.

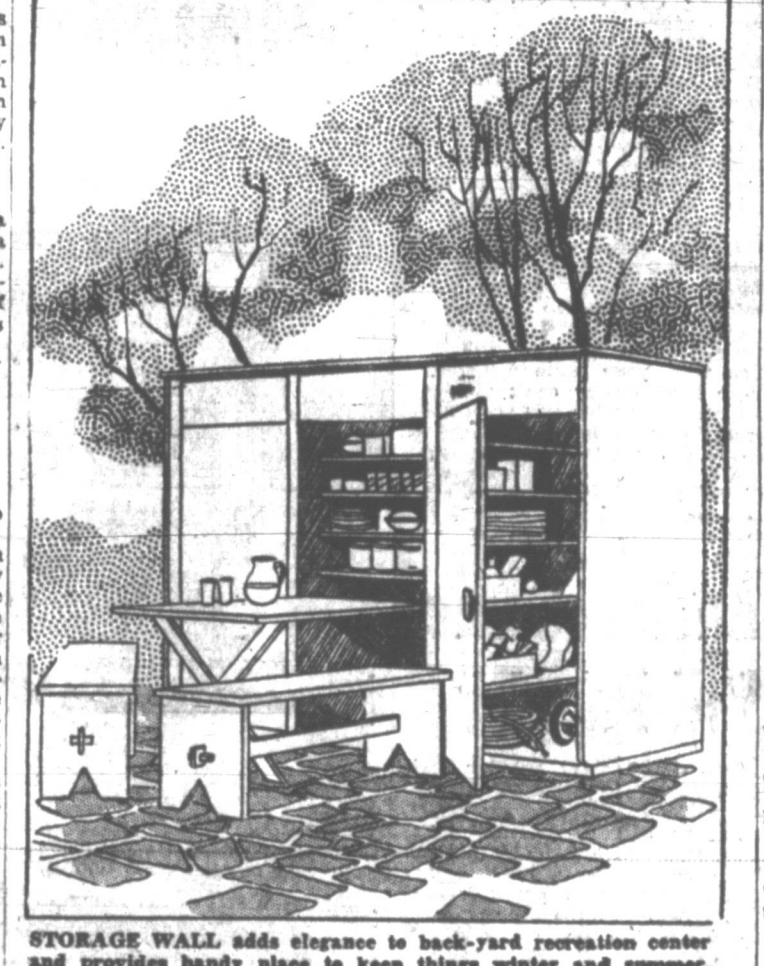
If she wants to avoid even this much, she can have her picnic

virtually ready-made with a trip to two- or three stores.

Down at the market, she can take pre-pick from a wide variety of pre-packaged, ready-to-serve foods that Granny would have thought amazing. From the baker comes cakes and breads; from the delicatessen comes potato salad, ice-cream packed in dry ice, and bottled or concentrated beverages whisk away the desert problem.

Once the food is set, there's hardly any planning needed at all. Beautiful picnic sites with tables, grills and water fountains can be found in state or local parks. The amount of equipment you take is entirely up to you.

But don't forget these: a flashlight or lantern, a small insect spray, plenty of napkins and some games for the children.



STORAGE WALL adds elegance to back-yard recreation center and provides handy place to keep things winter and summer.

For Soft Shade: Awnings

If you live in a treeless subdivision of it you have a sunny yard with small trees, don't let a shortage of shade stop you. Canvas awnings stretched overhead can give you shelter from the sun's rays and a comfortable spot in which to relax in the outdoors.

This canvas roof can be tacked to the top of a wooden frame or laced to it with heavy rope. Matching curtains should be hung on south and west sides of the shelter to be dropped for added protection in the afternoon.

Canvas is available in a variety of multicolored stripes, floral backed patterns, and solid hues.

Furnish To Suit Taste

The manner in which you furnish your canvas shelter will depend on your interests and those of your family. If you have small children, you may want to put a sand pile in one corner. You can stretch a canvas hammock between two of the posts and lie there to read, sleep, watch the children, or just "take it easy."

With proper care, the canvas roof and curtains should last for about five years. By that time your trees should be ready to take over and shade your back yard.

You should be able to build the hobby house easily and inexpensively yourself, with help and directions from local canvas or lumber dealers. While the roof and curtains are stored during the winter, you can string clotheslines to the wooden posts.

Window Awnings Cooling

The same canvas that covers your outdoor shelter can be used to protect your house from the hot summer sun. It is not, however, advisable for the home handyman to do his own awning jobs.

Local lumber or fabric stores will send experts to measure your windows, build awning frames and cover them with the cloth. Your job is merely to pick the design or color. In the long run, the awnings will keep your home cooler and far more tolerable in the dog days.

June bugs and Japanese beetles in the grub stage do considerable damage. Ten pounds of arsenate of lead mixed with a bushel or two of sand, evenly spread on 1000 square feet of lawn, will control the grub for from seven to 10 years.

Read The News Classified Ads

Take your leisure in style with the NEW trim fitting fashion-wise

Life o' Ease LEISURE JEANS

Fit like dress slacks yet give more comfort and ease than other jeans... Washable too.

\$4.95 To \$6.95

* No belt required * Elasticized side tucks and Snug-tex keep the jeans up and the shirt down * Large utility back pockets * Regular front pockets to secure contents * Pleated front * Smooth fitting saddle back and saddle crotch * No unsightly bulging anywhere.

FRIENDLY MEN'S WEAR
111 N. Cuyler Dial 4-5755

BE SURE of Your AIR CONDITIONING

Clear-Vue Evaporative RCA Victor Refrigerated

FIRST — Find out exactly what your home needs in evaporative or refrigerated air conditioning. Let one of C&M's trained men give a FREE ESTIMATE. They can help you get the right air conditioning for cool summer comfort.

SECOND — Come down to C&M. See Clear-Vue Evaporative Coolers and RCA Victor Refrigerated Conditions. Select the one that meets your needs.

FREE SURVEY — C&M initiated this FREE SURVEY to help you get the most for your air conditioning dollar. Just call 4-3511. A courteous, skilled air conditioning man will survey your home FREE. Then after you know exactly what your home requires for cool, comfortable air conditioning, make your choice: evaporative or refrigerated; the size of cooler your home requires; the best place to locate your cooler. C&M will be glad to help you select your air conditioner. Come in, see our complete selection!

REMEMBER — FREE INSTALLATION OF EVAPORATIVE CONDITIONERS UNTIL JUNE 21

TELEVISION
304 W. Foster Phone 4-3511

ROUGH and TUMBLE PLAY TOGS
that need NO IRONING!

BOY'S BOXER STYLE SHORTS
Sizes 1 to 6x
Seersucker - Cottons - Denims

BOYS' T-SHIRTS
Cotton Knit - Terry Cloth - Seersucker

GIRLS' SHORTS
Sizes 2 to 14 -- Seersucker & Denims
Seersucker - Denims
Treated Poplin - Twills

GIRLS' BLOUSES
Non-Ironing Materials
Twistalene -- Seersucker -- Plisse

BOYS' SWIM TRUNKS
Sizes 1 to 6
\$1.95 to \$3.50

GIRLS' BATHING SUITS
Sizes 1 to 14
\$3.50 to \$7.95

FORD'S YOUTH STORE
106 S. CUYLER DIAL 4-4021

The Jackson Twins
Blondie
Alley Oop
Bo
Buzz Sawyer
Martha Wayne
Mutt & Jeff
Bugs Bunny
Priscilla's Pop

I Pogo



The Jackson Twins



Blondie



Alley Oop



Bo



Buzz Sawyer



Martha Wayne



Mutt & Jeff



Bugs Bunny



Priscilla's Pop



OUT OUR WAY

By J. E. Williams OUR BOARDING HOUSE

with MAJOR HOOPLES



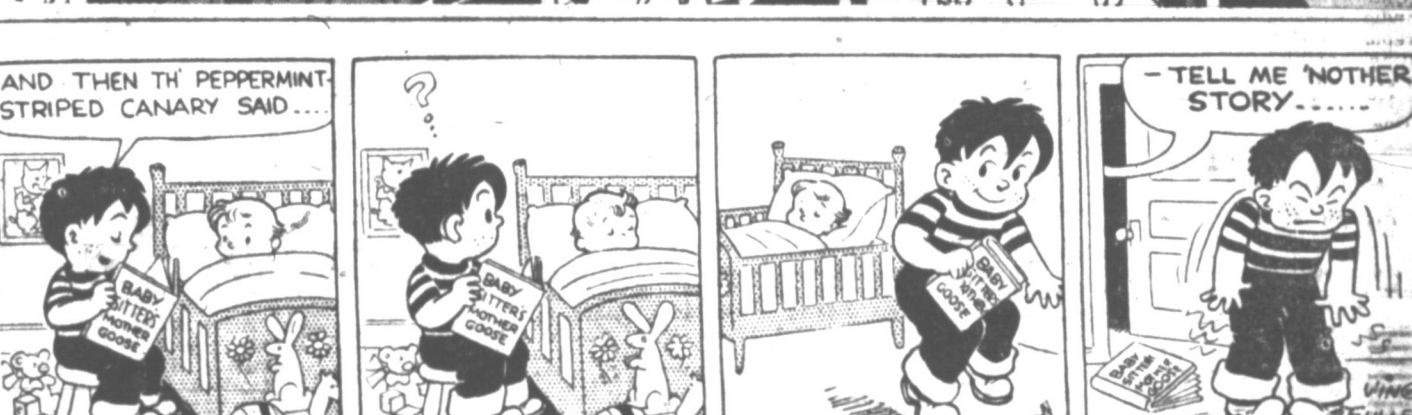
Steve Canyon



Vic Flint



Little Doc



Wash Tubbs



Boots



Mickey Finn



Freckles



Susie Q. Smith



\$140.34 In Postage Will Mail A Postal Card to Each Subscriber OF THE PAMPA DAILY NEWS --- You Can Reach Them All For Only 39c Per Insertion (7-Day Rate) In The News Classified Columns!

41 Nursery 41 Day Nursery, 700 N. Wells City health dept inspected. Day care and lunch by 4-8999 Mrs. Lewis Gallimore and Mrs. J. W. Holt.

42 Painting, Paper hng. 42 PAINTING and paper hanging, all work guaranteed. See F. E. Dyer, 600 N. Dwight. Phone 4-5304.

43 Lawnmower Service 43 SHEPHERD'S Lawnmower & Sewing Shop. Pickup and delivery. Work guaranteed. 612 E. Field. Ph. 4-3248.

103 Real Estate for Sale 103 MODERN 3 room unfurnished house on N. Russell close to, for sale. Call 4-5757.

OPEN HOUSE PRAIRIE VILLAGE ON PRAIRIE DRIVE 2:00 to 6:00 p.m. Today 2 and 3 Bedroom Houses for Sale VA, 100% Loans - FHA, Low Down Payment Monthly Payments Less Than Rent HUGHES DEVELOPMENT CO., Inc. 400 Hughes Bldg. Dial 4-3211 Ed Griffin Dial 4-5188

44 Dirt, Sand, Gravel 44 CARTER SAND & GRAVEL. Driveway Material & Dirt Moving. 213 N. Sumner. Dial 4-3231.

45 Household Goods 45 1-Piece Walnut dining room suite in excellent condition. Ph. 4-3248.

103 Real Estate for Sale 103 REDUCED PRICES Two 2 bedroom brick homes, very nice. 3 bedroom home, basement, double garage, \$7500.

WINTER AIR EVAPORATIVE COOLERS Don't Just Think About AIR-CONDITIONING Come in This Week and Talk It Over with Us! We Can Make Terms if You Desire Your Home or Office Can Be Comfortable All Year-Round if You Have a . . . WINTER - AIR EVAPORATIVE COOLER Our Years of Experience in Installation Is Your Guarantee DES MOORE TIN SHOP Heating & Air Conditioning 320 W. Kingsmill Phone 4-2721

46 Plowing - Yard Work 46 MOWING, all kinds. Weeds, grass, yards. Call Crawford N. Hughes, 512 S. Wells.

47 Plowing - Yard Work 47 ROTOTILLER YARD PLOWING Dial 4-3125 - Pop Jones.

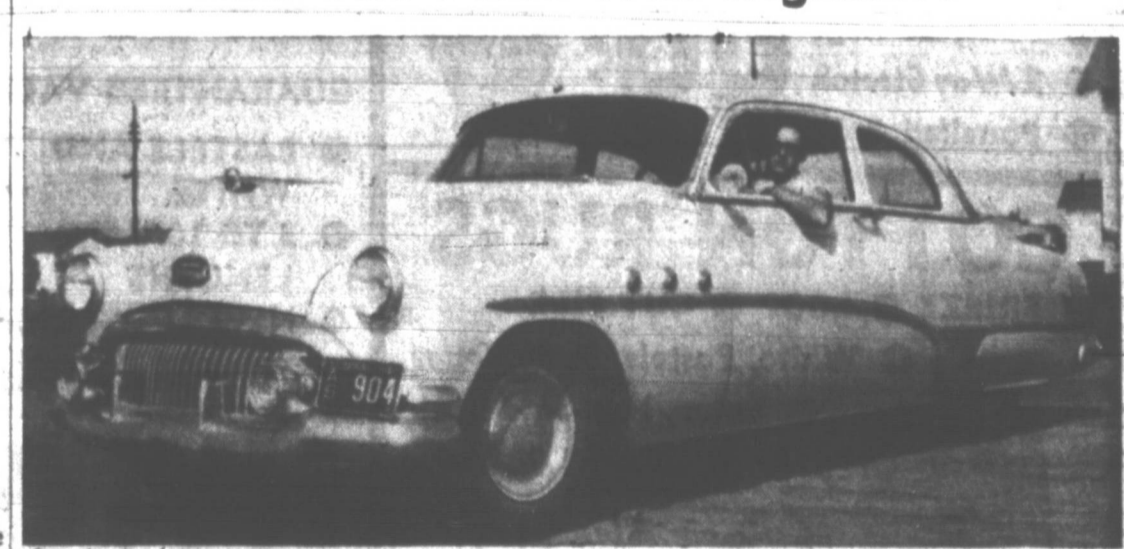
103 Real Estate for Sale 103 QUENTIN WILLIAMS 209 Hughes Bldg. Ph. 4-2523 or 4-2524

PANHANDLE LUMBER CO. "Everything for the Builder" 420 W. FOSTER PHONE 4-6881

TOP O' TEXAS REALTY CO. Real Estate - GI & FHA Loans - General Insurance - Royalties - Agency Management

103 Real Estate for Sale 103 HOMES for Sale 2 and 3 Bedroom DUPLEXES FOR RENT Hughes Development Company, Inc. 400 HUGHES BLDG. - PH 4-3211

CULBERSON CHEVROLET, Inc. "The Brightest Spot in Pampa" Finest Selection of Used Cars 810 W. Foster Phone 4-4666



SAYS DON MAYER, 1105 S. Dwight, of his '51 Special Dynaflow Buick: "Of course Tex Evans reputation of conditioning their cars and standing behind them had a lot to do with it. This Buick has given me service, comfort and all the driving pleasure I could ask for."

TEX EVANS BUICK CO. 123 N. Gray Phone 4-4677

Everybody loves a BARGAIN

Prices Slashed Throughout Levine's Two Big Floors

DAY-IN, DAY-OUT, YOU'LL PAY LESS AT LEVINE'S - YOUR THRIFT STORE FOR '54'

Ladies' Suits & Toppers
FINAL CLEARANCE!
SUITS | **TOPPERS**
 Reg. or Half Sizes Values to \$24.98 | 100% Wools Values to \$29.98
\$9.99 | **\$9.99**



NEW LOW PRICE !!
 TYPE 128
Cannon SHEETS
 Why Pay More When You Can Buy Cannon at These Low Prices



WAVY LINE CHENILLE BEDSPREADS
 ● Full Double Bed Size
 ● White, Pastels and Deep Tones
 ● Fringed Edge
 Reg. \$4.98 Value **\$2.99**



Special Purchase!
LADIES' HALF SIZE DRESSES
 ● BEMBERGS ● FRENCH CREPES
 ● BEAUTIFUL SHEER COTTONS
 ● BEAUTIFUL PRINTS, SUMMER STYLE
 ● SAVE OVER 50%, REG. \$6.98
 SHEER LOVELY FABRICS **\$3.00** 16 1/2 to 24 1/2

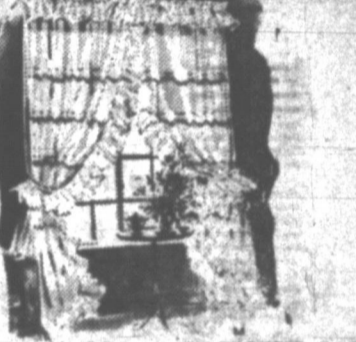


First Quality
81 x 99 \$1.57
81 x 108 \$1.67
Pillow Cases .. 37c

NYLON HOSE
 ● Black Heel and Seam
 ● 60 Ga., 15 Den.
 ● Full Fashion
 ● High Twist
 ● Snag Resistant
49c Pair
 Slight Imperfects of \$1.50 Quality



NYLON PRISCILLAS
 REGULAR \$3.98
 ● WHITE ● BLUE
 ● PINK ● MAIZE ● GREEN
 SINGLE WINDOW SIZE
 DEEP RUFFLE
\$2.99 Pair



Terry TOWELS
 ● REGULAR 49c QUALITY
 ● Choice of Pastel Colors
 ● Large Size 20x40"
3 for \$1



Sprinklehose
 The Perfect Garden Sprinkler System
 at new low prices!
 25-FOOT LENGTH 50-Ft. Length **\$1.99**
 Light Weight Plastic. Won't rot, clog or mildew.



REGULAR \$1.79
Nylon Panels
 ● WHITE
 ● EXTRA LARGE 42x90"
\$1.29

All Steel Enamel **LAWN CHAIRS**
 ● Red and Green
 ● Formed Edges
 Reg. \$6.98 Value **\$3.99**



Special Purchase
LADIES GIRDLES
 Values to \$2.98
 ● Panty or Reg.
 ● 2-Way Stretch
 ● Panelled Front
99c



Special Purchase!
 1,000 YARDS ONLY, PUCKERED
NYLON FABRICS
 GUARANTEED VALUES TO \$1.39 YARD
 ● PASTELS AND WHITE
 ● 3 TO 10 YARD LENGTHS
 ● NEW LOW PRICE
48c Yd.

SPECIAL PURCHASE
GIRLS' SQUAW DRESSES
 MADE OF GENUINE TWISTALENE
 ● ROWS AND ROWS OF RIC-RAC
 ● AQUA ● MAIZE
 ● RED ● GREEN
 ● SEVERAL STYLES
 SIZES 3 TO 6X SIZES 7 TO 14
 Regular \$3.98 **\$2.98** Regular \$4.98 **\$3.98**



COTTON RUGS
 ● FRIEZE ● LOOP ● CUT PILE
 ● White, Pastels, Deep Tones
 ● Latex, Non-Skid Back
 ● Regular \$1.98 Value
 Size 24x30
99c Each



NYLON NET TULE
 ● 72 INCHES WIDE
 ● WHITE, NAVY, AND PASTELS
 ● GUARANTEED 98c VALUE
44c Yd.



RECEIVING BLANKETS
 ● MILL END, EXTRA LARGE
 ● UNHEMMED
 ● PINK OR BLUE
29c Each

LEVINE'S
 "PAMPA'S FRIENDLY DEPARTMENT STORE"

BIRDSEYE DIAPERS
 ● Soft, Absorbent
 ● Sanitary Packaged
 Package of 12 **\$1.48**