

Dr. Sam sometimes dived for her parents. Their...
...among her fellow employees.

It was reported that once, at a...
...Dr. Sam's attention to Susan.
The Sheppards deny this.

Susan Hayes and Dr. Sam...
...became friendly when...
...in a laboratory...
...in the Bay View...
...Cleveland, Ohio, suburb.



With Susan on the witness...
...will the prosecution...
...be able to convince the jury...
...that she is the living...
...for the murder of Marilyn?...

SUSAN HAYES

Since being brought back to...
...Cleveland to testify, Susan has...
...been living in utter seclusion at...
...her parents' Rocky River home.

Susan quit her job early...
...this year to take one in...
...Los Angeles. In March, Sam...
...and Marilyn Sheppard went...
...there to visit friends. Dr. Sam...
...phoned Susan. While Marilyn...
...was visiting at a Monterey...
...County ranch, Susan told the...
...Grand Jury they lived together...
...for a week.

THE 'OTHER WOMAN' IN SHEPPARD CASE

All events in the Cleveland, Ohio, murder trial of Dr. Samuel H. Sheppard, from its plodding, tortuous beginning to the surprise testimony of Coroner Samuel R. Gerber were merely leading up to what can be the case's dramatic peak — the courtroom confrontation of Dr. Sam by Susan Hayes. In the sketches above, Artist Kudlaty illustrates highlights of her involvement in the sensational case. (NEA Service)

HOLLYWOOD TODAY!
MOVIES - TV - RADIO
by Erskine Johnson

HOLLYWOOD (NEA)—Guys and...
...Doris: The darling of "The Moon...
...is Blue," Maggie McNamara, says...
...she's licked her fears about Hol...
...lywood and a movie career.

Village Wives Offer Sacrifice To Frog Gods

SINGAPORE, Nov. 24—UP—Ter...
...rified and superstitious village...
...housewives offered sacrifices to...
...their Gods Tuesday for protection...
...against the bad luck they feared...
...would follow last week's so-called...
...frog war.

Two other "frog wars" were said...
...to have been fought just before...
...World War II and the Korean war.

Residents of tiny Bakar Arang...
...now feared their village would be...
...burned by "the fire of the Gods"...

Villagers who tried to separate...
...battling frogs found them with their...
...tongues bitten off, it was said.

Lively Trial Has Parade Of Witnesses

INDIANAPOLIS, Nov. 24—UP—The...
...prosecution called more wit...
...nesses Tuesday in an effort to...
...prove charges that Victor H. Liv...
...ely strangled 18-year-old Dorothy...
...Poore in a rape attempt, then se...
...xually assaulted her corpse and...
...crammed it into a dresser drawer.

The dresser in which the body of...
...the Clinton, Ind., girl was found...
...last July remained in the court...
...room for the second day despite...
...defense objections. State's attor...
...neys John Dally and James E. Ro...
...cap Jr., said they needed it to...
...question one more witness.

Lively, 28-year-old Beaumont, Tex.,...
...salesman who has confessed and...
...denied the slaying in his hotel...
...room, fidgeted nervously Monday...
...when the dresser was wheeled in.

Dr. David Rosenbaum, a hospital...
...pathologist, testified that exami...
...nation of the body showed the girl...
...could have been violated before...
...or after death.

Detective Sergeant John J. Sul...
...livan told how he found the girl's...
...jeans, blouse and shoes hidden in...
...an air duct in Lively's room.

There was a pamphlet and por...
...nographic pictures hidden in...
...there with them," he said.

behind Barbara Stanwyck's back...
...in RKO's "Escape to Burma."

Hollywood scouts saw Lisa in...
..."Cocobolo," an English movie...
...made in South America and pro...
...duced by Dick Wadling, ex-hubby...
...of John Wayne's wife, Pilar Pa...
...lette. The film ran into financ...
...ial trouble and still hasn't been...
...released. But it played enough...
...studio projection rooms to conv...
...vince Hollywood that Lisa has...
...stardust in her hair.

ALTHOUGH MIN stock soared...
...when he made "Robin Hood,"...
..."Rob Roy," and "The Sword and...
...the Rose" for Walt Disney in...
...England, Richard Todd never...
...wants to see another script that...
...directs him to thrust a sword into...
...the villain's middle.

He's through swashbuckling. Todd...
...told me on Fox's "A Man Called...
...Peter" set, and he's turning...
...down all offers to repeat his...
...derring-do.

AMBITIOUS

Mrs. Winifred Swanson, of Palmer, Mass., goes to work organizing her proposed "League of 20 Million Americans for the Censure of Sen. Joseph R. McCarthy." Backers of the Wisconsin Republican have recently formed the "Ten Million Americans Mobilized for Justice."

Oil Allowable

Remains Same

OKLAHOMA CITY, Nov. 24—UP—The...
...Corporation Commission...
...Tuesday set the oil production...
...allowable for Oklahoma at 486,000...
...barrels per day for December and...
...January. The figure is identical...
...with November's.

In keeping production at the...
...same level, the commission fol...
...lowed the recommendation of its...
...conservation division.

Dan Dunnett, assistant conserva...
...tion officer, said November daily...
...production has been running...
..."slightly under" the allowed fig...
...ure, or about 485,000 to 490,000...
...barrels.

Teen Topics
By MARLENE KOLB

THE MARQUEE
BY DICK KLEINER
TV SERGE RADIO RECORDS PEOPLE

Tomorrow's THE day — Home-coming! A full program has been planned, so all you grads and exes, especially of the Class of 1951, be sure to come.

There's a unique Broadway story behind the man who's stage manager for George Abbott's revival of "On Your Toes." His name is Bobby Griffith, and he's worked as Abbott's stage manager and assistant for more than 20 years.

Back to Saturday night's concert. Near the drinking fountain during intermission, overheard a young adult (between teens and 25) saying to Mrs. Robert Payne that this was the best a Pampa audience had behaved at one of these concerts.

This made him, automatically, a big man. He has a big office, a charge account at Sardi's and he and his partners are planning two more large shows. But the habits of 20 years are hard to break, and when the curtain went up for "On Your Toes," there was Bobby Griffith in shirtsleeves, working away backstage the same as always.

Man, did you ever dig the crazy contortions kids make with in the cafeteria on "knifeless days" (days when the food-on-plate doesn't require cutting with a knife)?

Oh, well, just one more bop joke. This one from Danny Owens, of the Four Tunes quartet, who wonders whether a bop cannibal would eat three squares a day.

PRINCE AND PRINCESS—The new issues of National Geographic...
...Great Britain have portraits of Prince Charles and Princess Anne.

40 Hours Devotion Set By Catholics
Forty hours of devotion will be observed at Holy Souls Catholic Church Sunday. This is a devotion in honor of the Holy Eucharist.

Nights Unbearable to Itching Skin?
Relief beyond belief for itchy, irritating skin with specially medicated Resinol—the ointment rich in lanolin.

Thanksgiving
Almighty God, Lord of heaven and earth; We beseech thee to pour forth thy blessing upon this land, and to give us a fruitful season; that we, constantly receiving thy bounty, may evermore give thanks unto thee in thy holy Church; through Jesus Christ our Lord. Amen.
PUBLIC SERVICE COMPANY

Those real cl won t
U.S. Be P
WASHJ
The JUST
asked to
the gover
\$3 million
non-prod
The cha
congress
fense pro
the opera
Tin Corp
River Mi
sula in Al
Siberia.
The co
Tuesday
turned ov
siders ad
It said
ceives \$
unds and
early 1951
the comm
through ti
J. Kadov
represent
retary Of
The co
PRO
(Conti
received
ly homoc
W
In two
a kind of
civilians
of Lynn,
Downey
had been
and the
dictated t
The 13
China ak
Pecten
years. I
life. Col.
Montgom
years. A
23. Lewi
eight y
Vasdi, C
ta six y
Brown,
five yea
Buck, A
tenced t
E. Kiba
tenced t
tel. C. I
sentence
John W.
Va., seni
Elmer
Mont, s
man Ha
Worthing
four yea
Brown,
tenced t
STO
(Con
crack
able fut
The b
rise m
Some e
in the
above
optimist
would s
distant.
Wedn
investm
situation
of dolla
rate of
able on
The l
on by
shoestr
unknow
of than
ella w
will m
averag

The Christian Science Church will hold a Thanksgiving service at 11 a.m. Thursday.

For Sale: used oak flat top desk and matching swivel chair.

City Mgr. Fred Brook will speak at 6:30 p.m. Friday in the Sam Houston School to the Pampa Lions Club Americanization Class on

"The Purpose and Organization of Local Governments." The first finance campaign of the Boy Scouts' Santa Fe District was kicked off at 7 a.m. today in Nora's Cafe, Wheeler. George Gandy is chairman.

Studio Girl Cosmetics D-4-8960. The 1954 Pampa community United Fund drive total today was 42,402.20.

Mrs. M. O. Brown, who visited the past week with her son and daughter-in-law, Mr. and Mrs. Jim T. Lacy, 1328 Coffey, left today for her home in Kansas City, Mo.

Miss Carolyn Carver, a junior at Hardin-Simmons University, was elected to Alpha Chi, national honor society.

Holy Souls parish, with Mrs. M. F. Roche as chairman, is sponsoring a clothing drive, to end Sunday, for overseas relief.

The Rev. W. S. Fisher, pastor of the Oakhurst Methodist Church, preached the funeral sermon.

Some 300 persons attended the funeral. More than 60 automobiles made up the funeral procession that drove slowly to Garden of Memories cemetery.

Briton Admits Being Red Spy

LONDON, Nov. 24—UP—A former British army clerk accused of spying confessed that he was sent by a Soviet diplomat to spy on United States Navy headquarters in London, a Scotland Yard agent testified Wednesday.

Chief Inspector Charles Ward said the 27-year-old defendant, John Clarence, told him he called at the big U. S. naval center in Grosvenor Square "at the suggestion" of a Russian attaché named Barabanov.

The Soviet embassy told newsman there was an Ivan Ilyich Barabanov, who is the second secretary. The embassy had no other comment.

Clarence was brought up for hearing on charges of collecting secret information on Britain's radar-controlled anti-aircraft defenses.

Ward quoted Clarence as saying he "offered his services in any capacity" to Barabanov and agreed to spy on Soviet refugees living in Britain.

Hearing Set in Murder Case DALLAS, Nov. 24—UP—A preliminary hearing was to be held Wednesday for Mrs. Eloise Lee, 26, charged with murdering her husband, Dr. M. D. Lee, a dentist, was killed Nov. 8, after the couple had argued.

Los Dueros Sponsors Meet The Los Dueros sponsor committee met recently in the home of Bobby Marlar to discuss the selection of a new sponsor.

A. W. Griggs of Cities Service Gasoline plant, was chosen new sponsor to replace L. H. Duncan. Next meeting of the club will be held in the home of Jerry Boston.

Read The News Classified Ads

'Voice Of Democracy' Speech Contest To Be Held Monday

Fifteen Pampa High School students will compete Monday afternoon in the annual "Voice of Democracy" speech contest sponsored by the Pampa Junior Chamber of Commerce.

The top three will appear in the finals at noon Tuesday during the weekly JayCee meeting in the Palm Room of City Hall, according to Miss Helen Schaefer, high school speech teacher.

The 15 will compete after school Monday at 3:35 p.m. Miss Schaefer said, She and Cameron Marsh, high school history teacher, will be the judges.

Her Sunday school class was at the funeral. Her body was in an orchid colored casket. It was not opened.

Some 300 persons attended the funeral. More than 60 automobiles made up the funeral procession that drove slowly to Garden of Memories cemetery.

4 Cases Of Beer Reported Stolen

Four cases of beer were stolen from the walk-in storage box adjoining the premises of the Steer Drive Inn, 716 W. Brown, sometime Wednesday morning, according to Police Chief Jim Conner.

B. W. Kelley, owner, said apparently nothing else was taken from the storage box. He discovered the lock on the door broken about 1:20 a.m.

parents wanted the boy's name changed to Douglas Walsh Thompson filled a typewritten page.

The petition said the parents earlier had believed Mr. Eisenhower "represented the highest tradition of national honor."

One parent is a Republican and the other is a Democrat, they said, Judge Johnson, who approved the name change, is a Democrat.

names of the contestants: Edgar Ethridge, Rose Smith, Lee Ledrick, Dan Teed, Dixie Sue Rhoades, Lynn Followell, Jimmy Edwards, Charlotte Hoggatt, Iris Golden, James Scarberry, Bob Schofield, Mary Ann Guthrie, Sondra Sullins, Pat McConnell and Anita Southard.

Cleburne Faces Phone Rate Hike

CLEBURNE, Tex., Nov. 24—UP—Mrs. Jim Cann presented a petition bearing 1,978 signatures opposing a rate increase for Southwestern Bell Telephone Co. at a public hearing before the city council Tuesday night.

The company has asked to increase one-party residential rates from \$4.50 to \$5.50 a month and business rates from \$9 to \$11 a month. Vernon Moore, local manager for the company, said it is making only 3.24 per cent now on its investment in Cleburne.

CC Committee Talks Program

The New Business Growers Committee of the Chamber of Commerce met this morning to discuss details for its 1955 program of welcoming new businesses and new firm managers to the Pampa community.

The work program calls for delegations to call on new arrivals in the business community with a view toward making them "feel at home" and to also take an active part in community work.

Other members of the committee are Floyd Imel, Ed Cleveland, George Newberry, Frank Smith, J. J. Rance, Paul Grossman, Joe Black, Evert Cameron, A. A. Schuneman, and Rufe Jordan.

GET THE BEST and get it FOR LESS St. Joseph ASPIRIN



SEA GULL SENTINELS

Those birds who appear to be on guard at a Cleveland, Ohio, yacht club, provided a real challenge to photographer Bernie Noble. Rocklike patience and a telephoto lens won the Cleveland Press newspaper photographer a \$25 prize. (NEA Service)

U. S. Tin Mine Venture May Be Probed By Justice Dept.

WASHINGTON, Nov. 24—UP—The Justice Department may be asked to investigate a charge that the government has poured nearly \$3 million in loans into a virtually non-productive Alaskan tin mine.

The charge was made by a joint congressional committee on defense production which looked into the operations of United States Tin Corp., operator of the Lost River Mine on the Seward peninsula in Alaska about 40 miles from Siberia.

The committee recommended Tuesday night that the case be turned over to the attorney general for "such action as he considers advisable."

It said the tin company has received \$2,894,575 in government funds and guaranteed loans since early 1951. The first of these loans, the committee said, was obtained through the "influence" of Kenneth J. Kadow, one-time Alaskan representative of former Interior Secretary Oscar Chapman.

PROTEST (Continued from Page One)

received letters indicating an early homecoming.

Wan Encouragement In two cases, however, there was a kind of wan encouragement. The civilians—Richard George Fecteau of Lynn, Mass., and John Thomas Downey of New Britain, Conn.—had been listed officially as dead and the Peiping announcement indicated they are alive.

The 13 Americans imprisoned in China along with their sentences: Fecteau, 27—sentenced to 20 years. Downey, 24—sentenced to life. Col. John K. Arnold Jr., 41, Montgomery, Ala., sentenced to 10 years. Maj. William H. Baumer, 23, Lewisburg, Pa., sentenced to eight years. Capt. Eugene J. Vandi, Clayton, N. Y., sentenced to six years. First Lt. Wallace L. Brown, Banks, Ala., sentenced to five years. First Lt. John W. Buck, Armathwaite, Tenn., sentenced to four years. Airman Steve E. Kiba, 22, Akron, Ohio, sentenced to four years. Airman Daniel C. Schmidt, Redding, Calif., sentenced to four years. Airman John W. Thompson III, 23, Orange, Va., sentenced to four years. Capt. Elmer F. Llewellyn, Missoula, Mont., sentenced to four years. Airman Harry M. Benjamin Jr., 22, Worthington, Minn., sentenced to four years. Sgt. Howard William Brown, 32, St. Paul, Minn., sentenced to four years.

STOCKS (Continued from Page One)

crack in prices in the foreseeable future.

Only the Beginning The bullish element believes the rise may be only the beginning. Some experts claimed industrialists in the future would climb well above the 400 level. The ultra optimistic claimed the average would soar to 600 in the not too distant future.

Wednesdays' market is based on investment by individuals and institutions, the experts said. Billions of dollars are invested for the high rate of return that has been available only in the stock market.

The boom of 1929 was brought on by wild speculation in which shoe-string traders scored triumphs unknown in market history. Most of them lost everything in the decline which began in 1929 and ran wild mid-1933 when the industrial average set a record low.

Livestock Market

The following is a report from the Fort Worth Livestock market, giving prices paid in the early business conducted today.

FORT WORTH, Nov. 24—UP—USDA—Livestock: Cattle 1,400. Steers scarce. Cows active - strong. Other classes steady. Utility cows mostly 4.50-9.50. Few commercial 10.50-11 canners - cutters 5.50-8.50. Shelly canners 5 down. Bulls 8-11.50. Two or three at 12. Few medium-good stocker steer yearlings 13-15.

Calves 800. Strong. Good-choice slaughter calves 13.50-19. Utility 9-14. Cull 7-9. Medium-good stocker steer calves 13-15.

Hogs 150. Butchers 25c lower. Sows steady. Choice 190-240 lbs. 15.75, the lowest since December, 1952. Choice 287 lbs. 17.75. Medium-choice lightweight butchers 17.50. Butcher pigs 16.50. Sows 15-17.

Sheep 100. Mostly steady, quality considered. Good-choice slaughter lambs 18. Cull-utility slaughter lambs 10-17. Good aged wethers 11. Few good feeder lambs 15.

Irrigation Clinic Planned In City

An irrigation clinic will be held in Pampa Dec. 17, according to E. O. Wedgeworth, manager of the C of C Ranchers and farmers in Gray and surrounding counties will be invited to attend.

The clinic, which will examine the already successful irrigation program of Panhandle, with some 25 projects underway, will be conducted by Quentin Williams, chairman of the C of C agriculture committee.

Two sessions will be held in the Palm room of City Hall from 10 to 12 a.m. and 1 to 4 p.m.

Ellender Says Dem Congress Shouldn't Scuttle Farm Plan

WASHINGTON, Nov. 24—UP—Sen. Allen J. Ellender (D-La.) said Wednesday that a Democratic Congress shouldn't try to kill the administration's flexible farm support program next year because such a move wouldn't get enough farm-belt backing to succeed.

Ellender, who will head the Senate Agriculture committee in the new Congress, is a staunch advocate of the system of rigid high supports for basic crops which the Republican Congress refused to continue into 1956.

But he said in an interview that the November congressional elections indicated to his surprise that "a lot" of Midwest farmers "want to give the flexible program a try."

Ellender's "wait and see" attitude put him somewhere between views held by President Eisenhower and House Democratic leader Sam Rayburn (Tex.). Mr. Eisenhower told a news conference Tuesday his farm belt tour last summer persuaded him Rayburn was wrong in saying that farmers want mandatory 90 per cent supports restored.

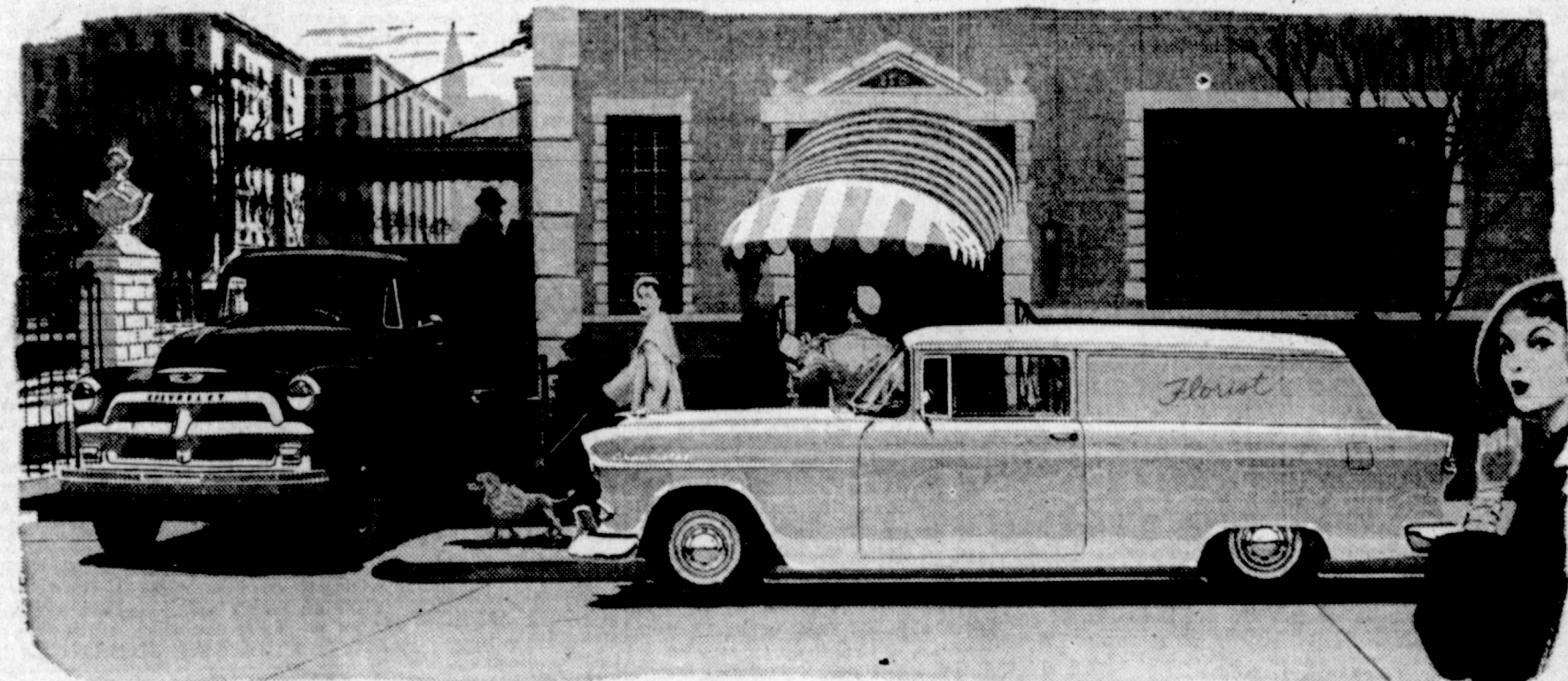
Ellender said, the flexible program will not arouse immediate and sharp farmer protests when it goes into force next year. Price supports won't be cut at all for cotton and peanuts and corn and

Celanese Corp. Votes Dividend

Directors of Celanese Corporation of America today declared a dividend of 1 1/2 cents a share on the common stock payable Dec. 23 to holders of record Dec. 3.

The Board also voted regular quarterly dividends of 1.12 1/2 on the preferred stock series "A" and "B" at the 7 per cent second preferred stock. Both preferred stock dividends are payable January 1, 1955, to holders of record December 3, 1954.

You get the First-Choice Features in America's First-Choice Truck!



'55 CHEVROLET TRUCKS

Only America's biggest selling trucks give you all these features that mean more work per day... more work per dollar! And Chevrolet is the lowest-priced truck line of all!

Table with 5 columns: DOLLAR-SAVING ENGINE FEATURES, TRIP-SAVING BODY FEATURES, LONG-LIFE CHASSIS FEATURES, ADVANCE-DESIGN CAB FEATURES, WORK-SAVING CONTROL FEATURES. Each column lists specific features of the truck.

Chevrolet is first in sales in all these weight capacities—1/2 ton, 3/4-1 ton, 1 1/2-2 tons!

CULBERSON CHEVROLET, INC.

212 North Ballard

Dial 4-4666

Jane Talk

By JANE KADINGO

Pampa News Women's Editor

A CERTAIN THRILL comes from making something yourself. It's the sense of accomplishment, I guess. But it certainly beats pride over something purchased. I'm going through that experience now, and just had to tell you about it. The lamp and planters Mrs. O. W. Johnson made, (explained in Monday's column), plus a suggestion from our managing editor, Jim Dean, inspired me to make a planter. I'll tell you all about it when I finish it. Maybe I'll have it done in time for Thursday's column, or maybe Friday.

IF YOU'RE WONDERING what to do with that old blanket that you just can't make yourself throw away, here are some suggestions on how to make them almost new again.

"AS MUCH as we all love the "newness" of a blanket fresh from the local store, on these crisp, cold nights, the warmth of any blanket, new or old, is comforting. If your blankets are still serviceable but worn looking, here are easy ways to make them look "better than new."

"PRAYED BINDINGS: The simplest blanket problem that faces every homemaker periodically is frayed bindings. Just rip off the old binding. Basic new binding around blanket, mitering corners neatly. Straight stitching around the edges is adequate but a zig-zag stitch around the edge will look twice as decorative. Why not make printed cotton bindings? Plaid cotton is dramatic on a dark blanket; a tiny flower-sprigged print is dainty on a pastel blanket. Use a medium-weight cotton fabric and cut the binding strips on the bias and about 3 1/2" wide.

"BLANKET COVERS: For blankets that are warm but faded and unsightly, a blanket cover is the answer. You'll need about 4 times the length of blanket plus 4". Tear fabric in half crosswise; stitch long edges together. Fold in half crosswise again. Seam sides, forming a bag. Turn in raw edges, inserting a 3/4" zipper in center. Or close with twill tape ties, or attach snap fasteners. For a luxury look, work a bold applique monogram in the center. Instead of turning in raw edges of applique pieces—just satin stitch over them. Slip in blankets (even two or three); tack in corners.

"BABY BLANKETS: From torn blankets, you can soon make a gray collection of covers for cribs and junior beds. Cut away torn parts and bind remaining piece in pastel cotton. If the blanket color is too dark for a baby's room, just cover one side with fabric in a eye nursery print, cut 6" larger all around than the blanket. Turn the 6" extensions to the under side of the blanket piece and finish them like regular bound edges."

TOMORROW WE WILL all sit down with friends and relatives to a wonderful Thanksgiving feast. . . and probably all will eat too much. But that's Thanksgiving. There is another side to the day, too. To "start the day right" it might be good to attend the city-wide Thanksgiving service at 8 a.m. in the First Christian Church.

I believe there is something in this "count your blessings" idea. It is so easy to say "I don't have this" or "I don't have that." . . . or maybe "how I wish I had this" or "I wish I had that." But when

Cook's Nook

By GAYNOR MADDOX
NEA Food and Markets Editor
Cauliflower is the belle of fall and winter vegetables. So treat it graciously. The first rule is to avoid overcooking.

Escalloped Cauliflower
From the New Hampshire Extension Service comes this recipe. It would be perfect with the Thanksgiving turkey.

Cream of fresh Cauliflower and Mushroom Soup
(Yield: 4 servings)
One cup cooked fresh cauliflower. 1 1/2 cup cooked tender cauliflower stems (ribs of leaves), 1/2 cup sliced fresh mushrooms, 1/2 cup diced fresh onions, 3 tablespoons margarine or butter, 3 tablespoons flour, 1/2 teaspoon salt, 1-2 teaspoon ground black pepper, 1 tablespoon cubes, 2 1/2 cups fresh cauliflower broth, 1/2 cup heavy cream.

For this pattern, send 30 cents in COINS, your name, address, size desired, and the PATTERN NUMBER to Sue Burnett (Pampa Daily News) 572 W. Quincy Street, Chicago 5, Ill.
Send 55 cents today for your copy of our pattern catalog, Basic Fashion. The fall and winter '54 line is filled with attractive, easy to sew styles for all ages.



AT BANQUET—Shown at the banquet Tuesday evening of the B&PW Club are, left to right, Mrs. Betty Ince of Amarillo, director of District 9, Texas Federation of B&PW Clubs, and Mrs. D. C. Ash, Pampa president. More than 75 members and guests attended the event.

MISSION STUDY HELD BY BAPTIST WOMEN
Members of Calvary Baptist Women's Missionary Union met at 9 a.m. Tuesday for the study of the foreign mission book, "Pilgrimage to Brazil." The study was presented by Mrs. Wes Langham, supplemented by the story of the first Baptist missionaries to Brazil, "The Bagley's of Brazil."

SOCIAL CALENDAR
WEDNESDAY
9:30—Geraldine Lawton Circle, First Baptist, with Mrs. W. B. Vandover, 317 N. Dwight.
10:00—Bishop Seamon Guild, St. Matthew's Episcopal Church, in parish house.
7:00—Sunbeams, First Baptist Church.
8:00—St. Margaret's Guild, St. Matthew's Episcopal Church, with Mrs. Bob Plummer, 1524 Williston.

GRACE FRIEND
Dear Grace Friend:
This probably to you will be sort of an unusual letter because of its nature. I would like to have your opinion on what you think I should do.

HOUSEWARMING PARTY HONORS SKELLY COUPLE
SKELLYTOWN—(Special)—Mr. and Mrs. Alvin Smith were complimented with a housewarming recently. Hostesses were Mrs. M. Bert Isbell, Frosty Hornor, A. E. Imel and Melvin Beighle.

PERRYTON BRIDE-ELECT HONORED AT SHOWER
PERRYTON—(Special)—Miss Alwida Red, bride-elect of Glen Roy Calliham, was honored recently with a bridal shower in the Notia Community Center. Hostesses were Mrs. Ralph Hale, Arnold Good, Fay Savage, George Yates, Etta Waggoner, and Fred Hale.

RELIGIOUS BELIEFS TOLD TO PARENT STUDY CLUB
The program, "Basic Religious Beliefs," was presented by Mrs. George Snell, followed by the "Sermon on the Mount" by Mrs. Tom Rose at the recent meeting of Parent Education Club in the home of Mrs. Gene Fathner.

White Elephant Sale Held By Exemplars

A "white elephant" sale was held at the recent meeting of the Exemplar Chapter, Bela Sigma Phi, in the home of Mrs. J. W. Graham Jr., Kewanee Camp. Following the sale, refreshments of cherry tarts and coffee were served.

STUDY OF AFRICA MADE BY WD BAPTIST LADIES
WHITE DEER—(Special)—Misses Marie Carreker and Geraldine Rampy were hostesses to the Business Women's Circle of the Baptist Women's Missionary Union recently. Mrs. Joe Seitz was program leader for a study on Southern Rhodesia, Africa.

WHITE DEER BROWNIES HAVE WEINER ROAST
WHITE DEER—(Special)—Browne Troop 26 met recently in Dorchester Recreation Park for a weiner roast and hike with troop leaders, Mrs. W. W. Wells and Mrs. Glendon Young.

WHITE ELEPHANT SALE HELD BY EXEMPLARS
A "white elephant" sale was held at the recent meeting of the Exemplar Chapter, Bela Sigma Phi, in the home of Mrs. J. W. Graham Jr., Kewanee Camp.

MATURE PARENT
By Mrs. Muriel Lawrence
Mark's got Chinese checkers. Recently a visiting uncle engaged him in two games. The uncle won the first; and as he moved the marble which won him the second, his seven-year-old nephew exploded. In all but words, Mark charged his uncle with cheating.

HOUSEWARMING PARTY HONORS SKELLY COUPLE
SKELLYTOWN—(Special)—Mr. and Mrs. Alvin Smith were complimented with a housewarming recently. Hostesses were Mrs. M. Bert Isbell, Frosty Hornor, A. E. Imel and Melvin Beighle.

WHITE DEER BROWNIES HAVE WEINER ROAST
WHITE DEER—(Special)—Browne Troop 26 met recently in Dorchester Recreation Park for a weiner roast and hike with troop leaders, Mrs. W. W. Wells and Mrs. Glendon Young.

WHITE ELEPHANT SALE HELD BY EXEMPLARS
A "white elephant" sale was held at the recent meeting of the Exemplar Chapter, Bela Sigma Phi, in the home of Mrs. J. W. Graham Jr., Kewanee Camp.

WHITE DEER BROWNIES HAVE WEINER ROAST
WHITE DEER—(Special)—Browne Troop 26 met recently in Dorchester Recreation Park for a weiner roast and hike with troop leaders, Mrs. W. W. Wells and Mrs. Glendon Young.



THANKSGIVING TREAT—warm apple dumplings subtly spiced and topped with a scoop of ice cream.

Turnovers, Ice Cream Provide Perfect End To Turkey Feast

By GAYNOR MADDOX
NEA Food and Markets Editor
The State of Washington offers her Delicious apples and luscious filbert nuts to the gala Thanksgiving dinner menu.

WHITE DEER BROWNIES HAVE WEINER ROAST
WHITE DEER—(Special)—Browne Troop 26 met recently in Dorchester Recreation Park for a weiner roast and hike with troop leaders, Mrs. W. W. Wells and Mrs. Glendon Young.

RELIGIOUS BELIEFS TOLD TO PARENT STUDY CLUB
The program, "Basic Religious Beliefs," was presented by Mrs. George Snell, followed by the "Sermon on the Mount" by Mrs. Tom Rose at the recent meeting of Parent Education Club in the home of Mrs. Gene Fathner.

WHITE DEER BROWNIES HAVE WEINER ROAST
WHITE DEER—(Special)—Browne Troop 26 met recently in Dorchester Recreation Park for a weiner roast and hike with troop leaders, Mrs. W. W. Wells and Mrs. Glendon Young.

Baby's Colds
Relieve Suffering Fast-Effectively with VICKS VAPORUB

LET ALL PEOPLE GIVE THANKS AT THE
Thanksgiving
Worship Service
at the First Christian Church
Thursday, November 25, 8 A.M.
THANKSGIVING SERMON BY
Dr. Woodrow Adcock
PASTOR, FIRST METHODIST CHURCH
Special Program of Thanksgiving Music by
High School A Cappella Choir
Directed by Robert Payne
Junior High 9th Grade Choir
Directed by Jim Austin
Sponsored by Pampa Ministerial Alliance

human
ions,
of the
chief
ember
rd in
a were
s where
been a
devor
how
ad as-
to his
oot, at
rying
larred
special
them
vealing
from
oosvelt
ord, at
n U.S.
Stalin
cession
to King
ia, and
replied
he him
United
s should
sment
nd give
the fil-
r secret
etailed
the van-
com-
ment
ch I be-
t from
with
ies, of
of the
t is con-
ormation
tic about
n agents
n in for-
"social-
re Com-
of Ameri-
provides
Richard
cracking
unless, of
this was
to build
s. Bebel
all peo-
in the
rets
LER
form d.
d, proved
ry little
n with a
nan many
of college
is rich
time to
He read
ld help
stant. He
mce, and
I read not
sure. I
g. Elimi-
vial, con-
give your
ll open up
Press
LENTY
Fantastic
Food
SE
on River,
ant ships
their holds
ushels of
a James
River
other ves-
s-shift sur-
hold 73-
t, a small
t worth of
nie Sam
a. I
fantastic
e cause of
support,
se GOP-
tempted to
its unplan-
high price
s to grow
ould eat—
tuted, in-
ports to
switch to
rket.
der sharp-
atic candi-
House and
l election,
that both
American
grow sur-
m indefi-
re a WW
boost farm
rice could
ine allies.
linnet and
for them
oing stop-
griculture
io efforts
is admini-
g the last
Washing-
\$1,000,000,
products

The Berrys comic strip panels with dialogue about parking and a man leaning out of a truck.

The Jackson Twins comic strip panels with dialogue about a Spanish tutor and mamba lessons.

Blondie comic strip panels with dialogue about Daswood and hearing noises in the kitchen.

Alley Oop comic strip panels with dialogue about alley riding and a holler boogie.

Bo comic strip panels with dialogue about a dog and a hospital.

Buzz Sawyer comic strip panels with dialogue about the world's fastest seaplane and a helicopter.

Martha Wayne comic strip panels with dialogue about a moon and a toast.

Chips comic strip panels with dialogue about money, eyes, and kisses.

Bugs Bunny comic strip panels with dialogue about rain and a bus stop.

Peep comic strip panels with dialogue about stuffing a turkey and a dog.

OUT OUR WAY comic strip panels with dialogue about a fine close-up and a movie film.

Steve Canyon comic strip panels with dialogue about boots and a cowboy.

Vic Flint comic strip panels with dialogue about a lie detector and a place.

Little Doc comic strip panels with dialogue about a dog and a picture.

Wash Tubbs comic strip panels with dialogue about a picture and a witness.

Boots comic strip panels with dialogue about a pig and a picture.

Mickey Finn comic strip panels with dialogue about a picture and a picture.

Freckles comic strip panels with dialogue about a picture and a picture.

Susie Q. Smith comic strip panels with dialogue about a picture and a picture.

OUR BOARDING HOUSE comic strip panels with dialogue about a picture and a picture.

Table of contents listing various sections and their page numbers, including KEVA, K, and Te.

HAVE ★ PANMA NEWS ★ CLASSIFIED ADS ★ RING YOUR REGISTER THAT'S WHAT YOU ARE IN BUSINESS FOR - TO RING YOUR REGISTER

TO SELL - BUY - RENT - TRADE ★ BRING YOUR WANT AD IN ★ MAIL IT ★ OR PHONE 4-2525 ★ AND ASK FOR CLASSIFIED

KEYA - Shamrock 1800 on Your Radio Dial... 9:15-Texas Roundup (news) 9:30-Music Show 9:45-Rhythm Clock Time 10:00-World News from KEVA 10:15-Time, Tuna, Temperature 10:30-Behind the Scenes (news) 10:45-Top Vocalists 10:55-Morning Serenade 11:00-Church of Christ 11:05-Weekly Headlines 11:10-Weather 11:15-News 11:20-Music 11:25-Weather 11:30-News 11:35-Weather 11:40-News 11:45-Weather 11:50-News 11:55-Weather 12:00-News

KPAT 1230 on Your Dial WEDNESDAY 9:00-Panhandle Farm Roundup 9:15-Panhandle Farm Roundup 9:30-Mary Morning News 9:45-Farm Report 9:55-Weather Summary 10:00-Ministerial Alliance 10:05-Five Minute News 10:10-Coffee Club 10:15-Five Minute News 10:20-Second Cup of Coffee 10:25-Women's Page 10:30-Coffee Club 10:35-Mid-Morning News 10:40-Music on Parade 10:45-Hats to Veterans 10:50-Five Minute News 10:55-Tina Turner 11:00-C. Daniels Show 11:05-Les Brothers (Gospel Songs) 11:10-Lunchbox Music 11:15-Tune of Yesterday 11:20-Five Minute News 11:25-World Highlights 11:30-World News 11:35-World News 11:40-World News 11:45-World News 11:50-World News 11:55-World News 12:00-World News

KPDN 1340 on Your Radio Dial WEDNESDAY P.M. 1:00-Radio Novel "Carnival Lady" 1:15-Betty's Beauty Shop, phone 4-2149 1:30-Madeline Carroll Story Time 1:45-Panhandle Plaster Party 1:55-Mary Morning News 2:00-Bobby Benson Show 2:05-World News 2:10-World News 2:15-World News 2:20-World News 2:25-World News 2:30-World News 2:35-World News 2:40-World News 2:45-World News 2:50-World News 2:55-World News 3:00-World News 3:05-World News 3:10-World News 3:15-World News 3:20-World News 3:25-World News 3:30-World News 3:35-World News 3:40-World News 3:45-World News 3:50-World News 3:55-World News 4:00-World News

The Panma News will not be responsible for more than one day on errors appearing in this issue. Call immediately when you find an error.

PERSONAL 3 PAMPA MONUMENT CO. EDWARD POHAR, OWNER-MGR. 211 E. FOSTER - PH. 4-2711

THURSDAY A.M. 6:00-World News 6:05-World News 6:10-World News 6:15-World News 6:20-World News 6:25-World News 6:30-World News 6:35-World News 6:40-World News 6:45-World News 6:50-World News 6:55-World News 7:00-World News 7:05-World News 7:10-World News 7:15-World News 7:20-World News 7:25-World News 7:30-World News 7:35-World News 7:40-World News 7:45-World News 7:50-World News 7:55-World News 8:00-World News 8:05-World News 8:10-World News 8:15-World News 8:20-World News 8:25-World News 8:30-World News 8:35-World News 8:40-World News 8:45-World News 8:50-World News 8:55-World News 9:00-World News

Loans 12 CASH \$10 TO \$50 PERSONAL SALARY WESTERN GUARANTY LOAN COMPANY

13 Business Opportunity 13 SMAR'S CAFE, 211 E. Foster, across from Junior High School, 212 N. Cuyler, for sale or lease. See owner, Mrs. W. W. Foster, phone 4-2525.

17-A Ceramics 17-A UNIQUE but inexpensive gifts, instructions, supplies. Mrs. Gerald W. Foster, 211 E. Foster.

Appliance Repair 43 KIRRIE Washer Service. All makes machines repaired. 7 days weekly. 705 W. Foster. Phone 4-2512.

57 Good Things to Eat 57 THANKSGIVING TURKEYS, nice and fat. Will dress free, delivery any time. Mrs. W. W. Foster, phone 4-2525.

60-A Sewing Machine 60-A WE HAVE Experienced Repairmen and use only genuine Singer parts. All work guaranteed. Call 4-2525 or bring to 214 N. Cuyler, Singer Sewing Center.

They'll Do It Every Time By Jimmy Hatlo



WHEN MISS RULER IS GIVING A STUDENT "WHAT FOR," IT SOUNDS LIKE HE'S THE WORST APPLE IN THE LOT...

Y-YOU LITTLE RUFFIAN! I SAW YOU PULL LITTLE GRENADINE'S HAIR, YOU YOUNG BULLY! Y-YOU JINGOOPOO! YOU'RE ON THE WAY TO BECOMING A JUVENILE DELINQUENT!

THEN COMES PARENTS VISITING DAY, AND SOMEHOW JUNIOR ISN'T SO BAD AFTER ALL...

TWILIENCE? WHY HE'S ONE OF THE... I SHOULD SAY THE BEST STUDENT IN THE CLASS... ALL-AMERICAN BOY... LITTLE GENTLEMAN...

FOR SALE: 12 ft. used home freezer, \$125. Used Maytag automatic washer, \$100. ...

68 Household Goods 68 95 Furnished Apartments 95 103 Real Estate for Sale 103

69 Miscellaneous 69 97 Furnished Houses 97 103 Real Estate for Sale 103

70 Musical Instruments 70 98 Unfurnished Houses 98 103 Real Estate for Sale 103

75 Feeds and Seeds 75 DROUGHT EMERGENCY All Grain 20% Cube

Purina Flock Chow Laying Ration \$4.70 cwt. Free Egg Cartons We Do Custom Mixing

Harvester Feed Co. Dial 4-2561

83 Farm Equipment 83 84 Office, Store Equipment 84

FOR SALE: Used Oak Flat Top Desk and matching swivel chair. Both in excellent condition. Call Bob Fugate Phone 4-2525

89 Wanted to Buy 89 WANTS to buy used furniture, especially kitchenware and good strong chairs. 221 W. Brown. Phone 4-2525.

92 Sleeping Rooms 92 95 Furnished Apartments 95

SPECIAL BRAND NEW 1955 TRAVELITE MOBILE HOME With Complete Bath \$1995 B & B TRAILER COMPANY

1213 E. FREDERIC PHONE 4.9922

116 Auto Repair, Garages 116

117 Body Shops 117

120 Automobiles for Sale 120

121 Trucks - Tractors 121

122 Tractors 122

123 Tractors 123

124 Tractors 124

125 Tractors 125

126 Tractors 126

127 Tractors 127

128 Tractors 128

129 Tractors 129

130 Tractors 130

131 Tractors 131

132 Tractors 132

133 Tractors 133

134 Tractors 134

Television Programs

KFDA-TV Channel 11 Wednesday, Nov. 24 11:00-11:15 Valiant Lady 11:15-11:30 Love of Life 11:30-11:45 Morning Movie Time 11:45-12:00 Jenny Foster 12:00-12:15 News and Weather 12:15-12:30 Lina Sheldon Show 1:00-1:15 Panhandle Postscript 1:45-2:00 Homemakers' Matinee 2:00-2:15 Bob Crosby 2:15-2:30 The Brighter Day 2:30-2:45 Secret Storm 2:45-3:00 On Your Account 3:00-3:15 Garry Moore 3:15-3:30 Movie Quick Quiz 3:30-3:45 Phantom Empire 4:45-5:00 Friendly Freddie Time 5:00-5:15 The Plainsman 5:15-5:30 Flash Gordon 5:30-5:45 Doug Edwards 5:45-6:00 News 6:00-6:15 Weather Vane 6:15-6:30 Godfrey 6:30-6:45 Racket Squad 6:45-7:00 I've Got a Secret 7:00-7:15 Blue Ribbon Boule 7:15-7:30 TBA 7:30-7:45 News Final 7:45-8:00 Weather Vane 8:00-8:15 Sports Review 8:15-8:30 Notre Dame Football Game 8:30-8:45 The Late Movie

Television Programs

KGNC-TV Channel 4 Wednesday, Nov. 24 9:00-9:15 Ding Dong School 9:15-9:30 A Time to Live 9:30-9:45 Comedy Kapers 9:45-10:00 Home 10:00-10:15 Weldon Bright Show 10:15-10:30 Betty White Show 10:30-10:45 Feather Your Nest 10:45-11:00 Channel 4 Matinee 11:00-11:15 News & Weather 11:15-11:30 News Ideas 11:30-11:45 Double Trouble 11:45-12:00 Greatest Gift 12:00-12:15 Food Fiesta 12:15-12:30 Harkins Falls 12:30-12:45 Gordon Suits Show 12:45-1:00 World of Mr. Sweeney 1:00-1:15 Modern Romances 1:15-1:30 Pinky Lee Show 1:30-1:45 Howdy Doody 1:45-2:00 For Kids Only 2:00-2:15 Captain Video 2:15-2:30 Kiddie Korral 2:30-2:45 Weldon Bright Show 2:45-3:00 News & Weather 3:00-3:15 Eddie Fisher Show 3:15-3:30 Johnny Linn's Notebook 3:30-3:45 Weldon Bright Show 3:45-4:00 Range Rider 4:00-4:15 Libraria 4:15-4:30 Badge 74 4:30-4:45 Al Rogers Barn Dance 4:45-5:00 Big Town 5:00-5:15 All Star Theater 5:15-5:30 News & Weather 5:30-5:45 Sports Scoreboard 5:45-6:00 Featuer Film

Television Programs

KFDA-TV Channel 11 Thursday, Nov. 25 11:00-11:15 Valiant Lady 11:15-11:30 Love of Life 11:30-11:45 Morning Movie Time 11:45-12:00 Jenny Foster 12:00-12:15 News and Weather 12:15-12:30 Lina Sheldon Show 1:00-1:15 Panhandle Postscript 1:45-2:00 Homemakers' Matinee 2:00-2:15 Bob Crosby 2:15-2:30 The Brighter Day 2:30-2:45 Secret Storm 2:45-3:00 On Your Account 3:00-3:15 Garry Moore 3:15-3:30 Movie Quick Quiz 3:30-3:45 Phantom Empire 4:45-5:00 Friendly Freddie Time 5:00-5:15 The Plainsman 5:15-5:30 Flash Gordon 5:30-5:45 Doug Edwards 5:45-6:00 News 6:00-6:15 Weather Vane 6:15-6:30 Godfrey 6:30-6:45 Racket Squad 6:45-7:00 I've Got a Secret 7:00-7:15 Blue Ribbon Boule 7:15-7:30 TBA 7:30-7:45 News Final 7:45-8:00 Weather Vane 8:00-8:15 Sports Review 8:15-8:30 Notre Dame Football Game 8:30-8:45 The Late Movie

Television Programs

KGNC-TV Channel 4 Thursday, Nov. 25 9:00-9:15 Ding Dong School 9:15-9:30 A Time to Live 9:30-9:45 Comedy Kapers 9:45-10:00 Home 10:00-10:15 Weldon Bright Show 10:15-10:30 Betty White Show 10:30-10:45 Feather Your Nest 10:45-11:00 Channel 4 Matinee 11:00-11:15 News & Weather 11:15-11:30 News Ideas 11:30-11:45 Double Trouble 11:45-12:00 Greatest Gift 12:00-12:15 Food Fiesta 12:15-12:30 Harkins Falls 12:30-12:45 Gordon Suits Show 12:45-1:00 World of Mr. Sweeney 1:00-1:15 Modern Romances 1:15-1:30 Pinky Lee Show 1:30-1:45 Howdy Doody 1:45-2:00 For Kids Only 2:00-2:15 Captain Video 2:15-2:30 Kiddie Korral 2:30-2:45 Weldon Bright Show 2:45-3:00 News & Weather 3:00-3:15 Eddie Fisher Show 3:15-3:30 Johnny Linn's Notebook 3:30-3:45 Weldon Bright Show 3:45-4:00 Range Rider 4:00-4:15 Libraria 4:15-4:30 Badge 74 4:30-4:45 Al Rogers Barn Dance 4:45-5:00 Big Town 5:00-5:15 All Star Theater 5:15-5:30 News & Weather 5:30-5:45 Sports Scoreboard 5:45-6:00 Featuer Film

HOP TO IT!!!

THESE BUILDING MATERIALS WON'T LAST LONG AT THESE PRICES!

USED BRICKS ... 1c each

CORRUGATED TIN 5c sq. ft.

USED LUMBER

PANHANDLE AUTO WRECKING CO. Miami Hiway Phone 4-8661

STOP BUY ANY CAR UNTIL YOU'VE SEEN THE 1955 RAMBLERS

ON DISPLAY Nov. 26 A

SCHNEIDER HOTEL GARAGE

McClure Nash Company 118 S. FROST DIAL 4.612

OPEN HOUSE Every Day This Week PRAIRIE VILLAGE

VA and FHA Monthly Payments Less Than Rent or Car Payments! No Down Payment to Vets (Closing Costs Only) Low Down Payment to Non-Vets

Hughes Development Co., Inc. 400 Hughes Bldg. Dial 4-3211

Ted Simmons, Salesman Dial 4-5675

TEXAS FURNITURE CO. 210 N. CUYLER - PH. 4-4623

TEXAS FURNITURE CO. 210 N. CUYLER - PH. 4-4623

TEXAS FURNITURE CO. 210 N. CUYLER - PH. 4-4623

TEXAS FURNITURE CO. 210 N. CUYLER - PH. 4-4623

TEXAS FURNITURE CO. 210 N. CUYLER - PH. 4-4623



Come See The Fighting Harvesters In Their Last Game Of The Season Pampa Harvesters — vs — Borger Bulldogs

**HOMECOMING
HARVESTERS'
GAME**

Harvester Stadium - Thurs. Nov. 25 - 2 p.m.

Attend This Turkey Day Classic

Everybody Get Behind The Harvesters With Your Support

- | | | |
|---|--|---|
| RICHARD DRUG
A Complete Camera Store | JOHNSON'S RESTAURANT
Bring Your Friends To Dine With Us | DES MOORE
Payne Furnaces For Comfort |
| GEORGE H. NEEF WELDING WORKS
We Go Any Where | SCHNEIDER HOTEL
Welcome To Our Harvesters and Visiting Teams | CHARLIE FORD'S SHAMROCK SERVICE
Tires - Oils - Shamrock Gasoline |
| C. A. HUSTED, GRADING CONTRACTOR
Latest Equipment Ready For Any Job | HOGUE-MILLS EQUIPMENT, INC.
Your International Harvester Dealer | PAMPA WAREHOUSE AND TRANSFER
Packing - Crating - Storage for Your Valuable Possessions |
| J. T. RICHARDSON, WATER SERVICE
Rig Building - Tank Trucks | LA BONITA BEAUTY SHOP
Merle Norman Cosmetics | BUDDY'S SUPER MARKET
Everything For Your Table Needs |
| LLOYD KUNTZ SINCLAIR SERVICE
Years of Car Service Experience | COURT HOUSE CAFE
A Meeting Place - Where Good Food Is Served | JACK VAUGHN'S PHILLIPS 66
Flite Fuel - Phillips Service |
| MURPHY MOTELS, REFRIGERATED AIR
No. 1 Highway 69 — No. 1 Downtown | C. M. JEFFRIES, TRUCKING
Service Is Our First Consideration | EMPIRE SOUTHERN GAS
Cook With Gas |
| EMPIRE CAFE
American and Chinese Food | JAMES E. LEWIS GULF STATION
422 W. Foster - Complete Gulf Service | SOUTHWESTERN PUBLIC SERVICE
Our Service At Your Service |
| CLARENCE WARD'S SUPER MARKET
Open Late Evenings and Sunday | McWILLIAMS-MOORE CHAMPLAIN SERVICE
We Never Sleep | ADDINGTON'S WESTERN STORE
Prices Are Born Here - Raised Elsewhere |
| DR. PEPPER BOTTLING CO.
For Your 10-24 Refreshments | SUNSHINE DAIRY
From Moo To You - In An Hour Or Two | McCARLEY'S JEWELRY
Diamonds - Watches - Silverware - Crystal - China |
| GATE VALVE SHOP AND SUPPLY
Pressure Tested - Sales - Service | IRA DEAREN GULF SERVICE
224 Acock - At The Sign of the Orange Disc | SMITH'S QUALITY SHOES
Rand Shoes For Men |
| BOB CLEMENTS, DRY CLEANERS
High Standard Dry Cleaning | PAMPA OFFICE SUPPLY
Everything For The Office | J. S. SKELLY, LIQUIFIED PETROLEUM GAS
Domestic and Commercial - Dial 4-4002 |
| REEVES OLDS, INC.
Cadillac, Oldsmobile Sales and Service | IDEAL FOOD STORES
No. 1 220 N. Cuyler No. 2 206 S. Cuyler | PLAINS ELECTRIC — R. L. RATLIFF
Industrial, Residential Wiring and Pole Line Construction |
| TARPLEY MUSIC STORE
Musical Instruments - Pianos - Records | TEXAS FURNITURE CO.
Quality Home Furnishings | RADCLIFF BROTHERS ELECTRIC
Appliance Repairing |
| PAMPA PAINT AND GLASS
See Us For Floor Coverings | MASTER CLEANERS
Where Cleaning Is An Art | MAURER MACHINERY CO.
Minneapolis-Moline Farm Machinery |
| | M. AND L. GAS STOP
LONGS INDEPENDENT SUPPLY | ALLIED PAINT STORE
Fine Line of New Wall Paper |