

WEATHER

May 17	86	54	.27
May 18	86	49	.09
May 19	85	52	.00
May 20	91	58	.00

BAILEY COUNTY JOURNAL

'The Community Of Opportunity-Where Water Makes The Difference'



Vol. 28, No. 12

12 PAGES TODAY

Published Every Sunday At Muleshoe, Bailey County, Texas 79347

20¢

SUNDAY, MAY 21, 1989

Nursing Home Problems Discussed

Roof, Plumbing Repair Must Be Made 'Soon'

around Muleshoe

At 5 p.m. tomorrow, Monday, Senator Phil Gramm will arrive at the new Muleshoe Municipal Airport to conduct ribbon-cutting and formal opening ceremonies for the airport.

The public is invited to attend the ribbon-cutting.

Muleshoe High School's varsity baseball team will play for Bi-District tomorrow, Monday, May 22, at 5 p.m.

They will be playing a one-game elimination played at Dalhart. The game will be played at Randall High School north of Canyon.

The Muleshoe Special Education Department is honoring Betty Jennings for 30 years of service to Muleshoe Schools with a reception on Sunday, May 28, from 3-5 at the First United Methodist Church.

The Special-Ed Dept. said the reception is open to the public.

Because of the heavy rains during the past week, the 25th anniversary reception planned for Kenneth and Joyce McGeehee has been changed from their home to the Muleshoe Church of Christ at 21st and American Blvd.

It will be held 2:30-4 p.m. today, Sunday.

A Muleshoe student has been named to the Dean's Honor Roll at ENMU-Clovis for the 1989 Spring Semester, according to Dr. Phyllis Musgrove, dean of instruction and student development.

Listed on the honor roll is Russell D. Daily, Muleshoe.

Ali Cage, an Austin College freshman from Muleshoe, has been named to the Student Development Board (SDB) of the college.

The daughter of Mr. and Mrs. J. D. Cage, she will serve on the public relations committee.

The college relations committee. Page 6, Col. 1

Bailey County Gets Some Hail Damage

Just after 10:30 a.m. Wednesday, with ominous black clouds moving into Bailey County from eastern New Mexico, the National Weather Service from Lubbock notified local authorities that a "very dangerous" cloud was moving into the county, prompting immediate weather watches.

School Bands End-Of-Year Concert Set

Mark Heidel, band director at Muleshoe High School and Martha Anthis, band director at Watson Junior High School, have issued a joint invitation for the annual end-of-the-year band concert.

The concert will be held Tuesday, September 23, at 7 p.m. in the Muleshoe High School auditorium, and there will be no charge to attend.

Performing will be the Watson Junior High School Cadet and Intermediate bands and from Muleshoe High School will be the Jazz and Concert bands.

Heidel and Anthis said, "We would like to extend a personal invitation for the general public to come to the concert to enjoy an evening filled with music."



EMERGENCY PERSONNEL UNLOAD ACCIDENT VICTIM--Late Wednesday evening, EMT's and paramedics unload Jeremy Carpenter, 18, from the Bailey County EMS ambulance at the emergency entrance of West Plains Medical Center. Carpenter, who was gravely injured in a vehicle accident minutes before, received further emergency treatment before being transferred by ambulance and helicopter to Methodist Hospital in Lubbock. (Journal Photo)

Muleshoe Still Gaining On Year With Sales Tax Rebate Check

State Comptroller Bob Bullock said Friday that May's statewide sales tax payments to cities, counties and transit authorities continued to follow this year's steady upward trend.

"We've watched sales tax rebates across the state grow by more than 11 percent overall this year. More money is being pumped into our economy, which is great for the state and local governments," Bullock said.

For the latest reporting period, Muleshoe's check was up some 2.07 percent from a year ago. The

net payment for this period was \$23,283.97, increased from the \$22,812.74 of a year ago. Total payments to date for 1989 are \$96,877.30, up 6.40 percent from the \$90,953.81 reported at the same time in 1988.

Morton, in Cochran County, shows a decrease for the pay

School Board Honors Local Civic Group

Thursday night, members of the Board of Trustees of the Muleshoe Independent School District, along with administrators, held a banquet to especially recognize a number of local business and professional people and organizations.

Dr. Lawrence Ward, superintendent, acted as Master of Ceremonies and introduced the MISD Board president, who in turn, introduced the MISD Board of Trustees and their spouses.

Special guests recognized were Mayor and Mrs. Darrell Turner; Muleshoe Area Industrial Foundation Chairman Duane and Mrs. Castleberry; Muleshoe Chamber of Commerce Manager John and Mrs. Smith; Muleshoe Chamber of Commerce President Robert and Mrs. Montgomery; Norma Bruce and Billie Downing, representing the Jennyslippers and Judy Watson and Clea Williams, both local news media representatives.

Singled out for special recognition were teachers in the MISD with 25 or more years' service, including Kerry Moore, 28; Norma Prather, 30; Bob Graves, 30; Joyeline Costen, 33; Helen Bryant, 36 and Elizabeth Watson, 43. This adds up to 199 years with the MISD, said the superintendent, and 212 total years of teaching.

Retiring teachers, Ben Gramling, 30 years and Gladys Herman, 26 years, were presented plaques.

Also receiving plaques were Cont. Page 6, Col. 4

period, as well as an overall decrease for the year. Their payment for this period a year ago was \$7,129.87, down by 13.91 percent to \$6,138.00 for May this year. Their total for the year reflects a 3.55 percent decrease, with payments of \$26,121.29 thru May this year, compared to \$27,083.11 for the same time last year.

In Lamb County, Littlefield shows a May decrease, with a check for \$30,143.57, down 4.54 percent from the \$31,576.65 of a year ago. Overall payments through May of this year show an increase, however, of 4.41 percent. Total payments to date for the year are \$115,036.17, up from the \$110,180.87 received through May, 1988.

From Parmer County, Friona showed a decrease from May, 1988 to their current check of 8.89 percent. Last year, Friona received a check in May in the amount of \$13,613.67. The check

Cont. Page 6, Col. 3

As the temporary board of directors of the proposed Muleshoe Area Hospital District continue to delve into the financial condition of West Plains Medical Center and the Mule-

Youth Hurt Wednesday In Car Wreck

Mrs. Jim (Frankie) Carpenter took a course in Cardiopulmonary Resuscitation (CPR) because she is one of the operators of the Methodist Day Care Center at the First United Methodist Church.

Wednesday evening, Mrs. Carpenter had occasion to use her knowledge of CPR and as a result, saved the life of an individual, ironically, her own son.

Jeremy left the Carpenter home just ahead of his parents, on their way to church services in Muleshoe.

About three-four miles west of Muleshoe on FM1760, just a few minutes later, the Carpenters were the first to arrive at a one vehicle accident.

The accident victim was their 18-year old son, Jeremy, a senior at Muleshoe High School.

Although an ambulance was called for, the Carpenters loaded their son into their own vehicle, and started for the hospital in Muleshoe, with Mrs. Carpenter administering CPR until they met the Bailey County EMS ambulance, and EMT's and a paramedic took over. However, Mrs. Carpenter was credited with saving the life of her gravely injured son.

After working on the injured youth for a few minutes, the ambulance completed the transfer to West Plains Medical Center for additional stabilization treatment.

From West Plains, the ambulance started for Lubbock with the youth, meeting the Carelink helicopter in Amherst. They made another transfer of Jeremy, this time into the helicopter for transfer to Methodist Hospital in Lubbock.

On Thursday afternoon, a Muleshoe EMT was allowed to briefly visit Jeremy in Surgical ICU at the hospital. Although seriously injured, and both arms broken, Jeremy was once again breathing 'on his own' and was alert and recognized the EMT.

At presstime, he was listed in serious condition at the Lubbock hospital.

shoe Nursing Home, one message is coming through loud and clear and stays unchanged -- "If the hospital district election fails, the hospital will be closed, immediately. However, that's not where the story ends -- Jim Burgess, president of the West Plains Medical Center Board of Directors, along with John Chisholm, hospital administrator say, "The hospital and nursing home are tied together, if one goes, they both go."

Although the nursing home is currently 'standing on its own,' it needs some major repairs, and if the hospital district election fails to get approval, there will be no money for the renovations, thus the facility will also have to be closed, state the hospital officials to the temporary board.

Rachel Snider, administrator of the Muleshoe Nursing Home gave a current report to the MAHD Wednesday night, and was well prepared to answer any questions posed by the board members, who are trying to find out conditions, financial and physical, so they can start looking for some solutions.

In her capable presentation, Ms. Snider told the board that in maintenance, which is routine with each and every building, whether it be a home, or a business, magnify that routine cost by a much more immense sized building and you will come up with something like this -- \$5,000 to replace ceiling tiles, as the ceilings are beginning to crack; plumbing, \$2,200 to solve the low hot water problem at one end of the nursing home; \$9,140 to \$12,800 for roof repair, depending on the guarantee sought; \$7,200 to replace carpeting; \$4,750 for replacing eaves, and painting and general fix up; and additional parking areas, \$7,800.

All in all, the maintenance is the same as it would be for any building, as stated, but because of the much larger size, would cost much more. Some of the repairs are 'cosmetic' at this point, but other repairs would be mandatory in order to keep Medicaid certification.

In prioritizing, Ms. Snider said both the plumbing and roof leaks were at the top of the list.

The nursing home administrator discussed the occupancy, saying 60 percent is private pay and 40 percent is Medicaid at this time, with a population that fluctuates, because of deaths and people in the hospital.

She said most people are Cont. Page 6, Col. 1



AND, IN THE END, HE GOT HIS MAN--Larry Gonzalez leaped high into the air to catch the ball at third base as he attempted to put out a Canyon runner during high school baseball action in Muleshoe Tuesday evening. Gonzalez was successful, and the runner was 'out on third.' (Journal Photo)

Great Buys & Super Savings

Get at least **\$60** Maybe more

Your old mower is worth a great deal when you trade up to Snapper.

A&M's MAY SALE

MARKETPLACE

S.P.E.C.I.A.L.S

Cooler
Specials

SNAPPER

14 DAY MONEY BACK GUARANTEE

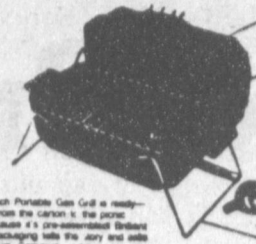
Cash in on that old mower now when you buy a 4 or 5 hp walk mower at regular retail price. From start to finish you can't beat a Snapper. Liberal trade-in allowances are also available on other walk mowers. Offers end soon!

If not satisfied with the performance of your Snapper product, return it within 14 days after purchase for a full refund. Applies to new Snapper lawn and garden products purchased at participating dealers for non-commercial use. See your dealer for details. AT PARTICIPATING DEALERS. Not valid with any other promotion.

It's a snap with a Snapper.

Portable Gas Grill Ready to go everywhere!

Skorck Grill For: **\$199**



ATTACHED LID
LAVI ROCK
CONNECT & PORTABLE
CAREFREE HANDLES
SUPPORT LEGS

MTD 3 1/2 HP 20" Push Mower

Now: **\$99.99**



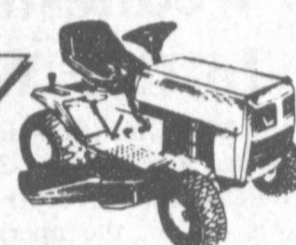
Reg. \$129.99

Lawn & Garden
Specials

Hurry In!

MTD 12 HP, 38", 7 Speed Riding Mower

Only: **\$849.99**

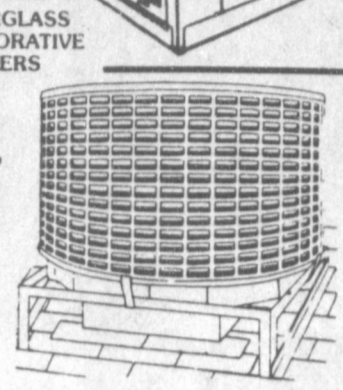


Reg. \$959.99

Aireze

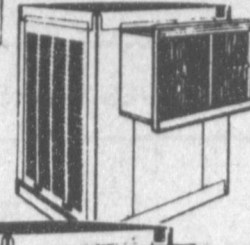
Downdraft Air Cooler

5500 CFM For: **\$439.99**



FIBERGLASS EVAPORATIVE COOLERS

Window Cooler 2 Speed Evaporative Style



2800 CFM Only: **\$199.99**

#WH2800P-2 Reg. \$239.99

Window Cooler 2 Speed 3000 CFM



Just: **\$299.99**

#FK-301-2 Reg. \$354.99

Window Cooler, 2 Speed

4500 CFM Now: **\$359.99**

Reg. \$389.99

Air Cooler Pads



Pad No.	Pad Size
1	28x34
2	22x34
3	24x30
5	24x38
8	20x36
30"	20x40

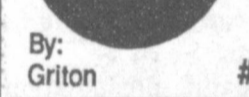
Tool Specials

14" Cut-Off Wheel For chop saws. For: **\$4.99**



Metal Cutting #40278

7" Grinding Wheel Now: **\$2.49**



By: Griton #DA7085 Reg. \$2.89

Super Lawn Food

40 Lb. Bag Just: **\$6.99** Reg. \$7.59



Covers: 3,000 Sq. Ft.



Air Conditioner Pump

For: **\$5.99** Reg. #Economy

No. 1, 2, 3, 5, At: **\$1.49**

8 is **\$1.89**

No. 30 is Just **\$2.29**

3/8" Cordless Drill and Screwdriver

Variable Speed **\$119.99**



All Season's Turf Food

20 Lb. Bag At: **\$5.49** Reg. \$6.49



30 Gallon Natural Gas

Household Specials

Just: **\$109.99** Reg. \$139.99



Two Handle Kitchen Washerless Faucet

For: **\$15.99** Reg. \$25.99

2 Handle Faucet w/o Pop



For: **\$10.99**

Reg. \$16.49

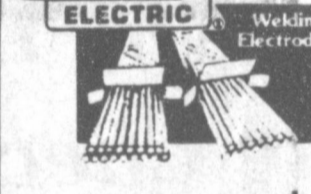
Truck Tote



At: **\$9.99**

Automotive SPECIALS

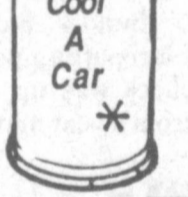
SKIL



Welding Rods Feeltweld 35

Only: **\$36.99**

12 oz. Aerosol Can



Freon Refrigerant

Only: **\$1.19**

High Pressure Washer

Now: **\$299.99**



TURBO-WASH Turn work into fun! The miracle's in the suds. The Only Way To Wash

The Incredible 3 Minute Car Wash



Just: **\$19.99** Reg. \$24.95

NEW ADJUSTABLE KNOB LETS YOU CONTROL SOAP AND WATER MIXTURE

3/4 HP Sander and Polisher

Now: **\$49.99** Reg. \$55.29

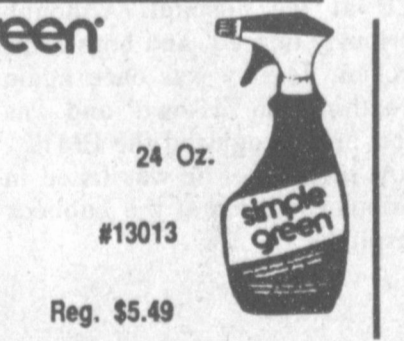


#9531

- Compact and powerful, easy to use
- Powerful 3/4 HP (max. motor output) makes quick work of sanding
- Versatile, can be used as a power primer
- Two speeds and reversible auxiliary handle provide good control
- 6" cord
- Includes backing pad, sandpaper disc, and polishing bonnet
- Full 2-year home use warranty

simple green

For Only: **\$3.99** 24 Oz. #13013 Reg. \$5.49

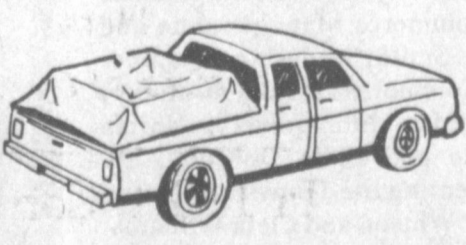


Super Hard Shell Turtle Wax



Reg. \$4.59

Keep That Cargo Dry & Safe



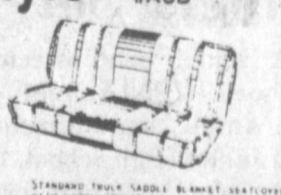
Truck Tarp 6'x8'

Now: **\$10.99** Reg. \$21.99

#684-T-68

Standard Saddle Blanket Seatcovers 1-Piece Bench Style #ASB

Now: **\$21.99** Reg. \$29.99



Battery Sale

24, 24 For 74 Top Mount or Side Mounting At: **\$34.99**

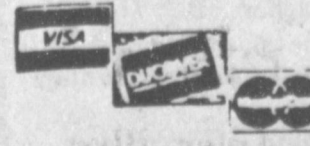
#GB-1183 #GB-1193 #GB-1373

3 Yr. Pro-Rated Warranty At: **\$41.99**

#GL 1183 #GL 1193 #GL 1373 5 Yr. Pro-Rated Warranty (Exchange Required On All Batteries)



2600 Mabry Dr. Clovis, N.M. 1-505-762-7717
1601 S. Ave. D. Portales, N.M. 1-505-356-8543
1302 W. American Blvd., Muleshoe, Texas 1-806-272-5571



All Stores Open Monday-Saturday 7:30 A.M. - 6:00 P.M.
Sundays 12:30 - 5:00 P.M.

FINE QUALITY CHAMOIS HEAVY DUTY FOR PROFESSIONAL AND COMMERCIAL CLEANING

Heritage Foundation Continues Renovations

Since Mount Vernon was saved from demolition in 1858, historic homes have been a key rallying point for preservation causes nationwide.

The theme for the 17th annual National Historic Preservation Week, May 14-20, "Look Homeward, America," cosponsored by Muleshoe Heritage Foundation and the National Trust for Historic Preservation celebrates America's past and its role in creating good places for Americans to live in the years ahead.

Muleshoe Mayor Darrell Turner is participating in the observance by proclaiming the importance of preserving familiar landmarks in our area.

In a special message from the White House, President George Bush salutes all Americans who have "worked hard to create and protect vibrant, livable towns and cities where communities work together to grow and prosper. Historic preservation has played a strong role in this work."

Thousands of preservation groups nationwide will celebrate their streetcar suburbs, vintage inner-city apartments, rural farmhouses, shotgun cottages and bungalows.

Across the country communities will be organizing house tours, workshops, block parties

and fund-raising events in the name of protecting America's most cherished ideal: home.

In Muleshoe, Preservation Week 1989 will be observed by keeping the public informed concerning progress made by the Muleshoe Heritage Foundation on restoring the Janes House, the Depot and the Old Cookhouse.

R. A. Bradley and the Heritage

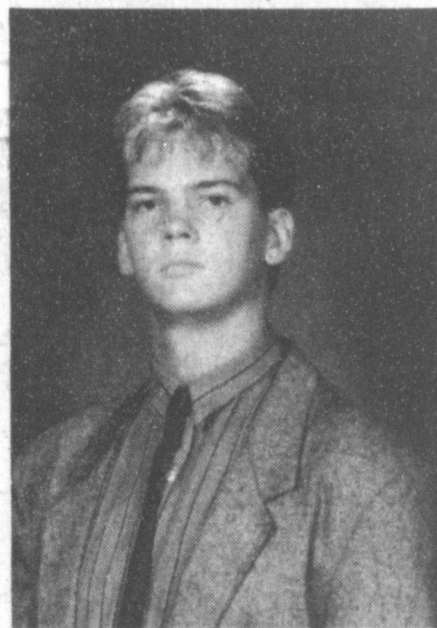
Local Youth May Graduate Of Boys Ranch

Tim Sliger, a former Muleshoe boy, and son of Thomas Sliger, will be graduated from Boys Ranch High School during commencement ceremonies at 10:30 a.m., Monday, May 29, in the Ned O. Miller Auditorium.

He is one of thirty-four seniors to receive diplomas and vocational certificates from Boys Ranch this year. Sliger lived at Boys Ranch for three years and was a member of the AB Chapter of the Vocational Clubs of America and the varsity track team. He was also active in drama. Sliger plans to attend the Dallas School of Arts.

Cal Farley's Boys Ranch, located northwest of Amarillo, is a home for about 400 boys, ages four to eighteen, from all over the nation. Boys Ranch was founded in 1939 by Cal Farley. Since then, more than 4,000 boys have been given a home and education without cost to any governmental, civic or religious organization. Boys Ranch is supported by voluntary contributions.

"We are proud of Tim Sliger and his accomplishment of the important goal of high school graduation," said L. Raeburn Hamner, Jr., Ranch president. "It is a pleasure to share this moment with Tim and with the many people everywhere who have helped provide for our boys."



TIM SLIGER

New Personnel, Resignations Facing Board

After formal opening of the meeting of the MISD Board of Trustees Monday night at 7:30 p.m., the following items will be considered:

Under business items are a proposed 1990 MHS Band spring trip; request to approve student transfer; discuss junior high addition needs and insulated window panels for Dillman Elementary.

Informational reports will be the Board President's report; the Superintendent's Report on trips to Abilene, June 1-2; San Antonio, June 5-7 and Lubbock, June 11-13; cooperative learning; KAYBN (writing); Testing T.A.'s and June board meeting date change.

A bus sale in Abilene, plus the bus status report; Durham Transportation company and budget, tax collections, financial, and other matters will be discussed by the Assistant Superintendent of Business; and Summer School will be discussed by the Assistant Superintendent of Instruction.

Other considerations will be resignations, hiring of personnel and discussion of job openings and future plans.



GARDEN SPOT OF THE WEEK--This garden spot can be found in the yard of Geronima Perez, 314 E. Ave. C. It was named "Garden Spot of the Week" by the Muleshoe Jennyslippers. If you know of a pretty garden spot, be sure to call the Chamber of Commerce office before 5 p.m. on Wednesday and make your nomination.

(Journal Photo)

Local Heart Association Asking For Memorials

With Memorial Day approaching, the American Heart Association (AHA) reminds Bailey County residents of the opportunity to honor and remember loved ones, friends, and associates through a gift to the AHA's memorial program.

Memorial contributions represent a good portion of the American Heart Association's fundraising income," said Bailey County AHA Memorial Chairman, Dorothy Turner, "making them a vital part of the association's efforts to support the excellent heart research, education and community service programs of the AHA.

"While honoring family and friends, memorial contributors strengthen the AHA's fight to reduce early death and disability due to heart disease, which took 18 lives in Bailey County in 1987," she added.

"Heart attack and stroke annually account for nearly half of all deaths in the South Plains and in the nation, making cardiovascular disease the number-one killer."

Memorial Chairman Turner says that the memorial program gives people a meaningful way to honor the memory of family and friends while supporting the important work of the AHA. She

adds that Memorial Day is a special opportunity to make such a gift.

Mrs. Turner adds that she has enjoyed her volunteer job as Memorial Chairman for seven years, saying that memorials made to AHA help to give added life to persons stricken with heart disease, by contributing through education, research, etc. Her work continues to be greatly appreciated by the AHA, as she plans to continue to help memorial donations become "gifts of life" for others.

Memorial contributions made to the AHA are carefully handled. Upon receipt of a memorial donation, Mrs. Turner sends an appropriate card to the recipient of the donor's choice. Included with the card is a thank-you card which the recipient may then mail back to the donor to acknowledge his or her thoughtfulness.

To make a memorial contribution to the AHA in Bailey County, please include the following information with your donation: name and address of donor(s), name and address of recipient(s), and name of person being honored. Contributions should be mailed to First Bank, Box 565, Muleshoe, TX 79347 or Muleshoe State Bank, Drawer 1010, Muleshoe, TX 79347.

DOES YOUR CAR PULL TO THE LEFT OR THE RIGHT?

Could be it needs the front end aligned. Let us check it out and straighten it if required.

FRONT-END ALIGNMENT

ONLY **\$28⁰⁰**

Includes:

- Camber Adjustment
- Toe Adjustment
- Shock Absorber Check
- Caster Adjustment
- Tire Check
- Steering Linkage Check

Don't Wait! Special Price Ends 5/31/89

Robert D. Green, Inc.

2400 W. Amer. Blvd.

272-4588



Mr. Goodwrench

It's Not Too Late!

We have a large selection of flowers, vegetables, trees, shrubs, Garden seed and pottery!

Decorative Bark

large, medium, & small
3 cu. ft. bag

Kentucky Blue Grass Seed

Climbing Roses

Herbs

All sizes of Geraniums

In 1 Gal. Containers

Day Lillies

Liriope

Hosta

Verbena

Stop by for a visit and look around!

Kristy's Plants

1516 W. Amer. Blvd.

272-5536

Board members said they want to make the citizens of Muleshoe to be aware of the progress made in restoring the Muleshoe Heritage Center. The street leading to the Janes House has been paved; the stairs have been sanded, ceiling has been replaced, carpet tacks have been pulled from the floors, and walls have been readied for painting.

Many organizations and individuals have contributed many hours of time and energy in helping make this project a reality.

Cara Juan Schuster asks if anyone would like to contribute

furnishings, or donations, please call her. Also, if anyone has any information relative to furnishings, etc. concerning the Janes House, please call any member of the Board.

Board members are R. A. Bradley, Maurine Hooten, Cara Juan Schuster, Chuck Smith, Mary Moore, A. T. Henderson, Clifford Black and Elizabeth Watson.

A lucky physician is better than a good one.

—German Proverb.

The physician is only nature's assistant.

—Galen.

Beef Industry Checkoff Report Is Mailed

The Texas Beef Industry Council recently enclosed a Monthly Report Form with its fiscal year 1987-88 annual report that was mailed to 85,000 Texas cattle producers. In the country, some cattlemen assumed that, because the Beef Promotion Monthly Report Form was enclosed, they had to turn it in or were required to make an annual sales summary. This form was enclosed for private treaty transactions.

If you buy a bull in the country you are responsible for checking off \$1 per head and remitting these funds to the Texas Beef Industry Council.

Some producers are confused over whether private treaty sales should be checked off. The answer is "Yes." All cattle sales must be checked off.

In private treaty sales, it is solely the buyer's responsibility to deduct the \$1 per head. These checkoff funds and a Monthly Report Form must be received in TBIC offices by the 15th of the month following the sale. This form, when received in TBIC offices, fulfills the seller's obligations as well.

For more information contact the Texas Beef Industry Council at 8310 Capital of Texas Highway N., Suite 440, Austin, Texas 78731; (512) 345-3531.

ATTENTION

The Free Installation package in the Associated Communications, Inc. ad which ran in the Thursday, May 18, edition expires May 31, 1989.

Ben Franklin

Better quality for less

2104 W. Amer. Blvd. Mon.-Sat. Sun.
272-3855 8 a.m.-8 p.m. 12-5 p.m.

Now Until May 30th

MEMORIAL DAY WEEKEND SPECIALS

R C Cola
Diet RC, Diet Rite, 6 pk. \$1.29
Nehi Grape & Orange 12 oz. cans

B.B.Q. Kettle Grill
22 inch Porcelain Coated Grill
\$44.44

Little Playmate Cooler
by Igloo
\$8.88

3 pc. Attractive Wood Handles
Tongs, Spatula & Fork
\$3.33

B.B.Q. Grill Set

Kingsford 10 lb. Bag Charcoal Briquets
\$2.97

Kingsford Odorless Charcoal 32 oz. Lighter Fluid
\$1.57

Foam Cups 51 Count 6.4 oz.
2 / \$1.00

Bamboo Plate Holder Package of 4
2 / \$1.00

Memorial Day Sprays
Reg. \$6.47
Now \$5.99

Microwaveable 100 ct. 9" Paper Plates
99¢

Wedding Shower Honors Miss Tami Bratcher

The fellowship hall of the Trinity Baptist Church was the scene of a wedding shower Saturday, May 13 honoring Tami Bratcher and Billy Brown.

Betty Carpenter registered the guests at 2 p.m. and they were greeted by the bride elect and prospective groom's mothers.

The serving table was covered with a white linen and lace table cloth and accented with an arrangement of silk flowers in shades of peach and blue. The special guests were Tommie

and Charles Bratcher and Billy Brown.

The hostesses gifts were an Oster Kitchen Center, electric can opener and hand mixer. Hostesses for the occasion included: Gayle Turner, Jean Harlan, Lela Sue King, Maudie Speck, Pat Prater, Terry McCamish, Barbara McCamish, Johnnie Parker, Ida Clark, Elaine Burgess, Thora Baker, Lu ease Bennett, Betty Carpenter, Louise King, Doris Vandiver, Rose Sain, Lucille Harp, Eva Dell Carpenter, Bonnie Carpenter and Maxine Carter.



TAMI BRATCHER AND BILLY BROWN

Rebekah Lodge News

Ona Berry, Thursie Reid and Lucille Harp undraped the charter in memory of Era Walker Tuesday night, May 15 when the Muleshoe Rebekah Lodge met in their regular session.

Audrey Langfitt, Noble Grand, presided over the short business meeting. Joyline Costen and Sandi Robinson presented the flags and Ruby Green gave the opening prayer.

Audrey Langfitt, Noble Grand, read a poem "Mother" in tribute to our mothers.

Ruby Green, District Deputy, of District 5 will visit Dimmitt Rebekah Lodge Thursday night and her district meeting for this district consisting of Muleshoe, Dimmitt, Hereford and Friona will meet in Friona Monday night, May 21. Everyone is ask to take a covered dish.

Pat Langfitt, Lodge Deputy, held a short school of instruction and Sandi Robinson led the candle light service. Fern Davis gave the closing prayer.

Twenty members were present and it was reported that a fellowship hour was enjoyed.

Hobby Club

Muleshoe Hobby Club met Thursday afternoon, May 18 at the Senior Citizens Complex with ten members present.

Kathryn Hancock was the hostess. Hazel Reeder won the hostess gift.

Those present were Laura Mae Stancel, Edith Fox, Jane Williams, Myrtle Chambless, Hazel Reeder, Blanche Awbrey, Mable Caldwell, Kathryn Hancock, Glenda Morris and Frances Bruns.

The next meeting will be on June 1 at the Senior Citizens Complex with Mable Caldwell as hostess.

No Comment

An English lady, self-appointed supervisor of village morals, accused a workman of having reverted to drink because "with her own eyes," she had seen his wheelbarrow outside a public house. The accused made no defense, but that evening placed his wheelbarrow outside her door and left it there all night.

Muleshoe Young Homemakers Elect New Officers

The Muleshoe Young Homemakers met Tuesday, May 9th at the Muleshoe Church of Christ. Members attending were Pam Prather, Linda Wimberley, Felicia Green, Tammy Ramm, Sherri Kennedy, Carren Black, Deanna Rasco, Glenda Powell, Terry Marricle, Lavon Hunt, Kay Lynn Brantley, Teresa Slayden, Sheila Black, JoEllen Cowart, Nancy Benham, Cindy Magby, and Cherie Maddox.

Hostesses for the evening were Kay Lynn Brantley, Sherri Kennedy, Pam Prather and Tammy Ramm. They served fresh vegetables and dips and Neimans \$250 cookies.

Sheila Black brought the program on hair and nail care.

The meeting was called to order by president Tammy Ramm. Roll call and minutes of the previous meeting were read by Terry Marricle, secretary. Pam Prather gave a detailed treasury report and listed some items for donations to the community.

Tuesday, May 23 will be Ladies Night Out, the final meeting for the year. Cars will leave Muleshoe at 6:30 p.m. sharp.

It was reported that Story Hour was successful this year as the Young Homemakers assisted Mrs. Anne Camp every third Wednesday of the month, with stories, songs and treats for the pre-schoolers.

New business discussed was selling homemade Ice Cream on July 4th at Joe's Boot Shop, furnishing cookies for the July Blood Drive, if asked, and selling funnel cakes at the Bailey County Fair in September.

Officers for the 1989-90 term were elected and are as follows: president, Terry Marricle; first vice president, Cindy Magby, second vice president, Glenda Powell; secretary, Deanna Rasco.

In Fashion

Many wear eyeglasses to correct eye problems and nearly everyone wears eyeglasses to protect eyes from sun rays. You are now able to get eyeglass frames made in such a way that are practically unbreakable, yet fashionable.

For a cool, crisp look, when the weather is really hot, a bronze linen dress, with peaked lapels and side buttons on the skirt is very attractive.

Bailey County Journal USPS 040-200
 Established March 31, 1963. Published by Muleshoe Publishing Co., Inc. Every Sunday at 304 W. Second, Box 449, Muleshoe, TX 79347. Second Class Postage paid at Muleshoe, TX 79347.
 L. R. Hall, President & Publisher
 Sauneger Hall, Vice President & Controller
 Cleta Williams, News
 Evelyn Harris, Society
SUBSCRIPTIONS
 Muleshoe Journal and Bailey County Journal
 Bailey County & Surrounding Areas \$14.75
 Muleshoe Journal and Bailey County Journal
 Elsewhere \$16.50
 Muleshoe Journal and Bailey County Journal
 Yearly By Carrier \$12.50
 Yearly By Local Mail \$14.75
 Advertising rate card on application.

Piano Guild Auditions Set

Dr. Ruth Jane Holmes of Lubbock Christian University will be the adjudicator for the National Piano Guild Auditions that will be held in Muleshoe Monday and Tuesday, May 22nd and 23rd. The auditions will be held in the sanctuary of the First United Methodist Church.

Fourty-six piano students from the studios of Fran Hamilton and Elaine Damron will be playing in these auditions. They will be performing by memory anywhere from one to twenty pieces, for which they will receive a grade, a certificate and a membership pin.

Mrs. Damron, local Guild chairman, states that this is the largest piano-playing event in the world with 105,464 students entered in 759 centers across the United States. Begun at Hardin-Simmons University, Abilene in 1929, national headquarters are still maintained in Texas. Mrs. Damron says that playing in the "Guild" gives the students incentive to practice and learn more repertoire well than any other contest or event of which she knows.

Dr. Ruth Holmes, this year's judge, is extremely well-qualified, according to Elaine Damron. She received her Bachelor of Arts degree in music from North Texas State University in 1962, her Master of Music degree in 1964 from North Texas, and her Ph. D. in Fine Arts in 1976 from Texas Tech University and she has taught privately, in high school and at the college and university level, the most recent of which having been at Texas Tech University and presently at

Lubbock Christian University. Her performance media include piano, voice, trumpet, and harpsichord. She belongs to many professional and honorary organizations.

Dr. Holmes was awarded the "Outstanding Teacher of the Year" by the Lubbock Music Teachers Association in 1979 and was given the Lubbock Christian University Excellence in Teaching Award in 1985. She is the President-elect of the Lubbock Music Teachers Association for 1989-91.



DR. RUTH JANE HOLMES

On Top of the World

Teacher—Jimmy, you should strive to be a successful man. You should aspire to reach the pinnacle of fame. Do you know what pinnacle means?

Jimmy—Yes, teacher; my father always enjoys a nice, quiet game of pinnacle.



CAREFREE® BLOUSES & SKIRTS

One Size Fits All Skirts Supply Limited



Val. to 54

CANDIES® LADIES SHOES

Entire Stock Except Woodbury Many Colors & Styles



Val. to 32

MADISON AVENUE® DRESS SHIRTS

Pink, Blue White, Yellow Oxford Cloth



Compare at 18

MARTHAS MINIATURES® LITTLE GIRLS DRESSES

Dressy & Cute Sizes T2 to 6 Get The Camera



Val. to 98

TAN JAY® LADIES SLACKS

Skirts & Sweaters In White Navy, Green Nautical Group



Val. to 53

HUSH PUPPIES® SUMMER COOLERS

For Men Lace up & Slip on, Khaki



Val. to 29

JANTZEN® LADIES SLACKS

Skirts & Sweaters Red & White & Navy. Nice!!



Val. to 59

PAMS CLOSET® JRS. ACID WASHED

Jumpers Size S, M & L Awesome



Val. to 39.99

NUNN BUSH® MENS DRESS SHOES

Burgundy & Black 7 1/2 to 13 N, Med & Wide



Val to 43

KEDS FOR WOMEN CLASSIC SNEAKERS

Oxfords Red, White Khaki



Val. to 24

ATHLETIC SHOES

NIKE, PUMA, CONVERSE, PONY, ADIDAS, AVIA, BROOKE



Muleshoe
 110 Main 272-4119
 9-6 Mon.- Sat.
 Closed Sun.

Bentley's
 SMART FASHION



Immediate
 Courtesy

Muleshoe United Methodist Childrens Center Open All Summer For Your Convenience

7:30 AM - 6:00 PM

Teachers Are Trained In Child Development, First Aid And C.P.R.

Outdoor games and activities

Arts



Crafts

Cooking

Storytime

Christian Devotionals

MUMCC does not sponsor swimming

lessons and gymnastic classes; however we will work with the parents of children taking swimming lessons and gymnastics during our operating hours.

Reading Program at the library for school age children.

Call Frankie Carpenter 272-3236

Enochs News

by: Mrs. J.D. Bayless

Mrs. Bonnie Believe and daughter, Reha Believe and Chrislin, all of Lubbock visited her parents, Mr. and Mrs. Goldman Stroud Wednesday.

Mr. and Mrs. Edward Crume were in Muleshoe the past week and she visited her sister, Mrs. Juanita Snow.

Mrs. Winnie Byars, Mrs. Ellen Bayless and Mr. and Mrs. Bobby Adams had dinner with the Senior Citizens in Morton Thursday.

Visiting Mr. and Mrs. Dale Nichols and spending Friday night with them was her brother's wife, Mrs. Nelda Sanderfer of Midland, they had supper with Mr. and Mrs. Jerry Nichols Friday night. Saturday they went to Clovis, N.M.

Mrs. Curtis Snitker of Hart took Dicie and Clifford Snitker, her grandparents, to Lubbock Monday and spent the night with Mrs. Artie Jennings. Tuesday morning Clifford has some surgery on his eye at Methodist Hospital.

Mrs. Inez Sanders visited in Amarillo last Sunday with Guy's sister, Mr. and Mrs. Henry McWilliams, also her niece, Mrs. Sandra Childers and grandbaby.

Mrs. Bill Key visited in the home of her sister, Mr. and Mrs. Bud Huff, Jr. Saturday.

Supper guests in the home of Mr. and Mrs. Goldman Stroud last Sunday were Mr. and Mrs. Travis Lambert of Muleshoe.

Mr. and Mrs. Curtis Snitker of Hart, visited in the home of his parents, Mr. and Mrs. Clifford Snitker went to the gin supper at Morton Saturday.

Rev. and Mrs. Harold Abney and children of Wolfforth had dinner with her parents, Mr. and Mrs. Buford Peterson and went with them to the gin supper Saturday.



ENGAGEMENT ANNOUNCED--Sylvia Buchenau of Muleshoe and Randel Buchenau of Alvord, TX wish to announce the engagement and approaching marriage of their daughter, Camille to Ray Beauchamp, son of Cecil and Janet Beauchamp of Anson, TX. Vows will be exchanged Saturday, July 1 at 2 p.m. in St. Luke's Methodist Church in Lubbock. Miss Buchenau is a graduate of Muleshoe High School and South Plains College of Cosmetology in Levelland. Beauchamp, a graduate of Anson High School, is presently a Sergeant at Reese Air Force Base, serving as an Aerospace Physiologist. He plans to enroll at Texas Tech in the fall.

(Guest Photo)



TOURNAMENT WINNER--Brenda Black presented Helen Templeton a footed lead crystal bowl Wednesday afternoon following the Naomi-Marie Memorial Golf Tournament. Ms. Templeton was the 1989 winner. (From Left) Brenda Black, Helen Templeton, Dorothy St. Clair and Marlene St. Clair.

(Journal Photo)

Country Club Report

By Claudine Elliot

The Muleshoe Women's Country Club Association met Wednesday, May 17th, for their monthly meeting.

The ladies enjoyed another delicious lunch prepared by Barbara Marlow.

Dorothy St.Clair, our president, presided over the business meeting. She recognized our guests, Amanda Knop, niece of Jerry Mayo, and Brenda Black, guest of her mother, Marlene St.Clair. We also had two birthdays for the month of May. They were Kay Fields and Jerry Mayo.

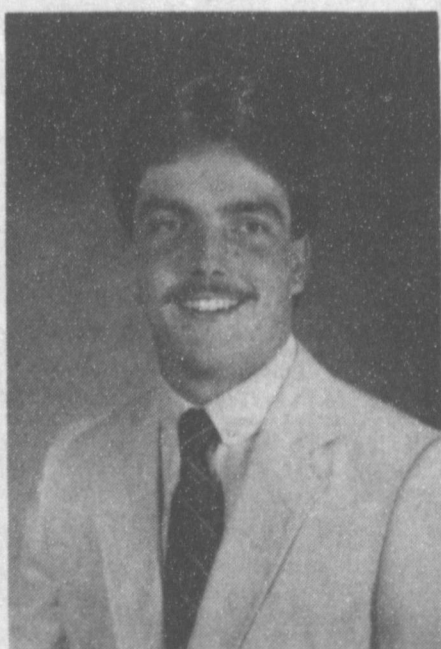
All committees made their reports. Ruby Hart, our Hi-Plains director reported that five ladies went to Canyon this month. They were Mary Holt, Ruby Hart, Cookie Bamert, Argilee Millen, and Linda Elder. Mary Holt won low gross and low putts in her flight. Cookie Bamert won low putts in her flight, Linda Elder won low net in her flight. Our next Hi-Plains Playday is June 14th at Olton.

Jeanetta Precure, our Ways and Means chairman, had our raffle drawing for this month and the lucky winner was Dorothy St.Clair.

Helen Templeton, our Playday chairman gave golf awards to: April 26th--Mary Holt, Yolonda Bell, Analita Haley, Evelyn Riley, Lynn Campbell, Marlene St.Clair, Jo Rempe, Argilee Millen, and Helen Templeton. May 3rd Chicago System--Helen Templeton and Cookie Bamert. May 10th Low on all four pars--Evelyn Riley, Analita Haley, Helen Templeton and Claudine Elliott.

This was a very special day for all of us, because it was our annual Naomi-Marie Memorial Tournament and a special time to remember good times shared with Naomi St.Clair and Marie White.

After the meeting, the ladies played golf to see who would win this much wanted honor of winning this tournament. Our new winner for 1989 was Helen Templeton. She was a proud winner and played a good round with a score of 89. Congratulations to Helen on winning!



AUC GRADUATE--Monty Ray Dent, son of Mr. and Mrs. Ronnie Dent, and grandson of Laura Stansell, all of Muleshoe, has just completed his education from Abilene Christian University. Dent received his BBA in Finance on May 6, 1989. He will be working as a Financial Analyst for GMAC in Abilene.

(Guest Photo)

We were also so happy to have some special friends of Naomi and Marie to come out and play cards. They were Millie May, Melzine Elliott, Jeanette Wagon and Ruth Malone. Two more special friends that joined us all for refreshments were Hope King and Jo Wood. It was so good to see these familiar faces with us again.

Helen Templeton was our Playday Chairman and in charge of all arrangements for this day. She really did a good job with good golf, good card playing and delicious refreshments. Our thanks to Helen on a job well done.

I thought it would be fun to list all the winners of this Naomi-Marie Tournament. Naomi St.Clair's friends started this Memorial to her in 1958 and later Marie White's name was added. This list is names on plaques that are displayed in our ladies locker room at all times.

1958 Jo Wood, 1959 Ruby Hart, 1960 Punk Bragg, 1961 Melzine Elliott, 1962 Mildred Lambert, 1963 Ruth Malone, 1964 Ruby Hart; 1965 Ruby Hart, 1966 Not listed, 1967 Mary Sweatman, 1968 Cookie Bamert,

1969 Mary Watkins, 1970 Mary Watkins, 1971 Lorene Ward, 1972 Mary Francis Holt, 1973 Ruby Hart, 1974 Claudine Elliott, 1975 Mary Francis Holt, 1976 Jama Brown, 1977 Mary Francis Holt, 1978 Ruby Hart, 1979 Dorothy St.Clair, 1980 Argilee Millen, 1981 Shirley Walker, 1982 Analita Haley, 1983 Brenda Black, 1984 Brenda Black, 1985 Mary Francis Holt, 1986 Analita Haley, 1987 Analita Haley, 1988 Jeanetta Precure and 1989 Helen Templeton.

A great day of fun was shared this day by friends old and new!

Texas A&M professor says birds as pets are soaring in popularity

COLLEGE STATION — Dogs and cats, look out: the pet biz is going to the birds.

Humans' traditional four-legged furry companions may not notice it, but feathered pets such as canaries and parrots — an estimated 40 million of them — are chirping and squawking their way into the hearts of more Americans than ever these days.

"Many landlords are unwilling to permit traditional pets, but they often will permit birds," said Dr. David L. Graham, director of Texas A&M's Schubot Exotic Bird Center and Schubot Professor of Avian Health in the university's College of Veterinary Medicine.

"And birds are, in general, less physically demanding to care for and easier to leave with someone else to care for during the absence of the owner than many other types of pets," he said.

Latest Arrivals

Mica Jan Pugh

Mr. and Mrs. Michael Pugh are the parents of a daughter, Mica Jan, who was born at 5:04 a.m. on May 6, in Lubbock General Hospital in Lubbock.

The young lady weighed 7 pounds and 7 ounces and was 20 inches long.

Maternal grandparents are Mr. and Mrs. Dale Newsom of Sudan and paternal grandparents are Michael Pugh of Muleshoe and Sherry Pugh of Corsicana.

Great grandmothers are Mrs. Polly Hargrove of Sudan and Mrs. Margaret Pugh of Hereford.

Mica Jan has an older brother, Todd Allen Pugh, one year of age.

FINANCING YOUR FUTURE

Q: My financial planner advised me to transfer my IRA funds into another IRA. The "planner" turned out to be a con artist who took my money and ran, never depositing it into the new account. Not only did I lose my money, but I also owed extra income taxes and penalties. Is this fair?

A: It's not fair, but the law provides no protection to victims of fraud who end up owing extra income taxes and penalties for early withdrawals from IRAs.

That provides an added reason for you—and everyone seeking financial advice—to always check a financial planner's qualifications, including designations, professional accomplishments, references and other supporting information. Reliable planners will not hesitate to show you their credentials.

One place you can turn to for professional recommendations is the American Society of Chartered Life Underwriters (CLU) and Chartered Financial Consultants (ChFC).

Dr. A.R. Ploudre

Optometrist

*Family Vision Care

*Contact Lenses

*Texas Medicaid

(505) 762-2951

1515 Gidding St., Clovis

Hours: Monday through Friday

8:00 a.m. to 12 noon

1-5 p.m.

Saturday, 8 a.m.-12 noon

For the Graduate

Great Gift Ideas for any Graduate!

Clothes - Jewelry - Boots - Tack and more!

20% off

Men's Suits, Sport Coats, Hats & Shirts

10% off

Billfolds, Buckles, Bootjacks, Hat bands, Gloves, Knives, Tack & Dashboard Spittoons

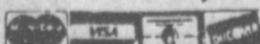
10% off All Sterling Silver!

Great Selections of Graduation Dresses & Suits!

Sale in effect May 22-26

OPEN 8:00 a.m. - 6:30 p.m. C.S.T.

We Accept:



Rip's
IN TEXICO
314 Wheeler
482-3363



You Think Money Just Falls From The Sky?

When your parents asked this, you knew the answer. And we're not about to advise you that your parents were wrong.

But the fact is, it's almost that easy when you see us for a personal loan.

(And, no, it doesn't grow on trees, either.)



202 S. 1st

Member F.D.I.C.

272-1715

Nursing Home Problems

Cont. From Page 1

private pay for six months, then apply for Medicaid. She said Medicaid usually takes three-four months to be approved.

Because of new state regulations, Muleshoe Nursing Home will be required to hire two additional LVN's, one full time and one part time, which will increase expenses for that facility. With the new 'Case Mix' laws, room rates will be varying, and there is currently a study being made on the possibility of increasing some of the rates.

MAHD temporary board member Bob Finney has been conducting a study of all nursing homes within a 50-70 mile radius of Muleshoe, and found that most of them charge more per room, per day, than is charged at the Muleshoe Nursing Home.

Only two of the nursing homes checked by Finney do not have a current waiting list for patients, he said.

Muleshoe Nursing Home currently has a waiting list of males, said Ms. Snider.

For the most part, the Muleshoe Nursing Home is current with vendors, and are 'catching up' on back bills as they go along.

They have a \$25,000 per month payroll, with 38 employees, including office workers.

Workman's Comp insurance is very costly for the Nursing Home, explained Ms. Snider, costing above \$8,000 per month. Building insurance is high, and the Nursing Home currently owes \$6,954 in building insurance. They also owe \$3,779 in workman's comp insurance at this time. Nurses are continuing to work with out 'benefit packages' (insurance) and if they become sick, "they are on their own" paying for their own

Muleshoe...

Cont. From Page 1

tee works primarily with the Alumni and Parent Relations Office on such projects as Parents' Weekend and Homecoming. The student relations committee is responsible for College Preview weekends.

The department of mathematics at Texas Tech University recently recognized 17 outstanding students and scholarship recipients at its annual Honors and Kappa Mu Epsilon Initiation Banquet.

The department awarded its first Outstanding Teacher of High School Mathematics award to Stephanie Barrett of Muleshoe. The award recognizes individual dedication and exceptional abilities of the teaching of high school mathematics.

H. B. Mardis, sixth grade science teacher at Watson Junior High was named Educator of the Week.

Principal's awards went to Audra Lee, sixth grade; Brooke Sinclair, seventh grade and Kristi Chapman, eighth grade.

Named Artist of the Month at WJHS was Joe Arrendondo.

illnesses.

Ms. Snider also said four of the beds need to be returned to the hospital. They are electrically operated, where the nursing home needs only flat beds or manually operated beds.

She also said eight mattresses need to be replaced, as several are covered with 'egg crate' mattresses at this time because of tears, or sink holes in the mattress.

She suggested a maintenance program, that one mattress be replaced each month, and one overbed table be purchased each month.

The hospital has only 28 overbed tables for 47 residents. She said the purchase of 10 more overbed tables would bring the number up to an operational number where they could 'get by.'

A suggestion was made to cut down on private rooms at the nursing home, to try to utilize more of the 57 beds the license allows. "It could make the tax burden less on the people," said Finney. "And, the most important thing is to have the facility available. We have noted, that when people need the nursing home, they need it now. With fewer private rooms, we could keep more people here, instead of them having to go out of town somewhere."

Maintenance supervisor James Pollock said the air conditioning is working at this time, making it more comfortable for the patients and workers.

Chisholm, hospital administrator, predicted that if the hospital and nursing home should close, all three doctors would be leaving Muleshoe. He said one doctor would retire immediately; one would leave within 30-45 days, and the third would remain just a little longer to dispose of property.

He said each had indicated an unwillingness to stay in Muleshoe if they have no hospital to practice in.

Board member Darrell Jennings reminded that if the

Hail...

Cont. From Page 1

have to replant. At the same time, Lazbuddie and the southeastern part of Farmer County received only light showers, and no crop damage from hail or water.

In the storm's aftermath, playa lakes in the northwestern corner of Bailey County were overflowing, and FM 1760 was under several feet of water for a few hours, with travel being discouraged in those areas.

Hail and water also created brief driving problems on the West Camp Road and on Highway 84, as hail piled up, then water overflowed and put the highways under water for several hours.

By mid-afternoon, all that remained of the Wednesday storm were dark clouds that were noted moving steadily north-northeast, and a narrow band of 'wiped-out' crops.

hospital district is not approved, it would be a year before another election could be held. Within that time, the hospital and nursing home would be closed right away. With that closure, licenses for the hospital and nursing home would be taken away, we would lose our physicians and nurses would move to where they could work.

Jim Burgess explained that the only reason the nursing home was kept open after Westworld closed West Plains Medical Center was with the hopes of reopening the hospital, and not wanting to displace the nursing home residents.

"We had to move patients once," he reminded, "because we did not have the money to make the repairs to keep Medicaid. This time, we cannot separate them, if we lose one, we lose them both (the hospital and nursing home)."

Robert Montgomery reported on the steering committee, who is heading up the election campaign and gave several plans prior to election.

He thanked the media for the vote registration effort, and said he appreciated all the employers who are working with their employees to help boost chances for the hospital district election to be approved by voters.

Two town hall meetings will be held prior to the election, one at Lazbuddie and another in Muleshoe.

Next Wednesday, at 8 p.m., John Chisholm will give a complete report on West Plains Medical Center, including the physical plant, finances, capital, equipment, and other related matters.

Rebate...

Cont. From Page 1

for May, 1989 was for \$12,403.59. For the year, Friona has a good 17.74 percent increase, with current payments of \$47,743.66, compared to last year's payments through May of \$40,550.19.

Houston received the largest check, which totaled \$20.1 million, an increase of 5.7 percent over the city's May 1988 payment.

The state's six metropolitan transit authorities and one city transit department received \$54.8 million. Bullock said that this month's payments to the transit authorities was up by 9.2 percent when compared to last year's May rebates.

The largest transit authority rebate, \$21.5 million, went to Houston's MTA. The payment reflected a six percent increase over the same period last year.

Bullock added that another \$10.5 million was allocated to 91 counties that collect the one-half percent county sales tax.

May's checks represent taxes collected in March by monthly filers and during the 1989 first quarter by quarterly filers. The deadline for both monthly and quarterly taxpayers to file sales tax reports with the Comptroller's office was April 20, Bullock said.

Five Mules Named To All-District Baseball Team

In their first year of competition, five Muleshoe Mule varsity baseball players were named to the District 2-3A All-District Baseball Team.

Named were Derek Pirtle, Canyon, catcher; Donald Bingham, Canyon, first base; Cody Garrison, Canyon, second base; Scott McNeill, Canyon, third base; Ricky Flores, Muleshoe and John Eller, Canyon, short-stop and Jeff Perez, Canyon, Cole Woodard, Canyon and Danny Rodriguez, Muleshoe, outfield.

Also, Roque Flores, Muleshoe, utility infielder; Jeff Stelzer, Canyon, utility outfielder; Abel Leal, Muleshoe, designated hitter; and Ken Land, Canyon and Joe Orozco, Muleshoe, pitchers.

District 2-3A Player of the Year was John Eller, Canyon.

One fault with the human race is the number of people who know how to read but have not learned how to think.



MULESHOE LITTLE DRIBBLERS--(Back Row, from Left) Kristen Nichols, Aimee Hugg, Reagan McElroy, Lisa Leffler, Jennifer Stegemoeller, Jamie Bohler. (L-R Front Row) Brandi Harrison, Leslie Powell, Jana Foster, Carolyn Schuster and Cari Favor. (Journal Photo)

School...

Cont. From Page 1

Julie Cage, who spent six years as a member of the School board, three as president; and Rex Harris, with three years on the board.

A 'first time' award presented was to Norma Bruce and Billie Downing, representing the Jennyslippers. Superintendent Ward said the award was for "a group who has done something to really help the schools."

The plaque for the Jennyslippers was for 'Meritorious Service' for a seminar on financial aid for students planning to attend college.

Dr. Ward said public schools

are a wonderful place where we can learn to learn. He added that drop-outs don't claim a school and prisoners don't claim a community.

He welcomed the community spirit, and correlation between the community and school in Muleshoe. He said it was an atmosphere where the citizens and teachers enjoy the spirit of exchange, and working together.

He also recognized all of the other school personnel present, then the non-school related people who had received special invitations to attend the banquet.

Entertainment was provided by Alan Finney, son of Bob and Barbara Finney, and Denise Detten, of Hereford. Dani Heathington of the Blue Goose, catered the dinner of roast beef with all the trimmings.

CARPORTS AND PATIO COVERS



Protect Your Auto, Van or RV From Weather Damage
Financing Available!

EB-TX 7105 Olton Rd., Drawer 369, Plainview, Tx
Call Now: 1-800-293-9526



36th Annual

Stockholders Meeting

Of

Muleshoe Co-Op Gins

Will Be

Thursday, May 25, 1989

8:00 pm

Muleshoe High School Cafeteria

Dividend Checks Will Be Passed Out

Steak Dinner will be served followed by the Business Meeting and election of New Directors

Board Members:

Tim Campbell, President
Ronald Scott, Vice-President
Bobby Redwine, Secretary
Charles Moraw, Manager

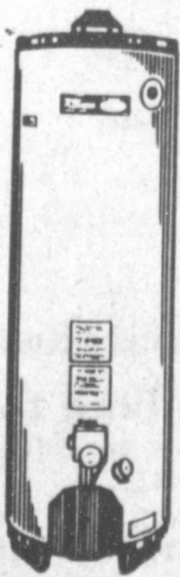
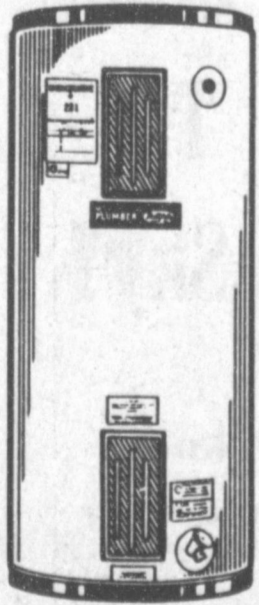
Directors:

Curby Brantley, David Stovall, James Brown



RSVP BY MAY 22

Water Heater Sale!



Master PLUMBER

129494

5-year limited warranty

107.88

40-Gal. Energy-Saving Gas Water Heater features heat-saving Foamlock™ insulation, heat traps to prevent heat from escaping. Special vacation setting saves energy while you're away. Low BTU input pilot uses less gas.

In Stock Only

No Rainchecks



Fry & Cox, Inc.

401 S. 1st

272-1511

Muleshoe Menu

MAY 22-26 MONDAY BREAKFAST
Cereal, Toast, Fruit and Milk lunch

COMBO
Pizza, Mixed Vegetables, Pickles, Fruit and Milk

TUESDAY BREAKFAST
Pizza, Mixed Vegetables, Pickles, Fruit and Milk

LUNCH
Honey Buns, Juice and Milk

COMBO
Hamburgers, Lettuce & Tomato, Pickles & Onions, Tater Tots, Cookies and Milk

WEDNESDAY BREAKFAST
Pancakes, Syrup, Fruit and Milk

LUNCH
Enchalladas, Beans, Salad, Corn Bread, Jello and Milk

COMBO
Taco's, Beans, Salad, Crackers, Jello and Milk

THURSDAY BREAKFAST
Cheese Toast, Fruit and Milk

LUNCH
Hot Dogs, Patato Salad, Pork & Beans, Pudding and Milk

COMBO
Ham & Cheese on Bun, Potato Salad, Pork & Beans, Pudding and Milk

FRIDAY BREAKFAST
Biscuits, Gravy, Sausage, Fruit and Milk

LUNCH
Fish, Macaroni & Cheese, Eng. Peas, Hot Rolls, Fruit and Milk

COMBO
Fish, Macaroni & Cheese, Eng. Peas, Hot Rolls, Fruit and Milk

Poor Player
A golfer hit a new ball into the lake, another new ball out onto a highway, and a third new ball into the woods.

"Why don't you use an old ball?" said the caddy.

Replied the golfer sadly, "I have never had an old ball."

Lazbuddie Menu

MAY 22-26 MONDAY BREAKFAST
Jelly Donuts, Juice and Milk

LUNCH
Bar-B-Q Sausage, Potatoe Salad, Pinto Beans, Corn Bread, Pudding and Milk

TUESDAY BREAKFAST
Toast, Bacon, Juice and Milk

LUNCH
Corn Dogs, Tater Tots, Pickles, Cake and Milk

WEDNESDAY BREAKFAST
Cereal, Juice and Milk

BREAKFAST
Chicken Strips, Potatoes & Gravy, Green Peas, Biscuits, Fruit and Milk

THURSDAY BREAKFAST
French Toast, Juice and Milk

LUNCH
Tacos, Pinto Beans, Green Salad, Fruit and Milk

FRIDAY BREAKFAST
Cinnamon Rolls, Fruit and Milk

LUNCH
Hamburgers, French Fries, Hamburger Salad, Cookies and Milk

SALAD BAR SERVED MONDAY THRU THURSDAY

The Cure
"Doctor," said the pretty nurse, "everytime I take the patient's pulse it gets faster. What shall I do?"

"Blindfold him!"

She Did
"How long have they been married?"

"About five years."

"Did she make him a good wife?"

"No, but she made him an awfully good husband."

And Desire
Great minds have purposes; others have wishes.

—Grit.

Courthouse News

WARRANTY DEEDS

Jackie Vurr Robinson to Jimmy Van Thomas---A one acre tract of land out of the (N/2) of Section (77). Block Y, WD&FW Johnson Subdivision No. 2, Bailey County, Texas.

Clifton Roach Randolph to Guadalupe Rejino and wife, Petra V. Rejino---All of the North (120) acres of the (NE/4) of Section Number (44), Block "Y", WD&FW Johnson Subdivision No. 2, Bailey County, Texas.

J.R. Carter and wife, Maxine Carter to Cliff J. DeSautell---All of Labors Numbers (16), and (17) in League Number (188), Ector County School Land, Bailey County, Texas.

Stephen J. Glenn and Lois B. Elliott to Clifford A. Mardis and wife, Lucille S. Mardis---All of that portion of Labor 25, League 191, Ector County School Land Survey lying East of Public Highway Number 214 Bailey County, Texas.

COUNTY COURT

Guadalupe Martinez, DWLS \$150 Fine, 3 Days Jail

Frank Guzman, DWI, \$250 Fine, 1 Year Probation

Adolfo Marcias, DWI, \$250 Fine, 1 Year Probation

Mike Fred Cavazos, DWI, \$250 Fine, 1 Year Probation

Gerardo Sandoval, DWI, \$350, 30 Days Jail

Manuel Pineda, DWI second offense, \$500 Fine, 15 Days Jail

Manuel Pineda, Work Release

Raul Deleon, Motion to Dismiss

Bennie Arnold Chavez, DWI \$200 Fine, 1 Year Probation

Correct
Prof.—Name two pronouns.

Student—Who, me?

Right or Wrong
Gus—Your wife's diction is perfect when she talks.

Bill—So is her contradiction.

Nursing Home News

By: Joy Stancell

Sunday afternoon the Muleshoe Singers came to sing and play gospel music to the residents.

Rev. Dennis Hayes visited the nursing home Tuesday. He will be coming every second Friday at 3 p.m. to present a devotional for us.

We have had ministers of the Methodist Church visiting us this week. Among those they have visited were, Ernest Kerr, Guy Kendall, Arnold Morris and Patsy Franklin.

Ora Roberts was visited by her daughter, Ruth Ell, her granddaughter, Sandy, her daughter, Ruby Clark, sons, James and J.D. Duncan and granddaughter, Darla Kay.

Edith Bruns was visited by her granddaughter and great grandsons, Tammie, Tyler and Trent Black and daughter-in-law, Francis Bruns Tuesday. Also her daughter, Ruth Briscoe.

Among those going out visiting over the Mother's Day holiday were Guy Kendall, Emma Schuster, Clemmie Ladd, Pearl Cox, Pat Franklin, Ruth Williams, Clara Weaver and Mary Sisemore.

Emma Schuster was visited by her daughters, Ester and Mildred from out of town Tuesday.

Friday afternoon our Mother's Day in the nursing home day room. We welcomed our families and friends who came for the celebration. We were entertained by a style show consisting of staff and residents family and friends. Refreshments of individually iced party cakes topped with strawberries and bananas and angle food cake were served from a beautifully decorated table of

white table cloth, strawberry arrangement centered the table with a lead crystal punch bowl full of fresh strawberries and bananas to one side. Each resident was presented with a silk corsage, a net basket of candies and small plants. Our thanks to Lona Embry for hosting the party and to all who participated.

Sixth Grader Essay Winner

"Access to Justice" was the subject, and sixth grader Catherine Williams, daughter of SFC and Mrs. Randy Williams, 5571A Kaiser Road, Ft. Sill, OK, was first place winner for her school.

She is the granddaughter of Cleta Williams, Muleshoe; and also the great-granddaughter of Myrtle Williams, also of Muleshoe.

She received a \$50 Savings Bond, the Liberty Bell Award and a Certificate of Achievement.

Her essay was as follows:
By: Catherine Williams
Geronimo Road
Elementary School

Justice means fairness, rightfulness, to treat fairly, it also means equality.

United States has a lot of justice. Americans are lucky that they have so much justice, they should be grateful and not take advantage of it. No matter what color or race you are. Everyone should have equal liberty and fair equality of opportunity.

If you do something that is wrong or illegal you may not have a lot of liberty or justice.

In our country all are equal before the law. All must obey the law. The Constitution planned for courts of justice and trial by jury to protect the innocent, punish the law breaker and aid all people to settle their dispute with just and peaceful laws.

(Editor's note: Cathy, a sixth grader, will transfer with her parents, to Germany, in June.)

Monday morning Emma Schuster, Stella Morgan, Guy Kendall, Mamie Askew, Ora Roberts, Effie Smith and Lois Ethridge hosted a book party to celebrate the publishing of their book *I Remember When*. These books can be purchased at \$7.50 each. Our thanks to Lorinda Bodiford and Hubert Kidd for making the book of our dreams come true.

The children from the Calvary Baptist Church made and brought Mother's Day cards to our Mother's Sunday.

Ruby McCamish was visited by all of her children and grandchildren Mother's Day.

Our thanks to Maria Bond for cleaning our aquarium. It sure looks nice. We and the fish thank you.

If you have any new ideas on ways we could involve our residents in community projects. We would appreciate your suggestions, for projects and activities.

Very Wise
It is a wise man who can be thrifty without being stingy; who can be generous without being wasteful.

Attention Morton & Muleshoe Area Residents Mobile Telephone service is now available with General Electric Mobile Phones in the Morton Area.

YOU CAN HAVE TOMORROWS COMMUNICATIONS TODAY.



CELL-Xsm

SMR NETWORK

- On Hook Dialing
- Discrete privacy between users
- No Roamer Fees within Cell-X network
- Fleet Dispatch & Individual calling
- 35⁰⁰/mo gives 100 min. Free airtime within Cell-X, then 25¢ per min.
- With telephone interconnect no charge for dispatch air time
- 7 Digit Dialing
- 1 + Long Distance Available in some areas

★ MANY ADDITIONAL FEATURES AND AREAS ARE PLANNED FOR THE FUTURE ★

GIVE US A CALL TODAY

1-800-882-7266

ASCOM Associated Communications, Inc.
(806) 293-3626 • Plainview, TX
(505) 763-5520 • Clovis, NM

★ With this Adv. receive FREE Installation on new GE Mobile telephones purchased from Ascom. Offer expires May 31.

★ See our Adv. in the Feist Area Wide

May Days Values!



EARLY BIRD Air Conditioner Special

19⁹⁹

* All Pads & Parts Extra

1. Change Pads*
2. Clean Water Basin
3. Lubricate Motor & Squirrel Cage
4. Adjust Float
5. Hook Up Water Lines & Fill
6. Run The Air Conditioner - Check Out Performance
7. Furnish New Pump Basket Screen Free of Charge.

Garden Hose

1/2" x 50'

\$4⁹⁹



20" Mower **\$97⁸⁸**

POYNOR'S

103 Main Muleshoe 272-1552

Letter To The Editor

(Editor's note: Your letters with your opinion concerning the upcoming Muleshoe Area Hospital District will be welcomed, and you are encouraged to voice your opinion. Remember, that all letters must contain your handwritten signature, and a return address, although under special circumstances, we can withhold your name and address.)

Dear Member,

This letter is to re-enforce to you the importance of passage of the MULESHOE AREA HOSPITAL DISTRICT election. As you know, the election is scheduled to be held JUNE 20, this doesn't leave much time to prepare.

Being a member of the M.A.I.F., we know that you are very concerned about the economic development of Muleshoe, and that you also know without a hospital, it will make our job of attracting a new industry even more difficult. We, (the foundation), have been asked to help with the passage of this election by encouraging the employers of our area to have an employee meeting sometime during a workday, to ask that all of their employees be sure they are registered to vote, and that they be sure to exercise their right to vote on this day.

The Hospital employs almost 100 people, and as such is the second largest employer in our area. If this payroll were to disappear, it would be greatly missed by all of us as citizens and merchants.

It is the general feeling, that if this measure is not passed, the hospital as well as the nursing home will be closed.

We need to be sure that people in our area understand this is not a choice of tax or no tax, but a choice of paying this tax to ourselves, or being annexed by a hospital district from Lubbock.

The board, or committee thereof, may be in touch with you soon, to ask for your help. Please help! Sometimes, economic development is just remaining "status quo."

Sincerely,

Duane K. Castleberry,
and Board of Directors,
MULESHOE AREA INDUSTRIAL FOUNDATION

May 11, 1989

To: Chamber of Commerce — Agriculture Members
From: Chamber Officers & Directors
Subject: Hospital District

Dear Members;

Each of you as members of the Chamber of Commerce & Agriculture are aware of the economic impact that the hospital issue will have on our community. Your chamber board of directors feels that in order to maintain economic prosperity in our community we must all work toward a solution to the hospital dilemma facing us. Your board of directors supports the creation of the hospital district and hopes that each of its members feel the same. We solicit your support in its passage.

The Chamber of Commerce board of directors asks that you encourage your co-workers or employees to register to vote by the registration deadline of May 19th, if they are not already a registered voter. You may register at the office of Kathleen Hayes, Bailey County Tax Assessor-collector in the Bailey County courthouse. It is crucial that everyone within the boundaries of the district are registered to vote on this issue.

Your Chamber of Commerce administration continues to work in your behalf on this matter. Many of you will be asked to help us in this endeavor. We appreciate your support.

Robert Montgomery
President
John W. Smith
Manager

The know-how is less important than the do-it-now.

To: Area Clubs & Organizations
From: Chamber Officers & Directors

Subject: Ribbon Cutting for the Muleshoe Municipal Airport

Date: Monday, May 22, 1989 at 4:45 p.m. at the new airport located four miles east of Muleshoe on Highway 84

Dear Members,

We will be honored on Monday, May 22nd to host a visit to our city by Senator Phil Gramm. Senator Gramm will officially cut the ribbon which will open our new Muleshoe Municipal Airport. As you know, Senator Gramm is a very influential national figure. It isn't often that we have an opportunity to host a person of this stature.

We will also have the Mayor Darrell Turner present to introduce the Senator. Also, the City Manager, Dave Marr, will speak as well as the Chamber of Commerce & Agriculture President, Robert Montgomery. There will be cookies and punch served after Senator Gramm speaks.

We expect to have our Muleshoe High School Band performing at the ribbon cutting and also the Chamber of Commerce & Agriculture Ambassador and Ambassadors present at this special event.

Please come to this special event and be at the Muleshoe Municipal Airport no later than 4:45 p.m. Let's show everyone

that we stand for progress and make this a fun evening. It will be over shortly after 6:00 p.m.

Sincerely,
John W. Smith
Chamber Manager

Local Relatives Attend Funeral In Oklahoma

Wednesday morning, Robbie Damron, Billie Joan Smith, Sam Damron and Jayne Reese of Odessa, flew to Oklahoma City to attend the funeral of Dorothy Faught, the sister of the late Joe Damron.

Services were held in the First Baptist Church of Oklahoma City.

She is survived by her husband, Si Faught, Oklahoma City; one son, Irving Lee Faught of Oklahoma City; two sisters, Mrs. Irvin Hawkins of Amarillo and Mrs. Vern Thompson of Sedalia, Mo; four granddaughters, and sister-in-law, Robbie Damron of Muleshoe.

Wrong Direction

"Do you believe that people follow the same occupation in the next world that they do on earth?"

"My mother-in-law won't. She makes ice cream."

Talent

A good diplomat is a man who can always make himself misunderstood. —Times, Indianapolis.

Patients In West Plains Medical Center

MAY 16-18
TUESDAY
Connie Lide and Dona Teague
WEDNESDAY

Noe Lara, Jr., Connie Lide, Tommy Haley, Dona Teague, Rosa Gonzales, and Marley Hall

THURSDAY
Connie Lide, Tommy Haley, Dona Teague, Joyce Gist, Rosa Gonzales, and Ruby Malone

Cash Rewards
Up To \$1,000
For Information!

Call
Bailey County
Crime Line

272-HELP

To All My Patients:

I want to take this opportunity to thank you for your confidence, loyalty and trust. Most of all, I value your friendship.

It is with deepest regrets, however, to let you know that I am moving as of June 23, 1989. It has been a privilege and a pleasure to serve and care for you. You are all special and occupy a very important spot in my heart.

Your records are at South Plains Hospital-Clinic in Amherst and will be sent to the doctor of your choice upon your request. I would be happy to give you names of doctors that you could see for continued care if you wish.

Once Again, thanks and God Bless! Take Care!

Sincerely yours,

Remy Cabarsag, M.D.

Dear Patients and Friends,

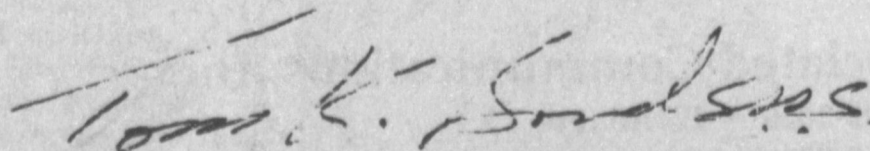
I would like to take this opportunity to ask for your support of the new "Hospital District". I have never taken such a position as to request your support for political or other interests. However, I feel this is such an important issue, that the survival of our community could possibly be at the foundation of this.

At the passage of the district, I am optimistic that our "community", served by West Plains Medical Center will grow, prosper, and lead the area in rural revitalization. More important, for the health of our children, grandchildren, parents, and even ourselves, we need a strong viable hospital that can treat any major emergency effectively.


With current state legislation, the question is really not whether we want a hospital district. It is whether we prefer a local hospital district and local board or we prefer a LUBBOCK Hospital District and board!

This is a serious matter. I ask you to consider it, then vote positive for the Hospital district.

For your Future and mine,



Tom K. Bonds D.D.S.



Pasqual, Pasqual

How old were you then?
Paul, Paul

How old are you now?
We Luv Ya Lots!

West Texas' Favorite Way To Cook Outdoors Just Got Better

PATIO PAIR SALE!

Now you can get all the fun, flavor, and convenience you always wanted from delicious year 'round outdoor gas cooking ... and a beautiful gas yard light.

Get this great gas grill, or any of 18 terrific models ...

Charmglow #9235 (shown w/ optional shelves). Includes: normal installation, 315 sq. in. cooking surface, 150 sq. in. warming rack, dual stainless steel burners, porcelain coated cooking grid, large viewing window, heat indicator, permanent briquets, permanent post, and much, much more!

\$12.31/mo.*

*sale price \$379, no down payment, 10.5% APR, 36 months term, total def. price \$443.16 + tax

And get this beautiful gas yard light... for only **\$4.19/mo.*** when installed in the same yard as your grill

*sale price \$129 w/post and normal installation, no down payment, 10.5% APR, 36 months term, total def. price \$150.84 + tax.

- Come in today for best selection.
- Don't miss this great sale!

Bonus: \$20 gift certificate for grill accessories free from Companion Products, Inc. with every grill purchase.

ENERGAS
101 W. American, 272-4284

Happenings Around Muleshoe

The Week Of May 15-20, 1989



ADULT EDUCATION--Students of the Adult Education who completed the class were given an end of the year party Thursday night in the home of Mary Helen Perez in honor of the E.S.L., ABE and GED class. Students were given certificates for perfect attendance. The class met each Tuesday and Thursday night. Alice Arguello was the E.S.L. teacher and A.B.E. and GED teacher was Mary Helen Perez. (Journal Photo)



RETIRING EDUCATORS HONORED--During the School Board's annual appreciation banquet Thursday, retiring teachers Gladys Herman and Ben Gramling were presented plaques of appreciation for their years of service to MISD. (Journal Photo)



RECEIVES PUBLIC SERVICE AWARD--Evelene Harris of *The Journals* received a State Heart Association Award Thursday morning. This Public Service Award was presented to *The Bailey County Journal* for demonstrating "a high measure of media responsibility and outstanding service to the community through use of the Heart Association's life saving educational messages." (Journal Photo)



ENTERTAINER AND PARENTS--Alan Finney, foreground, along with Denise Detten, a pianist from Hereford, provided entertainment at the Muleshoe Independent School District Board of Trustees appreciation banquet Thursday night. In the background are Alan's parents, Bob and Barbara Finney. (Journal Photo)



PLAQUES AWARDED FOR SERVICE TO SCHOOL BOARD--Julie Cage, left, and Rex Harris, who both went off the Board of Trustees of the Muleshoe Independent School District this year, were presented plaques of appreciation during the School Board banquet Thursday night. (Journal Photo)



JENNYSLIPPERS HONORED--Receiving a plaque for 'Extraordinary Service to the Muleshoe Independent School District' were Norma Bruce and Billie Downing, both representatives of the Muleshoe Jennyslippers. (Journal Photo)



IN A RUNDOWN PLAY--Joe Orozco, left, was successful in getting his runner out during a 'rundown' play at the Muleshoe-Canyon baseball game in Muleshoe last Tuesday evening. This was the last regular game for the year. (Journal Photo)



THRIFTWAY'S LATEST \$100 WINNER--Ray Day, manager of Servall Thriftway, presented a \$100 check to Toni King Thursday afternoon as she became the latest Monopoly winner at Thriftway. Toni didn't indicate her immediate plans for spending the extra 'bonus' check she received. (Journal Photo)

18. Legals

NOTICE TO ALL PERSONS HAVING CLAIMS AGAINST THE ESTATE OF CLAUDE RAY BLACK DECEASED

Notice is hereby given that original Letters Testamentary for the ESTATE OF CLAUDE RAY BLACK, were issued on April 25, 1989, in Cause No. 1801 pending in the County Court of Bailey County, Texas to:

ZIDA MAE BLACK
The residence of such Executor is Bailey County, Texas. The post office address is:
ZIDA MAE BLACK
C/O JOHNNY ACTKINSON
ALDRIDGE, HARDING, AYCOCK & ACTKINSON, P.C.
P. O. BOX 286
FARWELL, TEXAS 79325

All persons having claims against this Estate which is currently being administered are required to present them within the time and the manner prescribed by law.

DATED the 17th day of May, 1989.

ALDRIDGE, HARDING, AYCOCK & SON, P.C.

P. O. Box 286
Farwell, Texas 79325
Telephone No. 806/-
481-3361

By Johnny Actkinson
Attorney for the Estate
A18-21s-1tc

20. Public Hearing

PUBLIC HEARING CITY OF MULESHOE TEXAS COMMUNITY DEVELOPMENT PROGRAM

The City of Muleshoe will conduct a public hearing at 5:00 p.m. on Wednesday, May 31, 1989 in the Council Chambers at City Hall, 215 South First Street, Muleshoe.

The purpose of the hearing is to report on the completion of the street paving project funded through the Texas Community Development Program of the Community Development Block Grant administered by the Texas Department of Commerce and to discuss the upcoming TCDP grant application cycle for 1989 funds eligible activities, and community development needs for the city.

All citizens are encouraged to attend this meeting and comment on the project and the proposed application. Written comments will be accepted by the city until May 31, 1989.

For further information contact Dave Marr, City Manager at 272-4528. Handicapped individuals who might have difficulty attending the meeting may contact city hall to arrange for special assistance.
C20-21s-1tc

15. Misc.

NEED TO BUY: Single garage door in good condition. Call 272-3015.
B15-21s-tfc

GRAIN PRICES	
FEED CORN....	4.73
WCY....	5.50
RCY....	4.85
WHITE FOOD CORN...	6.50
MILO....	4.14
SOYBEANS....	6.75
WHEAT....	4.00
	97%
Prices Effective May 19, 1989	
MARKETS COURTESY OF FARMERS CO-OP ELEVATORS	
Muleshoe, Texas	
272-4335	

A.D. Roberts

Military Services Held At Morton

Military graveside services for D.A. Roberts, 67, of Hanford, Calif. were conducted at 11 a.m. today, Thursday, May 18 in Morton Memorial Cemetery with David Mircle of Morton officiating.

Burial was under the direction of Ellis Funeral Home of Morton. Roberts died at 10:25 p.m. Friday, May 12 in Hanford Community Hospital.

Born Dec. 26, 1921, in Garvin, Okla., he had been a resident of Hanford for 15 years moving there from Fresno, Calif. He was a retired carpenter, a Baptist, and a WWII veteran serving with the U.S. Navy. He married Dottie Jones on July 30, 1979, in Reno, Nevada.

Survivors include his wife, Dottie; a daughter, Linda Phelps

of Napa, Calif.; a sister, Ann Delozier of Battiest, Okla.; six brothers, H. E. Roberts of Millerton, Okla., James Roberts of Morton, Lloyd Roberts of Golden, Okla. and Delbert Roberts, Wilbert Roberts and C.W. Roberts, Wright City, Okla.; and two grandchildren.

J.D. Hughes Services Held Here Saturday

Funeral services for J. D. Hughes, 82, were held at 2 p.m., Friday, May 19, in the New Covenant Church with the Rev. Jimmy Low, pastor, and the Rev. Frank Hammond of Plainview, officiating.

Burial will be in Bailey County Memorial Park under the direction of Ellis Funeral Home of Morton. Hughes died at 10:10 p.m. Tuesday in Lubbock Hospitality House.

Born April 26, 1907, in Munger, TX, he had been a resident of Muleshoe since 1985, moving here from Mexia. He was retired from Northern Natural Gas Co., and was a member of the New Covenant Church of Muleshoe, the Pampa Odd-fellows Lodge and Masonic

Slow Service
"Are you the girl who took my order?" the impatient yeoman asked.

"Yes, sir," replied the waitress.
"Well, I declare," he remarked, "You don't look a day older."

Frankly Speaking
Passenger (who hasn't enjoyed rough weather):
"The ship seems to tip a good deal, steward."
Steward: "Yes, ma'am! However I assume it's

Lodge. He married Meda Cox on April 26, 1936 in Skellytown.

Survivors include his wife, Meda; a son, Homer Lee Hughes of Springfield, Virginia; a daughter, Mrs. Linda Low of Muleshoe; and four grandchildren.

The Winner
When it comes to cost per mile of operation, is there any vehicle more expensive than a supermarket shopping cart?
—News, Russell, Kan.

An Art?
Politics is the art of looking for trouble, finding it everywhere, diagnosing it incorrectly and applying the wrong remedies.
—Arizona Republic.

Libel on the Ladies
Willie—Did Edison make the first talking machine, Pa?

Pa—No, son. God made the first one, but Edison made the first one that could be shut off.

BIBLE VERSE

"Let no one despise thy youth, but set the believers an example in speech and conduct, in love, in faith, in purity."

1. To whom was this advice addressed?
2. By whom were these words spoken?
3. Is this advice still pertinent?
4. Where may this verse be found?

Answers to Bible Verse

1. Timothy, a young preacher.
2. Paul, an old preacher, about to die in Rome.
3. Yes—young people, by pure consecrated living can change the world today.
4. I Timothy 4:12.

Immaculate Conception Catholic Church

Father Patrick Maher
Northeast of City

First Baptist Church

220 West Ave. E.
Barry Bradley, Pastor

Emmanuel Baptist Church

Iglesia Bautista Emmanuel
107 East Third
Isaia Cardenas, Pastor

Trinity Baptist Church

314 E. Ave. B.
Rev. Dale Berry

Circle Back Baptist Church

INTERSECTION FM 3397 & FM 298
Pastor Glen Price
946-3676

Calvary Baptist Church

1733 W. Ave. C.
Rev. Rick Michael

Muleshoe Baptist Church

8th and Ave. G.
Bob Dodd, Pastor

Progress Baptist Church

Charles Fisk, Pastor
Progress, Texas

Richland Hills Baptist Church

17th and West Ave. D
Allen Petersen, Pastor

St. Matthews Baptist Church

Corner of West Boston & West Birch
M.S. Brown, Pastor

Progress Second Baptist Church

1st and 3rd Sunday
Rev. Arthur Hayes

The Community Church

Morton Hwy.
Mort Cross, Interim Pastor
272-5992

1st Baptist Church

Lazbuddie, Tx. 965-2126
Gary Wilcox, Pastor

The Lord is my shepherd



The 23rd Psalm is one of the most familiar chapters in the Bible. Early in life, most of us have committed it to memory. Every once in a while we should go back to these verses and think of the wonderful message of faith and trust in God that they reveal to us. They show us that we have a loving Father; one who will show us the right paths; one who will protect and provide for us. These scriptures end with a note of thanksgiving and a promise.

"Surely goodness and mercy shall follow me, all the days of my life; and I will dwell in the house of the Lord forever."

Plan to start a regular worship in the Lord's house.

The Church is God's appointed agency in this world for spreading the knowledge of His love for man and of His demand for man to respond to that love by loving his neighbor. Without this grounding in the love of God, no government or society or way of life will long persevere and the freedoms which we hold so dear will inevitably perish. Therefore, even from a selfish point of view, one should support the Church for the sake of the welfare of himself and his family. Beyond that, however, every person should uphold and participate in the Church because it tells the truth about man's life, death and destiny; the truth which alone will set him free to live as a child of God.



Coleman Adv.

St. John Lutheran

Sunday School and Bible Classes 9:30 a.m.
Church Services 10:30 a.m.
Rev. Mac Beas, Pastor

Templo Calvario

507 South Main
Sunday 10:00 a.m.
Sunday Evening 7:00 p.m.
Evangelistic Services
J.L. Soto, Pastor

New Covenant Church

Plainview Hwy.
Sunday 10:00 a.m.
Wednesday 7:00 p.m.
Jimmy Lowe, Pastor

Lazbuddie Methodist Church

965-2121
Larry Reid Farris, Pastor
Truth Tabernacle Pentecostal Church

Jehovah Witness

Friona Hwy.
Boyd Lowery, Pastor

Church Of The Nazarene

9th and Ave. C.
Dennis Hayes, Pastor

Longview Baptist Church

965-3413
B.C. Stonechiper, Pastor

Primera Iglesia Bautista

223 E. Ave. B.
Roy Martinez, Pastor

Lariat Church Of Christ

Sunday School 10:00 a.m.
Worship 11:00 & 6:00 p.m.
Wednesday Services 7:00 p.m.
Sam Billingsley, Minister

Muleshoe Church Of Christ

Cloviss Hwy.
Bret McCasland, Minister

16th & Ave. D. Church Of Christ

Sunday 10:30 a.m.
Evening 6:00 p.m.
Wednesday 8:00 p.m.

First Assembly Of God

Rev. David C. McCune
9:45 Sunday School
11:00 Morning Worship
6:30 Evening Services
7:30 Mid-week Services
272-3984

Primitive Baptist Church

621 South First
Elder Cleveland Bass, Pastor

Spanish Assembly Of God

East 6th and Ave. F.
Luis Doyle, Pastor

First United Methodist Church

507 W. 2nd Street
Richard Edwards, Pastor

El Divino Salvador Methodist Church

5th and Ave. D.
Jose M. Fernandez, Pastor

Lazbuddie Church of Christ

965-2932

United Pentacostal Lighthouse Church

207 East Ave. G.
Rev. N. W. Thompson
272-3258

Western Drug 114 Main 272-3106	St. John Lutheran 200 E. Ithaca & Fir 272-3391	Dairy Queen 1204 W. Amer. Blvd. 272-3412
Little Gulf 202 W. Amer. Blvd. 272-4918	Serv-All Thriftway 401 W. Amer. Blvd. 272-4739	Combination Motor & Salvage 272-4458
Bob Stovall Printing 221 E. Ave. B. 272-3373	Superior Med-Equip 623 W. 2nd 272-3767 or 965-2622	Farmers Co-Op Elevators Muleshoe 272-3988
Main Street Beauty Salon 115 Main 272-3448	Lenau Lumber 202 E. Ash 272-4222	Bobo Insurance 108 E. Ave. C. 272-4264
Irrigation Pumps & Power West Hwy. 84 272-4483	Wes-Tex Feed Yards 272-7555	Bratcher Motor Supply 107 E. Ave. D. 272-4288
	Muleshoe Lawn & Leisure 522 W. Amer. Blvd. 272-3162	Five Area Telephone Cooperative, Inc. 302 Uvalde 272-5533
		Richland Hills Texaco 1914 W. Amer. Blvd. 272-4875

Shop The Classifieds 272-4536

CLASSIFIED RATES
Minimum Charge \$2.30

Consecutive Insertions Minimum Charge \$2.00

CLASSIFIED DISPLAY RATES
\$1.75 Per Column Inch

DEADLINES
12 noon Tuesday For Thursday Paper
12 noon Friday For Sunday Paper
We reserve the right to classify, revise, or reject any ad. Not responsible for any error after ad has run once.

1. Personals
Call your local used cow dealer for 7 day a week dead stock removal. *965-2903 or 1-800-697-4043. cl -37t-tfc

Mary Kay Cosmetics
Josie Flowers
272-3865
Call 8-12a.m. and after 6p.m.

CONCERNED
About Someone's Drinking?
HELP IS AVAILABLE
through Al-Anon
Call 272-2350 or 965-2870 or come to visit Tuesday nights, 8:00 p.m. or Saturday mornings at 10:30 a.m. and through AA call 965-2870 or come visit Tuesday nights, 8:00 at 620 W. Second, Muleshoe.

3. Help Wanted
WANTED a Semi-Driver. Experienced 23 or over. Call 505-482-3410. c3-21s-1tc

ATTENTION-HIRING!
Government jobs-your area. \$17,840-\$69,485. Call 1-602-838-8885. EXT R10191. 3-21s-4tp

EXCEL-DTM Foods, 900-B Millard, Friona, TX. Now taking applications and interviews, for full-time production workers, on Wed. 1:30-3:30 CST. Located on west end of Millard Warehouse. Friona, TX (806)247-2781. E3-21s-2tc

WANTED: A general Office Worker. Must Have Neat Appearance And Be Able To Meet Public. Apply In Person, Only. No Information Will Be Given Over the Telephone. The Journal, 304 W. 2nd Street. TFC

SALESMAN
WANTED-Must have experience in retail business, 40 hr. week. Send resume to P. O. Box 344, Muleshoe, Tx. or come by 1302 W. American Blvd., NO PHONE CALLS PLEASE. A3-17s-tfc

3. Help Wanted
WANTED: Experienced Irrigation Truck Operator. Also Ag-Related Electrician. Only Experienced Need Apply. Call (806) 238-1596 Daytime. After 8 p.m. (806) 238-1328 or 481-9008. B3-18t-tfc
HELP WANTED: Taking Applications for Bookkeeper at James Crane Tire. See Mike or Call 272-4594. C3-20t-2tc
TRAINEE COOK
WANTED: Call 272-5433 or see Carol at the Dinner Bell. D3-20t-2tc

5. Apts. For Rent
FOR RENT: Nice 2-bedroom apartment. Water paid. Deposit required. 272-7575. P11-11t-TFC

8. Real Estate
HOME FOR SALE BY OWNER 3-Bedroom, 1 Bath, 1 attached Garage, Den with wbs, Nice Yard, Low Utility Bills, Friendly Neighborhood. PRICED TO SELL. 506 East Chicago--Phone 272-4402. 8-21s-3tsp
"ATTENTION-GOVERNMENT HOMES from \$1 (U-Repair). Delinquent tax property. Repossessions. Call 1-602-838-8885. EXT. GH 10191. 8-21s-4tp
YELLOW Siding, 2-bedroom, 2 1/2 bath, central heat, air conditioned mobile home. See to appreciate. 946-3443. R8-21s-2tc
PRICED TO SELL!!! Nice 3-2 House. New heat pump, dishwasher, disposal & kitchen flooring. Ceiling fans, double pane windows and more!! Call for appt. 272-3063 or 272-4303. H8-21s-8tc
FOR SALE: Mobile home and lot. Call 795-2165, collect. 8-19s-8tsp
FOR SALE: By Owner. Richland Hills. Super location. Nice 4-2-1. Carport, Brick, energy efficient, built-ins. F. P., heat pump, storage building. Fenced yard. "40's." Call 272-4344 or 272-3510. 8-19t-tfc
NEW 3-2 14x68, Fully Furnished. 10% down. 13.75 APR., 120 Months at \$210.00 per mth. Sharp Home. Call Mickey 1-800-999-9286. A8-20t-4tc
BURNING MONEY? Rent Sky High? Call Mickey 1-800-999-9286. Low Down. Low Monthly Payments. Low Interest. Short Terms. A8-20t-4tc
1984 16x66, 2-2 Mobile Home. Cathedral Ceiling. Lge. Garden Tub. Bay Windows, very nice. \$1000.00 down. 8.99% APR. 8 years. \$245.00 per mth. Call Mickey. 1-800-999-9286. A8-20t-4tc

8. Real Estate
GREAT BUY- 2-bedroom, 1 bath home on 1/2 acre, 1-1/4 miles west of Lazbuddie on Hwy. 145. Large mature orchard, trees, landscaped. Yellow aluminum siding, carpet, carport and storage. Ideal for retired couple, starter home or hired hand. Asking \$12,000. Call C.C. Matthews, Jr. 965-2133. S8-17s-tfc
FOR SALE: 31' Airstream Exceela 500. Awnings, rooftop heat pump air/forced air furnace. Fully loaded. Load leveler hitch - fits a square receptacle. Anti-sway bar. New shocks. Excellent condition. Priced to sell, \$15,000. Call 272-3469 or 272-3446. 8-20s-3tp
FOR SALE: 2 Bdrm house on 1 acre. 2 1/2 miles N. of town. Call 946-3472. 8-19t-4tp

9. Automobiles For Sale
FOR SALE: 1985 Chrysler Laser. Loaded. Turbo-charged. Call after 6 p.m. 272-5008. 917t-9tp
ATTENTION-GOVERNMENT SEIZED VEHICLES from \$100. Fords, Mercedes, Corvettes, Chevys. Surplus Buyers Guide. 1-602-838-8885. EXT. A 10191. 9-21s-4tp

116 E. Ave. C.
RICHLAND HILLS
IMMACULATE 3-2-2 Brick, corner lot, Cent. A&H, built-ins, FP, loads of storage & closet space, much more!
PRICE REDUCED 3-1-1 Cent. Heat, Evap. air, h-w, yard....
VERY NICE 3-2-3 Home, Cent. A&H, built-ins, FP, fans, splkr. sys., fenced. **PRICED TO SELL!!!!**
156.58' x 140' corner residential lot or lots - \$7,500.00!!!!
HIGHLAND AREA
VERY NICE 3-2 1/2-2 Brick, Cent. A&H, built-ins, 3,000+ sq. ft. of lv. area, fenced yd. splkr. system, & much more!!!!
VERY NICE 3-2-2 Brick, Cent. A&H newly remodeled kitchen with built-ins, storm windows, fenced yard, storage bldg. and much more!!!!
NICE 3-2-2 Brick home (2 story), on corner lot, Cent. A&H, built-ins, and much more. **LET'S LOOK TODAY!!!!** 160's
NICE 3-1 1/2-1 Brick Home Cent. A&H, built-ins, large den w/ fireplace, fenced yard, storage bldg. \$50's!!!!
PRICE REDUCED 2-2-2 Brick, corner lot, Cent. A&H, spacious rooms, utility, cov. patio, fenced yard, & much more. 40's!!!!
HIGH SCHOOL
NICE 2-1 1/2-1 Home, corner lot, built-ins, nice carpet, heat pump, fenced yard, storage bldg. & more!!!!
HIGH SCHOOL
3-2-1 1/2 carport Brick Home, Cent. A&H, built-ins, fenced yd., eff. apt. storage & more!!!!
PRICE REDUCED FOR QUICK SALE! Nice 2-1-1 Home, Cent. Heat, carpets, work-storage area, and much more. \$19,950.00!!!!
PRICE REDUCED-IMMACULATE 3-2-3 Brick Home, Heat Pump Sys., built-ins, nice finished basement w/FP, splkr. sys., & much more. \$50's!!!!
3-1-1 Brick, Cent. heat, energy eff.!!!!

DIANNE NIEMAN, BROKER

8. Real Estate
WHITT - REID
Real Estate - Insurance
Sales & Appraisals
201 Main Muleshoe, TX.
Office - 272-3611
A Good First Time Home Owner, 2-1-0 Extra Nice, Well Kept. Lenau \$17,000 O-H-18
Lovely starter home-just waiting for you, 3-1-1. Assessed Value \$39,870. Sacrifice price \$27,500. Central heat, Evap. cooling, Park addition near schools, brick 25-H-33
Country feel with city convenience, one acre, 3-3-2. 2 living areas, Heat pump, Spanish Decor, Sprinkler system, large domestic well, fire place, Sauna bath, Office, landscaped, Plainview Highway, restricted area, Priced at 67% of replacement cost. 100-H-2
50 x 90 foot Warehouse for lease.
Home Phones
Roy Whitt, C.R.E.A. 272-3058
Certified Real Estate Appraiser
Thursie Reid 272-5318 George Poteet 272-4047 Sandra Chancy 925-6727
We have buyers for farm land.. See us.

8. Real Estate
TRIPLE TRADE LOT
Smyer, Texas
New Universal Tractors For Sale 36-64 Horsepower. 3 sizes to choose from. Finance Plans Available. Large Selection of new and used trailers. We are a S&H Trailer Distributor. Bob Smith 234-2405 or 777-2405
\$10-20t-2tc

Bingham & Nieman Realty
272-5285 or 5286
HIGH SCHOOL
PRICE REDUCED - 3-1-1 Home, earthtone carpets, fenced yard, storm cellar & workshop!!!
COUNTRY CLUB-VERY NICE 3-2-2 brick, Cent. A&H, built-ins, FP, Earthtone carpet, large fenced yd., storage-workshop, corner lot. \$50's!!!!
LENAU ADD.
very nice 3-1-1 Home, WB stove, enclosed patio, storm windows & doors, well insulated, beautifully landscaped. LET'S LOOK TODAY!!!!
COZY 3-1 1/2-1 home, Cent. heat, nice earthtone carpets, fenced yard, storage bldg., & more!!!!
3-1-1 home, Cent. A&H, utility, storage bldg., cellar, gas grill & more. \$20's!!!!
COUNTRY HOMES
JUST LISTED-3-2-2 Brick on 1 acre on pavement close to town, Cent. A&H, built-ins, FP, etc. \$40's!!!!
VERY NICE 3-2-1 Home on 1 acre, close to town, Cent. Heat, Evap. air, nice carpets, nicely remodeled. \$30's!!!!
NICE 4-2 1/2-1 Brick on 1.2667 ac. on pavement at edge of town, built-ins, loads of storage, & much more. **PRICED FOR QUICK SALE!!!!**
2-1 home, 20 acres, sub. pump, sprinkler, barns & corrals. \$40's!!!!
NICE 3,500 sq. ft. office bldg. across from Courthouse. **PRICED TO SELL!!!**
JUST LISTED - NICE COMMERCIAL BLDG. ON MAIN HIGHWAY. Approx. 2800 feet of area, suitable for various types of business. Possible Owner Financing to qualified Buyer. \$20's!!!!
APPROX. 3,000 sq. ft. bldg. Railroad frontage. **CASH PRICE \$15,000.00.**
JUST LISTED-DRIVE-IN THEATER. fully equipped, nice snack bar. **JUST IN TIME FOR SUMMER SEASON!! PRICED TO SELL!!!!**
GEORGE NIEMAN, BROKER

Smallwood Real Estate
232 Main 272-4838
Like country living? 4 Bedroom, Large living room & fireplace. Large kitchen, Den, Lots of storage, Fenced Yard. Need space? This is it.
Muleshoe
FOR SALE: 3-2-2 Total Electric Brick Home, 1-40x75x14 All Steel Building, 1-30x40x12 Insulated Steel Building, 1-23x30 Cattle Barn with Steel Corrals, 2 Submersible Irrigation Pumps-Both with high pressure underground lines. All on approximately 30 acres between West Highway 84 and FM 1760. Will Divide. Call Kenneth Wilhite 806-272-4975 for appointment. 8-20s-tfc

10. Farm Equip.
FOR SALE: Wylie 3-seat sprayer. Hydrostatic Drive. Phone 965-2717 B10-21s-2tc

11. For Sale Or Trade
FOR SALE: Electric hydraulic tailgate lift for pickups. \$300. Call (806)965-2471. 11-19s-4tp

11. For Sale or Trade
REGISTERED Beef Master Bulls For Sale. Call M.D. Gunstream, (806) 272-5035 or 272-4515. G11-13t-tfc
SEVERAL rolls of smooth wire and insulated post, for electric fence. 104 W. 6th. Call 272-5788. 11-20s-tfc

18. Legals
NOTICE FOR BIDS
The Bailey County Commissioners Court will receive bids until 10:00 a.m., June 2, 1989, for the purchase of an underground automatic sprinkler system for the courthouse lawn. The system will be engineered by the bidder. Payment in full will be made when the system is fully installed and working properly. All bids must be received in the County Judge's Office prior to the above time and date. The Commissioners Court reserves the right to reject any or all bids and to waive formalities. Jim Watson County Judge

18. Legals
W18-21s-2tsc
NOTICE OF OPPORTUNITY
Notice is hereby given that South Plains Community Action Association Inc. is seeking Financial Assistance from the U. S. Department of Transportation under the Section 18 Grant Program. Grant funds will be used to continue providing Rural Public Transportation on a demand response bases with 24 hour notice. These services are for all communities in Bailey, Cochran, Garza, Hockley, Lamb, rural areas of Lubbock, Lynn, Terry and Yoakum counties. The system will purchase computer and office supplies, fuel, maintenance, contract services, printing services and insurance. Special provisions for transporting the Elderly and Handicapped are available. Fares will be charges for all transportation. However, persons receiving services under CSBG, SSI, Medicaid, and JTPA may qualify for subsidized fares. Copies of the grant proposal are available for inspection by the public at 411 Austin Street, Levelland. Any person wishing to request a public hearing on the proposed project must submit that request in writing to South Plains Community Action Association Inc., 411 Austin Street, Levelland, Texas prior to June 15, 1989. S18-21s-4tc

18. Legals
INVITATION TO BID
This agency is seeking bids for the purchase of three (3) vehicles under the UMTA Section 18 Grant Program as follows:
Item #1 - One (1) fifteen passenger standard van meeting the SDHPT-070-99-06 (Revised November 1988) specifications.
Item #2 - Two (2) fifteen passenger standard vans modified with raised roof, wheel chair lift and wheel chair tie downs. Meeting the SDHPT-070-99-08 (Revised November 1988) specifications. Bid packages may be picked up at Spartan's office located at 410 Houston. The bid opening will be held on Tuesday, June 6, 1989 at 2:00 p.m. CDT at 410 Houston Street, Levelland, Texas, 79-33b. Bidders are invited to attend the bid opening. S18-21s-4tc

18. Legals
ROUND-UP APPLICATION
Pipe-wick mounted on high-boy, Row Crops. CRP. Vol. Corn, 30" or 40" rows. Roy O'Brian, 265-3247. 19-20s-tfc

8. Real Estate
James F. Hayes & Co.
Agricultural Real Estate
Vic Coker
Agent
310 Main Street, Suite 103
159 Acres North of Muleshoe...on Highway 214. Lays perfect. 2 wells, Valley electric sprinkler with drops. Allotted. Nice!
1-210 Acre Farm... Lamb County: steel barn and other improvements, 2 wells, lots of underground pipe, good soil and lays good. Immediate Possession.
160 Acres...with 4 Bedroom house East of E... 2-8 inch irrig. 2 wells. Located on Pavement. A good value.
Phone 272-3100 Home 965-2468 Muleshoe, Texas

18. Legals
18. Legals

18. Legals