



WELL, CURL MY HAIR—An Italian Army private gets dolled up by a buddy for a military tableau depicting scenes from Italy's past military glories. Occasion was the military's 37th anniversary celebration in Rome of World War I victory over Austria.

FPC Estimates Electric Utility Load Is Going Up

By DEAN W. DITTMER
WASHINGTON, Nov. 19—UP—The Federal Power Commission's estimate that electric utility loads in 1960 will be more than 3 1/2 times the requirements for 1954 focuses attention on a possible trend in fuel sources for power.

Several days ago the FPC issued a report entitled "estimated future power requirements of the United States by regions, 1954-1960." This came on the heels of the agency's regular monthly publication—"consumption of fuel for production of electric energy."

For the year ending Sept. 30, the fuel consumption publication said, the electric energy-producing industry used 135,892,697 tons of coal, 72,397,284 barrels of oil and 1,166,656,693,069 cubic feet of natural gas.

Big Increase for Coal
—These amounts represent an increase of 16.4 per cent for coal, 4.6 per cent for oil and 2.2 per cent for natural gas compared to corresponding totals for the year ending Sept. 30, 1954, the publication said.

FPC officials did not have available immediately a percentage table showing what fuels were used for electric energy production for the 12 months ending Sept. 30 but had figures for the month of September.

They were: Coal 55.2 per cent, oil 5.3 per cent, gas 21.6 per cent, wood and waste products 0.1 per cent, and hydroelectric 17.6 per cent.

As a proportion of total production, the FPC said, water power output decreased from 19.8 per cent of the September, 1954, output to 17.6 per cent of the same month's output this year.

Requirements Go Up
In its report on estimated future power requirements the FPC said electric energy requirements and peak load factors are expected to grow at about the same rate with only a slight increase in load factor. Electric utility loads in the south and southwest have been the fastest growing. Future growth of these two regions is expected to be somewhat above the national average.

The three regions covering well-established industrial areas in the East and Midwest have not been growing as rapidly in electric consumption as the rest of the country for the last 15 years, the report said. Anticipated future growth is expected to be somewhat lower than in other areas.

Agricultural areas of the Midwest and a portion of the mountain states have had a per capita use of electricity considerably lower than the average, the report said.

Deaf Concentration Camp Report

ASUNCION, Paraguay, Nov. 19—UP—The chiefs of the diplomatic missions of the United States and three South American countries were invited Saturday by the Paraguayan government to fly to In-gavi to see for themselves that there is no concentration camp in the area.

The first state hospital for tuberculosis was established by Massachusetts in 1893; the first municipal hospital for TB in Cincinnati, Ohio, in 1897.



Do you have something that would look like a vinegar bottle in the trash can?

Ford Still Hopes To Pass Chevrolet In Sales For 1955

By REY W. BRUNE
DETROIT, Nov. 19—UP—Ford, which has fallen far behind in its race to beat out Chevrolet as the No. 1 selling automobile this year, still has hopes it will put out in front by the end of the year.

Ford and Chevrolet staged a neck-and-neck race in 1954, the first time in 19 years Chevrolet had been challenged seriously.

The race ended with both sides claiming victory, on the basis of different methods of determining new car sales through registra-

tions. Ford officials felt they won something of a moral victory when R. L. Polk swung to its method of figuring out the champion this year.

But Ford fell 50,000 new cars behind Chevrolet in this year's sales battle in the first nine months. It still hopes however it will stage a closing sales drive that will put it in first place on Dec. 31.

Look to October Reports

Part of the optimism which Ford officials express publicly at least is that they expect to cut down the

margin quite a bit when the reports from October are tabulated. Ford, making a quick four-day changeover, shut down for 1956 models early in September. It started selling its 1956 models earlier and was rolling on 1956 sales when Chevrolet shut down in October.

Another part of the optimism is based on the increased production facilities at Ford. Three new assembly plants were opened last spring and during the summer.

In a year like 1955, however, when sales soared to all-time records, Chevrolet was able to out-produce Ford, because of its bigger facilities.

Three New Plants

The three new plants didn't open in time for Ford to benefit during the big spring selling season this year. Ford officials have said they

never were able to meet demand this year.

Whether it would have made a difference in the sales totals, if Ford had been able to produce as many cars as Chevrolet, however, is a question that never will be answered.

Ford feels, however, it will be able to give dealers enough cars in the closing months this year to turn the sales leadership trick, if they can sell enough.

They've tackled the job with a gusto. Some advertisements even state Ford is aiming for "inventory zero" by the end of the year to win the sales leadership race, although the company itself says it isn't aiming for such a goal.

But, despite the big lead they will have to overcome, Ford at least hasn't given up on this year yet.

Daniel Boosted For Governor

CHILDRESS, Tex., Nov. 19—UP—The leaders of both Gov. Allan Shivers' and Ralph Yarborough's 1954 gubernatorial campaigns in Childress endorsed a Price Daniel for governor crusade Saturday.

"If we can secure a fine man of Price Daniel's ability to be our governor, I am all for it," said Leroy Reeves who served as county campaign manager for Yarborough last year.

"Price Daniel will have my wholehearted endorsement and support," said Ned Garrison, co-chairman of the forces for Shivers in

the lively 1954 campaign between the two.

Unknown leaders started a spontaneous movement requested that Sen. Daniel be a candidate for governor next year when circulating petitions immediately attracted a flood of signatures.

Political talk has it that Daniel will be available for the campaign in 1956 if Texans want him, but the Childress petition is believed to be the first outspoken action for Daniel.



ELMER'S GROCERY & CAFE

THANKSGIVING - NEW - LOW - SPECIALS

These Are Palo Duro Broad Breasted TURKEYS --- None Better --- WHY PAY MORE ?

Our Own TENDER CRUST BREAD 1 1/2-lb. Loaves 239^c	12-15 Lb. Broad Breasted Turkey Hens Lb. 53^c	16-22 Lb. TOM TURKEYS Lb. 47^c	Fresh Dressed FRYERS Lb. 39^c Long Island DUCKS and GEESE
--	--	---	---

Shurfine PEACHES No. 2 1/2 Can Sliced or Halves 3 85^c	Borden's NEW POP - OPEN BISCUITS 5 Cans 49^c Cello Pkg. Shelled FULL LB. PECAN Halves \$1³⁹ All Brands, 1/2 Gallons HOMO MILK 2 85^c	All 7 Flavors JELLO 3 pkgs. 25^c Home-Made, Full Lb. Ctn. Mince Meat 39^c Elmer's Super Market Will Be Closed ALL DAY THANKSGIVING DAY
---	--	--

Lady Borden ICE CREAM 2 Pints 49^c	80 Count Northern Paper Napkins 2 Pkgs. 31^c Colored OLEO 5 lbs. \$1⁰⁰ 46-oz. Del Monte Tomato Juice 29^c 303 Shurfine Whole Green Beans 25^c 303 Shurfine All Green Asparagus 27^c 303 Can Cranberry Sauce 21^c Bakers Pkg: Choc. Chips 21^c PILLSBURY FLOUR 10 79^c Lb. Sack	1-lb. Can Hill Bros. COFFEE 93^c Giant Cans BABO 14^c Pint Marshmallow CREAM 23^c Dromedary Cake Mixes, 3 for 79^c Curtis MARSH-Mallows 19^c 1 1/2-oz. Adams Pure Vanilla 29^c 1 1/2-oz. Can Poultry Seasoning 16^c PURE CANE SUGAR 10 98^c Lb. Bag	No. 2 1/2 Can Shurfine Pumpkin 2 For 37^c 2-oz. Can Pumpkin Pie Spice 29^c 1/2-oz. Can Rubbed Sage 22^c 2-oz. Can Nut-Meg 25^c East Texas Sweet Potatoes lb. 7^c Pascal Celery lb. 12^c Delicious Apples lb. 21^c Fresh Roasted Peanuts lb. 35^c Fresh Bunch TURNIP TOPS 10^c	1-lb. Cello Bag, Large Size Walnuts 55^c 8-oz. Blue Plate Cove Oysters 39^c 25 LBS. FANCY RED POTATOES 79^c Solid Head Cabbage, lb. 8^c Cello Packages Carrots, 2- 27^c SOLID HEAD LETTUCE 10^c Each
--	---	---	---	--

U.S. Good No. 7 Chuck Roast 37^c Pure Pork Sack SAUSAGE, lb. 19^c Lean, Meaty SPARE RIBS 37^c	Lean Beef SHORT RIBS 19^c Small Lean Pork Chops End Cut Center Cut 37^c lb. 45^c lb. Lean, Sugar Cured BACON SQUARES 3 LBS. 85^c	Cured HAMS SHANK END Lb. 35^c BUTT END Lb. 39^c WHOLE Hams lb. 43^c	8-10 LB. Broad Breasted Turkey Hens Lb. 57^c
---	---	---	--

Buddy's Will Be Open All Day Thurs.



THANKSGIVING

treats for your feast!

Prices Effective Thru SAT.

PINKNEY
HAMS 45^c
Half or Whole Lb.

FANCY LEAN
PORK CHOPS lb. 39^c

TURKEYS
Hens 53^c
6 to 14 Lb. Avg., Lb.

Toms 48^c
12 to 18 Lb. Avg., Lb.



MARYLAND SWEET
POTATOES LB. 9^c

CELERY CALIFORNIA GREEN PASCAL lb. 9^c

CRANBERRIES Fresh EATMORE CELLO PKG. 19^c

Hereford Large Iceberg
LETTUCE LB. 10^c

ONIONS GARDEN GREEN CALIFORNIA bch. 5^c

TOMATOES FANCY STEM lb. 19^c

Minute Maid FROZEN
ORANGE JUICE 2 6-Oz. Cans 35^c

Mixed Vegetables Flavor PaK Pkg. 19^c

PERCH FRESH FROZEN lb. 39^c

FRESH FROZEN
Strawberries 19^c
Regular Package

U. S. GOOD BEEF
T-BONE STEAK lb. 49^c

U. S. GOOD BEEF
ROUND STEAK lb. 59^c

U. S. GOOD BEEF
LOIN STEAK lb. 39^c

U. S. GOOD BEEF
RUMP ROAST lb. 45^c

U. S. GOOD BEEF
RIB STEAK lb. 39^c

FRESH
GROUND BEEF lb. 19^c

WICKLOW OR RATH
SLICED BACON lb. 35^c

WHITE SWAN
Maraschino Cherries Reg. 2 1/2-oz. Jar 10^c

WAPCO WHOLE
GREEN BEANS 2 303 Cans 29^c

KIMBELL'S
RED PITTED
Cherries
303 Can
19^c

White Swan Pitted
DATES LB. PKG. 35^c

Folgers All Grinds
COFFEE LB. CAN 89^c

Wapco Cut, No. 2 Can
Sweet Potatoes 2 CANS 29^c



WHITE SWAN CUT ALL GREEN
ASPARAGUS Tall Can 19^c

ROSE KIST
PIMENTOS 2-oz. Can 10^c

GOLD MEDAL 10 lb. 25 \$1.77
FLOUR bag 73^c

WILSON'S
BAKERITE 3 Lb. Can 69^c

DEL MONTE FANCY CRUSHED
PINEAPPLE 2 No. 1 Flat 29^c

WHITE SWAN
APPLE SAUCE tall can 17^c

OCEAN SPRAY - TALL CAN
CRANBERRY SAUCE 19^c

WUNDER BRAND SHELLLED
PECANS 6-oz. pkg. 59^c

WHITE SWAN FANCY SEEDLESS
RAISINS 15-oz. pkg. 17^c

White Swan Delicious - 46-oz. Can
PINEAPPLE JUICE 25^c

KOUNTY KIST - REG. CAN
Whole Kernel CORN 2 for 29^c

HI-HO
CRACKERS 1 lb. pkg. 33^c

SUNSHINE KRISPIE
CRACKERS 1 lb. pkg. 23^c

WAPCO WHOLE
NEW POTATOES 303 can 10^c

HEMET - NO. 2 1-2 CANS
SPICED PEACHES 2 cans 49^c

TIDE
LARGE GIANT
29^c 68^c

PURE CANE
SUGAR 10 LBS. 91^c

BORDEN'S
BISCUITS Reg. Can 10^c

BUDDY'S SUPER MARKET

Open Daily Til 9 PM
Open Sunday Til 7 PM

They'll Do It Every Time

By Jimmy Hatlo



Mainly About People

Sgt. First Class William A. Mitchell, whose wife, Jere, lives at 929 S. Wells St., recently was graduated with honors from the First Cavalry Division Non-Commissioned Officer Academy at Camp Schimmel Pfening, Japan. They serve the best: Pampa Hotel, Pampa Country Club, Pen-nant Club, O & Z Dining Room, Empire Cafe, F. W. Woolworth, Eat there—Then order Noland's Top of Texas Turkey, Ph. 4-7017, Box 1512.

Ted Swindle, high school senior, was elected all-school favorite last Friday and Mr. FTA at the district Future Teachers meeting in Canyon recently. Joan Robertson, also a senior, was elected as the other all-school favorite. In the run-offs were Carol Henry and Buddy Sharp.

Wanted Full Time Operator Apply in person LaBonita Beauty Shop 304 N. West.

Walter Stein's Spanish Class will meet in Lovett Memorial Library tonight at 7:30.

Fuller Brushes 514 Cook, 4-6316

Richard Ray Riley, son of Mr. and Mrs. Lesley S. Riley, has been named a member of Alpha Chi, national scholastic honor society at North Texas State College. He is a junior government major and a member of the government club, Phi Eta Sigma, honor society, and is a pledge of Sigma Phi Epsilon, social fraternity.

Select your appliance gift on Lay-a-way plan. Brooks Electric.

Tamm Abouhalkah's French class of the Adult Education program will meet at 7:15 tonight in Lovett Memorial Library.

Out-of-town visitors at the First Baptist Church Sunday were: Mrs. Truman Merril from Quilake, Mr. and Mrs. R. R. Westmoreland of McKinney, G. M. Sullivan from Ardmore, Okla.; Mr. and Mrs. W. A. Stepp of Oklahoma City, Mr. and Mrs. L. D. Powell from Colorado Springs, Colo.; Jay Oswald of Grank Prairie, W. T. Brown from Denton, Mr. and Mrs. R. J. Sailor, Jr., from White Deer, and Mr. and Mrs. Jack Gilpatrick of Canyon.

Let us help you with Wiring, fixtures and appliance needs. Brooks Electric.

The Fisherman's Class of the First Baptist Church will hold their annual Thanksgiving banquet tomorrow at 7 p.m. in the church. Calvin Whitley is teacher of the class. Wives of the men are invited to attend.

Mr. and Mrs. Alvia Fore are recent newcomers to Pampa.

Miss Nina Spearman, 1797 Mary Ellen, now working toward her master's degree at SMU, was maid-of-honor in the wedding Friday of Jeanette McKinley, daughter of Dr. and Mrs. V. B. McKinley of Dallas.

Mr. and Mrs. Steve Beck of Oklahoma City spent the week end with Mrs. Lilly McDonald, 628 1/2 N. Russell.

Mr. and Mrs. Howard Lockhart, 1141 N. Starkweather, spent the week end in Lubbock with their son, Tommy, a student at Texas Tech. They attended the Pampa-Lubbock game Friday night, and Dad's Day and the Texas Tech game Saturday. Their son, Tommy, will arrive home Wednesday for the Thanksgiving holiday.

A demonstration of how Soil conservation practices are planned to fit the farm and bring out available methods of completing the practices will be given by the tomorrow at Denworth at 1:30 p.m. James Gouddy, Clarendon FHA supervisor, and Jack Douglas, soil conservationist, have called the meeting. Ralph Thomas, county agent, is chairman of the group. Invitations have been sent to the Gray County SCD board of supervisors, bankers, the Gray County Extension Council, the ASC committee, and Production Credit men in this area.

Davy Strikes Out At The Cash Register

WASHINGTON — UP — Davy Crockett cooskin caps are riding the racks in the stockrooms. The T-shirts bearing the picture of the king of the wild frontier are tossed onto the remnant tables in the bargain basement.

In the aftermath of one of the biggest sales booms on record, local merchants now sadly report that the craze that was "so hot in May" has "really cooled off" in November.

Davy is king no more at the cash register.

"Our Davy T-shirts have been cut from \$1.29 to 29 cents," said one department store buyer. "And they're still moving slow."

What's filling in the gap for the young fry? "The kids are still western - happy," said one local merchant. And another Disney-inspired fad also has begun to move slowly to the fore.

Many stores here are now carrying and "moving pretty well" supplies of sweat-shirts, ties, suspenders and other clothing items labeled "Mickey Mouse Club."

While gadgets and gear that go with junior space-ship enthusiasm are still on the counters, most merchants report business on them is sagging from a year-old popularity peak.

Accuses Administration

WASHINGTON — UP — Americans for Democratic Action said Sunday the Eisenhower administration is using the Prosperity theme to cloak its inaction on behalf of low-income families.

Temperature In Deepest Oil Well Could Bake A Cake

By WESLEY A. LEATHEROCK

FORT WORTH — UP — An oil well crew drilling ever deeper in a hole already more than four miles into the depths of the earth has encountered temperatures of perhaps 340 degrees Fahrenheit, or hot enough to bake a cake.

The well, in Piquemines parish, Louisiana, sets a new record every foot deeper it is drilled. It is already 21,703 feet deep—271 feet deeper than the previous record set in California.

If any deeper hole has ever been drilled in the world, American oil men do not know about it.

The crew has been drilling since Feb. 26. They drilled to 19,732 feet in 121 days, then stopped and ran extension tests. That took 71 days. Since then they have been making about 34 feet in a day.

Used 110 Bits

They have used 110 drilling bits. They are now in geologic formations which were deposited 25 million to 30 million years ago.

The last measurement of the temperature so far in the earth was at 21,605 feet, when it was measured at 314 degrees Fahrenheit.

Gary Hicks Rites Set

Funeral services for Gary Lee Hicks will be held in the Lela Baptist Church at 2:30 p.m. Tuesday in Lubbock; Bob Lilly of Southwestern Public Service Co., Amarillo; and Rex Webster of the Great Plains Life Insurance Co. and Craig and Webster Advertising Agency in Lubbock.

Miss Louise Evans, feature writer for the Amarillo Globe-News, spoke on the techniques of interviewing and feature writing. Other speakers talked on men and women in the field of journalism.

Saturday afternoon, the delegates were guests of Texas Tech at the Tech-College of Pacific football game. The famous Kilgore College Angerettes performed during the half-time ceremonies.

arks 31st Traffic Fatality

SAN ANTONIO — UP — Bexar county recorded the 31st traffic fatality of the year, compared to 104 at the same time last year, when airman 20 Charles W. Riess, 20, of Lackland Air Base, died as his car went out of control and overturned at Loop 13, U.S. Highway 91 west.

To Establish Relations

COLOMBO, Ceylon — UP — The government of Ceylon announced Monday it has agreed to establish diplomatic relations with Thailand.

Award to Honor Alumnus

PRINCETON, N.J. — UP — The late F. Scott Fitzgerald, a famous Princeton University alumnus, will be honored by the establishment of a creative writing award in his name, it was announced Sunday.

Predicts Strong Economy

WASHINGTON — UP — Economist Leon Keyserling, who advised Presidents Roosevelt and Truman, predicted Monday that the 1956 presidential race will be run off in the face of "a strong and prosperous economy."

PHS Paper Wins First At Meeting

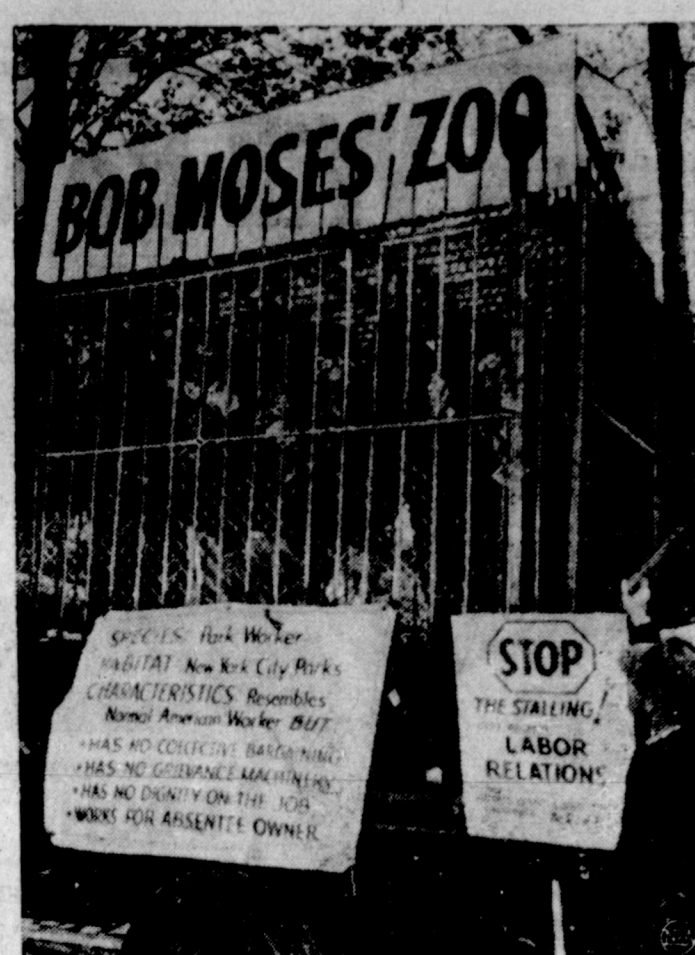
The Little Harvester, Pampa High School newspaper, won first place, and four staff members won two first and two third place ribbons at Texas Technological College Journalism Day in Lubbock Saturday.

Competing in the printed newspaper division, the school paper, edited by Mary Pippen, was adjudged best in its class.

Blue-ribbons for first place were won by Bill Athinson for sports stories and Jeanene Price for news stories. Martha Rithhaber won third place in advertisements, and Malcolm Brown tied for third in photography.

Attending the conference were 250 delegates from 34 schools in West Texas and New Mexico. Delegates from Pampa were Mary Pippen, Michael Price, Ted Swindle, Duggan Smith, Jeanene Price, Virginia Irwin Helen Steward and Tommy Strawn. They were accompanied by Miss Elizabeth Hurley, publications advisor, and Mrs. W. A. Pippen.

"Career Opportunities in Journalism" was the topic of the first session. Speakers were Jim Lindsey, managing editor of the Midland Reporter-Telegram; James Gillentine, publisher of the Hereford Brand; Keith Fuller of KCBT-TV in Lubbock; Bob Lilly of Southwestern Public Service Co., Amarillo; and Rex Webster of the Great Plains Life Insurance Co. and Craig and Webster Advertising Agency in Lubbock.



CAGEY PICKETS—These New York City park department employees huddle in a cage called "Bob Moses' Zoo" during a recent protest parade against Parks Commissioner Robert Moses. Some 2000 park employees marched to protest what they called "cruel practices and flagrant union-busting" by Moses. A truck carried the cage in the parade.

Bad Weather Keeps Ike From Posing For Pictures On Farm

By MERRIMAN SMITH

GETTYSBURG, Pa. — UP — Backstairs at the Gettysburg White House:

President Eisenhower was to have posed for pictures on the farm Saturday, but the camera was called off because of a steady, wet snow.

Mr. Eisenhower's physician Dr. Howard McC. Snyder, was not afraid of having the President exposed to the chilly damp weather, but he was dead set against the risk of the President slipping and falling in the slushy conditions underfoot.

Outside the entrance to the temporary White House press room here is a large sign which says "malinee today." This does not refer to Press Secretary James C. Hagerty's afternoon press conferences. The sign is an ad for the movie house next door.

Hagerty's conferences, however, frequently take on the aspects of a show. Hordes of college students and school frequently descend on the afternoon conferences. The younger children, particularly

stand and watch the reporters whaling away at their typewriters.

There's an apocryphal story going the rounds here that Mr. Eisenhower will have to buy more farm land if he continues to receive gifts of Angus heifers. He's received two new cattle in the week he has been here which brings his herd to 18.

The two heifers which arrived here in recent days have been bred and should be producing calves next year to increase the herd even more.

Just outside the President's room in the local postoffice are what once were the two general delivery windows. They've been closed however, and general delivery mail recipients must go to another part of the building.

This was done as a matter of security and convenience to the President and his staff.

Fresh lemon juice enhances the flavor of many vegetables, and is a good substitute for butter or margarine for the calorie counters.

Churchill Ends Vacation

WOODFORD, England, Nov. 19 — UP — Former Prime Minister Winston Churchill, now just a member of Parliament, returned to the political arena from a two-month French Riviera vacation over the weekend.

Chase Tribal Chief

KAMPALA, Buganda, East Central Africa — UP — Thousands of infuriated tribesmen were reported Thursday trying to capture and punish a tribal chief they regard as a traitor against the Kabaka, the king of the Bugandas.

Legal Publication

CITATION BY PUBLICATION

THE STATE OF TEXAS
TO: CLAUD D. STEWART

GREETING:
You are commanded to appear by filing a written answer to the plaintiff's petition at or before 10 o'clock a.m. of the first Monday after the date of issuance of this citation; the same being Monday the 2nd day of January, A. D. 1955, at or before 10 o'clock a.m., before the Honorable 21st District Court of Gray County, at the Court House in Pampa, Texas.

Said plaintiff's petition was filed on the 17th day of November, 1955. The file number of said suit being No. 11539.

The names of the parties in said suit are:
EUGENIA ELLEN STEWART as Plaintiff, and CLAUD D. STEWART as Defendant.

The nature of said suit being substantially as follows, to-wit:
Said Defendant's answer was filed on the 18th day of November of November, 1955.

Given under my hand and seal of said Court, at office in Pampa, Texas, this 18th day of November, A.D., 1955.

Helen Sprinkle, Clerk
County Court, Gray County,
Nov. 21 & 28 and Dec. 5 & 12, 1955

NOTICE TO BIDDERS

Sealed proposals addressed to the County Judge and Commissioners' Court of Gray County, Texas, will be received at the office of the County Judge, Pampa, Texas, until 2:00 P.M. November 22, 1955, for furnishing all necessary materials, machinery, equipment, supervision and labor for Bridge Construction, as follows:

Unit 1 — From Creek Bridge, Unit 2 — Grapevine Creek Bridge, Unit 3 — Wheeler Bridge.

Bidders must submit a satisfactory Cashier's or Certified Check, or a Bidder's Bond, in the amount of five percent of the bid submitted, as a guarantee to the County Judge in an amount not less than five (5%) percent of the bid submitted, for furnishing all necessary materials, machinery, equipment, supervision and labor for Bridge Construction, as follows:

Bidders are expected to inspect the sites of the work and to inform themselves regarding all local conditions.

Workes paid on this project must be not less than the general prevailing rate of wages. A detailed wage scale is attached in the specifications. Instructions to Bidders, Proposal Forms, Specifications and Plans may be obtained from Roberts, Merriman & Bowden, Consulting Engineers, 218 1/2 N. Russell, Pampa, Texas.

Gray County, Texas
County Judge
Nov. 14 and 21, 1955

WHAT IS THE CHURCH OF CHRIST?
Read the Answer in November Issue of Coronet Magazine
Now on Newstand

Hom & Gee Gro. With Your FREE Purchase Dinner and Kitchenware Genuine UNIVERSAL

421 E. FREDERIC DIAL 4-8531

Bakerite	SUGAR	Hixson	Kuner
3-lb. Can 69c	5-lb. Bag 49c	COFFEE	PUMPKIN
		75c Lb.	No. 2 1/2 Can 17c

LADY BORDEN ICE CREAM 2 Pints 49c

FLOUR	CAKE MIXES	EGGS
25-Lb. Sack \$1.79	BETTY CROCKER — WHITE, SPICE, YELLOW, MARBLE, DEVIL'S FOOD 2 boxes 49c	Guaranteed Fresh Dozen 39c
Hemet Spiced Peaches	BLUE PLATE, NO. 3 CAN SWEET POTATOES 19c	Kelly Homo 1/2 Gallon Carton 2 for 89c
No. 2 1/2 Can 25c	MINOT, NO. 300 CAN CRANBERRY SAUCE 17c	MILK
	KUNER, 303 CAN SUGAR PEAS 2 for 35c	BREAD
	TRUE VALUE, 303 CANS GREEN BEANS 2 for 19c	Meand's 1 1/2-lb Loaves 2 for 49c
	HUNT'S NO. 2 1/2 CAN FRUIT COCKTAIL 2 for 69c	Lux Liquid
	CURTIS, 10-OZ. PKG. MARSHMALLOWS 17c	Giant Regular 69c 33c
	NON-F-SUCH OR KIMRELL'S MINCE MEAT pkg. 23c	
	PECANS 6-oz. pkg. 69c	
	SALAD OLIVES 10-oz. Jar 33c	

PORK ROAST lb. 29c
Delite Hickory Smoked
Small Size Hams lb. 45c
Morrell Pride Boneless
CANNED HAM 9-lb. Can \$6.75

WE HAVE PLENTY OF FRESH DRESSED HENS, FRYERS & TURKEYS AT LOW PRICES

Choice Beef
CHUCK ROAST lb. 39c

Center Cut
PORK CHOPS lb. 49c

Delite Ready to Eat
PICNICS lb. 29c

JELL-O 3 boxes 23c

HUNT'S 4-OZ. CAN
TOMATO JUICE 25c

BROWN OR POWDERED
SUGAR 2 boxes 19c

Potatoes RED 25 Lbs. 75c

Cranberries Box 17c

LETTUCE Lb. 10c

CARROTS Cello Bag 10c

APPLES 4-Lb. Bag 39c

CELERY Lb. 9c



CARRYING ON—Mrs. Dorothy Carnegie will continue the world-wide organization created by her late husband, Dale Carnegie, author of "How to Win Friends and Influence People." The Carnegie organization sponsors courses in human relations, effective speaking and salesmanship. Mrs. Carnegie is its new president.

Quotes In The News

By UNITED PRESS
WASHINGTON — Buson 22-year-old government girl Ricky F. Gottlieb on why she accepted movie actor Marlon Brando's invitation to a Treasury Department lunch:
"I like nice looking men."

MIAMI — Sen. Estes Kefauver (D-Tenn.) to a newspaper reporter who posed as an unwed mother to investigate a black market baby racket in Kansas:
"Well we'll keep a lookout on your legislature and bar association, and maybe we can get out to Kansas and look into your black market in babies."

GETTYSBURG, Pa. — President Eisenhower to some 8,000 cheering neighbors who greeted him on his return to his Gettysburg farm:
"To each of you who has come out this morning, to each of the school children who along the way waved these little flags or his hand, or called a greeting, or very deep thanks. We are truly grateful to all of you."

PROVIDENCE, R. I. — Tom Taunas, manager of former heavyweight champion Ezzard Charles, after the veteran of 187 bouts was beaten by Toxie Hall Monday night:
"Charles came out without a scratch. All he needs are a couple more fights."

CHICAGO — Norman Cousins, magazine editor, on 25 bomb-scarred girls of Hiroshima, Japan, whom he brought to the United States for surgery:
"They love American food—especially hot dogs."

BALTIMORE, Md. — Gov. Theodore R. McKeldin on desegregation of the Maryland National Guard, the first such action by any state south of the Mason-Dixon line:
"We will no longer keep Negroes out of white units or whites out of Negro units. They will serve in the same units, effective immediately. I don't think we'll have any trouble."

LONDON — Sen. Mike Mansfield (D-Mont.) on the 1956 presidential race:
"As I'm a Democrat, I think that Mr. Stevenson is the outstanding candidate—and Sen. (Estes) Kefauver is likely to be vice president."

ALLENDER, Ont. — Oliva Dionne, father of the Dionne quintuplets, on the sickness of Marie, one of the four survivors:
"I don't think she will ever return to the convent."

NEW DELHI, India — Prime Minister Jawaharlal Nehru on India's foreign policy at a banquet honoring Soviet Premier Nikolai A. Bulganin and Communist party chief Nikita S. Khrushchev:
"If peace is sought after, it has to be by the methods of peace and the language of peace and good will."

CHICAGO — Gov. Averell Harriman of New York on the 1956 Democratic presidential nomination:
"It's still too early to say the matter is settled."

EAST LANSING, Mich. —UP—Telegrams from Athletic Director Biggie Munn of Michigan State to the coaches of the Illinois and Ohio State football teams—whose surprise wins over Michigan put Michigan State in the Rose Bowl:
"Thank you for your kind assist."

Whisper for Safety
CHICAGO — UP — Talkative barbers Thursday started a whispering campaign—for a good cause. Secretary-Treasurer Frank Allotta said members of the Masters Barbers Association of Chicago have been instructed to whisper into the ears of their customers: "Make every day a safe driving day."

The potential future earning of persons who die of tuberculosis in one year has been estimated at about \$1,500,000,000.

WARDS
SUPER MARKET
WEST ON FOSTER
OPEN 7 DAYS A WEEK
7:11 DAILY — 8:8 SUNDAY

TREAT YOUR FAMILY TO A TRADITIONAL
THANKSGIVING DINNER
THESE PRICES GOOD
Monday Through Saturday



HENS
FRESH DRESSED -- HEAVY TYPE
LB. **39^c**



TURKEY SPECIALS!
OVEN READY
ARMOUR'S STAR
10 to 12 lb. avg. lb. **53^c**
6 to 8 lb. avg. ... lb. **63^c**

Grain Fed Heavy Beef
Arm Roast LB. **29^c**

FRESH
Pork Roast LB. **29^c**

GRADE "A" FRESH DRESSED
FRYERS ... lb. **39^c**

FRESH GROUND
Hamburger LB. **23^c**

FRESH
Pork Steak LB. **39^c**

ARMOUR'S COLUMBIA
Sliced BACON lb. **36^c**

BEEF ROAST
GRAIN FED BEEF
CHUCK ROAST
LB. **29^c**

Heavy Grain Fed Beef
SIRLOIN STEAK Lb. **39^c**
Heavy Grain Fed Beef
RIB STEAK Lb. **39^c**
Heavy Grain Fed Beef
T-BONE STEAK Lb. **43^c**
BEEF
SHORT RIBS Lb. **17^c**

STEAK ROUND
LB. **49^c**

FRESH EATMORE
Cranberries LB. BOX **19^c**

WHITE SWAN FANCY
CRANBERRY SAUCE
Can **17^c**

WHITE SWAN FANCY
Pumpkin
Can 303 **10^c**

PURE CANE
SUGAR
10 Lb. Sack **91^c**

MARYLAND
SWEET POTATOES lb. **7^c**

YELLOW
ONIONS LB. **5^c**

Powdered
SUGAR Box **10^c**

Ball Crest Spiced
Peaches No. 2 1/2 Can **23^c**

CRISCO
3-Lb. Can **79^c**

CELERY
FRESH CRISP
LB. **9^c**

Bakers Angel Flake
Coconut Can **15^c**

White Swan Fancy
MINCE MEAT 9-oz. Box **17^c**

Del Monte
SUGAR PEAS No. 303 Can **19^c**

Del Monte
FRUIT COCKTAIL No. 303 Can **23^c**

White Swan
COFFEE Lb. **85^c**

Betty Crocker
CAKE MIX 4 Boxes **97^c**

Fresh Country
EGGS Doz. **39^c**

Sun Valley
OLEO 2 Lbs. **35^c**

WARDS
SUPER MARKET
WEST ON FOSTER
OPEN 7 DAYS A WEEK
7:11 DAILY — 8:8 SUNDAY

Mortgage Money For Homes May Be Scarce In 1956

By ROBERT F. MORRISON
WASHINGTON, Nov. 19 — UP — Forecasts from industry and government put new housing starts next year at around 1.2 million units.

The big question is whether there will be mortgage money enough to finance them.

Some groups feel there will be. Others, particularly the builders, are worried lest government credit curbs are clamped on too tightly.

The Commerce Department, in its annual look at next year's construction, estimated new non-farm one-to-four-family housing starts at 1.2 million.

Earl W. Smith, president of the National Association of Home Builders, expected starts in 1956 to be between 1,150,000 and 1,250,000.

Another Big Year
The U. S. Chamber of Commerce predicted 1956 "will not miss this year's record of an estimated 1.3 million by as much as 100,000 units."

The chamber recognized the financing difficulties found in many areas but added "that it does not follow that the present situation will be indefinitely protracted."

Rising incomes and expected higher savings available for investment offer hope that more funds will be in lenders' hands next year. The chamber also pointed out that some potential home loan funds are being used now to help handle outstanding commitments.

When these obligations have been met, it said, "bank funds will again be more readily obtained by builders and mortgage companies, though not on the same scale... as last spring."

Although somewhat fewer homes are generally expected to be built next year, the total spent for them, according to commerce department forecasts, will be about the same. Higher costs and the tendency for families to seek larger and more expensive homes will boost total outlay, the department predicts.

Second Biggest Year
Expectations for 1.3 million

Develop a special computer technique to determine fallout characteristics.

He said that in determining fallout density, it will be necessary to feed computers such target data as wind velocity, direction up to high altitudes, and the fallout rate of particles sucked up by each nuclear explosion.

He said that while tests so far are inconclusive, "we feel reasonably sure that fallout can be figured by computers." He added the CSA was working with other government agencies on an automatic transmission system of flash post-attack data to computer operators.

Apply to Population
Pohlitz said the same rule would apply to population density, factories and other resources.

He said a high-speed damage assessment system is being designed by Stanford research institute. In addition, the atomic energy commission and the U. S. Bureau of Standards are trying to de-

starts this year, if realized, will make 1955 the second biggest year in home building history. Only 1950 when 1,394,000 units were started, was better.

Should 1956 forecasts of 1.2 million be realized, that would be the fourth best year on record and the eighth straight in which more than 1 million new housing starts were made.

The National Association of Real Estate boards, at its recent annual convention in New York, was told by a University of Michigan business administration professor, Dr. Philip Wernette, that the demand for new homes will be "at least 1 million a year from now to 1960 and 1.5 million by 1970."

New non-farm residential construction this year is expected to total some \$16 billion, the Commerce Department said. It added next year will be at about that same level.

Despite the concern over a shortage of mortgage funds, Thomas J. Sweeney, assistant deputy administrator for loan guaranty of the Veterans Administration, estimated in a recent speech that repayments next year from the more than \$82 billion in outstanding home mortgages, plus a proportionate share in rising savings, should give lenders "at least \$17 billion for one-to-four family homes."

Gary, Ind. — UP — A \$55 old age assistance check drawn on Lake County public welfare funds was returned because of "insufficient funds." Embarrassed county officials claim a clerical error.



LOOK AT THE BIRDIE—Not exactly a dirty bird, but kind of earthy, is this potato sculptured by nature to look like a bird. It was found by Jesse Bedwell, above, while digging potatoes on his grandmother's farm outside Shelburn, Ind. The only thing Bedwell, 25, added to complete the similarity was the paper wings.

Diplomat Tours South America
BOGOTA, Colombia, Nov. 19 — UP—Henry F. Holland, assistant United States secretary of state, has arrived here on the first leg of a tour of six South American countries to study economic, political and defense ties between them and the United States.



BIG OKRA FROM LITTLE ACRES—In a plot 4 1/2 by 6 1/2 feet, L. E. Slawson of Fort Worth, Tex., has harvested more than 3500 pods of okra. And the vines were still sprouting okra when this picture was taken in Slawson's back yard.

'Brain' Would Compute U.S. Losses After Atomic Attack

By ROBERT F. MORRISON
WASHINGTON, Nov. 19 — UP — The Civil Defense Administration is turning to electronic brains to save lives in event of an atomic bomb attack.

It disclosed Saturday that tests made during "operation alert," the recent nationwide civil defense exercise, proved that electronic computers may be a quick way to summarize the nation's losses after a nuclear attack.

"Basis of the system," said CDA deputy assistant administrator Dan Pohlitz, "are decks of punched computer cards and steel recording tapes on which have been compiled America's resources—people, residences, manufacturing plants, utilities, and medical supplies.

Cards Locate Resources
"The cards or tapes 'locate' resources from a simulated electronic map of the United States. Each intersection of this map is a location representing an aggregate of resources. The assessment

system now includes 25,000 of these locations.

"To compute the destruction of dwelling units, for example, an electronic brain might be operated from a central headquarters this way:

"First, the attack factors are set up on the computer. Assuming a single weapon was used, factors are size of weapon, height of the burst, and 'ground zero' of the explosion. These become factors for figuring damage.

"The computer scans the area around ground zero and quickly determines the number of dwellings damaged. It prints these figures faster than the eye can read."

Apply to Population
Pohlitz said the same rule would apply to population density, factories and other resources.

He said a high-speed damage assessment system is being designed by Stanford research institute. In addition, the atomic energy commission and the U. S. Bureau of Standards are trying to de-

velop a special computer technique to determine fallout characteristics.

He said that in determining fallout density, it will be necessary to feed computers such target data as wind velocity, direction up to high altitudes, and the fallout rate of particles sucked up by each nuclear explosion.

He said that while tests so far are inconclusive, "we feel reasonably sure that fallout can be figured by computers." He added the CSA was working with other government agencies on an automatic transmission system of flash post-attack data to computer operators.

Apply to Population
Pohlitz said the same rule would apply to population density, factories and other resources.

He said a high-speed damage assessment system is being designed by Stanford research institute. In addition, the atomic energy commission and the U. S. Bureau of Standards are trying to de-

MAKING A GO OF LIFE

By ROY L. SMITH
Read Acts 15:1-6

Jesus raised a great problem. When he appeared on the scene of human affairs he lived an entirely new type of life. The world had never seen anything like it. But when, following his crucifixion, a large number of persons declared that he was not dead but that he had risen from the grave, the wonder turned to amazement. Here was the most astounding event in history.

The disciples went everywhere declaring that "Jesus died and rose again." (I Thess. 4:14.) So successful were they in convincing the world that it has been said that within a hundred years there was not a city with as many as five thousand people anywhere in the Empire which did not include within its ranks at least a small Christian church.

For perhaps as much as half a century this message concerning the Crucifixion and Resurrection was sufficient to carry the church along on a wave of success. Then there came a time when thoughtful men began asking sobering questions. "What kind of a man was this man Jesus?" "What gave him his amazing power over life?" "What gave him his authority?" "What raised him from the dead?" "Who was he?"

Then the Christians began trying to answer the questions, and in the process the Gospel of John was produced by one of the greatest

thinkers of the time. He declared that Jesus had been God appearing in the person of a man. "The Word was made flesh, and dwelt among us." (1:14.) Then toward the close of his book, he declared that he had written it to prove that Jesus "is the Christ, the son of God." (20:31)

I believe thou art very much like what Jesus was, and therefore I will not fear thee. As I read the New Testament I get a glimpse of what Jesus was like, and I would like very much to be like him. If I can be that sort of person, I am sure I will please thee, O God. Amen.

Do you judge men on the basis of whether or not they agree with you in matters of doctrine, or on the basis of the Christlike quality of the life they live? Are you willing that men should judge you on the basis of the Christlikeness of your living?

PATRICK'S SCHOOL SUPPLIES
314 N. CUYLER
Open 7 a.m. to 5 p.m.

Ice Cream
1/2 gal. 49c
Vanilla, chocolate, strawberry, black walnut, black cherry, banana crunch.

Sherbert
Pineapple, orange lime.
1/2 gal. 49c

Two 25c Packages
NOTE BOOK PAPER
39c
50c Hy-Grade
NOTE BOOK PAPER
19c
7 Hamburgers \$1.00

Miller Pharmacy
BETTER
Prescription Service
1122 Alcock Phone 4-5671
— We Deliver —

The world's most famous bottle has two companions



Family-Size

Easy to carry and store perfect for group refreshment.

King-Size

Just right for a king-size thirst or "two with ice!"

Standard-Size

The world's most famous bottle you know so well.



Almost everyone appreciates the best... and now you can get it in three convenient sizes. Same fine quality in all three. Nothing else in the world gives you the bracing sparkle and bright little lift that are so delightfully yours in ice-cold Coca-Cola. Keep a supply of the real thing at home in all three sizes—Standard, King-Size, Family-Size.



Fifty million times a day... at home, at work or on the way "There's nothing like a Coke!"
NEW SIZES AVAILABLE ONLY AT DEALERS IN THE PAMPA AREA

BOTTLED UNDER AUTHORITY OF THE COCA-COLA COMPANY BY
THE PAMPA COCA-COLA BOTTLING COMPANY

Family-Size, King-Size, Standard-Size
Coke for every home occasion

"Coke" is a registered trademark.

see it for FREE!



The New Trailways Vista-Liner "100"
ON DISPLAY TUESDAY, NOV. 22nd
AT BUS DEPOT -- 115 S. RUSSELL
1:30 P. M. TO 5:30 P. M.

The BUS of the Century!

TRAILWAYS

New Vista-Liner "100"

Among the new features on this luxury bus, you will find the first fully adjustable contour seat in transportation. Another revolutionary feature is the VL-100's Torsilastic spring action, which makes all highways seem like a ribbon of velvet. To see all the new features in this luxury bus, be sure to come by.

TRAILWAYS

DEPOT

115 SOUTH RUSSELL

PHONE 4-3317

In the Family Tradition

7 FLAVORS
JELLO
3 Pkgs. **19^c**

KUNER'S FANCY
PUMPKIN
300 Can **10^c**

JACK SPRAT COLORED QTRS.
Margarine
LB. **16^c**

YOURS FOR A WONDERFUL THANKSGIVING

Thanksgiving's a tradition with Americans. A Day of Thanks, a Day of Feasting in recognition of the bounty provided by our land... For a dinner long to be remembered, we've gathered together all your Thanksgiving Feast Foods. **OUR STORES WILL BE CLOSED THANKSGIVING**

"Better Food For Less"
IDEAL
FOOD STORES

Gunn Bros.

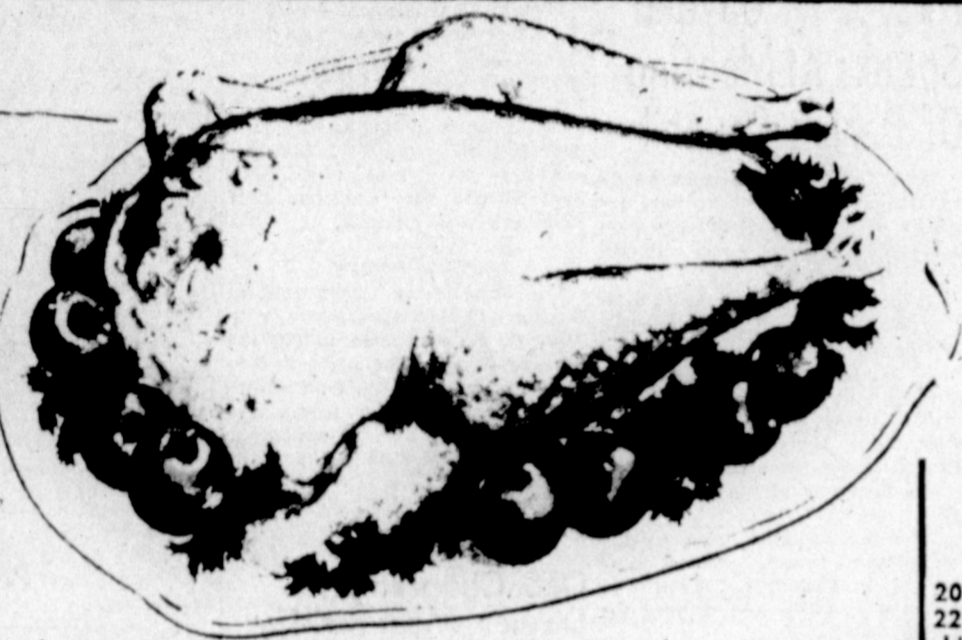
STAMPS

Free with Each 10c Purchase
DOUBLE

Stamps on Wednesday With Each \$2.50 Purchase or More



TRADITIONAL Ocean Spray
CRANBERRY SAUCE
300 Can **19^c**
TOP QUALITY



Extra fancy

TURKEYS

SWIFT'S PREMIUM OR PALO DURO

TOMS BRONZE	HENS BRONZE	BELTSVILLE TURKEY'S
20 to 22 Lbs. 49^c lb.	12 to 15 Lbs. 55^c lb.	4-8 Lbs. 63^c lb.

STEAK	BACON	STEAK	HAM	FRYERS
Choice Round T-Bone Lb. 79^c	Wilson Sliced Lb. 35^c	Choice Loin Lb. 69^c	Center Slices Lb. 89^c	Tender Grown Swift Premium Lb. 45^c

WUNDERLICKS NEW CROP SHELLED BI-LO
PECANS
POUND Cello Pkg. **\$1.19**

WEAREVER FOIL WRAP 25 Foot Roll 29^c	POWDERED OR BROWN SUGAR 1-Lb. Boxes 19^c
Nabisco, Sunshine, or Salad Water CRACKERS 1-Lb. Box 23^c	No. 2 Del Monte Sliced PINEAPPLE ... 33^c
	303 Can Hunt's Fruit COCKTAIL 19^c

FRESH OYSTERS - LONG ISLAND DUCKS - BAKING HENS

Fruits - Vegetables

FRESH CRISP CALIF. PASCAL

Celery 5^c
LB. ONLY

U. S. No. 1 Kiln Dried
Yams ... 2 lbs. **15^c**

U. S. No. 1 Jonathan
Apples ... 3 lbs. **29^c**

FANCY EATMORE
CRANBERRIES
1 Lb. Cello Bag **15^c**

We Will Also Have Mushroom, Brussel Sprouts, Endive, Artichoke, Chestnuts, Fresh Dates, Green Onions, Radishes, Egg Plants, Parsley Leaf, Lettuce, Coconuts, Chives.

and all the trimmings

Comation Milk 2 Tall Cans 25^c	Fresh Frozen Strawberries 10-Oz Pkg 19^c
Nonsuch Mince Meal 9-Oz Pkg 25^c	Hemet Whole Spiced Peaches No 2 1/2 Can 25^c
Jack Sprat Marshmallow Creme Qt. 39^c	Spiced Grapes 303 Can 23^c
Dromedary Cake Mix Pkg. 23^c	Stokely's Cut Green Beans 303 Can 19^c
Hershey's or Nestles Chocolate Chips 9-Oz Pkg 19^c	Stokely's Tomato Juice 46-Oz Can 25^c
No. 3 Can Blue Plate Whole Sw't Potatoes 27^c	Greenwood Pickled Whole Beets 303 Jar 25^c
Fresh Roasted Peanuts 12-Oz. 29^c	Betsy Ross Grape Juice 24-Oz Bottle 27^c
Dreher's Whole Sweet Pickles Qt. Jar 49^c	Welch's Pure Grape Jelly 20-Oz Jar 35^c
Wesson Oil Qt. Bottle 59^c	Holsum Stuffed Olives 3-Oz Jar 33^c
Staley's Waffle Syrup Pint 25^c	Holsum Green Olives 3-Oz Jar 27^c
Lindsay's Extra Large Ripe Olives ... 33^c	Ready To Serve Saladettes 300 Can 25^c

IDEAL'S HOME BAKED

Mince Pies 49^c
Big 8 In. Size EACH ONLY
Reg. 59^c

Brown 'n Serve ROLLS 2 Doz. 25	Ideal's Light Fluffy DINNER ROLLS Doz. 16^c	STUFFIN BREAD Lge. Loaf 19^c
---------------------------------------	--	---

IDEAL'S DELICIOUS
FRUIT CAKES

1-Lb. Loaf **69^c** | 2-Lb. Ring **\$1.37**

MADE FROM A FAMOUS RECIPE
CHOCK FULL OF FRUITS AND NUTS



CRISCO
3lb. can **79^c**
PURE CANE
SUGAR
10 lbs. **91^c**

PICKWICK
COFFEE
Lb. Can **69^c**
2 NEW SIZES
COKES
King Size, Ctn. of 6 **39^c**
Family Size, Ctn. of 2 **31^c**
Plus Bottle Deposit

IDEAL TASTY
Ice Cream 1/2 gal. **49^c**
IDEAL ENRICHED FLOUR 5-lb. bag **39^c** | 10-lb. bag **69^c**
SEEDLESS DRIED RAISINS 2 Lb. Bag **39^c**

RASPBERRY, LIME, ORANGE, PINEAPPLE
Sherbet 1/2 gal. **69^c**
LINDY PEAS 2 303 Cans **33^c**
MAYFLOWER CATSUP 2 14 Ounce Bottles **29^c**
CHARMIN NAPKINS 2 80 Count Boxes **25^c**

MIRACLE WHIP
Qt. Jar **49^c**
BISQUICK
Large Box **39^c**



Jane Talk

By JANE KADINGO
Pampa News Women's Editor

INSOMNIA SHOULD NEVER be shrugged off as just another by-product of modern living. It's as unnecessary as a snow shovel in July. And it can have damaging effects on your health, appearance, and disposition — even your job.

SLEEPER IS ONE of the most natural things in the world. So, if you rank among the millions of Americans who "can't" sleep well, there are four fields you owe it to yourself to explore: your physical condition; your preparation for sleep; and your sleep arrangements.

If you haven't had a check-up lately, make an appointment with your doctor to see if medical assistance is required. Minor ailments you aren't even aware of will sometimes keep you tossing and turning.

Since your body — and particularly your brain — isn't a machine that can be turned off with a flick of a switch, slow down gradually before bedtime. Calm your nerves; file your problems away until tomorrow by spending a half hour or so listening to relaxing music, reading, or whatever does the best job for you.

Candle-Making Told To Goodwill Group

A demonstration on candle-making and decorating was presented by Mrs. Worth Nelson at the recent meeting of the Goodwill Home Demonstration Club in the home of Mrs. Bill Cox, 733 Deane Drive.

Members brought homemade Christmas tree decorations which they explained.

During the business session, plans were made for two Christmas parties. The first will be at the next meeting, Dec. 1, in the home of Mrs. Worth Nelson, 733 N. Hazel.

Refreshments of doughnuts, rolls, coffee and punch were served during the social period.

So New And Smart

A stunning frock that makes headline news in date wear. Note the smart slanted detail, tiny stand-up collar, bold contrast, pattern No. 8332 is in sizes 10, 12, 14, 16, 18, 20. Size 12, 3 1/2 yards of 35-inch; 3 1/4 yards contrast.



8332 10-20

For this pattern, send 35 cents in COINS, your name, address, size desired and the PATTERN NUMBER to Sue Burnett, Pampa Daily News, 372 W. Quincy Street, Chicago 8, Ill.

Send 25 cents now for your copy of the new Fall & Winter '55 edition of our pattern catalog Basic FASHION. Colorful, exciting, filled with art easy to sew styles for

WHAT NEXT

To help solve the housewife's space problems? Here are some sofas, chairs, and ottomans in every style and price range convert into comfortable sleeping surfaces with a minimum of effort.

And now, to top all of this, a Canadian inventor has come up with an ingenious device to hoist milady's beds on steel wires into the wasted area between roof and ceiling, out of sight during the non-sleeping hours of the day.

SOCIAL CALENDAR

MONDAY

- 7:00 — OES Study Class B with Mrs. Mary Hatcher, 219 Gillespie.
- 7:00 — OES Study Class A with Mrs. Sweet Scherer, 409 N. Nelson.
- 7:30 — Harrah Methodist WSCS in Fellowship Hall.
- 7:30 — Pampa Duplicate Bridge Club in Pampa Hotel.
- 7:30 — Wesleyan Service Guild, First Methodist, with Mrs. Roy Kilgore, 1537 Coffee.
- 7:30 — Woodrow Wilson PTA study club with Mrs. J. L. Carpenter, 725 Deane Drive.
- 7:30 — Roberta Cox Circle, First Baptist, with Mrs. Bill Foley, 1515 Hamilton.
- 7:30 — Julia Luper Circle, First Baptist, with Mrs. E. B. Bowman, 717 Bradley Drive.
- 8:00 — Beta Sigma Phi, Upsilon chapter, in City Club Room.

TUESDAY

- 9:10 — Twentieth Century Culture, guest day coffee, in City Club Room.
- 10:00 — Chapter CS, PEO, with Mrs. D. V. Burton, 811 N. Russell.
- 2:30 — Twentieth Century Forum with Mrs. Roy Bourland, 1114 Christine.
- 2:30 — Civic Culture Club with Mrs. W. C. Scott, 1133 E. Kingsmill.
- 2:30 — Varietas Study Club with Mrs. Dow King, 1316 Christine.
- 2:30 — El Progresso, guest - federation day, in Lovett Library.
- 2:30 — Twentieth Century Club with Mrs. Jack Foster, 1228 Williston.
- 6:00 — Worthwhile HDC, Thanksgiving dinner, with Mrs. Roy Tinsley, east of city.
- 7:30 — B&PW Club in City Club Room, Thanksgiving dinner.
- 7:30 — Theta Rho girls in IOOF Hall, 210 W. Brown.
- 8:00 — Beta Sigma Phi, Rho Eta chapter, with Mrs. Thelma Brays, 1305 Hamilton.

WEDNESDAY

- 9:30 — Kezia Mae Seright Circle, First Baptist, in Barrett chapel.
- 10:00 — Fern Bitner Circle, First Baptist, with Mrs. Floyd Barrett, south of city.
- 10:00 — Geraldine Lawton Circle, First Baptist, in church.
- 3:00 — Mary Alexander Circle, First Baptist, with Mrs. W. R. Bell, on West McCullough.
- 8:00 — Women of the Moose in Moose Hall.

FRIDAY

- 6:00 — Rainbow Girls in Masonic Hall.

MANNERS MAKE FRIENDS



When friends are together, there is nothing wrong with a silence now and then. Some people — particularly women — think it is necessary to talk continually.

Talking when you haven't anything to say may seem necessary when with strangers but should not when you are with friends.



TO GIRLSTOWN

A bus load of Pampa Girl Scouts spent the weekend at Girlstown where they took the items they collected through "tricks or treats" Halloween. Adults accompanying the girls were Mrs. Marion Osborne, G5 council assistant; and Mmes. J. G. Crinklow, Silar Hopkins and J. D. Wright Jr. Shown above packing the boxes of sewing materials and toilet articles in the Girl Scout bus, are Shirley Wright, left, and Sylvia Grider. (News photo)

Hobart Street Baptist Church Circles Have Meets For Study Of Missions

Meetings were held recently by circles of the Women's Missionary Union of the Hobart Street Baptist Church.

DORCYE COGGINS — The Dorcy Coggins circle met in the home of Mrs. M. D. Crowell, with Mrs. K. A. Riley giving the opening prayer and teaching the mission study. Mrs. Crowell led the business session, and closing prayer was given by Mrs. D. L. Keeton. Mr. O. T. Crowell was a guest. Seven members were present.

LULA TERRY — The Lula Terry Circle met in the home of Mrs. E. T. Clark, with Mrs. M. H. Keyser in charge. Officers elected were Mrs. R. L. McCain, chairman; Mrs. O. C. Gist, co-chairman; Mrs. C. M. Tingle, secretary; Mrs. E. T. Clark, treasurer and periodicals; Mrs. Ed Foran, prayer and reporter; Mrs. Roy Shafer, community missions; Mrs. Don Alexander, program and young people's director; Mrs. H. V. Waitt, social chairman and stewardess; Mrs. H. H. Keyser, mission book; Mrs. Orville Williams, prayer pal chairman.

Closing prayer was led by Mrs. O. C. Gist. Mrs. M. K. Keyser was a guest. Nine members were present.

JUANITA HARPER — Mrs. Claud Brock was hostess to the Juanita Harper Circle, with Mrs. Bill Wright giving the opening prayer. Mrs. Preston Wallace taught the mission study, and prayer pal gifts were exchanged. Mrs. W. D. Pate gave the closing prayer. Present were seven members.

NINA HANKINS — Mrs. C. Wayne Brister presided and gave the opening prayer at the meeting of the Nina Hankins Circle in the home of Mrs. Carl Barnes. Prayer pal gifts were exchanged, and refreshments were served. Mrs. Ed Talley closed the meeting with prayer. Seven members attended.

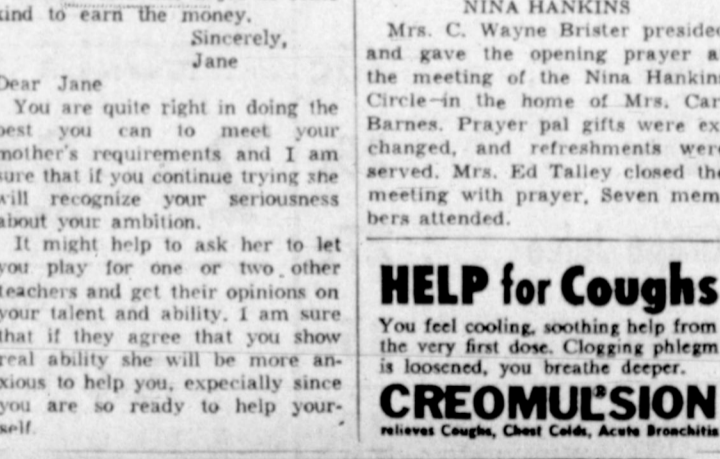
HELP for Coughs

You feel cooling, soothing help from the very first dose. Clogging phlegm is loosened, you breathe deeper.

CREOMULSION

Relieves Coughs, Chest Colds, Acute Bronchitis

White sewing machine CENTER 10-DAY FREE HOME TRIAL



WHITE'S

THE HOME OF GREATER VALUES

109 SOUTH CUYLER PAMPA PHONE 4-3268

Circles Of Women's Missionary Union Of First Baptist Church Have Meetings

Circles of the Women's Missionary Union of the First Baptist Church met recently in members' homes for mission and Bible study.

ROBERTA COX — The Roberta Cox Circle met in the home of Mrs. Percy O'Quinn, with Mrs. Mike Porter giving the opening prayer. The business session was led by Mrs. William Foley, and Mrs. Floyd Barrett taught the mission study. Seven members were present.

DORCYE COGGINS — Mrs. Pernal Scoggins was hostess to the Dorcy Coggins Circle, with Mrs. Edwin Adcock leading the opening prayer. The business session was led by Mrs. Henry Grouhen, and a royal service program was presented. Closing prayer was given by Mrs. Betty Cooper. Two new members welcomed were Mrs. Adcock and Mrs. Cooper. Six members attended.

JULIA LUPER — Mrs. Jim Bush gave the opening prayer for the Julia Luper Circle, which met in the home of Mrs. Forrest Montgomery. The business session was led by Mrs. E. B. Bowman, and Mrs. Bill Bailey taught the mission study. The devotional was presented by Mrs. Rex Jones, and Mrs. Leo Graham closed the meeting with prayer. Ten members were present.

KEZIA MAE SERIGHT — The Kezia Mae Seright Circle met in the Barrett Chapel, with Mrs. Harry Jennings leading the opening prayer. Mrs. Robert Powell led the business session, and Mrs. Charles Thomas taught the mission lesson. Closing prayer was given by Mrs. Howard Marlar. Present were eight members.

EDITH DYAL — Mrs. L. A. Baxter was hostess to the Edith Dyal Circle, with Mrs. Herman Whately giving the opening prayer. The business session was led by Mrs. Myron Spencer, and the mission study was

taught by Mr. A. L. Prigmore. Closing prayer was given by Mrs. Holler Lewis. Eleven women attended.

WINNIE TRENT — The Winnie Trent Circle met with Mrs. Hugh Ellis, with Mrs. G. E. Groninger leading the business session. Opening prayer was given by Mrs. Bob Allford, and the mission study was taught by Mrs. J. C. Sollmert. Closing prayer was given by Mrs. D. A. Caldwell. Nine members were present.

RUBY WHEAT — Mrs. J. R. Moss was in charge of the meeting of the Ruby Wheat Circle in the home of Mrs. J. W. Gambill. Mrs. J. H. Tucker gave the opening prayer and taught the Bible lesson. Closing prayer was led by Mrs. S. T. Halpain. Present were nine members.

LILLIE ROGERS — Mrs. Owen Johnson was hostess to the Lillie Rogers Circle, with Mrs. L. V. Hopp giving the opening prayer. The business session was led by Mrs. D. R. Morris and Mrs. Minor Langford presented the royal service program. Special prayers were led by Mrs. E. L. Anderson and Mrs. Gus Green, with Mrs. Morris giving the closing prayer. Attending were 13 women.

FERN BITNER — The Fern Bitner Circle met with Mrs. C. C. Matheny, with Mrs. A. A. McElrath in charge. Opening prayer was given by Mrs. D. W. Slaton and the mission study was taught by Mrs. Floyd Barrett. Mrs. McElrath gave the closing prayer. Ten members were present.

GERALDINE LAWTON — The meeting of the Geraldine Lawton Circle was held in the home of Mrs. G. L. Wilson, with Mrs. Lee Garrison giving the opening prayer. The business session was led by Mrs. L. H. Norman, and the mission study was taught by Mrs. A. B. Ackerman. Mrs. Chester Williams was a guest. Attending were 10 members.

MARY ALEXANDER — Mrs. T. C. McGlohon gave the opening prayer for the Mary Alexander Circle in the home of Mrs. T. O. Trout. Mrs. W. R. Bell led the business session, and Mrs. R. L. Hudson presented the devotional. The mission study was taught by Mrs. Shirley Nichols. Mrs. Henry Stephen led the closing prayer. Six women attended.

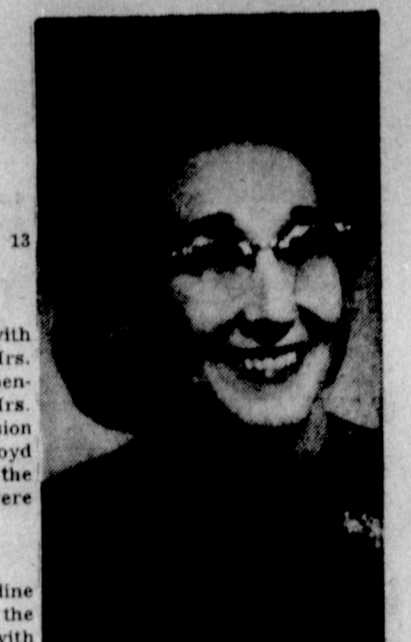
ETHEL HARDY — Mrs. H. C. Grady was hostess to the Ethel Hardy Circle with Mrs. Bob Strobbe giving the opening prayer and Mrs. Ivan Nobilit leading the business session. The mission lesson was taught by Mrs. Jeff Bearden, and Mr. Bob Syper gave the closing prayer. Mrs. Sam Malone was a guest. Nine members were present.

JUNE PETTY — The June Petty Circle met in the home of Mrs. Ella Gurley, with Mrs. O. B. Schiffman giving the opening prayer. The business session was led by Mrs. A. McClelland, and the mission lesson was taught by Mrs. Floyd Pennington. Mrs. R. L. Edmondson gave the closing prayer. Seven members were present. Mrs. Edmondson was a guest.

CONNIE LOU BLALOCK AND FRANKLIN KNOX ENGAGED TO MARRY — (Special) — Mr. and Mrs. J. W. Blalock of Shamrock announce the engagement of their daughter, Connie Lou, to Franklin Knox, son of Mr. and Mrs. Willie Knoll of Samnorwood. Miss Blalock is a graduate of Euless High School, Euless, Texas, and Mr. Knox is a graduate of Samnorwood High School. The wedding has been scheduled to take place in December.

MEETING IS HELD BY NAOMI CLASS — The Naomi Class of the First Baptist Church met recently in the home of Mrs. J. L. Burba, with Mrs. W. M. Dittberner in charge. Opening prayer was given by Mrs. Opal Downs, and the devotional was presented by Mrs. Katie Wilson.

Coffee and rolls were served during the social period. Present were Mmes. Ruth Herliacher, W. M. Dittberner, Beulah Hilton, Nellie Day, Ina Satterfield, Ella King, Trelna Batson, Opal Downs, Bill Forsman, J. L. Burba and Katie Wilson.



TO LEAVE

Mrs. Paulen Simmons will leave soon to spend the winter in Panama City, Fla., with her son, Bob, who is in the Air Force. She will also visit her sister in Macon, Ga. (Photo by Smith's Studio)

Bruce Lee Holmes Feted On Birthday

PERRYTON — (Special) — Mrs. Bruce Holmes, 417 South-west Fifth Avenue, was hostess for a party recently celebrating the fifth birthday of her son, Bruce Lee.

Mrs. Roy Enfield and Mrs. Jack Hill, Bruce's grandmother and aunt, assisted.

Fall flowers decorated the entertaining rooms. The group attended the theatre matinee. Following the show, refreshments of ice cream, birthday cake and soda pop were served in the Holmes' home. Mrs. Enfield made and decorated the cake.

Favors were small cars and candy cowboys.

Those present were Randy Tevis, Bill and Randy Dieball, Danny Wade, Ike Repligle, O. Jay Hill, Gary Hill, Mary Holmes.

Adults present were Mrs. Gene Repligle and Mrs. Cecil Tevis.

Purpose of a hat is to make a woman look pretty. If it doesn't, don't buy it. But when you try on hats, see yourself full-length and seated, too.

For Better Cleaning Master Cleaners

Where Cleaning Is An Art. 218 N. CUYLER — Ph. 4-8453

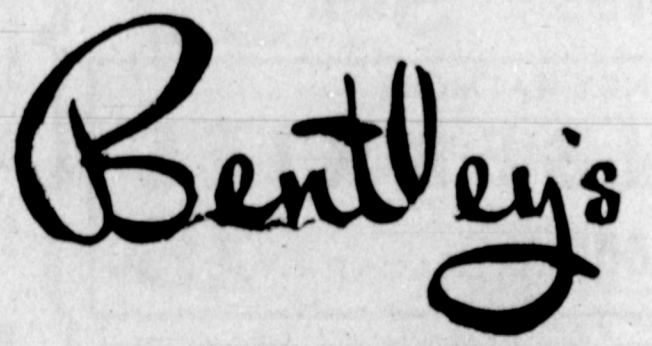
No Wonder Mothers Love THIS RELIEF FOR SUFFERING OF COLDS Does More Than Work on Chest

Nothing works like Vicks VapoRub — the proved medication that acts two ways at once. When you rub it on, VapoRub quickly relieves muscular soreness. At the same time, medicated vapors bring relief with every breath. Soothing medication travels deep into your child's nose, throat and large bronchial tubes. Congestion starts breaking up. Coughing eases. Warming relief comes, lasts for hours. So when colds strike, depend on —

VICKS VAPORUB

Rub on Relief. Breathe in Relief. Vicks and VapoRub are Reg. Trade Marks.

in order to prepare for a special surprise event



will be closed all day Tuesday

Special purchases will be unpacked — our own fine stocks of merchandise will be inventoried, regrouped and re-priced to make this truly the most outstanding value event ever!

Watch Tomorrow's Pampa News



THANKSGIVING

treats for your feast!



BE SURE SHOP
FURR'S

Fresh Baltimore Solid Pack
Full Pint for Dressing

OYSTERS
Pint 69c

PORK LOIN ROAST Lb. 37c

LONGHORN FIRST GRADE BACON Lb. 45c

BROAD BREASTED BRONZE TURKEYS

TOM S 16 Lbs. Lb. 49c
And Up
HENS 12 Lbs. Lb. 55c
To 15 Lbs.
HENS 8 Lbs. Lb. 59c
To 12 Lbs.

We Have Plenty of Ducks, Geese, and First Grade Hens
SWIFT PREMIUM BROOKFIELD LINK SAUSAGE Lb. 55c

CUDAHY WICKLOW BACON Lb. 39c

FOOD CLUB Fruit Cocktail
NO. 2 1/2 CAN 33c

FOOD CLUB - ELBERTAS PEACHES
NO. 303 CAN 25c

MATT'S APPLE CIDER
Quart Bottle 27c
1/2 Gallon Jug 53c

FOOD CLUB CHERRIES
NO. 303 CAN 17c

FOOD CLUB Cranberry SAUCE
2 NO. 300 CAN 35c

Extra Fancy Washington State
WINESAP APPLES lb. 17c

Premium Pack Idaho Russett
POTATOES 5 lbs. 29c

Large Thin Shell
PECANS lb. 59c

Plump Red Ripe, 1-lb. Pkg.
Cranberries 17c

Govt. Inspected Portales
YAMS 2 lbs. 17c

Fresh Flavored Pascal
CELERY lb. 5c

SHOP EARLY!
FURR FOOD STORES WILL BE CLOSED ALL DAY THURSDAY, THANKSGIVING DAY!

FURR'S FROZEN FOOD SPECIALS

FOOD CLUB FOODHOOK LIMAS 10-oz. pkg. 19c	Food Club 10-oz. pkg. Broccoli Spears 23c	Food Club 8-oz. pkg. French Fried POTATOES 17c
Food Club 10-oz. pkg. CORN 2 for 27c	Food Club 12-oz. can LEMONADE 25c	Food Club 6-oz. can Grapefruit JUICE 2 for 23c
Food Club 10-oz. pkg. Brussel Sprouts 23c	DARTMOUTH STRAWBERRIES 10-oz. pkg. 19c	

LIBBY'S SLICED, NO. 2 CAN PINEAPPLE 33c	FOOD CLUB, HALVES, NO. 303 CAN PEARS 23c
FOOD CLUB, NO. 300 CAN ASPARAGUS SPEARS 39c	FOOD CLUB, WHOLE, NO. 305 CAN GREEN BEANS 23c
FOOD CLUB, NO. 303 CAN APPLE SAUCE 15c	FOOD CLUB, 48-OZ. CAN PINEAPPLE JUICE 25c
ALL FLAVORS JELLO 3 pkgs. 20c	

Why Pay \$2.00? HELENE CURTIS
CREME SHAMPOO \$1.39

6oz. VALUE CHAMBERLAIN'S
HAND LOTION 43c

THE ONE AND ONLY
GERM FIGHTING TOOTH BRUSH DR. WEST'S 59c

7oz. VALUE - PALMOLIVE
Rapid Shave Bomb 59c

7oz. GIANT SIZE ANTISEPTIC
LISTERINE 63c

Furr's BAKERY SPECIALS

A real Thanksgiving Special! Filled with a Mince Apple Filling
MINCE MEAT PIES
Each 35c

Made with the best quality Fruits and Nuts. Satisfaction Guaranteed.
HOLIDAY LIGHT FRUIT CAKE Pound 69c

FURR'S Brown n' Serve Rolls 2 pkgs. 39c

CONDIMENTS

Towie Stuffed Thrown 7 1/2 oz. OLIVES 43c
TOWIE - 10-oz. Jar Salad OLIVES 37c
Elma Select - No. 1 Tall Can RIPE OLIVES 25c
Food Club Sweet Gherkins 22-Ounce Jar PICKLES 49c
Farm Home Kosher, 32-oz. Jar DILL STICKS 39c
Banner - Quart Jar Sweet Pickles 39c
Kuner's - 14-oz. Jar Cherry Peppers 32c
Kuner's - 8-oz. Jar Sweet Relish 22c

FOR PIES

Libby's - No. 303 Can Pumpkin, 2 for 25c
Libby's - No. 216 Can PUMPKIN 18c
Nonesuch - 9-oz. Pkg. MINCE MEAT 27c
Betty Crocker - 9-oz. Pkg. Pie Crust Mix 19c
Food Club, No. 303 Can Cherries, 2 for 35c
Lucky Leaf, No. 2 Can APPLES 23c
Schilling's Pumpkin, 2-oz. can PIE SPICE 31c

JELLIES and JAMS

FOOD CLUB CRANBERRY SAUCE 2 No. 300 Cans 35c
BAMA RED PLUM JAM 2-LB. JAR 43c
ZESTEE Strawberry PRESERVES 20-OZ. TUMBLER 49c
MA BROWN Pineapple PRESERVES 12-OZ. TUMBLER 29c
MA BROWN Red Cherry PRESERVES 12-OZ. TUMBLER 33c

ITEMS FOR DRESSING

Aunt Jimma, White, Yellow MEAL - 5-lb. bag 39c
Schilling's 1/2-oz. Can SAGE 23c
Schilling's 1 1/2-oz. Can Poultry Seasoning 17c
Schilling's 2-oz. Can BLACK PEPPER 17c
Schilling's 2-oz. Can Cayenne PEPPER 23c
Blue Plate, 4 2 1/2 oz. can OYSTERS 39c
Schilling's 3-oz. Bottle Garlic, Onion Salt 21c

BEVERAGES

H-I-C - 46-oz. Can ORANGE DRINK 25c
6-Bottle Carton (Plus Deposit) COCA-COLA 25c
Canada Dry (Plus Deposit) GINGER ALE qt. 21c
Shortening - 3-LB. CAN SNOWDRIFT 75c
FOOD CLUB Unconditionally Guaranteed FLOUR 25-lb. bag 1.69
Swift's - 1/2 Gallon Carton MELLORINE 49c

C AND C THRIFT STAMPS

FOR VALUABLE GIFTS

DOUBLE C AND C THRIFT STAMPS
EVERY WEDNESDAY WITH \$2.50 PURCHASE OR OVER

Northern, 80-count Box NAPKINS 10c

The Pampa Daily News

One of Texas' Five Most Consistent Newspapers

We believe that one truth is always consistent with another truth. We endeavor to be consistent with truths expressed in such great moral guides as the Golden Rule, the Ten Commandments and the Declaration of Independence.

Carries Warning

The report carried recently in the Whirligig column by Ray Tucker on the pro-Communist attack against the McCarran Internal Security Law is another link in the chain of evidence that pressure groups are constantly at work against the traditional American form of government.

Tucker says some of the activities of those who have signed the document attacking the constitutionality of the law. But apparently there are behind-the-scenes angles not reported in the daily press wires of the story.

Hankerings

Mac Finally Solves His Turkey Carving Problem

The most dismal failure of all the crusades that I have launched over the years is the one that has as its aim the elimination of the turkey as the national Thanksgiving Day dish.

As soon as I attempted to place the turkey on his back so that his breast would be up I knew that I had gotten hold of the same kind of turkey that has plagued me for years.



BETTER JOBS

By R. C. HOILES

Two New Ideas To Me

I want to pass on a couple of new ideas that recently entered my cranium. They are not original. I got the ideas from reading.

Notice the Doctor emphasizes the fact that one of the causes of war is a fear of a conquering government educating their children in a way the parents do not like.

What Weakens Government

A second idea was what is certain to weaken a just government. I'd often heard it said that when government attempted to do things foreign from what its original purpose was, that doing so weakened the government in its ability to perform the desired service.

Washington - "Do you think that there is any justification for the Republicans' complaint against the Democrats' investigations of the Eisenhower Administration?" asks H. G. of Altoona, Pa.

Washington - "Why do you think that there is any justification for the Democrats' complaint against the Republicans' investigations of the Eisenhower Administration?" asks H. G. of Altoona, Pa.

Washington - "Why do you think that there is any justification for the Democrats' complaint against the Republicans' investigations of the Eisenhower Administration?" asks H. G. of Altoona, Pa.

Washington - "Why do you think that there is any justification for the Democrats' complaint against the Republicans' investigations of the Eisenhower Administration?" asks H. G. of Altoona, Pa.

Caught Between



National Whirligig

Congressional Probes Have Been Worthwhile

By RAY TUCKER

PRELUDE - Every Sunday, Ray Tucker answers readers' questions of general interest on national and international policies and personalities. Questions may be sent to him at 708 Hillcrest Place, Chevy Chase, Md.

Washington - "Do you think that there is any justification for the Republicans' complaint against the Democrats' investigations of the Eisenhower Administration?" asks H. G. of Altoona, Pa.

Washington - "Why do you think that there is any justification for the Democrats' complaint against the Republicans' investigations of the Eisenhower Administration?" asks H. G. of Altoona, Pa.

Washington - "Why do you think that there is any justification for the Democrats' complaint against the Republicans' investigations of the Eisenhower Administration?" asks H. G. of Altoona, Pa.

Washington - "Why do you think that there is any justification for the Democrats' complaint against the Republicans' investigations of the Eisenhower Administration?" asks H. G. of Altoona, Pa.

Fair Enough

Travelers Pay Heavy Toll On East German Highway

By WESTBROOK PEGLER

Berlin - The loot extorted from the isolated city of Berlin by the Soviet enemy in the form of toll on the traffic on the old Hitler Highway across Soviet East Germany is about one million Marks every three weeks.

This robber-baron device was instituted last April on the pretext that the East Germans and Russians have to pay for expensive repairs to the pavement, culverts and so forth.

The highway repairs would be expensive if the enemy ever maintained the road. This autobahn was laid down in Hitler's heyday and the swift obsolescence of highways everywhere contributes something to the deterioration in addition to the wear and tear.

Many of the farm fields on both sides of the highway as far as the eye can see are heavily infested with weeds, too, which show up plainly now that they have gone to seed.

The exports from the Allied sectors of Berlin are mostly electrical devices, whose manufacture is one of the principal industries of our side of Berlin, and fine machinery.

There are only 110,000 unemployed in West Berlin now, an all-time low. Lacking the post-war period as "all-time" and 798,500 people are working at pay-jobs.

Germany cars using the autobahn pay \$3.75 each way for the trip across the lost province. The buses pay 25 Marks which includes toll for eight passengers and a little less than two Marks more for each additional passenger.

Similarly, Arthur H. Dean, former law partner of Secretary of State Dulles, quit the fund's board of directors the other day in a dispute over policy.

He - But, darling, I have none. She - No; I mean after we're married.

The Doctor Says

By EDWIN J. JORDAN, M. D.

Once in a while one runs onto a person who says he or she has never had any trouble sleeping. More common to most of us is an experience of sleeping well a good deal of the time but having spells when sleeplessness hits us and we get up in the morning unrefreshed.

Such an exaggerated kind of sleeping difficulty is hard to explain. It is possible, of course, that it started as a mild form of insomnia but that Mrs. C. has become accustomed to the use of sleeping tablets to such a degree that she is unable to have a restful night without them.

Most insomnia is probably caused by inability to throw off the worries and cares of the daytime. The person who starts thinking of the office within a few minutes of turning off the light at night is likely to develop chronic sleeplessness.

Often they make things worse by worrying about not sleeping. This is unnecessary, as most people can get nearly as much rest for their bodily functions by lying quietly and relaxing in bed as they would if they were sound asleep.

Washington - "Why do you think that there is any justification for the Democrats' complaint against the Republicans' investigations of the Eisenhower Administration?" asks H. G. of Altoona, Pa.

Washington - "Why do you think that there is any justification for the Democrats' complaint against the Republicans' investigations of the Eisenhower Administration?" asks H. G. of Altoona, Pa.

Washington - "Why do you think that there is any justification for the Democrats' complaint against the Republicans' investigations of the Eisenhower Administration?" asks H. G. of Altoona, Pa.

Washington - "Why do you think that there is any justification for the Democrats' complaint against the Republicans' investigations of the Eisenhower Administration?" asks H. G. of Altoona, Pa.

Washington - "Why do you think that there is any justification for the Democrats' complaint against the Republicans' investigations of the Eisenhower Administration?" asks H. G. of Altoona, Pa.

The Nation's Press

FUNNY BUSINESS IN A FUND

The so-called Fund for the Republic, a 15 million dollar offshoot of the Ford Foundation, masterminded by those waning geniuses, Paul Hoffman and Robert M. Hutchins, has been caught in another massive publication called "Bibliography of the Communist Problem in the United States" which was compiled and distributed at fund expense.

Harking to the outcry against their lopsided treatment, the professors who were recruited to draw up the bibliography say that they will revise it. But a question remains - why the Fund for the Republic, with a large budget allocated to a supposed objective study of communism, even contrives to wind up on the anti-anti-communist side.

It takes a considerable degree of cooperation from even the most naive to swallow Browder's story, but the Fund for the Republic has no difficulties in accommodating itself to his views, just as it has had no trouble drawing up a bibliography that points in the wrong direction. These are only a few of the odder performances of this ex-freedom outfit, which justify the recent observation of the former commander of the American Legion that he would have no truck with it.

Washington - "Why do you think that there is any justification for the Democrats' complaint against the Republicans' investigations of the Eisenhower Administration?" asks H. G. of Altoona, Pa.

Washington - "Why do you think that there is any justification for the Democrats' complaint against the Republicans' investigations of the Eisenhower Administration?" asks H. G. of Altoona, Pa.

Washington - "Why do you think that there is any justification for the Democrats' complaint against the Republicans' investigations of the Eisenhower Administration?" asks H. G. of Altoona, Pa.

Washington - "Why do you think that there is any justification for the Democrats' complaint against the Republicans' investigations of the Eisenhower Administration?" asks H. G. of Altoona, Pa.

Washington - "Why do you think that there is any justification for the Democrats' complaint against the Republicans' investigations of the Eisenhower Administration?" asks H. G. of Altoona, Pa.

Washington - "Why do you think that there is any justification for the Democrats' complaint against the Republicans' investigations of the Eisenhower Administration?" asks H. G. of Altoona, Pa.

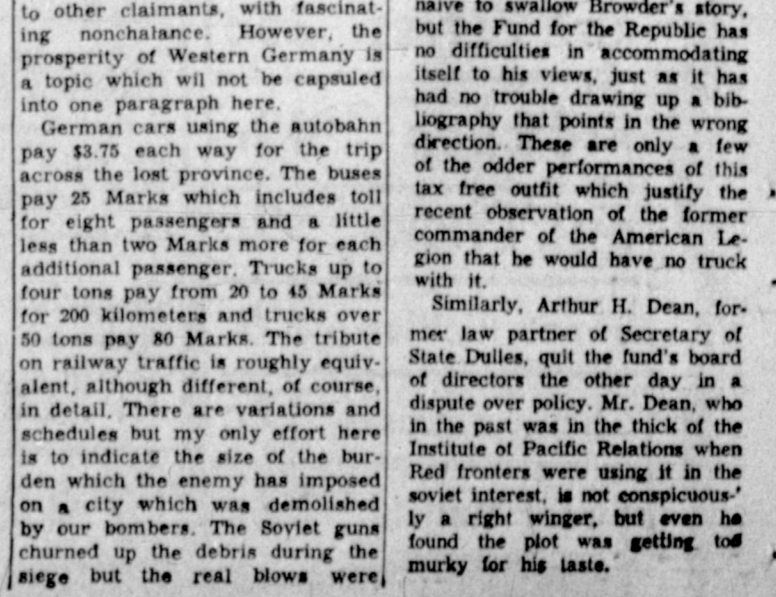
Happy Holidays

ACROSS 1 - Year's Eve 4 December 25th 8 Where Easter worshippers sit 12 Age 13 Love god 14 Landed 15 Finish 16 Enameled iron pots 18 Wished 20 Start again 21 Abstract being 22 Girl's name 23 Approaches 24 Small parts 26 Arabian gulf 27 Drink slowly 30 Comes in 32 On father's side 34 Mountain ridges 35 Cheerer 36 Neither 37 Good Queen 39 Weary 40 Ship's officer 41 Indian weight 42 Walk proudly 43 Act as 44 Chairman 45 Guardian 51 Sorry 52 French river 53 Secrete 54 Three (prefix) 55 Postal digits 56 Child 57 Placed

Word search puzzle grid with clues for 'Happy Holidays' and 'Answer to Previous Puzzle'.

MOPSY

IT'S JUST DARLING OF YOU TO PROTECT MY HEAVEN!



Dixie Dugon



The Jackson Twins



Blondie



Alley Oop



Bo



Joe Palooka



Martha Wayne



Mutt & Jeff



Bugs Bunny



Susie Q. Smith



OUR BOARDING HOUSE with MAJOR HOOPLE



OUT OUR WAY By J. R. Williams



The Berrys



Vic Flint



Little Doc



Wash Tubbs



Boots



Mickey Finn



Freckles



Susie Q. Smith



KEY
1580

8:45	Sport
8:55	Wheat
9:00	Wheat
9:15	Wheat
9:30	Wheat
9:45	Wheat
10:00	Wheat
10:15	Wheat
10:30	Wheat
10:45	Wheat
11:00	Wheat
11:15	Wheat
11:30	Wheat
11:45	Wheat
12:00	Wheat
12:15	Wheat
12:30	Wheat
12:45	Wheat
1:00	Wheat
1:15	Wheat
1:30	Wheat
1:45	Wheat
2:00	Wheat
2:15	Wheat
2:30	Wheat
2:45	Wheat
3:00	Wheat
3:15	Wheat
3:30	Wheat
3:45	Wheat
4:00	Wheat
4:15	Wheat
4:30	Wheat
4:45	Wheat
5:00	Wheat
5:15	Wheat
5:30	Wheat
5:45	Wheat
6:00	Wheat
6:15	Wheat
6:30	Wheat
6:45	Wheat
7:00	Wheat
7:15	Wheat
7:30	Wheat
7:45	Wheat
8:00	Wheat
8:15	Wheat
8:30	Wheat
8:45	Wheat
9:00	Wheat
9:15	Wheat
9:30	Wheat
9:45	Wheat
10:00	Wheat
10:15	Wheat
10:30	Wheat
10:45	Wheat
11:00	Wheat
11:15	Wheat
11:30	Wheat
11:45	Wheat
12:00	Wheat

K
1340

1:00	Kraft
1:15	Kraft
1:30	Kraft
1:45	Kraft
2:00	Kraft
2:15	Kraft
2:30	Kraft
2:45	Kraft
3:00	Kraft
3:15	Kraft
3:30	Kraft
3:45	Kraft
4:00	Kraft
4:15	Kraft
4:30	Kraft
4:45	Kraft
5:00	Kraft
5:15	Kraft
5:30	Kraft
5:45	Kraft
6:00	Kraft
6:15	Kraft
6:30	Kraft
6:45	Kraft
7:00	Kraft
7:15	Kraft
7:30	Kraft
7:45	Kraft
8:00	Kraft
8:15	Kraft
8:30	Kraft
8:45	Kraft
9:00	Kraft
9:15	Kraft
9:30	Kraft
9:45	Kraft
10:00	Kraft
10:15	Kraft
10:30	Kraft
10:45	Kraft
11:00	Kraft
11:15	Kraft
11:30	Kraft
11:45	Kraft
12:00	Kraft

Tel
M

7:00	Todi
8:00	Ding
9:00	Seax
10:00	Hom
11:00	Tem
11:30	Feal
12:00	Arti
12:15	Char
1:45	Don
2:00	Mal
3:00	New
3:15	Or
3:30	Wor
3:45	Pod
4:00	How
5:00	For
5:35	Hon
6:10	New
6:20	Nea
6:30	Tom
6:45	Job
7:00	Sid
8:00	Tex
8:30	High
9:00	Tex
9:30	Can
10:00	Can
10:30	New
10:40	New
10:50	Spo
11:00	Arm
12:00	Sign

7:00	Men
8:00	Cap
9:00	Cap
9:30	Aur
10:00	Car
10:15	Art
10:30	Cor
11:00	Val
11:15	Val
11:30	Sea
11:45	Sea
12:00	Jad
12:30	Lav
1:00	Rob
1:15	Me
1:45	Ho
2:00	Me
2:45	Bo
3:00	Th
3:15	Sec
3:50	Or
4:00	Fri
5:00	Th
5:20	Lo
6:00	We
6:05	Ne
6:15	Do
6:30	Ro
7:00	Bo
7:30	My
8:00	I
8:30	El
9:00	El
9:30	Ch
0:00	Ch
0:30	Ne
0:40	W
0:50	Sp
1:00	La
2:00	Si

Joe

1:00	Joe
1:15	Joe
1:30	Joe
1:45	Joe
2:00	Joe
2:15	Joe
2:30	Joe
2:45	Joe
3:00	Joe
3:15	Joe
3:30	Joe
3:45	Joe
4:00	Joe
4:15	Joe
4:30	Joe
4:45	Joe
5:00	Joe
5:15	Joe
5:30	Joe
5:45	Joe
6:00	Joe
6:15	Joe
6:30	Joe
6:45	Joe
7:00	Joe
7:15	Joe
7:30	Joe
7:45	Joe
8:00	Joe
8:15	Joe
8:30	Joe
8:45	Joe
9:00	Joe
9:15	Joe
9:30	Joe
9:45	Joe
10:00	Joe
10:15	Joe
10:30	Joe
10:45	Joe
11:00	Joe
11:15	Joe
11:30	Joe
11:45	Joe
12:00	Joe



KEVA - Shamrock 1580 on Your Radio Dial
1230 on Your Radio Dial
KPDN 1340 on Your Radio Dial

34 Radio Lab 34
TV APPLIANCE SERVICE CENTER
Exclusive Bendix Authorized Dealer

68 Household Goods 68
DON'S USED FURNITURE
We Buy & Sell Used Furniture

95 Furnished Apartments 95
103 Real Estate for Sale 103
111 Out-of-Town Property 111

Television Programs
MONDAY
KGNC-TV Channel 4

Let's Go Shopping
One of these days I must go shopping. I am completely out of self-respect. I want to exchange the self-righteousness I picked up the other day for some humiliation which they say is less expensive and wears longer.

35 Plumbing & Heating 35
LET WARD'S re-model your present plumbing. No money down. 30 months to pay on P.H.A. terms.

96 Unfurn. Apartments 96
97 Furnished Houses 97
98 Unfurnished Houses 98

Television Programs
TUESDAY
KGNC-TV Channel 4

40 Moving & Transfer 40
ROY'S Transfer, moving and hauling. Give us a call at home or 4-8151. Roy Free.

69 Miscellaneous for Sale 69
COPPER and steel kitchen cabinets. Built in steel construction, with large kitchen sink in good condition.

103 Real Estate for Sale 103
J. E. Rice, Real Estate
712 N. Somerville, Ph. 4-2301

Television Programs
KFDA-TV Channel 18

41 Nursery 41
PETER PAN KINDERGARTEN and NURSERY, 1215 E. Francis Street, Phone 4-5381.

70 Musical Instruments 70
PIANOS FOR RENT
\$5.00 - \$10.00 per month

North Crest
HUGHES DEVELOPMENT
412 W. Kingsmill - Phone 4-3211

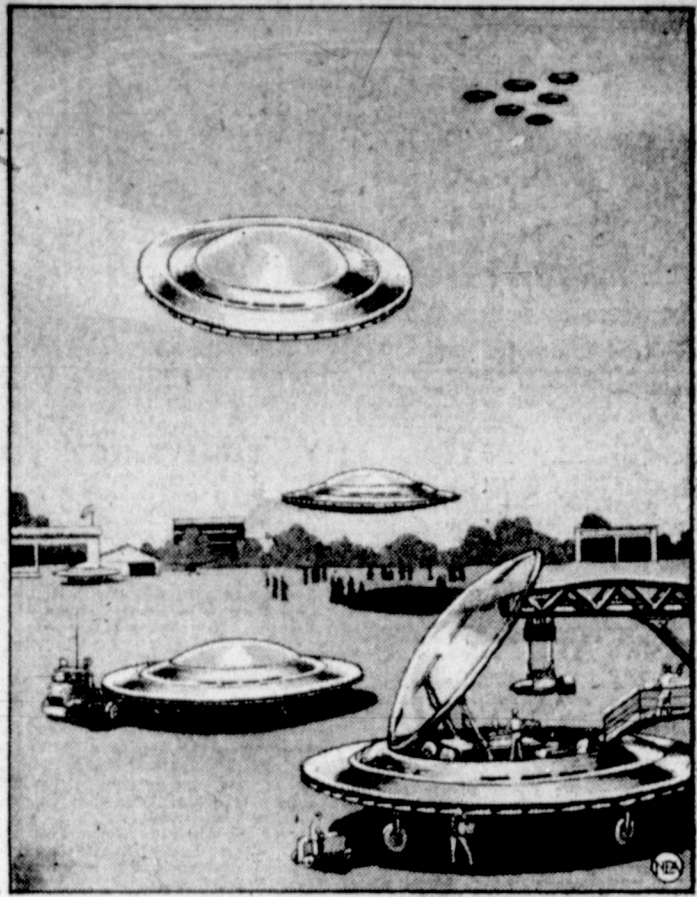
Cree Insurance Agency
Combs-Worley Bldg. - Dial 4-4192

22 Female Help Wanted 22
ADVERTISING FIRM wants housewives with clear handwriting. Make good money. Write SHIRLEY MITCHELL, 131 Belmont Street, Belmont, Mass.

You May Need...
A 3 bedroom home, on N. Gray, near Sam Houston School, priced to sell to close estate. Ideal for those with school children.

NO NEED TO LOOK ANYMORE
We Have 3-Bedroom DREAM HOMES
In the 2100 Block of North Faulkner that Are HIGH IN QUALITY - LOW IN PRICE

W. M. LANE REALTY
715 W. Foster
Phone 4-3641 or 4-9504



THEY'RE IN AGAIN—Like death and taxes, flying saucers seem always to be with us. Latest saucer news comes in a story copyrighted by a Toronto newspaper, saying that the Avro Aviation Company's Canadian engineers have designed a top-secret "flying saucer" which can fly at 1500 m.p.h. and take off vertically, making it independent of runways or carriers. The pilot sits in a plastic bubble, with a gas turbine engine of radically new design revolving around him at high speed. Above is an artist's conception of the weird craft, based on the meager information

Here Are Our Rules For Carving Turkey

We take pleasure in printing, at this season, our revised rules of the conduct in a traditional Thanksgiving rite. New husbands who are undertaking this chore for the first time will find the following advice extremely helpful.

By H. D. QUIGG

NEW YORK—UP—How to carve a Thanksgiving turkey — or, no matter how you slice it, you always get the bird.

Here are 10 simple rules:

1. Be prepared. Pick a quarrel with your wife Thanksgiving morning. Contend you don't have the proper carving knives. Nine times out of ten, she'll end up by carving it herself.
2. Be ingenious. Invite a guest who's a marvelous carver and at the last minute defer to his acknowledged genuine with the scalpel. You'll have to get your invitation to him around July, because all the other husbands in the neighborhood will be hiding for him, too.
3. Don't stint. Get an adequately large turkey—preferably one of 85 to 100 pounds. Such a carcass is much easier to carve steaks from. Also, you can have turkey hash for a month afterwards.

Ephraim Woolsey Method

4. Be different. Use what has come to be called the Ephraim Woolsey method. In 1794 Ephraim Woolsey brought a meat grinder to the Thanksgiving table. He ran

the turkey through it and served the guests. This method has the advantage not only of simplicity but of impartiality — there's no bickering over servings of light and dark meat.

5. Keep some simple facts of anatomy in mind while carving. The anklebone's connected to the thighbone, the thighbone's connected to the wishbone, the wishbone's connected to the trambone, the rolin' bone's connected to the kipkin, the gizzard's dew-pearled, the heart's in the highlands, take a sharp knife and begin around the coaxial, second to the right and straight on until morning.

Simple Rule of Thumb

6. Follow a simple rule of thumb. Keep your left one off the turkey. A fool and his left thumb are soon separated.

7. Keep your guests happy. Invite known sadists. They'll be in heaven watching your misery.

8. Alternatively, invite a drunk. He'll divert attention from *his* carving.

9. Invite a surgeon. Let him carve. The patter of feeble jokes revolving around him and his chore will reduce the gluttny of your guests.

10. Use a homemade carve-it-yourself kit. This includes a knife, a water pistol, and a clean white sock (ankle length will do if you haven't got a full length sock around). When the food is brought in, fill the sock with alternate layers of dressing and cranberry sauce and tie the end tightly. Fill the pistol with gravy. Begin carving.

When your Aunt Emma demands faster service, give her a jet of gravy in the eye. When your Cousin Willie snickers at your efforts, backhand him with the sock across the kisser. This will give you confidence.

OUCH!—Just looking at Julia as she and her partner rehearse their act in London can make your bones ache. But Darvas and Julia, specialty dancers, have trained for this sort of thing, which is why they appeared before Queen Elizabeth in the Royal Variety Performance at Victoria Palace Theatre

WASHINGTON—UP—The little red schoolhouse is fast disappearing from the scene. The number of one-teacher schools, the traditional little red schoolhouse type, has dropped 73.7 per cent in the last 25 years, the committee for the White House conference on education reported Monday.

There are now only 29,061 one-teacher schools left, the committee said. Twenty-five years ago there were 118,711.

Despite the decline in one-room schools, the nation's school district system still is organized along rural lines, according to the committee's survey.

It said 37,871 school districts have less than 10 teachers, and only 8,679 have 40 teachers or more.

The committee said reorganizations have cut the number of school districts in the nation by a "remarkable" 41 per cent in the last seven years.

It said eight midwestern states account for 57 per cent of about 59,000 present school districts. These same states have 53 per cent of the one-teacher schools.

Organization of school systems is one of the six main topics to be discussed by 2,500 delegates to the White House conference here Nov. 28 through Dec. 1.

On The Record

HIGHLAND GENERAL HOSPITAL NOTES SATURDAY

Admissions

Willie Harris, 418 Harlem
Mrs. Mildred Barefoot, Pampa
Jo Hubbard, 815 N. Gray
John Young, 637 N. Banks
Faye Steinburg, 1300 S. Barnes
Mrs. Ruby Cousins, McLean
Mrs. Carrie Stevens, 324 Roberta
W. L. Loveless, L-Ranch Motel
Mrs. Adele Osborne, 1315 William

Dismissals

Margaret Leslie, 1321 Coffee
Mrs. Thelma Ratliff, White Deer
Harvey Watson, 720 N. Sumner
Mrs. Dora Watkins, Pampa
R. R. Lawrence, 401 S. Stark-weather
E. E. Wilsford, Wheeler
Terry Tucker, Pampa
H. E. Ward, 1309 Duncan
Mrs. Martha Bevel, 507 E. Browning

Browning

Mrs. Gloria Casey, Lefors
Linda & Cynthia Key, 1230 Hamilton
Mrs. Margaret Phillips, Borger
Charletta Rosson, Lefors
Kathryn McClelland, 1024 S. Faulkner
Carletta Davis, 1403 E. Frederic
Mrs. Nona McDonald, 825 S. Banks
Mrs. Maxine Barton, 1109 Neel Rd.

HIGHLAND GENERAL HOSPITAL NOTES SUNDAY

Admissions

Lloyd Burnett, Kellerville
Mrs. Bessie Jones, Alba
Mrs. Ruth Huffines, Skellytown
Van Pate, 424 Yeager
Mrs. Elsie McCracken, Groom
Mrs. Minnie Nunley, Borger
Mrs. Stella Gist, 528 Doucette
H. E. Johnson, 807 N. Frost
Mrs. Ariana McAfee, 329 N. Somerville
Marvin Woodruff, 412 Naida
Pauletta Young, 1045 Neel Rd.
T. E. Anderson, McLean
Mrs. Birdie Hancock, 933 S. Wells

Wells

Judy Hancock, 933 S. Wells
Mrs. Lana Brewer, 729 E. Malone

Dismissals

Mrs. Virginia Greer, 321 Tignor
Mrs. Nancy Mayer, 709 N. Sumner
Mrs. Jean Magee, 716 Doucette
Lloyd Bennett, 1046 Farley
Willie Harris, 418 Harlem
Faye Steinburg, 1300 E. Frederic
Henry Dunn, Lefors
Nelda Price, 440 Graham
Pamela McClelland, 861 1/2 E. Frederic
Mrs. Odera Brown, Lefors
Mrs. Mildred Kennedy, Phillips
CONGRATULATIONS
Mr. and Mrs. C. H. Barefoot, Pampa, are parents of a boy, weighing 6 lb. 1/2 oz., born at 11:30 a.m. Saturday.

Eva Marie Saint Switches To Sophisticated Comedy Roles

By ALINE MOSBY

HOLLYWOOD—UP—Eva Marie Saint won acclaim and a gold Oscar for roles that matched her last name, but she's switched to sophisticated comedy—by putting up her long hair.

The slender actress collected an Academy Award for "On the Waterfront" and more plaudits for "Our Town" on television with her blonde mop brushing her shoulders. This month she finally got around to working in a Hollywood movie ("On the Waterfront" was made in New York).

Instead of doing tearful love scenes, the Oscar-winner is bouncing through a Bob Hope comedy—with a grown-up hair-do to match. "The studio suggested I put up my hair," Eva admitted Monday over lunch in the studio commissary. "It helps me with the character. That kind of little thing gives you a feeling. More sophisticated.

unusual to people who know me. I had such a wonderful time joking with my obstetrician before my baby was born. He'd say that for my next movie, no more tears, no more suffering, be happy and sing and dance. So I am!"

At first, set workers say, Eva Marie was "floored" by the usual mob of visitors to a Hope set, from Prince Albert of Belgium to Rocky Marciano. Hope also was "subdued" around the Oscar winner but now "they break each other up laughing."

Eva Marie and her husband, TV director Jeff Hayden, once were confirmed New Yorkers. But Hayden recently signed a seven-year directing contract with MGM, and the couple are scouting for a house here so they can settle among the orange trees and smog.

The actress with the little girl "I keep my hair long because if I cut it I think my husband would divorce me," she smiled.

Producers Norman Panama and Melvyn Frank were inspired for this surprise casting of the year when they watched Eva Marie accept her Oscar on TV last year. They decided her remarks about her forthcoming baby "showed she had warmth and a flair for comedy—she could be another Carole Lombard."

The beautiful actress accepted the Hope comedy over a stack of other top scripts because "it would show I could be versatile."

"I had become very bored with playing Evie," she said. "After 'Waterfront' the only scripts were that type."

"Actually comedy for me isn't

CSS Sells Grain Sorghum
DALLAS—UP—Three widely-separated grain firms bought 1-410,000 bushels of grain sorghum, the Commodity Stabilization Service office in Dallas has announced. The grain sorghum went to Leval and Company of Kansas City, Cargill, Inc., of Fort Worth and C. B. Fox of New Orleans.

Headache
Get the BEST relief
for LESS—get
St. Joseph
ASPIRIN
100 TABLET BOTTLE ONLY 49¢

Carafree Holiday Travel
Burlington
Zephyrs
Houston—Dallas
Fort Worth
Amarillo—Denver
Ticket Office
Dial 4-4731

Air Bases In Morocco Prompt U. S. Approach To Sultan

By CHARLES M. MCCANN

United Press Foreign Analyst

The United States has lost no time in trying to get on friendly terms with Sidi Mohammed Ben Youssef, the newly restored Sultan of Morocco.

President Eisenhower has sent him a warm personal message of friendship. The Sultan in turn has invited the President to visit Morocco.

Naturally nothing was said in the exchange about the four very valuable air bases which the United States has built in Morocco at a cost of about \$372 million.

But the protection of those bases under the new set-up in Morocco, is the reason behind the prompt American approach to the Sultan.

Expects Home Rule
Ben Youssef has left no doubt that he expects France to give Morocco a wide measure of home rule under the agreement by which he was restored, after two years in exile.

Also, he commented rather casually in Paris just before he returned to Morocco Wednesday that the United States negotiated directly with France in getting its bases and did not consult Moroccans.

His implication was that he wants to negotiate with the United States for the continued maintenance of the four big strategic backstops of the Allied defense organization in Europe.

Brig. Gen. Charles A. Helm, commander of the bases, has said of the largest one, which is at

Nouasseur, 20 miles from the big port of Casablanca:

"Strategically it is one of the most important bases outside of the United States."

Bases Completed
The bases have been completed within the last few months.

Little has been published about them. But they are now ready to send B-36 atomic bomber planes against the Soviet Union in case the Kremlin decides on war.

Fortunately, the United States got away to a good start in advance of Sultan Ben Youssef's restoration.

Julius C. Holmes, who has been in and out of the foreign service since 1925, was named minister to Morocco last May. He was also made United States diplomatic agent in the international zone of Tangier, bordering on Morocco, and made his headquarters there.

Holmes visited Rabat, the Moroccan capital, occasionally. But he pointedly avoided visiting Sidi Mohammed Moulay Araf, who served as sultan during Youssef's exile.

A crumb pie crust will hold together better if it is chilled in the pan for 24 hours before the filling is added.

"LAUGH and the World laughs with you . . ."

(it's easier if you have a nice cheery savings account)

There are 1,001 good reasons for setting aside some of your dollars — and they all add up to security. But, while you're saving, you'll find it's a grand pick-me-up for everyday contentment.

Want to treat your savings right? Here they're insured safe, earn liberal, dependable dividends.

Security FEDERAL SAVINGS & LOAN ASSOCIATION
AUBREY STEELE, Secy.-Treas.
208 NORTH RUSSELL
PHONE 4-8451

3% CURRENT ANNUAL DIVIDEND

LOOK FOR THIS EMBLEM INSURED

Little Red Schoolhouse Disappearing

WASHINGTON—UP—The little red schoolhouse is fast disappearing from the scene.

The number of one-teacher schools, the traditional little red schoolhouse type, has dropped 73.7 per cent in the last 25 years, the committee for the White House conference on education reported Monday.

There are now only 29,061 one-teacher schools left, the committee said. Twenty-five years ago there were 118,711.

Despite the decline in one-room schools, the nation's school district system still is organized along rural lines, according to the committee's survey.

It said 37,871 school districts have less than 10 teachers, and only 8,679 have 40 teachers or more.

The committee said reorganizations have cut the number of school districts in the nation by a "remarkable" 41 per cent in the last seven years.

It said eight midwestern states account for 57 per cent of about 59,000 present school districts. These same states have 53 per cent of the one-teacher schools.



OUCH!—Just looking at Julia as she and her partner rehearse their act in London can make your bones ache. But Darvas and Julia, specialty dancers, have trained for this sort of thing, which is why they appeared before Queen Elizabeth in the Royal Variety Performance at Victoria Palace Theatre

TOP O' TEXAS
DIAL 4-8781
Open 6:30 Ends
Adm. 10c - 50c Tonight

JANE RUSSELL
JEFF CHANDLER
FOX FIRE
Tobacco
BON BURYE

— Wednesday —
2 Big Turkeys 2
Ready for the Oven
To Be Given Away at 8 p.m.
Courtesy of the
Golden Spread Meat
Processing Company
(Formerly Pate Bond's)

LaVISTA
DIAL 4-1911
OPEN 1:15 Now thru Wed.
Adm. 15c - 60c

WILLIAM HOLDEN
JENNIFER JONES
LOVE IS A MANY SPLENDORING THING
CINEMASCOPE

LaNORA
DIAL 4-2589
OPEN 1:15 Now thru Wed.
Adm. 15c - 60c

MY SISTER RUTH
JANET LEIGH
JACK LEMMON
TECHNICOLOR BETTY GARRETT
Vote For AUDIENCE AWARDS



New '56 Dodge holds more official AAA records for performance than all other cars combined!

Turn the key, push a button...
GET THE FEEL OF SUCCESS!

New '56 Dodge invades the low-price field with the only full-styled, full-fashioned KING SIZE CAR... in a full choice of body styles!

See and drive one of these magnificent Dodge Coronets. You'll get the feel of success in Dodge Magic-Touch push-button driving.

You'll discover what it's like to step up from small cars—step out in style, comfort and roominess no car near its price can match!

You'll see that this is no stripped-down "price special"... but a full-styled, full-fashioned KING SIZE DODGE that outshines cars costing much more!

How can Dodge do it? This new '56 Dodge is a dividend of extra value from the greatest sales gain in the industry. This is your year to own a Dodge Coronet... the KING SIZE CAR in the low-price field!

VALUE LEADER OF THE FORWARD LOOK

A Warm Snack on a Snappy Day— Pack-A-Burger
1608 N. HOBART PAMPA
Call 4-2865
Your Order Will Be Ready When You Drive by
Until 11 p.m. Open 7 Days a Week
Fri.-Sat.-Sun. Weekdays

NATIONAL SAFE DRIVING DAY (THURSDAY, DEC. 1st) BE CAREFUL... BE COURTEOUS TODAY!
PURSLEY MOTOR COMPANY -- 105 N. BALLARD -- DIAL 4-4664