

THE WINNINGS

James Veale shows the ribbons he has won in stock shows for his prize swine. Veale, a Gray County 4-H Club boy, will submit his records to the judges in Amarillo Sept. 20 from where the top records will be sent to State judges in competition proceedings in the National 4-H Club Congress in Chicago, Nov. 30-Dec. 4.

McLean Cub Pack Has Meet

Cub Pack 25 of McLean staged its monthly pack meeting in the McLean Park Monday evening.

Local Youth Applies For Award Program

James Veale, a champion hog raiser in the Gray County 4-H Club program, is making application for participation in the National 4-H Swine Award program. On the national level he will be eligible for a \$400 college scholarship.

Veale's record book will be judged on a District basis Sept. 20 in Amarillo. The top records from Amarillo will be judged on a State basis, the first place winner at State receiving an all expense paid trip to Chicago for the National 4-H Club Congress, Nov. 30-Dec. 4.

Veale has been feeding swine throughout the five years he has been in the 4-H. He has placed a Reserve Champion at the Top of Texas Livestock Show and has shown at the Amarillo Stock Show and Tri-State Fair.

The State and National awards are made on the basis of a boy's 4-H record.

A Pampa High School sophomore, Veale lives seven miles west of Pampa.

Mrs. Covalt Rites Are Tomorrow

Mrs. Bonny Covalt, 46, who had resided in Pampa for 18 years, died yesterday at 4:45 p.m. in a local hospital after a five-day illness.

Survivors include her husband, L. R. Covalt, a building contractor, of the home address, 1223 Duncan; one son, Ray, Pampa; two daughters, Mrs. Geneva Michael, Pampa, Mrs. Euleta Gardner, Tulsa; two sisters, Mrs. W. G. Stely, Lefors and Mrs. Dave Stenley, Russell, Kans.; one brother, Gilbert Brisco, Drumright, Okla.; and five grandchildren.

Funeral services will be held at 4 p.m. tomorrow in the Dunkel Carmichael Funeral Home Chapel with Rev. Ennis Hill, pastor of the Calvary Baptist Church, officiating.

Pallbearers will be Harold Sims, L. B. Coberly, Tommy and Allen Covalt, nephews, Chis W. A. Ish, and H. M. Killough.

Interment will be in Fairview Cemetery.

TEAMSTER- (Continued From Page 1)

when asked about specific situations. Others Testify On the Esco Co. matter Baker didn't waver even after Mr. and Mrs. Virgil Smith, Des Moines, Iowa, motel managers, testified. The Smiths said E. J. Weinheimer, identified as a representative of Esco, received three bulky envelopes at their establishment in August of 1957. The same day, when Baker paid his motel bill, he took a \$100 bill out of an envelope that looked like one of Weinheimer's, they said.

COMMITTEE COUNSEL Rob Kennedy said Esco president George Callahan told the committee he sent 10 \$100 bills to Weinheimer in Des Moines. Baker said he did help settle the Esco dispute outside his 11-state Midwest territory because he'd go anywhere to "help brother Teamsters."

Baker also said he did not recall exchanging money with Lew Farrell of Des Moines, whom the committee identified as a labor middleman and one-time "emissary of the Capones in Iowa." He did not change his testimony when Kennedy asked if he and Farrell had business involving the Midwest Burlap Bag Co. in Des Moines. The counsel said that firm "suddenly" signed a Teamsters' Union appeared ready to star contract after the Textile Workers Union appeared ready to organize its workers.

Explorer V Is Being Prepared

CAPE CANAVERAL, Fla. (UPI) — Army rocketeers today continued preparations to launch a new satellite-bearing Jupiter C in a further exploration of the deadly radiation found in space by Explorers III and IV.

The Army did not describe its newest artificial moon, designated Explorer V, and declined to say when it was scheduled for blast-off. But it appeared the rocket and its satellite cargo would not be sent up for several days.

It was believed that the new satellite, presumably tube-shaped as were all its predecessors, would be used to probe the radiation band starting 600 miles from the earth and possibly continuing all the way to the sun.

Scientists have expressed the belief that this intense radiation could cause postponement of man's space travel indefinitely unless a way is found to protect humans from its bombardment.

Veale Back From Credit Meeting

W. L. Veale, manager of the Pampa Retail Merchants Association, has just returned from Chapel Hill, N. C., where he attended the Southeastern Management Institute. The intensive management course was attended by 135 executives from 16 states.

The Institute, which ended its week Friday, was sponsored by the University of North Carolina, the Associated Credit Bureaus of the Southeast and the Associated Credit Bureaus of America.

This was Veale's first Institute. He has three to go in the national program which offers annual institutes to give credit bureau and collection agency managers further training.

The week's courses covered all phases of management, including personnel, work methods and human relations. The school day ran from 8 a.m. to 4:30 p.m. daily with "bites" sessions after a supper.

Veale took his exam Friday and received his grades today.

The states represented in this Institute were Florida, Georgia, North and South Carolina, Alabama, Missouri, Tennessee, Texas, Illinois, Louisiana, Michigan, New York, Ohio, Pennsylvania and Virginia.

Freeman Is Scout Drive Head

Jack Freeman of the Farmers National Bank in White Deer will head the Boy Scout Finance Campaign this year according to Gerald Sims, district finance chairman for the Sante Fe District.

Freeman selected W. C. Powers to head the general solicitation and Rev. Marvin Menefee to handle publicity. Freeman is a member of the Executive Board of the Adobe Walls Council, and has been interested in Scouting for many years.

He and Powers have worked in the finance campaigns of White Deer the past several years and have given many hours to the Scouting program.

'Maria Golovin' Received Well

BRUSSELS (UPI) — A packed house gave an enthusiastic reception Wednesday night to Gian-Carlo Menotti's new opera, "Maria Golovin," which will occupy the American theater at the World's Fair until the end of the month.

The opera, written expressly for the fair, concerns a blinded soldier who meets and falls in love with a woman — the Maria of the title — only to lose her when her husband returns from the war.

Francis Duvaj and Richard Cross sang the leads.

Key Club Pre-School Meet Set

The Pampa Key Club will have a pre-school meeting in the cafeteria of Pampa High School on Thursday, Aug. 28 at 7:30 p.m.

All freshman boys entering high school are invited to attend, according to club representatives.

A program of entertainment will be presented and refreshments will be served.

The Key Club is a junior civic organization and will offer to all new members an opportunity to actively work on projects of service to the school and community.

New memberships will be processed at this meeting.

Mecher Rites Set Friday

Services for Miss Coonetta Kay Mecher, who died Monday in San Antonio, will be held at 2 p.m. Friday in Harrah Methodist Church with the Rev. O. M. Butler, pastor, presiding.

Miss Mecher is survived by her parents, Sgt. and Mrs. Danny Mecher, Albuquerque, N. M.; her brother, Wayne of Pampa, a half-brother, James McDaniel, who is stationed with the Army in Maryland; and her grandparents, Mr. and Mrs. W. R. Emmons, 505 Naida, and Mr. and Mrs. M. Mecher, Chicago, Ill.

Burial will be in Fairview Cemetery under the direction of Dunkel-Carmichael Funeral Home of Pampa.

ARAB (Continued From Page 1)

subversives and war material across national borders. To Study Ike Plan The resolution leaves it to Hammarskjold to make "such practical arrangements" so as to make possible the early withdrawal of foreign troops from Lebanon and Jordan. In their place would be some form of the United Nations — possibly observers.

study with the Arab countries the do-it-yourself economic program outlined last week by President Eisenhower and suggests he report on his progress by Sept. 30.

The Arab formula closely parallels the Western-backed resolution introduced by Norway and six other countries. The West was giving the Arabs priority in the voting, holding the Norwegian measure in reserve.

Vaccine Rushed To Nicaragua

MANAGUA, Nicaragua (UPI) — President Luis A. Somoza praised Francis Cardinal Spellman, Roman Catholic archbishop of New York, Wednesday for sending 10,000 units of Salk vaccine to combat an outbreak of polio here.

Mainly About People

* Indicates Paid Advertising

Golden Spread Kennel Club will meet Sunday at 5 p.m. on the Pampa High School football practice field, Decatur and Duncan Streets. Classes will be continued in dog obedience training. Interested persons are please asked to note the change in meeting place.

Hurl Graham Jr., 617 Doucette, was admitted yesterday to Worley Hospital, where he will be confined for an indefinite time. His room number of 209.

Mr. and Mrs. C. H. Mundy, 105 Wynne, returned yesterday afternoon from Clayton, N.M., where they attended the funeral of their brother-in-law, C. C. Crane.

Mrs. Carolyn James, 640 N. Dwight, returned Sunday from a two weeks' visit in Oakland, Calif., where she visited with her husband, Paul David James, who is stationed there with the Navy.

Kindergarden, \$10 a month MO 4-8719.

Mr. and Mrs. Milton Fitzgerald and sons Michael and Gerald of Donna are visiting in the home of Mr. and Mrs. J. M. Fitzgerald, 912 Christine. Milton Fitzgerald is J. M. Fitzgerald's brother.

Lefors swimming pool for sale, for information call, Mrs. B. J. Johnson, 4121 or 4592, Lefors.

Ed Eller from Miami, Fla., is visiting with his mother Mrs. May F. Eller, 416 N. Frost.

Oxygen equipped ambulances, Duenkel - Carmichael, MO 4-3311. Leroy Ellis, a Pampan living in New York City, is scheduled to appear on "Win With the Winner," a teevee quiz program, at 6:30 p.m. Tuesday.

(Read The News Classified Ads.)

UNION

(Continued From Page 1)

opposition to a union reform bill backed by the AFL-CIO. The measure died in the House Monday.

Labor's top echelon conceded the bottom of the recession may have been touched already. But it said a return to the administration's tight-money policy could bring an upturn before it could gain momentum.

Fears Further Decline A document drafted by the economic policy committee warned the Federal Reserve Board's recent anti-inflationary step to raise interest rates could plunge the economy into a further sharp decline.

Price increases need not follow wage boosts if businessmen seek higher profits by increasing sales instead of cutting back production, the council said.

The first and continuing prerequisite for an economy that aims to promote job opportunities for all able-bodied individuals who are willing to work is an increase

2

level of wages and salaries," it declared in a statement.

Even though Wall St. is prosperous, the council said as it drove toward adjournment of summer meetings at this union-owned resort, the recession is "stark reality" to 5,300,000 jobless in July.

Asks Tax Cuts "Although some lines of economic activity have begun to pick up and possibly a general upturn may start after the summer lull, six per cent or more of the labor force will be jobless 12 to 18 months from now," it asserted.

The bleak outlook was prepared for the AFL-CIO high command by United Auto Workers president Walter P. Reuther and top labor economists.

The council renewed its call for tax cuts for low and middle-income groups and closing of tax loopholes used by corporations and rich families.

It said the recent rise in steel prices meant the American public

Man Fined On Check Charge

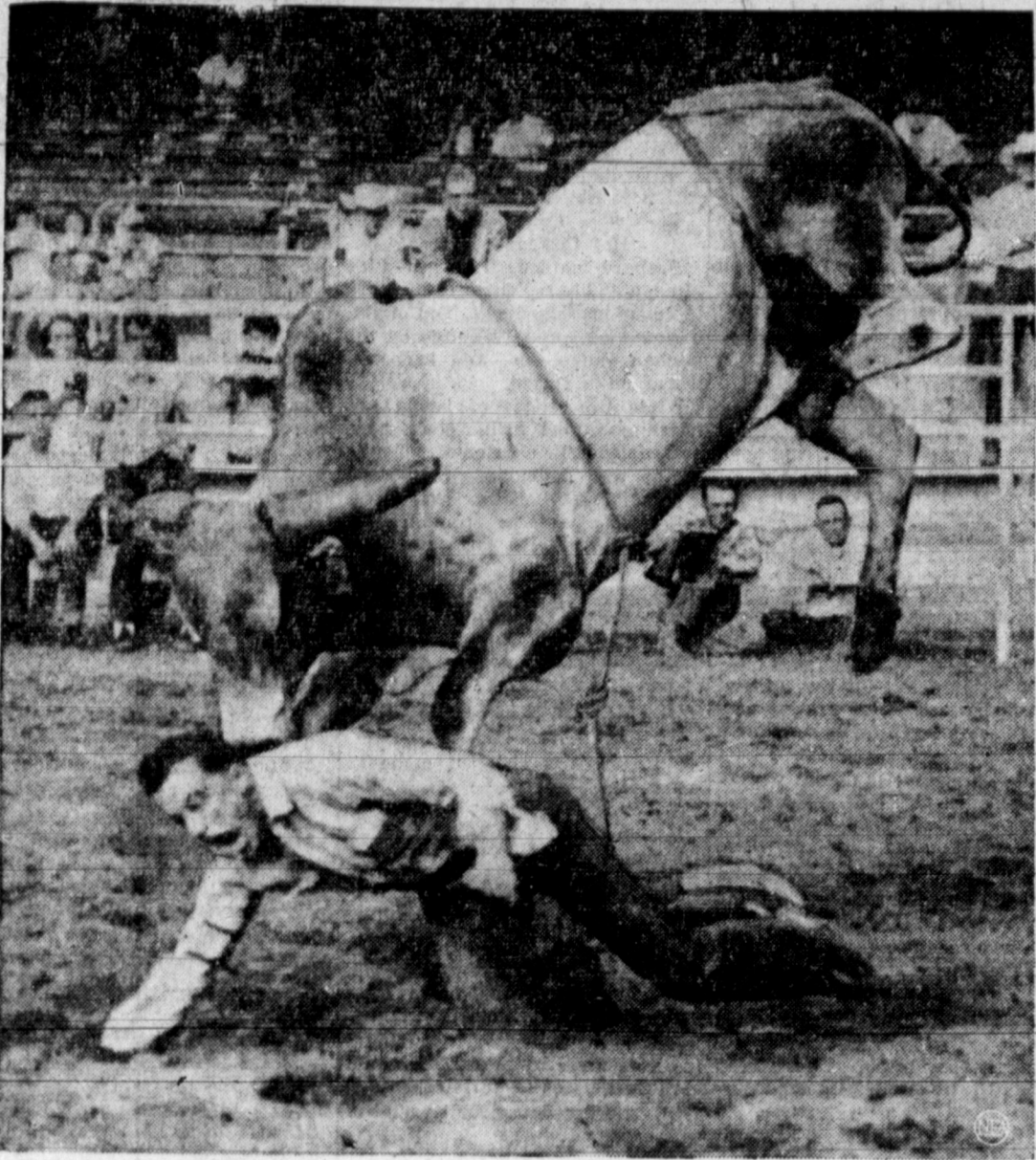
Weldon DePrang, 601 Varnon Drive, pleaded guilty in County Court Wednesday afternoon to charges of swindling with a worthless check filed by M. C. Hill of Mitchell's Grocery and Market.

DePrang was fined five dollars and costs of the court. DePrang also made restitution on the ten dollar check.

is compelled to provide guaranteed annual profits for the industry.

Advertisement STOP THAT ITCH! IN JUST 15 MINUTES, Your Itch MUST stop or your skin back at any drug store. Apply ITCH-ME-NOT to deaden itch, burning in minutes, speed healing. For externally caused Itch, get ITCH-ME-NOT today at HILAND PHARMACY.

Attention Farmers—We Pay Top Prices For Fresh Eggs!! Ward's Food Stores 600 E. Frederic U.S.D.A. GOOD Chuck Roast Lb. 49c U.S.D.A. GOOD Arm Steak Lb. 59c Nice Lean PORK SHOULDER ROAST Lb. 39c PORK CHOPS CENTER CUTS 59c/lb. END CUTS 49c/lb. Lean-Pork Shoulder STEAK Lb. 43c HONEY BOY SALMON tall can 39c WAPCO WHOLE GREEN BEANS 303 can 15c PINTO BEANS 2-lb. pkg. 15c SILVER BELL OLEO 1 lb. 15c PUFFIN BISCUITS 2 cans 15c 6 BOTTLE CARTON COCA COLA carton 29c SUNSHINE CRACKERS 1-lb. box 23c BORDEN'S MELLORINE 1/2 gal. 39c SNOWDRIFT 3 Lb. Can 69c HAVANA CLUB, No. 1 Flat Can PINEAPPLE 10c MEAD'S FINE, Parker House FROZEN ROLLS 2 pkgs. 49c WHITE SWAN COFFEE lb. 77c WHITE SWAN TEA 1/4 lb. 23c FROZEN FOODS BANQUET CHICKEN 19c POT PIES Each 19c MINUTE MAID 6-OZ. Lemonade 2 Cans 19c Golden Ripe Bananas 29c 2 LBS. YELLOW ONIONS 4c RUBY RIPE TOMATOES Lb. 19c SWEET GOLDEN CORN 6 Ears 29c



"GET OFF MY BACK!"—That's what cowpoke Jim Bayless seems to be saying after getting the worst of it in his battle with a raging Brahma bull. (Maybe the bull said it first.) Jim was only one of many contestants unseated in the 18th annual Pikes Peak or Bust Rodeo at Colorado Springs. Limber rodeo clowns kept the angry bulls from goring the cowboys and the only thing injured was a little pride.

Spending Issue Is GOP Choice

By RAYMOND LAHR
United Press International

WASHINGTON (UPI) — President Eisenhower's recent veto messages offer Republicans some clues this fall on how to attack the record of the Democratic-controlled Congress.

While the President spoke more softly, the GOP campaign orators will be able to quote him in denouncing the "reckless spending" programs in the New Deal tradition.

GOP candidates also are being urged to quote some economy bloc Democrats on the spending issue. When he vetoed an appropriation bill for the first time, Aug. 4, Eisenhower said there was "no sound justification whatever in adding unnecessarily over half a billion dollars to a deficit which may reach 12 billion dollars this fiscal year."

And in his veto of an atomic ice-breaker construction bill last

week, he wrote:

"A continued disregard of our budgetary problems through the institution of unneeded new programs and projects can only add to inflationary pressures to the detriment of all the people."

The mere threat of a veto stalled some spending programs in Congress this year and resulted in shaving sums off others.

To the extent that the 1958 election campaign is pitched to the record of Congress, the spending issue looks like a probable choice for the GOP.

Despite a continuing disagreement between most Democrats and the administration over farm policy, the Democratic-led Congress is not very vulnerable on the issue of support for the President. A partisan line could not be drawn easily on Pentagon reorganization, reciprocal trade and foreign aid—the three items which Eisenhower regarded as all-important parts of his program. Democratic congressional leaders also supported the President in resisting any election year tax reduction.

Spending Matched Estimates

But the record shows that the Democrats were willing to go further than the administration in voting money out of the federal Treasury. In large part, this was their response to Sputnik and the recession.

A current memo to Republican leaders from the GOP National Committee assembles some complaints against this trend from economy bloc Democrats, whose voices have been muted this year. After the economy binge last year, Democratic leaders were issuing statements telling how Congress had trimmed administration budget requests by some four, five or six billion dollars.

In the hocus-pocus of the appropriation bills, these cuts in no sense meant that there would be comparable cuts in federal spend-

ing. When the fiscal year books were closed June 30, overall spending was just about what the administration had estimated 18 months earlier.

The appropriation bills this year add up to upwards of a billion dollars more than the administration asked—more than half of the increase going to the Defense Department. How much this will mean in its effect on the budget will depend largely on the administration. If he wants to take the responsibility, the President can impose most of the extra money voted by Congress.

SLYFIELD GREEN—England—Four-year-old David Butler, who, using a stick, beat off a 1,200-pound bull which invaded a playground:

"The bull just stood still when I hit him. So I hit him again. He stamped his feet. So I hit him again."

HE'S A PLAINCLOTHES DETECTIVE, BUT HE'S OFF DUTY.



Advertisement
TO TAKE OFF WEIGHT, GET BARCENTRATE AT YOUR TEXAS DRUGGIST

'Shirley Temple's Storybook' Tuesday Was Fairly Charming

Television in Review
By WILLIAM EWALD
United Press International
NEW YORK (UPI) — Views and

reviews: "The Magic Fishbone," a Charles Dickens piece carried by NBC-TV's "Shirley Temple's Storybook" Tuesday night was a fairly charming hour of fluff. It wasn't a very singular tale—to a large extent, it smacked of Dickens' own "A Christmas Carol."

Barry Jones as a poor king, Estelle Winwood as an oddball fairy and Leo G. Carroll as a semi-Scrooge were the principal whackers. Lisa Daniels, a Welsh girl who played a princess, looked a bit hard for her part, but worked competently. One additional chunk of useless informa-

tion: The young man who played the fishmonger's boy was Richard Lupino, an American cousin of actress Ida Lupino.

The nighttime "Dotto" on NBC-TV was replaced Tuesday night by "Colgate Theatre," a fill-the-gap anthology series. It weighed in with JoAnne Dru as star of "Adventures of a Model," a pilot film for a series that never made it. After watching, I would say there's no mystery why—it was a humorless comedy with a hackneyed plot and tubercular dialogue. To compound the difficulty, canned laughter punctuated the

sound track with indecent regularity. Take it away, already. ABC-TV's "Pantomime Quiz" churned out some funny bits with Howie Morris, the elf who walks like a man, coming off funniest. The Duke of Bedford, making a return visit to the NBC-TV "Jack Paar Show," provided some won-

derful comic moments, overshadowing such pros as Shelly Beriman and Hans Conried. It was Paar's best show in several weeks.

The Channel Swim: Melvyn Douglas landed the role of Stalin in CBS-TV's "Playhouse 90" opener, "The Plot to Kill Stalin," on Sept. 25. NBC-TV has corralled Ginger Rogers for a live weekly variety series—it'll probably start sometime next year.

In response to numerous complaining letters, it says here, Beth March will positively die on the Oct. 16 CBS-TV spec, "Little Women"—there had been reports that the script would permit Beth to live so the ending would be happy-happy. Ralph Bellamy has the inside track for the lead role in the NBC-TV spec, "Swiss Family Robinson" on Oct. 12.

Advertisement
FOR ATHLETE'S FOOT USE T-4-L BECAUSE— It sloughs off infected skin. Exposes more germs to its killing action. IN 1 HOUR, if not pleased with STRONG instant drying T-4-L liquid, your 40c back at any drug store. Use T-4-L FOOT POWDER too—gives a film of antiseptic protection. Now at Hi-Land Pharmacy.



I like the
Quality

I like the low
prices

Elmers Economy EGGS **33c** Doz.
Buddy's Stamps Given With Every Purchase

Ready To Eat 8 to 14 lb. Avg. **HAMS LB. 49c**

ARMOUR'S STAR **FRYERS ... lb. 33c**

CHUCK ROAST ... lb. 45c

ARM ROAST ... lb. 49c

CLUB STEAK ... lb. 63c

CHUCK STEAK ... lb. 55c

LEAN MEATY **BEEF RIBS ... lb. 29c**

Calif. Vacuum Packed **LETTUCE, Lge Head—Lb. 15c**

Large Fancy Vine-Ripe Calif. **TOMATOES Lb. 15c**

Fancy Calif. Long White **POTATOES Lb. 6c**

Calif. Sun Kist **LEMONS Lb. 13c**

Home Grown **CANTALOUPE Each 9c**

Hi-Ho lb. Pkg. **CRACKERS 29c**

Betty Crocker Ass't Pkg. **CAKE MIX 27c**

W.S. Sliced or Halves No. 2 1/2 Can **PEACHES 29c**

400 Count Box **KLEENEX 19c**

Reg 6-Bottle Carton Plus Dep. **PEPSI-COLA 29c**

Wapco Cut-in Light Syrup **SWEET POTATOES 3 lb. can 25c**

CONCHO, Cut 303 Can **Green Beans 10c**

VAN CAMP'S, Tall 300 Can **Pork & Beans 12 1/2c**

WILSON'S **BAKERITE 3 LB. CAN 65c** (Limit One)

HERSHEY'S, Lb. Can **Choc. Syrup 15c**

UNDERWOOD'S Clover Loaf or Parkerhouse **BAR-B-Q ROLLS 22-Oz. Pkg. 25c**

BEEF GREEN PEAS 10-Oz. Pkg. 17c

16 oz. **CUT CORN 10-Oz. Pkg. 17c**

Pkg. **PERCH 16-Oz. Pkg. 39c**

Store Hours WEEK DAYS 7:30 to 9:00 SUNDAY 7:30 to 8:00

Delsey Reg. Roll **TOILET TISSUE 7 1/2c**

Chris-Pitts 12 oz. Bottle **BAR-B-QUE SAUCE 39c**

Banana Butter Scotch, Reg. 79c **MEADS LAYER CAKE 69c**

Wapples Plater **CHARCOAL BRIQUETS 5-Lb. 39c 10-Lb. 59c**

PAPER Note Book 25c 19c
Size ... **79c**
98c
Size ... **8c**

Chapter I in the Borden Quality Story

Cindy finds out why Borden's is the best-tasting milk!

"There's a farm where I went with my daddy. You never saw such great big cows, and the barns and everything are kept as clean as my mommy's kitchen. Guess that's why my Borden's Milk tastes so good."

Here in PAMPA...

You get richer, creamier milk when you buy Borden's! Strict quality control is the reason. In constant operation from farm to your table, it assures absolute freshness and purity—best flavor. So, like many of your neighbors, why don't you say, "My family drinks Borden's—the best-tasting milk in town!"

THE BORDEN COMPANY

Kounty Kist Whole Ker. **CORN 12 1/2c** Can

BUDDY'S SUPER MARKETS

Dog Food KIM TALL CAN 8c

"Time out for a cooler... And An Impromptu Party"



Treat yourself and the neighbor ladies to a delightful party refresher. Serve one or all of these delightful three: Blueberry Milk Flip, Misty Apricot Milk, or Strawberry Milk Mist.

Now's The Time For All Neighborhood Kids To Come To An Impromptu Party

Now's the time... TO TAKE THE TIME... to relax and have fun.

If you want to be voted the most popular neighbor on the block, have an impromptu party for your friends—right in the middle of busy cleaning days.

There's no need to go to a great deal of fuss 'n' feathers though. Just make a quick trip to the bakery, or if you're feeling ambitious, make your own fancy butter cookieettes. Double check your grocery supplies too. And plan to have plenty of cold milk, eggs, whipping cream, canned apricots, fresh blueberries, and strawberries on hand. Then make up several servings each of this delightful threesome.

Start with Blueberry Milk Flip, a wonderful combination of fresh blueberries, milk, egg, whipping cream, water, sugar and ice cream. And make a Misty Apricot Milk or two. This is a fluffy mixture of pureed apricots, whipping cream, egg, milk and vanilla ice cream with a drop of food coloring. Strawberry Mist is fun to concoct too. Just substitute strawberries for the apricots.

Then get on the telephone and in your most cheerful voice, send out the word that there are cooling milk and butter cookie refresher to be had at your home. It matters not which exciting frozen drink they choose, the girls will love them all.

- BLUEBERRY MILK FLIP**
6-8 ounce servings
1 1/2 cups fresh blueberries
1/2 cup sugar
1/2 cup whipping cream, whipped
1 egg, beaten
2-3 cup water
1/2 cup whipping cream, whipped
1 egg, beaten
1 quart milk
1 pint vanilla ice cream
Cook blueberries in sugar and water to make a thick syrup. Mash syrup through a sieve to form blue berry puree. Fold whipping cream and beaten egg into the milk; blend in blueberry syrup. Pour into glasses. Top each with a scoop of vanilla ice cream.
- MISTY APRICOT MILK**
4-8 ounce servings
1 No. 303 can peeled apricots
1/2 cup whipping cream, whipped
1 egg, beaten
2 cups milk
1 drop red food coloring
1 drop yellow food coloring
1 pint vanilla ice cream
Mash apricots through a sieve to form a puree. Fold whipping cream and beaten egg into the milk; blend in apricot puree and food coloring. Pour into glasses and top with a scoop of vanilla ice cream.
- Strawberry Mist Variation:**
In place of apricots, thaw and sieve one ten ounce package frozen strawberries to form puree. Omit food coloring.

Reunion Party Calls For Sandwiches



Planning a reunion party? Is it just for the girls who were in your class? Or will it be a reunion with husbands and children? Your problem is menu. Weather and menu must synchronize for certain!

Hot sandwiches... made with canned condensed soup... are a boon to your reunion planning. For even if the day is hot and appetites are slackened, these sandwiches will make a hit. Then too... if the weatherman pulls cooling breezes... REUNION SANDWICHES still fill the bill. They are tasty, attractive and easily made, for the basic preparation can be done ahead of time if you wish, then put together as you ring the "eating bell".

To make REUNION SANDWICHES, just "hotten up" the base... canned condensed tomato soup... with other pantry shelf regulars... chill powder, garlic, bay leaf, and Tabasco. Then add slices of cooked beef. After a short simmering period, pour the mixture over toasted buns.

Serve a "special" cooler... perhaps made with lemonade concentrate or one of the carbonated beverages. Party-up the drinks by using your favorite glasses... decorate with maraschino cherries.

- Your reunion will be a success with this synchronized planning!
- Reunion Sandwiches**
1/2 cup chopped onion
1/2 teaspoon chili powder
1 clove garlic, minced
2 tablespoons shortening
1 can (10 1/2 ounces) condensed tomato soup
1 cup water
1 medium bay leaf
Dash Tabasco
2 to 3 cups thinly sliced or small pieces of cooked beef
Buns, split and toasted
- In skillet, cook onion, chili powder, and garlic in shortening until onion is tender. Stir in soup, water, bay leaf, and Tabasco. Add beef. Cook over low heat about 20 minutes or until desired consistency, stirring now and then. Serve on buns. Makes 4 to 6 servings.
- GOOD SALAD EATING**
Here's an idea to add to your salad file. It uses the menfolks favorite, a can of pork and beans with tomato sauce. Mix 1 can (1 pound) pork and beans with tomato sauce, 1 cup diced cooked ham, 1 tablespoon minced onion, 1 tablespoon prepared mustard, and dash black pepper. Chill. Serve on crisp lettuce, garnished with mayonnaise if desired. Makes 4 generous servings.

Endless Variety Of Taste-Tempters Made From Nutritional Chicken Meat

Most people love a good chicken salad. Not only does it appeal to the appetite, but it is satisfying in its energy producing properties. The high protein and low cholesterol and low calorie content of chicken meat makes these salads a real nutritional springboard of healthful eating.

Making chicken salad at home is easy when you use a "bro-hen". This is a new word in chicken buying and is the name given by the broiler chicken industry to the hens which lay the eggs which hatch into broiler chickens. You can buy a bro-hen in your food store by asking for a heavy stewing hen, one which weighs at least four pounds or more. According to the National Broiler Council, these heavy hens are now available in large supply at prices especially kind to your pocketbook.

Round up lettuce leaves. Or mix it with curry powder and use it to fill avocado halves. Or cut a cucumber in half, the horizontal way, mix the scooped out cucumber with the chicken salad and re-stuff the boat-shaped shell with the mixture. Tomatoes stuffed with chicken salad are established favorites. Toasted frankfurter rolls make an interesting sandwich wrapping for chicken salad.

The technique for making chicken salad with a bro-hen is this simple: You can simmer the bro-hen whole or cut up into pieces. Put it in a big kettle with about 3 cups of water. Simmer about two hours with salt, celery tops, bay leaves, Ac'cent, onion and peppercorns. After it is cooked, immerse it in another pan of very cold water to chill the chicken quickly. You may then put the

Serving Sunday Breakfast In The Yard Brings Out Best In Summertime Living

Why persist in serving late Sunday breakfasts indoors, if you have outdoor cooking equipment in the yard? Actually it requires only a little more planning and some minor pre-preparation in the kitchen to cook a leisurely breakfast in the yard.

Let your meal be bountiful but not so elaborate that all the fun of eating outdoors is gone. Here is a sample menu which can be executed with ease.

OUTDOOR BREAKFAST
Chilled Melon Quarters With Sliced Berries
Grilled Canadian Bacon
Scrambled Eggs Oriental
Coffee Cake
Butter Hot Cakes
Milk

Prepare chilled fruits in the kitchen and carry them to the yard table on one large tray. You might, if you wish, prepare coffee on the kitchen range, too, and keep it warm on the grill.

While thin slices of bacon are frizzling on the grill, cook the Scrambled Eggs Oriental. This recipe was developed by home economists at LaChoy Food Products who use bean sprouts and water chestnuts to impart nutlike flavor and crunch to the fluffy eggs. Soy sauce provides pliancy. You probably will find it simpler to blend the egg mixture at your kitchen counter too; then tote the mixture to your grill.

SCRAMBLED EGGS ORIENTAL
(Four servings)
2 tablespoons chopped onion
2 tablespoons butter
1 can bean sprouts
1/2 cup sliced water chestnuts
6 eggs
1 teaspoon salt, dash pepper
2 teaspoons soy sauce
Cook onion in butter until tender in large skillet. Drain bean sprouts thoroughly and add to the onion. Then add water chestnuts. Mix lightly. Combine eggs, salt, pepper and soy sauce, beating slightly. Pour over bean sprouts and chestnuts. Cook over low heat on grill, stirring occasionally until eggs are set.

Did you know? One quart of milk weighs 2.15 pounds.

The first cows to visit America... and STAY... were those brought over to the Jamestown Colony in 1611.

Planning a Kiddie Party? Stop at the local five and dime and buy some decals... animals, toys or letters and place one on each child's milk glass to individualize them.

Don't throw out that left-over strained baby fruit. Combine it with a drop of vanilla and a glass of milk for a tasty drink for baby and you.

Chipped Beef For Emergency Meals

Variety in daily meals is a constant problem for most homemakers. Especially during the summer when less of the homemaker's time is spent in the kitchen, this situation is ever present.

Reba Staggs, well known home economist, has a solution for this problem.

Chipped beef is a handy item to have on hand. It is quick to prepare and for last minute meals or unexpected emergencies, it might help to know simple ways to vary a basic creamed chipped beef recipe:

1. Cook 2 or 3 tablespoons of minced onion and green pepper in fat, before adding flour.
2. Add curry powder to the sauce (about 1/4 teaspoon curry powder to 2 cups sauce). Serve on fluffy white rice.
3. Add chopped, hard-cooked eggs.

CREAMED CHIPPED BEEF
1 jar (6 ounces) chipped beef
3 tablespoons lard or drippings
3 tablespoons enriched flour
2 cups milk
Biscuits or toast

Melt lard or drippings in frying-pan and cook chipped beef until crisp. Add flour and blend. Stir in milk slowly. Cook until thick, stirring constantly. Serve on biscuits or toasted bread. Yield: 4 servings.

Food Page

Because the bro-hens are the mothers of the exceptionally tender meat broiler-fryers, they, too, make mighty fine eating. They are faster cooking than the "fowl" of yesterday's salad making schemes and have a large proportion of meat to bone, which means they are a thrifty menu item. With a 4 1/2 pound bro-hen, for instance, you get enough chicken salad for 8 servings. This gives you an excellent and inexpensive salad main dish for buffet parties.

If yours is a small family, a bro-hen made into salad will give you generous servings for one night's dinner and plenty left over for chicken salad sandwiches the next day. And don't those taste good when they're homemade!

The traditional chicken salad recipe uses mayonnaise, celery and salt and pepper. But for fun you can add onions, or olives or sliced almonds or watercress.

What endless varieties of taste tempters you can make from chicken salad. Serve it as an honest-to-goodness salad with surrounding lettuce leaves. Or mix it with curry powder and use it to fill avocado halves. Or cut a cucumber in half, the horizontal way, mix the scooped out cucumber with the chicken salad and re-stuff the boat-shaped shell with the mixture. Tomatoes stuffed with chicken salad are established favorites. Toasted frankfurter rolls make an interesting sandwich wrapping for chicken salad.

The technique for making chicken salad with a bro-hen is this simple: You can simmer the bro-hen whole or cut up into pieces. Put it in a big kettle with about 3 cups of water. Simmer about two hours with salt, celery tops, bay leaves, Ac'cent, onion and peppercorns. After it is cooked, immerse it in another pan of very cold water to chill the chicken quickly. You may then put the

CHICKEN SALAD
4 to 5 cups diced cooked chicken
1 cup diced celery
2-3 cup mayonnaise
2 tablespoons lemon juice
1/4 teaspoon Tabasco
1/4 teaspoon Worcestershire sauce
Combine chicken with celery. Mix mayonnaise, lemon juice, Tabasco and Worcestershire sauce; add to chicken. Toss lightly. Refrigerate until served (flavor improves on standing). Serve on crisp greens, or use as a filling for tomatoes or avocado halves. YIELD: 8 servings.

VARIATIONS:
Chicken Salad Oriental: Add 2 teaspoons soy sauce to mayonnaise; add 1/2 cup sliced toasted almonds to chicken.
California-Style Chicken Salad: Add 1 cup drained canned pineapple to chicken; add 1 teaspoon curry powder to mayonnaise.

For Picnic Fun
On Sandwich Bun
This "Bean Time USA" recipe is great for picnic fun on a bun. It makes plenty for eight big outdoor sandwiches.

BEANBURGERS
1/2 lb. ground beef
1 tsp. salad oil
1/2 tsp. salt
1/4 tsp. McCormick-Schilling Pepper
1-3 cup sliced green onions
1 can (1 lb.) Van Camp's Pork & Beans, drained
1/2 cup Stokely's or Van Camp's Catsup
8 round buns
Brown meat in oil in a large skillet. Add salt, pepper, and sliced onion. Cook slowly until well done. Add pork and beans and catsup. Heat. Spoon onto sandwich

'Do-It-Yourself' Idea For Novel Appetizers

Your guests will have a picnic making their own and trading with each other.

MAKE YOUR OWN APPETIZERS
Make Biscuit dough (see Biscuit quick pkg.). Wrap small balls of dough around an assortment of the following, or invent your own!
1. Vienna Sausages
2. Cubes of Cheese
3. Shrimp
4. Stuffed Olives

Cover with oil until guests arrive. Place appetizers on charcoal grill and keep turning with tongs until brown on outside, 10 to 20 min. depending on heat from fire. Serve with Stokely's Chili Sauce.

Hom & Gee Week End

Famous Food Buys!

SHURFINE Coffee 73 ^c lb.	SHORTENING Bakerite 3 Lb. 69 ^c	CUDAHY Ready To Eat Picnics Lb. 39 ^c
IMPERIAL SUGAR 5 ^{LBS} 49 ^c	SHURFINE CHEESE SPREAD 2-Lb. Box 59 ^c	Cudahy Thick Sliced BACON 2 Lbs. \$1 ³⁹
SHURFINE FLOUR 10-Lb. Bag 59 ^c	WESSON OIL 1/2 Gallon 1.00	Fresh Baby Beef LIVER lb. 29 ^c
SHURFINE GRAPES 2 Lbs. 29 ^c	Preserves 3 for 1.00	WIENERS 2 lb. bag 98 ^c
SHURFINE CELERY 10 ^c stalk	Swan Down, White yellow or D.F. CAKE MIX 4 boxes 1.00	U. S. Choice ROUND STEAK lb. 89 ^c
Bell Pepper 10 ^c lb.	Del Monte 303 can SPINACH 2 for 27 ^c	U. S. Choice CHUCK STEAK lb. 49 ^c
SHURFRESH Biscuits 25 ^c cans	Shurfine 300 can Pork and Beans 10 ^c	Fresh Ground BEEF 3 Lbs. \$1 ⁰⁰
Potatoes 3 25 ^c cans	Thompson Seedless GRAPES 2 Lbs. 29 ^c	SHURFINE MILK 3 Tall Cans 37 ^c
Pinto Beans 2-Lb. Bag 17 ^c	California No. 1 CELERY 10 ^c stalk	FOOD KING OLEO 2 Lbs. 29 ^c
Mellorine 1/2-Gal. Ctn. 39 ^c	U. S. No. 1 White Potatoes 10-Lb. Bag 39 ^c	

Hom & Gee GRO.
Shop 7 Days A Week & Save!
421 E. Frederic MO 4-8531
For Your Convenience We Are Open DAILY 7:30 to 8:00—SATURDAY 7:30 to 9:00



LITTLE LIZ
People who buy things to keep up with the neighbors spend most of their time keeping up with the payments.

Dr. R. E. Thompson
CHIROPRACTOR
Hours By Appointment
8 to 12 1:30 to 5:30
Thurs Sat 8 to 12
509 N. Ballard MO 4-7676

SATISFACTION in FRUITS and VEGETABLES ... For less at FURR'S!



California, Sunlist, large size
ORANGES lb. 19c
 Large Clusters, red, sugar sweet,
GRAPES lb. 19c
 Long Green, for salads or slicing,
CUCUMBERS lb. 2 for 19c

Shop Furr's For The Freshest Produce!

CARROTS
 FRESH AND CRISP
 MEDIUM SIZE
 CELLO BAG Ea. **10c**

CABBAGE
POTATOES

MEDIUM SIZE
 FIRM HEADS
 TEXAS, LB. **3c**

U.S. NO. 1
 REDS,
 10-LB. BAG **29c**

GREEN BEANS Elna Cut No 303 Can 2 For **25c**
CATSUP Elna 12-Oz. Bottle **15c**

COFFEE

FOLGER'S
 DRIP OR REG. 1-LB. **79c**

BREAD

SWEETHEART, BUTTERNUT
 or DOTTIE LEE, 1½-Lb. Loaf **27c**

PINTO BEANS

4 LB. BAG **39c**

SOUP

CAMPBELL'S
 TOMATO CAN **10c**

PREMIUM, box
SALT, 26-oz. box 10c
 CAROL, Vanilla or Chocolate
COOKIES, 1-lb. bag 29c
 ZESTER, Strawberry glass
PRESERVES, 12-oz. glass 25c



BIG SATISFACTION WITH FRONTIER STAMPS
DOUBLE ON WEDNESDAY
 With Purchase Of \$2.50 Or More
ORANGE DRINK
 LIBBY'S FRESH FROZEN, 6-OZ. CAN **12½c**
LEMONADE
 TOP FROST FRESH FROZEN, 6-OZ. CAN **10c**

FLOUR
 GLADIOLA or FOOD CLUB
 5-LB. BAG **39c**

We Reserve The right To Limit Quantities

MILK
 PET OR CARNATION
 TALL CAN **12½c**

CLOSED SUNDAYS

Why accept less? Get the most for your meat purchase by always selecting Furr's USDA Graded Grain fed beef. It is trimmed of excess bone and fat and guaranteed by Furr's.

CHUCK ROAST USDA Choice LB. **43c**

Sirloin Steak USDA Choice, Lb. **89c**

SHORT RIBS USDA Choice Lb. **29c**

GROUND CHUCK Extra Lean, Fresh Ground Lb. **55c**

HALIBUT STEAK Top Frost, 12-Oz. Pkg. **59c**

CHEESE Furr's Longhorn Cheddar 10 Oz. **45c**

HAIR SPRAY NESTLE'S \$1.25 SIZE **2 FOR 1 25c**

ASPIRIN Bayer's 75c Size **43c**

SHAVING CREAM Aero 60c Size **59c**

CANISTER SET Assorted colors, \$2.98 Value **\$2.49**

ANGEL CAKE PANS Heavy Aluminum, \$1.89 Value **98c**

FURR'S



NEW MUSCLES FOR NORAD—Looking south from the North Pole gives this enemy bomber's view of some of this continent's defenses against attack. Behind the radar picket fences of DEW, Mid-Canada and Pinetree lies the brain center of NORAD, the North American Defense Command. Advanced air bases in Iceland, Greenland and Alaska, and offshore radar-equipped ships, blimps and planes are also part of the defense system. Soon to be added to this picture will be a ring of launching sites with a potential range of 200 to 400 miles outside our borders. These are the 15 Bismarck guided missile bases (white type on Newsmap) which NORAD has announced will be built. Some are already under construction; other sites are planned for the future.

West's NATO Is Facing New Threat

By K. C. THALER
United Press International

LONDON (UPI)—NATO, the much-tried Western defense alignment, is facing a new threat which might lead to the exodus of Iceland, its strategically vital member.

Cause of the trouble is a fishing dispute with Britain which arose from Iceland's recent unilateral decision to extend her fishing limits by next month to a 12-mile zone.

Britain, to defend her fishing interests, has announced she will escort her trawlers to the disputed fishing grounds with naval vessels. Iceland replied the use of force against the 12-mile limit would be regarded by her as "an armed attack on Iceland."

for trouble in the Western camp, in turn lost no time in fanning the quarrel. She quickly backed the new Icelandic fisheries limits and, in line with her traditional propaganda strategy, has offered Iceland enlarged trade prospects as a political lure.

At the head of Iceland's fisheries ministry—which represents one of the leading branches of the country's scant economy—stands J. Josepsson, a Communist.

Visited Moscow

Earlier this month, he visited Moscow for trade talks and returned with a Soviet offer to increase the purchase of Icelandic herrings by 5,000 tons, bringing the total for this year to 20,000. The price Moscow is thus prepared to pay appeared modest in the extreme in comparison with the propaganda success the Soviet seems to be reaping at the expense of the Western defense alliance.

Iceland with a population of 160,000 is the smallest of NATO's member nations. But it commands an important strategic position in the northern approach to Europe and provides a vital base for the alliance. The presence of U.S. forces was one of the major controversial issues in the general election a year ago.

Iceland's defection from NATO would therefore be a major blow for the alliance and its strategic needs.

Cyprus Conflict

The Icelandic problem has added to the already existing tension within the alliance over the Cyprus conflict in which Britain, Greece and Turkey are involved.

Greek and Turkish antagonism has reached heights which experts feared could lead to an eruption with dangerous consequences for NATO. Greece and Turkey play an important part in NATO's southern flank defense.

NATO nations have been counselling a concerted effort to quell the Icelandic dispute before it

British, backing her fishing industry, maintained these fishing grounds have been free in the past to British fishing and by international law there could be no unilateral seizure of vast sea areas.

The problem has threatened to expand. Encouraged by Iceland, others have followed suit and are claiming a 12-mile fisheries limit.

Quotes In The News

SARATOGA SPRINGS, N.Y.—Financier-statesman Bernard Baruch, on his 88th birthday anniversary:

"I feel fine! But I can't do as much as I once did. I have to pace myself now."

CHICAGO—Actor Studs Terkel, in eulogizing Big Bill Bronz, the last of the 'shouting blues singers':

"On the morning Bill died there was rain and thunder and light-

ning as though the very elements had recognized that a big man had died."

Advertisement

TO TAKE OFF WEIGHT, GET BARCENTRATE AT YOUR TEXAS DRUGGIST

FITE FOOD

WE GIVE AND REDEEM PAMPA PROGRESS STAMPS
1333 N. HOBART Office Phone MO 4-8842; Store MO 4-4092

FOR YOUR CONVENIENCE WE ARE **OPEN SUNDAYS** 9 A. M. to 6 P. M.

Fresh Lean GROUND BEEF Lb. 39^c	Armour's Star First Grade FRYERS Whole LB. 39^c
Lean, Center Cut PORK CHOPS Lb. 69^c	Fite's Own, Pure Pork SAUSAGE LB. 49^c

Shurfresh Frozen, 6-oz. cans

LEMONADE 3 FOR 25^c

Kraft's Quart MIRACLE WHIP 49^c	Shurfresh, Reg. Cans BISCUITS 3 for 25^c
Glazier Club, 1/2 Gal. ICE CREAM 49^c	Shurfresh OLEO 1-Lb. Ctn. 17^c
Maryland Club, 1-lb. can COFFEE 79^c	Shurfine Reg. Cans EVAPORATED MILK 3 for 39^c
Wilson's BAKE-RITE 3 lb can 69^c	Wunder Brand SHELLED PECANS 12-Oz Pkg. 85^c
Gold Medal, FLOUR 10 lb. bag 85^c	Borden's Regular can EAGLE BRAND MILK 25^c
Pure Cane, SUGAR 5 lb. bag 51^c	Sunshine, 1-lb. box HI-HO CRACKERS 25^c
	Supreme 1-lb. box CRACKERS 25^c
	Ideal, Regular cans DOG FOOD 2 for 29^c

U. S. No. 1 Red POTATOES 10 Lb. Bag 29^c	Large Firm LETTUCE Lb. 10^c
California Fancy CORN 3 Ears 19^c	White Globe ONIONS Lb. 5^c

WHITE'S LABOR DAY SALE!

Now celebrating our **1,000,000th** TIRE now off the production line!

WHEELS BALANCED! only **\$1.25** Per wheel weights included!

WHITE Super Deluxe Nylon UNCONDITIONALLY GUARANTEED 18,000 MILES
REGULAR LIST PRICE \$28.80 FOR POPULAR 6.70-15 SIZE **14⁴⁷*** LABOR DAY SPECIAL NOW

*Plus tax with your old recyclable tire!

- * Electronically processed Nylon body
- * New Safety Tread Design!
- * Exclusive Super Cold Rubber Tread
- * Triple written guarantee!

INSTALLED FREE! BUY ON EASY TERMS!

WHITE'S "Tropic-aire" "JET-SPUN" SEAT COVERS

in a choice of blue or green!

REGULAR \$21.95 FOR COACH OR SEDAN **18⁷⁷** SALE PRICED AT ONLY

* Shock-proof * Burn-resistant * Scuff-proof

Installed FREE

PLASTIC PLAYPOOL

84" diameter — 20" deep — 4-ring model!

It's really BIG! Four individually inflatable rings of tough plastic. Easily inflated, deflated, and drained.

REG. \$14.95 **10⁹⁹** \$1.25 WEEKLY!

SPECIAL VALUE

WHITE'S "HI-SPEED" 6-VOLT BATTERY **8⁸⁸ EXCH.**

Guaranteed 24 months
Fits 1940-54 Chev. 1936-55 Plym. and others!

Installed FREE

BACK-TO-SCHOOL BIKE VALUE

Reinforced frame! Deluxe Mar-proof enamel finish!

TEXAS RANGER BIKE 26-INCH BOYS' OR GIRLS' MODEL
* Chrome rims
* Chain guard
Regular \$36.95 **32⁸⁸** Reduced to only

PAYMENTS \$1.25 WEEKLY!

Snag-proof, 2-ply **GAME BAG** Regular \$3.98 NOW **3⁴⁹**

Brush brown with rubber lined pockets!

4-WAY LUG WRENCH 4 sizes of sockets Special **88^c**

LOOK BIRD SEASON OPENS SOON

STEVENS 12-GAUGE PUMP SHOTGUN Precision balanced
Perfect for all-around field shooting. Hammerless, side-ejecting model has 5-shot magazine. Quick, smooth-operating slide action. Polished walnut stock.

12-GAUGE 59⁸⁸ EASY TERMS

chrome finish **BREEZE SILENCERS** Eliminates noise caused by wind! Special now **1²⁹**

Fiber, spring-filled **VENTILATED CUSHION** for complete driving comfort **2⁴⁹**

Economical **12-OUNCE CAN** Now **39^c** **HEAVY-DUTY HYDRAULIC BRAKE FLUID**

Special **4 1/2-inch REAR VIEW MIRROR** Chrome finish Offset head Reduced to only **2²⁹**

DELUXE BIKE REPAIR PARTS

20", 24" or 26" Bike tire \$1.98 Bicycle pedals each 49^c
20", 24" or 26" Bike tube \$1.11 Handlebar grips pair 19^c
Tire Sealing Fluid, 4-oz. 22^c Bicycle basket \$1.39
Deluxe Bicycle Padlock now only 49^c

WHITE'S THE HOME OF GREATER VALUES

X-PERT and SUPER-X ammunition at low prices
* HUNTING LICENSE AVAILABLE AT WHITE'S!

109 S. Cuyler Pampa MO 4-3268

On The Record

HIGHLAND GENERAL HOSPITAL NOTES

SATURDAY Admissions
 Jo Norman, 615 E. Kingmill
 Carol Sue Rhoten, 810 N. Frost
 Doris Lee Been, 327 E. Tuke
 Kenneth Mangham, E. Tuke
 Grace Henry, 2308 Mary Ellen
 Claudine Van Bibber, White Deer
Discharges
 Jerry Goodner, 509 Lowry
 M. C. Farmer, 209 Sunset Dr.
 Patsy Murray, 333 N. Perry
 Barbara McGinnis, Pampa
 B. O. Bendly, White Deer
 Raymond Ray Armstrong, Skellytown
Debra Moore, 405 N. Purviance
 Audrey Wood, Midland
 Bertie Karr, Stinnett
 Richard Crews Jr., 121 N. Stark-weather
Jean Jones, Pampa
 Geneva Oleta Farber, 1710 Lincoln
Sandra Smith, Borger
 Ruth Herlacher, 628 N. Wells
 Jean Akers, 1108 Juniper
Dismissals
 J. H. Romines, Cactus
 Wayne Williams, 1005 N. Somerville
Lola Ely, 408 Doucette
 Ethel Cotner, 1232 E. Browning
 E. E. Miller, Lefors
 Emmett Osborne, Pampa
 Mildred Hullender, 1522 Williston
 D. V. Biggers, 1540 Coffee
 Leonard Cable, 906 E. Browning
 Virginia Anthony, 421 Graham
 Sandra Smith, Borger
 Cleo Spencer, 507 Harlem
 Florence Combs, 1318 Barnes
 Emily Washington, 1806 N. Faulkner
 Decca May Dalton, 133 N. Sumner
Earl Brice, 849 W. Kingmill
 Mabel Malone, 1001 E. Foster
 Rita Lemmons, 2113 Christine
 Grace Wells, 422 N. Somerville
 H. G. Gilpatrick, 2105 N. Wells
 R. J. Andrus, Pampa
 Annie Eudey, McLean
 Beulah Leshler, Borger
 Jimmy Christian, 932 E. Gordon
 Irion Buxton, Phillips
 Ruth Herlacher, 628 N. Wells
 G. G. Tennant, Pampa

SUNDAY Admissions

Roxie Tucker, 407 Purviance
 Ella McCowan, Phillips
 Susie Chase, Pampa
 Edith Roberts, 418 N. Ballard
 Robert McGahan, 705 Denver
 Betty Overall, Pampa
 Beulah Leshler, Borger
 Hazel Bradshaw, Perryton
 Isabelle McGrady, Pampa
 Patricia Jenkins, 501 Naida
 Naomi Martin, Pampa
 Maurine Forbus, Phillips
 Rowena Kear, 409 Graham
 Lee Malloy, Borger
 Ivana Rogers, Sunray
Dismissals
 Bessie Laverne Harris, Kelton
 Percy Calloway, 507 N. Sumner
 Sandra Smith, Borger
 Thelma Adams, Lefors
 Betty Johnson, 1152 Huff Road
 Beulah McLeod, Panhandle
 Kenneth Mangham, Pampa
 Beulah Rhoades, Panhandle
 Amanda Carpenter, Alnreed
 Gladys Reed, Stinnett
 Debra Moore, 405 N. Purviance
 Ruby McDowell, 928 S. Sumner
 Richard Crews Jr., 121 N. Stark-weather
 Lena Pearl Darby, Pampa
 Gregory Thomas, Pampa
 Lloyd Merooney, Panhandle
MONDAY Admissions
 Mary Hawthorne, 102 S. Wynne
 Frankie Jo Kelley, 1072 Prairie Drive
 Jimmie Lee Christian, 932 E. Gordon
Mary Weatherly, Wheeler
 Doyl Sparlin, McLean
 Jerry Jones, 1197 Prairie Drive
 Frank Tolly, Mobeetie
 C. G. Atkins, 217 E. Kingmill
 Debra Moore, 405 N. Purviance
 Helen Brice, 849 W. Kingmill
 Barbara J. Archer, Lefors
 Lee Ledrick, Pampa
 Mary Luther, Canadian
 Sunny Muncieff, 1911 Coffee
 Mary Rose, 1926 N. Faulkner
 Janet Reeves, Lefors
 J. W. Lee, Pampa
 Alice Grays, Amarillo

Mrs. Jewell Lockhart, 1825 Hamilton
 Betty Grimes, Lefors
 Johnnie Rodgers, McLean
Dismissals
 Jessie Morey, 1121 S. Hobart
 Bertie Karr, Stinnett
 Patricia Jenkins, 501 Naida
 Steve Clark, 2132 Coffee
 Alice Proctor, Pampa
 Jo Norman, 615 E. Kingmill
 Dorothy Manning, 917 E. Campbell
Jerry Goodner, 509 Lowry
 Jane Harvey, 1924 N. Nelson
 Margaret Phillips, Borger
 Lois Steward, 1320 Terrace
 Ramond Armstrong, Skellytown
 Barbara Davis, 2125 N. Banks
 Betty Overall, Pampa
 Eddie Huston, 1602 Mary Ellen
 A. L. Garrison, Elk City, Okla.
TUESDAY Admissions
 Jessie Morey, Pampa
 Mary Ann Carter, McLean
 Wanda Devers, Pampa
 Wanda Mandeville, 431 Hazel
 Ricky Vanek, 1007 E. Browning
 Lee Ealick, Pampa
 Marcella Ross, 429 N. Cuyler
 Barbara Winegeart, 305 Roberta
 Viola King, Panhandle
 Ann Sutton, 732 E. Craven
 Frank L. Stallings, 405 E. Brown-
Sandra Smith, Borger
 Sue Derington, 1160 Terrace
 Minta Moore, 500 N. Doyle
 May Boston, 1910 Williston
 Jim Libby, Lefors
 Ada Ledford, Skellytown
Dismissals
 Susie Chase, Pampa
 Thelma Hill, Skellytown
 Carol Rhoten, 810 N. Frost
 Jean Jones, Pampa
 Louise Franklin, White Deer
 Ione Simmons, 1818 Beech
 Russell West, Wiley, Colorado
 Roy Henderson, Lefors
 Lee Ledrick, Pampa
 Maurine Forbus, Phillips
 Mary Eakes, Panhandle
 Patsy Murray, 333 N. Perry
WEDNESDAY Admissions
 Stella Gist, 528 Doucette
 Rubby Geneva Michael, 1320 Terrace
 Virginia Fowler, 1029 S. Sumner
 Lettie Robertson, 845 E. Fred-
Eric

Dayne Gores, Panhandle
 Treasie Mantooth, McLean
 Evelyn Nace, 1510 N. Faulkner
 Norma Jefcoat, 405 Doucette
 Margaret Duff, Pampa
 Hollie Miller, Borger
 Ruby Mullins, 1940 N. Sumner
 Zora Cree, 1620 Alcock
 Lela Rudd, Pampa
 Janet Davis, White Deer
 Hester Bowers, 1320 E. Brown-
Dismissals
 Ann Sutton, 732 E. Craven
 Ivana Rogers, Sunray
 Ricky Tucker, 1007 E. Browning
 Edith Roberts, 418 N. Ballard
 Lee Malloy, Borger
 Grace Henry, 2308 Mary Ellen
 H. A. Burr, McLean
 Lee Malloy, Borger
 Mary Ann Carter, McLean
 Isabelle McGrady, Pampa
 Camille Walters, Pampa
 Lorene Rector, Mobeetie
 Wayne Exley, 1132 Mary Ellen
 Don Conley, 1032 Christine
 Sunny Muncieff, 1911 Coffee
 J. R. Gardner, Perryton
 Roxie Tucker, 407 Purviance
 Sandra Wilson, Borger
 Wanda Mandeville, 431 Hazel
 Paul Malone, Pampa
 Mary Weatherly, Wheeler
 Availe Crockett, McLean
 Oleta Farber, 1710 Lincoln
 Mary Hawthorne, 102 S. Wynne
CONGRATULATIONS
Saturday, Aug. 16
 Mr. and Mrs. Paul Simmons, 1818 Beech, are the parents of a daughter born at 12:45 a.m. weighing 3 lbs. 11 oz.
 Mr. and Mrs. Tommy Rhoten, 810 N. Frost, are the parents of a son born at 2:35 a.m. weighing 5 lbs. 14 oz.
 Mr. and Mrs. Rodney Been, 327 E. Tuke, are the parents of a daughter weighing 4 lbs. 9 1/2 oz. born at 7:48 a.m.
 Mr. and Mrs. Dick Shigar, 1344 Coffee, are the parents of a daughter born at 9:51 a.m. weighing 8 lbs. 1/2 oz.
 Mr. and Mrs. J. E. Jones of Pampa are the parents of a daughter weighing 8 lbs. born at 9:40 p.m.
Sunday, Aug. 17:
 Mr. and Mrs. Leonard Akers, 1108 Juniper, are the parents of a son born at 1:48 a.m. weighing 7 lbs. 8 oz.
 Mr. and Mrs. Louis C. Tucker,

407 Purviance are the parents of a daughter born at 7:22 a.m. weighing 8 lbs. 8 oz.
 Mr. and Mrs. Hershell W. Farber, 1710 Lincoln, are the parents of a daughter born at 7:25 a.m. weighing 6 lbs. 14 oz.
Monday, Aug. 18:
 Mr. and Mrs. D. W. McGinis of Pampa are the parents of a daughter, born at 9:23 a.m. weighing 4 lbs. 15 oz.
 Mr. and Mrs. Albert Kelley, 1072 Prairie Drive, are the parents of a son weighing 6 lbs. 6 1/2 oz. at 9:42 a.m.
 Mr. and Mrs. T. G. Luther of Canadian are the parents of a daughter born at 10:15 p.m. weighing 7 lbs. 12 oz.
Tuesday, Aug. 19:
 Mr. and Mrs. B. J. Devers of Pampa are the parents of a son weighing 8 lbs. 7 oz. born at 1:39 p.m.
 Mr. and Mrs. Mason Winegart, 305 Roberta, are the parents of a son born at 8:40 p.m. weighing 7 lbs.
 Mr. and Mrs. W. J. Derrington, 1160 Terrace, are the parents of a son, born at 8:18 a.m.
 Mr. and Mrs. D. G. Michael, 1320 Terrace, are the parents of a daughter born at 10:32 a.m. weighing 8 lbs. 6 1/2 oz.

Storms Cause Damage In The Mid-US

United Press International
 Widespread severe thunderstorms during the night spread damage across lower Michigan and touched off flash flooding in parts of Oklahoma.
 The storms ranged from the southern Plateau, over the Rockies into Kansas, Oklahoma and Texas and northeast into the Great Lakes region.
 One of the worst storms slammed into Paw Paw, Mich., uprooting more than 100 trees and knocking out most power and telephone lines.
 No one was hurt in the storm, accompanied by strong winds and hail, but numerous homes were damaged and countless windows shattered.
 The line of storms across Michigan caused lesser damage at Detroit, Livonia, Swartz Creek near Flint and a rural area near Lowell. Mrs. Aletia Harrell, 50, Ferndale, was hospitalized with shock when lightning struck a tree under which she was sitting.
 Flash floods swirled across the Seminole and Weoka areas in Oklahoma, forcing evacuation of 30 families in the Seminole area.
 No serious injuries were reported and no one was reported missing, although one resident said he saw a man floating down the flooded Magnolia Creek in the Seminole vicinity.
 Boats were pressed into service to rescue four skaters stranded at a skating rink which was swept away at Seminole.
 Two state highways were closed to a school board attorney. The clerk of the high bench then will contact Whittaker, vacationing around Kansas City, Mo., as soon as he receives the board's plea.
 Whittaker has charge of the Eighth Circuit.

at Seminole when floodwaters climbed more than a foot over bridges at Salt Creek and Little River. Trains in the area were delayed and numerous cars were stalled on highways.
 Hail, rain and high winds also lashed North Texas Wednesday night with hail as big as golf balls pounding the northeast section of the community of Gainesville.
 More than two inches of rain fell at Gainesville in about one hour. Other heavy rainfalls amounts included 2.16 inches at Mineral Wells, Tex.; 1.8 inches at Topeka, Kan.; 1.04 at Emporia, Kan.; 1.20 at Hobbs, N.M., and 1.01 at Gladwin, Mich. Wednesday night.
CHICO TO WED ACTRESS
HOLLYWOOD (UPI) — Chico Marx, 67, oldest of the Marx Brothers, and actress Mary Divithas plan to be married Friday at a friend's home.



WILLING SCHOLARS—Here's one class children attend most eagerly. It's the Cowboy Classroom at Adventure Town in the Thousand Islands, N.Y. In a three-day course, small fry are taught by real Western cowboys to draw a gun, hold and throw a lariat, saddle a horse and sit in the saddle. Upon successful completion of the course, "graduates" are awarded their spurs. Cowboy-teacher above is Gordon Peer.

Miller-Hood Pharmacy
 Better Prescription Service
 FREE DELIVERY
 1122 Alcock MO 4-8469

● **JACOBY ON BRIDGE**
 By OSWALD JACOBY
 Written for NEA Service
 If your right-hand opponent doubles your partner's opening bid, you can show a very good hand by means of a redouble. Hence, North's jump to three hearts told his partner that he had good heart support, but was only interested in game if South had a good deal more than a minimum.
 South did have more than a minimum and decided to go to game anyway. He would have been well advised not to, since West came up with the defense to beat the

NORTH			
▲ A 5			
▲ Q 10 6 4			
▲ 8 4			
▲ Q J 10 7 5			
WEST			
▲ K J 8 3		▲ Q 6 2	
▲ A 8		▲ 7 5	
▲ A K J 7		▲ 10 9 8 5 3	
▲ 9 8 2		▲ 6 4 3	
EAST			
		▲ 10 9 7 4	
		▲ K J 9 3 2	
		▲ Q 2	
		▲ A K	
SOUTH (D)			
		▲ 10 9 7 4	
		▲ K J 9 3 2	
		▲ Q 2	
		▲ A K	
Both vulnerable			
South	West	North	East
1♥	4♥	3♥	Pass
4♥	Pass	Pass	Pass
Opening lead—♦ K			

hand.
 West opened the king of diamonds and studied the whole hand carefully. Declarer certainly held the king of hearts and the ace of clubs. He also ought to hold the king of clubs, but that did not matter too much. If East did have that king, South would be able to finesse against it.
 Hence the only chance to beat the hand would be to pick up a spade trick. Should East hold the queen of diamonds he could underlead his ace to put him in, but East had played the three spot on the king. Hence, the only chance would be to find East with the queen of spades.
 West promptly shifted to the three of spades and declarer was a dead pigeon.



GIVING ALL—The part of Sam, a laugh-getting pet in the movie "Miss Casey Jones," is a killer. Here's the 38th lobster to be used, photographed with costars Doris Day and Jack Lemmon.

YOUR MONEY S-T-R-E-T-C-H-E-S DURING...
DOLLAR DAYS!
 ONE DOLLAR

DOG FOOD 12 Tall Cans \$1.00
WELCHADE Grape Drink 3 Qt. Cans \$1.00
SWEET TRAT CRUSHED PINEAPPLE 6 303 Cans \$1.00
FOOD KING Light Meat TUNA 5 Cans \$1.00
MAYFIELD Golden Cream CORN 9 300 Cans \$1.00
HOME FOLK Blackberries 5 303 Cans \$1.00

SHURFINE MILK 7 Tall Cans \$1.00
FOOD KING OLEO 6 Lbs. \$1.00
STILWELL FROZEN STRAWBERRIES 6 10-Oz. Pkgs. \$1.00

SCHOOL SUPPLIES
NOTEBOOK PAPER 25c SIZE PKG.—19c 49c SIZE PKG.—39c
CRAYOLAS NO. 16 SIZE 15c
SHURFINE COFFEE 1-Lb. Can 69c
SHURFINE FLOUR 10-Lb. Paper Bag 69c
TALL CAN PET MILK 3 cans 43c
HAWKINS 1/2 GALLON MELLORINE 39c
SUNSHINE HI-BO CRACKERS large box 29c
JIRBY'S SPINACH 2—303 Cans 29c
HEINZ TOMATO SOUP Tall Can 10c
ARMOURS VIENNA SAUSAGE 2 Cans 39c
LIPTON'S TEA 1/4 Lb. 35c
FROZEN FOODS
LIBBY'S or SHURFINE, Frozen 6-oz. can LEMONADE 10c
FROZEN WHITTING, 1 1/2 Lb. Package FISH 3 FOR \$1.00
BANQUET, Frozen Chicken, Beef, or Turkey MEAT PIES 5 FOR \$1.00
SILVERDALE, Frozen 10-Oz. Package CUT CORN 7 FOR \$1.00
SILVERDALE, Frozen 10-Oz. Package SPINACH 7 FOR \$1.00

PET POWERED MILK Giant Box 89c
KRAFT'S ORANGE DRINK 4 46-Oz. Cans \$1
PRODUCE
CALIFORNIA LETTUCE 2 lbs. 19c
WHITE ONIONS 2 lbs. 9c
FANCY BANANAS 2 lbs. 25c
CELERY HEARTS 2 pkgs. 39c
MEAT
GRADE "A" FRYERS lb. 39c
LEAN PORK STEAK lb. 45c
CURED Half or Whole HAMS lb. 59c
SALT PORK lb. 25c
SLICED BOLOGNA lb. 39c
MITCHELL'S GROCERY and MARKET DOUBLE STAMPS WEDNESDAY With \$2.50 or More Purchase 638 S. CUYLER PHONE MO 5-5451



School Days!

ARE JUST AROUND THE CORNER

HERE'S

HOW TO SAVE

in ONE EASY LESSON

SHOP IDEAL FOR A COMPLETE STOCK OF School Supplies

FREE!

1 PACKAGE OF 5 EBERHARD-FABER

PENCILS

REG. \$19c RETAIL WITH THE PURCHASE OF \$1.00 OR OVER IN SCHOOL SUPPLIES

Sun State Fresh Frozen **ORANGE DRINK**
2 6-Oz. Cans **19c**

Bakerite **SHORTENING**
3 Lb. Can **69c**

Vigoro Golden **FERTILIZER**
50-Lb. Bag **\$3.19**
Will Not Burn Your Lawn

SHOP IDEAL

SOUP CAMPBELL'S TOMATO NO. 1 CAN **10c**

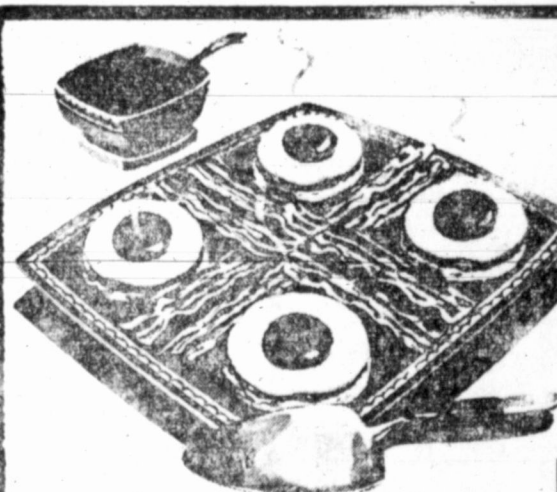
TOMATOES NEW PACK MAYFLOWER BRAND 303 CANS **10c**

PINEAPPLE SWEET TREAT CRUSHED 300 CAN **29c**

JELLO 10 DELICIOUS FLAVORS 3 PKGS. **19c**

"Better Food For Less"
IDEAL
FOOD STORES

2 Jumbo 1 1/2-Lb. Loaves **27c**
Ideal Enriched **BREAD**



SWIFT PREM. BEEF **SHORT RIBS**

25c LB.

FRESH GROUND **BEEF**

2-LB. PKG. **89c**

ARMOUR STAR **BACON**
THICK SLICED

2 LBS. **\$1.35**

CHUCK ROAST

SWIFT PREMIUM BEEF **49c** LB.

HAMS

PINKEY SUN RAY 10-12 LB. WHOLE LB. **55c**

FANCY ARTIFICIAL ROSES IMPORTED FROM ITALY!

YOURS WITH PURCHASE

GOLD MEDAL FLOUR 10-Lb. Bag **89c**
See Special Sacks For Details

ALLEN'S CUT **GREEN BEANS** 303 Can **10c**

MAYFLOWER **TOMATO JUICE** 46-Oz Can **25c**

ALL NUT **PEANUT BUTTER** Quart Jar **69c**

IDEAL **APPLE BUTTER** 28-Oz Jar **25c**

Black Flag Insect **SPRAY** Pt. **39c** Qt. **59c**

TOMATO PASTE Hunt's 6-Oz Can **10c**

CRACKERS Sunshine Hi. Ho 1-Lb. Box **33c**

MARGARINE Meadow Lake Lb **25c**

PIES Per Ritz Frozen Peach, Apple, Cherry Lge Size **53c**

SUPREME **SWEETNER** 8-Oz Bottle **69c**

DOG FOOD Far 2 1-Lb Cans **29c**

IDEAL TASTY **ICE CREAM** 1/2 GAL **53c**



COLO. BARTLETT **PEARS**

2 1/4 & Up Bus. **498**

2 Lbs. **29c**

GOLDEN RIPE **BANANAS** 2 LBS. **25c**

ARKANSAS **GRAPES** 4-QT. BSK. **49c**

CALIFORNIA **HONEYDEW MELONS** Ea. **29c**

DIAL SOAP 2 Reg. Bars **27c**

WHITE KING **SOAP** Giant Box **69c**

Pepsodent New Push Button **DENTRIFICE**

98c



WHEAT PUFFS

6-Oz. Pkg. **15c**

M. AND M **CHOCOLATE CANDY**

Family Size **29c**
MELTS IN YOUR MOUTH NOT IN YOUR HANDS

FROZEN-RITE PARKERHOUSE ROLLS

2 DOZEN **33c**

Gordon's **Frozen FISH STICKS**

1-Lb. Pkg. **59c**

WIN YOUR DREAM HOME OF \$35,000 IN CASH

80,000 in prizes 2028 chance to win in BETTY CROCKER "NAME THE NEW KITCHENS" CONTEST
Get entry blank at our display
Betty Crocker **CAKE MIXES** **29c**

U. S. No. 1

Pinto Beans 2 lbs. **19c**

Santa Rosa 46-oz. can Pineapple Juice **19c**

We Give Gunn Bros Stamps

Pure Cane Sugar 10 lbs. **97c**

Northern TOILET Tissue 3 rolls **23c**

7:00
8:35
9:00
9:30
10:00
10:30
11:00
11:30
12:00
12:10
12:20
12:30
12:40
12:50
1:00
1:30
2:00
2:30
3:00
3:45
4:00
4:30
5:45
6:00
6:15
6:20
6:30
7:00
7:30
8:00
8:30
9:00
9:30
10:00
10:30
10:45
11:00
11:30
11:45
12:00
1:00
1:30
2:00
2:30
3:00
3:15
3:30
4:00
5:00
5:30
5:45
6:00
6:15
6:25
6:30
7:00
7:30
8:00
8:30
9:00
10:00
10:15
10:25
10:30

Television Programs

THURSDAY **FRIDAY**

KGNC-TV Channel 4	KGNC-TV Channel 4
7:00 Today	7:00 Today
8:55 Daily Word	8:55 Daily Word
9:00 Dough-Re-Mi	9:00 Dough-Re-Mi
9:30 Treasure Hunt	9:30 Treasure Hunt
10:30 The Price Is Right	10:30 The Price Is Right
10:30 Truth or Consequences	10:30 Truth or Consequences
11:00 Tic-Tac Dough	11:00 Tic-Tac Dough
11:30 It Could Be You	11:30 It Could Be You
12:00 News	12:00 News
12:10 Artistry on Ivory	12:10 Artistry on Ivory
12:20 New Ideas	12:20 New Ideas
12:30 Weather	12:30 Weather
12:40 Artistry on Ivory	12:40 Artistry on Ivory
12:53 News	12:53 News
1:00 Lucky Partners	1:00 Lucky Partners
1:30 Haggis Baggis	1:30 Haggis Baggis
2:00 Today Is Ours	2:00 Today Is Ours
2:30 From These Roots	2:30 From These Roots
3:00 Queen For A Day	3:00 Queen For A Day
3:15 Modern Romances	3:15 Modern Romances
4:00 American Legend	4:00 American Legend
4:30 Hollywood Theater	4:30 Hollywood Theater
5:45 NBC News	5:45 NBC News
6:00 Local News	6:00 Local News
6:15 Sports	6:15 Sports
6:20 Weather	6:20 Weather
6:30 Tic Tac Dough	6:30 Tic Tac Dough
6:30 Crouche Marx	6:30 Crouche Marx
7:00 Dragnet	7:00 Dragnet
8:00 People's Choice	8:00 People's Choice
8:30 Buckskin	8:30 Buckskin
9:00 Price Is Right	9:00 Price Is Right
9:30 The Big Story	9:30 The Big Story
10:00 News	10:00 News
10:30 Jack Paar Show	10:30 Jack Paar Show
12:00 Sign Off	12:00 Sign Off

KFDA-TV Channel 10	KFDA-TV Channel 10
7:00 It Happened Last Night	7:00 It Happened Last Night
8:00 Kingdom of the Sea	8:00 Kingdom of the Sea
9:00 For Love or Money	9:00 For Love or Money
9:30 Play Your Hunch	9:30 Play Your Hunch
10:00 Arthur Godfrey	10:00 Arthur Godfrey
10:30 Dotto	10:30 Dotto
11:00 Love of Life	11:00 Love of Life
11:45 Theatre Ten	11:45 Theatre Ten
12:30 As The World Turns	12:30 As The World Turns
1:00 Beat The Clock	1:00 Beat The Clock
1:30 House Party	1:30 House Party
2:00 Big Payoff	2:00 Big Payoff
2:30 Verdict is Yours	2:30 Verdict is Yours
3:00 The Brighter Day	3:00 The Brighter Day
3:15 Secret Storm	3:15 Secret Storm
3:30 The Edge of Night	3:30 The Edge of Night
4:00 Bugs Bunny	4:00 Bugs Bunny
5:00 Popeye	5:00 Popeye
5:30 Ringside with the Wrestlers	5:30 Ringside with the Wrestlers
5:45 Doug Edwards	5:45 Doug Edwards
6:00 News, Ralph Wayne	6:00 News, Ralph Wayne
6:15 World of Sports	6:15 World of Sports
6:25 Weather Today	6:25 Weather Today
6:30 Abbot & Costello	6:30 Abbot & Costello
7:00 Richard Diamond	7:00 Richard Diamond
7:30 The Verdict is Yours	7:30 The Verdict is Yours
8:30 Death Valley Days	8:30 Death Valley Days
9:00 Live Wrestling	9:00 Live Wrestling
10:00 News, Ralph Wayne	10:00 News, Ralph Wayne
10:15 Weather, Dick Bay	10:15 Weather, Dick Bay
10:25 Sports Cast	10:25 Sports Cast
10:30 Command Performance	10:30 Command Performance
Sign Off	Sign Off

KVII-TV Channel 7	KVII-TV Channel 7
3:00 West Texas State Collete	3:00 West Texas State
3:30 Topper	3:30 Topper
4:00 Friendly Freddy	4:00 Friendly Freddy
5:00 Woody Woodpecker	5:00 Woody Woodpecker
5:30 Mickey Mouse Club	5:30 Mickey Mouse Club
6:00 News-Tonight	6:00 News-Tonight
6:15 Weather "Bunny"	6:15 Weather
6:22 Sports (Webb Smith)	6:22 Sports
6:30 Circus Boy	6:30 Rin Tin Tin
7:00 Zorro	7:00 Frontier Doctor
7:30 Real McCoy's	7:30 Boots & Saddles
8:00 Chevy Show	8:00 Famous Playhouse
8:30 Navy Log	8:30 If You Had A Million
9:00 Crossroads	9:00 Favorite Story
9:30 Favorite Story	9:30 Mickey Rooney
10:00 Cinema Seven	10:00 Shock

K P D N

THURSDAY
 6:00—News, Walter Compton
 6:30—Country Roadshow
 6:30—News, Markets, Weather
 6:30—Country Music Time
 7:00—News, Jim Terrell
 7:05—Musical Clock
 7:15—Sports News
 7:22—U.S. Weather Bureau
 7:45—Musical Clock
 8:00—Robert F. Hurleigh, News
 8:15—This That And That
 8:45—March Time
 9:00—Pampa Reports
 9:15—Three-Quarte, Time
 9:30—News, Henry Gladstone
 9:35—Staff Breakfast
 10:00—News, Westbrook Van Voorhis
 10:05—Trading Post
 10:15—The Answer Man
 10:30—News, Charles Warren
 10:35—Kate Smith Show
 11:00—News, Jim Terrell
 11:05—Frontier Quiz
 11:10—Maeie Money Maker
 11:15—Morning Melodies
 11:20—Ideal Food For Thought
 12:00—Cedric Foster, News
 12:15—Wilson Drug News, Charley Cross

FRIDAY
 6:00—U.S. Weather Bureau
 6:30—Game of The Day
 6:30—Conclusion—Afternoon Serenade
 6:30—News, John Wingate
 6:45—Afternoon Serenade
 6:45—News, Gabriel Heatter
 6:45—Afternoon Serenade
 6:45—News, Westbrook Van Voorhis
 6:45—Afternoon Serenade
 6:50—Ab Gunter Show
 6:50—Fulton Lewis, Jr., News
 6:55—Sports Review, Warren Haase
 6:55—Local News Roundup, Charley Cross
 6:55—The Three Suns
 7:00—News, Frank Singler
 7:05—Music Beyond The Stars
 7:10—Bill Stern Sports Beat
 7:15—Music Beyond The Stars
 7:20—News, Lyle Van
 7:25—Music Beyond The Stars
 7:30—News, Frank Singler
 7:35—Music Beyond The Stars
 7:40—News, Les Higbie
 7:45—Music Beyond The Stars
 7:50—News, Ken French
 7:55—Music Beyond The Stars
 8:00—News, Richard Rendell
 8:05—Music Beyond The Stars
 8:10—News, Ken French
 8:15—Music Beyond The Stars
 8:20—News, Richard Rendell
 8:25—Music Beyond The Stars
 8:30—News, Dennis Dehn
 8:35—Portals of Prayer
 8:40—Sign Off

Cliff Robertson Is Searching For Identity As An Actor

By VERNON SCOTT
 UPI Hollywood Correspondent

HOLLYWOOD—(UPI)—Cliff Robertson, a competent young actor who has starred in a few pictures, is searching for a gimmick or trademark that will catapult him into the bigtime with such stars as Marlon Brando and Gary Cooper.

"You must establish an identity with the public or you're lost."

the dark-haired Robertson maintains. "I'm not looking for a phony pitch, but every young actor needs a means of recognition. Once you've discovered some indelible trademark half the battle is over."

Robertson backed up his case with examples. "Charles Laughton, he points out, might have remained just another character actor if the 'Mr. Christie' line had never appeared in 'Mutiny on the Bounty.' And Gary Cooper's 'Yup' provides a classic example.

K H H H

4:40—Triple H Towing
 4:45—Spot News
 4:50—Triple H Good Morning
 5:30—Farm News Roundup
 6:45—Sacred Quartet
 7:00—Weather
 7:00—Trading Post
 7:15—Musical Interlude
 7:30—World News Roundup
 7:45—Musical Interlude
 8:00—Clock Watcher
 8:27—Spot News
 8:30—Clock Watcher
 8:35—News
 9:00—Ministerial Alliance
 9:15—Musical Interlude
 9:30—Spot News
 9:30—Coke Time
 9:35—News
 10:00—Hits For Misses
 10:27—Spot News
 10:30—Hits For Misses
 10:55—News
 11:00—Sagebrush Chapel
 11:25—News & Weather
 11:30—Spins & Needles
 11:35—News
 12:00—Gray County on Parade
 12:15—Sons of the Pioneers
 12:30—World News Roundup
 12:45—Blackwood Bros. Quartet
 1:00—Panhhandle Platter Party
 2:00—Fabulous 1230 Club
 2:00—Spot News
 2:00—Fabulous 1230 Club
 2:35—News
 2:35—Panhhandle Jamboree
 2:35—Panhhandle Jamboree
 2:37—Spot News
 2:40—Evening News
 2:45—Jim's Junction
 2:55—News
 2:55—News
 4:00—Triple H Towing

Joe E. Brown's mouth, for instance. "Yul Brynner's bald head is the best modern case on record. His noggin made him famous overnight."

Charles Boyer never spoke the words "Come weez me to zep Casbah," but that's the first thing that comes to mind when the French actor's name is mentioned.

Katherine Hepburn's reputation didn't suffer from her famous line, "The calla lilies are in bloom again." Both "Mae West," "Come up and see me sometime," and Greta Garbo, "I want to be alone," capitalized on public identity with their most famous utterances.

"You have to be more than talented, or young, or good looking to make the grade," Cliff said.

Read the News Classified Ads

51st Year THE PAMPA DAILY NEWS THURSDAY, AUGUST 21, 1958

Apache, El Paso Gauge Flows In Lipscomb

Apache Oil Corp. and El Paso Natural Gas Co. have gauged flows of 25 barrels of gas gravity 0.1 hourly at the third well in a new Lipscomb county pool in the Texas Panhandle.

The No. 1-B Kells, SW 1-11-43, H&TC suvey, perforated the Tonkawa at 7,294-7,314 feet and gauged the high flow, with little gas after fracture treatment. Tubing pressure was 50 pounds and casing pressure was 150 pounds. Production pipe was set at 453 feet.

Refinery Demand For Crude Up

AUSTIN (UPI)—Estimated refinery demand for Texas crude oil during September is 2,894,732 barrels a day, an increase of 131,141 barrels over the August forecast.

The September production allowable will be announced next Wednesday by the Texas Railroad Commission after a statewide production hearing.

MALONE PHARMACY
 Registered Pharmacist Always On Duty Free Delivery

PRESCRIPTION SERVICE
 Hughes Bldg MO 4-4971

PENNEY'S
 ALWAYS FIRST QUALITY!

Shop Penney's for *Everything* for

BACK to SCHOOL
You'll live better, You'll save!

SLIM, TRIM 'N HIP HUGGIN'

FOREMOST SUPER DENIM
 ... PACKED WITH POWER

Authentic Western! That's the way Penney Foremosts are made! Ruggedly built of the strongest cotton denim (13 3/4 ounce) reinforced, vat dyed, Sanforized.

2 98
 sizes 28 to 40
 Boys' Sizes 4 to 16 2.49

(These programs submitted by the stations themselves. The Pampa News is not responsible for program)

Open **7:30** **PAMPA** **Tonight Only**
 DIAL MO 4-8211

SOMETHING SPECIAL
69¢ FOR A CARLOAD
SPACE SHIPS FREE BUSLOAD
OUR SPECIAL FEATURE TONIGHT TRUCKLOAD

BING CROSBY MITZI GAYNOR
 In
"ANYTHING GOES"
COLOR * Wide Screen

Open **7:30** **TOPOTEXAS** **Today & Friday**
 DIAL MO 4-8211

ALAN LADD WILLIAM BENDIX
 In
"TWO YEARS BEFORE THE MAST"
Get More Out of Life...Go Out to a Theatre!

Box Office **LAVISTA** **Starts Friday**
 Open 1:45 **LAVISTA** MO 4-4011

Last Times Today Open 1:45-3 Shows Daily

DEBORAH KERR
 DAVID NIVEN
 JEAN SEBERG
 Mylene Demongeot
 —IN—

Otto Preminger Presents
BONJOUR TRISTESSE

BEST PICTURE OF THE YEAR!
THE BRIDGE ON THE RIVER KWAI!
 AN AMERICAN TECHNICOLOR & B&W PICTURE
 A COLUMBIA PICTURE

Box Office **LA NORA** **Today thru Sat**
 Open 1:45 **LA NORA** MO 4-7569

— Double Thrill Show —

THE GRAVE CAN'T HOLD IT... nothing human can stop it!

THE THING THAT COULDN'T DIE

Starring
 WILLIAM REYNOLDS - ANDRA MARTIN
 CAROLYN KEARNEY - JEFFREY STONE
 A UNIVERSAL-INTERNATIONAL PICTURE

ALSO SHRILL NO. 2—
 ALL NEW IN TECHNICOLOR
"HORROR OF DRACULA"
 PLUS LATE NEWS & CARTOON

WASH 'N WEAR
 little or no ironing

WASH 'N WEAR THESE HEATHER COTTONS

Penney's combed heather cottons in tones of red, blue, brown, grey are neatly tailored with regular collars, 2 pockets. They take to suds need little or no iron.

2 98
 small, medium large, ex-large

OUR DISTINCTIVE NEW CROSS-BRACE SLIP-ONS

Towncraft styled quality leather shoes designed to fit so they won't slip off. Mocassin style with leather soles, rubber heels. Sanitized to stay fresh! Black!

8 85
 sizes 7 to 12

RICH 'N SOFT ORLON V-NECKS

4 98
 small, medium, large, extra large

Penney's hi - bulk Orlons styled with looped v-necks ribbed cuff bottoms. How they wear! Moth, mildew resistant. Light blue, charcoal, scarlet, more.

STRIPED TWILLS BUCKLE-BACKED

3 98
 sizes 28 to 36

Nothing sets off Penney's authentic 'University' styling like stripes... they give you a trim, natural look! Rugged 7/4 once Sanforized cotton twill.

FINE QUALITY PENNEY POLOS

98¢
 Sizes small, medium, large

Soft, combed cotton, knit to a full, non-binding Towncraft fit! And Penney's tapes the shoulders, reinforces the neck! Machine washable colors.

extra mileage in Combed Argyles

69¢ pr.
 Sizes 10 to 13

The long staple cotton fibers and many miles of extra wear... give these colorful Towncrafts a hand - knit look! More? Nylon - reinforced heels and toes.

We're Moving To New Location

SEIDLITZ PAINTS SPECIAL OFFER!
 Good Only Until Sept. 16

1 Qt. SEIDLITZ SEMI-GLOSS ENAMEL reg. Price \$2.20 **FREE**
 with purchase of

1 Gal. SEIDLITZ SATINTONE LATEX WALL PAINT **\$5 89**

Our Finest Quality Paint!
 In matching or harmonizing colors.

100 NEW PAINT COLORS
 Choose from the season's most exciting colors. Any color you select is available in 12 different oil base paints and enamels and 5 different latex base paints — for all interior and exterior surfaces.
 Come in and ask for a FREE color card.

at our new location
 1431 North Hobart
Pampa Glass & Paint



Reckles



Bugs Bunny



Boots



Wash Tubbs



The Potts



Morty Meekie



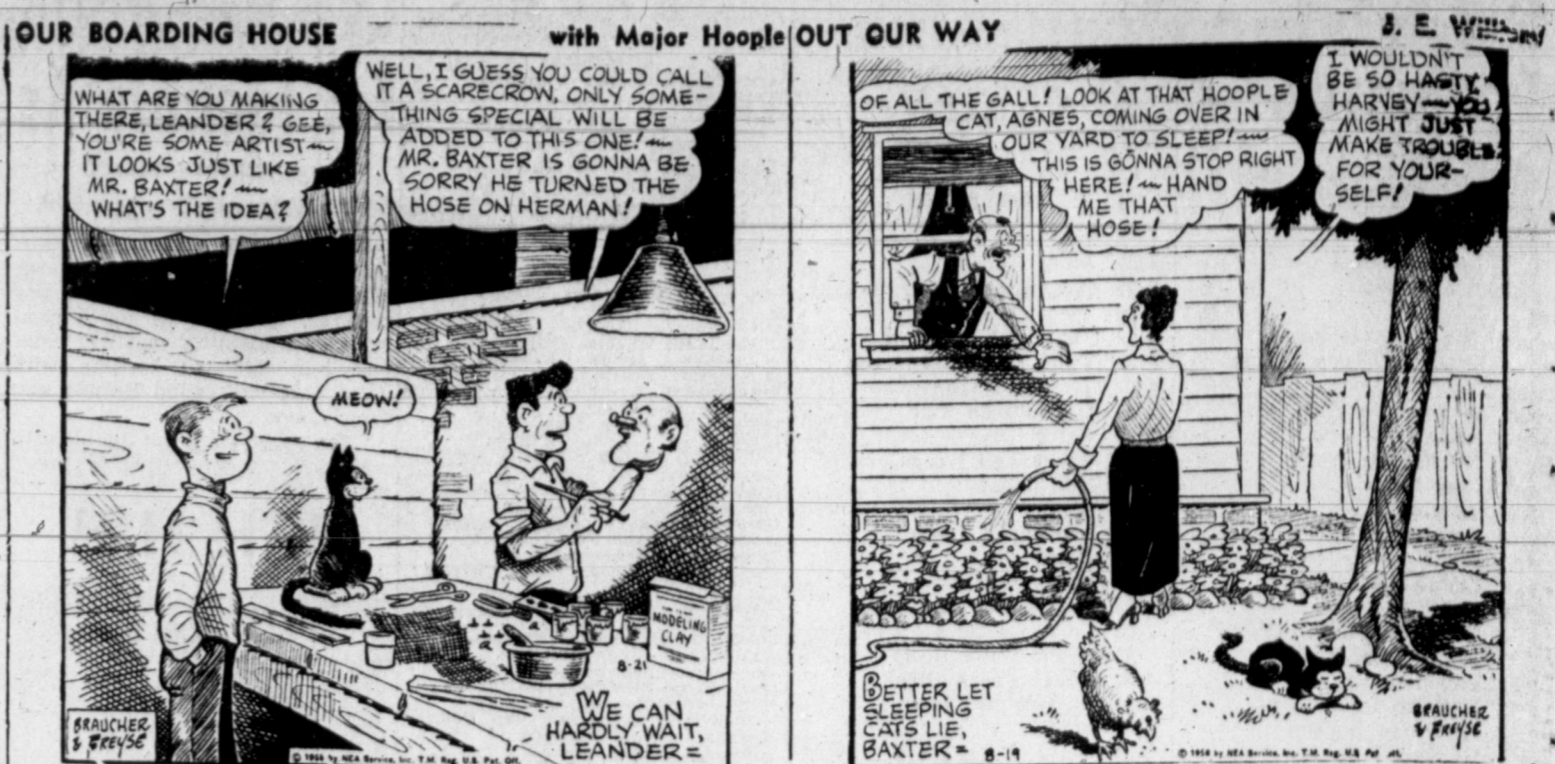
The Berrys



Dixie Dugan



Susie Q. Smith



OUR BOARDING HOUSE



Blondie



Alley Oop



Bonnie



Martha Wayne



Mickey Finn



Mutt and Jeff



Priscilla's Pop



Joe Palooka

NEW Kat l Whi Woo pres
DEAF I was an prove h name t was als go with 18 and to him ever, C arm. I to a m have fo that-ta it so I sleep worryn there a en off?
Dear list.
DEAF regular. When he tel just tel look in floor in is 45 ye ton las little to cleared them-I shub h day. H his ag
Dear ter on There's his hee
DEAF In-law rearing. I'm hc three 3 and are re and it tives t allow anima mess I get fo er, an the w They more stom theory v Please this n
Dear going somes The " my of
Pre. For
Wor tion C ner, 6 a pro preser ton, N and t The that I made pieces a syri somev alord their The too n erally sugar Cude, fruit stage. of a left v Mrs ondu Ref ing f Bow Smith It l van Bt



NEW KKK MEMBERS—Following their summer rushing and pledging season, new Kit Kat Klub members are, front row, left to right, Misses Gail Chisum, Zip Hall, Tama Whisenhunt and Barbara Epps; second row, left to right, Misses Sandra Braly, Linda Woodall, Joy Morgan, Jackie Fikes, Karen Wells, and Glenda Gorman. Unable to be present was Miss Katy Price. (Photo, Robert Brown)

All Good Things Must Come To An End, Casualness Is Not Fall Fashion Word

By ALICIA HART
NEA Beauty Editor

Many of us have had a lot of fun this summer trying out the chemise, and the popular tussled and tumbled hairdos.

And even the gals who would have nothing to do with the chemise enjoyed casual clothes and hair styles, and discarded their hats for the summer season.

But all things come to an end, and casual is not the word for fashion this fall. With many variations of the Empire look being the keynote of fall fashions, hats and coiffures will be formal and almost classical.

Hair will still be worn short, but no longer tousled. Instead it will be combed smooth at the crown, with "Empire fringes" forward on the face.

To achieve the elegant look the fall season demands, the hair is brushed up off the nape of the neck into little curls that can, if desired, be thrown into simulated chignons. And if you feel that your back hairline is not good enough to emphasize, your fluff of curls can start at the hairline and move up.

Skilful cutting and shaping is a real necessity for these hair styles, but if your hair is cut expertly, it can be handled quite easily.

Naturally, hats will again come into their own, when summer casual fashions are replaced by fall elegance. And you will find it an easy matter to get the perfect hat for your new hairdo.

The Empire trend will be carried out in the season's millinery, with hats that are natural mates for fall coiffures.

There are hats that are high-crowned and side-titled to show off the "Empire fringe," and there are others that sit right at the hairline so that the back curls will be the point of interest.

The fashion changes each season are exciting. Something new always is. It will be pleasant to slip out of the casual summer and into the formal fall.

Have your hair cut professionally, and go along from head to toe with the new Empire trend. You'll discover that the change to lady-like elegance will give you a delightful lift.

"Living Fence" Is Yard Suggestion

(Special to The News)

LEFORS — Mrs. L. D. Rider was hostess to the Lefors Home Demonstration Club in her home recently, at which time a program on the correct placement of shrubs and border plants were given by Miss Helen Dunlap, County Home Demonstration agent.

Miss Dunlap stressed the use of a living fence showing a drawing she had made to illustrate shrubs near the alley in an unstraight line, and in the service area for clothesline border.

The importance of planting a few well-placed plants rather than crowding them and the accurate long range plans which bring a reward in their beauty was emphasized also. "Flowers should be planted in the back of the house to avoid the showing of dead stubble in the winter months," stated Miss Dunlap.

Mrs. L. D. Rider, president, presided over the business session, with Mrs. A. T. Cobb reading the minutes after the repetition of the club prayer in unison.

One guest, Mrs. Elizabeth Litsch, county agent of Wheeler County, was present, with Misses A. T. Cobb, O. O. Bishop, Wanda Schiebella, J. L. Lantz, L. D. Rider and Miss Dunlap.

(Read The News Classified Ads.)

Women's Activities

The Pampa Daily News

Mrs. Davis Has Upsilon Meeting

Upsilon Chapter of Beta Sigma Phi pledges completed their Ritual of Jewels test Monday evening in the home of Mrs. Wiley Davis, 2310 Charles.

Pledges attending were: Mmes. Tommy Phillips, Bob Hudson, Charles Ingram, Gene Hall, Leonard Watson, Lynn Dawson, John Griffith, Earl Barnet and H. W. Bowerman.

Mrs. Davis, Upsilon vice president, was presented with a gift of appreciation from the pledges.

The remainder of the evening was spent playing bridge.

Announcement was made that the next meeting for the chapter would be in the form of an ice cream social and treasure hunt in the home of Mrs. Charles E. Jeffrey, 1077 Prairie Drive, on Friday evening.

Fur Fashion With Unique Treatments

By GAILE DUGAS
NEA Women's Editor

NEW YORK (NEA) — A girl can look almost any way she fancies in furs this fall. She can put her money into a brief mink jacket or a full-length Persian lamb coat with Empire waist and be in fashion either way.

For fur styles show the same variation in waistline length and cut as other fashions this year. There is nothing conservative or poky about the new furs and they're not intended for wear by a choice few women. These days, a girl can look upon a mink jacket as a sound investment, save for it, handle it with care and wear it with pride.

The three big silhouettes of fall get the full treatment in fur: the trapeze, modified chemise and the Empire line. All appear in full-length coats and to some degree in jackets, too.

Stoles aren't out of the picture yet but they're getting lots of competition from jackets and capelets. And the new stoles offer collars, curves and shaping. Generally, they're a far cry from the stole which was simply a flat length of fur with lining.

The luxury fur to watch is chinchilla. Already it's appearing in jacket and small, shaped stole form. It also shows up as the collar for full-length coats in fur or fabric. Black-dyed mink and sable are keeping it company.

While most women can't afford these furs in coat versions, they can afford them as small fur pieces for daytime or evening wear.

Whether a gal is small, medium or large, there's a fur and a silhouette for her this year. Petite figures get a treatment all their own and tall gals can take to deep, fluffy collars and big coats with wide cut.

Kangaroo Court For KKK Pledges

Kit Kat Klub recently completed its summer pledge season with activities that began with a meeting in the home of Miss Bobbie Lee Andis, 1710 Mary Ellen.

Pledges presented a program following the theme, "This Is Your Life." Miss Tama Lou Whisenhunt gave a history of the Kit Kat Klub beginning with the charter members and what they are doing now. She listed the advantages of being a club member, followed by each pledge giving a brief talk on what being a Kit Kat means to them. Members and pledges joined together in singing "Star Dust." The meeting was concluded with prayer by Miss Jackie Pike.

A book, containing the history of the charter members and signed by each of the current pledges, was presented to the club.

Following the program, pledges and members were taken to the Andis ranch, west of Pampa, for Mock Kangaroo Court. After pledging, a slumber party was held in the home of Miss DeAnne Prince. Assisting with the evening's activities were Messrs. and Mmes. Fred S. Vandenberg, Gene Father, and Bob Andis.

When a man is to meet a woman in a public place, he should make it a point to arrive a few minutes early so that he is there to greet her when she arrives. It is embarrassing for a woman to have to wait around for a man in a public place.

Mrs. C. Coleman Feted On Birthday

(Special to The News)

SKELLYTOWN — Mrs. Clifford Coleman was recently surprised by friends with a birthday party in her home.

Guests were entertained with a selection of games, under the direction of Mrs. Bill Smith, Pampa. After the honoree opened her gifts, birthday cake and ice cream were served.

Attending were Mmes. Garrel Huckins, Floyd McCoy, C. M. Lewis, R. E. McAllister, Frank Jack, Fred Genett, LeRoy Snodgrass, Clifton Hanna, Wayne Clowers, Jack Davis, Bob Volaw and Bill Smith.

DEAR ABBY...

By Abigail Van Buren

DEAR ABBY: Twelve years ago I was very much in love with a man and his name was CARL. To prove his love for me he had my name tattooed on his chest. There was also some fancy art work to go with it. It was a silly kid of 18 and I wanted to prove my love to him so I had "I am yours forever, Carl" tattooed across my arm. I am now happily married to a man named Bert and we have four kids. Bert doesn't like that tattoo and I am ashamed of it so I have been wearing long-sleeved houses, but it is miserable worrying about it all the time. Is there any way I can have it taken off?

TATTOOED
Dear Tattooed: See a skin specialist. You can have it removed.

DEAR ABBY: My husband is a regular Dr. Jekyll and Mr. Hyde. When I ask him to dance with me he tells me he is too tired, but just let one of the young girls look his way and he is out on the floor like lightning struck him. He is 45 years old and did the Charleston last Saturday night with some little teenager and everyone else cleared off the floor and watched them put on a show. He didn't shut his mouth about it until Tuesday. How can I get him to act his age?

ALSO 45
Dear Also: Don't throw cold water on your hubby or you'll put out the flame for everybody. There's no harm in his kicking up his heels if he's got a strong heart.

DEAR ABBY: I know mothers-in-law must not interfere with the rearing of their grandchildren, so I'm hoping the parents of my three little grandchildren (ages 2, 3 and 5), read this. The parents are refined and educated people and it is hard for friends and relatives to understand how they can allow their children to eat like animals. You wouldn't believe the mess they make at a table. They get food on themselves, each other, anyone sitting near, the floor, the walls and all over the table. They spit and throw food and more goes to waste than in their stomachs. The parents have a theory, "Leave them alone and they will learn by themselves." Please, Abby, can you tell me if this makes sense to you.

NOT INTERESTED
Dear Not: If children are ever going to learn how to be civilized someone will have to teach them. The "leave them alone" theory in my opinion is dangerous, foolish

Preserve Making For Worthwhile

Worthwhile Home Demonstration Club met with Mrs. O. A. Wagner, 616 N. Sumner, on Friday for a program on making preserves presented by Mrs. Bert Smith, 150 N. B. Cude, J. C. Payne, Bert and the hostess.

The demonstrators explained that preserves are fruit products made from whole small fruits, or pieces of larger fruits, cooked in a syrup until they are tender and somewhat translucent. They are stored in airtight containers in their own syrup or jellied juice.

They suggested that sometimes too much sugar is added. "Generally, we use about 3/4 lb. of sugar to one pound of fruit. The Cude, 526 S. Ballard, at 9:30 a.m. fruit should be at the firm-ripe stage. It should be of uniform size of a good shape, if it is to be left whole."

Mrs. J. L. Carlton, president, conducted the business session. Refreshments were served during the social hour to the members present, Mmes. J. L. Carlton, Smith by the hostess.

It was announced that the next meeting Sept. 4.

children's school shoes
wonderful values
by
Weather Bird

Get the children's school shoes here and get good looks, comfort, long wear... at prices surprisingly low for so much value...

Peter's
Happy Hikers

Smart Ivy Leagues in all the colors... With or without the hooks for laces; with or without the buckles! Choose from the Ripple Sole or the cushion Crepe Sole.

Children's and Ladies Sizes
\$5.95 and \$6.95

Triple Role
Bobbie Sox
Whites and Blacks
59c

KYLE'S
SHOES FOR THE FAMILY

121 N. Cuyler, Pampa — MO 9-9442

HOUSE OF:
City Club
Wesboro
Shoes for Men:
Vitality
Velvet Step
Rhythm Step
Shoes for Women

Dunlap's
PAMPA'S FINEST DEPARTMENT STORE

BACK-TO-SCHOOL SALE

Machine Washable—All First Quality.
Select from array of beautiful colors
37 Inches Wide **88c**

100% Wool Fabrics
Skirt Lengths
Fabrics For A Complete Skirt
1.99 ea.

New Fall Cotton Prints
Guaranteed Washable
39c Yd.

New Fall Woolens
● 54 to 60 inches Wide
● All First Quality ● New Colors
Reg. 2.98 and 3.98
\$1.99 Yd. and 3.98

Smart, by a famous maker
Wool Skirts

Four styles... many colors and patterns. Sizes 8 to 18. Choose from tweedy fabrics or flannel fabrics. Dunlap's believes you will find your entire skirt wardrobe here for fall 1958... and best of all, is Dunlap's back-to-school sale price!

5.99

Ladies Cotton Broadcloth Blouses
● Sanforized
● 7 Styles
● Solids and colors
● Sies 32
1.00

Exquisitely Detailed No Iron Cotton Broadcloth Blouses
fabulous is the word for this collection of blouses especially styled for Fall 1958. Dunlap's purchased seven styles... all with roll-up sleeves... in solid colors, stripes and prints. You'll find chemise styles, blouson styles and shirt styles...
3.98

Panty Girdle
Reg. 3.98 girdle!
Power net! You walk with freedom
1.99

Nylon Tricot Panties
Reg. 1.00
58c pr.

Panty Girdle
A quality creation made to sell for 3.98 by a famous maker.
SAVE NOW
2.98

Curves and Comfort in Dunlap's luxurious Cotton Bras
1.00 ea.

You get everything in this cotton bra with circular stitched cups and clever forked-strap construction that takes the strain off your shoulder. With center elastic gusset that means freedom of movement. Adjustable shoulder straps and hook back.

Nylon Tricot Slips
Should sell for 3.98 and 4.98! a new style in white, black, pink champagne, red, orange, blue, Sizes 32 to 40.
2.99 ea.

Nylon Hose
see it and love it! Luxury Knit, 75 gauge, twin thread, regular 1.65
1.00 pr.

Girl's Center Togs Car Coats
5.99

Never a coat like this for such a small price! Features a poplin shell, 8-oz. wool quilted lining, attached collar hood, elasticized sleeve, two patch pockets, in natural, red, turquoise, navy, charcoal and black. Sizes 7-14. Put it in Lay-away now!

For Back-To-School For Savings
Girls' Dresses
Sies 3-6x
2.98
Sizes 7-14
3.98
6 styles, in new details, new colors. Made by a famous manufacturer, from durable, washable cotton. Buy now and save at Dunlap's.

in the tourna
A-Letics.
for a cham
lude two from
le, Elk City,
rock.
Night
00 Til ?
rs
ly washable
Red, powder
or our back-
g of the sea-
LE
Wear
irts
3.99
ort Shirts...
ottons, des-
Horizontal
ular prints
d Plaids...
full cut and
M-L.
ol Value
y Nvlon
Sox
Stretch Sox
quality and
ed 6x3 rib.
Fits sizes 10
during Dun-
o-School use
eg. 79c
4c Pr.
r Career
Wool
nel
ks
2.95
88
abric for fall
s brings you
ection all al-
hel slacks in
rk shades.
e outstanding
really enjoy
u save 3.07
ing Dunlap's
3.99
ole Knee
eans
44
pr.
hirts
8c
ea.
Arygle
OX
59c
pr



Rick Pezdirtz
purely paydirtz

There we sat, taking our daily 10:30 a.m. snooze on a borrowed dictionary, when the black monsther Don Ameche-invented jangled us back to consciousness. It was a lady speaking, and our droopy ears began to perk up.

"How'd you like the fight, I knew that Harris would get what was coming to him," the lady snapped as we backed three paces away from the phone, stuffed cotton in our flappers, and returned to the battle scene.

"Patterson whipped him good, and I couldn't be happier," our caller was preaching. It was Pampa's prize pugilist, Gene Cooper's mom on the wires, a little woman who likes to unfurl her wrath each and every time she thinks about her son's being butted by Roy Harris, the depleted heavyweight challenger, in the Golden Glove semi-finals a handful of years ago.

"We'd heard the story before, but sat cooing, 'Yes, mams,' lest Emily Post wash her hands of us. It was about an hour later, our stinging ears just beginning to recuperate, when our old buddy, W. H. Cooper, Gene's pop, dropped by our desk. 'It was a pretty good fight, but I was sorry about the outcome. I'd have liked to see Harris whip Patterson.'

How about that, two members of the same family pulling for opposite punchers.

Clear the decks, they'll be action in the Cooper home tonight!

Of Ex-Harvesters . . .

It was sad news indeed to learn that Pampa's 1953 grid flash, John Darby, may have to hang up his grid gear for keeps because of injuries received in an auto accident.

J. N. Wright, who quarterbacked in that 1953 Harvester-backfield with Darby, Texas A&M's Ed Dudley, and former University of Houston threat, Harold Lewis, will coach this fall at Phillips.

Wright will assist head football coach, Joe Means, with trying to improve on the District 1-AAA Blackhawk's 5-5 record last season.

Bobby Wilhelm, who kicked the game winning conversion in a 7-6 triumph over Abilene in '53 and moved into the starting backfield when Darby was hospitalized with an injured kidney from the same game, has left for Corpus Christi University where he'll play football under Gene Sunderman for the Tarpons.

Wilhelm, however, went to Corpus on a full boxing scholarship. He had attended the University of Wisconsin and Oklahoma before marrying the former Paula Simpson of Borger. They have one child, a boy



J. N. WRIGHT
... Blackhawk aide
named Robert Kevin.

Gary Wilhelm, younger brother to Bob, who turned down an invitation at the last minute to play in Saturday night's first annual Panhandle Grid Classic in Amarillo, also nixed a scholarship offer to box and maybe play football at Corpus Christi U.

The pressure from Vern Woodward, new boxing coach at the University of Wisconsin was too much, and like his older bud, Gary will shove off for Madison and Badgerland in January for his Freshman year. He will work here this fall.

Fish & Fillies!

From Pottsville Kingdom's Lakeview Lodge comes reports of Pampa fishermen cleaning up with heavy catches.

Pampa people pulling in the Friday dinners included:

Stew Youngblood, 20 black bass weighing up to three pounds and 22 sand bass; M. A. Winget fishing with Maris and C. F. Winget of Colorado City and Odessa, caught 80 sand bass and crappie while night fishing. And Glenn Cox and wife landed 65 crappie from the same camp

Pampa horses running at Rat-on, N. M., La Mesa Park had one of their worst weekends last week. Only two in the money. Last Saturday, Frank and Walden Haynes' Count-Man finished in a dead-heat with Linda C. in the 6th race. Count-Man paid \$2.50 and \$3.00. Sunday, Los Me, owned by C. E. Sarvis, placed

The Leaders

National League	
Player & Club	G. AB R. H. Pct.
Musial, St. L.	110 387 49 135 345
Ashburn, Phil.	114 458 74 158 345
Maya, S. F.	118 461 85 151 328
Aaron, Milw.	119 471 87 154 327
Skinner, Pitts.	114 419 76 132 315
American League	
Runnels, Bos.	110 423 79 139 329
Kuenn, Det.	107 430 56 138 321
Cerv, K. C.	106 392 70 126 321
Goodman, Chi.	84 317 35 101 319
Sievers, Wash.	112 415 73 132 318
Home Runs	
National League—Banks, Cubs 35; Thomas, Pirates 32; Aaron, Braves 26; Mathews, Braves 25; Robinson, Redlegs 25.	
American League—Mantle, Yankees 35; Sievers, Senators 34; Jensen, Red Sox 33; Cerv, Athletics 29; Colavito, Indians 28.	
Runs Batted In	
National League—Banks, Cubs 101; Thomas, Pirates 95; Aaron, Braves 77; Anderson, Phils 76; Boyer, Cardinals 75.	
American League—Jensen, Red Sox 106; Sievers, Senators 89; Cerv, Athletics 85; Colavito, Indians 80; Mantle, Yankees 78.	
Pitching	
National League—Grisso, Giants 7-3; Raydon, Pirates 7-3; Purkey, Redlegs 14-7; Worthington, Giants 10-5; Willey, Braves 8-4.	
American League—Delock, Red Sox 11-3; Hyde, Senators 9-3; Moore, White Sox 9-3; Turley, Yankees 17-6; Ford, Yankees 14-6.	

CAPTURE 12 OF 18

Dodgers Lousing It Up For Milwaukee

By MILTON RICHMAN
United Press International

Wait Alston's crew clinched the season's series Wednesday night with a 2-1 victory over the Braves that sliced their lead to 5½ games. It was the Dodgers' third straight win over Milwaukee and entrenched them a bit more solidly in fourth place.

The Braves stacked Warren Spahn to a one-run lead in the first inning when Hank Aaron doubled to score Eddie Mathews. But the Dodgers bounced back with a pair in the fifth on Joe Pignatano's homer, a walk and Norm Larker's triple.

Drives In Eight Runs

Willie Jones had his best night of the season by driving in eight runs in Philadelphia's 12-2 victory over St. Louis, and San Francisco nipped Cincinnati, 4-3. Pittsburgh won the opener of a double-

THERE'LL BE SOME ML CHANGES MADE!

By JACK CUDY
United Press International

NEW YORK (UPI)—Hold on to your hat, because there will be more baseball trades this winter than ever before—judging from the swap talk circulating in both major leagues.

No one apparently is satisfied with what he's got and that includes Casey Stengel, whose Yankees have made a farce of the American League race despite a recent slump in which they dropped 9 of 12 games.

Never one to sit still even when he's winning, Stengel already has told general manager George Weiss he is of a mind to make changes this winter.

That doesn't mean such stars as Mickey Mantle, Whitey Ford and Bob Turley are in any danger of being dealt, but such players as Don Larsen, Andy Carey, Bobby Richardson and Johnny Kucks may change uniforms.

Lane Will Be Busy

Frank Lane made several deals when he came to Cleveland this year. That was just a starter. Wait'll you see him in action this winter—His chief object is a new double-play combination and, like practically everyone else, he's after more pitching, also.

Paul Richards, who acts as both general manager and field manager of the Baltimore Orioles, can't wait for the trading season to open again.

"We need hitting in the worst way," he says. "As soon as the market opens I'm going to try every possible thing I can come up with some power."

While he's looking, Richards also will have his eye peeled for a front-line center-fielder whom he can play between Gene Woodling and Bob Nieman.

White Sox Need Hitters

The White Sox, who made more deals than any other club last winter, promise to be back at the same old stand when the snow flies again. They thought they had corralled enough pitching to beat the Yankees; they realize now they were mistaken. And they also know it will take more hitting than they have to make them a serious pennant contender.

Over in the National League, the trading activity doubtlessly will be just as brisk.

The San Francisco Giants had a taste of first place this year and liked it so much they figure they could occupy it permanently if they go out and get themselves another 15-game winner.

Los Angeles broke the ice last June by peddling Don Newcombe. Next on the list could be Duke Snider or even Gil Hodges, providing the Dodgers can get what they want in return. They're after young pitchers.

After Pitchers

Like the White Sox, the Redlegs made all kinds of trades last winter, but apparently weakened themselves thereby. As usual, Cincinnati will be after pitching, and either Johnny Temple or Roy McMillan might be used as bait.

Pittsburgh is in the same class with San Francisco. The Pirates have plenty of power and feel they can go all the way if they can land another starting pitcher to go with Bob Friend, Vern Law, Ronnie Kline and George Witt.

TOP FEM GOLFERS BLAST OFF IN WATERLOO OPEN

WATERLOO, Iowa (UPI)—A talented field of 20 of the nation's top women pros and 21 amateurs teed off today in the \$7,500 Waterloo Women's Open invitational golf tournament at Sunnyside Country Club.

A top prize of \$1,313 drew a high-quality field of the play-for-pay girls, including the four top money winners on the current circuit—Louis Suggs, Marlene Bauer Hagge, Fay Crocker and Beverly Hanson.

The 72-hole tournament ends Sunday.

The women stars were scheduled to play 18 hole rounds each of the next four days over the rolling, rough-rimmed Sunnyside Country Club course.

The course was in excellent shape. Scattered thundershowers fell Wednesday as the golfers got in their practice rounds but skies cleared as the tee-off hour approached.

Most of the "name" women pros were entered in the tournament with the field filled out with amateurs—mostly Iowa girls—added on an invitational basis.

Included in the field was the pro-amateur duo of Jackie Pung and her 16-year-old daughter, Barnette.

Other top amateurs in the field included Western Junior champion Carl Mann, Olympia Fields, Ill.; Iowa amateur champion Judy Kimball, Sioux City; and runner-up Andy Cohn, Waterloo.

The touring pros got only one day instead of two to test the rain forced an extension of the tough Sunnyside course because rain forced an extension of the Heart of America Tournament at Kansas City, Mo., last weekend.

Bonnie Randolph, Columbus, Ohio, won the title Monday in a playoff with Betty Jameson, San Antonio, Tex. Both were entered in this



FAY CROCKER
... in the money



REST NOW, PLAY LATER—These four young Pampa golfers face a possible 144 holes of golf apiece next week in the Eisenhower Junior Golf Tournament in Denver, Colorado, Monday through Thursday and in the Top O' Texas Tournament here, Thursday through Sunday. Kneeling, left-to-right, are Johnny Ellis and Larry Tarvin. Standing, left-to-right, are Melvin Chisum and George Smith. (Sports Photo by Wally Truesdell)

AND IN ToT HERE

Pampa Golfing Quartet Set For Busy Week In Denver

Four young Pampa golfers—all members of last spring's Harvester links squad—face the biggest seven days of their embryo careers next week.

Melvin Chisum, ace of Coe's Bird Dog Trice's Pampa High golf team the past spring, and George Smith, Larry Tarvin and John Ellis will be up with the birds Saturday morning for a trip to Denver, Colo.

In Denver, the four youths will compete in the annual Eisenhower Junior Open Golf Tournament, sponsored by the president and the Denver Post.

Qualifying rounds in the four-day meet are set for Monday with 18-

holes in the medal play—meet scheduled Tuesday, 36-holes slated Wednesday and 18-holes in final rounds set Thursday.

"We've got to hustle back, when the tournament's over," Smith said Wednesday afternoon after posing for a picture, "none of us want to miss the Top O' Texas Tournament here."

The four boys will make the trip in Smith's automobile and stay at a motel while in Denver. Chisum, who plans to enter either Odessa Junior College or North Texas State next month is 18 years-old, and the only high school graduate among the group.

The other three will return to Pampa next spring as seniors. Ellis is also 18, while Smith and Tarvin are both 17.

Top prize in the Denver tourney is a \$1,000 college scholarship, with young golfers coming from all over the nation to play in the big junior event.

The Top O' Texas Tournament will be kicked-off with a West Texas Pro-Am meet next Thursday. Meet action is set for Thursday through Sunday with a 32-man championship flight firing 72-holes of medal play.

The lower flights will shoot 36-holes.



You get the right power... right down the line!

From the mountain-movin' Workmaster V8 in tandem down to the quick-stepping Thriftmaster 6 in pickups, Chevrolet trucks offer precisely the kind of power you need. Here are seven truck engines designed and built to work longer for less on your job.

HEAVY-DUTY SUPER TASKMASTER V8—This 175-h.p. V8 is tough-built for tough jobs. Like the Workmaster, it has 4-barrel carburetor, dual exhaust.

HEAVY-DUTY TASKMASTER V8—Engineered to put muscle in medium-duty jobs, this 283-cubic-inch V8 packs 160 h.p.

WORKMASTER V8—Built for top-tonnage hauls, this 348-cubic-inch V8 packs 230 h.p., has new "Wedge-Head" design.

TRADMASTER V8—This 160-h.p. V8 has stay-on-the-job stamina for tight schedules. 8.5 to 1 compression ratio.

THRIFTMASTER 6—Tops for cutting cost corners, this 235-cubic-inch 6 has 145 h.p., 8.25 to 1 compression ratio.

THRIFTMASTER 6 SPECIAL—Ruggedly built for Forward Control duty, it's got more "go" for stop-and-go hauling.

CHEVROLET TASK-FORCE TRUCKS

See your local authorized Chevrolet dealer

CULBERSON CHEVROLET, INC.

212 N. Ballard
Pampa
MO 4-4666

America's most impressive bourbon....

made for the man of means!

The whiskey that didn't watch the clock seven long years

OLD CHARTER

KENTUCKY STRAIGHT BOURBON

7 YEARS OLD • 86 PROOF • OLD CHARTER DISTILLERY CO., LOUISVILLE, KENTUCKY.

Peterson Looks Good In Drills For Grid Classic

AMARILLO — Pampa's Gary Peterson, an all-District 3-AAAA honorable mention selection last December, will be at guard on the second unit of the City Slicker squad here Saturday night when the first annual Panhandle Grid Classic gets underway.

Kickoff in the new schoolboy all-star extravaganza is set for 8 p.m. at Price College Field.

Both the City Slickers, composed of AAAA and AAA athletes, and the Sodbusters, made up of boys from AA, A and B schools, are expected to use alternate units in the Saturday night scrap.

White Deer's slick all-Regional halfback, Courtney White, suffered a bruised toe in Wednesday's Sodbuster drills, but is expected to be at full strength by game time.

Frank Hodnik, coaching the Sodbusters, is planning on starting Groom's Leon Anglin at one tackle on his first unit with southpaw quarterback, Del Ray Mounits, of Perryton, slated to open at quarterback.

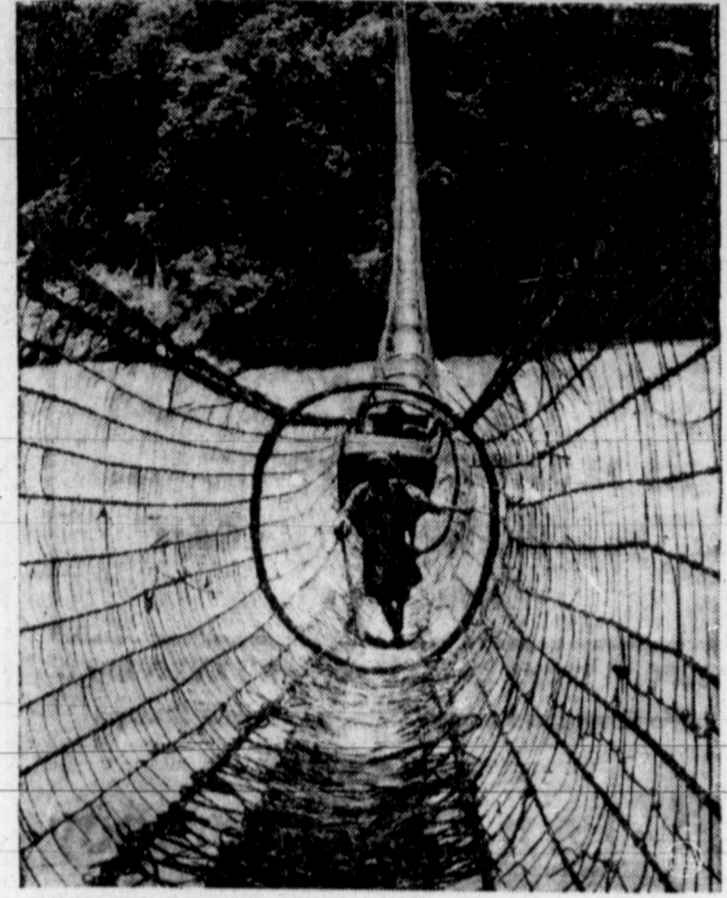
Tickets to the game can be purchased in Pampa at Richards Drug, B&B Pharmacy, the Sportsman Store and the Pampa Daily News.

Stiff Test

DARIEN, Conn. (UPI)—Barbara Romack of Sacramento, Calif., seeking to regain the National Women's Amateur golf championship she won in 1954, faced the stiffest test of the six U. S. Curtis Cup players who teed off today at the Wee Burn Country Club in the fifth round of the tournament.

Miss Romack met Jessie Valentine of Scotland, the last surviving member of the British Curtis Cup team. Two rounds were scheduled for today to narrow the field down to the four semifinalists.

Use the Wait-A-Minute... RENT-HIRE



WALKING THE WEB—Though this looks like the work of a giant spider, it is actually an aged-old bridge form in Tibet.



HER KING IS DEAD—Princess Faziela, left, 17-year-old intended bride of Iraq's assassinated King Faisal, appears forlorn as she arrives at Orly Field in Paris.



CANINE CROONER—Beside an "open-mouthed" stump that's almost a dead ringer for him, Alto the pooch croons a tune at Temagami in northern Ontario.

Legal Publication

Application for LIQUOR PERMIT
The undersigned is an applicant for a Retail Liquor Permit from the Texas Liquor Control Board and hereby gives notice by publication of such application in accordance with provisions of Section 10, House Bill No. 77, Acts of the 44th Legislature, designated as the Texas Liquor Control Act.

The Retail Liquor permit applied for will be used in the conduct of a business located at 121 S. Russell, Pampa, Texas, to be known as Hotel Package Store.

B. J. Smith
Owner

- 2 Memorial
5 Special Notices
Alcoholics Anonymous
Lucilla's Bath Clinic
Pampa Lodge No. 966

21 Male Help Wanted
Assistant Manager WANTED
ARE YOU INTERESTED IN A GOOD OPPORTUNITY IN PAMPA?
The Sherwin-Williams Company's Branch in Pampa, Texas, has an immediate opening for an Assistant Manager.

Apply In Person To: C. C. MANDEVILLE At The Sherwin-Williams Company, 110 S. Cuyler

22 Female Help Wanted
Experienced Sewing Machine Repairer
30 Sewing
Scott's Sew Shop

31 Appliance Repair
POTTS APPLIANCE SERVICE
33 Spraying
34 Radio Lab

35 C&M TELEVISION
36 Appliances
38 Paper Hanging

39 Painting
Buck's Transfer & Storage
40 Transfer & Storage

41 Child Care
43A Carpet Service

FOR RENT
Automatic Washers No Plumbing Required
PAUL CROSSMAN CO.

47 Plowing, Yard Work
48 Trees and Shrubbery
49 Cess Pools, Tanks

50 Building Supplies
51 Good Things to Eat

52 Cleaning & Pressing
53 Upholstery, Repair

54 Household Goods
55 Miscellaneous For Sale

56 Miscellaneous For Sale

57 Miscellaneous For Sale

58 Miscellaneous For Sale

59 Miscellaneous For Sale

70 Musical Instruments
71 Bicycles

75A Farm Service
78 Livestock

79 Horses
80 Pets

83 Farm Equipment
84 Office, Store Equipment

90 Wanted to Rent
92 Sleeping Rooms

95 Furnished Apartments

96 Unfurnished Apartments

97 Furnished Houses

98 Unfurnished Houses

101 Wanted to Buy

103 Real Estate For Sale

104 Farms for Rent

105 Lots

106 Business Property

113 Property to be Moved

114 Trailer Houses

124 Tires, Accessories

REBUILT MOTORS
Expert Installation

Montgomery Ward

125 Boats & Accessories

OPEN HOUSES

Highland Homes IMMEDIATE OCCUPANCY

JUST COMPLETING BEAUTIFUL 3 BEDROOMS

SELECT HARDWOOD FLOORS
G.E. CENTRAL HEAT
FACTORY BIRCH CABINETS

103 Real Estate For Sale

104 Farms for Rent

105 Lots

106 Business Property

113 Property to be Moved

114 Trailer Houses

117 Body Shops

120 Automobiles For Sale

BUY YOUR HOME IN COUNTRY CLUB HEIGHTS 30 YEAR FHA LOANS

WHITE HOUSE LUMBER CO.
101 S. Ballard MO 4-3291

PURSLEY'S NEW TRIM SHOP
CHARLES GRIFFITH
PURSLEY MOTOR CO.

HIGHLAND HOMES, Inc.
Pampa's Leading Quality Home Builder

Faubus To Decide On Emergency Meet

By **BYRCE MILLER**
United Press International

LITTLE ROCK, Ark. (UPI)—Gov. Orval E. Faubus indicated he would decide today whether to call an emergency session of the Arkansas Legislature to deal with a court ruling which orders resumption of integration at Central High School.

Glenn Walther, speaker of the House, said Faubus would summon the legislators to Little Rock. Walther said the extraordinary session will convene next week. Arkansas lawmakers said earlier this week they expected Faubus to call the session as a result of the ruling in St. Louis Monday by the Eighth Circuit Court of Appeals reversing an earlier edict to postpone integration at Central until 1961.

Two attorneys threw additional focus on the situation Wednesday when they asked the St. Louis court for a mandate ordering racial integration at Central in time for resumption of classes next month.

The request indicated more than the seven Negro children who helped Central integrate last year might seek admission in September.

More than 200 Negro children are eligible to attend the school this fall.

Board Will Appeal
The Little Rock School Board was expected to appeal to the U.S. Supreme Court within the next few days to uphold the postponement order handed down by U.S. District Judge Harry J. Lemley. Lemley had called for a delay of integration at the request of the

school board, which said it believed a "cooling-off" period was needed to avoid violence such as that attending the end of segregation at Central last fall when U.S. troops were sent in.

But the St. Louis court nullified Lemley's order, this week and President Eisenhower supported this action Wednesday.

Faubus, who was scornful of Eisenhower's statement, did not elaborate but said he probably would make a decision on the emergency session today.

"Quite a few legislators don't want a special session," Faubus said. "They are afraid a few people might be called in and asked a few questions."

Sees Popular Demand
But Walther said there was a popular demand for the session. "A special session of the Legislature will be called for 'next week,'" Walther exclusively told this reporter. "Ninety per cent of the people of Arkansas want it."

Faubus said Wednesday his feelings are "exactly as they were" last fall regarding integration and he made it clear he would seek every means to delay integration at Little Rock.

But, while the governor said he does not intend to use troops to enforce integration next month, President Eisenhower said he would if it is necessary to prevent "anarchy."

Will Enforce Rulings
The President told his Washington news conference the federal government must and will enforce court integration rulings if the states fail to do so.

Eisenhower said a state "can-

not by action or deliberate failure to act permit violence to frustrate the preservation of individual rights as determined by a court decree."

The St. Louis ruling Monday tossed the national spotlight on Arkansas' integration problems and it appeared today Little Rock again has become the integration battleground of the nation.

Faubus indicated Wednesday night he and the Little Rock School Board couldn't get together on means to keep Negroes out of Central High School.

Eight Die In Crash

PREWITT, N. M. (UPI)—Eight persons from Alabama and Colorado died Wednesday in a two-car crash and another was left near death.

The accident, the worst highway mishap in New Mexico in four years, happened one mile west of this northwest New Mexico town. A car driven by H. G. Bragg of Anniston, Ala., which state police said was four feet over the center line, slammed into another driven by Perez Sanchez, 47, of Las Animas, Colo.

The dead in the Colorado car included Daniel Sanchez, his wife, Jane, 45, their son, Eugene 6, and Hope Estrada, 20. In the other vehicle, Bragg, Mrs. Curtis Johnson, her two-year-old son, Ben Franklin, and her month-old daughter, Mary Louise, were killed. Only Daniel Sanchez, 14, survived from the Sanchez car.

Of the six persons in the Bragg car, two survived, but Curtis Johnson was in very critical condition at a Gallup, N. M. hospital. Ira Franklin Bragg of Anniston and the Sanchez boys were injured seriously.

Enterprise On Final Voyage

NEW YORK (UPI)—The USS Enterprise, one of the most illustrious warships in U. S. Naval history, began its final voyage today when it was eased out of its berth at the Brooklyn Navy Yard and moved by tug to Kearny, N. J., for dismantling.

The 834-foot aircraft carrier gained eminence early in World War II as the flagship of Adm. William F. Halsey and went on to earn 20 of a possible 22 Pacific battle stars.

Rapid advances in naval aviation technology made the Enterprise obsolete and the Navy sold her for \$561,333. A campaign led by Halsey to make the "Big E" a national shrine collapsed when the million dollars needed for the project could not be raised.

The carrier's record of destruction to the enemy in World War II included 911 planes, 71 ships sunk and another 192 damaged or probably sunk.

He Didn't Have A Chance!

KNOXVILLE, Tenn. (UPI)—As the only male contestant in a 4-H Club baking contest, John Mullins didn't have a chance, really. He whipped up a batch of biscuits, put them in the oven and stood by to wait.

A young lady contestant died up and engaged John in conversation. He joined in politely. Finally the girl moved on, and John, remembering, made a dash for the oven. His biscuits were burned to cinders.

Guide To Good Buys In Food

WASHINGTON (UPI)—Food shoppers with an eye on their budget will find an abundance of economical items at late summer markets this weekend.

Fruits and vegetables head the best buy list, with some of the protein foods sharing the spotlight.

Watermelons, from this year's very heavy harvest, continue a top buy. Other featured fruits will be peaches, blueberries, apples, pears, grapes, and lemons.

August markets continue to offer an abundance of vegetables from nearby market areas. These include snap beans, cabbage, corn, cucumbers, lettuce, onions, potatoes, squash, tomatoes, carrots, celery, and peppers.

Meat counters will offer their share of budget buys, too, among them such items as chuck beef steaks, round and rib roasts, and

ground beef. Legs of lamb and smoked hams also will be offered as good buys at numerous markets. Broiler and fryer chickens continue top buys from the plentiful supplies now on hand.

Medium and small eggs bear favorable price tags right now, and numerous dairy products continue in abundance, and are considered good buys.

In the fish line, August shoppers will find ample supplies of shrimp, fish sticks, and canned tuna.

Studebaker-Packard Corp. announced it is bringing out in November a new small car which will be three inches shorter than the Nash Rambler and sell for "about \$2,000. The announcement came as the company disclosed details of a refinancing aimed at strengthening its finances so that it can market cars more aggressively.

(Read The News Classified Ads.)



EXPLORING THE WEST—A favorite in German movies for a number of years, then a star of the dramatic "The Brothers Karamazov," Maria Schell is having a new adventure. Currently she's making "The Hanging Tree" with Gary Cooper. Its a died-in-the-west western as this still with Dan Borge indicates.

Prescription Specialists WE DELIVER

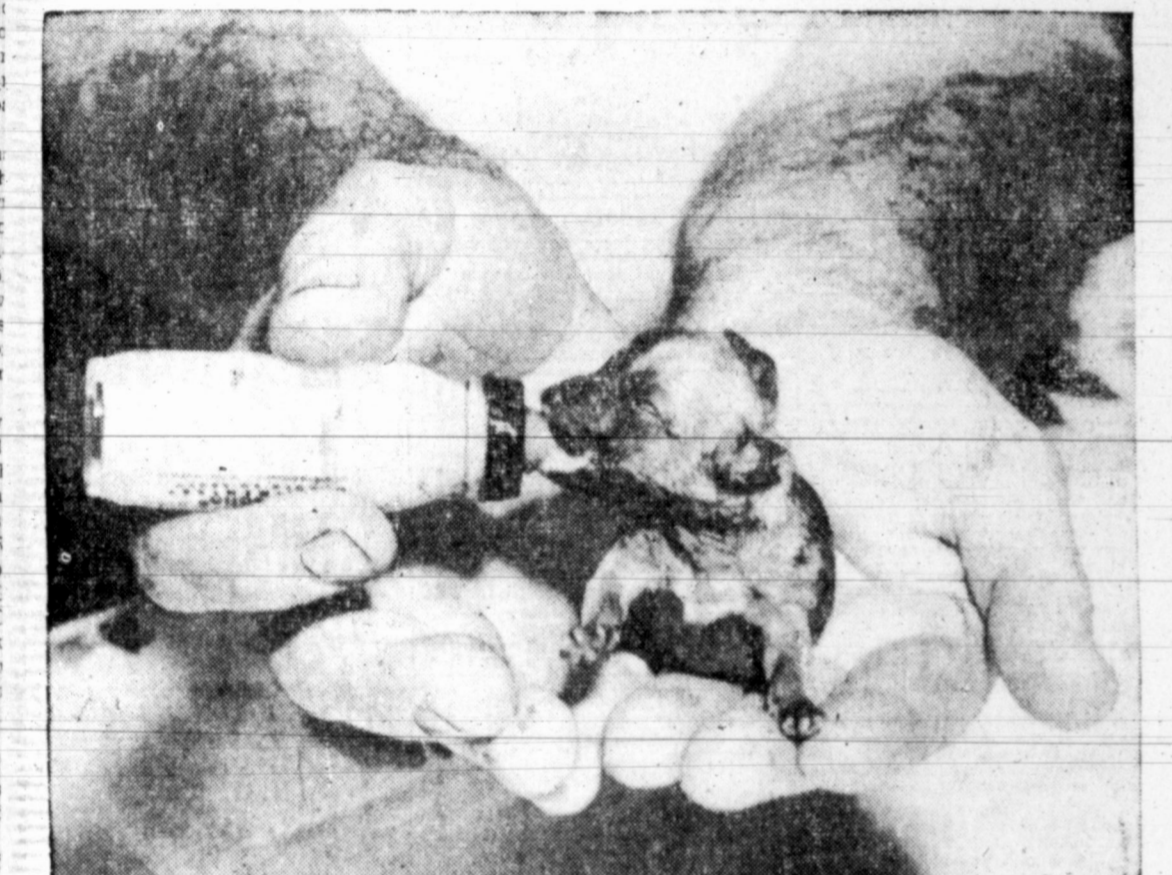
3 REGISTERED PHARMACISTS TO SERVE YOU ACCURATELY AND AS PROMPTLY AS POSSIBLE...

**Tom Perkins Lyle Gage
Mary Terrell**

PRESCRIPTIONS CALLED FOR AND DELIVERED
We Give and Redeem Pampa Progress Stamps

Hi-land Pharmacy
QUALITY SERVICE

1307 N. Hobart MO 4-2504



BOTTLE BABY—Lunch is being served to a chihuahua pup several days old. The pup is one of a litter born at the home of Leroy Wills in Baltimore, Md. The tiny chihuahua is hardly as big as one of Wills' hands.

SAVE *More* NOW!

MAPLE ARM SOFA
in brown nubby weave cover
Regular 269.50 **Now \$198.50**

One Group OCCASIONAL CHAIRS
modern covers
Regular 55.00 **Now 2 For \$75.00**

Karpen LOUNGE CHAIR
foam rubber seat and back
Regular price 198.50 **Now \$98.50**

Simmons STUDIO DIVEN
green plaid cover
Regular 99.95 **Now \$69.50**

Rose LOUNGE CHAIR
floor sample
Regular 129.50 **Now \$69.50**

Karpen MODERN SOFA
full foam rubber, turquoise
Regular 429.50 **Now \$249.50**

2 PICE LIVING ROOM SUITES
mastercraft, beige frieze, rubber cushions
Reg. 429.50 **Now \$298.50**

Mastercraft, rose wool frieze, rubber cushions
Reg. 309.00 **Now \$198.50**

Brandt 2 pc. suite, brown nubby weave rubber construction
Reg. 329.50 **Now \$249.50**

Mastercraft suite, charcoal nubby weave
Reg. 329.00 **Now \$219.50**

Mastercraft 2 pc. suite, beige frieze
Reg. 239.00 **Now \$149.50**

3 PICE CURVED SECTIONALS
Brown 3 pc. sectional, full foam rubber cushions
Reg. 389.50 **Now \$298.50**

Charcoal 3 pc sectional, full foam rubber cushions
Reg. 379.50 **Now \$298.50**

CHAIRS
1 brown reclining chair trimmed with plastic
Reg. 69.50 **Now \$49.50**

Platform rockers, beige or red, rubber cushions
Reg. 79.50 **Now \$59.50**

Swivel rockers with matching ottomans
Reg. 119.50 **Now \$79.50**

Swivel tub chairs, foam rubber cushions
Reg. 98.50 **Now \$55.00**

CHAIR BEDS
Armless chair, easily converts to single bed
These may be used together as sofas or sectionals
Regular price 75.00 **Now \$49.50 ea.**

Only one Black Plastic Make A Bed Sofa
Excellent innerspring mattress
Regular price 298.50 **Now \$198.50**

2 PICE BEDROOM SUITES
Large tripple dresser with matching bookcase bed
Choice of toast or blonde finish
Regular price 259.50 **Now \$189.50**

OPEN STOCK BEDROOM SUITES
Toast mahogany of finest construction
Many pieces from which to choose
Triple Dresser with bookcase bed
Regular 297.00 **Now \$219.50**

Double Dresser with bookcase bed
Regular 277.00 **Now \$198.50**

Matching Chest
Regular 129.50 **Now \$69.50**

Dressing Table and Bench
Regular 139.00 **Now \$79.50**

Large extension table, six chairs, and china cabinet, toast mahogany
Regular price 486.00 **Now \$298.50**

SPECIALS IN OUR CARPET DEPT.

1 12 foot width roll carpet Wool-Nylon-Viscolon maple sugar
Reg. 7.95 **Now \$5.95 Sq. Yd.**

1 12 foot width roll carpet, Brown Wool and nylon
Reg. 9.95 **Now \$7.95 Sq. Yd.**

1 12 foot width roll carpet, Wool Brown, High-low loop
Reg. 8.95 **Now \$6.95 Sq. Yd.**

1 9 foot width roll carpet, Brown cotton
Reg. 7.95 **Now \$4.95 Sq. Yd.**

MANY OTHER ITEMS NOT LISTED
Texas Furniture Company
Quality Home Furnishings

LUXURIOUS, NEW FALL FASHION COATS

AT LEVINE'S LOW PRE-SEASON PRICES!
NEVER BEFORE SUCH MAGNIFICENT NEW SILHOUETTES!
SUCH HEAVENLY RICH FABRICS...SUCH LOVELY COLORS!

SEE THESE STYLES...

- THE TRAPEZE
- DRAMATIZED BARREL SHAPE
- MODIFIED CHEMISE

AND THESE FABRICS...

- LOOP TEXTURES
- SOFT, DEEPLY PILED
- SMOOTH AND SHINY BLACKS

● FLARED
● FITTED
● SLIM LINE

\$29.99

SELECT NOW!

FREE LAYAWAY PLAN

ONLY AT LEVINE'S