



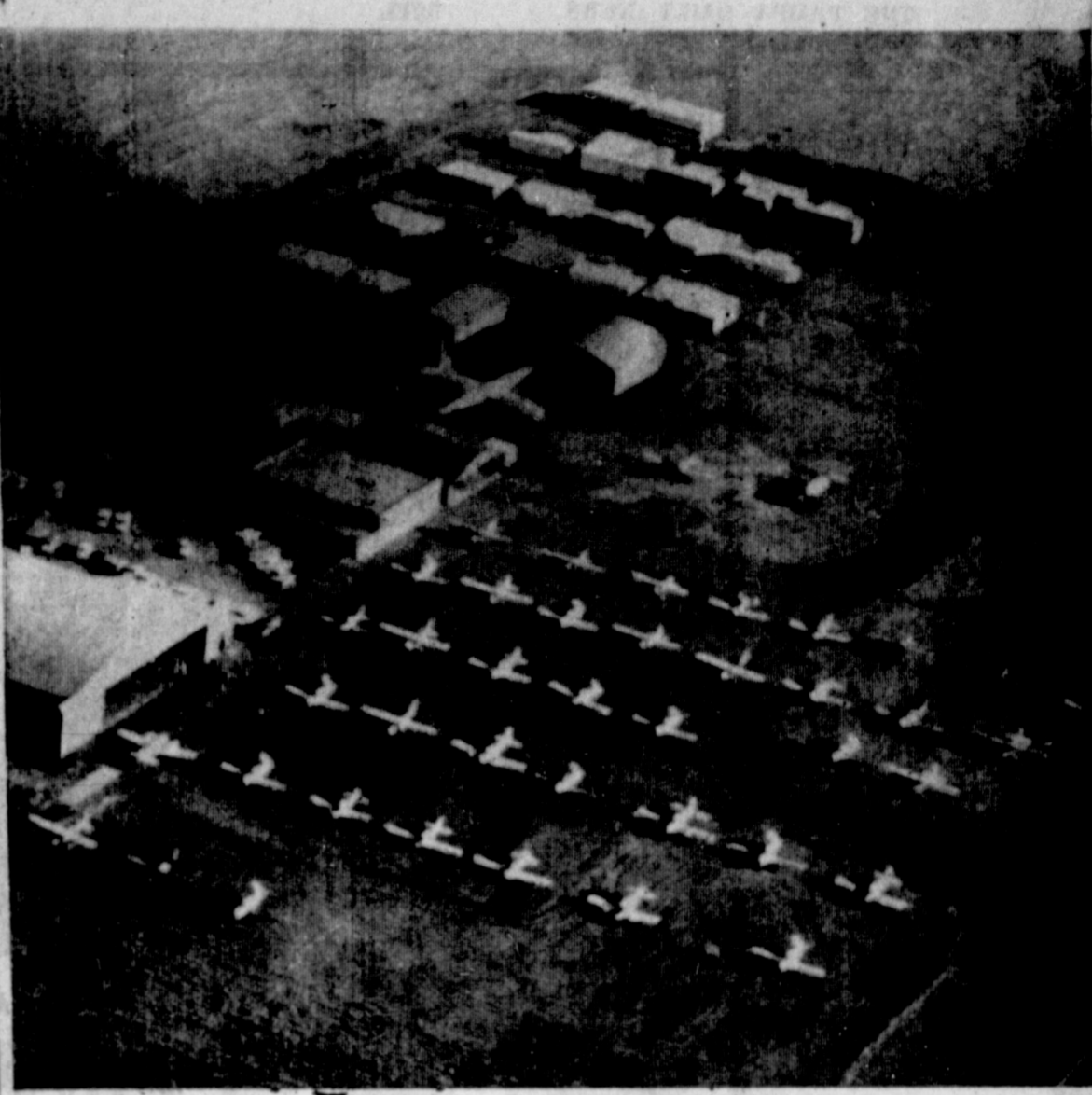
# The Pampa Daily News

Serving The Top O' Texas 58 Years

VOL. 58 — NO. 151

THE PAMPA DAILY NEWS, THURSDAY, OCTOBER 7, 1965

(16 PAGES TODAY)



Daily News Staff Photo

**AIR TOURISTS** — The 17th annual Texas Air Tour made a 1-hour stopover in Pampa late yesterday afternoon. The photo, taken from the air, shows some 40 of the 60 private planes just after they had landed and parked at Perry-Lefors Airfield. Pilots and passengers were greeted by the Chamber of Commerce Top O' Texas welcoming group. Because they were running an hour behind schedule, 25 of the 60 planes in the group went on to Berger and Perryton. The tour, promoting private air travel in Texas, started Oct. 2 in Temple and will end Saturday in Austin after visiting 28 cities. The planes landed here between 3:15 and 3:45 p.m. and departed at 5 p.m.

## President Has Busy Day Before Operation

### Friday Surgery Major

WASHINGTON (UPI) — President Johnson today began a busy work day before entering the hospital by taking a short walk in the rain, urging newsmen not to jump to conclusions and giving Republicans a fatherly lecture. Johnson will enter Bethesda Naval Hospital tonight for major surgery. His gall bladder will be removed Friday. He will be hospitalized for 10 days to two weeks.

## Mob Beats Rights Worker in Georgia

CRAWFORDVILLE, Ga. (UPI)—A small group of angry white men dragged a young white civil rights worker from his car today and struck him several times during another school bus integration attempt by Negro pupils.

The renewed racial turmoil followed the failure Wednesday by Gov. Carl E. Sanders to win a truce in demonstrations. The Negroes have threatened to march on the state capitol and the Ku Klux Klan has warned it will start an "action program" in the area.

The civil rights worker pulled from his car and beaten was identified as Bill Trainer, 22, of New York City. Three or four white men ripped a sweater off his back and struck him several times before an agent of the Georgia Bureau of Investigation broke up the fight.

### U.S. Military Strength in Viet Totals 140,000

SAIGON (UPI)—U.S. military strength in Viet Nam soared to a new high of 140,000 men today when final elements of the 1st Infantry Division poured ashore. U.S. and Vietnamese planes meanwhile continued to pound Communist targets in both North and South Viet Nam.

The President, who gave a display of his vigor and chipper mood in a series of activities Wednesday, started out with more of the same today, taking on a heavy load of official and ceremonial chores.

When Johnson left his living quarters this morning to go to his office in the west wing of the White House, he abandoned the usual route along a sheltered colonnade, far from the view of tourists, reporters and cameramen.

### Destroying Card Could Speed Up Draft Induction

Draft age men who burn their "draft cards" can get their inductions into the armed forces speeded up, Col. Morris S. Schwartz, state Selective Service director informed the Gray County Selective Service board today.

### Resentment Against Sukarno Mounting

KUALA LUMPUR, Malaysia (UPI)—Resentment was reported mounting today against Indonesian President Sukarno for his failure to crack down on the Communist party for its part in the abortive coup of last Thursday.

### Russia Now Has Its Own Version of 'Great Society'

WASHINGTON (UPI) — Russia now has its own version of the "Great Society."

### Police Call Off Hunt For Wounded Ex-Con

WICHITA FALLS, Tex. (UPI)—Police today called off a search for Delbert Garmon, 28, a wounded ex-convict who was shot at his wife and a policeman in Wichita Falls and then kidnapped five persons in a wild flight into Oklahoma.

### Four North Texas Students Suspended in Beating Case

DENTON, Tex. (UPI)—North Texas State University officials have indefinitely suspended four students charged with assault and "senseless and unprovoked" maiming of three other students. One of the students attacked Wednesday lost an eye.

### New Column Slated

Starting Friday the News Women's page will publish each Friday a column of interest to teen agers, "Pampa High School Campus News."

### 1965 Traffic Count

Accidents—405  
Injuries—108  
Deaths—0

### Weather

PAMPA AND VICINITY—Generally fair through tomorrow. Little cooler. Low tonight near 40, high tomorrow near 70. Winds northerly 10-20 m.p.h.

### Police Call Off Hunt For Wounded Ex-Con

Wounded Garmon in the face. Garmon drove with the Princes to Altus, Okla., where he waited until daylight. Then Garmon kidnapped another couple, Mr. and Mrs. Delbert Lott, and made them ride with him and the Princes to Oklahoma City.

### Police Call Off Hunt For Wounded Ex-Con

Wounded Garmon in the face. Garmon drove with the Princes to Altus, Okla., where he waited until daylight. Then Garmon kidnapped another couple, Mr. and Mrs. Delbert Lott, and made them ride with him and the Princes to Oklahoma City.

### INSIDE TODAY'S NEWS

	Pages
Classified	15
Comics	12
Crossword	14
Dear Abby	10
Editorial	14
Food	4
Horoscope	11
On the Record	2
School Menu	10
Society	10-11
Sports	13
Theaters	11
TV Schedule	6

### THEY DO MAKE MISTAKES

### But Computers Are Helping in School

By DENNIS P. LEAVY  
United Press International  
When a 17-year-old boy walked into his scheduled gym class at Sacramento, Calif., High School this fall, his classmates had him thrown out. It was, after all, a girls' gym class.

### INSIDE TODAY'S NEWS

State University broke down when faced with the massive schedule programming of 1,800 Ferris High School students from Spokane. Late registrants started classes three days behind schedule. All class listings for students whose last names began with the letter "H" were one hour off.

Follow the crowds to the Pampa Baptist Temple. Wayland A. Murray, pastor. (Adv.)

Michael Don Portman, 19, a dental student from Dallas lost an eye. The attackers smashed him across the face with a bottle in his apartment and ran off laughing like a pack of hyenas, according to other students.

Garmon released four of his hostages unharmed and the fifth escaped from him at an El Reno service station.

Both misuses were blamed on computers, used in increasing numbers to register and schedule record masses of students. Despite their efficiency, a United Press International survey of class computer errors indicated today the brain machines still had a few things to learn.

Embarrassed university officials noted the computers were six years old and the data had to be programmed later — in smaller chunks.

Embarrassed university officials noted the computers were six years old and the data had to be programmed later — in smaller chunks.

The University of Connecticut said it usually manages to catch most of its computer errors before classes start, like

the trumpet player who almost went to trombone class. Connecticut planned to take steps to remedy programming mistakes by spring scheduling time.

### On the Record

Highland General Hospital does not have a house physician. All patients, except severe accident victims, are requested to call their family physician before going to the hospital for treatment.

Please help us to help our patients by observing visiting hours.

**VISITING HOURS**  
MEDICAL AND SURGICAL FLOORS  
Afternoons 2-4  
Evenings 7-8:30  
OB FLOOR  
Afternoons 3-4  
Evenings 7-8

#### WEDNESDAY

- Admissions**  
Ruby Lee Eastland, 716 S. Gray.  
W. E. Ginn, Pampa.  
Mrs. Fern Jackson, White Deer.  
Billy Gross, 1224 Darby.  
Mrs. Patsy Wellesley, Borger.  
Mrs. Benita Langston, Fritch.  
Ralph Wayne Patrick, 414 N. Gray.  
Mrs. Delia A. Pennington, Stinnett.  
Mrs. Pearl Milson, 313 Houston.  
D. P. Williams, 1012 Darby.
- Dismissals**  
Brian Keith Watson, 1805 N. Nelson.  
Mrs. Leona Taylor, 480 Hughes.  
Mrs. Helen Minor, 721 S. Barnes.  
Mrs. Anita Davis, 1514 N. Faulkner.  
Baby Girl Davis, 1514 N. Faulkner.  
Mrs. Doris Stribling, 620 N. Christy.  
Baby Girl Stribling, 620 N. Christy.  
James A. Davis, 2123 Beech.  
Mrs. Rae Wood, Spearman.  
Mrs. Thula Ward, 1726 Dogwood.  
Mrs. Thelma Jean Moot, 2108 Beech.  
Melvin Bailey, 2221 N. Russell.  
Clay T. Lively, 1212 Hamilton.  
Mrs. Christina Haiduk, White Deer.  
Mrs. Verna Morris, 804-Deane Dr.  
Mrs. Ione Simmons, 1818 Beech.

### Wall Street In Review

NEW YORK (UPI)—P. W. Brooks & Co., Inc., says the failure of the Dow-Jones Industrial Average to reach satisfactory intra-day and closing highs when in position to do so may prove a warning signal for near-term initiation of a correction of as much as secondary importance.

However, the firm says it doubts the views expressed in some quarters that this is the end of the bull market.

Ralph A. Rotnem of Harris, Upham & Co. says that because of its age and vigor the present market can be called a "Methuselah" bull market. Rotnem points out that Methuselah lived 96 years but says that although the present advance may not last that long in years, it may test that age in points in the Dow-Jones Industrial Average.

Tessel, Patrick Inc., says that with the major and intermediate direction of the market still clearly pointing upward, the accumulation of leading stocks on minor weakness is recommended.

Read The News Classified Ads

**HI-POCKETS**  
...AND YOU CAN CUT DOWN COLLECTION CALL-BACKS BY PAYING YOUR NEWS-PAPERBOY PROMPTLY.

**GIANT PRINTING SERVICE**  
COLLECTION DAY TODAY



The new car Fever sweeps the nation about this time and it's sweeping the customers of Furr's. You may be the winner of a new 1966 Ford Mustang or other prizes in Furr's Dividend Sweepstakes. Pick up your card today. When your card is correctly completed you are a winner. If your completed card fails to win a Mustang... you still have a chance to win in weekly drawings. Prizes in addition to the Mustang include Philco Color TV Sets, \$25, \$10, \$1, Bonus Item of the Week, Free Purchases and Frontier Stamps. Stop by Furr's today and be a winner soon.

**FURR'S DIVIDEND SWEEPSTAKES**  
**BONUS ITEM FOR THIS WEEK**  
**ELNA FLOUR**  
5 LB. BAG



**Frontier Stamps**  
With Every Purchase

**COFFEE** Folgers Includes Off Label ..... lb. **75¢**

**MILK** Food Club Instant 8 Qt. Includes Off Label **42¢**

**GREEN BEANS** DEL MONTE CUT NO. 303 CAN **24¢**

**ORANGE JUICE** Dartmouth Fresh Frozen 6 Oz. Can **2 FOR 29¢**

**PINEAPPLE** DEL MONTE SLICED No. 2 can **3 FOR \$1.00**

**CRACKERS** Bremner lb. box **19¢**

**CHILI** AUSTEX With Beans 24 Oz. Can **39¢**

**OLEO** Western Ranch lb. **2 FOR 29¢**

Food Club **Prune Juice** 40 oz. bottle **39¢**

Hunts **Tomatoes** No. 2 1/2 can **23¢**

Food Club **Asparagus** No. 300 can **25¢**

Gold Medal **Flour** 5 lb. bag **49¢**

## AND TIME TO WIN A 1966 MUSTANG!



**CONGRATULATIONS**  
CAMPBELL SOUP CO. on your new plant in Paris, Texas

### JOIN THE WINNERS

Mrs. Lawayne Hogan 1024 Neel Road \$17.44 Purchase Free	E. A. Dixon 730 Reid St. Pampa, Texas Color TV Winner	Robert Smith 1307 Hamilton Pampa, Texas Mustang Winner	Fred Sloan Purchase Free Pampa, Texas \$43.73
--	--	---	--

Relive The Greatest Stories Ever Told!

**The Illustrated Bible Story Library**

MAGNIFICENTLY ILLUSTRATED IN DELUXE VOLUMES

174 VOLUME EACH WEEK - BELONGS IN EVERY HOME

### 19¢ Produce Sale

MIX OR MATCH

**MUSTARD** Fresh Large Bunches **3 FOR 19¢**

**COLLARDS**

**GREEN ONIONS**

**RADISHES**

APPLES Washington State Extra Fancy Red Del. lb. **19¢**

ORANGES Sunkist Large Size Calif. lb. **19¢**

LEMONS Calif. Sunkist Large Size lb. **19¢**

TOMATOES Texas Red Ripe lb. **19¢**

CORN Calif. Golden Batom 2 ears **19¢**

BELL PEPPERS Calif. Bull Nose lb. **19¢**

DATES Calif Tree Sweet Pitted lb. **69¢** unpitted 1 1/2 lb. **69¢**

PEANUTS Bo's Roasted or Raw 12 oz. pkg. **33¢**

Farm Pac or Swift Premium

**SLICED BACON** lb **79¢**

**Chuck Roast** U.S.D.A. Choice Heavy Beef lb. **49¢**

**Ground Beef** FRESH lb. **29¢**

Farm Pac or Longhorn Sliced **BOLOGNA** lb. **49¢**

Farm Pac or Swifts Premium **FRANKS** lb. **59¢**

Fresh Vegetable Seasoning **SALT JOWLS** lb. **39¢**

Boneless Filet Top Frost **PERCH FISH** lb. **49¢**

**GENERAL MERCHANDISE**

**MOUTHWASH** Listerine 7 oz. **49¢**

**BUFFERIN** Disinfectant, 7 Oz. **49¢**

**METRECAL** Assorted 8 Oz. Can **4 FOR \$1**

36's Count Reg. 69¢ **53¢**

Lysol Spray Liquid, Reg. 98¢, 8 Oz. **49¢**

Pepto Bismal Hair Tonic, 7 Oz. **79¢**

Vaseline Noxzema, 6 Oz., Reg. \$1.00 **89¢**

Skin Cream **69¢**

**STEAK CLUB** U.S.D.A. Choice Heavy Beef lb. **98¢**

**Furr's SUPER MARKETS**

## \$3,250 Settlement Reached in Suit

A \$3,250 settlement was announced by attorneys shortly before 10 p.m. yesterday in the \$100,000 damage suit lodged against Thomas Braly, 16, of 521 Somerville.

The jury retired to reach a verdict early yesterday afternoon following presentation of arguments of both sides.

The settlement was announced at 9:50 p.m. while the jury was still deliberating the case.

The suit was in connection with an automobile accident Jan. 25, 1965.

Plaintiff in the suit was Mr. and Mrs. Glen Gallaher of 400 Lowry.

The suit accused young Braly of negligence in causing the collision which resulted in injuries to Mrs. Gallaher and her 11-year-old daughter.

## Stock Market Quotations

The following 10-20 N. Y. stock market quotations are furnished by the Pampa office of Schneider Bernst Hickman, Inc.

American Can	35
American Tel and Tel	67 1/2
American Tobacco	29 1/2
Ankowsky	25 1/2
Bethlehem Steel	38 1/2
Chrysler	54 1/2
Celanese	85 1/2
DuPont	23 1/2
Eastman-Kodak	34 1/2
Ford	38
General Electric	21 1/2
General Motors	19 1/2
Gulf Oil	38 1/2
Goodyear	40 1/2
IBM	54 1/2
Montgomery Ward	36
Penney's	38 1/2
Phillips	56 1/2
R. J. Reynolds	67 1/2
Sears Roebuck	67 1/2
Standard of Indiana	45 1/2
Standard Oil of New Jersey	27 1/2
Sunday Oil	41 1/2
Shamrock Oil	35 1/2
Southwestern Public Service	42
Texasaco	84 1/2
U. S. Steel	49 1/2
Westinghouse	28 1/2

The following quotations show the range within which these securities could have been traded at the time of compilation.

Franklin Life	38 1/2
Gulf Life Ins.	40 1/2
Gr. Amer. Corp.	84
General Life	13 1/2

**SEARS CATALOG SALES OFFICE**  
1622 N. Hobart MO 4-3361

## Services Slated For Former City Teacher

Funeral services are scheduled for 3 p.m. Friday in Waxahachie for Miss Frances McCue, Pampa elementary school teacher for more than 35 years.

Miss McCue died at 6 p.m. Wednesday in a Waxahachie rest home. Services are scheduled in the Rudolph Funeral Chapel.

Miss McCue moved to Pampa in 1930 and began teaching the fifth grade at Horace Mann Elementary School. She taught there until 1952 when she moved to Woodrow Wilson and taught the fifth grade until her retirement in 1955.

Miss McCue was best remembered by her students as opening each class period with a prayer from the Bible. She always devoted five min-

## Two Pampans In Run-off for WTSU Class Offices

Mike Stone and John Mann of Pampa were announced as run-off candidates for sophomore and freshmen officers at West Texas University.

Stone is in the run-off for president of the sophomore class against Randy Carver of Hereford.

Mann is in a run-off with nine other candidates for five positions on the WTSU's Student Senate.

Run-off balloting is being held today with the results not expected to be counted until tomorrow.

Ky. Cent. Life	34 1/2	34 1/2
Nat. Old Line	35 1/2	35 1/2
Nat. Fd. Life	24 1/2	24 1/2
Jefferson State	65 1/2	65 1/2
Republic Nat. Life	25 1/2	25 1/2
Southland Life	160	160
So. West. Life	35 1/2	35 1/2
Carroll Corp.	37 1/2	37 1/2
Phoenix Nat. Gas	20 1/2	20 1/2
So. West. Invest.	13 1/2	13 1/2
National Producers Life	2 1/2	2 1/2
DPA Inc.	15 1/2	15 1/2

## Mainly - - About People - -

The News invites readers to phone in or mail items about the comings and goings of themselves or friends for inclusion in this column. \*Indicates paid advertising.

**World War I Barracks 1932 and Auxiliary will meet at 7:30 p.m. Friday in VFW Hall.**

**For furniture upholstery call Bob Jewell, MO 9-9221. Fine Fabrics and vinyls.\***

**Beauty-Plat Draperies, MO 5-5490.\***

**Garage Sale, Friday and Saturday, 2143 N. Sumner.\***

**Top O' Texas Coin Club will meet at 7:30 p.m. today in Citizens Bank.**

**Hunting and fishing licenses, Pampa Tent and Awning, 317 E. Brown, MO 4-8541.\***

**Rummage Sale, good assortment, Friday only, 321 S. Cuyler.\***

**Woodrow Wilson P-TA Executive Board will meet at 9:30 a.m. tomorrow in the home of Mrs. Billy J. Stephens, 712 Deane Dr.**

**Get 60 per cent of sale, bring top quality new and used merchandise to Golden Eagle, 216 N. Ward, MO 4-6132.\***

**Now Open. Kon-Tinkl Beauty Salon, 1204 E. Kingsmill. Barbara Hughes Wood-owner. Call MO 5-2725 for appointment.\***

**Beauty operator wanted. Full or part time, opportunity to service operator's full following while she is on vacation, Hughes Building Beauty Salon, MO 5-4029.\***

## Obituaries

**Mrs. Pearl Taylor**  
Funeral services for Mrs. Pearl Taylor of Reno, Nev., mother of Frank L. Henderson of 1412 E. Browning, were scheduled for 3 p.m. today in Reno.

Mrs. Taylor died Oct. 1 in Reno.

**Mrs. Myrtle Wilkinson**  
Funeral services for Mrs. Myrtle Wilkinson, 63, of 2012 Alcock St., will be at 10:30 a.m. tomorrow in Lamar Christian Church with Rev. J. W. Duke, pastor of First Christian Church, officiating. Burial will be in Memory Gardens under direction of Carmichael-Whitley Funeral Directors.

Mrs. Wilkinson was born April 11, 1902, in Clarendon. She died yesterday morning.

Pallbearers will be R. L. Hendricks, John King, Joe Wilson, P. T. Smith, Raymond Maddox and Dick Sierman.

**Mrs. Annie Mae Woodward**  
Funeral arrangements are incomplete with Carmichael-Whitley Funeral Directors for Mrs. Annie Mae Woodward, 83, long-time Pampa resident, who died at 9:15 a.m. yesterday in a local hospital.

Survivors include one daughter, Mrs. Blanche Cobb of Pampa.

## Tickets on Sale For Fireman's Ball

Pampa firemen said today that tickets are still available for the Firemen's Ball, scheduled for 9 p.m. today in the Moose Hall.

Proceeds from the ticket sales will be used to buy toys for the annual underprivileged children's party scheduled before Christmas.

Fire Chief Ernest Winborne said an orchestra will play for the dance which will last until about midnight.

Tickets may be purchased at \$1 per person from any fireman or can be bought at the door.

Winborne said anyone desiring tickets can telephone the fire department and they will deliver the tickets to them.

The chief said the fire department has not abandoned the program of collecting and repairing toys for the children's party. He said it is being held to supplement the repaired toys with new ones.

## \$13,010 Damage Suit Filed on Southard Firm

A \$13,010 damage suit was filed in 31st District Court in Pampa today against Southard Electric Co., of 720 W. Brown.

The suit was filed by the Emerald Pipeline Co. of Amarillo.

The suit accused the Pampa electric company of eight counts of negligence, resulting in a ruptured pipeline, owned by Emerald Pipeline Co.

The suit stated that a cable plov was carelessly driven into a pipeline causing it to puncture.

The suit states the incident occurred Jan. 7, 1965, 10 miles northwest of Gruver.

In 1940, Adolf Hitler postponed his planned invasion of the British Isles.

**The Pampa Daily News**  
YOUR FREEDOM NEWSPAPER  
SUBSCRIPTION RATES  
By carrier in Pampa, 40 cents per week; \$5.20 per 1 month; \$20.80 per year. \$1.75 per month on motor route in Gray County. By mail paid in advance in office. \$10 per year in retail trading zone. \$15 per year, \$1.25 per month, outside retail trading zone. Price per single copy 3 cents daily, 15 cents Sunday. Published daily except Saturday by the Pampa Daily News, 415 So. 1st St., Pampa, Pampa, Texas. Phone MO 4-2025, all departments. Entered as second class matter under the act of March 3, 1957.

Missing your Pampa Daily News? Dial MO 4-2525 before 7 p.m. weekdays, 10 a.m. Sundays.

## Rotary Club Hears Talk On Fire Prevention

A representative of the Pampa Chamber of Commerce 'Fire Prevention Week' committee, Mrs. Thelma Bray reminded members of the Pampa Rotary Club of the importance in taking proper fire precautions yesterday in the noon luncheon at Coronado Inn.

Fire Prevention Week is being observed all this week in Pampa.

Fred J. Neslage introduced a new member, John Sweeney to the group. Sweeney is area superintendent for the Sun Oil Company.

Honored as Junior Rotarian for the month of October was Doug Alton. A senior high school student, Doug is a member of the Harvester basketball team.

Kenneth McWilliams was Junior Rotarian for September.

## FLASH FLOODS CAIRO (UPI) -

Flashfloods from heavy rains have made more than 3,200 persons homeless between the Suez Canal town of Suez and Ismailia to the south.

Three persons also were killed, officials said. Navigation on the Canal itself was not affected.

## Police Plan to Ticket Violators of 15-Minute Parking Limit at Post Office

Police Chief Jim Conner said today that due to frequency of violations a stepped-up enforcement program will be started against motorists violating the 15-minute parking limit around the Pampa Post Office.

Conner said many motorists are using the parking area while they shop or in several instances persons who work downtown are using the parking area.

Conner said officers will begin checking the length of time cars are parked around the post office and write citations on those parked over 15 minutes.

Conner also reminded motorists that pedestrians have the right-of-way at the crosswalk in front of the post office. He said he has also directed officers to crack-down on motorists caught not observing the pedestrian right-of-way.

**DAIRY QUEEN**  
2 CONVENIENT LOCATIONS  
No. 1 1117 Alcock MO 4-6761  
No. 2 1700 N. Hobart MO 3-9168

**Freezer Beef Sale**  
Choice Grain Fed Beef  
Unconditionally Guaranteed  
Investigate Our Monthly Pay Plan  
This Meat Is Cut To Your Specifications. DOUBLE WRAPPED AND QUICK FROZEN TO INSURE TENDERNESS AND FLAVOR.

1/2 BEEF, 43c lb. Plus 6c Processing  
1/2 HOG, 35c lb. Plus 7c Processing

**CLINTS FOODS**  
Phone 883-4691 White Deer, Texas

**Top Food Values**

**MITCHELL'S Grocery**  
638 S. Cuyler  
Phone MO 5-5451  
BUCCANEER Saving Stamps  
DOUBLE ON WEDNESDAY

**SHORT RIBS 29c lb**  
**BAR-B-Q 69c lb**

**Chuck Roast 49c lb**

**Arm Roast 55c lb**  
**Sausage 89c 2 lbs.**

**Bacon 84c Lb. Pkg.**

**PORK STEAK 49c lb**

**FRESH CATFISH Thurs., Fri. Sat.**

**Mortons, Peach, Apple, Cherry 3 for \$1.00**  
**FRUIT PIES**

**Gortons, 11 Oz. Box 49c**  
**BREADED PERCH**

**Gortons, 8 Oz. Box 39c**  
**FISH STICKS**

**Powdered SUGAR 15c Box**

**Shurfine TOMATO SAUCE 9 for \$1.00**  
**PEANUT BUTTER \$1.09**

**Shurfine 2 Oz. Jar INSTANT COFFEE 35c**  
**Shurfine SALAD DRESSING qt. 45c**

**Food King Shortening 3 lb. can 65c**  
**IMPERIAL SUGAR 5 lb. Bag 55c**

**BELL PEPPERS 2 lbs. 25c**  
**Tokay Grapes 19c lb**  
**Yellow Onions lb. 5c**

**Shurfine LONG SPAGHETTI**  
**Shurfresh BISCUITS 13 for \$1**  
**Ideal, Tall Can DOG FOOD 2 for 29c**  
**38 Oz. Jar CRISCO OIL 73c**  
**Hershey, 1 Lb. Can SYRUP 19c**  
**Welch's, 20 Oz. GRAPE JELLY 39c**  
**Shurfine GRAPE JUICE 3 qts. \$1**  
**Log Cabin, 4 Oz. Bottle SYRUP 65c**

**Brown N' Serve ROLLS 4 for \$1**

**Time for a KitchenAid dishwasher**

If you're sick and tired of doing the dishes—and who isn't—here's a beautiful new way to end the monotony of daily dishwashing. Famous KitchenAid dependability, convenience features, and big, versatile capacity are now available in a wide selection of smart, hard working KitchenAid portable dishwashers.

**MODEL KD-SEC. The KitchenAid Classic Vari-Cycle In White or Edged Colonization to match other appliances or cabinets. Automatic-Lift Top Rack makes it easy to load glasses, pots, pans and deep bowls... gives convenient access to lower rack. Full-width Guide Bar makes it simple to roll about. NO INSTALLATION COST. USE IT RIGHT AWAY!**

**PUSH A BUTTON... DISHWASHER'S DONE.** Full Cycle for normal loads. Rinse and Hold for partial loads. Utility and Utensil for pots and pans. Indicator Light. Automatic Power Cord Reel.

**NO HAND RINSING.** New 4-Way Hydro-Sweep wash scrubs every dish sparkling clean. Same as in every KitchenAid built-in dishwasher.

**SAFE, THOROUGH DRYING.** Sanitized hot air is circulated over, under and around each piece. Automatic Rinse Agent Dispenser helps dishes dry or stain.

**PORCELAIN ENAMEL INSIDE AND OUT.** Exclusive with KitchenAid. Beautiful. Durable. Self-cleaning. Won't cut, scratch, rust or stain.

**Don't be switched from the best... KitchenAid. JOE HAWKINS APPLIANCES**  
854 W. FOSTER MO 4-3207

**SPECIAL AQUA NET HAIR SPRAY**  
Reg. 1.00 ----- **59c**

**CORICIDIN**  
Reg. \$1.19 25's ----- **73c**

**SPECIAL Hudnut Shampoo 89c \$1.25**  
**AQUA VELVA 43c 79c**

**Permanent Ogilvie With Shampoo \$2.50**  
Reg. \$3.25

**B & B PHARMACY**  
MO 5-5788  
Ballard at Browning  
S&H GREEN STAMPS

# Food Page

4 THE PAMPA DAILY NEWS THURSDAY, OCTOBER 7, 1965 58TH YEAR

## Definitions Given of Cooking Terms

Beginner cooks sometimes shy away from recipes that call for cooking methods with which they are unfamiliar. Even some experienced cooks are not certain of the differences in cooking techniques.

The following are standard definitions of some common cooking terms:

**Bake** — To cook in an oven, whether in covered or uncovered utensils.

**Baste** — To moisten food while cooking by pouring on melted fat, drippings or other liquid.

### Food Buying Guide

WASHINGTON (UPI) — A guide to the nation's food shopping buys for the coming weekend, prepared for UPI by the Agriculture and Interior Departments:

Shoppers will generally find plentiful supplies of good seasonal fruits and vegetables, with good selections of poultry. Shoppers should check their meat counters for specials, but fall production of meat is good, and a careful shopper can find good buys.

Look for buys in the meat section. There are good supplies of lamb, pork and beef in most areas, but special buys should be on roasts, chops, ham and special cuts.

Broiler-fryers and turkeys continue to be good buys. In some areas cheese and eggs are specially priced.

In the vegetable department, green beans, cabbage, carrots, corn, cucumbers, lettuce, onions, peppers, potatoes, radishes, squash, sweet potatoes and tomatoes still are plentiful. Harvests have been generally good on these items.

Apples and grapes are the national plentiful in the fruit section. But cantaloupes, oranges and plums are still in supply in most areas. Check for specials.

Nationally, fish sticks and canned tuna are the best buys in fish.

## Harvest Time Is Good Time to Fill Home Freezers

When harvest time comes, wise homemakers follow close behind.

This is their chance to save money by stocking up on good fruit and vegetable buys which can keep the family in luscious out-of-season specialties for months to come. The larger freezer sections of the new no-frost refrigerator-freezers can handle most of these foods with ease.

Fresh fruits and vegetables keep their flavor and food value when frozen in zero-temperature storage. Since freezer sections maintain but cannot improve original freshness and flavor, the food should be of good quality and carefully packaged.

It is not difficult to freeze fruits and vegetables, but specific directions should be followed depending on the particular food. Strawberries, for instance, can just be hulled and washed before packing. Corn requires blanching first. Fresh tomatoes cannot be frozen.

Detailed directions on approved home freezing methods can be obtained from the refrigerator-freezer manufacturer, the U. S. Department of Agriculture or the U. S. Government Printing Office, Washington, D. C.

## Receive Guests Warmly

When guests ring the doorbell, one way to welcome them is to swing open the door of your refrigerator-freezer. If you've stocked part of your appliance for fun, the greeting will be anything but chilly.

Guests go away a little happier after they've enjoyed some favorite dessert. And even the busiest hostess can be a social success if she's stocked the refrigerator-freezer with tempting treats.

Practically all desserts keep well in the freezer and promise instant fun when they're defrosted. Pies and cakes, wrapped in foil or plastic and promptly frozen, retain their freshness and flavor for months. Melon balls, berries, diced pineapple and sliced apples or peaches can all be frozen in plastic containers to make a luscious fruit salad on very short notice.

An assortment of ice cream makes about the handiest and most versatile dessert menu—as an a-la-mode topping, fancied up with fruit, nuts, sauce or whipped cream, or simply served by the scoopful.

You can give your guests a nostalgic treat by having an old-fashioned ice cream social. One idea is to serve "snowballs." Pack ice cream in fluted paper



**PARTY-FRESH** — Desserts that look as good as they taste make any meal festive. Special treats like these party-pretty parfaits can be prepared ahead of time and kept fresh in the refrigerator-freezer until ready for use. A generous supply of ice cream and sundae toppings such as chopped fruit and nuts can be stored in the freezer compartment as instant-dessert insurance for unexpected company.

baking cups, roll the tops in shredded coconut, chocolate flakes or chopped nuts. After the snowballs have hardened a bit, cover them with plastic wrap and freeze. They'll look as good as they taste.

Just as much fun is a make-your-own-sundae party. Store several flavors of ice cream in the freezer compartment until party time. Freeze chopped



nuts and diced or crushed fruit in small containers so they'll thaw rapidly. Have lots of whipped cream and different kinds of toppings on hand. Then invite the guests to heap their plates with their favorite ice cream flavor and add whatever topping they prefer. Another festive dessert is parfait. Make two or three kinds of pudding or gelatin.

Read The News Classified Ads

## Fare to the Fair Reduced 1/3

Round Trip Chair Car Fare

AMARILLO to DALLAS \$13.35 Effective Oct. 9-24



MOST ECONOMICAL WAY! The Train Is Safe, Comfortable, Relaxing and Lots of Fun!

FORT WORTH AND DENVER RY.

B. G. Monzingo MO 44731

# Food Specials for the Thriftwise

MIRACLE WHIP Salad Dressing ---- qt. **49¢**

EGGS Elmers Doz. **39¢**

Crushed, 303 Can **PINEAPPLE 17¢**

Hi-C, 46 Oz. Can **ORANGE DRINK 2 FOR 47¢**

HUNT'S CATSUP 14 Oz. Bottle **15¢**

CORN Del Monte Golden Cream Style 303 **15¢**

Kimbell's, 300 Size **PORK and BEANS 2 FOR 15¢**

Mission Blue Lake, 303 Can **GREEN BEANS 2 FOR 39¢**

Mead's **BISCUITS 3 FOR 19¢**

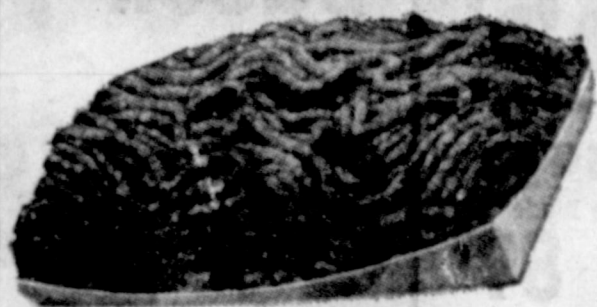
NORTHERN TISSUE ----- 3 rolls **19¢**

KIM, FACIAL TISSUE ----- 400 count **15¢**

THOMPSON TOKAY Grapes **15¢ lb**

Calif. Sunkist **ORANGES 17¢ lb**

U. S. No. 1 Red Potatoes 10 lb. bag **39¢**



FRESH GROUND

**BEEF 3 LBS \$1.00**

**ROAST Chuck 45¢ lb**

**STEAK Chuck 59¢ lb**

**BACON Armour's Star 69¢ lb**

**FRYERS Fresh Dressed 25¢ lb**

**SAUSAGE Country Style 2 lb. bag 98¢**

**PICNIC Fully Cooked lb. 39¢**

WARD'S SUPER SPECIAL **TIDE 39¢**

GIANT SIZE With \$7.50 or More Purchase Excluding Cigarettes

Heinz **SOUP Veg. Beef Reg. can 15¢**

Mission **SWEET PEAS 303 can 15¢**

Diamond **TOMATOES 303 can 3 FOR 39¢**

Kimbell's **MILK Tall Can 2 FOR 25¢**

Honey Boy **SALMON tall can 49¢**

Kimbell's **CHILE and BEANS 300 size 29¢**

**VALUABLE COUPON**  
Bring This Coupon To Our Store  
Free 100 Buccaneer Stamps  
With  
\$5.00 or More Purchase  
Excluding Cigarettes

**VALUABLE COUPON**  
Bring This Coupon To Our Store  
Free 100 Buccaneer Stamps  
With The Purchase of  
2 Pkgs. Pillsbury  
CAKE MIX

**VALUABLE COUPON**  
Bring This Coupon To Our Store  
Free 100 Buccaneer Stamps  
With The Purchase of  
3 Packages of  
OLEO

WE GIVE BUCCANEER STAMPS

DOUBLE STAMPS EVERY WEDNESDAY WITH \$2.50 OR MORE PURCHASE

502 W. FRANCIS

# WARD'S GROCERY

OPEN DAILY 8 TO 8 WE RESERVE THE RIGHT TO LIMIT QUANTITIES MO 9-9641

meet **RED SATIN!**

"Whisky created simply to please a man?"



—A man and his closest friends. You'll enjoy Red Satin at first meeting. It's an adventure in taste. So make a date to meet Red Satin. Tonight!

BLEND: WHISKY, 51% PROOF, 70% GRAIN NEUTRAL SPIRITS © 1965 BATH DIST CO., ALABAMA, FL.

Better Food For Less  
**IDEAL**  
FOOD STORES

Save 2 Ways At Ideal...Low, Low Prices  
Plus Free Gunn Bros. Stamps

SWIFT'S PREMIUM PRO-TEN BEEF

# ROUND STEAKS



Whole Slices lb.

# 89<sup>c</sup>

Sirloin Steak **98<sup>c</sup> lb.**

Pro-Ten Beef Round Swiss Steak **89<sup>c</sup> lb.**

T-Bone Steak lb. **\$1<sup>09</sup>**

Extra Lean Fresh Ground Beef **59<sup>c</sup> lb.**

WILSON'S RED RIND WISCONSIN LONGHORN lb. <b>69<sup>c</sup></b>	U.S.D.A. Grade A WHOLE FRYERS lb. <b>29<sup>c</sup></b>
IDEAL'S COUNTRY KITCHEN BOSTON BAKED BEANS Pint Ctn. <b>29<sup>c</sup></b>	H AND G GORTON'S WHITING 1 1/2-Lb. Pkg. <b>39<sup>c</sup></b>

**FOLGERS**  
COFFEE  
1 L C B A N **74<sup>c</sup>**

Frozen Breakfast Drink  
**BIRDS EYE AWAKE**  
Orange Flavored  
3 9 oz. cans **\$1<sup>00</sup>**

Assorted Flavors  
**IDEAL ICE MILK**  
HALF GALLON CTN.  
**39<sup>c</sup>**

SPECIAL LABEL  
LIFEBUOY SOAP  
6 Bath Size **87<sup>c</sup>**

SPECIAL LABEL  
LUX BEAUTY SOAP  
3 Reg. Size **35<sup>c</sup>**

BATH SIZE  
LUX BEAUTY SOAP  
2 Bars **35<sup>c</sup>**

ENRICHED FLOUR  
**GOLD MEDAL**  
SPECIAL LABEL  
5-Lb. Bag **45<sup>c</sup>**

REGULAR  
**KOTEX NAPKINS**  
3 Pkgs. of 12 **\$1<sup>00</sup>**

MILLSBURY LAYER  
**CAKE MIXES**  
3 19 1/2-oz. Pkgs. **\$1<sup>00</sup>**  
White, Yellow, Choc. Fudge, Swiss Choc., Double Dutch

MILLSBURY—DELICIOUS FLAVORS  
Frosting Mixes 13-oz. Pkg. **37<sup>c</sup>**

### DAIRY DELIGHTS AT EVERYDAY LOW PRICES

CHEESE FOOD  
**KRAFT VELVEETA**  
2-Lb. Loaf **89<sup>c</sup>**

OLD FASHIONED  
Longhorn Cheese 10-oz. Pkg. **39<sup>c</sup>**

KRAFT ASSORTED  
Cheese Spreads 5-oz. Jar **29<sup>c</sup>**

Ideal  
BUTTERMILK 1/2 gal. **39<sup>c</sup>**

ALL SWEET  
Margarine 1-Lb. Ctn. **29<sup>c</sup>**

Pure Cane  
**SUGAR**  
5 lb. bag **55<sup>c</sup>**

Reg. or King Size  
**COCA COLA**  
6 Bot. Ctn. **39<sup>c</sup>**  
Plus Deposit



RED FLAME TOKAY  
**GRAPES**  
3 **29<sup>c</sup>** lbs.

WASH. BARTLETT PEARS **5.99<sup>c</sup> lb.** OCEAN SPRAY FRESH CRANBERRIES 1-lb. BAG **29<sup>c</sup>**

STALEY Waffle Syrup Pint Btl. **29<sup>c</sup>**

STALEY Waffle Syrup Quart Btl. **57<sup>c</sup>**

LIPTON LEMON FLAVORED Instant Tea 2-Envelope Package **29<sup>c</sup>**

**BAKERY TREATS**  
FROM IDEAL'S MODERN OVEN

IDEAL WHITE OR CARAMEL ICED Cinnamon Rolls Pkg. Of 6 **29<sup>c</sup>**

IDEAL'S Homestyle Bread 2 1 1/2-Lb. Loaves **45<sup>c</sup>**

### DISCOUNT PRICES ON HEALTH AND BEAUTY AIDS

REGULAR \$1.00 Jergon's Lotion 11-oz. Btl. **79<sup>c</sup>**

REGULAR \$1.00 DEODORANT Right Guard 4-oz. Can **73<sup>c</sup>**

REGULAR \$1.45 SHAMPOO Head and Shoulders 6-oz. Btl. **47<sup>c</sup>**

COOKING OIL  
**MAZOLA OIL**  
48-oz. Btl. **98<sup>c</sup>**

HIGHLY UNSATURATED  
**CRISCO SHORTENING**  
3-Lb. Can **79<sup>c</sup>**

Bonus 1/4-More Pack  
**NESTLE'S QUIK**  
Reg. 2-Lb. Can **89<sup>c</sup>**

Bonus 1/4-More Pack  
**NESTLES QUIK**  
Reg. 1-Lb. Can **47<sup>c</sup>**

SUGARINE  
LIQUID  
**SY/ETENER**  
4-oz. Btl. **59<sup>c</sup>**

## CAMPBELL SOUP

**Tomato** can **10<sup>c</sup>**

MEAT VARIETIES 6 cans **\$1<sup>00</sup>**

VEGETABLE VARIETIES 8 cans **\$1<sup>00</sup>**

THIN, CRISP  
**Supreme Saltines** 1-lb. Box **29<sup>c</sup>**

FOR DISHWASHING  
**Liquid Lux** 32-oz. Plastic **98<sup>c</sup>**

FOR DISHWASHING  
**Liquid Swan** 22-oz. Plastic **69<sup>c</sup>**

LIQUID CLEANER  
**Handy Andy** 28-oz. Btl. **69<sup>c</sup>**

ALL-PURPOSE DETERGENT  
**Liquid Wisk** 1/2-gal. Btl. **\$1<sup>45</sup>**

REGULAR SIZE  
**WHITE DOVE SOAP**  
2 Bars **39<sup>c</sup>**

BATH SIZE  
**WHITE DOVE SOAP**  
Bar **25<sup>c</sup>**

SPECIAL LABEL BLUE  
**RINSO DETERGENT**  
Giant Size **69<sup>c</sup>**

TOWEL PACK  
**BREEZE DETERGENT**  
Giant Size **85<sup>c</sup>**

DETERGENT  
**CONDENSED ALL**  
10-Lb. Box **\$2.29**

FLUFFY  
**ALL DETERGENT**  
3-Lb. Box **79<sup>c</sup>**

Special Label Detergent  
**VIM TABLETS**  
Giant Size **59<sup>c</sup>**

For Electric Washers  
**DISHWASHER ALL**  
20-oz. Box **45<sup>c</sup>**

Liquid Detergent  
**COLD WATER All**  
96-oz. Btl. **\$2.29**

Television Programs

Channel 4 KGNC-TV, THURSDAY ABO
8:00 The Match Game
8:30 News
8:55 Sheriff Hill
9:30 Laramie
9:30 News

CHANNEL 4 FRIDAY
8:00 Today Show
8:30 News
9:30 NBC News
10:00 Morning Star

Channel 7 KVII-TV, THURSDAY ABO
8:00 No time for love
8:30 Where action is
9:00 Leave it to Beaver
9:30 Highway Patrol
9:30 Peter Jennings
9:35 News

CHANNEL 7 FRIDAY
8:30 Wake up & learn
9:00 Crop and Stock
9:15 Weather
9:30 News
1:00 State of Wells Fargo

Channel 10 KFDD-TV, THURSDAY CBS
8:00 The Secret Storm
8:30 Fear Forams
9:00 Chief Proud Eagle
9:30 Suburban
9:30 CBS News

CHANNEL 10 FRIDAY
8:30 Religion
8:35 Amarillo College
9:00 Jack Tompkins
9:30 News Report-Sports
9:30 Local Events
9:35 This Morning News
9:55 Canine Kangaroo
9:55 I Love Lucy



1966 CHEVROLET CAPRICE CUSTOM WAGON — The top-of-the-line Caprice, which was introduced in 1965 as a sport sedan, has been expanded to four distinctive models for 1966.

Television In Review

By RICK DU BROW
United Press International
HOLLYWOOD (UPI) — The exhausting one-day trip of Pope Paul to New York and the United Nations got exhaustive television coverage Monday.

ANNOUNCE APPOINTMENTS
WASHINGTON (UPI) — The Navy and Air Force have announced major appointments in their women's ranks.

In 1492, Christopher Columbus took possession of land in the Bahamas in the name of Spain.

Advertisement for Kentucky Fried Chicken featuring a picture of a man and text: NOW! FEATURING Col. Sanders Famous BAR-B-Q SANDWICH only 25¢

Youth Center Calendar

THURSDAY
4:00-Polywog Swim Lessons.
5:00-Adv. Beginner Lessons.
7:00-All Ages Swim; Fencing Lessons.
7:30-Skelly Oilers vs. Dairy Queen Volleyball.
8:15-Senior Citizens vs. Rejects.
9:00-Pampa Warehouse vs. Dozers.
10:00-Close.

BLAKE'S FOOD MARKET

1945 N. Hobart FREE DELIVERY MO 4-7471
Weekdays 8 to 8 Closed Sunday
BACON 69¢
ROUND STEAK 89¢
BOLOGNA 39¢
HAM 59¢
WHITE POTATOES 10 lbs. 55¢
COFFEE 69¢
TUNA 2:55¢
SOLID OLEO 2 lbs. 29¢
MILK 8:11
GRAPE DRINK 3:89¢
DOG FOOD 13 cans \$1.00
GREEN BEANS 8 cans \$1.00
LADIES HOSIERY 3 pairs \$1.00

FAT OVERWEIGHT
Available to you without a doctor's prescription...
Richard Drug, 111 N. Cuyler

FITE FOOD
We Give PAMPA PROGRESS STAMPS DOUBLE STAMPS
Wednesday With \$2.50 Purchase or More
ROUND STEAK 89¢
CHILI 59¢
SIRLOIN STEAK 89¢
GROUND BEEF 39¢
STEW BEEF 59¢
BOLOGNA 49¢
Beef for your freezer 47¢
LARGE EGGS 49¢
Tomato Soup 10¢
BREAD 25¢
COFFEE 73¢
BISCUITS 23¢
TUNA 25¢
CRACKERS 33¢
OLEO 35¢
COLD POWER 49¢
ICE CREAM 59¢
COCA-COLA 39¢
Russet Potatoes 49¢
CARROTS 9¢
GRAPE JUICE 19¢
POUND CAKE 69¢

High points of the Pope's day for television viewers would, of course, be the huge Mass, his address to the United Nations in French, his other statements in English, his meeting with President Johnson at the Waldorf Astoria and the enormous reception that greeted him as he entered St. Patrick's Cathedral on Fifth Avenue.

The nighttime coverage, however, was pretty often a one-network show, and the network was NBC-TV. The reason for this was that while ABC-TV and CBS-TV scheduled the Yankee Stadium Mass along with their regular entertainment shows on a delayed, taped basis across the country, NBC-TV maintained end-to-end "live" coverage of the papal visit coast to coast.

RECORD TRAVEL TO CARRIBBEAN
NEW YORK (UPI) — Travel to Caribbean islands set new records in 1964, according to preliminary figures released by the Caribbean Travel Association.

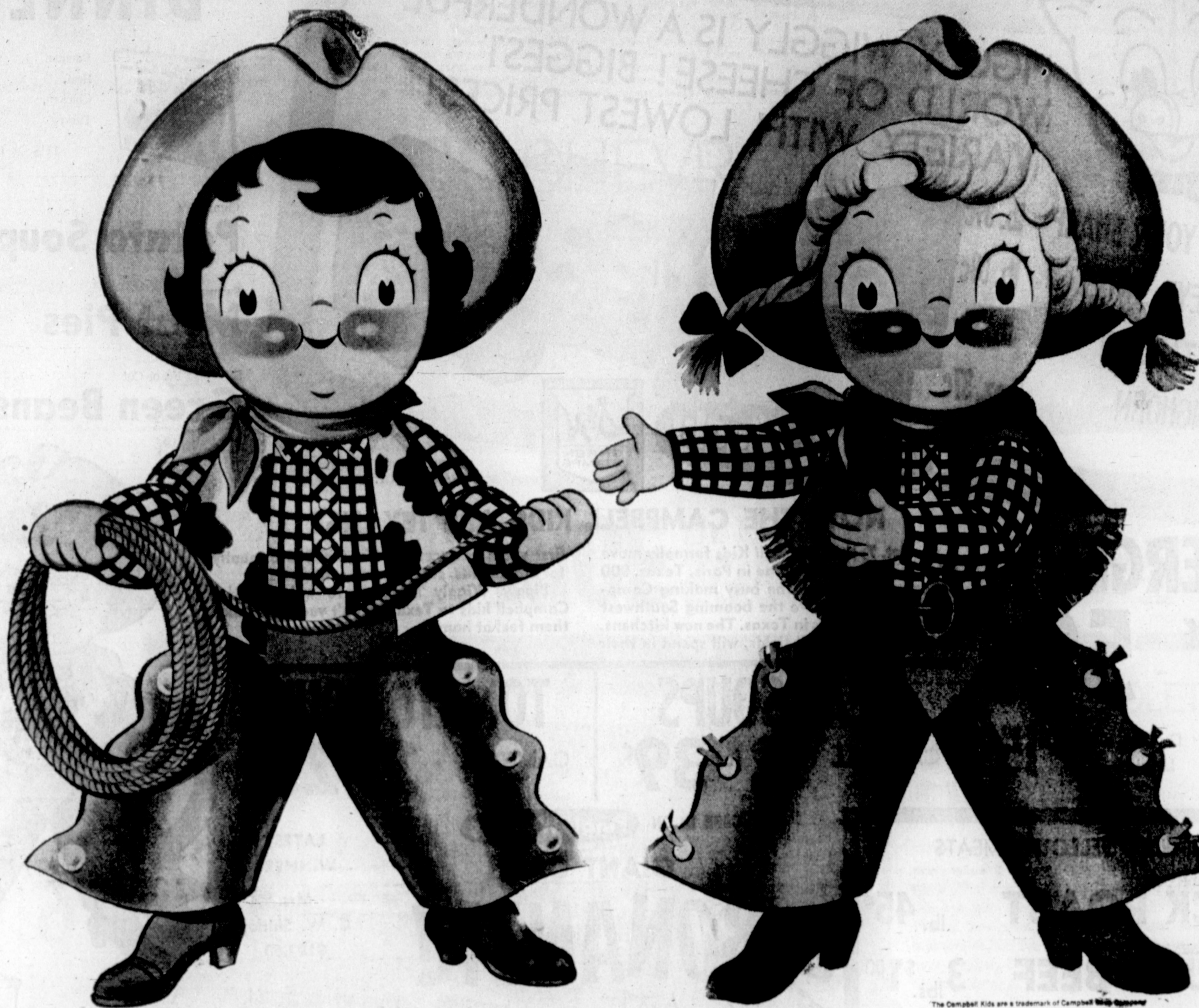
MARTINIQUE -CLOSER
NEW YORK (UPI) — Martinique, the French island in the Caribbean, will be brought nearer to the United States this winter. In December, Air France 707 jet services will cut direct flying time New York-Fort de France to 4 hours and 25 minutes.

MORE SAVINGS FOR YOU!

Grade A Med. Eggs 2 doz. 89¢
Duncan Hines CAKE MIX 3 boxes \$1
Kraft Miracle Whip qt. 49¢
OLEO Shurfresh 5 lbs. \$1.00
BISCUITS 12:51
PEANUT BUTTER 49¢
BLEACH 1/2 gal. 29¢
GREEN BEANS 4:10
PRUNE JUICE qt. 39¢
PORK & BEANS 7:10
PEAS 4:10
Meat Specials
Coffee 69¢
TUNA 4:10
Flour 79¢
Tissue 69¢
Sugar 49¢
SHURFINE CRACKERS 19¢

HOM'S FOODS

We Give Buccaneer Stamps-Double Wed With \$2.50 or More Purchase
421 E. FREDERIC OPEN 7 DAYS A WEEK MO 4-8531



The Campbell Kids are a trademark of Campbell Soup Company

## Now the Campbell Kids are Texans

*—proud to be making good foods for fellow Texans*

Today, October 7, the Campbell Kids formally move into their brand-new home in Paris, Texas.

This is the dedication date for the big, new Campbell Kitchens where 900 Texas employees will be busy making Campbell products to serve the booming Southwest market that centers in Texas.



THE NEW CAMPBELL KITCHENS IN PARIS, TEXAS

45 different food products are made in Campbell's Paris, Texas Kitchens. Among them are: Campbell Soups; Franco-American Spaghetti, Macaroni and Gravies; Bounty Stews; Campbell's Beans. Other Campbell products enjoyed by Texans include: Swanson Frozen Foods; V-8 Cocktail Vegetable Juice; Campbell's Tomato Juice; Red Kettle Dry Soup Mixes; and many foods especially prepared for restaurants, schools, hospitals and vending.

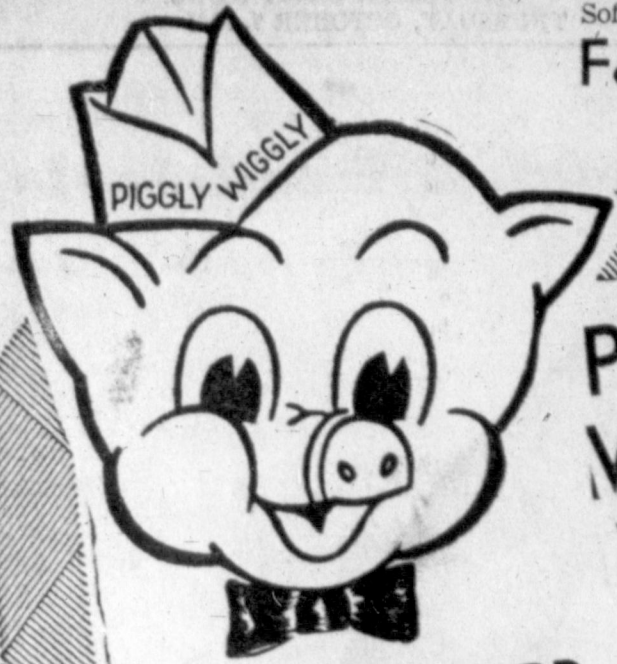
The new kitchens, as big as 31 football fields, will spend in their first years in excess of \$20,000,000 annually for ingredients, supplies and containers.

The Campbell Kids are proud to be here—and mighty proud to be Texans making good products for their fellow Texans!

*Campbell Soup Company*

T  
171  
lay  
mpa  
7c  
lb  
7c  
lb  
5c  
5c  
1.00  
9c  
S  
09  
ST  
19c  
5c  
9c  
9c  
9c  
lb  
89c  
19c  
19c  
19c  
19c  
5c  
lb  
39  
c  
S

Soft Ply Asst. Colors  
Facial Tissue 400 ct. **6<sup>F</sup>\$1<sup>R</sup>**



**PIGGLY WIGGLY IS A WONDERFUL  
WORLD OF CHEESE! BIGGEST  
VARIETY WITH LOWEST PRICES!**

**NEW YORK SHARP**  
**BIG EYE SWISS**  
**MOZZARELLO**  
**LONGHORN**

lb. 89c  
lb. 89c  
lb. 75c  
8 oz. 37c



**Piggly Wiggly**



THESE PRICES GOOD  
IN PAMPA, OCT. 7-9, 1965

FRESH FROZEN FOODS

# DINNERS



Banquet,  
Beef,  
Chicken,  
Turkey

**29<sup>c</sup>**

11 1/2 Oz. DINNERS

Campbell's

**Potato Soup**

**19<sup>c</sup>**

Swanson

**Meat Pies**

**4<sup>F</sup>\$1<sup>R</sup>**

Seabrook, Fr. or Cut

**Green Beans**

**5<sup>F</sup>\$1<sup>R</sup>**

## NOW THE CAMPBELL KIDS ARE TEXANS!!!

On Oct. 7, the Campbell Kids formally move into their brand new home in Paris, Texas. 900 Texas employees will be busy making Campbell products to serve the booming Southwest market that centers in Texas. The new kitchens, as big as 31 football fields, will spend in their

first years in excess of \$20,000,000 annually for ingredients, supplies and containers.

Piggly Wiggly is proud to welcome the Campbell kids to Texas! Won't you help make them feel at home?



**DETERGENT**  
**AJAX** **59<sup>c</sup>**

Gt. Box  
All Purpose, 10c Off

**Bleach** Du Rite, Liquid qt. **15<sup>c</sup>**

**MEAT SOUPS**

CAMPBELL **2 for 39<sup>c</sup>**

**TOMATO SOUP**

CAMPBELL **2 for 25<sup>c</sup>**

CASH IN ON **Piggly Wiggly's**  
**GIANT CASH**

# BONANZA!



LATEST  
WINNERS

Mrs.  
C. W. Shirley  
\$102.60

CAREFULLY SELECTED MEATS

BABY BEEF, BLADE-CUT	
<b>CHUCK ROAST</b>	lb. <b>45<sup>c</sup></b>
DATED FOR FRESHNESS	
<b>GROUND BEEF</b>	3 lbs. <b>\$1<sup>00</sup></b>
FRESH DRESSED WHOLE	
<b>FRYERS</b>	lb. <b>29<sup>c</sup></b>
Swiss Steak Baby Beef, Arm Bone Cut	lb. <b>59<sup>c</sup></b>
Rib Chops Baby Beef	lb. <b>69<sup>c</sup></b>
Short Ribs Baby Beef	lb. <b>29<sup>c</sup></b>
Pork Chops First Cut, Northern Pork	lb. <b>59<sup>c</sup></b>

Kounty Kist, Cut 303 Can	<b>8<sup>F</sup>\$1<sup>R</sup></b>	Zestee, Strawberry, 2 lb.	<b>59<sup>c</sup></b>
<b>GREEN BEANS</b>		<b>PRESERVES</b>	
Southern Roll, 1/2 lb.	<b>8<sup>c</sup></b>	Campfire, 300 Can	<b>2<sup>F</sup>15<sup>c</sup></b>
<b>OLEO</b>		<b>PORK &amp; BEANS</b>	
Hunts Tomato, 20 Oz.	<b>3<sup>F</sup>69<sup>c</sup></b>	E Z Time, 32 Oz.	<b>39<sup>c</sup></b>
<b>CATSUP</b>		<b>Liquid Detergent</b>	

C & H  
**SUGAR**  
Pure Cane **5<sup>LB.</sup> 55<sup>BAG</sup><sup>c</sup>**

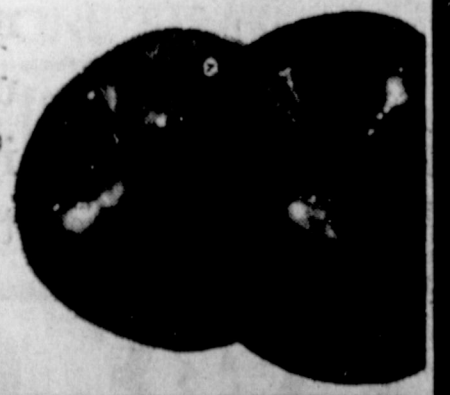


FRESH PRODUCE!

RED DELICIOUS  
**APPLES..... 10<sup>c</sup>**

Red Ripe  
**TOMATOES ... 19<sup>c</sup>**

Farm Fresh  
**CABBAGE ... 5<sup>F</sup>1<sup>R</sup>**



PURE VEG. SHORTENING  
**CRISCO**

**3<sup>LC</sup> 75<sup>BAN</sup><sup>c</sup>**



Ore Ida, 13 Oz.	<b>Instant Potatoes ... 59<sup>c</sup></b>
Blackburns	<b>WAFFLE SYRUP ... 32 oz. 39<sup>c</sup></b>
Faultless	<b>SPRAY STARCH ... 24 oz. 69<sup>c</sup></b>
Campbells, All Varieties	<b>MEAT SOUPS ... No. 1 can 2<sup>F</sup>39<sup>c</sup></b>
Ideal	<b>DOG FOOD ... No. 1 can 2<sup>F</sup>33<sup>c</sup></b>
HYTONE, Reg. 63c, 300 Count	<b>FILLER PAPER ... 27<sup>c</sup></b>

Lowest Prices... Greatest Variety... always at

**Piggly Wiggly**



# Foreign Commentary

By JAY AXELBANK  
**United Press International**  
**MOSCOW (UPI)**—When Nikita S. Khrushchev fell almost a year ago some diplomats here predicted the passing of Peking's enemy No. 1 would allow Russia and China to moderate their ideological feud.  
 Instead the Oct. 15 anniversary approaches with Sino-Soviet relations not only unimproved but possibly worse than under Khrushchev.

In fact, two undeclared wars in Asia—Viet Nam and Kashmir—may have made it virtually impossible for the Communist giants to ever patch up their differences, diplomatic observers say.

The Kremlin's openly expressed moral support for India in the Sino-Indian border conflict so infuriated the Chinese that they charged the Soviet "revisionist clique" was in league with Western "imperialists."

Not only has the Viet Nam conflict failed to make the feuding comrades close ranks against a common "imperialist" foe, but this situation, too, has driven a wedge between them.

### Accuses Russians

China has accused the Russians of being "accomplices" of the Americans in Viet Nam and there have been widespread reports circulating in Moscow that Peking has hamstrung the flow of Soviet aid to North Viet Nam across Chinese territory.

The new men in the Kremlin appear to be much cooler under Chinese verbal fire than Khrushchev. They have virtually turned the other cheek, almost never attacking China by name—and when doing so, only indirectly with calls for "international Communist unity."

On July 31 the Chinese took the gloves off. The "Peoples Daily" accused the Soviet Union of a policy of "capitulation, betrayal and split" by preaching peaceful coexistence. The newspaper referred to the new Kremlin leaders as "Khrushchev revisionists."

But thus far, unlike Khrushchev, the Brezhnev-Kosygin leadership appears reluctant to force a showdown. They backed away from such a confrontation at the March international Communist parley attended by 18 nations.

### Could Lose All

Diplomatic observers feel that the Russians—the "fat" Communists, compared to the Chinese—have everything to lose in a fight to the bitter end with lean and hungry Peking.

The Chinese, these observers say, are boxed in both by the Kremlin and resolute American action in Southeast Asia. Thus like a man who becomes reckless after overhelms less in the face of overwhelm-

### IDENTICAL NAMES

HINGHAM, Mass. (UPI)—A North Weymouth girl will have identical first and last names when she weds.

Mrs. Joyce Mary Barrett applied Thursday for a license to wed Joseph C. Joyce of Hingham. Her mother's maiden name was Celia Joyce. Her mother's maiden name was Mary A. Barrett.

The two families are not related.

# Industrial Competition Winners Announced

HOUSTON — Four Texas Chambers of Commerce were announced as winners this week in the annual Texas Industrial Week competition between organizations participating in the annual observance of the important role business and industry plays in local community life.

With entries grouped into four categories according to population, the winners were judged as: Dumas Chamber of Commerce (Group I — up to 10,000 population); Sherman Chamber of Commerce (Group 2 — 10,000 to 25,000 population); Orange Chamber of Commerce (Group 3 — 25,000 to 75,000 population); and Waco Chamber of Commerce (Group 4 — over 75,000 population).

The four winners will receive a special plaque marking their outstanding observance of the event with presentations being made by officials of the Texas Manufacturers Association, co-

ordinators of the annual affair. Runners up in each category will receive special certificates of merit for their outstanding observances. The runners up were: Group 1 — the Chamber of Commerce from Bonham, Clarksville, Coleman, Dalhart, Mart and Taylor; Group 2 — the Chambers of Commerce from Denison, Farmers Branch, Jacksonville, Mineral Wells, Comal County, Seguin and Guadalupe County and Sweetwater;

Group 3 — the Chambers of Commerce from Garland, Laredo, Denton and Tyler; Group 4 — the Chambers of Commerce from Abilene, Austin and Wichita Falls.

The annual observance of Texas Industrial Week came into being in 1951 when the Texas Legislature passed a measure officially designating the period April 1 to 7 as Texas Industrial Week. The observance was established to provide a vehicle

for all citizens of Texas to use to pay recognition to the importance of business and industry in the daily life of the state. Nearly all of the state's Chambers of Commerce each year sponsor special observances in connection with Texas Industrial Week. Information on these observances is submitted and judged each year to determine which group in the state did the most outstanding job of promoting business and industry in its area.

**FRIGIDAIRE**  
 Fully Automatic  
**GAS DRYER**  
 • No Stoop • Lint Filter on door  
 • Porcelain Drum  
 Special Price  
 Model DDACS-2  
 Limited Time  
**\$159.50**

**CROSSMAN**  
 Frigidaire Appliances  
 523 W. Foster MO 4-683

# NOW! '66 CHEVROLETS



Caprice Custom Coupe

## NEW CAPRICE BY CHEVROLET

Custom Coupe, Sedan and two luxurious new Custom Wagons now. Liquid smooth ride. Power you can order just as smooth,

and pin-drop quiet. Turbo-Jet V8 engines that go all the way up to 425 hp. Shimmering new interiors. The look of hand-rubbed walnut trim. Elegance everywhere. Made by Chevrolet, so you know what a beautiful value it must be.



## NEW CHEVELLE SUPER SPORT 396

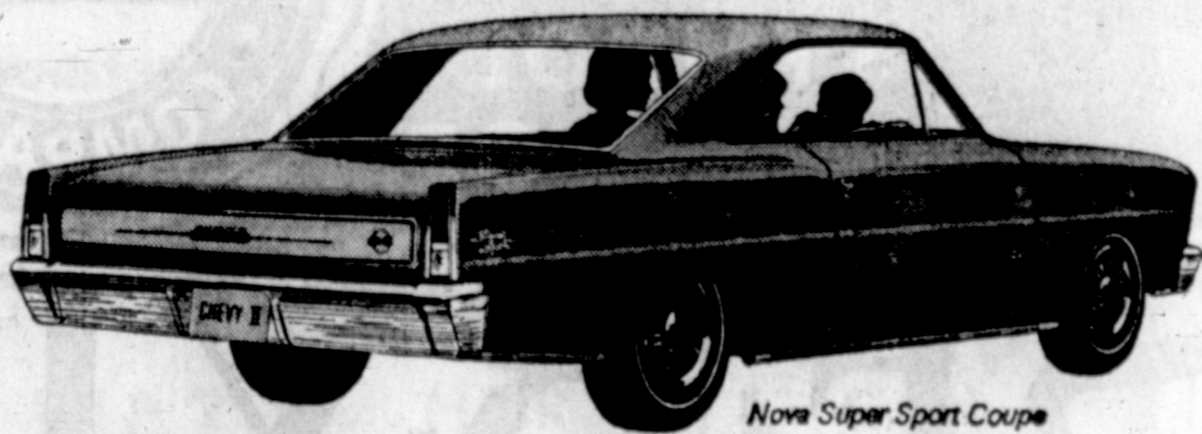
New 300's. New 300 Deluxe Jet V8's, either 325 hp or 360 hp. models. New Malibus. And two Both come with special hood, new Super Sport 396's—coupe grille, suspension, emblems, red and convertible—with engines stripe tires, floor-mounted shift. that tell you exactly what kind of Twelve beautiful Chevilles in all Chevilles they are. Both are avail- all as new inside as they are able with 396-cubic-inch Turbo- outside, headlamps to taillights.



Chevelle Super Sport 396 Coupe

## NEW CHEVROLET JET-SMOOTHER

We've again specially tailored those coil springs at every wheel to each body style. We've put in new softer shock absorbers. No Chevrolet has ever had a ride like this. Power begins with a thrifty Six at 155 hp, and goes on from there. Turbo-Jet V8's available at 325 hp, 390 hp and 425 hp in all the new Impalas, Bel-Airs and Biscaynes for 1966. Model shown: Impala Super Sport Coupe



Nova Super Sport Coupe



Corsa Sport Coupe

## ALL NEW CHEVY II

It's so different, we should really call it to a 350-hp Turbo-Fire V8. You can even order headrests for the front seats and on coupes. Fenders, grille, hood, taillights Mag-style wheel covers. What's the economical, dependable Chevy II coming to? Interiors are richer. Power available up A lot of smart '66 car buyers, we figure.

## '66 CORVAIR UNIQUE

Still, America's only rear-engine car. And with the special steering and suspension you can add, there's no better way to rid yourself of prematurely gray driving. Lots new. Corvair, like all the '66 Chevilles, has a padded dash, seat belts front and back, new fully synchronized 3-speed. Corsas, Monzas, 500's. Get one.

SEE THE NEW 1966 CAPRICE • CHEVROLET • CHEVELLE • CHEVY II • CORVAIR • CORVETTE NOW AT YOUR CHEVROLET DEALER'S

CULBERSON CHEVROLET, INC.

212 N. BALLARD

PAMPA, TEXAS

MO 4-4666

**TRUSTEE AUCTION**  
**OCT. 8**  
**10:00 a.m.**  
 Valley Water Well Co.  
 2705 W. St. Francis Ave.  
 Amarillo, Texas

4-1/4 acres w/3 br brick home  
 2 large metal bldgs. concrete  
 floors water well — paved  
 drive — fenced

various water well equip  
 & parts  
 2 wheel pipe trailer-elec.  
 motors  
 diesel engines & parts  
 air compressor — new Reda  
 pumps,  
 large lathe & threader — cat  
 heads cable — pipe — fittings  
 — etc.  
 truck beds — parts — water  
 tank  
 desks — chairs — air cond.  
 — etc.

Earl Wyatt-Trustee  
 BK-2-84

See brochure with  
**NELSON**  
 AUCTION SERVICE  
 Executive Office - 4824 Canyon Dr.  
 40 000 Ft. S. 0875 - Amarillo, Texas



Dear Abby....

Proudly Hail Your Son, The Conquering Hero

DEAR ABBY: Can you help settle an argument? It is between my husband and me and I hope you won't think it's too dumb to bother with. Our son has been away in the service for two years. He served his last eight months in Vietnam, and we just got word that he is coming home. He was awarded three medals for bravery and we are very proud of him. I had my brother paint some "Welcome Home" signs which I want to put up on our front lawn with flags all around. My husband says it will look like we're showing off for the neighbors and if we want to put up signs inside the house, it's okay, but not out in front of the house. Abby I planned a big party with all our friends and relatives, and his friends, too, and thought the signs on the lawn would give our boy a thrill when he first catches sight of the house. What do you say, Abby?

PROUD MOTHER DEAR PROUD: I say put the signs on the lawn, and if you can line up a brass band — that's all right, too!

DEAR ABBY: Some time ago my husband took our sifter home and was gone longer than usual, so I asked Vernon what kept him so long. He said he'd given Laura a driving lesson. (Laura is a cute teen-ager and the daughter of friends of ours.) Well, that burned me up because Vernon is so fussy with his car he won't even let me drive it I let that pass. Now something else involving Laura came up. Vernon heard she was looking for a job, so he volunteered the information that

there would soon be an opening at the place where he works. Do you think I have something to be worried about? Maybe you can put my mind at ease. I am —

"JEALOUS" DEAR JEALOUS: Only Vernon can put your mind at ease. Don't let these suspicions build up inside you. Tell Vernon you are jealous, and let him tell you why you have nothing to worry about.

DEAR ABBY: Several weeks ago I started having a series of baking failures. First a cake which I had made successfully dozens of times "ran over" and it took me an hour to clean up the mess it made in my oven. (Perhaps I should mention that the recipe called for 1/2 cup oil.)

Then my favorite cookies, which I had made for years, came out so dry I had to throw them out. Thinking my oven was off, I had it checked only to find out it was perfect. I couldn't for the life of me figure out what was wrong.

Finally, I remembered that I had bought a one-cup measuring cup at my neighborhood supermarket. I carefully compared its capacity to that of my standard measuring cup, and to my utter amazement discovered that my "new" cup held one-fourth cup more! Pass this on to your readers, Abby, for whatever it's worth.

CONFIDENCE REGAINED DEAR CONFIDENCE: Thank you for your helpful tip. All right, girls, when you've finished reading the newspaper go measure your measuring cups. I've just checked mine and they

Pampa Men To Speak at P-TA Fall Workshop

The Fall Workshop sponsored by District 19 of the Texas Congress of Parents and Teachers will be held at the High School in Phillips on Tuesday, Oct. 12. Registration and a coffee hour will begin at 8:30 a.m. and end at 9:30, at which time R. C. Marshall, district president, will call the workshop to order.

The presentation of colors will be handled by Boy Scout Troop 77 of Phillips. The pledge of allegiance will be led by Leo Steinkoenig of Borger, the invocation will be given by the Rev. Rollo Davidson of Phillips, and the official welcome will be extended by Cody Fontendren, school superintendent at Phillips.

Mrs. J. B. McCray of Panhandle is workshop chairman and will serve as moderator for the morning session. A panel discussion, with buzz sessions to follow, will carry out the theme

are accurate — sixteen tablespoons to the standard cup.

CONFIDENTIAL TO GIL: That's why there are more doctors than there are clergymen. It's easier to practice than it is to preach.

Troubled? Write to Abby, Box 69700, Los Angeles, Calif. For a personal reply, enclose a stamped, self-addressed envelope.

For Abby's booklet, "How To Have A Lovely Wedding," send 50 cents to Abby, Box 69700, Los Angeles, Calif.

"Youth Development and Youth Protection." Mrs. Mary Sliger of Canyon will speak on the role of the home and the school. George Smith, director of the Pampa Youth and Community Center, will discuss the role of the community.

Jess Taylor, Hutchinson County juvenile officer, will speak on the subject "Youth Protection Includes the Neglected and Dependent Child and the Young Offender in Court." The fourth speaker, Jerry Kolander of Amarillo, will discuss "Youth Protection Considers the Rehabilitation of the Delinquent Child."

Lunch from 12 noon until 1 p.m. will be followed by a short afternoon session on "Youth Opportunities," with Freeman Melton Jr., of Panhandle as moderator. Speakers will be Milton Morris from West Texas State University, discussing "For the College Bound;" E. L. Albritton, Distributive Education instructor from Pampa High School, "For the Terminal Student;" Charles Warner, Texas Employment Commission of Borger, "For the Out of School Youth;" and Mrs. Louis Seliger of Borger, "How We May Help a Child Become His Own Best Self."

The afternoon session will adjourn at 2:30 p.m.

P-TA members or others who would like to attend may contact one of the local unit presidents if they would like to make a reservation for a luncheon ticket.



... afternoon speaker E. L. Albritton



... morning speaker George Smith

Pampa Public Schools Menu

Table with menu items for Pampa Public Schools, including Pampa High School, Pampa Junior High, and Pampa Elementary School menus.

October Is Go-Go Month At

Advertisement for Dunlap's Coronado Center HI-JINX clothing for smart juniors. Features illustrations of models in various styles and prices ranging from \$10.00 to \$12.00.

The Women's Page advertisement featuring Reggy Jo Ormson as editor, with contact information for The Pampa Daily News.

A & W Drive Inn advertisement. Includes a photo of the building, address (1216 Alcock), and promotional text: "A PLEDGE OF QUALITY by The A&W Drive-Inn".

Senior Center Corner advertisement by Mrs. O. A. Wagner. Discusses the activities and members of the Senior Citizens Center.

The Doctor Says advertisement by Wayne G. Brandstadt. Discusses health tips for older adults, such as staying hydrated and avoiding heat.

Southwestern Public Service Company advertisement. Features the company logo and the slogan "SYMBOL OF SERVICE". Includes text about honoring employees and a list of names and years of service.

### Three L TOPS Have Lefors Meet

LEFORS (Spl) — The Three L TOPS Club met recently in the home of Mrs. Ben White for regular bi-monthly meeting. Mrs. D. C. Read, leader, was in charge of the regular business. Each member weighed on the new club scales and new weights were recorded, with no one recording a loss.

Roll call was answered with, "What I would like to improve about me most."

Mrs. White, presented a program on fashion, giving a few points on dress lines for different type figures.

Those present were Mmes. Boyd Beck, R. W. Beck, Walter Elliott, H. L. Teel, D. C. Read and the hostess.

Chilled canned apple sauce with a thick topping of grated orange rind makes a good breakfast fruit course.

### Astrological Forecast

By CARROLL RIGHTER

**FOR FRIDAY, OCT. 8**  
**GENERAL TENDENCIES:** You have the intuitive perception to get whatever answers are important to you at this time. Make a point to be alert to the voice within, the intuition. It's also a good time for whatever has to do with interests connected with society, catering, chemicals, girls, motion pictures, photography, television, art or culture.

**ARIES (Mar. 21 to Apr. 19)** — Putting your home or office in better order is vital at this time, preparatory for receiving persons of importance. Assist those in need. Don't turn anyone down.

**TAURUS (Apr. 20 to May 20)** — Those who are interested in you in every sphere of your life recognize your ability now and will give the backing you need. Get out socially tonight. Make new contacts that are valuable.

**GEMINI (May 21 to June 21)** — Stepping out to see the powerful person who can give your career a boost is best way to proceed now. Find better ways to make your work more efficient. Show that you have what it takes.

**MOON CHILDREN (June 22 to July 21)** — Now you know what to do to become more mentally alive and physically potent in your field of endeavor. New contact of value has excellent ideas. Put them in operation.

**LEO (July 22 to Aug. 23)** — Listen to those fine advisors who can enlarge the scope of your endeavors, both in business and in personal life. Delight waits in your health improved. See that your clothing is more up-to-date.

**VIRGO (Aug. 24 to Sept. 23)** — Associates and good friends are in the mood to listen to whatever ideas you may have now. Make any agreements binding. Come to a true meeting of minds, understanding with other.

**LIBRA (Sept. 24 to Oct. 23)** — Ideal day to make your surroundings better by being attractive and artistic orderly. Get health improved. See that your clothing is more up-to-date.

**SCORPIO (Oct. 24 to Nov. 23)** — Put those ideas to work that will make your life more pleasant, as well as that of your good friends. Take that little trip you have planned on. Be happy.

**SAGITTARIUS (Nov. 24 to Dec. 23)** — Think what must be done to make your home more charming and harmonious will see you doing something about it right away. Show good taste. Don't be extravagant. Do. Dec. 22 to Jan. 20 — Visiting, shopping, taking little trips are all time for today. Be sure to keep those beauty, dentist appointments on time. Have necessary conferences.

**AQUARIUS (Jan. 21 to Feb. 19)** — Elevate your level of consciousness so that you know how to command more income in the future. Analyze your position. Stop making it difficult just to meet your expenses.

**PISCES (Feb. 20 to Mar. 20)** — Although conditions around you may not be quite ideal, you need not let them concern you. Concentrate on the positive. Be with fascinating groups during your free time.

### Members of Girl Scout Troop 43 Enjoy Trip to Camp Mel Davis

On Sept. 24 Girl Scouts Troop 43 traveled to Camp Mel Davis, east of Lefors to camp overnight at the Girl Scout Lodge. The cold, rainy weather did little to daunt the enthusiasm the girls had for their first camp-out of the year.

On their arrival at the Lodge the scouts soon had a roaring fire built in the main-room fireplace. The girls enjoyed their "sack lunches" around the fire and spent the remainder of the evening singing songs, playing games and practicing craft skills.

Saturday morning the girls cooked breakfast in the lodge and spent the morning hiking by the river and playing games inside the lodge.

The scouts had planned to put their fire building skills to use for an outdoor werner roast Saturday before returning home but due to the damp, windy weather were forced to again use the inside fire place. The hotdogs and "som-mors" on the menu were delicious regardless of being cooked inside.

Following lunch the girls cleaned the lodge to prepare for another troop of girls. Before loading up to come home the troop made one last visit to "Ole' Harvey", a huge gallen tree which is a traditional Girl Scout favorite.

The girls returned to Pampa late Saturday afternoon and seems plans are underway for a Spring camping trip, this time to continue for another night and use of tents in place of the lodge.

Girls attending were Angela Allison, Marcie Holcomb, Patty Pitts, Nina Smith, Louise Tivis, Kathy Dawson, Amy Ellis, Sandra Keen, Linda Meredith, Terry Williams, Evelyn Wilson,

Shermette Stephens, Karen Strown, Kathy Caskey.

Previous activities of Troop 43 included the flag ceremony presented at William B. Travis P-TA on Sept. 16. The girls also helped care for the nursery during P-TA. As a year long project this troop of 4th and 5th

grade girls have promised their services to provide the "helping hand" at the nursery for each of the P-TA meetings at their school.

Plastic covered greenhouses are a practical and economical structure for growing plants.

people on the go...  
**go BURGER CHEF**  
 Fri.-Sat. and Sun. Only  
**5 Cheese Burgers 88¢**  
**HAMBURGERS**  
 2201 Perryton Parkway

**NOW THRU SATURDAY** **CAPRI** ADULTS 85c CHILD 35c  
 OPENS 1:45  
 FEATURE TIMES 2:00, 4:32, 7:05, 9:20  
**THE TRAIN**  
**WILL CARRY YOU TO THE PEAK OF ADVENTURE!**  
 JULES BRICKEN presents  
**BURT LANCASTER**  
 JOHN FRANKENHEIMER'S  
**THE TRAIN**  
 Released by UNITED ARTISTS

**NOW THRU SATURDAY** **LAVISTA** ADULTS 70c CHILD 25c  
 OPENS 6:45  
**SUSPENSE-PACKED ADVENTURE**  
 IN COLOR  
 20th CENTURY FOX PRESENTS AN ARNON BROS. PRODUCTION  
 MAX VON SYDOW YVETTE MITCHELL  
 EPREM ZIMBALIST JR. GILBERT ROLAND  
**THE REWARD**  
 ERIC FERRARIZ NINO COSTENOVATI HENRY SIDA Produced by ARNON BROS. Directed by JOHN HUGHES

**TONITE AND FRIDAY** **100% TEXAS** ADULTS 75c CHILD FREE  
 OPENS 6:45  
**ACTION PACKED CIVIL-WAR ADVENTURE!**  
**"MAJOR DUNDEE"**  
 In Color — Charleston Heston — Richard Harris

### MEET THE SWINGER

THE NEW POLAROID LAND CAMERA FOR ONLY **19.95**

Have you seen it yet? We have the SWINGER, the amazing new low-priced Polaroid camera. It's the camera that "talks" to you — says YES right in the viewfinder when the exposure is perfect. It's full of surprises. And it gives you your black and white pictures in 10 seconds. Come in and see it today. It's the most camera in the world for the price!

**Richard Drug**  
 Joe Tooley  
 Pampa's Synonym For Drugs  
 111 N. Cuyler MO 5-747

**SHOP DOWNTOWN FOR GREATER SELECTIONS**

# THANK YOU SALE!

**Russell Stover CANDIES**  
 HOME FASHIONED FAVORITES  
 1 lb. Box \$1.60  
 2 lb. Box \$3.15

**Heard-Jones DRUG**  
 114 N. CUYLER YOUR NEW REXALL SUPER DRUG STORE  
 STORE HOURS 7:30 A.M. to 7:00 P.M.  
 PRICES GOOD THURSDAY-FRIDAY-SATURDAY

**METRECAL** 6 pak \$1.39

**THRIFTY CARPET RUNNERS**  
 Reg. \$2.99  
 Durability • Precoated with Rubber Latex • Cushioned • Heavy Foam Pad Size 24 x 60  
**\$1.38**

Reg. 63c **ALKA SELTZER** Bottle of 25's **43¢**

Reg. \$1.48 **VITALIS HAIR TONIC** 99¢

Reg. \$1.08 **CORICIDIN COLD TABLETS** Bottle of 25's **53¢**

Reg. 99c **AQUA NET HAIR SPRAY** 57¢

Reg. \$9.95 **PRINCESS ANN DINNER SET** 16 pc. **\$3.88**

Reg. \$16.95 **Presto Automatic Toaster** 2 SLICE **\$10.59**

Reg. \$1.69 Indian Cocoa Fiber **DOOR MAT** Size 14" x 24" **\$1.07**

Reg. \$4.95 **Electric Corn Popper** **\$2.77**

Reg. \$26.95 **Presto COFFEE MAKER** Decor Cover CMF9W **\$15.29**

Reg. \$21.95 **PRESTO HAIR DRYER** Walk 'N' Wear H04 **\$11.89**

**PRESTONE ANTI-FREEZE** 1 gal. **\$1.59**

Reg. \$24.95 **PRESTO COFFEE MAKER** 2-9 Cup CMF9 **\$14.29**

Reg. \$17.95 **PRESTO CAN OPENER** With Knife Sharpener **\$12.45**

Reg. \$2.49 **PHISOHEX** 16 oz. **\$1.63**

Reg. \$2.49 **FREE TRIAL OFFER** VI-PENTA **ZESTABS** CHEWABLE VITAMINS / FREE 30-DAY TRIAL SUPPLY WITH EACH 100-TABLET BOTTLE  
 REGULAR PRICE \$3.49  
 REGULAR PRICE \$1.29  
**Now — both only \$1.97**  
 PROTECTED BY BIOGARD™ FOR FULL POTENCY AND FLAVOR  
 GUARANTEED-YOUR MONEY BACK IF NOT COMPLETELY SATISFIED

Reg. 89c **COLGATE** Family Size TOOTH PASTE **47¢**

Reg. \$1.98 **INFRA RUB** **\$1.27**

Reg. \$1.25 **MISS CLAIROL COLOR BATH** **77¢**

Reg. \$1.29 **ANACIN TABLETS** Bottle of 100's **87¢**

Reg. 98c **LISTERINE ANTISEPTIC** **63¢**

Reg. \$1.98 **INFRA RUB** **\$1.27**

Reg. 98c **CODE-10 HAIR DRESSING** **48¢**

**YOUR HEALTH TEAM**

As Pharmacists, we have frequent contact with Doctors in this community. Sometimes to furnish data requested on a new drug or sometimes to ask him about a detail concerning your prescription.

You can be sure we are always willing to work closely with your doctor... as a member of your health team.

**Your Pharmacy**  
 MO 4-7478

**WILLIAM PENN CIGARS** \$2.88 Box of 50

• BLUNTS  
 • PLANTERS CHOICE  
 • PERFECTOS

**WHITE OWL CIGARS** 4.88 Box of 50

• RANGERS  
 • NEW YORKER  
 • PERFECTOS

Reg. 77c **PAINT ROLLER and TRAY** 7-Inch Seamless Roller **53¢**

**SAVE NOW**

Reg. 98c **STRI-DEX** MEDICATED PADS **59¢**

**FLINT SALE!**

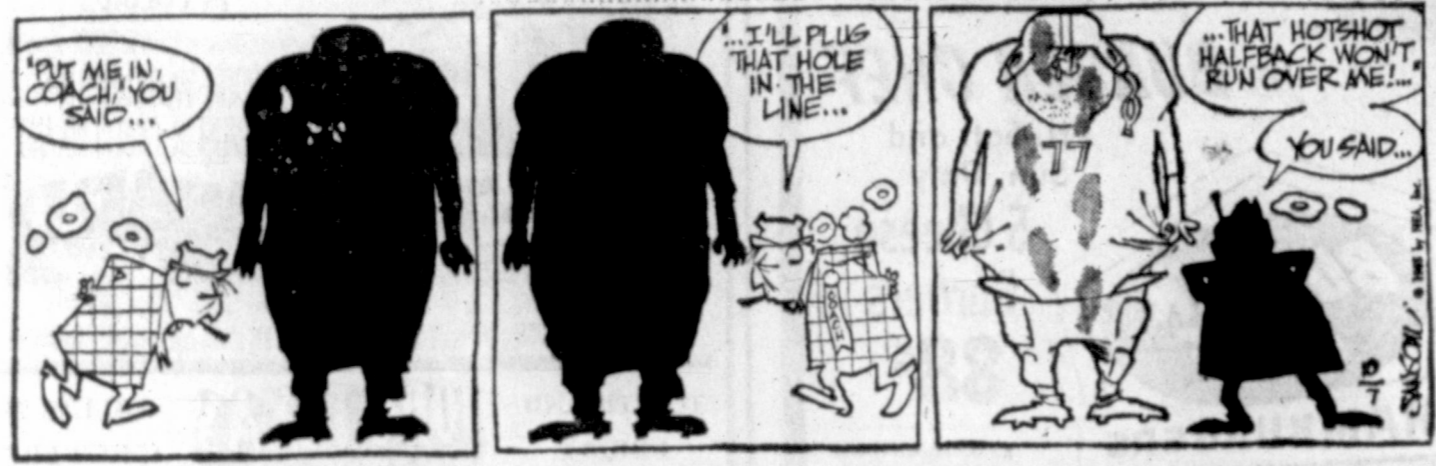
**1-Qt. SAUCEPAN** **\$2.87**  
 Sugg. Reg. Price \$5.75

OUT OUR WAY

J. R. Williams



The Born Loser



The Berrys



Bugs Bunny



Eek and Meeks



Captain Easy



Jackson Twins



Merry Maatle



OUR BOARDING HOUSE

With Major Hooper

Short Ribs



Blondie



Alley Oop



The Flintstones



Ban Casey



Mickey Finn



Priscilla's Pop



Dixie Dugan



Joe Palooka









# GIBSON'S IS SMASHING PRICES MADNESS!

IN A FIT OF MADNESS!

THESE PRICES GOOD THURS. FRI. & SAT.

**MEN'S 17 JEWEL HELBROS WATCH**



Reg. \$39.75 **\$15<sup>97</sup>**

**SUNGLASSES 1/2 OFF RETAIL PRICE**

French Scene Plaques **37<sup>c</sup>**

**LADY REMINGTON ELECTRIC SHAVER**



Reg. \$19.95 **\$12<sup>97</sup>**

**DUPONT LUCITE WALL PAINT**

NO DRIP NO STIR NO MESS

**SPECIAL CLOSE OUT ON THESE COLORS**

15 Gal. Sunner Blue  
8 Gal. Harmony Pink  
8 Gal. Larch Green  
5 Gal. Putty  
2 Gal. Drift Wood Gray

**\$2<sup>99</sup> gal.**

Several quarts of these colors . . . 89c qt.

All Gauges Hoppes

**GUN CLEANING KIT**

Reg. \$3.00 **\$1<sup>89</sup>**

**CHARCOAL LIGHTER FUEL**

Gibson Discount Price **19<sup>c</sup> qt.**

Sterno

**CANNED HEAT 10<sup>c</sup> can**

**CROWN SHOVELS**

Reg. \$4.17 **\$1<sup>97</sup>**

ONLY 8 LEFT

**WHEEL BARROWS**

Reg. \$9.97 **\$4<sup>97</sup>**

DuPONT LUCITE OUTSIDE

**HOUSE PAINT**

GIBSON DISCOUNT PRICE **\$5.59**

**LEAF RAKES**

Reg. \$2.97 **87<sup>c</sup>**

Family Size

**Shampoo**

Gibson Discount Price **89<sup>c</sup>**

Reg. \$1.50

**FREE GLEEM**

Family Size Gleem

**TOOTHPASTE**

Reg. 89c **53<sup>c</sup>**

**MEN'S BANLON and COTTON SOCKS**

**27<sup>c</sup> PAIR**

Glass

**Coffee Maker**

Reg. \$2.95 **\$1<sup>27</sup>**

Reg. \$1.15

**SHOE RACK 98<sup>c</sup>**

Gibson Discount Price

Asst. Patterns

**TV TRAYS**

Gibson Discount Price **77<sup>c</sup>**

Reg. 98c

**Save!! KING-JUMBO SIZE TV TRAY TABLES**

BRASS LEGS

**Suave HAIR SPRAY**



Gibson Discount Price **59<sup>c</sup>**

Reg. 99c

**Noxzema SKIN CREAM**



Reg. \$1.39 **79<sup>c</sup>**

**COTTON STRIPE RUGS**

27" x 48"

Reg. \$6.97 **\$1.97**

Northern Electric

Double or Twin

**BLANKETS**

Reg. \$15.00 **\$8<sup>97</sup>**

Gibson Discount Price

Tot's White Leather

**SHOES**

Reg. \$4.00 **\$1<sup>77</sup>**

Gibson Discount Price

**Regina ELECTRIC BROOM**



GIBSON DISCOUNT PRICE **\$9<sup>97</sup>**

REG. \$29.95

NOW YOU CAN USE GIBSON'S

**INSTANT CREDIT**

All you need is a Major Oil Company credit card. No down payment and No carrying charges from \$10.00 to \$100.00. See us today.

Colgate Instant

**SHAVE CREAM**

Reg. 79c **43<sup>c</sup>**

Lanolin Plus

**HAND LOTION**

Reg. \$1.25 **89<sup>c</sup>**

5 DAY ROLL-ON

**DEODORANT**

Reg. 79c **43<sup>c</sup>**

"WHERE YOU ALWAYS BUY THE BEST FOR LESS"

**GIBSON'S DISCOUNT CENTER**

OPEN DAILY 9 A.M. TO 9 P.M. EXCEPT SUNDAY