

On the Record

**VISITING HOURS
MEDICAL AND
SURGICAL FLOORS**
Afternoons 2-4
Evenings 7-8:30
OB FLOOR
Afternoons 2-4
Evenings 7-8

Highland General Hospital does not have a house physician. All patients, except severe accident victims, are requested to call their family physician before going to the hospital for treatment.

Please help us to help our patients by observing visiting hours.

WEDNESDAY

Admissions:
Ernest Christie, 807 E. Craven.
Mrs. Beulah E. Rhea, 529 Sloan.
Miss Nancy Carol Brown, Borger.
Jimmy Dale Winegeart, 1216 S. Faulkner.
Mrs. Lucille Stine, Borger.
Phillip Joe Reed, 1920 N. Dwight.
Mrs. Jennie Louise Hubbard, Borger.
Wayne Floyd Bradshaw, 1305 E. Kingsmill.
Mrs. Margaret Rhoten, 1017 Somerville.
Dismissals:
Mrs. Mead Fletcher, 412 Hill.
Mrs. Mary E. Craver, Pampa.
Mrs. Alice G. Taylor, 1325 N. Hobart.
Jack Gillpatrick, Pampa.
Michael R. Anderson, 1507 N. Sumner.
Mrs. Grace Futch, 1104 Sepaca Lane.
Mrs. Dortha Hernandez, 427 Crest.
Meredithe Kendrick Groom, Larry Lackey, Perryton.
Willie McAninch, Leofers.
Kevin D. Montgomery, 722 Scott.
Mrs. Lucy Terry, Spearman.
George Cree III, 1912 Charles.
Mrs. Ruby Eastland, 716 S Gray.
Everett Huffines, Skellytown.
Mrs. Jessie Hawkins, 427 Yeager.

Youth Center Calendar

Thursday
12:00—Close for Lunch.
1:00—Open; All Ages Swim; Trampoline.
4:30—Pool Closes; Swim Team Workout.
5:00—Center Closes for Supper.
7:00—Open; All Ages Swim; Trampoline.
10:00—Close.
Friday
9:00—Red Cross Swim Lns.
10:00—Red Cross Swim Ln.
11:00—Youth Center Swim Lns.
12:00—Close for Lunch.
1:00—Open; All Ages Swim; Trampoline.
4:30—Pool Closes; Swim Team Workout.
5:00—Center Closes for Supper.
7:00—Open; All Ages Swim; Trampoline.
8:00—Teen-age Dance in Gym.
10:00—Center Closes.
Saturday
9:00—Open; Gym Open Actv.
12:00—Swim Team Workout.
13:00—Close for Lunch.
1:00—Open; All Ages Swim; Trampoline.
4:30—Pool Closes.
1:00—Center Closes.
5:00—Calico Capers Sq. Daner.
Sunday
Closed

Wall Street In Review

NEW YORK (UPI)—Goodbody & Co. believes the market's recent action would indicate that traders might already have discounted the monetary and credit problems, including a possible hike in the discount rate. The company says the 900 level of the Dow Jones average remains as the principal barrier to a broad advance and that more consolidation, with the possibility of another test of the mid-May low, may be necessary before a clear-cut trend is established.

William R. White of Hornblower & Weeks Hemphill, Noyes says that until some of the world's monetary problems show signs of clearing up, it may be difficult for the market to break out of its narrow trading range of recent months.

FREE CHARM BRACELET



FREE DOUBLE-LINK
24-KT. GOLD FINISH

CHARM BRACELET

With this coupon and any purchase when you buy one charm for 50c
THIS COUPON EXPIRES JULY 23, 1966



50¢

EACH

Comparable value \$2.50 to \$5.00

36 EXCITING 24 KARAT GOLD FINISH CHARMS!

Every charm is an exact reproduction of charms costing \$25.00 to \$100.00 at world famous jewelers. Beautifully detailed, guaranteed to give years of delight to the wearer. Perfect gift idea, too, for Birthdays, Graduations and many special occasions!



FRYERS

Fresh Dressed
Freshest & Finest
Quality, U.S.D.A.
Grade A, Only Lb.

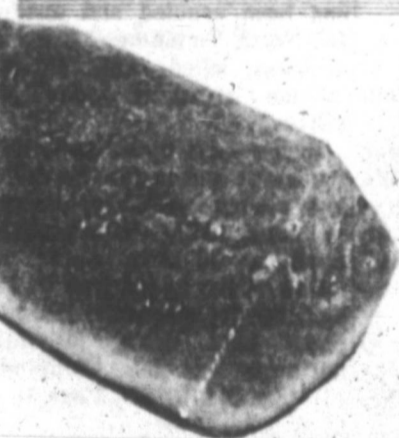
33¢



FRYER PARTS

Buy The Piece You Want

Fryer Wings lb. 25¢ Fryer Legs lb. 49¢
Fryer Thighs lb. 35¢ Fryer Backs & Necks lb. 19¢
Fryer Gizzards lb. 49¢ Fryer Breast lb. 79¢



WATERMELON 79¢

RED MEAT
LARGE SIZE

FURR'S FROZEN FOOD BUYS

DINNERS

Morton, fresh frozen
chicken, beef, turkey,
salisbury steak, meat loaf,
11 oz. pkg. **3 FOR \$1**

OLEO MARGARINE

All-sweet Quarters **25c**

CINNAMON ROLLS

Sara Lee Fresh **59c**

POUND CAKE

Sara Lee Fresh **69c**

APPLE JUICE

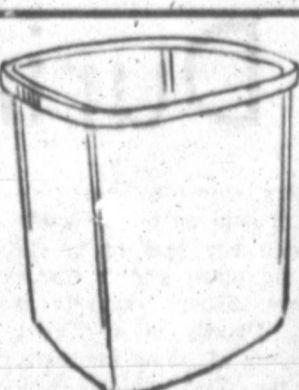
Tree Top Fresh **19c**

POTATOES

Ore. Ida. Hash Brown **29c**

SPINACH

Top Frost Fresh **12 1/2c**



Plastic Waste Basket
Each **37c**

ASH TRAY

Large Size, Bean Bag, Reg. 29c **23c**

Summer Houseware

B-O-N-A-N-Z-A!



Stackable Vegetable Storage Bin
Each **37c**



PLASTIC DISH PAN
14 Qt. Size **37c**



Bushel Size Laundry Basket
Oval or Round **37c Ea.**

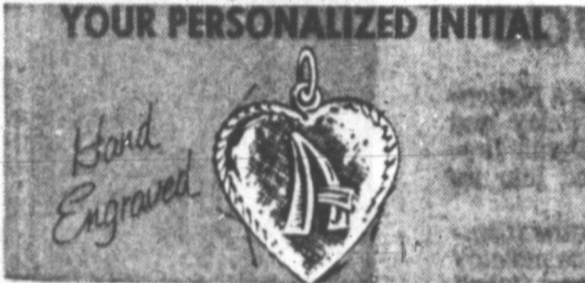
Decanter Giant One Gal. Reg. 89c **37c**

Shower Valet, Keeps Shower Organized, 98c value **37c**



Here For You—The New Frontier Stamp Album of Gifts

It's Furr's Gift to you—FREE, a beautiful 24 karat Gold Finish Charm Bracelet when you buy your first Princess Charm and only 50c, plus any purchase, using the coupon in this ad! And that's not all of the fantastic offer! For as you shop with us each week, you can add a charm or two for only 50c each—an unheard-of-price for charms of such exquisite detail and quality.



Personalize your charm bracelet with this lovely 24 karat Gold Finish Heart Charm . . . with your very own initial. These, too, are only 50c each. The charms have the "Solid Gold Look" . . . many are hand set with semi-precious stones and florentine finishes.



**WIN UP TO \$250 CASH
PLAY FURR'S**

Let's Go to the Races

GET TICKETS FOR THE NEXT SHOW
WEDNESDAY 8:30 P.M.
CHANNEL 10
KFDA-TV—AMARILLO

WIN FROM \$5 to \$250 by matching horse numbers in the TV show races with winning horse numbers of FREE cards given by Furr's Super Markets. Watch the TV show or check the winners before Saturday evening following the show.

KOUNTY KIST WHOLE KERNEL

CORN 12 oz. Can **2.29¢**

PEACHES

DEL MONTE, IN HEAVY SYRUP

NO. 2 1/2 CAN

25¢



VAN CAMPS GRATED NO. 1/2 CAN

TUNA 19¢

ASST. FLAVORS 3-3 OZ. PKGS.

JELLO 25¢

BLACK EYE, RANCH STYLE—No. 300 CAN

PEAS 12 1/2¢

MT. PASS NO. 303 CAN

Tomatoes 12 1/2¢

PINEAPPLE 25¢

SANTA ROSA SLICED NO. 2 CAN

Cold Power 69¢

Folgers or Maxwell House Giant Pkg.

Coffee lb. 73c 2 Lb. Can **\$1.45**

Preserves Strawberry, Elna 18 oz. glass **39¢**

Vienna Sausage Libby's No. 1/2 Can **50¢**

Instant Coffee Maryland Club 10 oz. jar **\$1.39**

Waldorf, 4 Roll Pkg. **29c**

TISSUE Dartmouth, Assorted **39c**

MELLORINE 1/4 Gal. **29c**



Rotary
Prog
On C

Pampa White gate progress projects luncheon Coronado White been harvested within a date is so early Nov Surfacin was another undertak ble, accor ed proper streets to sign pav they want The City work could early in 19 and S. Cuy struction plant will cluded in sue passe last Maro Gary Cr ate of Pamp named re Rotary Clu The youth in basketb Harvesters west Texa in the fal was made

• Ast (Conti to Hawai) Splashdo for 3:07 spaceship's to be fired It was spacewalk which a s work In his Collins joi and Eugen space pe lone space aut Altix neved out capsule Ma The Unit "spacewalk minutes to Leonov Young ar turned in fo midnight E rest up for "We're pr down here, told the ast went to slee good day"

• You (Continae brought to The two b cave Wedn companion, also of You caves, loca northeast dotted with small unde streams. The quetz bird of the fional bird

MEAT OUR ANI OUR SI KNC S

Fresh; I Grou

Chunk Bolo

Dandee Sandwic STE V

Floor Heading Toward Debate on Civil Rights

EDITOR'S NOTE — The House is heading toward floor debate on the far-reaching civil rights legislation proposed by President Johnson. It will be the most controversial measure to be considered by the election-year Congress this session. Two features of the bill involving a ban on discrimination in the housing field and ways to punish violence against Negroes and civil rights advocates would have the greatest impact — North as well as South. In this first of two articles, Arnold B. Sawislak of the UPI House staff explains what these provisions would do and what the legislative outlook is.

By **ARNOLD B. SAWISLAK**
WASHINGTON (UPI) — "It is the policy of the United States to prevent discrimination on account of race, color, religion or national origin in the purchase, rental, lease, financing, use and occupancy of housing throughout the nation."

To some, that 34-word statement of national policy in President Johnson's civil rights bill means "fair housing." To others, it connotes "forced housing." And to everyone, it represents the most emotionally charged and politically difficult issue to face Congress this year.

Johnson's proposals for nondiscrimination in jury selection and tougher penalties for racial violence came out of the House Judiciary Committee without major change. But the housing section emerged with some significant modifications and there is a strong chance that it will be worked over more when it gets to the House floor.

No Certainty
There is no certainty that the House will not kill the housing section entirely. Even though the committee approved the final version by an overwhelming bipartisan margin, the administration's original plan

at one point came within two votes of being dropped from the bill altogether.

Both the President's proposal and the committee version, now supported by the administration, forbid racial, religious and ethnic discrimination in the sale, rental and financing of housing.

But both coverage and enforcement were drastically altered before the committee voted out the legislation.

The committee bill would require open occupancy in less housing and prohibit discrimination by fewer persons than the President's plan. At the same time, it would provide cheaper and faster legal relief for home-seekers who have been turned down because of their race, religious or ethnic background.

Here is a rundown on the two basic approaches:

Coverage — The administration bill would cover all housing and vacant land. Property owners and their employees, real estate agents and brokers and all persons engaged in financing housing would be covered.

Some Exempted
The committee version would exempt from regulation the sale or rental of owner-occupied single family homes and multiple dwellings with up to four apartments. Vacant land and housing operated by religious and fraternal groups for their own members also would be exempted. Persons in the real estate and financing industries would be forbidden to discriminate. Property owners would be exempt unless they participated in the sale or rental of more than two dwellings in a single year.

aggravated persons to sue in federal or state courts for damages and injunctions to stop discrimination. If discrimination was widespread in an area, the justice department could sue.

The committee bill would retain the court enforcement, but create a new "fair housing board" within the housing and urban development department. The special board would have power to investigate complaints of discrimination and issue cease and desist orders to violators.

Even with the exemptions, the committee bill would cover a lot of housing. This would be true especially in big cities where big apartment buildings are the rule and in burgeoning suburbs where developers build hundreds of houses at a time.

But with the exemption on sales of existing single family homes and rentals of small apartment buildings, many of the dwellings that Negroes can afford could be denied to them.

There is a disagreement of some significance about the scope of the exemption approved by the committee for owners who do not sell or rent their property more than twice a year.

Claim Permission
The authors of the provision say it would permit discrimination by the owner himself or by an agent instructed by the owner to restrict sale or rental of the property. They emphasize, however, that the agent may discriminate only if explicitly told to do so by the owner. The agent may not suggest or initiate such practices on his own.

Civil rights groups disagree with this reading of the provision. They say the exemption is valid only for the owner, and cannot be transferred to his agent.

are sure to be offered when the bill reaches the floor. The prospects are for exemption of the agent who is expressly instructed to discriminate by the owner.

There also was some initial confusion about the role of the fair housing board. The first word was that it would have only conciliation powers, but the bill's language makes clear that it would have the same strong quasi-judicial enforcement powers in the housing



DOLLARS DOWN UNDER—Australia is abandoning the quaint but cumbersome pounds, shillings and pence monetary system of Britain and switching to a decimal system based on a new Australian dollar worth \$1.12 in U.S. currency. The \$1 bill features a portrait of Queen Elizabeth II and the Australian coat of arms on the front and reproduces Australian aboriginal paintings and carvings on the back. Bill denominations will be \$1, \$2, \$10 and \$20.

field as the national labor relations board has in labor-management disputes.

Strong Effort
A strong effort will be made on the house floor to eliminate the fair housing board enforcement procedure. Civil rights militants will fight for it as hard as for the housing section itself. But its removal may become the price of support demanded by wavering Republicans and Democrats.

The outlook then is for a final

housing section substantially weaker than proposed by the President.

Seasoned legislative tacticians in the pro-civil rights ranks concede that even this will be hard to pass, obtain from a troubled Congress. They argue however that it is worth the effort to establish the open occupancy principle in federal law even if only a relatively few homes are made available outside the present racial ghettos.

However, there is a possibility that civil rights groups might react furiously to a seriously weakened housing section. The Student Nonviolent Coordinating Committee (SNCC) already has rejected the entire bill. Less militant groups might leave the bill in no better condition than if it were too strong for a majority of the house to swallow.

The atmosphere of doubt about the fate of the housing section is similar to the situation in 1957, when Congress was considering the first civil rights bill to become law in the 20th century. No one was sure what it would take to win

then. The same is true now.

The reason for the doubt is that the housing section is the first civil rights proposal to hit the North with equal — if not stronger — impact than the South.

Northern delegations that have been all but unanimous in favor of liberalized federal voting, public accommodations and fair employment proposals in the past nine years appear to be wavering on open housing. At the same time, Southerners are still overwhelmingly opposed to any further legislation in the civil rights field and are eagerly looking for northern allies to fight the 1966 bill.

Passage of past rights bills has required two elements that so far do not seem to be present for open housing. The first is strong top-party support within Congress. The majority Democrats cannot pass a civil rights bill without the backing of Republican leaders and the votes of the GOP rank and file. In the present dispute, they haven't clinched that kind of bipartisan backing yet, especially in the

Senate.

The second necessary ingredient is strong support from outside Congress, including the White House. Presidents Eisenhower, Kennedy and Johnson gave top priority to the five bills that passed in 1957, 1960, 1964 and 1965.

But many Congressmen do not feel that the White House is trying its hardest this year. Moreover, the housing section thus far has not brought the delegations of citizens to the capitol that members saw in Precious years. Another "march on Washington" is not required, but members of Congress faced with hard decisions like to feel that someone "out there" cares.

Advertisement
FAT OVERWEIGHT
Available to you without a doctor's prescription, our product called Odrinex. You must lose ugly fat or your money back. Odrinex is a tiny tablet and easily swallowed. Get rid of excess fat and live longer. Odrinex costs \$3.00 and is sold on this guarantee: If not satisfied for any reason, just return the package to your druggist and get your full money back. No questions asked. Odrinex is sold with this guarantee by Richard Drug Store — 111 N. Cuyler Mall Orders Filled

Television in Review

By **RICH DU BROW**
United Press International
HOLLYWOOD (UPI) — The most interesting thing about Wednesday night NBC-TV special about a Siberian city is to compare the result with what the network originally set out to do.

I quote to start with, from an NBC-TV press release of one year ago announcing the planned program: "Actual filming will begin Sept. 22 (1965), continuing for three to four weeks during the mild weather of Siberia's 'golden autumn.'"

The viewer who tuned in Wednesday night to "Siberia: A day in Irkutsk" was aware of little weather other than the frigid, snowy shots on the screen. Now this in itself is not hugely significant, but gives one the feeling that perhaps things did not go wholly as planned.

The 1965 press release went on: "The program will be the first definitive television study outside of the Soviet Union, on what is happening in Siberia." But last week's summary advance on the show quotes producer George Vicas as saying: "The program does not pretend to be a definitive study of Siberia. That is impossible. But we do stop and say: Here is a city. We are going to show a day in the life of it. It gives you an idea of how Soviet citizens live."

Well, of course, other network documentaries have already given us a fair idea of how Soviet citizens live. But let us go on with that press release of a year ago:

What Tell Story
"Basically, according to Vicas, (the show) will tell the story of the hundreds of scientists, attracted by Irkutsk's 15 scientific institutions, who—although almost in the middle of a wilderness—have brought to full development an engineering perfection. These high degree of technical and are the scientists who played important roles in building the nearby Angarsk hydroelectric plant, largest in the world, as well as the one in Bratsk in the same region."

Well, as a matter of fact, there was hardly any of this on the WEDNESDAY NIGHT HOUR. There was a brief sequence alluding to the huge hydroelectric plant, and that was about all.

Helped Illustrate
At the end of the hour, reporter Kenneth Bernstein noted that some of the citizens shown in the program were not entirely of NBC-TV's choosing, but he indicated that there was a feeling that nevertheless, the broadcast did help illustrate reasonably how people lived in and around Irkutsk.

I bring up all these various points not because it is amusing to turn up contradictions, but merely because it is important to realize that there are certain assignments that can turn out to be extremely difficult—especially for television, which depends so much on visual material, as opposed to the advantages of the print medium.

France Has Own Atomic Weapons

PAPETE, Tahiti (UPI) — France's independent nuclear deterrent, a cornerstone of President Charles de Gaulle's foreign policy, is now operational.

A Mirage IV supersonic bomber dropped the operation A-bomb which France exploded Tuesday at its Pacific test site 800 miles southeast of Tahiti.

It was France's first air-dropped nuclear bomb and the first test of the first generation of its independent deterrent force. By next year, 62 Mirage bombers are due to be in squadron service.

Silos to hold medium range missiles already are being built in southern France for the second generation and work is being advanced on Polaris-type nuclear submarines and missiles to constitute the third stage of the force in the mid-1970s.

Freezer Beef Sale

Choice Grain Fed Beef
Unconditionally Guaranteed
Investigate Our Monthly Pay Plan
This Meat is Cut To Your Specifications. DOUBLE WRAPPED AND QUICK FROZEN TO INSURE TENDERNESS AND FLAVOR.

HIND QUARTER lb. 53c
1/2 BEEF lb. 43c
FRONT QUARTER lb. 33c
ALL PLUS 6c LB. PROCESSING

CLINTS FOODS

Phone 883-4691 White Deer, Texas

BAN SPRAY DEODORANT
Reg. \$1.00 67c
GIANT SIZE
save!

KODACOLOR COLOR FILM
620 120 127 87c
save!

TUSSY DEODORANT
cream, spray, stick or roll-on
1/2 Price Sale

MAALOX LIQUID ANTACID
12 OZ. 89c
save!

ANACIN PAIN TABLETS
200 TABLETS REG. \$2.33 \$1.69

COPPERTONE SUNTAN LOTION
REG. \$1.55

Smart Shoppers SAVE HERE

OFF INSECT REPELLENT SPRAY
Reg. \$1.19 87c
save!

Solarcaine FIRST-AID LOTION
6 OZ. PLASTIC 1.39
save!

Stainless Steel Blades 98c
Gillette, Reg. \$1.45

Summer Jewelry 59c

AQUA NET HAIR SPRAY 1/2 Price Sale

SERVICE
Lots of old-fashioned, personalized service with a friendly smile makes our pharmacy outstanding. We strive to know our customers better. May we serve you?

MALONE PHARMACY
HUGHES BLDG. KINGSMILL & SOMERVILLE PH 404-491

MORE savings MORE quality

HAWKIN'S Mellorine
1/2 Gal. 39c
Wagner, 3 Qts. FRUIT DRINK 89c

SHURFINE Shortening 3 LBS 69c

Del Monte, 14 Oz. CATSUP 4 for \$1.00
Reg or Barbecue Flavor

Lipton TEA
1/4 lb. Pkg. 39c
1/2 lb. 78c

Shurfine, 3 Oz. Can LEMONADE 3 For 29c

Morton's, 8 Oz. POT PIES 3 For 59c

Van Camp, 303 Can PORK & BEANS 2:29c

Shurfine, 303 Can BARTLETT PEARS 2:65c

Shurfine, Hamburger SLICED PICKLES qt. 35c

Bugles or Daiseys SNACKS 2:65c

Bath Size Jergens Soap 4:35c

Energy CHARCOAL 5 lbs. 39c

Club Steak Boneless Beef Lb. 89c

Stewing Hens lb. 39c

T-BONE STEAK lb. 98c

SLAB BACON lb. 75c

Pork Chops lb. 75c | **Pork Liver lb.** 35c

PRODUCE SPECIALS

AVOCADOS Each 10c

Santa Rosa PLUMS Lb. 23c

CUCUMBERS Lb. 17c

WHITE POTATOES 10 lbs. 49c

PICNIC COOLER
Jolly Foam 1-Gal. Size 75c
Large Picnic Size \$1.09

Clorox BLEACH 1/2 gal. 32c

CAKE MIX
Betty Crocker Devil Food, White, Yellow or Chocolate Frosting.
3 pkgs. \$1

Freezer Specials
27 lbs. Quality MEATS \$13.95

5 lbs. Sirloin or Round Steak
5 lbs. Chuck Roast
3 lbs. Pork Steak
2 lbs. Mitchells Sausage
6 lbs. Ground Beef
6 lbs. Fryers
Cut & Wrapped for Freezer

MITCHELL'S Grocery
638 S. CUYLER
We Give Buccaneer Stamps
Double on Wednesday on Purchase of \$2.50 or More



SHOPPING SATISFACTION IS **BIG** AT ...

YOU ENJOY "BIG" VARIETY IN ALL DEPARTMENTS ... "BIG" FRESHNESS IN PRODUCE ... "BIG" TENDERNESS IN BEEF ... "BIG" VALUES IN EVERYDAY LOW PRICES AND ADVERTISED SPECIALS. COME TO THE "BIG" STORE TODAY ... SEE WHAT A GREAT DIFFERENCE IT CAN MAKE IN YOUR BETTER WAY OF LIFE!

"Better Food For Less"
IDEAL
FOOD STORES

Prices Effective Thru
Saturday, July 23, 1966
Limit Rights Reserved.

"BIG" VARIETY! ...
Thousands of Brands to Choose from

DONALD DUCK FROZEN ORANGE JUICE The real Thing From Florida 6 6-Oz. Cans \$1.00	BANQUET FROZEN FRUIT PIES APPLE PEACH OR CHERRY 3 20-Oz. Pkgs. 89¢
DEL MONTE TOMATO SAUCE 10 8-Oz. Cans \$1.00	HEINZ PORK AND BEANS 8 300 Cans \$1.00
INSTANT COFFEE MAXWELL HOUSE 10-Oz. Jar \$1.39	FOOD CLUB FANCY FRUIT COCKTAIL 5 303 Cans \$1.00

Big *Tenderness!*
Tenderness is the "Big Word" in Ideal's Meat Department

- SWIFT PREM. PRO-TEN BEEF **ROUND STEAKS** FULL SLICES Lb. **89¢**
- SWIFT PREM. PRO-TEN BEEF **SIRLOIN STEAKS** CENTER SLICES Lb. **98¢**
- SWIFT PREM. PRO-TEN BEEF 5th And 6th RIB CUT **RIB ROASTS** THE KING OF ROASTS **79¢**
- TENDER, BONELESS BEEF ROAST SWIFT PREM. PRO-TEN BEEF **SIRLOIN TIP ROAST** Lb. **98¢**
- CHUCK WAGON **BACON** 1-Lb. Pkg. **79¢**
- COUNTRY KITCHEN **BOLOGNA** 1-Lb. Pkg. **69¢**
- SWIFT'S PREMIUM SKINLESS **FRANKS** 1-Lb. Pkg. **59¢**
- COUNTRY KITCHEN-POTATO or Baked BEANS **SALADS** 32-Oz. Ctn. **69¢**

"Big"
Freshness!
IN IDEAL'S Farm Fresh PRODUCE DEPARTMENT
RED, RED-RIPE! SWEET! JUICY!
WATERMELONS
LUSCIOUS **LE GRANGE NECTARINES** Lb. **29¢**
TREE-RIPENED **FREESTONE PEACHES** 2 Lbs. **29¢**
U.S. No. 1 **RED POTATOES** 10 Lbs. **39¢**
DEL MONTE **CATSUP** 5 14-Oz. Btls. **\$1.00**



Fresh!
Ground Beef Lb. **39¢**

Fresh Fryer Parts!

Plump Tender LEGS Lb. 55¢	MEATY THIGHS Lb. 59¢
All White Meat BREASTS Lb. 69¢	Pick Of The CHICK Breast, Legs, Thighs Lb. 59¢

- FIVE DELICIOUS FLAVORS **Ideal Sherbet** 1/2-Gal. Ctn. **49¢**
- LIGHT MEAT CHUNK STYLE **Star-Kist Tuna** 3 6 1/2-Oz. Cans **\$1.00**
- SIX DELICIOUS VARIETIES **Choice Cookies** 3 39¢ Pkgs. **\$1.00**
- MEADOWDALE SMOOTH **Peanut Butter** Large 2 1/2-Lb. Jar **98¢**
- IDEAL LARGE OR SMALL CURD **Cottage Cheese** 2-Lb. Ctn. **49¢**
- RED SEAL **Potato Chips** 1 Lb. Bag **39¢**
- Folger's Coffee** Lb. **73¢**

HURRY! HURRY! HURRY!
ONLY 2-MORE WEEKS TO COMPLETE YOUR SET
Beautiful Mountain Rose
DINNERWARE
THIS WEEK

SAUCERS Each **9¢** WITH EACH \$7.50 PURCHASE
2-FOR 18¢ WITH \$5.00 PURCHASE, ETC.

APPRECIATION SPECIALS!
Because you have responded so gratefully to our dinnerware offer, we want you to have this bargain price on these important Completer Pieces.

MOUNTAIN ROSE CREAM PITCHER & SUGAR BOWL Only **39¢** Each THIS WEEK ONLY
NO OTHER PURCHASE REQUIRED

FOOD CLUB WHOLE **Green BEANS** 5 303 Cans **\$1.00**

Closed Sundays So Our Employees May Attend The Church of Their Choice





SUNDAES FOR EVERY SUNDAY — What better way to appease summertime appetites than with a delicious ice cream sundae served in a crisp patty shell?

Sundaes Make Hit With Family

Summertime Sundays are days to relax and take it easy. Days to make meal planning as simple as possible. The weather is so hot no one wants to be in the kitchen while everyone else is out enjoying the beach or the backyard patio breezes. So simple meals are the order of the day.

When it comes to dessert, ice cream sundaes always make a hit with the family. You can serve one or many toppings, depending on your mood. All the fixings may be done during the

cool morning hours. Your every Sunday sundaes will be all ready to assemble when the question is asked, "What's for dessert?"

Prepare one or two packages of frozen puff pastry patty shells according to directions. Scoop balls of lemon sherbet or your favorite ice cream onto a cookie sheet and put them in the freezer. At serving time, transfer the ice cream balls into the baked patty shells and pour on the sauce. For an extra special topping try one or both of the recipes below.

RASPBERRY SAUCE
3 packages frozen raspberries
Juice of 1 orange
1 teaspoon grated orange rind
3 tablespoons sugar
2 tablespoons cornstarch
Thaw the raspberries and press through a food mill or a fine sieve. Spoon into a saucepan, add the orange juice, rind and sugar. Stir in the cornstarch blended with a little cold water. Bring to a boil. Reduce heat and simmer until thickened and all taste of cornstarch is gone. Serve cold. Yield 3 cups.

MINT-MARSHMALLOW SAUCE
½ cup sugar
¼ cup water
Few mint sprigs
2 cups miniature marshmallows
1 egg white, stiffly beaten
Mint flavoring
green food coloring
In saucepan simmer the sugar, water and mint for a few minutes, until you get a thin syrup. Remove mint and add marshmallow pieces. Let stand a minute or two. Beat with spoon until mixture is creamy. Then add to the stiffly beaten egg white, beating all the while. Add a drop or two of mint flavoring. Tint with green food coloring very delicately. Yield ½ cups.

Master Chef's Pick
By GAYNOR MADDOX
Newspaper Enterprise Assn.
Let's take a hint from master chefs who competed at a Pan-American Hotel and Restaurant Exposition in Miami Beach, Fla. Here are seven of the best recipes from the contest.

BEEF SHISH-KA-BOB
(Serves 4)
16 pieces ¾-inch cubes of sirloin steak or sirloin butt
1 cup vegetable oil
1 tablespoon pickling spice
8 fresh mushroom caps
4 tiny whole onions
1 large green pepper.

Marinate the 16 pieces of beef in one cup of oil and with the mixed spices. Let set in refrigerator overnight. Cut 16 green pepper with eight squares, bring to boil until almost done. Do the same with the tiny onions and eight mushroom caps — let cool.

To set up on skewer — hold the skewer in one hand and pierce in the following order: one cube of meat, a mushroom cap, a piece of green pepper, another piece of meat, a tiny whole onion, a piece of meat, a mushroom cap, a piece of green pepper, then one last piece of meat.

To cook the meat on the skewers, place them on a pan and cook under high broiler until brown, turn over and cook other side until brown. Serve on bed of rice and cover with mushroom sauce.

MUSHROOM SAUCE
½ onion
8 mushroom stems
½ cup sherry wine
pint brown gravy.
Dice half onion fine and slice the eight mushroom stems, sautee in butter until soft, add ½ cup sherry wine and let reduce until half, add one pint of brown gravy and season with salt and pepper.

Food Buying Guide Three-Fruit Ambrosia, Iced Tea Will Chase Your Thirst Away

The following guide to the nation's food shopping buys for this coming weekend was prepared by the U.S. Department of Agriculture and Interior for United Press International.

WASHINGTON (UPI) — The meat picture remains somewhat similar to last week. Beef in most areas is in good supply and is being featured by many stores. Ground beef, roast cuts, and steaks are the prominent items.

Look for buys in pork chops, ham, and pork roast cuts. Many areas are reporting good quantities on hand, selling at reasonable prices.

Broiler-fryers and turkeys are excellent choices for budget-minded shoppers. Remember them for summer outdoor cooking.

Green beans lead the plentiful vegetables list, followed by carrots, lettuce, onions, green peppers, potatoes, and radishes. Tomatoes, a traditional hot-weather vegetable, is the list's anchor.

Avocados, bananas, grapes, and nectarines start the weekend list of summer fruits. The sun's rays are also bringing out the best in peaches, plums, blueberries, and watermelons.

Fish sticks and portions, canned tuna, and scallops are around the nation, these are this month's seafood plentiful.

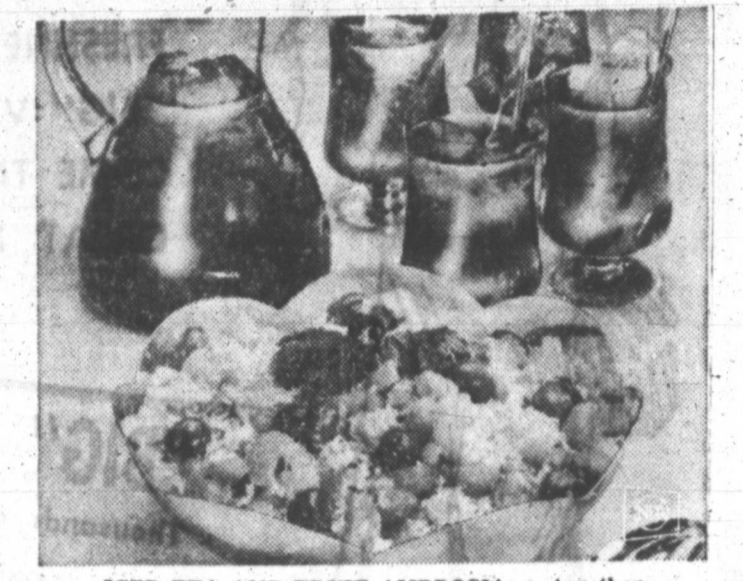
By GAYNOR MADDOX
Newspaper Enterprise Assn.
According to mythology, ambrosia and nectar were the food and drink of the gods on Mt. Olympus. No one knows exactly what they were. Today the words are used to describe food and drink that is exquisitely delicious and gratifying. More particularly, in recipe parlance, ambrosia has come to mean a fruit dessert — usually orange slices mixed with coconut.

The nectar can well be iced tea. It's refreshing, it's thirst-quenching, it's nonfattening.

Neither the recipe for ambrosia nor for nectar will make you immortal like the gods. But they will make you happy, especially in summer.

servicing bowl. (Save the drained syrup for future use in tea punch.) Sprinkle with flaked coconut. Garnish with sprig of mint and a few maraschino cherries.

HOW TO MAKE PERFECT ICED TEA
1. Bring 1 quart of freshly drawn cold water to a full rolling boil in a saucepan.
2. Remove from the heat and immediately add 1.3 cup loose tea or 15 teabags.
3. Stir. Brew 5 minutes, uncovered.
4. Strain again and strain into a pitcher holding an additional quart of freshly drawn cold water.
5. Keep at room temperature until ready to serve. Then pour over ice cubes and serve with lemon and sugar — and, for a final touch, a sprig of mint.



ICED TEA AND FRUIT AMBROSIA go together.

BANANA BAKE

Banana muffins are especially good for breakfast. Sit together 1½ cups of sifted all-purpose flour, ¼ cup of sugar, 1 tablespoon of baking powder and ½ teaspoon of salt. Stir in 1 cup of uncooked rolled whole wheat. Combine 1 beaten egg, ½ cup of milk, ¼ cup of liquid shortening and 2.3 cup of mashed banana.

Add all at once to dry ingredients, stirring just until moistened. Fill 12 greased muffin cups 2.3 full.

Bake in preheated 425-degree oven about 15 minutes.

Food Page

6 THE PAMPA DAILY NEWS THURSDAY, JULY 21, 1966 59TH YEAR

SIRLOIN STEAK
U.S.D.A. Good or Choice Beef **89¢ lb**

CHUCK ROAST
U.S.D.A. Good or Choice Beef **49¢ lb**

ARM ROAST
U.S.D.A. Good or Choice Beef **59¢ lb**

TOP O' TEXAS BOLOGNA **39¢ lb** **FRESH PORK LOIN ROAST** **39¢ lb**

Canned Pop Shurfine Ass't. Fla. 12 Cans **\$1**

T.V. Dinners Morton's Reg. Size **39¢**

PEACHES 3 2½ Cans **89¢**
CORN 5 303 Cans **\$1**

TUNA Shurfine Chunk Style 3 Cans **\$1**

PICKLES Shurfine Whole Dill 2 Quart Jars **69¢**

POTATOES 47¢
LEMONS 19¢

BLAKE'S FOOD MARKET
1945 N. Hobart FREE DELIVERY MO 4-7471
STORE HOURS
Weekdays 8 to 8 Sunday 9 to 7
We Give Buccaneer Stamps
Double Stamps Wednesday on \$2.50 Purchase or More
Home Owned & Home Operated Keep Your Grocery Money in Pampa

Rub a bit of solid perfume on the palm of the hand before putting on wedding gloves. The warmth of the hand will diffuse

Choice Beef CHUCK ROAST
Blade Cut **59¢ LB.**

Choice Beef PORK STEAK **55¢ lb**
Flavor Wright **BACON, Sli.** 2 Lb. **\$1.59**
CHOICE BEEF RIBS **29¢ lb**
Nice for Barbecue **LEAN NO WASTE Tenderized Steak** **98¢ lb**

200, 2 Ply Kleenex 2 Boxes **49¢**

No. 300 Cans RANCH STYLE BEANS 2:25¢
Morton Twin Pak POTATO CHIPS reg. 59¢ **49¢**

6 Bottle Ctn., Plus Dep. COKE or FRESCA **39¢**

4 Roll Pak Delsey TISSUE 2 PKGS. **89¢**

Shurfine APPLE BUTTER 3 Qt. **\$1**

Wagner BREAKFAST DRINK 3 Qt. **89¢**

LaChoy, 303 Can, BEEF or CHICKEN CHOW MEIN **59¢**

Shurfine Y. C. Sliced or Halves Peaches 4 No. 2½ Cans **\$1**

BORDEN'S Mellorine ½ gal. **39¢**

Shurfine, 303 Can SPINACH 7 Cans **\$1.00**

Bake Rite SHORTENING 3 Lb. Can **69¢**

2 Roll Pak Kleenex Towels **39¢**

ROUND STEAK Choice **89¢ lb**
FRYERS **33¢ lb**
Grade A Whole
Fresh Ground Beef 3 Lbs. **\$1**

SUPER QUALITY SUPER WINGS
SUPER FOOD SALE

BAMA 18 Oz. Jar RED PLUM JAM **29¢**

KRAFTS Miracle Whip qt. **49¢**

Shurfine BISCUITS 12 Cans **\$1**
Shurfine OLEO 5 Lbs. **\$1**

Starline TUNA chunk **35¢**
Liptons ½ lb. pkg. TEA **79¢**

Shurfine, 303 Can PEAS **5:51**
FOLGER'S Coffee Lb. Can **73¢**
Holly SUGAR 5 Lb. Bag **49¢**

PUREX ½ Gal. **29¢**
FLOUR Shurfine 10 Lb. Bag **89¢**

Shurfine Waffle Syrup qt. **39¢**
Liquid Detergent, 32 Oz. Gentle **39¢**

Shurfine 303 Can, Cut Green Beans **5:51**
FRESH PRODUCE Pascal Celery **29¢**

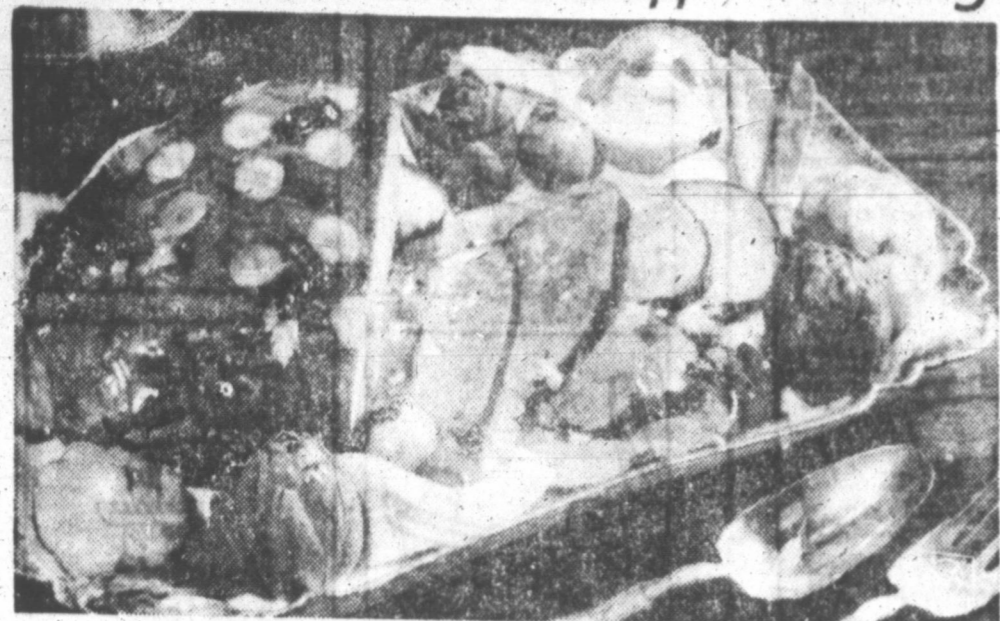
Sunkist Lemons lb. **25¢**
Calif. Long White **POTATOES** **18 lbs. 99¢**
Sunkist Oranges lb. **23¢**

Yellow ONIONS lb. **15¢** | **Calif. OKRA** lb. **37¢**

HOM'S FOODS
We Give Buccaneer Stamps-Double Wed With \$2.50 or More Purchase
421 E. FREDERIC OPEN 7 DAYS A WEEK MO 4-8531
LIMIT RIGHTS RESERVED

Clas
By GA
Newspape
For a ve
buffet party
French elev
come, serve
Mode. It is
recipe, slight
erican kitch
Good beef
truly the ki
handsome c
pork fat (ge
this). It is
and simmer
of wine, br
etables. Wh
glaze it wit
in gelatin
for a summ
BEEF
1 (3-lb.) b
or su
Pork fat
¼ cup olive
2 cups wh
¼ cup bra
1 bay leaf
½ teaspoon
2 sliced c
2 sliced st
1 sliced la
1 halved l
2 sprigs p
1 veal knu
1 (10½-ou
1 envelope
2 tablespo
Have butc
strips of po
tablespoons
Blueber
By GA
Newspaper
There's so
ly old-fashio
about a stea
ding. Almost
er or grandf
it. In those
cream was
days, with a
sciousness i
some may p
sauce.
STEA
BLUEBE
1 cup sift
½ cup sug
1½ teaspoon
bakin
½ teaspoon
½ cup fine
½ cup shor
1 egg, wel
2.3 cup mil
1 teaspoon
extra
1½ cups fr
Fresh L
Sift flour,
powder and
crumbs. Ad
cut it into
Combine egg
Stir into th
blueberries,
well-grease
cups. Cover
foil in plac
or the secur
Place on a
saucepan. A
ter to come
sides of the
to boiling p
hour. Unmol
serving dish
Lemon Sauc
FRESH
Combine ¼
blespoon cor
salt in a
pan Stir in
until slightly
stirring cons
blespoons fr
teaspoon gra
one tablespo
over Steams
Pudding. Y
If you was
dishwasher,
knives, fork
secure in th
If carelessly
slip out and
rotating imp
Read The N

Classic Summer Buffet Delight



GLAZED BEEF A LA MODE brightens your summer buffets.

By GAYNOR MADDOX
Newspaper Enterprise Assn.
For a very special summer buffet party when a touch of French elegance would be welcome, serve this Beef à la Mode. It is a classic French recipe, slightly adapted to American kitchens.

Good beef in any country is truly the king of meats. This handsome chunk is larded with pork fat (get your butcher to do this). It is marinated overnight and simmered in a heady brew of wine, brandy and fresh vegetables. When cool, you simply glaze it with these natural juices in gelatin. A magnificent dish for a summer buffet.

- BEEF A LA MODE**
1 (3-lb.) beef rump, round or sirloin
Pork fat for larding
1/4 cup olive oil
2 cups white table wine
1/4 cup brandy
1 bay leaf
1/2 teaspoon thyme
2 sliced carrots
2 sliced stalks celery
1 sliced large onion
1 halved large clove garlic
2 sprigs parsley
1 veal knuckle
1 (10 1/2-ounce) can beef broth
1 envelope unflavored gelatin
2 tablespoons cold water

Have butcher lard beef with strips of pork fat. Combine 2 tablespoons olive oil with wine.

Blueberry Pudding

By GAYNOR MADDOX
Newspaper Enterprise Assn.
There's something pleasantly old-fashioned and reassuring about a steamed blueberry pudding. Almost everybody's mother or grandmother used to make it. In those days, thick, heavy cream was the sauce. Nowadays, with so much calorie-consciousness abroad in the land, some may prefer a fresh lemon sauce.

- STEAMED FRESH BLUEBERRY PUDDING**
(Serves 8)
1 cup sifted all-purpose flour
1/2 cup sugar
1 1/2 teaspoons double-acting baking powder
1/2 teaspoon salt
1/2 cup fine dry bread crumbs
1/2 cup shortening
1 egg, well-beaten
2-3 cup milk
1 teaspoon pure vanilla extract
1 1/2 cups fresh blueberries
Fresh Lemon Sauce.

Sift flour with sugar, baking powder and salt. Blend in bread crumbs. Add shortening and cut it into crumb consistency. Combine egg, milk and vanilla. Stir into the mixture. Fold in blueberries. Turn into eight well-greased six-ounce custard cups. Cover well with foil. Hold foil in place with lastic bands or tie securely with strings. Place on a rack in a large saucepan. Add enough hot water to come half way up the sides of the mold, cover, bring to boiling point and boil one hour. Unmold while warm onto serving dishes. Serve with Fresh Lemon Sauce.

FRESH LEMON SAUCE
Combine 1/2-cup sugar, one tablespoon cornstarch, 1/2 teaspoon salt in a small saucepan. Stir in one cup water. Cook until slightly thick and clear, stirring constantly. Add two tablespoons fresh lemon juice, 1/2-teaspoon grated lemon peel and one tablespoon butter. Serve over Steamed Fresh Blueberry Pudding. Yields 1 1/4 cups.

If you wash silverware in the dishwasher, make sure that knives, forks and spoons are secure in their baskets or rack. If carelessly loaded, they may slip out and be nicked by the rotating impeller arm.

Read The News Classified Ads

GI Rations Really Last

By GAYNOR MADDOX
Newspaper Enterprise Assn.
Q — I have two sons in the armed services. I've been wondering how long those canned rations they get stay good? Do you know?

A — At the Natick, Mass., laboratories of the U. S. Army, food technologists recently opened a canned ration packed in 1918. The contents were taste-tested and all components were found to still be in edible condition. The can contained three 1-ounce chocolate bars, 1 gram pepper, 1/4-ounce salt, 1/2-pound bread, and a meat component.

The directions for preparing the bread and meat suggested that they could be eaten dry, stirred into cold water, boiled as a soup, or made into a thick porridge to be eaten hot or cold. In summarizing the testing, the Natick laboratories report said: "The container components and packaging materials of the World War I Emergency Ration show a good state of preservation and quality more than 46 years from date of pack."

Read The News Classified Ads

COOK'S TOUR

By JEANNE LESEM
UPI Food Editor

NEW YORK (UPI) — Southern pecan pie on the menu, flour in the quahog chowder and ice cream instead of plain cream on the Indian pudding.

It's enough to make Paul Revere's ghost ride forth in warning.

A recent vacation in coastal Maine, Martha's Vineyard and Nantucket, Mass., revealed these and other alarming inroads into New England's fine cooking traditions.

Lobster was plentiful but not cheap, and sometimes overcooked. Chowder with quahogs (the Algonquin Indian name for hardshelled clams) also was abundant but unreliable in quality. Too often too thin or worse yet — thickened with flour.

Ice cream on warm Indian pudding (corn meal pudding sweetened with molasses) has become so commonplace in restaurants that you'd think it was traditional.

Not so, says a food editor friend from Massachusetts.

"It's delicious, yes, but ice cream is for tourists and parties," she added. "Cold plain cream was the original New England homestyle, topping

heavy cream for those who could afford it."

Codfish cakes? Not once did I see them on a menu. No red flannel hash, no New England boiled dinner.

The best lobster and clam rolls we found at a snack bar near the dock in Edgartown, Martha's Vineyard. The former consists of lobster chunks in mayonnaise on a split frankfurter roll; the clams are quahogs, deep fried.

At one Nantucket guest house recommended for its typical New England breakfasts, the cook replied "Home cooking's no good," when asked if the corned beef hash on the menu were homemade. His hash—the canned variety — was served hot but not browned, and was undistinguished in flavor.

One lucky day we came across delicious cranberry sherbert at a drugstore in Edgartown. Another day, home-style chicken pie, with real chunks of chicken in a delicate sauce under a flaky pastry crust, at Chanticleer Inn, Siasconset, Nantucket.

But except for Indian pudding and occasionally, apple or blueberry pie, New England's legendary desserts — assorted fruit pies, cakes and puddings—were absent.

51st YEAR

THE PAMPA DAILY NEWS THURSDAY, JULY 21, 1966

7

"US" **Tareyton** "RATHER" **THAN** "

Smart Food Shoppers Pocket These Savings

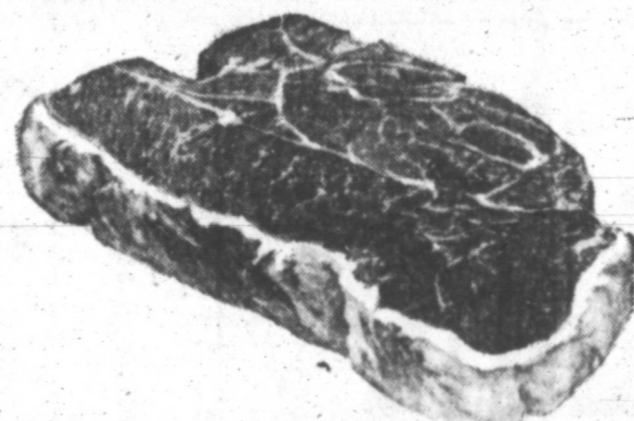
ELMERS
EGGS DOZ. **37c**

SUGAR Imperial or Holly 5 lbs. **49c**

Pinto Beans 2 Lb. Bag **25c**

SCOTT
Tissue 4 Roll Pkg. **35c**

MRS. TUCKER'S
Shortening 3 lb. tin **69c**



CHUCK ROAST
Swift Prem Heavy Beef **49c** Lb.

SWIFT PREM HEAVY BEEF
CHUCK STEAK **63c** Lb.

Round Steak Swift Prem Heavy Beef **89c** Lb.

FRYERS Fresh Dressed **33c** Lb.

HAMS Top O' Texas Shank Portions **39c** Lb.

HAM Top O' Texas Butt Portion **45c** Lb.

Sliced Ham Center Cut **89c** Lb.

Ground Beef 2 1/2 Lbs. **97c**

MELLORINE 1/2 Gal. **2 for 59c**

VAN CAMP
Pork & Beans 300 Size **12 1/2c** | Circus or Wagner Orange or Grape Drink **2 FOR 49c**

Milk Kimbell's Tell Can 2 for 27c

Biscuits Kimbell's 3 for 19c

Pineapple Crushed, Diamond, small can 10c

Green Beans Kimbell's whole 303 size 19c

Hominy Yellow 300 Size 2 for 15c

Salad Dressing Salad Bowl qt. 39c

Cake Mix Kimbell's Large Pkg. 25c

Coffee Folgers 1 Lb. 73c

Tuna Fish Van Camp 19c

Tea Kimbell's 1/4 lb. pkg. 29c

Kool Aid 5 Pkgs. 17c

Sloppy Joe Beef, Merton House 49c

Coca-Cola King Size 6 for 39c

AJAX-FAB

Or

COLD POWER

GIANT SIZE **59c**

SPECIALS FROM OUR DELICATESSEN

Home Made Pies **89c**

1 LB. MEAT LOAF
PT. OF PINTO BEANS
POTATO SALAD

ALL FOR ONLY **\$1.19**

VALUABLE COUPON
Bring This Coupon To Our Store
100 FREE BUCCANEER STAMPS
With Purchase of Large Size Easy-On SPRAY STARCH

VALUABLE COUPON
Bring This Coupon To Our Store
100 FREE BUCCANEER STAMPS
With \$5.00 or More Purchase Excluding Cigarettes

VALUABLE COUPON
Bring This Coupon To Our Store
100 FREE BUCCANEER STAMPS
With Purchase of 4 LIGHT BULBS

US No. 1 White POTATOES 10 Lb. Bag **55c**
Kentucky Green Beans **29c** Lb.
Peaches Fresh Large **19c** Lb.
Santa Rosa Plums **25c** Lb.

WE GIVE BUCCANEER STAMPS
DOUBLE STAMPS EVERY WEDNESDAY
WITH \$2.50 OR MORE PURCHASE

Shop Ward's For Low Low Everyday Prices

WARD'S GROCERY

OPEN DAILY 7:30 to 7:30 SUNDAY 8-7

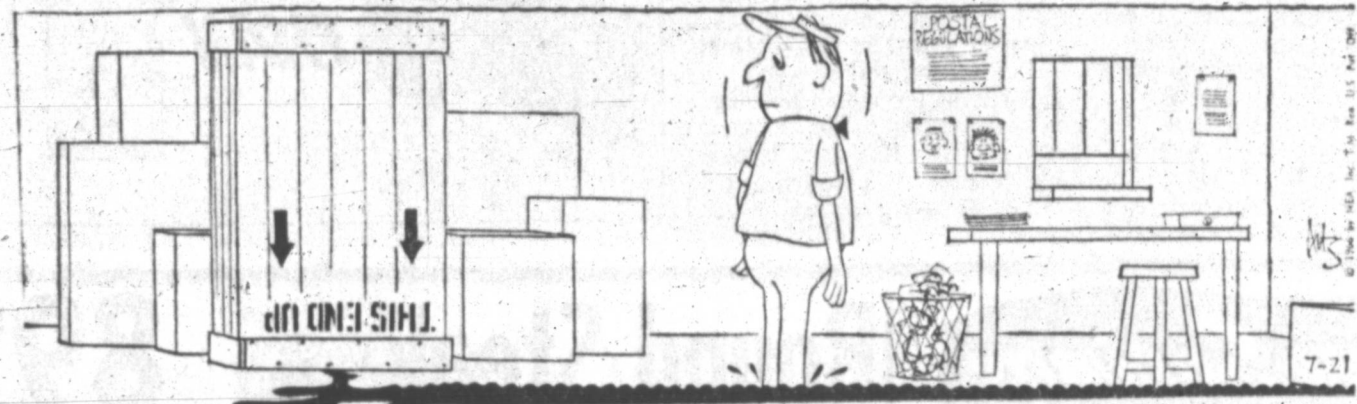
WE RESERVE THE RIGHT TO LIMIT QUANTITIES MU 4-9641

OUT OUR WAY

J. R. Williams



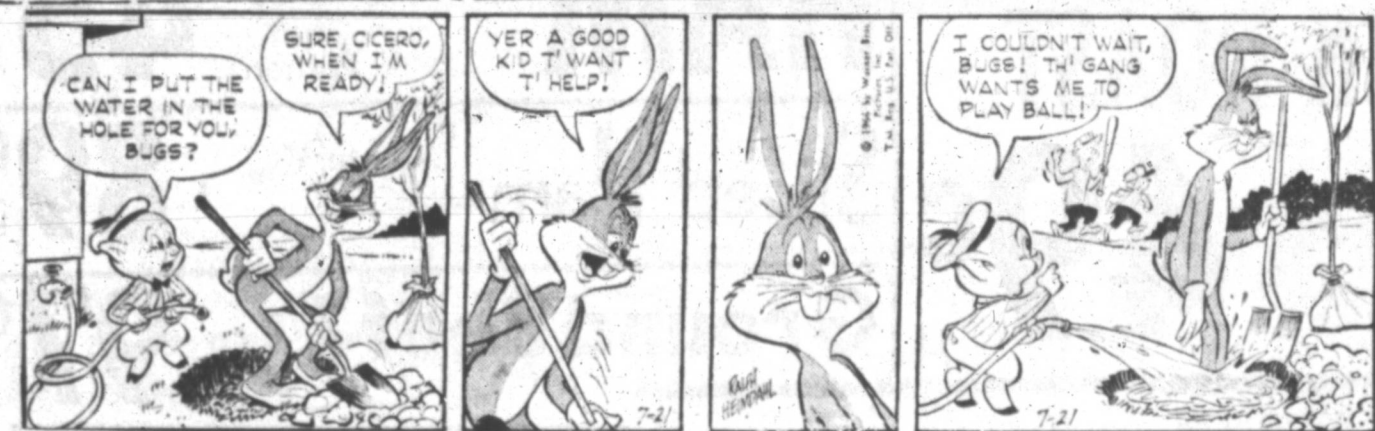
The Born Loser



The Berrys



Bugs Bunny



Eek and Meeks



Captain Easy



Jackson Twins



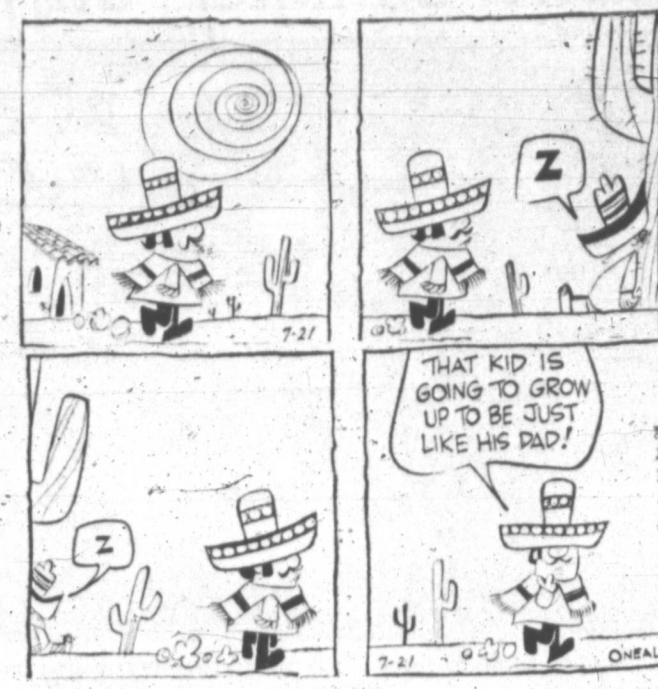
Meekly



OUR BOARDING HOUSE

With Major Hooper

Short Ribs



Blondie



Alley Oop



The Flintstones



Ben Casey



Mickey Finn



Priscilla's Pop



Dixie Dugan



Joe Palooka



DEAR many people alone and ship, and I am a retired and I own a few hours. For the been trying go steady up I can't. I have near my a derful com- ble is, the take them a week, w them, go to for drives. One of t pany shou much." W company? I wouldn share car both have comes and we could if we shar one of us anymore.

DEAR J you think about the financial a preciate a interested nize them hint. Than

DEAR RIEDS: on whethe of the you ute in any If they de to know w goes. If ne dependent have the p

DEAR A last Sunday church. It w tiful weddi perfect. We then left fo moon trip. was in a My father husband h fore and h

When cor cuation m and said h lawyer. Th

KYLE

S

50

FLA

Big Rac Values

TO MA SUMMI

STR

LA

Micro Or Rec

M

Blacks Most A

One B

109



Another Piggly Wiggly Fun Game!

WIN UP TO **One Million**
GREEN STAMPS!



HERE'S HOW TO PLAY:

- 1 Each time you visit the store you'll receive a "Match the S&H Stamp" envelope containing one half of a giant S&H Stamp. No purchase necessary.
- 2 Collect the top and bottom of an S&H Stamp with the same amount printed on them and win that amount of stamps.
- 3 Watch for the "Instant Winners." They can be redeemed immediately for the amount of stamps printed on them.

NOTHING TO BUY!..GET YOUR FREE MATCH THE S&H STAMP SLIP NOW!

205,000 WINNERS!

"FROZEN FOODS!"

Tip Top, Plain or Pink LEMONADE	10 ⁶ Oz. Cans	\$1 ⁰⁰
Birdseye Corn on the Cob	4 Ear Pkg.	47 ^c
Valley Gold, French Fries POTATOES	3 ² pound Pkgs.	89 ^c
Libby, Chopped or Leaf SPINACH	6 ¹⁰ Oz. Pkgs.	\$1 ⁰⁰

"National Brands!"

Lipton's Brisk Tea	1/2 pound Pkg.	83 ^c
Hunt's Whole, Unpeeled Apricots	No. 300 Can	23 ^c
Libby's Cream Style or Whole Kernel Golden Corn	2 ³⁰³ Cans	45 ^c
Del Monte, Garden Variety Sweet Peas	No. 303 Can	25 ^c
Dole, Hawaiian Pineapple Juice	46 Oz. Can	39 ^c
Star-Kist, Chunk Style Tuna	No. 1/2 Can	39 ^c

"Lever Brother's Products!"

Lux, 18c Off Label Liquid Detergent	Giant Bottle	53 ^c
New Sunshine, 18c Off Label Rinso Detergent	Giant Box	69 ^c
Lifebuoy, Coral Bar Soap	2 Reg. Size	29 ^c
Lix, Bath Size Facial Soap	2 Bar Pkg.	35 ^c
Heavy Duty Detergent Breeze	Giant Box	79 ^c
Wisk, Liquid LAUNDRY Detergent	Pint Bottle	45 ^c

"Summertime Specialties!"

Chocolate or Strawberry Flavor Nestle's Quik	1 pound Can	45 ^c
Hershey's Topping Choc. Syrup	16 oz. Can	23 ^c
Del Monte Apple, Orange, Grape, Cherry, or Fruit Punch Fruit Drinks	3 ⁴⁶ oz. Cans	\$1 ⁰⁰
Bonnebell Peanut Butter	18 Oz. Jar	49 ^c

"From the Dairy Case!"

Pillsbury Buttermilk, Sweetmilk Biscuits	3 ⁸ oz. Cans	29 ^c
Pillsbury Butterflake Rolls	8 Oz. Can	33 ^c
Meadowlake Margarine	1 pound Pkg.	29 ^c
Kraft's American Cheese	2 pound Loaf	\$1 ⁴⁹

"Home Needs!"

Kellar, Aluminum Folding, Extra Heavy Webbing, Extra Wide Arm Rest, Tubular Construction. LAWN CHAIR	reg. \$3.49	\$2 ⁸⁸
Agua Net Regular, Super, Dura Fresh, Reg. \$1.49 Value HAIR SPRAY	13 Oz. Can	59 ^c
Macleod's, 8c Off Label, Reg. 50c Value Tooth Paste	Family Size Tube	69 ^c

"Save! Save! Save!"

Early California, Jumbo RIPE OLIVES	No. 1 Can	39 ^c
Grape JELLY, Bama	18 Oz. Jar	37 ^c
American Beauty, Long MACARONI	2 ¹⁰ oz. Pkgs.	39 ^c
Gerber's Junior, Assorted Flavors BABY FOOD	2 ^{7 1/2} oz. Jars	35 ^c
Sunshine, Lady Joan Assortment COOKIES	12 oz. Box	47 ^c

Sugar	HOLLY, C & H, IMPERIAL	5 Pound Bag	49 ^c
Flour	SUNLIGHT FULLY GUARANTEED	5 Pound Bag	39 ^c
Baby Food	Heinz Strained Fruits & Veg.	3 4 1/2 Oz. Jars	25 ^c
Eggs	NEST FRESH, GRADE 'A' MEDIUM	DOZEN	39 ^c
Potatoes	INSTANT, GOOD 'N' RICH, 7 OZ. BOX		19 ^c
Peas	ROSEDALE GARDEN SWEET	6 No. 303 Cans	\$1
Coffee	FOLGER'S ALL GRINDS 1-POUND CAN		69 ^c
	(2-POUND CAN \$1.37) (3-POUND CAN \$2.05)		
Beverages	Rite Good Asst. Flavors No Deposit No Return	2 28 Oz. Btls.	37 ^c
Rice	ARROW MEDIUM GRAIN	2 POUND BAG	29 ^c
Viennas	LIBBY'S	3 No. 1/2 Cans	69 ^c
Pears	Pacific Gold	3 No. 2 1/2 Cans	\$1
MUSHROOMS	M. G. A., Sliced	2 Oz. Can	25 ^c
APPLE JUICE	Speas	Quart Bottle	29 ^c



These Prices Good July 21, 22, 23 In Pampa. We Reserve The Right To Limit Quantities.

"FRESH PRODUCE!"

Cantaloupe	FULL SLIP-VINE RIPE		
Red Grapes	Calif. Tokay	19 ^c	
GREEN ONIONS	2 Large Bunches	15 ^c	
Cauliflower	Cello Wrapped	Pound	29 ^c

Also Available at Piggly Wiggly: Egg Plant, Romaine, Tree Ripened Peaches, Avocados and Red Leaf Lettuce.

SALAD DRESSING	Morton's Quart Jar	47 ^c
SHAMPOO	Sue Free Egg or Green, 16 Oz. Bottle	29 ^c
DEODORANT	Hour after Hour, Reg. \$1.49, 7 oz. Aerosol Can	\$1 ¹⁹

Lowest Prices... Greatest Variety... always at...



"SUMMERTIME MEAT VALUES!"

Whole Fryers

USDA, GRADE A
(CUT-UP pound 37c)

POUND ... 33c

Swift Premium Aged Heavy Beef, Valu-Trimmed Round Steak	Pound	89 ^c
Swift Premium Aged Heavy Beef, Valu-Trimmed, Arm Bone Cut Swiss Steak	Pound	79 ^c
Swift Premium Aged Heavy Beef, Valu-Trimmed, Boneless Shoulder Roast	Pound	89 ^c
Pinkney's, All-Pork Sausage	2 pound Pkg.	89 ^c
Lean, 100% All Beef, Dated to Assure Freshness Ground Beef	2 pound Pkg.	89 ^c
Swift Premium Aged Heavy Beef, RUMP or Pikes Peak Roast	Pound	79 ^c
Swift Premium Aged Heavy Beef, Valu-Trimmed Family Steak	Pound	59 ^c
Lean Northern Pork, Country Style Pork Ribs	Pound	69 ^c
Lean Northern Pork, Rib Chops Boneless Pork Chops	Pound	\$1 ³⁹
Swift Premium, Pickle, Olive, Bologna Lunch Meat	3 6-oz. Pkgs.	\$1 ⁰⁰
Swift's Premium Aged Heavy Beef, Valu-Trimmed, Boneless Rib-Eye Steak	Pound	\$1 ⁹⁸
Icelandic Breaded Cod, Perch Fish Steaks	12 oz. Pkg.	55 ^c
Swift Premium Franks	Pound 12 Oz. Pkg.	55 ^c
Blue Morrow's Little Piggy Link Sausage	12 oz. Pkg.	59 ^c
Sea Star Fish Sticks	4 8 oz. Pkgs.	\$1 ⁰⁰