

On the Record

Highland General Hospital VISITING HOURS MEDICAL AND SURGICAL FLOORS Afternoons 2-4 Evenings 7-8:30 OB FLOOR Afternoons 2-4 Evenings 7-8

Highland General Hospital does not have a house physician All patients, except severe accident victims, are requested to call their family physician before going to the hospital for treatment.

- WEDNESDAY Admissions Mrs. Marilyn Lee Russell, 621 N. Hobart. Mrs. Ruth Cleteen Harmon, 1121 Sirocco. Royce Duane Bradsher, 207 E. Browning. Rhonda Jean Bradsher, 207 E. Browning. Baby Girl Russell, 621 N. Hobart. H. L. Ledrick, Pampa. Lon L. Spaulding, Skellytown. Mrs. Ann Parker, Pampa. Mrs. Eloise Collins, White Deer. Don Leon Eckman, Panhandle. Mrs. Vaunciel Organ, 414 Crest. Mrs. Stella Cobb, 821 E. Murphy. Mrs. Imogene Lewis, Wheeler. Lydia Renee Wright, 1038 S. Sumner.

- Dismissals Miss Mary Hassell, 2212 Coffee. Mrs. Sarah Anna Milligan, White Deer. Mrs. Ina West, McLean. Irvin Cole, 1106 Charles. Mrs. Vida Murphy, 524 N. Warren. Sharon Kay Baumgardner, 604 N. Davis. Mrs. Frances Mercer, 2125 N. Zimmer. Mrs. Judith Coble and Baby Boy, 2106 Hamilton. Christopher Drew Baumann, 1113 Terrace. Joe Myron Greenwood, 1935 Grape. Mrs. Nola Pearl Harvin, Borden. Mrs. Mary King, Panhandle.

CONGRATULATIONS: To Mr. and Mrs. Michael Russell, 621 N. Hobart, on the birth of a girl at 8:47 a.m., weighing 6 lbs. 3 ozs.

Wall Street In Review

NEW YORK (UPI) — Spear & Staff Inc. says that only if we suppose the market is going to panic as in 1962 can we find a logical basis for anticipating another big break from present depressed levels.

The advisory service says that with the fat largely squeezed out of current price-earnings ratios it would appear that only a "cuban type crisis compounded" could do it.

Leslie M. Pollack of Reynolds & Co. says the July, 1965, low of 832.74 in the Dow-Jones Industrial average now appears to be the area in which the market will see its next test of consequence.

P. W. Brooks & Co. Inc. says the behavior of stock prices now indicates further downward movement in the coming sessions but the firm still expects the decline to be contained within the 830 level of the Dow-Jones Industrial Average.

Kenneth B. Smilen and Kenneth Safian of Purcell, Graham, Co. say the basic trend of stock prices appears to be down. The analysts say there may be some minor rallies, and temporary resting periods from time to time but all signs point to continuation of the steady and orderly distribution of stocks of the past several months.

Bachtel & Co. says it would continue to concentrate on quality and continues to advise an investment strategy centered on quality stocks at the low end of their historic multiple range. Issues that consistently tend to outperform the overall market.

Read The News Classified Ads

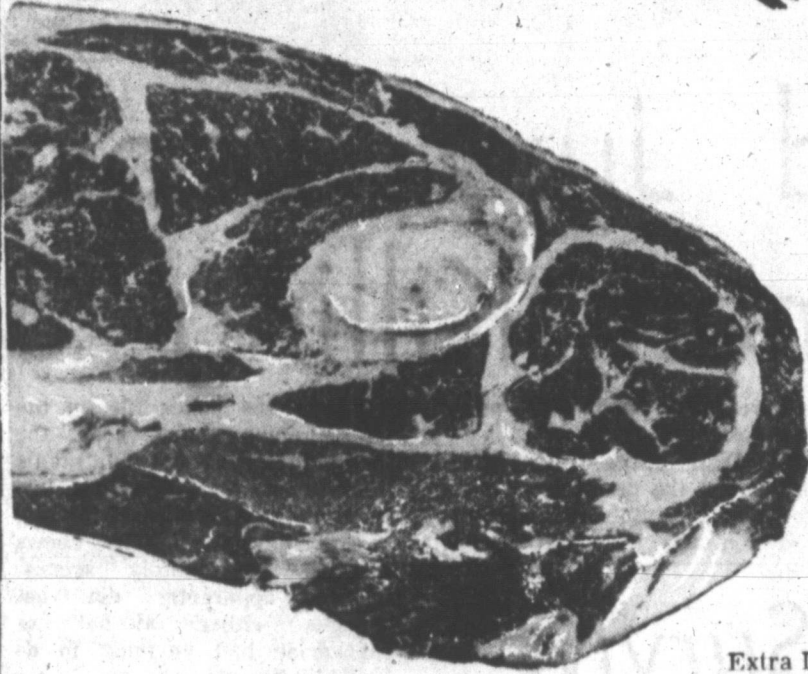
WIN UP TO \$250 PLAY "Let's Go to the Races"

SHOW TIME KFDD-TV CHANNEL 10 WED. 8:30 P.M.

PICK UP YOUR FREE CARD!

CHUCK ROAST

U.S.D.A. CHOICE BEEF Lb. 49c



Fresh Dressed U.S.D.A. Grade A Whole FRYERS Lb. 33c U.S.D.A. Grade A CUT-UP-FRYERS Lb. 37c U.S.D.A. Choice Beef CLUB STEAK Lb. \$1.19

Extra Lean for Bar B. Q. BEEF RIBS Lb. 39c Farm Pac. All Pork SAUSAGE 2 Lb. Bag \$1.29 Honey Suckle TURKEY and GRAVY 2 Lb. Pkg. \$1.99 Sea Star FISH STICKS Lb. 49c

BEEF ROAST Boneless Shoulder Lb. 79c

Bake-Rite SHORTENING 3 lb. can 69c

PEACHES Hunt's Yellow, Clings Sliced or Halves No. 2 1/2 Can 25c

ASPARAGUS Food Club, Cut All Green, No. 300 Can 25c

SUGAR All Brand 5-Lb. Bag 49c

DRINK Pineapple Grapefruit Libby's 46 Oz. Can 25c

GRAPE JUICE Food Club, 20 Oz. Bu. 29c

LOCAL GROWN CANTALOUPE Lb. 5c

Folgers, All Grinds COFFEE Lb. 73c 2 lb. can \$1.45 Food Club, 4 oz. can BLACK PEPPER 37c Dartmouth, Assorted Flavors MELLORINE 1/2 gal. 39c Northern, Assorted Colors TISSUE 4 roll pak. 39c

Maryland Club, 10 oz. jar INSTANT COFFEE \$1.39 Sunsweet PRUNE JUICE qt. 2.89c Farm Pac, Grade A, Medium EGGS doz. 39c Blue Bonnet SOFT MARGARINE lb. 49c

BAR-B-CUE TIME CHARCOAL 10 Lb. 39c

GENERAL MERCHANDISE— CHARCOAL LIGHTER Fluid, Union Carbide, Qt Size 29c



FROZEN FOODS Pies CREAM, Morton's Fresh Froz. Asst. Flavors Pkg. 29c Patio Beef, Fresh Frozen ENCHILADA DINNERS 12 oz. Pkg. 39c Ashleys, Fresh Frozen KSO DIPS 6 oz. Can 33c AVO DIPS 6 oz. Can 43c Mortons, Fresh Frozen FRUIT PIES Apple, Cherry, Peach, Boysenberry or Blackberry 32 oz. Pkg. 69c Mortons Fresh Frozen DINNERS Chicken, Beef, Turkey or Salisbury Steak 11 oz. Pkg. 39c

TEFLON COOKWARE Layer Cake Pan Muffin Tin Pie Pan Bread & Loaf Pan 1 qt. Sauce Pan Saute Pan 99c Ea.

Mugs & Tumblers Thermo by Gits 25c ea Sanitary Napkins Secure 12's 31c Garden Hose 75' x 1/2" Plastic \$1.99



Match winning horse numbers in TV Show Races with Winning Horse numbers of FREE cards given at Furr's. Watch the TV Show or Check the winners before Saturday, following the race on Wednesday.

CHARMS 24 KARAT GOLD FINISH

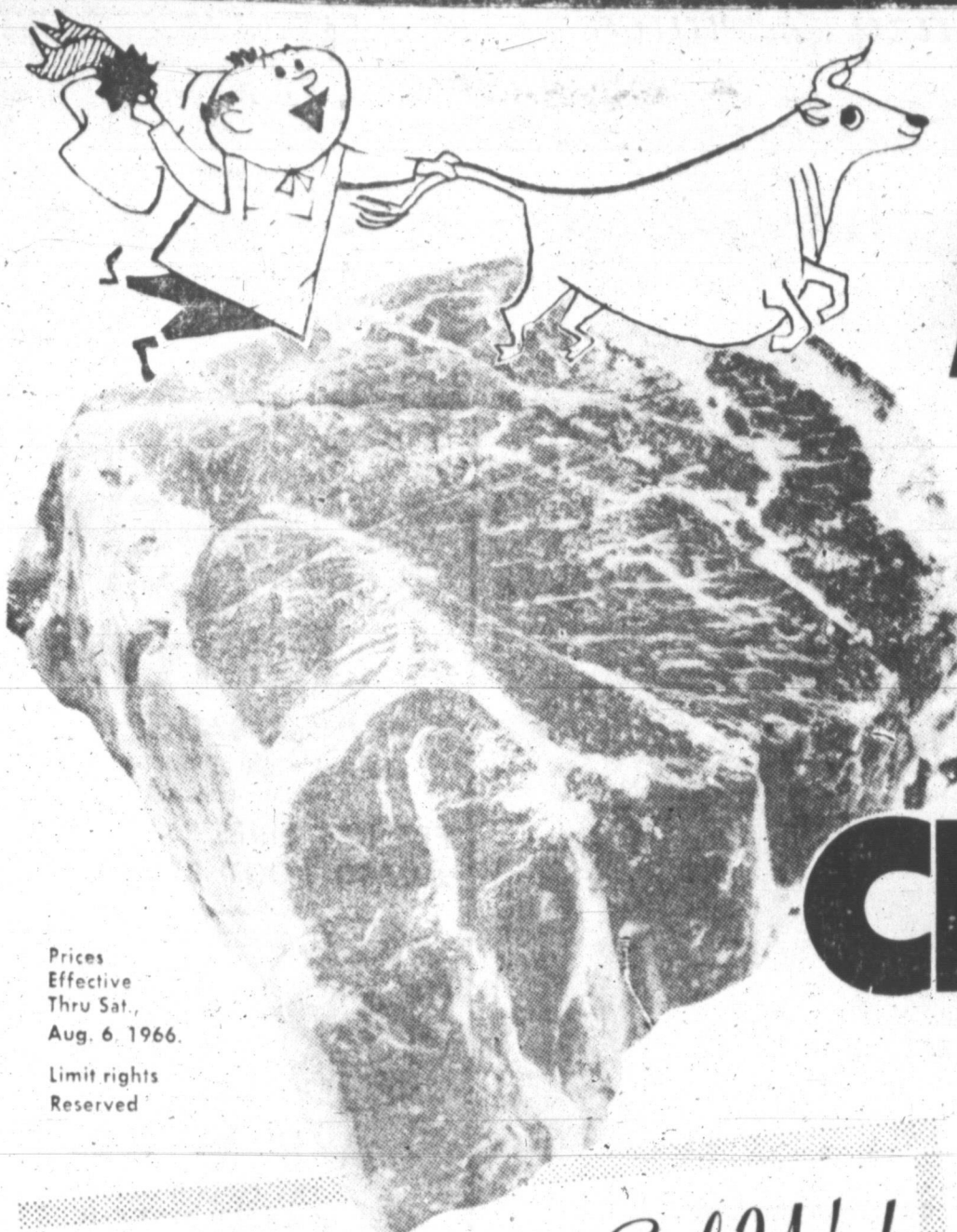
PRINCESS CHARMS 50c EACH

Add Princess Charms to your Charm Bracelet each time you shop at Furr's. Now for the low price of only 50c each you can have the selection of charms on your arm that perfectly suits your personality. Each charm is quality crafted in an exact reproduction of charms costing \$25 to \$100... and many are hand set with semi-precious stones and Florentine finishes.

PEANUT BUTTER

WAGON TRAIL 2 1/2 Lb. Jar 99c

CANTALOUPE



Lean Tender Ideal Beef at Heart-Warming Low Prices!

U.S.D.A. choice beef is an excellent buy at Ideal... big on tenderness... big on flavor... big on satisfaction, bite after bite! Surprise your family with a deliciously tender choice beef roast this week... Save a pretty penny too!



TENDER, DELICIOUS, SWIFT'S PRO-TEN BEEF

CHUCK ROASTS

Tender Juicy First Cuts

Lb.

49¢

Center Cut Arm Roast

Lb.

59¢

Prices Effective Thru Sat., Aug. 6, 1966. Limit rights Reserved

It's Appreciation Sale Week

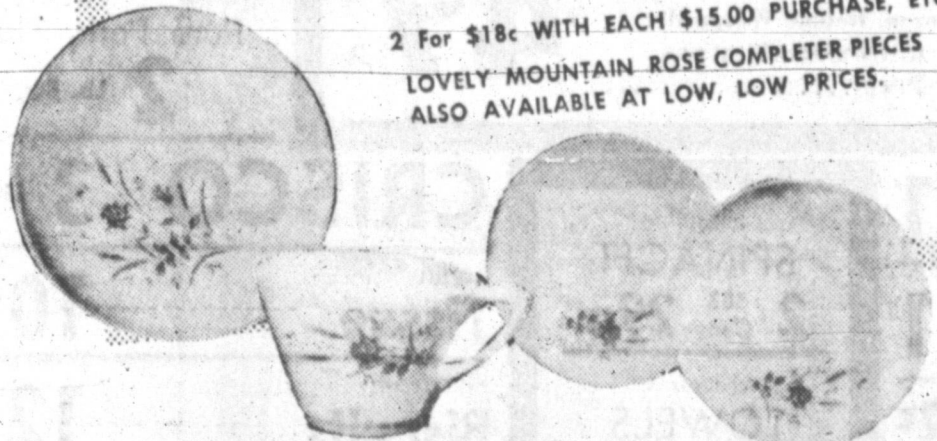
ON EXQUISITE MOUNTAIN ROSE DINNERWARE

MIX 'EM OR MATCH 'EM... COMPLETE YOUR SET THIS WEEK... ANOTHER CHANCE TO TAKE ADVANTAGE OF THESE TREMENDOUS SAVINGS!

- CHOICE OF:
- 10-IN. DINNER PLATE
 - 6-IN. BREAD & BUTTER
 - 5-IN. FRUIT DISH
 - COFFEE CUPS
 - SAUCERS

9¢ EACH ONLY WITH EACH \$7.50 PURCHASE WHILE THEY LAST

2 For \$18¢ WITH EACH \$15.00 PURCHASE, ETC. LOVELY MOUNTAIN ROSE COMPLETE PIECES ALSO AVAILABLE AT LOW, LOW PRICES.



IDEAL FLAVOR RICH ICE CREAM

Assorted Flavors 1/2-Gal. Ctn. **79¢**

PILLSBURY'S LAYER CAKE MIXES

SPECIAL LABEL WHITE, YELLOW, CHOC. FUDGE, APPLESAUCE SPICE, DOUBLE DUTCH OR SWISS CHOC. **3 Pkgs. \$1.00**

DEL MONTE LIGHT MEAT CHUNK TUNA **3 No. 1/2 Cans \$1.00**

ENRICHED FLOUR PILLSBURY'S BEST **5-Lb. 55¢ 25-Lb. Bag \$2.59**

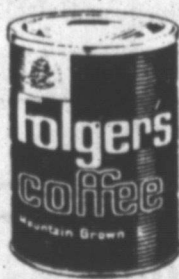
- HUNT'S Tomato Juice 32-Oz. Cans **27¢**
- SANTA ROSA Pineapple Juice 46-Oz. Cans **29¢**
- APPLE BAY Applesauce 2 303 Cans **29¢**
- SPECIAL LABEL DESSERT TOPPING Dream Whip 4-Oz. Pkg. **39¢**
- NAB'SCO Fig Newtons 1-Lb. Pkg. **39¢**
- IDEAL Cider Vinegar Gallon Plastic **89¢**
- ALUMINUM FOIL Reynold's Wrap 12-In Roll **33¢**
- DELIGHTFULLY SCENTED Calgon Bouquet 1-Lb. Pkg. **79¢**

FRESH FROM DAIRYLAND!

- WISCONSIN OLD FASHIONED Longhorn Cheese Lb. **73¢**
- KRAFT SHARP Cracker Barrel Cheese 10-Oz. Stick **69¢**
- KRAFT INDIVIDUAL WRAPPED American Slices 12-Oz. Pkg. **57¢**
- SPECIAL LABEL SWIFT'S Allsweet Margarine 1-Lb. Ctn. **29¢**

OVEN FRESH FROM IDEAL

- IDEAL BREAKFAST ROLLS Pineapple Twists Pkg of 6 **39¢**
- IDEAL OLD FASHIONED Sack Bread 1 1/2-Lb. Loaf **29¢**



All Grinds... Mountain Grown Coffee

FOLGER'S

Lb. Can **73¢**

DASH DOG FOOD 6 15 1/2-Oz. Cans **97¢**

PEELED SANTA ROSA TOMATOES 8 303 Cans **\$1.00**

ALL SIZES—REGULAR \$1.00 TIP TOP BRUSH ROLLERS 2 Pkgs. **99¢**

KOUNTY KIST WHOLE KERNEL GOLDEN CORN 2 12-Oz. Cans **29¢**



U.S. NO. 1 NORGOLD RUSSET

POTATOES 10 49¢

KRAFT FRESH ORANGE JUICE 3 Qt. **\$1.00**
FOR SALADS or STUFFING GREEN PEPPERS 3 FOR **25¢**

FOR DELICIOUS MEATS PERSIAN LIMES **25¢**

Closed Sundays So Our Employees May Attend The Church of Their Choice

Food Page

6 THE PAMPA DAILY NEWS THURSDAY, AUGUST 4, 1966 59TH YEAR

Fresh Salad Idea

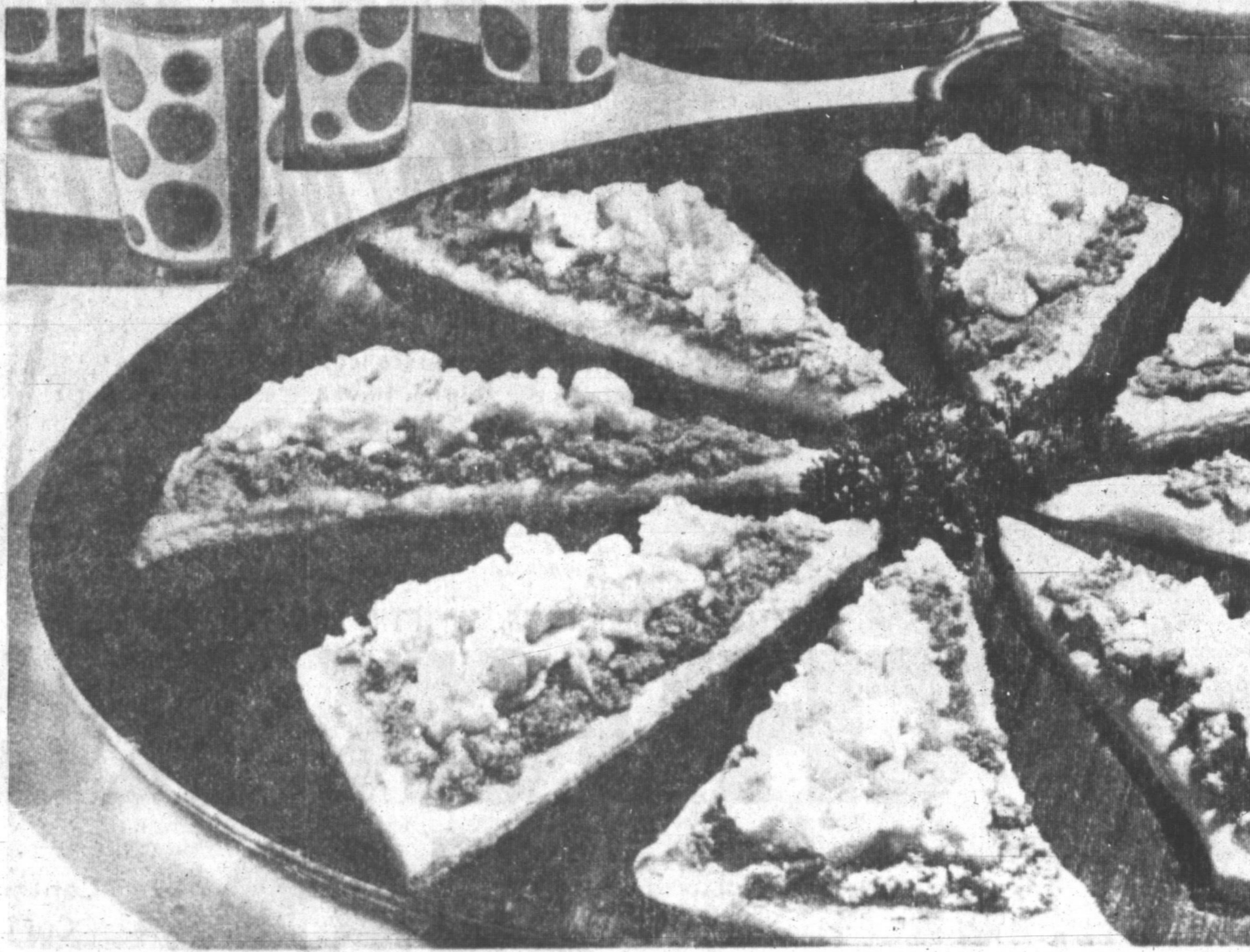
MOLDED FRESH PLUM RING (Serves 6)
 2 envelopes unflavored gelatin
 1 cup cold water
 1 cup hot water
 1/2 cup sugar
 2-3 cup fresh lemon juice
 1/4 teaspoon salt
 2 cups sliced fresh plums
 2 cups Chicken Salad.

Soften gelatin in cold water. Add hot water and sugar and stir until dissolved. Cool; stir in lemon juice and salt. Chill until mixture is about as thick as fresh egg whites. Fold in sliced plums. Fill 4-cup ring mold with gelatin mixture. Chill until firm and ready to serve. Unmold onto a serving plate. Fill center with chicken salad. Garnish as desired with salad greens.

CHICKEN SALAD (Makes 3 cups)
 2 cups diced cold cooked chicken
 1/4 cup diced fresh celery
 1/4 teaspoon salt
 1/4 teaspoon ground black pepper
 1/4 cup mayonnaise
 2 tablespoons sour cream
 1 tablespoon fresh lemon juice
 1 teaspoon finely chopped fresh onion.

Combine chicken, celery, salt and black pepper. Mix together mayonnaise, sour cream, lemon juice and onion. Add to salad and toss lightly. Spoon into center of molded plum salad ring.

Here's How to Plan a Lazy Brunch



SUMMER SUNDAY BRUNCHES can be enjoyed by both hostess and guests when planned for easy summertime living. Deviled ham 'n' crescent points topped with scrambled eggs are easy to prepare and make an excellent main course for a lazy summer brunch.

So often we put off entertaining simply because it's too much effort to see that the house is clean and to prepare the fancy foods that mean a party. But before you decide against inviting a few folks over, why not consider having a summer Sunday brunch? The first point in favor of this type of party is that you can use your patio or backyard... no house-cleaning is necessary! Secondly, the party fare can be simple and yet quite dramatic.

We'd suggest that you make up pitchers of frosty cold juices to start with. The fresh fruits of the season lend themselves to a colorful bowl or platter arrangement designed for help-yourself type service. The main course might be these wonderfully rich triangles of refrigerated dinner rolls, spread flat and topped with deviled ham and scrambled eggs. These, too, can be served buffet style and are satisfying, yet not too filling for a warm summer day's menu.

The rolls are, quick crescent dinner rolls, the refrigerated kind that you'll find in the dairy case. Each roll is spread out flat and baked off according to directions. Once they are crisp and browned, top the triangle-shaped rolls with canned deviled

ed ham and hot scrambled eggs. They're delicious and easy enough for a youngster to fix for you. The deviled ham and egg combination is a tasty one paired with fresh fruits and, of course, coffee — hot or iced. This is an easy way to entertain, and a relaxing way for the hostess as well as the guests.

Deviled Ham 'N' Egg Crescent Points
 1 can refrigerated quick crescent dinner rolls
 1 large can (4 1/2 to 5 1/2 ounces) deviled ham spread
 8 eggs
 1/2 cup milk
 1 teaspoon salt
 Dash pepper
 2 tablespoons butter or margarine
 2 tablespoons margarine
 Oven: 375 Degrees

CRESCENT POINTS
 Unroll dough; separate into 8 triangles. Place on ungreased cookie sheet. Bake at 375 degrees for 10 to 12 minutes, or until golden brown. Combine remaining ingredients to make scrambled eggs. Spread deviled ham spread on hot triangles. Top with hot scrambled eggs. Garnish with additional ham spread or parsley. Serve hot.

NOW THRU WEDNESDAY **CAPRI** ADULTS Till 6 pm 85¢ CHILD 35¢
 OPENS 1:45

Now a name... soon a legend.

JOSEPH E. LEVINE presents **STEVE McQUEEN**
KARL MALDEN **BRIAN KEITH**
ARTHUR KENNEDY **SUZANNE PLESSETTE**

"NEVADA SMITH"

with **RAF VALLONE** - **JANEY MARDOLIN** - **HOWARD DA SILVA** - **PAT HINGLE**
MARTIN LANDAU - **JOHN MICHAEL HAYES** - **MARLO ROBBINS** - **JOSEPH E. LEVINE**
 HENRY HATHAWAY - ALTRIS NEWBAM - & BRUCE PRODUCTIONS - A PARAMOUNT PICTURE

NOW AND FRIDAY **TOP OF TEXAS** ADULTS 75¢ CHILD FREE
 OPENS 7 P.M.

LAUGH-PACKED WESTERN ACTION

THE MURKIN CORPORATION presents JOHN STURGES' **THE HALLELUJAH TRAIL**
 NOW SEE HOW THE WEST WAS MADE

DIRECT FROM ITS RESERVED SEAT ENGAGEMENTS! **FIRST TIME AT POPULAR PRICES!**

UNLIKE ANYTHING YOU HAVE EVER SEEN! THE SUPER ACTION SHOW OF SHOWS!

BATTLE OF THE BULGE

STARRING **HENRY FONDA** · **ROBERT SHAW** · **ROBERT RYAN** · **DANA ANDREWS**
PIER ANGELI · **BARBARA WERLE** · **GEORGE MONTGOMERY** · **TY HARDIN**
CHARLES BRONSON · **HANS CHRISTIAN BLECH** · **WERNER PETERS**
JAMES MACARTHUR and **TELLY SAVALAS**

2-SHOWS DAILY 2 P.M. AND 8 P.M.

NOW SHOWING **LAVISTA** ADULTS Week Day Matinee \$1.00 Sat-Sun & Evening \$1.25 CHILDREN 50¢

Food Shopping's a Breeze Here

FRYERS Grade A Whole Fresh Dressed 33¢ lb	BACON Food King 1-Lb. Pkg. 79¢	ROUND STEAK U.S.D.A. Choice 89¢ lb	TENDERIZED STEAK No Waste Lb. 98¢
GROUND CHUCK Fresh Lean 59¢ lb	BACON Flavor Wright 2 Lbs. \$1.59	USDA Good, Heavy, Mature, Grain Fed Beef HALF BEEF Quick Frozen, Double Wrapped Cut-To-Your-Own Specifications Complete Price 49¢ lb	PORK STEAK Fresh 59¢ lb
GROUND BEEF Fresh 3 Lbs. \$1	Canned Pop 12 Cans \$1	CRISCO 3 Lb. Can 79¢	SAUSAGE Pure Pork, Flavor Wright 2 Lb. Bag 89¢
Shurfine, Assorted Flavors	Shurfine SPINACH 2 303 Cans 29¢	Softin Tissue 10 Roll Pak 69¢	Shurfresh Biscuits 12 Cans \$1
Shurfine, Yellow Cling, Slices or Halves	Kleeneex TOWELS Jumbo Roll 33¢	Shurfresh Oleo 5 Lbs. \$1	Shurfresh Oleo 5 Lbs. \$1
Folger's Coffee 1 Lb. Can 73¢	Softin NAPKINS 200 Count 29¢	van Camp's, Reg. Can Vienna Sausage 5 \$1	
Kraft's Miracle Whip Qt. 49¢	TIDE Detergent Giant Box 69¢	EGGS Shurfresh, Grade A, Medium 2 Doz. 89¢	MILK Shurfine, Tall Cans 7 For \$1
EGGS Shurfresh, Grade A, Medium 2 Doz. 89¢	MILK Shurfine, Tall Cans 7 For \$1	SUGAR Holly 5 Lb. Bag 49¢	FLOUR Gold Medal 5 lb. bag 49¢
FARM FRESH PRODUCE	King Size Coca-Cola 6 Bot. Ctn. 39¢ Plus Dep.	WATERMELONS Irish Grey 69¢ ea.	Luncheon Meat Shurfine, 12-Oz. Can 49¢
POTATOES California Long, White 10 Lb. Bag 49¢	Wagner's, Quart Breakfast Drink 3 For 89¢	CORN California, Whole Ear 3 Ears 39¢	Van Camp's Pork & Beans 5 No. 2 Cans \$1
PEACHES California Elberta 5 Lbs. \$1.00	Shurfine, Early Harvest Peas 5 303 Cans \$1	ENCHILADA DINNERS Patio Beef 3 Reg. Pkgs. \$1	LEMONADE Shurfine 6-oz. Can 10¢

HOM'S FOODS
 We Give Buccaneer Stamps—Double Wed. With \$2.50 or More Purchase
 421 E. FREDERIC OPEN 7 DAYS MO 4-8531 LIMIT RIGHTS RESERVED

Tuna Manicotti Is Savory Meal



TUNA MANICOTTI is a warm weather dinner delight.

By GAYNOR MADDOX
Newspaper Enterprise Assn.
Tuna, one of the most ancient and honored of foods, appears on American tables so often today that we have to rely on Japanese fishermen to supply about 42 per cent of the tuna packed by our American canners.

An excellent source of top quality but delicate protein, tuna is ideal for summertime meals. Combined with manicotti shells, rich red tomato sauce and three types of cheese, it makes a tempting warm weather main course.

TUNA MANICOTTI
(Serves 4)
2 cans (6 1/2 or 7 ounces)

Fried Zucchini

By GAYNOR MADDOX
Newspaper Enterprise Assn.
How about some new ways to cook summer's fresh vegetables? Here are two.

FRIED FRESH ZUCCHINI

(Serves 6 to 8)
5 (1 1/4 lbs.) medium zucchini squash
1 3/4 teaspoons salt
1 cup sifted all-purpose flour
2/3 cup milk
1 tablespoon olive or salad oil.

Cut zucchini into 2-inch sticks 1/2-inch thick. Sprinkle with 1/2 teaspoon of the salt and let stand 5 minutes. Combine remaining 3/4 teaspoon salt, flour, milk and oil. Mix until smooth. Drain squash sticks well and dry with a paper towel. Dip into the batter. Fry a few at a time in deep fat preheated to 360 degrees until golden. Drain on paper towels. Serve with the main dish.

FRESH CARROTS

with
MINTED GRAPES
(Serves 6)
1 lb. (about 8 medium) fresh carrots
2 tablespoons butter
1 tablespoon light brown sugar
1/2 teaspoon salt
1/2 teaspoon ground black pepper
1/2 cup boiling water
1 tablespoon butter
2 cups Thompson seedless grapes
2 tablespoons chopped fresh mint

Scrape carrots and cut in thin strips. In a saucepan melt the 2 tablespoons butter. Add carrots. Sprinkle with sugar, salt and black pepper. Add boiling water. Bring to boiling point, reduce heat, cover and simmer about 15 minutes or until crisp tender. Meanwhile in small skillet melt remaining 1 tablespoon butter. Add grapes and mint. Cook over low heat, stirring gently, until lightly glazed and heated. Serve over carrots.

Refreshing

Coupe Sahara makes a refreshingly cool dessert for a hot day.
Skin, halve and pit three large ripe peaches. Dip halves in 1 teaspoon of lemon or pineapple juice to prevent darkening. Combine 3/4 cup of water with 1/2 cup of sugar in a 1-quart saucepan. Stir and cook until sugar dissolves and syrup boils. Add peaches to boiling syrup, cover and cook 12 to 15 minutes, until peaches are tender.
Cool, then chill them in syrup. Just before serving, place a scoop of vanilla ice cream in each of 6 stemmed sherbert glasses. Top each with a poached peach half, a small scoop of raspberry sherbert and a spoonful of apricot puree or marmalade. Garnish with whipped cream, if desired.

Food Buying Guide - Crisp Chili Chicken Is Inspired Food

The following guide to the nation's food shopping buys for this coming weekend was prepared by the U.S. Department of Agriculture and Interior for United Press International.

WASHINGTON (UPI) — Fruits thrive under the hot sun's ray, but otherwise, the vegetables are not faring too well. Meats therefore, are the featured weekend specials.

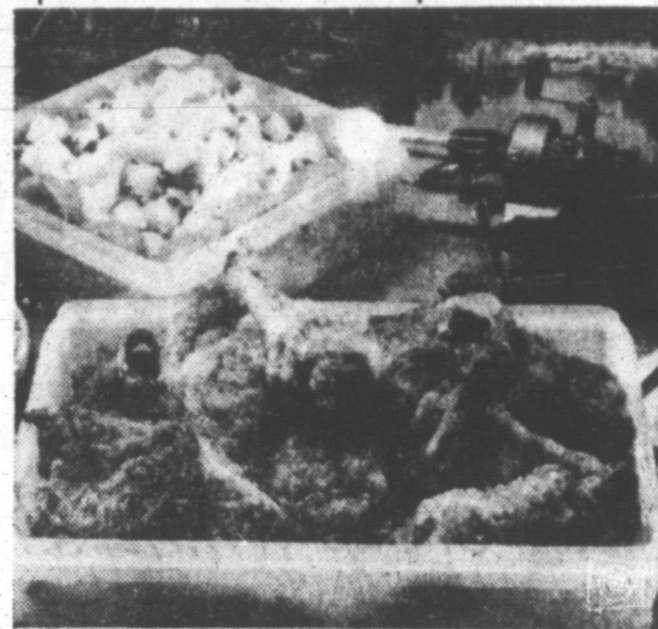
Look for rib roasts and steaks, especially sirloin cuts. Lamb is in good supply in some areas, too. Whole broiler-fryers and turkeys hold the line as good protein buys.

In the vegetable bin, green beans, cabbage, carrots and corn are the promotional items. Cucumbers, greens, peppers, potatoes, radishes, squash and tomatoes are other summer plentiful.

Bananas lead the fruit list. Cantaloupes, grapes, nectarines, peaches, pears, plums, watermelons and blueberries are other weekend items to look for.

Nationally, fish sticks and portions, and canned tuna are the fish plentiful.

er with remaining sauce and sprinkle with additional shredded mozzarella cheese, if desired. Bake in 350 degree (moderate) oven 25 minutes or until bubbling.



CRISP CHILI CHICKEN is a picnic treat.

By GAYNOR MADDOX
Newspaper Enterprise Assn.

Crisp chili chicken is really inspired food for a picnic. The chicken pieces are dipped in milk, to which are added mustard, Tabasco and Worcestershire sauce. Next the chicken is coated with flour seasoned with chili powder; then baked in a hot oven in foil-lined pans. The result is the finest, crisp flavorful chicken ever invited to a picnic. Of course, it can be served hot at home, too.

CRISP CHILI CHICKEN

(Serves 12)
3/4 cup butter or margarine
3 broiler-fryer chickens, cut into serving pieces
4 teaspoons salt, divided
2 cups flour
1 1/2 teaspoons chili powder



1 cup milk
3 tablespoons prepared mustard
2 teaspoons Worcestershire sauce
1/4 teaspoon Tabasco.

Manners Make Friends



Encourage youngsters to use good table manners at home.

Line two 15x10x1-inch baking pans with foil. Divide butter between pans; place in 425 degree oven about 5 minutes, until butter melts. Sprinkle both sides of chicken pieces with 3 teaspoons of the salt. Combine flour, chili powder and remaining 1 teaspoon salt. Combine milk, mustard, Worcestershire sauce and Tabasco. Dip chicken pieces in milk mixture, then coat with seasoned flour. Place skin-side down in melted butter in baking pan. Bake in 425 degree oven 30 minutes. Turn chicken, reverse pans on oven shelves, and bake 20 minutes longer.

Freezer Beef Sale

Choice Grain Fed Beef

Unconditionally Guaranteed

Investigate Our Monthly Pay Plan

This Meat Is Cut To Your Specifications. DOUBLE WRAPPED AND QUICK FROZEN TO INSURE TENDERNESS AND FLAVOR.

HIND QUARTER lb. 53c
1/2 BEEF lb. 43c
FRONT QUARTER lb. 33c

CLINTS FOODS

Phone 883-6911 White Deer, Texas

Shop these good old fashioned BARGAINS

THE STORE WHERE YOUR DOLLAR BUYS.

SHOP WARD'S FOR LOW EVERYDAY PRICES..



- Cream Pies Morton's 2 for 55c
- Fruit Cocktail Kimbell's 303 Can 19c
- Pineapple Diamond, Crushed can 10c
- Pork & Beans Van Camp 300 Size 2 for 25c
- Black Eye Peas Ranch Style 2 cans 21c
- Green Beans Red Dart 303 can 10c
- Hominy Yellow 2 303 cans 15c
- Salad Dressing Salad Bowl qt. 39c
- Cake Mix Betty Crocker 2 for 65c
- Salt Kimbell's Round Box 9c
- Coffee Maryland Club lb. 73c
- Coca-Cola King Size 6 for 39c
- Vienna Sausage Libby's 19c

.....MORE!!!

SWIFT PREM. HEAVY BEEF

CHUCK ROAST 49c lb.

CHUCK STEAK 63c lb.

SWIFT PREM. HEAVY BEEF **FRANKS 49c**
12 Oz. Pkg.

FRYERS 33c lb.
FRESHLY DRESSED

GROUND BEEF 97c
Fresh 2 1/2 Lbs.

LUNCH MEAT 98c
Swift ASSORTED 3 Pkgs.

Cudahy Round-Up **Bacon 79c lb.**

LANES "MARDI GRAS" **ICE CREAM 1/2 GALLON 39c**

MILK 2 FOR 27c
Kimbell's Tall Can

WAGNER 32 Oz. Can **Orange or Grape Drink 2 FOR 49c**

SHORTENING 59c
Mrs. Tucker's 3 Lb. Carton

PINTO BEANS 25c
2 LB. BAG

TIDE 69c
GIANT SIZE

VALUABLE COUPON
Bring This Coupon To Our Store
100 FREE BUCCANEER STAMPS
With Purchase of Per Chunk BOLOGNA

WATERMELONS 69c ea.
Large Size

VALUABLE COUPON
Bring This Coupon To Our Store
100 FREE BUCCANEER STAMPS
With \$5.00 or More Purchase Excluding Cigarettes

U.S. No. 1 Red **POTATOES 45c**
10 Lb. Bag

VALUABLE COUPON
Bring This Coupon To Our Store
100 FREE BUCCANEER STAMPS
With Purchase of 2, 2 1/2 Cans HUNTS PEACHES

CANTALOUPE 39c
Large Size 3 For

OKRA 19c lb.
Calif. Fancy

CHICKEN PLATE LUNCH 79c
TO GO
EIGHT VARIETY OF MEATS - EVERYDAY

Large **HOME MADE PIES 89c**
Fruit or Cream

WARD'S GROCERY EGGS 39c Doz.

Elmers

502 W. FRANCIS OPEN DAILY 7:30 TO 7:30 - SUNDAY 8-7 MO 9-9641
WE RESERVE THE RIGHT TO LIMIT QUANTITIES

We Give Buccaneer Stamps
DOUBLE STAMPS EVERY WEDNESDAY
WITH \$2.50 OR MORE PURCHASE

WE GIVE

WE GIVE

WE GIVE

WE GIVE

WE GIVE

WE GIVE

WE GIVE

WE GIVE

WE GIVE

WE GIVE

WE GIVE

WE GIVE

WE GIVE

WE GIVE

WE GIVE

WE GIVE

WE GIVE




Play "MATCH the STAMP!"

Win up to 1 Million S&W Green Stamps!

Latest Green Stamp Winners!!

- 1,000,000
MRS. R. E. FRASER AMARILLO
- 100,000
SARAH DUNAWAY PAMPA
JEAN YOUNG AMARILLO
- 10,000
ELVA McCOWN AMARILLO

PRICES EFFECTIVE
AUGUST 4, 5, 6
IN PAMPA

"STORE MANAGER'S SPECIALS!"
MILK
ALL BRANDS
1/2 GALLON CARTON
49¢

FROZEN FOOD Spectacular

DRINKS PEAS
ASSORTED FLAVORS LIBBY'S, GREEN

10 6-OZ. CANS \$1.19

10 10-OZ. PKGS. 1.19

Tater Gems Simplest Poly Bag 44c

Sandwich Larry Poor Boy Package 88c

Bread Dough Suzanne's 3 1-Lb. Loaves 49c

Cantone Egg Roll King 6-Oz. Pkg. 79c

Peas & Carrots Libby's 4 10-Oz. Pkg. 1.00

STILLWELL-SIX 10-OUNCE PACKAGES

Turnip Greens & Turnips 1.00

English Muffins Golden Gates 9-Oz. Pkg. 29c



FRESH! TASTY FRUITS & VEGETABLES

Lettuce CALIFORNIA, ROMAINE, LARGE GREEN HEADS... LB. 19¢

Radishes CALIF. FANCY, LARGE BUNCHES... 3 25¢

PEACHES CALIFORNIA, EXTRA FANCY... LB. 19¢

TOMATOES RED RIPE, BUBBLE PACK, EACH... 25¢

WIDEST SELECTION! HIGHEST QUALITY! AND LOWEST PRICES!!

GARDEN HOSE
Crompton Vinyl 3/4-In. 1" Dia. Guar. Reg. 1.98 Val. 30' Long
..... ONLY **1.09**

Tooth Paste Gleem 4c Off Label, Large 45c
Reg. 53c Value Tube

Ice Cube Tray Arrow Plastic 12 Twin 49c
Cube Tray, Pop Out Pack

Canvas Sneakers Children's or Reg. 2.88 1.88
Ladies' Value



ROUND STEAK
U.S.D.A. Choice Aged Heavy Beef, Valu-Trimmed
.....LB. **89¢**

CHECK THESE — Low Food Prices —

Dime Brand Milk Borden's 14-Oz. 37c
Condensed Can

Apricots Libby's, Halves, No. 30 33c
Unpeeled Can

Lima Beans Sealife, Large 2 Cans 31c

Instant Potatoes Pillsbury 5 1/2-Oz. 33c
Pkg.

Fruit Drinks Wagner's Assorted 3 Quart 1.00
Bottle

Pork & Beans Libby's, No. 2 29c
Can

Honey Borden's 15-Oz. 39c
Extract Jar

Napkins Zee Poly 300-Ct. 59c
Wrapped Pkg.

French Dressing Kraft's 8-Oz. 29c
Bottle

Floor Wax Bruce Self-Polishing 89c
Can

 **CRISCO**
SHORTENING
PURE VEGETABLE,
3 LB. CAN **79¢**

 **MIRACLE WHIP**
KRAFT'S,
QUART JAR **49¢**

 **VIENNA SAUSAGE**
LIBBY'S,
3 NO. 2 1/2 CANS **69¢**

Cottage Cheese ALL BRANDS, 2 LB. CTN. **49¢**

Lipton's Tea BRISK FLAVOR, 1/4-LB. PKG. **39¢**

Fruit Cocktail FLOTTILL, IN SYRUP, 3 NO. 2 1/2 CANS **1.19**

Zestee Preserves BIG 2-LB. JAR **59¢**

Luncheon Meat STAR FIRE, 12-OZ. CAN **39¢**

CRACKERS BREMNER, TEA FLAKE, 1-LB. BOX **23¢**

DRINKS MISSION, CANNED POP 12 CANS **1.19**

FLOUR SUNLIGHT, FULLY GUARANTEED 5 LB. BAG **39¢**

KING SIZE
Coca-Cola
6 BOTTLE CARTON
only **39¢**
PLUS DEPOSIT

QUALITY MEATS AT LOWEST PRICES!

SMOKED SLICED HAM, SMOKED SLICED BEEF, SLICED ZESTY BEEF, SLICED CORNER BEEF

Luncheon Meat Covered Wagon 5-Oz. 39c
Brand Pkg.

Sandwich Steak Lean, Boneless, for sandwiches Lb. 1.39

New York Steak U.S.D.A. Choice, Aged Lb. 1.98

Short Ribs Heavy Beef, Valu-Trimmed Lb. 29c

Family Steak U.S.D.A. Choice, Aged Heavy Beef, Valu-Trim. Lb. 59c

U.S.D.A. Choice, Aged Heavy Beef, Valu-Trimmed

Boneless Shoulder Roast Pk. 89c

Beef Steak Blue Morrow's Chuck Wagon 16-Oz. 79c
Pkg.

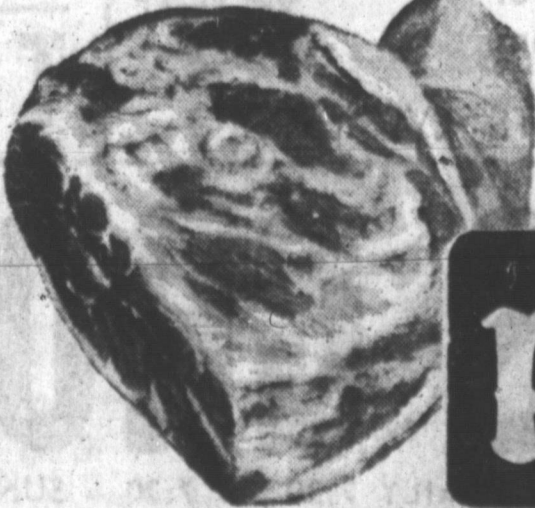
Pork Steak Lean Northern Lb. 59c

Fish Sticks Sealstar 4 8-Oz. 1.00
Pkg.

Fish Steaks Icelandic Perch 12-Oz. 55c
Or Code Pkg.

Breaded Shrimp Thunderbolt 6-Oz. 69c
Pkg.

SMOKED PICNICS
SWIFT'S PREMIUM,
WHOLE, **39¢**
LB.



LUNCHEON MEAT
SWIFT'S PREMIUM, BOLONA, OLIVE-PIMENTO, PICKLE... 3 6-OZ. PKGS. **1.19**

GROUND BEEF
100% ALL BEEF, DATED TO ASSURE FRESHNESS 2 LB. PKGS. **89¢**

SLICED BACON
HORMEL'S BLACK LABEL OR SWIFT'S PREMIUM
.....LB. **89¢**

reserves Bama 18-Oz. 39c
Apricot Jar

Lysol Spray 7-Oz. 89c
Disinfectant Can

Paper Plates Diamond, Lunch Style 48-Ct. 79c
Pkg.

Baby Juices Heinz Assorted Flavors 2 4 1/2-Oz. Cans 21c

Detergent Breese Heavy Duty 2 4 1/2-Oz. Boxes 83c

Bar Soap Palmolive Green 3 Reg. Bars 35c

Detergent Silver Giant 2 4 1/2-Oz. Boxes 83c

Facial Soap Vel. Beauty Bar 2 4 1/2-Oz. Bars 49c

Napkins Softly, Assorted Colors 168-Ct. 23c
Pkg.

Vanilla Extract Schilling's 2-Oz. Bottle 47c

Lowest Prices ... Greatest Variety ... always at ...

Piggly Wiggly

Television Programs

Channel 4 KQNC-TV, THURSDAY **ABC**

8:00 The Match Game 8:15 Weather 8:30 Dean Martin
 8:35 NBC News 8:35 Sports 10:00 News
 8:40 Sheriff Bill 9:30 Laurel Boon 10:15 Weather
 8:50 Bronco 9:30 Laredo
 8:55 Humpty Binkley 8:57 Mickey Finn's 10:30 Tonight Show
 8:59 News

CHANNEL 4 FRIDAY

8:35 Amarillo College 10:30 Showdown 12:05 Weather
 8:59 Today Show 11:00 Jeopardy 12:15 Luth Brent Show
 9:00 Today Show 11:30 Swinging Country 12:30 Let's Make A Deal
 9:15 Social Security 11:45 NBC News 12:55 NBC News
 9:30 Today Show 12:00 News 1:00 Days of Our Lives
 9:50 The Goons 1:30 The Doctors
 9:55 NBC News 1:40 Another World
 9:59 Concentration 2:00 News 2:30 Let's Dost Bar
 10:00 Chain Letter

Channel 7 KVI-TV, THURSDAY **ABC**

8:00 Never Too Young 8:25 Weather 9:00 The Baron
 8:25 Arlene Dahl's 8:30 Wells Fargo 10:00 Movie
 Beauty Spot 8:50 Jefferson 10:30 News
 8:30 Highway Patrol 4:30 Batman 10:45 Weather
 4:00 Pat Masterson 7:00 Gidget 10:40 Movie
 4:30 Where The 7:30 Henry Phya
 Action Is 8:30 Bewitched
 4:45 News 8:59 Peyton Place
 8:56 News

CHANNEL 7 FRIDAY

8:25 Featurette 8:50 Movie 10:30 Ben Casey
 8:30 Agriculture 10:00 Supermarket 1:00 Confidential For
 4:45 Weather 10:30 Sweep Women
 8:50 News 10:30 The Dating Game 1:20 A Time For Us
 7:00 Modern Education 11:00 Donna Reed 1:35 News
 7:30 Exercise With 11:30 Father Knows Best 2:00 General Hospital
 Gloria 2:30 News

Channel 10 KFDA-TV, THURSDAY **CBS**

8:00 The Secret Storm 8:00 News 10:00 News-Jim Price
 8:30 The Westeners 8:30 Weather 10:15 Weather Report
 4:00 Science Fiction 6:30 Munsters 10:25 Background
 4:30 Mister Minkus 7:00 Gilligan's Island 10:30 Big Flicker
 8:00 Everglades 7:30 My Three Sons 10:55 News
 8:30 CBS News 8:59 Movie 11:00 Big Flicker

CHANNEL 10 FRIDAY

8:37 Religion 10:00 Andy Of 11:20 Farm And Ranch
 8:50 Amarillo College 10:00 Mayberry News
 9:00 Jack Tompkins 10:30 Dick Van Dyke 11:30 As The World
 9:30 News Report 11:00 Love Of Life Turns
 7:30 Weather-Sports- 11:25 CBS News 1:05 Password
 Local Events 11:50 Search For 1:20 House Party
 7:50 CBS Meeting Tomorrow 2:00 To Tell The Truth
 News 11:45 The Guilding Light 3:25 CBS News
 8:00 Capt Kangaroo 12:00 News 3:30 Edge Of Night
 8:00 I Love Lucy 12:15 Weather 3:38 The McCoy

Report On Ike
 WASHINGTON (UPI) —Former President Dwight D. Eisenhower may return home in a day or two, a spokesman at Walter Reed Army Medical Center said today. Eisenhower was admitted to the hospital July 26 for routine heart and arthritis examinations.

Population Count
 WASHINGTON (UPI) —The census bureau predicted Tuesday the nation's nonwhite population will increase to as high as 38 million between 1965 and 1965. This would mean a 14.1 per cent increase in the number of nonwhite Americans, who numbered 22.1 million in 1965.

WALTER ROGERS REPORTS

Defense Expenditures Come First in Spending

The House of Representatives recently voted overwhelmingly to approve what most of us believe should be termed the most important single bill to come before us this Session — the appropriations bill to provide funds for military activities in the 1967 fiscal year, which began July 1. It's the largest defense appropriations bill since World War II.

Defense expenditures must come FIRST in any consideration involving Government spending. The old "guns versus butter" argument is not an either-or proposition. The maintenance of our security is the paramount problem for the United States — the principal responsibility of the Congress and the Administration — and unparalleled military power is an absolute necessity.

The defense appropriations bill passed by the House called for additional military spending authority of \$58.6 BILLION. The Defense Department had on hand, when the last fiscal year ended June 30, approximately \$42 BILLION in unexpended funds, most of it earmarked for specific obligations in weapons procurement, research and development, and the variety of other commitments entailed in our defense program. Therefore, there will be available for defense purposes in the current fiscal year (assuming the Senate confirms the House action) a total of \$100 BILLION, although, again, part of this money will not have been expended

by the end of the year. Some is for "leadtime" items, such as ships, requirements brought on by the war in Vietnam. We are spending billions more because of Vietnam, but the impact on the economy — and the taxpayer — has been lessened because of the steady preparations made



STUDY HEAD — Dr. Charles L. Taylor, educator and theologian from Dayton, Ohio, has been named director of the Theological Education Study of the Episcopal Church. The newly-launched study, expected to continue two years, is to examine all aspects of Episcopal theological education, focusing on "the changing role of the church, clergy and laity in modern society."

through heavy expenditures of earlier years.

The men and women who serve in the Congress are determined to keep this Nation strong — the strongest in the world.

The bill voted by the House contained a variety of provisions. One provision of particular interest to the Panhandle area, because of B-52 Strategic Air Command operations at Amarillo Air Force Base, called for the retention of 45 of the huge B-52 bombers originally scheduled to be phased out in 1967 and to maintain our B-52 fleet at the 600-bomber level. The bill also provided funds to support additional development work on an advanced manned strategic aircraft, the possible successor to the B-52 as our big manned bomber.

Walter Rogers
 Member of Congress
 18th District of Texas
 Recent visitors: Mr. George C. Bourns, Mr. E. H. Lindsey, Mr. A. L. Crossland, Mr. Jode D. White, and Mr. C. P. Vaughan of Canyon; Mr. and Mrs. Carl M. Prickett of Amarillo and Marilyn Prickett of Claude; Mr. and Mrs. John W. Gay and their children Kathy, Cindy, and David, of Childress; Mr. and Mrs. C. H. Sullivan and Donna Sullivan of Panhandle; and Mr. Thomas M. Coyne, Mrs. Thelma Puntch, and Mrs. Alta Bateman, all of Amarillo.

Indigo, obtained from a group of plants grown in the Far East, is the oldest dye known to man.

50TH YEAR THE PANHANDLE DAILY NEWS THURSDAY, AUGUST 4, 1966 9

In religious allusions, the circle is the emblem of eternity and the eternal God. The science of dynamics is the branch of physics concerned with the study of the laws of force and motion.

Jack rabbits can take 20-foot leaps and run 45 miles an hour. Read The News Classified Ads

ARTISTS! CARTOONISTS! Draw your own Tareyton smoker

"Us Tareyton smokers would rather fight than switch!"

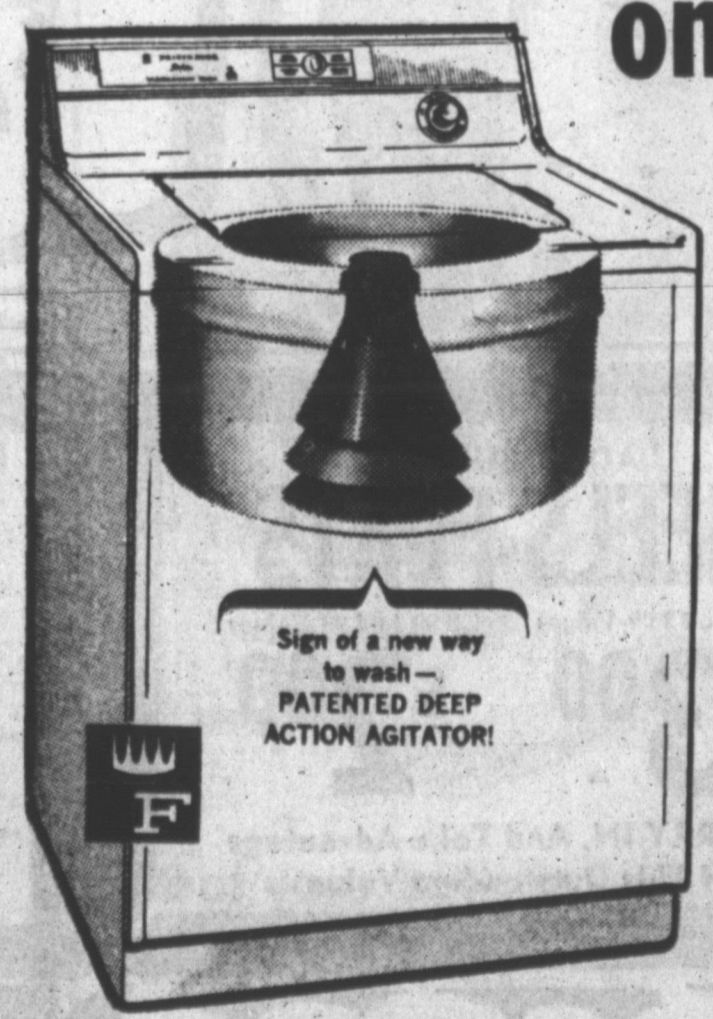
Join the Unswitchables. Get the filter cigarette with the taste worth fighting for. Tareyton has a white outer tip... and an inner section of charcoal. Together, they actually improve the flavor of Tareyton's fine tobaccos.

NO OTHER WASHER CAN MAKE THIS OFFER!

5 YEARS PARTS AND SERVICE GUARANTEE!

You Won't Spend 1¢ For Parts or Service For 5 Years on This New 1966 Washer

FRIGIDAIRE NEW JET-ACTION WASHER! 5-Yr. Guarantee!



CROSSMAN 5-YEAR Extended Service Agreement

In accordance with terms of extended Service agreement, Crossman will provide original purchaser all labor and parts needed to maintain appliance in normal operating condition, for 5 years after date of contract, in addition to service covered by Frigidaire warranty and protection plan. Frigidaire's normal Warranty: 1-year warranty for repair of any defect without charge, plus 4-year Protection Plan for furnishing replacement for any defective part in the complete transmission, drive motor or large capacity water pump! Add the Crossman guarantee to Frigidaire's standard guarantee, and you will not pay 1¢ for service or parts for 5 years!

Look at the Advantages of Crossman's Exciting 5-YEAR GUARANTEE!

1. Furnishes all service for 5 FULL YEARS to keep your washer operating at peak efficiency! No more repair bills!
2. Provides ALL PARTS for 5 FULL YEARS!
3. Genuine FRIGIDAIRE parts are used. You get prompt, efficient, professional service from Crossman's experts!
4. Remember... our 5 YEAR GUARANTEE gives you peace of mind. Your washer won't cost you an extra penny for 5 years or longer!

\$18888

OUR FAMOUS MODEL WAK

NO MONEY DOWN! \$10⁰⁰ MONTH

CROSSMAN FRIGIDAIRE APPLIANCES

The Women's Page

PEGGY JO ORMONSON
Editor

10

THE PAMPA DAILY NEWS
THURSDAY, AUGUST 4, 1966

59TH
YEAR

Pants Suits, Prints Make Fashion Waves



SHE LIKES HER PRINTS charming. The pants suit (left), fashion's newest pet, is at ease on the patio. Designed by Mr. Dino in Stretchnit's special printed fabric, the suit moves with every motion. Russ plays daisies against a delicate pastel voile (right) in this print blouse and skirt costume. Permanent-pressed pleats add mileage to this travel-happy team.

Dear Abby.... Neighbors' Talk Is Her Main Concern

DEAR ABBY: In 1955 I married Bob (not his real name) in the Catholic church. I was born a Catholic and Bob was a convert. We had two boys. For reasons which I shall not go into, we were divorced in 1961. I then married Bill (also not his real name) at a civil ceremony by a justice of the peace, but we lived together only seven months and were divorced. Bob has started to come around again.

We have a lot to talk about because of the boys, etc. so sometimes he stays all night, or for the weekend. The neighbors' mouths are going a mile a minute. Since our religion does not recognize divorce, we are still married in the eyes of the church. Right? So, are we doing anything wrong?

TALKED ABOUT
DEAR TALKED ABOUT: It's not the "eyes of the church" you are concerned about — it's the mouths of your neighbors. Talk to your priest. He will tell you what's wrong with using your religion to suit your own convenience.

DEAR ABBY: Can you tell me how to get rid of a telephone pest? This woman calls me every night when I get home from work because she wants someone to talk to besides her three-year-old son. (She's a divorcee.) She has no hobbies or outside interests. Her only friend moved out of town last year, and she has cultivated no new ones. I am her only "interest" and she borers me to death with her small talk.

I finally had to ask her to please quit calling me at work, so now she catches me at home in the evenings. Once she gets me on the line I can't get away from her. I have run out of excuses. Lately I have quit answering my telephone when I think it's her. Surely there must be a better way.

TRAPPED
DEAR TRAPPED: There is. Tell her to quit calling you at home, too.

DEAR ABBY: Recently my mother had an operation and after it was over, the surgeon came out to the waiting room to let me know the results.

Two of my lady friends were waiting with me, and they stood up when the doctor came into the room. I did not think it was necessary for a lady to stand up when a doctor entered

Strains on Family Lead to Accidents

BOSTON, Mass. — Accidents make up the foremost pediatric disease in the country, taking more children's lives each year than the next three chief child-killers combined—cancer, birth defects, and pneumonia.

In an effort to reduce the appalling accident toll, a team of physicians, psychologists, and social workers at the Children's Hospital Medical Center here made a detailed study of preschool children admitted for treatment of accidental injury.

They found that accidents do not "just happen." They are triggered by stress and by fatigue. Most accidents to children, they found, occur between three and six o'clock — when mothers are rushing to meet the demands of children home from school, preparing dinner, getting baby ready for his bath, tidying up.

Suggestions for avoiding accidents, as well as clear, simple instructions on what to do should accidents occur, are now available in an attractive, purse-sized booklet, "Accident Handbook." Compiled by the staff of the medical center, and published by Dell, the booklet can be bought for 25 cents.

Read The News Classified Ads

Great Debate on 'Why Johnny Can't Read' Goes On

By GAY PAULEY
UPI Women's Editor
NEW YORK (UPI) — The great debate goes on: Why Johnny can't read and whether he would be better able to if he were taught reading the basic ABC's way.

To Watson Washburn, a New York attorney and president of the Reading Reform Foundation, the answer to Johnny's problem is simple as ABC—start the children learning the alphabet first and start them early — "some children can learn to read at three and four," he said.

Washburn, state representative of the foundation, educators and others dealing with illiteracy and school dropout problems met Thursday in New York for the fifth annual conference of the foundation. Main objective—to plan new battle courses against what Washburn called the "look and guess" method of reading.

This method, in its simplest form, shows a child a picture and a word. He's to recognize the word henceforth from picture association—a "cat" to go with a picture of same.

To Washburn, the introduction 40 years ago of the "whole word shape" teaching method, instead of phonetics, is the "greatest blow to civilization since the dark ages."

In an interview before the conference, Washburn blamed it for what he called an all time high rate, in 1964, of draft rejections because of illiteracy; for a role in the massive school dropout numbers which worry parents, educators and the U.S. government alike; and for much of the nation's juvenile delinquency and older criminal element.

"Reading ability in our country probably is at its worst right now," Washburn contends, "although the tide in the

last few years has begun to turn. I would estimate about 25 per cent of elementary schools have returned to phonics. Once their results are seen, there will be pressure on other schools.

"A few more years and this horrible catastrophe will end," said Washburn. "I'm encouraged. The job then will be to pick up and teach the illiterate adults."

Washburn charged that in 1964, 29.9 per cent of men eligible for draft were rejected because of poor reading ability — "It had been about 25 per cent for the preceding 25 years."

"Of course," he said, "we have to consider these figures in light of men in college and draft exempt. But think of it — the millions who can't read newspapers."

As for dropouts, Washburn observed, "if you can't read, you might as well quit school. But if you can't read, you can't get a job either, so often the turn is to crime. Young criminals, many of the older ones, are frequently illiterate."

Washburn, who led his classes at Harvard and Columbia University law school, started his campaign for return to phonics some 15 years ago, perturbed when he found "my grandnieces at Brearley (an exclusive school for girls in New York) weren't reading well."

Before organizing the foundation formally in 1961, he consulted with heads of some 200 private preparatory schools — "hardly schools for the underprivileged, but almost all teaching remedial reading. About one third of the headmasters joined our committee right away."

Washburn blamed "misguided men" at Columbia for the word association method of teaching. "Forty years ago," he said,

"there was no such occupation as remedial reading teachers. Now there are thousands teaching remedial reading even at the college level. How did the young people get through high school if they couldn't read? The old automatic promotion method."

Read The News Classified Ads

Final Sale
Friday & Saturday
Last Call!
ALL SUMMER
MERCHANDISE
MUST GO!
Up To 60% OFF
Mayfayre
1615 N. Hobart MO 9-9212

LOOK WHAT A DOLLAR WILL BUY



Anthony's
C.R. ANTHONY CO.

Values to 98¢ yd. 36"-45" Wide
Fall Dress & Sport Fabrics



A wardrobe building sale... choose from yarn-dyed chambray, slub cloth, tip-top prints, solid colors and many others... all from famous mills in the newest and best colors and patterns for fall sewing. 100% cottons. See them today and save.

3 YDS. \$1.

Values to 1.69 yd. 38"-45" Wide
Dress & Sport Fabrics



A marvelous selection including Town and Country Trends and famous name prints of 50% cotton and 50% Avril rayon. Also choose solid color cotton broadcloths, textured prints, gingham and some Decron polyester and cotton blends... easy care.

2 YDS. \$1.

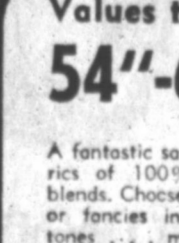
37"-41" Wide. Fashion Favorite
Wide Wale Corduroy



Fall's favorite... wide wale 100% cotton corduroy in shades of red, Kelly, royal, cranberry, golden or antique. Perfect for school, work or sportswear... even great for home furnishings... a most versatile fabric.

\$1. YD.

Values to 3.98 yd. Solids, Fancies
54"-60" Woolens



A fantastic savings in fine fabrics of 100% wool or wool blends. Choose from solid colors or fancies in dark or pastel tones... many of the very popular heather shades, checks, stripes. Buy now and save... at Anthony's.

\$2. YD.

Just 6 More Days To Cash in on This
Big Fabric Riot—Sew For Back to School

Anthony's
YOUR FAMILY STORE

CORONADO CENTER • DOWNTOWN

We Have Re-Grouped And Re-Priced Summer Goods to Move Quickly

CLEARANCE SALE
LADIES SUMMER DRESSES

Choose From Shirtwaist-Shirts Sheath & 2 Pc. — Misses and Half Sizes

Reg. 6.98 to 10.98 | Reg. 11.98 to 19.98
\$4.00 | \$7.00

CASH BUYS ONLY

LADIES SUMMER HEELS-FLATS

7.99 to 12.99 Values 3.99 to 4.99 Values
\$3.00 | \$2.00

HURRY IN, And Take Advantage of This Outstanding Value --

Childrens Size 3-6x - 7-14

PLAY-WEAR

1.00 to 1.98 Values 2.49 to 3.98 Values
66¢ | \$1.66

Choose from Shorts — Tops and Sets

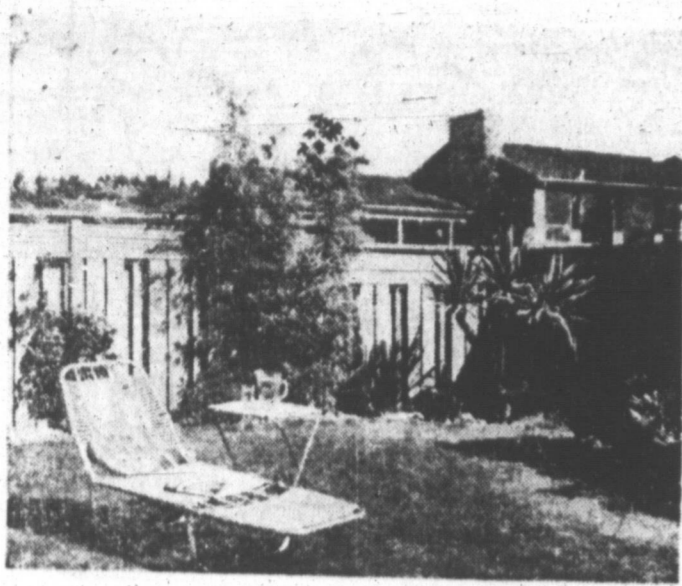
LADIES SUMMER SHORTS—BLOUSE

Values to \$2.98 Most All Sizes
Now \$1.88

MENS HENLEY STYLE Surfer Shirts

Values to 2.98
Choose from many styles and colors of the summers most popular shirt. \$1.66

Dimensional Pattern Helps Hide Fence



WHEN A BACK YARD fence is needed, use a dimensional design. This variation of the board-on-board produces strong shadow patterns that help "hide" the fence. Keep bottom rail away from ground. Weathered cedar or natural stain will complement plant materials.

Don't ignore the corners when planning your yard. These are the spots which can become especially interesting and contribute the most to a yard's overall plan.

Always a corner should be soft. But even though a right-angled effect is to be avoided, a fence turning the corner at a right angle often makes the best backdrop.

Think of the fence as you would the walls of a room. Like a wall, the fence defines and emphasizes what is placed against it: and the two components—wall and furniture, or fence and plant materials—must work together.

Usually, the fence comes first and plant materials are arranged later. The style of the fence is relatively unimportant, but a dimensional design that produces strong shadow patterns is suggested. This type of fence tends to hide itself by blending in with the sun-and-shadow effect of good planting and is particularly good for the usual back yard where height also is needed for privacy.

The board-on-board style, in which fence boards are nailed on alternating sides of the framing with overlapped edges, gives a good shadow pattern and "hides" well.

When something out of the ordinary is desired, the basic board-on-board pattern is easily varied. For example, two boards may be nailed on the front, the third at the back, two more at the front, and so on. This could be varied further by using boards of differing widths.

Finish and type of lumber for the fence are two other considerations: Western red cedar is said to be weather resistant. Where the fence is to be stained or left to weather, resawn cedar is suggested. Smooth-surfaced lumber is best for a paint finish. Color-wise, stick to natural wood tones, silvery grays, indefinite greens, or soft golds to avoid competition with the more important colors of foliage and blooms.

Now, to dress the corner, ar-

range a bed that curves gently—shallow for a small to medium yard, deep for larger spaces.

In the shallow bed, a single, good-sized plant of interest may be set at the corner, surrounded by river rock and bolstered by a few low materials—some hen-and-chicks, heather, or sedums. A piece of sculpture, a

RUTH MILLETT

Newspaper Enterprise Assn. Are today's small, streamlined, cooped-up kitchens the reason why so many housewives hate cooking? An anthropologist who has been studying how space affects mental outlook suggests that this may be so.

Well, cramped cooking quarters may have something to do with a woman's dislike for the job of feeding her family, but I don't think it's the most important reason.

There are other factors that matter more. Like having a husband who never compliments a meal. Or children who haven't been trained to eat whatever is put before them, but instead whine about not liking this or that.

The way some families live also makes cooking a frustrating job. What woman enjoys cooking dinner for a family that eats on the run, one demanding to be fed early in order to get here or there and another having to eat late? That means short order cooking for the housewife—and what pleasure can she get out of that?

Also, in some homes the television set is more important than the dinner table. In these homes the dinner hour doesn't mean a family gathered around a table, enjoying each other's company as well as food. Meals are hurriedly eaten from individual tray-tables and any attempt at talk is hushed impatiently for fear somebody will miss a line of dialogue coming from the television set.

Read The News Classified Ads

For Lovely Locks

NEW YORK (UPI)—Give your hair special care in summer when sand, sun, water and wind can turn silken glory into a nest of straw.

One suggestion: An ounce of prevention. Give the hair baby oil treatments at two-week intervals. Warm the baby oil, apply it to hair which has been divided into sections, and massage thoroughly. Wrap hair in hot towels for 15 minutes, then shampoo.

Delicate shades show best at the front, against the triple backdrop of fence, deeper flower tones and the massed green of leaves.

Astrological Forecast

By CARROLL RIGTER

FOR FRIDAY, AUGUST 5—GENERAL TENDENCIES: You have a whole new year ahead of you and it is hoped that you are ready to embrace the new year with a new spirit. You will have a lot of special talents to offer, and it is hoped that you are willing to do what you need to do in order to increase their scope and to place yourself in the line of their success.

ARIES (Mar. 21 to Apr. 19)—You can plan for the future more wisely now and gain added prestige, more success. And you will be able to show your own talents to the fullest. You will be able to do what you want to do.

Taurus (Apr. 20 to May 20)—You will be able to do what you want to do. You will be able to do what you want to do. You will be able to do what you want to do.

Gemini (May 21 to June 20)—You will be able to do what you want to do. You will be able to do what you want to do. You will be able to do what you want to do.

SCORPIO (Oct. 23 to Nov. 21)—You will be able to do what you want to do. You will be able to do what you want to do. You will be able to do what you want to do.

SAGITTARIUS (Nov. 22 to Dec. 21)—You will be able to do what you want to do. You will be able to do what you want to do. You will be able to do what you want to do.

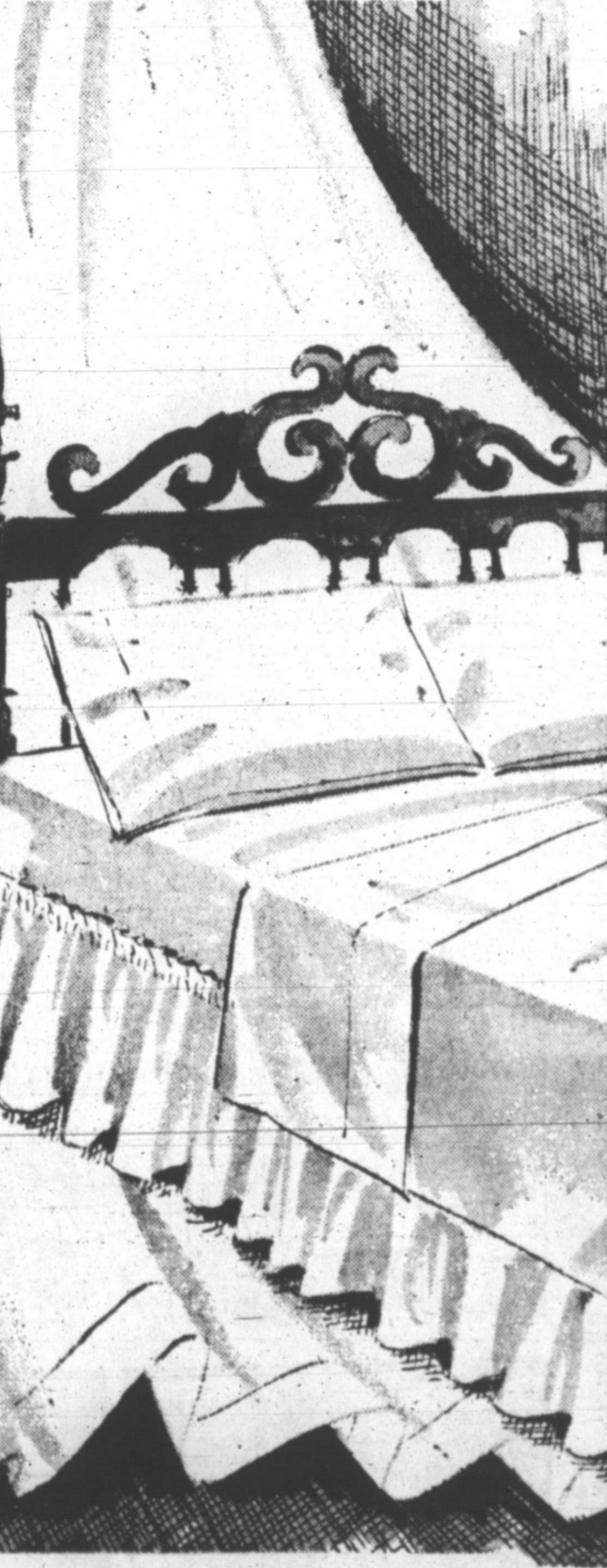
CAPRICORN (Dec. 22 to Jan. 19)—You will be able to do what you want to do. You will be able to do what you want to do. You will be able to do what you want to do.

AQUARIUS (Jan. 20 to Feb. 18)—You will be able to do what you want to do. You will be able to do what you want to do. You will be able to do what you want to do.

PISCES (Feb. 19 to Mar. 20)—You will be able to do what you want to do. You will be able to do what you want to do. You will be able to do what you want to do.

The youthful Mod look continues to dominate men's sportswear lines, reports the National Association of Men's Sportswear Buyers (NASMB) in its fall roundup. The look includes, say, NASMB, double-breasted revivals in outerwear, sweaters, blazers—"you name it." Look for big plaids also.

DOWNTOWN PAMPA Penneys ALWAYS FIRST QUALITY



LAST 2 DAYS! SUMMER WHITE GOODS EVENT!

Last chance at reduced prices! PENNEY'S FAMOUS SHEETS IN WHITE AND FASHION COLORS!

- NATION-WIDE** long-wearing cotton muslins. 133 count*
Make your bed in pretty colors or in snowy-white. Either way you'll find our Nation-Wide sheets so crispy-smooth, firm and wonderful wearing. All perfects. Lab-tested! Famous buys all year, now at reduced prices, sensational!
- PENCALE** fine combed cotton percales. 186 count*
Bedrooms wear color with flair these days, and we've so many beautiful colors you can have as many changes as you want. Deep tones, pastels or snowy-white, you'll love the silky-smooth luxury of our percales. All perfects. Lab-tested. Save now at these special low prices. *bleached and finished
- WHITE** \$1.51
twin 72" x 108" flat or Elasta-fit Sanforized bottom
- full 81" x 108" flat or Elasta-fit Sanforized bottom 1.71
- Pillow cases 42" x 36" 2 For 83c
- WHITE (PERCALE)** \$1.85
twin 72" x 108" flat or Elasta-fit Sanforized bottom
- full 81" x 108" flat or Elasta-fit Sanforized bottom 2.07
- Pillow cases 42" x 38" 2 For 1.05
- FASHION COLORS:** Deep tones: Avocado, honey gold, hyacinth, open blue, persimmon. Pastels: Pale pink, lilac, pastel yellow, opaline green, seafoam, lime, milk chocolate.
- twin 72" x 108" flat or Elasta-fit Sanforized bottom \$2.58
- full 81" x 108" flat or Elasta-fit Sanforized bottom 2.78
- Pillow cases 42" x 38" 2 For 1.28

SUMMER SHOE CLEARANCE
ENTIRE STOCK REDUCED
FINAL REDUCTIONS

MEN'S SHOES \$7 pr.
One Rack

LADIES' DRESS SHOES \$5 pr. and \$6 pr.
Summer Styles By Vitality, Rhythm Step

LADIES' FLATS Summer Styles \$3 pr.

LADIES' HOISERY Micro Mesh 2 Prs. \$1

CHILDREN'S SHOES Ideal To Start School \$2.00 pr.

SHOP THURSDAY NIGHT TILL 8 P.M.

Kyle's Fine Shoes
The Home of Florsheim and City Club Shoes
109 N. Cuyler MO 9-9442

SHOP DOWNTOWN FOR GREATER SELECTIONS

Treat your bath to fashion towel ensemble

hand towels 85c \$1.49 bath towel
washcloths 45c

Delightful frosted prints and solid colors, beautiful quality, beautifully styled. Solid color towels, 4 ft. long, are expensive 2-ply cotton terry with pucker-free borders. The rose prints are, thick, fluffy, and fringed.

Prints: Siam pink, saffron yellow, lavender. Solids: baby pink, moss green, saffron yellow, ming blue, red.

PENNEY'S ELECTRIC BLANKETS

\$15 single control 63" X 84" twin bed size
\$20 dual control 72" X 84" full bed size

5 YEAR REPLACEMENT GUARANTEE!

Dial the warmth you like, sleep in cozy even warmth, all night long. Deep-napped 100% Acrylic with Supernap. Nylon binding. Machine wash, lukewarm water.

THERMALIZE YOUR BEDROOM!

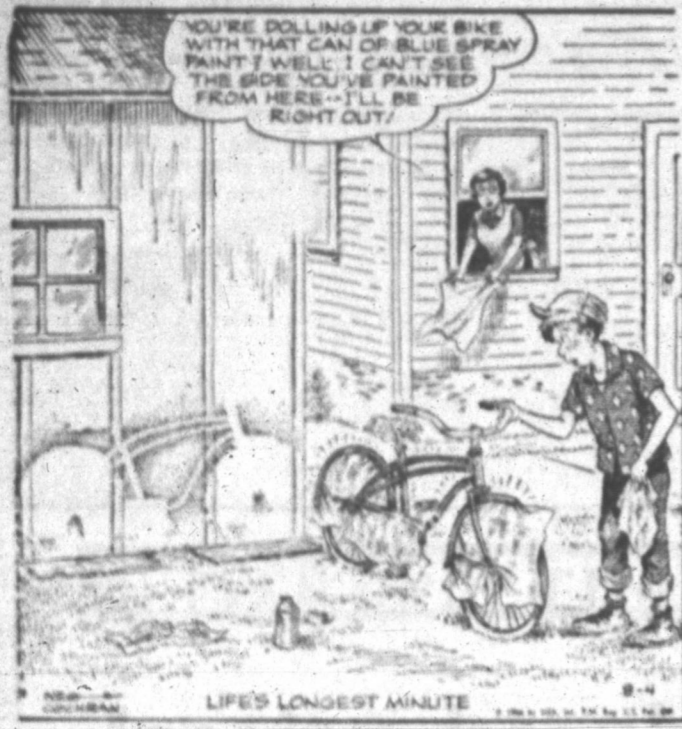
Double-duty bedspread or acrylic thermal blanket \$7.99 Each

Thermal fashions are the rage because they're practical all year round. They keep you warm with a light cover, or cool used alone. Beautiful and machine washable.

THERMAL BEDSPREAD: spread by day, blanket by night. All cotton. Fringe border. Twin or full. White, antique gold, beige, baby pink.

ACRYLIC THERMAL BLANKET: downy-soft acrylic, bound in nylon. Our lowest price ever. 72" x 90" size for twin or full beds. White, pink, rosebeige, peacock, lavender, moss green, blue, honey gold.

OUT OUR WAY J. R. Williams



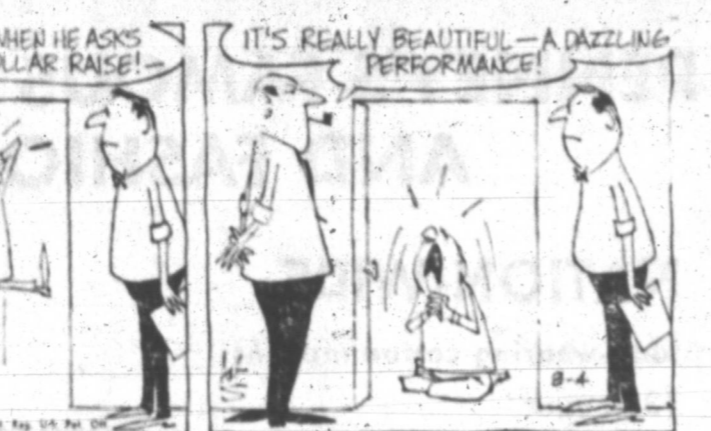
OUR BOARDING HOUSE With Major Hooper



Short Ribs



The Born Loser



Blondie



Alley Oop



The Berrys



The Finstones



Out Our Way



Bugs Bunny



Out Our Way



Mickey Finn



Eek and Meeks



Priscilla's Pop



Dixie Dugan



Captain Easy



Joe Palooka



Winthrop



Jackson Twins



Joe Palooka



Winthrop



Winthrop



Joe Palooka



Winthrop



San Fran Pittsburg Los Angeles Philadelphia St. Louis Cincinnati Houston Atlanta New York Chicago

Baltimore Detroit Cleveland California Minnesota Chicago New York Washington Kansas City Boston

Defen Tonig North

HOUSTON: Defense is expected tonight... it is to be a winning South in school all-

SHOP GIBSON'S EVERY-DAY FOR QUALITY-NAME BRAND MERCHANDISE... AND LOW DISCOUNT PRICES!

STIZZLING VALUES

ALL CERAMICS 1/2 OF GIBSON'S DISCOUNT PRICE



Helene Curtis Suave Set
HAIR SETTING LOTION 79¢
Reg. \$1.25 Gibson's Discount Price

Helene Curtis Suave Crystal Clear
HAIR SPRAY 59¢
Reg. 99c Gibson's Discount Price

Macleans **TOOTHPASTE** 53¢
Reg. 95c

NOXZEMA **SKIN CREAM** 53¢
Tube Reg. 89c

RAYETTE GOLDEN **SPRAY CADDY** 89¢
Reg. \$1.50

TREND For Dishes and Fine Fabrics, Reg. 99c 79¢



No cotton candy feel!
Never a stiff "cotton candy" feel with SUAVE Hair Spray. It holds firmly but never gets sticky about it.
A quality product by Helene Curtis

All Playtex Swim Caps 1/2 OFF Gibson's Disc. Price

BRYLCREEM **HAIR DRESSING** 89¢
Imperial Size Reg. \$1.39 Gibson's Disc. Price

COLGATE 100 **Mouth Wash** 89¢
Reg. \$1.29

Helene Curtis **Egg Shampoo** 69¢
Reg. \$1.59

LANOLIN PLUS **CREME RINSE** 47¢
Reg. 99c

5 DAY **DEODORANT** 69¢
Reg. \$1.49

10 x 50 CFGT
BINOCULARS 22.47
Reg. \$28.97
Gibson's Disc. Price

GARDEN RAKES, HOES AND CULTIVATORS 99¢
Reg. \$2.79

CHOCKS CHEWABLE VITAMINS 2.13
\$4.29 Value

Cord Fishing STRINGS 13¢
Reg. 27c

Pierced Earrings \$3.47
Reg. \$9.95

FLORAL **BATH TOWELS** 59¢

HAND TOWELS 33¢

GIBSON'S BLACK & WHITE FILM
620 Reg. \$1.50 3 Roll 77¢
127 3 Pack

ALL CHARMS 1/2 OFF Gibson's Disc. Price

WASH CLOTHS 19¢

See Our New Shipment of **BEDSPREADS** Including King Size All at Discount Prices

DuPont No. 7-Fast Flush **RADIATOR CLEANER** 33¢
Reg. 69c

Brake Fast Heavy Duty BRAKE FLUID 23¢
Reg. 43c Gibson's Disc Price

P.K. No. 610 Portable Kitchen **BARBECUE GRILL** 16.47
Reg. \$19.97

Riopan Anti-Acid Suspension 50% Savings 1.17
Buy 12 oz. Bottle get 6 oz. Size FREE Reg. \$2.75 Value

phisoAc **CREAM** 93¢
Reg. \$1.50

TRIAMINICIN 49¢
Reg. 98c for Hay Fever Allergies or Head Colds, 12's

All Rain Suits and Jackets 1/2 OFF GIBSON'S DISCOUNT PRICE

Air Mattresses 1.99
Reg. \$4.97 Gibson's Disc. Price

USE OUR EASY PAY PLAN
All you need is a major oil company credit card. No down payment and no carrying charges. Low monthly payments. Charge from \$10.00 to \$100.00. Limited to a 15 mile radius of Pampa.

GIBSON'S DISCOUNT CENTER

OPEN DAILY 9 A.M. TO 9 P.M. EXCEPT SUNDAY
PRICES GOOD THURSDAY, FRIDAY AND SATURDAY

D. Hen...
zler...
Br...
aut...
to h...
Ca...
ing...
wh...
gett...
Ca...
of th...
acqu...
Bu...
zenc...
-T...
they...
citiz...
S...
O...
IA...
- A...
Requ...
man...
Cath...
snipe...
becau...
does...
for h...
ed to...
the e...
Thom...
Sacre...
Whitr...
boy...
The...
for W...
one...
-vict...
"As...
with...
official...
words...
the Ca...
Christ...
Whitr...
ment...
"As...
20...
To...
Texa...
top di...
the Pa...
Associ...
day...
City...
host...
20 are...
chamb...
gers...
munici...
"The...
manag...
White...
special...
plan...
J. W...
manag...
Water...
and a...
Texas...
will le...
The...
Spring...
dent...
has be...
had no...
swer...
"If...
Kenn...
By J...
NASH...
Forme...
who le...
tration...
Kenned...
was...
another...
govern...
The...
defeat...
a 35-ye...
in Thu...
mary...
did no...
primar...
unlike...
candid...
election...
Gov...
ed as...
time...
1952, a...
defeat...
Democ...
U.S. S...