

AUTO ACCIDENT FATAL TO MAN OIL FOUND BELOW NORMAL DEPTH

Pampa Production Co. Nearing The Pay Sand

Like the man who says little but just keeps pounding away, so too the Pampa Production Company has said very little but has continued to pound toward the pay sand. This company is strictly a local, home organization. They are drilling about four miles northwest of Pampa on the Leopold farm, Section 141 in Block 3, Gray County. The hole is in perfect condition and the well is logging even better than had been anticipated, having struck the Pink shale Cave at 2320 feet, or higher than the other wells, which proves conclusively, as most of the contour maps show, that there is a structural or anticlinal nose extending out from the flank of the main fold toward the Northeast.

Because of these facts those interested in the company are very much enthused and a splendid producer is expected. Furthermore because of the small capitalization of \$70,000.00 and the large amount of acreage in the lease—200 acres—just an ordinary well would have a tremendous pay-off.

A good well brought in, in this territory would cause a frenzied drilling campaign because large companies hold leases all around this location. What it would mean to Pampa's development can be conjectured.

AMERICAN LEGION ELECTS OFFICERS

Members Plan Smoker For Ex-Service Men Here

A. C. Saitor was elected commander of the local American Legion post at the annual election of officers held Tuesday night. F. J. Thomas was elected vice-commander and G. C. Morris adjutant.

Other officers elected were: E. S. Vicars, finance officer; Hobart Phipps, sergeant at arms; John Studer, chaplain; members of the executive committee named are A. C. Saitor, E. S. Vicars, Dr. W. Purviance, E. F. Smith and J. D. Lard.

The members of the legion will give a smoker at the hall Monday night for all ex-service men. The membership committee expects to serve at least 150 men at the smoker.

Plans are now being made to build an addition to the Legion hall in order to accommodate the increasing number of service men that are making their homes in Pampa.

The Legion hall is used by various organizations to house meetings. Members of the Legion here express themselves as being desirous of making their building of service to as many persons as possible.

W. O. Gatton In Charge Of Gas Station Here

W. O. Gatton has taken charge of the Magnolia Filling Station at the corner of Caylor Street and Johnson Avenue. J. O. Davis, formerly manager of the station, is visiting from business.

Gatton has been with the company for some time in Amarillo. He has moved to Pampa to make his home. Davis is disposing of his life ship back of the service station which he operated in connection with the oil business.

Doctor and Mrs. A. Cole are expected to return from Chicago to stay or tomorrow. Doctor Cole underwent a minor operation at a hospital about two weeks ago. He has been doing some post graduate work there since his recovery.

GULF GETS GOOD WELL ON WORLEY

Number 8 Flowed 100 Barrels During First Hour

The Gulf Company's number 8 Worley Reynolds well came in Wednesday morning and made 100 barrels the first hour. The second hour the well flowed 75 barrels and 85 barrels the third hour. It bridged then, and practically little or no oil was obtained. The initial flow of the well, though, gave evidence that the production will be good as soon as the well is completed. It is located in section 83, block 3 of the Pampa field.

The operators had practically given the well up, having drilled past the supposed depth of the pay. The number 8 well is a direct offset of the company's number 5 Worley Reynolds well which was drilled to a depth of 2936 feet. The number 8 well which came in Wednesday morning was drilled to a depth of 2036 feet, or 100 feet deeper than the direct offset.

The offset well came in about three months ago for 500 barrels. It is making 350 barrels a day now. The new well is expected to set the on a substantial production as soon as it is completed.

The Empire Oil and Gas Company has shut down the Hughes number 1 south of Pampa after a flow of 25 barrels was made. The hole is drilled to a depth of 3125 feet now, with about 1000 feet of oil. As soon as adequate storage is arranged the hole will be carried down a few feet further. The well is located in section 129, block 3. It makes an extension to the fast-spreading Pampa field.

The Empire Company is expected the number 1 Bryan well near the Roxana well west of here to be in soon. Six inch casing was set at a depth of 3005 feet. The well is now drilling past 3050 feet.

MAN NARROWLY ESCAPES DEATH

Roy Walker Suffering From 2300-Volt Shock

Roy M. Walker, manager of the Oklahoma Public Service Company here, narrowly escaped death this afternoon when he came in contact with 2300 volts of electricity. He was given immediate medical attention, and by use of pumps, respiration was restored.

Walker was at the company plant showing some workmen about mechanical parts when he placed his hand near a switch. The current jumped and he was knocked to the floor by the shock. Workmen believed that he had been killed, but the latest physicians report stated that he would recover.

Another Mad Dog Discovered Here

A dog owned by Mr. F. Wise suddenly showed signs of rabies Thursday evening. It was killed as soon as it was discovered to be mad, and the owner does not believe that other dogs were bitten by it.

The first dog that was found to be mad here about three weeks ago had bitten the dog owned by Wise. Mayor Tom says that the proclamation issued recently concerning the care of dogs will be carried out to the letter and unless the dogs are vaccinated and kept at home, they will be killed on sight.

Mary Bell and Betty Joe Crawford are in Amarillo visiting their aunt, Mrs. James Roberts.

Proposed Rail Line Routed Through Here

The Rock Island Railway Company is endeavoring to obtain a permit to build a line from Dalhart by way of Pampa to Morla, Oklahoma. The proposed route would pass through the Hutchinson County field and the Pampa field. From Pampa it is routed through LeFors and on down to Morla.

A definite answer is not expected from the state offices for some time, if the permit to build the line is granted, Pampa will be on the intersection of two main-line railroads, with an outlet by rail in four directions.

HOSPITAL WORK UNDER WAY HERE

To Be Fully Equipped When Building Is Completed

The excavating work for the Pampa Hospital building was completed the first of the week and the concrete foundation work is being completed now. The contract calls for the completion of the building within ninety working days, dating from December 22. The Sharp Construction Company has the contract for the building.

The hospital will contain fifty rooms when completed, as well as two wards. The total cost of the building is \$47,850. Approximately \$13,000 will be spent to equip the building with the latest and best hospital equipment.

Bonds have been subscribed by citizens of Pampa to partially finance the project. M. R. Finley is still receiving subscriptions at his office in the Smith Building.

The architect's drawing of the building reveals that it will stand out at the corner of Kingsmill Street and Gillispie Avenue as a beautiful brick building, as well as a necessary business.

Lawyers Form Partnership -- F. A. Carey and C. S. Wortman have formed a law partnership and have opened offices in the Duncan Building. Wortman is an ex-district judge of Miami, Oklahoma. Carey has been practicing his profession here for several years.

MARKET ACTIVITY FAIRLY UNIFORM

Cattle Steady; Hogs Uneven; Lambs Lower

Fat steers continued in moderate supply at steady prices this week at the Kansas City Stock Yards. Quality of the offerings has been plain to fair. Butcher cattle which advanced sharply last week, went off from 10 to 15 cents this week. Light weight veal calves were steady and medium weights 50 cents lower. The New Year in the cattle trade is starting in line with the expectations of the market forecast.

Indications at market this week are that trade will develop an active turn. Hog prices were uneven in that the light weights declined 10 cents and the medium and heavies were strong. Lambs have averaged 25 cents lower this week than last.

The average daily receipts for the week to date were 17,000 cattle, 9,000 hogs and 6,000 sheep. Last week's daily average was 10,500 cattle, 5,000 hogs and 5,000 sheep. The average a year ago was 15,600 cattle, 8,600 hogs and 3,525 sheep.

Trade in fat steers opened slowly this week, but later became fairly active. A good clearance was reported. Sales ranged from \$7.25 to \$9.50. Trade in stockers and feeders was active. Prices ruled steady to strong. Weather conditions are unusually favorable for feeding operations and that in turn has tended to increase the demand for feeding classes.

The 130 to 200-pound good quality classes of hogs averaged from \$11.00 to \$11.35; packing hogs from \$10.00 to \$10.50; and stock hogs and pigs from \$11.25 to \$12.00.

Not enough sheep arrived at the market to give a fair test. Good to choice lambs sold at from \$12.25 to \$12.50; fair to good at \$11.50 to \$12.25. Yearlings were quoted at \$9.25 to \$10.00.

The trade in horses and mules started the new year with fairly liberal receipts. Demand came from a wide area. Prices are quoted steady.

Mrs. Evelyn Williams of the City, Oklahoma is visiting Mrs. Harry Groves.

MILAM HODSON DEAD AS RESULT OF AUTO WRECK TEN MILES EAST

H. J. Taylor Suffering From Injuries; Third Occupant Of Ford Touring Car, Roy Hicks, Is Uninjured

Milam Hodson was fatally injured Tuesday night about 11 o'clock when a car in which he was riding struck a horse. H. J. Taylor, proprietor of the Shamrock Steam Laundry at Shamrock, is suffering from serious injuries. A third occupant of the car, Roy Hicks, was uninjured.

The home of the three men is in Shamrock. They were driving on the Shamrock road when a horse suddenly ran from the side of the road immediately in front of the car. The car turned completely over three times.

Hodson's breast was crushed, one leg was broken, and his head partially crushed. He was taken to the home of O. Morehead which was a short distance from the scene of the accident. Two doctors from Pampa were notified and Hodson was given medical attention a short time after he was hurt. He died at 1:15 o'clock.

G. C. Malone brought the body to Pampa and prepared it for shipment. It was sent to Blanket, Texas for burial. Hodson is survived by his father, W. D. Hodson, and a brother, Garland, both of Blanket, Texas, and another brother, Reynolds, who lives at Shamrock.

Milam Hodson has been employed on a farm owned by Robert Terry near Shamrock for the past year. He was twenty years old.

Roy Hicks was riding in the rear seat of the Ford touring car and he and the two men in the front seat were talking. Hicks noticed a horse but as it was at the side of the road he thought that there was no danger. Just as the car approached the horse, though, it ran in front of the car. The men were traveling at the rate of about twenty-five miles an hour, but the driver was unable to slow up before striking the horse. Hicks dropped to the floor of the car and remained there while the Ford turned completely over three times. The two men in the front seat were thrown from the car when it turned over the first time. The driver, H. J. Taylor, was clutching a piece of the steering wheel in each hand when he was picked up by a passerby. Although Taylor's injuries are serious, he is expected to recover.

A thorough search for the horse that was struck was made a few minutes after the accident, but it could not be found. Hicks says that they drove by some campers about two miles this side of where the car turned over, and he believes that the horse had strayed from the camp.

The annual election of officers will be held at the meeting next week. Thursday night has been set as the date, providing a meeting place can be obtained on that night.

About \$3,500 was subscribed at the meeting Thursday night. Committees to raise that are already at work and it is expected that the full amount of the budget will be raised with a few days' time.

The annual election of officers will be held at the meeting next week. Thursday night has been set as the date, providing a meeting place can be obtained on that night.

125 CITIZENS AT C. OF C. MEETING

Commission Form Of Govt. Considered For Pampa

Approximately 125 citizens attended the mass meeting sponsored by the Chamber of Commerce Thursday night. The meeting was open to discussion and everyone was given an opportunity to contribute ideas.

A movement to change the form of government to a commission form of government was proposed, and a vote was unanimously in favor of such a change. A petition was signed by fifty persons at the meeting endorsing the change. C. L. Woodward, Nelson Walberg and C. C. Alexander were appointed to circulate the petition and to make arrangements for calling an election to change the form of government.

If a sufficient number of signatures of eligible voters is obtained, an election will be held in February to elect the officers of the commission government.

The repairing and upkeep of roads leading into Pampa was discussed by the various citizens, and the present plan is to devote about \$8,000 of the 1927 budget of the Chamber of Commerce to roads.

Members of the membership campaign committee were appointed at the meeting. They are: Neil McCullough, J. H. Lavender, J. D. Sugg, E. M. Dodson, M. K. Brown, Jess Wynn, T. E. Rose and E. C. Campbell. Each of these men will select a partner to work with.

About \$3,500 was subscribed at the meeting Thursday night. Committees to raise that are already at work and it is expected that the full amount of the budget will be raised with a few days' time.

The annual election of officers will be held at the meeting next week. Thursday night has been set as the date, providing a meeting place can be obtained on that night.

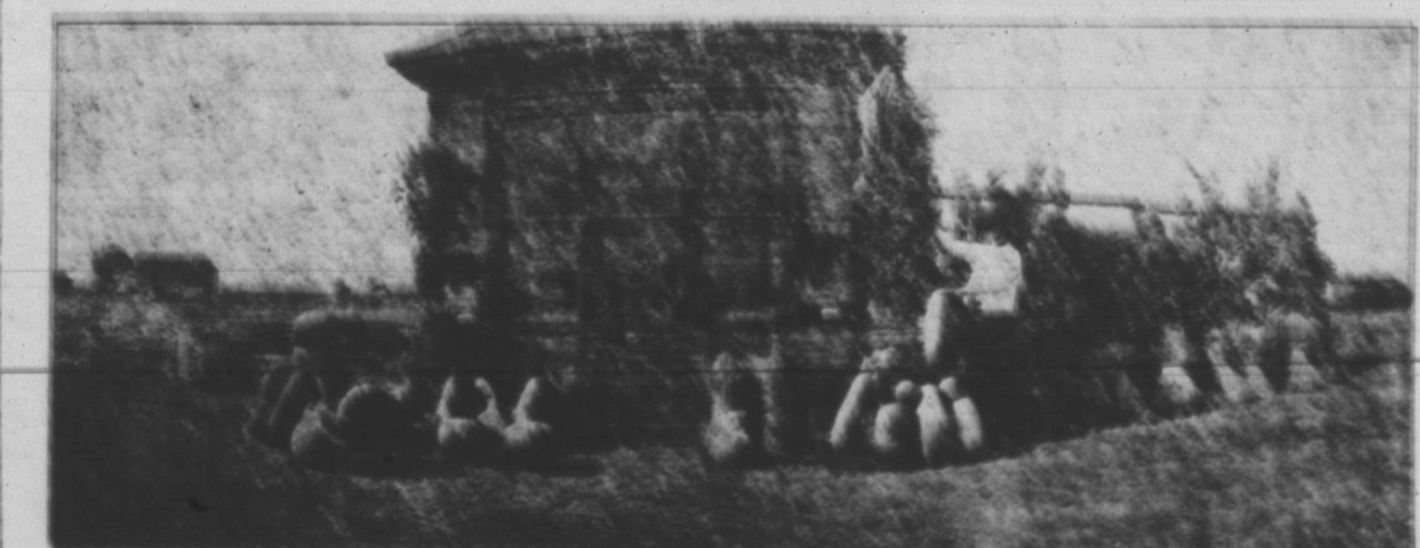
Pampa School To Keep Discounted Key Rate

The Pampa High School will maintain the 3 percent discount from the present key rate, according to a letter received from G. N. Holton, state fire chief, to R. C. Campbell, superintendent.

A Stream Of Oil In Pampa's Field

Wells of oil? Working its way through the Pampa oil field is a stream of oil. When the wells come in they can not always be captured at once, and a certain amount of oil from almost every well winds its way to the main artery of the field to the north.

The oil has become very thick and flows only when a new well adds to its volume. Standing by the little stream of oil, and surrounded by unexplored horizons, one can more readily realize the quantity of oil that is but a few miles from Pampa.



This picture was taken in 1907. It was then known as the "exhibition house." Passengers on excursion trains passing through Pampa were interested in surrounding acreage by means of the display of products grown here.

Years ago when the Texas Pambanite was severely wintered, a real estate firm in Chicago chartered a train occasionally and brought persons to lands further west in order to transact real estate business.

While this particular firm in Chicago was endeavoring to sell western lands, the White Deer Company at Pampa was also trying to sell surrounding acreage for four or five dollars an acre. Officers of the White Deer Company saw an opportunity to interest the persons passing through in land surrounding Pampa. The exhibition house shown

in the above picture was constructed near the Santa Fe tracks about where the depot now stands. The picture was taken in 1907.

The scheme worked well. The tourists could see the various products produced on the lands across from Pampa. But it did not work so well for the Chicago real estate dealers. They objected, but there was nothing they could do. The train had to stop in Pampa so that the engine boilers could be filled with water. There was no other place to stop just then.

The exhibition house was to be avoided by the Chicago men, though as a last resort, the train was stopped down the tracks west of here some distance, the engine uncoupled and sent on to Pampa for water. It would then go back for the cars and make a non-stop flight past the exhibition house.

The White Deer Company had incidents and pamphlets describing the surrounding lands, though, and secretly a train passed that the occupants were given the printed information.

DELINQUENT TAX RECORD

All lands and lots, or parts of lots, returned delinquent or reported sold to the State of Texas, and not redeemed for the years 1925 to 1926, inclusive, situated in Gray County, Texas. Compiled as provided for in Chapter 16, Revised Civil Statutes of 1921, and as provided for in Chapter 12, H. B. 11, Acts of second called session of the Thirty-Eighth Legislature.

Main table with columns: Year delinquent, Tax Roll Form, Owner, Abstract No., Certificate No., Survey No., Original Grantee, No. acres reported sold or delinquent, Total, and various owner/acreage details.

TOWN LOTS AND BLOCKS

Table with columns: Year delinquent, Tax roll form, Owner, City or Town, Lot No., Block No., Add., Total, and various owner/lot details.

**CITATION BY PUBLICATION
THE STATE OF TEXAS
TO THE SHERIFF OR ANY CON-
STABLE OF GRAY COUNTY, TEX-
AS—GREETING:**

You are hereby commanded, That you summon, by making publication of this citation in some newspaper published in the County of Gray if there be a newspaper published therein, but if not, then in a newspaper published in the nearest County to said Gray County, for four consecutive weeks previous to the return day hereof, E. F. Simmons, the unknown heirs of E. F. Simmons, William H. Stephens, the unknown heirs of William H. Stephens, C. L. Maple, the unknown heirs of C. L. Maple, Lillian Maple, the unknown heirs of Lillian Maple, A. J. Lee, the unknown heirs of A. J. Lee, W. H. H. Stephens, the unknown heirs of W. H. H. Stephens Cordelia A. Stephens, the unknown heirs of Cordelia A. Stephens, William A. Jackson, and the unknown heirs of William A. Jackson, whose residences are unknown, to be and appear before the Honorable District Court at the next regular term thereof, to be holden in the County of Gray, at the Court House thereof, in Lefors on the 28th day of February, A. D. 1927, then and there to answer a Petition filed in said Court, on the 30th day of December, A. D. 1926, in a suit numbered on the Docket of said Court No. 1553, wherein L. H. Webb is plaintiff and E. F. Simmons, the unknown heirs of E. F. Simmons, William H. Stephens, the unknown heirs of William H. Stephens, C. L. Maple, the unknown heirs of C. L. Maple, Lillian Maple, the unknown heirs of Lillian Maple, A. J. Lee, the unknown heirs of A. J. Lee, W. H. H. Stephens, the unknown heirs of W. H. H. Stephens, Cordelia A. Stephens, the unknown heirs of Cordelia Stephens, William A. Jackson, and the unknown heirs of William A. Jackson, are defendants.

The nature of plaintiff's demand being as follows, to-wit:
Suit by plaintiff, L. H. Webb, against the defendants above named in two counts, the first in trespass to try title, and in which count plaintiff alleges that on August 30th, 1916, he was in quiet and peaceable possession of the following described lands and premises, owning, holding and claiming the

same in fee simple, said lands being described as follows, to-wit: All of Section No. 43, in Block No. 25, Certificate No. 12-2526, issued to the H. & G. N. Ry. Co., situated in Gray County, Texas, containing 640 acres of land, more or less. Plaintiff further avers that on the date above mentioned the defendants herein unlawfully entered upon the above described premises and dispossessed plaintiff thereof and that they now unlawfully withhold from the plaintiff the possession of said premises. Plaintiff prays judgment for the title to and the actual possession of the above described lands and premises as against each and all of the defendants.

In the second count of said petition plaintiff pleads in the alternative and in subordination to his rights under the first count, that he and those under whom he claims title to the above described property have been in the actual and peaceable possession thereof, holding and claiming the same under a chain of title emanating from the sovereignty of the soil. The State of Texas, all of same being duly registered, for a period of more than three years preceding the institution of this suit; also that plaintiff, and those under whom he claims title to said land have had the actual, notorious and peaceable possession of said land, owning, holding and claiming the same under deed or deeds duly registered in the office of the County Clerk of Gray County, Texas, and paying all taxes thereon, cultivating, using and enjoying said lands, for a period of more than five years preceding the institution of this suit; plaintiff also alleges that he and those under whom he claims title to said land have had the actual, notorious and peaceable possession of said land for a period of more than ten years preceding the institution of this suit, claiming the same under a muniment of title duly registered in the office of the County Clerk of Gray County, Texas, in which the boundaries of said tract are fully described and that during all of said period of ten years plaintiff and those under whom he claims title to said land have cultivated, used and enjoyed the same.

Plaintiff prays judgment against the defendants, in the alternative, for the title to and the actual pos-

**Telephone Plants Are
More Than Instruments**

It is estimated that less than 3 per cent of the equipment used in telephone service is visible to the telephone user and is represented by the home receiver and bell box installed in the home. The remaining 97 percent is represented in switchboards, pole lines, cables, conduits, buildings and a myriad of other items necessary to make an efficient telephone system. Among these items may be found more than 2000 buildings owned and 4000 buildings leased.

The land occupied by buildings owned represents an investment of more than \$257,500,000.

Eleven thousand five hundred automobiles—mostly trucks—are used to furnish and maintain service, and 2000 other cars are hired for the same purpose.

Motor trucks fitted for digging and hoisting machinery and operated by a gang of three men now do the work of 50 men using the old manual methods.

Public Notice

The Statutes make it a crime to operate a business under a name other than that of the owner unless a certificate of ownership properly executed is on file with the County Clerk. The penalty is \$25 to \$100 and each day is a separate offense.

This law is intended for the protection of the public and will be enforced strictly after January 10. JOHN F. STUDER (County Attorney) 48-2tc

session of the above described lands and premises, together with general and special relief, legal or equitable.

HEREIN FAIL NOT, And have you before said Court, on the said first day of the next term thereof, this Writ, with your endorsement thereon, showing how you have executed the same.

Given under my hand and seal of said Court, at office in Lefors, Texas, this 30th day of December, A. D. 1926.

Charlie Thut, District Clerk, Gray County, Texas. 49-51-53-55c

**Smelting By Gas Is
Answer To Problem**

The use of gas to cook ore has solved a difficult mining problem, according to engineers, says the Texas Public Service Information Committee. This is a new application of that fuel to industry.

A rich body of zinc ore, recently uncovered in Oklahoma, was found to have a high content of asphalt oil, which made it difficult and expensive to smelt. Oil fired kilns did not free the ore from its gummy deposit and it was decided to try gas.

A main was put out to the mine by the local utility company and two rotary kilns were equipped with gas burners. Treatment in the gas fired kilns not only left the ore entirely free of asphalt which was cooked away, but a material increase in ore tonnage through the kilns was recorded.

Notice to Stockholders

The annual meeting of the stockholders of the Gray County State bank, will be held in the Directors room of the Gray County State bank January 11, 1927 at 3 o'clock p. m.

You will please take notice and govern yourself accordingly.

W. H. Doyle, Cashier. 46-4t-c

**Gas Industry Soon
To Invoke Science**

Five hundred thousand dollars will be spent exclusively for research by the American Gas Association, according to a report made at the gas convention, says the Texas Public Service Information Board.

The money will be used during a period of five years to develop new uses for gas for industrial heating operations and to improve equipment. While the use of gas in industry has grown by leaps and bounds, an increase of 64 percent in six years the gas companies have labored under difficulties in keeping up with the demand. This is due largely to lack of equipment

of right design and big efficiency for the utilization of this fuel in new uses in manufacturing plants.

Seventy per cent of the world's sulphur is produced in Texas.



NOTICE

Pampa Lodge No. 966, A. F. & A. M. Regular Meeting, Fourth Saturday in each month.

Masonic Hall in White Deer Land Building.

C. P. BUCKLER, Secretary.

**BIG REDUCTION ON ALL
WINTER CLOTHING**

ARMY AND NAVY STORE

**\$6.00 Worth of Music
for \$2.50**



**40 Minutes of Music
—on a Single Record**

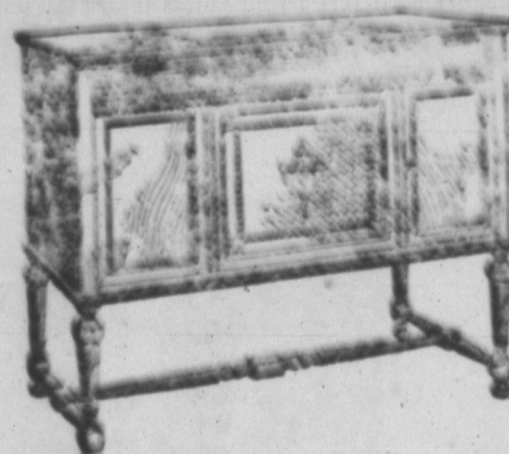
NOW you can hear, right in your own home, the music you love—concerts, recitals, and dinner music—tone for tone, as it issues from the throat or instrument of the artists. NOT JUST ONCE, BUT AS OFTEN AS YOU WISH, whenever you wish. A whole evening's entertainment between your thumb and forefinger.

The present-day 5- or 6 minute record, which plays for only 5 or 6 minutes, costs at least 75 cents whereas the Edison 40-minute record costs only \$2.50, or 38 cents for six minutes of music. The Edison 24-minute record costs just \$1.75 or only 44 cents for six minutes of undistorted music. The cost of phonograph music is cut in half. The New Edison Long Playing Phonograph, itself, costs no more than old-fashioned short playing phonographs.

The NEW **EDISON**
LONG PLAYING
PHONOGRAPH and RECORDS
NO NEEDLES TO CHANGE

THIS new phonograph comes in four exquisite console models, in the fashionable new English shade, "Tweedle Brown." A delight to the eye as well as to the ear.

40 minutes of undistorted music on a single record, no larger size than ordinary records, is possible ONLY with Edison records and on the New Edison Long Playing Phonograph. Everything that any other phonograph can give—plus the Long Playing feature and matchless tonal quality. Hear this latest invention of Thomas A. Edison. 40 Minute Informal Concerts going on all day. You are cordially invited.



E. E. FINKLEA
THE JEWELRY STORE OF THE PANHANDLE

Announces the Opening

OF THE EDISON SHOP
In The
PAMPA DRUG STORE

Carrying in Stock the New Edison and a Complete Stock of Edison Records—All the Latest Musical Hits!

E. E. FINKLEA
In The
PAMPA DRUG STORE

WE WELD

Broken Cylinders and many other parts of Automobile, Gas Engines, Pumps and etc. with

"ELECTRIC ARC"
Without Disassembling

Latest and best machinery made for Reconditioning gasoline motors.

Expert Mechanics in every department

Jones Everett Machine Company
PAMPA, TEXAS

PIPE THREADING, Heavy Forging and General Machine Work, Fishing Tools, Supplies, and Etc.

THE PAMPA NEWS
Published Tuesday and Friday
at Pampa, Texas

DAVID M. WARREN
Publisher
W. E. LUVÉ
Manager
BEN F. RENO
Editor

Office in News Building
Phone No. 100

SUBSCRIPTION RATES
In Texas

One year \$2.00
Six months 1.25
Three months65
Outside Texas
One year \$2.50
Six months 1.50
Three months85

Advertising Rates Upon Application

Entered at the Pampa, Texas
Postoffice as Second Class Mail

TALK

We all know the fellow who likes to hear himself talk, who is pained to the core by enforced silence. Quite often he is a real good fellow, a jolly, likeable lad whose sole besetting sin is talk—but how he does enjoy it! These marathon talkers usually stand ready to discuss any subject under the sun. Some are of the authoritative variety who have an all-embracing knowledge, though where they get their facts is a mystery to all, including themselves. Then there are philosophic talkers who rely upon their imaginings for verbal ammunition. Still another species of talker in the romancer or plain garden variety of liar. He makes his statements to fit his story or purpose.

All three of these varieties are real pests, but, being easily recognized and classified, their conversation is fortunately discounted and, therefore, does a minimum of harm.

The most common form of talker, however, is the thoughtless talker or rambler. He deals in undeveloped facts; often a kind of "Duke's Mixture" of facts and fancies, or possibly even pure facts, but those which have neither been aged by "Father Time" nor ripened by "Mother Nature".

Some of these men possess the mental laboratories to analyze and classify and develop and arrange these thoughts. Unfortunately, however, so great is the internal pressure of talk that they have not time to really think things out but must erupt in a flow of words. These talkers are often entertaining, but seldom edifying. Their opinions carry little weight; their judgments are lightly held.

Wise is the man, especially in business, who, before he

presents a problem or a proposition to a superior or an associate, boils it down to essential facts, arranging these in the order of their importance. The man who forms the habit of dissecting all important business problems in this manner will find that there are many not nearly as important as at first appeared, and that others which at first seemed merely incidental are more worthy of thought and attention. A proposition correctly presented is already partially accepted, while a problem is more than half solved.

Seldom, if ever, is the real thinker a great talker, for he works with the belief that thought must precede speech and the capacity of even the best minds is limited; while talk as exemplified by its most enthusiastic exponents, is restricted only by a possible hot box of the tongue, lips or vocal cords.

Yes, verbosity is an affliction not only to the perpetrator, but to all and sundry who must bear with him. Very likely President Coolidge prattled when a young child, but listen to him now—if you have time to wait.

Speech being given to the human race as a means of expressing thoughts, when we have no thoughts or none worth mentioning, would it not seem logical that we save our speech and not go and use it up in mere talk. Yet such logic does not appeal to the spontaneous and effervescent talker, for, like our faithful friend, the jack, who raises his dependent ear ere he emits his harmonious bray, the sound of his own voice is too good to miss.—The Southwestern Ambassador.

Texas has 1,864,225 horses and mules on its farms.

GRAY-PAMPA HOTEL

"In the Heart of Pampa"

112 S. Main St.

A. E. SHAW, Mgr.

PANHANDLE OIL MAPS

Blue Printing and Surveying
AMARILLO ABSTRACT CO.
108 West Fifth Street
Phone 1198
AMARILLO, TEXAS

LITTLE THINGS COUNT

If you want a good example of the fact that it's the little things that count, recall the recent death in New York of a fellow named Bobbie Leach. Some years ago he went over Niagara Falls in a barrel and escaped with a few bruises. Then he joined a circus and made parachute leaps from a balloon. But a few weeks ago he slipped on a banana peel, fell and broke his leg, and when the member was amputated he died from blood poisoning.

We always guard against the big things and escape them only to suffer from the little things, such as crossing a street or highway without looking both ways, driving with defective brakes or without properly focusing headlights.

In practically every phase of life it is the little things that cause most of the disturbance. The little things are far more numerous than the big things, and if we would watch the little things, the big things would almost take care of themselves.

News Want Ads Pay

Local Transportation Is A City's Very Life

A committee of aldermen has just completed a study of local transportation in a number of cities of the United States with a view of recommending some remedy for the muddled situation in St. Louis. Their conclusions are that competitive public transportation between motor buses and street cars is bad for the people who depend upon popular local transportation.

The committee reported as a conclusion that there is no place in any city except possibly the few very largest cities for the motor bus in competition with the street railways. "because such competition invariably renders adequate service by the street railways impossible if it does not actually ruin it, while after the ruin takes place the motor bus cannot adequately handle the load, particularly during the rush hour peak."

It is probably true that in some large cities there is a demand by some of the people or through conditions for a character of service which the motor bus can meet. In such cases the local street car company is the proper and only logical agency for rendering such service.

News Want Ads Pay

More than 800 persons are employed in Kansas City in the manufacture of tin cans.

Sixty carloads of pears were shipped from Gainesville during the past season.

PURE RICH MILK

The A. C. Brand, it's purity is guaranteed by the A. C. Bottle and sold direct from the Converse Farm and sold only at King's Butcher Shop in the building occupied by the Poultry Mercantile Association and at the Piggly Wiggly Store.

-FOR RENT-

Office Rooms, also single room for office. All new and nicely finished.

PHONE 327

Announcing—

Beautiful

CHEVROLET

in Chevrolet History



TRULY the most beautiful Chevrolet in Chevrolet history! Truly an achievement which must immediately change all existing ideas as to what the buyer of a low priced car has a right to expect for his money!

Here is the irresistible appeal of unbroken, flowing body lines—of modish new Duco colors, fashionably striped—of notable smartness—of that flawless silhouette regularly associated with the costliest of custom-built creations.

Here are score after score of advancements in design, literally too numerous to list completely—but typified by one-piece full-crown fenders, bullet-type lamps, coincidental steering and ignition lock and large 17-inch steering wheel.

Here is definite assurance of longer life, more satisfactory operation and even greater economy—for all models are equipped with a new AC oil filter and an improved AC air cleaner!

Such features as these are usually found only on cars costing up into the thousands. They are marks of distinction on the world's finest automobiles. Yet these are now offered on The Most Beautiful Chevrolet because the spectacular growth

of Chevrolet popularity has sent Chevrolet production to tremendous volume—and only the economies of tremendous volume plus inspired engineering make possible the manufacture of so fine a car to sell at Chevrolet prices.

We urge you to come in for a personal inspection. And we ask you to come, not in the customary casual mood—but actually anticipating the revelation you would expect when the world's largest builder of gearshift automobiles announces a completely new line of cars whose truly great value is based on irresistible beauty

and a host of improvements including:

- New AC Air Cleaner
- New AC Oil Filter
- New Coincidental Lock
- New Duco Colors
- New Gasoline Gauge
- New Radiator
- New Bodies by Fisher
- New Remote Control Door Handles
- New Tire Carrier
- New Bullet-Type Head Lamps
- New Windshield On Open Models
- New Heavy One-piece Full-crown Fenders
- New Hardware
- New Running Boards
- New Brake and Clutch Pedal Closure

—with these amazing price reductions!

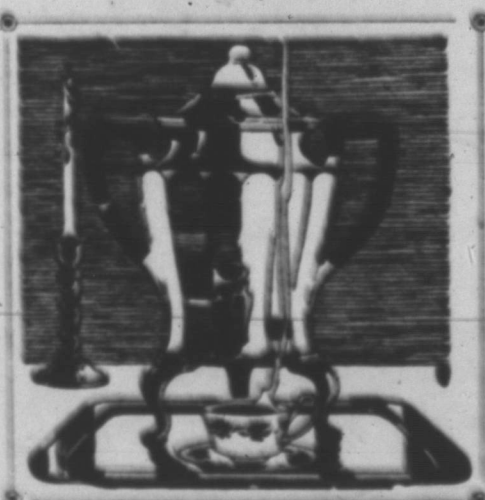
The COACH Former Price \$645	\$595	The COUPE Former Price \$645	\$625	The SEDAN Former Price \$735	\$695	The LANDAU Former Price \$765	\$745
The TOURING CAR Price includes balloon tires and steel disc wheels. Former price \$525 with balloon tires only.	\$525	The ROADSTER Price includes balloon tires and disc wheels. Former price \$525 with balloon tires only.	\$525	The Sport CABRIOLET Entirely new model with rumble seat.	\$715	1-Ton Truck (Chassis Only)	\$495
						1-2-Ton Truck (Chassis Only)	\$395

Balloon tires now standard on all models
All prices f. o. b. Flint, Mich., effective January 1st, 1927

PAMPA MOTOR COMPANY

QUALITY AT LOW COST

A Perfect Cup of Coffee



A cup of coffee, made with an Electric Percolator, has a flavor all its own. You will realize this great difference only after testing it for yourself. The consumption of current is very economical.

Southwestern PUBLIC SERVICE Company

THE LUNCHEON TABLE

This luncheon table should be naturally lighted—not with candles as is the dinner table, unless, of course, the room is a dark one. In that case the curtains should be drawn and candles lighted. The table itself should be bare, that is, not covered with the long cloth which is used only at dinner—a custom which the homemaker who does much of her own work, or to whom, as to most of us, the laundry bill is a matter of economy, has gladly welcomed.

Dollies of lace or linen, cross-stitched place cloths or the runner with flit lace insets are appropriate. The latter is especially attractive on the refectory table and is the only kind of long cloth that should be used with this type of table. These cloths may be white or colored, but must always harmonize with the dishes to be used, and the furnishings of the room. One of the prettiest luncheons I ever attended had the humble daisy as a motif. The place cloths—oblong—had little sprays of daisies, white and yellow, embroidered in lazy daisy stitch, and outline. The centerpiece was a brown basket, low, and of attractive shape, filled with daisies, white and yellow. The menu carried out the coloring.

- Cream of celery soup
- Salmon loaf garnished with slices of hard-boiled egg
- Saratoga chips
- Salad of cucumber and sliced boiled carrots on white lettuce leaves
- Peach ice cream colored light yellow
- White cake with yellow frosting
- Coffee

The centerpiece should match the place mats, but may be of any size or shape. It should not be smaller than the place mats themselves.

The decorations for the table may be as pretty as possible, but not so elaborate as for dinner. One large, low bowl of flowers may be placed in the center, or a glass basket of flowers in the center and four smaller ones at the corners. Flowers at the plates and ribbons on the table are in poor taste. The tendency is toward extremely simple decoration, but as lovely and unusual as possible.

There are 946 square miles of workable iron ore in 19 Texas counties.

HISTORICAL SITES BEING SPECIFIED

Fort Elliot Located Near Mobeetie Considered

In carrying out the work of marking the spots of historical interest in this section of the state, the Panhandle Historical Society, sent Professor L. F. Sheffy and J. Everts Haley, field secretary, to look into the matter of securing the Fort Elliot site near Mobeetie. It is thought that this site will be marked by the society as considerable interest attaches to it because of the fact that it was the only fort established in the Panhandle and one of the last to be maintained on the frontier as an aid in holding the Indians upon the reservations. It was established in 1875 and abandoned in the early '90's.

The two representatives of the society were joined by Mr. T. D. Hobart of Pampa, who is one of the directors of the organization. Mr. Hobart is one of the most prominent of the Panhandle pioneers who is yet active in a business way, and is noted for the lively interest in local history. Final arrangements

TOO LATE TO CLASSIFY

FOR SALE OR TRADE—Standard Six Studebaker Coach, 1926 model. Run about 7500 miles. Excellent condition. Will sell or take desirable lot or out-of-town tract on trade. For further information phone 148. 49-2tp

FOR RENT—2 room apartment, furnished. Phone 135. 49-1tc

WANTED—To lease from owner, rooming house 20 rooms or more. Address Box 732. 49-1tp

FOR RENT—Modern 3 room house. Also furniture for sale. F. E. Rostet, Francis St. Central addition. 49-1tp

for the making of the Buffalo Wallow Battle site, where a sharp battle took place between government scouts and Indians in 1874, will be made by the committee. —Canadian Record.

Expert watch, clock and jewelry repairing. Quality Jewelry Store located in H. & K Drug. 49-2tc

Texas has more than 20,000 oil wells in 75 counties, producing in excess of half a million barrels of petroleum a day.

There are approximately 440,000 farms in the state of Texas.

Essie Hicks of Shamrock was in Pampa Wednesday.

Frank Dunaway of Amarillo was here on business Thursday.

J. W. Leporin of Wichita was in Pampa Thursday on business.

Texas' natural gas field has a potential capacity of 35 billion cubic feet, of which 154 million cubic feet a day is being used.

Rex Theatre

THE PICK OF THE PICTURES
Phone 327

—SATURDAY—

A SPECIAL WESTERN
"THE YELLOW BACK"

Featuring a Rearing, Tearing, Hard Riding Acrobatic Cowboy AND COMEDY

MIDNIGHT PREVIEW

Starts at 11:45 Saturday Night

"THE WALTZ DREAM"
Big Charleston Contest
A BIG TIME FOR EVERYONE

—MONDAY—

CONWAY TEARLE AND IRENE RICH
in
"MY OFFICIAL WIFE"
One that you will like

AT THE CRESCENT THEATRE
If It Is A Good Show, It Is At The Crescent
Starting Sunday, January 9th

—SUNDAY and MONDAY—
THE UNKNOWN SOLDIER

with
Marguerite De-Le Motte and
Henry B. Walthall.
A picture every Father—Mother—Sister and
Brother will not want to miss.

—TUESDAY—

THE UN-NAMED WOMAN

with
Herbert Rawlinson and Wanda Hawley
A picture with heart interest

BIRD'S ROOFS



SHINGLE DESIGN Roofing

WITH THE NEW YEAR
Comes the desire to put your house in order for another year.
A BIRD'S ART CRAFT ROOF will give many years of satisfactory service.
Phone 210

THE FOX RIG CO.
Lumber and Building Material



Immense Reduction IN LADIES

Coats, Dresses, Hats FOR SATURDAY AND MONDAY ONLY

This lot of Dresses consists of the very latest modes and styles with values ranging up from \$22.50 to \$49.50. Special for Saturday and Monday, \$10.75 to \$22.50.

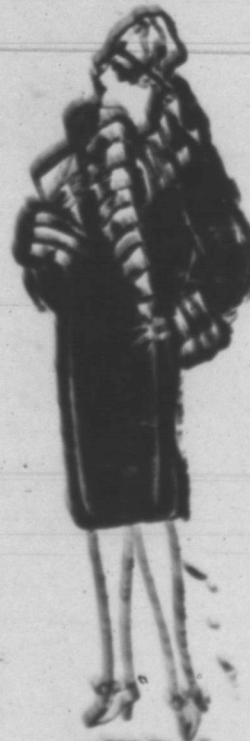
All the newest creations in Mid-Winter Ladies Coats. We are offering our entire stock at a

BIG REDUCTION

Nice assortment of Ladies Hats, New Spring Styles and colors. Your Choice for \$4.95.

REX CLOTHING CO.

THE REX CORNER
"WHERE THEY ALL MEET"



"There are more heroines in kitchens than in fiction."

Who's Who TODAY



GOV. "MA" FERGUSON

SMALL SERVICES ARE TRUE SERVICES, TOO
Hence our rule that no piece of business is too small for our most conscientious effort.

This serves the double purpose of enabling us to please all customers and keeping us in training for larger things.

"He that is faithful in a few things shall be made ruler over many" is true—both as to service and savings.

"There is no Substitute For Safety"

GRAY COUNTY STATE BANK

C. L. THOMAS, President W. H. DOYLE, Cashier

Charter No. 9142

Reserve District No. 11

REPORT OF THE CONDITION OF THE

FIRST NATIONAL BANK

at Pampa in the State of Texas, at the close of business on Dec. 31, 1926

RESOURCES

1. a Loans and discounts, including rediscoun- ts, acceptances of other banks and foreign bills of exchange or drafts, sold with indorsement of this bank (except those shown in Item 1-b)	\$ 676,571.40
b Acceptances of other banks discounted, excluding those sold with indorsement reported in Item 1-a	549,800.27
Total loans	\$1,226,371.67
2. Overdrafts, unsecured	1,127.60
3. U. S. Government securities owned:	
a Deposited to secure circulation (U.S. bonds par value)	6,260.00
b All other United States Government securities (including premiums, if any)	53,000.00
Total	59,260.00
4. Other bonds, stocks, securities, etc., owned:	
Banking House	17,525.00
Real estate owned other than banking house	20,000.00
Lawful reserve with Federal Reserve Bank	128,922.24
Cash in vault and amount due from national banks	257,335.57
Amount due from State banks, bankers, and trust companies in the United States (other than included in Items 8,9,&10)	3,849.72
Miscellaneous cash items	508.47
Redemption fund with U. S. Treasurer and due from U. S. Treasurer	313.00
TOTAL	\$1,758,217.93

LIABILITIES

19. Capital stock paid in	\$ 50,000.00
20. Surplus fund	25,000.00
21. a Undivided profits	696.15
c Less current expenses paid	696.15
23. Circulating notes outstanding	6,260.00
28. Cashier's checks outstanding	32,320.46
Demand deposits (other than bank de- posits) subject to Reserve (deposits pay- able within 30 days):	
29. Individual deposits subject to check	1,432,993.96
30. Certificates of deposit due in less than 30 days (other than for money bor- rowed)	7,642.00
31. State, county, or other municipal de- posits secured by pledge of assets of this bank or surety bond	17,500.00
33. Dividends unpaid	5,000.00
Total of demand deposits (other than bank deposits) subject to Re- serve, Items 29, 30, 31, and 33	1,463,135.96
35. Certificates of deposit (other than for money borrowed)	180,805.36
Total of time deposits subject to Reserve, Item 35	180,805.36
TOTAL	\$1,758,217.93

STATE OF TEXAS, COUNTY OF GRAY, ss:

I, DeLea Vicars, Cashier of the above named bank, do solemnly
swear that the above statement is true to the best of my knowledge and
belief.

DELEA VICARS, Cashier

CORRECT—Attest:

B. E. Finley, J. R. Henry, P. C. Ledrick; Directors.

Subscribed and sworn to me this 5th day of January, 1927.

(SEAL)

Cecil P. Buckler, Notary Public

Use Of Power Makes
Good Living Conditions

In 1869, the first year in which statistics upon the amount of mechanical power available to each American were collected, each wage earner had available to him 0.6 mechanical horsepower.

In 1919 each American wage earner had available to him 3.25 horsepower which means that in the short space of 50 years invention and supply put at the disposal of each wage earner 3.19 additional horsepower and increased his productive capacity 500 percent.

Thus the progress of invention, development and supply means that the day laborer in 1925 has comfort and luxuries that the great king lacked in 1869, and has enabled the stenographer and saleswoman to array themselves in costumes that would excite the envy of Cleopatra or the Queen of Sheba.

In thus bringing about this condition the electric, gas, telephone, water supply and electric railway industries played a leading part.

In 1781 the estimated total wealth of the world was 100 billions.

In 1921 the total wealth of the world was estimated at 1,000 billions.

This huge increase in wealth has been due largely to generation steam and electricity, gas, the use of the telephone and of the rapid, low cost transportation afforded by electric railways.

DAD'S GREATEST JOB

I may never be as clever as my neighbor down the street; I may never be as wealthy as some other men I meet; I may never have the glory that some other men have had; But I've got to be successful as a little fellow's Dad.

There are certain dreams I cherish that I'd like to see come true, There are things I would accomplish e're my working time is through; But the task my heart is set on is to guide a little lad, And to make myself successful as that little fellow's Dad.

I may never come to glory; I may never gather gold; Men may count me as a failure when my business life is told, But if he who follows after shall be manly, I'll be glad, For I'll know I've been successful as a little fellow's Dad.

It's the one job that I dream of; It's the task I think of most.

If I'd fail that growing youngster, I'd have nothing else to boast; For though wealth and fame I'd gather, all my future would be sad.

If I failed to be successful as that little fellow's Dad.

—Selected

Coal Is Saved By
Efficient Methods

A report made public by the shows that the gain in efficiency in the generation of electricity resulted in a saving of one-tenth of one pound of coal per kilowatt hour, or a saving of 2,000,000 tons of coal during 1925. The report shows that during 1925 an average of 2.1 pounds of coal was burned to produce a kilowatt of electricity, as compared to 3.3 pounds in 1919, or a saving of one-third in that time.

Although the amount of electricity produced was 11 1/2 percent more than in 1924, the amount of coal consumed was only 7 per cent greater, the amount of oil 34 per cent less and the amount of gas used in generating electrical power 4 per

cent less. Approximately 40,000,000 tons of coal were consumed in developing nearly 80 per cent of all power developed from fuels. Reducing the value of the oil, gas and wood used in generating power to the equivalent of coal would be equal to an additional 5,000,000 tons.

Every Person Uses
More Power Each Year

Production of electricity in the United States is increasing at a much faster rate than is the population. Figures compiled by the United States Geological Survey show.

The government's data shows that in 1919 when the United States had a population of 105,003,065, public utility generating stations

produced 371 kilowatt-hours per capita. On July 1, 1926, the country had an estimated population of 117,135,817. The Power Survey Committee of the Great Lakes Division of the National Electric Light Association estimates that production of electricity for 1926 will approximate 74,000,000,000 kilowatt hours, making the power consumption for the ensuing year 632 kilowatt-hours for each person in the country.

NEWS WANT ADS PAY

SOME GUNS NOW CUNABLE

You won't be ashamed to smile again, after you use Leto's Pyorrhea Remedy. This preparation is used and recommended by leading dentists and cannot fail to benefit you. Druggist return money if it fails. H. & K. Drug Co. 1-4-c

Condensed Statement of Condition of

THE FIRST NATIONAL BANK

of Pampa, Texas, at the close of business December 31, 1926

RESOURCES

Loans and discounts on time	\$ 557,071.40
Overdrafts	1,127.60
Real Estate	20,000.00
Bank Building	17,525.00
U. S. Bonds to secure circulation	6,260.00
Stock in Federal Reserve Bank	2,250.00

AVAILABLE CASH

Stocks and Bonds	\$ 40,754.66
Liberty Bonds	53,000.00
Call Loans	119,500.00
Bank acceptances	549,800.27
Cash and sight exchange	390,929.00
TOTAL	\$1,153,983.93

LIABILITIES

Capital Stock	\$ 50,000.00
Surplus	25,000.00
Undivided profits	696.15
Circulation	6,260.00
Reserved for Dividend	5,000.00
Deposits	1,671,261.78

TOTAL \$1,758,217.93

OPENING SALE

SATURDAY, JANUARY 8th

In order that we may get acquainted with you, and you with us and our Standard line of merchandise, we are making a sacrificial offer on our entire stock.

Our Ready-To-Wear stock consists of such brands as the Nationally advertised LeVine and Welmade Dresses. We also have a complete line of beautiful Spring Hats.

In our line of Clothing for Men we have for your inspection and approval, the Kuppenheimer Clothes, the Curlee Clothes and the Merit Clothes, all very reasonably priced.

Space forbids our listing the numerous items that we can save you money on by buying here Saturday.

To each person who visits our store Saturday, Jan. 8th, will be given a Souvenir.

CROSS DRY GOODS CO.

"Where Quality Values Reign Supreme"

Opposite Pampa Hotel

Start the New Year right—conserve—buy
Nationally advertised Groceries at lowest prices

SPECIALS for SATURDAY

Bananas, per lb. 8c

6 lb. Bucket Crisco \$1.14

3 lb. Bucket Crisco .62

1-2 lb. White Swan Coconut .18

3 lb. Bucket Maxwell House Coffee 1.47

No. 1 Wapco Sugar Corn .07

PIGGLY WIGGLY

CROP COMPARISON MADE FOR SEASON

Cotton Farmer Warned From Average Of 1926

The events of 1926 seem to convey a clear warning for the cotton belt, reasonable assurance to livestock producers, and conservatism along the line as to crop acreage in 1927, the Bureau of Agricultural Economics concludes in its Jan. 1 report on the agricultural situation.

"Considering the country as a whole," the report says, "1926 seems to have registered in the minds of a majority of farmers as a disappointing year. The rise in prices of farm products in 1924, which was fairly well sustained during 1925, had aroused still further hopes for 1926, but the sharp slump in cotton, grain and fruit prices this fall reduced the purchasing power of extensive regions and brought the season to a rather depressing close. Many producers of winter wheat, potatoes and certain livestock products did well, however."

"The crop season was a harassing one with very late spring, widespread drought in early summer and much rain during harvest. Although the major crops finally turned out average yields, their quality was lowered, with much consequent discount to farmers from the nominal market prices. The value of the principal crops, based upon prices Dec. 1, \$7,801,000,000, compared with \$8,949,000,000 a year ago. In spite of lower prices, however, about 2,000,000 acres or 5 per cent greater area of winter wheat was sown this fall than last."

A brighter picture is painted by the bureau for the livestock industries. The dairy industry is reported to have had a favorable spread between milk and feed prices most of the year, poultry producers were relatively prosperous, and hog producers have had the most advantageous spread in several years between corn and hog prices, although the cholera epidemic this fall wiped out many opportunities for profit.

"Cattle feeders did not have a very profitable experience last Win-

ter," according to the report, "yet the movement of cattle into the corn belt up to Dec. 1 indicated about as large a volume of feeding this winter as last. On the range end, cattlemen appear optimistic. The number of sheep and lambs on feed Dec 1 apparently exceeded last year's number by at least 200,000 head, the increase being in the corn belt with a heavy decrease in Colorado. The recent pig survey covering 11 corn belt States indicates only about 4 per cent increase in the fall pig crop, less than 1 per cent increase in the total 1926 pig crop no increase in the 1927 Spring Pig crop, and a probable decrease in hog slaughter during the marketing year 1926-27."

Of five leading farm crops, only potatoes had a purchasing power in November above the pre-war parity, says the report. Cotton, corn, wheat and hay have an exchange value so low as to discourage presumably any expansion of acreage this spring. The livestock products, excepting cattle, have a considerably higher exchange value per unit still at an advantage as compared with feed prices.

"One of the chief factors of stability in the present situation," says the bureau, "is the fact that low priced crops are to some degree offset by higher priced livestock products. The general commodities declined another point in November to 80, the five pre-war years being considered as 100."

More than 1,000 cars of dressed turkeys were shipped from Texas to eastern and northern markets for the holiday trade.

Trend Is Toward Many Rural Factory Centers

Electric power will eventually decentralize industry and garden communities devoted to manufacturing will take the place of congested factory centers, according to Guy E. Tripp, head of the board of directors of the Westinghouse Electric Corporation. He figures it out this way:

"The first electric light and power plants were naturally located in congested districts, where a ready market for their services was assured. Thus, the full benefits of electricity were for the most part bestowed upon populous centers, thereby intensifying the centralizing tendencies of steam power."

"Today, however, the United States is becoming covered with a great network of electric power lines. There are now in existence over 100,000 miles of high-voltage transmission lines, and this voltage is increasing rapidly."

"Under this extensive superpower development, power will be widely distributed and industries will be free, as far as power considerations are concerned, to locate, roughly speaking, almost anywhere."

"There are, as a matter of fact, many pressing reasons for the removal of industries out of the congested districts. Rent and taxes can be reduced, living conditions for employees can be improved, discipline can be better maintained, with less hardship to the individual, and raw materials can often be secured more readily."

"Given, therefore, economic pressure to decentralize, and the

means for its accomplishment, which exist in superpower, automobiles, and standardization, the ultimate result appears to be inevitable.

"To the industrial worker decentralization should prove a Godsend. The factory town with all that it implies, will be replaced by the garden community. The cost of living, housing and transportation, which now cuts so deeply into his income, will be reduced, and a new opened to any member of his family with taste and aptitude in that direction."

"On the other hand, industrial opportunities will not be reduced, for, with a car or motorcycle, freedom of movement to seek employment will be great."

Dramatic Teacher Located in Pampa

Mrs. E. E. Fisher will accept a limited number of pupils, adults, boys and girls, for training in dramatic art. The course includes private and class work in every phase of speech arts. Recitals will be given periodically. For further information call at Mrs. Fisher's home at the corner of Browning Ave. and Hazel St. in the northeast part of town.

"A barrel of pork for every farm" is the slogan adopted by the Chamber of Commerce of Temple.

When You Want a CAR
CALL BUCK'S TAXI
Phone 355
Anywhere Anytime

OFFICIAL STATEMENT OF FINANCIAL CONDITION OF THE GRAY COUNTY STATE BANK

at Pampa, State of Texas, at the close of business on the 31 day of December, 1926, published in the Pampa News, a newspaper printed and published at Pampa, State of Texas, on the 7th day of January, 1927

RESOURCES	
Loans and discounts, undoubtedly good on personal or collateral security	\$ 158,731.94
Loans secured by real estate, worth at least twice the amount loaned thereon	13,292.72
Overdrafts, undoubtedly good	3,515.49
Bonds, stocks and other securities	81,145.57
Call and Commercial paper	161,000.00
Real Estate (Banking House)	12,500.00
Other Real Estate	2,793.00
Furniture and Fixtures	3,200.92
Cash on hand	44,748.94
Due from approved reserve agents	116,377.61
Due from other banks and bankers, subject to check on demand	39,202.57
Interest in Depositor's Guaranty Fund	853.39
Assessment Depositors' Guaranty Fund	5,941.53
Acceptances and Bills of Exchange, undoubtedly good	8,605.00
TOTAL	\$ 651,908.68

LIABILITIES	
Capital Stock	\$ 25,000.00
Certified Surplus Fund	3,000.00
Undivided profits, net	12,069.68
Individual Deposits subject to check on which no interest is paid	504,077.46
Time Certificates of Deposit	39,562.46
Public Funds on Deposit	
County	\$24,919.55
City	1,087.68
School	8,865.38
Total	34,863.01
Cashier's Checks Outstanding	33,636.07
TOTAL	\$ 651,908.68

STATE OF TEXAS, COUNTY OF GRAY.
We, C. L. Thomas, as President, and W. H. Doyle, as Cashier of said bank, each of us, do solemnly swear that the above statement is true to the best of our knowledge and belief.

C. L. THOMAS, President
W. H. DOYLE, Cashier
CORRECT—Attest: C. B. Barnard, T. W. Johnson, L. C. McConnell, Directors
Subscribed and sworn to me this 6th day of January, A. D. 1927.
F. PREID, Notary Public, Gray County, Texas.
(SEAL)

RANGER HOTEL

Just South of Depot
35 Rooms

Reasonable rates by day, week or month

Hot and Cold Running Water
in All Rooms

Bath to Public 50c

Spring Suits
Spring Coats
Spring Dresses
Spring Hats

Advanced Showing
Early Spring Suits, Coats, Hats and
Dresses on balcony floor
See Our North Show Window

Ladies New Spring Foot
Wear
In Center Window



Forward with Pampa since 1916

278-280

North Cuyler

FRIENDLY SERVICE



The one thing about Marland Service that is as consistent as the quality of their Products

THE smile that is on the lips and not in the heart; the handshake that is flabby instead of firm are but surface indications of what lies beneath. Just so is service that is rendered you in supplies for your car. It either is sincerely friendly or make-believe. Sincere, because of a downright appreciation of your business and because it is instinctive or make-believe because it is just a part of printed instructions.



whether a patron buys supplies or not, that they must feel complimented that you came to their station. Marland Men are trained that Friendly Service is just as much a part of the transaction as is the quality of the products they dispense. We try to select only men who have that natural bent. They quickly get our viewpoint with the result that you always feel at home in a Marland Station, whether you make a purchase or not.

Marland Men are trained in Friendly Service. Trained to realize that they must feel what they express—that no matter

That's how we want you to feel, so that you will come back again and again.

MARLAND SUPER OILS
MARLAND REFINED UNDER EXCLUSIVE PATENTS

CLASSIFIED ADS

Rates for Classified Ads: One and one-half cents per word per week, minimum twenty-five cents. Strictly cash in advance.

FOR SALE

FOR SALE—1924 Chevrolet touring. Will trade well located lot equity. Third chair Wise & Brown Barber Shop. 48-2tp

FOR SALE—Coal range cook stoves at bargain prices, \$5.00 to \$35.00. All in good condition. G. C. Malone Furniture and Undertaking Co. 3-tfe

FOR SALE—Good Round-Oak Heater. See T. W. Johnson, just back of Rex Theatre. 42-1f-c

FOR SALE—Singer Machines bought and sold. New singers sold on easy terms. Eldridge, the Singer Man, at Thornton's Store. 49tf

FOR SALE—60 head pigs and shoats, 20 head native Jersey heifers and cows, fresh and springers. H. Belov, McLean, Texas. 46-48-50-3-1-p

FOR SALE—Up to date 4 chair barber outfit. Address P. O. Box 865, Pampa, Texas. 49-2tp

FOR RENT

FOR RENT—Two bed rooms and kitchenette. See or call Mrs. R. C. Barksdale, Phone 1733. 48-2tp

FOR RENT—Two well furnished housekeeping rooms. Inquire 4 miles east on 33 Highway. R. R. Mitchell. 44-81-p

WANTED

WANTED—Maid and fancy sewing of all kinds. Phone 21 or call at brown house one block east school building. 48-2tp

WANTED—By permanent couple: Nice two or three room furnished apartment real close in, prefer in private home. Can furnish reference. Would consider furnished house with reasonable rent. Mrs. A. D. Loke, Phone 135. 48-2tp

WANTED—Position as grocery clerk by experienced man at present employed. Address P. O. Box 775, Pampa, Texas. 49-2tp

WANTED—To buy—Pigs or hogs, any kind except fat hogs, four miles east on 33 highway. R. R. Mitchell. 49-3tp

WANTED—To buy used furniture and oil stoves. G. C. Malone Furniture and Undertaking Co. 3-tfe

Wanted—Clean, Cotton Rags, Pampa News.

Wanted—Modern, light house-keeping room. Best close in or on side walk No Children. Phone 100 or call for Ben R. or Jinks Brashears at News Office.

MISCELLANEOUS

We are glad to assist you in planning that new home you have been contemplating building. Our motto, "Service that Satisfies." White House Lumber Co., Pampa, Texas. 11-46

BELLS INSTALLED BY GAS COMPANY

Automatic Appliances Warn Of Any Trouble

The Pampa Gas Company has just completed the installation of bells to work in connection with the regulators. The bells are automatically turned on by the variation of the pressure in the gas lines.

The two wells from which the gas is extracted have a maximum pressure of 430 pounds. A Boylster specially constructed steam regulator cuts the pressure down to 175 pounds as it enters the main line leading into Pampa. The main line leads to the center of the city where the pressure is again reduced to 35 pounds before it enters the bell lines. If the pressure at any of the regulators varies a few pounds, either up or down, the bells are automatically turned on and the employees are warned that something is wrong. If the pressure is too high, an automatic valve is released and the gas released to the air until the correct level is maintained.

When the gas leaves the regulator in the city, it is distributed to six regulators in various parts of the city. These regulators reduce the pressure to 4 ounces. If the pressure becomes stronger than 2 pounds an automatic valve releases the surplus gas.

Five safety appliances must fail before the city is endangered from escaping gas, and then the electric bells give warning to employees at the gas headquarters and a crew is sent out immediately to correct the trouble. A bell automatically rings everytime any one of the regulators is not functioning according to specifications.

One of the signal bells is installed at the office of the company and one is installed in the homes of two of the employees who are under orders to always have someone in hearing distance of the bells.

Last Municipal In Wisconsin Is Sold

The way has been cleared for the purchase of the only remaining municipally owned gas and electric plant in the state of Wisconsin. The people of the town of Fort Atkinson voted on the offer of \$450,000 made by the Wisconsin Gas and Electric Company at a recent election, and the result was an acceptance of the purchase price offered.

The company will now take over the plant and operate it as a subsidiary.

Statistics prepared by the American Gas Association show that there is a distinct trend toward the abolition of privately owned utility plants, the public evidently feeling that private ownership and management results in better service.

R. R. Mitchell was here on business Thursday.

SOCIETY NOTES

W. M. U. Ladies Enjoy Program

W. M. U. met at the Baptist church Wednesday. Fifteen ladies were present, and an enjoyable program from Royal service was rendered. The members taking part in the program were: Mesdames Anderson, Morten, Greene, Haynes, Clem, Young, Tippin, Stark, Henry and Barrett.

Members of M. M. U. are compiling a cook book and they ask that persons give them their favorite recipes to be put in the book.

Miss Thorp Marries Homer Smith Of Stratford

Miss Mattie Bell Thorp was married to Homer Smith at Stratford last Saturday. Mr. and Mrs. Smith will make their home on a ranch near Stratford.

The bride has been employed as a nurse at the office of Doctor A. Cole for the past nine months. Cokes Expected Back Soon

New Quarters Ready Soon For Occupancy

The room formerly occupied by the post office is being redecorated and will be occupied by the Chamber of Commerce as soon as the work is completed.

The present plans are to furnish the room so that it can be used as a public meeting place as well as an office for the Chamber of Commerce. The room is expected to be ready for occupancy within the next few days.

In 1925, Texas produced \$600,000 worth of silver—an industry but few people know exists in Texas.

WHEN in need of Printing see what we can do before you go elsewhere.

Expert watch, clock and jewelry repairing. Quality Jewelry Store, located in H. & K Drug. 49-2tc

Texas produced 2,495,440 tons of limestone in 1925, valued at \$1,898,185. About 2,000,000 tons were used in highway construction and for railroad ballast.

NOTICE

The regular annual meeting of the shareholders of the First National Bank of Pampa, Texas will be held in the banking rooms of said bank, Tuesday, January 11th, 1927 at 2:30 o'clock p. m.

Please take notice and govern yourself accordingly. DELEA VICARS, Cashier 43-76-c

MAYO DENTAL CLINIC

LARGEST DENTAL ORGANIZATION IN SOUTHWEST
SPECIAL PRICES FOR NEXT TEN DAYS

We specialize in one day service—have teeth extracted in the morning and go home in evening with perfect fitting teeth.

MAYO'S ROOFLESS PLATES

Have made hundreds happy. Have your dental work done with a reliable organization that has been in business for years and are permanent.

We guarantee our work—all work done in our Amarillo office backed by guarantee on Fort Worth and Dallas offices.

EXAMINATION FREE

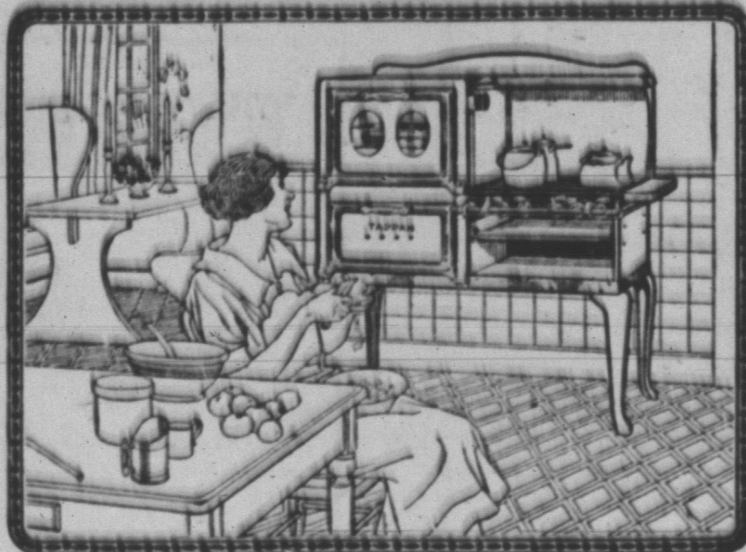
AMARILLO OFFICE

FORT WORTH OFFICE ASKEW BUILDING 912 1/2 Main St. DALLAS OFFICE 205 Envoy St. 9th and Polk Sts.

BACK FROM MARKET

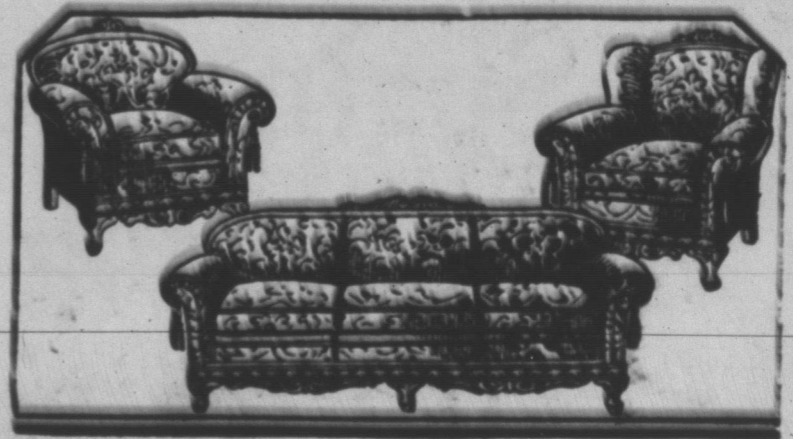
WITH GREATER QUANTITY, GREATER QUALITY, GREATER VALUES

Our buyer has just returned from Wichita, Kansas, where he purchased an immense stock of New Furniture which we are now offering at prices you can't possibly beat. We are able to offer this Nationally Advertised Furniture at a great saving to you because we buy in such great quantities. Our guarantee is behind every article sold and you must be pleased or we will gladly refund your money.



A CAR LOAD OF RANGES

Included in our new stock is a straight car load of Gas Ranges of every size and style. Take advantage of our quantity buying and buy your Range at a great saving.



NEW DESIGNS IN BED ROOM, DINING ROOM & LIVING ROOM SUITES

Bed Room Suites as charming as style and expert workmanship ever produced. Overstuffed Living Room Suites in beautiful Velours, excellently upholstered. Dining Room Sets in a wide variety of styles and finishes. You will never be able to buy as good quality for less money. Come in and let's talk FURNITURE.



QUALITY--FULL WEIGHT

There is more to buying groceries than just the price. Although we sell as cheaply as is consistent with good merchandise. We take pride in the fact that we always give the very best quality, full packed cans and full weight.

Drop in and let us show you the difference

HORN & COFFEE

"THE STORE THAT PLEASES"
Phone 5 For Quick Delivery

G. C. MALONE Furniture & Undertaking Co.

Store No. 1 North Main St.

Store No. 2 South Main St.

Store No. 3 Roxana, Texas