



The President's Message



**HOGS AND LAMBS LOWER IN WEEK**

**Cattle Prices Advance From 10 To 15 Cents**

Active demand advanced cattle prices 10 to 15 cents in the average, from last weeks close and spots as much as 25 cents. This gain added to the substantial advance last week took the market into the highest position for some time past. Receipts were moderate. Hog prices were 10 to 15 cents lower, but the market closed active and in a stronger position than at the opening. Both packers and shippers bought freely. Lamb prices were 15 to 25 cents lower than last weeks close and sheep were steady.

Average daily receipts for the week are: 16,000 cattle, 17,000 hogs and 8,000 sheep compare with 17,000 cattle, 15,000 hogs and 6,000 sheep a week ago; and 15,500 cattle, 14,225 hogs and 7,350 sheep a year ago.

The steer market was strong to 25 cents higher than last week's close, mostly 10 to 15 cents up. This advance has taken steer prices 50 to 75 cents above a week ago and the highest for some time past. There was an active demand in all divisions and early clearances were reported. Medium and strong weight steers are being regarded more favorably than in preceding weeks. Good strong and heavy weight steers sold at \$9.50 and light weights up to \$10. None showed much finish. The bulk of the fed steers sold at \$8.50 to \$9.50, with meal and hull fed grades \$7.75 to \$8.75. Cows and

and back to the high point of last heifers were 10 to 25 cents higher month. Most of the offerings were medium cows that brought \$5.50 to \$6.50. Veal calves were steady.

All classes of stock and feeding cattle were in active demand at strong to 25 cents higher prices. Weather conditions remained favorable for feeding operations, and tended to increase the demand for thin cattle. The improved demand for heavy fat cattle is increasing the call for good quality half fat steers.

Hog receipts 17,000 were the largest of the year, but of this number some 4,000 were direct to packers here from other markets. This large direct movement indicates that packers can buy at a sufficient price margin elsewhere and ship here for slaughter. The market ruled 10 to 15 cents lower than last week's close but late prices were stronger than early sales. The 140 to 250 pound hog sold at \$11.50 to \$11.70; 250 to 300 pounds \$11.30 to \$11.55; packing sows \$10.25 to \$10.75 and stock hogs and pigs \$11.25 to \$12.

Lambs were 15 to 25 cents lower. As soon as the decline was established trade became active. Sheep were scarce and in active demand. Good to choice lambs sold at \$12 to \$12.40; fair \$11.50 to \$12; feeding lambs \$11.50 to \$12.35. Fat yearlings brought \$10. Navajo ewes \$5.50 and breeding ewes \$8.

Trade in horses and mules remained active. Receipts were less than a week ago. Prices were quoted firm.

**Presbyterian Church**

Public worship will be conducted Sunday at the Rex Theatre by the Presbyterians as follows: Sunday School 10:00 a. m., preaching 11:00 a. m. Theme for the morning will be "Life After Death". Special music will be rendered.

**ASSEMBLY HALL OPEN SATURDAY**

**Building Has Seating Capacity For 2,000**

Lubbock, Jan. 13—The large assembly hall which is being constructed on the campus of the Texas Technological College, near the athletic field, is nearing completion this week, and the dedication program has been announced for January 15. This program is being sponsored by La Ventana, Tech year book, and will consist of short talks, music and feature numbers.

The new assembly hall, which is a hollow tile and concrete structure is being fully equipped for a gymnasium and will be used tentatively for that purpose. It contains a basket ball court, 50x90 feet, together with dressing rooms, shower baths, and other gymnasium equipment. The hall has a seating capacity about the court of 1,500 persons, and while the hall is used for other than athletic purposes the added space will increase the seating capacity to 2,000. A sectional stage will be constructed for the hall, which may be removed when not in use.

The athletic department has moved its offices to the new building and physical training classes are also being conducted there. The hall has a maple floor which makes it ideal for gymnastic games and exercises. There has been a noticeable increase in enrollment in physical training classes this term, due to the new advantages.

The assembly hall was one of the most needed improvements on the Tech campus. Heretofore, all general assemblies have been held in the stock judging pavilion which has a seating capacity of less than 1,000 and it has never been possible to get all of the students and faculty members together in any one assembly. The convocations and programs will now be transferred to the new hall, where ample room is provided.

It is announced that the remaining numbers of the Tech Artist Course will be presented to the public in the new hall.

The hall will also prove of great advantage to the basket ball teams. A tentative court was constructed last year in the stock judging pavilion, but it was much too small and the floor was rough. The new court will compare favorably with the best.

**M. A. Turner Ill**

M. A. Turner, secretary of the Chamber of Commerce, was ill at his home several days this week. He has been suffering with bronchitis.

**Michigan Coach To Start Texas Relays**

Austin, Texas, Jan. 12—Fielding Yost, famous coach of the University of Michigan, has been secured as the official starter and referee for the third annual Texas Relay Games to be held in the University of Texas Memorial Stadium next March. An added event of the games this year will be the four-mile relay, according to L. Theo Bellmont, director of University athletics.

Approximately 500 pamphlets concerning the Texas Relay Games have been sent to high schools of the state and colleges over the country.

**SALAD DRESSINGS**

Every good housekeeper should always have a supply of salad dressing in the refrigerator, thus greatly facilitating the preparation of every meal.

French dressing is easily prepared and just as easily kept. For a small amount use one-eighth teaspoonful salt, one-eighth teaspoonful paprika, two tablespoonfuls vinegar, and ten tablespoonfuls olive oil. Pour into a bottle, cork and shake well before serving.

Mayonnaise dressing may be made in fairly large quantities, perhaps a pint at a time, and kept in a glass covered fruit jar. Coat the top with a little olive oil each time some of the dressing is taken out. This will prevent a crust forming over the top of the dressing.

Boiled salad dressing should also be among the contents of the refrigerator. Mix together one level teaspoonful dry mustard, two level teaspoonfuls sugar, one level teaspoonful corn starch with a quarter cupful milk.

Scald three-quarters cupful milk, add the first mixture and cook un-

til it thickens. Now add the yolks of three eggs beaten until light with three teaspoonfuls water (cold) and cook five minutes longer, then stir in two tablespoonfuls melted butter and one third cupful mild vinegar. When any of the dressing is used, cover the top of dressing with olive oil or melted butter to prevent a tough film or crust from forming over the top.

When cool pour into glass topped fruit jar and place in refrigerator. **News Want Ads Pay**

**Dancing Around --REVUE--**

**Opening Monday January 17, 1926**

12 People—Mostly Girls  
A double Black Comedy Bill  
"BUD and HENRY IN THE TRENCHES"  
Plenty of Dancing — Plenty of Comedy AND PRETTY GIRLS

Don't forget the Midnight Show Saturday night, by the RED BIRD REVUE. Its their farewell performance.

**Grand Theatre**

SOUTH SIDE

When You Want a CAR

**CALL BUCK'S TAXI**

Phone 355  
Anywhere Anytime

**TO OUR PAMPA FRIENDS AND CUSTOMERS**

**-- ANNOUNCING --**

**The Opening of M-Blank's Store**

We have brought thousands of dollars worth of merchandise, consisting of Ladies Dresses, Coats, Shoes and a complete stock of men's Field Work Clothing to be sold at an ABSOLUTE SACRIFICE to help us raise cash.

**M-BLANK'S STORE**

"FAMOUS FOR VALUES"

Old Davis Hardware Bldg.

Facing Foster Ave.

Every item bought from Piggly Wiggly must give absolute satisfaction or your money will be cheerfully refunded.

**SPECIALS for SATURDAY**

Bananas, nice ripe, per lb. **8c**

8 lb. Bucket compound, Swift's Jewel, **\$1.11**

8 lb. Bucket compound, White Cloud, **\$1.11**

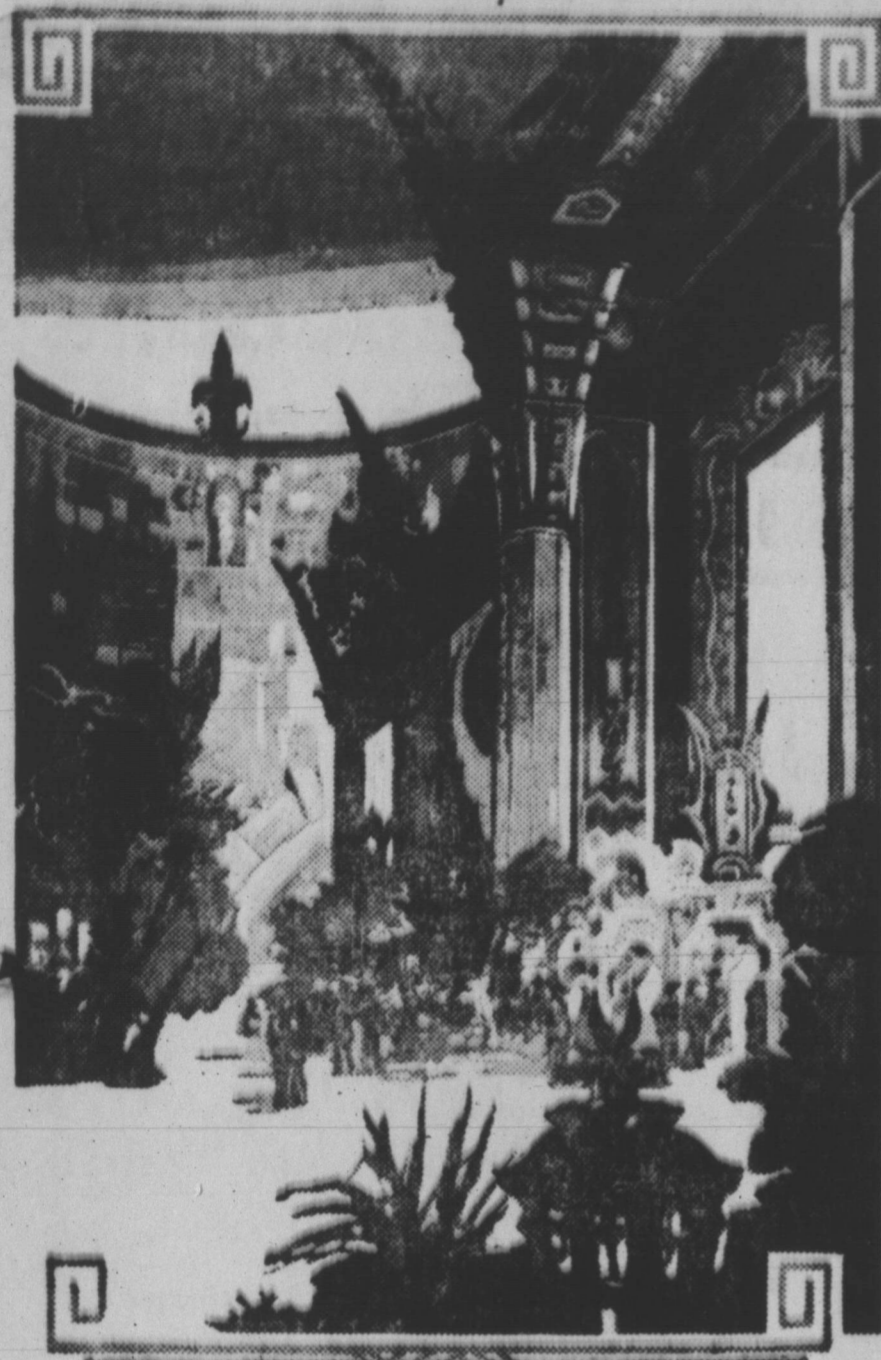
Van Camp's Tomato Soup, per can **8c**

48 lb. Sack Light Crust Flour **\$2.15**

Armour's Pork and Beans, No. 2 can, **8c**

**PIGGLY WIGGLY**

## Oriental Magnificence Motif for New Palace



The great wall of China, undoubtedly the greatest of all human structures and the ornate palaces of the Chinese emperors who prevailed in a civilization that was old long before Columbus discovered America, are architectural inspiration of a new motion picture palace of national distinction that is soon to be completed.

It is Grauman's Chinese Theatre and is being built at Hollywood Boulevard and Orchid street, the very center of the film capital of the world. It will have two entrances, one to the forecourt and one to the theatre proper. The forecourt entrance will be through a gate in walls that are forty-five feet high. And the entire forecourt is surrounded by these walls. The lower part of the walls will be lined with tanks built in replica of tropical seas and will be filled with

varicolored fishes from the Southern waters.

Inside, the theatre will have an aisle which entirely surrounds the seats. It will be separated from the seats by columns of only seven feet in diameter and reaching from floor to high ceiling. Chinese rugs, porcelains, tapestries and other ornate objects from the Orient will complete the decorative scheme and it all will be coupled with the most recent developments of the theatre. The theatre is designed to give the premier performances and runs to each of the two or three greatest pictures of the year. The showman who is building it distinguished himself in the entire world of entertainment when he showed "The Covered Wagon" in three-quarters of a million persons in Los Angeles, a city of a million. Thousands of the patrons were from all over the United States and the world.

## BLACK WALNUTS SHOW A PROFIT

### Government Tells How Best Results Are Obtained

"Plant a bushel of black walnuts this winter," is a suggestion of the Forest Service of the United States Department of Agriculture to farmers in the upland and hill sections of the South, the Ohio River basin, or the central Mississippi Valley regions.

There was a large crop of walnuts last fall, and by liberal plantings farmers in these regions may obtain good returns from both the nuts and the timber when ready for harvesting. The logs or stumps of the walnut have a market value of from \$150 to \$200 a thousand feet.

There are about 1,500 nuts in a bushel. They should be planted about two inches deep in good soil on waste strips, idle corners, and along fence rows. If hogs or squirrels are running over the land or if for other reasons fall planting was inconvenient, the nuts should be buried in a soil pit or kept in a damp cellar until spring and then planted.

Mrs. Rodeck At Blue Bird Shoppe  
Mrs. E. M. Rodeck, formerly of Denver, Colorado, has been employed at the Blue Bird Beauty Shoppe. She formerly owned and operated a shop in Denver for several years before moving to Pampa.

Mr. and Mrs. J. C. Patton of Amarillo were visiting in Pampa, Wednesday.

**KING--  
CAFE--  
AMARILLO**

## Brief Topics From Radio Station USDA

A Few Flashes From The Radio Service of the Department of Agriculture. They are samples of information put on the air frequently from many stations.

**Cow Tonics**  
If your cows are fed right they won't need tonics. If the cow's sick, call in a veterinarian. Play up right feeding and play down tonics in the cow's feed. Alfalfa hay, silage, linseed oil meal, and bran are mighty good feeds. And if you'll add some ground corn to your ration, you'll have a good combination. Try a grain ration mixture of 4 parts ground corn—3 parts bran—and 1 part linseed oil meal or cotton seed meal (much cheaper now). Feed 1 pound of this mixture for every 4 pounds of milk produced. Then feed all of the alfalfa hay the cows will eat, and from 30 to 40 pounds of silage a day per cow and you won't need to think about cow tonics.

**Chicken Bedbugs**  
Chicken bedbugs are common. They come out at night and attack the hens—then hide during the day. They draw considerable blood and their bites irritate the hens so they often lose flesh and even stop laying. The best thing to do is to spray the chicken houses with one of the wood preservatives, such as carbolineum—or with crude petroleum or creosote oil. You'll need from 3 to 5 gallons of the spray for a house which holds 200 hens. Spray it on with a good force pump. Drive the liquid into the cracks of the wood.

**Kill a Hog—Save \$15**  
You save an average of about

\$15 on each hog you slaughter for your own use. Of course this saving doesn't take into consideration the cost of your labor, curing materials, and such things.

**Lard Yield**  
A 200 pound hog will render about 20 to 25 pounds of lard. A three-hundred pounder will give you 50 pounds.

**SAID ABOUT WIVES**  
An eastern editor says that a man out west got himself into trouble by marrying two wives.  
A western editor replied by assuring his contemporary that a good many men in that section have done the same thing by marrying one.  
A northern editor reports that a number of his acquaintances found trouble by merely promising to marry, without going any further.  
A southern editor says that a friend of his was bothered enough by simply being found in company with another man's wife.  
—The McLean News

**Eyes Examined**  
By the most modern methods. GLASSES ground in our own shop, to meet your special requirements.  
**SPECIAL EQUIPMENT** for testing children's eyes.  
WHEN IT COMES TO GLASSES come to us. We guarantee you FIRST CLASS, HIGH GRADE WORK at reasonable prices.  
This is our fifteenth year in Amarillo.  
**YOU ALWAYS KNOW WHERE TO FIND US**  
**HYDEN'S**  
Exclusive optometrists and Opticians  
Dr. J. M. Hyden in charge  
7th and Polk Streets, Amarillo.

**MAYO DENTAL CLINIC**  
LARGEST DENTAL ORGANIZATION IN SOUTHWEST  
**SPECIAL PRICES FOR NEXT TEN DAYS**  
We specialize in one day service—have teeth extracted in the morning and go home in evening with perfect fitting teeth.  
**MAYO'S ROOFLESS PLATES**  
Have made hundreds happy. Have your dental work done with a reliable organization that has been in business for years and are permanent.  
We guarantee our work—all work done in our Amarillo office backed by guarantee on Fort Worth and Dallas offices.  
**EXAMINATION FREE**  
**AMARILLO OFFICE**  
FORT WORTH OFFICE ASKEW BUILDING DALLAS OFFICE  
912½ Main St. 9th and Polk Sts. 205 Envoy St.

**RANGER HOTEL**  
Just South of Depot  
35 Rooms  
Reasonable rates by day, week or month  
Hot and Cold Running Water  
in All Rooms  
Bath to Public 50c

**GRAY-PAMPA HOTEL**  
"In the Heart of Pampa"  
112 S. Main St.  
A. E. SHAW, Mgr.

**Nash Startles Industry**  
With new style trend in Body Designs. Visit our display room and see for yourself the grace, beauty and utility in these new Body styles.  
We also do general repair work and handle parts for all makes of cars.  
**"COURTESY AND SERVICE" OUR MOTTO**  
SALES SERVICE ACCESSORIES  
**Biggs Horn Nash Co.**  
DOC COLGROVE, Manager.

**BETTER CLOTHING THAN EVER**  
A complete line of Men's Work Clothes, leather Shoes and Boots, Rubber O'Shoes and Boots.  
**JUST ARRIVED**  
Some real honest-to-goodness Broadcloth shirts in the Newer patterns.  
**COME AND SEE 'EM**  
**Striblings Men's Clothing**  
REX THEATRE BLDG.

**9 Per Cent Non Taxable BUILDING AND LOAN INVESTMENT**  
Building and Loan Investments are based on income from first mortgages on homes. Only placed on a margin not to exceed 60% of a conservative appraisal value, which is considered the safest investment in the world. You may invest any amount which will earn for you 9% compounded.  
Mail accounts invited.  
**HOME INSTITUTION Building & Loan Texas Plains Association**  
OLIVER-EAKLE BLDG. PHONE 4293  
107 West Sixth. Phone 4293  
For full information regarding investments by mail, and detailed information on rate of interest paid on investments—Mail this coupon.  
Address \_\_\_\_\_  
Name \_\_\_\_\_  
Town \_\_\_\_\_

**WIN TEN DOLLARS IN GOLD**  
The Y & M Cafe is offering ten dollars in gold for the best name submitted for the name of the cafe.  
Each person may submit one name. Contest closes February 1. Turn in a name. You can win ten dollars in Gold.  
Cafe located east of White House Lumber Yard on Foster Avenue.  
**MCHAHAN & PINNECKER**

**EYE HELP**  
Do you have headaches? Do your eyes burn or itch or feel dry? Does the print blur or run together after you read a while?  
All are symptoms of eye strain and should be attended to as soon as possible. We are exclusive optometrists (eyesight specialists) and specialize in the study of the human eye and the correction of its defects.  
If you have eye troubles or need glasses you may see me in my office in the Fatheree Drug Store every Saturday.  
**DR. T. M. MONTGOMERY**  
associated with **HYDEN'S**  
620 Polk Street  
AMARILLO, TEXAS  
P. S. We are not boom Doctors. We have been in the Panhandle and Amarillo for fourteen years and will be here after the boom is over.

**NEWS WANT ADS GET RESULTS**



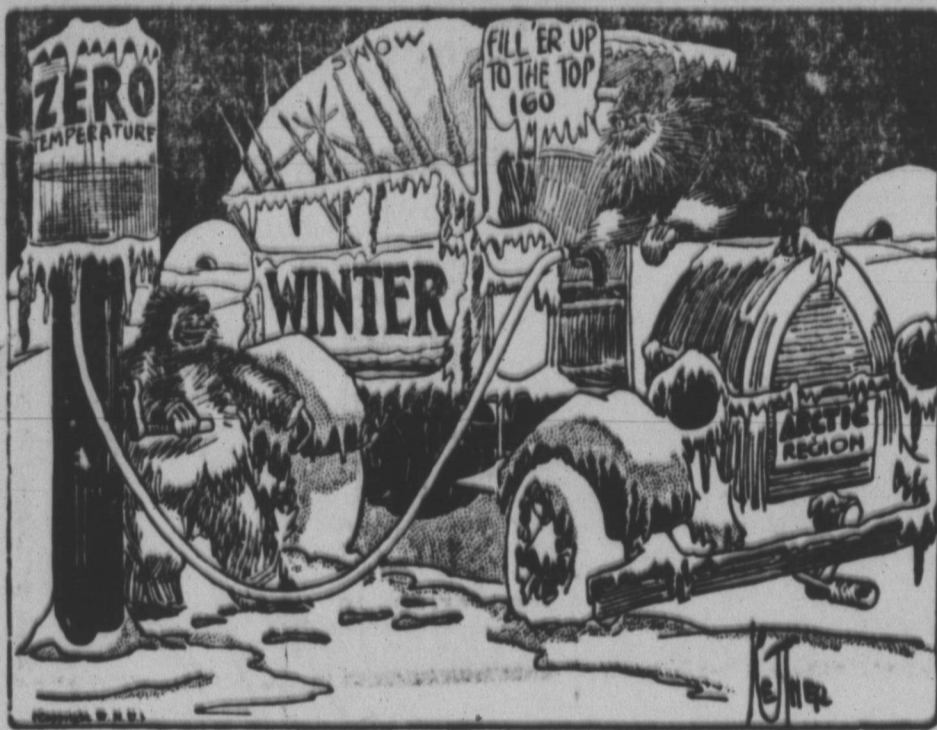
**Another Big U. S. Cotton Crop**



ANOTHER big cotton crop this year totaling 15,810,000 bales, will supply not only all American needs for clothing, but will provide a surplus to send enough abroad for those who depend on the American farmer for cotton, says the Sears-Roebuck Agricultural Foundation. This large crop comes on the top of the large crop of last year, amounting to 14,140,000 bales and a carry-over of 3,500,000 bales. Cotton will

be picked from 47,153,000 acres this year, according to the Foundation, and will make around 154 pounds of lint per acre. When used for export the cotton goes to the compress, where it is reduced to a smaller bale. A large percentage of the American crop normally is exported to help clothe the nations that cannot raise cotton. Prosperity in the cotton belt is thus directly related to the foreign demand.

**At the Filling Station**



**Spuds Are Scarce Again**



YOU will not be able to eat so many potatoes this year and on an average you will have to pay more for what you eat, according to the Sears-Roebuck Agricultural Foundation. While there will be 332,000,000 bushels more potatoes than last year, the prospective crop of 352,000,000 bushels is still 50,000,000 short of the five-year average. Farmers devoted 3,202,000 acres to potatoes this year, the Foundation finds, and according to the latest of

best reports, these should yield on the average 110 bushels per acre. In 1925 the yield was only 103.3, while in 1924 it was 127 bushels. The present prospects are for a crop 15 per cent below normal. Based on studies over a period of 23 years, the Department of Agriculture indicated that prices will be about 37.5 per cent above normal, and while prices are expected to be higher, the extreme high prices of a year ago are not likely.

Joe Vincent returned from Mountain View, Oklahoma, the first of the week. He spent several days visiting friends.

Mrs. Tom Carver returned from Perryton, Wednesday after spending several weeks visiting her parents, Mr. and Mrs. J. M. Grigsby.

NEWS WANT ADS PAY

NEWS WANT ADS PAY

**Mother's Cook Book**

The love we give is the only love we keep. The greatest and noblest men and women are those whose lives and actions are founded upon tender sympathies and who never fail to show kindness to the helpless who come within the sphere of their influence, whether a human being or an animal.

**VITAMINE FRUITS**

Oh Mother Nature has lavished the world with delightful fruits in season: short and blissful some of the seasons are, but did you ever notice, that the fruits which she has made rich in vitamins are with us all the year? Such fruits as oranges, lemons, grapefruit and limes. The value of such fruits has long been known, but it is only in recent years that we have understood why they are so valuable in the diet—they are rich in vitamins, the valuable elements which promote the growth and add vigor to children and adults. Very young babies are now given orange juice strained, beginning with a teaspoonful and increasing the amount as they grow. Orangeade and lemonade are the most commonly used drinks in all hospitals, for it is nature's way to give a pleasant taste.

**Lemon Sherbet.**

Soak two teaspoonfuls of gelatin in cold water for five minutes, boil two cupfuls of sugar and four cupfuls of water and the grated rind of a lemon for five minutes, add the softened gelatin, remove from the heat and stir until it dissolves. Chill, add one-half cupful of lemon juice, strain and freeze.

**Lemon Velvet Sherbet.**

Take the juice of three lemons, two cupfuls of sugar, one quart of rich

**"Inside" Information**

A cup of water placed in the oven when a fruit cake is baking helps to keep the right amount of moisture in the air and to prevent the cake from drying out.

If you have some jelly which is so firm enough to use on the table it will do in place of cider or grape juice in fruit cake, or mince meat.

When you are having an afternoon party and want to serve baking-powder biscuits, cut the biscuit dough into very small rounds. Moisten the top of one biscuit with a little rich milk, and place a second biscuit on top of it. When baked these tea biscuits are attractive in shape, easy to open, and delicious spread with butter or served with honey or preserves.

The U. S. Department of Agriculture will send you free for the asking a bulletin on the selection of cotton fabrics. Good practical information you'll find in it for use at the January white sales.

If you are using figured curtains in a room, choose a material with a background the same color as the walls but slightly darker. The principal color in the design of the curtain should repeat the color of the rug, or upholstery. Use figure curtains only when the walls give a plain effect.

All bean soups should have a little flour added to them as a binder, to prevent the thick part from settling to the bottom.

When you cut up material for salads, make the pieces large enough so that you know what you are eating and small enough to be dainty. Do not mix the dressing until serving time, except in the case of those salads which call for special treatment.

Mr. and Mrs. Kester Rippey were in Pampa last week.

William Crawford, postmaster, was in McLean on business last week.

USE A WANT AD

**PURE RICH MILK**

The A. C. Brand, it's purity is guaranteed by the A. C. Bottle and sold direct from the Converse Farm and sold only at King's Butcher Shop in the building occupied by the Poultry Mercantile Association and at the Piggly Wiggly Store.

**THE NEW \$20,000 STEAM LAUNDRY IS COMING**

Two blocks west of Cuyler on Kingsmill Avenue. WATCH FOR OUR OPENING ANNOUNCEMENT

**The City Laundry**

THIS COUPON ENTITLES YOU TO A \$2.50 SHIRT FOR \$1.10

AT

**THE BOSTON STORE**

First Door East of Dunaway Bros.

**Car Shortage Overcome by Co-operation**

The Santa Fe gives this a practical demonstration in 1926. You are invited to read this account of an achievement which saved Santa Fe patrons millions of dollars.

Five years ago one of the most serious transportation problems was the handling of very heavy freight traffic resulting from unusually large production and requiring prompt movement to secure favorable markets.

Even though the railroads did their best, car shortage and congestion were the natural results of such peak movements. And because of this slowing up everybody suffered. Such losses involved not only large sums of money, but partial paralysis of business. These transportation enemies now have been overcome.

To illustrate, the Santa Fe in June and July, 1926, had an enormous wheat crop to handle from Kansas, Oklahoma and Texas to the big markets. To provide for prompt handling 12,500 box cars in first-class condition had been distributed on sidetracks in the territory where they would be needed.

The demand for cars, however, resulting mainly from the use of "combines,"—which converted wheat standing in the field in the morning into wheat ready for loading in the afternoon,—was largely in excess of what had been anticipated.

For fifty days the average wheat loading was 1,050 cars per day, exceeding all previous records by 84 per cent, with one single day's maximum loading of 1,569 cars.

This huge crop, notwithstanding the new and rapid method of harvesting, was moved with a negligible

car shortage, without congestion, and with little or no delay, something never before accomplished under similar car-loading demands.

What made such a result possible? Co-operation of everyone interested and the loyal and efficient work of Santa Fe employees.

To meet the crisis the Car Service Division of the American Railway Association, with the consent of other railroads, diverted to the Santa Fe every available box car at Chicago regardless of ownership.

The Santa Fe also had the most hearty and helpful co-operation of Regional Advisory Boards, Terminal and Port Committees, State Grain Inspection Departments, State Railway Commissions, and the United States Shipping Board. Shippers and receivers of wheat also helped. And there was the whole-hearted support of its own employees.

This is a practical and convincing proof that co-operation can meet every transportation demand, eliminate car shortage and congestion, and save producers and shippers hundreds of millions of dollars annually.

The Santa Fe wishes to express its sincere appreciation of this co-operation and of the efficient and loyal service of its employees.

W. B. STOREY, President  
The Atchison, Topeka and Santa Fe Railway System.

**DO YOU WANT A GOOD POSITION?**

We offer THOROUGH and PRACTICAL courses in the following: Bookkeeping, Accounting, Banking, Machine Bookkeeping, Shorthand, Typewriting, and all auxiliary subjects. It will pay you to attend an established and an accredited school. Seventeen years in Amarillo. Day and Night Classes. Tuition reasonable. Write, phone, or call for information. Phone 835.

**Amarillo Business College**

C. H. WILEMAN, Manager. West of Court House

**PICK OF THE PICTURES—FIRST PICK**

**AT THE CRESCENT THEATRE**

—Sunday Matinee and Monday—

**"SLAVES OF FASHION"**

with **NORMA SHEARER**  
A picture the ladies want to see.

—TUESDAY—

**"THE SHOW OFF"**

with **FORD STERLING AND LOIS WILSON**  
A picture you will enjoy

Good Comedy With Each Program

**WHEN BETTER PICTURES ARE MADE**

**WE WILL SHOW THEM**

# The Sandman Story

by Martha Martin

## MRS. CAT, HOUSEKEEPER

"MEOW, me-ow, me-ow," said Mrs. Cat, "how I do enjoy the warm sun!"

Now Mrs. Cat was sitting on the back porch and Mrs. Black Cat, the neighbor's cat, was with her.

"Yes, it is very nice," said Mrs. Black Cat, "very nice indeed."

"And pray tell me how do you like housekeeping?" Mrs. Black Cat asked.

"You were a kitten so short a time ago, and now you are grown up and have kittens of your own. Dear me, dear me, me-ow, me-ow, how time flies, as people say."

"Only so short a time and you were nothing more than a little bit of a thing running around!"

"It makes us old cats feel pretty ancient I can tell you."

"Yes, it makes me feel sad and old to think of how the young generation

have liver for dinner or some other delicacy."

"I am glad to say she doesn't give me my food in too big pieces. She has it all carefully chopped up fine for me so it is nice and easy to eat it."

"I would not like it if she became careless. I must say I'm not bothered with the 'help' problem as some people speak of being bothered with it. I have the best of service."

"Of course I am quite sure the cook knows she cannot do any way with me. She feels, I know, that I am used to the best. My mother used to say to me when I was young:

"Always make creatures think you're used to the best. If you let them think you're satisfied with any old thing they'll give you any old thing." And I've found my mother's advice very good."

"I have shown that I expected the best and the best has always been given to me. Then I have a lovely warm bed for the kittens which the cook fixed for me. It is so nice and soft, padded with lovely soft cotton. The kittens are very comfortable."

"And that is what I call very satisfactory housekeeping."

"Yes," said Mrs. Black Cat, "you are really very lucky. I am fortunate, too, though sometimes I do enjoy a mouse. However, it is not because I am not fed all I want. It is because I love the hunt and the chase."

"Well, now you speak of it," said Mrs. Cat, "I think I will go mouse hunting myself before long. Your speaking of it makes me think of pleasant past adventures. But let us take a little nap now."

Mrs. Black Cat wasn't in the least insulted because Mrs. Cat suggested that they should keep quiet and rest. She, too, felt like a nap.

So the two cats closed their eyes and they had a delicious cat nap and after a while as the sun was going down Mrs. Black Cat got up and stretched herself and said:

"Well, Mrs. Cat, I must be going home. Supper will be ready for me. And I believe in being on time for my meals."

"The same with me," said Mrs. Cat. "And I know the kittens will be wondering what has become of me. I must go to my children. Well, glad to have seen you. Call again, Mrs. Black Cat. Good-by, me-ow, me-ow."

"Good-by, me-ow, me-ow," said Mrs. Black Cat. "I've had such a pleasant time and I'm so glad you're so comfortably situated. Good-by, me-ow, me-ow."



"The Best Has Always Been Given to Me."

of cats is creeping up on us. Why, really, I remember when you hadn't your eyes opened. But I asked you about housekeeping and how you liked it?"

"Well," said young Mrs. Cat, "I really like it very much. I find I have good service. There is the cook. She never forgets my meals."

"She has the best of milk and it is good rich milk, too. She gives me delicious breakfasts of bacon and often I

## EIGHT COUNTIES FIGHT ANIMALS

### Effort Being Made To Exterminate Wild Pests

The Bosque County Chamber of Commerce has taken the lead in organizing a predatory animal control association to cooperate with the State of Texas and the United States Department of Agriculture, Bureau of Biological Survey, in carrying on a fight against predatory animals in eight counties—Bosque, McLennan, Hill, Somervell, Erath, Hamilton, Johnson and Coryell.

A meeting has been called for 2:30 p. m. Jan 25, at the city hall, Clifton. There will be introduced in the coming session of the Legislature a bill providing for state cooperation with the United States Department of Agriculture in the work of eradicating predatory animals and onxious rodents. Farmers,

ranchers and other interested citizens are asked to attend the meeting in Clifton and lend their support to a movement considered so valuable to the sheep, goat and poultry industries in this section of the State.

C. R. Landon, leader, Predatory Animal control, United States Department of Agriculture, Bureau of Biological Survey, San Antonio, will be present to assist in perfecting this new organization. Interested citizens are asked to communicate with L. E. Bailey, secretary, Bosque County Chamber of Commerce, Meridian.

### Geological Bulletins Distributed In Spring

Austin, Texas, Jan. 12—Several bulletins on geological subjects are now being printed at the University of Texas press, according to Manager A. C. Wright. Among these are "Foraminifera of the Midway Formation" by Mrs. Helen Joanne Plummer, "Some Microscopic Characteristics of the Bend and Ellen-

burger Limestones" by Dr. J. A. Udden and V. V. Waite, "The Gueydan, a New Middle Tertiary Formation from the Southwestern Coastal Plain of Texas" by Thomas L. Bailey. A reprint of the bulletin, "Deep Boring at Spur" by Dr. J. A. Udden, director of the Bureau of Economic Geology, is also being prepared. Most of these publications will be ready for distribution in the spring, Wright stated.

NEWS WANT ADS PAY

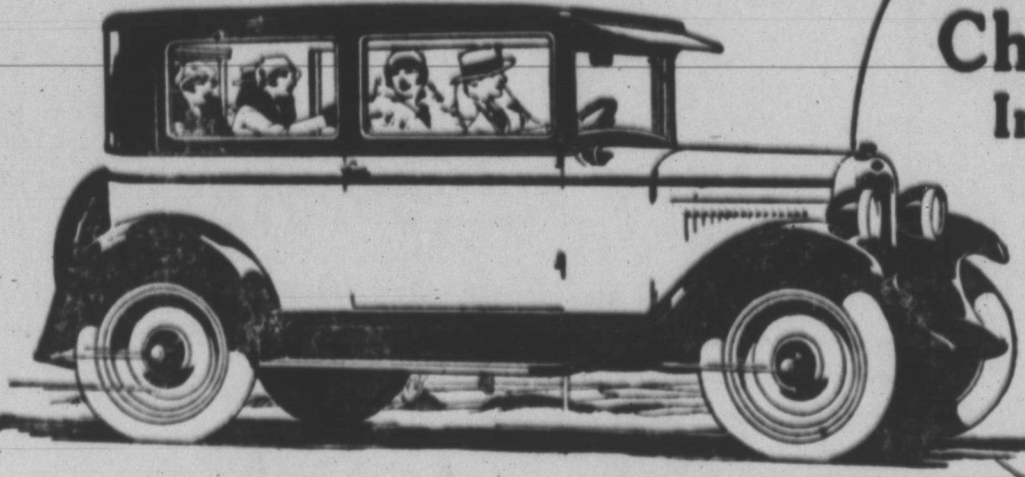
# C-H-I-C-K-S

## DODD'S HATCHERY

Custom Hatching Solicited. Starts operating this week. Book your orders now. Capacity 48,000 eggs. Quality and service guaranteed. All popular breeds. Write for prices.

PAMPA, TEXAS WOODARD, OKLA.

# The Greatest Sensation of America's Greatest Industry!



The Chevrolet Coach Improved in Quality

—YET REDUCED TO \$595 f. o. b. Flint, Mich. Former Price \$645



## New and Marvelously Beautiful Fisher Bodies —a host of Mechanical Improvements—New Features found only on the costliest cars

### —plus an Amazing Reduction in Prices

America has always expected great things from its greatest industry. But the announcement of the Most Beautiful Chevrolet has been the automotive sensation of all time!

Here is a car which in beauty, luxury, quality and modern design challenges the costliest creations of the day.

Here, in a price class where average standards have been the rule, is now offered a car so far beyond all expectations that comparisons cease to exist.

Seven superb models styled as low priced cars were never styled before and offering such marks of fine car distinction as: full crown one-piece fenders, bullet type lamps and "fish tail" rear deck modeling! New and supremely beautiful bodies by Fisher. And, above all, infinitely finer quality—the result of a host of additional improvements such as AC oil filter, AC air cleaner, coincidental steering and ignition lock, larger 17" steering wheel, gasoline gauge and many, many others.

All this is combined to a supreme degree in the long famous leader of the Chevrolet line—the Coach. It would be a brilliant achievement for any manufacturer merely to design such a splendid car to sell at any reasonably low price. But to sell it at the amazing price of \$595 is a feat of history making proportions. This one price reduction alone would suffice to center worldwide attention on Chevrolet. But due to economies of tremendous production plus the vast resources of General Motors, Chevrolet also announces striking price reductions on other models.

For years Chevrolet has led the world in providing Quality at Low Cost. But now with a new and more beautiful car—with a car infinitely finer in quality and greatly lower in price, Chevrolet stands supreme and unchallenged in dollar-for-dollar value!

No matter in what price class you intend to buy or whether you plan to spend more or less than the price of a Chevrolet, come in today and see the most beautiful low priced Coach ever designed. Admire its marvelous style and grace! Mark its many new fine-car features! Learn for yourself by personal inspection why, at its new low price, it is the greatest sensation of America's greatest industry!

## VARIETY OF FEED FOR DAIRY COWS

### Proper Food Increases The Production Of Milk

To produce a good flow of milk, a dairy cow requires certain kinds of proteins. No one feed supplies all these in sufficient quantities. By combining a variety of feeds, however, the desired result can be obtained. Alfalfa hay, silage, linseed-oil meal or cottonseed meal, bran and ground corn make a good combination, according to the United States Department of Agriculture. A good grain mixture can be made by mixing 4 parts ground corn, 2 parts bran, and 1 part linseed-oil meal or cottonseed oil meal. Give 1 pound of this mixture for every 3 to 4 pounds of milk produced. Then feed all the good legume hay 30 to 40 pounds of silage a day per cow.

Alfalfa hay is best but soy bean, cow pea and red clover hay are also good. The second and third cuttings of alfalfa, because of the

finer stems and greater abundance of leaves are better than the first cutting. Soy bean hay, a high-protein, leguminous roughage, is rich in minerals and very palatable. Cotton seed meal is one of the best and at this time is the cheapest source of protein for dairy cows. This feed in moderate quantities can be given safely to cows more than a year old.

### 9,417 Miles Better Roads Added In 1926

A net addition of 9,417 miles to the mileage of improved roads in the Federal aid system was made through the completion of projects during the fiscal year 1926, according to the Bureau of Public Roads of the United States Department of Agriculture. This brings the total of improved Federal-aid roads up to 55,962 miles. The improvement of several transcontinental routes is approaching completion. The entire Federal-aid system has an aggregate length of 182, 134 miles.

E. F. Reno, of the Pampa News, was visiting in Goodnight last Sunday.

9142

## The First National Bank

Pampa, Texas

Better Secure a Safety Deposit Box Now for Your Valuable Papers

B. E. FINLEY DE LEA VICARS  
President Cashier

# PAMPA MOTOR CO.

## QUALITY AT LOW COST

SCHOOL DAYS



Citation by Publication

THE STATE OF TEXAS,  
To the Sheriff or any Constable of Gray County—GREETING:  
You are hereby Comanded, that you summon, by making Publication of this Citation in some newspaper published in the County of Gray if there be a newspaper published therein, but if not, then in a newspaper published in the nearest County to said Gray County, for four consecutive weeks previous to the return day hereof, Rosa Weiss, a non-resident of this state to be and appear before the Hon. District Court, at the next regular term thereof, to be holden in the County of Gray, at the Court thereof, in Lefors, on the 28th day of February, same being the Fourth Monday of said month, then and there to answer a Petition filed in said Court, on the 13th day of January A. D. 1927, in a suit numbered on the Docket of said Court No. 1663, wherein A. L. Weiss is plaintiff and Rosa Weiss is defendant.

The nature of the plaintiffs demand being as follows, to-wit:

Suit for divorce, plaintiff alleging to be a bona fide inhabitant of Texas and that he has resided in Gray County 6 months next preceeding filing of suit. That plaintiff and defendant were married about 12 years ago and lived together until about 4 years ago; that plaintiff had always been a dutiful husband but that defendant was guilty of cruel outrages to plaintiff and his mother who lived with them that said treatment continued to the extent to render their living together insupportable. That they have no children and their property has already been divided. Plaintiff prays for decree of divorce and general and special relief.

Herein fail not, and have you before said Court, on the said first day of the next term thereof, this writ, with your endorsement thereon, showing now you have executed the same.  
Given under my hand and seal

of said Court, at office in Lefors this, the 13th day, of January, 1927 A. D.,

CHARLIE THUT, Clerk,  
District Court Gray County, Texas.  
(SEAL) 51-3-5-7

Notice of Publication in Probate, THE STATE OF TEXAS.

To the Sheriff or any Constable of Gray County, GREETING:  
You are hereby commanded to cause to be published in a newspaper of general circulation, which has been published continuously for a period of not less than one year in your county, at least once each week for ten days previous to the day hereof, copies of the following notice:

THE STATE OF TEXAS: To all persons interested in the Estate of T. W. Henry, deceased; S. O. Henry has filed an application in the County Court of Gray County, on the 11th day of January, 1927, for the probate of the last will and testament of T. W. Henry, deceased, which is filed with said application, said cause being No. 194, on the Probate Docket of the County Court of Gray County, Texas, which application will be heard by said Court on the 21st day of February, 1927, at the Court House of said County, in Lefors, at which time all persons interested in said Estate are required to appear and contest said application, should they desire to do so.

Herein fail not, but have you before said court, on the first day of the next term thereof, this writ, with your return thereon, showing how you have executed the same.

WITNESS my hand and official seal, at Lefors, Texas, this 11th day of January, 1927.

CHARLIE THUT, Clerk,  
County Court, Gray County, Texas  
(SEAL) 51-3-5-7

NOTICE OF ELECTION THE STATE OF TEXAS CITY OF PAMPA, COUNTY OF GRAY.

Notice is hereby given that an election will be held on the 19th day of February, 1927, at the American Legion Hall in the City of Pampa to determine whether a majority of the legally qualified voters of said city desire to adopt the commission form of government and to elect two commissioners to serve until the first Tuesday in April, 1927, following such election.

All persons who are legally qualified voters of said city shall be entitled to vote at said election. All voters desiring to support said proposition to adopt the commission form of government for said city shall have written or printed on their ballots the words "For Commission", and those opposed shall have written or printed on their ballots the words "Against Commission".

C. O. Busby and T. H. Lane have been appointed officers for said election, and the said C. O. Busby has been designated as the presiding judge, and D. W. Osborn and W. R. Campbell are also appointed clerks to assist in holding said election, and they shall within five days after said election has been held make due return thereof to me as Mayor of the City of Pampa as is required by law for holding a general election.

Said election was ordered by me as Mayor of the City of Pampa by order made on the 10th day of January, 1927, and this notice is given in pursuance of such order.

Dated this 10th day of January, 1927.

F. P. REID  
Mayor of the City of Pampa.  
(SEAL) 51-3-5-7

180 To 230 Pound Hogs Recommended

Hogs weighing between 180 and 230 pounds will ordinarily produce the best and most economical cuts of meat for family use. Hams and shoulders from such hogs will weigh 12 to 15 pounds, with loins and bacon strips at about 9 or 10

pounds. If the pig has been well fattened, not only will he produce more lard, but also the flavor of the meat will be improved. If the pig is given a 24-hour fast before the slaughter, with plenty of water available, the carcass will drain more thoroughly and produce a better product.

NEWS WANT ADS PAY

"Pretending to be rich keeps some folks poor."

Who's Who TODAY



DOUGLAS FAIRBANKS

THIS IS THRIFT THAT THE YEARNINGS BE LESS THAN THE EARNINGS

Any man who adopts this policy of living will find himself gradually accumulating a surplus.

THRIFT WEEK is not only a week for resolutions, it is a week for beginning the practice of the resolutions.

Our bank has several plans for your approval—we shall be glad to be made useful.

"There is no Substitute For Safety"

GRAY COUNTY STATE BANK

C. L. THOMAS, President W. H. DOYLE, Cashier

Dodd's Produce

WHOLESALE and RETAIL. Live and dressed poultry. Candeled and fresh eggs.

FEEDS All kinds stock and dairy.

FLOUR Red Star and Belle of Wichita

PRODUCE Cash paid for poultry, eggs, and hides.

DODD'S PRODUCE AND HATCHERY PAMPA — TEXAS

CROSS DRY GOODS COMPANY

Across the Street from the Pampa Hotel

Attention Ladies

In order to get better acquainted with the public we are offering for Saturday and Monday, our entire line of Ladies and Misses Wool Dresses at half Price.

Also A Big Reduction On All Winter Coats

To the Well Dressed Man

We carry a complete line of Men's Shoes and Clothing.

We want you to come in and let us fit you.

We have Kuppenheimer, Curlee and Merit Suits.

Our prices range from \$22.50 to \$60.00 with two pair of pants.



OPENING ANNOUNCEMENT

We are glad to announce to the people of Pampa that on next Monday, January 17th, we will open one of the most modern Cleaning Plants in the Panhandle. It is the Glover Continuous Flow System.

In order to introduce to you our high class service we will clean, ABSOLUTELY FREE, the first five Suits or Dresses brought to our office next Monday, our opening day.

Our plant is located at 608 East Foster Ave. Office located north of Ledbetter Drug Co.

De Luxe Cleaners

"SERVICE WITH A SMILE"

A. M. DUNCAN

C. E. PHILLIPS

# CLASSIFIED ADS

Rates for Classified Ads: One and one-half cents per word per week, minimum twenty-five cents. Strictly cash in advance.

## FOR SALE

**FOR SALE**—Coal range cook stoves at bargain prices, \$5.00 to \$35.00. All in good condition. G. C. Malone Furniture and Undertaking Co. 3-4c

**FOR SALE**—Singer Machines bought and sold. New singers sold on easy terms. Machines rented by week or month. Eldridge, the Singer Man at Thornton's Store. 49tc

**FOR SALE**—Black boards, red boards, large and small, also some nice gifts, one new single barrel shotgun. One repeating shotgun. R. R. 2. R. R. Mitchell. 51-2tp

**FOR TRADE**—Twenty young brood sows. Will trade for fat hogs. Inquire Roger's Cafe or Lipold place one and one-half mile east of town. 51-5tp

**FOR SALE**—Butchered grain fed hogs. Put in your order. About 200 lbs dressed. Four miles east on 33 Highway. R. R. 2. R. R. Mitchell. 51-2tp

**FOR SALE**—Used Martin Saxophone, good condition. Pampa Music Co. 51-1tc

**FOR SALE**—Columbia Atwater Kent Radio with Tubes only \$40.00. H. E. Dahl, phone 72. 52-2tp

## FOR RENT

**FOR RENT**—Two well furnished housekeeping rooms. Inquire 4 miles east on 33 Highway. R. R. Mitchell. 44-81-p

**FOR RENT**—One two-room house, immediate possession. McIntire Lumber Co., phone 281. 51-1tc

**FOR RENT**—Sleeping rooms for men. Shower bath. Third house north of Pampa Laundry. 51-2tp

**FOR RENT**—2 rooms, either for sleeping or light house keeping. See Mrs. Jack Killebrew. Four blocks north of Stag Hotel. 51-1tc

**FOR RENT**—Two room furnished apartment \$30 per month, bills paid. Tulsa Apartments, 2 blocks south, 2 blocks west of tracks. 51-1tp

**FOR RENT**—Two Room Furnished Apartment, phone 135. 51-11-p

**FOR RENT**—One large housekeeping room, first corner east of First National Bank. Adults only. 51-11-p

## WANTED

**WANTED** To Buy—Pigs or Hogs, any kind except fat hogs, four miles east on 33 highway. R. R. 2. R. R. Mitchell. 49-3tp

**WANTED**—To buy used furniture and oil stoves. G. C. Malone Furniture and Undertaking Co. 3-4c

**WANTED**—SALESMEN—Two men with cars for salesmen with the Fuller Brush Co. Write E. R. Manley, Pampa, Texas. 50-2tp

**Wanted**—Modern, light housekeeping room. Desire close in or on side walk. No children. Phone 100 or call for Ben R. or Jinks Brashears at News Office.

**WANTED**—2 Light Housekeeping rooms close in, apply at News Office. 51-11-p

**SALESMAN WANTED** for lubricating oils, greases and paints. Excellent opportunity. Salary or Commission. The Jed Oil Paint Co., Cleveland, Ohio. 51-11-p

**Wanted**—Clean, Cotton Rags, Pampa News.

**WANTED TO LEASE** From owner rooming house 20 rooms or more address Box 732. 51-1tc

**WANTED**—To lease from owner, rooming house 20 room or more. Address Box 732. 51-11-p

**WANTED TO RENT**—Furnished four, five or six room house, modern well located. References. Write or phone room 35, Butler Hotel, White Deer. 50-2tp

## LOST AND FOUND

**LOST**—Keys in leather case. Somewhere on streets. Return to Dr. Cole's office and receive reward. 51-2tc

## MISCELLANEOUS

We are glad to assist you in planning that new home you have been contemplating building. Our motto, "Service that Satisfies." White House Lumber Co., Pampa, Texas. 11-4c

Employment Agency. Two blocks east and one-half block north First National Bank. If you want work or help. See us. 51-11-p

## GRANDPA SPEAKS UP

By DOUGLAS MALLOCH

A LIMOUSINE is nice to ride in, A thing to take a lot of pride in, And even some old open flivver, In which you mostly shake and shiver, Will get you there, and do it slicker, And get you home, and do it quicker, Than any horse could ever do it, You're right, my boy, there's nothing to it.

And I'm not one who sits a-walling, When age is here and limbs are falling, Because the world is moving faster, And more and more mankind the matter, Of air and earth and time and distance, If you should bring around a yellow, And give a ride to one old fellow.

Though I'm an older man than many, I hope I'm just as spry as any, No, not in legs—they wobble maybe; But lots of ways I'm still a baby, And in my heart I'm just as sprightly, As if I went a-courting nightly, My soul still sings, my pulse still quickens, I'm old, but full of the old dickens.

I'm tired of hearing folks, "Drive slowly, For grandpa's in." By all that's holy I'm sick of being petted, pampered, And muffled up, and helped, and hauled, and pored, So bring around your road assassin, With lots of water, oil and gas in, And pick me up some day, dog-gone it, And take me out—and then step on it (By McClure Newspaper Syndicate.)

**MATRESS FACTORY**  
I have opened my mattress factory and am ready to do better work. I have an experienced finisher. All work guaranteed. Ideal Mattress Factory. Mrs. A. G. Howay, proprietor, P. O. Box 786. 51-11-p

Army and Navy Store, South Side. Cots, tents, blankets and comforts. 51-1tc

**WHEN in need of Printing see what we can do before you go elsewhere.**

## SOCIETY NOTES

**Mrs. Coffee Gives Bridge Party**  
Mrs. Walter Coffee entertained a number of friends at a bridge party Thursday afternoon. Following several hours of pleasure, a two-course luncheon was served.

The following mesdames were present: Howard, Johnson, Harrah, Hartell, Dickens of White Deer, Coffee, Arnold, Duncan, Cram, Sanders, Sugg, Studer and Mrs. Pearson of Woodward, Oklahoma.

**NOTICE TO ALL PRACTICING PHYSICIANS IN GRAY COUNTY**  
The law requires report and quarantine of contagious diseases. Please do so.  
V. E. Brunow, County Health Officer, P. O. Box 257, Pampa, Texas.

A. C. Birr of Oklahoma City was here on business the first of the week.

## AT THE THEATRES

Norma Shearer's latest portrayal, "A Slave Of Fashion," is coming to the Crescent Theatre Sunday and Monday. "The Show-Off," featuring Lois Wilson, Ford Sterling, Louise Brooks and Gregory is scheduled for Tuesday, and Peter B. Kyne's flaming romance, "Breed of the Sea," will show Wednesday.

One of the latest murder-mystery melodramas, "The Third Degree," will be at the Rex Monday. Dolores Costello is featured in this production. Florence Vidor and Ricardo Cortez in Frank Lloyd's production, "The Eagle of the Sea," will show at the Rex Wednesday.

The story of a country girl's city adventures under assumed identity makes "A Slave of Fashion" one of the novels of the movies. The theme of the story centers around a small town girl who comes to New York to live and dress like city girls. How she narrowly averts being disowned by her family but for the timely appearance of her bachelor husband, bring the story to a satisfactory conclusion.

"The Third Degree," coming to the Rex Monday, tells of the strange intermingling of two families—one listed prominently in the social register of New York, and the other the almost nameless carnival folk. Young romance, mysterious murder, the carefree joys of the circus tent,

blackmail and the grilling of "the third degree" all figure prominently in Miss Costello's fifth screen appearance since her memorable debut in "The Sea Beast."

News Want Ads Pay

## Office Furniture

—expresses prosperity and helps meet the continued growth of your Business.

—MAIL ORDERS INVITED—

### RUSSEL & COCKRELL Inc.

THE PANHANDLE PRINTING CO.  
"Our Business is to Help Your Business"  
615 TAYLOR ST. — — — AMARILLO, TEXAS  
Printing, Books, Desks, Typewriters

# ANNOUNCING THE

## New CHRYSLER Dealer

### DUNCAN AUTO COMPANY

at TEXAS GARAGE

## "50"s, "60"s, "70"s and Imperial "80"s

With the introduction of the Chrysler "50", Chrysler quality and value now reach the millions who have long wanted a Lower priced car with the advantages of Chrysler performance, engineering skill, fine workmanship and long life.

This new Chrysler is designed to accomplish savings so pronounced, to give you size and power and comfort so much greater, that you will not want to consider any other car in the same price class.

The Chrysler "50" is a full-sized car. Nothing cramped or skimmed in its strong all-steel bodies. Seats are wide and easy. Every detail is planned to give you the finest riding and greatest comfort. Each Chrysler "50" is a beauty.

In the new Chrysler "60" you have, unit for unit, the same standardized quality comprehended in all Chrysler cars—in advanced features, in materials, in craftsmanship, in rigid inspection and test, in characteristics of dependability and long life.

Sixty miles, and more, per hour; unprecedented get-away; gas economy of 22 miles and more per gallon. Never before has the motoring public been offered such supreme quality and value—in the field of the lower-priced Six—as is combined in the new Chrysler "60". Drive it, convince yourself that nowhere will you find a Six in the lower price field that can begin to compare with this great Chrysler achievement.

Ever since its formal presentation to the public the Chrysler "70" has been unanimously hailed as setting the pace for the best, finest and most advanced in motor car design in its price field. Five to twenty-five miles an hour in 7 seconds; power enough for any grade or pull through heavy sand or mud; smoothness which few cars ever approach—these are its performance characteristics.

The Chrysler Imperial "80" is the fruit of a conviction that the last word has not been spoken in fine car manufacture. Leading the splendid string of cars which bear the Chrysler name, its beauty and finish—as fine as money can build—its 92 horsepower—its 80 miles per hour and its utmost luxury for two to seven passengers invite dissatisfaction with the conventional and commonplac. The Imperial "80" is available in many body models—both Standard and Special.

We ask you to see these beautiful models at the

# DUNCAN AUTO CO.

LOCATED IN THE TEXAS GARAGE

WE NOW HAVE

## A Modern Plant

and can give

### ONE DAY ODORLESS CLEANING SERVICE

PHONE 261

WE CALL FOR AND DELIVER

### SOUTH SIDE TAILORS



## ANNUAL BUILDING BILL TWO BILLION

### Saving Money On Farm Lumber Cost Is Stressed

The Nations annual building bill for small and medium wooden dwellings and barns and other wooden structures is approximately two billions of dollars, according to the report of the sub committee on Construction of the National Committee on Wood Utilization of which Secretary of Commerce Herbert Hoover is the chairman. The major portion of this construction is on farms and the cost, the committee claims, could be reduced by tens of millions of dollars if the consumer would abandon the habit of buying long length lumber exclusively and then cutting one-fifth or more of it up into short lengths called for by the plans. This is due to the fact that many of the sawmills of the country offer these short lengths which are of equal quality with the longer lengths for from 15 to 35 per cent below the price of the latter. They are able to market, however, only about one fourth of what average timber would produce if fully utilized.

The report of the construction sub-committee makes a careful survey and analysis of plans for nine types of small and medium dwellings, one, one and one-half and two stories high, and of 35 other farm structures including barns, milk houses, grain storage buildings, and hog and poultry structures. Many of these plans were from agricultural engineering sources in the U. S. Department of Agriculture and from the engineering departments of a number of state agricultural colleges, and lumber bills were furnished with them. The tabulations analyze these and show what percentages of the total lumber were specified in lengths of 7, 6, 5, 4, and 3 feet. Commercial lengths vary by even feet on long lumber but by odd and even feet from 7 feet down. On these bills considerable long lumber had been specified to be cut into short lengths at the job; and new lumber bills were figured which listed all the short pieces of the plans in the short commercial lengths that would cut them. The right half of the tabulation lists these permissible percentages of shorts, separated by lengths of from 1 to 7 feet; and on dwellings further dividing into framing material common boards and trim, and subdividing by specific uses.

The original lumber bills specified the common boards (for sheathing and sub-floors) only by board feet and not by specific lengths; and in the finished material specified the window and door trim by cut lengths, so that analysis of the use of short material for comparison with the revised bills was useful only on the ten kinds of framing material. This averaged 15.8 per cent of the total lumber specified in 7-foot and shorter for the dwellings, as against 19.59 per cent of "permissible" used indicated by the revised lumber bills. The new bills showed, also, a permissible use of 26.13 per cent of the short lengths in the boards used for sheathing and sub-floors, and of 51.49 per cent in the finish lumber.

The tabulation of barns and other farm structures showed an even larger opportunity for the use of short lengths, which the original lumber bills fell far short of specifying.

Because the commercial lengths are not the exact lengths required there is usually a waste end cut off from each piece, and there are more such waste ends in a thousand feet of short lumber than of long, because there are more pieces. On the other hand, the waste end on the long board may be anything up to 2 feet, and is 1 foot or less on the short board which largely compensates. Another theoretical argument is that short stock takes more hand-saw cuts than long, but this seems to infer that because long boards trimmed on the main saw trimmer at great speed are not good for use without retrimming, the short lengths will come that way also. As a matter of fact, nearly every short piece will have at least one end trimmed by a cut-off instead of at the green lumber trimmer, and if it is dressed or further worked this trim occurs after both seasoning and working; and such ends will generally be good for use in framing or other unexposed joinery.

The Construction Sub-Committee of the National Committee on Wood Utilization consists of 29 members, 14 of whom are either architects or engineers, the balance consisting of representatives of a number of great national organizations, including the American Society of Agricultural Engineers. Copies of the Report can be secured from the Superintendent of Public Documents, Washington, D. C. ("The Marketing of Short Length Lumber", 28 pages 13 illustrations, 7 tables. Single copies 10 cents).

### War On Cattle Ticks In South Successful

Noteworthy progress in freeing southern territory from cattle ticks is reported by the United States Department of Agriculture, based on results to December 1, 1926. The report just compiled shows that 737 counties have been released from Federal quarantine against cattle ticks since systematic eradication work began July 1, 1906. There remain in quarantine 248 entire counties and also smaller areas, chiefly individual farms, in other counties. During the last year 12 counties and parts of 5 counties were released from Federal quarantine and 40 counties previously released in Arkansas, Florida, Georgia, Louisiana, North Carolina, Oklahoma, Texas and Virginia were entirely freed of cattle ticks.

### Service Suggests One Third Land In Timber

Every country, foresters believe, should have one-third of its land area in forests in order to meet its timber and wood needs, says the Forest Service of the United States Department of Agriculture. Our country now has 138,000,000 acres of virgin forests, together with 250,000,000 acres of cut-over land, or a total of only 388,000,000 acres that are really valuable for timber production. This is only one-fifth of our total land area.

In addition to the wood used in buildings and other construction, even medicines and clothing, are made from trees or lumber. Furthermore, forests protect game and give enjoyment to hunters and vacationists. They also prevent the washing away of hillsides by heavy rains, and help check floods by holding back the melting snow and rain water and allowing it to drain off slowly.

### News Want Ads Pay

## PANHANDLE LUMBER COMPANY

### RIG MATERIAL BUILDING MATERIAL

Quality - Service - Satisfaction

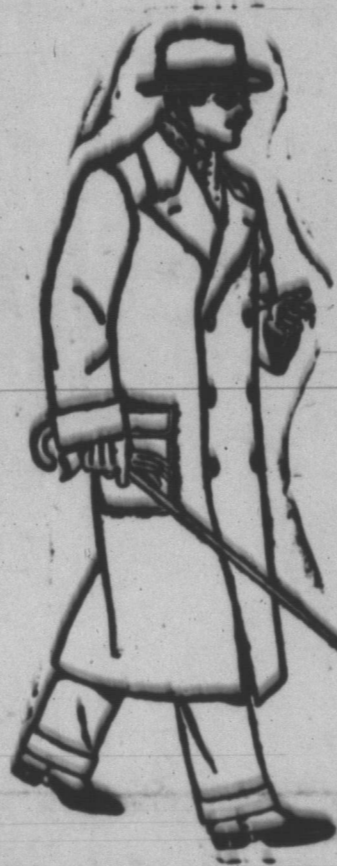
# OUR FIRST January Clearance Sale Begins Saturday, January 15

Two full weeks of rapid-fire selling to close out completely all Women's and Misses' Winter Coats and Woolen Dresses—Men's and Boy's Overcoats, Sheep lined Coats, Sweaters, Leather Jackets and Lumber Jacks. Everything new. Our regular prices mean economy—these January Clearance prices will bring you still greater Savings. COME!

## FOR COMPLETE CLEARANCE MEN'S AND BOYS' OVERCOATS AT

# 25

## Per Cent Discount



This includes every coat in stock. All are fresh and new for this season.

\$14.95 Mens Coats, \$11.20  
\$19.50 Mens Coats, 14.65  
\$24.50 Mens Coats, 18.35  
\$29.50 Mens Coats, 21.15

### MEN'S SOCIETY BRAND SUITS \$37.50

There are \$50.00 Suits in fine patterns and styles. A Clearance Bargain you should not miss.

Other Good Suits at \$24.50 \$29.50 \$34.50

Some have two trousers

### SHEEP LINED COATS \$9.95

36 inches long, leather trimmed pockets, good felt lining; sizes to 48, our \$11.85 value \$9.75

### LEATHER JACKETS \$12.50

Horse Hide, Cow Hide, and Chamois Skin Jackets in \$14.50 to \$15.00 values. Price \$12.50

### ALL-WOOL LUMBER JACKS

Men's and Boys' Lumber Jacks in good patterns, well made. To clear away at sacrifice prices. Values \$3.95 to \$6.50 for

\$2.95 \$3.45 \$4.45

### WEN'S WOOL SHIRTS

AT JANUARY CLEARANCE PRICES

Splendid quality shirts, medium and heavy weights. Most all sizes to 17.

\$1.95 \$3.45 \$4.45

### MEN'S UNION SUITS

Good weight cream color cotton unions. Sizes to 50. Suit

\$1.45

### MEN'S SILK AND WOOL UNIONS

Fine quality pure silk and wool union suits. Light Weight. Clearance price

\$4.75

### PART WOOL UNIONS

Men's natural gray colored unions in sizes to 46. Fine and warm for the out-door man. Suit

\$2.25

### MEN'S BATH ROBES

25% Discount

Men's and Boy's Sweaters 33 1-3% Discount

### MEN'S OVERALLS

Good weight Blue, bibb overalls. Sizes to 42. Pair

95c

## RADICAL REDUCTION ON WOMEN'S AND MISSES COATS For Complete Clearance

# 33 1/3

## Per Cent Reduction



Coming right in mid-winter this clearance sale will meet the hearty approval of thrifty women.

Imported and domestic fabrics. Styles you will like. 26 to sell.

\$12.75 Coats for \$ 8.50  
\$19.75 Coats for 13.15  
\$24.75 Coats for 16.50  
\$29.75 Coats for 19.85  
\$39.75 Coats for 26.50  
\$45.00 Coats for 29.85

Ladies Woolen Dresses For Clearance at 25% Discount.

### FINE WARM BLANKETS —AT LOW PRICES—

66x80 in. double cotton blankets good weight; gray and tan colors, wide colored borders, pr. \$2.85  
66x80 in. Nashua Woolknop, double blankets, fancy plaid colors; good weight, pair \$4.45  
66x80 inch double mixed wool blankets, fine quality heavy weight, beautiful plaid patterns; silk bound, pair \$5.50

### STAPLE COTTON GOODS —at attractive prices—

#### GINGHAMS

Merry Maid Zephyr Gingham, 32 inches wide beautiful patterns. Yard 29c

CHECK GINGHAMS AND CHEVOITS Fine for shirts, blouses, aprons, etc. Priced for economy at, per yard 15c

#### COTTON BATTS

Three pound cotton Batts, Size, 72 x 84 inches. Each 59c

#### OUTING

36 inch fancy outing flannels in patterns suitable for night-gowns, comfort coverings, etc. Yard 23c

#### KIMONA FLEECE

Dark patterns, good quality and weight, Yard 19c

#### WOOLEN FABRICS

One lot good grade dress woolens, values to \$1.50 Price per yard 89c

THE STORE WITH THE RIGHT GOODS  
**Diamond & Co.**  
DRY GOODS CO.

New Spring Silks, Fancy Wool Tweeds, and printed fabrics now on display. Also spring coats and dresses.

NEXT DOOR NORTH OF ROGER'S CAFE. PAMPA, TEXAS

# THORNTON'S

## PHENOMINAL INVENTORY SALE

### NOW GOING ON

We are through with taking inventory and have placed on sale our entire \$25,000 stock—consisting of Ladies Ready-To-Wear—Mens Furnishings and Footwear. To effect a clean sweep of all winter goods, we have placed price reductions on every item of our entire big stock and these prices are sufficiently low to show you we are in earnest.

We love to clean our house after New Year in order to make room for the arrival of new spring merchandise, and we have cut our prices from 30 to 40 per cent on the dollar.

**BROOKS**  
**FRIDAY, JANUARY 14, AT NINE O'CLOCK SHARP**  
 To the first 100 ladies entering our store one hundred \$1 Brooms

**15c**

**GRAY ENAMEL WEAR**  
 Assortment of six different styles of gray enamel wear which sells anywhere for 50 cents each. In this inventory sale, Assortment of six pieces for

**98c**

**ALUMINUM WEAR**  
 99 percent pure aluminum highly polished, sanitary finish, \$1 value. Assortment of boilers, percolators, kettles, pans and pitchers

**49c**

**SAFETY RAZORS**  
 100 Gillette Safety Razors with silver handles, \$1 values. One to each customer

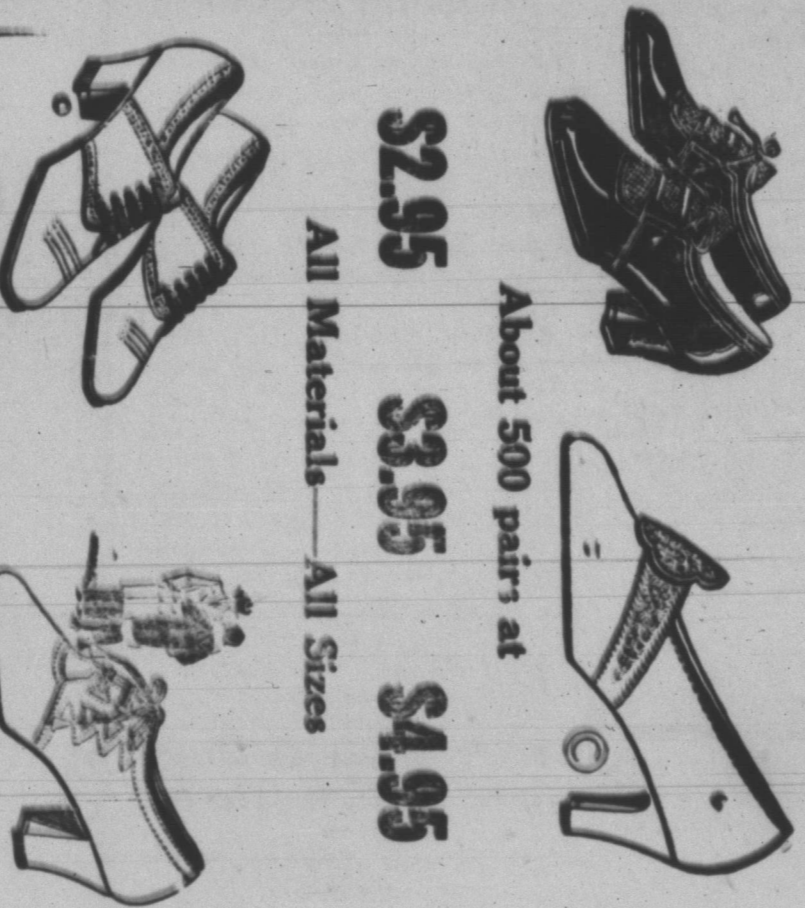
**15c**

**FOR THE MEN**

- \$3.50 Scout Shoes ----- \$2.25
  - \$5.00 Army Shoes ----- 3.95
  - \$12.50 Officer Boots ----- 7.95
  - \$2.50 Scotts Level Best Boots ----- 1.69
  - \$1.00 Blue Shirts ----- 69c
  - \$1.50 Mens Unions ----- 95c
  - 75 cent Mens Silk Hose ----- 39c
  - \$3.50 Wrights All-Wool Unions ----- 3.95
  - \$6.50 Mens Lumber Jackets ----- 3.95
  - \$2.00 Mens Overalls ----- 1.45
  - \$3.50 Mens MoleSkin Pants ----- 2.45
  - 15 cent Mens Socks ----- 8c
  - 25c Boss Gloves ----- 14c
  - \$1.00 Barber Towels, Dozen ----- 85c
  - 50 cent Bath Towels ----- 29c
  - \$5.50 Button Leg Pants ----- 3.95
  - \$15.00 Leather Coats ----- 10.85
  - \$1.75 Suitcases ----- 98c
- MENS SUITS**  
 \$35 All-Wool Suits with two pair pants ----- \$19.85
- MENS HATS**  
 The latest \$6.50 and \$7.50 Valentino Spring Hats included in this sale \$4.95 and \$5.95

**Come to Thornton's Shoe Market**

This is something new for the good people of Pampa. High grade shoes at low prices. Neatly arranged on twelve big tables. All the latest styles in ladies', men's and children's shoes.



**Ladies Shoes, Styles of the Hour**  
 Every Pair Guaranteed  
**\$2.95**   **\$3.95**   **\$4.95**

**Men's Dress Shoes**  
 \$7 and \$8 values  
**\$4.95**

All Materials—All Sizes  
 About 500 pairs at

**LADIES DRESS AND COAT SPECIALS**



We include in this sale all our new spring dresses and coats at a big reduction.

Coats and Dresses in every favored style and material.  
 Dresses at \$8.85 up.

**WINTER COATS**  
 \$20 Coats ----- \$10.85  
 \$30 Coats ----- 14.85  
 \$55 Coats ----- 29.85

**CHARLESTON DRESSES**

A big lot of the latest Charleston Dresses, Regular \$3.00 Dresses  
 Sale Price **\$1.95**

**LADIES HATS**  
 100 Spring Hats, \$6 to \$7.50 Values  
 Sale Price **\$2.95 to \$3.95**

**LADIES SILK HOSE**  
 \$1.00 Silk Hose, sale price **49 cents**  
 \$3.00 Chiffon Hose, sale price **\$1.95**

**LADIES SILK UNDERWEAR**  
 \$3.00 Silk and Wool Teddies at ----- \$1.95  
 \$1.50 Silk Teddies at ----- 95c  
 \$1.50 Silk Bloomers at ----- 95c  
 \$5.00 Silk Night Gowns at ----- \$3.45

**TOM BOY SKIRTS**  
 \$5.00 Tom Boy Skirts for only ----- \$1.95  
 \$6.50 Tom Boy Skirts for only ----- 2.95  
 Caps To Match at ----- 98c

**LADIES RAINBOW RAINCOATS**  
 \$10.50 Raincoats in any color, Sale price ----- \$7.85

**LADIES HOUSE FROCKS**  
 \$1.50 Ladies House Dresses at ----- 95c

**LADIES FANCY GARTERS**  
 \$1.00 Ladies Fancy Garters at ----- 59c  
 10-cent ladies handkerchiefs at ----- 4c

**LADIES HEAVY UNDERWEAR**  
 \$2.00 Ladies Underwear, any style, Sale Price ----- \$1.19

**LADIES HOUSE SHOES**  
 \$1.00 Felt House Shoes for ----- 69c  
 \$2.00 Leather and Satins with soft soles, only ----- \$1.24

**LADIES GLOVES**  
 Gloves in Wool and Kidskin, Any color and price ----- one-third off

—NEXT TO FIRST NATIONAL BANK—  
 —NORTH—

— -- THORNTON'S -- --

—NEXT TO FIRST NATIONAL BANK—  
 —NORTH—

DELINQUENT TAX RECORD

Of lands and lots, or parts of lots, returned delinquent or reported sold to the State of Texas, and not redeemed for the years 1885 to 1926, inclusive; situated in Gray County, Texas. Compiled as provided for in Chapter 10, Revised Civil Statutes of 1911, and as provided for in Chapter 15, R. 13, H. B. 11, Acts of second called session of the Thirty-Eighth Legislature.

Main table with columns: Year delinquent, Tax Roll Form, Owner, Abstract No., Certificate No., Survey No., Original Grantee, No. acres reported sold or delinquent, Total, and various parcel details including acreage and owner names.

TOWN LOTS AND BLOCKS

Table listing town lots and blocks with columns: Year delinquent, Tax roll form, Owner, City or Town, Lot No., Block No., Add., Total, and specific lot/block details.

**CITATION BY PUBLICATION  
TO THE SHERIFF OR ANY CONSTABLE OF GRAY COUNTY, TEXAS—GREETING:**

You are hereby commanded, That you summon, by making publication of this citation in some newspaper published in the County of Gray if there be a newspaper published therein, but if not, then in a newspaper published in the nearest County to said Gray County, for four consecutive weeks previous to the return day hereof, E. F. Simmons, the unknown heirs of E. F. Simmons, William H. Stephens, the unknown heirs of William H. Stephens, C. L. Maple, the unknown heirs of C. L. Maple, Lillian Maple, the unknown heirs of Lillian Maple, A. J. Lee, the unknown heirs of A. J. Lee, W. H. H. Stephens, the unknown heirs of W. H. H. Stephens, Cordelia A. Stephens, the unknown heirs of Cordelia A. Stephens, William A. Jackson, and the unknown heirs of William A. Jackson, whose residences are unknown, to be and appear before the Honorable District Court at the next regular term thereof, to be holden in the County of Gray, at the Court House thereof, in Lefors on the 28th day of February, A. D. 1927, then and there to answer a Petition filed in said Court, on the 30th day of December, A. D. 1926, in a suit numbered on the Docket of said Court No. 1653, wherein L. H. Webb is plaintiff and E. F. Simmons, the unknown heirs of E. F. Simmons, William H. Stephens, the unknown heirs of William H. Stephens, C. L. Maple, the unknown heirs of C. L. Maple, Lillian Maple, the unknown heirs of Lillian Maple, A. J. Lee, the unknown heirs of A. J. Lee, W. H. H. Stephens, the unknown heirs of W. H. H. Stephens, Cordelia A. Stephens, the unknown heirs of Cordelia A. Stephens, William A. Jackson, and the unknown heirs of William A. Jackson, are defendants.

The nature of plaintiff's demand being as follows, to-wit:

Suit by plaintiff, L. H. Webb, against the defendants above named in two counts, the first in trespass to try title, and in which count plaintiff alleges that on August 30th, 1916, he was in quiet and peaceable possession of the following described lands and premises, owning, holding and claiming the same in fee simple, said lands being described as follows, to-wit: All of Section No. 43, in Block No. 25, Certificate No. 12-2526. Issued to the H. & G. N. Ry. Co., situated in Gray County, Texas, containing 640 acres of land, more or less. Plaintiff further avers that on the date above mentioned the defendants herein unlawfully entered upon the above described premises and dispossessed plaintiff thereof and that they now unlawfully withhold from the plaintiff the possession of said premises. Plaintiff prays judgment for the title to and the actual possession of the above described lands and premises as against each and all of the defendants.

In the second count of said petition plaintiff pleads in the alternative and in subordination to his rights under the first count, that he and those under whom he claims title to the above described property have been in the actual and peaceable possession thereof, holding and claiming the same under a chain of title emanating from the sovereignty of the soil, the State of Texas, all of same being duly registered, for a period of more than three years preceeding the institution of this suit; also that plaintiff, and those under whom he claims title to said land have had the actual, notorious and peaceable possession of said land, owning, holding and claiming the same under deed or deeds duly registered in the office of the County Clerk of Gray County, Texas, and paying all taxes thereon, cultivating, using and enjoying said lands, for

a period of more than five years preceeding the institution of this suit; plaintiff also alleges that he and those under whom he claims title to said land have had the actual, notorious and peaceable possession of said land for a period of more than ten years preceeding the institution of this suit, claiming the same under a muniment of title duly registered in the office of the County Clerk of Gray County, Texas, in which the boundaries of said tract are fully described and that during all of said period of ten years plaintiff and those under whom he claims title to said land have cultivated, used and enjoyed the same.

Plaintiff prays judgment against the defendants, in the alternative, for the title to and the actual possession of the above described lands and premises, together with general and special relief, legal or equitable.

HEREIN FAIL NOT, And have you before said Court, on the said first day of the next term thereof, this Writ, with your endorsement thereon, showing how you

**Artificial Light For Hens Can Be Overdone**

Lengthening the hen's working day during the winter months by means of artificial light in the poultry house and thereby increasing her feed consumption with a view to greater egg production is advisable within reasonable limits, says the United States Department of Agriculture. Overstimulation of the hen, however, may cause a spring molt or other undesirable results with a consequent lowered egg yield. The laying hen should be regarded as a machine for the manufacture of eggs which, if operated under too high pressure, will be worn out prematurely.

have executed the same. Given under my hand and seal of said Court, at office in Lefors, Texas, this 30th day of December, A. D. 1926.

Charlie Thut.  
District Clerk, Gray County, Texas.  
49-51-53-55c

**Fertile Soil And Good Crops For Livestock**

Without fertile soil and good crops the livestock industry could not flourish, says the United States Department of Agriculture. Corn, clover and alfalfa are of great importance in the production of our meat supply. Eighty-nine per cent of the corn crop is used for the production of livestock, whereas only 11 per cent goes for export, human food and other purposes. Approximately 50 percent of the sustenance of the livestock of this country comes from pasture, 25 per cent from corn, and the rest from other harvested feeds. Legumes in the rotation help to maintain the fertility of the soil and result in high corn yields.

**SORE GUMS—PYORRHEA**

Foul breath, loose teeth, or sore gums are disgusting to behold, all will agree. Leto's Pyorrhoea Remedy is highly recommended by leading dentists and won't fail you. Druggists return money if it fails. H. & K. Drug Co. 3-12c

**ATTEND OUR  
PRE-INVENTORY  
SALE  
AND SAVE MONEY**

A Big Reduction On All Our Stock

**Farris Dry Goods Store**  
Across Street From White Deer Land Co.

For Results - Use A Classified Ad

On the main line of the Santa Fe, seven miles south-west of Pampa at western edge of Gray County.

Between the two great Panhandle oil fields, and in the heart of an important local drilling area.



**Where The Wealth of The Field Is Being Stored**

Four immense tank farms Over 3,000 feet of industrial trackage!  
Panhandle terminal for the Prarie Pipeline! Texas Company's field offices for entire field Champlin loading racks! Scores of buildings already up! Hundreds of men employed in vicinity! Big Panhandle Lumber Co. yard! Gas, electricity, and water available! Graded streets! School, church, stores, etc. already there! Local drilling activity! Midway between the two major fields in line of play! Valuable royalty rights with every building site!

The early investors in Tulsa real estate are millionaires today  
North Kingsmill is to be the industrial and concentration center for the  
Panhandle Oil Fields; and the early purchaser of building sites will reap a  
rich reward.

EXCELLENT BUILDING SITES ARE STILL AVAILABLE AT PRE-  
DEVELOPMENT PRICES—\$145 AND UP.

**KINGSMILL DEVELOPMENT CO.**

AMARILLO OWNERS AND DEVELOPERS PAMPA OFFICE  
302 Oliver-Eagle Bldg. Phone 4619 Field Office North Kingsmill Gray Co. Bank Bldg. Phone 342

**PANHANDLE  
OIL MAPS**

Blue Printing and Surveying  
AMARILLO ABSTRACT CO.  
105 West Fifth Street  
Phone 1193  
AMARILLO, TEXAS

---

—a Sure Sale  
—a Fair Profit  
if you list with

**RICE & PARK**

Real Estate, Oil Leases,  
Royalties, Drilling Con-  
tracts

PHONE 133

## Officials Explain Qualities Of Sweet Clover And Urge That Texas Sow More Acres

Sweet clover is fast becoming one of the most dependable crops grown in almost all sections of the state. It is very probable that it is the most widely adapted crop grown in this country. There are few if any sections of the state where it fails to grow under wild conditions. It can be found growing along the roadside upon the North Plains, in the El Paso country, in the Rio Grande section, in East Texas and in the Blackland belt.

It is one of the most satisfactory grazing crops that can be grown, and it can be grown successfully with Bermuda and other grasses. It is one of the best soil building crops that can be planted. It will furnish an abundance of humus to the soil and supply nitrogen. When handled right, it is one of our best hay crops, both from the standpoint of yield and quality of hay.

Sweet clover has about the same feeding value as does alfalfa and will grow upon land that will not grow alfalfa.

### Time of Planting

On the Experiment Station at Denton and from the experience of many farmers, it is proven conclusively that January and February plantings have been the most successful. Sweet clover planted in the fall will often seed the following Spring, and in shortening the growing period, its value is lessened. There are a very few instances where a stand has been secured when planted later than the last of February. When planted about the time of planting small grain a good stand is usually secured, or sweet clover may be sown broadcast without the use of a grain nurse crop. In all instances the best stands have been secured when the land is firm with only loose seed bed sufficient to cover seed.

The advantage of planting the clover with grain is that a crop may be secured from the land the first year. The main disadvantages are, that the grain crop may become so dense, or blow down so that the small clover plants are smothered,

or if moisture is low, the grain may dry out the land until the stand is injured. If it is seen that there is a shortage of moisture the grain may be cut early for hay instead of growing until it matures.

Owing to the fact that sweet clover matures seed and dies the second year, if it is desirable to keep it permanent in one field there should be a second planting made on the same land one year from the date of first sowing. With this method, there are one and two year old plants on the same land, and the clover does not seed until about July the second summer.

### Rate and Method of Seeding

Sweet clover is usually sown broadcast at the rate of from 15 to 20 pounds per acre. Owing to the extremely hard seed coat, it is best to sow scarified seed to insure a good stand. As an added insurance, it is best to inoculate the seed before planting.

The Denton Experiment Station has reported that probably the most satisfactory results have been obtained from planting sweet clover with small grain in late January and early February. The grain may be sown with drill and sweet clover then sown broadcast using a drag or section harrow with teeth down, to cover the seed.

### Sweet Clover for Grazing

From reports from many sections of the state, it has been shown that sweet clover will furnish grazing for from one to four mature cows per acre from early spring until the first freeze. It is equal to alfalfa for grazing all types of livestock. It can be grazed over a longer period, than can alfalfa and there is little danger, if any, from bloating.

### Sweet Clover for Hay

On the average, sweet clover will yield from 1-2 to 2 tons of hay per acre. The best quality of hay is obtained by cutting when the plants are about knee high. Two cuttings are usually made during the season. In cutting sweet clover for hay, and especially during the

second season, the sickle bar should be raised about six or seven inches. When cut close, some of the plants will be destroyed. When cut high the main stems left put out small limbs at each joint which produces a finer quality of hay the next cutting. If it is desirable to let the plants produce seed the second year, the clover may be cut one time, the second growth allowed to seed.

### Sweet Clover for Soil Building

Sweet clover is a nitrogen gathering plant, that is, it has the power to take free nitrogen from the air and store it in the soil. A hay crop of 1-2 tons of sweet clover contains approximately 43 pounds of Nitrogen, 8.5 pounds of phosphoric acid and 27.5 pounds of potash. If we value nitrogen at 25 cents a pound and phosphoric acid and potash at 6 cents per pound, one and one half tons of sweet clover hay would be worth \$12.71 from the acre yield of the plants, in addition to the value of the organic matter that would be returned to the soil. When used for grazing, the greater amount of both the organic matter and plant food is returned to the soil.

The enormous root system of sweet clover makes this crop a very desirable one to improve the physical condition of the soil, which in turn, increases the feeding area of the crop following clover.

Alfalfa should be grown on all land that is adapted to this crop. Alfalfa will grow, and return a good annual revenue for several years on suitable land. The value of alfalfa for a soil building crop is clearly demonstrated in the recent "More Cotton on Fewer Acres South". Mr. Littleton at Vermont won first prize on cotton following alfalfa, without the use of commercial fertilizer. The basis of soil fertility is humus, and the basis of profitable use of commercial fertilizer is humus. The most economical way to put humus in the soil and at the same time to put plant food in the soil is to grow alfalfa, clover and other legumes.

### Fires Scouted From Air

During the past fire season air-planes were used over the far western forests for patrol when the atmosphere was too dense for effective observation, and for reconnaissance of large fires.

## MORE BOLLWORM FOUND IN ARIZONA

### Infestations Confined To Irrigated Districts

The pink bollworm has recently been determined to be rather widely scattered in Cochise and Graham Counties, southeastern Arizona. Fortunately, the infestations are confined to small, recently developed irrigation districts remote from the important cotton producing areas in Arizona, particularly the Salt River District. Clean-up operations are now under way similar to those employed in east Texas in 1916 and western Louisiana in 1920, which apparent resulted in wiping out infestations in these States which were much more widespread and important than those now under consideration. In view of the isolation of the Arizona infestations and the limited areas involved, the possibility of effecting eradication is believed to be much more favorable even than it was in Texas and Louisiana. Some thirty Federal inspectors are now engaged in determining the extent of the infestation and directing clean-up work.

Federal quarantine action on account of the pink bollworm in Arizona will be deferred until the surveys referred to have been completed. In the meantime, quarantine officials of that State are cooperating with the United States Department of Agriculture in preventing the movement of all cotton products out of the infested areas.

### Early Birds for Eggs

Pullets hatched as early in the spring as weather conditions are likely to be more profitable layers than late-hatched birds. They begin laying earlier, thus producing a larger proportion of eggs during the period of high prices.

## Reindeer Industry Growing In Alaska

The reindeer industry in Alaska, although a comparatively recent commercial undertaking, promises to become an important factor in the future development of the territory, says the Biological Survey of the United States Department of Agriculture. The original stock of 1,280 animals imported to Alaska

from Siberia about 25 years ago, has increased to nearly 350,000, distributed in 110 herds.

More than 1,000,000 pounds of reindeer meat was exported from Alaska during 1924 and 1925, and a steady increase in the output and demand is indicated. When properly produced and handled, the meat compares favorably with beef. It is fine grained, contains a good, palatable fat, and when fresh is exceptionally juicy and tender.

# FOX RIG CO.

**RIG CONTRACTORS  
BUILD GOOD RIGS**

CALL US AT 210

FOR HEAVY TIMBERS

BOLTS AND OTHER RIG SUPPLIES

# WE WELD

Broken Cylinders and many other parts of Automobile, Gas Engines, Pumps and etc. with

## "ELECTRIC ARC"

Without Disassembling

Latest and best machinery made for Reconditioning gasoline motors.

Expert Mechanics in every department

**Jones Everett Machine Company**

PAMPA,

TEXAS

PIPE THREADING, Heavy Forging and General Machine Work, Fishing Tools, Supplies, and Etc.

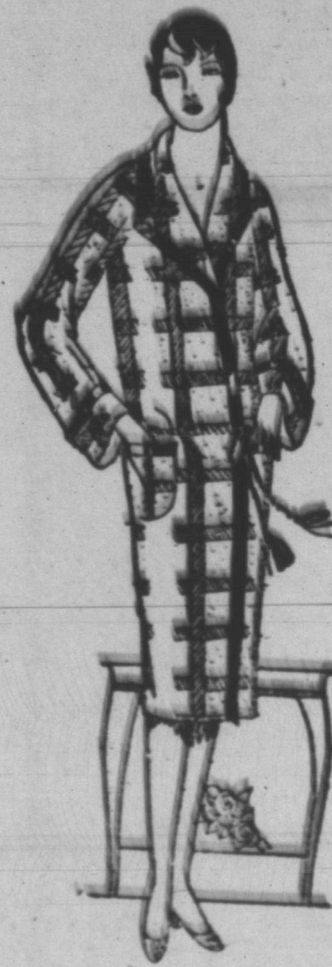


# Spring

Is Just around the Corner

Each day brings additional shipments of—

Newest Spring Coats  
Novelty Spring Suits  
Modish Spring Dresses  
And Advance Styles in  
Springtime Millinery



# Super Values!

In all Men's Lumber Jacks, Leather Coats, Jackets and Sweaters—For a limited time only, at a reduction of 25 percent.

Men's dress overcoats in newest styles and patterns at substantial reductions.

**J. E. Murfee & Co.**  
Outfitters to the Whole Family