

ADVERTISE IN THE NEWS
AND REACH HUNDREDS
OF PAMPA FAMILIES

THE PAMPA NEWS

SUBSCRIBE FOR THE
NEWS AND BE INFORMED
ON ALL LATE OIL NEWS

VOL. 20, NO. 62.

PAMPA, GRAY COUNTY, TEXAS, TUESDAY, FEBRUARY 22, 1927

Price, Five Cents

COMMISSION PLAN IS DEFEATED

PAMPA HOSPITAL, UNDER LEASE, IS TO COST \$60,000

MRS. B. BARKER SIGNS PAPERS FOR 2 YEARS

Now is Manager of
Garland's at
Panhandle

KNOWN AS NURSE
OF GREAT ABILITY

Remaining stock of
Corporation to Be
Sold Soon

With the election of temporary officers and leasing of the Pampa Hospital Inc. for two years, the institution's opening and operation upon after completion of the building is assured.

A two-year lease has been signed by Mr. B. Barker, now manager of the Panhandle hospital, at a figure which will yield a good income.

Officers were elected Saturday evening as follows: Dr. W. Purviance, president; Dr. A. Cole, vice-president and treasurer; M. A. Turner, secretary, and H. B. Lovitt, director. This election was held to satisfy state requirements in connection with incorporation. Another election of stockholders, will be held when the stock is completely sold.

It was decided at the meeting to issue \$60,000 in stock instead of \$40,000. About \$25,000 worth of stock had already been subscribed. The hospital will be one of the best in West Texas and will draw patronage over a very wide area.

Mrs. Barker is a nurse and executive with unusual experience and attainments. She is a graduate of the Wisconsin Training School for nurses in Milwaukee and a registered nurse under Nebraska laws. At one time she was superintendent of the state hospital at Lincoln, Nebraska. Her special work in bacteriology and nursing fit her for every kind of activity demanded in modern hospitals.

In 1914 Mrs. Barker was private nurse and secretary to Sarah Bernhardt and was in Paris when the war broke out. She also assisted the physician to the King of England on a number of occasions. This work led her to her beginning a long service under the British flag during the war. She was in Paris when the war closed.

Having a special interest in work among children, Mrs. Barker in Virginia organized health campaigns and had so much success that she was called to Washington, D. C., where she had charge of nutrition classes in public welfare work and often was called upon to speak to teachers and association meetings. In recent years she has assisted several other physicians in many difficult cases.

Mrs. Barker came to Texas last July and took over the management of Garland's hospital at Panhandle. On account of the needs and opportunities in Pampa, she is coming here, and will transfer part of her Panhandle staff, including two graduate nurses, from the University of Chicago.

It is planned to rush construction on the Pampa hospital, in order that it may be opened soon after April 15. Orders for exceptionally good equipment were prepared yesterday.

BENJAMIN SAWYER AND KISER WILL ALTER SOCIETY

Benjamin Sawyer and Mrs. K. Kiser and the members of the society met at the home of Mrs. Kiser last evening.

Brief discussion of business matters was held. Refreshments were served at the close of the afternoon. The next meeting will be held at the home of Mrs. F. J. McNamee, Tuesday, March 1 at 2:30 p. m.

MASS MEETING CALLED TUESDAY

A mass meeting for Tuesday evening at the high school auditorium was announced at local churches Sunday.

It was explained that the meeting was for the entire community, and that matters of law enforcement would be discussed. Ministers of the city called the session following discussions with members. Churchmen expressed their desire to help officers in keeping Pampa free of crime. It is agreed that the city is widely known for its obedience to law, but the meeting was called to reaffirm the intention to maintain order despite any influx of people this spring.

Two Oil Men Burned When a Well Explodes

Paul Jones and H. B. Brian, oil field workmen, were severely burned about 7 o'clock Saturday night when the Worley number 7 well of the Gulf company exploded. The men are at an emergency hospital at the Texan hotel, where they are under the care of a special nurse.

Jones, who is a driller, was sitting in the tool house and Brian, tool dresser, was just entering the tool house when the explosion occurred. They had just pulled the swab out of the well a few minutes before the escaping gas exploded. The cause of the explosion has not yet been determined.

The interior of the derrick burst into flames and the men had to pass through the derrick to get to the open. The face and hands of each man were severely burned.

Fire was extinguished by other workmen by the use of steam and water. The machinery and buildings were only slightly damaged. The derrick is constructed of steel.

The well, which is in the south Pampa pool, came in about a week ago and was making 120 barrels of oil and considerable gas when the explosion occurred.

PANHANDLE BABY IS BURNED IN ITS BED

Garland May Whitley, 3-month-old baby of Mr. and Mrs. J. M. May of Panhandle, was burned to death Sunday when its bed caught on fire from an explosion of gas which escaped by an older sister in changing a dress.

The older sister, Helen, was severely burned in trying to rescue the infant.

Double Track To Extend From Canyon to Pampa in Big Santa Fe Program

GAS FRANCHISE GIVEN TULSA

Rate Slides From 50
to 8 Cents in the
Be Good One

A franchise to lay gas pipes in the city of Pampa and to the gas field was granted to Dr. Fred Boso, of Tulsa, at a meeting of the city council last night. The franchise states that at least four miles of gas lines must be installed within the next six months; otherwise the franchise will become void.

The gas is to be sold to the consumers at a standard rate of 50 cents per 1,000 cubic feet for minimum amounts. A sliding scale charge reduces the rate to as low as 8 cents per 1,000 cubic feet on large quantities of gas.

A clause in the franchise states that the franchise will become void in case it is sold to the company now selling gas in Pampa.

Dr. Boso and his attorneys and engineer appeared before the council and submitted the proposed franchise. The franchise was partially revised and passed upon by members of the council.

H. J. Lippold, councilman from the first ward, submitted his resignation to the council last night, but it was not accepted. It was tabled until the next meeting night when it will be brought up for action.

Mrs. Theo Tipps and two children returned from Cleburne yesterday, where they were called by the sickness and death of their mother and grandmother, Mrs. M. C. Patrick. She had been ill for some time with pneumonia.

SHOE DEPARTMENT IS UNDER NEW MANAGEMENT

The Gordon Stores company has taken over the shoe department in their store here and have a buyer sitting the eastern market now purchasing a complete line of shoes for the department, which will be under the personal supervision of Abe Hockstein.

The shoe department was formerly operated by William Martin. He has moved to Amarillo.

To Start Soon on Million-Dollar Project

Extension to Pampa of the double track now under construction between Panhandle and Canyon was announced yesterday by F. A. Lehman, vice-president and general manager of the Santa Fe railroad.

Work on the Panhandle-Pampa project, to cost about a million dollars, will commence soon. Heavy oil traffic between the Pampa field and the Sweetwater division of the Santa Fe, which branches off at Canyon, accounts for the expenditure of \$3,000,000 to build the double track.

The announcement is taken here as a fore-runner of announcements of big industries for Pampa, probably refineries to be located between this city and Kingsmill. Heavy traffic over a period of years will be necessary to make the double-tracking profitable, it is pointed out.

The extra track out of the rapidly growing Pampa field will give oil companies fast service and clear the main line for adequate freight and passenger business, in addition to oil traffic. The Santa Fe is building for permanency, using 110-pound rails and rock ballast and the latest signal systems.

The Panhandle-Canyon track has been under construction for several months and more than 15 miles has been put into use. A costly bridge has been built north of Canyon where the track crosses the Red river. The first contract will likely be completed by June 1, and part of the Panhandle-Pampa extension may be in use soon thereafter.

The Santa Fe is also considering yard improvements here, including the sodding of the station grounds and planting of grass and shrubs.

PRESBYTERIAN AUXILIARY HAS A MISSION STUDY

The Women's Auxiliary of the Presbyterian church met Wednesday afternoon with Mrs. Fisher for Bible study, which was conducted by Mrs. T. D. Hobart. Mrs. John Andrews presided over the business session.

Later a special hour was enjoyed and delicious refreshments were served to 25 persons. The auxiliary will meet March 2 with Mrs. Hobart for mission study.

OIL WORKER BADLY HURT

William Little Has
Wounds Not Yet
Explained

William Little is at the emergency hospital here in a critical condition as the result of injuries received Saturday afternoon in the oil field south of Pampa. His scalp was cut from the center of his forehead to the back of his head and one of his thumbs was torn from his hand.

No one was near Little at the time of the accident, but it is believed a steam valve blew off and that the valve cap struck the man. Little was rushed to the hospital here, where his wounds were dressed. A report this morning stated that he had a chance to recover.

He is employed by McMillan, Smith and McDonald, rig contractors. He has been dead since the time of the accident and a clear explanation of how he was hurt has not yet been obtained. He is under the care of a special nurse now.

John Haggard to Build 56-Room Apartment House

Construction work on a 56-room apartment house one block west of the L. C. McMarty place will be started the first of next week. The building, which is being built by John Haggard, will be constructed of brick and tile.

Sixteen apartments will be included, 8 of which will contain two rooms and bath, and 8 will include three rooms and bath. The building will be modern throughout.

The outside dimensions of the house will be 55x100 feet. It will be completed within the next 60 days, providing the weather is normal.

Haggard recently completed the building now occupied by the C-G Motor and Accessories corporat on.

CITY ISSUE IS DECIDED BY 13 VOTE MARGIN

Only 313 Ballots Cast
By Whole of
Pampa

SECOND ELECTION
SOON PREDICTED

State Ruling Limits
Franchise to a
Small Group

Pampa, with a population approaching 10,000, Saturday cast 313 votes to defeat the proposed city commission plan of government by a 13 vote majority. The mayor-council plan is now in use.

The final vote stood 161 "against commission" and 148 "for commission." Fewer people voted than had been expected. At noon only 50 votes had been recorded. The polls were closed at 8 p. m. A heavier vote, however, would have been registered had not a ruling by the assistant attorney-general on voters' qualifications changed the announced requirements. This telegram follows.

"Hon. J. F. Studer, county attorney, Pampa, Tex: Voter otherwise not qualified must reside in city six months immediately preceding election. GALLOWAY CALHOUN, assistant attorney-general."

This ruling is held erroneous by many local men, who say those who have been in the state one year, and in the county six months, should be qualified after 30 days residence within the city limits.

It has also been noted that two of the election officials, C. O. Husby and H. J. Lippold, city tax assessor and alderman, respectively, were not qualified to serve because of their holding offices of trust. Mr. Lippold was called in as a clerk.

It is being predicted over the city that another election petition will be presented by Mayor Reed within the next few days. The mayor has the authority to receive a petition and to order an election.

Several votes were thrown out in the commission election because check marks were used. Oklahoma style, instead of scratching out the thing not wanted. About 63 ballots in the election for commissioners were thrown out because the entire ticket was crossed out. This did not change the election result, however, since the first proposition failed to carry. J. E. Murfee and Neil McCullough received heavy majorities in that vote.

Pampa Field Extensions Anticipated

Panhandle drilling activity is continuing strong, with many new rigs going up and the tools rapidly nearing the pay in each of the centers of wildcatting. While no wells of outstanding importance have developed in a fortnight, the Pampa field has been very active in preparation for a heavy spring program.

Local supply houses report an unexpectedly great amount of rig and drilling material being used. More complete rigs are going out than even the optimist had estimated. Lumber yards and supply yards are being rushed to supply the demands.

In the vicinity of the big Prairie-McConnell well in the northwest Pampa pool scores of derricks are coming up. The trend is rapidly extending across into Gray county and likely will be clearly defined as a connection with the Wheeler county gas area by mid-summer.

Pampa, located directly between the large territory and the oil

executives, who predict this city will become the mecca for oil men who have interests in Panhandle production and distribution.

Gray county wells for the week ending February 12 averaged 78.8 barrels production, making a total of 8,138 barrels. There were 161 producing wells.

Carson county, with 71 producers, averaged 88.9 barrels for a total of 6,317. Hutchinson county's 756 wells made 115,551 barrels, an average of 154.4 barrels per well. Wheeler county had 14 wells which made 119 barrels average for a total of 1,667 barrels.

What has the marks of a good well is the Rosina Petroleum company's No. 1 8979, in the northeast corner of a 320-acre lease in section 56, block 45, H & T C survey, south Hutchinson county, of the Pampa field, with a showing of more than 1,000 feet of oil. The hole drilled at 3,950 feet and the hole is now being knocked out.

Another development in the Pampa field was the purchase of a 50 per cent interest by the Prairie Oil and Gas company in two tracts of land in the northeastern part of Carson county, from the Marland Oil company. The price was said to be \$150,000 cash and \$250,000 in oil. The tracts are near the No. 1 McConnell, in section 67, block 4.

Trading among the major oil companies is one of the features of the present time, not only in the Panhandle district, but in other Mid-Continent fields. Absorption of many small companies is expected soon.

Panhandle towns are anticipating a great influx of people in the next few weeks and continuing through early summer on account of the widespread reputation for prosperity that this territory enjoys.

Pampa, like most of the other towns, is ill-equipped to take care of the transients, but will absorb

the more substantial business without great difficulty.

The Panhandle district has been divided into two areas by the Texas railroad commission.

J. W. McDonald, oil and gas inspector, with headquarters at Pampa Chamber of Commerce rooms, has these counties: Ochiltree, Lipscomb, Roberts, Hemphill, part of Carson, Gray, Wheeler, Armstrong, Donley, Collingsworth, Briscoe, Motley, Hall, Ladson, Cottle, Crosby, Dickens, King, Garza, Kent and Stonewall.

J. T. Elliott, oil and gas inspector for the Amarillo district, reports that his counties will be Dalham, Hartley, Oldham, Deaf Smith, Farmer, Bailey, Cochran, Yoakum, Sherman, Moore, Potter, Randall, Castro, Swisher, Lamb, Hale, Hockley, Lubbock, Terry, Lynn, Hansford, Hutchinson, Randall and block 3 of I & G. N. survey in Carson county.

DOUCETTE MAKES TWO OIL TEST LOCATIONS

A. H. Doucette made the following oil test locations this week:

J. C. Neudigate, in section 52, block 25, in the northeast corner of the southeast quarter, of Gray. The Nunn-Stubblefield oil company, in the southwest corner of the northeast quarter of section 5, block 3 of the 182N survey, in Carson county.

LIONS CLUB WILL BE ORGANIZED THIS WEEK

Following the visit today of R. B. Magee, of Electra, deputy district governor of Lions International, a group of local business men are taking steps to complete organization of a Lions club in Pampa. The club locally will start with a charter membership of fifteen.

AMARILLO ROTARY COMING

Ross D. Rogers and Rale F. Parcells of the Amarillo Rotary club, will meet with the members of the Pampa Rotary club at a 1 o'clock luncheon at the Schneider Hotel tomorrow. The men will make short talks to the club.

Not Cheap to Try to Beat License Law

Several more persons have been arrested during the past few days for operating cars and trucks without displaying 1927 license plates. A few persons have been arrested for operating vehicles with only one license tag.

One truck owner was fined yesterday for using license tags of the same number on two trucks.

"Splitting license tags is a serious offense," says Sheriff E. S. Graves. "It will be much cheaper for persons to buy license plates for each of their cars and trucks instead of buying one set of plates and splitting them."

A few persons have paid for tags by check and the checks have been returned marked "no funds." Some of the checks have been taken up, but three are still being held at the office of the sheriff. The persons who gave the "bad" checks are being sought now.

About 20 persons have been arrested during the past three days and charged with gambling or drunkenness. Most of them were released after they paid fines. The others are being held in jail.

A few persons who have been arrested and charged with operating cars or trucks with but one license plate state that they lost one of the tags. Duplicate tags can be obtained at Letors for \$1 each, according to Graves.

The duplicate tags must be obtained at once in order to avoid arrest, he says.

THE STATE OF TEXAS COUNTY OF GRAY

Notice is hereby given that by virtue of an execution issued out of the Justice court of Precinct No. 2, Gray county, Texas, on the 14th day of February, 1927, by Justice of the Peace on the case of Leo Banks vs. W. H. Patton, being No. 588 on the docket of said court, and to me, as Sheriff of Gray county, Texas, directed and delivered, I will proceed to sell, within the hours prescribed by law, to wit: between 10 o'clock a. m. and 4 o'clock p. m., on the 5th day of March, A. D. 1927, at Garland Frasher farm near Kingsmill, about 6 1-2 miles west of Pampa, Texas, in the county of Gray and state of Texas, the following described property to wit:

Two brown mare mules 15 1-2 hands high, weight about 1000 lbs. each:

One black horse, 4 years old, no brand, 15 hands high, weight 1000 lbs.:

Two horse mules, light bay and brown, 15 1-2 hands high, weight 900 lbs each:

One yellow mare mule, 16 1-2 hands high, no brands, nine years old, weight 1000 lbs;

Two black mare mules, 9 years old, 15 1-2 hands high, weight

Second Explosion at Borger Blows Man Into Bits

In the second explosion of the week, Homer Russel of Amarillo, was blown to bits yesterday afternoon at Borger.

The torpedo magazine of the Independent Torpedo company, containing glycerine, was detonated by an explosion in a truck driven by Russel.

The jar which set off the nitroglycerin has not been accounted for. A man named Davis is missing and might have been a victim of the tragedy.

A prairie fire which followed the explosion endangered other magazines of high explosives. Oil men and officers are making a thorough investigation of the two explosions.

Panhandle Plans Spring Paving

An early spring paving program involving about 22 blocks is being advocated in Panhandle, and petitions are being circulated among the property owners. This paving would make Panhandle one of the best paved little cities on the Plains.

The proposed paving is distributed between the business district and the residential section. Five blocks of additional pavement on Main street is planned.

about 1200 lbs. each:

One bay mare, nine years old, no brands, 15 1-2 hands high, weight about 1100 lbs;

One iron gray mare mule 4 years old, no brands, 16 hands high, weight about 1100 lbs;

One black mare mule 4 years old, no brands, 16 hands high, weight 1200 lbs.

Two bay mules, horse and mare mule, 6 years old, weight 900 lbs. each:

One black mare mule 6 years old, no brands, weight 1100 lbs.;

One bay mare mule, 6 years old, no brands, weight about 1100 lbs;

One gray horse, about 1350 lbs., about 15 hands high, about nine years old;

Two bay mares, 8 years old, no brands, 15 hands high, weight about 800 lbs. each, and one oil field wagon, wide tread, which said

The above described property being levied upon as the property of the defendant W. H. Patton to satisfy said judgment rendered in the above styled and numbered cause, amounting to the sum of \$232.50, with interest thereon from the 24th day of September, 1923, at the rate of 10 per cent per annum, and all costs of suit, including costs of this sale.

Given under my hand this 21st day of February, A. D. 1927.

E. S. GRAVES, Sheriff, Gray county, Texas.

Credit Man to Organize Local Merchants Soon

A representative of the state Retail Merchants' Credit association will be here Wednesday to organize a unit in Pampa. A meeting of local merchants will be held at the Chamber of Commerce rooms at 2 p. m.

The association man comes to Pampa on request. Proposed forming of an association last fall was postponed until spring, but recent developments have convinced many merchants that a credit association would be an economical arrangement and that immediate organization is desirable.

Two New Filling Stations to Sell "Pep" Gasoline

Two new filling stations, to be known as the Pampa "Pep" stations, will be opened here soon.

One will be located on West Foster avenue, and will be managed by W. A. Denny of Borger. The second station, managed by John Wraether, of Borger, will be located on the road to the south Pampa oil field, near the Wilcox addition. Both of the managers formerly lived in California.

The stations will handle straight run, high gravity Pep gasoline exclusively—a product manufactured from Panhandle crude oil at Borger. It is claimed that this gas is above the average in quality, although it sells at a price not surpassed in low cost by any other in the country, according to the managers.

The stations are owned by the Borger Gasoline company, which is planning to place a refinery either at Pampa or Kingsmill within the next few months.

The cream and blue signs of the company are distinctive.

Try Our Service Greater Pampa Realty Co

—Announces the opening of an office in the Johnson Hotel building, first door north of the Ledbette Drug company, facing Albert Square.

Lots, improved and unimproved, in all parts of Pampa, also rentals, collections, oil leases, royalties and out-of-town real estate will be handled.

Service and the best prices obtainable will be our constant aim.

List Your Properties With Us For Quick Sale Before Buying, see Us for Choice Locations and prices.

GREATER PAMPA REALTY COMPANY

J. E. STANLEY, President

Who's Who TODAY



FEB. 22ND

WASHINGTON'S BIRTHDAY HE IS GREATEST WHO SERVES MOST

For the "Father of Our Country" whose sacrifices are so willingly made and whose services so freely given—for they were given with remuneration—we hold boundless esteem and endless admiration.

The passing years have served to increase our appreciation and another anniversary gives us just another opportunity to do him honor.

FATHER WASHINGTON—OUR HEADS ARE BOWED.

"There is no Substitute For Safety"

GRAY COUNTY STATE BANK

C. L. THOMAS, President W. H. DOYLE, Cashier



COATS and FROCKS As Gay as Spring

If you are looking for a frock or coat that is very unusual—very stunning perhaps—you'll find it here in this most wonderful group of the Newer Spring Dresses and Coats. Only one or two of a kind in fashions of the higher type in taffeta, chiffon, crepe and satin in the season's most successful models for every daytime and evening occasion.

GORDON STORES COMPANY

STATE SUPERVISOR COMMENDS PAMPA SCHOOLS

DEMANDS MET DESPITE HUGE STATE GROWTH

Expansion Must Be Soon Here
 MORE ATTENTION TO ENGLISH ASKED

Inspector to Put In Request For Added Credits

Pampa high school is commended for keeping pace with recent rapid expansion, and further progress is outlined in the official report of H. F. Alves, supervisor of the state department of education, who recently made a thorough survey here.

A copy of the report has been sent to Supt. R. C. Campbell and one to the board of trustees by the state department. Better library facilities are especially urged by the department, and adequate equipment for the sciences is recommended. It is assumed that the school board will continue, with the support of the citizens, to provide sufficient housing for the new pupils. This is in line with the \$150,000 bond issue election, called for March 8, to authorize a building program.

To Recommend More Units
 The supervisor promised to recommend the granting of one and one-half more credit units, in commercial Spanish and commercial geography, respectively, and to ask that Pampa high be placed on the Southern list of accredited schools. Placing on the Southern list will obtain the highest recognition a high school can obtain, and automatically will obtain affiliation with the Northern list. If the recommendations of the state department are carried out, it is believed the classification will be granted.

Supt. R. C. Campbell received the following letter from Mary Jo Foppewell, chief supervisor of high schools:

I take pleasure in enclosing the official report of the supervisor who recently visited your high school. A copy of this report is also sent to the president of the school board for information. As this report

is official, it should be filed for future reference.

"The department of education is very anxious to render real, constructive service to the high schools and any requests or suggestions from teachers or school officials will receive very careful consideration."

The supervisor's report is substantially as follows:

The Pampa schools have seen an unusual growth since last session, during which time the enrollment has increased from about 600 to 1,500, and the teaching force from 21 to 40.

Housing facilities have been met temporarily by the erection of several two-room buildings on the grounds, until a program for modern school buildings can be properly planned and carried out. The school authorities are to be congratulated for the constant effort that has been put forth to provide even the temporary but good housing facilities and equipment.

In order to secure the best possible work, it is urgently recommended that the following receive serious consideration and immediate attention:

Separate inventories of the apparatus for each science should be prepared, checked against lists in bulletin 183, and deficiencies supplied. Invoices of apparatus purchased along with copies of the inventories are to be sent to the high school division not later than April 1, 1927. A set of relief maps is to be included. Inventories and duplicate invoices of laboratory equipment, as well as library and other equipment, should be available at all times. With apparent increase in enrollment for the near future, an expenditure of at least \$1,500 to \$2,000 will be necessary to provide adequate laboratory equipment next year for the sciences.

"Need a Librarian"

The library should be inventoried and the pressing needs at this time should be supplied. The teachers of the several departments should assist in carefully selecting books to be added in order that adequate reference and reading material be provided. Serious consideration should be given to the employment of a full-time, trained librarian beginning next year. This should be real economy in a system as large as Pampa's.

An appropriation of from \$750 to \$1,000 should be provided for additions for next year, and a yearly appropriation for renewals and additions should be allowed in the annual budget.

Additional teachers are recommended for the grades, with increased library facilities as provided in state requirements.

As soon as possible, adequate storage should be provided for the care of free textbooks. At the present time, only a very small room is available.

It is suggested that an inspection of textbooks be made at regular intervals, in order that these books may be kept covered.

Better English Desired
 It is advisable that the teachers in all departments cooperate effectively in securing proper spoken and written English. This cooperation should be in the form of a continuous nine-months campaign.

The school and authorities are commended for the following items denoting progress:

The erection of frame buildings to care for the increased enrollment.

The addition of sixteen grade teachers and three high school teachers.

Purchase of two additional trucks making a total of eight trucks for use in transporting children living at

a distance.

One hundred and seventy-five dollars has been spent for additions to the grade libraries.

Science department additions costing \$150 have been purchased.

For maps, charts, and similar equipment, \$275 has been spent.

About \$200 worth of playground equipment has been obtained.

Election is Noted

A 20 per cent increase has been voted and a bond issue for additional buildings will be submitted in an early election. As there has

been an increase in enrollment, so has there been a proportionate increase in assessed valuations as a source of local revenue.

The schools are further commended for the generally good attitude of teachers and pupils toward their work.

The supervisor sincerely appreciates the courtesies extended to him during his official visit to the schools.

Fred A. Hobart, of Canadian, has been here on business several days.

Social Meeting Of C. of C. To Agreement

The postponed social meeting of the Chamber of Commerce will be held Thursday evening at 8 o'clock.

An unusually fine program, to last more than an hour and a half, has been arranged.

The cold wave and snow prevented the holding of this meeting last Thursday. The business session to have been next Thursday has been moved forward one week.

COOKING A MEAL IS EASY



With plenty of Vegetables to serve, the preparation of a meal is comparatively easy. It is likewise easy to have plenty of vegetables on hand, if you will PHONE US YOUR PREFERENCES.

WOODWARD-LANE GROCERY

PHONE NO. 30

Rex Theatre

WEDNESDAY FEB. 23
 THOMAS MEIGHAN

"THE CANADIAN"

Thomas has never made anything so good. Remember, it is here for one day only.

THURSDAY, FEB. 24
 "THE MILLIONAIRE"

with
 GEORGE SIDNEY and LOUISE FAZENDA
 This will make you laugh.

FRIDAY, FEB. 25
 "LOVE 'EM AND LEAVE 'EM"

Hot Dog! Here is the picture. It's the one you will want your Wife, Sweetheart, Mother and Father to see.

SATURDAY, FEB. 26
 HOOT GIBSON

in
 "THE SILENT RIDER"
 You know what Hoot is, so why go farther.

AT THE CRESCENT THEATRE

TUESDAY
 "SILENCE"

with
 VERA REYNOLDS, H. B. WARNER
 and all-Star cast
 featuring

WEDNESDAY
 "LENA RIVERS"

Featuring
 EARL WILLIAMS and
 GLADYS HULETTE

THURSDAY
 AILEEN PRINGLE
 and CHESTER CONKLIN

in
 "THE WILDERNESS WOMAN"

VAUDEVILLE

TONIGHT—ALL THIS WEEK

Tom Lewis

AND HIS

"FLASHES"

13

PEOPLE

13

In a Repertoire of New
MUSICAL COMEDY HITS
 CLEVER SINGERS, DANCERS, COMEDIANS
 PRETTY GIRLS

A GUARANTEED SHOW WITH COMPLETE CHANGE OF VAUDEVILLE AND PICTURES DAILY

ADDED FEATURES

WEDNESDAY—AMATEUR CONTEST
 Night, 8 p. m.—3 Cash Prizes

SATURDAY NIGHT 11 p. m. MIDNIGHT RAMBLE

FRIDAY NIGHT "SCHOOL DAYS" A RIOT OF FUN

We are now featuring a 7-Piece Orchestra playing pictures perfectly.

Grand Theatre



Safe or Sorry

There are no cut prices to health. The best is none too good. So, when you buy cheap plumbing fixtures, and think you are saving money, you are really losing money. What's worse, you are making your home a breeder of disease.

The only kind of plumbing worth having is the best. Anything else is dead loss.

When you buy "Seconds," "reworked," "defective" plumbing goods, you buy trouble, sickness, death.

A crack in a home for disease germs. A leaky pipe leaks away health.

Quality plumbing—quality material—workmanship—the guaranteed.

WINNER PLUMBING CO.
 Phone 220 PAMPA, TEX.
 Phone 388N CANYON, TEX.
 Licensed and Bonded

THE PAMPA NEWS
 Published Tuesday and Friday
 at Pampa, Texas

DAVID M. WARREN
 Publisher

W. E. LOWE
 Manager

OLIN E. HINKLE
 Editor

Office in News Building
 Phone No. 100

SUBSCRIPTION RATES
 in Texas

One Year \$2.50
 Six Months 1.50
 Three Months85

Outside Texas

One Year \$3.00
 Six Months 1.75
 Three Months90

Advertising Rates Upon Application

Entered at the Pampa, Texas
 Postoffice as Second Class Mail

GOOD SCHOOLS

The state department of education is authority for the statement that Pampa schools are keeping pace with the growth of the city. That is a fact for which the trustees and school officials and teachers should be congratulated, and of which the city as a whole should be proud.

Education is a vital matter anywhere, but is especially important in cities which are undergoing more than ordinary growth. It usually would be assumed that schools having as many new pupils as Pampa institutions have would be demoralized. We have not found it so. School men and the public in general over this section should know that Pampa's schools are good schools. The high school has 29 1-2 units of affiliation, and very soon will have 31, which is nearly the limit of worthwhile recognition.

These facts evidence the far-sightedness and resourcefulness of the trustees. Their resourcefulness marks them as an outstanding group, which truly is recognizing its responsibilities.

Further acumen is shown in the manner of voting bonds to meet the demands of the present and those which will present themselves at the opening of school next fall. The bond issue of \$150,000 will not cause taxes to be raised a penny. On the other hand, increased valuations will pay for the needs. That point should be pondered over by every citizen until he understands it. As the school needs grow, more property will be placed here, and that property will bear the burden. In other words, the man who builds a new house here will, through his taxes pay his pro rata share for the cost of sending his child to school.

There should not be a dissenting vote in the school bond election of March 8.

WHAT'S YOUR SLOGAN?

"Abilene Is a Good Town." Lots of people over the state will make the above statement in discussing the merits of various places. Do Abilene people like the expression? It is a compliment most any place would be proud of—but not so Abilene. "Abilene Is a Good CITY" is the combination which brings a smile from an Abilene resident. All over West Texas towns and cities are competing for prestige; people, industries, new farmers, publicity, conventions. West Texas is going forward.

People are speaking well of Pampa; they expect it to make a city. Big oil companies are picking Pampa as the mid-point between the Hutchinson-Carson and the Gray-Wheeler county pools. Their officials are coming here to make their homes.

Under these circumstances how could any intelligent, wide-awake West Texas, Pampa citizen have any other slogan than "FOR A GREATER PAMPA?" The prosperity of Pampa business, the stability of Gray county agriculture will depend much upon the growth and progress of the cities of this vicinity. There is not an individual or institution in this territory which should fail to gain through the growth of the towns into cities. A few people can build a town, but it takes a lot of people working together, to build a city.

Pampa is not a "boom" town. There will be no serious decline in an area as rich

in natural resources as Pampa. Let's recognize this fact and unite in efforts to make this city one of the soundest in West Texas from every standpoint—financial, educational, religious.

The News stands on these principles and proposes to help build, not knock or retard. If there is a better platform it should be "trotted out." The City of Pampa would welcome a better one, we are sure.

What's your slogan for Pampa?

WASTEFULNESS

From the kitchen to the industrial plant, experts are studying means to eliminate waste known to be costing the country millions annually. Necessity has something to do with the question, but not everything.

It is recognized that billions of dollars worth of property "goes up in smoke," but the average person does not realize that smoke itself, no matter from whence it comes, is waste. Coal smoke has enough carbon and other chemical products in it to make recovery of its constituents profitable on a large scale. Smoke some day will be eliminated very largely, not because of necessity, perhaps, but because science will make the waste unnecessary.

Gasoline engines, as expertly made as they are, likely will be scrapped within the next quarter century. The mechanical age is still tinged with crudities.

Agriculture is not yet on a scientific basis of production. Mining and timber cutting are sloppy, wasteful occupations. Conservation, however, is beginning to be practiced. Trees are now a "crop" and production is being calculated very closely.

Nature has provided this country with every sort of wealth, and will continue to do so as the people use common-sense methods and utilize natural laws.

PENALTY LOGIC

If a person negligently and carelessly collides with one's automobile, breaks a plate glass window, or alienates the affections of a life-partner, the law provides a penalty and

damages may be recovered in some cases. But similar carelessness which results in a fire that ultimately spreads to another's property is not considered by the law-makers, with the exception of those in Indiana.

In Indiana a property owner may be held liable for damage done by fire to another's property, provided this damage was occasioned by failure to comply with an order of the state fire marshal. It is important to know that the state fire marshal issues orders for removal of fire hazards and includes enforcement of regulations pertaining to storage, use, manufacture, sale, handling, and transportation of combustible material.

There are many examples of fire risks which cannot be avoided because owners of adjacent property, resident or non-resident, disregard all precautions. It appears reasonable that a careless property owner should be held liable for spread of fires arising wholly from his own negligence.

PRESS FORUM

Will H. Mayes, who writes an editorial review of the state every week, is broadcasting a series of optimism which perhaps are justified, but with reservations. Writing on the cotton situation, he recently minimized the effect of the broken market. It is true that some of these farmers have in absence of poultry, cows, or hogs, fallen back upon the chattel mortgage to span the financial crisis. If these profits by the experience, well and good; if not, the lesson will be repeated. But as Mayes says:

"Despite the low price of cotton, Texas is unusually prosperous, for even the cotton has brought more money into circulation than usual because of the large acreage production. The money spent for labor in growing, picking, ginning, selling and shipping has far exceeded that of any former year, and growers are the only persons who have suffered any loss.

"The winter to this time has generally been mild, and winter-grown products have escaped frost injury; rains have been abundant; the grass range is fine, cattle, sheep and goats are in the pink of con-

dition; poultry yards are enriching their owners; dairying is increasing; pecan trees and fruits have yielded abundant fruitage; pantries are filled; the state government is in safe hands. Let us rejoice."

Editor Haynes of the Miami Chief some time ago wished the Pampa News success as a semi-weekly, and this newspaper has prospered ever since. Therefore the News reads with satisfaction this further good wish for its journey as a daily:

"The Chief has been looking for the appearance of the first issue of the Pampa Daily News, but as yet the baby daily of the Nunn-Warren publications has failed to put in an appearance. Announcement to the effect that it would be issued some ten days hence was retarded by the recent cold snap, which hindered enlargement of the building to house the additional equipment. The Chief will watch with interest the Pampa Daily, our next-door neighbor, and its success is assured from its infancy until it obtains a ripe old age. Here's success to the Pampa Daily News."

NEWS WANT ADS PAY

INSURANCE—BONDS—LOANS
FRASER & UPTON
 "The HOME Agents"
 Sharp-Reynolds Bldg.
 Phone 272

SCHNEIDER'S
Commercial
Hotel
 PAMPA - TEXAS
 A First-Class Hotel
 CUISINE A-1—GOOD ROOMS

Progress is a question of vital public issues, not of the private ambitions of men, in the opinion of the Claude News.

Nature is wonderful, but she has a way of accidentally seeming to prove a lot of fallacies about her ways.

Item: Fires destroy annually in Texas more than half as much property as there is added in new buildings during the year.

Students of Amherst College have started a campaign against compulsory church attendance.

News Want Ads Pay

News Want Ads Pay

REAL ESTATE. FARM LOANS. LEASES AND ROYALTIES

List your city property with me. I have calls for residence property, large tracts of land and exchanges for farms.

Good connections with the United States.

F. P. REID & CO.
 Office, Gray County Bank Bldg.

A BIG Windstorm

—could do much damage to your property. Secure adequate protection by **TORNADO INSURANCE**. Plate glass windows should be protected from any break with **PLATE GLASS INSURANCE**.

Don't forget that we write all other forms of Insurance, including fire on **RIGS** and **DERRICKS**.

FRASER AND UPTON
INSURANCE—BONDS—LOANS
 "Reliable Old Line Stock Companies"

A Finer
DODGE BROTHERS
MOTOR CAR

New in Beauty, Comfort and Performance
—Still more Dependable

Now ready for your inspection and personal test—a finer Dodge Brothers Motor Car than ever before, due to many new and vitally important improvements. So important, in fact, that only a personal inspection will give you an adequate idea of what further engineering advances and greater production have accomplished in extra values. Read this partial list of the latest improvements and then investigate:

- A New Clutch—Simple, Prompt, Sure and Silent.
- Softer Pedal Action
- Easier Gear Shifting
- New Body Lines—as smart and graceful as any on the boulevards
- New Color Combinations of Striking Beauty
- Still Sturdier Bodies
- Seats Re-designed for greater comfort
- New Silent-Type Muffler
- Improved Universal Joint, Propeller Shaft, Differential and Axle Shaft—creating greater sturdiness and resistance to wear
- And Many Other Smart New Refinements of Detail.

Remember, too, that all these are in addition to many important improvements recently announced, including the five-bearing crank shaft and the two-unit starting, lighting and ignition system that inspired owners to new expressions of enthusiasm and satisfaction.

Look at these big roomy cars and you will realize that it is not possible to invest more wisely in dependable transportation.

- TOURING CAR \$930.00
- COUPE \$985.00
- SPECIAL SEDAN \$1130.00

DELIVERED IN PAMPA
COBB MOTOR COMPANY

We Also Sell Dependable Used Cars

9142
The First National Bank
 Pampa, Texas

**Better Secure a Safety
 Deposit Box Now for Your
 Valuable Papers**

B. E. FINLEY
 President

DE LEA VICARS
 Cashier

WE NOW HAVE
A Modern Plant

and can give

**ONE DAY ODORLESS CLEANING
 SERVICE**

PHONE 261

WE CALL FOR AND DELIVER

SOUTH SIDE TAILORS

BOISE CITY

"The TULSA of the PANHANDLE"

OIL EXTRA

When the casinghead was removed Saturday from the top of the casing in the Ramsey's No. 1 State, in the northwest of the northeast of 27-5n, 5e, following the building and equipping of a new derrick to replace the one burned down February 5, the oil that filled the hole began to slop over. Reports from Boise City say that the drillers were experiencing difficulty in replacing the cap.

Nelson K. Moody, President Prairie Oil & Gas company:

"This will be the world's greatest oil field." Clyde H. Alexander, vice president Phillips Petroleum company: "Present development of the field extend over a general area of approximately 140 square miles—8,200 wells to be drilled in the area."

PRE-OPENING ANNOUNCEMENT INDUSTRIAL ADDITION

Boise City is the county seat of Cimarron county, Oklahoma, and is the nearest railroad center to the Great Ramsey Discovery well that opened the wildest oil boom that ever struck the country.

The whole oil world is going wild over the wildest wildcat that ever set 'em wild in Boise City.

Wilder than old Beaumont, Ranger, Desdemonia, Mexia, Smackover and El Dorado, all rolled into one.

Wilder than Borger, Panhandle, Pampa, Wilcox, Roxana, Skelly, Phillips, Stinnett, Sanford and Shamrock and the whole Texas Panhandle.

Boise City, so say the oil field boomers of many years' experience in many, many camps of the past in many states, is bound to enjoy the greatest oil boom in history.

Over 6,000 outsiders visited the Ramsey well on the first Sunday after the sensational news "leaked out" that a commercial producer had been opened up ten miles north of Boise City.

Thousands have been pouring into Boise City ever since, buying lots in Boise City, setting up new business in every line, starting new business blocks, hotels, rooming houses, garages, stores, etc., spreading out into the huge surrounding trade territory all over Cimarron county in the rich Oklahoma Panhandle.

BIG PROFITS ARE GOING TO BE MADE HERE

Lots that sold in Ranger, Texas, for \$150, resold later at \$8,000.

Lots that sold in Seminole at \$500, resold in 6 months for \$5,000.

Lots that sold in McCamey at \$200, are now selling \$3,000 to \$5,000.

Lots that sold in Borger for \$750, resold for \$10,000. Now is the time to get in on the ground floor at these pre-opening prices.

HURRY! HURRY!! HURRRY!!!

Prices for these wonderful Hotel, Apartment, residence, business and industrial sites, only—

\$150.00 Upward

Including all oil and gas rights. Warranty deed and certificate of title. Make your reservations now before the 20 per cent advance in price which will be announced at the—

GRAND OPENING
STEVE C. PAUL, Developer

Industrial Addition Has

—High and graded schools—railroad and depot adjoining—Facing one of the main business streets—Only a few steps from square and court house—A new \$100,000 high school to be built immediately adjoining the property.

ALL LOTS LEVEL AND STAKED

STREETS GRADED AND ROLLED

PAMPA OFFICE

ADAMS HOTEL

NEW HISTORICAL SOCIETY HEAD WRITES OF PLAINS

T. D. HOBART IS HONORED BY PIONEER GROUP

Prominent Men at Annual Meeting in Canyon

MORE FUNDS IS NEED OF GROUP

Museum Is One of Best in Plains Area

T. D. Hobart, Pampa cattleman, was elected president of the Panhandle-Plains Historical society at the annual meeting of the organization in Canyon Friday evening, in recognition of his interest in and contributions to the society.

Mr. Hobart read a paper concerning the historical spots in the Panhandle which should be marked, and with J. E. Hill of Amarillo, and Mrs. Olive K. Dixon of Miami, was placed on a committee to arrange for the placing of the Buffalo Wallow monument in Hemphill county September 12, commemorating the fifty-third anniversary of a battle with the Indians.

Other officers named by the society are Judge L. Gough of Amarillo, first vice-president; Dr. J. A. Hill, second vice-president; Mrs. T. V. Reeves, secretary; Miss Edna Graham, treasurer; and J. Evetts Haley, field manager. Judge Gough and Mrs. Dixon were made directors.

The society of which Mr. Hobart is now the head, has assembled one of the largest collections of relics and historical material in the Southwest. Many cases of exhibits are displayed in the halls of the West Texas State Teachers college building, and special rooms will soon be provided for the collection. During the past year 900 specimens, 1,500 papers and 140,000 words in interviews with oldtimers have been obtained for the society, largely through the efforts of J. Evetts Haley, field representative.

Many outstanding pioneers of the Plains were in Canyon Friday evening for the annual meeting. Among the speakers were Judge H. E. Hoover, of Canadian; Dr. R. Thomson of Amarillo; Col. A. P. Duggan, president of the West Texas Chamber of Commerce; Judge Thomas F. Turner of Amarillo; President J. A. Hill of the Teachers college; Judge Henry S. Bishop of Amarillo; Judge O. H. Nelson of Comero; Miss Laura V. Hamner of Amarillo; G. A. F. Parker of Hereford and Mrs. Dixon.

The most serious problem the Historical society faces is that of financing work which must be done now or much valuable data will perish, Mr. Hobart said on his return here. It is hoped that a few of the interested pioneers who can do so will endow the society with sufficient funds to carry on the work. A building to house the relics and material is greatly needed. The material is being used in historical work, and students from Texas University and other schools will make much use of it in the future.

Mr. Hobart commended the work of the Teachers college faculty in furthering the historical work and providing much of the funds being used.

His talk on historical places in the Panhandle follows:

I have been requested to prepare a paper on historic places in the Panhandle of Texas and will refer briefly to a few of the more important ones that have been called to my attention.

Conflicts With Indians

Under this head I would refer first to the battle at Adobe Walls in Hutchinson county in November 1854, between the troops under Kit Carson and the Kiowas and the Comanches. I understand that the little knoll or hill where Carson placed his artillery in the desperate stand that he made against great odds can probably be identified. As far as I have been able to determine, Mr. Charles Goodnight is the only one of the old pioneers who knew about this battle. He was out on a scout with Texas Rangers at the same time.

The battle between the buffalo hunters and Indians at Adobe Walls in June, of 1874, has been suitably commemorated and the site has been suitably marked by our society. The battle field on or near the North Fork of Red River in Gray county where an encounter took place between the troops under General McKenzie and the Indians in 1872

can probably be identified.

The site of what is generally known as the Buffalo Wallow fight with the Indians in what is now Hemphill county, September 12th, 1874, where William Dixon and Amos Chapman with four enlisted men from General Miles' troops had a most desperate encounter, has probably been located and steps have been taken to have it suitably marked.

At the same time that the Buffalo Wallow fight was in progress a desperate encounter was taking place a few miles to the northward where General Miles' supply train was rounded up by the Indians. The teamsters and escort, greatly outnumbered, were cut off from water for about three days. I have visited that place. It is easily identified and should be properly marked.

In 1874 an engagement took place between the troops under General Miles and the Indians, in what is now the J. A. Ranch in Armstrong county, and the same year there was a battle between the troops under General McKenzie and the Indians and two days later he fought another battle with them in Blanco Canyon. There he captured the Indian ponies and brought them back to his camp on Tule creek, a few miles from where he fought the battle. He killed some 1400 of the horses. I think that all of these places can be located.

Fort Elliott was established in 1875 and abandoned in the fall of 1890. It is proposed to suitably mark the location of this fort.

On my ranch in Hemphill county a few hundred yards from the home of my son, is a place where a part of General Miles' troops camped during the winter of 1874-75. It was at this camp that the two little German children were kept for some time after their recapture from the Indians in what is now Gray county. The signs of this camp are plainly visible.

Early Expeditions Old Trail

The ill-fated Santa Fe expedition that set out from Austin to Santa Fe (I think it was in 1842) apparently crossed the Tule and Palo Duro canyons. However, I do not know of any trace of the passing of this expedition.

Gregg in his "Commerce of the Prairies," describes his expeditions across the Panhandle on one of which he gave names to various streams entering the Canadian river. Names that are entirely different from the names by which we now know them. For instance, Red Deer creek he named Dry River, a very appropriate name.

The government expedition under Lieutenant Albert, in 1845 crossed the Panhandle from Colorado south east on through Indian territory. I am not aware of any trace of either Gregg's tours or of the expedition.

In 1849 Captain Marcy laid out the south Santa Fe trail from Fort Smith, Arkansas, to Santa Fe, N. M., across the Panhandle, and escorted a train of emigrants on their way to the newly discovered gold fields of California. On this expedition it is probable that the first white children to be born in the Panhandle made their appearance, the time being June 8, 1849, when a pair of twin boys were born on White Deer creek in Hutchinson county. Many years ago I discovered traces of the Santa Fe trail south of the divide between the Canadian and Ouchita rivers in Hemphill county. It also crosses the northwest corner of what is known as the Dixon creek pasture in Hutchinson county.

In 1852 Captains Marcy and McClellan ...wards the general of the civil war) with a detachment of troops explored Red river and many of its tributaries. They buried a bottle, containing a record of the expedition, under a tree at their upper camp on north fork of Red river south of the present city of Pampa. I do not know of any present trail of this expedition.

Later, trails like the Jones and Plummer trails from Mobeetie and Fort Elliott to Dodge City, the Fort Elliott and Fort Supply trail, the old stage road from Mobeetie to Tascosa, and from the former place to Old Clarendon and Wichita Falls can easily be identified.

It will doubtless occur to some of those present that I have overlooked many items of interest. However, if what I have said shall be the means of causing others to bring to the attention of our society important places whose memory should be preserved, a step forward will have been gained.

We who are still familiar with these historic places owe it to those who come after us to perpetuate their memory by seeing that they are properly marked.

Cyrus H. K. Curtis, Philadelphia publisher recently donated \$100,000 to Temple University.

MEN hurry home before the approaching storm; When day turns dark, they think of hearths and fires, Some bed to lie in, and a house to warm— When day turns dark these are the heart's desires. When that hour comes, when rolling clouds arise, When men go hurrying homeward ways, Home will not fall like manna from the skies— They must have built it in their better days.

No clap of hand will raise a fairy house, No shelter open by some magic deed; To have a roof when winter winds arouse A man must build in time of little need. The fool will say, "I'll build a house in time, But now the summer blossoms everywhere," But who would have a house to which to climb Must build it in the days when days are fair.

So folly thinks of faith. When all is well Why heed the solemn summons of the church? "When I have sorrow, I have woe to tell, Then for her consolation I shall search." But faith is builded as all shelters are, And who would pray must also learn to praise. A faith to hide us when the tempests roar We must have builded in our better days.

NEWS WANT ADS PAY

Precocious Children

Dante wrote a sonnet to his Beatrice at nine years; Tasso wrote poetry at ten, and Pascal was a profound thinker at the age of thirteen. Jonathan Edwards was famous at twelve. Goethe wrote a story in seven languages when he was ten; Voltaire was busy as a writer at thirteen, and Calderon was writing poetry at the same age.

Victor Hugo composed "Istamene" at fifteen, and by the time he was twenty had published four of his volumes. Pope wrote his ode to "Solitude" at twelve, and his "Pastorals" four years later. Moore translated "Anacron" at thirteen, and Byron was already writing verses at twelve, and by the time he was eighteen years of age he had published his "Hours of Idleness."

Easy to Fix Clock

A commercial traveler staying at a small hotel wished to catch an early morning train, and asked the proprietress for the loan of an alarm clock.

She produced the clock and remarked: "We don't often use it, sir, and sometimes it sticks a bit, but if I doesn't go off just touch the little hammer and it'll ring all right."—London Tit-Bits.

Alcohol in the Seas

The ancient seas were huge alcohol wells. The primeval ocean, with its huge masses of sugar-containing seaweed, was a fermentation vat. So says a Berlin scientist, Professor Lindner. These immense alcoholic seas stimulated delicate forms of early life, he explains, and adds that the plants today which produce sugar later to be converted into alcohol, are marked by their splendid coloration and intricate structures.

SORE GUMS NOW CURABLE

You won't be ashamed to smile again, after you use Leto's Pyorrhoea Remedy. This preparation is used and recommended by leading dentists and cannot fail to benefit you. Druggist returns money if it fails. H. & K. Drug Co. 1-11-c

NEWS WANT ADS PAY

PANHANDLE OIL MAPS

Blue Printing and Surveying AMARILLO ABSTRACT CO. 108 West Fifth Street Phone 1198 AMARILLO, TEXAS

SAFE FOR ALL

It used to be that the only fellow who could safely buy used cars was the expert who could tell what he was getting and the junk dealer who didn't care. Personally, we have found it profitable to make the world safe for used car buyers—amateurs as well as experts.

COBB MOTOR CO.

A USED CAR IS ONLY AS DEPENDABLE AS THE DEALER WHO SELLS IT

SPECIAL INTRODUCTORY OFFER ON LADIES' AND MISSES'

New Spring Dresses & Coats

Our buyers are back from the Eastern markets. They got some "Hot Prices" on good merchandise. The goods are here. We're passing the savings on to our customers. Practice economy at the Diamond store.

Beautiful Silk Dresses

Priced at

\$395

\$995

\$1675

RAYON SILKS

SILK CREPES

FANCY CREPE DRESSES

Pretty styles and colors. Sizes 36 to 44.

in newest styles and colors. See them. Sizes 13 to 42

In styles and colors equal to many high-priced garments.



HANDSOME SPRING COATS

\$16.75 \$19.50 \$25.00

These Coats are Fashion's latest approved styles.

Some have fur collars—some are plain tailored effects.

Sizes 14 to 44. Come in for your Spring outfit.

CHILDREN'S AND MISSES' DRESSES

\$1.00 and \$1.39

New printed fabrics in pretty styles. Sizes 6 to 14 years.

Ladies' Silk Hose 3 Pairs for \$1.25

Men's Silk Hose Values to \$1.00 Pair 59c

36-Inch Printed Dress fabrics; best colors Yard, 29c

32-Inch Fancy Gingham, All new patterns, Yard, 15c

SPRING SLIPPERS FOR CHILDREN

Just arrived—New Styles and colors. Popular prices.



Men's and Young Men OXFORDS

Snappy Spring styles, Pair

\$3.95 to \$7.50

Local Man is Married to a New York Girl

William Otho Gatton, Jr., of Pampa, and Miss Marjorie Strong, daughter of Mr. and Mrs. James B. Strong, of New York City, were married Saturday evening in Wichita Falls at the home of the bride's aunt, Mrs. E. W. Napier.

The ceremony was performed by Rev. Allen Bash, pastor of the Christian church of Wichita Falls, in a setting of Easter lilies, roses and smilax. The bride was given in marriage by her father and was accompanied by her mother as matron of honor.

Jack Arnott of Amarillo attended the bridegroom as best man. Preceding the ceremony, Mayor R. E. Shepherd of Wichita Falls sang "I Love You Truly," and Mrs. John T. Willis, of Pampa, a cousin of the bride played the wedding march.

Among the guests were the bride's parents of New York City, the bridegroom's parents from Amarillo, Mr. and Mrs. B. W. Williams, of Vernon; Mr. and Mrs. W. B. Williams and son of Dallas, Mr. and Mrs. Patrick Allen of Ennis, Mr. and Mrs. Sayre of Amarillo, Mr. and Mrs. John Willis of Pampa, Mr. and Mrs. H. D. Lewis of Pampa, Mr. and Mrs. Eli D. Willis of Panhandle, and Elizabeth Powell and Jack Arnott of Amarillo.

After an informal reception for intimate friends and relatives of the couple was held, Mr. and Mrs. Gatton went to Amarillo, where Mr. Gatton formerly lived, for a short visit before coming to Pampa to make their home. Mr. Gatton is associated with the Magnolia Petroleum company.

Pampa Band to Practice Soon

Twenty-five musicians met in the Chamber of Commerce rooms Saturday evening and discussed plans for the organization of a first class band for Pampa.

While no officers were elected, it was decided to call the first practice some time next week and to complete organization after a full membership is obtained.

The number of experienced musicians was particularly gratifying to those promoting the band idea. It is believed Pampa will have one of the best bands in this section within a few months.

The organization will be known as the Chamber of Commerce band.

The orchestra recently organized, which played for the Chamber of Commerce's last social meeting, sets to add four more instruments soon to obtain the desired balance. This group will be known as the Chamber of Commerce orchestra.

McLean C. of C. Reviews Year in Annual Meeting

More than 150 McLean citizens and a score of visitors from other Panhandle cities were present at the annual banquet of the McLean Chamber of Commerce last night. A spirit of optimism and good will pervaded the gathering.

M. A. Turner, secretary of the Pampa Chamber of Commerce, and Olin E. Hinkle, editor of the Pampa News, accepted invitations to be present.

O. H. Foster, secretary-manager of the McLean Chamber of Commerce, was toastmaster. O. G. Stokely, past president, told of 1926 achievements, detailing such work as obtaining 24-hour telephone service; fulfilling requirements of the postal highway, now designated as the "Main Street of America"; affiliating with the West Texas Chamber of Commerce; raising money for newspaper advertising; advocating

obtaining of sewerage and paving through the sale of the ice and light plant for \$100,000; obtaining a natural gas plant, and securing of a full-time C. of C. secretary. L. G. McMillen as present president, outlined a follow-up program for 1927, and especially urged that those present work for the success of the road

bond election called for March 30. Visitors spoke for more than an hour, bearing short greetings from the cities represented. J. Z. George, manager of the Amarillo Board of City Development, spoke at length on the need for more people and better farming on the Plains. Dr. Paul W. Horn, president of Texas Tech, delivered an effective

address in which he stressed the idea that real education deals with things as well as thoughts. He told of the Technological college.

John Glavin of Amarillo declared the Tri-State fair this year will be bigger and better than ever before, with more farm prizes.

A Baptist orchestra furnished mu-

sic and food was served by women of the Methodist church. Miss Carmen Ulm sang two vocal solos. A Panhandle quartet, led by W. R. Arnold, secretary of the Chamber of Commerce, was encored several times.

Speakers told of heavy oil play to be made in the vicinity of McLean in the coming months.

MALE QUARTET

AT THE

AT THE HIGH SCHOOL

FRIDAY NIGHT
FEBRUARY 25TH

Given under auspices of

PARENT-TEACHERS ASSOCIATION

Receipts to defray expenses of this organization. You can't afford to miss this unusual Lyceum number.

Admission 25 and 50 cents

The Days When I Was Young

By DOUGLAS MALLOCH

THE snows of many winters have drifted down to earth, The suns of many springtimes have melted them to mirth; The ice has strung her garlands where once the apples hung— Yet not a thing has ever changed since days when I was young.

My boy, the very changes were always still the same: November took the bluebird, and yet the robin came; I heard him come returning, I heard his carol sung— The robin sings the same today as days when I was young.

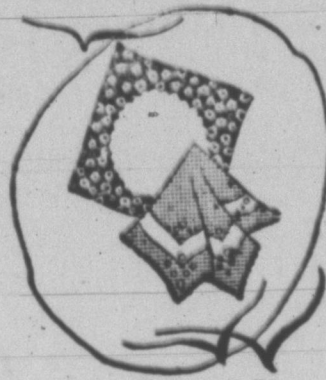
A little while we sorrow, a little time we grieve, When brown the meads and marshes and when the bluebirds leave, But still in God's high heaven a star of hope is hung— And spring will come the way it did in days when I was young.

For when this earthly summer has faded into mist, When I go down the river to keep the final tryst, I know that I shall find them, the folks to whom I clung, The loved it hurt so much to lose in days when I was young.

For surely if the Father can give the earth the spring, Then he can give the springtime to any other thing; And in some lovely springtime, again my loved among, I know that God will give me back the days when I was young. (© by McClure Newspaper Syndicate.)

What **SPRING Offers**

HANKIES ARE COLORFUL



—and so being, will be in great demand this Spring as compliments to colorful wardrobes. Of linen, voile and crepe, at

\$25 to \$150

THE NEW GLOVES



—for Spring are fascinating with their clever little cuffs and beautiful color combinations. A beautiful showing—reasonably priced.

BUTTONAIRES



Spring itself is in these gay buttonaires—Coat flowers of all kinds, sizes, and colors—the Very Smartest.—

65c to \$2.50

SCARFS WILL FLUTTER



—in the breeze, and you'll be very proud to have them do so because they're really most attractive. Special showing—

\$3.50 to \$7.50

NEW FABRICS ARE COLORFUL

CHILDREN'S NEW SPRING HATS AND CAPS ARE HERE

No matter what color you're looking for in the way of English prints, Peter Pan Gingham, and Everfast Suitings, you'll find it in our large assortment.



J. E. Murfee & Co.
Outfitters to the Whole Family

Established in 1916

Pampa, Texas.

SPRING TONICS

It's a good idea to use an approved, effective Tonic at the start of Spring. Our tonics put new "Pep" and vitality in your system. They are safe, unadulterated and effective. Start now and get in condition for the long grind of summer heat.

Ledbetter Drug Company
300 W. Foster Phone 266

CLASSIFIED ADS

Rates for Classified Ads: One and one-half cents per word per week, minimum twenty-five cents. Strictly cash in advance.

FOR SALE

FOR SALE—Singer Machines bought and sold. New Singers sold on easy terms. Machines rented by week or month. Eldridge, the Singer Man at Thornton's Store. Phone 335. 49-4tc

FOR SALE—Show case, 70 inches long, 27 inches wide and 14 inches high. In good condition. Will sell very reasonable. Call at Pampa News or phone 100. x

FOR SALE—By owner, six-room house, gas, lights and water, priced to sell. Must get quick action as I am leaving town. Inquire South Side Tailors. 61-2tp

FOR SALE—Male hogs, red or black, large or small, on the Roy Tinsley farm east of town. R. R. Mitchell. 61-4tp

FOR SALE—Dressed hogs, grain fed. Weight 200 pounds. I also do butchering for the public. R. R. Mitchell, four miles east on 33 Highway. 61-4tp

FOR SALE—Complete furnishings for two housekeeping rooms. Phone 164. 62-1tp

FOR SALE—Blue Porcelain Coal Range in good condition. Milady Beauty Shoppe. Phone 244.

FOR SALE—At \$3.00 per box, finest grapefruit, fresh picked, from Mission, Texas. Get them from refrigerator car near Cuyler street crossing. C. A. TIGNOR. 62-1tp

FOR SALE—Seed Sweet Potatoes, sweet potato Bermuda onion, cabbage, tomato and pepper plants. Write for prices delivered. T. JONES & CO., Clarendon, Texas. 62-3tp

FOR SALE—One three-burner gas stove, also two beautiful canaries with brass cage and stand for sale cheap. See M. BANK at Yellow Front store. 62-1tp

FOR SALE—New two room camp house, "lean-to" shed for two cars, some furnishings, radio, \$135. Inquire at Midway Filling Station, Kingsmill. A. V. JACOBS.

FOR SALE—One upright used piano. Inquire at Schneider Hotel. 62-2tp

FOR SALE—Cadillac 7-passenger limousine 59, excellent condition, new rubber, \$650. Can use cheap coupe part pay. Truman Ellerd, general delivery, Amarillo, Texas. 62-1tp

FOR RENT

FOR RENT—Two modern light housekeeping rooms, furnished. Phone 238. ANDER. 621p

FOR RENT—One light house-keeping room, \$25 month. Dr. W. F. Nicholas, Phone 328. 62-1tc

FOR RENT—Furnished apartments, \$16.00 week. Gas, lights, hot and cold water included. No children. Coca Cola Bottling Co. 62-2tc

FOR RENT—Furnished four apartment. Modern conveniences, showers, stationery tubs, electric washer. Pampa Bonzalette Court, West end Foster avenue. 62-1tc

FOR RENT—Furnished rooms for light housekeeping. Phone 173-J. Northeast part town. R. C. Barkdale. 62-2tp

FOR RENT—Newly furnished bedrooms, by week or month. First house east of Stagg Hotel, or phone No. 9. 62-2tp

FOR RENT—Light house-keeping rooms, well furnished, close in. Apply Milady Beauty Shoppe. 424 North Bullard.

FOR RENT—Light house-keeping room just east of Jones Everett Machine Shop. W. L. Shelton. 61-2tp

FOR RENT—Light house-keeping rooms. Phone 157. 57-1tc

FOR RENT—Well furnished house-keeping rooms. Close in. Inquire 4 miles east on 33 Highway. R. R. Mitchell. 59-4tp

HELP WANTED

WANTED—Experienced meat cutter wants work. Would consider anything temporarily. A hustler. Phone 179. 62-1tc

WANTED—Woman to do laundry work every other week for family of two. Phone 100 or inquire at Pampa News. 62-1tc

SITUATIONS WANTED

WANTED—Ditch filling, street grading, small houses to move, anything that a good tractor and a handy man can do. See Less Saltzman, North Ballard St., one block east Pennant filling station. 59-4tp

WANTED—Laundry work. All washing done by hand. Mrs. W. F. Mottin, South Side, across street east from Cotton Gin. 59-4tp

EXPERIENCED FARMER—Wants steady work on farm as manager. Will go anywhere. Address: Ed Rowland, Pampa, Tex. 61-2tp

WANTED

WANTED—Clean, Cotton Rags, Pampa News. x

WANTED—To buy used furniture and oil stoves. G. C. Malone Furniture and Undertaking Co. 3-4tc

WANTED—Four-room unfurnished apartment at once. Phone 147. The People's Store. 61-1tc

STRAYED

STRAYED—Ten Dollars Reward each, for information of one black horse, weight about 1500 pounds, star in forehead, roached mane; one sorrel saddle mare, weight about 950 pounds, stripe in face, scar on top of withers. Address R. J. Harp, Whittenberg, Texas. 61-4tp

MISCELLANEOUS

We are glad to assist you in planning that new home you have been contemplating building. Our motto, "Service that Satisfies." White House Lumber Co., Pampa, Texas. 11-1tc

Expert phonograph repairing done at the Pampa Music Co. 57-8tc

CEMETERY WORK—If you have a lot in the cemetery and want it worked, please see May at Malone's. 61-2tp

PERSONAL & LOCAL

Mrs. W. G. Warwick of Arkansas, is here visiting her husband, who sustained a broken hip about three weeks ago when he was struck by a truck at t street crossing near the Fox Rig Lumber company. He has been at the emergency hospital here since he was hurt.

Dr. Roy Webb suffered an injured foot yesterday afternoon when he stepped on a needle which pierced his foot to the bone. An x-ray was made and the needle, which broke beneath the skin, was removed.

Mrs. A. Cole and daughters, Lucille and Jeanette left for Amarillo this afternoon, where they will spend several days visiting.

Mr. and Mrs. Euford Langford, Mrs. Mary Anne Able and Miss Mattie Belle Thorpe motored to Mangum, Okla., Saturday and spent the week-end visiting friends.

NOTICE

All Knights of Pythias are requested to meet at Chamber of Commerce room Monday, February 28th, at 8 p. m. CHARLES BRYAN, P. C. T. 62-2tp

JUNIORS TO GIVE PLAY

Miss Bernice Whiteley, junior class sponsor, has announced that the class play, "The Arrival of Kitty," will be given for the benefit of the junior-senior banquet March 15 in the high school auditorium.

NOTICE TO CONTRACTORS AND BUILDERS

The building ordinance of the City, positively forbids the erection-removal or addition to any building in the city limits until building permit has been issued. Please be governed by this ordinance. F. P. REID, Mayor.

GOOD SALE TO HELP PAY FOR NEW PIANO

The Eastern Star held its regular meeting Saturday evening with seventeen members and visitors present. The organization in to meet each first and third Friday evenings, under a change adopted Saturday. It is growing rapidly, and members are being urged to attend regularly. A new piano will be installed soon, a cooked food sale will be held next Saturday at Bernard's store, beginning at 10 o'clock, to help pay for the piano.

DIRT FREE—500 loads given away at new Schneider hotel. Call at office. Sharp Construction Co. 623tc

LOST

LOST—One left rear three-bar pump wing about three miles from Pampa on Borger road. Reward. Phone 72. H. C. DAHL, Pampa. 62-1tp

BONDS SELL AT PAR
A \$60,000 water bond issue voted

at White Deer recently, last week was sold at par to Russell Sutherland

& company of Los Angeles. The new system is expected to be ready for use about July 1.

What SPRING Offers



**Color!
Color Color
In Men's Wear**

170-MAR-27

Especially in the New Shirts, Ties and Hosiery.



We are showing the newest lasts and leathers in Men's Oxfords—Bostonians and other good makes. From

\$5 to \$10



Color, too, in STETSON HATS—A multitude of styles, shades, and colors to match any suit.

Our clothing cabinets are overcrowded with the best markets afford in

**Hart, Schaffner & Marx
and Curlee Clothes**

J. E. Murfee & Co.
Outfitters to the Whole Family

The Best in Men's Goods For More Than 10 Years.
Pampa, Texas

PAMPA "PEP" GASOLINE

6
Straight Run---High Gravity
Best Gasoline in Ten Years

GALLONS FOR

\$1

Refined from Borger Crude Oil. Scientifically refined, treated and blended. Non-Corrosive and Non-Detonating. Will not carbon nor injure your motor in any respect, but will give you more "Pep," "Power" and "Mileage" and cost you less money than ordinary gasoline. It is just what your motor has been aching for—Don't fail to try it now—**SAVE MONEY!!**

GALLONS FOR

\$1

Look for the Cream and Blue signs and Stations.

STATION NO. 4

Scout Officers Will be Present At Council Meet

Tom Rose, the Rev. James Todd, and M. A. Turner, local Boy Scout officials, planned to go to Amarillo to attend the annual meeting of the Panhandle council today.

Formation of four Scout troops in Pampa is to be one of the activities of the week. The Panhandle council, comprising 27 counties of the Plains country, is the largest council in the world as far as area covered is concerned and with the growing volume of business before that body a large attendance is expected.

The program as outlined by Tom Nelson, Panhandle Scout executive, follows:

9:30 a. m.—Registration of delegates.

10 a. m.—District organization meeting.

11 a. m.—Nominating committee meeting.

11 a. m.—Meeting of the eight standing committees: Finance, organization, court of honor, civic service, publicity, reading, camping and training.

12 noon—Luncheon. Members of present executive committee.

1:30 p. m.—Call to order of annual council meetings.

Area executive's report and recommendations.

Report of organization committee.

Report of civil service committee.

Report of publicity committee.

Report of court of honor.

Report of training committee.

Report of treasurer.

Report of finance committee.

Report of national councilman relative to regional meetings.

Report of president.

4 p. m.—Eagle Court of Honor.

6 p. m.—Annual Council dinner.

Invocation.

Election of officers and directors.

Presentation of new officers and directors.

New President's remarks.

Speaker of evening.

Street railways of the United States will spend about \$263,830,000 on plant equipment and materials this year. About 3,000 new cars will be purchased and \$15,410,000 has been budgeted for new buses.

Building operations in the United States during 1926 were the largest in history, totaling approximately \$6,850,000,000, according to published statistics.

A bill to regulate the importation of milk and cream has been passed by the House of Representatives.

KNOW TEXAS

Fredericksburg—Construction is started on The Nimitz, \$125,000 hotel.

Alvin—New building completed for Alvin Dairy association. Potter county to have new court house.

Eagle Pass—First coat of gravel placed on new highway through Eagle Pass.

Alvin—Highway No. 58 between Liverpool and Alvin to be shelled.

Del Rio—Producers Wool and Mohair company increases capital stock to \$100,000.

Cleburne—Canning factory considering locating here.

Phillips Petroleum will build its fifth absorption gas plant in Panhandle field.

High Island—Gulf Production company completes Smith No. 6 well 11,000 barrels a day.

Second test well started in Pecos county shallow oil field, near recent Transcontinental discovery.

VAMPIRES

THIS is an ancient Slavic superstition which spread to many lands but flourished chiefly among peoples who buried their dead instead of cremating them. Though much less common than formerly the vampire superstition is by no means extinct. In 1870 and 1871 there were many trials of people accused of disturbing dead bodies in connection with vampirism in Germany—there seemed to be an epidemic of the superstition just then—and in comparatively recent years at least two cases have come to light in New England.

A vampire is supposed to be a dead person who comes forth from his grave to suck the blood of the living at night. The superstition is a bit hazy as to the form in which the vampire comes, whether as a ghost or in the actual, buried body. An examination of the oldest and best authorities would seem to indicate a sort of "astral body." Criminals and suicides turn into vampires but a rabbit running over, or a bird flying over the grave of an innocent person may change him into a vampire.

This superstition doubtless originated in the gloomy imagination of Slavs who saw their loved ones dying from some wasting disease for which they were unable to account. In a New England case of vampirism which the writer investigated about thirty years ago the family afflicted were found to be consumptive. Burning the body of the suspected vampire is the accepted remedy for the affliction.

(© by McClure Newspaper Syndicate.)

Would Have That Pleasure

Horace—I'll see you again some time, eh, what?
Phyllis—Yes, I often go to visit Uncle George.
Horace—Your Uncle George?
Phyllis—Yes, he's an insane asylum superintendent.

News Want Ads Pay

HOW TO STOP SMUT

By treating seed oats for smut the prospects for a good crop are greatly enhanced. An easy and effective method of seed treatment is to sprinkle the seed oats with a solution made by adding one pound of formaldehyde to 50 gallons of water. After the smut balls and trash have been removed by fanning, the seed should be spread on a clean floor, thoroughly sprinkled, and shoveled over until all of the grain is well moistened. It should then be covered with blankets or canvas and allowed to stand for several hours. It can then be sown at once or spread out in a clean place to dry. The seed will run through the drill much more readily if dried before seeding.

A good seed bed for oats is one with a surface of 2 or 3 inches of loose and finely pulverized soil, while the soil just beneath is firm and moist. In moist soil shallow seeding covered to a depth of 1 1/2 inches is advised. Under dry land conditions oats sometimes should be sown 3 inches deep or slightly deeper.

Illusion Often Lost by Personal Contact

The best authors should be read, not known. Even if a poet has written an epic, one hour's association with him may destroy the most idolatrous reader's illusion of him.

Your favorite humorist may turn out to be an ordinary person, dull in the use of the spoken word. Or what you believe to be the greatest living novelist may prove to be a little peevish man whose false teeth do not fit, made intolerant by nervous indigestion or egotism.

In any case, says Corra Harris in the Saturday Evening Post, some writer whom you have admired for his high notes in the purpling shadows of a great poem is almost sure to give vent to some meanly critical views of men quite contrary to the noble sentiments he bugled in that martial epic, because he was in a divine mood when he wrote it, and the thing merely interprets his mood, not his normal mind, which may be a mean little mind.

Carload Fancy Kiln Dried Oklahoma

SWEET POTATOES

4 1/2¢ per lb.

\$2.00 per Bushel

South of tracks Just east of Main St. Hotel Ritz Building.

Eyes Examined

By the most modern methods. GLASSES ground in our own shop, to meet your special requirements.

SPECIAL EQUIPMENT for testing children's eyes. WHEN IT COMES TO GLASSES come to us. We guarantee you FIRST CLASS, HIGH GRADE WORK at reasonable prices.

This is our fifteenth year in Amarillo.

YOU ALWAYS KNOW WHERE TO FIND US

HYDEN'S

Exclusive optometrists and Opticians

Dr. J. M. Hyden in charge

7th and Polk Streets, Amarillo.

—a Sure Sale

—a Fair Profit

if you list with

RICE & PARK

Real Estate, Oil Leases, Royalties, Drilling Contracts

PHONE 133

Virginia Lee Corbin



Magnificent Virginia Lee Corbin is regarded as one of the most attractive and promising screen players. This is one of her latest pictures. She may be seen to great advantage in "The Perfect Sap."

YOUNGEST STUDENT IS 15

AUSTIN.—The distinction of being the youngest boy attending the University of Texas goes to Martin Krost, 15, of Houston.

DR. EDGAR A. ELLIFF

Eye, Ear, Nose and Throat
Glasses Fitted
Duncan Bldg. Pampa, Texas

G. GOOD MONUMENT CO.

Manufacturers of Distinctive Granite and Marble

MEMORIALS "Mark Every Grave"

Write Us For Prices
800 Taylor Street Amarillo Texas

GREEK FOR MATH

AUSTIN.—A proposal to substitute an elementary course in either Latin or Greek for the course in mathematics required for almost every degree offered at the University of Texas has been made by Registrar E. J. Matthews. It is pointed out by those in favor of the plan that some knowledge of a classical language would prove more valuable than mathematics to many students in their careers.

MARBLES UP-TO-DATE CORRECT FLAT FEET

AUSTIN.—As a remedy for flat feet, University of Texas boys are advised to play marbles, but marbles up-to-date. According to University rules, the flat-foot victim places the marble between the first toe and its neighbor and walks a distance of 100 yards with the marble grasped in that manner. The process develops the necessary muscles and strengthens the fallen arches, it is explained.



Surround Yourself with Safety!

When you drive a Buick all these factors contribute to your feeling of security.

Extra power in the famous Buick Valve-In-Head Engine.

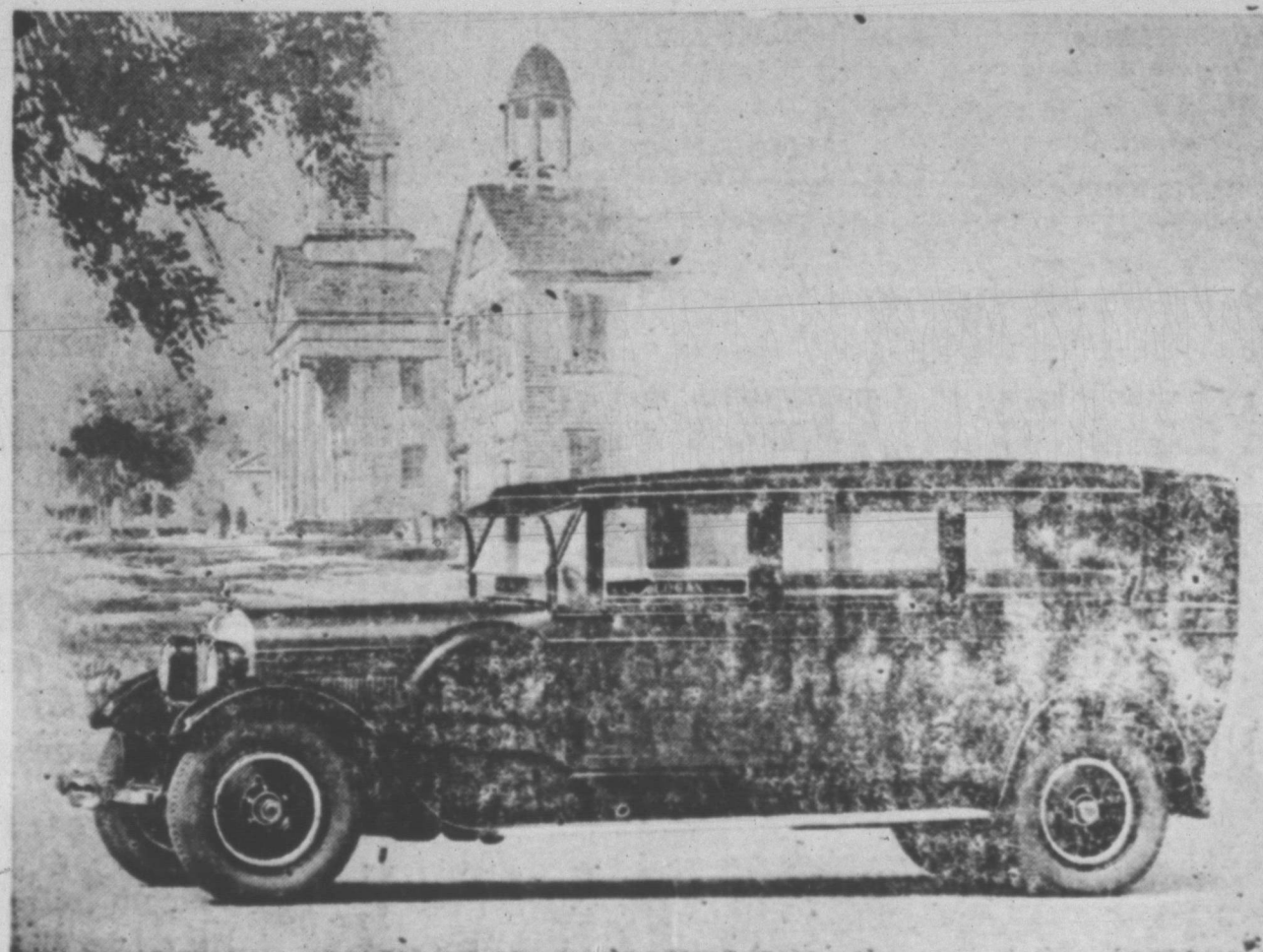
Extra protection from Buick 4-wheel Brakes because their operating parts are drop-forged steel.

Extra safety (and easier steering) from the five-bearing-surface steering gear.

Surround your family and yourself with safety. Buy a Buick!

THE GREATEST BUICK EVER BUILT

PAMPA BUICK CO.



DAY AND NIGHT AMBULANCE SERVICE

G. C. MALONE

Pampa, Texas.

Phone 181

LEFT OVER

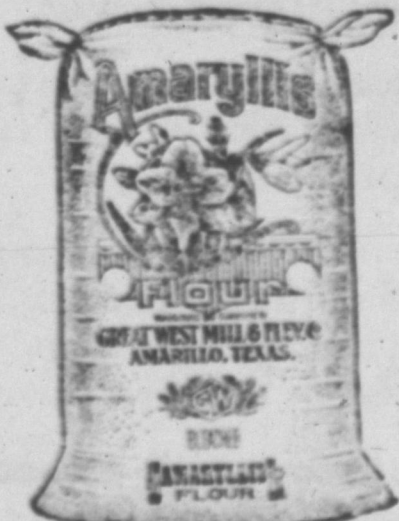
There's many a mile left over in every tire. Let us keep the old tires "Running." A few dollars spent with



means miles of EXTRA TRANSPORTATION—and the cost is less.

JUMPING JACK TIRE COMPANY

"Located Next to Ice Plant"



"FOR BETTER BAKING" BUY THEM FROM YOUR GROCER

GREAT WEST MILL & ELEVATOR CO.



Students Will Go Afieid to Learn

CANYON—As a recreational feature of its summer session, the West Texas State Teachers college has arranged for a series of mountain tours to be taken on week-ends. Trips to Carlsbad Cavern, the New Mexico Pueblo region, and others are listed.

Industrial excursions are being arranged to show the students the Panhandle oil fields, smelters, creameries, refineries, laundries and hotels. College authorities have found that students know little of industrial plants and are eager to learn. Competent guides will be furnished for all trips to make them as interesting and instructive as possible.

Early Altars Ablaze With Human Sacrifices

Throughout the ages men have made human sacrifices whenever they were under adversity and felt that the gods were athirst. H. G. Wells paints a graphic picture of a scene that may have occurred in the dawn of a prehistoric day about the vast stone altars on the Wiltshire uplands at Stonehenge. In England—the Druid priests with horribly painted masks, the air of festivity among the people who have come wearing their very best skin garments for the occasion and the helpless victims gazing toward the distant smoking altars upon which they are to die.

As time went on, the practice of human sacrifice became more elaborate. The reasons and occasions for human sacrifice were codified. The most civilized races decided that an entire community might be cleansed of an epidemic or saved from other calamity by this barbarous means.

Seek Synthetic Rubber

The Amazon district of Brazil is the great rubber-producing country of the world, for more than half of the total supply comes from there. The federated Malay states, the Congo region, Portuguese West Africa, the east coast of tropical Africa, Rangoon, Penang, Borneo and Mexico, the West Indies and Central America are the other rubber-producing districts. About one-tenth of the total yield comes from the Congo.

The rapidly increasing cost of the article has aroused experimenters, who have produced substances that have some of the qualities of rubber. It is not improbable that they may ultimately succeed, as the chemists did in producing artificial indigo, in making real rubber by synthesis.

Cream intended for whipping purposes should contain at least 30 per cent butterfat. Either raw or pasteurized cream will whip satisfactorily. The whipping quality of cream is improved by age. Aging for 24 hours is usually about right for cream with a 30 per cent butter fat content.

TEXAS BERRY IS ADOPTED BY CALIFORNIA

The Nossberry is a perfect success in southern California, according to a report to E. Teas, a Houston nurseryman, from H. M. Ramsay, formerly of Houston, now living at National City, near San Diego, California. Mr. Ramsay states that the berries are as large as English walnuts and grow in clusters. They have the delightful flavor of raspberries and are almost black when fully ripe, at which time they are of the best flavor. Mr. Ramsay also reports that the Hantberry is a failure with him and that the Loganberry has no raspberry flavor and does not compare in quality with the Nossberry. He says the vines are very vigorous in California, growing 6 or 8 feet in a season.

Professor H. Ness of the Texas Experiment station, who originated the Nossberry in his breeding experiments some 10 years ago, has expressed much gratification that this berry is a success in California. In Texas Professor Ness states that the berry seems to be at its highest flavor when it is at its most brilliant red color, rather than when dead ripe as mentioned by the California grower.

Distribution of this new berry was made from the station to numerous growers in Texas, including several nurseries, and the public now has access to supplies of this splendid fruit through the nurseries.

Crops grown on soils very rich in nitrogen tend to ripen slowly. There is an overgrowth of leaves and stem. The grain or seed is usually of poor quality. There is increased danger of plant diseases. In case of grain crops there is danger of lodging.

Cod-liver oil in the ration will help prevent weak legs in growing chicks.

One man and a "sledding" device which strips cotton from plants, can "sled" from two to three bales of cotton a day at a cost of about three dollars a bale. One man can pick only about 150 pounds of cotton a day.

WHAT THE GRACIOUS HOSTESS SAYS:

By DELLA THOMPSON LUCAS

SUPPER

THE supper to which guests are invited is a pleasant and intimate meal. One would never invite any except closest friends to supper. This meal is served from six-thirty to seven o'clock, and may be made a most delightful affair. The table is set for luncheon, with small cloths and centerpieces. Tall candles are used for lighting and preferably without shades. The tea or chocolate service is set in front of the hostess, and the host may serve his guests from his end of the table.

The Sunday night supper may be an even more informal meal by placing the food on the dining table or buffet.

There are many ways in which the gracious hostess may entertain informally, aside from the afternoon tea and the luncheon. The chafing-dish supper must naturally be a small entertainment, and only congenial people and intimate friends will be asked.

In this, as in any other simple form of entertainment, the background or setting counts for a great deal. All entertainment is more or less a play, and the stage should be set accordingly.

A small table that will hold the chafing dish and a tray of ingredients is necessary. Plates, silver and glasses or cups may be placed on another table, or on one leaf of a larger one if you are fortunate enough to have an old-fashioned drop-leaf table.

An electric chafing dish is more convenient than the alcohol, but we have used one of the latter for several years.

Many enticing dishes can be made. Here is one that goes by the ridiculous and meaningless name of rink-tun diddy. This is the way we made it:

Chop one good-sized onion very fine. Strain one can of tomatoes. Fork two pounds of cheese into bits. Beat three eggs together in a bowl. All this can be done before the party. Cook the onion until tender in a tablespoonful of butter directly over the fire. Add the tomato and let it come to a boil. Stir in a pinch of soda. Place the hot water pan underneath and add the cheese and stir until it melts, then fold in the beaten eggs. Season rather highly with paprika, about three drops of tabasco sauce, a tablespoonful of Worcestershire sauce, and add salt at the very last. When it is of a creamy consistency serve immediately on crisp saltines.

Ginger ale goes best of all beverages with this tasty concoction. (Copyright, by The Eastman syndicate.)

Recent experiments show that cooling eggs during incubation is not necessary unless the temperature in the incubator runs abnormally high. In that case remove the trays and leave them out in the air of the incubator room for a little while.

Watchful Waiting

Louella is a careless tot and usually loses her penny before she gets a chance to spend it. The other day her next-door neighbor met her on the street and Louella, as usual, explained that she was on her way to the store to spend her daily penny.

Just then her little brother came along and piped up: "Wun along Louella, I see wight be hind you an' finders is spenders."

News Want Ads Pay.

FIRE DESTROYS LAUNDRY

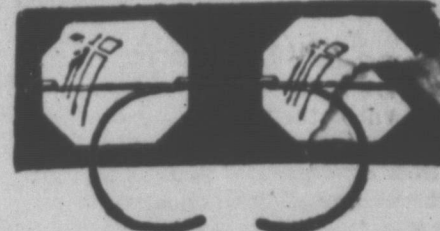
Fire starting from a pan of gasoline destroyed the White Deer laundry at White Deer last week, and threatened other buildings until a Santa Fe crew spotted an engine and threw water on the flames.

See The Classified Department.

DR. ROY A. WEBB
PHYSICIAN AND SURGEON
Office Phone 372, Res. Phone 282
Rooms 2 and 4, Duncan Bldg.
Pampa, Texas.

Have you read the classified ads?

EYE HELP



If you have eye troubles or need glasses you may see me in my office in the Fatheree Drug Store every Saturday.

DR. T. M. MONTGOMERY

associated with
HYDEN'S
620 Polk Street
AMARILLO, TEXAS

P. S. We are not boom Doctors. We have been in the Panhandle and Amarillo for fourteen years and will be here after the boom is over.

BUILDING STURDY CHILDREN



Beauty bread is a staple food on the table of those who wish their children to grow up sturdy and healthy. Made pure, fresh each day, it is a food they want every meal.

Cake — Pastries of All Kinds

PAMPA BAKERY

FRED SCHAFFNER, Prop.

Phone 81

133 Foster Ave.

PURE RICH MILK

The A. C. Brand, it's purity is guaranteed by the A. C. Bottle and sold direct from the Converse Farm and sold only at King's Butcher Shop in the building occupied by the Poultry Mercantile Association and at the Piggly Wiggly Store.

Stop-Look-Listen!

American railroads are the safest in the world to ride on. They are safer than any other kind of transportation. But you can make them even safer by being more careful. The welfare of yourself and family may be involved.

The railroads are making a vigorous effort to reduce accidents.

Won't you help?

You can help in many ways and especially by observing these ten don'ts.



DON'T cross railroad tracks, either walking or driving, until you stop and look in both directions, whether view is obstructed or not.

Stop—look—listen!

DON'T try to cross tracks in front of an approaching train. It pays to wait.

DON'T cross a track after a train has passed, until you have made sure no train is coming from the opposite direction.

DON'T walk or stand on railroad tracks. If compelled to walk in railroad yards, avoid walking between the rails of any one track. There is usually room between the tracks.

DON'T let your children play around rail-

road tracks or trains. Teach them to play elsewhere.

DON'T get on or off a non-passenger freight train, or crawl under it.

DON'T attempt to get on or off a moving passenger train. Wait until it stops.

DON'T be careless when stepping on or off a standing passenger train. Watch your step.

DON'T stand on platforms of passenger cars. It is safer inside.

DON'T place hand or arm in an open window. The window may close unexpectedly.

Two-thirds of all railroad accidents are incurred by persons going on railroad tracks without stopping, looking and listening.

You share in the responsibility for the accidents.

Your co-operation means greater safety.

W. B. STOREY, President
The Atchison, Topeka and Santa Fe
Railway System

PANHANDLE LUMBER COMPANY

RIG MATERIAL-BUILDING MATERIAL

Quality - Service - Satisfaction

"Let Us Bond and Insure You"

PAMPA INSURANCE AGENCY

—INSURANCE FOR EVERYTHING—

We have just opened our office in the
First National Bank Building

PHONE 7

PAMPA SHOE AND HARNESS SHOP

324 North Main St.
PAMPA, TEXAS



WHERE SERVICE AND
QUALITY MEET

Curiosity Has Played Big Part in Progress

From time immemorial women have been branded as being more curious than men. Now we are told by a London clergyman that men far outnumber women in the inquiries they address to him during the "Question Hour" he has instituted at his church. One cannot say that one sex is more curious than the other, but they are interested in totally different matters. Curiosity is lighthearted, and "masculine" than masculine. Few are ashamed to admit their desire to know the cost of a dress, but few would be reluctant to admit their ignorance of some important event in history. The opposite is the case with most men. They feel it is bad taste to be curious about personal matters, but they rarely mind asking for information about public affairs.

Curiosity often becomes a vice with some people. Most of us are familiar with old maids and bachelors who spend all their time probing into the affairs of others. Such people are an object of terror and dislike to the other inhabitants, and the originators of countless petty scandals and quarrels. Lack of any real occupation drives them slowly, as they grow older, into indecent prying into their neighbors' concerns.

We are apt to condemn curiosity as an unpleasant quality, and few of us will acknowledge that we are led and tempted by it. We forget that it is an instinct which is one of the most valuable and beneficial assets of humanity in the battle of life. It is the driving force behind the work of all scientists, explorers, and adventurers. Without it the world would still be in a state of barbarism.—Vancouver Province.

Practice of Kissing Not Universal Custom

The idea of the kiss being an instinctive gesture is negated by its being unknown over half the world, where the prevailing salute is that by smelling or sniffing (often called by travelers "rubbing noses"). The kiss appears constantly in Semitic and Aryan antiquity.

In Greece in the classic period it became customary to kiss the hand, breast or knee of a superior. In Rome the kisses of inferiors became a burdensome civility. The early Christians made it the sign of fellowship. It early passed into more ceremonial form in the kiss of peace given to the newly baptized and in the celebration of the eucharist.

While the kiss has been adopted as a religious rite, its original social use has continued. Among men, however, it has become less effusive. Court ceremonial keeps up the kiss on the cheek between sovereigns and the kissing of hand by subjects, and the pope, a Roman emperor, receives the kiss on his foot.—Encyclopedia Britannica.

Waxing Candles

Henry Drummond, author of "The latest Thing in the World," in his later moments (and he had many) was full of gayety, frequently displaying a unique and versatile form of wit. He was one of a group assembled one night at the home of Drummond's minister, Dr. Marcus Dods.

During the supper, which had to be taken by candle light, one of the candles began to droop. One of the young men set it upright, then it drooped to the other side. Finally it became a subject of remark.

Someone called it a most wicked candle; another said it should be sent to Greece, and sundry other jokes were leveled at the unfortunate light giver. Finally Drummond said, very earnestly, he thought the conversation was beginning to wax scandalous.

"Wires" Sent by Pigeons

Before the invention of the electric telegraph, carrier pigeons provided the fastest known means of transmitting messages, and were even used by English stockbrokers to get early reports on the market.

The carrier pigeon is useful because of his accuracy in returning to his home and the speed of his flight. He must be carefully trained over a long period. Pigeons have been known to carry a message as far as 500 miles in one day. During the Franco-Prussian war they were used by both sides to carry messages, but the invention of telegraph and wireless soon rendered their abandonment.

In the Glacial Age

It is impossible to say how long a glacial period of Lake Superior covered the greater parts of Saskatchewan, North Dakota and Minnesota. The lake, from measurements, appears to have covered an area of 110,000 square miles, with a depth of 700 feet. Besides the land now known as the Superior valley there remains still evidence of the shrunken remnant constituting Lakes Winnipeg, Rainy lake, Lake of the Woods and Red Lake.

OF "RUBS"

Each year University athletes have ten gallons of mud rubbed into aching muscles and use two miles of adhesive bandaging injuries, according to calculations of Maj. S. N. Ekdahl, who has charge of the athletic support.

THE YOUNG LADY ACROSS THE WAY



The young lady across the way says no wonder lamb is so expensive when so many of the sheep are killed just for their wool.

Charles M. Schwab, steel magnate, has predicted the reelection of President Coolidge in 1928.

Mother's Cook Book

The world moves on, its progress brings Grand reforms, undreamed of things; But nothing modern can fill the place Of the dear old home and mother's face. —Mrs. C. Jewett.

HOUSEKEEPING HINTS

AS FOOD materials differ in price with the locality and the season, it is often impossible to strictly follow a recipe, as we find some ingredients either too expensive or difficult to obtain.

If the housewife understands the composition of foods she can substitute some other food material with good results.

For example when butter is called for in a recipe chicken fat, sour cream, clarified bacon fat or some other butter substitutes may be used, depending upon the food to be prepared.

Cream contains more water than butter, chicken fat less; so, in using such fats, their composition must be considered.

Chopped nuts are added to foods such as salads, mock meat loaves and other dishes, adding food value to the dish. All these things are invaluable to the housewife who is interested in feeding her family well and with economy.

The Department of Agriculture of each state and at Washington are publishing bulletins from time to time, many of them for the asking, of great assistance to the housekeeper.

The following data may be helpful in learning to compare values:

In one cupful of milk there is or should be two teaspoonfuls of fat. In one cupful of cream, three tablespoonfuls of fat; double cream six tablespoonfuls of fat.

Butter, fourteen tablespoonfuls of fat; the two unaccounted for are salt and moisture.

One cupful of English walnuts, two-thirds of a cupful of fat.

One cupful of peanuts about one-third of fat.

Chocolate, one ounce, a scant tablespoonful of fat.

Minut Soup.

Take one cupful of bread crumbs, one tablespoonful of butter, one onion grated, salt, pepper and a little poultry dressing, one and one-half cupfuls of rich cream and three cupfuls of boiling water. Simmer one minute, serve with crackers.

Nellie Maxwell
(© 1927, Western Newspaper Union.)

Spring flowering shrubs should be pruned in the summer immediately after they are through flowering. To prune them now, would be to cut off this year's flowers.

ITEMS ON FARMING

Most poultrymen test incubating eggs on the 7th and 14th days. The first test is for the purpose of getting out the infertile eggs and those that have dead embryos in them. The second test is made to take out all eggs with embryos that have died from the 7th day up to the 14th.

The amount of heat that will raise the temperature of one pound of water one degree will raise the temperature of one pound of dry soil five degrees. Drained soil has less water to heat and will warm up faster than wet soil.

On extremely poor land, cowpeas will make a better growth than soybeans. Soybeans have a wider use than cowpeas, are a richer food, more easily cured for hay or harvested for seed, and yield decidedly more seed than cowpeas.

The feeding of silage will not give

to manure any unusual degree of acidity. The kind of feed consumed does effect the composition of the manure. If an animal were fed timothy hay only the manure would be of poor quality compared with that produced when the animal is fed alfalfa, bran and cottonseed meal.

Henry Ford has taken a firm stand opposing capital punishment in the United States.

BABY CHICKS
10c to 16c each
Custom Hatching
BOOK YOUR ORDERS NOW
DODD'S HATCHERY
PHONE 9
PAMPA — TEXAS

Business & Professional DIRECTORY

V. E. VON BRUNOW
PHYSICIAN AND SURGEON
Consultations by Appointment Only.
Phones 29 and 40
PAMPA, TEXAS

H. E. FLOREY
LAWYER
Office in Smith Building
PAMPA, TEXAS

O'NEAL ABSTRACT CO.
Abstracts of Title
PROMPT SERVICE
PANHANDLE, TEXAS

DR. T. M. MONTGOMERY
OPTOMETRIST AND OPTICIAN
In Pampa every Saturday
Call Father's Drug Store for appointment

DR. AURA W. MANN
CHIROPRACTOR
OFFICE 20-21, SMITH BUILDING
Office Phone 263
Residence Phone 213J

PAMPA SIGN WORKS
COMMERCIAL SIGNS
OF ALL KINDS
115 West Tyng Street

PAMPA ELECTRIC COMPANY
ELECTRICAL CONTRACTORS
All Work Guaranteed Phone 183
Estimates Furnished on all Classes Of Wiring

STUDER, STENNIS & STUDER
LAWYERS
Office Over First National Bank
PAMPA, TEXAS

J. B. DUFFIELD
GENERAL BUILDING CONTRACTOR
Concrete Work
No job too large or too small.
27, 28

INSURE YOUR FAMILY WITH AMERICAN CENTRAL LIFE INSURANCE
Real Estate
P. B. CARLSON, Agent
Room 14 Smith Bldg.

R. EDDY
Contractor
Team and Truck contracting, excavating, furnish Sand.
Phone 250

W. B. WILD, M. D.
PHYSICIAN & SURGEON
Office—Room 6-7 Smith Building
Phone 222 Pampa, Texas

W. C. GILL
Gen. Building Contractor
Estimates furnished on all kinds of building

COFFEE AND GRACE
Attorneys
CLEVE COFFEE H. L. GRACE
Offices in Sharp Reynolds Building.

DR. A. R. SAWYER
DENTIST
White Deer Land Building
Business Phone 168
Residence Phone 56
PAMPA, TEXAS

DRS. MARTIN & KLEIN
PHYSICIANS AND SURGEONS
SHARPE BUILDING
Phone 273

DR. W. F. NICHOLAS
DENTIST
Office Room 8-9 Smith Building
Phone 328 Pampa, Texas

DR. W. PURVIANCE
PHYSICIAN AND SURGEON
Office Over First National Bank
Office hours: 9 to 12—1 to 5
Office phone 107. Residence 45
PAMPA, TEXAS

JOHN F. CANTERBURY & CO.
Accountants and Auditors
Income Tax Service
604 Amarillo Bldg. Phone 2738
Jno. F. Canterbury, Accounting consultant, Amarillo, Texas

See **H. W. HICKMAN**
—For—
CONTRACTS on BUILDING
Pencil Plans Furnished.
Cabinet work, mill work and Truck Cabs. Bodies a specialty. Phone 225.

HICKMAN CONST. CO.
Ref. See customers.

ARCHIE COLE, M. D.
PHYSICIAN AND SURGEON
Office over First National Bank
Office hours 10 to 12—3 to 5
Residence Phone 8. Office phone 55
PAMPA, TEXAS

HAL B. STEWART
ARCHITECT
and
STRUCTURAL ENGINEER
613 1/2 Polk Street Amarillo, Tex.

CARY & WORTMAN
LAWYERS
General Practice, Compensation Cases, Criminal Law, Contracts, Duncan Bldg. Pampa, Texas



NOTICE

Pampa Lodge No. 966, A. F. & A. M. Regular Meeting, Fourth Saturday in each month. Masonic Hall in White Deer Land Building.

C. F. BUCKLER, Secretary.

G. C. MALONE
FUNERAL DIRECTOR AND LICENSED EMBALMER
Phone 181 Pampa, Texas

SHE TELLS THE STORY OF MANY OTHERS

Dr. W. C. Rountree, Texarkana, Texas.
Dear Doctor:—About 8 years ago I was taken with a bad case of stomach trouble. I got better in Winter and worse in Spring and Summer. I suffered untold agonies, took many kinds of medicine and found no relief. After four years I broke out with something that looked like sun burn. At first it appeared on my hands, later on my face and neck. My mouth got sore, feet burned and swelled until I could hardly walk. My heart beat too fast and I had a hurting in my chest. Some one sent you my name and you sent me one of your little books and Questionnaire, but I did not order your treatment at first. I waited thinking I would get better, but instead I got worse. Finally I got so bad that I could not walk 20 steps without resting. I ordered your Pellagra treatment and on the 9th day of July 1926 I began taking it. I soon saw that it was helping me and by the time I had taken one treatment the rash and many of the other symptoms had disappeared. I have taken four treatments and am entirely relieved of all symptoms of Pellagra. I appreciate the honesty and kindness with which you have dealt with me, for I have found everything that you told me about the treatment to be just like you said. I want to ask all who have this disease to not put off ordering your treatment like I did for while they are waiting this terrible disease is stealing their life away.
(Miss) Savannah Taylor, Rt. 1, Box 100, Naples, Texas.

Demand the Best

In cleaning, pressing and tailoring, we have one of the best plants in the Panhandle, and the best workmen in each department that it is possible to get.

SERVICE

We take the position that the very best service is none too good for our customers.

WE CALL FOR AND DELIVER

"Phone 221"

DE LUXE CLEANERS

"Service With a Smile"

Located North of Ledbetter Drug

SERVICE

There's a lot of satisfaction in knowing that your car will receive the undivided attention of expert mechanics when you leave it at the garage for repair.

Our superior motor service is made possible by the completeness of our shop, combined with years of experience as automobile repair men. REAL SERVICE can only be rendered by modern equipped shops.

You Must Be Pleased

A job never leaves our shop until the owner is satisfied. Our service is the kind that makes you come back. Estimates on all repair work will be cheerfully given.

Phone 358 FOR BETTER MOTOR SERVICE Phone 358

C-G Motor & Accessories, Corp.

MODERN FARMER MUST KNOW HIS BUSINESS—VOCATIONAL AGRICULTURE MEETS NEED

(Editor's Note: The following is another article of a series on agricultural problems by J. L. Lester, professor of vocational agriculture of Pampa High School.)

We as a people believe in education. We express this belief outwardly by passing compulsory school attendance laws and by the expenditure of billions of dollars for educational purposes.

By virtue of these expenditures and compulsory education laws, the educational standards were being raised for each and every profession and occupation except one, the farmer.

About 1908, a great many educational leaders discovered that the farmers as a class were not getting a square deal in educational matters.

About this time a law was passed by the Texas legislature requiring that the public free school add agriculture to the list of subjects that are required to be taught.

Subject Met Approval

This addition to the curricula was found to be exceedingly beneficial. But the subject of agriculture was taught as a regular academic science and was thought to lack definiteness and applicability to the farmer's immediate need.

So about 1917 the federal government passed what is known as the Smith-Hughes Vocational Agriculture law to assist in the work of giving full and definite training to this great group of workers.

This law functions through the state department of education and assists the state in the laudable task on a basis of "fifty-fifty" giving the great farmer group of workers appropriate and definite training for his task of feeding and clothing the human race. The federal government gives one dollar for each dollar put up by the state or district.

The definite program as outlined by the Federal Board for vocational education is as follows:

1. Efficient farm organization. Arrangement and balance of the farm based on business analysis.
2. Adjustment of crops and livestock to the outlook for supply and demand.
3. Low cost of production practices; applying the law of diminishing returns in securing high production.
4. Efficiency with labor and use of power machinery.
5. Control of waste from pests, disease and other preventable causes.
6. Standardization of products; Proper preparation for market.
7. Orderly marketing; use of the right time and place to sell.
8. Sound financing; long-time loans on real estate; proper use of short-time credit.
9. Long-time planning; to determine expenses in relation to growth of income.
10. Cooperation: Community self-help on all the above points.

By the efficient execution and application of the principles and purposes of these ideals expressed above, the educational standard among the farmers will keep pace, we hope, with all the others.

Competition is Growing

We had just as well face the stern fact that competition in every phase of life is growing keener each year.

The farmer of the future must needs have special training in his particular field, if he would succeed in his chosen occupation.

Students of agriculture know that average acre yield is growing less year after year. The population is increasing by leaps and bounds. The number of agricultural laborers is

decreasing, being two millions less today than in 1910.

The increase in the use of labor-saving machinery and the settling up of new acres have been, so far, sufficient to offset the decrease in the number of farm laborers and low acre production. But there is danger that this will not continue in the future unless the farmer of the future is given the exact sort of training for his work as is now believed to be necessary for the doctor, the teacher, the lawyer, the minister, and the other learned professions.

Farming Requires Skill

Farming has too long been a calling that attracted largely the most unlearned. It has too long been believed that men who could not succeed in any other calling or profession must needs farm for his living; that the lack of both mentality and training were necessary qualifications for the farmer. But we are coming more and more to a realization of the great truth that farmers need as much, even more, training for efficient service as any other group of workers or servants of the human family.

For where is there a father or a mother who does not desire that their children be not only as well fed and clothed as they, but better if possible? And since lands are rising in price, and since there are no more cheap lands, for the future generations to settle up, acre yields must necessarily be increased, not only that the original cost of the land be paid, but that higher rates of taxes and increased expenditures for improvements may be met. All this will require the most careful preparation on the part of the successful farmers of the future. He must be taught to farm wisely, not blindly.

Prof. A. B. Mayes once said: "To teach a person how to live and at the same time teach him how to make a living is a crime."

Aim of Training

The aim of the vocational agriculture program is just this very thing. That is, to teach the boy how to do better the things that he would naturally do anyway; and to teach by doing.

The farmer must know definitely about the laws that affect the development of both animals and plant life. He must be taught to use these laws to his advantage. He must be taught to call into his service all the forces and elements of society. He must be led to see the importance and the greatness of the work assigned to him. He must no longer be known as the old hay-seed squatter, etc. But with dignity and pride take his place among the other great factors of society.

Karl Druber of Budapest committed by diving into a cauldron of boiling tar.

Texas Progress Notes

Brownfield—A second centrifugal pump has been installed in the big well here, located within about ten feet of the water. Each pump has a 250 gallon per minute capacity. The water system is now adequately prepared to equal any emergency.

Robert Lee—C. C. Holder, of Bronte, has purchased the Robert Lee ice plant. He will erect a 25x49 foot stucco building with drive-in front for the conduction of business.

Canyon—The West Texas State Teachers college will give a scholarship, carrying exemption from all matriculation fees, to all successful contestants in the Home Town contest of the West Texas Chamber of Commerce. The contest, open to high school students, will be held in connection with the annual convention at Wichita Falls next May.

Stamford—A few farmers have responded to the offer of the West Texas Chamber of Commerce to mail them eight pounds of Black Hull Kaffie, with postage the only charge. The regional chagber has 125 sacks to distribute. They will be mailed out to those writing the Stamford headquarters.

El Dorado—Eight miles of road south of here, the only bad stretch remaining in State Highway No. 30 between San Angelo and Sonora, will be regraded, raised and its worst spots filled with caliche, this month. The work on the road will require about two weeks.

Leveland—A street lighting service system is being installed here, according to a contract recently made. Eighteen lights are to be put in.

Marfa—Camp Marfa, located within the corporate limits of Marfa, is to be a permanent army post now, according to a national bill recently passed. The camp is military headquarters for the Big Bend.

Ruidosa—A candleilla wax factory is being opened here by two Alpine men. Actual manufacturing will begin this month. The plant is to be known as the River Wax company.

Almagordo, N. M.—Bids are being received for the installation of a sewerage system and disposal tank for Almagordo. A sewer district has been made, and expenses are to be borne by certificate of indebtedness against the property.

Presidio—Fita are now being driven for the international bridge across the Rio Grande from Presidio to Ojiraga. It will connect state highway No. 118 which goes to Marfa and points north, with the main highway to Chihuahua and points south.

Anson—Jones county is smiling over prospects for a bumper grain crop this year. Much terracing is being done and more is expected in the section as soon as farmers can get back into the fields.

Borger—This big oil town will celebrate its first birthday on March 8 in a big fete planned by the local Chamber of Commerce. Every city in the section is invited to have delegations on hand.

Petersburg—A new residential section has been opened up here.

WHEN I WAS TWENTY-ONE

BY JOSEPH KAYE

At 21: Cecilia Beaux became a Paris Salon Artist by Accident.

AT ABOUT this time I attempted something more ambitious than the portraits from photographs that I had been doing—a large picture of my sister and her little son. He was getting to the age when a boy outgrows sitting on his mother's lap. It is becoming a bit uncomfortable both for his body and his pride. In their hearts, both mother and son realized this. They know that in a way it marks the end of one epoch in their mutual lives. This was what I wanted to express in the picture, which I called 'Les Derniers Jours d'Enfance'—the last day of childhood.

"I had my own studio then—such as it was—bare, ugly walls and practically no furniture except an old steamer chair. I knew the kind of dress I wanted the mother to wear but she did not happen to have it so we resorted to various makeshifts; she wore a black jersey, to which we attached one black satin sleeve—the one for the arm that would show in the picture, and so on.

"After the picture was painted a girl friend of mine, who had gone abroad to study, happened to come home for a visit. She saw the picture in my studio and insisted on bringing it back with her to Paris. There she sent it to the Salon—and it was accepted—Cecilia Beaux."

TODAY: Cecilia Beaux is the greatest American woman artist. She was chosen also in a recent canvass by the National League of Women Voters, as one of the twelve greatest living American women. Cecilia Beaux is practically self-taught, having had no more than two years' art tuition at most.

(© by McClure Newspaper Syndicate.)



(© by McClure Newspaper Syndicate.)



"It is to be noted," says Pertinent Polly, "that having a sharp tongue never gets anybody a reputation as a cutup."

Evidences of maintained or increased dairy activity in practically every important butter producing region of the world indicate heavier world butter supplies in 1927.

In view of the probability of another large crop of hard winter wheat in the United States this year, spring wheat farmers are urged by the department of agriculture to realize that any material increase in the area of spring wheat this year over last, even with average yields, may result in a production sufficient to put us on an export basis for all hard wheat.

WE WILL BUY

Stocks—Bought, Sold Quoted	
Alaska Pet.	Fly-Blackburn
Amarillo P.	Johnson Ranch
Badger Oil	McClure Oil Co.
Bayshore Pet.	Nabob Oil Co.
Black Diamond	Neptune
Bryan Royalty	Panfield Oil Co.
Canadian River	Panhandle Bk.
Chechako Oil	Sullivan
Cockrell-Mellroy	Sunburst Oil
Dixon Creek	Spring Creek
Double Five	Smith Royalty
Echo Oil	Rock Island
	Triangle Oil

We buy and sell ALL Stocks. "OIL & MONEY DIGEST" Describes all companies, gives latest ACCURATE prices, and tells how to buy Stocks on credit. FREE ON REQUEST.

YOUNG & HAWLEY
Central Oil Stock Exchange
Amarillo Bldg. Amarillo, Tex.

Buck BRAND WORK CLOTHES
FIT AND WEAR

SOLD BY
STRIBLINGS
REX THEATRE BLDG.
PAMPA, PANHANDLE

WE WELD

Broken Cylinders and many other parts of Automobile, Gas Engines, Pumps and etc. with

"ELECTRIC ARC"

Without Disassembling

Latest and best machinery made for Re-conditioning gasoline motors.

Expert Mechanics in every department

Jones Everett Machine Company

PAMPA, TEXAS

PIPE THREADING, Heavy Forgnig and General Machine Work, Fishing Tools, Supplies, and Etc.

PICK AS YOU PLEASE

And you will not find a single piece of our Candy that is not a little better. Home made Candies are always welcomed, especially if they come from the kitchen of the

ALWAYS FRESH
PAMPA CONFECTIONERY
Dick Culpepper, Prop.