

Robert Knowles
AUTOMOTIVE

806-669-3233 - 101 N. Hobart - 800-299-6699

***** MIXED ADC 760
*01 BV04227 12/31/14

SOUTHWEST MICRO PUBLISHING
2627 E YANDELL DR
EL PASO TX 79903-3743



BILL ALLISON AUTO SALES

"Your Nearly New Car Store"

FOR OVER 22 YEARS

1200 N. Hobart • 665-3992 • 800-658-6336

ROBERT KNOWLES

WEST TEXAS

FORD • LINCOLN • MERCURY

701 W. BROWN 665-8404

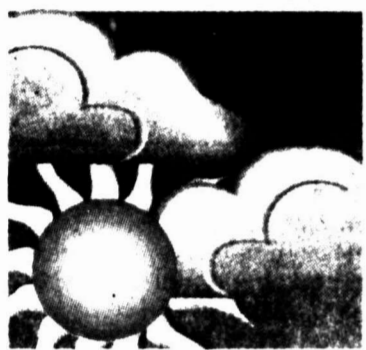
Pampa

Vol. 92 No. 96 • Pampa, Texas
50¢ Daily • Sunday \$1

Pampa Cyber Net

Internet Power for the New Millennium

Dialup or dedicated T-1, and high speed



High today 99
Low tonight 75
Fore weather details, see Page 2

PANHANDLE -- Dr. Doug Scott of the National Park Service will talk about bullets and cartridges recovered last summer by archaeologists at several Red River War battle-sites. Scott will speak at 2:30 p.m. Saturday at the Hazlewood Arts and Education Building across from the Square House Museum.

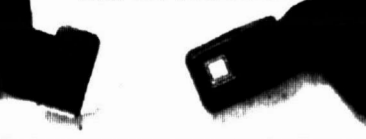
DUMAS -- The North Plains Underground Water Conservation District No. 1 will consider a tax increase Aug. 6 to finance a rain enhancement program. NPUCWD has been in talks with the Panhandle Ground Water Conservation District No. 3, headquartered in White Deer, concerning a joint rain making project.

LEFORS -- The Lefors Lions Club Back to School bash is Saturday, Aug. 7. Proceeds from the event will go towards local projects such as eyeglasses for children, a camp for diabetic youngsters and a scholarship for a Lefors student. The event will be held at the baseball field behind the City Hall.

- Arzell M. Anderson, 73,** McLean homemaker.
- Ladelle Evans, 90,** former Skellytown resident.
- Clell E. Gierhart Sr., 94,** Shamrock barber and real estate agent.
- John Russell Gilchrist, 87,** retired well tender.
- Erin Colleen Mongrain, 21,** former Shamrock resident.
- Joe W. Ogden, 69,** Lefors native and West Texas State football star.
- Bernice Lee O'Neal, 86,** Clarendon native.
- Johnnie W. Penland, 81,** retired machinist.

Classified7
Comics4
Medical5
Sports6

You're Careful Behind The Wheel Are You As Careful Choosing Your Car Insurance?



Don't trust just anyone to insure your car. See me
Mark Jennings Agent
1615 N. Hobart
665-4051

Truck drivers expected to attend city council meeting

By NANCY YOUNG
Managing Editor

As petitions are being circulated in the local community regarding the issue of whether truck drivers should be allowed to park in residential areas, questions have arisen as to whether neighboring communities have ordinances which limit the parking of 18-wheelers in residential areas.

Truck drivers, motor home owners and others who don't

want to see parking restrictions imposed in Pampa are expected to be at Tuesday's city council at 4 p.m. to present a petition objecting to a proposed residential parking restriction ordinance.

Most area city offices contacted by *The Pampa News* indicated the town council's have enacted ordinances either preventing or regulating the parking of the 18-wheelers in their towns.

Proponents of the issue cite safety of residents, noise, pollu-

tion and damage to city streets as reasons for the proposed change while truck drivers cite individual rights.

Canadian City Secretary Terri South said the community has had an ordinance disallowing truck parking in residential areas for several years. She said the ordinance preventing the parking of the 18-wheelers has been in effect for 15 years. South said the issue was resisted by the truck drivers temporarily in the community, but the majority of

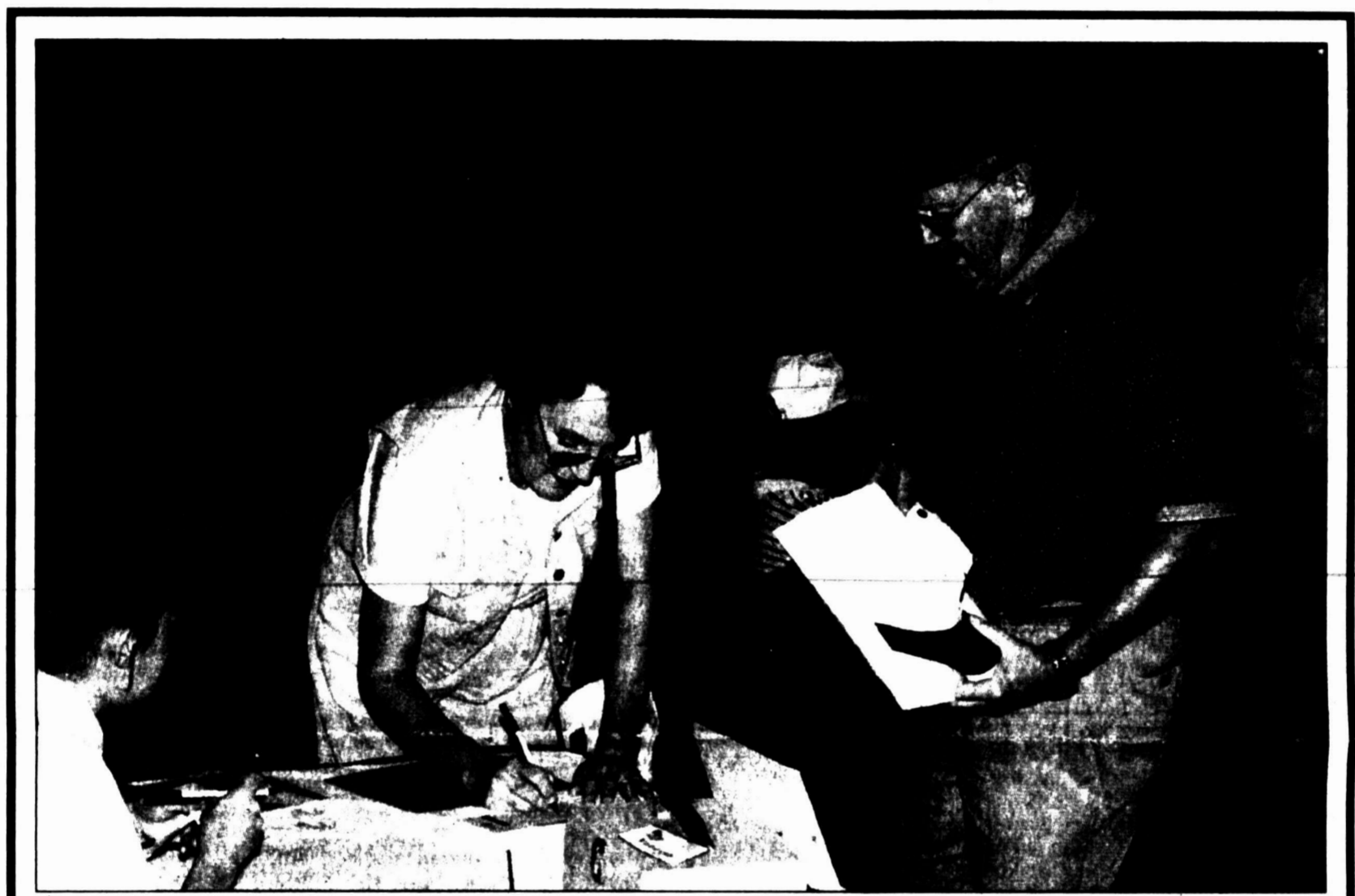
other citizens favored the change when it was passed in 1984.

The Canadian ordinance makes it unlawful for any person or any owner to leave, park, or stand any truck tractor, road tractor, truck trailer, semi-trailer or any other commercial motor vehicle of one-ton or more upon any public street, alley, parkway, boulevard, or public place which is within or adjacent to any area which is zoned as a single-family residential district or general residential district in Canadian.

Trucks which are loading and unloading passengers, freight or merchandise are not affected by the ordinance. Truck equipment, trailers and vehicles used by public service utility companies which are repairing or extending public utilities are not affected.

Fine of the offense provided by the ordinance is not to exceed \$200 per offense.

Stimmet City Administrator James Stroud said the Stimmet council passed an ordinance pre-



Gerald Creasy and his wife, Jane, register Sunday at the Pampa Country Club for the various Tri-State Senior activities this week. TSSGA helper Vanessa Fisher waits on the Creasys, who live at Panorama Village near Houston. For a complete listing of Tri-State Senior Golf Tournament winners from years past, see Page 2.

Golfers tee off Tuesday in annual tournament

Opening play starts Tuesday for the Tri-State Senior Golf Tournament at Pampa Country Club.

Some 144 golfers signed up for the 54-hole 65th annual Tri-State Senior Tournament at registration Sunday.

The opening round begins Tuesday in both match and stroke play at Pampa Country Club. After another round of match and stroke play on Wednesday, there will be stroke play in all flights as the tournament comes to an end Thursday.

"The course is in great condition," said PCC pro Mickey Piersall. "I think the seniors will be enjoying playing the course once again."

Two changes were made in this year's tournament format. The tournament will end on Thursday instead of Friday as it has in previous years. All the trophy presentations will be made at the annual awards banquet, which will be held at 7:30 Thursday in the Heritage Room at M.K. Brown Auditorium.

"In the past, we presented the trophies after Friday's last round and there was only a few people who stayed around to see who won. Most of them didn't find out

who won until months later," Piersall said. Monday's practice round was also eliminated. Instead, the annual men's scramble will be played on that day.

"Playing five days in a row, including the practice round, was really wearing them out. We think starting the tournament earlier and having the trophies presented at the banquet will be a positive thing," Piersall said.

Jim Holmes of Amarillo is returning to defend his Tri-State championship.

"The good lord willing and my back doesn't act up, I'll be there," said the 57-year-old Holmes, who currently serves as the interim superintendent in the Panhandle school district. "I'm looking forward to it. I believe it's one of the best senior tournaments in the United States."

Holmes entered the tournament for the first time in 1997, but had to withdraw in the first round because of back pain.

"I've played in a few tournaments this summer, but I haven't practiced much because of my back problems," he added. "I'm going to skip the scramble in Pampa and play in the tournament."

Last year, Holmes won the title by one

stroke (224-225) over Bob Poole of Horseshoe Bay. He had trailed by one stroke going into the final round.

Holmes is following in the tradition of his grandfather, B.E. Holmes of Shamrock, who won the first Tri-State tournament in 1935.

Poole returns to try for the title which eluded him a year ago. Pampa's Merle Terrell is expected to make a strong challenge for the top spot. Terrell finished third last year and was runnerup and medalist in 1995.

Tuesday's championship flight, consisting of 32 players, will be determined by handicap. After 18 holes, the flight will be divided with the 16 players having the highest scores forming the president's flight. The president's flight winner will be determined by the low 54-hole total. All other 16-player flights will be scheduled for match play Tuesday and Wednesday. For the final round on Thursday, every golfer in all flights will play medal play in four groups of four in each flight. Groups will be formed according to a player's record in Tuesday and Wednesday's play. Four trophies will be awarded in each flight.

More funds needed for medical expenses

While the Putt-A-Thon golf fund raiser for a Columbine shooting victim earlier this month was a success more donations are needed to offset mounting bills.

The putt-a-thon was held July 2 and 3 here in Pampa to help raise funds to help Richard Castaldo who was shot nine times during the rampage at Columbine High School in Colorado. Castaldo whose great-aunt, Dian Birdsell and cousins Jill Birdsell and Susan Bromlow live in Pampa, is now paralyzed from the chest down and confined to a wheelchair. While his family had insurance that helped with some of the medical bills they are having to build an extra room on their house that is wheelchair accessible. He is currently undergoing therapy in hopes that he will gain some use of his lower body.

So far over \$1,800 has been raised by pledges to the putt-a-thon and donations but more is needed. Anyone interested in donating can go to NBC Bank in Pampa. The First National Bank in Amarillo has also established a fund.

Storybook character to go on trial in Pampa

By MIRANDA G. BAILEY
For The News

Goldilocks is going on trial this weekend.

The storybook tabled youth will get her "just desserts" this weekend when she is tried by a jury of her peers in ACT's children's summer production, "The Trial of Goldilocks."

Directed by ACT Board of Directors Secretary Gina Kane, the show is featuring a cast of 28 youth ages 7 to 12.

Kane said she had her young actors on script by the beginning of last week and has been working on the finishing touches for this Thursday's opening night.

The show will begin at 7 night-ly on Thurs-Fri. and Sat., July 29-31 at the ACT theater in the Pampa Mall. The entrance is on the west side of the building behind Homeland grocery.

The production is geared for children of all ages, according to Kane.

"It's fun to do in rhyme and the kids are good," Kane said describing the show.

"I love being around kids," she added. "They've all been so cooperative and they've done really well."

Tickets can be bought at the door for children and adults for \$3.50 each.

City keeps on trucking

Beginning today, all requests for Pampa's Loan-a-Truck program should be made by calling 669-1178 or by going to the city landfill office on Loop 171.

Rick Stone, Pampa's sanitation superintendent, said today that demand for the trucks has been heavy. Requests should be made well in advance of the date needed, he said.

"Details of this program are available by calling the landfill office at 669-5840 or the new number, 669-1178," Stone said.

Pampa area dairy to starting milking next month

By NANCY YOUNG
Managing Editor

We've got milk! That's what Pampa Economic Development Corporation is proudly asserting. The long-awaited dairy industry in the Pampa area will be in operation in about a week.

Sponsored by the PEDC and the Pampa Chamber of Commerce, tours to the Moody Dairy will be available Saturday, July 31. All persons interested in taking the tour should go to the Pampa Chamber of Commerce building at 200 N. Ballard between 9 a.m.-12 noon. No personal vehicles will be allowed as

the location of the dairy is also a working feedlot.

William B. Ready of the PEDC said the dairy is planning to be open around Aug. 1. New to the Pampa area, the dairy will have 750 cows when it first opens and one barn. When it is operating at full capacity the dairy will have 2,500 cows and three additional barns. Twenty employees will be working at the facility.

After working two and one-half years to obtain the facility, local business leaders are excited about the new business which will diversify the local economy. The goal is to have 10,000 cows in the area in the next 12-18

months, and to double that amount during the following 12-18 months.

Ready said when the area reaches 10,000 dairy cows it will be possible to set up a supply house specific to dairies. Veterinarians specializing in dairy cows will also be interested in relocating to Pampa when that goal is reached.

When 20,000 dairy cows are placed in the dairy business in the local economy, a bottling plant will consider locating here. The establishment of 30,000 dairy cows will attract creameries and cheese manufacturing to the area.

A representative of a service center was in Pampa last week looking at local businesses to be a representative in a related dairy business. Ready said the goal is to diversify and branch out. He said it will also open up the market for employees. He said it will make employees more valuable when the area is diversified.

The Moody Dairy is relocating from Stephenville in Erath County which had an agricultural economy of \$200 million last year making it the tenth largest in the United States and the largest in Texas. The dairy economy will be a major contributor to the area.

Calligan 806-665-5729
314 S. Starkweather • Pampa

The Panhandle Country **SHOPPER** 806-669-2525
Call Today For More Information

Daily Record

Services tomorrow

OGDEN, Joe W. - 2 p.m., Church of Christ, Perryton.

Obituaries

ARZELL M. ANDERSON

McLEAN - Arzell M. Anderson, 73, died Friday, July 23, 1999, at McLean Care Center. The body was cremated. No services are scheduled. Arrangements are under the direction of Schooler-Gordon Funeral Directors of Amarillo.

Mrs. Anderson was born at Burns Flat, Okla. She married William F. Anderson in 1947 at Wheeler. She was a homemaker and a Baptist. She was preceded in death by a brother, Bobby Gutherie.

Survivors include her husband, William, of McLean; a son, Kerry Anderson of Amarillo; four grandchildren; and two great-grandchildren.

The family requests memorials to be to American Cancer Society.

LADELLE EVANS

PLAINVIEW - Ladelles Evans, 90, died Thursday, July 22, 1999. Services were to be at 11 a.m. today in Family Life Chapel at First Baptist Church with Dr. Travis Hart officiating and Steve Burleson of Spur and Mark Gunter of Olton assisting. Burial will be in Plainview Cemetery under the direction of Lemmons Funeral Home.

Mrs. Evans was born at Bloomburg and attended school at Brice. She married the Rev. Milton Odell Evans in 1927 at Memphis; he died in 1977. From 1943-69, she lived at Skellytown, Oklahoma and Holliday, moving to Plainview in 1969. She was active in WMU and GA's and taught young married ladies class at Holliday.

Survivors include a daughter, Mary Johnson of Plainview; seven grandchildren; 16 great-grandchildren; and five great-great-grandchildren.

CLELL E. GIERHART SR.

SHAMROCK - Clell E. Gierhart Sr., 94, died Friday, July 23, 1999. Services were to be at 10:30 a.m. today in First Baptist Church with the Rev. Jack Lee officiating. Burial will be in Shamrock Cemetery under the direction of Wright Funeral Directors of Shamrock.

Mr. Gierhart was born Dec. 23, 1904, in Grady County, Oklahoma, and attended school at Twitty and Shamrock. He married Elsie Mae Tarvin on Dec. 30, 1926, at Shamrock; she died in 1975. He later married Vauda Wood in 1978; she died in 1995. He was a barber for many years, owning his own shop. He also worked in Real Estate, leasing and royalties using his old barber shop as his office prior to sharing an office with B.F. "Buddy" Risinger.

He belonged to First Baptist Church of Shamrock where he was ordained as a deacon on Jan. 20, 1957. In addition, he served as treasurer and as head usher for many years. He was a longtime Rotary Club member.

He was preceded in death by his parents; three brothers; and six sisters.

Survivors include a son, Clell E. Gierhart Jr. of Sugarland; two grandchildren; and four great-grandchildren.

The family requests memorials to be to First Baptist Church or to First Baptist Church Building Fund, 401 N. Main St., Shamrock, TX 79079.

JOHN RUSSELL GILCHRIST

John Russell Gilchrist, 87, died Sunday, July 25, 1999, at Coronado Health Care Center. Services will be at Sterling, Kan., under the direction of Sullan Funeral Home.

Mr. Gilchrist was born Feb. 17, 1912, at Wauketa, Okla. He married Lena Workman on Jan. 28, 1951, at Clayton, N.M.; she died in 1997. The couple moved to Higgins in 1963. He worked for William's Gas Company prior to retiring in 1977 after 25 years of service. He was a well tender.

He was a Baptist and a veteran of World War II.

He was preceded in death by three brothers and by a sister.

Survivors include a daughter, Orlene Baird of Pampa; two sons, Bobby Gilchrist of Amarillo and Lonnie Gilchrist of Texoma, Okla.; three sisters; three brothers; 10 grandchildren; and nine great-grandchildren.

The family requests memorials to be to Crown of Texas Hospice.

ERIN COLLEEN MONGRAIN

ABILENE - Erin Colleen Mongrain, 21, a former Knox City resident, died Friday, July 23, 1999. Services were to be at 10 a.m. today in King County Mongrain Ranch with Leon Burkham and Gene McCarty officiating. Arrangements are under the direction of Smith Funeral Home of Knox City.

Miss Mongrain was born at Shamrock and attended school at Knox City for seven years. She graduated from Paint Creek High School in 1997. She worked for Abilene Petroleum Club and belonged to Church of Christ in Knox City.

Survivors include her parents, Emily and Jackie Swafford of McLean and Rocky and Pam Mongrain of Knox City; four sisters, Mandy Terry of Poetau, Okla., Angela Carmley of Round Rock, Crissy Swafford of McLean and Jessica Fleming of Cross Plains; two brothers, Alan Donaldson of Folsom, Calif., and Greg Donaldson of Wichita Falls; her grandparents, Marie Darr of Knox City and Clarence and Osa Billingsley.

JOE W. OGDEN

PERRYTON - Joe W. Ogden, 69, died Sunday, July 25, 1999. Services will be at 2 p.m. Tuesday in the Church of Christ with Terry Danley officiating. Burial will be in Ochiltree Cemetery under the direction of Boxwell Brothers Funeral Home of Perryton.

Mr. Ogden was born Oct. 16, 1929, at Lefors. He held a degree from West Texas State University, and was a member of the Sun Bowl championship team in 1950. He married Louise Keeton on April 24, 1949, at Pampa. He taught school at Amarillo and coached at Gruver and Perryton schools. He had been a Perryton resident for the past 35 years, moving from Gruver.

He worked for Perryton Furniture from 1961-72 and was an insurance agent, operating his own insurance agency, Ogden Insurance, from 1977 until retiring in 1997.

He was president of Ranger Loan Fund, was past president of Chamber of Commerce and was past president of Perryton Lions Club. He was awarded the Lions Club 40-year pen and was named Gold Star Citizen, Citizen of the Year and Kiwanis Workhorse of the Year. He served on the United Way Board of Directors and was active in Boy Scouts, coached at the YMCA and belonged to the T. Club.

Survivors include his wife, Louise, of Perryton; a daughter, Ruth Ann Vessels of Dumas; two sons, Joe Keith Ogden and Paul Ogden, both of Perryton; two sisters, Mary Martin of Arlington and Mary Hughes of Ardmore, Okla.; a brother, Carl Ogden of Farmington, N.M.; and eight grandchildren.

The family requests memorials to be to Ochiltree General Hospital Hospice, 3101 Garrett Dr., Perryton, TX 79070.

The body will be available for viewing until one hour prior to service time at the funeral home. The casket will not be open at the church.

BERNICE LEE O'NEAL

CLARENDON - Bernice Lee O'Neal, 86, mother of a Lefors resident, died Friday, July 23, 1999. Services were to be at 2 p.m. today in Clarendon Church of Christ with Mike Suiter, minister of San Jacinto Church of Christ of Amarillo, Bright Newhouse, minister of Hedley Church of Christ, and Brian Gochenour, minister, officiating. Burial will be in Citizens Cemetery under the direction of Robertson Funeral Directors.

Mrs. O'Neal was born at Clarendon. She married James LeRoy "Boots" O'Neal in 1932 at Tucumcari, N.M.; he died in 1995. She worked in various nursing and private homes prior to retirement.

She belonged to Clarendon Church of Christ.

Survivors include four daughters, Mary Kay Mangum of Lefors, Beverly Shepherd of Channing, Becky Miller of Midland and Patricia Gattis of Irving; four sons, John O'Neal of Clarendon, Bill "Boots" O'Neal of Guthrie, Wesley O'Neal of Electra and Joe O'Neal of Vernon; 16 grandchildren; 25 great-grandchildren; and five great-great-grandchildren.

JOHNNIE W. PENLAND

Johnnie W. Penland, 81, of Pampa, died Sunday, July 25, 1999. Services will be at 2 p.m. Wednesday in Carmichael-Whitely Colonial Chapel with Dr. Derrell Monday, pastor of Central Baptist Church, officiating. Burial will be in Memory Gardens Cemetery under the direction of Carmichael-Whitely Funeral Directors of Pampa.

Mr. Penland was born Nov. 15, 1917, at Altus, Okla. He married Eva Mae Tarpley on Jan. 11, 1936, at Altus. He had been a Pampa resident for 41 years and was a machinist for Cabot Corporation for 38 years prior to retiring.

He belonged to Central Baptist Church and was a veteran of the U.S. Air Force Signal Corps, stationed in Italy and France.

He was preceded in death by two brothers and by six sisters.

Survivors include his wife, Eva Mae, of the home; a son, Ennis Penland of Amarillo; two brothers, Elmer Penland and Jack Penland, both of Dallas; three grandchildren; and eight great-grandchildren.

The family requests memorials to be to Make-a-Wish Foundation.

Ambulance

The Rural/Metro reported the following calls during the 48-hour period ending at 7 a.m. today.

Saturday, July 24

10:35 a.m. - A mobile ICU responded to Pampa Regional Medical Center and transported one to Baptist St. Anthony's in Amarillo.

2:07 a.m. - A mobile ICU responded to the 500 block of Ward. No one was transported.

2:50 p.m. - A mobile ICU responded to the 2500 block of Perryton Parkway. No one was transported.

Sunday, July 25

12:37 a.m. - A mobile ICU responded to a local nursing facility and transported one to Pampa Regional Medical Center.

3:15 a.m. - A mobile ICU responded to Pampa Regional Medical Center and transported one to Northwest Texas Hospital in Amarillo.

7:33 a.m. - A mobile ICU responded to the 1400 block of West Coronado. No one was transported.

4:08 p.m. - A mobile ICU responded to a fire standby in the 500 block of South Reed.

4:26 p.m. - A mobile ICU responded to the 1400 block of West Coronado. No one was transported.

4:26 p.m. - A mobile ICU responded to a fire standby in the 500 block of South Reed.

4:50 p.m. - A mobile ICU responded to the a fire standby in the 500 block of South Reed.

7:36 p.m. - A mobile ICU responded to the 400 block of Hughes. No one was transported.

Monday, July 26

12:36 a.m. - A mobile ICU responded to the Jordan Unit and transported one to Pampa Regional Medical Center.

Fires

The Pampa Fire Department reported the following calls during the 48-hour period ending at 7 a.m. today.

Saturday, July 24

8:44 a.m. - Two units and six personnel responded to One Medical Plaza on an alarm malfunction.

3:18 p.m. - Two units and six personnel responded to 2406 Fir on a structure fire.

Sunday, July 25

7:31 a.m. - Two units and five personnel responded to Coronado and Wells on an automobile accident.

4:05 p.m. - Four units and ten personnel responded to 546 S. Reid on a structure fire.

7:35 p.m. - One unit and three personnel responded to the 400 block of Hughes on a medical assist.

Truck knocks out power and totals car



(Pampa News photo by Jeff West)

While over 350 homes lost cable service yesterday morning only about 30-40 customers lost electrical power when a semi truck and trailer caught some power and cable lines on the top of the trailer. The truck was driven by Larry Carl Ledford, 41, 1601 Somerville, who told police he had traveled down the 1400 block of Coronado several times before. The accident broke an SPS pole which fell onto a 1986 Camero owned by Joshua Raymond, Yukon Okla., that was parked illegally on the south side of the road. Power and cable lines also fell across the road striking a legally parked Dodge Shadow on the north side of the street. No injuries were reported.

CONTINUED FROM PAGE ONE

TRUCKING

venting the 18-wheelers from parking in residential areas in 1998.

Several reasons lead up to the passage of the ordinance, he said. He said truckers were parking the heavy trucks on city streets, causing damage to the streets which were not designed for the weights of the 18-wheelers.

He said another issue which concerned council members was safety and protection of the general public. Concern was expressed about the hazardous chemicals and other contents of the trucks which could be dangerous in a residential area. However, Stroud said all placard trucks are already covered by state laws and do not require action of local governing bodies.

Visibility adjacent to the trucks parked in the street was an issue raised by residents. These residents cited possible danger to small children in the area not being able to view oncoming traffic. Residents told of several incidents of children being almost run over by trucks.

Any vehicle 2,000 lbs. or over is governed by the ordinance.

The ordinance restricts the presence of trucks to those who are delivering goods and services in residential areas. These vehicles are allowed while the deliveries are being made only.

"We established a business district which allowed for the parking of vehicles and we also designated areas in the community for parking the 18-wheelers. Several of the local businesses who have large areas offered their commercial yards for the truck drivers to park," said Stroud. "We had resistance at first from the truck drivers. It just took some time for them to get accustomed to it. We

worked for several months on the ordinance before it passed."

The town does not restrict recreational vehicles and camping trailers.

The City of Childress has an ordinance preventing commercial parking in residential areas. City Manager Jerry Cummings said the trucks may not park in single family residential areas as provided by an ordinance passed by the council in 1972.

Cummings said no weight limit is provided in the ordinance, but lengths of vehicles is specified. He further said that camping trailers and recreation type vehicles are prohibited from being parked for a time limit exceeding 48 hours on residential streets.

Childress Police will contact local residents as a courtesy informing them of violations, said Cummings. He said he was not aware of citations being issued.

Many truckers have been parking on Wal-Mart and United parking lots, said Cummings. He said the stores have signs stating no parking, but the truckers keep parking there. Cummings said one of the reasons was because the only truck stop in town is not nearly large enough to handle all the trucks which travel through the Childress community.

Police officers in Childress periodically receive phone calls from Wal-Mart and United requesting assistance in trucks being removed from their properties, he said.

Borger has had an ordinance on the books since 1963 regulating transportation and distribution of petroleum products, explosive liquids and truck traffic in the community. The ordinance also regulates truck

routes in the community.

These one-ton vehicles may not be parked on public streets or alleys of the city of Borger with several exceptions.

Exceptions in the ordinance include emergency conditions involving vehicle failure, during the delivery of petroleum products to customers, and awaiting repairs on a specified truck.

The ordinance provides "petroleum products" shall include all the flammable liquids having a flash point of 200 degrees F. or below when tested by the closed cup tester of the U.S. Bureau of Standards. Examples of flammable liquids provided in the ordinance are gasoline, liquefied petroleum gas, naphtha, benzol, alcohol, kerosene and fuel oil.

Recreation vehicles and camping trailers as well as residential areas are not mentioned in the ordinance.

Clarendon does not restrict the trucks' parking in residential areas, said Linda Smith with the City of Clarendon city offices. She said the only restrictions the community has is the prevention of any motor vehicles to be parked in alley ways. She said there are not any ordinances preventing trucks from parking in residential areas.

Truckers in Dumas may park their truck cab at their homes on city streets, but are unable to park the trailers at the residential location because of a local ordinance, according to a spokeswoman in the Dumas municipal office.

She also said recreational vehicles may be legally parked in residential driveways and on the streets with limitations. These vehicles must be parked within certain distances of drives and intersections.

Limits are placed on the weight of trucks and where they may park in the community. One sign is located at the intersection of Hwy. 287 and Sixteenth Street informing people that trucks weighing over a specified limit are not allowed on city streets.

She also said signs were placed in a residential area of mobile homes near the baseball fields recently regulating the size of trucks which could be parked in residential areas, saying the trucks parked in the area had been a problem during the past softball season.

The work session at 4 p.m. Tuesday of the Pampa City Council precedes the regular meeting at 6 p.m. in the city commission chambers. Commission meetings are open to the public.

City Briefs

The Pampa News is not responsible for the content of paid advertisement

BACK TO SCHOOL - Save on Quality Eyewear at EyeCare Plus. Frame and Lens packages start at \$99. Includes Exclusive Two-Year Frame and Lens Warranty, scratch coat, 100% UV protection, and Impact Resistant Ultralight Lenses. Great selection for preschoolers to adults. 1916 N. Hobart, 669-2824.

BERMUDA GRASS taking over your flowerbeds? Kill it without harming other plants. Watson's, 125 N. Somerville.

BOYD'S CHRISTMAS In July Sale, on all past Christmas resin & ornament pieces at All Its Charm, 26th thru 31st.

1992 ASTRO Van for sale, 1 owner, good condition, 665-3557

CLOTHING ROOM Mary Ellen & Harvester Church of Christ (building across the street, south of Pampa High School), open Tues., July 27th, 9-5 p.m., or call 665-2373, lv. msg. for appt.

HUGE LOAD of New Statuary, Bird Baths & Patio Fountains. Watson's, 125 N. Somerville.

SHOP FOR back to school. Bargain tables available. Tralee Resale Shop 308 S. Cuyler.

Weather focus

PAMPA - Mostly sunny today with a high pushing the century mark.

It will be clear tonight with the temperatures in the lowers 70 degree range.

Tuesday will be mostly sunny with a high near 100 degrees.

Wednesday through Friday, the highs should be in the upper 90s. Temperatures could reach 102 degrees. Lows will be in the lower 70s.

The overnight low today was 75. Sunday's high was 99 degrees.

PANHANDLE - Tonight, mostly clear with a low 65 to 70. Southeast wind 10-15 mph.

Tuesday, mostly sunny with a high in the mid 90s. South wind 10-20 mph. 3 to 5 day forecast, Wednesday through Friday, mostly clear. Lows 65 to 70. Highs in the mid to upper 90s.

STATEWIDE - The week started at a blistering pace, as temperatures crept past 100 degrees in many parts of Texas on Sunday.

Forecasters say more hot, humid days are in store for the state. In North Texas, Mineral Wells reported a daytime high of 101 degrees and Wichita Falls was a toasty 104 degrees.

A high pressure system continued its grip on West Texas and South Texas saw some respite

with light rain along the coast. An isolated thunderstorm brought more than two inches of rain to Berry Bayou near Houston.

The National Weather Service predicts partly cloudy skies across North Texas this afternoon with a slight chance of afternoon thunderstorms. Highs will range from the mid 90s to near 103, but humidity will make the afternoon blaze feel closer to 105 across the area.

In West Texas, showers are possible in far west areas. Forecasters expect highs in the 90s except for some 80s in the mountains and near 105 in the Big Bend. Lows in the 60s and 70s.

Clarendon College-Pampa Center



(Special photos)

Mike Briggs, left, of BGR Architects-Engineers of Lubbock, points out features on the south side of the Clarendon College-Pampa Center construction site during a walk-through this week. Dr. Myles Shelton, Second from left, new president of Clarendon College; Nancy Paronto of the Pampa Center Foundation board; and Don Lane, chairman of the PCF board were part of the group on tour. According to Briggs, the construction of the new \$2.1 million facility is approximately 50 percent completed. The new facility at 1600 W. Kentucky is expected to open for classes

in January. At the right, Dr. Myles Shelton, right, Clarendon College president, and Randy Watson, Pampa Center Foundation board member, survey the future classroom area for Clarendon College-Pampa Center. The aluminum studs for the classrooms were being erected at the time of the mid-July walk-through for the PCF board members. The \$2.1 million college complex is on schedule and will open in January, 2000, according to Mike Brigs of BGR Architects-Engineers of Lubbock. The contractors for the building are West Texas Contractors, Inc. of Amarillo.

Daily Record

Police report

The Pampa Police Department reported the following arrests and reports during the 48-hour period ending at 7 a.m. today.

Saturday, July 24

David A. Arreola, 23, 401 N. Wells, was arrested on charges of violation of probation in Wise County.

Clinton P. Smile 20, 319 Roberta, was arrested on DPS warrants.

Criminal Trespass was reported in the 1100 block of South Banks.

A false report was reported in the 200 block of East Tuke.

Sunday, July 25

Rhonda Lea Porter, 33, 432 Crest, was arrested on a warrant on charges of unlawful possession of marijuana from Oklahoma.

Reginald C. Austin, 49, no known address, was arrested on charges of public intoxication.

Timothy J. Broadbent, 19, 436 Graham, was arrested on warrants.

Monday, July 26

Nathaniel Robinson Jr., 54, Berger, was arrested on charges of public intoxication.

Accidents

The Pampa Police Department reported the following accidents during the 48-hour period ending at 7 a.m. today.

Friday, July 23

No charges were listed when a 1995 GMC Yukon driven by Mary Price Ray, 30, backed into a legally parked 1995 Ford Aspire owned by Brenda Veach Zedlitz, 1501 N. Sumner in the 1300 block of Mary Ellen. No injuries were reported.

No charges were listed when a 1993 Peterbilt truck with tractor driven by Larry Carl Ledford, 41, 1601 Somerville, moved to the center of the

road in the 1400 block of Coronado and snagged some power and cable lines which broke an SPS pole which fell onto a 1986 Camero that was parked illegally on the south side of the road. Power and cable lines also fell across the road striking a legally parked Dodge Shadow on the north side of the street. No injuries.

Sheriff's Office

The Gray County Sheriff's Department reported the following arrests during the 48-hour period ending at 7 a.m. today.

Sunday, July 25

Teresa Haddock, 45, 916 S. Banks, was arrested on charges of driving while intoxicated and failure to display id.

William Michael Terrell, 28, 1033 Neel Road, was arrested on charges of possession of marijuana under two ounces.

William Ernest Kirkham, 38, 1505 N. Christy, was arrested on charges of public intoxication.

Stocks

The following grain quotations are provided by Attebury Grain of Pampa.

Wheat	2.24	Coca-Cola	62 7/16	up 3/16
Milo	2.89	Columbia/HCA	23 5/8	up 13/16
Corn	3.29	Enron	84 9/16	up 1/16
Soybeans	3.81	Halliburton	44 5/16	up 1/4
		IBI	4 1/2	dn 1/16
		KNE	20 1/2	NC
		Kerr McGee	51 15/16	dn 1/2
		Limited	44 3/4	dn 1/16
		McDonald's	41 7/8	dn 1/8
		Mobil	103 7/16	up 13/16
		New Atmos	25 1/4	up 1/16
		NCE	36 11/16	up 1/16
		Penney's	46 1/4	dn 3/16
		Phillips	52 13/16	dn 7/16
		Pioneer Nat. Res.	11	dn 1/16
		SLB	60 15/16	up 1/16
		Tenneco	24	dn 1/16
		Texasco	61 5/8	dn 3/4
		Ultramar	24 5/8	dn 3/8
		Wal-Mart	45 7/16	up 1/2
		Williams	45 7/16	dn 5/16
		Silver	5 15	up 1/8
		West Texas Crude	20.63	up 1/4

The following 9:30 a.m. N.Y. Stock Market quotations are furnished by Edward Jones & Co. of Pampa.

Amoco	112 3/8	dn 1 11/16
Arco	88 5/16	dn 1 1/8
Cabot O&G	18 1/8	up 1/8
Chevron	94 1/16	up 1/4

CONTINUED FROM PAGE ONE

MILK

omy was \$140 million of the agricultural base. Population in Erath County is 31,000.

Gray County's agricultural base was \$85 million last year with none of it dairy-related.

"Among the conditions making the local area a prime candidate for the dairy business are cool nights, low humidity, accessible feed sources, reasonable land and good water," said Ready. "These factors make a prime situation for a successful dairy economy."

He said the low humidity and lower temperatures will lower costs for the owners due to the decreased need for sheds as well as the decreased need for cooling and heating for the ani-

mals. He added the purchase of grain from local farmers will also be a positive effect upon the local farmers. Also, the farmers will not be dependent upon the world market prices.

"The dairy industry is a very, very clean industry," said Ready. He explained that dairy owners are required to wash down the area daily and maintain fly control problems. He also cited stringent health requirements of Texas and federal agencies.

He said there are no smells or odors associated with other industries involving livestock. Ready also said manure is not allowed to be stockpiled. He said that dairy cattle manure is a high quality fertilizer with numerous nutrients which is much in

demand, and is a by-product business of many dairies.

The Moody Dairy will be on three sections of land. He said the good land as well as the good work ethic of the Panhandle people was a positive in attracting the dairies.

Another dairy is expected to relocate in this area in the near future, as the business is in the process of obtaining necessary permits. Two additional dairies are strong prospects to the area.

Ready encourages Pampa residents to take the tour which will be about 30 minutes to one hour round trip. He also cited that the Street Fair sponsored by the Downtown Business Association will be held Saturday.

Tri-State Senior Golf Tournament winners from past years

1935: B.F. Holmes, Shamrock	Albuquerque, N.M.	1976: Web Wilder, San Antonio
1936: Bob Skaggs, Clovis, N. M.	1957: J.R. Brown, Amarillo	1977: Harold DeLong, Shawnee, Okla.
1937: B.F. Holmes, Shamrock	1958: A. Pete Edwards, Lubbock	
1938: Bill Gallacher, Carrizozo	1959: J.R. Brown, Amarillo	
1939: Bob Skaggs, Clovis, N.M.	1960: Lofton Burnette, Lubbock	
1940: Byron Clancy, Carter, Okla.	1961: Lew Lacy, Oklahoma City	
1941: John Payne, Edmond, Okla.	1962: J.R. Brown, Amarillo	
1942: Roy Allen, Oklahoma City	1963: Lofton Burnette, Lubbock	
1943: Harrison Smith, Oklahoma City	1964: Lofton Burnette, Lubbock	
	1965: Raymond Marshall, Lubbock	
	1966: David Goldman, Dallas	
	1967: David Goldman, Dallas	
	1968: Frank Sparks, Pasadena	
	1969: Raymond Marshall, Lubbock	
	1970: David Goldman, Dallas	
	1971: Harold DeLong, Shawnee, Okla.	
	1972: Web Wilder, San Antonio	
	1973: Harold DeLong, Shawnee, Okla.	
	1974: E. Doug Roush, Amarillo	
	1975: J. Carroll Weaver, Sinton	
	1976: J.R. Brown, Amarillo	
	1977: Harold DeLong, Shawnee, Okla.	
	1978: Roy Feden, Kermit	
	1979: Bob Gliese, Amarillo	
	1980: Bob Gliese, Amarillo	
	1981: J.R. Ferguson, Dallas	
	1982: Jack Williams, Plainview	
	1983: Jake Broyles, Lamesa	
	1984: J.R. Ferguson, Dallas	
	1985: Bob Gliese, Amarillo	
	1986: Jake Broyles, Lamesa	
	1987: Ken Bailey, Amarillo	
	1988: Jim Kirk, Ardmore, Okla.	
	1989: Jake Broyles, Lamesa	
	1990: Jake Broyles, Lamesa	
	1991: Jake Broyles, Lamesa	
	1992: Dick Alexander, Lubbock	
	1993: Jake Broyles, Lamesa	
	1994: Elmer Wilson, Pampa	
	1995: Tom Miller, Wichita Falls	
	1996: Elmer Wilson, Pampa	
	1997: Eddie Duenkel, Pampa	
	1998: Jim Holmes, Amarillo	

Style show set for next month

The Altrusa Lunch and Style Show will be 11:45 a.m. Aug. 14 at M. K. Brown Auditorium. Local merchants will be showing the latest fall fashions using local models.

Theme for the event is Garden Thyme. Sonja Solano, former Miss Amarillo Area, will provide vocal entertainment. Approximately 40 door prizes will be awarded at the event.

Tickets are available from any

Altrusa member or at the door. Proceeds from the annual Altrusa Lunch and Style Show go towards community service projects. Among the groups receiving financial assistance are Pampa Senior Citizens, Tralee Crisis Center, Sheltered Workshop, Children's Christmas Shopping Tour, Salvation Army Angel Tree, Schneider House, Lamar School, adult vocational award and PHS Career Clinic.

Calendar of events

PAMPA AREA LITERACY COUNCIL

Pampa Area Literary Council office will be open from 9 a.m.-3 p.m. Tuesday and Thursday. For more information, call 665-6000.

PAMPA CHESS CLUB

The Pampa Chess Club meets every Tuesday night at Yummie's Pizza in the Pampa Mall at 7:30 p.m. We offer casual yet competitive games, free instruction, and a quarterly newsletter. For more information contact James A. Shook at 669-0227.

CLEAN AIR AL-ANON

Clean Air Al-Anon will hold weekly meetings on Tuesdays and Thursdays at noon at 810 W. 23rd. For more information, call 669-3988.

TRALEE CRISIS CENTER

Tralee Crisis Center will offer Volunteer Training for people interested in working with victims of domestic violence, sexual assault and other crime victims. Training sessions will be from 6-9

p.m. beginning Tuesday, Aug. 24 at TCC, 310 S. Cuyler. For more information, call Diane Wells at 669-1131 or 1-800-658-2796. RSVP by Aug. 17.

GEM THEATRE

Gem Theatre in Claude will present the Community Heritage Players on Aug. 20 and 21. CHP will perform "You Can't Get There From Here," a comedy for the whole family. For reservations, call (806) 226-5409.

LUPUS FOUNDATION FUND-RAISER

The Lupus Foundation of America, West Texas Chapter, will hold "Back to School ADO" from 10 a.m.-6 p.m. Saturday, Aug. 7 at Southcrest Baptist Church parking lot, located in South Loop between Indiana and Quaker Avenue in Lubbock. The event will include games, food, prizes, face painting, water polo, horse rides, a chance to win a round trip to the Oct. 24 Dallas

Cowboy-Washington Redskin NFL football game and much, much more.

DON AND SYBIL HARRINGTON CANCER CENTER

The Women's Center of the Don and Sybil Harrington Cancer Center and BSA Health System will conduct a breast cancer screening clinic Aug. 9 at First United Methodist Church Educational Building, 201 E. Foster, in Pampa. Participants will receive a low-cost self-exam mammogram and a breast health appraisal along with individual instruction by a registered nurse in breast self-examination. Funding is available through the

Texas Department of Health for Texas residents who qualify for assistance. All exams are by appointment only. For more information, call (806) 359-4673 or 1-800-377-4673.

USS LONG BEACH REUNION

USS Long Beach Reunion Association will hold its 1999 reunion Sept. 15-19 at Pensacola, Fla. Participants will be staying at the Holiday Inn Bay Beach, 51 Gulf Breeze Parkway, Gulf Breeze, FL 32561-9990. For reservations, call (850) 932-2214. For more information, contact Don Shade at P.O. Box 69, Clymer, NY 14724-0069, (716) 569-2314, or e-mail LBCGN9@aol.com.

THE Pampa NEWS

403 W. ATCHISON • PAMPA, TEXAS
 TELEPHONES: (806) 669-2525
 1-800-687-3348 • FAX: 669-2520
 EMAIL: kbd@pan-tex.net • pamnews1@pan-tex.net

This newspaper (UPS 781-540) is published daily except Saturdays, Thanksgiving and Christmas Days. By The Pampa News, 403 W. Atchison, Pampa, TX. 79065. Periodicals postage paid at Pampa, Texas. Postmaster: Send address changes to the Pampa News, P.O. Drawer 2198, Pampa, Texas 79066-2198.

Publisher: L.W. McCall
 Ass. Publisher-Editor: Kate B. Dickson
 Managing Editor: Nancy Young
 Office Manager: Helena McKnight
 Circulation Manager: Dean Lynch

COPYRIGHT NOTICE
 The entire contents of The Pampa News, including its logotype, are fully protected by copyright and registry and cannot be reproduced in any form for any purpose without written permission from The Pampa News.

HOME DELIVERY
 All carriers are independent contractors and The Pampa News is not responsible for advance payments of two or more months made to the carrier. Please pay directly to the News Office any payment that exceeds the current collection period.

SINGLE COPIES
 Daily 50¢/Sunday \$1.00
 Member: Associated Press
SUBSCRIPTION RATES
CARRIER HOME DELIVERY
 1 yr. \$84.00 6 mos. \$42.00
 3 mos. \$22.00 1 mo. \$8.00

MAIL SUBSCRIPTIONS
 Mail in Roberts, Gray, Carson, Wheeler And Hemphill Counties in Texas
 1 yr. \$102.00 6 mos. \$51.00
 3 mos. \$25.50

Mail All Other Areas in U.S.
 1 yr. \$114.00 6 mos. \$57.00
 3 mos. \$28.50

Single Copy Mail
 Daily \$1.50 Sunday \$2.50
 No mail subscriptions are available within the city limits of Pampa. Mail subscriptions must be paid 3 months in advance.

Mon. - Thurs. Only

Buy One Chicken Fried Steak Dinner
 Get Second Chicken Fried Steak Dinner

For **1/2 Price**

SIRLOIN STOCKADE
 518 N. HOBART • 665-8351

SUMMER SPECIAL


10% OFF

4 TIRE PURCHASE
 (Plus Rotate & Balance)
 One Coupon Per Customer. Expires 8-15-99
 Not Valid With Any Other Offer.

SPEEDWAY DISCOUNT TIRES
 1312 N. Hobart • 806-665-0880

MEDICAL

Kids Q&A



American Heart Association
Fighting Heart Disease and Stroke

Help Your Heart Recipes

This recipe is intended to be part of an overall healthful eating plan. Total fat intake should be less than 30 percent of your total calories for a day — not for each food or recipe.

Risotto Milanese

<p>2 tablespoons light margarine 1½ cups uncooked arborio rice 3 green onions, finely chopped (about ½ cup) ¼ cup dry white wine (regular or nonalcoholic) 4 cups low-sodium chicken broth</p>	<p>¼ cup chopped fresh mushrooms (about 2 ounces) ¼ teaspoon saffron or ½ teaspoon turmeric 1 tablespoon grated Parmesan cheese</p>
--	---

In a large, heavy saucepan, melt margarine over medium heat. Add rice and green onions. Cook slowly until rice is milky, 2 to 3 minutes, stirring constantly with a wooden spoon. Add wine and continue to cook until wine is absorbed, 2 to 3 minutes, stirring constantly. Stir in remaining ingredients except Parmesan. Bring to a boil over medium-high heat, stirring occasionally. Reduce heat to low and cook, covered, for 20 minutes, or until rice is tender and liquid is absorbed. To serve, sprinkle with Parmesan. Serves 8.

154 kcal	3g Protein	1mg Cholesterol	0g Saturated Fat
28g Carbohydrates	30mg Sodium	1g Total Fat	1g Polyunsaturated Fat
0g Fiber	1g Total Fat	0g Monounsaturated Fat	

American Heart Association Cookbook, 6th Edition, ©1998. Reprinted with permission from Times Book, a division of Random House, Inc., New York. Visit our Web site at: <http://www.americanheart.org/>

Q: I want to wean my 4-month-old to rice milk, but my doctor says formula is the right choice. What should I do?

A: Your doctor is right. Fortified rice milk can be acceptable alternative beverage for older children. But using it now as your daughter's only source of nourishment could lead to serious and potentially irreversible nutritional deficiencies, says Dr. Judy Hopkinson, a lactation physiologist with the USDA's Children's Nutrition Research Center at Baylor College of Medicine.

To understand why rice milk is not recommended for infants, compare its ingredient list and Nutrition Facts label to that of infant formula. Rice milk contains only water, rice, oil and the only added vitamins are D, A and B-12. It is also low in protein and essential fats.

On the other hand, FDA regulations require that infant formulas contain the full nutritional banquet known to be essential for the only health. So, if you need to wean, go with formula. It is the only healthy alternative to breast milk for infants under one year of age.

sports drinks offer little advantage over plain, cool water, says Becky Gorham, a registered dietitian with the USDA's Children's Nutrition Research Center at Baylor College of Medicine.

Active kids do need to "tank up" on fluids before going out and rehydrate every 15 to 20 minutes while playing during the summer to help prevent heat-related illnesses.

If the availability of sports drinks encourages your kids to drink, you might consider compromising with a home-made "sport drink." Combine caffeine-free herbal tea, a little sugar, a bit of salt and a few ounces of orange juice. Chill in individual bottles. Or, just stock the refrigerator with plenty of bottles water to tempt thirsty kids on the go.

Q: Any tips for getting my teens to eat healthier while I'm at work this summer?

A: Stock the kitchen with healthy, easy-to-eat foods that your kids like, say nutritionists with the USDA's Children's Nutrition Research Center at Baylor College of Medicine. They offer these tips:

—Let kids help shop for healthy mid-day meal and snack foods.

—Stock the refrigerator with individual cartons of 100 percent fruit juice and small cans of fruit with pop-top lids, cut-up fruit, and pre-cut vegetables partnered with a favorite dip. Freeze cartons of 100 percent fruit juice to serve as "pops," or freeze grapes and slices of bananas for bite-size treats.

—Keep healthy, crunchy snacks on hand, such as pretzels, breadsticks, whole wheat crackers, ready-to-eat cereals, baked "Chips," and low-fat microwave popcorn.

—Think grab 'n' go for lunchtime fixin's. Stock whole wheat bread and low-fat deli meats and peanut butter for sandwiches; flour tortillas and low-fat cheeses for microwavable quesadillas; ready-to-eat salad mixes and pre-cooked chicken breasts for salads; and low-fat yogurt and granola for topping off fruit.

—Don't forget the beverages. Healthy thirst quenchers include 100 percent fruit juice, bottled water, low-fat milk, and frozen fruit juice "cubes" to float in mineral water.

Q: What is listeria?

A: Listeria is a bacteria that can contaminate food. While adults can generally ingest this bacteria without becoming ill, it shouldn't be ignored. Listeria can cause miscarriages in pregnant women and serious illness in newborn infants, the elderly and those with compromised immune systems.

To avoid listeria contamination, thoroughly wash vegetables before use and follow safe food-handling guidelines for cooking and storing meats. As an additional precaution, pregnant women and others at risk for serious illness from listeria should avoid unpasteurized milk products, soft cheeses like brie and queso fresco, and only eat hot dogs, deli meats or cold cuts, sausages, and leftovers that have been heated until steaming.

Send your nutrition questions via U.S. mail to: Kids' Nutrition Q & A, USDA/ARS Children's Nutrition Research Center at Baylor College of Medicine, 1100 Bates Street, Houston, TX 77030; or via E-mail to: cnrc@bcm.tmc.edu. Although individual responses are not possible, questions of general interest will be answered in this column.

New drug offers safer alternative for diabetics

HOUSTON — A newly released medication is offering a safer, more effective treatment for the millions of people with type II diabetes.

Manufactured as Avandia, the U. S. Food and Drug Administration recently approved it for use alone or in combination with the diabetes drug Metformin. The new medication was tested at sites throughout the United States including Baylor College of Medicine in Houston.

"The first generation of this class of insulin sensitizer drug for type II diabetes was introduced in the United States in 1997 but had a number of concerning characteristics, including rare reactions that led to liver damage or failure," said Dr. Alan Garber, a professor of medicine who oversaw the Baylor trials. "There has been no evidence of liver damage or liver toxicity in the 5,000 people studied to date with this second generation agent."

In type II diabetes, the body continues to make insulin but does not respond to it adequately. This is called insulin resistance. Previous medications treated the disease by increasing insulin production from the pancreas or decreasing glucose output from the liver.

The new agent, however, tar-

gets insulin resistance, the underlying cause of the disease. By acting as a sensitizer, it forces the body to take its own available insulin and use it more efficiently. It also reduces the amount of insulin needed, while improving blood sugar control.

According to Garber, Avandia produces far fewer side effects than previous diabetes medications. However, some patients may experience anemia, fluid retention, weight gain, headaches or an increased rate of upper respiratory tract infections. There have been no reports of drug-related jaundice or liver failure.

"With these new agents, the FDA recommends less frequent patient monitoring," Garber said.

Approximately 90 to 95 percent of the estimated 16 million Americans who suffer from diabetes have type II. Left untreated, the disease can lead to limb amputation, blindness, heart disease or kidney failure.

"We know type II diabetes to be a progressive disease, and as your pancreas progressively fails, more and more medications have to be used in combination to keep the blood sugar under control," Garber said. "This new class of medication gives patients with severe insulin resistance one of the best treatments available."

Q: My kids want me to stock up in sports drinks this summer, but I don't think they need them when all they do is play. Do they?

A: The added carbohydrates and minerals in sports drinks only benefit athletics engaged in continuous, high-intensity aerobic workouts that last for 90 minutes or more. For most children,

Dining out doesn't have to be fattening, unhealthy

DALLAS — Just because you're watching your weight, you don't have to give up dining out with friends. Whitt a little forethought, you can dine out as often as you like.

Many restaurants offer healthy fare, which they note with an asterisk or a heart or some other symbol. Choose those or ask the chef to prepare menu items to your specifications, says Claudia Barner, a registered dietitian and instructor at UT Southwestern Medical

Center's Allied Health Sciences School. Even at the most decadent restaurants, stick to your diet by carrying your own packets of low fat dressing, and powdered better substitute. Split an entree with a friend, or pack it up for tomorrow's lunch.

It's also important to stop eating when you are full. Barner notes: "Almost all restaurants serve in portions totally unrealistic with what we need for our calorie and activity needs."

Controlling High Blood Pressure

High blood pressure is linked to about 200,000 deaths in the United States each year. Of the 50 million Americans with the condition:

- 32 percent are unaware they have it
- 27 percent are on medication and have it controlled
- 26 percent are on medication but do not have it controlled
- 15 percent are not on medication



©1999, American Heart Association

American Heart Association
Fighting Heart Disease and Stroke

Drug fights blood vessel inflammation

DALLAS (AP) — A drug proven to reduce cholesterol also appears to battle another enemy: inflammation inside the arteries. The findings were contained in a study led by Dr. Paul Ridker, a cardiologist at Brigham and Women's Hospital in Boston. It was published in a recent issue of *Circulation*, a journal of the American Heart Association.

His team studied pravastatin, one of a class of cholesterol-lowering drugs called statins, for its ability to reduce levels of a protein that is elevated during inflammation. Inflammation can cause a heart artery to become clogged.

The researchers followed 472 men who had suffered a heart attack, stroke or clot and then had no major coronary events for the next five years.

They found that levels of the protein — C-reactive protein, or CRP — were as much as 38 percent lower in the men who took pravastatin compared with those who received a placebo. Even when patients in the placebo group lowered their "bad" cholesterol through diet and exercise, CRP increased over time.

Ridker noted that all the patients also were taking aspirin, which has shown to be good for the heart and circulation and may have contributed to reducing inflammation.

HI-PLAINS HYPNOSIS COUNSELING INSTITUTE



DR. JERRY R. LANE
CHT, LCDC, CPS, LCPC, CCBT
1224 N. HOBART, SUITE 109
EMAIL: drjrlcht@pan-tex.net

HOW AN I HELP IN THE TREATMENT PROCESS?

It is important to mention to your therapist your reactions to the process of change, using hypnosis, regardless of how unfair or ridiculous they may seem. Important clues may be derived from your reactions, dreams and resistance's to provide understanding of your inner conflicts and help in your progress.



GOLDEN PHOENIX CENTER

The Golden Phoenix Center has been appointed the specific mission of improving the psychological health of patients 65 years of age or older who require short term psychiatric hospitalization.

One Medical Plaza • Pampa, Texas

806-665-3721

P A M P A
Regional Medical Center



P A M P A
Regional Medical Center

SPORTS

Notebook

FOOTBALL

PAMPA — Harvester Booster Club will meet at 7 p.m. Aug. 2 in the Ready Room at the Pampa High athletic building.

Boosters will discuss the Meet the Harvesters night, which is planned for Aug. 7.

HOUSTON (AP) — Businessman Bob McNair, the leader of a group trying to bring pro football back to Houston, has told a television station that the odds are in the city's favor.

"I was told the chances are better than 50-50 that we would wind up with the team," McNair told KRIV-TV on Sunday.

NFL owners meeting Wednesday in Chicago will get a report from Los Angeles, which has a Sept. 15 deadline to arrange a stadium financing plan.

GENERAL

ALBUQUERQUE, N.M. (AP) — The Big West Conference is expected to break up at meetings as early as this week, leaving schools like New Mexico State looking for new conferences, NMSU officials said.

The two-division conference would become a one-division league that includes only California schools that do not play football in the conference, NMSU president William Conroy said in Las Cruces.

The Aggies likely would play football in the Sun Belt Conference, the Albuquerque Journal reported in Monday editions.

CYCLING

OOLETEWAH, Tenn. (AP) — Don't let the logo fool you. Sure, the bicycle Lance Armstrong used to blow by the competition in winning the Tour de France on Sunday has the Trek insignia painted on it.

But it was more the sponsor's cash than its engineering that was responsible for the victory.

Litespeed Titanium Components, a small family business based outside of Chattanooga and made up of about 60 employees, was the real mind behind the machine.

U.S. Postal Service, the team Armstrong rides for, is officially sponsored by Trek. Since Armstrong prefers bikes from Litespeed, however, Trek purchases them at a hefty \$6,000 apiece for him.

"Lance was a member of the Motorola cycling team and we sponsored it in previous years, so he was familiar with the cycle," explained David Lynskey, president of Litespeed.

Lynskey said the alloy tubing used for Armstrong's bikes is twice as strong and half as heavy as the tubing used for most bikes.

Tri-State photo



(Pampa News photo)

Bob Bean of Midwest City, Okla. has his photograph taken Sunday for the Tri-State Senior Golf Association during registration day at Pampa Country Club. The annual senior tournament tees off Tuesday at the PCC course.

Pampa claims runnerup trophy 11-12 state bambino tourney

PLAINVIEW — The Pampa Optimist 11-12 Bambino All-Stars did their best, but it just wasn't good enough. The Pampa team brought home the runnerup plaque as Andrews defeated Pampa 6-2 in the finals of the West Texas State Bambino Tournament here Friday.

Pampa played its best defensive game of the year as Tyler Doughty and Mateo Campos made brilliant plays to keep the game close.

Heath Miller started on the mound for Pampa. He walked two batters in the first inning. Campos made a difficult running catch of a foul ball from his shortstop position for the first out. Doughty fielded a hard smash at third, stepped on the bag and fired to Shea Brown at first for an inning-ending double play.

Andrews had three two-run home runs in the second inning to go ahead 6-0.

Thanks to a stout Pampa defense, they never scored again. Doughty made a sliding catch of a foul ball near the fence and threw a runner out at second from his knees after a diving stop. Campos fielded a rocket "that burned my hand" and tossed a runner out at second.

Miller gave up six runs on four hits while walking four and striking out one.

Campos pitched the next two innings. He allowed one hit and one walk. He did not allow a run and struck out one. Doughty pitched the last inning for Pampa. He shut down Andrews on one hit and no runs. He struck out one.

Pampa went down in order the first three innings with Andrews' starting pitcher, Bradley Villa, striking out seven. With two strikes, Campos lined a pitch against the right field wall for a double to lead

off Pampa's fourth inning. He stole third base and scored when the catcher's throw went into left field. Brown followed with a walk. He stole second without a throw, went to third on a passed ball and scored when Doughty ground out to the second baseman.

Pampa would get only two more base runners in the game. Eric Kingcade was hit by a pitch in the fifth inning. Brown singled and died on third base in the sixth inning.

Andrews had overpowered its opponents in its first three games, outscoring its opponents by a combined score of 46-1. Pampa was the only team to take Andrews to six full innings. Pampa was the only team to score against them.

Campos and Brown were the leading hitters in the five tournament games for Pampa with seven hits each. Campos and Doughty led the team in runs scored with six each. Doughty had 12 RBI to lead in that category. Campos was the leading pitcher with a 2-0 record. Doughty was 1-1 while Miller had a save and a loss.

"We had a lot of talent on our team," said Manager John Warner. "Of the 14 players on the team, 13 started at least one game. We had players who were unselfish and were on the bench until we needed their particular skill in a tight situation," Warner continued. "In our extra inning win against Seminole, Christopher Moody came off the bench to serve as a pinch runner. He tagged up perfectly on a sacrifice fly and scored the winning run."

"In our seventh-inning win over Plainview North, Jake Craig came off the bench as a pinch hitter in the bottom of the seventh and knocked in the winning run. These were guys

who played almost every inning of every game for their regular season teams and who were just as good as the guys on the field, but they were ready to play when we needed them in tight situations."

Warner praised Eric McClure "for his constant hustle and 125 percent effort," and Seth Foster "for his steady work as catcher. In the championship game we did not have a wild pitch or a passed ball."

"We had the best outfield in the tournament, thanks to players like McClure, Brown, Mitchell Crow, Eric Willingham and Keaton Hutto going all out on every play," Warner said. "I really appreciate the contributions made to our effort by our coaches, Billy Willingham and Tim Hutto," Warner continued. "They took many hours off work and dedicated themselves to helping our team get better. We were fortunate to have our high school baseball coach, Dennis Doughty, take charge of several of our practices and challenge our players to 'go all out.'"

We received coaching help from Marie Hickman, Rick Foster and Gary Gattis. Kristi Hutto and Tammy Kingcade helped by organizing a party for our boys and heading our fund-raising efforts."

Andrews competes in the Regional Bambino Tournament in Springdale, Ark. for the right to advance to the Bambino World Series this year.

Pampa's pitching machine team was runnerup to host Floydada in an invitational tournament. The Optimist 9-10 Bambino All-Stars lost 3-2 and 4-3 to Andrews to be runnerup in the West Texas 9-10 Bambino State Tournament, which was also held in Floydada.

Texas tames Tampa Bay

ST. PETERSBURG, Fla. (AP) — The Texas Rangers have really looked like a bunch of all-stars since the All-Star break.

Rick Helling came within two outs of a complete-game shutout and John Wetteland got his major league-leading 29th save as the Rangers won their eighth straight with a 4-3 victory over Tampa Bay on Sunday.

The Rangers, 10-1 since the break, improved to 18 games over .500 (58-40) for the first time since the end of the 1996 season.

"A big part of our success is we've been playing consistent baseball," said Rangers third baseman Todd Zeile. "It has been a knock on this team through this season and last season that the offense shines and sometimes the pitching doesn't and vice versa."

"Since the break, it's been a group effort."

Helling (8-7) and the Rangers nearly let the victory slip away. The right-hander — who allowed two runs and five hits over 8 1-3 innings — was lifted after Fred McGriff hit a two-run homer.

The comeback continued against Wetteland, who gave up a single to Bubba Trammell and Boggs' RBI triple. Making his second straight appearance after missing five days with upper back pain, Wetteland left Boggs stranded by striking out Aaron Ledesma and Rich Butler.

"John really stepped it up there when he had to and got two big strikeouts," Helling said. "Obviously, it would have been nice to have a shutout, but as

long as we win the game, I don't care who gets the win."

Boggs went 1-for-3 and moved within 11 hits of 3,000 for his career.

Zeile hit his 14th home run — a solo shot to center estimated at 436 feet — in the second inning. He has driven in a run in six straight games, totaling 10 RBIs.

Palmeiro added his 24th home run during a two-run fourth. The Rangers hit eight home runs in sweeping the three-game series.

Gregg Zaun added a run-scoring triple for the Rangers in the fourth inning. Rusty Greer knocked in a run on an eighth-inning groundout as the Rangers beat the Devil Rays for the seventh straight time. They are 6-0 at Tropicana Field.

The Devil Rays lost their fifth straight to fall to a season-worst 17 games (41-58) under .500.

Tampa Bay's veteran players, especially Sunday's starter Rolando Arrojo, have been mentioned in potential trades.

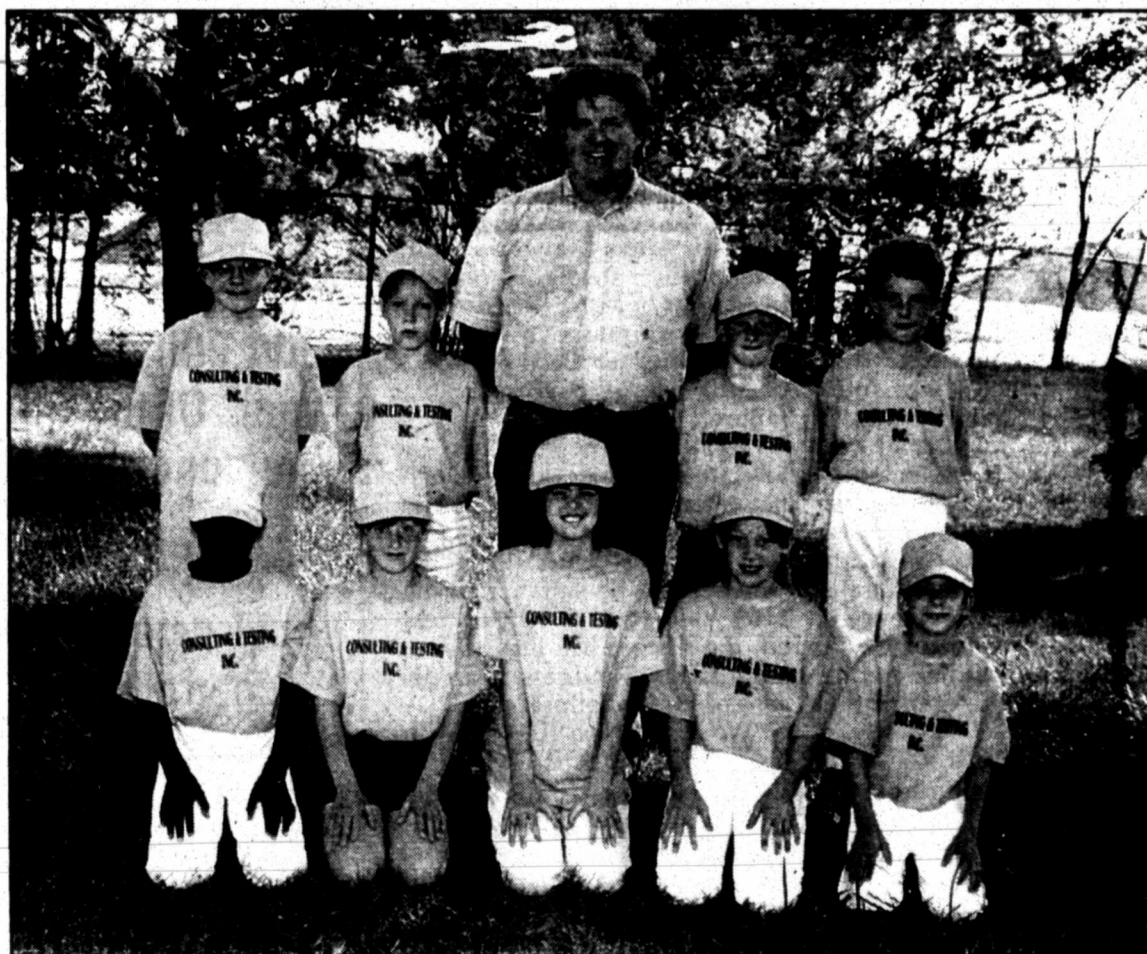
Local all-stars fall to Plano

GRAHAM — The Pampa All-Stars were eliminated from the sectional tournament by Plano Friday night in girls' softball action.

Pampa was held hitless by some tough pitchers as Plano won by a score of 21-4.

Pitching for Pampa were Brittner Rice, Nicole Clark and Maggie Hopkins.

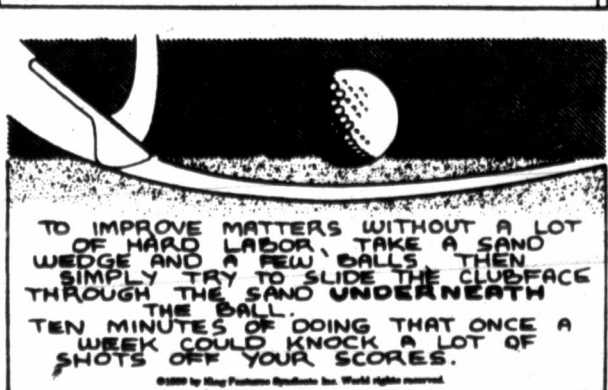
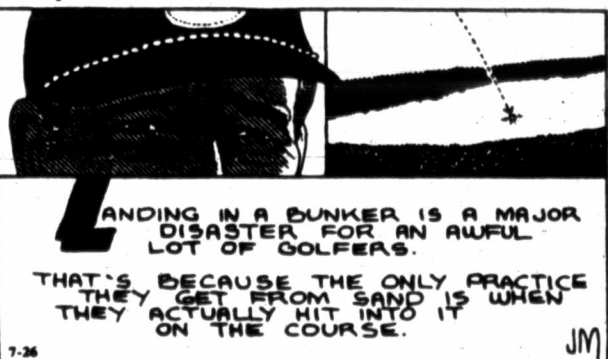
Consulting & Testing team



Consulting and Testing team sponsored a baseball team in the 9-10 year-old League in the Pampa Kids & Youth Club. Team members are (front row, from left) Shavious Kelly, Larri Galleher, Rachael Bartel, Stephanie Polasek and Richard Leal; (back row, from left) Myles Roberts, Trevor Phillips, coach Dan Bachler, Spencer Bachler and Stephen Denton.

SPONSORED BY **SADIE HAWKINS STORE**
 1301 S. HOBART
 665-5472

Play Better Golf with JACK NICKLAUS

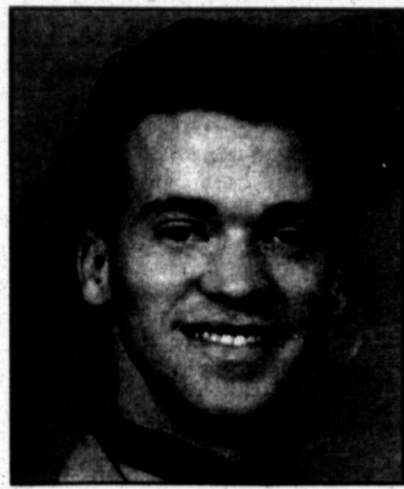


Check Our Deli Specials Daily
 www.sadiesnu

Major League Standings

National League At A Glance				
By The Associated Press				
All Times EDT				
East Division				
W	L	Pct.	GB	
Atlanta	60	41	.594	—
New York	59	41	.590	1/2
Philadelphia	53	45	.541	5 1/2
Florida	39	60	.394	20
Montreal	35	60	.368	22
Central Division				
W	L	Pct.	GB	
Houston	59	40	.596	—
Cincinnati	55	41	.573	2 1/2
St. Louis	50	49	.505	9
Pittsburgh	48	50	.490	10 1/2
Milwaukee	47	50	.485	11
Chicago	46	50	.479	11 1/2
West Division				
W	L	Pct.	GB	
Arizona	54	46	.540	—
San Fran.	53	46	.535	1/2
San Diego	49	49	.500	4
Colorado	44	54	.449	9
Los Angeles	44	54	.449	9
Saturday's Games				
New York 2, Chicago 1				
Houston 5, San Diego 2				
St. Louis 10, Colorado 2				
Cincinnati 7, San Francisco 6				
Pittsburgh 7, Montreal 2				
Philadelphia 4, Atlanta 3				
Florida 4, Milwaukee 1				
Arizona 3, Los Angeles 0				
Sunday's Games				
Pittsburgh 6, Montreal 1				
Atlanta 5, Philadelphia 4, 10 innings				
Houston 5, San Diego 2				
St. Louis 6, Colorado 4				
Florida 4, Milwaukee 3				
Cincinnati 2, San Francisco 1, 14 innings				
Monday's Games				
New York 5, Chicago 1				
Los Angeles 2, Arizona 1				
Chicago (Lieber 8-3) at Montreal (Smith 1-5), 7:05 p.m.				
Florida (Nunez 4-3) at Philadelphia (Person 4-2), 7:35 p.m.				
Pittsburgh (Cordova 5-4) at New York (Reed 8-3), 7:40 p.m.				
Milwaukee (Karl 7-8) at Atlanta (Maddux 10-6), 7:40 p.m.				
Houston (Elarton 5-3) at Colorado (Jones 5-8), 9:05 p.m.				
Arizona (Reynoso 5-1) at San Diego (Hitchcock 9-7), 10:05 p.m.				
St. Louis (Jimenez 5-10) at San Francisco (Ortiz 12-6), 10:05 p.m.				
Cincinnati (Villone 5-3) at Los Angeles (Valdes 8-8), 10:10 p.m.				
Tuesday's Games				
Chicago (Muhlolland 5-6) at Montreal (Hermanson 3-9), 7:05 p.m.				
Florida (A. Fernandez 4-6) at Philadelphia (Wolf 5-1), 7:35 p.m.				
Pittsburgh (Benson 7-8) at New York (Hershiser 10-7), 7:40 p.m.				
Milwaukee (Nomo 9-2) at Atlanta (Millwood 11-5), 7:40 p.m.				
Houston (Lima 13-5) at Colorado (Bohanon 5-7), 9:05 p.m.				
American League At A Glance				
By The Associated Press				
All Times EDT				
East Division				
W	L	Pct.	GB	
New York	60	37	.619	—
Toronto	55	46	.545	7
Boston	53	46	.535	8
Baltimore	45	53	.459	15 1/2
Tampa Bay	41	58	.414	20
Central Division				
W	L	Pct.	GB	
Cleveland	58	40	.592	—
Chicago	46	50	.479	11
Detroit	42	57	.424	16 1/2
Minnesota	40	57	.412	17 1/2
Kansas City	40	58	.408	18
West Division				
W	L	Pct.	GB	
Texas	58	40	.592	—
Oakland	50	48	.510	8
Seattle	47	51	.480	11
Anaheim	42	55	.433	15 1/2
Saturday's Games				
Baltimore 8, Anaheim 4				
New York 21, Cleveland 1				
Boston 11, Detroit 4				
Texas 5, Tampa Bay 3				
Chicago 6, Toronto 5				
Minnesota 10, Seattle 3				
Oakland 12, Kansas City 3				
Sunday's Games				
Detroit 9, Boston 1				
Kansas City 13, Oakland 11, 10 innings				
New York 2, Cleveland 1				
Baltimore 8, Anaheim 7, 11 innings				
Texas 4, Tampa Bay 3				
Toronto 11, Chicago 3				
Seattle 4, Minnesota 3				
Monday's Games				
Anaheim (Olivares 8-8) at Tampa Bay (Witt 5-6), 7:05 p.m.				
Detroit (Thompson 9-8) at Cleveland (Burba 7-6), 7:05 p.m.				
Toronto (Hentgen 6-7) at Chicago (Navarro 7-8), 8:05 p.m.				
Oakland (Heredia 7-5) at Minnesota (Milton 3-8), 8:05 p.m.				
Only games scheduled				
Tuesday's Games				
Anaheim (Sparks 4-7) at Tampa Bay (Callaway 1-0), 7:05 p.m.				
Boston (Saberhagen 6-4) at Toronto (Wells 11-6), 7:05 p.m.				
Detroit (Borkowski 0-0) at Cleveland (Nagy 11-6), 7:05 p.m.				
Texas (Sele 9-6) at Baltimore (Mussina 13-4), 7:35 p.m.				
New York (Hernandez 11-6) at Chicago (Baldwin 4-10), 8:05 p.m.				
Oakland (Hudson 5-1) at Minnesota (Mays 3-3), 8:05 p.m.				
Seattle (Fassero 4-11) at Kansas City (Appler 8-9), 8:05 p.m.				

Outdoor musical cast members have ties to Pampa area



Andrew Bost

CANYON — Three company members with family ties in the Pampa area brighten the Pioneer Amphitheatre in the spirit of "TEXAS" with 140 other professional company members. They will contribute their talents to the 1999 season of "TEXAS," an outdoor musical set in Palo Duro Canyon near Amarillo. "TEXAS" has dazzled an international audience since 1966.

Andrew Bost is currently studying ballet and psychology at the University of Utah in Salt Lake City. Bost was raised in Broken Arrow, Okla., the son of Richard Bost and Diana Edminster Bost. He has appeared in such shows as



Janice E. Nash

"Coppelia," "Le Corsaire," "Sleeping Beauty," "The Nutcracker," "Hello Dolly," "How to Succeed in Business Without Really Trying," "Ah Wilderness" and "Stephanie Hero," as well as many other productions. Her interests include Contact Improvisation, travel, writing and outdoor adventure. Her career goal is to appear in "Cats" on Broadway. He is the grandson of Beth Edminster.

Janice E. Nash has completed her master of arts degree in music, speech and dance and her bachelor of fine arts degree in dance from West Texas A&M University. Her formal training



Amy Watson

began with Neil Hess in 1989. Her performance credits as a Lone Star Ballet dancer include "The Nutcracker," "Westfest," "Dances at a Gathering," "Evita," "Follies," "Die Fledermaus" and "Kismet." Her credits with Ballet Mississippi include "The Nutcracker," "Le Corsaire," "Valse Fantasie," "Let the Music Dance" and "Carman" as well as serving as Ballet Mississippi's assistant to the director David Keary. Opening night will mark Nash's performing in every year of the 1990's decade of "TEXAS." She is the daughter of Tom and Doris Nash and is the granddaughter of Bob and Mandy

Cummings and Jeanne Horton. Amy Watson is a fourth year member of the dance cast. Currently a dance major at West Texas A&M University, Watson performs with the Lone Star Ballet and is a member of the dance ensemble. Some more recent performances with LSB include "The Nutcracker," a Texas Commission on the Arts performance in Austin as well as performances with the Light Crust Dough Boys, Brian Glow (The Sorcerer), and the Jim Cullum Jazz Band. As a senior, she is in the top 10 percent of her class and a member of a college honor society. Before she attended WTAMU, she studied dance under Jeanne Willingham for 15 years and was a member of the Pampa Civic Ballet. She also trained under Madeline Graves and belonged to the M.G. Dance Co. Her family includes parents

Randy and Becky and younger brother Ricky Watson.

"TEXAS," a drama written by the Pulitzer Prize winning author Paul Green, is a tale of the early settlers of Texas who contributed to the wonderment for the future of the land. "TEXAS" invites audiences into an exciting world of discovery. Pioneers battle for its possession, but ultimately friendships and teamwork unite the land and set in motion its imminent growth.

The stage of TEXAS is enhanced by the beautiful landscape of the Palo Duro Canyon with its stratified rock and verdant vegetation, native to the Texas Panhandle. This attractive setting creates the perfect backdrop for the tale, as it is a reminder of the land for which the cattle ranchers and farmers struggled for survival.

Not only does "TEXAS" excite visitors with the mystique of the

Canyon, this delightful production also offers exciting song and dance, titillating dialogue and colorful costumes and special effects to provide an electrifying spectacle. As "TEXAS" enters its 34th season, nearly 3 million people have been fascinated by this spectacular production.

"TEXAS" plays from June 9 to Aug. 21. The cost of tickets for children under the age of 12 range from \$4-\$19 and adult prices range from \$8-\$19. "TEXAS" plays all nights of the week except for Sundays, and all performances begin at 8:30 p.m. The "TEXAS" experience can begin with an optional barbecue dinner at an additional price served before every performance. For more information, call (806) 655-2181 or mail to "TEXAS," Box 268, Canyon, TX 79015, or go online at <http://www.texasmusicaldrama.com>

Library to celebrate end of reading club

Joe Weaver, a storyteller from Killgore Memorial Library in Dumas, will be at Lovett Memorial Library to help celebrate the end of the Summer Reading Club. There will be stories and refreshments, and Shania Brookshire will award gift certificates to the top 10 readers. She will also announce the winners of the Bookmark contest

sponsored by Texas Panhandle Library System. To be eligible for the top 10 readers \$10 gift certificate, reading logs must be turned in to the library by July 27. All children returning their reading logs prior to Aug. 12 will receive a coupon for ice cream from TCBY Treats, 2141 N. Hobart.



Beverly Taylor

Pampa News Classified

669-2525 • 403 W. Atchison • Pampa, Texas 79065 • 800-687-3348

Visa & MasterCard Accepted



Danny Cowan

Monday.....Friday 4 p.m. Wednesday.....Tuesday 4 p.m. Friday.....Thursday 4 p.m. City Brief Deadlines
 Tuesday.....Monday 1 p.m. Thursday.....Wednesday 4 p.m. Sunday.....Friday 12 noon
 Weekdays.....10 a.m. Day of Publication
 Tuesday.....Monday 4 p.m. Sunday.....Friday 4 p.m.

- | | | | | | | | | | |
|---|---|--|---|---|---|---|---|---|---|
| 3 Personal
MARY Kay Cosmetics and Skin-care. Facials, supplies, call Deb Stapleton, 665-2095.
BEAUTICONTROL Cosmetics sales, service, makeovers. Lynn Allison 1304 Christine, 669-3848 | 5 Special Notices
ADVERTISING Material to be placed in the Pampa News, MUST be placed through the Pampa News Office Only.
11 Financial
Continental Credit Credit Starter Loans Se Hablo Espanol 669-6095 | 14d Carpentry
OVERHEAD DOOR REPAIR Kidwell Construction. Call 669-6347.
ADDITIONS, remodeling, all types of home repairs. 25 years local experience. Jerry Reagan 669-3943
14e Carpet Serv.
NU-WAY Cleaning service, carpets, upholstery, walls, ceilings. Quality doesn't cost. It pays! No steam used. Bob Marx owner-operator. 665-3541, or from out of town, 800-536-5341. Free estimates. | 14t Radio/TV
RENT TO RENT
We have tvs, VCRs, camcorders, to suit your needs. Rent by hour, day, week. We do service on most major brand tvs & VCRs. Call for estimate. Johnson Home Entertainment, 2211 Perryton Pkwy. 665-0504. | 21 Help Wanted
JOB OPENING for position as Director of Nursing. Home care exp. preferred. Apply at AIBA Home Care. 516 W. Kentucky. | 69 Misc.
CHIMNEY Fire can be prevented. Queen Sweep Chimney Cleaning. 665-4686 or 665-5364.
INTERNET ACCESS- The leading Internet Service provider in the Eastern Texas Panhandle.
PAMPA CYBER NET 1319 N. HOBART PAMPA, TEXAS 806-665-8501 | 80 Pets & Suppl.
CANINE and Feline grooming. Boarding. Science diets. Roysce Animal Hospital, 665-2223.
ABOUT Town Dog Grooming. Pick up & Delivery Service. 665-5959
CREATURE Comforts tropical fish, birds, hamsters, pet grooming. 115 N. West, 669-PETS.
GREAT Pyrenees Puppies for Sale. 835-2906 after 6 p.m.
6 month old male Dachs-hund, 1 1/2 yr. female Good Pyrenees, free to good homes. 835-2349 | 96 Unfurn. Apts.
CLEAN 1 bedroom, stove, refrigerator, all bills paid. 669-3672, 665-5900
GWENDOLEN Plaza Apts. 1 & 2 bedroom, gas heat furn. 800 N. Nelson, Pampa, 665-1875
LRG. 1 bdr., appl. cov. parking, laundry. \$275 mo. + elec. \$100 dep. 1334 N. Coffee, 663-7522, 883-2461.
Schneider House Apts. Seniors or Disabled Rent Based On Income 120 S. Russell 665-0415
SUMMER'S hottest spot wants you! Let the temperature decide your 1st month's rent! Call Lakeview Apartments for details, 669-7682. | 102 Bus. Rent Prop.
OFFICE Space for rent, 3 months free rent. 669-6841.
103 Homes For Sale
Twila Fisher Century 21 Pampa Realty 665-3360, 663-1442 669-0007
124 N. Sumner, 3-1-1, 2 lrg liv. areas, c h/a, all new appl., rent, roof, \$33,000 669-3589.
1314 E. Kingsmill, 3 bdrm., remodeled kitchen, dining rm, laundry area & bath, storage bldg. 669-6186, 663-0613
3 bdr., 1 bt, 10 year old Brick home 1 car garage. Large yard. Excellent condition, central h/a. 665-1356 or 779-2827.
3 bdr., 1 3/4 ba., 1531 N. Nelson, new paint, tile, wallpaper, Marie, Century 21, Realtor, 665-4180.
3 houses for sale. Owner w/ carry w/\$800 down. Reasonable mo. payments. 665-4270 lv. message
4 bdr., 2 ba., cent. heat/air, woodburner, dishwasher, etc. 665-4842.
Jim Davidson, Realtor Century 21-Pampa Realty 669-1863, 669-0007 www.homeweb.com
Bobbie Nisbet Realtor 665-7037
BRICK 3 br., 1 ba., lrg. backyard, 2 shds., c h/a, playhouse. After 5 p.m. 669-6988, 669-0000.
BY Owner 1145 S. Wells, 3 br., 1 1/2 ba., ext lrg. lr, gar., stor. shed. \$37,500. 665-3059 lv. message.
BY Owner, 2718 Cherokee, 3 bdr., 1 3/4 ba., 2 car gar., new roof, new soffit & paint, new garage door & opener, flp, utility rm., new Maytag dishwasher, RCA satellite dish & receivers convey. \$68,500. 669-7632.
FSBO 3-1-1 Brick Doll House Completely redecorated inside. All new appl. & floor cov. 2128 N. Zimmerman. 665-6534
Gail W. Sanders Corral Real Estate 665-6596
OWNER will carry-1901 Coffee, corner, fenced, 3 bdr., recent carpet/paint, cvd. patio. \$1000 down, 15 yr. 11%, \$400 mo. incl. tax & ins. \$29.5K. Jannie Lewis Broker/Owner. 669-1221, 665-3458. | 114 Recre. Veh.
Bill's Custom Campers 930 S. Hobart Pampa, TX 79065 806-665-4315
88 Class C Citation Supreme, 24 ft., Ford 460, 42K mi., new tires, \$8000. 806-323-9980 Canadian
115 Trailer Parks
TUMBLEWEED ACRES
Free First Month Rent Storm shelters, fenced lots, and storage units available. 665-0079, 665-2450.
116 Mobile Homes
3 br., 2ba., \$2000 down, refinanced. Call after 5 p.m. 665-4774.
120 Autos
CULBERSON-STOWERS
Chevrolet-Pontiac-Buick GMC and Toyota 805 N. Brown 665-1665
Used Cars West Texas Ford Lincoln-Mercury 701 W. Brown 665-8404
Bill Allison Auto Sales Your Nearly New Car Store 1200 N. Hobart 665-3992
Quality Sales
1300 N. Hobart 669-0433 Make your next car a Quality Car
Doug Boyd Motor Co. "On The Spot Financing" 821 W. Wilks 669-6062
Chamberlain Motor Co. Hwy. 287 E. Clarendon 806-874-3527
Jerry Don Mackie
95 Ford Aerostar, leather seats, rear heat & air, keyless entry. Loaded! Call 665-9778 |
|---|---|--|---|---|---|---|---|---|---|

DOUG BOYD MTR. CO.
821 W. Wilks
669-6062

1992 BUICK REGAL LIMITED
4-Door, 3.8 Liter Low Miles..... \$6,995.00

1991 FORD EXPLORER XLT
Blue & Silver Extra \$6,995.00

1994 FORD AEROSTAR
Extended Mini Van All Wheel Drive, Dual Air..... \$7,995.00

1992 CADILLAC SEDAN DEVILLE
Blue & Silver Blue Leather, Sharp..... \$8,995.00

1995 MERCURY SABLE GS
Metallic Blue, Loaded 59,000 Miles..... \$7,995.00

1995 CHEVY BERETTA
Automatic, White Burgundy Int..... \$6,995.00

1991 FORD CROWN VICTORIA LX
White w/Blue Cloth Must See..... \$5,995.00

1994 CHEVROLET CAVALIER
4-Door, Automatic Purple, 43,000 Miles..... \$5,995.00

1990 TOYOTA CAMRY
4-Door, Automatic, Solid Gray, Gray Cloth Int. Toyota Quality..... \$4,995.00

ON THE SPOT FINANCING
BUY HERE PAY HERE

14h Gen. Serv.
COX Fence Company. Repair old fence or build new. Free estimates. Call 669-7769.
HOUSE Movement? Cracks in bricks or walls? Doors won't close? Call Children Brothers Stabilizing & Foundation Leveling. 1-800-299-9563 or 806-352-9563, Amarillo, TX.
CONCRETE work driveways, sidewalks, slab, storm cellars, concrete removal and repair. Call Ron 669-2624.
PAINTING, Fencing, Welding and Light Hauling. Free estimates. 663-1842
14i Gen. Repair
We SERVICE ALL WHIRLPOOL & G.E. Appliances 665-8894 Williams Appliance
14n Painting
PAINTING reasonable, interior, exterior. Minor repairs. Free estimates. Bob Gorson 665-0033.
50 yrs. exp. We paint, sandblast, drywall, texture, comm., residential. Give us a try! 665-3214
PAINTING at reasonable prices. Interior/Exterior. Commercial/Residential. 665-4621.
14r Plowing/Yard
A-1 Lawn Service. Most yards \$20 Quality Service at Reasonable price. 665-5923
DEPENDABLE lawn work, cleanup & flowerbeds, odd jobs. Free estimates. 669-2356.
14s Plumbing/Heat
JACK'S Faucet Shop, 715 W. Foster, 665-7115. Faucets, Plumbing Supplies & Repair Parts.
JACK'S Plumbing/Heat. New construction, repair, remodeling, sewer & drain cleaning. Septic systems installed. 665-7115.
Larry Baker Plumbing Heating/Air Conditioning Berger Hwy. 665-4392

21 Help Wanted
NOTICE
Readers are urged to fully investigate advertisements which require payment in advance for information, services or goods.
FOSTER FAMILIES NEEDED
Caring families are needed to become Therapeutic Foster Homes. Contact Michael Cooner, Buckner Children and Family Services. 352-3900
POSTAL JOBS TO \$18.35/HR
inc. benefits, no experience. For app and exam info., call 1-800-813-3585, ext 7688, 8 a.m.-9 p.m., 7 days fds, inc.
WILDLIFE JOBS TO \$21.60/HR
Inc. benefits. Game wardens, security, maintenance, park rangers. No exp. needed. For app. and exam info call 1-800-813-3585, ext. 7689 8 a.m.-9 p.m., 7 days fds inc
NEED a person with exp. in irrigation sprinkler systems, Eastern Texas Panhandle. A little work with cattle, a little work in farming, mostly irrigation sprinklers. House and utilities furnished. Send resumes to P.O. Box 172, Groom, TX 79039 or call with references to 806-248-7329 after 7 p.m., 806-898-1161 mobile day-time.
SIVALL'S, Inc. needs welders/fabricators. Drug test required! Only exp. should apply. 665-7111
NEED apprentices & journeymen, carpenter local. 702 S. Madison, Amarillo, 806-373-4574. EOE.
WANTED EXPERIENCED TRANSMISSION REBUILDER
Must have experience in automatic, standard, foreign and domestic transmissions. Salary open plus benefits. 358-9220
PANHANDLE Country Clubs is looking for Bar-tender/Manager & Greens Keeper. Send resume to Po Box 717, Panhandle, TX. 79068.
ST. Vincent de Paul Catholic School is taking applications for a 1st grade teacher. Call 665-5665 from 1-5 p.m.

50 Building Suppl.
White House Lumber 101 S. Ballard 669-3291
HOUSTON LUMBER
420 W. Foster 669-6881
55 Landscaping
WEST Texas Landscape & Irrigation. Residential & commercial. 669-0158, mobile 663-1277
60 Household
JOHNSON HOME FURNISHINGS
Rent 1 piece or house full Washer-Dryer-Ranges-Bedroom-Dining Room Livingroom 801 W. Francis 665-3361
PRE-Owned Appl. Good selection. Make offer. 500 N. Ballard, 665-6035, 665-1878
69 Misc.
ADVERTISING Material to be placed in the Pampa News MUST be placed through the Pampa News Office Only.

DISNEY VACATION!
Reserve now save hundreds 5 days, incl. Disney passes and maingate hotels
Entire vacation only \$274 p/p
800-632-4112 ext. 771
FOR Sale 50 yrs Collection. Salt & Pepper Shakers. Call for Appt. 669-1995
THE Old Plantation w/ Schanda's Creations, 529 S. Ballard, Tues.-Sat. 9:53 a.m. New items daily
RCA Satellite dish for sale, has 2 boxes, \$350 brand new. Call 665-1826 anytime.
69a Garage Sales
HUGE Multi Family Garage Sale, 809 Main St. Skellytown, Friday, Tuesday, July 23-27. 9 a.m. - ? Adult & kids clothes, crafts, remodeling materials, bicycles & lots of misc.
70 Musical
PIANOS FOR RENT
New and used pianos. Starting at \$40 per month. Up to 9 months of rent will apply to purchase. It's all right here in Pampa at Tarpley Music. 665-1251.
FOR Sale Upright Piano. Call 669-9894.
75 Feeds/Seeds
Oat Hay \$40
Sudan Grass \$30
669-7060
76 Farm Animals
COOL Your Yard. Cool your Pet. Mist & Cool. Now at 115 N. West-Creature Comforts 669-7387.
80 Pets & Suppl.
Grooming & Boarding Jo Ann's Pet Salon 669-1410
The Country Clip Dog Grooming Teresa Eubank 665-8714 Sat. appointments avail.
Lee Ann's Grooming Canine & Feline Grooming Call 669-9660

97 Furn. Houses
2 Bedroom \$250 month \$100 deposit 669-2909
98 Unfurn. Houses
LRG. 1 bdr. with double garage. Will rent on HUD. 665-4842
2 BDR. appliances \$275 mo. + \$150 dep. 1319 N. Coffee. 663-7522 or 883-2461.
3 bdr., 2 ba. mobile home, near Lamar school. Will rent on HUD. 665-4842
BEAUTIFULLY furnished 1 bedroom starting at \$335. All utilities included. 3 & 6 mo. leases. Pool, laundry on site. Caprock Apts. 1601 W. Somerville, 665-7149. Open Mo-Fr 8:30-5:30. Sa 10-4, Su 1-4.
FULLY furn. 1 bdrm. Free utilities. Fenced parking, laundry, bbq's in lovely patio. Walking distance-shopping & restaurants. \$325 mo. \$100 dep. Courtney Apts., 1031 N. Sumner 669-9712.
LARGE 1 bedroom duplex apt. Bills paid. \$250 mo. 665-4842.
LRG. 1 bdr. apt. new carpet, linoleum, paint, in quiet location, \$290 mo. + elec. 665-4842.
ROOMS for rent. Showers, clean, quiet. \$35 wk. Davis Hotel, 1161/2 W. Foster. 669-9115, 669-9137.
96 Unfurn. Apts.
2 bdr., \$400 mo., \$150 dep., built-ins, 2 bdr., 2 ba., \$465 mo., cov. parking. Ref. req. Coronado Apts., 665-0219.
CAPROCK Apts., 1/2 off 1st mo., 1,2,3 bdrm starting at \$249. All utilities included available. 3 & 6 mo. leases. Pool, washer/dryer hookups in 2 & 3 bdrm. fireplaces. No application fee. 1601 W. Somerville, 665-7149. Open Mo-Fr 8:30-5:30, Sa 10-4, Su 1-4.
99 Stor. Bldgs.
TUMBLEWEED ACRES SELF STORAGE UNITS
Various Sizes 665-0079, 665-2450
B & W Storage 10x16 10x24 2200 Alcock 669-7275 669-1623
105 Acreage
GRAY Co., 10 acres, near Lefors off Tumbleweed Rd. 8.64% interest. \$141/mo. Owner finance. Forest America Group 1-800-275-7376.

121 Trucks
1997 Z-71 4 WD Low Miles 868-2721
84 Ford 1/2 ton pickup, stretch cab, super nice, new motor, \$4295 obo. 1985 Olds 900, 88 Mercury Sable 1990, 82 Chevy pickup w/topper \$2200. 665-3138.
122 Motorcycles
CYCLE Shop, Motorcycles, ATV flat fixed. Tire Sale. 817 N. Cedar, 274-2230.
124 Tires & Access.
OGDEN AND SON
Expert Electronic wheel balancing. 501 W. Foster, 665-8444.
Power Stroke Diesels 94-99 50 h.p. & 107 ft. lbs. torque. 1-2 MPG better mileage \$245.95 computer chip. 1-800-873-2447 www.gocostal.com

Fund raiser set for Friday

Friends of Shane Pennington and his late wife, Robyn, are banding together to assist Shane and the couple's daughter, Saige, following the July 6 explosion which claimed the life of Robyn on the 6666 Ranch near Panhandle.

A benefit dance and auction for Shane Pennington's family is scheduled Friday from 9 p.m.-1 a.m. July 30th at Jones Activity Center in Canadian. Music will be by Side Pocket. Admission for the dance will be \$8 for single and \$15 a couple. Auction items may be donated by calling 806-624-4402.

Custom made spurs made by Kevin Burns of Stinnett and valued at \$1,000 are being raffled off at Bob's Western Wear in Borger. The proceeds for the raffle will go to Shane and the couple's two year old daughter, Saige Pennington.

Pennington's wife, Robyn, 34, was killed in the early morning July 6 explosion of their ranch house on the 6666 Ranch north of Panhandle. Their daughter was seriously injured in the explosion which destroyed the young family's home. The toddler was airlifted by Lifestar Helicopter from the ranch to Northwest Texas Hospital in Amarillo where she underwent surgery.

Saige and her father are now staying with his parents near Canadian. Shane Pennington had just left the family's ranch home to go to work on the ranch when the 5:30 a.m. blast occurred. He was not injured.

Raffle tickets for the spurs are available at Bob's Western Wear at \$2 each. Drawing will be Aug. 21.

Reading of new sign regulations scheduled for city commission

The Pampa City Commission is set to vote on new sign regulations for the city and to further discuss parking regulations for the city at their next meeting scheduled for tomorrow afternoon.

The new sign regulations will have their first reading during the regular session. Among restrictions in the new regulation are rules against having a sign exceed the maximum building height permitted in the district where the sign will be located.

Signs that can be located or constructed "so as to interfere with, or confuse the control of traffic," including any flashing lights that might resemble emergency signals. Any sign that is severely damaged must also be removed, according to the regulation. Other parts of the law restrict size and placement of signs.

No action is scheduled but discussion of proposed parking regulations is scheduled for the work session.

Members of the commission will also consider a replat of some land in Memorial Gardens. The Planning and Zoning commission has informed the commission they have no problems with the changes.

Members of the Planning and Zoning Commission, Parks and Recreation Advisory Board and the Celebration of Lights are scheduled to speak to the commission for the work session which begins at 4 p.m. Tuesday at City Hall.

Gushing with cool summer fun



(Pampa News photo by Nancy Young)
Pampa firemen Robert McDonald, Will Klusmeyer, and Joe Bates flushed the fire hydrant at the intersection of Atchison and Somerville Monday morning. The procedure is part of the annual maintenance to verify the hydrant is in working operation in case of fire in the area. The firemen were testing numerous hydrants in the Pampa community.

State and panhandle agencies team up to provide substance abuse treatment programs

By NANCY YOUNG
Managing Editor

Changing destructive lifestyles is not easy to do, even with help. Even though the American Medical Association determined in the early 1950s that alcoholism is a disease, there is still difficulty in obtaining treatment for alcohol and drug addictions in the Texas Panhandle.

However, the Texas Panhandle Mental Health Authority and the Texas Commission on Alcohol and Drug Abuse have teamed up to develop a cooperative network for providing a new program of substance-related services.

Northwest Texas Health Care System has just recently joined the network and is accepting clients into their Step One detoxification program. Persons over 18 who have a diagnosis of substance dependence and who live in the upper 21 counties of the Texas Panhandle are the target population for these services.

Funding is also available to those who qualify. Telephone screenings are being provided by the TPMHA hotline and can be accessed 24 hours a day, seven days a week. The program is voluntary.

A different type of program, the clients are encouraged to enter the day treatment program at NWTHS upon completing the detoxification portion of the program. The day program will operate 5-9 p.m. Monday through Friday while an alternative schedule is available at the Amarillo Council on Alcohol and Drug Abuse (ACADA) from 1-4 p.m. Monday through Thursday. TPMHA hotline personnel will link the caller with other community resources which are available if the person does not meet criteria for the detoxification program.

According to Tracy Griffith, director of TPMHA Panhandle Substance Abuse Services Network, the organization's mission is to respond to the diverse

needs of persons with serious and persistent mental illness and substance abuse and/or dependence problems by maintaining an accessible system of services utilizing best value practices which supports individual choices and results in lives of dignity and independence. Services are offered to children, adolescents, adults and their families in the 21 county area. Additional information may be obtained by contacting Gene Ann Grant, 806-354-2191.

Acknowledging that a person needs treatment and receiving the treatment for drug and alcohol abuse are not always easy for people to get so the new program is welcome to the Panhandle area.

If a person who is addicted to alcohol and drugs desires to get off those substances, there is no longer an in-patient treatment facility in the panhandle to help those substance abusers in the Panhandle. For a number of years, Panhandle Alcoholic Recovery Center was a model for treatment centers across the state of Texas for alcohol and drug abuse treatment. The center was located at the old air base properties for many years in Amarillo. The licensed counselors were recovering alcoholics who had overcome their alcoholism by attaining sobriety and living a sober life.

County judges from 26-counties across the panhandle were the governing board members for the 30-day in-patient treatment center. Most of the clients were court-ordered to the facility, while others entered voluntarily. A few clients went through the program more than once before they achieved sobriety, while some never did get to that point.

Each county contributed monetarily to the center for the operational costs. Clients came from across the area for treatment. Some had insurance to cover the treatment expenses while the majority did not. The center was

moved to the Amarillo medical complex located west of Coulter in the early 90s, and closed a few years ago.

Today, offenders with an alcohol and/or drug related problems must travel to the Allen Center in Plainview for the nearest residential in-patient treatment.

Occasionally persons with substance abuse problems are discovered upon arrest for DWI. Most often the substance abuse problems are identified only after numerous drug and/or run-ins with the law enforcement.

Gray County Attorney Todd L. Alvey said that said that a DWI first offender will usually be assessed one to two years probation along with eight to 10 hours classroom time in a DWI education class, fines, court costs, and probation fees. Alvey said that the average fine is \$750 while court costs usually run \$200. He also said the average probation fee is \$35 monthly for the duration of the probation.

Conditions of probation may include possible loss of license, restricting the probationer from driving, setting a curfew time to be home, and curtailing locations the probationer may frequent.

Two counselors, who are both licensed as Alcohol Dependence Counselors/Licensed Chemical Dependence Counselors, are counseling some misdemeanor probationers who have been convicted of alcohol-related offenses in the Gray County Court through the District Probation Office. Carolyn Taylor, Gray County Chief Probation Officer, said the counseling program is successful.

Many DWI offenders are required to attend Alcoholics Anonymous, according to Taylor, chief probation officer. She said that there are at least two AA meetings held each day, seven days a week in Pampa.

Roger Ranney, who is a ADC/LCDC counselor, has begun an AA group for juveniles.

A Narcotics Anonymous group is also available in Pampa, he said.

Ranney said that it takes time to get a client's trust, and to get them involved in the self-help programs. He said these programs will help.

A third DWI can garner the recipient a felony offense, according to Taylor. When a DWI offense is raised to the category of a felony, the offender may be court-ordered to a long-term treatment facility. The intensive in-house program usually lasts nine to twelve months. Taylor said the court-ordered treatment is a lock-down facility operated by the state.

Ranney said he feels it is unfortunate that so many people with alcohol and drug abuse programs don't even get the opportunity for help until legal problems such as DWI or others arise. She said the biggest concentration in today's society regarding alcohol and drug abuse is aimed towards prevention efforts.

He said the most successful intervention occurs when there are still two cars in the garage, the abuser still has a job, and the family is intact. "Usually, though, by the time we (probation office) get them, many, if not all, of their possessions are gone and the family structure has collapsed," said Ranney.

Ranney said often intervention might help an alcoholic or drug addict not go through so much turmoil.

Griffith said the networks are being asked to pool public and private funding sources to provide an integrated system of care due to a lack of funds available and the new facility is a major step in that direction for the Panhandle.

Most clients are able to complete their treatment on an outpatient basis which causes less disruption in their home life and employment status. An important component for a person's recovery is family and involvement. It will also include education and support.

A program for adolescents with drug and alcohol problems, ages 13-17, is available through the Amarillo Council on Alcohol and Drug Abuse. Genesis House in Pampa provides residential treatment and outpatient treatment for adolescents in Pampa.

A residential treatment for women is available through the Amarillo Women's Alcoholic Recovery Center, which is also known as the Haven.

Catholic Family Services provides prevention groups to families and children ages 4-17.

Latchkey program termed successful

By NANCY YOUNG
Managing Editor

"Gray County Latchkey, Inc. had a very successful year," said Susan Gallagher who is director of the local program. "The children were great."

Gallagher appeared before the Pampa Independent School trustees to convey the program's status within the school district.

The program began the year with 185 students enrolled. By the end of the year the enrollment had increased to 235 throughout all four elementary schools. Gallagher said the enrollment steadily grew throughout the year. However, she said daily averages dropped in January, April and May. She explained this was mainly due to the increase in lay-offs and transfers Pampa experienced as a whole.

The local program staffs one staff member to 10 children. Gallagher said the minimum standards provide one staff member to 23 children, but because of limited space the local program staffs more adult supervision.

Gallagher explained the program is governed by the Texas Department of Regulatory Services, and said the agency makes regularly unscheduled visits to monitor the program. They check on child safety, proper records, any violations in minimum standards and an overall view in how the program is running, she said. Each staff member is required to have 15 hours of child care training along with first aid and CPR certification.

She said the program is available at the elementary schools in the cafeterias. The caregivers provide games, puzzles, movies, cartoons, reading opportunities, creative thinking, creative art, music and out door play.

"It is an environment where children can choose what they want to do in those hours," she said.

While Austin Elementary School had 95 students enrolled in the Latchkey program, they had a daily average of 50 students. Reduced fees are offered the participating students.

CRMWA approves contingency plan

SANFORD — The Canadian River Municipal Water Authority could turn off the water for Pampa taps.

While it is highly unlikely, that is the only enforcement mechanism CRMWA has under the state-required Drought Contingency Plan.

At their quarterly meeting here this week, the CRMWA board of directors adopted both state-mandated Drought Contingency and Water Conservation Plans.

The core of the drought plan involves the triggering and termination responses based on a customized computer program which compares conditions to drought records and projected storage.

The plan sets four drought stages ranging from a mild water shortage, defined as a four year supply available in Lake Meredith, to a moderate water shortage, a three year supply, to a severe water shortage, a two year supply, to an emergency water shortage, an unprecedented loss of water service or contamination of the water supply.

John Williams, CRMWA general manager, said each stage is based on water conditions at the time. Presently, he said, there is an estimated seven to eight years supply of water in the lake.

"Where we are now," Williams said, "we'd probably be able to go through a drought without worrying about supplying water."

Williams said that right now, the drought and conservation plans are based on Lake Meredith which is the only supply of water under control of CRMWA. When the Roberts County well field comes on line, Williams said, additional water will be available and the plans will have to be redone.

Under the drought plan as each stage is reached, the goal of steps taken by CRMWA is to reduce water use by 10 percent in stage one, by 15 percent in stage two and by 20 percent in stage three. Stage four would require an assessment of the problem.

Williams said that most of the communities served by CRMWA rely not only on Lake Meredith, but have other water sources as well, so any action taken by CRMWA would have limited effect.

CINEMA
2nd Week
Lake Placid (R)
2 Shows Nightly 7:15 & 8:55
Daily Matinee 2:00
1st Run
Inspector Gadget (PG)
2 Shows Nightly 7:10 & 9:00
Daily Matinee 1:55
4th Week
Big Daddy (PG-13)
2 Shows Nightly 7:05 & 9:00
Daily Matinee 1:50
4th Week
Wild Wild West (PG-13)
2 Shows Nightly 7:00 & 9:05
Daily Matinee 1:45

Senior Citizens
Living At Its Best!
PAM APARTMENTS
1200 N. Wells • 669-2594
SCHNEIDER HOUSE
120 S. Russell • 665-0415

FOOTBALL CLEATS
Large Selection • Low Prices
AIDAS • REEBOK • RIDELL • PONY
Football Gloves • Mouthpieces • Fore Arm Pads
Neck Rolls • Workout Shorts • T-Shirts
Asics Volleyball Shorts & Knee Pads
HOLMES SPORTS CENTER
304 S. Cuyler • 806-665-2631