

# THE PAMPA NEWS

Vol. 20 No. 20.

Pampa, Gray County, Texas, Friday, August 13, 1926.

\$2.00 PER YEAR

## GRAY UNAFFECTED BY R. R. EDICT

### NEW SCHNEIDER HOTEL TO BE BUILT

#### TO COST OVER \$150,000 FOR BUILDING AND FURNISHINGS

Pampa is to have a new modern hotel.

Messrs. Cross, Atkins & Martin, fiscal, made the glad announcement just before leaving for their Amarillo office last evening.

The transaction in toto, it is understood contemplates the purchase by Cross, Atkins & Martin of all of the Schneider hotel interests, at a price said to run well into five figures with the retention of Mr. Alex Schneider Jr. as an associate, to be president and general manager of the Schneider Hotel company. M. C. Parker, Amarillo architect, is also added to the official roster.

The new hotel is to be under roof "before snow flies". It will have 100 rooms, be six stories high, and front the east, to occupy a site directly west of the present Schneider hotel across the street, and will cost upwards of \$150,000.

#### Plans Are Accepted

Architect Parker submitted tentative plans at the conference yesterday. The building is to be of brick, steel and concrete, with a spacious lobby, duty office room on first floor, toilet facilities in the basement and manager's suite on the second floor. It will have alternating tub and bath accommodations on every floor and many private rooms with bath. Neat banquet hall and grill, and hotel office rooms are near entrance. The general exterior plan is a handsome replica of lines familiar to Southern California hostesses.

#### First Class Service

"No pains will be spared to make the new hotel first class in every respect," Mr. Schneider said. "We hope to have it in operation within ninety days according to contract, but we shall have only the most complete and substantial building."

According to Mr. Atkins, bids will immediately be sought and excavation work will commence within a few days. "The tremendous demand for rooms comes at this time is the essence, and that a new modern hotel in Pampa is the very first demand at this time."

#### Hotel Comes First

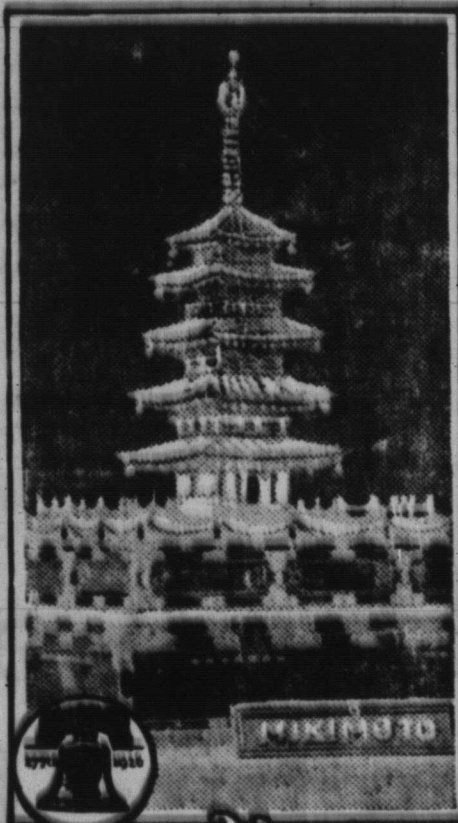
"We intend to relegate, if possible, everything else to a back seat until the new Schneider hotel is completed and host to hundreds from every land who are making futile efforts to obtain accommodations here today."

Announcement of the new hotel project was greeted with genuine enthusiasm about town last evening. Scarcely less satisfaction was assured that the justly famed Schneider family is to operate it.

The Schneider escutcheon bristles with mingled romance and success. Born in Switzerland more than three generations ago, Alex Schneider Sr., trained from childhood for the hotel business came to America, and in 1875 settled in the Panhandle country. The Jun-ior Schneider was born in Kentucky, and at an early age accompanied his parents to Switzerland, and here took a full course in the culinary art and hotel management. With his father and mother, he has operated the present Schneider hotel here for thirteen years. He is well known to hotel men over the country, and keeps well abreast of the times regard to all the ramifications of his fatherly duty.

A. R. Short of the firm of A. R. Short & Co. of Amarillo, accountant and auditor, was a visitor in Pampa, Wednesday of this week. Mr. Short visited a number of friends and customers while here this week, and expressed surprise at the rapid growth of the business and residential sections of the city during the past two months.

#### Millions in Pearls



This pagoda, a part of the Japanese exhibit at the Sesqui-Centennial International Exposition in Philadelphia, celebrating the 150th anniversary of the signing of the Declaration of Independence, is made entirely of pearls and its value exceeds \$1,000,000. The exposition continues until December 1.

### ATLANTIC READY TO SUPPLY TANKS FOR ALL OIL HERE

"The transportation problem for the oil producers of Gray county will be brought to an end if the Santa Fe railroad will handle the tank cars," was the gist of a statement of one of the "inside" late Thursday night.

The Atlantic Oil Producing company have entered the Gray county field with loading racks and an offer of enough tank cars to move the production of the entire field for months to come, according to information that leaked out Thursday night.

The Atlantic Oil Producing company is one of the largest companies in the world with its principal field in the transportation of oil. The largest loading racks yet to be constructed in the Gray county field are being built by this company one and one-half miles west of Pampa on the Santa Fe railroad. It is understood here that although the Atlantic company brings insufficient tank cars, the oil cannot be moved thru Amarillo to the Houston refineries and transportation cannot be made thru any other route due to the high freight rate to the Gulf Coast near refineries.

In other words, the tactics of deliberate obstruction followed by the outside interests in holding up Gray county crude en route to the Gulf coast, did fail to become a subject of investigation by the Inter-State Commerce Commission.

### MACK'S FOOTWARMERS AT THE SKATING RINK PAVILION TONITE

Mack's Footwarmers will make some snappy music for the dancing folks tonite at the Skating Rink Pavilion for they have a bunch of new selections to offer the public in the way of snappy fox trots, one steps, and dreamy waltzes.

The popularity of the Pampa Dancing Club is increasing with great rapidity and the Club according to all indications will become a permanent and complete success.

Many thanks are due to the management of the Pampa Dancing Club for their interest in the dancing element of Pampa, and furnishing them with a few hours of pleasant recreation.

Dave Warren was a visitor in Pampa, Friday of this week.

### M. A. TURNER, ABLEST AND FASTEST CHAMBER OF COMMERCE SECRETARY TO RUN PAMPA BOOM

With M. A. Turner elected by a joint session of the Pampa city council and chamber of commerce to the combination position of city secretary and secretary of the chamber of commerce the civic and commercial leaders of the "Queen City of the Plains" feel assured that the numerous complicated problems attaching to the proper handling of tens of thousands of new comers into a hitherto comparatively small town, and its oil field environs will be rightfully solved in an expeditious manner.

The bankers and heads of local business houses have been so pressed by the tremendous increase in their private affairs, that they have not been able to give sufficient personal attention to the carrying out of the ordinary work of a chamber of commerce.

Mayor F. P. Reid and members of the city council have also been so overloaded with private business matters brooking no delay, that they could not attend to the innumerable items, minor and important, affecting the general welfare, but falling within the official view of authorized public officers only.

#### Picks Pampa Over Other Booms

In view of the fact that a number of other oil-boom towns in the Panhandle as well as in the Trans-Pecos, following the getting of oil around 4300 feet by the Humble in Northern Reeves county, and in several bustling communities just east of the Pecos, after the good show of oil made by a wildcat in Winkler county, had been bidding against each other for the services of Mr. A. Turner, the citizens of Pampa and the oil development interests of the Wilcox Bayshore oil field tributary to this city, consider themselves fortunate in securing Mr. Turner as city secretary and secretary of the chamber of commerce.

#### Acting Mayor Helps Reid

As city secretary, Mr. Turner is armed with plenary powers in enforcing all city ordinances, especially those having to do with maintenance of sanitary housing and marketing conditions, the cleaning of streets and alleys, garbage disposal, establishment

of a sewer system commensurate with the swiftly growing demands of a community that has already attained a population of more than 5,000 souls, and control over other similar matters of general public concern.

In this capacity, Mr. Turner will investigate complaints of filthy and unsanitary conditions alleged to prevail in some of the public eating houses; he will enforce health regulations with regard to exposure of edibles, such as fruits, vegetables, meats and bread, to unscrubbed atmosphere carrying disease-breeding bacteria-laden dust and multitudes of weather flies.

#### To Keep Typhoid Out

He will also enforce drastic regulations adopted to protect the whole community from a threatened typhoid fever epidemic, such as has resulted in so many deaths recently in Amarillo. Strict milk inspection and forcing of modern toilets where water is available, will be certain.

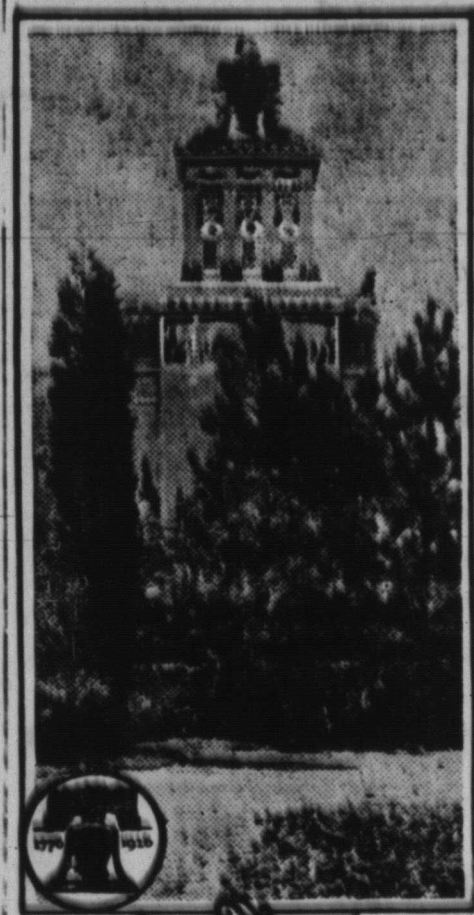
In the connection, Mr. Turner will see to it that all dairies that attempt to sell milk or cream or other dairy products within the corporate limits of Pampa, shall comply to the letter with every requirement governing cleanliness, bacterial count in the milk and cream and butter-fat percentage in cream and butter. All imitations or adulterants of dairy products will be barred from Pampa permanently, so the city fathers have determined.

Persons living in places equipped only with antiquated out-houses without water, will be compelled to make immediate connections with the city water system and sewer system; pending which time, daily application of chloride of lime in large quantities will be required, to prevent spread of typhoid fever and other communicable diseases by means of house flies and similar carriers.

#### Backed by Business Interests

In this work, Mr. Turner will have the full cooperation of all of the business interests, and will be assisted intelligently by the city and county health officers, and by the members of the city and county medical associations.

### "A Thing of Beauty Is a Joy Forever"



This is one of the beauty spots of the Sesqui-Centennial International Exposition in Philadelphia. The exposition celebrates the 150th anniversary of the signing of the Declaration of Independence. The view shows the tower of one of the main exhibit buildings rearing its head up from among the gorgeous landscape which artists have built around the giant structures which house exhibits from forty-three nations of the world. The exposition continues until December 1.

### C. F. FERGUSON TO OPEN GROCERY AND CLOTHING STORE

Cleo F. Ferguson, who has been employed at the Pampa Poultry Mercantile association for the past year announces that he is off the salary game for life and will establish with in the near future a little store of his own in the semi-business section of the city of Pampa. He is well known to the people of Pampa and needs no introduction.

Mr. Ferguson states that he has purchased equipment and stock for a grocery and gets furnishing store. He states that he will handle mainly groceries and work clothing.

The new store is located two blocks south and two blocks west of the main business section. He will have a drive-in entrance for the convenience of his customers and will be "at home" within a few days.

### SMITH AND COX FORM PARTNERSHIP

Louis O. Cox and Joe M. Smith, both residents of this city for a number of years, have associated themselves into a new firm which will be known as Smith & Cox. They will buy and sell ranch lands in this and other Panhandle counties.

Both these men are well known here. Mr. Cox having been with the Gray County State Bank for several years prior to his going into the real estate business about a year ago. Mr. Smith was until four months ago one of the editors and owners of the Pampa News. Both are prominent in local business circles.

The new firm is now permanently located in rooms 16 and 17 of the recently completed Smith building next to the Pampa office, where they invite their friends to visit them.

Mrs. Audrey Jeffus and Mrs. Steel left Thursday for Vantage, Penn. They plan to motor thru and will be gone until October.

Frank Hill arrived the first part of the week to accept a position with the Gray County State Bank.

### 'WE CAN TAKE CARE OF OIL' SAY OPERATORS HERE; DRILLING CONTINUES

The Pampa and Hutchinson county fields face an inevitable problem of overproduction or a shut down within the next thirty to sixty days unless more adequate facilities are provided for the transportation of oil, was the crux of a statement issued in Pampa by State Railroad Commissioner Earl Callaway and Jack Elliott.

It was pointed out by commissioner Callaway that no more wells could be brought in unless steel storage tanks or pipelines were provided to take care of the oil brought in from the two hundred and sixty odd new wells that are now drilling in the two fields. Such storage tanks to be surrounded by a dike with capacity equal to that of the storage tanks.

A warning was also issued against the use of natural gas in the boilers instead of steam. The gas pressure from the wells is far more than the pressure needed to operate the steam engines, and, Commissioner Callaway states, is being used to some extent directly into the steam chambers, causing a great waste of natural resources and producing a dangerous situation around the wells due to the uncontrolled natural gas.

Commissioner Callaway further stated that of the 88,000 barrels of oil now being produced daily in the Texas Panhandle fields, less than 42,000 barrels are being shipped daily, forcing the remaining 46,000 barrels to go into storage. With approximately 200 wells drilling in the Hutchinson county fields under 2500 feet and with the average production of producing wells around 293 barrels per day, the Hutchinson county field will in all probability see an increase production of 38,600 barrels per day, which will entirely swamp the present facilities provided by the big pipeline companies and railroads for the transportation of the oil.

While oil development is looking gloomy to the northwest, development in the Pampa field has no need for worry over taking care of production. More than sixty wells are going inward this week with the assurance that their oil will be taken care of by the mammoth 85,000 barrel storage tank on the Wilcox holdings in the center of the field and the Sinclair and Humble pipelines running the short distance of two to three miles to the loading racks at Pampa.

The Humble Pipeline company is now building an eight inch line to the Pampa field from its loading racks located two miles west of this place. The Sinclair pipeline company have recently double their pipeline capacity. The H. F. Wilcox company is now practically empty, together with the high gravity of the oil of the Pampa field, little difficulty is expected to be encountered by operators here during the next sixty days at least.

It is generally believed that the big pipeline companies operating in the Hutchinson-Carson county field can take care of the production by the addition of a number of booster pumps along the pipelines to help keep the heavy oil moving and not allow it to congeal in the lines. It is feared the independents and small operators will not be able to ship their oil, which will ultimately eliminate them from the developments in that section.

The Pampa City Council, Thursday night contracted for two more new water wells, drilling to start soon. This will make five wells for Pampa and will furnish a volume over 400 gallons of water per minute, which will be adequate for taking care of the city's needs for some months to come it is thought.

C. P. Tucker and family will leave for a week's vacation in the mountains of northwestern New Mexico, where C. P. plans to get some much needed rest and catch a few fish before the snow flies in the Texas Panhandle.

### PROSPERITY ITEMS

Ivey Duncan and family returned Wednesday of this week from an extended visit in Manitou, Colorado Springs and other points in Colorado and New Mexico. Ivey didn't say how many hours he spent along some of the little snow-capped mountain trout and fisher mosquitos.

Miss Pauline Callahan, daughter of Judge Ashberry A. Callahan of Panhandle and Susie Tracy, son of Sheriff Thorp also of that city, were visitors in Pampa this week.

Sheriff Wiley Pollard of Amarillo and several State rangers were in Pampa last week looking over this city. All was reported fair along the Pecos. They found "full speed ahead" to be the policy of the workers in Pampa.

Mrs. W. W. Sugg of Wellington, Texas, and daughter, Mrs. Frank Crawford of Sulphur, Oklahoma, visited their son and brother, your humble reporter, last Saturday and Sunday.

Phoebe Worley No. 3 is now making 85 barrels an hour, after being cleaned out. The production of this well has never been lower than sixty barrels per hour since it was brought in more than two months ago.

Worley-Reynolds No. 4 is producing oil at the rate of 77 barrels per day.

### PROSPERITY ITEMS

The White Deer Oil company wed on the Jordan-Brown ranch thirteen miles northwest of Pampa lost the bit in the hole on Wednesday of this week and some little delay is being caused by not having proper fishing tools, according to J. M. Whittington, who is drilling the well. The bottom of the hole is now at 2570 feet, with every indication of a good well being in as soon as the bit can be recovered.

LeFors is rapidly becoming the seat of Gray county in other things besides having the courthouse located there. An addition of lots is being sold—fishing stations are going up, one cold drink stand has been installed and a modern cafe.

Pampa and this section of Gray county received a heavy rain Wednesday night and Thursday morning of this week.

Osborne and Cady well in the SE quarter of sec. 188, bl. 3 Gray county, formerly known as the Young-Patrick well, is being cleaned out and the casing pulled. Mr. Osborne states that the well struck the first pay at 3164 to 3174 and a second pay at 3265 to 3275. The surface elevation is 3294. It is thought that the well will be shot during the early part of next week.

9142  
**The First National Bank**

Pampa, Texas

**Better Secure a Safety  
Deposit Box Now for Your  
Valuable Papers**

**B. E. FINLEY**  
President

**DE LEA VICARS**  
Cashier

**DR. GREEN DENTIST**

PERFECT SATISFACTION IN DENTAL  
WORK FOR LESS MONEY

BEST SET OF TEETH MONEY CAN BUY \$25.00		GOLD and PORCELAIN BRIDGES As Low as \$6.00 FILLINGS 50c Up
---	---	--

EASY WORKMAN ALL WORK GUARANTEED  
PAINLESS EXTRACTIONS WITH NITROUS OXIDE GAS  
Mission Theatre Bldg., 313 1-2 Polk St. Phone 795  
AMARILLO, TEXAS

**RAGS  
WANTED**

WILL PAY 5c PER POUND FOR CLEAN  
COTTON RAGS

**NEWS OFFICE**

**FRASER & UPTON  
Insurance Agency**

Reliable Insurance Service and Protection  
Oil Operators Compensation-Health and Accident  
Liability-Fire-Automobile

First Floor White Deer Land Bldg.

**A. B. SHORT & COMPANY**

Accountants & Auditors  
Tax Consultants

SMITH BUILDING AMARILLO, TEXAS

Accounting Systems Specially Designed

**SINGER SEWING MACHINES**  
Sold on Easy Payments  
M. V. McMURRY, Agt.  
OIL, NEEDLES, AND BELTS  
Office at Gate City Cafe

**WEST TEXAS ITEMS**

**BORGER**—This city has recently voted for the establishment of an independent school district. Only one vote was cast against the issue. Property will be conferred for the building, and the board of trustees has been elected. A committee has been appointed to take the scholastic census of the city.

**SLATON**—Three additional credits of high school work have been granted this institution by the State Department of Education. The total number of affiliated credits at the present time is twenty-four. Fourth year English is the only course offered without affiliation.

**ROSWELL, N. M.**—The construction of a new highway which will connect Roswell with the recently discovered oil field in Lea county, is to begin at once. This road will make the Maljamar field less than eighty miles from this city.

**SAN ANTONIO**—The highway in Bexar county between San Antonio and Converse on the Seguin Road, has been completed, inspected and accepted by the State for maintenance. Its completion gives San Antonio unbroken pavement virtually the entire distance to Gonzales.

**STAMFORD**—President Arthur P. Duggan of the West Texas chamber of commerce, and his party, made up of Chamber of Commerce officials will tour the southern districts and two New Mexico sections of the West Texas chamber of commerce territory within the next two weeks. Tax revision, diversified farming, and the work of the West Texas organization will be discussed before at local commercial clubs.

**BROWNFIELD**—Weekly rips are being staged by the Brownfield chamber of commerce for the purpose of bringing the farmers and business men together in a social way to create a better understanding between the two, which will aid in a more rapid development of this section of the country in the near future.

**CISCO**—The Bankhead Poultry Producers association began functioning in April, 1925, with no assets. \$1,800 was advanced by the Cisco chamber of commerce to help the beginning of the organization. According to recent reports the Association has \$1,500 cash, an equipment worth \$400 and no existing debts, although the organization itself was not established for the purpose of money making.

**LUBBOCK**—Plans are being made by the directors of the Lubbock sanitarium to launch a \$100,000 building campaign which will give this city the largest sanitarium west of Ft. Worth, with the finest equipment and the best arrayed clinic in the Southwest.

**STAMFORD**—Good news for hot weight. Freight rates on ice cream will not be raised 16 per cent as was planned by the carriers of this summer necessity. The Traffic Bureau of the West Texas chamber of commerce was instrumental in keeping the rates lowered, thus preventing a higher cost of the product.

**FOR SALE OR RENT**

Concrete mixer, engines, air compressors, pumps, saw rigs, paint sprays.

**UNIVERSAL SUPPLY & MACHINE CO.**

G. G. HENDERSON, 210 East 3rd Street, Amarillo, Texas.

**The Chrysler**

"60's"—"70's"—"80's"  
NEW "80" PRICES

- Pleasant ..... \$2,835
- Roadster ..... 2,940
- 5 P. S. .... 3,400
- 7 P. S. .... 3,500
- 4 P. Coupe. .... 3,250
- 7 P. Lim. .... 3,970

Prices f. o. b. Pampa

See Us For Used Cars

**Weatherford-Crawford Motor Co.**

**"You Can Get It At Davis"**

**Springs, Mattresses, Beds, Steel  
and Folding Cots, Cain Chairs,  
Quilts, Blankets and Pillows.**

**Coleman Stoves and Lanterns.**

**Davis Hardware and  
Furniture Co.**

**AMARILLO**—Election of a proposed school bond issue, amounting to something near \$300,000 will be held in September 4. This money will be spent in the completion of the senior high school with auditorium, gymnasium, manual training department, and the like; and the erection of a four room building north of Amarillo in Pleasant Valley.  
Mrs. Cliff Vincent is spending the week in Claude.  
Courtney Denny was an Amarillo visitor Saturday.  
Mrs. J. F. McKensie and daughter Marrian, of Los Angeles, Calif. are visiting Mrs. M. C. Vincent and family.  
Mr. and Mrs. Douglas Witt of Amarillo were visitors in Pampa, Monday.

**PLAN NOW**

**for Summer  
Comfort**

AN ELECTRIC IRON AND FAN



Two big items that will aid you in passing a comfortable summer, no matter how hot—

An Iron lightens your work — a Fan keeps you cool day and night.

**Southwestern Public  
Service**

## CLASSIFIED ADS

Rates for Classified Ads: One and one-half cents per word per week, minimum twenty-five cents. Strictly cash in advance.

### FOR SALE

Two Thousand acres to sell in two twenty miles south of Pampa on No. 23 Highway, level plains and grass land. Improved and unimproved cut in tracts to suit purchaser, me to hold one-sixteenth of a small amount of the oil right.  
W. C. Christopher. 20-4

OIL Field boarding house for sale. No expense except groceries and help \$600 will handle. Dixon Creek boarding house, two miles east of Borger, over 100 boarders. 20-1

FOR SALE—Four 25ftx140ft lots on street leading to south field of Pampa suitable or shop, yard or warehouse. See owner at Taylor Boiler Works. Pampa, Texas 20-1

FOR SALE—Improved Section Castro County. New six room house, modern; new paper and paint; good big barn, new paint; good young peach orchard; 14 bearing cherry trees; garden with strawberries, blackberries, gooseberries, grapes, etc., good chicken house; garage; 30 acres fenced hog proof; plenty of good water; wind mill; good tank, no waste land; 160 acres ready for wheat sowing; 75 acres more in cultivation. This is a real home; 5 miles north and two miles west of Hart; one third cash balance terms. John F. DuBose, Plainview, Texas. 20-10.

FOR SALE—Two drive belts, 120 and 160 feet long in good condition at only \$20.00 each. See W. C. Christopher. Twenty miles east of Pampa. 21-2wp.

USED PIANOS FOR SALE—Ludwig and Kroger pianos in good condition, tuned. Will sell on easy terms to reliable person. Parker Kemp Music Company. 19-3tp

FOR SALE—I have plenty of apples for sale at my place four miles southwest of Mobeetie. Will have apples ripening until late fall. I have 20 acres of the best apples grown in the Texas Panhandle. Prices reasonable.  
W. J. Jeffus 19-4wp

FOR SALE—One registered Jersey cow, will be fresh soon; also fine better yearling. Parker Kemp Music Company, Pampa, Texas. 19-3tp

FOR SALE—One candy floor case, a few counter cases—cheap. Wade's Store, Pampa, Texas. 4-4tc

FOR SALE—Ford coupe in good condition. See Henry Thut. 4tc

FOR SALE—Range stove in good condition. Phone 75. 14-4tc

FOR SALE—One second-hand 1925 Ford Roadster. See Studer & Studer. (13-4tc)

FOR SALE—Thor Washing Machine, good condition, cheap for cash. Schneider Hotel. (11-4tc)

FOR SALE—Used Cars:  
1—Stewart, 2 Ton Truck  
1—Ford Truck  
PAMPA BUICK CO., Phone 194W. (13-4tc)

FOR SALE—Coal range cook stoves at bargain prices, \$5.00 to \$35.00. All in good condition. G. C. Malone Furniture and Undertaking Co. 3-4tc

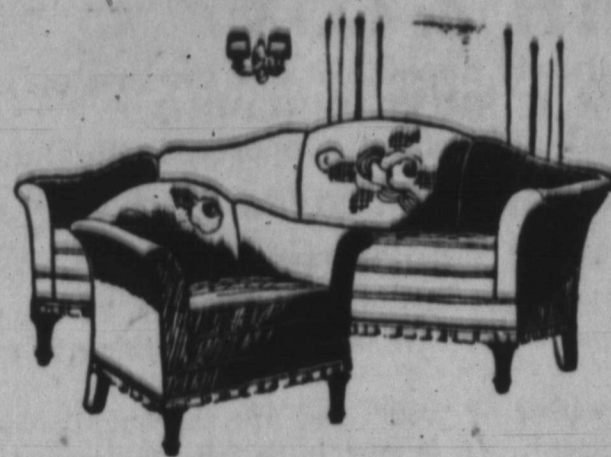
FOR SALE—One second hand Majestic Range. In good condition. C. P. Buckler. (8-4tc)

### WANTED

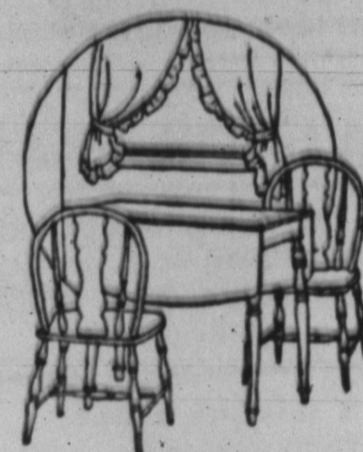
WANTED—Lease on rooming house or building. Box 382 Panhandle, Texas. 20-5

WANTED—To buy used furniture and oil stoves. G. C. Malone Furniture and Undertaking Co. 3-4tc  
(Continued on Editorial Page)

# Making the Home Pleasant



It is our special business to help you to make your home more pleasant and more livable. The correct choice of Furnituring is a long forward step in the right direction. We have many pieces awaiting your choice.

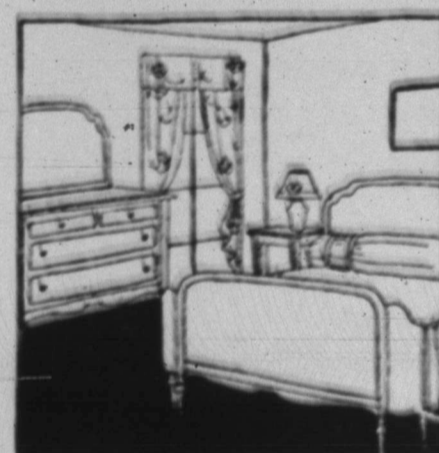


*Practical*

## BREAKFAST SETS

Imagine the added pleasure and enjoyment of a Breakfast served upon this charming Breakfast set. At the price quoted you can well afford it.

## BED ROOM BEAUTY



When a store of this high character advertises Bed room Furniture you may well expect something exceptional.

*We welcome you to see our new displays.*

# G. C. MALONE

FURNITURE & UNDERTAKING CO.

# J. TIDWELL SHOWS

HERE ALL NEXT WEEK

Starting Monday, Aug. 16th

Bigger and Better than ever

### PRESENTING

Hobby Horses, Ferris Wheel, The Charleston World's Greatest Ride

7 High Class Shows, and many other Attractions.

Under Auspices of the  
**City of Pampa**

5---Car Loads of Fun---5

150--PEOPLE--150

Come Out, Let's Trade Smiles

The Show That Pleases

## A New Firm in a New Location

THE undersigned have entered into a partnership which will hereafter be known as,

### SMITH & COX

and are now located in newly appointed and modern offices.

ROOMS 16 & 17 SMITH BUILDING

We intend to buy and sell all kinds of property, including,  
**Farm and Ranch Lands, Oil Leases and Royalties  
and City Properties**

WE are establishing connections in Amarillo, Wichita Falls, Oklahoma City, Tulsa and other points, and will have buyers for anything in our line, if priced right.

We have both been here a number of years, and are thoroughly with this country and its development. It is our intention to conduct a legitimate and high class sales business without employing any high-powered or questionable tactics.

**We will appreciate a List on Your Property  
Whether Large Or Small**

and will guarantee to give you a fair deal.

We cordially invite both buyers and sellers to make our offices their headquarters.

## SMITH & COX

Rooms 16 & 17, Smith Bldg., Phone 237

JOE M. SMITH

LEWIS O. COX

### FOR A GOOD MEAL

When you are really hungry and want a Square Meal, or if you just want a light Lunch, you will be satisfied if you come here.

**The Pampa Cafe**  
East Side Cuyler St.

Coming to Pampa  
**Dr. C. C. Mason**  
FOOT SPECIALIST

SUNDAY JULY 18  
**PAMPA DRUG CO.**

WE cordially invite the citizens of Pampa and vicinity to list property for sale or lease with us.

WE have a broad acquaintance of long standing in the Panhandle and feel we are in touch with many prospective investors.

**STROOPE & GOBER**  
Box 65, PAMPA, TEXAS.

## W. E. STAIRS

WATCH MAKER & JEWELER  
No Job Too Small or Too Large

—We make a specialty on Ladies Wrist Watches,  
and Fine Jewelry. Located at—

PAMPA CONFECTIONERY

## TASTY PASTRY

We are especially proud of our Pastries. Why? Well, the best way to find out is to try them yourself. They taste just as good as they look.

**Pampa Bakery**

FRED SCHAFFNER, Prop.

### SLUMBER PARTY AT HOME OF MRS. DAVE POPE.

Misses Claudine Pope and Bonnie younger set Monday night, August 9, with a delightful slumber party at the home of Mrs. Dave Pope. The girls formed a line party and spent the earlier hours of the evening at the theater, while the rest of the night and the wee small hours of the morning were enjoyed in games, dancing, and pranks. Refreshments were served throughout the evening and the guests were awakened at sunrise to a delicious breakfast served in camp-style over campfire. The following number were present: Elizabeth Carson, Margaret Buckler, Clara Brown Vera Kretzmeier, Virginia Paulknew, Lillian Mullinax, Leora May, Bonnie Carr, Mrs. Lewis Peterson and Claudine.

Dick Dunbar, of the Pampa Abstract Company is driving a new Pontiac.

### SOCIETY

Among the many marriages in July was that of Tressie Smith and Charles A. Gilbert of Wichita Kansas. The bride is the daughter of Mr. and Mrs. J. Wilson Smith, who reside six miles north west of Pampa. The groom is a tool dresser and has been working in the oil fields around Pampa. Having helped to bring in the Empire well three miles west of town. The happy couple are at home to their many friends at Borger Texas.

FOR SALE—Meat market consisting of McCray twelve foot case, large Enterprise cooler, Cleveland sausage mill, Electric fan, blocks, etc., \$1700 for quick sale. Phone 434; 407 West 9th street. Amarillo. 20-1

C. W. Bowers was thru here Monday on his way to LeFors.

FOR SALE—Furniture scales, practically new. Will weight up to 1000 pounds. See, E. L. Eldridge. 20-2wp

FOR SALE—Big work horses, wagons and leather harness. Irvin Cole Pampa, Texas. 20-3

## WRESTLING

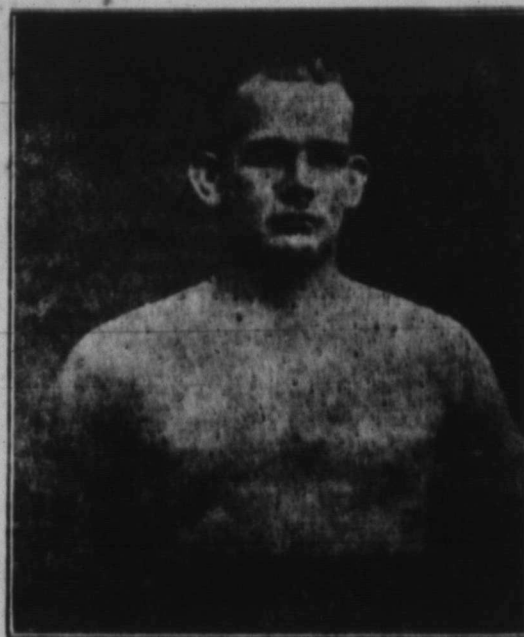
MONDAY, AUGUST 16

Skating Rink Pavilion 8:30 p. m. One Block South of Santa Fe Depot, Pampa.

**JACK VINCENT VS  
TOMMIE BENTLEY**

These two grapplers are matched to a finish two best out of three falls, ketch as ketch can. Police Gazette rules. Strangle hold barred.

**JACK VINCENT**, (right) Cedar Rapids, Iowa, light-heavyweight champion wrestler weight 178 lbs. The man with the famous reverse step over toe hold.



Two Good Preliminaries

Open challenge for 125 lb. amateur. Open challenge to 100 lb. amateur. Good elevated platform and plenty of seats. Come out and see two high class professional men go to a finish.

First 2 Rows ringside \$1.25  
General Admission \$1.00

**TOMMIE BENTLEY** (left) Heavy-weight 195 lbs., Wichita Falls, Tex.

J. A. BOLEN, Promoter

The W. M. S. will meet at the church Wednesday, August 18 at 3 p. m. or voice lesson. Following program will be rendered:

Hymn 332  
Reading Minutes  
Bible lesson, "If Jesus Came Today Would We Let Him Use Our Resources?"

James 2:14-7 Luke 19:11-28  
Prayer—Mrs. Lee Woodward  
Discussion Topic: "Why Support Protestant Missions in Brazil?"—Mrs. Carson, Mrs. J. E. Ward, Mrs. Edna Tulsy, Claude Ledrick.  
Hymn, "In Christ There is no East or West". All members bring Year Book.



## New Hupmobile Six 2 Passenger Coupe

Happy union of surpassing beauty with the practical and efficient

For the woman who wants a car for her very own—smart elegance, good taste, grace, and superlative ease and safety in handling. For the man who daily drives his car in business as relentlessly as he drives himself, the time-proven Hupmobile appetite for punishment, and the finest six-cylinder performance brought down from high-cost levels. See this car and ask yourself where you would look for its equal.

### of Special Interest

Valve-in-head—open below, with black upper body. Double head with gold strip.  
Seat 47 inches wide—ample for three persons. Rear seat for two additional passengers. Rumble cushions removable, if you need all the storage space.  
Rear window can be lowered for circulation and ventilation.  
Upholstery in hand-crafted leather, or velour, as you choose.  
Locks for golf bag door at side and for rear door cover.  
Clear-vision body, with special vision-ventilating windshield. Oil filter, gasoline filter, dash gasoline gauge, transmission lock, automatic windshield wipers, rear view mirror, rear signal light, swivel four-wheel brakes and ball joint drive shafts.

**Hupmobile Six**  
Sedan, two-passenger, four-door, \$2295. Coupe, two-passenger, with trunk, \$2395. Touring, two-passenger, \$2495. Four-door sedan, \$2595. Four-door touring, \$2695. Four-door sedan, \$2795. Four-door touring, \$2895. All prices include tax, license, and delivery.

**Hupmobile Eight**  
Sedan, two-passenger, four-door, \$2995. Coupe, two-passenger, with trunk, \$3095. Touring, two-passenger, \$3195. Four-door sedan, \$3295. Four-door touring, \$3395. All prices include tax, license, and delivery.

You want a bargain in a good car—come and see it here. You also want a sound buy, and you can't buy a better car for the money than the Hupmobile in the long run.

**GILLILAND AUTO COMPANY**

**FARRINGTON FILES**

"It is true a man cannot make himself love as he can make himself work but from this it does not follow that people may be treated without love, especially if something is demanded from them."—Tolstoi.

Mr. C. C. Stockstill was in Pampa Saturday.

Dick Walker was called hurriedly to the bedside of J. B. Baird at Clarendon, Monday of last week; Mr. Baird who has not known a well day for about four years, listed to the call of his maker Tuesday and went out to meet Him.

Guy Farrington is driving a new four-door coupe, Nash.

James and Clifford Lewis spent Saturday Pampa Saturday.

Miss Helen Converse spent Saturday night and Sunday with Miss Mary-belle Turcotte.

Little Ruth and Cas'e Mae Meador have been quite ill of late.

Miss Mary Hornly who has been visiting Miss Mary Rose Turcotte, and Miss Hornly's father, Mr. H. J. Hornly, left for their home in McPherson, Kansas, Friday.

Gene Brown is driving a new Star coach.

A Converse is having some terracing done on his lot out at Hillcrest.

The Farrington school house looks wonderfully clean and inviting with its several coats of paint.

Bill Huff was in the community Sunday driving a Ford Coupe.

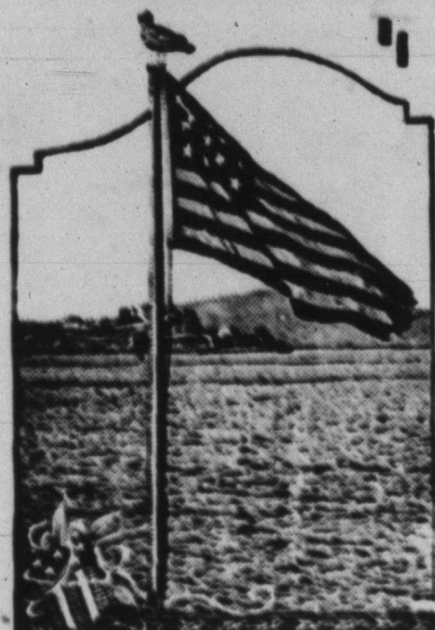
Ira Spearman went to Clarendon, Monday.

Sunday dinner guests in the Jno. Turcotte home were, Mr. and Mrs. Clyde Carruth, A. Converse and family and C. D. Turcotte and family.

W. L. Woodward returned Sunday from a business trip to Galveston.

Miss Mary Meers is visiting friends in Kansas City, Mo.

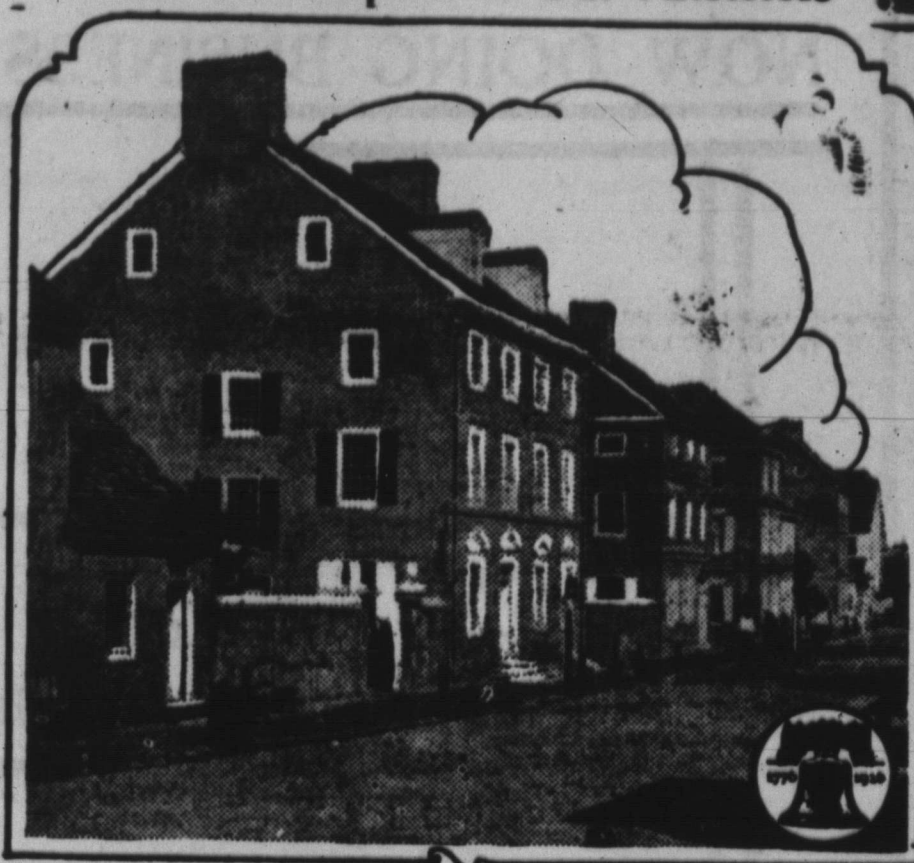
**ON LIBERTY'S EMBLEM**



...sought, ...the American flag on the boat, feels himself every inch an American. Photo taken in San Francisco bay. And here's to the grand old starry flag. That flies so high today—Spotless and pure as the virgin snow. Through all the world away! God grant that her folds will ne'er unfurl. Except for freedom's fight, And till the end she'll ever wave In defense of cause right!

**Divisions of Declaration**  
The Declaration of Independence may be said to be divided in three parts. In the first, the Colonists set forth their philosophy as to the right and duty of a people to throw off a government which has become despotic; in the second they rehearse a long series of grievances to show that British government in the Colonies had become so; and in the third they actually declare themselves "free and independent states."

**The Philadelphia of Our Ancestors**



Here is shown a section of "High Street," a reproduction of Philadelphia's famous Market street in the days of 1776. It is one of the outstanding features of the Sesqui-Centennial International Exposition now being held in Philadelphia to commemorate the 150th anniversary of the signing of the Declaration of Independence. Every building has been built to actual size and in actual architectural detail. The furnishings of each building are exact reproductions of those used in the Revolutionary days. Many of the pieces on display are the originals and today are worth thousands of dollars because of their historic value. The Exposition continues until December 1.

**CHRISTIAN CHURCH**

all strangers and visitors to all services. A cordial invitation is extended to all of this church, Bible school at 10:00 a. m., preaching of God's word at 11:00 a. m. and 8:30 p. m. All members of the church are urged to be attentive to the services an assist in greeting the many strangers and visitors who are now coming. One was received into membership of the church last Sunday evening, and three the Sunday before. The service Sunday evening was the largest attended service this summer. Plans are now being prepared for the fall and winter work. Come an dhelp, and be helped. James Todd, Jr., Minister.



"This book says a swallow can travel six thousand miles without stopping."  
"He'd have to travel further than that nowadays."

**Loganberry Cream.**  
1/2 cup evaporated milk  
1/2 cup water  
1/2 cup loganberry juice  
2 tbsp. lemon juice  
Pinch salt

Put all ingredients in a Mason fruit jar and shake thoroughly. Chill and serve in glasses filled 1/2 full of ice chips. Raspberry, blackberry, and cherry juice may be used instead of the loganberry.

**iced Cocoa.**  
3 tsp. cocoa  
1/2 cup sugar  
1/2 cup water  
Pinch salt  
1/2 cup evaporated milk diluted with 1/2 cup water  
1/2 tsp. vanilla

Mix cocoa and sugar thoroughly and add the 1/2 cup water and boil over a low flame for 15 minutes. Scald the diluted milk and add cocoa syrup and salt. Continue cooking for 15 minutes in double boiler. Add vanilla. Chill and serve with chipped ice. Top with whipped cream.

**Blackbirds Best Singers**  
In a singing contest between birds the blackbird would win, says Prof. C. J. Patten of the Royal Institution of London in the Popular Science Magazine. Of all feathered songsters the blackbird keeps the best time and rhythm and his song has the best tune. A thrush, however, could beat him in endurance, some thrushes being able to sing 16 hours a day.

**REAL ESTATE. FARM LOANS. LEASES AND ROYALTIES**

List your city property with me. I have calls for residence property, large tracts of land and exchanges for farms.

Good connections with oil firms and real estate dealers over the United States.

**F. P. REID & CO.**  
Office, Gray County Bank Bldg.

**STAR BRAND REMEDY**  
A GREAT POULTRY REMEDY  
Given fowls in drinking water or mixed in feed thoroughly rid them of all blood-sucking lice, all mites, fleas and blue bugs, destroy in them all intestinal worms and parasites. Its formula is sulphur and other ingredients known remedies for improving the appetite, purifying the blood, losing the system and preventing disease. Better prevent than try to cure. Contains no alcohol or poison. Can be given to all sorts of chicks, old fowls and turkeys, any kind of weather with good results.  
Its cost is very small—a one dollar bottle will last 100 fowls more than 100 days. The manufacturers are anxious for all poultry raisers to try it 25 days at their risk on the following conditions: After using 25 days, if your flock has not improved in health, produced more eggs—eggs that hatch stronger and healthier young chicks—come back to your dealer—he is authorized to refund your money.

PAMPA DRUG STORE

**BRICK AND TILE CONTRACT WORK**

BRICK CONTRACTOR WITH TWENTY-FIVE YEARS EXPERIENCE

Art Tile Work, Bath Rooms, Drain Boards, etc.

**ART JAYNES**

PHONE No. 37



**BUY GROCERIES HERE**  
IS NO GRAB BAG GUESS

When you come here in person to choose, or when you phone us your order, you may be certain of getting the best Groceries to be had. Quality is our watchword.

**HORN & COFFEE**  
PHONE 5 FOR QUICK DELIVERY

**Pampa Confectionery**

CIGARS — CIGARETTES — TOBACCO

Our Home Made Candies are Best

Always Fresh

TWO DOORS SOUTH OF THEATRE PAMPA, TEXAS

**The Friendly Bank**

This bank has earned and keeps the reputation of being a friendly bank for the very good reason that its officers and employees make it a business to look upon customers as friends.

We know that when you come into this institution you are conferring a favor upon us and, consequently we appreciate it and show our appreciation by the manner in which we serve you.

We Appreciate Your Patronage

**Gray County State Bank**

C. L. THOMAS, President. W. H. DOYLE, Cashier.

**Notice: TO THE PUBLIC**

**WE** WILL put on the **PRIEST ADDITION** in Northwest Pampa. These are the very best lots that have been offered for sale in Pampa. We will have **WATER, GAS AND LIGHTS**. These lots are priced right and Terms will be given.

*Buy in a Restricted District Where*

*There Will Be GOOD*

*HOMES; No Shacks*

FOR FURTHER INFORMATION SEE:

**KEAHEY & CHAPMAN**

PHONE 234

NOW OPEN

REST ROOM

**mitchell's**

The Ladies' Store

Millinery  
Art Goods

Read-to-Wear  
Beauty Parlor

We Strive to Please.

LOCATED IN NEW SMITH BLOC.

PAMPA, TEXAS

**THE PAMPA NEWS**  
Published Every Friday  
at Pampa, Texas

David M. Warren } Owners  
Dr. J. E. Nunn }  
J. L. Nunn }

**DAVID M. WARREN**  
Editor and Manager  
J. D. SUGG, Local Manager

Office in News Building  
Phone No. 100

**SUBSCRIPTION RATES**  
In Texas

One year	\$2.00
Six months	1.25
Three months	.85
Outside Texas	
One year	\$2.50
Six months	1.50
Three months	.85

Advertising Rates Upon Application

Entered at the Pampa, Texas  
Postoffice as Second Class Mail



Wonderful transformation is the only way to express the development that is taking place in the "Wheat City of the Plains"

Emerging from its period of lethargy and inactivity to the "boomiest" boom town of the oil fields, Pampa is the last two months has undergone an even more striking transformation than does the wonderful African butterfly on coming from its chrysalis.

But here the simile must end. Pampa boasts little of the gorgeousness and delicacy of the above mentioned creature. While a small portion of the building in Pampa and vicinity is more or less temporary, the principal proportion is built for years to come.

The brick business houses and residences now under construction and planned will run into seven figures.

Of the above the people outside the immediate vicinity of Pampa are in practically absolute ignorance. The propaganda spreaders of the self-styled principal city of the Texas Panhandle have carried out a campaign with the two-fold purpose of showing how unsafe living conditions were in the very

**CABINET WORK**

Screens and Frame Done to Order. Work Guaranteed

**T. S. JERNIGAN**

Galbraith Foxworth Lumber Yard

**WANTED**—Ceccon dhand piano. See Mrs. H. L. Ledrick. 29-tfc.

**WANTED**—Experienced saleslady for ladies ready-to-wear department. Apply, The People's Store 19-2wc

**LOST AND FOUND**

**FOUND**—a black hand bag on the highway east of town. Owner may have same by calling at the News office and paying for this add. 1t

**FOUND**—Ring of keys. Owner may recover by calling at News office and paying for this add. 18tfc

**FOUND**—Mason's level. Owner may recover same by applying at the News office and paying for this add.

**MISCELLANEOUS**

**LEAS**—For cash for five years, 300 acres cultivated and 1000 acres of fine grass, Lear Groom. New

heart of the oil fields and in showing the advantages of living in "their" alleged city.

The business men, hotel keepers and property owners have never profiteered on the thousands of prospective home owners and workmen who are daily coming to our fair little city. "A square deal for all" is the motto adopted by Mayor F. P. Reid and City Secretary M. A. Turner.

Miss Sara Ramsau of Austin is visiting Mrs. W. L. Woodward. She plans to be here the remainder of the summer

Mrs. Wm. L. Heskew of Borger was a visitor in Pampa, Wednesday of this week

steel windmill. \$1100 or \$1200 a year Edith Ellis, Box 285, Canyon, Tex. Telephone 465. 20-1wp

**A CHANCE** for a home. Four 50-foot lots, \$400 each, on water, gas and sewer lines. \$35 down and \$25 per month. J. M. Ikard at Sykes, Rost, & Zoyd Lumber Yard. 1c

**LUMBER**—Direct from mills, pre-war prices, quick shipments, complete house bills. Louisiana Lumber & Supply Co. Room 1, Massie Bldg. Amarillo, Texas. 16-4

**MONEY TO LOAN ON IMPROVED** farms. J. S. Uim, Green Bldg., Amarillo, Texas. 50-tfc

We have the Highland and Full-O-Pep Chick Feeds, also bulk rolled oats for sale at Pampa Poultry Mercantile Association. (7tfc)

**FOR QUICK ACTION LIST YOUR** oil leases, farm and city property with Rice and Park. Located just across street from Magnolia Filling Station. 4-tfc

**WANTED**—A room in private home must be cheap. State rate. Being a deaf mute working steady. See me or leave note in Pampa Drug store. M. E. Thurman. 29-2

**NOTICE**—I have 3 good young mules from 3 to 5 years old that I will let reliable parties have the use of until October 15th next with refusal of buying them in the meantime. These mules will do the work. J. C. McCONNELL.

**FOR EXCHANGE**—Five room residence with basement. Hereford for residence Pampa. Write Mrs. B. Frank Bule, Hereford, Texas.

Dr. J. W. Vogel of Wichita Falls, will be here permanently. Dr. Vogel was the first one to register in this county also has the certificate No. 1 of the State of Texas. See the paper for his location. 17tfc

**NOW DOING BUSINESS**

**WADE'S CIGAR STORE**

3 Doors South from Crescent Theatre

Most Complete Line of

**Cigars**  
**Cigaretts**  
**Chewing Tobaccos**  
In Town

Open 5:20 p. m.

We Serve You from the Street.

"Smoke with Wade"

**CAR LOAD OF MERCHANDISE**

Unloaded Last Week

**VALUES!--**

**VALUES!--**

**VALUES!**

**Why Pay Oil Boom Prices?**

<p><b>SPECIAL</b> for Saturday between the hours of three and five 24 rag knit rugs beautiful patterns. \$1.25 value 98c</p> <p><b>Mens Gloves</b> We have 170 dozen mens canvas to sell at—2 pair 25c We also carry the famous Boss Walloper Line.</p> <p>Overalls—Jumpers—Shirts Pants. In fact any thing for working man.</p> <p><b>They're Priced Right</b> Mens Athletic Underwear .... 75c</p> <p><b>SOAPS</b>— Palmolive, Cremevil, Lava, Sayman's Calco, Lemon, Calumet Lux, Crystal White Laundry soap. We handle exclusively the famous line of <b>BLACK AND WHITE</b> beauty creations.</p>	<p>Just arrived a shipment of plain white Chinaware.</p> <p>Cups and Saucers, \$1.25 per set Plates, \$1.25 per set.</p> <p>Special prices to Cafes and Hotels.</p> <p><b>THE most complete line of Aluminum ware; granite ware; tin ware and Chinaware in town.</b></p> <p>Come over and buy your <b>camp</b> goods from <b>WADE</b>.</p> <p>Army Cots ..... \$3.50 up Camp stoves, American .... \$6.00 Camp stoves, Coleman .... \$9.00 Fruit Jars, Qts. or Pints \$1.25 doz.</p> <p><b>Full line of Dairy Supplies</b> Let us outfit your rooms in Sheets and Pillow Cases.</p>	<p><b>THIS IS NO SALE PRICE</b></p> <p><b>Womens Beautiful Line of Silk Hosiery \$1.00 pair, any color, Any Size.</b></p> <p><b>MALTS</b>— Blue Ribbon Budweiser Millwaukee Puritan Bohemian</p> <p><b>MARCELLING</b>— <b>ESTELLE SMITH</b>—Call for appointments. Alarm Clocks ..... \$1.50 Pocket Knife ..... \$2.50</p>	<p><b>SPORTSMEN</b>— Look over our line before taking that trip. The only department of its kind in town. We're looking for our shipment of fall ammunition and Guns any day. Better buy what you want from where you can get it, and that's Wade's.</p> <p><b>Our Line of Candies are Complete</b> <b>Over 50 Different Kinds</b></p> <p><b>BOTTLING SUPPLIES</b> Bottles: \$1.50 per case. 10 gallon Crocks: \$2.50 Caps and Cappers</p>
--	---	--	--

If it's in Town  
WE HAVE IT!

**Wade's Store**

The Only Variety  
Store in Town



in the right direction **TOWARD**  
**Park Hill Addition**

**Opening Saturday, Aug. 14**

**KNOW THE FACTS:---**

**Elevation:**

It has the highest elevation of any residential section in Pampa

**Restricted:**

It is Pampa's high class restricted residence section----which means only good homes will be built near you in Park Hill.

**Location:**

Only ten blocks from the center of the business section of the fastest growing city in the State of Texas.

**Conveniences:**

Every lot in Park Hill Addition will have **GAS, WATER, ELECTRIC LIGHTS, AND SEWER!** Where else can you get these accommodations?

**Our Purpose:**

We have always chosen the best and developed the highest class home section in the other cities in which we have engaged in the sub-division business----this is our one and only aim in Pampa.

**Pre-Development Discount:**

We are giving 10 per cent discount on all lots bought during the Pre-development period, which starts Saturday, August 14th.

**Prices and Terms:**

Prices range from \$450 to \$675 with only one-fourth down and the balance in ten equal payments.

Salesmen on the ground every day

Uptown office located at 113 W. Foster Ave

**FISHER & TWIFORD**

**OWNERS AND DEVELOPERS**

113 Foster Ave.

Pampa, Texas

## DODGE BROTHERS DE LUXE SEDAN

People select motor cars by different standards.

Some desire luxury and ostentation. Others, utility and economy alone.

Dodge Brothers De Luxe Sedan strikes a fine and distinguished balance—both in appearance and price—between these two extremes.

It provides unusual comfort and roominess; a refinement of line and design in which the owner takes deep pride; and everywhere in the world the name it bears is associated with the highest standards of integrity and workmanship.

With reasonable care, the De Luxe Sedan serves its owners for years, frequently delivers mileage running well into six figures, and on the resale market brings prices that strikingly reflect the solid value Dodge Brothers have built into it.

Dollar for dollar's worth of genuine automobile!

COBB MOTOR CO.

## POULTRY AND EGG Cash Market

We solicit your poultry and eggs. We will pay you the highest cash price for your produce.

### Superior Poultry and Dairy Feeds

Let us sell you your next sack of chicken feed. The Superior Chicken Feeds are guaranteed if they do not give you satisfactory results, we will give you your money back.

### CHICKENS

Bring your hens and fryers to us we will pay you the top price for them. And if you wish to buy some nice fryers and hens we have them for you at all times.

Fresh candled eggs for sale all the time.

## C. C. DODD PRODUCE & HATCHERY

Pampa, Texas

## The FOX RIG CO.

Rig Contractors

### Build Good Rigs

We are located in West Pampa,  
S. W. Trail—at Santa Fe Railway.

YARDS AT  
PAMPA—PANHANDLE—ISOM

Phone 210; All Points

## Rehearsals in Full Sway for the Big Musical Comedy

All interest centers around the big novelty show to be staged in Pampa at an early date.

The magnitude of the production may be judged from the fact that more than two hundred will participate in the feature including comedy stunts specialties, burlesque, and huge beauty chorus. There are no curtain waits, one act follows another with startling rapidity and the keynote is snap vim and velocity necessary for the success of a musical and variety show.

"Round the Clock with the Debutantes", comes to Pampa well heralded having been presented with great success in various other cities where it has been characterized by press notices as a headliner among productions of its class. It is known as the "Amateur Follies of the Stage".

Rehearsals are going forward with a rapidity and thoroughness that testifies much to the success of the production. They are being held in the high school auditorium each evening at 10 o'clock for all children and 7:30 each evening for older girls and grown ups, anyone of the city who would enjoy taking part in this is invited to report immediately.

The novelties include a marmoth jazz scene including several upright pianos—girls dancing on the piano tops. A charleston contest and quick snappy novelties. A beautiful electrical scene, "A Fashion Show", and old fashioned scene, "Vanity Powder Puff Dance". "The Mirror and Flashlight Cabaret", the "Kiss Burglar" scene, "Dancing Wedding", "Bird Cage", scene from Canary cottage, "Everything at home except your wife". The large beauty, "Debutante Chorus". "Follies Gymnastic Chorus". "Dats a-my Gal", Italian scene, "Rainbows", the "Masquerade", scene from "Blue Paradise", "France Confetti Ballet", "Oriental Araby", the "Midnight Frolic" and the "Carnival". This last scene includes twelve business men costumed as carnival girls.

There are house party scenes and informal scenes for those who cannot attend all rehearsals and have minor parts.

A list of the cast might well have been extracted bodily from Who's-Who in local social circles. Every young matron and debutante will enchant the production with her beauty and charm and the youths will find ample opportunity for the display of what ever historic ability he possesses.

Following is a list of partial important players but does not include all:

- Babbs ..... Christine Campbell
- Mitzl ..... Fannie Fay Wright
- Duke Dyer Kiss De Lertious .....
- Duke Dyer Kiss De Fraud .....
- ..... Wynne Woods
- Outza the Wizard ..... Rev. Todd
- Speeler ..... John Studer
- French Maid ..... Mrs. Chas. Duncit
- Miss Chatter ..... Donnie Lee Stroope
- Italian Dancer ..... Catherine Vincent
- Miss Powder Puff ..... Melba Gram
- English Lord ..... John Perviance
- Roll'em Al Jolson ..... Jack Monday
- Spagetti ..... Elmer Hardin
- Hostess ..... Mrs. Wade Duncan
- Hostess ..... Mrs. Sa der

- Young Matrons.
- Mrs. Wade Duncan
- Mrs. Jno. Studer.
- Mrs. Carlson
- Mrs. Rev. Todd
- Mrs. Charley Duncle
- Mrs. Stovall
- Mrs. Salder
- Mrs. Arnold
- Debutante Group.
- Margaret Buckler
- Bonnie Carr
- Clara Brown

## SCHNEIDER'S Commercial Hotel

PAMPA - TEXAS  
A First-Class Hotel  
CUISINE A-1—GOOD ROOMS

### PAMPA CITY DRAY

E. L. Eldridge & Son  
Owners  
FREIGHT, EXPRESS AND  
BAGGAGE OUR SPECIALTY

We also make  
Long Hauls on Short Notice.

- Dorothy Doucette
- Frances Campbell
- Margarie Buckler
- Frances Finley
- Louise Walstad
- Dorothy Dodd
- Virginia Rose
- Mary Ellen Cook
- Pauline Barnard
- Wanda Barnard

Mrs. Clarence Davis of Cincinnati, Ohio, visited Mr. and Mrs. Walter Davis, Frank Davis and Letty Davis.

Mrs. Lee McBride visited Mr. and Mrs. Walter Davis.

Mr. and Mrs. Roy Hoff were in the community Sunday. They were driving a new Ford coupe.



## What the Neighbors Are Doing

George Brown's red hen to the sad rooster said,  
"I'm tired and sleepy and should go to bed,  
But the hen house's so drafty and cold and damp,  
It's not nearly fit to shelter a tramp."  
So she flew to a limb of a tree nearby,  
And so made her bed neath a rain-filled sky—  
No wonder she laid not an egg that fall,  
She was just too discouraged to try, that's all.  
But when George built her a new hen house tight,  
With windows and fresh air and nary a mite,  
She soon began laying, and most every day  
Mrs. Brown gathers eggs that her happy hens lay.

We furnish plans and known lumber for houses that will encourage hens to be industrious and profitable.

## PANHANDLE LUMBER COMPANY

# MILLER DRUG CO.

The Coolest Spot in Town

A cooling fountain drink in a cool place is worth considering. Sanitation is another thing worth considering; we have both.

TRY OUR FOUNTAIN

Curb Service  
Delivered to  
Your Home

# Miller's

Phone  
230



## Business & Professional DIRECTORY

**NELLIE WELLS**  
EXPERT MARCELLING, 60c  
For Appointments  
Call at Sam Kleth's residence

**V. E. VON BRUNOW**  
PHYSICIAN AND SURGEON  
Office Hours 10 to 12-3 to 5  
State License No. 7752  
PAMPA, TEXAS

**ARCHIE COLE, M. D.**  
PHYSICIAN AND SURGEON  
Office over First National Bank  
Office hours 10 to 12-3 to 5  
Residence Phone 8. Office phone 55  
PAMPA, TEXAS

**DR. W. PURVIANCE**  
PHYSICIAN AND SURGEON  
Office Over First National Bank  
Office hours: 9 to 12-1 to 5  
Office phone 107. Residence 45  
PAMPA, TEXAS

**O'NEAL ABSTRACT CO.**  
Abstracts of Title  
PROMPT SERVICE  
PANHANDLE, TEXAS

**JEANETTE C. SIMPSON,**  
A. B. R. N.  
GRADUATE NURSE  
Phone 33

**DR. T. M. MONTGOMERY**  
OPTOMETRIST AND OPTICIAN  
In Pampa every other Thursday  
Call Fatheree Drug Store for ap-  
pointment

SEE ME BEFORE YOU BUILD  
**M. C. PARKER**  
ARCHITECT  
(Suits 1, Ray-Bynum Building)  
Phone 1085 Amarillo, Texas

**W. B. WILD**  
PHYSICIAN-SURGEON  
Offices, Smith Bldg.  
PHONE 232 ROOM 20  
Facials, Marcelling, Shampooing,  
Manicuring, etc.

**MRS. G. A. LATUS**  
Motor System Graduate  
Block North Christian Church.

**HOOVER, STUDER,  
STUDER & WILLIS**  
ATTORNEYS AT LAW  
Conveyancing, Notary Work  
Titles Examined  
Office Over First National Bank  
PAMPA, TEXAS

**G. C. MALONE**  
FUNERAL DIRECTOR AND  
LICENSED EMBALMER  
Phone 181 Pampa, Texas

**DR. A. R. SAWYER**  
DENTIST  
White Deer Land Building  
PAMPA, TEXAS

**W. MINOR**  
CONTRACTORS  
Brick and Concrete  
At A. B. Kealey's Office  
PAMPA, TEXAS

**DR. AURA W. MANN**  
CHIROPRACTOR  
OFFICE 20-21, SMITH BUILDING  
PHONE 213J

**P. B. CARLSON**  
Agents for the  
AMERICAN CENTRAL LIFE  
INSURANCE  
Office with Gray County Land Co.  
PHONE 201

**HAL B. STEWART**  
ARCHITECT  
and  
STRUCTURAL ENGINEER  
613 1/2 Polk Street Amarillo, Tex.

**W. W. CARTER, M.D.**  
OFFICE IN SMITH BLDG.  
PAMPA, TEXAS  
Rooms 6 & 7 Phone 232

PipeLine Contractor Liberty Hotel  
**ED MARSH**  
Gas and Water Lines Special  
PAMPA, TEXAS

### Peace, Goodwill



Columbia, Peace and the Spirit of  
Brotherly love have been joined in one  
person, a beautiful woman. This  
young lady was one of the central fig-  
ures in a pageant staged at the Sequi-  
centennial International Exposition in  
Philadelphia, celebrating 150 years of  
American Independence. The Exposi-  
tion continues until December 1.

### LOW COST TRANSPORTATION

**Star Cars**  
MORE POWER  
Commercial Chassis . . . \$425  
Roadster . . . . . 525  
Touring . . . . . 525  
Coupster . . . . . 595  
Coupe . . . . . 675  
Coach . . . . . 695  
Sedan . . . . . 775  
(F. O. B. Lansing, Mich.)

**DURANT MOTORS, INC**  
JESS FLETCHER, Representative

**WHEN in need of  
Printing see  
what we can  
do before you  
go elsewhere.**



### Safe or Sorry

**T**HERE are no cut prices to  
health. The best is none too  
good. So, when you buy cheap  
plumbing fixtures, and think  
you are saving money, you are  
not. You are losing money.  
And what's worse, you are  
making your home a breeder of  
disease.

The only kind of plumbing  
worth having is the best. Any-  
thing else is dead loss.

When you buy "seconds,"  
"damaged," "defective" plumb-  
ing goods, you buy trouble,  
sickness, death.

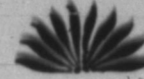
A crack is a home for disease-  
germs. A leaky pipe leaks  
away health.

Buy only quality plumbing—  
quality fixtures, quality mate-  
rials, quality workmanship—the  
kind that is guaranteed.

**TANNER PLUMBING CO.**  
Phone 220 PAMPA, TEX.  
Phone 388N CANYON, TEX.  
Licensed and Bonded

### WATCH FOR THE OPENING ANNOUNCEMENT OF

## CHANNING ADDITION



Located away from the busy, traffi -laden streets and the noise of the  
railroad, yet only seven blocks North- east from the center of the city. This  
addition will have everything to offer the home owner: Electric lights,  
Water, Gas and Sewer already contract ed for and work started on installation

The streets are being graded and put in good condition. Building re-  
strictions that will keep out the "shack", but admit the conservative home  
owner.

Watch for the opening of this new addition in the very best residential  
section of the city.

**Sylvia Maxwell,**  
Exclusive Agent

OFFICE ON ADDITION

Abstracts made to all City and County Real-estate.  
Dependable Service

Special Attention to Rush Orders

## PAMPA ABSTRACT COMPANY

Office New Smith Bldg.  
R. E. DUNBAR P. O. Box 794 C. D. DENNY

I. B. JAMESON D. B. JAMESON MRS. W. L. STRANGE

## The Southwestern Land Company

Specializing in Oil Leases, Royalties and Drilling Contracts.

See us for lots in the new additions.

1 Acre Block. Just Cut into Lots—Close in.

All kinds of business and residence lots at a good price.

## Building Material We Have Them---

**TILE**  
**PAINTS**  
**BRICKS**  
**LUMBER**  
**CEMENTS**  
**HOUSE PLANS**  
**HEAVY RIG TIMBERS**

Z T. P. HORSE ENGINES

FOR EVERY LOAD AND ANY AND ALL SUPPLIES THAT  
YOU WILL FIND IN A MODERN LUMBER YARD

## WHITE HOUSE LUMBER COMPANY

CARSON LOFTUS, Mgr.

Hart-Schaffner & Marx Clothes  
Stetson Hats  
Munsing Wear Underwear  
Bostonians Shoes  
Hole Proof Hosiery

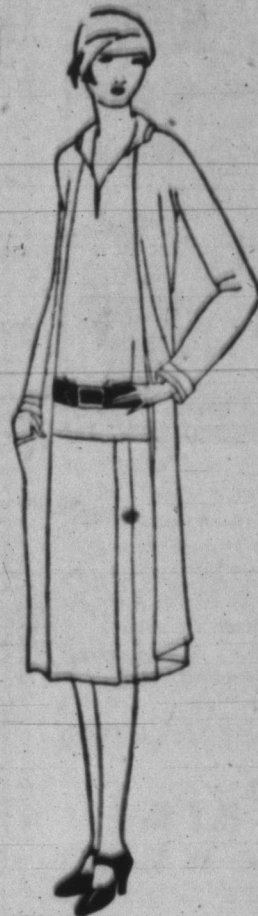
**J. E. Murfee & Co.**  
Outfitters to the Whole Family

Ladies - Ready - To - Wear  
Dress Goods  
Notions  
Shoes

# A SAFE PLACE TO TRADE

## Special Dress Values This Week

A collection that provides especially well for the individual taste. Each garment is highly authentic in style, excellent in quality and beautifully made. Yet you may choose at the following very low prices: \$9.50 — \$10.00 — \$12.50 And UP. Many new Fall dresses have arrived. Visit our read-to-wear department on Balcony floor. **NEW FALL HATS**

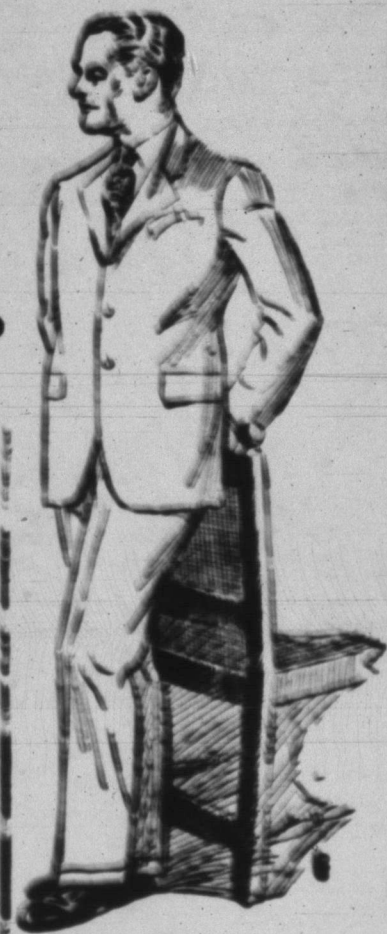


### Fall Footwear Fashions

Style, beauty and utility are combined in a high degree in this new fall Footwear. It is Footwear that assures you maximum style and comfort as well. Expert Shoe Fitters in charge. Shop our shoe window and see the new Fall Footwear first.

## Hart-Schaffner & Marx Fall Suits Business Men prefer These Suits

For several reasons, business men prefer these Suits. One reason, because they give more than the usual measure of service. Another reason, they always look good, due to the extra measure of tailoring used in their making. Hart-Schaffner & Marx and Curlee clothes are good and are guaranteed to give satisfaction. Look for the label a Small Thing to Look For, a Big Thing to Find.



### A New Fall Stetson Hat

One of the new fall styles to arrive. It is a nespacially attractive model. The felt is light weight for comfort during early fall wear. Complete showing of the New Fall Stetson Hats now on display.

SHEETS, PILLOW CASES, BLANKETS, COMFORTS, WIDE SHEETING, PILLOWS, TOWELS, ETC.

We are prepared to fill small or large bills of Sheets, Pillow Cases, Pillows, Towels, Comforts and Blankets for Rooming Houses, Hotels or Homes at very attractive prices. We buy in large quantities and are prepared to quote attractive prices.

# J. E. MURFEE & COMPANY

ESTABLISHED 1916

MAIN STREET "CUYLER"

PAMPA, TEXAS