

\$2,200,000 ROAD BOND IS PROPOSED

635 CARLOADS WHEAT SHIPPED FROM PAMPA

ELEVATOR OPERATORS ESTIMATE THAT TOTAL FOR YEAR WILL BE MORE THAN A MILLION BUSHELS

There has been 635 carloads of wheat shipped from Pampa since the beginning of the wheat-shipping season in June. Each car will average about 1400 bushels, which means that approximately 889,000 bushels of wheat have been shipped from Pampa.

Elevator operators here estimate that 100 more carloads will be shipped yet this season. If this number is shipped the total will pass the million-bushel mark. This season has been the best for a good wheat crop since 1921, according to elevator operators here.

The following is an estimate of the carloads shipped by the local elevators: Great West Mill and Elevator Co. 95 cars; Martin-Lane 55 cars; Pampa Grain Co. 270 cars; Stark and McMillan Grain Co. 120 cars; L. C. McMurtry Grain Co. 95 cars.

Santa Fe Officials Arrive In Pampa To Study Developments

Several officials of the Santa Fe Railway Co., accompanied by Mayor F. P. Reid and other residents of Pampa, made a tour of the oil field south of Pampa last week. "This field has made wonderful development," said one of the officials who had made a tour of the field several months ago.

Representatives of the Railway Co. who made the tour were: A. G. Wells, vice-president, F. A. Lehman, general manager, F. L. Meyers, assistant general manager, F. J. McKie, superintendent, M. C. Blanchard, chief engineer, and R. W. Pretue, train master. The party sent word ahead for Mayor Reid to meet them and accompany the touring party.

The purpose of the survey of the field was to draw conclusions from which the Railway Co. can make its future estimates, according to reports here. From all outside appearances the officials were interested in the rapid development of the field. Less than a year ago, where was then nothing but plant life growing, now is dotted with derricks. The oil soaked soil tells its own story.

S. W. Kleime, local Santa Fe agent, E. E. Reynolds, N. R. Burcher, E. R. Car, W. B. Solbert, John Henry and H. L. Pope also accompanied the party on the tour of the field.

Mayor Reid, after meeting the officials and talking with them, found that he and A. G. Wells, vice-president of the Railway Co., as well as F. J. McKie, superintendent of the company, were reared within a few miles of each other. They had never met before that they knew of, but all were confident that they had played on the same playgrounds when they were boys.

Piggly Wiggly Store Opens on Foster Ave.

A Piggly Wiggly grocery store has opened on West Foster Ave., this week. This store is a branch of the company's chain stores which are found throughout the U. S. and Canada.

C. E. Boston, formerly of Clearwater, is managing the store here. Each customer is given a basket when they enter the store and they are about the store selecting the articles that they wish to purchase. When they are through they pass by the cashier's desk as they go out and the articles they have selected are checked. The only clerks are the checkers and stock men. Limited people are able to wait on themselves at one time.

Mrs. C. C. Watson and children returned from Dallas Monday where they attended the fair and visited friends.

Dr. Cole Returns From Business Trip To East

Dr. A. Cole returned to Pampa Sunday after a two-weeks trip. He attended a meeting of the Southwest Clinical Conference in Kansas city for a week and from there went to Chicago where he spent a week, attending the annual meeting of the American College of Physiotherapy.

"Chicago and Kansas City were dull to me," said Dr. Cole when he returned, "I had to come back to Pampa where there is something going on." He says that he saw soldiers in Kansas City and in Chicago guarding the United States mail. Only recently the government has had the soldiers in the United States army to guard the mail in an effort to decrease the startling number of mail robberies.

To Complete High Line By First of the Week

Everything is scheduled to be complete on the new high line from Amarillo to Pampa by Monday, according to Theo Tipps. All of the poles were set by last Monday, and the wire was complete from Amarillo to a point three miles west of Pampa Wednesday.

The sub station here is being erected and larger transformers are being installed. It is expected that electric current will be supplying Pampa from the high line within a few days.

A pie supper will be held at LeFors school Friday, Oct. 29. The proceeds will be used to purchase school ground apparatus. The sale of the pies will begin at 7:30 o'clock Friday evening.

Grand Theatre Will Open Here Next Week

The Grand Theatre will open on Tuesday or Wednesday of next week, according to N. A. Dickson who will operate the show. Dickson formerly lived in Eldorado, Arkansas.

The theatre will have a seating capacity for 550 people. A rooming house is being finished on the second floor. About 12 or 14 rooms will be available when the building is completed. C. W. Dippoy, owner of the building, will operate the rooming house.

Witches and Black Cats Will Soon Be Out For Halloween

Witches, black cats, manequade faces and brooms are nearing their yearly debut as October 31 draws near. Weird noises will soon be heard and all will know that Halloween has come.

Halloween has been handed down generation by generation as the evening preceding All-hallow, or All-Saints' Day. In many countries this day is traditionally devoted to merrymaking, with playful ceremonies and charms to discover future husbands and wives.

In the United States it is mostly celebrated by the younger set. The little tots from walking out to five or six years of age devote themselves to games and pictures; the ones from this age to grown persons engage in the "playful" practice of terrorizing over small household objects, plants, various objects, animals and otherwise in the most inconspicuous spots available. In fact there is practically no limit to what they will or will not do on Halloween.

Many American youths enjoy participating in Halloween events every year. To the younger generation it makes them to participate in an extraordinary day of the year.

500 People Attend The Skelly Barbecue

About 500 people attended the barbecue at Skelly Sunday. Judge J. C. Paul of Panhandle made an interesting address. Barbecue was served to all those who attended the celebration.

Skelly is a new town on the highway between Pampa and Borger and eight miles north of White Deer. Several buildings are being built there now.

Council Lets Contract For Erection of Signs

The city council voted to have street signs installed at a meeting Tuesday night. The signs will be made of wood and will extend eight feet out of the ground. The making and installation of the signs has been contracted for \$175. They will be erected as soon as locations are made for them.

The council voted to have all the typhoid cases under the direct supervision of the doctors of the city at present. Ike Lewis, Dr. W. Purviance and Dr. V. Brunow were appointed as a committee to revise the sanitary ordinance and present it at the next meeting of the council.

\$5,000 Steel Bridge on Pampa-LeFors Rd.

The county let the contract for a bridge over the Thut creek, two miles this side of LeFors on the Pampa and LeFors Highway to the Austin Bridge Co. The consideration is a little more than \$5,000, according to A. H. Doucette.

The bridge will be a 100-foot steel 15-ton structure, with concrete piers and abutments. Work on the bridge will begin in about two weeks. It is expected to be completed within four weeks after work begins.

WILCOX NUMBER 5 IS IN FOR 35 BARRELS PER HOUR; McMAN COMPANY SHOOTS FOUR WELLS

Wilcox No. 5 came in last Saturday and is now making 35 barrels an hour. It is located in the northeast corner of the southwest quarter of section 53, block 3, Wilcox 13 and 14, both of which are producers, are in the same quarter of the same section.

The McMan Co. has shot four of its wells in the Gray county field, and it is believed that the production will increase substantially. The company's Wilcox No. 4 was given a 150-quart shot from 3967 to 3127, and is clearing. This well is in section 33, block 3, No. 5, in the same section, was shot with 100 quarts and is making 55 barrels. No. 8 was shot at from 2325 to 2335 and showed 120 barrels. Their Morton No. 1 was given a shot of 300 quarts at from 3163 to 3246 feet and made 267 barrels the first 18 hours it was tested.

Wortley No. 2 and Morton No. 1 of the Humble Oil and Gas Co. are approaching the pay. The Wortley well is in section 33, block 3, and the Morton well is in section 37, Gray County. The Wortley well has considerable oil in the hole, but no definite reports have been received as to what the well might make.

The Texas Company has hit gas in the Wilcox No. 2, and is moving the boiler back. A million feet of gas was reported at from 2340 to 2350 feet. This well is located in section 33, block 3, Gray County. The company's No. 3 Wilcox in the same section and block is drilling in gray clay at a depth of 2725 feet.

The Southwest Oil and Develop-

GRAY CO. HIGHWAY ASSOCIATION ORGANIZED AT MEETING HERE OF THE DISTRICT REPRESENTATIVES

The Gray County Highway Association was formed at a meeting of twenty men representing all parts of the county Tuesday afternoon at the Pampa Hotel. C. C. Cook was elected president of the association. Other officers elected were: M. D. Bentley, vice-president; E. B. Hedrick, secretary and treasurer. W. E. Ginn and A. P. McAfee were appointed members of the board of directors. The officers of the association will also act as members of this board.

Pampa H. S. Wins From Wheeler In Fast Game Here

The Pampa High School football team, won from the Wheeler team here last Friday afternoon 20 to 0. Both teams failed to score in the first half, but in the second, with aerial attacks and end runs, Pampa succeeded in making three touchdowns and kicking two of the extra points.

At the beginning of the half, Pampa kicked off to Wheeler. Wheeler returned and made two short gains through the line and kicked. Pampa's ball on their own 20-yard line. Pampa completed a pass for a 30-yard gain, but failed to gain through the line. Two more passes were completed and it was Pampa's ball on Wheeler's 10-yard line. Pampa fumbled but recovered. A yard was gained through the line. Pampa passed out of bounds. Wheeler kicked and Pampa returned to Wheeler's 25-yard line. Pampa waged two line plunges for a touchdown. Goal was kicked. Score, Pampa 7, Wheeler 0.

Pampa kicked off and Wheeler returned the ball to Pampa's 40-yard line. Wheeler gained 5 yards in three downs and kicked. Pampa had the ball on their own 25-yard line. Pampa failed to gain through the line and kicked. It was Wheeler's ball on their own 20-yard line. Pampa intercepted Wheeler's pass and made the first down. Pampa made two line plunges for a touchdown, but failed to kick the extra point. The score was 13 to 0 with eleven minutes of play to go.

Wheeler kicked off and Pampa returned to their own 20-yard line. Both teams opened up with aerial attacks. Pampa made several gains and made another touchdown. They kicked goal making the score 20 to 0. There was two minutes of playing left. Wheeler opened up with scattered aerial attack but failed to complete them. The final whistle blew with the ball in the center of the field. Score: Pampa 20, Wheeler 0.

Several cars from Wheeler brought rooters to Pampa. Between three and four hundred people witnessed the game. Pampa will meet Claude High School team here Friday, October 29.

3 New Hardware Stores Located Here

Three new hardware companies have opened in Pampa recently. The Pampa Hardware Company recently purchased the Johnson Hardware Company here. Donaway Bros., who recently purchased the Davis Hardware Co. stock have opened as well as the Thompson Hardware Company, who recently purchased the Crawford Co. Each of the three stores are putting in new stocks. Two of the companies have stores in other towns.

Mayor F. P. Reid, O. V. Vernon and W. V. Burton were named members of the nominating committee of the directors of the Tri-State Fair board for the next year at a meeting of the board in Amarillo Monday.

Mrs. F. C. Hedrick returned Monday from Denton, where she spent several days visiting friends and relatives.

SOCIETY NOTES

"Mystic Four" Entertains Members of Football Team

Members of the "Mystic Four" entertained in honor of the boys of the members of the Pampa High School Football team Friday evening at the home of Mrs. W. H. Lang. The evening was spent by playing games.

Those present were: Ted Williams, Elmer Harden, Albert Lewter, Sam Carleton, Alfred Duncan, Russell Kennedy, Jimmy Oleson, Carl Stone, Edward Heriecher, Angela Hallow, Mildren Taley, Thelma Qualls and Neil Jones.

Mrs. W. H. Lang and Miss Lou Jones were chaperons.

Mrs. Guy Farmington Entertains at Luncheon

Mrs. Guy Farmington entertained at 1 o'clock luncheon last Friday afternoon. The afternoon was spent playing games and by contests. The guests were: Mesdames Jon Lewis, C. C. Stockstill, Earl Lewis, Ira Spearman and Clyde Carruth. Regrets were received from Mrs. Harry Gillespie.

Mrs. Isbell Entertained Last Thursday Afternoon

Mrs. Bert Isbell was hostess to a number of friends Thursday, Oct. 21. The afternoon was spent embroidering, and with contests. The house was decorated in keeping with the season with yellow and black. A delicious salad course was served.

The following guests were present: Mesdames Tom Clayton, W. M. Castleberry, Chris Bohr, B. J. Osborn, W. A. Taylor, C. P. Woodward, Ivin Turman, Willy Vincent, W. E. Noblet, Alvin Turner, W. H. Peters, Miss Leach and Miss Ina Hale.

Mrs. Carson Loftus Hostess To the El Progresso Club

Mrs. Carson Loftus was hostess to the members of the El Progresso Club on Tuesday afternoon of this week. Mrs. P. C. Ledrick led the discussion on the subject of study which was "Wild Geese."

An interesting article was read by Mrs. C. C. Cook on the life of Martha Ostens, author of "Wild Geese." The article explained how

and why the author wrote the book Mrs. P. C. Ledrick very cleverly gave the setting of the story. Mrs. Dave Pope gave a vivid description of the characters, as well as the general setting of the story. The plot of the story was interestingly told by Mrs. T. D. Hobart.

Dainty refreshments of perfection salad, nut-bread sandwiches and coffee were served to the guests.

Mrs. W. Purviance Hostess to W. M. S.

The W. M. S. met with Mrs. W. Purviance Wednesday, October 27, for an all-day meeting. The Mission Study Book "Healing Ourselves," was studied. Mrs. Lee Woodward gave an interesting discussion of the book.

Mesdames B. J. Osborn, Dave Pope, T. D. Hobart and W. Purviance gave interesting discussions on special topics. They represented the various races of the United States in making clear the little effort that is being given to educational and religious training.

Luncheon was served by the hostess at noon. The next meeting of the group will be held next Wednesday at the church building. Mrs. Nicholson will be leader of the discussion.

Presbyterians Hold "Get-Together" Meeting

The Presbyterians held a "get-together meeting" last Thursday evening at the home of Mrs. Joe White. Those present were greatly enthused over the prospects of organizing and building a church building here. Games and contests were enjoyed and refreshments of pie and coffee were served.

Lycum Course to Present First Program

The first number of the Lycum course under the auspices of the P. T. A. will be given at 8 o'clock Wednesday evening, Nov. 3. The first course, which is presented by the Henchon Co., a group of high class entertainers, will consist of music, a magician and a reader.

The association is taking this means of raising funds for the benefit of the school. The tickets for the first program will be sold by the school children and at the drug stores Saturday afternoon.

Miss Mary Nail and Miss Josephine Cariker were visiting in Amarillo Saturday.

1925 Makes Record for Telephone Cable Work

The production of lead covered telephone cable manufactured by the largest concern engaged in the work reached a new peak in 1925 when the output of this cable both underground and aerial, totalled 36,100,000,000 conductor feet, as compared with 32,700,000,000 in 1924 and 19,600,000,000 in 1920, according to the Texas Public Service Information Bureau.

Thirty-six billion conductor feet would reach more than 2,000 times across the continent from New York to San Francisco. The Conductor foot is a measurement of the amount of wire entering into the manufacture of cable and therefore represents the wire mileage in the cable. The Conductor foot furnishes a standard of comparison for all cable, no matter how the cable itself differs in diameter.

The manufacturing of loading coils, which are used to improve transmission on trunk telephone and toll cables, increased to 301,000 in 1925 as compared with 218,000 in 1924.

Hereford Minister Tenders Resignation

Hereford, Texas.—The Rev. W. R. Hill, pastor of the First Baptist church of Hereford, tendered his resignation at last Sunday's services, and it was accepted. The resignation is to take effect Dec. 31, 1926.

Rev. Hill has been pastor of the local church for a little over four years, and has made many friends who regret to lose him. He stated this week that his plans for the future are not yet matured, although he has tentative offers from churches in Tennessee and Mississippi, and may decide to go up in that part of the country, where he originally lived. No announcement has been made as to the plans of the Baptist congregation for filling the vacancy.

—The Hereford Brand.

Oiled floors should be swept with a soft brush and dusted with an oiled cloth or mop. Occasionally clean them with a cloth wrung out of warm soapy water, followed by polishing with a cloth moistened with kerosene or good floor oil. Use water and soap sparingly.

Clarendon Ranch Sells 4,500 Yearling Calves

Clarendon, Texas.—One of the largest sales of stock reported in the Panhandle for some time is that by the J. A. Ranch at Clarendon. Forty-five hundred steer calves and short age yearlings have been sold at an average of \$35.00. This stock belonged to T. D. Hobart.—Clarendon Record.

Captain W. L. Woodward, who has been the guest of Mr. and Mrs. W. L. Woodward, has reported for Santa Anna. He will go from there to his home in Galveston.



Safe or Sorry

THERE are no cut prices to health. The best is none too good. So, when you buy cheap plumbing fixtures, and think you are saving money, you are not. You are losing money. And what's worse, you are making your home a breeder of disease.

The only kind of plumbing worth having is the best. Anything else is dead loss.

When you buy "Seconds," "Damaged," "Defective" plumbing goods, you buy trouble, sickness, death.

A crack is a home for disease germs. A leaky pipe leaks away health.

Buy only quality plumbing—quality fixtures, quality materials, quality workmanship—the kind that is guaranteed.

TANNER PLUMBING CO.
Phone 220 PAMPA, TEX.
Phone 388N CANYON, TEX.
Licensed and Bonded

Business & Professional DIRECTORY

V. E. VON BRUNOW
PHYSICIAN AND SURGEON
Office Hours 10 to 12—3 to 5
State License No. 7752
PAMPA, TEXAS

G. C. MALONE
FUNERAL DIRECTOR AND
LICENSED EMBALMER
Phone 181 Pampa, Texas

DR. A. R. SAWYER
DENTIST
White Deer Land Building
Business Phone 168
Residence Phone 56
PAMPA, TEXAS

W. MINOR
CONTRACTORS
Brick and Concrete
At A. B. Keahey's Office
PAMPA, TEXAS

INSURE YOUR FAMILY WITH
AMERICAN CENTRAL LIFE INSURANCE
P. B. CARLSON, Agent
175 West FOSTER

HAL B. STEWART
ARCHITECT
and
STRUCTURAL ENGINEER
613 1/2 Polk Street Amarillo, Tex.

STUDER, STENNIS & STUDER
LAWYERS
Office Over First National Bank
PAMPA, TEXAS
See H. W. HICKMAN
—For—
CONTRACTS ON BUILDING
Pencil Plans Furnished.
Cabinet work, mill work and
Truck Cabs. Bodies a specialty. Phone 225.
HICKMAN CONST. CO.
Ref. See customers.

PAMPA ELECTRIC COMPANY
ELECTRICAL CONTRACTORS
All Work Guaranteed Phone 183
Estimates Furnished on all Classes
Of Wiring

J. B. DUFFIELD
GENERAL BUILDING
CONTRACTOR
Concrete Work
No job too large or too small.
27,11c

ARCHIE COLE, M. D.
PHYSICIAN AND SURGEON
Office over First National Bank
Office hours 10 to 12—3 to 5
Residence Phone 8. Office phone 55
PAMPA, TEXAS

DR. W. PURVANCE
PHYSICIAN AND SURGEON
Office Over First National Bank
Office hours: 9 to 12—1 to 5
Office phone 107. Residence 45
PAMPA, TEXAS

O'NEAL ABSTRACT CO.
Abstracts of Title
PROMPT SERVICE
PANHANDLE, TEXAS

DR. T. M. MONTGOMERY
OPTOMETRIST AND OPTICIAN
In Pampa every other Thursday
Call Fatheree Drug Store for appointment

Facials, Marcelling, Shampooing, Manicuring, etc.
MRS. G. A. LATUS
Molar System Graduate
1 Block North Christian Church.

DR. W. F. NICHOLAS
DENTIST
Office Room 5-9 Smith Building
Phone 222 Pampa, Texas

DR. AURA W. MANN
CHIROPRACTOR
OFFICE 20-21, SMITH BUILDING
Office Phone 263
Residence Phone 213J

BOONE SIGN CO.
COMMERCIAL SIGNS
OF ALL KINDS
115 West Tyng Street

W. B. WILD, M. D.
PHYSICIAN & SURGEON
Office—Room 6-7 Smith Building
Phone 232 Pampa, Texas

DRS. MARTIN & KLEIN
PHYSICIANS AND SURGEONS
SHARPE BUILDING

ANNOUNCEMENT

WE have just opened a modern Coca-Cola plant in Pampa. Have installed the most up-to-date bottling machinery on the market, and extend to the public an invitation to make close and personal inspection at any time.

PAMPA COCA-COLA BOTTLING COMPANY

Bottlers of *Coca-Cola* and Seven Flavors of High Grade Soda Water.

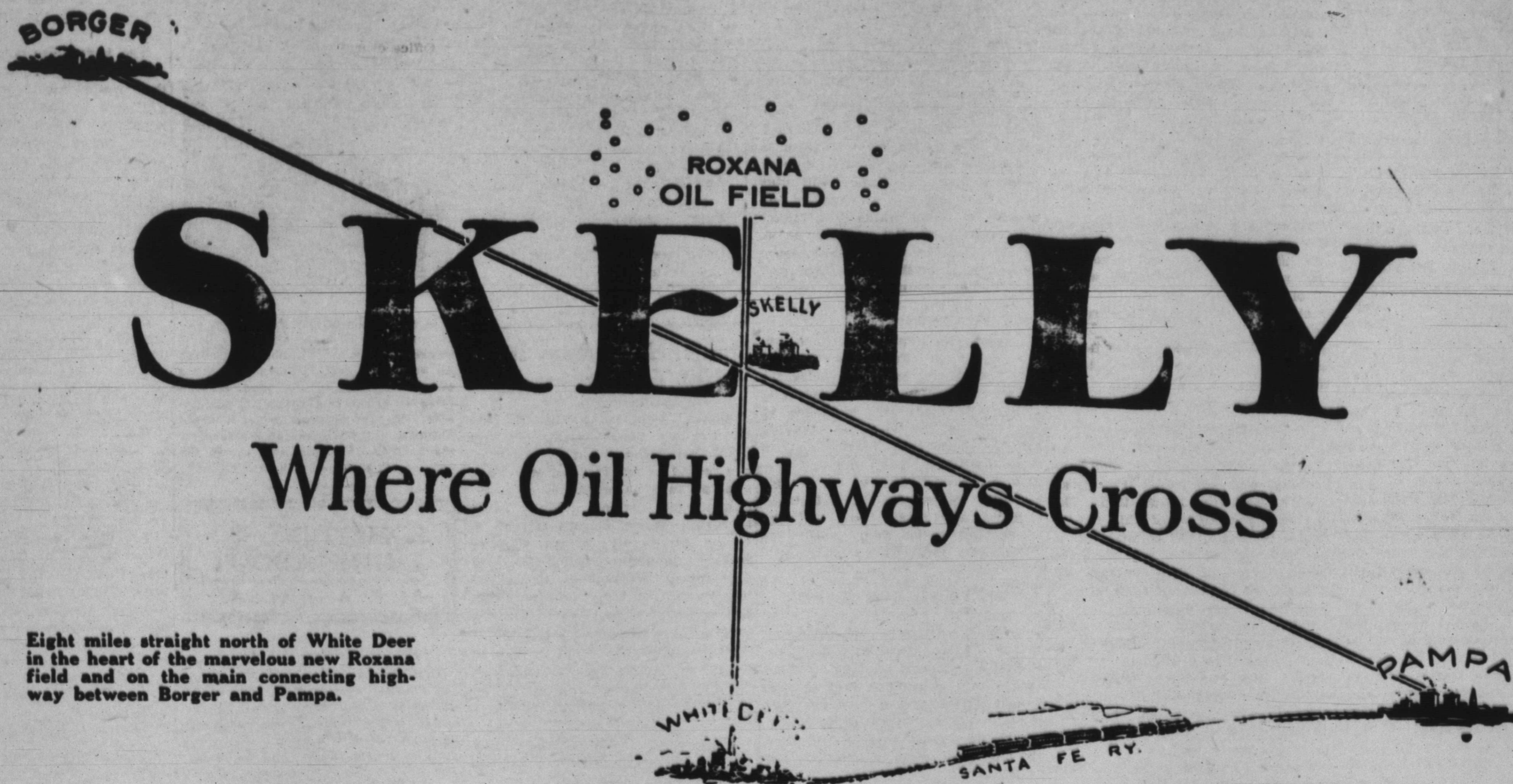
Lumber, Rig Timbers Building Material

We are open with a very complete line of Building Material of every kind, specializing in home building and oil field construction materials.

Let us furnish an estimate on your next order before you buy.

Mintener Lumber Co.
G. W. BECHTELHEIMER, Manager
Brown and Gray Sts. South Side

Make Money on Townsite Lots!



Eight miles straight north of White Deer in the heart of the marvelous new Roxana field and on the main connecting highway between Borger and Pampa.

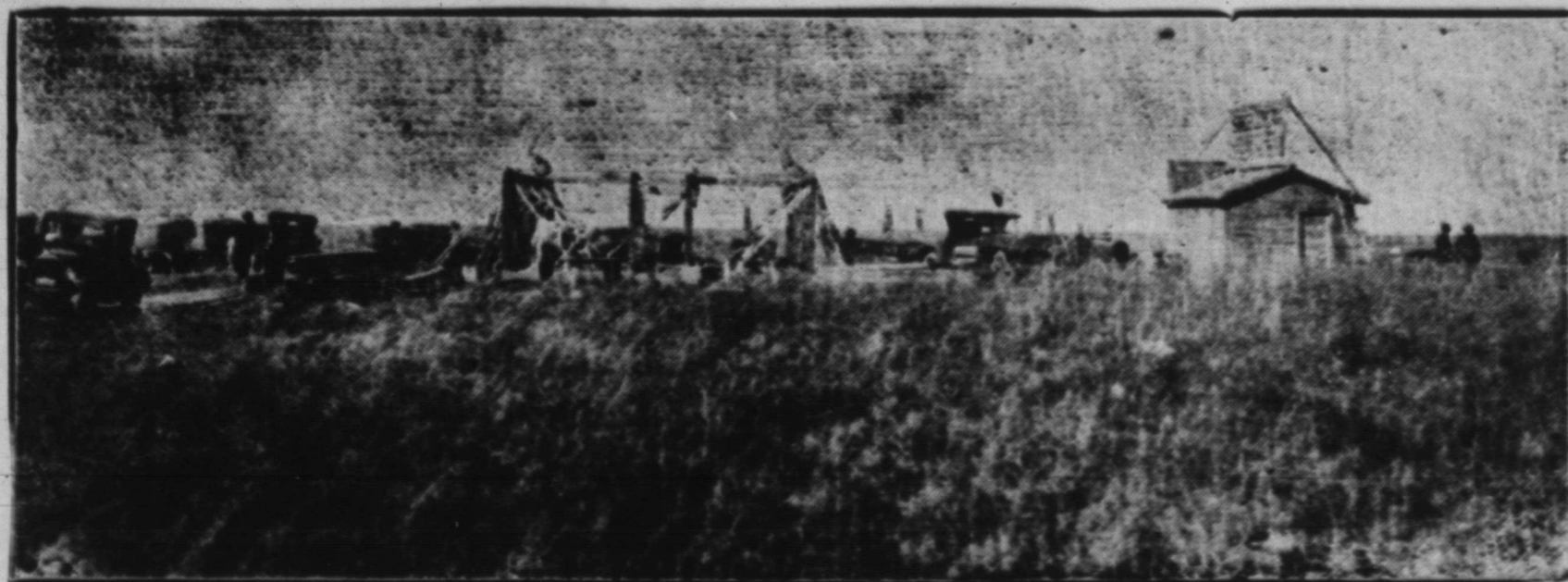
One man who purchased 8 lots on First St. in Skelly a week ago Saturday, sold four of them the next day for a 250 per cent profit on his down payment. Then he held two of the remaining four lots for a few more days, sold them for a 350 per cent profit, and has refused even larger profits on the two sites he has left. And this is just one of dozens of similar genuine instances of quick, big profits!

The merchants who are locating in Skelly report good business—dozens of buildings are going up—more than \$30,000 worth of building sites have already been purchased, practically all of them by people who know oil towns and have made their investments either to build on, or in the belief that they will double and treble their money on increases in values.

The desirable Main Street Extension of Skelly has just been opened for sale—the original townsite practically sold out within a week after being placed on the market. Yet there is no increase in prices in spite of the high valuations which now obtain for Main Street and First Street lots a block away!

Excellent lots in the new addition will be only \$75 up, terms only 25 per cent down, with five equal monthly payments on balance. Warranty deed with every lot, only the mineral rights being reserved. Every street graded; and water and gas being piped immediately to every lot.

Looking north from Skelly. The building under construction is the new Skelly Hotel at the corner of First and Main Street. A number of additional buildings not shown in the picture are in various stages of completion; the water well is being drilled; and civic improvements are going in rapidly.



Note the newest oil field in the Panhandle in the background. 21 derricks are already up around the Roxana discovery well in Sec. 92, Block 4, Carson County; and more than 100 locations have been made for immediate drilling. Skelly Townsite is at the crossroads of the Borger-Pampa road and the main highway from White Deer to the new oil field.

COME OUT TODAY!

To go to Skelly from the main line of the Santa Fe, turn North for eight miles at White Deer. From Pampa take Borger road straight west for fifteen miles; and from Borger take the Pampa road east for eighteen miles. Skelly is the crossing point for these main highways.

SKELLY TOWNSITE CO.

OWNERS AND DEVELOPERS

SKELLY FIELD OFFICE

AMARILLO
115 E 4th St., Phone 151

THE PAMPA NEWS

Published Every Friday
at Pampa, Texas

DAVID M. WARREN
Publisher
W. E. LOWE
Manager
BEN F. RENO
Editor

Office in News Building
Phone No. 100

SUBSCRIPTION RATES

In Texas
One year\$2.00
Six months 1.25
Three months65
Outside Texas
One year\$2.50
Six months 1.60
Three months85
Advertising Rates Upon Application

Entered at the Pampa, Texas
Postoffice as Second Class Mail

THE TOURIST FRIEND

A tourist in El Paso drove across a boulevard street without stopping. He did not see the sign. About two blocks further on a motorcycle officer drew alongside his car. The tourist stopped and awaited the usual proceedings. The policeman remarked that the driver seemed to be a stranger in the city. Let the tourist tell the story:

"He pointed out to me the one-way streets; he told me the speed limit and in what block I could park, and expressed the wish that my stay in El Paso would be most pleasant. He also advised me that if there was anything the police department could do for me not to hesitate to call on them."

This tourist became a friend of the entire city. Let us all express the wish to tourists that might be in Pampa that their stay be a most pleasant one. The traffic laws in different cities and town vary, and the result is that the tourist innocently violates traffic laws. If this is called to his attention in a polite manner, he will become a law abiding "citizen in mind" of the town in which he has received due consideration.

Bad boys or bad checks, which do you prefer?

GROWING PAINS

Trouble and inconvenience, heart aches and sighs, sorrow and happiness, it's all in a life-time. And so it goes in the life of a city. Youth is filled with happiness and prosperity, but the growing pains are severe. There are a few tears along with the smiles, but it is not true that the more the smiles the more the tears.

With the oil fighting for the surface of the earth in the Panhandle, with apologies to Lincoln, we might say that we are met on a great battlefield of that ground. Steps are being taken now that will make the future generations, as well as the present, proud of the city of Pampa. No doubt mistakes are being made now that will be difficult to remedy in years to come, but again the growing pains must be taken into consideration. Individuals are not perfect; how can anyone expect a city to be perfect?

Some are knocking—some are boosting, but Pampa will undergo the initiation stage and become a city regardless. We have wealth in oil below the ground, we have wealth in wheat above the ground, we have industrious people who are improving the mechanical side, we have churches, we have schools. World, just give us time.

BETTER ROADS

A group of progressive men met Tuesday and organized the Gray County Highway Association. The outstanding purpose of this organization is to lift the county out of the mud. These men represent the various parts of the county, and they are all combining their efforts to better the entire county.

These men are already at work, but they cannot take progressive steps without the support of the county. Not one of the individuals will derive more benefits from good roads than the rest of us. Let's cooperate with the new organization and have better roads.

When the election is held to vote on a bond issue let's all invest in prosperity. Our roads are the arteries that carry the life blood of the entire county. Bad roads mean isolation; good roads mean contact with the outside world.

PREVENTIVE HOUSECLEANING

If the home has been regularly and systematically cared for, the old fashioned strenuous pretid of upheaval which our mothers called "spring" or "fall" cleaning is no longer necessary. Even in the cleanest homes, however, the changes of the season necessitate certain changes in the details of housework, and some rearrangement of one's furnishings and storage places.

In going through one's home, the object should be not to make everything spick and span for the time being, but to make such changes as will help it to remain so with the least possible daily or weekly work. Much of the dirt that gets into the house is blown or tracked in. Remove dirt regularly from window sills, porches, steps and walk to keep it from being blown into the house. Screens covered with cheesecloth will stop much dust and soot at windows and doors. Concrete walks will reduce the amount of dirt carried in on shoes. Provide mats and scrapers to help still further. A place just inside the entrance where muddy boots and coats may be left is a great help.

Lessen the number of dust collecting places. Furnish waste baskets, ash trays, and receptacles for burnt matches in every room, and have all train the members of your family to help by leaving things where they belong and in good condition. Take dirt and rubbish away and dispose of it permanently when you have finished cleaning any given part of the house and make your motto "to keep clean rather than clean up."

LABELS MUST BE CORRECT

The only positive label requirement in the Federal food and drug act is that all canned food labels shall bear a correct statement of the net weight of the contents of the can. If other statements are made on the label, they must be true and must not be false or misleading in any particular.

A man is as old as his oats are wild.

News Wants Ads pay.

IT ISN'T YOUR TOWN—IT'S YOU!

If you want to live in the kind of a town, Like the kind of a town you like, You needn't slip your clothes in a grip, And start on a long, long hike, You'll only find what you left behind. For there's nothing that's really new, It's a knock on yourself when you knock your town, It isn't the town, it's you, Real towns are not made by men afraid. Lest somebody gets ahead, When everybody works and nobody shirks, You can raise a town from the dead. And if while you make your your personal stake Your neighbor can make one to, Your town will be what you want to see, It isn't your town, it's YOU.

One Inch of Rain Is 100 Tons to an Acre

Several hundred pounds of water are necessary during the life of a cultivated plant to produce one pound of mature matter. Thus a plant such as wheat or corn requires each day an amount equal to several times its own weight. It is not often that nature supplies just the amount required for best development throughout the growing season. A much greater quantity of water is supplied to the soil in a moderately heavy rain than is usually supposed. With a rainfall of one inch, without loss by runoff, more than 100 tons of water is supplied to one acre of land.

More than 7,000 African elephants are killed each year for the ivory in their tusks.

E. E. Pancow and W. R. Doyle will open the Denver Cafe on West Foster Ave., Monday. Both of the men come here from Denver, Colo.

Thomas Meighan



It was in the city of Pittsburgh, Pa., that popular Tom Meighan was born, where he spent his childhood and where he made his first appearance on the stage, later being assigned leading roles in prominent theatrical companies. He was induced to get into the picture, and he is one of the favorite stars. His latest picture, now in the making, is entitled, "The Canadian."

SOMETHING TO THINK ABOUT
By F. A. WALKER

Great Bridge Planned

Bids for the steel work of one of the greatest overwater railway spans of Europe have been asked by the Danish railway authorities, with the approval of the rigging. The steel work will cost more than \$5,000,000 and the completed bridge will cost at least \$8,750,000, according to estimates of the engineers. The structure will span the Little Belt, between the island of Funen and the east coast of Jutland.

Flappers Wait in Car While Sheik's Hook Face Powder

Hartford, Conn.—While their girl friends waited in stripped down cars for the get-away, four youths entered drug stores and took perfume, face powder and cosmetics for the beautification of their female companions.

Thus, according to alleged confessions today, began the criminal careers of Percy Parker and Andrew Dorback of Hartford, Harlan Wal-lenhoff of Rocky Hill, all in their teens.

The boys were said to have confessed that in the last five months they made twenty breaks in Hartford and at least ten more in surrounding towns, specializing in drug stores, chain groceries and provision stores and road houses.

On each of these raids they were said to have accompanied five or six Hartford girls, none more than 16 years of age.

Parker and Dorback were arrested yesterday when they were recognized by an officer as youths previously convicted of aking automobiles without permission of owners. Their alleged confession led to the other arrests.

Mrs. C. W. Bowers Hostess To Willing Workers Club

Mrs. C. W. Bowers was hostess to the Willing Workers Club on Wednesday afternoon. Instead of holding the regular meeting, a cooking demonstration was given by Mr. Bentley.

The Club gave a shower in honor of Mrs. L. W. Holland and her son, Bennie Leo. The club will meet regularly during the two remaining months of the year. Delicious refreshments were served to the six members of the club who were present and two visitors.

The club will hold its next meeting Nov. 3, with Mrs. A. Converse as hostess.

Price levels usually stay close to the pocket books.

Several men have been employed on the streets during the last few days, and the mud that stood in the gutters has been dragged into the street where it rapidly dried.

PIGGLY WIGGLY

2172 PIGGLY WIGGLY STORES ARE NOW IN OPERATION

The First PIGGLY WIGGLY Store Opens in Pampa

FRIDAY, OCTOBER 29, 1926

THIRD DOOR WEST OF MASTERS CAFE ON W. FOSTER AVE.

A BASKET Is Loaned For Use While in the Store

Advantages to Customers: Lowest Prices; Best Products; 1000 Items; Freedom of Choice; Clean Store and Fresh Goods.

And when you come to see and investigate the truth of this advertisement you will not be asked to buy and you will not be criticized for not buying.

Whether One Buys or Whether One Merely Looks—In Either Case It's All Right With PIGGLY WIGGLY

All Packages Are Wrapped At the Checking Counter

Help Yourself; No Waiting to Be Waited On; Vegetables and Fruit Sold by Weight—the Honest Way.

Piggly Wiggly Stores are a national affair with each city and town unit co-operating with all other town units toward a lower cost of operation and with ability to make lower prices.

Meat Market

For the convenience of our customers we are operating a thoroughly modern and sanitary Meat Market.

Operating Cost

The operating cost of PIGGLY WIGGLY STORES is lower than any heretofore known method of retail distribution. This saving in operating cost is given to the consumer, affording prices which are savings that cannot be obtained elsewhere.

Food Products

Food products of a variety including fresh fruits and vegetables, of more than one thousand items, each item priced by a swinging price tag. National known advertised brands of a most comprehensive assortment is the class of merchandise to be found in every PIGGLY WIGGLY Store.

Visitors Welcome

You can look and be at home in this store and go through its two separate aisles upon a tour of inspection as to merchandise, as to its cleanliness, as to the prices—you may know that we are glad that you came.

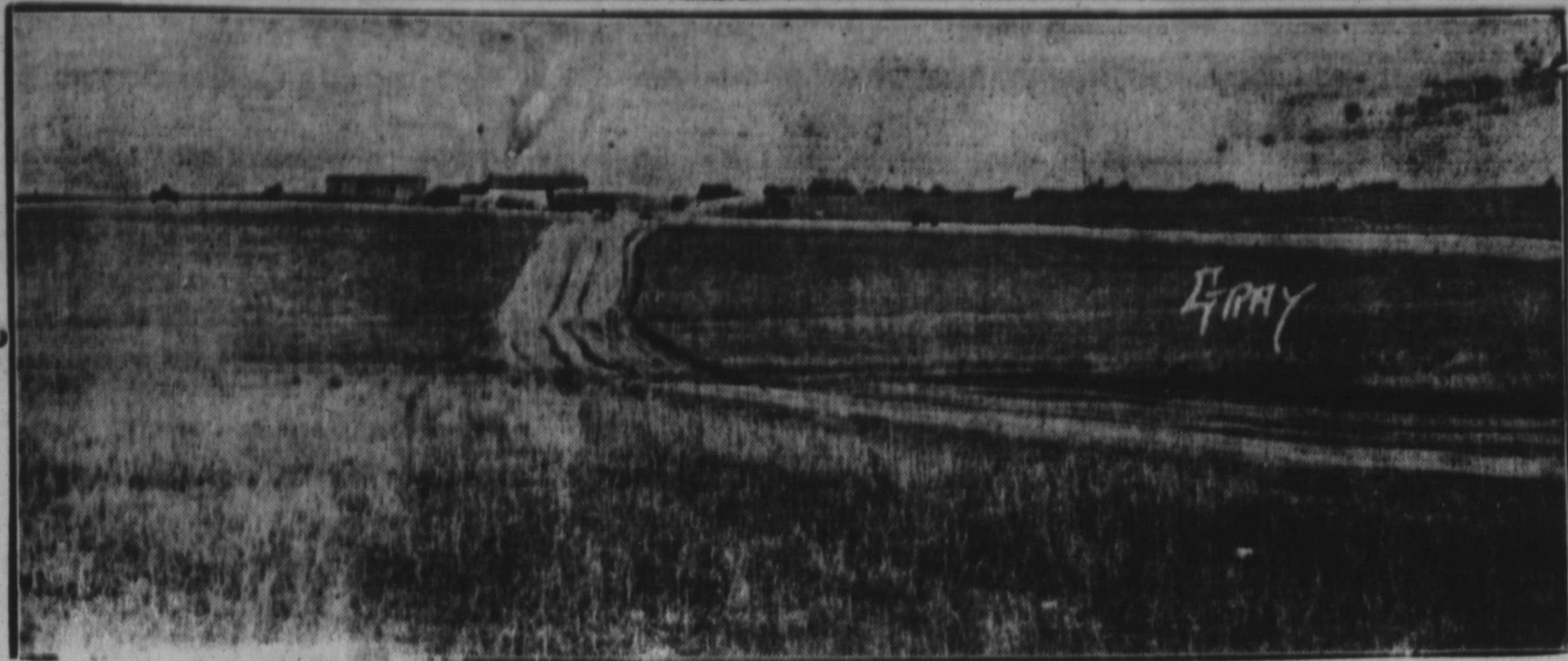
Your Own Decision

If you see something that you want to buy of your own free will, without persuasion from anyone, without intimation from anyone, without suggestion from anyone, without mental contact whatsoever with anyone—if you want to make a purchase voluntarily, we, of course, will be glad to have you as a customer.

Thousands Saved

The main thing, however, that we want everybody to know is, that it is desired to have Pampa women and Pampa men to come and look at this wonderful store. We will be satisfied with your judgment of our claim that Pampa will have a saying in her food bill that will go into thousands of dollars by cashing in on the opportunity afforded by PIGGLY WIGGLY Stores.

Many of the instrumentalities employed in PIGGLY WIGGLY Stores are protected by copyrights, trade marks and patents granted by and applied for in the United States and the principal foreign countries. All such instrumentalities will be fully protected and infringers are hereby notified that rights under these grants will be strictly and vigorously enforced.



Where two great highways cross! View looking east along the Borger-Pampa Highway, with the White Deer road crossing just in front of the new oil town of Skelly. Just north of Skelly a new oil field has come into being over night around the Roxana discovery well in Section 92, block 4, Carson county. Twenty-one derricks are up and more than one hundred location have been made for immediate drilling.

Pampa Is Praised in a West Texas C. of C. Publication

The following article appeared in "West Texas Today," the official publication of the West Texas Chamber of Commerce:

"Pampa is the thrice-blessed city of the North Plains Panhandle Country. The growing little Gray county town is thrice-blessed because some magic hand destined for it unlimited success with three chief resources: First in the field of livestock raising, second in wheat farming and the third in oil developing.

"Years ago a group of pioneer plainmen settled on a treeless stretch of land in Gray county and called the place they selected for their home 'Pampa,' borrowing the name from the Spanish language in which the word signifies a field of grass-covered, treeless plain. From the essential nature of the land, stock-raising, dairying and poultry raising grew to be important industries of the section. Today Pampa is headquarters for one of the most successful Farmers' Co-operative Poultry Associations in the southwest and many thousands of dollars worth of shipments in cream and in marketing of hogs take place through its commercial gateway each year. The Panhandle bows to Pampa in recognition of its adaptability for livestock production, dairying and poultry raising.

"Pampa's second blessing came in the form of its recognition as one of Texas' and America's greatest wheat centers, from which the place has become known as the queen 'Wheat City of the Plains.' Pampa is the largest wheat shipping town in the state, over two million bushels of grain being shipped from there annually. Five great grain elevators are used to accommodate the immense winter wheat crop. In addition to the banner production of this grain, oats, barley, rye, corn, kafir, maize, feterita, sorghum, broom corn and cotton are grown successfully on the black and fertile soil around Pampa.

"The flowing treasure of black gold, oil, Pampa's latest blessing, is showering the rising North Plains town with all good fortune.

Pampa is located in the geographical center of the great Texas Panhandle oil field. Already the Pampa section has many producing wells and a total of 254 are now drilling. Over 6,000 barrels of oil are shipped out from the town daily. Big oil companies located in the district are expending money investing in development projects in Pampa that will reach several million dollars before the first of the year.

"An abundant water supply is secured from wells in the territory with high parity tests. A modern sewage system serves the city. Natural gas is installed in the town, and a recent extension of the electric power plant gives completely satisfactory light service. There is a modern steam laundry in Pampa. It has brick and concrete business houses of the latest construction, and many blocks of sidewalks. Pampa's newspaper is one of the best and leading journals of the North Plains country. Banking facilities in the town consist of two institutions with combined deposits of over two million dollars.

Pampa is located on the leading highways connecting with strategic points in the Panhandle country. The main line of the Santa Fe railway system passes through the town and a \$35,000 fire proof depot of Spanish mission style is maintained by the system there.

"The thrice-blessed city of Pampa is being built into a city of the future through the constructive policies of its far-seeing mayor, F. P. Reid, and through its chamber of commerce organization of which M. A. Turner is secretary, who guides its development into channels for the fullest agricultural, industrial and commercial good of all."

If men are brothers under the skin, women are sisters under the rouge.

A person can stand on one of the highways leading into Pampa and draw but one conclusion, the traffic is certainly heavy.

M. Hefflin is building a new warehouse on Brown Avenue. The building, when completed, will be 47x50 feet.

News Wants Ads pay.

Unique Irrigation System Is Used in Gray Co. Acres

McClean.—The Aztecs, ancient Egyptians, and Asiatic races have developed systems of irrigation which won the admiration of modern hydraulic engineers. But the works of these people, remarkable as they undoubtedly are, are no more praiseworthy nor unique than the system of irrigation practiced by Wilson Brothers of this place, who irrigate a commercial apple orchard in a manner as unique as that of any of the race mentioned.

Wilson Brothers' orchards are located about three miles from McLean, in a valley formed by the breaks of the Red river. In this section water is secured at a depth of six to nine feet. The soil is deep sand and unsuited for ordinary methods of irrigating by canals. Wilson Brothers, however, irrigate their lands in a method that is both economical and practical and wonderful financial returns they reap from the orchard attest the success of their methods.

With an ordinary post hole digger, they dig to the water bearing sand six feet or so beneath the surface of the earth. A wooden box or other such simple method is used to "case" the hole and prevent caving. These holes are thickly interspersed throughout the orchards and grape vineyards. An ordinary windmill on a low tower is mounted on skids. In dry weather the windmill is skidded to one of the holes and the pumping barrel lowered into the water. The slight lift will permit the mill to run in even a light breeze. The water in abundance is pumped to the surface and used to irrigate the apple trees or grape vines within convenient distance of the shallow well. The supply of water here is practically inexhaustible and of a quality admirably suited for irrigation. The deep sand readily absorbs the water.

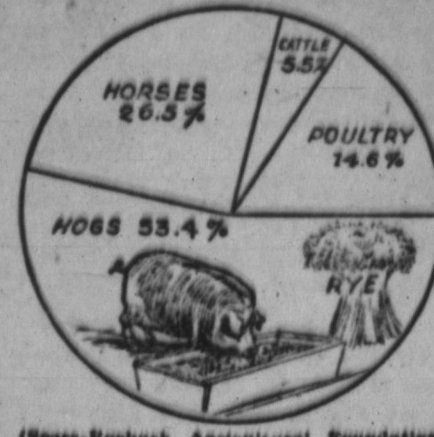
When the trees and vines near the well have received sufficient water, the pump is removed from the hole and the windmill is skidded to the next hole, where the procedure is repeated. This is continued un-

til the entire orchard or vineyard is watered, and, if rain has not fallen, they go back to the first hole and irrigate the grapes or apples again.

The method of irrigation practiced is so simple that even a boy can operate the irrigation plant. Expense of operation is practically nothing. No ditches are necessary and no space is taken up for irrigation canals. If a "well" becomes damaged they simply dig another hole with the post hole digger and fill up the hole which was damaged. The never-failing winds of Texas furnish ample power for the work.

The Wilson orchards have become famous throughout the entire southwest. Thousands of bushels of apples are sold annually from this orchard and the apples are wonderfully fine quality and flavor. Apples from these orchards have been displayed at fairs all over the country and have been consistent prize winners even when pitted against the best of Arkansas, Oregon or Washington. B. M. Whiteaker, exhibit manager of the West Texas Chamber of Commerce, who was here recently, arranged for apples from the Wilson orchards to be sent to Philadelphia for display at the exhibit maintained by the West Texas Chamber of Commerce at the Sesqui-Centennial Exposition there.

It is said that thousands of acres



(Sears-Roebuck Agricultural Foundation)

American thumbs have always been turned down where rye for table purposes is concerned. Most of our rye crop has been exported to Europe and the bulk of the remainder fed to farm animals, according to a survey by the Sears-Roebuck Agricultural Foundation. This year, however, a crop of 42,000,000 bushels is expected and less than usual will be sent to Europe as their crops will also be fairly large. This fact, coupled with feed-crop failures in many of our rye-growing sections, means that more of our rye crop will be fed to farm animals this year than usual. Hogs, on an average, consume 53.4% of the rye used on the farm, horses 26.3%, poultry 14.6% and cattle 55%.

Forgers, Drunks, Bootleggers and Vags Are Caught

The sheriff's department has made about thirty arrests during the past six days. One was charged with forgery, four with selling intoxicating liquor, four or five with vagrancy, and the rest for being drunk. The jail house is hostess to several persons all of the time, and a part of the time it is crowded.

Stolen cars, tires and accessories are beginning to be a thing of the past around Pampa, according to Sheriff E. S. Graves. For several months it was not unusual for the sheriff and his deputies to arrest several car thieves and car strippers a week. One of the deputies spent practically all of his time on the lookout for the thieves, and about two weeks ago the last one was apprehended. The fines were by no means small on those arrested and found guilty. "I believe that we have ended that kind of trouble for a while at least," says Sheriff Graves.

Photographs are extensively used in a London school where parrots are taught to talk.

USE A WANT AD

R. R. JONES

(LICENSED AND BONDED PLUMBER)

Plumbing and Steam Heating

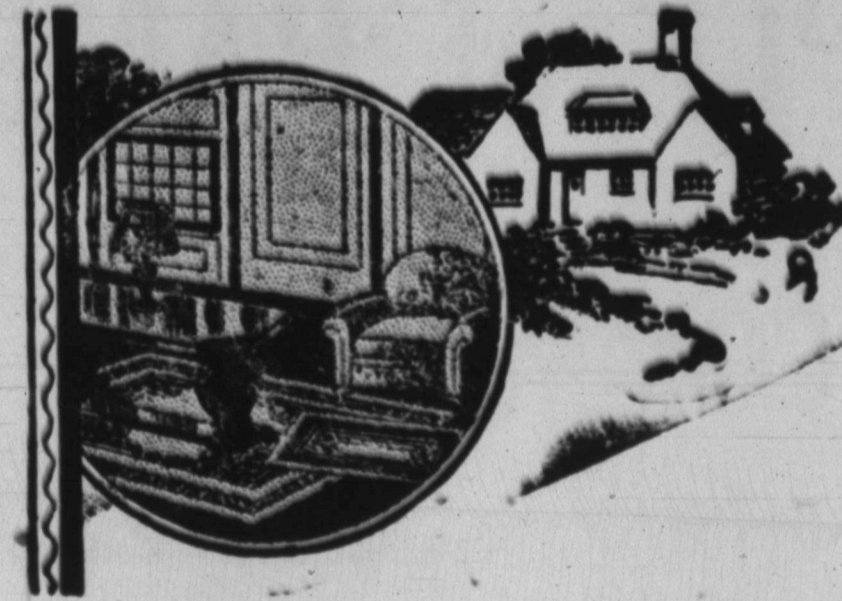
WE DO GOOD FIRST CLASS WORK
GIVE US A TRIAL

NO JOB TOO LARGE

NO JOB TOO SMALL

ESTIMATES GLADLY FURNISHED

PHONE NO. 258



Invest In Independence

We are offering a complete "Home Builders Service"

BUILDING MATERIAL, RIG TIMBERS

FAIRBANKS MORSE AGENCY

WHITE HOUSE LUMBER COMPANY

"Service that Satisfies"

Announcing

THE OPENING OF OUR
NEW CAFE
MONDAY, NOVEMBER 1st

We have installed the very latest restaurant equipment and, with expert help, are prepared to serve high quality foods at popular prices.

DENVER CAFE

Opposite Hotel Pampa

W. Foster Ave.

Classified Ads

Rates for Classified Ads: One and one-half cents per word per week, minimum twenty-five cents. Strictly cash in advance.

FOR SALE

FOR SALE—Improved Section Castro County. New six room house, modern; new paper and paint; good big barn, new paint; good young peach orchard; 14 bearing cherry trees; garden with strawberries, blackberries, gooseberries, grapes, etc., good chicken house; garage; 30 acres fenced hog ground; plenty of good water; wind mill; good tank, no waste land; 160 acres ready for wheat sowing; 75 acres more in cultivation. This is a real home; 5 miles north and two miles west of Hart; one third cash balance terms. John F. DuBose, Plainview, Texas. 20-10.

FOR SALE—Coal range cook stoves at bargain prices, \$5.00 to \$35.00. All in good condition. G. C. Malone Furniture and Undertaking Co. 3-1tc

FOR SALE—1 Ford truck, 1 new Essex touring, 1 Master Buick sedan; 1 Ford touring, 1925; 1 Ford touring, 1925; 1 Ford roadster, 1925. Pampa Buick Co. 25-1tc.

FOR SALE—125-acre farm 5 miles west Mobeetie. Price \$30 per acre. \$1,000 credit or more cash. One-nineteenth interest, in royalty reserved. Will not be rented before Nov. 1. Write or phone W. H. Pugh, R. F. D. No. 3, Mangum, Okla. (28-4tc)

FOR SALE—Six room house in White Deer; newly decorated, no encumbrance. 1 block west of school. Write Mrs. M. T. Shadix, Erick, Oklahoma. 29-4tp.

FOR SALE—Sweet milk in 5 gallon lots. 50 cents a gallon delivered. W. C. Christopher. (30-2tp)

FOR SALE—Furnished house and lot in Haggard Addition Gas in house. \$200 down balance in easy payments. 30-2-T-P

FOR SALE—Large coal heater for sale, good as new, phone 174-W. 30-2-P.

FOR SALE—Sorghum Case, bundled. See T. C. Neal, three-fourth mile south of railroad on Clarendon Highway, or phone 9005F4. 31-4tp

FOR SALE—Only restaurant in growing town, paying proposition, worth double amount asked. Harden and Reavis, Groom, Texas. (30-2tp)

Ivory enameled breakfast table and four chairs. Priced to sell. See Mrs. Stowell second house east of Christian Church. 31-1t-p

FOR SALE—Used furniture. Anyone wishing to buy used furniture, call on Mrs. I. N. Duncan, 1/2 mile north of Pampa on main highway. 31-1t

FOR SALE—House and lot, call first house south Pampa Lumber Co. L. J. LAURRELL. 31-1tp

FOR SALE OR TRADE—Vacant lots in Pampa, Texas, 30 acres in Oklahoma. Good geological survey, Dead and Abstract furnished. Price \$10.00 per acre. E. H. Stover, Mt. Sterling, Illinois, Box 141. 31-2tp

FOR SALE—No. 16 Round Oak Heater; also hot blast coal heater, good condition, medium size. Call 244, Milady Beauty Parlor.

FOR RENT

FOR RENT—Rooms—Maynard Hotel, just opened Everything new and clean. Rates by day, week or month. Located by Pampa Service Station. 29-4tc.

FOR RENT—Light housekeeping room three mile east on 33 highway on Roy Tinsley's farm—R. R. Mitchell.

FOR RENT—Furnished bed room, gas heat. A clean quick place in private home. Suitable for man working tour. \$5 per week. Phone 211J

FOR RENT—Latham cottages. Garage with each. As low as \$20 month. Eight blocks south of Main St. crossing and west. 30-4t-p

Three light housekeeping rooms three miles west of Pampa on Panhandle highway and half mile south. Phone 9018F13. Mrs. Roy Sullivan. 31-2t-p

Light housekeeping room south of Holmes City at the end of lane. Mrs. T. J. May. 31-2t-p

FOR RENT—Three-room house in block north of Pampa Laundry. Mrs. T. W. Sweetman. 31-2tp

WANTED

One hundred men to build small residence houses. We have the lots. Lee Banks & Co.

WANTED—Royalties near tests or locations. Must be on structure. Write W., care this paper. (29-4tp)

WANTED—To buy used furniture and oil stoves. G. C. Malone Furniture and Undertaking Co. 3-1tc.

Wanted—Clean, Cotton Rags, Pampa News.

Housework by young lady willing to work for board and school supplies. Call Jewell Sells, Schneider Hotel. 31-1t-p

WANTED—An elderly woman to do light housework and care for two small children. Apply Postmaster at Postoffice. 31-1tc

WANTED—Lady wishes charge of rooming house, eating house or cashier work. Apply Gray Pampa Hotel, Room 28. 18-1tp

GIRL WANTED—Apply Schneider Hotel. 31-1tc

LOST AND FOUND

FOUND—Two bay horses, one black mule, one bay mule, one dark gray mule at A. Holmes farm, three miles south Pampa. Come and get them and pay damages. (29-4tp)

LOST—Octagon Swiss wrist watch, black band, somewhere between Pampa tourist camp and Cuyler St. Reward. Return to News office. 31-1tp

FOUND—Money order payable to Commercial Investment Co., Denver Colo. Also check payable to Jessie Hunter. Call at Mayor's office. 30-1tc

MISCELLANEOUS

FOR QUICK ACTION LIST YOUR oil leases, farm and city property with Rice and Park. Located just across street from Magnolia Filling Station. 4-1tc

We are glad to assist you in planning that new home you have been contemplating building. Our motto, "Service that Satisfies." White House Lumber Co., Pampa, Texas. 11-1tc

I will start teaching Art in my home November first. Will be glad to have anyone. Mrs. E. R. Lurman, phone 188. 31-1tc

WILL SELL you a home built to suit you. Small payment down, balance monthly payments same as rent. J. M. Ikard, Star Cafe, 224 South Main. 31-2tp

FOR TRADE—Model 61 Cadillac, like new, to trade for lots. Phone 203 or call at 123 W. Foster. A. Spangle. 31-1tp

"One hundred thousand dead," cried the newsboy. "Where?" asked the excited bystander. "In the New York cemetery."

Hay Cafeteria Service

(Sears-Roebuck Agricultural Foundation)

Our hay crop furnishes one of the largest cafeteria services in existence, according to the Sears-Roebuck Agricultural Foundation. Seventy-eight million tons, it is expected, will be produced in 1926 a large part of which will be consumed by cattle. According to figures put out by the Department of Agriculture, 51.4% of this amount will be eaten by cattle, 44.6% by horses and the remaining 3.8% by sheep. The amount of hay eaten by hogs is very slight, only a small fraction of one per cent of the alfalfa crop. As in the case of other feed crops most of this hay is consumed right on the farm where it is grown.

Eat Way Through Corn Acres

(Sears-Roebuck Agricultural Foundation)

Eating their way through almost four million acres of canned corn in the form of silage is the job American cattle, mostly dairy cows, accomplish every year, according to the Sears-Roebuck Agricultural Foundation. It has been estimated that they eat 90.9% of the vast amount of silage while the small amount left, swine consume 2.2%, horses, 1.7% and sheep, 1.1%. Very little silage is fed to poultry. All silage made on the farm is consumed on the farm because it is not a product that can be handled successfully through commercial channels.

The rich get richer and poor get well that's another story.

"I'm out of breath," came the whistling cry of the flat tire.

"I've passed you many a time," said the left shoe to the right.

There's one born every minute, and Barnum didn't specify the sex.

Dora might be dumb, but she knows what its all about.

"Unchain a pair," cried the waiter, when his customer ordered two hot dogs.

CABINET WORK

Screens and Frame Done to Order. Work Guaranteed

T. S. JERNIGAN
Galbraith Foxworth Lumber Yard

Our Banking Policy

—is that this institution is whole-heartedly interested in the industrial and commercial development of Pampa and tributary territory. It will assist in the development and co-operate to the fullest extent with business concerns whose financial integrity is indicated by capable management.

COMPLETE BANKING, TRUST AND INVESTMENT SERVICE

Gray County State Bank
C. L. THOMAS, President. W. H. DOYLE, Cashier.

PEOPLE of PAMPA

and

COMMUNITY

A Special Invitation to Our Party FRIDAY NITE

Souvenirs for the Ladies.
Cigars for the Men.
Candy for the Children.
Refreshments for Everybody.

Music 6 p. m. to 10 p. m.
Hear our \$2,000 Violano-Virtouso

LEDBETTER DRUG CO.

300 W. Foster PAMPA, TEXAS Phone 266

UNUSUAL VALUES IN

Fur Trimmed Coats \$19.75

The season's favorite modes—fashioned of beautiful Bolivias and Velours. Handsomely fur trimmed. Each one a distinct style. Sizes for women and young misses. Come in for your winter coat today. This price means a saving to you, your choice of this fine group of new coats for \$19.75

BEAUTIFUL DRESSES AT \$19.75

These dresses are also values of unusual merit at the price—you will say so when you see them. Black, Claret Red and Green satin and satin face crepes; sizes 14 to 42. Come in and see them Friday or Saturday at only \$19.75

<p>SPECIAL LADIES' HOSE</p> <p>Rayon silk and silk lisle hose in big assortment of colors, including black. 10 dozen to sell Friday and Saturday. Supply your needs at</p> <p>3 Pairs for 87c</p>	<p>SPECIAL MISSES' HOSE</p> <p>15 dozen to sell Friday and Saturday. English ribbed in Champagne and nude colors; sizes 6 to 9. A good wearing hose and very cheap at</p> <p>3 Pairs for 87c</p>	<p>SPECIAL Fancy Chevrons</p> <p>500 yards fancy chevrons in assorted patterns for Friday and Saturday selling. This fabric is good for shirts, dresses, comfort lining, etc. Your choice</p> <p>15c Yard</p>
---	--	---

A Chain Store Corporation

Diamond & Co.

DRY GOODS CO.

We Make Your Dollars Go Further

Next Door North of Rogers Cafe

Gray County Seat As Described in West Texas Today

When the Creator planned the Garden of Eden, he must have had the beautiful valley of Letors to use as a pattern, according to residents of this beautiful spot in the exact geographical center of Gray county, Texas. This quaint little village, the county seat of the county, is located among the grape vines and cotton wood trees in the broad valley formed by the North Fork of Red River, just where the river breaks from the Cap Rock to wind its meandering way to the sea. The towering cottonwoods which were used to supply timber for the construction of Fort Elliott, are intertwined with the wonderful grape vines which grow wild throughout the valley and the vines actually enshroud the tops of the giant cottonwoods, and hang down like veils from the spreading branches of the "alamos." The sheltered dells of the valley, protected from the cold winds and the frosts are literally gardens of fruit. Here the cherry trees equal the famed cherries of Japan. The plum both wild and cultivated grows luxuriantly; apples produce astounding crops of wonderful "delicious" and "winsap" varieties and everything that grows in the north Temperate Zone finds its ideal home in Letors valley.

Letors boasts that it is the only county seat in Texas that does not have a jail. The sheriff became so discouraged at seeing the jail stand vacant year after year that he finally gave up in despair and leased the cell of the jail to a nearby oil town to be used as a hoosegow during its oil boom. One side of the stone jail building was torn out and the cell moved away. Letors also claims to have the smallest cemetery in one of the oldest towns in the state. Although the town has had settlers for nearly half a century, but four graves are in the cemetery which overlooks the town. The climate is just too healthy, and people cannot die, according to the residents there, many of them being above eighty years of age. They say one of the graves is that of the only doctor who ever settled there, and it was rumored he starved to death from want of practice. Letors boasts another distinction. It is the only town on the plains which has a saw mill. The giant cottonwoods of the valley were used to supply timbers for Fort Elliott. The old sawmill used in sawing the lumber is still standing, but has not been used for forty years. Letors is right now undergoing a great comeback. The development which has hit the entire north Panhandle country has put new life into the county seat. The population has increased 500 per cent

within six weeks. More than 100 business and residence have been purchased by incoming citizens within the past month. A new school building has been built, several new business houses have been constructed and sixteen residences are pledged to be built soon. The town has enjoyed the distinction of being the smallest county seat in Texas. Three times elections have been held to remove the court house to other points. One time a bare 3-votes saved the county seat for Letors. The people of the town now declare they are going to build the town so big that all efforts to remove the court house will be abandoned. Oil is a big factor in the building of Letors. The big Wilcox field is located but three and one-half miles away. The town is supplied with gas from its own well just one and one-half miles from the court house. Numerous tests are going down throughout the section and Letors is getting new life from the pool. The homes of Letors are supplied with water from wells nine feet deep. Post hole diggers are used to sink the wells, and the water secured is as pure and clear as one could wish. The residents collect grapes from the wild vines by hundreds of bushels. Practically every home has its supply of pure grape juice which they drink the year round. The crops of grain, cotton and maize produce abundantly in Letors and no where are crops more sure and abundant. Letors right now, is after the honors of having the largest West Texas Chamber of Commerce membership in proportion to population in the state. Twenty-five members has been set as the goal for the town and the town leaders have assured the West Texas C. of C. that these memberships will be secured at once. Letors may not be the largest town in West Texas, but they are determined to become known as the liveliest.—West Texas Today.

P.T. A. To Present A Health Program on Friday, Nov. 9

The Parent-Teachers Association will present a program at the high school auditorium at 3:15 o'clock Friday afternoon, Nov. 9. The following health program will be presented: Group Singing. Prayer, Mrs. Anderson. Health Play, First Grade. Song, Janice Purviance. Essay, "Our first settlers, What have we to thank them for?" Clyde Carter. Essay, "Our latest settlers, What have they to thank us for?" Topic on "How to prevent preventable disease," Mrs. B. E. Finley. Business session. Roll Call. Topic on "What is the best thing that happened to you this year?" "We earnestly hope that all parents will be present and will cooperate with us," says a member of the association. "The organization is working with and through the school with only one purpose in view, the welfare of the children of Pampa."

Pampa Ice Co. to Open Plant in White Deer

White Deer.—Representatives of the Pampa Ice Company, which is a chain company, purchased two lots located just south of the Santa Fe station his week adjoining trackage of that company and it is stated that they plan the construction of a cold storage plant here this winter and be ready by spring to begin operating. It is understood that the consideration involved in the purchase of the property was \$2,300. A small building stands on one of the lots purchased. Crumpacker & Coffee negotiated the deal.—White Deer Review.

More Water Power Insured.

The city has ordered a 30-horsepower motor to connect to the booster pumps at the water wells. "We'll have some pressure now," says M. A. Turner, city secretary. The new motor is expected to be here and installed immediately. Raucidity in lard is caused by chemical action of the air. The Federal Meat Inspection Service advises that lard should be well rendered; free from moisture and particles of scrap. Lard should be placed in completely yilled, tightly closed containers, preferably of glass or earthenware and kept in a cool dark place for preservation. Mrs. Loren Purviance and daughter, Mrs. Mark Skiles of Pleasant Plains, Ill., visited at the home of Dr. and Mrs. W. Purviance Saturday and Sunday. The persons who wrote "Thanks for the buggy ride" was no doubt here when the automobile wasn't.

MONDAY-TUESDAY, NOVEMBER 1st and 2nd
"SON OF THE SHEIK"
 With RUDOLPH VALENTINO

WEDNESDAY
"TESSIE"
 With MAY McAVOY

THURSDAY
"WE MODERNS"
 With COLLEEN MOORE

FRIDAY
 With TOM TYLER

SATURDAY
"HIS SECRETARY"
 With NORMA SHEARER

Comedy each night. Don't miss the Midnight Matinee Sunday Night 12:01 A. M.

CRESCENT THEATRE

Try popcorn for a breakfast cereal, served with milk or cream.

To remove saltiness from a slice of ham, let it stand in sour milk or buttermilk for an hour or two. This will also help to make it tender.

"HOT STUFF"

A rag with a deep-red stain, a paper label bearing "Stearns Canned Heat," an empty can, all may be found in the wayside ditch or probably in one of the alleys, but the story is the same; someone has wanted a drink and the evidence is that they got it. We think our people are civilized, but some few who drink the "hot stuff" must be eliminated. Blindness, internal complications, a slow agonizing death, yet the will-power of some is too weak. It's a queer old world, isn't it?

More than 40 per cent of nearly 70 headlights submitted to the official headlight testing laboratory of Texas have failed to meet the requirement of the automobile headlight law, according to C. R. Granberry, instructor of engineer in the University of Texas.

A. & C. MERCANTILE CO.
GROCERY & MARKET

Get your good things to eat here—our prices are always right.

SATURDAY-MONDAY SPECIALS

Pure Cane Sugar, 14 lbs	\$1.00
Peaberry Coffee, lb	33c
Sweet Potatoes, 10 lbs	35c
Armour's Pork and Beans, large can	10c
Picnie Hams, whole, lb.	19c
Swift's Bulk Compound, lb	16c
Frying Size Chickens, lb	35c

Service Our Motto

FREE! FREE! FREE! Nice Baking Pan with each lb. of Calumet Baking Powder Remember the address, 216 Cuyler Street.

Hudson Bay Fur Shop
 "THE SIGN OF PERFECTION"

FURS

FROM MANUFACTURER TO WEARER

Regular Price	Sale Price
\$650.00 Hudson Seal Coats, Nat. Squirrel, Kolinsky, Jap Marten and Mink Collars and Cuffs	\$395.00
\$625.00 Kolinsky Coats	\$475.00
\$650.00 Mink Coats, dark skins	\$525.00
\$750.00 Dark Siberian Squirrel Coats, genuine platinum fox collars	\$595.00
\$525.00 Natural Russian Pony Coats, Blue Fox Collars	\$375.00
\$495.00 Genuine Silver, Golden and Black Muskrat Coats, Fox and Beaver Collar and Cuffs	\$325.00
\$375.00 Belgium Buck Seals, Natural Squirrel, Cocoa, German Fitch, Marten Collar and Cuffs	\$250.00

\$395.00 Mendoza Beaver Coats, cocoa squirrel collar and Cuffs. \$235.00
 \$495.00 Scotch Mink Coat, Fox collar and cuffs. \$375.00

Buy Your Furs From a Furrier
 The only exclusive Furrier in the Panhandle

Foxes, all the leading shades; Stone Martens and Baumartens reduced 25 per cent regular price. Our location is secured by a long lease. All our FURS carry OUR written guarantee.

Cleaning, Repairing and Remodeling, special orders

Hudson Bay Fur Shop
 509 Polk Street Amarillo, Texas

ANNOUNCING

The opening of the

Grand Theatre

Pampa's New Playhouse

Featuring in Our Opening Picture

HAROLD LLOYD

—In—

"For Heaven's Sake"

One of screenom's greatest productions and Harold Lloyd's second latest picture

FIRST SHOW TUESDAY EVENING 7 o'clock

Wednesday Matinee 2 o'clock and running continuously until 10

ADMISSION CHILDREN 10c ADULTS 35c

Believing that Pampa deserves the best in pictures we are booking only Paramount, Fox and Universal pictures, the world's best.

Grand Theatre
 SOUTH MAIN AND BROWN STREETS

Schneider Hotel Co. To Begin New Building at Once

The Schneider Hotel Co. has announced its intention to immediately call for bids and proceed with the construction of a modern hotel on the site, and of the type described in these columns several weeks ago.

The following are the officers of the Schneider Hotel Co.: Alex Schneider, Jr., president, M. C. Parker, vice-president, O. K. Baker, secretary and treasurer. In the active management of the new hotel, Alex Schneider will be general manager and will be in charge of the catering, assisted by O. K. Baker, who will be in charge of the rooms and the front office. The company announces that the present plans are to have the new building completed and open for business by March 1, 1927.

Gross Atkins and Martin, who started the organization, have withdrawn all connection with the company, according to Mr. Schneider, and T. E. Baker and his son, O. K. Baker, formerly in the hotel business in Woodward, Okla., take their place on the board of directors.

O. K. Baker comes to Pampa with the unqualified endorsement of the citizens of Woodward, Okla., where he was reared and educated.

"Mr. Baker has accomplished the rather difficult feat of making a success of business in his 'home town,' writes Joe L. Pope, secretary of the Woodward Chamber of Commerce. He is a graduate of our high school, and a graduate of the U. S. Naval Academy at Annapolis; he is a man of ideals, fine business training, and trustworthy to the highest degree. No man residing in Woodward goes forth with a more complete indorsement than does O. K. Baker. He has always sustained every confidence reposed to him."

Mr. and Mrs. Joe Shelton announce the birth of a daughter Oct. 28. She has been named Joe Ella.

J. E. Brown departed for Rhomboro last Sunday where he will spend the winter visiting relatives. He expects to return next May.

NO. 192. THE STATE OF TEXAS

To the Sheriff or any Constable of Gray County, Texas, Greeting: You are hereby commanded to cause to be published once each week for a period of ten days before the return day hereof, in a newspaper of general circulation, which has been continuously and regularly published for a period of not less than one year in said Gray County, and, also, to cause to be posted in three public places in Gray County, Texas, no two of which places to be in the same city or town, for a period of at least ten days, exclusive of the day of posting, prior to the return day hereof, a copy of the following notice:

THE STATE OF TEXAS To all persons interested in the Estate of W. S. Cambern, deceased: Notice is hereby given that A. S. Cambern has filed in the County Court of Gray County, Texas, an application for the probate of the last will and testament of said W. S. Cambern, deceased, said will being filed with the clerk of said court contemporaneously with the filing of said application, and for letters testamentary thereon, said will being dated August 27, 1926, and which said application will be heard at the next term of said County Court of Gray County, Texas, commencing on the Third Monday in November, A. D. 1926, at the Court House thereof, in the town of Lefors, Texas, at which time all persons interested in said estate may appear and contest said application should they desire to do so.

Herein Fail Not, but have you before said Court on the said first day of the next term thereof this Writ, with your return thereon.

LOW-COST TRANSPORTATION

Star Cars

MORE POWER

Commercial Chassis	\$425
Roadster	525
Touring	525
Coupester	595
Coupe	675
Coach	695
Sedan	775

(F. O. B. Lansing, Mich.)

DURANT MOTORS, INC.
JESS FLETCHER, Representative

showing how you have executed the same.

Given under my hand and seal of said Court at Lefors, Texas, this 27th day of October, A. D. 1926.

CHARLIE THUT,
Clerk of County Court, Gray County, Texas.
Issue the 27th day of October, A. D. 1926.

CHARLIE THUT,
Clerk, County Court, Gray County, Texas. 31-2tc

Mr. and Mrs. J. L. Stroupe and Mrs. Olys Hazelton spent the weekend in Miami visiting Mrs. Milo Laughlin.

Captain Robertson of Santa Anna has been visiting Mr. and Mrs. W. L. Woodward.

Canyon May Organize a Kiwanis Club Soon

Canyon, Texas.—Dr. J. W. Stevens and V. G. Hill of Tulsa were in the city Monday desiring a conference with citizens with a view of establishing a Kiwanis Club here. Dr. Stevens is one of the district trustees, and will return to Canyon soon to take up the matter with citizens regarding the club.

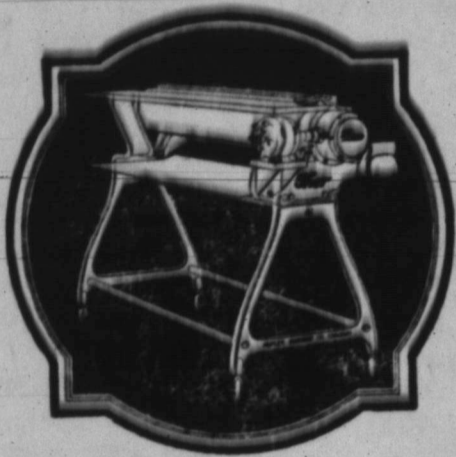
Mr. Hill is secretary of the Chamber of Commerce in Tulsa, and one of his important jobs just now is the building of the new \$50,000 hotel for Tulsa. He states that this is the fifth hotel he has helped promote as Chamber of Commerce secretary, and every one has been a great success.—Canyon News.

ANNOUNCING

The opening of Pampa's newest Barber Shop. We are now operating a thoroughly modern sanitary Barber Shop, manned by expert workmen and catering specially to Women's Bobs. Visit our shop and become a satisfied customer.

O. C. PERKINS

NEXT DOOR TO FIRE STATION



SHORTEN THE HOURS

ON IRONING DAY WITH AN

ELECTRIC Thor MANGLE

We also have Toasters, Waffle Irons, Table Stoves, Percolators and Other Appliances

Southwestern PUBLIC SERVICE Company

Pampa — Amarillo — Panhandle

After the Show

Try our 100 per cent

Iceless Fountain

Delicious Drinks--

--Butter Kistwich Sandwich

Meet Your Friends at the

Pampa Confectionery



Remember:

We have in connection with our "JEMCO" service a two ton Dodge truck for transporting either of our **ELECTRIC or ACETYLENE WELDING** plants direct to the spot necessary for quick and efficient repairs.

This "JEMCO" service is all the name implies--PLUS SATISFACTION.

Jones=Everett Machine Co.

PHONE 243

Pipe Threading and Nipple Work a Specialty

PAMPA, TEXAS