

PAMPA CENTER OF ACTIVITY

POSTAL BUSINESS SETS NEW MARK

POPULATION INCREASED FROM 1 TO 10 THOUSAND IN YEAR

J. Kelly Found Dead In Okla. City Hotel

J. A. Kelly was found dead in the Huckins Hotel Monday, December 27, in Oklahoma City, according to a wire to the News from that city. Death was due to heart failure. He was married three days before in Oklahoma City preceding his death. The body was sent to Toledo, Ohio for burial, according to the wire received here. Kelly came to Pampa several months ago from Ranger. He has been active in promotion work here as well as in other oil field cities of the Panhandle. Word has been received at the Gray-Pampa Hotel from the father of Kelly stating that he would be here in a few days. Kelly made his home at the hotel while in Pampa.

It was rumored here the first of the week that he had died in Oklahoma City, but nothing definite concerning his death could be found. A special wire to the News yesterday verified the rumor.

MARKET ACTIVE ON LIVESTOCK

Hogs Make New High Point For Past Six Weeks

The livestock market opened the past-Christmas season active with prices higher than usual, according to a report by market correspondent, Charles M. Pipkins.

Hogs made a new high point for the past six weeks; lambs were 75 cents higher than a week ago, and cattle were strong to 25 cents higher than last weeks close, and 50 cents above last weeks average. Receipts are reported moderate in all divisions and the advance indicates that larger supplies are needed. Demand will be adequate to care for the winter supply of the fat classes and the price level should work higher, according to Pipkins.

The average daily receipts for the weeks to date are 7,500 cattle, 5,000 hogs and 5,000 sheep, compared with 15,000 cattle, 9,000 hogs and 5,000 sheep a week ago. The daily average a year ago was 8,300 cattle, 5,350 hogs and 5,550 sheep. Only a few horses and mules arrived this week, according to the report. All sold rapidly. The new year's trade will open about Jan. 3 with a large number of buyers expected.

Firemen Answer 100 Per Cent Wednesday

Every fireman responded and went to the scene of the fire at the home of T. D. Hobart Wednesday morning, according to John Andrews, city marshal.

"This is the first time the department has been called out for some time," says Andrews, "but every man was at the station and ready to go in a few seconds after the fire alarm was given."

Ben White is now acting as fire chief. The firemen presented a petition to the city council recently asking that he be made fire chief. The council asked that the firemen hold an election for their chief, and then have the election confirmed by the council.

Thorton's Buyer To Market Daily Thorton departed for St. Louis Thursday to buy new stock for Thorton's Store. She will also go to the Chicago markets for a part of the stock. She expects to return in a week or ten days.

Miss Dornice Lou Stroop will leave for Simmons University Sunday where she is enrolled. She has been spending the holidays with her parents, Mr. and Mrs. J. L. Stroop.

PAMPA OFFICE TO HAVE NEW RATING

Postal Saving Dept. Will Be Added In Near Future

The money order and postal receipts here during the past quarter have established a new high record for Pampa, according to W. A. Crawford, postmaster. The money orders total \$81,350.94 up to noon Thursday. Between \$2000 and 3,000 will be added to this when the last two days business is figured.

The postal receipts totaled \$9,065.20, not including the last two days' receipts. Of this amount, \$8710.28 was derived from the sale of stamps, and \$354.92 from box rent. This amount will soar over the \$10,000 mark with the heavy sale of stamps usually experienced the last day or two of the month, according to Crawford.

The Pampa Post Office will receive a new rating soon after the first of the year. It is now a third rate post office, but will no doubt be given a higher rating. A new department is to be added in a short time and will be known as the "Postal Saving Department." An experienced man is expected to come here and introduce the department.

Skelly and Roxana have each applied to be put on a route out of Pampa. Recommendations for postmasters for the places have been sent to headquarters and an office is expected to open at each place soon.

Harry Hoare Employed At Pampa Drug Store

Harry Hoare has been employed as pharmacist at the Pampa Drug Store. He has been employed in the cities in the southern part of the state for the past few years.

He came to the States from Canada several years ago. His father and Mayor F. P. Reid were pals in Canada, having been born and raised in the same community.

Grass Fire Spreads Over Twenty Acres

About twenty acres of grass was burned Thursday afternoon when fire broke out in a pasture north of town. The fire department and a crew of volunteer firemen succeeded in extinguishing the flames before any serious damage resulted.

The origin of the fire has not been determined. Brooms, sacks and boards were used by the fighters to keep the flames from spreading any further.

Cross Dry Goods Store To Open Next Saturday

The Cross Dry Goods Store will open in the room next to the Denton Cafe next Saturday, according to W. S. Cross, proprietor. Merchandise for the new store is arriving now and being placed in the stock apartments.

Earl Allen, formerly of Memphis, will be charge of the store. Cross owns and operates a dry goods store similar to the one to open here, in Memphis. He will spend part of his time at Pampa as soon as the store is opened. Ladies and mens ready-to-wear will be carried in stock.

Miss Mary Lewis is spending the holidays with her mother at Willow, Oklahoma.

Dr. W. R. Wini Retains Dr. W. R. Wini who has been in an Amarillo hospital for about two weeks, and in an Oklahoma hospital about a week, has returned to Pampa. He underwent an operation for throat trouble. He is able to be at his office at the Smith Building now.

1926—BEST WISHES—1927

As we turn the page to 1927 we find ourselves in the center of a thriving community. As 1926 is put into the past, a continuation of the work of this progressive community is carried into a new year.

We feel that the success of The News is but a reflection of the success of the entire community. The program for 1926 was large, but the program for 1927 is even larger. We are glad that we can share in the new extensive program.

With the keenest desire and most sincere resolve to do our utmost, individually, to make our record on this new page during 1927, as nearly perfect as possible, we wish you each and all a Happy, Happy New Year.

Dog Killing Continues To Avert Danger Here

About thirty dogs have been killed here during the past few days as the result of a proclamation issued by Mayor F. P. Reid stating that all dogs running loose on the streets would be killed. Positive signs of rabies were found in the brain of a dog sent away for an analysis.

Several owners of dogs have asked that the police kill their pets in order to guard against further danger of the dogs becoming mad. Several dogs are known to have been bitten by the dog with rabies. All of them that have been located have been shot.

3 NEW ADDITIONS TAKEN INTO CITY

Limits Are Extended To North, South And West

Three new additions, know as the North, West and South Additions, were taken into the city at a meeting of the city council Thursday night. The additions were taken up separately, and the councilmen voted unanimously in favor of each addition.

A petition signed by 28 residents in each of the north and west additions was presented, and the petition from the north and west, by a sufficient majority of the residents. The three additions extend the city limits considerable in three directions. Their annexation goes into effect immediately.

Legal matters concerning the paving and issuance of warrants were completed. The paving will begin on or about March 1, unless weather conditions will not permit.

C. O. Busby was elected city assessor. He will begin work immediately after the first of the year. He will be paid for his work at the rate of two and one-half cents on the \$100 valuation assessed. It is expected to take several months to complete the roles. Several major city improvements are being planned to start as soon as a part of the 1927 taxes can be taken in.

Ashes In Coal Bin Starts Small Fire

The fire department made a run to the home of T. D. Hobart Wednesday morning and extinguished a small blaze in the basement of the house. Little or no damage was caused by the fire.

A pile of paper and rags in the coal bin were believed to have been ignited from fire in ashes that were emptied in the bin the night before. The Hobart home is in the northwest part of the city.

C. of C. Mass Meeting Scheduled Thursday

The Chamber of Commerce will hold a mass meeting at the American Legion Hall next Thursday night, according to M. A. Turner, secretary. Members and all citizens and visitors are invited to attend the meeting.

A survey of the business district is being made by the secretary now. A stenographer has been employed to aid in the work. A program for the new year is being worked out. The survey of the business district will be completed within the next few days, according to Turner.

HUGHEY NUMBER 1 HAS OIL IN HOLE

Empire Co. Rigging For Wildcat In Section 59, Block 25

About 400 feet of oil is reported to be standing in the hole of the number 1 test well on the Hughey place. The Empire Oil and Gas Company is drilling the well which is located in section 129, block 3, south of Pampa. The bit hit the pay at a depth of 3115 feet in the granite wash. Six-inch casing was run at a depth of 3076 feet.

The same company is rigging up for a wildcat test in section 59, block 25 of Gray County. The tools are being moved to the new location now. If the well proves a success, as is expected, a still more extended area of proven acreage will be credited to the Pampa pool.

The Empire is drilling at a depth of 3085 feet in its Bryan number 1 in the Roxana field west of here. Six-inch casing was run at 3005 feet. The well is expected in as a good producer within a few days.

Drilling in the field here is progressing rapidly. Several of the companies are expected to be into the pay in wells within the next few weeks. A lull in operation was felt during the holiday season, but operations are expected to continue with even more vigor after the first of the year.

American Legion To Hold Election Soon

The members of the American Legion here will hold an election for new officers in the near future. Walter Coffee is Adjutant now and Mrs. Von Branow is Commander.

The members of the Legion have been giving dances at the Legion Hall on West Foster Avenue for the past few weeks. A capacity crowd has been in attendance. Frank Thomas, who is managing the dances says that the dances will continue as long as the people demand them.

Building Permits Averaged Quarter Million Monthly Since September; Faster Action Forecast For 1927

A population of from 1000 to 1200 on January 1, 1926; a population of at least 10,000 today. Pampa has enjoyed a steady constant growth during the past year. Developing from a little town, it is now known throughout this section of the country.

Where little frame buildings and vacant lots stood, there are now large brick buildings and residences of the most modern type. Where the deer grazed only a few years ago, busy people are now hurrying about.

The building permits for the past few months have averaged approximately \$250,000 per month. Hotels, garages, residences, apartment houses, a new hospital, a new post office building, theatres, warehouses, machine shops, lumber yards, store buildings, cafes, all have been completed during the latter part of 1926, and many are now under construction. City officials predict that the building during 1927 will make an enormous jump over this year.

The First National Bank and the Gray County State Bank are being rebuilt and added to in order to keep pace with the community. The First National Bank is making an addition to their building which will be completed at an early date. The interior of the Gray County State Bank is being remodeled and new fixtures are being installed.

Fifteen lumber yards are located here, most of which have established their quarters within the last few months. Some of the leading oil supply companies operating here established headquarters here. Machine shops have installed equipment that is unsurpassed for the care and repair of oil field machinery.

During the past year oil wells have been drilled and brought in as good producers in practically every direction from Pampa. The nearest producing well, three miles south was drilled in about two months ago and is a good producer of high quality crude today.

Wells have been brought in for good production north and west, leaving the city of Pampa itself on the main line of the oil trend. Operators say that the surface has just been scratched, that the field is proven, but that the real development will be made in 1927.

The oil men have invested heavily throughout the entire county. West of Pampa for six miles to Kincaid there is a net work of landing racks, large storage tanks, switchees, buildings and residences. Four of the leading companies have completed or about to complete casinhead plants to extract gasoline. The high quality of the Pampa crude is said to have caused the heavy investment in this vicinity. Storage for the oil is being enlarged almost daily, and the amount exported by pipe lines and by rail is rapidly increasing. Pipe lines from the Pampa, Hutchinson County and Carson County fields intersect just west of here. The output of the Gray field in the future will be solely determined by the facilities to handle the oil, according to the operators.

A year ago the railroad activities here were normal and a few men cared for the exports and imports. Today the Santa Fe Railway Company employees more than eighty men in the local yards. Carloads of merchandise and supplies are left here every day. Several tracks are employed to take the express from the baggage cars of the passenger trains.

More than a million bushels of wheat were shipped from the five elevators here this year. 1926 was the best wheat year here since 1921, but the years between were not failures by any means. The soil surrounding Pampa for miles in every direction is fertile and ideal for the production of wheat.

The contract for paying twelve blocks in Pampa was let to the Stuckey Construction Company

TAXES COLLECTED HERE THREE DAYS

Car License Issued To Owners Presenting Receipts

E. S. Graves, county tax collector opened offices here Monday, Tuesday and Wednesday and collected county taxes and issued the new 1927 automobile licenses. He went to McLean Thursday and to Alanreed Friday and collected in that part of the county.

Persons who did not pay their taxes or secure automobile license plates while the office was here will have to go to Lefors, county seat of Gray County, and do so.

An almost continuous line formed at the tax windows here while the office was open. Cars were waiting in line at the Willard Service Station at the same time so that a light receipt could be obtained. No licenses were issued, or will be issued unless a light receipt that is less than thirty days old is presented, according to Graves.

about a month ago and work on the streets will begin about March 1, according to A. H. Doucette, city engineer. It is expected that paving will be enlarged and that continuous paving will take place until the major streets are surfaced with a permanent covering.

W. A. Crawford has made arrangements for free delivery service here, and one carrier will begin work in a short time. As sidewalks and streets signs are installed, Crawford says that the delivery service will be made more extensive. More than 10,000 people are now being served through the post office here, according to Crawford.

A tour of the outskirts of the city reveals that many fine residences have been completed here and more are under construction. Many persons who have come here to visit and look over the oil fields, are known to have returned later with their families and made their homes in Pampa.

The enrollment in the schools has increased from 500 to 1200 pupils in less than one year. New pupils from practically all of the western and mid-western states keep the enrollment on an increase, according to R. C. Campbell, superintendent. He says that the school will be placed on the first class list within a short time. New and larger school buildings are being contemplated now.

The churches of Pampa report large increase during the past few months. Two new church buildings are expected to be completed here during the spring. Services are now being held in the churches regularly, and two of the theatres house congregations on the Sabbath.

The city has completed four water wells that produce some of the finest water obtainable. More wells will be drilled at once, according to Mayor F. P. Reid, so that the water supply will be in keeping or a little ahead of the rapidly increasing demand. The city has a storage capacity of more than 300,000 gallons. New equipment has been installed at the water works. Rotary pumps are used to keep the pressure in the lines.

Doctors Warn Against Excessive Charleston

London—Charleston enthusiasts will be concerned to learn that over-indulgence in this fascinating dance is held responsible for a new epidemic. Numbers of girls are going about with bandaged knees—the bandaging being necessary to support ligaments strained by excessive dancing of the Charleston.

"I do not say the dance is dangerous," a Harley Street doctor said the other day, "but it certainly needs to be danced with discretion. Danced for long periods by persons unaccustomed to the intricate and unnatural 'side wave,' it has a bad effect on the legs.

"During the last few weeks I have had case after case of strained ligaments and 'oedema' (soft swelling) brought on by it. Until now this swelling has been confined to professional dancers learning intricate steps, and has always affected the ankles. Since the Charleston came in, however, the knees are affected. Every one is not troubled. Some dance half the night with impunity; others should never dance it unless they wear elastic knee bands of the type worn by footballers."

AT THE THEATRES

"Putting out an eye" was Lon Chaney's daily task during the filming of the "Road To Mandalay," his Metro-Gladwyn-Mayer vehicle coming to the Crescent Saturday. Every day the actor applied a chemical to his eyeball which created a white film over it, giving the bizarre effect of a man with one eye destroyed by a knife-lash. This gruesome make-up is said to be one of the greatest effects he has ever obtained in the way of illusions.

Don't think that vamps or flappers are entirely confined to the big cities, Clara Bow, who plays the leading female role in "Mantrap," which is coming to the Rex Theatre Monday proves that both are more dangerous in isolated communities, where they can appeal to the sympathies of lonely men.

"Mantrap" is a half-humorous triangle story of a trader in the Canadian woods, a New York lawyer tried of women because they form his principal clients in fashionable divorce cases, and a manicure girl from Minneapolis who has gone to live in the Canadian woods and finds life rather morose.

The Red Bird Review is being featured at the Grand Theatre all next week. A change of picture program which is running in connection with the vaudeville has been announced by the manager of the theatre.

R. E. (Bob) Perry generally known as the "second king of the ivories," will begin an indefinite engagement at the Crescent Theatre Friday night. Perry has been broad casting from Radio Station W. D. A. G. at Amarillo for some time past.

The Rex Theatre announces a special New Year's show to be held at 12:01 a. m. Saturday. Special features have been arranged for the midnight frolic.

Club Cook Books Classified

Club histories and club cook books are classified as English projects by one Harris County teacher and will be counted toward English notebook credit. This same teacher also offers a prize to the girl who makes the most attractive cook book, advises Miss Vivian Weaver, County Home Demonstration Agent.

Calling The Flocks

When a flock of seventy hens composed of every imaginable breeds shows no more than six that will lay well enough, to pay for their feed, Gertrude Breat of Colman figures that the owner should sell or can the whole flock, and replace with standard bred birds of one breed. This condition is found in many a Texas farm flock during calling de-

Hat Class Profits

Seventeen hats valued at \$3.00 apiece or more were made at a total cost of less than \$10.00 at a two day millinery school recently conducted by Myrtle L. Miller of Hunt County, with the assistance of Mrs. Dora R. Barnes, Clothing Specialist. In other words, a little work and the use of materials on hand saved \$41.00.

Biggs Horn Nash Co. Open

The building formerly occupied by the Rose Motor Company has been remodeled and is now occupied by the Biggs Horn Nash Company. Dot Colgrove is proprietor of the new garage.

Nash automobiles are being distributed. A general repair shop is being operated in connection with the garage.

"Inside" Information

Plan Work

Do you plan your day's work, allotting a certain amount of time to each task? Try it, always aiming to shorten the time spent on routine activities so to gain more for pleasant occupations.

Best Rice

Boil rice in a large quantity of water until tender, then pour it into a colander or sieve to drain, cover with a clean cloth and put it in a warm oven or over a vessel of hot water. As it seams each grain swells and becomes separate.

Milk Stains

In removing milk stains use cold or lukewarm water first, sponging carefully if the garment cannot be laundered. This removes the protein, which hot water coagulates and sets. Afterwards follow with hot water and soap on washable materials, or with chloroform, gasoline, carbon tetrachloride or some other grease solvent if laundering would injure the fabric.

Pasteurizing

Milk and cream for ordinary use or milk for babies may be successfully pasteurized at home. The process is not difficult and requires only simple equipment. Farmers' Bulletin 1359 entitled "Milk and Its Uses in the Home" gives a full description of the method and equipment.

Tarnish

Tarnish on silver can be removed by the electrolytic method. Various commercial devices for this can be bought for use at home, or it can be done in the following way: Fill an enameled or agateware kettle partly full of water in which has been dissolved 1 teaspoon of either washing soda or baking soda and 1

PRESBYTERIAN SERVICES

Rev. Irvin of the Presbyterian Children's Home will conduct Presbyterian services at the Rex Theatre at 11 o'clock Sunday morning, according to a special wire received by the News from the Rev. W. M. Baker. Sunday School will be held at 10 a. m. The public is cordially invited to attend the services.

Eight Blocks Sewer Completed

Eight blocks of sewer have been completed in the Channing addition in the northwest part of the city. The streets have been graded and water, lights and gas have been connected to the addition.

Twelve houses have been completed in the addition and construction on eleven more will start at once, according to the owners.

H. S. Building Being Cleaned

The general overhauling of the High School Building is progressing rapidly, according to R. C. Campbell, superintendent. New fixtures are being added and the old fixtures repaired. The entire building is being cleaned.

Mrs. Tom Carver returned home from Perryton today after spending the Christmas holidays with her parents, Judge and Mrs. J. M. Grigsby.

teaspoon salt to each quart of water, heat this solution to the boiling point, put in strips of aluminum or bright zinc, add the tarnished silver, and boil it. The silver must be covered completely by the water and each piece must be in contact with the aluminum or zinc, either directly or through other silver. When the tarnish has disappeared, the silver should be removed from the kettle, washed, and dried with a clean, soft cloth.

Texas Progress Notes

Childress—The greatest achievement of Childress during 1926 according to The Index is securing abundant supply of natural gas for fuel.

Fort Worth—Street cars in this city traveled more than six and half million miles during the fiscal year of the company just closed. In 1914 the distance was about one half as much.

Corpus Christi—Extensive enlargements and improvements of the generating plant and transmission system of the Central Power and Light Company in this vicinity are nearing completion.

White Deer—A new telephone line is being built by the local telephone company to the oil field towns of Skelly and Roxana.

Clarendon—Extension of the white way lighting system in this city now under way includes four blocks on Sully Street and lights at the College.

El Paso—The El Paso Electric Company is building an emergency line into the upper Rio Grande Valley.

Dalhart—Plans are being completed for improvement of the local electric power and light facilities to the extent of a quarter of a million dollars.

Mr. and Mrs. J. L. Nooten and family of Perryton visited Mr. and Mrs. J. L. Stroope and family here the first of week.

GRAY-PAMPA HOTEL

"In the Heart of Pampa"

112 S. Main St.

A. E. SHAW, Mgr.



NOTICE

Pampa Lodge No. 006, A. F. & A. M. Regular Meeting, Fourth Saturday in each month.

Masonic Hall in White Deer Land Building.

C. P. BUCKLER, Secretary.

HEAR THE LATEST VICTOR RECORDS

AT THE

ODEN MUSIC SHOPPE

DECEMBER 31st RELEASE

Broken Hearted Sue, Brox Sisters; Pretty Cinderella, Brox Sisters.

Broken Engagement, Kelly Harrell; Oh My Dear Go Ask Your Mother, Kelly Harrell.

A Little Love A Little Kiss, Victor Salon Orchestra; Estrella, Victor Salon Orchestra.

You Will—Won't You, Nat Shilkret Victor Orchestra; In Araby With You, Nat Shilkret Victor Orchestra.

I'm All Alone In A Palace Of Stone, Henry Burr; Just A Little Longer, Peerless Quartet.

Broken Hearted, Tom Waring; Thinking, Tom Waring

We'll Have a Kingdom, Roger Wolfe Kahn and His Orchestra; Don't Sing Aloha When I Go, Waring's Pennsylvanians.

Some Day, Nat Shilkret; There Ain't No Maybe In My Baby's Eyes, Jan Garber Orchestra.

I Don't Mind Being All Alone, Art Landsy and Orchestra; I Never Knew What The Moonlight Could Do, George Olson and His Music.

NEWS WANT ADS GET RESULTS

HOPING YOU
REMAIN TO SHARE
IN PAMPA'S
GREATER 1927

BEST WISHES
FROM

Pampa Ice Mfg. Co.

We thank you all for the business we have enjoyed in the past and wish you a very happy and successful 1927.

ARMY AND NAVY STORE

1926

1927

It is with genuine pleasure that we offer our sincere thanks for the support of the people of Pampa through the past year. It is our desire to serve you even better in 1927.

And we wish you all a Very Happy and Prosperous New Year

PAMPA BAKERY

It is our great pleasure, at this time, to express our thanks to the people of this territory for the wonderful patronage given us since we opened here.

May 1927 be a year of
JOY AND HAPPINESS
For You All.

Home Furniture

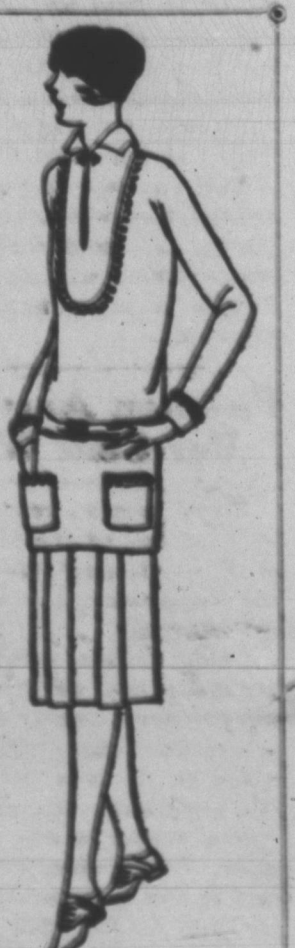
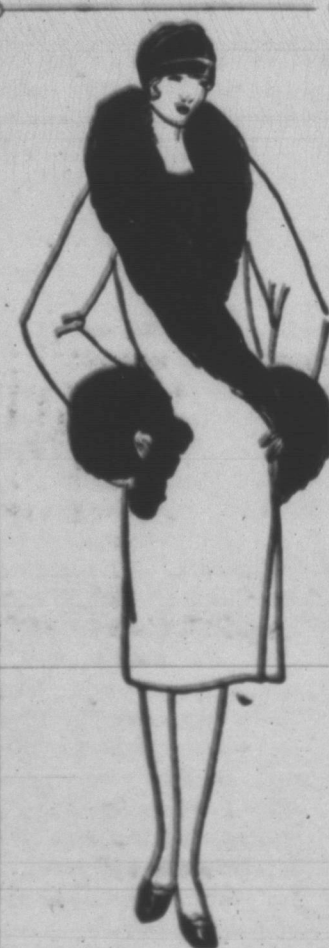
AND AUCTION CO.
145 Tyng Street

Final Clearance

OF LADIES FINE
WINTER COATS
Commencing

SATURDAY, JAN. 1st

All Ladies and Misses Winter Coats will go on sale at prices that will move them in a very few days. We advise those who will be interested in purchasing a coat to be on hand early Saturday, for the rastic reductions we will make on these coats will move them right out.



J. E. Murfee & Co.
Outfitters to the Whole Family

GOOD SPACING OF PLANTS IS URGED

Specialists In Cotton Raising Explain Methods

The proper distances to space cotton plants for largest yields has been a live question for years. Articles frequently appear in the press advocating close spacing and late thinning as means of increasing cotton yields, but in too many instances the meaning of close spacing is not clear. Close spacing to one person may not mean close spacing at all to another. The Texas Agricultural Experiment Station has been for 12 years conducting spacing experiments with cotton at the Main Station, College Station and at the substations at Beeville, Troup, Angleton, Temple, Spur, Lubbock, Pecos, Nacogdoches and Chillicothe.

These experiments include tests of spacing from 3 to 36 inches at 3-inch intervals. Practically all sorts of weather conditions have prevailed at each of these points during the history of these experiments and some very interesting conclusions have been drawn regarding the effect of the different rates of spacing. The results have been analyzed from the standpoints of the best present-day methods and present a truly reliable basis for the proper spacing of cotton in practically every important cotton region of Texas so as to give maximum yields. While a few more or less wide variations appear in the yields from time to time it has been possible to point rather definitely to the range of spacing that is safest in each locality. These are shown in detail in Bulletin No. 340 which has just been published by the Station and which can be had free as long as the supply lasts, by writing to A. B. Conner, Acting Director, College Station.

Dr. E. W. Allen, Chief of the Office of Experiment Stations of the United States Department of Agriculture, says: "This seems to be a very thorough and careful piece of work in which advanced methods, including statistical analysis, have been employed. The fact that it is based on experiments at your main station and nine other places gives unusual breadth to the investigation and shows the relationships under different conditions. It is this type of thorough study which makes for advance in our understanding of such matters as this having close practical applications." Dr. C. A. Mooers, Director of the Tennessee Experiment Stations classes the bulletin as "The best of its kind that I have seen. I am glad to say that your conclusions do not differ materially from those reached by me in work done chiefly at the West Tennessee Experiment Station. I have always thought that the very close spacing of cotton, so widely recommended for general use in the last few years, was not justified by experimental data." Other experiment station officials in the cotton belt have noted the wide range of these experiments and the fact that in no other single state could be found so wide a range of climate and soil conditions as to enable such comprehensive work on cotton spacing.

In general, the bulletin concludes that the cotton plant has the ability to adjust itself to produce satisfactory yields within a comparatively wide range of spacing and that the highest yields have resulted from the close to medium spacing, 6 to 21 inches in the different parts of the state, except to Eastern Texas on the sandy lands where comparatively wide spacing, 27 to 36 inches gave the best results. Twelve inches was found to be the best spacing at Angleton, Lubbock and Spur; 9 to 12 inches at College Station; 21 inches

Oldest Dallas Child Dead
John Neely Bryan, the first white child born in what is now Dallas, Texas died Wednesday at the age of 81 years. He is survived by his wife, three sons, two daughters, one brother, one sister, nine grandchildren and three great-grandchildren.

When Wifey Takes The Wheel
Doctor (to patient who claims to be a nervous wreck)—"What are your symptoms?"

Patient—"I jump when I hear a telephone, the door-bell sends me into hysterics. Any stranger coming to the house frightens me out of my life, and I'm afraid to pick up a newspaper. Do you know wrong with me?"

Doctor—"Yes. My wife drives a car too!"

Sad Story
Diner—"Waiter, there's a button in my soup."

Waiter (ex-printer)—"Typographical error, sir; it should be mutton."—Utica Gas & Electric News.

A glance at the latest automobile license tag is enough to convince the thinking man that there is no longer any safety in numbers.—Merchants Supplement.

News Want Ads Pay

at Beeville and Temple; 27 inches at Nacogdoches; and 30 inches at Troup and Chillicothe.

The experiments include early, medium and late thinning and the results secured showed the cotton thinned at the usual time when the fourth and sixth leaves are forming, produces larger yields than which was thinned late.

Some Great Discoveries Now In Are Accidents

Humble materials and accidental happenings have played an important part in some of the world's greatest discoveries.

Charles Goodyear, in a fit of disgust hurled a piece of rubber compound into the stove, and the charred mass which he later removed from the fire gave him the long looked for method of vulcanizing rubber.

Fluor-spar from Greenland, used as ballast by a fishing vessel and discarded as useless on a Boston dock, made possible the aluminum industry of today.

Telephone engineers some years ago developed "permalloy"—a magnetic alloy of nickel and iron—which when rolled into a thin, narrow ribbon and wound around the copper core of a submarine cable increased the speed of cabling six times, but they were unable to find a flux that would weld the ends of the rolled pieces of permalloy into a continuous tape. Every flux known to them was tried without success, and finally a workman in a spirit of fun said, "Let's try salt," and picking up a salt cellar which he had been using in seasoning his lunch shook it on the weld. The cap accidentally flew off and the salt poured over the weld. The experimenters were astonished to see that the salt combining with the borax which they had been using formed a foamlke flux completely covering the weld, and success was assured. An accident to be sure, but it solved the problem of welding permalloy and made possible the two high speed cables which now cross the Atlantic.

Know Texas

Texas produces forty minerals on a commercial scale.

Petroleum, sulphur, lignite, coal, natural gas, asphalt, and clays are among the leading Texas mineral products.

Borings for oil have disclosed potash salts in several sections of West Texas and commercial development of potash is probable in a year or two.

Gypsum, salt, cement materials, and building stone are abundant and are being produced in quantities in Texas.

In the regions of igneous uplifts in Texas precious metals and rare gems are found.

More Money For Eggs
Mr. and Mrs. Harry W. Best of Jackson County are reported to be realizing a nice income from their poultry flock. Mrs. Best says, "By furnishing infertile eggs and shipping direct to a Houston poultry concern, we receive from three cents to five cents more per dozen."

Install Large Electric Sign
The White House Cafe has installed a 22-foot electrical street sign with an electrical capacity of 16,000 watts. The combined electrical capacity of all of the electrical appliances, which are used throughout the cafe, is 16,000 watts.

NOTICE

The regular annual meeting of the shareholders of the First National Bank of Pampa, Texas will be held in the banking rooms of said bank, Tuesday, January 11th, 1927 at 2:30 o'clock p. m.

Please take notice and govern yourself accordingly.

DELEA VICARS, Cashier
43-7t-c

Notice to Stockholders

The annual meeting of the stockholders of the Gray County State bank, will be held in the Directory room of the Gray County State bank January 11, 1927 at 3 o'clock p. m.

You will please take notice and govern yourself accordingly.

W. H. Doyle, Cashier.
46-4t-c

9142

The First National Bank

Pampa, Texas

Better Secure a Safety Deposit Box Now for Your Valuable Papers

B. E. FINLEY,
President

DE LEA VICARS
Cashier

AT THE
CRESCENT THEATRE
COMMENCING SATURDAY, JAN. 1st

—SATURDAY—
"THE ROAD TO MANDALAY"
with
Lon Chaney and supporting cast

—SUNDAY and MONDAY—
"TIN GODS"
with
Thomas Meighan

—TUESDAY—
"THE BAT"
An All Star Cast
Good Comedy With Each Program
WHEN BETTER PICTURES ARE MADE
WE WILL SHOW THEM

Rex Theatre

"THE BEST OF PICTURES"
Continuous From 2 p. m. To 11:30 p. m.
Always Sure To See A Good Picture

—SUNDAY, MATINEE ONLY—

LEW CODY

in

"THE GAY DECEIVER"
Something You Will Like

—MONDAY—

CLARA BOW and ERNEST TORRENCE

in

"MANTRAP"
You can't help getting a kick out of this

—TUESDAY—

LEO MALONEY

in

"COWBOY COURAGE"
Also Good Two Reel Comedy

—WEDNESDAY—

BILLIE DOVE

in

"THE MARRIAGE CLAUSE"
Postively One Of The Best

THIS COUPON WILL ADMIT ANY
WOMEN FREE WITH ONE PAID
ADMISSION TUESDAY, JAN. 4th.

Don't Fail To Bring This Coupon

Channing Addition

To the City of Pampa

A Restricted Home Site District

SEWER

LIGHTS

GAS

WATER

All Installed

Prices: \$500 to \$650--Terms

CHANNING ADDITION

Office 119 West Foster Ave.

CANDY

FOR NEW YEAR GIVING

As a dainty, yet welcome, gift for the New Year, a box of Delicious Home-made Candies is ideal. We have them already packed, or will assort them into your choice.



Crystal Palace Confectionery

THE PAMPA NEWS

Published Tuesday and Friday at Pampa, Texas

DAVID M. WARREN
Publisher
W. E. LOWE
Manager
BEN F. RENO
Editor

Office in News Building
Phone No. 199

SUBSCRIPTION RATES
In Texas

One year	\$2.00
Six months	1.25
Three months	.65
Outside Texas	
One year	\$2.50
Six months	1.60
Three months	.85

Advertising Rates Upon Application

Entered at the Pampa, Texas
Postoffice as Second Class Mail

ROAD HOGS AND ROAMERS

The fire trucks made a run from the station to the northwest part of the city Wednesday, and in traversing a distance of less than a mile, several cars were met or passed. Two or three of the cars gave the fire trucks all of the road possible, some gave at least half, but others wound their way down the street as though the sirens and bells on the trucks meant "close up boys, we've got all day to get to the fire."

The license number on a truck driven by one of the road roamers was taken, and it is the intention of the fire officials to see that the driver is fined.

Suppose your house was on fire and several men had volunteered to save your home. Would you still detain them? No! You'd see that they arrived as quickly as possible.

Car and truck drivers who will not give the fire trucks a clear passage should be punished. They are as guilty as the person who slips up during the quiet hours of the night and sets fire to a building. They are preventing others

from performing their duty as they wish.

When you are driving a car or truck and you hear the fire sirens and bells why steer your vehicle to the side of the road. It won't mean much to you, but it will mean a lot to the man who has his home at stake.

DO YOU HAVE AMBITION?

Do you have ambition? Doubtless you think you have, but have you? Do you really know what ambition is? Says Herbert N. Casson: "Probably not more than one man out of ten has any ambition at all. Ambition is not merely wishing and hoping and painting pictures in your mind of what a great man you will be. Day-dreaming! That is not ambition. Being able to etao tion. Being discontented with what you got! That is not ambition. Reading about glorious deeds and imagining yourself doing things like that—that is not ambition.

"No. Ambition is active, not passive. Ambition is the process of self-development. It is a day by day matter. It is something you Do, not something you Wish. Ambition is wishing plus will power and perseverance. An ambitious man is one who does his job better today than he did yesterday. He is a man who is improving—gaining—climbing—moving steadily up toward the top. No lazy man is ever ambitious. He only pretends he is, to excuse his laziness. Ambition is only another word for growth. And growth depends on courage and industry and reading good books, and common sense, and keeping at it. If a young man wants to become more ambitious, he can do so by following these two simple rules:

- (1) Learn something new every day.
- (2) Do something better every day.

"The test of true ambition is Action."

Now, after that, ask yourself again if you are really ambitious and are genuinely

striving to make your ambitions materialize.

—Forbes Magazine.

Wanted—Modern, light house-keeping room. Desire close in or on side walk. No Children. Phone 199 or call for Ben Reno or Jinks Brashears at News Office.

Frozen Milk is Watery

During cold weather special precautions should be taken against exposing milk for too long a time to temperatures below freezing. If it is necessary to haul it far in cold weather cans should be protected with jackets or blankets. The milk solids in frozen milk have a tendency to separate, making it difficult to secure an accurate butterfat test. Frozen milk is often watery in appearance and tasteless.

Fat in Beef

Yellow fat in a beef cut or carcass usually denotes low-grade beef from a grass-fattened animal. Firm white tallow in a beef cut, with small veins of this fat appearing

throughout the substance of the meat, denotes beef of a superior grade and such meat is usually tender and palatable.

Cheap Crop

A plentiful supply of ice is an important factor in producing milk and cream of high quality. Dairymen who live in natural ice regions should take advantage of their good fortune by putting up a supply for next summer. Now is a good time to repair the ice house and see that all equipment and supplies are ready for the ice harvest. Ice is a cheap crop but a valuable one nevertheless.

Lumber States

The forests of California, the largest user of lumber in the Union, yield a total of about two billion feet (board measure) of lumber annually, according to the Forest Service of the United States Department of Agriculture. The annual lumber requirements of the State are about four billion feet. There is enough timber in this

State, it is estimated, to build forty million 5-room bungalows, or to lumber than California. These, in furnish all the wood for building the order of their output, are Wash- and fuel that would be required by In- ton, Oregon, Louisiana, and Mis- this country for nearly eight years. sissippi.

**ANNOUNCING THE OPENING OF
STRIBLINGS
PAMPA'S NEW MEN'S STORE**

With a complete line of Boots, Shoes, Pants, Caps and a general line of Standard Brand Men's Furnishings.

BLANKETS — COMFORTS

STRIBLINGS

REX THEATRE BUILDING


PAMPA — — — PANHANDLE

Announcement--

We have moved the location of our sales rooms from Thornton's Store to the Horn & Coffee Grocery and are now open with a full line of Pianos, Sheet Music and Records.

We invite you to inspect our stock and see for yourself the quality of instruments and music we are offering.

Pampa Music Company
AT HORN & COFFEE GROCERY



Buck BRAND WORK CLOTHES FIT AND WEAR

SOLD BY
STRIBLINGS
REX THEATRE BLDG.
PAMPA, PANHANDLE

**We Are Pointing the Way
to
A Safe New Year Resolution**



Resolve that this year, this very month, you will buy those things that are necessary to make your home attractive, convenient and comfortable. Make it a place in which you'll be proud to live.

Resolve further that, in order to insure perfect satisfaction as to quality and price of your furnishings, you will buy them at Dunaway's. You'll find us especially glad to help you in every possible way. Come in and let's talk it over.

We wish for you all, just those things that will give you most happiness and contentment in 1927. May your cup be filled to overflowing.

QUALITY

SERVICE

Dunaway Bros. Hardware & Furniture Co.

"THE HOME FURNISHERS"

PANHANDLE

PAMPA

ISOM

Mother's Cook Book

We cannot kindle when we will
The fire that in the heart resides;
The spirit bloweth and is still;
In mystery our soul abides.

CHESTNUT DISHES

When roasting chestnuts before the fire, always slit the small end so that they do not burst open too violently. A corn popper is a convenient utensil to use. Shake them over the coals until they pop open.
To prepare chestnuts for various dishes, they are slit at the side and placed in a frying pan with a small amount of fat, stirred until they pop open, then set in the oven for a few minutes. This takes the tinner brown coat off with the shell.

Chestnut Souffle.

Mix one cupful of chestnut puree (prepared by boiling or roasting until soft, then until fine and smooth) with one-fourth cupful of sugar, two table-spoonfuls of flour, cook with one-half cupful of milk five minutes, stirring constantly; beat the whites of three eggs until stiff, cut and fold into the mixture. Bake as any souffle and serve with:

Cream Sauce.

Mix three-fourths of a cupful of thick cream with one-fourth cupful of milk, beat until stiff, add one-third of a cupful of powdered sugar and one-half teaspoonful of vanilla.

Chestnut Pudding.

Blanch a pint of chestnuts, halve and cook them an hour in a cupful of milk, letting them simmer until soft. Press through a sieve, add a half cupful of sugar, a little salt, vanilla and a pinch of nutmeg. Beat three eggs, separating the yolks and the whites, add the yolks to the chestnut pulp, stir well, then fold in the beaten whites. Pour into a buttered baking dish and bake fifteen minutes. Serve hot or cold, with cream or custard.

Chestnut Pancakes.

Beat separately the yolks of three eggs, add three-fourths of a cupful of cream, a tablespoonful each of sugar and butter with sufficient flour to make a batter. Drop on a hot griddle and when well baked on both sides spread with chopped and seasoned chestnuts. Sprinkle with sugar and roll up. Serve hot.

Nellie Maxwell
(© 1926, Western Newspaper Union.)

**THE YOUNG LADY
ACROSS THE WAY**



The young lady across the way says the founders of the republic knew best and the Supreme court never ought to be given the power to override the decisions of congress on questions of constitutionality.
(© by McClure Newspaper Syndicate.)

Sure Winner

"My dear girl, speculation on change is always a big risk—one gains one day and loses the other."
"Then, you silly old boy, it's easy. Only speculate every other day."
—Sally Goss, Paris.

GIRLIGAGS



"I don't see why automobiles should put the street cars entirely out of business," says Meditative Meg. "A girl has to get home somehow."

**Present Reports Show
Bond Election Failed**

The election held Thursday to vote on the issuance of bonds with which to carry out the proposed road paving did not carry, unless the votes were extremely in favor of the issuance in districts that have not yet been heard from.

The vote in the Pampa box was 166 for and 102 against; McLean 94 for and 41 against, and Alanreed 37 for and 28 against. There are eight election quarters in the county, but the majority of the votes are in the three above named places. A two-thirds majority would have been necessary to make the election carry.

**Rats Become Serious
Problem To Industry**

Many of the rats prevalent in agricultural and poultry-raising sections are carried from towns and farms in shipments of dairy and poultry feed, the Biological Survey of the United States Department of Agriculture has learned from surveys in these regions. This emphasizes the nation-wide need for concerted effort between the rural and urban people as a basis for the efficient control of rats. The problem calls for widespread coordination of effort and the utmost persistence in the application of repressive measures. United action by representatives of farmers' unions and chambers of commerce or other civic organizations is urged by the bureau in all parts of the United States where rats occur.

Firemen's Hall Friday

The Firemen's Hall will be held at the American Legion Hall next Friday Night. Preparations for the affair are about complete. The funds raised at the ball will go toward purchasing equipment for the fire department.

**Continous Growth
For Pigs Is Urged**

The profitable pig is one that gains continuously from date of farrowing until marketed. During the suckling period the sow should be given feed that will stimulate the production of milk. Give her corn or ground barley as the main feed supplemented by shorts or middlings, tankage or fish meal, or old process linseed meal. The corn may be fed on the ear or shelled. The other feeds may be fed dry or in slop. The sow should have all the feed she will clean up twice daily in addition to pasture.

It is very important that the pigs make good gains during the suckling period. If the hand-feeding method is followed, the labor of caring for brood sows and their litters is considerable, but where the self feeder is used, several days or even a weeks supply of feed may be stored in the hoppers in a very short time.

Mr. and Mrs. McConnell left Wednesday for Clovis to visit with friends and relatives.

NOTICE
On and after January 5, 1927, we will sell strictly for cash. No delivery. By selling for cash only, we can save our many customers considerably.

The Pampa Poultry Mercantile Association

Judge T. M. Wolfe of Lefors was in Pampa this week on business.

C. W. Lawrence who has been visiting friends and relatives in Winchester, Kentucky is expected home in a few days.

**Baby Beef Favored
For Market Profits**

Under favorable conditions there are several advantages in producing young beef for market rather than mature beef. Young cattle make larger gains than older cattle on the same quantity of feed, yearlings being able to make 25 to 40 per cent more gain than mature cattle on the same feed. Furthermore, by raising and fattening calves the money invested can be turned over

in a short time. Young heaves offer greater choice in the date of marketing because they hold their bloom longer. This is a decided advantage if the market is unsteady or weak.
Cattle with inferior form and poor quality are not suitable for the production of desirable beef. To produce young beef, grain must be fed in considerable quantities from the time of weaning of even before to the time of marketing. When the feed consists chiefly of roughage, no attempt should be made to feed out calves. Calves to qualify for this purpose must have quality and finish. One of the best breeds (Shorthorn, Hereford, Aberdeen-Angus, and Galloway) should be used in the production of young beef.

"WHEN MONEY TALKS IT SHOULD SAY—
'SAVE ME.'"

**Who's Who
TODAY**



**NEW YEAR'S
GOODBYE '26—WELCOME '27**

For better or for worse we come to the end of the '26 trail. For better or for worse we begin the journey of '27.

The memory of whatever may have been is worth while only as we profit by the mistakes made. 1927 will not be perfect but by intimate co-operation we can make much improvement financially. Let's work together this year?

"There is no Substitute For Safety"

GRAY COUNTY STATE BANK

C. L. THOMAS, President W. H. DOYLE, Cashier

RANGER HOTEL

Just South of Depot
35 Rooms

Reasonable rates by day, week or month

Hot and Cold Running Water
in All Rooms

Bath to Public 50c

-FOR RENT-

Office Rooms, also single room
for office. All new and nicely
finished.

PHONE 327

WHEN in need of
Printing see
what we can
do before you
go elsewhere.

**NORTH
KINGSMILL**

"WHERE THE WEALTH OF THE FIELD IS BEING STORED"

1927 **A GREAT NEW OIL YEAR** **1927**
AND
A GREAT NEW OIL TOWN
on the main line of the Santa Fe, 7 miles southwest of Pampa.

A Real Opportunity For Investors And Merchants

**Two Months Old—And a Score
of Substantial Buildings Already
Up!**

Practically all of the scores of lots which have been purchased in North Kingsmill in the short time since the opening are for quick improvement—already more than ten buildings are completed—and dozens more are planned to start before the first of the year!

**Big Important Companies Opening
Yards and Offices!**

The Panhandle Lumber Co., has already opened its yard adjacent to the three-quarters of a mile of trackage available at North-Kingsmill; the Champlin Refining Co., is building its new loading racks; and the Texas Co., has moved its general offices for the Panhandle to the Kingsmill area. And the merchants who are locating here find a quick, thriving market among the hundreds of oil field workers and prosperous farmers located in the vicinity. More restaurants, filling stations, garages, barber shops, rooming houses, etc., are needed immediately!

**Tremendous City Development
Certain!**

North Kingsmill is the logical location for supply houses; refineries; oil field equipment manufacturers; merchants and business men. For this new oil city is midway between the two great Panhandle oil fields and near to important new production. It is the Panhandle terminal for the great Prairie Pipe line from Ringling, Okla.; it is a trunk line railroad station with ample track and shipping facilities; and it is sur-

**GET
IN
EARLY**

Industrial and Business Lots at
Remarkable Low Prices—
ONLY \$145 UP!
Valuable 1-32 Royalty Rights Given
With Each Building Site!

KINGSMILL DEVELOPMENT CO.

AMARILLO OWNERS AND DEVELOPERS
302 Oliver-Eagle Bldg. Field Office—North Kingsmill
Phone 4619

PAMPA
Gray Co. Bank Bldg.
Phone 342

**DRIVE
OUT
TODAY**

RADIO PROGRAM SATURDAY NIGHT

Leading Musicians To Be On The Air Here At 7 O'clock

On Saturday night, January 1st, at 7 P. M. (Pampa Time) the Victor Talking Machine Company will broadcast an elaborate program by outstanding Victor Artist, from Stations WEAJ and WJZ, New York.

The artists participating in the two-hour program are John McCormack, Tenor; Rosa Ponselle, Soprano; Mischa Elma, Violinist; Alfred Cortot, Pianist; and the Victor Salon Orchestra under the direction of Nathaniel Shilkret.

The stations thru which the program will be re-broadcast are:

- WDAF Kansas City
- KSD St. Louis
- WOC Davenport
- WGN Chicago
- KYW Chicago
- WWJ Detroit
- WTAM Cleveland
- WCCO Minneapolis-St. Paul
- WHAD Milwaukee
- KDKA Pittsburg
- WCAE Pittsburg
- WGR Buffalo
- WRC Washington
- WFI Philadelphia
- WEEI Boston
- WBE Boston and Springfield
- WJAR Providence
- WTAG Worcester
- WTIC Hartford
- WCSH Portland, Maine.

Insult Before Injury

Auto Salesman—"And what kind of a horn would you like, sir? Do you care for a good, loud blast?"
Haughty Customer—"No; I want something that just sneers."

Home Making Is Aided By Modern Appliances

The art of home-making is not dying, but on the contrary is more active today than ever before, according to Miss A. Deane Dowell, home service counsellor, American Gas Association. Cooking is more in vogue, in spite of the kitchenette tendency in modern homes and apartments, the reason being the influence of modern home conveniences.

"I have talked with thousands of housekeepers and home-makers," says Miss Dowell, "and almost without exception they say that the modern gas range, incinerator, heater and other appliances have done more to interest them in their homes than anything else. They are learning the business-like methods of their husbands in their housekeeping duties, in contrast to their mothers who were forced to work in steaming sweltering kitchens.

"The modern appliances intrigue the interest of the women today, for they like to accomplish things just as anyone does. The fact that the drudgery is eliminated help make housekeeping the fascinating game it really is."

Beautifying The Yard

A sand table and a miniature model house are used by Vivian Weaver of Harris County to teach club girls good ideas in yard improvement. Grass, gravel walks, drives, trees, shrubs, vines, and flowers are added to illustrate the improvement made in the appearance of the home which is properly landscaped. This is followed by discussing the types of trees, shrubs, and flowers which grow well in Harris County, emphasis being placed on native plants.

Miss Alberta Carlson of Oklahoma City is visiting her sister, Mrs. Charles Shoup.

Traffic Is Big Item In Public Transportation

In the planning of street car and bus lines other vehicular traffic must be taken into consideration. The growth of automobiles and motor trucks has been so great in the past few years that it is almost beyond comprehension, says the Pennsylvania Public Service Information Committee.

Here is a problem greater than any other the electric street railway industry has to contend with. Vehicular traffic cannot be legislated off the streets as it has become part of our civic development. Yet some measures must be taken to meet the situation else motor traffic will paralyze all other forms of transportation.

It is also necessary that relief should not interfere with free movement of all public transportation agencies. Baltimore has proposed the creation of a system of major traffic streets so located as to reduce to a minimum vehicular traffic through the business section.

Whatever the solution, the street railway man will be involved in it. It is to the interest of every community that mass transportation be provided first and individual transportation be built around it. Only in that way can the best interests of business and industry be served.

Unightly Calendars Removed

A crusade has been started to remove unsightly calendars and torn pictures from the walls of Coleman County homes by Gertrude Brent in her picture framing project. Her procedure is to select out of the best pictures for each room in the demonstrator's home and then construct suitable frames from boxes. At the next meeting the pictures are mounted and the frames painted and tinted.

TEXAS LEADS ALL IN TURKEY CROP

Ranks Fifth In Point Of Poultry And Egg Output

Texas leads the United States in turkey production, and is fifth in point of poultry and egg producing states. Raising of America's national bird at present is centered in the Heart of Texas region, though numerous sections are increasing turkey production and bid fair to run McCullough County a close race in the industry.

The eight leading turkey producing states in the United States, in their order of importance, are: Texas, Missouri, Oklahoma, California, Kentucky, Virginia, North Dakota and Minnesota.

The number of poultry in the United States is larger than in any other country of the world. China ranks second; Russia third.

The largest share of poultry meat consumed is provided by chickens; turkeys, geese, ducks, guinea fowls and pigeons follow in the order named.

Production of turkeys decreased from 11,000,000 in 1890 to 6,500,000 in 1900, and to 3,700,000 in 1910. The production in 1920 was 3,627,000. Production of ducks decreased in about the same proportion as turkeys.

In 1920 poultry raised on 90.8 per cent of the farms in the United States. The percentage of farms keeping hogs in the same year was 75.2 per cent; dairy cattle, 70.8 per cent; beef cattle, 28.6 per cent; sheep, 8.4 per cent.

The value of poultry and eggs produced in the United States in 1920 was \$1,074,000,000; cattle \$924,000,000; wheat \$726,000,000; fruits and fruit products, \$681,000,000; oats, \$529,000,000; potatoes, \$40,000,000; tobacco, \$299,000,000.

Only four farm products exceeded the value of poultry and eggs in 1923. They were: Dairy products, corn, cotton and swine.

Eggs represent 57.4 per cent, and poultry meat 42.6 per cent of the

total value of all poultry products. The ten leading poultry and egg producing states in their respective order are Iowa, Illinois, Missouri, Ohio, Texas, Kansas, Indiana, Pennsylvania, Minnesota and Nebraska.

News Want Ads Pay

PANHANDLE OIL MAPS

Blue Printing and Surveying
AMARILLO ABSTRACT CO.
108 West Fifth Street
Phone 1198
AMARILLO, TEXAS

MAYO DENTAL CLINIC

LARGEST DENTAL ORGANIZATION IN SOUTHWEST
SPECIAL PRICES FOR NEXT TEN DAYS

We specialize in one day service—have teeth extracted in the morning and go home in evening with perfect fitting teeth.

MAYO'S ROOFLESS PLATES

Have made hundreds happy. Have your dental work done with a reliable organization that has been in business for years and are permanent.

We guarantee our work—all work done in our Amarillo office backed by guarantee on Fort Worth and Dallas offices.

EXAMINATION FREE

AMARILLO OFFICE

FORT WORTH OFFICE ASKEW BUILDING 912½ Main St.
DALLAS OFFICE 205 Enavoy St.

Tom Attaway PREMIER RUBE COMEDIAN AND HIS Vaudeville Troop



STRONGER AND BETTER EACH NIGHT
HERE ALL NEXT WEEK

Don't Fail To See Elmer Higgins, the Funny Old Rube
YOU'VE SEEN THE REST NOW SEE THE BEST

GRAND THEATRE

SOUTH SIDE

"JEMCO" "SERVICE"

The Kind of SERVICE our customers get does not discriminate in any manner; we give the small jobs our careful attention, prompt and at reasonable prices.

Cylinder Regrinding

We have our HEALD GRINDER in operation with competent Mechanics to re-condition any Cylinder Block, refit with new pistons, (ground to 1-2 thousand of an inch), Perfect Circle Rings, Spencer-Smith Pistons and etc.

ELECTRIC AND ACETYLENE WELDING

Jones Everett Machine Company
PAMPA, TEXAS

A REAL OPPORTUNITY

You Ladies who have waited until after Christmas to buy your Coat or Dress in order to save some money, need not wait any longer. We have placed "ON SALE" our entire stock of Ladies and Childrens winter Coats, Dresses and Sweaters at greatly reduced prices. A look will convince you.

MITCHELL'S the Ladies Store

CLASSIFIED ADS

Rates for Classified Ads: One and one-half cents per word per week. Minimum twenty-five cents. Strictly cash in advance.

FOR SALE

FOR SALE—Coal range cook stoves at bargain prices, \$5.00 to \$35.00. All in good condition. G. C. Malone Furniture and Undertaking Co. 3-tfc

FOR SALE—Good Round-Oak Heater. See T. W. Johnson, just back of Rex Theatre. 42-tf-c

FOR SALE—Singer Machines bought and sold. New singers sold on easy terms. Eldridge, the Singer Man, at Thornton's Store. 42-tfc

FOR SALE—60 head pigs and shoats, 20 head native Jersey heifers and cows, fresh and springers. H. Belew, McLean, Texas. 46-48-50-3-t-p

FOR SALE OR TRADE—Two lots in Channing, Texas. Will consider car or Pampa property. Call Mrs. Johnson at Wheeler-Bowman Hotel, Phone 280. 47-11-p

FOR RENT

FOR RENT—Two well furnished housekeeping rooms. Inquire 4 miles east on 33 Highway. R. R. Mitchell. 44-81-p

FOR SALE—National cash register, good condition. Registers to \$100.00. Apply at Thornton's Store, first door north First National Bank. 47-11c

LOST AND FOUND

LOST—Dark Tan Traveling Bag with name A. J. Duncan, Rosco, Texas written on outside. Reward to finder. Phone 100 or call Pampa News. 47-21-p

WANTED

WANTED—To buy used furniture and oil stoves. G. C. Malone Furniture and Undertaking Co. 3-tfc

Wanted—Clean, Cotton Rags, Pampa News.
Wanted—Modern, light house-keeping room. Desires close in or on side walk. No Children. Phone 100 or call for Ben Rice or Jinks Brashears at News Office.

POSITION WANTED—As house-keeper. No objection to children. Apply at Gray-Pampa Hotel, ask for Virginia LaCount. 47-211p

WANTED—Position by Steno-book-keeper, several years experience in Auto business. Understands parts, accessories and selling. Send reply to News Office. 47-21-p

WANTED—3 or 4 room apartment, furnished or unfurnished. Half of Duplex preferred. Phone 327. 47-11c

MISCELLANEOUS

FOR QUICK ACTION LIST YOUR oil leases, farm and city property with Rice and Park. Located just across street from Magnolia Filling Station. 4-tfc

We are glad to assist you in planning that new home you have been contemplating building. Our motto "Service that Satisfies." White House Lumber Co., Pampa, Texas. 11-tfc

SORE BLEEDING GUMS

Only one bottle of Leto's Pyorrhoea Remedy is needed to convince you. No matter how bad your case, get a bottle, use as directed, and if you are not satisfied, druggists will return your money. H. & K. Drug Co. 5-tfc

Number of Horses In U. S. Decreasing

Although horse breeders are maintaining and improving their stock year after year, the horse population of the nation is on a gradual decline, says the United States Department of Agriculture. In only 5 states—Nevada, Arizona, Wyoming, Montana, and New Mexico—are enough foals born every year to maintain their own horse population. In order to keep up the present number of horses in the United States it is necessary to increase the annual foal crop by 85 per cent over the entire country. In some States this figure runs much higher. In Illinois, for instance, 120 per cent more foals are needed annually. In Ohio 186 per cent, in Indiana 215 per cent, and in Connecticut 1,190 percent.

Mr. and Mrs. Leonard Grigsby of Tulsa, Oklahoma are visiting Mr. and Mrs. Tom Carver this week.

Mrs. T. E. Braley returned from Denver, Colo. this week where she has been visiting her son, Richard Chaney. She reports snows in Denver for the past few days.

News Want Ads Pay

SOCIETY NOTES

Miss Hazel King Bride Of Paul Cramer

Miss Hazel King was married to Paul Cramer here December 24. The ceremony was performed by the Rev. James Todd Jr., at his home.

The bride is the daughter of Mr. and Mrs. Richard A. King of Schfield, Alabama. Cramer is the son of Capt. Paul Ward Cramer of Lawton, Oklahoma.

Cramer is connected with the Rex Clothing Store here. The bride and groom are making their home in Pampa.

Mr. and Mrs. McConnell Given Surprise Birthday Dinner

Mr. and Mrs. J. C. McConnell were entertained with a surprise birthday dinner Tuesday at the home of Mr. and John Bell, Jr. A real good turkey dinner with lots of the trimmings was served.

A cake bearing 70 burning candles was presented to Mr. McConnell and one with 65 burning candles was presented to Mrs. McConnell. Each was also presented with many beautiful gifts.

Other guests present were; Mr. and Mrs. Will Castleberry and grand children, Mr. and Roger McConnell and sons, Mr. and Mrs. Floyd McConnell and daughter, Mr. and Mrs. Lundy Stalls and family, Mrs. J. M. Bell, Mrs. Walter McConnell and sons, Russel and Earl, Mrs. Buford Deering and daughters, Azelle and Boone, and Miss Mattie Ruth Stalls.

M. K. Brown and T. D. Hobart are expected to return from the J. A. Ranch near Clarendon tomorrow. They have been at the ranch for the past week.

Work On New Building Progressing Rapidly

Exterior work on the Brunow Building at the corner of Cuyler Street and Foster Avenue is progressing rapidly. A store building will occupy the lower part and office rooms and an apartment will be on the second floor.

Dr. Von Brunow, proprietor of the building, will make his home in the apartment and have his offices on the second floor. A private roof garden will be finished on top.

The old frame building that was moved away from the corner was one of the first buildings in Pampa. It was constructed by Dr. Brunow with the aid of a few carpenters from around here. It housed the first post office here for many years when Dr. Brunow was postmaster.

Oak Trees Prove Best For Roadside Planting

Success in roadside tree planting, says the United States Department of Agriculture, depends on properly locating the plants along the highway, selecting suitable varieties, and adequately protecting them from thoughtless persons, roving stock, and insects and diseases.

The best effects in roadside planting are usually produced by giving the predominant place to the common plants of the neighborhood, using introduced plants in subordinate positions. Next in desirability are plants from regions having similar country or abroad. Oaks are more generally useful for roadside planting than any other kind of tree. There are species of this tree native to nearly all parts of the country.

W. S. Cross of Memphis was here on business the first of the week.

Game Reported Plentiful

Many hunters have been seen hurrying about with their guns and dogs during the last few days of the deer season. Several have reported that the game is plentiful, and that getting the limit of quail is a small matter for one who is an average marksman.

Transstate Highways Increasing Rapidly

Ten years ago there were only five States in which there was as much as a single improved trans-state highway. These States were Massachusetts, Connecticut, New

York, New Jersey, and Maryland. To-day 25 States have improved highways continuous from border to border in at least one direction and 16 of these have completed such transstate arteries in two directions.

NEWS WANT ADS PAY

We Extend To You

Our sincere good wishes for continued Prosperity and Happiness during the New Year and thank you for the patronage we have enjoyed since opening our store here. May we continue to serve you in 1927 as in the past, with high grade groceries at minimum cost to you.

SPECIALS FOR NEW YEARS DAY

Peck Spuds	54c
No. 2 Standard Corn	12c
No. 2 Snider's Sliced Beets	15c
Snider's Catsup (large size)	25c
21-2 lb. Can Your Luck Coffee	\$1.14

PIGGLY WIGGLY

ANNOUNCEMENT

We Will Open

SATURDAY

January 8th

With a complete line of Dry Goods, Men's Clothing, Women's Clothing, Childrens Clothing and everything a GOOD DRY GOODS STORE SHOULD have.

Our stock will consist of Standard Brand Merchandise, insuring high quality, and you'll be well pleased with our prices.

We wish you a very Happy New Year, and hope that we may be instrumental in making it a prosperous one for you as well as ourselves.

Cross Dry Goods Store

ACROSS STREET FROM PAMPA HOTEL
WATCH FOR IMPORTANT ANNOUNCEMENT TO BE Made SOON IN REGARD TO OUR OPENING

Business & Professional DIRECTORY

V. E. VON BRUNOW
PHYSICIAN AND SURGEON
Office Hours 10 to 12—3 to 5
State License No. 7752
PAMPA, TEXAS

H. E. FLOREY
LAWYER
Office in Smith Building
PAMPA, TEXAS

O'NEAL ABSTRACT CO.
Abstracts of Title
PROMPT SERVICE
"ANHANDLE. . . . TEXAS"

DR. T. M. MONTGOMERY
OPTOMETRIST AND OPTICIAN
In Pampa every other Thursday
Call Fathree Drug Store for appointment

DR. AURA W. MANN
CHIROPRACTOR
OFFICE 20-21, SMITH BUILDING
Office Phone 263
Residence Phone 213J

BOONE SIGN CO.
COMMERCIAL SIGNS
OF ALL KINDS
115 West Tyng Street

PAMPA ELECTRIC COMPANY
ELECTRICAL CONTRACTORS
All Work Guaranteed Phone 183
Estimates Furnished on all Classes of Wiring

STUDER, STENNIS & STUDER
LAWYERS
Office Over First National Bank
PAMPA, TEXAS

J. B. DUFFIELD
GENERAL BUILDING CONTRACTOR
Concrete Work
No job too large or too small. 21-tfc

INSURE YOUR FAMILY WITH AMERICAN CENTRAL LIFE INSURANCE
P. B. CARLSON, Agent
175 West FOSTER

G. C. MALONE
FUNERAL DIRECTOR AND LICENSED EMBALMER
Phone 181 Pampa, Texas

DR. A. R. SAWYER
DENTIST
White Deer Land Building
Business Phone 168
Residence Phone 56
PAMPA, TEXAS

DRS. MARTIN & KLEIN
PHYSICIANS AND SURGEONS
SHARPE BUILDING
Phone 273

DR. W. F. NICHOLAS
DENTIST
Office Room 8-9 Smith Building
Phone 232 Pampa, Texas

DR. W. PURVIANCE
PHYSICIAN AND SURGEON
Office Over First National Bank
Office hours: 9 to 12—1 to 5
Office phone 197. Residence 45
PAMPA, TEXAS

JOHN F. CANTERBURY & CO.
Accountants and Auditors
Income Tax Service
608 Amarillo Bldg. Phone 2738
Jno. F. Canterbury, Accounting consultant, Amarillo, Texas

See H. W. HICKMAN
—For—
CONTRACTS on BUILDING
Pencil Plans Furnished.
Cabinet work, mill work and Truck Cabs. Bodies a specialty. Phone 225.

HICKMAN CONST. CO.
Ref. See customers.

ARCHIE COLE, M. D.
PHYSICIAN AND SURGEON
Office over First National Bank
Office hours 10 to 12—3 to 5
Residence Phone 3. Office phone 55
PAMPA, TEXAS

HAL B. STEWART
ARCHITECT
and
STRUCTURAL ENGINEER
613 1/2 Polk Street Amarillo, Tex.

W. B. WILD, M. D.
PHYSICIAN & SURGEON
Office—Room 6-7 Smith Building
Phone 232 Pampa, Texas