





# Daily Record

## Services tomorrow

**CARDIN**, Edna Mae Potter — Graveside services, 2 p.m., Mulberry Cemetery, Sweetwater, Okla.  
**CAVE**, Kellie Melynn — Memorial services, 11 a.m., Mary Ellen and Harvester Church of Christ, Pampa.  
**HUTSON**, Cleve Marie — Graveside services, 12 noon, Eastview Cemetery, Vernon.  
**RICHARDSON**, Gordon Henry — 11 a.m., St. Andrew United Methodist Church, Borger.

## Obituaries

**EDNA MAE POTTER CARDIN**  
 Edna Mae Potter Cardin, 92, of Pampa, died Wednesday, Oct. 11, 2000, at Amarillo. Graveside services will be at 2 p.m. Saturday in Mulberry Cemetery at Sweetwater, Okla., with the Rev. Mike Mang, chaplain of the hospice in Clinton, Okla., officiating. Burial will be under the direction of Carmichael-Whitley Funeral Directors of Pampa.  
 Mrs. Cardin was born Aug. 24, 1908, at Sweetwater. She married Kentner B. Cardin on Feb. 1, 1927, at Sayre, Okla.; he died Dec. 10, 1969. She had been a Pampa resident since 1959 and worked as a sales clerk for Woolworths and Duckwall's (later Alco), retiring in 1978.  
 She was a Methodist.  
 She was preceded in death by four brothers and four sisters.  
 Survivors include a brother, Ira Potter of Pampa; and numerous nieces and nephews, great-nieces and great-nephews and great-great-nieces and great-great-nephews.  
 The family requests memorials to be BSA Hospice, P.O. Box 950, Amarillo, TX 79176.

**COENE HUNTER**  
 SKELLYTOWN — Coene Hunter, 72, died Thursday, Oct. 12, 2000, at Amarillo. The body was cremated and consequently not be available for viewing. No services are pending at this time. Arrangements are under the direction of Carmichael-Whitley Funeral Directors of Pampa.  
 Mrs. Hunter was born Sept. 24, 1928, in Van Zandt County, Texas. She had been a Skellytown resident for the past nine years and was a homemaker and a Baptist.  
 She was preceded in death by twin daughters and by her husband, Don Hunter, in June of 1990.  
 Survivors include four daughters, Dianne Wiltgen of Grand Junction, Colo., Darlene Kinnamon of Meeker, Colo., Debbie Davis of Skellytown and Norma Bicknell of Kalispell, Mont.; two sons, Charles Davis of Skellytown and Eddie Davis of Kalispell; a sister, Yreva Topper of Wheeler; 18 grandchildren; and nine great-grandchildren.  
 The family requests memorials to be BSA Hospice, P.O. Box 950, Amarillo, TX 79176.

**CLEVA MARIE HUTSON**  
 VERNON — Cleve Marie Hutson, 81, died Thursday, Oct. 12, 2000, at a nursing home in Vernon following a lengthy illness. Graveside services will be at 12 noon Saturday in Eastview Cemetery with the Rev. Nancy Moore officiating. Burial will be under the direction of Sullivan Funeral Home of Vernon.  
 Mrs. Hutson was born Nov. 14, 1918, at Bonham, to the late Madison Joe and Maude Buchanan Morgan. She lived in Vernon most of her life and belonged to United Methodist Church.  
 Survivors include a son, Bill Vanek of Arlington; three sisters, Lola Broom of Childress, Edna Maxwell of Pampa and Murle Anderson of Smyrna, Ga.; two grandchildren; and five great-grandchildren.  
 Visitation will be from 10 a.m. until service time Saturday at the funeral home.

**GORDON HENRY RICHARDSON**  
 FRITCH — Gordon Henry Richardson, 86, died Tuesday, Oct. 10, 2000, at Golden Plains Community Hospital in Borger. Services will be at 11 a.m. Saturday in St. Andrew United Methodist Church in Borger with the Rev. Weldon Rives officiating. Burial will be in Westlawn Cemetery in Borger under the direction of Brown Funeral Directors of Borger. Graveside rites will be administered by Adobe Walls Masonic Lodge #1355.  
 Mr. Richardson was a native of Troup, Texas and was a longtime Phillips resident prior to moving to Fritch. He was a retired instrument man for Phillips Petroleum Company and belonged to St. Andrew United Methodist Church and Adobe Walls Masonic Lodge #1355.  
 He was preceded in death by his wife, Mary Frances Richardson, on May 19, 1996.  
 Survivors include a daughter, Susan Richardson Tullis of South Easton, Mass.; two sons, Gordon Henry Richardson Jr. of Atlanta, Ga., and Robert Dale Richardson of Brandon, Manitoba, Canada; two sisters, Dorothy Mansell of Groom and Juliette Newton of Okmulgee, Okla.; three brothers, Newton Richardson of Canyon, Thurman Richardson of Panhandle and Tony Richardson of Lake Havasu, Ariz.; six grandchildren; and a great-grandchild.  
 The family will receive visitors from 6-8 p.m. today at the funeral home.

## Police report

The Pampa Police Department reported the following arrests and reports during the 24-hour period ending at 7 a.m. today.

**Thursday, Oct. 12, 2000**  
 Gary Lynn Hoskins, 42, 300 S. Starkweather, was arrested for possession of marijuana under two ounces and possession of drug paraphernalia.

A missing person report was filed with Pampa Police Department regarding Dawn Lynn Ellis, 34. According to the report, she was last seen on Dec. 28, 1999, in Pampa.

A burglary of a motor vehicle was reported in the 1800 block of Beech. A cell phone and cell phone charger were reported to have been taken between 7:30 p.m. on Tuesday and 7:30 a.m. on Oct. 11.

## Ambulance

Rural/Metro reported the following calls during the 24-hour period ending at 7 a.m. today.

**Thursday, Oct. 12, 2000**  
 7:24 a.m. — A mobile ICU responded to 1000 block of Prairie. One was transported to Pampa Regional Medical Center.

8:55 a.m. — A mobile ICU responded to the 1200 block of North Wells. One was transported to PRMC.

10:58 a.m. — A mobile ICU responded to the 1100 block of Prairie. One was transported to PRMC.

9:20 p.m. — A mobile ICU responded to the 400 block of Hughes. One was transported to PRMC.

## Sheriff's Office

No incidents or arrests were reported by the Gray County Sheriff's Office during the 24-hour period ending at 7 a.m. today.

## Fires

Pampa Fire Department responded to the following calls during the 24-hour period ending at 7 a.m. today.

**Thursday, Oct. 12**  
 8:41 a.m. — Two units and four firefighters presented a fire prevention program at Travis Elementary School.

9:23 a.m. — Two units and five firefighters presented a fire prevention program at St. Matthew's School.

10:13 a.m. — Two units and five firefighters presented a fire prevention program at Community Day Care Center.

1:36 p.m. — Two units and three firefighters responded to a grass fire on the railroad right of way near the prison, east of Pampa.

2:17 p.m. — One unit and four firefighters responded to a reported hazardous materials spill in the 100 block of North Hobart. Firefighters determined the spill was not a hazardous material.

11:13 p.m. — One unit and three firefighters were called to standby for Lifestar helicopter at One Medical Plaza.

**Friday, Oct. 13**  
 4:57 a.m. — One unit and two firefighters responded to a fire on the railroad right of way near the prison, east of Pampa. Railroad ties were smoldering from an earlier grass fire.

## Stocks

The following grain quotations are provided by Atchafalaya Grain of Pampa.

Wheat	2.72	Columbia/HCA	40 1/8	up 1/16
Milo	3.18	Enron	80 1/16	up 3/16
Corn	3.57	Halliburton	45 13/16	dn 1/16
Soybeans	4.09	KMI	38 5/8	dn 7/8
		Kerr-McGee	67 1/4	dn 1/8
		Limited	22 1/16	up 5/16
		McDon	28 13/16	up 7/16
		Exxon	92 1/8	dn 2
		New Atco	20 1/16	dn 1/16
		XCEL	27 1/4	dn 1/16
		NOI	32 1/4	dn 15/16
		OKF	41 3/8	dn 1/4
		Phillips	64 7/16	dn 2
		Pioneer Nat	14 5/16	up 3/16
		SLB	82 1/4	dn 2 3/4
		Tenneco	4 9/16	up 3/16
		Texas	54 7/8	dn 1/8
		Ultramar	25 13/16	dn 1/2
		Wal-Mart	44 13/16	up 11/16
		Williams	42 3/16	dn 1/2

The following show the prices for which these mutual funds were bid at the time of completion:

Occidental	20 15/16	dn 3/4
Fidelity Magell	122.57	dn 18.34
Puritan	18.34	dn 18.34

The following 9:30 a.m. N.Y. Stock Market quotations are furnished by Edward Jones & Co. of Pampa.

BP Amoco	55 5/16	dn 1 3/8
Cabot	18 7/8	dn 3/16
Cabot O&G	22 1/8	dn 1/8
Chevron	85 3/16	dn 2 1/8
Coca-Cola	57 1/8	dn 1/8
New York Gold	276.65	
Silver	4.90	
West Texas Crude	36.05	

## Emergency numbers

Ambulance	911
Crime Stoppers	669-2222
Energas	1-888-Energas
Fire	911
Police (emergency)	911
Police (non-emergency)	669-5700
SPS	1-800-750-2520
Water	669-5830

## Sheriff's Association seeks memberships

Responding to the increasing number of businesses wanting to assist law enforcement officials and build a stronger partnership in the fight against crime, Sheriff Don Copeland announced that Gray County businesses are being invited to become Members of the Sheriff's Association of Texas.

Membership appeals will go out in the mail shortly. The funding provides critically important technical resources, training, and legislative support on key criminal justice issues.

In addition, dues will be used to support crime prevention and awareness programs, promote public safety, fight drug abuse, provide additional training for

sheriffs and their deputies, and provide scholarships for children of law enforcement officers.

Contributions are tax-deductible. "With government funding becoming increasingly difficult to secure, the Business Membership drive has taken on greater importance than ever before," said Sheriff Copeland. "The funding is vital to helping us carry out our mission of making our communities safer places to live, work and play."

Businesses not receiving a membership appeal or desiring more information can obtain it by contacting the Sheriff's Association of Texas at 1601 S. IH-35, Austin, Texas 78741, or

visit the web site at www.bssheriffs.org.

The Business Membership Program has begun to provide businesses with an opportunity to lend their support to more effective law enforcement and to better help local sheriffs protect the lives and property of citizens. "As the need for building stronger public-private law enforcement partnerships in this country continues to escalate, programs such as this continue to grow in importance," said Sheriff Copeland. "I encourage every business receiving a membership appeal to consider joining forces with us by becoming a Business Member. It is a valuable investment in our future."

## PORT

might have provided the bombers with some logistical support.

The diplomats, insisting on anonymity, said the boat used by suicide bombers was similar to boats used by port authorities to guide vessels into port or facilitate ships with refueling.

Seven bodies have been recovered, and 10 sailors missing since the blast were presumed dead, according to U.S. Navy officials in Washington. Officials said they expected to find more bodies on Friday.

The Navy released the names of the 17 sailors. All but one is from the enlisted ranks. Two are female.

Meanwhile, American military planes evacuated 22 of the 33 injured from Aden to Germany for medical treatment, said Lt. Terrence The Cole, a Bahrain-based U.S. Navy spokesman in Yemen.

The French Defense Ministry

CONTINUED FROM PAGE ONE

said its army planes had taken the 11 other injured sailors overnight to Bouffard military hospital in Djibouti, where six underwent surgery.

Dudley said some of the injured sailors were in serious condition and others were stable. He did not give further details.

American investigators as well as U.S. Marines and soldiers filled Aden, bringing in equipment to search for clues beneath the water near the USS Cole. Sniffer dogs also were seen being brought to the area. The HMS Marlborough, a British frigate, was heading to Yemen from the Gulf to provide technical assistance, Dudley said.

He said investigators may keep working at the site another two days. The USS Cole, one of the world's most advanced warships, was left slightly tilted in Aden harbor.

"The ship took (in) some water and we are trying to

dewater it. But, generally, it is seaworthy and we will tow it to the United States," said Dudley, of the Bahrain-based U.S. 5th Fleet.

The Cole is a \$1 billion guided missile destroyer home-ported at Norfolk, Virginia. It was heading with a crew of about 350 to the Gulf for maritime intercept operations in support of the U.N. embargo against Iraq.

U.S. embassies in the Middle East said Friday they had been ordered by the U.S. State Department to cease public operations until Monday in light of developments in Yemen and escalating violence in the West Bank and Gaza Strip.

Dave Ballard, a U.S. Embassy spokesman in Cairo, Egypt, said the order affects the embassy's library and probably its visa operations. Because of the Friday-Saturday weekend in many Islamic countries, no practical effect would be seen in many countries until Sunday.

## MIAMI

will be designed and displayed around the school. The journalism class will be writing articles on student successes for the local newspaper. Student successes will also be recognized by the school board and announced daily to the school.

Finally, school officials plan to expand the use of technology in the school through staff training.

At this week's meeting, board members approved amendments to the 2001 budget after the school district received \$35,000 from the Telecommunications Infrastructure Fund (TIF) for the school library and \$28,500 from the state for an accelerated reading program at the kindergarten and first grade level.

"We had only budgeted \$15,000 (for the reading program)," Dinsmore said. He explained that the budget amendments would reflect the additional revenue from the grants and the related expenditures.

Expenditures include computers, compatible software, a laser printer, digital cameras, LCD panels and a CD tower, the school superintendent said, as well as \$8,000 for the necessary furniture. The \$8,000 will be funded through the school district, he said.

"When we get it all up and running, we'll open the school library to the community, probably for two nights a week," Dinsmore said.

With the amendments, the school district's budget now reflects a \$30,000 deficit.

CONTINUED FROM PAGE ONE

"We hope to have enough savings throughout the year to cover the deficit like we did this year," Dinsmore said. "If not, we'll dip into the reserve to cover it."

Five board members reported on their trip to the Texas Association of School Boards convention in Houston, Sept. 22-25. Rick Tennant, Tom Grantham, Troy Manley, Brad Booze and Diane Wheeler represented the school board. Dinsmore also attended.

Christi Hall, senior sponsor, told the board that eight seniors plan to leave Saturday after Project Graduation and spend two days in Arlington where they will go to a water park, Six Flags Over Texas, and a Texas Rangers game. The seniors will then fly to Miami, Fla., and go on a four-day cruise to the Bahamas, Coco Cay, and Key West.

In other action, board members took the following actions:

- approved bills as presented;
- accepted a fund balance report stating that as of Sept. 30, the school district had approximately \$838,000 in its reserve fund;
- heard lunch room report and fuel expense reports.
- tabled action on a proposal from the Future Farmers of America and 4-H advisors to build a green house; and
- appointed Mike Lloyd, Roberts County extension agent, as an adjunct faculty member, allowing him to supervise Miami ISD students when no other school staff are present.

## LEPC

Emergency Management (DEM).

Hall pointed out that a number of free DEM training courses are available to local industry and emergency services if 20 or more people will attend.

"It's nice to know this training exists," Hall said. "Everything is free to get this instructor up here

and do this class."

He added that the LEPC would place the request for the training.

"The only thing it would cost you is employees' time off their job," he said.

Hall said he plans to attend the LEPC state conference through an anonymous grant from a local industry.

He told members of the \$25,000 grant from Cabot Corporation

Foundation brings the LEPC closer to purchasing a new \$75,000 weather radar set-up for the county.

Anyone wishing to donate toward the radar can contact Hall at 665-5820.

Next meeting is set for Nov. 8 in the Heritage Room at M.K. Brown Auditorium. The December LEPC meeting is set for noon, Dec. 13, at Chaney's Cafe.

## City Briefs

The Pampa News is not responsible for the content of paid advertisement

**94 SUBURBAN** 4x4, 120K mi., rear h/a, good cond. 665-6719.

**BOSSSES DAY!** Is next Monday 16th. Show your appreciation, surprise your Boss with a basket of goodies or a balloon bouquet. Celebrations, Coronado Center, 665-3100. We deliver.

**CLOTHING ROOM** Mary Ellen & Harvester Church of Christ (building across the street, south of Pampa High School) open Tues. Oct. 17th, 9-1 p.m., or call 665-2373, lv. msg. for appt.

**CUT FUEL** cost by updating with a new high efficiency heat-nating appliance. Fireside Comfort, 725 W. Brown, Hwy. 60, 665-9333

**DANCE AT** Moose Lodge to "White Deer Crazy's", Sat., Oct. 14th. Members & guests.

**DANCE, MCLEAN** Country Club, Sat. Oct. 14th, to Plain Country, 8-11:30 p.m. Members & guests.

**ENVIRO PRO** Cellulose Blow-In insulation is here. Free Day Rental with 25 bags or more. Franks True Value & Just Ask Rental, 401 N. Ballard, 665-4995.

**GAS PRICE** Increasing! Oh-no what to do? Come see us at Fireside Comfort, 725 Brown, Hwy. 60.

**GOLDKRAFT JEWELERS** 10th Anniversary - Best Sale ever! Thurs., Fri., Sat., 1334 N. Hobart, 10 a.m.-6:30 p.m.

**MARGARET FURLONG** National Celebration Event, Oct. 14, 2000. Register for free angel at Joy's Unlimited.

**MIKE & Kim Voss** will be playing all your favorite music at Sunset Bar & Grill this Fri. & Sat. night. We're making a weekend of it, check out our new drink specials. Come early & try one of Peggy's fabulous steaks!

**SAT. ONLY 7:30 A.M.-?** Big men sizes, women's 16-18, name brand winter clothing, toys. Don't miss. 1504 N. Zimmers. Early Bird's Welcome.

**FALL FLAGS** are in at Joy's Unlimited.

**NEARLY NEW 1/2 Price** on all children's & mens clothing. 2143 N. Hobart.

**PART-TIME** clerical/insurance position avail. Send resume to P.O. Box 2689, Pampa, TX 79066

**PROFESSIONAL HOUSE-KEEPER/Errand Girl** will clean your home or business or do your shopping & errands. Call 669-6439 for more info.

**REV. BOB'S Appliances, 2000 W. Alcock. Lay-A-Way & Trade-Ins** welcome. 665-6035, 665-1878

**SALE! SALE! Sale!** Take an extra 20% off all Fall clothing thru Sat. Twice Is Nice.

**SAT. ONLY 7:30 A.M.-?** Big men sizes, women's 16-18, name brand winter clothing, toys. Don't miss. 1504 N. Zimmers. Early Bird's Welcome.

## Weather focus

**PAMPA** - Mostly cloudy today and 40 percent chance of thunderstorms today. High is expected to be in the mid-70s. Tonight, mostly cloudy with a 15 percent of thunderstorms and southwest winds expected to be 10 to 15 miles per hour. High temperature expected in lower 50s.

On Saturday, 40 percent chance of thunderstorms with a high of 70. Southwest winds of 10-20 mph are expected to change to the northwest. Partly cloudy with a 30 percent chance of thunderstorms and an overnight low between 45 and 50.

Sunday, partly cloudy with a high near 70. Yesterday's high was 73 and the overnight low was 61.

**STATEWIDE** - A Pacific storm is approaching Texas very slowly on Friday, promising a rainy weekend for much of the state.

A slow-moving Pacific cold front in advance of the storm stretched across Texas western doorstep on Friday morning, forecasters said. The trough of low pressure just behind it is cut off from propelling air currents, meaning it will drift slowly to the east across Texas.

The North Texas forecast calls for cloudy with a chance of showers and thunderstorms Friday night through Saturday.

Lows Friday night will be in the mid-60s. Highs Saturday will be in the upper 70s to lower 80s.

The West Texas forecast features mostly cloudy with a chance of showers and thunderstorms through Saturday. Lows Friday night will be in the 40s and 50s. Highs will range from 65 to 75, with some low 80s along the Rio Grande.

South Texas expected partly cloudy skies through Saturday, with a chance of Saturday afternoon showers and thunderstorms in the Hill Country. Lows Friday night will be 65 to 75. Highs Saturday will be in the 70s, with 80s along the Gulf Coast and in the Rio Grande Valley.



# Community Calendar

**PAMPA AREA LITERACY COUNCIL**  
Pampa Area Literacy Council office is open from 10 a.m.-4 p.m. Monday-Friday. For more information, call 665-2331.

**THEE PLACE**  
Thee Place for Singles is open 7-10:30 p.m. Saturdays at 520 W. Kingsmill.

**ADHD/ADD SUPPORT GROUP**  
If interested in the ADHD/ADD Support Group call Connie at 669-9364.

**ST. MARK CME CHURCH**  
St. Mark will host a monthly breakfast the first Saturday of every month from 8 a.m. to 11 a.m. Donations will be accepted.

**MACEDONIA CHURCH**  
Macedonia Church will host a monthly breakfast the third Saturday of every month from 8 a.m. to 11 a.m. at 441 Elm Street with the Rev. L.L. Patrick. Donations will be accepted and the public is invited.

**THE FELLOWSHIP OF CHRISTIAN COWBOYS**  
The Fellowship of Christian Cowboys potluck will meet on the fourth Saturday of each month at 6 p.m. in the Clyde Carruth Pavilion. For more information, contact Keven Romines at 665-8547 or Jim Greene at 665-8067.

**PRE-SCHOOL STORY HOUR**  
Lovett Memorial Library will sponsor a pre-school story hour at 10 a.m. every Tuesday this fall beginning Sept. 5. The free program is open to children 18 months to 5 years of age and will include stories, crafts and other activities. No registration is required. For more information, call the library at 669-5780.

**CPF**  
Cerebral Palsy Foundation is seeking families with children (birth to age 12) affected by cerebral palsy in an effort to establish a chapter in the area. CPF offers financial and emotional support as well as many free services. For more information, call 1-888-872-7966 toll-free.

**GED TESTING**  
Clarendon College-Pampa Center conducts GED testing the fourth Monday and Tuesday of every month except for May and June. Test dates for these

two months are May 22 and 23 and June 19 and 20. Those taking the full test must attend both days. Preregistration is required. For more information, call Jana Wesson-Martin at 665-8801.

**THE SALVATION ARMY**  
The Salvation Army, 701 S. Cuyler, will be accepting Christmas applications from 9 a.m.-12 noon and from 1-3 p.m., Oct. 9-13. Applications must include: Picture ID; birth certificates for each child in the household; Social Security cards for each individual in the household; and proof of income (pay check stub, award letters) and expense. For more information, call 665-7233.

**SENIOR PARENT MEETING**  
A PHS Senior Parent Organizational meeting will be at 7 p.m. Monday, Oct. 16 at the high school library. Parents of 2001 graduating seniors are urged to attend. Plans for the upcoming All-Night Party will be discussed. If you are unable to attend or need additional information, call Tonya Stowers at 669-7713.

**MIP CLASSES**  
Clarendon College will offer Minor in Possession classes from 7:30-10:30 p.m., Oct. 9-10, Nov. 13-14 and Dec. 11-12 in Clarendon, and Oct. 16-17 and Nov. 20-21 in Pampa. For more information, call Eddie Hankins, (806) 874-5074.

**PRPC CONTRACT PROCUREMENT CENTER**  
Panhandle Regional Planning Commission Contract Procurement Center will sponsor "Doing Business with the Texas Department of Criminal Justice" with James W. David, HUB coordinator with Texas Department of Criminal Justice, from 6-8 p.m., Tuesday, Oct. 24 at Panhandle Regional Planning, Commission Board Room, 415 W. 8th Ave., Amarillo. RSVP by Oct. 20 to Edmond Esparza, phone (806) 372-3381 or fax (806) 373-3268.

**ALZHEIMER'S SUPPORT GROUP**  
The local Alzheimer's Support Group will conduct a four-part series this fall. The series will kick-off Sept. 7 with Dr. Bruce Harrow presenting an overview of the disease. Topics will include: Communication and Activities of Daily Living, Oct. 5; and Community Resources and Caregiving

Planning, Nov. 2. The series will conclude Dec. 7 with a panel discussion. The group meets regularly at 7 p.m. the first Thursday of each month at Shepard's Crook Nursing Agency, 916 N. Crest. For more information, call Dauna Wilkinson, 665-0356.

**FPC EXTENDED EDUCATION CLASSES**  
Frank Phillips College in Borger will offer the following extended education classes this month: Beginning Drawing; American Red Cross Adult Basic Life Support; and ARC CPR-Basic Life Support-Bloodborne Pathogen. For more information, (806) 274-5311 or 1-800-687-2056, ext. 777.

**EXTENSION BAZAAR**  
Moonlight Extension Education Club will hold its 22nd Annual Christmas Bazaar Dec. 9 at the Bailey County Civic Center and Coliseum in Muleshoe. Booth space will be available until Dec. 4. To request an application, contact Linda Huckaby, 902 W. 8th, Muleshoe, TX 79347.

**HARRINGTON CANCER CENTER**  
The Women's Center of the Don and Sybil Harrington Cancer Center has announced the following breast cancer screening clinics: Oct. 9, Shepard's Crook Nursing Agency, 916 N. Crest, and Sept. 5, First United Methodist Church Educational Building, 201 E. Foster, Pampa; Sept. 6, 20, Hemphill County Hospital, Canadian; Sept. 19, United Methodist church, Miami; and Sept. 14, Wesley Community Center, 1615 S. Roberts, Amarillo. Participants will receive a low-cost self-exam mammogram and a breast health appraisal along with individual instruction by a registered nurse in breast self-examination. Funding is available through the Texas Department of Health for Texas residents who qualify for assistance. All exams are by appointment only. For more information, call (806) 356-1905 or 1-800-377-4673.

**DIALOGUE**  
The Don and Sybil Harrington Cancer Center will hold "Dialogue," a patient/family education support group sponsored by the cancer center and the American Cancer Society, Thursdays from 12 noon-1:30 p.m. this month. For more information, call Gerry Kelly at (806) 359-4673, ext. 235 or Stan McKeever at (806) 359-4673, ext. 141 or toll-free at 1-800-274-4673.

**PRESIDENT'S COMMITTEE SCHOLARSHIPS**  
President's Committee on Employment of People with Disabilities is hosting three scholarship competitions for post-secondary students with disabilities for the 2000-01 academic year. Two competitions are open to candidates with disabilities seeking financial assistance for undergraduate study at a four-year college or university. The third competition is open to female candidates with disabilities seeking financial assistance for graduate study. For more information, visit the President's Committee website at [www.pcep.gov](http://www.pcep.gov) and click the "Scholarships" link on the home page.

**MSAA**  
A wide range of free, direct support services is available to local residents suffering from multiple sclerosis through Multiple Sclerosis Association of America. Services include general information, therapeutic equipment, educational literature, national lending library, no-cost MRIs, cool suits, wheelchairs and scooters, support groups and more. For more information, contact MSAA at 1-800-LEARN-MS or access [www.msaa.com](http://www.msaa.com) on the Internet.

**FAN BOOKLET**  
The Financial Assistance Network in Washington, D.C., recently published the booklet, "Free & Low Cost Medical Care." The booklet includes information on how and where to get free and low-cost medical care under the Federal Hill-Burton program. Consumers can obtain a copy by sending \$5 to cover printing, postage and handling to: Financial Assistance Network - Free & Low Cost Medical Care Booklet, Dept. MCB-0725, P.O. Box 60848, Washington, DC 20039-0848. The information is also available at [www.FinancialAssistanceNetwork.org](http://www.FinancialAssistanceNetwork.org).

**AIYSE**  
American International Youth Student Exchange Program is seeking American high school students, ages 15-19, to participate in its foreign exchange program. Students will spend a semester or year with an European family or participate in a 4- to 6-week family stay abroad in the summer. Students are screened by AIYSEP school counselors and educators in local schools. To qualify, students must have evidence of maturity, superior character and knowledge of English and a foreign language. For more information, call 1-800-347-7575.

**T.O.P.S. #149**  
Take Off Pounds Sensibly (T.O.P.S.) #149 meets at 6 p.m. Monday at 513 E. Francis. Call 669-2389 for more information.

**T.O.P.S. #41**  
Take Off Pounds Sensibly (T.O.P.S.) #41 meets at noon Monday at 511 N. Hobart. For more information, call 665-3024.

**AL-ANON**  
Al-Anon will hold weekly meetings on Mondays and Wednesdays at 8 p.m. at 910 W. Kentucky.

**VFW CHARITY BINGO**  
The Pampa Veterans of Foreign Wars Post #1657, 105 S. Cuyler, will be having Charity Bingo every Sunday at 1:30 p.m. Doors open at 12 noon. The public is welcome. License No. 1-75-6037422-9.

**CELEBRATION OF LIGHTS**  
The Celebration of Lights project will hold regular workshop meetings at 6:30 p.m. on Monday nights at 822 E. Foster. Anyone wishing to help with the project is invited to attend any work session.

**PAMPA DUPLICATE BRIDGE CLUB**  
The Pampa Duplicate Bridge Club plays Monday at 1 p.m. and Thursdays at 10 a.m. at The Senior Citizens. For a partner, or more information, please call Marie Jamieson at 669-2945.

**PANHANDLE ALLIANCE FOR THE MENTALLY ILL**  
A support group for the mentally ill and family members meet the second Tuesday of the month at 7 p.m. at 218 N. Russell. This week we are discussing the negative symptoms of paranoid schizophrenia. There is no charge. For more information or if you need a ride call Sharon King, 665-2818.

**MONTHLY GOSPEL SINGING**  
First Pentecostal Holiness Church, 1700 Alcock, hosts a Gospel Singing from 2-4 p.m. every second Sunday of the month. Pastor Albert Maggard and the congregation of First Pentecostal cordially invites the public to attend. Singers and musicians from area churches participate in this informal congregational singing and enjoy various special vocal and instrumental presentations.

## Country Fair



(Special photo)

The Greater Area Pampa Chamber of Commerce will present "A Country Fair Evening on the Orient Express" from 5 p.m.-12 midnight at M.K. Brown Auditorium. Activities will include: a silent auction, a live auction, dinner, bingo and dancing. Tickets are \$15 in advance or \$20 at the door. For more information, call the Chamber, 669-3241. Above: Shirley Jernigan and Gwen Watson of the Chamber look over gift certificates to be auctioned during the Country Fair.



**DOMINO'S PIZZA**  
**665-8080**

1332 N. Hobart • Pampa

<b>CARRY-OUT</b> <b>MEDIUM 1 TOPPING</b> <b>3.99 + TAX</b> <b>LARGE 1 TOPPING</b> <b>5.99 + TAX</b> <small>Deep Dish Extra • Limited Time Offer</small>	<b>MEDIUM 1 TOPPING</b> <b>6.99 + TAX</b> <b>LARGE 1 TOPPING</b> <b>7.99 + TAX</b> <small>Deep Dish Extra Limited Time Offer</small>	<b>MEGA DEALS</b> <b>ANY MEDIUM PIZZA</b> <b>8.99 + TAX</b> <b>2nd Pizza only 6.99</b> <small>No Double Portions Limited Time Offer</small>
<b>DOUBLE DEALS</b> <b>2 MEDIUM 2 TOPPING</b> <b>11.99 + TAX</b> <b>2 LARGE 2 TOPPING</b> <b>13.99 + TAX</b> <small>Deep Dish Extra • Limited Time Offer</small>	<b>SIDE ITEMS</b> <b>BUFFALO WINGS 4.39</b> <b>BREADSTICKS 1.89</b> <b>CHEESYBREAD 2.99</b> <small>20 oz coke, diet coke, sprite .95 2 Liter bottle of coke 1.99</small>	<b>MEGA DEALS</b> <b>ANY LARGE PIZZA</b> <b>10.99 + TAX</b> <b>2nd Pizza only 8.99</b> <small>No Double Portions Limited Time Offer</small>
<b>2 LARGE PIZZA'S</b> <b>WITH 1 TOPPING</b> <b>10.99 + TAX</b> <small>Deep Dish Extra • Limited Time Offer</small> <b>OR 3 LARGE PIZZA'S</b> <b>15.99 + TAX</b>	<b>2 MEDIUM PIZZA'S</b> <b>WITH 1 TOPPING</b> <b>8.99 + TAX</b> <small>Deep Dish Extra • Limited Time Offer</small> <b>OR 3 MEDIUM PIZZA'S</b> <b>12.99 + TAX</b>	<b>MEGA DEALS</b> <b>ANY EXTRA LARGE PIZZA</b> <b>12.99 + TAX</b> <b>2nd Pizza only 10.99</b> <small>No Double Portions Limited Time Offer</small>

## HARVEST SALE

LAST 2 DAYS

<p style="text-align: center;">Men's Microfiber <b>JACKETS</b></p> <p style="text-align: center; font-size: 2em;"><b>34<sup>99</sup></b></p> <p style="text-align: center; font-size: 0.8em;">Reg. \$46</p> <p style="font-size: 0.8em;">*Tan *Black</p>	<p style="text-align: center;">New Shipment Cotton Jersey Knit <b>SHEET SETS</b></p> <p style="text-align: center; font-size: 2em;"><b>19<sup>99</sup></b></p> <p style="text-align: center; font-size: 0.8em;">All Sizes</p> <p style="text-align: center;">Large Selection Of Womens <b>BLOUSES</b></p> <p style="text-align: center; font-size: 2em;"><b>14<sup>99</sup> - 19<sup>99</sup></b></p> <p style="text-align: center; font-size: 0.8em;">Reg. 20-38 *Animal Prints *Denim *Solids</p>	<p style="text-align: center;">Microfiber <b>VESTS</b></p> <p style="text-align: center; font-size: 0.8em;">With Fleece Lining</p> <p style="text-align: center; font-size: 2em;"><b>19<sup>99</sup></b></p> <p style="text-align: center; font-size: 0.8em;">Reg. \$28</p>
<p style="text-align: center;">Animal Motif <b>HANDBAGS</b></p> <p style="text-align: center; font-size: 2em;"><b>19<sup>99</sup></b></p> <p style="text-align: center; font-size: 0.8em;">Reg. \$28-\$38</p>	<p style="text-align: center;">Stainless Steel <b>STOCK POTS</b></p> <p style="text-align: center; font-size: 2em;"><b>9<sup>99</sup></b></p> <p style="text-align: center; font-size: 0.8em;">All Sizes Each</p> <p style="font-size: 0.8em;">*8 Qt. *12 Qt. *16 Qt. *20 Qt.</p>	<p style="text-align: center;">Microfiber Print <b>JACKETS</b></p> <p style="text-align: center; font-size: 2em;"><b>29<sup>99</sup></b></p> <p style="text-align: center; font-size: 0.8em;">Reg. \$40</p>

DUNLAPS

669-7417  
Coronado Center  
Mon.Sat. 10-6



## UW helps make Girl Scout trips possible

This article is one in a series of articles of profiles on the agencies and organizations supported by Pampa United Way. This information is being provided by Pampa United Way as part of its 2000 "Lead the Way!" fund-raising campaign.

Canoeing in the panhandle? Yes! The Girl Scouts organized a canoe interest group in 1987. Approximately 75 girls from Pampa, Lefors, Borger, Dumas, Amarillo, Clarendon, Wellington, Stinnett and Fritch have developed their canoeing skills on area lakes. The first group of girls from Pampa went on a white water trip to the Guadalupe River in 1987. Since that trip, the group has canoed the Guadalupe River five times, the San Marcus three times, the Illinois River twice and the Lower



Mountain Fork and Little River once. The summer of 1999 the group took a little

different trip. They went to Utah on a science raft trip. A science institute took the girls on a five-day raft trip on the San Juan River. Once the Scouts put the rafts on the river, the only way off was at the end of the trip. All the gear was loaded on the rafts each morning and unloaded each evening. The girls put up tents, cooked meals and participated in science activities on the river at the end of each day. On the trip home, the group visited Four Corners where Utah, Colorado, New Mexico and Arizona meet and swam in Blue Hole, a scuba school pool, in Santa Rosa, N.M.

Girls 12 and older are welcome to learn how to canoe with the local Girl Scouts — a United Way Agency. Call the Girl Scout office, 669-6862, for more information.



(Special photo)

The local Girl Scouts rely on funds from the United Way. Approximately 75 girls from Pampa, Lefors, Borger, Dumas, Amarillo, Clarendon, Wellington, Stinnett and Fritch have developed their canoeing skills on area lakes. The first group of girls from Pampa went on a white water trip to the Guadalupe River in 1987. Since that trip, the group has canoed the Guadalupe River five times, the San Marcus three times, the Illinois River twice and the Lower Mountain Fork and Little River once.

## Report: Two million mothers had no child support in 1997

WASHINGTON (AP) — Nearly 2 million mothers raising children without a father in the home in 1997 failed to get any child support payments owed them by the absentee parent, the Census Bureau reported.

Advocacy groups contend that number alone highlights glaring weaknesses of a child support system in transition, in spite of other census figures that show more custodial parents were getting full-time jobs and leaving public assistance programs.

Of the 6.3 million U.S. mothers owed child support from absentee fathers in 1997, roughly 30 percent or 1.99 million women, did not receive any payments, according to the Census data released Friday. In 1993, 1.72 million women owed support, or 29 percent, did not receive payments.

About 42 percent, or 289,000 of the 674,000 fathers owed child support in 1997 from absentee mothers did not receive any payments. That was down from 353,000 deadbeat mothers, or 45 percent, in 1993, in the same category.

The Census survey, taken every two years, is the nation's only estimate of all child support paid and owed across the country, including private agreements between parents.

The Department of Health and Human Services has more recent figures, but only tracks cases that go through government collections systems.

"There have been some improvements in child support enforcement but it hasn't done enough," said Debbi Weinstein of the Children's Defense Fund.

"When you look at the figures of how much families with child support get, that can mean the difference between safe neighborhood or dangerous neighborhood, when it's collected," she said.

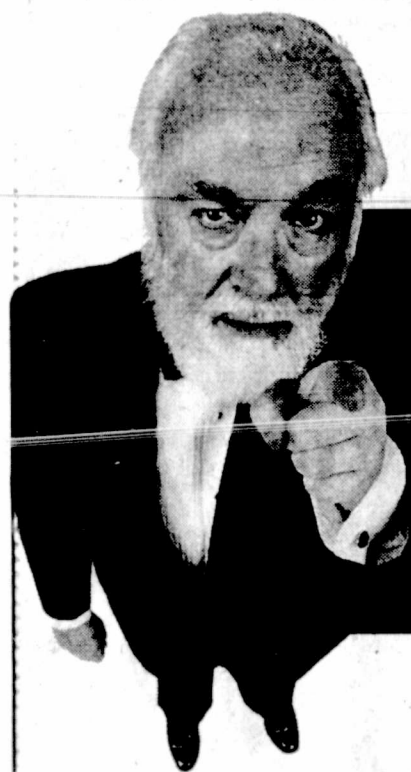
Child support enforcement was overhauled in 1996 as part of welfare reform. Since then there have been other new outreach initiatives — such as helping fathers who cannot afford to pay child support find jobs — that improved the situation, HHS spokesman Michael Kharfen said.

The full effects of reform won't be seen until results from the 1999 survey come out next year since many states took years to make necessary changes, Kharfen said.

"It shows early efforts to improving the child support system," he said. "But this is still very encouraging news which is consistent with what we're seeing."

"How much time are we supposed to give it, though?" countered Gordy Brilling of Phoenix, who has been divorced since 1992 and has custody of two teen-age daughters. "It's been a constant battle through the years" getting child support from her husband in Georgia. He is now battling cancer.

"We don't know how it all works, and that's part of our frustration," said Philene O'Keefe, of Indian Hills, Nev. Since divorcing in 1998 and gaining custody of her 3-year-old daughter, O'Keefe says she received a child support check this week, the first one since January.



## Are You Positive About Pampa?

If you are positive about Pampa, let us know. Bring in a typed article with a photo about your business, school, church, family or organization. The only rule -

### IT MUST BE POSITIVE!

The Deadline Is October 18<sup>th</sup> At Noon  
We Will Run Your Article On October 29<sup>th</sup>

If we have a tremendous response of articles some will run in subsequent editions.

Please ... no articles or photos on disk. Photos can be picked up at the Pampa News after the article is in the paper.

Bring Articles To:

**Pampa News**  
403 W. Atchison

**IT'S FREE!**  
No Late Entries  
Will Be Accepted

## Blues man



(Special photo)

Amarillo's Blues man, Stew Moss, is returning for a second engagement in Pampa. He will be performing at 8 p.m. tonight at the Coffee Shop, 220 N. Cuyler. Moss plays everything from traditional Blues or Zydeco to country blues and hokum. He recently appeared at B.B. King's Blues Club in the Big Apple and is preparing for an overseas trip to Europe where he plans to tour Germany. He has released two CDs, "Going Back to Texas" and "Big Red Gal." The concert is open and free to the public.

## THE Pampa NEWS

403 W. ATCHISON • PAMPA, TEXAS  
TELEPHONES: (806) 669-2525  
1-800-687-3348 • FAX: 669-2520

EMAIL: kbd@pan-tex.net • pamnews1@pan-tex.net  
This newspaper (UPS 781-540) is published daily except Saturdays, Thanksgiving and Christmas Days, by The Pampa News, 403 W. Atchison, Pampa, Tx. 79085. Periodicals postage paid at Pampa, Texas. Postmaster: Send address changes to the Pampa News, P.O. Drawer 2198, Pampa, Texas 79086-2198.

Publisher: L.W. McCall  
Assoc. Publisher-Editor: Kate B. Dickson  
Managing Editor: Nancy Young  
Circulation Manager: Dean Lynch

### SINGLE COPIES

Daily 50¢/Sunday \$1.00  
Member: Associated Press

### SUBSCRIPTION RATES

#### CARRIER HOME DELIVERY

COPYRIGHT NOTICE 1 yr. .... \$4.00 6 mos. .... \$2.00  
3 mos. .... \$2.00 1 mo. .... \$1.00

The entire contents of The Pampa News, including its logotype, are fully protected by copyright and registry and cannot be reproduced in any form for any purpose without written permission from The Pampa News.

#### MAIL SUBSCRIPTIONS

Mail In Roberts, Gray, Carson, Wheeler And Hemphill Counties in Texas  
1 yr. .... \$102.00 6 mos. .... \$51.00  
3 mos. .... \$28.50

#### Mail All Other Areas in U.S.

1 yr. .... \$114.00 6 mos. .... \$57.00  
3 mos. .... \$28.50

HOME DELIVERY  
All carriers are independent contractors and The Pampa News is not responsible for advance payments of two or more months made to the carrier. Please pay directly to the News Office any payment that exceeds the current collection period.

#### Single Copy Mail

Daily ..... \$1.50 Sunday ..... \$2.50  
No mail subscriptions are available within the city limits of Pampa. Mail subscriptions must be paid 3 months in advance.



# Communities split over Scout policy

NEW YORK (AP) — For 90 years, the Boy Scouts have helped foster togetherness and civic pride. Over the past few months, in communities across America, they have become a catalyst for conflict.

In June, the Supreme Court upheld the Scouts' ban on gay Scout leaders. Denouncing that policy as discriminatory, numerous school boards, city councils, corporations and charities have halted or reduced support for the Scouts.

Yet this fall there is increasing evidence of a backlash against that backlash. Parents, business executives and conservative political groups are speaking out against those who are retaliating against the Scouts.

"People are absolutely outraged that they would consider attacking the Boy Scouts," said Janet Folger, a conservative activist in Florida with the Center for Reclaiming America.

"This time they've gone too far, and it's going to hurt them," she said of the Fort Lauderdale City Commission's decision to cancel a grant to the Scouts. "We're going to be looking to remedy this assault through the electoral process."

Elsewhere around the country:  
—In Tempe, Ariz., the City Council reversed an attempt to keep city workers' donations from going to the Scouts through the United Way. The initial decision prompted a flurry of angry calls and e-mails, and the city's openly gay mayor, Neil Giuliano, is now targeted by a recall campaign.

—In Kentucky, numerous donors to the United Way of the Bluegrass threatened to stop contributions if the charity cut off its funding to the Boy Scouts. The United Way decided to continue supporting the Scouts.

—In Eugene, Ore., a school district's ban on Boy Scout recruiting at schools was lifted following vehement complaints. The superintendent and school board chairwoman apologized for not seeking the opinion from the public before the ban was imposed.

—In Indiana, a conservative organization is raising \$17,000 to help the Boy Scouts' Hoosier Trails Council offset the loss of funding from the United Way of Monroe County.

"People were not happy that anyone would put a political agenda ahead of helping boys," said Eric Miller, executive director of Advance America. "Maybe we here in Indiana can send a signal to other locations around the country."

Emotions are equally strong on the other side. This week, the Minneapolis school board said its schools can no longer sponsor Scout troops; more than two dozen troops with about 900 members must find new sponsors.

In Denver, a rabbi told his congregation he is protesting the ban on gays by returning scouting awards he earned as a youth. "I have always respected the Scouts, but they have made a terrible mistake," said Steven Foster.

"There are conflicting feelings around the country on this," said Eric Ferrero, a spokesman for the American Civil Liberties Union. "There's a lot of gray area, a lot of people in flux, trying to figure out what this means for their community and their children."

Gregg Shields, spokesman for the Boy Scouts of America, said the organization does not have updated figures on donations or membership that could measure the effect of the Supreme Court decision. But he said recent start-of-school recruitment drives went well, and he described overall support for the Scouts as solid.

"I'll see where a foundation somewhere might have cut funding to us, and a donor will drop in the council office and give an amount that makes up for the amount withdrawn," he said.

Shields was heartened by a 362-12 vote in Congress last month, when lawmakers rejected a proposal to strip the Boy Scouts of their federal charter.

"These are congresspeople going back to their districts for re-election," Shields said. "They know their constituents. They know how people feel."

He noted that presidential candidates Al Gore and George W. Bush have voiced support for the Scouts, and that federal officials ruled the Scouts could continue to hold jamborees on government land.

Rep. Tom Tancredo, R-Colo., has gone further, introducing what he calls the Scouts Honor Act. It seeks to protect the Scouts against punitive measures by any entity that receives federal funds.

"I don't think anybody expects radical change on the political level," said the ACLU's Ferrero. "The Boy Scouts have spent 90 years being thought of as part of the fabric of America. That doesn't change in 3 1/2 months."

## Lieberman criticizes Bush's leadership on his home turf

McALLEN, Texas (AP) — A tour of the colonias that many of Texas' poorest citizens call home — some without running water, sewers or electricity — caps Democrat Joseph Lieberman's tour of opponent Gov. George W. Bush's home state on Friday.

Lieberman says the dehumanizing conditions that about 400,000 people live in along the Mexican border is another area where the Republican presidential candidate has failed as a leader.

Lieberman said Bush cares so little he's never even visited a colonia, as the communities are called.

Bush spokesman Dan Bartlett said Thursday that the governor has campaigned across south Texas and has provided \$5.6 million in low-interest loans to colonia residents besides helping them with water and sewer connections through legislation passed in 1999.

"We think the most important thing is not where you've been, but what you've done," he said.

Lieberman, the Democratic vice presidential nominee, was starting Friday with a "Today" show appearance and was returning to Washington after touring the colonias. He takes off again Sunday night for a Detroit fund-raiser before campaigning in Florida on Monday.

Visiting Bush's former home town Thursday, Lieberman criticized the governor's environmental record and met with Odessa residents who have complained about health problems they attribute to pollution from a nearby industrial complex.

He said Texas has ranked worst in the country for releases of air pollutants during Bush's 5 1/2 years in office.

Not everyone agreed. Supporters of the city's industrial complex gathered to protest Lieberman's criticism. Angry callers to radio talk shows urged residents to tie purple ribbons on their vehicle antennas in support of Huntsman Polymers Corp.

## Texas relatives await word in wake of ship's bombing

UNDATED — Five Texas families with relatives at risk in the Mideast terrorist bombing of the warship USS Cole are grateful for updates from the Navy from half a world away in the wake of the attack, even though all the news hasn't been good.

Navy seaman Keisha Stidham of Austin, Texas was reported in critical condition Friday from the attack that killed six crew members and injured 34 others. Eleven crew members remain missing, including sailor Tim Gauna of Ennis and Ronchester Santiago of Kingsville.

A photo helped relay the news that Stidham, 19, was wounded Thursday as the ship entered port in Yemen on the Arabian peninsula.

A photographer with the Austin American-Statesman showed Marc and Michelle Poston a photo

of an injured female in a Yemen hospital. The victim in the photo, broadcast over Yemeni television and picked up by wire services, was Stidham, whose face was covered with bandages but was very recognizable, family members said.

"I just burst into tears again because of the joy," said Michelle Poston.

She had earlier received an e-mail from her daughter that read, "I'm alive, and I'm doing OK." Then a Navy official called to tell her that her daughter had been injured in the explosion.

"I just burst into tears after I read it," Poston said Thursday afternoon. "I've been feeling numb and crying all day."

She wept in relief Thursday night when she saw a picture of Stidham, a Leander High School graduate who had been stationed for 10 months in the Cole's supply area, with her eyes open and her

face partially covered with bandages.

## Discovery rocketing toward international space station rendezvous

SPACE CENTER, Houston (AP) — The crew of space shuttle Discovery rocketed toward the international space station, readying for four days of space-walking construction on the orbiting outpost.

Hurling along at 17,000 mph, the shuttle was to make its 240-mile-high hookup with the station Friday afternoon.

Discovery and its crew of six Americans and one Japanese are carrying two new segments of the growing space complex: a girder-like truss and a docking port. Beginning Sunday, astronauts will embark on four back-to-back spacewalks to hook up the new sections.

Commander Brian Duffy and pilot Pam Melroy may have to make the rendezvous without the

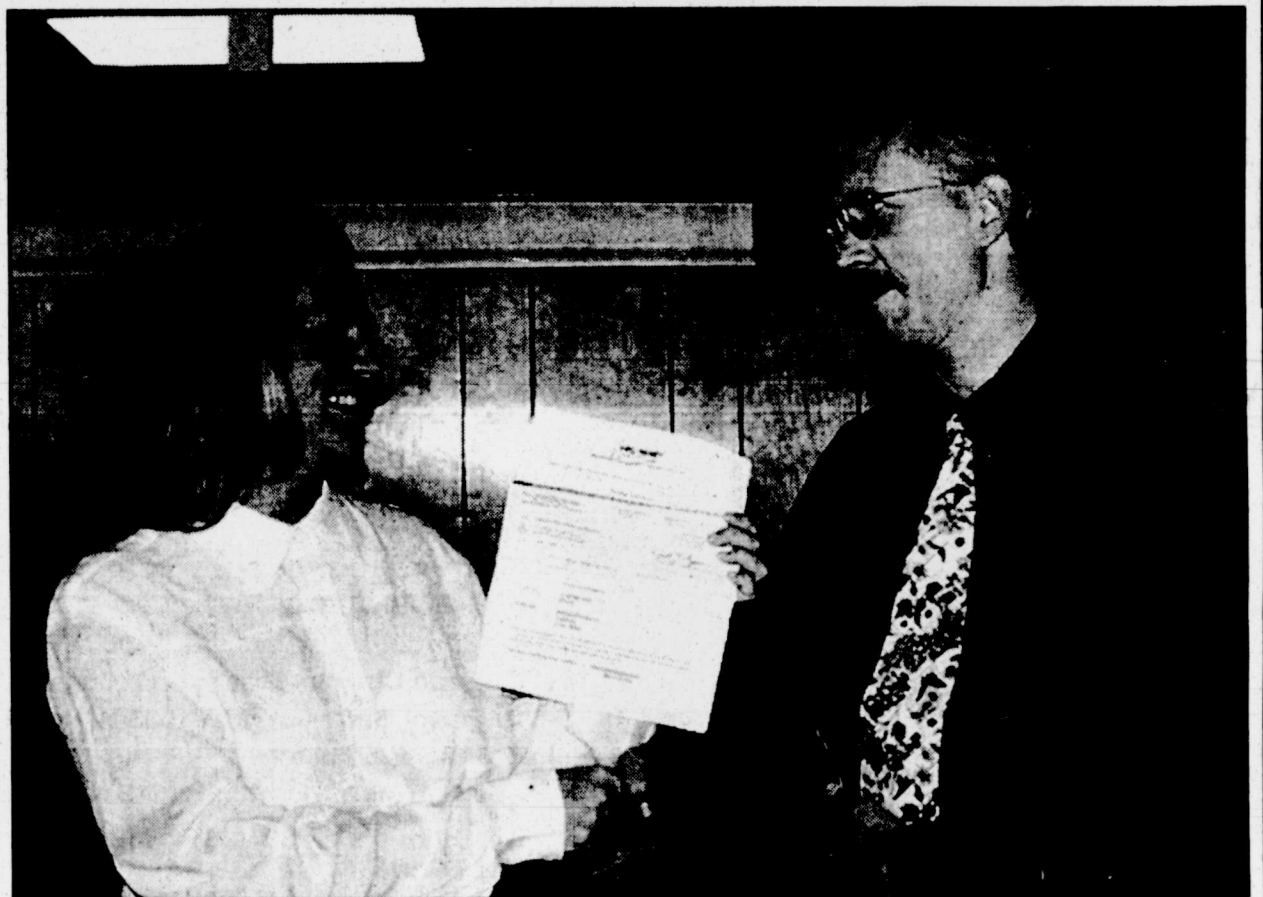
use of the main shuttle antenna, which began malfunctioning Thursday. Flight director Chuck Shaw said he did not expect that to be a problem, since the astronauts have practiced for such a failure and have backup navigational aids.

The dish-shaped antenna, normally used to beam TV images to Mission Control, doubles as a radar system during station approaches. NASA engineers were testing the antenna to see if its radar function could be salvaged in time for the rendezvous, but were not optimistic.

"The loss of the TV is going to be an irritant and it's disappointing because it's fun to watch," Shaw said. "But it is no way an impact to either safety or mission success."

Discovery, which finally launched Wednesday after three failed attempts because of parts and weather problems, is flying the 100th space shuttle mission.

## Fall Festival donation



(Pampa News photo by Nancy Young)

Jennifer Evans, president of the St. Vincent's de Paul Home and School Association, was presented with a \$300 grant from David Brown, right, assistant manager of Wal-Mart. The grant will be used to help with the Annual Fall Festival to be held Oct. 28 at the school. Proceeds from the event will go towards the purchase of a copy machine at the school and playground equipment for the students.

## Marshall estate dispute continues

HOUSTON (AP) — Former Playboy Playmate Anna Nicole Smith spent more time with her bodyguard than she did with her husband in the weeks after her marriage to aging millionaire J. Howard Marshall II, according to testimony by the late millionaire's son, E. Pierce Marshall.

Pierce Marshall says he hired private detectives to follow Smith. They reported that she even ran outside to meet the body guard in her underwear late one night.

A Harris County Probate Court jury will decide whether Pierce Marshall illegally prevented Smith, a former Houston stripper, and Pierce Marshall's brother, J. Howard Marshall III, from collecting inheritances. Pierce Marshall inherited nearly all of J. Howard Marshall II's

estate, worth as much as \$1.6 billion.

Smith and J. Howard Marshall II married June 27, 1994, when she was 26 and he was 89. He died in 1995 at age 90.

## Thursday, Friday & Saturday Specials

**Buy Any Entree At Regular Price And Get 2nd At 1/2 Price**

All Entrees Include Bakery Fresh Fruit & Ice Cream Sundaes

**The Singletree Restaurant**  
518 N. Hobart • 665-3666

**Salim A. Sagarwala, MD**  
*Pediatrician*

- **Medical School:** Dow Medical College, Karachi, Pakistan
- **Residency:** Interfaith-Maimonides, New York and New York Flushing Hospital
- **Experience:** Two Years as Attending Physician Neonatal ICU, Interfaith Medical Center, New York
- **Certifications:** Board Eligible in Pediatrics, Neonatal Advanced Life Support, Pediatric Advanced Life Support, Advanced Cardiac Life Support
- **Affiliations:** American Academy of Pediatrics, American Medical Association

**Now Accepting Patients Age Birth-18 Years**

1701 N. Hobart • Pampa, Texas  
For Appointment Information Call  
**806/665-5388**

**ALL FURNITURE ON SALE!! COME SEE OUR COMPLETE LINE OF RUSTIC FURNITURE!!**

<b>Simmons ONLY</b> Green Pillow Mattress Set 2 Piece Set <b>\$249</b>	<b>People's Choice Room Group</b> Sofa/Loveseat 2 Table Lamps 3 Oak Tables Designer Fabrics <b>\$699</b>	<b>Multi-Position Recliner</b> Dacron Fiber Filled Back Assorted Colors <b>\$77</b>	<b>ROCKING RECLINER</b> Assorted Colors Heavy Duty Mechanism <b>\$199</b>
<b>4-PC. Pine Bedroom Set</b> Full/Queen Headboard Chest \$199 Dresser, Night Stand & Mirror <b>\$58</b>	<b>Jewelry Armoire</b> Available in 2 Finishes Old World Craftsmanship <b>\$99</b>	<b>Mule Chest</b> Old World Craftsmanship <b>\$199</b>	<b>Santa Fe Pine Entertainment Center</b> <b>\$349</b>
<b>Whirlpool</b> 4 Cycle 2 Temp 1 Water Level 2 Cycle 1 Temp <b>\$173</b>	<b>Extra Large Capacity Laundry</b> 4 Cycle 2 Temp 4 Cycle 3 Temp Dryer \$229 <b>\$279*</b>	<b>MAMIAQ</b> Washer 10 Cycle 2 Speed 7 Cycle Quiet Pack Dryer \$298 <b>\$388</b>	<b>Whirlpool</b> Extra Heavy Duty Super Capacity Super 27 2 Speed 8 Cycle 3 Temp Dryer \$299 <b>\$399</b>
<b>Whirlpool</b> 21 Cu. Ft. Refrigerator 2 Half Shelves 1 Full Wire Shelf 2 Shelves in Door <b>\$477</b>	<b>Deluxe Apartment Refrigerator</b> similar to illustration <b>\$299</b>	<b>Dak Dinette</b> 42" Table 4 Windsor Chairs <b>\$199</b>	<b>Whirlpool</b> Super Heavy Duty Capacity Washer 3 Temp 5 Cycle <b>\$296</b>
<b>Whirlpool</b> Multi-Cycle On/Off Heated Dry Option <b>\$159</b>	<b>Whirlpool</b> ELECTRIC RANGE GAS RANGE <b>\$196</b>	<b>SONY</b> 35" Color TV Remote Control Special Features Advanced Color Viewfinder <b>\$499</b>	<b>SONY</b> 25" Color TV Remote Control Special Features Limited Quantities <b>\$174*</b>
<b>RCA</b> 52" Big Screen Stereo 2 Tuner Pic-in-Pic Remote Control <b>\$1398</b>	<b>RCA</b> 31" Color TV Stereo TV <b>\$388</b>	<b>RCA</b> 35" Color TV Remote Control Special Features <b>\$644*</b>	<b>TOSHIBA DVD</b> TWIN TRAY PLAYER <b>\$274</b>

Limit One Sale Item Per Family. Some items are limited quantities. Not responsible for typographical errors. Lifetime Price Guarantee excluded on all mail orders. For every product we sell, we'll beat any legitimate price from a local store stocking the same new item in a factory-sealed box. Even after your purchase, if you find a lower price during the lifetime of the exact model, we'll refund the difference. Our Lifetime Price Guarantee is not applicable on bonus, free offers, special financing, DSS/DSS, rebates, one-of-a-kind, damaged, used cellular or other limited offers. \*After Mail In Rebate. After Factory Rebate. Similar To Illustration. Model May Vary.



# This Devotional Directory Is Made Possible By The Following Businesses Who Encourage All Of Us To Attend Worship Services

## Adventist

Faith Advent Christian Fellowship  
Grant Johnson.....324 Rider  
Adventist Seventh-day  
Mel Matthews, Minister.....425 N. Ward

## Apostolic

Pampa Chapel  
Rev. Ron Noble.....711 E. Harvester

## Assembly of God

Calvary Assembly of God  
Rev. Jerry Pollard.....Crawford & Love  
Carpenter's Church Assemblies of God  
Independent  
Fred C. Palmer, Minister.....639 S. Barnes  
Cornerstone Christian Center (White Deer)  
Robben Epperson, Pastor.....201 S. Swift St.  
First Assembly of God  
Rev. Michael Moss.....500 S. Cuyler  
New Life Assembly of God  
Harold & Wendy Eggert.....1435 N. Sumner  
Skellytown Assembly of God Church  
Rev. Danny Trussell.....411 Chamberlain

## Baptist

Barrett Baptist Church  
Rev. J.C. Burt.....903 Beryl  
Bible Baptist Church  
Bob Hudson, Pastor.....500 E. Kingsmill  
Calvary Baptist Church  
Rev. Richard Bartel.....900 E. 23rd St.  
Central Baptist Church  
Dr. Derrell Monday, Pastor  
.....Starkweather & Browning  
Fellowship Baptist Church  
Charles Lowry, Pastor.....217 N. Warren  
First Baptist Church  
Rev. Randy White.....203 N. West  
First Baptist Church (Mobeetie)  
.....Mobeetie Tx.  
First Baptist Church (Lefors)  
Lewis Ellis, Pastor.....315 E. 4th  
First Baptist Church (Skellytown)  
Fines Marchman.....306 Roosevelt  
First Baptist Church (Groom)  
Byron Williamson.....407 E. 1St.

First Baptist Church (White Deer)  
John Collis, Minister.....411 Omohundro St.  
First Baptist Church (McLean)  
Pastor James Martindale.....206 E. 1st St.  
First Free Will Baptist  
Rev. Tom Smith.....731 Sloan St.  
Grace Baptist Church  
Rev. Gene Burnham.....824 S. Barnes  
Highland Baptist Church  
Paul Nachtigall, Pastor.....1301 N. Banks  
Hobart Baptist Church  
Rev. Jim Powell.....1100 W. Crawford  
Iglesia Bautista Emmanuel  
Bilingual  
Dr. Jimmy Flynn, Pastor.....1021 S. Barnes  
Macedonia Baptist Church  
Rev. I.L. Patrick.....441 Elm. St.  
New Hope Baptist Church  
Rev. Thomas J. Patterson.....912 S. Gray  
Primera Idlesia Bautista Mexicana  
Rev. Heliodoro Silva.....1541 Hamilton  
Progressive Baptist Church  
Rev. Bob Davis.....836 S. Gray  
Trinity Baptist Church (McLean)  
Pastor: James Mantooth. 603 Commerce St.

## Catholic

Sacred Heart (White Deer)  
Monsignor Kevin Hand.....500 N. Main  
St. Mary's (Groom)  
Father Neal Dee.....400 Ware  
St. Vincent de Paul Catholic Church  
Father John Valdez.....810 W. 23rd

## Christian

Church of the Brethren  
.....600 N. Frost  
First Christian Church (Disciples Of Christ)  
Senior Pastor Barry Loving ...1633 N. Nelson  
Hi-Land Christian Church  
Mike Sublett, Minister .....1615 N. Banks

## Church of Christ

Central Church of Christ  
Tom Russell, Minister.....500 N. Somerville  
Church of Christ (Lefors)  
Rick Pierce.....215 E. 3rd

## Church of Christ

Tim Walkar, Pulpit Minister  
.....Mary Ellen & Harvester  
Church of Christ (Groom)  
Dale Meadows.....101 Newcome  
Church of Christ (McLean)  
Jim Reyna.....4th and Clarendon St.  
Church of Christ (White Deer)  
Don Stone.....501 Doucette  
McCullough Street Church of Christ  
Frankie L. Lemons, Minister 738 McCullough  
Skellytown Church of Christ  
Kenneth Burkett, Preacher.....108 5th  
Wells Street Church of Christ.....400 N. Wells  
Westside Church of Christ  
Michael Gibson, Minister....1612 W. Kentucky

## Church of God

Church of God  
Rev. Gene Harris.....1123 Gwendolen

## Episcopal

St. Matthew's Episcopal Church  
Rev. Jacob S. Clemmens ....721 W. Browning

## Gospel

Brianwood Full Gospel Church  
Rev. Lynn Hancock.....1800 W. Harvester  
Open Door Church of God in Christ  
Elder H. Kelley, Pastor.....404 Oklahoma

## Jehovah's Witness

.....1701 Coffee

## Lutheran

Zion Lutheran Church  
Pastor Leif Hasskarl.....1200 Duncan

## Methodist

First United Methodist Church  
Rev. Todd Dyess.....201 E. Foster  
First United Methodist Church (Mobeetie)  
Rev. Gary Jahnel.....Wheeler & 3rd  
First United Methodist Church (McLean)  
Rev. Thacker Haynes.....219 N. Gray  
First United Methodist Church (White Deer)  
Rev. Robert P. Kelley.....101 W. 8th

## Groom United Methodist Church

Rev. Tom Moore.....303 E. 2nd  
Lefors United Methodist Church  
Rev. Jim Teeter.....311 E. 5th. Lefors  
St. Marks Christian Methodist Episcopal Church  
Rev. Raymond McKeever.....406 Elm  
St. Paul United Methodist Church  
Rev. Jim Teeter.....511 N. Hobart

## Mormon

Church of Jesus Christ of Latter Day Saints  
Bishop Roger L. Roundy.....29th & Aspen

## Nazarene

Church of The Nazarene  
Rev. Doug Yates.....500 N. West

## Non-Denominational

Bible Church of Pampa  
Pastor Don Yates.....300 W. Browning  
Iglesia Biblica Del Pueblo  
Alfonso Lozano, Pastor.....712 Lefors St.  
Iglesia Nueva Vida - New Life Church -  
Bilingual  
Pastor Pedro Hernandez..801 E. Campbell  
Redeeming Grace Mission  
Liz Sculthrop, Mission Pastor..422 West St.  
Salvation Army  
Lt. Matthew Branscum  
& Penney Branscum.....S. Cuyler at Thut  
Trinity Fellowship Church  
Lonny Robbins, Pastor.....1200 S. Sumner

## Pentecostal

Faith Tabernacle  
Rev. Ben Corbitt, Pastor.....610 Naida  
First Pentecostal Holiness Church  
Rev. Albert Maggard.....1700 Alcock  
HiLand Pentecostal Holiness Church  
Nathan Hopson, Pastor.....1733 N. Banks

## Presbyterian

First Presbyterian Church  
Dr. Edwin M. Cooley.....525 N. Gray

**Southwest Collision**  
2525 W. Hwy. 152 • Pampa  
669-9997

**Pampa Nursing Center**  
1321 W. Kentucky 669-2551  
Medicare  
Medicaid  
Special Alzheimer's Care

**FotoTime**  
107 N. Cuyler Pampa, Tx 665-8341  
Photo Processing Photo & Camera Accessories  
Clocks & Gifts

**PARSLEY'S SHEET METAL & ROOFING**  
214 E. Tyng 669-6461  
Pampa, Texas

**DIAMOND SHOP**  
"May God Be With You During The Week"  
Ken & Stephanie Rheams

**SONIC**  
1418 N. Hobart Pampa, Texas 669-3171  
America's Drive-In.

**WELDON HOLLEY, INC. DBA Culligan**  
314 S. STARKWEATHER 665-5729

**LARRY BAKER PLUMBING HEATING & AIR**  
2711 Alcock TACLA003191 665-4392

117 N. Cuyler • Pampa  
806-665-1251  
Serving The Texas Panhandle Since 1927

**EASY'S POP SHOP**  
729 N. Hobart 665-1719

**Titan SPECIALTIES LTD.**  
Hwy. 152 West Pampa, Texas 665-3781

**Century 21 Pampa REALTY INC.**  
312 N. Gray • 669-0007

**PAMPA OFFICE SUPPLY CO.**  
215 N. Cuyler 669-3353

**ParMichael & Whitley FUNERAL DIRECTORS**

**JOHN T. KING & SONS**  
918 S. Barnes 669-3711

**CLIFTON SUPPLY COMPANY**  
734 S. Cuyler 665-0089  
NEW & RE-BUILT QUINCY PUMPS

**POST OFFICE SERVICE STATION**  
123 S. BALLARD PAMPA, TX. 669-3101  
Tim & Deb Thomas Owners Over 20 Years Service "We Do Almost Anything"

**KEYES PHARMACY**  
"Your Key To Better Health"  
928 N. Hobart - Pampa, Texas  
669-1202 - Emergency 909-3509  
Merlin Rose R.Ph. - Owner - Pharmacist

**CURT B. BECK, P.E.**  
CONSULTING ENGINEER - POLLUTION AND ENERGY  
"When You Need To Know The Facts"  
HUGHES BLDG. SUITE 173A PAMPA, TEXAS 665-9281

**WAYNE'S WESTERN WEAR**  
1504 N. Hobart 665-2925

**Allison Agency**  
Helen Allison  
623 W. Foster - Pampa - 665-6816

**CHARLIE'S FURNITURE & CARPETS**  
7400 S.W. 34th 1533 Hobart 665-0995  
AMARILLO

2201 Perryton Pkwy. 669-CHIC (2442)  
Jay Gist Pampa, Texas Royce Jordan

**HAYDON-FORD CHIROPRACTIC CLINIC**  
103 E. 28th St., Pampa, Tx. 665-7261  
Dr. Mark W. Ford Jr

**M&H LEASING CO., INC.**  
1925 N. Hobart • Pampa, Tx. • 665-1841  
TACLA011838C

**GOODYEAR Ogden & Son**  
Pampa's Goodyear Distributor Since 1948  
501 W. Foster 665-8444

**DEAN'S PHARMACY**  
2217 Perryton Pkwy. 669-6896  
Jim Pepper Pampa

**LOOPER FENCE CO.**  
Myrel D. Looper & Lonny Fowler  
Price Road • Pampa, Texas • 806-665-1712

**ENGINE PARTS SUPPLY**  
416 W. Foster 669-3305

**THE GIFT BOX Christian Book Store**  
117 W. Kingsmill • 669-9881

**"Rock Bottom Prices"**  
1233 N. Hobart 665-0896  
Pampa, Tx.  
Albertsons Maxwell Carey - Store Director

CHEVROLET-PONTIAC-BUICK-GMC-OLDSMOBILE-CADILLAC  
**Calbertson - Sowers, Inc.**  
PAMPA, TEXAS  
805 N. HOBART 665-1665

**Texas PRINTING company**  
PHONE (806) 669-7941  
319 N. BALLARD PAMPA, TEXAS

1224 N. Hobart 806-665-0022 Member FDIC  
**NBC NATIONAL BANK OF COMMERCE**  
an office of First National Bank, Waukesha, WI

**SIMMONS BUSINESS SERVICES CORP.**  
Complete Computerized Bookkeeping & Tax Preparation  
1313 N. HOBART • PAMPA • 806-665-1677

**Pampa Concrete Co., Inc.**  
220 W. Tyng Ave. • 669-3111

**Coe's Machine Shop**  
115 E. Atchison 669-6651  
Alternators • Starters • Generators • Parts • Supplies  
Ted & Marilyn Powers - Owners

**H PAMPA REGIONAL MEDICAL CENTER**  
One Medical Plaza Pampa, Texas 806-665-3721

669-7171  
Borger Hwy.-Pampa  
Jerry E. Carlson, Pres.

**DORMAN TIRE & SERVICE CO., INC.**  
Herman Law 1800 N. Hobart Pampa, Tx. 665-5302

JESUS CHRIST, THE SAME YESTERDAY, TODAY, AND FOREVER

HEBREWS 13:8



# RELIGION

## Bible Church of Pampa to hold 'Bible conference'

Bible Church of Pampa will host a "Fall Bible Conference" with Dr. John Sproule Oct. 14-15. The conference will get under way at 7 p.m. Saturday at the church. Sproule will cover the following topics: "God for Us," 6 p.m., Saturday; "The Superiority of the New Covenant," 9:45 a.m., Sunday; "Three Solemn Exhortations," 10:45 a.m., Sunday; and "The Race of Life" and "The

Immutable Messiah," 6 p.m., Sunday. Dr. Sproule graduated from the University of Kentucky in 1954 as an electrical engineer and practiced engineering with General Motors from 1954-65. He resigned from GM in 1965 to enter the ministry. He received his Th.M. degree from Dallas Theological Seminary in 1969 and the Th.D. degree from Grace Theological

Seminary in 1981. He has held professorships at Southeastern Bible College in Birmingham, Ala. (1970-76), Grace Theological Seminary in Winona Lake, Ind., (1976-86), and Capital Bible Seminary in Lanham, Md., (1986-94). His field of expertise is New Testament Literature and Exegesis and his primary studies over the past 25 years have been New Testament Greek and Theology. He served as president of Washington Bible College and Capital Bible Seminary from 1991-94.

Sproule has conducted Bible conference ministries and pastors conferences in the USA and internationally. During his tenure at Capital Bible Seminary, he taught over 100 midshipmen at the U.S. Naval Academy an overview of the Epistle to the Romans and the Epistle to the Hebrews. His academic expertise is in the fields of theology and New Testament Greek studies. He is the primary translator of the "Epistle to the Romans" in the New King James Version and is the author of several articles published in theological journals and newsletters. In September 1980, he authored "In Defense of Pre-Tribulationism," published by



Dr. John Sproule

BMH Books, Winona Lake.

Dr. Sproule now resides near Montevallo, Ala., and is engaged in Bible conference ministries, writing for publication and adjunct professorships. The ministry was incorporated in April 1997 as John Sproule Ministries, Inc., with Sproule serving as president. The ministry address is 108 Moss Hill Lane, Calera, AL 35040, (205) 668-1516. His e-mail address is jsproule@narrowgate.net



The Rev. Ben Corbitt is the new pastor of Faith Tabernacle. Above: Corbitt with wife, Beverly, and daughter, Rebecca.

## Faith Tabernacle UPC announces new pastor

The Rev. Ben Corbitt recently joined Faith Tabernacle United Pentecostal Church, 610 Naida, as its new pastor.

Corbitt and his family come to Pampa from Springdale, Ark. The Reverend has filled various positions in ministry over the past six years including youth pastor, associate pastor, outreach minister and evangelist. For the past 10 years, Corbitt and wife Beverly have worked in children's ministries — children's choir, outreach ministry, Sunday school and puppet ministry.

Rev. Corbitt is licensed with United Pentecostal Church International.

The couple have a daughter, Rebecca, who will be attending Travis Elementary School.

## Trinity Fellowship to present services with Rev. Bart Pierce

The Rev. Bart Pierce will speak at Trinity Fellowship Church beginning at 10:30 a.m. Sunday, Oct. 22. The Reverend will also minister at 6 p.m. Sunday and at 7 p.m. nightly Oct. 23 and 24. Pierce is senior pastor of Rock City Church, located in Baltimore, Md., and his wife, Coralee, currently serves as pastoral assistant to her husband. Dedication services were held in August of 1995 for the church's 3,000-seat sanctuary.

The ministries Rev. Pierce has pioneered include:

—Adopt A Block, taking the city of Baltimore back block by block.

—Can Can Make a Difference, a feeding program for the impoverished that distributes over seven million pounds of food a year.

—Nehemiah House, a shelter for homeless men which has given a fresh new start to over 2,000 men formerly tormented by a life of drugs, alcohol and crime.

—The Hiding Place, a home which cares for pregnant women and women in crisis situations.

In addition to the many outreach programs, Pierce provides apostolic oversight to churches in the Ukraine and Madagascar as well as domestically here in the States. Pierce actively works to promote unity in the city of Baltimore by fostering relation-



Rev. Bart Pierce

ships with area pastors and their congregations.

Before moving to Baltimore in 1983 to pastor the Rock City Church, Pierce served as an associate pastor of the Rock Church in Virginia Beach, Va., where he was saved in 1972. While on staff, he functioned as youth pastor, Chaplain of the Academy and as an instructor of the Bible school.

Rev. Pierce served as the National Youth Coordinator for Washington For Jesus in 1980 and 1988 and as the National Pastor's Coordinator in 1996. He has appeared numerous times on CBN and has spoken in many churches and conferences throughout the world. Currently, he is authoring a book with Destiny Image.

## Church briefs

Grace Baptist Church, 824 Barnes, will sponsor revival services with Sam Davison, pastor of Southwest Baptist Church in Oklahoma City, Okla., Oct. 16-20.

## Being good for the right reason

When I was 15 or 16, Mama, Daddy and I were on our way to see our cousins in Knoxville, Tenn. We were just outside Knoxville in Alcoa, Tenn., a suburban industrial town, riding along quietly. It was at a time in my life when I was, for lack of a better word, religious. I went to church every time the doors were open, read my Bible every day, and looked for and noted its messages. I truly wanted to be and tried to be a better person.

From the Back Pew...

By Cheryl Berzanskis

As a Christian it is important to know why we do what we do from the simplest to the most profound act. While knowing Jesus' words may be a comfort on a cold hard day, to run one's life by the scoreboard is decimating to the soul because the motivation of the Spirit is absent.

Being good for the right reason, because the Spirit leads, is neither exhausting nor calculating. It is what makes this life satisfying in the earthly realm.

As we were riding along I was reading my Bible, the one our church gave to fourth graders, and it occurred to me that one could be good for all the wrong reasons.

Consider Jesus' promise to His disciples in Matthew 19: "And every one that hath forsaken houses, or brethren, or sisters, or father, or mother, or wife, or children, or lands, for my name's sake, shall receive an hundred-fold, and shall inherit everlasting life.

But many that are first shall be last, and the last shall be first."

It occurred to me that apparent unselfishness might be the most selfish state of being possible.

Could it be that one who appears humble, sacrificial and virtuous could — HORRORS! — be angling for a reward not of this world?

Could a saintly figure merely be taking a very long term view? That's when I realized that what passes itself for good might not really be so.

When one lays claim to a faith system, one tacitly agrees to the value system which accompanies it. There is the presumption of a Pilgrim's Progress journey toward virtue or at least the craving for virtue.

When we do not see virtue in another's life we call him a hypocrite or a toy Christian without much respect for the internal spirit (think King David here). We only believe the evidence of faith is manifested through works. But works motivated by rewards alone can sour the soul, too.

### National Council of Churches reports improved finances

NEW YORK (AP) — The National Council of Churches, which ended last year with a \$4 million deficit and severely depleted reserve funds, is reporting improved finances.

General Manager Barbara Ellen Black told an executive board meeting that an incomplete audit for January through June indicates the council brought expenses in line with

YOU ARE INVITED TO  
**First Presbyterian Church**  
 525 North Gray • Pampa  
**For NEW**  
**"INFORMAL" WORSHIP**  
(music will include contemporary, gospel, spirituals, folk tunes)  
**8:30 a.m.**  
**Every Sunday**

**ALL-YOU-CAN-EAT**

**STEAK AND SHRIMP FRIDAY**

**Sirloin Stockade**

All of this for just **\$8.49** FRIDAY 4 pm - close

- Grilled Sirloin Steak
- Peel N' Eat Shrimp
- Full Hot & Cold Buffets

If you missed our introductory offer of All-You-Can-Eat Grilled Sirloin, Peel N' Eat Shrimp, Full Hot and Cold Buffets, plus our Down Home Dessert Bar for just \$7.99 ... it's not too late! You can still take advantage of our Friday "Steak & Shrimp Night". Just use the coupon below and this incredible FEAST can be yours for just \$7.99 per person. This offer is only available at the Borger Sirloin Stockade.

**700 Borger Shopping Plaza, Borger • (806) 274-5880**

Use this coupon and take advantage of our introductory price of \$7.99 per person.

**ALL-YOU-CAN-EAT STEAK & SHRIMP!**  
**Every Friday Night**

- \* Grilled Sirloin
- \* Peel N' Eat Shrimp
- \* Full Hot & Cold Buffets

**\$7.99** WITH THIS COUPON

One coupon per person, per visit. Not valid with any other offer or coupon. Redeemable only at the Borger Sirloin Stockade. Offer expires: October 29, 2000.

**Mc's CAR WASH**

4 BAY SELF-SERVE AUTOMATIC

1811 N. HOBART 1901 N. HOBART

OPEN 24 HOURS

**Mc's Automatic Car Wash**  
 Brushless Wash & Spot Free Final Rinse

Automatic Teller Accepts:

- \* \$1, \$5, \$10 bills (includes new type bills)
- \* Quarters
- \* Credit Cards • Visa • Mastercard • Discover
- \* Mc's Tokens
- \* Mc's \$5 Token Note

Wash Levels	\$4	\$5	\$6	\$7
Undercarriage			X	X
Presoak	X	X	XX	XX
High Pressure Wash	X	X	X	X
Low Pressure Wax				X
High Pressure Clear Coat Conditioner		X	X	X
High Pressure Rinse	X			X
Spot Free Rinse	X	X	X	X

**A few helpful hints for a successful carwash**

- Pay at Automatic Teller - 24 hrs. every day.
- To Make your wash selection - Press "Red" Selection Button.
- Green entry light will begin flashing when unit is ready for you to enter.
- Do not allow vehicle to get up on guide rails.
- Pull forward until Red Spotlight comes on. Located at front left side.
- Put vehicle in park & leave engine running.
- Allow unit to complete all cycles.
- Do not exit until Exit light begins flashing.

WASHING Your Car with us is an exciting, clean, & refreshing experience — and a fun ride for the youngsters.

**Your Business Is Appreciated!**  
 Thanks - Lee & Katie McDonald







# SPORTS

## Harvesters battle stiff winds to beat Caprock

### Notebook

#### SOCCER

**PAMPA** — Soccer Booster Club parents need to place their orders for Harvester Soccer Center Circle Club Shirts by Wednesday, Nov. 1 at T-Shirts & More.

Call Mike Crain at 665-6302 if more information is needed.

#### GOLF

**PAMPA** — Hidden Hills Seniors Association held a 4-man scramble Wednesday.

Results are as follows:  
 First place: Jerry Covalt, Elmer Wilson, Jerry South and Bill Abernathy, 64.  
 Second place: Darrell Phillips, Travis Johnston, Callens George and Dale Hawkins, 65.  
 Third place: Larry Ogden, Don Riddle, Harvey Malone and K.T. York, 65.  
 Fourth place: Dale Haynes, Bob Swope, Jim Ashford and David Crossman, 66.  
 Closest to hole: Ted Jett, No. 15

#### BASEBALL

**SEATTLE (AP)** — When the Kingdome was blown up, the only disappointment for the New York Yankees is that they didn't get to flick the switch.

"We had such nightmares of the Kingdome," Andy Pettitte said Thursday, a day before starting against Seattle in Game 3 of the AL Championship Series. "It was like a vacation to come to this ballpark and play."

With the series tied 1-1, the Yankees aren't about to break out the surfboards and swimsuits. Still, it's a lot less mentally taxing than playing the ballpark where they blew a 2-0 lead in the 1995 ALCS.

"If I look back to list our disappointments, that would be at the top of the list," Paul O'Neill said after a relaxed workout on a sunny, but cool afternoon.

Following a seven-run eighth inning that carried the Yankees to a 7-1 win Wednesday, the Yankees are brimming with confidence again. Pettitte, 7-4 in postseason play, pitches against Aaron Sele, 0-2 with losses to the Yankees in 1998 and 1999.

#### BASKETBALL

**Pampa Boys Basketball Schedule**

**Nov.**  
 14-Trinity Christian, 8 p.m. at WTA&M Fieldhouse (Canyon); 18-Seminole, 3:30 p.m. at Plainview High School; 20-Tascosa, 7:30 p.m. away; 24-Frenship, 3:30 p.m. away; 28-Tascosa, 7:30 home; 30-Amarillo Tournament.

**Dec.**  
 5-Perryton, 7:30 p.m. home; 7-Vernon Tournament, to be announced. 12 - Clarendon, 7:30 p.m. home; 16-Odessa High, 5:30 p.m. away; 21-Dumas, 7:30 p.m. away; 28-Caprock Tournament.

**Jan.**  
 2-Caprock, 7:30 p.m. home; 5-Canyon, 7:30 p.m. away; 9-Randall, 7:30 p.m. home; 12-Borger, 7:30 p.m. away; 16-Palo Duro, 7:30 p.m. away; 19-Hereford, 7:30 p.m. home; 23-Dumas, 7:30 p.m. home; 26-Caprock, 7:30 p.m. away; 30-Canyon, 7:30 p.m. home.

**Feb.**  
 2-Randall, 7:30 p.m. away; 6-Borger, 7:30 p.m. home; 9-Palo Duro, 7:30 p.m. home; 13-Hereford, 7:30 p.m. away.

**PAMPA** — The Pampa Optimist girls basketball program is having signups on Oct. 17 through Oct. 19 from 6 p.m. to 7:30 p.m. in the Optimist Gym.

The signups are for girls in the third through sixth grades. Girls need to attend two of the three tryouts.

Cost is \$35. Coaches and referees are also needed. If interested, call 665-8120.

There will be a coaches meeting at the Pampa Optimist Club on Monday, Oct. 16 beginning at 8 p.m.

**AMARILLO** — The Pampa Harvester tennis team continued their march through district as they fought the wind and Caprock on Tuesday, walking away with a 14-5 victory.

"I was extremely pleased to end the dual with Caprock with only five matches lost," said Pampa coach Carolyn Quarles. "The extreme wind conditions were a great equalizer, so the circumstances were in Caprock's favor. They played well and pushed us to have to work hard, particularly in the girls' matches. The Pampa girls did a great job of fighting back and making adjustments."

The Pampa boys' team swept nine matches, increasing their record in district to 98-1.

The team is 11-0 in district with three matches remaining. Canyon, No. 2 in district, comes

### High School Tennis

to town on Saturday, with the dual starting at 10 a.m. on the PHS courts.

Players of the Week are Ashlei Jordan and David Thacker. Jordan, a junior, won her singles match against a tough German foreign exchange student by the score of 3-6, 6-1, 6-3. Thacker, a sophomore, also won a tough three-setter, 7-6, 2-6, 6-1, in singles.

The Pampa junior varsity improved their record to 7-0 with a 15-0 win over Caprock JV.

#### Pampa 14, Caprock 5 (varsity)

**Boys Singles**  
 Michael Cornelison (P) def. Sam Nanu, 6-1, 6-2.  
 Bryce Jordan (P) def. Caleb

Bonilla, 8-2.  
**Boys Doubles**  
 Cornelison-Jordan (P) def. Nanu-Gomez, 6-1, 6-1.  
 Spearman-Smith (P) def. Ramirez-Guzman, 6-3, 6-2.  
 Gerber-Thacker (P) def. Rollins-Hernandez, 6-0, 6-0.

**Girls Doubles**  
 Massey-Guzman (C) def. Kindle-Stucki, 6-2, 6-3.  
 Czuratis-Wutzel (C) def. Lee-Jordan, 6-0, 1-6, 6-4.

**Mixed**  
 White-Brooks (P) def. Bonilla-Aleman, 6-4, 6-4.  
**Pampa Varsity Two 15, Caprock JV 0**  
**Boys Singles**  
 Tyler Howard def. Jason Hernandez, 6-2, 6-1.  
 Stephen Nelson def. Tim West, 6-0, 6-3.  
 Zack Hucks def. Cory Hernandez, 6-0, 6-1.  
 Adam Etchison def. Hugo

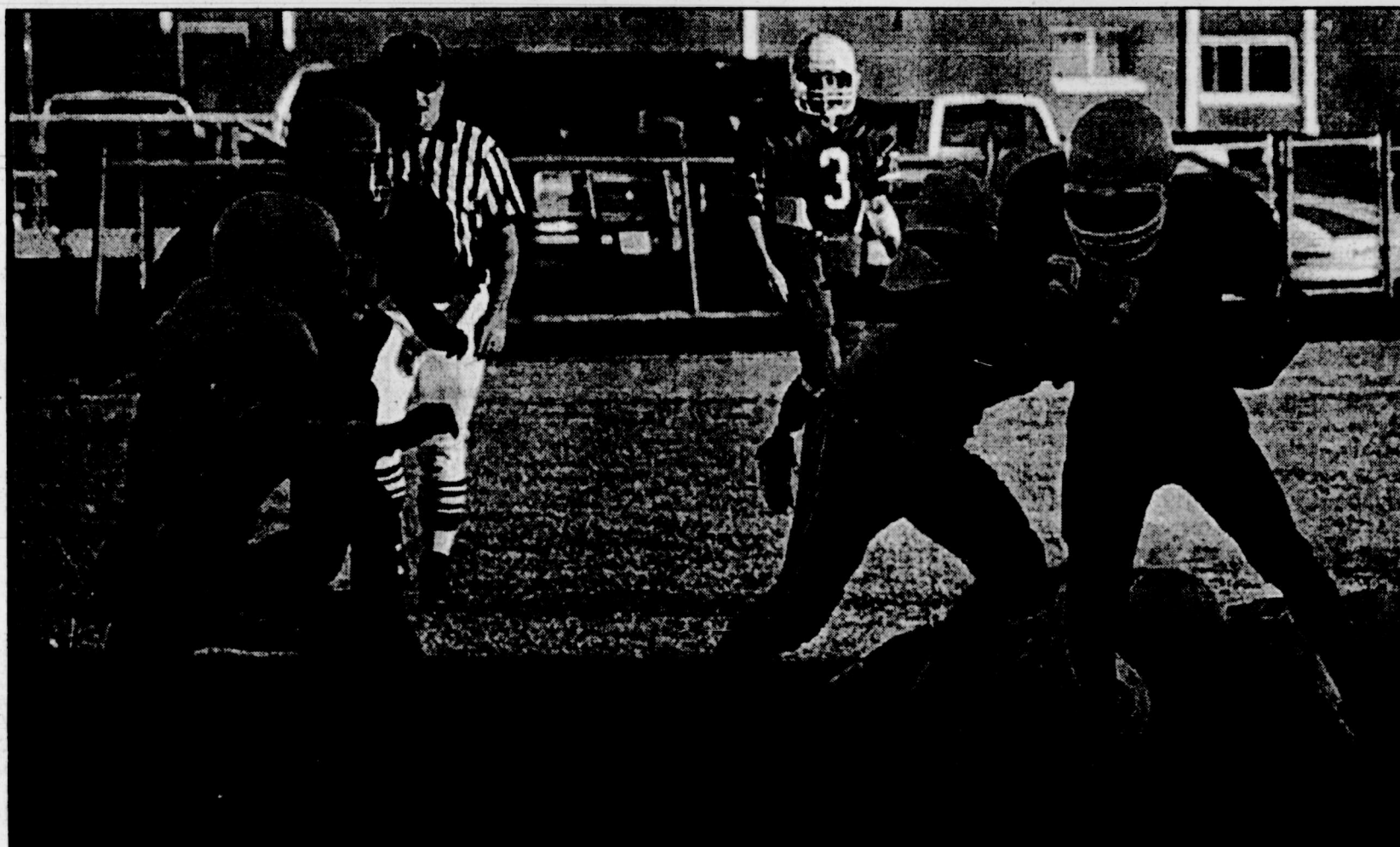
**Girls Singles**  
 Jennifer Massey (C) def. Brittany Kindle, 6-4, 6-4.  
 Shawntae Guzman (C) def. Michelle Lee, 6-4, 6-7, 1-6.  
 Sarah Czuratis (C) def. Stacie Carter, 6-1, 6-1.  
 Ashlei Jordan (P) def. Sarah Zimmer, 3-6, 6-1, 6-3.  
 Tara Jordan (P) def. Angelina Penna, 6-3, 6-3.  
 Helen Brooks (P) def. Bethany

Garcia, 6-0, 6-0.  
**Girls Singles**  
 Liz West def. Kim Kirchgessner, 6-0, 6-0.  
 Bonnie Holmes def. Brandi Lill, 6-1, 6-0.  
 Stephanie Nelson def. Jennifer Acklin, 6-0, 6-0.  
 Lauren Acker def. Loretta Jimenez, 6-0, 6-0.  
 Tiffany Neef def. Christina Garcia, 6-1, 6-0.  
 Julie Thompson def. Nikki Baldivia, 6-0, 6-0.

**Boys Doubles**  
 Nachtigall-Turner def. Ruiz-West, 6-4, 6-1.  
 Simon-Howard def. C. Hernandez-Garcia, 6-1, 6-0.

**Girls Doubles**  
 West-Acker def. Kirchgessner-Lill, 6-2, 6-1.  
 Holmes-Nelson def. Acklin-Jimenez, 6-0, 6-0.  
 Neef-Thompson def. Garcia-Baldivia, 6-0, 6-1.

### Breaking tackles



Tailback Cameron Seger of the Pampa 8th grade B team breaks tackles as he gains yardage against Borger in middle school football action earlier this week. The game ended in a 6-6 tie.

(Photo by Grover Black)

## New York Mets find a way to win, again

**ST. LOUIS (AP)** — Once Rick Ankiel zinged the first pitch of the game to the backstop, it was bound to be a wild one at Busch Stadium. And it was, with the New York Mets again finding a way to win at the end.

With Ankiel out of control, the Mets took control of the NL championship series. Jay Payton hit an

RBI single in the ninth inning and New York beat the St. Louis Cardinals 6-5 Thursday night for a 2-0 lead.

The Mets won for the fifth straight time in this postseason, with three of them coming in their final at-bat.

And this one was helped by an error from a first baseman. Sound

familiar?

An error by first baseman Will Clark on Robin Ventura's two-hop grounder — set up Benny Agbayani's first sacrifice bunt of the season. Payton followed with a single off losing pitcher Mike Timlin.

Clark's misplay did not rival Bill Buckner's error in Game 6 of the 1986 World Series, but the result was the same: Mets win.

The Mets' victory also kept them on track for a Subway Series, meaning they may not have to leave New York for the rest of the year. The Yankees and Seattle are tied at one game each in the ALCS.

Turk Wendell wound up with the win and Armando Benitez pitched the ninth for a save in a game that lasted one minute short of four hours. Leiter got a no-decision, leaving him winless in nine

postseason starts.

Timo Perez's mad dash around the bases helped New York take a two-run lead in the eighth.

The Mets' late-season sparkplug singled with two outs, took off on Matt Morris' full-count pitch and hustled home when Edgardo Alfonzo hit a soft single into the no man's land of shallow right-center field. Todd Zeile greeted reliever Dave Veres with an RBI single for a 5-3 lead.

The Cardinals came back to tie it in the bottom half, with a run scoring on John Franco's wild pitch and another on pinch-hitter J.D. Drew's double. After pinch-hitter Mark McGwire was intentionally walked, Wendell struck out Craig Paquette to end the inning.

### Tri-State Rodeo Results

#### Tri-State Rodeo at Boys Ranch

Breakaway: 1. Emily Smith, Canyon, 3.889; 2. Kaylee Holt, Gruver, 4.005; 3. Lindsey Milloy, Hereford, 4.706.

Calf roping: 1. Joe Boggeman, Hereford, 9.801; 2. Josh Donnell, Canyon, 12.559; 3. Tyler Hargrave, Canyon, 14.464.

Barrel racing: 1. Kaily Richardson, TPR, 17.309; 2. Emily Smith, Canyon, 17.409; 3. Amanda Schumacher, Hereford, 17.491.

Ribbon roping: 1. Justin Lehman, Vernon, 5.731; 2. Josh Donnell, Canyon, 5.887; 3. Monty Wood, Amarillo, 6.128.

Pole bending: 1. Robin Brown, Boys Ranch, 21.849; 2. Kaylee Holt, Gruver, 22.003; 3. Karen Brown, Boys Ranch, 22.108.

Bull riding: 1. Josh Pacheco, Dalhart, 72; 2. Joshua Valdez, Dalhart, 70; 3. Chad Hoffman, Pampa, 89.

Goat tying: 1. Kaylee Holt, Gruver, 3.990; 2. Emily Smith, Canyon, 9.544; 3. Lindsey Milloy, Hereford, 10.277.

Team roping: 1. Ty Crutchfield-Aaron Potter, Dalhart, 7.666; 2. Tyler Hargrave (Canyon) - Josh Donnell, (Amarillo); 3. Sterling Via, (Amarillo)-Justin Wright (Stratford), 8.319.

Steer wrestling: 1. Josh Donnell, Canyon, 8.188; 2. Troy Bryant, Canadian, 11.805; 3. Hunter Cure Williamson, Vernon, 14.954.

All-Around Boy: Josh Donnell, Canyon, 32 points.

All-Around Girl: (tie) Emily Smith, Canyon, 35 points; Kaylee Holt, Gruver, 35 points.

Now Serving Fridays & Saturdays

Menudo Small \$4.25 Large \$5.75

Mexican Shrimp Cocktail \$6.99



AMBER'S MEXICAN FOOD RESTAURANT

2014 N. HOBART • PAMPA, TX • 665-1173

## ALL ABOARD

Join Us At The  
**2000 COUNTRY FAIR**

**THE GREATER PAMPA AREA CHAMBER OF COMMERCE**

Presents

**A "COUNTRY FAIR" EVENING ON THE ORIENT EXPRESS**

Auction - Dinner - Dance  
 Saturday, October 14, 2000  
 Dinner and Silent Auction - 5:00 PM  
 Live Auction - 7:45 PM  
 Dance to Insufficient Funds Band -  
 9:00 PM to 12:00 AM  
 MK Brown Civic Auditorium  
 \$15.00 Per Person \$20.00 At The Door  
 For More Information Call  
 The Pampa Chamber of Commerce  
 At 669-3241

1<sup>st</sup> Drawing

2<sup>nd</sup> Drawing

3<sup>rd</sup> Drawing

4<sup>th</sup> Drawing

5<sup>th</sup> Drawing

6<sup>th</sup> Drawing

7<sup>th</sup> Drawing



# Ravens-Redskins figures to be low-scoring battle

By DAVE GOLDBERG  
AP Football Writer

In its last three games, Baltimore has allowed 10 points, all in Jacksonville last week, and seven were on a late touchdown drive engineered by Jamie Martin after he replaced Mark Brunell.

But the Ravens have scored just 27 points in their last two games — on nine Matt Stover field goals.

On Sunday, they travel 25 miles down the road to visit the Redskins, whose three-game winning streak is largely the work of their multimillion dollar defense.

Is this a scoreless tie waiting to happen?

Not quite. Las Vegas has made the over-under 34 1/2, not very much for a game that should be played in good weather. The Redskins are favored by 3 1/2, meaning if you play the exact odds, the score comes out something like 19-15 1/2, Washington.

But Washington has injuries on the offensive line, not good against one of the NFL's top front seven.

The Ravens, on the other hand, have Tony Banks at quarterback. Last week against the Jags, Banks looked like St. Louis Tony — the shaky QB who underthrew and overthrew receivers.

Banks will have trouble throwing against the Washington secondary — Champ Bailey, Deion Sanders and Darrell Green are the best cornerback trio in the league.

But Stephen Davis will have trouble running against the Baltimore front, particularly without Tre Johnson, Cory Raymer and probably Keith Sims. Irving Fryar, who despite

## Pro Picks

his 38 years has been Washington's best receiver, also is out.

Stover, 18-of-20 on field goals this season, is more experienced and probably more dependable than Kris Heppner, signed this week by the Redskins after going 6-for-9 in four games with Seattle.

That's the difference.  
RAVENS, 12-9

**Jacksonville (plus 6) at Tennessee (Monday night)**

Will playing the team that handed them their only three losses last season wake up the Jaguars?  
TITANS, 21-6

**Oakland (plus 2 1/2) at Kansas City**

The Raiders' secondary was shredded by San Francisco's Jeff Garcia. This week it's an ex-49er, Elvis Grbac.  
CHIEFS, 24-20

**Atlanta (plus 18) at St. Louis**

The Falcons had Chris Chandler in their first meeting and were at home. They still lost by 21, although they held the Rams to 41, two points under their average.  
RAMS, 49-17

**Minnesota (minus 6) at Chicago**

Dick Jauron won't bench Dave McNown. The Chicago fans keep booing.  
VIKINGS, 26-10

**New York Jets (plus 3) at New England**

The Patriots seem to have found it, whatever "it" is. Jets barely won at home, 20-19.

## PATRIOTS, 20-19

**Indianapolis (minus 5 1/2) at Seattle**

The end of a three-game road trip for Indy.  
COLTS, 27-21

**Cleveland (plus 12) at Denver**

The Browns continue looking for that elusive third win.  
BRONCOS, 27-10

**Cincinnati (plus 8) at Pittsburgh**

Bill Cowher goes back to Kent Graham, 0-3 at QB in place of Kordell Stewart, 2-0, against the Bengals ...  
STEELERS, 19-3

**San Francisco (plus 4 1/2) at Green Bay**

Powers no longer.  
PACKERS, 40-35

**Dallas (plus 4 1/2) at New York Giants**

The Giants can't beat the good teams, but they're near the top of the NFL's bundle of mediocrity.  
GIANTS, 20-9

**Philadelphia (minus 3) at Arizona**

Donovan McNabb learns from his mistakes.  
EAGLES, 22-13

**San Diego (plus 10) at Buffalo**

Time to get healthy.  
BILLS, 23-3

**Carolina (pick 'em) at New Orleans**

The Saints aren't half bad. Well, maybe half.  
SAINTS, 20-10

Last week: 5-9 (spread); 9-5 (straight up).

Season: 39-45-2 (spread); 52-34 (straight up).

# Oklahoma gets another chance to make big impression in Big 12

DALLAS (AP) — Oklahoma gets another chance to make another huge impression.

The eighth-ranked Sooners (5-0, 2-0 Big 12), a week after humiliating Texas 63-14, are on the road Saturday to play second-ranked Kansas State (6-0, 2-0) in a game matching the nation's two highest-scoring teams.

In other Big 12 games Saturday, top-ranked Nebraska (5-0, 2-0) plays at Texas Tech (5-1, 1-1); No. 25 Texas (3-2, 1-1) goes to Colorado (1-4, 1-1); Iowa State (4-1, 1-1) is at Oklahoma State (2-3, 0-2); Baylor (2-3, 0-2) is home against Texas A&M (3-2, 1-1); and Kansas (2-3, 0-2) plays at Missouri (2-3, 1-1).

Kansas State leads the nation in scoring 51.3 points per game; the Sooners are next at 47.8. And both are coming off big wins — Kansas State over Kansas 52-13; and Oklahoma over No. 25 Texas.

Oklahoma has dominated the overall series 63-16-4, but Kansas State has won the last five games. The two teams haven't played since 1997, when the Wildcats won 26-7 during the first of their three straight 11-win seasons.

The Wildcats provide a stiff challenge, especially at home where they have won 25 straight games.

Before Kansas State won the last five games in the series, Oklahoma had won 22 straight games. The Sooners also won 34 straight until K-State won consecutive games in 1969 and 1970.

Texas Tech, which has allowed just 59 points in six games this season — a Big 12 best — plays top-ranked

Nebraska, which is averaging 42 points a game.

Nebraska has won all five previous meetings with Texas Tech, including a 29-0 victory when they last met in 1997. With a victory, the Cornhuskers become bowl eligible for an NCAA-record 32nd consecutive season.

A week after its embarrassing loss, Texas plays a team it hasn't beaten since 1975. The Longhorns have lost its last six games against Colorado, including 47-30 when the two teams last played in 1997.

While the Longhorns were losing to Oklahoma last week, Colorado was snapping its season-opening four-game losing streak with a 26-19 victory at Texas A&M.

Iowa State tries to rebound from its first loss of the season, 49-27 to Nebraska in a game the Cyclones trailed just 21-20 early in the fourth quarter. Oklahoma State has lost three straight games.

## Tech center to miss up to 6 weeks with broken wrist

LUBBOCK, Texas (AP) — Texas Tech center Andy Ellis has broken his right wrist, but could be back in time for the season opener.

The 6-foot-11 junior, who missed half of last season with a dislocated left shoulder, was hurt in an accident at his home.

Coach James Dickey said Ellis will miss five or six weeks of practice.

"We just want to be cautious

The ISU-OSU game features the league's top two rushers, Iowa State's Ennis Haywood (128.4 ypg) and Oklahoma State's Reggie White (117.6 ypg).

A week after having its 22-game home winning streak snapped by Colorado, Texas A&M hits the road for a chance to extend its 14-game unbeaten streak against Baylor. The Aggies are 13-0-1 since Baylor won 20-15 in the 1985 game.

The Bears, coming off a 28-0 loss to Texas Tech, are expected to use their third different starting quarterback. Freshman Kerry Dixon is expected to replace Guy Tomcheck, who took over when Greg Cicero broke his collarbone.

Missouri and Kansas continue the oldest and one of the closest rivalries west of the Mississippi River when they play for the 109th time since 1891. The home-standing Tigers have a 50-49-9 series lead.

with him and make sure he's ready for the season," Dickey said.

The Red Raiders, who open practice Saturday, start the season Nov. 22 at home against Prairie View.

They have exhibition games Nov. 13 and 16.

Ellis averaged 16.9 points and a team-best 8.9 rebounds in 14 games as a sophomore. He averaged 9 points and 4.9 rebounds as a freshman.

# Pampa Special Olympians compete in Borger Bowling Tournament

BORGER — Recently, 22 Special Olympians traveled to Borger to participate in their Invitational Bowling Tournament.

Liberty Bloxom, Cody Dyer and Dicky Don Hendricks were first-place medal winners.

Winning second-place medals were Gary Carr, Howard Eblin, Amy Hammer, Mindy Hervey, Jessie Lopez, Taisey Phillips,

Jennifer Roden and Ameer Street.

Bringing home the bronze medals were Jaime Arebalo, Lisa Busby, Todd Carter, Hector Estrada, Shawn King, Eric Knott, Robert Lavoto, Mark McMinn, Cordell Schneider, Donald Stuart and Raul Soriano.

Coaches for the bowlers were Cindy Cooper, Troy Owens, Cindy Mote and Ron Sinyard. Helpers on the trip were Eva

Isbell, Jackie Hendricks and Linda Beth Salmon.

Harvester Lanes will be hosting the Special Olympic Area Bowling Tournament on Oct. 21. Everyone is invited to come to the bowling alley between 8:45 a.m. and 3:30 p.m. to watch the action. If you would like to volunteer to help with the tournament, you can call 665-2137 and leave your name.

# Texas Fishing Report

AUSTIN (AP) — Here is the weekly fishing report as compiled by the Texas Parks and Wildlife Department. (Report also available on Web as www.tfwishing.com.)

**CENTRAL**  
**BASTROP:** No report available.  
**BELTON:** Water murky; 54° low; Black bass are slow. White bass are slow on chartreuse and green slabs. Crappie are slow.

**BROWNWOOD:** Water murky; 73 degrees; 8.5° low; Black bass are slow on black/purple and white/green worms in 8 to 10 feet. Crappie are slow on minnows and jigs in 4 to 8 feet.

**BUCHANAN:** Water murky upper - clear lower; 74 degrees; 99.5° Black bass are fair to good early on Berkley threadin poppers, 1/8-oz silver titanium spinnerbaits and 1/4oz. Rat-L-Traps in 5 to 6 feet. Later, try Tequila Scoundrels on wacky rig or watermelon lizards in rrip or brush along 8 to 12 foot breaklines. Striped bass are fair to good in lower end drifting live bait, trolling bucktail jigs or vertically jigging in 24 to 35 feet. White bass are slow trolling shad-type crankbaits or casting white bucktails. Crappie are slow on live minnows or chartreuse soft plastics over brushpiles in 12 to 16 feet. Channel catfish are fair on minnows, worms and dip bait in 8 to 20 foot channels.

**CANYON LAKE:** Water clear; 73 degrees; 902.80°; Black bass are good early on white 1/8oz. titanium spinnerbaits, silver/blue titanium buzzbaits and clear Rat-L-Traps. Mid-morning work 8 to 15 feet along ledges with small profile, slow falling plastics. Striped bass are slow to 17 inches drifting live bait over submerged islands and humps at mid lake. White bass are fair in the mouths of south side creeks vertically jigging or using white bucktails in 12 to 25 feet off points. Crappie are fair on minnows and crappie jigs on outside edges of trees in 8 to 20 feet. Channel catfish are good on liver and punchbait in Fisherman's Corner. Yellow and blue catfish are fair on trotlines with live perch or goldfish upriver.

**COLEMAN:** No report available.  
**COLORADO RIVER:** Due to the severe drought, the Colorado River is extremely low. Very little fishing activity is taking place. All fishing is poor.

**DECATUR (WALTER E. LONG):** Water clear; 79 degrees; Black bass are fair to good on white flake worms and minnows in 3 to 4 feet. Striped bass are fair on minnows, spinnerbaits and spoons. White bass are slow. Hybrid bass are good to 20 inches on minnows in 10 to 15 feet. Crappie are good on minnows in 15 to 18 feet. Channel and blue catfish are good on shrimp and punchbait. Yellow catfish are slow.

**FAYETTE:** No report available.  
**GRANBURY:** Water stained on upper end, clear on lower end; 72 degrees; 3.13° low; Black bass are slow on jigs and spinnerbaits. All fish are slow.

**GRANGER:** Water murky; 74 degrees; 2.5° low; Black bass are fair on worms and small spinnerbaits. White bass are slow. Crappie are good on minnows and 1/16oz. maribou jigs in 3 to 12 feet. Channel and blue catfish are good to 12 pounds on cut shad and cut perch. Yellow catfish are good on trotlines baited with live perch.

**LBJ:** Water clear; 72 degrees; 824.90°; Black bass are fair to good on silver/green titanium buzzbaits or spinnerbaits, 1/4oz. Rat-L-Traps and watermelon scoundrels in 8 to 12 feet. Channel catfish with brush piles on breaklines. Hybrid bass are good on Texas rigged soft plastics and plastic jerkbaits in or close to rrip and on creek channel points. White bass are very good on white bucktail jigs along channels. Crappie are good on chartreuse soft plastics and white crappie jigs with spinners in brush piles in 16 feet. Channel catfish are fair to good on cutbait and dipbaits at mid lake and lower end in 8 to 15 feet. Yellow and blue catfish are good on liver perch on full moon cycles.

**NAVARRO MILLS:** Water clear; 82 degrees; 2.5° low; Black bass are slow. White bass are slow on topwaters, spoons and spinnerbaits. Crappie are slow on minnows. Channel and blue catfish are slow on shrimp and cutbait.

**PROCTOR:** No report available.  
**SOMERVILLE:** Water murky; 5° low; Black bass are poor. Striped bass are poor. White bass are fair on minnows and Rat-L-Traps. Crappie are good on minnows and jigs. Channel and blue catfish are good on worms, shrimp, stinkbait, minnows and doughbait. Yellow catfish are slow.

**SQUAW CREEK:** Black bass are fair on topwaters early, and mid-day on crankbaits. Sand bass are slow on soft plastics.  
**STILLHOUSE:** Water clear; 69 degrees; 3.5° low; Black bass are good on minnows. Striped bass are slow. White bass are good on minnows. Crappie are slow on minnows. Channel and blue catfish are excellent on chicken livers.

**TRAVIS:** Water clear; 76 degrees; 40° low; Black bass are good to 4 pounds on chrome topwaters, white spinnerbaits and red shad worms in coves in 5 to 10 feet. Striped bass are poor. White bass are poor. Crappie are fair to 1 pound on small minnows and tube jigs under docks in 10 to 18 feet. Channel and blue catfish are good to 5 pounds on bloodbait and shrimp off the points in 15 to 26 feet. Yellow catfish are poor.

**WHITNEY:** Water clear; 72 degrees; 7° low; Black bass are slow. Striped bass are fair on live shad. White bass are slow. Crappie are slow to 13 inches on minnows and jigs in 20 feet. Channel and blue catfish are good on night crawlers, liver and cutbait in 25 to 35 feet.

**NORTHEAST**  
**ATHENS:** Water clear; 72 degrees; 1.5° low; Black bass are good on topwaters, spinnerbaits and Carolina-rigs fished around the boat docks and pads. Crappie are fair on minnows. White bass are fair on Little George's and small topwaters fished close to the bank. Blue catfish are good on live and prepared baits fished on the edge of the creek channel in the main lake. Bream are good on nightcrawlers and shrimp.

**BOB SANDLIN:** Water fairly clear; 70 degrees; 1.25° low; Black bass are fair on red shad worms fished around the hydrilla. Crappie are fair to good on minnows fished in 16 to 18 feet. No reports of white bass. Catfish are good on nightcrawlers and chicken livers fished off the bottom in the west end of the lake.

**BRIDGEPORT:** Water fairly clear; 69 degrees; Black bass are fair on topwaters early and shad pattern crankbaits or white spinnerbaits during the day (look for the shad). Crappie are fair to good on minnows fished around the bridge in 10 to 15 feet. Catfish are fair on prepared baits fished off the bottom.

**CADDU:** Water clear; 68 degrees; 2.5° low; Black bass are good on chartreuse white spinnerbaits and Banded 200 & 300 series. Striped bass are fair on minnows and stumps over and on the edges of hydrilla. Carolina-rigged red bug salt frys are working along humps and ridges throughout the lake in 15 to 25 feet (second & third break-lines). The schooling largemouth are good on un-weighted white and albino flukes and chrome/blue Rat-L-Traps.

**GRAPEVINE:** Water lightly stained; 71 degrees; 7° low; Black bass are fair on chrome/blue spinnerbaits and 3/8oz. chartreuse spinnerbaits fished along edges of feeder creeks in 8 to 12 feet. Crappie are fair on minnows fished in brush and on rocky banks on the north side near Twin Coves in 15 to 18 feet. White bass are good on 2" pearl grubs, pearl/chartreuse maribou jigs and pearl/black Tailhummers fished on main lake humps near Dyer Slough in 15 to 22 feet. Catfish are fair on King's punchbait fished on drop-offs along both ends of the dam in 10 to 20 feet.

**JOE POOL:** Water fairly clear; 73 degrees; 1.41° low; Black bass are good on Carolina-rigs fished in the creeks around the lay-downs. Crappie are good on minnows and jigs fished over brushpiles in 12 to 14 feet. White bass are good on slabs and Little George's fished by the dam. Catfish are fair on nightcrawlers and chicken livers fished off the bottom.

**LAKE OF THE PINES:** Water clear; 70 degrees; 1° low; Black bass are slow on Carolina-rigged worms and crankbaits. Crappie are slow on minnows in 25 feet. Channel and blue catfish are good bank fishing with nightcrawlers and during the day drift fishing Canadian nightcrawlers and bloodbait in 10 feet. Bream are good on crickets and French fries around the docks.

**LAVON:** Water clear; 70 degrees; Black bass are good on white/chartreuse spinnerbaits, chrome/blue Rat-L-Traps and Pop R's fished early and late in 6 feet or less also try Texas-rigged chartreuse/pepper salt frys fished on main lake points, main lake banks and tree-lines in 8 to 12 feet.

**LEWISVILLE:** Water lightly stained; 71 degrees; 14.2° low; Black bass are fair on spinnerbaits, tube jigs and Carolina-rigged lizards fished in 5 to 15 feet. Crappie are slow to fair on minnows fished in 10 to 15 feet. White bass are fair to good on minnows and small spoons. Catfish are fair on nightcrawlers fished off the bank.

**MARTIN CREEK:** Water clear; 72 (cold side) degrees; 4° low; Black bass to 4.5 pounds are good on Carolina-rigged cotton candy French fries and chrome or bone Rat-L-Traps. Crappie are good on minnows and jigs. Channel and blue catfish are good on prepared baits fished in deep water around creek channels and stumps. Bream are good on worms fished in the shallows.

**MONTICELLO:** Water clear; 84 degrees; Black bass are good on un-weighted flukes and Pop R's fished early over and on the edges of grass. On windy days, Crappie are slow on minnows fished under the rips. Crappie are slow on minnows fished under the bridges in 10 feet. White bass are fair on white or yellow slabs fished off Robinson Park and by Yankee Creek. Hybrid strippers are slow. Catfish are fair on cut baits and hot dogs fished off the bottom.

**RAY ROBERTS:** Water clear; 70 degrees; 13.5° low; Black bass are fair on Carolina-rigged centipedes and french fries fished near structure with grass. Crappie are fair to good on tube jigs fished under a lip core around brushpiles. White bass are surface schooling. Catfish are good on prepared baits.

**RICHLAND-CHAMBERS:** Water lightly stained; 73 degrees; Black bass are fair on topwaters fished early. Crappie are good on minnows fished in 20 feet. White bass are slow on minnows and Rat-L-Traps fished in 15 to 25 feet. Blue catfish are fair on cut shad

fished in 30 feet. Yellow catfish to 22 pounds are fair on shad and perch fished in 30 feet.

**TAWAKONI:** Water fairly clear; 72 degrees; 1° low; Black bass are fair on white or white/chartreuse spinnerbaits with double willow blades fished light to cover. Crappie are fair on minnows fished around the bridges and boathouses. Striped bass are fair to good on topwaters and slabs.

**TEXOMA:** Water fairly clear; 68-70 degrees; Black bass are fair on spinnerbaits, Carolina-rigs and topwaters fished around the shoreline. Crappie are fair to good on minnows and jigs fished over brush piles. White and striped bass are fair on shad. Catfish are fair to fair to good on chicken livers and bloodbait fished off the bottom.

**TYLER:** Water clear; 71 degrees; Black bass are slow on deep diving crankbaits and crawfish pattern craw worms fished over humps. Crappie are excellent on minnows fished by the new water intake. Catfish are good on worms, shrimp and Magic Bait fished in the shallows. Bream are excellent on red wigglers fished from the bank.

**WRIGHT PATMAN:** Water off color; 70 degrees; Black bass are fair on black/blue worms and topwaters fished early. Crappie are good on minnows fished over brush piles off Rocky Point. Hybrid strippers are fair on Rooster Tails fished behind the floodgates. Catfish are good on doughbaits and nightcrawlers fished in the river.

## SOUTHEAST

**CONROE:** Black bass are good on spinnerbaits and crankbaits along rrip rap rocks, in the main lake and off secondary points in 8 to 14 feet. White bass are fair on Texas rigged watermelon lizards and plum craw worms. Crappie are good on minnows and jigs around brush piles in 12 to 15 feet. Catfish are good on prepared baits.

**GIBSONS CREEK:** Black bass are good on spinnerbaits and crankbaits in shad and crawfish patterns around the lily pads. Crappie are fair on minnows over brushpiles. Catfish are fair along the creek channel edges in 8 to 18 feet.

**HOUSTON COUNTY:** No report available.  
**LIVINGSTON:** Water clear; 76 degrees; Black bass are very good on soft plastics, spinnerbaits and crankbaits in 2 to 6 feet. Striped bass are slow on Rat-L-Traps. White bass are slow on little georges, hellbenders, charlie slabs and pet spoons in 3 to 13 feet. Crappie are good on minnows in 6 to 12 feet. Blue catfish are good, especially on trotlines. Yellow catfish are good on perch.

**SAM RAYBURN:** Water clear; Black bass are good on jigs with gator pups and rigs as trailers, watermelon plastics and topwaters along grass edges. Small crankbaits in shad colors are working well early in 8 to 14 feet.

**STEINHAGEN:** No report available.  
**TOLEDO BEND:** Water clear; 88 degrees; 166.8°; Black bass are good on topwaters, shallow crankbaits, traps, spinnerbaits and plastics around the mouths of creeks, along main lake ridge points and river channel ledges. Deep diving crankbaits in shad colors and soft plastics in greens and reds are working well. White bass are good on slab spoons and Rinky Dink talkspinners along river channel sandbars in 16 to 20 feet. Crappie are good on jigs and shiners over brushpiles along the river channel ledges in 16 to 20 feet.

**SOUTH**  
**AMSTAD:** No report available.  
**BRAUNING:** Water murky; 84 degrees; lake level normal; Black bass are fair to 4 pounds on plastic worms, deep diving crankbaits and spinnerbaits in 10 to 15 feet. Striped bass are fair to 3 pounds on liver and spoons in 15 to 20 feet. Red drum are fair to 10 pounds on crawfish, Rat-L-Traps and shad. White bass are fair on minnows. Yellow catfish are good to 3 pounds on cheesebait, shad and liver in 10 to 15 feet. Blue catfish are good to 3 pounds on shad, minnows and liver in 10 to 15 feet.

**CALAVERAS:** Water murky; lake level normal; Red drum are excellent to 29 pounds on spoons and Rat-L-Traps in 5 to 10 feet. Channel catfish are fair to 15 pounds on shad or chartreuse plastics in 15 to 20 feet. Blue catfish are fair to 10 pounds on night crawlers and bloodbait in 15 to 20 feet. Yellow catfish are fair to 15 pounds on shad and bloodbait in 15 to 20 feet.

**CHOKE CANYON:** Water clear; 72 degrees; 235° low; Black bass are fair on Carolina rigged watermelon seed and red shad color worms and deep diving crankbaits in shad or chartreuse colors in the lower end of the lake off the points, humps and ridges in 10 to 15 feet. White bass are good on live minnows, jigging spoons and crankbaits near the dam. Crappie are fair on live minnows near the dam. Catfish are fair on cheesebait on the South Shore Flats and off the points and flats in 3 to 8 feet. Trotlines and juglines are improving.

**COLETO CREEK:** No report available.  
**FALCON:** Water clear; 80 degrees; 52° low; Black bass are good on spinnerbaits and soft plastics in black/none, black/chartreuse and chartreuse pepper in the hardwoods in the creeks and on the main lake. White bass are good on crankbaits in freiger and red and on soft plastics in watermelon, junebug, and black/none. Mexican licenses and boat permits are required to fish on the Mexican side of the lake. Boats can only be launched at the state park by the dam.

**PANHANDLE**  
**BAYLOR:** Water clear; 64 degrees; Black bass are fair on topwaters and spinnerbaits early and black/blue Carolina-rigged lizards during the day. Crappie are slow to fair on minnows and jigs. Catfish are fair on nightcrawlers.

**GREENBELT:** Water fairly clear; 60-62 degrees; Black bass are good on spinnerbaits fished in the shallows. Crappie are fair on minnows. White bass are good on chrome Rat-L-Traps and slabs. Walleye are good on Rat-L-Traps and slabs fished in 10 to 22 feet. Smallmouth bass are good on jerkbaits and spinnerbaits. Channel and blue catfish are slow. Yellow catfish are slow.

**MACKENZIE:** Water fairly clear; 62 degrees; Black bass are fair on buzzbaits, black/blue spinnerbaits and topwaters fished in the coves. Crappie are fair on minnows fished in the coves around brush piles. White bass are good on small crankbaits fished in 15 to 20 feet. Hybrid strippers are fair on deep shad pattern diving crankbaits fished in 20 to 25 feet of water. Channel and blue catfish are slow on prepared baits. Yellow catfish are slow on trotlines baited with live perch.

**MEREDITH:** Water fairly clear; 61-63 degrees; Black bass are slow on white spinnerbaits and blue/black worms fished in the creeks around standing timber. Crappie are fair on minnows fished in 20 to 30 feet. Smallmouth bass are fair on spinners and chartreuse plastics in the lower end of the lake off the points, humps and ridges in 10 to 15 feet. White bass are good on live minnows, jigging spoons and crankbaits near the dam. Crappie are fair on live minnows near the dam. Catfish are fair on cheesebait on the South Shore Flats and off the points and flats in 3 to 8 feet. Trotlines and juglines are improving.

**ARROWHEAD:** Water clear; 69 degrees; Black bass are good on spinnerbaits and crankbaits fished near the Hettlerita bridge. Crappie are good on small minnows fished in 10 to 14 feet near the derrick and docks in the state park. White bass are fair on minnows and jigs. Channel and blue catfish are good on nightcrawlers. Yellow catfish are slow on trotlines baited with goldfish on the south end of the lake.

**BRADY:** Water slightly stained; 71 degrees; Black bass are fair on plastic worms and crankbaits fished in 5 to 8 feet. Crappie are poor on minnows fished in brush in 6 to 10 feet. White bass are good on crankbaits fished in 2 to 4 feet. Blue and channel catfish are fair on stink bait fished in 4 to 10 feet. No reports on yellow catfish.

**COLORADO CITY:** Water lightly stained; 69 degrees; Black bass are poor on minnows and spinnerbaits. White bass are poor on minnows. Channel and blue catfish are good on shrimp. Redfish are poor on shrimp and shad.

**FT. PHANTOM HILL:** Water slightly stained; 67-69 degrees; Black bass are good on spinnerbaits and minnows fished in 4 to 5 feet. Crappie are good on small minnows and white jigs fished in 8 to 9 feet near the dam. Sand bass are poor on minnows and jigs. Hybrid strippers are good on perch, goldfish and shad fished in 5 to 7 feet. Blue catfish are good on shad, perch, goldfish and carp fished in 3 to 4 feet. Yellow catfish are good on trotlines baited with goldfish set in 3 to 5 feet.

**HUBBARD CREEK:** Water lightly stained; 64 degrees; Black bass are good on topwaters fished around duck weed. Crappie are good on small minnows and jigs fished in 7 to 8 feet around brush piles. White bass are good on small spinner. No reports on hybrid strippers. No reports on channel catfish. Yellow catfish are fair on trotlines baited with live bait.

**KEMP:** Water slightly stained; 63 degrees; Black bass are poor fished in 2 to 10 feet. Sand bass are fair on minnows and jigs. Crappie are poor on minnows fished in



# Memos: New Jersey knew of racial profiling for years

By JOHN P. McALPIN  
Associated Press Writer

A 1996 memo to then-superintendent Col. Carl Williams showed that troopers had for years overwhelmingly stopped minority motorists more than whites. In a three-month period in 1994, 94 percent of New Jersey Turnpike motorists stopped by troopers from one barracks were minorities.

"At this point we are in a very bad spot," the sergeant who examined the police records wrote.

In another 1996 memo obtained Thursday, Williams wrote the word "No!" and drew an arrow

next to a recommendation that individual troopers be held responsible and subject to counseling for racial profiling.

It wasn't until last year that then-Attorney General Peter Verniero admitted some troopers routinely targeted minority drivers. At the time, federal investigators were looking into civil rights claims, and troopers said they were ordered to stop minorities to boost drug bust statistics.

Critics have said that Verniero, Williams and other state officials knew of the practice and did nothing to stop it.

In 1999, Gov. Christine Whitman fired Williams after he said in a newspaper interview that minor-

ity groups are more likely to be involved in drug trafficking. New Jersey also agreed to a settlement with the Justice Department and allowed an independent monitor to oversee the State Police.

Documents like those obtained Thursday — and others reported by The New York Times and the Record of Hackensack — appear to link Verniero to several meetings about racial profiling before his 1999 report detailing the practice. Verniero is now a New Jersey Supreme Court justice.

"Justice Verniero was asked all these questions during the course of the Legislature's racial profiling hearings," Whitman said Thursday. "He answered them in the fashion that he has always

answered questions, which was honestly and straightforwardly."

Repeated allegations of racial profiling met with a "pattern of denial" by state police that the problem existed, Whitman said. She said she did not know racial profiling was a fact until Verniero's report.

"That was both frustrating and disappointing, and it angered me, because we had been hearing a lot, we had been concerned about this, and yet there had been his consistent belief that this was not something that occurred, and I put my credibility on the line as well, saying that there was no racial profiling," she said.

## classifieds ...



Good Going ... Congratulations ... I Love You ... Say It With A

# HAPPY AD ... 15 Words Only \$10 Per Edition

Want more information ... call one of the Pampa News classified representatives today



Danny Cowan



Beverly Taylor

# ... 669-2525

<b>3 Personal</b> BEAUTICONTROL Cosmetics sales, service, makeupers. Lynn Allison 1304 Christine, 669-3848 SINGLE female seeks roommate to help with expenses. Modest 3 bedroom home. 669-9452.	<b>14t Radio/Tv</b> <b>RENT TO RENT</b> We have tvs, VCRs, camcorders, to suit your needs. Rent by hour, day, week. We do service on most major brand of tvs & VCRs. Call for estimate. Johnson Home Entertainment, 2211 Perryton Pkwy. 665-0504.	<b>21 Help Wanted</b> EXP. scraper operators needed for a construction job in the area. Also needed, a Form Carpenter / Concrete Supervisor for Industrial Construction jobs. For more info, please call personnel director at 806-274-7187. NEEDED evening shift cook's helper. Must be able to work week-ends. 30 hours weekly. Also day dishwasher for week ends only. 12 hours weekly. St. Ann's Nursing Home in Panhandle, Tx. 537-3194. Ask for Linda Miller or come by in person.	<b>57 Things To Eat</b> Custom Meat Processing 1/2 Beef, Pork Freezer Packs Clint Sons Processing 883-7831 White Deer <b>58 Sporting</b> KING Cobra II style irons 3-PW. Oversize heads, True Temper dynamic steel shafts, Golf Pride tour wrap grips, Knight golf stand bag, \$100 for all. 669-1729.	<b>69a Garage Sales</b> 2101 N. Christy Lots of misc Weather permitting Sat. 8:00 am-3:00 pm FOR Sale young nanny goat & baby. Call 806-826-3108.	<b>77 Livest./Equip.</b> FOR sale Feeder Pigs, \$25 ea. Call 883-2136 or 883-6242, White Deer. FOR Sale young nanny goat & baby. Call 806-826-3108.	<b>95 Furn. Apts.</b> Corporate Units New furniture, W.D. Bills pd. Lakeview Apts. 2600 N. Hobart 669-7682 EFFICIENCY. apt. \$225 mo., bills pd. Rooms \$20 day, \$80 wk. & up, air, tv, cable, phone. 669-3221.	<b>98 Unfurn. Houses</b> 1, 2, 3 bedroom houses for rent on HUD. 665-4842. NICE clean 3 br. house. C/H/A. 2114 N. Nelson 806-878-2016. 3 br. 2 bath. Call 665-4446. 3 bd. 1 bt. c/h/a (heat pump), att. gar., new paint \$335 mo. \$250 dep. 665-0524. 704 Magnolia. LEASE extra nice brick 3 br., 1 3/4 ba., dbl. gar., fpl., 2125 Lynn. \$700 + dep. 669-6467.	<b>103 Homes For Sale</b> 2522 Evergreen, 3/2, approx. 1900 sq. ft., lots of storage, fenced, stor. bldg. avail. 665-0079, 665-2450 HOUSE for sale: 2411 Fir. 4/2-2, 2060 sq. ft., new carpet & tile. \$97,500. 669-3141. NEAT 2 bdr., fpl. \$1200 dn., \$260 mo., + 1 & ins. or \$13,000 cash. 917 Barnard 665-6604, 886-5466 PRICE reduced, Grandview-Hopkins school, 4 acres & barn. 665-1536	<b>115 Trailer Parks</b> TUMBLEWEED Acres. 1st mo. rent free. Cellars, fenced, stor. bldg. avail. 665-0079, 665-2450 <b>116 Mobile Homes</b> "WHOLESALE to the Public" Show Home, 28x52 Lancaster, 3 br., 2 ba., total elec. Perfect for the beginning family. Call the Housing Professionals @ Nationwide Manufactured Homes 1-800-820-0103.
<b>5 Special Notices</b> ADVERTISING Material to be placed in the Pampa News, MUST be placed through the Pampa News Office Only.	<b>19 Situations</b> HOUSECLEANING. If interested call 665-7389 or 665-8914.	<b>NEEDED</b> evening shift cook's helper. Must be able to work week-ends. 30 hours weekly. Also day dishwasher for week ends only. 12 hours weekly. St. Ann's Nursing Home in Panhandle, Tx. 537-3194. Ask for Linda Miller or come by in person.	<b>60 Household</b> <b>JOHNSON HOME FURNISHINGS</b> Rent 1 piece or house full Washer-Dryer Ranges Bedroom-Dining Room Livingroom 801 W. Francis 665-3361	<b>INSIDE</b> Sale: Fri. & Sat. 8 a.m.-? 1220 E. Francis. No Early Birds! SALE: L&P Interiors, 110 S. Cuyler. Oct. 14, filing cabinets, desk & chair, rowing machine, van seat, sleeper sofa, 2 loveseats, TV, ant. furn, glassware, collectibles, Jr. drum set toy & games, drapery & upholstery, fabrics, shade, rods, verticals, mini blinds, lots more. 30%-60% off, 10am-4pm.	<b>FREE</b> kittens (4 with no tails), 6 wks. old, mother-Persian, father Manx. 669-2877. FREE 2 kittens (1 female, 1 male), 7 weeks old, litter box trained. 669-9862. 5 puppies, 5 1/2 wks. old, 1/2 Red Heeler & 1/2 who knows. 665-4331.	<b>ONE/TWO</b> bdr., furn./outfurn. All utilities paid, starting at \$250, \$100 dep. 610 Carr. 665-5436 LRG. efficiency apt., new carpet, water & gas pd. \$250, 665-4842. ONE/TWO bdr., furn./outfurn. All utilities paid, starting at \$250, \$100 dep. 610 Carr. 665-5436	<b>WANTED</b> responsible party to rent 2 bdr. house, 701 Bradley, Pampa. Will sell w/ reas. down payment. 248-7045. CLEAN, ready to move in, 2 br., stove/refrig., dining room, 1308 Garland, \$285. 665-8925.	<b>APPROX.</b> 1500 sq. ft. for rent. Perfect office or small business space. Will build-out to suit tenant. Perfect location across the street from Wal-Mart, 2216 N. Hobart, \$475 per mo. neg. Int. parties call 467-9600 in Amarillo.	<b>WHOLESALE to the Public</b> Show Home, 28x52 Lancaster, 3 br., 2 ba., total elec. Perfect for the beginning family. Call the Housing Professionals @ 1-800-342-0440.
<b>12 Loans</b> CASH For Notes we buy Owner-held mortgages/deeds RU collecting prmts. Why wait? Get lump sum now! 800-806-8946.	<b>BRENDA'S</b> Alterations: taking new customers, also accepting iron/laundry. 665-4737.	<b>SECRETARY</b> with oil and gas exp. Ability to do Railroad Commission reports a must. Some accounting exp. also needed. Please send resume to P.O. Box 2474, Pampa, Tx. 79066-2474.	<b>SALES</b> reps needed in your general area. Must enjoy working with merchants & be self motivated. Salary plus Commission plus Residual. Potential 35K-55K. Training in Amarillo. Fax resume to 505-332-4373 or call 505-332-4378.	<b>ADVERTISING</b> Material to be placed in the Pampa News MUST be placed through the Pampa News Office Only.	<b>INTERNET ACCESS.</b> The leading Internet Service provider in the Eastern Texas Panhandle. PAMPA CYBER NET 1319 N. HOBART PAMPA, TEXAS 806-665-8501	<b>ANTIQUE</b> Clock Repair, Auth. by Ridgeway & Howard Miller. Larry Norton, 669-7916 aft. 5.	<b>100 Rent, Sale, Trade</b> 2 or 3 bdr. houses for rent or sale. Low down payment, owner will finance. Call 669-9532.	<b>102 Bus. Rent. Prop.</b> OFFICE space for rent, 3 months free rent. 669-6841. APPROX. 1500 sq. ft. for rent. Perfect office or small business space. Will build-out to suit tenant. Perfect location across the street from Wal-Mart, 2216 N. Hobart, \$475 per mo. neg. Int. parties call 467-9600 in Amarillo.	<b>121 Trucks</b> REDUCED 95 Ford F150 XLT, ext. cab, 4x4, tow pkg., 45k, keyless entry, \$15,000.00. Super nice. 806-826-5907 aft. 5.
<b>14b Appl. Repair</b> AUTH. service on all GE, Whirlpool, Maytag and Sharp appli. Williams Appliance Service, DJ Williams, 806-665-8894.	<b>NEEDED</b> Full time evening shift cook. Must be able to work week-ends. 35 hours weekly. St. Ann's Nursing Home in Panhandle, Tx. 537-3194. Ask for Linda Miller or come by in person.	<b>NEED</b> Oilfield Machinist. Apply in person at Riddle Welding, Inc., 211 Carolina, Borger, Tx.	<b>WEST</b> Texas Gas, Inc. is seeking a natural gas service employee. Apply at 507 E. Front St., 806-248-7461, EOE.	<b>FOR</b> Sale used 36 in. Zero Clearance Fireplace, w/venting pipes & chimney cap, good cond. See at 725 W. Brown.	<b>FOR</b> Sale used 36 in. Zero Clearance Fireplace, w/venting pipes & chimney cap, good cond. See at 725 W. Brown.	<b>FOR</b> Sale used 36 in. Zero Clearance Fireplace, w/venting pipes & chimney cap, good cond. See at 725 W. Brown.	<b>2</b> bdr., \$400 mo., \$150 dep., built-ins, cov. parking. Ref. req. Coronado Apts., 665-0219.	<b>OFFICE</b> space for rent, 3 months free rent. 669-6841. APPROX. 1500 sq. ft. for rent. Perfect office or small business space. Will build-out to suit tenant. Perfect location across the street from Wal-Mart, 2216 N. Hobart, \$475 per mo. neg. Int. parties call 467-9600 in Amarillo.	<b>100 Rent, Sale, Trade</b> 2 or 3 bdr. houses for rent or sale. Low down payment, owner will finance. Call 669-9532.
<b>14c Carpentry</b> CUSTOM homes, additions, remodeling, residential / commercial Deaver Construction, 665-0447.	<b>EARN</b> what you're worth at home, up to \$1.5k pt & 55k fp mo. 1-888-898-7502 destiny@wealth.com.	<b>NEED</b> full time Accounts Manager, bilingual preferred. Apply in person, 201 N. Cuyler or call for appl. 669-0558.	<b>MEDICAL</b> Office seeks entry level Technician/Assistant. Must be neat in appearance, and a people person. Approx. 32 hours weekly. Willing to train the right person. Respond to Box 1, c/o Pampa News, P.O. Box 2198, Pampa, Tx. 79066-2198.	<b>FOR</b> Sale used 36 in. Zero Clearance Fireplace, w/venting pipes & chimney cap, good cond. See at 725 W. Brown.	<b>FOR</b> Sale used 36 in. Zero Clearance Fireplace, w/venting pipes & chimney cap, good cond. See at 725 W. Brown.	<b>FOR</b> Sale used 36 in. Zero Clearance Fireplace, w/venting pipes & chimney cap, good cond. See at 725 W. Brown.	<b>2</b> bdr., \$400 mo., \$150 dep., built-ins, cov. parking. Ref. req. Coronado Apts., 665-0219.	<b>OFFICE</b> space for rent, 3 months free rent. 669-6841. APPROX. 1500 sq. ft. for rent. Perfect office or small business space. Will build-out to suit tenant. Perfect location across the street from Wal-Mart, 2216 N. Hobart, \$475 per mo. neg. Int. parties call 467-9600 in Amarillo.	<b>100 Rent, Sale, Trade</b> 2 or 3 bdr. houses for rent or sale. Low down payment, owner will finance. Call 669-9532.
<b>14d Carpet Serv.</b> NU-WAY Cleaning service, carpets, upholstery, walls, ceilings. Quality doesn't cost...! It pays! No steam used. Bob Marx owner-operator. 665-3541, or from out of town, 800-536-5341.	<b>NEEDED</b> Handyman or Roofer in exchange for house to live in. 662-9520.	<b>CAREMOR</b> Health Services is now taking appli. for Delivery Driver. Apply at 1600 N. Hobart.	<b>PUT</b> your computer to work \$25 to \$75 per hr. pf & ft. call 1-888-241-1029 or www.911prosp.com.	<b>FOR</b> Sale used 36 in. Zero Clearance Fireplace, w/venting pipes & chimney cap, good cond. See at 725 W. Brown.	<b>FOR</b> Sale used 36 in. Zero Clearance Fireplace, w/venting pipes & chimney cap, good cond. See at 725 W. Brown.	<b>FOR</b> Sale used 36 in. Zero Clearance Fireplace, w/venting pipes & chimney cap, good cond. See at 725 W. Brown.	<b>2</b> bdr., \$400 mo., \$150 dep., built-ins, cov. parking. Ref. req. Coronado Apts., 665-0219.	<b>OFFICE</b> space for rent, 3 months free rent. 669-6841. APPROX. 1500 sq. ft. for rent. Perfect office or small business space. Will build-out to suit tenant. Perfect location across the street from Wal-Mart, 2216 N. Hobart, \$475 per mo. neg. Int. parties call 467-9600 in Amarillo.	<b>100 Rent, Sale, Trade</b> 2 or 3 bdr. houses for rent or sale. Low down payment, owner will finance. Call 669-9532.
<b>14h Gen. Serv.</b> COX Fence Company. Repair old fence or build new. Free estimates. Call 669-7769.	<b>NEEDED</b> Handyman or Roofer in exchange for house to live in. 662-9520.	<b>CAREMOR</b> Health Services is now taking appli. for Delivery Driver. Apply at 1600 N. Hobart.	<b>PUT</b> your computer to work \$25 to \$75 per hr. pf & ft. call 1-888-241-1029 or www.911prosp.com.	<b>FOR</b> Sale used 36 in. Zero Clearance Fireplace, w/venting pipes & chimney cap, good cond. See at 725 W. Brown.	<b>FOR</b> Sale used 36 in. Zero Clearance Fireplace, w/venting pipes & chimney cap, good cond. See at 725 W. Brown.	<b>FOR</b> Sale used 36 in. Zero Clearance Fireplace, w/venting pipes & chimney cap, good cond. See at 725 W. Brown.	<b>2</b> bdr., \$400 mo., \$150 dep., built-ins, cov. parking. Ref. req. Coronado Apts., 665-0219.	<b>OFFICE</b> space for rent, 3 months free rent. 669-6841. APPROX. 1500 sq. ft. for rent. Perfect office or small business space. Will build-out to suit tenant. Perfect location across the street from Wal-Mart, 2216 N. Hobart, \$475 per mo. neg. Int. parties call 467-9600 in Amarillo.	<b>100 Rent, Sale, Trade</b> 2 or 3 bdr. houses for rent or sale. Low down payment, owner will finance. Call 669-9532.
<b>14n Painting</b> 50 yrs. exp. We paint, dry-wall, texture, comm., residential. Free Estimates. Happy Painters 665-3214	<b>NEEDED</b> Handyman or Roofer in exchange for house to live in. 662-9520.	<b>CAREMOR</b> Health Services is now taking appli. for Delivery Driver. Apply at 1600 N. Hobart.	<b>PUT</b> your computer to work \$25 to \$75 per hr. pf & ft. call 1-888-241-1029 or www.911prosp.com.	<b>FOR</b> Sale used 36 in. Zero Clearance Fireplace, w/venting pipes & chimney cap, good cond. See at 725 W. Brown.	<b>FOR</b> Sale used 36 in. Zero Clearance Fireplace, w/venting pipes & chimney cap, good cond. See at 725 W. Brown.	<b>FOR</b> Sale used 36 in. Zero Clearance Fireplace, w/venting pipes & chimney cap, good cond. See at 725 W. Brown.	<b>2</b> bdr., \$400 mo., \$150 dep., built-ins, cov. parking. Ref. req. Coronado Apts., 665-0219.	<b>OFFICE</b> space for rent, 3 months free rent. 669-6841. APPROX. 1500 sq. ft. for rent. Perfect office or small business space. Will build-out to suit tenant. Perfect location across the street from Wal-Mart, 2216 N. Hobart, \$475 per mo. neg. Int. parties call 467-9600 in Amarillo.	<b>100 Rent, Sale, Trade</b> 2 or 3 bdr. houses for rent or sale. Low down payment, owner will finance. Call 669-9532.
<b>14o Plumbing/Heat</b> JACK'S Faucet Shop, 715 W. Foster, 665-7115. Faucets, Plumbing Supplies & Repair Parts.	<b>NEEDED</b> Handyman or Roofer in exchange for house to live in. 662-9520.	<b>CAREMOR</b> Health Services is now taking appli. for Delivery Driver. Apply at 1600 N. Hobart.	<b>PUT</b> your computer to work \$25 to \$75 per hr. pf & ft. call 1-888-241-1029 or www.911prosp.com.	<b>FOR</b> Sale used 36 in. Zero Clearance Fireplace, w/venting pipes & chimney cap, good cond. See at 725 W. Brown.	<b>FOR</b> Sale used 36 in. Zero Clearance Fireplace, w/venting pipes & chimney cap, good cond. See at 725 W. Brown.	<b>FOR</b> Sale used 36 in. Zero Clearance Fireplace, w/venting pipes & chimney cap, good cond. See at 725 W. Brown.	<b>2</b> bdr., \$400 mo., \$150 dep., built-ins, cov. parking. Ref. req. Coronado Apts., 665-0219.	<b>OFFICE</b> space for rent, 3 months free rent. 669-6841. APPROX. 1500 sq. ft. for rent. Perfect office or small business space. Will build-out to suit tenant. Perfect location across the street from Wal-Mart, 2216 N. Hobart, \$475 per mo. neg. Int. parties call 467-9600 in Amarillo.	<b>100 Rent, Sale, Trade</b> 2 or 3 bdr. houses for rent or sale. Low down payment, owner will finance. Call 669-9532.

**Century 21**  
 More POWER to you:  
 For All Your Real Estate Needs  
**669-0007**

**SALE OR LEASE**  
 Texaco  
 Exploration and  
 Production Inc.  
 (Property Owner)  
 P.O. Box 277  
 Velma, Ok. 73491

**Quentin Williams, REALTORS**  
 Keagy-Edwards, Inc.  
**Selling Pampa Since 1952**  
 669-2522 • 2208 Coffee & Perryton Pkwy.

**JUNIFER** - Three bedroom home with new carpet and vinyl floor coverings, remodeled bath, steel siding, single garage. MLS 5036.  
**MAQNOLIA** - Nice two bedroom home with energy saving windows. Large livingroom, corner lot, work shop or storage building (10x16), single garage.  
**MAQNOLIA** - Nice two bedroom home with large living and dining area. Single garage. MLS 5206.  
**RUSSELL** - Cute two bedroom home with siding for low maintenance. Large master, one bath, single garage. MLS 5243.  
**RUSSELL** - Corner lot, two bedrooms with one large room up-stairs (unfinished). Single garage. MLS 4840.  
**TERRY ROAD** - Corner lot. Large home for a growing family. Three bedrooms, central heat and air, open living/kitchen/dining room. Office opens to side street. Has a double carport and double garage. MLS 5235.  
**TIGOR** - 2 bedroom home has been remodeled. New carpet, storage building, single carport. MLS 5054.  
**WEST** - One bedroom home with mock fireplace. Most furniture in home stays. Has single garage. MLS 5052.

Becky Baten 669-2214 Roberta Babb 665-6156  
 Susan Ratzliff 665-3565 Debbie Middleton 665-2247  
 Heidi Christensen 665-6308 Bobbie Sue Stephens 809-7780  
 Darrel Sehorn 669-6204 Lois Strate Blair 665-7030  
 Bill Stephens 669-7790 Danny Whiteley 665-9830  
 JUDI EDWARDS OHL CBS HARTLEY REAGY OHL CBS  
 BROCK/OWEN 665-3687 BROCK/OWEN 665-1449  
 Visit our new site at [www.quentin-williams.com](http://www.quentin-williams.com)  
 E-mail our office at [qw@quentin-williams.com](mailto:qw@quentin-williams.com)

**CAR SHACK**  
 \$705.32 Down  
 12 Payments @ \$162.01  
 Will buy you one of these used cars ...  
**1992 Ford Taurus**  
**1990 Chevrolet Caprice**  
**1989 Buick LeSabre**  
 807 W. FOSTER • 665-3341

**Dairy Queen**  
 Now Hiring At The Pampa Dairy Queen  
 Manager  Assistant  
 Team  Manager  
 Leader  Crew Manager  
 Apply in Person:  
 Dairy Queen  
 220 No. Hobart  
 1-806-665-9510  
 Teresa Westbrook, District Manager  
 Carol Sharp, Manager

**Crown Financing Group**  
 - Consolidate Bills  
 - Personal/Business Loans  
 - Low Interest Rates  
 - Good Or Bad Credit  
 - No Up Front Fees  
 Call Toll Free 1-888-350-2027

**Driver/Warehouse Assoc.**  
 A prominent national industrial distributor of pipe, valves and fittings has an opening in our Pampa, Tx. branch for Driver / Warehouse Associate. Must be experienced, have a good driving record and pass drug screen. We offer competitive compensation and fringe benefits incl. profit sharing and 401-K savings plan. For confidential consideration, please send your resume and salary history to:  
**MCJUNKIN CORP.**  
 P.O. BOX 2216  
 PAMPA, TX. 79066  
 An AAP/EOE/M/F/H/V/A EMPLOYER A SMOKE FREE WORKPLACE

**Larry Baker**  
 Heating & Air Conditioning  
 Borger Hwy. 665-4392



# Foes criticize Chinese manufacture of abortion pill for U.S.

By PAUL RECER  
AP Science Writer

WASHINGTON (AP) — Abortion foes said that allowing a plant in China to make abortion pills for American women is an "outrage" that puts patients at risk, but a sponsor says the drug meets all the "rigorous standards" required by law.

Officials in China confirmed on Thursday that the Shanghai-based Hua Lian Pharmaceutical Co., will make the raw compound for RU-486, or mifepristone, an abortion drug approved last month for use in the United States.

The Food and Drug Administration refused to identify the manufacturer when it approved mifepristone two weeks ago, saying it feared for the safety of the drug plant and its workers. The agency persisted in its refusal Thursday, even though family planning officials in Shanghai confirmed Hua Lian's role in the manufacture of the abortion drug.

Rep. Christopher Smith, R-NJ, a persistent abortion foe, denounced the arrangement in China, a country he has accused of committing crimes against humanity for requiring abortions as a population control measure.

"The company that produces baby poison for enforced abortion in China will now be producing it for American women," said Smith. "The Chinese government will make money on the killing of unborn children in America. ... This is an outrage."

An FDA spokesman said that the agency still refuses to discuss the manufacturing arrangement for RU-486.

"Because of threats and acts of violence directed at persons associated with these (reproductive rights) issues, the FDA made a determination that it would withhold information regarding the manufacturer of this drug," said the spokesman, who demanded anonymity "for obvious reasons."

The Washington Post first revealed the name of the Chinese plant on Thursday, reporting that Hua Lian is one of two Chinese factories that make RU-486 for abortions in China.

China has a policy permitting urban couples to have only one child and uses compulsory abortion to enforce that quota.

Douglas Johnson, legislative director of the National Right to Life Committee, said that permitting the import of a Chinese-made abortion drug poses a health risk for American women.

"It is a public health issue because China is a major source of impure drugs, and the FDA cannot possibly monitor a Chinese factory effectively," Johnson said in a statement.

But the FDA spokesman said the agency thoroughly inspected the Hua Lian plant before mifepristone was approved. The plant will be re-inspected every two to four years to ensure quality.

"Foreign supply of drug ingredients is not at all unusual," said the spokesman. "About 80 percent of the ingredients for American drugs are from foreign sources."

Hua Lian got help from the U.S.-based Rockefeller Foundation in winning the production license for RU-486 under FDA specifications, said Gao Ersheng, a research director at the Shanghai Family Planning Commission.

In July, FDA inspectors toured the Hua Lian plant, the Xin Lian factory on Shanghai's outskirts. A family planning commission technical expert, Zhu Huibin, said Xin Lian was now upgrading its production line.

RU-486 was first developed by the French manufacturer

Roussel-Uclaf, but that company declined to make or distribute the drug in the United States. Instead, at the urging of the Clinton administration, U.S. rights to the drug were turned over to the Population Council of New York, a nonprofit organization that promotes reproductive research.

The Council awarded U.S. distribution rights to Danco Laboratories, a New York firm with an unlisted phone number and address. The Washington Post reported that Danco was formed in the Grand Cayman Islands in 1995. Danco is to market RU-486 under the brand name Mifeprex.

Sandra Waldman, a spokeswoman for the Population Council, said questions about the quality of the Chinese-made drug "is a phony issue" because the drug has met "all the rigorous standards" that FDA-approved products must meet.

"People should be assured that they are not getting shoddy

merchandise," she said.

Waldman said the Council was still concerned about the safety of groups, including workers at the Chinese factory, who are involved in producing and distributing RU-486 in the U.S. The Council recently hired a guard for its New York offices.

No Danco official would talk with the Associated Press, but a statement faxed from the company said the plant that will make RU-486 for the U.S. market meets "both Danco's drug specifications and the current good manufacturing practices of the FDA."

The statement said Danco had a contractual agreement that "prohibits us from discussing the identity or location of the manufacturer."

Smith, the New Jersey congressman, said he fears patients who are injured by RU-486 will not be able to seek damages from the manufacturer because the plant is located in China.

## Judge orders Pennzoil to pull ads

HOUSTON (AP) — A New Jersey federal judge has ordered Pennzoil Quaker State Co. to pull its advertisements featuring Green Bay Packers quarterback Brett Favre, saying the ads are false and misleading.

In his ruling, U.S. District Judge Alfred M. Wolin called the Houston-based company's national ad campaign "repugnant" to federal advertising laws. He will later decide whether the company must pay damages, including punitive damages.

Competitor Castrol North America, based in Wayne, N.J., filed the lawsuit that prompted Wolin's ruling.

The advertisements, which were featured on television and Pennzoil's Web site, claim that Pennzoil's product is superior to other motor oils, including

Castrol. Favre rubs Castrol oil under his eyes at the end of the ads, implying that the product is good only as the black grease paint used to reduce glare during games.

"Castrol is gratified that the court has acted to halt Pennzoil's false advertising campaign," said Paul Waterman, Castrol's general manager for retail in North America in a written release.

Pennzoil spokesman Ray Scippa said the company would appeal.

The two companies have had many legal battles over ad claims.

In 1992, Wolin ordered Pennzoil to pull five television ads featuring "sweeping and untrue" testimonials from professional race-car drivers.

## Palo Duro to host Haunted Canyon again this year

CANYON — Spooks and ghouls will entertain park visitors during the second annual Haunted Canyon slated from 7-9 p.m., Saturday, Oct. 21 at Palo Duro. The event is free and open to the public. Park fees will be waived for the evening.

Activities will include face painting, games, a haunted hay ride and a costume and a pumpkin carving contest. Both contests will be open to children ages 0-12. Costume contest participants should register from 7-8 p.m. — judging will begin at 8:30.

Children entering the pumpkin carving contest should bring their carved "creation" and a non-flammable lighting source (i.e. a glow stick) to the event by 8 p.m.

Judging categories for both contests will be based on age and prizes awarded to first, second and third place winners. Contestants must be present to win.

Donations will be accepted for the Lone Star Legacy Endowment Fund. For more information, call Heather Lanman at (806) 488-2227, ext. 49.

# TEXAS FURNITURE 1932 - 2000 DOWNTOWN PAMPA

# ANNIVERSARY SALE

SAVE UP TO 60% STORE WIDE

When we have a Party like this all kinds of nice things happen.

### BEDROOMS

- Dresser
  - Mirror
  - Headboard
  - Chest
  - Night Stand
- 5 Pcs. **\$988**

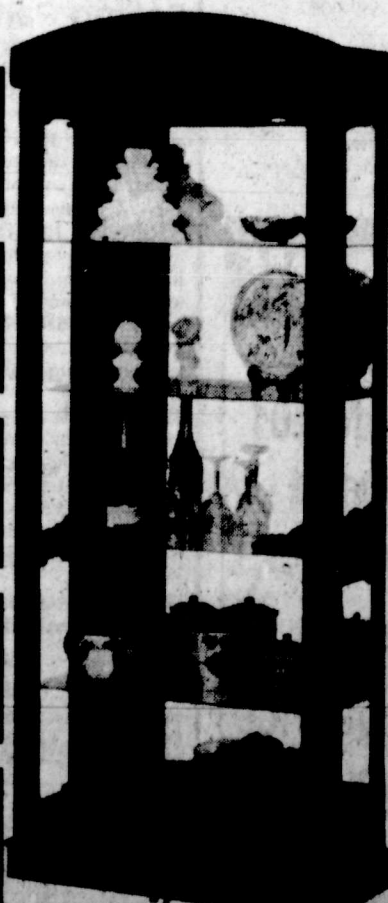
**CURIO CABINETS**  
As Low As **\$299**

**COMPUTER DESKS**  
As Low As **\$299**

**ENTERTAINMENT CHESTS**  
**\$299**

**TABLE LAMPS**  
**\$49**

**QUEEN ANNE CHAIRS**  
**\$199**



**SLEEP SOFAS**  
**\$599**

**SOFAS** Retail \$478 **\$478** Broad Choice of Styles

## LA-Z-BOY TWO GREAT CHAIRS

FOR ONE LOW PRICE

**LA-Z-BOY ROCKER RECLINER**

**TWO FOR \$576**

**LA-Z-BOY CHAISE RECLINER**

**TWO FOR \$699**



### Bedroom Design GLIDE ROCKER

Constructed of carved hardwood solids in oak finish with matching Glide Ottoman

**\$499**

Chair & Ottoman

### SEALY MATTRESS Better Sleep On A

POSTURE PREMIER FIRM

Twin Set	Full Set	Queen Set
<b>\$249</b>	<b>\$299</b>	<b>\$349</b>

SEALY POSTUREPEDIC PLUSH

Twin Set	Full Set	Queen Set	King Set
<b>\$399</b>	<b>\$449</b>	<b>\$499</b>	<b>\$749</b>



**Texas FURNITURE**  
210 N. Cuyler in Downtown Pampa