

425 BODIES REMOVED FROM SCHOOL RUINS

Strikers Ordered Jailed

SHERIFF SAYS HE MUST HAVE 600 DEPUTIES

DETROIT, March 19.—Circuit Judge Allan Campbell today ordered the issuance of writs of attachment calling for arrest of 6,000 sit-down strikers who have occupied eight Chrysler corporation automobile plants for twelve days.

Thompsons' Sister Dies In Explosion

Bob and Fred Thompson, owners of the Thompson Hardware store here, were called to New London last night where their only sister, Miss Lissie Ella Thompson, was killed in the explosion of the New London school building which claimed the lives of more than 400 teachers and students.

DEATH LIST OF BLAST

- The identified dead in the New London school explosion: Maxine Rogers, Adus Franklin Dorsey, LaVerne Barton, Geraldine Stearns, H. D. Gunn, G. F. Scott, Thomas Rogers, May Lloyd, Ruth Apple, Mary Ethel Neal, Latham Eakes, Helen Harrison, Corrine Carp, May Hew, Bobbie Lorrain Brown, Myrtle Freeman, Betty Ruth Apple, Billy Morefield, Herman Walker, Coral Millif, Bessie Estel Holland.

RACE BETTING HEARING SET FOR THURSDAY

AUSTIN, March 19 (AP)—Friends and foes of horse racing in Texas started mobilizing forces today for a hearing on the wagering repeal issue next Thursday night before the Senate criminal jurisdiction committee.

SOIL CONSERVATION IS GIVEN APPROVAL BY COMMITTEE

AUSTIN, March 19 (AP)—Friends and foes of soil conservation and watershed district establishment bill to encompass the entire state emerged from a sub-committee and was approved without a dissenting vote by the House committee on agriculture.

Brown Duster Fogs Over Plains Area

A brown duster, which blew up late last night, was growing in intensity over the Pampa area at mid-afternoon today.

U. S. TEMPERATURE READINGS (At Pampa)
Sunset Thurs 55 10 a. m. 55
6 a. m. Today 48 11 a. m. 58
7 a. m. 44 12 Noon 59
8 a. m. 47 1 p. m. 58
9 a. m. 52 2 p. m. 55 1/2
Lowest temperature last night was 37 1/2 degrees. Maximum today, 59 1/2 degrees. Minimum today, 48 degrees.

GRAND NATIONAL RACE WON BY ROYAL MAIL AT AINTREE

Ball of Fire Rolled Into School Room

Editor's Note: Seventeen-year-old John Nelson, survivor of the London consolidated school tragedy, a hero of the explosion, tells a graphic story of the nation's most appalling modern child disaster.

By JOHN NELSON
I was in the manual arts shop in the basement of the building, working on a lathe. My teacher, Mr. L. Butler, was standing about five feet away. I guess there were 15 kids in the room.

Suddenly a big mass of sand and what looked like a ball of fire tumbled into the room. Something hit me on the leg. It slit the front of my pants. See? It felt like a 'Charley horse' you get playing football.

Do You Like 'Fiesta of the Pampas'?

Suggestions for a title to Pampa's June celebration began to make their appearance on the contest editor's desk at the Daily News office today.

GOLDEN COOLEEN RUNS SECOND, PUCKA BELLE THIRD

AINTREE, England, March 19 (AP)—Royal Mail, one of the favorites owned by H. Lloyd Thomas, today won the 99th running of the grand national steeplechase before an estimated crowd of 500,000 including the king and queen.

American Horse Falter. Mrs. F. Ambrose Clark's Flying Minutes, one of the two American-bred horses in the race, made a gallant challenge but fell after showing the way with Royal Mail the second time over the treacherous Becher's Brook jump.

NEW YORK, March 19 (AP)—Americans won a grand total of \$4,327,317 on today's Aintree grand national steeplechase.

Winners Named. These race winners, together with \$2,102,317 awarded at the time of the Irish hospital sweepstakes drawing, brought the grand total to more than \$4,000,000.

Happy Easter. Elizabeth, N. J. 'My Baby,' New York. 'Alpha Omega,' New York. 'Lucky Jim,' Baltimore. J. Bosco, New Britain, Conn. Mrs. F. W. Shields, Durham, S. C. K. Johnson, Wellesley Hills, Mass. 'Little Fish,' Willitsville, Perry county (no state listed).

'Job Is Finished,' Say Anguished Diggers After Downpour Delays Rescue

NEW LONDON, March 19 (AP)—Laborers ceased digging into the ruins of the London consolidated school this afternoon and wearily said "the job is finished" after 425 bodies had been removed from the pile of debris.

Dance halls, roller skating rinks, churches, hotels, hospitals and morgues in six nearby towns were filled with dead. Colonel C. E. Parker, National Guard commander, said every brick had been turned in the basement of the explosion-rocked structure and that the job of seeking bodies had ended.

Crushed and torn bodies of children came out of the blast-shattered schoolhouse in a rainstorm as a military inquiry was quickly set in motion within the ruins. It was a dismal, drizzling scene, dotted with frenzied, red-eyed parents and determined investigators.

Major Gaston Howard, appalled at the nation's worst modern child tragedy, said an investigation board of six would start functioning this afternoon. Survivors and eye witnesses would be questioned in an open hearing, he said.

The recovered bodies, comprising virtually all of the countryside's younger generation and their teachers, were distributed among widely scattered morgues.

Legislators Order Probe To Learn Cause Of Blast

AUSTIN, March 19 (AP)—The Texas House of Representatives adopted a resolution providing for a legislative investigation to determine the cause of the explosion which wrecked the London school house in East Texas and took the lives of hundreds of children.

Chairman C. V. Terrell said the commission had been in touch with Capt. E. N. Stanley, its chief engineer, who had gone with many other commission employes to the school house and assisted in relief work in every possible way.

London Conditions Do Not Exist Here

Parents of children in Pampa schools were assured today by Supt. E. B. Fisher that conditions which probably caused the explosion and terrific death toll at New London do not exist in local institutions.

FLU SAVED BOY

NEW ORLEANS, March 19 (AP)—Mrs. Billie Thibodeaux thanked the influenza today for saving her little son from probable death in the New London, Texas, school explosion.

I Heard...

A bunch of the faithfuls down at the police station muttering under their breath when Officer W. C. "Slim" Dillman strolled into the office in less than 12 minutes from the time he left to mark the cars on six blocks, both sides of the street.

\$92,373.24 In Checks Arrive For Farmers

Federal benefit checks for Gray county farmers in the sum of \$92,373.24 arrived at the county farm agent's office here this forenoon.

4 COUNTY OFFICIALS AT LUBBOCK MEETING

Four Gray county officials were in Lubbock today attending the annual meeting of the Texas County Judges and Commissioners Association which opened today and runs through Saturday.

SCAFFOLDING AROUND TANK IS BLOWN DOWN

Scaffolding around the interior of the huge water storage tank recently purchased by the city near LePors was blown down during the terrific wind storm last night.

PARENTS SEEK CHILDREN IN MANY MORGUES

NEW LONDON, March 19 (AP)—Dismal drizzling dawn found New London red eyed in grief today. Only tiny tots had slept.

125 STUDENTS STRIKE TO PROTEST ELECTION

HOWE, March 19 (AP)—About 125 of the 140 students in the high school went on strike today in protest of the election of J. Roy Williams as superintendent last night.

I Saw...

H. B. Lovett on the street looking fat and sassy. He has just returned from Mineral Wells where he "got boiled out," he said.

Who's Zoo on Broadway Lists New Names As Rialto Applauds Beastly Performances

Mutt Fills Stellar Role; Trained Goose Stars

BY GEORGE ROSS, NEA Service Staff Correspondent. NEW YORK, March 19.—Though the Theater Guild's latest offering, "Storm Over Patsy," is much ado about nearly nothing...

the same frivolous spirit as the material—the principals being Sarah Algood, Ian McLean, Roger Livesey and Claudia Morgan. And Patsy, impersonated by the gaffish Colonel, was so historically perfect that he will receive an extra hamburger in his pay envelope.

LAST BARRIER TO SIMPSON'S DIVORCE FALLS

LONDON, March 19 (P)—The last apparent barrier to Mrs. Wallis Simpson's absolute divorce and her marriage to Edward of Windsor was cleared today when a charge of "collusion" was dismissed by the president of the British divorce court.

IN THE CHURCHES

CALVARY BAPTIST CHURCH South Barnes St. Sunday school, 9:45 p. m. Worship, sermon, 11 a. m. B. T. U., 6:45 p. m. Evening worship, 7:45. Tuesday night Brotherhood meeting, 7:30. Wednesday night prayer meeting, 7:30.

8 p. m., sermon by the Rev. Eugene A. Mauch, O. S. A., of Amarillo, following benediction; Saturday following mass, Way of the Cross for children; Sunday following children's class, Way of the Cross and benediction; Wednesday at 8 p. m., Way of the Cross and benediction. The public is cordially invited to these services preceding Easter.

shall obey and adore in proportion as we apprehend the divine nature and love Him understandingly, war- ring no more over the copereality, but rejoicing in the affluence of our God." (Page 140). Sunday 11 a. m. Sunday school 9:30. Wednesday 8 p. m. The reading room in church edifice is open Tuesday and Friday 2 to 4 p. m. The public is cordially invited to attend our services and use the reading room.

SEDAN IS RECOVERED AFTER BEING STOLEN A 1930 Graham-Paige sedan belonging to Jim Kivehlin was recovered by city officers during the night, several hours after it had been stolen from where it was parked in the 200 block on North Cuyler street.



Broadway "Who's Zoo"—The curious goat and a couple of kids (above) with one of "White Horse Inn's" beauties; at right: shaggy Colonel, overnight star of "Storm Over Patsy," right above; Sylvia, the stage-struck goose in "Sun Kissed" and Chops, the tiny porker starring in "Frederika."

Francis Stevenson, an elderly little solicitor whose mysterious intervention last December—just one day before Edward abdicated—caused today's almost final scene in the drama of empire, gave his personal to the action wiping out his charge of "collusion."

Anguish and Terror Told In Shrieks

OVERTON, March 19 (P)—A shriek, half of anguish, half terror, echoed in the American Legion auditorium. Another mother had identified her child among those who died in the London school explosion.

ST. MATTHEW'S MISSION (Episcopal) R. J. Snell, minister in charge Services for Palm Sunday, March 21: Church school, 9:45 a. m. Evening prayer and sermon, 7:30 p. m. Holy Week services: Holy communion, 10 a. m. Wednesday Good Friday service 12 to 1 p. m., March 26. To all of these services we welcome the public.

CENTRAL CHURCH OF CHRIST 500 N. Somerville Will M. Thompson, minister Radio service 8:30 a. m. (Each Sunday). Bible study 9:45 a. m. Preaching 11 a. m. Communion 11:50 a. m. Young people's meeting 7 p. m. Preaching 8 p. m. Subject, "Is Baptism a Part of the Gospel?" Ladies Bible class Monday, 2:30 p. m. Song practice Tuesday, 8 p. m. Midweek Bible study Wednesday, 8 p. m. You are cordially invited to be with us in these services.

FIRST METHODIST Will C. House, pastor Decision day will be observed in Sunday morning services. In a special meeting at 2:30, the pastor will conduct a class of instruction for children who are to unite with the church on Easter. Teachers and parents of these children are urged to be present. Sunday school, 9:45 a. m. The pastor will be in charge of adult assembly. Morning worship, 11. Sermon, A Renewed Life. Epworth Leagues, 6:30. Evening service, 7:30. Sermon Life's Dominant Forces. The Treble Clef club will sing special numbers. We extend a hearty welcome to visitors.

FIRST BAPTIST CHURCH Kingsmill and West Streets Church school meets by departments at 9:45 B. T. U. at 6:45. Worship at 11 and 7:45. The pastor will preach at each hour. To these services a welcome.

EVERY MAN'S BIBLE CLASS City Hall Auditorium, 9:45. We will study another great chapter Sunday morning. Special music for the opening period. We welcome those without a Bible class.

MCCULLOUGH-HARRAH M. E. Hubert Bratcher, pastor Church school 9:45. Ross Combs and Neeley Rogers, superintendents.

FIRST CHRISTIAN CHURCH John S. Mullen, minister Kingsmill and Starkweather Sts. 9:45 a. m. Sunday school. The senior and adult departments meet together in the auditorium for the devotional exercises, going from there to the various class rooms. 11 a. m. Morning worship. Sermon by the minister. "Where Are the Nine?" Anthem by the choir. The Lord's Supper is always observed by this church at the morning worship hour. 6:30 p. m. Intermediate and senior Christian Endeavor societies meet. All young people cordially invited. 7:30 p. m. Evening evangelistic service. Special music by the choir, solo on the vibraphone by Howard House. Minister's sermon, "What shall I do with the Christ?" The Lord's supper will be observed at the close of the service for those who were unable to attend the morning hour.

FRANCES AVENUE CHURCH OF CHRIST M. C. Cuthbertson, minister Sunday services: Bible school, 9:45 a. m. Worship, 11 a. m. and 7:45 p. m. Radio service 4 p. m. Training work, 7 p. m. Sermon subject, 7:45. What does the Church of Christ believe about the name of the church? Week-day services: Tuesday, 2:30 p. m., Ladies class. A gospel meeting will begin at the Church of Christ, Miami, March 22. M. C. Cuthbertson, minister of Francis Avenue Church of Christ, will do the preaching.

CENTRAL BAPTIST John O. Scott, pastor Sunday school, 9:45 a. m. Preaching services at 11 a. m. and 7:30 p. m. B. T. U. classes at 6:30. You are most cordially invited to worship with us. Come as you are.

FULL GOSPEL TEMPLE 500 S. Cuyler H. E. Comstock, pastor Sunday school, 9:45 a. m. Preaching, 10:45 a. m. and 7:45 p. m. C. A. S., 6:45 p. m. A welcome awaits you at all services.

HOLY SOULS CATHOLIC Joseph Wonderly, pastor Regular Sunday services: Masses at 8 a. m. and 10 a. m., children's instructions at 4 p. m., benediction at 5 p. m. Week-day masses, 7:30 a. m. Special Lenten services: Friday at

PROGRAM TIME KPDN 1310 KILOCYCLES THE HIGH FIDELITY VOICE OF THE PAMPA DAILY NEWS

SATURDAY. 6:30—Musical Clock. 7:30—Birthday Clock. 7:45—Overnight News. 8:00—Just About Time. 8:15—Home Folks Frolic. 8:30—Eddie Eben. 8:45—Lost and Found. 8:50—Announcer's Choice. 9:30—Shopping With Sue. 9:30—Musical Surprise. 9:45—Behind the Microphone. 10:00—Morning Melange. 10:30—News. 10:45—Hawaiian Moods. 11:00—Tuning Around. 11:30—Lunchen Dainties. 12:00—Richard Lebert.

Indescribable Is Inadequate Word, Say Undertakers

DALLAS, March 19 (P)—The most appalling aspects of the New London school disaster were described today by two Dallas undertakers who cared for some of the twisted bodies of hundreds of child victims. "Indescribable is an inadequate word," Jerom Crane said. "We went immediately to the Overton funeral home. There were at least 75 bodies there. At least 20 of them will never be identified, unless parents are able to do so from remnants of clothing that still remained. "Barton Beatty and I personally cared for the bodies of 17 children between the ages of 10 and 17. They were the most horribly mangled re-

main of human beings either of us had ever seen. "I personally cared for two men and one woman. They were teachers. Their identification may be possible. With the more badly dismembered remains all we could do was to embalm and then wrap them in cloths for final disposition." Crane said that trucks were busy clearing up the debris. "They were loading up and hauling a thousand yards or so away, then returning for more. That was to speed the work," he said. Crane believed that the injured were comparatively few. "It was a case of instant death or actual, almost miraculous escape," he said.

The task, now under way, of cataloging more than 4,000,000 books in the British Museum Library will take 25 years. There will be 230 volumes to the catalog. There are 595,000 Swedish-born persons living in the United States.

MEN SAY GLANNUX BRINGS QUICK VIGOR and PEPI! MEN PAST 40... DON'T FEEL OLD! Why not enjoy life again, with renewed strength and vital vigor? Men everywhere say safe easy-to-take GLANNUX does it! makes them feel years younger, feel more manly and successful. Results... 89¢ Full-size \$2.00 box. CRETNEY DRUG STORE

For Spring...! SILK HOSIERY VALUE! Silk crepe hosiery in all the newest shades. Full fashioned and long wearing. 79c Hose, 2 Pairs \$1 \$1 Hose, 2 Pairs \$1.85

New Arrivals in TOPPERS \$10.95 We've a complete selection in spring's swanky new TOPPERS. New shades include gold, green, dawn, blue, and shrimp. All wanted sizes. SPRING DRESSES Gilbert's invite your inspection of a beautiful assortment of solid and print dresses for street and evening wear. All the 1937 styles and materials. \$7.95 up GILBERT'S LADIES' STORE 102 S. Cuyler

GREAT Spring DRUG Event! PAY CHECKS CASHED Fresh Shipment Pangburn's Easter Candy 80c to \$2.50 PER POUND We stock all kinds of TRUSSES 100 Tablets Caroid and Bile \$1.09 \$1.50 Anusol Hemorrhoidal Suppositories \$1.39 75c Doan's Kidney Pills .63c \$1.00 Gem Razor and Blades .49c \$1.00 Adierka .79c 60c Alka Seltzer .49c \$1.00 Agarol .81c \$1.00 Cardui .79c \$1.00 Crazy Crystals .89c 25c Peroxide .17c \$1.00 Mercolized Wax .89c 35c Energine .27c We Rent Kodaks Develop Pictures, Sell Eastman Films \$1.00 Gly-Cas \$5.00 Esther Cream \$4.00 60c Murine .49c 75c Fitch's Shampoo, 25c Hair Tonic, 50c Scalp Brush A \$1.50 Value All For 69c 10c Cashmere Bouquet Soap, 6 Bars 49c Dr. West Tooth Paste and Tooth Brush 39c CUTEX Junior Sets 21c \$1.00 Richard Hudnut Marvelous Make-Up Kit Matched to the Color of Your Eyes Powder - Rouge Lipstick - Mascara Eye Shadow 55c 50c Red Arrow Shaving Lotion 50c Red Arrow Hand Lotion BOTH 79c 35c Prep for Shaving 3 Jars 50c 100 Bayer Aspirins 59c 25c McKessons Baby Talcum 16c 25c Shu-Milk For White Shoes 17c Woodbury's Two for the Price of One SALE Buy One and Get One Free Shampoo - Hair Oil Shaving Lotion 50c 25 Double Edge Q-T-No Blades 39c 20 Single Edge Blades 39c \$1.25 L. B. Hair Oil 89c 35c Pond's Creams 19c Don't Take Chances With your health by taking some patent medicine because it once helped a friend. Your constitution is different from his and requires a different form of treatment. Consult your family doctor when in need of help. He knows best! 4 REGISTERED PHARMACISTS ON DUTY RICHARD'S DRUG CO. Telephone 1240 & 1241 Prescription Laboratory Three Registered Pharmacists on Duty

FREE! \$10.00 IN CASH PRIZES EACH WEEK! FORD SEDAN AT CLOSE OF CONTEST! ENTER NOW! A FEW MINUTES WORK MAY WIN FOR YOU ONE OF THE FIVE CASH PRIZES GIVEN WEEKLY OR THE FORD SEDAN!

Last Week's Winners:

1st. David McNabb, LeFors 2nd. Mrs. C. V. McGowan
3rd. L. O. Roenfeldt 4th Mrs. Roy N. Jones 5th. Mrs. S. O. Garner

BUTTER

QUALITY
Fresh Creamery
Quarter Molds in
Cartons

LB. **33c**

MINUTE STEAKS

Cut From Small Veal—
Prepared Ready To Fry

LB. **35c**

POULTRY

And Fresh
Sea Foods

OYSTERS
Baltimore Ex. Select, Pt. **38c**
HADDOCK
Deluxe Fillets, Lb. **23½c**
HALIBUT
Choice Steak, Lb. **25c**
TROUT
Fancy Speckled, Lb. **30c**
HENS
Fancy Colored, Lb. **17½c**
STEWERS
Not Too Large, Lb. **13½c**
FRYERS
Extra Fancy, Lb. **30c**
TURKEYS
Choice Birds, Lb. **21½c**

PORK CUTS

Picnic Cuts
LB. **16½c**
Spare Ribs
LB. **17½c**
Pork Chops—End Cuts
LB. **17½c**
Shoulders, Center Cuts
LB. **19½c**



Shortening

Cudahy
White Ribbon
Fresh Car

4 LB. **54c**
CTN.

GRAPEFRUIT JUICE Texas, 10 Oz. Size CAN **5c**

DOG FOOD Ace Brand, Reg. Size CAN **5c**

WHOLE FIGS
SKINLESS IN LIGHT SYRUP
9 OZ. TIN

12c

SUGAR Fine Granulated In Kraft Bags
SATURDAY ONLY — LIMIT

10 LB. **49c**
BAG

CANNED CHERRIES

BRIMFUL BRAND
Fine for Pies or Sauce — Medium Size

2 CANS **29c**
FOR

STEAKS

Cut From Choice
Grain Fed Beef

Meaty Cuts, Lb. **10½c**
Center Cut Chuck, Lb. **17½c**
Choice Clubs, Lb. **23½c**
Fancy Sirloin, Lb. **27½c**

SUGAR CURED

Armour's Star - Wilson's

2 Center
Cut Slices
For
29c

½ OR
WHOLE
LB. **26½c**

PURE LARD

Kettle
Rendered

IN THE BULK

LB. **12½c**

PEANUT BUTTER

A FRESH BARREL

LB. **12½c**

SLICED BACON

CUDAHY
RIVAL
REX—BANQUET
OR KORN-KING

LB. **26½c**
LB. **31½c**

BLUE RIBBON

FANCY

ASK FOR YOU

PRICES IN EFFECT WHEN THE PAPER LEAVES THE PRESS
WEEK. . . MEAT AND PRODUCE PRICES ARE FOR FRIDAY

FLOUR

Heart of Gold
Flour
24 LB. BAG **84c**
48-Lb. Bag \$1.63
Red Star
Flour
24 LB. BAG **89c**
Great West
FLOUR
24 LB. BAG **89c**
Pillsbury's Best
FLOUR
24 LB. BAG **95c**
48 Lb. Bag \$1.85

SOAP

WATER MOPS

NO. 16 LINEN
EACH **19c**

CRACKERS

Fresh Tasty Flakes

IT'S THE SAVING ON EVERY

STAND
FOOD MARKET
"SELLS DE"

No. 1—Somerville and Kingsmill, Phone 42
No. 5—211 N. Cedar, Phone 12

COCO

Pure Leadway Brand
For Every Use

2 LB. **12½c**
CAN

CANNED PEACHES

BRIMFUL BRAND
Fancy Table — Syrup Pack

No. 2½
Size
CAN **14½c**

BREAD

Fluffy - 16 Oz. Loaf

EACH **5c**

CAKES

Made by Burrows Bakery
Regular 15c Seller

EACH **12c**
SATURDAY ONLY

NUCOA
The New Vegetable
Oleomargarine
LB. **21c**

TOMATO
JUICE
Empson's Pure
7 OZ.
CAN **5c**

ARBUCKLE
COFFEE
Ariosa Brand
LB. **16c**
BAG

SOAP CHIPS
CRYSTAL WHITE
5 LB. **33c**
BOX

Black Pepper
In Fancy Blue Shakers
Can Be Used for Salt
or Pepper
2 OZ.
9c

BROOMS
A Real Sweeper
5 Strand
EACH **21c**

GREEN BEANS
Fancy Cut
No. 2 Size
2 CANS **19c**
FOR

VINEGAR Colored Distilled, Full Pint BOTTLE **5c**

PANCAKE FLOUR Fancy Brimful Brand 3 LB. **17c**
3 BAG

Salad Dressing

A'Real Brand — Fresh Shipment

QT. **21c**

PUREX The Master Bleacher QT. JAR **14c**

SUGAR Powdered or Brown, in the Bulk 2 LB. **15c**
BAG

OLEO Red Rose Brand
LB. **18c**

SARDINES American, in Salad Oil 2 CANS **9c**
FOR

CATSUP Beech-Nut Brand, 14 Oz. BOTTLE **17c**

SALT In 50-Lb. Blocks
PLAIN **43c**
SULPHUR **53c**

BROWN BEANS
MARCO BRAND
NO. 2 SIZE
CAN **10c**

MUSTARD Pure Old King Cole
6 OZ. GLASS
5c

SARDINES Eatwell Brand
8 OZ.
CAN **5c**

SLAB BACON

Cudahy Rex
Light Average

1/2 or Whole Slab **LB. 24 1/2c**

LAMB

Stamped Genuine
Spring

TENDER STEW MEAT **LB. 10 1/2c**
MEDIUM SHOULDERS **LB. 15 1/2c**
LEGS Prepared to Serve **LB. 27 1/2c**
FANCY CHOPS **LB. 35c**

DELICATESSEN

No. 1 Market Only

POTATO SALAD **LB. 15c**
BAR-B-Q BEEF RIBS **LB. 20c**
CHEESE SPREAD **LB. 22 1/2c**
BAKED HAM **LB. 65c**

ROASTS

Cut From Choice
Grain Fed Steers

Meaty Cuts, Lb. **12 1/2c**
Rolled, No Bone, Lb. **16 1/2c**
Choice Chuck, Lb. **17 1/2c**
Center Cut Arm, Lb. **19 1/2c**

CHEESE

1st Grade Full
Cream Longhorn
Made from Whole Milk, Not Skimmed

LB. 18 1/2c

BACON

Fancy Sugar
Cured Squares

LB. 19 1/2c

RIBBON BEEF

WH CLUB
YOUR CHOICE CUTS

Minced Ham, Lb. **12 1/2c**
Franks, Large, Lb. **13 1/2c**
Sausage, Pure Pork, Lb. **17 1/2c**
Large Bologna, Lb. **12 1/2c**
Hamburger, Lb. **12 1/2c**

FRIDAY AFTERNOON... GROCERY PRICES GOOD ONE
AFTERNOON, SATURDAY AND MONDAY ONLY.

5 BARS 17c

FRESH LIMA BEANS
PURITY BRAND
No. 2 Size

CAN 10c

2 LB. BOX 12 1/2c

MACARONI Or Spaghet
TABLESALT Bel-dine
TOILET 1 1/2 Lb.
HERSHEY'S Rock
STARCH Crystal
STEEL WOOL Tissue
SOAP 650
GOLD DUST Sheet
CLEANSER 5 1/2 Oz.
MATCHES Chocolate
SOAP Syrup
Fault-
less
6 Oz.
A
Real
Cleanser
Armour's
Coco
Hardwater
Cleanser,
Small
Size
Light-
house
Diamond
Brand
White
King or
Creme Oil

BOX
BOX
ROLL
CAN
BOX
BOX
BOX
BAR
BOX
BOX
CAN
BOX
BAR

YOUR CHOICE
EACH **5c**

EVAPORATED MILK
ARMOUR'S

3 TALL OR **19c**
6 SMALL CANS

Standard's Fresh Fruits and Vegetables

BANANAS Large Golden
Ripe

SATURDAY ONLY
DOZEN 12c



GRAPE FRUIT

Medium Size
3 For 10c

DOZEN 33c

LETTUCE
CRISP AND GREEN

HEAD 5c

NEW POTATOES
FANCY WASHED
FLORIDA'S

LB. 7 1/2c

TURNIPS
IN THE BULK

LB. 2 1/2c

ORANGES
EXTRA LARGE SIZE

DOZEN 24c

APPLES
FANCY WINESAP

DOZEN 19c

SPINACH
SMALL AND TENDER

LB. 7 1/2c

FRESH TURNIPS
LARGE ORIGINAL

BUNCH 5c

CABBAGE
FIRM GREEN HEADS

LB. 3c

CELERY
WELL BLEACHED

STALK 10c

CAULIFLOWER
NOT TOO LARGE

LB. 12 1/2c

BUNCH VEGETABLES
CARROTS - RADISHES - GREEN
ONIONS AND MUSTARD GREENS

3 BUNCHES FOR 10c

PIE CHERRIES

FANCY MICHIGAN
NO. 5

CAN 54c

COCOANUT

1/2 Lb.
Cello
Long Shred

BAG 13c

VIENNA SAUSAGE

Andrews,
4 Oz.
Net

2 CANS 15c

PINEAPPLE

No. 2
Crushed or
Matched Slices

2 CANS 31c

TISSUE

Standard
Food
Brand

3 ROLLS 19c

PINEAPPLE

Juice,
No. 2
Size

CAN 14c

PINEAPPLE

Juice,
1 1/2 Oz.
Size

2 CANS 19c

MARSHMALLOWS

1 Lb.
Cello

BAG 19c

SALT

Table,
10
Lb.

BAG 19c

SYRUP

Full Quart Size

CAN 19c

Staley Brand
Golden or Crystal White

PROCTOR & GAMBLE SOAPS

Memium Ivory Bar **9c**
Ivory Flakes Large Box **23c**
P. & G. Soap 6 Large Bars **24c**

GREEN BEANS

VALLEY ROSE
Fancy Whole in the Can
NO. 2 SIZE

CAN 12 1/2c

CRACKERS

BROWN'S SALTINES
CRISPY CRACKERS

2 LB. BOX .. 29c

DOG FOOD

SANDY BRAND
NO. 1 TALL

2 CANS 19c
FOR

COFFEE

WHITE SWAN
Plain or Drip Grind

LB. 26c
CAN

CANNED CHILI

RATLIFF BRAND
No. 2 Size

CAN 21c

TOMATO JUICE

MARCO BRAND
No. 2 Size

2 CANS 19c
FOR

Black Pepper

CAGE'S BRAND
1 1/2 Oz.

CAN 5c

TOMATOES

SOLID PACK
No. 2 Size

3 CANS 23c
FOR

CANNED HOMINY

LARGE
2 1/2 Size

CAN 10c

STANDARD FOOD MARKETS
**"KNOW YOUR GROCERIES"
CONTEST**

OFFICIAL ANSWER FORM FOR WEEK
STARTING MARCH 19, 1937

Standard Food Markets:

I submit the following items as the 5 Best
Food Values in your advertisement of March 19,
1937 in your "Know Your Groceries" Contest:

Best Value
Second
Third
Fourth
Fifth

Your Solution MUST be deposited not later
than Tuesday, March 23, at 7 p. m. at any Stand-
ard Foot Market.

6th Week's Form
My Name
Address
City Phone

ON EVERY ITEM THAT COUNTS

STANDARD

MARKETS

"5c OR LESS"

111 N. C. Phone 127

TRY A QUART OF OUR PURE ICE CREAM

YOU ARE THE SUPREME COURT FOR THESE GROCERY VALUES! WE KNOW YOU'LL RULE THEM CONSTITUTIONAL!



GROCERY PRICES GOOD FOR ONE WEEK!

COFFEE
DRIP OR REGULAR
Saturday Only
POUND CAN

25c

PEACHES
SYRUP PACKED
SIZE 2 1/2 CAN

12 1/2c

PEAS
NO. 2 CAN

5c

VEGETOLE
Compound
8-LB. CARTON

Sat. Only
\$1 04

Meat and Produce
Prices Good for
Friday and Saturday
Only

Listen to GOLDEN LIGHT "Inquiring Reporter"
KPDN—Mon., Wed., and Fri.
6:30 P. M.
Ask Us About Free Theater Passes
Golden Light
COFFEE
Drip or Reg. — Lb. **21c**

OUR OWN DELICIOUS ICE CREAM MADE FRESH DAILY!
TRY A QUART — YOU'LL LIKE IT!
BANANA NUT, CHERRY NUT, BLACK WALNUT,
HONEY MOON SPECIAL, VANILLA, STRAWBERRY, CHOCOLATE

Pint 15c
Quart 30c
Gallon \$1

CARNATION FLOUR
48-Lb. Sack \$1.85
24 LB. SACK 94c
Free! Upside Down Cake
Pan with either size sack.

Piggly Wiggly
THE Season's
Choice
FRUITS
and
VEGETABLES

GRAPEFRUIT 29c
Texas Marsh Seedless — Doz.

- CARROTS 3 Large Bunches **10c**
- RADISHES 3 Large Bunches **10c**
- ONIONS 3 Large Bunches **10c**
- MUSTARD 3 Large Bunches **10c**
- TURNIPS Large Bunch **4c**
- ORANGES Texas, Large Size, Doz. **25c**
- CABBAGE Firm and Green — Pound **2 1/2c**
- LETTUCE Large Heads **5c**

POTATOES 31c
U. S. No. 1 White — 10 Lb. Sack

- APPLE BUTTER Qt. Can **15c**
- SUGAR Powdered or Brown — 2 Boxes **15c**
- SPINACH No. 2 Can — 3 for **25c**
- FIGS Preserved Skinless — Qt. Jar **59c**
- COFFEE Chase & Sanborn — 1 Lb. **25c**
- COCOA Hershey's — 1 Lb. **14c**
- WAX PAPER Cut Rite — 2 Rolls **15c**
- SALAD DRESSING Or Sandwich Spread — Qt. Jar **23c**
- CHOCOLATE CHERRIES Pound Box **29c**
- FAULTLESS STARCH 3-10c Boxes **25c**
- SODA 3 1-Lb. Boxes **25c**
- RAISIN BRAN 2 Boxes **25c**
- SALMON Tall Can — Pink — Can **11c**
- MATCHES 6-Box Carton **21c**
- TOMATO JUICE Full No. 2 Can **10c**
- PANCAKE FLOUR Whole Wheat—3-Lb. Sack **17c**
- CEDAR OIL Furniture Polish — Qt. Bottle **29c**
- ASPARAGUS Green or Natural — No. 1 Can **15c**
- EGGS Fresh Country, Doz. **19c**
- PEAS No. 2 Cans Empson—2 for **25c**
- MARSHMALLOWS 1-Lb. Cello Bag **15c**
- PRESERVES Assorted Flavors — 2-Lb. Jar **39c**
Strawberry **43c**
- PINTO BEANS 5-Lb. Bag **43c**
- BLACK PEPPER 1/2-Lb. Bee Brand — Can **15c**
- Saltine Flakes 1-Lb. Box **17c**
- KIDNEY BEANS Van Camps — 3 Tall Cans **25c**
- POP CORN Giant Yellow — Large Pkg. **15c**
- CHERRIES Brimfull — No. 2 Can **15c**
- DEL MONTE CORN Vacuum Pack Whole Kernel — Can **15c**
- HOMINY Brimfull Brand — Size, 2 1/2 Can **10c**
- PINEAPPLE Full, No. 2 Can — Sliced **15c**
- BEANS Marco — Asp Style, No. 2 Can **20c**
- OLD DUTCH CLEANSER 3 Cans **25c**

Quality MEATS

FRYERS 59c
Heavy Type, 2-Lb. Average

- HAMS Armour's Star — Whole or Half — Lb. **28c**
- BACON SQUARES Pinkney's Smoked — Lb. **20 1/2c**
- MEAT FOR LOAF Beef and Pork—Fresh Ground, Lb. **17 1/2c**
- ROAST Choice Quality Pinkney Beef, Lb. **18 1/2c**
Center Cut Chuck Sun-Ray Beef, Lb. **20 1/2c**
- CURED HAM Center Slices, 1st Grade Ham, Lb. **42c**
- PORK SHOULDERS Half or Whole — Lean, Lb. **19c**
Fresh Meaty Roast — Top Cut, Lb. **22c**
- CHEESE Kraft's Elkhorn — Mild, Full Cream, Lb. **23c**
- OLEOMARGARINE "Red Rose"—2 Pounds **35c**

BACON LB. 27c
Edgemere Brand,
Sliced and Rined

SUGAR 55c
Pure Cane
Cloth Bag
(Sat. Only)
10 LBS.

VANILLA 10c
Imitation
Flavoring
8 OZ. BOTTLE . .

LOOK!

A Beautiful Cut Glass Wall Mirror

FOR ONLY
\$1 15

With the Purchase of \$5.00 or More in Groceries
At Our Store
SATURDAY ONLY!

- HONEY 3-Lb. Jar Lake Shore **47c**
- BEANS Mexican Style— 3 Tall Cans **25c**
- SYRUP Ribbon Cane 1 1/2 Can **15c**
- TAMALES Ratliff's, 2 Large Cans **25c**
- MILK 3 Tall or 6 Small **21c**
- PORK & BEANS Van Camp's Tall Can **6c**

PIGGLY WIGGLY

- PORK & BEANS TALL CAN
 - SPAGHETTI TALL CAN
 - LIMA BEANS TALL CAN
 - SPINACH JUICE TALL CAN
 - TOMATO SOUP
 - VEGETABLE SOUP
 - WHITE KING TOILET SOAP
 - BEL DINE MACARONI
 - ELASTIC STARCH LG. BOX
- YOUR CHOICE 5c**

GATE-CRASHING DIED OUT WITH 'ONE-EYE' CONNOLLY AND YOUNG

BY GEORGE ROSS.

NEW YORK, March 18.—With "One-eye" Connolly and Tammany Young departed to another world, the era of glorified gate-crashing seems to have died out completely. It is regrettable, for the Messrs. Connolly and Young were the leading disciples of a colorful cult whose ingenuity often rivalled that of the great Houdini himself.

There are still a few gentlemen of leisure lingering about Manhattan who make a practice of blandly "crashing" theaters, night clubs and private functions, but their efforts are pitifully puny compared to the exploits of "One-eye" and Tammany.

Probably Tammany's greatest coup took place one spring afternoon at a polo match in Meadow Brook, Long Island. The Prince of Wales was visiting the country at the time, an expected visitor at the match. Getting by the custodian of the front gate was a simple task for Tammany, but once inside, the only seats which appealed to his fancy were those fenced off with a velvet rope for the royal party.

No fewer than eight cops guarded the empty seats, and for once it seemed as if Tammany's desire for a particularly excellent vantage point would have to go unsatisfied.

It was while he was sulking that he spotted the Prince's car coming slowly through the gate. No man for hesitancy. Tammany jumped briskly on the running-board.

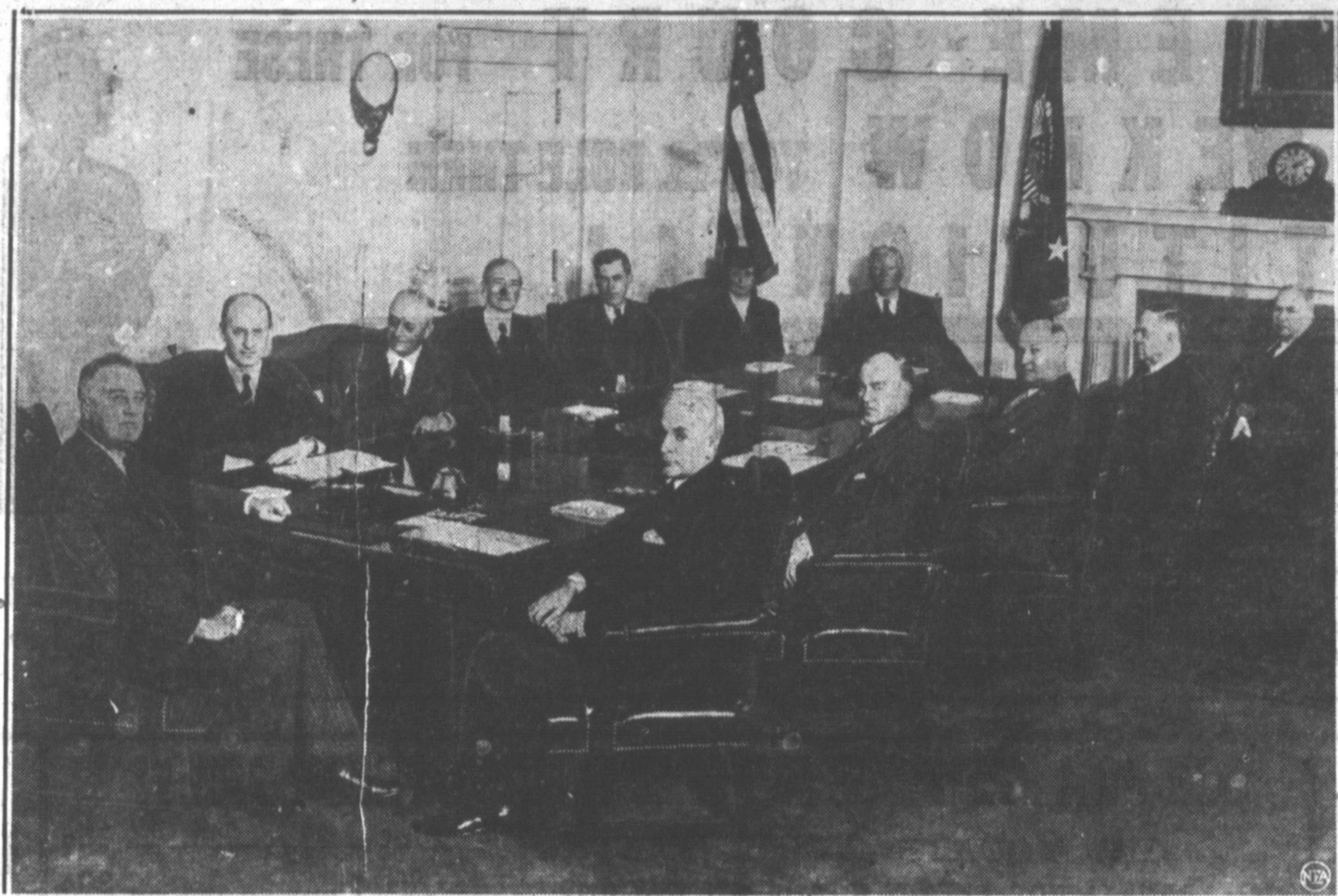
"Do you want to get to the polo grounds?" he shouted at the chauffeur.

"I think," the Prince of Wales answered, "we're already in the grounds."

"Oh, you ain't, mister," Tammany replied. "Just tell this chauffeur to go straight ahead and keep his finger on that horn. I'll take you in."

Tammany saw the game that afternoon as the right-hand guest of the prince. And the next day he received 10 boxes of banquet-size cigars from the present Duke of Windsor. Tammany sold the cigars at a handsome profit. His brand was the 10-cent kind.

ROOSEVELT MEETS WITH HIS ADVISERS AT WHITE HOUSE



When these eleven men and one woman get together in Washington, the executive branch of the United States government is in session. Gathered with President Roosevelt (left) around the big table for a Cabinet meeting at the White House are (starting at far side of table and going around clockwise): Henry Morgenthau, Jr., Treasury; Homer S. Cummings, Attorney General; Claude A. Swanson, Navy; Henry A. Wallace, Agriculture; Frances Perkins, Labor; Vice President John N. Garner; Daniel Roper, Commerce; Harold Ickes, Interior; James A. Farley, Postmaster General; Harry Woodring, War; and Cordell Hull, Secretary of State.

TRAILERS TAXED ONLY IN ONE STATE IN U. S.

DENVER, Colo., March 19.—Trailers are free to come and go throughout the United States in spite of reports to the contrary, states Joe H. Thompson, director of the Conoco Travel Bureau with national headquarters in Denver, Colorado.

From a legal standpoint they are still classed as motor car accessories, rather than dwelling places, in spite of the fact that they have many of the appointments of the modern home. Eighteen states do not even tax trailers as personal property.

There have been rumors concerning possible inimical legislation pertaining to trailers, but thus far only one state has passed legislation preventing trailers from passing state borders at will, provided the owner is not engaged in gainful occupation. Georgia extracts a \$3 registration fee from every non-resident trailerite crossing its borders.

The majority of the other states grant unlimited reciprocal privileges to non-resident trailerites who are properly registered in their home state, though ten of these do require them to procure a visitor's permit within a few days after entering the state. In most instances no fee is charged for this permit, according to Thompson. The few states with limited reciprocal privileges allow time limits of thirty, sixty, or ninety days, with some as long as six months.

For **PRINTING** SATISFACTION AND SERVICE
PAMPA DAILY NEWS
COMMERCIAL PRINTING

AUTO LOANS

See Us for Ready Cash to Refinance.

Buy a new car. Reduce payments. Raise money to meet bills. Prompt and Courteous Attention given to all applications.

PANHANDLE INSURANCE AGENCY
Combs-Worley Bldg Ph. 604

Crashed Headlines, Too.

It was the rivalry between "One-eye" and Tammany which lent impetus to their fantastic feats. "One-eye's" favorite maneuver consisted of informing the press, and the management, beforehand that he expected to crash that night's function. The result would be a double cordon of cops, an alert ticket-taker—and the inevitable Connolly safely inside informing all and sundry that he had passed another miracle.

"I dunno," a house manager once said, "how he does it. It must be osmosis."

At the Dempsey-Carpentier fight in Jersey City, Tammany was thrown out by a policeman six times before his inventive brain spawned a scheme better than any ticket of admission. Considerably annoyed by the pugnacious tactics of the policeman, he stalked up to a lieutenant. "Major," Tammany said, "I was hired here tonight by Rickard himself to watch out for gate-crashers. But this guy has been following me around and throwing me out. I just wonder how far this joke will go."

Grand Opening.

A movie premiere still is an opulent sight along Broadway. Klieg lights flood the streets in blinding illumination and crowds surge toward the playhouse like butterflies near the flame. A movie opening, in fact, is thrice as lavish as the unveiling of a flesh and blood play.

Theatersgoers, by the way, are astonished at the spontaneous applause that greets the celluloid shadows on the screen. Even one quick flash of the director's or star's name in the screen credits will evoke a salvo of palm-clapping. A movie opening is the only time, apparently, when those who helped to create the film can get audible audience reaction.

The government of Australia is planning to erect a high-power short wave radio station capable of disseminating throughout the world an Australian official news service.

Mighty Plane Battle Is Won By Government

MADRID, March 19 (AP)—Spanish government troops exploded a new mine under the insurgent-held clinical hospital in the University City suburb today, precipitating vicious fighting and bombardment.

Heavy artillery from both sides took part in the engagement. Big shells whined into Madrid, wounding several persons. Usually reliable sources said the government succeeded in strengthening its positions in the hospital sector.

Artillery also boomed on the Guadalajara salient, northeast of Madrid, after the government had announced it had driven a defense shaft south and east of Brihuega, effectively stopping the insurgent advance.

The government's aerial warriors claimed the whip hand in the struggle for air supremacy.

"The insurgents haven't a chance," one said.

The clashes of government and insurgent armadas have been marked by mass attacks of a size unprecedented in modern warfare.

The government claimed a telling blow against Gen. Francisco Franco's Guadalajara salient, northeast of Madrid, declaring its planes laid waste to the insurgent strongholds of Sigüenza and Brihuega.

The attack and counter-attack darkened the sky of the Guadalajara front with 110 planes on Tuesday. Eighty-five of these, it was announced, were government bombers and pursuit ships.

One flier, whose name was guarded carefully, declared:

"We've got them beaten in speed and every other way."

"The Italian planes are better than the German but even they are inferior to ours," the government spokesman continued. "I think that was definitely shown by the drubbing we gave them."

Center of Legal, Medical Puzzle



Baffling to legal as well as medical men was the case of Mrs. Helen Willis Love, who, seeking death by "will power," put herself into a coma after she was found guilty of slaying her husband. While attempts were made to "revive" Mrs. Love, shown above at Los Angeles with an attendant during her state of "suspended animation," the trial judge called a bedside session to determine whether sentence could be pronounced.

Deserts Were Man's First Used Homes

PHILADELPHIA, March 19 (AP)—Man's earliest known home in the United States was agreed upon today as the present "deserts" of the southwest.

They were rainy, lake regions then. This dates them at from 13,000 to 25,000 years ago. The earliest Americans were described by several scientists at the symposium on early man held by the Academy of Natural Sciences of Philadelphia.

Previous claimant to the earliest honors was the skeleton of an Indian girl found under circumstances indicating that she fell off a raft and drowned 20,000 years ago in a Minnesota glacial lake.

Today Dr. Ales Hrdlicka of the United States national museum said the girl was a Sioux and that the evidence is all against Sioux Indians in Minnesota 20,000 years ago.

Dr. Ernest T. Antevy, who reported new finds in the southwestern "deserts," agreed that the Minnesota girl was doubtful evidence. He could have dated his desert "men" at 25,000 years ago, but chose 13,000 the very latest time when the lakes could have existed.

California, Arizona and New Mexico were the sites.

More than 48,000 pounds of black walnuts and 1,000 pounds of hickory nuts are being planted on Oklahoma farms by soil conservation workers.

CONSISTENTLY LOW PRICES

Look over these **Bargains**

- Tune in GOLDEN LIGHT "Inquiring Reporter"
- KPDN—Mon., Wed and Fri. 6:30 P. M.
- FREE THEATER PASSES
- Golden Light Coffee, Lb. 21¹/₂c
- POST TOASTIES— 2 For 21c
 - MILLERS 40 per cent BRAN— 2 For 15c
 - CATSUP— Heinz, Large, 2 for 35c
 - SPINACH No. 2 Cans, 2 For 19c
 - MILK—Carnation or Libby's 6 Small Cans 23c
 - SALT— White Swan, 2 for 15c
 - White Swan COFFEE See Our Display for Good News—Lb. 29c
 - CHILI— Pure Maid, 2 for 24c
 - INSTANT POSTUM— Small Size 23c
 - SPUDS U. S. No. 1— 10 Lbs. 33c
 - LEMONS Dozen 35c
 - CABBAGE— Lb. 2¹/₂c
 - CARROTS Beets - Onions— 3 Bunches 10c
 - GRAPEFRUIT— 3 For 10c
 - BANANAS— Pound 5c

RED STAR FLOUR

Buy in Quantity and Save on This Quality Flour

24 LB. 98c SACK

48 LB. \$1.93 SACK

Tender full flavored Meats!

- Swiss Steak Grain Fed Beef LB. 21¹/₂c
- Chuck Roast Center Cut LB. 13¹/₂c
- LUNCH MEAT Mixed, Lb. 25c
- STEAK Family Style LB. 13¹/₂c
- PORK SHOULDER Shank Half LB. 15¹/₂c
- FRANKFURTERS LB. 12¹/₂c
- STEW MEAT LB. 9¹/₂c
- Bacon Squares LB. 21¹/₂c

HOME SUPPLY

GROCERY & MARKET

"CONSISTENTLY LOW PRICES!"

119 E. Kingmill Phone 1222

Spring's STYLE SHOW

Tonight Only On the Stage

Spring's Newest Fashions Presented On Living Models.

Presented by MURFEE'S Inc. - MITCHELL'S GILBERT'S LADIES' STORE - HARRAH'S LIVELY & MANN - THE FRIENDLY

Flowers by the BLOSSOM SHOP

Sponsored by Pampa A. A. U. W.

ON THE SCREEN TODAY THRU SATURDAY

JOAN OF ARCS Like the maid of France she fights against intolerance and bigotry!

At It's Best

CLAIRE COLBERT

Mac MURRAY

MAID OF SALEM

Also Sunday Roundup News

LA NORA

GROWN

Today and Saturday Ridin', Ropin', Fightin', Singin'

BITTER TROUBLE TEXAS

Also Episode 11 "ROBINSON CRUSOE OF CLIPPER ISLAND"

COMING SUNDAY A Thrilling Epic of Crime War "LET 'EM HAVE IT" with Richard Arlen Bruce Cabot Virginia Bruce Alice Brady

POPE URGES EMPLOYERS TO MEET GREAT DUTIES

VATICAN CITY, March 19 (AP)—Pope Pius XI, striking at communism as "the ruin of family and society," called upon the employers of the world to meet "the great duties imposed by justice."

"The wage earner is not to receive as alms what is his due in justice," said the pontiff.

"Let no one attempt with trifling charitable donations to exempt himself from the great duties imposed by justice."

"... the very dignity of the workman makes him justly and acutely sensitive to the duties of others in this regard."

Thus, "under the eye of God," he sought to rout the "false" doctrine of communism, which he said, "is founded on pure materialism which rejects all spiritual values."

HUNTER'S ALIBI SAN DIEGO, Calif., March 19 (AP)—It's expensive to have a duck fly in front of your gun when you are rabbit hunting. Herman L. Wilts, WPA worker, charged with shooting a wild duck out of season was fined \$25 by Justice Phil Smith. "I shot at a rabbit and hit a duck," Wilts told the judge.

Resuming Practice

Office Hours: 11 to 12 a. m. & 3 to 5 p. m.

Consultations by Appointment only

Dr. V. E. v. Brunow

Brunow Bldg., Pampa, Texas

Paul D. Hill Now Business Manager Of Pampa Mortuary

We feel most fortunate in securing the services of Mr. Hill who has been a well known resident of Pampa for many years and has many friends in Pampa and vicinity.

Active in civic organizations, clubs, and church, Mr. Hill is a tireless worker in most all major community projects. We consider the addition of Mr. Hill an asset to our organization.

PAMPA MORTUARY, Inc.

501 E. Francis AMBULANCE SERVICE Phone 191

READY WILLING AND ABLE

Featuring RUBY KEELER LEE DIXON ROSS ALEXANDER in the Pastest Dance Hit of the Year

REX Today Sat.

BUCK JONES "EMPTY SADDLES" —ALANTO— Chap. 8 "PHANTOM RIDER"

STATE TODAY **TIM McCOY** in "DARING DANGER"

SPECIAL WEEK END PRICES FOR THRIFTY BUYERS

SOUP Heinz, Tomato, Vegetable or Vegetable Beef, Small Can 9c	MARSHMALLOWS Angelus, 1 Lb. Cello Pkg. 15c	TAMALES Gebhardt's, No. 2 Can, 2 Cans 35c	SANDWICH SPREAD Gebhardt's, No. 1/4 Can, 2 Cans 15c	COCOA Hershey's, 2 Lb. Can 22c
---	--	---	---	--

CORN Del Monte, Vacuum Pack, 12 oz. Can 2 CANS 27c	MATCHES Strike Anywhere 6 BOX CARTON 19c
--	--

CRACKERS Excell 2 LB. BOX 15c	COFFEE Schilling's 1 LB. CAN . 27c
---	--

GRANULATED SOAP White King LARGE PKG. 30c	TOILET TISSUE Charmin, 4 ROLL BOX 23c
---	---

SUGAR PURE CANE, Friday and Saturday Only 5 LB. Kraft Bag 23c	BUTTER First Grade Creamery Solid Molds LB. 32 1/2c
---	---

CHILI Gebhardt's, With Beans 15 OZ. CAN . 15c	RAISINS Seedless, 4 LB. PKG. 28c
---	--


SPICED BEANS Gebhardt's, 15 oz. Can 2 CANS... 15c	PEACHES Choice Evaporated LARGE CELLO PKG. . 23c
---	--

SALMON Libby's, Fancy Red Sockeye, No. 1 TALL CAN 22c	PEAS Glen Valley, No. 2 Can 3 CANS . . 29c
---	--

CHOCOLATE SYRUP Hershey's 16 OZ. CAN 10c	CORN Libby's, Fancy Country Gentleman 17 OZ. CAN 13c
--	--

CRISCO Fresh Stock 3 LB. CAN 57c
--

Tune In GOLDEN LIGHT "INQUIRING REPORTER"
 KPDN EVERY MON., WED. AND FRI. 6:30 P. M.
 Ask Us About FREE THEATRE PASSES
GOLDEN LIGHT COFFEE 1 LB. PKG. **21c**



KRAUT Curtis, No. 2 1/2 Can 9c	S. O. S. CLEANSER Pkg. 11c	TOMATO JUICE Libby's, 14 Oz. Can 7 1/2c	TURNIP GREENS No. 2 Can 8c
OYSTERS Blue Plate, 5 Oz. Can 11c	BAKING POWDER K. C., 25 Oz. Can 17c	SHREDDED WHEAT N. B. C., 12 Oz. Pkg. 11c	OATS 3-Minute, Large Box 18c
TUNA Bonita, No. 1/2 Can, 2 Cans 25c	GRAHAM CRACKERS N. B. C., 1 Lb. Box 15c	JELLY White House, 2 Lb. Jar 21c	SHAVING SOAP Colgate's 5c
CORN FLAKES Kellogg's, 2 Large Pkgs. 21c	SARDINES American Oil, 2 Cans 9c	SPINACH Olmito, No. 2 1/2 Can 12 1/2c; No. 2 Can 8c	SHOE POLISH Jet Oil, Bottle 12c
BISQUICK 40 Oz. Pkg. 29c	POTTED MEAT Libby's, Can 4c	FIELD CORN Waynesville, No. 2 Can 9c	MARGINE Good Luck, 1 Lb. Crtn. 20c
GELATINE Knox, Plain or Acidulated, Pkg. 19c	PINEAPPLE JUICE Libby's, 12 Oz. Can 7 1/2c	TOMATOES No. 2 Can, 3 Cans 21c	SALAD DRESSING Relish Spread, Bestyett, Qt. Jar 27c

P & G SOAP 10 GIANT BARS 35c
--

GRAPE JUICE CHURCH'S—QT. BOTTLE 29c PT. Bottle 15c
--

REFSH FRUITS AND VEGETABLES
 Prices Good Friday, Saturday and Monday

BANANAS Extra Fancy, Golden Ripe LB. 2 1/2c	TURNIPS Bulk, extra nice, Lb. 2 1/2c
NEW POTATOES No. 1 Florida, Lb. 7 1/2c	ORANGES Texas Seedless, Doz. 29c
APPLES Extra Fancy Winesaps, Doz. 25c	CABBAGE Nice and Green, Medium Size Heads LB. 1c

Prices Effective From Friday, March 19th, Through Thursday, March 25th

HAMS **24c**
 First Grade Sugar Cured Whole or Half, Lb.

SALT PORK For Boiling, Lb. 12 1/2c	BOLOGNA In the Piece, Lb. 12c
FRANKS Extra Nice 2 LBS. 25c	FRYERS 2 Lb. Avg., colored type, Lb. 25c

MEAT SUGGESTIONS
 Prices Good Friday, Saturday and Monday

DOG FOOD 16 Oz. Cans, Each 5c	PEANUT BUTTER 2 Lbs. Bulk 25c
---	---

4-H CLUB BABY BEEF
 This week we offer cuts from these choice calves purchased from the Amarillo Fat Stock Show. These cuts will sell at prices no higher than the price of similar cuts from our best beeves.

STEAK **15c**
 Lean Meaty Cuts from Baby Beef, Lb.

PIGS FEET Pickled, Each 5c	SAUSAGE Seasoned Right, Lb. 15c
SLICED BACON Sugar Cured, Lb. 23c	HAMBURGER 2 lbs. All Meat 25c

Save at **FURR FOOD**

Shop Where Economy Rules
 No. 1 Store — 314 W. Foster
 No. 2 Store — 109 S. Cuyler

The PAMPA DAILY NEWS

Published every evening except Saturday, and Sunday morning by the Pampa Daily News, 322 West Foster Street, Pampa, Texas.

Phone 666—All departments. JAS. K. LYONS, Gen. Mgr. TEX DE WEESE, Editor. PHILIP R. FOND, Bus. Mgr.

MEMBER OF THE ASSOCIATED PRESS (Full Licensed Wire). The Associated Press is exclusively entitled to the use for publication of all news dispatches credited to it or not otherwise credited to this paper and also the regular news published herein.

Entered as second class matter March 15, at the post-office at Pampa, Texas under the act of March 3rd, 1879. National Advertising Representatives: Texas Daily Press League, New York, St. Louis, Kansas City, Los Angeles, San Francisco and Chicago.

SUBSCRIPTION RATES—By carrier, 15c per week; \$3.50 per 6 months. By mail payable in advance in Gray and Adjoining Counties, \$5.00 per year, \$2.75 per 6 months; elsewhere Gray and Adjoining Counties, \$7.00 per year, \$3.75 per 6 months, 75c per month. Price per single copy 5c.

An independent Democratic newspaper, publishing the news fairly and impartially at all times and supporting its editorial columns the principles which it believes to be right and opposing those questions which it believes to be wrong, regardless of party politics.

"YOU BET YOUR LIFE"

With Pampa in the midst of its 90-day safety campaign and every organization pitching in to do its utmost to cut traffic accidents and fatalities, a new booklet on the subject appears.

The traffic gambler, the booklet points out, is eleven times as likely to be killed or injured in an automobile accident as the holder of a sweepstakes ticket to win even a small prize.

The nation's traffic problems is referred to as a "lottery" in which everyone, willing or not, must have a hand. "The sky's the limit" when you gamble in traffic by driving or walking carelessly, because you bet your life.

After analyzing reports of 36,800 fatalities and 997,840 injuries in traffic accidents last year, these interesting and little known facts about accidents are set forth:

More than 97 per cent of drivers involved in fatal accidents have had one or more years' driving experience.

More than 75 percent of all fatal accidents occur when the road is dry. More than 85 percent of all fatal accidents occur in clear weather.

Saturday is the most dangerous day for driving, and Tuesday the safest. More persons were killed last year between seven and eight o'clock in the evening than at any other hour.

TEX'S TOPICS

This will show you what happens when a man who writes a column decides he is over-worked and should take a day off. . . . Probably he is the only one who decides anything of the sort, but, nevertheless, he has decided it, so what? . . . Well, so this:

New Yorkers are playing new game at skating rinks . . . floor is boxed off into giant squares numbered one to six. . . when music stops, skaters stop, too. . . die is cast, those in box indicated leave floor. . . elimination follows, prizes are awarded. . . Huge American flying boat is to be placed in service in Japan by Japan Air Transport Co. . . it has capacity of 32 passengers, two pilots, mechanic, steward . . . four cabins each have eight seats . . . kitchen in tail end.

Those who have designs on city council jobs in Bulgaria must pay their taxes promptly . . . it's one of rules in new electoral code. . . another is that women who are mothers can vote, and women who aren't, can't. . . Mrs. Grawson Jordan, 28-year-old bride at Belmont, N. Y., who has done trapping and hunting for 19 years thinks that "maybe next year she'll be able to keep enough muskrat skins for herself to make her a coat."

Last time Gibraltar was forced to repel powerful enemy force was when it was besieged by French and Spaniards in years from 1779 to 1783. . . now it is again "key point" in present "little world war." . . Streets of Gibraltar are small, crooked and oddly-named, like streets in English novel of Victorian period. . . there is Bomb House Lane, Cannon Street, Forty Steps and Victualling Office Lane . . . population, 19,000.

Highway along Riviera coast in southern France has new patented non-skid surface. . . It is lit by flood lights and wide enough for four lanes of traffic . . . they used to have trouble about tourists popping off road into the sea. . . New round-the-world cruise, on the "Bremen," will make trip in 90 days. . . almost as fast as in Jules Verne story (80) . . . difference is that cruise members can be on shore 47 days of the 90 . . . usual time needed: 136 days.

Plans are now being made for series of stamps to commemorate 1939 New York World's Fair. . . including panoramic view of fair site and views of outstanding fair buildings. . . Columbian exposition (Chicago, 1893) was first in U. S. given stamp series. . . Cockpit in Martin bomber of Army air corps contains black box, half size of orange crate. . . with emergency rations, equipment for use in forced landing. . . among items: 8 pounds chocolates, 3 cans tomatoes, 5 pounds hard-tack, 2 pounds coffee, pistol, flashlight, and others.

New Imperial Airways flying boat "Cavaller" has arrived in Bermuda, is one of 28 to be built for its various lines. . . will hit 200 miles per, go 1,000 miles without refueling . . . and is nine feet from floor to ceiling on lower deck. . . Female orchestra and solo singers are banned from cafes and restaurants of town in East Hungary. . . decree says it is "necessary in defense of public morality and gypsy music" . . . and another decree says waitresses cannot be younger than 40.

Police radio may soon be used by England's mounted, bicycle police. . . in city of Liverpool bicycles are being fitted out with small receiving sets. . . while in other sections of Lancashire mounted police are being equipped with special wave-length sets. . . United States government is spending \$4,000,000 to cool off its offices in Washington. . . putting air conditioning in all important buildings. . . Washington's mean temperature in June is 72, in July 77, in August worse.

Simple, isn't it? . . . Yes, that's what happens when a fellow who scribbles a column like this, gets so far behind in his work and so completely out of quick ideas that he tosses up the sponge for the day and decides to let somebody else do it, with the aid of his old scissors. . . It's a little trade secret, but we don't mind letting you in on it. . . Bill Karn's radio voice now comes over KOMA, Oklahoma City, daily after 6 p. m. . . You're welcome.

Yesteryear In Pampa

TEN YEARS AGO TODAY A daily mail route to Mobeetle, which would serve about 150 farm homes, was asked by the local postoffice and Mayor F. P. Reid.

T. D. Hobart was elected vice-president of the Texas Cattle Raisers association at El Paso.

The Gray County creamery opened under management of H. Gerhart.

FIVE YEARS AGO TODAY The third annual vocational judging contest was held here, with 90 boys entered. Mole-team placed first in poultry and livestock judging, Panhandle in dairy judging. L. Billingsley of McLean made a perfect record in poultry judging.

A play, "The High Heart," entered by the high school in the district drama tourney at Canyon, was eliminated by Miami. Arless O'Keefe was coach; the cast included Joe Kahl, James Groom, Malcolm Carr, Paul Camp, Dorothy Doucette, Florita Freeman.

"General Goering guarded carefully on his trip to Poland." At that, there must be a fortune in those medals.

Mickey Cochrane of Detroit told Security and Exchange commission probes that he knew nothing about stocks. He's a Tiger, not a bull or bear.

EASTER FASHION NOTES FROM ABROAD



Man About Manhattan

By GEORGE TUCKER

NEW YORK—Despite its craving for lurid headlines and new stories of an intimate, gossipy nature, New York frequently misses the real drama that lies underneath the front page news. Often the most tragic and the most romantic comedies are hidden in obscure little paragraphs among the public notices and in the lost and found departments.

These are the notes of the agony columns, the "Please come home" and "All forgiven" items, and while they may seem silly and even ludicrous to you, they are anything but that to the ones whose lives they concern.

Take, for instance, this note in one of the big metropolitan dailies: "Joseph, won't you write soon? Martin keeps asking for you." . . . It is signed simply "Mother and Dad." . . . Here are the elements of heartache that O. Henry could twist into fascinating fiction. . . Who is Joseph? More important still, who is Martin? . . . He might be a brother, a friend, even a small son. The wording of the note suggests that he is ill.

Another query on the same page concerns a wife who left England a quarter of a century ago. . . "Will Clara Harrison (the wife of John Edward Harrison), Leeds Road, Bradford, who left Bradford, England, for the U. S. A. about 25 years ago, and believed to have lived in Philadelphia, please communicate with Messrs. Watson, Son & Smith, Solicitors, Bradford." . . . Perhaps this woman was a young bride at the time. . . E. Phillips Oppenheim would have a legacy involved, and an exciting romantic chase across two continents.

Then there are such items as these:

Somewhere in New York, between the French Lin pier and the Hotel Pierre, a diamond and onyx locket has been lost. . . A Masonic ring, carrying an emblem and a diamond, is also missing. . . This is engraved "Ida to Sam." . . . Easier to locate will be a black Cocker spaniel with a white nose. . . She answers to "Topsy." . . . Suitable rewards are waiting if you can return any of these.

"Restaurant Owners, if your business does not show the right profits, I am the man who can tell you why!" . . . Now there is a fellow with a lot of self-confidence.

"Young Vennesse, 24, well educated, widely traveled, rich in ideas, seeks position where he can make his abilities count." . . . "Young lady, 32, pleasant, seeks responsive office position, where experienced, earnest services are valued." . . . "Two young men, 25, personable, well born, accomplished, excellent cultural backgrounds, will accept any legitimate connection involving adventure and romance."

Comedy and heartache—they flow through the columns of the newspapers every day in a turbulent procession of melodrama and adventure. But New York seldom sees them. New York can't get past that murder story on Page One.

Moderate to severe erosion has taken place on 64 per cent of the land in the United States, it is estimated by Harold Stover, Kansas State college extension engineer.

Blackball wheat originated from three heads found by Earl G. Clark in 1912 in a field of Turkey wheat near Sedgewick, Kas., according to the Kansas State College News.

People You Know

By ARCHER FULLINGIM

Boys in every part of town, but especially in South Pampa, let out a big whoop when they heard Wilmer Postma would lead the children in their recreation.

Playing and games, this summer, for Mr. Postma, quietly, and without any fuss has become a hero, a champion of boys in Pampa, suave, diplomatic and determined, but always smiling.

The boys like him so much because he likes them so much; they are certain of his devotion to them and they are his devotees. They hover around him perpetually. When they see that blond head and lithe form approaching they come running; he can do those things that boys like to do. . . Here we see him at a Scout meeting. The boys are boxing. He puts on the gloves with one and gives a skillful exhibition of shadow boxing, and he knows how to wrestle, too. . . He has known the high, dark forests and the snow on the mountain peaks in his native Colorado, as a forest ranger, and as a framer of dim trails, and his nature stories are wondrously revealing and gripping.

He can interpret the signs of nature. . . At the swimming pool he could lead a game of Follow the Leader in swimming, diving, life-saving. . . He is the kids' hero on the playground. . . A man with a thousand stories and a thousand games and a love for the open can do anything with either boys or girls, and Wilmer Postma may not have a thousand but he has enough. . . The kids will be doubly glad when summer comes. . .

AROUND HOLLYWOOD

By WM. A. ULMAN, JR.

HOLLYWOOD—When the telephone rang I was peacefully asleep at my new screen play. The caller was Robbin Coons, prop conductor of this column. He sounded awful. He had the flu. Out of the depths of his delirium he had gotten an idea. He asked me if I would tell the breathless world how to write a screen play.

Would I? For five years I've been waiting for a chance.

Now there are several ways to begin writing a script. Some of the boys sleep on the right, some on the left, and one of my very best friends uses the flat-on-the-back, mouth-slightly-agape system. Personally I've always preferred the twisted-torso, or tummy-down-face-up method.

That goes on for two weeks or more. Then the boss calls up to ask where the devil the script is. It's considered bad manners for the writer to say he doesn't know either.

So in desperation you start reading the novel and wondering how it ever got to be a best-seller. Then you start writing what is known as a "treatment." The original author is frequently quite bitter about it, too.

Hire More Writers The next step is to hire two new writers whose job it is to read every thing that has been written about the story or on it. This is called "necessary research" and can be prolonged all summer. The new writers then toss it out the window and start from scratch on the final step.

They find an old plot outline in the middle drawer of the desk and begin putting it into continuity, i. e., screen play form, with dialogue,

How's Your Health?

Edited by DR. IAGO GALSTON for the New York Academy of Medicine

COLD SHOWERS

Are cold showers good for you? That depends upon what is meant by good. If you like them, enjoy taking them, then certainly they are "good" for you. At least they are little likely to cause harm, provided the shower is followed by a brisk rubdown with a warm towel.

But, if as Benjamin Franklin did, you find the cold shower a form of refined cruelty, then there is little warrant for suffering. A tepid, cooling shower will do. Or, if one is Spartan in temper, a gradual descent from warm to cold may be indulged in.

The theory behind cold showers is that they "harden you," by which is meant that they help to protect one against colds. This theory has not been proved.

Many a cold shower devotee proves just as susceptible to colds as his softer brother. And, if as is now fairly definitely established, colds are due to a filterable virus, then cold showers seem to have little bearing on the subject.

And yet there is a little more to the matter. Cold showers may train the heat regulating mechanism of the body to respond more promptly and more adequately to sudden changes in temperature.

Chilling the body, as is well known, contributes to the development of common cold, possibly even to that variety caused by a filterable virus. Possibly the body can be trained to meet a sudden chilling by compensatory speeding up of blood circulation, and by increasing the blood to the skin.

However, these speculations are generally sprinkled with conditional phrases, for basically we do not know, or, putting it the other way round, the case for cold showers has not been proved convincingly.

Anyway, it is easier and less painful for many to meet the hazard of sudden chilling by means of mufflers, rubbers and extra clothing, than by taking cold showers.

For those who like 'em, our compliments; for those who don't, but take them none the less, our admiration and applause.

January rainfall was the heaviest ever recorded in Tennessee, Kentucky, Ohio, Indiana, Kansas, Arkansas, North Carolina, Virginia, West Virginia, Maryland, Pennsylvania, and New York.

Smoking and chewing tobacco on which taxes were paid totaled 309,589,530 pounds in 1936 as compared with 304,249,609 pounds the previous year.

camera angles, visual characterizations, and a certain amount of technical direction that will be completely disregarded.

After several rewrites to compensate for different directors and players, one draft is picked out and called "Final." After that when you change it, it is called First Revised Final and so on up to Fifth Revised Final. From there is but a hop, skip and a jump to the semi-finals and before you know it you're back in the preliminaries with everybody telling you you're nothing but a punch-drunk old stumble-bum, anyway.

And then you do get better! Another good way to write a screen play is to call up Robbin Coons and tell him you've got the flu and will please write your script for you. I like that way best.

ANSWERS TO QUESTIONS

BY FREDERIC J. HASKIN

A reader can get the answer to any question of fact by writing The Pampa Daily News Information Bureau, Frederic J. Haskin, Director, Washington, D. C. Please enclose three (3) cents for reply.

Q. How much financial loss was caused by the depression? L. A. A. The International Labour Office at Geneva has estimated that, for all countries involved, the loss was \$176,000,000,000.

Q. Do any colleges have students living in trailers? J. L. T. A. At the edge of the State Agricultural college campus at Logan, Utah, students have developed a trailer town where 44 students minimize their expenses by living in this manner.

Q. What is high wine? W. M. A. It is the highly alcoholic first distillation from a fermented mash in making whisky or brandy.

Q. What is the name of the small pointed gardening tool used to make holes for transplanting? S. N. A. It is called a dibble.

Q. How many languages does King Farouk of Egypt speak? H. L. M. A. The 17-year-old king is an accomplished linguist and speaks English, French and Arabic fluently.

Q. Does Germany have a sterilization law? M. H. R. A. A law for the prevention of inherited disease in posterity was promulgated, effective January 1, 1934. It provides that persons suffering from insanity, epilepsy, may, by surgical operation be rendered sterile if the experience of medical science shows it probable that their offspring would suffer from bodily or mental defects. It applies to cases of congenital feeble-mindedness, insanity, epilepsy, St. Vitus's dance, hereditary blindness and deafness, serious hereditary bodily malformation, and chronic alcoholism. Compulsory emasculation of dangerous sexual criminals is also ordered.

Q. What is the state that observes Mother-in-Law day? H. J. A. Texas observed March 6 as Mother-in-Law day. Governor Allred, in a proclamation, asked that honor be paid these women for their sympathy, long-suffering, and expensive help given newlyweds of every generation.

Q. Is starch made from the sweetpotato? H. L. V. A. In 1936, approximately half a million pounds of sweetpotato starch was produced.

Q. What is the Garcia Library? A. The Garcia Library is a collection of 400,000 manuscripts, 25,000 books and pamphlets and 3,000 newspapers in Spanish at the University of Texas, and is said to be the most complete collection in the United States on every phase of Mexican life.

Q. Why do so many Texas trees lean to the north? A. Because of the strong winds from the south.

Q. What prosperous Texas town once sold for \$50? A. The entire site of the present town of Seguin was sold for \$50 in 1843.

Q. What caused numerous depressions in Texas prairies called "hog wallows"? A. They resulted from extended droughts that cracked open the ground, leaving cavities that afterward filled sufficiently to grow over in grass, the so-called "hog wallows" being the sunken places at intersections of the soil cracks.

Q. How many miles of oil pipeline have been placed in Texas and at what cost? A. Approximately 50,000 miles costing nearly \$500,000,000.

Q. How many oil refineries are there in Texas, and what did they cost? A. Something more than 200, representing an investment of \$400,000,000.

Q. What Texas county leads in blackberry production? A. Smith county is the banner blackberry county in the nation. Shipments in 1934 were 1,852,550.

CENTENNIAL SCRAP BOOK Get the Scrap Book book. Encourage the children to save newspapers full of pictures and items relating to Texas that should be kept for convenient reference. Especially will it be helpful to preserve Texas history in this form during Centennial year.

USE THIS COUPON. The Pampa Daily News Information Bureau, Frederic J. Haskin, Director, Washington, D. C.

Name..... Street..... City..... State..... (Mail to Washington, D. C.)

SONGS THAT ARE YOUR OLD FRIENDS

To run through the pages of Everybody's Song Book is to greet scores of old friends and to bring memories that make the eyes grow misty. You will find yourself humming the familiar airs, and conning the words of which you have, in many instances, only a hazy recollection. And then you will be planning a songfest at which you will go through the book, from cover to cover.

Over 200 songs are included in this book of 144 pages, and they are all indexed for ready reference. The paper is durable and the cover is heavy and strong. And don't forget that the music is given for every song—music adapted to the average voice.

A copy of this book will be sent postpaid to any address for 20 cents. Send coin in your order.

This, That and Everything

By JESS KELLEY

Much has been said lately in legislative halls about examinations of applicants for driving licenses, before such licenses were granted. Such examinations as have been suggested would test the applicants along the lines of ability to read road signs, his knowledge of traffic laws and ability to exercise ordinary and reasonable control of a motor vehicle.

Without any desire to appear pessimistic I do not hesitate to say such superficial suggestions are but insignificant monopoly of time needed for enactment of effective measures capable of dealing with this traffic evil. This traffic problem is never going to be solved until people show at least some evidence of understanding what causes so many accidents. Most of the legislative suggestions made by law makers indicate that they do not know what is causing this trouble.

Accidents on highways are mostly caused by neglected knowledge rather than by lack of knowledge. The very fellows who make driving dangerous, as a rule, would pass such tests as the average suggested examination would call for. Just as well test the criminal for his knowledge of right and wrong. We do not doubt the criminal's information along these lines. His trouble is a lack of moral character. This is what is wrong with the average dangerous driver—he knows well enough, but he takes a reckless attitude of irresponsibility.

LET'S KNOW TEXAS AND TEXANS BY WILL H. MAYES

In this column answers will be given to inquiries as to Texas history and other matters pertaining to the State and its people. As evidence of good faith inquiries must show the questions and address, but only their initials will be printed. Address inquiries to Will H. Mayes, Austin, Texas.

Q. What is the Garcia Library? A. The Garcia Library is a collection of 400,000 manuscripts, 25,000 books and pamphlets and 3,000 newspapers in Spanish at the University of Texas, and is said to be the most complete collection in the United States on every phase of Mexican life.

Q. Why do so many Texas trees lean to the north? A. Because of the strong winds from the south.

Q. What prosperous Texas town once sold for \$50? A. The entire site of the present town of Seguin was sold for \$50 in 1843.

Q. What caused numerous depressions in Texas prairies called "hog wallows"? A. They resulted from extended droughts that cracked open the ground, leaving cavities that afterward filled sufficiently to grow over in grass, the so-called "hog wallows" being the sunken places at intersections of the soil cracks.

Q. How many miles of oil pipeline have been placed in Texas and at what cost? A. Approximately 50,000 miles costing nearly \$500,000,000.

Q. How many oil refineries are there in Texas, and what did they cost? A. Something more than 200, representing an investment of \$400,000,000.

Q. What Texas county leads in blackberry production? A. Smith county is the banner blackberry county in the nation. Shipments in 1934 were 1,852,550.

CENTENNIAL SCRAP BOOK Get the Scrap Book book. Encourage the children to save newspapers full of pictures and items relating to Texas that should be kept for convenient reference. Especially will it be helpful to preserve Texas history in this form during Centennial year.

USE THIS COUPON. The Pampa Daily News Information Bureau, Frederic J. Haskin, Director, Washington, D. C.

Name..... Street..... City..... State..... (Mail to Washington, D. C.)

GLANCES

By George Clark



32 Years Ago Pampa Had Houses, Buckler Remembers

Can you visualize a Pampa, 32 years ago, that consisted of nothing more than three or four houses, two general stores and a box-car for a depot? With the modern Pampa and its metropolitan airs, it probably is a bit difficult to conjure in your mind's eye the picture that greeted C. P. Buckler, of the White Deer Land Company, when he first set foot in Pampa back in 1905.

Closeup and Comedy

Closeup and Comedy by EHSKINE JOHNSON-GEORGE SCARBO. A collage of illustrations and caricatures, including a woman's face, a man, and various scenes.

PRESIDENT ROOSEVELT APPALLED BY DISASTER

WARM SPRINGS, Ga., March 19 (AP)—President Roosevelt, shocked by the tragedy of the New London, Texas, school explosion, ordered governmental agencies today to help succor the oil town where several hundred school children were killed in yesterday's blast.

Hopkins News

By Helen Partridge. HOPKINS No. 2, March 19.—Mrs. Bruce Peck, in charge of chapel the same program that was given in the morning at Sam Houston school in Pampa by the Hopkins group.

Shower Is Surprise. Mrs. Paul Lambert at the Bowers plant was honored at a surprise shower given in the home of Mrs. Homer Gibson Tuesday afternoon.

It was in the spring of 1905 that he came to Pampa to assist in the development of a 631,000-acre tract of land situated in what is now Gray, Carson, Roberts and Hutchinson counties.

At that time, according to Mr. Buckler, this huge tract was divided into some 18 or more pastures of various sizes, all leased to cattlemen.

Speulators Bought Land. Settlers became interested in this section when some eastern speculators bought Texas land and used to send or bring car loads of them into Texas to look at their land.

Mrs. Dellie Cannon, of 803 Brooks St., Houston, Tex., is now adding her name to the Long List of Widely-Known people of This Vicinity who are publicly praising and endorsing the Amazing New Medicine, Known as VAN-TAGE, which is now being introduced to

to stop here for water and we had a little exhibit house built on the railroad right of way.

"Then we had booklets printed up which gave information on the kind of crops grown here and the possibility of future development. As a result, some of the farmers, while they went on and looked at the other fellow's land, came back here, bought land and settled down. They told their friends and in this way the country was settled with farmers."

"I confess I was getting ready to slug one of your agents who persisted in handing booklets into my car last week, when we got him side tracked by a little diplomacy. He seemed to be a little light in the upper story and a few questions asked him caused him to tangle himself so that he did us no harm whatsoever, but nevertheless it might pay him to be a little more discreet in the future. I assume that his methods were without your knowledge or sanction."

"My real reason for writing you is to inquire just what you have to offer. We can bring down one or two carloads of people each excursion. Anything that we sell must offer better than one dollar per acre while my General Agents must have another fifty cents and then we must have something to pay cost of free sleeping cars, livery rigs, etc. Kindly write me fully what you can offer and if it is satisfactory I may stop off to see you on the return from next weeks excursion. I am going down with a carload on the Wright Special next week, am going to stop off at Amarillo, Sunday, the 9th, at Elmhurst. If you can write me so that it will reach Chicago before leaving here next Tuesday evening do so, or if pressed for time write me and address it to Room 7, Union Depot, Kansas City, where I will be Wednesday forenoon, September 5th. We can sell from 10 to 25 sections per trip if the proposition and terms are right.

ing the divide." I have been in Texas some 24 years, and my knowledge of Texas people convinces me that they do not take kindly to slugging, and I have known the results to have been very unpleasant.

COMMON COLDS. Relieve the distressing symptoms by applying Mentholatum in nostrils and rubbing on chest. MENTHOLATUM Gives COMFORT Daily.

AMBULANCE. Phone 400. Duenkel-Carmichael Funeral Home. 321 N. Frost.

Free! Free! SAVE ONLY THREE EMPTY GOLDEN LIGHT COFFEE Bags For FREE Admission To The LaNora, Rex, or State Theatres. This Offer Good For Children At All Times Good For Adults to Any Matinee (except Sat., Sun., and Holidays). Listen to the Golden Light "INQUIRING REPORTER" Every Mon., Wed., and Fri. KPND - 6:30 P. M. ROASTED TODAY - - - DRINK IT TOMORROW

DO YOUR FOOD SHOPPING AT PAMPA FRUIT & VEGETABLE MARKET AND HAVE MORE TO SPEND FOR EASTER TOGS! SUGAR 10 LBS. 47c. BREAD 16-Oz. Loaf, Sliced, Sat. Only 5c.

Vegetables LETTUCE Large Crisp Heads, EACH... 5c. BANANAS Golden Ripe, Green Tops, DOZ... 10c. LEMONS 360 Size, Doz... 25c. Carrots, Radishes Green Onions, Beets 3 FOR 10c. GRAPE FRUIT Tex., Marsh Seedless, Nice Size, Dozen... 25c. CABBAGE Fresh, South Texas, LB.... 2c. SPUDS No. 1 White, 10 LB.. 29c.

OATS White Swan, China, lge. box... 25c. PRUNES Fresh, Gal Can... 28c. PEACHES In Light Syrup, No. 2 1/2 Can... 15c. APRICOTS No. 2 1/2 Can, 2 for... 35c. Thompson's Seedless RAISINS 4 Lb. Bag 31c; 2 Lb. Bag... 16c. CRACKERS Excell Fresh Salted and Crisp, 2 Lb. Box... 14 1/2c. SALAD DRESSING Qt. Jar... 25c. MUSTARD Qt. Jar... 11c. SPINACH No. 2 Can, 3 for... 25c. SYRUP Diamond A, Gal. 59c; 1/2 Gal... 33c. B. E. PEAS Tall Can, 2 for... 15c. POST TOASTIES Reg. Box... 10c.

POTTED MEAT Armour's Star, all meat, 3 for... 10c. PRUNES Evaporated, Box \$1.29, Lb... 6 1/2c. TOMATOES Full No. 2 Can, 3 for... 23c. Sweet & Tender CORN No. 2 Can, 3 for... 25c. SALMON Pink, Tall Can, 2 for... 25c. SHORTENING Armour's Vegetole, 4 Lb. Carton... 53c. PINEAPPLE Juice, Tall Can, 3 for... 25c. GRAPE FRUIT Juice, No. 2, 2 for... 19c. PICKLES Sour or Dill, Qt. Jar... 15c. JELLO All Flavors, 3 for... 17c. MACARONI Or Spaghetti, Reg. Box... 4c. RICE Whole Grain, 2-Lb. Pkg... 19c.

COFFEE Golden Light, 1-Lb. Pkg... 21c. SOAP P. & G. Giant Size, 10 Bars... 35c. PEAS Early June, No. 2 Can... 12 1/2c. PINEAPPLE Del Monte, No. 1 Can... 9c. YAMS No. 2 Can... 10c. APPLE BUTTER No. 2 1/2 Can... 15c. OXYDOL Makes Washing Easy, lge. box... 19c. MILK Armour's Double Rich 3 Tall or 6 Small... 19c. SALAD OIL Armour's Star, Pint Can... 10c. JELLY Rex, 1/2 Gal. Bucket... 39c. FOLGER'S COFFEE Folger's Lb. COFFEE Can... 27 1/2c. BROOMS Parlor Painted Handle, each... 25c. MEAL In Kraft Bag, 5 Lbs... 17c.

QUALITY Meats LIVER Fresh Pig... LB. 11c. BONES Pork Neck... LB. 8 1/2c. OLEO That Good Butter Sub... LB. 16 1/2c. BACON 1-Lb. Cello Wrapped... LB. 26 1/2c. CHILI Made Fresh Daily In Our Market, Lb... 14 1/2c. BACON SQUARES Sugar Cured, Lb... 19 1/2c. PORK SHOULDER Whole Only, Lb... 16 1/2c. HAMS Shanks and Butts As Cut and Displayed... LB. 17 1/2c. BACON Dold Sterling, Lb... 28 1/2c. BACON Cudahy Puritan, 1/2 or whole... 28 1/2c. CAT FISH Lb... 30c. WHITE TROUT Lb... 10c. HALIBUT Lb... 30c. SHRIMP Lb... 30c. OYSTERS Pt... 35c. FRYERS Milk Fed, Lb... 25 1/2c. HENS Nice and Fat, Lb... 14 1/2c. TURKEYS No. 1 Birds, Lb... 19 1/2c.

MEAT & PRODUCE PRICES ARE FRIDAY SATURDAY AND MONDAY FLOUR CARNATION Every Sack Guaranteed Upside Down Cake Pan Free 24 LB. 96c. Shop Our Store Daily and Save PAMPA FRUIT & VEGETABLE MARKET "The Most of the Best for the Least" 204 North Cuyler

THE FINANCIAL WHIRLIGIG

By LOUIS SCHNEIDER

FAILED
For some weeks your correspondent has been warning that New York money interests were upset by the fight of investors against low-yielding bond rates. Offerings weren't going so fast as might have been expected. This warning was confirmed by last week's public offering of the Philadelphia Electric thirty-year 3 1-2 per cent first mortgage bonds.

Morgan, Stanley & Company, an affiliate of J. B. Morgan & Company headed an underwriting syndicate of sixty-nine of the leading houses in the country. A nation-wide list of 350 distributing dealers handled the sale of the issue. Despite all this cautious preparation, anticipated success turned into failure.

Bond houses aren't so optimistic these days. They feel that yields will move up to a four per cent or better level on prime issues. This accounts for the bad market action of the high grade bond list.

EXPLAINED
For weeks the Western Union shares have been under pressure. The reason is that those liquidating fear the enactment of the child labor amendment. That would forbid the employment of anyone under the age of 18.

Your correspondent has been officially informed that Western Union employs about 15,000 messengers. The average age is estimated a bit above 16. The amendment would, therefore, entail a higher wage scale, which would reduce the organization's income.

OVERLOOKED
Based on the results of the first two months compared with results with the first quarter of last year it is that General Motors will show 85 cents a share for the current first three-month period. As previously disclosed by your correspondent insiders don't agree. They see a profit of only 25 cents a share. It is well to point out that those who make the higher estimate have failed to take into consideration higher labor and raw material costs.

BETTER
Last week your correspondent exclusively disclosed that the Columbia class A and B shares are to be split on a two for one basis. This step will be officially authorized next Wednesday. It has since been learned that early in April the management will make application to have the shares listed on the New York Stock Exchange.

Of the 750,000 each of authorized class A and B shares there are 474,298 shares of A and 474,337 shares of B outstanding. The A stock has straight voting power while the B has cumulative voting power. Otherwise the shares participate alike in the company's earnings.

For the fiscal year ended with January 2, CBS reported a net profit of \$441 on the class A and B shares. It was the best in the company's history. It compared with 1935's excellent showing of \$330 a share. Of last year's profit 75 per cent was paid out in dividends.

It was authoritatively learned that January sales of this year ran 25 per cent ahead of last year. February results were 12 per cent ahead. March results will be as good as those of February. Based on anticipated bookings—so insiders say—second quarter sales volume will show an average increase of 20 per cent over the like period last year.

FIGHT
Those close to the utility industries are of the opinion that President Roosevelt is gunning for them. That is why they are avoiding the utility securities. It accounts for the bad market action of this section of the list.

In one quarter it was learned that President Roosevelt's Supreme Court fight has one aim behind it—to get a group of judges who will agree with his utility views. The utility organizations opposed him during his first term. They refused to register with the Securities Exchange commission and the fought him on other matters in every section of the country. His pet T. V. A. program was almost stopped by utility owners.

Fears are current that should his Supreme Court fight succeed the utilities will be the first to suffer.

REPORTS ARE THAT:
Air Reduction came through the depression as an earner and shares as dividend payers—held by investment accounts. . . Standard Oil of Indiana divided increase consideration. . . Because of bookings and other prospects Mack Trucks taken as promising speculation. . . Due to overhauling tax fear and possible peace control American Sugar being avoided. . . American Crystal Sugar—former American

LIVING COSTS GOING HIGHER DAY BY DAY

AND SO ARE WAGES OF WORKERS OVER NATION

NEW YORK, March 19 (AP)—The abundance of American life hinges today, as many analysts see it, on the outcome of the race between wages and living costs.

Economists and statisticians, scanning the latest data on the national standards of living, find that recovery of payrolls since the dark days of extreme depression has far outstripped the increasing take of the butcher, baker and landlord.

But the sweeping advances in prices of basic staples, particularly since the turn of the year, they explain, will cut into the fatter pay envelopes, to a degree as yet undetermined.

The U. S. Bureau of Labor statistics' latest index of factory payrolls, for January, showed a gain of nearly 23 per cent over a year previously, while the index of living costs was up only 4 1-2 per cent.

Compared with the depression bottom of 1933, the index of factory payrolls has shot up 139 per cent, while living costs increased only 22

Daily NEWS Page of Famous Comic Characters

OUR BOARDING HOUSE with Major Hoople



OUT OR WAY



HUSBAND SHOTS SELF AFTER WIFE IS KILLED

SAN ANTONIO, March 19 (AP)—A 56-year old man identified as J. W. Willeford, who is charged with killing his wife and her daughter, Mrs. Lillie Dunfer, at Hallettsville Tuesday night, was found shot twice in the head at a hotel early today.

Hospital attendants gave him a chance to recover, but said at least one 32-caliber bullet was lodged in the brain tissue in the front of his head.

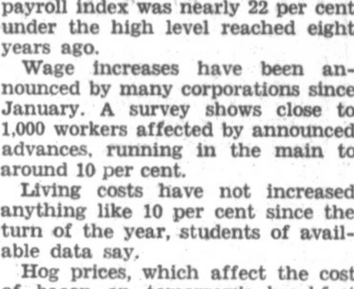
A. J. Svoboda, proprietor of the hotel, found the man wandering about his room after hearing a shot.

Although Willeford was on his feet and mumbling, he was unconscious. Detectives Lee Jones and C. L. Wissman found a 32-caliber pistol containing two exploded cartridges in the room.

Two notes were found. One, written on a blank piece of paper and hardly legible, said: "This is to let everybody know to notify my some, Ely Willeford, and Dell Lois Rollins at Yoakum, Texas."

I was signed J. W. Willeford. The other note, written on the back of a utility bill, said: "I want the world to know that I killed the one I love because I loved her."

THIMBLE THEATRE Starring POPEYE



Flaming Youth



By E. C. SEGAR



By E. C. SEGAR



CHAMP STEER SOLD
FORT WORTH, March 19 (AP)—Beau Randolph's Type, grand champion steer, exhibited by 15-year old Byron Eckert, of Mas county, was sold on the auction block today to Leonard Bros. of Fort Worth for \$1,124 a pound. The animal weighs approximately 1,000 pounds. Last year's grand champion brought \$1,400 a pound.

Real Estate Loans!

We offer F. H. A. Building & Loan, and Life Insurance loans that will meet your building needs. Be sure to see us!

For Residence and Business Loans

Phone 336

M. P. DOWNS
504 Combs-Worley Bldg

ALLEY OOP



Not First-Grade Prey



By HAMLIN



Answer to Previous Puzzle

- 14. Frother.
- 15. Feather scarf.
- 16. Gorges.
- 17. Enormous.
- 18. Waterfalls.
- 19. Otherwise.
- 20. Silkworm.
- 21. Weariness.
- 22. Small child.
- 23. Street.
- 24. To doze.
- 25. Father.
- 26. To eject.
- 27. Venomous snake.
- 28. Not the same.
- 29. Barley spikely.
- 30. Greater.
- 31. Witticism.
- 32. Mother.
- 33. To make a mistake.
- 34. Half an em.
- 35. Queer.
- 36. Perching.
- 37. Striped fabric.
- 38. River nymph.
- 39. Pattern cast.
- 40. Pertaining to wings.
- 41. Wrens.
- 42. Born.
- 43. New York is his home
- 44. Treasury (pl.).
- 45. Homes.
- 46. Card game.
- 47. Unless.
- 48. To soak flax.
- 49. Death notice.
- 50. Pertaining to wings.
- 51. Northwest.
- 52. Definite article.
- 53. Sword handle.
- 54. Consumed.
- 55. To drink dog-fashion.
- 56. To eat.
- 57. His department deals it.
- 58. Brink.
- 59. Being.
- 60. Perishes.
- 61. Sound.
- 62. Thought.
- 63. Sound of sorrow.
- 64. Flying mammal.
- 65. God of war.
- 66. To bring legal suit.
- 67. Supped.
- 68. South Carolina.
- 69. Tone B.

Cabinet Official

ambassador to Turkey (pl.).

23. Meriting.

26. Sugar sand.

29. Cow's cry.

30. Branch.

31. To stroke lightly.

34. Courtesy little.

36. Exit.

37. His department deals it.

39. Brink.

40. Being.

42. Perishes.

44. Sound.

45. Thought.

46. Sound of sorrow.

47. Flying mammal.

48. God of war.

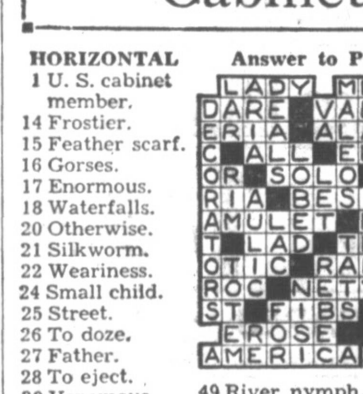
50. To bring legal suit.

52. Supped.

54. South Carolina.

56. Tone B.

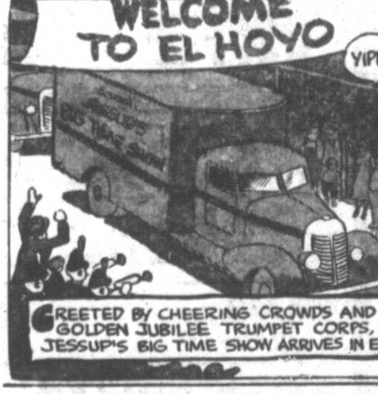
WASH TUBBS



Hail, Hail, the Gang's All Here!



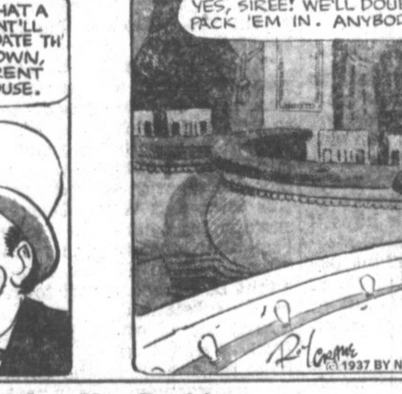
MYRA NORTH, SPECIAL NURSE



Mr. Lavender



By THOMPSON AND COLL



BEET SUGAR

Beet Sugar—taken as long-pull speculative risk.Dope sheets bullish Celanese because 75 cents a share reported for first quarter.If Congress doesn't revoke tax on undistributed corporate profits Texas Pacific Land will increase dividend payments.Those accumulating Anaconda Copper look for shares to move ahead of Kennecott's price.National Acme has kept pace in share price with that of increased earnings.

Investment trust accounts reducing floating supply of United States Pipe & Foundry—buyers on all dips.Chrysler being switched into General Motors.Howe Sound's dividend not estimated as high as \$2.25 a share.Large amount of outstanding shares accounts for bad market action of American Radiator.American Machine & Foundry's earnings prospects considered attractive.Tip sheets say Studebaker will add tax points to credit market price within next six months—don't forget this comes from tip sheets and not from those who are in a position to know.And, that Mexico's President Cardenas assures foreign controlled oil companies they will not be molested by government owned oil property competition.

BEET SUGAR

Beet Sugar—taken as long-pull speculative risk.Dope sheets bullish Celanese because 75 cents a share reported for first quarter.If Congress doesn't revoke tax on undistributed corporate profits Texas Pacific Land will increase dividend payments.Those accumulating Anaconda Copper look for shares to move ahead of Kennecott's price.National Acme has kept pace in share price with that of increased earnings.

Investment trust accounts reducing floating supply of United States Pipe & Foundry—buyers on all dips.Chrysler being switched into General Motors.Howe Sound's dividend not estimated as high as \$2.25 a share.Large amount of outstanding shares accounts for bad market action of American Radiator.American Machine & Foundry's earnings prospects considered attractive.Tip sheets say Studebaker will add tax points to credit market price within next six months—don't forget this comes from tip sheets and not from those who are in a position to know.And, that Mexico's President Cardenas assures foreign controlled oil companies they will not be molested by government owned oil property competition.

BEET SUGAR

Beet Sugar—taken as long-pull speculative risk.Dope sheets bullish Celanese because 75 cents a share reported for first quarter.If Congress doesn't revoke tax on undistributed corporate profits Texas Pacific Land will increase dividend payments.Those accumulating Anaconda Copper look for shares to move ahead of Kennecott's price.National Acme has kept pace in share price with that of increased earnings.

Investment trust accounts reducing floating supply of United States Pipe & Foundry—buyers on all dips.Chrysler being switched into General Motors.Howe Sound's dividend not estimated as high as \$2.25 a share.Large amount of outstanding shares accounts for bad market action of American Radiator.American Machine & Foundry's earnings prospects considered attractive.Tip sheets say Studebaker will add tax points to credit market price within next six months—don't forget this comes from tip sheets and not from those who are in a position to know.And, that Mexico's President Cardenas assures foreign controlled oil companies they will not be molested by government owned oil property competition.

BEET SUGAR

Beet Sugar—taken as long-pull speculative risk.Dope sheets bullish Celanese because 75 cents a share reported for first quarter.If Congress doesn't revoke tax on undistributed corporate profits Texas Pacific Land will increase dividend payments.Those accumulating Anaconda Copper look for shares to move ahead of Kennecott's price.National Acme has kept pace in share price with that of increased earnings.

Investment trust accounts reducing floating supply of United States Pipe & Foundry—buyers on all dips.Chrysler being switched into General Motors.Howe Sound's dividend not estimated as high as \$2.25 a share.Large amount of outstanding shares accounts for bad market action of American Radiator.American Machine & Foundry's earnings prospects considered attractive.Tip sheets say Studebaker will add tax points to credit market price within next six months—don't forget this comes from tip sheets and not from those who are in a position to know.And, that Mexico's President Cardenas assures foreign controlled oil companies they will not be molested by government owned oil property competition.

FRECKLES AND HIS FRIENDS



By BLOSSER



BEET SUGAR

Beet Sugar—taken as long-pull speculative risk.Dope sheets bullish Celanese because 75 cents a share reported for first quarter.If Congress doesn't revoke tax on undistributed corporate profits Texas Pacific Land will increase dividend payments.Those accumulating Anaconda Copper look for shares to move ahead of Kennecott's price.National Acme has kept pace in share price with that of increased earnings.

Investment trust accounts reducing floating supply of United States Pipe & Foundry—buyers on all dips.Chrysler being switched into General Motors.Howe Sound's dividend not estimated as high as \$2.25 a share.Large amount of outstanding shares accounts for bad market action of American Radiator.American Machine & Foundry's earnings prospects considered attractive.Tip sheets say Studebaker will add tax points to credit market price within next six months—don't forget this comes from tip sheets and not from those who are in a position to know.And, that Mexico's President Cardenas assures foreign controlled oil companies they will not be molested by government owned oil property competition.

BEET SUGAR

Beet Sugar—taken as long-pull speculative risk.Dope sheets bullish Celanese because 75 cents a share reported for first quarter.If Congress doesn't revoke tax on undistributed corporate profits Texas Pacific Land will increase dividend payments.Those accumulating Anaconda Copper look for shares to move ahead of Kennecott's price.National Acme has kept pace in share price with that of increased earnings.

Investment trust accounts reducing floating supply of United States Pipe & Foundry—buyers on all dips.Chrysler being switched into General Motors.Howe Sound's dividend not estimated as high as \$2.25 a share.Large amount of outstanding shares accounts for bad market action of American Radiator.American Machine & Foundry's earnings prospects considered attractive.Tip sheets say Studebaker will add tax points to credit market price within next six months—don't forget this comes from tip sheets and not from those who are in a position to know.And, that Mexico's President Cardenas assures foreign controlled oil companies they will not be molested by government owned oil property competition.

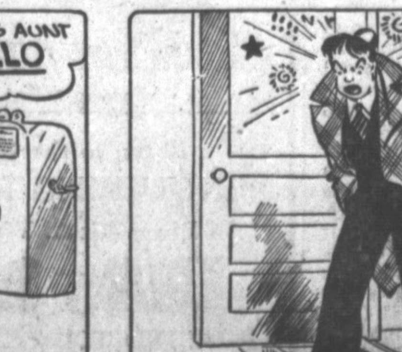
BOOTS AND HER BIDDIES



Dern Queer???



By MARTIN



BEET SUGAR

Beet Sugar—taken as long-pull speculative risk.Dope sheets bullish Celanese because 75 cents a share reported for first quarter.If Congress doesn't revoke tax on undistributed corporate profits Texas Pacific Land will increase dividend payments.Those accumulating Anaconda Copper look for shares to move ahead of Kennecott's price.National Acme has kept pace in share price with that of increased earnings.

Investment trust accounts reducing floating supply of United States Pipe & Foundry—buyers on all dips.Chrysler being switched into General Motors.Howe Sound's dividend not estimated as high as \$2.25 a share.Large amount of outstanding shares accounts for bad market action of American Radiator.American Machine & Foundry's earnings prospects considered attractive.Tip sheets say Studebaker will add tax points to credit market price within next six months—don't forget this comes from tip sheets and not from those who are in a position to know.And, that Mexico's President Cardenas assures foreign controlled oil companies they will not be molested by government owned oil property competition.

Run/Down shoes

MADE LIKE NEW

Guaranteed Workmanship

City Shoe Shop

104 1/2 W. Foster

Pampa Office

Supply

Phone 288

Expert repair service on all office machines. Guaranteed workmanship and adding machines. Exclusive Royal Dealer. Call us for dependable service.

Landlords--Meet Your Future Tenants in the Rental Columns

Classified Advertising Rates Information. All want ads are strictly cash and are accepted over the phone with the positive understanding that the account is to be paid when our collector calls.

Announcements (Cont.) Special Notices. ROOFING New and repair. Hot Mopping. Prices reasonable. Work Guaranteed. Free Estimate. Phone 1015.

If You Want To Make Some EASY MONEY. It's a pleasure to know you can do it when you want to make some extra dollars. Folks who advertise in the News... which reaches buyers of everything from poodles to pianos...

LIVESTOCK (Cont.) 33-Poultry - Eggs - Supplies. SEE YOUR CHICKS BEFORE YOU BUY. 10,000 day old and started chicks of 15 most popular breeds to select from.

COLE'S HATCHERY. 628 West Foster Pampa, Texas. At our hatchery you can see and know you are buying quality chicks.

NOTICE! POULTRY AND DAIRYMEN. I am no longer with Pampa Milling Co. I will again open the Farmers Feed Store 510 So. Cuyler and ask all my friends and customers to visit me there.

ROOMS AND BOARD 43-Sleeping Rooms. ROOM CLOSE IN, 311 North Front. Phone 550-J. Ladies only. 5c-25c.

45-Housekeeping Rooms. WARM, MODERN Apartments, for couple. Close to reasonably priced. Elise Hotel, 323 South Russell, Phone 9525. 6c-30c.

47-Hotels For Rent. 4-ROOM unfurnished house \$25.00 per month. Phone 338. 12-299. NEW STUCCO 4-room modern house, also 3-room modern house unfurnished. Apply Tom's Place, east highway 33. 3p-300.

ANNOUNCEMENTS 1-Card of Thanks. 2-Special Notices. 3-Last and Final. 4-Death and Burial.

DIVINE HEALING. Mystic Magnetism, Strange, Wonderful, Treatments. Readings Free, Results Guaranteed. Over four hundred people have been here.

It Pays to use the WANT-ADS. Read Them Every Day in the PAMPA DAILY NEWS. You'll Find It Pays to use the WANT-ADS.

EMPLOYMENT 1-Male Help Wanted. 2-Female Help Wanted. 3-Male & Female Help Wanted. 4-Salesmen Wanted. 5-Positions.

Green Lantern. Under New Management. Specializing in home made hot rolls and pies. Exceptionally good home cooked meals.

REPOSESSOR AND USED FURNITURE. We have recently repossessed some furniture and have it priced to sell again. Here are some of the articles. Call and see the rest.

Baby Chicks. Day old, and started Hatch off every Monday. Custom Hatching. Get our prices before you buy. DODD'S HATCHERY. 1/2 Mile East of Denver Viaduct.

34-Livestock For Sale. FOR SALE-2-year galton, coming three-year-old cows, just fresh, extra gentle. J. A. Purvis, 7 miles south of Pampa, 4p-299.

49-Apartments For Rent. 3-ROOM unfurnished modern apartment. 418 North Hobart. Phone 152-2. 2c-300.

53-Business Property. FOR RENT OR LEASE-Filling station. Call Barrett at number 272. 2c-300.

FOR RENT REAL ESTATE 47-Home for Rent. 48-Apartment For Rent. 49-Parish Apartment. 50-Cottage and Rooms.

14-Professional Service. SPENCER Individually designed corsets and surgical garments. Mrs. Tom Bliss, Phone 991. 220 N. West St.

Pampa Furniture Co. Frank Foster, Owner. 120 W. Foster Phone 105. 2-letter size filing cabinets \$17.50 with lock \$24.50. 1 six-piece dinette set slightly used \$35.00.

USED CARS TOM ROSE FORD. 1936 Ford Coach-Heater, \$150. 1935 Ford Sedan, Heater, Radio and Trunk, \$485.

60-Business Property For Sale. FRUIT MARKET. Business established. Must sell because of sickness. 522 South Cuyler. 3p-299.

ACCOUNTANTS J. B. Roby. 415 Combs-Worley, R. 280 W. Of. TRV. Pampa Bakery, 115 W. Foster, Ph. 51.

OIL PERMANENTS. Ladies that have been getting a disappointment instead of a good permanent will do much better by getting one of our National Advertised Permanents.

THIS CURIOUS WORLD By William Ferguson. The SEA-CUCUMBER, A RELATIVE OF STAR FISHES, DISCARDS PORTIONS OF ITS BODY WHEN FOOD BECOMES SCARCER... AND REPLACES THEM WHEN TIMES GET BETTER.

USED CARS AT A SAVING! 1935 Ford DeLuxe Sedan \$400. 1935 Ford Coupe \$375. 1935 Chevrolet Coupe \$425.

MONEY TO LOAN. Salary Loans - Personal Loans \$5 to \$50. We Require No Security. We solicit oil field and carbon black workers.

ANNOUNCEMENTS 1-Special Notices. BICYCLE SHOP. Expert repair service on all makes. Tom Kibby Bicycles Shop, 212 E. Foster. 5c-299.

YATES BEAUTY SHOPPE. 1/2 block north of high school. 420 North Cuyler. Plenty of Parking Space. TROY BEAUTY SHOP. Hotel Adams - Phone 345. Permanents \$1.50 to \$7.50.

PROFESSIONAL METEOROLOGISTS TAKE NO STOCK IN LONG-RANGE ALMANAC WEATHER PREDICTIONS. EXPERTS AGREE THAT THE MAXIMUM POPULATION THE EARTH CAN SUPPORT IS 12,000,000,000 PERSONS.

TOO DIZZY. OTTUMWA, Iowa--Frank Tregon, avid admirer of Jerome (Dizzy) Dean, St. Louis Cardinals pitcher, met firm resistance in his effort to hang the tag of "Dizzy" on his infant son.

IT BANISHES "BILLS"! Our Loan Plan is your way to wild worry about miscellaneous bills. Our family-finance advisers will show you how to convert all those worrisome little bills into one easily handled, easily repaid loan.

HER NAME IN LIGHTS

Chapter XXI. The model in the froth of coral tulle parted the curtains and whirled through them with a dash of ecstasy. The salesgirl turned to Daphne. "Vionnet's distinction? ... 'Has verve, don't you think?' ... 'Southern mood.' ... 'An ephemeral beauty.'"

"You certainly would! Suppose you try it on?" She had a qualm when she wrote the newest figure in her balance book. Writing checks wasn't new to her this week.

"Take a little holiday," Mr. Johnson had said. "I'm afraid we're working you too hard. Forget business for a week or two and we'll get a fresh start the first of the year. You're looking very tired and a good time will perk you up."

M. P. DOWNS Automobile Loans. Short and Long Terms. REFINANCING. Small and Large. 804 Combs-Worley Bldg. Phone 338.

CAP ROCK BUS LINE. ADDS NEW SERVICE TO THE LINE. Leaves Pampa at 7:15 a. m., 11:40 a. m. and 4:30 p. m. For Okla. City at 11:40 a. m. and 4:30 p. m. over the Cap Rock making direct connection with the Greyhound Lines at Shawnee and ride big nice buses over all paved routes.

NEW HARRIS FOOD STORE OPENS TODAY

PROVIDING YOU TWO CONVENIENTLY LOCATED STORES -- 322 WEST KINGSMILL AND 306 SOUTH CUYLER ST.

Listen to the GOLDEN LIGHT "INQUIRING REPORTER" Every Mon., Wed., and Friday **6:30 P. M.**

KPDN See Our Displays For **FREE THEATRE PASSES** With Every Three Pounds of Golden Light **COFFEE** Drip or Regular **LB. .22c**




HARRIS FOOD STORES

Specials for Friday Afternoon, Saturday and Monday

STALEY'S SYRUP No. 10 Can **63c** No. 5 Can **33c**



FREE! While supplies last
Upside Down Cake Pan with Carnation Flour Rogers Silverware Coupons, 48 Lb. \$1.89
24 Lb. Sack 98c

SALAD DRESSING
Elf Food **QT. JAR . . . 33c**

SWEET POTATOES
No. 2 Can **3 FOR 27c**


CRACKERS
Fresh Salted **2 LB. BOX . . . 15c**

SOUPS
Heinz, All Kinds, **3 FOR 29c**

CLOROX
A Better Bleacher, Quart—27c; **PINT. 15c**

SUGAR Fine Granulated
10 Lb. Kraft Bag **49c**
10 Lb. Cloth Bag **53c**

COFFEE Schilling's 2-Lb. 53c; **LB. 27c**



PEACHES Hillsdale, Packed by Libbys, No. 2 1/2 Can **14 1/2c**

SALMON Alaska Select **CAN 10c**

PUMPKIN No. 2 Can **3 FOR 25c**

THE DIONNE "QU. IS" use only PALMOLIVE 3 BARS **17c**
The soap made with soothing olive oil!



NO. 10 FRUITS Peaches - Blackberries Pears - Apricots 45c; **PRUNES 29c**

BUTTER Cloverbloom **LB. 33 1/2c**

FLOUR Queen of the West—48 lbs. \$1.75; Every Sack Guaranteed—Watch for Free Coupons for sack of flour. **24 LBS. 89c**

ENTERTAINMENT SATURDAY
The Oklahoma Rambling Cowboys will play and sing at both stores at different times all day Saturday. They will broadcast direct from the floor of the Harris Food Store over KPDN at 10:15 a. m. both Friday and Saturday. Come in and see and hear these entertainers broadcast.

FREE!
Coffee and Doughnuts will be served all day Saturday at both Stores.

LIGHT BULBS 25 to 60 Watts—2 for **25c**

SUGAR Powdered or Brown—3 Lbs. **19c**

Tomatoes Peas Kraut Spinach No. 2 Cans **3 FOR . . 23c**

GOOD LUCK Margarine — Lb. **20c**

COFFEE Bright & Early — Lb. **23c**

VINEGAR Pint Jars **5c**

OXYDOL Large Size — Pkg. **19c**

CORN FLAKES Kellogg's—Free Cereal Bowl with 2 Pkgs. **21c**

TISSUE Primm **4 ROLLS . . . 19c**

CORN MEAL Corn Dodger—10 Lbs. **33c** **5 LBS. 17c**

BREAD Made With Milk While or Whole Wheat—Pullman 9c **16 Oz. Loaf 5c**

CATSUP **14 OZ. BOTTLE . 10c**

JELL-O Six Delicious Flavors **2 Pkgs. 11c**



PEAS Tiny Tot, or Green Beans, whole stringless, No. 2 Cans **12 1/2c**


CRYSTAL WHITE SOAP 5 Giant Bars . . . **21c**



TOMATO JUICE Heinz — **3 CANS 25c**

CANDY ASSORTED **POUND 10c**

CRACKERS Saltines, **LB. BOX 15c**



RICE Fancy Whole Grain, **5 Lbs. 29c**


MILK PET, CARNATION, ROSE 3 Large or 6 Small Cans **23c** **ARMOUR'S** 3 Large or 6 Small Cans **19c**

RATLIFF PRODUCTS Chili — No. 2 Can **23c** Tamales — Regular Size **12 1/2c** Mexican Style Beans **3 for 25c** Chili and Tamales served all day at both stores.

SHORTENING Armour's Vegetable—8 lb. Carton \$1.05; **4 LB. CART. . . 54c**

Tender, Juicy Meats That **SAVE YOU MONEY!**

ROAST Baby Beef—Arm or Chuck, Lb. **15c**



BACON Cudahy's Rex, Small Size, Whole or Half, **LB. 24c**

ROAST Baby Beef, Meaty Cuts, **LB. 12 1/2c**

LIVER Fresh Pork — Lb. **11c**
FISH White Trout — Lb. **11 1/2c**
PORK CHOPS Small Lean — Lb. **22 1/2c**
SAUSAGE Pure Meat — Lb. **17 1/2c**
CHEESE Longhorn — Lb. **17 1/2c**

FRYERS 2 1/2-Lb. Average Each **59c**
HENS Nice, Fat, Dressed Free, Lb. **15c**

STEAK Loin or T-Bone, Lb. **19c**
BACON Economy or Loyal, Lb. **25c**
Cottage Cheese Fresh Creamy — Lb. **12 1/2c**
Bacon Squares Swift's Sugar Cured, lb. **17 1/2c**
PORK ROAST Nice Cuts — Lb. **19c**

ROAST Stamped Baby Beef, **LB. 19c**

HAMS Armour's Star, Swift's Premium, **LB. 25 1/2c**

Fresh Fruits and Vegetables FOR LOWER COST MEALS

CELERY Well Bleached — Stalk **10c**



Potatoes Red McClures, **10 LBS. FOR . . 29c**

Pineapple Fresh, Large Size, **EACH 23c**

ORANGES Med Size — Doz. **19c**
LETTUCE Firm Heads **5c**
CAULIFLOWER Snow White, Lb. **15c**
APPLES Fancy Winesaps, Doz. **12 1/2c**

VEGETABLES Turnips, Carrots, Radishes, Beets, Green Onions, **YOUR CHOICE** **3 Bunches 10c**

CABBAGE Hard Heads — Lb. **2 1/2c**
PEPPERS Fancy Green — Lb. **15c**
LEMONS Sunkist — Doz. **29c**
CARROTS Turnips, Beets, bulk, Lb. **3c**

Bananas Fancy Fruit, Not Chilled, **DOZEN 10c**

Grapefruit Texas Seedless, **5 FOR 10c**