

Pampa Social News

BY MISS WILLETTE COLE

PHONE 606

Friday Program Ends Successful Three-Day Conference of Eighth District P-T. A. in this City

Pampa's biggest convention, the sixth annual conference of the eighth district Texas Congress of Mothers and Parent-Teacher associations...

Mrs. C. E. Hutchins was appointed by the executive board as chairman of the nominating committee for the 1930 convention...

More than 200 delegates and visitors were registered for the three-day meeting. All sessions of which were held at the Methodist church...

District Officers

District officers and chairmen who attended were: Mrs. J. M. Crain of Claude, president; Mrs. J. M. Bull, Perryton...

All of the officers, as well as many enthusiastic delegates and visitors, expressed gratification over the convention, describing it as one of the most successful held by the eighth district...

Final business of the sixth annual conference of the Eighth district Congress of Mothers and Parent-Teacher associations took place Friday afternoon...

During the afternoon program, Mrs. Gervis Taylor, dean of girls, Amarillo high school, gave an excellent address on "High Schools and the P-T. A."

Mrs. W. A. Murphy of Dimmitt, district chairman of state and national child welfare days, spoke on "Special State and National Days."

Supplementing the program of lectures and reports were excellent entertainment numbers given by local talent. Musical organizations, singers, and readers gave numbers at the main sessions...

Each of the committees mentioned above had the co-operation of the citizenship, as did the finance committee, which had completed its work before the convention...

Interesting Events Feature Last Program of P-T. A. Conference

Historian, gave the history of the Eighth district from its organization in 1922 to the present time and briefly reviewed each of the previous conventions...

The installation ceremony was demonstrated by Mrs. Crain, district president, assisted by Mrs. T. J. Page corresponding secretary...

Enjoyable entertainment numbers were given by local talent. The meeting was closed with the audience repeating the Lord's prayer...

Baptist to Give School Sermon

The Rev. W. Y. Fond, state evangelist of the Baptist church will deliver the baccalaureate sermon to the Central high school class of 1929 on Sunday morning...

The baccalaureate address will be delivered by Dr. Paul W. Horn, president of Texas Technological college Lubbock...

Social Calendar

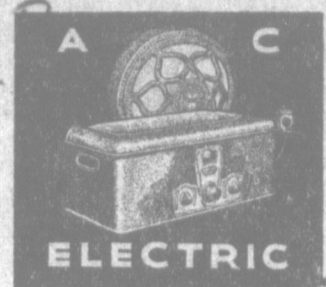
TUESDAY: El Progreso will meet at 2:30 o'clock in the home of Mrs. T. D. Hobart...

The Women's auxiliary of the Presbyterian church will meet at 3 o'clock in the home of Mrs. Joe Smith...

Mrs. A. L. Hammett will entertain members of the Pla-Mor Bridge club and their husbands at her home. The game is announced for 8 p. m.

The Coterie club will meet at 2:30 o'clock in Mrs. Ollie Smith's home. Mrs. Floyd A. Smith will be hostess to the Lone Star Bridge club...

WEDNESDAY: The Women's auxiliary of the Presbyterian church will meet at 3 o'clock in the home of Mrs. Joe Smith...



Crosley now adds STYLE ... to Radio's greatest success

The Neutrodyne A-C Power Speaker operating GEMBOX combined with Crosley DYNACONE, the electro-magnetic Power Speaker...

\$94 WITHOUT TUBES

TARPLEY MUSIC STORE 2 Doors South of Murfee's

Advertisement for Mitchell's 'Apparel for Women' featuring a 20% discount on banquet dresses, hats, and jewelry. Includes illustrations of clothing and accessories.

Large advertisement for Whippet cars featuring a '33% Ahead of Record Year!' headline. Includes an illustration of a Whippet Six Sedan and promotional text for M'Garrity Motor Co.

ESSEX CHALLENGER BREAKS RECORD

ESSEX CHALLENGER

Driven By Jack Callaway

FROM EL PASO TO PAMPA

A DISTANCE OF

FIVE HUNDRED AND

EIGHTEEN MILES IN

NINE HOURS AND

FORTY MINUTES



BOSTON PHILLIPS

Messages were sent through the day by phone and telegraph from each town as Mr. Callaway passed through the towns.

A copy of the telegram sent Mr. Roston Phillips of the Phillips Motor company of Pampa concerning the Test Drive made April 2:

This drive was made by Western Union Time.

PHILLIPS MOTOR CO 4 2 29
PAMPA TEXAS

CALLAWAY OUT EL PASO TEN FORTY FIVE YOUR TIME ARRIVED PAMPA EIGHT TWENTY FIVE FIVE NINE HOURS FORTY MINUTES DISTANCE FIVE HUNDRED EIGHTEEN MILES AVERAGE FIFTY FIVE ONE TENTH IN ESSEX CHALLENGER COACH EQUIPPED WITH DUNLOP CLETED TIRES

(Signed) WESTERN UNION

(This is copy of telegram sent every dealer in this district by Western Union, Pampa.)

The ESSEX CHALLENGER COACH driven by Mr. Callaway on this record-breaking drive was thoroughly inspected by expert mechanics at the Phillips Motor company immediately upon its arrival from El Paso and it was found to be in perfect condition in every way. This car is now at the Phillips Motor company and the public is invited to inspect it thoroughly. It has never had a wrench on it since making this record-breaking drive.

An average speed of 60.8 miles was maintained with the Challenger Coach over the mountainous road from El Paso to Roswell, N. M., and the distance from El Paso to Clovis, 341 miles, was traveled in six hours flat. This drive of 518 miles could easily have been made in 9 hours if road conditions from the New Mexico line to Pampa had been at all favorable. Mr. Callaway says he would have made better than a 60-mile average from El Paso to Pampa if the roads had been permissible.

Quaker State Oil used exclusively.

Ethyl Gasoline

NEARLY 100 PEOPLE IN PAMPA HAVE PURCHASED AN ESSEX CHALLENGER FROM THE PHILLIPS MOTOR COMPANY SINCE THEY OPENED FOR BUSINESS IN PAMPA DECEMBER 23, AND ARE NOW ENJOYING THEIR SPLENDID PERFORMANCE AND COMFORT RIDING.

WE INVITE YOU TO VISIT OUR SHOW ROOMS AND SEE THIS BEAUTIFUL NEW CAR AND TO TRY IT ON THE ROAD. ANOTHER BEAUTY POINT IS THE PRICE—\$695.00 F. O. B.

Not a car, but an automobile at such a small price. Think of it.

DUNLOP TIRES SET ANOTHER RECORD!

The Essex Challenger was equipped with DUNLOP CLETED TIRES and TUBES on its 500-mile Record-Breaking Run from El Paso to Pampa, Tuesday, April 2. These Tires did not show the least sign of wear after this grueling drive at high speed on all kinds of roads—over rock-strewn mountain roads that would cut the ordinary tire to pieces in a few miles.

JACK CALLAWAY, THE DRIVER OF THE RECORD-BREAKING ESSEX, SAYS:

"I USE DUNLOP TIRES BECAUSE THEY ARE REAL TIRES AND I KNOW THAT YOU CAN ALWAYS DEPEND UPON THEM TRAVELING AT ANY RATE OF SPEED ON THE WORST POSSIBLE ROADS."

MR. CALLAWAY AVERAGED 55.1 MILES PER HOUR FOR 518 MILES.

INSPECT THESE RECORD-BREAKING DUNLOPS (FULLY GUARANTEED FOR 12 MONTHS AGAINST EVERYTHING) AT THE

PHILLIPS MOTOR COMPANY

AUTHORIZED HUDSON-ESSEX DEALERS And Dealers for the DUNLOP TIRES AND TUBES

"WE NEVER CLOSE"

113 FROST ST.

PHONE 368

6300

FOR ECONOMICAL TRANSPORTATION



140
58.80 Campbell-Eivard

Ten Reasons why 300,000 careful buyers have chosen the New Chevrolet Six since January 1st

Ever since the date of its introduction, the new Chevrolet Six has swept triumphantly on to greater and greater heights of popularity. Value for value and price for price—buyers have compared it with other cars in the low-price field. And the result has been an overwhelming public preference—over 300,000 buyers since January 1st. And everywhere the enthusiasm is constantly increasing—for the new Chevrolet Six combines, as does no other car in the world, those ten great fundamental factors which careful buyers are now demanding in the cars they buy.

6-Cylinder Smoothness

Due to the finer inherent balance of its six-cylinder valve-in-head motor, the new Chevrolet provides that smooth, quiet, flexible performance which is the distinguishing characteristic of the truly fine automobile. At every speed, the power is delivered easily, freely and without annoying vibration. You can ride and drive for hours without annoying rumble or noise fatigue—every mile a delight for both driver and passengers.

6-Cylinder Getaway

And in sheer brilliance of performance, as well as in smoothness and quietness of operation, the new Chevrolet Six is a revelation. An automatic acceleration pump results in remarkably fast acceleration whenever the accelerator is suddenly depressed. And a new high-compression non-detonating cylinder head eliminates every trace of "lugging"—even when you have occasion to accelerate swiftly in high gear.

6-Cylinder Speed

Naturally, Chevrolet's powerful six-cylinder valve-in-head motor might be expected to provide speed in abundance. But even more important than the speed of the new Chevrolet Six is the smooth, quiet, restful comfort you experience at every point on the speedometer. You can open the throttle wide with a feeling

of complete security—and you come to the end of a full day's drive entirely free from the weariness caused by engine noise and body rumble.

6-Cylinder Power

The great reserve power of the new Chevrolet Six is a constant delight. The steepest hills are taken with ease. Heavy roads are negotiated without the necessity for frequent gear-shifting. And even at the higher speeds, there is always that feeling of confidence which comes from the knowledge that additional power is at hand . . . instantly available for whatever need may arise.

Modern Safety Features

The new Chevrolet Six is equipped with every modern safety and convenience feature—typified by a full ball bearing steering mechanism, nonlocking 4-wheel brakes with separate emergency brake, foot controlled adjustable two-beam headlights, automatic fuel pump, theft-proof Electrolock, electric motor temperature indicator, and Fisher VV windshield and adjustable driver's seat in all closed

models. As a result, it is one of the easiest and safest cars in the world to handle.

Better Than 20 Miles Per Gallon

The marvelous performance of the Chevrolet Six would be considered exceptional in any automobile. But in the new Chevrolet it is nothing short of sensational—for here it is combined with operating economy of better than 20 miles to the gallon of gasoline. As a result, those who can afford to own any automobile can afford to own and operate a Chevrolet Six!

Exceptional Riding Comfort

Another vital factor that has influenced hundreds of thousands in their selection of the new Chevrolet Six is its exceptional riding comfort. Built on a wheelbase of 107 inches . . . offering the deep-cushioned luxury of bodies by Fisher . . . and with the entire upper structure cradled on four long semi-elliptic shock absorber springs—it travels the roughest highways with amazing comfort. And its balance on turns and curves is equally

exceptional—for the rigid frame and the long springs reduce rideaway to the minimum.

Beautiful Fisher Bodies

The marvelous bodies on the Chevrolet Six reveal, as never before, the matchless artistry that has made the Fisher name renowned throughout the world for excellence in coachcraft. Longer, lower and roomier . . . finished in attractive, long-lasting colors . . . and upholstered in rich deep-tufted fabrics that give to the interiors an air of custom elegance—they introduce into the low-price field an entirely new measure of style and distinction.

Proved Dependability

Before the new Chevrolet Six was presented to the public, it had been tested for more than a million miles on the roads of the General Motors Proving Ground. Never did a new motor car go into the hands of its owners more thoroughly proved in every detail. And now, reports of its performance on the highways of the nation pay glowing tribute to its endurance and dependability.

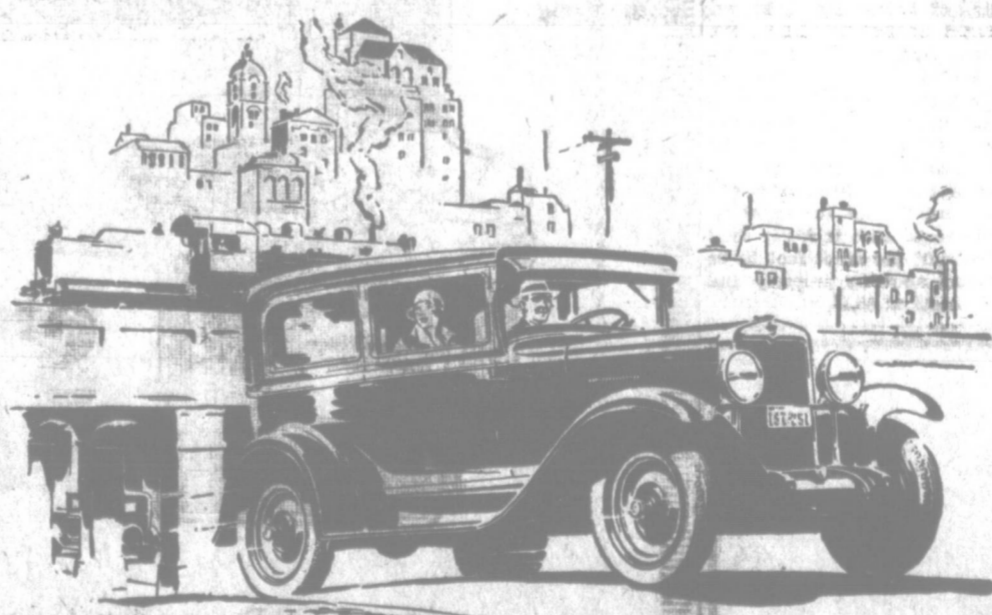
Amazingly Low Prices

Many people do not realize that this marvelous new six-cylinder Chevrolet is actually offered in the price range of the four. Compare total delivered prices as well as factory prices when determining automobile values. You will find Chevrolet delivered prices include the lowest handling and financing charges available.

The **\$595** COACH

The ROADSTER . . . \$525	The Convertible LANDAU . . . \$728
The PHANTOM . . . \$525	The SEDAN DELIVERY . . . \$595
The COUPE . . . \$595	LIGHT DELIVERY CHASSIS . . . \$400
The CABRIOLET . . . \$675	DELIVERY CHASSIS . . . \$545
	DELIVERY CHASSIS WITH CAB . . . \$650

All prices f. o. b. factory, Flint, Mich.



A SIX IN THE PRICE RANGE OF THE FOUR

Culberson-Smalling Chevrolet Company, Inc. PAMPA, TEXAS

ASK FOR A DEMONSTRATION TODAY

