

Century 21
Pampa Realty, Inc.
312 N. Gray • 669-0007

1512 OKLAHOMA • \$52,500
2 Bedrooms, 1 Bath

1712 CHESTNUT • \$49,500
3 Bedrooms, 1.75 Baths

2113 DUNCAN • \$47,250
3 Bedrooms, 2 Baths

Phone In
Move In
1-888-883-2086

THE Pampa NEWS

MONDAY, SEPTEMBER 2, 2002

***** ALL FOR ONE / ONE FOR ALL *****
#01 BU04887 12/31/14
SOUTHWEST MICROFILM GROUP
300 N ZEEB RD
ANN ARBOR MI 48106-1500
TEL: 734 763-0700 FAX: 734 763-0703



Pampa Cyber
Internet For the
New Millennium
Dialup or
71 and

WEATHER WEATHER

High **92** Low **65**

LOCAL

Pre-SAT test set

On Oct. 15, Pampa High School counselors will give the Preliminary Scholastic Aptitude Test National Merit Scholarship Qualifying Test (PSAT/NMSQT).

Freshman and sophomores may register for the test, but preference will be given to juniors. Middle school students may register, but must make their own transportation arrangements. Students outside PHS may contact their school counselor, who can contact the PHS counselor's office at 669-4800.

Registration for the test begins Monday, Sept. 9, and will continue through Friday, Sept. 26, in Mrs. Lowrey's office at Pampa High School. Cost is \$10, payable at registration. Each registrant receives a study guide and bulletin.

PSAT/NMSQT, a short form of the Scholastic Aptitude Test (SAT), measures verbal and mathematical reasoning abilities with other college-bound juniors.

DEATHS

Jess E. "Randy" Baker Sr., 44, field mechanic.
James W. Kennemer, 80, retired Phillips employee.
Wiley Warren Pettit, 91, former rodeo cowboy.

INSIDE...

Classified7
Comics4
Sports5

West Texas LANDSCAPE

Free Estimates
Landscaping
and Irrigation
120 S. Hobart
669-0158

CHILDERS BROTHERS HOUSE LEVELING

Level Floors
Floor Bracing
Cracks In Bricks
Sinking Floors & Windows
Interior Wall Cracking
FREE ESTIMATES
1-800-299-9563
WWW.CHILDERSLEVELING.COM

Did You Know...

Question

When was the first pipeline laid in Gray County?

Victims often revictimized

By NANCY YOUNG
MANAGING EDITOR

Perceptions and beliefs

Those are two factors which determine how a victim is treated by professionals following a sexual assault, says Lyn Williams, training director for the Texas Association Against Sexual Assault (TAASA).

Williams told the 40 professionals attending a training seminar, co-sponsored by TAASA and Tralee Crisis Center here this week, that the

manner in which victims are treated will determine if they are "revictimized."

Revictimization can be lessened by the professionals who are called in immediately after a sexual assault occurs, said Williams.

Studies have revealed that people who are victims do not report the offenses primarily because they didn't want to get involved with the criminal justice system, said Williams.

Williams said a staggering proportion of crimes are never reported. He said part of the

reason is because the victim does not want to relive the incident.

"In a town the size of Houston, victims can be anonymous to a point," he said. "But in a town the size of Pampa it is much more difficult."

The Austin-based trainer said as recently as 1974 many myths still surrounded sexual assault victims. He said that although the professionals have learned these were myths, the belief that victims caused their sexual assault was

common.

Williams said that in a 1937 study, child victims were described as "seductive personality types who bore some responsibility for their sexual contact with adults."

He characterized Sigmund Freud's discourse on the "seductiveness of children" as dominating victimization studies before 1974 as "amazing."

"That has changed," he said.

Urging participants at the recent seminar to provide (See VICTIMS, Page 3)



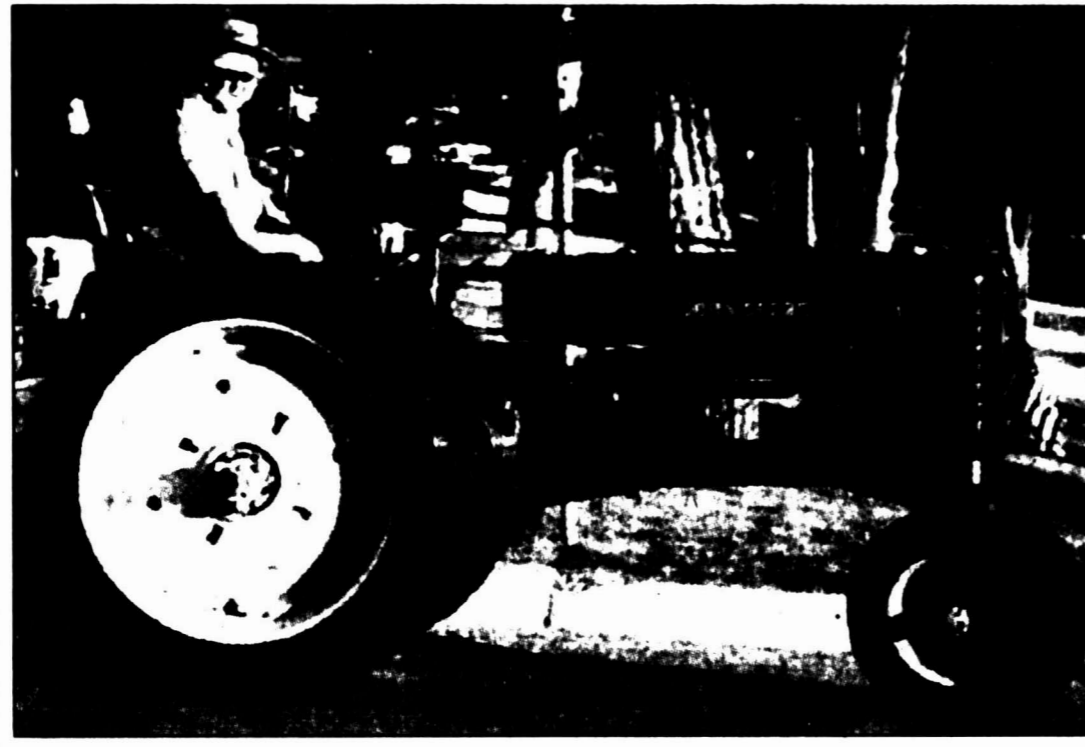
Lyn Williams
TAASA trainer

Getting ready



(Pampa News photos by Dee Dee Laramore)

Lynette Selby, above left, a member of the Paute tribe, wears the tribal dress and displays some of the Native American jewelry that can be seen at the "People of the Circle" booth at Pampa's Chautauqua celebration in Central Park today. A large teepee houses the display of native American art from Black Bear Trading Co. Below, Bill Hagerman drives his antique John Deere tractor into Central Park for the Golden Spread Tractor Club's display.



'Accident' turns out to be prank

By DEE DEE LARAMORE
EDITOR

After more than an hour of searching high grass along the railroad tracks east of Pampa late Sunday for someone believed to have been struck by a train, local emergency workers eventually determined that they were the victims of a juvenile prank.

Shortly after 9 p.m. Sunday, an emergency call of a train-pedestrian accident one mile east of Pampa at Loop 171 sent out to Rural Metro Ambulance, Gray County Sheriff's Department, Pampa Police Department, Pampa Fire Department, and Texas Department of Public Safety troopers.

Anticipating a traumatic injury, LifeStar Helicopter was also launched but then recalled.

Authorities said a train official had called in the accident and stopped the train on the tracks east of town.

Emergency crews and law enforcement officials converged on the area and began to search through the tall grass with flashlights for the supposed victim.

Finally, when no one was found, officials determined no one had been hit by the train.

"The engineers said he said two pickups full of what looked like kids playing around along the tracks," said Chief Deputy Kelly Rushing today.

Rushing said the engineer saw one of them get in front of the train and it looked like the train hit the person.

"They must have just been acting like it," Rushing said.

"People think they can judge a train, but they can't. A train can fool you," he added.

"They were laying on the tracks," said Capt. W.D. Thomas of the Pampa Fire Department. "It's not anything I didn't do as a kid, but it still doesn't make it right. It's just so dangerous."

County Commissioners to set '03 budget, tax rate tomorrow

Gray County Commissioners will consider adopting both the 2003 budget and tax rate when they meet at 9 a.m. Tuesday in the county courtroom at 315 N. Ballard.

Other items on the agenda include medical network options, potential expenditure budget of special inventory tax, increase in funding for McLean EMS, and line item budget transfers.

The commission will also consider past due amounts on hanger leases 41, 42 and 43 as well as a lease with Panhandle Water Conservation on the hangar spaces.

Consideration of a resolution with Panhandle Regional Planning Commission regarding 911 and address data base and an interlocal agreement with the Texas Association of School Boards is also on the agenda.

The commission will pay bills and salaries as approved by the county auditor.

Transplant patient's death raises

By BARNINI CHAKRABORTY
ASSOCIATED PRESS WRITER

ATLANTA (AP) — Health officials have identified a new possible target in their fight against West Nile virus as it spreads across the country.

They say a woman may have gotten the virus through blood transfusions, and four people possibly became infected after receiving her organs following her death.

One of the organ recipients has died, and three were hospitalized with symptoms associated with West Nile, although tests to determine if they were infected with West Nile through

the transplants are still being conducted.

"We've known for some time that there is a theoretical possibility that people can get this through blood or organ transplants," said Tom Skinner, a spokesman for the Centers for Disease Control and Prevention. "It's highly unusual but it's certainly possible."

American Red Cross spokeswoman Trudy Sullivan acknowledged that no test exists to screen blood for West Nile, but she said the blood supply is safer than ever and anyone showing symptoms of the virus would be turned away.

"Yes, the screening process doesn't cover everything, but if you've even got flu-like symptoms, you will be turned away," Sullivan said. "We have a number of different layers of safety."

West Nile infections can be hard to spot, though. Only about 1 percent of those infected show symptoms, with those with weakened immune systems most susceptible, according to the CDC. So far this year, 638 people in 28 states have tested positive for West Nile virus and 31 have died.

All the previous cases had been blamed on mosquito bites, but health officials now fear four people may have been infected with West Nile

after receiving the kidneys, heart and liver of a woman who died in Georgia last month after a car accident, the CDC said Sunday.

Officials say the woman may have been infected already or may have gotten West Nile through blood transfusions in the emergency room.

The Atlanta-based CDC is trying to trace donors who contributed the transfused blood, the blood products made from the donations, and any other patients who may have received blood or blood products from the donations.

The Food and Drug Administration issued an alert to blood banks two (See DEATH, Page 3)

S
E
P
2
0
0
2

Powell maintains low profile as Bush ponders attack on Iraq

WASHINGTON (AP) — Secretary of State Colin Powell continues to maintain a low profile on attacking Iraq, but close associates say it is not meant to signal his views.

While some other senior advisers to President Bush have been publicly vocal, Powell is concentrating on privately laying out a case to European allies and Arab friends that Iraq's President Saddam Hussein poses a threat to the world, these intimates say.

The secretary, in his consultations with foreign leaders, takes the position that even if Saddam reversed his refusal for 3 1/2 years to admit international inspectors to search for weapons of mass destruction it would not end the Bush administration's dispute with Baghdad.

Powell says Iraq must go further and disarm, as it promised the U.N. Security Council at the end of the Persian Gulf war to liberate Kuwait in 1991.

Whatever views Powell holds beyond that are reserved for the president, say Powell's associates, speaking on condition of anonymity.

But his consultations, mainly by telephone, are geared to seeking as much unity as possible on Iraq as a threat to stabil-

ity in the Middle East, as well as elsewhere.

His opportunity to lobby will expand this week as he attends an environmental and economic summit in Johannesburg, South Africa.

Leaders from Africa, Europe and Asia will attend — and be available for Powell to present the administration's case against Saddam. Powell flies there Monday night.

In a BBC program marking the anniversary of the Sept. 11 terror attacks, Powell stressed the need to hold unfettered international inspections in Iraq. "The president has been clear that he believes weapons inspectors should return," he said.

"Iraq has been in violation of these many U.N. resolutions for most of the last 11 years or so," Powell said. "And so, as a first step, let's see what the inspectors find."

Last week, when Britain appeared ready to propose a deadline for inspections, the State Department spokesman Richard Boucher suggested even if Iraq complied that would not be enough to satisfy the Bush administration.

He said Iraq had backtracked on commitments nine times since 1991 and that inspections were not an end

in themselves.

Powell's low profile is partly due to taking some time for vacation. But it is still in marked contrast to the strong public statements by Vice President Dick Cheney, Secretary of Defense Donald H. Rumsfeld and Condoleezza Rice, Bush's assistant for national security.

Cheney has been especially outspoken, accusing Iraq of avidly pursuing nuclear weapons. His remarks appeared to support a pre-emptive strike.

Bush has said little and evidently has not yet made a decision on how to attempt to overthrow Saddam. Powell has given no public indication he disagrees with the administration's goal of ousting the Iraqi leader.

His advice on how to go about it is for the president's ears alone, officials say.

The former chairman of the U.S. Joint Chiefs of Staff brings with that advice long experience in combat.

At the same time, he is known to be an advocate of restraint — against Iraq after Kuwait was freed and against intervention in the Balkans against ethnic conflict in the first Clinton administration.

Most of the European allies

and Arab governments have sought to dissuade Bush from launching an attack. And members of Congress are asking the administration to outline its position and provide an assessment of whether the U.S. military was ready to take on Iraq.

Sen. Chuck Hagel, a ranking Republican on the Senate Foreign Relations Committee and an early advocate of caution in Bush's approach to Iraq, agrees that Saddam regime is a threat. But the Nebraskan says Bush needs to keep an eye on a political map

filled with dangers.

Another senior member of the committee, Sen. Dick Lugar, R-Ind., who joined Hagel weeks ago in counseling a go-slow approach to achieving Bush's oft-stated goal of "regime change" in Iraq, said the president should consult both the United Nations and Congress before acting.

Lugar said a U.N. resolution demanding return of weapons inspectors would give political cover.

"There's no question that Saddam Hussein represents a

threat to the region, ultimately a threat to the United States and all peace-loving people," Hagel said Sunday on ABC's "This Week." "I think the question ... is the urgency of that threat."

"Who would we go to war with on our side? ... When do we do that? Who would then replace Saddam Hussein? Would we further destabilize the Middle East, Central Asia, South Asia? ... And, of course, one of the big questions is, how long would the United States need to stay in the Middle East?"

Bush marks holiday at labor picnic

WASHINGTON (AP) — President Bush is courting union members on Labor Day while promising working Americans that reviving the nation's economy is among his top concerns.

Bush was spending Monday's holiday at a picnic with members of one of the largest construction unions, the United Brotherhood of Carpenters and Joiners of America.

The trip was Bush's 13th as president to Pennsylvania, which has the fifth most electoral votes. He lost the state to Democrat Al Gore in 2000 and since has visited it more than any other.

Labor groups are key donors and organizers for Democrats, who cling to a one-seat majority in the Senate and are a handful of seats away from controlling the House. Thirty-six governorships also are at stake in the November elections.

Unions and their members made \$90 million in donations in the 2000 election cycle, of which 94 percent went to Democrats. Unions made up 11 of the 20 largest political action committee contributors to federal candidates that year.

But Republicans are trying to reach out to skilled-trades unions, which tend to be more conservative politically. Bush also hopes to drive wedges between the Democratic Party and its traditional allies.

"The ground is shifting and the president is proud to have as much labor support as he has," spokesman Ari Fleischer said.

Bush and unions have worked together to push his energy plan, which includes opening Alaska's Arctic National Wildlife Refuge to oil drilling, and imposing new tariffs to help protect the ailing U.S. steel industry.

CONTINUED FROM PAGE ONE

DEATH

weeks ago to exercise extra caution when screening donors, Dr. Jesse Goodman of the FDA said.

"We have been very active and tried to anticipate the possibility of something like this," Goodman said.

Three of the four patients developed symptoms of encephalitis, the inflammation of the brain and central nervous system, which is the most serious consequence of West Nile virus.

One of the four has died in Atlanta, said Dr. James Hughes, director of the CDC's National Center for Infectious Disease. Standard pathology tests from an autopsy confirmed the recipient had encephalitis. Tests are ongoing to see if the recipient was infected with West Nile, which causes encephalitis.

Another recipient, from Jacksonville, Fla., showed symptoms of encephalitis Sunday, said Dr. John Agwunobi, the Florida Secretary of Health.

CDC officials say they're sure the man didn't contract the disease from a mosquito, said Mary Jo Trepka, epidemiology director with the county health department.

Samples from the four

transplant recipients were sent to the CDC's lab in Fort Collins, Colo., Hughes said. Test results are expected within the week.

There is no test yet that can quickly or accurately identify the presence of the West Nile virus. Patients are diagnosed based on their immune response to the virus.

However, researchers at the CDC are trying to find a way that will cut down the time from when infection occurs and when a response to the virus can be measured, the CDC said. It now takes about 15 days.

Officials say they remain optimistic that there is a low chance West Nile can spread through blood because there have been no confirmed cases to date.

There are also no known cases of person-to-person transmission of other diseases in the same family as West Nile called the arboviral encephalitides: St. Louis encephalitis, La Crosse encephalitis and Eastern and Western equine encephalitis.

However, there have been cases of other mosquito-borne diseases being passed by blood transfusion or transplant. Last year, a CDC review of blood-donation problems turned up 93

patients who contracted malaria after blood transfusions.

Cases have also been reported in which dengue, another mosquito-borne disease, was transmitted to a health care worker by a needle-stick and between siblings after a bone-marrow transplant.

Sullivan said the blood supply is safer than it's ever been, and that her organization is "focused on allaying any fears or concerns about the safety of the blood supply for both donors and recipients."

Every unit of blood donated goes through up to 12 tests to ensure patient safety, including tests for HIV and hepatitis C, Sullivan said.

On the Web:
CDC West Nile:
<http://www.cdc.gov/ncidod/dvbid/westnile/index.htm>

CONTINUED FROM PAGE ONE

VICTIMS

respect and assistance to the victims, he said the dignity and healing of the victims often depends on the manner in which they are treated upon reporting the crime.

He said police and ambulance personnel are often the first responders to a sexual assault scene. As the investigation continues, the behavior of victim advocates, medical staff, elected officials, spiritual leaders and the media frequently determine how a victim responds, he said.

Williams said professionals should be trained and sensitized about victims' feelings and belief systems.

Insensitive questions such as "Why were you wearing that?" or "Why were you in that neighborhood?" contribute to the feelings of revictimization, said Williams.

He added that attitudes that suggest that the victim contributed to his or her own attack are damaging.

"Victims get the feeling of being blamed," he said. "It is an intimidating experience."

"Victims experience anxiety about testifying

in open court," he said. He added the inconvenience and frustration of court appearances are other issues which the victim deals with.

Emotions a sexual assault victim may experience include humiliation, shame and self-blame, guilt, fear of people, grief, depression, denial and anger and irritability.

Behavioral characteristics are self-blame, humiliation and embarrassment, loss of affect or numbness, omission of details, reluctance to report, incomplete memory, nightmares and flashbacks, and anger at others for not protecting her.

Lack of information on the status of their case is the number one complaint Williams said he hears from victims.

He said the criminal justice system is recognizing its shortcomings and making improvements as the expanded awareness of the effects of victimization is increasing.

Anyone who has been a victim of sexual abuse may contact Tralee Crisis Center, 310 S. Cuyler. The center provides counseling and referrals to victims. Victims may contact them at 669-1131 or go by the office. Tralee also provides assistance to domestic violence victims.

DRIVER: WHAT'S YOUR 20?

NOW HIRING

CFI

- * Company
- * Owner Operators
- * Solo and Teams!

1-800-CFI-DRIVE

* Loads With Miles Available Immediately!

www.cfidrive.com

LOANS

\$100 to \$500

Subject To Our Usual Credit Policy

Usually 30 Minute Service

Credit Bureau Reporting

665-6442

1534 N. Hobart

Call Or Come In Today

SUN LEAS COMPANY

Win a \$25,000 kitchen makeover!

Now lose your old kitchen while you're losing weight. Enter our Lookin' Good-Cookin' Good Sweepstakes at a Weight Watchers location near you. No purchase necessary. Details at participating locations.

JOIN MEETINGS NOW FOR ONLY \$18!

Call 1-800-651-6000 or visit WeightWatchers.com

PAMPA

St. Matthews Episcopal Church

727 W. Browning

Thursday 5:30 PM

Weigh-in begins 30 minutes prior to meeting time

realfood.reallife.realresults.

Weight Watchers

Void where prohibited. Offer ends 10/2002. ©2002 Weight Watchers International, Inc. Owner of the WEIGHT WATCHERS trademark. All rights reserved. Offer valid in participating locations only in AL, FL, GA, OK, TX, NC, SC and WA. Fee for subsequent weeks \$11.82 depending on geography. Not valid for The At Work Program® or community meetings or online services.

WE'VE EXPANDED



- New Products
- More Inventory
- More Room to Look

WAYNE'S WESTERN WEAR, INC.

Everything for the Cowboy, Cowgirl & Cowhorse

Open Daily 9 A.M. to 6 P.M., Thursday 9 A.M. to 8 P.M., Closed Sunday

1505 N. Hobart • 665-2925

Heard-Jones HEALTH MART

Mon. - Fri. 8 a.m. - 6 p.m.

Sat. 8 a.m. - 5 p.m.

114 N. Cuyler • 669-7478

BONUS COUPON

Expiration Date: 09/30/2002 while supplies last



Brawny Paper Towels

59¢ Limit One Roll With Coupon

S-20 **Sale Price without Coupon 79¢**

We Are Closed Today For Labor Day. Look For Our Fall Bonus Sale Insert In Today's Paper. Sale Starts 8:00AM Tuesday. Prices Good 14 Days.

Expiration Date: 09/30/2002 **BONUS COUPON** while supplies last



Soft 'N Gentle Bath Tissue

4-Roll Pack (390)

49¢ Limit One Pack with Coupon

S-30 **Sale Price without Coupon 79¢**

Get a Morgan!

We Make! You Need!

Morgan Builds, Sells, Delivers & Services We Make It... You Need It! Financing Available OAC Major Credit Cards Accepted 90 Days Same As Cash

Spas Many Sizes Up to 105 Jets

Buildings Any size

Storage Offices Carports Garages Barns Cottages

FACTORY DIRECT

Morgan Family Fun Since 1961

Bldgs Spas Pools AND CARPORTS

7402 Canyon Dr. • I-27 & Bell
806-358-9597
www.morgapusa.com

MONDAY, SEPTEMBER 2

DEAR ABBY

written by Pauline Phillips and daughter Jeanne Phillips

Boyfriend's Disappearing Act Leaves Woman In Suspense

DEAR ABBY: I am so confused. Three months ago, I met and began dating a wonderful guy I'll call Jason. I hadn't been in a relationship in more than two years because my ex-husband molested my 6-year-old daughter, and it caused me to distrust men.

When Jason and I are together, he makes me feel not only beautiful, but special and important. Even though I've known him only a few months, my feelings for him are stronger than they've been for anyone.

The reason I'm mixed up is because when Jason and I are together, we have so much fun. But when he leaves, it's sometimes a week or even two weeks before I hear from him again.

When I call him, I get no answer. I always leave a message, but get no immediate call back. When Jason finally does call, his excuse is he went to New York to visit his mother.

I have made it clear how worried I get because he doesn't call to tell me he's leaving town. He also knows I become insecure when I can't reach him.

I'm at a point where I'm beginning to wonder if he is really going out of town to visit "Mother." I think he might be seeing someone else - I have never been invited to his place.

Should I give up on him or hang in there, Abby? And how can I be sure my fears and insecurities aren't due to my "trust issues" with men?

DEAR UNSURE AND CONFUSED: Your gentleman friend has a secret life he hasn't shared with you - and I seriously doubt his mother has anything to do with it. Ask him to level with you - and if he doesn't, let him go.

P.S. If you really think your fears and insecurities are a result of your trust issues, a few sessions with a professional counselor should put them in perspective.

DEAR BOTHERED: Tell your in-laws they are endangering your marriage. As a man of God, your father-in-law should honor your request and not come between a husband and wife. Ginny is no longer a child, and she needs to understand that her parents won't always be there to "bail her out." I don't know what's causing these monetary crises, but the both of you might benefit from financial counseling.

DEAR ABBY: I have been married to "Ginny" for two happy years. My wife is the best. She's understanding, loving and, most of all, my best friend.

The only problem is her parents. Don't get me wrong, I love them dearly and have known these folks since I was 12. Ginny's dad has been my pastor a good portion of my life in our small town.

What bothers me is the fact that my in-laws won't let us fall down! Whenever Ginny and I are faced with any type of financial difficulty, her parents find out about it and insist on helping us. Well, it doesn't help.

I've tried to tell Ginny how important it is to live within our means. She just keeps on spending because she knows her mom and dad will bail us out.

Time after time, I've tried to politely refuse their offers of help, to no avail. They end up giving the money directly to Ginny. Abby, can you come up with some advice on what I can do?

BOTHERED IN NEBRASKA

Dear Abby is written by Abigail Van Buren, also known as Jeanne Phillips, and was founded by her mother, Pauline Phillips. Write Dear Abby at www.DearAbby.com or P.O. Box 69440, Los Angeles, CA 90069.

What teens need to know about sex, drugs, AIDS and getting along with peers and parents is in "What Every Teen Should Know." To order, send a business-sized, self-addressed envelope, plus check or money order for \$5 (U.S. funds) to: Dear Abby, Teen Booklet, P.O. Box 447, Mount Morris, IL 61054-0447. (Postage is included in the price.)

UNSURE AND CONFUSED IN KNOXVILLE, TENN.

For Better or For Worse

THANKS FOR MEETING ME, CANDACE! SO WHO'S THE HOTTIE?

A GUY I MET ON THE BUS. HE WANTS TO BE A HELICOPTER PILOT! DID HE ASK FOR YOUR ADDRESS?

YES, BUT I DIDN'T GIVE IT TO HIM. HE KNOWS WHERE I'LL BE ON CAMPUS. IF HE WANTS TO SEE ME AGAIN - I'LL BE AROUND.

PLAYING HARD TO GET? NOPE... PLAYING HARD TO HURT.

Zits

SO... LIKE...

Y'KNOW... HOW'S IT GOIN' 'N STUFF

THEY SAY THEY WANT MEANINGFUL CONVERSATION FROM US, BUT THEY REALLY DON'T. YOU GOT THAT RIGHT?

Garfield

CATCH THAT MOUSE!

OKAY. HANG ON. LET ME GO SLIP ON MY RUNNING SHOES

SEEMS LIKE A REASONABLE REQUEST

Beetle Bailey

I REALLY LIKE ALL THAT STUFF IN THE CONSTITUTION ABOUT LIFE, LIBERTY AND THE PURSUIT OF HAPPINESS

FORGET ABOUT IT

Marvin

YOUR GRANDMA REALLY HAS A GREEN THUMB, MARVIN

GREEN?! SHE MUST BE A VEGETARIAN

B.C.

WHAT'S LABOR DAY, DAD?

TO YOUR MOM, IT'S THE DAY YOU WERE BORN.

Hagar The Horrible

WHY ARE YOU CARRYING THAT PLANT INTO BATTLE?

I COULDN'T GET ANYONE TO CARE FOR IT WHILE I WAS GONE

Peanuts

SCHOOL STARTS TOMORROW, MARCIE... I NEED TO BORROW A NOTEBOOK, SOME PAPER, A RULER AND A PENCIL...

HAS IT EVER OCCURRED TO YOU, SIR, THAT THOSE ITEMS CAN BE PURCHASED AT YOUR NEAREST STORE?

DON'T ASK ME TO BE MAID OF HONOR AT YOUR WEDDING, MARCIE...

Blondie

NO! I WANT THAT WORK DONE AND ON MY DESK BEFORE NOON!

GOOD WORK, MY BOY!

OKAY, HE'S GONE! LISTEN, DID YOU GET THAT I WANTED EXTRA CHEESE AND PEPPERONI ON THAT PIZZA?

Crossword Puzzle

CROSSWORD

By THOMAS JOSEPH

- ACROSS**
- 1 Entrap
 - 6 Wickedness
 - 10 Gives a hoot
 - 11 Presses
 - 13 Make suitable
 - 14 Bamboo eater
 - 15 Umbrella part
 - 16 Lamb's mom
 - 18 Big weight
 - 19 VCR button
 - 22 Pallid
 - 23 Stand
 - 24 Murdered
 - 27 Copier need
 - 28 Times of preparation
 - 29 Bran type
 - 30 Loyal cronies
 - 35 Ref. wk.
 - 36 Online address, for short
 - 37 Shoe with
 - 38 Swindle
 - 40 Thrill
 - 42 Scout's rider
 - 43 Famous
 - 44 Early garden
 - 45 Elevator parts
- DOWN**
- 1 Muffler's kin
 - 2 Gymnast
 - 3 Mecca natives
 - 4 Sen.'s counterpart
 - 5 Singer
 - 6 Venomous snake
 - 7 Writer
 - 8 Hold
 - 9 Approve
 - 12 Carpenter's tool
 - 17 Took the prize
 - 20 Contort
 - 21 Penned
 - 24 Flaw
 - 25 Sir Walter Scott
 - 26 Go down
 - 27 Final part
 - 29 Hookey's
 - 31 Thin mattress
 - 32 "Swell!"
 - 33 Hamper
 - 34 Watermelon waste
 - 39 Had dinner
 - 41 Old card game

CHARSHIP

C	H	A	R	S	H	I	P
C	H	I	T	A	T	E	N
H	A	D	O	N	E	R	A
E	N	D	Z	O	N	E	W
A	G	E	V	O	L	T	A
P	E	N	N	E	D	E	E
A	R	O	S	E			
S	P	A	T	U	P	S	H
C	O	M	E	S	B	Y	E
A	S	A	O	T	H	E	L
R	E	N	A	L	O	W	L
F	U	D	G	E	L	E	E
R	A	T	S				

- Saturday's answer**
- 20 Contort
 - 21 Penned
 - 24 Flaw
 - 25 Sir Walter Scott
 - 26 Go down
 - 27 Final part
 - 29 Hookey's
 - 31 Thin mattress
 - 32 "Swell!"
 - 33 Hamper
 - 34 Watermelon waste
 - 39 Had dinner
 - 41 Old card game

NEW CROSSWORD BOOK! Send \$4.50 (check/m.o.) to Thomas Joseph Book 1, P.O. Box 536475, Orlando, FL 32853-6475

STUMPED?

For answer to today's crossword call 1-800-454-7377, 99¢ per min., 18 years of age or older only. A King Features Service.

Marmaduke

"If you come in here with a bone, you leave here with a bone."

The Family Circus

"I'm ready to go, in case we're goin' anywhere."

Flo & Friends

I really miss you, Harold. Life's just not the same without you.

Sigh. I know you can't hear me, but it makes me feel good to talk to you.

I miss you, too, Ruthie.

FOO
PA
Hills
man
Satu
Re
1. E
Down
Wine
2. Bo
Jess
Aber
3. Ha
McCa
and B
4. H
Washi
Sheph
139.
Closes
Dorma
TEN
NE
usual,
Willi
Wit
her ar
year si
than
Willi
rain da
into the
nals w
over Da
It
comple
from th
The
accused
William
Europe,
Saturda
Tennis
spotted
through
played.
Albre
will re
Rikers
appear
unless h
Stromey
written
that he
William
BASE
ARL
(AP) -
and Ran
as the
Rays co
second s
season
over the
Sunday
The L
first thr
son ag
Tigers.
sweep c
of 2000
Tamp
first ser
two of
on June
Rays ha
17 stra
longest
since
Phillies
1997.
Victo
had lost
starts, b
into the
Rodrigu
homer,
games.
two run
six int
Carter
three ir
major le
Winn
Chris C
loaded
Rays w
long 13
winning
five.
Carl
4 for th
Den
out the
hit ovr
innings
took co
fourth.



YOU... make it work

TO ALL THE AMERICANS WHO KEEP US STRONG

Our Sincere Thanks And Very Best Wishes For A Happy Labor Day

Century 21 PAMPA REALTY INC. 312 N. Gray
More POWER to you 669-0007

The Hobby Shop
217 N. Cuyler
806-669-6161

Massage Therapy
Cathy Potter • RMT
1221 N. Hobart • NBC Plaza II • Ste. 9 • 669-0013

BEST SALES & RENTALS
201 N. Cuyler • 669-0558

Schneider House Apartments
Senior Living At Its Finest
120 S. Russell • Pampa, TX. • 665-0415

DORMAN 1800 N. Hobart
TIRE & SERVICE CO., INC. 665-5302
665-6441
800-665-5302

Coe's Machine Shop
851 W. Kingsmill Ave.
669-6651

H PAMPA REGIONAL MEDICAL CENTER
One Medical Plaza
Pampa, Texas
806 665-3721

FIRST STATE BANK OF MIAMI
Main Bank
100 S. Main • Miami, TX • 806-868-2771
Pampa Branch
120 W. Kingsmill • Pampa, TX • 806-665-3669
Member FDIC

PEGGY'S PLACE
Sunday, Monday, Tuesday Open 6AM-10PM
Wednesday Through Saturday Open 24 HOURS
1801 ALCOCK • 665-7830

Apartment Living For Seniors
Pam Apartments
1200 N. Wells • 669-2594

BATH FITTER®
Tested and proven in 1000's of commercial & residential locations all across North America.
of Amarillo
1-888-465-4978 Toll Free

Best Finance
201 N. Cuyler • 669-0558

PARSLEYS SHEET METAL & ROOFING
214 E. TYNG AVENUE
800-442-4668 • 806-669-6461

Culbertson - Stowers, Inc.
INC. 1927
805 N. Hobart • 806-665-1665
rstowers@pan-tex.net

Chevrolet "WE'LL BE THERE"
GMC "We Are Professional Grade"
Buick "The Most Dependable, Longest Lasting, Truck on the Road"
BREAK THROUGH "Cadillac Break Through"
PONTIAC EXCITEMENT "PASS IT ON"
Buick "It's all good"

SUNA AUTOMALL
HWY. 287 EAST • CLARENDON, TX 79226
1 (806) 874-3527

Johnson Home Furnishings
801 W. Francis 665-3361

WARREN CHISUM
STATE REPRESENTATIVE

B&B PHARMACY
669-1076 -OR- 665-3788 EMERGENCY 665-2892
300 N. Ballard

Ingrams Plumbing
812 Denver Ave.
665-8317

LEFORS FEDERAL CREDIT UNION
117 W. 2ND STREET
LEFORS, TEXAS
835-2773

NATIONAL BANK OF COMMERCE
an office of First National Bank, Waupaca, WI
Member FDIC
1224 N. Hobart Pampa, Texas 806-665-0022
501 Commerce St. Childress, Texas 940-937-2514
305 N. Main Shamrock, Texas 806-256-2181

Pizza Hut Delivery
1500 N. Banks • 665-0887

Johnson Home Entertainment Center
2211 Perryton Parkway 665-0504

THE PAMPA NEWS
403 W. Atchison 669-2525