

THE BORDEN STAR

VOLUME XX

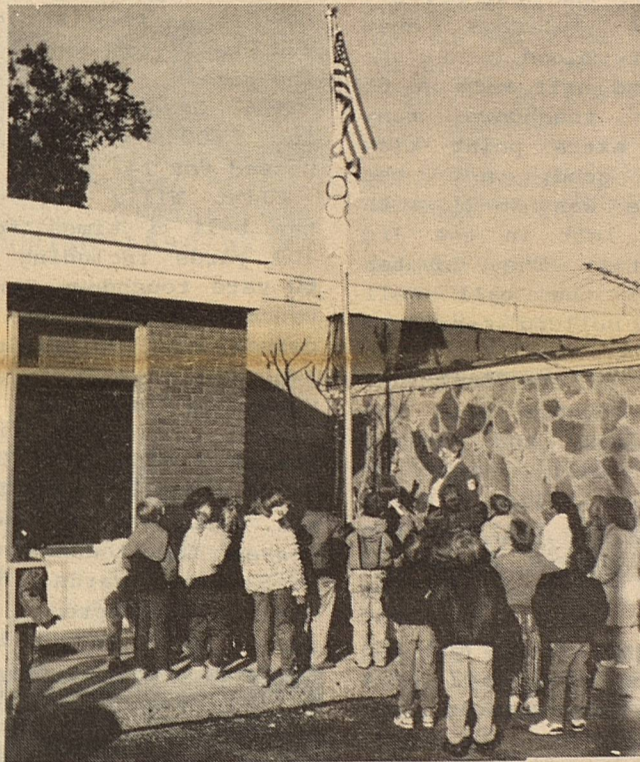
NOVEMBER 6, 1991

Serving the Counties of Borden, Dawson, Garza, Howard, Lynn & Scurry

Postmaster Raises Olympic Flag

There's a new flag flying in Gail, Borden County, Texas! Borden County ISD's kindergarten, 1st and 2nd graders were invited by Postmaster, Glenda Akins and Postmaster Relief, Terry Smith, to participate in the official Olympic Flag Raising Ceremony at the Gail Post Office Tuesday, November 11, 1991. Students were briefed on the symbol of excellence represented by the Olympic Rings, and told the rules governing hoisting and lowering of the flags. They were encouraged to study hard, train, and develop to be the best they could be. They were given an envelop with an 'Olympic Ring' stamp affixed as well as a replica to take and color.

This local even is one of more than 30,000 flag raising ceremonies taking



Postmaster AKINS explaining to the K-2 classes about the new flag in town.

place throughout the country, involving more than 700,000 employees in Olympic-oriented events. The U.S. Postal Service

Organization invites you to share in the pride and excitement of their sponsorship of the 1992 Olympic Cont. to pg. 8

GRAVESIDE SERVICES HELD

Graveside services for F.J. "Dick" Cantrell, 84, of Lubbock was held at 2 p.m. Monday in the Gail Cemetery with the Rev. Richard Laverty, pastor of First Baptist Church, officiating.

Burial was under direction of Sanders Funeral Home.

Cantrell died at

11:15 a.m. Saturday in Methodist Hospital after a lengthy illness.

Cantrell was born in Moody and had been a Borden County resident since the 1920s before moving to Lubbock in 1982. He was a stock farmer and office manager for the Borden County Agriculture Stabilization and

Conservation Service for 35 years. He was a Baptist.

Survivors include two sons, Richard of Ohio and Tom P. of Albuquerque, N.M.; two sisters, Mary Sanders of Lubbock and Pauline Bringham of Laguna Hills, Calif.; and five grandchildren.

Cross Country Race

The District Cross Country race was held in Stanton last Tuesday. The Coyotes competed against Buena Vista and Grady for the district title. Buena Vista and Grady both edged the Coyotes out of advancing to Regional as a team. Seth Vestal finished 5th place which was just good enough for him to compete at the regional cross country meet this Saturday, November 9th, in Lubbock at Mae Simmons Park. Seth ran a personal best time of 18:29.84 to qualify.

There were five other runners from Borden County, each running a personal best. The race is 3 miles long, and these boys have improved with each race.

Clint Wills finished in 6th place with a time of 18:57.

John Paul Harris finished 11th with a time of 19:53.

Cody Cox finished 13th with a time of 20:29.

Brandon Adcock ran a 21:24 and Shawn Lewis ran a 22:23.

This is the first year for cross country at Borden County. The meets are usually held



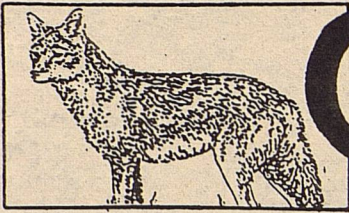
SETH VESTAL involved in cross-country race.

Saturday mornings after a Friday night football game. This is especially hard on a football player, that had a game the previous night, but it is good for them.

These young men deserve a great deal of praise for their efforts, and we will be looking forward to continued improvement next year.

Drive safely. Don't wreck your life.

State Department of Highways and Public Transportation



COYOTE NEWS

Coyotes out SCRAP the Bulldogs

The Borden County Coyotes went to Loraine last Friday night to meet the Bulldogs in district 6A action. The Bulldogs found themselves on the short end of the contest as the Coyotes clawed their way to a 62 to 35 point victory. The victory moved the Coyotes closer to a play off spot with a 3-1 district record. Loraine fell to 2-2. The Coyotes accumulated 549 total yards, and the bulldogs accumulated 407 total yards.

The Coyotes received the opening kick off and scored on their

first possession when Joe Acosta ran 38 yards for the 6 points. Richard Buchanan and his extra-point team made the score 8-0 with 7:41 left in the quarter. The Coyotes defense held the Bulldogs without a 1st down when Will Shafer intercepted a Bulldog pass. John Paul Harris scored on the next possession with a 74 yard run around the end. Richard Buchanan's team again was successful with the PAT, and the score was 16-0 with 4:41 left in the 1st quarter. The Bulldogs were again held, and the Coyote's next possession Brandon Adcock capped off the drive with a 26 yard touchdown run. This time the PAT attempt was no good, and the score was 22-0 with 3:44 left in the 1st quarter. The Coyotes kicked off to the Bulldogs and again forced them to punt without a 1st down. The Coyotes fell short on their next possession, and were forced to punt. Joe Acosta booted a 33 yard punt as the quarter ended. The Bulldogs were again held and were forced to punt. On this possession Clint Wills ran for a 60 yd touchdown. The PAT was successful by Richard Buchanan, and the score was 30-0 with 7:51 left on the clock. The Coyotes once again forced the Bulldogs to punt. Virgil Glaze ran twice for 6 yards and Cody Cox ran for a 2 yard gain on this Coyotes possession. The Bulldogs took the ball on downs and scored from 12 yards out. The PAT was not good, and the score with 3:13 left in the

first half was 30-6. The next Coyotes possession resulted in a 32 yard touchdown pass to Kirk Jones. The PAT attempt failed as Guy Zant attempted to pass to J.J. Kincheloe in the end zone. The score with 2:15 left in the 2nd quarter was 36-6. The Bulldogs answered with a score of their own with a 52 yard run. The PAT was good with a 1 point pass play, and the score with 1:31 left in the half was 36-13. The Coyotes failed to score again in the first half as time ran out on the next drive.

The Bulldogs drew first blood in the second half with a 65 yard touchdown run. The extra point kick was good, and the score was 36-21 with 9:38 left in the 3rd quarter. The Coyotes moved the ball well into Bulldog territory before fumbling the ball to the Bulldogs. The Coyotes held the Bulldogs and gained the ball back on downs. Clint Wills threw the ball to John Paul Harris for a 53 yard touchdown pass on this drive. The PAT was not good, and the score with 5:07 left in the quarter was 42-21. On the next Coyotes possession the Coyotes failed to make a 1st down because of penalties. The Coyotes quickly got the ball back on downs. This long drive was capped by a 20 yard TD run by Brandon Adcock. The PAT was not successful, and the score with 8:26 left in the game was 48-21. With 6:54 left in the game Loraine busted another run loose for 18 yards and a TD. The PAT was good, and the score was 48-29. The ball was exchanged a time a piece on downs, and on the next Coyote possession, Brandon Adcock hit John Paul Harris on a 47 yard TD pass.

The extra point attempt failed, the Coyotes were ahead 54-29 with 2:26 remaining in the game. With 2:08 left in the game, Loraine found pay dirt on a 63 yard pass. The extra point attempt was no good and the score was 54-35. The Bulldogs kick off was then returned 60 yards for a touchdown by Brandon Adcock. Richard Buchanan kicked this PAT good, and the score with 1:58 left was 62-35. The Coyotes then received the ball back on downs. The clock ran out on possession of the Coyotes as they sat on the ball to conclude the game.

The Coyotes rushed for 402 yds and passed for 147 yards.

Clint Wills carried the ball 8 times for 107 yards including a 60 yard touchdown run. He completed 3 of 7 passes for 100 yards. Two of these passes were good for TD's.

John Paul Harris rushed 5 times for 97 yards and a 74 yard TD run. He caught two passes for touchdowns of 53 and 47 yards. He also intercepted a pass and made 15

tackles.

Brandon Adcock rushed 19 times for 132 yards. Two rushes were good for TD's. He threw one pass for a touchdown of 47 yards. Brandon also ran a kickoff back 60 yards for a touchdown.

Kirk Jones carried the ball 2 times for 5 yards and caught 2 passes for 47 yards one was good for a 32 yard touchdown.

Joe Acosta carried the ball 3 times for 53 yards including a 38 yard TD run. He had a good night defensively with 14 tackles.

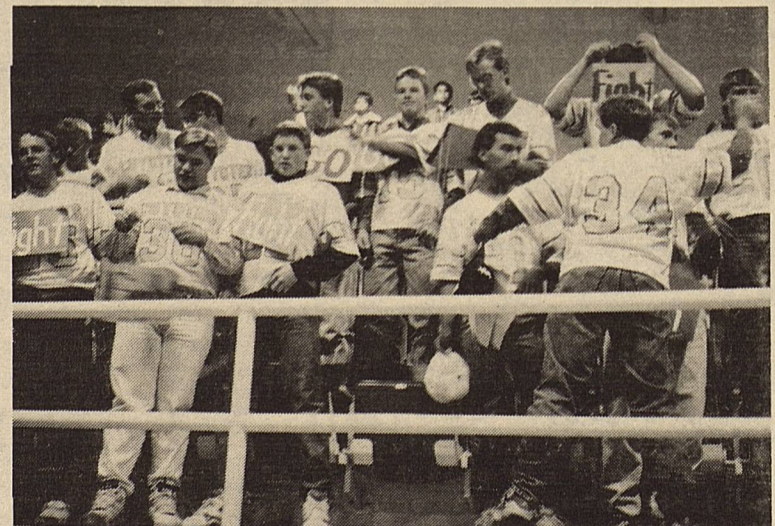
Will Shafer had a good game at quarter back and safety.

Monty Stone performed a thankless job of blocking for the ball carriers.

Clay Miller started on defense before suffering a cracked jaw and had to leave the game.

J.J. Kincheloe played well at center and defensive end. J.J. recovered a fumble and had 4 tackles.

The rest of the Coyotes played a great deal in this high scoring game.



THE "FIGHTING COYOTES" ALL FIRED UP WITH THEIR GO! FIGHT! WIN! SIGNS MADE BY THE KINDERGARTEN AND PRESENTED TO THE COYOTES



GO

COYOTES

The Borden Star
Publication No. 895520
(USPS 895-5200)

CO-EDITORS:
Verna Adcock
Clarajane P. Dyess

Published weekly, except for Christmas and New Years, on Wednesday at Gail, Borden County, Texas 79738, Box 137 Kincaid St. Second Class Postage paid at Gail, Texas.

Any errors that we make reflecting on the reputation or standing of any Firm, Corporation or individual that appear in the columns of the Borden Star will be gladly corrected when called to the attention of the staff.

Subscription Rates:
\$8.00 per year

BORDEN STAR OWNERS:
Mrs. Rich Anderson,
Borden Co. I.S.D., Mrs. Bob Dyess, Mrs. Joe Gilmore, T.L. Griffin, Mrs. Lorene Jones, R.D. Lewis, Mrs. Edna Miller, Martin Parks, Mrs. Pat Porter, Mrs. Clarence Porter, Mrs. Doris Rudd, Eddie Simer, Mrs. Glenn Toombs, Sonny Tucker, Dan Turner, Nathan Zant.

It miser is t Coyote themse play-c probat the re We ha aclime cold.

We v play Friday have



KI SC AD PE

NO

MONDAY

Lunch
Steak
Mashed
Black-
Hot ro
Fruit
Milk

Breakf
Cereal
Toast
Juice
Milk

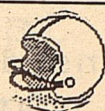
TUESDA
Burrit
Tossed
Pinto
Cracke
Cookie
Milk

**
Sweet
Fruit
Milk

Wednes
Hobo S
Green
Hot Ap

COACHS ' CORNER

by: Bobby Avery



It was cold and miserable, but this is the practice the Coyotes need to prepare themselves for the play-offs. It will probably be cold for the rest of the season. We have got to get acclimatized to the cold.

We were scheduled to play Highland this Friday night but they have elected to end

their season after last week. Borden County now has a win because of their forfeit, bringing our district record to 4-1.

We will be using this open date in preparation of our play-off game with the Sands Mustangs.

This game is tentatively scheduled to be played in Lamesa November 15th.



KINDERGARTEN PLAYING THE COYOTE "FIGHT SONG" WITH THEIR MUSICAL INSTRUMENTS ALONG WITH MR. HARRIS DURING LAST WEEKS PEP RALLY.

School Menu

NOVEMBER 11-15, 1991

MONDAY

Lunch

Steak Fingers
Mashed Potatoes
Black-eyed Peas
Hot rolls
Fruit
Milk

Hot Rolls
Milk

Cheese Toast
Fruit
Milk

Breakfast

Cereal
Toast
Juice
Milk

Thursday
Spagetti
Corn
Agratin Potatoes
Garlic toast
Jello w/fruit
Milk

TUESDAY

Burritos
Tossed Salad
Pinto Beans
Crackers
Cookies
Milk

Pancake Pups
Juice
Milk

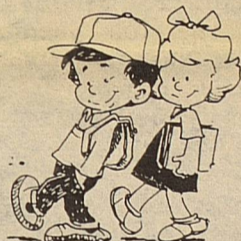
Sweet Rolls
Fruit
Milk

Friday
Hamburgers
Lettuce/Tomatoes
French Fries
Cake Milk
Milk

Wednesday

Hobo Stew
Green Beans
Hot Apple Dessert

Pancakes
Juice
Milk



GASOLINE/DIESEL QUOTATION REQUEST

The Superintendent's Office, on behalf of the Board of Trustees of the Borden County Independent School District, will receive bids on gasoline and diesel as described in the following paragraphs, on November 15, 1991.

Proposals shall be addressed to Jimmy Thomas, Superintendent, Borden County Independent School District, Box 95, Gail, Texas, and shall be delivered in a sealed envelope marked "Gasoline/Diesel Proposal". Proposals will be received up to but not later than 2:00 P.M. on November 15, 1991. Bid proposals will be opened and read aloud in the Board Room at that time. Bid proposals will be tabulated and presented to the Board of Trustees for their consideration on November 18, 1991 in the Borden County Independent School District Board Room at a regular Board Meeting which will begin at 8:00 P.M. Bids received after that time will not be considered.

All proposals shall be made on the form that will be provided by the Borden County I.S.D. as requested by respective vendors. No bid will be considered unless this form is used.

The right is reserved by the Borden County Independent School District to accept or reject any or all bids and to waive all formalities.

It is anticipated that approximately 55,000 gallons of unleaded gasoline and 6,000 gallons of diesel fuel will be used during the contract period. All prices quoted are to be for unleaded gasoline and diesel fuel. In addition, respective vendors will be required to deliver gasoline and diesel to the Borden County School in Gail, Texas; supply all equipment; supply all tanks; and supply all pumps with gauges.

This contract will begin on December 1, 1991 and terminate on November 30, 1992.

Questions regarding bid specifications shall be directed to Jimmy Thomas, Superintendent, Borden County Independent School District at P.O. Box 95, Gail, Texas 79738 or by calling 806-756-4313.

FOOD SERVICE QUOTATION REQUEST

The Superintendent's Office, on behalf of the Board of Trustees of the Borden County Independent School District, will receive bids for food service commodities and supplies as follows:

Sealed bid proposals will be received by the District for Meat, Vegetables, Fruits, Condiments, Miscellaneous Food Items and Non-Food Disposable Products.

Bid proposals will be received in the office of the Superintendent until 2:00 P.M. on November 15, 1991. Bid proposals will be opened and read aloud in the Board Room at that time. Bid proposals will be tabulated and presented to the Board of Trustees for their consideration on November 18, 1991 in the Borden County Independent School District Board Room at a regular Board Meeting which will begin at 8:00 P.M. Proposals shall be addressed to Jimmy Thomas, Superintendent, Borden County Independent School District, Box 95, Gail, Texas, and shall be delivered in a sealed envelope marked "Food Service Quotation".

The Borden County I.S.D. Board of Trustees reserves the right to accept or reject any or all proposed bids, to waive any and all technicalities, and to accept the proposal which will best serve the needs of the District. Bid pricing proposed must be valid for a period of thirty days following submission to the Board of Trustees, and the conditions of the bid will include the option to select items on a per-item basis. Bids may be quoted on one, several, or all items. All products shall be priced F.O.B. the Borden County I.S.D. cafeteria in Gail, Texas. The term of this contract will be from November 25, 1991 to May 19, 1992.

Questions regarding bid specifications shall be directed to Jimmy Thomas, Superintendent, Borden County Independent School District at P.O. Box 95, Gail, Texas 79738 or by calling 806-756-4313.

OBITUARY

Myrtle Iona Beaver

1916-1991

Services for Myrtle Iona Beaver, 75, of Brownfield were held at 11 a.m. Tuesday in Bethel Baptist Church with the Rev. Clay Lewis, pastor, officiating. The Rev. C.J. McQuillan, a retired ministered, assisted.

Burial was in the Terry County Memorial Cemetery under direction of Brownfield Funeral Home.

She died at 8:10 p.m. Saturday in Lubbock's Methodist Hospital after a lengthy illness.

She was born in Roscoe and was raised in Lynn County. She attended school in the New Moore community before moving to

Brownfield in 1944. She married Fred Beaver on May 3, 1965, in Morton. He died on Dec. 6, 1981. She was a Baptist and a house wife. A daughter, Glenna Faye Moore, died on June 22, 1956.

Survivors include three sons, Billy Moore of Levelland, J.D. Moore of Longview and Carl Moore of Scappose, Ore.; a stepdaughter, Mae Taylor of Alta Loma; four sisters, Eva Doyle of Gail, Flora Mae Rogers of Brownfield, Nannie Lae of Lamesa and Lois Murphy of Lake Thomas; 10 grandchildren; and eight great-grandchildren.

hormonal imbalance or some other identifiable disease. In this case, treating the underlying causes will usually cure the hypertension.

The other 98% of people with hypertension have primary or essential hypertension. The causes of this type of high blood pressure are not known, but it can be triggered by a number of factors. A family history of hypertension or stroke at an early age increases the chance of developing high blood pressure. Men are more likely than women to develop hypertension, especially before middle age.

Other factors such as alcohol consumption, cigarette smoking, excessive weight and diet are also linked to hypertension. If you suspect you have high blood pressure, consult your physician.

Controlling Hypertension

Hypertension is referred to as the "silent disease" because it has no symptoms until it reaches an advanced stage. If not controlled, hypertension, or high blood pressure, can lead to heart attacks, strokes and kidney failure.

Usually, hypertension can be detected during a routine physical exam or during a high blood pressure screening program. There are two measurements of blood pressure—systolic and diastolic. Systolic pressure refers to the pressure at the moment the heart muscle contracts to pump blood out. Diastolic pressure is the pressure at the moment the heart muscle relaxes to let blood flow in. Systolic pressure is always higher than diastolic pressure.

There are some general guidelines to follow to find out if your blood pressure is high:

SYSTOLIC (Top number)

160 and above:
Consult your doctor.

140-159:
Borderline; recheck in two months.

Less than 140:
Normal; recheck in two years.

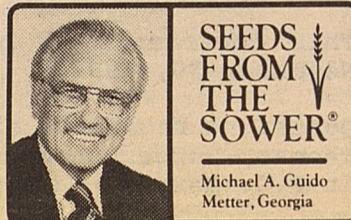
DIASTOLIC (Bottom number)

90-104:
Mild hypertension; Check within two months

85-90:
On high side of normal, recheck annually.

Less than 85:
Normal; recheck in two years.

The American Heart Association states that about 2 percent of the people with high blood pressure have secondary hypertension, or hypertension caused by diabetes, a kidney disease, a



SEEDS FROM THE SOWER®

Michael A. Guido
Metter, Georgia

One morning a pilot, flying over the Gulf of Mexico, saw a shipwrecked family clinging to a life preserver and kicking away sharks.

Writing "Follow Me" on a piece of canvas, he led a boat to the Horne family and they were saved.

This is a shipwrecked world. Our Lord has commanded, "Follow Me." We belong to a Lifesaving Service. It's our business to win the lost at any cost.

We'll rescue the perishing not because of what we know, but because of Whom we know, and how well we know Him, and how much we long for others to know Him.

FLEA MARKET

Inside "A" Frame Building
Downtown Gail, Texas

NOVEMBER 5th & 6th

Come By and See What We Have!



11 Cor. 4:6

Son Shine Christian Bookstore

BIBLES • GIFTS • MUSIC • SCHOOL TEACHING SUPPLIES

#30 Highland Mall

Big Spring, Texas 79720

(915) 267-6442

Wind Suits



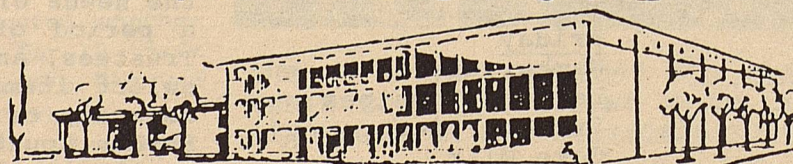
—H— Western Wear

College Heights Shopping Center
Snyder, Texas



THE FIRST NATIONAL BANK

The Symbol of Banking in Big Spring



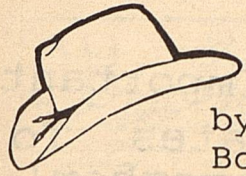
FULL SERVICE BANKING

Member F.D.I.C.

400 Main Street

267-5513

BIG SPRING, TEXAS



Let Me Get
My Hat
by Dennis Poole,
Borden County CEA-Ag

1992 Borden County Lamb Validation

Validation procedures for lambs to be exhibited at the 1992 Borden County Stock Show will be held on Thursday, November 7, 1991, at the county show barn. A sheep shearer will be on hand to shear lambs for \$3.00 per head beginning at 9:30 a.m. on Thursday.

ALL LAMBS TO BE EXHIBITED AT THE 1992 COUNTY STOCK SHOW MUST BE TATTOOED ON THIS DAY.

If you want to shear your lambs, please plan to arrive between 9:30 a.m. and 2:00 p.m. This will allow ample time to get sheep sheared before it gets late. All validation procedures will conclude by 5:30 p.m.

BRING THE EXACT CHANGE FOR SHEARING OF YOUR LAMBS--WE WILL NOT HAVE EXTRA MONEY TO MAKE CHANGE. Please put this event on your calendar and plan to be here.

Meeting Planned

A meeting will be held on Tuesday, November 12, 1991, in the High School Ag Classroom to enter all 1992 major and county livestock shows. We will begin taking entries at 3:30 p.m. and end by 5:30 p.m. Please try and have a family representative

present to enter your animal projects if at all possible on this day. Be sure and bring your child's social security number with you. We must include this number on all entry cards now. If they do not have one, we must put the parents number on the card.

Supply Outlook Good For Texas-Grown Christmas Trees

Texas Christmas tree growers are busy shaping and manicuring their trees this month, anticipating a good harvest enhanced by plentiful rains this year.

The estimated value of the 1991 Texas Christmas tree harvest should equal the \$8 million crop of last year. This is an economic impact of at least \$17 million.

The Texas Christmas Tree Growers Association estimates that more than 400,000 Texas-grown Christmas trees will be marketed this year, about the same as last year.

Weather conditions have been good throughout the state during most of this growing

season. Adequate rainfall means that the trees should be of good quality, having both excellent color and size.

The association lists 144 farms in 76 Texas counties that plan to market trees this year. Most farms will begin sales near the Thanksgiving holidays.

The association's annual marketing survey shows; that about 63 percent of the growers will market their trees by the choose-and-cut method this year, an increase of 12 percentage points over last year. Approximately 32 percent will wholesale trees (down 10 percent-

age points from last year) and 5 percent will market trees through grower-operated retail lots.

Choose-and-cut marketing gives the producer top dollar for his product,

The growers association was formed in the late 1970s and has grown to more than 425 members.

Producers are striving each year to offer the public a better product than the year before. The Virginia pine is the primary species grown in the eastern part of the state while the Afghan pine is adapted to the drier areas.

A copy of the tree growers' marketing brochure that lists locations of all participating Christmas tree farms will be available from local county extension offices throughout the state.

Thank you for
reading the
BORDEN STAR

5...THE BORDEN STAR, WED., NOVEMBER 6, 1991

To the 4-H'ers of Borden County

friends helping friends



We would like to take this opportunity to thank you for selecting us as "Outstanding Leaders of 4-H" for 1991. The plaque is very beautiful! As far as we are concerned, there's not a better group of kids anywhere. You really make us proud of you with your conduct and hard work at the stock shows, 4-H banquets, ball games, and school work. We are happy to be associated with such a wonderful group of kids. It makes the time and effort all worth while!

Thanks,
Guy and Patricia Zant



GIGANTIC GARAGE SALE
O'DONNELL METHODIST CHURCH
Saturday, November 9th
9:00 a.m. until _____
612 5th Street

REQUEST FOR BIDS ON TEXAS HIGHWAY CONSTRUCTION

Sealed proposals for 345.086 miles of seal coat on various limits on BI 20-M, SH 351, US 83, FM 608, SH 70, US 380, FM 57, SH 92, US 277, SH 208, FM 707, FM 669, FM 33, FM 126, FM 142, FM 604, FM 605, FM 821, FM 1229, FM 1584, FM 1611, FM 2230, Loop 332, & FM 1544 in Nolan, Taylor, Callahan, Jones, Shackelford, Kent, Stonewall, Fisher, Haskell, Mitchell, Borden and Glasscock Counties, covered by CPM 6-15-18, CPM 11-1-24, CMP 11-2-11, CPM 11-3-9, CPM 11-4-20, CPM 34-2-28, CPM 53-15-16, CPM 106-3-23, CPM 106-3-24, CPM 106-4-30, CPM 263-7-5, CPM 317-1-25, CPM 318-2-19, CPM 318-3-10, CPM 360-4-24, CPM 407-5-18, CPM 454-3-31, CPM 484-1-15, CPM 558-3-18, CPM 558-5-8, CPM 677-3-8, CPM 733-1-11, CPM 733-2-16, CPM 733-3-26, CPM 741-1-16, CPM 972-2-7, CPM 974-2-12, CPM 974-3-11, CPM 975-1-14, CPM 1156-2-13, CPM 1156-3-4, CPM 1362-2-19, CPM 1503-1-9, CPM 1503-2-6, CPM 1527-1-12, CPM 2149-1-7, CPM 2398-1-30 and CPM 3423-1-4

will be received at the Texas Department of Transportation, Austin, until 1:00 P.M., November 15, 1991, and then publicly opened and read.

Plans and specifications, including minimum wage rates as provided by Law, are available for inspection at the office of Mitchael V. Chetty Resident Engineer, Big Spring, Texas, and at the Texas Department of Transportation, Austin, Texas. Bidding proposals are to be requested from the Division of Construction and Contract Administration, D.C. Greer State Highway Building, 11th and Brazos Streets, Austin, Texas 78701. Plans are available through commercial printers in Austin, Texas, at the expense of the bidder.

The Texas Department of Transportation hereby notifies all bidders that it will insure that bidders will not be discriminated against on the ground of race, color, sex or national origin, in having full opportunity to submit bids in response to this invitation, and in consideration for an award.

Usual rights reserved.



Bids during this signup will not be accepted for the 1992 crop year. All bids will be made for the 1993 crop and the first year annual rental payment would not be paid until October 1, 1993. Mark your calendar.

Important Dates To Remember!

1992 HAYING/GRAZING ACR & CU FOR PAY

For crop year 1992, ACR and/or CU for pay may not be grazed or ahyed during the five month non-grazing/nonhaying period of April 1, 1992 thru August 31, 1992.

FAILED ACREAGE

Producers who abandon standing crop acreage must file an ASCS-574 prior to the destruction of the crop. Producers with failed acreage need to measure and identify those acreages that are failed.

COTTON PRODUCTION CARDS

Around the later part of November, all operators will be getting an ASCS-503 (Cotton Production) card in the mail. Two cards will be sent to each operator. If you have more than two farms, you may pick up additional forms at our office or at the gin.

Operators are responsible for reporting actual production harvested on each farm.

SALE OF WOOL AND UNSHORN LAMBS

All individuals who have sold wool and/or unshorn lambs need to turn in their original sales receipts by no later than January 31.

FUTURE CRP SIGN-UP

Signup for the 12th Conservation Reserve Program (CRP) will be from June 15 through June 26, 1992.

1992 FEED GRAIN PROGRAM

USDA has announced a required 5 percent acreage reduction program for the 1991 crops of sorghum, corn and barley along with a required zero percent reduction for oats. Other provisions will be made available as they are announced.

TEXAS PARKS & WILDLIFE SYMPOSIUM

The Texas Parks & Wildlife Department's South Plains Wildlife Symposium is scheduled for Wednesday, November 13, 1991, at the Texas A&M Agriculture REsearch & Extension Center, located just north of the Lubbock Airport, exiting east on FM 1294 off I-27. The main telephone number at the center is (806)746-6101. The symposium is being co-sponsored by the Texas Agriculture Extension Service, USDA Soil Conservation Service, Texas Forest Service, Texas Panhandle Chapter of Quail Unlimited, the Range and Wildlife Management Department of Texas Tech University, and Texas Chaper, The Wildlife Society. Pre-registration is \$6.00/person (includes packet of resource materials and lunch) with checks made payable to "Wildlife Symposium," and mailed to TPWD, 3409 South Georgia #25, Amarillo, Texas 79109, by no later than Friday, November 8, 1991. Advertisement brochures will be going out in the counties during the week of October 14th, so if persons wish to pre-register without a form, they should include a name, address with zip-code, phone number, and payment for each attendee. Registration at the door is \$8.00.

Thurs. November 7th - Parent's Club Meeting in school Conference Room, 2:30. ***

Thurs. November 7th - Lamb Validation, County Show Barn beginning at 9:30 a.m. ***

Fri. November 8th - End of 2nd. Six-Weeks ***

Mon. November 11th - Junior High Basketball at Loop. ***

Tues. November 12th - Livestock show enteries meeting in school Ag Classroom from 3:30-5:30 ***

Thurs. November 14th - High School girls Basketball scrimmage with Stanton in Gail at 6:00 p.m. ***

Fri. November 8th - Play-off Football game with Sands in Lamesa.

NOTICE OF RATE CHANGE REQUEST AND STATEMENT OF INTENT

Notice is hereby given that MIDWEST ELECTRIC COOPERATIVE, INC. (the "Utility") intends to change rates for electric utility service effective November 27, 1991, or as soon thereafter as may be permitted by law. The Utility has not had a general rate increase since 1986. Based upon a test year ending December 31, 1990, the increase requested over actual test year revenues is \$1,518,446 or 15.75%. Of this amount, \$482,193, or approximately 5%, is attributable to an increase in the cost of wholesale power purchased by the Utility from Texas Utilities Electric Company which the Utility already has authority to charge to its customers. The increase requested over test year revenues adjusted for annualization of this test year wholesale power increase is \$1,036,253 or 10.3%. The changes are applicable to all areas, all customer classes, and all customers served by the Utility.

Implementation of the proposed changes is subject to approval by the appropriate regulatory authority. A statement of intent including the proposed revisions of tariff and schedules and a statement specifying in detail each proposed change is available at the general office of the Utility located at U. S. Highway 180 West, P. O. Box 518, Roby, Texas 79543.

Persons who wish to intervene or otherwise participate in these proceedings should notify the Commission as soon as possible. A request to intervene, participate, or for further information should be mailed to the Public Utility Commission of Texas, 7800 Shoal Creek Boulevard, Suite 400N, Austin, Texas 78757. Further information may also be obtained by calling the Public Utility Commission Consumer Affairs Division at (512) 458-0223 or (512) 458-0227, or (512) 458-0221 teletypewriter for the deaf.



HOGG FLYING SERVICE

GRASS SEEDING BRUSH CONTROL SPRAYING


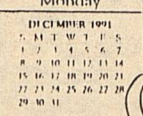

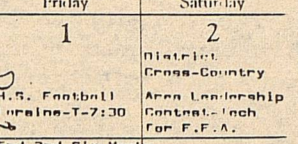
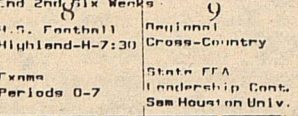

FAST PROFESSIONAL SERVICE

Call: 806/872-9696 or 872-7617

Lamesa Airport



Owner: Glenn W. Hogg

Sunday	Monday	Tuesday	Wednesday	Thursday	Friday	Saturday
 OCTOBER 1991 S M T W T F S 1 2 3 4 5 6 7 8 9 10 11 12 13 14 15 16 17 18 19 20 21 22 23 24 25 26 27 28 29 30 31	 NOVEMBER 1991 S M T W T F S 1 2 3 4 5 6 7 8 9 10 11 12 13 14 15 16 17 18 19 20 21 22 23 24 25 26 27 28 29 30				1 H.S. Football Lufkin-T-7:30	2 District Cross-Country Area Leadership Contest-1 inch For F.F.A.
3	4	5	6 Exam Periods 1-3-5	7 Exam Periods 2-4-6	8 End 2nd Six Weeks H.S. Football Highland-H-7:30 Exam Periods 0-7	9 Regional Cross-Country State FFA Leadership Cont. Sam Houston Univ.
10	11 Junior High B.O. Loop-T	12	13	14 H.S. N.O. Scrim. Girls-Stanton-H 6:00	15	16
17	18 Junior High B.O. Wellman-H	19 H.S. N.O. Jayton-H-5:00	20	21	22 Progress Report Due H.S. N.O. Westbrook-H-5:00	23
24	25 Junior High B.O. Dawson-T	26 EARLY DISMISSAL 2:30 P.M.	27	28 THANKSGIVING HOLIDAY November 27, 28, 29, 30, 1991	29 	



MRS. AKINS telling class about flag.

Branon Funeral Home

Service in this area since 1922.

Phone 872-8335 403 N. Austin, Lamesa

PRIZE WINNING PIES

After winning more than 600 ribbons for her cooking at contests and fairs in Tennessee and Kansas, Sherry Sanders of Great Bend, Kansas could be excused if she wasn't excited about winning the top prize in pie baking at her state fair. But excited she was, as the blue ribbon earned her a trip to New Orleans to compete in the Crisco Great American Pie Celebration, with a kitchen-full of KitchenAid appliances going to the winner.

Sherry was just following in her mother's footsteps—her mom was the Crisco contestant from Tennessee the previous year. And Sherry did herself proud in New Orleans, winning a bronze rolling pin and \$250.00 after her pie was judged "Best Crust."

HEART DISEASE

We're Making a Difference.

American Heart Association

BENNY WHITE FLYING SERVICE



Call for your Defoliation and Seeding Needs

806/497-6426

Mobile # 806/759-7549
Key, Texas

MY BEST APPLE PIE

- | | |
|---|------------------------------------|
| Filling | Crust |
| 4 c. sliced, peeled (1/4-inch slices) Golden Delicious apples, (about 1 1/2 lbs. or 2 to 3 large) | 1 1/2 c. all-purpose flour |
| 3 c. sliced, peeled (1/4-inch slices) Granny Smith apples (about 1 lb. or 2 large) | 1 1/2 c. whole wheat flour |
| 1/4 c. apple juice | 1/2 c. firmly packed brown sugar |
| 2 tbsp. lemon juice | 1 tsp. salt |
| 1/2 c. granulated sugar | 3/4 tsp. cinnamon |
| 1/2 c. firmly packed light brown sugar | 1 c. Butter Flavor Crisco, chilled |
| 3/4 tsp. cinnamon | 1/2 c. cold water |
| 1/2 tsp. nutmeg | 1 egg |
| 2 tbsp. plus 1 1/2 tsp. quick-cooking tapioca | 1 tsp. white vinegar |
| 1 tsp. vanilla | Glaze |
| | Milk |
| | Granulated sugar |

For filling, combine apples, apple juice and lemon juice in large saucepan. Cook and stir on high heat 5 min. or until apples are slightly limp. Pour into large shallow dish. Place in refrigerator, uncovered, until cool (about 20 min.). Spoon apples and any liquid into large bowl. Add granulated sugar, brown sugar, cinnamon, nutmeg, tapioca and vanilla. Toss until apples are coated. Heat oven to 400°F.

For crust, combine all-purpose flour, whole wheat flour, brown sugar, salt and cinnamon in large bowl. Cut in Butter Flavor Crisco using pastry blender (or 2 knives) until mixture resembles coarse cornmeal. Combine water, egg and vinegar in small bowl. Beat with fork until well blended. Sprinkle over flour mixture, one tablespoon at a time, tossing lightly with fork until dough will form a ball. Press dough between hands to form three 5 to 6-inch "pancakes". (Wrap one in foil for later use. Refrigerate up to one week or freeze for longer storage.) Flour rolling surface and rolling pin lightly. Roll dough for bottom crust into circle. Trim one inch larger than upside-down 9-inch pie plate. Loosen dough carefully. Fold into quarters. Unfold and press into pie plate. Trim edge even with pie plate. Spoon filling into unbaked pie shell. Moisten pastry edge with water. Roll top crust same as bottom. Lift onto filled pie. Trim 1/2 inch beyond edge of pie plate. Fold top edge under bottom crust. Flute. Cut slits in top crust for escape of steam. (Extra "pancake" can be rolled out for cutouts or special decorations, if desired.)

For glaze, brush top crust with milk. Blot any excess with paper towel. Sprinkle with granulated sugar. Bake at 400°F for 15 min. Reduce temperature to 350°F. Bake for one hour or until filling in center is bubbly and crust is golden brown. Cool to room temperature before serving. Makes one 9-inch pie.

PROPANE QUOTATION REQUEST

The Superintendent's Office, on behalf of the Board of Trustees of the Borden County Independent School District, will receive bids on propane as described in the following paragraphs on November 15, 1991.

The proposal shall be addressed to Jimmy Thomas, Superintendent, Borden County Independent School District, Box 95, Gail, Texas and shall be delivered in a sealed envelope marked "Propane Proposal". Proposals will be received up to but not later than 2:00 P.M. on November 15, 1991. Bid proposals will be opened and read aloud in the Board Room at that time. Bid proposals will be tabulated and presented to the Board of Trustees for their consideration on November 18, 1991 in the Borden County Independent School District Board room at a regular Board Meeting which will begin at 8:00 P.M. Bids received after that time will not be considered.

All proposals shall be submitted on the form that will be provided by the Borden County Independent School District as requested by respective vendors. No bid will be considered unless this form is used.

The right is reserved by the Borden County Independent School District to accept or reject any or all bids and waiver all formalities.

It is anticipated that approximately 55,000 gallons of propane gas will be used during the contract period. All prices quoted are to be for propane fuel. In addition, respective vendors will be required to deliver propane to the Borden County School, the Plains Community Center, and to the teacherages of the Borden County Independent School District. All tanks are owned by the Borden County School.

The contract will begin on December 1, 1991 and terminate on November 30, 1992

Questions regarding bid specifications shall be directed to Jimmy Thomas, Superintendent, Borden County Independent School District at P.O. Box 95, Gail, Texas 79738 or by calling 806-756-4313.

Low-Fat Ground Beef Interest Grows

Beef producers' bold plan to fund development of low-fat products has resulted in more than 90% lean ground beef--today's hottest food item in America's restaurants and supermarkets.

Now producer funds are explaining the benefits of this new product so consumers who want to lower their fat intake can include it in their diets. An example is a recent cooking school at the State Fair of Texas in Dallas that taught 300 consumers how to prepare this exciting new beef product.

Money for development of low-fat ground beef and consumer education events like the cooking school came from the beef checkoff, an industry program that is operated by beef producers and funded through sales of cattle.

"I can't think of a better use of checkoff funds than developing products that meet consumers' needs and then providing those same consumers with information on how best to use the products," area beef producer Lucille Sterling of Colorado City, Texas, said. Sterling is a Director of the Texas Beef Industry Council.

"Our checkoff dollars made this possible, and the industry will only benefit by reaching a completely new group of consumers who enjoy the great taste of beef but who also want to control their intake of fat."

Sterling said the recent cooking school, hosted for consumers by the Texas Beef Industry Council, showed how the checkoff program can coordinate national programs on a state level.

U.S. beef producers earmarked \$373,000 in 1987 to develop low-fat ground beef in universities and private research laboratories. The research resulted in several formulations that use combinations of more than 90% lean beef, water and naturally produced fat replacers. The first product was introduced by McDonald's with its McLean Deluxe last March. By September 1991, several other companies launched low-fat products in 8,500 retail stores across the U.S. In late September, the product was also introduced in the school lunch program.

As soon as the product hit Texas supermarkets, the Texas Beef Industry Council conducted its cooking school during the State Fair. More than 300 Texas consumers heard Peter Kump of Peter Kump's New York Cooking School explain how low-fat ground beef allows persons on most diets to enjoy the great taste of beef.

"Anything eaten out of proportion is bad for you," Kump said. "But there are no bad foods. Even fat is necessary in moderate amounts. That's why I like the new low-fat ground beef products. The fat is down to

only 8%. Nutritionists tell us to limit our intake of calories from fat to only 30%, so low-fat ground beef is very good to achieve that."

While the fat is lower in more than 90% lean ground beef, the nutritional benefits remain high, Kump told his audience. Beef is an excellent source of protein, B vitamins and heme iron, the form of iron the body readily absorbs. That's important, he noted, since 30 percent of Americans have an iron deficiency and another 30 percent are borderline. Kump noted that just 3 ounces of beef provides as much nutritional iron as 3 pounds of broccoli.

Diet-conscious consumers can use low-fat ground beef for all the benefits of regular ground beef and half the fat content, Kump said.

"The beef looks the same as regular ground beef, but costs about 30 cents more per pound," Kump said. "I think it is worth every nickel of it."

Following Kump's presentation, all the State Fair cooking school students were provided with 2 pounds of low-fat ground beef product provided by a company that recently entered the Texas market. To help consumers prepare the low-fat ground beef, Texas BIC provided the cooking school students with 10 low-fat ground beef recipes developed for the school by Kump and a 24-page recipe booklet produced with checkoff funds.

"As a beef producer, I'm grateful that we have the beef checkoff program to develop products that meet our

changing consumers needs," Sterling said. "On a state's level, checkoff dollars also help us inform Texas consumers where to find the new product and how to use

it. The high interest in low-fat ground beef by consumers proves that America's beef industry was on target when it developed this new product. Everybody wins."

Olympic Flag Cont. from pg.1

Games. The USPS is mandated by law to pay all their expenses for operation since they receive NO TAX SUBSIDY and must maintain an break-even operation over every three-year period. Since the Olympic Games represent the spirit of excellence and achievement, our sponsorship is an effective vehicle to achieve our strategic goals of delivering quality service, holding costs below inflation while stabilizing postage rates and enhance employee commitment while supporting America's Olympic team.

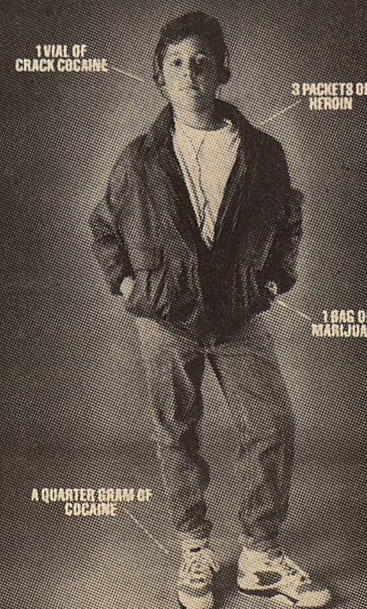
Postmaster General, Anthony M. Frank is pushing from the top down through the entire ranks of postal employees in three specific areas of dedication and commit-

ment: 1)Pride in delivering excellence in service every day to the American public 2)Image that will show the American people the U.S. Postal Service Organization's growing commitment to excellence and quality 3)Profit resulting from selling Olympic merchandise to our employees, inform the public of our expedited services (overnight EXPRESS MAIL and flat-rate PRIORITY MAIL...2 lbs, 2 days, for \$2.90 anywhere in the U.S.A.) and through selling subsponsorships to international postal organizations.

The aim of the local post office in Gail is to deliver the best. You are invited to make comments or suggestions as to how it can be of greater service to you.

THE BORDEN STAR

THIS IS HOW A DESPERATE DRUG ADDICT SEES YOUR CHILD.



He doesn't see the energetic, young mind that's underneath the cassette recorder. He doesn't see the much-loved-kid-on-the-block that's inside the leather jacket. All he sees is the cassette recorder, and the jacket, and how to get the money for his next fix.

But the drug addict's real blindness is that he'll never see the heartbreak he will cause when he leaves your child lying on the street.

You must fight back. You can make a difference. Start now by calling 1-800-WE PREVENT and we'll send you information on successful ways to join with others to protect your children from crime in your neighborhood.

Fight back against drug-related crimes. Call 1-800-WE PREVENT.



Crime Prevention Coalition and U.S. Department of Justice

We're proud to be a part of the area since 1905.



Snyder National Bank

We take Snyder to Heart!



Member FDIC

1715 25th
573-2681