

U.S., BRITAIN, FRANCE VIEW CHINA SITUATION

Communists Name Specific Conditions for Chinese Peace Talks

Action Is Sought By Nationalists

WASHINGTON (AP)—The United States was reported today consulting with Britain and France on a Chinese government move aimed at opening the way to mediation by outside powers in China's war.

Under Secretary of State Lovett told a news conference yesterday that a communication had been received from Chiang Kai-shek's government but declined to say what it was about.

However, press dispatches from Nanking have reported that China was raising the question of possible action by one or more of the big four nations — Britain, France, America and Russia — to try to end the long conflict between Chinese government and Communist forces.

Some answer may be sent to Nanking by the State Department in a few days, but indications are that no step will be taken in Washington without careful checking with London and Paris.

Diplomats consider it a speculative possibility that Moscow's opinion on the China situation is also being sought by the United States and possibly by the other Western powers.

It seems likely that none of the Western nations would want to make a move in China which would bring it into direct conflict with any pending Soviet move there.

As far as the United States is concerned, officials apparently do not intend to put this government in position of taking responsibility for any future action of Generalissimo Chiang, whether directed toward making peace or continuing the war.

American policy in recent months has been hands off and officials here insist that neither in Washington nor Nanking have American authorities urged any particular course of action upon Chiang.

The U.S. sounding out of British and French opinion on Chiang's latest mediation maneuvers evidently occurs as part of a larger picture of informal talks among the Western powers about the whole problem of communism in Asia.

Some answer may be sent to Nanking by the State Department in a few days, but indications are that no step will be taken in Washington without careful checking with London and Paris.

Diplomats consider it a speculative possibility that Moscow's opinion on the China situation is also being sought by the United States and possibly by the other Western powers.

It seems likely that none of the Western nations would want to make a move in China which would bring it into direct conflict with any pending Soviet move there.

As far as the United States is concerned, officials apparently do not intend to put this government in position of taking responsibility for any future action of Generalissimo Chiang, whether directed toward making peace or continuing the war.

American policy in recent months has been hands off and officials here insist that neither in Washington nor Nanking have American authorities urged any particular course of action upon Chiang.

The U.S. sounding out of British and French opinion on Chiang's latest mediation maneuvers evidently occurs as part of a larger picture of informal talks among the Western powers about the whole problem of communism in Asia.

Some answer may be sent to Nanking by the State Department in a few days, but indications are that no step will be taken in Washington without careful checking with London and Paris.

Diplomats consider it a speculative possibility that Moscow's opinion on the China situation is also being sought by the United States and possibly by the other Western powers.

It seems likely that none of the Western nations would want to make a move in China which would bring it into direct conflict with any pending Soviet move there.

As far as the United States is concerned, officials apparently do not intend to put this government in position of taking responsibility for any future action of Generalissimo Chiang, whether directed toward making peace or continuing the war.

American policy in recent months has been hands off and officials here insist that neither in Washington nor Nanking have American authorities urged any particular course of action upon Chiang.

The U.S. sounding out of British and French opinion on Chiang's latest mediation maneuvers evidently occurs as part of a larger picture of informal talks among the Western powers about the whole problem of communism in Asia.

Some answer may be sent to Nanking by the State Department in a few days, but indications are that no step will be taken in Washington without careful checking with London and Paris.

Pampa News

VOL. 47—NO. 207 (14 Pages) PAMPA, TEXAS, THURSDAY, JANUARY 13, 1949

Briton, Truman to Discuss Palestine

LONDON (AP)—The Foreign Office announced British Ambassador Sir Oliver Franks will see President Truman this afternoon in a meeting apparently aimed at patching up deepening British-American differences over Palestine.

An informed diplomatic source said Franks has received instructions from Foreign Secretary Bevin since yesterday's four-hour long British cabinet session filling him to make these points to President Truman:

1. Britain regards the Jews as the aggressors in the present phase of the Palestine war.
2. Britain feels that unless Jews and Arabs get a settlement the "security, tranquility, peace" of the Middle East will remain upset, with results that can only benefit communism.
3. British will regard a Jewish attack on the Red Sea port of Agaba, or on any other part of Trans-Jordan, as an attack on it, self now that King Abdullah has invoked the British-Trans-Jordan mutual defense treaty.
4. Britain does not intend to suspend the precautionary measures it has taken in the conflict area. This includes alerting of naval units in East Mediterranean bases; dispatch of British troops to Agaba; placing of RAF airfields in the Suez Canal Zone of

Health Unit Center Plan Explained

What the state participating health unit center plan is, and how it works, was explained yesterday by City Health Inspector Ray Salmon to the Pampa Rotary Club at its weekly meeting in the Palm Room, City Hall.

Salmon said that the plan is financed by the city, county and state with the state putting up 40 cents to every 60 cents put up by the city and county combined. In addition, the state supplies all material for the laboratory and pays 65 percent of the laboratory technician's salary.

He emphasized that the unit does not practice curative medicine, but works entirely on preventive medicine with the exception of medical treatment for city and county prisoners and some social disease work.

The health inspector added that the health unit can be disbanded at any time after it is set up by either the city or county withdrawing their funds or by a protest from the local medical association. If the medical association would enter a protest the state would immediately withdraw its funds.

He said a petition requesting the center had been circulated here among the doctors and to the "best of his knowledge" had been signed by all of the doctors, but that his information was not official.

Several doctors in town have refused to sign it.

Salmon also stressed that the health unit plan is not a step toward socialized medicine, but is maintained only for inspection and sanitation work with the view of preventing disease and holding epidemics in check by careful public health supervision.

It was announced that Rex Rose will be chairman of the advanced gifts drive for the March of Dimes in Gray County.

Virgil Mott led the club singing and Steve Matthews presided over the business session.

29 Oil Tank Cars Derailed, Burn

TEMPLE (AP)—A 29-car train carrying crude oil and freight derailed last night seven miles east of Lampasas, setting off a spectacular fire that was still blazing early today.

The train was a Santa Fe tank car train bound from Brownwood to Temple after being loaded at the McCamey oil field.

An eyewitness said orange-red flames roared 250 feet into the air and that heavy black smoke billowed a half mile beyond that.

At Temple, the Santa Fe announced 29 oil tank cars were involved.

"Because of the destroyed trestle," said the eyewitness, "the railroad will have to send wrecker trains from two directions." The train was derailed at about 8:45 p. m.

The southwestern Bell Telephone Company said last night that 14 West Texas communities still were without telephone service. Nine hundred circuits were out, 1,900 ice-heat poles were down, and there were 8,600 wire breaks.

The weather bureau forecasts a slowly rising temperature throughout the state.

In the storm's wake there were shattered communications lines, disrupted power service and a large amount of moisture badly needed by the farmers and ranchers.

The weather bureau forecasts a slowly rising temperature throughout the state.

In the storm's wake there were shattered communications lines, disrupted power service and a large amount of moisture badly needed by the farmers and ranchers.

The weather bureau forecasts a slowly rising temperature throughout the state.

In the storm's wake there were shattered communications lines, disrupted power service and a large amount of moisture badly needed by the farmers and ranchers.

The weather bureau forecasts a slowly rising temperature throughout the state.

In the storm's wake there were shattered communications lines, disrupted power service and a large amount of moisture badly needed by the farmers and ranchers.

The weather bureau forecasts a slowly rising temperature throughout the state.

In the storm's wake there were shattered communications lines, disrupted power service and a large amount of moisture badly needed by the farmers and ranchers.

The weather bureau forecasts a slowly rising temperature throughout the state.

In the storm's wake there were shattered communications lines, disrupted power service and a large amount of moisture badly needed by the farmers and ranchers.

The weather bureau forecasts a slowly rising temperature throughout the state.

In the storm's wake there were shattered communications lines, disrupted power service and a large amount of moisture badly needed by the farmers and ranchers.

The weather bureau forecasts a slowly rising temperature throughout the state.

In the storm's wake there were shattered communications lines, disrupted power service and a large amount of moisture badly needed by the farmers and ranchers.

The weather bureau forecasts a slowly rising temperature throughout the state.

In the storm's wake there were shattered communications lines, disrupted power service and a large amount of moisture badly needed by the farmers and ranchers.

The weather bureau forecasts a slowly rising temperature throughout the state.

In the storm's wake there were shattered communications lines, disrupted power service and a large amount of moisture badly needed by the farmers and ranchers.

The weather bureau forecasts a slowly rising temperature throughout the state.

In the storm's wake there were shattered communications lines, disrupted power service and a large amount of moisture badly needed by the farmers and ranchers.

The weather bureau forecasts a slowly rising temperature throughout the state.

In the storm's wake there were shattered communications lines, disrupted power service and a large amount of moisture badly needed by the farmers and ranchers.

The weather bureau forecasts a slowly rising temperature throughout the state.

In the storm's wake there were shattered communications lines, disrupted power service and a large amount of moisture badly needed by the farmers and ranchers.

The weather bureau forecasts a slowly rising temperature throughout the state.

In the storm's wake there were shattered communications lines, disrupted power service and a large amount of moisture badly needed by the farmers and ranchers.

The weather bureau forecasts a slowly rising temperature throughout the state.

In the storm's wake there were shattered communications lines, disrupted power service and a large amount of moisture badly needed by the farmers and ranchers.

The weather bureau forecasts a slowly rising temperature throughout the state.

In the storm's wake there were shattered communications lines, disrupted power service and a large amount of moisture badly needed by the farmers and ranchers.

The weather bureau forecasts a slowly rising temperature throughout the state.

In the storm's wake there were shattered communications lines, disrupted power service and a large amount of moisture badly needed by the farmers and ranchers.

The weather bureau forecasts a slowly rising temperature throughout the state.

In the storm's wake there were shattered communications lines, disrupted power service and a large amount of moisture badly needed by the farmers and ranchers.

The weather bureau forecasts a slowly rising temperature throughout the state.

In the storm's wake there were shattered communications lines, disrupted power service and a large amount of moisture badly needed by the farmers and ranchers.

The weather bureau forecasts a slowly rising temperature throughout the state.

In the storm's wake there were shattered communications lines, disrupted power service and a large amount of moisture badly needed by the farmers and ranchers.

The weather bureau forecasts a slowly rising temperature throughout the state.

In the storm's wake there were shattered communications lines, disrupted power service and a large amount of moisture badly needed by the farmers and ranchers.

The weather bureau forecasts a slowly rising temperature throughout the state.

In the storm's wake there were shattered communications lines, disrupted power service and a large amount of moisture badly needed by the farmers and ranchers.

The weather bureau forecasts a slowly rising temperature throughout the state.

In the storm's wake there were shattered communications lines, disrupted power service and a large amount of moisture badly needed by the farmers and ranchers.

The weather bureau forecasts a slowly rising temperature throughout the state.

In the storm's wake there were shattered communications lines, disrupted power service and a large amount of moisture badly needed by the farmers and ranchers.

The weather bureau forecasts a slowly rising temperature throughout the state.

In the storm's wake there were shattered communications lines, disrupted power service and a large amount of moisture badly needed by the farmers and ranchers.

The weather bureau forecasts a slowly rising temperature throughout the state.

In the storm's wake there were shattered communications lines, disrupted power service and a large amount of moisture badly needed by the farmers and ranchers.

The weather bureau forecasts a slowly rising temperature throughout the state.

In the storm's wake there were shattered communications lines, disrupted power service and a large amount of moisture badly needed by the farmers and ranchers.

The weather bureau forecasts a slowly rising temperature throughout the state.

In the storm's wake there were shattered communications lines, disrupted power service and a large amount of moisture badly needed by the farmers and ranchers.

The weather bureau forecasts a slowly rising temperature throughout the state.

In the storm's wake there were shattered communications lines, disrupted power service and a large amount of moisture badly needed by the farmers and ranchers.

The weather bureau forecasts a slowly rising temperature throughout the state.

In the storm's wake there were shattered communications lines, disrupted power service and a large amount of moisture badly needed by the farmers and ranchers.

The weather bureau forecasts a slowly rising temperature throughout the state.

In the storm's wake there were shattered communications lines, disrupted power service and a large amount of moisture badly needed by the farmers and ranchers.

The weather bureau forecasts a slowly rising temperature throughout the state.

In the storm's wake there were shattered communications lines, disrupted power service and a large amount of moisture badly needed by the farmers and ranchers.

The weather bureau forecasts a slowly rising temperature throughout the state.

In the storm's wake there were shattered communications lines, disrupted power service and a large amount of moisture badly needed by the farmers and ranchers.

The weather bureau forecasts a slowly rising temperature throughout the state.

In the storm's wake there were shattered communications lines, disrupted power service and a large amount of moisture badly needed by the farmers and ranchers.

The weather bureau forecasts a slowly rising temperature throughout the state.

In the storm's wake there were shattered communications lines, disrupted power service and a large amount of moisture badly needed by the farmers and ranchers.

The weather bureau forecasts a slowly rising temperature throughout the state.

In the storm's wake there were shattered communications lines, disrupted power service and a large amount of moisture badly needed by the farmers and ranchers.

The weather bureau forecasts a slowly rising temperature throughout the state.

In the storm's wake there were shattered communications lines, disrupted power service and a large amount of moisture badly needed by the farmers and ranchers.

The weather bureau forecasts a slowly rising temperature throughout the state.

In the storm's wake there were shattered communications lines, disrupted power service and a large amount of moisture badly needed by the farmers and ranchers.

The weather bureau forecasts a slowly rising temperature throughout the state.

In the storm's wake there were shattered communications lines, disrupted power service and a large amount of moisture badly needed by the farmers and ranchers.

The weather bureau forecasts a slowly rising temperature throughout the state.

In the storm's wake there were shattered communications lines, disrupted power service and a large amount of moisture badly needed by the farmers and ranchers.

The weather bureau forecasts a slowly rising temperature throughout the state.

In the storm's wake there were shattered communications lines, disrupted power service and a large amount of moisture badly needed by the farmers and ranchers.

The weather bureau forecasts a slowly rising temperature throughout the state.

In the storm's wake there were shattered communications lines, disrupted power service and a large amount of moisture badly needed by the farmers and ranchers.

The weather bureau forecasts a slowly rising temperature throughout the state.

In the storm's wake there were shattered communications lines, disrupted power service and a large amount of moisture badly needed by the farmers and ranchers.

The weather bureau forecasts a slowly rising temperature throughout the state.

In the storm's wake there were shattered communications lines, disrupted power service and a large amount of moisture badly needed by the farmers and ranchers.

The weather bureau forecasts a slowly rising temperature throughout the state.

In the storm's wake there were shattered communications lines, disrupted power service and a large amount of moisture badly needed by the farmers and ranchers.

The weather bureau forecasts a slowly rising temperature throughout the state.

In the storm's wake there were shattered communications lines, disrupted power service and a large amount of moisture badly needed by the farmers and ranchers.

The weather bureau forecasts a slowly rising temperature throughout the state.

In the storm's wake there were shattered communications lines, disrupted power service and a large amount of moisture badly needed by the farmers and ranchers.

The weather bureau forecasts a slowly rising temperature throughout the state.

In the storm's wake there were shattered communications lines, disrupted power service and a large amount of moisture badly needed by the farmers and ranchers.

The weather bureau forecasts a slowly rising temperature throughout the state.

In the storm's wake there were shattered communications lines, disrupted power service and a large amount of moisture badly needed by the farmers and ranchers.

The weather bureau forecasts a slowly rising temperature throughout the state.

In the storm's wake there were shattered communications lines, disrupted power service and a large amount of moisture badly needed by the farmers and ranchers.

The weather bureau forecasts a slowly rising temperature throughout the state.

In the storm's wake there were shattered communications lines, disrupted power service and a large amount of moisture badly needed by the farmers and ranchers.

The weather bureau forecasts a slowly rising temperature throughout the state.

In the storm's wake there were shattered communications lines, disrupted power service and a large amount of moisture badly needed by the farmers and ranchers.

The weather bureau forecasts a slowly rising temperature throughout the state.

In the storm's wake there were shattered communications lines, disrupted power service and a large amount of moisture badly needed by the farmers and ranchers.

The weather bureau forecasts a slowly rising temperature throughout the state.

In the storm's wake there were shattered communications lines, disrupted power service and a large amount of moisture badly needed by the farmers and ranchers.

The weather bureau forecasts a slowly rising temperature throughout the state.

In the storm's wake there were shattered communications lines, disrupted power service and a large amount of moisture badly needed by the farmers and ranchers.

The weather bureau forecasts a slowly rising temperature throughout the state.

In the storm's wake there were shattered communications lines, disrupted power service and a large amount of moisture badly needed by the farmers and ranchers.

The weather bureau forecasts a slowly rising temperature throughout the state.

In the storm's wake there were shattered communications lines, disrupted power service and a large amount of moisture badly needed by the farmers and ranchers.

The weather bureau forecasts a slowly rising temperature throughout the state.

In the storm's wake there were shattered communications lines, disrupted power service and a large amount of moisture badly needed by the farmers and ranchers.

The weather bureau forecasts a slowly rising temperature throughout the state.

In the storm's wake there were shattered communications lines, disrupted power service and a large amount of moisture badly needed by the farmers and ranchers.

The weather bureau forecasts a slowly rising temperature throughout the state.

In the storm's wake there were shattered communications lines, disrupted power service and a large amount of moisture badly needed by the farmers and ranchers.

The weather bureau forecasts a slowly rising temperature throughout the state.

In the storm's wake there were shattered communications lines, disrupted power service and a large amount of moisture badly needed by the farmers and ranchers.

The weather bureau forecasts a slowly rising temperature throughout the state.

In the storm's wake there were shattered communications lines, disrupted power service and a large amount of moisture badly needed by the farmers and ranchers.

The weather bureau forecasts a slowly rising temperature throughout the state.

In the storm's wake there were shattered communications lines, disrupted power service and a large amount of moisture badly needed by the farmers and ranchers.

The weather bureau forecasts a slowly rising temperature throughout the state.

In the storm's wake there were shattered communications lines, disrupted power service and a large amount of moisture badly needed by the farmers and ranchers.

The weather bureau forecasts a slowly rising temperature throughout the state.

In the storm's wake there were shattered communications lines, disrupted power service and a large amount of moisture badly needed by the farmers and ranchers.

The weather bureau forecasts a slowly rising temperature throughout the state.

In the storm's wake there were shattered communications lines, disrupted power service and a large amount of moisture badly needed by the farmers and ranchers.

The weather bureau forecasts a slowly rising temperature throughout the state.

In the storm's wake there were shattered communications lines, disrupted power service and a large amount of moisture badly needed by the farmers and ranchers.

The weather bureau forecasts a slowly rising temperature throughout the state.

In the storm's wake there were shattered communications lines, disrupted power service and a large amount of moisture badly needed by the farmers and ranchers.

The weather bureau forecasts a slowly rising temperature throughout the state.

In the storm's wake there were shattered communications lines, disrupted power service and a large amount of moisture badly needed by the farmers and ranchers.

The weather bureau forecasts a slowly rising temperature throughout the state.

In the storm's wake there were shattered communications lines, disrupted power service and a large amount of moisture badly needed by the farmers and ranchers.

The weather bureau forecasts a slowly rising temperature throughout the state.

In the storm's wake there were shattered communications lines, disrupted power service and a large amount of moisture badly needed by the farmers and ranchers.

The weather bureau forecasts a slowly rising temperature throughout the state.

In the storm's wake there were shattered communications lines, disrupted power service and a large amount of moisture badly needed by the farmers and ranchers.

The weather bureau forecasts a slowly rising temperature throughout the state.

In the storm's wake there were shattered communications lines, disrupted power service and a large amount of moisture badly needed by the farmers and ranchers.

The weather bureau forecasts a slowly rising temperature throughout the state.

In the storm's wake there were shattered communications lines, disrupted power service and a large amount of moisture badly needed by the farmers and ranchers.

The weather bureau forecasts a slowly rising temperature throughout the state.

In the storm's wake there were shattered communications lines, disrupted power service and a large amount of moisture badly needed by the farmers and ranchers.

The weather bureau forecasts a slowly rising temperature throughout the state.

In the storm's wake there were shattered communications lines, disrupted power service and a large amount of moisture badly needed by the farmers and ranchers.

The weather bureau forecasts a slowly rising temperature throughout the state.

In the storm's wake there were shattered communications lines, disrupted power service and a large amount of moisture badly needed by the farmers and ranchers.

The weather bureau forecasts a slowly rising temperature throughout the state.

In the storm's wake there were shattered communications lines, disrupted power service and a large amount of moisture badly needed by the farmers and ranchers.

The weather bureau forecasts a slowly rising temperature throughout the state.

In the storm's wake there were shattered communications lines, disrupted power service and a large amount of moisture badly needed by the farmers and ranchers.

The weather bureau forecasts a slowly rising temperature throughout the state.

In the storm's wake there were shattered communications lines, disrupted power service and a large amount of moisture badly needed by the farmers and ranchers.

The weather bureau forecasts a slowly rising temperature throughout the state.

In the storm's wake there were shattered communications lines, disrupted power service and a large amount of moisture badly needed by the farmers and ranchers.

The weather bureau forecasts a slowly rising temperature throughout the state.

In the storm's wake there were shattered communications lines, disrupted power service and a large amount of moisture badly needed by the farmers and ranchers.

The weather bureau forecasts a slowly rising temperature throughout the state.

In the storm's wake there were shattered communications lines, disrupted power service and a large amount of moisture badly needed by the farmers and ranchers.

The weather bureau forecasts a slowly rising temperature throughout the state.

In the storm's wake there were shattered communications lines, disrupted power service and a large amount of moisture badly needed by the farmers and ranchers.

The weather bureau forecasts a slowly rising temperature throughout the state.

In the storm's wake there were shattered communications lines, disrupted power service and a large amount of moisture badly needed by the farmers and ranchers.

The weather bureau forecasts a slowly rising temperature throughout the state.

In the storm's wake there were shattered communications lines, disrupted power service and a large amount of moisture badly needed by the farmers and ranchers.

The weather bureau forecasts a slowly rising temperature throughout the state.

In the storm's wake there were shattered communications lines, disrupted power service and a large amount of moisture badly needed by the farmers and ranchers.

Cotton Industry in Dither Labor Running From Fields

The cotton industry is in a dither, according to an article in the current issue of Capper's Farmer. The story says that labor is running away from cotton fields. Growers must use machinery to replace workers, which brings new problems for everyone.

Drift of labor from cotton started during World War I. The drift grew through the Twenties boom, slowed for the depression and speeded up again for World War II. Growers turned to mechanization as the only way out.

Both pickers and strippers that harvest cotton mechanically are in limited production. Growers would like to use these machines but conditions must be just right, their operation requires changes all along the line. It is one reason why only five percent of the 1948 crop was machine harvested.

Mechanization has sent scientists back to the seed for treatments which will improve stands, the story points out. It has sent designers back to planters for precision spacing. It has required development of alk cutters, stalk shredders and tools for reducing soil-improving crops so residues won't interfere with precision planting and cultivating.

Right spacing through positive planting and good germination, mechanical and chemical weed killing are necessary to replace hand hoeing and make better harvester operations. So engineers have had to work on better cultivators, mechanical choppers and weed killers that won't harm cotton.

Mechanization has started mills to worrying about quality," the story continues. "Machine-picked cotton has been found to be lower grade with high waste, lower spinning efficiency and poorer appearance. The ginner also has a headache. Machine harvest throws more of the crop on his hands in shorter time. So storage of seed cotton to spread ginning becomes a problem. If storage is at the gin, the ginner must add to his investment. If cotton is stored on farms, growers will have to be more careful than they ever have been about moisture.

"Even a new type of plant is wanted, one that is ideal for mechanical culture and harvest. The stripper manufacturer wants the new cotton to be mature, resistant, have fiber easy to extract, a condensed fruiting period, few side branches. The picker manufacturer wants a plant on which all the bolls will mature and open at nearly the same time. The economist says that the yield must not be reduced, and the miller wants the quality of the fiber retained or improved."

"Before 1945, when Mr. H. F. Guerra was in, when I went to the polls they just asked me my name and the names of my family in the cemetery," Solis testified.

An "H. P. Guerra" is commissioner of Precinct 2 centered at Roma and is the nominal head of the lod party which dominated Starr County politics for more than 50 years. But in the 1946 and 1948 elections Guerra's party lost all important county offices except those in Precinct 2.

Groups Tells Importance of Terracing Farms

A terrace system is being planned on Bruce Maddox's farm west of Miami, it was reported from the Roberts County Soil Conservation District today.

Much water runs out of a terrace system so it is important to have grass where the terraces will empty before they are built.

The outlets may be a roadside ditch, a grass strip down the side of a field or a natural

Headquarters for Livestock Supplies!



Headquarters for Livestock Supplies! Authorized Dealer

FRANKLIN

Vaccines and Supplies for Cattle, Sheep, Hogs, Horses and Poultry

CRETNEY DRUG STORES

draw smoothed down and seeded to grass. A typog map of the fields is often necessary in order to determine the best spots for the outlets.

Anyone who has a sloping field should plan to have it terraced, the district said, because the top soil is rapidly washing away.

Help in getting the system properly designed may be received from the local soil conservation district. Since time is the important thing, these outlets should be established so the terracing program can be completed.

RUNNING STAND

When frightened, the collared lizard dashes off on all fours, much like any other lizard, but as it attains full speed, the tail is raised sharply and the body assumes an upright position.

THEIR THOUGHT

Eskimos, unaccustomed to it, are bewildered by the sight of hand-shaking as a form of greeting. They assume it to signify that when your right hand grows tired, your friends help you hold it.

England has some 8,000 parish councils.

We Carry a Complete Line of Franklin's Stock Supplies



FRANKLIN products

FOR CATTLE HORSES SHEEP HOGS POULTRY

FRANKLIN Products Reduce Livestock Loss

FRANKLIN CONCENTRATED CULTURE BLACKLEG BACTERIN

Clostridium Chauvei-Septicus Bacterin Hemorrhagic Septicemia Bacterin

Pasteurella-Pseudodiphthericum Bacterin Franklin Brucella Abortus Vaccine (Ovine Abortus Vaccine)

Franklin Mixed Bacterin (Bovine) Mixed Bacterin (Ovine)

Mixed Bacterin (Equine) Mixed Bacterin (Porcine) Mixed Bacterin (Avian)

Also we carry DDT and wettable sulphur in any quantity. Seen us for all your stock needs.

BERRY'S PHARMACY

100 S. CUYLER PHONE 1110

Start the New Year right with these

Bargains

STOP

CRISCO 3 Lb. Can	105
PEACHES, Hunts No. 2 1/2 can	25c
TOMATO JUICE 3 No. 300 Cans HUNTS	25c
TOMATOES 2 No. 2 Cans ROSE HEART	25c
HOMINY 3 No. 300 Cans VAN CAMPS	25c
PUMPKIN 2 No. 2 1/2 cAns DEL MONTE	25c

GOOD MEAT MEANS GOOD HEALTH!

CREAMERY BUTTER Lb. 69c

FRESH PORK - ROAST Lb. 39c

PORK SAUSAGE Lb. 35c

JELLO 3 pkgs. Asst. Flavors	25c	PRUNE JUICE SUNSWEEP, per quart	27c
COFFEE Folgers Per Lb.	55c	TAMALES MARCO, 17 oz. can	23c
MILK, 2 cans Carnation or Pet	27c	PINTO BEANS 3 Lb. Cello Bag	33c

MITCHELL'S GROCERY AND MARKET

638 S. Cuyler Free Delivery Phone 1549



LARGEST GATHERING OF RURAL YOUTH IN HISTORY—Part of the throng of 90,000 4-H Club boys and girls, Future Farmers and Future Homemakers, as they were seen at the State Fair of Texas on Rural Youth Day. The total attendance for the day was 236,047, which broke all previous State Fair records.

Goal of a Permanent Agriculture Is in Sight, Soil Conservation

WASHINGTON — H. H. Bennett, chief of the Soil Conservation Service, said in his 1948 fiscal year report yesterday that a margin between land deterioration and land conservation in the United States has been so narrow that the goal of a permanent agriculture is in sight "if we but speed up our efforts."

The report pointed out that during each of the 15 years of the life of the Soil Conservation Service, more conservation work was done per employee than during the preceding year.

"Moreover," the soil conservation chief observed, "increased experience on the part of service technicians, together with an increased experience and efficiency of the soil conservation districts and cooperating farmers, collectively have made it possible for the service to increase the work load per man each year without sacrificing quality or thoroughness of the conservation work done."

The 1948 accomplishments with a staff reported at 17 percent less per soil conservation district than the year before brought to 571,163 the number of active conservation plans made in the districts since August, 1937, covering 157,751,622 acres. The 1948 year's 169,673 plans covered 31,484,947 acres. The 21,576,654 acres treated in the last fiscal year brought the total acreage treated in districts since the first ones were organized to 82,824,431. The figures do not include their work done during the demonstration phases of service activities, mainly on private lands.

The report showed there were 2,033 conservation districts in the 48 states, Hawaii, Puerto Rico, and the Virgin Islands as of June 30, comprising 1,114,002,260 acres, and including about three-fourths of all the farms and two-thirds of the farmland in the country.

Bennett also reported a considerable spread of soil conservation to other countries.

"A prosperous and lasting agriculture utterly depends on an adequate supply of productive land, properly used and so protected that it will remain permanently productive," the report emphasized. "Without this solid foundation, there can be no real hope for a continuously successful agriculture anywhere."

By sharply increasing present conservation operations on the land, he said, the United States can overcome and control erosion within 20 to 25 years. To this end, he advanced several recommendations for getting the conservation job done on time:

1. Set up a timetable for the establishment of those basic measures needed for the conservation of our soil and water resources, according to capability of the land and availability of need of water.
2. Adjust research in conservation to specific protection of water in field work and intensify research on those problems.
3. Encourage and promote a comprehensive program of conservation education through all available educational agencies and institutions.
4. Complete land capability surveys of the country and analyze the information to provide land facts needed for future farm planning and action.
5. Recognize and use land capabilities in making production adjustments and in developing other agricultural programs.
6. Encourage continued organization of soil conservation districts, in order to develop conservation programs with local leadership and direction.
7. Improve the conservation credit structure.

CHILDREN NATURAL WRITERS

By HAL BOYLE

NEW YORK — Some notes on the writing trade:

All children are natural writers because they are natural talkers.

Words are wonderful and new to them. They let the words roll and strange and splendid things are born. All children do this, even the dullest.

Writers sometimes complain that Chaucer and Shakespeare had an advantage because they wrote at a time when the English language was fresh. They say a writer has it tougher now because he has to labor to avoid literary clichés.

No child ever talks in hackneyed terms. Not until he has been put through the wringer of education.

Let me give a borrowed example of the child's matchless gift of imagery. Columnist Frank Farrell published it recently in the New York World-Telegram.

A radio producer's small daughter spent the afternoon at the American Museum of Natural History, a storehouse of stuffed animals and boy extinct monsters.

When the mother asked where she had been, the small girl replied:

"To a dead zoo."

One of the best-selling authors in Soviet Russia is Joe Stalin, the old watchdog of the Kremlin. It is too early to tell how he will ultimately rank in the world of letters. But at least one of his observations is profound enough to ring through the ages. Stalin, it was, who once wrote:

"Paper will put up with anything that is written on it."

Yes, even this!

Britain Urged to Treat Incident as Regrettable

By DEWITT MACKENZIE

AP Foreign Affairs Analyst

Britain and Israel will do well if they follow America's urgent advice that they treat the shooting-down of the five British planes by Israeli forces as a "regrettable incident only."

This "incident" in itself isn't of world-rocking consequence. Yet it could be the fuse to set off a chain of explosions which would blow us all into another global conflict.

The differences between Britain and the Jewish people of Palestine are many and of long standing. However, the current upheaval revolves about a politico-military situation, involving control of the big stretch of desert in Southern Palestine known as the Negev.

Israel claims the Negev as part of the new Jewish state's territory. Britain wants control because of the Negev's great strategic importance.

Of course that's a great oversimplification of a complicated case.

The importance of this area is emphasized by Britain's occupation of the Red Sea port of Aqaba in Trans-Jordan. This ancient city, from which King Solomon sailed

for Ophir to gather gold and gems, is at the crossroads of land and sea routes.

Israel has protested to the United Nations against this British move.

But there are other considerations involved in the Anglo-Israel quarrel. This Middle Eastern area is a vital sector of the cold war. The British are fearful that Russia may gain domination of this theatre by backing Israel.

Pursuing this line of thought we note that the Negev also is vastly important for these reasons:

1. It provides airfields for the protection of the Arabian oil regions.
2. It provides airfields for protection of the Suez Canal zone.
3. In event of war it would provide airfields for advance defense of Allied bases along the Mediterranean for bombers.

Rancher Says He Never Filled Out His Own Ballot

RIO GRANDE CITY — (AP) — A retired rancher has testified here that whenever he showed up at the polls—prior to 1945—election officials "just asked me my name and the names of my family in the cemetery."

Martin Solis, 67-year-old retired farmer and rancher from La Grulla, said "I didn't have time to make out a ballot."

Solis testified in an election contest suit brought by Armando Longoria against his cousin, Jose Maria Longoria, to whom Armando lost the 1948 race for Precinct 3 Starr County commissioner.

Solis, testifying Wednesday in the sixth day of the suit, said he had been making out his own ballot since 1945 although he had been voting at La Grulla for "many years prior to that."

Cold Wave Costs California Part Of Citrus Crop

SACRAMENTO, CALIF. — (AP) — A state agricultural official estimates less than 25 percent of California's 1948-49 citrus fruit crop was spoiled by last week's cold wave. Navel oranges were affected most.

R. E. Blair, statistician for the State Agriculture Department, said damage was held down by many growers protected their fruit with smudge pots and heating equipment.

Blair based his estimates on reports from county agricultural commissioners and the range and lemon administrative commissions. He pointed out that damage may become greater due to the new cold wave which has hit the citrus belt.

Blair said his loss estimate was in terms of production volume. Any estimate in terms of dollars, he added, would be difficult to make because it would be hard to figure what the fruit would have sold for if it had reached market.

In the San Joaquin Valley producing areas, he explained, the navel crop was two thirds harvested before the frost. But in the southern counties (Los Angeles, Riverside, Orange and San Bernardino) all of the fruit was still on the trees.

Valencia—or juice—oranges are in an early stage of growth and are capable of recovering by their harvest time, which comes in March.

Lemons are in all stages of development, since they are grown on a round-the-year basis. He predicted there would be no shortage of fresh lemons, but said the amount available for processing would be less.

Blair also said none of the reports which have reached him indicate there is any real tree damage. This means the producing ability in future years has not been affected, he said.

MAGNETO REPAIRING

COMPLETE STOCK PARTS AND NEW MAGNETOS

SALES-SERVICE-PARTS

for

Briggs & Stratton Kohler Light Wisconsin ENGINES PLANTS ENGINES

ALL WORK GUARANTEED

RADCLIFF BROS. ELECTRIC CO.

519 S. Cuyler Phone 1220

YOU TOO—CAN BE ON TOP OF THE WORLD!

It's not too early... plan NOW... build this spring. Our 42 years of building experience is at your service ready to guide you over the rough spots, give you interesting suggestions, help you plan and build the home you want. We'll even help arrange your financing, too. Bring the whole family in, let's talk over YOUR idea: plan YOUR home this week.

PANHANDLE COMPANY, INC.

PHONE ONE THOUSAND WEST FOSTER

-WANTED-

A HUSBAND TO TAME THIS PROUD WILFUL BEAUTY!

BARBARA STAMWICK

B. F.'s Daughter

PHONE 1231

Wheeler County Livestock Show To Be Enlarged

SHAMROCK (Special) — An association in livestock shows for Wheeler County will be put into effect this year, declares Vernon Carter, chairman of the Chamber of Commerce Agricultural Committee.

Heretofore Shamrock's winter show has been confined to animals owned by Vocational Agriculture students and 4-H Club members. This year a complete beef cattle show will be held, including pure bred adult stock as well as calves.

There will be two divisions of the show, Carter said, one for breeders and the other for young stock.

This year's show will be held in the Community Building Saturday, Feb. 12. Approximately 25 cash calves and between 30 and 40 breeding cattle are expected. Cash awards and ribbons will be made to boys entering calves, and ribbons will be presented to breeders. Ribbons will be awarded winners in all classes in both divisions.

H. H. Reeves, Shamrock rancher, and W. K. Frey, county agent, have been appointed to select judges. Howard Weatherly, Vocational Agriculture teacher, will have charge of the show room and ring.

The Agricultural Committee estimated that it will cost approximately \$250 to put on this year's show.

1. Set up a timetable for the establishment of those basic measures needed for the conservation of our soil and water resources, according to capability of the land and availability of need of water.

2. Adjust research in conservation to specific protection of water in field work and intensify research on those problems.

3. Encourage and promote a comprehensive program of conservation education through all available educational agencies and institutions.

4. Complete land capability surveys of the country and analyze the information to provide land facts needed for future farm planning and action.

5. Recognize and use land capabilities in making production adjustments and in developing other agricultural programs.

6. Encourage continued organization of soil conservation districts, in order to develop conservation programs with local leadership and direction.

7. Improve the conservation credit structure.

Slander Suit Against Governor Dropped

JACKSON, Miss. — (AP) — A \$50,000 slander suit against Gov. Fielding L. Wright and two other States' Rights leaders has been dismissed in U. S. District Court here.

Lycurgus Spinks, president of the Over 60 Club in Mississippi, and an unsuccessful candidate for governor against Wright in 1947, charged the three men slandered him during a trip they made to Arkansas last May.

About 140,000,000 tons of coal are burned annually in England.

San Antonio Sends Marchers to Parade

SAN ANTONIO — San Antonio will have three marching contingents in the President's inaugural parade at Washington, Jan. 20.

Announcement was made that 230 aviation cadets from Randolph Air Force Base and 100 women of the Air Force from Lackland AFB would go to Washington to take part in the historic parade. Earle III had been announced that approximately 80 members of the Texas Cavaliers would go.

Hollywood is seven miles northwest of the business section of Los Angeles.

WHY PAY MORE?

**Bud Syrup
CRYSTAL WHITE**

5 lb. jar 49c

YOU TOO WILL SAY IT'S LIKE A PICNIC SHOPPING WITH YOUR FRIENDLY

FURR FOOD STORES

**FRESH MERCHANDISE - CLEAN STORES
COURTEOUS EMPLOYEES - JOIN
YOUR NEIGHBOR & SAVE.**



Campbell's Soup
BEEF NOODLE
Can 17c

Gerber's
BABY FOOD
3 Cans 19c

Nabisco Crackers
RITZ
Lge. Pkg. 29c

Libby's Preserves
PLUM
16 Oz. Jar 21c

**TOMATO JUICE
DEL MONTE 28c**
4 6-oz. CAN

FLOUR GOLD MEDAL 25 lbs. \$1.69

PUMPKIN BESTEX No. 2 can 11c

CRISCO Shortening 3 lb. can \$1.10

Rose Cut
GREEN BEANS, No. 2 can 15c

Nation Pride
CORN, 12-oz. - 2 cans 37c

Delco
PINTO BEANS, No. 300 - 2 cans 21c

Stokely
PEAS, No. 2 can 21c

Sunshine Krispy
CRACKERS, 2 lb. box 45c

Folger's
COFFEE, pound 55c

Fascination—Chocolate Covered
CHERRIES, pound box 59c

Silverdale
APRICOTS, No. 2 1/2 can 27c

Ma Brown
DILL PICKLES, 22-oz. jar 29c

FURR'S MEATS ARE GUARANTEED

Pork Roast
Lean Shoulder Cut
Lb. **43c**



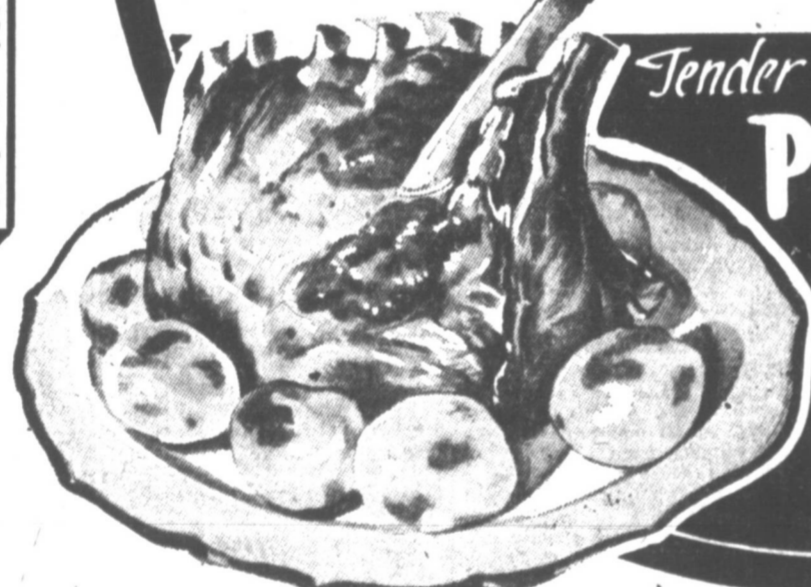
Sausage

Country Style

Lb. **39c**

BACON 1-lb. layers lb. **51c**

FISH FILLET
RED PERCH lb. **35c**



Tender GRAIN FED
PRIME RIB ROAST 65c lb.

WHY PAY MORE?

\$1.00 Value
SOFTSKIN CREAM 69c

50c Tooth Paste
PEPSODENT 37c

\$1.00 Helene Curtis
SUAVE 89c

\$1.00 Shampoo
PRELL 67c

50c Value
Phillips Milk of Magnesia 31c

50c Value
CREOMULSION 39c

Produce plucked at peak of perfection, received fresh from the garden daily—

TEXAS MARSH SEEDLESS— DOZ.
GRAEFFRUIT 23c

FRESH - CLEAN - CRISP
CARROTS

3 lbs. **10c**

SWEET - FRESH - GREEN
CABBAGE

Lb. **5c**

WASHINGTON JONATHAN
APPLES

3 lbs. **29c**

WASHED DOUBLE RED
POTATOES

NONE FINER
50-lb. bag **\$1.39**



OVEN FRESH PASTRY—

Fresh Sliced—for Health Sake Eat
100% WHOLE WHEAT BREAD Loaf 18c

Try These Delicious Rolls—the Family Will Really Enjoy Them
Dinner Rolls or Butterflake Rolls Dozen 15c

Fruit and Nut Filled—Tops in Coffee Cakes
COFFEE CAKES Each 20c

Golden Brown—Fine for Lunches
JELLY ROLLS Each 15c

Delicious Served with Ice Cream or Sliced Peaches
POUND CAKES Each 35c

Large—from Oven to You
DEVILS FOOD CAKES Each 75c

Duncan Coffee
Maryland Club
Lb. Tin 57c

Heinz
BABY FOOD
3 Cans 23c

Golden Light
COFFEE
Lb. Tin 55c

SALAD DRESSING
or Spread—Morton's
Pt. Jar 25c

PORK & BEANS Armour's 20 Oz. Can 18c

CHILI WITH BEANS Armour's 16 Oz. Can 29c

TREET Armour's 12 Oz. Can 45c

CHOPPED HAM Armour's 12 Oz. Can 52c

VIENNA SAUSAGE Armour's Can 19c

Pure Cane
SUGAR 10 Lb. Bag 97c

Silverdale
PEARS Silverdale No. 2 1/2 Can 35c

Jolly Time
POP CORN Jolly Time 2 for 37c

Blue Plate—No. 2 1/2 can
Sweet Potatoes 21c

20-oz. Pkg.
QUAKER MEAL 15c

Quaker
OATS 3 Lb. Box 34c

Kellogg's
CORN SOYA Box 15c

Skinner's
RAISIN BRAN Box 15c



Hi-Lex Bleach
Quart **15c**



SWAN
Med Bar 2 for 19c



RINSO
Lg. 31c



LUX
TOILET SOAP 3 reg. for 27c



SPRY
3 lb. can 1.10



LIFEBUOY
3 reg. for 27c

MAKE YOUR FOOD DOLLAR WORK AS HARD FOR YOU AS YOU WORK FOR IT. SAVE AT FURR'S

J
A
N
1
3
4
9

Sparks Polio Drive



Grantland Rice, famed American sports writer, once again leads national sports drive for MARCH OF DIMES January 14-31. Under his chairmanship the entire sports world pledges 100% cooperation in the 1949 fight against infantile Paralysis.

Peace Move?



A new cabinet, being formed in Nationalist China under Premier Designate Sun Fo, above, son of Sun Yat-sen, founder of the Chinese Republic, is seen as a possible move toward a negotiated peace with the Communists. Strong efforts are being made to win the services of men who favor making peace.

Aiken to Nebraska?

SAN FRANCISCO—(AP)—Oregon's head football Coach Jim Aiken, is going to Lincoln in a few days to talk about the University of Nebraska's top coaching job. Aiken said he had talked twice with George (Potsy) Clark, Nebraska athletic director and last Nebraska grid coach, and that Clark has invited him to Lincoln for further discussion.

Australian aborigines constantly carry the skull of their nearest and dearest dead relative, for use as a drinking cup.

Most of the states of the Union have small deposits of tin, but none of them has a sufficient quantity to mine profitably.

Some species of cactus have green flowers.

In Hollywood

By **ERKINE JOHNSON**
HOLLYWOOD (NEA)—Orson Welles' "MacBeth" is going out of release for a redubbing job. The new soundtrack will be minus the thick Scotch brogue laid on by Orson. Katharine Hepburn and her new M-G-M boss, Dore Schary, are talking about her film future. She'd like to return to Broadway but Dore has other ideas.

Producer Lester Cowan will test Page Cavanaugh, lifelong friend of the late Ernie Pyle, for his film based on the columnist's life. What's wrong with Burgess Meredith, who played Pyle before?

Susan Hayward and husband Jess Barker went on location recently and were unable to find a nurse or baby sitter for their 4-year-old twin sons, Timothy and Gregory. So they hired Richard Coe, a Hollywood stunt man and husband of Susan's stand-in, to take care of the boys for 10 days. The conversation between Susan and the stunt man when she arrived home went something like this:

Susan: "How much do I owe you?"
Coe: "Well, I'm really a stunt man. For jumping off a motorcycle, I get \$50. For jumping off a tricycle, make it \$5. For jumping off a cliff into a river, I get \$75. For jumping off the garage into a dishpan—well, I missed the dishpan—make it another \$5." Etc., etc.

THREE GRAND POINTS
If you don't think Jack Benny

NEED MONEY?
We make Salary and Auto Loans
AMERICAN CREDIT CO.
324 S. Cuyler Phone 303

How To Relieve Bronchitis

Creomulsion relieves promptly because it goes right to the seat of the trouble to help loosen and expel germ laden phlegm and aid nature to soothe and heal raw, tender, inflamed bronchial mucous membranes. Tell your druggist to sell you a bottle of Creomulsion with the understanding you must like the way it quickly relieves the cough or you are to have your money back.

CREOMULSION
for Coughs, Chest Colds, Bronchitis

-WANTED-
A HUSBAND
TO TAME THIS PROUD
WILFUL BEAUTY!



B. F.'s Daughter
PHONE 1231

is one smart fellow, listen to this: Daughters." CBS will rebate, "he said, \$3000 for every point Benny drops below his present Hooperating. The rebating continues until Jack equals his NBC audience. Joan Crawford's next after "Miss O'Brien" at Columbia will be a Warner musical, the first time film she's made since "Dancing

that James said "let's forget that clause" after the first two days of shooting. Arthur Murrays with a chain of dancing schools. Playwright Elmer Rice objected so strenuously to the title of the picture, "Counselor at Law," that Equity Films changed it to "Roll, Thunder, Roll." Ellen Drew will get a new lease on her career in Ben Bogauss' "The Crooked

Pampa News, Thursday, January 13, 1949 PAGE 5
"Way." She looks terrific these days.
Note from a reader: "I hope Hollywood doesn't forget Barbara Bel Geddes' performance in 'Remember Mama' when they start passing out those Oscars."

DR. J. L. CHASE, JR.
Opening of Office for Practice of Optometry
DUNCAN BLDG.
Rooms 5 & 7 Ph. 4004

Better Foods Lower Prices!

CANDY
HERSHEYS
Box of 24
\$1.10

HAIR TONIC
Vaseline
50c size

TONI REFILL KIT
89¢ plus tax

SYRUP PEPSIN
Dr. Caldwell's
60c size **49¢**

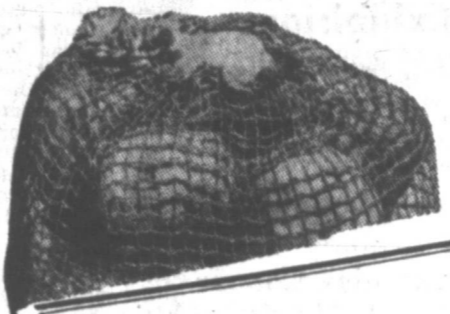
LISTERINE
ANTISEPTIC
50c size **39¢**

CORN
Whole Kernel
Shurfine
2 for **21¢**

SALMON
Humpty Dumpty
Tall can **59¢**

CRUSTENE
fine for baking
3 lb. tin **85¢**

Yes, you may shop with ease in your AG Stores, the Nation's leading grocers today. You will receive every courtesy possible. AG appreciates your patronage, and we show our appreciation through better service, higher quality, lower prices, and a better understanding between customer and clerks. Satisfaction is guaranteed by each AG Member.



Shop and Save the AG WAY

CABBAGE Firm Heads Lb. 6½¢	CELERY Pascal Lb. 12½¢
GRAPEFRUIT Ruby Red, Large 2 for 15¢	POTATOES Colorado Red 10-lb. mesh bag 49¢

GELATIN DESSERT
Shurfine, all flavors
Box **5¢**

APPLE BUTTER
Shurfine
Qt. jar **23¢**

SALAD WAFERS
Supreme
Lb. box **25¢**

KLEENEX
300 size, 29c
200 size **18¢**

TUNA
Star Kist
½ lb. can **43¢**

Grapefruit Juice
2 No. 2 cans **15¢**

Orange Juice
2 No. 2 cans **25¢**

Mince Meat
9 oz. pkg. **19¢**

CATSUP
Shurfine
14 oz. bottle **19¢**



EVERY DAY PRICES

VEL
Box **29¢**
Every Day Price

DREFT
Box **29¢**
Every Day Price

RINSO
Large box **31¢**
Regular Price

BREEZE
Regular price **29¢**

DUZ
Large box **31¢**
Regular Price

OXYDO!
Large box **31¢**
Regular Size



BUY BETTER Meats

BACON
Sliced, layer
Lb. **49¢**

Chuck Roast
Baby Beef
Lb. **53¢**

BALOGNA
Lb. **39¢**

Bacon squares
Lb. **29¢**

HUNTER FOOD MARKET

U.S. 60 WEST PAMPA PHONE 2222

C. M. JONES MARKET
503 SOUTH BARNES PHONE 2262

MITCHEL'S GROCERY
838 SOUTH CUYLER PHONE 1500

MILLER GROC. & MKT.
2000 ALCOCK PHONE 1908

WINTER CLEARANCE
of
Children's Winter Apparel
SEE SIMMONS
Children's Wear
ADVERTISEMENT IN
FRIDAY PAMPA NEWS

Panhandle Brand
Fresh Country
SAUSAGE
PARTICULAR MEATS FOR
PARTICULAR PEOPLE

READY MIXED CONCRETE
TRANSMIX
CONCRETE AND MATERIAL CO.
P. O. Box 2002 Phone 428

1948 Day-by-Day Sports Calendar

DECEMBER

1 - Columbia Broadcasting System and Music Corporation of America buy into Tournament of Champions in deal designed to capitalize on sports through television.

2 - Joe Novak of Los Angeles elected president of Professional Golfers' Association.

4 - Thrice-beaten Southern California surprises by being unbeaten Notre Dame, 14-14. Missouri Valley eleven losses to Evansville in Refrigerator Bowl after winning 41 straight games.

5 - Harvey Johnson of New York Yankees kicks four conversions to run consecutive string to 77, new pro record. Mel Patton's record 9.3 for 100-yard dash accepted by AAU. Baltimore Colts upset Buffalo Bills, 35-15 as teams end tie for eastern division All-America conference title. Patterson Panthers beat Wilmington, 12-0.

6 - Captain Tom Hamilton leaves Navy for Pitt athletic director's post. Briton Bruce Woodcock wins London fight over Lee Savold on fourth-round foul.

8 - Pirates obtain Catcher Clyde McCullough and Pitcher Cliff Chambers of Cubs in exchange for Third Baseman Frank Gustine and Pitcher Cal McLish.

10 - Joe Fuks, Philadelphia Warrior a.c.c. reports basketball bribe attempt. Joe Louis beats Billy Conn in exhibition. Exzard Cunds, 11-Harry Stuhldreher quits as Wisconsin football coach. Citation runs earnings to \$865,150, taking Tanforan Handicap by five lengths.

12 - Chicago Cards down Bears, 24-21. Chicago Cardinals down Bears, 24-21. Chicago Cardinals down Bears, 24-21. Chicago Cardinals down Bears, 24-21.

13 - Pirates obtain Catcher Clyde McCullough and Pitcher Cliff Chambers of Cubs in exchange for Third Baseman Frank Gustine and Pitcher Cal McLish.

14 - Joe Fuks, Philadelphia Warrior a.c.c. reports basketball bribe attempt. Joe Louis beats Billy Conn in exhibition. Exzard Cunds, 11-Harry Stuhldreher quits as Wisconsin football coach. Citation runs earnings to \$865,150, taking Tanforan Handicap by five lengths.

15 - Chicago Cardinals down Bears, 24-21. Chicago Cardinals down Bears, 24-21. Chicago Cardinals down Bears, 24-21.

16 - Chicago Cardinals down Bears, 24-21. Chicago Cardinals down Bears, 24-21. Chicago Cardinals down Bears, 24-21.

17 - Chicago Cardinals down Bears, 24-21. Chicago Cardinals down Bears, 24-21. Chicago Cardinals down Bears, 24-21.

18 - Chicago Cardinals down Bears, 24-21. Chicago Cardinals down Bears, 24-21. Chicago Cardinals down Bears, 24-21.

19 - Chicago Cardinals down Bears, 24-21. Chicago Cardinals down Bears, 24-21. Chicago Cardinals down Bears, 24-21.

20 - Chicago Cardinals down Bears, 24-21. Chicago Cardinals down Bears, 24-21. Chicago Cardinals down Bears, 24-21.

21 - Chicago Cardinals down Bears, 24-21. Chicago Cardinals down Bears, 24-21. Chicago Cardinals down Bears, 24-21.

22 - Chicago Cardinals down Bears, 24-21. Chicago Cardinals down Bears, 24-21. Chicago Cardinals down Bears, 24-21.

23 - Chicago Cardinals down Bears, 24-21. Chicago Cardinals down Bears, 24-21. Chicago Cardinals down Bears, 24-21.

24 - Chicago Cardinals down Bears, 24-21. Chicago Cardinals down Bears, 24-21. Chicago Cardinals down Bears, 24-21.

25 - Chicago Cardinals down Bears, 24-21. Chicago Cardinals down Bears, 24-21. Chicago Cardinals down Bears, 24-21.

26 - Chicago Cardinals down Bears, 24-21. Chicago Cardinals down Bears, 24-21. Chicago Cardinals down Bears, 24-21.

27 - Chicago Cardinals down Bears, 24-21. Chicago Cardinals down Bears, 24-21. Chicago Cardinals down Bears, 24-21.

28 - Chicago Cardinals down Bears, 24-21. Chicago Cardinals down Bears, 24-21. Chicago Cardinals down Bears, 24-21.

29 - Chicago Cardinals down Bears, 24-21. Chicago Cardinals down Bears, 24-21. Chicago Cardinals down Bears, 24-21.

30 - Chicago Cardinals down Bears, 24-21. Chicago Cardinals down Bears, 24-21. Chicago Cardinals down Bears, 24-21.

31 - Chicago Cardinals down Bears, 24-21. Chicago Cardinals down Bears, 24-21. Chicago Cardinals down Bears, 24-21.

BETTER BOWLING

By BILLY SIXTY

KEEP THE TRACK: To deliver the reliable, basic straight ball point the thumb directly at the pins, and then, keep that relative position throughout the swing. As a result, the arm naturally reaches straight out for the target when the ball is released. You can think of it as holding the line of the swinging arc. This is often called a "straight arm" and beginners should make a real effort to develop this straight line, swing-through for accuracy.

After the student has learned to do this, he very often runs into trouble when the more spectacular hook is used. Usually the temptation to put "a lot of stuff" on the ball is too much, and he either gives it too much wrist turn, or LIFTS his arm upward so abruptly and quickly in releasing the ball that the arm gets out of the pin-spilling groove. It swings outside, or the LEFT of the line.

As you can see in the illustration, the ball should swing parallel to the body. The arm follows a straight line from the top of the backswing to the finish of the swing-through.

With an unhurried motion, finger-spin is applied as the arm reaches outward and upward, just as the ball is released—never with a quick motion. As the fingers are on the outside (right) of the ball, the hoop-spin is imparted by the third and fourth fingers easily, with little effort. In fact, it should be with such ease that no pressure is felt in the process of the arm lift.

To check on your straight swing-through, see that it is extended

-WANTED-
A HUSBAND
TO TAME THIS PROUD
WILFUL BEAUTY!



BARBARA STANWYCK

B. F.'s Daughter
PHONE 1231

BOWLING

Sunshine Dairy			
Turner	127	151	345
Lowell	146	147	426
Wells	150	154	423
McFall	125	109	336
Handicap	2	2	2
Total	550	641	2053
Reeves Oldsmobile			
Hasey	156	153	325
Bryan	123	141	309
Handicap	2	2	2
Total	281	296	936
Behrman's			
McConnell	125	166	316
Summy	125	128	278
Colley	85	122	205
Little	107	129	275
Strie	112	118	257
Total	602	663	2031
Zale's Jewelry			
Book	129	154	343
Worsome	129	153	337
Summy	81	120	204
Walsenauer	321	121	309
White	142	128	317
Handicap	37	37	74
Total	652	723	2107
Harvester Drug			
Dickerson	205	162	349
Dummy	117	117	251
Kitchens	118	75	205
Lahly	125	105	235
Dummy	127	127	281
Total	722	662	2001
Court House Cafe			
Hutchens	157	128	345
Putnam	150	146	347
Walters	125	128	311
Landrum	123	142	311
Alford	142	121	304
Handicap	6	6	12
Total	723	669	2134

Questions Raised on Method Used to Get Bat Averages

By JOE REICHLER

NEW YORK—(AP)—The 1948 major league baseball averages are out and that raises the question again—Is the present system of rating batters fair?

The '48 averages show Stan Musial of the St. Louis Cardinals and Ted Williams of the Boston Red Sox as the champion batters of their respective leagues. No fault is to be found with that since it is generally conceded that they were the outstanding batters in baseball.

But what of other batters? Dale Mitchell of the Cleveland Indians is listed as the American League's third best batter with a .336 average. Al Zarilla of the St. Louis Browns is fourth, Barney McCosky of the Philadelphia Athletics is fifth and Bob Dillinger of the Browns is sixth. They rate above such sluggers as Joe DiMaggio, Vern Stephens, Tommy Henrich, Joe Gordon and Bobby Doerr, Stephens, for instance is the 35th best batter, according to the averages. Gordon is no. 27 and Doerr is no. 23.

It is the same story in the National League. Mike McCormick, part-time outfielder of the Boston Braves, is ninth with a .303 mark. Bob Beffing, Chicago Cub catcher, is No. 10 while Johnny Mize of the New York Giants is 22nd and Ralph Kiner of the Pittsburgh Pirates is as low down as 40th on the list.

A year ago we offered a new rating system under which runs batted-in, runs scored and total bases are added then divided by the number of games played. Today's average are figured on hits and at bats.

This system gives credit to the heavy hitters—the guys who can hit for distance and drive runners across. It also recognizes the single hitters—those who can get on base—by giving credit for runs scored.

Players like Ted Williams and Ed Stanky, of the Braves, who

Tresh to Indians

CHICAGO—(AP)—Mike Tresh's 10-year-old tenure as a catcher with the Chicago White Sox has ended with his sale to the Cleveland Indians for an unannounced sum of cash.

Frank Lane, general manager of the White Sox, said yesterday the sale is preliminary to a later transaction by which the Sox will obtain a young infielder from the Indians.

The corner of the eye is the only tissue of the human body without blood.

draw a lot of bases on balls, will benefit by the latter. The more passes they coax, the more opportunities they have to cross the plate.

Pampa News, Thursday, January 13, 1948 Page 7

Slice... Slice... it's better



Mann's THIN SLICE Bread

Green Trimmed Wrapper - 34 Slices

LOOK FOR THE 'LITTLE MANN'

WINTER CLEARANCE

of
Children's Winter Apparel

SEE SIMMONS
Children's Wear

ADVERTISEMENT IN
FRIDAY PAMPA NEWS

JUST ARRIVED FROM SUNNY SOUTH FLORIDA

2 CARLOADS OF FRESH FRUITS & VEGETABLES

EASY TO PEEL TANGARINES 23c lb.

White or Yellow SQUASH lb. 13c
Nice Size Florida NEW POTATOES 4 lbs. 29c
Fancy Long Green CUCUMBERS lb. 19c
Egg Plant lb. 19c Fcy Wax Beans lb. 23c

GREEN STRINGLESS BEANS 23c

PERK with Armocel

WASHES UP TO 46° WHITER

... WASHES COLORS 31° BRIGHTER

Here's proof beyond question from 1,216 washing tests.

PERK leaves your whole wash whiter, brighter!

Wash after wash, tests proved it on the Hunter Reflectometer and General Electric Spectrophotometer: New Perk with Armocel washed whites up to 46° whiter, colors 31° brighter than any other leading type of soap.

These washing tests also proved: Perk with Armocel cuts washing time one-half... saves one-third on soap.

ARMOCEL - THE DOUBLE-ACTION WASH PERFECTOR

Only Perk contains Armocel, Armour's exclusive new ingredient that gives you: 1. Magnet Action: Perk with Armocel draws dirt out of clothes like a magnet, sends it in the water so dirt cannot settle back. Removes accumulated grays, prevents future grays. 2. Sunshine Action: Perk with Armocel gives clothes a new sunshine brilliance that reflects the radiant, sunny sun whiteness, brightness in your wash.



PERK IS YOUR BEST BUY—for clothes—for dishes

IDEAL FRESH BAKED SPICED HONEY CREAM CAKE

2 MOIST LAYERS - BUTTER CREAM ICING

PINT IDEAL FLAVOR RICH ICE CREAM

A REGULAR 52¢ VALUE

BOTH FOR ONLY 39¢

Texsun Fancy Grade A GRAPEFRUIT JUICE 45-oz. can 15c

Mrs. Tucker's SHORTENING 3-lb. can 89c

Five More Cups **COFFEE** Ground Fresh as You Buy, lb. 40c

MIXED VEGETABLES Veg-All tall can 18c

Sunshine KRISPY CRACKERS LB PKG 22c

POP CORN 10 OZ CAN 21c

OSCAR MAYER WIENERS IN BRINE 4oz 49¢

UNCLE BEN'S RICE LB. PKG. 24¢

BESTYETT Thousand Island DRESSING PT JAR 29c

FRESH FROM OUR BAKERY..

BUTTER SCOTCH Pecan Rolls 6 for 29c

Blondies or Brownies 3 for 9c

BREAD Fresh Buttermilk 13c

FROZEN FOODS SPARKLES STRAWBERRIES PKG 43¢

SPARKLES BROCCOLI PKG 28c
CORN ON THE COB PKG 24c
HONOR MIXED VEGETABLES PKG 32c
HONOR CAULIFLOWER PKG 32c
HONOR CUT CORN PKG 28c
HONOR FRESH PEACHES PKG 39c
HONOR FREE PEACHES PKG 33c
HONOR LIMA BEANS PKG 41c
HONOR PEAS PKG 29c
TABLE TESTED LIMA BEANS PKG 39c
HONOR SPINACH PKG 29c

HEADQUARTERS FOR Campbell's SOUPS ALL 21 KINDS -

TOMATO SOUP CAN 9c

ASPARAGUS - BEAN WITH BACON - OX TAIL
BLACK BEAN - GREEN PEA - PEPPER POT
VEGETARIAN - VEGETABLE - CREAM OF SPINACH

2 CANS 27¢

BEEF - BEEF NOODLE - BOULLION - CONSOMME
CHICKEN WITH RICE - CREAM OF CHICKEN
CHICKEN GUMBO - CLAM CHOWDER - MUSHROOM
SCOTCH BROTH - VEGETABLE BEEF

2 CANS 35¢

HYPOWER CHILI WITH BEANS 21c
HYPOWER TAMALES 23c

PLANTERS always fresh!
COCKTAIL PEANUTS
PLANTERS salted PEANUTS
SPECIAL 32c

HOUSEHOLD NEEDS

BAYER ASPIRIN REG 25c 19c
ALKAL SALT 80c SIZE 54c
FOUR WAY COLD TABLETS 25c SIZE 19c
PEPETOENT TOOTH PASTE 50c SIZE 43c
LISTERINE MOUTH WASH 50c SIZE 43c
HALO SHAMPOO 1.00 SIZE 79c

IDEAL GRAPE JAM 2 LB. JAR 39¢

DEL MONTE FRUIT COCKTAIL NO. 2 1/2 CAN 39¢

FROZEN FISH

OCEAN PERCH LB 43c
COD FILLETS LB 42c
SMALL TENDER WHITING LB 20c
CATFISH FILLETS LB 51c
LARGE SHRIMP LB 98c

WELCH'S RED RASPBERRY PRESERVES 3 LB. JARS \$1.00

FOR QUICK HOT DISHES

FRANCO AMERICAN SPAGHETTI 15 1-2 OZ CAN 15c
FRANCO AMERICAN MACARONI 15 1-2 OZ CAN 17c
FRANCO AMERICAN BEEF GRAVY NO 1 CAN 15c
ELLIS BRICK CHILI NO 300 CAN 39c
ELLIS TAMALES NO 2 CAN 32c
ELLIS CORN BEEF HASH NO 300 CAN 31c

TOP QUALITY MEATS

BACON IDEAL LAYER SLICED LB. 49c

ROAST BEEF CHUCK LB. 49c

FRYERS FRESH DRESSED LB. 59c

BEEF SHORT RIBS LB. 32c

BEEF FRESH GROUND LB. 49c

STEAK CHOICE PRIME RIB LB. 69c

LARD PINKNEY SNOWHITE 4-lb. carton 79c

Ideal Food Stores

SOUTHWEST'S SHOPPING CENTER

DAILY DOUBLE!
— BEND WA-Y-OVER, KISSING KNEES STRAIGHT, FEET APART, BRUSH HAIR VIGOROUSLY 50 TIMES, HELPS STAVE OFF WEARINESS AND STIMULATES YOUR HAIR AND SCALP AT THE SAME TIME!

STRAP HANGERS!
— TO KEEP CHILDREN'S SHOULDER STRAPS FROM SLIPPING FROM SHOULDERS, TAKE OUT 2 WOODEN STRIPS FROM HEM IN TAIL OF DRESS. STITCH, ATTACH TO SHOULDERS AND SLIP STRAPS THRU!

THE MAIL BAG
MR. J. M. O. SACRAMENTO— WHEN DRIVING SCREWS IN HARD WOOD, RUB SCREWS WITH SOAP TO MAKE THEM GO IN EASILY!

© 1949 BY TESTED TIPS
DUP BY JOYCE F. BILE CO.

Two Piece Frock



Especially appealing to the slightly larger figure is this subtly tailored two-piece frock. Shoulders shirring lends a feminine note—the gored skirt is easy as can be to put together. Wear it everywhere with pride.

Pattern No. 8212 is for sizes 34, 36, 38, 40, 42, 44, 46, and 48. Size 38, short sleeve, 4 yards of 39" inch.

For this pattern, send 25 cents, in COINS, your name, address, size desired, and the PATTERN NUMBER to Sue Burnett, 1150 Ave. Americas, New York 19, N. Y. Send 25 cents today for your copy of the Fall and Winter FASHION. A treasure of sewing information for every home sewer! Contains 60 pages of special features and designs free pattern printed in the book.

★ WE, THE WOMEN

BY RUTH MILLETT
NEA Staff Writer

Asks a man: "Why is it that all over the country women are chopping off their hair for a new look to end all new looks when they know full well men don't like short hair on women?"

Well, it's like this: John tells Mary he hates her short haircut and he hopes to goodness she'll have sense enough to leave her long hair to please John in this matter. But the pressure against her is terrific. Every time she goes to the beauty salon the short-haired operator gives her long locks a snarl and says: "When are you going to let me cut your hair?"

When she goes to try on a hat that the saleslady hints that the right haircut would help her find the right hat.

IN MAGS. TOO

Every woman's magazine she picks up features mostly short-cut frumpier and more behind the styles than ever.

And everywhere she goes the other women are running their fingers through their short hair and exclaiming over how wonderful it feels.

To everyone who asks her when she is going to leave her own shining locks on a barber shop floor she explains that John wants her to keep her hair long.

But all that explanation brings as a laugh for taking a man seriously on a matter like that. "He'll get used to it short," the women all tell her.

So any day now Mary will probably weaken.

Dress Properly For New Sport

By ALICIA HART
NEA Staff Writer

If you decide to adopt a sport as an exciting new interest for the years ahead, decide also to dress properly for the activity.

When you invest in an outfit for a sport that you're trying out, say it's golf, bicycling or even horseback riding, the chances are excellent that you'll stick to the sport after the initial fling.

The outfit need not be elaborate or expensive. As a matter of fact, most women chafe for simple and functional clothes for active sportswear.

Yet no matter how simple and functional a sports costume is, the woman with a style flair can make hers attractive by adding the fashion touches which distinguish the other clothes which she wears.

When her clothes fit well and look smart, she welcomes the opportunity to wear them.

"Call it vanity or what you will," says a coach who inducts women into new sports. "The proper clothing for an activity helps to turn a recruit into a veteran."

Mushrooms do not need to be peeled before cooking, they should be thoroughly washed, however, Cook them whole or slice them.

The Woman's Page

Page 10 Tampa News, Thursday, January 13, 1949

Community Concert Association Presents Virginia MacWatters

Miss Virginia MacWatters, coloratura soprano, is the artist to be presented in the second concert of the Pampa Community Concert Association for this season. It will be held at 8:30 p.m. Monday in the Junior High School Auditorium.

Miss MacWatters began her musical career in her home city, Philadelphia, where as a child she showed unusual ability at the piano. It was after she had sung a leading role in a school opera that she was first encouraged to develop her voice. She won a scholarship to the Curtis Institute of Music in Philadelphia and began her serious study of opera.

Later when Lotte Lehmann, the famed singer, was autographing one of her books for an hour or so at a Philadelphia department store, Miss MacWatters was the first in line. When she came face to face with the great singer, she not only bought the book with the money she had earned teaching piano, but received a favor beyond price from Lotte Lehmann. Although the famous diva was in the city for a concert and her time was limited, she granted Virginia MacWatters an audition. Miss Lehmann's encouragement and praise decided Virginia to forsake her career as a concert pianist in order to become an opera singer.

Her rise since that time has been steady. The Metropolitan Auditions of the Air won her an award as well as a contract with the New Opera Company to sing the role of Adele in "Rosolinda," which is on Broadway for 540 performances. There followed appearances in recitals and concerts on the East and West coasts with



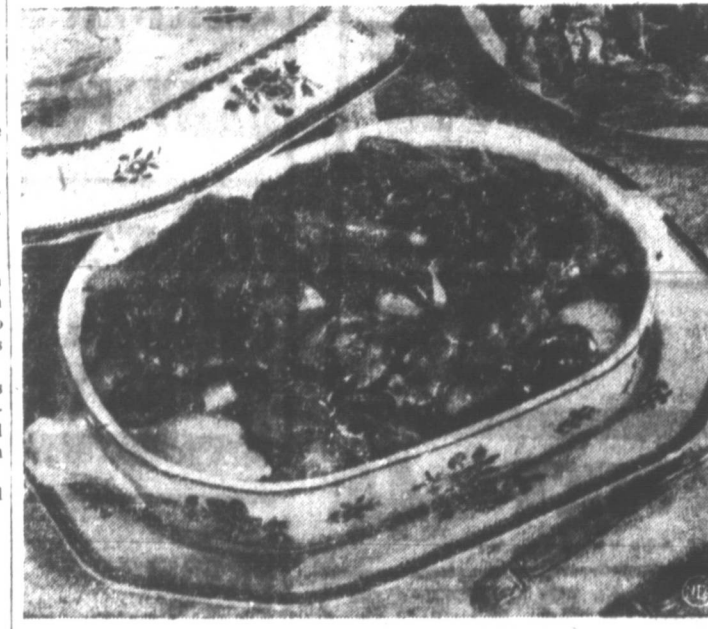
Miss Virginia MacWatters

nationally known orchestras, including the New York Philharmonic and the Chicago Symphonies. Her first operatic debut was with the San Francisco Opera Company, during which season she sang five leading roles to critical acclaim.

Virginia MacWatters has "extracurricular" activities, such as clay modelling and military which are her favorites, although she has a particular penchant for intricate dishes and tricky sauces. Her other artistic interests include portrait painting and literature.

Federic Kurzwil will accompany Virginia MacWatters and will play several piano solos.

Duck Fricassee With Vegetables Graham Cracker Dessert Is New



Fricassee of duck with vegetables.
By GAYNOR MADSEN, NEA Staff Writer

There is more than one way to enjoy a duck. Here are two: Duck Fricassee With Vegetables (4 to 6 servings)

Five to 6-pound Long Island duckling, dressed weight; 2 tablespoons duck fat; 1 clove garlic, minced; 3 tablespoons flour; 3 cups duck broth; 3 tablespoons tomato paste; 1 teaspoon chili powder; 1 cup sliced stuffed olives; 1-2 cup flour; 1-2 teaspoon salt; 1 teaspoon baking powder; 1 tablespoon sugar; 1-3 cup corn meal; 1 egg; 1-2 cup milk; 2 tablespoons duck fat, melted.

Have butcher cut duckling in quarters. Cook duck, including giblets, in 3 cups water and 2 teaspoons salt in Dutch oven. When tender, remove duck. Strain broth. Allow fat to rise, then pour it off. Place 3 tablespoons fat in saucepan. Add minced garlic and cook over low heat 2 minutes. Stir in flour. Add 2 cups of the duck broth. Cook, stirring constantly, until sauce thickens. Stir in tomato paste and chili powder. Correct seasonings to taste, if necessary. Remove meat from bones in large pieces, cut

Place onions, carrots, coarsely cut duck giblets and pieces of duck in sauce. Cover tightly and cook over moderate heat until duck and vegetables are tender, about 45 minutes. Serve immediately with hot rice on the side.

Duck Pie Spanish Style
(4 to 6 servings)

Five to 6-pound Long Island duckling, dressed weight; 3 tablespoons duck fat; 1 clove garlic, minced; 3 tablespoons flour; 3 cups duck broth; 3 tablespoons tomato paste; 1 teaspoon chili powder; 1 cup sliced stuffed olives; 1-2 cup flour; 1-2 teaspoon salt; 1 teaspoon baking powder; 1 tablespoon sugar; 1-3 cup corn meal; 1 egg; 1-2 cup milk; 2 tablespoons duck fat, melted.

Have butcher cut duckling in quarters. Cook duck, including giblets, in 3 cups water and 2 teaspoons salt in Dutch oven. When tender, remove duck. Strain broth. Allow fat to rise, then pour it off. Place 3 tablespoons fat in saucepan. Add minced garlic and cook over low heat 2 minutes. Stir in flour. Add 2 cups of the duck broth. Cook, stirring constantly, until sauce thickens. Stir in tomato paste and chili powder. Correct seasonings to taste, if necessary. Remove meat from bones in large pieces, cut

B&PW Topic Is On 'Legislation'

Program subject was on "Legislation" at Tuesday's meeting of Business and Professional Women's Club in the City Club Room.

Mrs. Ann Chapman led the program officers assisted by Mrs. Myrtle Simmons. They discussed bills pending in both the state Legislature and Congress with which business women should familiarize themselves. Payment of poll taxes was stressed.

Miss Florence Merriman handed in her resignation as president of the organization. The group is to present her with two pieces of luggage later.

Mrs. Tommie Stone had a call board meeting and the group decided to ask Miss Inez French who recently resigned as vice president, to fill out Miss Merriman's unexpired term. Mrs. French's election for a vice president will then be held.

Refreshments were served to about 15 members, including four new members.

Bible Class Has Business Meeting

Mrs. James Winter, 522 N. Russell, was hostess to the Fidelity Bible Class at the First Baptist Church when the group met Friday for a regular business session.

Mrs. Tom Tipps, president, directed the business discussion and program. Reports were presented by Mrs. M. J. Lewis, Mrs. E. Lewis presented a devotional. Plans were made for a covered dish Valentine dinner for husbands, Friday evening, Feb. 4. Group No. 4 will be hostess for the occasion.

A refreshment plate was served to those mentioned and Mmes. Everett Butler, S. A. Rockwell, D. W. Mitchell, Owen Johnson, Mark Fiske, D. A. Brown, Frank Howard, Fred Carver, Roy Lewis and E. R. Haskins.

Next meeting will be Friday, Jan. 21.

Fireman's Auxiliary To Order Badges

Fireman's Auxiliary met Friday afternoon in the home of Mrs. Lewis Gallemore for the first meeting of the new year.

Mrs. Lester Mason had charge of the business meeting at which plans were made to order miniature badges for all auxiliary members.

Refreshments were served to those mentioned and Mmes. J. E. Winborne, Albert Fuller, Tom Haggard, E. N. Pierce, Charles Winborne, Elmer Darnell, Robert Burns, Roy Prescott and one guest, Mrs. J. E. White.

The next meeting will be held at 7:30 p.m. Jan. 20.

McKENNEY ON BRIDGE

By WILLIAM E. MCKENNEY
America's Card Authority
Written for NEA Service

I had the pleasure of meeting the charming Margaret Phelan of New York City, who recently was singing in the Wedgewood Room at the Waldorf-Astoria Hotel with Eddie Duchin's orchestra. Margaret has gained popularity with her rare ability to combine operatic and popular music, and on top of it, to sing a few comedy songs.

Old-time baseball fans will remember Art Phelan, who back around 1912 played with the Chicago Cubs and Cincinnati Reds. Art's Margaret's father and at the present time he owns the Alexandria, La., team.

All of her family love to play cards, but they glare at her because she refuses to make it seriously. Her partner glares when she did not win the first trick in today's hand; however, that was the only way that the contract could be made.

It was when the first trick was returned the queen of diamonds, East could have won and returned a heart. Now, even if Margaret held up one round before winning the heart, West would get in with the king of diamonds and run the heart suit.

When East held the first trick with the nine of hearts and returned the jack, Margaret won the trick with the ace and led the queen of diamonds. East won but he had no more hearts to return. All he could do was to lead a spade or a club. Margaret could win either and lead another diamond. West won the second diamond with the king and led another heart; but declarer won this in dummy with the king and proceeded to make four no trump.

There is more water flow in Idaho's rivers than in the rivers of any other state in the Union.

giblets in medium-size pieces, and add to sauce. Lightly stir in olives. Heat thoroughly and pour into baking dish (10 x 6 x 2 inches). Mearwhil sift flour, salt, baking powder and sugar into 1-quart mixing bowl. Stir in cornmeal, then add egg and milk, stirring quickly and lightly until mixed. Stir in melted fat. Top batter with corn bread batter. Bake in hot oven (400 degrees F.) until corn bread is done, about 20 minutes.

Mrs. Vanderburg Speaks to NSA

Mrs. Elma Vanderburg, an officer of Citizen's Bank, was guest speaker at the meeting of the Top o' Texas chapter of the National Secretaries Association Friday evening in the City Club Room.

Mrs. Vanderburg outlined some of the duties and responsibilities which are hers in her capacity. She said that a woman employed by a bank as a secretary or in any other position should have a good memory, perform her duties with dignity, have a sense of humor and be cooperative.

Lillian Jordan, president, conducted the business meeting during which the treasurer's report was given and the club correspondence read. The chapter voted to make a donation as a group to the polo drive now in progress.

Mrs. Jordan announced that a registrar from National Headquarters would be in Pampa in the near future to contact secretaries who might be interested in becoming members of the chapter.

The meeting was adjourned to the Schneider Hotel Dining Room for dinner.

Others attending were Mmes. Letha Northup, Lillian McNitt, Madeline Johnson, Leuro Belle Cornelius, Tommie Stone, Minnie Barnes, Mildred Lafferty, Elma Vanderburg and Misses Charlie Neal Young, Leoná Parker and Inez French.

The Social Calendar

THURSDAY
7:30 B&PW business meeting, home of Mrs. Ed Oivens, 1108 Charla.

FRIDAY
7:30 Rainbow Girls meeting, semi-formal, election, Masonic Temple.

SUNDAY
9:30 - 4:30 Community Singing Church of God, Field and Campbell, 1949 song books, have arrived.

MONDAY
8:30 Community Concert, Virginia MacWatters, coloratura soprano, Junior High School Auditorium.

TUESDAY
7:30 Theta Rho Girls Club, IOOF Hall.
8:30 Toastmaster, City Council Room.

COLLEGE HEAD NAMED
NEW YORK—(AP)—Father Vincent J. Flynn, president of the College of St. Thomas, St. Paul, Minn., was elected president of the Association of American Colleges. Elected to the board of directors was Dr. M. E. Sawyer, president of Texas Christian University, Fort Worth.

Read The News Classified Ads

THE ONE WAY MILLIONS ASK FOR ASPIRIN AT ITS BEST IS St. Joseph

A FAT BANKROLL

TO ANYONE WHO WILL MARRY B. F.'s DAUGHTER PHONE 1231

CHEST COLDS?
QUICK RELIEF WITH MENTHOLATUM

LESSENS CONGESTION...EASES SORENESS

MENTHOLATUM

DR. GEORGE SNELL
ANNOUNCES THAT HIS NEW DENTAL CLINIC IS NOW OPEN

1121 N. FROST
2 Blocks North of Sam Houston School

NALC Auxiliary Folds Social

The NALC Auxiliary met Thursday in the home of Mrs. Elmer Byars, 305 E. Francis.

After a brief business meeting, games were played and refreshments served.

Attending were Mmes. Bert Stevens, Virgil Howell, Leroy Morgan, Jimmy Ayres, T. V. Parks, Carl English, C. E. Blanton, Mae Manning and Miss Lura Manning.

FALSETEETH That Loosen Need not Embarrass

Many wearers of false teeth have suffered real embarrassment because their plate dropped, slipped or wobbled at just the wrong time. Do not live in fear of this happening to you. Just sprinkle a little FALSETEETH, the invisible (non-stick) powder on your plates. Holds false teeth more firmly. They feel more comfortable. Does not sour. Checks "plate odor" (denture breath). Get FALSETEETH at any drug store.

January WHITE Sale of HOUSEWARES

Here is a white sale that is different! Gleaming white enamelware and kitchen aids to brighten your "culinary workshop"

THIS WEEK'S FEATURE

Enameled Dishpan
Here is a big, serviceable, attractive dishpan. Holds 11 quarts, 16-inches in diameter. Has sturdy handles. \$1.49

Roller Skates
All steel, ball bearing construction. Rubber insulated wheel trucks. A fast sturdy skate. Adjustable length. Key toe clamp. Pair \$2.95

35-Piece Dinnerware Sets
In 12 Patterns
Beautiful chinaware sets in new floral patterns — just arrived! Table setting for 6 in pattern similar to illustration above. \$9.95 value. \$9.95

FRUIT JUICER
Easy, quick lever action squeezer gets all the juice. Finished in sparkling chrome and white enamel. \$3.95

STEP-ON GARBAGE CAN
Gleaming white enamel finish. Smooth treadle action raises lid. Galvanized inner can lifts out. \$1.49

WASTE-BASKETS
Round and oval decorated waste baskets. Very sturdy construction. We have a variety of colors and designs. 75c

Pressure SAUCEPAN
Case aluminum with polished outside finish. Accurate, safe pressure dial. Saves time, fuel and flavor. 3-qt. size 11.95

BOWL SETS
1 and 6 piece mixing bowl sets in colored glass and decorated pottery. A bright cheer for the kitchen. 1.95 up

FOLDING IRONING BOARD
The finest, newest all steel ventilated ironing board. Automatic action, legs lock securely. Top is 15 x 54 inches. The best for only \$6.95

OPEN SAUCEPAN
2-quart heavily enameled saucepan in gleaming white, with contrasting trim. Enamelled rim fused potter's against chipping. 49c

Controlled Heat LIGHT WEIGHT IPON \$12.50

PAMPA HARDWARE

120 N. Cuyler Phone 70

Exciting new fabrics forecast a fresh style appeal for spring fashions. The greatest center of a new lighter-weight and more apple wool trend in "pudding" beige features a multicolor plaid border angled from front to back in a spectacular V-shaped inset. Granitene wool, a new sleek, tight-woven, dull-surfaced fabric, makes the suit (left) with a boxy Empire-styled jacket of mauve pink and a slim skirt of "coin silver" gray. Pure silk dress (right) in a limited edition print of wavy black stripes on a pink-dotted background of bright blue interprets the straight silhouette called the "slim line." The chemise-styled dress is embellished with a boxy jacket for which stripes are cleverly angled to emphasize straight-as-a-string lines.

KIDNEYS MUST REMOVE EXCESS ACIDS

Help 15 Million of Kidney Tubes Flush Out Poisonous Waste

When disorder of kidney function permits poisonous matter to remain in your blood, you may experience backache, headache, pain, leg pain, loss of pep and energy, getting up at night, swelling, puffiness under the eyes, headache and dizziness. Prevent or ease such passages with smarting and burning secretions please there is something wrong with your kidneys or bladder.

Don't wait! Ask your druggist for Doan's Pills, a scientific, tested remedy by millions for over 50 years. Doan's Pills will help you feel the 15 million of kidney tubes flush out poisonous waste from your blood. Get Doan's Pills.

Beware of Romance

By Roberto Courtland
Copyright by University Pub. Co.
Reprinted by NEA SERVICE, INC.

THE STORY: When sixteen-year-old Harry Carson learns that his darling Betty, who has just turned sixteen, has been seen with a young man, he is so angry that he leaves home and goes to the hotel in St. Vincent, where he meets Betty. She tells him that she has a change and suggests that they go to St. Vincent, an island resort. At the hotel in St. Vincent, Harry meets Betty's mother, Mrs. Carson, who tells him that Betty is not his girl, but that she is the girl of his father's heart.

FOR a few days things went along more smoothly than Harry had dared to hope. Susan seemed to have adjusted herself, though there were fits of crying and self-pity that left her soggy and miserable, with a splitting headache, and demanding more attention than Aunt Jane, barely managing to conceal her distaste, felt she was entitled to.

"Don't it, if only she'd make an effort to pull herself out of it!" sneered Aunt Jane wearily.

"But, Aunt Jane, she loves Dad, and after all, twenty years—"

"Sure, sure, I know. But, Merry, she's done it, and after all, she has no right to make your life miserable."

Merry's young chin quivered a little.

"I'm not exactly bounding with high spirits myself."

"I know. And that's what makes me feel so bad," said Aunt Jane, her eyes fixed on Merry's face. "You're just the same as the girl who looked at me in her eyes. 'Here you are, at the very height of your school when you shouldn't have a thing on your mind but fun and good times, and making good grades in your school work, and looking forward to graduation and keepin' steady company with some nice young man.'"

Merry said through her teeth, "Well, at least there's no danger of my steady company, I mean."

Town Stays Jump Ahead of Houston In Squabble Over Area Annexation

By DAVE CHEAVENS
AUSTIN — (AP) — Texas public schools face what many believe to be their most critical year in history in 1949.

This state's school system is built on this Constitutional bedrock adopted in 1876:

"A general diffusion of knowledge being essential to the preservation of the liberties and rights of the people, it shall be the duty of the Legislature of the state to establish and make suitable provision for the support and maintenance of an efficient system of public free schools."

Legislators since then have gone about the job in piecemeal fashion, building up a system governed by laws so confusing and conflicting that school administrators have long urged the need for complete reorganization.

The next Legislature will not be without expert guidance as it takes the job of pulling some of the loose ends together and otherwise following the Constitutional mandate of providing "an efficient system of public free schools."

It will have before it the recommendations of a committee that worked nearly two years on a complete study of the public schools. The 50th session created what came to be known as the Gilmer-Alkin Committee on Education — so named for Rep. Claud Gilmer of Rock Springs and Sen. A. M. Alkin, Jr., of Paris, co-authors of the resolution creating it.

The actual research has taken more than 16 months of intensive study. It has drawn on the thinking power of several thousand citizens, including not only trained educators, but laymen. Advisory committees were set up, colleges and universities were called on for what they could contribute, state government agencies chipped in. Not a locality in the state was passed up in the effort to drain off the best available information and suggestions for improving the schools.

The committee finally pulled all this together into 33 proposals which roughly boil down to these four questions:

1. That of modernizing the machinery for operating the public schools.
2. That of financing what the committee calls a "minimum foundation program" for educating each child in the state.
3. That of improving the teaching.
4. That of making sure attendance, textbooks and building facilities are adequate.

And one of the specific recommendations is that the school law be completely recodified.

The 51st Legislature faces a real test of its ability to think unemotionally and act wisely in its attitude toward the recommendations of the Gilmer-Alkin Committee. The report has brought some sharp criticism. It has been as loudly praised. It will be up to the Legislature to decide who is right, and what is best for the school children of the state.

Advocates of the report say that it could be the turning point up or down for the state's public schools. Opponents are saying the same thing. The Legislature can take its choice.

RUSSIA INVITED
ATHENS, Greece — (AP) — The United Nations Special Commission on the Balkans voted to invite Russia and Poland again to take their seats on the commission. The conciliatory attempt was proposed by China.

If the intake manifold is kept at winter running temperature, gum deposits in the intake valves can be decreased.

Both are Democrats in good standing with the administration, so both will have a say in who gets top federal jobs in their state.

Former Commanders To Attend Reunion
FORT WORTH — (AP) — Acceptance from several former commanders of the 8th Air Force invited to attend its seventh anniversary celebration Jan. 28 were received by Maj. Gen. Roger M. Ramey, Secretary for Air W. Stuart Eyrington also indicated he would be here, barring some last-moment delay in Washington.

The acceptances came from Lt. Gen. Ira C. Eaker, Maj. Gen. William E. Kepner, and Lt. Gen. James H. Doolittle.

Read The News Classified Ads

LOANS

• Automobile • Truck • Household Furniture and Other Personal Property

WE WILL LOAN YOU MONEY TO COMBINE ALL YOUR OBLIGATIONS

H. W. Waters Insurance Agency
We Loan on ANY Good Collateral
208 N. Russell Phone 339

WINTER CLEARANCE

of Children's Winter Apparel

SEE SIMMONS
Children's Wear
ADVERTISEMENT IN FRIDAY PAMPA NEWS

Orange Crop Up Over Last Year

WASHINGTON — (AP) — The 1948-49 orange crop will be four percent larger than last season, the Agriculture Department said.

The orange crop was estimated at 174,000,000 boxes. The grapefruit crop was estimated at 96,200,000 boxes.

The Texas orange crop was indicated at 4,700,000 boxes, the same as a month ago, and compared with 5,200,000 last season.

The Texas grapefruit crop was indicated at 13 million boxes, the same as a month earlier, and compared with 13,200,000 last season.

Freezing temperatures in California and Arizona are expected to cut heavily into the citrus crop. However, a California agricultural official estimated that citrus losses from the current cold wave amount to less than 25 percent of the crop.

FREIGHT RATES UP
WASHINGTON — (AP) — New freight rates increases estimated to add \$425 million a year to railroad shipping charges went into effect Tuesday.

The sharpest increases occur in the East and South. West of the Mississippi River, a four percent increase is effective.

The flavor of good beer is said to be ruined by the addition of salt.

YOUR FRIENDLY Griffith THEATRES IN PAMPA

Open LaNora Ph. 1231
1:45 9c-40c till 6 p. m.; 9c-50c after

TODAY ONLY
HIS WIFE WENT TO THE COUNTRY... and he went to town!

GEORGE BRENT VIRGINIA MAYO TURHAN BEY CAROLE LANDIS ANN DVORAK

Out of the Blue

—PLUS—
Johnny Long & Orchestra The Fight Game

FRIDAY and SATURDAY
From the Best-Selling Book!

Barbara STANWYCK Van HEFLIN Charles COBURN

B.F.'s Daughter
Richard Hart - Keenan Wynn

Open REX Ph. 327
1:45 9c 37c

LAST DAY
Rocky with Roddy McDowall

PLUS
"Bet Your Life," and "Look-Listen"

FRIDAY and SATURDAY
THRILL-FILLED!!!
ALLAN LANE and his horse "BLACK JACK"
DESPERADOS OF DODGE CITY A MUSIC HALL

—ALSO—
Chapter 7 FEDERAL AGENT

Open CROWN Ph. 1323
1:45 9c 29c

LAST DAY "SITTING PRETTY" with MAUREEN O'HARA ROBERT YOUNG CLIFTON WEBB

—PLUS—
What's Hatin'—and Smooth Sailing

FRIDAY and SATURDAY
GENE AUTRY in TWILIGHT On The RIO GRANDE

—ALSO—
Chapter 12 DICK TRACY

Experiment Farms May Go to States

WASHINGTON — (AP) — The federal government is moving to divorce itself from many agricultural experiment stations which have served it for 62 years in demonstrating farming practices in the West.

Agriculture Secretary Braman sent to the Senate a draft of legislation to cede these tracts to the states.

Before making any transfer, however, the department would enter into an agreement with the affected states intended to insure completion of present research programs.

The stations — actually demonstration farms — which will be offered to the states in which they are located include Big Spring and Dalhart, Texas.

J. L. FARMER Representing The Rural Life Ins. Co. OF DALLAS, TEXAS Life, Accident & Follo Insurance 1228 Garland Phone 1862-R

From where I sit... by Joe Marsh

We Both Won This One

Blow my top the other morning when I discovered a shirt I'd put on had two buttons missing.

"Joe," the missus says, "do you ever read what you write? For a man who writes newspaper pieces all about tolerance, you sometimes show a lot of race prejudice."

"Race prejudice!" I holler. "No one can accuse me of that." "I mean prejudice against the entire human race," she interrupts with a smile. "Why get mad at the world over two little buttons? That took the wind out of me."

From where I sit (as I told the missus that evening), a lot of me sometimes get too worked up over little things... little differences of opinion or taste. One person prefers beer or ale, another prefers cider or lemonade. But why criticize the other fellow just because his tastes aren't the same as mine? "That sounds more like you, Joe," she laughs, snipping off a thread. (It so happens she was sewing on buttons.)

Joe Marsh

Copyright, 1949, United States Brewers Foundation

Income Isn't Keeping Up With Spending; Uncle Sam Seeks New Means of Revenue

By CHARLES MOLONY
WASHINGTON — (AP) — Uncle Sam was having money troubles as 1948 closed and 1949 dawned. Income isn't keeping up with spending. So treasury officials are looking around for ways to get more revenue.

Right now the picture shapes up this way:

Individual income taxes look set to stay the same in 1949 as they have been since they were cut in 1948. At least for the great majority of the 40-odd million income tax payers.

Corporations may have to begin paying higher taxes in 1949 to compensate for the \$8 billion-a-year tax loss. The loss is a big one.

Administration sources indicate that President Truman will ask the new Congress for a bigger bite from the corporate profits he talked about so much in his election campaign.

The President may have no easy task getting Congress to go along, despite the new Democratic majorities, especially if he asks for a peacetime excess profits tax.

Two Democrats who will have great power as chairmen of the tax handling committees, Senator George (D-Ga.) and Rep. Dougherty (D-NC), already are on record as strongly opposed to an excess profits tax in particular.

President Truman denounced the individual tax cut during his campaign as a "rich man's bill" — he had vetoed it twice in 1948 and plugged instead a \$100-million tax cut. So he may ask stiffer rates on individuals in upper income brackets.

But taxpayers can take consolation in the fact that the government, for the first time, will stress instructions on how to hold their payments as low as the law allows.

The No. 1 tax development of 1948 for taxpayers in general was the preparation by the Internal Revenue Bureau of a 16-page pamphlet on "How to Prepare Your U.S. Income Tax Returns," referring to returns due between Jan. 1 and March 15.

The pamphlet breaks precedent by telling the taxpayer, in simple language, specified things he can claim for deductions as well as things he cannot claim. It will be made available to all, and will explain about the changes made by the 1948 tax cut bill.

The revenue bureau also arranged to do some closer checking to prevent cheating.

The one art in which the savage races excel the civilized ones is honesty, according to the Encyclopedia Britannica.

Swan Down, Two to Go

When freezing weather clamped down on San Francisco, the water birds in Golden Gate Park had a hard time of it. They flew in for a landing, only to skid along on an icy surface. To the rescue came Whitley the Swan, heavy enough to break through the ice. The ducks and mallards, background, are waiting to take advantage of Whitley's ice-breaking abilities.

Income Isn't Keeping Up With Spending; Uncle Sam Seeks New Means of Revenue

Ambassador Warns Against False Feeling of Security

By DEWITT MACKENZIE
AP Foreign Affairs Analyst
America's direct-spoken ambassador to Moscow, Lt. Gen. Walter Bedell Smith, has given us a line which should be drilled into every doorstep of democracy — lest we forget.

Discussing Russo-American relations at a press conference in Pittsburgh, the general said he felt things might continue in the present state indefinitely without worsening or bettering. He added:

"We can't afford to allow ourselves to be lulled into a false sense of security, neither can we afford to become hysterical. We must view this as a long term thing. The Russian Politburo (core of the Soviet dictatorship) also thinks in terms of years."

That, puts the thing in a nutshell, not only for the United States but for all the democracies. So, leaving the ambassador out of further discussion, let's examine the situation from that standpoint.

We are in for a long, hard fight. It might last another generation — two generations. There's no gauge by which to make an estimate.

But could be fatal if we didn't recognize that our greatest danger lies in allowing ourselves to be lulled into a sense of security by any seeming slackening of the Moscow drive. We must beware of Red Trojan horses.

You bet the Politburo thinks in terms of years! It is in process of remodeling the whole world politically and economically. It is trying to destroy religion and substitute a code of immorality which is a throwback to the days of barbarism.

The present cold war is merely an incident in this vast project. Lenin was building for a war of generations when he laid down the Bolshevik code. Stalin has shown in all his moves that he has been preparing for a long fight. Trotsky wanted to rush things — and Stalin stepped on him. Communist espionage long has been going on in America and other nations.

The Red is straining every nerve to gain control of trade unions the world over. It is spreading insidious propaganda through schools.

Because of the nature of this Bolshevik offensive it can be dealt with only as we would handle ordinary crime. We've got to hunt it down and treat it as we would

YOUR FRIENDLY Griffith THEATRES IN PAMPA

Open LaNora Ph. 1231
1:45 9c-40c till 6 p. m.; 9c-50c after

TODAY ONLY
HIS WIFE WENT TO THE COUNTRY... and he went to town!

GEORGE BRENT VIRGINIA MAYO TURHAN BEY CAROLE LANDIS ANN DVORAK

Out of the Blue

—PLUS—
Johnny Long & Orchestra The Fight Game

FRIDAY and SATURDAY
From the Best-Selling Book!

Barbara STANWYCK Van HEFLIN Charles COBURN

B.F.'s Daughter
Richard Hart - Keenan Wynn

Open REX Ph. 327
1:45 9c 37c

LAST DAY
Rocky with Roddy McDowall

PLUS
"Bet Your Life," and "Look-Listen"

FRIDAY and SATURDAY
THRILL-FILLED!!!
ALLAN LANE and his horse "BLACK JACK"
DESPERADOS OF DODGE CITY A MUSIC HALL

—ALSO—
Chapter 7 FEDERAL AGENT

Open CROWN Ph. 1323
1:45 9c 29c

LAST DAY "SITTING PRETTY" with MAUREEN O'HARA ROBERT YOUNG CLIFTON WEBB

—PLUS—
What's Hatin'—and Smooth Sailing

FRIDAY and SATURDAY
GENE AUTRY in TWILIGHT On The RIO GRANDE

—ALSO—
Chapter 12 DICK TRACY

HURRY HURRY SPECIAL

SALE BEGINS SAT. MORNING, 9 A. M.

150 PAIRS BOYS' AND YOUTH'S LEE'S RIDERS

Sizes 2 to 16 Years
REG. \$2.50 VALUE

\$1.50

While They Last!

250 PAIRS MEN'S LEE'S RIDER'S

Complete Run of Sizes
REG. \$3.50 VALUE

\$2.50

These Are Genuine Lee's Riders—America's Finest Authentic Cowboy Pants—A Few are Slightly Seconds
NO LIMIT—BUY ALL YOU WANT!

ADDINGTON'S WESTERN STORE

119 S. CUYLER PAMPA

OUT OUR WAY By J. R. WILLIAMS



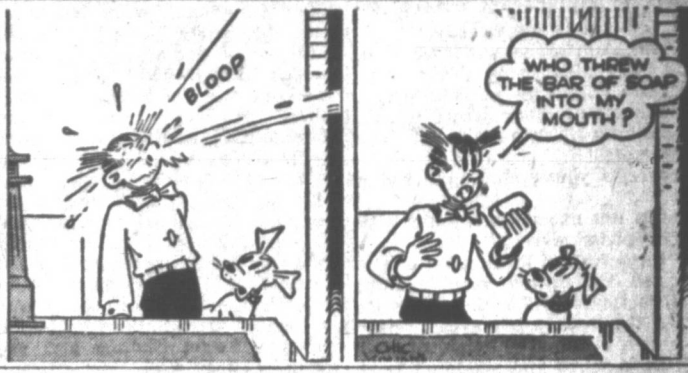
BRANDING HOUSE with Major Hoople



NAPOLEON



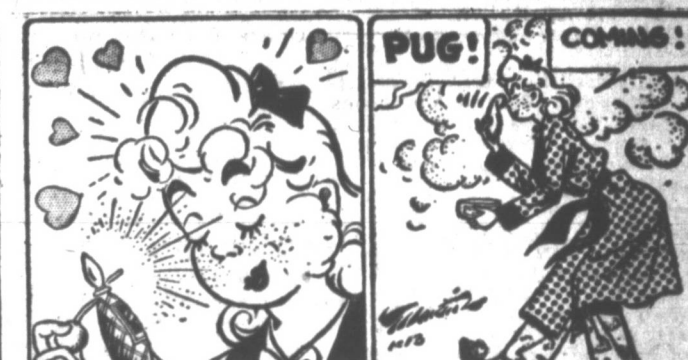
SIDE GLANCES By GALBRAITH



Sea Creature

Crossword puzzle with clues for sea creatures and a picture of a shark.

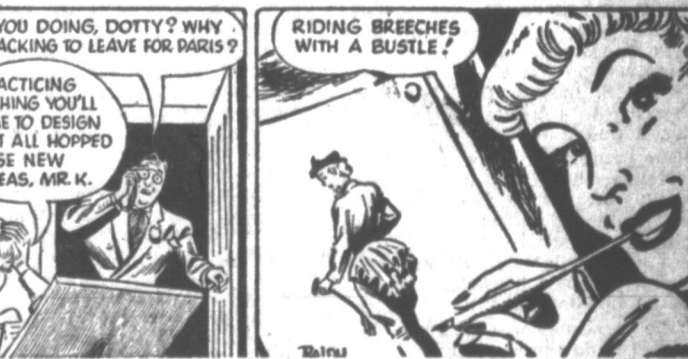
CARNIVAL By DICK TURNER



Mutt & Jeff



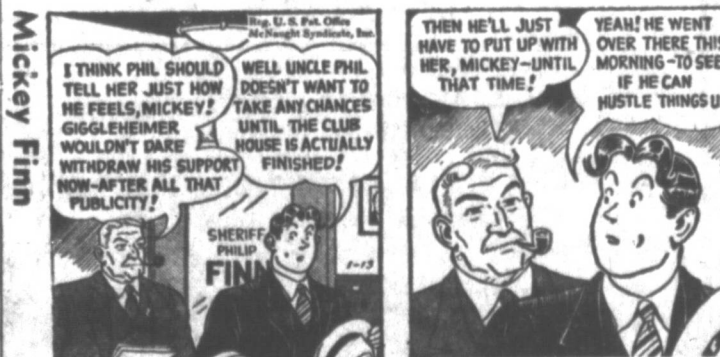
Vic Flint



Bugs Bunny



Mickey Finn



Priscilla's Pop



Penny



Japanese Rice Fields Grow Again



During the war, Japanese rice fields were virtually deserted. Now, with the help of American occupation forces, which introduced a quota system, Japan's rice production has been boosted over pre-war figures. The grain is dried on open racks, like these at Niigata. Trees latticed with straw rope, hold it. (U. S. Army photo from NEA-Acme.)

What Will Come of Truman's Program

By JAMES MARLOW
WASHINGTON (AP) - Now that President Truman has laid down his program to Congress, how is it going to be carried through? Suppose you wanted to make a touchdown fast and the line was tough and you could only get around the ends. You wouldn't buck the line - till you had to. That's how the Democratic leadership in Congress probably will try to shove over President Truman's program, or as much of it as they can. Just keep this in mind in trying to figure out what may happen in the new Congress: The Democrats have a majority over the Republicans in both the House and Senate. So Mr. Truman has that much in his favor. If all the Democrats stuck together in every case, they could pass any bill they wanted to over the Republicans in both the House and Senate. But Democrats and Republicans are not so solidly united as Democrats or Republicans. Then there's the problem of the Southern Democrats, and it's a real problem for Mr. Truman. This is the score in Congress: In the House - Democrats, 292 (between 100 and 110 Southerners); and Republicans, 171. In the Senate - Democrats, 54 (24 are Southern Democrats); and Republicans, 42. Any time the Southern Democrats get sore and join forces with the Republicans, Mr. Truman's Democrats in both houses are swamped, unless enough Republicans desert their side and vote the Truman way. And the Southern Democrats are plenty sore about Mr. Truman's program for more civil rights for Southern Negroes. Now those Southern Democrats, many of them, may be perfectly willing to vote for a lot of Mr. Truman's program. And, in return for their favorable voting, they may hope on a work out a compromise of some kind on the civil rights issue. But suppose Mr. Truman's strategists tried to put through the civil rights program early in this session. The Southerners would fight it, of course. But it might make them so sore that Mr. Truman would lose their help for the rest of the term on the rest of his program. So Mr. Truman's program probably will be a compromise of some kind.

Gracie Reports

By GRACIE ALLEN
Errr! Freezing - it's wonderful. Los Angeles has been enjoying the coldest spell in its history. It's been so cold that a stool pigeon heard a prominent member of our Chamber of Commerce making secret plans for a Florida vacation. Some blame the freeze on that northwestern wind that blew through the Rose Bowl and others say it began when two lady movie stars showed up at a party. I read a while ago that the Ice Age was coming back, but I don't see it. I can't say I'd care for neoprene stories appearing 10,000 years from now reading "Gee, Ah, and sabre-toothed tiger found intact in ice field."

The Best New Year's Gift Of All - - -
Nice "roomy" 5 room home, will take automobile or small house in trade. Also new 4 room home, only \$1500 down.
M. P. Downs, Real Estate - Phone 1264

Spare the grease and spoil the car!
Regular Lubrication of your car, prevents squeaks, rattles and abnormal wear on vital moving parts. It not lubricated regularly your car will have costly repair bills; repair bills that are entirely unnecessary. Regular visits to our Lube Racks will save you money and increase driving efficiency.
DRIVE IN NOW TO - - -
COFFEE PONTIAC CO.
220 N. Somerville 6-Pontiac-8 Phone 365

All the important news is not on the front page. Take a look at the - - -
Want Ad Page
For Real Scoops - - - read the want ads every day.

FOR SALE
7 room Stucco residence with single car garage. Located on 5 city lots within one block of Post Office, Wheeler, Texas. Priced for immediate sale. For further information call or write - - -
Roy T. Wileman, Box 390, Altus, Okla.

110-City Property (cont.)
J. E. RICE, Realtor
Phone 1831
Large 5 room East Francis \$2900.
2 bedroom brick home, garage and apartment in rear \$12,000.
Lovely 3 room furnished rock house on the hill \$12,700.
Large 5 room and double garage, 3 block of Senior High School \$14,500.
Close in 4 bedroom, carpeted dining and living rooms, will take smaller house in trade.
5 room modern, 2 1/2 room garage apartment furnished \$11,500.
Well established business, selling as going concern, shown by appointment only.
4 room modern 1 1/2 acre \$2750.
Nice 5 room double garage, on one acre \$7500.
Lovely 3 room brick home, basement, double garage, close in \$12,750.
Lovely 4 bedroom home 100 ft. front \$2500.
Large 5 room rock on the hill \$12,500.

111-Lots
FOR SALE by owner, 90 foot, north-west corner lot, Coffee & Franklin Addition, on paving, Ph. 28811.
LOTS, LOTS, LOTS
JOHN I. BRADLEY, Ph. 777
1398 Booth - Weston 2011J
REALTOR
bedroom home on the hill, to exchange for 2 or 3 bedroom home. Your Listings Appreciated.
TOM COOK, Realtor
900 N. Gray Phone 1037J
115-Out-of-town Property
FOR SALE in Skellytown lot. See Bert Schmidt, in Skellytown.
116-Farms-Ranches
W. H. HAWKINS, Realtor
Ph. 1853 2309 Rham
Bargain in 5 acres close in. Call 1831.
FOR CHEAPER and better home moving call 818.
H. P. HARRISON
117-Property To Be Moved
OUR 20 YEARS OF SERVICE is your guarantee for better - - - HOUSE MOVING
R.R.C. - I. C. C. Permits GRADUATE STUDENTS in chemical engineering, explained. It is purified by converting it to a derivative, methyl lactate, which is easier to purify. The purified methyl lactate is then reconverted to pure lactic acid.
Lactic acid has an important role in the making of plastics and has recently been referred to as one of the most versatile chemical intermediates.
Troupe has designed, with the aid of Dr. K. A. Kobe, chemical engineering professor supervising his research, a methyl lactate plant, - the only one of its kind in the state. The plant is producing the chemical at the rate of four gallons per hour.
If the operation being performed on a commercial scale, it would add to its role in the purification of lactic acid, methyl lactate is valuable as a solvent, especially for cellulose acetate. Troupe's pilot plant, partially financed by funds from the Bureau of Industrial Chemistry, is for the study of the rate of formation of methyl lactate from lactic acid and methanol.
Workers among the ancient Hittites and Assyrians had a five-day working week 4,000 years ago.

110-City Property (cont.)
J. E. RICE, Realtor
Phone 1831
Large 5 room East Francis \$2900.
2 bedroom brick home, garage and apartment in rear \$12,000.
Lovely 3 room furnished rock house on the hill \$12,700.
Large 5 room and double garage, 3 block of Senior High School \$14,500.
Close in 4 bedroom, carpeted dining and living rooms, will take smaller house in trade.
5 room modern, 2 1/2 room garage apartment furnished \$11,500.
Well established business, selling as going concern, shown by appointment only.
4 room modern 1 1/2 acre \$2750.
Nice 5 room double garage, on one acre \$7500.
Lovely 3 room brick home, basement, double garage, close in \$12,750.
Lovely 4 bedroom home 100 ft. front \$2500.
Large 5 room rock on the hill \$12,500.

111-Lots
FOR SALE by owner, 90 foot, north-west corner lot, Coffee & Franklin Addition, on paving, Ph. 28811.
LOTS, LOTS, LOTS
JOHN I. BRADLEY, Ph. 777
1398 Booth - Weston 2011J
REALTOR
bedroom home on the hill, to exchange for 2 or 3 bedroom home. Your Listings Appreciated.
TOM COOK, Realtor
900 N. Gray Phone 1037J
115-Out-of-town Property
FOR SALE in Skellytown lot. See Bert Schmidt, in Skellytown.
116-Farms-Ranches
W. H. HAWKINS, Realtor
Ph. 1853 2309 Rham
Bargain in 5 acres close in. Call 1831.
FOR CHEAPER and better home moving call 818.
H. P. HARRISON
117-Property To Be Moved
OUR 20 YEARS OF SERVICE is your guarantee for better - - - HOUSE MOVING
R.R.C. - I. C. C. Permits GRADUATE STUDENTS in chemical engineering, explained. It is purified by converting it to a derivative, methyl lactate, which is easier to purify. The purified methyl lactate is then reconverted to pure lactic acid.
Lactic acid has an important role in the making of plastics and has recently been referred to as one of the most versatile chemical intermediates.
Troupe has designed, with the aid of Dr. K. A. Kobe, chemical engineering professor supervising his research, a methyl lactate plant, - the only one of its kind in the state. The plant is producing the chemical at the rate of four gallons per hour.
If the operation being performed on a commercial scale, it would add to its role in the purification of lactic acid, methyl lactate is valuable as a solvent, especially for cellulose acetate. Troupe's pilot plant, partially financed by funds from the Bureau of Industrial Chemistry, is for the study of the rate of formation of methyl lactate from lactic acid and methanol.
Workers among the ancient Hittites and Assyrians had a five-day working week 4,000 years ago.

110-City Property (cont.)
J. E. RICE, Realtor
Phone 1831
Large 5 room East Francis \$2900.
2 bedroom brick home, garage and apartment in rear \$12,000.
Lovely 3 room furnished rock house on the hill \$12,700.
Large 5 room and double garage, 3 block of Senior High School \$14,500.
Close in 4 bedroom, carpeted dining and living rooms, will take smaller house in trade.
5 room modern, 2 1/2 room garage apartment furnished \$11,500.
Well established business, selling as going concern, shown by appointment only.
4 room modern 1 1/2 acre \$2750.
Nice 5 room double garage, on one acre \$7500.
Lovely 3 room brick home, basement, double garage, close in \$12,750.
Lovely 4 bedroom home 100 ft. front \$2500.
Large 5 room rock on the hill \$12,500.

111-Lots
FOR SALE by owner, 90 foot, north-west corner lot, Coffee & Franklin Addition, on paving, Ph. 28811.
LOTS, LOTS, LOTS
JOHN I. BRADLEY, Ph. 777
1398 Booth - Weston 2011J
REALTOR
bedroom home on the hill, to exchange for 2 or 3 bedroom home. Your Listings Appreciated.
TOM COOK, Realtor
900 N. Gray Phone 1037J
115-Out-of-town Property
FOR SALE in Skellytown lot. See Bert Schmidt, in Skellytown.
116-Farms-Ranches
W. H. HAWKINS, Realtor
Ph. 1853 2309 Rham
Bargain in 5 acres close in. Call 1831.
FOR CHEAPER and better home moving call 818.
H. P. HARRISON
117-Property To Be Moved
OUR 20 YEARS OF SERVICE is your guarantee for better - - - HOUSE MOVING
R.R.C. - I. C. C. Permits GRADUATE STUDENTS in chemical engineering, explained. It is purified by converting it to a derivative, methyl lactate, which is easier to purify. The purified methyl lactate is then reconverted to pure lactic acid.
Lactic acid has an important role in the making of plastics and has recently been referred to as one of the most versatile chemical intermediates.
Troupe has designed, with the aid of Dr. K. A. Kobe, chemical engineering professor supervising his research, a methyl lactate plant, - the only one of its kind in the state. The plant is producing the chemical at the rate of four gallons per hour.
If the operation being performed on a commercial scale, it would add to its role in the purification of lactic acid, methyl lactate is valuable as a solvent, especially for cellulose acetate. Troupe's pilot plant, partially financed by funds from the Bureau of Industrial Chemistry, is for the study of the rate of formation of methyl lactate from lactic acid and methanol.
Workers among the ancient Hittites and Assyrians had a five-day working week 4,000 years ago.

110-City Property (cont.)
J. E. RICE, Realtor
Phone 1831
Large 5 room East Francis \$2900.
2 bedroom brick home, garage and apartment in rear \$12,000.
Lovely 3 room furnished rock house on the hill \$12,700.
Large 5 room and double garage, 3 block of Senior High School \$14,500.
Close in 4 bedroom, carpeted dining and living rooms, will take smaller house in trade.
5 room modern, 2 1/2 room garage apartment furnished \$11,500.
Well established business, selling as going concern, shown by appointment only.
4 room modern 1 1/2 acre \$2750.
Nice 5 room double garage, on one acre \$7500.
Lovely 3 room brick home, basement, double garage, close in \$12,750.
Lovely 4 bedroom home 100 ft. front \$2500.
Large 5 room rock on the hill \$12,500.

111-Lots
FOR SALE by owner, 90 foot, north-west corner lot, Coffee & Franklin Addition, on paving, Ph. 28811.
LOTS, LOTS, LOTS
JOHN I. BRADLEY, Ph. 777
1398 Booth - Weston 2011J
REALTOR
bedroom home on the hill, to exchange for 2 or 3 bedroom home. Your Listings Appreciated.
TOM COOK, Realtor
900 N. Gray Phone 1037J
115-Out-of-town Property
FOR SALE in Skellytown lot. See Bert Schmidt, in Skellytown.
116-Farms-Ranches
W. H. HAWKINS, Realtor
Ph. 1853 2309 Rham
Bargain in 5 acres close in. Call 1831.
FOR CHEAPER and better home moving call 818.
H. P. HARRISON
117-Property To Be Moved
OUR 20 YEARS OF SERVICE is your guarantee for better - - - HOUSE MOVING
R.R.C. - I. C. C. Permits GRADUATE STUDENTS in chemical engineering, explained. It is purified by converting it to a derivative, methyl lactate, which is easier to purify. The purified methyl lactate is then reconverted to pure lactic acid.
Lactic acid has an important role in the making of plastics and has recently been referred to as one of the most versatile chemical intermediates.
Troupe has designed, with the aid of Dr. K. A. Kobe, chemical engineering professor supervising his research, a methyl lactate plant, - the only one of its kind in the state. The plant is producing the chemical at the rate of four gallons per hour.
If the operation being performed on a commercial scale, it would add to its role in the purification of lactic acid, methyl lactate is valuable as a solvent, especially for cellulose acetate. Troupe's pilot plant, partially financed by funds from the Bureau of Industrial Chemistry, is for the study of the rate of formation of methyl lactate from lactic acid and methanol.
Workers among the ancient Hittites and Assyrians had a five-day working week 4,000 years ago.

110-City Property (cont.)
J. E. RICE, Realtor
Phone 1831
Large 5 room East Francis \$2900.
2 bedroom brick home, garage and apartment in rear \$12,000.
Lovely 3 room furnished rock house on the hill \$12,700.
Large 5 room and double garage, 3 block of Senior High School \$14,500.
Close in 4 bedroom, carpeted dining and living rooms, will take smaller house in trade.
5 room modern, 2 1/2 room garage apartment furnished \$11,500.
Well established business, selling as going concern, shown by appointment only.
4 room modern 1 1/2 acre \$2750.
Nice 5 room double garage, on one acre \$7500.
Lovely 3 room brick home, basement, double garage, close in \$12,750.
Lovely 4 bedroom home 100 ft. front \$2500.
Large 5 room rock on the hill \$12,500.

111-Lots
FOR SALE by owner, 90 foot, north-west corner lot, Coffee & Franklin Addition, on paving, Ph. 28811.
LOTS, LOTS, LOTS
JOHN I. BRADLEY, Ph. 777
1398 Booth - Weston 2011J
REALTOR
bedroom home on the hill, to exchange for 2 or 3 bedroom home. Your Listings Appreciated.
TOM COOK, Realtor
900 N. Gray Phone 1037J
115-Out-of-town Property
FOR SALE in Skellytown lot. See Bert Schmidt, in Skellytown.
116-Farms-Ranches
W. H. HAWKINS, Realtor
Ph. 1853 2309 Rham
Bargain in 5 acres close in. Call 1831.
FOR CHEAPER and better home moving call 818.
H. P. HARRISON
117-Property To Be Moved
OUR 20 YEARS OF SERVICE is your guarantee for better - - - HOUSE MOVING
R.R.C. - I. C. C. Permits GRADUATE STUDENTS in chemical engineering, explained. It is purified by converting it to a derivative, methyl lactate, which is easier to purify. The purified methyl lactate is then reconverted to pure lactic acid.
Lactic acid has an important role in the making of plastics and has recently been referred to as one of the most versatile chemical intermediates.
Troupe has designed, with the aid of Dr. K. A. Kobe, chemical engineering professor supervising his research, a methyl lactate plant, - the only one of its kind in the state. The plant is producing the chemical at the rate of four gallons per hour.
If the operation being performed on a commercial scale, it would add to its role in the purification of lactic acid, methyl lactate is valuable as a solvent, especially for cellulose acetate. Troupe's pilot plant, partially financed by funds from the Bureau of Industrial Chemistry, is for the study of the rate of formation of methyl lactate from lactic acid and methanol.
Workers among the ancient Hittites and Assyrians had a five-day working week 4,000 years ago.

110-City Property (cont.)
J. E. RICE, Realtor
Phone 1831
Large 5 room East Francis \$2900.
2 bedroom brick home, garage and apartment in rear \$12,000.
Lovely 3 room furnished rock house on the hill \$12,700.
Large 5 room and double garage, 3 block of Senior High School \$14,500.
Close in 4 bedroom, carpeted dining and living rooms, will take smaller house in trade.
5 room modern, 2 1/2 room garage apartment furnished \$11,500.
Well established business, selling as going concern, shown by appointment only.
4 room modern 1 1/2 acre \$2750.
Nice 5 room double garage, on one acre \$7500.
Lovely 3 room brick home, basement, double garage, close in \$12,750.
Lovely 4 bedroom home 100 ft. front \$2500.
Large 5 room rock on the hill \$12,500.

111-Lots
FOR SALE by owner, 90 foot, north-west corner lot, Coffee & Franklin Addition, on paving, Ph. 28811.
LOTS, LOTS, LOTS
JOHN I. BRADLEY, Ph. 777
1398 Booth - Weston 2011J
REALTOR
bedroom home on the hill, to exchange for 2 or 3 bedroom home. Your Listings Appreciated.
TOM COOK, Realtor
900 N. Gray Phone 1037J
115-Out-of-town Property
FOR SALE in Skellytown lot. See Bert Schmidt, in Skellytown.
116-Farms-Ranches
W. H. HAWKINS, Realtor
Ph. 1853 2309 Rham
Bargain in 5 acres close in. Call 1831.
FOR CHEAPER and better home moving call 818.
H. P. HARRISON
117-Property To Be Moved
OUR 20 YEARS OF SERVICE is your guarantee for better - - - HOUSE MOVING
R.R.C. - I. C. C. Permits GRADUATE STUDENTS in chemical engineering, explained. It is purified by converting it to a derivative, methyl lactate, which is easier to purify. The purified methyl lactate is then reconverted to pure lactic acid.
Lactic acid has an important role in the making of plastics and has recently been referred to as one of the most versatile chemical intermediates.
Troupe has designed, with the aid of Dr. K. A. Kobe, chemical engineering professor supervising his research, a methyl lactate plant, - the only one of its kind in the state. The plant is producing the chemical at the rate of four gallons per hour.
If the operation being performed on a commercial scale, it would add to its role in the purification of lactic acid, methyl lactate is valuable as a solvent, especially for cellulose acetate. Troupe's pilot plant, partially financed by funds from the Bureau of Industrial Chemistry, is for the study of the rate of formation of methyl lactate from lactic acid and methanol.
Workers among the ancient Hittites and Assyrians had a five-day working week 4,000 years ago.

110-City Property (cont.)
J. E. RICE, Realtor
Phone 1831
Large 5 room East Francis \$2900.
2 bedroom brick home, garage and apartment in rear \$12,000.
Lovely 3 room furnished rock house on the hill \$12,700.
Large 5 room and double garage, 3 block of Senior High School \$14,500.
Close in 4 bedroom, carpeted dining and living rooms, will take smaller house in trade.
5 room modern, 2 1/2 room garage apartment furnished \$11,500.
Well established business, selling as going concern, shown by appointment only.
4 room modern 1 1/2 acre \$2750.
Nice 5 room double garage, on one acre \$7500.
Lovely 3 room brick home, basement, double garage, close in \$12,750.
Lovely 4 bedroom home 100 ft. front \$2500.
Large 5 room rock on the hill \$12,500.

111-Lots
FOR SALE by owner, 90 foot, north-west corner lot, Coffee & Franklin Addition, on paving, Ph. 28811.
LOTS, LOTS, LOTS
JOHN I. BRADLEY, Ph. 777
1398 Booth - Weston 2011J
REALTOR
bedroom home on the hill, to exchange for 2 or 3 bedroom home. Your Listings Appreciated.
TOM COOK, Realtor
900 N. Gray Phone 1037J
115-Out-of-town Property
FOR SALE in Skellytown lot. See Bert Schmidt, in Skellytown.
116-Farms-Ranches
W. H. HAWKINS, Realtor
Ph. 1853 2309 Rham
Bargain in 5 acres close in. Call 1831.
FOR CHEAPER and better home moving call 818.
H. P. HARRISON
117-Property To Be Moved
OUR 20 YEARS OF SERVICE is your guarantee for better - - - HOUSE MOVING
R.R.C. - I. C. C. Permits GRADUATE STUDENTS in chemical engineering, explained. It is purified by converting it to a derivative, methyl lactate, which is easier to purify. The purified methyl lactate is then reconverted to pure lactic acid.
Lactic acid has an important role in the making of plastics and has recently been referred to as one of the most versatile chemical intermediates.
Troupe has designed, with the aid of Dr. K. A. Kobe, chemical engineering professor supervising his research, a methyl lactate plant, - the only one of its kind in the state. The plant is producing the chemical at the rate of four gallons per hour.
If the operation being performed on a commercial scale, it would add to its role in the purification of lactic acid, methyl lactate is valuable as a solvent, especially for cellulose acetate. Troupe's pilot plant, partially financed by funds from the Bureau of Industrial Chemistry, is for the study of the rate of formation of methyl lactate from lactic acid and methanol.
Workers among the ancient Hittites and Assyrians had a five-day working week 4,000 years ago.

110-City Property (cont.)
J. E. RICE, Realtor
Phone 1831
Large 5 room East Francis \$2900.
2 bedroom brick home, garage and apartment in rear \$12,000.
Lovely 3 room furnished rock house on the hill \$12,700.
Large 5 room and double garage, 3 block of Senior High School \$14,500.
Close in 4 bedroom, carpeted dining and living rooms, will take smaller house in trade.
5 room modern, 2 1/2 room garage apartment furnished \$11,500.
Well established business, selling as going concern, shown by appointment only.
4 room modern 1 1/2 acre \$2750.
Nice 5 room double garage, on one acre \$7500.
Lovely 3 room brick home, basement, double garage, close in \$12,750.
Lovely 4 bedroom home 100 ft. front \$2500.
Large 5 room rock on the hill \$12,500.

111-Lots
FOR SALE by owner, 90 foot, north-west corner lot, Coffee & Franklin Addition, on paving, Ph. 28811.
LOTS, LOTS, LOTS
JOHN I. BRADLEY, Ph. 777
1398 Booth - Weston 2011J
REALTOR
bedroom home on the hill, to exchange for 2 or 3 bedroom home. Your Listings Appreciated.
TOM COOK, Realtor
900 N. Gray Phone 1037J
115-Out-of-town Property
FOR SALE in Skellytown lot. See Bert Schmidt, in Skellytown.
116-Farms-Ranches
W. H. HAWKINS, Realtor
Ph. 1853 2309 Rham
Bargain in 5 acres close in. Call 1831.
FOR CHEAPER and better home moving call 818.
H. P. HARRISON
117-Property To Be Moved
OUR 20 YEARS OF SERVICE is your guarantee for better - - - HOUSE MOVING
R.R.C. - I. C. C. Permits GRADUATE STUDENTS in chemical engineering, explained. It is purified by converting it to a derivative, methyl lactate, which is easier to purify. The purified methyl lactate is then reconverted to pure lactic acid.
Lactic acid has an important role in the making of plastics and has recently been referred to as one of the most versatile chemical intermediates.
Troupe has designed, with the aid of Dr. K. A. Kobe, chemical engineering professor supervising his research, a methyl lactate plant, - the only one of its kind in the state. The plant is producing the chemical at the rate of four gallons per hour.
If the operation being performed on a commercial scale, it would add to its role in the purification of lactic acid, methyl lactate is valuable as a solvent, especially for cellulose acetate. Troupe's pilot plant, partially financed by funds from the Bureau of Industrial Chemistry, is for the study of the rate of formation of methyl lactate from lactic acid and methanol.
Workers among the ancient Hittites and Assyrians had a five-day working week 4,000 years ago.

110-City Property (cont.)
J. E. RICE, Realtor
Phone 1831
Large 5 room East Francis \$2900.
2 bedroom brick home, garage and apartment in rear \$12,000.
Lovely 3 room furnished rock house on the hill \$12,700.
Large 5 room and double garage, 3 block of Senior High School \$14,500.
Close in 4 bedroom, carpeted dining and living rooms, will take smaller house in trade.
5 room modern, 2 1/2 room garage apartment furnished \$11,500.
Well established business, selling as going concern, shown by appointment only.
4 room modern 1 1/2 acre \$2750.
Nice 5 room double garage, on one acre \$7500.
Lovely 3 room brick home, basement, double garage, close in \$12,750.
Lovely 4 bedroom home 100 ft. front \$2500.
Large 5 room rock on the hill \$12,500.

111-Lots
FOR SALE by owner, 90 foot, north-west corner lot, Coffee & Franklin Addition, on paving, Ph. 28811.
LOTS, LOTS, LOTS
JOHN I. BRADLEY, Ph. 777
1398 Booth - Weston 2011J
REALTOR
bedroom home on the hill, to exchange for 2 or 3 bedroom home. Your Listings Appreciated.
TOM COOK, Realtor
900 N. Gray Phone 1037J
115-Out-of-town Property
FOR SALE in Skellytown lot. See Bert Schmidt, in Skellytown.
116-Farms-Ranches
W. H. HAWKINS, Realtor
Ph. 1853 2309 Rham
Bargain in 5 acres close in. Call 1831.
FOR CHEAPER and better home moving call 818.
H. P. HARRISON
117-Property To Be Moved
OUR 20 YEARS OF SERVICE is your guarantee for better - - - HOUSE MOVING
R.R.C. - I. C. C. Permits GRADUATE STUDENTS in chemical engineering, explained. It is purified by converting it to a derivative, methyl lactate, which is easier to purify. The purified methyl lactate is then reconverted to pure lactic acid.
Lactic acid has an important role in the making of plastics and has recently been referred to as one of the most versatile chemical intermediates.
Troupe has designed, with the aid of Dr. K. A. Kobe, chemical engineering professor supervising his research, a methyl lactate plant, - the only one of its kind in the state. The plant is producing the chemical at the rate of four gallons per hour.
If the operation being performed on a commercial scale, it would add to its role in the purification of lactic acid, methyl lactate is valuable as a solvent, especially for cellulose acetate. Troupe's pilot plant, partially financed by funds from the Bureau of Industrial Chemistry, is for the study of the rate of formation of methyl lactate from lactic acid and methanol.
Workers among the ancient Hittites and Assyrians had a five-day working week 4,000 years ago.

110-City Property (cont.)
J. E. RICE, Realtor
Phone 1831
Large 5 room East Francis \$2900.
2 bedroom brick home, garage and apartment in rear \$12,000.
Lovely 3 room furnished rock house on the hill \$12,700.
Large 5 room and double garage, 3 block of Senior High School \$14,500.
Close in 4 bedroom, carpeted dining and living rooms, will take smaller house in trade.
5 room modern, 2 1/2 room garage apartment furnished \$11,500.
Well established business, selling as going concern, shown by appointment only.
4 room modern 1 1/2 acre \$2750.
Nice 5 room double garage, on one acre \$7500.
Lovely 3 room brick home, basement, double garage, close in \$12,750.
Lovely 4 bedroom home 100 ft. front \$2500.
Large 5 room rock on the hill \$12,500.

111-Lots
FOR SALE by owner, 90 foot, north-west corner lot, Coffee & Franklin Addition, on paving, Ph. 28811.
LOTS, LOTS, LOTS
JOHN I. BRADLEY, Ph. 777
1398 Booth - Weston 2011J
REALTOR
bedroom home on the hill, to exchange for 2 or 3 bedroom home. Your Listings Appreciated.
TOM COOK, Realtor
900 N. Gray Phone 1037J
115-Out-of-town Property
FOR SALE in Skellytown lot. See Bert Schmidt, in Skellytown.
116-Farms-Ranches
W. H. HAWKINS, Realtor
Ph. 1853 2309 Rham
Bargain in 5 acres close in. Call 1831.
FOR CHEAPER and better home moving call 818.
H. P. HARRISON
117-Property To Be Moved
OUR 20 YEARS OF SERVICE is your guarantee for better - - - HOUSE MOVING
R.R.C. - I. C. C. Permits GRADUATE STUDENTS in chemical engineering, explained. It is purified by converting it to a derivative, methyl lactate, which is easier to purify. The purified methyl lactate is then reconverted to pure lactic acid.
Lactic acid has an important role in the making of plastics and has recently been referred to as one of the most versatile chemical intermediates.
Troupe has designed, with the aid of Dr. K. A. Kobe, chemical engineering professor supervising his research, a methyl lactate plant, - the only one of its kind in the state. The plant is producing the chemical at the rate of four gallons per hour.
If the operation being performed on a commercial scale, it would add to its role in the purification of lactic acid, methyl lactate is valuable as a solvent, especially for cellulose acetate. Troupe's pilot plant, partially financed by funds from the Bureau of Industrial Chemistry, is for the study of the rate of formation of methyl lactate from lactic acid and methanol.
Workers among the ancient Hittites and Assyrians had a five-day working week 4,000 years ago.

110-City Property (cont.)
J. E. RICE, Realtor
Phone 1831
Large 5 room East Francis \$2900.
2 bedroom brick home, garage and apartment in rear \$12,000.
Lovely 3 room furnished rock house on the hill \$12,700.
Large 5 room and double garage, 3 block of Senior High School \$14,500.
Close in 4 bedroom, carpeted dining and living rooms, will take smaller house in trade.
5 room modern, 2 1/2 room garage apartment furnished \$11,500.
Well established business, selling as going concern, shown by appointment only.
4 room modern 1 1/2 acre \$2750.
Nice 5 room double garage, on one acre \$7500.
Lovely 3 room brick home, basement, double garage, close in \$12,750.
Lovely 4 bedroom home 100 ft. front \$2500.
Large 5 room rock on the hill \$12,500.

111-Lots
FOR SALE by owner, 90 foot, north-west corner lot, Coffee & Franklin Addition, on paving, Ph. 28811.
LOTS, LOTS, LOTS
JOHN I. BRADLEY, Ph. 777
1398 Booth - Weston 2011J
REALTOR
bedroom home on the hill, to exchange for 2 or 3 bedroom home. Your Listings Appreciated.
TOM COOK, Realtor
900 N. Gray Phone 1037J
115-Out-of-town Property
FOR SALE in Skellytown lot. See Bert Schmidt, in Skellytown.
116-Farms-Ranches
W. H. HAWKINS, Realtor
Ph. 1853 2309 Rham
Bargain in 5 acres close in. Call 1831.
FOR CHEAPER and better home moving call 818.
H. P. HARRISON
117-Property To Be Moved
OUR 20 YEARS OF SERVICE is your guarantee for better - - - HOUSE MOVING
R.R.C. - I. C. C. Permits GRADUATE STUDENTS in chemical engineering, explained. It is purified by converting it to a derivative, methyl lactate, which is easier to purify. The purified methyl lactate is then reconverted to pure lactic acid.
Lactic acid has an important role in the making of plastics and has recently been referred to as one of the most versatile chemical intermediates.
Troupe has designed, with the aid of Dr. K. A. Kobe, chemical engineering professor supervising his research, a methyl lactate plant, - the only one of its kind in the state. The plant is producing the chemical at the rate of four gallons per hour.
If the operation being performed on a commercial scale, it would add to its role in the purification of lactic acid, methyl lactate is valuable as a solvent, especially for cellulose acetate. Troupe's pilot plant, partially financed by funds from the Bureau of Industrial Chemistry, is for the study of the rate of formation of methyl lactate from lactic acid and methanol.
Workers among the ancient Hittites and Assyrians had a five-day working week 4,000 years ago.

110-City Property (cont.)
J. E. RICE, Realtor
Phone 1831
Large 5 room East Francis \$2900.
2 bedroom brick home, garage and apartment in rear \$12,000.
Lovely 3 room furnished rock house on the hill \$12,700.
Large 5 room and double garage, 3 block of Senior High School \$14,500.
Close in 4 bedroom, carpeted dining and living rooms, will take smaller house in trade.
5 room modern, 2 1/2 room garage apartment furnished \$11,500.
Well established business, selling as going concern, shown by appointment only.
4 room modern 1 1/2 acre \$2750.
Nice 5 room double garage, on one acre \$7500.
Lovely 3 room brick home, basement, double garage, close in \$12,750.
Lovely 4 bedroom home 100 ft. front \$2500.
Large 5 room rock on the hill \$12,500.

111-Lots
FOR SALE by owner, 90 foot, north-west corner lot, Coffee & Franklin Addition, on paving, Ph. 28811.
LOTS, LOTS, LOTS
JOHN I. BRADLEY, Ph. 777
1398 Booth - Weston 2011J
REALTOR
bedroom home on the hill, to exchange for 2 or 3 bedroom home. Your Listings Appreciated.
TOM COOK, Realtor
900 N. Gray Phone 1037J
115-Out-of-town Property
FOR SALE in Skellytown lot. See Bert Schmidt, in Skellytown.
116-Farms-Ranches
W. H. HAWKINS, Realtor
Ph. 1853 2309 Rham
Bargain in 5 acres close in. Call 1831.
FOR CHEAPER and better home moving call 818.
H. P. HARRISON
117-Property To Be Moved
OUR 20 YEARS OF SERVICE is your guarantee for better - - - HOUSE MOVING
R.R.C. - I. C. C. Permits GRADUATE STUDENTS in chemical engineering, explained. It is purified by converting it to a derivative, methyl lactate, which is easier to purify. The purified methyl lactate is then reconverted to pure lactic acid.
Lactic acid has an important role in the making of plastics and has recently been referred to as one of the most versatile chemical intermediates.
Troupe has designed, with the aid of Dr. K. A. Kobe, chemical engineering professor supervising his research, a methyl lactate plant, - the only one of its kind in the state. The plant is producing the chemical at the rate of four gallons per hour.
If the operation being performed on a commercial scale, it would add to its role in the purification of lactic acid, methyl lactate is valuable as a solvent, especially for cellulose acetate. Troupe's pilot plant, partially financed by funds from the Bureau of Industrial Chemistry, is for the study of the rate of formation of methyl lactate from lactic acid and methanol.
Workers among the ancient Hittites and Assyrians had a five-day working week 4,000 years ago.

110-City Property (cont.)
J. E. RICE, Realtor
Phone 1831
Large 5 room East Francis \$2900.
2 bedroom brick home, garage and apartment in rear \$12,000.
Lovely 3 room furnished rock house on the hill \$12,700.
Large 5 room and double garage, 3 block of Senior High School \$14,500.
Close in 4 bedroom, carpeted dining and living rooms, will take smaller house in trade.
5 room modern, 2 1/2 room garage apartment furnished \$11,500.
Well established business, selling as going concern, shown by appointment only.
4 room modern 1 1/2 acre \$2750.
Nice 5 room double garage, on one acre \$7500.
Lovely 3 room brick home, basement, double garage, close in \$12,750.
Lovely 4 bedroom home 100 ft. front \$2500.
Large 5 room rock on the hill \$12,500.

32-Upholstery Repair

BRUMMETT FURNITURE
Will have our upholstering shop open about Feb. 1st and will do all types of furniture work. Ph. Pendine. 210 Dixie.

MRS. VERA Stephens Craft Shop and Upholstery - Ship Covers and Drapery 221 E. Cuyler, Ph. 168

Fugate Upholstery Shop
810 N. Bank Phone 1917W

33-Curtains
HAVE YOUR curtains and drapes expertly done. Satisfactory tinting 417 N. Cuyler, Phone 2210.

LACE Curtains, ruffles, curtains, table linens, shirts, uniforms, finished at 113 N. Davis Phone 1426W.

34-Laundry
IRONING wanted at 1245 S. Wilcox. Phone 2319W.

WE'LL PICK UP and deliver your rough dry and wet wash. We have hot-air-press service.
KIRKBY'S LAUNDRY
118 N. Hobart Phone 18

Ironing Wanted. Ph. 2163W.

Ideal Steam Laundry
Carl and Inez Lawrence
Helpful, soft-water, dryers. Push-up delivery wet wash, rough dry. Phone 463 721 East Atchison

He's Got a Lot of Crust

Mainly About People

Lt. Audrey Burns will conduct her farewell meeting with the Salvation Army here next Sunday. Lt. Burns, who has been assistant of files here since last June, is being transferred by the Dallas office to some other part of Texas.

Nickelodeons for rent. Ph. 273. Top of Texas Amusement Co. Mrs. Verona E. Strickley and her new son, John S., have been removed from the Worley Hospital to their home at 620 E. Foster. The child was born at 3 a. m. Tuesday, weighed 6 pounds 14 ounces at birth.

Reserve seats for Pampa Borger basketball game Fri. nite available at Pampa School Business Office in City Hall. \$1.20 including tax. Student tickets available at Borger Gym.

Removal notice of American National Insurance Co. 319 N. Ballard St. Garman Bldg.

Mr. and Mrs. R. F. Kuhn, 1924 Christine, are the parents of a boy, John Lindsey, born this morning at the Worley Hospital.

He-Man Now



After going around for three years with long blond curls, Billy Gilbert, 3, of Chicago, had them clipped. He seems to think that the change is a decided improvement for a husky he-man like he is.

The party which was to have been held Saturday by the Bell Home Demonstration Club has been postponed indefinitely.

Battery raised fryers all year round. 1009 Twiford. Ph. 24283.

The ESA Sorority will have its business meeting at 2 p. m. today in the home of Mrs. Ed Givens, 1108 Charles, instead of the City Club Room as originally planned.

Duenkel - Carmichael Cadillac Emergency Ambulance. Ph. 4007. Hospital beds, wheel chairs for rent at Prescription Laboratory.

Sgt. Frank C. Allison, son of Mrs. Ameliaslove Allison, 813 E. Frederic, is now serving as a range NCO with the Eighth Army Replacement Training Center, Yokohama, Japan.

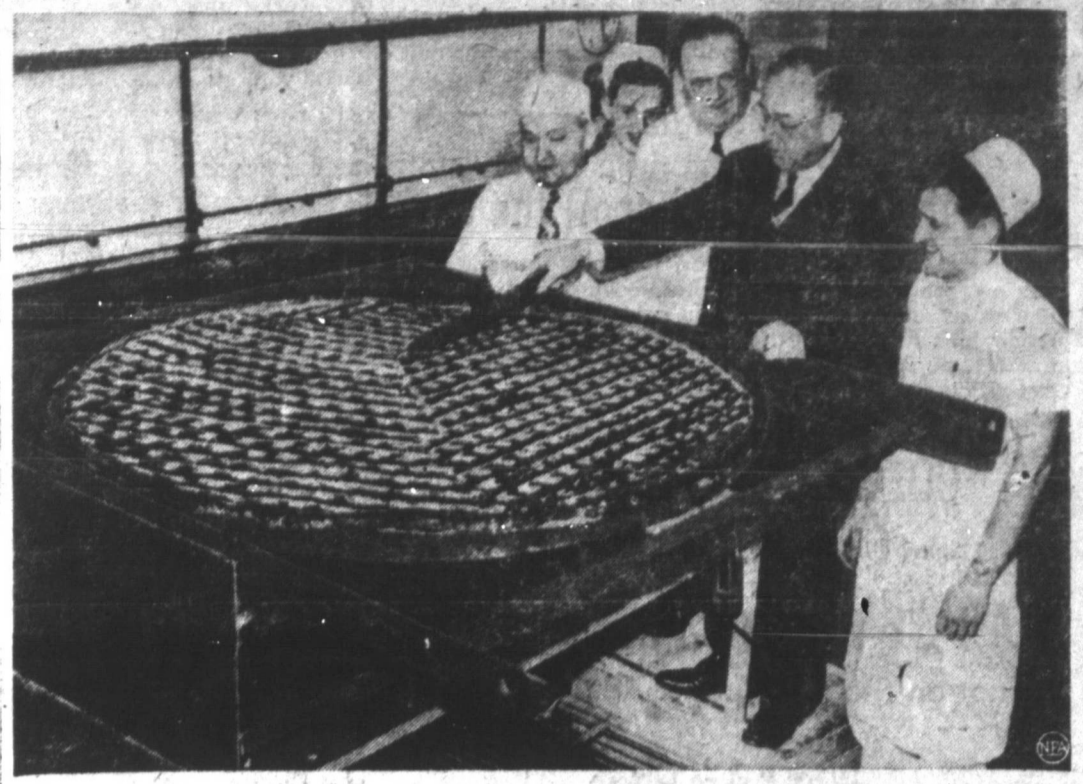
Wanted - experienced ready-to-wear sales girl, good pay and permanent position to right party. Apply Gilbert's.

Our Clients have paid us... \$42,016,264.00

GEORGE S. MAY COMPANY Business Engineering OFFICES IN PRINCIPAL CITIES

WISE ECONOMY

3-MINUTE OATS



With 150 pounds each of cranberries, apples and sugar and a 100-pound crust, this ponderous pastry is the largest pie ever created in New England. It was baked in Quincy, Mass., and Quincy's mayor, Charles A. Ross, in dark, taste-tests the masterpiece. They didn't say if it was made to eat or to throw at somebody.

1949 Will Echo Texas' Bitter Political Feuding

AUSTIN — (AP) — Texas political feuding hit a new hectic high in 1948 and some of it will re-echo in 1949.

The year past had three major political disturbances: The Lyndon Johnson-Coke Stevenson Senate scrap; the internal warfare among the Democrats; the resurgence of Republican hopes for new strength in this usually Democratic state.

Although 1949 is an off-year so far as nominating and electing state and district officials is concerned, you needn't look for too much of a lull in political activity. Here are some prospects:

1. Coke Stevenson's determination to press for a Senate investigation into his charges that fraudulent vote-counting deprived him of the Democratic nomination should make some headlines early in 1949.
2. The fight to oust Wright Morrow of Houston as Democratic national committeeman from Texas is not over. It could come to a new head early in the year, possibly at the meeting of the National Committee scheduled incidentally to the inauguration of President Truman.
3. Prospective candidates for governor, lieutenant governor, attorney general and other major state offices in 1950 will begin jockeying for favorable positions. This same trend will run right on down to the level of county politics.
4. Republicans have opened permanent state headquarters in

Austin with a full-time staff working quietly with their eyes on 1952's elections and their ears on Johnson's friends are confident that Stevenson's charges will die a natural death in the overwhelmingly Democratic Senate.

Stevenson said in November that he is "prepared" to and "intends" to prove his charges. He discounts the fact that the Senate is Democratic, saying that twice in 25 years Republican Senates have rejected the election of Republicans.

Their bitter battle for the Democratic nomination slogged over into the general election campaign, with Stevenson confining out in favor of Jack Porter, the Republican candidate took a sound licking. The runoff campaign and its aftermath rivaled anything that has ever happened in Texas politics for its degree of bitterness and its exchange of hard words.

The fight against Morrow was symptomatic of internal dissension among the Democrats.

Morrow was named national committeeman at the Brownwood convention in May as a concession to the right wing or State's Rights faction of the party. He had Gov. Beauford H. Jester's support, and it was this backing by the Governor that enabled Morrow to stay in the saddle as the titular party leader in Texas. He needed the right votes at Brownwood.

The fight against Morrow was symptomatic of internal dissension among the Democrats.

Morrow was named national committeeman at the Brownwood convention in May as a concession to the right wing or State's Rights faction of the party. He had Gov. Beauford H. Jester's support, and it was this backing by the Governor that enabled Morrow to stay in the saddle as the titular party leader in Texas. He needed the right votes at Brownwood.

The September convention did all it could to give Morrow the boot, but he has refused to be booted.

The attack on him was born of his alignment with the Texas regular party in 1944 and other accusations of disloyalty to the Democrats. Morrow's reply is that his efforts in behalf of the Truman-Barkley ticket speak for themselves, that he worked harder than some of his critics, and that he is willing to stand on his record.

Although the convention and its executive committee have both recommended that Morrow be replaced with Byron Skelton of Temple, the National Committee has made no public expression yet. The committee rules provide that an ill vacancies created by death or resignation.

On the office-holding front, look for much activity on the part of prospective candidates for governor in 1950. Public officials who make a lot of speeches or stay in the public eye otherwise during the next year are the ones to keep an eye on.

Among the top-ranking prospects for candidates for governor are Lieut. Gov. Allan Shivers, Attorney General Price Daniel, Railroad Commissioner Olin Culbertson, Land Commissioner Bascom Giles, and Cato March, the Baylor law teacher who has run twice before and says he will keep trying.

The Republicans made some gains in 1948. Their play in 1949 will be to woo Democrats who think the way they do. There may also be an internal fight among them for control of the state party, just as there will be on the national level following Tom Dewey's defeat.

The State's Right party with Gov. J. Strom Thurmond as its presidential candidate ran a poor third in the general election in Texas. The other extreme, the Progressives, with Henry Wallace at the helm, were left far behind. Neither the State's Righters nor the Wallaceites have given any hint they intend to sign off for a while in Texas.

The year 1949 may not answer two big questions: What of the future political plans, if any, of retiring Senator W. Lee O'Daniel and Governor Jester?

An early announcement of O'Daniel's personal plans in the business field is expected, but it is likely it will be "wait and see" so far as politics are concerned. Talk at Austin is that Jester

wants to devote the next two years to being Governor and that he now intends to leave politics. Whether or not some event may change that remains to be seen.

Legal Records
MARRIAGE LICENSES
Rex W. Spearman and Susan Rucker
Jack M. Sharp and Mrs. Iona L. Morris.
REALTY TRANSFERS
Harry B. Morgan and wife to James W. Anderson; Lot 4, Block 1, Hughes-Pitts.
Mrs. J. W. Morris to W. L. Morris; Lot 4, Block 1, Young's Second.

'Whitecollar' Class Gets Health Warning
AUSTIN — (AP) — The "whitecollar" class of workers were urged by State Health Officer George W. Cox to guard against diabetes. The disease continues to take the lives of hundreds of Texans every year, he said, despite modern medicine's making it possible or the diabetic to live out a normal life span in comparative comfort.

Dr. Cox noted that the disease seldom affects persons whose occupations call for manual labor or vigorous exercise.

As preventative, Dr. Cox prescribed simple, wholesome diets. Sufficient sleep and exercise.

The flicker's diet is almost 50 percent ants.

J. RAY MARTIN
B.M.A. BUSINESS MEN'S ASSURANCE CO.
Life, Accident, Health Hospitalization Group
107 N. Frost Phone 772

A FAT BANKROLL

TO ANYONE WHO WILL MARRY B. F.'s DAUGHTER PHONE 1231

UNKLE HANK SEZ

A PERSON ALL WRAPPED UP IN HIMSELF MAKES A HECK OF A LOOKIN' PACKAGE.

we're all wrapped up in selling you the International Harvester tractors, trucks, implements and refrigeration equipment you need. Our personnel is anxious to prove to you that this equipment is reliable and long-lasting. Come by HOGUE MILLS EQUIPMENT INC. today for further information.

Hogue Mills Equipment
INTERNATIONAL TRACTOR, IMPLEMENT, POWER
PARTS SERVICE
301 WEST WOODWAY, P.O. BOX 1200
PAMPANA, TEXAS

Choice

We cut, double wrap, meats, fish, poultry, and game for home freezers.

BEEF ROAST	STEAKS
AA Grade Chuck lb. 49c	AA Grade, Round, Loin, lb. 79c
PORK SAUSAGE	GROUND BEEF
Home Made lb. 59c	Best in Town lb. 49c
HAMS	PORK ROAST
Hickory Smoked lb. 59c	Country Killed lb. 49c
BABY FOODS	COFFEE
Gerber's each 7½c	Monarch lb. 49c

Just received --- a shipment of Kosher Salami and Kosher Dill Pickles ---

Pampa Frozen Foods

314 E. Francis Phone 1212

ON SALE FRIDAY MORNING 9 A.M.

Levine's

Sensational Sale!

350 BRAND NEW Reliance 'Happy Home' COTTON DRESSES

SEE OUR WINDOWS

THE GREATEST DRESS VALUE OF THE YEAR

\$1.99 2 FOR \$3.85

MANY STYLES! MANY COLORS!

SIZES: 16½ to 24½
12 to 20
9 to 15

MATERIALS: 80 Square Percale, Checked Percale, Printed Broadcloth, Florals, Stripes, Checks

STYLES: Zipper Fronts, Coat Styles, Utility Styles, Shirtwaist Types, Swirl-Skirts, Wrap Around Styles

Only at Levine's Are Values Like This Possible!

LEVINE'S

PAMPA TEXAS