

# TOP OF TEXAS WRAPPED IN SNOW

## Truman Budget Nearly \$42 Billion

### Cold War With Reds Takes Half

WASHINGTON—(AP)—President Truman today handed Congress a record \$41,858,000,000 peacetime budget—half of it to wage the cold war with Russia.

And he warned that the price of bulwarking freedom in the world is going higher still.

The spending program Mr. Truman charted for the 12 months beginning next July 1 is \$1,678,000,000 higher than this year's—also a peacetime record.

Still to come is the cost of rearming Western Europe—a step the President said he will propose before the year is out, to boost the total still further.

Even in the absence of that outlay, the Chief Executive declared, the nation faces an \$873 million 1950 deficit piled atop a \$600 million red ink entry for 1949—unless taxes are raised.

Soberly Mr. Truman declared that future budgets will have to be bigger yet to meet America's mounting responsibilities in the world and to pay the bill for a greatly expanded military establishment at home.

Thus the President renewed with emphasis his plea that Congress jump taxes \$4 billion a year—not counting higher levies for increased social security benefits and a new health insurance program he wants to start the New Deal ball rolling again.

These important disclosures were made on highest authority following issuance of the budget message.

1. The President figures on July 1 being the effective date for the \$4 billion-a-year tax hike he wants on corporation, estates and "middle and upper" bracket income. He thinks it may yield only \$2 billion in fiscal 1950, however, because of a time lag

### Tickets for CC Banquet Still on Sale

Approximately 50 tickets for the annual Chamber of Commerce Board of City Development banquet are still unsold and may be purchased by the first persons calling for reservations at the Chamber of Commerce office.

The banquet will start at 7:30 p.m. tomorrow in the High School Cafeteria. Thurman Sensing, principal speaker, has arrived in Pampa, so the banquet will be held regardless of weather conditions.

Delegations from nearly all of the neighboring towns have agreed to attend. There will be more than 100 out-of-towners at the banquet if roads are passable.

"A large and varied program of entertainment has been planned," Joe F. Key, retiring president, said.

Ken Bennett's orchestra will provide dinner music and R. Virgil Mott will lead group singing. Senior High Girls' Sextette and the High School Quartet also will provide part of the evening's entertainment.

Incoming officers of the Pampa Chamber of Commerce will be installed by Borger City Manager A. A. Merridith. Fred Thompson will succeed Joe F. Key as president. George S. Vineyard will replace Thompson as first vice president. John O. Pitts again will serve as treasurer and E. O. Wedgworth will continue as manager.

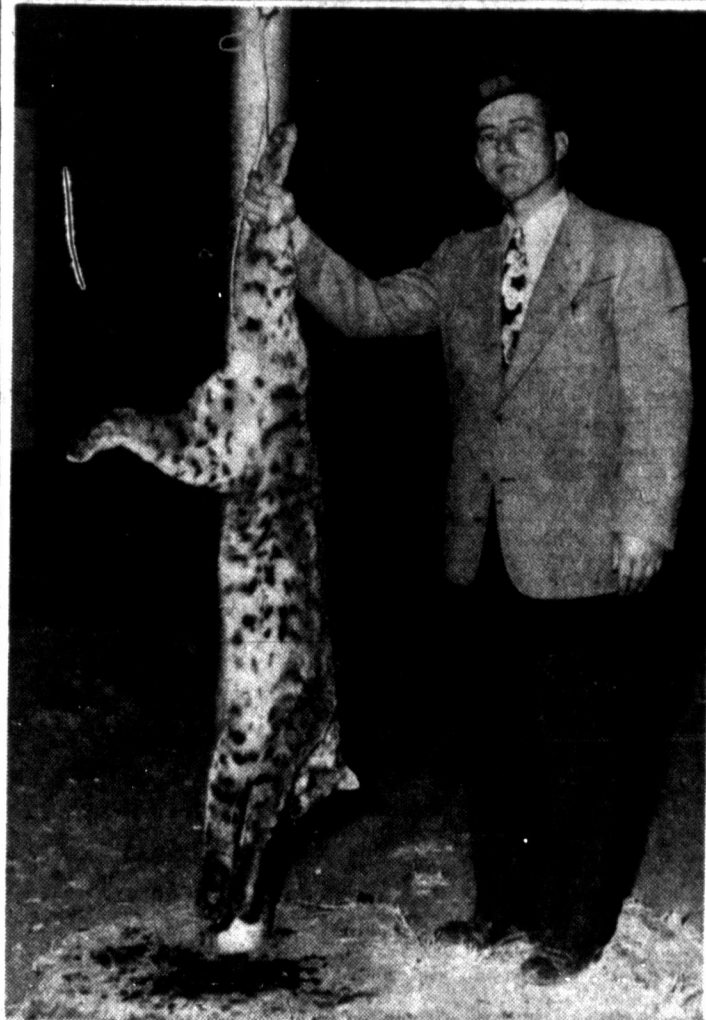
"Tested Tips," illustrated panels by Jack and Betty Gray, is a new feature to be found beginning today on the Woman's Page. Handy little tips on ways to do things with more ease.



GREETED NEW SECRETARY OF STATE—Dean Acheson, left, who was attending a meeting of the Hoover Commission in Washington, is congratulated by Herbert Hoover, former president of the U. S., following the announcement that Acheson has been appointed Secretary of State to succeed General George Marshall who resigned primarily because of poor health. (NEA Telephoto.)

# Pampa News

VOL. 47—NO. 204 (8 Pages) PAMPA, TEXAS, MONDAY, JANUARY 10, 1949



### Canadian Adds Another 'Wildcat' Title With Killing of Huge Bob-Cat

CANADIAN—(Special)—That Canadian is really in "wildcat territory" was brought home to a bang one evening last week when Norman Magill shot and killed a huge bob-cat in his pasture about four miles from Canadian, along the Canadian River.

Magill was looking after some calves shortly before sundown when he saw the wildcat looking things over just beyond the calves. Taking his shotgun from the car, Magill cautiously made his way among the cattle to get in gun range of the big

cat, and shot him in the face with number six shot, then finished him with a club.

The wildcat measured 48 inches from the tip of his nose to the tip of his stubby tail, and weighed 30 pounds. Many of the old-timers of the area, seeing the bob-cat, declared it was the largest specimen of the wildcat, (lynx family) they had ever seen. Magill will have the hide tanned and made into a rug.

Other "wildcats" of interest are the wildcat oil wells being drilled and the "Canadian Wildcats" football and basketball teams.

### Ghost Bills to Come Up Before 51st Legislature

By DAVE CHEAVENS  
AUSTIN—(AP)—The 51st Legislature will be asked to pump new life into last session's ghost bills.

These were measures appropriating \$4,838,000 passed by the 50th Legislature in its closing hours, but which died when the comptroller was unable to certify there was enough money in hand or in sight to pay for them.

Under the state's pay-as-you-go Constitutional provision, every appropriation bill must be so certified unless it has passed by a four-fifths majority of both House and Senate.

The bills which will be revived in one form or another, probably early in the session starting tomorrow, were: \$1 million for the Dallas cancer and pellagra hospital; \$1,500,000 additional for soil conservation districts; \$1 million for Lamar College at Beaumont; \$1 million for a branch of the University of Texas Medical School at San Antonio; \$180,000 for museums at Lubbock and West Texas State; \$125,000 for the Memorial Museum at Austin; \$30,000 for various junior colleges.

Rep. Jack Brooks of Beaumont said the Lamar College bill's passage would be his No. 1 objective during the session. It also has the support of Lieut. Gov. Allan Shivers.

The session should see a history-making scramble for state funds. The state's financial condition is far better than it was

When the brotherhoods set the truck last week, the town of 2,000 had only a 10-day water supply. They still need the water that is to be hauled from Lake Olney 37 miles away. But the drought's broken at Archer City.

### Britain Moves to Brace Military

LONDON—(AP)—Key British cabinet members and defense chiefs heard Foreign Secretary Ernest Bevin give a detailed report today on the Middle East crisis stemming from Israel's action in shooting down five RAF planes.

The session was called by Prime Minister Attlee, presumably to consider Britain's next move and perhaps determine how far she will go in strengthening land, sea and air bases in that part of the world.

Britain appeared to be massing strength behind her Arab allies as she concentrated warships and troops in the tense Mediterranean area.

The move came on the heels of Britain's "strong protest" to Israel against the shooting down of five RAF planes Friday.

Britain's protest was contained in a brief memorandum handed to a representative of the Israeli Consul General Cyril Marriot.

A Tel Aviv dispatch said the Israeli representative refused to accept the British protest because it was addressed to "Jewish authorities in Tel Aviv" and not to the provisional government of Israel.

It was the second such Israeli refusal in two days. The first was by the Israeli delegation to the U. N. Security Council in New York for the same reason. Britain does not recognize the state of Israel.

If the British government wants the protest to reach Tel Aviv it now may be required to transmit it through a third power—such as the United States or Russia—which has diplomatic relations with both Britain and Israel.

Government sources said it is probable Britain's next step will be a strong demand that the U. N. Security Council insist that Jewish troops keep within Israel's boundaries and that Israel pay for the loss of planes and pilots.

If she fails to get effective Security Council action Britain was reported by one government measure of her own to bulwark See BRITAIN, Page 3

### Methodists to Hear Noted Missionaries

SHAMROCK—(Special)—Methodists from throughout the Clarendon District will gather in Shamrock tomorrow, when the local First Methodist Church is host to the District Missionary Institute. Rev. W. E. Hamilton, Clarendon District superintendent, will be in charge of the institute, which will begin at 10:30 a.m. and continue until 12:30 in the afternoon.

Two of the outstanding Christian educators of the United States will be guest speakers at the meeting. One is Rev. Edwin T. Iglehart, STD, missionary of the Methodist Church and long a professor on the staff of Aoyama Gakuin, noted Methodist College in Tokyo. The other is Rev. Harold Marcus Hilliard, a number of years active in promoting the extension of church work among Spanish-speaking people in America's Southwest, and later in Puerto Rico, and now a member of the staff of the Division of Home Missions and Church Extension of the Methodist Church.

In addition to the addresses by the two outstanding speakers, business will be discussed concerning plans for a campaign on the "Advance for Christ," program of all Methodism.

The public is invited to attend the two-hour session. Rev. E. M. Dunnam, local pastor, stated.

### Tickets Available For Scout Banquet

Tickets for the annual Pampa Girl Scout Association banquet will be available at the Scout office in the City Hall until Saturday noon. A. C. Troop president, said this morning.

The annual banquet will be held at 7 p.m. Tuesday in the Palm Room of the City Hall. Aubrey Steele, first vice president, will preside and Jimmie McCune, chairman of the Membership Committee, will serve as master of ceremonies.

"The Inspiration of Working with Youth," will be the topic of the principal speaker, Ed Weiss, former Finance Committee chairman. The Senior Girls' Sextette will provide the entertainment and L. G. Langston will be in charge of the installation of the 1949 officers of the association.

### THE WEATHER

U. S. Weather Bureau  
WEST TEXAS: Occasional snow in Panhandle and South Plains and freezing rain or rain elsewhere this afternoon, tonight and Tuesday. Much colder except little change in Panhandle and South Plains with lowest temperatures three to ten in Panhandle and South Plains, and 12 to 24 elsewhere. Slight today except sleet and snow extreme north, decidedly colder today with cold wave southward. Sleet and snow continuing throughout state tonight and Tuesday. Colder southeast tonight, continuing cold Tuesday. Highs today 5 to 10 in Panhandle to near 20 northeast, lows tonight near 5 above Panhandle 25 elsewhere. Westerly winds 25 miles per hour today.  
8:00 a.m. .... 5-10 a.m. .... 5-10  
7:00 a.m. .... 5-10 noon .... 5-10  
8:00 a.m. .... 7 West. Max. .... 25  
9:00 a.m. .... 7 West. Min. .... 5  
10:00 a.m. .... 7  
Need Lamps? Get them at Lewis Hardware Co.

### Roads Open but Very Dangerous

Following a sleet storm that began yesterday morning, the head and shoulders of Texas were wrapped in an icy mantle today.

Rain, which started here early yesterday, turned to sleet and fell intermittently all day. A heavy sleet storm began again at 5:30 a.m. today, to bring the total precipitation from Saturday night to Monday morning to .32 of an inch.

Most of the towns in the Pampa area report very similar conditions. The major highways are still open, so far, but all towns east of here report dangerous and slick driving conditions. Fortunately, no serious accidents were reported in the Pampa area this morning.

Schools were closed today in Miami, Wheeler, Mobeetie, White Deer and Skellytown. W. O. Carrick, superintendent of schools at Wheeler, said that since most of the Wheeler school population was rural, the Wheeler schools may be closed tomorrow, also.

Pampa, Lefors, McLean, and Canadian kept their schools open; however, the attendance was down. E. R. Reeves, superintendent of schools at Lefors, reported an attendance of about 84 percent.

Pampa's schools remained open today and school buses "made their rounds without any trouble," Knox Kinard, superintendent of schools, said.

All the school units in Pampa are open and comfortably heated, Kinard said, but attendance fell off today to around 60 percent.

Unless the weather should take a sudden turn for the worse, Snow and sleet swept the Great Plains and freezing, drizzling rain blanketed a vast portion of North and West Texas and extended southward as far as Waco, according to the Associated Press.

They said the cold front by midmorning slid through Austin from the south. Weather was muggy and cloudy.

Extreme East Texas had not yet caught the effects of the cold front.

The Weather Bureau predicted colder weather for the state tonight and added:

"We'll have bad weather at least until the middle of the week."

The center of the bitter weather was still in the Dakotas, with See ROADS, Page 3

### More Misery Hits West, Mountains

By The Associated Press  
A benumbing cold wave heaped more misery today upon the mountain and Rocky Mountain regions which still were counting their losses from last week's paralyzing blizzard.

Citrus fruit growers in Southern California were fighting again to save the remainder of their crops from another freeze. Snow fell in Los Angeles yesterday for the first time since 1932, and in Long Beach for the second time in 50 years. It melted rapidly.

Temperatures as low as 19 degrees were forecast for tonight or early tomorrow in the fruit area which suffered a \$25 million damage last week to the \$100 million-a-year crop.

The frigid blast in the Great Plains and Rocky Mountains was Montana's coldest in 10 years. It brought renewed fear for the survival of livestock already weakened from the lack of feed during the blizzard which brought death to at least 22 persons and tied up rail and highway travel for three days.

Blizzard conditions again were reported in some Wyoming areas and in northeastern New Mexico, but snowfall throughout the area generally was moderate with railroads and bus lines operating on or near normal schedules.

At Livingston, Mont., the mercury had skidded to 26 below zero early today. International Falls, Minn., had a -18, Bismarck, N. D., a -11, and Casper, Wyo., -14. Readings generally below zero were in prospect for the entire region as far south as northern Kansas.

The Red Cross set up a blizzard relief service yesterday at Rapid City, S. D., and sent out planes in search of victims of See MORE, Page 3

### WE HEARD...

Peg o' Pampa made a big mistake in her column yesterday. We've looked all over town for her, but can't seem to find her. She said "a newcomer to Pampa and gaining daily in popularity is Ed Cleveland from Snyder. He told us this morning he is from Stamford."

Alfred L. Lemmon collided with Richard Hardin's sedan late yesterday afternoon when he skidded on the icy streets. He was later charged with leaving the scene without giving his address.

### Borgan Dies Of Exposure; 3 Wrecks

BORGER—Fifty-seven-year-old Robert Boyce was a victim of the bitter weather in Borger yesterday.

A cement finisher, Mr. Boyce was found frozen to death at 3:30 a.m. yesterday in an alley off the 800 block of Main Street by city police. Friends of Mr. Boyce said he had suffered from a heart ailment for some time. He had been a Borger resident for approximately 18 years, coming from Carmen, Okla.

He was a former commander of the Adobe Walls Post No. 1789, Veterans of Foreign Wars. Also, he was a member of the American Legion Post in Carmen. Funeral arrangements have not been announced. Poston-Simpson Funeral Home is returning the body to Carmen for final rites.

Three automobile accidents were reported in Pampa over the weekend, two of which were due to weather conditions.



COUNTY IN THE RED—The Rev. Edgar Henshaw (left) is shown presenting to Dr. Julian Key a check for \$4,095, sent to this county by the National Foundation of Infantile Paralysis, after the local March of Dimes fund was exhausted in taking care of polio cases. More money from NFIP is forthcoming. Rev. Henshaw is a member of the Board of Directors, and Dr. Key is the secretary. A campaign to raise \$10,000 between now and Jan. 31, is now underway in Gray County.

# All-City Boxing Tournament Starts Tonight

## Weighing-In Completed and Pairings Made for Tonight

### Football Coaches President Lashes NCAA Sanity Code

### LA Open in Finals Today

LOS ANGELES (AP)—The closing round of the \$15,000 Los Angeles Open Golf Tournament is in prospect today.

Four professionals headed into the final round for the \$2,800 top money tied for first place at 214. Two strokes behind them were two more ranking challengers.

Heading the procession and hoping for a weather break after yesterday's most unusual climate were Lloyd Mangrum, Jimmy Demaret, Leland Gibson and Eric Month.

Pressing just behind were Sam Snead and E. J. (Dutch) Harrison.

Mangrum and Demaret, off their past records, dominated the final round forecasting.

But Gibson, 39-year-old pro from Kansas City, a veteran of this tournament since 1939, ignored the harsh winds and cold yesterday and shot the finest round of the day. It was a 67, four under par for the Riviera Country Club course.

Gibson and Demaret were the only players to break par. And only two, Snead and lagging Vic Ghezzi, were able to match it.

### BETTER BOWLING

RE-SPOTTING PINS: Anyone who plays any game will tell you that it means a lot, and it is worth a lot to know the rules. While it may take a little time and effort to learn the bowling rules, it will pay you dividends. Rule 10, for example, covers the matter of calling for a re-spot of the 10 pins under (b) as follows:

"When a pinsetter removes or interferes with any pin or pins before it or they stop rolling or before the ball reaches the pins, the ball shall be ruled 'dead.' The shot does not count, and the pins must be re-spotted.

In the American Bowling Congress, and other major tournaments, for instance, a re-spot claim is seldom disallowed. The rule provides for such contingencies.

League bowlers should call infractions of the rule, too, because it can mean the loss of pins and possibly even of a 300 game. The rest of the "dead ball" rule provides for a re-spot (A) when one or more pins are missing from the setup; (C) Bowling on the wrong alley or out of turn; (D) When a bowler is interfered with by a pin setter, another bowler, spectator, or moving object as the ball is being delivered and before the delivery is completed. In that case the bowler has the option of accepting the pinfall on the ball, or calling for a re-spot; (E)

**Martin-Turner**  
Fire, Auto, Comprehensive, and Fidelity Insurance  
—LOANS—  
107 N. Frost Phone 772

**MILLIONS SAY... WHY PAY MORE!**  
St. Joseph Aspirin is so pure. 12 tablets 10c; 100 tablets only 45c. Why pay more, or ever accept less than the St. Joseph guarantee of "Aspirin at its best." Buy **St. Joseph ASPIRIN** WORLD'S LARGEST SELLER AT 10c

**Piles May Lead to Chronic Ailments**  
FREEBOOK—Explains the Causes and Effects

**HAROLD WRIGHT Insurance Agency**  
"Right Service"  
107 E. Foster Phone 1361

**ELECTRIC MOTOR REWINDING and REPAIRING**  
Light Plant and Generator Service  
Pick-up and Delivery Anywhere  
**Dirksen Electric Motor Service**  
720 W. Brown Phone 3336



Page 2 Pampa Texas, Monday, January 10, 1948

## WARREN'S WARM UP

By Warren Hesse—News Sports Editor

QUESTION: What is the most one-sided score ever run up in a major football game?

ALL-CITY TOURNEY: Tonight the all-city boxing tourney gets underway, with the winners in each division receiving a boxing trophy award donated by the Jaycees, and proceeding on to the district Golden Gloves meet the following week. Yesterday the weighing-in ceremonies were held at the Sportatorium.

### Writers Pick AA Cage Champions

AUSTIN (AP)—With nearly seven weeks of sparring complete, Texas Class AA basketball teams are settling down to the business of determining which eight clubs will qualify for the state tournament here next March.

The six bi-district champions, plus the two that will receive byes will be battling for an undefeated crown. Crozier Tech of Dallas, which won the 1947 AA trophy, has been moved into the City Conference division.

All of the 16 districts will be in conference competition by next Friday night.

District races shape up this way, based on surveys of coaches and sports writers over the state:

- 1-AA: Amarillo. Contenders—Pampa, Lubbock and Borger.
- 2-AA: Childress. Contenders—Quanah, Wichita Falls and Graham.
- 3-AA: Abilene. Contenders—Lamesa and San Angelo.
- 4-AA: Bowie of El Paso. Contenders—El Paso and Fort Worth.
- 5-AA: Bonham. Contenders—Gainesville and Greenville.
- 6-AA: Highland Park. Contenders—Denton and McKinney.
- 7-AA: Brownwood. Contenders—Stephenville.
- 8-AA: Texarkana. Contenders—Henderson, Kilgore and Gladewater.
- 9-AA: Waco. Contenders—Waxahatchie and Temple.
- 10-AA: Bryan. Contenders—Nacogdoches and Lufkin.
- 11-AA: Beaumont. Contenders—Orange and Port Arthur.
- 12-AA: Texas City. Contenders—Baytown, Galena Park and Galveston.
- 13-AA: Austin. Contenders—Laredo and Corpus Christi.
- 14-AA: Harlingen. Contenders—Alice and San Benito.

### McLean Makes Plans For Annual Banquet

McLEAN (Special)—The annual banquet for grid players of McLean High School, will be held in the Legion Hall here on Tuesday night, Jan. 18.

The grid affair will be sponsored by the McLean Quarterback Club, and will be given in honor of the members of this year's Tiger squad.

John Haynes, who is president of the Quarterback Club, stated that program plans are being worked out. Leo "Dutch" Meyer, popular TCU football coach, will be principal speaker, and will probably show films of one of the TCU games. It is also planned to have several musical numbers on the program.

Co-chairman of the entertainment committee, which will be in charge of the banquet, are J. Lester Dwyer and Mrs. W. W. Shadd. Members of the committee to assist the co-chairmen are Logan Cummings, John Cooper, and Mrs. C. R. Griffith.

### Sox Get Bevans

CHICAGO (AP)—Baseball's busiest rebuilders, the Chicago White Sox, Saturday salvaged Floyd (Bill) Bevans, loser of a one-hitter in the 1947 World Series, from the New York Yankees.

He comes to the Sox mound staff conditionally, and can be returned if his sore shoulder does not work into shape. The big 31-year-old righthander twirled 3 2-3 hits in six innings against Brooklyn in the 1947 series only to lose 2-1 when Cookie Lavagetto doubled in two runs. Late in 1947 he strained a right leg ligament officiating a basketball game. This and his shoulder trouble left him useless to the Yanks last season. During 1948 he pitched some semi-pro ball and appeared in only eight innings for Newark of the International League in mid-season.

### Woman 'Athlete Of Year' Chosen

NEW YORK (AP)—Mrs. Fanny Blankers-Koen, Dutch Olympic Games star, has been chosen woman "Athlete of the Year" for 1948—first time the honor has ever gone to a foreigner in the annual Associated Press poll.

Mrs. Mildred (Babe) Didrikson Zaharias of Denver dropped to second last year with 16 first place votes and 99 points.

Mrs. Vicki Draves of Pasadena,

## Harvesters Settle For Rough Week

### Baylor, Texas Likely Foes For Title

By The Associated Press  
It looks like Baylor and Texas will fight it out again for the Southwest Conference basketball title.

The Conference campaign opened last week and defending champion Baylor and last year's runner-up, Texas, brushed past two foes each to loom as the outstanding clubs in the championship chase.

Whether this rating is justified will be seen this week. Both the Bears and Texas Longhorns face strong opposition—from the clubs given the best chance to spring upsets.

Texas downed Southern Methodist, 50-44, last week but the potentially dangerous Mustangs may be a tougher foe for Baylor, even on the Bears' home court at Waco.

It was a hectic week for all save the "Big Two" last week. Texas Christian surprised Southern Methodist, 58-52, and then upset the TCU Frogs, 58-42.

Arkansas took it on the chin from Baylor, 41-37, and Southern Methodist tripped Texas A&M 55-37. Texas whipped Texas Christian and Baylor.

Slater Martin, Texas ace guard, took over individual scoring leadership in season play from Southern Methodist's Jack Brown, 212 points to 202.

Julius Dolnicz, Texas Christian's 22-year-old center, tops conference scorers with 80 points.

### Sports Round-Up

By HUGH FULLERTON, JR.  
NEW YORK (AP)—The local basketball folks will toss a "night" for Nat Holman tomorrow in honor of his 30 years of college coaching. Nat's coaching probably has been an important factor in the development of big-time basketball hereabouts as Ned Irish's promotion. Shortly afterward Holman's City College team will make a flying trip to the West Coast and Clair Bee's Long Island cagers will go on an even more extended tour. Both probably will get a painful lesson as to how the other half lives. Ted Hazlewood, North Carolina U. tackle, didn't bother to return to Chapel Hill after the Sugar Bowl game. Ted was a graduate student and apparently took care of his own graduation.

CLEANING THE CUFF.  
Bill Lee, Citaton's pop, didn't have a stakes winner among his two-year-old sons and daughters last year. . . . College Baseball coaches are thinking about picking their own All-America baseball team—and selling it to a magazine like the football and basketball coaches did. When the new Cincinnati Arena is opened next month, it probably will have shatterproof glass screens for night hockey games. The other night hockey player, J. J. son of the Arena president, stopped in Toronto to see a hockey game and pick up some dope on arena management. He hardly had reached his seat when he was smacked over the eye by a flying puck.

DORAZIO ACCUSED.  
PHILADELPHIA (AP)—Gus Dorazio was free in \$1,500 bail today after the former heavy-weight boxer was arraigned on a charge of homicide in the fatal beating of a brewery worker. Dorazio, 31, was accused of homicide by fist after Albert Blomeyer died of injuries suffered in a fight Friday.

THE INSURANCE MEN  
Wm. T. Fraser & Co.  
Automobile, Compensation, Fire and Liability Insurance  
112 W. Kingsmill Phone 1044

**Enter Rag-Time Doubles**  
Each Sat. & Sun. During Jan.  
Separate for Men & Women  
**PAMPA BOWL**  
10% of Total Receipts Goes to Polio Fund

**DR. GEORGE SNELL**  
ANNOUNCES THAT HIS NEW DENTAL CLINIC IS NOW OPEN  
1121 N. FROST

**Beware Coughs From Common Colds That HANG ON**  
Cremolium relieves promptly because it goes right to the seat of the trouble to help loosen and expel germ laden phlegm and aid nature to soothe and soothe, soothe, inflamed bronchial mucous membranes. Tell your druggist to sell you a bottle of Cremolium with the understanding you must like the way it quickly allays the cough or you are to have your money back.  
**CREMOLIUM** for Coughs, Chest Colds, Bronchitis

Calif., double Olympic diving champion, was third. Fourth was Barbara Ann Scott of Ottawa, Olympic and European figure skating champion.

**TEX EVANS BUICK CO.**  
123 N. Gray Phone 123

**1/3 OFF**

**DR. GEORGE SNELL**  
ANNOUNCES THAT HIS NEW DENTAL CLINIC IS NOW OPEN  
1121 N. FROST

**2 Blocks North of Sam Houston School**

**DR. GEORGE SNELL**  
ANNOUNCES THAT HIS NEW DENTAL CLINIC IS NOW OPEN  
1121 N. FROST

**2 Blocks North of Sam Houston School**

**120 WEST FOSTER PHONE 108**

# ALL GAS HEATER

**DR. JOE R. DONALDSON**  
is now associated with Drs. Overton, Williams & Wyatt.  
COMBS-WORLEY BUILDING

**TEX EVANS BUICK CO.**  
123 N. Gray Phone 123

**1/3 OFF**

**Pampa Furniture Company**  
120 WEST FOSTER PHONE 108

**TESTED TIPS** By Jack and Betty Gray

**PRESSING MATTER!**  
—HARD-TO-IRON RAINCOATS ARE A PEESE IF YOU WRAP THEM FIRST IN A DAMP TOWEL, THEN COVER WITH WAX PAPER AND CAN IN REFRIGERATOR BEFORE IRONING!

**NAIL TALE!**  
—TO MAKE SHORT NAILS LOOK LONGER, MOORE ATTRACTIVE, USE PINK POLISH INSTEAD OF DARK... COVER NAILS, BUT LEAVE TIPS UNCOVERED!

**the MAIL BAG**  
MRS. R. S. SCHNEIDER—YOU'LL FIND DURING CARRIED FURNITURE, PICTURE FRAMES, ETC., READY IF YOU USE A SPOET DRY PAINT BRUSH INSTEAD OF A CLOTH!

© 1949 BY TESTED TIPS  
DIN BY JOHN F. O'LEARY CO.

The 1949 meeting is Hialeah's 22nd racing season. The track opened in 1925, but did not operate in 1927, 1943 and 1948.

**NEW RELIEF!** WHEN CHILD FEELS

**Choked Up** WITH A COLD

**VAPORUB STEAM** relieves distress fast!

Mother, you know what wonderful relief you get when you rub on warming Vicks VapoRub. Now... if a cold chokes up your youngster and makes breathing difficult... here's a special way to use VapoRub for grand relief, too!

Put a good spoonful of Vicks VapoRub in a bowl of boiling water or vaporizer. Then... let your child breathe in the soothing VapoRub Steam. Medicated vapors penetrate direct to congested upper bronchial tubes, bring relief with every breath! For congested relief while child sleeps, rub throat, chest and back with Vicks VapoRub. It keeps working for hours to relieve distress. Try it!

**VICKS VAPORUB**

**YOUR FRIENDLY Griffith THEATRES IN PAMPA**

Open 1:45 Ph. 1231  
to 8:00 P.M.; to 8:00 after

**LaNora** Ph. 1231  
to 8:00 P.M.; to 8:00 after

**TODAY THRU WED.**  
WRAP UP BOB HOPE FUN!  
Jane RUSSELL

**PLUS**  
"Dough Ray Me-ow"  
Champion in the Making and Latest News

Open 1:45 Ph. 327  
to 8:00 P.M.

**REX** Ph. 327  
to 8:00 P.M.

**TODAY THRU TUES.**

starting LOUIS  
Hayward  
and  
Bluff  
A COLUMBIA PICTURE

**PLUS**  
"Fast That Came to Dinner"  
"Photo Frenzy" and  
Late News

Open 1:45 Ph. 1323  
to 8:00 P.M.

**CROWN** Ph. 1323  
to 8:00 P.M.

**LAST DAY**  
"Flowing Gold"  
with JOHN GARFIELD

**PLUS**  
"Duke Bandit" Cartoon  
and Her Favorite Poole

**TUES. WED. THURS.**  
"Sitting Pretty"  
with CLAYTON WOOD  
BOBBY YOUNG  
MAUREN O'HARA

## The Social Calendar

**MONDAY**  
7:30 Members of the Pampa OES chapter are to be guests at Wheeler for their constituting service, Masonic Temple.  
7:30 Pythian Sisters, Carpenter's Hall.

**TUESDAY**  
2:30 Varieties Studio Club, Mrs. Ralph Thomas, 1705 Williston, hostess.  
2:30 Twentieth Century Forum, Mrs. Aubrey L. Steele, 124 Charles, hostess.  
2:30 El Progresso Club, Mrs. P. C. Ledrick, hostess.  
2:30 Twentieth Century Club, Mrs. J. W. Gordon, 1309 Charles, hostess.  
2:30 Civic Culture Club meets in the home of Mrs. L. J. McCarty, 1020 N. Russell.  
7:30 Theta Rho Girls' Club, IOOF Hall.  
8:00 Pampa Toastmaster's Club, City Council Room.

**WEDNESDAY**  
2:30 First Baptist W.M.U. Circles meet in homes. Guest, Groom Circle, Mrs. O. A. Davis, 705 S. Barnes; Lily Huntley Circle, Mrs. H. G. Wilkie, 1325 W. Ripley; Doree Hawkins Circle, Mrs. L. W. McGlothlin, Berger Highway; Lena Lutz, Mrs. R. Edmondson, 912 N. Gray; Blanche Groves, Mrs. A. L. Prigmore, 1145 Terrace; Mae Deter, Mrs. E. L. Tarrent, 220 N. Gillespie; Elnora Couthen, Mrs. E. L. Anderson, 1002 E. Francis.  
6:30 Presbyterian Church Fellowship Dinner, church basement.  
8:00 Knights of Pythias, Carpenter's Hall.

**THURSDAY**  
9:30 Yucca Delphians, City Club Rooms.  
1:15 E. M. Baker P-TA Executive Board meeting.  
2:15 E. M. Baker P-TA meeting, school Auditorium.  
2:00 Sam Houston P-TA meeting, at the school.  
2:30 Horace Mann P-TA meeting, at the school.  
7:30 Rebekah Lodge, IOOF Hall.

**Two Teen-Aged Girls Sentenced**  
DALLAS —(AP)— Juvenile Judge Sara T. Hughes sentenced two teen-ager girls who attacked a Dallas County jail matron, causing her death, to the State Training School for Girls at Gatesville until they are 21 years old. The girls, who are 15 and 17, were sentenced after short hearing with juvenile authorities. The delinquency petitions filed against the girls said they, in an attempt to escape from the county jail, had injured the matron by causing her to fall and strike her head on the jail floor that the matron died the following day. The matron was Mrs. Kassie Mae Chandler.

**DR. J. L. CHASE, JR.**  
Opening of Office for Practice of Optometry  
**DUNCAN BLDG.**  
Rooms 5 & 7 Ph. 4008

**Don't let a cough TEAR YOU APART**

Get decisive quick relief from miserable coughs due to colds

PINEX is a real cough medicine—a prescription-like formula of recognized medicinal ingredients. Works right where the trouble is. Relieves dry coughs—soothe irritation—loosens phlegm—lessens tickle—helps easy breathing. For over 40 years millions have depended on quick-acting PINEX for effective relief.

PINEX SAVES YOU ABOUT \$2.00  
Most ready-mixed cough syrups contain teaspoonful doses of sugar and water or liquid honey yourself and get a full pint of effective cough medicine at about 1/4 the usual cost. No fun—no bother! A child can mix it! Don't needlessly pay more. Get PINEX at any drugstore. Satisfaction or money back!

**PINEX**  
America's Largest Selling COUGH SYRUP

**MAGNETO REPAIRING**  
COMPLETE STOCK PARTS AND NEW MAGNETOS  
**SALES-SERVICE-PARTS**  
for Briggs & Stratton Kohler Light Wisconsin ENGINES PLANTS ENGINES  
ALL WORK GUARANTEED  
**RADCLIFF BROS. ELECTRIC CO.**  
519 E. Cuyler Phone 1220

## The Woman's Page

### LUMMUS-BROWN WEDDING HELD IN SHAMROCK HOME

SHAMROCK—(Special)— Miss Cora Lummus of Shamrock, daughter of Mr. and Mrs. J. W. Lummus of Dumas, became the bride of A. C. Brown, son of Mr. and Mrs. J. R. Brown of Shamrock, in a wedding Thursday evening at the home of her brother-in-law and sister, Mr. and Mrs. Leroy Wall. Nuptial vows were exchanged in a double-ring ceremony with the Rev. Edw. C. Derr, pastor of the First Baptist Church, officiating. Mrs. Woodrow Sims was the bride's attendant. She wore a tailored suit of green gabardine with black accessories and a corsage of Tailsman roses. Woodrow Sims was best man. The bride was attired in a two-piece dress of light grey wool with matching accessories. She wore white gloves and her corsage was of Vanda orchids. At the reception, the bride's table was laid with a cloth of Italian cutwork. At one end was the wedding cake, encircled with white mums and a shower of satin ribbon. White candles in crystal candelabra shed a soft glow on the setting. Miss Paula Bledsoe, Denton, cousin of the bride, presided at the silver coffee service. Mrs. Garland Abernethy served the wedding cake. Attending the wedding were: Mr. and Mrs. J. R. Brown, Ra Lummus, Mr. and Mrs. Garland Abernethy, Miss Paula Bledsoe, Glenda Rea and Sherry Brown, and Mrs. Edw. C. Derr. The couple left for a trip to Dallas and Fort Worth following the reception. Mr. Brown is associated with the Universal Insurance Company and she is employed in the alteration department at the Ladies Store. They will make their home in Shamrock.

**Isaacs-Purcell Vows Exchanged**  
SHAMROCK—(Special)— Miss Flora Isaacs, daughter of Mr. and Mrs. T. J. Isaacs, Friday evening became the bride of Cecil Purcell, son of Mr. and Mrs. Arthur Purcell of Leila. The ceremony was held in a single-ring service performed at the home of the Rev. and Mrs. L. J. Crawford. Miss Cora Isaacs, sister of the bride, was bridesmaid. She was attired in a dress of black crepe and wore a corsage of red roses. Carroll Henry was best man. The bride chose for her wedding a grey tailored suit which was accented with black accessories. Her corsage was of white carnations. Mrs. Isaacs, mother of the bride, wore a dress of black crepe and a corsage of red roses. Immediately following the ceremony a reception was held at the home of Mr. and Mrs. Darrell Miller. Mrs. James Miller and Mrs. Vaudrey Henderson presided at the refreshment table. Mrs. Purcell was graduated from Shamrock High School in 1947. Purcell attended Shamrock High School before entering military service in 1943. He served with the U. S. Army Engineers and was stationed in the European Theatre of War for 27 months. He is now employed at Lucy's Drive Inn. The couple will make their home in Shamrock.

**Mrs. Sparks Gets Trip to Chicago**  
SKELLYTOWN — Mrs. Goldie Sparks has recently returned from a week's expense-paid trip to Chicago, as a guest of the House of Compton, encyclopedia publishers. She is now employed at \$100,000 for an "anti-inflation" program carrying broad control powers. The national health program and bigger social security benefits could run into billions of dollars without affecting budgeted outlays, since they operate through government trust funds not counted with general receipts and expenditures.

**Worthwhile HD Hears Duke Talk**  
Worthwhile Home Demonstration Club had a lesson "Parlor or Living Room—You Choose" at its meeting Friday in the home of Mrs. G. H. Anderson, 637 N. Nelson. Mrs. Mary Anne Duke, county home demonstration agent, led the discussion. She said the living room reveals the philosophy of the family living there and that the furniture should be comfortable, practical and attractive. Mrs. Roy Robertson, president, had charge of the meeting at which members received their program year books. Mrs. Joe Looper, vice president, stressed the importance of carrying out the minimum club goals in a new year. The club camera is with Mrs. Roy Tinsley. Mrs. R. E. Engle was a guest and consented to become a member. Next meeting will be Jan. 21 in the home of Mrs. C. B. Chisum, Johns Lease, south of town. Refreshments were served to those mentioned and: Mmes. D. L. Lunsford, O. G. Smith, O. A. Wagner, Chester Williams, J. R. Grundy, J. C. Payne, John A. King, N. B. Cude and E. B. Stueben and son, Eddie.

**Entre Nous Club Has Installation**  
Members of the Entre Nous Club recently met in the country home of Mrs. Ruth Spearman to install officers for 1949. Committee chairmen were installed as follows: Mrs. Joe Lewis, chairman, program; Mrs. Spearman, recreation; and Mrs. Guy Farrington, special. After secret pals were drawn for the forthcoming year, refreshments were served. Following members: Mmes. W. D. Stockstill, J. L. Stroope, C. A. Tignor, Norman Walberg, W. S. Tolbert, O. H. Ingram, C. H. Gowers, C. C. Stockstill, Joe Lewis, Holley Gray, E. A. Shackleton and Donnie Lee Stroope. The next meeting will be Jan. 28 in the home of Mrs. C. W. Bowers in Miami.

**Coffee Honors Mrs. R. Johnson**  
Mrs. W. J. Vaughn and Mrs. Myles Morgan were co-hostesses at a coffee Friday morning in the Vaughn home, 1133 Starkweather, honoring Mrs. Roy Johnson. The Johnsons serve to make their home in Wichita, Kan. Farewell gifts were presented to the honoree and refreshments were served to Mmes. J. W. Arndt, A. E. Hickman, W. M. McWent, Frank Tabor, S. E. Waters, Calvin Whately, to the honoree and to Jan Johnson, Bobby Lynn Whately, Jocelyn and Cecily Morgan and Billy Vaughn.

**Lefors Baptist Class Has Social**  
LEFORS — Mrs. D. D. Lewis was hostess to the Mary Martha Sunday School Class of the Baptist Church, Thursday, for the monthly business meeting and social. In the absence of the president, Mrs. Lewis presided during the business session. After the social hour, which consisted of a quiz game and secret pal exchanges, refreshment plates were served. Mmes. R. C. H. Huff, W. C. Cannon, A. E. Penington, Bud Cumberland, Lonnie Ables, Claude Lamb, C. H. Earhart, E. W. Ammons and one visitor, Mrs. Ralph Puckett.

**Breakfast Served At Schafer Club**  
Mrs. Roy Beck was hostess to members of the Schafer Club Thursday morning at a breakfast in her home. Breakfast was served to Mrs. B. A. Wesner, R. E. McCallister, W. L. Reed, Leroy Allen, T. A. Ingram, L. F. Karlin, Ray Carr, C. C. Coffey, P. E. Stephenson, Russell Veal, Ed Harmon, L. D. Cowart and one visitor. The next regular meeting of the club will be at 7:30 p.m., Jan. 24, in the home of Mrs. Helen Scott. Mrs. P. E. Stephenson will be co-hostess.

**DELICIOUS APPLES**  
Each of the seven in the Southwest Conference offered a place-kicking specialist during the 1948 grid season. One man did the exclusive kicking for each team.

**Marquis-Marrs Engagement Told**  
Mr. and Mrs. Bert Marquis of Odessa, formerly of Pampa, are announcing the engagement and forthcoming marriage of their daughter, Dorothy, to Howard Murray Marrs, son of Mr. and Mrs. W. M. Marrs, Odessa. The couple will exchange wedding vows Jan. 22 at the Odessa Northside Church of Christ. Marquis was a Phillips employe for many years in Pampa before going to Odessa to be with the company there. The family lived on the Johns Lease.

**Renkin Reported Off Investigating Group**  
WASHINGTON — (AP)— Rep. John E. Renkin's job with the House Un-American Activities Committee was reported at an end. Members of the Democratic Committee on Committees told newsmen a substantial majority had voted to keep any committee chairman in the House from serving on another committee. The Mississippi Democrat is slated to head the Veterans Affairs group.

## BRITAIN

(Continued from Page 1)  
The Arab states against possible territorial encroachment by Israel. Meantime Britain hastened deployment of her Mediterranean forces. Two British frigates sailed early yesterday from Malta to Cyprus near the Palestine coast. An admiralty spokesman said the aircraft carrier Triumph and the cruiser Phoebe, which have been cruising the Mediterranean, have been recalled to rejoin other British warships concentrated there. The British Foreign office announced Saturday that troops had been sent from the Suez Canal Zone to Trans-Jordan's Red Sea port of Aqaba. A Trans-Jordan government spokesman in Amman confirmed that the Britons had arrived in Aqaba, at the request of Trans-Jordan. An Israeli spokesman in Tel Aviv has denied all five British planes were shot down on the Egyptian side of the border. At least three planes, he said, were downed on the Palestine side of the frontier.

## COLD WAR

(Continued from Page 1)  
expenditures in the fiscal year 1950 are likely to be larger than those for 1950... even higher expenditures are expected to be required in future years. The cost of championing democracy was reckoned by the President in these words: "The 1950 budget, like all those since the end of the war, is dominated by our international and national defense programs. Together, they are expected to amount to \$21 billion, or half of all budget expenditures." He also asked funds to start new programs, some vastly expanding the government's participation in the economic affairs of the nation or launching it into new fields of social benefit undertakings. A \$290 million-a-year program of aid to education, an initial \$180,000,000 for alum clearance and low-rent housing, \$100,000 for an "anti-inflation" program carrying broad control powers. The national health program and bigger social security benefits could run into billions of dollars without affecting budgeted outlays, since they operate through government trust funds not counted with general receipts and expenditures.

## MORE

(Continued from Page 1)  
last week's storm. Snow there amounted as much as 10 to 20 feet deep. A Girl Scout party of 14 was marooned in the mountains 60 miles east of San Diego, Calif., by a blizzard which also was blamed for the crash of a U.S. plane which killed five persons. The girls reported they had shelter against the 75-mile-an-hour wind but that their food supply was low. Sleet and freezing rain were falling in a narrow band from Oklahoma northeastward through Missouri and into western Illinois. Indiana had a general rain. The East and South had fair weather with temperatures near normal.

## Ancient Ball Court Found in Mexico

PANOCO, Mex. —(AP)— Scientists exploring a buried city near here reported the discovery of an ancient outdoor ball court complete with scoreboard. Roberto Favon, Mexican archeologist, estimated the court was 2,000 years old. He said three temples were found near the court.

**ARE YOU DISCOURAGED** because you suffer distress from periodic FEMALE COMPLAINTS which makes you NERVOUS, HIGH-STRUNG on such days? Are you troubled by distress of female functional monthly disturbances which makes you suffer from irritability, nervousness, restlessness, weak-at-such-times? Then try Lydia E. Pinkham's Vegetable Compound to relieve such symptoms! In a recent medical test it proved remarkably helpful to women troubled this way. Why don't you get smart and try it yourself? Pinkham's Compound is what doctors call a uterine sedative. It has a grand soothing effect on one of women's most important organs.

**Lydia E. Pinkham's VEGETABLE COMPOUND**

**Mann's THIN SLICE Bread**  
Slice for Slice it's better

Mr. and Mrs. Bert Marquis of Odessa, formerly of Pampa, are announcing the engagement and forthcoming marriage of their daughter, Dorothy, to Howard Murray Marrs, son of Mr. and Mrs. W. M. Marrs, Odessa. The couple will exchange wedding vows Jan. 22 at the Odessa Northside Church of Christ. Marquis was a Phillips employe for many years in Pampa before going to Odessa to be with the company there. The family lived on the Johns Lease.

**Green Trimmed Wrapper - 24 Slices**  
LOOK FOR THE "LITTLE MANN"

## Mainly About People

**Legal Records**  
REALTY TRANSFERS  
Clifford G. Ryan and wife to Melle B. Richey; Lots 11 and 12, Block 8, Buckler. T. B. Solomon and wife to Ernest H. Eads and wife; part of Section 102, Block 3, I & G N R Rwy. surveys, Gray.

**Fervent Weighted**  
MIAMI, Fla. — (AP)— Calumet Farm's "big little horse" Fervent has been assigned top weight of 128 pounds for the 12th running of Hialeah's \$80,000 added Widener on Saturday, Feb. 26.

**UNKLE HANK**  
IT ISN'T A TRUTHFUL PERSON THAT AGREES WITH EVERYBODY

**SELECT USED CARS**  
BOYLES NASH CO.  
Phone 130  
W. of Schneider Hotel

**SOOTHES SMARTING PAIN... MAKES YOU SMILE AGAIN!**

**MENTHOLATUM**

Quick relief with MENTHOLATUM

Don't go on suffering from painful, dry, cracked lips—reach for Mentholatum. Feel fast-acting Mentholatum's famous combination of menthol, camphor and other ingredients soothe tender lip skin, revive dried-out skin cells, help them retain needed moisture. Soon smarting pain leaves, lips feel smoother—it's a pleasure to smile again. In tubes and jars—35¢ and 75¢ sizes.

**SOOTHES SMARTING PAIN... MAKES YOU SMILE AGAIN!**

**MENTHOLATUM**

Quick relief with MENTHOLATUM

Don't go on suffering from painful, dry, cracked lips—reach for Mentholatum. Feel fast-acting Mentholatum's famous combination of menthol, camphor and other ingredients soothe tender lip skin, revive dried-out skin cells, help them retain needed moisture. Soon smarting pain leaves, lips feel smoother—it's a pleasure to smile again. In tubes and jars—35¢ and 75¢ sizes.

## Bank's Official Statement of Financial Condition of the Citizens Bank & Trust Company

at Pampa, Texas, at the close of business on the 31st day of December, 1948, pursuant to call made by the Banking Commission of Texas in accordance with the Banking Laws of this State.

**RESOURCES**

- Loans and discounts, including overdrafts \$2,168,711.71
- United States Government Obligations, direct and guaranteed 2,136,055.20
- Obligations of states and political subdivisions 188,469.70
- Other bonds, notes, and debentures 384,531.25
- Corporate stocks, including \$ (none) stock in Federal Reserve Bank 5,000.00
- Cash, balances due from other banks, including reserve balances, and cash items in process of collection (including exchanges for clearing house) 1,008,083.91
- Furniture, fixtures, and equipment 8,000.00
- Other assets 1,300.00

Total Resources 5,902,151.77

**LIABILITIES AND CAPITAL ACCOUNTS**

- Common Capital Stock 75,000.00
- Surplus: Certified \$75,000.00, Not Certified \$ (none) 75,000.00
- Demand deposits of individuals, partnerships, and corporations 4,309,675.66
- Time deposits of individuals, partnerships, and corporations 354,644.97
- Public funds (Incl. U. S. Govt. states and political subdivisions) 953,430.04
- Other deposits (certified & cashier's checks, etc.) 32,402.01
- Total all deposits \$5,650,152.68
- Total Liabilities and Capital Accounts \$5,902,151.77

STATE OF TEXAS  
COUNTY OF GRAY

I, Floyd F. Watson, being cashier of the above named bank, do solemnly swear that the foregoing statement of conditions is true to the best of my knowledge and belief.

FLOYD F. WATSON.

Subscribed and sworn to before me this 7th day of January, 1949.

Paul D. Keim  
Notary Public, Gray County, Texas.

CORRECT—ATTEST:  
F. E. IMEL  
V. L. BOYLES  
C. E. HIGH  
Directors.

Fair Enough -- by Westbrook Pegler

Because he represented himself as a wise guy who saw that the Russians were turning against us...

The Most Dangerous Part About Irredeemable Paper Money

There is a group of patriotic citizens in the United States that is attempting to perform a great service to the American people...



NATIONAL WHIRLIGIG news behind the news

By RAY TUCKER WASHINGTON — The attack on Senator Robert A. Taft as Republican policy leader in the Senate...

STRENGTHEN — President Truman carried the states of two of the more rebellious leaders — which Senator William F. Knowland represents.

DISASSOCIATE — The Republicans do not have to jog their memories too hard to recall that Senator Lodge sat at Mr. Dewey's side as an adviser on foreign policy from start to finish of the campaign.

WISERACK — Anyway, it may be significant that the Dewey "evase coincides with lively circulation of a Congressional quip in which the November outcome is interpreted as "another triumph of GOP political matter."

ISOLATIONIST — Even the anti-Taft factor tintured with a few drops of honest and purposeful idealism had a strong smell of practical politics.

PRESTIGE — The uprising of the next few days, while arrangements were made to close the big house, the servants given a month's vacation on double pay to compensate for lack of notice...

FUNNY BUSINESS BY HERSHBERGER

Lefors

LEFORS — (Special) — Rev. and Mrs. R. H. Campbell had their third children and families home for the holidays...

The Men's Fellowship had an oyster supper in the basement of the Methodist Church on Tuesday night.

The W.S.C. met in the church for the regular meeting on Tuesday afternoon with Mrs. N. C. Jordan as leader.

Mr. and Mrs. M. F. Tibbitts and Glen and Mrs. Ray Jordan and Nancy visited in Wellington on Tuesday.

Mr. and Mrs. Marvin Cooper and boys, Earl Page and Marvin Lee, from Pampa attended the basketball game on Tuesday night.

Mr. and Mrs. J. D. Fouburg of Dalhart, former residents here, visited friends last week.

Mr. and Mrs. Claude Lamb and Phyllis visited in Shamrock on Tuesday.

Mr. and Mrs. D. D. Lewis and family, David Dean and Susan visited Mr. Lewis' sister and family, the Herb Giers of Borger over the weekend.

The Nina Hankins Circle of the Baptist Church met in the home of Mrs. P. F. Schlick on Tuesday afternoon.

McLean

McLEAN — (Special) — John H. Dwyer son of Mr. and Mrs. John H. Dwyer, has been elected to membership in the Texas Tech Honorary Agriculture Club.

Mr. and Mrs. W. A. Davis of the Health community are the parents of a daughter, born Dec. 21. She has been named Jana Ray.

Mr. and Mrs. Frank Preiser are the parents of a daughter born Dec. 17, in Bossier City, La. Susan Louanne weighed 17 pounds and 11 ounces.

Three members of Mrs. Jim Back's Junior English Class have won awards for their good deeds stories sent to Lewis Nordskye, Amarillo News Column writer.

girls had as their guests Sunday her mother and father, Mr. and Mrs. W. M. Sanders of Wheeler; a sister and family, Mr. and Mrs. Clarence Anglin of Clovis, N.M., and a brother, Macy Sanders and son, Boyd, also of Wheeler.

Mrs. D. D. Lewis was hostess to the Mary Martha class on Thursday afternoon. In absence of the president, Mrs. Lewis had charge of the short business meeting.

Refreshments of pecan pie and coffee was served by the hostess to Mesdames C. W. Cannon, Charles Earhart, Claude Lamb, A. E. Pennington, Patsy Ammons, J. C. Huff, Louie Ables, Bud Cumberland and a guest Mrs. Ralph Puckett and little Butch Ables and Karan Cumberland.

Mr. and Mrs. O. Lewis visited in the home of their son and family the D. D. Lewises.

Mr. and Mrs. Claude Lamb and Phyllis visited in Shamrock on Tuesday.

Sensing Speaks Language of Truth

Every age has its apostles, and their stamp may not be recognizable in that given time.

Every age has its apostles, and their stamp may not be recognizable in that given time. Fortunately it is those who are not followed, but it is deplorable that the people were not able to follow those who spoke the truth.

One of the hazards of representative democracy — with its attendant freedoms is that the populace might just as easily follow bad advice as good.

Mr. Sensing, director of research for the Southern States Industrial Council, Nashville, Tenn., should be recognized for the good he speaks to those of the South — for those of all the nation, for that matter.

He is an advocate of personal and economic freedom. For some years now he has been showing the people the road they seem to be taking. Almost daily he is being proven correct by the acts of our freedom.

Mr. Sensing, who will speak at the Senior High School tomorrow night under the sponsorship of the Chamber of Commerce, said recently in one of his columns which appear in The News...

Benjamin Franklin came out of the hall where they (the American patriots) were holding the Constitutional Convention, the people crowded around him and asked, "Mr. Franklin, what do we have?" His answer was "You have a republic, if you can keep it."

Such are the things that Mr. Sensing will speak of when he visits with Pampans tomorrow night. In commending him on his

MOPSYP by Gladys Parker

Office Cat

Insurance Superintendent (Suspicious) — How did your husband happen to be seen at the office when he is insured for such a large amount?

Q. — How much detail did Chambers go into with Berle? A. — Yes, Sir.

Q. — Did Berle express any alarm? A. — He was deeply impressed and much concerned.

Q. — How much detail did Chambers go into with Berle? A. — Yes, Sir.

Q. — How much detail did Chambers go into with Berle? A. — Yes, Sir.

Q. — How much detail did Chambers go into with Berle? A. — Yes, Sir.

Q. — How much detail did Chambers go into with Berle? A. — Yes, Sir.

Q. — How much detail did Chambers go into with Berle? A. — Yes, Sir.

Q. — How much detail did Chambers go into with Berle? A. — Yes, Sir.

Office Cat

Insurance Superintendent (Suspicious) — How did your husband happen to be seen at the office when he is insured for such a large amount?

Q. — How much detail did Chambers go into with Berle? A. — Yes, Sir.

Q. — Did Berle express any alarm? A. — He was deeply impressed and much concerned.

Q. — How much detail did Chambers go into with Berle? A. — Yes, Sir.

Q. — How much detail did Chambers go into with Berle? A. — Yes, Sir.

Q. — How much detail did Chambers go into with Berle? A. — Yes, Sir.

Q. — How much detail did Chambers go into with Berle? A. — Yes, Sir.

Q. — How much detail did Chambers go into with Berle? A. — Yes, Sir.

Q. — How much detail did Chambers go into with Berle? A. — Yes, Sir.

Gracie Reports

By GRACIE ALLES Well, this is the smudge-pot season in Southern California.

And they think it more than coincidental that Everett P. Dirksen of Illinois, another Dewey sidekick, is the man most prominently advanced as a replacement for Hugh Scott, Jr., the national chairman.

It is a triumph of mind over matter because Truman didn't mind what he said, and what

It was a triumph of mind over matter because Truman didn't mind what he said, and what

It was a triumph of mind over matter because Truman didn't mind what he said, and what

It was a triumph of mind over matter because Truman didn't mind what he said, and what

QUICKIES

By Ken Reynolds

While you look for a plumber in the News Wash Ads — you want me to bail — WHERE?

"Susan Argon, for two pins I'd turn you across my knee and while the livin' laylights out of you," she stormed.

"Why," marveled Merry, startled, "that's almost exactly what Dr. Dick said."

Susan stared from one to the other and then her face grew pinched and almost ugly and her eyes narrowed.

"Now, my girl, you march yourself straight to bed, and I don't want to hear another peep out of you" until morning.

MOPSYP by Gladys Parker

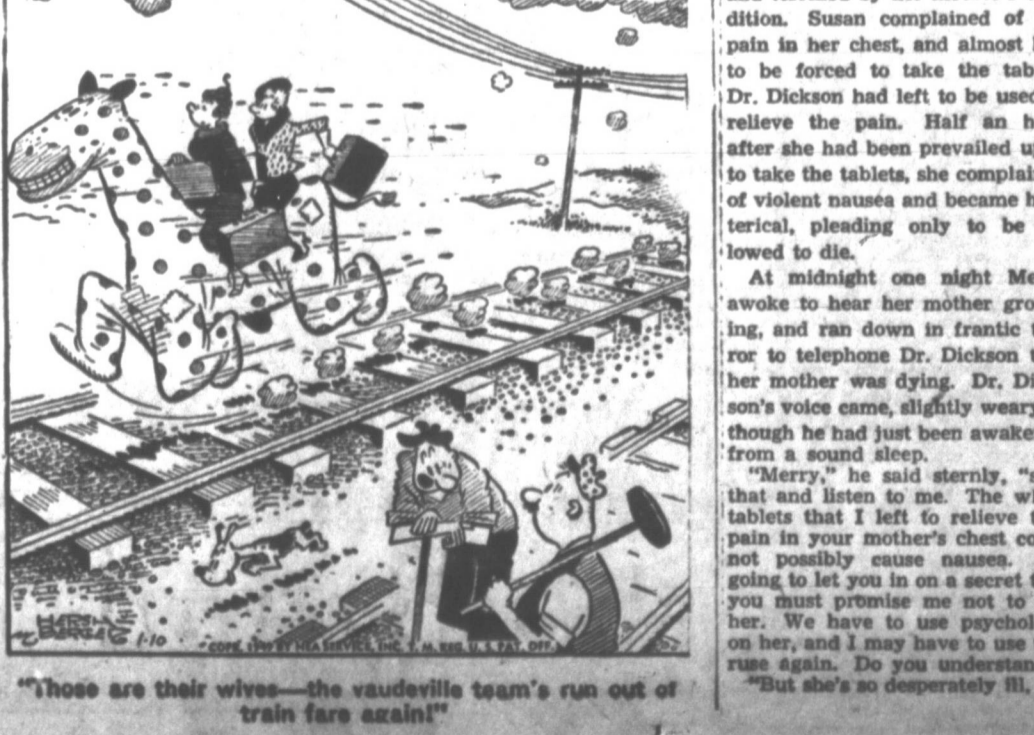


IT WAS MARKED: "DO NOT OPEN UNTIL CHRISTMAS." I HAD TO DO SO TO SEND HIS COACHMAN TO AN EMPTY BOX.

IT WAS MARKED: "DO NOT OPEN UNTIL CHRISTMAS." I HAD TO DO SO TO SEND HIS COACHMAN TO AN EMPTY BOX.

IT WAS MARKED: "DO NOT OPEN UNTIL CHRISTMAS." I HAD TO DO SO TO SEND HIS COACHMAN TO AN EMPTY BOX.

FUNNY BUSINESS BY HERSHBERGER



# Leather Goods Galore--at Mack's Shoe Store

## First Thought In Giving Parties

Pampa Baking Company, owned and operated for the past year by Frank Rapatine, can take care of every special occasion.

One item that has aided many Pampa hostesses in providing tasty parties is the colored bread put out by the bakery. The orders may be called into the bakery.

## Martin-Turner

Fire, Auto, Comprehensive,

Loans and Bonds

107 N. Frost Phone 772

## Pampa Wholesale Company Serves Seventeen Towns

The Pampa Wholesale Company, 420 W. Kingsmill, is ready to serve the regional wholesale merchants.

Four trucks of the company already cover all towns in this vicinity. The trucks are daily seen in one of the following towns—Canadian, Lipscomb, Follett, McLean, Wheeler, Berger, Perryton, Booker, Shamrock, Allison, Stinnett, Spearman, Miami, Mobeetie, Skellytown, Dumas or Pampa.

Also, the company services several filling stations enroute. The company is owned by the Fatherses, who have lived in Pampa since 1920. They have seen Pampa grow from a tiny boom town into "the best little city in the Top o' Texas area."

The Pampa Wholesale Company now specializes in wholesale products entirely. Prior to last year, the company handled both retail and wholesale products.

and the colored party bread is the result.

Makers of Golden Loaf Bread, the employes provide many tasty products. Carrying a complete line of pastries, the local bakery can take care of every baking need.

## Used Car Values At J. C. Daniels

What better way to start the New Year

Is there than getting a used car here?

Stop at Daniels this very day.

He has what you want for what you want to pay.

One other thing you should keep in mind, The service's the best you'll ever find.

He employs 35 factory-trained men

To fix car troubles and charge the minimum.

## Every Entree a Specialty!

Dine at Johnson Cafe for fine food, pleasant surroundings and fast service. Try our merchants lunch. A balanced meal at a low price.



NEW LOCATION  
**JOHNSON CAFE**  
115 E. Kingsmill

## By Appointment . . .

Authorized General Electric

Dealer

- ★ Refrigerators
- ★ Ranges
- ★ Washing Machines
- ★ Dishwashers
- ★ Disposals
- ★ Radios

**BROOKS ELECTRIC**

BORGER HIGHWAY PHONE 27

## PAMPA WHOLESALE CO.

WHOLESALE

- Cigarettes • Cigars • Tobacco
- Drugs • Fountain Supplies
- Candy and Confectionery Items
- Janitor Supplies

Factory Distributors

Established in 1930

420 W. Kingsmill Phone 915

We Carry a Complete Line of Franklin's Stock Supplies



**FRANKLIN PRODUCTS**  
DEPENDABLE IMMUNITY

CATTLE HORSES SHEEP HOGS POULTRY

**FRANKLIN PRODUCTS Reduce Livestock Loss**

FRANKLIN CONCENTRATED CULTURE BLACKLEG BACTERIN  
Clostridium Chauvi-Septicus Bacterin Hemorrhagic Septicemia Bacterin  
Pasteurella-Pseudodiphthericum Bacterin Franklin Brucella Abortus Vaccine  
Franklin Mixed Bacterin (Bovine) Mixed Bacterin (Ovine)

Mixed Bacterin (Equine) Mixed Bacterin (Porcine) Mixed Bacterin (Avian)

Also we carry DDT and wettable sulphur in any quantity. Seen us for all your stock needs.

**BERRY'S PHARMACY**

100 S. CUYLER PHONE 1110

MADE IN PAMPA **Golden Loaf Bread** BAKED FRESH DAILY

## DeLuxe Offers Special Services

The Bachelor Laundry Service, installed at the De Luxe Cleaners during the past summer, is one of the special services offered by the plant.

It was installed to take care of person's shirts, socks, pants, handkerchiefs and underwear washing needs. This individualized service is designed to please the most exacting persons. However, it is not necessary to be a bachelor to use the Bachelor Laundry Service.

Another special service offered at DeLuxe is the cleaning and glazing of furs. This is done by approved furrier methods. There is no need for Pampanians to send their furs out of town for this service or to have them stored for the summer. DeLuxe has an all-steel, fire proof cold storage vault that is unexcelled.

## Enjoy Eating? Here's a Tip

Johnson's Cafe, 119 E. Kingsmill, certainly is the place for Pampanians who like waffles.

With the help of the new waffle iron that Owen Johnson purchased when he moved his restaurant business to its present location, his customers are now able to have the best waffles they've ever tasted.

Also, Johnson specializes in pastries. Besides selling more than 50 pies daily, he sells rolls and doughnuts both to customers eating there and as take-out orders.

So to turn eating into a great at Johnson's Cafe, 119 E. Kingsmill.

**PHILLIPS 66 GAS & OIL**

- Washing
- Grease
- Tires
- Batteries

Pick Up Service  
**Henderson-Wilson**  
Phillips 66 Service Station  
301 W. Kingsmill Ph. 2283

## SEWING MACHINES

SINGER AND OTHER MAKES  
New and Reconditioned  
Expert repair service on all makes. Call

**Pampa Sewing Machine Exchange**  
304 W. Foster Phone 8550

## Lloyd's Magnolia Service

Everything for the automobile and Good Used Cars  
**Panhandle Motor Co.**  
120 S. Cuyler Phone 900

## Ranch Brand JEWELRY

We make your old shoes like new with excellent materials and fine craftsmanship.

## MACK'S SHOE SHOP

318 S. Cuyler Pampa

## LITTLE PEG SEZ:



The boss said he felt fit as a fiddle . . . he looks like a bass drum.

FOR A CAB AT YOUR DOOR  
CALL 91 PEG'S CAB

## Popular Stop, 400 W. Foster

The green and white Shamrock Service Station, 400 W. Foster, is the daily stopping place for many Pampanians.

It is no wonder the station is so popular among townspeople considering the courteous service found there and the versatile employes who go out of their way to please their customers.

The white building, decorated with the green Shamrock emblem, has facilities for many car repair jobs. Besides selling Shamrock gasoline, the employes fix flats, wash cars and do excellent lubrication jobs.

The station is always tidy as it had just been through a vigorous scrubbing. It helps make Foster and Somerville corner one of the better looking corners in Pampa.

## Centrally Located It's Easy to Find

A well-known store serves Pampanians quicker

And has everything from cosmetics to liquor.

Centrally located, it's quite a drug store.

After one stop there, they're all back for more.

This Berry's Pharmacy is the place for coffee datin'.

At 100 S. Cuyler where they're all congregatin'.

## B. M. A. Business Men's Assurance Co.

Life and Health

Hospitalization. Educational Annuity

**J. RAY MARTIN UNDERWRITER**

107 N. Frost Phone 772

## SAFETY ON WHEELS

In Winter, more than ever, your safety depends on the proper balance and alignment of your wheels. Come in and let our expert mechanics do the job and give your car a complete engine checkup, too!

WE USE THE FAMOUS BEAN VISUALIZER TO ASSURE YOU PROPER ALIGNMENT

**LEWIS MOTOR CO.**

211 N. Ballard Phone 1710

## COSTS LESS

Our tremendous stock insures you of a perfect fit regardless of the Make or Model of Your Car. Any desirable Color Combination.

Largest stock of seat covers in the Top o' Texas

**Hall & Pinson Tire Co.**

301 W. FOSTER PHONE 255

## georgiana dresses . . .

ARRIVING WEEKLY

Come in and See These Soon

## THE TOGGERY

216 N. Russell Across Street East of Courthouse Phone 207

## Jewelry

You will find Rickett's the reliable in repair service on your jewelry.

**RICKETTS JEWELRY**

New Location 318 1/2 W. Foster—Next to Rex Theatre

## SHAMROCK The Home of Better Oils

- Shamrock Oil 30c qt.
- Golden Shell Oil 30c qt.
- Shell X-100 Oil 35c qt.
- Pennzoil 40c qt.
- Quaked State Oil 40c qt.
- Havoline Oil 40c qt.
- Gulf Pride Oil 40c qt.
- Conoco Nih Oil 40c qt.
- Uniflow Oil 40c qt.

**Shamrock Service Sta.**

400 W. Foster Phone 1910

## Burl Lewter Has Managed Store for Past 16 Years



YOU AIN'T SEEN NOTHIN' YET—From the picture (above) of the interior of Mack's Shoe Store, 318 S. Cuyler, it is impossible to see all the leather and novelty items stocked by Burl Lewter, owner. Besides repairing shoes and boots, Burl has items on his shelves everyone can use.

By JIM McCLUSKEY  
Public Relations Editor

Burl Lewter, owner of Mack's Shoe Store, has a larger and more varied stock of goods in his store than ever before.

He has been in the shoe repairing business in Pampa for the past 16 years, but now is able to offer many items to his customers that one doesn't ordinarily get at a shoe store.

Though Burl specializes in shoe repairing of all types, he has available many items since he enlarged his store. Some of the things that may be purchased there are fancy sterling silver tie clasps, belt-buckles, key chains, gloves, shoe polish, shoe strings, socks, brushes automatic pencils, leather belts, work shoes, welder's boots, levis, Western-style shirts, halters, hand-tooled bags for ladies, spurs, bridles, bits, ropes, watch bands, pocket knives, billfolds and many types of Western jewelry.

Further, Burl carries other necessities including dog collars, combs, razor blades and ever-sharp leads.

Burl also has a very large stock of Mexican-made boots. Once more, the boots are very reasonably priced, too. Besides being quite fancy in design, the boots wear excellently. Mack's Shoe Store also carries Mexican-made shoes that are distinctive in the shoe line.

Besides making boots and shoes to order, he does shoe repairing of all kinds.

He has served Pampanians for the past two years from 318 S. Cuyler. The large black boot at the front of the store makes it easily recognizable from the street. His former location was 119 1/2 S. Cuyler.

Burl's wife, Velma, not only assists him at the store, but also she has many outside activities. A Girl Scout leader for the past six years, she is now leader of Troop 19 of which her daughter, Nickie, is a member. Mrs. Lewter stresses "thankfulness for minor favors" at her Scout meetings.

Also she has been a Sunday School teacher at the Central Baptist Church for the past six years. The Lewters live at 808 E. Francis. Burl is a member of the Odd Fellows. He was engaged in baking and trucking before he started in the shoe business.

Whether your rush is to pick up your date for some party, to take your wife to the hospital or merely to save walking, Peg's Cab Company is the place to notify.

By phoning 94 you are assured of speedier and more dependable service. Before you've had time to replace the receiver, on of Peg's new two-way radio dispatch cabs will be at your door.

## Have Your Mattresses, Divans, Pillows, etc. STERILIZED!

We offer a new HEALTH SERVICE to Pampa. When we sterilize . . . we kill all germs and insects. We're approved by the State Health Department.

PICK-UP AND DELIVERY Trucks in Pampa every Monday and Thursday. (A penny post card will bring us to your door) Phillips Sterilization Plant Box 1061 Phillips, Texas

## Bring Your Car To Us

Complete Body Repair Service at Reasonable Prices!

**TOMMY'S Body Shop**

806 W. Foster Phone 1802

## Gulf Products

- Car Washing
- Lubrication
- Complete Car Repair Service
- On Any Make of Car under the supervision of Mr. Roy Chisum.

**Pampa Lubricating Co.**

114 E. Francis Phone 272

## Paint Needs Taken Care of At Thompson's

Thompson Glass and Paint Company, 219 N. Ballard, has the only complete stock of paints in Pampa.

Owned and operated by E. C. Thompson, the company has been at its present location since about the first of June. It was formerly located at 11 W. Foster.

Besides the fully guaranteed paint products, the store carries wall paper, wall covering, paint brushes. The company has Wall-Tex wall covering, which is ideal for kitchen and bathroom walls.

During an off-painting season, Thompson Glass and Paint stocked paint and more paint. So when you're needing a particular kind of paint that is hard to find—go to 219 N. Ballard. There one can get anything and everything and in any amount in the way of paint.

## Best Car Care Found Right Here

Many people want the same kind of protection for their cars as they do for their children. pany, 211 N. Ballard, all cars are given the excellent treatment. One-stop service is provided for all makes of cars. The alignment the wheels get at Lewis' is something, for with a John Bean Visualizer, the employes of the motor company do a fine job when it comes to aligning wheels on the car. They use the electric eye method that is found only in the most precision instruments.

Wesley Lewis has owned the company for the past two years. Since he returned from the Air Corps, after serving from 1942 to 1946, he has worked at a local tire shop. There he purchased his motor company and became the Studebaker agent for Pampa.

Whether your rush is to pick up your date for some party, to take your wife to the hospital or merely to save walking, Peg's Cab Company is the place to notify.

By phoning 94 you are assured of speedier and more dependable service. Before you've had time to replace the receiver, on of Peg's new two-way radio dispatch cabs will be at your door.

Whether your rush is to pick up your date for some party, to take your wife to the hospital or merely to save walking, Peg's Cab Company is the place to notify.

By phoning 94 you are assured of speedier and more dependable service. Before you've had time to replace the receiver, on of Peg's new two-way radio dispatch cabs will be at your door.

## In a Hurry? Telephone 94 Ought to Make This One Stop

Been around the "friendly service" corner lately? If you're a Mobilgas user, chances are that you have been to the Hall & Pinson Tire Company, 301 W. Foster.

The company has been owned and operated at its present location for the past five years by O. V. and L. O. Hall and Dale Pinson.

## TRY OUR NEW

BACHELOR LAUNDRY SERVICE

Shirts, Pants, Sox, Underwear and Handkerchiefs expertly laundered and perfectly pressed —fast service—Call

**DeLuxe Dry Cleaners**

315 W. Kingsmill Phone 610

## TREAT YOUR FLOORS TO A NEW COVER

We have a nice stock of Asphalt Tile, Plastic Tile, Rubber Tile, Sheet Rubber.



Frank Nelson is in charge of floor-covering dept.

EXCELLENT WORKMANSHIP

**THOMPSON**

GLASS and PAINT COMPANY

219 NORTH BALLARD PHONE 1079

FREE ESTIMATES



Yes, Winter Is Here!

Tune Up That Motor Now!

Is your car laboring through the winter weather? It's time for a check-up. Let our experts look it over . . . tell you what you need . . . at no charge. Don't delay.

i.c. **daniels**

The Outstanding Automobile Dealer in the Top o' Texas Lincoln and Mercury Sales & Service

219 W. Tyng Phone 8845

OUT OUR WAY By J. R. WILLIAMS. FINE! YOU GOT IT IN ALL RIGHT—NOW HOW ARE WE GOING TO GET OFF TH' ROACH WHEN IT'S DOWN? OH I HADN'T THOUGHT OF THAT! WELL, I'LL WORK OUT SOMETHIN'!

OUR BOARDING HOUSE with Major Hooper. SIR, I AM TAKING A POLL ON THE EATING HABITS OF THE AMERICAN MALE, AND YOU LOOK LIKE THE IDEAL PROSPECT! ONE: DO YOU EAT BETWEEN MEALS? TWO: DO YOU LIKE CARROTS? THREE: HOW ABOUT PIE? FOUR: FAP! SIR, I EAT CONTINUOUSLY! HAW-KAFF! I KEEP POKETSFUL OF BEET TOPS, SUN-FLOWER SEEDS, FERNS AND MOSS WHICH I MUNCH STEADILY! AS TO PASTRY, I ARISE AT THREE A.M. DAILY AND CONSUME FOUR PAW PAW TARTS! GOOD DAY, SIR HAR-RUMPH!

NAPOLEON. I'VE BEEN THROUGH FIFTEEN BOOKS BUT, BY GOLLY, I'VE NOT THE SAUCE THAT WILL MAKE CHICKEN TASTE LIKE AMBROSIA! I CAN JUST SEE MY GUESTS NOW STANDING ABOUT THE TABLE TOASTING THE GREAT AMATEUR CHEF, ELEVY! SOMETHING'S BURNING!

SIDE GLANCES By GALBRAITH. "No car, no dough, a big date, and it's snowing—you're okay if you're equal to this emergency, Dad!"

Feathered Friend. HORIZONTAL 57 Compass point 1 Depleted 58 Century plant flying creature 5 It is a bird 8 It eats 1 Levels dances 12 Extent 2 Astronomy 13 Vase 3 French article 14 Opposed 4 Boy 15 Note of scale 5 Totals 16 Reduced in rank 6 Love god 17 Plural ending 42 Blackthorn 18 Any 7 Notion 21 Commits 43 Tiles 19 Unit 8 Notion 23 Spring flowers 44 Essential being 20 Unit 9 Many 25 Pesters 45 Right (ab.) 22 Donkeys varieties are found 26 Most unusual 48 Worm 23 Also 34 Pamper 49 Health resort 24 Liquid measure 10 Position 32 Ascended 52 Depart 25 One time 11 Impede 36 One of Furies 55 Boy's nickname 27 Cloy 37 Make happy 28 Ruminant (ab.) 29 Sun god 30 Decimeter (ab.) 31 Pronoun 32 Daybreak (comb. form) 33 Lawsuit 35 Crack 38 Scraps 39 Relate 40 Underworld god 41 Natural fat 46 Observe 47 Doctor of Science (ab.) 48 Enrolls 50 Calcium (symbol) 51 Limbs 53 Harvest goddess 54 Caresse 56 Beth's son (Bib.)

CARNIVAL By DICK TURNER. HANDKERCHIEF DEPARTMENT. "I think we ought to transfer Montgomery for the day—he has a cold!"

L'I Abner. FIVE O'CLOCK? THE INTER-VIEWS ARE OVER! YOU'VE HAD A HARD DAY DUMPING DEAR BEAUTIFUL GIRLS, WHOSE ONLY DESIRE IS TO BECOME DUMPING W. LUMP?? IF ONLY HE'D SHOW SOME INTEREST IN JUST A SMILE—EVEN A TWITCH! BUT—NO! ALWAYS THAT SAME WEARY "URP!!"

Alley Cop. THANKS FOLKS FOR YANKIN ME OUT OF ANKLE! HERE'S NEXT TIME WE MEET! I'LL BE CHAY, SOME UNFINISHED BUSINESS—YOU NEED SO LONG! YOU CAN'T STAY HERE IN BUSHNY COUNTRY! THESE LEWISANS'LL TEAR YOU APART! OH, I'LL BE CHAY, SOME UNFINISHED BUSINESS—YOU NEED SO LONG! SHALL WE LET HIM GOT MY SOK, SAITS GUFFREY SAY NO? IT'S SUFFICE! C'MON, LET'S GO GET 'IM! WERE TOO LATE HE'S GONE! THIS 'INGLES NOT SO THICK—YOU'D IN C'APPEAR QUICK? GAYEY! GOT ME!

Blondie. IT'S TOO LATE TO EAT SPAGHETTI NOW, DEAR. I'LL KEEP YOU AWAKE ALL NIGHT! YOU'D BETTER NOT READ DAWNWOOD! THAT'S A GOOD NIGHT'S SLEEP! IT'S TOO CHILLY TO TAKE A BATH TONIGHT DEAR—YOU'D CATCH A COLD! THAT'S THE GOOD THING ABOUT BEING A HUSBAND—YOUR THINKING IS ALL DONE FOR YOU!

Wash Tubbs. COCKSURE THAT HE HAS ESCAPED SUSPICION, GENTLY IS TRICKED BY EASY INTO CALLING AT THE CONSTABLES OFFICE. KEEP YOUR EYE ON THAT LOGGAGE WHILE I PICK UP A KEY—WON'T TAKE A SECOND! INSIDE, PENNY IS WAITING EAGERLY FOR EASY TO APPEAR, AS HE PROMISED BY PHONE, WHEN— GOOD EVENING, CONSTABLE. I'M HERE TO— INSPECTOR, LOOK! THAT'S GUFFREY SNEATH! STOP! I'VE SOME QUESTIONS— OKAY, THEN FOLLOW ME TO THE POLICE STATION... I'M LATE ALREADY!

Red Ryder. DIDN'T YOU HEAR? THE WHOLE TOWN KNOWS HE WAS PACKED OUT OF THE HOTEL NEBRASKA! IT'S SHORE NO SURPRISE TO ME! IT'S GOT MY MIND STAMPEDIN' TOOD! HE WAS A HERO TO MY KIDS! MEAN TAKE A LAST LOOK OUTSIDE, RYDER! YOU'LL NEVER LEAVE THIS SHACK ALIVE! I'LL GET OUT OF HERE— ONE-EYE— AND YOU'LL GO WITH ME! BRAVE TALK, BUT YOU'LL WHIPPER LIKE A SICK PUP WHEN NET BROWN STARTS DRTIN'!

Boots. FOR OVER A MONTH NOW HAS BEEN RECEIVING ANONYMOUS LOVE NOTES, SIGNED "LOVESICK," IN AN OLD HOLLOW TREE OVER IN THE VACANT LOT... AT FIRST PUG WAS MILDLY AMUSED, THEN CURIOUS, EVEN ANXIOUS; AND NOW... ROD HAS DECIDED IT'S HIGH TIME HE PUT AN END TO THE SUSPENSE! IT'S TWO O'CLOCK IN THE MORNING AND HE'S BEEN WAITING PATIENTLY NEAR THE OLD TREE SINCE EARLY EVENING!!!! I THOUGHT FOR A MINUTE I HEARD!!— IT IS SOMEONE COMING!

Freckles. JEEPERS, IT'S DOWN—RIGHT BALMY TODAY! YEAH, THE SNOW'S MELTED AWAY LIKE LAST WEEKS ALLOWANCE! HE DOESN'T KNOW— THERES SNOW— AW, SO... YOUR WAY IS WHERE WE'LL GO! FUNNY, BUT THESE SNOW SKIS GET HEAVIER EVERY MINUTE!

Vic Flint. I CAN SEE WHY ORIGINAL LA FLEUR FASHIONS ARE WORTH \$100,000 IN PRESTIGE TO YOUR STORE, MR. KLEEMAN, BUT JUST WHERE DO I COME IN? WE NEED YOU TO GUARD AGAINST THE STYLES BEING COPIED, FLINT. GIBBERY MUST BE ALLOWED TO SKETCH OR PHOTOGRAPH THOSE DRESSES! FROM A PHOTOGRAPH, MANUFACTURERS CAN TURN OUT PERFECT IMITATIONS, CAN'T THEY, DOTTY? SURE, MR. K. THEY WORK SO FAST THAT THE DAY WE OPEN OUR SHOW OF FLOOD LA FLEURS... I DON'T THINK SO— BUT I'M AFRAID THE MAN HE LANDED ON IS!

Mutt & Jeff. UMM—M— ROAST CHESTNUTS— GIMME A BAG! GOT NOTHING SMALLER? I GOT NO CHANGE FOR TEN DOLLARS! THAT'S THE SMALLEST I GOT! I GET CHANGE! YOU WATCH THE SMALLEST STAND MISTER! SURE! UMMBOY! I JUST LOVE ROAST CHESTNUTS! WONDER WHAT'S KEEPIN' THAT GUY? OH, WELL, I GUESS HE JUST FORGOT! PROBABLY DON'T HIS CHRISTMAS SHOPPIN' OVER THE YEAR!

Mickey Finn. WHERE IS SHE TAKING TO SOME CONCERT AT THE ACADEMY OF MUSIC? I IMAGINE IT'LL BE A VERY TRYING EVENING FOR HIM! GAGGLES! SISTER IS STILL GIVING PHIL THE BE RUBIN!

Bugs Bunny. QUIZ 'EM! HOW SMART ARE YOU? WHO WAS OUR FIRST PRESIDENT? HOW SMART ARE YOU? IN WHAT STATE IS NEW YORK CITY? DUNKE!

Penny. THESE BILLS ARE SCANDALOUS— YOU'VE GOT TO TRIM YOUR SAILS, YOUNGLADY! I TRY AMPULLY HARD, FATHER. HERE'S ONE FOR A TWO POUND HUNDRED OF TOBACCO— YOUR MOTHER DIDN'T BUY IT AND NEITHER DID I! I CHARGED IT AND GAVE IT TO YOU AS A PRESENT! DON'T YOU REMEMBER, FATHER? IT WAS A PEACE OFFERING! THE DAY AFTER YOU WERE SO PEEVED OVER LAST MONTH'S BATCH OF BILLS.

Pricillie's Pop. HOW OFTEN HAVE I TOLD YOU NOT TO LEAVE STUFF LYING AROUND?! WHEN YOU'VE FINISHED USING A THING, LEARN TO PUT IT AWAY! AND DON'T BE STARING OUT THE WINDOW WHEN I'M TALKING TO YOU!

Penny. THESE BILLS ARE SCANDALOUS— YOU'VE GOT TO TRIM YOUR SAILS, YOUNGLADY! I TRY AMPULLY HARD, FATHER. HERE'S ONE FOR A TWO POUND HUNDRED OF TOBACCO— YOUR MOTHER DIDN'T BUY IT AND NEITHER DID I! I CHARGED IT AND GAVE IT TO YOU AS A PRESENT! DON'T YOU REMEMBER, FATHER? IT WAS A PEACE OFFERING! THE DAY AFTER YOU WERE SO PEEVED OVER LAST MONTH'S BATCH OF BILLS.

Classified... NOTICE... Ed F... 518-20... Winter 113 N... Woodie Comp... Remem wreck... PUR... COR... Chry... Phone 5... KILL... 115 N... BA... 616 W... Pampa... Long's... Panhan... 916 W... Local H... Roy... ARE YOU... 11-M... WANTED... 12—Fe... MIDDLE... Waitres... son. W... Middle... Gray c... Must re... Box G... News... 15—Sa... FACTORY... 17—St... 18—Su... FOR BAL... 19—W... Wagon... 20—W... HAVE p... 21—In... 22—Ka... Gaskets... 23—B... Gene... Ind... 24—B... 25—B... 26—B... 27—B... 28—B... 29—B... 30—B... 31—B... 32—B... 33—B... 34—B... 35—B... 36—B... 37—B... 38—B... 39—B... 40—B... 41—B... 42—B... 43—B... 44—B... 45—B... 46—B... 47—B... 48—B... 49—B... 50—B... 51—B... 52—B... 53—B... 54—B... 55—B... 56—B... 57—B... 58—B... 59—B... 60—B... 61—B... 62—B... 63—B... 64—B... 65—B... 66—B... 67—B... 68—B... 69—B... 70—B... 71—B... 72—B... 73—B... 74—B... 75—B... 76—B... 77—B... 78—B... 79—B... 80—B... 81—B... 82—B... 83—B... 84—B... 85—B... 86—B... 87—B... 88—B... 89—B... 90—B... 91—B... 92—B... 93—B... 94—B... 95—B... 96—B... 97—B... 98—B... 99—B... 100—B...

# Coast-to-Coast Television Using Planes Now Possible

**BALTIMORE**—(AP)—Coast-to-coast television using high flying airplanes now is possible. Westinghouse Electric Corporation announced it has solved major technical problems linking airplanes and television for greater broadcasting range.

And, said Westinghouse, the airborne method of telecasting is "ready for commercial development."

It issued a preliminary report on the engineering phases of stratovision, as the system is called, describing it as a "practical and useful method of expanding television and other high frequency communication" such as static-free FM broadcasting.

There are no longer, Westinghouse announced, any "technical restrictions which prevent the use of stratovision broadcasting" to provide:

1. A coast-to-coast television and frequency modulation network.
2. Expanded TV coverage for the "millions of rural listeners who will be unable to receive television programs for years, if ever, with conventional television methods."
3. A military communications system independent of ground conditions.
4. A network system for transmitting TV programs simultaneously to audiences assembled in theatres or public places throughout the country.

The Westinghouse report was based on three years of test flights aimed at overcoming the natural limitation of television waves by the earth's curvature to about 30 miles on the ground.

Cooperating in the experiments were Westinghouse and the Glenn L. Martin airplane manufacturing company.

Westinghouse Vice President Walter Evans said a converted B-29 Superfortress used to relay television signals now averages "showed successful reception" reports from televiewers in an area of about 250 miles about the plane circling at 25,000 feet.

He said commercial development of stratovision now awaits only the "crystallization of public demand for the expanded service, the application by the radio industry to meet this demand, and the classification of channel facilities to make possible this application."

## Mme. Minister?

Dr. Edith Summerskill, above, "glamor girl" of the British parliament, is believed in line to succeed John Strachey as Food Minister in the British cabinet. Now undersecretary in the food ministry, she would be the first woman minister of cabinet rank.

## KPDN 1940 ON YOUR DIAL

- TUESDAY P. M.**
- 12:00 Cedric Foster News-MBS.
  - 12:15 News-KPDM.
  - 12:30 Danahy Show-KPDM.
  - 12:45 Checkboard Jamboree-MBS.
  - 1:00 Queen for a Day-MBS.
  - 1:30 Golden Hour Chest-MBS.
  - 1:45 Red Benson's Movie Matinee-MBS.
  - 2:00 Top of Texas-KPDM.
  - 2:15 Sports-KPDM.
  - 2:30 Hill Neighbor-KPDM.
  - 2:45 Adventure Parade-MBS.
  - 3:00 Supermarket-MBS.
  - 3:15 Billy Rose-MBS.
  - 3:30 Tom Sawyer-MBS.
  - 3:45 Fulton Lewis Jr. News-MBS.
  - 4:00 Pinner at Court House Call-KPDM.
  - 4:15 Singing Sam-KPDM.
  - 4:30 Sports-KPDM.
  - 4:45 Five Minute Mystery-KPDM.
  - 5:00 George O'Hanlon Show-MBS.
  - 5:15 Captain Midnight-MBS.
  - 5:30 Red Hot-MBS.
  - 5:45 Mutual News-MBS.
  - 6:00 News-KPDM.
  - 6:15 American Forum-MBS.
  - 6:30 Guy Lombardo-MBS.
  - 6:45 Inside of Sports-MBS.
  - 7:00 Dance Music-MBS.
  - 7:15 News-MBS.
  - 7:30 Dance Music-MBS.
  - 7:45 Music and Markets-KPDM.
  - 8:00 Cedric Foster-MBS.

## WEDNESDAY A. M.

- 6:00 Farm Fair-KPDM.
- 6:15 News-KPDM.
- 6:30 News-KPDM.
- 6:45 Farm Fair-KPDM.
- 7:00 Farm Fair-KPDM.
- 7:15 News-KPDM.
- 7:30 News-KPDM.
- 7:45 News-KPDM.
- 8:00 Editors Diary-MBS.
- 8:15 Tell Your Neighbor-MBS.
- 8:30 Victor Lindh-MBS.
- 8:45 News-KPDM.
- 9:00 Let's Chat-KPDM.
- 9:15 Korn Kobblers-KPDM.
- 9:30 Vagabond-KPDM.
- 9:45 News-KPDM.
- 10:00 Pressing Parade-MBS.
- 10:15 Victor Lindh-MBS.
- 10:30 Gabriel Heatter-MBS.
- 10:45 Larry Ross-MBS.
- 11:00 Kate Smith Shows-MBS.
- 11:15 Kate Smith Shows-MBS.
- 11:30 Victor Lindh-MBS.
- 11:45 Music and Markets-KPDM.
- 12:00 Cedric Foster-MBS.

## TONIGHT ON NETWORKS

- MBS—7:30 Rex Harrison as Thomas Jefferson; 8:30 Marian Anderson with Don Redmond City Playhouse.
- CBS—8:30 Club Crosby; 9:30 Godfrey Talent Scouts; 10:30 Radio Theater.
- ABC—8:30 Lone Ranger; 9:00 Opera House; 9:30 Arthur Godfrey Show; 10:30 On Trial "Corporate Persecution."
- MBS—7:30 Gregory Wolfe's Case; 7:50 Sherlock Holmes; 9:30 Korn's A Crack-in'.

## TUESDAY ON NETWORKS

- MBS—8:30 a.m. Honeymoon in N.Y.; 12:00 Lunch with Lopez; 5:30 Sketches in comedy; 7:30 Bob Hope; 8:30 People are Funny; 9:30 a.m. The Godfrey hour; 3 p.m. Hint Hunt; 5:15 a.m. and Winter; 6:30 Club Crosby; 8:30 Morey Amsterdam; ABC—11 a.m. Welcome Travelers; 3 p.m. Ladies in Society; 4 (Repeat at 5) Green Hornet; 7:15 Earl Godwin; 9:45 a.m. and Winter; 11:30 Lunch with Bill Stiner; 2 p.m. Red Jensen show; 6:15 Dinner; 7:30 Detective Yarn.

## 1947 and guided Greenville in the Big State part of last year, replaces Buster Chatham. Chatham goes to New Orleans as assistant coach and manager.

# THE PAMPA NEWS BUSINESS & PROFESSIONAL DIRECTORY

- Candies**—Candies Box and Bulk of fine quality and low prices. Ideal Food Stores.
- Dance Schools**—Helene Madeira, Dance School. Ballroom, tap, ballet, acrobatic. 414 W. Foster, Phone 3452.
- Dry Cleaners**—Service Cleaners for Better Cleaning. Arlin Smith, owner-manager. 212 W. Foster, Phone 1250.
- Engineers - Civil**—Oil Field Land and Lot Surveys. Const. Supervision. Geo. Thompson. 212 W. Kingman, Ph. 1705.
- Electrical Appliances**—Davis Electric Contracting and Appliance Co. 119 W. Foster, Phone 512.
- Florists**—Remember the shut-ins with flowers. They bring comfort and cheer. Plains Nursery, 517 Brown, Ph. 1144.
- Instruction**—Small Fry Play School. Kindergarten activities, nursery school routine, degree teacher. Phone 1273.
- Horticultural**—John Ben Cattle Sprayers. Hugo Mill Equipment Inc. Phone 1400.
- Good Things to Eat**—Elle's Diner and fried pies. Delicious. Fresh ingredients. 616 S. Cuyler, Hot coffee.
- Household Goods**—Beautiful Gift Suggestions in Stanley Brown Combs and useful items. Call 557-W. 125 S. Nelson.
- Insurance**—State Farm Insurance Company. Mutual Benefit H & A Association. Ph. 244-W. 500 N. Faulkner.
- Laundry Service**—Wet Wash, Rough Dry. Help You Save. Dwyer, Ph. 1124. Wiggins Laundry, 505 Henry.
- Leather Goods**—City Shoe and Boot Shop. Reconditioning. 110 W. Foster, Phone 1078.
- Photographers**—Smith studio, 122 W. Foster. Child Photography with speed lights. Ph. 1510 for appointments.
- Real Estate**—John I. Bradley. Real Estate Office. 212 1/2 N. Russell, Phone 771.
- Plumbing**—L. H. Sullins. Plumbing, Heating. 220 W. Kingman, Phone 103.
- Plumbing**—Pampa Supply Co. Plumbing Supplies and Contracting. 216 N. Cuyler, Phone 501.
- Plumbing**—Lanes Sales Company. Plumbing and Heating. 216 W. Foster, Phone 558.
- Sewing Shops**—Sewing Machines and Vacuum Cleaners Repaired. All makes repaired and all work guaranteed. 24 hour service. Free check-up. Singer Sewing Mch. Co. 214 N. Cuyler, Ph. 689.
- Sewing Shops**—Yes! We make covered. 24 hour service. Singer Sewing Mch. Co. 214 N. Cuyler, Ph. 689.
- Slaughtering**—Simonton Custom Slaughterers. Kill cut, wrap. 801 LeFlore, Ph. 444.
- Watch Repair**—Zales Watch Repairing. 107 N. 202, Phone 887.

**The Best New Year's Gift Of All** --- Nice "roomy" 5 room home, will take automobile or small house in trade. Also new 4 room home, only \$1500 down. M. P. Downs, Real Estate - Phone 1264

**A BRICK HOME WITH INCOME** --- A beautiful 5 room brick home and garage and a 2 bedroom home and garage and 2 furnished apartments. These three rentals bring in \$107.50 per month. You can live in this beautiful home and have a good income. The brick home is worth what we are asking for all this property, located close in on Gray Street.

**CLOSE IN DUPLEX** --- Two 3 room partly furnished apartments with 2 tub baths and 2 garages, fenced in back yard. Hill St. Price \$8000. Good terms.

**H. T. HAMPTON, Realtor** --- Phone 866 Duncan Building Phone 2466J

**OUR SERVICE PLEDGE TO YOU FOR 1949** --- We'll strive to be the most efficient, most friendly and fairest mechanics and service men you've ever had with work on your car. Complete motor tune-up or small repair job.

**COFFEY PONTIAC CO.** --- 6-PONTIAC-8 220 N. Somerville Phone 365

**110-City Property (cont.)** --- FOR SALE three room modern stucco house and garage. See L. R. Cain in LeFlore after 5 p.m. week days or Saturday or Sunday.

**LEE R. BANKS** --- Real Estate --- Ph. 388 or 52 1st Natl. Bank Bldg.

**Arnold Real Estate** --- Duncan Bldg. Rm. 6 Ph. 758

**B. E. FERRELL** --- FOR quick sale 2 large room house with a shop building on lot. 400 Roberts. Phone 3945V.

**J. E. RICE, Realtor** --- Phone 1831

**Business** --- Frozen Food Locker and good stock of groceries. Will sell grocery stock at reduced price. Call 2412.

**All Listings - - - APPRECIATED** --- 1398 Booth - Weston 2011J

**111-Lots** --- FOR SALE by owner, 60 foot, north-south corner lot, Coffee S. Fraser Addition, Westing. Ph. 2351.

**115-Out-of-town Property** --- FOR SALE in Skellytown 6 room modern house and lot. See Bert Hollis in Skellytown.

**26-Beauty Shops (cont.)** --- HILLY CHEST Beauty Shop will help you to keep beautiful at all times. Phone 1313. 408 Cravat.

**27-Painting-Papering** --- Norman, Painting-Papering. 784 N. Sumner. Phone 1065V.

**31-Plumbing-Heating** --- DES MOORE TIN SHOP. Sheet Metal, Heat, Air Conditioning. Phone 102.

**32-Upholstering Repair** --- BRUMMETT FURNITURE. Will have our upholstering shop open about Feb. 1st and will do all types of furniture work. Ph. Pending. 310

**33-Curtains** --- HAVE YOUR curtains and spread expertly done. Satisfactory tinting. 417 N. Christie. Phone 3295V.

**34-Laundry** --- OPEN ready for business—West Side help yourself laundry. Mr. and Mrs. L. W. Frank, 2100 N. Alcock, Ph. 4053.

**35-Cleaning-Pressing** --- Tip Top Cleaners, Ph. 889. Send all your cleaning 1908 Alcock.

**36-Sewing** --- VOH SEWING of all kinds see Gladys Stone, 2 1/2 miles south of Pampa on Highway 102. Ph. 1942W.

**37-Mattresses** --- A NEW MATTRESS made to order and delivered. We pick up and deliver.

**38-Venetian Blinds** --- BEAUTIFUL made-to-measure blinds—Call 1112 Pampa Tent and Awning Co. 321 E. Brown. Phone 13.

**42-Building Materials** --- FOR SALE 100 sacks of cement below market price. Ph. 1514J or 1206 S. Barnes.

**44-Electric Service** --- Martin Neon Sign Co. 605 S. Ballard. Phone 2207.

**54-Professional Service** --- For Practical Nurse - - - FOR RENT furnished 2 room apartment. 212 W. Foster, Ph. 2341V.

**55-Turkish Bath** --- STEAM BATH for Rheumatism - - - STEAM BATHS for Reducing. Lucille's Clinic 705 W. Foster, Ph. 97.

**61-Furniture** --- Check our ads and store for real bargains in living room, dining room and dinette suites.

**ECONOMY FURNITURE** --- Phone 535 615 W. Foster

**USED FURNITURE** --- Good used studio divan \$19.50. Baby bed \$14.95. Apartment furniture range \$59.50.

**61-Furniture (cont.)** --- SEE the new 1949 Commercial Fridgaires on display at Bert A. Howell Co. 1131. 408 Cravat.

**67-Radios** --- DIXIE RADIO SHOP. 112 E. Francis. Phone 1644.

**68-Farm Equipment** --- ALIS CHALMERS combine in good condition for sale.

**70-Miscellaneous** --- Greggton Parts Shop No. 2 Ltd. Sales - Service - Welding. 103 S. Hobart. Phone 614.

**72-Wanted to Buy** --- JUNK JUNK JUNK WANTED. Bring in your Junk Batteries, Iron, Brass, Radiators, Aluminum, Cop per Wire, while prices are high.

**76-Farm Products** --- EAT more eggs, when you suffer from indigestion. Buy fresh grade A eggs at 62 S. Ballard.

**81-Horses-Cattle-Hogs** --- HAVE never meat hog for sale, also have big hind hog, with delivery. B. M. Rogers, Star Route 2, Pampa.

**82-Feeds-Seed-Plants** --- K. B. FEED STORES. All kinds poultry, dairy and cattle feed. 225 W. Atchison Ph. 1814.

**89-Nursery-Landscaping** --- VISIT OUR NURSERY - - - You'll find what you need in shrubs, trees and landscaping.

**90-Wanted to Rent** --- YOUNG couple with baby are in desperate need of a 3 or 4 room furnished apartment. References. Call 188 between 7 and 5.

**95-Sleeping Rooms** --- FOR RENT nice sleeping room, living room or kitchen privilege. 905 E. Beryl. Phone 2412.

**96-Apartments** --- FOR RENT modern 2 room furnished apartment. All private, inquire 320 N. Gillespie.

**97-Used Furniture** --- TWO ROOM unfurnished apartment for rent. Inquire Adams Grocery, 1250 S. Barnes, Ph. 2090.

**98-Used Furniture** --- ONE and two room furnished apartments. Inquire Tom's Place on East Frederick.

**99-Used Furniture** --- FOR RENT 2 room furnished apartment for couple only. Ph. 1029E.

**99-Used Furniture** --- THREE room unfurnished apartment for rent. 1250 S. Barnes, Ph. 2090.

**99-Used Furniture** --- FOR SALE apartment size Frigidaires. In excellent condition. See at Garage. 923 E. Francis, Ph. 734M.

**You'll Do It Every Time** --- **By Jimmy Hatlo**

- 12-Female Help Wanted** --- MIDDLE aged lady to do part time telephone survey work. Pleasant surroundings. Hourly salary basis. No commission. See Mr. Reeves, 1134 South Main, Pampa, Ph. 812, on Tuesday, Jan. 10-11, '49-between 9:30 to 11:30 a.m.
- 13-Salesmen** --- FACTORY SALESMEN—Sell Chatham Chester nationally known Chester shoes direct. Complete line for entire family. Full time or side line. Full time men earn up to \$80.00 per day in commission. High repeats. Samples and equipment free to prospect. CHAS. CHESTER SHOES CO., 538 Chester Bldg., Brockton, Mass.
- 17-Situation Wanted** --- WANT small part time bookkeeping job. Phone 3451J.
- 18-Business Opportunity** --- FOR SALE one of the finest little restaurants in Pampa. Conveniently located. Now enjoying good patronage. Reasonably priced. Call or write to McClellan, Wheeler, Texas.
- 19-Watch Repair** --- HAVE good time all the time with property timed clocks. 920 S. Faulkner. Ph. 375W. Buddy Hamrick.
- 20-Industrial Service** --- CALIFORNIA repair additions, call on and trim work. Owen Wilson, 515 N. Russell, Phone 3653J.
- Kotara Water Well Service** --- A Supply. Phone 370, W. T. Tule.
- Caskets Made to Order** --- For caskets, trunks, tractors and industrial equipment. All types sheet metal. RADCLIFF SUPPLY CO. 113 E. Brown. Phone 1220.
- Gene Tucker - Phone 732J** --- Ind. Building Contractor
- BERT A. HOWELL Co.** --- Commercial Refrigerator Sales & Service. 113 N. Ward will be open soon. Experienced refrigeration service-man now on duty. Call 152 for your Refrigeration Service.
- 26-Beauty Shops** --- STINE have a phone now and were looking to make appointments for your beauty shop. Violet's Beauty Shop. Ph. 3910 326 S. Cuyler

## Refinements and Location Determine Price of Home

What factors influence the selling price of a house? The fact that a \$25,000 house may be twice as large as the \$5,000 house a few blocks away is only one reason why it costs more, it was pointed out today by the Construction Research Bureau, New York clearing house for building information.

The higher-priced residence stands on a larger, more costly plot of ground in a more desirable location in the community; contains much more equipment and other fittings and refinements of higher quality; has an individual, custom-planned design not found in the low-priced home.

The \$5,000 home occupies a plot seldom wider than 60 feet. The house contains an average of 800 square feet of living space, no more than two bedrooms and one white part-tiled bath. The \$25,000 house has 1,400 to 1,600 square feet of living space; three or more bedrooms and two or more colored, fully-tiled bathrooms. This additional size alone adds \$5,000 to \$7,500 to construction cost.

Most zoning ordinances require that a house of this size shall occupy a plot 80 feet or more in width. This extra size may add up to \$2,000 more to cost. If on a paved street, cost goes up another \$1,000 to \$1,500; proximity to a school may add \$200 or more.

The small house usually is of frame construction or may have a front wall of masonry veneer. It lacks storm windows, has no garage. Included in its selling price are kitchen range of medium quality, laundry tubs, medium grade kitchen floor covering, a few built-in kitchen cabinets, automatic water heater and sometimes a refrigerator and automatic washer. There is no fireplace. The heating plant is small. Many small homes have no sub-flooring.

The price of the \$25,000 home soars in \$500 and \$1,000 jumps when including a fireplace, top-quality hardware, slate or tile roof, outdoor terrace or garage, sliding closet doors, picture windows, basement recreation room, rare wood for interior trim and doors, air conditioning, complete automatic laundry, and a large number of high-quality kitchen cabinets and other built-in features. Example: One builder reports that he puts \$100 worth of kitchen cabinets in his \$3,000 house; \$1,400 worth in his \$25,000 house. A distinctive or unusual floor plan adds to the price, but the buyer usually gets a house that meets his idea of what a home should contain.

Few builders today skimp on quality of basic building materials, using the same lumber grades in the low-priced and high-priced house, the same grades of lime, cement and plaster, the same quantity of insulation. Usually, workmen with greater skill are employed at premium pay on the high-priced house. Most homes in all price brackets now have copper and brass plumbing, natural-

## Remodel Attic And Add to Home Income

The Federal Housing Administration urges remodeling of unused attics into rentable living quarters as an added source of income for budget-strained families, and is making easy credit available for such conversions, it was pointed out today by the Construction Research Bureau, New York clearing house for building information.

Most attics will make at least two rooms without structural changes and winter is a good time for interior remodeling, the Bureau said. Cost of conversion usually is low and rental income soon pays for it.

Funds can be obtained from any FHA-approved lender. The loan is repayable in 3 years, with monthly payments usually less than the extra income. Before altering, permission must be obtained from the mortgage holder. This usually is quickly granted, the same lender making the improvement loan.

First step is to insulate the attic roof, gable ends and dormers with full-thick mineral wool to make the attic livable in summer and winter because heat passes through an uninsulated roof quicker than any other part of the house. Batts or blankets of this fireproof insulation are easily fitted between roof rafters and wall studs, then covered with building or plaster board which can be painted, papered or left in its natural finish.

Several types of economical flooring are available, together with serviceable, low-priced doors, plumbing and other needed equipment. Plan the bath so it will come directly above piping on the floor below to economize on installation when extending plumbing to the attic.

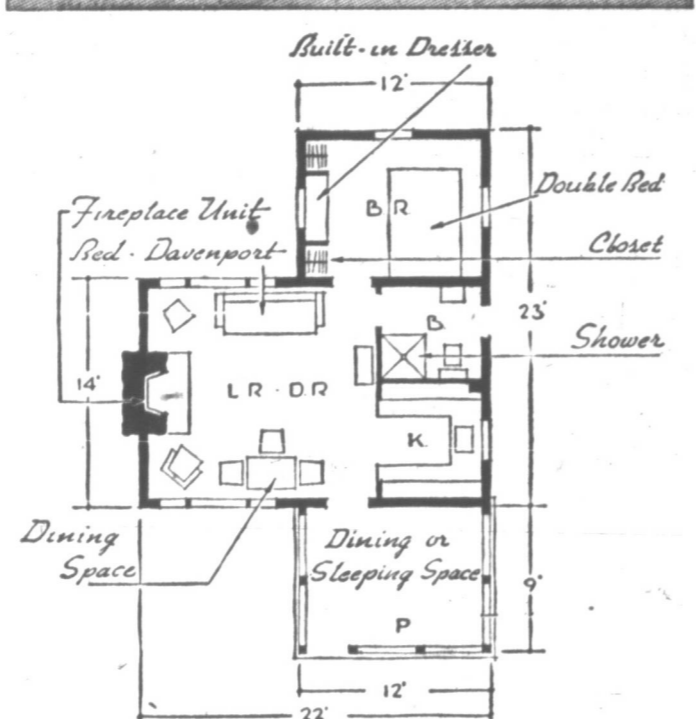
Extending heating facilities to an attic seldom requires more than joining a pipe to a radiator on the floor below, bringing it up through the ceiling and attaching radiators in the attic. If this is too costly or complicated, or the house is heated by warm air, a self-contained oil-burning space heater can be used in each attic room.

A burkhan is a traveling mound or dune, of loose sand. Some in Egypt have been known to move as much as 30 feet a year.

fireproof thermal insulation, fire-resistant roofs and are carefully put together with closely-spaced, well-braced framing.

## BUILDING NEWS

### Low-Cost Expansion Cottage



This attractive frame cottage which can be built by easy stages at a cost well below \$5,000 for a complete two-bedroom home, was developed by Michigan State College, East Lansing, Michigan. For economical construction, the floor is a 4-inch concrete slab. Standard insulated frame construction is recommended by the College. Fireproof mineral wool in full-thick batts is the most widely used form of insulation, according to the U. S. Department of Commerce. This cottage can start with a basic 14' x 22' structure, costing under \$2,500 and containing bathroom, kitchen and living-dining-room. Plans call for placing gables on each side of the basic structure for later addition of two 9' x 12' wings. One wing will provide a bedroom, the other a porch, which, if enclosed, will make another bedroom. Sheets of building-board make the low-cost interior finish. If the budget does not permit, the basic 14' x 22' room can be erected as a shell and used as a summer home until wings, insulation and wall finish can be added.

### Ample Material For '49 Homes Looms in Sight

Widespread, serious building materials shortages are not expected to develop during the coming year. Building materials production reached record levels in 1948, according to latest U. S. Department of Commerce figures, and although the department has made no prediction on the supply situation for 1949, material industry spokesmen say most materials will adequately fill 1949 needs.

The Department of Commerce forecasts that despite near-record building volume, supplies of materials, except some steel products and possibly cement, will balance demand during coming months. As 1948 neared its close, over-all production ran 6 percent ahead of a year earlier when building material output set an all-time record.

Expected large-scale lumber shortages failed to develop in 1948 and lumber output rose 2 percent over 1947, the department said. The lumber industry believes all shortages have ended as production is keeping well ahead of shipments from the mills. Even millwork, often a bottleneck during last summer's high volume of building, is now readily available in most sections. Douglas fir, Southern pine and plywood have dropped in price during recent weeks between 10 and 15 percent.

### State Assistance Shows 44th Rise

AUSTIN—(AP)—The Texas old age assistance program this month had 1,105 more participants than last—the 44th consecutive monthly increase.

Department of Public Welfare Director John H. Winters said his department is mailing 211,321 checks totaling \$7,170,014 to needy aged persons. Payments average \$33.91.

The roll has increased 41,087 since May, 1945, when the continuous climb began, Winters said. Welfare checks in all categories this month went to 260,038 and totaled \$8,250,774.

### Postmen Allowed To Feed Birds

DALLAS—(AP)—The rural postman can feed the birdies while he delivers mail. The department says it's okay.

Dallas Postmaster J. Howard Payne has revealed a Postoffice Department directive authorizing rural letter carriers to "distribute grain as food for birds at times when natural food is covered with snow, or when for some other reason there is a shortage of natural food."

The postman has to arrange for the food, though.

A new U. S. postage stamp honors the Brahma, a popular breed of chicken about a century ago and the ancestor of many common types today.

Shrews, which are mice-like but not rodents, will die if they go without food even a few hours.

### Rules Offered For Figuring Paint Needs

How much paint to buy is often a problem when the home-owner does his own painting. The following rules are offered as a guide by the Construction Research Bureau of New York, clearing house for building information.

Multiply distance around the house by height to the eaves to determine over-all number of square feet; add square feet of gable area (one half of height times greatest width). Subtract total number of square feet of window area. Divide the result by 400. The result is the number of gallons of exterior paint to buy for one coat; double it for two coats.

For inside work, multiply total distance around the room by the wall height and deduct 15 square feet for each window and door. The length of baseboard is considered as square feet. Length of room multiplied by width gives ceiling area. One window frame and sash contain about 40 square feet; the average home staircase, 135 square feet.

Allow 135 square feet for each side of door and its frame; 10 square feet for only one side of the frame; 20 square feet for only one side of the door. Multiply the front area of radiators by four to get total area of surface to be painted.

There is no layman's yardstick to determine the amount of interior paint required because of the varied surfaces encountered. Paint dealers can estimate the amount if given accurate figures on square footage and a description of the surfaces.

### Texas Needs 51 Thousand New Teachers

AUSTIN—Texas schools must have a minimum of 51,772 new teachers in the next ten years. That is 5,000 more than the total of teachers now in the schools. They number 46,500.

Replacement of teachers is causing educators great concern, according to Miss Maurine Walker of Waco, first vice president of the Texas State Teachers Association and a member of the National Education Association on teacher education and professional standards.

There is already a tremendous shortage of teachers and the profession is not proving sufficiently attractive to induce enough people to enter it," Miss Walker said. "Texas, itself, is now short several thousand qualified teachers. National and state surveys disclose that in the next decade 1,277,714 new teachers will be needed throughout the United States.

"Texas will have to find a bare minimum of 51,772 new instructors."

"Surveys of the National Committee show that 31,688 teachers will leave the Texas schools during the next ten years. They will die, retire or quit the classroom for other reasons."

The birth rate, rapidly accelerated during the war years, will be reflected in huge increases in schools throughout the nation, Miss Walker pointed out. "Texas alone will need nearly 16,000 to take care of the increased enrollment due alone to the advanced birth rate," the Teachers Association officer said.

"The state must find an additional 4,500 teachers to replace those teachers with emergency certificates who are on a temporary basis. During the war years lower teaching standards due to the shortage of teachers."

That the estimated 52,000 new teachers is a minimum figure was indicated by Miss Walker because of Texas' tremendous growth industrially.

"Texas is growing industrially far more rapidly than the average person realizes," she said. "Should the state continue to attract industry as successfully as it has during the last seven or eight years, our schools will have thousands of more pupils than any of the surveys indicate."

Those factors made the future of great concern, especially in Texas, Miss Walker declared, because most schools in the state are now badly overcrowded.

Ronoke Island, Va., was the birthplace of Virginia Dare, first baby born of English parents in the new world (in 1857).



**READY MIXED CONCRETE TRANSMIX**  
CONCRETE AND MATERIAL CO.  
800 S. Russell P. O. Box 5901 Phone 455

### Governor Plans Cutting Taxes

BATON ROUGE, La. —(AP)—Gov. Earl K. Long said he was "seriously considering recommending that the Legislature clip two cents off the Louisiana cigarette tax."

The tax was raised from five to eight cents a package at the regular session last year.

The act increasing the tax earmarked \$3 million of the proceeds for distribution among cities on a population scale.

The Governor issued his statement in answer to questions about a story by a Dallas News staff correspondent who interviewed him.

In the interview, the Governor said the cigarette tax was the only one of six new or increased

Wall finish is applied to the building board.

There is a wide choice of good materials now available for partition construction, and some builders are reporting cost reductions of about \$25 for each partition of the lighter construction.

Until recently, load-bearing partitions were 4 to 6 inches thick, studs spaced 16 inches apart, and engineered to carry maximum loads. Non-bearing partitions were sometimes thinner with studs 24 inches apart, but in general the rule was to make all partitions of the same strength and construction.

With the advent of new materials and techniques and the desire of builders to trim costs wherever possible without sacrificing structural soundness, thinner partitions of both types are gaining in use, where building codes will permit. Even where laws require extra heavy load-bearing partitions, the thinner, money-saving non-bearing partitions are being extensively used. These are not over 3 inches thick, being framed with 2x2 studs spaced 24 inches apart. Stronger, better building boards provide rigidity for this light construction.

### Carter Sand & Gravel

SUCCESSOR  
BARNES SAND AND GRAVEL

Driveway Gravel • Concrete Material  
Top Soil Fill Dirt

PHONE 1175-J 213 N. SUMNER

### School Men Vote Support For Program

AUSTIN — (AP)—The Texas Association of School Administrators voted general approval of the Gilmer-Aikin education proposals Friday and held State School Superintendent L. A. Woods responsible for a "one-sided" panel discussion of the proposals.

The association said it deplored being "misrepresented by a one-sided symposium" held Thursday. The panel members chosen by Dr. Woods were known in advance of the discussion to be in opposition to the Gilmer-Aikin report, the school men said.

They endorsed a resolution previously passed by the House of Delegates of the Texas State Teachers Association approving the general aim and objectives of the Gilmer-Aikin recommendations.

The TASA is one of several groups attending the sixteenth annual mid-winter conference of Texas school administrators, teacher educators and supervisors. Dr. Woods is general chairman of the conference.

Additional, though milder, support of the Gilmer-Aikin suggestions came from the Association of Equalization Schools. It adopted a resolution expressing its appreciation to the Gilmer-Aikin committee for its "intensive study of our education system."

"We commend the members of the committee for their unselfish service in making this study," the resolution continued, "but the association recommends that the bills which will be written as a result of the committee's findings be studied carefully and those bills which will advance our educational system and improve educational opportunities for the children of our state be supported by the association."

"We feel that until the proposals are in concrete form, no definite commitments should be made."

### PLAN YOUR SAVINGS NOW!

Planning to save a part of your earnings regularly is the wise thing to do. If your design for living includes travel, a home, education, or security, start saving NOW!

Combs-Worley Bldg. Phone 804

### SECURITY FEDERAL SAVINGS AND LOAN ASSOCIATION

## BEST QUALITY KILN DRIED LUMBER

ROUGH and SURFACED

- FIR — YELLOW PINE
- CLEAR WHITE PINE
- OAK FLOORING
- PECAN FLOORING
- RED CEDAR SHINGLES
- ASBESTOS SIDING

for Roofs and Side Walls

- Asphalt SHINGLES, All Colors
- INSULATION for Side Walls and Attic
- CEMENT and SHEETROCK
- GYPSUM SHEATHING
- COMPLETE STOCK OF BUILDING MATERIALS

LET US SERVE YOU

## LYNN BOYD

"GOOD LUMBER"

805 S. Cuyler Phone 900

ALLIED DEALER

## Thompson Glass & Paint

219 North Ballard Phone 1079

Get New FLOOR COVERING NOW

Wouldn't it be wonderful to have new asphalt tile, plastic tile or rubber tile or sheet rubber on your floors?

Well — Just Call 1079!

Ask for Frank Nelson. Mr. Nelson is in charge of this department and is an expert mechanic. He can handle your job — large or small.

Phone Us TODAY!

### HOME! HOME! OUR SWEET MODERN HOME!!

## For Real Home Harmony!

Modernize NOW to fit your growing needs. Handy kitchen cabinets, durable HARDWOOD flooring, a combination study-guest room, up-to-date bathroom—all mean greater living pleasure for you. Our quality materials, 42 years of experience are here to help with all your plans. Come on in, talk 'em over with us this week. ASK ABOUT OUR HANDY BUDGET PLAN!

## PANHANDLE LUMBER COMPANY, INC.

PHONE ONE THOUSAND 470 WEST FOSTER

### AT YOUR FAVORITE GROCERY STORE

Mann's MILKED MILK Bread

A new U. S. postage stamp honors the Brahma, a popular breed of chicken about a century ago and the ancestor of many common types today.

Shrews, which are mice-like but not rodents, will die if they go without food even a few hours.