

# The Weather

West Texas—Temperatures Sunday about same as Saturday except colder over Panhandle

# THE PAMPA NEWS

(VOL. 39, NO. 290)

(20 PAGES TODAY) SUNDAY, MARCH 15, 1942 PAMPA, TEXAS Wide World News Service-Full AP Leased Wire (PRICE FIVE CENTS)



# 12 ALLIED WARSHIPS SUNK IN BATTLE OF JAVA

## Cruiser Houston Among Those Lost

WASHINGTON, March 14 (AP)—The navy today announced the sinking of 12 Allied warships, with a thirteenth believed lost, some in the battle to keep the Japanese out of Java and the others in boldly trying to escape from a tightly closed enemy trap in which they later found themselves.

Two American ships, the cruiser Houston and the destroyer John D. Pope, were among those lost. The rest were Australian, British and Dutch. These punishing reverses were offset in part by the destruction of or severe damage to eight Japanese warships.

By VERN HAUGLAND MELBOURNE, March 14 (AP)—Japanese bombers raided islands only 30 miles off the northeastern tip of Australia today in a possible softening-up prelude to an invasion attempt against the commonwealth mainland from newly won bases in New Guinea.

By HARRY E. HOARE FIFTEEN years ago last December the Pampa Chamber of Commerce named its first office secretary. Yesterday that same secretary wrote Mrs. Charles I. Hughes, wife of Pampa's justice of the peace, who resigned to become Mrs. Hughes, her wife.

By HARRY E. HOARE FIFTEEN years ago last December the Pampa Chamber of Commerce named its first office secretary. Yesterday that same secretary wrote Mrs. Charles I. Hughes, wife of Pampa's justice of the peace, who resigned to become Mrs. Hughes, her wife.

By HARRY E. HOARE FIFTEEN years ago last December the Pampa Chamber of Commerce named its first office secretary. Yesterday that same secretary wrote Mrs. Charles I. Hughes, wife of Pampa's justice of the peace, who resigned to become Mrs. Hughes, her wife.

By HARRY E. HOARE FIFTEEN years ago last December the Pampa Chamber of Commerce named its first office secretary. Yesterday that same secretary wrote Mrs. Charles I. Hughes, wife of Pampa's justice of the peace, who resigned to become Mrs. Hughes, her wife.

By HARRY E. HOARE FIFTEEN years ago last December the Pampa Chamber of Commerce named its first office secretary. Yesterday that same secretary wrote Mrs. Charles I. Hughes, wife of Pampa's justice of the peace, who resigned to become Mrs. Hughes, her wife.

By HARRY E. HOARE FIFTEEN years ago last December the Pampa Chamber of Commerce named its first office secretary. Yesterday that same secretary wrote Mrs. Charles I. Hughes, wife of Pampa's justice of the peace, who resigned to become Mrs. Hughes, her wife.

By HARRY E. HOARE FIFTEEN years ago last December the Pampa Chamber of Commerce named its first office secretary. Yesterday that same secretary wrote Mrs. Charles I. Hughes, wife of Pampa's justice of the peace, who resigned to become Mrs. Hughes, her wife.

By HARRY E. HOARE FIFTEEN years ago last December the Pampa Chamber of Commerce named its first office secretary. Yesterday that same secretary wrote Mrs. Charles I. Hughes, wife of Pampa's justice of the peace, who resigned to become Mrs. Hughes, her wife.

## RAF Bombs Cologne, Reds Tighten Noose

### Top Speed Of 40 Miles An Hour Asked

WASHINGTON, March 14 (AP)—President Roosevelt has written state governors asking cooperation to conserve rubber by limiting the maximum speed of all motor vehicles to 40 miles an hour and requiring frequent checking of tires for possible repair or retreading.

The White House announced today that identical letters had been sent to the governors of all 48 states.

"Reduction of speed limits and regular inspection of tires," the President said, "constitute another important means of federal-state cooperation in the war effort."

The text of the letters follows: "My dear governor: "As you know we are doing everything possible to conserve rubber.

"It has been said that a large part of our rubber stock-pile is on the wheels of the more than 30,000,000 motor vehicles of the country. If this stock-pile is conserved by the individual motorists, as we are endeavoring to conserve the national stockpile, tires will last much longer, cars will run much farther, and civilian life will be less disturbed because of lack of sufficient transportation facilities.

"Rubber experts agree that fast driving wastes rubber and that tires run many more miles when driven at limited rates of speed.

"I would greatly appreciate your cooperation in an effort to achieve these objectives throughout the country.

"The tire rationing program, so recently established by the office of price administration, has been

### Six Injured In Razing Of Tank

Three men were seriously injured and three others suffered minor injuries when an oil storage tank which was being razed near Kingsmill collapsed late Friday afternoon.

Most seriously injured was J. O. Key who suffered a broken back, crushed right foot, internal injuries and shock. His condition was reported favorable late last night.

Ellis Hensley had both feet crushed and broken and his back injured and Dave Commins suffered a hip injury and crushed heels. All three are in a local hospital.

Admitted for emergency treatment but released Friday night were Leon Holloway, Floyd Smith and Carl Barnes.

The men were employed by Bill Ponder of Fort Worth, according to attending physicians.

The accident occurred while the men were tearing down a storage tank at the Magnolia Petroleum company tank farm near Kingsmill.

## Dutch Still Fighting In Hills Of Java

By BILL BONI Associated Press War Editor An uneasy calm lay over the far Pacific theater of war last (Sat.) night—a calm which might be regarded as foreboding, as the proverbial lull before the storm of the next enemy offensive, or could be looked on more sanguinely as a welcome and rare breathing spell afforded the United Nations in which to rally their gathering strength to meet that assault.

On Europe's share of the world battlefront the Russian armies pounded ahead along the entire line from the Baltic to the Black sea. Over the English channel and western Germany itself the RAF struck fresh blows at the Nazis in Eritria's own mounting spring offensive of the air.

But there was only slight aerial activity over Australia's barrier islands, with Allied bombers smashing at a Japanese air base and no fresh news of the invasion fleet last reported steaming east. In Washington the war department did not even issue a morning communiqué on the situation in the Philippines, and in Burma there was nothing more severe than patrol skirmishes.

There was one definitely cheering report from the Pacific sector, however. Issued in Australia by aggressive Hubertus J. Van Mook, lieutenant governor general of the Dutch East Indies, Van Mook announced that Dutch forces are known to be carrying on the fight against the invader in the hills and mountains of Java, Sumatra and Celebes, and that they are in position to wage bitter, dangerous guerrilla warfare for some time to come.

Heartening in itself, it was fresh evidence that, while the Japanese invasion columns have progressed almost unchecked in more than three months of conquest, their strength constantly is being drained by the large occupation forces which must be left behind—not to mention the steadily reinforced divisions which General MacArthur's men have kept engaged on Bataan alone.

### What Is My Number? You'll Know Tuesday

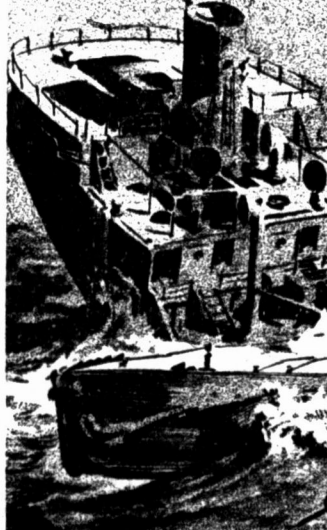
They'll fill the big fishbowl in Washington again on Tuesday, St. Patrick's day, and for the third time selective service registrants of Gray county and of other counties over the nation will be asking the universal question: "What is my number?"

The third draft lottery will be held in Washington Tuesday with ceremonies scheduled to begin at 5 o'clock Pampa war time.

After a brief speech by Brig. Gen. Lewis B. Hershey, the draw will begin and continue without interruption until completed.

It is estimated that 6,000 numbers will be drawn. Selective service officials estimate the draw will be

Every hat personally supervised. Nelson Street-O-Liner service. Roberts, The Hat-Man.



SEA DRAMA—WITHIN SIGHT OF SHORE—The 677-ton Gulf Oil corporation tanker Gulftrade was torpedoed by an enemy submarine so close to the New Jersey shore that, had it been daylight, observers on land

## Germany Solidly With Hitler, Says Rabbi

Horrors that follow World War 2 may be greater than the horrors of the war itself, Dr. Arthur Bluhm, rabbi of B'nai Israel temple at Amarillo, told members of the Pampa Kivans club at the club's weekly luncheon at noon Friday at the First Methodist church.

"I know the Poles and the Czechs," said Dr. Bluhm, "and I dread to think what will happen to any German they catch. The Germans oc-

cupying Poland and Czechoslovakia know it, too. The Poles and Czechs won't stop to ask if this man or that has been a sniper. A lot of innocent people will be killed.

All Out For Hitler Any wishful thinking his hearers might have had that an underground movement in Germany would easily pave the way for a

See GERMANY, Page 3

See DUTCH, Page 6

See WARSHIPS, Page 6

See NUMBER, Page 6

See RAF BOMBS, Page 6

See TOP SPEED, Page 6

See CONGRATULATIONS, Page 6

See HITLER, Page 6

See MANY STRANGERS, Page 6

See CANADIAN CANCELS, Page 6

See ANVIL PARK BODEO, Page 6



FIRST PICTURES OF BITTER MALAYAN FIGHTING—In the top photo two Japanese light tanks blaze furiously after being set afire by sharp-shooting

Australian anti-tank gunners in the battle for Malaya. Note blackened ruins of other vehicles at left. Lower picture shows body of a crew-member

lyng beside his smouldering tank after Australian anti-tank guns had fired it when it stopped on tree-blocked road in Malaya.

## Pampans Leave To Contact Washington

### Twice-Torpedoed U. S. Freighter Sinks, 20 Survive

WEST PALM BEACH, Fla., March 14 (AP)—Torpedoed twice, then pounded by close-range gunfire, the American freighter Cardonia was sunk in the Caribbean. 20 survivors related here today.

The crew members, who reached port yesterday, left today for their home port of New Orleans, ready for another trip to sea. They said after the torpedoing a week ago, an enemy submarine blasted at least 30 shells into the freighter at 100 yards.

One member of the crew, A. L. Busley, water tender from Beaumont, Tex., was drowned when a lifeboat capsized during the escape. Sixteen others were believed safe elsewhere. The sinking had been announced from Haiti.

Capt. W. G. Darnell of Houston, Tex., dressed in a borrowed army uniform, led his crew aboard the train and confirmed their story of the sinking, although he was otherwise silent on the episode.

Other searchers said the attack came about dawn. Most of them were only partly dressed when the alarm was sounded.

"The captain stood on the bridge as cool as anything I've ever seen," one related. "There was no excitement. Even the skipper's dog, named 'D. M.', got off okay."

"We had plenty of life boat drills and we knew what to do in case of attack. We did the job in no time at all. I can't tell you how cool all the boys were."

"As we pulled away, the ship was

See FREIGHTER, Page 6

## You Can't "Ask Mrs. Hughes At C-C" Any More

### Gasoline Rationed In Twenty States

WASHINGTON, March 14 (AP)—A 20 per cent reduction in gasoline dispensed to filling stations in eastern seaboard and Pacific northwest states was ordered by the war production board today in a step which informed quarters said was preliminary to rationing.

The order means the average motorist among the 10,000,000 automobile owners in the affected areas will have to curtail his use of motor fuel by even more than one-fifth since filling stations were directed to meet just all the "minimum, necessary requirements" of essential users.

Among those classes as essential users were physicians and nurses, government vehicles, school buses, taxicabs and agricultural machinery.

The approximately 100,000 filling stations in the 20 states where the order applies were directed to continue their operations to 12 hours daily and 72 hours weekly. The curfew was to hours and days was left to individual retailers.

The gasoline order was issued by WPA director Donald M. Nelson on recommendation of Petroleum Coordinator Ikes. It was described in oil circles as an intermediate action to hold down gasoline consumption until cards could be printed and issued for a rigid gasoline rationing program. This might require several weeks.

### Cabot Turns Plane Over To Uncle Sam

Officials of the Cabot company here will have to travel on foot or by train because they've turned their plane over to Uncle Sam. E. G. Allen, general manager of the southwest division, with offices here, announced yesterday that he had instructed his pilot, Francis M. Clark, to deliver the Beechcraft to Hensley field at Dallas.

Mr. Allen said the government needs such planes and that he offered them the Cabot Beechcraft. Yesterday he received word that the government would take the ship, at their price.

"Uncle Sam needs the ship more than we do so he can have it at his price," Mr. Allen declared.

## Population Greater Than One Year Ago

### Sweden On Alert

BERN, Switzerland, March 14 (AP)—Sweden stepped up her defense preparations to the highest degree tonight as signs of invasion by the German army increased the tension in the war-enneared Scandinavian kingdom.

The men were employed by Bill Ponder of Fort Worth, according to attending physicians.

The accident occurred while the men were tearing down a storage tank at the Magnolia Petroleum company tank farm near Kingsmill.

The men were employed by Bill Ponder of Fort Worth, according to attending physicians.

The accident occurred while the men were tearing down a storage tank at the Magnolia Petroleum company tank farm near Kingsmill.

The men were employed by Bill Ponder of Fort Worth, according to attending physicians.

The accident occurred while the men were tearing down a storage tank at the Magnolia Petroleum company tank farm near Kingsmill.

The men were employed by Bill Ponder of Fort Worth, according to attending physicians.

The accident occurred while the men were tearing down a storage tank at the Magnolia Petroleum company tank farm near Kingsmill.

## Have You Paid Your Income Tax Yet?

Have you paid your income tax yet? If you haven't you have until midnight Monday to get a check off to Uncle Sam. That's one day later than last year because March 15, deadline, falls on Sunday this year and Uncle Sam has agreed to give his children an extra day of grace.

Income tax experts here reported an unprecedented last minute rush yesterday, necessitating the burning of midnight oil.

With exemption lowered, many who never before had to file returns are compelled to this year.

See I HEARD, Page 6

See I HEARD, Page 6

See I HEARD, Page 6

See I HEARD, Page 6

See I HEARD, Page 6

See I HEARD, Page 6

See I HEARD, Page 6

See I HEARD, Page 6

SEA DRAMA—WITHIN SIGHT OF SHORE—The 677-ton Gulf Oil corporation tanker Gulftrade was torpedoed by an enemy submarine so close to the New Jersey shore that, had it been daylight, observers on land

could almost have seen the dramatic scene pictured in the artist's conception sketched above. The attack took place not more than three and a half miles off Barnegat Light. After blasting the ship in two with

a torpedo, the U-boat boldly maneuvered between the shattered halves. Eighteen crew members were missing, presumed lost. Sixteen survivors were brought ashore by rescue vessels.

It's time to change to summer oil and grease to protect your car to make it last longer. Hampton's Storage Garage, Phone 408.

Have your car washed and waxed at regular intervals. Wash with Spectra's service. Phone 408. Spectra's Service, 1212.







### Conference At Amarillo Will Be Attended By 3,000 Educators

W. B. Weathered, Gray county superintendent of schools, and president of the Northwest Conference for Education, will preside at the conference to be held next Friday and Saturday in Amarillo.

Nearly 3,000 teachers, administrators, trustees, and P-T-A workers are expected to attend.

Sessions will be held in the Amarillo Municipal auditorium and in various Amarillo churches and schools.

In addition to three general sessions, at which outstanding speakers will discuss "Educating For a Better World," there will be more than a score of sectional meetings and lunches, each with its officers, speakers, and programs.

**Pampans As Chairmen**

Pampans will direct five of these sectional meetings Friday:

E. W. Cabe, Jr., chairman of the guidance section, young people's assembly room, First Baptist church.

Miss Helen Martin, music section chairman, 311 senior high school.

Oscar Hinger, chairman, physical education section, Central Junior High school playground.

Mrs. Sam Irwin, chairman, primary section, senior high school auditorium.

Kenneth Carman, chairman, speech section, 115 senior high school.

Registration will begin at 8:30 a. m. Friday, March 20, at the Municipal auditorium and will be completed by 9:30 a. m., when the first general session will begin. While the sectional gatherings are being held in the afternoon, the house of delegates will assemble at 2:30 o'clock at the senior high school to elect officers and state executive committee members, delegates to the state house of delegates, and hear reports of committees.

Committee chairmen include the following:

Resolutions, Chester Strickland, White Deer; educational progress, P. T. A. Luncheon

The Parent-Teacher group will have a noon luncheon Friday at the Amarillo hotel. Mrs. W. B. La-Master of Perryton will preside.

A dinner will be given for teachers of vocational agriculture at 6 p. m. Friday at the Amarillo hotel. Prof. Milton Morris of West Texas State will be chairman.

Each of these gatherings will be addressed by one or more speakers.

**Sectional Programs**

Sectional programs, beginning at 2 p. m. will include the following:

Art section—Central Junior High school auditorium; Miss Eva Patching, chairman.

Band and orchestra section—Senior high school, room 108.

Commercial teacher section—Senior high school cafeteria; Olin Huff, Canyon, chairman.

Elementary language arts section—Vaughn classroom of Polk Street Methodist church; Mrs. Virginia D. Jenkins, Amarillo, chairman.

Elementary social studies section—Senior high school library; Miss Ester DeLis, Amarillo, chairman.

Foreign language section—Room 211 of senior high school; Miss Anna May Klapproth, Amarillo, chairman.

High school language arts section—Parlor of Polk Street Methodist church; Miss Dorinda E. Bond, Amarillo, chairman.

High school science section—Room 308 of senior high school; Prof. L. S. Baker of West Texas State, chairman.

High school social studies section—Room 212 of senior high school; Mrs. A. L. Brint, Amarillo, chairman.

Homemaking section—Federated club rooms of Municipal auditorium; Miss Ouida O'Neal, Amarillo, chairman.

Library section—Parlor of Polk Street Methodist church; Mrs. Virginia Crabtree, Amarillo, chairman.

Manual arts section—Room 11 of senior high school; Maurice Mitchell, Amarillo, chairman.

Mathematics section—Room 301 of senior high school; J. Irvin Kimmins, Phillips, chairman.

Trustees section—47th district court room; O. Stevens, Dimmitt, chairman.

The conference includes district 9 of the Texas State Teachers association, an area which covers the 26 Panhandle counties. Schools throughout this region will close for the two days of the teacher convention.

**BUY DEFENSE STAMPS**

**Treasury Expects \$2,750,000,000 In 1942 Income Taxes**

WASHINGTON, March 14 (AP)—The treasury expects to get \$2,750,000,000 of income taxes this month, which will more than double any previous monthly collection—but will be enough to pay for only one month of war at the current spending rate.

At least two-thirds of the tax money will go into the war program, since at present other federal costs run about one-third of total expenditures. Next year, the war "cut" is due to be much higher.

The war program is budgeted at \$59,000,000,000 in the coming fiscal year.

The treasury figured today that if you paid \$5—the approximate tax on a single man who earned \$25 last year—you would have paid for a bonnet, complete with scabbard. If you had an income in 1941 of about \$75,000, your tax of roughly \$35,000 would pay for a medium tank. To pay for a flying fortress, costing about \$500,000, you would have to report an income of around \$750,000.

**BUY DEFENSE BONDS**

Reconditioning and remodeling of existing dwellings in defense areas is being urged as a means of utilizing all possible housing. Expert technical service has been made available without charge, by the Home Owners Loan Corporation. The program embraces repair of approximately 550,000 homes.

### GERMANY

(Continued from Page 1)

United Nations triumph was shattered by the rabbi's statement:

"I would say that from 80 to 90 per cent of the German people are Nazis. Even those Germans who are not Nazis are solidly with Hitler."

Asked if it would be necessary to invade Germany to bring the Germans to see the light, and destroy a lot of German towns, the rabbi stated that to destroy property would create a riot, but he also pointed out that the German wars since 1813 had been fought on foreign soil.

Only once in the World War was Germany invaded, he said, and that was the time the Russians entered East Prussia, a thinly populated region.

**Prisoner At Dachau**

Dr. Bluhm's talk was divided into two parts. The first was his speech to the club at noon, which was broadcast over KPDD; the second, his answers to the forum conducted at the close of the program.

The Amarillo rabbi spoke from first-hand knowledge of the Germans' "kind" treatment. From Nov. 10 to December 7, 1938, he was a prisoner in a Nazi concentration camp at Dachau in Germany.

Through intercession of a Dutch friend, he was enabled to leave and go to Holland, thence to America, in 1939.

Long before 1938, however, Dr. Bluhm knew the Nazi system. He knew it so well that he was able to draw a map of the prison and tell his fellow prisoners what to expect while the prisoners were being taken to the camp.

**First Aid Surgeons**

It is not against Jews alone that the Nazis wreak their fury, he said, but against all who are not Nazis. He told one incident of a German who was not a Nazi arranging to go to a hospital for an operation.

The Nazis pounced on him the day he was being taken to the hospital and took him to a prison camp. He kept his efforts to try to get to the hospital.

Under the Nazi system, there is little chance of prisoners ever getting into a hospital. First aid men, with no knowledge of surgery, act as surgeons, without giving patients antiseptics. Consequently, 90 per cent of such patients die.

**Saint of Dachau**

A Christian architect, whom the rabbi described as a modern saint, died a horrible death because he had tried to help Dr. Bluhm and others, and would not promise not to continue to help prisoners.

This architect had done much to eliminate slums in German cities.

When the Nazis discovered him bringing coffee to the rabbi and his fellow prisoners, they forbade the architect to give the coffee.

There were several other attempts to aid, appointments made by the rabbi and architect, and finally Dr. Bluhm learned the architect was "in the hospital."

The Nazis had tied a heavy stone to his feet, bound his arms to his back, and alternately lifted and lowered the architect from the branches of a tree, until he fainted.

This had happened twice. Each time he was revived with a jar of water thrown into his face. When he was first bound, the Nazis asked him why he helped the prisoners.

"Because, thou shalt love thy neighbor," the architect replied.

**Nazi Kultur**

Numerous as they are fiendish are the tortures employed by the Nazis. Dr. Bluhm told of these:

Prisoners unloaded at a station, told to run as "fast as foxes" to a freight car, then clubbed, bayoneted, and beaten for an hour.

Prisoners jammed like sardines on the trip in freight cars to the prison camp. Then more of the bloody gauntlet, and no food for 24 hours.

Prisoners kept out in the rain until their clothing was soaked, denied any food.

The "attention" torture under which prisoners are kept standing rigidly at attention, sometimes for four or five hours, regardless of physical condition.

If a prisoner can't answer this call, the companions of that man are forced to carry him to the "round-up," or the entire barracks suffers.

This "suffering" means that several will die in the special tortures in the camp towers arranged by the brutal Nazis.

Another trick of the Nazis is to declare a prisoner "water-shy," put a hose in his mouth, turn on the water, and thus kill him.

**Screams of Dying Man**

Dr. Bluhm has heard the anguished screams of a flogged prisoner, when a line of his companions were forced to stand with their backs to the man, forbidden on pain of death to watch, and hear the man die under the Nazi whips.

A boy of 15, who had been in a Nazi prison, but whose release had been obtained, was driven nearly mad by the bayoneting, kicking and clubbing he endured. Even when safe in Holland he covered at the sight of a uniform.

Palm books have been taken from prisoners, split upon, while the pagan Nazis reviled their captives.

Vicious criminals are favorites of the Nazis. About 15 per cent of the inhabitants of the prison camps are in this class.

**German Gangsters**

They become warden prisoners and delight in the brutality they can enforce on men who were once judges, attorneys, bankers, clergymen.

A faint spark of conscience was roused by Dr. Bluhm in one of these wardens, whom most of the prisoners regarded as a spy.

The rabbi learned that the boy had been a storm trooper who refused to destroy the shop owned by a girl who would not become a Nazi. When commanded to do so, he said he would not think of doing that to a man, much less to a girl that he had danced with and loved.

Put in prison, the former storm trooper was trying to regain favor. He scoffed at the idea of God, but sometimes the rabbi was able to make the look of a human being come back into the boy's eyes.

No Escape

Escape from a Nazi concentration camp? It's impossible for the place

### GERMANY

is too well guarded, said Dr. Bluhm. Only twice in six years has he known of men to "escape." One of these was an engineer who planned it for six months; another "escaped" by donning a storm trooper's uniform and having contact with friends on the outside who bribed a guard.

Working outside the camp, there is a possibility of escape; inside, the situation is hopeless.

Why have the Germans become lower than beasts?

Dr. Bluhm says it is due to the education they receive that extols war and Hitler, calls Hitler "giver of bread," takes God out of prayers and substitutes the name of the Austrian house painter, in short, makes a god of Hitler. Then, too, there are the old German poems that each German schoolboy learns, the tales of ancient Teutonic gods, and how the Germans own all the lands and all the seas and are a super-race.

**All Religions Opposed**

It is not against the Jews alone that the Nazis execute their viciousness; all religion, Catholic, Protestant, and Jewish, is subjected to the same pagan attack, the same reviling, the same Nazi songs mocking God and Jesus and all that is holy. The Nazis have abolished God and the Germans have long since believed in right, justice, or anything that lifts man above a fiend, the rabbi explained.

Dr. Bluhm had to learn English after he came to the United States.

### GERMANY

His speech was in good English although naturally with a trace of accent.

Kiwanians listened intently throughout the rabbi's talk and many remained for the forum that followed the luncheon.

The program was in charge of L. N. Atchison who introduced Dr. Bluhm. Attendance at the luncheon was 60. Guests were W. E. James, Howard Lane, Vernon Hall, J. L. Sperry, Ed Weiss, Paul Hill, Frank Leder, Harry Wahlberg and Brownwood Emerson.

**BUY DEFENSE BONDS**

Farmers have more than 320 different ways of putting electricity to work on their farms, a survey has revealed.

### GERMANY

Submarine Launched

VALLEJO, Calif., March 14 (AP)—Another submarine, launched eleven months ahead of schedule, slid into the water today as this nation's newest weapon against the Axis.

She was the U. S. S. Whale, the first ship of the U. S. navy to bear that name.

The keel of the Whale was laid June 28, 1941.

**To Relieve Misery of**

**COLDS**

Take 666

LIQUID, TABLETS, SALVE, NOSE DROPS

### GERMANY

• PARIS FASHION

• NATURAL POISE

• CONNIES

Friedman - Shelby

• FOOT FASHION

• BEIGE

• CREAM

• NAVY

• RED

• WHITE

• BLACK

Color is the thing! Match your outfits at Anthony's! Our Spring collection is the most outstanding we've ever had!

**SAVE ON DRY CLEANING**

MONDAY AND TUESDAY ONLY

3 SUITS OR PLAIN DRESSES \$1.10

CLEANED & PRESSED FOR

YOU MAY SEND AN ASSORTMENT

We Call For and Deliver

307 WEST FOSTER

**NU-WAY CLEANERS**

PHONE 57

**Let a Buick Dealer CONSERVE YOUR CAR!**

Play Safe! To Make Your Car Last, Insist on Service According to Factory Standards, by Men Trained in Factory Methods!

ALL CARS don't have the same service needs. All adjustments shouldn't be made the same way on all makes.

Buick C-Y-C Service provides regular care by authorized factory-trained mechanics who know your car "like a book."

They are not just mechanics, they are Buick experts, with direct, first-hand contact with factory service specialists who keep them constantly informed about every operation on every model.

They learn from the factory - not from "trial and error." They don't guess - they know! And by looking over your car regularly - say once each month - they can prevent trouble before it gets started, save you annoyance as well as money.

Come in for a FREE CHECK-UP that shows the exact condition of your car - and let us give you all the details about C-Y-C Service.

**Better Buy Buick SERVICE**

**TEX EVANS BUICK CO., INC.**

204 N. BALLARD ST. PAMPA, TEXAS

**CONSIDER THIS, FOR EXAMPLE**

There are no less than eleven steps called for in adjusting Buick brakes for wear, all of eighteen steps for a major brake adjustment. Don't you think you ought to go to men who know what these operations are, and will be sure to perform them all right?

\*\*\*

COME IN FOR A FREE CHECK-UP by authorized factory-trained mechanics

**Easter Magic!**

• PARIS FASHION

• NATURAL POISE

• CONNIES

Friedman - Shelby

• FOOT FASHION

• BEIGE

• CREAM

• NAVY

• RED

• WHITE

• BLACK

Color is the thing! Match your outfits at Anthony's! Our Spring collection is the most outstanding we've ever had!

**The Shoes Smart Women Prefer are at Anthony's.**

Here are brands you know... Shoes you love... designed to suit your mode of living this Spring... Priced as only Anthony's price them... Get yours tomorrow!

**\$3.98**

MANY STYLES 2.98 to 4.98

Choose from Many New Materials

Choose from many new materials. Jewel bright patent... soft rich beige... new mellow cream. Crushed kids... smooth calf and elasticised gabardines. Every new style is represented in Anthony's fine Spring showings!

**Easter Shoes FOR BOYS and GIRLS**

RED GOOSE BRAND

Strong, durable shoes for boys and girls are featured at Anthony's... They're all leather in vital parts!

Styles for Girls

Open toe sandals... T-straps... two-tone oxfords. Many cute styles in black and brown calf.

Styles for Boys

Real he-man styles... shark tips... wing toes. Choose from blacks, browns or combinations.

Sizes, 5 1/2 to 8, 8 1/4 to 11 1/2, 12 to 3.

Anthony's Are Children's Shoe Outfitters

**\$1.98 and 2.98**

Anthony's Present Monday through Friday "Charlie Ross the Singing Salesman."

WKY-7:45 a. m., 930 Mc.

**C.R. Anthony Co.**



THE PAMPA NEWS

Published every evening, except Saturday, and Sunday morning of The Pampa News, 322 West Foster Avenue, Pampa, Texas. Phone 656—All departments.

MEMBER OF THE ASSOCIATED PRESS (Full Licensed Wire). The Associated Press is exclusively entitled to the use for publication of all news dispatches credited to it or otherwise credited to this paper and also the reprinted news published here.

Entered as second class matter March 16, 1937, at the post office at Pampa, Texas, under the name of Pampa News, Inc. Postmaster: Advertising Representatives: 1939 Daily Press League, New York, St. Louis, Kansas City, Los Angeles, San Francisco and Chicago.

SUBSCRIPTION RATES: BY CARRIER in Pampa, 25c per week. Per month, \$1.00. In advance, \$2.50 for three months, \$5.00 per six months, \$10.00 per year. BY MAIL, payable in advance, anywhere in the Panhandle area, \$3.00 per year. Outside of the Panhandle, \$7.50 per year. Price per single copy, 5 cents. No mail orders accepted in localities served by carrier delivery.

An Independent Democratic newspaper, publishing the news fairly and impartially at all times and supporting in its editorial columns the principles which it believes to be right and opposing those questions which it believes to be wrong, regardless of party politics.

PLEDGE OF ALLEGIANCE—"I pledge allegiance to the Flag of the United States of America and to the Republic for which it stands, one nation indivisible, with liberty and justice for all."

Over Home Plate To Poorhouse

Joe DiMaggio can probably make a good case for spurning the New York Yankees' offer of around \$40,000 for his services this year. Ted Williams can probably argue convincingly that his draft deferment is just and that his mother would want if he did not play baseball this year.

This is war, however, and the people are getting mad. It was probably only the mild beginning when "The Texas Boys" at Camp Blanding, Fla., sent this wire to DiMagg:

"We cordially invite you to a tryout with the 143rd infantry, 36th division—the fightingest regiment in this man's army. The pay is only \$21 per month but that is better than nothing. Please advise.

"P. S.—We would settle for last year's salary."

Dinner In Bataan

The men of Bataan are worried. Not about the Japs, however. Steaks—thick and juicy—are troubling the knights of MacArthur's round table. Already, they're planning a victory dinner to celebrate driving of Japanese from the Philippines, and a respite from salmon and canned beef.

To some of the gloom-howlers at home this "over-confidence" will be a shocking surprise. But the promise of the Bataan victory dinner should not stir false confidence. It is not an immediate prospect, and it will be dated only by the speed and power of America's home front effort.

The Nation's Press

RACE SNOBBERY (The Christian Century—By Frank D. Campbell) The Christian Century is to be congratulated for warning that the zeal of the white man for the harvest for the racial snobbery which has marked the attitude of too many whites in the East.

Each citizen in every state bears some share of moral and civic responsibility for the continuance of race and color legislation upon the national statutes, and for our world leadership in race discrimination.

THE MEANING OF ROOSEVELT'S LABOR ADVICE (L. A. Examiner—By George Rothwell Brown) President Roosevelt's political partiality for organized labor is not only impairing national unity, but it is impairing the unity of the Democratic Party.

THE MEANING OF ROOSEVELT'S LABOR ADVICE (L. A. Examiner—By George Rothwell Brown) President Roosevelt's political partiality for organized labor is not only impairing national unity, but it is impairing the unity of the Democratic Party.

THE MEANING OF ROOSEVELT'S LABOR ADVICE (L. A. Examiner—By George Rothwell Brown) President Roosevelt's political partiality for organized labor is not only impairing national unity, but it is impairing the unity of the Democratic Party.

THE MEANING OF ROOSEVELT'S LABOR ADVICE (L. A. Examiner—By George Rothwell Brown) President Roosevelt's political partiality for organized labor is not only impairing national unity, but it is impairing the unity of the Democratic Party.

THE MEANING OF ROOSEVELT'S LABOR ADVICE (L. A. Examiner—By George Rothwell Brown) President Roosevelt's political partiality for organized labor is not only impairing national unity, but it is impairing the unity of the Democratic Party.

THE MEANING OF ROOSEVELT'S LABOR ADVICE (L. A. Examiner—By George Rothwell Brown) President Roosevelt's political partiality for organized labor is not only impairing national unity, but it is impairing the unity of the Democratic Party.

THE MEANING OF ROOSEVELT'S LABOR ADVICE (L. A. Examiner—By George Rothwell Brown) President Roosevelt's political partiality for organized labor is not only impairing national unity, but it is impairing the unity of the Democratic Party.

THE MEANING OF ROOSEVELT'S LABOR ADVICE (L. A. Examiner—By George Rothwell Brown) President Roosevelt's political partiality for organized labor is not only impairing national unity, but it is impairing the unity of the Democratic Party.

THE MEANING OF ROOSEVELT'S LABOR ADVICE (L. A. Examiner—By George Rothwell Brown) President Roosevelt's political partiality for organized labor is not only impairing national unity, but it is impairing the unity of the Democratic Party.

THE MEANING OF ROOSEVELT'S LABOR ADVICE (L. A. Examiner—By George Rothwell Brown) President Roosevelt's political partiality for organized labor is not only impairing national unity, but it is impairing the unity of the Democratic Party.

THE MEANING OF ROOSEVELT'S LABOR ADVICE (L. A. Examiner—By George Rothwell Brown) President Roosevelt's political partiality for organized labor is not only impairing national unity, but it is impairing the unity of the Democratic Party.

THE MEANING OF ROOSEVELT'S LABOR ADVICE (L. A. Examiner—By George Rothwell Brown) President Roosevelt's political partiality for organized labor is not only impairing national unity, but it is impairing the unity of the Democratic Party.

THE MEANING OF ROOSEVELT'S LABOR ADVICE (L. A. Examiner—By George Rothwell Brown) President Roosevelt's political partiality for organized labor is not only impairing national unity, but it is impairing the unity of the Democratic Party.

THE MEANING OF ROOSEVELT'S LABOR ADVICE (L. A. Examiner—By George Rothwell Brown) President Roosevelt's political partiality for organized labor is not only impairing national unity, but it is impairing the unity of the Democratic Party.

THE MEANING OF ROOSEVELT'S LABOR ADVICE (L. A. Examiner—By George Rothwell Brown) President Roosevelt's political partiality for organized labor is not only impairing national unity, but it is impairing the unity of the Democratic Party.

Common Ground

By H. C. HOLES

"I speak the gas-word principal. I give the sign of democracy. By God! I will accept nothing which all cannot have their counterpart of on the same terms."

TOO AWFUL TO BELIEVE TRUE The circumstances surrounding the letting of contracts for the making of army clothes indicate conditions that one hardly can believe to be true.

And all these companies are men who employ only CIO employees headed by Sidney Hillman who is working for the government for \$1 a year and still receiving \$14,000 a year salary from the CIO Textile Union.

If I remember correctly, Donald Nelson remarked that he did not care who was at the head of the Labor Relations Board. If he knows anything about production, he knows that those at the head of the Labor Relations Board are of the utmost importance, if we are to have industrial peace and, thus, production.

If Nelson wants to lose the confidence of the people and cause untold billions of waste and probably the unnecessary loss of millions of lives in the war, he can do it by entering into this kind of a union racket.

Truly, it seems too awful to believe that our government is in the hands of people without any principles whatsoever. If it is true, they must believe that the people have lost all sense of decency and justice.

ROOSEVELT'S LOAVES AND FISHES If people are to believe in unnatural prestidigitator acts that are incompatible with natural law, it probably is much better that they believe these acts happened 2000 years ago than attempt to have the state put them in practice.

It will be remembered that many orthodox preachers fail to explain the proper interpretation of the feeding of 5,000 people with five loaves and two fishes and having twelve baskets left over.

But it seems that Roosevelt has been trying to re-enact the loaves and fish act. He, in reality, is saying that he can take the wealth of the few rich people and spread it out to those who need it and permit them to work less and establish minimum wages and have twelve baskets of capital left to continue to improve the lot of man.

GOOD FOR GOODSPPEED Then there's Marjorie Reynolds, whose real name is Goodspeed and who arrived at the age of three and remained, along with the rest of the family, because their car had broken down.

THE NEWS IS RIGHTFULLY PROUD OF ITS NEWS CARRIERS, THE BOYS WHO BRING YOU THE PAPER, PROUD OF THEIR INITIATIVE, PROUD OF THE TRAINING THEY RECEIVE, PROUD OF THE RECORD THESE BOYS HAVE MADE IN SELLING DEFENSE BONDS AND STAMPS.

WHERE IT IS LOCATED The Great Barrier Reef is built of coral and is a chain of islands which extends along the northeastern coast of Australia for more than a thousand miles.

WHY HAS MR. BIDDLE'S RUBBER STAMP? Attorney General Biddle's extraordinary statement that he knows nothing about a bill sent to Congress to impose government in secret on the country arouses curiosity about his signs or rubber stamps Mr. Biddle's name on his communication to the legislative branch.

THE MEANING OF ROOSEVELT'S LABOR ADVICE (L. A. Examiner—By George Rothwell Brown) President Roosevelt's political partiality for organized labor is not only impairing national unity, but it is impairing the unity of the Democratic Party.

THE MEANING OF ROOSEVELT'S LABOR ADVICE (L. A. Examiner—By George Rothwell Brown) President Roosevelt's political partiality for organized labor is not only impairing national unity, but it is impairing the unity of the Democratic Party.

THE MEANING OF ROOSEVELT'S LABOR ADVICE (L. A. Examiner—By George Rothwell Brown) President Roosevelt's political partiality for organized labor is not only impairing national unity, but it is impairing the unity of the Democratic Party.

THE MEANING OF ROOSEVELT'S LABOR ADVICE (L. A. Examiner—By George Rothwell Brown) President Roosevelt's political partiality for organized labor is not only impairing national unity, but it is impairing the unity of the Democratic Party.

THE MEANING OF ROOSEVELT'S LABOR ADVICE (L. A. Examiner—By George Rothwell Brown) President Roosevelt's political partiality for organized labor is not only impairing national unity, but it is impairing the unity of the Democratic Party.

THE MEANING OF ROOSEVELT'S LABOR ADVICE (L. A. Examiner—By George Rothwell Brown) President Roosevelt's political partiality for organized labor is not only impairing national unity, but it is impairing the unity of the Democratic Party.

THE MEANING OF ROOSEVELT'S LABOR ADVICE (L. A. Examiner—By George Rothwell Brown) President Roosevelt's political partiality for organized labor is not only impairing national unity, but it is impairing the unity of the Democratic Party.

THE MEANING OF ROOSEVELT'S LABOR ADVICE (L. A. Examiner—By George Rothwell Brown) President Roosevelt's political partiality for organized labor is not only impairing national unity, but it is impairing the unity of the Democratic Party.

THE MEANING OF ROOSEVELT'S LABOR ADVICE (L. A. Examiner—By George Rothwell Brown) President Roosevelt's political partiality for organized labor is not only impairing national unity, but it is impairing the unity of the Democratic Party.

THE MEANING OF ROOSEVELT'S LABOR ADVICE (L. A. Examiner—By George Rothwell Brown) President Roosevelt's political partiality for organized labor is not only impairing national unity, but it is impairing the unity of the Democratic Party.

THE MEANING OF ROOSEVELT'S LABOR ADVICE (L. A. Examiner—By George Rothwell Brown) President Roosevelt's political partiality for organized labor is not only impairing national unity, but it is impairing the unity of the Democratic Party.

THE MEANING OF ROOSEVELT'S LABOR ADVICE (L. A. Examiner—By George Rothwell Brown) President Roosevelt's political partiality for organized labor is not only impairing national unity, but it is impairing the unity of the Democratic Party.

THE MEANING OF ROOSEVELT'S LABOR ADVICE (L. A. Examiner—By George Rothwell Brown) President Roosevelt's political partiality for organized labor is not only impairing national unity, but it is impairing the unity of the Democratic Party.

THE MEANING OF ROOSEVELT'S LABOR ADVICE (L. A. Examiner—By George Rothwell Brown) President Roosevelt's political partiality for organized labor is not only impairing national unity, but it is impairing the unity of the Democratic Party.

THE MEANING OF ROOSEVELT'S LABOR ADVICE (L. A. Examiner—By George Rothwell Brown) President Roosevelt's political partiality for organized labor is not only impairing national unity, but it is impairing the unity of the Democratic Party.

THE MEANING OF ROOSEVELT'S LABOR ADVICE (L. A. Examiner—By George Rothwell Brown) President Roosevelt's political partiality for organized labor is not only impairing national unity, but it is impairing the unity of the Democratic Party.

CATCHING UP

By H. C. HOLES

When a water hole is dug in the sand near White Sands National Monument, N. M., the pool mysteriously becomes stocked with fish in a short time.

THE MEANING OF ROOSEVELT'S LABOR ADVICE (L. A. Examiner—By George Rothwell Brown) President Roosevelt's political partiality for organized labor is not only impairing national unity, but it is impairing the unity of the Democratic Party.

THE MEANING OF ROOSEVELT'S LABOR ADVICE (L. A. Examiner—By George Rothwell Brown) President Roosevelt's political partiality for organized labor is not only impairing national unity, but it is impairing the unity of the Democratic Party.

THE MEANING OF ROOSEVELT'S LABOR ADVICE (L. A. Examiner—By George Rothwell Brown) President Roosevelt's political partiality for organized labor is not only impairing national unity, but it is impairing the unity of the Democratic Party.

THE MEANING OF ROOSEVELT'S LABOR ADVICE (L. A. Examiner—By George Rothwell Brown) President Roosevelt's political partiality for organized labor is not only impairing national unity, but it is impairing the unity of the Democratic Party.

THE MEANING OF ROOSEVELT'S LABOR ADVICE (L. A. Examiner—By George Rothwell Brown) President Roosevelt's political partiality for organized labor is not only impairing national unity, but it is impairing the unity of the Democratic Party.

THE MEANING OF ROOSEVELT'S LABOR ADVICE (L. A. Examiner—By George Rothwell Brown) President Roosevelt's political partiality for organized labor is not only impairing national unity, but it is impairing the unity of the Democratic Party.

THE MEANING OF ROOSEVELT'S LABOR ADVICE (L. A. Examiner—By George Rothwell Brown) President Roosevelt's political partiality for organized labor is not only impairing national unity, but it is impairing the unity of the Democratic Party.

THE MEANING OF ROOSEVELT'S LABOR ADVICE (L. A. Examiner—By George Rothwell Brown) President Roosevelt's political partiality for organized labor is not only impairing national unity, but it is impairing the unity of the Democratic Party.

THE MEANING OF ROOSEVELT'S LABOR ADVICE (L. A. Examiner—By George Rothwell Brown) President Roosevelt's political partiality for organized labor is not only impairing national unity, but it is impairing the unity of the Democratic Party.

THE MEANING OF ROOSEVELT'S LABOR ADVICE (L. A. Examiner—By George Rothwell Brown) President Roosevelt's political partiality for organized labor is not only impairing national unity, but it is impairing the unity of the Democratic Party.

THE MEANING OF ROOSEVELT'S LABOR ADVICE (L. A. Examiner—By George Rothwell Brown) President Roosevelt's political partiality for organized labor is not only impairing national unity, but it is impairing the unity of the Democratic Party.

THE MEANING OF ROOSEVELT'S LABOR ADVICE (L. A. Examiner—By George Rothwell Brown) President Roosevelt's political partiality for organized labor is not only impairing national unity, but it is impairing the unity of the Democratic Party.

THE MEANING OF ROOSEVELT'S LABOR ADVICE (L. A. Examiner—By George Rothwell Brown) President Roosevelt's political partiality for organized labor is not only impairing national unity, but it is impairing the unity of the Democratic Party.

THE MEANING OF ROOSEVELT'S LABOR ADVICE (L. A. Examiner—By George Rothwell Brown) President Roosevelt's political partiality for organized labor is not only impairing national unity, but it is impairing the unity of the Democratic Party.

THE MEANING OF ROOSEVELT'S LABOR ADVICE (L. A. Examiner—By George Rothwell Brown) President Roosevelt's political partiality for organized labor is not only impairing national unity, but it is impairing the unity of the Democratic Party.

THE MEANING OF ROOSEVELT'S LABOR ADVICE (L. A. Examiner—By George Rothwell Brown) President Roosevelt's political partiality for organized labor is not only impairing national unity, but it is impairing the unity of the Democratic Party.

THE MEANING OF ROOSEVELT'S LABOR ADVICE (L. A. Examiner—By George Rothwell Brown) President Roosevelt's political partiality for organized labor is not only impairing national unity, but it is impairing the unity of the Democratic Party.

THE MEANING OF ROOSEVELT'S LABOR ADVICE (L. A. Examiner—By George Rothwell Brown) President Roosevelt's political partiality for organized labor is not only impairing national unity, but it is impairing the unity of the Democratic Party.

THE MEANING OF ROOSEVELT'S LABOR ADVICE (L. A. Examiner—By George Rothwell Brown) President Roosevelt's political partiality for organized labor is not only impairing national unity, but it is impairing the unity of the Democratic Party.

THE MEANING OF ROOSEVELT'S LABOR ADVICE (L. A. Examiner—By George Rothwell Brown) President Roosevelt's political partiality for organized labor is not only impairing national unity, but it is impairing the unity of the Democratic Party.

THE MEANING OF ROOSEVELT'S LABOR ADVICE (L. A. Examiner—By George Rothwell Brown) President Roosevelt's political partiality for organized labor is not only impairing national unity, but it is impairing the unity of the Democratic Party.

THE MEANING OF ROOSEVELT'S LABOR ADVICE (L. A. Examiner—By George Rothwell Brown) President Roosevelt's political partiality for organized labor is not only impairing national unity, but it is impairing the unity of the Democratic Party.

THE MEANING OF ROOSEVELT'S LABOR ADVICE (L. A. Examiner—By George Rothwell Brown) President Roosevelt's political partiality for organized labor is not only impairing national unity, but it is impairing the unity of the Democratic Party.

THE MEANING OF ROOSEVELT'S LABOR ADVICE (L. A. Examiner—By George Rothwell Brown) President Roosevelt's political partiality for organized labor is not only impairing national unity, but it is impairing the unity of the Democratic Party.

THE MEANING OF ROOSEVELT'S LABOR ADVICE (L. A. Examiner—By George Rothwell Brown) President Roosevelt's political partiality for organized labor is not only impairing national unity, but it is impairing the unity of the Democratic Party.

THE MEANING OF ROOSEVELT'S LABOR ADVICE (L. A. Examiner—By George Rothwell Brown) President Roosevelt's political partiality for organized labor is not only impairing national unity, but it is impairing the unity of the Democratic Party.

THE MEANING OF ROOSEVELT'S LABOR ADVICE (L. A. Examiner—By George Rothwell Brown) President Roosevelt's political partiality for organized labor is not only impairing national unity, but it is impairing the unity of the Democratic Party.

THE MEANING OF ROOSEVELT'S LABOR ADVICE (L. A. Examiner—By George Rothwell Brown) President Roosevelt's political partiality for organized labor is not only impairing national unity, but it is impairing the unity of the Democratic Party.



Around Hollywood

By PAUL HARRISON

NOBODY WOULD DO ANYTHING FOR HER; nobody, that is, except a press agent who managed to have her and her people chosen by a local booster's organization as "the typical tourist family."

THE MEANING OF ROOSEVELT'S LABOR ADVICE (L. A. Examiner—By George Rothwell Brown) President Roosevelt's political partiality for organized labor is not only impairing national unity, but it is impairing the unity of the Democratic Party.

THE MEANING OF ROOSEVELT'S LABOR ADVICE (L. A. Examiner—By George Rothwell Brown) President Roosevelt's political partiality for organized labor is not only impairing national unity, but it is impairing the unity of the Democratic Party.

THE MEANING OF ROOSEVELT'S LABOR ADVICE (L. A. Examiner—By George Rothwell Brown) President Roosevelt's political partiality for organized labor is not only impairing national unity, but it is impairing the unity of the Democratic Party.

THE MEANING OF ROOSEVELT'S LABOR ADVICE (L. A. Examiner—By George Rothwell Brown) President Roosevelt's political partiality for organized labor is not only impairing national unity, but it is impairing the unity of the Democratic Party.

THE MEANING OF ROOSEVELT'S LABOR ADVICE (L. A. Examiner—By George Rothwell Brown) President Roosevelt's political partiality for organized labor is not only impairing national unity, but it is impairing the unity of the Democratic Party.

THE MEANING OF ROOSEVELT'S LABOR ADVICE (L. A. Examiner—By George Rothwell Brown) President Roosevelt's political partiality for organized labor is not only impairing national unity, but it is impairing the unity of the Democratic Party.

THE MEANING OF ROOSEVELT'S LABOR ADVICE (L. A. Examiner—By George Rothwell Brown) President Roosevelt's political partiality for organized labor is not only impairing national unity, but it is impairing the unity of the Democratic Party.

THE MEANING OF ROOSEVELT'S LABOR ADVICE (L. A. Examiner—By George Rothwell Brown) President Roosevelt's political partiality for organized labor is not only impairing national unity, but it is impairing the unity of the Democratic Party.

THE MEANING OF ROOSEVELT'S LABOR ADVICE (L. A. Examiner—By George Rothwell Brown) President Roosevelt's political partiality for organized labor is not only impairing national unity, but it is impairing the unity of the Democratic Party.

THE MEANING OF ROOSEVELT'S LABOR ADVICE (L. A. Examiner—By George Rothwell Brown) President Roosevelt's political partiality for organized labor is not only impairing national unity, but it is impairing the unity of the Democratic Party.

THE MEANING OF ROOSEVELT'S LABOR ADVICE (L. A. Examiner—By George Rothwell Brown) President Roosevelt's political partiality for organized labor is not only impairing national unity, but it is impairing the unity of the Democratic Party.

THE MEANING OF ROOSEVELT'S LABOR ADVICE (L. A. Examiner—By George Rothwell Brown) President Roosevelt's political partiality for organized labor is not only impairing national unity, but it is impairing the unity of the Democratic Party.

THE MEANING OF ROOSEVELT'S LABOR ADVICE (L. A. Examiner—By George Rothwell Brown) President Roosevelt's political partiality for organized labor is not only impairing national unity, but it is impairing the unity of the Democratic Party.

THE MEANING OF ROOSEVELT'S LABOR ADVICE (L. A. Examiner—By George Rothwell Brown) President Roosevelt's political partiality for organized labor is not only impairing national unity, but it is impairing the unity of the Democratic Party.

THE MEANING OF ROOSEVELT'S LABOR ADVICE (L. A. Examiner—By George Rothwell Brown) President Roosevelt's political partiality for organized labor is not only impairing national unity, but it is impairing the unity of the Democratic Party.

THE MEANING OF ROOSEVELT'S LABOR ADVICE (L. A. Examiner—By George Rothwell Brown) President Roosevelt's political partiality for organized labor is not only impairing national unity, but it is impairing the unity of the Democratic Party.

THE MEANING OF ROOSEVELT'S LABOR ADVICE (L. A. Examiner—By George Rothwell Brown) President Roosevelt's political partiality for organized labor is not only impairing national unity, but it is impairing the unity of the Democratic Party.

Know People You

By Archer Fullingim

NEVER STUDY THE MENU. Study the clientele, she said further. What the other people are eating is what you eat. And trust the waiters. If you order chocolate pudding and the waiter says "You want apple pie?" don't correct him—thank him. He's trying to give you a tip. With his boss right there he can't tell you the chocolate pudding stinks.

THE MEANING OF ROOSEVELT'S LABOR ADVICE (L. A. Examiner—By George Rothwell Brown) President Roosevelt's political partiality for organized labor is not only impairing national unity, but it is impairing the unity of the Democratic Party.

THE MEANING OF ROOSEVELT'S LABOR ADVICE (L. A. Examiner—By George Rothwell Brown) President Roosevelt's political partiality for organized labor is not only impairing national unity, but it is impairing the unity of the Democratic Party.

THE MEANING OF ROOSEVELT'S LABOR ADVICE (L. A. Examiner—By George Rothwell Brown) President Roosevelt's political partiality for organized labor is not only impairing national unity, but it is impairing the unity of the Democratic Party.

THE MEANING OF ROOSEVELT'S LABOR ADVICE (L. A. Examiner—By George Rothwell Brown) President Roosevelt's political partiality for organized labor is not only impairing national unity, but it is impairing the unity of the Democratic Party.

THE MEANING OF ROOSEVELT'S LABOR ADVICE (L. A. Examiner—By George Rothwell Brown) President Roosevelt's political partiality for organized labor is not only impairing national unity, but it is impairing the unity of the Democratic Party.

THE MEANING OF ROOSEVELT'S LABOR ADVICE (L. A. Examiner—By George Rothwell Brown) President Roosevelt's political partiality for organized labor is not only impairing national unity, but it is impairing the unity of the Democratic Party.

THE MEANING OF ROOSEVELT'S LABOR ADVICE (L. A. Examiner—By George Rothwell Brown) President Roosevelt's political partiality for organized labor is not only impairing national unity, but it is impairing the unity of the Democratic Party.

THE MEANING OF ROOSEVELT'S LABOR ADVICE (L. A. Examiner—By George Rothwell Brown) President Roosevelt's political partiality for organized labor is not only impairing national unity, but it is impairing the unity of the Democratic Party.

THE MEANING OF ROOSEVELT'S LABOR ADVICE (L. A. Examiner—By George Rothwell Brown) President Roosevelt's political partiality for organized labor is not only impairing national unity, but it is impairing the unity of the Democratic Party.

THE MEANING OF ROOSEVELT'S LABOR ADVICE (L. A. Examiner—By George Rothwell Brown) President Roosevelt's political partiality for organized labor is not only impairing national unity, but it is impairing the unity of the Democratic Party.

THE MEANING OF ROOSEVELT'S LABOR ADVICE (L. A. Examiner—By George Rothwell Brown) President Roosevelt's political partiality for organized labor is not only impairing national unity, but it is impairing the unity of the Democratic Party.

THE MEANING OF ROOSEVELT'S LABOR ADVICE (L. A. Examiner—By George Rothwell Brown) President Roosevelt's political partiality for organized labor is not only impairing national unity, but it is impairing the unity of the Democratic Party.

THE MEANING OF ROOSEVELT'S LABOR ADVICE (L. A. Examiner—By George Rothwell Brown) President Roosevelt's political partiality for organized labor is not only impairing national unity, but it is impairing the unity of the Democratic Party.

THE MEANING OF ROOSEVELT'S LABOR ADVICE (L. A. Examiner—By George Rothwell Brown) President Roosevelt's political partiality for organized labor is not only impairing national unity, but it is impairing the unity of the Democratic Party.

THE MEANING OF ROOSEVELT'S LABOR ADVICE (L. A. Examiner—By George Rothwell Brown) President Roosevelt's political partiality for organized labor is not only impairing national unity, but it is impairing the unity of the Democratic Party.

THE MEANING OF ROOSEVELT'S LABOR ADVICE (L. A. Examiner—By George Rothwell Brown) President Roosevelt's political partiality for organized labor is not only impairing national unity, but it is impairing the unity of the Democratic Party.

THE MEANING OF ROOSEVELT'S LABOR ADVICE (L. A. Examiner—By George Rothwell Brown) President Roosevelt's political partiality for organized labor is not only impairing national unity, but it is impairing the unity of the Democratic Party.

THE MEANING OF ROOSEVELT'S LABOR ADVICE (L. A. Examiner—By George Rothwell Brown) President Roosevelt's political partiality for organized labor is not only impairing national unity, but it is impairing the unity of the Democratic Party.

THE MEANING OF ROOSEVELT'S LABOR ADVICE (L. A. Examiner—By George Rothwell Brown) President Roosevelt's political partiality for organized labor is not only impairing national unity, but it is impairing the unity of the Democratic Party.

THE MEANING OF ROOSEVELT'S LABOR ADVICE (L. A. Examiner—By George Rothwell Brown) President Roosevelt's political partiality for organized labor is not only impairing national unity, but it is impairing the unity of the Democratic Party.

THE MEANING OF ROOSEVELT'S LABOR ADVICE (L. A. Examiner—By George Rothwell Brown) President Roosevelt's political partiality for organized labor is not only impairing national unity, but it is impairing the unity of the Democratic Party.

THE MEANING OF ROOSEVELT'S LABOR ADVICE (L. A. Examiner—By George Rothwell Brown) President Roosevelt's political partiality for organized labor is not only impairing national unity, but it is impairing the unity of the Democratic Party.

THE MEANING OF ROOSEVELT'S LABOR ADVICE (L. A. Examiner—By George Rothwell Brown) President Roosevelt's political partiality for organized labor is not only impairing national unity, but it is impairing the unity of the Democratic Party.

THE MEANING OF ROOSEVELT'S LABOR ADVICE (L. A. Examiner—By George Rothwell Brown) President Roosevelt's political partiality for organized labor is not only impairing national unity, but it is impairing the unity of the Democratic Party.

THE MEANING OF ROOSEVELT'S LABOR ADVICE (L. A. Examiner—By George Rothwell Brown) President Roosevelt's political partiality for organized labor is not only impairing national unity, but it is impairing the unity of the Democratic Party.

THE MEANING OF ROOSEVELT'S LABOR ADVICE (L. A. Examiner—By George Rothwell Brown) President Roosevelt's political partiality for organized labor is not only impairing national unity, but it is impairing the unity of the Democratic Party.

THE MEANING OF ROOSEVELT'S LABOR ADVICE (L. A. Examiner—By George Rothwell Brown) President Roosevelt's political partiality for organized labor is not only impairing national unity, but it is impairing the unity of the Democratic Party.

THE MEANING OF ROOSEVELT'S LABOR ADVICE (L. A. Examiner—By George Rothwell Brown) President Roosevelt's political partiality for organized labor is not only impairing national unity, but it is impairing the unity of the Democratic Party.

Behind The News In Washington

&lt;



# LeFors And McLean Tie 5 to 5 In Boxing Match

LeFors and McLean battled to a 5 to 5 tie in their inter-city boxing match at LeFors Friday night before a packed house.

McLean fans, and even Coach Sewell Cox, expressed surprise at the excellent showing of the Tigers against the veteran Pirates. No fights were fought over the 140-pound division.

Two of LeFors' headline attractions, Eugene Cooper and Waylon Hughes, did not box due to lack of opponents.

There were three technical knockouts, all in favor of LeFors, but the remaining seven fights on the card were close, as three split decisions among the judges indicated.

The two teams came out of the fracas with one casualty each. Bobby Dunn, who won a close one in the opener from Noah Hugg of McLean, injured his first and he was brought to Worley hospital yesterday for X-ray pictures.

Virgil Smith of McLean was more than holding his own against Billy Cheek when he injured his thumb, but was unable to go on and Coach Cox threw in the towel at the beginning of the third round.

The closest fights of the evening were between Raymond Smith of McLean and Noel Clemmons, who won the decision, and between Wayne Hill of McLean and Charles Vanlandingham of LeFors. Hill won a split decision.

Judges were Dan McGrew, Dr. W. L. Campbell, Oscar Hinger, all of Pampa. Coach Rankin of LeFors was the third man in the ring.

Results of the matches, giving names of McLean boys first, with weights following names: Noah Hugg, 79 pounds, Bobby Dunn, 74 pounds, decision, Billy Day, 93 1/2.

Frank Simpson, 99, decision, Lovell Hughes, 96. Raymond Smith, 109, Noel Clemmons, 98, decision.

Wayne Back, 109 1/2, Don McLaughlin, 111, decision. Virgil Smith, 126, Billy Cheek, 129 1/2, decision.

W. C. Simpson, 128, decision, Alan Krause, 128. Joe Wayne Hill, 130, decision, Charles Vanlandingham, 129. Lavelle Vineyard, 129, decision, Billy McGinnis, 125.

# 47 Basketball Teams From 22 States In Denver Meet

By LOUDON KELLY DENVER, March 14 (AP)—Basketball's melting pot begins boiling tomorrow. Before next Saturday night it will cook the victory hopes of all but two teams.

Forty-seven quintets from 22 states have checked in for the 35th renewal of the National A.A.U. tournament getting away at 11 a. m. tomorrow.

In a country that cradled basketball a half century ago, there is no cage tournament quite like this one. It's always the biggest and it brings forth the greatest variety of teams and players.

The favorites usually are such veteran A.A.U. outfits as the defending champion Hollywood Twentieth Century, the Phillips 66 Oilers from Bartlesville, Okla., winners two years ago, and the Denver Legion.

Nine college teams are competing for this title that no college outfit has won since 1925. The quietest traveling the farthest—and the fastest—is the navy fliers from Pensacola, Fla. The airmen flew here in transport.

Next to Colorado's nine, California has the most entrants with seven. Kansas has five, Oklahoma and Missouri three each, Montana, Oregon, and Washington two a piece, and Nebraska, Wisconsin, Texas, Arkansas, Iowa, Florida, Wyoming, Louisiana, Illinois, Idaho, Michigan, New Mexico, Arizona, and Utah one each.

The two survivors of the first six days of the one-defeat-and-out marathon will clash Saturday night for the championship.

Seeded teams include Hollywood, Phillips, Denver Legion, Dallas (Tex.) Peppers, Los Angeles Clippers, Oakland (Calif.) Golden State, Seattle Alpine Dairy, and Shreveport (La.) Morris Dickson. Nine other entrants get first round byes.

Seeded teams include Hollywood, Phillips, Denver Legion, Dallas (Tex.) Peppers, Los Angeles Clippers, Oakland (Calif.) Golden State, Seattle Alpine Dairy, and Shreveport (La.) Morris Dickson. Nine other entrants get first round byes.

# Haas And Sauer Give Reds Needed Power At The Plate

By HARRY GRAYSON NEA Service Sports Editor TAMPA, March 14—Cincinnati has one of the finest pitching staffs in the business—Bucky Walters, Paul Derringer, Elmer Riddle, Johnny VanderMeer, Gene Thompson, Whitey Moore, Ray Starr, Jim Turner, and Joe Beegs.

But the most discussed athletes at Plant field today are Berthold Haas and Henry Sauer.

Bert Haas supplants fleet Bill Werber at third base.

Hank Sauer is being converted from a first baseman into a left fielder.

Between them they are expected to furnish the wallop, the lack of which kept William Boyd McKechnie sitting on lonely park benches a great many nights last summer.

Haas, who had three whiffs with the Brooklyn, in batting 315 led the American association in runs batted-in with 131, topped it in total bases, ranked second in triples, third in doubles and total hits, and played every inning of every one of the pennant-winning Columbus club's 156 games.

Sauer, a left fielder, was converted to a first baseman in 1938. He has been a headcase to Dean Bill McKechnie since Wally Berger left apart at the seams.

After playing every inning of every game of the Southern association season, Hank Sauer joined the Reds in September as a leading candidate for a bench job demanding a two-fisted socker.

Though he stands 6 feet 4, you get some idea of Sauer's nimbleness and ball-handling from the fact that he was a basketball star.



Bert Haas, left, replaces Bill Werber at third base; Rollie Hemsley supplants Ernie Lombardi behind the bat, and Hank Sauer is being converted into an outfielder by the Cincinnati Reds.

# Haas And Sauer Give Reds Needed Power At The Plate

By HARRY GRAYSON NEA Service Sports Editor TAMPA, March 14—Cincinnati has one of the finest pitching staffs in the business—Bucky Walters, Paul Derringer, Elmer Riddle, Johnny VanderMeer, Gene Thompson, Whitey Moore, Ray Starr, Jim Turner, and Joe Beegs.

But the most discussed athletes at Plant field today are Berthold Haas and Henry Sauer.

Bert Haas supplants fleet Bill Werber at third base.

Hank Sauer is being converted from a first baseman into a left fielder.

Between them they are expected to furnish the wallop, the lack of which kept William Boyd McKechnie sitting on lonely park benches a great many nights last summer.

Haas, who had three whiffs with the Brooklyn, in batting 315 led the American association in runs batted-in with 131, topped it in total bases, ranked second in triples, third in doubles and total hits, and played every inning of every one of the pennant-winning Columbus club's 156 games.

Sauer, a left fielder, was converted to a first baseman in 1938. He has been a headcase to Dean Bill McKechnie since Wally Berger left apart at the seams.

# Frisch Has Good-Looking Ball Club

By ROBERT MYERS SAN BERNARDINO, Calif., March 14 (AP)—Frankie Frisch's third season as guardian of the bouncing Bucces of Pittsburgh may be a charming one for all concerned, because the Old Flash has a good-looking ball club.

Frisch and pep mark the Pirate atmosphere as they wind up their spring training here, and it's a safe bet that, barring unusually bad luck, Pittsburgh will wind up well in the first division.

Pittsburgh has a worry with the left side of the infield, notably third base. But Frisch is long on outfielders, with good lefthand hitters. He has what he thinks is the best catching staff in the National league, plus a well-balanced hurling corps.

His infield problem now centers on an infling outfielder, Bob Elliott, trying his hand at the hot sack and looking very well at the assignment.

Shortstop is a battle between young Al Anderson, who played there as a rookie last season, and Pete Coscarart, obtained from Brooklyn with Babe Phelps, Jim Waskell, and Luke Hamlin in the Arky Vaughan deal. Coscarart may capture the job.

Eddie Fletcher is a valuable mainstay at first and Frankie Gustine is set at second. Frank thinks Elliott might do at third, notably in the air when Lee Handley's shoulder was wrecked in an auto accident. He may be able to play, but then he may not. Dependable Stu Martin is still on hand for utility duty around the infield, so that helps relieve the pressure.

At the moment, the working-out progress includes a big hand from sports. In addition to the Joe Louis-Abe Simon fight March 27, other affairs lined up are the Army-Navy football game, and national "days" by racing and baseball. In other fields, the plan is for a revival of "Yip, Yip, Yaphank," the camp show Irving Berlin put on so successfully during the last World War, and a series of war expositions, military representatives of the United Nations would give in various cities of the country.

# Two Texas Stars Placed On All-America Cage Quintet

Texas colleges placed two men on "Pic" magazine's all-America basketball team, announced yesterday. They are Price Brookfield, sensational forward for the West Texas State Buffaloes of Canyon, and Bob Kinney, great center from Rice Institute at Houston. Doll of Colorado, Kotz of Wisconsin, and Burgess of Stanford rounded out the first string.

Members of the team were presented solid gold wrist watches and their pictures were carried in "Pic" magazine this week.

Brookfield and his teammates are playing in Madison Square Garden in New York now.

"Pic" story of the all-America team follows: Picking an all-America basketball team is at best, a case for the aspirin bottle. Therefore "Pic" has dropped this little problem child into the laps of the leading basketball coaches and writers throughout the country and herewith presents the choices of the men who are best qualified to judge basketball flesh.

Since basketball is such a big business proposition, today's coaches and writers do not have to go too far to witness the performances of the best of America's 6,500 collegiate players.

With western teams coming to New York and nearby stopping places, and eastern aggregations hopping westward it is not surprising to note that authorities in different sections of the country have the same opinion about the same players. Doll of Colorado, Kinney of Rice, and Brookfield of West Texas State, received as many votes from eastern selectors as they did from critics in their own district. Likewise, Andy of the sophomores sensation at Illinois polled as many votes in the Pacific coast sector as he did in his own Big Ten balliwick.

These choices of the "Pic" board of selectors, who each receive 14-carat, solid-gold, 17-ewel, shock-proof—Golden Chief—Bennur wrist-watches, are without peers when it comes to the basketball skills. They have height, scoring punch, drive, defensive acumen, and basketball finesse. But best of all they are team players, the real backbone of any dream team.

The returns agree with the consensus of writers that the Midwest and far western quintets are superior to eastern lives this year. Only Holub and Davis who made the squad together with Holzman of City College, Modzelewski of Rhode Island State, and Noszka of Duquesne, prevented the Midwest from running away with all the voting honors. John Kotz, Wisconsin's brilliant forward, received nothing but first team votes, the only player so honored, while Rice's Kinney only received one second-team ballot.

In the breakdown of positions, the east captured two berths, the south one, the southwest two, three went to the Midwest, while the Rockies and the Pacific coast landed one place a piece. All the players but Bob Davies of Seton Hall won their positions without too much pressure from their nearest competitors.

# Willingham Manager Of Borger Team

BORGER, March 14—Hugh Willingham is the new manager of the Borger Gassers in the West Texas-New Mexico league. He succeeds Gordon Neil who was mailed a managerial contract but from which team owners received no response. That was when they signed Willingham, second baseman on last year's great team.

The new manager officially assumes his duties tomorrow and his first job will be to recruit some pitchers and rookie diamond stars. He is faced with an acute shortage of hurlers here. However, a heartening note was struck this morning when George Finger, spokesman for the Borger Baseball club, announced that five veterans from last year would probably return their signed contracts very soon. These virtually assured to be back in the fold include Harry Riordan, first baseman; Bernie Rodriguez, catcher; Larry Gilchrist, shortstop; Blaine Peterson, outfielder; and Hal Webster, left fielder.

Willingham, according to averages as of Aug. 31, 1941, hit 342, slammed out 20 homers, 34 doubles, four triples, and batted in 115 runs as a Gasser last season. Prior to coming here he played with the Elrod Oilers and Halliburton Centers, two top semi-pro clubs of the country.

The Gassers will probably start spring training in the early part of April and will train here in Borger. They open the season April 28 meeting the Amarillo Gold Sox.

BUY DEFENSE BONDS TEMPE, Ariz., March 14 (AP)—Spring football practice had ended prematurely at Arizona State Teachers college here and campus sources said today the school may abandon its 1942 Border conference schedule.

Financial difficulties and loss of manpower to the armed forces and defense industries were understood to be the contributing factors. One member made a formal motion at the student council meeting this week to abandon intercollegiate grid competition as an economy measure, it was learned. The council tabled the motion but is expected to discuss it further Tuesday.

BUY DEFENSE BONDS ANSWEERS TO WAR QUIZ Questions on Editorial Page 1. What is that ship signaling? The insignia denotes a signalman. 2. How do you do, lieutenant? 3. Admiral Chester W. Nimitz is commander-in-chief of the United States Pacific fleet.

San Antonio Express, says, "Bob Kinney of Rice is as good as you will find in a lifetime." From a strictly offensive viewpoint there isn't a college five in the land that can match the scoring power of the "Pic" squad. Holub is the east's leading point getter while Kotz leads the Big Ten. Kinney the Southwest conference, and Brookfield the Border conference.

BUY DEFENSE BONDS Every day, an average of seven schools and five churches burn in the United States.



BABE RUTH was called upon to play this rough and tumble game in his movie, "The Pride of the Yankees," showing a Pullman car celebration of Yankee after winning world series.

Scoreboard for Grayson's game. Columns 1-9, R, H, E. Row 1: 1 2 3 4 5 6 7 8 9 R H E. Row 2: G R A Y S O N ' S. Row 3: S C O R E B O A R D.

By HARRY GRAYSON NEA Service Sports Editor TAMPA, March 14—When Dizzy Dean first cracked the headlines and was rated nothing more than an incredible hick, I asked the one-time cotton-picker how much thought he put into pitching.

"Oh, they tell me this about one hitter and that about another," replied Ol' Diz, "but they all look alike to me. I just rear back and pump that a thing through there with something on it."

"That puts the problem up to Branch Rickey who had the same idea in selling ball players long before he peddled Dean and his lame arm to the Chicago Cubs for \$185,000 and three useful hands, one of them Curt Davis, who opened the 1941 world series for the Brooklyn.

There isn't a truer baseball saying than "They never die on the Cardinals."

Rickey usually knows, of course, but when he is not positive his sound theory is never to wait to be certain whether a high-salaried Red Bird I had an off-year or is on the way down.

# Miami Wins Six Out Of Eight Boxing Bouts From Childress

Special To THE NEWS MIAMI, March 14—Out of eight bouts, Miami took six of them from the Childress team Friday night in the last match of the season the Warriors will fight at home. They go to Stinnett for a return match Tuesday night, and to Canadian the following week for the elimination bouts.

Results were as follows, Miami boys named: Howard won over King, 70 pounds. Parker decided Malcolm, 85. Kivlehen decided Goodman, 95. Locke won over Reeves, 120. Kent lost to Huff, 130. Cowman won over Toome, 140. Pennington was decided by Stinnett, 145.

BUY DEFENSE BONDS BIT'S ABOUT BOWLING Bowling as it should and shouldn't be done will be shown on the screen at the Rex theater today, Monday, and Tuesday. Ned Day, world match champion, will demonstrate the art of bowling. Andy Varipapa, world champion trick shot artist, will show trick and fancy shots. Lemuel Q. Stoopnagel, the comedian, will show how not to bowl.

The Southpaw bowlers of Pampa came into their own at the Pampa Bowl Friday night when they toppled 2486 pins to win two out of three games from the Right-handers.

# Negro Teams Divide Games

Pampa and Amarillo negro school basketball teams divided games here Friday night, the Pampa girls winning 5 to 2 over Amarillo with the Pampa boys losing 30 to 19. The win was the first of the season for the Pampa girls.

The Amarillo boys, by winning, took the rubber game of the series between the teams. The score was tied at 12 to 12 at the end of the first quarter, with Amarillo leading 18 to 16 at the half. Pampa lost two players on fouls early in the second half and Amarillo jumped into a commanding lead before losing two of their players on fouls.

Durham led the Pampa attack with four field goals. Oliver added two, Foltz one, and Johnson one. Hazy, Harris, and Williams were other members of the team. Keys, with five goals, was Amarillo's hot-shot. Griggs added six points, Lowe six, and Ward three.

At the moment, the working-out progress includes a big hand from sports. In addition to the Joe Louis-Abe Simon fight March 27, other affairs lined up are the Army-Navy football game, and national "days" by racing and baseball. In other fields, the plan is for a revival of "Yip, Yip, Yaphank," the camp show Irving Berlin put on so successfully during the last World War, and a series of war expositions, military representatives of the United Nations would give in various cities of the country.

# Sports Events To Aid Families Of Selectees

By SID FEDER NEW YORK, March 13 (AP)—The new emergency relief set-up by the army started when someone discovered draftees' families could be just as needy as those of regular soldiers, threw its program into high gear today.

A heavy-weight championship fight that figures to net more than \$50,000 already is a reality. From there, the program is laid out to cover a flock of other sports, the stage, and military exhibitions, to mention a few of the things the directors figure will keep the dollars pouring in for the folks the boys leave behind.

"We have no set goal yet, so far as a definite sum is concerned," explained Col. John Thomas Taylor of the war department's public relations bureau in Washington in announcing the tentative plans. "But we'll have one soon. We have to work it all out yet."

At the moment, the working-out progress includes a big hand from sports. In addition to the Joe Louis-Abe Simon fight March 27, other affairs lined up are the Army-Navy football game, and national "days" by racing and baseball. In other fields, the plan is for a revival of "Yip, Yip, Yaphank," the camp show Irving Berlin put on so successfully during the last World War, and a series of war expositions, military representatives of the United Nations would give in various cities of the country.

PANHANDLE INSURANCE AGENCY. Home for Financial Protection. BONDS... LOANS

Bob Sagnau, All-America halfback at Notre Dame in 1940, trades football uniform for flying duds at Navy's "University of the Air"

Where can I safely keep my U. S. Defense Bonds? DEFENSE BONDS HERE

The bonds are registered by the government, which means that only the owner can receive the money for them. Nevertheless you will want to safeguard your U. S. Defense Bonds for your own peace of mind and to prevent the inconvenience that might result if they were lost. We suggest a safe deposit box in our vault as the logical place. The annual rental fee for a box is quite moderate and you can use it for storing many other valuables beside the bonds.

First National Bank in Pampa. Capital Account Over \$350,000. Member Federal Deposit Insurance Corporation. Buy U.S. Defense Bonds Here



# Every Person Will Carry Ration Book

Gray county residents will soon have rationing with a double R, according to information received here by the Gray County Rationing board from Mark McGee, state administrator.

Not only will sugar be rationed, but also there is a possibility that hosiery, radios, and bicycles will be rationed.

Under the setup, every person in Gray county will carry a ration booklet. The state administrator warns that this book may be used not for sugar alone but for other articles that may be rationed.

The sugar situation, as muddled as a legislative report, boils down to this at the present time:

Register At Schools

On some day in the near future, date not set by state administrator and unknown to the county board, there will be an R-day for all adult inhabitants of Gray and of other counties in the United States.

Locally, adults will go to the nearest school where they will make applications for and receive their "War Ration Book One."

One adult can sign for others, that is, the head of a family can obtain booklets for other adults in the family.

These booklets contain stamps for 28 weeks, one for each week.

How much can be obtained on each stamp and what is not explained.

No Rules Announced

When this is to be done is unknown to the county board. There is no date set, other than it will be in advance of Ration Day.

There is no law, as far as is known, requiring a grocer to buy back sugar he has sold, nor stipulating the price he shall pay.

One local grocer said he had been taking back sugar he had sold to persons known to him, paying full retail price. In other cases, he had paid wholesale price.

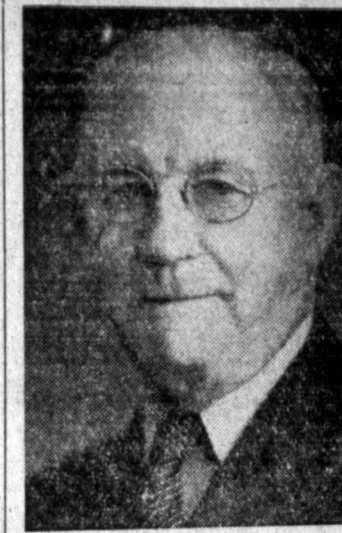
Asked how he knew if the sugar had been sold by his store or another, he said "we just have to take the customers word for it."

Ask Sugar Return

Locally, the Gray County Rationing board is to "supervise" this part of the rationing setup, but the county superintendent of schools will be the person actually charged with getting the R-day in motion and the first issue of the booklets.

Chairman of the county board is designated as the county custodian.

## H. C. Coffee For Commissioner Pct. 2



To the Voters of Commissioners Precinct No. 2:

I made the race two years ago for county commissioner of this precinct and was defeated by the late Mr. R. A. Smith by a small margin. Inasmuch as I ran second, out of a large field of candidates, I again offer my name to the voters of this precinct, knowing that I am qualified to fill the office if the voters choose to entrust it to my care.

If elected, I will be under no obligation to any clique or clan and will be on the job continuously.

Thanking the voters in advance for any assistance they will render, I am

Very respectfully,  
H. C. COFFEE  
(Political Advertisement)

## Mainly About People

Mrs. Grover Selts and sons left Friday night for Los Angeles for an extended visit with her sister.

Ralph Chism invites his many friends and customers to meet him at Pampa Brake and Electric, 315 W. Foster.—Adv.

Young people's back-to-church singing will be held tonight at 9:15 o'clock in the First Methodist church.

Lost—In business district, ladies octagon, Bulova wrist watch. Reward for return to Pampa News.

Fuller Brushes, Ph. 2152-J, 514 W. Cook.

Mrs. Estelle Purvis and Mrs. A. Cole, taking a nurses refresher course in Amarillo, are spending the week-end at their homes here.

For sale or trade for good car—5 rooms of furniture, Maytag, Westinghouse ref., dining room suite, Like new. 402 S. Hobart.

Mrs. Crawford Atkinson underwent an appendicitis operation at a local hospital Friday. Her condition last night was serious.

Collections in the Boy Scout drive here had reached the \$4,000 mark yesterday and Del Beagle, chairman of the drive, expects the total to hit \$5,000.

Glaude Hips of Electra, formerly of Pampa, underwent an operation for appendicitis in the U. S. Veterans hospital in Amarillo Friday.

Virgil Lee Boswell, son of Mr. and Mrs. C. E. Boswell, 1031 East Browning, and now stationed at Goodfellow field, army air corps basic flying school at San Angelo, recently was promoted from the rank of corporal to the rank of sergeant. Sergeant Boswell is attached to the 49th school squadron as an airplane mechanic. He joined the army in March, 1941.

Pvt. Warren G. Givens, son of A. R. Givens of Skellytown, has been graduated from the world's largest air corps technical school at Sheppard field, Wichita Falls, where he has been attending classes for the past several months. Private Givens, attached to the 317th technical school squadron while in school at Sheppard field, was graduated March 10. Prior to enlistment he attended White Deer High school.

Anniversary of the 234 members of the American Legion will be observed today in a red network NBC radio program broadcast from New York from 12:30 p. m. to 1 p. m., Pampa war time. The show will be produced, cast and music by Rudy Vallee; National Commander Lynn W. Stambaugh, of North Dakota, will make a brief speech from Chicago.

A marriage license was issued here Thursday to Floyd Franklin Smith, Jr., and Miss Mildred Denise Roberts.

Houston E. Cook of 381 Malone street, Pampa, is improving at the U. S. Veterans hospital at Amarillo, to which he was admitted Feb. 14, according to a postal card received here yesterday.

Mrs. Stella Pollard and son, Junior, returned Friday night from a six-week visit with relatives in Parkersburg, West. Va.



GRAND CHAMPION beef entered in the Gray County Junior Livestock show last week, sponsored by the Pampa Chamber of Commerce, was shown by Eugene Smart of McLean. The beef was purchased by Sam Dunn for \$209.16 and re-sold to Brunley Grocery. Pictured at the right is Eugene, Mr. Dunn and the grand champion.



HOGS were included for the first time in the show and the grand champion was entered by Johnny Chilton of McLean. It was purchased by Eugene Smart of the Fictured at the left is Johnny Tom, Cox, the auctioneer, and the champion.

RESERVE CHAMPION entered in the show was shown by Bobby Sherrod, also of McLean. His winning beef was purchased by Charlie Carpenter of McLean for \$122.10. Pictured at the right is Bobby holding his reserve champion, Mr. Carpenter and the champ himself.

## M'Coy Heads Older Boys Conference

John Tom McCoy of Pampa was elected president of the Young Men's Christian Association Older Boys conference Saturday, second day of the three-day meeting which ends here at noon today.

The Pampa succeeds Robert Wheatley of Amarillo.

Other officers elected were Dan Belmore of Tucuman, N. M., vice-president; Jack Parker, Perryton, secretary.

Tucuman, N. M., was given the attendance award, which is based on the number of miles traveled to the conference plus the number of delegates attending. The New Mexico town had 12 delegates at the conference.

Amarillo Orators Win

John Hill of Central Junior High school, and James Andrews, high school, both of Amarillo, swept the field in the speaking contest, "Essential Needs for a Working Democracy," winning over the speakers from the eight other towns represented at the conference.

Attendance at the conference here was 125, with Hereford, Canyon, Phillips, Plainview, Tucuman, five Amarillo schools and Pampa Junior High and high school represented.

In the basketball tourney, held yesterday afternoon also, Horace Mann Junior High of Amarillo won in the junior division and Dalhart in the senior class. Nine quintets competed.

Today's Program

Three addresses, one by a national Y. M. C. A. official, are scheduled for today.

At the high school auditorium this morning, the Rev. B. A. Norris, pastor of the First Christian church is to speak on "The Master Builder."

Following the meeting of discussion groups, B. P. Faubion of the Dallas office will speak on "H. Y. Inspection and Guidance" and George B. Corwin of New York, national secretary, is to address the conference on "A New World Under Construction."

The Rev. Norris is scheduled to speak between 9:15 and 9:45; Mr. Faubion, from 10:20 to 10:50; and Secretary Corwin from 11 to 11:50.

Today's program opened with the leaders breakfast held downtown.

Secretary Corwin had been scheduled to address the conference at noon yesterday but did not arrive in Pampa in time, so his speech was postponed until 6 o'clock yesterday afternoon.

The Rev. Robert Boshen, pastor of the Presbyterian church, spoke on "Blue Prints for the New World"

## RAF Bombs

earlier in the week had hammered at the industrial Ruhr valley, at the Kiel naval base and at Nazi-occupied territory, unleashed a "great weight" of explosives over the maze of communications centered on the Rhineland city of Cologne and set huge fires.

In daylight yesterday the RAF added to its score. Its fighter planes, roaring over the English channel, tangled with Nazi squadrons and when the day was done 19 German planes had been blasted out of the skies—and not a single British pilot was so much as scratched.

In the Mediterranean area the airplane also was the chief weapon. British and Axis bombers exchanged blows at their African armies' principal supply bases. On land the Free French striking into Libya from the south extended their advance to 200 miles, while at sea the Italians claimed to have sunk a submarine.

Italy also was responsible for what may have been another information-fishing fever. The Rome radio cited "Argentine maritime circles" as authority for a report that the British liner Queen Mary, with 10,000 "North American" troops on board, had been torpedoed in the South Atlantic and was seeking to reach the Falkland Islands.

## Senae Committee Approves Sales Tax

By JACK BELL

WASHINGTON, March 14 (AP)—A majority of the Senate Finance committee expressed qualified approval today of a sales tax as a means of raising part of the \$7,000,000,000 additional revenue being sought to help finance the war.

While most members said much would depend on prior house action, an informal canvass by the Associated Press showed 14 senators were willing under certain conditions to impose general sales levies. Six of these made it plain, however, they were prepared to follow such a course only if they became convinced that present methods of taxation would not yield sufficient revenues.

Against this, only Senator LaFollette (Prog.-Wis.) among the 21 members flatly opposed a sales tax under any circumstances.

There have been indications recently that members of the house ways and means committee, which will act first on tax legislation, might turn to a sales levy as a partial substitute for the stiff increases recommended by the treasury in individual and corporate income taxes.

Taking cognizance of this trend,

## TOP SPEED

(Continued from Page 1)

a marked success and has met with ready acceptance throughout the United States, largely because of the enthusiastic cooperation and assistance on the part of the governors and their state defense councils.

"Reduction of speed limits and regular inspection of tires constitute another important means of federal-state cooperation in the war effort."

AUSTIN, March 14. (AP)—Texans will need no urging to comply with a Presidential request to reduce speeds and conserve automobile tires, Governor Coke R. Stevenson said today.

The governor foresaw full cooperation with Mr. Roosevelt's suggestion and observed that the law of economics, if nothing else, would bring about the desired results.

It was his opinion that a majority of highway drivers already were observing the proposed speeds well below the 60 mile per hour maximum permitted under state law. Further, he said, they evidently were closely watching the condition of their tires.

The governor saw no need for a special session of the legislature to amend the speed law because he believed compliance with the President's request would be immediate.

"Texas people will fall in with the President's request in a full spirit of cooperation," the governor declared.

## WARSHIPS

(Continued from Page 1)

The Pope, whose wartime complement was 145 officers and men, was under the command of Lieutenant Commander Welford C. Blinn, a native of Sparta, Ohio, whose residence was listed as New Smyrna, Fla.

Prime Minister John Curtin spoke last night at the United States, instead of Great Britain, as the "paramount factor" for the democracies as far as this country is concerned.

Now that the war no longer is remote and this country has become an invasion-conscious, high officials were resorting to a keen argument in an effort to convince Washington that Australia should have prior consideration over India.

Australian reconnaissance planes searched widely over the waters to the north and east for signs of any Japanese invasion fleets, including the armada reported sailing toward the Solomon Islands. However, there was no further word of assaults on sea trains of invaders.

## FREIGHTER

(Continued from Page 1)

flaming like fury. Then she stood right up on her stern, straight as an arrow, and in about a minute and a half she went down." The ship was of 5,044 tons.

One of the lifeboats drifted for 30 hours before the men in it were rescued. Another was picked up five hours after the sinking.

The following survivors reaching port here all appeared in good health:

Captain George W. Darnell, Houston, Tex.

First Mate H. E. Denker, Galveston.

Second Mate Angel R. Lennia, Galveston.

Third Assistant Engineer Ray, Jr., Galveston.

H. Pedersen, Cook, Houston.

Robert L. Cox, second cook, Ponca City, Okla.

George T. Russ, second engineer, New Orleans.

Santiago Parra, fireman, San Juan, Puerto Rico.

Robert Dunn, third engineer, Galveston.

Wendall C. Cyrus, seaman, Cushing, Minn.

Luis Rosado, boatswain, Ponce, Puerto Rico.

Manuel Silva, address unknown.

N. O. Dahlstrom, chief engineer, Houston.

Joe Skehan, seaman, Good Springs, Ala.

Sam J. Fuller, messman, Jacksonville.

Krute Pearson, address unknown.

Luis Lope, Houston.

Johann Wilkinson, address unknown.

H. A. Chapman, first assistant engineer, Beaumont, Tex.

Edward E. Hunter, New Orleans.

## HITLER

(Continued from Page 1)

and American navies busy there while Japan is pushing conquest in the Indian ocean.

Beyond these immediate plans, the source added, Hitler is disclosing to the Japanese his dream of finally conquering the war by invading England and smashing Iceland.

Then, he tells the Japanese—who may be suspicious of the plan because it involves letting the United States build up strength from Pacific bases while all this is going on—Germany and Japan together will begin applying a military, economic and political stranglehold upon the Americas.

Since January, 1941, a total of 101,650 publicly financed homes for defense workers were completed or are under construction, while 224,348 FHA-inspected, privately financed homes were built.

Eyes Examined — Glasses Fitted

**DR. A. J. BLACK**

Optomist

Offices, Suite 309, Rose Bldg.

For Appointment — Ph. 352

**KNOWLEDGE**

That Helps To Banish Suffering

YOUR PHARMACIST'S knowledge was gained by specialized college training, tested by rigid state examinations, strengthened by long experience to the end that he might serve you best in time of sickness. Millions of dollars have been spent in medical research to improve old products and develop new ones. And all these benefits are brought to you by MODERN PHARMACY.

"THE DRUG STORE YOUR DOCTOR TRUSTS"

**MODERN PHARMACY**

FREE DELIVERY

115 W. Kingsmill Phone 2404

**LOVE IS NOT ON THE PRIORITY LIST**

Neither is Fine Jewelry

Remember! March 21st is the last day you can buy Diamonds, Watches, and Silverware and still name your own terms.

LADY'S BIRTH RING \$14.95

Stone in hand—some mounting, free! CREDIT

NEW CONTACTS \$1.00 UP

A gift to give a life. TERMS

4 DIAMOND ENSEMBLE

Four lovely 14K gold mountings. \$77.50

20 WEEKS

Bracelet & Locket \$12.50

A gift that will appeal to every feminine heart. 50c Weekly

Diamond Illustrations Enlarged to Show Detail

You Pay No More For Quality

At

**McCarley's**

106 N. Cuyler Phone 750

THE STORE THAT CONFIDENCE BUILT

**BETTER CLEANING ALWAYS**

MADE IN MEXICO

**Pampa Dry Cleaners**

301 N. Cuyler Ph. 41-J A New

**Modernize!**

**NEW BEDROOM ENSEMBLE**

Yes... this bedroom suite is 18th Century and typically American in its quality and craftsmanship... It is exquisitely finished and boasts features of construction of particular merit. We include the Bed, Chest, Vanity and Bench.

REGULAR PRICE \$109.50

**\$89.50**

LIBERAL TERMS

LIBERAL ALLOWANCE FOR YOUR OLD FURNITURE

**Texas Furniture Co.**

QUALITY HOME FURNISHERS

210-12 N. CUYLER PAMPA



Friday, noon, was the high A. Selby, Amarillo faculty peaker. Presenting the world

numbered, at the 12-occu- "great he maze on the and set

RAF fighter Eng-Nasi was id been ad not much rea the weapon changed prin- and the Libya ad- sea the sunk a for what informa- rane- circ- that gy, with oops on the king to

1944

Material for this page must be in by 10:30 a. m. on week days and 6 p. m. Friday

# THE PAMPA NEWS

SUNDAY, MARCH 15, 1942 PAMPA, TEXAS (VOL. 39, NO. 290)

Items for the Woman's Page are welcomed From Pampa and surrounding territory

## Just Between Us Girls

BY JOHNNIE DAVIS

The fewer luxuries you may have, the more you'll enjoy the necessities! St. Patrick's Day—when Irish eyes are smiling and there's "wearin' of the green"—rolls around again Tuesday. . . . Prosaic facts about St. Patrick may be lost in antiquity, but shure an' there's wan thing we may be shure of. . . . He must have been a mighty fine person to know, because so many of the accessories we associate with his holiday are amusing and gay. . . . Pipes, shamrocks, and pretty colleens all offer immunities. . . . You can just bet the St. Patrick Day party original and inviting. . . . You can just bet by all the blarney stones of Erin that there aren't five more attractive colleens anywhere than the Pampa girls, Ann Chisholm, Ellen Mary Haley, Margaret Gribbon, Clara Mae Lemm, and Pat Bissett, who are enrolled in Saint Mary college at Leavenworth, Kansas. . . . Texas girls, it seems, are notable for their beauty and good taste in clothes, and with the arrival of this group, their Kansas classmates were thoroughly convinced of the fact.

All federated club women of Pampa are joining together in endorsing the nomination of Mrs. Raymond W. Harrah for the office of first vice-president of seventh district, Texas Federation of Women's Clubs. . . . An excellent combination for the Panhandle section of seventh district would be Mrs. W. E. Beard of Amarillo as president, and Mrs. Harrah as vice-president, who have been nominated for these offices, respectively, as they have worked together previously in club and P. T. A. activities. . . . Mrs. Harrah, who is a past president of Twentieth Century club, which is sponsoring her nomination, is now a member of the fine arts, citizenship, and legislative committees. . . . Also she is sponsor of Upsilon chapter of Beta Sigma Phi sorority. . . . Too, she is a talented artist and equestrian. . . . One of her hobbies is collecting tea cups.

March . . . third month of the calendar . . . Texas Independence Day . . . St. Patrick's Day . . . federal income taxes due . . . spring begins . . . green grass . . . wind . . . bright sunny days . . . spring planting . . . new spring hats . . . teacher's conference . . . spring fever . . . bicycling . . . the anniversary of the first United States postage stamps . . . Alexander Graham Bell's first telephone message. . . . Eli Whitney's invention of the cotton gin.

Skaters who meet each Monday night at the new high school gymnasium are fast becoming experts. . . . These include Dr. and Mrs. H. H. Hicks, Mr. and Mrs. Buck Miller, Mr. and Mrs. Don Conley, Mr. and Mrs. Ralph Dunbar, Mr. and Mrs. George Hofness, Dr. and Mrs. Charles H. Ashby, Mr. and Mrs. Clifford Brant, Jr., and numerous others. . . . Some of the group are so competent that they can play basketball on skates.

Charm will be uppermost in the minds of students at Texas State College for Women at Denton during the Redbud Festival and Self-Development Week when 100 charm princesses elected by the student body will preside over the activities. Princesses including Miss Joan Gurley of Pampa will be presented at the Redbud Coronation March 21. . . . Daughter of Mr. and Mrs. F. O. Gurley, Miss Gurley is a sophomore majoring in costume designing. . . . Judged on the basis of a 12-point criteria including good manners; good grooming; poise; sincerity; a sense of honor; and general personality, each princess and her escort will be presented on the stage in the auditorium. . . . Following the coronation of the Queen, Miss Gurley will be honored at the Coronation Ball in the elaborate ballroom of the new Union building.

Miss Geraldine Smith of Pampa was extended a special invitation to attend all sessions of the fourth annual Writers' Conference held at Texas State College for Women at Denton. . . . Only a limited number of students who are interested in literature and the technique of creative writing were invited to participate in the conference. . . . Miss Smith, daughter of Mr. and Mrs. J. G. Smith, also attended the banquet honoring the guest speakers at the conference. . . . A freshman majoring in business, she was recommended by her teachers to attend these sessions. . . . Outstanding writers on the five-day program were Carl Sandburg, famed American poet; Carlotta Smith, music editor of Coronet and Esquire; and Hudson Strode, traveler and writer on South America and the Caribbean Islands.

Mrs. J. W. Walker of Plainview, president of the Texas Federation of Women's Clubs, wore a "defense stamp" corsage to a bang-up affair in Washington, D. C. recently. . . . Mrs. Henry Morgenstau, Jr., pointed it out to the Secretary of Treasury. . . . Many admiring eyes were cast on Mrs. Walker that day for being patriotic instead of wearing the traditional, and expensive, orchids. . . . Mrs. Walker will be in Lubbock March 26 for the district convention which several Pampa women will attend.

It just goes to show that you can't do two things at once successfully. . . . One evening last week Lois Shelhamer went home from the office and put some potatoes on the stove to cook for dinner. . . . With that done, Lois and Shelly went out in the yard to set out some plants which her parents at Paducah had given them Sunday while they were visiting there. . . . In the mean time, Lois became so interested in digging in the dirt that she forgot the potatoes which burned to a crisp, in addition to the pan. . . . Too, the fumes filled the house.

Pampans who maintained their membership last week in the Panhandle Civic Music Association may have an opportunity to hear Gladys Swarthout, star of opera, radio and screen, next season. . . . Through the C. M. A. this year, more than 40 Pampans saw the famous Ballet Russe and last year heard Fritz Kreisler. . . . Other artists under consideration for the coming season include Carmen Amaya and her troupe of gypsy dancers; St. Louis Little symphony, Efrem Zimbalist, violinist; Ruth Draper, world-famous monologist; Claudio Arrau, Chilean pianist; and Salzedo concert ensemble. . . . Mrs. Lynn Boyd of Pampa has received word that she has been named a member of the executive committee of the Panhandle Civic Music Association. . . . Several persons went to Amarillo Friday night to hear Jacques Abram, pianist, in his last concert of this season.

The violet is accepted as the flower for the month of March. The blooming of violets, which are the symbol of faith, will be very timely this spring when so many people need their faith renewed.

Out-of-town visitors here last week included Barbara Heimbaugh and Ralph Daniels of Denton, both members of the cappella choir of the C. M. A. of Denton, both members of the cappella choir of Mrs. Victor Heimbaugh, who entertained with a dinner for her. . . . Ralph was a guest of Frankie Lou Keehn, with whom he attended school in Tulsa.

Thanks to Parent Education club members for the beautiful linen handkerchief. . . . Mrs. W. A. Rankin is president of the group and Mrs. Perry O. Gaut is the capable publicity chairman.

One of the most excited persons in town is Winifred Wiseman who will become the bride of J. C. Line of Las Vegas, Nevada, on April 1. . . . Winifred will go to Las Vegas for her wedding and will return to Pampa after Easter for the remainder of the school term. . . . She is a music instructor in Junior High school. . . . During her announcement party last Sunday in the home of Mrs. Kenneth Carman, J. C. telephoned long distance from Las Vegas and Winifred became almost speechless from excitement. . . . She couldn't think of a word to say.

A handsome couple strolling along in the warm sunshine one afternoon last week was Mr. and Mrs. Bob Carter. . . . Both are teachers in Pampa schools.

Among the members of Business and Professional Women's club who went out for skating in a big way was Lillian McNutt. . . . Several weeks ago she jokingly remarked that she may have made some pretty deep dents in the floor of the gymnasium when falling with her skates on, but that she hadn't broken any bones. . . . But at the present time courageous Mrs. McNutt is carrying her right arm, which is broken, in a sling. . . . When the accident occurred, she told fellow club members that her arm didn't hurt because she didn't want to "break up the party." . . . Now that she is well on her way to recovery, she can hardly wait to get on another pair of skates and try it again.

From all reports, the skating party given by the Esquires and Seven Elevens, brother clubs of the Sub Debs and Kit Kats, was a gala occasion. . . . Highlighting the event, the Esquires appeared wearing their new white coveralls. . . . Jake Halter, president of the Esquires, could not skate because of a dislocated knee injured while boxing. . . . Too, these clubs played basketball, but the Seven Elevens were unable to defeat the scoring Esquires.

We only begin to realize the value of our possessions when we commence to do good to others with them.—Cook.



PRE-EASTER STYLES — The canisole top makes the news in this blue net evening gown. It is decorated with hand-made peach-colored roses. The long-sleeved jacket that goes with it has a snug waist, rippling peplum.



THE DOUBLE PIN-STRIPED, navy wool suit at left, with its cinched-in waist actually reflects the peg-top mode, even though its skirt flares at the bottom. At right is a navy flulle afternoon



dress of the type stylists say will be a "must" for wartime wardrobes. Its classic lines and sedately scalloped white pique accents illustrate the important trend to conservative simplicity.



SOME CALL IT "PEG-TOP." Hattie calls it "trouser-top." The headline-making skirt is shown on a red wool dress with matching checked jacket. Front pleats, plus side pockets and a taper to the knee give it the characteristic "trouser-top" peg lines.

## Sub Debs Entertain With Blackout Dance

Inspired by the Hi-Y convention in session here, a blackout dance was given in the Schneider hotel Friday evening by Sub Deb club members for their guests and Hi-Y delegates.

Forming an air raid shelter, the ball room was decorated in black and red. Large signs welcomed the Hi-Y delegation, and sandbags flanked the entrance to the hall. Members of the hostess club are Misses Martha Pierson, Gret'n Ann Bruton, Dorothy Drescher, Elaine Colleen Bergin, Nelle Roach, Evelyn Ly, Doris Alexander, Betty Culbertson, Francis Crocker, Anita Andrews, Colleen Bergin, Nelle Roach, Evelyn Kidwell, and the sponsor, Mrs. Al-len Evans.

Sponsors for the dance were Mr. and Mrs. Frank Culbertson and Mr. and Mrs. James B. Massa. Refreshing were Raymond Hall, Frankie Foster, Robert Fletcher, Evan Jones, Alvin Thomas of Plainview, Bill Herndon of Perryton, James Dement of Plainview, Clarence Puett of Tucumcari, New Mex-ico, Patyee Hollingshead, Otis Dav- is, Robert Rook, Helen Marie Alex- ander, Harry Pointer of Amarillo, Omice Brown of Tucumcari, Jodie Clavel, John Estes of Hereford, Ernest Miller, J. V. Adams, Bettye Jean Myers.

Janice Wheatley, Tino Crawford, Bob Smith, Glen Staffer, Bob Chas- by, Betty Culbertson, Gracie Hines, Johnny Humphreys, Francis Ball of Tucumcari, Fred Pursley of Tucum- cari, Opal Anders, S. M. Orif, Neal Holden, Billy Waters, Virginia Wind- sor, Joyce Taylor, Joyce Turner, George Rawlings, Charles Beach, Colleen Bergin, Bill Arthur, Esther Mullinax, Wanda Roberts, Maureen Scrimshire, Dick Manry, Ken Radey of Amarillo, Fred Sudebaugh of Amarillo, Georgia Faye Overstreet, Irma Raye Smith, Jimmy Berry, Jim Wanner, Frances Crocker, Bill Stockstill, Hugh Farnik, John Paul McKinley, Henry Lane, Bob Vaughn of Phillips, Buck Shaw of Phillips, Wanda Giles, Elizabeth Roberts, Dixie Hedgecocks, Grover Heiskell, Elaine Carlson, Nelle Roach, Eugenia Phelps, Jerry Kerbow, Mickey Hat- ferty, R. D. Redus, Jack Baker, Bob- by Anderson, John Knox, Dick Kuehl, Betty Lee Berry, Harry Ker- bow, A. C. Enloe.

Willadean Ellis, Harold Crad- duc, Leon Holmes, Doris Anne Davis, Buddy Simmons, Mollie Ken- nedy, Bill Foreman, Harlan Graham of Tucumcari, Joe Cree, Charles Winborne, Burl Jordan, Jr. and Carolyn Darnell.

BUY DEFENSE STAMPS

## Mrs. Clay Will Represent Lodge At State Meeting

Naming Mrs. Jess Clay as delegate to the grand lodge of the state of Texas at San Antonio, members of Rebekah lodge met in the I. O. O. F. hall Thursday evening for a weekly meeting.

Others going from Pampa were Mr. and Mrs. Vensel Castka, Jess Clay, John Hall, representatives of the I. O. O. F. lodge, Mrs. John Hall, Mrs. H. M. Cone, and Elmer Rupp. The group left this morning and will be gone for five days. Ester club will meet Tuesday afternoon at 2:30 o'clock in the I. O. O. F. hall.

Attending the regular meeting were Edna Braly, Sannie Sullivan, Dorothy Voyles, Lucille Clauder, Emma Louvier, Zola Donald, Pearl Castka, Bobby Brummett, Cora Lee Baer, Cora Kolb, Tressie Hall, Etta Crisler, Ethel Mae Clay, Elsie Cone, Oma Cole, Pearl Cordell, Frances Hall, Ruby Wylie, Zola Medford, Ar- line Neighbors, May Forsyth, Bonita Brown, Bertha Mae Hutchens, Mary Anthony, Ellen Kretzmer, Carl Baer, Alva Phillips, Vensel Castka, C. A. Forsyth, and Jess Clay. Skellytown guests were Pearl Ge- nard, Maud Lee Greer, Dorothy Statton, and Dorothy Shelton.

## El Progresso Club Tea Entertains Members, Guests

Arranged by El Progresso club was the annual guest tea held in the city club rooms last week for members and their guests. Hostesses were Mmes. W. R. Ewing, James Todd, George Briggs, W. M. Craven, D. V. Burton, and Gertrude McMurtry.

The tea table was gaily decorated with spring flowers. Mrs. T. D. Ho- bart and Mrs. S. G. Surratt, both gowned in pastel frocks, poured tea. Mrs. W. Furlance, president, re- ceived the guests while Mrs. Rob- ert Boshen had charge of the guest book. Ernestine Holmes played musical numbers as the guests ar- rived and during the refreshment hour.

An added feature of the room decorations was a large bowl of Oregon grapes, which had been gathered, packed, and sent by Mrs. C. T. Hunkapillar of Oregon, a former member of the club. Mrs. Hunka- pillar was to have had charge of the program. She was replaced on the program committee by Mrs. Charles Thut who was assisted by Mmes. Carl Jones, Dave Pope, and Edgar Henshaw.

"Wise Consumption—Key to Successful Living" was the topic of a panel discussion on consumer's in- formation. In the brief business session, the members endorsed the nomination of Mrs. Raymond W. Harrah as vice-president of the seventh district of Texas Federa- tion of Women's Club.

Guests present were Mmes. Net- tie Boshen, D. J. Gribbon, Siler Faulkner, Sr., D. J. Gribbon, Siler Sweetman, A. B. McAfee, Marion Allen, Walter Daugherty, E. A. Shackleton, E. J. Hanna, W. O. Day, C. L. Thomas, John K. Sweet, Jim White, H. E. Carlson, A. H. Doucette, W. S. Kiser, M. A. Graham, Clinton Henry, Ennis Favors, J. L. Sperry, C. A. Hutchinson, Earl Schleg, Clyde Fatheree, and W. H. Hick. Members present in addition to those named were Mmes. John An- drews, Robert Smellage, and George Walstad, Sr.

## Business Girls Class Entertained At Buffet Dinner On Friday

Entertaining members of the Young Business Girls class of the First Baptist church, a colorful buf- fet dinner was served at the home of Miss Catherine Ward Friday evening.

A springtime centerpiece decorat- ed the dinner table which was set with fiesta pottery. Tall green tap- ers lighted the room. Attending were Misses Mary Eliz- abeth Furlong, Estoye Arlington, Hil- dred Brake, Wilma Crowley, Lois Cambern, Ernestine Francis, LeRoy Griffin, Florine Macy, Elvone John- son, Aldean Willis, Florence Crocker, Muriel Kitchens, and Catherine Ward; and Mrs. Rufe Jordan, teacher.

Arrangements for the event were made by Mrs. Jordan and Miss Francis, president.

BUY DEFENSE BONDS

## AAUW To Continue Study Of Present Crisis On Tuesday

American Association of University Women will continue its study of the present international crisis at its next regular monthly meeting to be held in the city club rooms on Tues- day night at 7:30 o'clock.

The facts for discussion, which are based on the President's address of December, 1941, will include ad- ditional information and facts re- leased since that time. Mrs. Robert Smellage, program leader for the evening, will be as- sisted by Mmes. Dave Beach, Robert Boshen, Sam Irwin, Frank Smith, and Aubrey Steele.

Mrs. V. P. Sheldon will preside over the business session which will follow the program. The new officers for the 1942-1943 year will be elected. Plans for sending delegates to South- western Sectional conference to be held in Oklahoma City in April will be completed. All members are asked to be pres- ent.

## Club Continues Study Of Defense Garden Activities

Continuing the dual study of flower arrangements and defense gardening, Pampa Garden club met in the city club rooms Friday morn- ing with 44 members present.

Mrs. R. W. Reeder, program chair- man, explained the types of flower arrangements, which fall into two main groups: formal and informal. She pointed out that formal ar- rangements always have bi-lateral symmetry, while informal arrange- ments are asymmetrical. By means of large drawings, she illustrated four types of formal arrangements—vertical, horizontal, circular, and ra- dial, and then contrasted them with their counterparts in informal arrangements.

Mmes. Glenn Pool, H. W. Morrow, Ora Duengel, and W. T. Fraser brought informal arrangements to demonstrate classical and contem- porary lines and their adaptations. Mrs. Reeder pointed out the rhythmic curves achieved in classical adaptations and explained that con- temporary arrangements differ from the classical in having the third dimension—depth. This is achieved through the use of a second base or holder with the tertiary or horizontal element to the right placed forward in the container while the first and second elements are higher and placed to the left back.

Participating in a forum on de- fense gardening were Mrs. Julia E. Kelley, Gray county home demon- stration agent, Mrs. S. T. Beauchamp, and Mrs. Troy Maness. Speak- ing on the topic "Grow Your Own Vitamins," Mrs. Kelley gave point- ers on selecting vegetables rich in Vitamin content and on conserving the vitamins after vegetables are harvested. She also gave practical suggestions about preparing the soil, selecting seeds, and caring for plants. She distributed lists of veg- etable seeds which have been found best suited to the Panhandle area and bulletins on "Sub-irrigation for Gardens," all prepared by the Ex- tensive Foods.

See ACTIVITIES, Page 8

## Reception Given To Announce Marriage Of Miss Elaine Murphy And Lieut. Eldon Davis Solemnized In Nevada

To announce the marriage of their daughter, Miss Elaine Murphy, Mr. and Mrs. W. B. Murphy entertained with a reception at home Friday evening.

Miss Murphy became the bride of Lieut. Eldon L. Davis on November 1, in a double ring ceremony so- lemnized in Las Vegas, Nevada, with the Rev. C. H. Soan of the First Baptist church officiating.

For the service, the bride wore a gold costume suit with fur trim and antique brown accessories. Her corsage was of tallisman roses. The couple, who have been living in Glendale, Arizona, spent their honeymoon in Hollywood, Calif. They are now visiting in the home of Mr. and Mrs. Murphy while en route to Alexandria, Louisiana, where Lieut. Davis will be connected with the air corps.

Mrs. Davis, who was graduated from Pampa High school, attended West Texas State college at Canyon where she was beauty queen in 1940, as well as a smile girl. She is past worthy advisor of the local Order of Rainbow for Girls and a former grand officer of the state Order of Rainbow in Texas. Lieut. Davis, son of Mr. and Mrs. Ben Davis of Amberst, attended



MRS. E. L. DAVIS West Texas State college where he received his B. S. degree. While at- tending high school and college, he

was a member of the basketball and football teams. At Canyon he was a member of the T club. A red, white, and blue color motif was stressed at the reception. At- tending were Misses Ulane Zecek, Annie Johnson, Clarice deCordova, Peggy Murphy; Mrs. Lyndell Cox, Mr. and Mrs. Raymond Palmistier, Mr. and Mrs. George Henderson, Mr. and Mrs. Russell Rittenhouse, Mr. and Mrs. C. J. Binion, and Mr. and Mrs. Eddie Martin.

BUY DEFENSE STAMPS

## Sports Tog Dance Planned By Tarde Felice Members

Tarde Felice club members met Thursday at White Way Drive Inn when Penny Jones and Loretta McArthur were hostesses.

Plans were made for a sports-tog dance to be given soon. Refreshments were served to Misses Wanda Giles, Marjory Hill, Anna Lois Heard, Juanita Osborne, Joyce Wanner, Doris Jean Caldwell, Elizabeth Roberts, Eugenia Phelps, and the hostesses. Another meeting of the club will be held on March 19.

HEADED FOR SUCCESS!



SUZIE BY Brewster

Young and happy, the very incarnation of Spring. The feminine turned down brim contrasts impishly with the mannish crown. Superb fur felt in the season's smartest colors. See this and many other lovely Brewster creations available in our millinery department.

DARK COLORS . . . . . 5.95  
PASTELS . . . . . 7.50

Murfee's Pampa's Quality Department Store







15, 1942  
 SCS  
 dy  
 eting  
 A large at-  
 or Methodist  
 urch Monday  
 chapters in  
 book which  
 ady for the  
 new member,  
 welcomed into  
 the president  
 I. A short de-  
 with a song  
 by Mrs. Lan-  
 k, on "Family  
 member of scrip-  
 tures.  
 e taught the  
 k. "The Pam-  
 Her chapters  
 ly "Patrons"  
 is "Training"  
 e subjects  
 tered into by  
 e change the  
 book.  
 an, present-  
 in, independent  
 of sake on "Our  
 Effort."  
 ership chair-  
 Mrs. Robert  
 e attending  
 len Massen-  
 CAMPS  
 uths of their  
 sygen in the

### Lieutenants In Cancer Drive To Be Named Soon

Names of the 12 lieutenants who are to take charge of the campaign in Pampa for the \$275 sought in the county-wide anti-cancer drive, scheduled to be held in April, are to be announced soon by the local unit.

The campaign is sponsored by the federated clubs, and the local unit is the women's field army of the American Society for the Control of Cancer.

In connection with the campaign the field army here reminded Pampanians that South America is far ahead of North America in cancer control, according to Dr. James Ewing of New York, who told members of the society:

"It would be smug for us to sit back complacently and feel that we lead the world in cancer control," he said. "The United States can claim credit chiefly for pioneering in this field. South American countries have, it is true, copied many of our methods, but they are going ahead so vigorously in this work that they are second to none. Although their conditions and problems differ, they are fully alive to the need for cancer education."

"Many countries, notably Peru, Colombia and Argentina, have magnificent cancer hospitals that fully equal the best facilities to be found in the United States."

"Nursing is their great problem. Their girls are just learning to go into nursing as a profession. Nurses from the United States head many of their nursing organizations. The need for experienced nurses is a real opportunity for nurses from this country."

### Building Totaled \$14,250 Last Week

Building permits issued here last week totaled \$14,250, hiking the total for the year to \$32,800, according to the city building inspector.

One permit was issued for a new residence. It was to G. K. Redding for a \$4,300 residence at 1,200 North Russell. The City of Pampa took out a \$6,500 permit for remodeling the second floor of the city hall.

Other permits issued were for small repair jobs on residences and store buildings.

### MEAT EATERS

The greatest meat-consuming group in the country is the United States Army, which has an annual per capita consumption of 300 pounds of meat.

**DON'T HIDE YOUR SHOES**  
 Have them put in tip-top shape by—  
**GOODYEAR SHOE SHOP**  
 D. W. SASSER  
 One Door West of Perkins Drug



MONTY WOOLLEY as the traveling lecturer who comes to dinner, breaks his leg and remains a month to tyrannize his hosts' household in the new comedy, "The Man Who Came to Dinner," opening at the LaNora today.

### Evans Story Of Jim Wells Denied

BROWNSVILLE, March 14. (AP)—A long-time associate of the late James B. (Jim) Wells says Publisher Silliman Evans doesn't know his Texas border political history.

Judge Harbert Davenport asserted yesterday there was no truth to Evans' testimony before a senate subcommittee that Wells paid poll taxes for 100,000 persons living along the Rio Grande.

Evans merely was relishing a border political joke of the mid-nineties in relating he had seen a telegram Jim Wells once sent campaign headquarters asking how many votes would be needed to elect a certain candidate, Davenport continued.

The story, the judge added, arose in 1894 during a senatorial campaign. The poll tax law in Texas was not adopted until 1903. Davenport, who is president of the Texas State Historical Society, said many of the "funny stories" about border politics were the result of slow communications.

"Evans never saw any telegram of the kind he said he did," Davenport said, "and if he did Wells never had anything to do with it."

The late Judge James B. Parn (Jim) Wells never bought a poll tax receipt except his own in his life.

Wells, who died nearly 20 years ago, was engaged for nearly half a century in South Texas politics but never sought public office.

Evans, a former Texan who publishes newspapers in Nashville and Chicago, was one of several witnesses

### News Carriers Sell \$7,000 In Defense Stamps Last Week

Sales of defense stamps by carrier boys of The Pampa News topped the \$7,000 mark this week-end, with the total to date for the 13 weeks since the work started being \$7,200, representing the sale of 72,000 10-cent stamps.

Dale Butler continued to lead the field with sales totaling \$1,396.20, with Darrell Hogsett again runner-up, at \$924; Burl Graham, Jr., third, \$699.20; Gene Alford, fourth, \$676.90.

### County To Be 40 Years Old June 30

Thoughts of R. C. Wilson, county auditor, turned Saturday to the approach of a semi-centennial anniversary of the organization of Gray county, under a chance study of volume 1 of the minutes of the county commissioners.

Gray county is now 40 years old. First meeting of the Gray county commissioners was held on June 30, 1902. George H. Sanders was the first county judge.

Created from Bexar county in 1876, Gray was organized 26 years later.

The county's name is from Peter W. Gray, attorney and scholar, who was a member of the first state legislature in 1846.

urging congressional prohibition of poll taxes in eight Southern states.

### SMART COMEDIES, COMEDY WITH CRIME, AND 'LOW-DOWN' BLUES IN NEW FILMS

Myrna Loy, William Powell Featured In "Shadow Of The Thin Man"; Monty Woolley In Title Role Of "The Man Who Came To Dinner"; Whorff In "Blues In The Night"

By BROWNWOOD EMERSON

A witty, smart and sophisticated comedy, a crime-comedy combination, and a story about a blues band are all contained in the film programs at Pampa theaters this week.

Opening the week at the LaNora for a three-day run starting today is Warners' "The Man Who Came to Dinner," with Monty Woolley, Bette Davis, and Jimmy Durante.

Myrna Loy and William Powell have the leading roles in Metro's "Shadow of the Thin Man," showing today, tomorrow, and Tuesday at the Crown.

"Blues in the Night," at the LaNora Wednesday and Thursday features Priscilla Lane and Richard Whorf, in a film that captures the spirit of those low down blues, spirit of jazz, and contains melodrama as well.

March of Time's latest film, "Far East Command," will be shown on Friday and Saturday at the LaNora. In addition to the scenes of Malaya and Singapore, the film shows how Australia and New Zealand, in return for U. S. assistance, are prepared to make available to our AEF huge supplies of food, munitions, and industrial products, as well as a countryside with broad highways and newly-built flying fields which will afford the Americans ideal striking bases against Jap attack.

Combining comedy and melodrama, George Sanders' latest adventure as the Falcon is up to par as a general program picture. This time the Falcon hopes to get away with his fiancée on a honeymoon.

On the eve of his departure a detective friend acquaints him with a situation involving a formula for making synthetic diamonds and the attempts of a gang to get the formula. The story is told in RKO's "A Date With the Falcon," with Sanders, Wendy Barrie, and Allen Jenkins, showing at the Rex Wednesday and Thursday.

"Design for Scandal," Metro picture with Rosalind Russell, Walter Pidgeon, and Fred Astaire is on the LaNora screen Friday and Saturday. It's the story about a woman jurist who can pass judgment wisely on all things but love.

Roy Rogers returns from his native surroundings under government auspices to round-up a gang of cattle rustlers in Republic's "Man from Cheyenne," at the Rex Friday and Saturday.

### 24 Applications For Tires Okayed

Saturday was the busiest day the Gray County Rationing board has experienced since the board was formed last January. There were 39 applications considered, of which 24 applications for new tires and tubes were approved. One recapping permit was allowed. No car ration permits were issued. The board did not complete its work until an hour and a half past its usual time.

Total number of new tires authorized for purchase was 27, of which 10 were tractor tires; new tubes, 21. The single recapping permit was to the Shamrock Products company Pampa, one tire.

### Certificates Issued

Glen Ragsdale, Pampa, plumber, one tire; John Lee, farmer, one tire; one tube; Adams McCahey, Pampa, oil producer, one tire, one tube; Pampa water and sewer department, Pampa, public health, two tires, two tubes.

Bill Stovall, LeFors, farmer, two tractor tires; John Rice, McLean, farmer, two tractor tires; L. L. Stovall, Kingsmill, farmer, two tractor tires; R. C. Carter, Laketon, farmer, two tractor tires; A. E. Turner, McLean, farmer, two tractor tires.

McLean Independent School district, McLean, one tire, one tube for bus; Herman Dees, Pampa, candy salesman, one tire, one tube; E. L. McCough, Pampa, plumber, one tire, one tube; H. E. Greenhill, Laketon, farmer, two tires, two tubes.

Osborne Machinery company, Pampa, two tires, two tubes; Lewis Cox, Pampa, produce dealer, one tire, one tube; L. L. Stovall, Kingsmill, farmer, (same as applicant for tractor tires), two tires; Maurice Robinson, Pampa, hauling contractor, one tire, two tubes.

Gray Brothers, Pampa, farmer-ranchers, one tire, one tube; A. W. Reiger, Pampa, petroleum distributor, four tires, four tubes; D. T. Pille, LeFors, gravel hauler, two tires, one tube; Ben Skorepa, Pampa, welder, one tire, one tube; Shamrock Products company, Pampa, petroleum distributors, one tire; Columbia Carbon company, Pampa, one tire, one tube; Chester Huff, Pampa, soft drink manufacturer, one tire, one tube.

### Ruth Enjoys Role In Gehrig Picture

Special To The NEWS  
 HOLLYWOOD, Calif., March 14—Babe Ruth is back in baseball. The big Bambino has dusted off his spikes and pulled his old, battered glove from the hook on the wall of his den. There's a new spring in the step of the slugger and a new glint in his eye as he lines 'em over the fence again, even though it's only for the camera in Samuel Goldwyn's "The Pride of the Yankees," the life of Lou Gehrig.

The big, bad boy of baseball has just turned 48, but except for a little grey in his hair and a few more lines in his pudgy face, he's still the same old Babe. He still has that big nose all over his face and the race horse ankles and the deep, gruff voice that calls every one, "Hiya, kid."

"Hiya, kid," he said, "it sure feels great to be back in uniform. You see this glove? It's the same one I played my last game of ball with. That was in 1935 with the Boston Braves. When I quit baseball, I hung it up on the wall of my den along with hundreds of memories of my ball-playing days. And I never thought I'd use it again, but when I was packing to come out to the coast, I just got a feeling about the old glove and threw it in the bag, along with my spikes."

### KPDN The Voice Of the Oil Empire

- SUNDAY**  
 8:00—Morning Melodies.  
 8:15—Songs of the Week.  
 8:30—World Observer.  
 8:45—Modernisms.  
 9:00—Assembly of God Church—Studio.  
 9:30—Jusele Jim.  
 9:45—The Times of the Day.  
 10:00—First Baptist Church.  
 10:15—Interlude.  
 10:30—Sunday Serenade.  
 11:15—Voices in Song.  
 12:30—Lionel Lincoln Drama.  
 12:45—Monitor Views the News—Studio.  
 1:00—Wilson Ames at the Gonzo.  
 1:15—From and About.  
 1:30—Miracles and Melodies.  
 1:45—Ministerial Address.  
 2:15—Father Flanagan's Boys Town.  
 2:45—Dante Orchestra.  
 3:00—Old Fashioned Revival Hour.  
 4:00—Good Afternoon.

- MONDAY**  
 7:00—Musical Clock.  
 8:00—What's Behind the News.  
 8:15—Musical Interlude.  
 8:30—Melody Mart.  
 8:45—Timely Events.  
 9:15—Vocal Varieties.  
 9:30—Sam's Club of the Air.  
 9:45—What's Happening Around Pampa—Studio.  
 9:50—Dance Tempo.  
 9:55—News with Harry Wahlberg.  
 10:00—The Woman's Page of the Air.  
 10:30—The Trading Post.  
 10:35—Interlude.  
 10:45—The Studio.  
 11:00—The Berger Hour.  
 11:15—The Little Show.  
 11:30—Light of the World—WKY.  
 11:45—White's School of the Air.  
 12:00—Jerry Seem Fronties.  
 12:15—Lam and Abner.  
 12:30—News with Tex DeWessa.  
 12:45—The Music of Bob Willis.  
 12:55—Musical Interlude.  
 1:00—Trouble Shooters—WKY.  
 1:15—Aunt Susie—WKY.  
 1:30—Sun Off.  
 1:45—Sign On.  
 2:00—Melody Parade.  
 2:15—Listen and Answer.  
 2:30—Mildred's Melody.  
 2:45—Trading Post.  
 2:55—Musical Interlude.  
 3:00—News with Harry Wahlberg—Studio.  
 3:15—Maid Ranch.  
 3:30—Dance Orchestra.  
 3:45—Monitor Views the News.  
 4:00—Sundown Serenade.  
 7:00—Easy Aces.  
 7:15—Mallman's All-Request Hour.  
 8:00—Bordertown Barbecue.  
 8:15—To Be Announced.  
 8:30—Jeff Guthrie—Studio.  
 8:45—Sale of Paradise.  
 9:00—Pop Concerts.  
 9:15—Cashier Harmonies.  
 9:30—Best Bands in the Land.  
 9:45—Lam and Abner.  
 10:00—Goodnight.

### Democracies To Win Says Henry Wallace

OMAHA, March 14 (AP)—The democracies will win the war, Vice President Henry Wallace said tonight, "not merely because we have shown our capacity to fight with a wholehearted spirit, but because the people of the entire world appreciate that we are fighting for the prosperity and dignity of the common man in all nations."

He delivered that summation of faith in his first major speech since the Pearl Harbor attack, prepared for delivery before a midwest audience here of farmers and city folk, and broadcast over the blue network.

Hillier and Japan, he said, "are driving desperately against time. They must knock us out by 1942 or not at all. All signs indicate that the summer of 1942 will be a repetition of the summer of 1918, with the Axis making one last desperate all-out attempt."

"But when the final struggle is brought to a finish, we can have a better peace than at the end of 1918, providing every person in the United States realizes that his every action every day is producing results in terms of life and death for our young men."

### 400 Aliens Behind Wire At Santa Fe

SANTA FE, N. M., March 14. (AP)—More than 400 Pacific coast Japanese aliens arrived today and were hustled off to the Santa Fe detention station for internment.

A 12-car train bearing them from San Francisco and Los Angeles arrived at 7:30 a. m. (MST), two hours later, all of the aliens were behind the heavy, barbed wire fence surrounding the converted CCC camp.

The transfer proceeded smoothly under the watchful eyes of armed border patrolmen.

In batches of about 20 each, the Japanese filed from the train, entered CCC trucks and were driven away to the camp, which thus became the second in New Mexico to house nationals of any enemy nation.

Some 400 seamen of the scuttled German liner Columbus were interned at a former CCC camp at Fort Stanton for more than a year.

### Moheette Resident For 14 Years Dies

Frank Charles Peace, 58, died Friday night at the family home in Moheette where he had made his home for 14 years. He moved to Moheette from Elk City. He operated the Moheette Recreation club.

Mr. Peace was a veteran of the first world war, serving with the Third company, first battalion, 164th defense brigade. He was an active member of the Presbyterian church and of West Post of the American Legion at Wheeler.

Survivors are the widow, a daughter, Mrs. Bedia Johnson, Bay City, a step-son, James Ed Hatfield, San Bernardino, Calif., his mother, Mrs. Sarah Jane Peace, Oklahoma City, one brother, W. T. Peace, Kennedy, five sisters, Mrs. Lillie May Price and Mrs. Anna Ball, both of Oklahoma City, Mrs. Jeanette Johnston, Anadarko, Okla., Mrs. Ollie Taylor, Pearsall, and Miss Julia Peace, nurse in service at Camp Huila.

Funeral services will be conducted at 3 o'clock this afternoon in the Moheette Methodist church with the Rev. Gilliam of Dodson officiating. Burial will be in Wheeler cemetery.

Pallbearers and honorary pallbearers will be members of West Post.

### Funeral Held For 16-Month-Old Baby

Funeral services for Shirley Jean Finley, 16 months old, were conducted at 4 o'clock yesterday afternoon in the chapel of the Duemmel-Carmichael Funeral home by the Rev. T. D. Sumrall, pastor of Central Baptist church. Burial followed in Fairview cemetery.

The child, daughter of Mr. and Mrs. W. M. Finley, five miles north of Pampa, died in a local hospital Friday afternoon of pneumonia. The parents survive.

The Young Men's Christian Association was founded in London in 1844.

### THIS WEEK IN PAMPA THEATERS

**LANORA**  
 Today, tomorrow, and Tuesday: "The Man Who Came to Dinner," with Bette Davis, Ann Sheridan, Monty Woolley.  
 Wednesday and Thursday: "Blues in the Night," with Priscilla Lane, Richard Whorf.  
 Friday and Saturday: "Design for Scandal," with Walter Pidgeon, Rosalind Russell, plus March of Time's "Far East Command."

**REX**  
 Today, tomorrow, and Tuesday: Jane Withers in "Young America."  
 Wednesday and Thursday: "A Date With the Falcon," with George Sanders, and Wendy Barrie.  
 Friday and Saturday: Roy Rogers in "Man from Cheyenne."

**CROWN**  
 Today, tomorrow, and Tuesday: "Shadow of the Thin Man," with William Powell, and Myrna Loy.  
 Wednesday and Thursday: "Boom Town," with Clark Gable, Spencer Tracy, Claudette Colbert, Hedy Lamarr.  
 Friday and Saturday: "Man from Music Mountain," with Gene Autry, Smiley Burnette; chapter 8, "The Iron Claw," latest news.

**STATE**  
 Today and tomorrow: Kay Kyser and John Barrymore in "Playmates."  
 Tuesday: Richard Arden in "Forced Landing."  
 Wednesday and Thursday: "Dr. Kildare's Wedding Day," with Lew Ayres and Lionel Barrymore.  
 Friday and Saturday: Charles Starrett and Russell Hayden in "West of Tombstone."

Eyes Examined Glasses Fitted  
**OWENS OPTICAL OFFICE**  
 DR. L. J. ZACHRY  
 Registered Optometrist  
 109 E. Foster Phone 269

**WE ARE RATIONING LAUGHS!**  
**ONLY 1,000 TO THE CUSTOMER!**

Once Every Blue Moon Comes A Picture We Want To Rave About. This Is Such A Picture — It Has Everything —

A Good Story  
 A Grand Cast  
 A Swell Romance  
 And The Funniest Situations You Ever Saw.

Don't Be Among Those Few Who Miss It. . .

Also "The First Swallow" and News  
**La NORA**  
 SUN. MON. TUES.

"The Man Who Came to Dinner"

**KAY KEYSER**  
 AND HIS COLLEGE OF MUSICAL KNOWLEDGE in  
**"PLAYMATES"**  
 —with—  
 John Barrymore — Patsy Kelly  
 Lupe Valdez — May Robson  
 Also "Points On Arrows" and Color Cartoon

MONDAY — STATE — TODAY

Find Adventure Romance and Fun!  
**THE AMERICAN**  
 4-H WAY

Just a bunch of kids, but Uncle Sam is mighty proud of them and the part they play in America today. . . You'll know why when you see—

**Jane Withers**  
 IN  
**YOUNG AMERICA**

With Jane Darwell — William Tracy  
 Ben Carter and Louise Beavers

**REX — Today & Mon., Tues.**

**How to Guard Your Eyesight and get more FUN OUT OF LIGHT**

There's new zest in every meal, and eye protection after meals, if the bulb in each socket of the chandelier is a 40-watt.

Remember:  
 Eyesight is priceless;  
 but Light is cheap!  
 Always Have Enough Light In Your Home

**Southwestern PUBLIC SERVICE Company**

**CROWN**  
 STARTS TODAY  
 Adults 25c

**Wm POWELL**  
**Myrna LOY**  
 AND ASTA  
**Shadow OF THE THIN MAN**

HARRY NELSON - DONNA REED  
 SAM LEVINE - ALAN BAXTER  
 ROBERT WILLS - RUCKE WALL

Directed by MAJOR W. S. VAN DYKE II

**SHORTS & NEWS**



Here Is What a Rental Vacancy Costs Its Owner Each Day

Table with columns for Rent (\$25, \$30, \$35, \$40, \$45, \$50, \$55, \$60, \$65) and Loss (\$3.16, \$3.33, \$3.50, \$3.66, \$3.83, \$4.00, \$4.17, \$4.33). Includes CASH RATES and PAMPA NEWS RENTAL ADS.

THE PAMPA NEWS Office hours 8 a. m. to 5 p. m. Sunday hours 9:30 a. m. to 10 a. m. Cash rates for classified advertising: Words 1 Day 2 Days 3 Days...



There was a young farmer named John. Who said to himself—'Well, I swan! Defense Bonds get bigger in value I figger While helping our Victory on.'

Get a bumper yield on your savings by investing them in U. S. Defense Bonds and Stamps for Victory. Get one today!

BUSINESS SERVICE

18—Building Materials

FARMERS AND RANCHERS! We are equipped to repair your sagging Windows. Call Pampa News, 466, and we will come to you.

18-A—Plumbing & Heating

DES MOORE is ready now to help you plan your air-conditioner before hot weather. Phone 102.

21—Upholstering-Refinishing

SPEAR for furniture repair work. Years of experience workmanship. Low prices. Phone 835. 616 W. Foster.

22—Sand and Gravel Hauling

WE DO all kinds of trucking or hauling. Gravel, sand, fill, etc. Call Pampa News, 466, for estimates and information on moving.

23—Cleaning and Pressing

SATISFACTORY service is a habit with us. Phone 1290. Service Cleaners, Clyde Jones, Prop.

24—Curtain Cleaning

LACE curtains washed, tinted, stretched, mended, etc. Mrs. Lattin, 311 N. Ballard, Ph. 1675. Furnished \$4.00 up.

26—Beauty Parlor Service

IMPERIAL Beauty Shop, where you get a shampoo and wave set for 50c that really stays. 325 S. Cuyler.

27—A—Turkish Baths, Swedish Massage

REDUCE without harmful drugs. The safe way is the natural way—Lacie's Turkish Bath and Swedish Massage—423 S. Barnes, Ph. 97.

29—Mattresses

BUY your next mattress or innerepring of Ayer and Son. More cotton, better cotton, better built; also used mattresses as low as \$2.50. Phone 633.

30—Household Goods

CASH odds and ends, close out sale, price no object. Must cash now for new springing furniture. Irwin's, 509 W. Foster, Phone 291.

31—Floor Sanding-Refinishing

BEAUTIFUL smooth floors in your home are a necessity. Estimates free. Lovell's A-1 Floor Service, Phone 62.

FUNNY BUSINESS

"Miss Jones, take a heartrending letter to the tire rationing board!"

MERCHANDISE

30—Household Goods

OFFICE desks, 12 filler \$12 and \$25. Office chairs, \$4 to \$10. Bedroom suites, \$22.50. Chest of drawers, \$25.00. Sprung desk and chair, \$15.00. One 9 piece dining set, \$15.00. One 8 piece dining set, \$12.00. Pampa Transfer and Storage Co.

35—Plants and Seeds

VICTORY Gardens. Time now to start them. Get your onion sets and seeds from Harvester Seed Co., Phone 1139.

36—Wanted To Buy

WANTED: Pickup, good mechanical condition, good rubber. Inquire at 404 1/2 S. Cuyler street, Pampa, Texas.

36—Wanted To Buy

WANTED to buy: Good used bath room fixtures and kitchen sink. Phone 1501W or 243M.

LIVESTOCK

39—Livestock-Feed

FOR SALE: Fresh Jersey milk cows, priced reasonable, terms. See Pat Ponton Chumlin lease, 3 miles west LeFors.

40—Baby Chicks

POULTRYRAISERS—See that your chicks get the right starting feed. Purina Starters contains all the ingredients essential for livability, growth and vitality. It is scientifically prepared and is preferred by thousands of poultrymen all over the country. Harvester Feed Co., Pampa, Texas.

41—Farm Equipment

GOOD used 22-36 tractor on rubber. Carload of new tractor. Full line of truck parts and service. Kaley Implement Co., Phone 1361.

42—Sleeping Rooms

GLIAN, quiet sleeping rooms. Where there is plenty of parking space. Walk to town from the American Hotel.

42—Sleeping Rooms

FOR RENT: Sleeping rooms, adjoining bath. Quiet neighborhood, walking distance. 518 N. Somerville, Phone 1098.

42—Sleeping Rooms

FOR RENT: Nice 3 room furnished house, electric refrigerator, bill paid. 212 N. Nelson.

42—Sleeping Rooms

FOR RENT: Two room furnished house, electric refrigerator, bill paid. 212 N. Nelson.

42—Sleeping Rooms

FOR RENT: Two room furnished house, electric refrigerator, bill paid. 212 N. Nelson.

42—Sleeping Rooms

FOR RENT: Two room furnished house, electric refrigerator, bill paid. 212 N. Nelson.

42—Sleeping Rooms

FOR RENT: Two room furnished house, electric refrigerator, bill paid. 212 N. Nelson.

42—Sleeping Rooms

FOR RENT: Two room furnished house, electric refrigerator, bill paid. 212 N. Nelson.

42—Sleeping Rooms

FOR RENT: Two room furnished house, electric refrigerator, bill paid. 212 N. Nelson.

42—Sleeping Rooms

FOR RENT: Two room furnished house, electric refrigerator, bill paid. 212 N. Nelson.

42—Sleeping Rooms

FOR RENT: Two room furnished house, electric refrigerator, bill paid. 212 N. Nelson.

42—Sleeping Rooms

FOR RENT: Two room furnished house, electric refrigerator, bill paid. 212 N. Nelson.

42—Sleeping Rooms

FOR RENT: Two room furnished house, electric refrigerator, bill paid. 212 N. Nelson.

42—Sleeping Rooms

FOR RENT: Two room furnished house, electric refrigerator, bill paid. 212 N. Nelson.

42—Sleeping Rooms

FOR RENT: Two room furnished house, electric refrigerator, bill paid. 212 N. Nelson.

42—Sleeping Rooms

FOR RENT: Two room furnished house, electric refrigerator, bill paid. 212 N. Nelson.

42—Sleeping Rooms

FOR RENT: Two room furnished house, electric refrigerator, bill paid. 212 N. Nelson.

42—Sleeping Rooms

FOR RENT: Two room furnished house, electric refrigerator, bill paid. 212 N. Nelson.

42—Sleeping Rooms

FOR RENT: Two room furnished house, electric refrigerator, bill paid. 212 N. Nelson.

42—Sleeping Rooms

FOR RENT: Two room furnished house, electric refrigerator, bill paid. 212 N. Nelson.

42—Sleeping Rooms

FOR RENT: Two room furnished house, electric refrigerator, bill paid. 212 N. Nelson.

42—Sleeping Rooms

FOR RENT: Two room furnished house, electric refrigerator, bill paid. 212 N. Nelson.

42—Sleeping Rooms

FOR RENT: Two room furnished house, electric refrigerator, bill paid. 212 N. Nelson.

42—Sleeping Rooms

FOR RENT: Two room furnished house, electric refrigerator, bill paid. 212 N. Nelson.

HOLD EVERYTHING



"The general's madder than a wet hen—somebody stole his bathtub!"

FOR RENT REAL ESTATE

47—Apartments or Duplexes

FOR RENT: Nice unfurnished duplex, 3 rooms, bath, garage, close in. All utilities paid. 308 N. Somerville, Ph. 1219-W.

47—Apartments or Duplexes

FOR RENT: Two room furnished apartment. Bills paid, \$16 per month. Apply Tom's Place, 316 E. Frothingham, Phone 1313-W.

47—Apartments or Duplexes

FOR RENT: Two room furnished apartment. Bills paid, rent reasonable. Ph. 277.

47—Apartments or Duplexes

FOR RENT: Unfurnished two room duplex. Newly papered. Bills paid. 630 N. Warren. Inquire 708 Jordan.

47—Apartments or Duplexes

GARAGE apartment, furnished, with furnace heat. Bills paid. Adults only. No pets. 1118 East Frank.

47—Apartments or Duplexes

FOR RENT: 5 room house with garage. Close in. Couple preferred. Bills paid. Ph. 2406. evenings Ph. 1275-W.

FOR SALE REAL ESTATE

54—City Property

FOR SALE: Sacrifice! 3 room modern house. Large pantry, hard-wood floors, in-laid linoleum, bath, kitchen. Good location. 102 N. Somerville, Ph. 1098.

54—City Property

FOR SALE: 3 rooms and bath, lot 50 x 150, \$1,000.00. Terms, a good buy. 6 room duplex, \$2,000.00. Terms, 5 room home, well located, furnished at cost of \$2,000.00. Owner says sell at sacrifice. Take a look at this. To be moved, frame staves shingle roof 28 x 80. Good condition. \$1,000.00. Less than 1/2 of value. We buy, sell and trade. We can get your property. List with us. Haggard and Brown, Room 4, First National Bank Bldg., Phone 908.

54—City Property

FOR SALE: New 5 room house on Christine St. P. H. A. financed. Write box 599, Pampa, Texas.

54—City Property

FOR SALE: Duplex, 417-419 N. Russell. Duplex, 1025-1027 E. Browning. 4 1/2 houses, 1031 East Browning, Phone 555 or 1104. Ask for Dan Metrow.

54—City Property

FOR SALE: New 5 room house on Christine St. P. H. A. financed. Write box 599, Pampa, Texas.

54—City Property

FOR SALE: 5 room house on Christine St. P. H. A. financed. Write box 599, Pampa, Texas.

54—City Property

FOR SALE: 5 room house on Christine St. P. H. A. financed. Write box 599, Pampa, Texas.

54—City Property

FOR SALE: 5 room house on Christine St. P. H. A. financed. Write box 599, Pampa, Texas.

54—City Property

FOR SALE: 5 room house on Christine St. P. H. A. financed. Write box 599, Pampa, Texas.

54—City Property

FOR SALE: 5 room house on Christine St. P. H. A. financed. Write box 599, Pampa, Texas.

54—City Property

FOR SALE: 5 room house on Christine St. P. H. A. financed. Write box 599, Pampa, Texas.

54—City Property

FOR SALE: 5 room house on Christine St. P. H. A. financed. Write box 599, Pampa, Texas.

54—City Property

FOR SALE: 5 room house on Christine St. P. H. A. financed. Write box 599, Pampa, Texas.

54—City Property

FOR SALE: 5 room house on Christine St. P. H. A. financed. Write box 599, Pampa, Texas.

54—City Property

FOR SALE: 5 room house on Christine St. P. H. A. financed. Write box 599, Pampa, Texas.

54—City Property

FOR SALE: 5 room house on Christine St. P. H. A. financed. Write box 599, Pampa, Texas.

54—City Property

FOR SALE: 5 room house on Christine St. P. H. A. financed. Write box 599, Pampa, Texas.

54—City Property

FOR SALE: 5 room house on Christine St. P. H. A. financed. Write box 599, Pampa, Texas.

54—City Property

FOR SALE: 5 room house on Christine St. P. H. A. financed. Write box 599, Pampa, Texas.

54—City Property

FOR SALE: 5 room house on Christine St. P. H. A. financed. Write box 599, Pampa, Texas.

54—City Property

FOR SALE: 5 room house on Christine St. P. H. A. financed. Write box 599, Pampa, Texas.

54—City Property

FOR SALE: 5 room house on Christine St. P. H. A. financed. Write box 599, Pampa, Texas.

AUTOMOBILES

62—Automobiles for Sale

Reasonably Priced USED CARS 1933 FORD 4 door Sedan 1938 CHEVROLET Coupe 1936 CHEVROLET Coupe 1937 PONTIAC Coach

62—Automobiles for Sale

Ask about the lowest finance charge in town on our budget pay plan. As long as 12 mo. to pay on repair work.

Lewis-Coffey Pontiac Co.

Complete line of Skelly Products, 220 N. Somerville Phone 368

For the Buy of Today

See PURSLEY MOTOR CO.

38 Chevrolet 2 dr. New tires, radio and heater. 37 Plymouth Coupe. New motor and heater. 36 Ford 2 dr. Motor overhauled, good tires, radio and heater.

Many Other Good Buys

Pursley Motor Co.

Dodge—Plymouth Dealers 211 N. Ballard Phone 113

65—Repairing-Service

Car Conservation Is A Contribution To Victory

See us for wheel alignment and balancing—we'll make your tires last! Use your car under our conservation plan.

CULBERSON CHEVROLET CO.

212 N. Ballard Phone 366

See Us For Proper Front End Alignment, Wheel Balancing, Body and Fender repairs, Complete Motor Check, And Repairs to any Make of Car.

TEX EVANS BUICK CO. INC.

204 N. Ballard Phone 124

66—Tire Vulcanizing

FOR SALE: Two 45x21, two 47x19. All new tires and tubes. Car free. New Japanese gas range. P. W. Baker, 1108 Alcock.

JUNK TIRES AND TUBES WANTED

Tires 40c a 100 Pounds. Tubes 3c and 4c per pound. C. C. MATHENY 818 W. Foster Phone 1051

CORK OAKS

The life of a cork oak is about 150 years. Cork may not be stripped from trees until they are 20 years old, and only after the third stripping is good cork produced.

BUY DEFENSE STAMPS

During 1942 the United States consumed 100,000,000 pounds of chewing tobacco.

SOLED GLANCES

The soldiers in Gen. Philip H. Sheridan's army knew him as "Little Phil."

62—Automobiles For Sale

FOR SALE: 1941 Mercury 5 passenger coupe. Good rubber. Low mileage. Owner gone to army. Call 1687W or write Box 481, Pampa, Texas.

62—Automobiles For Sale

FOR SALE: 37 Ford 60 Taylor. Good motor. \$95 cash. 509 N. Duval.

62—Automobiles For Sale

FOR SALE: New 5 room house on Christine St. P. H. A. financed. Write box 599, Pampa, Texas.

62—Automobiles For Sale

FOR SALE: Duplex, 417-419 N. Russell. Duplex, 1025-1027 E. Browning. 4 1/2 houses, 1031 East Browning, Phone 555 or 1104. Ask for Dan Metrow.

62—Automobiles For Sale

FOR SALE: New 5 room house on Christine St. P. H. A. financed. Write box 599, Pampa, Texas.

62—Automobiles For Sale

FOR SALE: 5 room house on Christine St. P. H. A. financed. Write box 599, Pampa, Texas.

62—Automobiles For Sale

FOR SALE: 5 room house on Christine St. P. H. A. financed. Write box 599, Pampa, Texas.

62—Automobiles For Sale

FOR SALE: 5 room house on Christine St. P. H. A. financed. Write box 599, Pampa, Texas.

62—Automobiles For Sale

FOR SALE: 5 room house on Christine St. P. H. A. financed. Write box 599, Pampa, Texas.

62—Automobiles For Sale

FOR SALE: 5 room house on Christine St. P. H. A. financed. Write box 599, Pampa, Texas.

62—Automobiles For Sale

FOR SALE: 5 room house on Christine St. P. H. A. financed. Write box 599, Pampa, Texas.

62—Automobiles For Sale

FOR SALE: 5 room house on Christine St. P. H. A. financed. Write box 599, Pampa, Texas.

62—Automobiles For Sale

FOR SALE: 5 room house on Christine St. P. H. A. financed. Write box 599, Pampa, Texas.

62—Automobiles For Sale

FOR SALE: 5 room house on Christine St. P. H. A. financed. Write box 599, Pampa, Texas.

62—Automobiles For Sale

FOR SALE: 5 room house on Christine St. P. H. A. financed. Write box 599, Pampa, Texas.

62—Automobiles For Sale

FOR SALE: 5 room house on Christine St. P. H. A. financed. Write box 599, Pampa, Texas.

62—Automobiles For Sale

FOR SALE: 5 room house on Christine St. P. H. A. financed. Write box 599, Pampa, Texas.

62—Automobiles For Sale

FOR SALE: 5 room house on Christine St. P. H. A. financed. Write box 599, Pampa, Texas.

Political Calendar

The Pampa News has been authorized to present the names of the following citizens as candidates for office, subject to the action of the Democratic voters, at their primary election Saturday, July 25, 1942.

For District Judge: H. B. HILL W. R. EW



SERIAL STORY

KINGS ROW

BY HENRY BELLAMANN

OUT OF DANGER

CHAPTER XXVIII

PARRIS showed a chair toward the kitchen table and sat down. Randy stood for a moment looking at him.

"What's the matter, Randy?" "You said just now that you considered Drake all right—just as he always was. What about you?"

Parris looked puzzled. Randy finished the preparations for coffee. "You know ever since you got back here to Kings Row that you're not happy, I don't mean to meddle with your business in any way, but I just wondered if there is anything I can do for you?"

"You're a sweet kid to think about me, but it's just a matter of readjustment. I—I didn't like Kings Row when I came back."

"And now you want to go away?" "You were never more mistaken in your life. I've got my job—it's work I like and want to do."

"I'm glad, Parris. I'd hate to see you go away."

"I never expect to. It's a little hard to explain, but in some way that lies considerably beyond the ordinary meaning of the word this is home. I was pretty suddenly and violently upset, and when I came back there didn't seem to be anything here that I thought was here. My friendship with Drake was about all that was left of parent soil—do you understand what I mean?"

"I think so."

"Drake, and old Professor Berdorff. Well—it took me a while to put down roots again. The hospital is new ground, of course."

Randy nodded. "Randy, do you know what mysticism is?"

"I kind of know, I guess. Belief in something that is behind something else that isn't there."

Parris laughed, and Randy set cups on the table. "Well, that'll do as a starting point! I hate mysticism, as I hate everything that isn't clear. And that's ridiculous, too, because just about all of my work is concerned with chasing spooks that aren't there. I have to try to keep myself and my ideas realistic, but hallucinations—I'm getting off the track. I started out to say something else. I'm not exactly in love with Kings Row, nor with the town, or the way it looks, nor any places in the town, nor the people that live here. But I'm attracted to the stages of being I went through right here."

"I understand something of what you mean. Go on."

"I thought and felt certain things here. Now a lot of people carry their spiritual homes around with them—either inside of them, or, well, maybe the way a mail carrier carries his shell on his back. I can't do that. I have to have a place. And, strangely enough, this is my place. I live in some sort of way that I've got to be here. I used to love to walk about the country and—just look at it. I have to learn to do that again."

Parris laughed. "I'm talking too much."

"It's your own medicine, Doctor."

"What?" "You know—talking it out. You've explained it to me—"

"Well, I know I'm going home—that's the first time I've said 'home' since I landed here!"

"Maybe you ought to get married, Parris."

He looked at her thoughtfully. "No, Randy, I don't think so. There doesn't seem to be any room anywhere for that kind of an arrangement."

THERE was a special-delivery letter lying under the lamp on his table when he reached his apartment.

Dear Dr. Mitchell: I haven't had the pleasure of meeting you since your return from abroad, and I regret that my first communication with you is somewhat professional rather than social. I shall be grateful if you will call as soon as convenient. I should like, also, to have you keep this in strict confidence.

Very truly,  
Harriet Gordon

Parris frowned. Mrs. Henry Gordon! Strange.

He turned and looked around the apartment. The door stood open into his study. Beyond he could see a dim light burning in the bedroom. He had called this "home" without thinking.

It was a small apartment on the fifth floor of the central administrative building of the hospital, identical with those assigned to all bachelor staff members.

Randy's suggestion that he marry found no response in him, nor did it disturb him in any way. There was no one. . . . But something else did disturb him. Just two words she had spoken in her friendly fashion: "And you?"

Oh, drat Randy's teasing question! Parris threw a towel over an enamel bench and sat down, to wait for the bath to fill. Something about the patterns in the water made him think of the little pools and shallows of the creek where

he used to play with Renee. Renee . . . and Cassie . . . moving through the drift of recollections. Events stood out with flaming clarity against the half haze of the surrounding time.

He had little enough in the recollections of his boyhood life in Kings Row to be happy about. The nature of his bereavements and his griefs had been too dark, and too severe for a boy. And now that he was living again in the scene of their happening there must be at times some unconscious associations; some spectral presences. . . .

A WEEK passed before Parris was free to call on Mrs. Gordon. "It's been a long time since I've seen you," she said. "Of course I've heard—Louise was always speaking of Parris Mitchell."

Mrs. Gordon sat, very stiff and straight, in an incongruous Roman chair. Her hair, a surprisingly even dark chestnut, was fastened high with a comb. The comb reminded him of his grandmother. He wandered a little.

"Mrs. Gordon looked sharply at him. "I said, that I have been going through a very trying experience since my husband passed away."

"Oh, I'm sorry to hear that."

Mrs. Gordon moved forward in her chair. "I have called you to speak about Louise."

"Is Louise ill?"

"Mrs. Gordon twisted the ends of her black-lace scarf. "Dr. Mitchell, I've been afraid Louise's mind has been affected. You may remember that some time ago Louise had a most unfortunate attachment for one of the most undesirable boys in this town."

"You are speaking of Drake McHugh?"

"Yes—a very sad case. I suppose I was lax in my care of Louise, but before I could guess what might happen she imagined she was in love with him."

"Yes, Mrs. Gordon. You might just tell me what happened."

"Dr. Mitchell, Louise hated her father!"

"Really? Why?"

"I could never guess. Dr. Gordon was a saint." The woman's face was suddenly transformed. A look that was curiously stark and white gave her an appearance of—Parris almost said "exaltation." It might have been nearly such an appearance if it had not been at the same time so hard, and so—yes, it was a cruel look. Every line of Mrs. Gordon's expression was fantastic. Parris felt a little creepy. He decidedly did not like this interview.

(To Be Continued)

Second U. S. O. Campaign To Be Launched

A second campaign which aims at tripling the amount raised in the first will be started on May 11 of this year when the United Service organization seeks more funds to provide recreation for Uncle Sam's soldiers, sailors, marines, and defense workers.

Announcement of the new campaign of the U.S.O. was contained in a letter received here yesterday by County Judge Sherman White.

Last year Gray county raised \$2,500 or \$500 above its quota in the U.S.O. drive, of which Jack Hanna of Pampa was chairman. On August 20, a check for \$2,000 was sent in to headquarters, and the balance retained in a local bank, as a reserve fund in anticipation of another campaign. This was done with the full consent of the U.S.O.

All Money Sent In

Later on, however, the U.S.O. made a call for the extra \$500 from Gray and this was sent in.

The national campaign in 1941 was for \$10,765,000. More than 16 million dollars was contributed.

In preparation for the 1942 U.S.O. War Fund campaign, the organization is today sponsoring a nationwide open house at all its centers.

These are 395 clubs and 143 smaller units operating in 246 communities in 44 states and at 15 overseas bases.

Among the activities of the U.S.O. is the recent Victory Book campaign, designed to supply service men with good books at U.S.O. centers.

Other activities of the U.S.O. include providing shows, entertainment of various sorts, and all possible recreation for the armed force members in their hours off duty.

The United Service Organization, Inc. is now the official destination as the words "for national defense" have been dropped. Harper Sibley of New York is president.

Combined in the U.S.O. are the Young Men's Christian association, Young Women's Christian association, the National Catholic Community service, Salvation Army, Jewish Welfare board, and National Travelers Aid society.

BUY DEFENSE STAMPS

Federal Home Loan Shows Assets Gain

A gain of \$11,918,163 in total assets over the previous year was made in 1941 by the 126 insured savings and loan associations in Texas, the Federal Home Loan Bank of Little Rock reported today, in its annual compilation of the statements of the home financing institutions in the state. Included in the report are the figures of the Security Federal Savings and Loan Association in Pampa.

WTSC Summer Term To Start May 27

CANYON, March 14 — College careers will begin May 27 for high school students who "speed up" their educations as urged by many federal agencies. Some of them will complete work for degrees before reaching the induction age of 20 years for the military services.

West Texas State's summer session has been organized to meet the needs of these beginning students, as well as others. Freshmen may start regular work in most departments and, by attending each degree session, complete work or degrees by mid-winter of 1945. Entering Juniors and junior college graduates may finish by the summer of 1943.

The summer session will be in two terms, one of nine weeks and one of six weeks—or a total of 15 weeks. Each week will be of 5 1/2 days, with classes lasting one hour. In this 15-week session the student may complete approximately the same amount of work ordinarily done in regular semester. Tuition and fees for nine weeks will be \$30 and for

six weeks will be \$20. Defense courses will be offered in many departments. Industrial arts, business courses, and work in first aid, safety, health, cooking, radio, and preparation for officers' training in the armed forces will be stressed. The usual summer courses also will be offered, but special classes in government, history, geography and other subjects will be added.

BUY DEFENSE BONDS

Guard Will Hold Special Drill Today

There'll be something special today about the volunteer drill of members of Company D, Texas Defense Guard.

On April 12, a field day, with rifle shooting, will be held at Canyon and the local company will have an important part in the maneuvers. The drill here this afternoon will include extended order movements, expected to be a part of the field day practice.

Time of the drill has been postponed 15 minutes, and the men will assemble at 2 o'clock this afternoon at Harvester park.

**GET YOUR CAR TUNED-UP for Spring**

**"ALL-OUT" for the Defense of Your Car**

Spring is here again, and many more Springs may pass before you are able to have a new car, so give the one you have special care. Bring it in and we'll put our defense efforts to work.

**"WE NEVER CLOSE"**

**COMPLETE SPRING CHECK-UP**

Includes Wash and Lubrication, Adjusting Tappets, Check Fuel Pump, Clean Carburetor, Check Ignition and Timing —by mechanics of long years of experience on all makes of automobiles.

—ACROSS FROM THE CITY HALL—

**PAMPA GARAGE & STORAGE**

113 North Frost Phone 979

L'L ABNER



RED RYDER



ALLEY OOP



FRECKLES AND HIS FRIENDS



WASH TUBBS



BOOTS AND HER BUDDIES



OUT OUR WAY



The Monster!!!



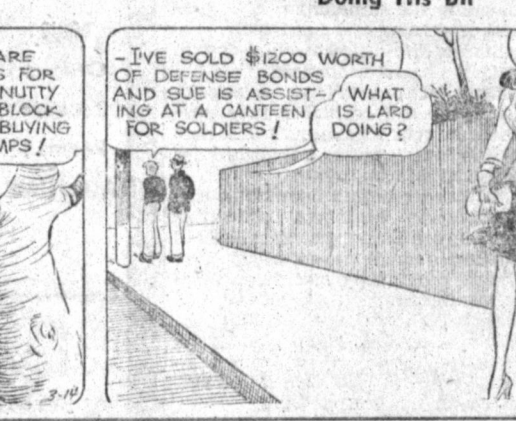
Outside Looking In



Sound The Alarm



Doing His Bit



Wrong Address, Mister



It Looks Bad



OUR BOARDING HOUSE



ENTER JEB S. SCRAGG!!!



By FRED HARMAN



By V. T. HAMLIN



By MERRILL BLOSSER



By ROY CRAN



By EDGAR MARTIN



By J. R. WILLIAMS



with MAJOR HOOPLE





### Texans At War

**GALVESTON, March 14 (AP)**—The navy's "E" for excellence has been awarded to the workers, contractors and officers who constructed the Galveston naval base on Pelican Spit, for their having made during January, 1942, the best construction record of any naval station of comparable size.

**HOUSTON, March 14 (AP)**—An inventory of all drilling equipment owned by drilling contractors and operating oil companies is under way, the American Association of Oilwell Drilling Contractors announced. The inventory will show geographical location of the equipment.

**WESLACO, March 14 (AP)**—Construction of the master gravity irrigation canal from Rio Grande City to Brownsville in the valley, the main feature of the government's proposed \$65,000,000 flood control and irrigation program for this section, will be delayed until after the war, says Congressman Milton W. West.

**SAN ANTONIO, March 14 (AP)**—Red Cross home nursing classes in Bexar county now have enrolled 800 women.

**WICHITA FALLS, March 14 (AP)**—A grand total of 5,104,384 pounds of scrap materials vital to the war effort have been shipped from Wichita county.

**BEAUMONT, March 14 (AP)**—Gas masks are to be issued to every citizen in this vital defense area under the program of OCD, according to George D. Switzer, defense coordinator. Switzer said Beaumont had been designated as a portion of the vital defense area to obtain certain equipment.

**HOUSTON, March 14 (AP)**—Harris county chapter of the American Red Cross chalked up 136,846 1/2 hours of work on garments for the army, navy and civilians during February, according to the monthly Red Cross production report. This knitting and sewing was done by 10,385 women.

**BEEVILLE, March 14 (AP)**—Bee county has approximately 360 men serving in the various branches of the army, navy and marine corps.

**GALVESTON, March 14 (AP)**—Graduation exercises of the University of Texas school of medicine will be held Friday evening, March 20, at 8:30 p. m. at the city auditorium when approximately 700 students of the school of medicine and 50 nurses of the John Sealy college of nursing will receive their diplomas.

**HOUSTON, March 14 (AP)**—A military review of the American Legion posts of Harris county, the Legion's disaster units and the Red Cross women's motor corps and nurse units will be held at 3 p. m. tomorrow. A 100-piece band and the girls defense units from the tricolored also will participate.

**MCALLEN, March 14 (AP)**—Charles C. Toomey of Tulsa, district governor of Texas-Oklahoma Kiwanis clubs, will be the honor guest at a meeting for five upper valley clubs Tuesday.

**COLLEGE STATION, March 14 (AP)**—Another in the ever-increasing list of national defense courses offered at Texas A. & M. college will be the creamery defense short course March 16—April 25. C. N. Sheppardson, head of the college dairy husbandry department, announces.

**HOUSTON, March 14 (AP)**—An ordinance designed to prevent repetition of the Americas Day disaster in which three persons were killed and 50 injured by collapse of the canopy on the old city hall last November was adopted by city council. The ordinance prohibits anyone from gathering or standing on canopies or open fire escapes, except when making repairs or in an emergency.

**HOUSTON, March 14 (AP)**—Representatives of the United States Treasury department and the office of civilian defense will have places on the program of the Texas Baptist Sunday School convention to be held here April 7-9. Milton T. Gregory, assistant regional director, eighth regional office of civilian defense, will present the case for civilian defense activities. A personal representative of Secretary Henry Morgenthau will represent the Treasury department.

**WHITESBORO, March 14 (AP)**—Grayson county commissioners court has approved the state designation of Highway 10 from Whitesboro to Red river. The highway will connect with a proposed \$1,300,000 bridge across Red river at Willis, Okla., which will serve as an outlet for Southern Oklahoma when the present outlet at Woodward, Okla., is flooded by waters of the Denison Dam Lake. The new route will intersect federal highway 82 at Whitesboro.

### Washing Machine Production Halted

**WASHINGTON, March 14 (AP)**—The war production board today ordered production of domestic washing machines and ironers halted entirely by May 15 and directed larger companies to shut down on April 15.

Between now and the date production is halted the companies will be permitted to produce one and a half times their February production quotas.

The order, preliminary to conversion of the industry to war production, does not prohibit or limit manufacture of replacement parts for existing equipment.

**BUY DEFENSE STAMPS**

In spite of the war and its attendant ill Great Britain still has 1,000,000 passenger cars in operation.

### Cattlemen's V For Victory



Every pound of meat saved for home use releases that much Food-Freedom to help feed America and her armed forces, so Texas County agents are brushing up on their meat butchering. In one school on the Caldwell Ranch, Taylor County, Roy Snyder, animal industries specialist of the Texas Extension Service, welding the saw, shows his "students" how to make a perfect beef cattle "V for Victory."

### 150 Nags Entered In Kentucky Derby

**LOUISVILLE, March 14 (AP)**—The 1942 Kentucky Derby winner was just one of a list of 150 horses today. Churchill Downs announced that the owners of that number of Derby faith had at least \$25 worth of Derby faith in their hopefuls and had nominated them for what some quarters used to call the Alsab Derby.

Alsab was in the list of nominations, of course, but you have to count down to sixth place to find him in the alphabetical order and off his winter form you might have to count more to find him in the back-streets experts' ranking of probable top finishers in the mile-and-a-quarter hot-foot on May 2.

Besides Mrs. Al Sabath's somewhat deflated king of the two-year-olds, the list contains these which also graduated into three-year-old ranks with record's fit to nose into their owners' memory books:

B. F. Whitaker's Requested; Warren Wright's Some Chance; Sun Again and Mar-Kell, a filly; Green-Swain's Devil Diver and Shut Out; Charles S. Howard's filly, Chiquita Mia; Milky Way Farms' Black Raider and Dogpatch; C. H. Jones' Pharos; Belair Stud's Apache-Lavann Stable's Chuckle; Mrs. R. McIvany's Bright Willie; T. D. Buhl's Sweep Swinger; and the R. C. Stable's Radio Joe.

Since Alsab's mid-winter fall from grace there hasn't been enough horn-blowing in behalf of any single horse to elect a stand-out favorite for the 68th running of the big race, if you except Requested's romp in the Flamingo.

**BUY DEFENSE STAMPS**

Canada's automotive export trade reached an all-time high during 1941, according to the Department of Commerce.

**NEW ARRIVALS!**

**SPRING SPORT FELTS**

TWO FEATURE STYLES AT THIS LOW PRICE

**\$1.98**

**"Lucky Chain"**

Two of these gay sport hats, so magically smart the year around.

These wool felts are fascinating... and just right to bolster up your Spring Wardrobe.

Colors: Saddle Beige, Mission Rose, Sunn Blue, Blond Beige, Rancho Green, Pebble Sand, Liberty Red, also White.

**BUY YOUR EASTER HAT NOW!**

**"ROCKET"**

**LEVINE'S**

### Today's War Analysis

By KIRKE L. SIMPSON  
Wide World War Analyst

Even before Japanese war designs in the now separated Pacific and Indian ocean theaters unfold fully, it is clear that the Allies and Axis alike are bracing for even more critical developments in the Atlantic as spring approaches.

Further United Nation retreats before Japan in event of successful invasions of Australia or India would be grave set-backs. But they would not end the war. It is in the Atlantic that the vital communication lines of Allied victory hopes lie. It is there the ultimate test will come.

The Axis could be smashed in Russia. While the Anglo-American fleet holds the Atlantic ship-bridge to England and to Russia, Axis victories elsewhere remain but inconclusive incidents of the struggle.

And the dominant fact in the Atlantic as of today is that those communication lines are secure. Neither Japan's intervention in the Pacific nor Axis submarine raiding in close American waters has diverted British-American attention from its main task in the Atlantic.

The sea corridors to England and to Russia are open. Heavy convoys of war goods and of Canadian and American troops have reached the British Isles through them not only unscathed, but unattacked. War essentials for Russia are flow-

ing unchecked through the Arctic and White sea.

These are ominous portents for Hitler. Diversion of his U-boats from the open Atlantic to harry coastal shipping in American and Latin American waters was itself a confession of their inability to cut Allied Atlantic life lines. The indicated concentration of heavy Nazi surface warcraft in Norwegian waters further demonstrates that failure.

The only known element of the Nazi surface fleet powerful enough to cope with Anglo-American naval forces disposed to safeguard essential traffic to England and Russia is the battleship von Tirpitz. She has been spotted and attacked by the British in Norwegian waters. But she escaped the fate of her mighty sister ship, the Bismarck. Had she been sunk or crippled the most dangerous threat to Allied Atlantic war traffic would have been ended.

Yet British planes which sighted and attacked her achieved their main purpose. They warded off an attack on convoy lines that could have been disastrous.

The Tirpitz and other Nazi surface craft lurking along Norway will be hunted ships from now on.

The air power odds must turn heavily against Hitler as American craft supplement Britain's plane output unless he finds means to break those Atlantic lifelines.

**BUY DEFENSE STAMPS**

To serve the mounting volume of traffic, the Federal Airways System was extended and improved. At the end of the year, there were in operation 32,487 miles of lighted airways, equipped with radio course signals, communications and weather-reporting facilities, and emergency landing fields.

### Dangerfield Gets Iron Ore Smelter

**WASHINGTON, March 14 (AP)**—Construction of an iron ore smelter near Dangerfield, Tex., will begin "in the near future," Rep. Wright Patman said today, following its approval by the defense plant corp.

The corporation agreement to finance the project, carried a stipulation that the Southwestern Steel company, which will operate it, supply \$1,000,000 working capital.

The company, Patman said, plans eventual expansion of facilities to include steel rolling mills and open hearth furnaces.

Approval was given by President Sam Husband of the DPC in conference with Patman and a group of private individuals who have been seeking to bring the iron industry to east Texas.

Located in the vicinity of Hughes Springs, the plant will be within an average of six miles of ore sources which Patman described as of a quality or superior to that of the Lake Superior area and "much superior to that of the Birmingham district in Alabama."

The blast furnace will employ several hundred men, in addition to thousands of workers needed to mine and transport the ore.

**BUY DEFENSE STAMPS**

Nearly half of the automobiles in the United States are five or more years old.

**U. S. RAINFALL**  
The average rainfall for states west of the Rockies is 17.9 inches; for states between the Rockies and the Mississippi river, 28.0 inches; and for states east of the Mississippi, 43.5 inches.

**SILVER**  
The words "sterling silver" stamped on articles of use or adornment indicate silver of a definite fineness, with 7 1/2 per cent of the metal being copper. Pure silver is too soft to withstand much usage.

**TOMORROW IS THE LAST DAY...**

you have to file your 1941 Income Tax Return and pay the first installment.

It is a pleasure to pay our income tax if we have the money. You will have the money to pay future income tax installments if you will place part of each salary check in a Savings Account in this Association.

Safety of your account is insured up to \$5,000.00 and can be started with \$1.00. Your savings will work for you as your account will be credited with dividends at the annual rate of 3 1/2 per cent.

**WE SELL UNITED STATES DEFENSE BONDS**

**SECURITY FEDERAL SAVINGS AND LOAN ASSOCIATION**

**COMBS - WORLEY BLDG. PHONE 604**

**USE LEVINE'S LAY-A-WAY PLAN** A DEPOSIT WILL HOLD YOUR PURCHASE

**LOOK!**

**WHAT YOU CAN BUY!**

**YOUR COMPLETE WARDROBE For Easter!**

Men and women, this is an opportunity to save and buy the easy way. Use our lay-a-way plan, you'll hardly miss the money. This is a special deal for Easter, so take advantage now! Save the difference!

**WOMEN! LOOK!**

WHAT YOU CAN BUY FOR

**\$12.00 YOUR COMPLETE EASTER WARDROBE**

**LOOK! MEN!**

WHAT YOU CAN BUY FOR

**\$25.00 YOUR COMPLETE EASTER WARDROBE**

A FINE QUALITY SPRING

**SUIT \$18.50**

**DRESS \$3.98**

Will you have you looking your best on Easter Sunday and all Spring? Rose Brand and other famous makes assure you the best in style and materials.

A PAIR DRESS OXFORDS \$3.40

A DRESS SHIRT \$1.19

A MILLER HAT \$2.98

A NEW SPRING TIE 50c

A SUIT Underwear 50c

A PAIR SOCKS 25c

A MAN'S Handkerchief 10c

A PAIR DRESS SHOES... \$2.98

AN EASTER HAT... \$1.98

A NEW PURSE... \$1.00

A PAIR DRESS GLOVES... \$1.00

A PAIR HOSE... \$1.00

AN UPLIFT Brassier... 69c

A LADIES' SLIP... \$1.29

A LADIES' Hand'chief 25c

Save the difference

**COMPLETE WARDROBE FOR ONLY \$25**

**COMPLETE WARDROBE FOR ONLY \$12**

THIS WEEK ONLY

THIS WEEK ONLY

THIS WEEK ONLY

**ITS LEVINE'S FOR BETTER VALUES**