

Japs Reeling Under Growing Air And Sea Power Of U.S.

Americans In Pacific Play A Rough Game

By JOHN H. WIGGINS

WASHINGTON, Oct. 14 (AP)—Growing prowess of American sea and air power had the Japanese reeling today under a six-day puning that wrecked enemy ships, planes and equipment throughout the whole Pacific zone from the Aleutians to the Solomons.

Communications from the three active war fronts presented this picture of United States and Allied fighting successes:

Solomon Islands—A heavy cruiser, four destroyers and a transport sunk; another destroyer probably sunk; three cruisers torpedoed and bombed, one severely; eight bombers, four fighter planes and three seaplanes destroyed.

Aleutian Islands—Japanese ships, camps and hangars at Kiska, the invader's lone remaining foothold, blasted by aerial bombs and burned by incendiaries. Resistance was relatively weak.

New Guinea—Enemy ground forces pushed back in Owen Stanley mountains toward their Kokoda base by Gen. Douglas MacArthur's Allied troops while heavy bombers dropped 1,900-pound explosives on the Japanese airbase at Rabaul, New Britain. Grounded aircraft smashed by direct hits.

The American forces, the navy reported, lost a destroyer and two fighter planes in the Solomons. All American and Allied bombers returned from the Aleutian and New Britain raids although some suffered minor damage.

Japan's losses as disclosed by navy communiques yesterday and last night, pushed her total Solomon Islands toll to 260 destroyed planes, eight vessels sunk, three probably sunk and 37 damaged. The announced American total was 10 lost ships.

The latest series of beatings administered to the Japanese in the southeastern Pacific started Oct. 9 when marine corps aircraft damaged two cruisers and shot down three seaplanes.

On the night of Oct. 11-12, United States cruisers and destroyers surprised Japanese vessels attempting to land reinforcements on Guadalcanal island and with torpedoes and gunfire sank a 10,000-ton heavy cruiser, a destroyer and a 5,000-ton transport. The enemy sank a destroyer as yet unidentified by the navy.

Falling in its landing mission, the Japanese fleet steamed away.

British Babies' Blanket Brigade



Happy little London evacuees are all togged out in blankets for after-dinner nap on country estate of Mrs. Randolph Churchill, daughter-in-law of Britain's prime minister.

but was caught a few hours later in a torpedo and dive bombing assault by pursuing navy and marine corps planes. At least one more cruiser was badly damaged and a destroyer was sent to the bottom.

Later in the day, the planes attacked again, leaving a destroyer sinking and smashing either too damaged or another one sufficiently to cause the crew to abandon ship.

Meantime, the navy added, the marines on Guadalcanal launched their first offensive in weeks. Against bitter resistance from reinforced Japanese troops seeking to recapture the island's valuable airbase, they enlarged their gains and inflicted heavy casualties on the enemy jungle forces.

At headquarters of the Alaskan army force, officers expressed belief that American and Canadian airmen have run the Japanese out of the Aleutian skies. The last fighter opposition was met Oct. 3 when five of six Japanese planes were shot down and the other fled.

Thus, with the Japanese Kiska

Market Briefs

NEW YORK, Oct. 14 (AP)—Stocks took a slow slide downhill today as a pause in buying activities coincided with a further profit-selling movement.

Some leaders were in fair demand at the opening but the early fractional gains mostly were erased before midday. In the closing hour moderate losses were general with a few of the higher priced issues off a point or more. A few specialties firming near the finish.

Volume tapered on the decline, transactions for the five-hour stretch totaling about 400,000 shares.

An early 2-point drop in American Telephone occasioned selling in other pivots. On the minus side were DuPont, Eastman Kodak, Westinghouse, Air Reduction, Montgomery Ward, General Motors, Chrysler and Philip Morris, N. Y. Central led a downward movement in the rails.

Steele and aircraft showed negligible changes and either way Homestake Mining, Dome and American Rolling Mill moved up just before the final gong.

Bonds and commodities were irregular. Chicago wheat closed 1/4 to 3/4 of a cent higher and corn rose 1/4 to 3/8. Cotton futures in late trades were 25 to 65 cents a bale advanced.

FORT WORTH GRAIN

Wheat No. 1 hard winter according to contract and milling 1.00-35-34.

Barley No. 2 non 28-75.

Corn, yellow No. 2 yellow white per 100 lb. nom 1.18-15; No. 2 white 1.14-16; No. 2 yellow 34-35-35.

Oats No. 2 red 28-50.

Curtis Oil Del... 28 25 24 25

Curtis Wright... 27 26 24 25

Douglas Air... 2 60 26 27 3/4

Freight Sulph... 2 38 29 28 29 1/2

Gen El... 2 38 29 28 29 1/2

Gen Motors... 36 44 1/2 41 1/2 41 1/2

Greystone... 2 12 15 12 13 1/2

Houston Oil... 8 3 3 3 3 3 3/4

Int Harvester... 12 6 1/2 6 1/2 6 1/2 6 1/2

Mid Cont Gas... 2 17 17 17 17 1/2

M K T... 24 1 1/2 1 1/2 1 1/2 1 1/2

Ohio Oil... 8 9 9 9 9 9 1/2

Packard... 27 25 24 25 25

Pan Am Airways... 45 21 1/2 21 1/2 21 1/2

Panhandle P & R... 7 2 1/2 2 1/2 2 1/2

Pennor... 2 25 25 25 25

Phillips Pet... 11 4 1/2 4 1/2 4 1/2

Plymouth Oil... 2 17 17 17 17 1/2

Pure Oil... 12 10 9 10 10

Radio... 107 3 1/2 3 1/2 3 1/2

Seals Roebuck... 6 54 1/2 52 1/2 53 1/2

Shell Union Oil... 8 16 15 16 15 1/2

BUY VICTORY BONDS
Use the Classified Ads

NOTICE TO THE CREDITORS OF THE ESTATE OF TOMMIE HILL, DECEASED
Notice is hereby given that original letters testamentary upon the estate of Tommie Hill, deceased, were granted to the undersigned on the 8th day of July, 1940 in the County Court of Gray County, Texas.

All persons having claims against said estate are hereby required to present the same to me, within the time prescribed by law, at my Post Office address, Jericho, Texas.

A. L. Hill
Executor of the estate of Tommie Hill, deceased (Sept. 23-30, Oct. 7-14)

NEW YORK CURB

Am Cyan B	12 37 1/2	37 1/2
Ark Nat Gas A	10 1 1/2	1 1/2
Cities Service	6 3/4	3 1/4
Ed Bond & Sh	43 1 1/2	1 1/2
Gulf Oil	10 35	34 3/4
Humble Oil	7 62	
Lone Star Gas	2 4 1/2	

BUY VICTORY BONDS

CHICAGO, Oct. 14 (AP)—Cash wheat No. 1 hard 1.26; No. 2 northern spring 99; No. 2 hard 1.25 1/4.

Corn sample grade mixed 72; No. 1 yellow 78 1/2-79 1/4; No. 2 77 1/2-78 1/4; No. 3 77 1/2-78 1/4; No. 4 76-77 1/2; sample grade yellow 64-75; No. 1 white 1.11; No. 2, 1.10; sample grade white 90 1/2.

Oats No. 1 mixed 48 1/2-49; No. 2, 48; sample grade mixed 41 1/2; No. 1 white 48 1/2; No. 2, 48-48 1/2; No. 4 42-43 1/2; sample grade white 48 1/2-49 1/2.

OKLAHOMA CITY LIVESTOCK

OKLAHOMA CITY, Oct. 14 (AP)—U. S. Dept. Agr.—Cattle 4,000 calves 70 1/2; calves steady; medium light weights 11.25-12.00; grassy butcher heifers 9.00-10.00; vealers 13.50; slaughter calves 8.00-12.00; stockers uneven.

Hogs 2,000; fairly active; 15 higher; top 14.25; good and choice 10.00-12.50; 14 1/2; lighter weights 14.00-16; stocker and feeder pigs 13.00-14.00.

Sheep 500; fat lambs 50 higher; top 18.00; most good choice lots 13.00-15.00; throwouts 10.00.

CHICAGO PRODUCE

CHICAGO, Oct. 14 (AP)—U. S. Dept. Agr.—Potatoes, arrivals 120; on track 355; total U. S. shipments 799; supplies heavy; demand strong for Idaho russets and Colorado red McClure steady; for northern stock about steady for best quality; weak for off condition stock Idaho russet Burbanks U. S. No. 1, 2.50-2.65; Colorado red McClure U. S. No. 1, 2.25-2.50; Minnesota and North Dakota blues triumphs U. S. No. 1, 1.85-2.10; cobbles U. S. No. 1, 1.80.

CHICAGO GRAIN

CHICAGO, Oct. 14 (AP)—Corn prices rose about a cent a bushel and wheat almost that much at 10:05 today as the grain market tried to extend its recovery following last week's broad decline.

Wheat closed 3/4 cent lower than yesterday, December \$1.24 1/4, May \$1.23 1/2; corn 1/4 cent higher, December 50 3/4, May 50 1/2; oats 1/2 cent up; soybeans unchanged to 1/8 cent lower; rye 1/2-1/4 lower.

CHICAGO GRAIN TABLE

Wheat Open	High	Low	Close
Dec.	1.24 1/4	1.23 1/2	1.24 1/4
May	1.23 1/2	1.23 1/2	1.23 1/2
July	1.23 1/2	1.23 1/2	1.23 1/2

BUY VICTORY BONDS

Many native South Sea island youths have learned to become expert radio technicians.

War And The Top O' Texas

Joseph B. Eastman, ODT director, has asked school districts throughout the nation to survey their bus services immediately to determine where curtailments can be made, in line with ODT conservation policies. It should be assumed, he stated, that a physically able child can walk two miles to and from school where weather conditions permit. Fewer stops, main road routes and elimination of school bus service where rail or public bus service is available, were among measures recommended.

To encourage increased production of heavy crude oils increasingly needed by United Nations forces operating in the Pacific area, WPB has authorized California operators to use materials to rehabilitate certain old wells. Several hundred

"NO HARSH LAXATIVES FOR ME"

ADLERIKA gives me proper action, is pleasant and easy. Used ADLERIKA past 10 years for relief of constipation. (A. W. V.) ADLERIKA usually clears bowels quickly and relieves gas pains. Get it TODAY. Wilson's Drug and Creamery Drug Store

Beware Coughs That Hang On

Creomulsion relieves promptly because it goes right to the seat of the trouble to help loosen and expel germ laden phlegm, and aid nature to soothe and heal raw, tender, inflamed bronchial mucous membranes. Tell your druggist to sell you a bottle of Creomulsion with the understanding you must like the way it quickly allays the cough or you are to have your money back.

CREOMULSION
for Coughs, Chest Colds, Bronchitis

Starch Helps Make Munitions, Batteries..

Everyone knows that corn starch is used in pies, puddings, cakes and other good things to eat. In addition to various household uses, it is necessary, too, for making batteries, cosmetics, paper and textiles, to name a few. Where does Anheuser-Busch fit in this picture? We learned a lot about cereals from constant analysis of barley for Budweiser. With that knowledge we started a Corn Products Division, which now supplies millions of pounds of starches each year to food and other industries.

Year after year, we have striven with research and resources to better the methods and facilities for brewing Budweiser. To do this, a laboratory specializing in fermentation and nutrition was necessary. Discoveries made in the laboratory and in the plant have led to the development of products contributing to human necessity and progress. Some of these products would appear to have only a remote relationship to brewing, yet, they are the result of scientific research into many allied fields.

Endless research in making the world's leading beer has led to other products

<p>VITAMINS, B COMPLEX—Our plant is one of the world's largest sources for manufacturers of pharmaceutical and food products.</p> <p>VITAMIN D—Anheuser-Busch produces enough of the basic material for Vitamin D to supply the entire American market.</p> <p>BAKER'S YEAST—We are one of America's biggest suppliers of standard and enriched yeasts and malt syrup used to make bread.</p> <p>CORN SYRUP—many millions of pounds annually for America's candy industry.</p> <p>SYRUPS—for food, table and confectionery uses and special syrups for medicinal purposes.</p>	<p>VITAMINS FOR LIVESTOCK—We are America's biggest supplier of yeast vitamins used to fortify animal feeds.</p> <p>REFRIGERATING EQUIPMENT—for retailers of frozen foods and ice cream the country over. This division is now working all-out on glider wing and fuselage assemblies for our Armed Forces.</p> <p>DIESEL ENGINES—Adolphus Busch, founder of Anheuser-Busch, acquired the first rights to manufacture this revolutionary engine in America and thus started our great Diesel industry on its way.</p>
---	---

Budweiser

ANHEUSER-BUSCH • SAINT LOUIS

EVERYTHING

IN SERVICE

FOR ANYTHING

ON WHEELS

WHETHER IT'S A PASSENGER CAR OR A TRUCK, AN OIL CHANGE AND LUBRICATION OR A COMPLETE OVERHAUL JOB—WE'RE ALL SET TO SERVE YOU!

Whatever you drive, you can count on us for every kind of service you'll need for the Duration. We're all set to keep you on wheels—with modern service equipment, and factory-trained mechanics who know how to do each job right. Our special tire-saving services, for example, include all the mechanical adjustments so necessary to prevent waste of rubber. Our special gas-saver

Oldsmobile Service

OLDSMOBILE DEALERS' ALL-ROUND, ALL-QUALITY, ALL-CAR SERVICE

CHRISTOPHER MOTOR CO.

114 S. FROST PAMPA, TEXAS

The Easiest Way To Find What You Want -- Classifieds!

THE PAMPA NEWS
Phone 666 322 West Foster
Office hours 8 a. m. to 5 p. m.
Sunday hours 1:30 a. m. to 10 a. m.

2-Special Notices
DUE to delivery conditions we advise you to call Pampa News Stand before 9 a. m. in case you fail to get your Amarillo News Globe.

ANNOUNCEMENTS

3-Bus-Travel-Transportation
LADY wants share expense ride to San Diego, California. Call 795.
BRUCE TRANSFER for local or long distance moving in Kansas, New Mexico, Oklahoma and Texas. Ph. 934.

EMPLOYMENT

5-Male Help Wanted
WANTED: Route boys for Pampa News Routes. Apply at Pampa News office.
6-Female Help Wanted
WANTED-Woman for light housework, no laundry, short hours. Call at Apt. 1, Carroll Apts, 520 N. Front.

BUSINESS SERVICE

26-Beauty Parlor Service
SPECIAL notice-Cut prices on Tuesdays and Wednesdays for all permanent at the Frisella Beauty Shop, Phone 345.
SPECIAL OFFER! Our \$7.00 oil permanent for \$5.50, and our \$5.00 value for \$3.50. Call 768 for appointment. Elite Beauty Shop.

MERCHANDISE

28-Miscellaneous
FOR SALE-Two bicycles-Lady's and man's good condition. See especially Call 2244 W. or inquire 414 East Kingsmill.
FOR SALE-Upright standard Royal typewriter. Good condition, \$25. Mrs. Jack Higgins, 308 S. Cuyler St.

MERCHANDISE

30-Household Goods
AN inexpensive ad on the classified page will sell that article you no longer need. It is the patriotic thing to do. Many of you have articles that are now frozen on the market, such as alarm clocks, musical instruments, children's toys and old pieces of furniture, that your neighbor needs.

FOR SALE-REAL ESTATE FINANCIAL

61-Money To Loan
We Loan Employed People \$5 or More
SALARY LOAN CO.
107 E. Foster Phone 303
We Serve the Top O' Texas with Chattel and Salary Loans

WANTED TO Buy

WANTED TO BUY-Alarm clock in good condition. Call 1756 J after 6 p. m.

LIVESTOCK

39-Livestock-Feed
FOR SALE-Extra good bundled cane, also good Kafir Heads. J. A. Thompson, Moberle, Texas.

ROOM AND BOARD

42-Sleeping Rooms
FOR RENT-Front bedroom, telephone and living room, private bath. Phone 1207 W. To couple. 218 N. Gillespie. Ph. 1207 W.

FOR RENT-REAL ESTATE

46-Houses for Rent
FOR RENT-Furnished or unfurnished six 20 floored tent. C. C. Bates, 50 S. Hobart.
FOR RENT-To people, lovely furnished 5 room, modern home, conveniently located, south side of town. Call 445. East Francis, Ph. 1010.

FOR SALE-REAL ESTATE

54-City Property
FOR SALE-Four room modern house, furnished or unfurnished. Second house, south across pavement from Shell Camp on Amarillo Highway.
FOR SALE-Close on duplex \$3000, five room house near Woodrow Wilson school. \$2500, 6 room house on Mary Ellen \$4000. See J. V. New.

FOR SALE-REAL ESTATE

56-Farms and Tracts
A BARGAIN IN LAND! Lane land Co. 40 years in land business. In close-out sale, offering adding timber, good dry farms. Terms 1/3 cash balance on good terms. Lane Land Co. 122 S. E. Main, Fortales, New Mexico.

CONSTRUCTION EXPERT

HORIZONTAL
Answer to Previous Puzzle
14 Infirm.
18 Tidy.
19 Rush.
24 Correct.

Crossword puzzle grid with numbers 1-60.

USED CARS

1941 Chevrolet club coupe \$895.00
1941 Plymouth sedan \$895.00
1941 Ford sedan \$895.00

FOR SALE-REAL ESTATE FINANCIAL

62-Automobiles For Sale
1941 Chevrolet club coupe \$895.00
1941 Plymouth sedan \$895.00
1941 Ford sedan \$895.00

FOR SALE-REAL ESTATE FINANCIAL

63-Trucks
NOW WRECKING 1937 Plymouth, 1937 Dodge, two 1936 Fords, one 1937 Pontiac, two 1937 Chevrolet trucks, one 1937 Ford truck. C. C. Matheny Tire and Salvage Shop, 818 W. Foster. Phone 1051.

FOR SALE-REAL ESTATE FINANCIAL

64-City Property
FOR SALE-Four room modern house, furnished or unfurnished. Second house, south across pavement from Shell Camp on Amarillo Highway.

FOR SALE-REAL ESTATE FINANCIAL

65-Farms and Tracts
A BARGAIN IN LAND! Lane land Co. 40 years in land business. In close-out sale, offering adding timber, good dry farms. Terms 1/3 cash balance on good terms. Lane Land Co. 122 S. E. Main, Fortales, New Mexico.

FOR SALE-REAL ESTATE FINANCIAL

61-Money To Loan
We Loan Employed People \$5 or More
SALARY LOAN CO.
107 E. Foster Phone 303
We Serve the Top O' Texas with Chattel and Salary Loans

WANTED TO Buy

WANTED TO BUY-Alarm clock in good condition. Call 1756 J after 6 p. m.

LIVESTOCK

39-Livestock-Feed
FOR SALE-Extra good bundled cane, also good Kafir Heads. J. A. Thompson, Moberle, Texas.

ROOM AND BOARD

42-Sleeping Rooms
FOR RENT-Front bedroom, telephone and living room, private bath. Phone 1207 W. To couple. 218 N. Gillespie. Ph. 1207 W.

FOR RENT-REAL ESTATE

46-Houses for Rent
FOR RENT-Furnished or unfurnished six 20 floored tent. C. C. Bates, 50 S. Hobart.
FOR RENT-To people, lovely furnished 5 room, modern home, conveniently located, south side of town. Call 445. East Francis, Ph. 1010.

FOR SALE-REAL ESTATE FINANCIAL

63-Trucks
NOW WRECKING 1937 Plymouth, 1937 Dodge, two 1936 Fords, one 1937 Pontiac, two 1937 Chevrolet trucks, one 1937 Ford truck. C. C. Matheny Tire and Salvage Shop, 818 W. Foster. Phone 1051.

FOR SALE-REAL ESTATE FINANCIAL

64-City Property
FOR SALE-Four room modern house, furnished or unfurnished. Second house, south across pavement from Shell Camp on Amarillo Highway.

FOR SALE-REAL ESTATE FINANCIAL

65-Farms and Tracts
A BARGAIN IN LAND! Lane land Co. 40 years in land business. In close-out sale, offering adding timber, good dry farms. Terms 1/3 cash balance on good terms. Lane Land Co. 122 S. E. Main, Fortales, New Mexico.

CONSTRUCTION EXPERT

HORIZONTAL
Answer to Previous Puzzle
14 Infirm.
18 Tidy.
19 Rush.
24 Correct.

Crossword puzzle grid with numbers 1-60.

USED CARS

1941 Chevrolet club coupe \$895.00
1941 Plymouth sedan \$895.00
1941 Ford sedan \$895.00

FOR SALE-REAL ESTATE FINANCIAL

62-Automobiles For Sale
1941 Chevrolet club coupe \$895.00
1941 Plymouth sedan \$895.00
1941 Ford sedan \$895.00

FOR SALE-REAL ESTATE FINANCIAL

63-Trucks
NOW WRECKING 1937 Plymouth, 1937 Dodge, two 1936 Fords, one 1937 Pontiac, two 1937 Chevrolet trucks, one 1937 Ford truck. C. C. Matheny Tire and Salvage Shop, 818 W. Foster. Phone 1051.

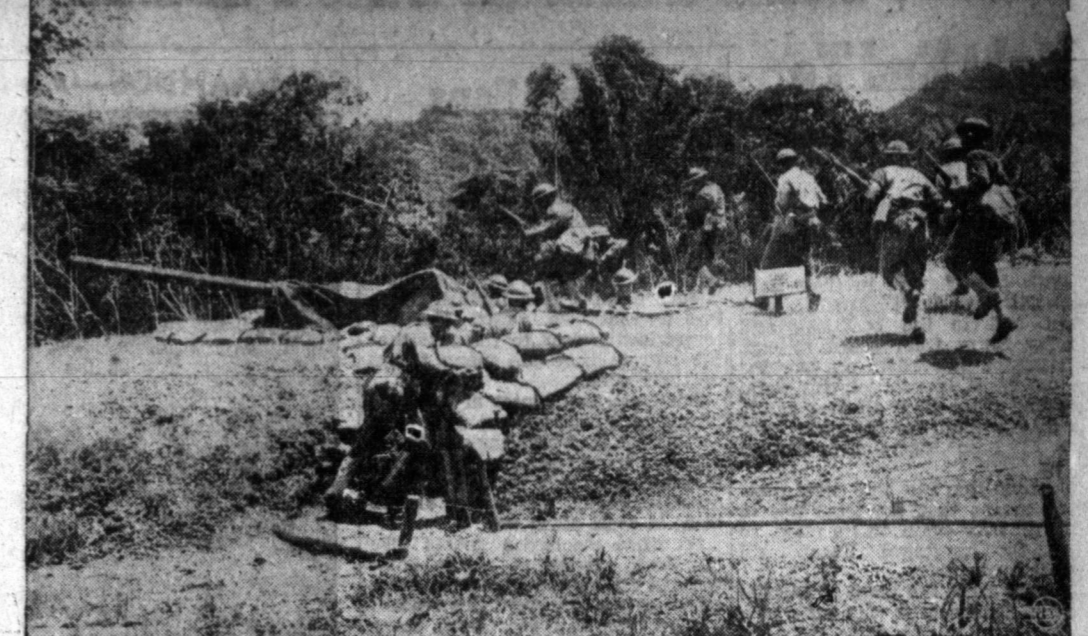
FOR SALE-REAL ESTATE FINANCIAL

64-City Property
FOR SALE-Four room modern house, furnished or unfurnished. Second house, south across pavement from Shell Camp on Amarillo Highway.

FOR SALE-REAL ESTATE FINANCIAL

65-Farms and Tracts
A BARGAIN IN LAND! Lane land Co. 40 years in land business. In close-out sale, offering adding timber, good dry farms. Terms 1/3 cash balance on good terms. Lane Land Co. 122 S. E. Main, Fortales, New Mexico.

Guarding Gateway to Panama Canal



A U. S. gun crew, consisting of Negro soldiers, runs to man anti-aircraft gun somewhere in Trinidad. Negroes from southern states are stationed at this important approach to the Panama Canal.

Marines Succeed In Spanning Out Along Solomons

WASHINGTON, Oct. 14 (AP) - The navy announced today that United States marines had succeeded in enlarging their positions on Guadalcanal island in the Solomon Islands during two days of offensive fighting in which the Japanese had "many casualties."

A Bit of Britain in U. S.



With sailor pals, "Winston," mascot of British warcraft, looks the U. S. over. Some 500 men of the British Royal Navy are quartered at former east coast CCC camp, waiting assignment to new ships or for their vessels to be repaired. (Passed by censors.)

Nimitz Pays Visit To Guadalcanal

PEARL HARBOR, Oct. 14 (AP) - U. S. fleet headquarters disclosed today that Admiral Chester W. Nimitz visited Guadalcanal island in the Solomons two weeks ago and presented 27 awards to navy, marine and army heroes.

83-Year-Old Man Looks Forward To 69th Year On Paper

DALLAS, Oct. 14 (AP) - G. B. Dealey, who was 83 on Sept. 18, wasn't interested Monday in having completed his 68th year with the News. It was the start of the 69th that concerned him.

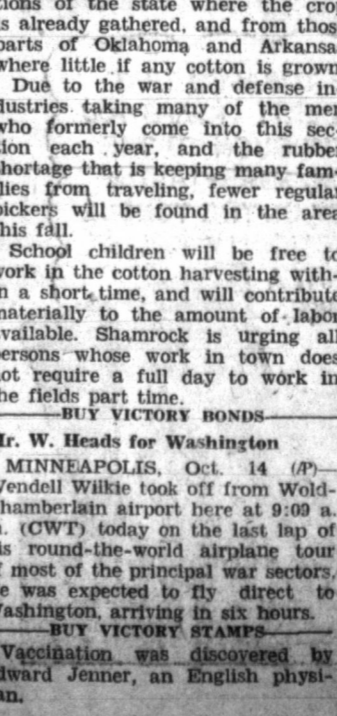
Farm Labor Wanted In Wheeler County

SPECIAL TO THE NEWS
SHAMROCK, Oct. 14 - The farm labor shortage in Wheeler county is becoming acute. The booming October sun and daily winds are rapidly ripening hundreds of acres of grain crops and cotton fields on the lighter soil are becoming white.

Germany And Italy Squabble Over Trieste

BERN, Oct. 14 (AP) - Istanbul and Stockholm correspondents of the National Zeitung of Basel reported indications today that German-Italian differences were accentuated by Trieste and one dispatch said the rift stemmed partly from recent Italian-American developments.

Happy Ex-Warriors



Italian soldiers, apparently happy at having been taken captive, enjoy meal of bully beef and crackers at British prison camp behind desert battle lines. (Passed by censor.)

GET YOUR Greeting Cards HERE! MAKE YOUR WISH Attractive To Receive. When you send your Christmas and New Year's greetings to someone, you want to send a card that is attractive and pleasing to the eye.

THE PAMPA NEWS

SERIAL STORY PLAY BY PLAY BY PAUL DAVID PRESTON

THE STORY: At Lincoln Field Blythe Miller, daughter of the cadet pilot football team's coach, is sitting by the hospital bedside of Nancy Hale, Nancy's young, pretty widow of a soldier, and her small son. Nancy had been rescued when the football team's bus crashed into her car. Though sorry for her, Blythe feels she has a rival in Nancy for the attention of Duane Hogan, big, athletic football star. Duane won't realize that Blythe is in love with him. But he's been rather attentive to Nancy since he rescued her from her wrecked car. And even now he's coming down the hospital corridor with an armload of flowers for Nancy.

for something to put in. Summers on the Journal brought Scooter down to the office and kept him all one morning; Beridge, the financial editor, figured up that the city room wasted 22 man-hours playing with him. SUMMERS wrote paragraphs about downtown football gambling, attacking it viciously as a blot on amateur athletics. He drew up contrast between a typical crooked gambler and baby Scooter as two "influences" on the gridiron. This anti-gambling campaign was one in which all the local papers had joined. The papers arranged, too, for Nancy Hale's story to be published all over the nation, and that same week a famous picture magazine sent its best photographer down from New York. He flew in, took every possible shot of Nancy and baby Scooter and the two of them in the upstairs apartment. By that time the cadets had made the loft into a veritable "dream house."

Americans Can Hold Solomons, Admiral Declares

WASHINGTON, Oct. 14 (AP)—Rear Admiral John S. McCain, lately a naval air commander in the Southwest Pacific, declared confidently today that "we can hold the Solomons and expand them." McCain, who was called back here to head the Bureau of Aeronautics, said he based this belief on evidence that American units in the Solomon island campaign had shown "sufficient superiority in material and men." The admiral, who appeared at a press conference held by Secretary Knox, reported that in one period, August 21 to September 17, the Japanese lost 132 planes over Guadalcanal island to 28 American planes—a ratio of five to one. McCain's confident appraisal of the situation followed by one day a navy announcement adding three heavy cruisers to the reported American naval losses but in the savage but successful battle two months ago to break Japanese control of the Solomons. The admiral, whose headquarters were at the island of Espiritu Santo, 665 miles from Guadalcanal, made two trips to Guadalcanal and he said there were evidences that the Japanese actually were declining in aerial strength in the Solomons area. In this evidence, he said, were facts as to the types of planes they were using and the speed with which they were making replacements.

Nine States Will Receive Fund To Stop Soil Erosion

LUBBOCK, Oct. 14 (AP)—Forty million dollars to stop soil erosion and land losses will be made available in the nine states of the Southern region of the Agricultural Adjustment administration as part of the War-Time program for all-out production. Associate AAA Chief E. D. White of Washington told the Regional conference here. White made this statement after an address by AAA Chief Fred S. Wallace, who said Agriculture War boards face four specific jobs during the coming year. —BY VICTORY STAMPS

Agriculture War Boards Face Four Important Jobs

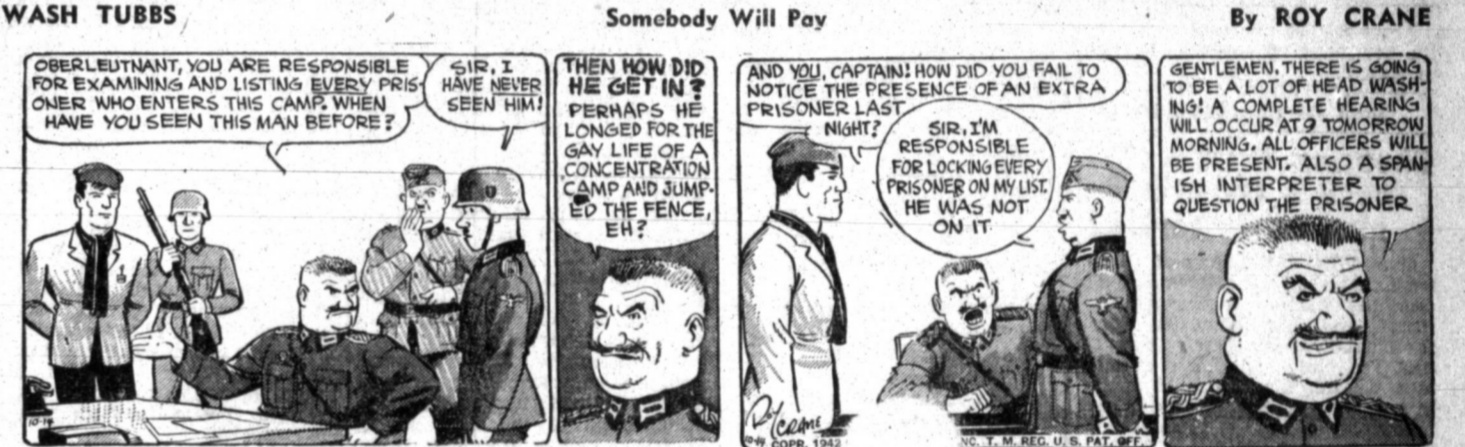
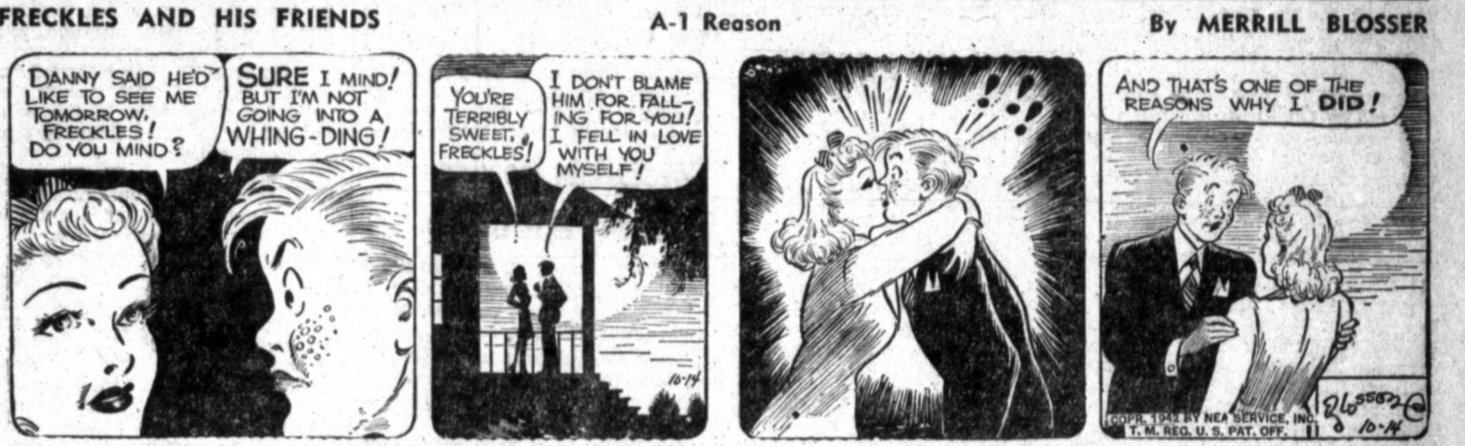
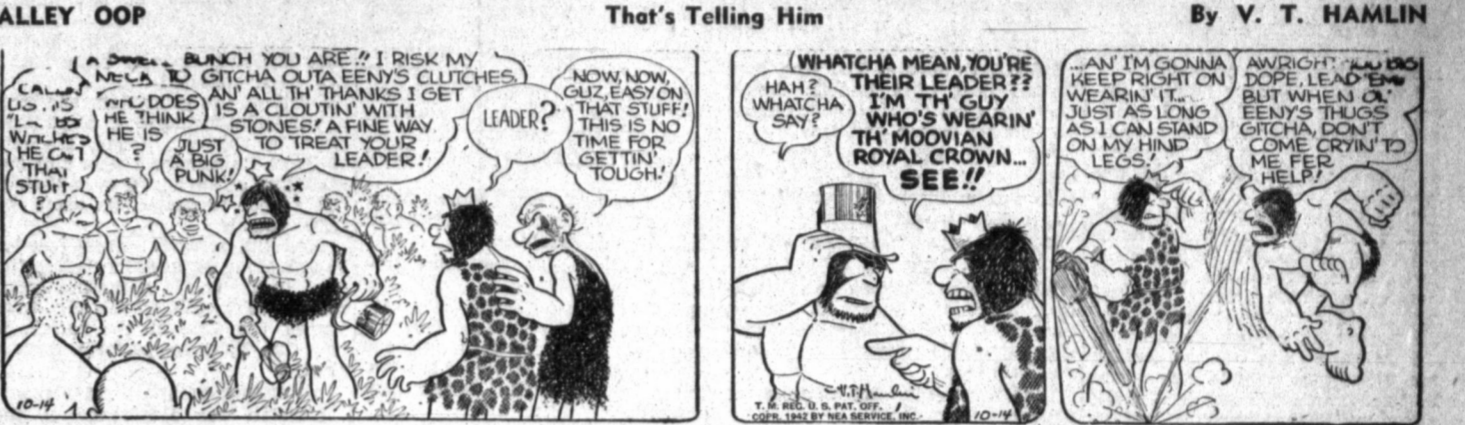
LUBBOCK, Oct. 14 (AP)—Agriculture war boards throughout the nation face four specific jobs during the coming year. Fred S. Wallace, chief of the agricultural adjustment agency, from Washington, said Tuesday in a speech prepared for delivery before the nine-state Southern AAA Regional conference here. The AAA administrator said war boards must encourage farmers to concentrate on production of war crops, to practice conservation of all farm resources, and follow practices which will make the farm self-sufficient, and must advise farmers how to make the most of their government payments to produce things the nation needs. "Every agency represented on the war board is important in proportion as it helps the farm family meet a situation, only important insofar as it helps the American people win this fight," Wallace declared. Speaking as leader of a morning panel discussion, the AAA head said, "We all have a deep satisfaction in the 1942 production record. "We set our sights at 5 1/2 per cent over-all increase in production. It looks now as though the increase will amount to 12 per cent over 1941, which up to that time had been the greatest production year in history." Tonight, delegates will hear a talk by Francis Flood, associate editor of the Oklahoma Farmer-Stockman, on leave for the duration of the war and now representative of the British supply council, in Washington. His talk is entitled, "Britain's War Effort."

BBC Says Goering Padding His Pockets For Life Of Ease When Nazis Collapse

NEW YORK, Oct. 14 (AP)—The British Broadcasting company is telling Europe in multi-language broadcasts that Reichsmarshal Hermann Goering has massed a vast fortune in war profits and deposited about \$8,000,000 in foreign countries, including the United States. These broadcasts, heard here by CBS, said one of the Reichsmarshal's latest acquisitions was a villa in Appelviken, near Stockholm, which he bought in the name of his sister-in-law, Frau Von Villemoxtz-Moellendorf, and where he hopes to live in ease after the collapse of Germany. The BBC broadcast said Goering holds life insurance of American, Swiss, Swedish and Dutch companies, and has made investments in the Pennsylvania and Illinois central railroads, Bethlehem steel and cities service. In addition, BBC said, about \$600,000 in bonds were deposited for him in a Japanese bank in San Francisco, and about \$400,000 in foreign currency is being held for him by an importing firm in Chicago and broker in Zurich. BBC said the investments and deposits were made through agents. The conference, which ends tomorrow. Yesterday, they heard I. W. Dugan, Southern AAA region director, say that "the time has come when all of us must make whatever sacrifices are required. . . I know we can count on American farmers to do whatever they are called upon to do."

George Says Sales Tax Is Answer

WASHINGTON, Oct. 14 (AP)—Chairman George (D-Ga.) of the Senate Finance committee declares that if the treasury wants to boost taxes above the levels established by the revenue bill now nearing congressional enactment it must be prepared to accept a retail sales tax. George, chairman of the joint conference committee which begins efforts today to compose senate and house differences in the record-breaking measure, told reporters there was no longer any question in his mind as to the form new taxation would have to take. "If the treasury asks us to pile more taxes on the terrific burden contained in this bill," he said, "then the only answer is the sales tax." The pending measure would boost annual treasury collections to somewhere between the \$24,000,000,000 estimated by Secretary of the Treasury Morgenthau, and the \$28,000,000,000 estimated by George. Morgenthau said recently he would ask for \$6,000,000,000 more revenue as soon as this bill became law. George made it plain that if any such request is formally sent to congress he will insist upon the treasury's outlining a definite program combining compulsory savings with taxation. The pending bill was amended by the senate to direct a joint congressional study of compulsory savings plans, with a report due by Dec. 1. When this study is completed, George declared a program ought to be enacted with the understanding that its main features would be retained for the duration of the war. He said the only subsequent changes should be those to correct inequities and to adjust onerous rates.



FUNNY BUSINESS



OUT OUR WAY



OUR BOARDING HOUSE



