

## They Are Your Highways . . . To Save Them Is Your Problem

There is an old Proverb . . . One Picture Speaks Louder Than a Thousand Words.

These recent pictures of various Texas truck-damaged highways tell a tragic story.

They show conclusively what is happening to Texas highways under the relentless pounding of heavy and overloaded trucks.

These are your highways.

You provided the money to build them.

You are paying at the rate of \$115,000,000 annually to maintain and repair them, according to the 1950 report of Texas Highway Department.

You must furnish the money through taxes to rebuild them. Texas Highway Department officials say this will cost one and one-quarter billions of dollars.

You have granted the big truckers the Privilege of using them for personal gain - not the Right to abuse and destroy them.

It is in the interest of every Texas taxpayer, including the truckers and the railroads, to prevent the destruction of Texas highways and to safeguard the lives of the people who use them.

Now before the Texas Legislature is a bill, sponsored by the big truckers, to raise the truck load limit from its present 48,000 pounds to 58,420 pounds, an increase of more than 20%.

Raising the truck load limit means increasing damage to the highways . . . increasing the hazard to human life . . . increasing congestion on the highways . . . increasing the inconvenience to automobile travel . . . and increasing the burden carried by Texas taxpayers—all of this for the sole benefit of the big truckers.

With its present truck load limit, Texas has the finest system of highways in the United States.

To keep it that way it is important that you write your State Senator and Representatives in Austin at once telling them that you oppose the Big Truckers' bill to increase the Texas truck load limit.

## The Texas Railroads

# Small Homes Need Double Duty Rooms

With the trend toward smaller homes and at the same time diversified family activities and interests, architects say that every room in the house should be made to do double and even triple duty, since few home owners can afford the luxury of additional rooms for special uses.

Accordingly, many small homes today are designed so activities can be absorbed in areas other than the living room. A bedroom furnished as a study solves the problem of quietness for mental concentration. An alcove can be used for hobby work which can be placed out of sight if adequate cabinets are provided.

By combining dining and living room, more space is available for large groups. Lines of division are achieved by arrangement of furniture or low bookshelves or cabinets. Since it is not always possible to provide a special recreation room, careful arrangement of kitchen - dining space will permit children to entertain here without interfering with other members of the family in the living room.

The main essential is thoughtful planning and arrangement of furniture and storage space so that every square foot of area in the home can be used to best advantage.

entry to basement, kitchen and bedroom hall, with a closet also provided.

Kitchen cabinets are opposite walls with double compartments sink under window, stove and refrigerator on inside wall. Dining area, at end of kitchen, has double windows and is connected with living room.

Bedrooms have ample wall space for furniture. Wardrobe-type closets have storage space overhead. Central hall opens freely to all rooms.

Plans call for a frame construction with siding exterior. Hip roof is planned to have asphalt shingles.

The dimensions are 26 feet by 36 feet. The floor area is 924 square feet and cubage is 18,480 cubic feet, including full basement.

entry to basement, kitchen and bedroom hall, with a closet also provided.

Kitchen cabinets are opposite walls with double compartments sink under window, stove and refrigerator on inside wall. Dining area, at end of kitchen, has double windows and is connected with living room.

Bedrooms have ample wall space for furniture. Wardrobe-type closets have storage space overhead. Central hall opens freely to all rooms.

Plans call for a frame construction with siding exterior. Hip roof is planned to have asphalt shingles.

The dimensions are 26 feet by 36 feet. The floor area is 924 square feet and cubage is 18,480 cubic feet, including full basement.

# Service Men's Lives May Depend On Finish

Whether it's guns or communications equipment, food containers, or helmets, the finish is vital. In the case of helmets, for instance, their finish must be able to withstand extremes of abuse: weather, abrasion, salt water - even frequent use as a cooking utensil! In texture and color, the finish must blend with the ground and must be of extremely low reflectivity.

Read The News Classified Ads.

**EASY TO APPLY... EASY ON THE EYE!**

**PATTERSON-SARGENT**

## FLATLUX

**THE WONDER ONE-COAT WALL PAINT MADE WITH OIL**

**PROVED WASHABLE! PROVED DURABLE!**

Buy and try this greatest of all flat wall paints today! Made with oil, Flatlux goes on smoothly, easily... dries fast to a beautiful washable finish. Covers wallpaper in one coat.

**ONLY PER GALLON**

**NOW... MORE THAN EVER... USE A PROVED PAINT!**

### WHITE HOUSE PROPERTIES

Across Street from Post Office Phone 50

# Family Income Said Rising Faster Than Building Costs

The average family in the United States is in a position today to afford better housing than it was prior to World War II, says the National Assn. of Home Builders.

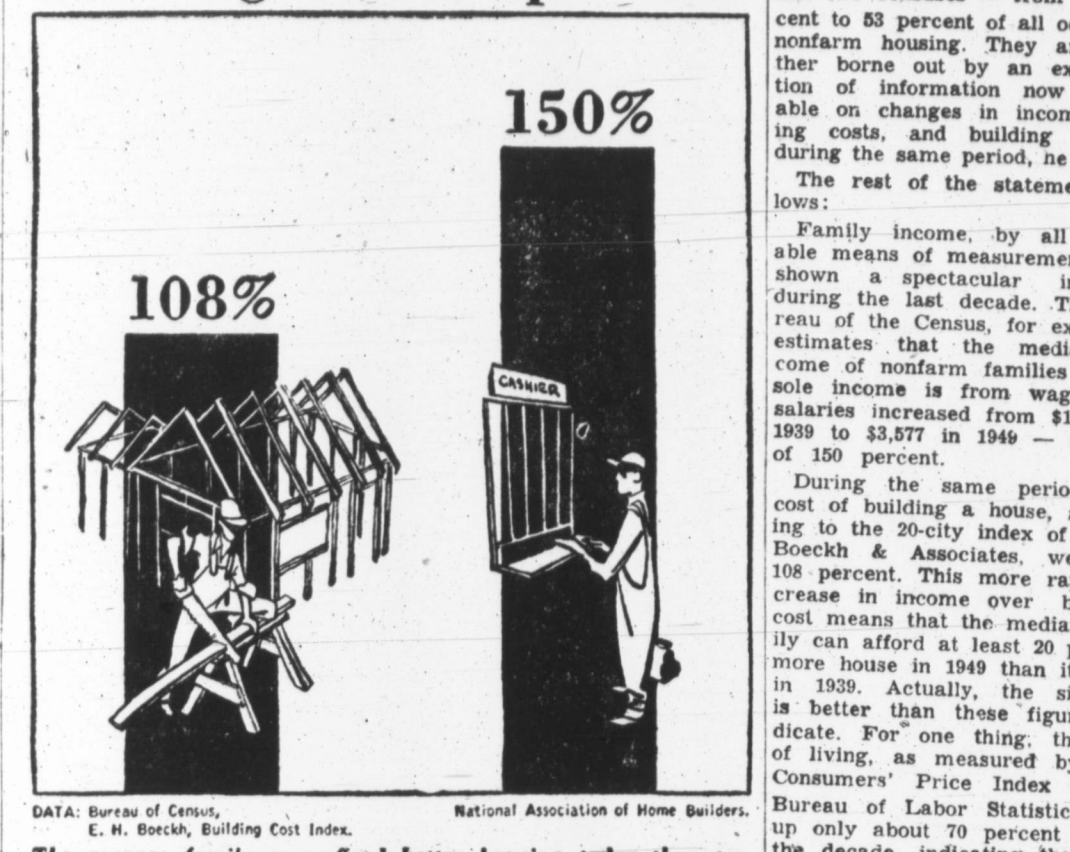
Its income has increased more rapidly than either its cost of living or the cost of building, leaving it with more purchasing power available for shelter than it had in 1939, the organization said.

Moreover, this improvement has been greatest among families in the lower part of the income scale, so that many of these families can now enter the market for better housing than in the past prewar year, according to Frank W. Cortright, NAHB executive vice president.

Cortright pointed out that facts are attested by the extraordinary increase in home ownership in the period between the last two censuses - from 41 percent to 53 percent of all occupied nonfarm homes. They are further borne out by an examination of information now available on changes in income, living costs, and building cost during the same period, he added.

The rest of the statement follows:

**Family Income Up 150%**  
**Building Costs Up 108%**



DATA: Bureau of Census, E. H. Beech, Building Cost Index. National Association of Home Builders.

The average family can afford better housing today than ten years ago, statistics reveal. Family income has increased from \$7,431 in 1939 to \$11,577 in 1949, a gain of 156%. During the same period the cost of building a house went up 108%.

# Insulating Board Helps Build Cool Summer Cottages

When planning to build or remodel a summer cottage, take a cool tip from builders who find that insulating board reduces the rate of heat flow through the wall and roof structure as well as provides an economical interior finish.

For these two reasons and because it serves as a structural material; insulating board is widely used by builders for the interior walls and ceilings of summer cottages, tourist cabins and camp buildings.

Insulating board not only slows down the entrance of heat but it lowers the surface temperature of the walls in the summer. This helps to increase the sensation of coolness. In the winter, this phenomenon has the reverse effect. The walls are warmer and occupants feel warmer than they would if the walls were cold.

Application costs of insulating board are low because it comes in large sheets that can be handled and nailed easily. Where economy is the major consideration, the simplest type of wall, consisting of a framework of 2-by-4-inch uprights placed 16 inches apart with insulating board sheathing on the outside, can be used. The exterior surface of the board should be covered with an exterior siding. The interior surface may be either painted, stained or left in its natural colors.

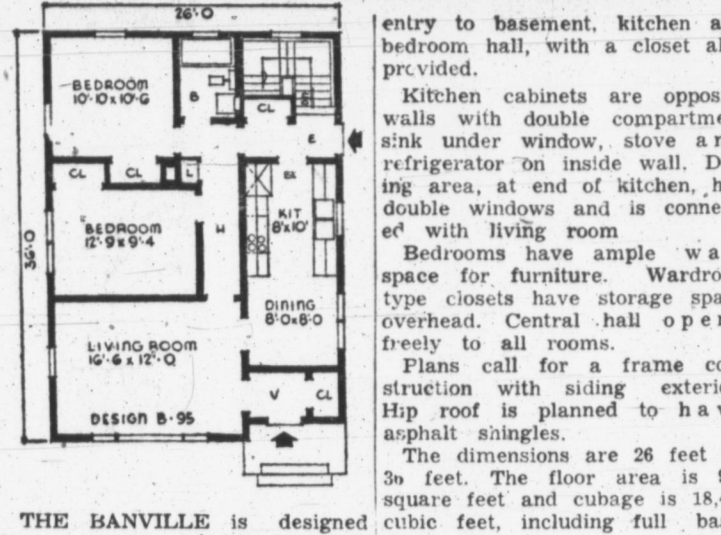
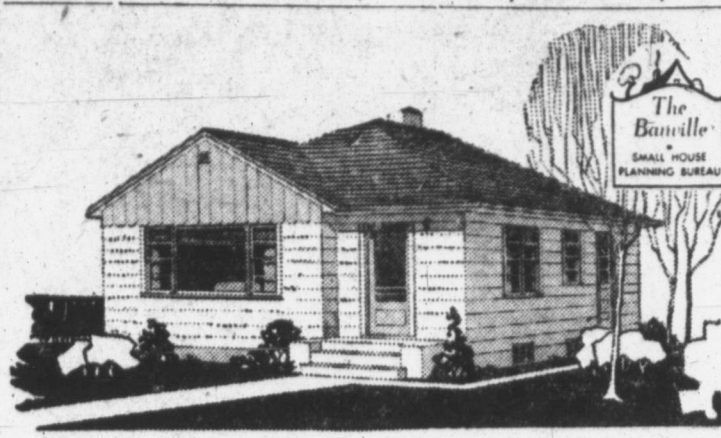
In building the more expensive type of cottage, standard frame wall construction should be followed. This consists of insulating board sheathing on the outside of the uprights, with an exterior finish of wood siding, board then may be used on the brick veneer. Insulating board outside of the studs either as a decorative finish or as a base for plaster.

Another indication of improved income and buying power can be found in the BLS records of average weekly earnings among production workers in manufacturing industries. From 1939 through 1949, the earnings of these workers increased from less than \$24 to nearly \$55 for the average week - a gain of 130 percent. After allowing for increases in taxes, the increase in spendable income still was 128 percent for a worker with three dependents. (These figures refer, of course, only to the income of the individual worker and do not take into account the total family earnings.)

The Bureau of Labor Statistics has also computed these figures in terms of 1939 dollars in order to show the real increase in what these earnings will buy. It found that, even taking into account the increase in prices as well as the increase in taxes, the average manufacturing worker with three dependents could buy more than one-third more goods, including better housing, in 1949 than he could in 1939 (again not including other earning members of the family).

# The Pampa Daily News BUILDING NEWS

PAGE 4 PAMPA NEWS, MONDAY, APRIL 16, 1951



**THE BANVILLE** is designed for narrow lot. It has two bedrooms, living room and a combination kitchen-dining room. The front entrance leads into a vestibule with a coat closet; rear

# Wall Lamps Can Be Valuable As Space Savers In The Home

Save space and clutter by using a pair of wall lamps to light davenport located between windows, doorways or passageways. Modern new wall lamps which are as handsome to look at as they are efficient when properly placed and wisely chosen are recommended in General Electric's new Tested Home Light Conditioning Recipe for reading when seated on a davenport or in an unholstered chair.

Select wall lamps with top diameter of diffusing bowl approximately eight inches. Bottom of the shade should be about 12 inches across. Use the 50-100-watt three - lite or a 150-watt bulb in lamps with diffusing bowls. New style lamps which use the 150-watt R - 40 bulb which requires no diffuser are also a good choice.

As the lamp cannot be moved away from the wall, you may have to move the davenport or chair a little to coincide with the following measurements:

Measure out from the center of the lamp shade (about six inches from the wall) 26 inches then from this point measure 15 inches to the right or left at a right angle. Then, place the chair or sofa so that the center of your reading matter is at this point. The lower edge of the shade should be 48 inches above the floor, as shown by the measurements on the drawing above.

**LOW-COST DRAMEX**

COLORS LIKE PAINT—RESEMBLES LIKE PLASTER... IN ONE EASY COAT.

GET YOUR FREE DRAMEX COLOR CARD FROM:

**Allied Paint**

219 N. Ballard Phone 1679

# Youngsters' Room Furnished Cheaply

An old beer barrel converted into a table; framed finger-paintings made by the children and hung on the walls; unbleached muslin draperies; unfinished furniture finished by the children; are features which held down the cost of furnishing a room for children, as designed recently by Hunter College students.

Ingenuity and an eye for scale and color proved as important as money in planning the room in a New York City Housing Authority apartment. Draperies and wall-storage pieces are home-made, unfinished furniture was painted without outside help. Colors were selected to blend with the tan walls and light, tubular woodwork of the housing project.

The beer barrel was painted green and topped with a 2'x3' piece of plywood to form a table beneath the double window. Three-legged wooden stools painted at home and topped with round sailcloth cushions made at home are comfortable seats for the youngsters while working at the beer-barrel table.

Two beds were made by dividing a lift-up studio couch into its two component parts and fitting them into one corner at right angles to each other. An unfinished bookcase was placed at the head of each bed.

Bedspreads were made of brown untextured material. Unbleached muslin at 35 cents a yard made gathered draperies bordered with bands of coral and blue-green. The draperies are hung in two tiers, the bottom tier hanging to sill-length. Large finger-paintings by the youngsters, framed in simple wood molding, make colorful and effective wall decorations over the two beds.

The stools, bookcases, chest of drawers and other unfinished pieces were all painted blue-green to match the woodwork.

Floor covering is asphalt tile in a dark off-shade of red which harmonizes well with the blue-green and buff coloring of woodwork and walls.

Inexpensive metal gooseneck lamps were placed on the beer-barrel table. Parchment - shaded metal lamps on the bookcases at the head of the two beds make attractive and efficient reading and study lamps.

The room is not only delightful but easy to keep clean and neat. The sturdy fabrics do not show soil easily, can be washed safely at home when laundering is necessary. The asphalt tile floor is stain and wear-resistant mops clean in a jiffy. The lamps are unbreakable and the youngsters' toys and books store neatly in the bookshelves at the head of each bed.

Here is a cheerful room whose charm and usefulness belie its low budget. With few changes and freshness, it will serve the needs of the two youngsters for years.

entry to basement, kitchen and bedroom hall, with a closet also provided.

Kitchen cabinets are opposite walls with double compartments sink under window, stove and refrigerator on inside wall. Dining area, at end of kitchen, has double windows and is connected with living room.

Bedrooms have ample wall space for furniture. Wardrobe-type closets have storage space overhead. Central hall opens freely to all rooms.

Plans call for a frame construction with siding exterior. Hip roof is planned to have asphalt shingles.

The dimensions are 26 feet by 36 feet. The floor area is 924 square feet and cubage is 18,480 cubic feet, including full basement.

**See Them NOW!**

The Most Exciting Wallpaper you have ever seen

**New 1951 WALL PAPERS**

**ALLIED PAINT STORE**

340 N. Ballard Phone 1074

**NOW! venetian blinds that wipe clean with a damp cloth**

Just run a damp cloth over new aluminum-venetian plastic tapes and opening tempered aluminum slats—every speck disappears! Tapes never stretch, warp, fade, fray! Slats snap into place, refuse to chip; peel, crack, or break! 165 color combinations; send for free estimate.

**Linoleum Asphalt Tile**

**Pampa Tent & Awning**

317 E. Brown Phone 1112

**Montgomery Ward**

CATALOG ORDER DEPARTMENT

217 N. Cuyler Pampa Phone 803

**New Selection Washable Wallpapers In Our Special Wallpaper Catalogs**

**52c To \$4.20** Double Roll

Come to Wards Catalog Order Department and see our special Wallpaper Catalogs featuring over 400 of the most beautiful patterns offered to date - at whatever price you want to pay. Choose from fine quality fade-proof and washable patterns from leading manufacturers. FREE INSTRUCTIONS.

**SAVINGS OF 1/2 TO 1/2 AT WARDS, ALWAYS**

**Wallpaper-Paint**

**Bill Buildit SAYS:** A little paint and wallpaper go a long way to give you a brand-new home! You'll be amazed and thrilled at the way old furniture and drapes take on new charm and loveliness against the glowing beauty of newly painted and papered walls and sparkling newly coated trim.

**We Recommend**

**Reliable Painters & Paper Hangers**

**PANHANDLE LUMBER COMPANY, INC.**

PHONE ONE THOUSAND COMPANY, INC. 470 WEST FOSTER

# LINOLEUM

The patterns, colors and textures of this NEW in-laid linoleum are so varied... so smart and interesting that today smart homemakers use it more extensively than ever before. In every imaginable color.

**PAMPA GLASS & PAINT**

117 N. FROST PHONE 3909

**18 In. Red Cedar Shingles**

**No. 2 Grade**

**Per Square \$12.00**

A roof that will last for more than 30 years.

**PONDEROSA PINE**

1x8.6 ft. No. 4 and Better and 2x4, all Lengths, No. 4 and Better

**Only 6 3/4c per board foot**

**1/4 INCH PANELWOOD**

**Only 10c Foot**

A Good Substitute for Plywood

2% CASH DISCOUNT allowed on all purchases of material amounting to \$10.00 or more.

*We Are Conforming to Ceiling Prices*

*Let us serve you!*

## LYNN BOYD

"Good Lumber"

805 S. CUYLER PHONE 900

# Service Cleaners Expands To Meet Area Needs



OVER FIFTEEN YEARS IN SAME LOCATION — For more than fifteen years, Service Cleaners has been located in the same place, 312 South Cuyler, and under the same name. Pictured above is a front view of Service Cleaners showing the new delivery truck.

## Clothes Receive Expert Attention; Minor Repairs An Added Service

Service Cleaners began its operation here in Pampa over twenty years ago. About fifteen years ago it moved to its present location at 312 South Cuyler, and has been operating there ever since under the same name. How many times it moved and where to during its first few years is not known.

The facilities at its present location were outmoded and outgrown some ten years ago, making it necessary, in keeping pace with the growth of this trade area, to modernize its building, equipment and operational procedures. So, with a firm belief in the people of Pampa and the surrounding area and confidence in their acceptance of modern dry cleaning service, Oliver Jonas look over Service Cleaners about a year ago and completed a program of modernizing the building and setting up equipment sufficient to take care of the needs of this area for the present and also additional needs in keeping with probable future growth.

Oliver Jonas has been in the cleaning business around fifteen years and is highly qualified to pass on the value of cleaning to you. Furthermore, his long period of experience in the dry cleaning trade has made him pre-eminent in his chosen field.

Jonas, who sincerely loves his work, has been in the cleaning business in Pampa since 1942. He said that spring cleaning has about swamped them, but that they have no complaints. Having asked for it, they really appreciate the opportunity to be rushed with work. He said that Service Cleaners' scores of customers are responsible for their rushing business and that they feel happy about the whole thing.

of the equipment operated by the firm is of the most modern and up-to-date type. Every effort is expended to guarantee the ultimate in cleaning on each garment submitted to the Jonas firm. Each article of clothing is given the individual attention of a specialist in the required operation.

Another outstanding service offered by Service Cleaners is their policy of attending to all minor repairs in garments submitted for cleaning. These repairs are taken care of without the necessity of a request by the owner of the garment. No extra charge is made for this repair service. Service Cleaners also gives expert attention to drapes, slip covers, wool blankets and other like items.

Jonas said that due to their shortage of space, they do not have a cold storage room, and cannot store your fur coat and other valuable furs. However, they will clean and moth-proof your woolen garments, and at a

Your Clothes Are Properly Insured While In Our Care

PHONE 1290

**SERVICE CLEANERS**  
312 S. Cuyler

**The Electric Supply**

"Pampa's Electrical Headquarters"

- CONTRACTORS
- APPLIANCES
- FIXTURES
- REPAIRS

"We Specialize in Oil Field Electrification"

All Work and Materials Fully Guaranteed

319 W. Foster Phone 1106

Protect Your Investment with Fire and Automobile Insurance

See Garvin Elkins  
Room 10 — Duncan Bldg.  
Phone 866

**Top of Texas Realty & Insurance**

### Prevent Loss; Let Mack's Restore Leather Goods

With spring already on us and summer just around the corner it is time to start giving some serious thought to the renewing and refurbishing of all of your high grade leather goods you've been holding back for summer wear.

D. T. Stewart, of Mack's Shoe Store, is anxious to prove his ability to renew your leather items and restore them to their original fine condition. Weather changes, dampness, dry-hot winds weaken stitching and allow fine boots and shoes to be contorted from their original shape. A few minutes at Mack's shoe store will be enough to examine them for stitch breaks and dryness and to make the necessary repairs before the article is damaged beyond repair.

Stewart can repair the zipper in your purse, zippers in leather jackets, and can dye leather shoes in all colors.

At Mack's you can get Cavalier Shoe Polishes in every color that the Cavalier Company manufactures, in suede and regular polish both. You can also get shoe oils, leestoot oil, all oils needed for water-proofing and softening the leather.

If you like, Stewart can put your name on a belt with any color background. You can get more of those bright fluorescent ball caps, and he also carries a stock of belt buckles in different sizes and prices.

If you have a pet dog you can buy dog harness and collars in all sizes at Mack's. If you have an extra large or small dog that can't be fitted out of the stock, Stewart will fit them.

Now is a good time for you to start thinking about getting ready for Rodeo Week. At Mack's you will find a complete line of western wear for men and a good line of ladies western wear. Stewart has special order ladies western shirts to match their husbands shirts. All are form fitting. At Mack's you will find as good a line of western shirts as there is on the market. They feature western shirts tailored by Karman of Denver, Colorado.

It has been said that at Mack's Shoe Store you can find every item that you will need for your rodeo ensemble. It might pay you to visit them and see what they have to offer. At Mack's you'll find the finest in boots, spurs, belts, watchbands, billfolds, handbags, hatbands, silver jewelry, and other items that will help add to your western ensemble.

### Franklin Life Passes Billion Dollar Mark

The Franklin Life Insurance Company of Springfield, Illinois, has passed the Billion Dollar mark as to insurance in force, according to an announcement just released by President Charles E. Becker to Jeff D. Bearden, Representative for the company.

The significant event provided a dramatic climax to the Company's 67th anniversary celebration held during March. A net increase of \$70,000,000 during the first quarter of this year put the Franklin well ahead of schedule in attaining Billion Dollar stature.

The Franklin Life is one of the fifteen oldest legal reserve life insurance companies in America, and the oldest existing life insurance company granted its original charter in the State of Illinois. The Company now operates in forty-three states, the District of Columbia and Hawaii, and has substantial business in this area.

### Goodwill Used Car Lot Boasts Real Bargains

On the corner of Gray and Foster you'll find one of the best, most up-to-date used car lots in the Panhandle area, the Noblitt-Coffey "Goodwill" Used Car lot. Here under the direction and management of Weldon Stewart is assembled one of the finest collections of used cars to be found. Most of them are late date, low mileage cars that have a lot of good transportation left in them. It is here that the fine service work of the firm really becomes evident.

The "Goodwill" used cars have gained an enviable reputation, because, just as he does on new cars, Ivan Noblitt backs up his sales agreements and the condition of his used cars.

With entrances on Gray and Foster, it's a place you can't miss. And with the honest values Noblitt has to offer, it is a place that you must not miss. Whether it's a new or a used car, you will be safe in dealing with Noblitt-Coffey Pontiac, Inc.

For More JOYOUS VACATION DRIVING Get Your AUTO ACCESSORIES — From —

**Noblitt-Coffey**  
PONTIAC, INC.  
122 N. Gray Phone 365

ABOVE IS A VIEW OF THE remodeled interior of Clyde's Pharmacy, corner of Cuyler and Foster. At the left foreground may be seen the new fountain.

### Remodeling Enhances Looks, Efficiency Of Clyde's

Since buying out H. C. Berry's interest in Berry's Pharmacy one year ago this month, Clyde Oswald at Clyde's Pharmacy has carried on a program of expansion and improvement that was culminated last week with a completely redecorated interior including the installation of a new fountain and new asphalt tile floor.

Mr. Oswald has been active as a pharmacist in Pampa for twenty-five years. For twelve years he was manager of a rival firm. He then advanced to a partnership in Berry's Pharmacy, and now to the ownership of Clyde's Pharmacy.

Clyde gives much credit for the success of Clyde's Pharmacy to a fine team of employees active in the firm. These include, J. V. Young, assistant manager, who joined Clyde last May. Mr. Young has been a Pharmacist since 1932 and has been in Pampa since 1945. He formerly had a store in Graham, Texas, for nine years.

Mrs. Emma Olson, the head cosmetician of the firm, has spent the last twenty-five years in Pampa. She has a wealth of experience at her command in solving your problems of beauty care and in helping you select your beauty aids, having spent the past seventeen years in the handling of cosmetics and allied articles.

Berta Osburn holds the second spot in the cosmetics field at Clyde's Pharmacy. Miss Osburn has been with Clyde's Pharmacy for more than two and a half years and has developed into an expert consultant in the beauty-aid field. Betty Nettie Milligan and Mrs. Betty Taylor, very capably manage the fountain, George Duke is the porter.

During his year in business in Pampa, Clyde has become a respected member of the Chamber of Commerce. He is also active in Kiwanis and Elks Club affairs. Clyde believes in giving plenty of good cheer to everyone who enters his store, whether he sells an item or not. Clyde will give of his time to anyone who asks it.

If you have a prescription to be filled, you will receive rapid and highly scientific service at Clyde's Pharmacy.

Drop in at your earliest convenience and look the place over. You'll be amazed at the

**WE TAKE GREAT PRIDE**

In doing a top-notch service job on your car. When you drive up here we make sure that your windshield is cleaned, headlights cleaned and your every need is cared for.

**SHAMROCK SERVICE STATION**  
400 W. Foster Phone 1915

**Highest Quality Most Economical Petroleum Products in Pampa**

Regular .....22.9c  
Ethyl .....23.9c

**BELL Quality Service**  
Open 24 Hours Daily  
214 E. Brown Phone 9588

Who Wants To Stay Home With Weather Like This?

HERE'S TRANSPORTATION WORTH THE PRICE!

- '46 DODGE 2 Door — R&H
- '47 CHEVROLET Business Coupe, R&H
- '48 STUDEBAKER Commander 4-Dr. H&OD
- '48 FORD R, H and OD
- '48 STUDEBAKER Champion Starlite Coupe R, H and OD
- '47 STUDEBAKER Commander, R, H and OD
- '47 STUDEBAKER Commander, R, H and OD
- '46 FORD

**SPECIAL '42 NASH '600'**  
2 Door \$385.00

We will be open until 7:30 Every Evening

**LEWIS MOTORS Used Car Lot**  
1200 W. Wilks and Amarillo Hwy Ph. 4498

Headquarters for Guns

- Ammunition
- Rods
- Reels
- Fishing Supplies
- Equipment for all Sports
- Hobby Supplies
- Mechanical Toys

**SPORTSMAN'S STORE**  
115 E. Kingsmill Phone 677

**CONFECTIONS FOUNTAIN TOBACCOS NEWS CRYSTAL PALACE**  
121 N. Cuyler Phone 9582

New! Scientific! TIRE REPAIRS by OK's Exclusive

**INFRA-RAY Rubber Welding**

Safe, Permanent Repairs That Will Outlast the Tire!

Proved by Miles from Safe Driving

**OK Rubber Welders**  
BILL SUGG, Owner Phone 4032  
118 Alcock

RECAPS • REPAIRS • NEW • USED

**HAWKINS RADIO LAB**  
First in Radio First in Television New and Used Radios For Sale  
917 S. Barnes Phone 36

**AIR CONDITIONING**

Call DES' ... All types of Sheet Metal Work.

Payne Forced Air Heating

**DES MOORE TIN SHOP Heating**  
320 W. Kingsmill Phone 102

Pampa News advertising is an investment, not a cost.

**MAGNETO REPAIRING**  
All Makes and Models Authorized Factory Shop All Work Guaranteed

**Radcliff Bros. Electric Co.**  
519 S. Cuyler Pampa, Texas Phone 3391

LOW COST—EXPERT SERVICE

**The Bright Side to This Scene...**

... We can make crumpled fenders and bent bumpers so new-looking, that no one will know you were in an accident! What's more, we do it FAST... and this means you get your car sooner and PAY LESS! Drive up now.

Night Phone — 1764-J  
24 Hour Wrecker Service

Your "Friendly" Dodge-Plymouth Dealer

**PURSLEY MOTOR CO.**  
105 N. BALLARD PHONE 113

### Lengthen Car Life... Lubricate NOW!

Now it's more important than ever to prolong the life of your car... and one of the most vital services that help keep your car rolling is PROPER lubrication... a grease job the way our experts do it! Low cost service while you wait. Drive up!

**PLAINS MOTOR CO.**  
113 N. FROST PHONE 180

"It's Freshnerized"

The Talk of the Town

**MEAD'S FINE BREAD**

IN THE BRIGHT YELLOW WRAPPER AT ALL GROCERS

**Insist on! COWBOY BOOTS**

by **TONY LAMA**

**MACK'S SHOE SHOP**  
308 S. CUYLER PAMPA

**New Low Prices! FRIGIDAIRE Water Coolers**

— the only ones with the Meter-Miser Frigidaire Water Coolers give you years of trouble-free service. Bottle and pressure-type models, all powered by the famous Meter-Miser. 5-Year Protection Plan.

Also industrial and tank type coolers.

**Bert A. Howell & Co.**  
119 N. WARD PHONE 152

The Pampa Daily News
One of Texas' Two Most Consistent Newspapers
Published daily except Saturday by The Pampa News Co., Inc., 507 W. 12th St., Pampa, Texas. Phone 666. All departments. MEMBER OF THE ASSOCIATED PRESS. (Full Leased Wire.)

Luxury Tax On Meat?
The proposal of a luxury tax on meat isn't as silly as it seems. Certainly if the price of meat goes any higher it is going to be a luxury for all of us.

Washington... by Peter Edson
WASHINGTON—(NEA)—If you are superstitious, keep your fingers crossed for the rest of April. It has been a great month for starting New wars. American Revolution began when the British fired on the farmers at Lexington, 10th of April in 1775. Mexican War began April 24, 1846. Fort Sumpter was fired on April 23, 1861, to begin the Civil War. Spanish-American War began April 21, 1898, and U.S. declared war on Germany April 6, 1917.

We Need Competition
The scare buying which was so much in the headlines some months ago has vanished almost completely. Another fact is that it made no sense in the first place. This country has not encountered shortages of anything essential. Consumer goods output, despite the demands of war, far outpaces the needs of the nation.

Answers: "WHAT?"
"Biggest laugh of the week was provided by the Marshall Plan. An Economic Cooperation Administration release announced that three industrial efficiency experts from Norway were coming to the United States. Purpose of the visit "to study labor-management cooperation."

Old Habit Prompts Mclemore To Pick Winning Ball Clubs
Old habits have a way of clinging to a fellow, like ivy does to a wall. Sir Christopher Wren designed pool room. I have been more than a decade since anyone cared (if they ever did) about how I felt about the way the teams in the American and National Leagues would finish the season.

Thoughts
And they shall scoff at the kings, and the princes shall be a scorn unto them; they shall deride every strong hold; for they shall heap dust, and take it.—Habakkuk 1:10.

Bid For A Smile
The Season's Silly Question
The supervisor of Washburn National Forest in that mountainous region of silly questions might be reached at—ask for 1949 when he got a phone call from a woman counting words in the words "what kind of wood is the best kind to knock on to stay lucky."

So They Say
There has been a genuine misapprehension of the government of Communist China. I do not believe that the Communist coup in China came from the Chinese "grass roots" but that it is an actual military conquest by Soviet Russia.—Robert A. Smith, former chief of India-Burma OVI division.

Famous Edifice
HORIZONTAL
4 Negative reply
5 Eat
6 Remunerated
7 Noun suffix of quality
12 Performers
14 Beat
15 Sheikman
16 Style of architecture
18 Health resort
19 101 (Roman)
20 Obstructs
21 Direction (ab.)
22 Unfortunate
23 Wicked
25 Wings
27 Vind
28 Marsh grass
29 Preposition
30 Split pulse
31 By way of
32 Hypothetical structural unit
33 Germinated grain
34 Equate
37 Curator
38 Square plant
39 Chinese river
40 Physicians
41 Tullurium (symbol)
42 Enervate
43 Musical movement
50 Secured
51 Enlist
53 Ream
55 Shop
56 Relaxed
VERTICAL
1 Relisher
2 Lively
3 Follower

Answering Correspondence

By DAVID BAXTER
One from Santa Ana, California: "Mr. Baxter—You said you despised George Bernard Shaw. Did you know that the greatest hatred is—and they hated him without a cause? Shaw was invited to the Hearst by Marion Davies who wanted to have her picture taken with him... You say that the Catholics are murderers and then you ask the Protestants to join hands with them and all go together and kill the Communists... You said you have respect for even a Communist who is loyal to his party principle. Tell us more."

Washington... by Peter Edson
WASHINGTON—(NEA)—If you are superstitious, keep your fingers crossed for the rest of April. It has been a great month for starting New wars. American Revolution began when the British fired on the farmers at Lexington, 10th of April in 1775. Mexican War began April 24, 1846. Fort Sumpter was fired on April 23, 1861, to begin the Civil War. Spanish-American War began April 21, 1898, and U.S. declared war on Germany April 6, 1917.

Old Habit Prompts Mclemore To Pick Winning Ball Clubs
Old habits have a way of clinging to a fellow, like ivy does to a wall. Sir Christopher Wren designed pool room. I have been more than a decade since anyone cared (if they ever did) about how I felt about the way the teams in the American and National Leagues would finish the season.

Thoughts
And they shall scoff at the kings, and the princes shall be a scorn unto them; they shall deride every strong hold; for they shall heap dust, and take it.—Habakkuk 1:10.

Bid For A Smile
The Season's Silly Question
The supervisor of Washburn National Forest in that mountainous region of silly questions might be reached at—ask for 1949 when he got a phone call from a woman counting words in the words "what kind of wood is the best kind to knock on to stay lucky."

So They Say
There has been a genuine misapprehension of the government of Communist China. I do not believe that the Communist coup in China came from the Chinese "grass roots" but that it is an actual military conquest by Soviet Russia.—Robert A. Smith, former chief of India-Burma OVI division.

Famous Edifice
HORIZONTAL
4 Negative reply
5 Eat
6 Remunerated
7 Noun suffix of quality
12 Performers
14 Beat
15 Sheikman
16 Style of architecture
18 Health resort
19 101 (Roman)
20 Obstructs
21 Direction (ab.)
22 Unfortunate
23 Wicked
25 Wings
27 Vind
28 Marsh grass
29 Preposition
30 Split pulse
31 By way of
32 Hypothetical structural unit
33 Germinated grain
34 Equate
37 Curator
38 Square plant
39 Chinese river
40 Physicians
41 Tullurium (symbol)
42 Enervate
43 Musical movement
50 Secured
51 Enlist
53 Ream
55 Shop
56 Relaxed
VERTICAL
1 Relisher
2 Lively
3 Follower



Washington... by Peter Edson

Washington... by Peter Edson
WASHINGTON—(NEA)—If you are superstitious, keep your fingers crossed for the rest of April. It has been a great month for starting New wars. American Revolution began when the British fired on the farmers at Lexington, 10th of April in 1775. Mexican War began April 24, 1846. Fort Sumpter was fired on April 23, 1861, to begin the Civil War. Spanish-American War began April 21, 1898, and U.S. declared war on Germany April 6, 1917.

Old Habit Prompts Mclemore To Pick Winning Ball Clubs
Old habits have a way of clinging to a fellow, like ivy does to a wall. Sir Christopher Wren designed pool room. I have been more than a decade since anyone cared (if they ever did) about how I felt about the way the teams in the American and National Leagues would finish the season.

Thoughts
And they shall scoff at the kings, and the princes shall be a scorn unto them; they shall deride every strong hold; for they shall heap dust, and take it.—Habakkuk 1:10.

Bid For A Smile
The Season's Silly Question
The supervisor of Washburn National Forest in that mountainous region of silly questions might be reached at—ask for 1949 when he got a phone call from a woman counting words in the words "what kind of wood is the best kind to knock on to stay lucky."

So They Say
There has been a genuine misapprehension of the government of Communist China. I do not believe that the Communist coup in China came from the Chinese "grass roots" but that it is an actual military conquest by Soviet Russia.—Robert A. Smith, former chief of India-Burma OVI division.

Famous Edifice
HORIZONTAL
4 Negative reply
5 Eat
6 Remunerated
7 Noun suffix of quality
12 Performers
14 Beat
15 Sheikman
16 Style of architecture
18 Health resort
19 101 (Roman)
20 Obstructs
21 Direction (ab.)
22 Unfortunate
23 Wicked
25 Wings
27 Vind
28 Marsh grass
29 Preposition
30 Split pulse
31 By way of
32 Hypothetical structural unit
33 Germinated grain
34 Equate
37 Curator
38 Square plant
39 Chinese river
40 Physicians
41 Tullurium (symbol)
42 Enervate
43 Musical movement
50 Secured
51 Enlist
53 Ream
55 Shop
56 Relaxed
VERTICAL
1 Relisher
2 Lively
3 Follower

Better Jobs National Whirligig

By R. C. HOILES
Charity, and the Biblical Policy (Continued)

In the last issue I was quoting from a booklet issued by the Foundation for Economic Education, written by Rev. Russell J. Clinchy, pastor of the First Church of Christ, Hartford, Connecticut. I want to quote further from this article that should be read by everyone who believes in any form of government subsidy—by anyone who believes in tax supported schools, which are undoubtedly the belief that leads many people to believe in other forms of socialism and government subsidies. Tax supported schools are nothing but a government subsidy. And Gov. Earl Warren of California is right when he says if a man believes in tax supported schools he should believe in socialized medicine because they are alike in theory.

Washington... by Peter Edson
WASHINGTON—(NEA)—If you are superstitious, keep your fingers crossed for the rest of April. It has been a great month for starting New wars. American Revolution began when the British fired on the farmers at Lexington, 10th of April in 1775. Mexican War began April 24, 1846. Fort Sumpter was fired on April 23, 1861, to begin the Civil War. Spanish-American War began April 21, 1898, and U.S. declared war on Germany April 6, 1917.

Old Habit Prompts Mclemore To Pick Winning Ball Clubs
Old habits have a way of clinging to a fellow, like ivy does to a wall. Sir Christopher Wren designed pool room. I have been more than a decade since anyone cared (if they ever did) about how I felt about the way the teams in the American and National Leagues would finish the season.

Thoughts
And they shall scoff at the kings, and the princes shall be a scorn unto them; they shall deride every strong hold; for they shall heap dust, and take it.—Habakkuk 1:10.

Bid For A Smile
The Season's Silly Question
The supervisor of Washburn National Forest in that mountainous region of silly questions might be reached at—ask for 1949 when he got a phone call from a woman counting words in the words "what kind of wood is the best kind to knock on to stay lucky."

So They Say
There has been a genuine misapprehension of the government of Communist China. I do not believe that the Communist coup in China came from the Chinese "grass roots" but that it is an actual military conquest by Soviet Russia.—Robert A. Smith, former chief of India-Burma OVI division.

Famous Edifice
HORIZONTAL
4 Negative reply
5 Eat
6 Remunerated
7 Noun suffix of quality
12 Performers
14 Beat
15 Sheikman
16 Style of architecture
18 Health resort
19 101 (Roman)
20 Obstructs
21 Direction (ab.)
22 Unfortunate
23 Wicked
25 Wings
27 Vind
28 Marsh grass
29 Preposition
30 Split pulse
31 By way of
32 Hypothetical structural unit
33 Germinated grain
34 Equate
37 Curator
38 Square plant
39 Chinese river
40 Physicians
41 Tullurium (symbol)
42 Enervate
43 Musical movement
50 Secured
51 Enlist
53 Ream
55 Shop
56 Relaxed
VERTICAL
1 Relisher
2 Lively
3 Follower

National Whirligig

By RAY TUCKER
WASHINGTON—New England interests seem to be losing their

Washington... by Peter Edson
WASHINGTON—(NEA)—If you are superstitious, keep your fingers crossed for the rest of April. It has been a great month for starting New wars. American Revolution began when the British fired on the farmers at Lexington, 10th of April in 1775. Mexican War began April 24, 1846. Fort Sumpter was fired on April 23, 1861, to begin the Civil War. Spanish-American War began April 21, 1898, and U.S. declared war on Germany April 6, 1917.

Old Habit Prompts Mclemore To Pick Winning Ball Clubs
Old habits have a way of clinging to a fellow, like ivy does to a wall. Sir Christopher Wren designed pool room. I have been more than a decade since anyone cared (if they ever did) about how I felt about the way the teams in the American and National Leagues would finish the season.

Thoughts
And they shall scoff at the kings, and the princes shall be a scorn unto them; they shall deride every strong hold; for they shall heap dust, and take it.—Habakkuk 1:10.

Bid For A Smile
The Season's Silly Question
The supervisor of Washburn National Forest in that mountainous region of silly questions might be reached at—ask for 1949 when he got a phone call from a woman counting words in the words "what kind of wood is the best kind to knock on to stay lucky."

So They Say
There has been a genuine misapprehension of the government of Communist China. I do not believe that the Communist coup in China came from the Chinese "grass roots" but that it is an actual military conquest by Soviet Russia.—Robert A. Smith, former chief of India-Burma OVI division.

Famous Edifice
HORIZONTAL
4 Negative reply
5 Eat
6 Remunerated
7 Noun suffix of quality
12 Performers
14 Beat
15 Sheikman
16 Style of architecture
18 Health resort
19 101 (Roman)
20 Obstructs
21 Direction (ab.)
22 Unfortunate
23 Wicked
25 Wings
27 Vind
28 Marsh grass
29 Preposition
30 Split pulse
31 By way of
32 Hypothetical structural unit
33 Germinated grain
34 Equate
37 Curator
38 Square plant
39 Chinese river
40 Physicians
41 Tullurium (symbol)
42 Enervate
43 Musical movement
50 Secured
51 Enlist
53 Ream
55 Shop
56 Relaxed
VERTICAL
1 Relisher
2 Lively
3 Follower



**Jack-on T-twins**

A SAILOR TWO SOLDIERS AND A MARINE #1 TICKETS, PLEASE!  
 I PUNCHED YOURS BACK THERE IN THE BEAR I WASN'T THERE! IT WAS!  
 BUT YOU DIDN'T! I WASN'T THERE!  
 I'VE BEEN TAKING TICKETS FOR THIRTY YEARS! I NEVER HESitates A PASSENGER AND I NEVER FORGET A FACE!  
 LOOK! HERE'S MY TICKET!  
 GUESS IT'S TIME FOR ME TO PUT IN FOR RETIREMENT!  
 CHEER UP! SHE'S A TWIN! PRETTY HARD TO TELL 'EM APART!  
 PRETTY HARD, HE SAYS FOR HIM IT'S DAMN NEAR IMPOSSIBLE!

**Blondie**

DAGWOOD I SPENT ALL DAY CLEANING THE SOFA--ARE YOU LYING ON IT WITH YOUR SHOES ON?  
 THUMP  
 THUMP  
 NO, DEAR

**Alley Oo P**

ADVENTURING IN THE 19TH CENTURY, OOP AND BOO-O OPERATE A LOCOMOTIVE WHICH, UNTIL A FEW MOMENTS AGO, WAS HAULING A TRAINLOAD OF PROSPEROUS BANK BANDITS.  
 NO USE HAULING THEM WHEN WE GOT THEIR LEADER AND LOOT UP HERE IN THE CAB.  
 WELL, THAT DOES FOR THE BANDIT GANG!  
 HMM...! IT'S THE SHAPE OF WHAT'S IN HIS SADDLE--BAGS THAT INTERESTS ME!  
 UMM...! LOOKIT TH' SUGAR!  
 WOW!

**Bo**

LADY, I CAN'T TELL YOU HOW GLAD I AM TO GET RAGS BACK AGAIN, I'M SURE OBLIGED TO YOU.  
 I HOPE HE'S BEEN NO TROUBLE TO YOU, BEIN' BLIND, HE DOES NEED EXTRA LOOKIN' AFTER, BUT HE TRIES TO PLEASE...  
 HE'S JUST A MONGREL AND YOU PROBABLY WONDER WHY I FUSS OVER HIM, BUT THERE'S A GOOD REASON, IT'S A LONG STORY...  
 RAGS HAS BEEN NO TROUBLE AT ALL, FRIEND, AND WE'D SURE LIKE TO HEAR THAT STORY...

**CARNIVAL** By DICK TURNED SIDE GLANCES By GALBRAITH

"If you'd show his picture to your commanding officer, I bet he'd let you come home every week-end!"  
 "Onions! You realize, Pat, this means we must have been eating sliced tulip bulbs all winter!"

**Mutt & Jeff**

I'VE GOTTA CONSERVE ON OUR DOUGH! WE CAN AFFORD ONLY THIS MUCH STEAK!  
 VEH!  
 FINE MANNERS YOU HAVE! IF I HAD REACHED FIRST, I WOULD HAVE TAKEN THE SMALLER PIECE!  
 WELL, YOU GOT IT, DIDN'T YOU?  
 WHAT'S THE MATTER? DON'T YOU ENJOY THE MEALS I COOK?  
 FRANKLY, I DON'T!  
 THEN WHY DO YOU EAT EVERYTHING IN SIGHT?  
 BECAUSE IT GIVES ME INDIGESTION, AND I'M NUTS ABOUT BICARBONATE OF SODA!

**Bugs Bunny**

SCREE! I'LL STOP MAKIN' THIS RACKET FER A QUARTER!  
 NO SALE, CICERO!  
 HOW ABOUT A DIME?  
 NOPE!  
 A NICKEL... MAYBE?  
 UH-UH?  
 HERE'S THE DOLLAR I PROMISED YOU FOR KEEPIN' CICERO AT HIS PRACTICIN' FOR A WHOLE HOUR!

**Priscilla's Pop**

DID YOU HEAR THE NEWS, HOLLY-HOCK? PRISCILLA'S IN LOVE!  
 OOOH, THE LUCKY!  
 GOLLY PRISCILLA! HOW DOES A GIRL KNOW WHEN SHE'S IN LOVE?  
 IT'S EASY! EVERY TIME YOU SEE HIM YOUR HEART GOES THUMP THUMP AND YOU GET GOOSE BUMPS ALL OVER!  
 WHAT'S THE MATTER, HOLLY-HOCK?  
 OH, DEAR! OH, DEAR!!  
 THAT'S WHAT HAPPENS TO ME WHEN I SEE THE DENTIST!

**OUR BOARDING HOUSE** By J. E. WILLIAMS with Major Hoople

NO, I DON'T KNOW WHY PITCHERS PUT THEIR FOOT UP LIKE THIS, BUT I KNOW WHY I DO--HE CAN'T SEE WHUT TH' BALL IS GONNA DO TILL IT GETS PAST MY FOOT!  
 OH, WELL, THAT'S NOT VERY DISHONEST FOR YOU--CONSIDERIN' HOW LITTLE TH' BALL DOES!  
 UH-YAS, IN MURMANSK THE CZAR GAVE ME A MEDAL!--THE FIREMEN WERE FIGHTIN' A HOTEL FIRE AT B6 BELOW--THEIR NOZZLES FROZE--I DEvised A HOGE CONNECTION WITH THE HUGE BOILERS OF A TURKISH BATH AND WE QUELLED THE FLAMES WITH STEAM!  
 A FIREMAN NAMED HICKEY TOLD US ABOUT AN IGLOO FIRE AT 100 BELOW--THE FIRE FROZE AND STAYED SOLID ALL WINTER--WHEN IT THAWED IN SPRING THE IGLOO BURNED DOWN!  
 ALL OUT! FIRE ON SPRUCE STREET!  
 BONG-BONG  
 STEAM, COLD FIRE AND HOT AIR

**Little Doc**

THE WORRY WART  
 4-16 J.R. WILLIAMS

**Vic Flint**

ANSWERING LOU'S PHONE CALL, GROWL AND FLINT ARRIVE AT THE HAUNTED HOUSE TO FIND A BODY.  
 HE'S DEAD, ALL RIGHT. LET'S GET A LOOK AT HIM.  
 WHY IS IT JOE FARO?  
 AH, AND JUST WHO IS JOE FARO?  
 HE WAS A--A CLIENT OF MINE.  
 I MIGHT HAVE TSK, TSK, LET KNOWN! FLINT, US BE CALM, YOU'RE A HEAD-GENTLEMAN ACHIE--YOU'RE A MAGNET FOR MAKE MY STIFFS, YOU'RE--EXAMINATION.  
 WHAT KILLED HIM, CORONER? SAY YOUR MAN, OED OF HEART?  
 HE WAS BEATEN BEFORE DEATH, BUT IT WAS NOT THE CAUSE OF HIS--HEM--DEMISE.

**Wash Tubbs**

EASY AND PENNY WATCH SPILL BOUND AS A TRAINER TIES TO STOP THE BERSERK ELEPHANT, USING A BULL-HOOK ON ITS TRUNK.  
 SEVERAL SHOTS IN EMILY'S TOUGH HIDE HAVE LITTLE EFFECT EXCEPT TO EXCITE HER EVEN MORE...  
 QUICK! AL! WE'LL GET THESE CHAINS AROUND 'ER LEGS WHILE SHE'S TANGLED IN THE TENT ROPES!

**Boop**

DORY, THAT WAS THE POLICE ON THE PHONE!  
 AN' THE BURGLAR YOU CAPTURED WANTED--THERE'S A REWARD FOR HIM!  
 AND YOU'RE GOING TO GET IT! YOU'RE RICH!  
 F'GOODNESS SAKE!

**Mickey Finn**

GEE, RED--IT'S GOOD TO SEE YOU AGAIN! AND YOU LOOK SWELL--YOU'RE ALL TANNED UP!  
 YEAH! IT WAS PRETTY NICE DOWN THERE IN FLORIDA, MICKEY!  
 WE'VE BEEN READING ABOUT YOU IN THE PAPERS! YOU'RE SURE BEEN GOIN' GREAT!  
 WELL--AH--I TAGGED A FEW!  
 I'LL SAY YOU DID! YOU CAME HOME WITH THE TEAM? YOU HAVEN'T BEEN FARMED OUT?  
 NOT YET! I-I THINK I MIGHT STICK THIS YEAR, MICKEY--BUT, OF COURSE, YOU NEVER CAN TELL!  
 GEE, I HOPE YOU DO, RED! WELL, C'MON INSIDE! UNCLE PHIL ISN'T IN, BUT SERGEANT HALLIGAN WILL WANT TO SEE YOU--AND TOM WILL BE BACK ANY MINUTE!  
 OKAY!

**Penny**

THAT WILL BE BRUZ, HIS SISTER WARNED ME HE'S GOING TO BREAK OUR DATE FOR TONIGHT.  
 R-I-N-G  
 HELLO, ELWOOD, HONEY YOU'RE CALLING EARLY TONIGHT HOW SOON WILL YOU BE OVER, SUGAR?  
 WHERE DO YOU GET THAT ELWOOD, HONEY STUFF? THIS IS BRUZ, WE HAVE A DATE TONIGHT AND I'M COMING RIGHT OVER TO KEEP IT.  
 BRUZ ISN'T BREAKING OUR DATE AFTER ALL, SOMETHING SEEMS TO HAVE MADE HIM CHANGE HIS MIND.

**Freckles** FUNNY BUSINESS By HERSCHBERGER

YOU KNOW THE HIGH SCHOOL SYMPHONY IS COMING UP! TRIXIE'S DAD WOULDN'T MIND HER APPEARING AT THE SCHOOL, WOULD HE?  
 YOU MEAN IT? YOU WOULDN'T FOOL AN OLD MAID, WOULD YOU, FAT BOY?  
 IT'S IN THE BALL-PANT-SIZE!  
 DON'T GIVE IT ANOTHER THOUGHT, TRIXIE!  
 YOU CAN WHISTLE THAT IN THREE-QUARTER TIME! YOU'RE IN, BABY, YOU'RE IN!  
 "I told you that old trombone would come in handy!"





THE AMERICAN WAY



A Punishment Long Overdue

Mainly About People

Experienced pin boys over 11 apply in person at Pampa Bowl. Mrs. Wilson Hatcher, 216 N. 6th...

CITIES

At least 8,000 will take part in welcome parade of bands, military units and city department contingents.

AIRPORT

County Attorney Bill Waters this morning reported he had received three opinions from the attorney general's department at Austin...

MARKETS

FORT WORTH LIVESTOCK: April 15-16, 1951. Cattle 2.50; calves 2.00; hogs 1.50; sheep 1.00; pigs 1.00.

PROVE FREE

Rheumatism Arthritis Pains Relieved in FEW MINUTES. Make This 24 Hr. Test...

Money Back Guarantee. Get Muscle-Rub today from your Druggist. Use the bottle. If you are not delighted with results...

New Tenant Taking Over Mac's Office

TOKYO (AP)—A new tenant took over today in Tokyo's huge steel and concrete Dai Ichi Building, seat of allied control over Japan.

Vital Statistics

Table with 3 columns: Time, Location, and Statistics. Includes entries for 4:00 a.m., 7:00 a.m., 9:00 a.m., and 10:00 a.m.

GOP

(Continued from Page 1) would come here Friday after a huge welcome being planned for him in New York.

First 400 Soldiers Return On Rotation

PUSAN, Korea.—(AP)—The first 400 soldiers to be returned from the Korean front under the Army's new rotation policy arrived today to board a transport for the United States.

CHARGES

(Continued from Page 1) eral employees, even if the donations are freely offered.

AIR BASE

(Continued from Page 1) good basic training and fair treatment — but there were exceptions.

Robber Finds Easy Looting in Mansion

NEW YORK (AP)—Robbers entered former film actress Hope Hampton's Park Avenue mansion from the roof early yesterday, found no one at home, and left by the front door with loot valued at \$335,000.

SPK SPEEDY ACTION

WASHINGTON (AP)—Secretary of State Acheson today urged Congress to act quickly to send 2,000,000 tons of grain to India where, he said, a famine is developing more rapidly than this country anticipated.

Allies

(Continued from Page 1) made the day's best gains on the ground as the United Nations maintained the initiative across the Korean peninsula.

Canada Refuses To Pose As 'Yes Man' For U.S. Policies

By DEWITT MACKENZIE / AP Foreign Affairs Analyst. It is of course easy to adopt the attitude that the boundary between Canada and the United States has been wiped out.

Like Mother, Like Daughter

Novolina, Metropolitan Opera soprano, approves a junior version of own costume worn by daughter, Jarmila Daubek, in New York.

Youth Being Held In Theft Of Auto

Roland Motley, believed to be 17, formerly of Corinth, Kans., was being held in Gray County jail on charges of auto theft after he was picked up Saturday night driving a car taken from the McWilliams used car lot on S. Cuyler.

Bull On Crutches

This Guernsey bull at the veterinary clinic of the University of California, Davis, Calif., is able to walk on the special crutch fitted to its fractured shoulder.

The Road to Failure is Paved with Wasted Assets

GEORGE S. MAY COMPANY Business Engineering Central Division Engineering Bldg. Chicago 6, Ill. Established 1925

Ohio Truss Co. MATERNITY SUPPORT

Physician Approved and Recommended. In Stock at Harvester Drug Also in stock

SACRO-LUMBAR Supports

SACRO-ILIAC Supports \$11.50 \$ 8.95

HARVESTER DRUG

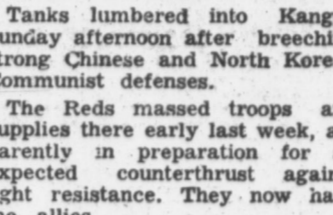
Double S&H Green Stamps on Prescriptions COMBS-WORLEY BLDG. PHONE 1280

FOXWORTH-GALBRAITH LUMBER COMPANY

PHONE 209 PAMPA

Pittsburgh Barnhide Barn Paint

Barnhide will protect your barns and outbuildings against the ravages of sun, rain, sleet and snow. Designed especially for old, weathered surfaces and over old dried-out paint. Easy to apply. Brush or spray.



Get FALSTAFF today!

Extra satisfaction... bottle after bottle!

- 1 YOU GET PREMIUM QUALITY YEAST IN AND YEAR OUT! The Falstaff you enjoy in 1951 is the same premium quality as the Falstaff you knew in 1941...

YOU CAN ALWAYS EXPECT THE SAME SATISFYING BREW!

No matter how you buy your Falstaff—in bottles or cans—or in any quantity—anytime, any place—you can always expect this premium quality beer to be the same each time you taste it.

YOU CAN BE SURE OF A REALLY SUPERIOR BEER!

There's tradition behind Falstaff... three generations old! Experience like this guarantees you a superb and superior beer. Not only premium quality ingredients go into Falstaff, but also the skill and integrity of the brewers.



LIKE MOTHER, LIKE DAUGHTER—Jarmila Novolina, Metropolitan Opera soprano, approves a junior version of own costume worn by daughter, Jarmila Daubek, in New York.



Youth Being Held In Theft Of Auto

Bull On Crutches

This Guernsey bull at the veterinary clinic of the University of California, Davis, Calif., is able to walk on the special crutch fitted to its fractured shoulder.

Robber Finds Easy Looting in Mansion

NEW YORK (AP)—Robbers entered former film actress Hope Hampton's Park Avenue mansion from the roof early yesterday, found no one at home, and left by the front door with loot valued at \$335,000.

SPK SPEEDY ACTION

WASHINGTON (AP)—Secretary of State Acheson today urged Congress to act quickly to send 2,000,000 tons of grain to India where, he said, a famine is developing more rapidly than this country anticipated.

The Road to Failure is Paved with Wasted Assets

GEORGE S. MAY COMPANY Business Engineering Central Division Engineering Bldg. Chicago 6, Ill. Established 1925

Ohio Truss Co. MATERNITY SUPPORT

Physician Approved and Recommended. In Stock at Harvester Drug Also in stock

SACRO-LUMBAR Supports

SACRO-ILIAC Supports \$11.50 \$ 8.95

HARVESTER DRUG

Double S&H Green Stamps on Prescriptions COMBS-WORLEY BLDG. PHONE 1280

FOXWORTH-GALBRAITH LUMBER COMPANY

PHONE 209 PAMPA

Canada Refuses To Pose As 'Yes Man' For U.S. Policies

By DEWITT MACKENZIE / AP Foreign Affairs Analyst. It is of course easy to adopt the attitude that the boundary between Canada and the United States has been wiped out.

Like Mother, Like Daughter

Novolina, Metropolitan Opera soprano, approves a junior version of own costume worn by daughter, Jarmila Daubek, in New York.

Youth Being Held In Theft Of Auto

Roland Motley, believed to be 17, formerly of Corinth, Kans., was being held in Gray County jail on charges of auto theft after he was picked up Saturday night driving a car taken from the McWilliams used car lot on S. Cuyler.

Bull On Crutches

This Guernsey bull at the veterinary clinic of the University of California, Davis, Calif., is able to walk on the special crutch fitted to its fractured shoulder.

The Road to Failure is Paved with Wasted Assets

GEORGE S. MAY COMPANY Business Engineering Central Division Engineering Bldg. Chicago 6, Ill. Established 1925

Ohio Truss Co. MATERNITY SUPPORT

Physician Approved and Recommended. In Stock at Harvester Drug Also in stock

SACRO-LUMBAR Supports

SACRO-ILIAC Supports \$11.50 \$ 8.95

HARVESTER DRUG

Double S&H Green Stamps on Prescriptions COMBS-WORLEY BLDG. PHONE 1280

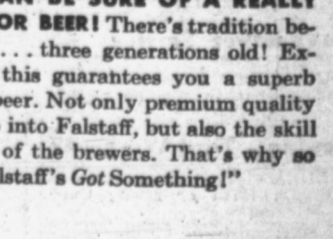
FOXWORTH-GALBRAITH LUMBER COMPANY

PHONE 209 PAMPA

Itching or Dry Eczema

Why scratch and suffer helplessly? Find happy relief as so many others do — use soothing, medicated RESINOL, the popularity of many uses

Falstaff's got something!



Extra satisfaction... bottle after bottle!

- 1 YOU GET PREMIUM QUALITY YEAST IN AND YEAR OUT! The Falstaff you enjoy in 1951 is the same premium quality as the Falstaff you knew in 1941...