

**Asst. Agents**  
INSURANCE AGENCY, L.L.C.  
...for all your insurance needs!  
Doing Business with people you know and trust!

1224 North Hobart  
Pampa, TX  
806-665-7081  
www.asstagents.com

Jim Ellison

\*\*\*\*\*ORIGIN MCI-D NDC 790  
0000471 12/31/2009  
HERITAGE MICROFILM  
4049 21ST AVE SW  
Cedar Rapids, IA 52404-6399

Steve

25% - 40% Off Select Trees!  
Tree Sale  
Wetters Landscape  
120 S. Hobart St. • 665-0158 • Mon-Sat • Sun 9-5pm

# The PAMPA NEWS

Wednesday, January 20, 2010 Volume 105 • No. 216 50¢ Daily • Weekend \$1.50

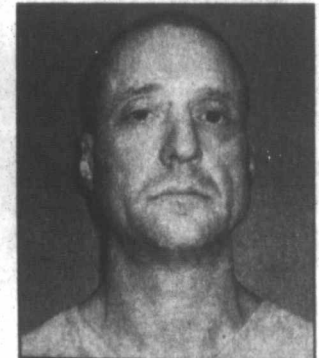
## Four arrested in early morning drug bust



BY BETSY PHILLIPS  
editor@thepampanews.com

Pampa Police Department personnel were still gathering evidence and information today after arresting four people on drug charges at 413 Magnolia in Pampa. Department officials said information on the apparent drug bust would be released tomorrow morning.

Booked into Gray County Jail this morning were Matthew Gilbert Maul, 38, Dale Lynn, McClure, 50, Cassandra Elaine Mullen, 21 and Rhan Scott Goldsmith, BUST cont. on page 3



Maul

Pampa Police Department personnel were gathering evidence on the scene of a drug bust this morning, Wednesday, January 20, at 413 Magnolia. The investigation is still ongoing.

staff photo by Betsy Phillips

Welcoming 2010  
With HUGE Savings!  
On New Products  
Arriving From Market

Get any new in-stock laminate or tile for just  
**10¢**  
Per sq. foot!

From 1/2" to 1/4" thick, with  
installation purchase required.

The Floor Store  
2110 Perryton Parkway  
(806) 665-4455

CHILDERS BROTHERS INC.  
HOUSE LEVELING

Uneven Floors  
Floor Bracing  
Cracks In Bricks  
Sticking Doors & Windows  
Interior Wall Cracking

FREE ESTIMATES  
1-800-299-9563  
WWW.CHILDERSLEVELING.COM

One STOP Flooring

John 15  
Greater love  
has no one than this.

Store Hours:  
Monday-Friday 9am-5pm  
Saturday 10am-1pm  
1533 N. Hobart - Pampa, TX  
(806)665-0995

M#10341 - LICENSED - INSURED  
BOB'S PLUMBING  
PAMPA, TEXAS  
806-669-1940  
CELL# 806-584-0809  
HOURS MON-FRI 8-6 • SAT 8-12  
EMERGENCY ANYTIME  
OWNERS: BOBBY FAIRES / DUECE FAIRES

Sentry Self Storage  
24 hr Controlled Access  
24 hr Video Surveillance  
Personal & Commercial  
665-1000

VISION SOURCE  
OAKELY  
MAUI JIM  
RAYBAN  
CARE CREDIT ACCEPTED  
1324 N. BANKS  
806.665.0771

VISION  
COMPUTER SERVICES  
I have computer problems.com  
806-665-HELP(4357)  
Combs-Worley Building  
120 W Kingsmill Ave  
Suite 303

MASSAGE ADVANTAGE  
Ford Family Chiropractic  
Rehabilitation & Wellness Center  
PAMPA TX

BEST DEAL \$39

MASSAGE  
Call: (806) 665-7261

M & H Leasing  
TOP OF TEXAS  
RENTAL

Rent the Bible in a year  
Gen. 43-45; Ex 9-11  
Matt 12:24-Matt 15:21-39  
1945 N. Hobart • 665-2061

## Pampa EMS board elects 2010 officers

BY DAVID BOWSER  
dbowser@thepampanews.com

Pampa's new ambulance service is firmly in the black and looking to expand.

At their first board meeting Tuesday night, Dr. Jim Hall of the Emergency Services Foundation of Texas, parent of Pampa EMS, indicated that they had \$287,019.75 in accounts receivable and \$40,980.49 in their bank account.

He said their net income for the last quarter of the calendar year 2009 was \$210,255.56.

Those numbers should improve, he said, now that Pampa EMS has been assigned an account number for and can receive Medicare payments. He noted that Medicare accounts for about a third of the ambulance service's business.

Over a Mexican food dinner, the board elected offi-

cers for 2010 and reviewed the last three-month in which the ambulance service has been in business.

Although the foundation's charter (it's a not-for-profit foundation) requires the board of directors to meet once a year, Hall said they could meet more often. The board announced its intention to meet quarterly their first year.

Hall said the cooperation the foundation has had from local leaders had been great. He said the ambulance service has developed a good rapport with other first responders.

"The Pampa Police Department does a great job," he said.

Joe Anstey, chief administrator for the ambulance service, said they had made almost 500 ambulance calls in their first quarter of service.

"We've seen a pretty fair

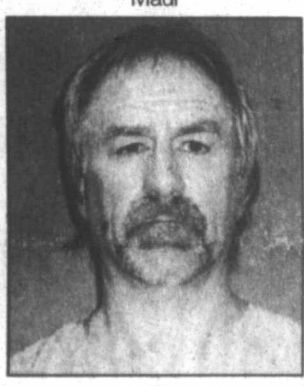
EMS cont. on page 3



Mullen



Goldsmith



McClure

## Cary Rushing named county's chief deputy

BY DAVID BOWSER  
dbowser@thepampanews.com

Although his brother, Jason Rushing, works for the Pampa Police Department and his father's cousin, Kelly Rushing, was a Special Texas Ranger with the law enforcement arm of Texas and Southwest Cattle Raisers Association, Gray County deputy and now is the chief of police at Pampa, Cary Rushing said it was entirely his decision to go into law enforcement.

David Cary Rushing was named chief deputy at the Gray County Sheriff's office earlier this month and has now become part of the family legacy.

Born in 1977 in Freeport, Tex., Rushing came to Pampa by way of Shamrock.

After graduating from Shamrock High School, Rushing first went to Hardin Simmons University before turning to Amarillo College and their criminal justice program.

"I just decided that's what I wanted to do," Rushing said.

From there, he heard that Gray County Sheriff Don Copeland was looking for deputies.

"I came in and interviewed," Rushing said. He started work for



Gray County Sheriff's Office Chief Deputy Cary Rushing

Sheriff Copeland Jan. 1, 1999.

"I was 21 and a half," he grinned.

As chief deputy, Rushing's duties will be to operate the sheriff's office in the absence of the sheriff, Copeland said.

Sheriff Copeland has been instrumental in guiding the younger Rushing's career.

In 2003, Rushing was assigned to the Panhandle Regional Narcotics Task Force for a year.

"When the sheriff suggested that I do that, I was excited about it," Rushing said. "Looking back on it,

it is the best thing that he ever did for me."

Rushing said he received numerous training hours.

"I learned it wasn't all putting guys in jail," he said. "I learned how to work a case from start to finish. I learned to work with other agencies and build up contacts and long term friendships."

He said he did a lot of growing during those days.

Among the schools that Rushing has attended is the Narcotics Investigation School.

"I've been to state and

RUSHING cont. on page 3

## Broadway in Pampa

Broadway will come to Pampa next week at the Pampa High School Choir perform show tunes at M.K. Brown Auditorium.

Choir Director Brianna Bailey said the choral department will present an Evening on Broadway at M.K. Brown Heritage Room at 7 p.m., Wednesday and Thursday evenings (April 27 and 28). The cost is \$25 per person. The money goes toward the choir's spring trip.

Entertainment will be Broadway Show tunes including music from Beauty and the Beast, Kiss Me Kate, Wicked, Dreamgirls, Annie, Show Boat, Rent, South Pacific, 42nd Street, Music Man, Little Women, Cabaret, Hairspray, Babes in Arms, Guys and Dolls and Jekyll and Hyde, Bailey said.

HOUSE HUNTERS- REALTOR

Open Houses  
Sunday 2:00-4:00  
See Sunday Ad for Details

Linda Laycock Broker 806 662.082	Jordan Oneal Assoc. 806 670.6629	Larry Hadley Assoc. 806 662.2779
---	---	---

PAMPA UNITED WAY  
AWARDS BANQUET




JANUARY 20TH 7:00PM  
AMERICAN BANK CENTER  
RSVP TO 665-60-1111





# For the record

## PAMPA FORECAST

Thursday	Friday	Saturday
		
High 56 Low 35	High 62 Low 37	High 52 Low 30

**Tonight:** A 20 percent chance of showers before midnight. Mostly cloudy, with a low around 32. Wind chill values between 25 and 30. South wind 10 to 15 mph becoming west northwest. Winds could gust as high as 20 mph.

**Thursday:** Mostly sunny, with a high near 56. Wind chill values between 25 and 35 early. Northwest wind 5 to 10 mph becoming south.

**Thursday Night:** Partly cloudy, with a low around 35. Wind chill values between 26 and 31. South wind between 5 and 15 mph, with gusts as high as 20 mph.

**Friday:** Mostly cloudy, with a high near 62. Windy, with a south wind 15 to 20 mph increasing to between 25 and 30 mph. Winds could gust as high as 40 mph.

**Friday Night:** A 30 percent chance of showers. Mostly cloudy, with a low around 37. Windy, with a south southwest wind between 20 and 25 mph, with gusts as high as 35 mph.

**Saturday:** Mostly sunny, with a high near 52. Windy, with a west southwest wind between 20 and 25 mph, with gusts as high as 35 mph.

**Saturday Night:** Mostly cloudy, with a low around 30. West northwest wind between 10 and 15 mph, with gusts as high as 20 mph.

(\*) This information brought to you by...

PRESTIGE

AUTOBODY & ACCESSORIES

101 S. HOBART 806-665-3500

IN STOCK: HELMETS, GLOVES, GOGGLES

## Obituaries

### June Thomas, 67

Pampa— June Thomas, 67, died January 15, 2010, in Pampa, Texas.

Services will be held at 2 p.m. Thursday, January 21, 2010, at Calvary Baptist Church, with Rev. Richard Bartel, pastor, officiating. Cremation and arrangements are under the direction of Carmichael-Whately Funeral Directors.

Mrs. Thomas was born December 23, 1942 in Tuscaloosa, Alabama. She

was raised in Caracas, Venezuela. She was a graduate of Ardmore High School in Ardmore, Oklahoma and graduated from the University of Alabama. June was Miss Oklahoma from 1960-1961, and had a part in the television show "Gunsmoke." She had been a resident of Pampa since 1963. She was a member of The Woody Guthrie Folk Music Center.

Survivors include three sons, Brad Thomas of Phoenix, Arizona, Brent Thomas and Brennon Thomas, both of Pampa; a daughter, Tori Thomas of Houston; one sister, Toni Vackar of Houston and a granddaughter, Amy Thomas of Pampa.

MEMORIALS: to a favorite charity  
Sign the on-line register at [www.carmichael-whatley.com](http://www.carmichael-whatley.com)



Thomas

### Marie Colley, 98

Skellytown— Marie Colley, 98, died January 18, 2010, in Pampa, Texas.

Services are pending with Carmichael-Whately Funeral Directors of Pampa.

Mrs. Colley was born May 21, 1911 in Mena, Arkansas. She married William Ira Colley on October 7, 1927 in Hannibal, Missouri. He preceded her in death on

May 20, 1989. Marie had been a resident of Skellytown since 1945. She was a member of the First Baptist Church of Skellytown, the WMU, Order of the Eastern Star, and was a matron of the Masonic Lodge. She supported the Disabled Veterans and Cal Farley's Boy's Ranch.

Survivors include a grandson, Lee Colley and

wife Minerva of Arlington; daughter-in-law: Betty Colley of Borger; five great-grandchildren; three great-great-grandchildren. Marie was preceded in death by a son, James Colley; and two grandsons, Linton Colley and Craig Colley.

Sign the on-line register at [www.carmichael-whatley.com](http://www.carmichael-whatley.com)



Colley

## EMERGENCY SERVICES

### PAMPA PD

The Pampa Police Department responded to the following calls during the period between 7 a.m. Tuesday, January 19 to 7 a.m. Wednesday, January 20.

Monday  
Animal Control Officers responded to six calls or stops.

Pampa Police Officers made 12 traffic stops, had 10 ongoing investigations,

and responded to two requests for information.

A warrant was serviced in the 800 block of N. Hobart Street.

Found property was reported in the 400 block of S. Graham Street.

An alarm was reported in the 900 block of Crane Road.

Disorderly conduct was reported in the 2400 block of N. Charles Street.

Disorderly conduct was reported in the 100 block

of E. Harvester Avenue.

Disorderly conduct was reported in the 1100 block of N. Hobart Street.

Criminal trespass was reported in the 1100 block of S. Hobart Street.

A traffic complaint was taken in the Montagu and Frost intersection.

Theft was reported in the 600 block of E. Frederic Avenue.

A runaway was reported in the 700 block of S. Barnes Street.

A building check was conducted in the 300 block of W. Kingsmill Avenue.

A suspicious person was reported in the 100 block of N. Starkweather Street.

A suspicious person was reported in the 400 block of S. Gray Street.

A suspicious person was reported in the Kentucky and Banks intersection.

## Closing arguments set in minister's murder trial

WACO, Texas (AP) — Closing arguments were set for Wednesday afternoon in the murder trial of a minister accused of killing his wife, whose death was first ruled a suicide.

Matt Baker's attorneys called just one witness for his defense. A DNA expert testified that his wife, Kari Baker, could not be excluded from the people who might have touched a typed suicide note.

Baker did not testify. He

faces up to life in prison if convicted in the 2006 death.

The Waco Tribune-Herald reported Wednesday that Baker attorney Guy James Gray showed jurors e-mails indicating the couple were working on their

marriage.

Baker was a Baptist preacher in the Waco area when his wife was found dead. He has maintained that she killed herself because of a deep depression.

## Feds probing rash of church fires

TYLER, Texas (AP) — Federal authorities are investigating a rash of church fires in East Texas, where seven such blazes have been reported since Jan. 1.

Police said the latest Tyler-area fire at Fellowship of Prairie Creek church in Lindale was quickly contained Wednesday morning.

No injuries or deaths have been reported.

The Lindale fire came after two weekend church

fires in Tyler, about 100 miles east of Dallas.

Authorities have not said the fires are linked, or whether arson was the cause.

Agents with the Bureau of Alcohol, Tobacco, Firearms and Explosives moved in last week after three church fires were reported over 12 days in nearby Athens.

The Athens blazes caused officials to re-examine a church fire in Canton, 40 miles west of Tyler.

## Palin to campaign with Perry Feb. 7

AUSTIN, Texas (AP) — Former vice presidential candidate Sarah Palin is heading to Texas to campaign with Republican Gov. Rick Perry on Feb. 7.

The Perry campaign issued a statement Wednesday saying the former Alaska governor will join Perry at a rally in the Houston area. More details will be released in the coming days.

Perry says he and Palin share "conservative values of limited government, low taxes and individual freedom." Palin endorsed Perry in his re-election big last year, and it was expected that she would campaign with him at some point.

Perry faces U.S. Sen. Kay Bailey Hutchison and party activist Debra Medina on March 2 in the Republican primary.

## LAST MINUTE ADS

The Pampa News is not responsible for the content of paid advertisement

**CERAMIC TILE.** Keith Taylor, 874-1779 lv. msg.

**DRAIN STOPPED up?** Why Wait? Ingram & Son Plumbing, M12466, 665-8317.

**HAVE YOU** entered your Pet in the Cutest Pet Contest at the Pampa News, yet?? You could win a cash prize, 1st-\$100, 2nd-\$50 or 3rd-\$25! See details in the Pampa News!! Deadline to enter Wed. Jan. 20th, before 4pm.

**LAMP LITER RESTAURANT.** Come Join Us for Breakfast!, Tues. thru Sat. 6am-11am, and Sat. til 3pm. for the late risers!

**LEFORS FCU** is accepting sealed bids on a 2005 Chev. Impala. Call 806-835-2773 for more info. Lefors FCU reserves the right to reject any and all bids.

**MUST SEE!!!** Beautiful 1 1/2 CT. Diamond Wedding Ring Set. Size 6. Only worn 2 years. Purchased at Zales. Asking \$1500. Please call 662-5716 after 4 pm.



Fetch your copy of The Pampa News today!  
(Or call 669-2525 to have it delivered to your door.)

The Pampa News's

# Cutest Pet Contest

Three prizes will be awarded

First Place — \$100 cash prize  
Second Place — \$50 cash prize  
Third Place — \$25 cash prize

**CONTEST RULES:**

- All entries must be received by 4 p.m. Wednesday, Jan. 20.
- Attach your pet's photo to the contest entry form and write your pet's full name on the back of the photograph as well. **Include a \$10 entry fee.**
- Pictures will not be returned unless you include a self-addressed, stamped envelope with your entry.
- By submitting a photo, you are granting this newspaper permission to publish the photo in any future edition of this newspaper.
- Employees of this newspaper or contest sponsors and their immediate families are not eligible to win. The readers of The Pampa News will judge the contest based upon a ballot to be printed along with all the entries in the Jan. 27 issue.

**\$10 entry fee**

ENTRY FORM

Owner's Name \_\_\_\_\_

Address \_\_\_\_\_

Telephone number \_\_\_\_\_

Pet's name \_\_\_\_\_

Send your entry form, \$10 entry fee and pet photo to The Pampa News, P.O. Box 2198, Pampa, TX 79065 or bring it by The Pampa News Office at 403 W. Atchison Monday-Friday 8 am to 4 pm.  
All photos will be published in THE PAMPA NEWS on Wednesday, Jan. 27 with a ballot for readers to judge the winner.



## Texas population gain expected from Katrina

DALLAS (AP) — Texas could add four congressional seats following the 2010 Census because of a population jump partly linked to Hurricane Katrina, demographers say.

Demographer William Frey with the Brookings Institution looked at population growth rates from the first half of the decade. Frey predicts Texas, which now has 32 U.S. House members, will gain four seats, in part because of Katrina, the Dallas Morning News reported Wednesday. The one-a-decade count also helps divvy federal funds.

Katrina stormed ashore in August 2005, sending evacuees from Louisiana and other parts of the Gulf coast to Texas, with the bulk forced to flee New Orleans.

Houston took in nearly 250,000 displaced people, and a year after the storm, Texas still had about 251,000 evacuees, according to a survey by the state Health and Human Services Commission.

Nicole Smothers, 38, moved with her family from New Orleans to Houston and does not expect to return. The census will count where she lives as of April 1 as her home state.

She found a job in the Houston city planning office, owns a home and holds a Texas driver's license.

"There is no way we can justify going back to New Orleans," Smothers said. "Our whole life is in Texas now."

Smother's 70-year-old mother-in-law rents

an apartment in nearby Missouri City but still receives mail at the property she owns in New Orleans. She would like to return.

"Her roots are there," Smothers said. "Her friends are there. Her base is there."

Census figures show that the population of Texas on April 1, 2000, topped 20.8 million, as the strong economy and immigration bolstered the growth in annual numbers.

"The Katrina evacuees are a drop in the bucket in terms of population growth," Texas state demographer Karl Eschbach said. "But a shift of a few thousand can affect where a congressional seat goes."

## Judge rules Leach lawsuit can go forward

BETSY BLANEY LUBBOCK, Texas (AP) — A judge ruled on Wednesday that fired Texas Tech coach Mike Leach's lawsuit against the university can go forward but not as quickly as his attorneys wanted.

State District Judge William Sowder denied a motion by Leach's attorneys to speed up taking depositions from school administrators and obtaining documents relevant to the case.

"I see no reason to give Mr. Leach any special treatment in this case," the judge told the court. "So this case will take an ordinary course of action."

Leach's attorneys said Sowder's denial doesn't jeopardize their case.

"We're pleased with the court's decision today," attorney Ted Liggett said after the hearing.

The university fired Leach on Dec. 30, two days after it suspended him amid allegations he mistreated a player with a concussion. His suit includes

allegations of libel and slander, breach of contract and violation of Texas' Whistleblower Act.

Leach has denied he mistreated the player, sophomore receiver Adam James. The player said his coach twice ordered him to stand for hours while confined in a dark place during practice.

The AG's office did not immediately have a comment Wednesday.

Sowder ordered the university to retain or preserve all documents and e-mails related to Leach's firing.

Perkins told Sowder he believed the seven claims in Leach's suit were an attempt "to pile on" accusations against the school

and that the judge could rule on their motion to dismiss the case.

"Based on their own arguments you have everything you need" to take up the school's motion to dismiss on sovereign immunity grounds, he said.

Leach attorney Paul Dobrowski told the judge Wednesday that the coach "cannot get a job" due to the actions of the university.

With allegations of player mistreatment hanging over his head, Leach has been left out of discussions for openings at USC, Tennessee, East Carolina and South Florida, Dobrowski has said.

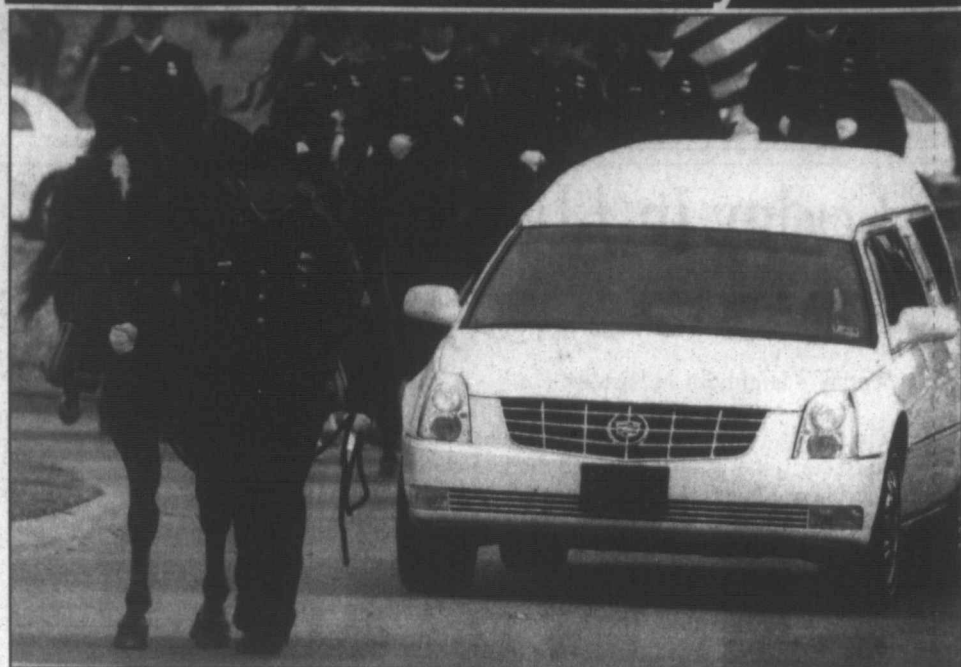
## Rushing

local officers certification course for clandestine methamphetamine labs at Quantico, Va., he said. "I'm a site safety officer for clandestine meth labs." He's also a qualified

firearms instructor and has earned several other advanced certifications.

"I just hope I can live up to expectations," Rushing said.

## In the line of duty



Fort Worth Police Mounted Patrol Sgt. Ward Robinson leads Arlington, Texas, officer Craig Story's hearse during services at Moore Memorial Gardens in Arlington, Tuesday, Jan. 19, 2010. Story, 34, was killed in the line of duty last week in a wreck. (AP Photo/Star-Telegram, Paul Moseley)

## Desk and Derrick Club to meet

The Desk and Derrick Club of Pampa will hold its monthly meeting at 6:30 p.m. Tuesday, Jan. 26 at the Pampa Country Club.

Pampa Chamber Director Joe Weaver will be the guest speaker. The public is invited. Reservations may be made by contacting Elaine McDonnell, W.O. Operating Co., Ltd., 806-665-8298.

## EMS

amount of volume," Anstey said. "Especially when you consider we had to create (the ambulance service) from the ground up."

The ambulance service has grown over the last three months. It now employs 38 people. More than 20 of those are medical personnel.

Anstey said went over Pampa EMS reaction times and compared them to national standards.

The national standard for when the phone rings at dispatch until an ambulance crew has been notified is two minutes. Pampa EMS does it in less than a minute. In December it was 0.17 of a minute.

The response time nationally is 12 minutes. Pampa's response time is about 10 minutes or less.

Hall credited Anstey and Don and Better Fletcher with getting the ambulance up and running and in the financial shape that it's in today.

Anstey in turn commended the staff for the work they had put in during the last months or more.

Hall was re-elected president of the board for another term.

Dr. Bobby Smith was elected vice president, Mike Giesler, RRT, was elected secretary. Kim Laycock was elected to the board, and Gary Willoughby was elected to serve at large.

Gray County Judge Richard Peet will represent the county.

The City of Pampa has not yet named a board member to represent the city.

The keep continuity, the board Tuesday night chose to stagger terms.

Hall and Smith will serve two-year terms. Giesler and Laycock will serve one-year terms. Willoughby will serve a two-year term.

Peet and the city representative will serve three-year terms.

Anstey also announced that the ambulance service expects to expand. He said they are in talks with Boys Ranch now and may soon be providing ambulance service to them.

## Bust

cont. from page 1

aka Ryan Scott Goldsmith. Charges had not been finalized as of press time, but all had been charged with possession of a controlled substance. Maul and McLure also had outstanding warrants, according to officials.

### ON VACATION WITH THE PAMPA NEWS! - WASHINGTON, D.C



Dayton Wallace of Pampa took this photo on the Capitol Mall while on the Texas Panhandle Honor Flight Oct. 7-9. Along on the trip was his daughter, Brenda Wilkerson of Red River, NM.

Remember to take a copy of The Pampa News with you on your getaway. Take a photo of family and friends holding the newspaper. We'll print your picture in the newspaper. So, whether you are going to Paris, France or Paris, Texas (or Clarendon for that matter) ... take us along for the ride! Remember to: Identify every person in the photograph from left to right, front row first; Give us some information about the trip and the landmark in the photo; Give us a name of a contact person and a telephone number/email address and where they live. To see your photo in the paper faster, email the photo and information to: rfriddle@thepampanews.com.

# BEALLS

## WINTER CLEARANCE

# SAVE 80%\*

WHEN YOU TAKE AN EXTRA 33% OFF ENTIRE STOCK RED-TICKET MERCHANDISE

PLUS... SAVE 60% WHEN YOU TAKE AN EXTRA 20% OFF

ENTIRE STOCK YELLOW-TICKET MERCHANDISE

Prices effective through January 26, 2010. \*Total savings off original price. Selected styles, entire stocks only where indicated. In-store markdowns may have been taken. Selection may vary by store.

Coronado Center • 665-8612  
Mon - Sat 10:00 am-8:00 pm • Sun 12:00 noon-6:00 pm



# Viewpoints

## Today in History

Today is Tuesday, Jan. 19, the 19th day of 2010. There are 346 days left in the year.

### Today's Highlight in History:

On Jan. 19, 1960, the Treaty of Mutual Cooperation and Security between Japan and the United States of America was signed by both countries in Washington, D.C. (Domestic opposition to the treaty led to the resignation of Japanese Prime Minister Nobusuke Kishi (nah-boo-soo-keh kee-shee)).

### On this date:

In 1807, Confederate general Robert E. Lee was born in Westmoreland County, Va.

In 1809, author, poet and critic Edgar Allan Poe was born in Boston.

'Any girl can be glamorous. All you have to do is stand still and look stupid.'

— Hedy Lamarr, Austrian-American Actress

In 1853, Giuseppe Verdi's opera "Il Trovatore" premiered in Rome.

In 1861, Georgia seceded from the Union.

In 1937, millionaire Howard Hughes set a transcontinental air record by flying his monoplane from Los Angeles to

Newark, N.J., in seven hours, 28 minutes and 25 seconds.

In 1955, a presidential news conference was filmed for television for the first time, with the permission of President Dwight D. Eisenhower.

In 1966, Indira Gandhi was elected prime minister of India.

In 1970, President Richard M. Nixon nominated G. Harrold Carswell to the Supreme Court; however, the nomination was defeated because of controversy over Carswell's past racial views.

In 1980, retired Supreme Court Justice William O. Douglas died in Washington, D.C. at age 81.

In 1990, Arthur J. Goldberg, former Supreme Court justice, labor secretary and U.S. Ambassador to the United Nations, was found dead in his Washington apartment at age 81.

Ten years ago: Michael Skakel (SKAY'-kul), a nephew of Robert F. Kennedy, was charged with bludgeoning to death 15-year-old Martha Moxley in Greenwich (GREH'-nich), Conn. in 1975, when he was also 15. (Skakel was later convicted, and is appealing.) A dormitory fire at Seton Hall University in New Jersey killed three people and injured 62. Former Italian Prime Minister Bettino Craxi died in Tunisia at age 65. Actress Hedy Lamarr was found dead in her Orlando, Fla. home; she was 85.

Five years ago: Previewing his second inauguration, President George W. Bush pledged to seek unity in a nation divided by political differences, saying, "I am eager and ready for the work ahead." Condoleezza Rice won strong but not unanimous endorsement as secretary of state from a Senate panel. The American Cancer Society reported that cancer had passed heart disease as the top killer of Americans age 85 and younger. Former chairman and chief executive of Citicorp Walter B. Wriston died in New York at age 85.

One year ago: Russia and Ukraine signed a deal restoring natural gas shipments to Ukraine and paving the way for an end to the nearly two-week cutoff of most Russian gas to a freezing Europe.

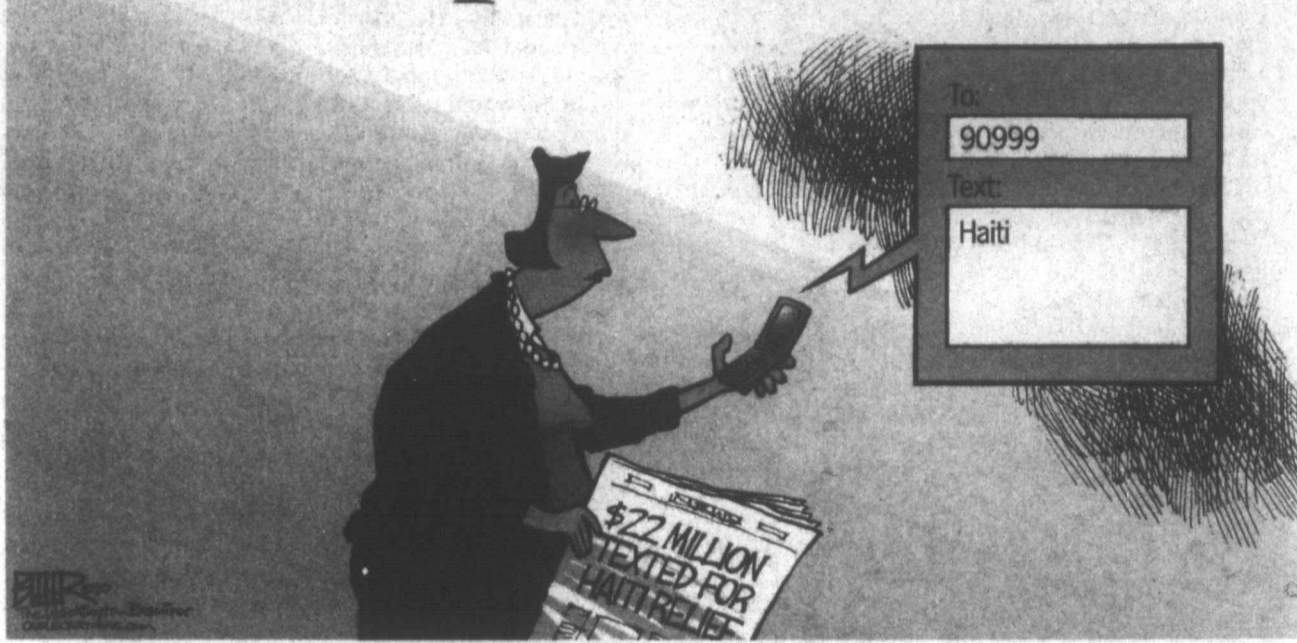
Today's Birthdays: Former U.N. Secretary-General Javier Perez de Cuellar is 90. Actress Jean Stapleton is 87. Actor Fritz Weaver is 84. Actress Tippi Hedren is 80. Former PBS newsman Robert MacNeil is 79. Movie director Richard Lester is 78. Singer Phil Everly is 71. Actor-singer Michael Crawford is 68. Actress Shelley Fabares is 66. Country singer Dolly Parton is 64. ABC news-woman Ann Compton is 63. TV chef Paula Deen is 63. Rock singer Martha Davis is 59. Singer Dewey Bunnell (America) is 58. Actor Desi Arnaz Jr. is 57. Comedian Paul Rodriguez is 55. Conductor Sir Simon Rattle is 55. Actress Katey Sagal is 53. Reggae musician Mickey Virtue (UB40) is 53. Rock musician Jeff Pilson (Foreigner) is 52. Actor Paul McCrane is 49. Actor William Ragsdale is 49. Tennis player Stefan Edberg is 44. Rock singer Whitfield Crane (Ugly Kid Joe) is 42. Singer Trey Lorenz is 41. Actor Shawn Wayans is 39. Rock singer-musician John Wozniak (Marcy Playground) is 39. Actress Drea (DRAY-uh') de Matteo is 38. Comedian-impressionist Frank Caliendo is 36. Actress Marsha Thomason is 34. Actress Jodie Sweetin is 28. Actor Logan Lerman is 18. Olympic gold medal gymnast Shawn Johnson is 18.

## We welcome your letters

To insure publication, please adhere to the following guidelines:

- Letters should be brief and to the point. All correspondence will be edited for length and clarity.
- All letters must be signed. Submit your name, address and telephone number with the letter for verification. Only your name and city will be published.
- Defamatory comments will not be published.
- E-mail submissions are welcome.

# Compassion 2.0



## Analysis: GOP sees Mass. win as stop sign for Democrats

An AP News Analysis WASHINGTON (AP) — Reeling from the loss of a long-held Massachusetts Senate seat, Democrats are rethinking the lessons of Barack Obama's 2008 election, with the GOP cheerfully suggesting they scale back their ambitions and agenda.

Republican Scott Brown's win in a liberal state will do more than vastly complicate Obama's bid to overhaul the U.S. health care system. It will send his party into a painful re-examination of voters' anger and desires ahead of the November elections for Congress, governorships and state legislatures.

Questions will include whether Americans really want more government help in matters such as obtaining health insurance, even though Obama campaigned on that very issue. Most immediately, Brown's win Tuesday over Martha Coakley to replace the late Edward M. Kennedy will deprive Democrats of a filibuster-proof Senate majority. That could kill the Democrats' effort to revamp health care unless House Democrats reluctantly embrace a previously passed Senate version that many of them dislike. It would require no new Senate action, although liberal groups might be furious.

Gleeful Republicans warned against such a move. The message from Massachusetts, said Sen. Bob Corker, R-Tenn., is: "Go back to the drawing board" on health care.

Democrats didn't go quite that far, but some were clearly chastened.

"In many ways the campaign in Massachusetts became a referendum not only on health care reform but also on the openness and integrity of our government process," said Sen. James Webb, D-Va. He urged that "we suspend further votes on health care legislation until Sen.-elect Brown is seated."

Democrats may spend months trying to divine the lessons of Tuesday's setback. Many of them saw the 2008 election as a repudiation of George W. Bush's presidency, with Obama as the fresh new leader promising to harness the government to expand health coverage, discipline banks and stimulate the moribund economy.

But Brown's victory suggests that many voters still harbor suspicions or outright resentment of the federal government, no matter who's in charge.

Conservatives, perhaps sensing the mood better than liberals, have accused Obama of Big Brotherism and even socialism as he pushes his health plan and pours billions of dollars into economic stimulus programs.

The president rightly notes that he campaigned precisely on those issues. But that's small comfort to nervous and perplexed Democratic lawmakers who now expect stiff anti-incumbent winds in November and heightened GOP attacks against big government.

It's unclear how much Democrats will change their tactics. Rep. Chris Van Hollen of Maryland, head of the Democratic Congressional Campaign Committee, said his colleagues will continue to blame the previous administration for driving the economy "into a ditch" and running away.

The Senate's Democratic campaign chief, Sen. Bob Menendez of New Jersey, seemed more humble. "We will sort through the lessons of Massachusetts," he said, including "the need to show that our commitment to real change is as powerful as it was in 2008."

American voters rejected Republican control in the 2006 congressional elections and the 2008 presidential election. Democrats widely assumed that a top priority, and a winning political issue, was to make health insurance more accessible and competitive.

But now, just 14 months later, voters are snarling at the Democrats they put in charge, leaving them to wonder how to expand services without invoking public wrath.

John Triolo, a Massachusetts independent who voted for Obama in 2008 and for Brown on Tuesday, exemplified the confusing message.

"I voted for Obama because I wanted change," said Triolo, 38, a sales manager from Fitchburg. "I wanted change, I thought he'd bring it to us, but I just don't like the direction that he's heading."

Everyone should have health coverage, Triolo said, "but I think we should take the time to look at it, but not ram it down our throat."

Obama may be as puzzled as anyone by his party's inability to keep the seat held by Kennedy, a liberal icon, for nearly a half-century. The president was "surprised and frustrated" by the course of the

Coakley-Brown contest, spokesman Robert Gibbs said before polling places closed Tuesday.

Democrats were dismayed last November to see the GOP take over the governorships of New Jersey and Virginia, states that Obama had carried the year before. Tuesday's results were more painful and troubling.

Massachusetts is among the nation's most liberal states, and the candidates made it clear that a Brown victory could kill the Democrats' health care push in the Senate.

Democrats now must ask: Did Massachusetts voters register their discontent based on a decent understanding of the complex health care legislation? Or did conservatives do a better job of framing and spinning the debate, starting

with raucous public meetings in August that caught Democrats flat-footed?

The latest AP-GfK poll showed an even split between Americans who support the health care package and those who oppose it. But Republican lawmakers say Brown's victory proves that public intensity and momentum are on their side.

If Democrats can find any solace in Tuesday's results, it's this: Massachusetts pollsters detected a strong anti-incumbent mood among voters, which could hurt Republican officeholders as well as Democrats in November.

## THE PAMPA NEWS

403 W. Atchison • Pampa, TX 79065  
806-669-2525 • 800-687-3348  
Fax: 806-669-2520

**Randall Pribble**  
Publisher  
rpribble@thepampanews.com

<b>ReDonn Woods</b> Advertising Manager rwoods@thepampanews.com	<b>Betsy Phillips</b> Editor bphillips@thepampanews.com
<b>Sue Pribble</b> Advertising Representative spribble@thepampanews.com	<b>David Bowser</b> Reporter dbowser@thepampanews.com
<b>Beverly Taylor</b> Classified Advertising classified@thepampanews.com	<b>Andrew Glover</b> Reporter aglover@thepampanews.com
<b>Kera Kent</b> Circulation circulation@thepampanews.com	<b>Marcus Elkins</b> Press Supervisor press@thepampanews.com
<b>Carrie Hair</b> Accounting bookkeeper@thepampanews.com	<b>Chico Ramirez</b> Circulation Supervisor

This newspaper (UPS 781-540) is published daily, except Sundays, Thanksgiving and Christmas Day, by The Pampa News. Periodicals postage paid at Pampa, Texas. Postmaster: Send address changes to The Pampa News, P.O. Drawer 2198, Pampa, TX 79065-2198.

All carriers are independent contractors and The Pampa News is not responsible for advance payments of two or more months made to the carrier. Please pay directly to the Pampa News any payment that exceeds the current collection period. There are no mail subscriptions available within the city limits of Pampa. Mail subscriptions must be paid three months in advance.

© 2010 The Pampa News

MEMBER  
2010

M  
Carl  
Spring  
ing the  
versary  
ried Ca  
4, 1950  
Carol  
Lakevi  
graduat  
High  
attend  
College  
was  
and rec  
degree  
State U  
The co  
ing in F  
They  
Gary M  
of Bor  
wife C  
a dece  
Dittber



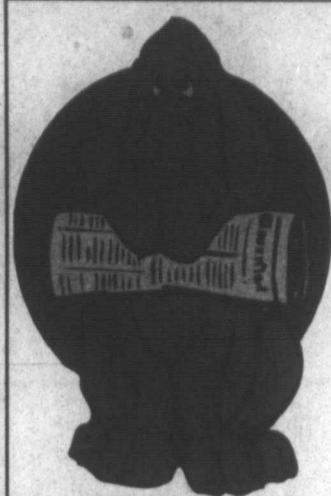
ABBY  
a curio  
person  
pursue  
and be  
fessor.  
have a  
Howev  
others  
of educ  
I lik  
as a n  
sibling  
that wh  
their p  
across  
these p  
less sen  
to be  
GOOD  
DE  
one of  
told y  
come  
ing, I  
ner mi  
sitive.  
more t  
it's tin  
Book s  
niable  
to othe  
import  
to peo  
"smart  
they w  
you.  
Do  
to "co  
you k  
educat  
you sp  
when  
will do  
these q  
tive, y  
sociall  
you're  
and pe  
in the  
DE  
parents  
older  
small.  
and I  
wonder



# Meyers celebrate 60th anniversary

Carl and Carol Meyer of Spring Creek will be celebrating their 60th wedding anniversary. Carol Jo Byars married Carl Meyer on February 4, 1950 in Clovis, NM. Carol was raised in the Lakeview Community and graduated from Lakeview High School. She then attended Draughtons Business College in Plainview. Carl was raised in Plainview and received an accounting degree from North Texas State University in Denton. The couple met while residing in Plainview. They have four children: Gary Meyer and wife Cheryl of Borger; Greg Meyer and wife Constance of Austin, a deceased daughter Carla Dittberner and husband Terry

Dittberner of Austin; John Meyer and wife Susan of Tulsa, OK. The couple's grandchildren include Jeremy Meyer of Borger, Nathan Meyer of Dallas, Dale Meyer of Phoenix, AZ, Jennifer Meyer of Lewisville, Janet Ruiz of Grape Vine, Tammy Yourman of New Braunfels, Trey Dittberner of Virginia Beach, VA; Colt Meyer, Casey Meyer and Cristian Meyer of Tulsa, OK. The couple also has seven great grandchildren. Carl and Carol have lived in the Pampa area for over 50 years. Both Carl and Carol are actively involved with their Sunday School classes of First Baptist Church in Pampa.



News you can sink your teeth into!

Call 669-2525 to subscribe!

The Pampa News

**Sudoku**

Answer to yesterday's puzzle:

1	9	7	4	6	8	5	2	3
8	6	2	5	3	9	4	7	1
4	5	3	7	2	1	8	9	6
5	1	9	8	7	3	2	6	4
7	2	8	9	4	6	1	3	5
3	4	6	1	5	2	9	8	7
2	7	1	6	9	5	3	4	8
6	3	5	2	8	4	7	1	9
9	8	4	3	1	7	6	5	2

			1			2		
7			2	5				6
		2	6		3		9	
5	3					6	7	
			4			2		
						1		
			7	8		5		
	7			9	4			

Level: Advanced

## Dear Abby...



By Pauline & Jeanne Phillips

DEAR ABBY: I have always been a curious and motivated person. Because of it, I pursued higher education and became a college professor. Most of my siblings have also gone to college. However, their significant others have varying levels of education. I like to think of myself as a nice person, but my siblings have let me know that when I converse with their partners, I often come across as patronizing. Do these partners need to be less sensitive, or do I need to be more so? -- THE GOOD PROFESSOR

DEAR PROF: If only one of your siblings had told you that you often come across as patronizing, I'd say his or her partner might be overly sensitive. However, because more than one has said it, it's time for a self-check. Book smarts are an undeniable asset, but sensitivity to others can be even more important. If you talk down to people, no matter how "smart" you are, eventually they will run away from you.

Do you feel compelled to "correct" those whom you know to have less education than you? Do you speak in polysyllables when a few simple words will do? If the answers to these questions are affirmative, you need to be more socially sensitive when you're with your family -- and possibly when you're in the classroom as well.

DEAR ABBY: My parents divorced when my older brother and I were small. Mom remarried, and I was adopted by the wonderful man who raised

me as his beloved daughter. I had limited contact with my biological father, "Nate," which seemed to please everyone. After my adopted dad passed, Nate came back into my life. I have not seen much of him but he was present at my second marriage five years ago, traveling across country to be there. Last month he called to tell me he has been diagnosed with terminal cancer and has named me as his

heir since my older brother is deceased.

As a birthday gift, I presented him with a box from a company that does genome sequencing. It allows people to see their DNA and learn about their ancestry as well as any health-related issues. I enjoyed learning about genetics and thought Nate would, too.

Imagine how stunned I was when I learned that Nate is NOT my father. The company has assured me there is little chance the test is wrong, and they are certain we are not related.

I am close to my mother and horrified that she kept this secret from me for

more than 50 years. I don't want anyone to be hurt, but I need the truth. What do I do? -- QUESTIONING MY DNA IN S.F.

DEAR QUESTIONING: Have a calm, private conversation with your mother and tell her what you have learned. If she denies it, have the test repeated. When you receive the results, either apologize to your mother or raise the subject again. She may know your father was, or you may have been the result of an opening shot in the sexual revolution, a chapter your mother may not care to revisit.

**MASSAGE ADVANTAGE**

**LOWEST PRICE! \$29**  
\* Package II

# MASSAGE DISCOUNTS

• Redeemable at All Locations • Licensed Massage Therapists  
• Full 30 & 60 Minute Massages • Sharable Packages • No Sign-Up Fees

**BEST DEAL! \$39**  
\*\* Package IV

<b>Package I</b> (1) Half Hour Massage Only \$39	<b>* Package II</b> (6 or More) Half Hour Massages Only \$29 each	<b>Package III</b> (1) One Hour Massage Only \$49	<b>** Package IV</b> (6 or More) One Hour Massages Only \$39 each
--	--	---	--

CALL PAMPA'S MASSAGE ADVANTAGE LOCATION TODAY:  
**CALL: (806) 665-7261**  
@ FORD FAMILY CHIROPRACTIC REHABILITATION & WELLNESS CENTER  
701 N. PRICE RD. PAMPA, TX

LOCATIONS ALSO IN COLORADO, MINNESOTA, & NORTH CAROLINA  
WWW.MASSAGEADVANTAGE.COM

# Pets of the Week... sponsored by The Pampa News

Pictures Of All The Animals Can Be Viewed In The Window Of The Shelter Office 24 Hours A Day



"Laci"  
Female - Ferrier Mix



"Cowboy"  
Male - Pashhund

www.cityofpampa.org

Come by and see the animals available for adoption

IF YOU'RE LOOKING FOR A "FOREVER FRIEND" VISIT US TODAY!  
OPEN TO THE PUBLIC MONDAY-SUNDAY 3 PM - 5 PM

FOR INFORMATION ABOUT THESE PETS OR ANY OTHER  
CONTACT THE ANIMAL SHELTER AT 669-5775 OR COME BY THE SHELTER AT HOBART STREET PARK







# The Pampa News

# Classifieds



**SELL IT FAST!  
IN THE CLASSIFIEDS!**

**1 Public Notice**  
Abandoned Vehicles  
At the location of 641 S. Cuyler Street. Be advised that the vehicles listed below have been accepted for storage in accordance with the provisions of the vehicle storage facility Chapter 85.704. These vehicles were towed in Pampa, Texas by the authority of Gray county Law Enforcement. This notice is to inform you that these vehicles are presently being stored at Douglas Towing and Recovery and the charges accumulated from the date the vehicle was placed in storage, the vehicles will be deemed abandoned.  
**Vehicle 1**  
2006 Chevy Pickup  
1gbhk29v16e214512  
VSF Total \$3720.00  
**Vehicle 2**  
1993 Ford Taurus  
1falp52u2vg239303  
VSF Total \$1758.00  
E-24 Jan. 20, 2010

**3 Personal**  
\*ADOPT\* Art classes to Zoo trips & everything between, baby will be King/Queen. Expenses paid.  
Kim 1-800-361-9323  
**5 Special Notices**  
**ADVERTISING Material to be placed in the Pampa News. MUST be placed through the Pampa News Office Only.**  
**13 Bus. Opp.**  
GREAT Investment opportunity Howardwick Convenience store. 665-1875, 806-383-1985.  
**14d Carpentry**  
Carpentry, Roofing, Replacement Windows, steel siding & trim. Continuous gutters. Jerry Nicholas 669-9991, 662-8169  
CUSTOM Building & Remodeling. New Homes & Additions. Shawn Deaver Const., 806-662-2977.  
OVERHEAD DOOR REPAIR Kidwell Construction. Call 669-6347.

**14d Carpentry**  
WOOD & METAL FENCING and REPAIRS Call 665-2859 or 662-5582.  
**14e Carpet Serv.**  
NU-WAY CLEANING SERVICE Bob Marx Owner-Operator. Call 665-3541.  
**14h Gen. Serv.**  
CERAMIC tile work. Remodeling floor, shower, kitchen, wall. Texture, painting, dry wall. Free est. Call 665-3453 leave message. Jesus Barraza.  
HOUSE Cracking? In bricks or walls? Childers Brothers, Inc. 800-299-9563, 806-352-9563  
COX Fence Company. Repair old fence or build new. Free estimates. Call 669-7769.  
SOLIS FENCING. New Fence / Fence Repairs. Free estimates. 806-486-1368, 662-2473.  
PANHANDLE HOUSE LEVELING Floor or roof sagging, walls cracking, doors dragging, bricks cracking? Call us 1st! 669-0958

**14h Gen. Serv.**  
JH Concrete, specializing in all types of concrete incl stamp, stain Free est. 806-382-5408  
**14s Plumbing/Heat**  
BROWNING Heating & Air Cond., 665-1212. Free est. on new equip. We service all brands!  
JACK'S Plumbing, 715 W. Foster, 665-7115.  
**14u Roofing**  
WENDELL'S ROOFING CO. Metal Roofs, Composition Roofs and Built-Up Roofs. Free Estimates. 806-665-7648  
**21 Help Wanted**  
NOTICE  
Readers are urged to fully investigate advertisements which require payment in advance for information, services or goods.  
Licensed Massage Therapist needed immediately for a busy Rehab / Wellness Center. Please fax resume to (806)665-0537  
CAREER OPPORTUNITY  
Immediate opening for Bob-Tail Driver. CDL / HAZMAT required. Stable co., good benefits. Frontier Fuel Co., Dalhart, TX. Please call 806-244-6431.  
POSITION AVAILABLE: REGISTERED NURSE  
Looking for reliable & self motivated RN's with unbeatable work ethics. Flexible place to work with great benefits available. Call for an interview. EOE  
ROADRUNNER HOMECARE (866)210-8275 or (806)259-2597

**21 Help Wanted**  
F-T LVN's, F-T CNA's and F-T Marketer needed. Call McLean Care Center, 779-2469, Candy Branscum, Adm.  
BORGES HEALTHCARE CENTER has immediate openings for LVN's and CNA's. Apply in person to Cheryl McFall, RN, our new DON, at 1316 S. Florida, Borges, EOE.  
TRUCK Driver needed. Class A CDL and Drug testing required. Call 662-5005.  
Licensed Physical Therapy Assistant needed for a growing multi-disciplinary Physical Therapy practice in Pampa, Tx. Fax Resume to: (806)665-0537  
CONTINENTAL CREDIT has openings for ASSISTANT MANAGERS / COLLECTORS  
Do you have customer service and collection experience? If so, we want to talk with you about joining our team.  
Prior Management Experience a Plus!  
Great Benefit Package incl: Medical, Dental, 401K, Profit Sharing and Disability Insurance.  
STARTING PAY UP TO \$8 / HR.-BASED ON EXPERIENCE  
Apply Confidentially In Person At: Continental Credit 1429 N. Hobart Pampa, TX 79065 Equal Opportunity Employer  
NEED immediately-person exp. in alignments, front end work, tire repair. Drug test required. Apply in person. No phone calls. Gonzales Wheel Alignment, 125 N. Somerville.  
NEED person exp. in service calls for busy tire shop. Must be on call after hrs. Drug test req. Apply in person. No phone calls. Gonzales Wheel Alignment, 125 N. Somerville.  
FREE 1/2 Chihuahua 1/2 min pin Female. 664-4817.  
FREE to good home male full blood Rott already neutered, good with kids. 663-1148.  
FREE puppies. Pit Bull / German Sheppard Mix. 3 Female, 2 Male. 806-217-0413.  
BEAUTIFUL tiny Yorkie male, 5 mo. has all shots. \$800. Call 665-6295.  
PIT/ROTT mix puppies, born Sept 5th. Must be ONLY pet, no other dogs or cats. No small children. Must give away due to owners death. 669-7752.

**21 Help Wanted**  
\$2000.00 SIGN-ON BONUS Licensed Vocational Nurses  
Pampa Nursing Center has openings for LVN's on all shifts. Apply in person, 1321 W. Kentucky.  
**50 Building Suppl.**  
White House Lumber 101 S. Ballard 669-3291  
**69 Misc.**  
ADVERTISING Material to be placed in the Pampa News MUST be placed through the Pampa News Office Only.  
FURNITURE CLINIC Refinishing, Repairing Re-Gluing 662-9700  
FOR Sale: 1 1/2 Ct. Diamond Engagement / Wedding Ring Set. Only worn for 2 yrs. Purchased @ Zales. Size 6. \$1500. Call 662-5716 after 4 pm. Serious callers only please.  
FOR Sale: Kenmore Elite gas dryer- Large capacity sweater rack \$350. 18.2 Cubic ft. Frigidaire Refrigerator \$350. 806-665-9445 or 806-664-0801  
NEW queen sz. mattress set \$246, twin sz. sets \$128. Red Barn, 1420 S. Barnes. Open Sat. or call 665-2767  
FREESTANDING lrg. gas or wood burning stove. Exc. cond., \$600. 665-6295.  
AUTOCLAVE, \$600. Exc. cond. Call 665-6295.  
**80 Pets & Suppl.**  
FREE 1/2 Border Collie 1/2 Catahoula Male. 1 male 1/2 Chihuahua 1/2 min pin. 664-4817  
FREE 1/2 Chihuahua 1/2 min pin Female. 664-4817.  
FREE to good home male full blood Rott already neutered, good with kids. 663-1148.  
FREE puppies. Pit Bull / German Sheppard Mix. 3 Female, 2 Male. 806-217-0413.  
BEAUTIFUL tiny Yorkie male, 5 mo. has all shots. \$800. Call 665-6295.  
PIT/ROTT mix puppies, born Sept 5th. Must be ONLY pet, no other dogs or cats. No small children. Must give away due to owners death. 669-7752.

**95 Furn. Apts.**  
All real estate advertised herein is subject to the Federal Fair Housing Act, which makes it illegal to advertise "any preference, limitation, or discrimination because of race, color, religion, sex, handicap, familial status or national origin, or intention to make any such preference, limitation, or discrimination." State law also forbids discrimination based on these factors. We will not knowingly accept any advertising for real estate which is in violation of the law. All persons are hereby informed that all dwellings advertised are available on an equal opportunity basis.  
1 bdrm's avail. starting at \$445/mo. 1/2 Off 1st mo. rent w/7 mo. lease. Corp. units: utilities, linens, basic cable. Caprock Apts. 665-7149  
**96 Unfurn. Apts.**  
1 Bedroom Apts. Reasonable Rate Coffee Street Apts. 665-4274  
1/2 Off 1st Mo. Rent, 1&2 BR starting at \$390 / mo. On-site laundry & w/d hookups in all 2 bdr. apts. Caprock Apts., 665-7149.  
3 BR for only \$649/mo. 1/2 off 1st mo. rent. w/d hookups & on-site laundry. Caprock Apts., 665-7149.  
**ALL BILLS PAID 1 Bdrms.**  
No Sec. Deposit Monthly Leases Avail. (817) 909-4766  
APTS. Houses Duplexes. K&B Properties. Ref. & dep. req. Lakeview Apts. 669-4386  
CLEAN 1 bdr., stove, refrig. All bills paid. 886-1674.  
FIRST month 1/2 rent, nice updated 2 bdr., w/d conn., Austin sch. Fig Tree Apts., 663-9727.  
GWENDOLEN Plaza New Year's Special, larg. 2 bdr., 1 1/2 bdr. Total move-in \$500. 665-1875.  
THE Schneider House, now leasing apts., 1 & 2 bdr., utilities incl. 120 S. Russell or 665-0415.

**98 Unfurn. Houses**  
PICK UP rental list, in the Black Box, at 125 S. Houston, Pampa.  
3 bedroom 2 bath 662-9775  
3 bdr., 1 ba., new flooring throughout, new tile in entry & bath. Lrg. back yard. Great neighborhood. 2122 Hamilton. \$700 mo., \$700 dep. 806-570-9824, 665-5667  
2/1/1. Great neighborhood. 1704 Hamilton. \$575 mo. \$575 deposit. 570-9824 or 665-5667.  
3-1-CP \$550. 4-1-1 \$625. \$400 deposit. 665-1122 or 663-1073  
306 Hazel \$450 mo., \$400 dep. 662-9669  
LRG. 3 bdr., 1040 Cinderella. \$650 mo., \$200 dep. 662-7557  
LRG. 3 or small 4 bdr., 700 Bradley. \$550 mo., \$200 dep. 662-7557.  
2 bdrm, 1 bath. New carpet & paint. Great area. HUD ok. Call 665-4082.  
**99 Stor. Bldgs.**  
TUMBLEWEED Acres, self storage units. Various sizes. 665-0079, 665-2450.  
**102 Bus. Rental**  
DOWNTOWN office space for rent. Utilities & cleaning service provided. Ample parking. 669-6823  
OFFICE Space for rent, ask about 3 months free rent. 669-6841.  
**103 Homes For Sale**  
2407 Fir St. Move In Ready! 3 bdr., 2 ba. home with 2 living areas. Call 665-2276  
3 bdr., ceramic tile, garage. OWC. 1129 Seneca. 662-7557.  
HIGHEST CASH PAID FOR HOUSES! CALL 665-1875  
PRICE Reduced! 4 bdr., 1 3/4 ba. 2300 sq. ft. Newly renovated. 669-1846, 663-0514.  
TRUSTAR Real Estate, 1716 N. Hobart. List with us! Property mgmt., Home staging. 665-4595.  
**115 Trailer Parks**  
TUMBLEWEED Acres, Storm Shelters, fenced, stor. bldg. avail. 665-0079, 665-2450.  
**116 Mobile Homes**  
MOBILE home & lot for sale. 2 bdr., 1 ba. 1017 S. Somerville. \$3800. Call 688-6035  
**120 Autos**  
NOW taking bids - on 2000 Chev. Corvette (repossessed). V8, 6 spd., 81,707 mi. Pamel Community Federal Credit Union reserves the right to accept or reject any or all bids. Can be seen at 1939 N. Hobart, Pampa. 688-7041  
LEFORS FCU is accepting sealed bids on a 2005 Chev. Impala. Call 806-835-2773 for more info. Lefors FCU reserves the right to reject any and all bids.  
1987 Pontiac Firebird, has been wrecked-needs body repair for sale. Call 662-5316.

**dollargeneral**  
SERVE • EXCEL • SUCCEED  
**NOW HIRING Pampa, TX**  
• Store Mgrs. in Training  
1 year retail mgmt. exp. preferred. Position begins at competitive hourly wage and with opportunity to become Store Manager.  
• Assistant Managers  
6 months supervisory exp. preferred  
• Lead Associates  
• Associates  
Apply in person:  
**DOLLAR GENERAL** RETAIL CAREERS  
2225 Perryton Pkwy., Suite 3 Pampa, TX 79065  
Supports a Drug Free Workplace • Equal Opportunity Employer  
www.dollargeneral.com

**Bookkeeper- Established Pampa Company looking for an exp. individual that can handle all A/R, AP, Payroll/Taxes, Invoicing / Sales Tax. Must have good phone skills & professional attitude. QuickBooks & Manufacturing exp. a plus.**  
Job includes: Health insurance, retirement, paid holidays & vacation.  
Salary based on experience.  
Please send Resume by Jan. 25th to:  
Box 87  
c/o The Pampa News  
P.O. Box 2198,  
Pampa, TX 79066-2198

**POSITION AVAILABLE: REGISTERED NURSE**  
Looking for reliable & self motivated RN's with unbeatable work ethics. Flexible place to work with great benefits available. Call for an interview. EOE  
ROADRUNNER HOMECARE (866)210-8275 or (806)259-2597

**NEED immediately-person exp. in alignments, front end work, tire repair. Drug test required. Apply in person. No phone calls. Gonzales Wheel Alignment, 125 N. Somerville.**  
**NEED person exp. in service calls for busy tire shop. Must be on call after hrs. Drug test req. Apply in person. No phone calls. Gonzales Wheel Alignment, 125 N. Somerville.**  
**FREE 1/2 Chihuahua 1/2 min pin Female. 664-4817.**  
**FREE to good home male full blood Rott already neutered, good with kids. 663-1148.**  
**FREE puppies. Pit Bull / German Sheppard Mix. 3 Female, 2 Male. 806-217-0413.**  
**BEAUTIFUL tiny Yorkie male, 5 mo. has all shots. \$800. Call 665-6295.**  
**PIT/ROTT mix puppies, born Sept 5th. Must be ONLY pet, no other dogs or cats. No small children. Must give away due to owners death. 669-7752.**

**\$1500.00 SIGN-ON BONUS Certified Nurse Aide**  
Pampa Nursing Center has openings for CNA's on all shifts. Apply in person, 1321 W. Kentucky.

**AXYDLBAAXR is LONGFELLOW**  
One letter stands for another. In this sample, A is used for the three L's, X for the two O's, etc. Single letters, apostrophes, the length and formation of the words are all hints. Each day the code letters are different.  
**1-20 CRYPTOQUOTE**  
K N U X D P X A ' Q B K H W Q G W  
Z X S P U X ' D ' Z W T S B H K A V ,  
R Q S Z Q I S L K A V S A X Q G W Z X A W .  
P X B B U I S Z Q X A  
**Yesterday's Cryptquote: EVERYBODY GETS SO MUCH INFORMATION ALL DAY LONG THAT THEY LOSE THEIR COMMON SENSE.**  
— GERTRUDE STEIN

**FOR RENT**  
1987 Pontiac Firebird, has been wrecked-needs body repair for sale. Call 662-5316.

**Daily Horoscope**  
HAPPY BIRTHDAY for Thursday, Jan. 21, 2010:  
This year, you are able to break past restrictions. You often become energized after a conversation with a key associate or partner. You might not always see eye to eye. In fact, you might actually like the difference of opinion. Issues could develop this year involving travel, education and/or in-laws. You might have difficulty detaching in order to see the complete picture. If you are single, you often find people you date quite challenging. Learning to respect different opinions and not always being right could be important. If you are attached, the two of you need to juggle your different concerns, each taking over what is critical to his or her well-being. ARIES always has a wild idea or two.  
The Stars Show the Kind of Day You'll Have: 5-Dynamic; 4-Positive; 3-Average; 2-So-so; 1-Difficult  
**ARIES (March 21-April 19)**  
\*\*\*\*\* Be direct in your dealings, and you will feel better. You are on top of your game. Others could be taken aback by your creative, energetic and smiling ways. You will have what you want, no matter what. Tonight: All smiles.  
**TAURUS (April 20-May 20)**  
\*\*\* Listen to news and understand what is happening behind the scenes. Someone is very fiery and full of him- or herself. Rather than get into a heated dance or argument, look the other way. Tonight: Do for you.  
**GEMINI (May 21-June 20)**  
\*\*\*\*\* Get ready, as friends and associates join together to help you accomplish something that is very important. Curb a tendency toward sarcasm, especially if you're trying to heal a rift. This person might be overly sensitive, but you are also very dramatic. Tonight: Be with a favorite person.  
**CANCER (June 21-July 22)**  
\*\*\*\*\* You might want to understand exactly what is going on behind the scenes. Be sensitive to the possibilities. Someone sees you as far more capable than he or she ever could be. Be sensitive to this associate. He or she is competent but needs some encouragement. Tonight: A must appearance.  
**LEO (July 23-Aug. 22)**  
\*\*\*\*\* Look at the big picture, and then you'll have less of a chance for a backfire. You'll also be less likely to waste energy when your plate is full. Communicate what is on your mind. Others might be more upset than you realize. Tonight: Imagine. Walk in someone else's shoes.  
**VIRGO (Aug. 23-Sept. 22)**  
\*\*\*\* Deal with another person directly. You might want to avoid that situation but honestly cannot. Listen to your inner voice when you're angry or hurt. Don't hold back, but also don't explode. You want to be heard. Tonight: Talk over dinner.  
**LIBRA (Sept. 23-Oct. 22)**  
\*\*\* You have been so serious for so long. Listen to someone's opinions and share. Could you be looking at the glass as half-empty? Though normally you are not negative, you could be right now. Tonight: Listen to a partner. You will hear a whole different version of what occurred.  
**SCORPIO (Oct. 23-Nov. 21)**  
\*\*\* If you are not feeling 100 percent, it might be time to see the doctor or start a reasonable diet. In any case, you cannot go wrong taking better care of yourself.  
Don't forget the dentist, either! Tonight: Choose something relaxing.  
**SAGITTARIUS (Nov. 22-Dec. 21)**  
\*\*\*\*\* Allow more playfulness to come forward than in the past. Your inventiveness and creativity emerge as your strong suit once more. Evaluate a friend's suggestion, keeping in mind where he or she is coming from. Tonight: Follow the action.  
**CAPRICORN (Dec. 22-Jan. 19)**  
\*\*\*\*\* Steer clear of problems and stay more upbeat. You might be wondering what to do in order to get past an issue with a family member or someone you care a lot about. Let this person express his or her anger, even if you don't like what you hear. Tonight: Order in.  
**AQUARIUS (Jan. 20-Feb. 18)**  
\*\*\*\*\* Stay in touch with your feelings and express them before they become bottled up and even more of a problem. In fact, someone might find it quite disarming to hear your vulnerability. Tonight: Chat chat over dinner.  
**PISCES (Feb. 19-March 20)**  
\*\*\*\* Be aware of your efforts and what they are worth. It is important to ask for what you feel is fair. A partner starts acting up. You might want to assume more responsibility to complete this project. Tonight: Balance your checkbook. Pay a bill or two.  
**BORN TODAY**  
Golfer Jack Nicklaus (1940), Spice Girl Emma Bunton (1976), singer Mac Davis (1942)  
\*\*\*  
Jacqueline Bigar is on the Internet at www.jacquelinebigar.com.  
© 2010 by King Features Syndicate Inc.

Find your answer in The Pampa News - in print and online!  
Go to www.thepampanews.com or call 806-669-2525.



# Sports

## Randall Raiders outlast Pampa Harvesters' rally

BY ANDREW GLOVER  
aglover@thepampanews.com

The Pampa Harvesters basketball team rallied from a double-digit deficit but lost their fourth consecutive game 55-50 to the Randall Raiders Tuesday in Pampa.

Head Coach Dustin Miller said his team really fought back and that's all you can ask for.

"We had the chance to win the game or tie it," Miller said. "We had a shot it just didn't go down for us."

In the first quarter both teams made baskets on their first couple of possessions. The Raiders went on a run with the score tied at five. Randall scored the next eight points to lead 13-5. The teams exchanged baskets their final two possessions of the quarter and the Raiders led 15-11 after the first.

Both teams scored baskets on their first two possessions of the second quarter. Alex Clendening made a two-pointer to cut Randall's lead to 20-16 but that would be the closest



staff photo by Andrew Glover  
Alex Clendening attempts a layup against Randall Tuesday. Pampa lost 55-50.

the Harvesters would get. The Raiders scored the next

seven points to lead 27-16. Randall did not allow their

lead to get smaller than nine the rest of the quarter

and led 32-20 at halftime.

In the third quarter, the Harvesters started to get back in the game. After Pampa hit a two-pointer and Randall made two free throws, the Harvesters went on an 8-0 run to cut the Raiders lead to 34-30. Both teams exchanged baskets the rest of the quarter and Pampa trailed 38-32 after the third.

Clendening hit a three-pointer to open the fourth quarter to cut the Raiders' lead in half. Both teams exchanged baskets on their next possessions. Clendening scored four straight points for Pampa to cut Randall's lead to two. After the Raiders hit a three, Clendening scored four more points to cut the Raiders lead to one.

The Raiders expanded their lead to three but Latigo Collins made a three to tie the game at 48. Randall scored the next four points to take the lead for good. The Harvesters trailed 53-50 in the last minute and missed a three-point shot. Pampa got the offensive rebound and missed another three

and the Raiders got the rebound.

Clendening led the team in scoring with 21 points. Collins scored 13 and Travis Hagerman scored nine. The Harvesters (9-12, 1-4) visit Palo Duro (14-5, 5-0) 7:30 p.m. Friday. The Dons have won 83 straight district games. Miller said his team will have to limit turnovers and transition baskets to have a chance.

"Try to make them beat you from the perimeter," Miller said. "It's tough they're good top to bottom. They can beat you inside and outside. They can run and press. You just try to limit their easy baskets."

The junior varsity lost 54-34. Coach Matt Embry said his team trailed 31-30 after the third quarter and that his team ran out of energy in the fourth quarter.

"Turnovers, transition defense that's what killed us in the fourth," Embry said. "We got tired they stayed energetic. They ran the floor, we weren't getting back... I was proud of the effort of the first three quarters."

## Lady Harvesters let third quarter lead slip away

BY ANDREW GLOVER  
aglover@thepampanews.com

The Pampa Lady Harvesters basketball team allowed an early lead to slip away as they lost their second straight game 52-39 to the Randall Lady Raiders Tuesday.

Head Coach Gene Valentine said Randall went on a run in the fourth quarter to take the game.

"They got separa-

tion from us and we just couldn't get it back," Valentine said.

In the first quarter, the teams played fairly competitive. The Lady Harvesters opened the game with a 6-2 run and maintained a four-point lead most of the quarter. But Randall ended the quarter on a 4-0 and both teams were tied at 10 at the end of the quarter.

In the second quarter,

both teams played close. Pampa scored the first three points of the quarter to take a 13-10 lead. The Lady Raiders went on a 7-3 run to take their first lead of the game at 17-16. Both teams exchanged baskets the rest of the quarter and went into halftime tied at 21.

The Lady Harvesters started the third quarter strong, scoring the first six

points of the quarter to take a 27-21 lead. Each team scored a basket on their next possessions, but with Pampa leading 30-23, the Lady Raiders would go on a run. Randall would outscore Pampa 14-3 to end the third quarter with a 37-33 lead.

Both teams scored on their first possession of the fourth quarter. The Lady Raiders made a two-pointer to bring their lead up to six and then hit a three-pointer to expand their lead to 44-35. The Lady Harvesters wouldn't get closer than seven the rest

of the quarter. The Lady Raiders outscored Pampa 15-6 in the final quarter.

Shelbie Watson and Taryn Eubank led the team in scoring with 10 points each. Emilie Troxell scored eight and Ashlee Holland scored six. The Lady Harvesters (8-15, 3-4) visit Palo Duro 6 p.m. Friday. Valentine thinks his team is much better than they were when they lost 67-45 December 15 in Pampa.

"We're more aggressive," Valentine said. "We push the ball up court better. We're handling press- es better. If we can limit

Taylor and Patterson we can neutralize the inside we can slow those two down and have a chance."

The junior varsity lost to Randall 48-44. Coach Forrest Harding said his team did a good job of fighting back.

"We were down by 18 with a quarter and a half to go and came back and just missed a couple shots," Harding said.

Delaney Clendening led the team in scoring with 17 points, Caitlin Sieck scored 10 and Kaitlynn Ramirez scored seven.



staff photo by Andrew Glover  
Shelbie Watson attempts a jumper against Randall Tuesday. Pampa lost 52-39.

Would you like a copy of a photo you see in the paper?  
Buy it Online!

Go To:  
[www.thepampanews.com](http://www.thepampanews.com)  
and click on

See a great photo in THE PAMPA NEWS? Order a copy for yourself today!

Maybe its time to start thinking inside the box.

And get results from your advertising.

- 86% of adults read a community newspaper at least once a week.\*
- 59% of adults rely on the local newspaper as their primary news source.\*
- Only 10% watch television for community information.\*

How will you reach your target audience?

The PAMPA NEWS

\* Survey conducted by the National Newspaper Association and the Center for Advanced Social Research at the Missouri School of Journalism at the University of Missouri-Columbia. Research surveyed adults 18 years old and up in markets with fewer than 100,000 residents.