

**HOUSE HUNTERS - REALTOR**

Linda Laycock, Broker (806) 662-1312  
Larry Hedley, Associate (806) 662-2779

Jordan O'Hara, Associate (806) 670-8623  
Tasha Holman, Associate (806) 440-4153

Pampa MLS & Amarillo MLS

**DOUG BOYD MOTORS**

1227 S. Hobart  
Pampa, TX 79066  
409-665-6300

Visa & Mastercard Accepted  
www.DougBoydMotors.com

Marc Steve

**Premier Floor Warehouse**

Pampa, TX  
301 S. Cuyler  
669-7001

Come see all our new market items!  
Everything is on sale!

For All Your Flooring Needs  
Before You Buy Give Us A Try!

**New Years Special!**

Maple Espresso  
100% True Hardwood  
Only \$6.97  
(Per sq. ft. installed)  
While supplies last.

Mon-Fri 9am-5pm • Sat 10am-1pm  
**One Stop Flooring**  
665-0995 • 1533 N. Hobart

# The PAMPA NEWS

**TODAY IN SPORTS**



**Playoff bound**

Harvester seniors power team to postseason

Page 1B

Search for  
The Pampa News



Volume 106 • No. 255      Weekend Issue      Saturday and Sunday, February 5-6, 2011      75¢ Daily • Weekend \$1.50

**CHILDERS BROTHERS INC. HOUSE LEVELING**

Uneven Floors  
Floor Bouncing  
Cracks In Bricks  
Sinking Doors & Windows  
Interior Wall Cracking  
FREE ESTIMATES

1-800-299-9563  
www.childersleveling.com

**Vision**

Computer Services  
Over 20 years of computer problems solved

806-665-HELP(4357)  
Combs-Worley Building  
120 W Kingsmill Ave  
Suite 303

CALL \$49/HR.  
No Membership Fees.

**MASSAGE ADVANTAGE**

(806) 665-7261

@ Ford Family Chiropractic  
Whitaker & Stephens Center  
See Website For More Advantages

www.MASSAGEADVANTAGE.COM

**CRAWFORD RESIDENTIAL ROOFING**

- Composition • Wood
- 26 Gauge Metal
- Stone Coated Steel
- Bonded & Insured

806-662-2029

A New Selection of Trees Has Arrived!

1208 Hobart • 669-0133  
Mon-Fri 9am-5pm • Sat 10am-4pm

**WTL** TIMBERLINE

**National Bank of Commerce**

An Office of First National Bank Waupaca, WI

1224 N. Hobart  
806-665-0022

FDIC

**Texas FURNITURE**

PROUDLY SERVING PAMPA SINCE 1932

1415 N. HOBART • 806-665-1623  
MONDAY-SATURDAY 9:00-5:30



**Roberta's FLOWERS**

217 N. Ballard  
669-3309

Where Your Friends Buy Their Flowers  
www.robertasflowers.com

**M & H Leasing TOP OF TEXAS**

**ELITE** Co.

"Before you make a difference, you have to believe you can."

1945 N. Hobart • 665-2061

## Senior parents begin prom preparations

**ARNIE AURELLANO**  
editor@thepampanews.com

Prom night may still be months away, but the parents of Pampa High School's seniors are already hard at work at making their kids' last prom night a special one.

A preliminary planning meeting was held Monday by a group of senior parents to start begin preparations for this year's prom, scheduled for May 14, and the



photo courtesy of Beth Rice

Senior parents Jeanna Zuniga (from left), Caprice Mayhew, Bonnie Carlson, Huey Green, Kathy Bradley, Beth Rice, Lisa Gibson, Amanda Copeland, Judy Green and Deanna and Eugene Polasek met on Monday to begin prom preparations.

## SWEET VICTORY?



staff photo by Redonn Woods

Teri Slavick of the United bakery holds up a custom-made Pittsburgh Steelers cake purchased by Jahene Lucas and her son, Maxx Organ.



staff photo by David Bowser

Suzanne Wood has taught music for over three decades.

## Wood loves music, kids

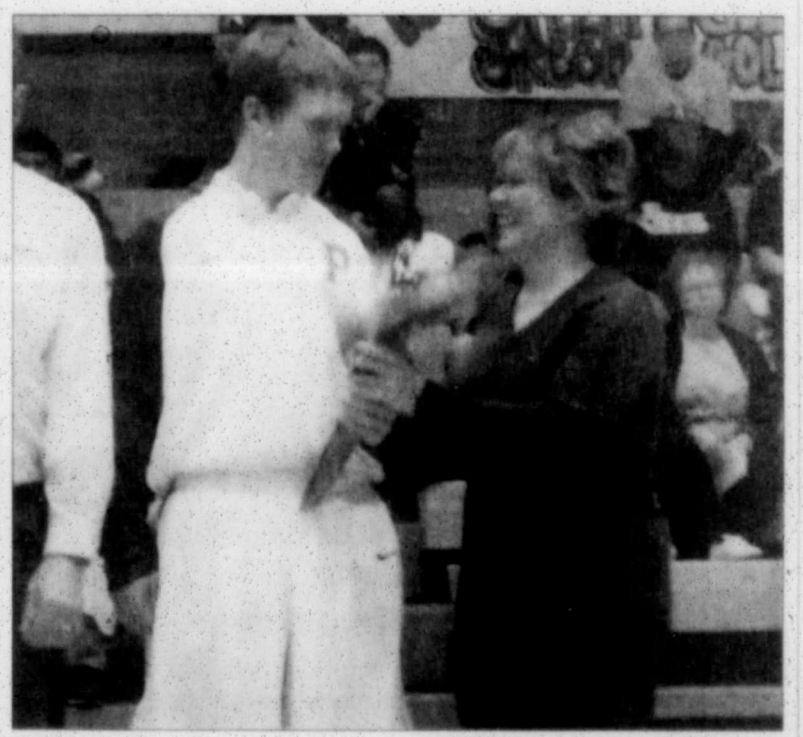
**REPORTER**  
emailaddress@thepampanews.com

Suzanne Wood's life is music. She's been teaching it a little more than 30 years now.

A native of Fort Worth, Wood's family moved to West Texas when she was a teenager. "I moved to Friona when I was in high school," Wood said.

Music has always been an important part of her life, she

## PHS BASKETBALL SENIOR NIGHT A ROSY MOMENT



staff photo by Andrew Glover

Senior Jonathan Polasek presents his mom, Deanna, with a yellow rose during Senior Night festivities before the boys' basketball game on Friday.

**LIVE MUSIC at the Pampa Chamber of Commerce!**

February 5 • 7:30 p.m. • \$10 per person

Richard Smith, guitar & Julie Adams, cello

Swing, fiddle tunes, Beatles, Bach, Joplin rags, finger pickin', originals, blues, pop, comedy and much more!

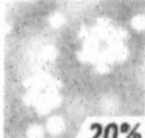


For more information, call 669-3241 or exec@pampachamber.com

**IN THIS ISSUE:**

Obituaries ..... 2A	Kid's Page ..... 6A
Local Record ..... 2A	Comics ..... 7A
Weather ..... 2A	Sports ..... B1,B2,B3
Afternoon Rush ..... 3A	Entertainment ..... 4B
Viewpoints ..... 4A	Dear Abby ..... 2C
Ag Report ..... 5A	Classifieds ..... 2D,3D



## PAMPA FORECAST

Sunday	Monday	Tuesday
 20%	 20%	 20%
High 40 Low 19	High 38 Low 23	High 26 Low 10

**Saturday Night:** A 30 percent chance of snow. Mostly cloudy, with a low around 25. Wind chill values between 13 and 23. Windy, with a north northwest wind 5 to 10 mph increasing to between 15 and 20 mph. Winds could gust as high as 25 mph.

**Sunday:** A 20 percent chance of snow. Partly sunny, with a high near 40. Windy, with a north northwest wind between 15 and 25 mph, with gusts as high as 35 mph.

**Sunday Night:** Mostly cloudy, with a low around 19. Blustery, with a north northwest wind between 5 and 15 mph.

**Monday:** Partly sunny, with a high near 38. Breezy, with a northeast wind 5 to 15 mph becoming south. Winds could gust as high as 20 mph.

**Monday Night:** A 20 percent chance of snow. Mostly cloudy, with a low around 23. South southeast wind around 10 mph becoming northeast.

**Tuesday:** A 20 percent chance of snow. Mostly cloudy, with a high near 26. Windy, with a northeast wind 10 to 15 mph increasing to between 20 and 25 mph. Winds could gust as high as 40 mph.

**Tuesday Night:** A 30 percent chance of snow. Mostly cloudy and windy, with a low around 10.

This information brought to you by...

**PRESTIGE**  
**AUTOBODY & ACCESSORIES**  
101 S. HOBART 806-665-3500  
**Dents, Dings, Collisions, we do it all**  
**Free Estimates, All Insurance**

## LAST MINUTE ADS

The Pampa News is not responsible for the content of paid advertisement.

**A SPECIAL Thank You** to my parents, Jim & Sharon Stanley, for all the love & support you have given us during this difficult time. Love you, Candy & Chrissy Branscum.

**CLOTHING ROOM** at Mary Ellen & Harvester Church of Christ open Tues, Feb. 8th, 9-11 a.m. Enter the South double doors on West side of church bldg. on Mary Ellen St.

**VOGUE CLEANERS** Special Wash & Press Shirts \$1.99, Jeans \$3.99, 1542 N. Hobart, 669-7500.

**PAMPA SHRINE Club** We Cater!! 50-200 people. (approx. 3000 sq. ft.) available for rent. Weddings, Banquets, Company Parties or Family Reunions. Kitchen facilities avail. at no extra chrg. Call Ben Watson 665-3359 to reserve!

**PAMPA SOCCER Assoc.** Spring Registration, Feb. 1st-Feb. 12th, T-Shirts & More, 111 W. Kingsmill, 665-3036.

**MASSAGE THERAPY,** Shirley Chase, 806-665-0635.  
**OAK FIREWOOD,** \$275 Delivered, 806-663-3124.

## Obituaries

### Cesar "Chito" Holguin, 21

Cesar "Chito" Holguin, 21, died February 3, 2011, in Pampa.

Rosary will be held at 5:30 p.m. Sunday, February 6, 2011, at Carmichael-Whalley Colonial Chapel, and funeral mass will be at 10 a.m. Monday, February 7, 2011, at St. Vincent dePaul Catholic Church, with Rev. Francisco Perez, pastor, officiating.

Burial will be at Fairview Cemetery under the direction of Carmichael-Whalley Funeral Directors.

Chito was born February 28, 1989, in Oklahoma City. He had been a resident of Pampa most of his life, graduating from Pampa High School in 2007. He attended Amarillo College and Clarendon College. Chito enjoyed watching and playing football, basketball and softball. He was a member of St. Vincent dePaul Catholic Church. He will be remembered for his laughter, sense of humor and his smile.

Survivors include his parents, Tiburcio and Delma-Holguin of Pampa; sister, Danita Salazar and husband Johnny of Pampa; numerous aunts, uncles and cousins; a niece, Aubrey Salazar of Pampa; nephew, Zanden Salazar of Pampa; and his girlfriend, Ashley Facio of Pampa.

Memorials may be made to St. Vincent dePaul Catholic Church, 810 W. 23rd, Pampa, TX 79065.

Sign the online register at [www.carmichael-whatley.com](http://www.carmichael-whatley.com).



Holguin

the V.F.W. He was a member of the Wheeler County Stock Show Board, and served on the Mobeetie ISD School Board for 14 years.

Survivors include his wife, Patricia Corse of the home; son, Steve Corse and wife Samie of Mobeetie; two daughters, Zana Jones and husband Rick of Claude, and Jana Corse of Amarillo; stepson, Eldon Eads of Pampa; two stepdaughters, Neta Cornelison of Midland and Brandie Killebrew of Guilford, Conn.; five grandchildren, Davis Corse of Mobeetie, Haley Jones and Ashley Jones, both of Claude, Taylor Cornelison of Midland, and Katy Tracy of Pampa. Douglas was preceded in death by a brother, Wallace Corse in 1972.

Memorials may be made to First United Methodist Church, Mobeetie, TX 79061.

Sign the online register at [www.carmichael-whatley.com](http://www.carmichael-whatley.com).

### Malena Dale Baten, 61

Malena Dale Baten, 61, died February 4, 2011, in Pampa.

Services will be at 2 p.m. Monday, February 7, 2011, at Calvary Baptist Church, with Rev. Dallas Stringer, pastor, and Rev. Richard Bartel, associate pastor, officiating.

Burial will be at Fairview Cemetery under the direction of Carmichael-Whalley Funeral Directors.

Malena was born January 22, 1950, in Pampa. She had been a lifelong resident of Pampa, graduating from Pampa High School in 1967. She married Jerry Don Baten on September 22, 1967, in Pampa. She was a member of Calvary Baptist Church. Malena was a homemaker and the owner of "All It's Charm" for five years. She also enjoyed selling Tupperware. She will be dearly missed by her family, especially her grandchildren.

Survivors include her husband, Jerry Don Baten of the home; two sons, Brent Baten and wife Misty of Pampa, and Earnie Baten and wife LaDawn of Dumas; a daughter, Christin Chisum and husband Chris of Pampa; brother, Kelly Everson and wife Sonya of Pampa; sister, Delpha Cates and husband Doug of Pampa; six grandchildren, Destry Baten, Clay Baten, Jacey Baten, Blake Chisum, and Alyson Chisum, all of Pampa, and Sydnee Baten of Dumas; and many nieces, nephews and cousins.

Memorials may be made to Calvary Baptist Church Building Fund, 900 E. 23rd, Pampa, TX 79065.

Sign the online register at [www.carmichael-whatley.com](http://www.carmichael-whatley.com).



Baten

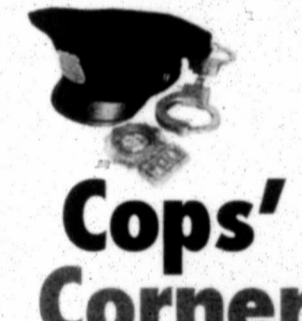
### Douglas K. Corse, 79

MOBEETIE—Douglas K. Corse, 79, died February 3, 2011, in Amarillo.

Services will be at 2 p.m. Sunday, February 6, 2011, at First United Methodist Church of Mobeetie, with Rev. Dick Irvine, retired Methodist minister, and Rev. Wesley Holland, pastor of First United Methodist Church of Mobeetie, officiating.

Burial will be at Mobeetie Cemetery under the direction of Carmichael-Whalley Funeral Directors of Pampa.

Mr. Corse was born December 21, 1931, on the family ranch in Hemphill County where he lived until his death. He graduated from Mobeetie High School in 1949. He was a veteran of the U. S. Navy, serving during the Korean Conflict. Douglas married Mary Aline Walker on April 21, 1954, in Mobeetie. She preceded him in death on January 1, 2002. He later married Patricia Trimble on August 4, 2002, in Mobeetie. He was a member of the First United Methodist Church of Mobeetie, the American Legion, and



**Cops' Corner**  
The Pampa Police Department is striving to be a proactive police department. One way to do this is to ensure we do everything possible to make awareness

to our citizens through programs and classes. Some of the programs we offer here at the Police Department are the McGruff program and the Eddie Eagle gun safety program.

The McGruff program has a variety of classes that can be taught through the familiar Crime Dog mascot, including bicycle safety, water safety, Halloween safety, and child safety (abductions).

The Eddie Eagle gun safety program teaches young children three basic

concepts if a gun is spotted:

1. DON'T TOUCH.
2. LEAVE THE AREA.
3. GO TELL AN ADULT.

We feel it is very important that children understand these concepts at a young age. With the help of Eddie Eagle, children enjoy learning these rules, and if they see a gun lying around, they will be more prepared to make a good decision.

The Pampa Police Department is also in the process of starting a Community Meeting where the public is invited. Our first meeting

is set for March 31 and we want to encourage the community to come and attend.

If you have any questions or need more information on these programs please contact Officer McCullar at 806-669-5700 ext 259.

Thank you,  
Pampa Police Department  
201 W Kingsmill  
Pampa Texas 79065  
(806)669-5700  
Emergency Dial 911

## For the record

Continued from Fri.  
**Police Department**  
Public intoxication was

reported in the 100 block of East Harvester.  
A threat was reported in the 400 block of South Graham.

Harassment was reported to police.  
A suspicious vehicle was reported in the 400 block of Rose.

An alarm was reported in the 100 block of West 30th.

An open door was reported in the 300 block of Rider.

A fire alarm was reported in the 1300 block of West Kentucky.

A burglary was reported in the 400 block of North Wynne.

A fire investigation was reported in the 1600 block of Coffee.

Firefighters made a fire prevention call in the

2500 block of Perryton Parkway.

An assault was reported in the 2300 block of North Fir.

A domestic disturbance was reported in the 1800 block of North Hamilton.

**Friday, Feb. 4**  
Suspicious persons were reported in the 300 block of North Starkweather and in the 2500 block of Perryton Parkway.

A suspicious vehicle was reported in the 1200 block of East 23rd.

An alarm was reported in the 1300 block of Hamilton.

### Sheriff's Office

The Gray County Sheriff's Office reported the following arrests during the 24-hour period ending at 8 a.m. Friday.

**Thursday, Feb. 3**  
James Kent Pruitt, 49, was arrested by police on charges of possession of a dangerous drug.

Kristi Gayle Maddox, 35, was arrested by deputies on charges of driving while intoxicated, second offense.

**Lordy, Lordy Look Who's 40!**  
**Happy Birthday Tammy Joan Parker!**  
Love,  
David, Sierra & Reece

**China King Super Buffet**  
(Formerly Buffet City)  
518 N. Hobart • 806-669-3565  
**Over 100 items Deluxe Buffet**  
3 Hot Food Bars • Salad Bar • Fruit Bar  
Cookie Bar • Ice Cream Bar  
**Dinner includes:** crab legs, oysters, steak, sushi, salmon, fish, lots of shrimp...

**Helping People Live**  
"The Hospice Approach to Living with Dying"  
**Volunteer Training/Education Class**  
A class for anyone interested in becoming a hospice volunteer or learning more about hospice care.  
5 Class Sessions beginning February 15 - March 1, 2010  
Tuesdays & Thursdays  
9:00 a.m. - 12:00 noon  
BSA Hospice  
600 N. Tyler Street  
Amarillo  
Must have a registration of 5 or more participants to hold class.  
There is no fee to attend.  
To register call Marilee Bulls (806) 212-8715 or toll free (800) 315-6209



We would like to thank the Highway Patrol, Paramedics and Hospital Staff for all of your assistance on the night of our parent's accident. Also, Carmichael-Whalley Funeral Home for making a very difficult time in our life a little easier with your guidance and kind words. Rick Parnell, the service was very heartfelt and you did a wonderful job of sharing just what she meant to everyone whose lives she had touched. To all of our friends, neighbors and family who called, brought food, sent flowers or sat with us and shared in our memories, words cannot express how much it meant to us. **Thank you, each and every one.**  
The family of Emma Nell Dewitt  
Noel Dewitt  
Linda & Robert McCain  
Ray Dewitt  
Kay & Dennis Shepard  
Damon & Maggie Dewitt  
Cecelia & Alan Cloud

**STAY CONNECTED**  
Keep up with your hometown news no matter how far away you roam.  
Call 669-2525 to subscribe to The Pampa News Online

# AFTERNOON RUSH Explosion highlights lax pipeline rules

## Bush to Geneva canceled

GENEVA (AP) — Organizers have canceled a visit next week by former U.S. President George W. Bush to Switzerland because of security concerns.

Bush's spokesman David Sherzer says the two-term president was informed Friday by the United Israel Appeal that his Feb. 12 dinner speech in Geneva had been called off.

Saturday's edition of Swiss daily Tribune de Geneve cited the Jewish charity's lawyer, Robert Equey, saying the visit was canceled because of the risk that protests by left-wing groups could result in violence.

Several human rights groups including Amnesty International were also planning to ask Swiss prosecutors to open a criminal investigation of Bush over his admission that he personally authorized the waterboarding of terrorism suspects.

## Pricey Prince show axed

DALLAS (AP) — Prince's Super Bowl-weekend concert was a Super Bust.

The superstar was supposed to perform at a fundraiser for the art foundation of George Michael and his long-time partner, Kenny Goss.

Things started falling apart early Friday, though, when a statement was sent by the foundation saying the concert was canceled. Then the statement was rescinded shortly after that, saying the concert was back on.

But the concert, recently moved from a tent in downtown Dallas to a hotel just north of the city, never materialized Friday night.

A source close to Prince says he's "extremely disappointed" that the organizers were unable to bring him and his band to Dallas.

## Toyota investigator named

LOS ANGELES (AP) — A Texas judge has named a special counsel to investigate whether Toyota Motor Corp. intentionally hid evidence during a lawsuit filed by a woman paralyzed in a car crash, court documents showed.

Johnson County District Judge John E. Neill appointed J. Gregory Coontz on Thursday after reviewing information from former Toyota lawyer Dimitrios Biller, who has said the automaker hid back safety data in rollover cases and has released thousands of pages of company documents.

Neill said in a letter to attorneys that "questions exist" over whether Toyota "properly complied with the court's discovery order" in the case of Pennie Green, whose 1997 Toyota Camry rolled over as she swerved on a highway in Johnson County in 2005. She was rendered a quadriplegic when the roof collapsed on her and broke her spine.

Green filed the lawsuit in a Cleburne, Texas, court and settled for \$1.5 million in 2007. But in 2009, she filed a motion to hold Toyota in contempt, saying that if she had been aware of hidden evidence she would have held out for a bigger settlement or gone to trial.

## Blowout containment an issue

ATLANTA (AP) — Deepwater permits in the Gulf of Mexico have been withheld largely because the industry is unable to prove it could contain another major blowout at the bottom of the sea, the head of the agency that oversees offshore drilling said Friday.

Michael Bromwich, director of the Bureau of Ocean Energy Management, Regulation and Enforcement, made the disclosure in a letter he sent to executives at Exxon Mobil, Chevron and Helix Energy Solutions Group.

Bromwich asked the companies when the containment system they and others are working on will be ready. He also wanted to know how the companies will demonstrate that the equipment will be readily and immediately available to other firms in the event of a blowout.

"These systems are critical to moving forward with safe and responsible deepwater drilling activities," Bromwich wrote.

## Firm owner to change plea?

NEW ORLEANS (AP) — Court records indicate that the owner of a Brownsboro, Texas, security firm might plead guilty in a case accusing him of plotting with a New Orleans police commander to get kickbacks from a hurricane security contract.

Both Joseph Branch of Gladius Inc. and police Capt. Michael Roussel are scheduled for trial March 28, but records show Branch has a change of plea hearing scheduled March 10.

The *Times-Picayune* reports that both pleaded not guilty on Friday to federal wire fraud in a six-count indictment that replaces a single count handed up in June. The five new counts involve alleged statements in e-mails and a phone call.

The men are charged with scheming to inflate a contract with Entergy Services Inc. — one eligible for Federal Emergency Management Administration coverage.

## Kelly speaks on flying decision

HOUSTON (AP) — The astronaut husband of Rep. Gabrielle Giffords said Friday his wounded wife would embrace his decision to rocket into space in two months and he expects her to be well enough to be at his launch.

Space shuttle commander Mark Kelly refused to say whether the congresswoman took part in his decision and declined to go into details about her condition or whether she can communicate.

"I know her very well and she would be very comfortable with the decision that I made," Kelly told reporters.

His decision, announced Friday, comes just four weeks after Giffords was shot in the head outside a Tucson, Ariz., supermarket. His choice to lead space shuttle Endeavour's final voyage was made easier, he said, by his wife's rapid progress in rehab.

The 46-year-old astronaut said he never imagined, in the immediate aftermath of the shooting that he would ever fly the two-week mission. He immediately quit training after the Jan. 8 shooting.

SAN BRUNO, Calif. (AP) — First, the pipeline exploded. Then the flames, like a blowtorch, set the neighborhood overlooking San Francisco Bay ablaze.

Flaming chunks of asphalt hurled into the air from the blast blew through the roof at Bill Magoolaghan's house. As he watched from a nearby hillside in San Bruno, one question came to his mind: Why can't someone stop the tower of fire?

"The gas flames were still shooting 300 feet into the air," he recalled thinking, 40 minutes after the Sept. 9 explosion.

One reason is that the line was not equipped with remotely operated or automatic shut-off valves that would have halted the gas within minutes of the accident — devices that federal safety officials have recommended to industry and regulators for decades.

An Associated Press investigation found that the utility, Pacific Gas & Electric Co., agreed as far back as 1997 that remotely operated valves did a better job of protecting public safety than manual ones. But it opted against using them widely across its network of high-pressure transmission lines, saying they weren't necessary or required.

When the flame was finally halted 89 minutes after the explosion, residents were left to survey the damage: eight dead, dozens injured and 55 homes left uninhabitable. The explosion also focused attention on the condition of the nation's pipelines — some aging and many, like San Bruno, running beneath towns and cities.

The accident, the AP found, also highlights a troubling pattern: A pipeline explodes. Federal investigators call for safety improvements. The government leaves it largely to industry to make safety decisions.

The result is that safety measures are adopted sporadically, sometimes decades later — if at all.

Now, as federal investigators prepare for a March hearing on the explosion — the first on a pipeline accident in a decade — lawmakers are pressing for sweeping reforms to a patchwork system of safety regulations.

"It's after an accident that we find there were shortcomings," said Deborah Hersman, head of the National Transportation Safety Board, which investigates pipeline accidents. "Unfortunately, we've had to learn that lesson too many times."

The industry and regulators from the U.S. Department of Transportation, which oversees the nation's 2.5 million-mile network of gas and liquid pipelines, say they have made vast improvements in recent decades, noting the number of fatal accidents has dropped as the network expanded dramatically.

Christina Sames, vice president of operations and engineering at the American Gas Association, said she can "count on one hand" incidents of the magnitude of San Bruno over the last 20 years. "Those are definitely outliers," she said.

While the NTSB is in charge of investigating such accidents, regulators

or industry do not have to adopt its recommendations.

An AP analysis of accidents dating to 1969, when the NTSB began investigating pipeline accidents, shows that the agency has made similar recommendations time and again, including on utilities' failures to draft appropriate emergency plans, mark pipeline locations or adequately inspect risky stretches of pipe.

The NTSB is looking at the same issues in San Bruno, but pipeline safety advocates say the case of the shut-off valves provides the clearest example of how a weak regulatory system can jeopardize public safety.

Since 1969, NTSB has called for the more-sophisticated valves on natural gas or hazardous liquid pipelines eight times.

The first followed a 1970 propane pipeline explosion that injured 10 people in Franklin County, Mo. The NTSB said a fire that raged for an hour and 40 minutes after the initial blast "would have burned out much sooner" if there were valves.

In response, the Transportation Department proposed requiring remotely operated valves on some types of lines. The proposal, however, was later withdrawn. Agency officials concluded in 1981 that such valves were "not an effective means to reduce the accident effects" following a pipeline rupture, saying most damage in

from the initial blast.

"I made the recommendations for automatic valves because I thought they potentially could have prevented that fire. But nothing happened," said Henry Shepherd, who was chief of NTSB's pipeline safety division in the 1970s and lead investigator on the case.

The DOT "would pass around their studies on our safety recommendations to industry to get their feelings on it and it would inevitably come back that our recommendations for valves were too costly or infeasible, which we never felt was valid," he said.

NTSB again recommended valves after a 1986 gasoline pipeline accident in Mounds View, Minn. Fuel poured through the town for 20 minutes before it ignited, killing two people. The fuel then fed the fire for another hour and 20 minutes.

Congress told transportation officials to study the cost and feasibility of remotely operated or automatic valves for hazardous liquid pipelines. Pipeline companies questioned their reliability — although one company later said it had used automatic shut-off valves since the 1940s with few problems.

By the time the Transportation Department finished its report in 1991, two more pipeline accidents had occurred in which the NTSB concluded closely spaced remotely operated valves could have limited damage.

55 minutes to close the manual valves on a gas line that ruptured following a train crash in San Bernardino, Calif. In the second, propane flowed from a broken line in Blenheim, N.Y., for 21 hours. Although remotely operated valves were in use, the closest one was 47 miles away.

Still, after soliciting industry comments, transportation officials concluded the valves offered "no significant benefit."


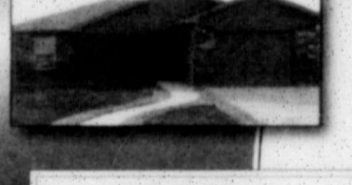
NTSB officials railed against the study, saying it was seriously flawed for not considering the consequences of pipeline accidents in urban areas and because it overlooked new technology that made the valves more reliable.

The issue resurfaced in 1994 with a gas explosion in densely populated Edison, N.J., sending a 400-foot-high column of flames into the sky. It took two-and-a-half hours to shut the manual valves on the spewing 36-inch pipeline. The blast caused \$25 million in property damage and two serious injuries.

The NTSB renewed its push for more remotely operated valves.

Transportation officials agreed to another study, but citing industry suggestions, left out the cost of potential damages or lives lost. Instead, the agency factored in the cost of lost fuel when pipelines break. The officials ultimately declined to require the valves, saying that they were not cost-effective.

**A New Neighbor has arrived in Pampa! Now Open, Stop by today!**

1517 Alcock Street,  
Pampa, TX 79065  
Office: 806-440-0054  
hamptonvillages@gmail.com  
Mon-Fri—10am-6pm  
Saturday—10am-2pm

Professionally Managed by Alpha-Barnes Real Estate Service

**HAMPTON VILLAGES**

Hampton Villages is brand new community of individual homes. We feature beautiful 2, 3 & 4 bedroom homes for lease.

**Each home features**

- Upgraded carpet and Wood Style laminate flooring
- Beautiful black Energy star appliances
- Energy efficient low E Windows
- 2 inch mini blinds
- Ceiling fans
- Walk-in closets
- Kitchen Pantries
- Full size Washer and Dryer connections
- One car attached garages
- Each home is Certified Energy Efficient by Energy Star!

**Communities Amenities:**

- Beautiful Community Center with full kitchen
- Full-time Resident Services Coordinator
- Planned activities
- Kids Club
- Business Center
- Controlled Access gates
- Clothes care center

**Rents range from \$525 to \$715**  
**Minimum and Maximum income restriction apply for qualification**

\*Section 8 vouchers accepted  
\*Handicap and Hearing and Visual units  
\*Available in some units

pipeline failures comes. In one case, it took crews... The agency cited a study

Pa+MPA

Pampa ISD Events for the Week of February 7-12

February 10 • Lunch and Learn for Moms • 12-1 pm  
*The Brown Children's Alliance 315 N. Ballard St.*

**Pampa High School**  
Feb. 7-11 • Rose Sales  
Feb. 8 • 9<sup>th</sup>, 10<sup>th</sup> and 11<sup>th</sup> Grade Parent Meeting • 6:30 pm • Commons  
Feb. 11 • End of Six Weeks  
Feb. 12 • ACT

**Pampa Jr. High**  
Feb. 7 • Choir Man Fest (boys only)  
Feb. 11 • Cheerleader Parent/Student Meeting • 3:30 pm • Library  
Feb. 11 • Art Contest

**Austin Elementary**  
Feb. 8 • Family Night — Scholastic Book Fair • 5:30-7:30 pm  
Feb. 8 • Booster Club Meeting • 7:00 pm  
Feb. 9 • Lunch with Grandparents • 10:40-1:00 pm  
Feb. 9 • Munchies with Mom • 2:30-4:30 pm  
Feb. 10 • Donuts with Dad • 6:30-8:00 am  
Feb. 11 • Last Day of Book Fair (ends at noon)

**Lamar Elementary**  
Feb. 8 • Group Picture Day  
Feb. 11 • Valentine Class Parties

**Travis Elementary**  
Feb. 11 • End of 4<sup>th</sup> 6 weeks

**Wilson**  
Feb. 11 • Pajama Day

check us out online @  
[www.thepampanews.com](http://www.thepampanews.com)

SIMPLIFY YOUR FINANCES.

Duane Harp  
Financial Advisor  
1921 N Hobart  
Pampa, TX 79065  
806-665-6753  
[www.edwardjones.com](http://www.edwardjones.com) Member SIPC



Edward Jones  
MEMBER SIPC

# Viewpoints

## Today in History

Today is Saturday, Feb. 5, the 36th day of 2011. There are 329 days left in the year.

### Today's Highlight in History:

On Feb. 5, 1811, George, the Prince of Wales, was named Prince Regent due to the mental illness of his father, Britain's King George III.

### On this date:

In 1631, the co-founder of Rhode Island, Roger Williams, and his wife, Mary, arrived in Boston from England.

In 1783, Sweden recognized the independence of the United States.

In 1911, Missouri's second Capitol building in Jefferson City burned down after being struck by lightning.

In 1917, Congress passed, over President Woodrow Wilson's veto, an immigration act severely curtailing the influx of Asians.

In 1937, President Franklin D. Roosevelt proposed increasing the number of Supreme Court justices, critics accused Roosevelt of attempting to "pack" the court. The proposal failed in Congress.

In 1940, Glenn Miller and his orchestra recorded "Jive-Go-Down" for RCA Victor's Bluebird label.

In 1958, Gamal Abdel Nasser was formally nominated to become the first president of the new United Arab Republic, comprising Syria and Egypt.

In 1971, Apollo 14 astronauts Alan Shepard and Edgar Mitchell stepped onto the surface of the moon in the first of four lunar landings.

In 1984, the Soviet Union announced that it had withdrawn its troops from Czechoslovakia and Vietnam.

**Ten years ago:** Four suspects in Osama bin Laden's Sept. 11 attacks in New York in the 1998 bombings of two U.S. embassies in Africa. The four were convicted and sentenced to life in prison without parole.

**Five years ago:** Jacob Rohde, suspected of an attack at a Massachusetts gas bar, the killing of an Arkansas officer and the slaying of a mother of three, was mortally wounded in a shootout with authorities.

**One year ago:** Toyota's president, Akio Toyoda, emerged from seclusion to apologize and address criticism that the automaker had mishandled a crisis over sticking gas pedals.

**Today's Birthdays:** Country singer Claude King is 88. Baseball Hall-of-Famer Hank Aaron is 77. Actor Stuart Damon is 74. Financial writer Jane Bryant Quinn is 72. Actor David Selby is 70. Singer-songwriter Barrett Strong is 70. Football Hall-of-Famer Roger Staubach is 69. Singer Cory Wells (Three Dog Night) is 69. Movie director Michael Mann is 68. Rock singer Al Kooper is 67. Actress Charlotte Rampling is 65. Actress Barbara Hershey is 63. Actor Christopher Guest is 63. Actor Tom Wilkinson is 63. Actor-comedian Tim Meadows is 59. Actress Jennifer Jason Leigh is 49. Actress Laura Linney is 47. Actor-comedian Chris Parnell is 44. Rock singer Chris Barron (Spin Doctors) is 43. Singer Bobby Brown is 42. Actor Michael Sheen is 42. Country singer Sara Evans is 40. Actor Jeremy Sumpter is 22.

**Thought for Today:** "Many excellent words are ruined by too definite a knowledge of their meaning." — *Vladimir Nabokov, Invitation of a Beulah (1928)*



## Yearning for the days of a sensible right

One of the more disagreeable traits of many tea party "spokespeople," aside from their loose connection with facts, is their zest for threatening Republicans who don't leap when they say "jump."

I appreciate that these voices are largely self-appointed, and that many subscribers to the movement may not agree with this approach. But boy, it's painful to see grown statesmen cower at the commands of puffed-up "revolutionaries" inflicting damage on their party, never mind the country.

You might think that a liberal leaning like mine would refish tea partiers' causing havoc in the Republican camp — storming the primaries to replace plausible candidates like Delaware's Rep. Mike Castle or Nevada state Sen. Sue Lowden with unelectables. But I don't because I want a two-party system that offers acceptable choices. And I want a political leadership that can do America's business without having to sate the populist passions of folks unacquainted with economic realities or the art of compromise.

I used to vote for select Republicans running for national office. That's become next to impossible because tea party groups have pushed GOP leaders to treat any cooperation with the Democratic foe as abject surrender. You might like your Republican, but your Republican is no longer free to act his or her conscience without being called all kinds of things.

Indiana Sen. Dick Lugar is a clas-



FROMA HARROP

sic conservative with a deep understanding of foreign affairs. Tea partiers are very upset with him for pushing an arms reduction agreement with Russia. Why would they object to a treaty that has the full support of the U.S. military establishment? There's no rational explanation other than ignorance of the world we live in — or perhaps a simple lust to push powerful people around.

Utah Sen. Orrin Hatch should be nobody's idea of a liberal, but the tea party faction has been sending him through the wringer for voting yes on the financial bailout — the only responsible way to go — and for improving children's health coverage. The Tea Party Express ultimately backed off on a primary challenge to Hatch in 2012. But it has left blood in the water around which the anti-tax Club for Growth has started circling.

That was a strange spectacle, Rep. Michele Bachmann competing with her party's official response to President Obama's State of the Union address with her "tea party" version. More jarring still was Utah Rep. Jason Chaffetz's apparent need to apologize to the Minnesota Republican for calling this "bad form."

After a couple of drinks, a moderate Republican friend confided that he sometimes wishes his party would nominate Sarah Palin for president, get its clock cleaned, then go back to being old-fashioned, thinking conservatives. I ventured that the angry right is not the all-powerful force it purports to be. The Republican leadership might figure this out before the 2012 election and stand up to its incoherent demands.

Otherwise, the GOP's 2010 triumph will be a onetime deal. Presidential races bring out a broader electorate. One of the choices is very likely to be Barack Obama, whose ardent supporters are not necessarily older white people who think that every government program, except for Medicare, is socialism. Meanwhile, an improved economy will have left voters in a better mood. And those still determined to "throw the bums out" will find more Republicans among the bums.

Thus, the strong tea party brew will be greatly diluted by liberals, moderates and old-school conservatives. Republicans would do themselves a favor by recognizing this sooner rather than later. They need not fear the displeasure of Michele Bachmann as much as the displeasure she stirs in others.

*Froma Harrop is a writer and the author of a twice-a-week syndicated column which appears in about 200 newspapers, as well as a blogger for RealClearPolitics.*

## The PAMPA NEWS

403 W. Atchison • Pampa, TX 79065

806-669-2525

Fax: 806-669-2520

Randall Pribble

Publisher

rpribble@thepampanews.com

ReDonn Woods

Advertising Manager

woods@thepampanews.com

Sue Pribble

Advertising Representative

spribble@thepampanews.com

Beverly Taylor

Classified Advertising

classified@thepampanews.com

Kera Kent

Subscriptions

circulation@thepampanews.com

Carrie Hair

Accounting

chickreaper@thepampanews.com

Chico Ramirez

Circulation Manager

circulation2@thepampanews.com

Annie Aurellano

Editor

editor@thepampanews.com

David Bowser

Reporter

dbowser@thepampanews.com

Andrew Glover

Reporter

aglover@thepampanews.com

Marijane Kent

Composing

composing@thepampanews.com

Marcus Elkins

Press Supervisor

press@thepampanews.com

The Pampa News (U.P.S. 781-540) is published daily, except Sundays, Memorial Day, Independence Day, Labor Day, Thanksgiving, Christmas Day and New Year's Day. Periodicals postage paid at Pampa, Texas. Postmaster: Send address changes to The Pampa News, P.O. Drawer 2198, Pampa, TX 79066-2198.

© 2010 The Pampa News



## Sunday in History

Tomorrow is Sunday, Feb. 6, the 37th day of 2011. There are 328 days left in the year.

### Today's Highlight in History:

On Feb. 6, 1911, Ronald Wilson Reagan, the 40th president of the United States, was born in Tampico, Ill.

### On this date:

In 1778, the United States won official recognition from France with the signing of a Treaty of Alliance in Paris.

In 1788, Massachusetts became the sixth state to ratify the U.S. Constitution.

In 1899, a peace treaty between the United States and Spain was ratified by the U.S. Senate.

In 1933, the 20th Amendment to the Constitution, the so-called "lame duck" amendment, was proclaimed in effect by Secretary of State Henry Stimson.

In 1952, Britain's King George VI died; he was succeeded by his daughter, Elizabeth II.

In 1959, the United States successfully test-fired for the first time a Titan intercontinental ballistic missile from Cape Canaveral.

In 1978, Muriel Humphrey took the oath of office as a United States senator from Minnesota, filling the seat of her late husband, former Vice President Hubert Humphrey.

In 1991, comedian and television performer Danny Thomas died in Los Angeles at age 79.

In 1992, 16 people were killed when a C-130 military transport plane crashed in Evansville, Ind.

In 1996, a Turkish-owned Boeing 757 jetliner crashed into the Atlantic Ocean shortly after takeoff from the Dominican Republic, killing 189 people, mostly German tourists.

**Ten years ago:** Ariel Sharon was elected Israeli prime minister in a landslide win over Ehud Barak.

**Five years ago:** President George W. Bush submitted a \$2.77 trillion budget blueprint for fiscal 2007. Attorney General Alberto Gonzales defended the

Bush administration's eavesdropping program before the Senate Judiciary Committee. Terrorist conspirator Zacarias Moussaoui disrupted the opening of his sentencing trial in Alexandria, Va., and was tossed out of court. Hundreds of protesters hurled stones and fire bombs at the Danish Embassy in Tehran to denounce published caricatures of the prophet Muhammad. Stephen Harper was sworn in as Canada's 22nd prime minister. Isabelle Dinoire, the Frenchwoman who'd received the world's first partial face transplant, showed off her new features at a news conference.

**One year ago:** Former Alaska Gov. Sarah Palin, delivering the keynote address at the first national tea party convention in Nashville, Tenn., declared, "America is ready for another revolution." American missionary Robert Park headed home after North Korea released him from six weeks' detention for crossing its border Dec. 25 to protest religious suppression in the totalitarian regime. Jerry Rice and Emmitt Smith led a class of seven new members in the Pro Football Hall of Fame.

**Today's Birthdays:** Actress Zsa Zsa Gabor is 94. Actor Patrick Macnee is 89. Actor Rip Torn is 80. Actress Mamie Van Doren is 80. Actor Mike Farrell is 72. Former NBC News anchorman Tom Brokaw is 71. Singer Fabian is 68. Actress Gayle Hunnicutt is 68. Actor Michael Tucker is 67. Producer-director-writer Jim Sheridan is 62. Singer Natalie Cole is 61. Actor Jon Walmsley is 55. Actress Kathy Najimy is 54. Rock musician Simon Phillips (Toto) is 54. Actor-director Robert Townsend is 54. Actor Barry Miller is 53. Actress Megan Gallagher is 51. Rock singer Axl Rose (Guns N' Roses) is 49. Country singer Richie McDonald is 49. Singer Rick Astley is 45. Rock musician Tim Brown (Boo Radleys) is 42. Actor Brandon Hammond is 27.

**Thought for Today:** "Life is just one grand sweet song, so start the music." — *President Ronald Reagan (1911-2004)*

# St. Valentine's Day

February 14

Large Selection of Russell Stover Valentine Candy

New Shipment of Jewelry & Handbags

New Shipment of Perfume & Cologne

**Heard Jones**

114 N CUYLER • 669-7478

**White Rain**  
Shampoo

**59¢**

w/coupon 18 oz

**Softsoap**  
Hand Soap

**59¢**

w/coupon 5 oz

**Palmolive Ultra**  
Dishwashing Liquid

**79¢**

w/coupon 10 oz

**Sparkle**  
Paper Towels

**79¢**

56 Sheets

**Luv's**  
Diapers

**\$4.99**

26-32 count

**Ajax 2X**  
Liquid Detergent

**2/\$5**

w/coupon 50 oz

**Kleenex**  
Facial Tissue

**2/\$3**

w/coupon • 200 ct. box

**Cottonelle**  
Double Roll Bath Tissue

**\$3.99**

w/coupon • 6 pack

**Saturday Fountain Special**

**Hamburger & Chips ..... \$ .99**

**Cheeseburger & Chips ..... \$ 1.49**

To Go Orders Welcomed - Chips 49¢

**Health Mart**  
PHARMACY

*Caring for you and about you*

**NOW WITH 2500 STORES NATIONWIDE**

**Heard Jones Healthmart**

- Locally Owned
- Caring for Panhandle Families for over 83 years
- Accepts All Prescription Plans
- 24 Hour Emergency services for established customers
- Free City Wide Prescription Delivery
- Fast, friendly service by people who care about you!

**BenFranklin.com**

Click on store locator and scroll down to our store to view the coupon book online.

## 'Tis the season to concentrate on feral hog control

COLLEGE STATION — Wet, mild weather improved winter pastures during the last week of January, according to Texas AgriLife Extension Service personnel.

The winter storm that struck Feb. 1 brought more moisture, which should benefit crops, but the extreme cold was expected to further stress livestock.

But if there's a silver lining to weather this time of it year, it's that conditions are optimal for feral hog control, said Billy Higginbotham, AgriLife Extension wildlife specialist.

"February is a month when we really need to concentrate control of feral hogs for a number of reasons," Higginbotham said.

This is because during the last 30 to 45 days of winter, native food supplies are becoming scarce and hogs are on the move in search of something to eat, he said.

"This makes them more vulnerable to some of our control techniques, such as trapping, shooting and snaring, because they are moving and in search of food," he said.

Another thing to consider, Higginbotham said, is that sows that were bred in late fall will be due to having litters in mid-spring, he said.

The typical litter size is four to six piglets, and a sow can have at least one litter a year. They are one of the most reproductive large mammals on Earth, he said.

"Therefore, we've got this window of opportunity over the next 30 to 45 days prior to spring green-up when we need to concentrate some control efforts."

No one really knows how many feral hogs there are in Texas, Higginbotham said.

"But we do know that regardless of the population out there, the economic damage can be drastically reduced by adopting best management practices," he said.

For ground-based and aerial hunters, the advantages of feral hogs being on the move are obvious, he said.

In areas like East Texas, where there is more cover, the name of the game is trapping, ground-shooting and snaring, Higginbotham said. For trappers, it's important to fit the size of the trap



### TEXAS AgriLife Extension

to the size of the herd, which is called a "sounder."

He recommended that landowners "get the hogs on bait." This expression means getting them used to visiting a location for food, usually shelled corn. Then, using automatic cameras or other means, the landowner needs to estimate the size of the hog herd and construct a trap size accordingly.

It's not too late this year to get started on getting the hogs on bait, he said, but even it were, it's a good idea to do it anytime a landowner sees signs of feral hog damage.

More information on controlling feral hogs can be found at <http://feral-hogs.tamu.edu/>

AgriLife Extension district reporters compiled the following summaries:

**PANHANDLE:** Texas Panhandle temperatures were average to above average. Soil-moisture levels were mostly very short to short.

Wheat was struggling because very dry conditions; the crop's condition ranged from very poor to fair in most areas. Lack of winter wheat grazing was becoming a concern for ranchers. Rangeland was in very poor to good condition, with most counties reporting poor. Cattle were in fair condition.

**ROLLING PLAINS:** Small grains needed moisture. "Winter wheat was in poor condition because of dry conditions. There is still the potential wheat to make a good crop, but moisture will be required. Native pastures held on as the winter calf crop continued to hit

the ground. Livestock producers were supplying supplemental feed, and cattle were in good condition. Cattlemen were preparing for a forecast of snow and ice storm with single-digit temperatures. All animals will need additional protection from the cold and increased calorie intake to have the energy to combat the frigid temperatures.

**SOUTH PLAINS:** The region had another dry week with mild to warm days. Soil-moisture levels were very short to short. General field activity included shredding cotton stalks,

and cultivating cotton fields. Winter wheat was in poor to fair condition. Dryland winter wheat growth was minimal. However, some irrigated wheat was in fair condition. Pastures and rangeland were in poor to fair condition and needed moisture. Supplemental feeding of cattle contin-

check us out online @  
[www.thepampanews.com](http://www.thepampanews.com)

**NOTICE TO PROPERTY TAXPAYERS**

**NOTICE TO FILE RENDITION STATEMENTS, PROPERTY REPORTS, APPLICATIONS FOR QUALIFIED OPEN-SPACE LAND VALUATION, APPLICATIONS FOR EXEMPTIONS, AVAILABILITY OF FORMS AND PROCEDURE FOR THE DETERMINATION OF THE QUANTITY OF PROPERTY HELD IN INVENTORY.**

TO ALL PERSONS OWNING OR CONTROLLING, AS AGENTS OR OTHERWISE, ANY PERSONAL OR REAL PROPERTY SUBJECT TO APPRAISAL BY THE GRAY COUNTY APPRAISAL DISTRICT, I, W. PAT BAGLEY, CHIEF APPRAISER FOR THE SAID GRAY COUNTY APPRAISAL DISTRICT, PURSUANT TO SECTION 11.44 CHAPTER 11, SECTION 22.21 CHAPTER 22, SECTION 23.43, AND SECTION 23.54 CHAPTER 23, TEXAS PROPERTY TAX CODE, HEREBY GIVE NOTICE ON BEHALF OF GRAY COUNTY APPRAISAL DISTRICT, A POLITICAL SUBDIVISION OF THE STATE OF TEXAS, WHOSE PROPERTIES ARE APPRAISED BY THE CHIEF APPRAISER FOR THE GRAY COUNTY APPRAISAL DISTRICT, TO SAID OWNERS AND AGENTS TO FILE ALL RENDITION STATEMENTS, PROPERTY REPORTS, APPLICATION FOR QUALIFIED OPEN-SPACE LAND VALUATIONS AND APPLICATIONS FOR EXEMPTIONS WITH THE SAID CHIEF APPRAISER ON OR BEFORE APRIL 15, 2011 AT 815 NORTH SUMNER, POST OFFICE BOX 836, PAMPA, TEXAS 79066-0836. ALL FORMS ARE AVAILABLE AT THE SAID ADDRESS.

THE GRAY COUNTY APPRAISAL DISTRICT HEREBY ESTABLISHES A PROCEDURE FOR THE DETERMINATION OF THE VALUE OF THE PERSONAL PROPERTY ON JANUARY 1, 2011 AS REQUIRED BY SECTION 23.12 CHAPTER 23, TEXAS PROPERTY TAX CODE. THE VALUE OF PERSONAL PROPERTY SUCH AS INVENTORY, SUPPLIES, FURNITURE & FIXTURES, EQUIPMENT, VEHICLES, TOOLS AND OTHER PERSONAL PROPERTY DETERMINED BY RENDITION, OBSERVATION BY THE APPRAISERS, COMPARISON OF LIKE PROPERTIES, PERTINENT RECORDS OF THE BUSINESS AND ANY OTHER REASONABLE APPROACH THAT WILL ACCURATELY REFLECT THE MARKET VALUE OF PERSONAL PROPERTY.

**(EFFECTIVE JANUARY 1, 2004) BUSINESS OWNERS WILL NOW FACE A 10% PENALTY FOR RENDERING LATE OR NOT AT ALL, AND CAN FACE CIVIL PENALTIES OF UP TO 50% FOR FILING A FALSE RENDITION OR DELIBERATELY EVADING THE PERSONAL PROPERTY TAX. IN SOME CASES, CRIMINAL SANCTIONS FOR FRAUD MAY BE ASSESSED.**

THE STATE OF TEXAS  
COUNTY OF GRAY

**NOTICE OF DEFERRED COLLECTION OF CERTAIN TAXES  
CHAPTER 33, SECTION 33.06 TEXAS PROPERTY TAX CODE**

AN INDIVIDUAL IS ENTITLED TO DEFER COLLECTION OF TAXES OR ABATE A SUIT TO COLLECT A DELINQUENT TAX ASSESSED AGAINST HIS/HER RESIDENCE HOMESTEAD IF HE/SHE IS 65 YEARS OF AGE OR OLDER AND OWNS AND OCCUPIES THE RESIDENCE AS HIS HOMESTEAD. TO OBTAIN A DEFERRAL, AN INDIVIDUAL MUST FILE AN AFFIDAVIT WITH THE CHIEF APPRAISER STATING THE FACT THAT THE PERSON HAS ATTAINED THE AGE OF 65 AND OWNS AND OCCUPIES THE PROPERTY AS HIS RESIDENCE.

TO OBTAIN AN ABATEMENT, THE INDIVIDUAL MUST FILE IN THE COURT IN WHICH SUIT IS PENDING AN AFFIDAVIT STATING THAT THE PERSON HAS ATTAINED THE AGE OF 65 AND OWNS AND OCCUPIES THE PROPERTY AS HIS RESIDENCE.

AFFIDAVITS FOR DEFERRAL ARE AVAILABLE AT THE GRAY COUNTY APPRAISAL DISTRICT OFFICE. ALL APPLICATIONS AND RENDITION FORMS ARE AVAILABLE AT 815 NORTH SUMNER, PO BOX 836 - PAMPA, TEXAS 79066-0836, PHONE NUMBER 665-0791.

THE STATE OF TEXAS  
COUNTY OF GRAY

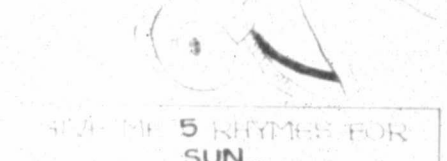


# kicks kids

GAMES AND PUZZLES

## DRAW IT!

**DRAW A MANE**  
I'M BALD!



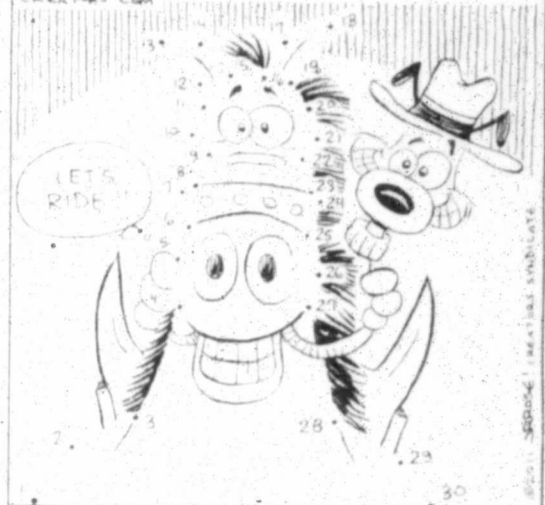
5 RHYMES FOR SUN...



FIND 3 DIFFERENCES...

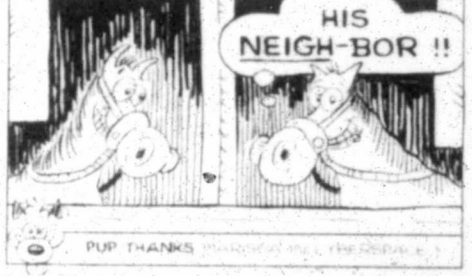


**THIS COW-PUP SURE LIKES TO RIDE, BUT MY HORSE APPEARS TO HIDE!! JOIN THE DOTS, AND YOU WILL SEE THERE'S A HORSIE UNDER ME!!**



**WRITE US... WE'LL WRITE YOU BACK!**  
IF YOU HAVE AN E-MAIL ADDRESS, SEND IT TO: PUP, 35 LAUREL STREET, WASHINGTON, DC 20540. OR E-MAIL: PUP@THEPAMPANews.com

**WHO WAS THE HORSE'S BEST FRIEND?**

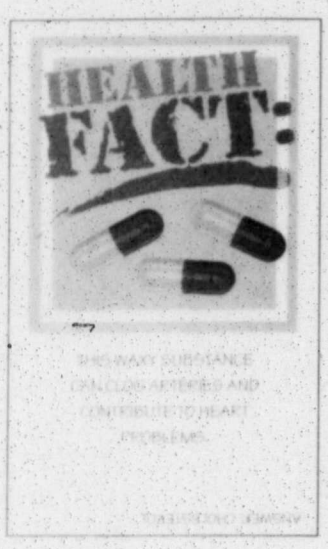


## Heart Health Word Find

Just in time for American Heart Month, find the hidden words in the puzzle.

ARTERIES	DIET	HEALTH
CARDIAC	DOCTOR	HEART
CHECKUP	EXERCISE	NUTRITION
CHOLESTEROL	FAT	VEINS

S N Z G Q K R E W D A K  
P W U I M O X H E A R T  
M U P T T E K J O K T O  
V X K C R L J R M C E T  
V E O C A I D R A C R H  
K D I F E L T D N Q I T  
Z S A N U H J I N L E L  
E T O B S R C E O K S A  
W Z Q N T U Z T K N S E  
M G S F R F P N B F G H  
C H O L E S T E R O L W  
I Y X Q Y K X X Q B C E



*How they SAY that is...*

**ENGLISH:** Blood  
**SPANISH:** Sangre  
**ITALIAN:** Sangue  
**FRENCH:** Sang  
**GERMAN:** Blut

## Health Match

Match the doctor with his/her speciality

- |                       |                         |
|-----------------------|-------------------------|
| 1. Gastroenterologist | A. Heart                |
| 2. Cardiologist       | B. Bones                |
| 3. Orthopedist        | C. Brain                |
| 4. Neurologist        | D. Stomach & intestines |

## GET THE PICTURE?

Can you guess what the bigger picture is?

ANSWERS: STEPHENSON

## ASK SHAGG

Dear Shagg,  
Do clownfish eat other fish?  
Teresa Chavez  
tchavez@comcast.net

NO. THE CLOWNFISH DIET IS MAINLY ALGAE, PLANKTON AND TINY SHEEPFISH THAT THE FISH FIND WHILE LIVING AROUND THE SEA ANEMONES.

ASK SHAGG: IF YOU HAVE A QUESTION ABOUT ANIMALS, SEND IT TO: ASK SHAGG, 35 LAUREL STREET, WASHINGTON, DC 20540. OR E-MAIL: SHAGG@THEPAMPANews.com

## ANIMAL SILHOUETTES

CAN YOU IDENTIFY THESE ANIMALS THAT LIVE UNDERGROUND?

ANSWERS: EARTHWORM, MOLE, GROUNDHOG, GROUND SQUIRREL WHO OWNS AN APARTMENT

THEY ALSO EAT CREAM PIES AND SELTZER WATER, BUT NOT ON PURPOSE.



# adult addlers

## Word Search — Month of February

A Q N U S E E X D A P  
R T H J S A C F E B N O G D Q O K  
K N H J F A C F E B N O G D Q O K  
E E O D R S O T A L G U Y A X  
T D R T I S N F E B R U A R Y  
N I O P G E H A R Y K U A R Y  
I S O S L N P O N O E L E U S  
W E H A G Y I Z R L S Q D S N  
H R V J E C A H A T O T I A O  
Y P L A R E C H E S T E C Y Q W  
U B R G Z R J L D A A S N T W  
Y A D H T R I B E E W P T I R  
T H G I E Y T N E W T C S L P  
X J L Z K X X R L O X B K S L  
V V H K R R B Q V V V Y L W K

Aquarius    Frosty    Pisces    Shortest    Valentine  
Birthday    Leap year    Presidents    Snow    Washington  
February    Lincoln    Recess    Twenty-eight    Winter

## MOOD INDIGO

- ACROSS**
- 1 Summit
  - 5 Cuff, to-a-bank
  - 9 Back
  - 14 Cocoon fiber
  - 15 Half an old train
  - 16 Self-evident truth
  - 17 Jumpy
  - 19 Succinct
  - 20 Frost's kin
  - 21 Seafaring tapers
  - 22 Buyer's need
  - 23 Bristly appendage
  - 25 Gutbeak's ...
  - 27 Furtive
  - 28 Literary utopian of 18th C. England
  - 32 More like a carmine pigment
  - 33 Falhorn
  - 34 Clare Booth or Henry
  - 38 Manager
  - 40 Character
  - 42 Unwieldy plant
  - 43 Neighbor of Tarr, a prepper, spectsly
  - 49 Stomach muscles
- DOWN**
- 1 Folio, for one
  - 2 Songwriter Porter
  - 3 Lake Michigan port
  - 4 Victorian, for one
  - 5 Standout testee
  - 6 Presto
  - 7 Czarny cavaryman
  - 8 Digit
  - 9 Lustrous fabric
  - 10 Jump by Baul or Bottano
  - 11 Logroly
  - 12 Scoundrel
  - 13 Abrasive
  - 18 Past and present
  - 22 Pop-eye's energizer
  - 24 Eccentric
  - 26 Slant
  - 28 Mow, like the wind
  - 29 Wash
  - 30 Bought
  - 31 Full of lumps
  - 35 Klutzy
  - 36 Philippine island
  - 37 Scots Gaelic
  - 39 Little people in "The Tenth Muse"
  - 41 Crox de
  - 44 Kabul native
  - 47 World agency since WWII
  - 48 Resident of an old Egyptian capital
  - 49 Washington's successor
  - 50 Soft cap
  - 51 Silly nasty
  - 55 Inert gas
  - 57 Utah ski resort
  - 58 Regardant
  - 60 Inauguration period
  - 62 Pink-stip
  - 63 Clandestine org

## Puzzle Solutions

### Crossword Puzzle Answers

MOOD INDIGO

### Word Search Answers

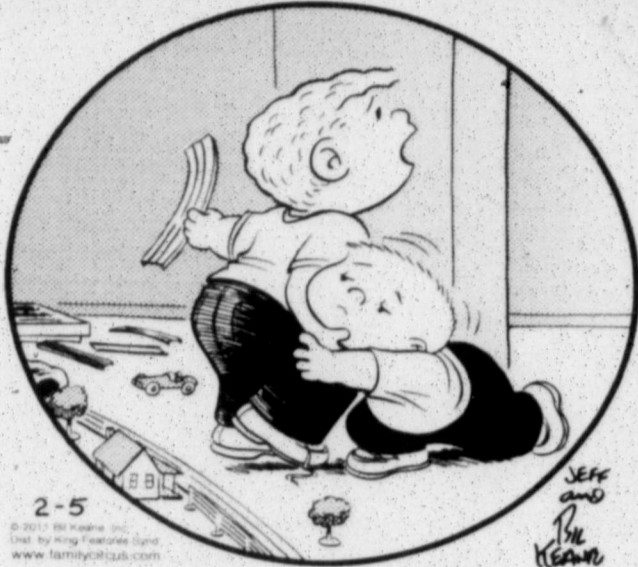
**Tall John Solution**

## TALL JOHN PUZZLE

JOHN BEGINS AT STONE 1 AND STEPS EXACTLY 53" TO STONE 2. ~CAN YOU COMPLETE A PATTERN WHICH TAKES HIM TO EVERY STONE IN THE POND AND RETURNS HIM TO STONE 1? JOHN'S EVERY STEP MUST BE 53".

# comics PAGE

THE FAMILY CIRCUS By Bil Keane

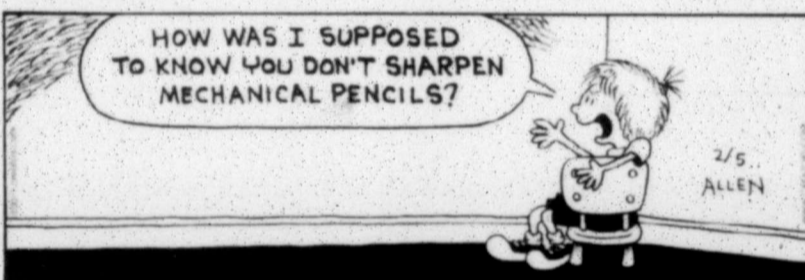


"Mommy! Isn't it time for PJ to take a nap?"

Non Sequitur



Nest Heads



## daily horoscope

**HAPPY BIRTHDAY** for Monday, Feb. 7, 2011:

This year, you will communicate your issues and ideas in a dynamic manner so that others hear you loud and clear. This newfound strength funnels into your daily life, adding to your immediate relationships, from neighbors to loved ones. You find the right words. If you are single, you will need to sort through your many admirers with an eye to the type of bond you desire. If you are attached, the two of you discover a newfound appreciation for each other. Your differences become a strong point. ARIES brings out the best in you.

**The Stars Show the Kind of Day You'll Have:** 5-Dynamic; 4-Positive; 3-Average; 2-So-so; 1-Difficult

**ARIES (March 21-April 19)**

★★★★ Charging ahead is one of your innate, "I feel good" responses. You are able to communicate your needs in a manner that makes waves. Avoid someone who is determined to have it his or her way and will do nearly anything to assure that outcome. Tonight: You call the shots.

**TAURUS (April 20-May 20)**

★★★ Make it OK to withdraw and observe. Fatigue marks your decisions and actions. Make it OK to be low-key, and postpone any project that simply feels like too much to do. Change evolves because of your willingness to look within. Tonight: Get extra R and R.

**GEMINI (May 21-June 20)**

★★★★ Zero in on what you want. Meetings help you orchestrate a goal and gain support. Others easily could go to extremes. Decide to stay on your path. A partner clearly masters the control game. The only way to win is not to play. Tonight: Be with the one you want.

**CANCER (June 21-July 22)**

★★★★ A must appearance carries a lot of weight. Pressure builds because of a key group of associates and friends taking a stand. You might decide to go it alone. You have a decision to make. Honor your integrity. Tonight: Could be late.

**LEO (July 23-Aug. 22)**

★★★★ Keep stretching in order to grasp more of what others think and where they are coming from. Once you can empathize and walk in their shoes, discussions will become easier. An unexpected distraction could force you to deal with more mundane tasks. Tonight: Take in a new place.

**VIRGO (Aug. 23-Sept. 22)**

★★★★ Relate to others directly. You'll gain unusual clarity and support. Understanding evolves between you and those you deal with directly. Your creativity emerges when you don't like what occurs. You might veer in a different direction. Tonight: Gather your bills.

**LIBRA (Sept. 23-Oct. 22)**

★★★ You could be making situations far more difficult than need be. How you handle a partner could change, especially as you might feel strongly. Fatigue drains your energy and your good intentions. Pressure builds from out of field. Tonight: Defer to another person's desires.

**SCORPIO (Oct. 23-Nov. 21)**

★★★★ Your pace could be a little more hectic than you originally visualized. Communication proves to be active, with personal aspects of your life intertwining with the professional side. Adjust your schedule accordingly, and if you must, screen your calls. Tonight: Get some exercise.

**SAGITTARIUS (Nov. 22-Dec. 21)**

★★★★ Your enthusiasm activates even those who are lazy! You not only get the job done and are able to communicate your needs, but you also help others. Be careful with a money matter. There is an inherent risk with finances. Tonight: Acting as if there is no tomorrow.

**CAPRICORN (Dec. 22-Jan. 19)**

★★★ You know what to do, and you will do it. Unfortunately, the powers that be might not agree, implying a power struggle of some sort. The only way to win is not to play. Stress revolves around your schedule as well. Tonight: Head home. Stay peaceful.

**AQUARIUS (Jan. 20-Feb. 18)**

★★★★ Keep conversations active and flowing. Don't allow someone to seduce you into doing less than necessary. Express your ideas; represent who you are. An opinion about a situation could be changing, especially at the present moment. Tonight: Out and about.

**PISCES (Feb. 19-March 20)**

★★★ Be careful with funds. You easily could make a mistake that costs you not only in funds, but also that doesn't allow you to do something that you have long desired. Be careful of pushing a group of associates too far. Tonight: Don't overindulge.

**BORN TODAY**

Comedian Chris Rock (1965), singer Garth Brooks (1962), author Sinclair Lewis (1885)

Tundra



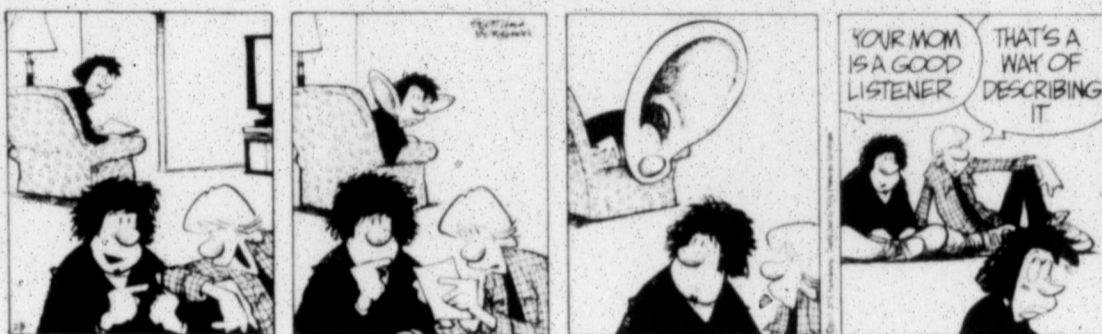
Shoe



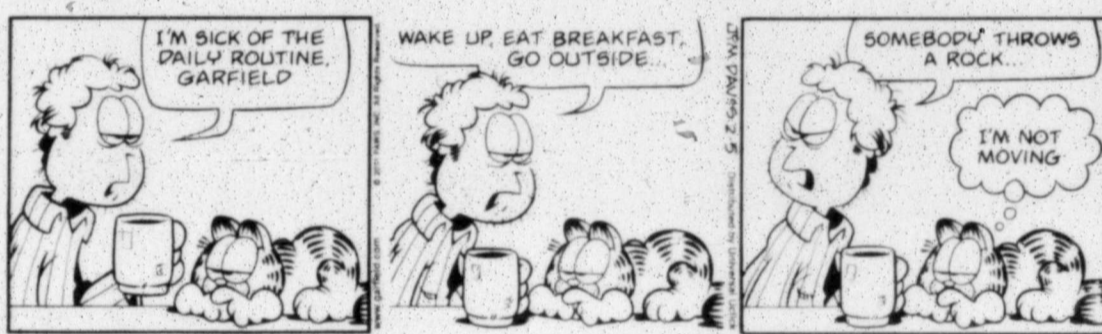
Mother Goose and Grim



Zits



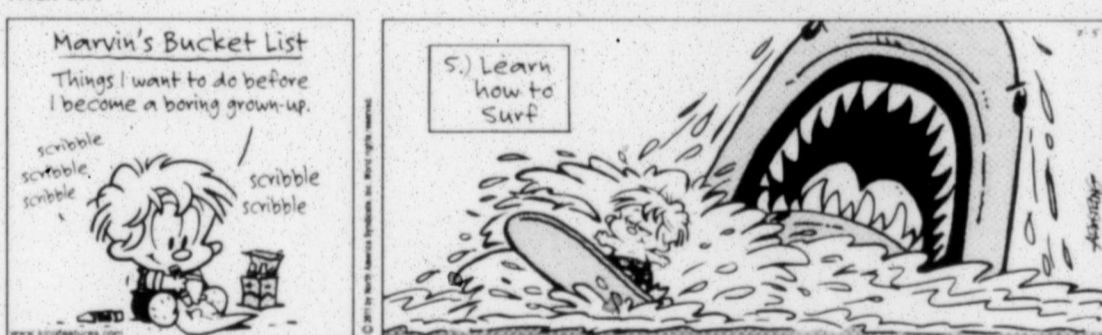
Garfield



Beetle Bailey



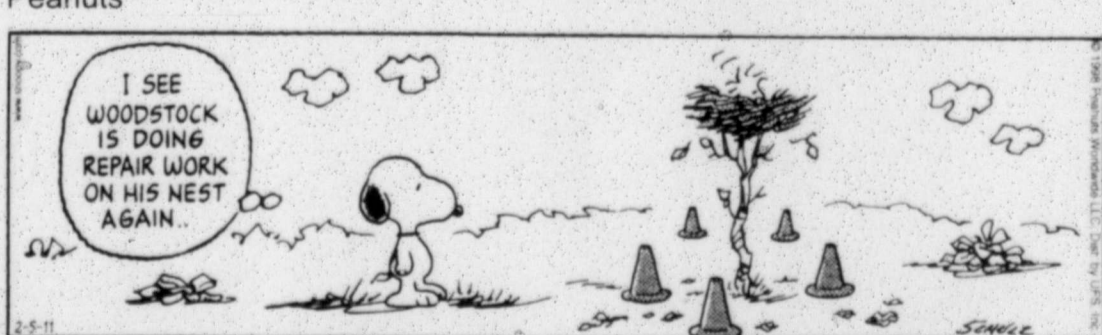
Marvin



Hagar The Horrible



Peanuts



Blondie



# Obama: Business, government responsible for future

WASHINGTON (AP) — Government has a responsibility to make the U.S. the best place in the world to do business, but companies have a responsibility to invest in the nation's future by keeping jobs here, hiring American workers and paying decent wages, President Barack Obama says.



Obama

ing to the influential U.S. Chamber of Commerce early next week.

Underscoring his points, Obama referenced his visit this week to Penn State University, where researchers are designing more energy-efficient

buildings.

He also spoke about next Thursday's trip to Marquette, Mich., a place the White House says illustrates how increased Internet access can help businesses grow. Obama has called for expanding high-speed, wireless Internet access to 98 percent of Americans within five years.

He talked about federal tax credits and financing programs that are helping companies boost their bottom lines and hire workers.

Obama said that government has a responsibility to support businesses but that businesses have responsibilities, too.

"They should set up shop here and hire our workers and pay decent wages and invest in the future of this nation," he said. "That's their obligation."

Obama, who has been working overtime to overcome perceptions that he is anti-business, said his message to the Chamber of Commerce on Monday will be that everyone will benefit if government and businesses work together.

"Our workers will succeed. Our nation will prosper. And America will win the future in this century just like we did in the last," he said.

Republicans devoted their weekly message to the economy and jobs, too, but Rep. Jeb Hensarling of Texas used it to chide Obama for proposing to extend Washington's "spending binge" at a time of growing budget

deficits.

Congressional budget experts recently projected that the difference between federal spending and revenues will surge to a record \$1.5 trillion for the budget year that ends Sept. 30.

Hensarling called for spending cuts and spending reform.

"You know, my questions for the president are these: Mr. President, how does spending us down the road to national bankruptcy help us 'win the future'?"

"And Mr. President, how does borrowing even more money from the Chinese make us more competitive?" Hensarling continued.

"After two years, it's pretty clear we can't borrow, spend and bail out our way to economic prosperity. No nation can," Hensarling added. "So while I appreciate the president's can-do rhetoric, his job-destroying policies won't do, and that's what matters most to American families."

## Wood

cont. from page 1

plenty to be done."

Lisa Gibson, the student council advisor at PHS, said that anyone interested can check the Web for information on the prom's planning stages.

"We would welcome any senior parents who want to be involved," said Gibson. "We're going to be building all the decorations ourselves, so there's going to be some manual labor, painting. Interested parents can look at the Pampa High School website and the school calendar to see when our next meeting is going to be."

Gibson said that putting the prom together is as special for the parents as going to the prom is for the kids.

"Senior prom is the culmination of it all, pretty much," Gibson said. "(The parents) all worked together on the eighth grade party before they all went to high school, and we can do one more thing for our kids before they all leave for college. It's one more big thing."

"I think it's kind of cool that the kids know that their parents did this for them."

Anyone interested in volunteering can contact Lisa Gibson at the high school at 669-4800 or online at [lisa.gibson@pampaisd.net](mailto:lisa.gibson@pampaisd.net).

## Wood

cont. from page 1

Her father played the trumpet and sang.

"We had a little home band going," she laughed. "We had a great time."

After high school, she went to Texas Tech where she majored in music.

"That's all I did," Wood said. "It's always been music."

From Tech, Wood and her husband moved to Amarillo.

"I taught three years in Amarillo," she said. "I taught orchestra."

As the family began to grow, first with a girl and then a boy, they moved to Perryton where she gave private lessons.

"I've always taught private voice and piano," Wood said.

She said she's always been a teacher.

"I love to teach," Wood said.

She also teaches Sunday school at Pampa's United Methodist Church, where she's also the choir director.

Wood has taught in Pampa for about 29 years.

While Wood is based at the new Pampa Junior High, she goes to Pampa High School for a couple of periods each day to teach.

She said she loves the new junior high.

"It's beautiful," Wood said.

But her life revolves around music.


"I feel very fortunate to be teaching the thing that I love more than anything," Wood said.

She said she can't imagine doing something that she didn't love to do.

"I love teaching children," Wood said. "It's fun and different. There are just lots of advantages working with children."

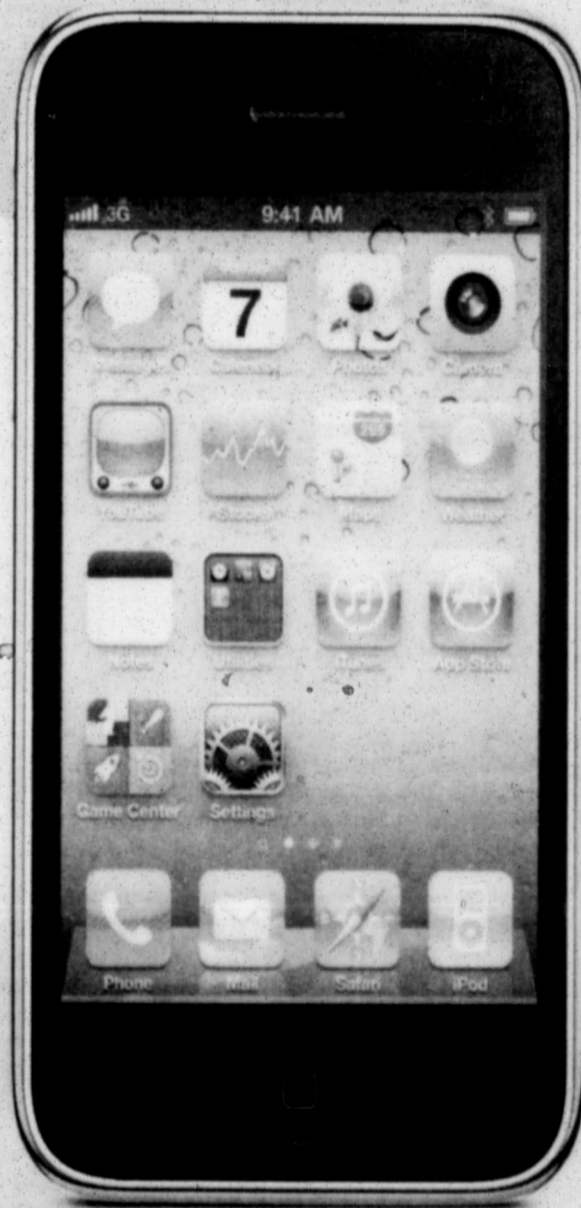
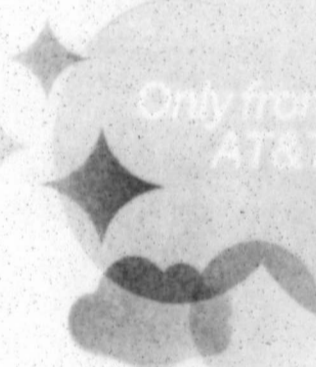
With a smile and a charming laugh, she said that music is her lifetime job.

"I just think schoolteachers are so important in this world," Wood said. "They deserve respect and admiration. I don't know many that don't love it like I do."

Rethink Possible 

# iPhone 3GS now only \$49

Cue the applause app.



**Pamcel Community Federal Credit Union**

*We LOVE our Members*



**1% off your qualifying loan interest rate starting as low as 3.50% on your next new or used auto or unsecured loan**

**Come in today for a sweet deal!**

Not a member? You can be.  
We now serve the entire Gray County area

**PamCel** 1939 N. Hobart 806-688-7041 

**Limited-time offer.** Requires new 2-year wireless voice agreement of \$39.99 or higher with min. \$15/mo DataPlus plan. Subject to wireless customer agrmt. Credit approval req'd. Activ. fee up to \$36/line. Coverage & svcs, including mobile broadband, not avail everywhere. Geographic, usage & other conditions & restrictions (that may result in svc termination) apply. Taxes & other chrgs apply. Prices & equip. vary by mkt & may not be avail. from ind. retailers. See store or visit [att.com](http://att.com) for details and coverage map. **Early Termination Fee (ETF):** None if cancelled during first 30 days, but a \$35 restocking fee may apply; after 30 days, ETF up to \$150 or \$325 applies depending on device (details [att.com/equipmentETF](http://att.com/equipmentETF)). Subject to change. Agents may impose add'l fees. **Regulatory Cost Recovery Charge** up to \$1.25/mo. is chrg'd to help defray costs of complying with gov't obligations & chrgs on AT&T & is not a tax or gov't req'd chrg. Screen images simulated. ©2011 AT&T Intellectual Property. All rights reserved. Apple, the Apple logo, and iPhone are trademarks of Apple Inc., registered in the U.S. and other countries.



# Sports

## Harvester seniors lead way to win; district in reach

ANDREW GLOVER  
aglover@thepampanews.com

Senior night can sometimes bring the best out of senior players. For Pampa Harvester seniors Garrett Ericson, Jonathan Polasek, Zach Murray, Joseph Mechelalay, Brandon Chairez and Greg Cabrales, Friday night was more than just their penultimate home game.

With a district title on the line and playing the biggest game of their lives, these six seniors all stepped up and defeated

the Perryton Rangers 72-58 to open up a two-game lead in District 1-3A.

Head coach Dustin Miller credited Perryton, who played Dalhart last night for how they challenged his team and added that the home court advantage was key.

"Perryton showed some resiliency and had a tough game last night," Miller said. "They gave us all we wanted. I'm glad the game was on our court. I don't know what would have happened if it was in Perryton."

Senior guard Polasek who started his night by drawing a charge and hitting a three, said it was a night he won't forget.

"The roar of the crowd when I made those two plays were unforgettable," Polasek said.

Though the end result ended in the Harvesters favor, the game didn't start Pampa's way as they struggled to hit shots. Pampa was one for five beyond the arc and Perryton opened up a 10-3 lead early in the quarter. Ericson hit two jumpers and pulled the Harvesters within three still. Pampa trailed, 14-9 after one.

The second quarter got off to the same start the first did for Pampa. The Rangers opened the quarter with a 5-2 run, prompting Miller to call a timeout. After the Harvesters broke the huddle, they turned things around. Ericson nailed a three and got the Harvesters within three. Senior Brandon Chairez came off the bench towards the end of the half and provided the spark Pampa needed. The senior swingman nailed a wide open three to tie the game at 25. Then Chairez took a nice feed from junior center Reid Miller for a layup and put Pampa up by one which they carried into halftime.

Chairez said, Coach Miller told him he wanted him to jump start the team. "He told me to pick up the slack for the team."

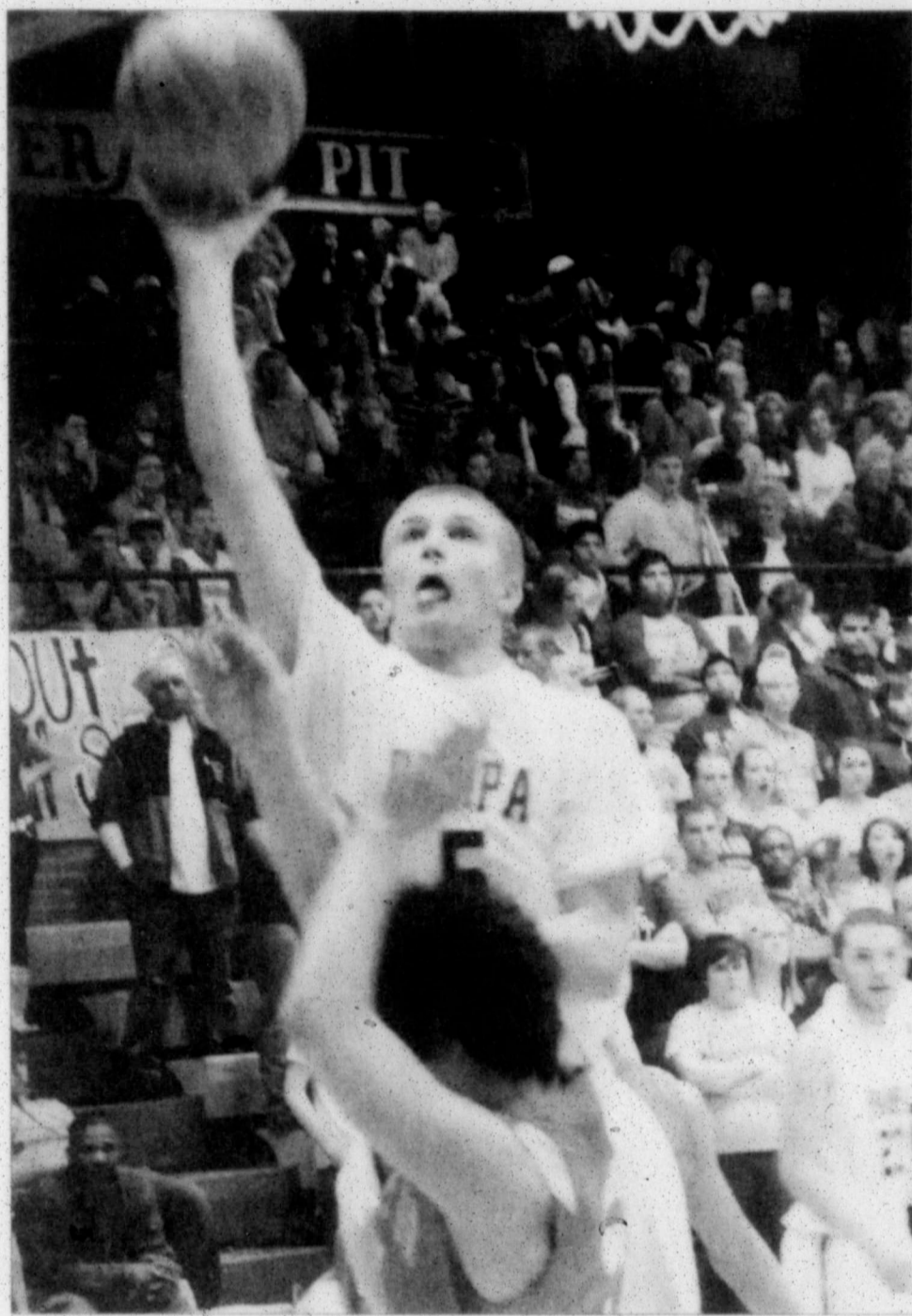


photo courtesy of Joe Murray

Latigo Collins attempts a first half lay up against Perryton with his tongue sticking out. Collins scored 19 points in the Harvesters 72-58 victory.

**WILD**

NEW Shipment Has Arrived!

**T-Shirts & More**

111 W. Kingsmill | 806-665-3036

BOYS cont. on page 3B

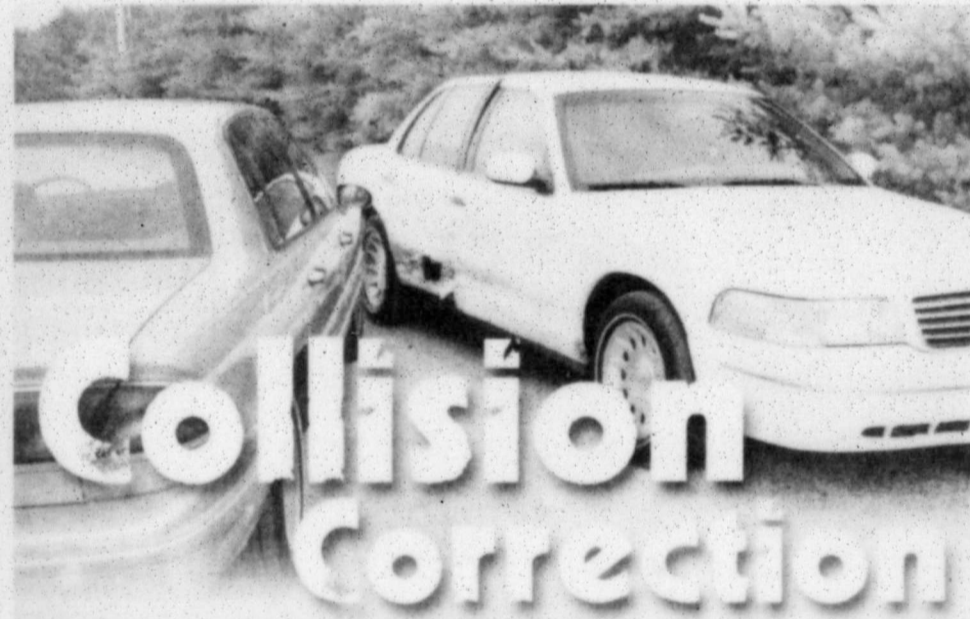
a retirement dinner,  
a Mardi Gras celebration,  
a super bowl party...

*You think up the  
excuse for a party*

...we'll do all  
the work for you!

**Dyer's  
Bar-B-Que  
Catering**

Call us at  
665-4401  
or come by Dyers -  
Hwy 60 W.



**Fast • Reliable • Affordable**

**We specialize in collision repair,  
so you can count on us for  
quality work at a great price.**

- State-of-the-art frame straightening
- Custom color matching
- Dents and dings removed
- Insurance specialists

**Free Written Estimates**

..... **NEW! Think Green!**  
...or Jetstream Blue...Victory Red,  
...Velocity Yellow...Arctic White

Culberson-Stowers Body Shop is proud to announce the introduction of BASF's R-M Onyx HD waterborne paint. R-M Onyx HD is an environmentally friendly automotive paint that offers an 80% reduction in solvent emissions when compared to conventional automotive refinish paint technology. So we can repaint your vehicle any color of the rainbow and it will still be GREEN.

**Culberson Stowers Body Shop**

805 N. Hobart | Pampa, TX | 806-665-1665

# Sports

## Lady Harvesters lose, now face must win situation



Kayla Hughes battles for position with Perryton's Shelby Skaggs in the first half Friday. This game was Hughes' last home game and Pampa lost 52-37.

ANDREW GLOVER  
aglover@thepampanews.com

There could have been no better way for Lady Harvester seniors Cori Cook and Kayla Hughes to go out than with a win over the newly crowned district champion Perryton Rangerettes and be closer to clinching a playoff spot for a consecutive season.

Unfortunately, Friday night, at McNeely Field House didn't have that fairy tale ending. Pampa now faces a must win situation after a 52-37 loss.

Cook said she thinks they played well, but wished for a better result.

"We played really good for it being our last home game," Cook said. "We probably played our best game at home; it's just unfortunate we still lost."

Hughes was disappointed with the result and said the night was a definition of her season.

"It was a (bad) game," Hughes said. "We had (bad) refs. I fouled out."

Valentine said his team played with good intensity but just weren't able to hit the key shots.

"In the third quarter we missed three wide open lay-ups," Valentine said. "We got it down to a nine point difference. I thought we played hard."

"Our defense played hard and held them."

The Lady Harvesters got off to a rough start. The Rangerettes scored the opening seven points of the game

and didn't allow Pampa to get closer than four in the first quarter. Junior post Kailyn Troxell hit a three to get the Lady Harvesters on the board. Pampa was held to five points in the quarter and trailed 12-5 after one.

Junior guard Caitlin Sieck created a spark in the second quarter, hitting three three-pointers. The rest of the team, though, wasn't able to ignite as they only combined for six points. Frustrations boiled for Pampa when Hughes was called for a technical after she was called for a foul. Hughes recorded four fouls in the first half.

The Lady Harvesters got as close as five early in the quarter, but the Rangerettes didn't allow them to get closer as they went on a 9-3 run and opened up a 23-12 lead. Pampa did play even with Rangerettes in the second and trailed 27-20 at halftime.

The Rangerettes erased any hope of the Lady Harvesters pulling a comeback in the second half. The Lady Harvesters didn't score a field goal in the third. Pampa only scored six points from the free throw line and didn't get closer than seven. Though Pampa didn't allow Perryton to open up their lead much holding them to 11 points but trailed 38-26 after three.

Cook said their play on defense helped the stay in the game.

"We were able to control them and play off of them," Cook said.

Hughes said they didn't allow anyone

**GIRLS** cont. on page 3B

photo courtesy of Joe Murray

### District 1-3A Girls Basketball Standings

Team	W	L	W%	W	L	W%
x-Perryton	8	0	1.000	21	8	.565
Borger	3	5	0.375	11	17	.393
Dalhart	3	5	0.375	14	14	.500
Pampa	2	6	0.250	6	20	.231

x - clinched district title

### Upcoming Games

Tuesday

Pampa at Dalhart 6 p.m., Borger at Perryton 6 p.m.

### How the Lady Harvester seniors fared

- Cori Cook-6 points, played good defense crowned basketball queen after the game.
- Kayla Hughes-1 point, hustled the whole game.

## this week in SPORTS:

FEB 8

### Tuesday

• Pampa High School Fr, JV and Varsity Girls Basketball vs. Dalhart, JV: 4:30, Varsity 6 p.m., Freshman 7:30 p.m., Dalhart

• Pampa High School Fr, JV and Varsity Boys Basketball vs. Dalhart, JV: 4:30, Varsity 7:30 p.m., Freshman 6 p.m., Dalhart

• Pampa High School JV and Varsity Girls soccer vs. Randall, 5 p.m., Kimbrough

• Lefors Boys and Girls Basketball vs. Groom Girls 6 p.m. Boys 7:30 p.m., Groom

• Pampa High School JV and Varsity Boys soccer vs. Randall, 7 p.m., Kimbrough

FEB 9

### Wednesday

• Seniors Scramble: Sign up 10 a.m., 10:30 a.m. shotgun start, Hidden Hills

FEB 10

### Thursday

• JV and Varsity Softball Scrimmage vs. Canyon, Varsity 4:30 p.m., JV 6 p.m., Canyon

FEB 11

### Friday

• Pampa High School Fr, JV and Varsity Boys Basketball vs. Borger JV: 6, Varsity 6 p.m., Freshman 6 p.m., Borger

• Lefors Boys Basketball vs. Shamrock, 7:30 p.m., Shamrock

• Pampa High School Wrestling Regionals, TBA, Randall

FEB 12

### Saturday

• Pampa High School Wrestling Regionals, TBA, Randall

• Pampa Varsity baseball scrimmage vs. Hereford, 1 p.m., Hereford

• Pampa Varsity softball scrimmage vs. Randall, Lubbock High and Amarillo High, Randall

www.thepampanews.com

## BANANAGRAMS!

Add a G to each of the six-letter words below and then rearrange the letters in each word to form a new seven-letter word.

LOCALE

\_\_\_\_\_

DEADER

\_\_\_\_\_

LEASES

\_\_\_\_\_

STOLEN

\_\_\_\_\_

Yesterday's Answer  
COPPER R  
RAIN CONCEPT  
COTTON PORTION  
L

## Sudoku

Answer to yesterday's puzzle:

8	7	3	9	5	2	4	1	6
1	2	6	8	4	7	5	3	9
9	4	5	6	1	3	2	8	7
7	3	4	2	6	8	1	9	5
6	1	9	4	7	5	8	2	3
2	5	8	1	3	9	7	6	4
5	6	7	3	2	1	9	4	8
4	8	1	5	9	6	3	7	2
3	9	2	7	8	4	6	5	1

	4	2	3					8
			9					1
		7						9
	6					2	1	
	8	5			9			7
								4
			5		8	9		2
7				2				
		4			6			

Level: Advanced

Happy Valentines Day!

Clip and bring in coupon for 30% OFF Total Purchase!

"Holmes" Expires Feb. 15, 2011 Excludes Custom Orders.

Pampa Harvester Headquarters

HOLMES



est. 1962

304 S. CUYLER

806-665-2631

Proudly supporting the Pampa Harvesters!

# Sports

## Boys

cont. from page 1B

Chairez said. "I hit that wide open three and then Reid (Miller) was struggling with the ball and I made a nice cut to the basket and got a wide open layup. I think that gave our team confidence and helped a lot in turning the game around."

The Harvesters started the second half where they left off in the second quarter. Ericson and Latigo Collins made early baskets to put Pampa ahead by five. Later in the quarter, Polasek nailed his second three and gave Pampa their largest lead of the night at 40-31.

Perryton took a timeout, but it didn't help. Junior guard Cole Engle hit two threes and expanded the Harvesters lead to 50-38. Engle scored eight points in the third. Ericson took advantage of his trips to the charity stripe and sunk all five free throws. The senior forward was eight-for-nine at the free throw line in the second half. The Harvesters led 53-40 after three.

Polasek said they have been a second half team all season.

"If we keep it close, we can turn things around," Polasek said. "We made adjustments at halftime and were able to pull away."

The Rangers (14-13, 3-3) did keep the Harvester faithful at the edge of their seats as they made a run at the Harvesters. Perryton outscored Pampa 8-3 to start the fourth and cut the Harvesters lead to 56-48. Pampa didn't allow the Rangers to get closer. Ericson converted a jumper and Engle was fouled during the play. Engle converted both free throws and opened Pampa's lead to 60-48. Towards the end of the game, Murray got on the board with a layup.

Coach Miller said he was pleased with how all of his seniors played.

"The seniors have worked their tails off since last February," Miller said. "We have one goal. Brandon was incredible that first half. Greg and Joey we get from them what we get every time, effort, intensity and rebounds. Garrett came up big. I thought Jonathan best game of the year in the biggest game of the year. I thought Zach handled the ball good and distributed it."

Hunter Wade led the Rangers in scoring with 26. Braiden Vernon followed with 11 and Kalyann Samples scored 10. Samples and Zach Allred led the team in rebounds with six each.

Ericson led the Harvesters in scoring with 21 and rebounds with seven. Collins followed with 19, scoring 16 in the second half. Engle scored 15 with eight coming in the third.

The junior varsity (7-12, 2-4) lost 55-44. Coach Matt Embry said his team played great but couldn't overcome foul trouble.

"We played with our best effort tonight and still didn't win," Embry said. "It's tough to win when your opponent shoots 25 more free throws than you do. This team will win out the last three games."

The freshman (3-16, 1-5) lost 60-40.

The Harvesters (15-10, 5-1) clinched a playoff spot and can clinch district with two wins or a win and a Perryton loss.

Miller said his team knows where they sit but knows they still have games to win.

"We want to finish this thing off," Miller said. "We don't want to count on someone else to do it for us. We plan on going to Dalhart and playing like our life is on the line again. We got to have that win in Dalhart."

### How the Harvester seniors fared

- **Garrett Ericson:** 21 points, 7 rebounds
- **Jonathan Polasek:** 8 points, drew one charge
- **Zach Murray:** 2 points, 3 rebounds
- **Brandon Chairez:** 5 points, 1 rebound
- **Joseph Mechelay:** attempted to draw two charges
- **Greg Cabrales:** played quality minutes in the second and fourth quarter; also crowned as basketball king before the game.

### District 1-3A Boys Basketball Standings

Team	W	L	W%	W	L	W%
y-Pampa	5	1	0.833	15	10	.600
Perryton	3	3	0.500	14	13	.519
Dalhart	3	3	0.500	16	7	.696
Borger	1	5	0.167	11	11	.550

y=clinched playoff spot

### Upcoming Games

#### Tuesday

Pampa at Dalhart 7:30 p.m., Borger at Perryton 7:30 p.m.

#### Friday

Pampa at Borger 7:30 p.m., Dalhart at Perryton 7:30 p.m.

#### Tuesday

Perryton at Pampa 7:30 p.m., Dalhart at Borger 7:30 p.m.

## CROSSWORD

By THOMAS JOSEPH

ACROSS 41 None too

1 Alliance smart

since 42 Calls for

1949 43 College

5 Stamp head

sheet 44 Messes

9 Person up

with

promise

10 "Dead

Ringers"

star

12 "I have

half — to

..."

13 Around

14 American

tennis

star

16 Crayon

makeup

17 Hosp.

parts

18 Romanian

tennis star

20 Sink

setting

22 Peer

group?

23 Mischie-

vous

25 Verdi

piece

28 Swear

32 American

tennis star

34 Roof

ornament

35 Maze

runner

36 Swiss

tennis star

38 Folder's

phrase

40 Lamblike

### DOWN

1 "Enough!"

2 In the

thick of

3 Watch

over

4 Number

type

5 Guitarist's

needs

6 "Entou-

rage"

agent

7 Sweden

neighbor

8 Put in a

box

9 Hitter Rod

27 Chant

11 Jazz

29 More

blowers

spooky.

15 Traveling

30 Shells

out

19 Circus

31 Car

structure

quartet

21 Noggin

33 Many a

time

24 "There!"

37 At any

time

26 Acted

the

39 Can.

nomad

neighbor



Yesterday's answer

## Girls

cont. from page 2B

to dominate them. "Our defense worked," Hughes said. "We were able to limit their shooters."

Perryton jumped out early in the fourth and sealed the game with a 10-4 run. Cook and Hughes ended their final game at McNeely well though. Cook nailed a three and Hughes made a free throw to get on the board. Cook finished the night with six points.

Valentine said Cook played well in her final home game.

"She played well," Valentine said. "She hit a couple of shots and a three. She missed a couple lay ups. She did a good job for her last home game."

Lisa Rinker led the Rangerettes in scoring with 16 points, tallying seven in the fourth quarter. Sidney Walton followed with 12. Walton led Perryton in rebounds with eight. Sieck, who started her third consecutive game for the injured Kirsten Kuhn led Pampa in scoring with 16. Junior forward Delaney

Clendening led the team in rebounds with nine. Clendening was held to four points after scoring 14 in Tuesday's victory over Borger.

The junior varsity (10-15, 5-3) lost 43-41. Coach Braydon Barker said they missed some opportunities.

"We had three chances to tie the game and send it into overtime," Barker said.

The Lady Harvesters (6-20, 2-6) finished the season winless at McNeely Field house. With Borger's victory over Dalhart, Pampa must beat the Lady Golden Wolves Tuesday in Dalhart and the Lady Bulldogs have to lose to Perryton to force a three-way tie for second.

Valentine said beating Dalhart isn't impossible for his team.

"We know we can do it," Valentine said. "Borger beat Dalhart twice and we beat Borger twice. We just need to get off to a good start and not let them get ahead of us."

### SCHEDULE CHANGES

- The JV and Varsity softball scrimmage against Canyon has been rescheduled for 4:30 and 6 p.m. Thursday at Canyon.
- The varsity baseball scrimmage at Heroford Monday is cancelled.

The paper will alert of other schedule changes when they become available. If you know of a cancellation contact Andrew Glover at 669-2525 or aglover@thepampanews.com.

## Think Success!

Boost business by advertising with The Pampa News! Not only can we provide Graphics Design services, but we are a daily newspaper that is delivered to over 4,000 homes. What better way to get the word out? Call today!



## 24-Hour Roadside Assistance

Call 806-688-9056!



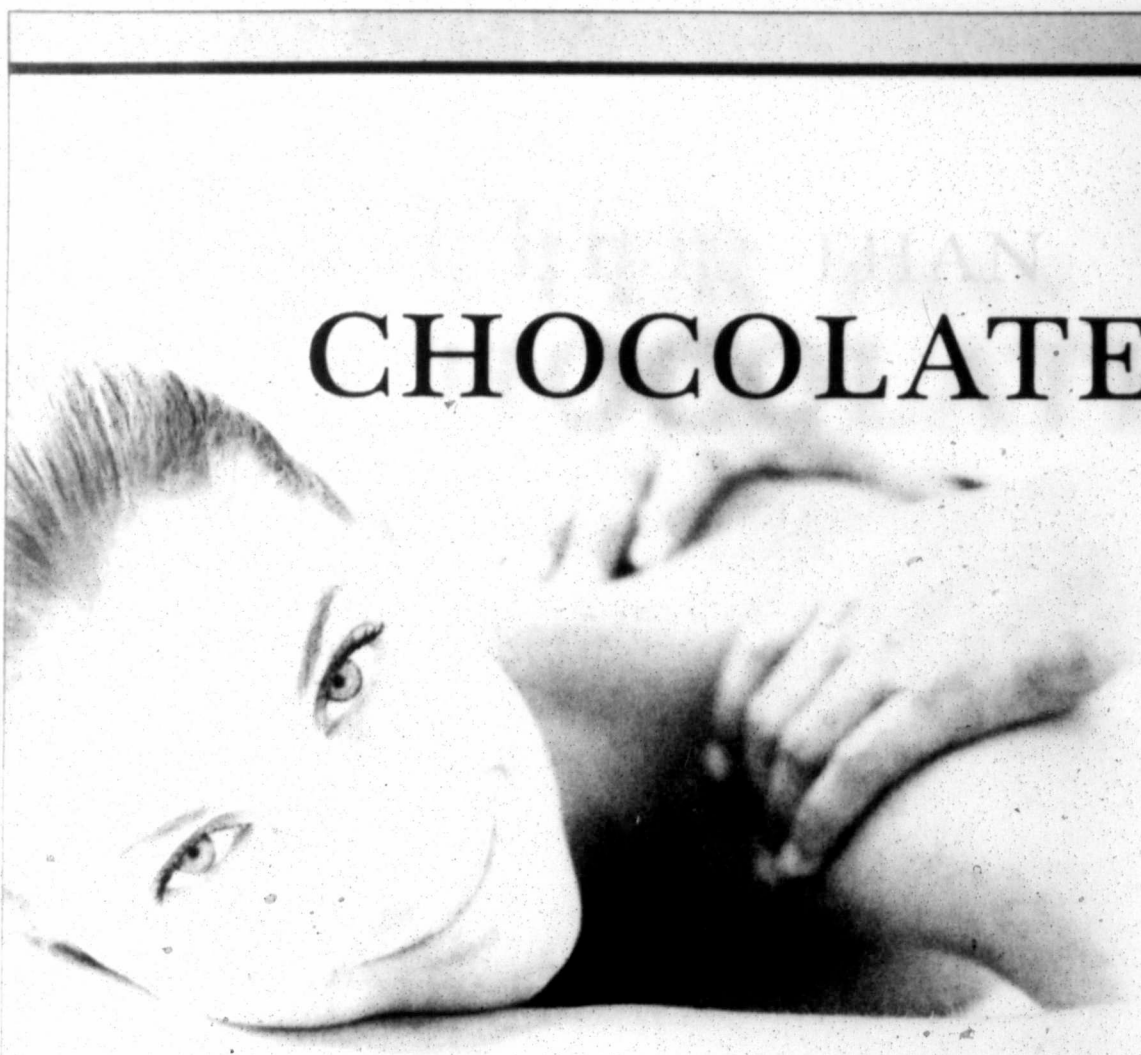
Hours of Operation:  
Now open until 5:00 PM on weekdays  
and 8:00 AM - 2:00 PM Saturdays!

## Tires Plus

125 N. Somerville • Pampa, TX • 688-9056

For information about our rates or services, call:  
Redonn Woods — 662-5837  
Ad Sales Manager  
Sue Pribble — 662-8595  
Sales Associate  
Beverly Taylor — 669-2525  
Classified Ads

check us out online @ [www.thepampanews.com](http://www.thepampanews.com)



# CHOCOLATE...

**\$39**  
(1) Half Hour  
Therapeutic  
MASSAGE

Save \$10 Ask How!

**\$49**  
(1) One Hour  
Therapeutic  
MASSAGE

## MASSAGE ADVANTAGE

Location @ Ford Family Chiropractic  
Rehabilitation & Wellness Center  
701 N. Price Rd. • Pampa, TX 79065  
www.MassageAdvantage.com

### Your Valentine's Day Gifts!

- Purchase & Share Member Card with Anyone
- Full 60 or 30 Minutes of Massage
- Nationwide Redemption
- No Fees for Membership or Sharing
- Redeemable Anytime Within 12 Months

**Purchase: (806) 665-7261**

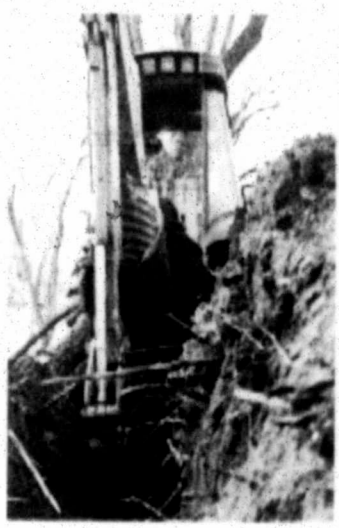
**GUILT FREE & ZERO CALORIES.**

Advertised rate is prepaid & requires a signed agreement stating expiration is 12 months from date of purchase. Additional restrictions apply. Not redeemable for cash.

Max **Long Boyd Motors** Steve  
Corner of Hwy 60 & 70 • 806-669-8082 • Buy Here, Pay Here, No Credit Check

# The PAMPA NEWS

- FRONT PAGE NEWS
- SPORTS
- FEATURES
- EDUCATION
- PIET OF THE WEEK
- MO OF THE WEEK
- OBITUARIES
- POLITICS
- COUNTY
- POLICE AND FIRE
- CITY



**A DAY AT THE PARK**  
staff photo by David Bouser  
Jay Weeden pulls an old culvert out of the ground in Central Park as the City of Pampa replaces the pipe that helps drain the park.

**CLICK HERE**  
to read the 1st edition of the Pampa News  
New York Times  
Click to subscribe  
Click to Log in  
After you make an order, you will receive an email or text message with your account information.

**UNITED WAY CELEBRATES 2010 WITH LUNCHEON**  
by Annie Aureliano

United Way is providing messages from Tuesday, February 2, 2011. Meetings and Awards Luncheon. The luncheon was held on Tuesday, Feb. 2, 2011 at the Pampa Convention Center.

**PAMPA RENEWS ANIMAL CONTROL ASSISTANCE PACTS**  
by David Bouser

The City of Pampa is renewing its animal control assistance pact with the Pampa Animal Control Authority. The pact will cover the costs of animal control services for the City of Pampa.

**1-877-MY-CABLE**

**FUNERAL FUND ESTABLISHED FOR PAMPA WOMAN**  
by Annie Aureliano

Paula Phyllis Weeden, a longtime Pampa resident, has left behind an estate plan for the Pampa Regional Medical Center. Her estate plan includes a donation to the center for the purchase of medical equipment.

**BEGIN HERE**  
The Pampa News is on Facebook  
Go to facebook and search for "The Pampa News"

**PGWCD CONSIDERS USE OF SOIL MOISTURE PROBES**  
by David Bouser

**WHITE DUFFR** - The Panhandle Groundwater Conservation District is studying the possibility of using soil moisture probes to enhance timely water application to crops in the area.

**DO YOU THINK I'M CUTE?**  
staff photo by David Bouser  
Frolicking in the dog days of winter, Major, a seven-month-old English Bulldog puppy that arrived in Pampa over the Christmas holidays.

**OLDS GETS PRISON TIME FOR INJURY TO ELDERLY**  
by David Bouser

Lawrence Scott Olds was in the Gray County jail today awaiting transfer to the Texas Department of Corrections after being convicted of beating his mother.

**ENBRIDGE CAREER FAIR TOMORROW**

**What's happening**

- Nice show by Harvesters for McNeely - 2/5/11 9:22
- Later putting on a show in the first at Phi - 2/5/11 9:22
- Wednesday night Pampa folk in game - 2/5/11 9:22
- Lady Harvesters struggle to run offense - 2/5/11 9:22
- Rainy route up from three - 2/5/11 9:22

**this week's thepampanews.com poll**

How concerned are you about the proposed sale of Pampa Regional Medical Center?

Very Concerned  
Somewhat Concerned  
Not Concerned

**CLICK HERE TO VOTE**

The Pampa News, online poll, is only for informational purposes and does not constitute an offer. The poll will be subject to the terms and conditions of the Pampa News website.

# READ IT Online



Access a complete issue of  
**THE PAMPA NEWS**  
every day,  
Monday through Saturday,  
on your computer!

Keep up with your hometown news  
anywhere you can access the  
Internet -  
at home, on vacation,  
away at college.

Call Kera at 669-2525  
for subscription details.

# Community

## SUPER WINNER



Dr. Lance W. Krogh (left), along with Ford Family Chiropractic Team Members Stacy Minnet (second from left) and Laura Garza (right), present Rose Shank of Pampa with a Super Bowl XLV Party Pack to enjoy while watching the game. Ford Family Chiropractic Team Members wore the jerseys of their favorite NFL Teams leading up to Super Bowl XLV and each patient reporting for treatment during January had a chance to win.

### CLUB & ORGANIZATION NEWS

#### Knife and Fork Club

The Knife and Fork Club of Pampa will be meeting on Tuesday, February 8th at 7:00 p.m. at the Pampa Country Club.

Melody Grace from Amarillo will be the special entertainer. Melody has been singing since she was 5. She grew up singing religious and then started singing Patsy Cline.

A few years back, she learned some 50's music to perform during a 50's high school reunion. Melody performs regularly at the Pampa Country Club as a wedding singer and a dinner singer during special banquets. She is also a speaker for Christian Women's Clubs.

Anyone may attend the meeting by going to Heard Jones Pharmacy and purchasing a ticket. The cost is \$15 per person. For more information, call Darlene Lewis at 806-440-4191.

#### Salvation Army

The Salvation Army recently announced its new world leader. The 19th General will be Canadian-born Commissioner Linda Bond.

Commissioner Bond becomes the third woman and the fourth Canadian to hold the post of General of The Salvation Army since the international church and charity organization was founded 146 years ago.

The commissioner, who currently heads up the church and registered charity's work in the Australian Eastern Territory, was elected by The High Council of The Salvation Army made up of senior leaders from around the world who met this week in Sunbury-on-Thames near London.

Commissioner Linda Bond, 64, will have the title General-elect until

she succeeds the current world leader General Shaw Clifton, who retires at the beginning of April.

Commissioner Bond comes to the role of General of The Salvation Army with 42 years' experience of Christian ministry and leadership.

Since 2008 Commissioner Bond has headed up The Salvation Army's work across Eastern Australia, a huge territory with its headquarters in Sydney.

Prior to this, she worked at Salvation Army International Headquarters in London as the Secretary for Spiritual Life Development and International External Relations. She had previously served as Undersecretary for Personnel in the mid-90s.



## IT'S A TOUCHDOWN!

WHEN YOU CHOOSE KEYES PHARMACY

Choose Keyes for all of your pharmacy needs!

Whether it's a cough, cold, allergies or the flu, you can count on us to get you back on your feet! Come see us today for over-the-counter and pharmaceutical remedies to help you feel better!

## Keyes Pharmacy

928 N. Hobart • Pampa, TX • 806-669-1202



Hours of Operation:

Monday - Friday 8:30 a.m. - 6:00 p.m.

Saturday 8:30 a.m. - 12:00 p.m.



## Subscribe Today!

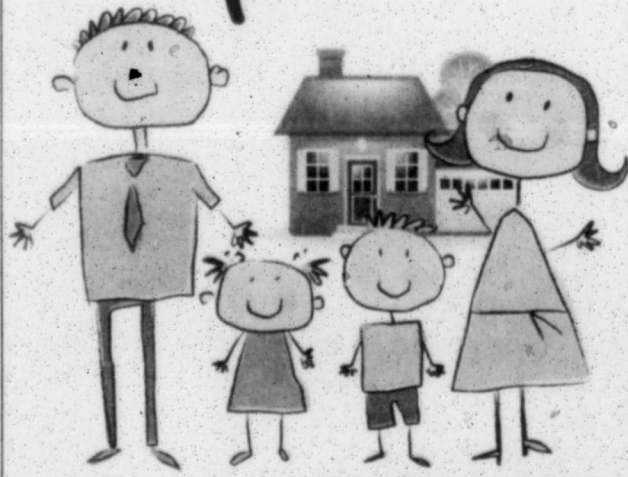
Have it delivered to your doorstep or view it online!

To subscribe, contact Kera Kent at The Pampa News today!

806-669-2525

You can also contact us via email at [circulation@thepampanews.com](mailto:circulation@thepampanews.com) or visit us at our Pampa office: 403 W. Atchison Ave.

## Need more space?



We can help!

Your needs change as your family grows. Whether you're looking for a bigger house, a bigger yard or just want to make some changes to the house you already have, let one of our loan officers help you out with a home loan or a home improvement loan today.

Member FDIC

National Bank of Commerce

An Office of First National Bank Waupaca, WI

**Pampa**  
1224 N. Hobart  
806-665-0022

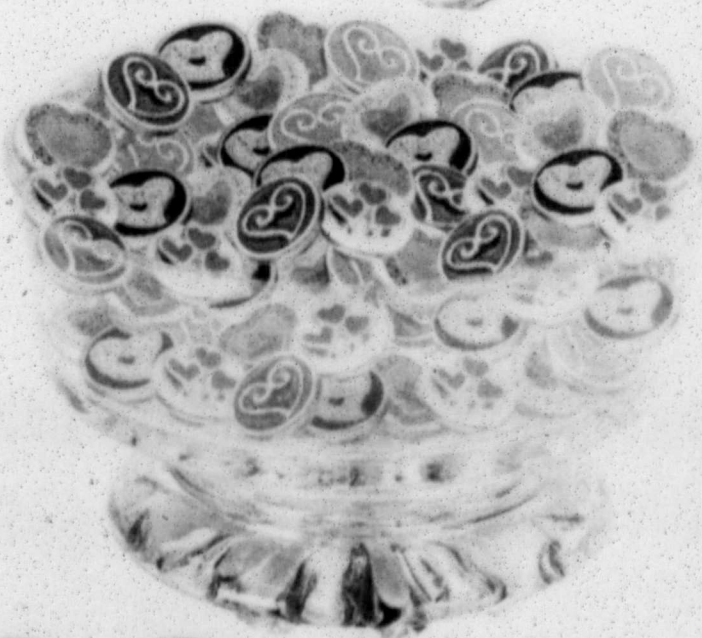
**Shamrock**  
305 N. Main  
806-256-2181

**Childress**  
501 Commerce  
806-937-2514

## RHEAMS Diamond Shop

### Kameleon Love Pops

Buy a ring or necklace and 2 poppers and get a FREE case!



KAMELEON  
Change is Natural



● KJP352 \$29.00



● KJP353 \$29.00



● KJP312 \$39.00



● KJP620 \$39.00



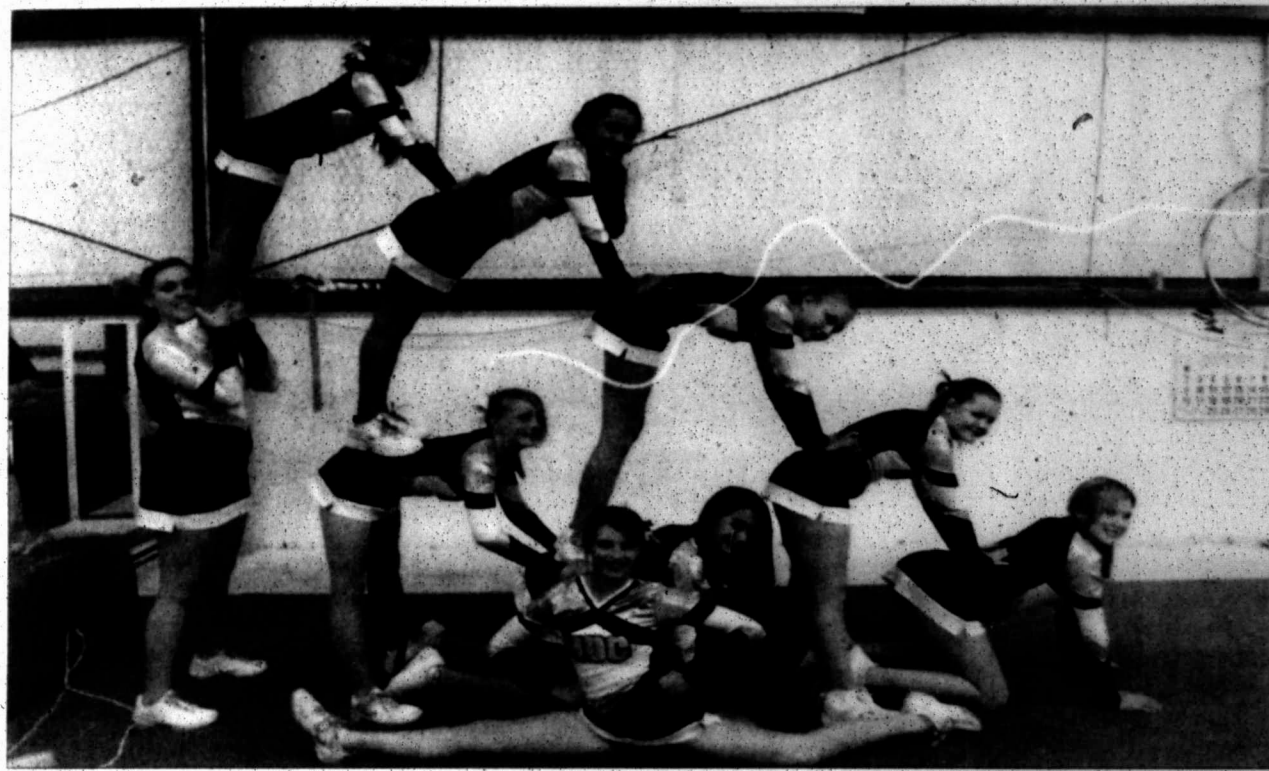
● KJP600 \$44.00



● KJP602 \$44.00

111 N. Cuyler Pampa, TX | 806-665-2831 | "2009 Business of the Year"

# Community



## SPIRIT SQUAD

Gymnastics of Pampa's competitive cheer squad, House of Cheer, made good showings at their first two competitions. They competed at the All-Star Cheer and Dance Competition and the Redline Cheer Competition, both held in Lubbock. They brought home the first place trophy from the ASC competition and a second place trophy from the Redline Cheer competition. Competitors include Victoria Valenzuela (top row, from left), Alexis Valenzuela, Whitney Browning, Samantha Clancy, Danielle Bowers (bottom row, from left), Savannah Davis, Vanessa Ontiveros, Jaycee Garth and Callie McDonald. Not pictured are Harper Kelly, Sierra Burr, Kelly Osborne and Riley Lindley. The girls are coached by Kathy Rice and Collin Rains.

photo courtesy **Kathy Rice**



## Dear Abby...

By Pauline & Jeanne Phillips

**DEAR ABBY:** My older brother "Mike" was married several months ago. The family was informed after the fact Mike and his bride, "Sophie," didn't elope. They had planned their church wedding for the better part of a year, and decided to include only a small group of friends while completely excluding the family. Naturally, this has caused hurt feelings. As far as I'm concerned, I have lost a sibling rather than gained one.

Mike and Sophie are now throwing themselves a party in their honor to celebrate their union. My mother not only wants me to attend, but expects me to give them a gift as well. Mom says he is "family" and therefore I am obligated to give a gift. I say I wasn't invited to their wedding so I'm under no obligation to give one. I have no desire to reward someone who thinks so little of me. What do you say? — **LEFT OUT SIBLING IN WISCONSIN**

**DEAR LEFT OUT SIBLING:** If you haven't already done so, tell your brother how hurt you feel to have not been invited to his wedding, then listen to what he has to say. Give him a chance to mend fences. If that doesn't happen, then skip the celebration. But remember that if you don't attend, the rift that has been created may never be healed.

**DEAR ABBY:** I am a high school senior who is worried about leaving my older sister, "Jamie" is 10 years older and moved back home with my parents and me after she finished college. She takes medication because of her anxiety and stays in her room most of the time.

In the six years that Jamie has lived here she has made no friends or acquaintances. I believe I'm the only person she has a relationship with other than her therapist. As I spend more time on schoolwork and projects and less time with her, she feels ignored and becomes desperate to spend time with me. I feel I'm her only link to the outside world. I'm worried that when I move away she'll lose that connection and not make any attempts to find a relationship or a job.

I care deeply about Jamie, but I want to go to college. How can I help her to get moving? — **MY SISTER'S KEEPER IN ILLINOIS**

**DEAR SISTER'S KEEPER:** I can think of two ways. The first is to not allow your sister's mental disorder -- because that is what you are describing -- to keep you from going to college and having a life. Your sister has your parents, so she won't be all alone. The second is to write a letter to her therapist explaining your concerns. If anyone can help your sister, it is her therapist.

**DEAR ABBY:** I have a friend from school who is very close to me. I only get to see her at lunch at school. We have managed to keep our friendship going through e-mails and sleepovers.

However, she is often not available for sleepovers, and when she is, she must always leave at 12 a.m. I know it's not just me because other friends of hers have said this, too. Once I asked her why she had to leave so early and she said it was her mom.

Why do you think her mom is so adamant about early endings? — **WONDERING IN ATLANTA**

**DEAR WONDERING:** It's probably because your friend's curfew ends at midnight or a little after, and her mother hasn't given her permission to attend all-night sleepovers. But if you want to be sure -- have your mother ask her mother.

**DEAR ABBY:** May I make a plea to all physicians? Please remove the magazines and children's books from your waiting rooms! Again and again, I see patients sneezing and coughing over and around these materials without covering their mouths, and handling them with contaminated hands.

The next patient who innocently touches one of those items puts him or herself at risk of infection. The same applies to children's toys, if they are provided in waiting rooms.

My advice to patients, and to parents of children with appointments, is to bring their own reading materials, iPads, laptops or needlework to pass the time waiting for their doctor's appointment. Parents should bring a favorite toy for this purpose.

Let's all work together to keep our germs to ourselves. Thank you for getting the word out, Abby. — **EDYTHE IN TENNESSEE**

**DEAR EDYTHE:**

That's excellent advice, and something people rarely think of. Children frequently put their hands in their mouths -- and adults who touch the furniture and doorknobs in doctor's offices should wash their hands before touching their faces. An ounce of prevention is worth a pound of cure -- and it's less expensive!

**DEAR ABBY:** Your columns about the kindness of strangers impel me to relate a recent experience. As an 80-year-old retired general contractor, I stay busy by making custom furniture. Recently, I picked up a full load of hardwood planks.

Because some of the pieces were very long, I had to keep the tailgate of my pickup truck down. All went well until I reached the first stop sign. When I started to pull away, my truck went forward, but the load stayed put! Halfway across the busy intersection with traffic going all directions, I panicked. I knew I couldn't lift those 46 planks by myself.

Out of nowhere, two gentlemen rushed through the traffic, and without a word, began loading the planks, two at a time, into my truck. When they were all loaded, I offered each young man my heartfelt thanks. My proffered reward was brushed aside with a sport. "That's not necessary. Have a good day!" People are great in Southern California. — **GRATEFUL IN GARDEN GROVE, CALIF.**

**DEAR GRATEFUL:** Actually, people are great all over. But as another resident of Southern California, I second the motion.

**DEAR ABBY:** I would like to offer a word of hope for all those hurting grandmothers whose sons' wives have been unkind or ignored them. Have patience! Someday those very same daughters-in-law will be mothers-in-law. In my case, my grandson married a girl just like his mother. Now my daughter-in-law is a grandma, too, and she's getting the same kind of treatment she gave me. Of course, I say nothing -- but I smile a lot.

Please don't print my name or town. Sign me ... **SMILING IN ILLINOIS**

**DEAR SMILING:** Yours may be a knowing smile, but it proves the truth of that old song lyric, "When you're smiling, the whole world smiles with you." Your letter is a reminder of how often events come full circle with unexpected results.

## Texas Furniture

**SAVE ON RECLINING SECTIONALS.**

**SEE AND SAVE! OUR BIGGEST SELECTION OF SECTIONALS**

**RECLINING SOFAS AS LOW AS \$699**

**IN STOCK NOW!**

### FAMOUS LA-Z-BOY RECLINERS

Buy One <b>\$599</b> Get One FREE!	Buy One <b>\$799</b> Get One FREE!
--	--

**T.V. CONSOLES AS LOW AS \$399**

**ASHLEY SOFAS \$499**

**LEATHER RECLINERS \$399**

**PLUSH COMFORT SWIVEL ROCKERS \$299**

**TEMPUR-PEDIC**

PRESSURE RELIEVING SWEDISH MATTRESSES AND PILLOWS

**COME IN AND SEE FOR YOURSELF!**

Save Now... **BEDROOMS**

Better Sleep On A **Sealy**

**ASHLEY**

**FINAL CLOSEOUT PRICES ON DISCONTINUED MATTRESS SETS.**

MON - SAT 9:00 AM TO 5:30 PM

## Texas FURNITURE

1415 N. HOBART • 665-1623  
PROUDLY SERVING PAMPA SINCE 1932

**QUEEN 2PC SET AS LOW AS \$399**

6 MONTHS NO INTEREST

**f** The Pampa News is now on facebook!  
Go to facebook and search for The Pampa News

# Sunday Horoscope

**HAPPY BIRTHDAY** for Sunday, Feb. 6, 2011:

This year, you make a difference to many people. You express exuberance and happiness. Even if you are a person who tends to be down more than up, in the next 12 months, expect to be more upbeat than you have been in years. If you are single, you draw admirers and have your choice of suitors. The process proves to be most exciting. If you are attached, the two of you achieve much better communication than you have in years. ARIES knows how to bring out the best in you.

The Stars Show the Kind of Day You'll Have: 5-Dynamic; 4-Positive; 3-Average; 2-So-so; 1-Difficult

**ARIES (March 21-April 19)**

★★★ Play most of the day low-key. You could be unusually tired or need time with a partner. Plan on having brunch out with friends or family. Suddenly you revive. An older friend's or loved one's request proves to be easier than you thought. Tonight: Act as if there is no tomorrow.

This Week: Charge into Monday, a force to be dealt with. Keep up the pace.

**TAURUS (April 20-May 20)**

★★★★ Get going; join friends and family. Time spent together helps you recycle. Enjoy the support and caring of many people, especially if you share a common problem. Be proactive, and what you want will be accomplished quickly. Tonight: Get some extra R and R.

This Week: Not until Wednesday will you be up to snuff. You might be amazed by what you can accomplish.

**GEMINI (May 21-June 20)**

★★★★ Take the lead and bring others together. Your fatigue is quite evident to others. You wonder why you are doing what you are doing. Join a friend mid-afternoon. Together you recharge. You certainly know what you need and want. Tonight: Where the party is.

This Week: Meetings play a significant role Monday and Tuesday, keeping you busy.

**CANCER (June 21-July 22)**

★★★★ Reach out for someone at a distance. You know what you want. Decide to meet someone halfway. Planning a trip

to meet could be more fun than you realize. Midday, check in on an older friend or relative. Others follow your lead. Tonight: A must show.

This Week: You are on top of your game, as success becomes more likely as the days pass.

**LEO (July 23-Aug. 22)**

★★★★ Let a partner call the shots. Not only will this person feel good about getting his or her way, but you also can enjoy some carefree time. In the afternoon, go for a drive in the country or to a movie. Let your mind escape. Opportunities flood the moment. Tonight: Try a new spot.

This Week: Detach and look at what is going on before you charge in.

**VIRGO (Aug. 23-Sept. 22)**

★★★★ Others have very strong ideas about what works for you. Don't feel pressured to do anything a certain way. You need to be easier on yourself. This is your day of rest as well. Respond to a special invitation late in the day. Tonight: Dinner and a chat.

This Week: Deal directly with key people. New information forces reflection, if not research.

**LIBRA (Sept. 23-Oct. 22)**

★★★ Get through a key project. Then you will feel like you can really kick back and enjoy yourself. Several loved ones and friends have been calling. They want you to join them. Why not? A get-together proves to be even more fun than you imagined. Tonight: Listen to different options.

This Week: Listen to others and weigh the pros and cons. Then, with a trusted adviser, make a needed decision.

**SCORPIO (Oct. 23-Nov. 21)**

★★★★ Your creativity helps someone who is very shy. Your style helps this person feel important and secure. A family member appreciates your efforts. An unexpected surge of energy in the evening encourages a brisk walk.

Tonight: Relax; choose a favorite hobby.

This Week: Dive into work. From Wednesday on, schedule more meetings.

**SAGITTARIUS (Nov. 22-Dec. 21)**

★★★★ Perhaps you have spent enough

time at home. Get together with friends and loved ones. Have brunch with some of them, and maybe go to a movie or basketball game later. As you start enjoying yourself, your energy soars. If you are single, a flirtation could begin out of nowhere. Tonight: Cheering yourself on.

This Week: Your creativity flourishes. Stay even, knowing what you want.

**CAPRICORN (Dec. 22-Jan. 19)**

★★★★ Make Sunday calls, but also pop in on someone you haven't spoken to in a while. Even with distance, there is no reason why you cannot share, with all the communication options available. It is quite likely you could be planning a trip soon. Tonight: Happy at home.

This Week: Make sure the groundwork is complete before you move to the next stage.

**AQUARIUS (Jan. 20-Feb. 18)**

★★★ You could be on a wild spending spree before you know it. Make sure you can afford this type of extravagance. Make time to meet a friend or

loved one. Together you'll have quite a time. Feelings flow with ease. Tonight: Hanging out as if it were Friday night.

This Week: Schedule meetings; return calls Monday and Tuesday. Plan on isolating yourself Wednesday and Thursday in order to get a project completed.

**PISCES (Feb. 19-March 20)**

★★★★ Take advantage of the morning, when you feel energized. Wherever you choose to go, you enjoy yourself. If you are with the right person, you might find that you could have a very good time. Tonight: In the mood to let the party continue.

This Week: Be careful with your funds. You easily could make a mistake Monday or Tuesday. Talks, meetings and discussions are highlighted from Wednesday on.

**BORN TODAY**

Fortieth U.S. president Ronald Reagan (1911), news anchor Tom Brokaw (1940), singer Bob Marley (1945).

Share Curiosity.  
Read Together.

Ad Council [www.read.gov](http://www.read.gov)

# SAVE HUGE

on in-stock flooring!

ONE STOP FLOORING in Pampa is clearing out all in-stock\* carpet! Come in and receive \$1 off installed in-stock carpet and we will dress up your entryway with tile, hardwood or laminate, up to 35 sq. ft.

**Did we mention the entryway is FREE?**

Choose from our select in-stock flooring! We also have limited amounts of tile, laminate and wood flooring starting as low as 50¢ per sq. ft. up to \$2 per sq. ft. Cash and Carry! Jason overbought at market and needs to sell his in-stock flooring!

## One STOP Flooring

806-665-0995      1533 N. Hobart      Pampa, Texas

Store Hours: Monday - Friday 9:00 am - 5:00 pm      Saturday 10:00 am - 1:00 pm

\*Minimum of 2 rooms of carpet

# Community

## Weekly Menus

### Meals on Wheels

**MONDAY, February 7**  
 BBQ Chicken, Baked Beans, Peach Cobbler  
**TUESDAY, February 8**  
 Polish Sausage, Cheese Grits, Mixed Greens, Cake  
**WEDNESDAY, February 9**  
 Later Tot Casserole, Cabbage, Black-Eyed Peas, Mixed Fruit  
**THURSDAY, February 10**  
 Ham, Okra, Tomatoes, Pinto Beans, Cornbread, Pudding  
**FRIDAY, February 11**  
 Spaghetti/Meat Sauce, Green Beans, Bread Stick, Salad, Cookies

### Pampa Senior Citizens Center

**MONDAY, February 7**  
 Chicken Fried Steak or Salmon Patties, Mashed Potatoes, Spinach, Beets, Beans, Cole Slaw or Tossed Salad, Jello - German Chocolate Cake - Banana Pudding or Fruit Cup, Hot Roll or Cornbread  
**TUESDAY, February 8**  
 Mushroom Smothered Steak or Ham & Fruit Sauce, Yams, California Blend, Corn, Beans, Cole Slaw, or Tossed Salad, Jello - Cinnamon Swirl Cake - Pumpkin Pie or Fruit Cup, Hot Roll or Cornbread  
**WEDNESDAY, February 9**  
 Roast Beef Brisket, Brown Gravy or Cook's Choice, Mashed Potatoes, Fried Okra, Baby Carrots, Beans, Cole Slaw or Tossed Salad, Jello - Lemon Bundt Cake - Cherry Creme Pie or Fruit Cup, Hot Roll or Cornbread  
**THURSDAY, February 10**  
 Chicken Strips or Taco Salad, Tater Tots, Cheese Hominy, Green Beans, Pinto Beans, Cole Slaw or Tossed Salad, Jello - Cherry Chocolate Cake - Vanilla Pudding Cup or Fruit Cup, Hot Roll or Cornbread  
**FRIDAY, February 11**  
 Fried Cod Filet, Hushpuppies or Tamales, Chili, Cheese, Potato Wedges, Turnip Greens, Beans, Cole Slaw or Tossed Salad, Jello - Brownies - Tapioca Cup or Fruit Cup, Garlic Breadsticks, Hot Roll or Cornbread

### Pampa Independent School District

**MONDAY, February 7**  
 Mini Corndogs or Chicken Nuggets, Green Beans, Sliced Carrots, Pineapple Tidbits. **Breakfast - Breakfast Pizza**  
**TUESDAY, February 8**  
 Chef Salad or Pizza, Western Beans, Carrot Sticks, Applesauce.  
**Breakfast - Waffle Sticks, Syrup**  
**WEDNESDAY, February 9**  
 Chicken & Noodle or Steak Fingers, Corn, Broccoli Florets, Pears, Hot Roll. **Breakfast - Oatmeal, Toast**  
**THURSDAY, February 10**  
 Soft Taco or Popcorn Chicken, Refried Beans, Taco Salad, Fresh Fruit, Spanish Rice. **Breakfast - Biscuit, Sausage Patty**  
**FRIDAY, February 11**  
 Grilled Cheese Sandwich or Hamburger, French Fries, Burger Salad, Mixed Fruit, Gelatin. **Breakfast - Cereal, Toast**

## RHEAMS Diamond Shop

## Sweetheart Sale

Seiko Watches  
**20-50% off**

Kameleon Heart  
**\$92<sup>00</sup>**

Cross My Heart Necklace  
**\$59<sup>95</sup>**



A child's promise of friendship, a parent's vow of devotion, an adult's pledge of love, the Father's eternal commitment - "Cross My Heart, I Love You" is a powerful symbol of unconditional love.

**FREE box of candy with Valentine purchase**

Diamond Heart Jewelry

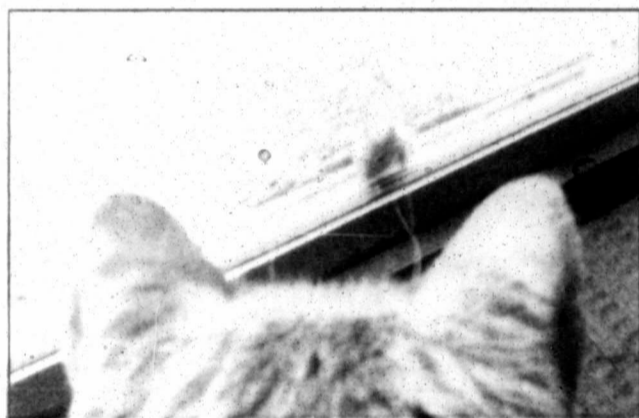
**20% off**



A real rose trimmed or dipped in 24K Gold that lasts forever, a strand of freshwater pearls & Russell Stover Chocolates. Give her 3 reasons to smile this Valentine's Day.

**All for only \$99!**

111 N. Cuyler Pampa, TX | 806-665-2831 | "2009 Business of the Year"



**Don't get left out in the cold!**  
 Call  
 669-2525 to subscribe!  
 The Pampa News

**Still trying to reach people the old-fashioned way?**

**Advertise online with thepampanews.com**

Our new website has great local features that Pampans are logging in to view every day!

- free classifieds
- all the latest in local sports by sports reporter Andrew Glover
- local news stories that affect people in Pampa and Gray County
- feature stories about interesting people and events in our area
- polls for Pampans to express their views on pertinent topics
- everything Pampans want to know about how city and county government officials spend our tax dollars
- The Pampa News "Kid of the Week"
- The Pampa News "Pet of the Week"

**Get more for your advertising dollars!**

- advertising online with thepampanews.com allows you to target Pampa shoppers specifically
- your ad will be linked live to your website — with a single click, our readers can learn all about your business and products
- rates start at as low as \$50/month

# There's a better way!

Contact a Pampa News ad representative at 669-2525 and start sending a message that will reach its destination!





# The Sweetest Sentiments

Dozen Roses **\$19.99**

Wrapped - Medium Stem -  
Variety of Colors. Cash-N-Carry

Faith Hill  
Arrangements

**\$61<sup>95</sup>**



All My Heart



The Valentine's  
Bouquet

Starting at Just



Classic  
Dozen  
Roses

**\$69<sup>95</sup>**

The  
Girly Girl

1 Dozen Roses  
& Oriental Lilies

**\$99<sup>95</sup>**

Starting At Just

Mini  
Arrangements  
Cash-N-Carry

**\$12<sup>99</sup>**



Become a  
fan of  
Brandon's  
on Facebook!



5005

## Brandon's The Fine Art of Flowers

123 N Cuyler • 665-5546

[www.brandonsflowers.com](http://www.brandonsflowers.com)

OPEN LATE  
Valentines Day  
Feb. 14th!  
Open Sunday  
Feb. 13th.

teleflora



The Pampa News'

# Classifieds

Sell it fast! Classifieds work! The Pampa News is delivered to over 4,000 homes daily. What better way to get the word out? To place an ad, contact Beverly Taylor at 806-669-2525 or via email at [classified@thepampanews.com](mailto:classified@thepampanews.com) today!

Winter Classified Ad Special

4 Lines, 4 Days

\$18.50

8 Lines, 4 Days

\$21.50

Valid Through February 2011

## First Landmark Realty

(806) 665-0717

Let's make a deal - Owner will carry note or lease with option to purchase. Two office ware house buildings with over 15,000 square feet. Owner will lease or carry note on excellent terms \$2,250 per month on a gross lease basis of P&I Payments of \$1,845 per month. **OE**

### Four Bedroom Home

Game room is wated for sound, deck has pellet burning stove and entertainment center. Hardwood floors, isolated master bedroom, cedar will allow \$8,999 for completion of central heat and an conditioner. **OE**

### South Side of Railway with Spur Potential

Vacant industrial tract of land containing 0.664 acres along south boundary of railway in city limits over 200 feet of frontage. **OE**

Blubbie Nisbet BKR 662-8118  
Irvine Riphahn GRI 665-4534  
Chris Moore GRI 665-8172  
Lith Brainerd 665-4579

CALL FIRST LANDMARK FIRST FOR ALL OF YOUR REAL ESTATE NEEDS. WE APPRECIATE YOUR BUSINESS.

### Classic Two Story

Ready to move in. Brick home, lovely formal living room, formal dining room, kitchen-breakfast-den combination. Spacious, huge utility room. Knotty pine walls in finished basement. Lots of built-ins and storage. Cedar closet, plenty of additional room for workshop in double car garage. Custom wood work throughout and excellent. 5 bedrooms, 3 bathrooms. **8628**

### Custom Built Home in Excellent Location

Beautiful home built in 2006, one owner home, classic interior, plantation wood blinds throughout home, double pane windows, lovely kitchen with granite counter tops with 3 bedrooms, 2 1/2 baths. Ready for you to enjoy. **8856**



## The Pampa News Kid of the Week

Submit your favorite photos of your kids, grandkids, nieces, nephews, etc. to [editor@thepampanews.com](mailto:editor@thepampanews.com). Once a week, we will choose a new photo to feature on our website as "Kid of the Week."

All photos must have been taken within the past 12 months. Children must be 6 years of age or younger at the time the photo was taken. Include your phone number and the name and age of the child.

## Pampa Realty Inc. 669-0007

Pampa MLS & Amarillo MLS



- Jim Davidson (BKR/OWNR) 662-9021
- Rebecca Akins 395-1978
- Katrina Bigham 898-8510
- Donna Courter 595-0779
- Twila Fisher (BKR) 440-2314
- John Godard (BKR) 595-1234
- Linda Lapacka 662-9611
- Zeb Sailors 664-0312
- Sandra Schuneman (BKR) 662-7291
- Andrea Walling 664-6227

### TRAVIS SCHOOL DISTRICT West and Northwest

916 Crane	\$150,000	3/2/2	1710 SF/GCAD
920 Crane	\$150,000	3/2/2	1617 SF/GCAD
924 Crane	\$150,000	3/2/2	1522 SF/GCAD
928 Crane	\$150,000	3/2/2	1617 SF/GCAD
908 Crane	\$147,000	3/2/2	1617 SF/GCAD
1909 Dwight	\$140,000	4/2/2	1448 SF/GCAD
1924 Lela	\$129,900	3/2/2	1728 SF/GCAD
2132 Lynn	\$119,900	3/1 75/2	2484 SF/GCAD
1964 Lynn	\$92,000	4/1 75/2	1753 SF/GCAD
927 Centered	\$92,000	4/1 75/2	1553 SF/GCAD
1054 Serra Dr	\$84,900	3/2/2	1752 SF/GCAD
1808 N. Wells	\$80,000	3/1 75/3	1731 SF/GCAD
1821 Colleen	\$69,000	3/1 75/1	1349 SF/GCAD
1800 Kelly	\$59,000	3/1 75/1	1817 SF/GCAD
1816 N. Dwight	\$52,500	3/1 75/1	1102 SF/GCAD

### WILSON SCHOOL DISTRICT Southeast Pampa

1113 Terrace St	\$58,500	2/1 5/2	1178 SF/GCAD
420 Russet	\$45,000	3/1/1	1344 SF/GCAD
509 Rowley	\$27,500	2/1/1	930 SF/GCAD

### OTHER AREAS Outside Pampa City Limits

5.98 Acres Near Letors	\$530,000		Ranch West of Letors
226 N. Ballard	\$395,000	1/1	Commer. 4 bth/27797 SF/GCAD
619 N. Price	\$252,600		Comm 3, 3552 SF/GCAD 9 Bays
2270 FM 2386 WD	\$197,000	3-2 75/2	3010 SF/GCAD 17.9 acres
845 S Hubart	\$175,000		4 lots - 10+ on North and Comm
1421 N. Hubart	\$175,000		Smoke House 416 SF/GCAD
416 S Swift WD	\$74,500	3/2/2	1830 SF/GCAD
1931 Potter Berger	\$58,900	2/1 1/2	1095 SF/HCAD
225 E Francis	\$57,500		111 745 SF/GCAD comm
800 N. Am. Letors	\$55,000	2/1 1/2	1382 SF/GCAD
201 205 207 Swift	\$50,000		Church & 2 houses
1426 Margaid Berger	\$44,900	3/2/2	1694 SF/HCAD
513 S Giamas WD	\$41,900	3/1 75/2	1608 SF/GCAD
501 Caliche Berger	\$37,900	3/2/1	1530 SF/HCAD
306 S Haynie Fritz	\$29,900	3/1 1/2	1651 SF/HCAD
315 Chaparra Berger	\$28,200	3/1 75/1	1152 SF/HCAD
1102 A Jackson Berger	\$22,900	2/1 1/2	1158 SF/HCAD
417 Monroe Berger	\$19,900	2/1/1	851 SF/HCAD

Visit our web page at [www.pamparealty.com](http://www.pamparealty.com) Edms/Bath/Garage Light/County Appraisal District

### 1 Public Notice

#### NOTICE OF PUBLIC HEARING

The City Commission of the City of Pampa will conduct a Public Hearing at 4:00 p.m. on February 22, 2011 at City Hall, 201 W. Foster Street, Pampa, Texas on the 3rd floor in the City Commission Chambers. This will be a public hearing for the purpose of receiving public comments concerning the following request:

The Pampa Independent School District requests to re-zone the following described property from Single Family 2 District to Commercial property and improvements, commonly known as the former Pampa Junior High School, located at 2401 Charles, Pampa, Texas, encompassing approximately 18.246 acres of land. The applicant proposes to enhance the marketability and value of the said property.

The public is encouraged to attend this hearing. Public comments on the proposed zoning change are welcome and will be heard. G-53 Jan 30, Feb 6, 2011

### 1 Public Notice

#### NOTICE OF PUBLIC HEARING

The Planning and Zoning Commission of the City of Pampa will conduct a Public Hearing at 5:00 p.m. on February 21, 2011 at City Hall, 201 W. Foster Street, Pampa, Texas on the 3rd floor in the City Commission Chambers. This will be a public hearing for the purpose of receiving public comments concerning the following request:

The Pampa Independent School District requests to re-zone the following described property from Single Family 2 District to Commercial property and improvements, commonly known as the former Pampa Junior High School, located at 2401 Charles, Pampa, Texas, encompassing approximately 18.246 acres of land. The applicant proposes to enhance the marketability and value of the said property.

The public is encouraged to attend this hearing. Public comments on the proposed zoning change are welcome and will be heard. G-54 Jan 30, Feb 6, 2011

### 1 Public Notice

#### NOTICE TO PROPOSERS

The Pampa Independent School District will receive sealed proposals in the Business Office at 321 W. Albert, Pampa, Texas 79065, until 2:00 p.m., Thursday, February 17, 2011 for Athletic Supplies and Equipment. For specifications or additional information please call Betty Meadows, Purchasing Director at (806)669-4700 G-49 Feb 4, 6, 2010

### 5 Special Notices

ADVERTISING Material to be placed in the Pampa News, MUST be placed through the Pampa News Office Only.

### 13 Bus. Opp.

XTREME Audio & Truck Access. Store for sale. 407 W. Foster. For info call 806-440-6433.

### 14d Carpentry

OVERHEAD DOOR REPAIR Kidwell Construction. Call 669-6347, 806-663-0192

### 14e Carpet Serv.

NU-WAY CLEANING SERVICE Bob Marx Owner-Operator. Call 665-3541

### 14g Elec. Contr.

RUSSELLCROW Electric for your electric needs! Comm., Resi. 665-0878, 440-1171

### 14h Gen. Serv.

HOUSE Cracking? In bricks or walls? Childers Brothers, Inc. 800-299-9563, 806-352-9563

COX Fence Company. Repair old fence or build new. Free estimates. Call 669-7769

CERAMIC tile work. Remodeling floor, shower, kitchen. Texture, painting, dry wall. Free est. Call 665-3453 leave message. Jesus Barraza

ROCK Driveways. Free Estimates. 806-679-7985 or 806-664-3112

NAVARRO Masonry. Brickwork, stucco, synthetic or original, concrete, fences all types & carpentry. 438-1066

JH Concrete, all types of concrete incl stamp, stain, deck, pools. Free est. 806-382-5408

### 14n Painting

INTERIOR / Exterior Painting. Call Steve Porter, 669-9347 or 662-2574

### 14s Plumbing

JACK'S Plumbing 715 W. Foster 665-7115

Shop Smart SHUP THE CLASSIFIEDS!



THE PAMPA NEWS Made Fresh Daily!

To subscribe, call 806-669-2525 today!

The Pampa News

## Winter Classified Ad Specials

Does not include Last Minute Ads on page 2.



4 Lines, 4 Days - \$18.50

8 Lines, 4 Days - \$21.50

Offer Valid Dec. 2010 - Feb. 2011

To place an ad in The Pampa News' Classifieds, call Beverly Taylor at 806-669-2525 or e-mail [classified@thepampanews.com](mailto:classified@thepampanews.com) today!

## Want to Downsize Your Gas Guzzler?

Find your answer in the The Pampa News - in print and online!

Go to [www.thepampanews.com](http://www.thepampanews.com) or call 806-669-2525.

**AUTOMOTIVE**  
06 CIVIC. Runs great. 34 MPG, 30k miles. Call Jim

**CRYPTOQUOTE**

One letter stands for another. In this sample, A is used for the three L's, X for the two O's, etc. Single letters, apostrophes, the length and formation of the words are all hints. Each day the code letters are different.

**2-5**

Z K D D B X B W Z O A C R H Z O Z N A W

J W L H Z L L D E Y Z X A X E X R

N W E E W F E Q Z L J D L W M X L

E Q W N Z L I — T D Q L N W F F M

Yesterday's Cryptoquote: WE MAKE A LIVING BY WHAT WE GET, BUT WE MAKE A LIFE BY WHAT WE GIVE. — WINSTON CHURCHILL

**RE/MAX Hometown**

**1115 Charles**  
3 Bedrooms, 1.75 Baths,  
2016 SF - \$84,500




**Patti Hudson - Owner/ Broker**... 806-662-4896  
**Linda Burt**... 806-664-3931  
**Mindy Carroll**... 806-663-2229  
**Gerald Urban**... 806-662-1561  
**Roy Devoll**... 806-896-0000  
**Dennis Edmondson**... 806-662-7503

QR - Quick Response gives all details and photos when you scan with a free app on smart phones.

**14w Air Cond/Heat**  
BROWNING Heating & Air Cond. 665-1212. Free est. on new equip. We service all brands!

**19 Situations**  
WILL do house cleaning & office cleaning. Ask for Rosie, 663-2868.

I do baby sitting, clean houses & sit with senior citizens in their homes. Call 664-3316

**21 Help Wanted**  
**NOTICE:** All ads that contain phone numbers or give reference to a number with an area code of 809 or a prefix of 011 are international toll numbers and you will be charged international long distance rates. For more information regarding the investigation of work at home opportunities and job lists, The Pampa News urges its readers to contact the Better Business Bureau of South Texas, 609 S. International Blvd., Weslaco, TX, 78596, (210) 968-3678.

**21 Help Wanted**  
**NEED** mature, exp. office help. Must live on property. Apply at 1347 Coffee St. 1-806-334-1626

**FULL TIME:** Automotive Shop Help. Counter-Help. Apply in person, 101 S. Hobart, Pampa, TX

**21 Help Wanted**  
**NEED** mature, exp. office help. Must live on property. Apply at 1347 Coffee St. 1-806-334-1626

**21 Help Wanted**  
**NEED** mature, exp. office help. Must live on property. Apply at 1347 Coffee St. 1-806-334-1626

**21 Help Wanted**  
**NEED** mature, exp. office help. Must live on property. Apply at 1347 Coffee St. 1-806-334-1626

**21 Help Wanted**  
**NEED** mature, exp. office help. Must live on property. Apply at 1347 Coffee St. 1-806-334-1626

**21 Help Wanted**  
**TURNER ENERGY SERVICES LLC**  
A COMPLETE PRODUCTION SERVICE CO.  
Do you want to work for a company that truly understands what you want and need? Then Turner Energy Services would like to talk to you! We have full time TRANSPORT DRIVER positions available in our Miami & Wheeler locations. Previous experience preferred and a valid CDL driver license required.

**21 Help Wanted**  
**CLASS A CDL DRIVER**  
W/HAZMAT  
Must pass drug test. Apply in person! No Phone Calls Please.  
Triangle Well Service  
129 S. Price Rd.  
Pampa, TX.

**21 Help Wanted**  
**WELDER**  
Must pass weld test. Please apply in person.  
2930 Hwy. 152 West

**21 Help Wanted**  
**RECEPTIONIST**  
Needed for busy Medical Practice. Must have excellent people phone skills. Competitive salary/benefits. Please mail resume to: Box 54688, Amarillo, TX 79159 or e-mail to: [amarillo@receptionist.com](mailto:amarillo@receptionist.com)

**21 Help Wanted**  
**OUTREACH Health Services is HIRING PROVIDERS IN THE PAMPA AREA.** Must be 18+ or older, PASS CRIMINAL BACKGROUND CHECK. More info, call Jennifer 806-373-0986 or 1-800-800-0669 EOE.

**21 Help Wanted**  
**INTERIM Health Care** is seeking part time pediatric provider for Pampa area. Experience in child care preferred. Contact Terri in pediatrics 806-467-1156

**21 Help Wanted**  
**SHEPARD'S Cook** Nursing Agency needs Full-Time Accountant. Full benefits. Come by 916 N. Crest Rd., Pampa for application.

**21 Help Wanted**  
**MACHINIST** Helper needed. Written & physical test req. Please apply in person, 2930 Hwy. 152 West, Pampa

**21 Help Wanted**  
**R. Chester Trucking** is searching for good responsible and dependable truck drivers who are not drug addicts or drunks. We are a Family Based Company looking for the right people to join our family. If interested come and apply at 1800 W. McCullough, Pampa, TX. 7am-5pm or call 806-665-0379

**21 Help Wanted**  
**MAINTENANCE** Man needed. Must have current dr. lic., own tools & pass drug test. Apply at Gwendolyn Plaza Apts. 800 N. Nelson.

**21 Help Wanted**  
**NOTICE**  
Readers are urged to fully investigate advertisements which require payment in advance for information, services or goods.

**21 Help Wanted**  
**COOK:** for evening meal & prep kitchen duties. Prefer experienced individual, but will train, qualified applicant to prepare meals for special diets. Must be reliable and dependable, and pass drug screen & background check. EOE. Apply in person, CORONADO HEALTHCARE CENTER, 1504 W. Kentucky Ave., Pampa.

**21 Help Wanted**  
**SIVALLS, Inc.** is looking for an Industrial Maintenance Tech. Electrical & Mechanical background a must. Drug test required. Benefits & Health Ins. Profit Sharing, 401K, 8 paid holidays & 10 Vacation days per yr. Call 806-665-7311. Pampa.

**21 Help Wanted**  
**OPTICAL TECH**  
We are currently accepting appl. for intermediate level staff position. Qualified applicants must show at least 2 yrs general office exp. or college level education. Fax resume to 806-665-3511 or in person 1524 S. Banks, Visum, Soudice.

**21 Help Wanted**  
**WELDERS** needed. Must pass weld test. Please apply in person. 2930 Hwy. 152 West

**21 Help Wanted**  
**NEWSPAPER CARRIER NEEDED FOR PAMPA ROUTE**

**21 Help Wanted**  
**APPLY IN PERSON**  
Mon-Fri, 8-3pm.  
The Pampa News  
403 W. Atchison, Pampa, Tx.

**21 Help Wanted**  
**CNAs**  
Immediate openings! Requires: TEXAS State Certification. Experience preferred, but not required. Also seeking WEEKEND RN. State licensed. Competitive rates and full time employees eligible for benefits. EOE. For information, call 806-665-5746 or apply in person at CORONADO HEALTHCARE CENTER 1504 W. Kentucky Pampa

**60 Household**  
ROUND Oak Table, 4 Chairs & China Cabinet, \$250. Call 669-1679.

**69 Misc.**  
**ADVERTISING** Material to be placed in the Pampa News MUST be placed through the Pampa News Office Only.

**69 Misc.**  
**FIREWOOD** For Sale \$160 a truck delivered. Call 664-1908 or 664-1901.

**69 Misc.**  
**WASHER** dryer, freezer, sofa, tables-all sizes, etc. 662-7557.

**69 Misc.**  
**NEW** Quality queen mattress set \$246. Used furniture, Red Barn, 1420 S. Barnes, 665-2767. Openreach Sal.

**69 Misc.**  
**LOOKING** to place Lease Bid on Expired Grassland-Contracts of 100+ Acres, to run cattle on an Pampa area. John, 806-626-2403.

**69 Misc.**  
**WANT** to lease grassland (cash) lot-cattle between Pampa & McLean or Canadian area. Bobby Hall, 806-270-0195.

**69 Misc.**  
**AR15 M4** with carry handle & short barrel, ex. condition incl. many accessories and ammo \$1000. Hot springs jet, setter, 3 person hot tub ex. cond., kept indoors \$1500. 664-0813.

**69 Misc.**  
**ELVIS & BEETLES** LP's for sale, Call 662-0084.

**95 Furn. Apts.**  
EFF. APT., air, tv & cable, \$150 week, \$500 month, all bills paid 669-3221

**96 Unfurn. Apts.**  
\$1000 off 1st Mo. Rent 1 bdr starting \$395 / mo. On-site laundry. Caprock Apts. 665-7149.

**96 Unfurn. Apts.**  
1 and 2 bdr, avail. now at the Gwendolyn Apts. Call today they won't last long! 665-1875.

**96 Unfurn. Apts.**  
2 & 3 bdr starting at \$559 / mo. \$150 off 1st mo. Rent w / 7 mo. lease. W/d hookups in all units. Caprock Apts. 665-7149.

**ALL BILLS PAID**  
1 Bdrms  
Monthly Leases  
Avail.  
(817)909-4766

**BENT CREEK APARTMENTS**  
"Lovely 2 & 3 Bdr Apts."  
"Full Single Store Units"  
"Electric Range"  
"Frost Free Refrigerator"  
"Blinds & Carpet"  
"Washer - Dryer Combo"  
"Central Heat Air"  
"Walk-in Closets"  
"Expensive Storage"  
"Front Porches"  
HUD  
ACCEPTED  
1400 W. Somerville Pampa, TX

**89 Wanted To Buy**  
NEED Money Now  
We will give you top \$5 for your house. Call us today. 665-1875.

**95 Furn. Apts.**  
NO transportation, no problem. These large 1 bdr apts w/ appliances are in walking distance to everything you need 665-4274.

**PAM APTS**  
Now Leasing 1 Bdrms, 2 persons maximum. Income based rent.  
1200 N. Wells  
669-2594

**SCHNEIDER** Apartments. Call for special rates. Short term lease. Business people welcome. 665-0415.

**98 Unfurn. Houses**  
PICK up rental list, in the Black Box, at 125 S. Houston, Pampa.

**BEAUTIFUL** condo, 3 bedroom, 2 ba, fireplace & pool. Gas/water paid by owner. 665-6936 or 665-3788.

**3 bdr** Varmon-Dr. \$500 mo., option to buy. Owner will finance HUD ok. Avail 27-11-886-5899.

**SALE or LEASE:** \$15,000 As Is. Call 663-3980.

**99 Stor. Bldgs.**  
TUMBLEWEED Acres, self storage units. Various sizes. 665-0079, 665-2450.

**102 Bus. Rental**  
DOWNTOWN office space for rent. Utilities & cleaning service provided. Ample parking. 669-6823.

**OFFICE** Space for rent. Ask about 3 months free rent. 669-6841.

**103 Homes For Sale**  
1601 Grape Ln. 4 bdr, 3 ba, 2777 sq. ft. Corner lot. For info: [r.robben25@hotmail.com](mailto:r.robben25@hotmail.com)

**SCORE A DEAL!**

**EXTENDED WARRANTIES up to 100K Miles Available on Most Models!!**

2010 Chevy Silverado 1500	Silver	3917A	\$18,375
2010 Chevy Tahoe	Taupe Gray	3914A	\$35,555
2010 Chevy Malibu	Dark Blue	3908A	\$15,355
2010 Chevy Traverse - SOLD	Dark Cherry	3909A	\$24,342
2010 Dodge Ram	Red	T09193A	\$14,995
2010 Ford F-150	Gray	G10025A	\$17,385
2009 Chevy Impala	Red	3905A	\$13,355
2009 Chevy Malibu	Gray	3906A	\$14,335
2009 GMC Acadia	White	G10083D	\$24,395
2009 Chevy Suburban	White	3915A	\$33,295
2008 Buick Enclave	Black	B10015A	\$24,895
2008 Chevy Avalanche	Ruby	C10167A	\$21,295
2008 Ford F-150	Gold	T10134A	\$16,995
2008 Honda Fit	Black	C10164A	\$13,495
2008 Toyota Tacoma	White	T10151A	\$13,995
2008 HHR - Only 28K Miles!	Red	C10196A	\$12,995
2007 Infiniti G35 Sedan	Black	T10092B	\$16,995
2007 Chevy Silverado 1500	Gray	C10158A	\$17,495
2007 Chevy Silverado 1500	Silver	C10100A	\$18,695
2006 Buick Rendezvous	Silver	3904B	\$11,695
2006 Ford Expedition	Blue	T10098B	\$14,195
2006 Ford Ranger	White	T10146A	\$8,895
2006 Scion xB - SOLD	Silver	T10131A	\$8,795
2006 Toyota Sienna	Blue	T10131A	\$8,995
2005 Chrysler Town & Country	Silver	B10029A	\$10,250
2005 Dodge Caravan	White	3921B	\$9,495
2004 Buick LeSabre - SOLD	White	3863C	\$7,355
2004 Chevy Silverado 4x4 Crew	White	G11003B	\$14,995
2003 Dodge Ram 1500	Gold	G10125B	\$9,495
2001 Mercedes Benz S-Class	Silver	3920A	\$15,998

**COME BY AND REGISTER TO WIN 2 TICKETS TO LAURA BUSH!**

**Culberson-Stowers**  
805 N. Hobart • 665-1665 • [www.culbersonautos.com](http://www.culbersonautos.com)

**Keagy-Edwards, Inc. Quentin Williams REALTORS**

Becky Baten 669-2214 Roberta Babb 665-6158  
Heidi Chronister 665-6388 Joan Mabry 669-3201  
Darrel Sehorn 669-6284 Sandra Gunner 665-4218  
Rod Donaldson 665-2800 Maxine Watson 662-9052  
JUDI EDWARDS GRI, CRS MARILYN KEAGY GRI, CRS  
BROKER-OWNER 665-3687 BROKER-OWNER 665-1449

**Selling Pampa Since 1952**  
669-2522 • 2208 Coffee & Perryton Pkwy.

Address	Price	Bdr/Baths	gead/sq.ft.
2724 Duncan & 900 st apt.	325,000	4/3.5	3137
2239 Lynn - SOLD	285,000	4/3.5	4069
1812 E. Harvester on an acre	280,000	4/2	2246
1717 Charles	225,000	3/3.5	2327
2326 Chestnut	215,000	3/2	2711
8521 Co. Rd. 10 + 407 acres	215,000	3/1.5	1910
2211 Charles	179,900	3/2	2741
1437 & 1439 N. Wells	175,000	(2) 2/2	1475
2328 Duncan	165,000	3/2	2379
2742 Cherokee	159,900	3/1.75	2081
307 W. 8th, White Deer	140,000	3/1.75	1554
2337 Aspen	140,000	3/1.75	1756
1620 N. Christy - SOLD	134,900	3/1.75	1760
1100 N. Russell	125,000	3/1.5	1708
515 Warran, White Deer	122,000	3/2	1732
2122 Beech	115,000	3/1.5	1872
615 N. Gray - SOLD	91,900	3/2	1787
1016 Sierra	89,900	3/2	1546
205 N. Poplar, Skellytown	80,000	3/1	1964
2316 Comanche	78,500	3/1.75	1543
907 Cinderella	75,000	3/1.75	1192
801 E. Francis + 2 on Hazel	70,000	2/1	1008
1816 N. Christy	69,900	3/1.75	1136
336 Jean	45,000	3/1	1170
1132 Starkweather	40,500	2/1.75	1365
714 N. Banks	35,000	2/1	684
320 Miami	30,000	2/1	864
801 Grimes, White Deer	26,500	3/2	1400
709 N. Dwight	25,000	1/1	488
822 N. Frost - SOLD	6,500	3/1	960

**COMMERCIAL**

820/828 W Kingsmill	225,000	10,000
103 E. 28th Street	219,000	2210
1511 N. Banks	88,000	LOT
Pheasant Lane	40,000	LOT
2200 Coffee	20,000	LOT
Harvester/Magnolia	10,000	LOT
509 N. Cuyler	1,500	LOT

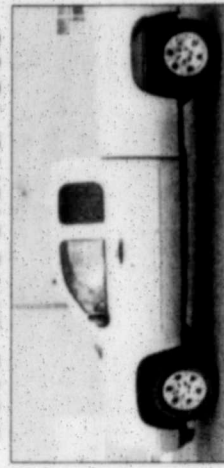
**FOR SALE: APPROX. 160 ACRES OF GRASS 5 M. NORTH OF CLAREN-DON ON HWY 70 OR 7 M SOUTH OF 1-40 ON THE PAVEMENT. WELL, GOOD FENCE, ELECTRIC, GOOD LOCATION.**  
CALL 806-248-7224, 806-676-6503 OR 806-354-0253 EVENINGS.

**115 Trailer Parks**  
TUMBLEWEED Acres, Storm shelters, fenced, stor. bldg. avail. 665-0079, 665-2450.

# No matter which SIDE you're on — you'll find a great deal HERE!

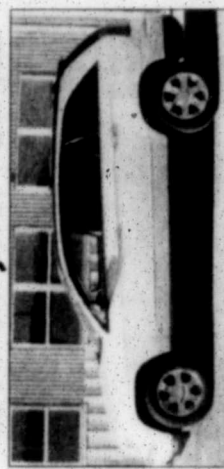
2008 Chevrolet Silverado	Black	Stock# P2820a	\$32,995.00	2008 Ford F-150	Silver Metallic	Stock# P2659	\$16,995.00	2005 Kia Amanti	Carbon Grey	Stock# P2846	\$11,995.00
2005 Hummer H2	Red	Stock# P2723a	\$31,995.00	2004 GMC Sierra 1500	White	Stock# P2821	\$16,995.00	2007 Dodge Ram 1500	White	Stock# P2823	\$11,995.00
2010 Dodge Ram 1500	White	Stock# P2829	\$29,995.00	2003 Ford Thunderbird	Black	Stock# P2841	\$16,995.00	2002 Chevrolet Suburban	Blue	Stock# R2474	\$10,995.00
2007 Hummer H3	Blue	Stock# R2891	\$24,995.00	2003 GMC Sierra 1500	Pewter Metallic	Stock# P2740	\$16,995.00	2007 Ford Five Hundred	Black	Stock# P2833	\$10,995.00
2010 Chrysler Town & Country	Bright Silver Metallic	Stock# P2715	\$23,995.00	2004 Chevrolet Tahoe	Maroon	Stock# R2707a	\$15,995.00	2003 Jeep Grand Cherokee	Light Pewter Metallic	Stock# P2843	\$10,995.00
2006 Hummer H3	Black	Stock# P2566	\$22,995.00	2006 Chevrolet Silverado 1500	Gold	Stock# P2737	\$15,995.00	2006 Mercury Grand Marquis	Blue	Stock# P2590A	\$10,995.00
2009 Kia Borrego	Beige	Stock# P2716	\$22,995.00	2005 Ford Explorer	Bronze	Stock# P2779	\$15,995.00	2002 Toyota Avalon	Black	Stock# P2856	\$10,995.00
2003 Cadillac Escalade EXT	Pearl	Stock# P2752	\$21,995.00	2009 Mazda MAZDA5	Maroon	Stock# P2541	\$14,995.00	2006 Chrysler 300	Mist green	Stock# R2784	\$10,995.00
2004 Cadillac Escalade	Pearl	Stock# P2767	\$21,995.00	2004 Ford Explorer Sport Trac	Blue	Stock# P2284	\$14,995.00	2002 Dodge Ram 1500	Green	Stock# P2772	\$9,995.00
2004 Cadillac Escalade	Quicksilver	Stock# P2818	\$21,995.00	2006 Toyota Tundra	Gold	Stock# P2217	\$14,995.00	2005 Mercury Mariner	Blue	Stock# P2745	\$9,850.00
2007 Chevrolet Silverado 1500	Red	Stock# P2801	\$21,995.00	2003 Ford F-150	Silver	Stock# P2582	\$14,995.00	2002 Jeep Grand Cherokee	Onyx Green-Pearlcoat	Stock# P2831	\$9,850.00
2007 Ford Expedition	Oxford White	Stock# P2879	\$21,995.00	2007 Dodge Magnum	Silver	Stock# R2768	\$14,995.00	2001 Land Rover Discovery	Kent Green	Stock# P2756	\$9,850.00
2006 Hummer H2	Beige	Stock# P2602A	\$21,995.00	2006 Pontiac G6	Liquid Silver Metallic	Stock# P2200	\$13,995.00	2005 GMC Savana	Yellow	Stock# P2516	\$8,995.00
2006 Hummer H2	Birch White	Stock# P2688	\$21,995.00	2007 Chrysler Pacifica	Linen Gold Metallic	Stock# P2271	\$13,995.00	2003 Ford Explorer	Silver Birch Metallic	Stock# R2849	\$8,995.00
2003 Hummer H2	Sunset Orange Metallic	Stock# R2724	\$21,995.00	2009 Dodge Caliber	Stone White	Stock# P2667	\$13,995.00	2004 Chevrolet Impala	Maroon	Stock# R2814	\$8,995.00
2005 Cadillac Escalade	Quicksilver	Stock# P2880	\$19,995.00	2005 Chevrolet TrailBlazer	Gold	Stock# P2560	\$13,995.00	1998 Pontiac Firebird	Blue	Stock# P2730a	\$8,995.00
2005 Ford Expedition	Mocha/tan	Stock# P2870	\$18,995.00	2004 Ford F150	Gray	Stock# P2388a	\$13,995.00	2000 Chevrolet C2500	White	Stock# P1228	\$8,995.00
2006 Chevrolet Silverado 1500	Blue	Stock# R2539	\$18,995.00	2007 Chrysler 300	Brilliant Black Crystal	Stock# P2795	\$12,995.00	2003 Dodge Durango	Blue	Stock# R2689	\$8,995.00
2009 Mitsubishi Eclipse	Blue	Stock# R2683	\$18,995.00	2002 Chevrolet Avalanche	Green	Stock# P2754a	\$12,995.00	1994 Ford F350	Black	Stock# R2794a	\$7,995.00
2006 Ford F-150	Brown	Stock# R2857	\$18,995.00	2003 Ford Expedition	Med. Wedgewood Blue	Stock# R2471	\$12,995.00	2001 Ford F150	Maroon	Stock# R2485	\$7,995.00
2005 GMC Yukon XL	Pewter	Stock# P2750	\$18,995.00	2005 GMC Sierra 1500	Blue	Stock# P2796	\$12,995.00	2000 Dodge Ram Van	White	Stock# R2498a	\$7,995.00
2005 Dodge Ram Pickup	Blue-Green Crystal	Stock# P2587	\$18,995.00	2007 Dodge Charger	White	Stock# R2839	\$12,995.00	2006 Kia Spectra	White	Stock# P2082	\$7,995.00
2005 Dodge Ram 1500	Black	Stock# P2780	\$17,995.00	2004 GMC Sierra 1500	White	Stock# P2885	\$12,995.00	2001 Pontiac Grand AM	Bright Red	Stock# P2822	\$7,995.00
2006 Dodge Ram 1500	Red	Stock# P2787	\$17,995.00	2004 Jeep Grand Cherokee	Blue	Stock# P2792	\$12,995.00	2000 Chevrolet Monte Carlo	Red	Stock# R2819	\$7,995.00
2007 Ford F-150	White	Stock# P2403	\$17,995.00	2000 Chevrolet Impala	White	Stock# R2530	\$11,995.00	2005 Chevrolet Cobalt	Ultra Silver Metallic	Stock# P2592	\$7,995.00
2006 Toyota Tundra	Salsa Red Pearl	Stock# P2824	\$17,995.00	2001 Ford F150	Gold	Stock# R2275	\$11,995.00	2001 Chevrolet Silverado	White	Stock# R2731a	\$7,995.00
2004 Chevrolet Suburban	Black	Stock# P2594	\$17,995.00	2000 Dodge Ram 1500	White	Stock# P2842	\$11,995.00	2002 Ford Explorer	Black	Stock# R2276a	\$7,995.00
2004 GMC Yukon	Pewter	Stock# R2623	\$16,995.00	2000 Chevrolet Malibu Maxx	Pewter	Stock# R2813	\$11,995.00	2005 Ford Taurus	Maroon	Stock# R2861	\$6,995.00
2005 Chevrolet Avalanche	Black	Stock# P2869	\$16,995.00	2007 Chevrolet Silverado 1500	Black	Stock# R2884	\$11,995.00	2004 Chevrolet Impala	Charcoal	Stock# P2405a	\$6,995.00
2005 Chevrolet Avalanche	Black	Stock# P2869	\$16,995.00	2005 Dodge Durango	Black	Stock# P2510	\$11,995.00	1993 Chevrolet K3500	Turquoise	Stock# R2689A	\$6,995.00
2003 Toyota Corolla	Black	Stock# P2869	\$16,995.00	2003 Dodge Ram 1500	White	Stock# P2055	\$11,995.00	2002 Chrysler PT Cruiser	Black	Stock# P2526A	\$5,995.00
								1996 Cadillac Deville	Green	Stock# P2886	\$5,995.00
								1998 Jeep Grand Cherokee	Bright Platinum Metallic	Stock# R2866	\$5,995.00

## 2008 GMC Sierra 1500



P2862 \$21,995

## 2005 Chrysler Pacifica



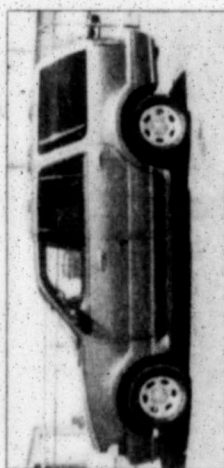
P2915 \$11,995

## 2006 Nissan Altima



R2651 \$10,995

## 2002 Lincoln Navigator



P2586 \$12,995

## 2008 Toyota Tundra



P2762 \$23,995

## 2004 Jeep Liberty



R2863 \$9,850

## 2003 Toyota Corolla



P2491 \$8,995

**Hwy 60 @ Hwy 70 • Pampa • 669-6062**  
**Open 9:00 am - 6:00 pm Monday-Saturday**

**DOUG BOYD MOTOR CO.**  
**BUY HERE • PAY HERE**

www.DougBoydMotors.com



Steve



Marc