



WEATHER

March 13	58	40
March 14	52	18
March 15	59	21
March 16	46	36 T.

BAILEY COUNTY JOURNAL

'The Community Of Opportunity-Where Water Makes the Difference'

Vol. 23, No. 12

12 Pages Today

Published Every Sunday at Muleshoe, Bailey County, Texas 79347

Sunday March 17, 1985



FLAG RAISING CEREMONY CONDUCTED--Following the sanctions ceremony establishing the Muleshoe/Bailey County Sesquicentennial Commission Wednesday afternoon, a flag raising ceremony was held at the Muleshoe Mule Thursday morning. Both a new American flag and the official Texas Sesquicentennial flags were raised. Pictured are Toni Eagle, chairman of the Muleshoe/Bailey County Sesquicentennial Commission and Muleshoe Mayor Charles Bratcher.

City Tax Rebate Check Shows Slight Increase

Sesquicentennial Sanctions Held At High School

The crowd was enthusiastic, and there was a crowd; the music was outstanding, and the music was by the Muleshoe High School jazz band; the speeches were short, to the point, and patriotic, and sesquicentennial activities 'got off the ground' in Muleshoe.

Wednesday afternoon, Muleshoe High School students, Watson Junior High School students, faculty members, Sesquicentennial commission local members, visitors from Austin and dignitaries met in the high school auditorium for the ceremonies.

John Isaac, representing the SCAC group from MHS was moderator for the ceremony following a musician presentation by a band that is probably unmatched for quality and sound in this part of the country.

Muleshoe Mayor Charles Bratcher and Bailey County Judge Gordon H. Green each gave brief remarks, followed by Toni Eagle, chairman of the Muleshoe/Bailey County Sesquicentennial Commission, who spoke briefly and introduced Lee Storey from Austin.

Storey was highly complimentary of the musical accomplishments of the jazz band, and called soloist Alan Finney to the front of the stage to accept his sesquicentennial lapel pin as a tribute to the band.

He performed the official sanctioning ceremony, and presented a plaque signed by Texas Governor Mark White, and the official Texas Sesquicentennial flag to Mrs. Eagle.

Mrs. Eagle also introduced the members of the Muleshoe/Bailey County Sesquicentennial Commission to the group in the auditorium.

State Comptroller Bob Bullock Friday sent checks totaling \$68.8 million in local tax payments to the 991 cities that levy the one-percent local sales tax.

Overall the checks represented large increases over city payments made last March, but Bullock warned that the increases resulted from the way the city money was processed and did not necessarily indicate anything about the economy.

"Simply, in January, several really large national corporations paid late and their money is included in the March checks," Bullock said.

Muleshoe is reflecting a 5.34 percent increase for the year in tax rebates at this point. They received a check in the amount of \$12,376.95 for the latest pay period, compared to the \$19,621.89 received for the same time last year. However, they are showing the increase in yearly rebates, with the total to date being \$58,346.03, as compared to the \$55,385.99 at the same time last year.

Morton's check for this pay period was \$5,594.75, and for the same time last year was \$3,755.73. Overall for the year, Morton has shown an increase of 11.15 percent with receipts of \$13,526.75, compared to the \$12,170.31 received by this date.

At Littlefield, receipts for the year have decreased. Tax rebates for this pay period were \$18,863.70, down from the \$22,825.53 for the same period last year. They show a 6.09 percent decrease in receipts to the year. To date this year, Littlefield has received \$71,634.68, compared to the \$76,282.82 received during the same period last year.

Friona showed a whopping 23.79 percent increase for the year with payments to date of \$30,461.65, compared to the 1984 figure of \$24,608.46. Their check for the latest pay period was \$9,117.47, up from the \$7,156.48 during the same time last year.

Houston's check was the largest--\$11.7 million--and re-

presented 17 percent of total payments. Allocations to Houston in 1985 total \$39.4 million. Dallas received \$8.8 million to bring this year's check to \$29.2 million. San Antonio's payment of \$4.2 million increased 1985 payments to \$14.2 million.

Austin received \$3.4 million
Cont. Page 6, Col. 3

Elementary School Plans Balloon Race

"Countdown to the 'Great Balloon Race' begins at 3 p.m. on Friday, March 22," says Bill Taylor, Jr., principal of Mary DeShazo Elementary School in Muleshoe.

Students at Mary DeShazo will launch 400 helium-filled balloons as part of the nationwide 'Writing Pals Balloon Contest' sponsored by 'Weekly Reader,' the classroom newspaper.

"A message attached to each balloon explains the project and asks that the finder return it to Mary DeShazo," says Principal Taylor. "Weekly Reader will present a \$500 prize to the school that gets back the message that has traveled the farthest distance. In addition, 100 runner-up prizes will be awarded," he added.

Since the annual balloon launch began, Weekly Reader has furnished about two and one half million free balloons to schools participating in the Weekly Reader Writing Pals program, a pen pal program in which weekly Reader pairs classes across the country.

According to Principal Taylor, the balloon launch will be the climax of Mary DeShazo's year long participation in Weekly Reader Writing Pals. The goal of the program is to motivate children to write to, and to become familiar with, students in other parts of the country.

"Mary DeShazo pupils will write to every person who sends back a message card from our balloons," declares Principal Taylor.

35th Annual Country Jamboree Scheduled By Floyd Lions' Club

For an evening, or two evenings of entertainment and festivity, make your plans now to attend the 35th Annual Country Jamboree, to be presented by the Floyd Lion's Club. It is scheduled for Friday, March 29 and Saturday, March 30, with performances at 7 p.m. (MST) each night.



This year, for the first time, the annual Jamboree will be held in Greyhound Arena at the Physical Education Complex on Eastern New Mexico University campus at Portales, according to Panny Bigler of the Floyd Lions Club.

He said the location had been moved to provide the extra seating needed as the event is growing each year. "More than 3,000 seats will be available for each performance," he said. "We have grown so big, and so many people are enjoying our Jamboree each year, that we have changed the location."

Bigler said all the seats will be good seats, and will still carry the very low price of \$2.50 for admission to the popular event. "That way," he commented, "the entire family can afford to attend the show, even if they drive to Portales for it."

Parking will be more than adequate on the university campus, and near the Greyhound Arena. The Lion's Club spokesman promised a different show for Cont. Page 6, Col. 3

seating needed as the event is growing each year. "More than 3,000 seats will be available for each performance," he said. "We have grown so big, and so many people are enjoying our Jamboree each year, that we have changed the location."

Bigler said all the seats will be good seats, and will still carry the very low price of \$2.50 for admission to the popular event. "That way," he commented, "the entire family can afford to attend the show, even if they drive to Portales for it."

Parking will be more than adequate on the university campus, and near the Greyhound Arena. The Lion's Club spokesman promised a different show for Cont. Page 6, Col. 3

seating needed as the event is growing each year. "More than 3,000 seats will be available for each performance," he said. "We have grown so big, and so many people are enjoying our Jamboree each year, that we have changed the location."

seating needed as the event is growing each year. "More than 3,000 seats will be available for each performance," he said. "We have grown so big, and so many people are enjoying our Jamboree each year, that we have changed the location."

Bigler said all the seats will be good seats, and will still carry the very low price of \$2.50 for admission to the popular event. "That way," he commented, "the entire family can afford to attend the show, even if they drive to Portales for it."

Parking will be more than adequate on the university campus, and near the Greyhound Arena. The Lion's Club spokesman promised a different show for Cont. Page 6, Col. 3

seating needed as the event is growing each year. "More than 3,000 seats will be available for each performance," he said. "We have grown so big, and so many people are enjoying our Jamboree each year, that we have changed the location."

Bigler said all the seats will be good seats, and will still carry the very low price of \$2.50 for admission to the popular event. "That way," he commented, "the entire family can afford to attend the show, even if they drive to Portales for it."

Parking will be more than adequate on the university campus, and near the Greyhound Arena. The Lion's Club spokesman promised a different show for Cont. Page 6, Col. 3

seating needed as the event is growing each year. "More than 3,000 seats will be available for each performance," he said. "We have grown so big, and so many people are enjoying our Jamboree each year, that we have changed the location."

Bigler said all the seats will be good seats, and will still carry the very low price of \$2.50 for admission to the popular event. "That way," he commented, "the entire family can afford to attend the show, even if they drive to Portales for it."

Parking will be more than adequate on the university campus, and near the Greyhound Arena. The Lion's Club spokesman promised a different show for Cont. Page 6, Col. 3

seating needed as the event is growing each year. "More than 3,000 seats will be available for each performance," he said. "We have grown so big, and so many people are enjoying our Jamboree each year, that we have changed the location."

seating needed as the event is growing each year. "More than 3,000 seats will be available for each performance," he said. "We have grown so big, and so many people are enjoying our Jamboree each year, that we have changed the location."

Bigler said all the seats will be good seats, and will still carry the very low price of \$2.50 for admission to the popular event. "That way," he commented, "the entire family can afford to attend the show, even if they drive to Portales for it."

Parking will be more than adequate on the university campus, and near the Greyhound Arena. The Lion's Club spokesman promised a different show for Cont. Page 6, Col. 3

seating needed as the event is growing each year. "More than 3,000 seats will be available for each performance," he said. "We have grown so big, and so many people are enjoying our Jamboree each year, that we have changed the location."

Bigler said all the seats will be good seats, and will still carry the very low price of \$2.50 for admission to the popular event. "That way," he commented, "the entire family can afford to attend the show, even if they drive to Portales for it."

Parking will be more than adequate on the university campus, and near the Greyhound Arena. The Lion's Club spokesman promised a different show for Cont. Page 6, Col. 3

seating needed as the event is growing each year. "More than 3,000 seats will be available for each performance," he said. "We have grown so big, and so many people are enjoying our Jamboree each year, that we have changed the location."

Bigler said all the seats will be good seats, and will still carry the very low price of \$2.50 for admission to the popular event. "That way," he commented, "the entire family can afford to attend the show, even if they drive to Portales for it."

Parking will be more than adequate on the university campus, and near the Greyhound Arena. The Lion's Club spokesman promised a different show for Cont. Page 6, Col. 3

seating needed as the event is growing each year. "More than 3,000 seats will be available for each performance," he said. "We have grown so big, and so many people are enjoying our Jamboree each year, that we have changed the location."

'Papersack Kids' Also Need Love

They're called 'Papersack Kids'--those youngsters across the nation who need homes, love and affection, either temporarily or permanently.

In Bailey County, there are only two homes specially designated to receive and keep the 'Papersack Kids.' Both of these homes are at Progress, and are the homes of Don and Sandra Martin and Marshall and Ann Williams.

Don Martin is a Primitive Baptist minister and a carpenter and his wife, Sandra, is employed by the Bailey County Attorney's office. Marshall Williams is a carpenter and his wife, Ann, is the owner of Ann's T-Shirts.

At this time in the Martin home are brother and sister, Ruben, age six and Erica, age three. The Martins have had custody of Erica since she was five weeks old, except for a six month period of time.

For Don and Sandra Martin, and their own children, Terry and Charles, the foster home life is a very real, very rewarding way of life for them.

It all started for the Martins when they kept reading and hearing of abused and neglected children, and the great need for someone to take care of them, and most of all--to love them.

They applied for a foster home license, and after training and investigation, were approved to become a foster home. They have now had six children in their home, on a temporary basis.

"It's very hard to give them up," said Don Martin. "But, you have to think of all you have given them, love, a family environment and a good home."

The Martins said that some children are withdrawn to start with; and it is very rewarding once you start seeing the

change in them. They are approved for three children, and have always dealt with younger children since being a foster home.

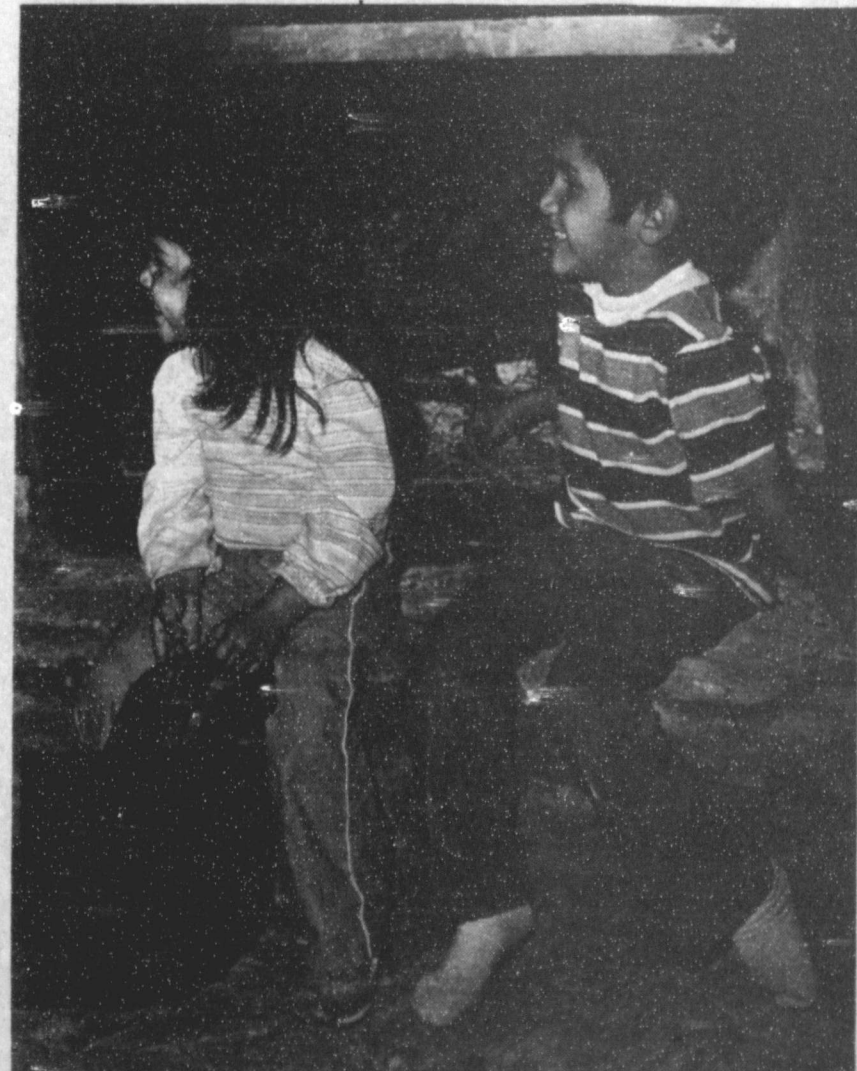
They also have the prerogative to accept or turn down a child or children when they are called upon.

The Martins encourage other Bailey County residents to

consider becoming foster parents. Even single member families, and senior citizens may be licensed as foster parents and foster homes, they said.

During the interview in the Martin home last week, their two foster children Ruben and Erica were typical, laughing and

Cont. Page 6, Col. 1

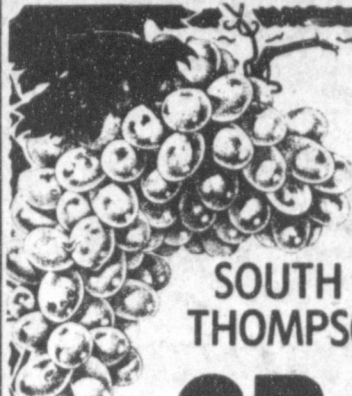


THEY'RE WELL CARED FOR--They are called 'Papersack Kids' but this duo, Erica and Ruben, are well-adjusted, happy and healthy youngsters. They are two of the foster children currently housed in foster homes in Bailey County.



TIM DEWEY

STRETCH Your Food Dollar!



SOUTH AMERICAN THOMPSON SEEDLESS
GRAPES
LB. **99¢**

GREEN LEAF
LETTUCE
3 BUNCHES **\$1.00**

SOUTH AMERICAN
PLUMSLB. **89¢**
WASHINGTON EXTRA FANCY RED ROME
APPLESLB. **49¢**
CALIFORNIA GREEN PASCAL
CELERYLGE. STALK **29¢**
CALIFORNIA PURPLE TOP
TURNIPSLB. **49¢**
RUBY RED
GRAPEFRUITLB. **33¢**



EXTRA LEAN FRESH CHUCK
GROUND CHUCK
\$1.59



WILSON'S REGULAR, POLISH OR ALL BEEF
SMOKED SAUSAGE LB. **\$1.99**

ALL GRINDS COFFEE
HILLS BROS.
HILLS BROS. **\$2.39**
1 LB. CAN

GRANULATED
SHURFINE SUGAR
5 LB. BAG **\$1.39**

WILSON'S 93% FAT FREE BONELESS REGULAR OR HONEY
HALF HAMS
LB. **\$2.39**



FREE PAAS Easter Egg Color Kit.
SEE DETAILS AT OUR STORE...

HEAVY DUTY
PUREX 42 OZ. BOX
DETERGENT **\$1.49**

HEAVY GRAIN FED BEEF BONELESS
CHUCK ROAST LB. **\$1.69**
HEAVY GRAIN FED BEEF BONELESS
CHUCK STEAK LB. **\$1.89**
ARMOUR'S PRE-COOKED CHICKEN FRIED
BEEF PATTIES LB. **\$1.49**

POTATO CHIPS
RUFFLES
\$1.39 SIZE **99¢**

CARNATION EVAPORATED
MILK
2 13 OZ. CANS **99¢**

KELLOGG'S
FROSTED FLAKES
20 OZ. PKG. **\$2.29**

SHURFINE WHOLE KERNEL OR CREAM STYLE
GOLD CORN
3 17 OZ. CANS **\$1**

This Week's Special
Anniversary Porcelain Fine China
Coffee Cup
Regular Price \$2.99
only **88¢**



Thrifty McSever

KITCHEN TESTED FLOUR
GOLD MEDAL
5 LB. BAG **89¢**

BUY AN 84 OZ. BOX OF
FAB **\$3.99**
AND GET ONE GALLON OF
CLOROX FREE!

FACIAL TISSUE
KLEENEX
250 CT. BOX **\$1.19**

WHITE OR ASSORTED COLORS
BATH TISSUE
WHITE CLOUD
4-ROLL PKG. **\$1.19**

MARGARINE QUARTERS
BLUE BONNET 1 LB. PKG. **59¢**

BIG COUNTRY ASSORTED
BISCUITS 2 10 CT. CANS **\$1.00**
SHURFRESH HALFMOON LONGHORN
CHEESE 8 OZ. PKG. **\$1.19**
BORDEN 1/2 GAL. **BUTTERMILK** **99¢**
BORDEN 1/2 GAL. **CHOCALATE MILK** **59¢**
BORDEN QT. **ICE CREAM** **\$1.59**

NABISCO REGULAR OR DOUBLE STUF
OREO
20 OZ. PKG. **\$1.99**

DIET DR. PEPPER 7-UP
DR. PEPPER
6 PK 12 OZ. CANS **\$1.59**

CARNATION ASSORTED VARIETIES HOT
COCOA MIX 12 CT. PKG. **\$1.49**
DUNCAN HINES ASSORTED READY-TO-EAT
COOKIES 12 OZ. PKG. **\$1.49**

FROZEN FOOD SPECIALS
CRISP CRUST PARTY PIZZA ASSORTED VARIETIES TOTO'S
PARTY PIZZA 12 OZ. PKG. **99¢**

BROCCOLI, CAULIFLOWER & CARROTS
BROCCOLI, GREEN BEANS, ONIONS & RED PEPPER
CORN & RED PEPPERS
BIRDSEYE VEGETABLES 16 OZ. PKG. **\$1.39**
SHURFINE FROZEN
ORANGE JUICE 2 6 OZ. CANS **\$1.00**

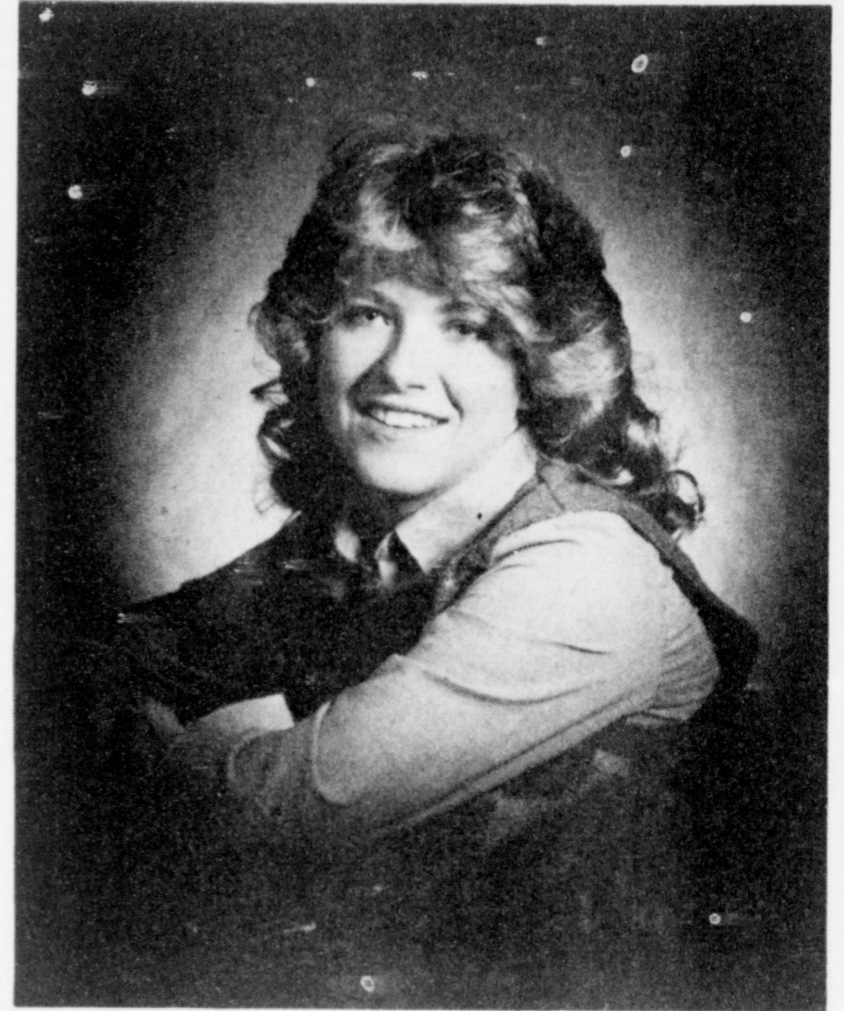
FILLER
NOTEBOOK PAPER
200 CT. **49¢**

Double S&H Green Stamps On Wednesday
With A Minimum Purchase Of \$5.00

Come Home for Good!
WE ACCEPT FOOD STAMPS
WE RESERVE THE RIGHT TO LIMIT QUANTITIES
THRIFTWAY

PRICES EFFECTIVE MARCH 17-23, 1985
Thrifty McSever

A Day to Remember

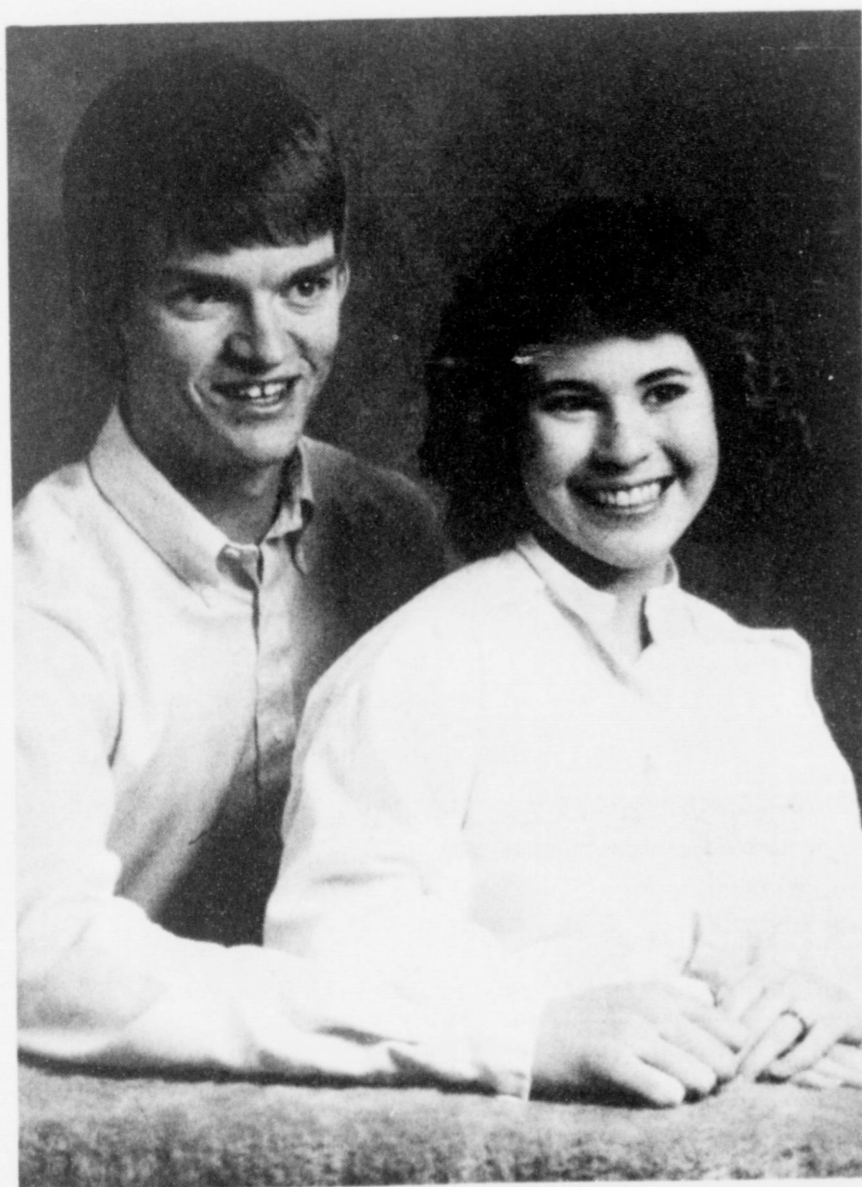


WEDDING PLANS REVEALED--Mr. and Mrs. Charles Haight of Muleshoe announce the engagement and approaching marriage of their daughter, Tammy Graham to Lyle Louder, son of Doug Louder of Sonnyside. A March wedding is being planned. Miss Graham is presently a senior at Muleshoe High School. Louder is a 1982, graduate of Springlake Earth High School and a 1984, graduate of South Plains College at Levelland. The couple will make their home in Sonnyside where he is engaged in farming.

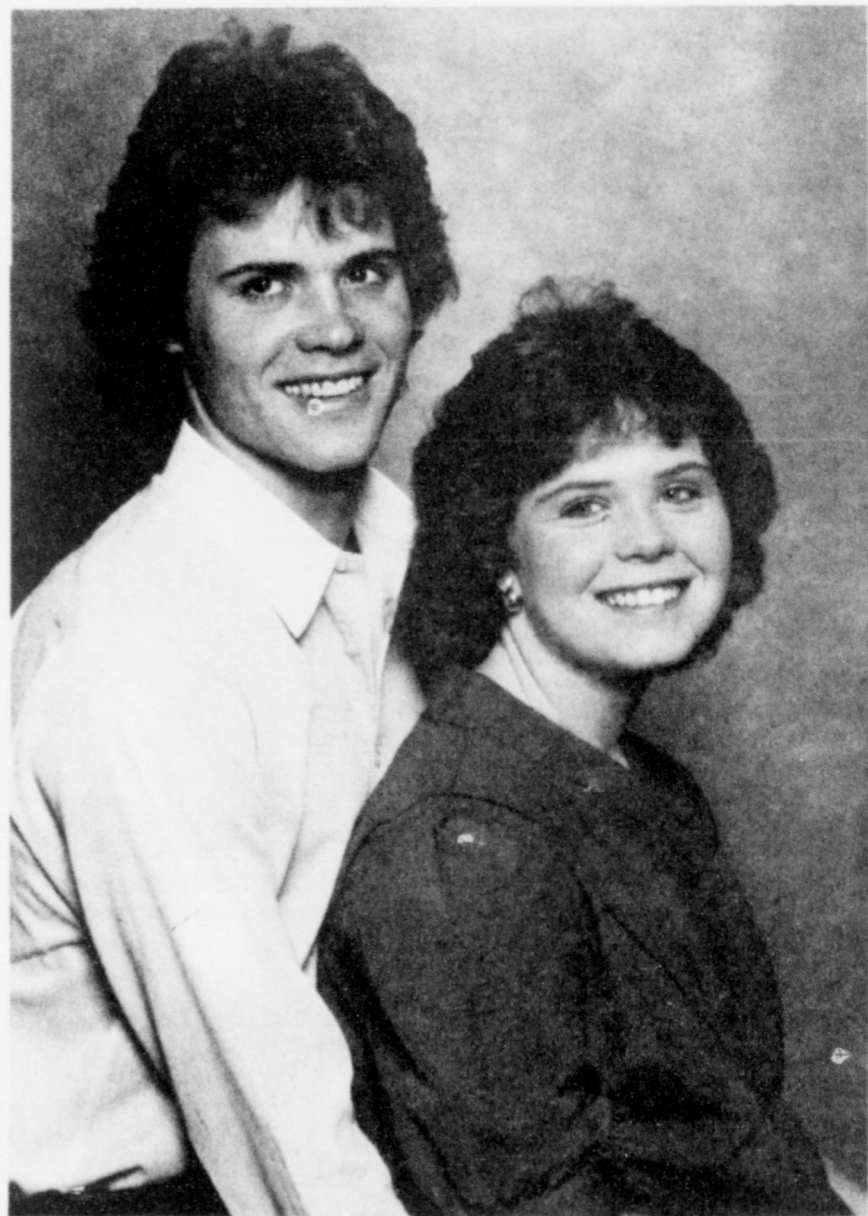


MRS. J. MAC BENTON
(nee Marcia Lynn Rudd)

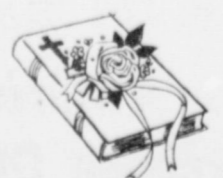
Story Page 4



JUNE DATE SET--Ms. Wanda Horn of Muleshoe would like to announce the engagement and approaching marriage of her daughter, Donna Neil to Elvin Corder, son of Mr. and Mrs. Doyle Corder, Sr. of Lubbock. Vows will be exchanged at 2 p.m. Saturday, June 1 in the Quaker Avenue Church of Christ in Lubbock. Miss Horn is a 1984 graduate of Muleshoe High School and is presently a freshman at Texas Tech University. Corder is a freshman student at L.C.C at Lubbock.



MARRIAGE ANNOUNCED--Tamra Van Denison and Jeffrey Eldon Bussey, both of Lubbock were united in marriage Thursday, March 7 at Lubbock. Parents of the bride are Coy and Jeannie Denison of Lubbock and Terry and Larlena Wallace of Lewisville. Bussey is the son of Leon and Judy Logsdon of Muleshoe and Muril and Inez Bussey of Hereford.



Double Ring Ceremony Unites Miss Rudd, Benton

On March 16, in a double ring ceremony, Marcia Lynn Rudd and J. Mac Benton were united in marriage, at the First Baptist Church, Muleshoe. The pastor Rev. Barry Bradley officiated.

Parents of the bride are Mr. and Mrs. W.O. Rudd, Muleshoe and the groom's parents are Mrs. Imogene Benton and the late John H. Benton of Sunray, Texas.

The altar area of the church featured an archway of greenery with yellow and white satin bows. Each side of the archway was accented by baskets of greenery and bows. Yellow and white bows nested in greenery marked the pews. A white memory candle was also nestled in greenery, accented with yellow and white love knots, completed the sanctuary setting.

Mrs. Bobbie Johnson and Mrs. Frances Hamilton provided musical selections and accompanied Mrs. Rhonda Wicker, Euless, Texas, cousin of the groom, as she sang "The Wedding Song" and "What A Difference You've Made In My Life."

The bride was escorted to the altar by her father to the traditional wedding march.

At the close of the wedding vows, the bride and groom lighted the memory candle while "My Only Love" was played.

The bride chose a floor length gown of chiffon and knit, featuring an empire waist. The high neckline was edged in Venice lace. The yolk was offset with a wide chantilly lace ruffle, forming a deep V in the front and back. The bodice was complimented with lace motifs and seed pearls. The full sleeves were edged in a wide chantilly lace ruffle at the wrist. The skirt featured crystal pleats sweeping into a chapel train. A chapel length veil of chiffon and lace completed the ensemble. Miss Rudd carried a cascade of white roses and stephanotis atop an Irish linen wedding handkerchief, a wedding gift made by Lessie Townsend, St. Louis, Mo.

For something old, she wore

her maternal grandmother's platinum wedding band, something new-her dress, borrowed-her veil from her sister-in-law. A blue garter and pennies minted in the years of the couples birth completed the tradition.

Bridal attendants were Debra Uphoff, Madison, Wi., sister of the bride and Renee Rudd, Muleshoe, sister-in-law of the bride. They were dressed in maize lace floor length gowns, with fitted bodice and lace trim. Each carried bouquets of white roses and stephanotis.

TOPS CLUB

Muleshoe TOPS Club chapter No. 34 met at 6:30 p.m. Thursday, Feb. 27 in the meeting room of Bailey County Electric.

Clara Lou Jones, leader, called the meeting to order. The TOPS pledge was recited and the fellowship song sung.

Jewel Peeler, weight recorder, called the roll with eight members present.

Evelene Harris, secretary, read the minutes of the previous meeting and they were approved as read. Ruth Clements, treasurer, gave a treasurer's report.

Officers for the coming year were elected. New officers are Clara Lou Jones, leader; Clara Crain, co-leader; Ruth Clements, treasurer; and Evelene Harris, secretary. These officers will be installed on March 28.

Contest winners were Nan Gatlin, KOPS and Evelene Harris, TOPS. Rose Sain was named best loser for the week. Runners up were Ruth Clements, first and Jewel Peeler and Evelene Harris, second.

Monthly best loser was Linda Wimberley. Rose Sain was first runner up and Ruth Clements was second runner up.

The meeting was closed with the singing of the goodnight song.

Amber Uphoff, Madison, Wi., niece of the bride, and Sunceray Chamblre, Austin, Tx. cousin of the groom, served as flower-girls. They carried baskets of love knots.

Brendan Uphoff, Madison, Wi., nephew of the bride, carried the rings. Leslie Teaff, Russellville, Ark. served as best man. Dennis Taylor of Memphis, Tx served as groomsman. Ushers were Brian Rudd, Muleshoe, brother of the bride, Fred Uphoff, Madison, Wi., brother-in-law of the bride and Mark Kopke, Amarillo, Tx.

The groom was attired in a black tuxedo, white shirt, black tie and cummerbund. His attendants wore black tuxedos, white shirts, yellow ties and yellow cummerbunds. The ring bearer was dressed identical to the groom.

Following the ceremony, guests attended a reception in the fellowship hall of the church. The bride's table was overlaid with white chiffon featuring swags and white chiffon roses. The table was centered with a candelabra of greenery highlighted by the bride's corsage of white roses.

A four tiered wedding cake,

trimmed in yellow and white roses topped with the bride and groom adorned the table. Fruit punch, cake, mints and nuts were served from crystal and silver appointments. Serving were Kecia Robertson, Dot Burkhardt, Amarillo and Kathy Teaff, Russellville, Ark.

A white tailored overlay covered the groom's table. Silver and brass candlesticks and greenery complimented the chocolate layer cake decorated with the Masonic symbol. Coffee and cake were served from silver and brass, by Beth Gist of Kellar, Tx, and Brenda Mayes of Richardson, Tx.

Nina Brown of Hereford, Tx, registered the guests. Rice bags were distributed by Kristi Teaff of Russellville, Ark.

The rehearsal dinner was hosted by the groom's mother Friday night at K-Bobs.

The bride is a graduate of Eastern New Mexico University with a Bachelor of Business Administration with a degree in accounting. She is a lifetime member of Phi Gamma Nu and she has been active with the Order of Rainbow. She is currently employed by Pioneer Corporation of Amarillo in the corporate tax department.

The groom is a graduate of Amarillo College with a degree in appliance repair. He is currently employed by the City of Amarillo. Benton is a Past Master of Sunray Lodge #1281 AF&AM and also Past Patron of Sunray Chapter #869 Order of

the Eastern Star. Both are members of the Starlite Squares square dance club in Amarillo. Out of town relatives and friends attended from Madison, Wi., Russellville, Ark., Tucson, Az., Ava, Mo., Lubbock, Amarillo, Euless, Austin, Dallas-Ft. Worth, Earth, Springlake, Hereford, Memphis, Tx, Clovis, Portales, Albuquerque, N.M. and Trinidad, Co.



MRS. CECIL WARD

Wedding Shower Fetes Mr and Mrs Cecil Ward

Mr. and Mrs. Cecil Ward was feted with a wedding shower Thursday, March 14 from 7 until 8 p.m. in the fellowship room of the 16 and Ave D Church of Christ.

Mrs. Cleo Ward and the honoree greeted the guests.

Marilyn Harris, cousin of the groom, served assorted breads, spiced tea and coffee from china and crystal appointments.

The serving table was covered with a Battenburg lace cloth and accented with a silk floral arrangement in shades of rust and peach. The honoree's corsage was made of silk iris.

Special guest included Mrs. Cleo Ward, mother of the

groom. The hostesses gifts were Noritake Stoneware and the silk centerpiece arrangement.

Hostesses for the occasion included: Mrs. Ben Green, Mrs. Bill Harmon, Mrs. Gordon Wilson, Mrs. Darrell Kenemer, Mrs. Gary Dale, Mrs. Freida Locker, Mrs. Ed Althof, Mrs. June Wagnon, Mrs. Lyndon Huckaby, Mrs. Tom Flowers, Mrs. James Brown, Mrs. Gladys Wilson, Mrs. Haney Poyner, Mrs. Leroy Hughes, Mrs. Joe Harbin, Mrs. C.L. Taylor, Mrs. Leonard McCormick and Mrs. Gene Scarbrough.

Definition

Radical: A person who can outtalk you on any subject. -Pilot, Brunswick, Ga.

South Plains Community Action Has Moved
To
Tradewinds Plaza
800 W. American Blvd.

Candlelight Ceremony Unites Franklin, Hill

Miss LaRhonda Franklin became the bride of Rick Hill in a candlelight ceremony Saturday, Feb. 2 in the First Baptist Church of Sudan. The Rev. Jerry Dodson, pastor, read the double ring vows.

Parents of the couple are Ms. Karen Franklin of Littlefield, Kenneth Ogerly and Mr. and

West Texas Writers

Guild Sponsors

Poetry Contest

The West Texas Writer's Guild is sponsoring a poetry contest to celebrate sesquicentennial year. The Guild plans to publish a book of poetry to be sold May 10, 1986, when Levelland celebrates the sesquicentennial year.

Nita Smith, reporter for the group, said "Winners in the contest will be notified and will have their poems published in the Guild's book of poetry. Poems may be on any subject and must be not less than eight lines and not more than 40.

"Entry fee is \$5.00 per poem and you may enter as many as you like. Send a cover sheet for each poem entered. Cover sheet should have title of poem, name and address, do not put name and address on poem.

"Send entries to West Texas Writer's Guild, Poetry Contest, Chamber of Commerce, 1101 Ave. H, Levelland, Texas 79336. "The contest will be open until Aug. 10."

Too Late

Cynical husband: "I never appreciated real happiness until I got married--then it was too late."

-Record, Columbia, S.C.

Mrs. Theron Hill of Sudan.

Musical selections for the ceremony included "The Wedding Prayer" and "Up Where We Belong."

Marriage vows were exchanged at the altar amidst an archway with the memory candle underneath. A heart-shaped candelabra accented with blue and white carnations and light blue candles in clear votive holders stood on each side of the archway.

Given in marriage by her father, the bride wore a gown of sheer white, dotted swiss lined in white polyester cotton. The gown featured a stand-up neckline, a front and back V-yoke of illusion net accented with a re-embroidered applique, and a close fitting bodice with a lace trimmed flounce. The bride's gown also featured Leg of mutton sleeves trimmed in lace and a four flounce hem extending into a chapel length train, all edged with white lace. Ms. Marie Allen, aunt of the groom, made the bridal gown.

The bridal bouquet was of light blue and white carnations accented with white baby's breath and cascading greenery.

In the tradition of the marriage ceremony, something old was a small white Bible held in a bouquet given to the bride by her step mother; something

new was her bridal gown; something borrowed was the veil from Sheila Miller; and something blue was the bride's garter.

Elaine Chisolm, of Littlefield, served as maid of honor. Tracey Provence of Sudan, sister of the groom, served as bridesmaid. The bride's niece, LaShonda Franklin, of Amarillo served as flower girl, and Dustin Provence, nephew of the groom, of Sudan served as ring bearer.

Theron Hill of Sudan served as best man and Darren Provence also of Sudan, brother in law of the groom, served as groomsman.

Billy Scott of Amarillo and Jimmy Kyle Glascock of Sudan, cousin of the groom, served as ushers.

Following the ceremony a reception was held in the fellowship hall of the church. Serving at the bride's table were Debbie Franklin and Charla Franklin, sisters of the bride, and Deanna Jones.

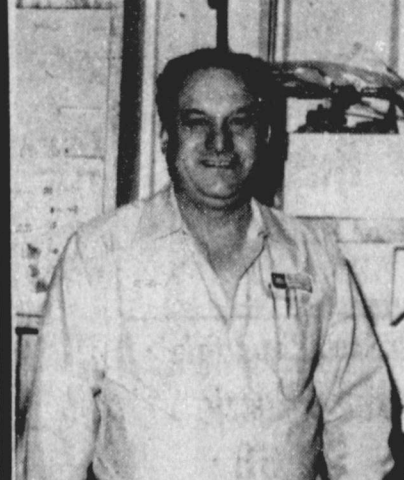
The groom's cousins, Mary Baker and Mitzi Glascock served at the groom's table.

The bride is presently attending South Plains College in Levelland.

The couple will make their home in Sudan where he is self employed with his father in Hill's Shop.

"Thanks"

Muleshoe,
From The Service
Department, Of
Muleshoe Motor Co.



Robert Perez
has 15 years experience in brake, tune ups & carburetor jobs.

"Car Capital Of The South Plains"

Muleshoe Motor Co.
1225 W. Amer. Blvd. 272-4251

ANTHONY'S

Coupon Sale

<p style="text-align: center;">COUPON</p> <p style="text-align: center;">Boy's Shorts And Matching Shirts</p> <p style="text-align: center;">20% off regular price</p> <p style="text-align: center;">Valid March 18, 19, 20</p>	<p style="text-align: center;">COUPON</p> <p style="text-align: center;">Lee, Levi, & Chic Junior Jeans</p> <p style="text-align: center;">Reg. \$24.97</p> <p style="text-align: center;">\$18.97 LIMIT 4</p> <p style="text-align: center;">Valid March 18, 19, 20</p>
<p style="text-align: center;">COUPON</p> <p style="text-align: center;">Chain-By-The-Inch</p> <p style="text-align: center;">save 50% off</p> <p style="text-align: center;">Plus FREE Matching Bracelet with purchase of chain necklace</p> <p style="text-align: center;">Valid March 18, 19, 20</p>	<p style="text-align: center;">COUPON</p> <p style="text-align: center;">Mens, Womens, Childrens Shoes</p> <p style="text-align: center;">30% off regular price</p> <p style="text-align: center;">Limit 2 Pair</p> <p style="text-align: center;">Valid March 18, 19, 20</p>
<p style="text-align: center;">COUPON</p> <p style="text-align: center;">Ladie's Bras</p> <p style="text-align: center;">Buy "3" (At Regular Price)</p> <p style="text-align: center;">Get 1 FREE (Of Equal Value)</p> <p style="text-align: center;">Valid March 18, 19, 20</p>	<p style="text-align: center;">COUPON</p> <p style="text-align: center;">Entire Stock Jr. Spring And Summer Coordinates</p> <p style="text-align: center;">25% off</p> <p style="text-align: center;">Valid March 18, 19, 20</p>
<p style="text-align: center;">COUPON</p> <p style="text-align: center;">\$5 off Reg. Price</p> <p style="text-align: center;">Percale or Muslin Sheets</p> <p style="text-align: center;">Valid March 18, 19, 20</p>	<p style="text-align: center;">COUPON</p> <p style="text-align: center;">FREE Monogram With Purchase Of Shirt At Regular Price Of \$12.00 Or More. (Includes Three Small Letters) LIMIT 3</p> <p style="text-align: center;">Valid March 18, 19, 20</p>
<p style="text-align: center;">COUPON</p> <p style="text-align: center;">Good For Any Single Reg. Price Item In The Store. (No Lay-A-Ways, Please)</p> <p style="text-align: center;">25% off Original Price</p> <p style="text-align: center;">Limit Two Items Per Customer</p> <p style="text-align: center;">Valid March 18, 19, 20</p>	<p style="text-align: center;">BONUS COUPON</p> <p style="text-align: center;">(No Law-A-Ways, Please)</p> <p style="text-align: center;">30% off Yellow Ticket Sale Price</p> <p style="text-align: center;">Valid March 18, 19, 20</p>

Coupons May Not Be Used In Conjunction With Each Other

321 Main 272-3478 **Coupons Valid In Muleshoe, Texas** Open Daily 8-6

Coupons Must Be Presented

Bailey County Journal USPS 040-200

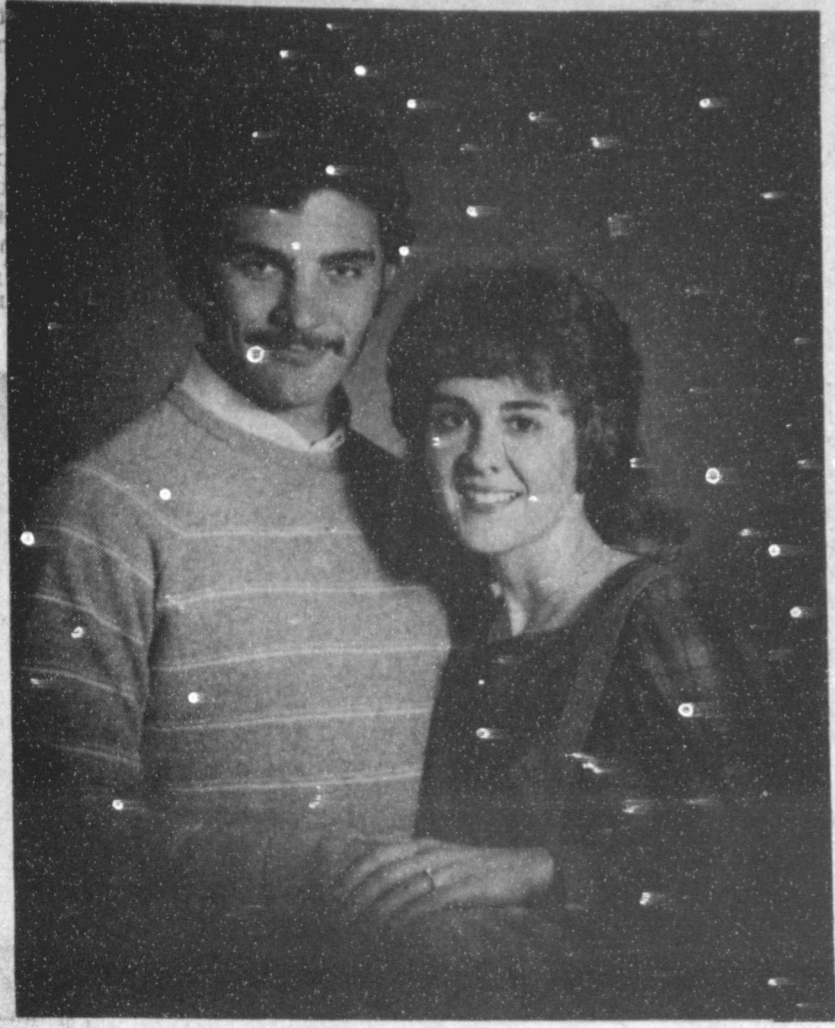
Established March 31, 1963. Published by Muleshoe Publishing Co., Inc. Every Sunday at 304 W. Second, Box 449, Muleshoe, Texas, 79347. Second Class Postage paid at Muleshoe, Texas 79347.

TA MEMBER 1985

TEXAS PRESS ASSOCIATION

L.B. Hall-President
James Woods-Vice President
Ceta Williams News
Evelene Harris-Society
Holly Mithage-Advertising
Lillie Nino-Circulation/Classified
Sammye Hall-Bookkeeper

SUBSCRIPTIONS:
Muleshoe Journal and Bailey County Journal
Bailey and surrounding counties \$11.95
Muleshoe Journal and Bailey County Journal
Elsewhere in Texas \$12.95
Muleshoe Journal and Bailey County Journal
Outside of Texas \$13.95
Yearly by Carrier \$11.50
Advertising rate card on application.



ENGAGEMENT ANNOUNCED--Mrs. Gary Hicks of Lazbuddie would like to announce the engagement and approaching marriage of her daughter, Ray Ann to Ross W. Benedict of Wimborne, Alberta, Canada, son of Mr. and Mrs. Jack Benedict. Miss Hicks is a 1982, graduate of the First Baptist High School at Lazbuddie and attended Ravenscrest Bible School in Estes Park, Colo. She is presently teaching first grade at the Lazbuddie Baptist School. Benedict attended Ravenscrest Bible School and is presently attending Olds College in Olds, Alberta. He will graduate in June. A July 12 wedding is planned at the First Baptist Church of Lazbuddie.

The Creative Woman

By Sheryl Borden

Information on making country samplers, homemade sweetened condensed milk and how to prevent unnecessary appliance service calls will be presented on "The Creative Woman" on March 19 and 23.

Ann Hurt is a designer from New York and she has written a book entitled "Country Samplers." She will explain the steps involved in making a sampler from layout to the finished product.

Connie Moyers is the marketing home economist with Southwestern Public Service Co. from Clovis and she will share a recipe for making homemade sweetened condensed milk in the blender. The recipe makes about one and one-fourth cup, which is equivalent to a 14 ounce can of commercial sweetened condensed milk and the cost is considerably less.

District Two Homemakers Meeting Scheduled Here

Bailey County will host the South Plains District II homemakers meeting on Thursday, April 11 at the Bailey County Civic Center to help celebrate 50 years of extension work in Bailey County.

Mrs. Fern Davis stated that any person in the county who has been a member at any time for the past 50 years or anyone now interested in extension work is invited to attend.

A full day program has been planned with homemakers in 20 counties participating.

Lunch will be served at noon, \$5.50 per plate. If you need a luncheon ticket you may send your money to Helen Redwine at Route 2, Muleshoe, Texas 79347. Deadline for buying a meal ticket is March 29.

Muleshoe Rebekah Lodge No. 114 will be catering the meal.

Founder Of Lubbock Eagle Forum To Speak At Dinner

Phyllis Schlafly, public advocate for conservative issues and founder of Eagle Forum and Stop ERA, will speak in Lubbock, Monday, March 25. She will speak at a dinner at the Koko Palace, at 7:30 p.m. The dinner is open to the public and tickets are \$15 for adults and \$10 for students. For reservations, you are asked to send you Lubbock Eagle Forum, 5228 85th Street, Lubbock, Texas 79424, or call 806-794-8152.

Mrs. Schlafly, author, lobbyist, and attorney, is a national spokesman promoting traditional values in public policy. She will speak on a collage of issues including education, national defense, comparable worth, and babies' rights. Eagle Forum has national projects involving each of these issues, and others.

She has been recognized as one of the 25 most influential women in the United States, according to THE WORLD ALMANAC and the third most admired woman in the world according to GOOD HOUSEKEEPING readers' poll. She testifies regularly before con-

gressional and state legislative committees and has delivered more than 1,000 network television and radio commentaries, as well as authored nine books and more than 1,000 syndicated columns. Mrs. Schlafly is the mother of six children, and one grandchild.

Mrs. Schlafly is a spokesman promoting the President's Strategic Defense Initiative or High Frontier, as a non-nuclear defensive system for the United States. She has led the movement to protect the free enterprise system by exposing the dangers of "Pay Equity" and "Comparable Worth." Her newest book, CHILD ABUSE IN THE CLASSROOM, is a compilation of testimonies of parents at education hearings last year.

Friendship Club

Members of the Friendship Club met in the home of Kathryn Cole Thursday, March 14.

Mrs. Cole, president, called the meeting to order. Adelyn Swafford gave the opening prayer and roll call was answered by eight members.

Reports from committees were heard. Olene Watts gave the program about the first house that was built near the Pecos River in Crockett County, in the year of 1904. It is now at the Headquarters Museum at Texas Tech University.

Refreshments of apple and pecan pie and cool whip, tea and coffee was served to the following, Erma Ray, Gladys Dorsey, Adelyn Swafford, Ruth Shafer, Rob Damron, Olene Watts, Maud Young and the hostess, Kathryn Cole.

WMU Weekly Meeting Held

Five members of the WMU from Trinity Baptist Church met Tuesday afternoon for Bible study. Their subject was "Love That Finds the Family of God." The group studied from I John 3 through I John 5th chapter.

Opening the session with prayer was Maxine Carter and Winona Spears gave the closing prayer.

Others present included Eva Ashford, Clara Coffman and Pearl Dunlap.



LATEST ARRIVALS

Cyndi Kate Vandiver

Mr. and Mrs. Monti Vandiver are the proud parents of a daughter born at 8:18 p.m. Monday, March 11 in West Plains Medical Center.

The young lady weighed six pounds and six and half ounces and has been named Cyndi Kate Vandiver. She is the first child for the couple.

Grandparents are Mr. and Mrs. Butch Vandiver of Muleshoe and Mr. and Mrs. Clayton McDaniel of Roswell, N.M.

Great grandparents are Mr. and Mrs. R.O. Gregory and Mr. and Mrs. H.F. Vandiver, all of Muleshoe.

Study Club

The Muleshoe Study Club met Tuesday afternoon in the home of Mrs. Mervin Wilterding. Refreshments were served to the following members: Mrs. T.R. White, Mrs. Charles Sain, Mrs. Joe Costen, Mrs. Betty Jo Carpenter, Mrs. Doyle Turner, Mrs. Wesley Glover and the hostess.

Mrs. Shain called the meeting to order and Mrs. Carpenter led in the club collect. Mrs. Turner led in the pledge to the United States Flag.

Mrs. White read the minutes of the previous meeting and they were approved as read.

The club voted to send Mrs. H.S. Sanders to the GFWC Caprock District Convention as a delegate. The convention will be held in Lubbock on March 22 and 23. Mrs. Shain, president of Muleshoe Study Club, will be attending also.

The program for the day was on making table favors for the GFWC State Convention to be held in Houston at a later date. The club voted to make a paper weight of plaster of paris in the form of the State of Texas and have a picture of the Muleshoe Mule-horse show emblem located on it.

The club elected Mrs. Turner to chair the Library Book Sale for this year. Her helpers are Mrs. Glover and Mrs. Wilterding. The book sale this year will be in April.

A membership card file for the members was started.

The next meeting will be held in K-Bob's Restaurant on March 28 with Mrs. H.S. Sanders as hostess.

Its purpose is to help parents become aware of psychological testing and games in the classroom and the parent's right under the Hatch Amendment to be informed when these activities occur. Eagle Forum's Babies' Rights Project is an effort to teach legislators and the public about "the national disgrace of abortion" and how under the restrictions of the Supreme Court ruling, federal funding of such can be eliminated permanently.

Alpha Zeta Pi

Sorority Meets

In Bamert Home

Alpha Zeta Pi met Tuesday, March 5 in the home of Rayniel Bamert. Rayniel and Marilyn Crittenden served chicken tetraziani, fresh green salad, hot rolls and strawberry delight for dessert.

A short business meeting was held. Paula McMeans presented the program: an informative discussion on Erma Bambeck's "Motherhood the Second Oldest Profession."

Members present included: Jan King, Paula McMeans, Lyniece Goodnough, Barbara Young, Annette Bonds, Gina Smith, Rayniel Bamert, Tammy Black, Debbie Cowley, Rhonda Myers, Khristy Phelps, Marilyn Crittenden and Roxi Johnson.

Eagle Forum is a volunteer organization working through State Legislatures and Congress to preserve a free economy and preserve traditional values in public policy.

Eagle Forum is a volunteer organization working through State Legislatures and Congress to preserve a free economy and preserve traditional values in public policy.

Best of Press



Who's Weak

A man is never so weak as when a pretty girl is telling him how strong he is.

-Coast Guard Magazine.

Very True

All people are born free and created equal, but grow up in a graduated income-tax world.

-Star, Cincinnati.

Childrens Easter Egg Coloring Contest

Preschool thru 5th Grade

4 Categories

Come In And Pick Up Your Eggs To Paint!!



Art Loft

1529 W. Amer. Blvd

272-3485

Ben Franklin

Better quality for less

2104 WEST AMERICAN BLVD. MULESHOE
PH. 272-3855 OPEN 9 A.M. - 8 P.M.

GARDEN CENTER

SALE STARTS TUESDAY, MARCH 19, 1985

Standard Fruit Trees

Red Delicious Apple, Wealthy Delicious Apple, Yellow Delicious Apple, Elberta Peach, Hale Haven Peach, Red Haven Peach, Early Golden Apricot, Montmorency Cherry, Bartlett Pear & Santa Rosa Plum.

Beauty Queen
1 1/2 Grade
Roses
\$3.47 each

Raintime
2 Arm Spinner
Sprinkler
\$1.77

Concord-Niagara-Thompson Seedless
Grapes
Pack Of 2 \$4.77 Pkg.

Fruitless Mulberry
5-6 Ft.
4-5 Ft.
Purpleleaf Plum
\$7.47 each

Lawton Blackberry
Pack Of 5 \$5.27 Pkg.

Tyler Rose Bushes
2/5 \$

1/2" X 50 Ft. 100% Vinyl Garden Hose
\$3.87

Melnor Pistol Grip Hose Nozzle
\$1.63

3-4 Ft. Tall Compact Excelsa Arborvitae
\$13.97 each

Flowering Shrubs
Pink, Purple, Red & White
Crape Myrtle & Old Fashion Purple Lilac
\$4.17 each

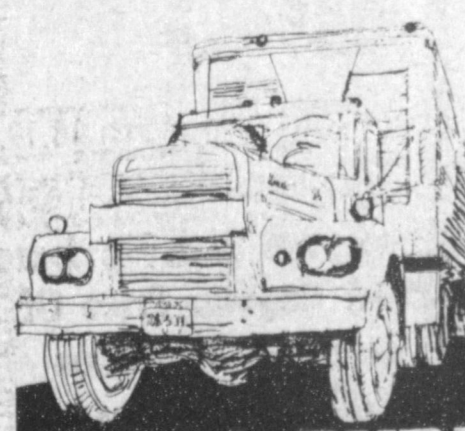
5-6 Ft. Trees
Cottonless Cottonwood, Thornless Honeylocust, Silver Maple, Globe Willow & Wisconsin Weeping Willow
\$6.47 Each

Lombardy Poplar
Pack Of 5 \$6.97 Pkg.

Melnor Oscillating Sprinkler \$4.97

Assorted Hand Garden Tools
97¢ each

SAVE! 10% ON AUTO INSURANCE WITH



FARM BUREAU

THE BAILEY COUNTY FARM BUREAU IS SPONSORING
a DEFENSIVE DRIVING COURSE
NEAL DILLMAN SCHOOL CAFETERIA
Monday & Tuesday, March 18 & 19, 6:PM to 10:PM

FOR ADDITIONAL INFORMATION,
AND TO PRE-REGISTER
CONTACT:
Bailey County Farm Bureau Office
1612 W. American Blvd.
Phone 272-4567

Papersack Kids

Cont'd. From Page 1

happy children. This is usually not the case when the children are first taken to a foster home. They are withdrawn, suspicious, and very definitely miss the parents they left behind, regardless of their home environment or living conditions they left behind.

"These children have been neglected, and in many cases, abused," said the Martins, "but they still love and miss their natural parents."

In some cases, the parents are allowed to see the children on neutral grounds, and their cases are reviewed by case workers each six months to see the progress the family is making toward having their children returned to their custody and care.

"We desperately need people who are willing to license their homes as temporary, one or two day, or weekend foster homes," said the Martins. "Like the time our son was hospitalized in Lubbock recently, we need extra homes where children can be taken for just overnight even."

Both the Martin children, Terry and Charles, think "it's great" for their parents to be foster parents. Although they are too young to really think about being foster parents themselves, they believe they are getting good training for the future.

Getting the name 'Papersack Kids' from the fact they often go to foster homes with their very few belongings or extra clothing in a paper bag, a clothing bank has been set up through the Bailey County Child Welfare Board to help clothe the youngsters. A small clothing allowance is given the foster parents to help clothe the youngsters. Also baby furniture is always a need. Items such as baby beds, high chairs, car seats, play pens and other infant's furniture helps set up the foster home.

Otto Rathel of the Texas Department of Human Resources, Children's Protective Service, serves a seven-county area west of Lubbock, and helps place the children in foster homes.

He says: "The number of children identified as being in need of temporary care outside their own home has increased tremendously due to the growing awareness of our communities in regard to abuse and neglect of children."

"Historically, foster parents have been thought of as babysitters and have had children placed with them with little or no previous information regarding the children's condition and background.

"The current focus of Children's Protective Services is to provide for the safety and well-being of the children in this area. The primary objectives are to:

"Maintain a child in his/her home or with relatives, if at all possible, providing whatever services are indicated in order to assist the parents in maintaining their family unity and to deal with any problems which the family is having.

"Provide temporary care for the child in a licensed foster home until he/she can return to his/her home or be placed with relatives. To provide as much continuity for the child, in regard to his/her family relationships, while in foster care.

"Provide adoptive services should the family not be able to provide for the child's care and welfare, after a reasonable period of time.

"A team approach is utilized to ensure that long-term plans can be established for the children in foster care, with the objective being to maintain them in foster care for as short a period as possible. The Children's Protective Services Team consists of the child's caseworker, foster parents, protective service supervisor, and other involved child care professionals. Each of the team members have their own responsibilities in regard to the child's care and well-being.

"We currently have eighteen active foster homes in Bailey, Lamb, Cochran, Hockley, Yoakan, Terry, and Lynn Counties collectively. Only two of these homes are in Bailey county. During 1984, approximately forty children were placed, from all seven counties, into foster care.

"Whenever appropriate, an effort is made to place children within their own county in order to provide continuity in regard to relationships with their family members.

"Being a foster parent is hard work and is certainly not a money making endeavor. Board payments are made to the foster parents and other reimbursements are available so that the family can receive cooperation for actual costs of caring for the foster child.

"Information packets are available to interested individuals, and the foster home development worker and active foster parents will be available to answer initial questions.

"Orientation meetings are held periodically, as well as pre-service training, in order to give interested parents an opportunity to decide if being foster parents will work of their family at the present time."

Jamboree...

Cont'd. From Page 1

each of the two nights, and said that auditions have provided the very best in performers for the shows.

Call ahead for reserved seats. Remember, the tickets are only \$2.50 each and more information, or reservations may be made by calling Rusty Bennett at 505/356-5166; Wayne Tivis, 505/359-0591; Bill Roberts, 505/478-2324 or Rod Payne, 505/356-5927.

"People in the Muleshoe area have always attended our annual Jamboree and we anticipate seeing many of our Muleshoe area friends during the two nights of the show this year," added Bigler.

Rebate...

Cont'd. From Page 1

to push this year's total to \$11 million.

Austin received \$3.4 million to push and total \$8.4 million so far in 1985. El Paso's payment was \$1.6 million bringing total payments this year to \$8.4 million.

Bullock also sent checks totaling \$28.1 million to the state's four Metropolitan Transit Authorities. Houston's MTA check was \$13.6 million and brought total payments this year to \$45.5 million. Dallas' DART received \$11.5 million for 1985 payments of \$38.8 million. San Antonio's VIA payment of \$2.3 million pushed this year's total to \$7.8 million and Fort Worth Transit Authority's check for \$612,172 brought its total to \$1.9 million.

March checks represent taxes collected on sales made in January and reported to the Comptroller by February 20.

Muleshoe...

Cont'd. From Page 1

be sponsoring an outsiders' basketball tournament April 22-26 at the Lazbuddie School. The tournament will be limited to teams of eight men and eight women on a first come, first serve basis.

Deadline for entry is April 12, with an entry fee of \$75.

To enter your team, or for further information, call Rick Copp at 965-2152.

*** Bailey County Community Action says butter and cheese will be distributed March 20, 21 and 22 from 9 a.m. to 4 p.m. at the Catholic Center, 805 E. Hickory.

*** A Men's Softball tournament is scheduled in Muleshoe for Saturday and Sunday, March 30 and 31 and entries are being taken at this time.

Entry fee is \$85 per team plus one Blue Dot softball with trophies to be given to the first through third place teams and first and second place individuals.

For more information, or to enter your team, contact Terry Field at 272-5551; Gary Hugg at 272-3759 or Glen Morris at 272-4329.

New Officers To Be Named At Game Night

The Muleshoe Independent School District will be hosting the Annual Chapter I Parent Program on Friday, March 22, at 7:30 p.m. in the high school cafeteria, announced Georgia Pena.

She said preparations are well underway for an enjoyable evening for the entire family.

Billy Balderas will be the master of ceremonies for the games played and everyone who attends will be having a chance to win some very nice prizes which include games, books, puzzles, and educational toys.

Mrs. Pena said three special games during the evening will delight some lucky winners with extraordinary prizes. There will be a hostess at each table to make sure that everyone understands how to play and to assist with making it a fun-filled evening for the entire family.

Six members will be elected to serve on the Chapter I Parent Advisory Council for the Muleshoe Schools for 1985-1987. The following nominations have been received: Katherine Sanders, Roman Reyna, Johnny Cisneros, Maria Cisneros, Doroteo Barron, Jesus Heredia, Glori Heredia, Aurora Martinez and Virginia Reyes.

Refreshments will be served and every effort will be made to make this an enjoyable evening, concluded Mrs. Pena. Make plans now to attend.

Those who jest with good taste are called witty.

-Aristotle.



PRACTICING FOR THE JAMBOREE--Two of the performers scheduled for the County Jamboree planned by the Floyd Lion's Club are Jewel and Raymond Hall of Portales. In the background, on the steel, is Gary Beavers of Clovis. They are just a few of the many accomplished musicians scheduled to perform March 29 and March 30.

Student Notified Poem Scheduled For Publication

One of Muleshoe's more talented youth is scheduled to become a published poet in the near future. Eleven-year-old Virgil Snell wrote a poem entitled "Eagle's Prayer," and the poem has been accepted for publication in G/C/T Magazine.

Bill Taylor, principal at Mary DeShazo Elementary School, was notified of the acceptance

Church...

Cont'd. From Page 1

colleges and conventions," added the local minister.

He also said Rev. Dewey has a unique style in his sermon presentation that appeals to young and old alike. "As he ministers in youth camps across America, his heart is stirred by the problems young people face in our humanistic society and he addressed those problems directly," continued Rev. Davis.

"The Deweys also have been actively involved in mission work for many years. With the help of family and friends, they have financed the building of churches in Central America. You will be challenged and blessed as you hear first hand what is happening in other countries.

"He will bring you into an atmosphere of joy and worship that will keep you singing for days. Come and be a part of this praise experience to the Lord. Admission is free," concluded Rev. Davis.

of the poem for publication in an upcoming publication.

The letter stated in part:

"Congratulations! We are pleased to let you know that your material, Eagle's Prayer, has been selected to appear in our magazine..."

"Thank you very much for sending your fine work to us. Work like yours maintains our high standards and excellent quality."

Virgil is the son of John and Della Snell and his poem is below:

EAGLE'S PRAYER

I am the bird the nation seeks,
I fly higher than the mountain peaks.
I fly higher and higher with my
widespread wings,
But man hunts me down with
guns and things.
What a sight to see as I freely
soar,
But the slaughter of my friends
is evermore.
So spare me and you will see,
What a great national bird I can
be.
Virgil Snell, age 11

"Have a TAX REFUND coming?"



Hugh W. Block

Ask about our Guarantee

We can't promise everyone a refund, but if you've got one coming, we'll guarantee to find you the biggest refund -- or your return is free.

H&R BLOCK®

THE INCOME TAX PEOPLE

Weekdays 9-6

Saturdays 9-5

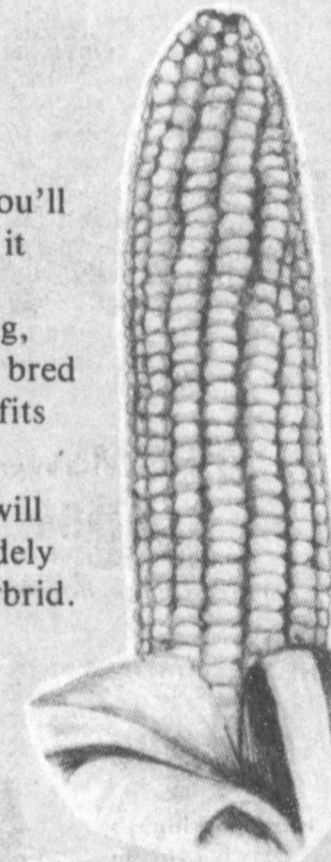
224 W. 2nd

272-3332

You'll Love These Ears.

With Terra Brand TR 3303 hybrid corn, you'll love the ears and profit it produces. TR 3303 is a consistently high yielding, dependable hybrid corn bred to produce growing profits for you.

Just consider why you will love TR 3303. It's a widely adapted, single cross hybrid.



It possesses a strong stalk with very erect leaves and good ear retention. TR 3303 features medium maturity with quick dry down.

All this combines to give you a dependable, consistently high yielding hybrid corn.

That's why you'll love TR 3303...it's growing profit.

Grow With TR 3303 From

"Your Partners For Profit"...

See Your Local Terra Seed Dealer

TERRA SEED COMPANY
P.O. Box 10121
Lubbock, Tx.
806/744-4592



GOING UP AND OVER--An unidentified high jumper goes over the bar during a junior high school track meet held in Muleshoe Friday evening. Mary Bastardo won second in the event, as she cleared four feet, six inches.

We put Freedom back in Agriculture...

by providing All Risk Crop Insurance protection you can count on!

- Provides crop investment protection.
- Assures family income and security.
- Allows maximum use of capital.
- Permits expansion.
- Increases borrowing and repayment power.
- Expands professional management capabilities.

- Backstops forward contracting and hedging.
- Promotes peace of mind.
- Helps manage risks.
- Produces cash flow during low crop yields.
- Protects your way of life.

Presented by: **Omaha Indemnity**
A Mutual of Omaha Company

Marketed and serviced by: **Omaha All Risk Insurance Services**

CALL:

Office: **Ronnie Holt** Home: **965-2842**
272-4581

**Dulsie M. Hunt
Former Muleshoe
Resident Dies**

Funeral services for Dulsie M. Hunt, 76, of Lubbock were held at 2 p.m. Friday, March 15 in the Muleshoe Church of Christ with Royce Clay, a Church of Christ Minister from Big Spring, officiating.

Interment was in Bailey County Memorial Park under the direction of Ellis Funeral Home of Muleshoe. Mrs. Hunt died at 10:25 a.m. Wednesday at Lubbock Hospital House.

A native of Hopkins County, Mrs. Hunt was born April 29, 1908, and married Frank J. Hunt on Feb. 28, 1927, at Gilmer. They moved to Lubbock on Feb. 4, 1983, from Mule-

shoe. She was a member of the Vandellia Church of Christ in Lubbock.

Survivors include her husband; Frank; one son, Bill Hunt of Muleshoe; three daughters, Mrs. Dorothy Hipp of Lubbock, Mrs. Chris Hollers of Lubbock and Mrs. Wanda Jo Reynolds of Chico; two sisters, Mrs. Opal Hunt of Greenville and Mrs. Doss Holland of Lewisville.

**Mrs. Wilbanks
Funeral Services
Held Friday**

Services for Mrs. Fred Wilbanks, 70, were held at 11 a.m. Friday, March 15 in the First Baptist Church with the Rev. Buster Huggins, pastor of the Trinity Baptist Church, officiating, assisted by the Rev. Berry Bradley.

Burial was in Lazbuddie Cemetery under the direction of Ellis Funera' Home. Mrs. Wilbanks died at 12:30 p.m. Wednesday in the Methodist Hospital in Lubbock.

Mrs. Wilbanks was born May 23, 1914, in Marshall, Ark. and had been a resident of Muleshoe and Lazbuddie since 1952. She married Arlin Fred Wilbanks on April 15, 1935, in Marshall, Ark. He died March 9, 1983.

Mrs. Wilbanks was a school teacher, a member of the Trinity Baptist Church in Muleshoe, Senior Citizens Association and the Muleshoe Singers.

Survivors include one son, Paul Wilbanks of Muleshoe; one daughter, Marilyn Engelking of Lazbuddie; three sisters, Cleo Milford of Lawton, Okla., Tula James of Oklahoma City, Okla., and Grace Shipman of Salasaw, Okla.; four grandchildren; and five great grandchildren.

**West Plains
Hospital Report**

**PATIENTS IN WEST PLAINS
MEDICAL CENTER**

March 12 - Ernesto Navarro, Inez Cox, Mike Pharis, Hylton Moore, Tom Merritt, Agna Wolf, Judy Madole, Sandra Englant, Cindy Purdy, Jerry Redwine, Iva Carpenter, Jo Huggins, Lyn Vandiver and Baby Girl

March 13 - Antonio Vidana, Inez Cox, Mike Pharis, Hylton Moore, Emmitt Dean, Tom Merritt, Agna Wolf, Judy Madole, Cleo Webb, Cindy Purdy, Jerry Redwine, Irene Splawn, Iva Carpenter, Jo Huggins, Lyn Vandiver and Baby Girl

March 14 - Antonio Vidana, Nicholas Thomas, Mike Pharis, Benny Torres, Hylton Moore, Emmitt Dean, George Turner, Lois Hible, Tom Merritt, Agna Wolf, Judy Madole, Cleo Webb, Myrtle Clayton, Jerry Redwine, Irene Splawn, Iva Carpenter and Jo Huggins.



Now
-Pathfinder. **MRS. FRED WILBANKS**

Stop worrying about what Junior will do when he grows up--better go see what he's up to now.

**Three Way
News
by Mrs. H.W. Garvin**

Makers of Traflen gave a steak dinner for the farmers in the Three Way area Monday night in the Three Way cafeteria. The Three Way seniors furnished the meal.

Mrs. Bobby Kindle was in Midland Monday on business.

H.C. Toombs underwent surgery in Methodist hospital Friday afternoon.

Mr. and Mrs. Ben Nelson from Seminole spent Sunday with her sister the Robert Kindle family.

The Three Way seniors sponsored a volleyball tournament at the Three Way gym over the weekend.

Farmers in the community have started plowing their land at this time.

The Kindle family all had dinner in the Bobby Kindle home Sunday.

Dr. Ray Harvey from Plainview preached at the Three Way Baptist Church Sunday.

A wedding shower was given Saturday afternoon in the fellowship hall of the Three Way Baptist Church honoring Mr. and Mrs. Steve Barnes.

Mrs. H.W. Garvin was a dinner guest in the home of her brother, Mr. and Mrs. George Tyson, Sunday.

Mrs. Bulah Toombs spent Sunday with the S.G. Longs.

Katie Dupler from Levelland and Mrs. Minnie Dupler from Maple were dinner guests in the home Sunday of Mr. and Mrs. Bill Dupler.

The children of Mrs. Viola Bateas honored their mother

with a birthday party Saturday afternoon.

The Three Way home ec room was the scene of a bridal shower Sunday afternoon honoring Glenda Peacock, bride elect of Tommy Brown.

Clarence Genton from Stamford is visiting his daughter, the Rayford Mastens.

Mrs. Minnie Dupler spent the week end in Andrews visiting her son, the Leon Duplers.

The manager of Maple Co-op gin, Marvin McAllen, and several of the gin board members are attending the ginners convention at McAllen.

Mrs. Joe Sowder was in Clovis Saturday to get her grandchildren, children of Mr. and Mrs. Jack McCarty of New Mexico, who will spend the week with their grandparents. Also guests in the Joe Sowder home Sunday were Dr. Ray Harvey from Plainview and Mike Sowder from Maple.

Mr. and Mrs. Bill Dupler spent the week end in Monahans visiting their daughter, the

Bobby Sinclair. Mrs. S.G. Long was in Lubbock Saturday attending the Eastern Star meeting.

Mr. and Mrs. Monte Toombs and children from Vernon spent the week end with his parents, the H.C. Toombs. Also visiting was Garry Toombs from Muleshoe.

Several families from the community are on vacation this week during spring break.

Mr. and Mrs. George Tyson were in Portales, N.M. Saturday shopping.



Humble yourselves in the sight of the Lord, and he shall lift you up.

1. Who was the author of the above statement?
2. To whom was he writing?

Answers to Bible Verse
1. James.
2. The early Christians.

PUBLIC NOTICE

Article 4477-9a of the Texas Statutes provides in part:

Sec. 2.01. (a) A person commits an offense if that person disposes of trash, junk, garbage, refuse, unsightly matter, or other solid waste on a public highway or right-of-way.

(b) A person who commits an offense under this section is, on conviction, subject to a fine of not less than \$15 nor more than \$200.

Notice is hereby given that, effective immediately, Bailey County will vigorously enforce the foregoing statute.



DULSIE M. HUNT

**Courthouse
News**

WARRANTY DEEDS

Julian E. Lenau and wife, Lois K. Lenau and Charles L. Lenau and wife, Marie Lenau to Hector J. Leal and wife, Irma Leal--The Southeasterly (24'9") of the Northwesterly (50') of Lots Numbers (3), (4) and (5), in Block Number (6), Northside Addition to the City of Muleshoe, Bailey County, Texas.

Donna Gill to Loran Darwin Robertson--A Lot in the City of Maple, Bailey County, Texas, beginning at a point 1,290 feet North of the Southeast corner of Section 15, League 142, Hansford County School Lands, Bailey County, Texas.

J.T. Montgomery and wife, Alice Faye Montgomery to Orvis Burris--All of the (SW 1/4) of Lot (2), and all of Lot Number (3), in Block Number (2), Warren Addition Number (2), Bailey County, Texas.

Weldon Muri Stevenson and wife, Bessie Mae Stevenson to Theresa Barrett--All of Lots (3), and (4), Ladd's Subdivision of Block (6), Hillcrest Addition No. 2, to the Town of Muleshoe, Bailey County, Texas.

Gene Hamilton and wife, Carelean Hamilton to Walter Lackey and wife, Brenda Lackey--A 1.0 acre tract of land out of the S/2 of Section 80, Block Y, WD&FW Johnson Subdivision, Bailey County, Texas.

Ralston Purina Company to Jerry Monk--A tract of land consisting of 26.09 acres out of Section 76, Block Y, WD&FW Johnson Subdivision No. 2, Bailey County, Texas.

COUNTY COURT

Daryl L. Nippert, Order Discharging Defendant From Probation

Johnny R. Rowton, Order Discharging Defendant From Probation

Jerry Don Beasley, VS Texas Department of Public Safety, Agreed Judgment

Andy Jay Winton, DWI, \$350, Fine 2 Years Probation

Elena Alarcon, DWI, \$300 Fine, 72 Hours Jail

Franando Ramero, DWI, \$300 Fine 2 Year Probation

Raul Infante Gonzales, Order of Dismissal

Raul Infante Gonzales, DWI, 40 Days Jail, \$250 Fine

DISTRICT COURT

First National Bank of Muleshoe VS James Williams, Judgment

Jesse Leal VS Wilburn Johnson, Individually and D/B/A New-Tex Outdoor Advertising Company, Judgment

Debra Ann Slaughter and John Curtis Slaughter, DV

Gloria Sigala and Ramon Melendez Sigala, DV

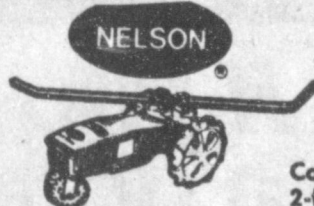
Holly Ann Millsap and Ted Richard Millsap, DV

Benjamin M. Garcia VS The St. Paul Insurance Company, Judgment.



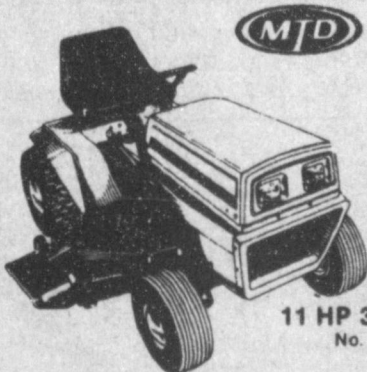
**Super
Lawn Food
649**

16-4-4 Plus Iron and Sulfur formulated especially for alkaline soils of the Southwest. A 40 lb. bag covers up to 6,000 sq. ft.



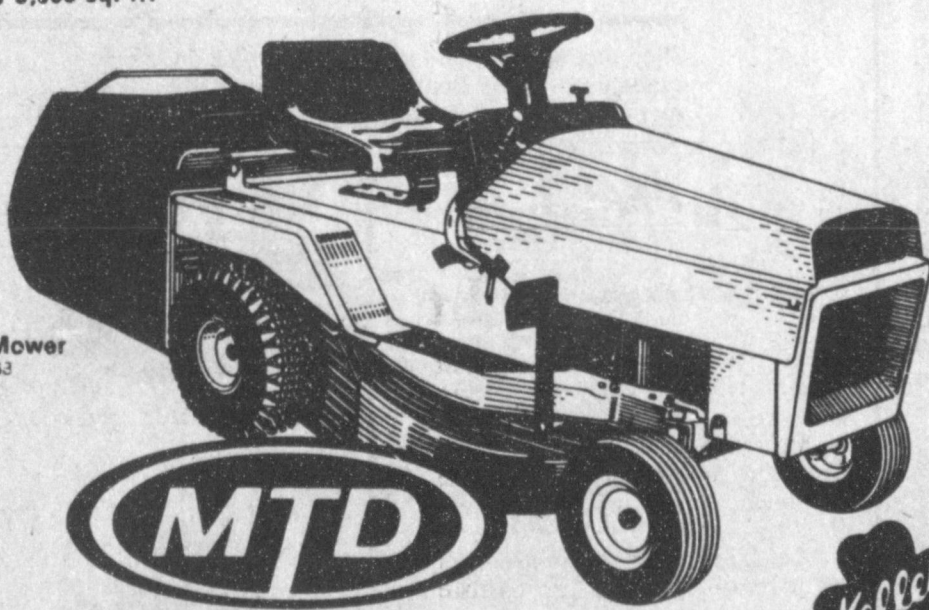
**Rain Train®
Sprinkler
49⁹⁹**

Covers up to 16,000 sq. ft. Features 2-forward speeds and a neutral for stationary use. Propels itself across the lawn following hose pattern. Adjustable arms give coverage width from 15 to 55 ft. No. 1860



**11 HP Mower
949⁹⁹**

Side discharge. No. 135-668



5 Speed Lawn Tractor

1049⁰⁰

10HP/26" rear discharge. 5-speed. Electric start. Model 135-528

5 HP Tiller W/Reverse No. 215-381

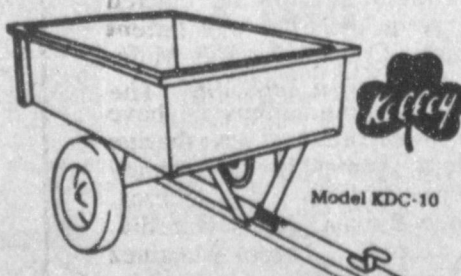
349⁹⁹

Hard working, yet easy to control.



**Broadcast
Spreader
234⁹**

50 lb. Capacity Hopper. The spreader with non-corrosive hopper. Features 4' x 8' spreading width, totally enclosed gear box and tubular hand and leg stand. No. 58-50



**Dump Cart
99⁹⁹**

10 cubic foot heaped capacity. Heavy-gauge steel welded construction. Removable tailgate for easy dumping. Dump controlled from tractor seat.



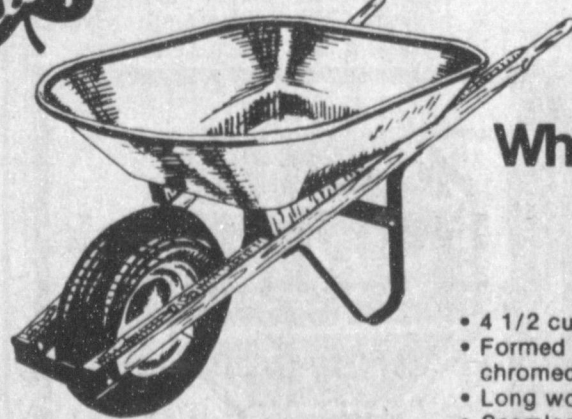
**Weed & Feed
Plus**

62⁹ 11⁹⁹

20 Lb. Bag 25-3-3 fertilizer. 20 Lb. bag covers 5,000 sq. ft. Controls dandelions and over 40 other weeds plus gives a full feeding of fertilizer.

**Turf Food
4⁹⁹**

Covers 5,000 Sq. Ft. 26-3-3. Fast acting green-up power. Slow releasing nutrients for continual feeding and root development. 20 Lb.



**Big 4
Wheelbarrow
39⁹⁵**

- 4 1/2 cu. ft. capacity.
- Formed steel legs and chromed nose piece
- Long wooden handles
- Seamless 19-gauge steel tray
- No. KB-4



**Gas Trimmer
79⁹⁹**

Fully enclosed 2-cycle air-cooled engine. Trouble-free electronic ignition. 34" flexible steel drive shaft. Fully adjustable assist handle. Deflector shield with line limiter. 14" cutting path. Top-N-Go® automatic line advance. 40 ft. .080" diameter line.

WEED EATER

Model 1400



* UP TO \$600.00 OF INSTANT CREDIT
* (Details in Store)
1000 Limit on Credit Card after issue. (Not \$500.00 like most cards)
Over 1000 Participating Members honor Cordovan Credit Cards.
Any item from our large inventory available for purchase with your Cordovan Credit Card.



FOUNDATION EXPLODES—On the east side of the elevator at Farmer's Co-op Elevator, this is what a six-inch thick foundation looked like Tuesday afternoon following an explosion at the elevator.

SANDHILLS PHILOSOPHER

Editor's note: The Sandhills Philosopher on his Johnson grass farm on Sandy Creek explains human error this week.

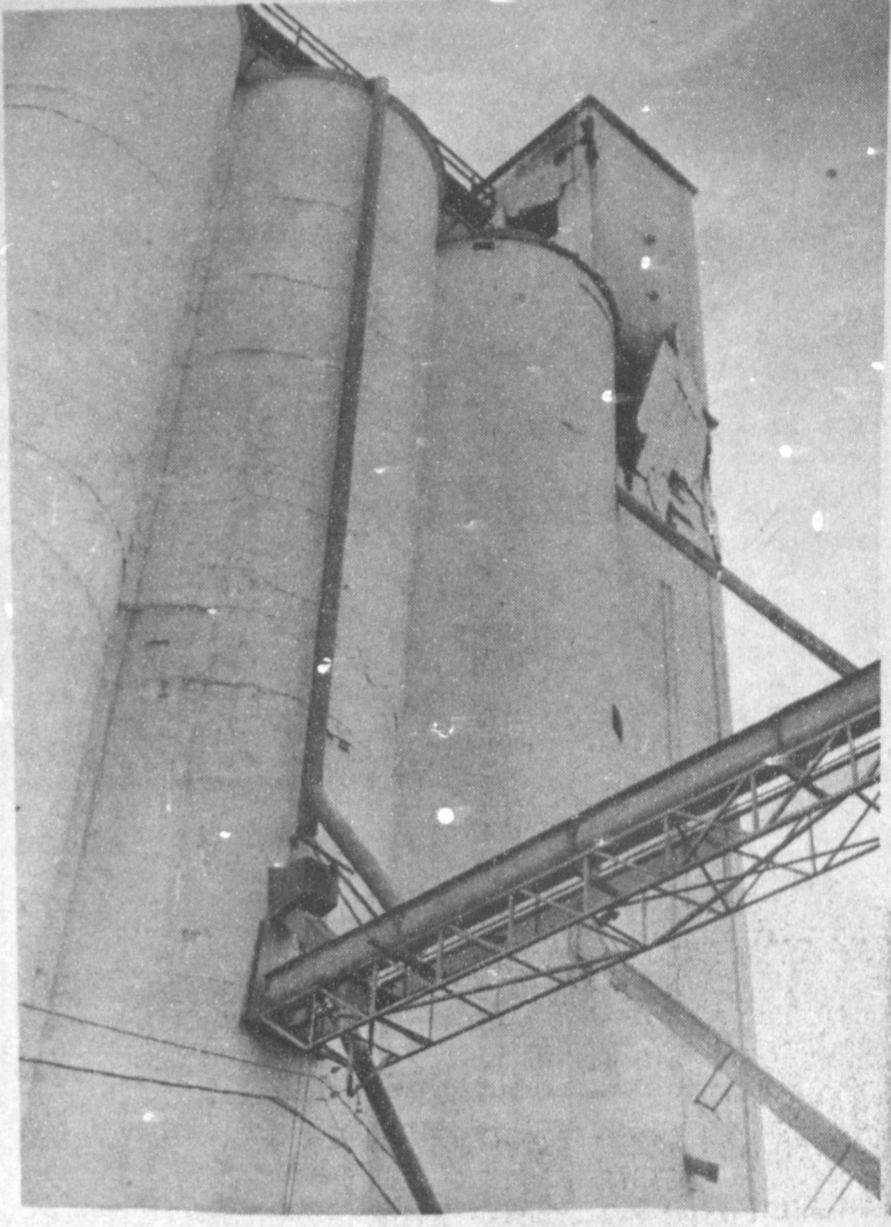
Dear editor:
There's been a lot of criticism lately of a big defense contractor who has been changing a lot of odd things to the government. For example, his firm, one of the biggest in the country, billed the government hundreds of thousands of dollars for airplane trips around the world on personal business, adding it to the cost of producing weapons.
But the expense item that lifted the most eyebrows and brought the most howls from

Healthful Hints
From Your
Ambulance Service

It is about time for spring cleaning and most of us get out the old step ladder, bucket, and that awful smelling ammonia to clean our windows and get rid of that musty odor from the past winter. If your ladder is like mine it's really old and about to fall apart. If your ladder is like this, get someone to fix it, or do what I'm going to do, buy a new one. Whatever you do get a ladder that is sturdy and doesn't wobble. A wobbly ladder could get you hurt. Most falls that occur during spring cleaning come from people on ladders that were about to fall apart. If you have taken some medication don't get on the ladder. You may become dizzy or woozy, or if you are not felling well and you just have to get out and clean make sure that if you get dizzy you can get down from the ladder safely and rest awhile then try to do it later. If you get on the ladder be careful. And when you use ammonia in your house, open your windows and make sure the house is well ventilated, as ammonia may make you dizzy. That is all for this week. Be careful on those ladders.
by: Eloy Flores EMT-P.I.

New Rule On Formaldehyde Levels In Mobile Homes

A new government standard may make living in a mobile home a little healthier, says a Texas A&M University Agricultural Extension Service housing specialist.
According to Dr. Jane Berry, a rule for formaldehyde emission levels is included in a revision of the Manufactured Housing Construction and Safety Standards from the Department of Housing and Urban Development (HUD).
"For the first time, manufacturers of certain building materials and factory made housing will be required to produce products that emit formaldehyde at levels below that established by HUD," says Berry.
Formaldehyde is commonly used as an ingredient in pressed wood products such as particleboard, fiberboard and paneling, which are used for mobile home construction. But some of the formaldehyde does not completely bond in the mixture during manufacturing, she explains.
This "free formaldehyde" is then released from the products, especially when they are new, says the specialist. It may also react with water or water vapor created by Texas' hot, humid weather to produce formaldehyde gas.
Formaldehyde has been known to cause eye, nose and throat irritation. Some people also report headaches, fatigue, memory loss and other symptoms, Berry says.
People with chronic respiratory problems, young children and the elderly tend to be more susceptible to formaldehyde exposure, she notes. Since many young families and retirees select mobile home housing, this ruling should help protect these groups, Berry says.
In announcing new emission standards, HUD states that it does not take a position on whether formaldehyde causes cancer in humans. In addition, HUD believes that it is not possible to implement a standard that will protect everyone, because some people are more susceptible to it than others.
The new ruling also requires manufacturers of factory-built housing to offer a ventilation improvement option with each home, she says.
Since adequate ventilation is critical in reducing a build-up of formaldehyde gas, especially in a new mobile home, Berry urges buyers to consider such an option carefully.



EXPLOSION BLASTS WALLS—Pictured here, high on the header house and lift shaft at Farmer's Co-op Elevator, mute evidence remains of the power of the explosion that ripped through the elevator Tuesday. The scene shows the east and north sides of the elevator.

Soil Compaction Care Prevents Crop Problems

"Survival in farming for the 1980's could be more a result of risk management in a farm's operation than any other key decision area," area farmers were told in a Tuesday morning breakfast seminar hosted by Whitt-Reid Real Estate & Insurance.
Roy Whitt local insurance agent and business man, says "the multi-peril crop insurance can be an excellent risk management tool for farmers looking ahead to 1985."
"With the insurance premiums subsidized by the federal government by up to 30 percent and the administrative costs of servicing and marketing paid entirely by the federal government, it stands to reason that as a whole, farmers receive more back from insurance than is paid in," Whitt continued.
"The amount of money it takes to put in a crop these days, whether it is borrowed or not, is too much to lose and expect to bounce back."
"I believe there is a profitable future in agriculture, but it will only go to those who will survive these difficult times immediately ahead of us. Risk management is the key...and selecting the right risks and keeping your exposure down to your financial capacity is the lesson we don't have to all learn the hard way."
"Crop insurance can't guarantee a profit, with some of the low yields we have had in

recent years... it may not cover all of your costs, but it can provide some degree of cash flow protection for farmers and land owners.
"The time is short, since the final sign-up date for multi-peril crop insurance is April 15th. Many farmers will want to start now to get their production records in order with ASCS in order to qualify for production guarantees and premium rates based on actual production history," he concluded.
Robert Dole, Senate Majority Leader, on farmer dilemma:
"We're concerned about farmers...We're not going to be able to help every farmer in every state with a federal program."

Ellis Funeral Home
Pre-Need Funeral Plans
Supervised By Texas Department Of Banking
Price Frozen At Time Of Purchase

A&M
1601 S. Ave. D. Portales
2600 Mabry Dr. Clovis
1302 W. American Blvd.
CLOVIS-PORTALES
MULESHOE
OPEN Mon. thru Sat.
7:30AM - 7:30 PM

If you haven't priced a John Deere lately, you should

Shop around. We want you to know how good our deals are on John Deere equipment right now. How very competitive. John Deere has made special allowances and we're passing along savings worth up to thousands of dollars. We're ready to show you just how sweet a deal you can make — right now.

DEAL 1. 4WD TRACTORS
Thousands of dollars in pass-along savings on every new John Deere 4WD tractor in stock. No interest until June 1, 1985, with John Deere financing. * Or in lieu of the finance waiver take an extra discount worth thousands more!

DEAL 2. 100- TO 190-HP TRACTORS
Huge pass-along savings on new 100 to 190-hp tractors plus interest-free financing until June 1, 1985. * If you prefer, take an additional discount in lieu of finance waiver. Save on used tractors, too, with the same Deere financing interest-free offer.

DEAL 3. 40- TO 85-HP TRACTORS
Get unheard of savings — like factory-direct discounts worth up to \$2700 — on new John Deere 40 to 85-hp utility tractors. Then get interest-free John Deere financing until June 1, 1985. * Or, take an additional discount in lieu of finance waiver.

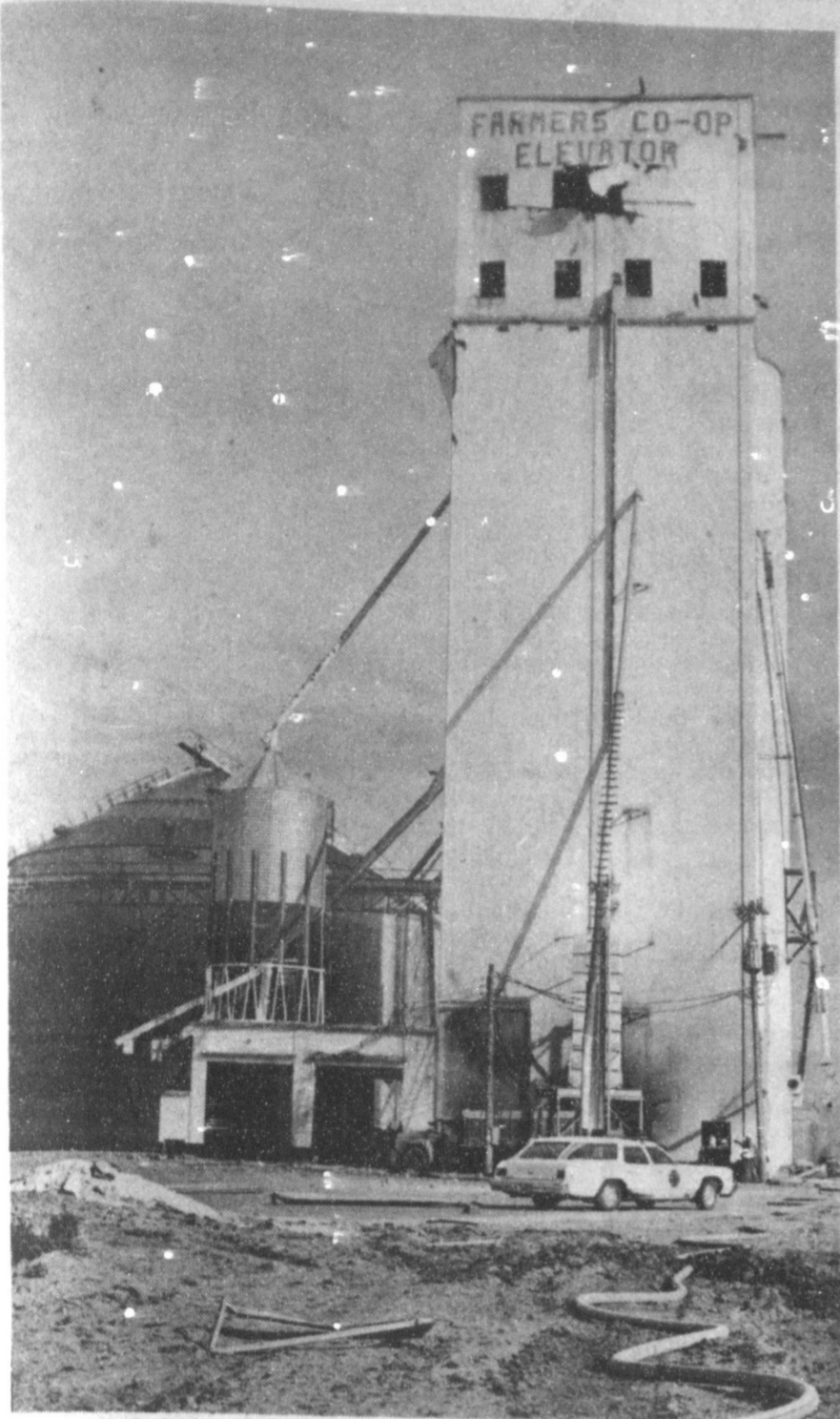
DEAL 4. COMBINES
Take advantage now of fabulous off-season savings on all new Titan combines. Thousands of dollars off PLUS INTEREST-FREE FINANCING TO THE FIRST OF THE 1985 USE SEASON when the combine is purchased with new header equipment. There's also a discount in lieu of finance waiver available.

DEAL 5. IMPLEMENTS
Make your best deal on a MOLDBOARD PLOW • STANDARD DISK • DuraCushion® DISK • ROLLER HARROW • FIELD CULTIVATOR • CHISEL PLOW • SPREADER. Then we'll add a pass-along discount allowed by the John Deere factories.

DEAL 6. HAY AND FORAGE EQUIPMENT
Buy a new baler, mower-conditioner or PTO forage harvester and get pass-along discounts worth hundreds of dollars. Discounts on self-propelled windrowers are worth up to \$3000. Save even more with interest-free financing from John Deere until July 1, 1985, on new and used hay equipment, and until September 1, 1985, on new and used forage equipment. * There are discounts in lieu of waivers on new equipment.

DEAL 7. PLANTERS
Make your best deal on a new John Deere planter, and then get an additional discount worth as much as \$7500! Special finance waivers are available, too.
We're ready to write the most competitive deals around on any new John Deere equipment. Stop by today for all the details.
*Availability of John Deere financing subject to approval of credit. These offers may be withdrawn at any time.

Dent - Rempe, Inc.
806/272-4296 Muleshoe, Texas 79347 Tuffy & Ronnie Dent



STREWN DOORS AND WINDOW FRAMES--Scattered across the countryside are what is left of metal doors and metal window frames ripped from Farmer's Co-Op Elevator during the explosion there last Tuesday afternoon.

Nursing Home

News

by Joy Stancell

Thursday afternoon Sherry Ott, brought the young people from the New Covenant Academy to visit and have a puppet show for the residents. We enjoyed their visit as well as Jermane's.

Thursday afternoon Nell Magby, Lynn Haralson, Sunny Bee, LaVerne James, J.E. Embry, came to play dominoes and Skip-Bo with the residents.

Fri. morning Lois Ethridge, Cleo Bellar painted plaques in Ceramic class. Rosa Holland, Ernest Kerr, Edith Bruns and Fred Peat painted Tues. morning.

Sun. morning Earl Peterson came for Bible Study. The Muleshoe Singers came for Gospel Singing Sun. afternoon.

Lena Hawkins came Monday morning for Bible Study.

Tues. afternoon the Hospital & Nursing Home Auxiliary came to shampoo and set the ladies hair and give manicures. Later they played Skip-Bo.

Wed. morning Ruth Hall came to show films to the residents. Refreshments of pie and coffee were served.

Tues. afternoon ladies from the Trinity Baptist Church brought home made pies for the residents. Lula Mae Shanks stayed and visited and served pies.

We received a pot of Easter Amarylliss from Inez BoBo. Wed. We are excited about watching them grow.

Lois Ethridge was visited by her sister, Maxine, her son Wayland Ethridge this week.

Golda Slaughter came one day to visit Cleo Bellar and play Skip-Bo with the residents. Cleo Bellar was also visited by Darlene, Cheryl, Larry and Don Bellar.

Blanche Cotton was visited by her daughter Barbara Finney Wed. afternoon.

Ernest Kerr enjoys having the paper read at coffee time in the mornings.

We are enjoying putting the beautiful picture puzzles together that have been given to us by our friends.

Fri. afternoon the Lazbuddie Church of Christ came to visit and have a Devotional. Refreshments of cup cakes and apricot bars were served.

Fri. afternoon, Jason, Audra, Jerrad Clarkson brought their little lamb down to visit. His fleece was as white as snow, everywhere the children went, the lamb was sure to go. His visit brought smiles and excitement to all those around.

Fred Peat was taken out Sat. to the barber shop to get a nice hair cut.

Hylton Moore is in the hospital at this time. Hurry and get well Mr. Moore, We Miss You.

Clara Weaver was visited by Gil Lamb, Mr. & Mrs. McCormick, Glenda Jennings, Chris and Mr. Weaver. She received a card from her daughter Linda.

B.B. Street was visited by Mr. & Mrs. Donald Street Wed.

Emmett Dean went out with Lewis Scoggins Tues.

Residents having March Birthdays are Jewell Tipton March 18, 1908, Clara Weaver March 24, 1919. The ladies would really enjoy getting cards on their special day.

Our Thanks to the Hospital and Nursing Home Aux. for their gift of money for our activities.

Thank you Truth Seekers of the First Baptist Church for your donation to our Ceramic class.

Western Drug, we really are enjoying the delicious chocolates that you gave us. Thank you very much!

Effie Jennings was visited by several of her family members this week. Among those visiting her, were Glenda Jennings.

Blanche Cotton is now a resident in the Nursing Home. Blanche was born Oct. 4, 1904. I'm sure Blanche would enjoy a visit or a card from her friends.

Sustained Periods Of Cold Weather Pose Hypothermia Threat

The winter of 1984-85 already has broken records throughout Texas for severe cold and sustained harsh weather conditions. Indications are that it will continue later than winters normally linger, not only in Texas but nationwide. The Texas Department of Health has warned Texans that the unusual, sustained periods of cold weather pose a threat of hypothermia to many who are unaware of the danger, chiefly the very young, the sick, and the elderly.

The Commissioner of Health, Dr. Robert Bernstein, explained that hypothermia, dangerously reduced body temperature, can lead to coma and death of the victim. "Particularly at risk, of course, are persons who must be outside for long periods in severe weather. But most people who routinely work in such conditions know the risks and dress accordingly. Persons stranded in automobiles in bad weather, though, may not be prepared for the cold."

Dr. Bernstein said travelers in severe weather should heed weather reports, dress in layered clothing, and possibly pack their cars with extra clothing or blankets. He advised them to make sure their cars are in dependable condition, and should they be stalled or forced off the road by the weather, not abandon the warmth of their vehicles. Like outside workers, Dr. Bernstein said, travelers generally know these basics.

"It is the elderly, the very young, and persons who are ill who may become hypothermia victims without anyone suspecting danger before it is too late. Some become victims in relative comfort at home," Dr. Bernstein said.

The Health Department's Associate Commissioner for Personal Health Services, Dr. Clift Price, explained, "Many people don't realize what hypothermia is, or how a little drop in body temperature can bring it about."

Hypothermia occurs when the deep body temperature falls to 95 degrees, just less than four degrees below normal. At that point, the victim exhibits mild lethargy, confusion, drowsiness which can progress to coma, a bloated face and a pinkish tint to the skin, trembling-not shivering-of one or more limbs, irregular heartbeat, slurred speech, shallow and slow breathing, and dropping blood pressure.

"These signs are easily mis-

table for symptoms of other health problems," Dr. Price said. "With our current understanding of hypothermia, we suspect that many deaths in the past may have been attributed to a previous heart condition or stroke, when in fact the real cause was hypothermia. One of the keys to our current understanding is that research shows perhaps 10 percent of all persons begin to lose one of their greatest protective mechanisms against hypothermia at about age 65--the reflex of shivering when body temperature drops."

Shivering is the body's mechanism for generating more heat when needed, and is also a signal to the individual's consciousness that more heat is needed. In short, elderly people sometimes do not know, either consciously, or physiologically, when they are dangerously cold.

"The same is true for persons using some sedatives, other medications, and alcohol, which impair the shivering reflex or cause the victim not to be aware of the cold. We know now that the so-called street people may appear to be intoxicated, but may actually be showing signs of hypothermia which are mistaken for drunkenness," Dr. Price said.

He added that an infant or young child has a greater body surface area proportionate to his weight than does an adult. Consequently, a baby can radiate his reserve of body heat much faster than one of his parents. In severe cold, over long periods, adults should give special attention to their children's warmth, making sure that clothing and bedding are adequate, Dr. Price advised.

Dr. Bernstein added, "The precautions we recommend are really common sense. Avoid prolonged exposure to the cold.

Dress warmly and avoid alcohol and medications that can cause drowsiness or impair judgement when one must be exposed to the cold. Relatives and neighbors should frequently check on the wellbeing of elderly persons, especially those living alone. And children should be warmly dressed and limited to the amount of time they are given to play or walk to school in the cold."

"If one discovers a victim of hypothermia," he said, "call an ambulance, the fire department, or police immediately. Wrap the victim in blankets or heavy clothing, and try to get the victim to drink warm liquids-not alcohol. Do not rub the victim's hands and other limbs to stimulate circulation, as this can cause damage to internal organs by pumping frigid blood deep within the body."

Letter To The Editor Policy

The Muleshoe Journal and Bailey County Journal welcomes letters to the editor on issues of concern to readers. Such letters must meet certain qualifications in order to be considered for publication.

Letters must bear the writers signature, address and phone number in order that the authorship may be confirmed. Under some circumstances we will delete the name of the writer, if, in our judgement, the request to do so is justified.

Letters should not exceed 250 words and must meet standards of good taste as well as legal guidelines. Letters attacking another person, a church or specific religion will not be published. Comments on issues are encouraged in order to maintain a forum for discussion of public views.

Enochs News

by Mrs. J.D. Bayless

Visiting the home of Mr. and Mrs. Bill Key Friday afternoon were his sisters, Mr. and Mrs. Robert Butler and Mrs. Juanita Howard of Littlefield also Mrs. Mildred Butler of Weatherford.

Mrs. Brenda George of Lubbock and Kelly Mosser of Slaton spent Friday night with her parents, the E.N. McCall's, and Kelly stayed for an extended visit.

Mr. and Mrs. Dale Nichols visited in the home of their son, Mr. and Mrs. Donnie Nichols and baby Monday.

Stacy Blasingame of Lubbock spent the weekend with Mrs. Etta Layton.

Diane Crume of Temple spent the weekend with her parents, Mr. and Mrs. Edward Crume.

Visiting Mr. and Mrs. Guy Sanders Sunday were Mr. and Mrs. Tony Rodriguez and daughter from Dallas, Texas.

We express our sympathy to Mr. and Mrs. Jim Richardson and family in the death of his mother, Mrs. Mary Richardson of Levelland.

Visiting Mrs. Etta layton Sunday afternoon were Mrs. Juanita Snow, Mr. and Mrs. Jerry Nichols and children of Muleshoe and Mr. and Mrs. J.E. Layton.

Funeral service for Mrs. Dovie Dane was at the Enochs Baptist Church at 2:00 p.m. Sunday March, 10th.

Visiting in the home of Mr. and Mrs. Bill Key Sunday evening were, Mr. and Mrs. John Latham and Mr. and Mrs. Garvin Long.

Dinner guests in the home of Mr. and Mrs. Jarrol Layton Sunday was her parents, Mr. and Mrs. Leon Dupler from Andrews, Texas.

Mr. and Mrs. E.N. McCall took their little grandson, Kelly, home Sunday afternoon and visited their daughters, Dolores Mosser and family and Brenda George.

Rev. and Mrs. Mike Heady and family flew to Lincoln, Ark. Saturday were Bro. Mike preached at the Baptist Church Sunday.

Mrs. Albert Jackson and children of Clovis, New Mexico spent Saturday till Monday with her grandparents, Mr. and Mrs. Edd Autry.

Mrs. Ima Roberts, Mrs. Bud Huff, Mrs. Bill Key, Mrs. Wilma Petree, Mr. and Mrs. Buford Peterson, Rev. and Mrs. Mike Heady and children all went to see the film of the Mission trip some went to in Mexico, at the Baptist Church in Sudan.



Wes Tex Feed Yard

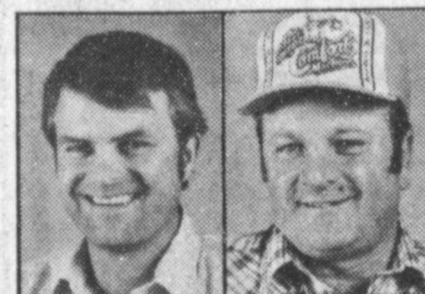
Is Now Accepting Contracts

On Corn Silage Contact Gayland Black

272-7555 8 a.m. - 6 p.m.



Those who know best



Bob Bomer Bomer Electric Dee Puckett Southwestern Geothermal

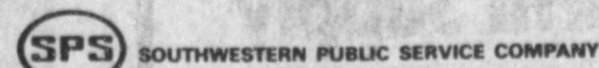
recommend the heat pump

for modern, energy-efficient heating and cooling.

The top heating and air conditioning contractors in this area recommend the heat pump for its clean, quiet, economical operation. They agree it's the system to bring you comfort now and for a long time to come.

Look to those who know heating and cooling best. They'll recommend the best heat pump system for you.

Contact your heat pump contractor. Or call Southwestern Public Service Company for your free Heat Pump Buyer's Guide.



Sudan

News
by Evelyn Ritchie

Norma Poe was released Saturday from the Methodist Hospital in Lubbock and is recuperating at home.

Mr. and Mrs. Glen Cardwell were in Lubbock on Monday for doctors appointments and also visited their daughter, Mrs. Susan Nettles and girls while there.

John Corly of Albuquerque, N.M. visited Monday evening with his aunt, Mr. and Mrs. G.C. Ritchie.

Mrs. Glenda Synatschk and Amanda Joann were released Wednesday afternoon from the Amherst Hospital. Her mother, Mrs. Glen Cardwell was there with her for a while.

Mrs. Todd (Chyrel) Chumbley and Tori Raylynn were released Tuesday afternoon from the hospital in Lubbock and her mother, Mrs. Norma Phillips has been there with her for a few days.

Weather permitting the fire department will be testing the storm sirens on Monday evening.

Mrs. Gus Bellamy visited in Snyder this week with her son, James Henry and family. It was reported that he is not doing well.

Tommy Seymore was released Monday from the Methodist Hospital following surgery there several days ago.

Please use the ease-a-phone message center when calling Sudan Beacon 227-2183 but wait for the electronic tone before leaving your name and or number as it will not record if you do not wait for the tone. Thank you.

Mr. and Mrs. Bo Lance and Dayna visited during the weekend in Baird with her parents, Mr. and Mrs. Carroll Gillett and family.

Mr. and Mrs. Billy Wayne Gore, Stephanie and Dennis of Odessa visited during the weekend with their parents, Mr. and Mrs. Wayne Doty and Mr. and Mrs. Billy Gore and families.

Susan Nettles and girls of Lubbock visited Sunday with her parents, Mr. and Mrs. Glen Cardwell and visited her sister, Mr. and Mrs. Herman Synatschk at the Amherst Hospital following the birth of Amanda Joann.

Mrs. Rex Baccus of Richardson has been visiting her grandmother, Mrs. Mildred Chisholm for the past several days. Her brother, Scott of Texas Tech has also been here with her after classes each day.

Lisa Wood was a patient in the Lubbock General Hospital all last week following a concussion she received during the Tech-Rice basketball game.

Madge Beauchamp is a surgical patient in the Community Hospital in Lubbock where she underwent surgery on Thursday.

Mrs. Letha Gordon has been transferred from the Amherst hospital to St. Mary's in Lubbock where she is to undergo surgery this week.

Tommy Seymore is to be released this week from the Methodist hospital following

surgery there last week. It was reported that he is doing fair.

Pill Bellar was to be released this week from Littlefield Medical Center where she has been a medical patient for the past several days.

Mr. and Mrs. Dewayne Powell and girls were in Midland during the weekend to visit her brother, Mr. and Mrs. David Beckett and girls. They took their granddaughter, Brandi of Littlefield with them.

Jack Kelly was taken to the Amherst Hospital Sunday following a wreck when he hit and tore down the brick mailbox at the home of Jerry Ray and other damage to some electrical wires that knocked out electricity to some of the homes in that area for about an hour. He was released that day.

Six Sudan Hornets and Hornets were recently named to All District for District 7-A basketball. The Hornets are Jerry Dodson and Jeff Kinnie and the girls include Sharla Harrison who was also unanimously voted as Most Valuable Player and Joann Wooley, Jeannie Nix and Shawnda Masten.

Seven members of the Sudan FFA chapter recently attended the San Antonio Livestock show. Members in attendance were Jeff Taylor, Gordon Martin, James Clay, Brad Byerley, Dale Johnson, Charlie Fisher and Sam Merryman.

Some of the other members sent their animals but did not attend.

Placings were 4th place Lt. Wt. Yorkshire owned by John Taylor and shown by Jeff Taylor sold for \$2.50 per lb. Gordon Martin placed 21 Lt. wt Duroc and sold his barrow for \$2.75 per lb. Charlie Fisher placed 6th with his Hv. Wt Yorkshire and sold him for \$2.50 per lb.

Mr. and Mrs. James Clay and Mr. and Mrs. Edward Fisher also attended the show with the boys.

While at San Antonio, Kenn Carr, FFA members and parents visited the Zoo, Tower of the Americas and The Riverwalk.

Mrs. Shanda Broadhurst of Littlefield visited Monday afternoon with her parents Mr. and Mrs. Calvin Vernon, and other family members.

Baptist Men held their regular breakfast meeting at 6:30 Sat. March 2nd.

Sunday school teachers, workers and their families held a covered dish supper on Thursday night in the fellowship hall of the church.

Missy Fisher who has been a member of the Wayland Queens basketball team has had 47.6 percent of the field goal attempts with 68 out of 143. She hit 7 out of 7 FTA for 100 percent; and averaged 1.2 with 34 rebounds, had 45 assists, 9 steals, 3 blocks and had 21 personal fouls during the season.

Lisa Wood, who is a member of the Texas Tech team had four of four field goals and 12 FTA during the game with the Aggies recently. She also added four assists and four rebounds during this game. Other season stats were unavailable at this time.

Norma Phillips has been in Lubbock with her daughter, Mr. and Mrs. Todd Chumbley and new infant daughter Tori Raylynn who was released Tuesday from the Methodist Hospital.

Mr. and Mrs. John Burnett and Mr. and Mrs. Marvin Tollett were in Hobbs, N.M. re-

cently to attend a meeting of the Fraternal Order of Eagles.

Lisa Wood, daughter of Mr. and Mrs. Dan Wood, was released Monday from the Lubbock General Hospital where she has been for the past several days due to a concussion she received some time ago in a basketball game. She did not get to make the road trip with the Texas Tech team this week but hopes to be able to play in the upcoming tournament. Her parents have been staying at the hospital there with her most of the time. Cliff Stephens of Midland also visited with her while she was a patient there.

Dr. Evelyn Milam of Nevağa, Mo. has been here visiting her mother, Mrs. John Milam and accompanied her to the Sudan area Senior Citizens covered dish supper on Monday night.

15. Misc.

DAVIS COMMERCIAL PUMPING SERVICE

Pumping of Cess-pools and Cleaning of Septic tanks; grease pits and mud pits.

We now handle Sewage treatment chemicals.

Trap Cleer - Cuts down on Cleaning grease traps and Sewage lines for Garbage disposables odor free and clean.

Septic Cleer - Helps in Maintaining Cess-pools & Septic tanks to Maintain performance. Also for Recreational Vehicles.

Pit Cleer - Hog and Cow Confinement Pits, Lagoons, sewage Plants, Grease traps.

Call 272-3467 Elmer Davis or 272-5023 James Kemp or mail a post card with Name & address to Box 71 Muleshoe, Tex. 79347 for information on any of the above.

Chemicals are stocked at James Kemp Discount Furniture 414 West American Blvd. Muleshoe Tex.

8. Real Estate For Sale

HENRY REALTY
111 W. Ave. B
Muleshoe, Texas
272-4581

JUST COMPLETED
3 bedroom, 2 bath, large living room, kitchen & dining. Excellent condition, near high school. Priced to sell.

320 ACRES with large beautiful 3 Bedroom, 3 bath, 3 car garage, spacious gameroom, central heating and air, underground sprinkler for yard 30' x 50' shop for building, 5 wells.

80 ACRES with 6' well and 8' well, under ground pipe owner financing available. 7 miles west of Muleshoe.

ACRES West of Muleshoe, 6 Inch Well, Sideroll, All Wheat.

One Acre Sites for Home Construction. 3 Miles east of Muleshoe on HWY. 3 lots remain.

ONE ACRE sites for Home Construction. 3 Miles East of Muleshoe on HWY. 3 lots remain.

COMPLETELY remodeled 2 Bedroom home. Ideal first home, must see to appreciate. Nice location with F.H.A. loan.

APARTMENT complex, mobile home park, vacant land for expansion. Terms available. 8-231-tfc

18. Legal Notice

REAL ESTATE FORECLOSURE SALE

PROPERTY OWNED BY: LLOYD R. WILLIAMS and ELSIE WILLIAMS
LEGAL DESCRIPTION OF PROPERTY: The Northeast Quarter (NE/4) of the North Half (N 1/2) of Section Number Five (5), Block "Z", W.D. and F.W. Johnson's Subdivision, Bailey County, Texas; SAVE AND EXCEPT: 37.00 acres out of the Northeast part of Section 5, Block Z of the W.D. & F.W. Johnson Subdivision in Bailey County, Texas, as shown by the plat thereof of record in Volume 3, Page 272, Deed Records of Bailey County, Texas. The survey of same having been made for Lloyd Williams by virtue of his ownership and is described as follows:

BEGINNING at a 5/16" spike for the Northwest corner of Section 5, Block Z of the W.D. & F.W. Johnson Subdivision in Bailey County, Texas, whence a set 3/8" iron rod for its Southwest corner bears South 5280.12 feet;

THENCE South 89°55'50" East along the North line of said section, 2640.28 feet to the NORTHWEST and actual BEGINNING corner of this tract;

THENCE continuing South 89°55'50" East along the North line of said section, 610.49 feet to a point;

THENCE South parallel with the West line of said section, at 40 feet pass a 1/2" iron rod in the South line of the West Camp Highway and at 2640.06 feet a 1/2" iron rod in the South line of the North 1/2 of said section;

THENCE North 89°55'50" West along the South line of the North 1/2 of said section, 610.49 feet to a point;

THENCE North parallel with the West line of said section, at 2600.06 feet pass a 1/2" iron rod in the South line of said highway and at 2640.06 feet the place of beginning.

PLACE: Bailey County Courthouse Muleshoe, Texas

DATE: April 2, 1985

TIME: 11:00 O'clock A.M.

TERMS: The real estate will be sold for cash to highest bidder. Sold subject to all taxes due thereon. Title will be conveyed by substitute trustee's deed. For more information, contact REBA HEWLETT, Small Business Administration, 1611 Tenth Street, Suite 200, Lubbock, Texas 79401-PHONE (806) 743-7471. s18-10t-4tc

TRUSTEE ELECTION ORDER AND NOTICE (ORDEN Y AVISO DE ELECCION DE REGENTES)
The Muleshoe Independent School District Board of Trustees hereby orders and gives notice of an election to be held on April 6, 1985, for the purpose of electing two trustees for a full three year term.

(Por la presente la junta de regentes del distrito escolar independiente ordena y da aviso que se llevara a cabo una eleccion el dia Abril 6 de 1985 con el proposito de elegir dos de regentes indicada a un termino completo.)

ABSENTEE VOTING by personal appearance will begin on 18, March, 1985, and continue through 2, April, 1985, from 8:00 a.m. to 5:00 p.m. on each day which is not a Saturday, Sunday, or an official state holiday. (VOTACION POR AUSENCIA en persona comencara el 18 el Marzo de 1985 y continuara hasta el 2 el Abril de 1985 desde las 8:00 a.m. hasta las 5:00 p.m. en todos los dias que no sean sabado, domingo, o dia oficial de vacaciones estatales.)

County Clerk's Office, Courthouse, Muleshoe, Texas 79347 is the address of the place for absentee voting in person and to mail applications for an absentee ballot. (La direccion indicada es del sitio para votar por ausencia en persona y para hacer solicitud para boleta de ausencia por correo.)

The POLLING PLACE(S) designated below will be open from 7:00 a.m. to 7:00 p.m. on the day of the election. (Los sitios de votacion indicados abajo se abran desde las 7:00 a.m. a las 7:00 p.m. el dia de la eleccion.)

Pct. No. (Num. de precinto) Location (Colocación)
All Precincts (Bailey County) - Muleshoe High School Cafeteria
Precinct #3 (Lamb County) - Muleshoe High School Cafeteria
Julie Alexander Cage
Ronnie Holt
Dewey Moore
Royce Harris
Gordon Wilson
Howard Watson
Ben Roming
m18-11s-1tc

PEOPLE READ THE CLASSIFIEDS!

The Amazing Magic of Natural Herbs

All natural Weight Control Program will help you **LOSE** from **10 TO 29** pounds in a month **WITHOUT** diet pills, exercise or hunger pains.

- ★ Lose Inches & Pounds
- ★ Gives You Vitality and Energy
- ★ 100% Guaranteed Or Your Money Back
- ★ Natural, No Drugs

For More Information Call:

Rex or Betty Steinbock
965-2866



BARGAIN OF THE MONTH



1.99 While Supplies Last
3 1/2-Gal. Deco-Pail in choice of black, red or blue plastic with geometric designs. 1620-BK/RD/BL
QUANTITIES LIMITED



HARDWARE VALUE OF THE MONTH



4.48 While Supplies Last
Heavy-Duty Drum Auger has spring steel wire to free up tough drain clogs fast. 15-ft. line, easy grip. 504365
QUANTITIES LIMITED



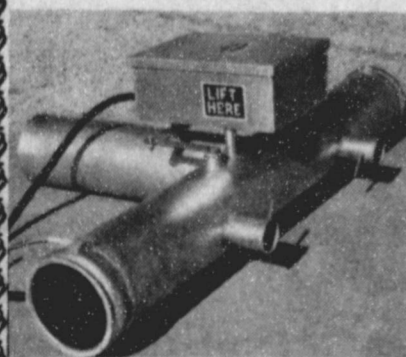
TOOL VALUE OF THE MONTH



5.99 While Supplies Last
Anvil Pruner w/Holster features Power-Link™ to draw branch into pivot area for easy cutting action. 3/4-in. cut. 205971
QUANTITIES LIMITED

SMAR - TEE

The Original Balanced Twin Value Surge Tee For Low Amperage Draw & Low Hydraulic Shock.



- Row Gates On Tee
- Lightweight Approx. 40 lbs.
- Timer Easy To Set Cycle Lengths 15 min. to 12 Hours
- 6 Months Limited Warranty

Manufactured By



Plainview, Texas
806-293-1304

Local Dealer: **Campbell & Wiedebush**

1620 W. Amer. Blvd.
806-272-4611
Mobile 965-2221

Fry & Cox, Inc.

401 S. 1st

272-4511

CLASSIFIED ADS

DEADLINE FOR CLASSIFIED ADS IS TUESDAYS AND FRIDAYS 12:00 NOON

CLASSIFIED RATES
 1st Insertion Per Word...\$1.15
 Minimum Charge...\$2.30
 2nd Insertion Per Word...\$.13
 Minimum Charge...\$2.00
CLASSIFIED DISPLAY
 \$1.70... per column inch
BLIND AD RATES
 50% more
DEADLINES
 12 Noon Tues. for Thursday paper
 12 Noon Fri. for Sunday paper
WE RESERVE THE RIGHT TO CLASSIFY REVERSE OR REJECT ANY AD NOT RESPONSIBLE FOR ANY ERROR AFTER AD HAS RUN ONCE

1. Personals

NEED ASSISTANCE filling out your insurance forms. For more information call Richelle King 272-4449. kl-50t-tfc

HELTON'S Roofing and Exterior Painting, Mobil Home Roofs our speciality. Also the best in Ag. products. Call Jerry Helton 272-3836, 915 Gum, Muleshoe, Tx. h1-8t-tfc

LUNSFORD PAINT AND BODY SHOP- Farwell, Tx. Free estimates - everything except hail damage. All work guaranteed. 806-481-3287. 11-4s-2mc

PAINTING and Paper Hanging Call 272-3304 or 806/792-1669. a1-10s-3tc

FURNITURE Upholstering & Repairs Burrows Upholstery Shop 209 W. 2nd Phone 272-4255 Home Phone 272-5722. b1-41t-tfc

AFRAID The old rocking chair will get you if you retire? How about pottering around 4 rentals. \$770 monthly income \$25,000 balance, 8% 505-762-5964. 1-11s-1tp

HOUSE Painting Interior and Exterior Reasonable rates. Call 965-2388 or 965-2128. w1-4t-tfc

NEED WORK! Several years experience working with public in cashier positions, sales clerk, etc. Also will do house or office cleaning - Professionally done. Honest and dependable Contact 272-5117. 3-11s-2tp

Part time help wanted.



4. Houses For Rent

RUIDOSO CHALET: 4 Bedroom for rent by day, weekend, or weekly. Call 505-257-2622 or 915-943-4261. Owner Dr. Albertson. a4-49t-tfc

5. Apts. For Rent

NICE 1 Bedroom Apartment for Rent call 272-3107 m5-11s-tfc

3. Help Wanted

CONCERNED About Someone's Drinking HELP IS AVAILABLE through Al-Anon Call 227-2350 or 965-2870 or Call 227-2350 or come to visit Tuesday nights. 8:00 p.m. at 1116 W. American Boulevard, Muleshoe

8. Real Estate For Sale

NEW Mobile Home 1,064 sq. ft., 3 bedroom, 2 bath, 1,100 down payment, \$310 per month, delivery & set up included this month only call Shelby collect 806-763-5319. a8-10s-7tc

FOR SALE BY OWNER: 3 bdrm, 3 bath brick home large fenced yard-lots of storage and storm cellar. Call for appointment 272-3592 located 1810 W. Ave. C. d8-7t-tfc

SPRINGLAKE BRICA home 2,000 sq. ft. plus basement. 3-2-2, fireplace, pavement, 9/10 acre. Kathy Hawkins, broker. 915-692-8346 after 6 and on weekends. w8-7t-tfc

NEW 14x56 Mobile Home \$700 down payment, \$210 per month delivered & anchored, 3 units only, Call Shelby collect 806-763-5319. a8-10s-7tc
FOR RENT or take up payments 1982 Mobile Home, 3 bedroom - 1 1/2 bath 272-3693 or 272-3759. d8-8t-1mp

FOR SALE: Very nice 3 bedroom home in the country. On paved road. Reasonably priced. Fenced yard. Call 965-2155. 8-6s-8tsp

FOR SALE BY OWNER 2-1-1 on 2 lots. All fenced yard, storage building, fruit trees. \$17,500. Call 965-2120. L5-41s-stfc

FOR SALE: 177 acres, immediate possession, circle sprinkler, 1 mile E. 1/2 S Lazbuddie. 965-2131 or 965-2959. f8-10t-8tc

Smallwood Real Estate 232 Main 272-4338

4 Bedroom, 2 bath, Country Club Addition. Owner will finance ***

3 Bedroom, 2 Bath, Carpet, Central Heat, Evaporative Cooling on roof ***

3 Bedroom, 2 Bath, A&H Brick Venner, 2 car Garage, good location ***

Duplex-2 Bedroom, 2 Bath, 2 living Areas, fenced back yards *** s8-11s-stfc

JIMMIE CRAWFORD Real Estate & Ins. 1725 W Ave E Muleshoe, Texas Phone 272-3666

3-1 Brick with tile fence and garden. 1600 Sq. Ft. Real good price-\$39,500. ***

3-1 1/2-2 Brick with carport. Price reduced to \$45,000. ***

3-1 1/2 Brick with storm cellar. Over 1,000 Sq. Ft. \$31,500. ***

2-1-1 with fenced back yd. 930 Sq. Ft. Very clean \$26,000. ***

Krebs Real Estate -Appraisals- Lots and small tracts Will finance Farms- 100 A to 1200 A irrigated and dry 1004 W. 6th Tele. 272-3191 k8-10s-stfc

9. Automobiles For Sale

FOR SALE: E-Z Go Golf Cart with charger \$350.00. Call R. Schroeder, Hereford, Tx 364-2413. s9-11s-6tc

FOR SALE: Small stereo in wood cabinet, includes AM-FM Stereo. \$50. Call 272-4536 9am-5 pm.

14. Farm Prop. To Rent

FOR RENT: 1/2 section, circle sprinkler, good water, landlord terms good. Call 965-2365 day or 272-3884 after 5:00 or 965-2373. w14-10t-4tc

15. Misc.

HOME REPAIRS. F.M. Saldana Construction Licensed and bonded plumber. Specialized in cement, carpenter work, remodeling, painting, acoustical ceilings. 272-4955 15-16s-tfc

TRAILER space for rent call 272-3784 after 5:00. s15-11t-8tc

Too Late To Classify

FOR SALE: Brick Country Home-3 br, 1 1/2 bath, fully carpeted. On 7 acres. House is on pavement in nice community. For more information call 946-3398 call after 6:00 Monday-Friday anytime on weekends. 8-9s-2tsp

11. For Sale Or Trade

For sale by owner In Bovina, Texas

Large four bedroom two bath home. Living room, dining room, den with fireplace. Large utility room, lots of storage. Double garage with automatic opener. Two large lots behind house. House is on the edge of town for country feeling.

Heated swimming pool. Automatic sprinkling system throughout yard. Nice landscaping.

Adjoining town property is 4 1/2 acre pasture with three stalls, corral, and saddle house. This property can be sold with house, or sold separately.

To see, or for more information call in Bovina, Texas 806-238-1536. 8-7s-8tp

J.B. SUDDERTH REALTY INC. Drawer 887 Farwell, TX 79325 Ph. 806-481-3288

181 acres, one 6 in and one 8 in well, valley sprinkler, west of Progress on highway. Owner financing available. ***

472 acres, four wells with electric motors, two late model valley low-pressure sprinklers. Wheat crop included. Priced at \$650 per acre. Owner will finance. ***

477 acres, five wells, three circle sprinklers, beautiful wheat crop, east of Muleshoe. \$600 per acre. Excellent financing. ***

80 acres, 2 wells, 1 electric motor, West of Muleshoe on highway. Owner says Sell! ***

480 acres irrigated with circle sprinklers, lays good, on highway, West of Muleshoe. Owner says Sell! ***

160 acres, 8 in well with circle sprinkler, good water area, South East of Oklahoma Lane crossroads. ***

Good 155 acres, one 8 inch well, one 6 inch well, good water area on FM Hwy 303 NW of Earth. ***

40 acres irrigated, 1-8 in well, concrete pipe, excellent water area, 5 1/2 mi East of Lariat. ***

160 acres irrigated, 2-8 in wells, excellent water area, 5 1/2 miles East of Lariat. ***

665 acres irrigated, 5-8 in wells, 3 houses, 1 barn, and 1 shop. Excellent water area. 5 1/2 miles East of Lariat. ***

155 acres irrigated with circle sprinkler, excellent water area, North East of Muleshoe. ***

320 acres irrigated, 3-8 in wells, good water area. Lays very good. 4 mi North East of Oklahoma Lane crossroads. ***

320 a, 3-8 in wells, circle sprinkler, 3 mi SE Clays Corner. ***

158 a, 3 good wells, circle sprinkler, elevator and new office building on highway, Progress area. ***

BINGHAM & NIEMAN REALTY 116 E. Ave. C 272-5285***272-5286

WE HAVE 12.1% APR MONEY AVAILABLE FOR FIRST TIME HOME BUYERS!!!!!!!!!!!!

SHOWN BY APPOINTMENT ONLY-COUNTRY CHARM WITH CITY CONVENIENCE--Spacious 4 Bdrm., 2 3/4 Bath, 2 Car Garage Brick Home. Beautifully Landscaped. Approx. 3570 sq. ft. of Lv. area. Dual Cent. A&H units, Cathedral beamed Den with cozy fireplace, large Game Room with portable bar, separate Living, Dining, & Breakfast areas. Nice kitchen with built-ins including BBQ Grill, large Utility Area with pantry & storage. Interior of home is trimmed in pecan wood & paneling & has nice enclosed entry-garden area. Other amenities include thermal windows, large covered patio with gas grill, undrgrd. sprinkler sys., nice workshop with heating & elect., & numerous other extras.

RICHLAND HILLS

3-1 1/4 Brick, Cent. A&H, built-ins, fireplace, approx. 1,000 sq. ft. of lv. area, fenced yard, nice storage-workshop bldgs.!!!!!!

JUST LISTED-4-2 1/2-2 Brick, Cent. A&H, built-ins, fireplace, study, basement, fenced yard, & more. \$60!!!!!!

REDUCED PRICE-3-1 1/2-2 carport, Brick, Cent. A&H, built-ins, gas log fireplace, fenced yard. \$48,000!!!!!!

3-1 1/4-1 Brick, Cent. A&H, built-ins, fenced yard, storage bldg. -A Good Buy.....

JUST LISTED-3-3-1 carport Brick, Cent. A&H, built-ins, fireplace, nice large den with built-in bar & gun cabinets, loads of storage, large utility, covered patio, gas grill, & storage bldgs.!!!!!!

LUXURY LIVING in this 3-2-2 Custombuilt brick, loads of built-ins, wet bar, Jacuzzi whirlpool, atrium, basement, Cent. A&H, & more.....

JUST LISTED-2-1-1 Brick, Cent. heat, storm windows & doors, new roof, built-ins, fenced yard & more. \$40's!!!!!!

COUNTRY CLUB

3-1 1/2-2 Brick, Cent. A&H, built-ins, nice. \$40's.....

LENAU ADD.

JUST LISTED-2-1-1 Brick, Cent. A&H, some built-ins, fireplace, Comb. den-office, fenced yard with 2 nice pecan trees, corner lot!!!!!!

3-1-1 home, corner lot, Cent. heat, Evap. air, fenced yard. \$30's.....

3-1 1/4-1 carport home, nice carpet, fenced yard, neat. \$30's!!!!!!

HIGH SCHOOL AREA

3-1-1 Brick, Cent. heat, built-ins, utility, well insulated, storm windows & doors, fenced yard, water softener, storage bldg. \$30's!!!!!!

3-1 1/4-1 Brick, Cent. A&H, built-ins, fenced yard. \$40's.....

FARMS

ENOCHS 354 acres, good productive dryland farm. \$250 per acre.....

60 acres dryland, close to town....

80 acres, Stegall area. Good productive dryland farm....

2-1 home on 20 acres, 20 hp. sub. pump, domestic well, large barn & corrals, 1/2 mile sprinkler pipe, & more. \$42,500....

2-1 home on 32 acres, 6" well, close to town on pavement....

160 acres, well with 40 hp. Elec. motor. \$400 per acre.

JUST LISTED-320 acres good cultivated land, near Stegall area in Roosevelt County, N.M. - \$250 per acre....

We have numerous other farms, commercial property, & lots listed. Contact us for details on these and other listings.

"WE APPRECIATE YOUR BUSINESS" GEORGE NIEMAN, BROKER DIANNE NIEMAN, BROKER

Multi-peril Crop Insurance

Guaranteed Pounds of Production Makes Sense Guaranteed Cash Flow

Hail? Drought? Insects? Disease? Blow Out? You name it!!



You must apply before April 15th See Roy Whitt 201 Main or Call 272-3611.



See Us For Life & Health Insurance 201 Main All Risk Crop Insurance 272-3611

Enjoy Country Living. 18 Acres, good land, 3 bedroom, bath, 3 hog houses, insulated, concrete floors. Seller says sell... ***

Best location in town, 3 BR, 1 1/2 bathes, Large family room, large patio, B-Q grill, garage, brick 2181 square feet of living space, Bargain less than \$30 S.F. Must see to appreciate 50-H3 ***

Nice small 2 bedroom. Low down payment and take up monthly payments. OH-4 ***

3-1 fireplace, dishwasher, range-oven, disposal, 2 rooms have been redone, large storage house (15x32) and has underground sprinkler in front yard.25-3H ***

3-2-carport and 1-1 apartment, nice back yard with B-B-Q and patio, basement, and much more. \$56,000.00 50-6H ***

201 Main Muleshoe, Texas 272-3611 Thursie Reid 272-5318 Roy Whitt 272-3058 Henry Reid Broker

"WE TRY HARDER"