

**AMMONS LANDSCAPE**  
 Christmas Lights & Decor  
 Get your **free** estimate today!  
 AmmonsLandscape.com 669-7777

**DOUG BOYD MOTOR CO.**  
**GEAR UP FOR THE FALL**  
 Corner of Hwy 60 & 70 • Call 806-669-3062  
 Buy Here, Pay Here, No Credit Check, Visa & Mastercard Accepted.  
 Go to our website at: www.DougBoydMotors.com

**Premier Floor Warehouse**  
 All in-stock carpet \$12.95 - \$18.95 per sq. yd. installed with pad  
 We will beat any legitimate bid by 10% on any product that we carry!  
 301 S. Cuyler, Pampa TX • 669-7001

**In Stock CLOSEOUT SALE**  
 Bring in this ad for a **FREE** entryway with one of our in stock materials with the purchase of flooring. Offer is only for the month of November. Lots of wood, laminate and tile flooring available.  
 Mon-Fri 9am - 5pm • Sat 10am - 1pm  
**One STOP Flooring**  
 665-0995 • 1533 N. Hobart

**CHILDERS BROTHERS INC. HOUSE LEVELING**  
 Uneven Floors  
 Floor Bracing  
 Cracks In Bricks  
 Sticking Doors & Windows  
 Interior Wall Cracking  
**FREE ESTIMATES**  
**1-800-299-9563**  
 WWW.CHILDERSLEVELING.COM

**Vision COMPUTER SERVICES**  
 I have computer problems.com  
**806-665-HELP(4357)**  
 Combs-Worley Building  
 120 W Kingsmill Ave  
 Suite 303

CALL \$49 HR.  
**MASSAGE ADVANTAGE**  
**(806) 665-7261**  
 @ Ford Family Chiropractic  
 Rehabilitation & Wellness Center  
 See Website For More Advantages.  
 WWW.MASSAGEADVANTAGE.COM

A New Selection of Trees Has Arrived!  
**WTL**  
 120 S Hobart St • 669-0158  
 Mon-Fri: 9-5  
 Saturday: 9-4  
 PINESTONE

**HOUSE HUNTERS - REALTOR**  
 Linda Laycock  
 Broker  
**(806) 662-1312**  
 Jordan O'Neal  
 Associate  
**(806) 670-6623**  
 Larry Hadley  
 Associate  
**(806) 662-2779**  
 Tisha Holman  
 Associate  
**(806) 440-4153**  
 Pampa MLS & Amarillo MLS

**THE FLOOR STORE**  
**(806) 665-4455**  
 New Owners last 2 years

**Texas FURNITURE**  
 PROUDLY SERVING PAMPA SINCE 1932  
 1415 N. HOBART • 806-665-1623  
 MONDAY-SATURDAY 9:00-5:30

Ask about our jump service!  
**Roberta's FLOWERS**  
 217 N. Ballard • 669-3309  
 Where Your Friends Buy Their Flowers  
 www.robertasflowers.com

**M & H Leasing TOP OF TEXAS**  
**Nov. 4 7-8:30 am**  
 Join us for **FREE** "Pink Out" donuts and coffee  
 1945 N. Hobart • 665-2061

# The PAMPA NEWS

Monday, November 7, 2011 Volume 107 • No. 179 75¢ Daily • Weekend \$1.50

## PISD aids homeless students through fund

**MOLLIE BRYANT**  
 mbryant@thepampanews.com

Within the Pampa Independent School District, 134 students have been identified as homeless, and while these kids are probably not living on the streets, they may be in the need of stability that will help them excel in school and life.

A child is considered homeless if he or she lacks an adequate or permanent nighttime residence.

"They may not be living in a park or in a car, but they don't have their own rooms or neces-



**Pingel**

sarily know where they'll spend the next night," said Suzanne Pingel, PISD's Homeless Student Liaison.

"Kids living with their parents in a shelter count as homeless, and so do kids who choose not to live with their parents because of drugs, abuse or being kicked out."

According to Pingel, PISD also includes kids placed in temporary homes through CPS or those who live with their grandparents or other family members for a short while in their count of homeless students.

Pinpointing kids who need help can be a little tricky, because students may not find their situation unusual or they may be reluctant

to ask for help. Enrollment may be the first chance to find these students.

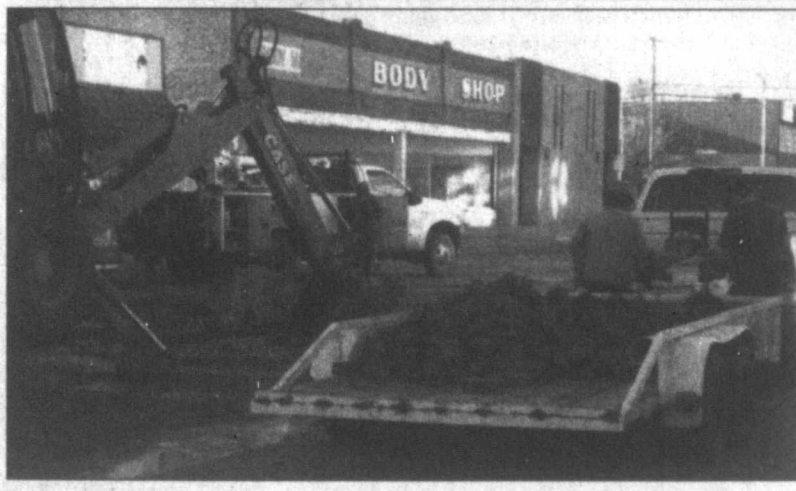
"New enrollments into PISD fill out a student residence form which asks if they live in their own home or in the home of a family member. Students who don't say they live in their own home send up a red flag," said Pingel. "Once we get to know kids, it's easier to figure out their situations, and younger kids tell their teachers pretty much everything. All of our teachers are educated on what to look for **HOMELESS** cont. on page 3

**TODAY IN SPORTS** Not so fast  
 inside: Social Security and you  
 C000471 12/31/2020  
 HERITAGE ARCHIVES  
 2195 BRITANNIA BLVD STE 102  
 SAN DIEGO, CA 92154-6290  
 Page 8  
 Page 3

## MAIN EVENT



staff photos by **Arnie Aurellano**



**City of Pampa Water Department** crews were hard at work on Sunday repairing a broken water main under the red bricks of Frost Street just west of City Hall.

## FSA urges producers to file for NAP

THE PAMPA NEWS

Gray County USDA Farm Service Agency Executive Director Matthew Street is urging local producers who want to purchase coverage through the Noninsurable Crop Disaster Assistance Program (NAP) to do so before the sales closing date of Thursday, Dec. 1.

NAP provides financial assistance to producers of noninsurable crops when low yields, grazing loss, loss of inventory or prevented planting occur due to normal disasters.

The following crops have a NAP application closing date of Dec. 1, 2011: Grazing and forage/hay on native and improved grass, honey, potatoes, radishes, grapes and caneberries. "Purchasing a crop insurance policy is an easy way for producers to practice risk management," said Street. "The 2011 crop year has proved that natural disasters can directly affect the profitability and recovery of agricultural operations."

In order to meet eligibility requirements for NAP, crops must be noninsurable, commercially-produced agricultural commodity **NAP** cont. on page 2

## Oklahoma quakes rattle nerves; no injuries reported

THE ASSOCIATED PRESS

SPARKS, Okla. (AP) — Oklahomans more accustomed to tornadoes than earthquakes suffered through a weekend of earthquakes that cracked buildings, buckled a highway and rattled nerves. One quake late Saturday was the state's strongest ever and jolted a college football stadium 50 miles away and was followed early Sunday by a jarring aftershock.

There were no reports in the hours after the quakes of any severe injuries or major devastation.

"That shook up the place,

had a lot of people nervous," Oklahoma State wide receiver Justin Blackmon said of the late Saturday quake, the strongest of a series of quakes. "Yeah, it was pretty strong."

The magnitude 5.6 earthquake Saturday night was centered near Sparks, 44 miles northeast of Oklahoma City, and could be felt throughout the state and in Kansas, Missouri, Arkansas, northern Texas and some parts of Illinois and Wisconsin, said geophysicist Jessica Turner at the U.S. Geological Survey. A magnitude 4.7 quake early Saturday was felt from Texas

**QUAKES** cont. on page 5

## Tremors felt by some Pampans

**ARNIE AURELLANO**  
 editor@thepampanews.com

State lines couldn't contain the series of temblors that rocked Oklahoma over the weekend, as several Pampa residents reported feeling effects from the quakes.

"I heard the picture window rattle (on Saturday evening)," said Charla Shults. "I was sitting here that night and I thought the wind got up. Well, I got up and looked, and I thought, 'Well, it's not blowing that big. That was weird.'"

"The funny thing was my husband (Wendell Shults) was in Oklahoma

and he was about 70 miles from it, and he didn't feel it," laughed Shults.

It's not the first tremor the area has felt, Shults said. She remembered an instance from her childhood when she and her mother felt a quake shake their kitchen in White Deer, and she also recalled more recent quakes around Miami and Wellington.

Tim and Rene Johnson, who live about 25 miles north of the city, said that the quakes jostled several objects in their house.

"I was sitting up watching TV in my recliner," Tim said. "Across the **PAMPANS** cont. on page 5

**"Country Christmas" Parade**  
 December 3rd  
 Entry forms can be picked up at the Chamber office  
 Deadline for entry is Nov. 30



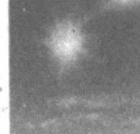
**IN THIS ISSUE:**

Obituaries	2	Viewpoints	4
Local Record	2	Puzzles/Dear Abby	5
Weather	2	Comics	6
Afternoon Rush	3	Classifieds	7
The Savage Truth	3	Sports	8





## PAMPA FORECAST

Today	Tuesday	Wednesday
 60%		
High 65 Low 39	High 49 Low 28	High 53 Low 29

**Today:** Showers and thunderstorms likely. Mostly cloudy, with a high near 65. Wind chill values between 32 and 42 early. Northeast wind around 10 mph becoming south. Chance of precipitation is 60%. New rainfall amounts between a quarter and half of an inch possible.

**Tonight:** A chance of rain and thunderstorms. Mostly cloudy, with a low around 39. North northwest wind around 10 mph. Chance of precipitation is 40%.

**Tuesday:** Partly sunny, with a high near 49. Wind chill values between 32 and 42 early. Windy, with a north northwest wind 10 to 15 mph increasing to between 20 and 25 mph. Winds could gust as high as 35 mph.

**Tuesday Night:** Partly cloudy, with a low around 28. Windy, with a north northwest wind between 10 and 20 mph, with gusts as high as 25 mph.

**Wednesday:** Sunny, with a high near 53. North northwest wind between 5 and 10 mph.

This information brought to you by...

**PRESTIGE**  
**AUTOBODY & ACCESSORIES**  
 101 S. HOBART 806-665-3500  
**We have Weathertech & Husky Liners to protect your vehicle!**

## HIGH FLYERS

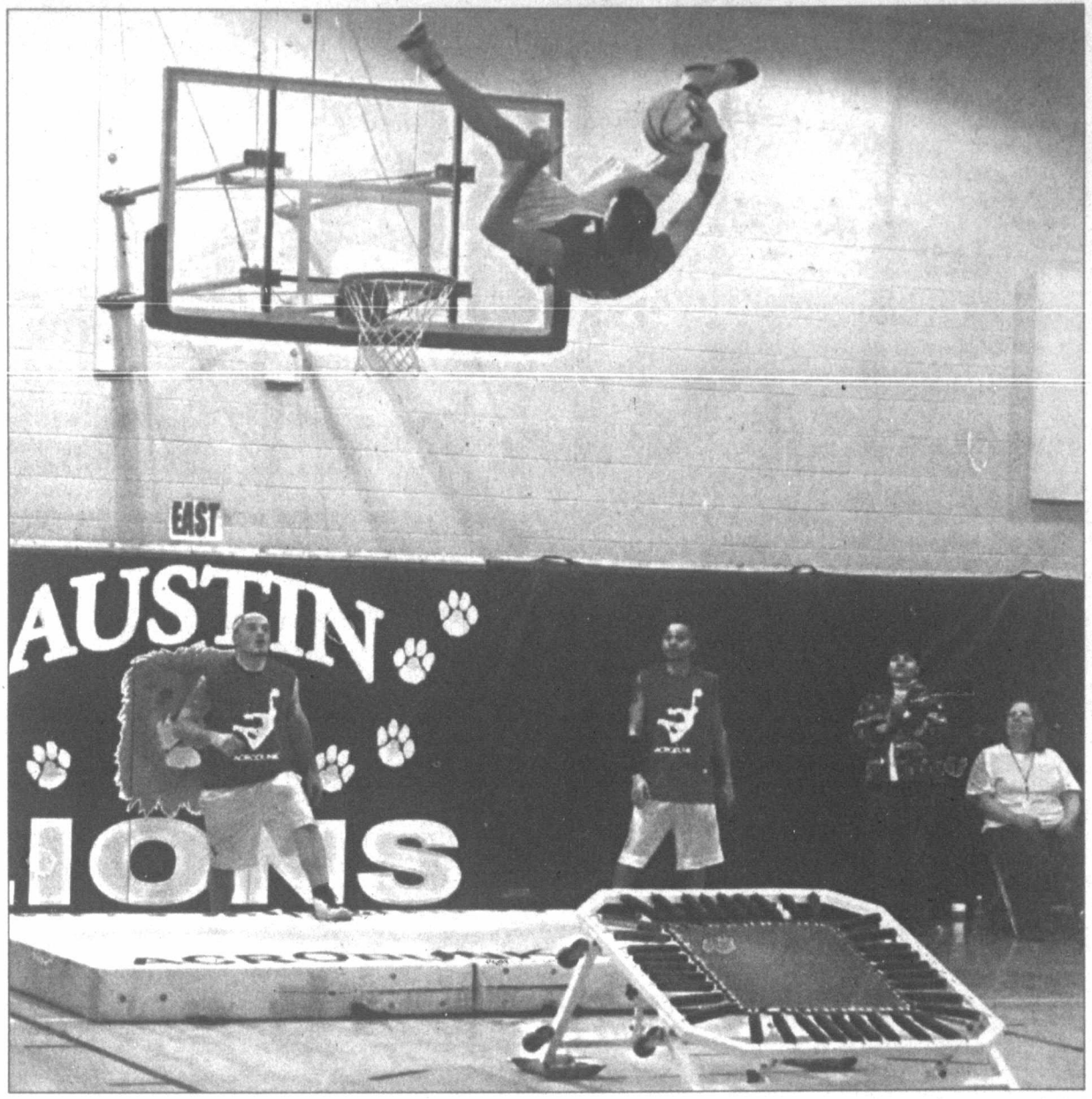


photo courtesy of Diane Jennings/Austin Elementary Booster Club

Athletes from the Acrodunks dunk team paid a recent visit to Austin Elementary as a reward for the kids participating in a fundraiser.

# Thousands protest against Keystone XL pipeline project

WASHINGTON (AP) — Thousands of protesters gathered in Lafayette Square across from the White House on Sunday to oppose a plan for a transnational oil pipeline they fear could harm the environment.

At one point, the crowd linked hands to surround the White House, keeping up pressure on President Barack Obama as his administration decides whether to approve the massive Keystone XL project.

Demonstrators chanted "yes we can, stop the pipeline," while other protesters carried a plastic tube simulating the pipeline that would run 1,700 miles through six states. The protest drew support from actor Mark Ruffalo, Presidential Medal of Freedom winner John Adams and NASA scientist James Hansen, each of whom spoke to the crowd.

The proposed pipeline by developer TransCanada

would carry oil derived from tar sands in Alberta, Canada, to refineries in Houston and Port Arthur, Texas. Opponents say it would bring "dirty oil" that requires huge amounts of energy to extract and could cause an ecological disaster in case of a spill. They are calling on Obama to block the \$7 billion project, which is currently being reviewed by the State Department.

Obama missed most of the protest while he played golf at Fort Belvoir in Virginia during the afternoon.

Dan Quigley, a freshman at St. Michael's College in Colchester, Vermont, traveled by bus with about 40 students to attend the protest. The 19-year-old said the pipeline could have an adverse effect on greenhouse gases and pose a hazard to water supplies.

"It's putting a lot of time and effort into something that's pulling us into a wrong direction," he said. "If

we are going to do anything this large scale it has to be something that's proactive for helping the environment."

TransCanada spokesman James Millar said the pipeline would help reduce American dependence on oil from the Middle East and Venezuela while creating thousands of new construction and manufacturing jobs.

"Killing Keystone just leads to more of the same — hundreds of oil tankers shipping millions of barrels of higher priced oil across our oceans to American shores," Millar said in a statement.

Bill McKibben, founder of the climate safety grassroots movement 350.org, said demonstrators hoped Obama would live up to the image that helped him win election in 2008.

"He's completely capable of doing the right thing," McKibben said.

## Ordinance could make El Paso greener

EL PASO (AP) — Shade tree-lined streets, parking lots dotted with shrubs and trees, and decorative gravel landscaping will begin to define development in El Paso under a new landscape code.

The landscaping ordinance, which takes effect Monday, mandates a higher percentage of greenery, along the lines of the Arizona cities of Tucson and Phoenix or Albuquerque, N.M. Supporters say the new ordinance will create more attractive spaces that will draw shoppers and tourists, and ultimately raise property values in the areas where it is applied.

Other expected benefits include reduced heating from sunbaked concrete, reduced dust and lower energy costs for homes and businesses.

"I'm very excited about it," city Rep. Susie Byrd said. "It's the greening of commercial development. ... It will also pull landscaping up to the front to provide shade for the sidewalks. I think people will be more willing to go out and walk."

The new code doubles the amount of required landscapable area in most new development from 7.5 percent to 15 percent, requires trees on the parkway strip between the sidewalk and the street, and increases the number of trees required on the frontage landscape buffer of the project property. It also increases the number of plants required for landscaped areas within the property and the number of trees per parking space.

Developers and other community officials had argued that the proposed code was too rigid, used imprecise language, would increase costs, and would require more water. All that creates barriers to development, they said.

"It takes months and sometimes years to attract a business to come to El Paso," said Ray Adatao, El Paso Association of Builders executive vice president. "The rules have changed so much in the last couple of years. And the economy hasn't helped."

Some changes were made to suit developers in the final ordinance approved by the El Paso City Council on Oct. 17. After negotiations among industry representatives and city staff, the amount of landscaping was reduced somewhat and changes were made to provide flexibility in the number and size of trees required. Those things

were approved by council members, and Adatao said the final language provided a "workable solution."

During council debate before the measure was approved, city Rep. Dr. Michiel Noe questioned the impact on the city's water resources.

"I do believe that (water) is an issue," Noe said. "We might find out in the future that it's a lot bigger issue than we're making light of right now. ... There's no way they're (additional plants) going to decrease our water usage. There's no plant I'm aware of that takes no water."

An El Paso Water Utilities economist, however, calculated that water use would increase by a hundredth of a percent annually.

One approved change was resisted by Byrd, prompting her to cast the sole "no" vote.

It allows a reduction from 15 percent landscaping to about 10 percent for "infill" projects in Central El Paso, part of which is her district. The area runs roughly up the east side of the Franklin Mountains from Rim Road on the west, approximately to Boone and Marr streets on the east, and Fred Wilson Avenue on the north.

"It really encourages strip-center development that you see on the East Side, rather than thoughtful development that's in character with the rest of the neighborhood," Byrd said. "I think what that amendment did is it really made it easier to do the wrong thing."

The change was made to encourage development in areas that already have schools, sewer and water infrastructure, and police and fire stations. That type of development requires less taxpayer support.

But Byrd said there already are plenty of incentives, including park-fee waivers, tax incentives and reduced parking requirements.

"On the regulatory side, we have made it super easy for developers, big and small, not to have to deal with excessive regulation," Byrd said.

Adatao, who also lives in Central El Paso, said he is not sure what type of projects Byrd is talking about.

"Business wants to be where it's nice and clean and new and where the income levels are higher," Adatao said. "Central doesn't have those income levels."

## New Braunfels to mull river can ban

NEW BRAUNFELS (AP) — New Braunfels residents will decide Tuesday whether they want to ban disposable containers on local rivers, an ordinance that has divided the town where the economy and character heavily rely on tourists taking to the water and tubing.

The Hill Country town about 40 miles northeast of San Antonio has been embroiled in the can ban battle since August, when the New Braunfels City Council voted to prohibit disposable containers on the Guadalupe and Comal rivers.

Opponents quickly formed the "Can the Ban" political action committee and gathered enough signatures to force a referendum, arguing that the council's estimate of how much trash is collected from the rivers is wrong and that the measure is really a veiled attempt to ban drinking on the waterways — something they say will kill tourism.

Supporters also gathered quickly, forming the SupportTheBan.org committee and raising \$23,500 — nearly double the amount collected by their opponents.

It appears the efforts have paid off. By Thursday, the Austin American-Statesman (<http://bit.ly/t2LR3>) reported some 4,800 people had already headed to the polls in early voting. That is 14 percent of the town's registered voters, and more than double the total votes cast in the May election, which included races for three council seats, said City Secretary Patrick Aten.

The outcome, however, won't be known until after polls close on Tuesday.

Meanwhile, Kathleen Krueger, spokeswoman for SupportTheBan.org and the city's former mayor pro tem, said her people are still calling and emailing voters.

Mayor Gale Pospisil, who supported the ordinance, dismissed the criticism, which included arguments that the city cannot back up its claim that 700,000 gallons of waste are cleared annually from the rivers.

## LAST MINUTE ADS

The Pampa News is not responsible for the content of paid advertisement

NO PAMPA Newspaper will be delivered on Veteran's Day, Fri. Nov. 11th and the office is also closed that day. Early Classified and Last Minute Ad deadline for Weekend Edition (Sat/Sun) Nov. 12/13th-deadline .s Thurs. Nov. 10 at noon, and Mon. Nov. 14th the deadline is Thurs. Nov. 10, at 2pm.

## NAP

crops for which the catastrophic risk protection level of crop insurance is not available.

In the event of a natural disaster, NAP covers the amount of loss greater than 50 percent of the expected production based on the approved yield and reported acreage.

Eligible producers can apply for coverage using form CCC-471. Producers must file the application

and service fee by the Dec. 1 deadline. The service fee is the lesser of \$250 per crop or \$750 per producer per administrative county, not to exceed a total of \$1,875 for a producer with farming interests in multiple counties.

For more information on sales closing dates and NAP, contact the Gray County FSA office at 806-665-6561 ext 2.

cont. from page 1



# MORNINGRUSH

## Perry's parents: U.S. needs son

PAINT CREEK (AP) - Gov. Rick Perry's parents say the nation needs their son as a leader now more than ever, blasting President Barack Obama but refusing to criticize other GOP hopefuls.

The Dallas Morning News published Sunday a rare interview with Perry's parents, 86-year-old cattleman Ray Perry and his wife, 82-year-old Amelia. The pair say Perry's West Texas roots, strong work ethic, church training and straight up style are what the nation needs in this critical juncture.

Ray Perry openly states "we certainly don't need another Obama." But the pair declined discussing the sexual harassment allegations plaguing GOP rival Herman Cain or any of the other Republican candidates.

The couple also gave a simple "no comment" when asked about the racial epithet that had once been painted on the family's hunting lodge.

## Vote Tuesday on water measure

HOUSTON (AP) - When Texans head to the polls Tuesday they will be asked to approve a water conservation tax incentive that appears especially enticing during a record-breaking drought.

The constitutional amendment - known as Prop 8 - would give tax breaks to landowners who take measures to conserve water and preserve water quality.

The rule would give landowners who implement water-conserving measures a lower valuation on their property, similar to how an agricultural or wildlife exemption works. Some of the measures would include planting more native grasses that require less water or fencing off streams to prevent erosion.

The tax breaks differ based on how much land is utilized. Since the calculations would be the same as other existing programs it could save them up to thousands of dollars annually on taxes.

## New Braunfels votes on can ban

NEW BRAUNFELS (AP) - Residents in New Braunfels will vote Tuesday on whether they want to ban disposable containers on their rivers, a proposal that has divided a town whose economy relies heavily on tourism.

The New Braunfels City Council voted in August to ban the cans on the Comal and Guadalupe rivers. Opponents formed the "Can the Ban" political action committee and gathered enough signatures to force a referendum.

By Thursday, the Austin American-Statesman reports some 4,800 people had already headed to the polls in early voting. That is 14 percent of the town's registered voters.

Opponents say a ban will hurt tourism because tubers like to drink while leisurely floating down the river. Supporters say tourists litter the waterways with their cans.

## Oil and gas rig count up by 5

HOUSTON (AP) - The number of rigs actively exploring for oil and natural gas in the U.S. rose by five this week to 2,026.

Houston-based drilling product provider Baker Hughes Inc. reported Friday that 1,112 rigs were exploring for oil and 907 for natural gas. Seven were listed as miscellaneous. A year ago this week the rig count stood at 1,683.

Of the major oil- and gas-producing states, Louisiana gained four rigs, Oklahoma, Texas and Wyoming each gained two and Alaska and Colorado each gained one.

California and Pennsylvania each lost four rigs, Arkansas lost two and New Mexico lost one. North Dakota and West Virginia were unchanged.

The rig count peaked at 4,530 in 1981. A low of 488 was recorded in 1999.

## TVA considers wind power

NASHVILLE, Tenn. (AP) - The Tennessee Valley Authority is exploring the possibility of using wind power to provide cleaner energy.

The utility signed a nonbinding understanding last month to consider the possibility of using a proposed 800-mile power-line "superhighway" that would carry wind-generated electricity from Oklahoma to Tennessee. TVA would have the option of using the power or charging a fee to send it to other regions.

The company that has proposed building the line, Clean Line Energy Partners LLC, of Houston, said that wind energy from Oklahoma is less than nuclear power and comparable to natural gas-fired generation.

Stephen Smith, executive director of the Southern Alliance for Clean Energy, which has pushed for more conservation and alternative energy at TVA, told The Tennessean that "it's one of the most exciting renewable developments that TVA is contemplating".

Much of the idea is still speculative, according to TVA officials, who said the cost is unknown, wind farms and transmission lines would need to be constructed and the project would need approval from public service commissions.

Clean Line executive vice president Jimmy Glotfelty said those hurdles could be overcome like they were in the past when railroads were built.

"America doesn't do big projects anymore," he said. "This would create a lot of jobs and a lot of benefits."

TVA already has contracts to purchase about 1,600 megawatts of wind power from different producers, but this proposal is different in various ways, including that it would provide electricity through a direct, efficient line.

A document signed by the utility and the company says the first of two proposed lines would transmit up to 3,500 megawatts of power beginning in 2016.

David Till, TVA transmission strategy general manager, said the utility plans to keep customers in mind as it mulls the proposal.

"We are committed to study this," he said. "We are not at the point where we could say if we could take any energy over that line."

# COLA news you may have missed

TOM MARGENAU  
Creator's Syndicate

## Social Security and you

Because my column usually has a one- or two-week lead time before publication, it's almost impossible for me to give my readers any real "news" about Social Security. And this was demonstrated once again recently, when the Social Security Administration announced the cost-of-living adjustment, or COLA, for 2012 Social Security checks.

In case you were vacationing in Borneo and missed it, monthly benefits will go up 3.6 percent beginning with January's Social Security checks. That's now old news. But other increases tied into the annual COLA adjustment didn't make most news stories. I'll share them here.

But first, I must get something else out of the way. Every single time I mention the annual cost-of-living increase in this column, I'm flooded with emails from readers complaining that it's not enough. I've explained countless times in this space how the COLA is computed. But it does no good. People still gripe that they should get more money.

So this time, rather than use up half of this column explaining a process people don't want to believe anyway, I'm going to refer you to the source. If you want to know how the annual Social Security COLA is figured, visit [SocialSecurity.gov/COLA](http://SocialSecurity.gov/COLA).

And here's an interesting tidbit about Social Security COLAs that demonstrates the power of the senior-citizen lobby in this country and how politicians will bend over backwards to court their votes: The first increase for 2012 will be paid in January.

On the surface, that may seem to make sense. But remember that Social Security benefits are always paid one month in arrears. In other words, the check that comes in January 2012 is actually the payment for December 2011. So why do folks start getting their 2012 COLA increase on their December 2011 Social Security check?

Well, you have to go back about 20 years or so. At that time, COLA increases were effective with the month they were due. Had that old law never been changed, people would have been scheduled to get

their first 2012 COLA increase on their January checks, which are paid in February.

But a couple of decades ago, seniors got all in a huff about this. They mistakenly thought they were being cheated out of one month's COLA because they didn't get their first increase until February. Rather than simply explain the logistics of the one-month delay in benefits, Congress knuckled under and decided that henceforth, COLA increases would be effective with the December payment of the prior year (payable in January of the next).

In addition to increases in monthly benefits, there are other changes to Social Security that are important to many people.

Let's start with people still working and paying Social Security taxes. If you're fortunate enough to be making a six-figure salary, you'll be paying slightly higher taxes in 2012. The Social Security taxable earnings base is going up from \$106,800 to \$110,100. So people making that kind of money will be pumping a few more nickels into Social Security's coffers next year.

One other annual change affects only people trying to get the necessary credits they need to qualify for Social Security in the first place. Most people who are working earn four credits per year. In 2011, you earned those four credits once you made \$4,480. In 2012, you won't get those credits until you make \$4,520. (You actually will get one Social Security credit for each \$1,130 you earn in 2012. But no one can earn more than four credits per year.) To qualify for retirement benefits, you generally need 40 credits. Fewer credits may be needed to get Social Security disability payments or for your family members to get survivor benefits if you die.

Another annual increase impacts people who are getting Social Security checks but are still working. If you're under 66 years old, there's a limit to how much money

you can make each year before your Social Security benefits are reduced. In 2012, you'll be able to make \$14,640 per year before seeing any reductions. That's an increase of only \$480 above the 2011 limits. For each two dollars you earn above the \$14,640 limit in 2012, one dollar must be withheld from your Social Security checks.

There's a higher limit for working retirees in the year that they turn 66. In 2012, they can make up to \$38,880, with no reduction in benefits, from January up to the month of their 66th birthday. Once they reach 66, no limit exists on the amount of money they can make while getting Social Security checks. (The age-66 limit is \$37,680 in 2011.)

People getting Social Security disability benefits get the same 3.6 percent increase as retirees. And one other minor change might impact them. Disability benefits are paid to anyone who is unable to work at a "substantial" level. The law used to define that level as a job paying at least \$1,000 per month. In 2012, that threshold goes up to \$1,010. In other words, if you get disability benefits and are trying to work, you can make up to \$1,010 per month next year, and you'll still generally be eligible for your disability payments.

Another COLA increase impacts folks getting Supplemental Security Income, or SSI payments. The standard federal SSI payment amount will go up in 2012, from \$674 per month to \$698. But many states add money to the basic federal payment. Some states pass along the increase in their state supplement, but some don't. So depending on where you live, your monthly SSI check may or may not go up.

SSI is a federal welfare program managed by the Social Security Administration. It makes monthly payments to low-income seniors and disabled people. As I constantly try to remind my readers, SSI is (SET ITAL) not (END ITAL) a Social Security benefit, and SSI payments are not funded out of Social Security taxes.

If you have a Social Security question, Tom Margenau has the answer. Contact him at [thomas.margenau@comcast.net](mailto:thomas.margenau@comcast.net).

## Homeless

and what to ask for. Sometimes I call them at home and offer assistance. At the high school, they can come to their counselor or to me as a social worker."

A while back, a fund was created through the Pampa Education Foundation to assist needy kids. Started by a local businessman, Pingel says the fund receives anonymous donations every month from Pampa businesses. Donations go toward helping students meet their basic needs, like clothes, school supplies and, occasionally, for school related events.

"One of the things that becomes big with children from extreme poverty is their clothes don't meet our dress code, so they wind up

having dress code issues," said Barry Haenisch, Superintendent of PISD. "(Pingel is) able to offer, maybe not new clothes, but gently used clothes. She's able to take care of some issues that would have an academic effect, but they're not really academically related."

"We have a great community that's willing to listen to our needs," said Pingel. "We use the fund to give them a little boost or access to something they

might not usually have." People interested in donating to the special fund for needy children can do

so at the First State Bank of Miami or can contact Pingel at the high school for additional information.

## Why brave the COLD, when you can Bank from HOME!



### Benefits of Internet Banking

- Obtain balances on your checking or savings account
- Verify that deposits have been credited to your account
- Find out which checks have been cleared
- Transfer funds between your NBC accounts
- Review your loan balance
- Find out when your last loan payment was posted
- View check images online
- Make a loan payment
- Use Bill-Pay to pay all your bills online

### While you are warm, check out some of our other services

- Home Loans
- Consumer Loans
- Ag Loans
- Commercial Loans
- CD's
- IRA's
- Safe Deposit Boxes
- Checking
- Internet Banking
- Telephone Banking
- 1-800-831-4409
- Online Bill Pay
- ATM/ Visa Check Cards



## National Bank of Commerce

An Office of First National Bank Waupaca, WI

<b>Pampa</b> 1224 N. Hobart (808) 665-0022	<b>Shamrock</b> 305 N. Main (806) 256-2181	<b>Childress</b> 501 Commerce (940) 937-2514
--	--	--

### Face time and think time make a difference.

**Duane Harp, AAMS®**  
Financial Advisor  
1921 N. Hobart  
Pampa, TX 79065  
806-665-6753

**Edward Jones**  
MAKING SENSE OF INVESTING

### Stay connected to Gray County Text pampanews to 35350

You receive headline news, alerts and deal/contest information from your **HomeTown News Source**



Check out our Facebook page or our website [www.pampanews.com](http://www.pampanews.com) to sign up for our mobile messaging!

(Standard text messaging fees may apply)

## Cinema 4

Movie Showing Friday, November 4 through Thursday, November 10.
<b>Pump in Boots (PG, 3-D)</b> Fri 7:00 9:00 Sat 2:00 4:30 7:00 9:00 Sun 2:00 4:30 7:00 Mon/Thu 7:00
<b>Tower Heist (PG-13)</b> Fri 7:15 9:45 Sat 2:00 4:30 7:15 9:45 Sun 2:00 4:30 7:15 Mon/Thu 7:15
<b>In Time (PG-13)</b> Fri 7:30 9:45 Sat 2:00 4:30 7:30 9:45 Sun 2:00 4:30 7:30 Mon/Thu 7:30
<b>Paranormal Activity (R)</b> Fri 7:30 9:45 Sat 2:00 4:30 7:30 9:45 Sun 2:00 4:30 7:30 Mon/Thu 7:30

Call 669-2525 today to get THE PAMPA NEWS with all the local news you need delivered right along with your daily mail





# Viewpoints

## Today in History

Today is Monday, Nov. 7, the 311th day of 2011. There are 54 days left in the year.

### Today's Highlight in History:

On Nov. 7, 1911, Marie Sklodowska Curie was awarded the Nobel Prize in Chemistry, eight years after winning the Nobel Prize in Physics with her late husband, Pierre.

### On this date:

In 1811, U.S. forces led by Indiana Territory Gov. William Henry Harrison defeated warriors from Tecumseh's Confederacy in the Battle of Tippecanoe.

In 1861, former U.S. President John Tyler was elected to the Confederate House of Representatives (however, Tyler died before he could take his seat).

In 1916, Republican Jeannette Rankin of Montana became the first woman elected to Congress.

In 1917, Russia's Bolshevik Revolution took place as forces led by Vladimir Ilyich Lenin overthrew the provisional government of Alexander Kerensky.

In 1940, Washington state's original Tacoma Narrows Bridge, nicknamed "Galloping Gertie," collapsed into Puget Sound during a windstorm.

In 1944, President Franklin D. Roosevelt won an unprecedented fourth term in office, defeating Thomas E. Dewey.

In 1962, Richard Nixon, having lost California's gubernatorial race, held what he called his "last press conference," telling reporters, "You won't have Nixon to kick around anymore."

In 1973, Congress overrode President Richard Nixon's veto of the War Powers Act, which limits a chief executive's power to wage war without congressional approval.

In 1980, actor Steve McQueen died in Ciudad Juarez, Chihuahua, Mexico, at age 50.

In 1991, basketball star Magic Johnson announced that he had tested positive for the AIDS virus, and was retiring. (Despite his HIV status, Johnson has been able to sustain himself with medication.)

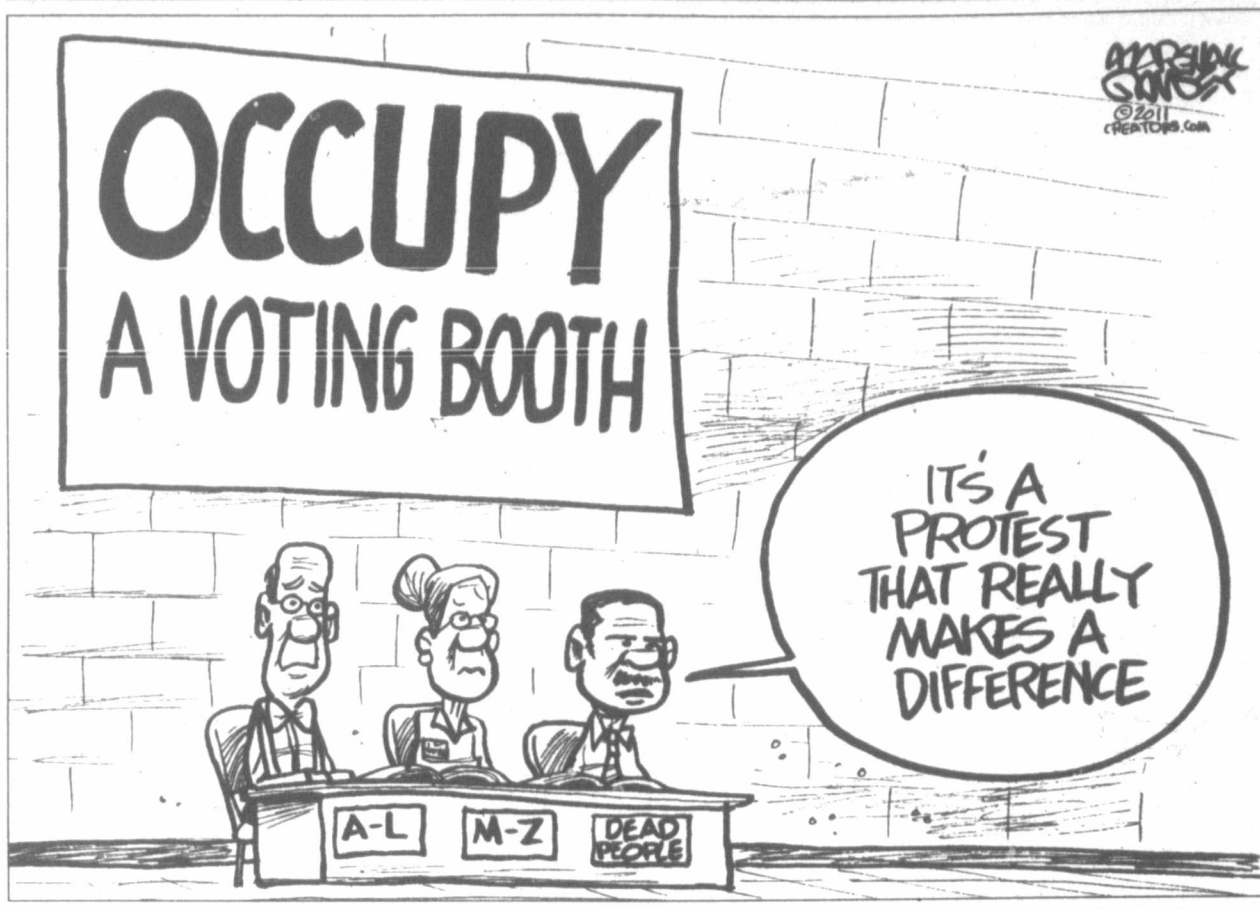
**Ten years ago:** The Bush administration targeted Osama bin Laden's multi million-dollar financial networks, closing businesses in four states, detaining U.S. suspects and urging allies to help choke off money supplies in 40 nations. At the White House, President George W. Bush and British Prime Minister Tony Blair confidently offered back-to-back pledges of victory, no matter how long it took.

**Five years ago:** Democrats won control of the House and Senate, riding a wave of anger over the Iraq war and congressional scandals.

**One year ago:** Scientists at the world's largest atom smasher, the Large Hadron Collider near Geneva, recreated the state of matter shortly after the Big Bang using collisions of lead ions.

**Today's Birthdays:** Evangelist Billy Graham is 93. Actor Barry Newman is 73. Singer Johnny Rivers is 69. Singer-songwriter Joni Mitchell is 68. CIA Director David Petraeus is 59. Actor Christopher Knight ("The Brady Bunch") is 54. Rock musician Tommy Thayer (KISS) is 51. Actress Julie Pinson is 44. Actor Christopher Daniel Barnes is 39. Actress Yunjin Kim is 38.

**Thought for Today:** "All forms of totalitarianism try to avoid the strange, the problematic, the critical, the rational. To do so, they must deny the metropolitan spirit, equalize everything in city and country, and retain a center which is not the center of anything because everything else is swallowed up by it." — Paul Tillich, *American theologian (1886-1965)*.



## Amid deficit gloom, some states enjoy surpluses

BECKY BOHRER  
Associated Press Analysis

JUNEAU, Alaska (AP) — The budget questions that sent Alaska lawmakers into special session this year had nothing to do with austerity measures or disagreements over cuts to state agencies or programs.

They just couldn't agree on what to do with all that extra money.

Resource-rich Alaska took in nearly \$1.9 billion more than expected last fiscal year thanks largely to high oil prices and ended the fiscal year with an estimated \$260 million surplus, an amount equal to nearly 4 percent of its general fund.

A handful of states — led by those that enjoy bountiful energy reserves such as West Virginia, Wyoming and North Dakota — have found themselves in similarly enviable positions, oases of optimism in an otherwise barren landscape of budget cuts and government layoffs. A few other states, including Massachusetts, South Carolina and Virginia, have combined slight increases in tax revenue with tight spending controls to produce modest surpluses.

In West Virginia, the surplus is going toward reserves, pension programs and debt. Wyoming put much of the extra money into savings after years of investing heavily in roads and schools.

And in North Dakota, which is experiencing an energy boom similar to the one Wyoming went through several years ago, investments included an extra \$370 million for road repair and construction, especially in the oil-producing western part of the state. Some \$340 million will go to schools over the next two years to help reduce property taxes, while \$22 million will go toward a disaster relief fund for a state that has been inundated with floods in recent years.

At the same time they are saving and investing, North Dakota and West Virginia are reducing their corporate income tax rates, a move that could make them even more attractive to certain businesses.

Unemployment in the many of the states running surpluses has been well below the national jobless rate of 9.1 percent. North Dakota's rate, for example, was 3.5 percent in September.

"I don't think you can say we're out of the woods," Alaska labor department economist Neal Fried said. "We were never in the woods." A yearlong review of fiscal and economic data in all 50 states by The Associated Press found 15 states with budget surpluses as they headed into the current fiscal year. They ranged from Mississippi, where the \$6.6 million surplus represented less than 1 percent of general fund spending, to Wyoming, where the \$437 million surplus was equivalent

to 28 percent of the state's general fund.

Massachusetts has benefited from stronger-than-anticipated revenue from capital gains taxes to build a surplus of just more than 1 percent of its general fund budget. It used nearly three-quarters of the \$460 million surplus to replenish the state's reserve fund, while directing other surplus money to cities and towns recovering from deadly tornadoes in June, state courts and to provide modest raises to social service workers.

Most states have not been so fortunate.

They continue to feel the effects of a recession that has led to steep declines in state and local tax revenue, with 23 states having to make budget cuts during the last fiscal year, according to the National Association of State Budget Officers.

In Washington state, for example, the Legislature is preparing for a special session to address a \$2 billion, mid-year deficit. The state's Democratic governor has proposed eliminating the state's health care program for the poor and a medical program for disabled adults. Lower than expected tax revenue in California means that state is likely headed for deeper cuts to social services and higher education.

Even in Alaska, officials are grappling with how to reverse a decades-long trend of declining oil production and face a future of reduced federal aid as Congress seeks to clamp down on spending, rising Medicaid costs and \$11 billion in unfunded pension liabilities. Gov. Sean Parnell acknowledged this in making record cuts to an infrastructure spending bill passed by lawmakers last spring.

Yet even with those reductions, the state wound up with a \$2.8 billion public works package, the same as the year before — a spending level Parnell deemed "healthy."

Among the state's priorities is investing in new roads, schools and energy projects that could help make the delivery of heat, electricity and fuel more reliable and affordable.

Alaska also is putting \$66 million toward pursuing what would be the largest dam built in the U.S. in decades. Officials say the \$4.5 billion, 700-foot high Susitna River dam would help meet Alaska's goal of getting half its electricity from renewable energy sources by 2025, plus help meet the energy demands of the state's most populous region.

The state also plans to spend money on transportation projects and upgrades to school buildings, including contributing about one-third the cost of a \$109 million arena at the University of Alaska Anchorage. At the same time, Alaska is building the nation's largest rainy day fund at \$14 billion, an amount that is roughly double the

state's entire general fund.

The governor and legislative leaders also have set aside \$400 million that could serve as an endowment for college scholarships.

Juneau resident Teddy Castillo said such a program would be a huge help to her family. One daughter will graduate high school next year and another is a high school freshman.

"I think it's just awesome to have that opportunity available for them," Castillo said.

In West Virginia, the worldwide demand for coal and a conservative approach to government spending have kept the state's finances in the black.

Instead of expanding programs, lawmakers and governors have devoted about \$1 billion that was left unspent between 2004 and 2008 toward public pension programs and other debts. Most of that money eased a shortfall in the main retirement fund for teachers.

But one consequence of the state's tight-fisted approach has been government on the cheap: West Virginia ranks low for teacher and public employee wages despite several rounds of pay raises and has among the most restrictive eligibility requirements for Medicaid.

"If you're a mom with two children and you earn more than \$6,500 a year, you're not eligible," said Perry Bryant, executive director of West Virginians For Affordable Health Care. "If you're childless, you don't qualify even if you're childless."

Wyoming, which gets most of its money from taxes on gas, coal and oil production, investments this year included \$45 million in additional highway money and \$15 million to try to attract large computing centers to the state. The state also has a scholarship fund for high school students, similar to what Alaska is establishing.

Republican state Sen. Phil Nicholas doesn't take Wyoming's energy wealth for granted. He remembers seeing how the state went from facing a \$500 million shortfall in the late 1990s to being flush with cash thanks to the energy boom that started about 10 years ago.

While energy production generates more tax revenue, it also can lead to higher ozone levels and other negative consequences.

"Recognizing that price, though, Wyoming and our communities are significantly dressed up, if you will," said Nicholas, chairman of the Senate Appropriations Committee.

He said every town in the state has nicer schools, better parks and other amenities than existed before.

"You'd be hard-pressed to go to any community in this state that has not benefited significantly," he said.

## The PAMPA NEWS

403 W. Atchison • Pampa, TX 79065  
806-669-2525 • Fax: 806-669-2520

**Randall Pribble**  
Publisher  
rprbble@thepampanews.com

- |  |  |
|--|--|
| <b>ReDonn Woods</b><br>Advertising Manager<br>woods@thepampanews.com           | <b>Arnie Aurellano</b><br>Editor<br>editor@thepampanews.com        |
| <b>Sue Pribble</b><br>Advertising Representative<br>spribble@thepampanews.com  | <b>Mollie Bryant</b><br>Reporter<br>mbryant@thepampanews.com       |
| <b>Beverly Taylor</b><br>Classified Advertising<br>classified@thepampanews.com | <b>Andrew Glover</b><br>Reporter<br>aglover@thepampanews.com       |
| <b>Marijane Kent</b><br>Composing<br>composing@thepampanews.com                | <b>Ryan Frazier</b><br>Composing<br>composing2@thepampanews.com    |
| <b>Carrie Hair</b><br>Accounting<br>bookkeeper@thepampanews.com                | <b>Marcus Elkins</b><br>Press Supervisor<br>press@thepampanews.com |
| <b>Chico Ramirez</b><br>Circulation Manager<br>Circulation2@thepampanews.com   |  |

The Pampa News (UPS 781-540) is published daily, except Sundays, New Year's Day, Martin Luther King Jr. Day, President's Day, Memorial Day, Independence Day, Labor Day, Columbus Day, Veterans Day, Thanksgiving Day, and Christmas Day. Periodicals postage paid at Pampa, Texas. Postmaster: Send address changes to The Pampa News, P.O. Drawer 2198, Pampa, TX 79066-2198.

© 2011 The Pampa News



## We welcome your letters

- To ensure publication, please adhere to the following guidelines:
- Letters should be brief and to the point. All correspondence will be edited for length and clarity.
  - All letters must be signed. Submit your name, address and telephone number with the letter for verification. Only your name and city will be published.
  - Defamatory comments will not be published.
  - E-mail submissions are welcome.
  - The views and opinions expressed here do not necessarily reflect those of *The Pampa News* or its staff.

Qua  
to Miss  
Turner  
quent m  
Sunday  
of Okla  
night's  
occurr  
no imm  
activity.  
Follow  
several  
walls,  
in Shaw  
adminis  
been da  
to KWT  
An en  
epicente  
ders thro  
and the  
the stron  
Sunday  
building  
"Earth  
aly right  
Oklahor  
centered  
Oklah  
year, an  
Oklahor  
number  
occurre  
graphs i  
Saturd  
Univers  
defeated  
was stil  
locker  
Stadium  
The t  
ute, ripp  
"Ever  
idea," C  
said. "Y  
somethi  
The n  
early S  
officials  
right aft  
"Noth  
City Po  
the Tul  
A few  
nerves o  
At th  
register  
had cor  
ing. Bu  
4.0 mag  
  
Pan  
room, v  
fruits a  
wigglin  
ing. My  
on?" It  
"It w  
added.  
April  
are in t  
to Dun  
Oklaho  
"We s  
second  
"The  
  
DEA  
neighb  
has bec  
in our  
worced  
ther is t  
Don  
as a fat  
spent a  
gether.  
I have  
being w  
My  
hand, f  
"infiltra  
are few  
hood, s  
enough  
streets i  
I can't  
him aw  
ly he is  
life will  
he's a p  
predator  
drinking  
ly age.  
our hou  
safe.  
My  
save ev  
that. B  
the bad  
kids on  
wonder  
who co  
Hov  
see this  
differen  
and tha  
family  
A LON  
DE



# Quakes

to Missouri. Turner told The Associated Press that the subsequent magnitude 4.0 quake that struck at 3:39 a.m. Sunday was an aftershock centered some 36 miles east of Oklahoma City in the same region. Like Saturday night's quake, she said it was another shallow quake occurring about 3 miles underground, but experts had no immediate explanation for the spurt in seismic activity.

Following the quakes or numerous small aftershocks, several homeowners and businesses reported cracked walls, fallen knickknacks and other minor damage. But in Shawnee, the fire department said one spire on the administration building at St. Gregory University had been damaged and another one was leaning, according to KWTW in Oklahoma City.

An emergency manager in Lincoln County near the epicenter said U.S. 62, a two-lane highway that meanders through rolling landscape between Oklahoma City and the Arkansas state line, crumpled in places when the stronger quake struck Saturday night. Other reports Sunday were sketchy and mentioned cracks in some buildings and a chimney toppled.

"Earthquake damage in Oklahoma. That's an anomaly right there," Todd McKinsey of Moore told The Oklahoman newspaper after the magnitude 5.6 temblor centered 50 miles away left him with cracked drywall.

Oklahoma typically has about 50 earthquakes a year, and 57 tornadoes, but a swarm of quakes east of Oklahoma City contributed to a sharp increase in the number of temblors. Researchers said 1,047 quakes occurred last year, prompting them to install seismographs in the area. A cause of the uptick wasn't known.

Saturday night's earthquake jolted Oklahoma State University's stadium shortly after the No. 3 Cowboys defeated No. 17 Kansas State. The crowd of 58,895 was still leaving when it hit, and players were in the locker rooms beneath the stands at Boone Pickens Stadium.

The temblor seemed to last the better part of a minute, rippling upward to the stadium press box.

"Everybody was looking around and no one had any idea," Oklahoma State quarterback Brandon Weeden said. "We thought the people above us were doing something. I've never felt one, so that was a first."

The magnitude 4.7 earthquake that struck the area early Saturday was also widely felt, but emergency officials said no injuries were reported at area hospitals right after that.

"Nothing is destroyed or anything like that," Prague City Police Department dispatcher Claudie Morton told the Tulsa World after the Saturday morning quakes.

A few hours before dawn Sunday, the latest quake set nerves on edge anew.

At the Prague Community Hospital in the region, registered nurse Jessie Plumb said no injured people had come into the emergency room by Sunday morning. But she said she and other hospital staffers felt the 4.0 magnitude quake before dawn while on the second

floor of the building. "It kind of gave a little bit of a shake, a little bit of rock 'n roll," she told AP by phone. "I would say it was 20 or 25 seconds." She said she was anxious because of the number of quakes concentrated in her region in so short a span and the fact that they were so strong.

Saturday's late-night quake was slightly less in intensity than a temblor that rattled the East Coast on Aug. 23. That 5.8 magnitude earthquake was centered in Virginia and was felt from Georgia to Canada. No major damage was reported, although cracks appeared in the Washington Monument, the National Cathedral suffered costly damage to elaborately sculpted stonework, and a number of federal buildings were evacuated.

Turner said the Saturday night quake was Oklahoma's strongest on record.

USGS records show that a 5.5 magnitude earthquake struck El Reno, just west of Oklahoma City, in 1952 and, before Oklahoma became a state in 1907, a quake of similar magnitude 5.5 struck in northeastern Indian Territory in 1882.

She said an active spate of quakes began occurring in the region in February 2010 and added the latest activity appears to be part of that trend. She also said the magnitude 4.7 quake early Saturday appeared to be a prelude to Saturday night's more potent quake and Sunday's was an aftershock. "If these are going to continue to happen, we can't predict," she told AP.

But she said experts were still puzzling out why the latest quakes were concentrated in such a small geographic area around Sparks.

"The largest earthquake is a 5.6 and we call that the main shock," she said. "Everything before that 5.6 we consider a foreshock including the 4.7. Everything after the 5.6 we consider an aftershock."

Oklahoma Geological Survey researcher Austin Holland told Oklahoma City television station KOTV that the earthquake and aftershocks occurred on a known fault line.

Residents in Prague and Sparks felt an intense shaking, but for those farther away the quake was more of a dull rumble, he said.

"It shakes much more rapidly when you're closer to it," Holland said. "Because it's a large earthquake, it's going to rumble for a while."

The Prague police dispatcher Morton said her office was swamped with calls, mostly from jittery locals expressing their alarm. She said residents told her that picture frames and mirrors fell from walls and broke, drawers worked loose from dressers and objects tumbled out of cabinets.

"Oh, man. I've never felt anything like that in my life," Morton told the Tulsa newspaper. "It was the scariest thing. I had a police officer just come in and sit down and all the sudden the walls started shaking and the windows were rattling. It felt like the roof was going to come off the police department."

cont. from page 1

# BANANAGRAMS!

Each of the two-letter groups below may be extended both on the right and the left to form a six-letter word. Use the tiles directly above each group to fill in the blanks.

EGIMRT

NO

ACEHLN

OS

CEILPT

AN

CEELNR

AM

Yesterday's Answer: IMPERIL, PILGRIM, PRIMING, PRICING, CARPING, ORGANIC, GARCONS, COGNACS

11.7

# Sudoku

Answer to yesterday's puzzle:

6	5	2	1	4	3	8	7	9
9	7	8	6	2	5	1	3	4
4	3	1	8	7	9	2	5	6
2	4	3	9	6	8	7	1	5
5	8	9	3	1	7	6	4	2
7	1	6	4	5	2	3	9	8
1	6	7	2	9	4	5	8	3
3	2	4	5	8	1	9	6	7
8	9	5	7	3	6	4	2	1

		9		5		6		
	2		6				4	
6					8	7		2
				1			8	
	3	5		2		4		
		1					6	
			3	4				
4		7					5	
			5	1				

Level: Intermediate

# Pampans

cont. from page 1

room, we have a hanging basket with fruits and vegetables inside, and it was wiggling. Then my recliner started rocking. My stomach was like, 'What is going on?' It was weird.

"It went long enough to register," he added. "Like 30 or 40 seconds."

April Dewey and her husband, Kelley, are in the process of moving from Pampa to Duncan, Okla., and were actually in Oklahoma when the quakes hit.

"We spent the weekend there and on our second night, the earth shook," said April. "The garage and the walls started shak-

ing — like shifting. It wasn't like just that they were rattling. It was like a swaying. And the garage door just started banging. I was like, 'Oh my God, what's happening?'"

"Kelley was laying in bed playing with his phone, and the bed started shaking. He thought I was doing it to aggravate him, and he was like, 'April, stop it,'" she said with a chuckle.

"When you've never experienced the earth moving under you, trust me, it is pretty freaky."



# Dear Abby...

By Pauline & Jeanne Phillips

DEAR ABBY: Our neighbor's son, "Donny," has become a regular fixture in our home. His parents divorced years ago, and his father is terminally ill.

Donny has "adopted" me as a father figure. We have spent a great deal of time together. Not having a son — I have daughters — I admit that being with him is a novelty.

My wife, on the other hand, feels no one should "infiltrate" her family. There are few boys in our neighborhood, and Donny isn't old enough to venture to other streets in search of playmates. I can't bring myself to turn him away knowing how lonely he is and how difficult his life will become. I worry that he's a prime candidate for a predator, or that he could start drinking or smoking at an early age. I'd rather have him in our house where I know he's safe.

My wife says we can't save everyone, and I know that. But when I hear about the bad things that happen to kids on the news, it makes me wonder where was someone who could have helped them.

How can I get my wife to see this is a chance to make a difference in this boy's life, and that he's no threat to our family unit? — FRIEND OF A LONELY CHILD

DEAR FRIEND: Your

wife appears to be responding to Donny on an emotional rather than a rational level. Because she didn't "produce" a son, she views the time or emotional nourishment that you give Donny as something being taken away from her daughters. That's sad.

It's possible that a religious adviser could help her to view this differently, but if she can't find sympathy in her heart for the boy, then I recommend you talk to Donny's mother about finding a Big Brother for him, through her religious denomination.

DEAR ABBY: My 16-year-old son, "Victor," is hearing-impaired. He wears hearing aids in both ears. The aids are small and not easily seen.

Recently we were in a new doctor's office, and the nurse was talking to my son but looking in another direction. When I explained that Victor is hearing-impaired and couldn't hear her, she replied, "Oh, I know teenagers — selective hearing." I said, "No, he is hearing-impaired and wears hearing aids."

The same thing happened at summer camp. My husband said Victor has a hearing problem, and the counselor responded with, "So I need to smack him on the side of his

head to get him to listen?"

Please inform your readers that hearing aids aren't just for older people. My son has informed people he wears hearing aids because he can't hear well, and he still gets the same smart-alecky retorts. Have you any suggestions? — NOT BEING FLIPPANT IN PENNSYLVANIA

DEAR NOT BEING FLIPPANT: Oh, yes. The nurse in your doctor's office was tactless. If she didn't apologize for her comment, you should have mentioned it to the doctor so he could educate her not only about hearing loss, but also about diplomacy. As to the ignorant camp counselor, your husband should have immediately reported it to the camp director.

After reading your letter, I consulted Dr. Rick Friedman at the House Ear Clinic in Los Angeles, who told me that approximately one in 2,000 children is born with hearing problems. (There is a genetic component, and hearing problems can run in families.) Being subjected to loud noises can also have a negative impact on hearing, and Dr. Friedman said studies are being conducted to determine to what extent.

# CROSSWORD

By THOMAS JOSEPH

ACROSS 41 Cockpit

1 Letter after alpha

5 Arp's art

9 Philly cager

10 Rust, for one

12 Un-escorted

13 Poor

14 Cheering call

16 Golf peg

17 Way out

18 Changes

21 [Not my spelling]

22 Looks of scorn

23 Dallas native

24 Malia's dad

26 Fellows

29 Per — income

30 Cab

31 Low digit

32 Insect midsection

34 Highest points, for short

37 Wonderland visitor

38 Ryan of film

39 Holds a lease

40 Regarding

41 Cockpit

guesses

DOWN

1 Missis-

issippi port

2 Strangely different

3 Belief

4 Region

5 Mob leader

6 Log chopper

7 Calorie counter

8 Venomous vipers

9 Wise ones

11 Peepers

15 Tailless pet

19 Job for a plumber

20 Kayo count

22 Theater fixture

23 Numerical prefix

24 Fruit in a split

25 High points

26 Yacht spot

27 Demands

28 Vetoes

29 Crooner Perry

30 Available, as a room

33 Tortoise's rival

35 Chow down

36 Traffic caution

A	T	O	M		D	E	L	I	S				
P	O	R	E	S		O	R	A	T	E			
S	P	I	N	E		L	A	T	H	E			
E	G	O		N	I	L		V	I	M			
S	U	L	T	A	N		F	I	N	S			
		N	E	A	T		F	R	E	A	K		
					P	O	L	E	D				
					O	P	E	R	A	B	U	F	F
S	L	I	D		T	A	P	E	R	S			
O	D	E		L	E	T		D	Y	E			
F	A	M	A	I	N		E	L	O	P	E		
R	E	N	T	S			S	T	R	A	D		
							D	A	N	S			

Saturday's answer

NEW CROSSWORD BOOK! Send \$4.75 (check/m.o.) to Thomas Joseph Book 1, P.O. Box 536475, Orlando, FL 32853-6475

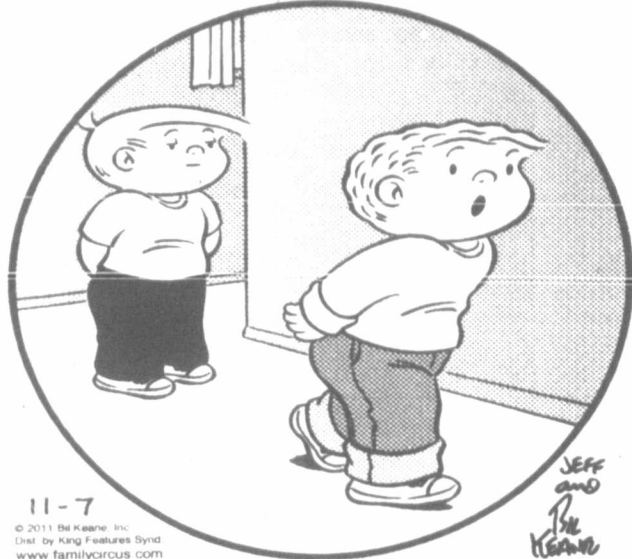
	1	2	3	4		5	6	7	8			
9						10						11
12						13						
14					15				16			
17					18	19	20					
21					22							
				23								
	24	25							26	27	28	
29									30			
31						32	33					
34			35	36			37					
38									39			
	40								41			

11-7



# comics PAGE

THE FAMILY CIRCUS By Bil Keane



11-7

© 2011 by King Features Inc. Dist. by King Features Synd. www.familycomic.com

"Billy called me a nerd. Is that a good thing or a bad thing?"

Non Sequiter



THE OCCUPY A BARSTOOL MOVEMENT

© 2011 WILKINER, INC. 11-7 DIST. BY UNIVERSAL UCLICK WILKINERBENTLEY.NET GOCOMICS.COM

Nest Heads



11-7 ALLEN

## daily horoscope

HAPPY BIRTHDAY for Monday, Nov. 7, 2011:

This year you might feel that people are putting you under unusual pressure. You wonder why. Often there are mixed messages. Friends in general are angry, and it might have more to do with the circumstances than with you. If you are single, you could meet a potential suitor through a group event or happening. If you are attached, sometimes you could be confused by a certain vagueness from your sweetie. Clarify and confirm as much as you can. ARIES pushes you hard.

**ARIES (March 21-April 19)**

★★★★ Anger could point to why some situations are backfiring. You often feel the frustration and irritation. Trying to identify what is going on could be futile at present, whereas you can control where you unleash your anger. Go for a walk, and another walk if need be. Tonight: Whatever makes you smile.

**TAURUS (April 20-May 20)**

★★★ A vagueness surrounds plans or a goal. A special long-term goal could be more important than you realize. A friend could inspire you, but is this person all talk? Be aware of what is going on. A romantic tie isn't satisfying. Tonight: Play it low-key.

**GEMINI (May 21-June 20)**

★★★★ Zero in on what counts. You could be exhausted by recent happenings. A vagueness surrounds a boss, which makes it difficult to please him or her, much less come out ahead of the game. Suppressing anger doesn't work. Try to work through an issue within. Tonight: Keep your goal in mind.

**CANCER (June 21-July 22)**

★★★★ A boss knows how to trigger you and move you in his or her chosen direction. You could feel vague about alternatives, though you are sure there are quite a few. Relax rather than get absorbed mentally and cause yourself a problem or lose your temper. Tonight: Burning the midnight oil.

**LEO (July 23-Aug. 22)**

★★★★ Let your imagination wander. While someone might be vaguely upset with your lack of interest, you also could make a mistake financially. Try not to distort the here and now with your mental leaps. Try being more understanding with a partner. Tonight: Put on a good piece of

music.

**VIRGO (Aug. 23-Sept. 22)**

★★★★ You might be losing your temper a bit more easily than in the past. You might wonder what is going on. Rest assured you are not the only person asking this question. A partner or close associate could be confused. Be direct. Tonight: Dinner for two.

**LIBRA (Sept. 23-Oct. 22)**

★★★★ Others steal the stage and interfere with what you see your message to be. As tension mounts, you worry. You know what you want and why. Now allow yourself to wait a few more days as others expound on their views. Tonight: Work out stress.

**SCORPIO (Oct. 23-Nov. 21)**

★★★★ Be aware of your limits. A friend might push to get you more involved. A meeting could demand much more from you than you originally thought. Knowing your boundaries and how to say no could be more important than you realize. Tonight: When tired, call it a night.

**SAGITTARIUS (Nov. 22-Dec. 21)**

★★★★ Let your imagination flow. You could encounter some frustration when dealing with a boss, who seems irate and difficult to handle. You might be confused on a deep level as to what you did or how you triggered this person. Don't push. Tonight: Ever playful.

**CAPRICORN (Dec. 22-Jan. 19)**

★★★ Don't push too hard to get an agreement. Before you know it, others could act strangely. Your sixth sense kicks in, giving you direction on what to do. Make phone calls to those you believe really understand the dynamics. Tonight: Give it time!

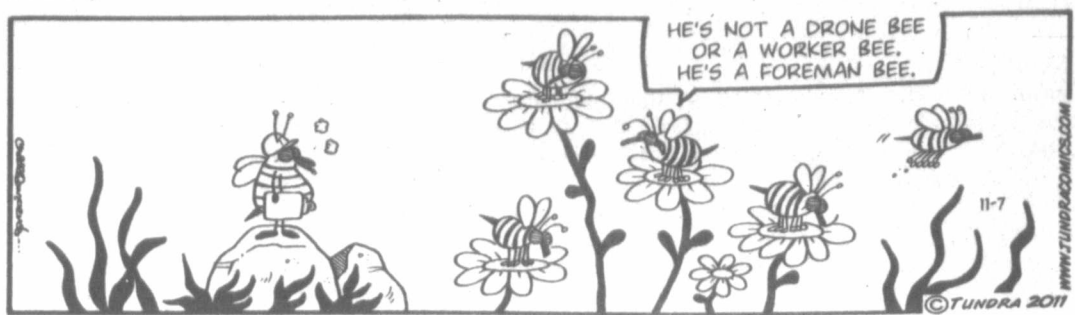
**AQUARIUS (Jan. 20-Feb. 18)**

★★★★ Your words might not have the impact you desire. You don't know what you want or where you are heading. Be careful with your finances, even in front of an expert. He or she might not have the same ideas as you. In this case, this person could be wrong. Tonight: Listen rather than offer.

**PISCES (Feb. 19-March 20)**

★★★★ Someone comes on a little too strong for your taste. All you can do is be your gracious self. Your willingness to get past an immediate problem touches another person, even if he or she gives you flak. Understand what needs to happen. Tonight: Stay centered.

Tundra



Shoe



Mother Goose and Grim



Zits



Garfield



Beetle Bailey



Marvin



Hagar The Horrible



Peanuts



Blondie



3 Pers  
ADOPT  
young  
geth  
cious  
paid.  
800-98  
5 Sp  
ADV  
terial  
The  
MUST  
throug  
News C  
10 Los  
-LOST J  
(merle)  
& tags  
ward. V  
806-66  
9640 or  
FOUNI  
male, b  
To ide  
5523, o  
14d C  
CUSTO  
Remod  
Homes  
Shawn  
806-66  
OVER  
REPAI  
structio  
6347, 8  
14e C  
CLEA  
Bob M  
ator. C  
14g El  
RUSSE  
tric fo  
needs!  
665-08  
14h G  
HOUSI  
bricks  
ers Br  
299-95  
9563  
.COX I  
Repair  
build  
mates.  
C  
for t  
apos  
hint  
11-7  
X F  
C D  
A P  
H F  
S  
HA  
ANI



# The Pampa News Classifieds

### 3 Personal

**ADOPT:** Adoring young sweethearts, together 17 yrs, await precious baby. Expenses paid. Wendy & Scott 800-989-8921

### 5 Special Notices

**ADVERTISING Material to be placed in the Pampa News, MUST be placed through the Pampa News Office Only.**

### 10 Lost/Found

**LOST** fe. Sheltie (sable/merle) 18 lbs, w/collar & tags, Navajo st. Reward. Very special pet. 806-665-6843, 663-9640 or 806-205-1437

**FOUND** Chinese Pug male, bigger than usual. To identify call 665-5523, cell 663-1782

### 14d Carpentry

**CUSTOM** Building & Remodeling. New Homes & Additions. Shawn Deaver Const., 806-662-2977.

**OVERHEAD DOOR REPAIR** Kidwell Construction. Call 669-6347, 806-663-0192.

### 14c Carpet Serv.

**NU-WAY CLEANING SERVICE** Bob Marx Owner-Operator. Call 665-3541.

### 14g Elec. Contr.

**RUSSELLCROW** Electric for your electric needs! Comm., Resi. 665-0878, 440-1171.

### 14h Gen. Serv.

**HOUSE** Cracking? In bricks or walls? Children's Brothers, Inc. 800-299-9563, 806-352-9563

**COX** Fence Company. Repair old fence or build new. Free estimates. Call 669-7769.

### 14h Gen. Serv.

**CERAMIC** tile work, stucco, cement. Remodeling, floor, shower, kitchen. Texture, painting, dry wall. Free esti. 665-3453 leave message, Jesus Barraza.

**LET M&S** help you w/ your concrete needs. Free Est. Doc or Mike 669-6990, 664-2009

### 14s Plumbing

**JACK'S** Plumbing 715 W. Foster 665-7115

### 14w Air Cond/Heat

**BROWNING'S** Heating & Air and Refrigeration Specialists since 1964!! 665-1212.

### 19 Situations

**PRIVATE** Sitter avail. Mon thru Fri 7:30am-7pm, weekends anytime. References and resume available. Call 806-205-2998.

### 21 Help Wanted

**NOTICE** Readers are urged to fully investigate advertisements which require payment in advance for information, services or goods.

**APT Manager Position** Must Live On Premises Above Average Salary & Bonuses E-mail Resume To [nlamarillo@yahoo.com](mailto:nlamarillo@yahoo.com) 806-383-1985

**BOOKKEEPER** needed! Experience necessary, accounts payable, general ledger, oil & gas. Salary based on experience. Send resume to **Box 11** c/o The Pampa News, P.O. Box 2198, Pampa, Tx. 79066.

### 21 Help Wanted

**MAINTENANCE MAN NEEDED.** Must Have Own Tools. Call 665-1875. Apply at 800 N. Nelson or email [nlamarillo@yahoo.com](mailto:nlamarillo@yahoo.com)

**GREEN** Country Equipment "John Deere Dealer" in Pampa is accepting applications for a service technician Good wage, benefits. Apply at 12098 E. Frederic in Pampa.

### 21 Help Wanted

**SIVALLS** Inc. is looking for Welder-Fabricators. Welding and drug tests req. Benefits: health ins., profit sharing, 401K, 8 paid holidays and 10 days vacation per year. 806-665-7111, Pampa, Tx.

### 21 Help Wanted

**MAINTENANCE MAN NEEDED.** Must Have Own Tools. Call 665-1875. Apply at 800 N. Nelson or email [nlamarillo@yahoo.com](mailto:nlamarillo@yahoo.com)

**EXP.** Backhoe Operator with current CDL & clean driving record needed. Must pass drug test. Hourly plus benefits. Apply in person, 100 N. Cuyler, Ste. 200.

**WELDERS NEEDED** Must be able to pass ASME Code Test **Apply in person only** Crall Products 2930 Hwy. 152 West Pampa, TX

**FULL** time Auto Technician / Installer wanted. Must be 18 yrs. old Send replies to **Box 16** c/o Pampa News, 403 W. Aitchison, Pampa.

**BRITKARE** Home Medical has a CSR opening. Full-time position with benefits. Apply at 912 W. Kentucky

**TEXAS** Rose Steak house is hiring Cooks, servers & hosts. Apply in person. No phone calls!

**CLASS A** CDL driver needed. 1 yr exp. DOT physical drug screen required. 806-665-2451

**MAINTENANCE MAN NEEDED.** Must Have Own Tools. Call 665-1875. Apply at 800 N. Nelson or email [nlamarillo@yahoo.com](mailto:nlamarillo@yahoo.com)

**NEW** Queen Matt. Sets. Sale Price \$266. Red Barn, 1424 S. Barnes. Call anytime 665-2767

**SOLID** Oak Wood Pellets to heat your home! Hurry-\$275 per ton. Chief Plastics, 1237 S. Barnes, 806-665-6716.

**FOR** Sale King Serta pillowtop mattress set w/frame, 2 Broyhill end tables, 665-5042.

**MINUTES** from downtown-efficiencies. Short term leases avail. 806-665-4274.

**1 and 2 bdr.,** avail. now at the Gwendolen Apts. Largest square footage in Pampa. 665-1875

**NO transportation,** not a problem. These large 1 bdr. apts. w/ appliances, are in walking distance to everything you need. 665-4274.

**SCHNEIDER** Apartments. Call for special rates. Short term lease. Business people welcome. 665-0415

### 21 Help Wanted

**MACHINIST** needed. 3-5 yrs. exp. on manual lathes. Apply in person, Crall Products, 2930 Hwy 152 West, Pampa.

### 80 Pets & Suppl.

**FOR ADOPTION** Siamese, Calico, Orange, Tabby, Gray. Spayed / Neutered & shots. Call 665-4901 lv. msg.

### 89 Wanted To Buy

**NEED** Money Now? We will give you top \$\$ for your house. Call us today, 665-1875

**We Buy & Sell Houses** Call us today!! 665-1875

### 95 Furn. Apts.

**CLEAN** 2 bdr., 1 ba., gar. \$525 per mo. \$525 dep. Ref. required 514 N. Dwight. 440-1445

**2 br., 1 bath,** partially furnished. Call 806-662-1708

### 99 Stor. Bldgs.

**TUMBLEWEED** Acres, self storage units. Various sizes. 665-0079, 665-2450.

### 102 Bus. Rental

**DOWNTOWN** office space for rent. Utilities & cleaning service provided. Ample parking. 669-6823

**OFFICE** Space for rent, ask about 3 months free rent. 669-6841.

**OFFICE** Space available at 2100 Perryton Parkway. Exc. location. Call 662-4010.

### 103 Homes For Sale

**1901** Grape. 2000 sq ft. 3/2/2. 2 liv areas. Newly remodeled-granite. \$165,000. 662-8615

**LARGE** older home, 3 bdr. Dining room, utility. Central heat. OWC. 662-7557

**TRUSTAR** Real Estate for all your complete real estate needs. Show, list, property mgmt. 665-4595.

### 115 Trailer Parks

**TUMBLEWEED** Acres, Storm Shelters, fenced, stor. bldg. avail. 665-0079, 665-2450.

### 120 Autos

**LET** M&S help you with your automotive needs. November Special All Vets 10% Off on Labor. 120 N. Gray, 669-6990.

**GENERAL** Ameritrac tires 120/117R like new 17" for duel, spare \$150 ea, 440-4200.

### 121 Trucks

**1998** Dodge Ram Quad Cab \$2000 or best offer! 806-662-6193

### 97 Furn. Houses

**3** bdr., gar., storage. Furniture incl: washer, dryer, tv, etc. \$750 mo. \$500 dep. 662-7557

### 98 Unfurn. Houses

**PICK** up rental list, in the **Black Box**, at 125 S. Houston, Pampa.

**2** bd, 1 ba, central h/a, dining area, utility, storm shelter, carpet. \$500 mo. 806-881-9798

**3** bdr, 2 ba. brick. Utility room, fenced. \$750 mo, \$500 dep. 662-7557.

**CLEAN** 2 bdr., 1 ba., gar. \$525 per mo. \$525 dep. Ref. required 514 N. Dwight. 440-1445

**2** br., 1 bath, partially furnished. Call 806-662-1708

**99 Stor. Bldgs.** TUMBLEWEED Acres, self storage units. Various sizes. 665-0079, 665-2450.

**DOWNTOWN** office space for rent. Utilities & cleaning service provided. Ample parking. 669-6823

**OFFICE** Space for rent, ask about 3 months free rent. 669-6841.

**OFFICE** Space available at 2100 Perryton Parkway. Exc. location. Call 662-4010.

**1901** Grape. 2000 sq ft. 3/2/2. 2 liv areas. Newly remodeled-granite. \$165,000. 662-8615

**LARGE** older home, 3 bdr. Dining room, utility. Central heat. OWC. 662-7557

**TRUSTAR** Real Estate for all your complete real estate needs. Show, list, property mgmt. 665-4595.

**TUMBLEWEED** Acres, Storm Shelters, fenced, stor. bldg. avail. 665-0079, 665-2450.

**LET** M&S help you with your automotive needs. November Special All Vets 10% Off on Labor. 120 N. Gray, 669-6990.

**GENERAL** Ameritrac tires 120/117R like new 17" for duel, spare \$150 ea, 440-4200.

**1998** Dodge Ram Quad Cab \$2000 or best offer! 806-662-6193

### 97 Furn. Houses

**3** bdr., gar., storage. Furniture incl: washer, dryer, tv, etc. \$750 mo. \$500 dep. 662-7557

### 98 Unfurn. Houses

**PICK** up rental list, in the **Black Box**, at 125 S. Houston, Pampa.

**2** bd, 1 ba, central h/a, dining area, utility, storm shelter, carpet. \$500 mo. 806-881-9798

**3** bdr, 2 ba. brick. Utility room, fenced. \$750 mo, \$500 dep. 662-7557.

**CLEAN** 2 bdr., 1 ba., gar. \$525 per mo. \$525 dep. Ref. required 514 N. Dwight. 440-1445

**2** br., 1 bath, partially furnished. Call 806-662-1708

**99 Stor. Bldgs.** TUMBLEWEED Acres, self storage units. Various sizes. 665-0079, 665-2450.

**DOWNTOWN** office space for rent. Utilities & cleaning service provided. Ample parking. 669-6823

**OFFICE** Space for rent, ask about 3 months free rent. 669-6841.

**OFFICE** Space available at 2100 Perryton Parkway. Exc. location. Call 662-4010.

**1901** Grape. 2000 sq ft. 3/2/2. 2 liv areas. Newly remodeled-granite. \$165,000. 662-8615

**LARGE** older home, 3 bdr. Dining room, utility. Central heat. OWC. 662-7557

**TRUSTAR** Real Estate for all your complete real estate needs. Show, list, property mgmt. 665-4595.

**TUMBLEWEED** Acres, Storm Shelters, fenced, stor. bldg. avail. 665-0079, 665-2450.

**LET** M&S help you with your automotive needs. November Special All Vets 10% Off on Labor. 120 N. Gray, 669-6990.

**GENERAL** Ameritrac tires 120/117R like new 17" for duel, spare \$150 ea, 440-4200.

**1998** Dodge Ram Quad Cab \$2000 or best offer! 806-662-6193

## Pampa Realty Inc. 669-0007



312 N. Gray St. Pampa, Tx 79065  
**Real Estate For The Real World**  
Each Office Independently Owned and Operated



### Pampa MLS & Amarillo MLS

Jim Davidson (BKR/OWNER).... 662-9021  
Linda Lapacka, GRI, ePro..... 662-9611  
Andrea Walling..... 664-6227  
Zeb Sailors..... 664-0312  
Donna Courter..... 595-0779  
Katrina Bigham..... 898-8510  
John Goddard (BKR)..... 595-1234  
Sandra Schuneman (BKR)..... 662-7291

### AUSTIN SCHOOL DISTRICT North and Northeast

1 Cypress Point Rd.....	\$235,000	3/2/2 - 1849 SF/GCAD
2701 Duncan St.....	\$189,900	3/1.75/2 - 2364 SF/GCAD
1915 Holly Ln.....	\$162,500	4/2.5/2 - 2179 SF/GCAD
1130 Williston St.....	\$147,900	4/2/2 - 2711 SF/GCAD
2541 Christine St.....	\$129,500	3/1.75/2 - 2050 SF/GCAD
1612 Evergreen St.....	\$99,900	4/1.5/0 - 2320 SF/GCAD
1100 Russell St.....	\$98,000	3/1.5/3 - 1288 SF/GCAD
1020 Mary Ellen St.....	\$85,000	3/1.75/1 - 1811 SF/GCAD
1308 Charles St.....	\$51,900	3/1.75/1 - 1702 SF/GCAD
706 E. 15th St.....	\$39,500	4/1/1 - 1196 SF/GCAD
1307 Charles St.....	\$38,000	2/1/0 - 1132 SF/GCAD

### TRAVIS SCHOOL DISTRICT West and Northwest

8463 Western St. + 6.33 acres.....	\$225,000	2/1/2 - 1225 SF/GCAD
916 Crane Rd.....	\$150,000	3/2/2 - 1710 SF/GCAD
2113 Lynn St.....	\$122,995	4/2/2 - 2077 SF/GCAD
1824 Christy St.....	\$89,900	3/1.75/1 - 1870 SF/GCAD
977 Cinderella Dr.....	\$82,000	4/1.75/2 - 1553 SF/GCAD
1916 Zimmers St.....	\$75,000	3/1.5/1 - 1244 SF/GCAD
1612 Sumner St.....	\$67,900	3/2/2 - 1073 SF/GCAD

### WILSON SCHOOL DISTRICT Southeast Pampa

533 Powell St.....	\$69,900	3/1/2 - 1372 SF/GCAD
612 Powell St.....	\$55,000	3/1/0 - 1166 SF/GCAD
614 Magnolia St.....	\$35,000	3/1/1 - 1436 SF/GCAD

### OTHER AREAS Outside Pampa City Limits

804-805 W. Jackson Ave, WD.....	\$140,000	4/2/2 - 2536 SF/CCAD duplex
415 Hattie, Miami.....	\$135,000	3/2/2 - 1562 SF/RCAD
503 Ware Av, Groom.....	\$133,000	4/2.75/1 - 2828 SF/CCAD
400 S. Popham, WD.....	\$67,900	3/1/0 - 1494 SF/CCAD
600 W 3rd Av, WD.....	\$67,500	3/1/1 - 1100 SF/CCAD
609 Gulf, Lefors.....	\$34,995	2/1/1 - 898 SF/GCAD

### COMMERCIAL PROPERTY & LAND

9.58 Acres east hosp. 120 S. Gillespie St.....	\$2,503,828	9.58 acres east of hospital
11756 Hwy 152.....	\$2,500,000	12 acres, 2 bldgs 25,000 SF each
30th & Charles St.....	\$1,999,404	50.9 acres of land N of Walmart
FM 14 Rd, Lefors.....	\$530,000	530 acres w/water well
220 N Ballard.....	\$395,000	Lt. Comm. 4 bath 6782 SF/GCAD
500 W Harvester Av.....	\$350,000	Lots south of United
748 S Price Rd.....	\$340,000	3 Ac. + 14,400 warehouse offices
302-308 W Foster.....	\$309,900	4 Retail Outlets 10,874 SF/GCAD
117 - 121 Ballard.....	\$230,000	24,500 SF/GCAD
1801 Alcock St.....	\$185,000	Office Building, 3,100 SF/GCAD
615 N Price Rd.....	\$179,900	3/4 + 6,550 SF/GCAD 9 bays
845 S Hobart/900 Wilks St.....	\$175,000	4 Lots + 10' on north
420 W Foster Av.....	\$165,000	Houston Lumb & Gas Station
Harvester St.....	\$150,000	60 x 110 Bldg Lots
FM 2300 & 1-40, Groom.....	\$145,000	Quonset & 6+/- acres
1435 Alcock St.....	\$135,000	2 Bldg. 3,200 SF/GCAD; 1,020 SF/GCAD
1421 Hobart St.....	\$105,000	Smoke House 1816 SF/GCAD
523 W Foster Av.....	\$85,000	7,598 SF/GCAD
301 & 305 W Foster Av.....	\$75,000	3,550 SF/GCAD each
23rd & Crescent Dr.....	\$65,000	Lot 4 Blk 1 N ofth Crest Sec 1
405 W Foster Av.....	\$65,000	2,000 SF/GCAD C H/A
220 E Francis.....	\$57,500	1/1 745 SF/GCAD Comm.
401 W Foster Av.....	\$47,000	2,500 SF/GCAD w/basement & overhead doors
Chaumont Terr.....	\$35,000	Lots 1 & 2 Block 2
Dogwood Ln.....	\$22,000	Lots 15-17 & 40' of 18
Wall St.....	\$15,000	1/2 Block
Fraser Annex #3 28th.....	\$10,000	Lot 8, W45' Blk 71
Holly Lot 10.....	\$10,000	Residential Lot 85' x 120'
Dogwood Ln.....	\$9,000	Lot 2 & 40.35' of Lot 1
Jupiter St.....	\$9,000	Lot 3 Blk 4 Country Club Heights
Jupiter St.....	\$6,500	Lot 7 Blk 3 Country Club Heights

Bdrms./Bath./Garage - SqFt./County Appraisal District

**Office Hours: M-F 8-5, Saturday 9-2, Sunday call our agents.**  
Visit our web page at: [www.pamparealtor.com](http://www.pamparealtor.com)

AXYDLBAAXR  
is LONGFELLOW</



# Sports

## No. 12 Lady Harvesters fall to Lady Loboes in area

ANDREW GLOVER

aglover@thepampanews.com

LUBBOCK —The No. 12 Pampa Lady Harvesters entered Saturday's area round game hoping to reverse momentum, as they were coming off a loss and the Monahans Lady Loboes were coming off a victory in the bi-district round. It would be Monahans that continued its momentum, upsetting Pampa in a three-game sweep (25-23, 25-10 and 25-16) at Lubbock High.

"We just didn't have it," head coach Libby Garza said. "We didn't have any fight. We were a little complacent. Monahans played amazing and didn't give up on one ball."

Senior Alanna Stephens said they focused too much on their mistakes.

"It's overcoming adversity," Stephens said. "We didn't do a good job of that."

Junior Maddie Fatheree said they came against a good team.

"They stepped up for sure," Fatheree said.

The Lady Harvesters (30-10) got on a roll behind senior Kirsten Kuhn's serving. Seniors Kailyn Troxell and Ramie Hutto contributed kills to put Pampa ahead 7-3. The Lady Harvesters would lead by as many as six. Monahans didn't allow Pampa to pull away. The Lady Loboes cut Pampa's lead to twice, then cut it to one at 20-19. Monahans took a 23-22 lead prompting Garza to take a timeout. The Lady Harvesters tied the game with a kill by Stephens but the Lady Loboes took the match.

Monahans (29-16) continued their momentum in the second game, jumping out to a 5-0 lead. Pampa didn't get closer than four and took a timeout trailing 8-2. After the timeout, the Lady Harvesters weren't able to rally. Monahans didn't allow the lead to get smaller than five. The Lady Loboes gained their largest lead of the game at nine, forcing Garza

to use her last timeout. Again, the Lady Harvesters weren't able to rally.

Stephens said the team got in the way of itself.

"We were our biggest struggle," Stephens said. "We couldn't get over making a mistake."

With the season on the line, Pampa fell behind early in Game 3. The Lady Loboes were able to catch the Lady Harvesters out of position to take a 8-4 lead. Garza took a timeout, Pampa showed some life behind two kills by Troxell to cut the lead to 11-8. Hutto scored two kills to cut the lead to two, forcing a timeout by Monahans. The Lady Loboes responded and outscored Pampa 6-1 to take a 20-15 lead, forcing Garza to use her final timeout of Game 3. The Lady Harvesters were unable to make a comeback.

Monahans will face Borger (22-19) in the regional quarterfinals. Garza said she is proud of what her seniors accomplished and hopes her younger players can build on what her seniors started.

"No other team can say they did what (my seniors) did," Garza said. "I told my younger girls to let this be a learning experience. I told my seniors to not regret today. They need to focus on the positives."

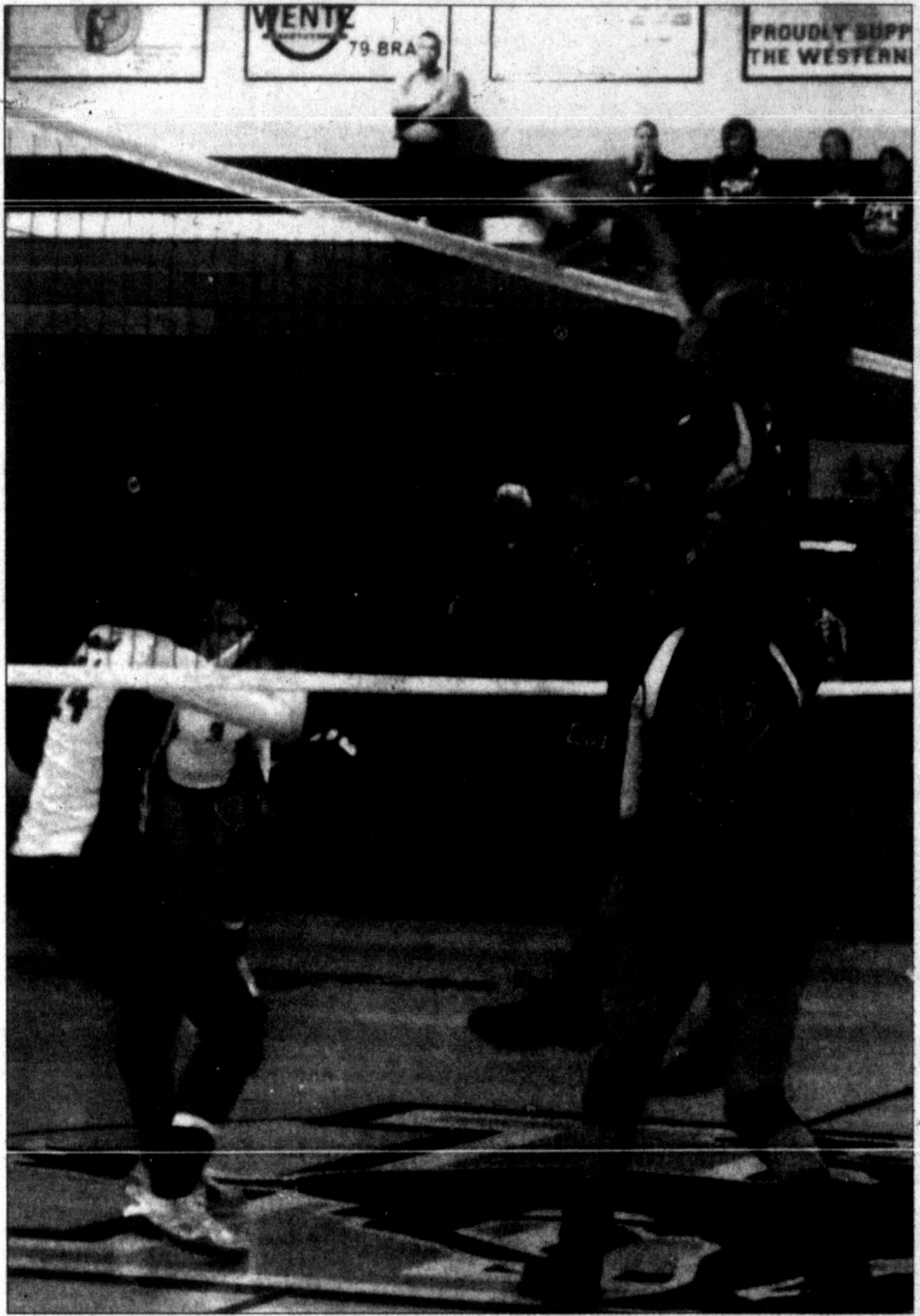
Stephens said the seniors set a new standard for Pampa volleyball.

"It's not going to be OK for people to not win district anymore," Stephens said.

The senior class of Hutto, Stephens, Kuhn, McKinlee Stokes, Stephanie Allen, Caitlin Sieck and Troxell went 90-59, won two district titles and a regional quarterfinals berth.

Fatheree said she is looking forward to continuing the Lady Harvesters' winning tradition.

"(The seniors) set it up for us younger girls to push and reach that bar," Fatheree said. "I'm ready to step up and make my own legacy."



staff photo by Andrew Glover

Senior Stephanie Allen attempts to plant the ball between Monahans' defenders Saturday. The Lady Harvesters were swept in the area round.



staff photo by Andrew Glover

Junior Maddie Fatheree sets a ball in the area round Saturday. Fatheree is one of four returning players from this season's team.

## Pampa's Truitt, McAnear move on to state cross country meet

ANDREW GLOVER

aglover@thepampanews.com

Pampa High School will be represented by two runners in the state cross country meet. Junior Terra Truitt and senior Trent McAnear will be running in Round Rock Saturday.

Truitt finished ninth with a time of 12:40. McAnear finished 10th in the boys race with a time of 16:47.

Elms

The top ten individuals and the top three teams advanced. Head coach Mark Elms said he is proud of his runners.

"It's fantastic," Elms said. "It's been since 2008 that we've sent someone to the state meet. We just took one girl then. This is the first time since 1993 that I've taken a boy to state. It's exciting."

The Lady Harvesters missed going to state as a team by three points, finishing in fourth. Elizabeth Gill finished with a time of 12:59, J'CEE Holmes ran a 13:12, Yesenia Soria finished with a time of 13:35, Vanessa Ontiveros finished with a time of 13:42, Kendle Ramey ran a 14:18 and Jessie Dixon ran 14:47.

## Melodies in Motion SEIKO CLOCKS

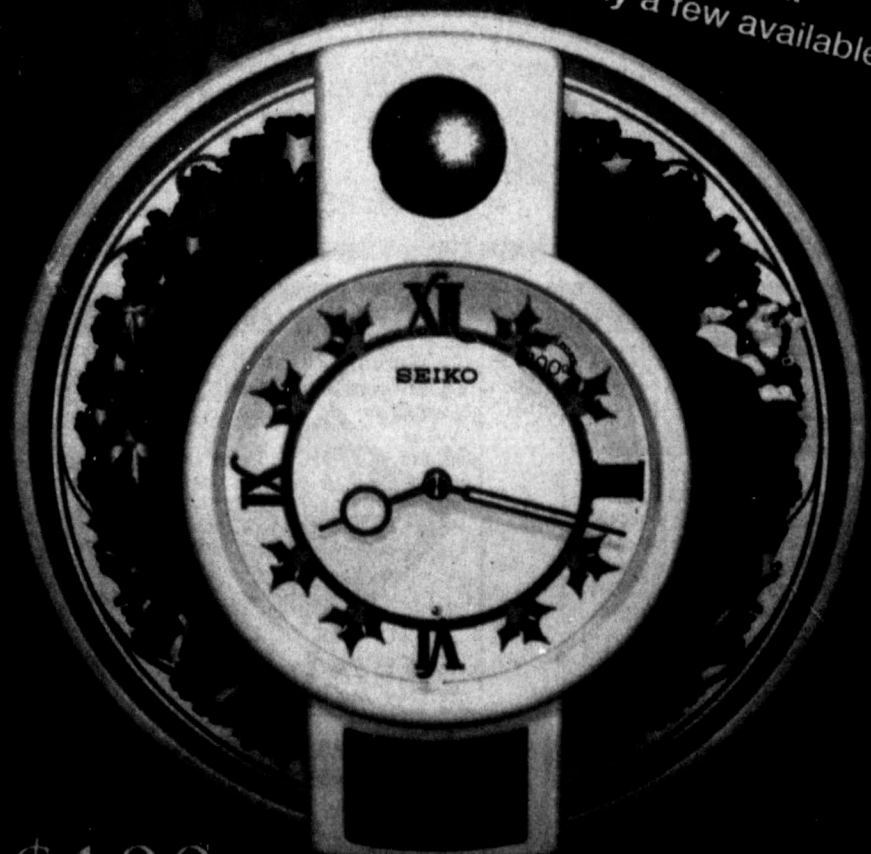
This Christmas clock plays:

Deck the Halls  
O Tannenbaum

We Wish You a Merry Christmas  
Joy to the World  
Silent Night  
Jingle Bells

while Santa Claus rides around the clock on his sleigh.

Hurry in!  
Only a few available!



\$100

**RHEAMS**  
DIAMOND SHOP

111 N. CUYLER

806-665-2831

2009 "BUSINESS OF THE YEAR"

0640