

CHILDERS BROTHERS INC.
HOUSE LEVELING
 Uneven Floors
 Floor Bracing
 Cracks In Bricks
 Sticking Doors & Windows
 Interior Wall Cracking
FREE ESTIMATES
1-800-299-9563
 WWW.CHILDERSLEVELING.COM

DOUG BOYD MOTOR CO.
 Have a Safe and
 Happy New Year!

All in-stock carpet
\$12⁰⁰ - \$18⁰⁰
 per sq. yd. installed with pad
 We will beat any
 legitimate bid by
10%
 on any product
 that we carry
Premier Floor Warehouse
 301 S. Cuyler, Pampa TX • 669-7001

The PAMPA NEWS

TODAY IN SPORTS



Monday, Jan. 23, 2012 www.thepampa.com Volume 107 • No. 239

75¢ \$1.50 weekend
Mitt's got company
 Gingrich wins South Carolina GOP primary | p3

Bronze lining
 PHS Wrestling finishes third at district duals | p8

Reminder: There's still time to file for ballot

ARNIE AURELLANO
 editor@thepampa.com

The uncertain nature of the ongoing redistricting process has given any would-be candidates another chance to throw their hats in the ring. According to Linda Lewis, Gray County election administrator, candidates are now eligible to file for a place on the ballot for local elections until 6 p.m. on Wednesday, Feb. 1. The old deadline — which itself had been extended multiple times — had been this Dec. 19 of last year.

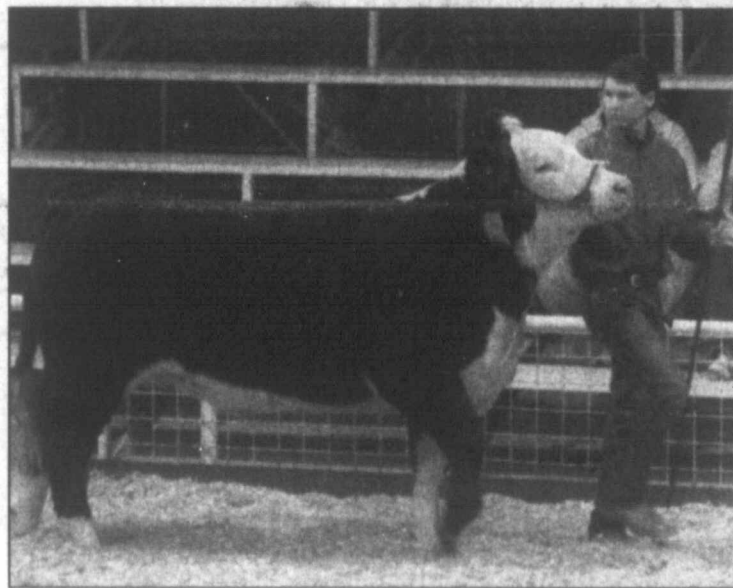
The court order that extended the filing deadline (or, more accurately, opened a second filing period) was actually filed in mid-December. However, with much of the election process still in limbo due to the redistricting chaos, Lewis said that she wanted to remind Gray County that places on the ballot are still open.

"Much of the election calendar hinges on the date of the elections themselves," Lewis said. "The deadline to file for the ballot is a set number of days before the (primary) election, but since that date's been moved forward, that affects the filing deadline, too. It's just crazy how it's all happening right now."

Additionally, per the court order, candidates who had filed previously will be permitted to withdraw or amend their applications with a new application during this second filing period.

ELECTION cont. on page 6

STOCK'S LOOKING UP



Junior stock show sees rise in entries, sale next

ARNIE AURELLANO
 editor@thepampa.com

January has been a good month to the Top O' Texas Livestock Association.

With 76 exhibitors on Saturday, the Gray County Junior Livestock Show saw an increase in entries from last year, said livestock association representative Charla Shults. The rise in junior livestock show participants follows a Top O' Texas Livestock Show earlier in the month that saw 300 pigs and 100 lambs shown in Pampa.

The numbers add up positively for the association, which has put a lot of effort into the two shows, according to Shults.

"Absolutely, I feel it's been a good month," she said. "Everyone's worked hard. We've worked hard."

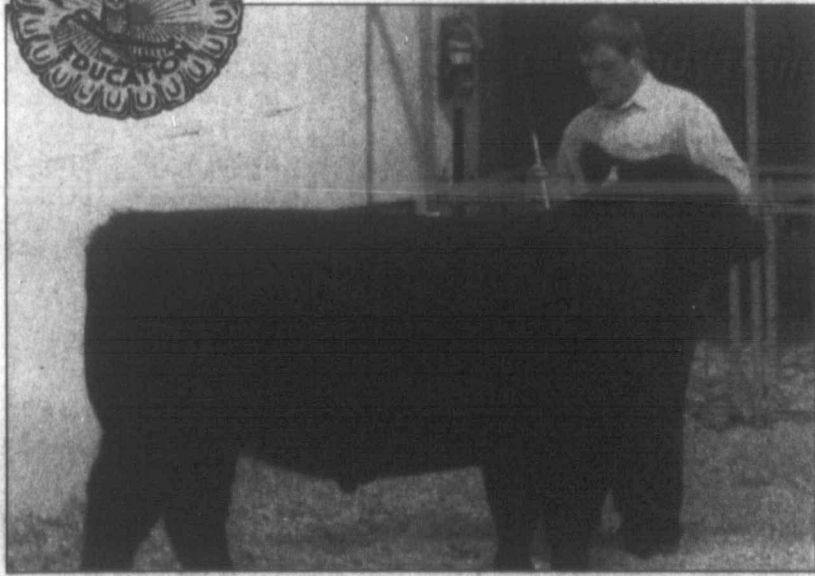
STOCK cont. on page 2

photos courtesy of **Charla Shults**

TOP: The Hendricks twins, Austin and Weston Go head to head in the Goat Show. Weston took home grand champion goat honors. **BOTTOM:** Kyler Payne enters the ring with his Hereford steer.



SENIOR SPOTLIGHTS



photos courtesy of **Charla Shults**

TOP: Gray County senior 4-H member Brady Roye shows his English Cross Breed steer. **RIGHT:** Pampa High School senior FFA member Janel Parks exhibits her Medium Wool lamb. Roye, Parks and other local 4H and FFA exhibitors will participate in the Gray County Livestock Sale tonight at M.K. Brown Auditorium. To support these kids as a sale buyer, contact Becky Bailey at 806-669-8033.

Rotary Club selling tickets for drawing

■ **Proceeds benefit
 senior scholarship**

MOLLIE BRYANT
 mbryant@thepampa.com

Sales for the Rotary Club's annual gift card drawing are under way.

The drawing is for gift cards to Walmart and United, with prizes including cards for \$2,000, \$1,000, and two for \$500. Proceeds from the gift card sale go towards the club's yearly Pampa High School senior scholarship.

"Every year we do this drawing," said Raymond Jaramillo, president of Rotary Club. "That way we're giving back to the community."

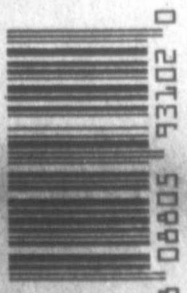
M & H Leasing
TOP OF TEXAS
LEASE
SIGN THE PLEDGE
 Receive free "Don't Text
 and Drive" finger bands.
 1945 N. Hobart • 685-2061

Total Care Health
 Caring & Effective Health care
 for Your Entire Family
(806) 688-2273
 • Family Care • Urgent Care
 Insurance, Cash, and Medicare!
Matthew Gill, RN, FNP-C
 701 N. Price Rd.
 Pampa, TX 79065

HouseHunters Realtor
 Linda Laycock Broker (806) 662-1312
 Larry Hadley Associate (806) 662-2779
 Jordan O'Neal Associate (806) 670-6623
 Tisha Holman Associate (806) 440-4153

IN THIS ISSUE:

Obituaries	2	Comics	5
Local Record	2	Social Security & You	6
Weather	2	Puzzles/Dear Abby	6
Morning Rush	3	Classifieds	7
Viewpoints	4	Sports	8



PAMPA FORECAST

Today	Tuesday	Wednesday
High 56 Low 30	High 53 Low 33	High 52 Low 31

Today: Mostly sunny, with a high near 56. Wind chill values between 16 and 26 early. South southeast wind between 10 and 15 mph.

Tonight: Mostly cloudy, with a low around 30. East southeast wind around 10 mph.

Tuesday: A 20 percent chance of showers after noon. Mostly cloudy, with a high near 53. East northeast wind between 10 and 15 mph.

Tuesday Night: A 50 percent chance of rain. Mostly cloudy, with a low around 33. North northeast wind around 15 mph.

Wednesday: A slight chance of rain and snow. Partly sunny, with a high near 52. North wind between 10 and 15 mph. Chance of precipitation is 20%.

Wednesday Night: Partly cloudy, with a low around 31. North northwest wind around 10 mph.

This information brought to you by...

PRESTIGE
AUTOBODY & ACCESSORIES
 101 S. HOBART 806-665-3500
Protect your family with a grille guard, Ranch Hand or Cattleman

AXYDLBAAXR
 IS LONGFELLOW
 One letter stands for another. In this sample, A is used for the three L's. X for the two O's, etc. Single letters, apostrophes, the length and formation of the words are all hints. Each day the code letters are different.
1-23 CRYPTOQUOTE
 HMMLDD HD FTL FR GFDL
 GEHTCD NEHXE Z UZT DEFVMI
 WLDHDG FT SWHTXHSML ZG
 GEL FTDLG. — LINZWI C.
 AVMNW - MJGGFT
Saturday's Cryptoquote: SWALLOW YOUR PRIDE OCCASIONALLY. IT'S NOT FATTENING.
 —FRANK TYGER

Call 669-2525 today to get
THE PAMPA NEWS with all the local news you need delivered right along with your daily mail

COMMUNITYcalendar

Monday, Jan. 23
 •Gray County Sale at the M.K. Brown Civic Auditorium.
Tuesday, Jan. 24
 •Cancer Support Group led by Dietitian Cynthia Ackley - PRMC 2nd Floor Classroom. 6:30-8 pm.
Wednesday, Jan. 25
 •Pampa Rotary Club meets, noon at the M.K. Brown Room of the Chamber office.
Thursday, Jan. 26
 •Pampa Lions Club meets, noon at the First United Methodist Church.
 •Pampa Police Dept. community meeting concerning the Community Emergency Response Team (CERT), Chamber of Commerce building, 6:30 p.m.-7:30 p.m.
 •Altrusa International of Pampa, Inc. meeting, 6:30 p.m., First United Methodist Church.
Friday, Jan. 27
 •Pampa Kiwanis Club meets, noon in the basement of the First Methodist Church.
Tuesday, Jan. 31
 •Cajun Dinner fundraiser in PHS commons, 5 p.m.-7 p.m.
Wednesday, Feb. 1
 •Pampa Rotary Club meets, noon at the M.K. Brown Room of the Chamber office.
Thursday, Feb. 2
 Pampa Lions Club meets, noon at the First United Methodist Church.

If your nonprofit or community organization has an upcoming meeting or event, submit it to The Pampa News Community Calendar at least one week in advance by e-mailing to prible@thepampanews.com. Submissions should include only the date, time, location and contact number for the event. The Pampa News reserves the right to edit or reject any submission. Items will be considered for the calendar solely at the discretion of the newspaper.

Obituaries

Dortha Weatherly, 81

Dortha Weatherly, 81, died Saturday, January 21, 2012, in Pampa.

Services will be at 2:00 p.m. Tuesday, January 24, 2012, at Wheeler Cemetery in Wheeler with Keith Feerer, minister of Mary Ellen & Harvester Church of Christ, and Dale Meadows, elder of Mary Ellen & Harvester Church of Christ, officiating. Arrangements are by Carmichael-Whatley Funeral Directors.

Mrs. Weatherly was born Nov. 21, 1930 in Wheeler and graduated from Kelton High School. She married Leon Weatherly on May 9, 1953 in Wellington. She and her husband had lived in Pampa for nearly 40 years. She was a member of Mary Ellen and Harvester Church of Christ since 1972. She was a very loving mother and housewife.

Dortha is survived by her husband: Leon Weatherly of the home; two sons: Steven Weatherly and wife Rhonda of Amarillo and Mason Weatherly and wife Jerrie of Winston-Salem, NC; a daughter: Dreka Nachlinger and husband Ken of Katy; two sisters: Evelyn Mason and Wilma Mason, both of Pampa; a brother: Carl Mason and wife Elaine of College Station; three grandsons: John Nachlinger of Piscataway, NJ, Josh Nachlinger of Houston and Logan Weatherly of Benton, Arkansas; a granddaughter: Katrina Lopez and husband Isaac of Amarillo; several nieces, nephews, and cousins. She was preceded in death by her parents and by a granddaughter, Kandace Weatherly.

Memorials can be made to Mary Ellen and Harvester Church of Christ, 1342 Mary Ellen, Pampa, TX 79065. Family will receive friends at the funeral home from



Weatherly

5-7 PM on Monday, January 23, 2012. Sign the online register book at www.carmichael-whatley.com

Eltha Crawford, 95

SKELLYTOWN — Eltha Crawford, 95, died Saturday, January 21, 2012, in Clarendon.

Services are pending with Carmichael-Whatley Funeral Directors.

Mrs. Crawford was born on May 10, 1916 in Joplin, Missouri and attended Pampa High School. She married Aulcie Paul Thurmond on Oct. 25, 1935 in Lefors. He preceded her in death on Nov. 5, 1968. She then married E. E. Crawford in 1972. Mrs. Crawford was a member of the First Baptist Church in Skellytown since 1958. She was a very loving, wife, mother, and grandmother. She was a member and past Worthy Matron of Pampa Chapter #65, Order of the Eastern Star.

Eltha is survived by two sons, Roy Thurmond and wife Irene of Clarendon and Jim Thurmond and wife Pam of Sapulpa, Okla.; two grandsons, Bryan Paul Thurmond and wife Karren of Midland and Paul Thurmond of Sapulpa, Okla.; two granddaughters, Jenny Knocke and husband Nick of Tulsa, Okla., and Angie Jackson and husband Brian of Germany; two great-granddaughters; and three great-grandsons.

She was preceded in death by her second husband, E. E. Crawford, by her parents, Ernest and Iva Burns, and by a brother, Ray Fitch.

Memorials may be made to First Baptist Church Youth Fund, 400 Lindberg, Skellytown, TX 79080.



Crawford

Stock

"(This particular show) ran so smoothly," Shults added. "We have amazing livestock association board members and officers and committee members. Everybody did such a great job. It was so successful."

Perhaps more importantly, Shults said. January was a good month for the Gray County kids who participated in the shows. With the junior livestock

show being the last local show until many of the kids move on to bigger competitions in Fort Worth, San Antonio, San Angelo, Austin and Houston, the kids received valuable input on their animals and showmanship.

"The judge that we had is Kevin Williams," Shults said. "He's the assistant ag education professor at (West Texas A&M), and he's also, I do

believe, a part of the judging team at WT. I don't think we could have gotten any better information to get them going down the road."

Several area kids received more local accolades to start off their show season.

London Lowrey brought home grand champion steer honors, while grand champion pig went to Emily Licklider. Weston

Hendricks received grand champion goat and Kaylene Wyant took grand champion lamb. Lowrey, Licklider and Wyant had also competed in the Top O' Texas show, with Lowrey and Licklider placing in the top three of their respective classes. [Editor's Note: Full results of the Gray County Junior Livestock Show will be published in tomorrow's edition of The Pampa News.]

With the competition itself out of the way, tonight's livestock sale will showcase the kids who competed over the weekend and match the animals up with their buyers. The sale will be held at the M.K. Brown Civic Center; meals will be served at 5:30 p.m., with the sale itself kicking off approximately an hour later.

cont. from page 1

UNDO DAMAGE
 Windshield cracks, chips, and breaks fixed in a jiffy!
First Rock chip repair \$25
 additional \$10 each
 Repair . Replacement . Mobile Service
 Chevy Pickups (1988-2006) - \$149.⁰⁰
 Includes Suburbans, Tahoes and Escalades
 Call Us Today for a FREE QUOTE,
 and let us help answer your insurance questions!
 900 E. Frederic Ave
 Pampa, Texas Will match or beat any competitors price!
www.wix.com/undo-damage-pampa-tx Weekends: 806-662-0883 Steve Reynolds, Owner
 Open Mon-Fri 8am-6pm

A&A Auto Glass
 806-662-0883
 Open Mon-Fri 8am-6pm

Online Banking
 As a local bank with 50 years in this community, we're committed to meeting your needs both today and in the future.
 With Online Banking you can..
 Enjoy free, secure access to all of your accounts
 View your balances, checks, and account statements
 Make and track payments
 Pay your bills in a secure and convenient place
Ask about Free Checking & Online Banking Services
 National Bank of Commerce
 1803 N. Hobart • Pampa, TX 79065
 806-665-0022

WANNA BURGER?
 We have **THE BURGER** you grew up with. Serving Pampa Since 1954
MON-TUES
 Hotdog cheese extra \$1.00
 Mini Pak-A-Burger, fries and cherry pie \$2.99
 Mouth watering Shakes
 Garlic Fries
 Pumpkin Pie Shake
 Fresh Roasted Green Chile & Jalapeno
Pak-A-Burger
 1803 N. Hobart • Pampa, TX 79065
 669-2665 • Mon-Sat 11-9
 You've tried the rest. Now Taste The Best!
 Drive-up Window Delivery to Businesses

MORNINGRUSH

Gingrich storms to South Carolina win

Two teenagers die in accident

AMARILLO (AP) — Two teenagers have died in a traffic accident in the Texas Panhandle.

Amarillo police say the 19-year-old driver, Kaylin Pearson, was heading west on Amarillo Boulevard early Sunday. When she turned left onto North Florida Street her car was struck on the passenger side by an eastbound SUV.

Police say Pearson and her passenger, 19-year-old Kermiece Jonf, died at the scene.

The Amarillo Globe-News reports that autopsies will be done.

Elder Bush saddened by death

HOUSTON (AP) — Former President George H.W. Bush says he was "deeply saddened" by the death of his friend, ex-Penn State football coach Joe Paterno.

The 85-year-old died Sunday from lung cancer. In a statement Bush called Paterno "an outstanding American who was respected not only on the field of play but in life generally."

The nation's 41st president says the coach was "a true icon in the world of sports" and he was proud they were friends.

Bush said he and his wife Barbara send their condolences to Paterno's "devoted wife Suzanne and to his wonderful family."

Paterno, a Republican and supporter of the elder Bush, was a sainted figure at Penn State for almost half a century.

His career was abruptly halted over how a child sex abuse scandal was handled.

Pedestrian killed by police car

DALLAS (AP) — A 43-year-old woman was struck and killed by a passing Dallas police patrol car as she stepped into the street.

Police say Beverly Kirk was attempting to cross the road after an ambulance had just passed and apparently did not see the marked squad car traveling behind it at about 3 a.m. Sunday.

The ambulance had its lights and sirens on. The patrol car did not.

Kirk died at the scene.

Police issued a statement saying the officer, who was not named, was responding to a disturbance call and not required to activate his lights and sirens for that kind of call.

An investigation is underway. No additional information is available.

COLUMBIA, S.C. — Former House Speaker Newt Gingrich stormed to an upset victory in the South Carolina primary Saturday night, dealing a sharp setback to former front-runner Mitt Romney and suddenly scrambling the race for the Republican presidential nomination.

"Thank you, South Carolina!" a jubilant Gingrich tweeted to his supporters. He appealed for a flood of donations for the next-up Jan. 31 primary. "Help me deliver the knockout punch in Florida. Join our Moneybomb and donate now," said his tweet.

Exit polls showed he led among voters who said their top priority was picking a candidate who could beat President Barack Obama — a group that had preferred Romney in earlier contests in Iowa and New Hampshire.

Romney, the national front-runner until now, was unbowed. He vowed to contest for every vote "in every state" and unleashed a double-barreled attack on Obama and Gingrich.

Referring to Gingrich's criticism of his business experience, Romney said, "When my opponents attack success and free enterprise, they're not only attacking me, they're attacking every person who dreams of a better future."

He's attacking you," he told supporters, the closest he came to mentioning the primary winner's name.

Returns from 57 percent of the state's precincts showed Gingrich with 40 percent of the vote to 27 percent for Romney. Former Pennsylvania Sen. Rick Santorum was winning 18 percent, Texas Rep. Ron Paul 13 percent.

As the first Southern primary, South Carolina has been a proving ground for Republican presidential hopefuls in recent years. Since Ronald Reagan in 1980, every Republican contender who won the primary has gone on to capture the party's nomination.

Based on the vote total, Gingrich won at least 15 of the 25 Republican National Convention delegates at stake and none of the other contenders was yet assured of any.

But political momentum was the real prize with the race to pick an opponent to Obama still in its early stages.

Already, Romney and a group that supports him were on the air in Florida with a significant television ad campaign, more than \$7 million combined to date.

Aides to the former Massachusetts governor had once dared hope that Florida would seal his nomination — if South

Carolina didn't first — but that strategy appeared to vanish along with the once-formidable lead he held in pre-primary polls. Romney swept into South Carolina 11 days ago as the favorite after being pronounced the winner of the lead-off Iowa caucuses, then cruising to victory in New Hampshire's first-in-the-nation primary.

But in the sometimes-surreal week that followed, he was stripped of his Iowa triumph — GOP officials there now say Santorum narrowly won — while former Utah Gov. Jon Huntsman dropped out and endorsed Romney and Texas Gov. Rick Perry quit and backed Gingrich. Romney responded awkwardly to questions about releasing his income tax returns, and about his investments in the Cayman Islands.

Gingrich, the former speaker of the House, benefited from two well-received debate performances while grappling with allegations by an ex-wife that he had once asked her for an open marriage so he could keep his mistress.

By primary eve, Romney was speculating openly about a lengthy battle for the nomination rather than the quick knockout that had seemed within his grasp only days earlier.

Exit polling showed

Gingrich, the former House speaker, leading by a wide margin among the state's heavy population of conservatives, tea party supporters and born-again Christians.

In a state with 9.9 percent unemployment, about 80 percent of all voters said they were very worried about the direction of the economy. Gingrich's edge over Romney among that group tracked the overall totals closely, the former speaker winning 41 percent and the runner-up 27.

The exit poll was conducted for The Associated Press and the television networks by Edison Research as voters left polls at 35 randomly selected sites. The survey involved interviews with 2,381 voters and had a margin of sampling error of plus or minus 4 percentage points.

RE/Max
Ron Lilley, Broker

Gary Winton: Realtor®/Office Manager
806-440-1698
1712 N. Hobart • (806) 665-4595

We help you buy or sell your home!

Come In Or Call For A Quote
AUTO • HOME • BUSINESS • LIFE
Gray County Insurance Doing Business As
JOHNSTON INSURANCE AGENCY
1712 N. HOBART PAMPA, TEXAS
806.665.4133 • 866.665.2788
Not The Largest... Not The Smallest...
But The Best Rates & Service!

Keep a level head in an up-and-down market.

Duane Harp, AAMS®
Financial Advisor
1921 N. Hobart
Pampa, TX 79065
806-665-6753

Edward Jones
MAKING SENSE OF INVESTING

Member SIPC
www.edwardjones.com

Cinema 4

Showing Friday!
Friday, January 20 through
Thursday, January 26.

The Devil Inside (R)
Fri 7:30 9:45
Sat 2:00 4:30 7:30 9:45
Sun 2:00 4:30 7:30
Mon/Thur 7:30

Underworld 4 (R)
Fri 7:00 9:45
Sat 2:00 4:30 7:00 9:45
Sun 2:00 4:30 7:00
Mon/Thur 7:00

The Darkest Hour (PG-13)
Fri 7:30 9:45
Sat 7:30 9:45
Sun 7:30
Mon/Thur 7:30

War Horse (PG-13)
Fri 7:00 9:45
Sat 2:00 7:00 9:45
Sun 2:00 7:00
Mon/Thur 7:00

We Bought A Zoo (PG)
Fri No Showings
Sat 2:00 4:30
Sun 2:00 4:30
Mon/Thur No Showings

www.cinema4pampa.com
Colorado Shipping Ctr

you're invited

Pampa Regional Medical Center would like to invite you to join us for a **Meet and Greet** reception to welcome our new physicians.

Miguel A. Cintron, MD, FACOG
GYNECOLOGY • FEMALE INCONTINENCE • OBSTETRICS

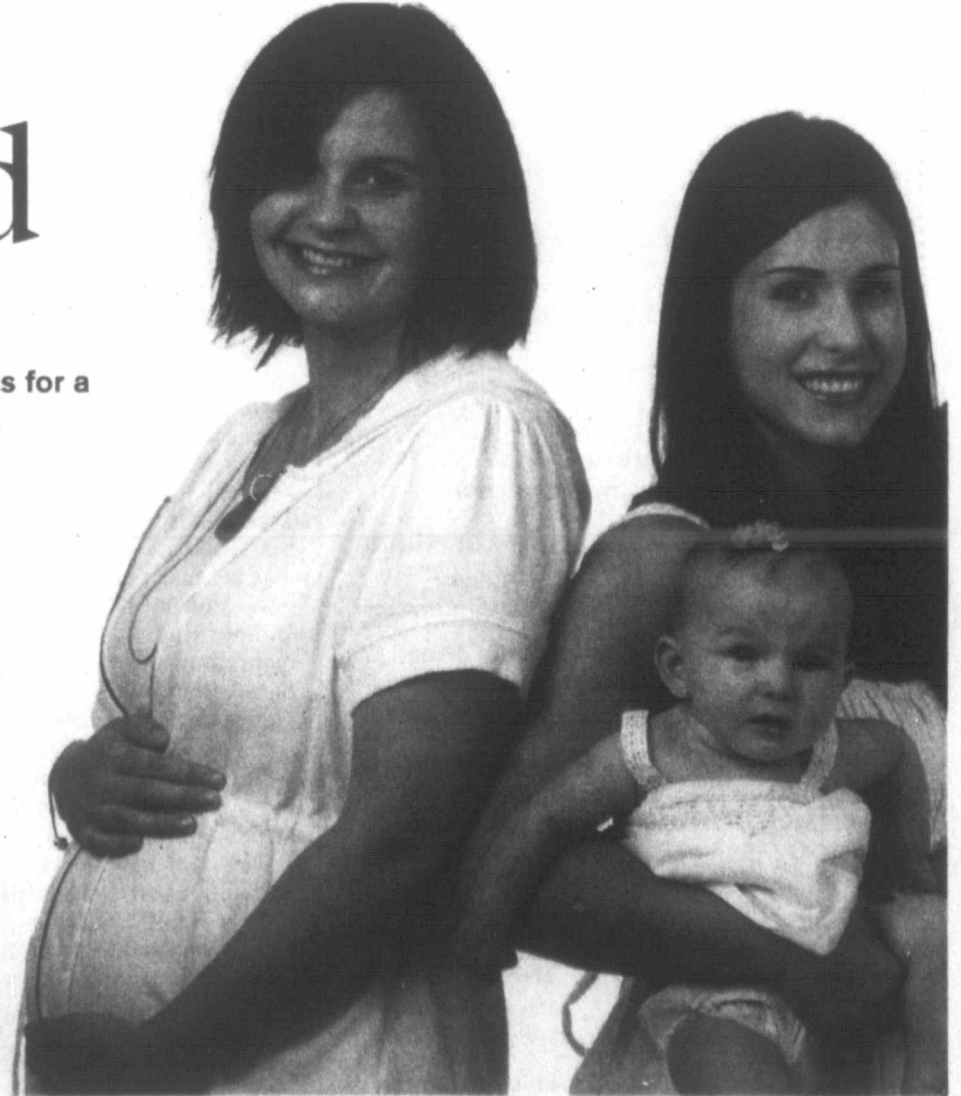
— and —

Bruno Armando Romeo, Jr., MD
GYNECOLOGY • FEMALE INCONTINENCE • OBSTETRICS

Tuesday, January 24 • 8:30 - 10:00 am • PRMC Cafeteria
Community is invited • Breakfast will be served

• • • • • Habla Español • • • • •

PAMPA REGIONAL MEDICAL CENTER
One Medical Plaza, Pampa, Texas • prmcpx.com



Viewpoints

Today in History

Today is Monday, Jan. 23, the 23rd day of 2012. There are 343 days left in the year.

Today's Highlights in History:

On Jan. 23, 1962, Jackie Robinson was elected to the Baseball Hall of Fame in his first year of eligibility. Tony Bennett recorded "I Left My Heart in San Francisco," by George Cory and Douglass Cross, in New York for Columbia Records.

On this date:

In 1789, Georgetown University was established in present-day Washington, D.C.

In 1812, the second New Madrid Earthquake struck, with an estimated magnitude of 7.5, according to the U.S. Geological Survey.

In 1845, Congress decided all national elections would be held on the first Tuesday after the first Monday in November.

In 1932, New York Gov. Franklin D. Roosevelt announced his candidacy for the Democratic presidential nomination.

In 1937, 17 people went on trial in Moscow during Josef Stalin's "Great Purge." (All were convicted; all but four were executed.)

In 1950, the Israeli Knesset approved a resolution affirming Jerusalem as the capital of Israel.

In 1960, the U.S. Navy-operated bathyscaphe Trieste carried two men to the deepest known point in the Pacific Ocean, reaching a depth of more than 35,000 feet.

In 1964, the 24th amendment to the Constitution, eliminating the poll tax in federal elections, was ratified.

In 1968, North Korea seized the Navy intelligence ship USS Pueblo, charging its crew with being on a spying mission. (The crew was released 11 months later.)

In 1973, President Richard Nixon announced an accord had been reached to end the Vietnam War.

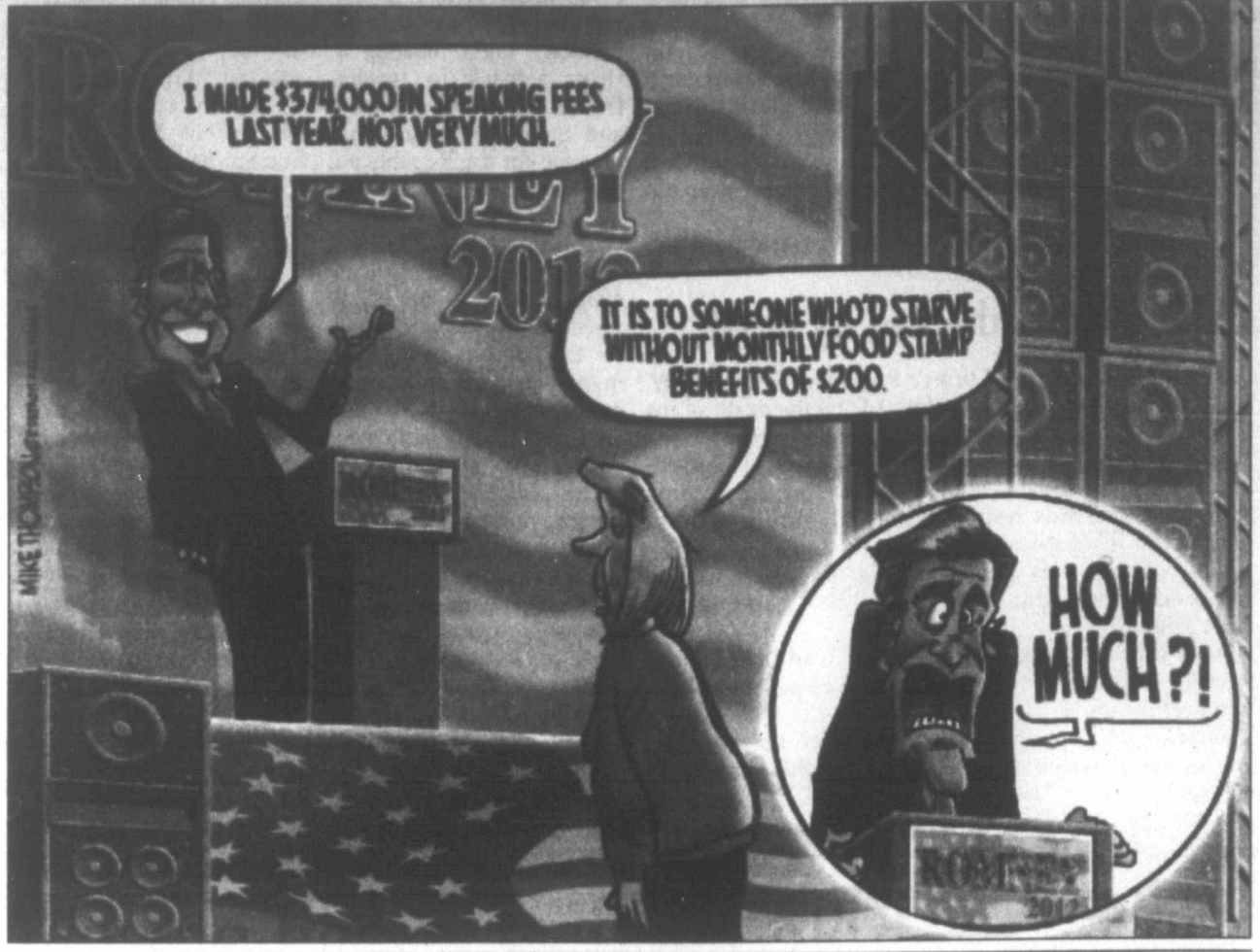
Ten years ago: Wall Street Journal reporter Daniel Pearl was abducted in Karachi, Pakistan, by a group demanding the return of prisoners from the Afghan campaign; he was later murdered. Kenneth Lay stepped down as chairman and chief executive of Enron Corp.

Five years ago: In his State of the Union address, President George W. Bush implored Congress to give his plan to send more U.S. troops to Iraq a chance to work.

One year ago: Allies and adversaries of President Hugo Chavez took to the streets of Caracas by the thousands, staging rival demonstrations to commemorate the 53rd anniversary of Venezuela's democracy.

Today's Birthdays: Actress Jeanne Moreau is 84. Actress Chita Rivera is 79. Actor-director Lou Antonio is 78. Actor Gil Gerard is 69. Actor Rutger Hauer is 68. Rhythm-and-blues singer Jerry Lawson (The Persuasions) is 68. Singer Anita Pointer is 64. Actor Richard Dean Anderson is 62. Rock musician Bill Cunningham is 62. Rock singer Robin Zander (Cheap Trick) is 59. Los Angeles Mayor Antonio Villaraigosa is 59. Princess Caroline of Monaco is 55. Singer Anita Baker is 54. Reggae musician Earl Falconer (UB40) is 53. Actress Gail O'Grady is 49. Actress Mariska Hargitay is 48. Rhythm-and-blues singer Marc Nelson is 41. Actress Tiffani Thiessen is 38. Rock musician Nick Harmer (Death Cab for Cutie) is 37. Christian rock musician Nick DePree (Kutless) is 27.

Thought for Today: "It's not what you are, it's what you don't become that hurts." - Oscar Levant, pianist-composer-actor (1906-1972)



The 1 percent, social justice blues

Growing up in Levittown out on Long Island, I remember my father buying pants through the mail. This seemed strange to me. There was a Robert Hall clothing store nearby, and it had pants all over the place. But my dad said he could buy two pair for the price of one from some guy in South Dakota. One problem: The pants never fit.

My father didn't much care. He saved some money, which he put in the bank, affording me an opportunity to go to private schools.

My parents never wanted to be rich and did not resent those who were, although my dad did not like Joseph Kennedy. He called JFK's father a bootlegger. The truth is, we O'Reillys did not even know any rich people. They lived in Garden City, about five miles away.

Today, I am a rich guy, a 1 percent. I can buy all the pants I want. My late father could not even fathom how much money I make. I have trouble processing it, as well.

But I never worked for cash. I always wanted to do something interesting and actually walked away

from a high-paying TV job back in the 1990s to attend Harvard, where I secured a master's degree in public administration. There were tons of rich folks at Harvard. I did not resent them.

Today, the Occupy Wall Street crew and many progressive Americans believe that I am a greed head, even though they have no idea what I do with my money. Just the fact that I have it

gives them license to brand me a dreadful "1 percenter." The reason that I have prospered monetarily is that I put freedom to good use. I worked hard, got a great education, paid my dues in journalism and, finally, hit it big. America gave me the freedom to do all those things. In the past, my achievements might have been celebrated. Not today. Now, more than a few folks say I am not paying my fair share to ensure the security of my fellow citizens.

According to the IRS, the 1.4 million households that comprise the 1



BILL O'REILLY

percent (that is taking in about \$350,000 a year) pay 37 percent of the nation's income tax. That's a big number, is it not? And The New York Times reports that the 1 percenters contributed about 30 percent of all charitable donations in 2007. Another big number.

So I've decided that those demanding more of my money for "social justice" are really attacking freedom. In this country, it is not wrong to prosper. You should not be demeaned for "having."

President Obama will be doing the nation a huge disservice if he bases his upcoming campaign on class warfare, because that's really an assault on individual freedom. Yes, we are all Americans, and we should all be in it together. But that doesn't mean the government can guarantee individual outcomes. In a free society, it can't.

Veteran TV news anchor Bill O'Reilly is host of the Fox News show "The O'Reilly Factor."

Delay in Texas primaries costs incumbents

CHRIS TOMLINSON
Associated Press - Analysis

AUSTIN (AP) — Now that the U.S. Supreme Court has thrown out interim political maps drawn by the federal court in San Antonio, Texans may have to wait a little longer to vote in their party primaries while incumbents and big-name candidates watch their advantages slip away.

The court ruling and a tight timeline make it hard for the Texas primaries to take place on April 3, which was already a delay from Texas' original primary date of March 6. The Supreme Court said that because the Legislature's maps have not been cleared under the Voting Rights Act and a set of maps drawn by a federal court in San Antonio were flawed, the three judges in San Antonio need to try again to come up with maps that will compensate for Texas' growing population, but not discriminate against minorities.

That will take time and the San Antonio court scheduled a meeting for Feb. 1 to discuss next steps. Republican and Democratic officials all voiced hope on Friday that the court will act quick enough to keep the election on April 3, but if the federal judges do not begin work until Feb. 1, that date is nearly impossible.

The drawn-out mapping process is a major headache for Texas politicians. Those running for Congress or the Legislature don't know what their districts will look like and some can't even be sure they should run until they see the new maps.

The delay and uncertainty hurts incumbents because their biggest advantage is name recognition and fundraising. The longer the primary race, the more time challengers have a chance to campaign and raise

money. The Texas primary campaign was originally scheduled to last only through the first 10 weeks of the year but will now last at least 14 weeks, maybe more.

"The more time a challenger has to make up ground and get out there and do more campaigning, do more fundraising, the better off you are as a challenger," said James Henson, director of the Texas Politics Project at the University of Texas at Austin. "Challengers are loving this."

In court, the chairman of the Republican Party, Steve Munisteri, testified that he wanted to hold the primary as early as possible to give Texas the greatest possible voice in the Republican presidential race. The later the primary, the less likely Texas will influence the outcome. A corollary is that if the presidential race has been decided by the time Texans vote, fewer of them turn out.

Low turnout can be a big problem for incumbents facing challengers, most of whom are usually backed by activist groups unhappy with the incumbent.

"Low turnout, all things being equal, benefits people who are highly organized, and that tends to be the activist groups," said Henson, who studies voting patterns. "But in the cases of some incumbents that have good campaign operations, that can give them an advantage."

The biggest race in Texas this year is for the U.S. Senate. Lt. Gov. David Dewhurst is the best known candidate, and thanks to his personal fortune and impressive fundraising, he is the perceived front-runner. But the indefinite primary may diminish those advantages.

Former Texas Solicitor General Ted Cruz is running against Dewhurst and he has the backing of two activist groups, FreedomWorks and the Club for Growth. The tea party-oriented FreedomWorks is

helping Cruz organize support and the conservative Club for Growth is airing ads attacking Dewhurst as too moderate.

Tom Leppert, the former Dallas mayor and businessman, is also running political ads to raise his name recognition. The longer the primary campaign, the more impact these efforts will have.

"It gives them the chance to exploit the vulnerabilities that Dewhurst does have," Henson said.

Eventually, though, Texans will vote and both Republicans and Democrats say they need to hold primaries 45 days before the state conventions in early June. The San Antonio court could have new maps by mid-February, but the parties would still need to re-open candidate registration under the new maps. That makes a mid- to late-April primary more likely.

Another option is a split primary, with one vote for statewide and countywide races on April 3 and all others on a later date. No one has voiced support for that plan because not only will it further diminish voter turn-out, it will cost the state and county governments at least \$15 million.

Meanwhile, the federal court in Washington will continue hearing arguments this week on whether the state's maps comply with the Voting Rights Act, with final arguments scheduled for Feb. 3. If the court decides the Legislature's maps are legal, then the San Antonio court will schedule arguments for the lawsuit brought by Texas minority groups calling them unfair and still need temporary maps.

If the Washington court declares them illegal, the San Antonio court's new maps will remain in effect until the Legislature meets again to draw new ones.

The PAMPA NEWS

403 W. Atchison • Pampa, TX 79065

806-669-2525 • Fax: 806-669-2520

Randall Pribble

Publisher
rpribble@thepampanews.com

ReDonn Woods

Advertising Manager
woods@thepampanews.com

Bernie Frazier

Advertising Representative
bfrazier@thepampanews.com

Beverly Taylor

Classified Advertising
classified@thepampanews.com

Marijane Kent

Composing
composing@thepampanews.com

Carrie Hair

Accounting
bookkeeper@thepampanews.com

Sue Pribble

Subscription Manager
spribble@thepampanews.com

Arnie Aurellano

Editor
editor@thepampanews.com

Mollie Bryant

Reporter
mbryant@thepampanews.com

Andrew Glover

Reporter
aglover@thepampanews.com

Holley Bimson

Composing
composing2@thepampanews.com

Marcus Elkins

Press Supervisor
press@thepampanews.com

Chico Ramirez

Circulation Manager
Circulation2@thepampanews.com

The Pampa News (UPS 781-540) is published daily, except Sundays, New Year's Day, Martin Luther King Jr. Day, President's Day, Memorial Day, Independence Day, Labor Day, Columbus Day, Veterans Day, Thanksgiving Day, and Christmas Day. Periodicals postage paid at Pampa, Texas. Postmaster: Send address changes to The Pampa News, P.O. Drawer 2198, Pampa, TX 79066-2198.

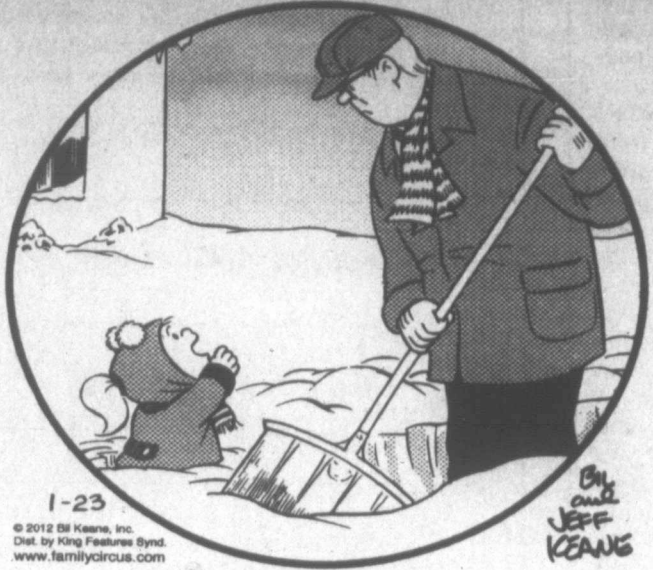
© 2011 The Pampa News

TA MEMBER 2011
TEXAS PRESS ASSOCIATION

Non
HEY SAY THE YEA THE DR DOG M
Nest
MA TO E IT'S
HAP 24, 2011
You l
ginning
find the
standing
tight be
ters to s
you lig
come fi
be diffi
are att
get eno
is inde
in other
The S
Have: 5
2-So-s
ARII
★★★
with of
you all
part, if
a flow
to conti
TAU
★★
what is
have th
ers and
combin
emerge
the wee
GEN
★★★
distanc
to think
evolves
with tak
tion? S
Tonight
CAN
★★★
fore mu
going o
Your in
fore you
believe
with a l
LEO
★★★
how m
is bein
slightly
mor, an
with th
you rea

comics PAGE

THE FAMILY CIRCUS By Bil Keane



1-23

© 2012 Bil Keane, Inc. Dist. by King Features Synd. www.familycircus.com

By Bil Keane

"Isn't it GREAT, Daddy? This all started with just one flake!"

Non Sequitur



Nest Heads



daily horoscope

HAPPY BIRTHDAY for Tuesday, Jan. 24, 2012:

TAURUS (April 20-May 20)
 You have an opportunity for a new beginning in several areas of your life. You find that often you have difficulty understanding new concepts because of a very tight belief system. Try to open up the filters to see the world with more depth. If you lighten up, many opportunities could come forward. If you are single, it might be difficult to maintain that status. If you are attached, your significant other cannot get enough of you. A fellow AQUARIUS is independent like you but very different in other ways.

GEMINI (May 21-June 20)
 Reach out for someone at a distance. Your ability to clear out a mess, to think differently and to resolve issues evolves. Have you been toying around with taking a class, or perhaps a mini vacation? Schedule this event, if not now, soon. Tonight: Answer your emails, then decide.

ARIES (March 21-April 19)
 You might want to touch base with others before a meeting. Make sure you all are on the same page. For the most part, if everyone has the same objectives, a flow exists. Information gathering needs to continue. Tonight: Where the fun is.

TAURUS (April 20-May 20)
 Take a stand and acknowledge what is going on behind the scenes. You have the ability to get together with others and clear out a problem. Your intuition combines with leadership, and new skills emerge. Trust your instincts. Tonight: To the wee hours.

CANCER (June 21-July 22)
 Work with someone directly before making a judgment. Much more is going on than you think with this person. Your impressions might be askew, therefore you will not be able to trust what you believe "should" happen. Tonight: Chat with a key person in your life.

LEO (July 23-Aug. 22)
 Others test the waters to see how much give you have. Listen to what is being shared, knowing the story is slightly slanted. Maintain a sense of humor, and you might even have fun dealing with the situation. Try not to let on that you read others as clearly. Tonight: Sort

through invitations.
VIRGO (Aug. 23-Sept. 22)
 Your ability to grow past an issue can determine your success. Do not get fixated on the same issue when approaching many different situations. Let go and believe there will be a solution heading your way. Examine new possibilities. Tonight: Some time off.

LIBRA (Sept. 23-Oct. 22)
 A serious attitude could prevent some of the exchanges necessary for you to be more creative and dynamic. Ask yourself: What am I trying to accomplish? Realize that your life goals might be better served by an upbeat attitude. Tonight: Choose fun.

SCORPIO (Oct. 23-Nov. 21)
 Mentally or even physically, you are at home. A domestic situation might dominate. You know when enough is enough. A light attitude allows a different type of interaction. Clear out a personal matter to release your mind and increase your focus. Tonight: Don't go far.

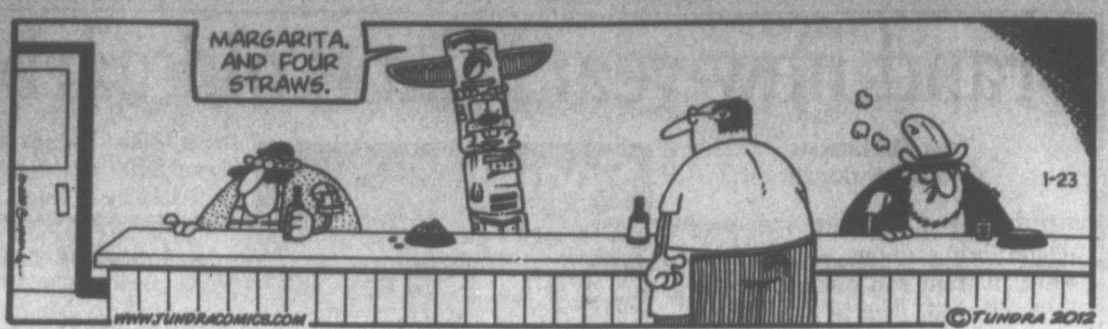
SAGITTARIUS (Nov. 22-Dec. 21)
 Your friendlier side emerges, despite a difficult situation involving a friend or associate. Let go and you might see everything fall into place. As long as you resist, so will others. Make necessary calls, squeezing in a chat or two with a friend. Tonight: Hang out.

CAPRICORN (Dec. 22-Jan. 19)
 Be aware of the costs of proceeding in such a different mode. Others might not feel as secure as you would like. Weigh the pros and cons once more before acting on a decision. The decision is neither right or wrong. Tonight: Pay bills, then decide.

AQUARIUS (Jan. 20-Feb. 18)
 Creativity increases. You easily could come up with the nuggets of a great idea. Do not hold back, as you have a receptive audience. Be open, yet present your thoughts with flair. Someone cannot resist you. Tonight: Whatever feels right.

PISCES (Feb. 19-March 20)
 Know when to say less and think more. Your ability to separate reality from wishful thinking needs to emerge. You might be wishing more than gathering information. Continue being an observer. Know your objectives. Tonight: Get some extra R and R.

Tundra



Shoe



Mother Goose and Grim



Zits



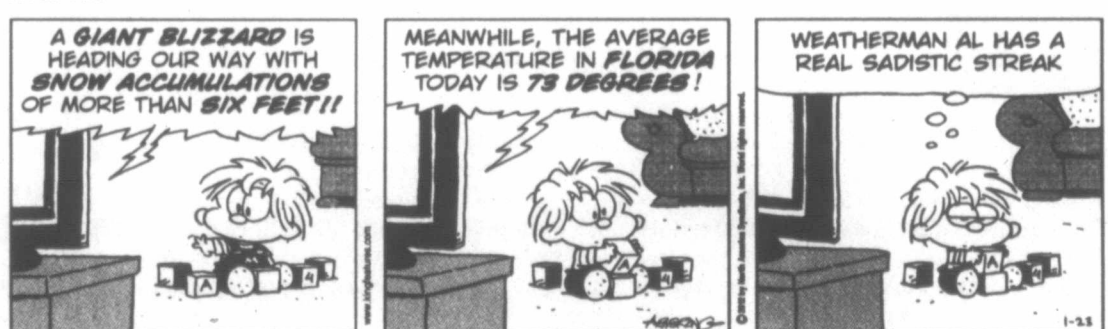
Garfield



Beetle Bailey



Marvin



Hagar The Horrible



Peanuts



Blondie



Brand new year, same old garbage

TOM MARGENAU
Creator's Syndicate

If anyone thought the new year would bring about a refreshing wave of truth and honesty on the Internet, well, then he is about as glib as the people who believe the latest bit of trash that's floating around out there in cyberspace.

I'd guess about fifty of my readers sent me the following message and asked me to comment on it. Here is what the message says:

"This is another example of Obamacare ripping off seniors. The per-person Medicare (Part B) insurance premium will increase from the present monthly fee of \$96.40; rising to \$104.20 in 2012; \$120.20 in 2013; and \$247 in 2014. These are provisions incorporated in the Obamacare legislation, purposely delayed so as not to confuse the 2012 re-election campaigns. Please send this to all seniors that you know, so they will know who's throwing them under the bus."

My regular readers know that I don't normally wade into the muddy waters of Medicare. I prefer to deal with Social Security issues. But this latest Internet whopper is so outrageously wrong that I just have to set the record straight. I hardly know where to begin.

First, there are no proposed Part B Medicare premium increases for future years. So the premium is not set to go up to any of the amounts listed, and certainly not to the quoted "\$247 in 2014."

In fact, they only recently announced the 2012 Part B premium. The basic premium for 2012 is \$99.90. And that's actually a decrease compared to the 2011 premium rate of \$115.40 and the 2010 premium rate of \$110.50. In fact, the 2012 premium is back down near the 2009 rate, which was \$96.40. And by the way, the 2012 decrease is a direct result of savings generated by the "Affordable Care Act," or what so many people like to call "Obamacare."

In other words, this latest Internet fantasy would have people believe that Obamacare is causing

Social Security and you

an increase in Part B premiums for seniors, when actually just the opposite is the case.

Do you remember earlier when I mentioned the muddy waters of Medicare? Anytime you discuss Part B premiums, you are bound to start confusing people. And that's because many people are paying different rates for their Part B coverage.

Throughout the history of the program, the basic Part B rate has gone up steadily each year — usually by a few dollars. As I said, the "basic" rate was \$96.40 in 2009, \$110.50 in 2010, and \$115.40 in 2011. But because there were no Social Security cost-of-living increases in 2010 and 2011, the law stipulated that a senior's Part B premium had to be held at the 2009 level of \$96.40.

In other words, because many people were paying only \$96.40 for Part B Medicare in 2011, they will see the 2012 rate of \$99.90 as an increase. But it is actually a decrease from the "official" premium rate of \$115.40. Do you see what I mean by "muddy waters?"

And it gets worse. Depending on a variety of circumstances — such as when you went on the Medicare program, or maybe if you went off the program and then came back on — some people actually paid the full premium of \$110.50 in 2010 and \$115.40 in 2011.

Oh, and it gets even muddier! There are people who are paying much higher premiums for Medicare. About 10 years ago, Congress decided that wealthier people should be charged more for their Part B coverage. I'm not even going to begin to get in the verities of these complicated rules. Suffice it to say that the richest Americans can be paying about \$320 per month for Medicare. (Oh, and don't ask me to feel sorry for

these folks. The government takes about \$400 per month out of my civil service pension check for my health coverage. And believe me, I am nowhere near the income level of those wealthy folks paying the \$320 Medicare rate!)

And that leads to an important point I need to make. I know from my emails that many seniors think the government is taking them to the cleaners when it comes to paying for Medicare. Actually, just the opposite is true.

The original Medicare Act passed in 1965 specified that the Part B premium must be set at a level to cover 25 percent of the costs of running the program. In other words, that \$115.40 you should have been paying in 2011 (although most of you actually paid only \$96.40) and the \$99.90 you will be paying in 2012 covers only one-fourth of the costs of all the coverage you get.

Guess who picks up the rest of the tab? That's right. The taxpayers. Now, I fully understand that many senior citizens are taxpayers, so they are part of the group helping to pay for the 75 percent of Medicare costs not paid for by the Medicare premium. But the point I am trying to make is that Part B Medicare is a heavily subsidized health insurance program and is actually quite a good deal for most American seniors.

One final point: I know many of you have questions or issues about your Part B premium. But please don't send those questions to me. There is nothing I can do to help you. Instead, you should seek help from a trained Medicare counselor: one of your State Health Insurance and Advocacy Program (SHIP) coordinators. You can find out who they are at your local senior center. Or on the Web, go to Medicare.gov. Pull down the "Help and Support" menu and then click on "Useful phone numbers and websites."

If you have a Social Security question, Tom Margenau has the answer. Contact him at thomas.margenau@comcast.net.

BANANAGRAMS!

Each set of 10 tiles below contains two common five-letter words. The letters of the first five-letter word are adjacent, but not in order. Find them and rearrange them to spell a word. Cross out those letters and imagine that the five remaining letters are now consecutive. These remaining letters can now be rearranged to spell the second word.

LEVEL

A Y G R I O V N N N

A E F O A A L H W R

N A N A Z U E G I E

Yesterday's Answer: POE, CHRISTIE; TARANTINO, COPPOLA; BONAPARTE, CAESAR; HEISENBERG, TESLA

123

Sudoku

Answer to yesterday's puzzle:

1	4	7	2	5	3	8	9	6
2	6	3	1	9	8	4	5	7
8	9	5	7	6	4	2	3	1
3	1	8	6	2	7	5	4	9
4	7	9	5	8	1	6	2	3
5	2	6	3	4	9	1	7	8
7	5	4	9	1	6	3	8	2
9	8	1	4	3	2	7	6	5
6	3	2	8	7	5	9	1	4

			2					
		7	1					
	5				8		1	
4		2	6			7		
		9	5			1		
				9			8	
	4		3	8	6			
1					7	4		
								9

Level: Beginner

Election

During the first filing period, twelve people declared candidacies with the Gray County Republican Party: Don Copeland, Randy Stubblefield, Robert

Douglas and David Lee for sheriff, Josh Seabourn and Steve Hall for county attorney, Joe Wheeley for Precinct 1 County Commissioner, John

Neil Fulton for Precinct 3 County Commissioner, Gaye Whitehead for tax assessor-collector, and Gary McFall and Joe Montgomery for constables.



Dear Abby...

By Pauline & Jeanne Phillips

DEAR ABBY: I'm writing this because I hope you will tell your readers to learn the signs of a stroke. I wish I had known.

I was visiting my grandma seven years ago. During dinner she had a stroke. I knew something was wrong, but wasn't sure what it was. My sister and I asked her if she wanted to go to the hospital, but she said no. We respected her wishes and didn't insist. We finally took her two days later.

Abby, my grandmother never spoke again. She spent her last seven years aware of what she wanted to say, but unable to say it. The guilt I carry is hard to live with.

Please tell your readers to make sure they know the signs of a stroke and to remember that while most people don't want to go to the hospital, the first three hours after a stroke are CRITICAL. If you suspect that your loved one is having a stroke, get that person to a hospital FAST, even if they don't want to go! You can't take back the damage a stroke causes.

My grandmother is gone now and I miss her terribly. She was a loving grandparent, and I hope she'll forgive me.

— MISSING HER IN UTAH

DEAR MISSING HER: What happened to your grandmother was tragic, but you were no more at fault than the millions of others who are also unaware of the signs of stroke. In your grandmother's memory, I'll describe them.

The most common stroke symptoms are: sudden numbness or weakness of the face, arm or leg — especially on one side of the body. Sudden confusion, trouble speaking or understanding. Sudden trouble seeing in one or both eyes. Sudden trouble walking, dizziness, loss of balance or coordination. Sudden severe headache with no known cause.

Other important but common symptoms include: sudden nausea, fever and vomiting — distinguished from a viral illness by the speed of onset (minutes or hours versus several days). And brief loss of consciousness such as fainting or convulsions.

If you see or have any of these symptoms, call 911! Every minute counts, and treatment can be more effective if it's given quickly.

DEAR ABBY: My 20-year-old goddaughter is pregnant. She is beautiful, smart and talented. Her boyfriend is wonderful to her and they are very happy together. My problem is people who frown on her happiness. I am regularly asked if I'm disappointed in her. My response is usually: "It's unexpected, but we will make the best of it. She and her boyfriend both work and have a great support network and a huge family."

I think it's rude of people to assume that this is bad news. How do I respond to those who are so oblivious? — OFFENDED AUNT IN SCRANTON, PA.

DEAR OFFENDED: The way you are answering them is appropriate, positive and polite. You need no help from me.

TO MY ASIAN READERS: This is the Year of the Dragon, a symbol of power and good fortune. Those born in the Year of the Dragon are confident, brave and fearless. A symbol of strength in Asian culture, the dragon once symbolized the emperor of China. I wish a healthy, happy and prosperous New Year to all of you.

CROSSWORD

By THOMAS JOSEPH

- ACROSS**
- 1 Bluegrass instrument
 - 6 Treaties
 - 11 Visitor from space
 - 12 Boise's state
 - 13 Some messages
 - 14 Two-dot character
 - 15 Look for
 - 17 Tote
 - 18 Elite police group
 - 22 Twosome
 - 23 Banishes
 - 27 Peruvian peaks
 - 29 Draw out
 - 30 Purloins
 - 32 Hide away
 - 33 Wets
 - 35 Poseidon's realm
 - 38 Boot attachment
 - 39 Dublin natives
 - 41 Harvests
 - 45 Concur
 - 46 Full range
 - 47 Exodus figure
 - 48 Vacant
- DOWN**
- 1 Slugger's need
 - 2 Tavern quaff
 - 3 Veto
 - 4 Global air current
 - 5 Beginning
 - 6 Prospector's tool
 - 7 Commotion
 - 8 Cry out
 - 9 Quaker's pronoun
 - 10 Musical number
 - 16 Wide shoe
 - 18 Health clubs
 - 19 Long for
 - 20 Staff member
 - 21 Bad place to change horses
 - 24 Pear-shaped instrument
 - 25 Bus. sch. course
 - 26 Stitches
 - 28 Walks through water
 - 31 Try the tea
 - 34 Sudden swell
 - 35 Thailand, once
 - 36 Therefore
 - 37 Broadcasts
 - 40 Take in
 - 42 Band blaster
 - 43 Place
 - 44 Hog home

L	O	P	E	Z		B	A	I	T	S
I	R	A	T	E		A	S	C	O	T
S	I	N	A	I		A	K	I	T	A
T	O	A	S	T	S		C	A	T	
E	L	M		G	A	Z	E	L	L	E
D	E	A		E	D	U	C	E	S	
						D	I	S	C	O
				A	I	R	S	A	C	
				S	T	R	E	T	C	H
				M	O			K	E	R
				A	N	N	O	Y		T
				S	C	E	N	E		T
				H	E	R	E	S		O
								O	P	E
										N

Saturday's answer

NEW CROSSWORD BOOK! Send \$4.75 (check/m.o.) to Thomas Joseph Book 1, P.O. Box 536475, Orlando, FL 32853-6475

1	2	3	4	5		6	7	8	9	10
11						12				
13						14				
			15		16			17		
18	19	20						21		
22					23			24	25	26
27					28			29		
30						31		32		
35	36	37			38					
39				40				41	42	43
45								46		
47								48		

1-23

AUTOMOTIVE

80 CNGC, Photo Grant, 34

800, 300 miles, Call Jim

Go to www.thepampanews.com or call 806-669-2525.

The Pampa News Classifieds

5 Special Notices

ADVERTISING Material to be placed in the Pampa News, MUST be placed through the Pampa News Office Only.

13 Bus. Opp.

HAVE large Pool Hall for lease. Great downtown location. Call for details, 665-1875.

14d Carpentry

CUSTOM Building & Remodeling. New Homes & Additions. Shawn Deaver Const., 806-662-2977.

OVERHEAD DOOR REPAIR Kidwell Construction. Call 669-6347, 806-663-0192.

14e Carpet Serv.

NU-WAY CLEANING SERVICE Bob Marx Owner-Operator. Call 665-3541.

14h Gen. Serv.

HOUSE Cracking? In bricks or walls? Childers Brothers, Inc. 800-299-9563, 806-352-9563

14h Gen. Serv.

LET M&S help you w/ your concrete needs. Free Est. Doc or Mike 669-6990, 664-2009

TILED Floors, Showers, Backsplashes, Tub Surrounds, Cabinet Tops, etc. Stone & Ceramic. 26 Yrs. Exp. Keith Taylor 874-1779 lv. msg.

14s Plumbing

JACK'S Plumbing 715 W. Foster 665-7115

14w Air Cond/Heat

BROWNING'S Heating & Air and Refrigeration Specialists since 1964!! 665-1212.

21 Help Wanted

NOTICE Readers are urged to fully investigate advertisements which require payment in advance for information, services or goods.

NEED Part-Time Church Cook, exp. helpful but not necessary. Apply in person 201 E. Foster, Pampa.

21 Help Wanted

ST. Ann's Nursing Home is hiring Director of Nursing and an MDS Coordinator. Contact Administrator at 537-3194. Good benefits. Position now available.

LVN'S and **CNA'S**, come check out our benefits! We have openings for Full-Time. Apply today St. Ann's Nursing Home, in Pampa, handle, 537-3194.

Operations Manager

Railsolve is looking for operational leader for a rail-related operation. Position involves maintaining a safe work place, training other employees, motivating employees and maintaining high morale, provide high level of customer service, perform administrative duties (payroll, purchases, work scheduling, etc.). Must be willing to work any shift, outside, in all types of weather. Benefits include insurance (medical, life and dental), company matched 401k savings plan, bonus opportunities, paid vacation and holidays. Drug-free workplace, background check required. Please forward resume to:

hr@railsolve.biz or fax to 770-996-6830 EOE M/F/H/V

P-T Painter needed for 150 unit apt. community.

Apply 1601 W. Somerville, 665-7149

WANTED New and Used Vehicle Sales Professionals.

Only the Best Apply!! Exceptional pay structure and enjoyable work environment. Come enjoy our team! Call 806-661-3561.

R. Chester Trucking is now hiring

HOT SHOT CDL DRIVERS who take pride in their work and are not drug addicts or drunks. We offer competitive pay, monthly bonuses and we have steady work! Call Rick at 806-665-0379

MIDWEST Precision Testing

has an immediate opening for a Lab Technician. Candidate will be responsible for water analysis and general chemistry, will train but must be analytical. Send resume to: neil_ray@mwptlab.com

EXPERIENCED DIESEL MECHANIC

Must pass drug test Salary depends on experience. Apply in person! No Phone Calls Please. Triangle Well Service 129 S. Price Rd. Pampa, TX.

FULL-TIME Insurance Specialist / Receptionist.

Busy retail optical office in Pampa needs Receptionist with some optical or medical billing exp. Will train the right person, but 1-2 years experience preferred. Please mail or fax your resume to: Panhandle Eye Group, LLP, 1916 N. Hobart, Pampa, TX 79065. Fax 806-669-3586.

49 Pools/Hot Tubs

REPO / 5 PERSON SPA W/ WARRANTY. Call Morgan Spa, make offer, 806-358-9659

69 Misc.

ADVERTISING Material to be placed in the Pampa News MUST be placed through the Pampa News Office Only.

NEW Queen Mattress Sets! Sale Price \$246. Red barn, 1424 S. Barnes, 665-2767

69 Misc.

CEMETERY Plots, Sec C, Block 96, Spaces 1, 2, 3 \$1475 ea. Memory Gardens. 806-373-3799

WASHER, dryer, table, chairs, refig, stove, rockers, china cabinets, freezer, etc. 662-7557

80 Pets & Suppl.

FOR ADOPTION Siamese, Calico, Orange, Tabby, Gray. Spayed / Neutered & shots. Call 665-4901 lv. msg.

FREE 4 Chihuahua mix puppies. Call 669-2298.

89 Wanted To Buy

NEED Money Now? We will give you top \$ for your house. Call us today, 665-1875

We Buy & Sell Houses

Call us today!! 665-1875

95 Furn. Apts.

EQUAL HOUSING OPPORTUNITY

All real estate advertised herein is subject to the Federal Fair Housing Act, which makes it illegal to advertise "any preference, limitation, or discrimination because of race, color, religion, sex, handicap, familial status or national origin, or intention to make any such preference, limitation, or discrimination." State law also forbids discrimination based on these factors. We will not knowingly accept any advertising for real estate which is in violation of the law. All persons are hereby informed that all dwellings advertised are available on an equal opportunity basis.

GRAY Co. Precinct 1 is now taking applications for Experienced Heavy Equip. Operator.

incl. motor grader, CDL is a plus. Good pay & benefits. Call Precinct 1 Warehouse in Lefors, 835-2711, lv. message.

SUBWAY is accepting applications for all shifts: days, nights, weekends.

Apply inside Pampa Walmart. Adults only please.

APTS. Houses Duplexes. K&B Properties Ref. & dep. req. Lakeview Apts. 669-4386

CAPROCK APARTMENTS

1, 2 and 3 bedrooms with rent starting as low as \$395 / mo. Pool and on-site laundry, W/D hookups in all 2 & 3 bdrms. 665-7149

MINUTES from downtown-efficiencies. Short term leases avail. 806-665-4274.

1 and 2 bdr. avail. now at the Gwendolen Apts. Largest square footage in Pampa. 665-1875

NO transportation, not a problem. These large 1 bdr. apts. w/ appliances, are in walking distance to everything you need. 665-4274.

96 Unfurn. Apts.

SCHEIDER Apartments. Call for special rates. Short term lease. Business people welcome. 665-0415

98 Unfurn. Houses

PICK up rental list, in the Black Box, at 125 S. Houston, Pampa.

NICE 2 bdr. Stove & refig. incl. Rent based on ref. 663-6121, 669-2139

BEAUTIFUL condominium, 2 bedroom, 1 1/2 bath, fireplace & pool. Gas /water paid by owner. 665-3788 or 665-6936.

99 Stor. Bldgs.

TUMBLEWEED Acres, self storage units. Various sizes. 665-0079, 665-2450.

SCRATCH & DENT MORGAN BUILDINGS. 10'x12', 12'x16' & 12'x20'. MAKE OFFER! 806-358-4559.

102 Bus. Rental

DOWNTOWN office space for rent. Utilities & cleaning service provided. Ample parking. 669-6823

OFFICE Space for rent, ask about 3 months free rent. 669-6841.

103 Homes For Sale

BEAUTIFUL 3,526 sq. ft. home, 1715 Christine, 3 bd/3 1/2 b., f.p. in den, oversize 2 car garage, lots of storage. Dbl corner lot. \$230,000 to view call John 806-570-0622.

CUTE 2 bdr., att. gar. New metal roof. Great neighborhood. \$30,000. 806-359-1199.

FSBO, 123 Walnut Dr., 4 bd, 1 3/4 & 1/2 bth, 4 car gar., covered patio, 806-665-3524.

OWNER Will Finance, 313 Miami 2 bdr., 1 ba. Call Trustar RE, 665-4959.

PARTIAL Under-ground on 5 lots. Brick 4 bdr. 2 ba. (whirlpool tub), tile floors, fireplace, central, h/a, dbl car gar. Lots of extras. \$127,500. 712 Hazel. 663-0074 or 595-0104.

TRUSTAR Real Estate for all your complete real estate needs. Show, list, property mgmt. 665-4959.

115 Trailer Parks

TUMBLEWEED Acres, Storm Shelters, fenced, stor. bldg. avail. 665-0079, 665-2450.

120 Autos

2007 Kia Sportage Lx. Super clean. Loaded. Low miles!! \$11,470. Call 661-3561

2008 Subaru Impreza Limited. Tan leather. Really nice. Low miles. \$20,940. 661-3561.

121 Trucks

2008 F350 King Ranch dually truck, 4 wd, leather. Nice truck. \$35,650. Call 661-3561

2008 Nissan Frontier Nismo 4wd truck. Red. Off road special. \$20,350. 661-3561

Pampa Realty Inc. 669-0007



Pampa MLS & Amarillo MLS

Real Estate For The Real World
Each Office Independently Owned and Operated



- Jim Davidson (BKR/OWNER).....662-9021
- Linda Lapacka, GRI, ePro.....662-9611
- Andrea Walling.....664-6227
- Zeb Sailors.....664-0312
- Donna Courter.....595-0779
- Katrina Bigham.....898-8510
- John Goddard (BKR).....595-1234
- Sandra Schuneman (BKR).....662-7291

AUSTIN SCHOOL DISTRICT North and Northeast

- 2200 Dogwood Ln.....\$192,500.....4/22 - 2629 SF/GCAD
- 932 Crane Rd.....\$155,000.....3/22 - 1634 SF/GCAD
- 1130 Williston St.....\$147,900.....4/22 - 2711 SF/GCAD
- 2541 Christine St.....\$129,500.....3/1.75/2 - 2050 SF/GCAD
- 1901 Ft.....\$110,000.....3/1.75/2 - 2102 SF/GCAD

TRAVIS SCHOOL DISTRICT West and Northwest

- 8463 Western St. + 6.33 acres.....\$225,000.....2/1/2 - 1225 SF/GCAD
- 932 Crane Rd.....\$155,000.....3/2/2 - 1634 SF/GCAD
- 919 Sierra Dr.....\$149,000.....4/2/2 - 1761 SF/GCAD
- 1424-1426 Dwight.....\$149,000.....2/704 SF/GCAD Duplex
- 2113 Lynn St.....\$125,900.....4/2/2 - 2077 SF/GCAD
- 1609 Dwight St.....\$85,900.....3/1.75/2 - 1550 SF/GCAD
- 1829 Zimmers St.....\$85,000.....3/2/2 - 1511 SF/GCAD
- 1824 Christy St.....\$84,900.....3/1.75/1 - 1870 SF/GCAD
- 2125 Lynn St.....\$79,900.....3/1.75/2 - 1521 SF/GCAD
- 1612 Sumner St.....\$64,900.....3/2/2 - 1073 SF/GCAD

WILSON SCHOOL DISTRICT Southeast Pampa

- 533 Powell St.....\$69,900.....3/1/2 - 1372 SF/GCAD
- 612 Powell St.....\$55,000.....3/1/0 - 1166 SF/GCAD

OTHER AREAS Outside Pampa City Limits

- 612 Ware Av, Groom.....\$130,000.....3/1.75/4 - 1637 SF/CCAD
- 503 Ware Av, Groom.....\$128,000.....4/2.75/1 - 2828 SF/CCAD
- 804-805 W. Jackson Ave, WD.....\$120,000.....4/2/2 - 2536 SF/CCAD duplex
- 400 S. Popham, WD.....\$67,900.....3/1/0 - 1494 SF/CCAD
- 600 W 3rd Av, WD.....\$67,500.....3/1/1 - 1100 F/CCAD
- 129 Abilene, Borger.....\$42,900.....3/1.5/1 1176 SF/CCAD
- 609 Gulf, Lefors.....\$34,995.....2/1/1 - 898 SF/GCAD

COMMERCIAL PROPERTY & LAND

- Perryton Parkway.....\$2,503,828.....9.58 acres east of hospital
- 120 S. Gillespie St.....\$4,100/mo.....For Lease - 7,372 SF/GCAD
- 11756 Hwy 152.....\$2,500,000.....12 acres, 2 bldgs 25,000 SF each
- 30th & Charles St.....\$1,400,000.....45.9 acres of land N of Walmart
- FM 14 Rd, Lefors.....\$530,000.....530 acres w/water well
- 30th & Charles.....\$435,600.....5 acres in city limits
- 220 N Ballard.....\$395,000.....Lt. Comm. 4 bath 6,782 SF/GCAD
- 500 W Harvester Av.....\$350,000.....Lots south of United
- 748 S Price Rd.....\$350,000.....3 Ac. + 14,400 warehouse offices
- 302-308 W Foster.....\$309,900.....4 Retail Outlets 10,874 SF/GCAD
- 117 - 121 Ballard.....\$230,000.....24,500 SF/GCAD
- 1801 Alcock St.....\$185,000.....Office Building, 3,100 SF/GCAD Café
- 845 S Hobart/900 Wilks St.....\$175,000.....4 Lots + 10' on north
- 420 W Foster Av.....\$165,000.....Houston Lumb & Gas Station
- Harvester St.....\$150,000.....60 x 110 Bldg Lots
- FM 2300 & 1-40, Groom.....\$145,000.....Quonset & 6+/- acres
- 1435 Alcock St.....\$135,000.....2 Bldg, 3,200 SF/GCAD; 1,020 SF/GCAD
- 1421 Hobart St.....\$105,000.....Smoke House 1816 SF/GCAD
- 523 W Foster Av.....\$85,000.....7,598 SF/GCAD
- 301 & 305 W Foster Av.....\$75,000.....3,500 SF/GCAD each
- 23rd & Crescent Dr.....\$65,000.....Lot 4 Bk 1 North Crest Sec 1
- 405 W Foster Av.....\$65,000.....2,000 SF/GCAD C H/A
- 220 E Francis.....\$57,500.....1/1 745 SF/GCAD Comm.
- 401 W Foster Av.....\$47,000.....2,500 SF/GCAD w/basement & overhead doors
- Chaumont Addition.....\$35,000.....Lots 1 & 2 Block 2
- Dogwood Ln.....\$22,000.....Lots 15-17 & 40' of 18
- Wall St.....\$15,000.....1/2 Block
- Fraser Annex #3 28th.....\$10,000.....Lot 8, W45' Bk 71
- Holly Lot 10.....\$10,000.....Residential Lot 85' x 120'
- Dogwood Ln.....\$9,000.....Lot 2 & 40.35' of Lot 1
- Jupiter St.....\$9,000.....Lot 3 Bk 4 Country Club Heights
- Jupiter St.....\$6,500.....Lot 7 Bk 3 Country Club Heights

Bdrms/Bath/Garage - sqft/County Appraisal District

Office Hours: M-F 8-5, Saturday 9-2, Sunday call our agents.

Visit our web page at: www.pamparealtor.com

KITCHEN MANAGER WANTED

with line experience, setting menus, understanding inventory & cost margins

Please mail Resume to P.O. Box 2436 Pampa, TX 79066-2436

NOW HIRING CRUDE OIL DRIVERS! PLEASE CALL, COME BY OR VISIT OUR WEB-SITE TO GET STARTED!

www.kimrad.com

806-331-7148 or 7146

806-622-5097 fax

371 W Loop 335 South-Amarillo TX 79111

NOMAC DRILLING

CONSIDER A HIGH-ENERGY CAREER WITH NOMAC DRILLING

Nomac Drilling, an affiliate of Chesapeake Energy Corporation, has opportunities throughout:

- Liberal, Kansas
- Elk City, Oklahoma
- Woodward, Oklahoma
- Pampa, Texas

- Available positions:
 - Floorman
 - Motorman
 - Derrickman
 - Driller

If you are interested in these opportunities, please send your resume to OKC@selfopportunity.com to set up your personal interview. You may also call 800-594-7036 to schedule your appointment.

TWITTER.COM/CHESAPEAKE FACEBOOK.COM/CHESAPEAKE ehh.com | NYSE: CHK

The Shopper's Square

Shop Right. Shop The Pampa News' Classifieds!

Auto Body

PRESTIGE Auto Body & Accessories

We feature name brand car and truck accessories and a state-of-the-art collision center. Whether it's repairing your vehicle back to it's factory look or adding automotive accessories, our professionally trained staff will take care of you.

(806) 665-3500
101 S. Hobart Pampa, TX

Roofing

"Serving Satisfied Customers Since 1978."

Construction Insurance Services Available Claims Welcome

Paul Blake ROOFING
806-655-3094

FREE Estimates!
1501 4th Ave. Canyon, TX

Advertising

Advertise Your Business Here!

Call The Pampa News at **806-669-2525** to place your ad in "The Shopper's Square" today!

Pumping Serv.

REED'S PUMPING SERVICE

Let Reed's Meet Your Needs!

Septic Cleaning & More!

806-669-3682

To place an ad in The Pampa News' Shopper's Square, call us at 806-669-2525! Get Noticed. Get Results.

Sports

Harvester wrestling finishes third in district duals



photo courtesy of Leah Pearson

Senior Ryan Pearson grabs hold of his opponent in a dual against Dumas Saturday at Boys Ranch. Pampa faced all of their district opponents.

ANDREW GLOVER
aglover@thepampanews.com

Last year, the Pampa Harvesters wrestling team entered the district duals with not many left on the team.

This season, though, Pampa entered with confidence and left Boys Ranch with a third place finish Saturday.

"We did pretty well," senior Ryan Pearson said. "Last year, we only had four people left. This year we have a full team."

Pampa beat Borger, River Road and Bushland, but fell to defending district champion Dumas and Boys Ranch.

Senior Dylan Hooker said he felt good about the performance but said there's room for improvement.

"We could have done better," Hooker said. "We did pretty good."

Pearson said that he and his teammates knew Dumas was a good team, but felt they competed well.

"We did all right," Pearson said. "They they were tough."

Hooker said the team struggled against Dumas and Boys Ranch adding that experience was a factor.

"They have been wrestling for longer," Hooker said. "They seemed like they had a one up on experience."

Pearson said Pampa knows what it needs to work on for the district tournament on February 4 at Borger.

"Now that we've seen everyone it will help us to prepare better," Pearson said.

Hooker said the team should have a strong outing in district.

"For the individual tournaments, we will have quite a few people go to regionals," Hooker said.

The senior added that they will work hard in practice this week.

"We will get our mistakes out this week," Hooker said. "We are going to try to come out stronger."

PHS tennis warms up against Randall to start spring

ANDREW GLOVER
aglover@thepampanews.com

The Harvester tennis team got to see where it stands in the spring season, as it opened with a warm-up match against Randall Saturday at Pampa High School.

"We just mixed and matched to see what we have," head coach Sarah Corse said. "We got a lot of kids out here."

This is Pampa's first match since it closed the fall season in October (the Harvesters played team tennis in the fall and will play as individuals in the spring). Senior David Moore split his singles' matches (4-8, 8-3) and lost his doubles match with senior Hunter Hucks (0-8) Saturday.

Moore said he felt OK about how he played.

"I haven't played an opponent in a while," Moore said. "There wasn't too much pressure today. It was fun to get back out there."

Some of the Harvesters played in their first matches Saturday. Junior Diamond Marrufo, for example, joined the team after playing volleyball in the fall. Junior Robin Doan started working with the

team in November. Freshman Genevieve Zavala is in her first season.

Doan said it was different finally playing a real opponent.

"It showed what I have to work on," Doan said.

Corse said it was good for Marrufo, Zavala and Doan to get experience.

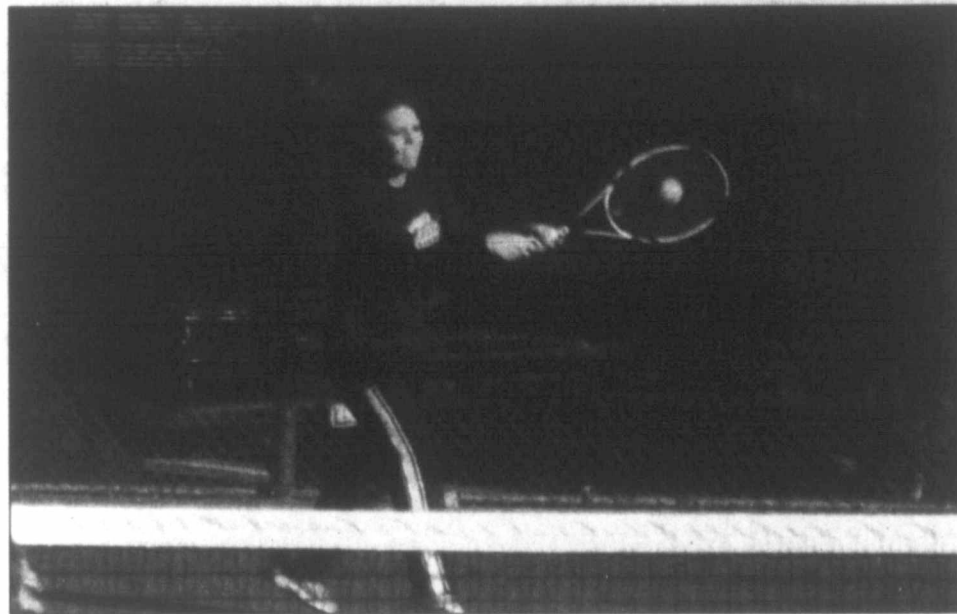
"That was great experience for them," Corse said. "I look forward to seeing where they go from here."

Senior Logan Karbo had a strong performance Saturday, winning all three of his doubles matches. Karbo won his first two with Hucks (8-5 and 8-4). Karbo won a mixed doubles match with junior Maddie Fatheree 8-5.

Senior Delaney Clendening who played in the fall, split two mixed doubles matches with senior Landon Karbo (8-4, 6-8). Clendening entered Saturday coming off a basketball game Friday.

"Logan and Hunter played great today," Corse said. "Delaney and Landon look like they will make a good doubles team. It looks pretty bright for the spring."

The Harvesters travel to Lubbock Friday for their first tournament starting at 8 a.m.



staff photo by Andrew Glover

Junior Makayla Hampton connects on a ball in her singles match against Randall Saturday. Hampton won 8-4. The Harvesters compete in Lubbock for their first spring tournament.

NEW 2012 MODELS ARE IN LIVINGSTON

The new 2012 digital models have arrived. This week, Livingston is offering tremendous savings on its most popular hearing aids. Call today to schedule a no-obligation consultation with one of our highly skilled clinicians!

ANY SIZE, ANY STYLE

From West Texas Labs **\$1495 each** Financing Available

MSRP \$2,700 ea D200 by WTX Labs	MSRP \$2,150 ea D200 by WTX Labs	MSRP \$1,814 ea D200 by WTX Labs	MSRP \$1,650 ea DP 7 by Starkey Labs

Hear Now. 0-Down. Pay Later. 0%-Interest. Hear Now.

You Can't Afford Not To Hear.
Introducing an invisible hearing aid you can afford.

You've never seen anything like it. AMP is designed to fit snugly inside your ear canal, where no one can see it.

It's comfortable and easily removable, so you're in control of your hearing. If you've been waiting for a more affordable alternative to custom hearing aids, it's time to discover AMP, the hearing aid for people who aren't ready for a hearing aid.

Livingston
Audiology & Hearing Aid Center

1-888-820-6601
701 N. Hobart • Pampa

lhac.com

Kameleon
Interchangeable Jewelry

KAMELEON
Change is Natural.

Sophisticated.
Flirty.
Serious.
Complicated.
Playful.

No matter how you're feeling today, there's a piece of Kameleon jewelry or an accessory that can be combined with any JewelDop to create an expression that's uniquely you.

Check out the many new JewelDops available!

Watch for Valentine Pops Coming!

AVAILABLE AT

RHEAMS
DIAMOND SHOP

111 N. CUYLER | 806-665-2831

2009 "BUSINESS OF THE YEAR"