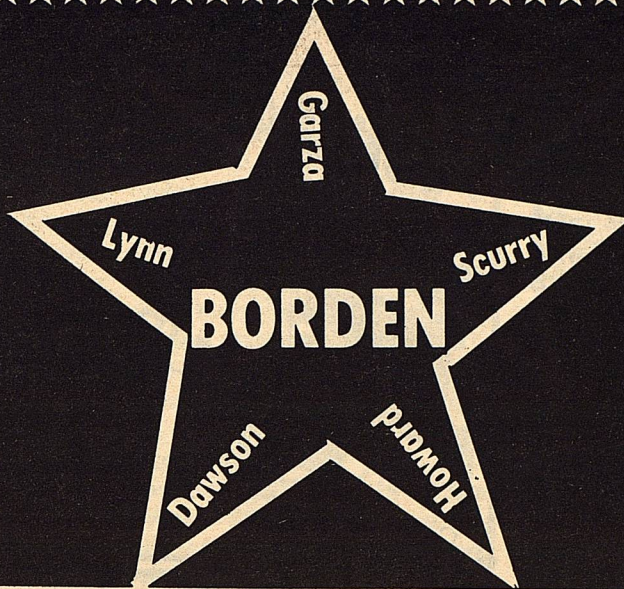


THE

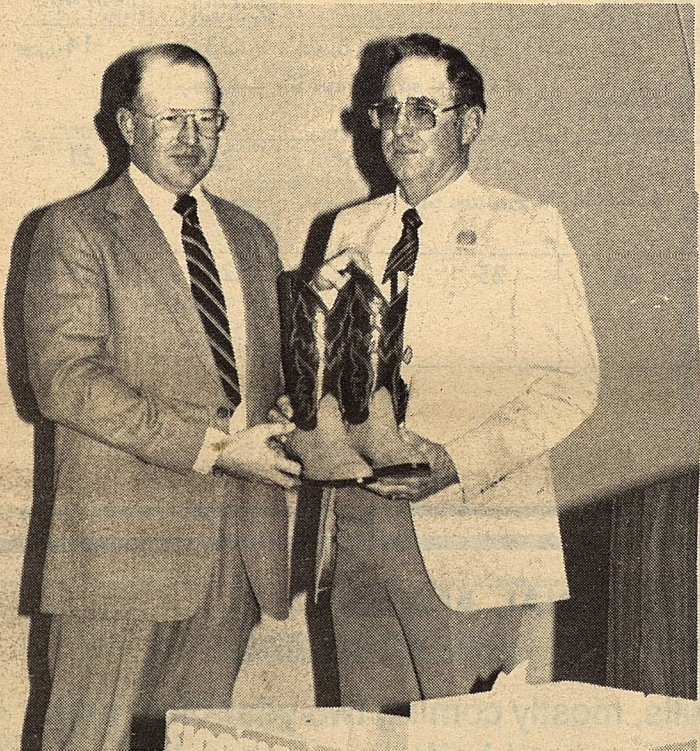
Volume XLII



STAR

February 25, 1987

Serving the Counties of Borden, Dawson, Garza, Howard, Lynn & Scurry



THIRD TIME IS A CHARM- Lady Coyotes Defeat O'Donnell

There were a lot of firsts in Monday night's game against district rival O'Donnell. It was the first year for Class A to have a sub-regional playoff to narrow the regional field down to four teams. It was the first time this year for Borden to have four players to foul out. It was the first time the Lady Coyotes have hit 25 free throws in one game. But most important, it was the first time Borden has defeated O'Donnell this year after two previous losses to the eighth ranked and previously undefeated Lady Eagles. And the convincing 51-38 victory came

at the right time, in the playoffs! Many key factors contributed to what most considered an upset. Although O'Donnell shot more free throws than the Lady Coyotes, they didn't shoot them as well. Kelli Williams put on a clinic in that department as she canned 19 of 22 for the game, 18 of 20 in the second half. As a team, Borden shot just under 80 percent from the line for the game compared to O'Donnell hitting 18 or 33 for 55 percent. Another factor was the bench for both teams as Borden was able to utilize its depth in the win. Kristi Adcock, a freshman,

came off the bench to score 4 points but more importantly gather in nine rebounds before fouling out. Also Tammy Johnson, Lynn Herridge, Kristi Stone, Ralynn Key, and Linda Sternadel played super defense in the second half holding O'Donnell to a total of 14 second half points.

O'Donnell held the lead after one period of play 12-11. Borden soon found itself in foul trouble in the second stanza as three starters, Elana Himes, Kate Phinzy, and Lisha Sternadel each had three personals. Still Borden stayed close as O'Donnell could not take advantage to pg 2

Arlan Youngblood Honored In Fort Worth

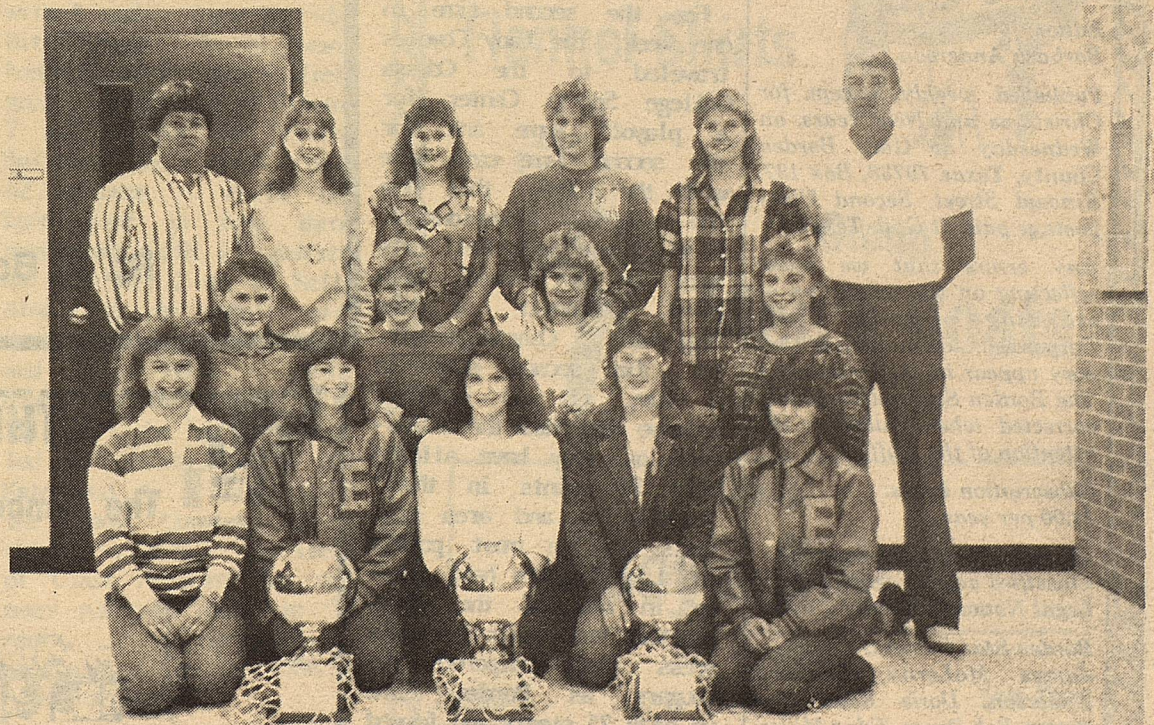
Laresa rancher Arlan Youngblood was honored recently in Fort Worth by members of the Texas Hereford Association. Youngblood, who is the immediate past president of the organization, received a handmade buckle designating his term as the 47th president. Youngblood was also presented with a pair of Nocona boots in appreciation of his service to the THA during his tenure.

Raising Hereford cattle and growing cotton is all Arlan Youngblood has known. He has been doing that and nothing else his entire life, so he has developed a few ideas about how they both can be done practically.

Youngblood was born in 1927 on a farm in northern Dawson County, where he and his dad, the late Alton Youngblood, made a living farming cotton, and today Arlan is a co-owner of the Key-Caprock Gin near Laresa.

This year, 1987, the Youngblood Ranch will celebrate its fiftieth year of producing Hereford cattle and for those 50 years, the ranch has enjoyed a reputation as a quality source of Herefords for both the commercial and registered producer. The first registered Herefords were bought in 1937 and by the late 1960's were one of the first Hereford operations to

to pg 5



LADY COYOTES BEAT O'DONNELL to win Sub-Regional Championship. Coach May, Shelly Lewis, Lynn Herridge, Elana Himes, Linda Sternadel, Assistant Coach - Joe Bond. Front Ralynn Key, Lisa Powell, Tammy Johnson, Kate Phinzy, Kelli Williams, Kristi Adcock, Lisha Sternadel, Kristi Stone and Elvira Balague.

Sub-Regional

from pg 1
of their fortunes and held a 24-21 half-time lead. The turning point came in the third period as Elana Hires fouled out midway through the quarter and Borden was trailing by five. Then O'Donnell began fouling themselves and it was the Kelli Williams show at the line as she connected on 10 of 11 free shots and hit two field goals for all of Borden's 14 points in the period. The defense held O'Donnell to five points, holding leading scorer Stacie Bessire scoreless. The last quarter Borden slowly edged away behind Kelli's 8 of 9 free throws and put back field goals of Kristi Adcock and Linda Sternadel for a 16-9 edge. Kate and Lisha picked up their fifth personals in the fourth quarter. O'Donnell's Bessire, who fouled out in the middle of the fourth quarter was held to a season low 15 points and no other player for O'Donnell had more than 7. Kelli led all scorers with 31 points followed by Elana with 6, Lisha hit 5, Kristi Adcock made 4, Linda and Kate each hit 2, and Lynn made 1. Kristi and Linda led in field goal percentage with 100 percent followed by Lisha with 67 percent. Elana led in free throw

with 100 percent hitting 4 of 4 followed by Kelli with 86 percent making 19 of 22. Tammy Johnson led in assists with 3 and Kelli led in steals with 3. Despite limited playing time, Elana led in rebounds with 14 followed by Kristi with 9.

The win raises Borden's record to 25-4 on the year and drops O'Donnell to 31-1. Borden now advances to the regional semi-finals Saturday morning at 11:00 in Levelland at the Texan Dore. They will meet the winner of the Sundan-Anton game in the second game of a double header. In the first regional game at 9:30, the Nazareth-Happy winner will play the Wheeler-Kelton winner. The Lady Coyotes would like to express their sincere appreciation for the super crowd we had for if it were not for great fans, the game would not have been near as exciting! They would like for everyone to come up to Levelland Saturday morning and support them as the final 16 teams left make a bid for a state title. Congratulations to the Lady Coyotes, 1986-87 Sub-Regional Champions!

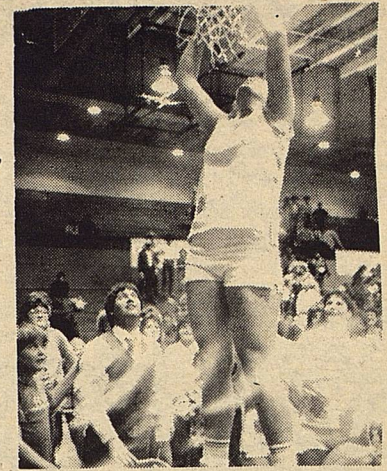
Lady Coyotes Win Area Title

For the second time in one week, the Lady Coyotes traveled to the Odessa College Sports Center for a playoff game and for the second time came home with the trophy, this time the Area Championship. A 43-25 win over Dell City sets up a rematch with rival O'Donnell in the Regional Quarter-finals. For the second game in a row, it was Borden's defense that made the difference as they have allowed only 25 points in the bi-district and area contests. The most points the Lady Coyotes have given up in any of the eight quarters was seven. Borden's press also harpered the Cougars as Borden came up with 25 steals and forced many other turnovers. The Lady Coyotes led after one quarter 12-7 and increased it to a 24-12 half-time

CONGRATULATIONS SUB-REGIONAL CHAMPS



Coach Bill May



Taking down the sub-regional net

February 1987

Sunday	Monday	Tuesday	Wednesday	Thursday	Friday	Saturday
1	2	3	4	5	6	7
	6:00 p.m. J.H. Basketball Boys & Girls Grady - Here	5:00 p.m. H.S. Basketball Boys & Girls O'Donnell - There			5:00 p.m. H.S. Basketball Boys & Girls Grady - Here	UIL Literary Meet Plains I.S.D.
8	9	10	11	12	13	14
	6:00 p.m. J.H. Basketball Boys & Girls Sands - There	5:00 p.m. H.S. Basketball Boys & Girls Sands - There	← 9th Grade TEAMS Test →			
15	16	17	18	19	20	21
			← 7th Grade TEAMS Test →		HOLIDAY	
22	23	24	25	26	27	28
					End of 4th Six Weeks	

JANUARY 1987							MARCH 1987						
S	M	T	W	T	F	S	S	M	T	W	T	F	S
1	2	3	4	5	6	7	1	2	3	4	5	6	7
8	9	10	11	12	13	14	8	9	10	11	12	13	14
15	16	17	18	19	20	21	15	16	17	18	19	20	21
22	23	24	25	26	27	28	22	23	24	25	26	27	28

NATIONAL ANXIETY REGISTERED HEREFORD SALE

Featuring 40 bulls, mostly coming two year-olds, and 40 females — pairs, bred heifers and open heifers.

Monday, MARCH 2
Snyder Ag Complex
SNYDER, TEXAS

For catalog contact:
LELAND WALLACE

Rt. 2, Box 91, Big Spring, Texas 79720
(915) 399-4370

THE BORDEN STAR
Publication No. 895520
(USPS 895-520)
Publication No. 895520

Editor
Barbara Anderson

Published weekly, except for Christmas and New Years, on Wednesday at Gail, Borden County, Texas 79738, Box 137, Kincaid Street, Second Class postage paid at Gail, Texas.

Any errors that we make reflecting on the reputation or standing of any Firm, Corporation, or individual that may appear in the columns of The Borden Star will be gladly corrected when called to the attention of the staff.

Subscription Rates:
\$8.00 per year

Ad. rate: \$2.00 a column inch
Classified ads: 15 cents a word
Legal Notices: 20 cents a word

Borden Star Owners:
James McLeroy, Barbara Anderson, Doris Rudd, Pat Porter, Bob Dyess, Edna Miller, Ruth Weathers, Mrs. Nathan Zant, Sonny Tucker, Eddie Simer, Loreen Jones, Martin Parks, Dan Turner, Lela Porter, Marge Toombs.

THE FIRST NATIONAL BANK

The Symbol of Banking in Big Spring



FULL SERVICE BANKING

Member F.D.I.C.

400 Main Street

267-5513

BIG SPRING, TEXAS

Lady Coyotes Capture Bi-District

After a sluggish cold startstart, the Borden Lady Coyotes heated up in the second half in bi-district action Tuesday night and defeated Sanderson 49-25. Sanderson actually held the lead at the end of the first quarter 4-6, but Borden came back to take a one point lead at half 13-12. As cold as things were from the field in the first half, they

were just as hot in the second half as Borden out-scored the Eaglettes 20-7 in the third quarter and 16-6 in the last. In the last period, Borden connected on 8 of 12 field goal attempts and hit 50 percent of their 16 attempts in the third stanza. Borden finished at 47 percent from the field for the game and 5 of 9 free throws for 56 percent.

Elana Hires, Borden's

5'10" sophomore, was easily the dominating factor of the game as she had a season high 27 points, led in rebounds, and blocked or altered many shots on defense. Six other players scored with Lisha Sternadel hitting 7, Kate Phinizy made 5, Tanny Johnson hit 4, Kelli Williams, Ralynn Key, and Elvira Balague each made 2. Ralynn led in field goal percentage with 100 percent followed by Elana with 68 percent making 13 of 19. Tanny followed with 67 percent. Kelli led in free throw percentage hitting 2 of 2 for 100 percent. Kelli also led in assists with 5 followed by Lisha with 4. Lisha led in steals with 8 followed by Kelli with 6. Elana led in rebounds with 8 and Lisha and Kate each had 6.

Season record for the Lady Coyotes now stands at 23-4 and the win moves them into Area Playoffs against Dell City. The Winner takes on the O'Donnell-Fort Hancock winner. Congratulations to the Lady Coyotes, 1986-87 Bi-District Champions.

Area Title

from pg 2

lead.

Lisha Sternadel led all scorers with 14 points followed by Elana Hires with 10. Kelli Williams had 8 followed by Tanny Johnson and Kate Phinizy with 4 each. Lynn Herridge hit 2 and Shelly Lewis had 1. Lisha led in field goal percentage hitting 7 of 10 for 70 percent followed by Elana with 42 percent. Kelli and Lynn tied in free throw percentage with 100 percent as each hit 2 of 2. Kelli also led in steals with 9 followed by Kate, Lisha, and Elana with 4 each. Elana led in rebounds with 11 and Lisha had 6. Tanny led in assists with 6 and Kate had 4. This raised the Lady Coyotes season record to 24-4. The field of Class A teams has now been narrowed down to 32 teams. Congratulations to the Lady Coyotes, 1986-87 Area Champions!



-H-
Western Wear
3205 College Ave.

FINAL MARKDOWN

75% off

All
Ladies
Winter
Clothing



Men's
Sweaters
and
Flannel Shirts



Group
Men's Coats

Group
Boy's Shirts

EXAMPLE

Regular Coat \$60.00	Sale Price \$15.00
Sweater \$18.95	\$4.75

No Charges, Layaways, Exchanges
ALL SALES FINAL

SCHOOL MENU

March 2-6, 1987

Monday	Corndogs & Cheese Pork & Beans Fruit Milk	Salad Bar
Tuesday	Lasagna Green Beans Little Whole Potatoes Fruit Hot Bread Milk	Salad Bar
Wednesday	Chicken Nuggets Mashed Potatoes English Peas Jello Hot Rolls Milk	Salad Bar
Thursday	Hamburgers French Fries Lettuce & Pickles Brownies Milk	Salad Bar
Friday	Holiday - No Classes	

SHERIFF'S NOTICE OF SALE

THE STATE OF TEXAS
COUNTY OF BORDEN

WHEREAS by virtue of Writ of Execution issued out of the District Court of Borden County, Texas, on the 13th day of January 1987, in Cause No. 881, where Quality Truck Tires, Inc. was Plaintiff, and Bill Flint dba Flint Construction was Defendant, on a judgment rendered in said Court against Defendant and in favor of the said Plaintiff, for the sum of Seventeen Thousand Two Hundred Eighty five Dollars, with interest thereon at the rate of Nine (9) per cent per annum, from date of judgment, together with all costs of suit; I did on the 14th day of January, 1987, at 3:00 o'clock P. M., levy upon the following described lots, tracts and parcels of land situated in Borden County, Texas, as the property of Bill Flint dba Flint Construction to-wit:

Lot 1 (one), Lot 2 (two), Lot 3 (three), Lot 4 (four), Lot 5 (five), Lot 6 (six), in Block 97 (ninety seven) Townsite of Gail, Texas Borden County.
Lot 1 (one), Lot 2 (two), Lot 3 (three), Lot 4 (four), Lot 5 (five), Lot 6 (six), Lot 7 (seven), Lot 8 (eight), Lot 9 (nine), Lot 10 (ten), Block 98 (ninety eight), Townsite of Gail, Texas Borden County.
Lot 11 (eleven), Lot 12 (twelve), Lot 17 (seventeen), Block 39 Townsite of Gail, Texas Borden County.
Lot 7 (seven), Lot 8 (eight), Lot 9 (nine), Block 40 Townsite of Gail, Texas Borden County.
Lot 10 (ten), Lot 11 (eleven), Lot 12 (twelve) Block 26 Townsite of Gail, Texas Borden County.

and on the 3rd day of March, 1987, being the first Tuesday of said month, between the hours of 10 o'clock A.M. and 4 o'clock P.M. on said day, at the courthouse door of said County, and I will offer for sale and sell at public auction, for cash to the highest bidder, all the right, title and interest of Bill Flint dba Flint Construction in and to said above described property.

Witness my hand this the 23rd day of January, 1987
Norman Sneed Sheriff,
Borden County, Texas

Reggie Vaughn Convert

Could I possibly, Nope, I just can't Sun it all up into a few small words of thanks, what a super time I had with all of you last Saturday night, during my concert. Never have I met such a friendly group of people before. We share a great unity together, and that's Jesus Christ .Praise God For ever to those who care to know Jesus in their lives, you are now a born again child of the living God....I can see angels jumping up and down in Heaven right now!

I would like to thank the Borden County School for the use of the nice

conference room. Not many schools these days would allow a place for even one simple prayer to be said, not to mention a Christian Concert. A big thanks to Pastor Ray, Mike and Susan Stephens and the new Creations, your support and prayers put this into full swing, Thanks.

To my friends, your so very special kids, guess ya know I'll never forget you guys...Thanks for your warmth, your love, and your kindness. Thank you for the love offering, I pray that God will Bless it back to you double fold...

In His Love,
Reggie

DIET TIPS FOR SENIORS

As people age, their metabolism slows down, and that can mean extra weight for those who don't watch their calorie consumption. According to Shelley Fillipp, outpatient nutrition counselor at Methodist dHospital, calorie needs decrease 20 percent from age 20 to 60, or 5 percent each decade.

Maintaining proper weight is possible through calorie monitoring and exercise. Special diets that are for controlled fats, diabetes, low sodium or weight control are sometimes necessary as people age.

To achieve a reduction in calorie amounts, some recipes can be adapted to use less sugar and fat, Fillipp says. For instance, the four tablespoons of butter usually called for in prepared macaroni and cheese can be reduced to two with little change in the result. The same practice often can be

applied to many cookie recipes by reducing the sugar by a third to a half.

The important point to consider in fat consumption is the amount of saturated fat. Just because a food item is void of cholesterol doesn't mean it is without saturated fat, Fillipp notes.

Some tips to consider in reducing cholesterol and saturated fat are to:

1. Remember that food preparation methods can affect fat content. Baking, broiling, boiling, steaming or roasting is healthier than frying.
2. Emphasize fish and poultry in the diet. Red meat is higher in cholesterol and fat.
3. Limit egg yolks to three per week. Egg yolks are extremely high in saturated fat and cholesterol.
4. Use skim milk and dairy products made from skim milk. Avoid whole milk dairy products.

5. Cook with small amounts of corn and safflower oil. Avoid butter, lard and other saturated fats.

6. Read all labels and make a list of packaged items that contain recommended ingredients. Avoid all items with coconut oils, palm oil, lard, beef fat and chicken fat used in processing.

EMS NEWS

The regular monthly meeting of the Borden County E M S will be held Tuesday, March 3, 1987, at 6:00 P. M. in the High School Conference Room. A basic C P R Course will be taught by a certified instructor. This is a one night, four hour class. There is no charge for the course and the public is invited.

DONATIONS

Lake Thomas Neighborhood Club

Ruth Weathers MEMORIALS

In Memory of Beno Hendricks: Midge Hendricks

In Memory of Edward Rinehart: Midge Hendricks

Stone Inducted Into Fraternity

Snyder—Can Stone of Gail was among 49 Western Texas College students inducted into Phi Theta Kappa recently.

Phi Theta Kappa is the only nationally recognized honor fraternity for students in junior - community colleges. To be eligible for membership, students must have a grade point average of at least 3.2 while enrolled for a minimum of 12 hours of college credit work. The Psi Zeta chapter at WIC was chartered in 1972

and currently has more than 90 members.

Stone is a graduate of Borden County High School where he was a member of the Beta Club. He also belonged to the Future Farmers of America and 4-H. He is a pre-pharmacy major at WIC and plans to transfer to Southwestern Oklahoma State University following completion of his studies here. He is the son of Dan Stone of Gail.

New Baby

Mr. and Mrs. William Roper of Ackerly are the parents of a baby son. Billy Maurice was born February 17 in Stanton. He weighed 8 pounds and 2 ounces and measured 19 inches long.

Grandparents are Mr. and Mrs. Boyd Roper and Mr. and Mrs. Charlie Pearson. Billy has a young uncle Allen Pearson of the home.

PRAYER CORNER

Father in Heaven,
We give humble and hearty thanks for the President of our nation, the Representatives, the Senators, judges and policemen, mayors and for all the men and women in positions of governmental authority. Lord, we pray that You will help them, lead and direct them with their decisions and especially in times of trouble and uncertainty. Make their hearts open to You for Godly counsel. We ask that You cover our nation with a spirit of Christian unity and please Lord, protect us from evil and ungodly influences.

We believe that You desire for us to lead a quiet life in peace with Your Son, Jesus Christ as our guide and advocate. Our nation was created as "... one nation, under God...." and we pray that the people in our United States will continue to look to You for answers. We thank You that our freedom enables us to read and study the good news of the gospel openly.

In Jesus Name,
Amen

Blessed is the nation whose God is the Lord."
P'salm 33:12
-s- a Reader

Briggs Welding & Muffler Service

267-1488
267-1380
Big Spring, TX 79720

501 N. Birdwell
Across From
Auction Barn

UNDERGOING FACELIFT

BIG SPRING LIVESTOCK AUCTION
P.O. BOX 102
BIG SPRING, TEXAS 79720

<p>OWNERS Ranell Sherrod J.E. Airhart Gayland Airhart Quinton Airhart Alex Fry</p>	<p>Donald Airhart-General Manager Debra Borchardt-Office Manager</p> <p>915 - 267 - 5881 915 - 267 - 3664 915 - 267 - 3665</p>
---	--

Singer gains try on Nashville show

By Shirley A. Gorman
SDN News Editor

A dream is only a dream until it's realized, and that is what Cindy Hataway of Snyder is trying to do.

Since her days as a student at Fluvanna Junior High School, she has wanted to be a nationally recognized professional singer. Now, as a working mother of two boys, she has gained a nationwide TV appearance and a chance to record with a Nashville record company.

Several months ago, on the advice of numerous friends, Hataway decided to enter the "You Can Be A Star Contest" which is aired on the Nashville Network.

She prepared a tape of her singing two country and western songs which she sent, along with a photo of herself, to the producers of the show. The tape was accepted in the first of a long series of steps involved in being accepted as a contestant. Next, Hataway was invited to Nashville in September for a video audition.

She recorded "Dancing Your Memory Away" and "You're The First Time I Thought About Leaving" on the tape she sent to the show.

When the video auditions were reviewed in January, Hataway

was notified that she had passed yet another hurdle in the contest. She has since been asked to return to Nashville on April 9 to tape one of the shows.

"We all get to sing one song for the show and it can't be longer than 2½ minutes long," Hataway explained.

Several shows will be taped on that date and a winner will be declared for each one. The winners of each show will compete against each other and the process continues until a final selection is made.

The overall winner will cut a record with a major recording company and is guaranteed an appearance on the Grand Ole Opry and Nashville Now.

Hataway is not sure of the air date of the show she will be taping next month. She explained that each time you win you have to select a different song for the next phase of the contest.

For each episode of the "You Can Be A Star Contest," three singers compete before three judges. The audience is also given an opportunity to vote.

While taping her segment of the show, she will be backed by Bill Anderson's "Po Folks Band."

Hataway described the video audition in September as "wild,"

See SINGER, to pg 7



CINDY HATAWAY
...to Nashville...

COUNTY AG-AGENT REPORT

DENNIS POOLE

START GARDEN INDOORS

Get your spring garden off to a good start by growing your own transplants indoors.

The key to growing transplants successfully is to plant seed at the proper time so the young plants will be ready to set out when your garden is ready and weather conditions are favorable.

For the best survival and quick recovery after planting in the garden, transplants should be young, sturdy and in good nutritional condition.

Usually four to six weeks is sufficient time to grow most transplants. Vine crops take two to three weeks to develop two to three true leaves while lettuce takes three to four weeks. Tomatoes need five to seven weeks to reach transplanting stage.

To determine the optimum seeding time for most transplants, figure back four to six weeks from the average last spring frost date in Borden County.

Some transplants such as cabbage, cauliflower, broccoli, lettuce and onions can be set in the garden four to six weeks before the last frost date.

When starting plants indoors, use a soilless or synthetic soil mix available at garden centers or nurseries.

Seed can be started in almost any type container such as flower pots, milk cartons or cake pans. Be sure the container has holes for adequate drainage.

Other popular containers are seed flats, peat pots

and peat cubes or pellets.

Once you've got the needed materials and planting time is at hand, fill the containers with the synthetic mix, firm it in well and then water thoroughly.

Space the seed evenly, cover lightly and water again.

To improve germination, slip the container into a plastic bag and placing it in an area at room temperature but out of direct sunlight. Remove the bag when the seed first emerge and place the container in sunlight.

Once the container has been removed from the plastic bag, add water to maintain good moisture. Frequent watering will be necessary but use care to avoid saturation.

When plants are of adequate size and outside conditions are suitable for plant growth, transplant them into the garden area and you've got a jump on the planting season.

SCS NOTES

By Terry Hefner
Soil Conservationist

The Secretary of Agriculture has approved new criteria for use in defining highly erodible land for the Conservation Reserve Program signup February 9-27.

Any land that was eligible in 1986 will be eligible in 1987. That includes land that is in Land Capability Class VI, VII, or VIII, and was farmed two years between 1981 and 1985 to

an annual crop or alfalfa.

Cropland in Class II through V is eligible if it is eroding greater than three times the soil loss tolerance level and was farmed two or more years between 1981 and 1985.

Land in Class II through V Having a predicted average annual soil loss of two times the soil loss tolerance or greater with a serious gully erosion problem is also eligible.

Another kind of land will be eligible in 1987 and it will be the only criteria used in future years. This will be highly erodible land that has both an erosion index of 8 or greater and had an erosion rate greater than that recommended by the Soil Conservation Service Field Office Technical Guide during the 1981-85 base period.

An EI of 8 identifies an area of land that has the potential to erode at more than 8 times the rate at which soil can maintain continued productivity.

The February signups will be used to accept applications for both 1987 and 1988 contracts.

So here is what all this really means: if you have land that does not have an EI of 8 but is eligible for CRP under the 1986 criteria, this is your last chance to offer to place land in the reserve.

Farmers who have small grain growing on their land face another dilemma. If they harvest the grain, they will not be able to place land in the CRP until 1988.

To stay eligible for farm program benefits, highly erodible land will need a conservation plan by January 1, 1990 and planned practices will need to be completed by 1995.

ASCS NEW By Jerry Stone

CONSERVATION RESERVE SIGNUP (CRP)

Signup for the 1987 or 1988 Program began on February 9th and will continue thru February 27th. If you are interested in placing highly erodible cropland into this program, and if your bid is accepted, you will be eligible to receive cost sharing payments of up to 50 percent of the eligible costs to establish a cover crop not to exceed \$55 per acre. Producers whose bids are accepted, will receive an annual rental payment for a period of 10 years and exceed \$50,000. These contracts that you sign at the time that you place your bid are binding if your bid is accepted.

IMPORTANT... Before bidding the land into the CRP Program. Each of you should check with your accountant to see how the annual payment will affect your social security. **1987 FARM PROGRAM SIGNUP**

1987 FARM PROGRAM SIGNUP

Signup for wheat, cotton, and feed grain will continue thru March 30th. Advance payments may be requested at the time of signup.

REMINDERS:

All signatures must be in the County Office by April 10th.

All new entities must be in effect by March 1st.

All ASCS - 561 forms must be completed by April 15th so that the County Committee can make their determination.

1987 Conserving Use (CU) acres may be hayed or grazed with no restrictions; however the ACR (Set-aside) can not be baled anytime, but may be grazed except for a five month non-grazing period (April 1 thru August 31st).

1986 FINAL DEFICIENCY PAYMENTS

You should receive the final 1986 cotton deficiency payments within the next few days. We will start issuing them as soon as we have verified all the information. The final rate was announced at the maximum of 26 cents.

CCC LOANS

Final date to request CCC Loans are:

Wheat-March 31st.

Grain Sorghum-May 31st

Cotton - May 31st

FOREIGN LAND

All Foreign land owners must report the purchase of land to this office.

CHANGE IN FARM

Please contact this county office if you have made any changes, address, ownership, operators or whatever so we can keep our county office records up to date.

FriHA ACCEPTING LOANS

Producers in Borden County are eligible for Farmers Home Administration disaster emergency loans. Generally, that means that farmers who have lost at least 30 percent of their production due to the drought are eligible for FriHA Loans. Proceeds from crop insurance and the PIK program are taken into account when determining eligibility.

FriHA County Supervisor, Claude Roper, is urging farmers who are interested in receiving an emergency loan to get their application in to FriHA as soon as possible. Claude said, "We hope farmers will get their applications in early rather than waiting until August 12th. The longer they wait, the more chance there is for long delays in getting their checks. If the applications come in early, we can avoid backlogs and speed up the process. The FriHA Office is at 109 NE 3rd, Seminole Texas, phone number 915-758-3254.

Truckload

Fabric Sale

Sponsored by: Borden County 4-H
Monday - March 9, 1987
9:00 a.m. - 6:00 p.m.
4-H Exhibit Building

NOTICE OF AVAILABLE FUNDS

The Permian Basin Regional Planning Commission's Area Agency on Aging (AAA) is accepting applications for provision of supportive services such as information and referral, transportation, outreach, in-home services (such as homemaker and chore maintenance), legal services, and congregate and home-delivered nutrition services through senior centers or other social service agencies for persons 60 years of age and older under Title III of the Older Americans Act for the 17 county Permian Basin Region. The eligible counties are: Andrews, Borden, Crane, Dawson, Ector, Gaines, Glasscock, Howard, Loving, Martin, Midland, Pecos, Reeves, Terrell, Upton, Ward, and Winkler. The contract period begins

October 1, 1987 and ends September 30, 1988.

To apply for these funds, the applicant agency must complete a grant application which is available at the area agency office. The deadline for receipt of the application is 4:00 p.m., Friday, March 20, 1987. A meeting for interested service providers will be held Tuesday, February 17, 1987 from 9:00 a.m. to 3:00 p.m. at the Permian Basin Regional Planning Commission's offices located at 2514 Pliska Drive, Midland Regional Airport, Midland, Texas.

For further information on the application and the application process, contact the Permian Basin Area Agency on Aging, P. O. Box 6391 ATS, Midland, Texas 79711, telephone (915) 563-1061.

Singer slated for Nashville show

Continued from pg 4

requiring her to make a quick trip to Nashville, then to return to Snyder in time for her area singing engagements. She sings twice a week in Sweetwater and occasionally sings in Colorado City—when time and scheduling permit.

While making the video, she recalls getting lost while trying to find the ladies restroom, ending up on the stage of the Grand Ole Opry and asking Roy Acuff for directions.

Traveling to Nashville was not a new experience for Hataway since she had cut two singles there in 1974 and she also recorded two albums there.

Hataway admits to feeling pressured by the contest. "I'm going down there with some weight," she said. "If I lose I will feel like I have let all the people here down."

She finally decided to enter the contest, she says, because, "I don't want to have to say 'what if.'"

Hataway tries to instill this same attitude in her two boys, Royce, 16, and Ross, 11. "I'm always telling them to reach for the stars," she said.

Hataway began singing with her sister, Donna Patterson Smith, while she was in junior high.

After high school, Hataway put her singing on hold while she pursued other interests. However, the dream to be a singer never completely died and, in 1973, she started again.

She was asked to sing at a local Farm Bureau banquet. Later, she entered the Farm Bureau talent contest and won first the district, then the state contest in Abilene. She went on to perform at the national Farm Bureau gathering in New Jersey in January of 1974.

In 1976 and 1980, she provided the special entertainment at the Farm Bureau state convention.

In 1978, she performed at the Odessa Opry and was voted best vocalist of the year.

She also performed at the Grapevine Opry and was nominated for best female vocalist for two consecutive years.

She has also performed at Johnny's High Country Music Revue in Fort Worth.

Through it all, she has raised her family. For the past five years, she has been employed as the clerk-secretary for the Scurry County Health Unit.

Even with her experience, she admits singing before an audience still makes her nervous. After a couple of songs, however, she begins to "relax and enjoy the audience."

"I think it's normal to have butterflies before a performance," she said.

While Hataway is enthusiastic about the contest, she says she is prepared for the final outcome "either way."

"When I was in Nashville, I heard about contestants who were ready to junk their jobs for the Nashville scene. I'm not that way," she said.

Work Schemes

Here are three elements of a lottery - consideration, prize, and chance. In typical work at home promotions involving stuffing envelopes, the consideration is usually called an "application or introduction fee" or could be the price of a "startup kit." Consideration in multi-level marketing schemes is the money paid to a promoter in order for the participant to become a distributor and to recruit new distributors. The prize is always the promise "big money" that can be made quickly after the promotion has progressed several levels, and the chance is that investors will not recruit all the people necessary to fill the pyramid and recoup the initial investments much less earn the "big money" prize. In fact, the chance that all participants will receive mail is mathematically impossible. If a scheme requires participants to mail to six new participants, who in turn must mail to six, etc., by the eleventh level of mailing, the entire United States population would be exhausted; and by the thirteenth level, the world population (over four billion) would be exhausted.

The U. S. Postal Inspection Service, who investigates mail fraud and Postal Lottery Statute violations, says that promoters as well as participants in work at home fraud schemes can be found in violation of Federal law even if they did not realize the promotion was illegal when they first got into it. If you receive information about a work-at-home promotion you feel may be in violation of the law, turn it in to your Postmaster or mail it to the Postal Inspector in Charge, P. O. Box 162929, Fort Worth, TX 76161-2929. Remember, if it sounds too good to be true -- it probably is.

LEGAL NOTICE

The Board of Trustees of the Borden County Independent School District hereby gives notice of an election to be held on April 4, 1987 for the purpose of electing two School Board Members. The terms of Jack McPhaul and Jon Monger expire on April 4, 1987.

Anyone interested in having their name placed on the ballot should file an application in the office of the Superintendent. The deadline for placing names on the ballot is March 4, 1987.

WESTERN SEED & DELINTING

Certified Cotton Seed

Paymaster 145, 303, 404, 792

Coker 3131, S110, 500

Terra 383, SR-10, SR-482

SP-21, SR-215, CAMD-E

CAB-CS

COTTON
PLANTING SEED

ACID
DELINTING

Wheat
Grain Sorghum
Hay Grazer

Wheat & Oats Cleaning

LAMESA, TEXAS
RON BUTLER

BUSINESS PHONE
(806) 872-8896
(806) 872-5388

RESIDENCE PHONE
(806) 872-5271



Visit Our Deli

Party Trays Pastries Custom Cakes

710 N. 4th

Lamesa

PROSM TEXAS A NEW OPTIONAL CALLING PLAN FROM AT&T

On November 13, 1986 AT&T Communications of The Southwest, Inc. ("AT&T") filed with the Public Utility Commission (PUC) of Texas to introduce a new intrastate, optional calling plan, PRO Texas. A comparable interstate plan, known as PROSM America, is currently available to Texas customers.

PRO Texas gives Texas consumers an opportunity to save money on direct dialed in-state long distance calls.

Customers who choose this new AT&T plan will receive a 10% discount on all AT&T intrastate direct dialed station calls by paying a monthly charge of \$15.00.

The PRO Texas discount applies to calls placed during all rate periods and all days. The discount is in addition to the AT&T intrastate evening discount of 25% and the night/weekend discount of 40%. A one time charge of \$6.00 will be billed to initiate the service. However, this charge will be waived during the first 90 days that the offering is available.

PRO Texas will be available to all Message Telephone Service customers in Texas. AT&T estimates that it will generate revenues in the first year of almost \$8 million, which is .7% of AT&T's annual revenues for all Texas intrastate service.

The PUC has assigned Docket No. 7194 to this proposed service offering. The proposed effective date for PRO Texas is March 16, 1987. Persons who wish to intervene or otherwise participate in these proceedings should notify the PUC as soon as possible. A request to intervene, participate, or for further information should be mailed to the Public Utility Commission of Texas, 7800 Shoal Creek Boulevard, Suite 400N, Austin, Texas 78757. Further information also may be obtained by calling the Public Utility Commission Consumer Affairs Division at (512) 458-0223 or (512) 458-0227, or (512) 458-0221 teletypewriter for the deaf.



SMService Mark of AT&T

Branon Funeral Home

Service in this area since 1922.

Phone: 872-8335

403 N. Austin - Lamesa

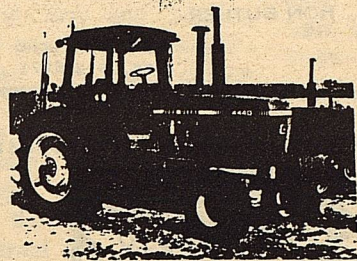
AUCTION

Ed Rinehart & Guests
Farm Equipment & Vehicles
Saturday, February 28, 1987
10:00 A. M.

Location: Sale will be held in Gail, Texas, which is located halfway between Snyder and Lamesa on Hwy. 180. Actual sale site will be at the Borden County AG Barn at the Gail School. Motel accommodations are available at Snyder or Lamesa.

TRACTORS

- 1 J. D. 4640 (80) Diesel Quad Range Cab Air Cond. Dual Wheels 3358 Hrs.
- 1 J. D. 4440 (82) Diesel Quad Range Cab Air Cond. 1570 Hrs. (very clean)
- 1 3588 IH (81) Diesel 1300 Hrs. Cab Air Cond. Sheded PTO (very nice)
- 1 J. D. 4020 (68) L P New Rubber
- 1 Ford 6000 Diesel
- 1 J. D. 4020 (67) L P
- 1 J. D. 3020 (66) L P
- 1 David Brown Diesel (74) 995
- 4 8N Ford Tractors (Gas)
- 1 M F 65 L P



EQUIPMENT

- 1 J. D. 6 Row Planter (Good)
- 1 J. D. Rotary Hoe (400)
- 1 J. D. Hayme Plow
- 1 J. D. Dirt Mover 10 ft.
- 1 Athens Offset Disc (166)
- 1 CMC Module Builder Model 3273 (Like New)
- 1 J. D. Hayme Plow (1100)
- 1 7 Shank Chisel Plow (Big DX)
- 1 Browne Bros. Plow
- 1 Tandum Disc Drag
- 1 Oliver 6342 Roll over Breaking Plow
- 1 Sand Fighter
- 1 Clod Buster
- 1 Folding Tool Bar
- 2 283 Cotton Strippers
- 1 4 Row J. D. Planter
- 1 2 Row Caldwell Shredder
- 4 Cotton Trailers
- 1 2 Row MF Planter
- 1 Rotocycle Shredder 2 Rows
- 1 2 Row Case Planter
- 2 Ford 4 Row Cultivators
- 1 Ford 2 Row Cultivator
- 1 J. D. 2 Row front mount Cultivator
- 1 M M 8 Disc Oneway
- 1 13 Shank M F Tiller Plow
- 1 3 Row Lister & Bar
- 2 9 Row Drag Type Sand Fighters
- 1 11 Shank Athens Chisel Plow
- 1 3 Bottom 14 ft. Ford Moldboard
- 1 4 Row Tool Bar
- 1 2 Row Set J. D. Rotary Hoes
- 1 2 Bottom J. D. Moldboard
- 1 8 ft. Moline Oneway
- 1 1000 Gal. Water Tank Tandum Trailer (Like New)
- 1 20 ft. Spring Tooth Harrow
- 1 8 Row Hemby Rotary Hoe
- 1 2 Row 3 pt. Cultivator
- 1 2 Row Planter 3pt.
- 1 Little Rhino Blade
- 1 Boss Irrigation System
- Several Lots Plow Sweeps
- Hydraulic Hoses
- Boxes Bolts Nuts
- 3 500 Gal. Fuel Tanks & Stands
- 2 Grain Drills
- 1 150 Gal. Diesel Tank
- 1 500 Gal. Propane Tank

VEHICLES

- 1 1981 Ford F800 Grain Bed 18 ft. Dump Scotty Lift 56,000 miles (very clean)
- 1 1972 Diamond Reo 3 Ton with clements 28 ft. Dump
- 1 1971 I. H. 5 yd. Dump
- 1 1972 Ford 3 Ton Garbage Truck
- 1 1971 Chev. School Bus
- 1 1961 Chev. School Bus
- 1 1976 Chev. Suburban
- 1 1973 Chev. Suburban (4 wheel drive, new motor)
- 1 1974 Chev. Suburban
- 1 1976 GMC Suburban
- 1 1976 Pontiac Stationwagon
- 1 1973 Pontiac Stationwagon
- 1 1978 Pontiac Stationwagon
- 1 1970 Dodge 3/4 ton Pickup
- 1 1965 Ford 1/2 ton Pickup
- 1 1974 Ford 3/4 ton Pickup
- 1 1974 Ford Truck with 5000 Gal. stainless Steel Tank
- 1 1973 Mack Truck 350 Eng. Tractor
- 1 36 ft. Lutkin Float
- 1 1979 Cadillac 4 Door Fleetwood
- 1 1981 Ford Thunderbird
- 1 1977 Merc. Grand Marque
- 1 1977 Chev. 1/2 ton Pickup (L P)
- 1 1981 Chev. Monte Carlo
- 1 1949 Buick 4 Door (Antique)
- 1 1977 Linc. Town Coupe (nice)
- 1 1972 Jeep CY5
- 1 1952 Jeep
- 1 1979 CJ5 Jeep (rebuilt engine)



COMBINE

- 1 G Gleanor Combine with Header Trailer

TRAILERS

- 1 Demco 8 x 30 Dual Tandum vac/Hyd. Gooseneck
- 1 Hickoryking 8 x 20 Flat Gooseneck
- 1 5 x 16 Hale Stock Trailer Covered
- 1 McQuerry One Horse Trailer

MOTOR CYCLES

- 1 1980 Goldwing Honda (Limited) 8000 miles (very good)
- 1 450 CL Suzuki
- 1 3 Wheeler

TRAVEL TRAILERS

- 1 1982 Country Squire 35 ft. 5th. Wheel Travel Trailer (real nice)
- 1 1980 Terry R-Travel Trailer 27 ft.
- 1 1971 Unique 25 ft. Travel Trailer

WOOD WORKING TOOLS EQUIPMENT

- 1 Craftsman Comb. Sander
- 1 Craftsman 12" Band Saw with stand
- 1 Craftsman Joiner with stand
- 1 Craftsman Shaper with stand
- 1 Craftsman Radial Arm Saw with stand
- 1 Wards Radial Arm Saw with stand
- 1 Black and Decker 3/8 Drill
- 1 Blackwell Sweeper 9517-H Gas Motor
- 1 Reese Spudder G-25378 Gas Motor
- 1 Ingersoll Rand 2" Air Ratchet
- 1 Sears Shop Vac
- 4 Air Compressors
- 10 Electric Extension Cords
- 1 Century 100,000 BTU Heater
- 1 17" Tool Box
- 1 20" Tool Box
- 1 Mechanic Tool Box
- 50 3/8 Boomers
- Tools
- Misc. Cabinets

Several lots of new Moline and Massey-Ferguson parts, chains, new disc, plow points, cutter blades, Athens disc parts etc.

CONDITIONS

Everything will be sold as is, where is, with no Guarantee or Warranty. Close inspection before sale would be advised.

TERMS

Cash, Cashiers Check or Personal and Company checks with Bank letter of Guarantee. All sales are final.

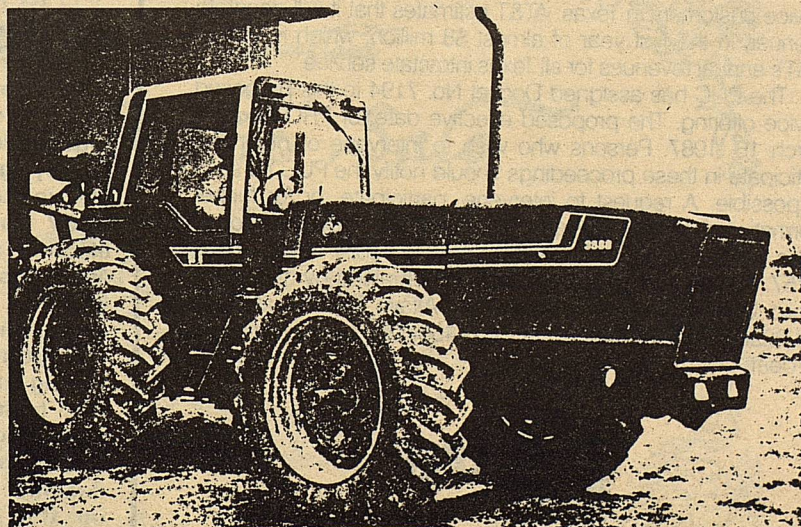


Sheriff Sale

For Information call: Sheriff Sneed, Gail, Texas. The following personal property will be sold, Feb. 28, 1987, following the Rinehart Farm Sale. This property belonging to Flint Construction Company.

- 1 12 x 12 ft. building
- 1 16 x 32 ft. building
- 1 Dune Buggy
- 1 1970 1 ton Dodge truck (stack bed)
- 3 Butane Tanks
- 4 210 Barrel Oil Tanks
- 2 350 Barrel Tank (on skids)
- 1 1971 25 ft. Unique Travel Trailer
- 1 Lot Pallets
- 1 Lot Fuel Tanks
- 1 14 x 56 2 bedroom Carriage House Mobile Home
- 1 14 x 66 3 bedroom Manatee Mobile Home
- 1 29 ft. 24 in. tin horn
- 1 30 ft. 30 in. tin horn
- 1 12 ft. 12 in. tin horn
- 1 11 ft. 18 in. tin horn
- 1 Lot Timbers
- 1 500 Gal. fuel tank on stand
- 3 Old tanks
- 1 Lot Junk Iron
- 1 4 Wheel Trailer J. D.
- 3 1000 Gal. Water Tanks (tandum axle)
- 1 Dynamark Lawn Mower
- 2 Light Poles
- 1 Satellite Disc
- 1 Dog House
- 1 Horse Walker
- 2 Yearling Horse Colts
- 1 3 year old Sorrel Mare
- 1 5 year old Dun Mare
- 1 6 year old Dun Mare
- 1 10 year old Dun Gelding
- 1 Wheel Barrow
- 2 6 ft. Water Troughs
- 2 Saddles

- Misc. Horse Tack
- 218 ft. 8 in. Casing
- 154 ft. 14 in. Casing
- 55 ft. 16 in. Casing
- 90 ft. 3 in. Fiberglass Pipe
- 4 Highline Poles



Sale Conducted By:
PLUMMER AUCTION CO., INC.
 (Since 1962) TXE-037-0480
 P. O. Box 926
 Henderson, Texas 75652
 (214) 657-5961
 Gail, Texas (915) 856-4475
WE WORK A LITTLE HARDER FOR YOU!