

CHILDERS LEVELING
HOUSE LEVELING
 Uneven Floors
 Floor Bracing
 Cracks In Bricks
 Sticking Doors & Windows
 Interior Wall Cracking
FREE ESTIMATES
1-800-299-9563
 WWW.CHILDERSLEVELING.COM

DOUG BOYD MOTOR CO.
 Corner of Hwy 90 & 75 • Call 956-282-5222
 Buy Here, Pay Here, No Credit Check, Visa & Mastercard Accepted.
 Go to our website at: www.dougboymotor.com

We will beat any
 legitimate bid by
\$12⁰⁰ - \$25⁰⁰
 on any product
 that we carry!
Proper Floor Maintenance
Proper Floor Maintenance
 301 S. Caylor, Pampa, TX • 609-7001

The PAMPA

*****AUTO**MIXED ADC 750
 0000471 12/31/2020
 HERITAGE ARCHIVES
 2195 BRITANNIA BLVD STE 102
 SAN DIEGO, CA 92154-6290



Tuesday, Jan. 31, 2012 www.thepampanews.com Volume 107 • No. 246

75¢ Play The Pampa News' **GRIDIRON** **Punching their tickets?**
 \$1.50 weekend Predict the big game | pB2 Lady Harvesters look to make playoff reservations | pB1

County's restoration fund to cover courthouse fixes

Gray County denied money from THC, but restoration will still move forward

MOLLIE BRYANT
 mbryant@thepampanews.com

Despite hopes for \$1.1 million that would go towards completing the Gray County Courthouse restoration, the county was not among those awarded courthouse restoration grants by the Texas Historical Commission. However,

Gray County is not alone, as Panhandle counties Armstrong and Lipscomb also were not among the 13 recipients of \$21 million worth of matching grants. "We'd been accumulating resources for this purpose for a while now, but felt if we could get the grant, it would be fantastic," said Judge Richard Peet

of Gray County. "It's OK. We'll keep plodding along." The county's restoration fund will now cover the restoration, which involves replacing the building's doors, including a revolving door on the east entrance. The county also will restore the district courtroom balcony, which was taken out in the 1950s. "We'll replace the balcony to the way it was," said Peet. "It's just a matter of opening it up again, and replacing it back to its original design." The county received \$3.8 million

from the state to fund the building's restoration in 2003, but the doors and balcony remained to be restored. When the county will begin the next step in the restoration depends on another one of its projects — the rebuilding of the Perry Lefors Airport terminal building. Gray County plans to utilize the current terminal building for storage. "We'll get started as soon as we get the terminal building relocated to Precinct 2," said Peet. "We'll put it on a slab, partition it off, use it for storage and then empty the balcony."

UNDER THE HOOD



staff photo by Mollie Bryant
No, that crane isn't Harvest Bible Church roof. The church's windows are undergoing repairs, with Harley Knutson (bottom left) treated to a front row seat.

Weekend traffic stops yield pair of drug arrests

MOLLIE BRYANT
 mbryant@thepampanews.com

Deputies with the Gray County Sheriff's Office arrested two suspects for possession of drugs following traffic stops last weekend. According to a report from the Sheriff's Office, deputies performed a traffic stop near the intersection of Ballard and Francis at around midnight on Sunday, Jan. 29.



Grimes

The driver, Billy Michael Grimes, 50, of Pampa, was attempting to conceal an item that turned out to contain about six grams of crack cocaine. Grimes was arrested at 12:42 a.m. and charged with possession of a controlled substance over four grams but less than 200 grams. He was released on a \$20,000 bond.



Davis

Sunday morning around 10 a.m., deputies performed a traffic stop on I-40. When the driver, 27-year-old Lawrence Steven Davis Jr. of Jonesboro, Ga., showed signs of nervousness, deputies asked to search the vehicle. They found about six pounds of marijuana.

DRUGS cont. on page A3

Turner continues Pampa growth

So far, close to 50 people at local branch

THE PAMPA NEWS

After starting up an office here in September, Turner Energy Services is continuing its expansion in the Pampa area, according to yard manager Kevin King. "Our plans are still in the works," he said. "We've got a lot of new equipment coming in, and we've hired a lot of local people here." So far, the oil field service company has hired between 42 and 50 people at its Pampa location, including yard, field and office managers, and mechanics. Turner expects to grow

to 100 employees in the future, the majority of which will be truck driving positions. Turner's remarks are in line with previous statements made last year by Billy Hickman, Turner Energy Pampa manager, who had projected that the company would be hiring 100 people within a year. Turner Energy Services first announced its expansion into Pampa in August. The company, a division of Complete Production Services, is already present in the Panhandle, with branches in Borger, Canadian and Wheeler.

STATE REDISTRICTING CHAOS Redistricting negotiations stall

THE PAMPA NEWS

SAN ANTONIO (AP) — Settlement talks aimed at creating interim maps for an April 3 primary seem to have stalled, says the attorney for one of the largest plaintiff groups involved. Luis Vera, representing the League of United Latin American Citizens, said talks have broken down between the Texas attorney general's office and Democratic and minority plaintiff groups. He said if he had to bet, he wouldn't put money on an agreement being hammered out by Monday, the deadline set by the San Antonio panel of judges for all sides to agree on maps if they want

an April 3 primary. Voters statewide have been thrown off by the uncertainty regarding the primaries, as many election offices across the state — including Gray County's — have not been able to send out voter registration cards as a result. "Everything broke down yesterday," Vera said Monday afternoon. "Whether it resuracts, I don't know." Meetings were held in Austin and San Antonio over the weekend, and there was talk of a possible agreement as early as today. But it appeared that the AG's office wasn't meeting with all the plaintiff groups, sparking concerns that

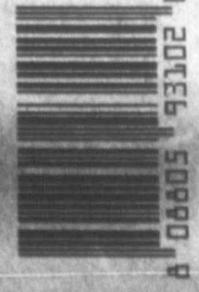
REDISTRICTING cont. on page A3

M & H Leasing
TOP OF TEXAS
CL
SIGN THE PLEDGE
 Receive free "Don't Text and Drive" finger bands.
 1945 N. Hobart • 665-2061

Total Care Health
 Caring & Effective Health care
 for Your Entire Family
(806) 688-2273
 • Family Care • Urgent Care
 Insurance, Cash, and Medicare
Matthew Gill, RN, FNP-C
 701 N. Price Rd.
 Pampa, TX 79065

HouseHunters Realtor
 Linda Laycock Associate
 (806) 882-1312
 Larry Hadley Associate
 (806) 662-2779
 Jordan O'Neal Associate
 (806) 670-6623
 Tisha Holman Associate
 (806) 440-4153

IN THIS ISSUE:
 Obituaries 2A
 Local Record 2A
 Weather 2A
 Morning Rush 3A
 Viewpoints 4A
 Comics 5A
 Puzzles/Dear Abby 6A
 The Savage Truth 6A
 Classifieds 7A
 Gridiron Mania 2B, 3B
 Sports 4B



PAMPA FORECAST

Today	Wednesday	Thursday
High 59 Low 33	High 58 Low 32	High 56 Low 30

Today: Mostly sunny, with a high near 59. Wind chill values between 25 and 35 early. North northwest wind between 10 and 15 mph, with gusts as high as 20 mph.

Tonight: Partly cloudy, with a low around 33. East wind 5 to 10 mph becoming north.

Wednesday: Mostly sunny, with a high near 58. North northwest wind around 5 mph.

Wednesday Night: Mostly clear, with a low around 32. East northeast wind 5 to 15 mph becoming south southwest.

Thursday: Mostly sunny, with a high near 56. South southwest wind around 15 mph, with gusts as high as 20 mph.

Thursday Night: A slight chance of rain and snow. Mostly cloudy, with a low around 30. Blustery, with a north northwest wind between 15 and 25 mph, with gusts as high as 30 mph. Chance of precipitation is 20 percent.

() This information brought to you by...

PRESTIGE

AUTOBODY & ACCESSORIES

101 S. HOBART 806-665-3500

GREAT VALENTINE'S DAY GIFTS!!
DETAIL OR BEDLINER

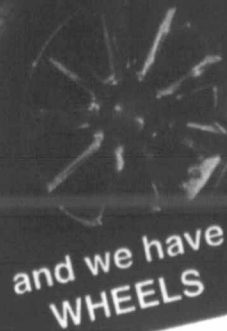
LAST MINUTE ADS

The Pampa News is not responsible for the content of paid advertisement

CERAMIC TILE, also Tumbled Stone- Showers, Countertops, Floors, Tub Surrounds. 26 yrs. exp. Call Keith Taylor, 874-1779 lv. msg.

The Right Tires For Your Car

The proper tires will optimize your vehicle's gas mileage and performance. We have a complete selection of in-stock and special-order tires from every major manufacturer, all at competitive prices. Talk to our experts today about the right tires for your car.



We have ALL MAJOR BRANDS of Tires...

- Passenger
- Light Truck
- Agricultural
- Tractor

Free rotation & balance with purchase of 4 for the life of the tire.



Installing Peace of Mind
1800 N Hobart
665-5302
hudsontirepros.com

TRUSTAR

1712 N. Hobart • (806) 665-4595
Non-Litery Broker

228 W Brown
665-5710
or 665-1360
www.uhaul.com

WINK'S U-HAUL

- Automatics • A/C • Power Steering • AM/FM Radio
- Low Cost Moving Protection Plan
- One-Way Rentals U.S. & Canada Mileage Included
- FREE 24-Hour Road Service • Auto Transports & Tow Dollies
- Complete Line of Moving Supplies & Towing Accessories
- Prices as Low as * \$9.95 Per Day (* plus mileage)

2350

Pampa Realty Inc. 669-0007



- Jim Davidson (BKR/OWNR)..... 662-9021
- Linda Lapacka..... 662-9611
- Andrea Walling..... 664-6227
- Zeb Sailors..... 664-0312
- Donna Courter..... 595-0779
- Katrina Bigham..... 898-8510
- John Goddard (BKR)..... 595-1234
- Sandra Schuneman (BKR)..... 662-7291



Real Estate For The Real World

Each Office Independently Owned and Operated
www.pamparealtor.com

IGLESIA BAUTISTA
EMANUEL

Servicios de Domingo

Escuela Dominical: 10:00am
-Adoración: 11:00am
-Servicio de noche: 6:00pm
Servicio Miércoles: 6:00pm

¡Jesus Vive!

Venga ver
1021 S. Barnes
665-4330

Pastor
Willy Jaramillo

Obituaries

Shirley Joe Emerson Winborne, 75

Shirley Joe Emerson Winborne, 75, died January 29, 2012, in Pampa.

Services will be at 10 a.m. Wednesday, February 1, 2012, at First Christian Church, with Rev. Barry Loving, pastor of First Christian Church of Amarillo, and Dr. Jeff Knighton, pastor, officiating.

Burial will be at Fairview Cemetery under the direction of Carmichael-Whatley Funeral Directors.

Mrs. Winborne was born April 26, 1936, in Dumas. She came to Pampa in 1938 from Sunray, graduating from Pampa High School in 1954. Shirley married James Thomas "Speck" Winborne on June 19, 1953, in Pampa. He preceded her in death in 2002. She was a member of First Christian Church where she served as director of membership for 37 years, and was elected "Elder Emeritus." She served on the Genesis House board, was on



Winborne

the original board and founding officers of Hospice of the Panhandle, was awarded the Beta Sigma Phi Woman of the Year in 1990, and served as hospital chaplain at Pampa Regional Medical Center for many years. Shirley was secretary of the Pampa Ministerial Alliance for over 6 years, was a member of the Knife & Fork Club, the Pampa High School Band Boosters, and the Pampa Boat and Ski Club.

Survivors include two daughters, Gaylene Bradley and husband James, and Jamie White and husband Scott, all of Pampa; a son, Tommy Winborne and wife Jamie of Pampa; a sister, Carla Blair and husband Kenneth of Carlsbad, N.M.; six grandchildren, Amy Ladd and husband Aaron and Abby Foster and husband Lincoln, all of Keller, Morgan Baldrige and husband Blake of Amarillo, Britton White and wife Megan, Natalie Winborne and Jaycee Winborne, all of Pampa; three great-grandchildren, Rhett Ladd and Grant Ladd, both of Keller, and Sailor Baldrige of Amarillo. Shirley was preceded in death by her parents, Carl and Ola Faye Emerson; and a sister, Mary Jane Brown.

Memorials may be made to First Christian Church, 1633 N. Nelson, Pampa, TX 79065

Sign the online register at www.carmichael-whatley.com.

For the record

Police Department

The Pampa Police Department reported the following incidents for the 72 hour period ending Monday, January 30 at 7 a.m.

Pampa PD reported 81 traffic related incidents.

Animal Control officers and the Pampa PD reported 21 animal related incidents.

Pampa EMS, the Pampa Fire Department and the Lefors Volunteer Fire Department reported 18 medical incidents.

Friday, January 27

A suspicious person was reported at the 900 block of Duncan.

A burglary of a motor vehicle was reported at the 1800 block of North Zimmerman.

An offense against family and children was reported at the 400 block of East Browning.

Endangerment of a child or elderly person was reported at Lefors and Browning.

An accident occurred at the 1500 block of West Kentucky.

Criminal mischief was reported.

A suspicious person was reported at the 100 block of

East Harvester.

Disorderly conduct occurred at the 1300 block of Terrace.

A stolen vehicle was reported at the 1800 block of North Hobart.

Suspicious persons were reported at the 1100 block of North Williston and the 1300 block of North Hobart.

Criminal mischief was reported at the 800 block of North Hobart.

A burglary occurred at the 800 block of North Nelson.

A violation of a protective order occurred at the 2200 block of North Hamilton.

Suspicious vehicles were reported at the 2300 block of North Rosewood and the 2500 block of North Perryton.

Disorderly conduct occurred at the 1400 block of West Somerville.

A suspicious vehicle was reported at the 1600 block of West Somerville.

Suspicious persons were reported at the 2200 block of North Hamilton and the intersection of Browning and Warren.

A threat occurred at the 500 block of North Sloan.

Saturday, January 28
Suspicious persons were reported at the 2500 block of North Christine and the 1200 block of West Alcock.

Disorderly conduct occurred at the 900 block of East Francis.

A suspicious vehicle was reported at Crawford and Prairie.

A violation of city ordinance occurred at the 1700 block of North Coffee.

A suspicious vehicle was reported at the 1100 block

of Wilcox.

Criminal mischief occurred at the 700 block of North Bradley.

A suspicious vehicle was reported at the 900 block of North Duncan.

Harassment occurred at the 100 block of South Hobart.

Harassment was reported.

A theft was reported.

Disorderly conduct occurred at the 100 block of West 30th.

A theft occurred at the 2500 block of North Dogwood.

An assault occurred at the 1800 block of North Hamilton.

A domestic disturbance occurred at the 700 block of East Browning.

A suspicious person was reported at Tyng and Ballard.

An accident occurred at the 1900 block of North Hobart.

A suspicious person was reported at the 600 block of North Dwight.

An assault occurred at the 1200 block of North Duncan.

Disorderly conduct occurred at the 1200 block of North Mary Ellen.

A runaway was reported at the 100 block of South Faulkner.

Disorderly conduct occurred at the 1000 block of West Wilks.

Sunday, January 29
A domestic disturbance occurred at the 500 block of North Powell.

A suspicious person was reported at Hobart and Harvester.

Disorderly conduct occurred at the 1900 block of West Gwendolyn.

A burglary occurred at the 400 block of West Buckler.

A suspicious person was reported at the 600 block of South Ballard.

Endangerment of a child or elderly person was reported at the 2800 block of North Perryton.

A hit and run occurred at the 1600 block of West Somerville.

A structure fire occurred at the 400 block of North Perry.

Criminal mischief occurred at the 700 block of North Gray.

Disorderly conduct occurred at the 700 block of North Christy.

A burglary occurred at the 800 block of North Nelson.

Disorderly conduct occurred at the 900 block of Sierra and the 1100 block of North Perry.

A suspicious person was reported at Hobart and Brown.

Criminal mischief occurred at the 2800 block of North Charles.

An assault occurred at the 800 block of East Campbell.

Disorderly conduct occurred at the 1100 block of North Perry and the 900 block of South Varnon.

Fraud occurred at the 1000 block of North Hobart.

Endangerment of a child or elderly person occurred at the 1700 block of North Hobart.

A suspicious vehicle was reported at the 1900 block of North Sumner.

A suspicious person was reported at the 400 block of North Starkweather.

Monday, January 30
A suspicious vehicle was reported at the 1200 block of North Hobart.

A prowler was reported at the 200 block of North Nelson.

Sheriff's Office

The Gray County Sheriff's Office reported the following arrests for the 24 hour period ending Monday, January 30 at 7 a.m.

Friday, January 27
Jessie Tyler Riley, 25, was arrested by deputies for burglary of a habitation.

Jacob Coronado, 20, was arrested by deputies for deadly conduct.

Francisco Xavier Torres, 23, was arrested by deputies for driving while intoxicated.

Saturday, January 28
Pedro Ramirez-Vazquez, 37, was arrested by DPS agents for driving while intoxicated.

Juan Benavidez, 66, was arrested by deputies for indecency with a child involving sexual contact.

Willie Loyd Ballard, 37, was arrested by police for failure to identify and capias pro fine times two.

Antonio Masha Braziel, 29, was arrested by police for public intoxication.

Sunday, January 29
Billy Michael Grimes, 50, was arrested by deputies for possession of a controlled substance.

BANAGRAMS!

Each set of letters below is arranged alphabetically, and the ? is in the correct alphabetical position. Figure out what letter the ? represents and rearrange the letters to spell a six-letter word. For example, in A?ENTV the ? could be an A, B, C, D or E. Here it represents a D, which can be combined with the other letters to spell ADVENT. The first letter is placed to get you started.

? E E H N V	A I M R ? X
H	M
? E I I L T	E E F ? O T
E	T
B ? N O U Y	D I M O P ?
B	P

Yesterday's Answer: MEANIE, FELINE, STATUE, PRUNED

L31

JESSICA WHITELY PHOTOGRAPHY

721 W. Kingsmill • (806) 662-6104 • www.imagesbyjessica.com

Precious Memories make Precious Gifts

2115

MORNINGRUSH

Redistricting

cont. from page 1

Texas town's wells run dry

AUSTIN (AP) — The Lower Colorado River Authority has started trucking water to the Central Texas village of Spicewood Beach, the first community to run out of water due to the drought.

A spokeswoman for the agency, Clara Tuma, said the region's wells are no longer producing enough water to meet the community's needs. The first tanker was expected to arrive Monday afternoon.

Spicewood Beach, located on Lake Travis, has about 500 water connections that serve roughly 1,100 people.

The community has watched the water level drop since October 2010, when the worst single-year drought in Texas began.

Tuma said the river authority, which operates the wells, will truck water to the community for as long as it is needed. She did not have an estimate of what the operation will cost.

Assisted living resident arrested

HARLINGEN (AP) — Police say a man armed with metal bar or pipe has been accused of attacking three fellow residents at a South Texas assisted living facility.

The Cameron County Sheriff's Department says 28-year-old Brandon Schmitt of Harlingen was in custody Monday on three counts of burglary of a habitation. Bond has been set at \$150,000.

Jail records did not list an attorney for Schmitt, who was arrested Friday at Villa Residential Care in Harlingen. Details on why he lives at the facility weren't released.

KRGV-TV reports all three victims are women. Police say the victims were transported to a hospital. Further details on their conditions were not immediately available.

2 rescued from North Texas Lake

DALLAS (AP) — A deputy who swam to a car as it sank in a Dallas-area lake has saved two women in a rescue captured on patrol car video.

Rockwall County sheriff's Lt. David Davis said Monday that nobody was hurt in the incident at Lake Ray Hubbard.

Davis says the women drove through a nearby park early Saturday and apparently got lost, in the dark, while seeking Interstate 30. The car drove down a boat ramp.

Deputy Keven Rowan was patrolling and saw the car in the water.

Rowan, in the video, is seen along the water and yells "Can you get out of the car?"

He swims to the car and uses a window-breaking device to shatter the glass and escort both women to shore.

The vehicle sinks moments later.

Texan's fraud fine: \$10M

HOUSTON (AP) — A former Houston cell phone store owner-turned-concert promoter must repay nearly \$10 million in a Medicare fraud investigation.

A federal judge in Houston on Monday also sentenced 39-year-old Aghaebuna "Ike" Odelugo of Sugar Land to six years prison.

Odelugo in 2010 pleaded guilty to conspiracy to commit health care fraud, committing health care fraud and money laundering. Prosecutors say Odelugo must make \$9.9 million in restitution to the government program and forfeit nearly \$7.5 million in illegal earnings.

Investigators say Odelugo, from mid-2005 through March 2008, had a bogus billing deal with more than a dozen durable medical equipment company owners. The operations were in Texas, Louisiana, Arkansas, Georgia, North Carolina, West Virginia, Delaware, Massachusetts, New Hampshire and Michigan.

Odelugo ran the billing scam from his now-closed cell phone store.

Man jailed for cartel gun deals

HOUSTON (AP) — A federal judge in Houston has sentenced a Texas man to more than eight years in prison for organizing illegal gun purchases.

Among the purchases was one that put an assault rifle in the hands of the Zetas cartel that was used in a deadly attack on two U.S. agents in Mexico.

U.S. District Judge Lynn Hughes sentenced 30-year-old Manuel Gomez Barba to 100 months in prison Monday, to begin upon completion of a previous nine-year drug sentence.

The indictment alleged Barba paid others to buy 44 guns knowing they'd be exported to the Zetas in Mexico. The U.S. attorney's office says ballistics testing linked to a February 2011 shooting on a Mexican highway that killed U.S. Immigration and Customs Enforcement agent Jaime Zapata and wounded colleague Victor Avila.

Drugs

cont. from page 1

Davis was arrested at 11:44 a.m., and charged with possession of marijuana over five pounds but less than 50 pounds. His bond was set at \$20,000.

Missing out on community events?

Catch up with The Pampa News! Call 669-2525 to subscribe.

Cinema 4

Movies Showing Friday, January 27 through Thursday, February 2.

Wan On A Ledge (PG-13) Fri 7:30 9:45 Sat 2:00 4:30 7:30 9:45 Sun 2:00 4:30 7:30 Mon/Thu 7:30

One For The Money (PG-13) Fri 7:30 9:45 Sat 2:00 4:30 7:30 9:45 Sun 2:00 4:30 7:30 Mon/Thu 7:30

The Devil Inside (R) Fri 7:30 9:45 Sat 2:00 4:30 7:30 9:45 Sun 2:00 4:30 7:30 Mon/Thu 7:30

Underworld 4 (R) Fri 7:30 9:45 Sat 2:00 4:30 7:30 9:45 Sun 2:00 4:30 7:30 Mon/Thu 7:30

(621) 9192 / (621) 9220

the state was attempting to divide and conquer.

"LULAC won't do that," said Vera.

That sentiment was echoed by Gary Bledsoe, an attorney for the NAACP, which has worked closely with LULAC on the case.

"We want to see a package that is good for Latinos and the African American community," he said Monday afternoon.

Rep. Trey Martinez Fischer, chair-

man of the Mexican American Legislative Caucus, the lead plaintiff in the case, said Monday morning that he thought the attorney general's office was trying to work with as many plaintiff groups as possible.

"Their intention is to try and work something out," a stance he called "encouraging."

But thus far, he said, MALC hasn't been satisfied with what the state has offered, although he declined to offer specifics.

Even if an agreement is reached, it's not known whether it would go unchallenged.

An attorney for Sen. Joe Barton argued Friday before the three-judge panel in San Antonio that the attorney general's office doesn't have the authority to remake maps approved by the state Legislature, and that any maps that were redrawn would also need to be approved, or "pre-cleared," by the Department of Justice.

Jessica Whiteley Photography

721 W. KINGSMILL • 806.662.6104 • www.imagesbyjessica.com

No need to wait for special prices ... it's always affordable!

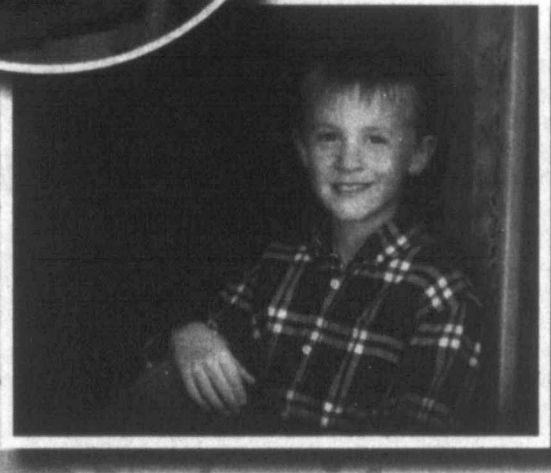
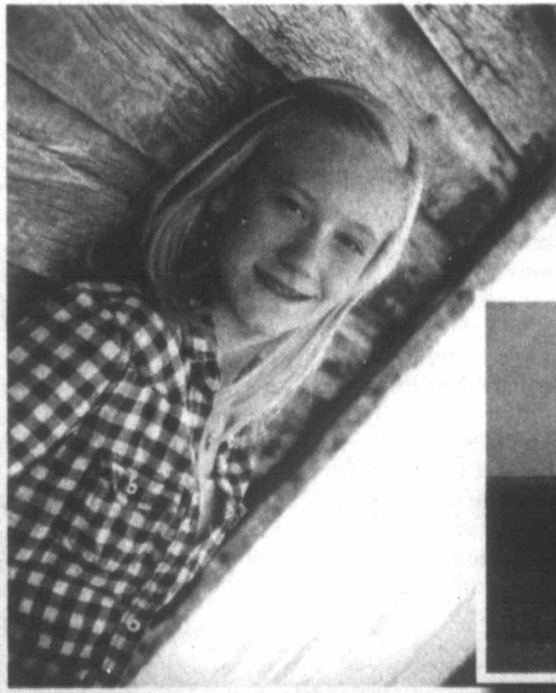


Engagements • Weddings
Portraits • Special Events
Regular Studio Prices
Sitting Fees:
\$10.00 In Studio
\$20.00* On Location
* In Pampa



Now Carrying a full line of:
Wedding Invitations
Graduation Announcements
Holiday Cards

Personalized Photos & Announcements Also Available!



Jessica Whiteley Agent

Whitney Insurance Agency

Auto • Home • Life
Health • Commercial • Annuities
Financial Services • Estate Planning
Long Term Care • Mobile Home • Motorcycle
Authorized John Deere Crop Insurance Agent

721 W. Kingsmill Ave.
Pampa, TX 79065

Office (806)665-2221 • Home (806)665-2927
Fax (806)665-0129 • Toll Free (866)665-2221



Donald R. Whitney L.U.T.C.F.

CRL
Pump & Supply

24 HOUR SERVICE
Complete Line of Oil Field Supplies
New Location • Larger Selection of Inventory
All Major Manufacturers
Quality Down Hole Pump Repair
Just opened Goodyear Hydraulic Hose & Fittings Shop

503 Industrial Blvd. | 1019 W. Alcock
Borger, TX 79007 | Pampa, TX 79065
806-274-2692 | 806-665-0947
www.crlpump.com

Viewpoints

Today in History

Today is Tuesday, Jan. 31, the 31st day of 2012. There are 335 days left in the year.

Today's Highlight in History:

On Jan. 31, 1961, NASA launched Ham the Chimp aboard a Mercury-Redstone rocket from Cape Canaveral; Ham was recovered safely from the Atlantic Ocean following his 16 1/2-minute suborbital flight.

On this date:

In 1606, Guy Fawkes, convicted of treason for his part in the "Gunpowder Plot" against the English Parliament and King James I, was executed.

In 1917, during World War I, Germany served notice it was beginning a policy of unrestricted submarine warfare.

In 1929, revolutionary Leon Trotsky and his family were expelled from the Soviet Union.

In 1944, during World War II, U.S. forces began a successful invasion of Kwajalein Atoll and other parts of the Japanese-held Marshall Islands.

In 1950, President Harry S. Truman announced he had ordered development of the hydrogen bomb.

In 1971, astronauts Alan Shepard, Edgar Mitchell and Stuart Roosa blasted off aboard Apollo 14 on a mission to the moon.

In 1992, leaders of the U.N. Security Council's member states held an unprecedented summit, after which they issued a declaration on collective security, arms control and nuclear non-proliferation.

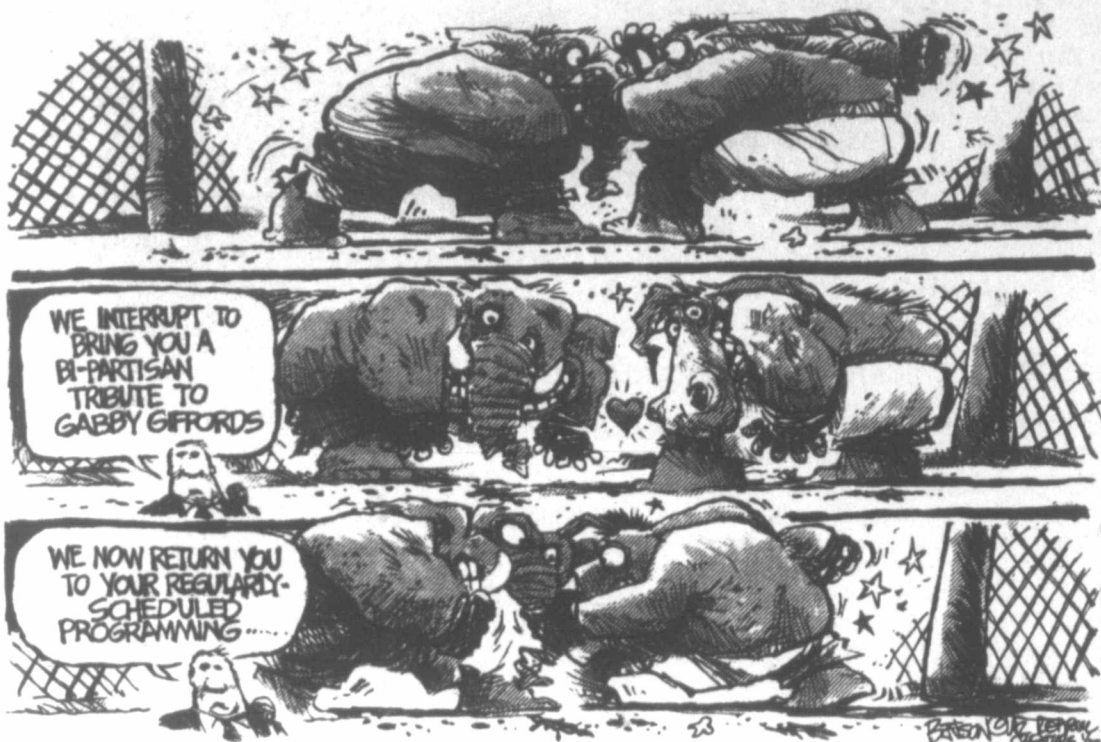
Ten years ago: The Bush administration handed abortion opponents a symbolic victory, classifying a developing fetus as an "unborn child" as a way of extending prenatal care to low-income pregnant women under the State Children's Health Insurance Program.

Five years ago: President George W. Bush, visiting Wall Street, delivered his "State of the Economy" speech in which he took aim at lavish salaries and bonuses for corporate executives. Delaware Sen. Joe Biden formally launched his bid for the Democratic presidential nomination. Nine blinking electronic devices planted around Boston threw a scare into the city in what turned out to be a marketing campaign for a late-night cable cartoon. Best-selling author and columnist Molly Ivins died in Austin, Texas, at age 62.

One year ago: A federal judge in Florida declared the Obama administration's health care overhaul unconstitutional, siding with 26 states that argued people cannot be required to buy health insurance. Egypt's military promised not to fire on peaceful protests and recognized "the legitimacy of the people's demands."

Today's Birthdays: Actress Carol Channing is 91. Baseball Hall-of-Famer Ernie Banks is 81. Composer Philip Glass is 75. Actor Stuart Margolin is 72. Actress Jessica Walter is 71. Blues singer-musician Charlie Musselwhite is 68. Actor Glynn Turman is 66. Baseball Hall-of-Famer Nolan Ryan is 65. Singer-musician Harry Wayne Casey (KC and the Sunshine Band) is 61. Rock singer Johnny Rotten is 56. Actress Kelly Lynch is 53. Actor Anthony LaPaglia is 53. Singer-musician Lloyd Cole is 51. Rock musician Actress Minnie Driver is 42. Actress Portia de Rossi is 39. Actor-comedian Bobby Moynihan is 35. Actress Kerry Washington is 35. Justin Timberlake is 31.

Thought for Today: "Mystics always hope that science will some day overtake them." - Booth Tarkington, American author-dramatist (1869-1946)



Meth fills hospitals with burn patients

JIM SALTER
Associated Press

ST. LOUIS (AP) - A crude new method of making methamphetamine poses a risk even to Americans who never get anywhere near the drug: It is filling hospitals with thousands of uninsured burn patients requiring millions of dollars in advanced treatment - a burden so costly that it's contributing to the closure of some burn units.

So-called shake-and-bake meth is produced by combining raw, unstable ingredients in a 2-liter soda bottle. But if the person mixing the noxious brew makes the slightest error, such as removing the cap too soon or accidentally perforating the plastic, the concoction can explode, searing flesh and causing permanent disfigurement, blindness or even death.

An Associated Press survey of key hospitals in the nation's most active meth states showed that up to a third of patients in some burn units were hurt while making meth, and most were uninsured. The average treatment costs \$6,000 per day. And the average meth patient's hospital stay costs \$130,000 - 60 percent more than other burn patients, according to a study by doctors at a burn center in Kalamazoo, Mich.

The influx of patients is overwhelming hospitals and becoming a major factor in the closure of some burn wards. At least seven burn units across the nation have shut down over the past six years, partly due to consolidation but also because of the cost of treating uninsured patients, many of whom are connected to methamphetamine.

Burn experts agree the annual cost to taxpayers is well into the tens if not hundreds of millions of dollars, although it is impossible to determine a more accurate number because so many meth users lie about the cause of their burns.

Larger meth labs have been bursting into flame for years, usually in basements, backyard sheds or other private spaces. But those were fires that people could usually escape. Using the shake-and-bake method, drugmakers typically hold the flammable concoction up close, causing burns from the waist to the face.

"You're holding a flame-thrower in your hands," said Jason Grellner of the Franklin County, Mo., Sheriff's Department.

Also known as the "one-pot" approach, the method is popular because it uses less pseudoephedrine - a common component in some cold and allergy pills. It also yields meth in minutes rather than hours, and it's cheaper and easier to conceal. Meth cooks can carry all the ingredients in a backpack and mix them in a bathroom stall or the seat of a car.

The improvised system first emerged several years ago, partly in response to attempts by many states to limit or forbid over-the-counter access to pseudoephedrine. Since then, the shake-and-bake recipe has spread to become the method of choice.

By 2010, about 80 percent of labs busted by the federal Drug Enforcement Administration were using shake-and-bake recipes, said Pat Johnakin, a DEA agent specializing in meth.

So instead of a large lab that supplies many users, there are now more people making meth for their personal use. The consequences are showing up in emergency rooms and burn wards.

"From what we see on the medical

Guy cited a similar percentage at Vanderbilt, which operates the largest burn unit in Tennessee. He said the lies can come with a big price because the chemicals used in meth-making are often as dangerous as the burns themselves.

He recalled the case of a woman who arrived with facial burns that she said were caused by a toaster. As a result, she didn't tell doctors that meth-making chemicals got into her eyes, delaying treatment.

"Now she's probably going to be blind because she wasn't honest about it," Guy said.

In Indiana, about three-quarters of meth busts now involve shake-and-bake. And injuries are rising sharply,

mostly because of burns, said Niki Crawford of the Indiana State Police Meth Suppression Team.

Indiana had 89 meth-related injuries during the 10-year period ending in 2009. The state has had 70 in the last 23 months, mostly from shake-and-bake labs, Crawford said.

What's more, meth-related burns often scar some of the body's most sensitive areas - the face and hands. "I don't think a lot of these patients will be able to re-enter society," said Dr. Lucy Wibbenmeyer of the burn center at the University of Iowa. "They'll need rehab therapy, occupational therapy, which is very expensive."

Researchers at the University of Iowa found that people burned while making meth typically have longer hospital stays and more expensive bills than other burn patients. ΓCδ bills that are frequently absorbed by the hospital since a vast majority of the meth-makers lack insurance.

Medicaid provides reimbursement for many patients lacking private insurance, but experts say it amounts to pennies on the dollar.

Doctors at Bronson Methodist Hospital in Kalamazoo, Mich., performed a five-year study of meth patients in the early 2000s, then a follow-up study in 2009-2010. Their investigation concurred with the Iowa findings. The Kalamazoo study also found that meth burn victims were more likely to suffer damage to the lungs and windpipe, spent more time on ventilators and needed surgery more often.

That report also found that only about 10 percent of meth patients had private insurance coverage, compared with 59 percent of other patients. And in many cases, their injuries leave them unable to work.

An Associated Press survey of key hospitals in the nation's most active meth states showed that up to a third of patients in some burn units were hurt while making meth, and most were uninsured.

side, that's the primary reason the numbers seem to be going up: greater numbers of producers making smaller batches," said Dr. Michael Smock, director of the burn unit at Mercy Hospital St. Louis.

It's impossible to know precisely how many people are burned while making shake-and-bake meth. Some avoid medical treatment, and no one keeps exact track of those who go to the hospital. But many burn centers in the nation's most active meth-producing states report sharp spikes in the number of patients linked to meth. And experts say the trend goes well beyond those facilities, easily involving thousands of drug users.

The director of the burn center at Vanderbilt University in Tennessee, the state that led the nation in meth lab seizures in 2010, said meth injuries are doubly damaging because patients often suffer thermal burn from the explosion, as well as chemical burns. And the medical challenge is compounded by patients' addictions.

"You're not judgmental in this kind of work, but you see it day after day," said Vanderbilt's Dr. Jeffrey Guy. "We've had patients say, 'I'm going out for a smoke,' and they come back all jacked up. It's clear they went out and did meth again."

Few people burned by meth will admit it.

"We get a lot of people who have strange stories," said Dr. David Greenhalgh, past president of the American Burn Association and director of the burn center at the University of California, Davis. "They'll say they were working on the carburetor at 2 or 3 in the morning and things blew up. So we don't know for sure, but 25 to 35 percent of our patients are meth-positive when we check them."

We welcome your letters

- To ensure publication, please adhere to the following guidelines:
- Letters should be brief and to the point. All correspondence will be edited for length and clarity.
 - All letters must be signed. Submit your name, address and telephone number with the letter for verification. Only your name and city will be published.
 - Defamatory comments will not be published.
 - E-mail submissions are welcome.
 - The views and opinions expressed here do not necessarily reflect those of *The Pampa News* or its staff.

The PAMPA NEWS

403 W. Atchison • Pampa, TX 79065

806-669-2525 • Fax: 806-669-2520

Randall Pribble

Publisher
rpribble@thepampanews.com

ReDonn Woods

Advertising Manager
rwoods@thepampanews.com

Bernie Frazier

Advertising Representative
bfrazier@thepampanews.com

Beverly Taylor

Classified Advertising
classified@thepampanews.com

Marijane Kent

Composing
composing@thepampanews.com

Carrie Hair

Accounting
bookkeeper@thepampanews.com

Sue Pribble

Subscription Manager
spribble@thepampanews.com

Arnie Aurellano

Editor
editor@thepampanews.com

Mollie Bryant

Reporter
mbryant@thepampanews.com

Andrew Glover

Reporter
aglover@thepampanews.com

Holley Bimson

Composing
composing2@thepampanews.com

Marcus Elkins

Press Supervisor
press@thepampanews.com

Chico Ramirez

Circulation Manager
Circulation2@thepampanews.com

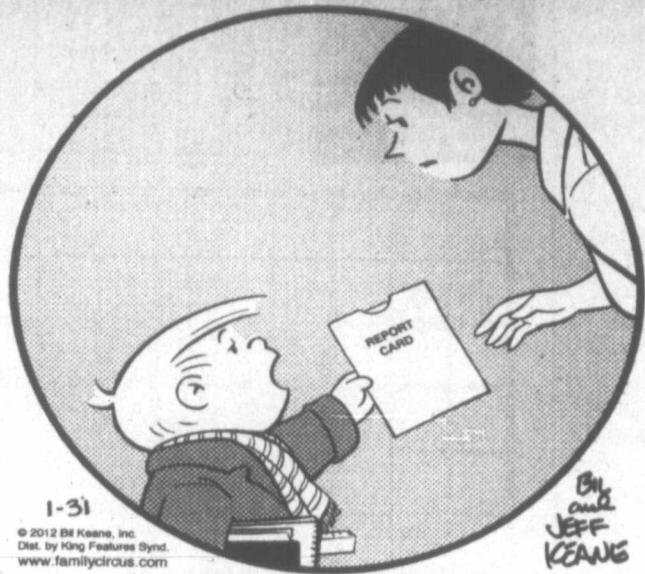
The Pampa News (UPS 781-540) is published daily, except Sundays, New Year's Day, Martin Luther King Jr. Day, President's Day, Memorial Day, Independence Day, Labor Day, Columbus Day, Veterans Day, Thanksgiving Day, and Christmas Day. Periodicals postage paid at Pampa, Texas. Postmaster: Send address changes to The Pampa News, P.O. Drawer 2198, Pampa, TX 79066-2198.

© 2011 The Pampa News



comics PAGE

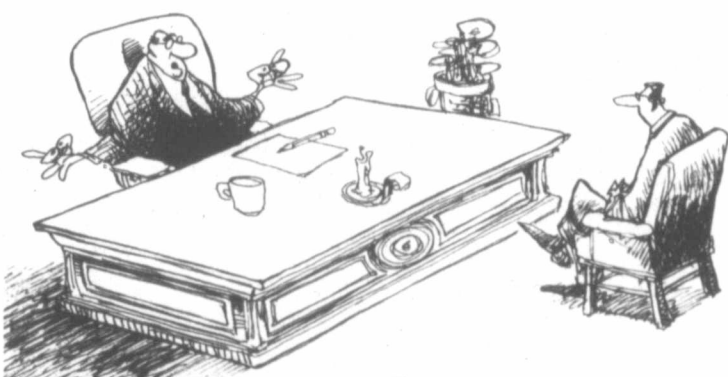
THE FAMILY CIRCUS By Bil Keane



"The good news is I was very consistent."

Non Sequitur

SO, LONG STORY SHORT, THE PROCESS OF ELIMINATION TO SIMPLIFY MY LIFE FINALLY CAME DOWN TO A CHOICE BETWEEN MY GOLF CLUBS AND YOUR JOB...



THE OFF-RAMP ON THE ROAD TO ENLIGHTENMENT

© 2012 WILEY PERIODICALS, INC. 1-31
DISTR. BY UNIVERSAL UCLICK WILEY PERIODICALS EARTHLINE NET COMICS.COM

Nest Heads



daily horoscope

HAPPY BIRTHDAY for Wednesday, Feb. 1, 2012:

You are full of get-up-and-go this year. Charisma, wit and energy make a close to irresistible mix. Those in creative fields manifest much more dynamic energy and ingenuity. For the most part, your work flows. If you are single, romance might be on your mind more than ever before. You could have several potential sweeties in your life in the next year. Date and make sure you want the person you choose. Someone better easily could be around the corner. If you are attached, the two of you start acting like young lovers. People delight in being around you, as you remind them that romance can stay alive with a commitment. GEMINI is always fun to be around.

ARIES (March 21-April 19)
★★★★ Listen to the feedback you get; you might not have seen what others see. Accept different opinions graciously, even if they are not given graciously. The unexpected occurs out of the blue. Curb a tendency to be sarcastic or nasty. Tonight: Where the action is.

TAURUS (April 20-May 20)
★★★ Stay on top of a situation and be clear about what is going on. You might want to have a discussion involving finances, with an eye to change. Remember, you need someone's agreement to make this happen, so cut any sharp comments. Tonight: Out.

GEMINI (May 21-June 20)
★★★★ Your smile might not work magic in the morning, but by the evening it will. You might not want to repeat the same conversation verbatim — a little change could spark another person's interest. Examine the possibilities with an open mind. Use care with those who seem to be on edge. Tonight: Whatever makes you smile.

CANCER (June 21-July 22)
★★★ Know that sometimes it is better to back up rather than get in the middle of a major conflict. Your interests will be better served. Someone you look up to becomes difficult and unstable. Accept the situation, as you might not be able to change it. Tonight: Burning the candle at both ends.

LEO (July 23-Aug. 22)
★★★★ Look toward making a difference where it counts. Your happy and caring side emerges when dealing with others, especially in a group. You note a convivial-

ity that you rarely see. Let go and enjoy the moment. Don't allow a difficult situation to develop. Tonight: Only where the fun is.

VIRGO (Aug. 23-Sept. 22)
★★★★ Realize what you are expecting from someone you look up to. Perhaps you don't see this person realistically. Could that be possible? Rather than scrap about a situation, take responsibility for your side of the issue. Tonight: Others notice you.

LIBRA (Sept. 23-Oct. 22)
★★★★ You'll get results by pulling back and dealing with a problematic situation through detachment. Plunge right in. You could have a problem. You could discover that a partner or loved one acts in a most unexpected manner. Tonight: Try something unusual or different.

SCORPIO (Oct. 23-Nov. 21)
★★★★ You might be surprised by what is happening with a close partner or loved one. You work very hard to clear out an issue. Accept the unexpected at work. Work with new technology. Your efficiency and flex count. Tonight: Curb sarcasm.

SAGITTARIUS (Nov. 22-Dec. 21)
★★★★ Others have a way of challenging you. Be aware of what is going on with a child or loved one. There might be a side of you that wants no problems. You cannot avoid the inevitable. Confusion surrounds a personal decision. Tonight: Let another person make the final choice.

CAPRICORN (Dec. 22-Jan. 19)
★★★ You have been working way too hard for your taste. Be aware of another's effort; don't listen to hearsay about this person. Avoid those who are sarcastic and demanding, if possible. You could have quite a shake-up or realization. Tonight: Choose a stress-buster.

AQUARIUS (Jan. 20-Feb. 18)
★★★★ You simply cannot help yourself — you feel good and are light and lively. Use care with your finances, as you might not be seeing the situation clearly, could miscount your change or might actually be deceived. Understand your limitations, and remain up. Tonight: Let the fun begin.

PISCES (Feb. 19-March 20)
★★★★ You might not be as present as you might like to be when dealing with another person. Laughter in your mind surrounds a decision that could make you feel a little silly, mainly because you have worried about it for quite a while. Tonight: Order in.

Tundra



Shoe



Mother Goose and Grim



Zits



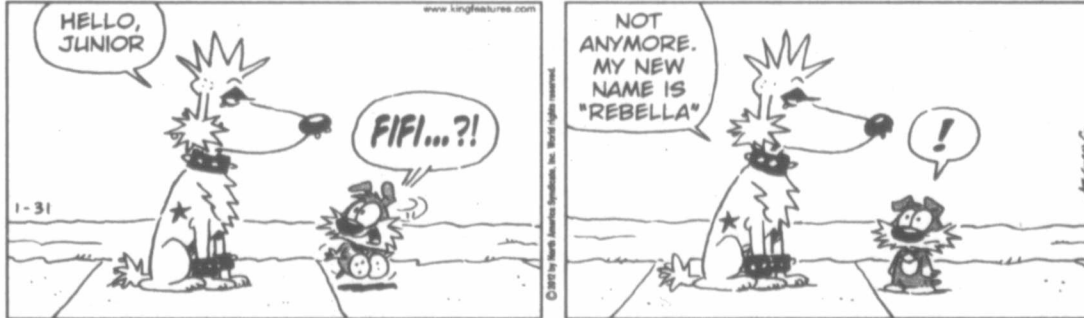
Garfield



Beetle Bailey



Marvin



Hagar The Horrible



Peanuts



Blondie



It's 2012: politics, policy and world issues will play role in your finances

TERRY SAVAGE
Creator's Syndicate

Every year brings different financial challenges, and despite the spate of predictions at the start of the year, very few forecasters can claim long-term success at looking into the future. Events and context change, demanding changes in investment strategy. But basic principles stay the same. The secret of all successes is to know which is which!

You need to hold firm to your basic standards, which must be set based on knowledge. In a calm moment, you need to figure out your "risk tolerance" — an economic term that stands for: "How much money can I afford to lose?" Then you must have the knowledge to truly evaluate the risks you are taking when you make money decisions.

If you decide you can't lose even one penny, you'll probably want to leave your money in insured, short-term deposits — despite the fact that you earn almost no interest these days. But if the greater long-term risk is "running out of money," then you'll want some exposure to the stock market, which has always provided more growth than chicken money — over the long run (20 years), even adjusted for inflation.

Even if you have this basic knowledge, you have to make adjustments in your strategy as events change. You need to make decisions that guide your ship — but you don't have to completely change course. This is the time of year to make those adjustments.

One thing is sure: If you want the year to end with an improvement in your personal finances, you'll have to be flexible and willing to change, and be open to new ideas.

The Savage Truth on money

The first step is to get some perspective about what's going on in the economy.

This year will be the most "political" year not only because it is an election year, but because there are so many huge economic issues confronting us. Within the next few months, Congress will have to vote on raising the debt ceiling, extending the payroll tax cuts and increasing funding for the U.S. Postal System. Then by year end, they will be faced with the expiration of the extended "Bush tax cuts."

And in between, it's likely that the Supreme Court will force a re-thinking of President Obama health care plan, which will need funding if the mandate to purchase health care insurance is declared unconstitutional. Energy is becoming a political issue, as well, with the president's decision to rule out the pipeline from Canada that could bring us cheaper oil.

Every financial decision facing Congress will carry a political price in this election year. So the best bet is another year of political wrangling and divisiveness. And that wrangling will impact the interest rate and stock markets, likely making them more volatile and creating more headline days.

It's that kind of volatility that you must steel yourself against. Think of how many headlines there were about big moves in the market last year. Then put those scary days into perspective. According to Dow Jones Indexes, the Dow Jones

Industrial Average ended the year with a gain of 640 points. But in between it traversed 28,032 points — if you add up all the closing gains and losses!

Surely there were a lot of emotional trades made on both sides during those headline days.

Into this mixture, you'll have to add two huge global considerations that will weigh on your personal financial decisions. Most immediate is the concern of Europe's banks, and their ability to finance all the European country debt they hold. With country credit ratings being downgraded, there will be fewer institutions able to buy the already outstanding debt — not to mention the billions that must be refinanced as they come due this year.

The second great global concern is Chinese growth. A few years ago, there was a lot of China-bashing — condemning the growth of China at the expense of jobs here. Now, the world is worried about a Chinese economic slowdown that would impact our exports of grain and farm machinery, as well as world trade. European countries need China to buy their products to keep Europe out of recession.

As Walt Disney said so well: "It's a small world, after all!" That small world is impacting our jobs, our prosperity and our future — as well as your investments.

It's only human nature — and often a wise prod — to worry about the future. But based on history, there's no reason to believe our nation, and our personal finances, won't come out ahead again — if we go with the flow of change, instead of standing against the tide.

Let's start with a belief that the world is not coming to

an end — whether over the euro, or our national debt, or the Mayan calendar predictions! Given that premise, our immediate need is to survive this year in a way that prepares us for the future.

Take a quick look back. If you've survived so far, you've come a long way. Based on historic cycles, we should be more than halfway through our problems. This is not the time to give up planning!

Whether you're debating about the stock market, concerned about risk to your savings, or simply wondering how to keep a roof over your head — or find a new one if you've lost yours — you've made it through the worst of the crunch.

Terry Savage is a registered investment adviser and is on the board of the Chicago Mercantile Exchange. She appears weekly on WMAQ-Channel 5's 4:30 p.m. newscast, and can be reached at www.terrysavage.com.

Answer to yesterday's puzzle:

8	4	9	1	5	6	3	7	2
5	6	7	3	2	4	1	9	8
3	1	2	9	8	7	6	4	5
6	2	3	4	9	1	8	5	7
9	5	4	7	3	8	2	1	6
1	7	8	2	6	5	9	3	4
7	8	1	6	4	3	5	2	9
2	3	6	5	7	9	4	8	1
4	9	5	8	1	2	7	6	3

Sudoku

								1
3	5		6		9	8		
		1			5			
			7	8				
						4		
						2		3
9								8
	7	4		2	3	6		
		6	1	4				

Level: Beginner

CROSSWORD

By THOMAS JOSEPH

ACROSS 47 Worry

- 1 New Orleans cuisine
- 6 Dance moves
- 11 Wake up
- 12 Viola's cousin
- 13 Where there's nothing new
- 15 Last letter
- 16 Swear
- 17 Farm animal
- 18 Software test versions
- 20 Top choices, for short
- 23 Hunker down
- 27 Farm animals
- 28 Spur on
- 29 "Understand?"
- 31 Church code
- 32 Org. that tracks Santa
- 34 Occupation
- 37 Road sealer
- 38 Fake hair
- 41 Delighted
- 44 Singer West
- 45 In a way, in slang
- 46 Tribal leader

P	O	R	T	S	L	I	M		
F	E	M	U	R	P	E	N	A	L
I	R	E	N	E	A	W	A	K	E
A	S	L	E	E	P	B	E	T	
T	I	E	S	R	A	P	I	D	S
S	A	T	T	O	M	A	T	O	
			M	A	J	O	R		
H	O	A	X	E	S	M	A	T	
P	I	C	N	I	C	M	A	M	E
A	N	T	T	H	O	R	A	X	
S	T	A	T	E	L	I	Z	A	
S	A	V	E	R	R	A	N	O	N
T	E	A	R	B	R	A	N		

Yesterday's answer of

- 19 Team
- 20 Sailing hazard
- 21 Tin Man's prop
- 22 Old soldier
- 24 Coffee dispenser
- 25 In the past
- 26 Decimal base
- 30 Sway
- 31 Gentle touch
- 33 Fan cry
- 34 Gag
- 35 Track shape
- 36 Crook
- 38 Had on
- 39 Tiny amount
- 40 Pesky insect
- 42 Reuben bread
- 43 Trim the grass

NEW CROSSWORD BOOK! Send \$4.75 (check/m.o.) to Thomas Joseph Book 2, P.O. Box 536475, Orlando, FL 32853-6475

1	2	3	4	5	6	7	8	9	10
11					12				
13				14					
15				16			17		
			18				19		
20	21	22			23		24	25	26
27							28		
29				30		31			
			32		33				
34	35	36		37			38	39	40
41			42				43		
44						45			
46						47			

1-31



Dear Abby...

By Pauline & Jeanne Phillips

DEAR ABBY: Recently my 80-year-old mother was admitted to the hospital, gravely ill. She had been undergoing chemotherapy and caught double pneumonia. My 36-year-old niece went to visit Mama, took pictures of her lying in her hospital bed and emailed the photos to everyone.

It was shocking and upsetting seeing my mother this way. Many of the people who received the photos had not been able to visit her. Abby, what's your opinion on this, and how should it have been handled? — SINCERELY UPSET IN FLORIDA

DEAR SINCERELY UPSET: I don't blame you for being upset. What your niece did was a gross invasion of privacy. Is this how your mother would have wanted people to see her? If the answer is no, your niece owes your mother an apology.

If your mother is still hospitalized, talk to the

nurse in charge of the unit she's in and give her a list of visitors who should have access to her. Explain why you want visitation restricted, and in the future your mother's privacy will be assured.

DEAR ABBY: My sister's husband died suddenly three years ago. "Pamela" now says she's in love with a 60-year-old man I'll call "Mickey," whose company is doing construction work on her home. She has put on a new roof, siding and added a deck, and the jobs are not ending. Next on the schedule is a shed and a new coat of paint for the inside of the house.

Friends and family are concerned that Pamela is scheduling more jobs as a way to see Mickey. When I pointed out that he hasn't even invited her out for coffee, she claimed they have a "relationship" because he hugged her, kissed her on the cheek and told her, "You're

my girlfriend." Pamela has invited Mickey to family dinners and events, but he turns her down because "he's visiting relatives out of town." He has never invited her to go anywhere.

My sister should be ready to date now, but no one lives up to this man. None of us have met him, and we're worried she is just imagining there's a relationship. What can we do before Pamela goes broke or crashes emotionally? — SOMETHING'S MISSING IN NEW JERSEY

DEAR SOMETHING'S MISSING: Do you know the name of Mickey's company? Start checking him out. Does he have a contractor's license? A Facebook page? Does anybody in the lumber or paint business know him? Something does seem fishy. Mickey may be married and your sister may be grasping at straws. But when all is said and done, it is her money.



Beverly Taylor - Classifieds

The Pampa News'

Classifieds

Sell it fast! Classifieds work! The Pampa News is delivered to over 4,000 homes daily. What better way to get the word out? To place an ad, contact Beverly Taylor at 806-669-2525 or via email at classified@thepampanews.com today!

Winter Classified Line Ad Specials

4 Lines, 4 Days

\$18.50

8 Lines, 4 Days

\$21.50

Prices Good Dec., Jan., Feb.

Public Notice

NOTICE OF SHERIFF SALE OF THE STATE OF TEXAS COUNTY OF GRAY. By virtue of Orders of Court, the Official Sale issued out of the Court of the Honorable 223RD DISTRICT COURT of the City of PAMPA, GRAY County in the State of TEXAS, the following cases on the described property, to-wit: 3rd day of January, 2012, and to me, as Cause No. TAX-2064 2012, and to me, as Cause No. TAX-2064 2012, directed and de-

Public Notice

livered, I will proceed to sell at 10:00 AM on the 7th DAY OF February, 2012, which is the first Tuesday of said month, at the Official Sale of said GRAY County, ET AL vs. GREEN KATHERINE M Lot Sixteen (16), Seventeen (17), and Eight-

Public Notice

een (18), all in Block Nineteen (19). That Tract 1: Lot Thirty-six (36), in Block Eight (8), Prairie Village, an Addition to the City of Pampa, Gray County, Texas Cause No. TAX-2918 GRAY COUNTY, ET AL vs. GREEN KATHERINE M Lot Sixteen (16), Sev-

Public Notice

enteen (17), and Eight-

Public Notice

een (18), all in Block Nineteen (19). That Tract 1: Lot Thirty-six (36), in Block Eight (8), Prairie Village, an Addition to the City of Pampa, Gray County, Texas Cause No. TAX-3017 GRAY COUNTY, ET AL vs. BIDLER, TERRY L. Lot Ten (10), Block Eighty-one (81), a replat of Blocks 81 & 82, Original Townsite of

Public Notice

McLean, Gray County, Texas Cause No. TAX-3056 GRAY COUNTY, ET AL vs. EMORY JACK Lot Sixteen (16), located in Blocks Eighty-one (81) and Eighty-two (82). Original Town of McLean, Gray County, Texas Cause No. TAX-3234 GRAY COUNTY, ET

Public Notice

AL vs. DELATORRE, GERARDO Lot Four (4), in Block Nine (9), Original Town of Pampa, Gray County, Texas Cause No. TAX-3290 GRAY COUNTY, ET AL vs. RIVERA, ROSA LINDA Lots Twenty-one (21) and Twenty-two (22), in Block Thirty-five

Public Notice

(35), Wilcox Addition to the City of Pampa, Gray County, Texas, including the 1982 mobile home measuring 12'x44' Cause No. TAX-3365 GRAY COUNTY, ET AL vs. ORTIZ IRMA & JOSE Lots Twenty-five (25) and Twenty-six (26), in Block Eleven (11),

Public Notice

Wilcox Addition to the City of Pampa, Gray County, Texas Cause No. TAX-3397 GRAY COUNTY, ET AL vs. WOODS, BILLIE YOUNG East Seventy-five feet (E 75') of Lot Eight (8), in Block Eight (8), Crawford Addition to the City of Pampa, Gray County, Texas

Public Notice

Cause No. TAX-3411 GRAY COUNTY, ET AL vs. WOODRUFF, PAMELA J. The South thirty feet (S 30') of Lot Fifteen (15), and the North thirty feet (N 30') of Lot Sixteen (16), all in Block Fifty-three (53), Fraser Annex, an Addition to the City of Pampa, Gray County,

1 Public Notice

Texas Cause No: TAX-3468 GRAY COUNTY, ET AL vs. SOTO, JULIO & MARTINEZ, ANGELICA Lot Two (2), in Block Two (2), Littleton, an Addition to the City of Pampa, Gray County, Texas Cause No: TAX-3473 GRAY COUNTY, ET AL vs. GUINN, JERRY H TRUST Lot Five (5), in Block Two (2), Crow Addition to the City of Pampa, Gray County, Texas Cause No: TAX-3493

1 Public Notice

GRAY COUNTY, ET AL vs. HUGHES, THOMAS B III Lots Eighteen (18) and Nineteen (19), in Block Twenty-five (25), Wilcox Addition to the City of Pampa, Gray County, Texas Cause No: TAX-3528 GRAY COUNTY, ET AL vs. GRISSOM, CARLOS J ESTATE Lot Seventeen (17), in Block One (1), Parkhill Annex Addition to the City of Pampa, Gray County, Texas Cause No: TAX-3555 GRAY COUNTY vs. BURKS, JIMMY D

1 Public Notice

Lot One (1), in Block Two (2), Gordon, an Addition to the City of Pampa, Gray County, Texas Cause No: TAX-3558 GRAY COUNTY, ET AL vs. MYERS, LARRY DON Tract B-1-B, in Suburbs 156, Gray County, Texas Cause No: TAX-3562 GRAY COUNTY, ET AL vs. BAKER, TIMOTHY A The West forty feet (W 40') of Lot Eleven (11), and all of Lot Twelve (12), all in Block Thirty-one (31), Original Town of Pampa, Gray County, Texas Cause No: TAX-3564 GRAY COUNTY, ET AL vs. JOHNSON, J.J. ESTATE Lot Four (4), in Block Two (2), Cohen Addition to the City of Pampa, Gray County, Texas Cause No: TAX-3592 GRAY COUNTY, ET AL vs. HOSEA, RUBY ESTATE Lot Twenty-four (24), in Block One (1), Routsom Subdivision an Addition to the City of Pampa, Gray

1 Public Notice

County, Texas Lot Twenty-five (25), in Block One (1), Routsom Subdivision, an Addition to the City of Pampa, Gray County, Texas Cause No: TAX-3595 GRAY COUNTY, ET AL vs. DEFEVER, RODNEY D The West Eighty-one feet (W 81') of Lot Sixteen (16), in Block Forty-three (43), Wilcox Addition to the City of Pampa, Gray County, Texas Cause No: TAX-3600 GRAY COUNTY, ET AL vs. PEREZ, AUGUSTIN MORALES & PEREZ, AUGUSTIN N JR All of Lot Fourteen (14), and 50' x 92' of Lot Fifteen (15), all in Block Five (5), Hillcrest Terrace Subdivision, Gray County, Texas Cause No: TAX-3606 GRAY COUNTY, ET AL vs. WHITE, JAMES Lot Five (5), in Block Three (3), Haggard, an Addition to the City of Pampa, Gray County, Texas Cause No: TAX-3609 GRAY COUNTY, ET AL vs. MCGEE, GORDON Lots Three (3) and Four (4), in Block Thirteen (13), Shaw, an Addition to the City of Lefors, Gray County, Texas Cause No: TAX-3612 GRAY COUNTY, ET AL vs. COON, EDNA ESTATE Lot Eight (8), in Block Sixteen (16), Talley, an Addition to the City of Pampa, Gray County, Texas Cause No: TAX-3630 GRAY COUNTY, ET AL vs. JOHNSON, BOB Lot Five (5), Six (6), and Seven (7), all in Block Fourteen (14), Wilcox, an Addition to the City of Pampa, Gray County, Texas Cause No: TAX-3640 GRAY COUNTY ET AL vs. LESLY, WILLIAM G. ESTATE Lots Nineteen (19), Twenty (20), and Twenty-one (21), all in Block Sixty-five (65), Original Town of McLean, Gray County, Texas ALL BIDDERS MUST COMPLY WITH SECTION 34.015 OF THE TEXAS PROPERTY TAX CODE. Levied on the 9th day of January, 2012, as the property of said Defendants to satisfy the judgments rendered in the above styled and numbered causes, plus all taxes, penalties, interest, and attorney fees accrued to the date of sale and all costs recoverable by law in favor of each jurisdiction. GIVEN UNDER MY HAND THIS 9th day of January, 2012.

1 Public Notice

Don Copeland SHERIFF GRAY County, Texas By **Joe D. Montgomery** Deputy The minimum bid for a person owning an interest in the property or for a person who is a party to the suit (other than a taxing unit), is the aggregate amount of the judgment(s) against the property plus all costs of suit and sale. THERE MAY BE ADDITIONAL TAXES DUE ON THE PROPERTY WHICH HAVE BEEN ASSESSED SINCE THE DATE OF JUDGMENT. For more information, contact your attorney or the tax collector. B-42 Jan 17, 24, 31, 2012

14w Air Cond/Heat

BROWNING'S Heating & Air and Refrigeration Specialists since 1964!! 665-1212.

19 Situations

WILL do housecleaning. Daily, weekly or bi-weekly. Call 806-670-5137.

21 Help Wanted

NOTICE Readers are urged to fully investigate advertisements which require payment in advance for information, services or goods. NEED Part-Time Church Cook, exp. helpful but not necessary. Apply in person 201 E. Foster, Pampa. ST. Ann's Nursing Home is hiring Director of Nursing and an MDS Coordinator. Contact Administrator at 537-3194. Good benefits. Position now available. LVN's and CNA's, come check out our benefits! We have immediate openings for Full-Time. St. Ann's Nursing Home, Panhandle, 537-3194. WANTED New and Used Vehicle Sales Professionals. Only the Best Apply!! Exceptional pay structure and enjoyable work environment. Come enjoy our team! Call 806-661-3561.

21 Help Wanted

PART-TIME Home Health Provider needed immediately, for Pampa. Please call Nurses By Prescription, 806-355-1899.


HSE SPECIALIST

Duties are to promote a safe and healthful workplace, coordinate aspect of the HSE management system while maintaining compliance with federal, state, local, and company requirements. Able to meet ATF, DOT requirements. OSHA 511 and EMT certifications will be required at a future point. Some travel required, 5 years experience preferred. High School diploma or GED. Pre-employment physical exam / drug screen, background check required. Competitive wage and benefit pkg including 401K. EOE. Contact: Hunting Titan 806/665/3781 hr@titanspecialties.com 11785 Hwy 152 Pampa, TX 79065

89 Wanted To Buy

NEED Money Now? We will give you top \$3 for your house. Call us today, 665-1875 We Buy & Sell Houses Call us today!! 665-1875

95 Furn. Apts.

 All real estate advertised herein is subject to the Federal Fair Housing Act, which makes it illegal to advertise "any preference, limitation, or discrimination because of race, color, religion, sex, handicap, familial status or national origin, or intention to make any such preference, limitation, or discrimination." State law also forbids discrimination based on these factors. We will not knowingly accept any advertising for real estate which is in violation of the law. All persons are hereby informed that all dwellings advertised are available on an equal opportunity basis.

99 Stor. Bldgs.

SAVE BIG!! SCRATCH & DENT MORGAN BUILDINGS 8'x10', 10x12, 12x16, 12x20. Make Offer. 806-358-4559

102 Bus. Rental

DOWNTOWN office space for rent. Utilities & cleaning service provided. Ample parking. 669-6823 OFFICE Space for rent, ask about 3 months free rent. 669-6841. FOR Rent 1541 N. Hobart. Prime retail, 3,000 sq. ft. Call 595-0234.

103 Homes For Sale

2 bdr., 2 ba. condo, fpl. New heat/air. Updates. 1 car gar. Swimming pool. 1131 E. Harvest. 806-898-2484 FOR Sale 3/2/2, central heat/air, f.p. covered patio, corner lot. Call 817-682-1239. OWNER Will Finance. 313 Miami 2 b dr., 1 ba. Call Trustar RE. 665-4595. PARTIAL Underground on 5 lots. Brick 4 bdr., 2 ba. (whirlpool tub), tile floors, fireplace, central, h/a, dbl car gar. Lots of extras. \$127,500. 712 Hazel. 663-0074 or 595-0104.

COMAC WELL SERVICE & ROUSTABOUT

NOW HIRING RIG OPERATORS WITH CDL LICENSE RIG CREW MEMBERS & ROUSTABOUT w/ CDL

All Must Have Experience!
Paid Vacations
Group Insurance
Must Pass Drug Test
Must Have Good Driving Record
Must Have Good Past Emp. History
806-274-2259
1100 Industrial Blvd., Borger, TX
for Application 7:30am-4:30pm.

TURNER ENERGY SERVICES LLC
A COMPLETE PRODUCTION SERVICE CO.

We have full time TRANSPORT DRIVER positions available in our Borger, Pampa, Canadian, Wheeler, Perryton & Joe Lee locations. Previous experience preferred and a valid CDL driver license required.

We Offer Competitive Wages, Excellent Benefits!

- Health, Dental & Vision Ins.
- STD / LTD Ins.
- Company Paid Life Ins.
- Paid Holidays, Vacation & Sick Leave
- 401(k) Retirement Plan w/ up to 4% Match
- Uniforms
- Retention Bonus Every 3 months
- Higher Pay For Night Drivers
- Starting Pay Depending on Experience
- Top Pay is \$23.00 / hr

Come Grow With Us Today!
Pampa Yard: 806-665-0353 1333 N. Price Rd., Pampa
Miami Yard: 806-868-6561 479 FM 283, Miami
Canadian Yard: 806-323-8301 111 S. Airport Rd, Canadian
Wheeler Yard: 806-826-3522 County Road 16, Wheeler
Perryton Yard: 806-435-1190 12625 FM 1267, Perryton
Joe Lee Yard: 806-375-2199 8710 US Hwy 83, Wheeler
EOE/ Drug Free Workplace

THOMAS AUTOMOTIVE, INC

Our shop is an independent auto repair shop that has been in operation for over 40 years. We are well established with a loyal customer base and excellent reputation for high quality. We offer our employees competitive rates and benefit packages. At this time, we are hiring for the following positions:

Apprentice Tech- Minimum experience but highly motivated with a desire to learn and progress. Wheel Alignment experience a plus.

Technician A/B- Highly motivated individual with 3 to 5 years experience required. Ability to work on variety of makes / models in a fast paced environment a plus. Commission based on level of experience.

Please stop by Thomas Automotive at 217 E. Atchison, Pampa, to pick up an application. Applicants will be required to pass a drug test upon employment.



Your guide to...
Local Beauty Professionals

Look and feel your best! This guide is a list of local salons and parlors that want to cater to you!

Massage Therapy
Cathy Potter, Holly Albert & Brittany Shuman
1224 N. Hobart, Suite 9
(806) 669-0013

Massage Advantage
Trena Moore, LMT
701 N. Price Road
(806) 665-7261

Massage Therapy
Magic Moments
Massage
By Genna
By Appointment Only
806-662-4586

5 Special Notices

ADVERTISING Material to be placed in the Pampa News, MUST be placed through the Pampa News Office Only.

10 Lost/Found

LOST on Foster & Lowry, 1 female golden retriever, tan, no collar, 1 female solid white, looks like retriever, no collar, 1 female black w/white on belly, neck, tip of tail, no collar. Please call Kelly 898-9417.

13 Bus. Opp.

HAVE large Pool Hall for lease. Great downtown location. Call for details, 665-1875.

14d Carpentry

CUSTOM Building & Remodeling. New Homes & Additions. Shawn Deaver Const., 806-662-2977.

14e Carpet Serv.

NU-WAY CLEANING SERVICE Bob Marx Owner-Operator. Call 665-3541.

14h Gen. Serv.

HOUSE Cracking? In bricks or walls? Childers Brothers, Inc. 800-299-9563, 806-352-9563

COX Fence Company.

Repair old fence or build new. Free estimates. Call 669-7769.

CERAMIC tile work,

stucco, cement. Remodeling, floor, shower, kitchen. Texture, painting, dry wall. Free estimate. 665-3453 leave message. Jesus Barraza.

LET M&S help you w/

your concrete needs. Free Est. Doc or Mike 669-6990, 664-2009

TILED Floors,

Showers, Backsplashes, Tub Surrounds, Cabinet Tops, etc. Stone & Ceramic. 26 Yrs. Exp. Keith Taylor 874-1779 lv. msg.

JH Concrete, all types

of concrete incl stamp, stain, fence, pools. Free est. 806-382-5408

R. Chester Trucking

is now hiring HOT SHOT CDL DRIVERS who take pride in their work and are not drug addicts or drunks. We offer competitive pay, monthly bonuses and we have steady work! Call Rick at 806-665-0379

EXPERIENCED DIESEL MECHANIC

Must pass drug test. Salary depends on experience. Apply in person. No Phone Calls Please. Triangle Well Service 129 S. Price Rd. Pampa, TX.

FULL-TIME Insurance Specialist / Receptionist.

Busy retail optical office in Pampa needs Receptionist with some optical or medical billing exp. Will train the right person, but 1-2 years experience preferred. Please mail or fax your resume to: Panhandle Eye Group, LLP, 1916 N. Hobart, Pampa, TX 79065. Fax 806-669-3586.

DCP Midstream

in Pampa is seeking an experienced Industrial Mechanic to perform maintenance, repair and overhauls on 2 and 4 cycle engines, pumps, compressors and gas turbines. For more info. or to apply, please visit: www.dcpmidstream.com/careers or call (303)605-2170

ADVERTISING Material to be placed in the Pampa News

MUST be placed through the Pampa News Office Only.

WASHER, dryer, table, chairs, refig, stove, rockers, china cabinets, freezer, etc.

662-7557

QUEEN or Full Mattress Sets \$246, Twin \$146.

New sets. Sale Price. Red Barn, 1424 S. Barnes, 665-2767.

FREE Big Tan Recliner.

Come by 418 Naida, Pampa (it's in the yard).

80 Pets & Suppl.

FOR ADOPTION Siamese, Calico, Orange, Tabby, Gray. Spayed / Neutered & shots. Call 665-4901 lv. msg.

FREE 3 m. mix breed puppies.

Ready to go & very cute! Will be small to med. sz. dogs. Call 669-0949.

Mac Supply Inc.

Electrical Contractors We are seeking an experienced individual in office management and accounting bookkeeping. Offering competitive salary & great benefits. Please send resume to P.O. Box 1157, Pampa, TX 79066 or email to: sservice@macsupplyinc.net

LOOKING for bright personalities & energetic people for all positions.

Avail. immediately. Exp. a + but not necessary. Apply in person, Holiday Inn Express, 3119 Perryton Pkwy.

HEALTH and Human Services has Texas Works Advisor I position available.

Bilingual preferred, monthly salary \$2300.08. Applications must be submitted through https://accesshr.state.tx.us

WAITRESS / Hostess wanted.

Must be 18 yrs. Apply between 11am-2pm, Mon-Fri. Dyer's MAINTENANCE Tech needed. Small plumbing repairs, painting, texturing & some electrical. Apply at The Floor Store, 2110 Perryton Pkwy or 662-8615

49 Pools/Hot Tubs

FACTORY Reconditioned Demo Spa. Priced to move! Call Morgan Spa, 806-358-9659.

69 Misc.

ADVERTISING Material to be placed in the Pampa News MUST be placed through the Pampa News Office Only.

WASHER, dryer, table, chairs, refig, stove, rockers, china cabinets, freezer, etc.

662-7557

QUEEN or Full Mattress Sets \$246, Twin \$146.

New sets. Sale Price. Red Barn, 1424 S. Barnes, 665-2767.

FREE Big Tan Recliner.

Come by 418 Naida, Pampa (it's in the yard).

80 Pets & Suppl.

FOR ADOPTION Siamese, Calico, Orange, Tabby, Gray. Spayed / Neutered & shots. Call 665-4901 lv. msg.

FURNISHED rooms in White Deer, utilities and cable included.

Weekly or monthly rentals. Call for details 665-1875.

ROOM For Rent, \$100 wk., all bills paid incl. cable. Private entrance.

806-661-8508

96 Unfurn. Apts.

APTS. Houses Duplexes. K&B Properties. Ref. & dep. req. Lakeview Apts. 669-4386

MINUTES from downtown-efficiencies. Short term leases avail.

806-665-4274

1 and 2 bdr. avail. now at the Gwendolen Apts.

Largest square footage in Pampa. 665-1875

NO transportation, not a problem. These large 1 bdr. apts. w/ appliances, are in walking distance to everything you need.

665-4274.

SCHNEIDER Apartments.

Ref. & dep. req. Business people welcome. 665-0415

98 Unfurn. Houses

PICK up rental list, in the Black Box, at 125 S. Houston, Pampa.

BEAUTIFUL condominium, 2 bedroom, 1 1/2 bath, fireplace & pool. Gas w/water paid by owner.

665-3788 or 665-6936.

3 bdr., 2 ba, 2 liv areas, 2 car gar. & privacy fence. \$900 mo. plus dep. 663-0058.

3 bdr., 1 ba., 1 car gar. \$750 mo. 1117 E. Foster. HUD ok. Avail. Feb 1st. 228-313-6047.

HAMPTON VILLAGES AVAIL NOW!!

Rush In... Won't last long!! 3 Bdrs & 4 Bdrs (Income Qualifications Apply) Application Fee Waived and Security Deposit in 2 payments if you apply and are approved. 1507 Alcock 806-440-0054

99 Stor. Bldgs.

TUMBLEWEED Acres, self storage units. Various sizes. 665-0079, 665-2450.

Rod Donaldson Agent 663-2800

Quentin Williams Realtors

NEW LISTING!! 2145 Aspen

3 bdr., 2100 Sq. Ft. MLS# 12-9271

PRICE REDUCED! \$105,000

1212 W. 21st Ave 3 bdr., 1/34 ba 4 car garage MLS# 11-9070

LOTS OF SPACE! 225 Dixie Dr.

4 bdr., 2395 sq. ft. Howardwick, TX OE (Listing Agent is Owner) Look up these listings at www.rodfindahome.com Anyone can sell you a house, let me find you a home!!

TRUSTAR Real Estate for all your complete real estate needs.

Show, list, property mgmt. 665-4595.

104 Lots

3 lots Skellytown, \$2,100, suitable for mobile home. Gas, water elec. avail. 336-4824.

115 Trailer Parks

TUMBLEWEED Acres, Storm Shelters, fenced, stor. bldg. avail. 665-0079, 665-2450.

116 Mobile Homes

USED 14x80 mobile home, mobile home only, lot not included. Make offer. 817-205-1953

120 Autos

08 Toyota Sequoia Platinum. 4 wd. Green. Leather interior. Low mi. \$37,125.

2007 Ford Expedition EL. Tan with leather, 3rd row seat. Low mi. \$24,740. 661-3561

FOR Sale 1999 Windstar, see at 605 Hazel or call 665-1084, 662-0302.

121 Trucks

2006 Ford F250 XLT Crew Cab Diesel, 4 wd. White, cloth interior. Loaded. \$21,375. Call 661-3561

2008 F350 Dually King Ranch, 4 wd. White with leather interior. Nice vehicle. \$35,650. 661-3561

80 GMC 3/4 ton, 350 eng., standard, engine has 15,000 mi., runs good, \$1000. 670-5137

AXYDLBAAXR is LONGFELLOW

One letter stands for another. In this sample, A is used for the three L's, X for the two O's, etc. Single letters, apostrophes, the length and formation of the words are all hints. Each day the code letters are different.

1-31 CRYPTOQUOTE

S A A B F H A Z U W P S U W

W O O W P N H S A A G

B U H V H P S A . — Z W P H O

Z H Z W U T N

Yesterday's Cryptoquote: I ARISE IN THE MORNING TORN BETWEEN A DESIRE TO IMPROVE THE WORLD AND A DESIRE TO ENJOY THE WORLD. THIS MAKES IT HARD TO PLAN THE DAY. — E.B. WHITE

MANAGEMENT OPPORTUNITY

Sonic Drive-In is on the grow - with exciting opportunities for fast food restaurant general managers, managers and assistant managers.

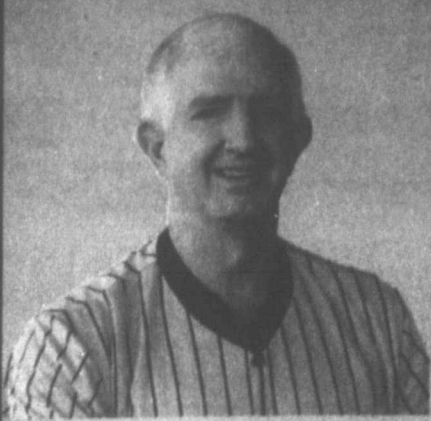
Are you looking for a change? Sonic is a quick service food chain whose time has come again... on the grow with new ideas and innovations in the food industry. We want to take a few potential managers and provide them with the opportunity to achieve. If you have food service experience, operational and people skills, the willingness and stamina to follow through, a possibility of relocation, and a desire to work, then Sonic may be the place for you. We are a locally owned and operated franchise with 35+ years of success.

Please send resumes to:
J. Howard
217 Springfield
Clovis, NM 88101



11 ET JFF.

et (S teen forth) of 11 in (53), an y of inty.



Passing The Savings On To You!

Toyota 2011 Models

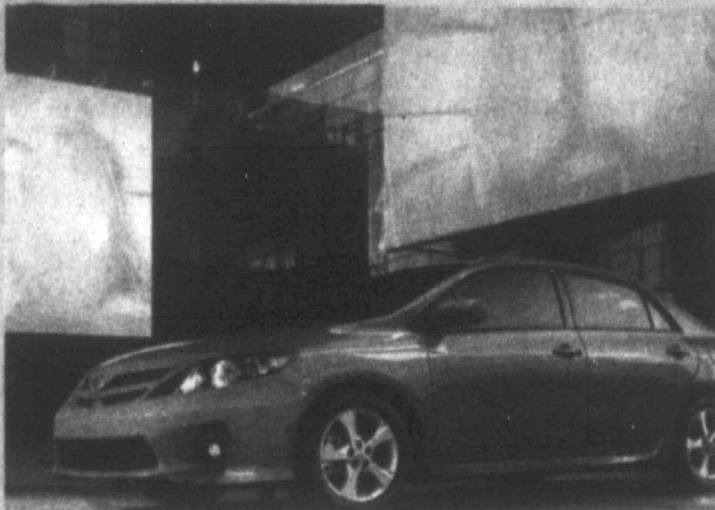


Am I the Camry type?

With each day bringing new advancements to the way we live and work, shouldn't your car be advanced too? Meet the 2011 Toyota Camry, the car designed to fit you and your lifestyle. You're no doubt familiar with Camry; it's America's best-selling car. 1 And over the past 25 years, it's become the standard for quality. In fact, 90% of all Camrys sold in the last 15 years are still on the road. 2 And the Camry Hybrid LE now offers an estimated 43 city mpg. 3 Quite simply, the 2012 Camry is what you've come to expect from this legendary sedan. The reinvented Camry is ready. Are you? The 2011 Toyota Camry is a 4-door, 5-seat sedan, available in 10 trims. The Base model is equipped with a standard 2.5L, 4-cylinder, engine that achieves 22-mpg in the city and 33-mpg on the highway.

Am I the Corolla type?

Without a doubt. Since we introduced Toyota Corolla in 1968, we've sold over 34 million of them around the world. 1 One look at the 2011 Corolla and it's easy to see why: Its many thoughtful features, fuel efficiency and legendary reliability make it a great value. It also has fresh styling inside and out, and comes equipped with an impressive list of standard safety features. Just the kind of qualities you'd expect from the best-selling compact car in America. 2 Are you the Corolla type? Perhaps the real question should be: Which model of Corolla is your type? The 2011 Toyota Corolla is a 4-door, 5-seat sedan, available in 5 trims. The Base model (M5) is equipped with a standard 1.8L, 4-cylinder, engine that achieves 28-mpg in the city and 35-mpg on the highway.



Am I the Prius type?

If you think of the 2011 Toyota Prius as a vehicle designed only for a specific person, you'll be glad to know that it offers something for nearly everyone. We all want to be environmentally responsible. Happily, Prius was named a 2010 Top10 Green Car by Kelley Blue Book1. And who doesn't prefer spending less on gas? Prius has an EPA-estimated combined 50 mpg rating. 2 If you need the assurance of proven technology, allow us to point out that this is the third generation of the world's most popular hybrid. In the end, it doesn't matter whether your type is passionate about the environment, technology or saving money. Prius is for you. We hope that clears the air.

Am I the Tundra type?

When it comes to hard work, there's just no substitute for power. Then again, pickup owners don't all demand the same thing from their trucks. Which is why Tundra offers a choice of engines, including a brawny 5.7L V8, a strong 4.6L V8 and a very capable 4.0L V6. So whether you're hauling, towing or just heading home, you can rest assured that with Tundra, you're carrying a payload of capability. Tundra has a 5.7L i-FORCE V8 that cranks out the power to tow up to 10,400lb. It's also equipped with a stout 10.5-in. ring gear to help handle those five tons. Not to mention massive 4-piston brake calipers to help bring it all to a stop without breaking a sweat. But Tundra doesn't just work harder, it works smarter. Dual Independent Variable Valve Timing with intelligence (VVT-i) makes this truck as efficient as it is powerful. Why do we keep going to these extremes? Because when you've got a 1/2-ton truck carrying a reputation this size, you don't take it lightly.



CULBERSON-STOWERS
805 North Hobart Street • 665-1665
www.culbersontoyota.com

Previously Owned Vehicles

TT170A	2008 Toyota Sequoia Platinum 4wd Green /with leather loaded What a peach!	\$37,124 <u>low miles</u>	3941A	2008 Nissan Frontier Nismo 4wd Red/ with cloth, off road special This is one special truck.	\$20,345 <u>low miles</u>
3940A	2009 Chevrolet Silverado Z-71 Ext Cab White /with black cloth, 4x4 Like New, COME SEE!!	\$24,334 <u>low miles</u>	3943A	2007 Kia Sportage Lx Black Cherry /with cloth. Super Clean. Hard loaded, Economical	\$11,465 <u>low miles</u>
TT145A	2008 Toyota RAV-4 Sport V6 4wd Black /with grey interior Super Clean	\$17,677 <u>low miles</u>	TT141A	2008 Subaru Tribeca Limited Brown /with tan leather. Super Clean. This is a beauty.	\$20,936 <u>low miles</u>
TT022B	2009 Chevrolet HHR LT Grey /with grey cloth, Loaded! Economical and Sporty	\$10,401 <u>low miles</u>	011037B	2010 Chevrolet Malibu LTZ Gm Certified, leather, Sunroof. Just like new.	\$17,157 <u>low miles</u>

We need your clean Trade-ins

Lady Harvesters look to lock up playoffs vs. Borger



staff photo by Andrew Glover

Senior Kirsten Kuhn defends Perryton's Makayla Swift Tuesday. Pampa meets the Rangerettes again 6 p.m. Friday in Perryton.

ANDREW GLOVER
aglover@thepampanews.com

The Pampa Lady Harvesters will be looking to achieve one of its season goals Tuesday as victory over the Borger Lady Bulldogs will clinch a playoff spot.

The game is 6 p.m. at McNeely Fieldhouse. If Pampa clinches, it will be the second appearance in three seasons and first in class 3A. Head coach Gene Valentine said a win will achieve what the team set out to do.

"If we take care of Tuesday, we will be where we want to be," Valentine said. "It may not be the position that we want."

The Lady Harvesters (12-14, 2-4) trail Dalhart by two games for second and would need to win out and Dalhart to lose out to clinch second seed.

In the previous meeting with Borger, senior Delaney Clendening had to hit a buzzer beater to secure a 40-38 victory.

Pampa won the first meeting by 48. Junior Taylor Morgan said the team has to execute.

"We can't underestimate them," Morgan said.

Senior Kirsten Kuhn agreed.

"They improved a lot from the first time we played them,"

Kuhn said. "Playing people, three times it's hard to beat them that third time."



Valentine



Morgan

The Lady Harvesters will have to defend Borger's Nellie Embers, who gave the Lady Bulldogs a spark with nine points in the January 20 game.

Pampa plays its final road game against the Perryton Rangerettes (21-5, 6-0) 6 p.m. Friday.

If Perryton beats Dalhart today, it will clinch the district title for the second straight season. The Lady Harvesters have yet to beat Perryton since they've been in the same district.

The Lady Harvesters will have to limit Lacey Herbert's production. Herbert scored 10 points and earned six trips to the free throw line during the January 24 game.

District 1-3A Playoff Scenarios

The girls are in the final third of district; here's a look at each team's playoff possibilities.

Pampa

Can clinch a playoff spot with a win or Borger loss.

Can clinch second seed if it wins out and Dalhart loses out.

Borger

Can clinch a playoff spot if it wins out and Pampa loses out.

Dalhart

Can clinch second seed with a win or Pampa loss.

Can clinch district if it wins out and Perryton loses out.

Perryton

Can clinch district with a win or Dalhart loss.

Harvesters could use point guard to improve offensive issues

Friday night on my way back from Dalhart, I again was left with questions about the Harvester basketball team. How could they have lost in similar fashion? Did they not get the point of my last column? Is Dalhart actually better than us? Then it hit me what the real issue with this team is.

They don't have a point guard.

Last year, Zach Murray filled that role. I think some of us, myself included, forgot how valuable he was. Murray didn't light up the scoreboard, but he was responsible for several of our scores last year. On top of that, Murray was a great ball handler and didn't get himself in trouble.

This year, senior Latigo Collins is playing that position. Collins is a good ball handler, but that doesn't necessarily make him a good point guard. Collins' first instinct is to score, not to set up the offense, which makes him a good shooting guard, is a role he fit beautifully last season.

With Collins driving, this sometimes leads to the other four guys standing around and wanting to believe that Collins every time can beat three defenders to the rim. I've already mentioned in previous columns that was just as unsuccessful as thinking Collins could catch the ball over four defenders in football. If Collins does pass it off, he doesn't get the ball to people who are in position to score, but that's not Collins' fault. This is part of the reason Pampa hasn't shot the ball well lately.



ANDREW GLOVER

Senior Reid Miller and junior Derrek Pollard are getting the ball at the perimeter and have to drive to the basket. This rarely has ended up with a positive result. Either they turn the ball over or shoot a fade away jumper and miss. If the team had a point guard, then Miller and Pollard

can post up or make a cut to the basket. At the very least, it puts them a jump stop or a dribble away from a layup. At times, they are taking the ball up the floor when they should be passing it in. Also, when Collins has shot three-pointers, he's doing it off the dribble instead of off a pass. This may explain why Collins hasn't shot as well outside the perimeter. When Collins picks up his dribble, he's telling the defender what he is going to do and allows it to contest the shot. If Collins receives the ball off a pass, he can get the shot up before the defender can get to him.

After the last two district losses, senior Cole Engle and Miller told me they didn't run the things they worked on in practice. A true point guard will help that. If the Harvesters are running an offense, it's going to help divert opponents' attention on Collins because they will have to pay attention to everyone else's movements.

It can open things up for Collins to get to the rim, especially if a defender is having to worry about him on down screens, front or back door cuts. Plus, Pampa does all those passing drills at the beginning of warm ups. Might as well put them to use.

The question is, who can play this role on this year's team? One option is to start junior Ty Hutto at point guard. In the times, we've seen him this year, Hutto can handle the ball well and isn't necessarily looking to score, which means he is more likely to set up the offense. Hutto has some speed which Pampa can use to its advantage. Hutto is going to play a bigger role on next year's team. With the way district has gone, it might not be a bad idea to see what he can do.

Obviously bringing Hutto off the bench means you have to adjust the lineup. With Hutto at point, move Collins to shooting guard, Engle to small forward, keep Miller and Pollard the same and bring junior Tyler Powell off the bench. This has nothing to do with Powell's ability, because like I said, he's a good player. By having him on a bench, you have another person who can relieve Miller or Pollard.

The other option is to switch Collins and Engle. Engle likes to score as well when he has the ball, but he's willing to give it up to get someone a better look. If Engle is playing point, it allows Collins to do what he's good at. If Collins draws attention in the paint, it could set up Engle for a three.

I know that head coach Dustin Miller and assistant coach Matt Embry have a grasp of the team, but maybe they need to make a change.

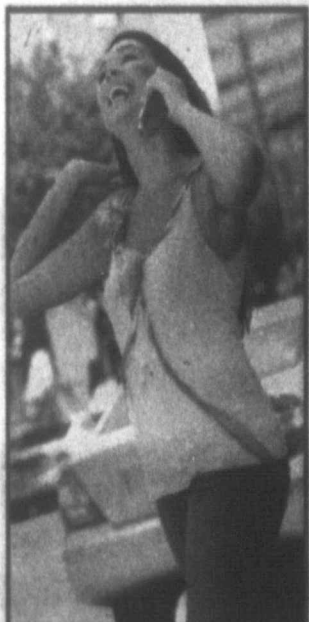
They knew what personnel we had on day one of practice and understood that not having a true point guard could create an issue. Embry has coached Hutto on junior varsity last year and knows what he's capable of.

I understand Dustin and Embry aren't the ones throwing the ball away, missing key shots, or moping after a timeout because they lost momentum. They now know that the team's lack of offense is an issue and need to do something about it to salvage the season. Changing the lineup could give the team a boost and new energy.

Is having a true point guard going to solve all of the Harvesters problems? No. This team still has to make shots and have to play with a sense of urgency the rest of the way. It could help to start improving or solving them.

What if this plan doesn't work? We lose and further jeopardize our chances of winning district and making playoffs. That's not much different than we are doing now. The only place I can see Pampa going is up, and they certainly have the talent and coaching to bounce back.

Andrew Glover is The Pampa News sports reporter. He can be reached online at aglover@thepampanews.com



Spread the news faster than your teenager on a cell phone!

Advertise here. Call ReDom or Sue @ 669-2525 to advertise in The Pampa News

Carpet - Vinyl - Hardwood - Laminates

Free Estimates for both Commercial and Residential

We are your Kitchen and Bathroom Remodels Headquarters

THE FLOOR STORE

2110 Perryton Pkwy - Pampa
WK: 806-665-4455
FAX: 806-665-5507
sales@pampafloorstore.com 7286

Don't Forget!
Valentine's Day
will be here
SOON

Roberta's
Flowers

217 N. Ballard • Pampa, Tx
669-3309

Since 1954
www.robertasflowers.com

PLAY GRIDIRON MANIA

Play to win \$50 Pampa News Bucks!

	10	1	2	3	4	
	NEW	YOR	GIANTS			
S T O T S	<p>HUDSON TIRE PROS TIRE & SERVICE</p> <p>Stop in today and let our specialists get your car ready to hit the road.</p> <p>1800 N Hobart 665-5302 hudsontirepros.com</p>	<p>POP SHOP 1 & 2 729 N. HOBART 665-1719</p> <p>--- EASY & CONVENIENT --- --- CANDY - SOFT DRINKS - SNACKS --- --- BEER - GIFT ITEMS - CIGARETTES - LIGHTERS --- --- DON'T FORGET OUR HAPPY HOUR ---</p>	<p>It's a Touchdown!</p> <p>When you choose Keyes Pharmacy for all your prescription needs!</p> <p>Keyes Pharmacy 928 N. Hobart • 806-669-1202 Weekdays: 8:30 a.m. - 6:00 p.m. Saturday: 8:30 a.m. - 12:00 p.m.</p>	<p>HOLMES Sports • Auto • Center est. 1962 Pampa, Texas 304 S. CUYLER 806-665-2631</p>	<p>First Southwest INSURANCE Auto Home Life Health Business</p> <p>Kevin Hucks Agent 1619 N. Hobart Pampa, Texas 79065 806-669-0888 Fax 806-665-4443 hucksinsurance@centramedia.net</p>	
	<p>THE INSURANCE TEXANS TRUST</p> <p>Germania INSURANCE</p> <p>ALLISON AGENCY Tyler Allison & Helen Allison 1827 N. Hobart Pampa, Texas 79065 806-665-6815</p> <p>HOME • AUTO • LIFE REPRESENTING LOCAL CHAPTER #282</p>	<p>EZ CLEAN LAUNDROMAT 715 N. HOBART 665-2295</p> <p>--- SAFE & CLEAN ENVIRONMENT --- --- LARGE LOAD WASHERS & DRYERS --- --- ON SITE MANAGER ---</p>	<p>CLARENDON COLLEGE PAMPA CENTER 1601 W. Kentucky Pampa, TX www.clarendoncollege.edu</p> <ul style="list-style-type: none"> • Nursing • Welding • Heating & Air Conditioning HVAC • Wind Energy • EMS Training • Cosmetology • Office Technology • Academics <p>(806) 665-3801</p>	<p>BILL ALLISON EST. 1976 AUTO SALES</p> <p>Lynn Allison Loyd Waters 806.665.3992 1200 N. Hobart Pampa, TX 79065 www.billallisonauto.com</p>	<p>SHEVE BEGRADSKI UTILITY TIRE AUTO REPAIR 806-669-6771 447 W. BROWN • PAMPA TEXAS</p>	
P A T R I O T S	<p>CRAWFORD EXTERIORS ROOFING • SIDING • WINDOWS</p> <p>806.688.1152 www.crawfordexteriors.com</p>	<p>HOLMES Sports • Auto • Center est. 1962 Pampa, Texas 304 S. CUYLER 806-665-2631</p>	<p>HUDSON TIRE PROS TIRE & SERVICE</p> <p>Stop in today and let our specialists get your car ready to hit the road.</p> <p>1800 N Hobart 665-5302 hudsontirepros.com</p>	<p>Mikey's Liquor Store Beer • Liquor • Wine Cigarettes • Lotto 1222 Price Rd. 806-665-8862 M-S 10am - 9pm</p>	<p>SHEILA WEBB -Agent- Coronado Center - North Side P.O. Box 2689 Pampa, TX 79066-2689 (806) 669-3861 • (806) 299-3861 sheila.webb.cx3m@statefarm.com "Like A Good Neighbor, State Farm Is There." STATE FARM INSURANCE COMPANIES HOME OFFICES: BLOOMINGTON, IL</p>	
	<p>First Southwest INSURANCE Auto Home Life Health Business</p> <p>Kevin Hucks Agent 1619 N. Hobart Pampa, Texas 79065 806-669-0888 Fax 806-665-4443 hucksinsurance@centramedia.net</p>	<p>POP SHOP 1 & 2 729 N. HOBART 665-1719</p> <p>--- EASY & CONVENIENT --- --- CANDY - SOFT DRINKS - SNACKS --- --- BEER - GIFT ITEMS - CIGARETTES - LIGHTERS --- --- DON'T FORGET OUR HAPPY HOUR ---</p>	<p>Pamcel FEDERAL CREDIT UNION 1939 N. Hobart Pampa, TX. 79065</p> <p>Debbie Stokes President & CEO 806-688-7041 www.pamcelfcu.com</p>	<p>PRESTIGE AUTOBODY & ACCESSORIES 101 S. Hobart • 665-3500</p>	<p>CLARENDON COLLEGE PAMPA CENTER 1601 W. Kentucky Pampa, TX www.clarendoncollege.edu</p> <ul style="list-style-type: none"> • Nursing • Welding • Heating & Air Conditioning HVAC • Wind Energy • EMS Training • Cosmetology • Office Technology • Academics 	
L A N D	<p>HUDSON TIRE PROS TIRE & SERVICE</p> <p>Stop in today and let our specialists get your car ready to hit the road.</p> <p>1800 N Hobart 665-5302 hudsontirepros.com</p>	<p>SHEVE BEGRADSKI UTILITY TIRE AUTO REPAIR 806-669-6771 447 W. BROWN • PAMPA TEXAS</p>	<p>It's a Touchdown!</p> <p>When you choose Keyes Pharmacy for all your prescription needs!</p> <p>Keyes Pharmacy 928 N. Hobart • 806-669-1202 Weekdays: 8:30 a.m. - 6:00 p.m. Saturday: 8:30 a.m. - 12:00 p.m.</p>	<p>Mikey's Liquor Store Beer • Liquor • Wine Cigarettes • Lotto 1222 Price Rd. 806-665-8862 M-S 10am - 9pm</p>	<p>SHEILA WEBB -Agent- Coronado Center - North Side P.O. Box 2689 Pampa, TX 79066-2689 (806) 669-3861 • (806) 299-3861 sheila.webb.cx3m@statefarm.com "Like A Good Neighbor, State Farm Is There." STATE FARM INSURANCE COMPANIES HOME OFFICES: BLOOMINGTON, IL</p>	
	<p>First Southwest INSURANCE Auto Home Life Health Business</p> <p>Kevin Hucks Agent 1619 N. Hobart Pampa, Texas 79065 806-669-0888 Fax 806-665-4443 hucksinsurance@centramedia.net</p>	<p>EZ CLEAN LAUNDROMAT 715 N. HOBART 665-2295</p> <p>--- SAFE & CLEAN ENVIRONMENT --- --- LARGE LOAD WASHERS & DRYERS --- --- ON SITE MANAGER ---</p>	<p>CLARENDON COLLEGE PAMPA CENTER 1601 W. Kentucky Pampa, TX www.clarendoncollege.edu</p> <ul style="list-style-type: none"> • Nursing • Welding • Heating & Air Conditioning HVAC • Wind Energy • EMS Training • Cosmetology • Office Technology • Academics 	<p>HOLMES Sports • Auto • Center est. 1962 Pampa, Texas 304 S. CUYLER 806-665-2631</p>		
E N G L A N D	<p>HUDSON TIRE PROS TIRE & SERVICE</p> <p>Stop in today and let our specialists get your car ready to hit the road.</p> <p>1800 N Hobart 665-5302 hudsontirepros.com</p>	<p>SHEVE BEGRADSKI UTILITY TIRE AUTO REPAIR 806-669-6771 447 W. BROWN • PAMPA TEXAS</p>	<p>It's a Touchdown!</p> <p>When you choose Keyes Pharmacy for all your prescription needs!</p> <p>Keyes Pharmacy 928 N. Hobart • 806-669-1202 Weekdays: 8:30 a.m. - 6:00 p.m. Saturday: 8:30 a.m. - 12:00 p.m.</p>	<p>Mikey's Liquor Store Beer • Liquor • Wine Cigarettes • Lotto 1222 Price Rd. 806-665-8862 M-S 10am - 9pm</p>	<p>SHEILA WEBB -Agent- Coronado Center - North Side P.O. Box 2689 Pampa, TX 79066-2689 (806) 669-3861 • (806) 299-3861 sheila.webb.cx3m@statefarm.com "Like A Good Neighbor, State Farm Is There." STATE FARM INSURANCE COMPANIES HOME OFFICES: BLOOMINGTON, IL</p>	
	<p>First Southwest INSURANCE Auto Home Life Health Business</p> <p>Kevin Hucks Agent 1619 N. Hobart Pampa, Texas 79065 806-669-0888 Fax 806-665-4443 hucksinsurance@centramedia.net</p>	<p>POP SHOP 1 & 2 729 N. HOBART 665-1719</p> <p>--- EASY & CONVENIENT --- --- CANDY - SOFT DRINKS - SNACKS --- --- BEER - GIFT ITEMS - CIGARETTES - LIGHTERS --- --- DON'T FORGET OUR HAPPY HOUR ---</p>	<p>Pamcel FEDERAL CREDIT UNION 1939 N. Hobart Pampa, TX. 79065</p> <p>Debbie Stokes President & CEO 806-688-7041 www.pamcelfcu.com</p>	<p>PRESTIGE AUTOBODY & ACCESSORIES 101 S. Hobart • 665-3500</p>	<p>CLARENDON COLLEGE PAMPA CENTER 1601 W. Kentucky Pampa, TX www.clarendoncollege.edu</p> <ul style="list-style-type: none"> • Nursing • Welding • Heating & Air Conditioning HVAC • Wind Energy • EMS Training • Cosmetology • Office Technology • Academics 	
W E D N E S D A Y	<p>HUDSON TIRE PROS TIRE & SERVICE</p> <p>Stop in today and let our specialists get your car ready to hit the road.</p> <p>1800 N Hobart 665-5302 hudsontirepros.com</p>	<p>SHEVE BEGRADSKI UTILITY TIRE AUTO REPAIR 806-669-6771 447 W. BROWN • PAMPA TEXAS</p>	<p>It's a Touchdown!</p> <p>When you choose Keyes Pharmacy for all your prescription needs!</p> <p>Keyes Pharmacy 928 N. Hobart • 806-669-1202 Weekdays: 8:30 a.m. - 6:00 p.m. Saturday: 8:30 a.m. - 12:00 p.m.</p>	<p>Mikey's Liquor Store Beer • Liquor • Wine Cigarettes • Lotto 1222 Price Rd. 806-665-8862 M-S 10am - 9pm</p>	<p>SHEILA WEBB -Agent- Coronado Center - North Side P.O. Box 2689 Pampa, TX 79066-2689 (806) 669-3861 • (806) 299-3861 sheila.webb.cx3m@statefarm.com "Like A Good Neighbor, State Farm Is There." STATE FARM INSURANCE COMPANIES HOME OFFICES: BLOOMINGTON, IL</p>	
	<p>First Southwest INSURANCE Auto Home Life Health Business</p> <p>Kevin Hucks Agent 1619 N. Hobart Pampa, Texas 79065 806-669-0888 Fax 806-665-4443 hucksinsurance@centramedia.net</p>	<p>EZ CLEAN LAUNDROMAT 715 N. HOBART 665-2295</p> <p>--- SAFE & CLEAN ENVIRONMENT --- --- LARGE LOAD WASHERS & DRYERS --- --- ON SITE MANAGER ---</p>	<p>CLARENDON COLLEGE PAMPA CENTER 1601 W. Kentucky Pampa, TX www.clarendoncollege.edu</p> <ul style="list-style-type: none"> • Nursing • Welding • Heating & Air Conditioning HVAC • Wind Energy • EMS Training • Cosmetology • Office Technology • Academics 	<p>HOLMES Sports • Auto • Center est. 1962 Pampa, Texas 304 S. CUYLER 806-665-2631</p>		

HOW TO PLAY

THE PAMPA NEWS'

GRIDIRON

Mania

Circle one ad only from the grids on Page 2 and Page 3 that corresponds with your prediction for the final game score (using the last number of each score.)

EXAMPLE:

Patriots 28 and Giants 22

You would circle 8 down and 2 across: Mikey's

You may enter as many times as you wish, however, all entries must be original newspaper pages, no copies. Bring entries to *The Pampa News* at 403 W Atchison or mail to PO Box 2198, Pampa, Texas 79066. All entries must be received by Friday, Feb. 3 at noon. If more than one correct entry is received, the \$50 Pampa News Bucks winner will be drawn from the correct entries.


GOOD LUCK!

NAME _____
 ADDRESS _____
 PHONE _____

5 NEW YORK GIANTS 9

Mikey's Liquor Store
 Beer · Liquor · Wine
 Cigarettes · Lotto
 1222 Price Rd.
 806-665-8662
 M-S 10am - 9pm

PRESTIGE
 For all your towing needs.
 We have Flatrate Airbag
 and BMW Towing Ball Hooks



(806)-665-3500

BILL ALLISON
 EST. 1976 AUTO SALES

**Lynn Allison
 Loyd Waters**
 806.665.3992

1200 N. Hobart
 Pampa, TX 79065
 www.billallisonauto.com

SHEILA WEBB
 -Agent-

Coronado Center - North Side
 P.O. Box 2689
 Pampa, TX 79066-2689
 (806) 669-3861 • (806) 299-3861
 sheila.webb.cx3m@statefarm.com

"Like A Good Neighbor,
 State Farm Is There."

STATE FARM
 INSURANCE COMPANIES
 HOME OFFICES:
 BLOOMINGTON, IL

SEVE SEGRALVO
UTILITY TIRE



AUTO REPAIR
 AND
WAX

806-669-6771
 447 W. BROWN • PAMPA, TEXAS

10

2

3

4

5

6

7

Pamcel
 FEDERAL CREDIT UNION
 1939 N. Hobart
 Pampa, Tx. 79065

Debbie Stokes
 President & CEO
 806-688-7041
 www.pamcelfcu.com

TIRE & SERVICE
HUDSON
TIRE PROS

Stop in today and let
 our specialists get
 your car ready to hit
 the road.

1800 N Hobart
 665-5302
 hudsontirepros.com

POP SHOP 1 & 2
 729 N. HOBART 665-1719

--- EASY & CONVENIENT ---
 --- CARRY -SOFT DRINKS -SHAKES-
 --- BEER -GIFT ITEMS -CIGARETTES -LIGHTERS
 --- DON'T FORGET OUR HAPPY HOUR ---

EZ CLEAN
LAUNDROMAT
 715 N. HOBART 665-2285

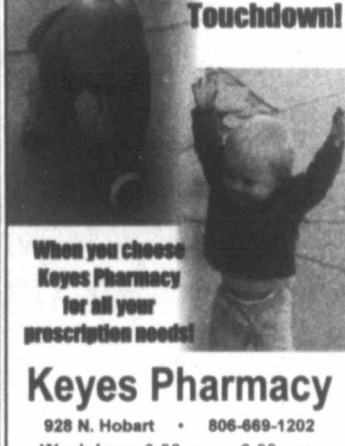
--- SAFE & CLEAN ENVIRONMENT ---
 --- LARGE LOAD WASHERS & DRYERS
 --- ON SITE MANAGER ---

CRAWFORD EXTERIORS
 ROOFING • SIDING • WINDOWS



806.688.1152
 www.crawfordexteriors.com

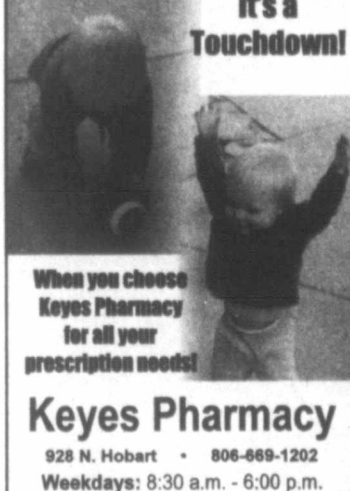
It's a
 Touchdown!



When you choose
 Keyes Pharmacy
 for all your
 prescription needs!

Keyes Pharmacy
 928 N. Hobart • 806-669-1202
 Weekdays: 8:30 a.m. - 6:00 p.m.
 Saturday: 8:30 a.m. - 12:00 p.m.

It's a
 Touchdown!



When you choose
 Keyes Pharmacy
 for all your
 prescription needs!

Keyes Pharmacy
 928 N. Hobart • 806-669-1202
 Weekdays: 8:30 a.m. - 6:00 p.m.
 Saturday: 8:30 a.m. - 12:00 p.m.

THE INSURANCE TEXANS TRUST

Germania
 INSURANCE

ALLISON AGENCY
 Tyler Allison & Helen Allison

1827 N. Hobart
 Pampa, Texas 79065
 806-665-6815

HOME • AUTO • LIFE
 REPRESENTING LOCAL CHAPTER #262

**Dents, Dings,
 Collisions -
 We do it all!**

PRESTIGE
 AUTOBODY & ACCESSORIES
 101 S. Hobart • 665-3500

Mikey's Liquor Store
 Beer · Liquor · Wine
 Cigarettes · Lotto
 1222 Price Rd.
 806-665-8662
 M-S 10am - 9pm

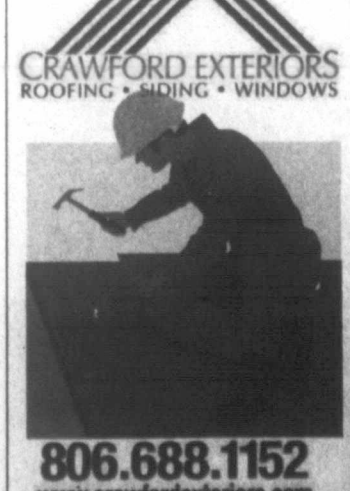
CLARENDON
COLLEGE
 PAMPA CENTER

1601 W. Kentucky
 Pampa, TX
 www.clarendoncollege.edu

- Nursing
- Welding
- Heating & Air Conditioning
- HVAC
- Wind Energy
- EMS Training
- Cosmetology
- Office Technology
- Academics

(806) 665-3301

CRAWFORD EXTERIORS
 ROOFING • SIDING • WINDOWS



806.688.1152
 www.crawfordexteriors.com

BILL ALLISON
 EST. 1976 AUTO SALES

**Lynn Allison
 Loyd Waters**
 806.665.3992

1200 N. Hobart
 Pampa, TX 79065
 www.billallisonauto.com

TIRE & SERVICE
HUDSON
TIRE PROS

Stop in today and let
 our specialists get
 your car ready to hit
 the road.

1800 N Hobart
 665-5302
 hudsontirepros.com

THE INSURANCE TEXANS TRUST

Germania
 INSURANCE

ALLISON AGENCY
 Tyler Allison & Helen Allison

1827 N. Hobart
 Pampa, Texas 79065
 806-665-6815

HOME • AUTO • LIFE
 REPRESENTING LOCAL CHAPTER #262

HOLMES
 Sports Center
 est. 1962
 Pampa, Texas
 304 S. CUYLER
 806-665-2631

First Southwest
INSURANCE

Auto | Home | Life | Health | Business

Kevin Hucks
 Agent
 1619 N. Hobart
 Pampa, Texas 79065

806-669-0888
 Fax 806-665-4443
 hucksinsurance@centramedia.net

POP SHOP 1 & 2
 729 N. HOBART 665-1719

--- EASY & CONVENIENT ---
 --- CARRY -SOFT DRINKS -SHAKES-
 --- BEER -GIFT ITEMS -CIGARETTES -LIGHTERS
 --- DON'T FORGET OUR HAPPY HOUR ---

EZ CLEAN
LAUNDROMAT
 715 N. HOBART 665-2285

--- SAFE & CLEAN ENVIRONMENT ---
 --- LARGE LOAD WASHERS & DRYERS
 --- ON SITE MANAGER ---

Pamcel
 FEDERAL CREDIT UNION
 1939 N. Hobart
 Pampa, Tx. 79065

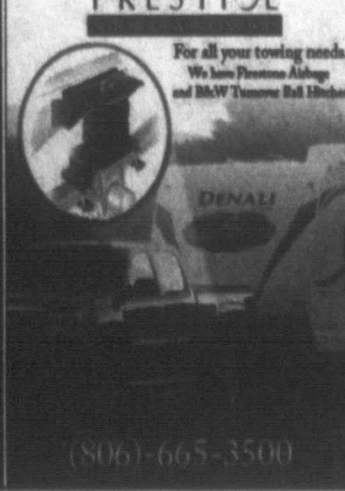
Debbie Stokes
 President & CEO
 806-688-7041
 www.pamcelfcu.com

CLARENDON
COLLEGE
 PAMPA CENTER

1601 W. Kentucky
 Pampa, TX
 www.clarendoncollege.edu

- Nursing
- Welding
- Heating & Air Conditioning
- HVAC
- Wind Energy
- EMS Training
- Cosmetology
- Office Technology
- Academics

PRESTIGE
 For all your towing needs.
 We have Flatrate Airbag
 and BMW Towing Ball Hooks



(806)-665-3500

LET FREEDOM RING

National Freedom Day is a day that honors the signing of a resolution that proposed the 13th amendment of the nation's Constitution on February 1, 1865. Abraham Lincoln, who was president at that time, signed the resolution to outlaw slavery.

In 1948, Truman signed a bill proclaiming February 1st as National Freedom Day. On this day, many towns in the United States, have festivals, lay wreaths at the Liberty Bell, while other citizens honor the freedoms that the United States offers.



NATIONAL BANK OF COMMERCE
An Office Of First National Bank Waupaca, Wisconsin
PAMPA • 1224 N. HOBART • 665-0022
SHAMROCK • 305 N. MAIN • 250-2181
CHILDRESS • 601 COMMERCE • 940-837-2514

LEFORS FEDERAL CREDIT UNION
835-2773
117 W. 2ND STREET • LEFORS TEXAS

PARSLEYS
SHEET METAL AND ROOFING
214 E. TYNG AVENUE
800-442-4668 • 806-669-6461

Robertas FLOWERS
217 N. Ballard • 669-3309
Where Your Friends Buy Their Flowers

FIRST STATE BANK OF MIAMI
Main Bank • 100 S. Main • Miami Tx • 806-868-2771
Pampa Branch • 120 W. Kingsmill • Pampa Tx • 806-665-3669
Member FDIC

Century 21 PAMPA REALTY INC
312 N. GRAY
940-697
More POWER To You

WARREN CHISUM
PO Box 2061,
Pampa, TX 79065
806-665-3552

The
PAMPA NEWS