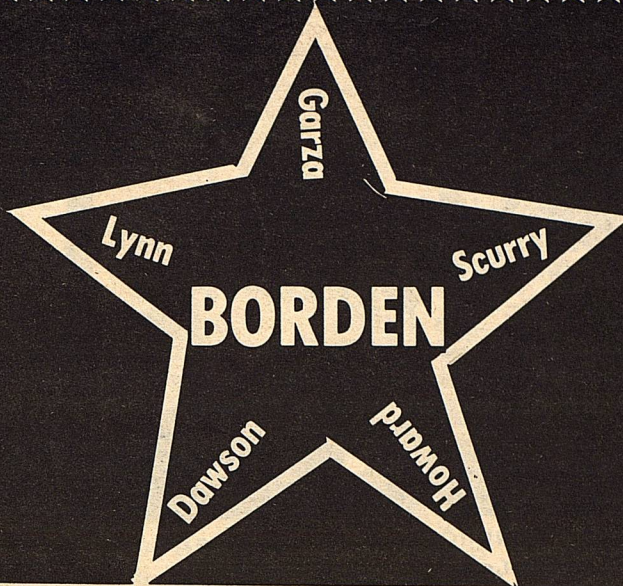


THE

VOLUME XIV



STAR

April 22, 1987

Serving the Counties of Borden, Dawson, Garza, Howard, Lynn & Scurry

THE GREAT TEXAS TRASH OFF

"The Great Texas Trash Off," scheduled for Saturday, April 25th will involve more than 15,000 volunteers throughout the state in the largest one-day clean-up effort in the nation.

Approximately 2,000 miles of Texas highways will be cleaned up during the day. This is equivalent to the distance between New York City and Billings, Montana (2,039 miles); Chicago and Los Angeles (2,048 miles) or Atlanta and Las Vegas (1,979 miles). (Source for mileage: Rand McNally Road Atlas)

Fifty thousand 40-gallon garbage bags will be used by the volunteers to pick up an estimated 1.5 million gallons of trash.

The goal of "The Great Texas Trash Off" is to demonstrate the amount of trash on Texas highways as part of the highway department's aggressive war against litter.

The groups involved participate in the Adopt-a-Highway program, developed and sponsored by the State Department of Highways and Public Transportation. Civic, community and business groups "adopt" 2-mile stretches of Texas highways and take the responsibility for keeping them clean.

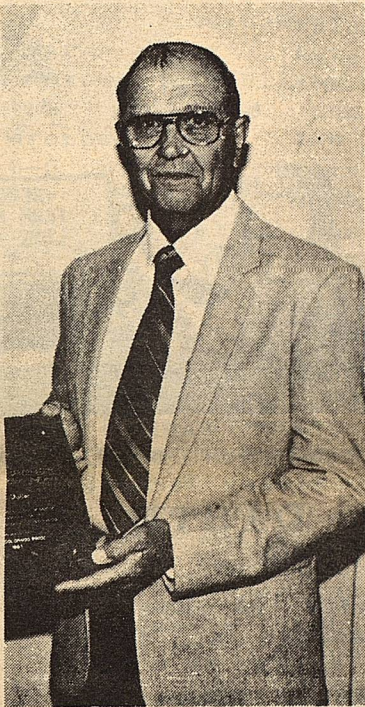
The Texas Adopt-a-Highway program, the first of its kind in the nation, has become a model for other states who are developing similar programs.

More than 1,300 groups have joined the program since it was introduced on a statewide basis in March 1986.

The program was initially developed in the Tyler area to get local civic groups involved in the antilitter program. In March 1986, the program was introduced statewide and expanded to allow business and employee associations to participate.

"The Great Texas Trash Off" is part of the highway department's tough talking DON'T MESS WITH TEXAS program aimed at convincing "habitual" litterers to put their trash where it belongs.

In 1985, Texas taxpayers spent \$24
con't to 6



W. F. FULLER



VAN YORK

CONSERVATION AWARDS---

Honored at the UCSWD banquet Thursday, April 16th were Van York, Conservation Rancher of the Year; and W. F. Fuller of Dunn, Conservation Farmer of the year. York and Fuller were honored for consistent application of conservation practices in their farming and ranching activities. (SND Staff Photo).

4-H TRAP & SKEET SHOOT MEETING

The 1987 Shooting Sports Program will begin Tuesday, April 30, 1987 in the 4-H Exhibit Building at 4 p.m. This meeting will be for all 4-H shooters. New shooter orientation and safety training will be the program.

All shooters should try to attend if at all possible for the first requirement of our

program is SAFETY.

All shooters must complete the Minors Release and Indemnity Agreement clause before shooting and all will be due on April 30th at the first meeting. Pat Telchik has offered to notarize these release forms for you, so try to get this done before April 30, 1987.

Liability insurance will also

be discussed during the April 30th meeting.

ART SHOW

The Post Art Guild will sponsor the Annual Spring Art Show April 28 - May 3. The Algerita Art Center will be the place for the show.

The art will be judged by David Rindlesbacker, Professor of Art, West Texas State University, on Thursday, April 30.

Awards being presented will include: Citizen's Award - approximately \$400; Juror's Art Choice - \$60; Juror's Photography Choice - \$60; People's Choice - \$25; and Purchase Awards in excess of \$1500.

The entry fee is \$4.00 per painting, miniature, sculpture, or photograph.

Media includes Oils, Acrylic, Watercolor, Mixed Media, Pastel, Graphics, Sculpture and Photography.

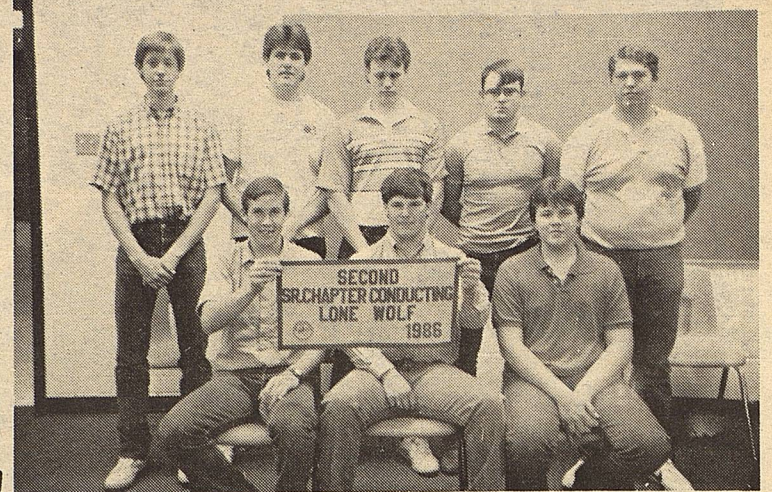
Entries must be original work only. Class work, tracings, copywork and or kits are not allowed. Each exhibitor must sign the work, signifying that entries are original. Work must not have been entered previously
Con't to pg. 8



GERRY SMITH
1st-EXEMP.SPEAKING



JUNIOR CHAPTER CONDUCTING TEAM- 1st
Jon Herring, Jeff Lewis, Cody Cooley,
James Smith. Front-Brian Bond, Lisha
Sternadel, Rachael Romero and Cody
Stone.



SENIOR CHAPTER CONDUCTING TEAM:
Will Phinizy, Robert Buchanan, Kerry
Fryar, Harold Barnes, Randell Hollis.
Front-Shannon Bond, Gerry Smith and
Richie Anderson. 2nd place at Dist.



DAIRY CATTLE JUDGING
2nd-Area and Dist.,
6th at Tech. Robert
Buchanan, Richie
Anderson, Rachael
Romero and Cody
Stone.



CODY STONE
2nd-CREED STEAKING



FARM RADIO TEAM-2nd in District-
Shannon Bond, Robert Buchanan and
Mickey Burkett.



LIVESTOCK JUDGING
3rd-Kerry Fryar,
Will Phinizy,
Randell Hollis and
Gerry Smith

FFA ATTENDS DISTRICT BANQUET

The Gail FFA attended the Lone Wolf District Awards Banquet at Snyder this past Tuesday, April 14, 1987.

The students pictured above were awarded banners they won in fall and spring competition.

Randell Hollis, a sophomore in Vo. Agriculture won the District Treasurer spot for next year, being elected during the Banquet.

Kelli Williams, a senior at Gail represented the Gail FFA Chapter during the district Sweetheart competition. She was 2nd in the competition. There was a total of 16 students who attended the banquet from the Gail FFA Chapter.

**Briggs Welding
&
Muffler Service**

267-1488
267-1380
Big Spring, TX 79720

501 N. Birdwell
Across From
Auction Barn

SCHOOL MENU	
SCHOOL LUNCHES April 27-May 1, 1987	
Monday	Barbecued Wieners Pinto Beans Buttered Mixed Vegetables Cornbread Honey Butter Milk Salad Bar
Tuesday	Hamburger Steak Mashed Potatoes Green Beans Jello Hot Rolls Milk Salad Bar
Wednesday	Chicken Nuggets Mashed Potatoes Vegetable Salad Pudding Hot Rolls Milk Salad Bar
Thursday	Hamburgers French Fries Lettuce & Pickles Brownies Milk Salad Bar
Friday	No School

THE BORDEN STAR
Publication No. 895520
(USPS 895-520)
Publication No. 895520

Editor
Barbara Anderson

Published weekly, except for
Christmas and New Years, on
Wednesday at Gail, Borden
County, Texas 79738, Box 137,
Kincaid Street, Second Class
postage paid at Gail, Texas.

Any errors that we make
reflecting on the reputation or
standing of any Firm,
Corporation, or individual that
may appear in the columns of
The Borden Star will be gladly
corrected when called to the
attention of the staff.

Subscription Rates:
\$8.00 per year

Ad. rate: \$2.00 a column inch
Classified ads: 15 cents a word
Legal Notices: 20 cents a word

Borden Star Owners:
James McLeroy, Barbara
Anderson, Doris Rudd, Pat
Porter, Bob Dyess, Edna Miller,
Ruth Weathers, Mrs. Nathan
Zant, Sonny Tucker, Eddie
Simer, Loreen Jones, Martin
Parks, Dan Turner, Lela Porter,
Marge Toombs.

WESTERN SEED & DELINTING

Certified Cotton Seed

Paymaster 145, 303, 404, 792
Coker 3131, S110, 500
Terra 383, SR-10, SR-482
SP-21, SP-215, CAMD-E
CAB-CS

COTTON PLANTING SEED ACID DELINTING

Wheat
Grain Sorghum
Hay Grazer

Wheat & Oats Cleaning

LAMESA, TEXAS
RON BUTLER

BUSINESS PHONE RESIDENCE PHONE
(806) 872-8896 (806) 872-5271
(806) 872-5388

ELEM. & JR. HIGH HONORS LIST

The following named elementary and junior high students grades 5-8, have achieved academic honors for the third six-weeks:

HIGH HONORS		HONOR ROLL	
	Grade		Grade
Shane Kemper	8	Audra Hess	7
Eric Lusk	8	Kristin Kilmer	7
Amanda Anderson	7	Steve Thurman	7
David Buchanan	7	Richard Buchanan	5
Rich Holzmann	7	Melody Harrison	5
Patsy Underwood	7		
Shara Woodward	7		
Brandon Adcock	5		



GIRLS DISTRICT TENNIS TEAM: Rachael Romero, Amy Lewis, Tammy Johnson, Kelli Williams, Kate Phinizy, Kandy Belew.

TENNIS TEAM TAKES DISTRICT TITLE

Kelli Williams captured her fourth district tennis title and Rachel Romero and Amy Lewis won the first of what they hope will be followed by three more, as Borden this year's team championship with 35 points with Klondike second with 15 and O'Donnell and Plains had 10. Borden clinched the team title after the quarter-final rounds as they were the only school to have more than one participant in the semi-finals with one singles player and both doubles teams.

Kelli Williams dropped just five games in this year's district tournament, all coming in the finals. In the quarter-finals, she defeated Morales from Plains 6-0, 6-0. In the semi-finals, she defeated Jodi Roberts from Dawson by an identical 6-0, 6-0 score. Then in the finals, she met Stacy Bessire of O'Donnell. This would be a repeat matchup of last year's zone, district, regional, and state championship. Staci opened up with the first two games but the lead was short lived as Kelli reeled off the next five games for a 5-2 lead. Both then held serve as Kelli captured the first set 6-3.

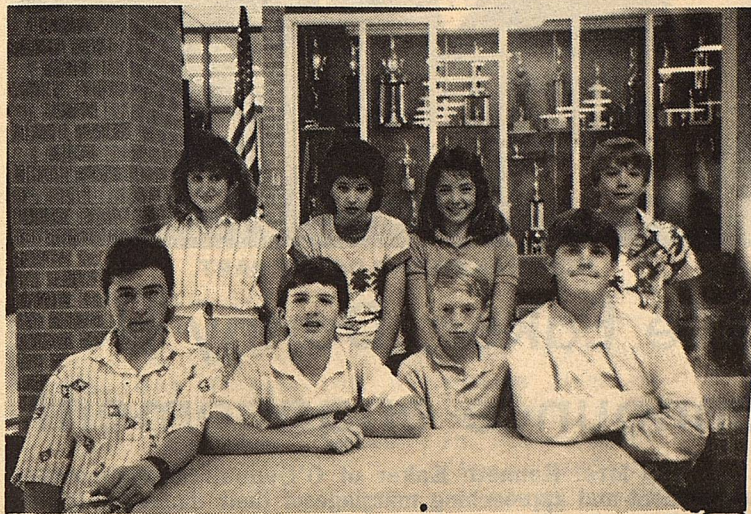
Again in the second set, Stacy won the first two games, but they would be her last as Kelli dominated the next six games for the district singles title 6-3, 6-2. Kandy Belew also reached the quarter-finals with her two wins on Monday but she was defeated by Bessire by a 6-0, 6-0 score.

In doubles action, the unseeded freshmen team of Rachel Romero and Amy Lewis beat all odds and won the district doubles title. In the quarter-finals they defeated the #4 seeded team from O'Donnell, Santos and Gilliam by a 6-0, 6-4 score. Then the exciting match of the tournament came in the semi-finals as Amy and Rachel met the #1 seeded team from Plains Stephens and Spencer. Plains won the first set 6-4 and held a 6-5 lead in the second and was serving at 40-15, two match points. Borden saved off both and came back to win the third set 6-4 for their regional berth. Then in the finals they met the #2 seeded team from Klondike. It was a short final as the duo from Borden won 6-3, 6-0. Tammy Johnson and Kate Phinizy reached the semi-finals as they won 7-5, 7-5 over Jones and Jones from Dawson. Then in

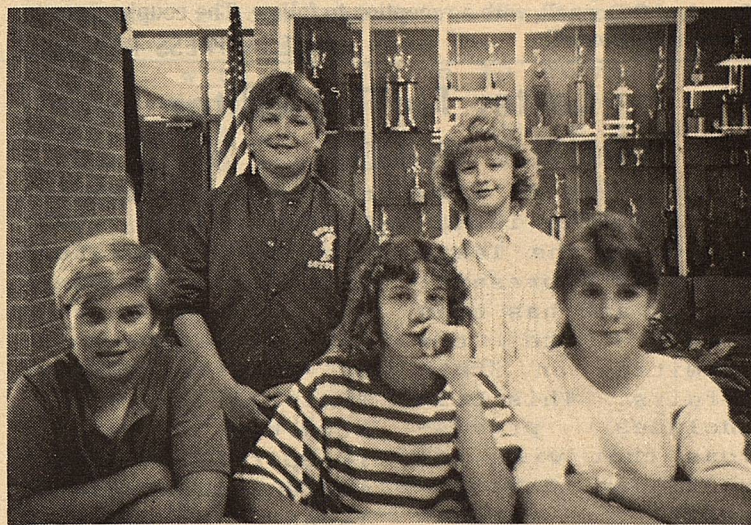
the semis they met Snell and Turner from Klondike. They opened with a relatively easy 6-2 first set win but split sets and lost the last two 6-3, 6-2. Then in the third place match against Plains, Borden again opened with a first set win 6-4 but split sets again and lost 6-3, 6-4.

In boys action, Brice Key and Brian Bond both made it to the quarter-finals with their wins on Monday. Both met defeat as they faced the #1 and #2 seeds of the tournament. Brice met Kris Andrews of Plains, the #2 seed and dropped a 6-0, 6-0 match. Brian met Cody Crouch of O'Donnell, the #1 seed and lost a 6-0, 6-1 decision.

Kelli, Rachel, and Amy will now travel to the Regional Tournament on South Plains College campus in Levelland on April 30 and May 1. Kelli, the defending Class A state champion, will be trying for her fourth trip to Austin to the state tournament. Her strongest competition will again come from Stacy Bessire of O'Donnell. In doubles, Nazareth will probably be one of the favorites as they return one player off their state doubles champions. Anton will also have to be considered one of the top seeds in doubles. Last year, Nazareth and O'Donnell were Region I representatives at Austin in doubles and Kelli and Stacy in singles. Again congratulations to Kelli, Rachel, and Amy for their district titles and to the team for their 1987 District Team Championship!



JUNIOR HIGH HIGH HONORS Back Row- Patsy Underwood, Amanda Anderson, Shara Woodward, Brandon Adcock. **Front-** Shane Kemper, Eric Lusk, Rich Holzmann and David Buchanan.



JUNIOR HIGH HONOR ROLL- Back Row- Richard Buchanan, Melody Harrison. **Front-** Steve Thurman, Kristen Kilmer and Shayne (Audra) Hess.

April 1987

Monday	Tuesday	Wednesday	Thursday	Friday	Saturday
MAY 1987 S M T W T F S 1 2 3 4 5 6 7 8 9 10 11 12 13 14 15 16 17 18 19 20 21 22 23 24 25 26 27 28 29 30		1	H.S. Tennis 2 Forsan Jr. Hi. & Elem. District UIL Literary Meet Klondike	3 H.S. Tennis Tourney-Stanton Jr. Hi. Track Meet	4 H.S. Track Meet
13	14	15	16	17	18
H.S. District Tennis Brownfield	Band - Concert & Sightreading Texas Tech 4:00 p.m.		H.S. District Tennis Brownfield	HOLIDAY	
20	21	22	23	24	25
HOLIDAY	FFA-FHA Banquet 7:00 p.m. Jr. Hi. Tennis Big Spring				Jr. Hi. District Tennis Lamesa Regional Literary Meet Levelland
27	28	29	30		
Regional Tennis Tourney Levelland					



EDIE EAKER AND DANNY HART

Edie Eaker, Danny Hart announce engagement

Mr. and Mrs. Kenneth Eaker of O'Donnell announce the engagement and approaching marriage of their daughter, Edith Ann, to Danny Jay Hart, son of Sidney Hart of Gail and Brenda Isbell of Tahoka.

The bride-elect is a graduate of O'Donnell High School and is a candidate for graduation from South Plains College with a degree in business. The bridegroom is a graduate of Tahoka High School and is employed in Lubbock.

The ceremony will be held on Saturday, May 9 in the First Baptist Church of O'Donnell, with a reception to follow. The couple plans to reside in O'Donnell.

LAMESA PRESS REPORTER

Letter To The Editor HOUSE BILL 2312

House Bill 2312 was recently introduced in the Texas House of Representatives and has been referred to the Committee on State Affairs. This bill includes provisions that will require an environmental impact statement followed by through review by various state agencies before the Texas Railroad Commission can issue a permit for eminent domain for oil, gas or other minerals pipeline construction. The bill further provides that notice be given to landowners and counties through which the pipeline route is proposed and public hearings be held.

House Bill 2321

represents legislation that will provide greater protection of our most valuable resource--water--by assuring pipelines are not constructed where irreparable harm would result should leaks occur.

Public support is essential for the bill to be presented for House vote. In order to insure that the Committee is made aware of your concern in this regard, please contact your State Representative and State Senator voicing your support of House Bill 2321. All Texas State Representatives' addresses are Box 2910, Austin, 78768 and all State Senators' addresses are Box

THEATRE TO HOST "BUS STOP"

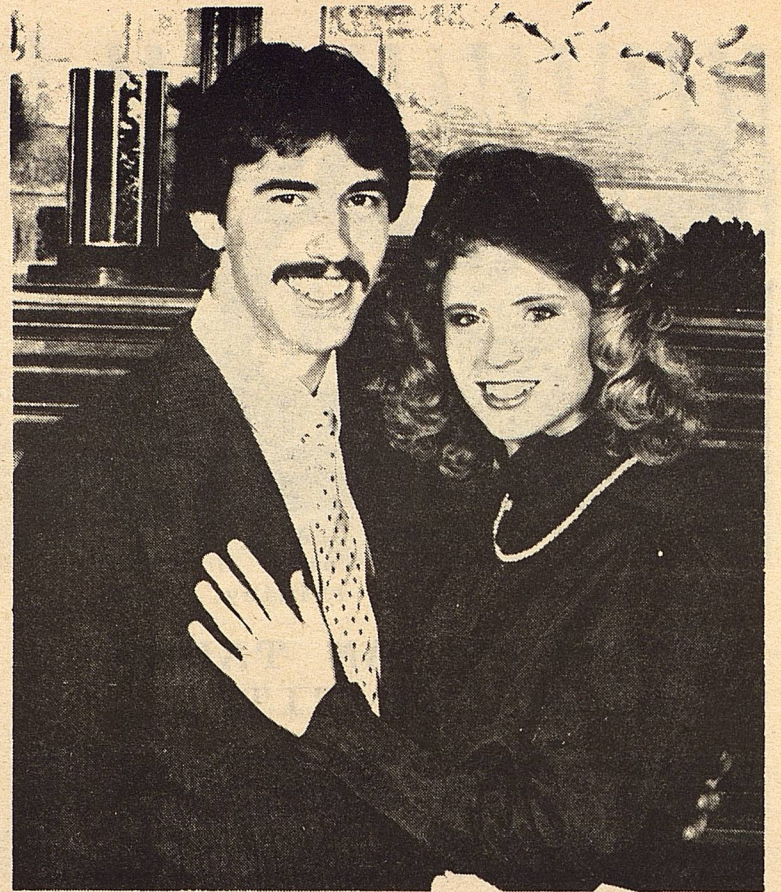
Reservations are now being accepted for the April 30, May 1, 2 and 3 Garza Theatre Performances of William Inge's famous "Bus Stop" in the historic Garza Theater on East Main Street in Post.

The classic award winning tragi-comedy is designed and directed by Will McCrary, supported by a cast of talent from Post.

Tickets for the four performances may be purchased by mail, Garza Theatre Box Office, 226 East Main St., Post, Texas 79356 or reservations may be called in from 10 a.m. to 4 p.m. at 806-495-4005. Adult Tickets are \$6 and children 12 and under are \$3.

Performances start at 7:30 p.m. Thursday, Friday and Saturday and the Sunday matinee begins at 2 p.m.

The cast includes Stephanie McCurrin, Roger McCurrin, Leta Pierce, Randall Lawrence, Cheryl Thompson, Max Chaffin, Benny Jackson and Will McCrary.



SANDRA KOONTZ AND KIP PEASE

Sandra Koontz, Pease announce engagement

Mr. and Mrs. Van Kountz of Klondike announce the engagement and approaching marriage of their daughter, Sandra Vanette, to Kip Pease, son of Mr. and Mrs. Kimball Pease of Rotan.

Miss Kountz is a graduate of Klondike High School and is a senior at Texas Tech University. Pease is a graduate of Texas Tech University and is presently employed with the Shamrock Texan at Shamrock.

The couple will wed July 11 at the Second Baptist Church in Lamesa.

LAMESA PRESS REPORTER

CLASSIFIED

BUDDAS BILL BAILEY
AT STUD
Futurity Winning Son
OF DOC'S BUDDA
Call (915) 3994724.

MOBIL HOLMES
Low--Down Payments
repossessed.
Call collect (806)
763-4051

FOR SALE
LIKE NEW
-WILDCAT- 4-WHEELER
(Spray Rig)
(915) 856-4462

HOUSE
Take Over Payments
2 & 3 bedroom home
Call Collect
806 763 4051

FOR SALE
Need to Sell: 14X64
trailer house \$5000
or best offer.
Call (915) 573-9412

GOVERNMENT HOMES from
\$1 (U repair). De-
linquent tax proports.
Call 1-619-565-1657
Ext. H 3435TX for
current repo list.

12068, Austin, 78711. The Texas Legislature will consider this bill soon.

Sincerely,

J. West
207 Forrest Trail
Universal City,
Texas 78148

PUBLIC HEARING ON SPEED LIMIT SET

The State Highway and Public Transportation Commission has scheduled a public hearing to receive public views and comments on proposed action raising the maximum speed limit on rural portions of Interstate highways in Texas to 65 miles per hour.

The hearing is scheduled for 9 a.m. Friday, May 1, in

the first floor auditorium, Room 101 of the Dewitt C. Greer State Highway Building, 11th and Brazos streets, Austin.

The public hearing is the first legal step necessary to consider changing the speed limit in Texas. After the public hearing, the commission will re-

view testimony. If the commission decides to change the limit, the order would be filed with the governor. If he concurs with the order, he will issue a proclamation. The earliest effective date would be eight days after the filing of the commission order with the governor.

Extension Home Economics

By: Kandy K. McWhorter

FITTING FITNESS INTO YOUR BUSY LIFE

Between a job, family and household chores, most of us consider ourselves too busy to take the time to exercise. We ride instead of walk, gulp down our food and spend leisure time in sedentary activities.

We also like to believe that exercising would simply add to our fatigue at the end of the day. However, exercise has been shown to increase energy and help people cope with stress.

The truth is, we do not need to find extra time and space for fitness. But we do need to use our time and space a little differently. Here are some ideas:

Substitute moving time for waiting time. Do not wait for elevators, parking spaces or bus rides less than a mile. Wear your walking shoes and walk whenever possible.

Try an exercise break instead of a coffee break. Take a quick walk even if it is only around the office, or do some exercises right at your work station. The office is no place to do pushups, but you can do neck and shoulder rotations, flex your arms and legs, stretch your fingers and toes.

Get some midday relief from back aches by sitting in a chair, bending from the waist, letting your head dangle between your knees and then slowly rolling your spine back up into position.

Once you start exercising throughout the work day, you may decide you want more. Consider getting up earlier for stretching exercises or a brisk walk. Join a lunch time aerobics class or take a brisk walk over the noon break. Take an exercise class after work or use an exercise audio or video cassette at home.

When you put your body in motion, you may be surprised at how much fitness fits in a busy day.

NEW HORN - FLY CONTROL PRODUCT

Cattlemen in Texas and Oklahoma will have a new option for horn fly control this Spring. The INHIBITOR Bolus, developed for STARBAR, a division of Zoecon Corporation, provides one-time, full-season protection against Horn Flies.

According to Lou Buice, Brand Manager for STARBAR, "the INHIBITOR Bolus contains an insect growth regulator (IGR), Methoprene, which breaks the life cycle of the horn fly by preventing eggs from developing beyond the pupal stage in the manure of treated cattle. Methoprene contains carbon, hydrogen and oxygen and has been used for horn fly control in various forms for over ten years".

Buice offers, "the INHIBITOR Bolus contains no organo phosphates or phio groups and is approved for both beef and lactating dairy cattle. Also, the INHIBITOR does not require pre-slaughter withdrawal".

"The single dosage and full-season control makes the INHIBITOR an economical solution to horn fly infestation", continues Buice, "and offers producers protection against horn flies that have built up a resistance to other products."



"A cheerful look brings joy to the heart, and good news gives health to the bones."

Proverbs 15:30

COUNTY AG-AGENT REPORT

DENNIS POOLE

CHECK SOIL TEMP BEFORE PLANTING

In many cases the early bird does get the worm. But when it comes to spring planting, farmers may want to use a little restraint and take a look at soil temperatures before cranking up their planters.

One of the keys to getting spring crops off to a good start is to heed soil temperatures.

Soil temperatures have been shown to have an important effect on how well seeds germinate. Planting in cool soils often leads to poor seed germination and poor crop stands. Plants that do come up often lack vigor for early growth. And this opens the door to early season disease and insect attacks.

Farmers may want to begin planting only after the danger of a late frost is past and the soil has warmed to temperatures favorable to the intended crop.

Producers also need to keep atuned to weather forecasts prior to planting. A sudden change in weather conditions following planting can be detrimental to the crop, particularly a cool, wet spell that can lower soil temperatures drastically.

Just when is it safe to plant what crop?

Average minimum temperatures (at the four-inch depth) for planting are as follows: corn, 50 degrees; sorghum, 55 degrees; cotton, 65 degrees; and soybeans, 70 degrees. "Minimum" rather than "average" temperatures should be used for rice and peanuts, with rice being 60 degrees and peanuts, 70 degrees. Hardy vegetables such as onions, cabbage and potatoes can be planted once soil temperatures are still marginal, farmers need to pay particular attention to using high quality seed, fungicides and other seed protectants, and adjusting seeding rates.

How do farmers keep abreast of changing soil temperatures?

Daily readings are taken at various locations throughout Texas in cooperation with the Extension Service, the Texas Agricultural Experiment Station, the National Weather Service and individual cooperators. For example, the regional temperature reading for North Texas is based on temperatures at Lavon Dam northeast of Dallas, while readings at Lufkin and Longview make up the East Texas average. Regional readings are also made for the High Plains, Trans-Pecos area, Coastal Plains, South Texas and the Lower Rio Grande Valley.

As temperatures are collected, they are included in daily agricultural weather advisories issued for each of the regions by the National Weather Service's Southwest Agricultural Weather Service Center at Texas A&M University. The advisories are fed into the NOAA (National Oceanic and Atmospheric Administration) weather

con't to pg 6

Clairborne's
THRIFTWAY

Visit Our Deli

Party Trays Pastries Custom Cakes

710 N. 4th

Lamesa

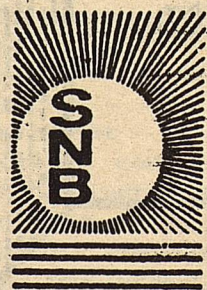
We're proud to be a part of the area since 1905

Snyder National Bank

This is your Bank

Member
FDIC

1715 25th
573-2681



CO. AGENT REPORT

BORDEN COUNTY EMERGENCY NUMBERS

Sheriff's Office	915-856-4311
Borden School	915-856-4313
Highway Department	915-856-4491

•••EMTS•••

GAIL	PLAINS	FLUVANNA	LAKE THOMAS
Gerald Boyd 915-856-4352	Frances Burkett 806-439-6683	James Aaron 915-573-7760	Kathy Billington
Lisa Ludecke 915-856-4463	Randy Hensley 806-327-5462	Kent Holmes 915-573-4164	Larry Billington
Kandy McWhorter 915-856-4394		Nelva Jones 915-573-2426	
Pat Ray 915-856-4363		Carol Lewis 915-573-8900	
Tom Rowe 915-856-4416		Barbara Miller 915-573-7720	
Buster Taylor 915-856-4434		Patrick Toombs 915-573-5269	
Joanne Trussel 915-856-4340			
Buddy Wallace 915-856-4478			

POISON CONTROL NO. 1-800-392-8548

con't from pg 5

wire teletype system to be received by commercial radio and television stations. The advisories are also carried over the NOAA Weather Radio Network.

Specific temperature readings for about 40 locations also are distributed daily through regular weather service dissemination channels.

Keeping tabs on the weather and soil conditions can help farmers get off to a good start with spring planting. With the high cost of farm inputs, it's information that should be put to good use.

TRASH-OFF

con't from 1

million to clean up litter along the state's highways. The cost had been increasing 17-20 percent every year since 1970.

DON'T MESS WITH TEXAS is credited with a 29 percent reduction in litter after just the first year.



Security State Bank

1411 Gregg

Big Spring, Texas

Member F.D.I.C.

Branon Funeral Home

Service in this area since 1922.

Phone: 872-8335

403 N. Austin - Lamesa

TOP DOLLARS PAID

For Oil and Gas Minerals

Producing and Non-Producing

Write: MINERALS P. O. Box 7522,

Midland Texas 79708

Or Call: (915) 684-4110

These textbooks are being considered for use in Texas Public Schools beginning in the Fall of 1988.

IMPORTANT ANNOUNCEMENT

SUBJECT AREAS: LEARNING SYSTEMS:

Supplementary Prekindergarten Learning Systems
Kindergarten Systems English and Spanish
Social Studies Systems 1-2 English and Spanish
Spanish As A Second Language Systems 1-3

TEXTBOOKS:

Spelling 1-6
Social Studies English 3-6, Spanish 3-5
Spanish As A Second Language 4-6
Vocal Music 7-8
Choral Music 7-8
Speech 7-8
Spelling 7-8
Reading Improvement 7-8
Physical Science IIS
Introductory Physical Science
Economics IIS
Analytic Geometry IIS
Elementary Analysis IIS
Probability and Statistics IIS
Business Mathematics HS
Business Communications IIS
Business Law IIS
Introductory Speech Communications HS

TEXTBOOK DISPLAY

WHERE: Room 235, Education Service Center -
Region XVII, 4000 - 22nd Place, Lubbock, TX

WHEN: 8:00 a.m. - 5:00 p.m. Monday - Friday
(except holidays) May 3, 1987 - March 26, 1988

SPECIAL VIEWING TIMES

5:00 p.m. - 7:00 p.m. Friday, May 8, 1987
9:00 a.m. - 12:00 p.m. Saturday, May 16, 1987
9:00 a.m. - 12:00 p.m.; 1:00 - 4:00 p.m. Saturday,
June 6, 1987
10:00 a.m. - 12:00 p.m. Saturday, December 12, 1987

REVIEW/CHECKOUT PROCEDURES:

LEARNING SYSTEMS:

These can be reviewed only on-site
i.e., ESC-XVII Building.

TEXTBOOKS:

Samples may be reviewed on-site or checked out for review for a period of five (5) consecutive days, including weekends and holidays. A maximum of five (5) titles may be checked out at a time. Individuals wishing to check out sample textbooks should do so in person. Samples cannot be sent via ESC-XVII delivery system. In addition, textbooks should be returned in person by 5:00 p.m. of the fifth day. These procedures will assist in maintaining the display in a manner beneficial to all who wish to review the books.





RECEIVES PLAQUE--Weldon Key, left, president of Key Bros. Implement Co. Inc., receives a plaque honoring his 32 years of service as a John Deere dealership from Gary Brogan, center, of Dallas, division sales manager. Leroy Key, vice-president of Key Bros. Implement Co., Inc. looks on. (Key Bros. Photo)

Key Bros. Implement receives Deere honor

Weldon Key, the John Deere farm equipment dealer in Snyder, has been recognized by Deere and Company for Key Bros. Implement Co., Inc.'s service to customers and its contribution to John Deere's position as the free world's leading supplier of farm equipment.

The dealer recognition was in conjunction with the 150th anniversary celebration of Deere and Company, which was founded in 1837 by pioneer blacksmith John Deere.

Leroy Key received a commemorative plaque engraved with a quote from John Deere, "I will never put my name on a product that does not have in it the best that is in me." The plaque also bears the company's Sesquicentennial medallion in sculptured brass.

In addition, Gary Brogan, division sales manager, of John Deere's Dallas branch office presented Weldon Key with a plaque recognizing his 32 years of service as a John Deere dealer. Brogan said, "These plaques attest to the importance of your contribution as an independent businessman who represents the John Deere name and all it stands for."

Brogan said the plaques were the company's way of thanking Key Bros Implement Co. and other John Deere dealers in more than 100 countries for their efforts, "which have maintained Deere's standing as the largest supplier of farm equipment in the free world since 1963."

Key Bros. Implement Co., Inc. has been in business since 1954 and employs 20 people.

SCHEMERS LOCALLY TARGET THE ELDERLY

The Better Business Bureau has received several calls lately indicating that South Plains senior citizens, usually ladies, are going to be the major target for scams this spring and summer. For example:

Several seniors have received telephone calls this week supposedly from a local telephone directory company representative wanting to set up appointments to make sure their listing is correct. Officials from that telephone directory company reported that neither they nor any other directory company made such appointments and that the names of the

callers were fictitious. The motive is not yet known but any senior that receives a call from a directory company wanting to set up an appointment should call the BBB immediately. (NOTE: When possible ladies

living alone should not use their first name in directories, it's safer to use initials).

Other seniors have reported receiving calls from individuals representing themselves as being with the gas or electric company. The caller states that the senior citizen must have a gas leak because of her high bill and they wish to inspect. After

cont. to pg. 8

ASCS NEWS

By Jerry Stone

PAYMENT LIMITATION

1987 person determinations are based on conditions that exist on April 1, 1987. Any change in a farming operation that increases the number of persons for payment limitations requires a person determination ruling by the County Committee.

The burden of proof to provide evidence for a "person determination" lies with the producer or entity desiring to be determined a separate person. Any farming operation must have the basic ingredients to operate which are: capital, land, equipment, labor, management, and financing. The answer will be "NO" to any new entity for 1987, until that entity proves that there has been substantive change and provides the evidence to prove it.

Payment limit determinations are unpopular and complicated. Under the present regulations any person who will exceed the \$50,000 payment limitation requires a person determination. A person determination requires the County Committee to look at ALL your farming interests.

The County Committee shall require that all or any part of the deficiency, diversion, ACP, or CRP payments otherwise due a person on ALL FARMS in which he has an interest, be withheld or refunded if that person adopts or participates in adopting any scheme or device designed to evade, or has the effect of evading, the rules of the payment limitation provisions.

SMALL GRAIN CERTIFICATION-MAY 1, 1987

Friday, May 1, 1987 is the final date to certify any small grain acreage. If you have a wheat, barley, or oat base, but have none of these crops planted, you need to certify to a zero acreage by this date also.

You must certify any small grain, regardless of use (for grain, for cover, for grazing, for baling, etc.). You must certify any small grain regardless of location (turnrows, road right-of-ways, bar ditches, etc.) If you do not want to report these areas, you must dispose of them before May 1. After May 1, they will be considered as the crop and could cause you compliance problems. This is because of the limited cross-compliance rule that is in effect this year. You can have no more acres of a nonparticipating crop than you have base acres for that crop if you are participating on another crop on that farm. Keep this in mind when you are making your planting plans for your summer crops.

You may file a request to leave small grains standing for ACR (setaside) or CU (conserving use). This must be done by May 1 also, and will cost \$10 to file. If this request is not made, you must dispose of the crop by May 1. Disposing of the crop does not necessarily mean plowing up. You may dispose of the crop by shredding.

If your wheat for grain has failed, you must certify it and file an ASCS-374 before disposing of the crop. After doing this, you may replant to another crop. In most cases, the second crop will be considered "invisible". This means that it will not count for history, it will not count against that crop's permitted, and it will not be eligible for any program benefits. WHEN the first crop fails and WHEN the second crop is planted determines whether the second crop is "invisible". Check with us and get a ruling on this before you get into trouble.

MEASUREMENT SERVICE

We are again offering measurement service. The cost of this is \$20 for the first 25 acres and 2¢ for each additional acre. One change in this for 1987 is that after we do the measurement service and you do not have the required setaside (ACR), you must give us the required amount. There is no tolerance on ACR. If you want measurement service on your small grain, you must request this by May 1, 1987.

PRODUCERS EXCEEDING THE \$50,000 LIMITATION

Producers whose projected deficiency and diversion payments will exceed the \$50,000 limitation are eligible to have their share of the unpaid ACR acres reduced in proportion to the amount that they exceed the limitation. Remember, we have Limited Cross Compliance this year, and producers cannot exceed the base acres of a program crop on the farm if he is participating in the 1987 Farm Program. Just because you reduce your ACR acres, does not mean you can still plant a program crop (such as grain sorghum) on these acres.

Producers have until June 1, 1987, to file an ASCS-477A (Request For Reduced ACR Acres). Just because you participate in the 1987 Farm Program or receive reduced ACR acres, does not mean your 1987 crop base is protected. The planted acreage, ACR, and conserving use acres have an effect on your planting history for a given year. Be sure if you receive reduced ACR acres that you fully understand what and how much you can actually reduce without reducing your crop bases.

NONGRAZING ON ACR

The nongrazing period on ACR acres in Borden County begins APRIL 1 and concludes on AUGUST 31, 1987. ACR acres can only be grazed this year. They cannot be hayed.

1986 CROP LOANS

The final date for placing 1986 commodities in CCC loan are: Wheat - March 31, 1987; Cotton and Grain Sorghum - May 31, 1987.



THE FIRST NATIONAL BANK

The Symbol of Banking in Big Spring



FULL SERVICE BANKING

400 Main Street

267-5513

Member F.D.I.C.

BIG SPRING, TEXAS

ART SHOW

con't from pg. 1
in the Post Art Show. The Guild reserves the right to refuse entries considered in poor taste, nudity, wet or non-original.

All work must be framed and wired for hanging. Miniatures can be no larger than 5 X 7 inches unframed. Photography smaller than 8X10 will be considered miniature. Photography must be mounted, matted or framed, ready for hanging. The artist's name, title of work, address and price must be attached to the back of entries. A 15 percent commission will be charged on all sales with the exception of the Purchase Awards.

For more information, contact Billye Hackney 495-4092 or Algerita Art Center 495-4000.

"SCHEMES"

cont. from pg. 7
the "inspection" the schemer announces that the gas lines need to be replaced for up to \$1,000. A variation of this is the replacing of the electric meter in the alley for

\$300.
Today, the Bureau received a call from a 71 year old lady who had just been ripped off of \$2,000. The schemers used the old "pigeon drop" scam. This occurred March 20.

All of the above mentioned scams are currently being conducted in the south plains. Consumers are urged to make sure that their senior citizen relatives and friends know about these criminal activities against the senior consumer.

Texas Commodities Sales

(SAN ANTONIO)--Agreements to sell more Texas cotton and grain sorghum to Mexico and to use Texas technology in developing new Mexican agricultural ventures are already in the works following two days of productive talks between key agricultural officials from both sides of the Rio Grande.

- One Mexican importer came to the table with a concrete offer to purchase 144 million pounds (72,000 metric tons) of Texas grain sorghum.

- Another supplier is seeking to fill orders for 150,000 bales of Texas cotton that Mexico anticipates buying during the next 12 months.

- New creative methods of international finance are being developed by Texas ranchers and dairy operations to assist with sales to financially-strapped Mexican livestock breeders and dairy producers.

- Texas officials agreed to put Mexican suppliers in touch with importers and distributors of products that do not compete with Texas-grown products or those which are not available during certain times of the year. These include apples, cut flowers, off-season produce and rodeo livestock.

- Numerous joint ventures in Mexico, with Texas partners and expertise, were also discussed. Already, one such joint venture arranged by M-TEC has resulted in construction of a new livestock embryo transfer facility in Colima, Mexico, which has resulted in the export of \$1 million in cattle embryos from Texas. Among the new projects discussed in San Antonio are joint ventures to produce fine chocolates from Mexican cacao beans; instant and freeze-dried coffee; handmade cigars; spices; paper and cellulose products.

Concerning regulatory issues, several important agreements were reached. These include:

- Assurances by the Mexican government that Mexican producers will be able to obtain with less delay the "import permits" necessary to purchase Texas livestock and other agricultural products.

PRAYER CORNER

Have mercy on us, O God, according to Your unfailing love; according to Your great compassion, blot out our transgressions. Create in us a pure heart, O God, and renew a right spirit within us. Do not cast us away from Your presence or take Your Holy Spirit from us. Restore to us the joy

of our salvation and grant us willing spirits to sustain us.

May the words of our mouths and the meditations of our hearts be pleasing in Your sight, O Lord, our Rock, our Redeemer. Thank you Father. We ask these things in Jesus' Name, Amen.
Psalms 19:14, 51:1, 10-12



Over 300 Pair Of Great-Looking Jeans

30% Off

Stonewash or Dark Denim

Jr. or Misses Sizes

A Fit For Every-Body

ROCKY MOUNTAIN CLOTHING

BAKARDI INTERNATIONAL INC.

PARIS Blues

SUNSET Blues™
MADE IN U.S.A.

Lee



CALVIN

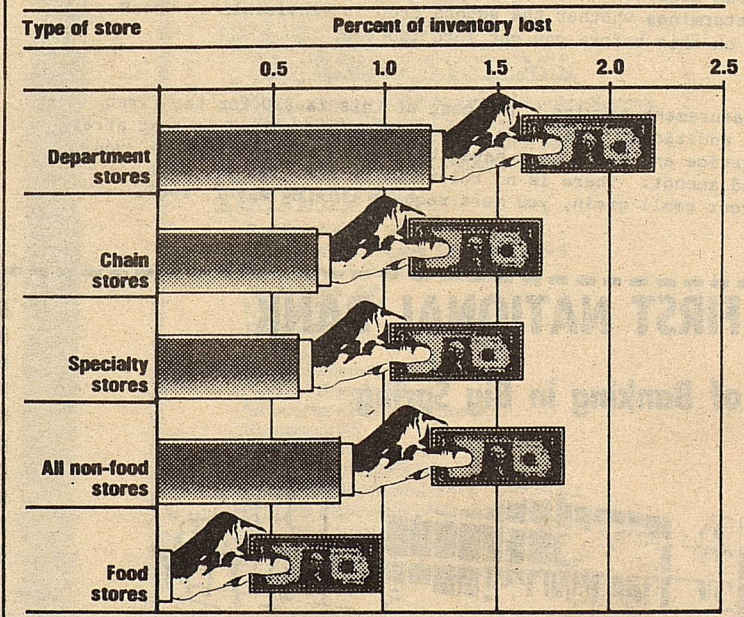
ZENA
FOR THE AMERICAN WAY OF LIFE

-H- Western Wear
College Heights Shopping Center

Snyder

Store Losses

The cost of theft, shoplifting and error



Source: National Mass Retailing Institute

NEA GRAPHIC

In a recent survey, representatives of 30,100 stores said they lost almost \$1.3 billion in 1985. They attributed 42 percent of the losses to employee theft, 31 percent to customer shoplifting, 23 percent to bad paperwork and 4 percent to theft by the vendors who sell the stores merchandise.