

CHILDERS BROTHERS INC.
HOUSE LEVELING
 Uneven Floors
 Floor Bracing
 Cracks In Bricks
 Sticking Doors & Windows
 Interior Wall Cracking
 FREE ESTIMATES
1-800-299-9563
 WWW.CHILDERSLEVELING.COM

fall
ON THE ROAD
 Corner of Hwy 60 & 70 • Call 806-669-6062
Buy Here, Pay Here, No Credit Check
 Visa & Mastercard Accepted
 Go to our website at: www.DougBoydMotors.com
DOUG BOYD MOTOR CO.

FREE
 Pad on ANY installed
 carpet job.
 Pad with purchase of any
 INSTALLED IN-STOCK
 laminate.
Premier Floor Warehouse
 301 S. Cuyler, Pampa TX • 669-7001

We will beat any
 legitimate bid by
10%
 on any product
 that we carry!

The PAMPA NEWS

*****AUTO**MIXED ADC 750
 0000471 12/31/2020
 HERITAGE ARCHIVES
 2195 BRITANNIA BLVD STE 102
 SAN DIEGO, CA 92154-6290



Saturday, October 27, 2012 www.thepampanews.com Volume 108 • No. 165

\$1.50 Viewpoints: Trees need better care | House of Cheer places 3rd in Dallas
 75¢ weekdays | Celebrities back presidential candidates | p4 Both cheer squads competed at Texas State Fair | p2B
 38¢ subscription

BP spill trial delayed for Mardi Gras, Super Bowl

By MICHAEL KUNZELMAN
 Associated Press

NEW ORLEANS (AP) — To avoid disruptions from the Super Bowl and Mardi Gras, a federal judge in New Orleans has postponed a trial for claims spawned by BP's massive 2010 oil spill in the Gulf of Mexico.

U.S. District Court Judge Carl Barbier announced during a hearing Friday that he is mov-

ing the start of the trial from Jan. 14 to Feb. 25. The trial is designed to identify the causes of BP's deadly well blowout and assign percentages of fault to the companies involved in the ill-fated Deepwater Horizon drilling project.

The NFL's Super Bowl is Feb. 3 at the Superdome. Mardi Gras is Feb. 12, but parades begin weeks earlier.

Barbier, however, refused to

postpone a Nov. 1 deadline for businesses and individuals to opt out of a multibillion dollar settlement between BP and private plaintiffs' attorneys over economic damage claims from the spill. He also said he won't delay a Nov. 8 fairness hearing on the proposed settlement.

Some plaintiffs' attorneys who didn't have a hand in brokering the deal had urged Barbier to extend the opt-out deadline,

saying their clients need more time to decide whether it's in their best interest to participate. Barbier said some claimants or their lawyers have a "fundamental misunderstanding" about how the process works.

"There is clearly sufficient — more than sufficient — transparency in this settlement," he said.

Barbier said he was disturbed to hear reports that some attorneys with large stables of clients

are advising them to opt out of the settlement en masse. The judge said it would be "highly inappropriate" for a lawyer to make that determination without individually assessing and analyzing each client's claim.

Barbier also offered a word of caution for claimants who are thinking of opting out of the deal.

"Opting out will mean you're **TRIAL** cont. on page 3

BURN BORGER, BURN!



SITTING PRETTY. From the left, John Cox, Rhett Hardin, Ty Hutto and Derrek Pollard sit a top the wood pile before it was torched for the "Beat Borger Bonfire" west of town Thursday night. For a story and more pictures, see page B2.

Freezing temps chill Pampa

■ Slightly warmer than average winter expected, according to weather service

By TIMOTHY P. HOWSARE
 thowsare@thepampanews.com

After several days of summer-like weather, bone-chilling gusts blew throughout the day Thursday and temperatures dipped into the 20s Thursday night as a strong cold front moved into the Panhandle.

The winds died down Friday and the temperatures notched up a bit, though temperatures in the mid to high 20s were predicted for both Friday and Saturday nights.

The good news is temps in the Panhandle are expected to warm up going into the week, and by Halloween, daytime highs should reach into the 70s.

Halloween night is expected to be **WEATHER** cont. on page 3

Pampa Salvation Army begins Angel Tree campaign

By TIMOTHY P. HOWSARE
 thowsare@thepampanews.com

Martha Higdon wants to help underprivileged children in Gray County have a Merry Christmas with help from the Salvation Army's Angel Tree program.

Higdon has been captain of the Pampa Salvation Army since June. She moved to Pampa from Temple, where she had a similar job.

"We want to make sure no child goes without Christmas," she said. "We serve those who are well below the poverty line and the working poor."

The program works like this: Christmas trees will be put up at several locations throughout Pampa with angel ornaments that have a child's first name and a number. Those who wish to participate can pick an angel off the tree and then buy Christmas presents for that child.

The presents then are brought back to the store and placed into a barrel, unwrapped and with the child's name and number written on the outside of the packaging. Higdon advises angel donors to buy a set of clothes along with a couple toys for their Angel Tree child.

"We want to make it is well-rounded,"

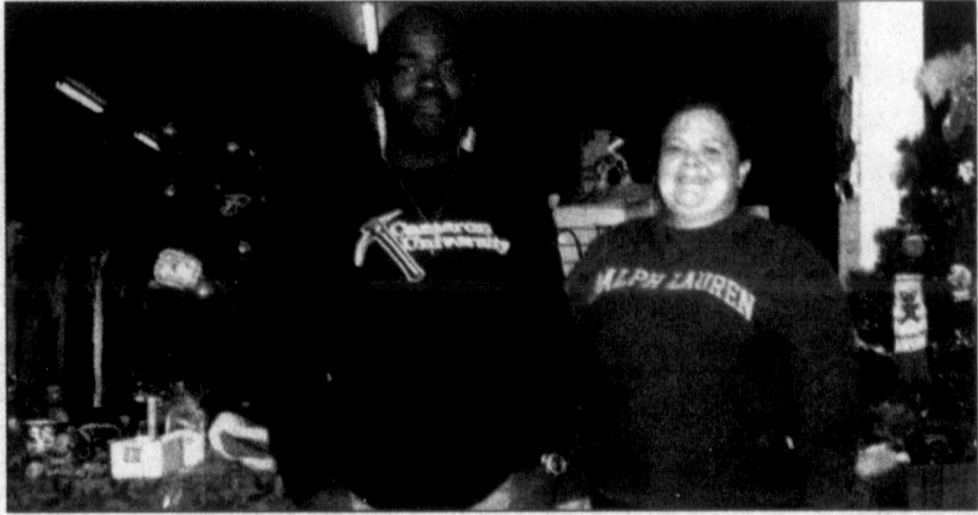


Photo by Timothy P. Howsare

Michael Higdon, store clerk, and Martha Higdon, Salvation Army captain at the Salvation Army store at Cuyler and Kingsmill.

she said.

So far, Higdon said, Walmart and the United Supermarket have agreed to put up Angel Trees, and she expects a few other stores will jump on board.

Along with the Angel Tree program, Higdon said the Salvation Army is tak-

In 2 murder cases, moms turn sons

By JOCELYN NOVECK AND P. SOLOMON BANDA
 Associated Press

GOLDEN, Colo. (AP) — Mindy Sigg sat sobbing, listening to prosecutors tell a court that her 17-year-old son had confessed to the abduction and killing of 10-year-old Jessica Ridgeway.

While any mother would be devastated, there was an even more heartbreaking wrinkle for Sigg: She was the one who called police.

It was not the only high-profile case this week in which a mother made that painful choice. In New Jersey, Anita Saunders saw something on a Facebook page that led her to call police.

Her two sons, ages 15 and 17, are now charged with murdering 12-year-old Autumn Pasquale, a bike-lover who authorities said was lured to their home with the promise of new parts.

MURDERS cont. on page 3

Sample ballots today in D section

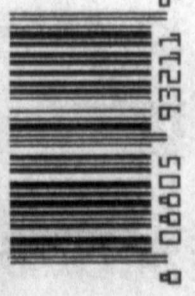
M & H Leasing
TOP OF TEXAS
ICE
 Call us for all your
ICE MACHINE and
 leasing needs
 1945 N. Hobart • 665-2061

Total Care Health
 Caring & Effective Health care
 for Your Entire Family
(806) 688-2273
 • Family Care • Urgent Care
 (Insurance, Cash, and Medicare)
 Matthew Gill, RN, FNP-C
 701 N. Price Rd
 Pampa, TX 79065




HouseHunters Realtor
 Linda Laycock Broker (806) 662-1312
 Larry Hadley Associate (806) 662-2779
 Jordan O'Neal Associate (806) 670-6623
 Tisha Holman Associate (806) 440-4153

IN THIS ISSUE:

Obituaries 2A	Comics 8A
Local Record 2A	Sports 1B,2B,4B
Weather 2A	Classifieds 1C-5C
Viewpoints 4A	Puzzles/Dear Abby . . 5C



PAMPA FORECAST

Today	Sunday	Monday
		
High 55 Low 30	High 58 Low 35	High 64 Low 39

Today: Sunny with a high of 55. Zero chance of rain. Winds south southwest at 14 mph. Sunrise at 8:01 a.m.

Saturday night: Clear with a low of 30. Zero chance of rain. Winds south at 8 mph. Sunset at 6:53 p.m.

Sunday: Partly cloudy with a high of 58. Zero chance of rain. Winds south at 8 mph. Sunrise at 8:02 a.m.

Sunday night: Clear with a low of 35. Zero chance of rain. Winds south at 8 mph. Sunset at 6:52 p.m.

Monday: Sunny with a high of 64. Zero chance of rain. Winds south at 14 mph. Sunset at 8:03 a.m.

Monday night: Clear with a low of 39. Zero chance of rain. Winds south at 10 mph. Sunset at 6:51 p.m.

() This information brought to you by...

PRESTIGE
AUTOBODY & ACCESSORIES
 101 S. HOBART 806-665-3500
Now in... Golf Carts

CITY BRIEFS

The Pampa News is not responsible for the content of paid advertisement

FOR RENT, 107 N Cuyler, Need low rent, more space, better location? Call 669-3333 or 669-3684.

PLEASE JOIN us for an 85th birthday celebration for Cecil Gill. Sunday, Oct. 28th 2-4, Art Gallery, Roberts County Museum, Miami.

HELP US honor our veterans by sharing their stories. The Pampa News is planning a special Veterans Day section, and we want your story or stories of your loved ones! Type up your story and email them to showsare@thepampanews.com, along with photo and contact information. **Deadline for stories is Noon, October 30th.** For questions or info, contact **Tim** at The Pampa News, 806-665-2525.

PAMPA SHRINE Club We Cater!! 50-200 people. (approx 3000 sq ft) available for rent. Weddings, Banquets, Company Parties or Family Reunions. Kitchen facilities avail. at no extra chrg. Call Ben Watson 665-3359 to reserve!

PUT YOUR Business Name on the Halloween Candy List. Listing is free, ad will be in the Pampa News, Tuesday Oct. 30th edition. Deadline to be on the list is Mon. Oct. 29th before noon. 669-2525.

RED SCHOOL House Arts & Craft Show, Nov. 2, 9-6, Nov. 3th, 9-4. All items hand-made. Unique crafts, great gift ideas. 5 mi. north of Pam-pa, on Hwy. 70.

4-H PECANS now on sale for Christmas Orders! Call 4-H Office 669-8033, 12125 E Frederic.

Obituaries

Meagan Joyce Lamberson Green

Meagan Joyce Lamberson Green, 27, of Panhandle, died Tuesday, Oct. 23, 2012, in Amarillo, Texas.

Services will be held 2 p.m. Saturday, Oct. 27, 2012 in the First Baptist Church in Panhandle with Rev. Josh Light, officiating.

Interment at Panhandle Cemetery in Panhandle. Arrangements by Robertson Funeral Directors of Clarendon.

Meagan was born October 21, 1985 in Amarillo to Bob and Elaine Lamberson. She grew up in Amarillo and attended Palo Duro High School. After moving to Panhandle, she married David Green on May 8, 2007 in Las Vegas, Nev. She was a devoted mother to their two children, Jaythan and Madison.

Survivors include her husband, David Green of Panhandle; her son, Jaythan Green of Panhandle; her daughter, Madison Green of Panhandle; her sister, Mandy Collier and husband Jason and their two children,

Bailey and Tyler of Pampa; her parents, Bob and Elaine Lamberson of Amarillo; her grandfather, Ed Fitzhugh of Amarillo; her aunt, Gayle Fitzhugh of Amarillo; her mother in law, Katherine Williams of Clarendon; and a host of beloved extended family members and friends. Meagan will lie in state at Minton-Chatwell Funeral Directors in Panhandle Friday and Saturday. In lieu of flowers the family request memorials be sent to the Endowment Fund for Meagan's children c/o Happy State Bank.

Meagan Green



Anita Gale Taylor

Anita Gale Taylor, 65, our loving mother, sister, aunt and friend, passed away on Tuesday, Oct. 23, 2012.

Anita was born April 14, 1947 in Ft. Worth. She was a 1965 graduate of Pampa High School.

After graduation she married Thurston Taylor and later married Dave Gibson. She had been a resident of Atlanta, Ga., for more than 40 years where she was a supply representative for the dry cleaning industry. Anita loved to cook for family and friends.

She also enjoyed reading and playing smart phone word games. She was a beacon of light to all who knew her and found joy in caring for her family and friends.

Survivors include her son; Christopher Gibson and companion Jennifer New of Georgia; a daughter: Jessica Taylor Pulley and husband Chris of Utah; two sisters: Tanya Ward and husband Mike of Pampa, and Linda Olsen and husband John Beheler of Houston; 3 nieces: Rachelle Olsen, Kimberley Storey and Brittany Olsen; and a nephew; Mark Oler. She was preceded in death by her parents: Joe and Maxine Jeffers; and a nephew: Blake Olsen.

Memorials should be made to a favorite charity.

There are no local services scheduled at this time. Cremation arrangements are under the direction of Carmichael-Whitley Funeral Directors.

Anita Taylor



Sign our guest book at www.RobertsonFuneral.com.

Sign the online register at www.carmichael-whitley.com.

For the record

Pampa resident arrested for indecency with child

BY GAYDEN HAYS.
ghays@thepampanews.com

The following people were arrested and booked into the Gray County Jail between Thursday and Friday morning:

■ Christopher Dale

Gann, 23, Pampa, for bond surrender on a original charge of failing to register as a sex offender.

■ Javier Salazar, 42, Pampa, for two counts of indecency with a child with contact.

■ Benito Lopez, 22,

Pampa, for assault causing bodily injury, family violence, and driving while intoxicated second offense.

■ Chistina Marie Garcia, 36, Canadian, for theft of property more than \$50 but under \$500.

■ Sandra Deavila, 50, Glendale, Calif., for driving while intoxicated first offense.

■ Aaron Christopher Sanders, 22, Pampa, possession of marijuana less than two ounces.

Arson, child sexual assault among Grand Jury indictments

BY GAYDEN HAYS
ghays@thepampanews.com

The Grand Jury of the 223rd Judicial District Court for Gray County found that there was enough evidence to indict 20 people this month.

All indictments will have trials set in Gray County. Eric Christopher Lewis was indicted for Aug. 13, 2012 arson charges.

The charges were brought against him by Gray County Fire Marshal Michael Ryan.

The Jury found that Lewis acted with intent to damage veg-



Eric Lewis

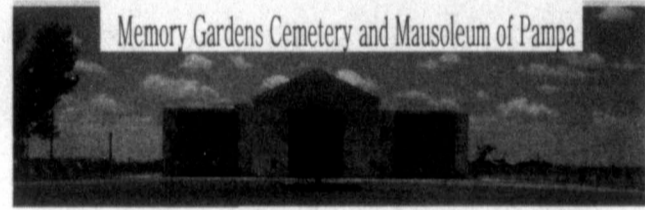


Eric Connell

etation on property at 853 E. Kingsmill in Pampa. Used in the act was a flammable accelerant, and the resulting fire was not part of a controlled burn.

Also indicted by the Grand Jury was Eric Connell, 31, of Pampa for the July 1 crime of sexual assault of a child.

The jury found enough evidence of Connell having sex with a minor, and now both cases will be sent to the 31st District Court to be prosecuted, by trial by jury in the 223rd Judicial District Court for Gray County.



To Recognize The Contributions Veterans Have Made To The Liberty We Enjoy, Memory Gardens Cemetery is Offering 2 Side-by-Side Burial Spaces for \$995.00 for Veteran and Spouse. There Are a Number of Veteran's Spaces Available Thru This Program. You Must Be Able to Show Proof of Honorable Discharge To Assure Reservation. Mail the Information Card TODAY! (A Savings of \$1195.00)

Send the Information Request Form Below to Receive Valuable Information OR Call for Immediate Response.

806-665-8921

Yes, I want more information on the Veteran's PRE-PLANNING program FOR MY FAMILY!

I would like to take advantage of the 2 Side-by-Side Veteran's Spaces for \$995.00.

Veteran's Burial Headstones and Bronze Memorial Information

Veteran's Casket Information (Receive a 10% Discount when order is placed at Memory Gardens Cemetery)

Name _____
 Address _____
 City _____ State _____ Zip _____

Mail To:
 Memory Gardens Cemetery and Mausoleum of Pampa
 P O Box 1972 Pampa, Texas 79066 (806) 665-8921

"Come join the thousands of families who already own in Gray County's most beautiful Cemetery..."

The Pampa News all-sports special section will be published Wednesday.

NOTICE OF PUBLIC MEETING TO DISCUSS PAMPA INDEPENDENT SCHOOL DISTRICT'S State Financial Accountability Rating

Pampa Independent School District will hold a public meeting at 6:30 PM November 15, 2012 in the Board Room at Carver Center 321 W. Albert Pampa, Texas

The purpose of this meeting is to discuss Pampa Independent School District's rating on the state's financial accountability system (FIRST).

Our clients' interests come first.

Duane Harp, AAMS®
 Financial Advisor
 1921 N Hobart
 Pampa, TX 79065
 806-665-6753

Keith Demetriades
 Financial Advisor
 1921 N Hobart
 Pampa, TX 79065
 806-665-6753

Member SIPC
www.edwardjones.com

Edward Jones
 MAKING SENSE OF INVESTING

Select **50% OFF**

**Hand Tools
 Blades
 Bits
 and More**

IRWIN **LENOX** **Warrior American**

CHIEF PLASTIC PIPE & SUPPLY INC.
 1237 S BARNES • PAMPA, TEXAS
 806.665.6716 OR 800.649.6716

1240 S BARNES • 806.665.2755
CHIEF PLASTICS
 Effective 10/1-10/31/12

Come In Or Call For A Quote
 AUTO • HOME • BUSINESS • LIFE

Gray County Insurance
 Doing Business As

JOHNSTON INSURANCE AGENCY

1712 N. HOBART
 PAMPA, TEXAS
 806.665.4133 • 866.665.2788

HICKORY SMOKE PRIME RIB
 W/ YOUR CHOICE POTATO
 SALAD & A ROLL
COME SEE US!

Dyers BBQ
 HWY 60 W. • Pampa, Texas • (806) 665-4401

Murders

Continued From Page 1

What does it feel like to turn in your child, knowing they could be sentenced to many years in prison? Surely, no one knows but those who've done it.

But a main motivation, according to one criminologist, is simply a desire to do the right thing.

"These are law-abiding people, pro-social people," said Kathleen Heide, professor of criminology at the University of South Florida. "And besides doing the right thing, the parents often want to get their children help."

What they often aren't aware of, though, are the full ramifications in terms of likely punishment.

"If these are cases of first- or second-degree murder, in most cases the kids will be charged as adults," Heide said. "This means they can be sentenced to life in prison."

In both cases, authorities are deciding whether to prosecute the suspects as adults.

Certainly not all parents

are ready to turn in their kids. One high-profile case from the 1990s, in fact, resulted in strains between the United States and Israel, when a father helped his teenage son escape this country after a particularly brutal murder in Maryland. The son, Samuel Sheinbein, confessed and is now serving a 24-year sentence in Israel — a lighter term than he likely would have gotten in the United States.

Mindy Sigg made a different decision. Reached by phone on Wednesday, she told The Associated Press: "I made the phone call, and he turned himself in. That's all I have to say." Then she broke down in tears.

Her son Austin Reed Sigg made his first court appearance Thursday in the death of Jessica and in a separate attack on a 22-year-old runner, who managed to break free, in May.

Prosecutors say he has confessed in both cases, and investigators have overwhelming DNA evidence against him. He was ordered held without bail; prosecutors are expected

to formally charge him next week.

Sigg's father, Rob Sigg, issued a written statement Thursday commending his ex-wife's decision and asking for prayers and support for the Ridgeway family.

"This horrible event is a tragedy for both the families, as well as the community. I ask also for your prayers and support for Austin's mother, whose courageous act — unimaginably painful for any parent — has put this tragedy on the path to resolution," he said. "I am hopeful that as the legal process unfolds, the Ridgeway family may come to know peace."

Peg Claspell, who lives near the Siggs, said she was grateful to the mother for her decision and called it the "most loving, difficult thing."

"I can't imagine the pain for her, and she's in my prayers," Claspell said. "She has a long and difficult time ahead of her."

Claspell's husband, Tom, struggled when asked if he would turn in a child. "I can say yes, but I don't know if I would. It

would be a very hard thing to do," he said, explaining it would depend on the severity of the crime.

In a case like this, "I probably would," he said.

In the New Jersey case, Justin Robinson, 15, and Dante Robinson, 17, have been charged with murder and other counts in the death of 12-year-old Autumn, whose body was found Monday stuffed in a recycling bin only blocks from her home in Clayton.

An autopsy found the seventh-grader suffered blunt force trauma consistent with strangulation.

The boys are due in court Friday for a hearing to determine if they will remain in custody.

What's rare about both cases, said Heide, the criminologist, is that boys of this age rarely kill girls, especially girls so young. "Usually boys this age kill other males, and in their own age cohort," she said.

Jessica disappeared three weeks ago after leaving her home in the Denver suburb of Westminster to walk to school. She never arrived. Her remains were found

on Oct. 10. Sigg was taken into custody late Tuesday after police received the mother's phone call. He lived about a mile from Jessica.

Sigg wore a blue-green jail uniform and had a light goatee when he appeared in a heavily guarded courtroom in Golden.

Four of his family members were seated in the court, and they sobbed at times during the hearing.

When District Judge Ann Gail Meinster asked Sigg if a parent was present, he said "Yes" and looked toward his relatives. He then mostly sat with his head bowed.

Seven of Jessica's family members sat in the courtroom with their arms around each other. Sigg glanced in their direction just once.

Public defender Ryan Loewer had argued for setting bail for Sigg, saying he has no prior criminal history. Prosecutor Hal Sargent said Sigg had confessed and investigators had a strong case.

"There's DNA evidence, and the evidence is overwhelming," he said.

DEGA to collect canned goods

SUBMITTED

The Pampa Chapter of DEGA is canvassing neighborhoods door-to-door at 5 p.m., Oct. 30, to collect canned goods and toiletries for the Tralee Crisis Center.

If your neighborhood is not canvassed, there will be drop boxes set up at the First Baptist and First Christian church offices on Wednesday and Sunday and at Victoria Rose.

Everyone's help is appreciated.

Trial

Continued From Page 1

opting to go it alone in individual lawsuits against the defendants," he said, warning that it could take years for individual cases to be resolved.

Earlier this week, BP and the lead plaintiffs'

attorneys on the case urged Barbier to disregard objections to the proposed settlement and give it his final approval.

More than 200 people and groups formally objected to the deal, while 983 potential claimants had asked to opt out as of Oct. 19. More than 100,000 plaintiffs could benefit from the deal.

Brent Coon, a Beaumont, Texas-based attorney who says he represents about 14,000 clients with spill-related claims, has urged Barbier to amend the settlement terms so that claimants won't have to decide whether to opt out until the claims administrator has determined how much money they are eligible to receive.

"There's no reason why there should be pressure on claimants to make this decision," Coon said.

BP, which estimates it will pay \$7.8 billion to resolve claims through the uncapped settlement, agreed to continue paying claims though a court-supervised process before the judge decides whether to give final approval.

Barbier said claimants have been paid or received offers worth a total of roughly \$1.1 billion since a court-supervised process replaced the Gulf Coast Claims Facility overseen by claims administrator Kenneth Feinberg.

"It's actually been pretty remarkable, in my opinion, how this has worked," Barbier said.

Weather

Continued From Page 1

clear, with a low around 43.

"The weather will be wonderful for all the ghosts and goblins," said

Victor Murphy, a climate services program manager for the National Oceanic and Atmospheric Administration.

Looking into his crystal ball, Murphy said the NOAA predicts above normal temperatures in the Panhandle for December,

January and February.

For precipitation, he said the chances for it being normal, above normal or below normal are equal.

To keep outdoor plants safe from frost, Brandon McGinty, Gray County extension agent, said pot-

ted outdoor plants should be moved inside where its warm.

"Bring them into your house or garage," he said.

If you can't move your plants, then cover them with blankets, he said.

Plants should not be watered before a cold

nightfall, he said.

"Moisture on the plants could burst the cells (from the below-freezing temperatures)," he said. "Water in the morning."

He advised it's also best to water plants on the soil surface, and not on the leaves.

Cinema 4

Showing Now!
Friday, October 26 -
Thursday, November 1

Frankenweenie (PG)

Fri 6:45 9:00
Sat 2:00 4:30 6:45 9:00
Sun 2:00 4:30 6:45
Mon/Thurs 6:45

Fun Size (PG-13)

Fri 7:00 9:00
Sat 2:00 4:30 7:00 9:00
Sun 2:00 4:30 7:00
Mon/Thurs 7:00

Alex Cross (PG-13)

Fri 7:30 9:45
Sat 2:00 4:30 7:30 9:45
Sun 2:00 4:30 7:30
Mon/Thurs 7:30

Paranormal Activity 4 (R)

Fri 7:30 9:45
Sat 2:00 4:30 7:30 9:45
Sun 2:00 4:30 7:30
Mon/Thurs 7:30

www.cinema4pampa.com
Coronado Shopping Ctr.
688-9192 / 688-9229

Congressman Mac Thornberry

"The true hope of America is worth fighting for. Our country and future generations are counting on us."

Please Vote November 6th
Early voting October 22nd through November 2nd

Thornberry
U.S. Congress

Paid for by Thornberry for Congress Committee, P.O. Box 9392, Amarillo, TX 79105

Stock Inventory Installation Special

Bring in this ad by October 31st for **10% off** any installed job using our large selection of instock materials

One STOP Flooring

1533 N. Hobart • (806) 665-0995
Mon-Fri 9am - 5pm • Sat 10am - 1pm

GOD BLESS!

National Bank of Commerce

Please Help Us Support Pampa United Way!

An Office of First National Bank Waupaca, WI

1224 N. Hobart
(806) 665-0022

Childress
501 Commerce
(940) 937-2514

Shamrock
305 S. Main
(806) 256-2181

FDIC

Viewpoints

The PAMPA NEWS

403 W. Atchison • Pampa, TX 79065
806-669-2525 • Fax: 806-669-2520

ReDonn Woods

Publisher
rwoods@thepampanews.com

Tim Howsare

Editor
btinsley@thepampanews.com

Bernie Frazier

Advertising Representative
bfrazier@thepampanews.com

Gayden Hays

Sports & Religion Editor
ghays@thepampanews.com

Dana Whinery

Advertising Representative
dwhinery@thepampanews.com

The 'New Normal' Christianity?

NBC's sitcom "The New Normal" isn't just trying to remake society for the Gay Left. It's trying to remake Christianity, which is to say, destroy it. For its October 22 episode, "The Godparent Trap," NBC ran promos with the gay character Brian in the confessional, and the priest sneering, "If you're not going to take this seriously, I'm going to go back to playing Angry Birds."



BRENT BOZELL

As the plot unfolds, we're told Brian was raised Catholic, and as he sits in a pew and looks around at religious pictures, he cracks gay jokes in his mind. He sees the Apostles: "Twelve dudes sitting around gossiping and drinking wine. You call that the Last Supper? I call that a Tuesday night."

He sees a picture of the Blessed Virgin Mary: "Hey, Mary — I'm a virgin, too. I've also slept in a barn with three wise men." Then he turns to an image of Jesus on the cross, and says, "I'm sorry. I shouldn't be talking trash about your mother. But you know who judges me? Your father."

The priest asks Brian if he came for confession, so he enters the confessional. But he's really not there to confess, but to continue the wisecracks. "Commandment-wise, I've pretty much done them all, except kill someone and covet my neighbor's wife." That earns the Angry Birds line NBC liked so much.

Brian then says he wants to find godparents for his forthcoming baby from a surrogate mother, but he feels he doesn't have a religious foundation. (Ya think?) The priest insists "the church is not anti-gay," and to which predictably, Brian retorts, "Yet any chance he gets, the Pope treats gay marriage like (actress/reckless driver) Amanda Bynes treats pedestrians."

Then the priest himself turns on the Vicar

of Christ as a crazy old loon: "Come on, haven't you ever had a lovable old uncle who popped off intolerant comments at a family barbecue?" Brian asks, "Can't you get fired for saying stuff like that?" The priest wisecracks, "I don't know if you've noticed, but it's pretty hard to get fired around here."

When the priest suggests there are churches "geared to your community," Brian shoots back "I don't want to be forced to use a separate water fountain. Why can't the church just accept all people? ... You toss Jesus' name around. You don't exactly practice what you preach. Jesus wouldn't judge people on their sexuality because Jesus loved everyone."

In an interview with The Hollywood Reporter, "New Normal" creator Ryan Murphy admitted the show is based on his life. Surprise, surprise. He was raised Catholic, and Brian, the bitter, wisecracking gay man, "is clearly me."

This priest not only bashes the Pope as an intolerant old fool, he's recruiting Brian to Fight the Power in earthy language. He says, "I never bought that Jesus-is-a-blissed-out-hippie crap. The man was pissed off." He was "the Chuck Norris of his day," and to turn the other cheek was "an act of defiance. It meant: I will see your insult and raise you a 'suck it!'" Jesus "saw hypocrisy and injustice and said 'Seriously? You guys are idiots. This has got to change!'"

Yup, that's what Jesus said in the Book of Tinseltown, Chapter 90210.

Brian replies, "So you're saying the church can change?" The priest then unspools a gay rights lecture, complete with soothing musical accompaniment: "Well it would. I've seen gay people battle discrimination and march for marriage equality. They demanded the right to fight for their country, but for their souls? Nope. They just give up and walk away. Jesus was a fighter, son. How about you?"

BOZELL cont. on page 3

Letter to the Editor

City needs to take better care of trees

Driving Pampa's streets on Russell, Charles, Mary Ellen, Christine, Duncan, around our parks; one cannot but help notice all the dead and dying elm trees. For yours truly and I certainly would think other citizens are doing the same, what happens when a branch from one of these dead trees or the tree itself falls on a park goer, a pedestrian on a sidewalk, a vehicle driving or parked on one of the streets?

If such happens, the obvious will be a liability issue due to personal injury or property damage. For the matter, dead trees along Somerville have already been cut down, but why not the above mentioned streets and in our parks? Continuing the same thought, whose realm do the trees along side our streets and sidewalks fall under, the city's if one considers right of way, or the homeowners? No matter, if there is injury or property damage due to a falling branch or tree, we already know by

today's litigious society what will transpire next...

Borrowing a line from Kilmer's Ode to a Tree, "Who intimately lives with rain," it's pretty easy to figure out Pampa's trees plight. All the trees have needed is water, be it rain or from a tap. And, insects, as part of God's plan, have attacked the trees to further endanger their being. Likewise, another plight for homeowners and our city government when the drought is considered is the pinch on pocketbooks and budgets due to higher water bills. However, the flip side of that is the fact the dead branches and trees need to come down - before - liability issues arise. But here is another point that I feel needs to be considered since obviously, not watering the trees was. How much is it going to cost our city government to contract removal of the dead trees from parks and right of ways?

Central Park in particular is listed as a tourist attraction by the

Chamber of Commerce. Pampa's founding father's planted the trees in the park as a means of enjoyment and especially, shade for park goers.

The trees are part and parcel Pampa's history, and in that aspect I'm somewhat confused by our city governments decision not to water the trees. And don't tell me the trees are nearing the end of their life cycles.

I know of places in the Panhandle where the very same type elm trees, having seen appropriate care, are well over 100 years old.

What is more tied to earth and sky than the human being but the tree? I am imploring our city council to find whatever means possible be it finessing the budget, raise a tax or two if need be, to water/treat and save Pampa's trees.

**Dennis Palmitier
Pampa**



How To Write Us

The Pampa News welcomes letters to the editor. When submitting a letter, please include the writer's name, address and signatures.

We reserve the right to edit letters or not to publish certain letters.

By Fax:
806-669-2520

By U.S. mail:
Letters
The Pampa News
403 W. Atchison
Pampa, Texas
79065

By E-mail:
thowsare@thepampanews.com

Star-powered political rallies get party started

By MATTHEW DALY
Associated Press

WASHINGTON (AP) — Baseball great Hank Aaron is a Barack Obama guy. Golf legend Jack Nicklaus is in Mitt Romney's camp.

From athletes and astronauts to singers and Hollywood stars, a growing line of celebrities is turning up at fancy dinners and rallies to build support and get out the vote for Obama or Romney, the president's Republican challenger. Obama has entertainers like Bruce Springsteen, Katy Perry, George Clooney, Beyonce and Jay-Z.

Romney's supporters include Clint Eastwood, musicians Kid Rock and Lee Greenwood and comedian Dennis Miller. Often the Democratic ticket attracts younger and glitzier stars.

Both campaigns have spent huge amounts of time and effort making sure their rallies feature opening acts that reinforce a campaign message, whether it's the economy, health care, veterans or some other issue.

Nicklaus, who now designs golf courses, teed up Romney at a campaign event near Columbus, Ohio.

The golfer said he's had to lay off workers because of the struggling economy. "We can't keep doing what we've been doing. We have to look at the problems at hand and change them," he said.

On the Democratic side, Pearl Jam front-man Eddie Vedder ripped into Romney at an Obama fundraiser in Florida. Vedder said he was upset by Romney's caught-on-tape comments that 47 percent of Americans consider themselves victims and entitled to government help. If Romney wins the White House, "none of those 47 percent of people would have a voice," Vedder said.



Barack Obama



Mitt Romney

Aaron, who wore No. 44 for the Milwaukee and Atlanta Braves, urged a crowd in Wisconsin to re-elect Obama, president No. 44. Appearing with Obama in Milwaukee, Aaron said one of the most touching moments

of his life was when Obama was elected as the country's first black president. "As one who wore the number 44 on

his back for decades, I ask you to join me in helping the 44th president of the United States hit a grand slam," said Aaron, the last Negro League player to compete on a major league roster.

After retired space-shuttle astronaut Sid Gutierrez trumpeted Republican vice presidential candidate Paul Ryan in Florida last month, Obama countered with his own famous former astronaut. Former Ohio Sen. John Glenn, the first American to orbit the earth, appeared with a rally with the president. Singer Will.i.am, who

wrote the song "Yes We Can" for Obama's 2008 run, also was on stage that day. Obama joked that the singer "sometimes looks like he's been to outer space," while Glenn "has actually been to outer space."

Celebrity warm-up acts may draw news coverage, but they're unlikely to have a lasting effect on the election, said Darrell West, director of governance studies at the Brookings Institution think tank.

Even so, appearances by high-profile supporters can validate candidates "by taking them out of the political realm into popular culture," West said.

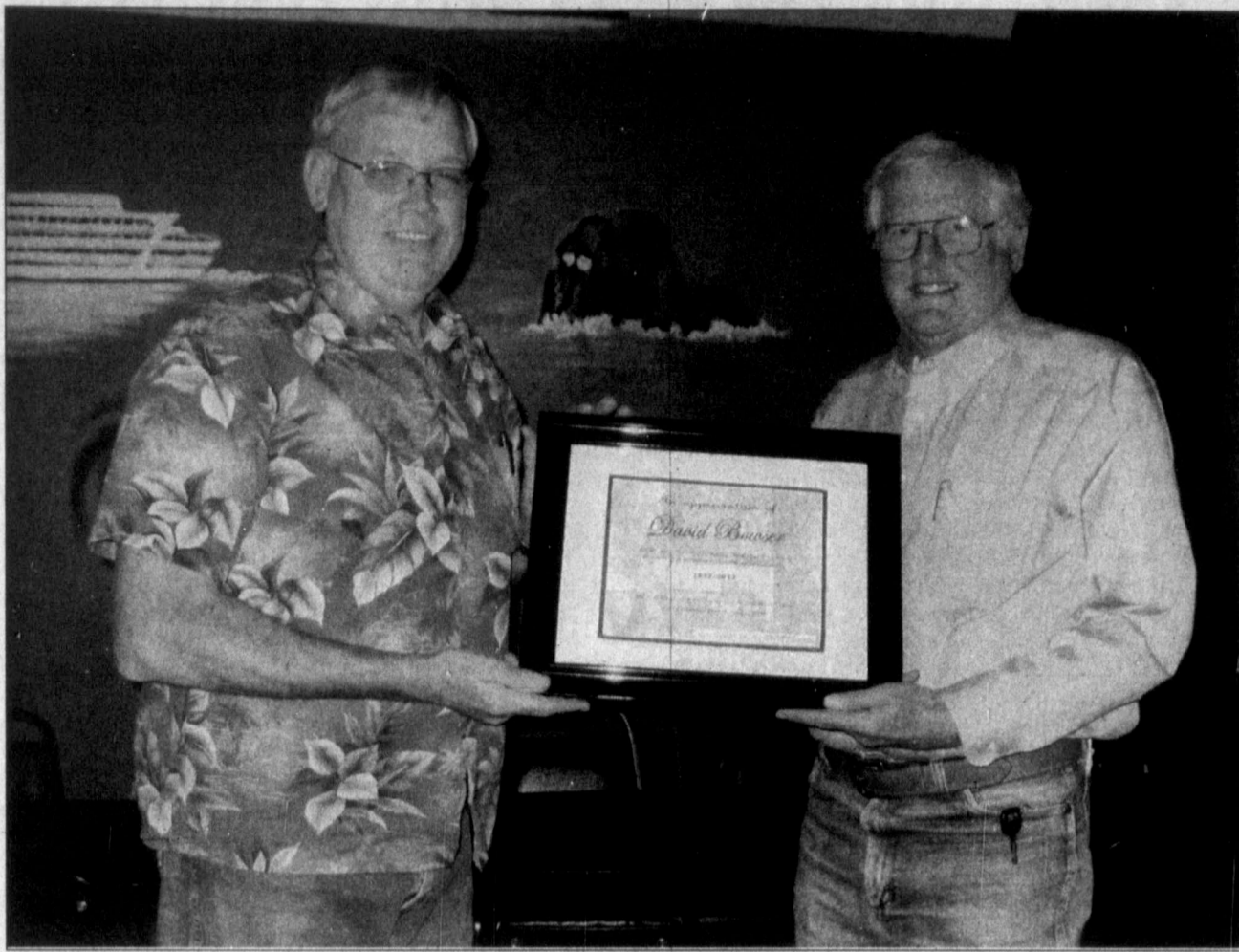
"Voters are cynical about candidates and think they will say anything to win," West said. "Having a nonpolitical opening act gives politicians credibility at a time of massive cynicism."

The Pampa News (UPS 781-540) is published daily, except Sundays, Mondays, and all national holidays. Periodicals postage paid at Pampa, Texas. Postmaster: Send address changes to The Pampa News, P.O. Drawer 2198, Pampa, TX 79066-2198.

© 2012 The Pampa News



BOWSER HONORED



DAVID BOWSER, right, former writer and photographer for The Pampa News, covered events and reported news relating to Woody Guthrie and Pampa's Woody Guthrie Folk Music Center for more than 10 years. The Center recently honored Bowser for his efforts. Guthrie Center board member Joe Weaver presents him with a certificate of appreciation.

Photo submitted

Rural housing improvements announced

SUBMITTED

TEMPLE — Agriculture Under Secretary for Rural Development Dallas Tonsager announced recently the selection of recipients in 49 states and the Commonwealth of Puerto Rico for grants to make repairs and improve housing conditions for low- and very-low-income rural residents.

"For many rural residents, maintaining a home with basic features such as indoor plumbing and safe electrical wiring is often unaffordable," Tonsager said. "This program supports basic repairs to improve living conditions for rural residents with extremely limited incomes."

The more than \$4.4 million in funding announced today is being provided through USDA Rural Development's Housing Preservation Grant program. Funds are provided to intermediaries such as town or county governments, public agencies, federally recognized Indian Tribes, and non-profit and faith-based and community organizations. These organizations then distribute the funds to homeowners and owners of multi-family rental properties or coop-

erative dwellings who repair dwellings occupied by low- and very-low-income residents. Funds are not provided directly to the ultimate recipients by USDA.

Grants may be used to make general repairs, such as installing or improving plumbing or providing or enhancing access to people with disabilities. Funds may also be used to weatherize and make homes more energy efficient. Many of the USDA grants are being leveraged with funding from additional sources.

"The cost of maintaining a home is challenging for many rural homeowners," said Paco Valentin, USDA Rural Development State Director. "This funding, available through Rural Development Housing Preservation grants, will help rural property owners make improvements to ensure their homes are decent, safe, sanitary and energy-efficient."

In Texas, three recipients have been awarded more than \$236,000 to help low- and very-low income rural homeowners eliminate safety or health challenges. Rolling Plains Management Corporation will receive \$118,277 to

repair and rehabilitate 54 homes over a two year period in 25 counties with leveraged funds from the Texas Department of Housing and Community Affairs. The City of Marble Falls will receive \$100,000 to be used on 12 homes in conjunction with the Amy Young Barrier Removal Program managed by the Texas Department of Housing and Community Affairs to provide grants to persons with disabilities for home modifications necessary for accessibility and the elimination of hazardous conditions. Community Services, Inc. will receive \$18,000 to assist five homeowners with leveraged funds from the DOE and LIHEAP Weatherization Programs for plumbing, electrical and structural repairs required to bring houses into code compliance and for energy saving measures.

President Obama's plan for rural America has brought about historic investment and resulted in stronger rural communities. Under the President's leadership, these investments in housing, community facilities, businesses and infrastructure have empowered

rural America to continue leading the way — strengthening America's economy, small towns and rural communities. USDA's investments in rural communities support the rural way of life that stands as the backbone of our American values. President Obama and Agriculture Secretary Tom Vilsack are committed to a smarter use of Federal resources to foster sustainable economic prosperity and ensure the government is a strong partner for businesses, entrepreneurs and working families in rural communities.

USDA, through its Rural Development mission area, administers and manages housing, business and community infrastructure programs through a national network of state and local offices. Rural Development has an active portfolio of more than \$174 billion in loans and loan guarantees.

These programs are designed to improve the economic stability of rural communities, businesses, residents, farmers and ranchers and improve the quality of life in rural America.

Bozell

Continued From Page 4

No one on this show expressed an authentically Christian opinion. There are only leftist lectures — predictable, boorish, amateurish. (Unsurprisingly, Murphy is a huge Obama backer who held a fundraiser at his house with the president because "I just can't imagine a world in which he does not win.")

You can also find the "cool, rebellious priest" model at the movies. A new film called "The Sessions" takes on the story of a 40-something disabled man who weighs about 70 pounds employing a "sexual surrogate" (a sort of therapeutic prostitute) so he can lose his virginity. People magazine reports he's supported

in this quest by a priest, "who in hilarious chats about just how sinful this particular sin would be, gives his blessing." The movie is based on real life, where the disabled man consulted "Father Mike," a young, bearded priest from the neighborhood church who "told me Jesus was never big on rules, that he often broke the rules out of compassion."

Hollywood wants to remake God in its own image, full of its version of "compassion" and shattering every traditional value. This mission is too important to weigh down with authentically Christian characters instead of wise-cracking and cartoonish propagandist puppets.

L. Brent Bozell III is the president of the Media Research Center.

HERBS • VITAMINS • WEIGHT LOSS • ENERGY • WOMEN'S & MEN'S NEEDS

Herbs Etc.

- Nature's Sunshine Herbs & Vitamins
- Weekly Classes
- Consultations
- Cleansing
- Protein Supplements
- 20 years experience
- Personal Service

109 W Kingsmill . Pampa (806) 665.4883
www.panhandlesunshine.com

Thanks RE/MAX!

"I would like to take a moment and express my deep appreciation for our realtor Patti Hudson. As a first time home buyer my wife and I felt overwhelmed at the daunting task of buying a home. Patti's knowledge and experience in real estate was invaluable to us. Not only was she the utmost professional but she offered lots of encouragement to us through the entire process of finding a home to meet our specific needs. It's obvious that Patti cares for her clients in a way that is unusual in today's business world. I cannot say enough what a difference having the right realtor made for us. I will recommend Patti to all my friends and family."

- Thankful For Patti, Charles and Karie Lowry

Linda Burt 664-3931
Patti Hudson, 81r 662-4896
Dennis Edmondson 662-7503
Scooter Hutchison 440-6061
Roy Devoll 896-0000

HARVEST FEST

2012

WED, OCTOBER 31
6 TO 7:30 P.M.

COME ENJOY A FAMILY NIGHT WITH US AT
CENTRAL BAPTIST CHURCH
501 E. FRANCE (USE SOUTH DOOR).

FOR PRESCHOOL THROUGH 6TH GRADE

COSTUMES ARE WELCOME

Katy Perry, Quincy Jones to perform at Newman benefit

NEW YORK (AP) — Katy Perry, Quincy Jones, Alicia Keys and Vince Gill are on the same bill: The singers are performing at an event to benefit the late Paul Newman's The Painted Turtle Camp.

The Dec. 4 gathering at the Dolby Theatre in Los Angeles is being billed as "You've Got a Friend ... A Celebration of Carole King and Her Music."

King will perform alongside John Legend, Amy Grant, Herb Alpert and Lani Hall.

Newman's The Painted Turtle is a camp in Lake Hughes, Calif., in The SeriousFun Children's Network, which the actor founded to assist children with serious illnesses as well as their families.

Newman died in 2008.

World War I-era tank returns to Poland

WARSAW, Poland (AP) — A tank used by Poland in its 1920 war against the Red Army was returned from Afghanistan where it was serving as a decoration at the defense ministry.

Defense Minister Tomasz Siemoniak said

Friday the French-made FT-17 tank has "historic and sentimental value" for Poland.

According to historians it probably was captured by the Bolsheviks during the war, and later sent to Kabul as a gift.

It was spotted at the Defense Ministry in Kabul by an Afghan employee of Poland's embassy.

Cabot & NOI Employees Credit Union

Now Open To The Community

Why Use A Credit Union?

- Members helping Members - Money stays in Pampa to help people.
- Better interest on Loans** - We offer Auto, Rv, Motorcycle, Boat, Mortgage, and Personal Loans
- Lower Fees** - No minimum balance required for checking or savings accounts. No Credit card fees.
- Talk to Live People** - Walk into any credit union and speak to a person. No call center & no stranger.
- Free ATM's** - Free ATM for all members. 50,000 ATMS nationwide for free!

1063 N. Sumner 806-665-0847
www.cabnoiecu.org
Hours: Lobby M-F 9-5 Drive-up M-F 7:30-6

NCUA

CONEY ISLAND CAFE

114 W. Foster
Serving Great Food Since 1933

hotdogs • hamburgers • sandwiches
stew/cornbread • beans/cornbread (Wed)

call ahead for to-go orders
806-669-9137

East Coast braces for monster 'Frankenstorm'

SETH BORENSTEIN
AP Science Writer

WASHINGTON (AP) — When Hurricane Sandy becomes a hybrid weather monster some call "Frankenstorm" it will smack the East Coast harder and wider than last year's damaging Irene, forecasters said Friday.

The brunt of the weather mayhem will be concentrated where the hurricane comes ashore early Tuesday, but there will be hundreds of miles of steady, strong and damaging winds and rain for the entire Eastern region for several days, according to the National Oceanic and Atmospheric Administration.

The hurricane has killed at least 20 people in the Caribbean, and just left the Bahamas. It is expected to move north, just off the Eastern Seaboard.

As of Friday morning, federal forecasters were looking closer at the Delaware shore as the spot it will turn inland and merge with a wintry storm front. But there is a lot of room for error in the forecast and the storm could turn into shore closer to New York and New Jersey and bring the worst weather there.

Wherever Sandy comes ashore will get 10 inches of rain and extreme storm surges, Louis Uccellini, NOAA's environmental prediction director, said in a Friday news conference. Other areas not directly

on Sandy's entry path will still get 4 to 8 inches of rain, maybe more, he said. Up to 2 feet of snow should fall on West Virginia, with lighter snow in parts of Ohio and Pennsylvania, regardless of where Sandy first hits.

A wide swath of the East, measuring several hundreds of miles, will get persistent gale-force winds in the 50 mph area, with some areas closer to storm landfall getting closer to 70 mph, said James Franklin, forecast chief for the National Hurricane Center.

"It's going to be a long-lasting event, two to three days of impact for a lot of people," Franklin said. "Wind damage, widespread power outages, heavy rainfall, inland flooding and somebody is going to get a significant surge event."

That storm surge will only be magnified by the full moon this weekend to make it a "dangerous period," Uccellini said.

Last year's Hurricane Irene was a minimal hurricane that caused widespread damage as it moved north along the coast after making landfall in North Carolina. With catastrophic inland flooding in New Jersey, Massachusetts and Vermont, federal officials say Irene caused \$15.8 billion in damage.

Sandy is "looking like a very serious storm that could be historic," said Jeff Masters, meteorology director of the fore-

casting service Weather Underground. "Mother Nature is not saying, 'Trick or treat.' It's just going to give tricks."

Government forecasters said there is a 90 percent chance — up from 60 percent two days earlier — that the East will get pounded.

Utilities are lining up out-of-state work crews and canceling employees' days off to deal with expected power outages.

From county disaster chiefs to the federal government, emergency officials are warning the public to be prepared. And President Barack Obama was briefed aboard Air Force One.

Boat owners were yanking their vessels out of the water Friday at the Southside Marina in Point Pleasant Beach, N.J., about 60 miles south of New York City.

"We're taking them out as fast as we can," said marina employee Jim Martin.

Atlantic City's casinos made contingency plans in case they have to close, as they did for three days last year when Tropical Storm Irene approached.

Eastern states that saw outages that lasted for days after last year's freak Halloween snowstorm and Hurricane Irene are already pressuring power companies to be more ready this time.

Asked if he expected utilities to be more prepared, Massachusetts Gov.

Deval Patrick responded: "They'd better be."

Jersey Central Power & Light, which was criticized for its response to Irene, notified employees to be ready for extended shifts. In Pennsylvania, PPL Corp. spokesman Michael Wood said, "We're in a much better place this year."

New York Mayor Michael Bloomberg on Thursday said the city was striking a tone of calm preparedness.

"What we are doing is we are taking the kind of precautions you should expect us to do, and I don't think anyone should panic," Bloomberg said. The city has opened an emergency situation room and activated its coastal storm plan.

Sandy was expected to deal only a glancing blow to North Carolina's Outer Banks, where Lori Hilby said she planned to ride out this storm at home, unlike past storms such as Irene. Hilby, the manager at Tommy's Natural

Foods Market and Wine Emporium in Duck, N.C., said the shop would remain open throughout the storm.

She said she sold a fair amount of beer and wine to people who planned to ride out the storm on the barrier island.

"I'll never evacuate again," Hilby said. She said most of the power lines there are underground, so the power often stays on even during powerful storms.

"Whenever I evacuate, I always end up somewhere and they lose power and my house is fine. So I'm always wishing I was home instead of at somebody else's house with no power."

There are still plenty of stores open in Duck, and Halloween decorations and displays were still on houses despite the rain that started to roll in Friday. Few homes were boarded up.

Some have compared the tempest to the so-called Perfect Storm that struck off the coast of New England in 1991, but that one hit a less populated area.

Nor is this one like last year's Halloween storm, which was merely an early snowfall.

"The Perfect Storm only did \$200-million of damage and I'm thinking a billion" this time, Masters said. "Yeah, it will be worse."

Music Lessons

Guitar . Trumpet . Keyboard . Bass

Call For Lessons

KEN WILSON

Music Teacher

806-206-2860

Family Dining

is our specialty!



Sunday Special

Prime Rib Meal 10 oz./14 oz.

- Burgers
- Pasta
- Steaks
- Fresh Salad Bar
- Desserts
- Children's Menu

Kelley's Dixie Café

2537 Perryton Pkwy.
806-669-1000
Mon-Fri: 11-9 Sat/Sun: 8-9

Bob Douthit Autos

806-669-3481

PARTS New/Used

- Computerized Inventory
- Nationwide Parts Network

Experienced, Bonded & Insured

Towing Service

- We tow it ALL, BIG & SMALL Cars • Trucks • Oilfield Equipment
- 24-Hour Wrecker Service
- We Do Auto Lock-outs

CALL US FIRST

1432 S. Barnes • Pampa

SALE

Fall & Halloween

40% off

Silks & Decor

40% off

Niven Morgan "Gold" Bath & Body

40% off

Aquiessse Candles

BRANDON'S

Flowers & Fine Gifts

123 N. Cuyler 665-5546 brandonsflowers.com

NOW OPEN

till 4 on Saturdays!

Got a Good Recipe?



We want you to share it!

We're looking for a selection of fantastic recipes from our community to publish in our Pampa News Holiday Cookbook! Share your recipe with us and it will be printed with in the special magazine we will be circulating in the newspaper.

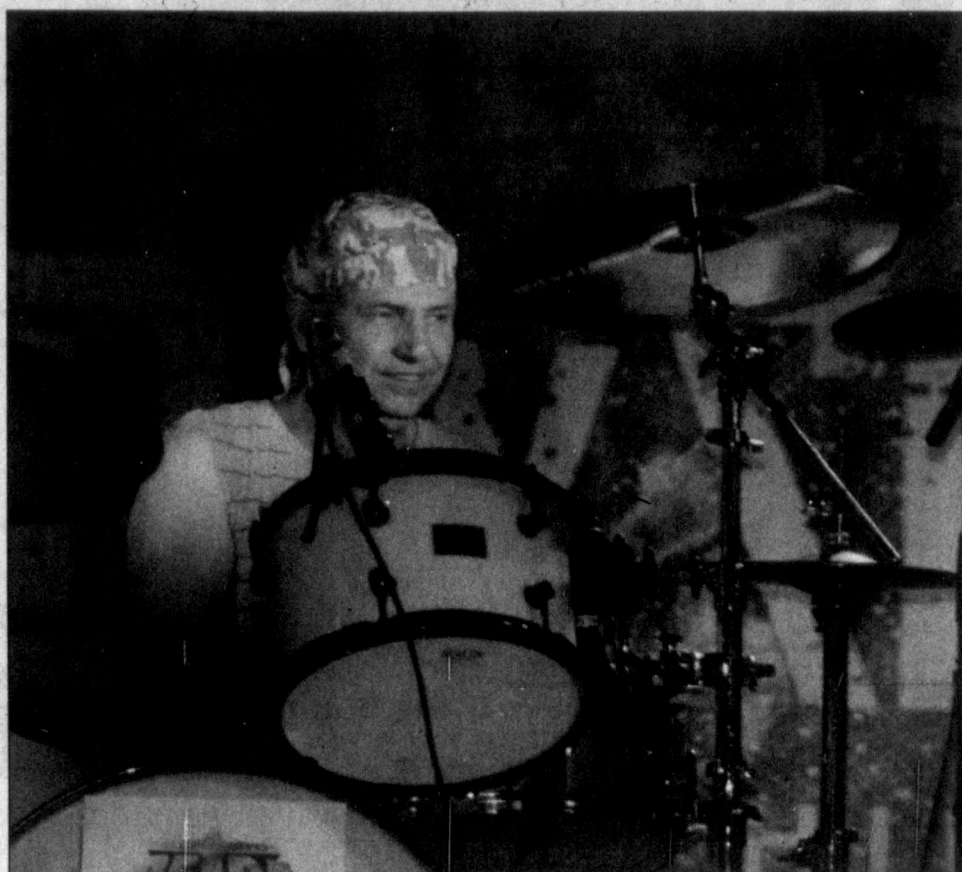
Send recipes to composing2@thepampanews.com

Please include the following:

1. Your recipe, neatly typed
2. Your name & town
3. A phone number to be reached in case we have questions

Contributors is November 01, 2012. The deadline to get your recipe into the paper for this year's cookbook is November 01, 2012. If you have any questions please contact The Pampa News at 806-206-2860.

Scenes from Petra, Seventh Day Slumber concert



Photos Lyz Campbell
The two popular Christian rock bands performed Sunday, Oct. 21, at M.K. Brown Memorial Auditorium. About 200 people attended, including youth groups from out of town. Clockwise from top right, Petra's drummer, Petra's lead singer (names unknown) and Joseph Rojas, lead singer for Seventh Day. Rojas gave his testimony and there was an altar call where about 20 people responded. Rojas' 11-year-old, son Blaise played the drums on one of the band's newly released songs. After Seventh Day Slumber performed, Petra took the stage to perform their hits that span from 1976.

HAPPY HAUNTING!

from the staff at
Keyes Pharmacy
928 N. Hobart • 806-669-1202
Monday - Friday 8:30 a.m. - 6:00 p.m.
Saturday 8:30 a.m. - 12:00 p.m.

Amid bumper peanut crop, families could get PB&J break

GREG SCHREIER
Associated Press

ATLANTA (AP) — Choosy moms and dads may be packing more PB&J in lunches this winter, when the cost of a jar of Jif or Skippy is expected to fall even as other grocery prices rise.

Peanut butter prices soared last year after a drought and high heat in the Southeast, where most peanuts are grown. This year, that region got a break while farmers in most of the rest of the United States suffered huge losses in the widest drought in decades.

Farmers are now expected to bring in two-thirds more peanuts than they did in 2011. That could mean a price drop at the grocery store.

"After last year's small crop, we saw peanut butter prices on average rise 30 percent or more," said Patrick Archer, president of the American Peanut Council. "With this year's excellent crop, the supply and demand should come back into balance and peanut butter prices should come back to a more normal level at the retail level."

A 10 percent decrease on a \$3 jar of peanut butter, for example, would translate to a savings of 30 cents. That may seem nominal, but the impact is greater for food banks and other big buyers.

Bill Bolling, founder and executive director of the Atlanta Community Food Bank, said food banks usually must buy protein-rich items like peanut butter, beans and meat. His organization buys anywhere from 200,000 to 400,000 pounds of peanut butter each year, depending on the price.

"If costs go down 10 percent or 20 percent, we can buy that much more product," Bolling said. A big supply also increases the possibility of donations — for instance, a company may donate large shipments if there is a mistake in packaging or a huge surplus, he said.

Bolling said peanut butter is one of the most popular products at the food bank because children like it, it's high in protein and it has a long shelf life.

Peanuts are already considered a staple of the American diet, with the average U.S. consumer eating about 6 pounds of peanut butter and other peanut products each year, according to estimates from the American Peanut Council, an industry trade group. But peanut butter

could become even more attractive as strong global demand, high prices for livestock feed and a huge sell-off of cattle and other animals in drought keep pushing up meat prices.

U.S. farmers are expected to produce more than 3 million tons of peanuts in 2012, according to figures released Oct. 11 by the U.S. Department of Agriculture. That's a 66 percent increase over 2011, when growers produced more than 1.8 million tons.

Experts say several factors created the perfect conditions for a banner year. High peanut prices after last year's small crop encouraged farmers to plant more; USDA figures show acreage was up nearly 50 percent in 2012 compared with a year earlier. Farmers in

the Southeast also got a break in the weather. Spring came early, allowing them to plant sooner. Temperatures were generally milder, and thunderstorms in August and September provided some much-needed relief in the weeks before farmers began the peanut harvest, which is currently in full swing.

Experts also say a peanut variety developed in recent years is boosting the record yields, in part because it tends to be resistant to disease.

"In this south Georgia area, we probably had as good a growing season as I can remember in a long time, and maybe in my 26 years (as executive director)," said Don Koehler, executive director of the Georgia Peanut Commission.

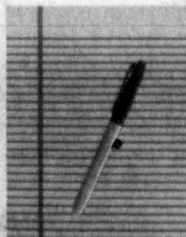
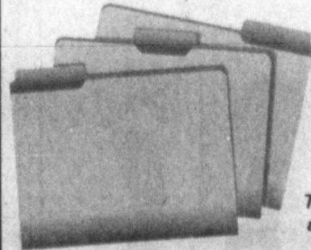
8 out of 10 people don't have a will

ESTATE PLANNING WORKSHOP

Thursday, November 1st @ The Plaza
1201 N Hobart St - Unit 3D - Pampa, Texas
12:00 pm - 1:00 pm

Come Learn about
-Reasons for a will
-Elements of an estate plan

Please RSVP to
Pampa Corps - 806-665-7223 or
Chris Edens - 806-300-7885
by October 29th.



The Salvation Army has been providing estate planning assistance for over 30 years with no cost or obligation.

RASCO CONSTRUCTION & PAMPA
GLASS & SUPPLY ARE NOW...

HIGH PERFORMANCE
Exterior • Coatings • Glass

ARE YOU READY FOR A NEW GARAGE DOOR?
ASK US ABOUT FINANCING OPTIONS!

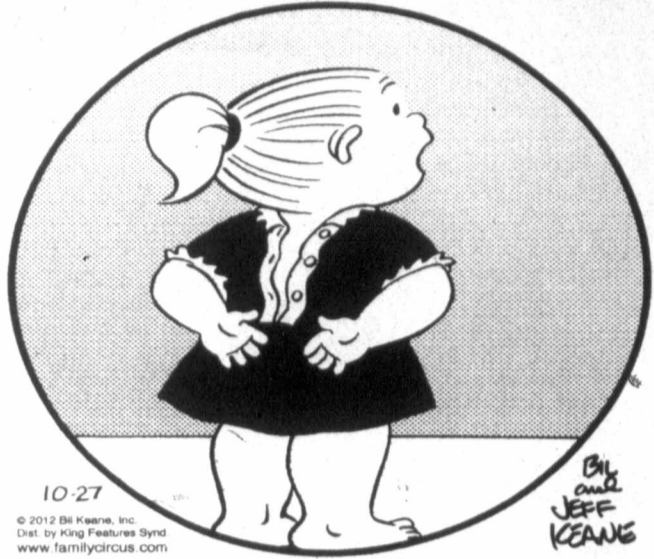
10206d

PAMPA, TX 79065
806.665.8100
PERFORMANCEXTERIORS.COM

UNIVERSITY OF TEXAS
CERTIFIED CONTRACTOR
f BBB

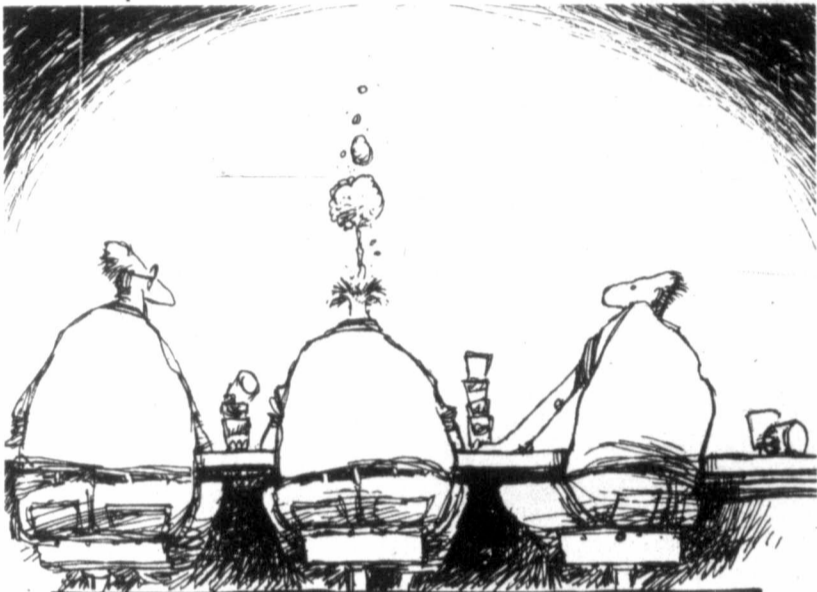
comics PAGE

THE FAMILY CIRCUS By Bil Keane



"Why do they have these buttons in the back when my arms are in the front?"

Non Sequitur



The trick to winning the "I BET I CAN DRINK MORE SHOTS OF TEQUILA THAN YOU" contest is to come in last...

© 2012 King Features Inc. Dist. by King Features Synd. www.familycircus.com

Nest Heads



daily horoscope

HAPPY BIRTHDAY for Monday, Oct. 29, 2012:

Charisma and intensity mark this year. You will look at life more deeply. You often swing from being emotional to being highly intellectual. Make a note of which mood works better for you. You will need some time alone to process your feelings. If you are single, a slew of admirers follow you nearly wherever you go. You might date several people before you meet someone you feel comfortable with. If you are attached, your relationship is exciting, yet you will note a back-and-forth emotional struggle. If those feelings are new, they are likely to disappear in a year. If you need more space, say so rather than act out. TAURUS can challenge your very foundations.

The Stars Show the Kind of Day You'll Have: 5-Dynamic; 4-Positive; 3-Average; 2-So-so; 1-Difficult

ARIES (March 21-April 19)
 ★★★ Curb a possessive streak, as it could cause a problem in your interactions. You also might become quite competitive with someone, which could strain the trust that exists between you. Confusion and mixed messages are amplified right now. Curb your need to win. Tonight: Don't let others pressure you.

TAURUS (April 20-May 20)
 ★★★ Your will could be tested by someone who is just as strong as you are. Others might not want to be around you with this power struggle going on. Be willing to seek an alternative way of doing something. As the saying goes, "If the mountain will not come to Muhammad, then Muhammad must go to the mountain." Tonight: Make peace, not war.

GEMINI (May 21-June 20)
 ★★ You might want to be hard to find with today's Full Moon looming over you. Recognize a tendency to be more sensitive than you realize when dealing with others. You could make an assumption, thus taking the first step to a misunderstanding. Tonight: The wise shall not be found.

CANCER (June 21-July 22)
 ★★★★★ You might be on the verge of achieving a long-term goal, and you have many people rooting for you. Confusion surrounds communication. Realize the different possibilities that surround a key relationship. Make time for this person. Tonight: You soon will have a lot to smile about.

LEO (July 23-Aug. 22)
 ★★ You are in the limelight, and you can't seem to escape it. You might feel tired and withdrawn when dealing with others' issues, and a misunderstanding could occur as

a result. You will have a lot of errands and tasks to complete. Don't worry; you will do just that. Tonight: A must appearance.

VIRGO (Aug. 23-Sept. 22)
 ★★★★★ Reach out to someone at a distance. This person often makes suggestions that you see as unusual yet effective. You have a lot to juggle, and somehow you will manage not to drop any balls. Cancel plans if you feel overwhelmed. Tonight: Decide on a trip in the near future.

LIBRA (Sept. 23-Oct. 22)
 ★★★★★ Deal with a partner on a one-on-one level. You could prevent a misunderstanding, though you might need to clarify a plan of action first. Do not be overgenerous, as you ultimately could create a problem, whether it has to do with the other person or with your finances. Tonight: Be with a special friend.

SCORPIO (Oct. 23-Nov. 21)
 ★★★★★ Defer to others and appease their requests rather than get into a power struggle. You will be much happier as a result. You will have many invitations, so choose according to your preferences. Be with people you enjoy. Tonight: Let someone else make the first move.

SAGITTARIUS (Nov. 22-Dec. 21)
 ★★★★★ You might choose to take a practical approach at this point, but you have some concerns that you have not chosen to share. You could be experiencing a low-level depression and not really be able to isolate what is going on within yourself. Tonight: Move forward with a project.

CAPRICORN (Dec. 22-Jan. 19)
 ★★★★★ Your creativity surges. You also could feel quite amorous and just be waiting for the right time to express your deeper feelings. Don't wait too long, though, or you could discover that the apple of your eye has lost interest. Not everyone is as patient as you are. Tonight: Follow your feelings.

AQUARIUS (Jan. 20-Feb. 18)
 ★★★★★ You are able to relax around those you know well. You might be feeling as if you want to spend more time at home, yet your work or commitments force you to be out more and more. You intuitively will know what to do. Do not play into today's Full Moon frenzy. Tonight: Make it easy and stay at home.

PISCES (Feb. 19-March 20)
 ★★★★★ You have a lot to say, and your words could trigger multiple reactions. Use care and just smile. Others might be more confused than you realize. Your intuition will kick in, and you will know exactly what to say. Tonight: Hang out with friends.

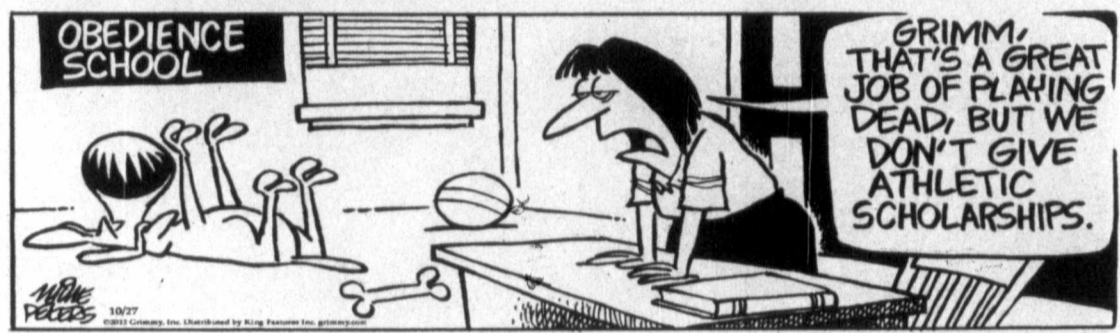
Tundra



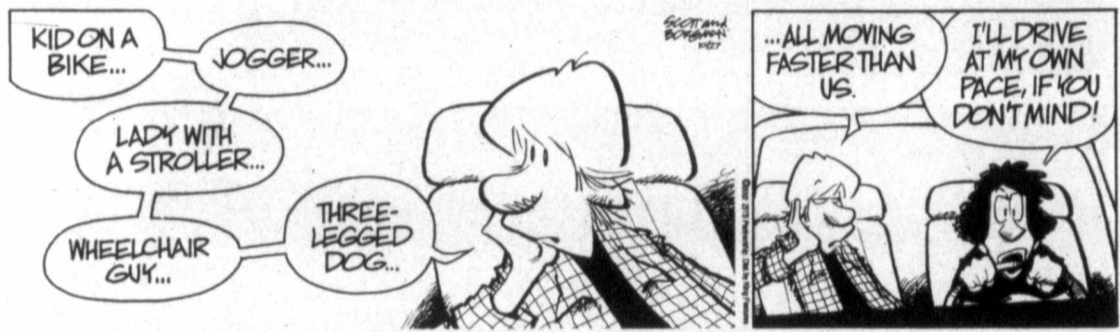
Shoe



Mother Goose and Grim



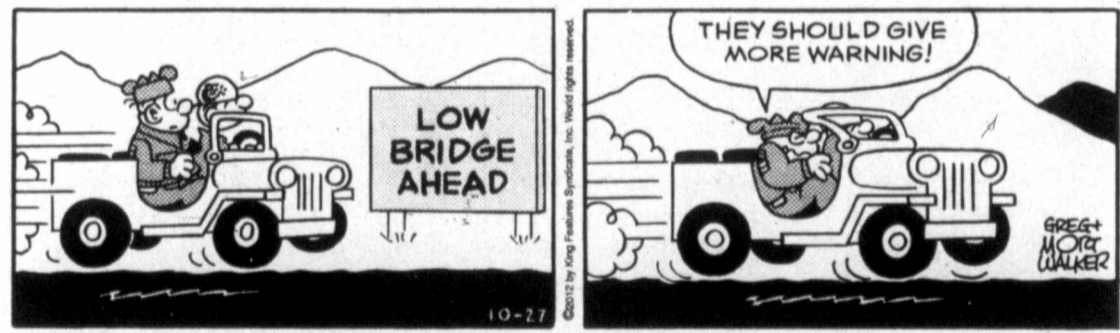
Zits



Garfield



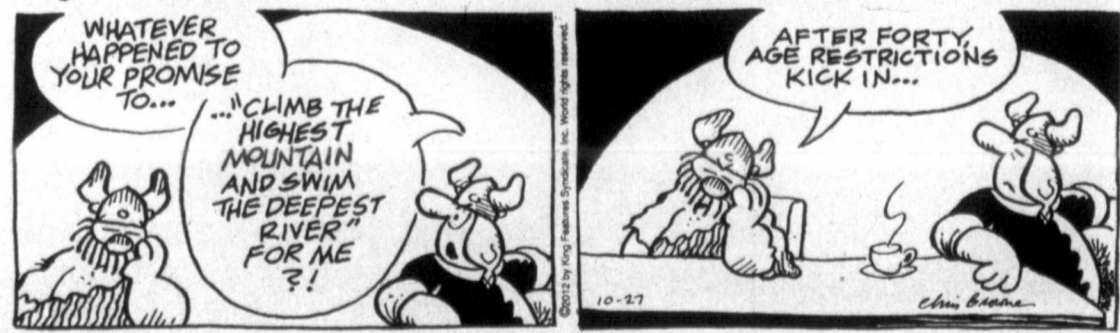
Beetle Bailey



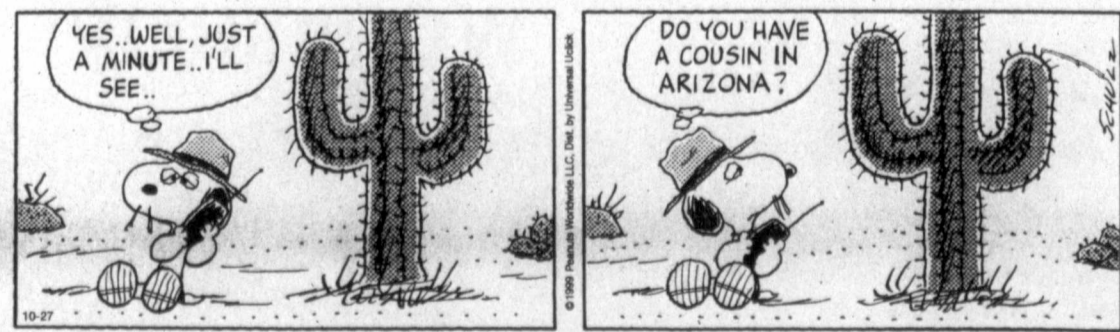
Marvin



Hagar The Horrible



Peanuts



Blondie



Joy (loves atm... the fr... and 1...
 HERBS
 Na 11
 Par
 MO
 Min
 pota
 Bre:
 TUI
 Chic
 stick
 Bre:
 WE
 Fish
 mix:
 Bre:
 TH
 Soft
 fruit
 Bre:
 FRI
 Gril
 blac
 fanc
 Bre
 Pal
 MO
 Chi
 ma
 slav
 cob
 TU
 Ove
 pot:
 sala
 frui
 WE
 Roa
 mas
 slav
 late
 TH
 Chi
 pea:
 cak
 bre:
 FRI
 Cod
 pot:
 toss
 garl
 Pal
 MC
 Spa
 sala
 TU
 Pol
 WE
 Tat
 frui
 TH
 Har
 din
 FR
 Hot

A 'JOY' AT THE SCHNEIDER HOUSE



Photo by Bernie Frazier

Joy Combs, Manager of Schneider House at Russell and Atchinson, loves to do seasonal decorations for her residents. It makes our atmosphere "homey," she said. Her fall decorations were put up at the first of October and just before Thanksgiving they will come down and then up comes her Christmas decorations.

World War II vets dies at 93 after casting last ballot

HONOLULU (AP) — A World War II veteran who inspired many with his determination to vote even though he had end-stage liver cancer died Wednesday.

Frank Tanabe's daughter Barbara Tanabe said he died at her Honolulu home, where he has spent the past few weeks in hospice. He was 93.

Barbara Tanabe said she put the American flag up outside the home to mark the day for him and their family.

"He really liked it when I put out the flag," she said.

Hundreds of thousands of people saw a photo of Frank Tanabe filling out

his absentee ballot with the help of his daughter last week, after his grandson posted the picture on the social media site Reddit.

The photo struck a chord, prompting many to thank Frank Tanabe for his service and praise his patriotism. The story spread further when The Associated Press and other media organizations wrote about the photo and the response it generated online.

Tanabe served in a mostly Japanese-American unit of the Military Intelligence Service during the war, interrogating Japanese prisoners in India and China.

He volunteered for the Army from an internment

camp where the U.S. government sent him as part of a policy to detain and isolate 110,000 Japanese-Americans after the start of the war with Japan. He spent time in both the Tule Lake camp in California and the Minidoka camp in Idaho.

Decades later, Tanabe explained how he felt in an interview for a documentary tribute to Japanese-American veterans.

"I wanted to do my part to prove that I was not an enemy alien, or that none of us were — that we were true Americans. And if we ever got the chance, we would do our best to serve our country. And we did," he said.

Milton David Roofing

Honesty is the best image.

- Free Estimates and Inspection
- New Roof Installation and Reroofing

Call Today For Your Free Estimate
806-665-7575

HERBS • VITAMINS • WEIGHT LOSS • ENERGY • WOMEN'S & MEN'S NEEDS

Herbs Etc.

Nature's Sunshine Herbs & Vitamins
109 W Kingsmill • Pampa (806) 665.4883
www.panhandlesunshine.com

Weekly Menus

Pampa Independent School District

MONDAY, October 29
Mini corndogs or chicken nugget, green bean, sliced potatoes, pineapple tidbits, fresh fruit

Breakfast- Breakfast pizza

TUESDAY, October 30
Chicken spaghetti or rib b que, baked beans, carrot sticks, fresh fruit, juice, garlic toast

Breakfast- Donut, sausage patty

WEDNESDAY, October 31
Fish strips or popcorn chicken, corn, broccoli florets, mixed fruit, fresh fruit, cornbread

Breakfast- Waffle sticks, syrup

THURSDAY, November 1
Soft taco or pizza, refried beans, tossed salad, fresh fruit, juice, Spanish rice

Breakfast- Biscuit, sausage patty

FRIDAY, November 2
Grilled cheese sandwich or hamburger, french fries, black eyed peas, burger salad, peaches, fresh fruit, fancy gelatin

Breakfast- Cereal, toast

Pampa Senior Citizens Center

MONDAY, October 29
Chicken fried steak or chicken chow mein/noodles, mashed potatoes, green beans, beets, northern beans, slaw, tossed salad, Jell-O, butter pecan cake, apple cobbler, fruit cup, hot roll, cornbread

TUESDAY, October 30
Oven baked chicken or Salisbury steak, sour cream potatoes, spinach, corn, pinto beans, slaw, tossed salad, Jell-O, chocolate cobbler, cherry cheesecake fruit cup, hot roll, cornbread

WEDNESDAY, October 31
Roast beef brisket/brown gravy or cook's choice, mashed potatoes, California blend, fried okra, beans slaw, tossed salad, Jell-O, orange swirl cake, chocolate icebox pie, fruit cup, hot roll, cornbread

THURSDAY, November 1
Chicken strips or sausage & kraut, mashed potatoes, peas, carrots, beans, slaw, tossed salad, Jell-O, dump cake, coconut cream pie, fruit cup, hot roll, cornbread

FRIDAY, November 2
Cod fish filets/hushpuppies or tamales/chili/cheese, potato wedges, hominy casserole, beans, slaw, tossed salad, Jell-O, walnut brownies, tapioca cup, garlic breadstick, hot roll, cornbread

Pampa Meals on Wheels

MONDAY, October 29
Spaghetti/meat sauce, green beans, bread stick, salad, cookies

TUESDAY, October 30
Polish sausage, cheese grits, mixed greens, cake

WEDNESDAY, October 31
Tater tot casserole, cabbage, black eyed peas, mixed fruit

THURSDAY, November 1
Ham, okra/tomatoes, pinto beans, cornbread, pudding

FRIDAY, November 2
Hot dogs/buns, chili, onion rings, peach cobbler



HARVEST FESTIVAL

Wednesday October 31

6:00 - 8:00 P.M.

**First Baptist Church
Fellowship Hall**



YOU ARE INVITED TO ATTEND!

Children Must Be Accompanied By An Adult

Candy ~ Refreshments ~ Games



FREE!!!

PLEASE, NO SCARY COSTUMES!!!!



Gary Winton: Realtor®/Office Manager
806-440-1698
1712 N. Hobart • (806) 665-4595

We will help you buy or sell your home!

ROBERT'S QUALITY AUTO SERVICE

SM - AUTO REPAIR

OIL CHANGES - TUNE UPS

AC - BRAKES - STATE INSPECTIONS

806-669-1117



ROBERT CHAVARRIA

• Auto Lockout • Pickup/Delivery



(L-R) Robert Chavarria, Jessalyn Abad and Luis Sanchez

Thanks for your business!

Committed to Quality

300 N. Hobart
Alcock & Hobart
(behind Platinum Car Care)
Hours: Mon-Fri 7-7; Sat 8-4

Committed to You

Melodies in Motion

LOCKS

\$225

\$525

\$99⁹⁹ (was \$325)

\$99⁹⁹ (was \$200)

\$137 (was \$275)

\$275

RHEAMS

DIAMOND SHOP

111 N. CUYLER | 806-665-2831

2009 "BUSINESS OF THE YEAR"

Think Success!

Boost business by advertising with The Pampa News! Not only can we provide Graphics Design services, but we are a daily newspaper that is delivered to over 4,000 homes. What better way to get the word out? Call today!



For information about our rates or services, call:

Bernie Frazier — 662-8595
Sales Associate

Dana Whinery — 663-9065
Sales Associate

Sandra Cochran — 669-2525
Classified Ads

It is that time of year again...

FLU SEASON

To help protect you from this virus... the friendly and professional staff of

Total Care Health will be providing
FLU SHOTS for just \$25 (CASH)

WE ALSO ACCEPT MEDICARE OR INSURANCE
(No out of pocket expenses for Part B Medicare)



Total Care Health

Caring & Effective Health care for Your Entire Family

Call 688-2273 to schedule an appointment or stop by at 701 N. Price Rd. Pampa, TX

We put the CARE back into Healthcare.

OPEN MON-FRI
Same Day Appts.

Victorian Rose

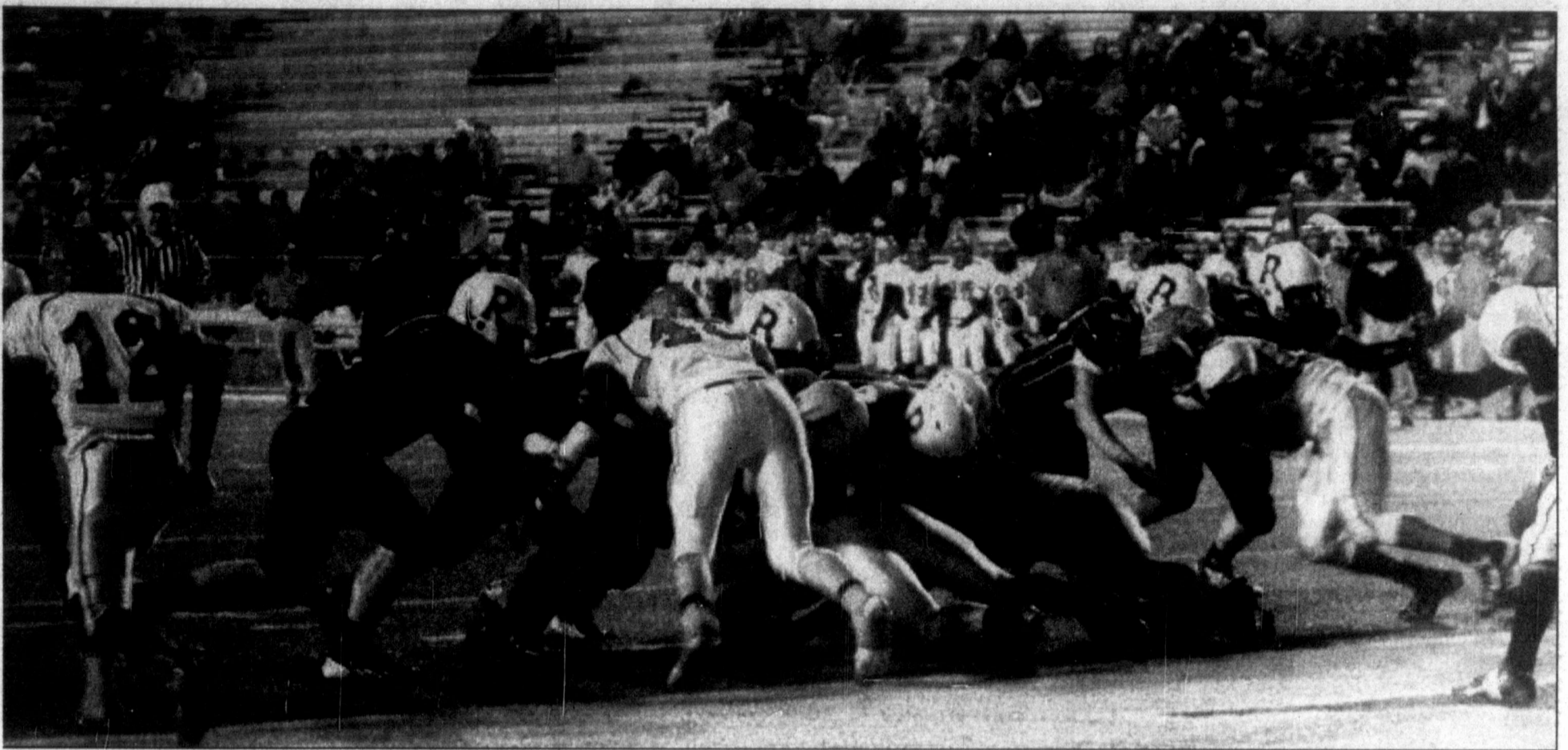
113 W. Kingsmill * 806-688-5372

"A Unique Boutique with a Victorian Flair"

Fall & Halloween Specials ~
10%-25% OFF Select Items
Exp. 10/31/12

Find us on Facebook

PampaSports



QUARTERBACK SNEAK. Pampa's Ryan Smith follows his offensive line into the end zone for a Harvester touchdown. Despite the good play by both the offense and defensive units, Pampa lost 21-14. The Harvester had the ball on the Bulldog 6-yard line as time expired. Photo by Charla Shultz

Pampa loses heartbreaker 21-14

By GAYDEN HAYS
ghays@thepampanews.com

Second down and goal at the seven yard line of the Borger Bulldogs, and with the incomplete pass from Pampa's Ryan Smith to Chris Howard with seven seconds left in game ended the hopes of a comeback victory for the Harvesters.

Pampa fell to their district rival 21-14 in a game that went back and forth, each team scoring twice in the fourth.

Pampa led the game off kicking the ball to the Bulldogs who won the opening toss.

The Harvester defense held the high powered Borger runners in check and forced a punt on their opening possession.

On the Harvesters first play from the line of scrimmage, Smith took the ball around the end and gained 30 yards before a Borger defender dragged him down at the Bulldog 41-yard line. However, on the next play Smith lost the ball and Borger took over.

The Harvester defense held and forced another Bulldog punt, despite 71-yard rushing by Smith in the first quarter the Pampa offense was unable to score, and the Harvester defensive unit lead by outstanding plays by Chris Howard, Chris Rivera, Austin Wood, Kyler Allen forced a stalemate that saw the first quarter come to an end with a score of 0-0.

In the second quarter, the teams traded two punts then with 6:20 left in the quarter Pampa took possession at the Borger 46 yard line after a short punt by the Bulldogs kicker.

The 10-play drive by the Harvesters consisted of nine running plays and one pass from Smith to Trey Wiggins that set the Harvesters up first and ten at the Borger 16-yard line with 3:22 left in the second quarter. Runs by Sammy Smith and Ryan Smith gave the Harvesters a fourth down and goal at the Bulldog two foot line.

On a the next play Smith fumbled, and despite the Harvesters recovering the fumble in the end zone, the points did not count since a fumble into the end zone is not allowed. The Bulldogs took over on downs and ran the remaining eight seconds of the clock with both teams going into the dressing room tied, 0-0.

Pampa took the opening kickoff in the second half and went three and out and were forced to punt. The Bulldogs took over at their 34 yard line. After a Pampa unsportsman like conduct penalty gave Borger first down and 10 at their own 47, they turned to their running game. Dontre Butler the recent Tascosa transfer ran the ball seven times and scored on a seven yard scamper around the left end with 5:52 left in the third. Giving the Bulldogs the first points on the board and with the good extra point, Borger led 7-0.

The two teams traded punts again and with 2:16 in the third quarter, Pampa took over at their own 38 yard line.

Ryan Smith passed the

Attack the day

sponsored by: **PAMPA REGIONAL MEDICAL CENTER**

Ball five times on the drive connecting on four of the passes, spreading the ball around with passes being caught by Tyler Powell, Kristian Vizcaino, Chris Howard and Sammy Smith.

The last and scoring play was the pass for 9-yards to Howard in the end zone with 9:49 left in the fourth. The Extra point by Alan Stovall was good and the score was once again tied up 7-7.

The next drive for the Bulldogs was to last only :29 seconds when on the second play of the drive on second down and six from the Borger 31-yard line, Kendrick Freeman out ran the Pampa defenders 69 yards, and quickly put Borger on top again 14-7 after the good extra point.

The last Pampa drive was the aerial show, this drive for the Harvesters was just the opposite, with nine running plays in the ten play drive with Ryan Smith scoring at the 5:04 mark in the quarter.

With the point after, Pampa tied it up 14-14.

However, as with the

last drive, Borger's transfer running back Butler scored on a 69-yard run, this being his second touchdown of the game.

With 4:45 left in the game, the Harvesters despite turning the ball over on downs twice, were immediately given

the ball back by fumble recovers by the defense giving Pampa life again each time.

The last recovery gave Pampa first and ten at their 18 yard line with :35 left on the clock.

Smith connected with Howard for receptions

of 34 and 24 years and with a unsportman like conduct penalty set the Harvesters up First and Goal at the seven yard line of the Bulldogs.

Time was the enemy and Pampa ran out of time as an incomplete pass ended the game.



STANDING TALL. Pampa's Tyler Powell catches a Ryan Smith pass in the first half. Despite solid play, the Harvesters fell to district rival the Borger Bulldogs. Pampa will end their season next week at Dalhart Friday at 7:30 p.m. Photo by Charla Shultz



RACING

PRESTIGE
AUTOBODY & ACCESSORIES
Pampa, TX

ANSWER

METAL MULISHA

SCOTT

Halloween

806-206-2860

PampaSports

Students bonfire idea lights up Pampa sky

By GAYDEN HAYS
ghays@thepampanews.com

Watching the Harvester football practice one day, Dakota Eppeson and Drew Facio hatched an idea of holding a bonfire before the Pampa versus Borger football game to show Pampa spirit and pride.

"Drew and I were talking, and came up with the idea," said Eppeson about the first meeting. "Then I talked to my Dad, and it began to roll."

Kenny Eppeson had the property that could be used, and contacted the local authorities getting permission for the controlled burn.

The bonfire was erected of old wooden fencing and topped with an outhouse and appropriate

anti-bulldog material.

Thursday night the fire was lit, with the watchful eyes of the Hoover Volunteer Fire Department on hand. A trailer with a sound system was there, providing music.

"The players were kinda surprised, I just told them they were speaking," commented Eppeson on the varsity football players participation in the event.

Besides cheers and music during the event, the Harvester fight song and the Pampa High School song were performed by all present.

"I need to thank all the businesses that donated items and their time, the Hoover Fire Department, Ross and Tammi Allen, and of course the Harvester Booster Club."



Photo by Charla Shultz

BURNING. Pampa Senior Dakota Eppeson, with the help of her father and many businesses and individuals, hosted the 2012 Pampa "Beat Borger Bonfire" Thursday Night.



Photo by Charla Shultz

THIRD PLACE WINNERS. House of cheer level one team: (Back Row): Bryan Yates, Shay Shook and Cole Sims (Middle Row): Alexis Valenzuela, Tori Robles, Keelsey Henry, Madison Meyers, Vanessa Ontiveros and Case Sark (Kneeling): Jacey Sims, Maddie Yates, Victoria Valenzuela, Samantha Clancy and Kimberly Tomlinson (Sitting): Kylee Perez and Gabby Lopez. Not Pictured: Abigail Ramirez.

Pampa's House of Cheer squads place 3rd in Cotton Bowl Cheer Competition

By CHARLA SHULTZ
For the Pampa News

Gymnastics of Pampa's House of Cheer squads traveled to the Cotton Bowl in Dallas to participate in the Spirit Celebration 2012 State Fair of Texas Championship Cheer Competition.

House of Cheer has two squads this year as noted by Coach

Kathey Rice, they have added another squad this year doubling the size of the gym participants. These cheerleaders range in age 5-17 practice for hours a week to prepare for these competitions and with numerous girls competing for the first time this weekend.

Both squads competed among 20 total squads in different divisions with both Level 1 and Level

2 squads bringing home third place trophies and medals and being recognized for the squad traveling the farthest to participate.

Next up for the House of Cheer, Rice and both cheer squads will be traveling to Arlington in November to compete at the Dallas Cowboys Cheerleaders competition in the new Cowboys Stadium.



Easy & Convenient!
Drive-up Window

Pop Shop 1&2

Buy Any Size Fountain Drink & Get One

WITH COUPON Expires 10-31-12

719/729 N. Hobart

Enjoy the Ride

Equipping your car with state-of-the-art Audio and all the extras!

- Audio Systems
- Video Systems
- Remote Starters
- Security Systems
- and Much More

Back up Safely & Securely with a Rear-view Camera and Back-up Sensors

See our Professionals for what fits your car the best.

SMARTPHONE Integration Solutions... Check With Us!

HALL'S

700 W Foster 665-4241 Mon - Fri 9-6 Sat 10-2

Music Lessons

Guitar
Trumpet
Keyboard
Bass

Call For Lessons

KEN WILSON
Music Teacher

806-206-2860

Propane Gas & Electric Heaters

Also Space Heaters

Frank's Best Hardware

401 N Ballard • 665-4995

Is Your Business Giving Out Candy On Halloween?

Call The Pampa News 669-2525. Give us your business name, and we will add you to our list. Deadline is Oct 25th. The list will run in the October 30th paper.

FUN Size

TELL US YOUR STORY...

In honor of Veterans Day, The Pampa News is planning a special Veterans Section. We want your story or the story of your loved ones that have served for our country.

To be a part of our special Veterans Day Section just type up your stories, scan in your photos, then email them to us at thowsare@thepampanews.com. Please include names and your contact information to be submitted along with your story.

For questions or more information please contact **Tim at The Pampa News** 806-669-2525.

Deadline for stories is **Noon, October 30th**. Stories will be published inside The Pampa News on **Saturday, November 10th**.

**HELP US HONOR OUR VETERANS
BY SHARING THEIR STORIES.**



Photo by Kristi Slatten

BEATING THE BULLDOGS. Pampa freshman No. 14 Jonathan Barboza is running with the ball against Borger during their 27-0 victory Thursday night in Borger. The JV and freshmen teams finish their season next week versus Dalhart at Harvester Stadium beginning at 4:30 p.m.

Fall sports tab coming Wednesday

The Pampa news will release the all Fall sports tab Wednesday. That will include, tennis, basketball, volleyball, swimming, golf, cross country and a special section on the "Pride of Pampa Band."

It will include all teams rosters and schedules or records so far for the fall season, both the boys and girl squads will be highlighted.

- Hidden Hills Seniors**
4-Man Scramble
First- 60
 E. Maxwell
 OK. Lee
 J. Jensen
 M. Ball
- Second- 60**
 RD. Stephens
 J. Gilbert
 L. Moreno
 J. Stavenhagen
- Third- 64**
 L. Etchison
 D. Dunham
 J. Mabry
 K. Burkett
- Fourth- 64**
 G. Hall
 J. Stephens
 JG. Davis
 Closest to the hole # 6
 Darrell Hinkle
 Closest to the hole # 15
 Gene Hall

TRICK OR TREAT!

Halloween Portraits are OH SO SWEET!

OCT 31ST 5:30-7:30

Hidden Hills Seniors 4-Man Scramble 10-24-12

Shutterbug Photography
 Picture Packages \$5-\$25-\$60
 E. Maxwell
 OK. Lee
 J. Jensen

207 N. Cuyler
 806-669-1441
 www.myshutterbug.com

Just Arrived! **Peace Love & Cure Bling Design**

Looks Great on BLACK!

T-SHIRTS & MORE
 111 W. KINGSMILL • 806-665-3036

You Need it.....We Do it



Tires & Wheels
 • Passenger • Light Truck
 • Agricultural • Tractor
 Free rotation & balance
 with purchase of 4 for the life of the tire.



Brakes
 • Premium Pad Installation
 • Rotor & Drum Resurfacing
 • Master Cylinder • Calipers



Alignment
 Alignment of your car is crucial for proper handling

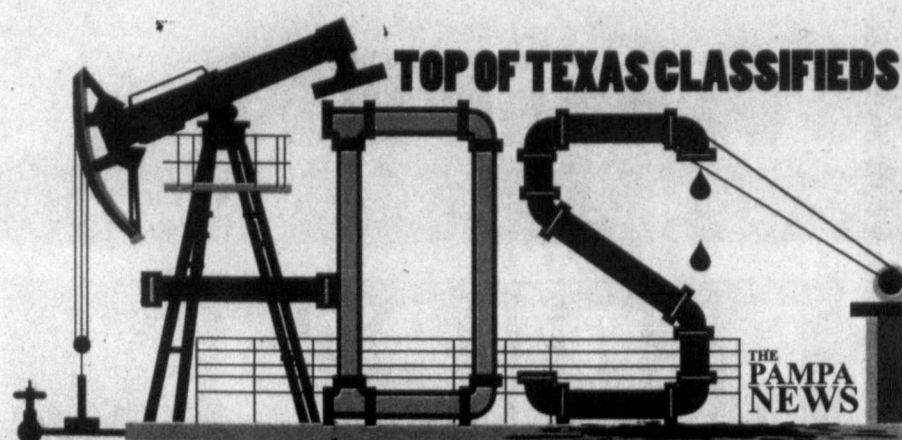


Routine Maintenance
 • Oil Change • Tire Balance
 • Shocks Inspection • Tire Pressure



1800 N Hobart
665-5302
 hudsontirepros.com

And of course....we fix flats!
 Stop in today and let our specialists get your car ready to hit the road.



ADS For Sale \$9 runs one week
ADS Jobs \$3990
ADS Services as low as \$69 per month see display
ADSHappy Ad FREE \$3 with photo

Say Happy Birthday to friends for FREE
 Items for Sale priced under \$50 FREE
 FREE ads for free items

Reaching over 12,000 readers daily • Call Sondra at (806) 669-2525

2 Happy Ads



Happy Birthday Berwynne Colton Wolf!!

Love, Mom & Dad

HAPPY BIRTHDAY LYSSA SCHAUB LOVE YOUR FAMILY

3 Personal

ADOPT: College Sweethearts, Happy Creative Home, Laughter, Security, At-home Parent, Beaches. Expenses paid 1-800-362-7842. James & Helene

10 Lost/Found

LOST in 800 block of Somerville Female Black Lab mixed dog Please call 662-2883 662-6352 leave message

SETTER Found at Walnut Creek. Cream/Tan Spots. No collar. Very sweet. Call 669-7531.

14d Carpentry

OVERHEAD DOOR REPAIR Kidwell Construction. Call 669-6347, 806-663-0192.

CUSTOM Building & Remodeling. New or Additions. Shawn Deaver Const., 662-2977.

14e Carpet Serv.

NU-WAY CLEANING SERVICE Bob Marx Owner-Operator. Call 665-3541.

14h Gen. Serv.

CERAMIC tile work, stucco, cement. Remodeling, floor, shower, kitchen. Texture, painting, dry wall. Free est. New# 440-0239 lv msg. Jesus Barraza.

HOUSE Cracking? In bricks or walls? Childers Brothers, Inc. 800-299-9563, 806-352-9563

COX Fence Company. Repair old fence or build new. Free estimates. Call 669-7769.

ROBERT MARTIN CONCRETE COMPANY Been in business for self for 23 plus yrs.

RELOCATING: Specialize in custom home and foundations, curbs, gutters, parking lots, drive-ways and sidewalks, etc. No job too Big Or too Small. Call 806-665-0493 or 580-206-9711.

14s Plumbing

JACK'S Plumbing 715 W. Foster 665-7115

14w Air Cond/Heat

BROWNING'S Heating & Air and Refrigeration Specialists since 1964!! 665-1212.

21 Help Wanted

PART Time Cook Needed at First United Methodist Church. Apply in person. at 200 E. Foster.

21 Help Wanted

NOTICE Readers are urged to fully investigate advertisements which require payment in advance for information, services or goods.

PAMPA ISD is accepting applications for Sub Bus Driver. You may apply on-line www.pampaisd.net or pick up application at Carver Center, 321 W. Albert St. EOE

Full / Part Time Aide Needed in Physical Therapy Clinic No exp. needed Apply in person 2111 N. Hobart, Pampa

21 Help Wanted

CORRECTIONS OFFICER POSITION

The Ochiltree County Sheriff's Office is accepting applications for Corrections Officer. Ochiltree County has an excellent employee benefits package including family health care, paid vacation, retirement, health club membership and longevity pay. Current salary range is from \$2,784-\$3,119/Month. For more information contact: Sheriff Terry Bouchard, 21 SE 6th, Perryton, Tx. 79070, or email HYPERLINK "mailto:txsheriff@ptsi.net" txsheriff@ptsi.net.

21 Help Wanted

BUSINESS OFFICE MANAGER

Seeking Individual with excellent customer service skills to coordinate business office functions at our busy long-term healthcare facility. AP/AR, payroll, basic HR duties, preparing reports, etc. Must be proficient with computers & various software packages, especially MS Office spreadsheets, with good communication & organizational skills. Experience or background with medical office a plus! EOE/MFHV. For more information call our Administrator (806)665-5746, or apply in person at CORONADO HEALTHCARE CENTER, 1504 W. Kentucky, Pampa.

Immediate Openings Available! Dedicated Runs! Home Daily!

Average up to **\$1,500** sign on bonus **\$80,000** annually

Join our rapidly growing Dupre' Logistics Family

Day Shift Positions Available • Work 5 days/week Great benefits, vacation/holiday pay and MUCH MORE! Paid hourly + OT after 40 hours Must have 2 years Grade Exp., Class A CDL with "X" and, and TWC card. EOE

800-366-4910 www.duprelogistics.com

AXYDLBAAXR is LONGFELLOW

One letter stands for another. In this sample, A is used for the three L's, X for the two O's, etc. Single letters, apostrophes, the length and formation of the words are all hints. Each day the code letters are different.

10-27 CRYPTOQUOTE

DZ HBN EMQ'K PIK ODC BZ

KXI UWITIKBQ DQ HBNO

ETBUIK, HBN'C FIUK KIMEX

DK KB CMQEI. — PIBOPI

FIOQMOC UXMY

Yesterday's Cryptoquote: IT IS FOLLY FOR A MAN TO PRAY TO THE GODS FOR THAT WHICH HE HAS THE POWER TO OBTAIN BY HIMSELF. — EPICURUS

Keagy-Edwards, Inc. 10274

Quentin Williams REALTORS

Becky Baten 669-2214 Joan Mabry 669-3201
 Heidi Chronister 665-6388 Sandra Bronner 665-4218
 Darrel Schom 669-6284 Maxine Watson 662-9052
 Rod Donaldson 663-2800 Christy Parker 898-8542
 Roberta Babb 665-6158
 JUDI EDWARDS GRI, CRS MARILYN KEAGY GRI, CRS
 BROKER-OWNER .. 665-3687 BROKER-OWNER ... 665-1449
 669-2522 • 2208 Coffee & Perryton Pkwy.

Address	Price	Bri/Baths	gsad/sq.ft.
1801 Evergreen	209,000	3/2	2318
2406 Evergreen	194,900	3/2	2432
2629 Evergreen	192,000	3/2	2461
12240 HWY 60 E	172,500	3/2	2632
2321 Aspen	159,500	3/2	2172
1908 Evergreen	149,000	3/2	2221
1437&1439 N. Wells	149,000	(2) 2/1	1510/1475
1701 Evergreen	139,000	3/1.75	2104
1501 N. Faulkner	125,000	5/2	2400
1609 N. Christy	122,500	3/2	1491
1824 Beech	118,000	3/1.75	1910
1528 N. Dwight	116,000	3/1.75	1498
1212 W. 21st - PENDING	99,000	3/1.75	1608
112 N. Sumner	89,900	3/2	2190
613 Lowry	89,900	3/2	1868
2627 Navajo	87,000	3/1.75	1479
321 N. Starkweather	60,000	4/1.75	1500
2301 Rosewood	49,900	3/1	1357

VEHICLE AUCTION
Sat. October 27th
10:00 A.M.

701 West Brown, Pampa (Old Ford Bldg.)

14 (06-92) CARS, 11 (05-99) SUV
 16 (07-86) PICKUPS
 2001 VOYAGER
 18' PONTOON BOAT
 KAWASAKI & YAMAHA
 JET SKIS

Dealers & Individuals Welcome
 Full Listing on Web Page www.loydsauction.com

Lyndon Loyd Auctioneers
 806.826.5850 or 334.0407
 Wheeler, Tx. (Lic. 7119)

First Landmark Realty
(806) 665-0717

OPEN HOUSE

WALNUT CREEK HOME

Open House from 2:00pm to 4:00 pm. Sign in yard. Come and see. OE

COUNTRY LIVING

3 bedroom brick, 2 full baths- 1 remodeled, fireplace in living room, New roof & chain link fence. Lots of amenities. Huge workshop with 14' overhead door, wired for 220. Super condition. Call Irvine to see. 9547

GREAT FLOOR PLAN

3 bedroom brick, 1 3/4, 1/2 baths, fireplace in large den, living room, dining room. Half bath in utility. Sit on the covered patio and enjoy the view. Great neighborhood. Call Lilith for appt. OE

NEW LISTING

3 bedroom on corner lot with open floor plan and plenty of storage. Fenced backyard and covered patio. Call Lilith to see. 9519

EXCELLENT INVESTMENT

Tumbleweed acres mobile home park on Kentucky Street. Utilities in good condition. Paved streets, curbs and gutters. Community storm shelter. Call Irvine. OE

Bobbie Nisbet BKR 662-8118
 Irvine Riphahn GRI 665-4534
 Chris Moore GRI 665-8172
 Lilith Brainard 898-0247

Call First Landmark First
 FOR ALL OR YOUR REAL ESTATE NEEDS.
 WE APPRECIATE YOUR BUSINESS.



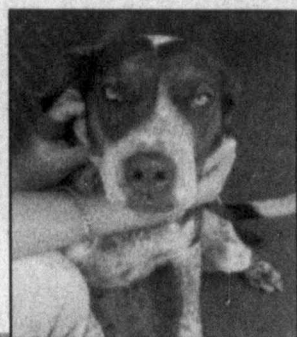
TOP OF TEXAS CLASSIFIEDS

Reaching over 12,000 readers daily • Call Sondra at (806) 669-2525

Animal Shelter helps Pampa residents adopt a "Forever Friend"



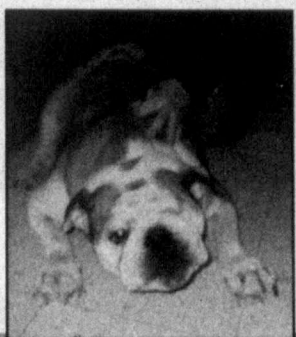
"Buffy"
DMH Kitten
#5246



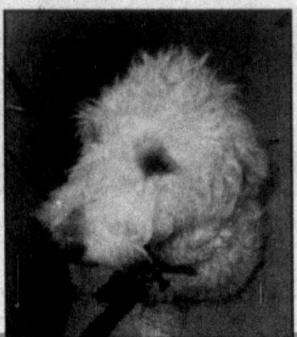
"Leia"
Brittany/Heller Mix Female
#5606



"Piper"
Terrier Female
#5881



"Emmett"
English Bulldog One eyed
#5909



"Anakin"
Laberdoodle Male
#5916



"Helen"
Poodle Mix Female
#5919

Donations needed:
Small beds for puppies/kittens, and dry puppy chow

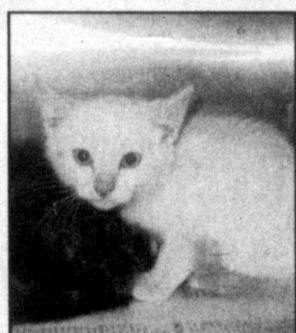
For more info about these pets or for any other questions, call 806-669-5775.

Sponsored by:



BOURLAND & LEVERICH
SUPPLY CO. L.L.C.

Since 1935



"Gaius"
DSH Kitten
#5921



"Han"
DLH Bobtailed Cat
#5926



"Jordy"
Terrier Pup Male
#6003

CULBERSON-STOWERS PRE-OWNED WEEKLY SPECIALS

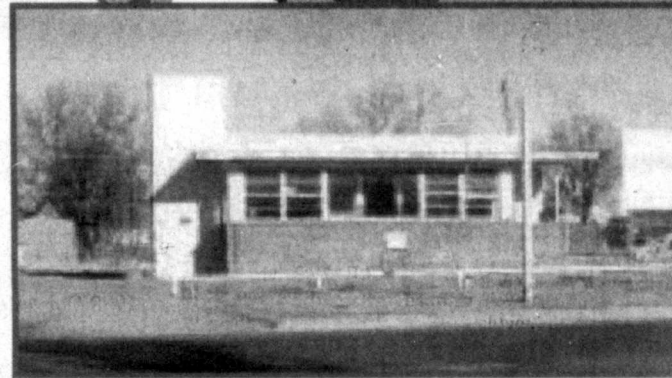
Must Bring In Ad to Receive *Value Price*

- | | | |
|--------|--|-----------------|
| T2046A | 2011 GMC All Terrain
White w/ leather. Sporty.
Come Get It! | \$32,998 |
| 3961A | 2010 Chevy Silverado EXT CAB 4WD
White w/black cloth. Z71. Power Seat.
LOADED!
2 to choose from | \$25,499 |
| 3993A | 2012 Chevy Malibu LT
13,000 Miles. Mocha Steel w/black cloth.
JUST LIKE NEW. Come Get It.
3 to choose from | \$18,998 |
| 3984B | 2006 F250 XLT 4wd
White w/gray cloth. Crew cab. Diesel.
JUST LIKE NEW! What a truck. | \$18,998 |
| 3995A | 2012 Chevy Impala LT
24,000 Miles. White w/tan cloth.
Sun roof. SUPER NICE.
3 to choose from | \$18,498 |
| 3970A | 2012 Dodge Caliber SXT
49,000 Miles. Black w.gray cloth. Auto.
Sporty. Economical. | \$14,888 |
| T2137 | 2006 Chrysler PT Cruiser
Blue w/gray cloth. Nice.
Economical. | \$7,998 |

We will not be beat on any deal.
Like us on Facebook for a chance to win a free oil change.

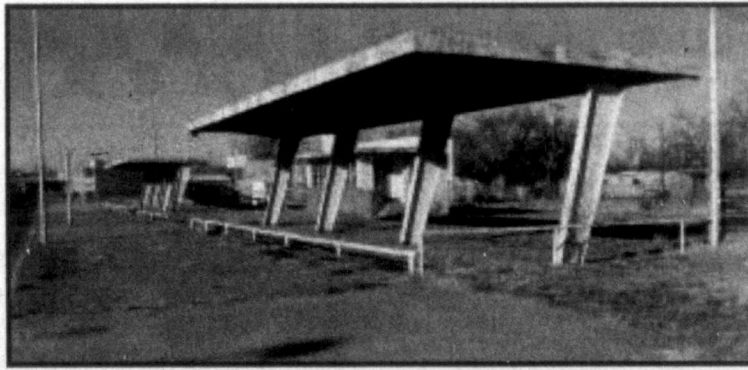
CULBERSON-STOWERS USED CARS
805 North Hobart Street • 665-1665
www.culbersonautos.com
We need your clean Trade-ins

New Price



810 W Foster Ave

MLS# 12-9422
NICE Location for car lot, storage buildings
many numerous possibilities-EASY Access on
and off



HouseHunters Realtor

- | | | | |
|---|---|---|--|
| Linda Laycock
Broker
806-662-1312 | Tisha Holman
Associate
(806) 440-4155 | Larry Hadley
Associate
(806) 662-2775 | Jordan O'Neal
Associate
(806) 470-6623 |
|---|---|---|--|



Guitar . Trumpet . Keyboard . Bass
Call For Lessons
KEN WILSON
Music Teacher
806-206-2860

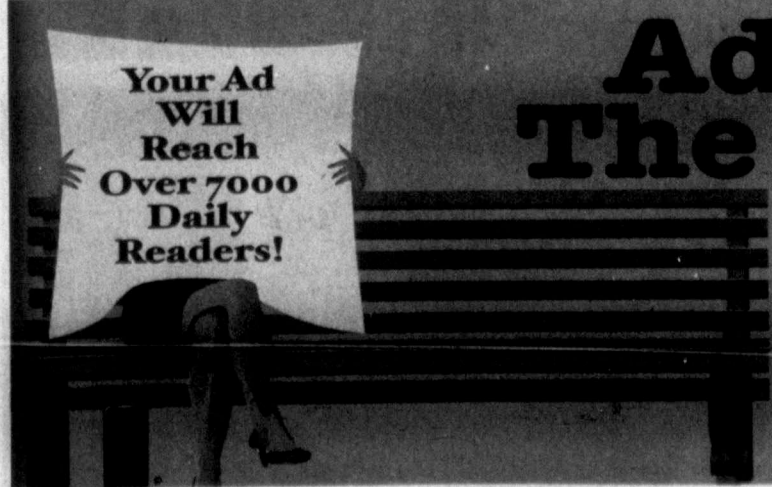
Your Ad
Will
Reach
Over 7000
Daily
Readers!

Advertise with The Pampa News!

Dana Whinery
806-663-9065

Bernie Frazier
806-662-8595

Sondra Cochran
806-669-2525





TOP OF TEXAS CLASSIFIEDS

Reaching over 12,000 readers daily • Call Sondra at (806) 669-2525

Culberson Stowers

Fall Savings

Sale ends 10/31/12



New 2012 Chevrolet Cruze

\$500 OR **1.9%** APR*
 Bonus Cash

New 2012 Chevrolet Silverado
 1500 Crew Cab

\$3500 OR **0%** APR*
 Customer Cash

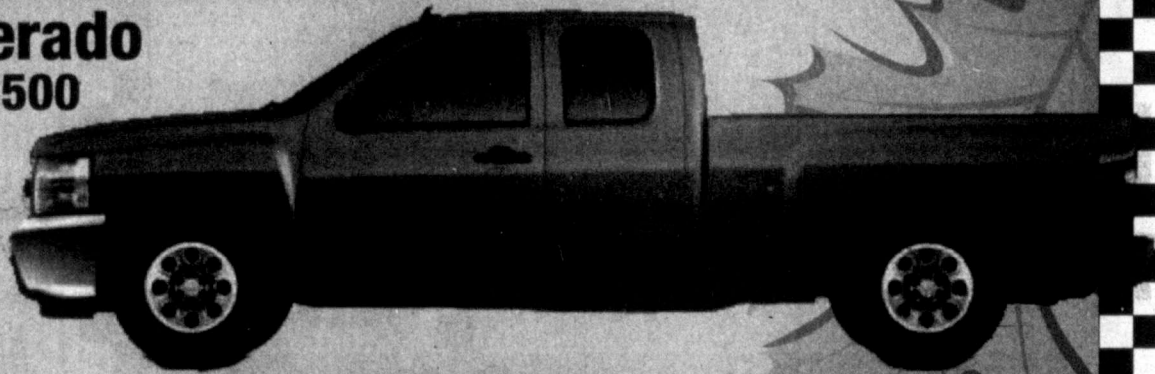


New 2013 Chevrolet Malibu

2.9% APR*
*for 60 months with approved credit

New 2012 Chevrolet Silverado
 2 Wheel Drive Extended Cab 1500

MSRP \$34,420
 List \$32,630.64
 Trade-In Rebate \$6,750
(\$5,700 without trade-in)



Sale Price
\$25,681

Plus T.T.&L.

CULBERSON-STOWERS

805 North Hobart Street • 665-1665

www.culbersonstowersautos.com

If we don't have what you are looking for, then let our experienced vehicle locators find it for you.
 FOLLOW US ON FACEBOOK FOR A CHANCE TO WIN A FREE OIL CHANGE!
 *T.T.&L EXTRA Plus \$50 Dealer Fee

City Briefs

New Rates and Specials!

• Per Line City Briefs

~~\$4.15~~

now only

\$2.50

with 4 line Minimum

PLUS Buy a Saturday Edition City Brief...

Monday it runs

FREE

OR

• Buy 2 days...

Get the 3rd day

FREE

For Deadlines Call Sondra

At The Pampa News **669-2525**

Must Schedule time of

sunday horoscope

HAPPY BIRTHDAY for Sunday, Oct. 28, 2012:

This year you often worry about your level of energy. Sometimes you have too much, and other times, all you want to do is nap. You push yourself hard; therefore, you need as much rest as possible. If you are single, meeting someone is not the issue ... choosing someone is. You'll tend to become involved with people who are emotionally unavailable. If you are attached, the two of you benefit from romantic getaways together. TAURUS has the same issues as you but handles them differently.

ARIES (March 21-April 19)

★★★★ There is too much energy around you. With your innate assertiveness, you could say or do something that someone might take offense to. Be sensitive to others, yet make it clear that you are who you are. A partner or friend could be gentler than you might think. Tonight: You have a fence to mend.

This Week: A sudden revelation or development is uncomfortable. Adjust as necessary.

TAURUS (April 20-May 20)

★★ Do not be as tenacious as usual if you want to get past a problem. Money could be at the root of the issue, and you really do not want to stand on ceremony right now. You also might be in a self-indulgent period, so be careful. Tonight: Treat your sweet tooth.

This Week: Make the most of the next three days.

GEMINI (May 21-June 20)

★★★★ Focus on the whole picture, rather than just a part of it. The same is true regarding your friends. Enjoy them and participate in a fun happening; do not let a tiff ruin your day. Let it go. It was an unfortunate collision. Tonight: Only with people you like and/or love.

This Week: Consider surfacing late Wednesday. It will be worth it.

CANCER (June 21-July 22)

★★★★ Take a stand. Remember, just because you are extremely responsible does not mean that others must be. Lose the judgment, and you will be happier and better able to relate more easily. Accept someone's caring gesture as it was intended. Tonight: Check in on an older relative.

This Week: Zero in on what you want Monday, Tuesday or even Wednesday.

LEO (July 23-Aug. 22)

★★★★ Honor a desire to take off. In a different environment, you can relax, take in new perspectives and lose some of the negativity you might have been projecting. A child is drawn to you because of your childlike side. Tonight: Just be yourself.

This Week: You cannot seem to get away from all the attention, so don't even try.

VIRGO (Aug. 23-Sept. 22)

★★★★ One person makes it clear that he or she wants all of your attention. You might need to adjust your plans accordingly, unless you want to cause upset. This person is direct and usually not so needy. Honor your needs if you must, or postpone a get-together. Tonight: Be a good listener and follow someone's lead.

This Week: Take in new ideas, then test them out.

LIBRA (Sept. 23-Oct. 22)

★★★★ Defer to others, and make sure you understand what is happening with them. In a sense, you could feel frayed, as many people call and request your time and presence. Hopefully, you have your priorities in mind and automatically know which way to turn. Tonight: Catch up on someone's news.

This Week: Relate to a key

person on a one-on-one level. Remain open to suggestions.

SCORPIO (Oct. 23-Nov. 21)

★★★★ Invite someone to join you at a flea market or to go for a picnic somewhere you both love. Getting out of your normal environment helps you recharge without even realizing it. Flow with the moment, and let go of normal demands. Tonight: Note a different outlook.

This Week: Others test your determination. They find out once more how strong-willed you are.

SAGITTARIUS (Nov. 22-Dec. 21)

★★★★ You are more playful than you have been in a long time. You are extremely assertive. Perhaps instead of being pushy, you could use the same energy for a workout or a physical project. Tonight: Let the fun begin.

This Week: Allow greater give-and-take with associates and a loved one.

CAPRICORN (Dec. 22-Jan. 19)

★★★★ You'll want to make time for a close family member. You could be more pushed than

usual, and you might decide to let go of your frustration through a disagreement. Stop. Is that really what you want to do? Make your decision thoughtfully, and not from an automatic reaction. Tonight: At home.

This Week: Your creativity emerges. Do not hesitate to use it.

AQUARIUS (Jan. 20-Feb. 18)

★★★★ You have a tendency to say what you feel. Be careful, as someone around you might be more sensitive than you realize. Avoid hurting this person's feelings. A friendship could be blooming. Tonight: Surround

yourself with fun.

This Week: Know what you want. Your creativity surges mid-week.

PISCES (Feb. 19-March 20)

★★★★ Be aware of your spending, which easily could get out of control. Pressure builds, as you have so much to do. Being a good juggler is helpful, but prioritizing eases tension. Make time for an older relative. Tonight: Order in.

This Week: Speak your mind with the expectation of being heard.

Texas Furniture 80th Anniversary Sale!

1932-2012. Proudly Serving Pampa for 80 years!

Renforth Plush	Renforth Pillow-Top	Debonaire Plush
QUEEN SET \$399	QUEEN SET \$499	QUEEN SET \$599
TWIN SET \$299	TWIN SET \$399	TWIN SET \$499
FULL SET \$379	FULL SET \$479	FULL SET \$579

★★★★ Sealy Posturepedic ★★★★★

"Bryan Park" Plush or Firm	Firm Pillow-Top
TWIN SET \$599	QUEEN SET \$799
QUEEN SET \$699	KING SET \$1099
FULL SET \$679	KING SET \$1099
Sealy "Valmont Plush"	"Pillow-Top"
TWIN SET \$799	QUEEN SET \$999
QUEEN SET \$899	KING SET \$1299
FULL SET \$879	KING SET \$1299



LA-Z-BOY recliners
Buy-One as low as **\$699**
Get-One FREE



5 pc. room package

\$999



your choice

sofa

\$599

loveseat

\$379

Texas FURNITURE

665-1623 • 1415 N. Hobart

MON-SAT 9 AM TO 5:30 PM
VISA M.C. DISCOVER
8 MONTHS NO INTEREST FINANCING WITH APPROVED CREDIT

Protect Your Family From Unwanted Pests



Highest Level of Service & Great Customer Experience
No contract Required
Consistent Service Schedule for All of Our Customers

For Service, Contact our Applicator of The Week
Rick Pearson 806-662-6156 (text or voice)
rick@yourbugman.com

GREAT PLAINS PEST CONTROL
www.yourbugman.com



7761a

LOAD THE BASES WITH INTERNET, TV & PHONE & HIT A HOMERUN IN SAVINGS!



INTERNET PRICES STARTING AT ONLY

\$24.95

*PRICES MAY VARY ACCORDING TO RATE PLAN AND AVAILABILITY. \$49.00 ACTIVATION FEE. CALL FOR DETAILS.

Bundle & save up to \$180 in 12 months

- NO INSTALLATION FEE
- UNLIMITED DATA
- NO PHONE LINE NEEDED

Your Hometown Internet Provider

(866) 980-2714

www.erfwireless.net

Sample Ballots - General Election Precinct 1 & 2

FRONT

Vote Both Sides

Vote en Ambos Lados de la Página

OFFICIAL BALLOT BOLETA OFICIAL
GRAY COUNTY, TEXAS
CONDADO DE GRAY, TEXAS
 November 06, 2012 - 06 de noviembre de 2012

GENERAL ELECTION ELECCIÓN GENERAL
 Precinct Precincto 1

Instruction Text:
 Please use a black or blue ink pen only. Completely fill in the box provided to the left of your choice. Make no stray marks on the ballot. Do not use ink that soaks through the paper. To vote for a write-in candidate, completely fill in the box provided to the left of the words "Write-In" and write in the name of the candidate on the line provided.

Título de Instrucción:
 Por favor use solamente una pluma de tinta negra o azul. Llene completamente el espacio cuadrado a la izquierda de su selección. No haga marcas extraviadas. No use tinta que se pueda penetrar el papel. Para votar por un candidato por voto escrito, llene completamente el espacio cuadrado a la izquierda de las palabras "Voto Escrito" y escriba el nombre del candidato en la línea provista.

President and Vice President
 Presidente y Vice Presidente
 Mitt Romney \ REP
 Paul Ryan \ DEM
 Barack Obama \ DEM
 Joe Biden \ LIB
 Gary Johnson \ LIB
 Jim Gray \ GRN
 Jill Stein \ GRN
 Cheri Honkala \ GRN
 Write-in

Presiding Judge, Court of Criminal Appeals
 Juez Presidente, Corte de Apelaciones Criminales
 Sharon Keller \ REP
 Keith Hampton \ DEM
 Lance Stott \ LIB

Member, State Board of Education, District 15
 Miembro de la Junta Estatal de Educación Pública, Distrito Núm. 15
 Elsa Alcalá \ REP
 William Bryan Strange, III \ LIB

Member, State Board of Education, District 15
 Miembro de la Junta Estatal de Educación Pública, Distrito Núm. 15
 Marty Rowley \ REP
 Steven D. Schaferman \ DEM

State Senator, District 31
 Senador Estatal, Distrito Núm. 31
 Kel Seliger \ REP

State Representative, District 88
 Representante Estatal, Distrito Núm. 88
 Ken King \ REP

Justice, 7th Court of Appeals District, Place 2
 Juez, Corte de Apelaciones, Distrito Núm. 7, Lugar Núm. 2
 Mackey K. Hancock \ REP

Justice, 7th Court of Appeals District, Place 3
 Juez, Corte de Apelaciones, Distrito Núm. 7, Lugar Núm. 3
 Pat Pirtle \ REP

District Attorney, 31st Judicial District
 Procurador del Distrito, Distrito Judicial Núm. 31
 Franklin McDonough \ REP

County Attorney
 Procurador del Condado
 Joshua M. Seabourn \ REP

County Sheriff
 Don Copeland \ REP

Tax Assessor - Collector
 Asesor - Colector de Impuestos
 Gaye Whitehead \ REP

County Commissioner, Precinct No. 1
 Comisionado del Condado, Precincto Núm. 1
 Joe Whalley \ REP

Constable, Precinct No. 1&3
 Condestable, Precincto Núm. 1
 Gary McFall \ REP

BALLOT LEGEND
 LEYENDA DE LA BOLETA

REP Republican Party Partido Republicano
 DEM Democratic Party Partido Demócrata
 LIB Libertarian Party Partido Libertariano
 GRN Green Party Partido Verde
 IND Independent Independiente

Straight Party
 To cast a straight-party vote, select the party name in the box provided to the left of the ballot. A party automatically selects all candidates associated with that party. If you select a candidate associated with a party other than the straight-party selection, your vote for that candidate will be counted in that particular contest.

Partido Completo
 Para marcar un voto de partido completo, escoge la opción a la izquierda del nombre de ese partido. Seleccionar un partido automáticamente escoge todos los candidatos asociados con ese partido. Si selecciona un candidato asociado con un partido distinto a su selección de partido completo, su voto por ese candidato se computará en ese carrera.

BACK

Vote Both Sides / Vote en Ambos Lados de la Página

OFFICIAL BALLOT BOLETA OFICIAL
GRAY COUNTY, TEXAS
CONDADO DE GRAY, TEXAS
 November 06, 2012 - 06 de noviembre de 2012

GENERAL ELECTION ELECCIÓN GENERAL
 Precinct Precincto 1

County Commissioner, Precinct No. 1
 Comisionado del Condado, Precincto Núm. 1
 Joe Whalley \ REP

Constable, Precinct No. 1&3
 Condestable, Precincto Núm. 1
 Gary McFall \ REP

FRONT

Vote Both Sides

Vote en Ambos Lados de la Página

OFFICIAL BALLOT BOLETA OFICIAL
GRAY COUNTY, TEXAS
CONDADO DE GRAY, TEXAS
 November 06, 2012 - 06 de noviembre de 2012

GENERAL ELECTION ELECCIÓN GENERAL
 Precinct Precincto 2

Instruction Text:
 Please use a black or blue ink pen only. Completely fill in the box provided to the left of your choice. Make no stray marks on the ballot. Do not use ink that soaks through the paper. To vote for a write-in candidate, completely fill in the box provided to the left of the words "Write-In" and write in the name of the candidate on the line provided.

Título de Instrucción:
 Por favor use solamente una pluma de tinta negra o azul. Llene completamente el espacio cuadrado a la izquierda de su selección. No haga marcas extraviadas. No use tinta que se pueda penetrar el papel. Para votar por un candidato por voto escrito, llene completamente el espacio cuadrado a la izquierda de las palabras "Voto Escrito" y escriba el nombre del candidato en la línea provista.

President and Vice President
 Presidente y Vice Presidente
 Mitt Romney \ REP
 Paul Ryan \ DEM
 Barack Obama \ DEM
 Joe Biden \ LIB
 Gary Johnson \ LIB
 Jim Gray \ GRN
 Jill Stein \ GRN
 Cheri Honkala \ GRN
 Write-in

Presiding Judge, Court of Criminal Appeals
 Juez Presidente, Corte de Apelaciones Criminales
 Sharon Keller \ REP
 Keith Hampton \ DEM
 Lance Stott \ LIB

Member, State Board of Education, District 15
 Miembro de la Junta Estatal de Educación Pública, Distrito Núm. 15
 Elsa Alcalá \ REP
 William Bryan Strange, III \ LIB

Member, State Board of Education, District 15
 Miembro de la Junta Estatal de Educación Pública, Distrito Núm. 15
 Marty Rowley \ REP
 Steven D. Schaferman \ DEM

State Senator, District 31
 Senador Estatal, Distrito Núm. 31
 Kel Seliger \ REP

State Representative, District 88
 Representante Estatal, Distrito Núm. 88
 Ken King \ REP

Justice, 7th Court of Appeals District, Place 2
 Juez, Corte de Apelaciones, Distrito Núm. 7, Lugar Núm. 2
 Mackey K. Hancock \ REP

Justice, 7th Court of Appeals District, Place 3
 Juez, Corte de Apelaciones, Distrito Núm. 7, Lugar Núm. 3
 Pat Pirtle \ REP

District Attorney, 31st Judicial District
 Procurador del Distrito, Distrito Judicial Núm. 31
 Franklin McDonough \ REP

County Attorney
 Procurador del Condado
 Joshua M. Seabourn \ REP

County Sheriff
 Don Copeland \ REP

Tax Assessor - Collector
 Asesor - Colector de Impuestos
 Gaye Whitehead \ REP

County Commissioner, Precinct No. 2
 Comisionado del Condado, Precincto Núm. 2
 Joe Montgomery \ REP

BACK

Vote Both Sides / Vote en Ambos Lados de la Página

OFFICIAL BALLOT BOLETA OFICIAL
GRAY COUNTY, TEXAS
CONDADO DE GRAY, TEXAS
 November 06, 2012 - 06 de noviembre de 2012

GENERAL ELECTION ELECCIÓN GENERAL
 Precinct Precincto 2

Constable, Precinct No. 2
 Condestable, Precincto Núm. 2
 Joe Montgomery \ REP

Sample Ballots - General Election Precinct 3 & 4

FRONT

Vote Both Sides

Vote en Ambos Lados de la Página

OFFICIAL BALLOT BOLETA OFICIAL
GRAY COUNTY, TEXAS
CONDADO DE GRAY, TEXAS
 November 06, 2012 - 06 de noviembre de 2012

GENERAL ELECTION ELECCIÓN GENERAL
 Precinct Precincto 3

Instruction Text:
 Please use a black or blue ink pen only. Completely fill in the box provided to the left of your choice. Make no stray marks on the ballot. Do not use ink that soaks through the paper. To vote for a write-in candidate, completely fill in the box provided to the left of the words "Write-In" and write in the name of the candidate on the line provided.

Título de Instrucción:
 Por favor use solamente una pluma de tinta negra o azul. Llene completamente el espacio cuadrado a la izquierda de su selección. No haga marcas extraviadas. No use tinta que se pueda penetrar el papel. Para votar por un candidato por voto escrito, llene completamente el espacio cuadrado a la izquierda de las palabras "Voto Escrito" y escriba el nombre del candidato en la línea provista.

President and Vice President
 Presidente y Vice Presidente
 Mitt Romney \ REP
 Paul Ryan \ DEM
 Barack Obama \ DEM
 Joe Biden \ LIB
 Gary Johnson \ LIB
 Jim Gray \ GRN
 Jill Stein \ GRN
 Cheri Honkala \ GRN
 Write-in

Presiding Judge, Court of Criminal Appeals
 Juez Presidente, Corte de Apelaciones Criminales
 Sharon Keller \ REP
 Keith Hampton \ DEM
 Lance Stott \ LIB

Member, State Board of Education, District 15
 Miembro de la Junta Estatal de Educación Pública, Distrito Núm. 15
 Elsa Alcalá \ REP
 William Bryan Strange, III \ LIB

Member, State Board of Education, District 15
 Miembro de la Junta Estatal de Educación Pública, Distrito Núm. 15
 Marty Rowley \ REP
 Steven D. Schaferman \ DEM

State Senator, District 31
 Senador Estatal, Distrito Núm. 31
 Kel Seliger \ REP

State Representative, District 88
 Representante Estatal, Distrito Núm. 88
 Ken King \ REP

Justice, 7th Court of Appeals District, Place 2
 Juez, Corte de Apelaciones, Distrito Núm. 7, Lugar Núm. 2
 Mackey K. Hancock \ REP

Justice, 7th Court of Appeals District, Place 3
 Juez, Corte de Apelaciones, Distrito Núm. 7, Lugar Núm. 3
 Pat Pirtle \ REP

District Attorney, 31st Judicial District
 Procurador del Distrito, Distrito Judicial Núm. 31
 Franklin McDonough \ REP

County Attorney
 Procurador del Condado
 Joshua M. Seabourn \ REP

County Sheriff
 Don Copeland \ REP

Tax Assessor - Collector
 Asesor - Colector de Impuestos
 Gaye Whitehead \ REP

County Commissioner, Precinct No. 3
 Comisionado del Condado, Precincto Núm. 3
 Neil Fulton \ REP

Constable, Precinct No. 1&3
 Condestable, Precincto Núm. 1
 Gary McFall \ REP

BALLOT LEGEND
 LEYENDA DE LA BOLETA

REP Republican Party Partido Republicano
 DEM Democratic Party Partido Demócrata
 LIB Libertarian Party Partido Libertariano
 GRN Green Party Partido Verde
 IND Independent Independiente

Straight Party
 To cast a straight-party vote, select the party name in the box provided to the left of the ballot. A party automatically selects all candidates associated with that party. If you select a candidate associated with a party other than the straight-party selection, your vote for that candidate will be counted in that particular contest.

Partido Completo
 Para marcar un voto de partido completo, escoge la opción a la izquierda del nombre de ese partido. Seleccionar un partido automáticamente escoge todos los candidatos asociados con ese partido. Si selecciona un candidato asociado con un partido distinto a su selección de partido completo, su voto por ese candidato se computará en ese carrera.

BACK

Vote Both Sides / Vote en Ambos Lados de la Página

OFFICIAL BALLOT BOLETA OFICIAL
GRAY COUNTY, TEXAS
CONDADO DE GRAY, TEXAS
 November 06, 2012 - 06 de noviembre de 2012

GENERAL ELECTION ELECCIÓN GENERAL
 Precinct Precincto 3

County Commissioner, Precinct No. 3
 Comisionado del Condado, Precincto Núm. 3
 Neil Fulton \ REP

Constable, Precinct No. 1&3
 Condestable, Precincto Núm. 1
 Gary McFall \ REP

FRONT

Vote Both Sides

Vote en Ambos Lados de la Página

OFFICIAL BALLOT BOLETA OFICIAL
GRAY COUNTY, TEXAS
CONDADO DE GRAY, TEXAS
 November 06, 2012 - 06 de noviembre de 2012

GENERAL ELECTION ELECCIÓN GENERAL
 Precinct Precincto 4

Instruction Text:
 Please use a black or blue ink pen only. Completely fill in the box provided to the left of your choice. Make no stray marks on the ballot. Do not use ink that soaks through the paper. To vote for a write-in candidate, completely fill in the box provided to the left of the words "Write-In" and write in the name of the candidate on the line provided.

Título de Instrucción:
 Por favor use solamente una pluma de tinta negra o azul. Llene completamente el espacio cuadrado a la izquierda de su selección. No haga marcas extraviadas. No use tinta que se pueda penetrar el papel. Para votar por un candidato por voto escrito, llene completamente el espacio cuadrado a la izquierda de las palabras "Voto Escrito" y escriba el nombre del candidato en la línea provista.

President and Vice President
 Presidente y Vice Presidente
 Mitt Romney \ REP
 Paul Ryan \ DEM
 Barack Obama \ DEM
 Joe Biden \ LIB
 Gary Johnson \ LIB
 Jim Gray \ GRN
 Jill Stein \ GRN
 Cheri Honkala \ GRN
 Write-in

Presiding Judge, Court of Criminal Appeals
 Juez Presidente, Corte de Apelaciones Criminales
 Sharon Keller \ REP
 Keith Hampton \ DEM
 Lance Stott \ LIB

Member, State Board of Education, District 15
 Miembro de la Junta Estatal de Educación Pública, Distrito Núm. 15
 Elsa Alcalá \ REP
 William Bryan Strange, III \ LIB

Member, State Board of Education, District 15
 Miembro de la Junta Estatal de Educación Pública, Distrito Núm. 15
 Marty Rowley \ REP
 Steven D. Schaferman \ DEM

State Senator, District 31
 Senador Estatal, Distrito Núm. 31
 Kel Seliger \ REP

State Representative, District 88
 Representante Estatal, Distrito Núm. 88
 Ken King \ REP

Justice, 7th Court of Appeals District, Place 2
 Juez, Corte de Apelaciones, Distrito Núm. 7, Lugar Núm. 2
 Mackey K. Hancock \ REP

Justice, 7th Court of Appeals District, Place 3
 Juez, Corte de Apelaciones, Distrito Núm. 7, Lugar Núm. 3
 Pat Pirtle \ REP

District Attorney, 31st Judicial District
 Procurador del Distrito, Distrito Judicial Núm. 31
 Franklin McDonough \ REP

County Attorney
 Procurador del Condado
 Joshua M. Seabourn \ REP

County Sheriff
 Don Copeland \ REP

Tax Assessor - Collector
 Asesor - Colector de Impuestos
 Gaye Whitehead \ REP

County Commissioner, Precinct No. 4
 Comisionado del Condado, Precincto Núm. 4
 Nathan Hecht \ REP
 Michele Petty \ DEM
 Mark Ash \ LIB
 Jim Chisholm \ GRN

BACK

Vote Both Sides / Vote en Ambos Lados de la Página

OFFICIAL BALLOT BOLETA OFICIAL
GRAY COUNTY, TEXAS
CONDADO DE GRAY, TEXAS
 November 06, 2012 - 06 de noviembre de 2012

GENERAL ELECTION ELECCIÓN GENERAL
 Precinct Precincto 4

County Commissioner, Precinct No. 4
 Comisionado del Condado, Precincto Núm. 4
 Nathan Hecht \ REP
 Michele Petty \ DEM
 Mark Ash \ LIB
 Jim Chisholm \ GRN

FREE ADS
 for Free Items!
 Call Sondra Today!
669-2525
 The Best Stuff Sold
 in ADS

Sample Ballots - General Election Precinct 5 & 6

FRONT Vote Both Sides *Vote en Ambos Lados de la Página*

OFFICIAL BALLOT *BOLETA OFICIAL*
 GRAY COUNTY, TEXAS
 CONDADO DE GRAY, TEXAS
 November 06, 2012 - 06 de noviembre de 2012

Precinct *Precincto* 5

Instruction Text:
 Please use a black or blue ink pen only. Completely fill in the box provided to the left of your choice. Make no stray marks on the ballot. Do not use lines that cross through the paper. To vote for a write-in candidate, completely fill in the box provided to the left of the words "Write-in" and write in the name of the candidate on the line provided.

Texto de Instrucción:
 Por favor use solamente una pluma de tinta negra o azul. Llene completamente el espacio cuadrado a la izquierda de su selección. No haga marcas extrañas. No use líneas que se crucen por el papel. Para votar por un candidato por voto escrito, llene completamente el espacio cuadrado a la izquierda de las palabras "Voto Escrito" y escriba el nombre del candidato en la línea provista.

BALLLOT LEGEND
 LEYENDA de la BOLETA

REP	Republican Party	Partido Republicano
DEM	Democratic Party	Partido Democrático
LIB	Libertarian Party	Partido Libertariano
GRN	Green Party	Partido Verde
IND	Independent	

<input type="checkbox"/> Mitt Romney \	REP	President and Vice President
<input type="checkbox"/> Paul Ryan	REP	President and Vice President
<input type="checkbox"/> Barack Obama \	DEM	President and Vice President
<input type="checkbox"/> Joe Biden	DEM	President and Vice President
<input type="checkbox"/> Gary Johnson \	LIB	President and Vice President
<input type="checkbox"/> Jim Gray	LIB	President and Vice President
<input type="checkbox"/> Jill Stein \	LIB	President and Vice President
<input type="checkbox"/> Cheri Honkala	LIB	President and Vice President
<input type="checkbox"/> Write-in	LIB	President and Vice President

12000050110086

FRONT Vote Both Sides *Vote en Ambos Lados de la Página*

OFFICIAL BALLOT *BOLETA OFICIAL*
 GRAY COUNTY, TEXAS
 CONDADO DE GRAY, TEXAS
 November 06, 2012 - 06 de noviembre de 2012

Precinct *Precincto* 6

Instruction Text:
 Please use a black or blue ink pen only. Completely fill in the box provided to the left of your choice. Make no stray marks on the ballot. Do not use lines that cross through the paper. To vote for a write-in candidate, completely fill in the box provided to the left of the words "Write-in" and write in the name of the candidate on the line provided.

Texto de Instrucción:
 Por favor use solamente una pluma de tinta negra o azul. Llene completamente el espacio cuadrado a la izquierda de su selección. No haga marcas extrañas. No use líneas que se crucen por el papel. Para votar por un candidato por voto escrito, llene completamente el espacio cuadrado a la izquierda de las palabras "Voto Escrito" y escriba el nombre del candidato en la línea provista.

BALLLOT LEGEND
 LEYENDA de la BOLETA

REP	Republican Party	Partido Republicano
DEM	Democratic Party	Partido Democrático
LIB	Libertarian Party	Partido Libertariano
GRN	Green Party	Partido Verde
IND	Independent	

<input type="checkbox"/> Mitt Romney \	REP	President and Vice President
<input type="checkbox"/> Paul Ryan	REP	President and Vice President
<input type="checkbox"/> Barack Obama \	DEM	President and Vice President
<input type="checkbox"/> Joe Biden	DEM	President and Vice President
<input type="checkbox"/> Gary Johnson \	LIB	President and Vice President
<input type="checkbox"/> Jim Gray	LIB	President and Vice President
<input type="checkbox"/> Jill Stein \	LIB	President and Vice President
<input type="checkbox"/> Cheri Honkala	LIB	President and Vice President
<input type="checkbox"/> Write-in	LIB	President and Vice President

12000060110010

BACK Vote Both Sides *Vote en Ambos Lados de la Página*

OFFICIAL BALLOT *BOLETA OFICIAL*
 GRAY COUNTY, TEXAS
 CONDADO DE GRAY, TEXAS
 November 06, 2012 - 06 de noviembre de 2012

Precinct *Precincto* 1

County Commissioner, Precinct No. 1
 Comisionado del Condado, Precincto Núm. 1

Joe Wheeley REP

Constable, Precinct No. 1&3
 Condestable, Precincto Núm. 1

Gary McFall REP

200000093111

BACK Vote Both Sides *Vote en Ambos Lados de la Página*

OFFICIAL BALLOT *BOLETA OFICIAL*
 GRAY COUNTY, TEXAS
 CONDADO DE GRAY, TEXAS
 November 06, 2012 - 06 de noviembre de 2012

Precinct *Precincto* 1

County Commissioner, Precinct No. 1
 Comisionado del Condado, Precincto Núm. 1

Joe Wheeley REP

Constable, Precinct No. 1&3
 Condestable, Precincto Núm. 1

Gary McFall REP

000000101192

Sample Ballots - Precinct 7

Gray County polling locations

FRONT Vote Both Sides *Vote en Ambos Lados de la Página*

OFFICIAL BALLOT *BOLETA OFICIAL*
 GRAY COUNTY, TEXAS
 CONDADO DE GRAY, TEXAS
 November 06, 2012 - 06 de noviembre de 2012

Precinct *Precincto* 7

Instruction Text:
 Please use a black or blue ink pen only. Completely fill in the box provided to the left of your choice. Make no stray marks on the ballot. Do not use lines that cross through the paper. To vote for a write-in candidate, completely fill in the box provided to the left of the words "Write-in" and write in the name of the candidate on the line provided.

Texto de Instrucción:
 Por favor use solamente una pluma de tinta negra o azul. Llene completamente el espacio cuadrado a la izquierda de su selección. No haga marcas extrañas. No use líneas que se crucen por el papel. Para votar por un candidato por voto escrito, llene completamente el espacio cuadrado a la izquierda de las palabras "Voto Escrito" y escriba el nombre del candidato en la línea provista.

BALLLOT LEGEND
 LEYENDA de la BOLETA

REP	Republican Party	Partido Republicano
DEM	Democratic Party	Partido Democrático
LIB	Libertarian Party	Partido Libertariano
GRN	Green Party	Partido Verde
IND	Independent	

<input type="checkbox"/> Mitt Romney \	REP	President and Vice President
<input type="checkbox"/> Paul Ryan	REP	President and Vice President
<input type="checkbox"/> Barack Obama \	DEM	President and Vice President
<input type="checkbox"/> Joe Biden	DEM	President and Vice President
<input type="checkbox"/> Gary Johnson \	LIB	President and Vice President
<input type="checkbox"/> Jim Gray	LIB	President and Vice President
<input type="checkbox"/> Jill Stein \	LIB	President and Vice President
<input type="checkbox"/> Cheri Honkala	LIB	President and Vice President
<input type="checkbox"/> Write-in	LIB	President and Vice President

12000070110031

To vote at the polls on Tuesday, Nov. 6, you will need either your registration card or driver's license. Polls open at 7 a.m. and close at 7 p.m. and there is handicap access at all seven locations. Poll locations are:

- Precinct 1** - Lefors Community Center, 103 N. Court, Lefors, 835-2200
- Precinct 2** - Lovett Memorial Library, 111 N. Houston, Pampa, 669-5780
- Precinct 3** - Grandview Hopkins School, 11605 FM 293, Grandview Community, 669-3831
- Precinct 4** - Lovett Library, McLean, 302 N. Main, McClean, 779-2851
- Precinct 5** - First Christian Church, 1633 N. Nelson, Pampa, 669-3225
- Precinct 6** - Zion Lutheran Church, 1200 Duncan, Pampa, 669-2774
- Precinct 7** - M.K. Brown Memorial Auditorium, 1000 N. Sumner, Pampa, 669-5790

If you are over 65, disabled or will be out of county on election day and wish to vote by mail, call the Gray County Clerk's Office at 669-8004 to request an application for a mail-in ballot. The last day to request applications is Oct. 30, but ballots can be received up to Nov. 6.

BACK Vote Both Sides *Vote en Ambos Lados de la Página*

OFFICIAL BALLOT *BOLETA OFICIAL*
 GRAY COUNTY, TEXAS
 CONDADO DE GRAY, TEXAS
 November 06, 2012 - 06 de noviembre de 2012

Precinct *Precincto* 7

County Commissioner, Precinct No. 3
 Comisionado del Condado, Precincto Núm. 3

Neil Fulton REP

Constable, Precinct No. 1&3
 Condestable, Precincto Núm. 1

Gary McFall REP

00000011104





GISTIX

Flogistix LP, A leader in the manufacturing and service of Natural Gas Compressors and Disposal Pumps is seeking to expand our Production in our Pampa TX location. If you meet or exceed our qualifications, **WE WANT YOU ON OUR TEAM,** please submit your application today!

POSITIONS AVAILABLE

- **Warehouse Associate** - forklift & shipping/receiving experience preferred. Must have a good driving record
- **Welders – Code and Wire**
- **Supply Chain Buyer**
- **Wire & Finish** - experience in stainless tubing, insulation and heat trace, conduit & electrical wiring
- **Panel Shop** - electronic assembly experience

JOB REQUIREMENTS/QUALIFICATIONS

- Must be able to pass a pre-employment physical and drug screen.
- Must have mechanical aptitude.
- Must have good written and verbal communication skills
- Be able to pass a pre-employment physical and drug screen.

HOW TO APPLY

Email: jobs@flogistix.com

Mail: PO Box 501, Pampa, TX 79066-0501

Fax: 888-812-4114

Applications available: 2538 W. Kentucky, Pampa, TX

FLOGISTIX is an Equal Opportunity Employer.
Competitive pay and benefits.



SMARTER. BOLDER. FASTER

806-669-0007

312 N Gray Pampa, TX

Pampa MLS & Amarillo MLS



Jim Davidson
ABR, RECS • Broker/Owner
Cell 662-9021

Pampa Realty Inc.

Each Office Independently Owned and Operated

The place to look every week for new property listings and essential real estate services.



1101 Christine St

4 bd, 3 ba, 2 gar 4278 SFGCAD
\$425,000



Andrea Walling - 664-6227

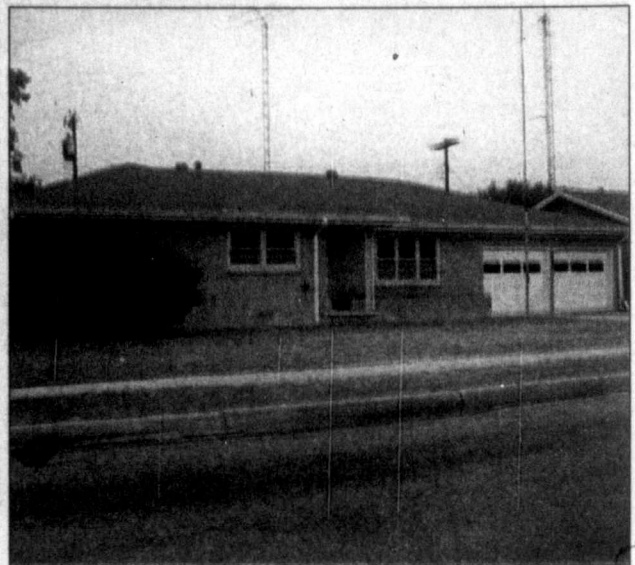


2200 Dogwood Ln

4 bd, 2 ba, 2 gar 2629 SFGCAD
\$162,500



Linda Lapacka - 662-9611



2541 Christine St

3 bd, 1.75 ba, 2 gar 2050 SFGCAD
\$129,500



Linda Lapacka - 662-9611



511 Warren St, WD

3 bd, 1.75 ba 1 gar 1676 SFCCAD
\$118,900



Linda Lapacka - 662-9611



300 W 5th, Mobeetie

4 bd, 1.75 ba 2 gar 1926 SFWCAD
\$115,000



Andrea Walling - 664-6227

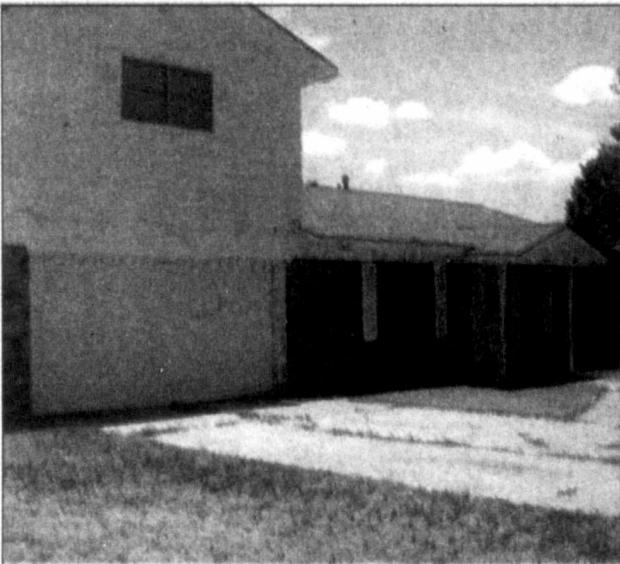


2320 Christine St

3 bd, 2 ba 1234 SFGCAD
\$115,000



Linda Lapacka - 662-9611



2536 Charles St

3 bd, 1.75 ba, 1 gar 1568 SFGCAD
\$96,500



Zebby Sailors - 664-0312

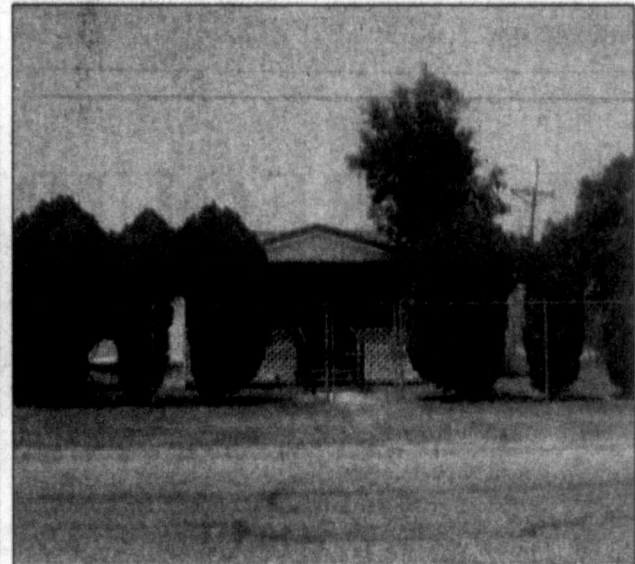


2705 Navajo Rd

3 bd, 1.75 ba, 1 gar 1125 SFGCAD
\$89,000



Linda Lapacka - 662-9611



1514 W McCullough

3 bd, 2 ba, 2 gar 1242 SFGCAD
\$87,500



Linda Lapacka - 662-9611

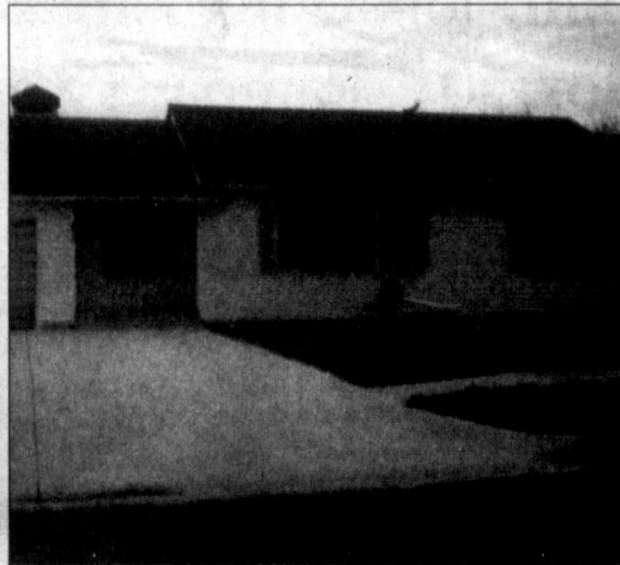


930 Christine St

3 bd, 1 ba, 0 gar 1402 SFGCAD
\$78,000



Katrina Bigham - 898-8510

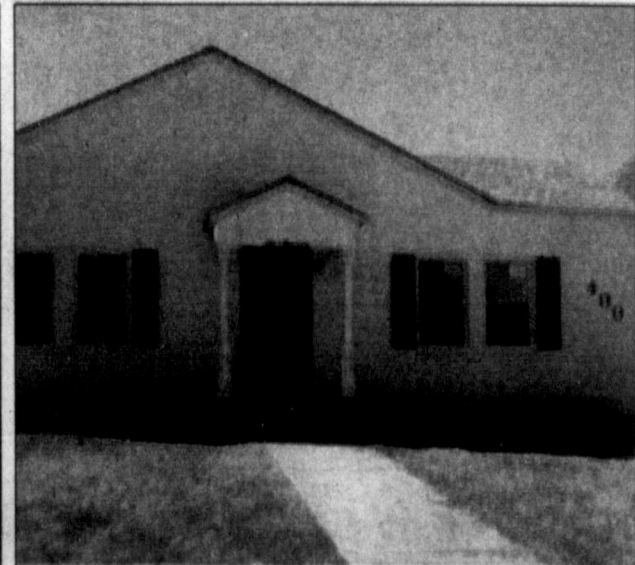


1510 Williston St

4 bd, 1.5 ba, 1 gar 1404 SFGCAD
\$65,000



Donna Courter - 595-0779



400 S Popham St, WD

3 bd, 1 ba, 1494 SFCCAD
\$51,500



Donna Courter - 595-0779

RESIDENTIAL • COMMERCIAL • INDUSTRIAL • Home Page: pamparealtor.com • RESIDENTIAL • COMMERCIAL • INDUSTRIAL

Century 21 Pampa Realty Inc has not verified these square footages and makes no guarantee or warranty of square footage data. They are derived from 3rd parties or appraisal districts.