

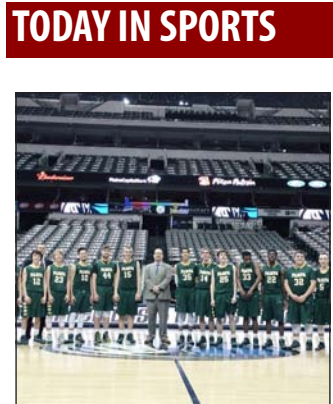
**CHILDERS BROTHERS INC.**  
**HOUSE LEVELING**  
 Uneven Floors  
 Floor Bracing  
 Cracks In Bricks  
 Sticking Doors & Windows  
 Interior Wall Cracking  
**FREE ESTIMATES**  
**1-800-299-9563**  
 WWW.CHILDERSLEVELING.COM

*Let us wrap it up for you!*  
**DOUG BOYD MOTOR CO.**  
 Merry Christmas  
 Corner of Hwy 60 & 70  
 Pampa, Texas  
 806-669-6062  
 www.DougBoydMotors.com



**\$5 off any in-stock carpet installed**  
**\$3 off any ordered carpet installed**  
**1/2 off any in-stock hard surfacing installed**  
 Dec 1st - Jan 1st  
**Premier Floor Warehouse**  
 301 S. Cuyler, Pampa TX • 669-7001

# The PAMPA NEWS



Tuesday, December 9, 2014      www.thepampanews.com      Volume 110 • No. 173

**75¢** Prairie Plains Perspective | p6  
 Christmas parade pictures | p7

Harvesters get to play at Mavericks' Arena  
 All-District football teams announced | p9-11

## A GREAT DAY FOR A PARADE



Photo by Lindsey Tomaschik  
 Pampa held its annual Christmas parade Saturday afternoon. Downtown Pampa was full of activity as community members gathered to watch the parade and visit the downtown shops. Santa was in attendance and the parade concluded with him atop the old firetruck. The Pampa News would like to wish its readers a happy holiday season.

### Pampa PD investigating Saturday night shooting

**SUBMITTED BY PAMPA PD**  
 On Saturday, Dec. 6, at approximately 7:30 p.m., the Pampa Police Department received a report of a shooting victim who had been dropped off at the Pampa Regional Medical Center by an unknown female subject. The 41-year-old male victim was transferred from Pampa Regional Medical Center to North West Texas Hospital in Amarillo for treatment of multiple gunshot wounds. The victim remains at the North West Texas Hospital in critical condition. The incident is believed to have occurred at a residence in the 1100 block of S. Christy in Pampa, and a possible suspect has been identified. No charges have been filed at this time due to the continuing investigation.

### Gov. Perry: Congress must act immediately on border security

**Announces E-Verify executive order for state agencies.**

**SUBMITTED BY OFFICE OF RICK PERRY**  
 AUSTIN – Gov. Rick Perry today highlighted the ongoing need for the state's border security operations, and called on Congress to quickly pass a bill to provide the resources necessary to secure our southern border. In the absence of adequate federal resources, the governor reiterated Texas' commitment to using all available tools to enforce the law, and announced an executive order directing state agencies to use E-Verify to check the employment eligibility of current and prospective employees.



**Rick Perry**

"Texas' increased law enforcement presence in the border region is all the more necessary as the federal government continues to ignore the

**PERRY** cont. on page 4

### City Commission to meet today

**STAFF REPORT**  
 The Pampa City Commission will meet at 4 p.m. this afternoon at City Hall. The mayor and commissioners will discuss and consider taking action on the following agenda items:

- Adopting on second and final reading an Ordinance amending Ordinance No. 1469 to tax Tangible Personal Property in Trans-

### TPN holding Christmas contest

**STAFF REPORT**  
 The Pampa News' latest contest could win you up to \$100. Ruby the Christmas elf had been hiding all around Pampa, and potential winners can enter the contest by picking up a paper and finding the special elf ad. The ad will tell readers where Ruby is that day. From there, participants will go to that business, take a picture, tag themselves at the busi-

### Foggy conditions lead to Gray County fatality

**SUBMITTED BY TEXAS DPS**  
 An Amarillo man is dead after foggy conditions lead to a wreck six miles east of Pampa on U.S. Highway 60 around 9:45 a.m. Friday morning. A 2012 Volvo Truck Tractor towing a 2008 EBY Bullride Cattle Trailer driven by Sergio Saenz, 28, of Amarillo, was traveling west on State Highway 152 near the intersection with U.S. 60 in Gray County. A 2005 Ford F-350 towing a 2013 CM Trailer, driven by Jeremiah Grove, 24, Amarillo, was traveling east on U.S. 60 near the same intersection with State Highway 152. The driver of the cattle truck was traveling at an unsafe speed for the heavy fog conditions and failed to see a vehicle that was already stopped at the stop sign on Highway 152 waiting to enter U.S. 60. Saenz steered the cattle truck to his left traveling on the shoulder, striking several signs and entering U.S. 60 disregarding the stop sign. The Ford F-350, traveling east, struck the cattle

**DPS** cont. on page 4

## AAA tips to avoid holiday misfortune



**SUBMITTED BY AAA TEXAS**  
 IRVING – The National Retail Federation expects sales from November and December will increase 4.1 percent to \$616.9 billion. In the coming weeks parking lots at malls and shopping centers will be overflowing with holiday shoppers as many people make their final purchases leading up to the Year-End holidays. AAA Texas advises bargain hunters to avoid common parking lot pitfalls and to keep their wits about them at all times. "Overly zealous shoppers can forget even the most basic safety precautions when rushing to get the best deals or find those perfect gifts for loved ones, often locking their keys in their cars or hitting another vehicle when zipping in and out of parking spaces," said AAA Texas/New Mexico Representative Doug Shupe. AAA Texas offers the following advice for navigating parking lots and protecting vehicles and pedestrians this holiday shopping season: Head for the side door and play the outfield. Many shoppers want to park near their favorite stores or near the mall entrance. Most malls have secondary entrances on the sides and those entrances

**AAA** cont. on page 4

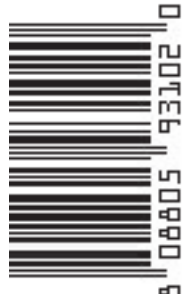
**Malcolm Hinkle**  
 Refrigeration Co.  
 Texas Lic # TACLA40021C  
 Heating & Air  
 Rooftop Units  
 Indoor Air Quality  
 Refrigeration  
 Ice Makers  
 Commercial & Residential  
 Sales & Service Since 1952  
**806/665-1842**

**Total Care Health**  
 Caring & Effective Health care  
 for Your Entire Family  
**(806) 688-2273**  
 Family Care • Urgent Care  
 (Insurance, Cash, and Medicare)  
 Teri Pay, FNP-BC  
 701 N. Price Rd.  
 Pampa, TX 79065

**PANHANDLE PLAINS REALTY**  
 Your dream home is waiting!  
 Linda Laycock, Broker - 806.662.1512  
 Tisha Calhoun, REALTOR® - 806.440.4153  
 Larry Hadley, REALTOR® - 806.662.2779  
 Pampa MLS & Amarillo MLS

**IN THIS ISSUE:**

Weather .....	2	Comics .....	12
Obituaries .....	3,5	Classifieds .....	13-15
Sports .....	9-11	Puzzles/Dear Abby ..	14





# TEXAS FURNITURE



## Holiday Magic Sale

Great savings now to get your home ready for the holidays!

### BUY ONE... GET ONE FREE RECLINERS



PLUSH, COMFORTABLE  
**SOFAS**  
\$499 and \$599

HIGH QUALITY  
WIDE SCREEN  
**TV STANDS**  
\$349 • \$599

QUEEN SIZE  
ADJUSTABLE  
BEDS  
**\$1099**



MEMORY FOAM  
QUEEN SETS  
now only  
**\$599**

### ...save on sealy...



SEALY "CHARWOOD" PLUS  
TWIN SET **\$299**    FULL SET **\$389**    QUEEN SET **\$399**

### SEALY POSTUREPEDIC your choice "Plush" or "Firm"

FULL SETS **\$689**    QUEEN SETS **\$699**    KING SETS **\$999**

### SAVE NOW ON AMERICA'S #1 MATTRESS

TEMPUR-PEDIC  
**CLOUD** \$1799  
QUEEN SET

SEE OUR BIGGEST  
SELECTION OF ASHLEY  
**SECTIONALS**  
NOW STARTING  
AT ONLY **\$1099**

ASHLEY RECLINING **SOFAS \$799**

**HURRY IN!**  
12 months no interest

Proudly serving Pampa since 1952  
**Texas**  
FURNITURE

665-1623 • 1415 N. Hobart

MON-SAT 9 AM TO 5:30 PM  
VISA    DISCOVER    MasterCard  
6 MONTHS NO INTEREST  
FINANCING WITH APPROVED CREDIT

### PAMPA FORECAST

Today	Wednesday	Thursday
High 61 Low 41	High 62 Low 40	High 63 Low 41

**Today:** Partly cloudy with a high of 61. Winds south at 5 to 10 mph. Sunrise at 7:43 a.m.

**Tonight:** A few clouds with a low of 41. Winds south-southeast at 10 to 15 mph. Sunset at 5:32 p.m.

**Wednesday:** Cloudy skies with a high of 62. Winds south-southwest at 10 to 15 mph. Sunrise at 7:43 a.m.

**Wednesday night:** Cloudy early clearing late with a low of 40. Chance of rain: 10 percent. Winds south-southeast at 10 to 15 mph. Sunset at 5:32 p.m.

**Thursday:** Sunny skies with a high of 63. Chance of rain: 10 percent. Winds south at 10 to 15 mph. Sunrise at 7:44 a.m.

**Thursday night:** Clear with a low of 41. Chance of rain: 10 percent. Winds south at 10 to 15 mph. Sunset at 5:32 p.m.

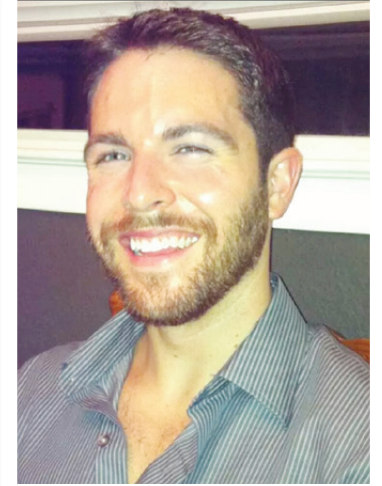
This information brought to you by...

**WHALEY ROOFING and Construction**  
10 year workmanship guarantee  
**806-420-7033**  
free estimates & roof inspections • all types of roofs  
roofing the in the Panhandle 25 years

**BALLARD'S Guns**  
805 S. Benedict White Deer, TX 79097  
Kerry Ballard (806)570-4722 ballardsguns3@yahoo.com  
Zach Ballard (806)584-4347 www.ballardsguns.com  
Trevor Ballard (806)584-4329 facebook.com/Ballards.Guns3

**WESTERN FINANCE**  
WHERE SERVICE COUNTS  
LOANS up to \$1340  
We Specialize in Helping People Who Have NO CREDIT OR BAD CREDIT  
• LOANS ON CAR TITLE  
Loans repaid in installments with no pre-payment penalties.  
• NO TITLE? We also offer COLLATERAL & SIGNATURE LOANS  
• CREDIT STARTERS  
2115 N Hobart • Pampa 806-665-0970  
Apply by Phone Today!  
www.WesternShamrock.com  
Mon - Fri 9am - 6pm • Sat 9am - 1pm

John W. Sparkman, D.D.S. and staff are pleased to announce the association of **Kyle Chambers, D.D.S.** to our practice of Family and Cosmetic Dentistry



Born and raised in Amarillo, Dr. Chambers is a graduate of Randall High School. He earned his B.S. in Biology, summa cum laude from West Texas A&M University, and received his dental training at Texas A&M University Baylor College of Dentistry.

**Welcoming New Patients**  
Please call 806-665-0256 for appointment  
2401 N. Hobart, Pampa, Texas 79065



# Obituaries

## Edward Stroud

Edward Stroud, 84, of Pampa, died Dec. 5, 2014, in Pampa.

Services will be at 2 p.m. Tuesday, Dec. 9, 2014, at Trinity Fellowship, with Rev. Lonny Robbins and Ronnie Goode officiating. Burial will follow in Fairview Cemetery with military honors courtesy of Altus Air Force Blue Knights Honor Guard. Arrangements are under the direction of Carmichael-Whitley Funeral Directors.

Mr. Stroud was born Oct. 20, 1930, in Gem City and graduated from Canadian High School. He had been a resident of Pampa since 1955. He married Carolyn Reed on Dec. 26, 1956, in Clayton, N.M. Ed was a veteran of the U.S. Air Force, serving during the Korean Conflict as a draftsman. He was a clerk for the U.S. Postal Service for 30 years, retiring on Oct. 31, 1985. After his retirement, he and Carolyn had a wholesale costume jewelry business where they traveled around together from 1987 to 1994. Ed was a member of Trinity Fellowship where he served as a director of the food outreach program and later helped start and run the Harvest House until 2012. Ed also was active in the Kids Cafe. Ed was preceded in death by his daughter, Lynda Bruce, on Oct. 25, 2014, two sisters, Deanie Powers in 2006 and Gwen Brock in 2000.

Survivors include his wife, Carolyn Stroud of the home; two grandsons, Ryan Bruce and wife Tracy, and Christian Bruce and wife Bobbi, all of Pampa; a brother, Cliff Stroud of Wichita Falls; seven great-grandchildren, Kaitlyn, Madison, Austin, Tucker, Jaelyn, Claire and Gary.

Memorials may be made to Harvest House, P.O. Box 2929, Pampa, Texas 79066-2929 or Pampa Senior Citizens, 500 W. Francis, Pampa, Texas 79065.

Sign the online guest register at [www.carmichael-whitley.com](http://www.carmichael-whitley.com).



Edward Stroud

Cremation and arrangements are under the direction of Carmichael-Whitley Funeral Directors.

Mrs. Hughes was born on March 7, 1939, in Sterling, Colo. She attended schools in Colorado. She worked for Gibson's store and then she went to work for Wal-Mart and was employed there for more than 20 years. Jean liked the crafts, where she enjoyed crocheting, stamping, and scrap-booking. Jean also loved to bowl whenever she could. Jean will be greatly missed by her family and friends. Jean was preceded in death by her father, H.H. Hughes, mother, Vera Johnson, stepfather, Mike Johnson, four brothers, J.R. Hughes, Bob Hughes, Don Hughes, and Mike J. Johnson, a sister, Betty Quebedeaux, a grandson, Matthew Owens, a granddaughter, Mashonda King Urbanczyk and by a great-grandson, Bentley Smith.

Survivors include three daughters, Pam Spencer-Lowrey and husband Crickett of Pampa, Debbie McGill and Cheryl Wright, both of Enid, Okla.; a son, Michael McGill, of Pampa; a sister, Dorothy Pennington of Manchester, Iowa; 15 grandchildren and 32 great-grandchildren and numerous nieces and nephews.

The family would like to thank Interim Hospice for their wonderful care of Mrs. Hughes.

Sign the online register at [www.carmichael-whitley.com](http://www.carmichael-whitley.com).



Jean Hughes

Mr. Stover was born April 20, 1938, in Telephone, Texas. He had been a resident of Pampa for the past 12 years after moving from Skellytown, where he resided for 22 years. Smokey married Jeanetta Smith on July 29, 1957 in Borger. He was a heavy equipment operator who worked all over the Panhandle area and other states, in Borger he was known as "Picker." He was a Borger city firefighter for three years. He had a great love for music his entire life and he loved to listen and play classic country music. Jeanetta was the love of his life but music was his passion.

Survivors include his wife, Jeanetta, of the home; three sons, Randy Stover and Bobby Stover and wife Linda, all of Pampa, and Robert Stover and wife Nita of Skellytown; a daughter, Deborah Williams of Houston; 11 grandchildren and 10 great-grandchildren. Smokey was preceded in death by his parents, Robert Lee and Rosa Ella Stover, seven brothers, two sisters, a granddaughter and a great-granddaughter.

Sign the online register book at [www.carmichael-whitley.com](http://www.carmichael-whitley.com).



Bobby Stover

OBITUARIES cont. on page 5

## Bobby "Smokey" Stover

Bobby "Smokey" Stover, 76, of Pampa, died Saturday, Dec. 6, 2014, in Pampa.

Graveside services will be at 10 a.m. Tuesday, Dec. 9, 2014, at Memory Gardens Cemetery with Rev. Jim Sinyard, pastor of the Carpenter's Church, officiating. Arrangements are by Carmichael-Whitley Funeral Directors.

## Jean Hughes

Jean Hughes, 75, of Pampa, died Dec. 2, 2014, in Pampa.

Memorial services will be announced at a later date.

## Eldringhoff Funeral Home

Muy Pronto

Servicio Completo de Funeraria

- Opciones de Visualizacion de Toda la Noche
- Ayuda Con Servicios Internacionales
- Velas Conmemorativas
- Rosario

303 N. Frost • Pampa, Tx • 806.662.6662



For show times call 688-9192 or 688-9229

Located in the Corondo Shopping Center behind Hastings 1201 N. Hobart Pampa, Texas

## BOB DOUTHIT

PARTS & AUTO SALES

1432 SOUTH BARNES  
PAMPA, TEXAS

24 HOUR WRECKER SERVICE 806.669.3481

**PARTS - NEW & USED**

Computerized Inventory    Truck Accessories  
Nationwide Parts Network    New & Used Tires

**TOWING SERVICE**

We Tow It All                      24 Hour Wrecker Service  
Cars/Trucks/Oilfield equipment    We Do Auto Lock-Outs

BONDED INSURED  
EXPERIENCED

24 HOUR TOWING  
806.669.3481

# DOWNTOWN Moonlight Madness

STORES OPEN  
TILL 10PM

SHOPPING ON THE BRICKS  
**DOWNTOWN PAMPA**  
FRIDAY  
DEC. 12TH  
5-10 PM

REFRESHMENTS & SPECIALS

OVER \$10000  
IN PRIZES WILL BE GIVEN AWAY!

the first

# NOEL

CELEBRATING THE BIRTHDAY  
OF A KING

---

COME JOIN US

As we celebrate  
The Birth Of A King

---

SUNDAY  
DECEMBER 14th

At 6:00 pm

---

Central Baptist  
Church

513 E. Francis - Pampa  
665.1631

---

Presented by the Sanctuary  
& Golden Heirs Choirs



# The PAMPA NEWS

SERVING THE TOP O' TEXAS SINCE 1906

403 W. Atchison • Pampa, TX 79065  
806-669-2525 • Fax: 806-669-2520  
www.thepampanews.com

This newspaper (UPS 781-540) is published daily, except Sundays, Mondays and all national holidays by The Pampa News, 403 W. Atchison. Periodicals postage paid at Pampa, Texas. Postmaster: send address changes to The Pampa News, P.O. Drawer 2198, Pampa, Texas 79066-2198.

<b>Publisher</b> ReDonn Woods	<b>Subscription Rates – Mail Delivery</b>
<b>Managing Editor</b> John Lee	1 year ..... \$114.00
<b>Sports Reporter</b> Zachary Green	6 months ..... \$57.00
<b>Reporter</b> Lindsey Tomaschik	3 months ..... \$28.50
<b>Advertising Director</b> Callie Odell	1 month ..... \$9.50
<b>Business Manager</b> Carrie Hair	<b>Single Copies</b>
<b>Circulation</b> Jamie Humphrey	Daily 75¢/Sunday \$1.50
<b>Classifieds</b> Beverly Taylor	<b>Miss Your Paper?</b>
Member Associated Press and Texas Press Association	Circulation department hours of operation are 8 a.m. to 5 p.m. weekdays.
	<b>Copyright Notice</b>
	The entire contents of The Pampa News, including its logotype are fully protected by copyright and registry and cannot be reproduced in any form for any purpose without written permission from The Pampa News.

## Perry

Continued From Page 1

very real issue of border security in favor of political posturing on immigration," Gov. Perry said.

"It's clear now more than ever that Congress must finally pass a bill that dedicates the necessary resources to securing our border, once and for all. Without border security, immigration reform is a fruitless exercise."

E-Verify is an Internet-based system that allows

employers to determine the eligibility of their employees to work in the U.S.

The governor noted improvements to E-Verify that have streamlined the system and improved its accuracy. While 17 state agencies already use E-Verify, the governor's executive order expands its use to all state agencies under control of the Governor's Office and all those with whom they enter into contracts for services to determine the work eligibility of employees and sub-contractors.

Additionally, the governor noted that following the

dramatic influx of unaccompanied minors that illegally crossed into Texas over the summer, Texas has updated its contingency plan for dealing with potential mass migration scenarios.

The governor noted that President Obama's announcement of executive action granting amnesty to millions in the U.S. illegally makes a mass migration scenario more likely than ever before.

Gov. Perry was joined at the press conference by Texas Department of Public Safety Director Steve McCraw, who discussed the sig-

nificant impacts of the ongoing, state-led surge operation – dubbed Operation Strong Safety – in the Rio Grande Valley.

Since the beginning of the operation in June, weekly apprehensions of illegal aliens by federal authorities have dropped dramatically in the area of operation – with most recent figures showing an approximately 73 percent decrease.

This week, the Legislative Budget Board voted unanimously to continue funding Texas' enhanced border security presence through Aug. 31, 2015.

## AAA

Continued From Page 1

usually have less traffic and additional convenient spaces. Also, outlying areas normally have more open spaces, lighter traffic and a lower risk of collision.

See and be seen. Use your headlights when scouring parking garages for spaces, even in the daytime. The light will let other cars see you coming around turns

and can make fitting into that tight parking space a little easier. Research shows that keeping vehicle headlights on reduces crash risks, even during daylight hours.

Beware of tall vehicles. Avoid parking between a pair of tall SUVs or minivans where it might be hard for you to back out of the space. If you can't see well enough to back out safely, get help from one of your passengers.

Look out for little ones. It can be difficult to see

small children in busy parking lots. Be aware of your surroundings and look for children, who may make quick and unpredictable movements. When walking to and from stores, hold the hands of your children to keep them safe from traffic.

Stay on track and alert. Pedestrians should use walkways and crosswalks, if available. If walking in the traffic lanes is unavoidable, be alert for subtle cues – including exhaust or reverse lights – that signal a vehicle is about to pull out.

Make sure you have your keys before locking the car door. Every year during weekend holiday shopping, AAA technicians help members who become stranded after locking keys in their vehicles.

Deter thieves from window shopping. Place all shopping bags and valuables in the trunk, including the GPS unit and its mount, so they won't be visible to would-be thieves. Remove any evidence, such as GPS suction cup marks from the vehicle's windshield. It takes a thief just seconds to smash a window and steal your belongings and new gifts.

Stay on guard in parking lots. Choose a well-lighted area to park at night. When returning to your vehicle, have keys ready in hand and check the car's interior before entering, using a

keychain flashlight or even a smartphone app. Don't shop alone. If you must, always be aware of your surroundings; pay attention to any unusual or suspicious activity or persons and report them.

Slow down, buckle up. Even a low-speed collision can result in injuries. Make sure everyone is strapped in a seat belt or child safety seat while the vehicle is in motion, even if it is just a short trip to another part of the parking lot.

Get your tree home safely. Wrap a line around the tree and secure on the left and right rear corners as well as the left and right front corners of the vehicle. Secure tree to roof-mounted carrying rack. Place the cut portion of the trunk facing the front of the vehicle. Be sure limbs don't impede vision to the front or rear of your car. Drive carefully with heavy load by braking, steering and accelerating gently.

As North America's largest motoring and leisure travel organization, AAA provides more than 54 million members with travel, insurance, financial and automotive-related services. Since its founding in 1902, the not-for-profit, fully tax-paying AAA has been a leader and advocate for the safety and security of all travelers. AAA clubs can be visited on the Internet at AAA.com..



### 'TIS THE SEASON FOR COUGHS & COLDS

## B&B Pharmacy

300 N. Ballard  
665-5788 • 669-1071  
Night Emergency: 665-2892

We deliver all year around  
"Your Hometown Pharmacy"

7140

## IntegraCare

Home Health

An Affiliate of Kindred at Home

Our patients quickly discover that skilled care, compassion and honor are at the very core of everything we do and everyone we touch.



Pampa

806.665.0301  
www.integracarehh.com

15676

## CITY BRIEFS

**DR. PIERATT** is retiring!! Copies of your dental records may be picked up at his office, Monday thru Thursday 9am-2pm now thru Dec. 15th.

**JAM IS Here!!** \$5 per jar. Stop by Rheams Diamond Shop, 111 N. Cuyler, downtown Pampa and pick some up today!! (proceeds go to St. Paul Methodist Church).

**KNIGHTS OF** Columbus Holiday Turkeys, Deep Fried & Smoked avail. Contact Jack Albracht 806-665-7161, Pete Denny 806-662-9083 or Wes Hukill 806-664-2752.

**MASSAGE THERAPY** Gift Certificate Special for Christmas. Call Cathy Potter Massage Therapy, 806-669-0013. 1224 N. Hobart Ste. 9.

**OUTSIDE BUILDING** 10x14 metal with wood floor for sale. Call 669-1901.

**PACK-N-MAIL STARTING** Dec. 1st, Annual 25% Off Sale on gift items and 45% off on sterling silver jewelry!

**PAULA'S BEARS-** Pampa News and several other businesses are collecting New Teddy Bears, in honor of people that are battling cancer or have lost the their battle. If you are interested in donating a Teddy Bear to cancer patients, bring it by 403 W. Atchison, or contact 806-440-3854. Deadline is Dec. 12th.

**M&S AUTOMOTIVE** Service Center can help keep your vehicles in top running condition. M&S offers a full line of repairs on all makes and models incl. domestic and foreign models. "Fair and honest service is Our Goal!" Give us a call at 669-6990 or stop by 120 N. Gray, where we are "right on the price and right on the corner."

The Pampa News is not responsible for the content of paid advertisement

## DPS

Continued From Page 1

trailer in its side. Both vehicles ignited on fire as a result of the crash.

As a result of the wreck, Grove was killed.

Saenz suffered minor in-

juries and was released from Pampa Regional Medical Center.

Both drivers were wearing their seatbelt.

**Single-vehicle wreck kills one outside of Miami**

A Canadian man is dead after a single-vehicle accident two miles west of Miami at 8:50 p.m. Friday night.

Brian Adam Uriegas, 23, Canadian, was driving 2006 Ford F-450 towing a 20-foot Top Hat traveling east on U.S. Highway 60.

The vehicle entered into the north barrow ditch and traveled approximately 100 feet before crashing into a tree with the front left bumper while the cab portion of the vehicle struck a tree branch causing maximum damage to the entire vehicle.

The vehicle came to a rest in the north barrow ditch facing north approximately 15 feet beyond the point of impact with the tree.

The driver was transported to Northwest Texas Hospital in Amarillo where he later died from his injuries.



"I want a floor that invites me to forget a hectic day by filling a tub to the brim with bubbles and soaking my cares away."

Come by Witt Flooring Center and let Victor or James help you pick out flooring that is perfect for your home.

**WITT FLOORING CENTER**

806 N. MAIN BORGER, TX  
806.273.9488  
Mon-Fri 8-5:30 Sat 9-3 | www.borger.buyabbey.com

**2 GREAT OFFERS EVERY WEEK AT KFC**

SPECIAL OFFER MONDAYS ONLY

**2-PIECE MEAL \$2.99**  
plus tax | no substitutions  
lunch or dinner | no limit

leg and thigh  
individual mashed potatoes with brown gravy  
1 freshly prepared biscuit

SPECIAL OFFER WEDNESDAYS ONLY

**CHICKEN FRIED STEAK MEAL \$1.99**  
plus tax | no substitutions  
lunch or dinner | no limit

chicken fried steak with white gravy  
individual mashed potatoes with gravy  
individual cole slaw | 1 freshly prepared biscuit

**DINE IN - DRIVE THRU - CARRY OUT**

PAMPA 2201 N. Hobart St. 665-2766

19409

**ROBERT'S QUALITY AUTO SERVICE**

Oil changes are what we do!  
Let us do YOUR next oil change

Family Owned we provide INTEGRITY VALUE & SERVICE

**PENNZOIL**

Ladies Day Tuesdays!

300 N. Hobart  
806-669-1117  
M-F: 7-7 Sat: 8-4

Jessalyn Robert

**The Sturgeon Law Firm**

**Ben L. Sturgeon**

Board Certified in Civil Trial Law

• Personal Injury • Estate Planning  
• Wrongful Death • Family Law  
• Probate • Oil & Gas

**NEW LOCATION**

105 E. Foster Suite 200 | 806-688-9292  
Fax: 806-688-1150



# Obituaries

Continued From Page 3

## Tanita Louise Gowin

Tanita Louise Gowin, 49, died Dec. 7, 2014, in Amarillo. Services will be at 2 p.m. Wednesday, Dec. 10, 2014, at First Baptist Church, with Rev. Barry Owens, associate pastor, and Joe Millican, chief of the Hoover Volunteer Fire Department, officiating. Burial will follow in Memory Gardens Cemetery under the direction of Carmichael-Whitley Funeral Directors.

Mrs. Gowin was born Aug. 22, 1965, in Dodge City, Kan. She had been a lifelong resident of Pampa, attending Pampa High School. She received an associate's degree in business from Clarendon College, and a certificate from Exposito School of Hair Design. Tanita was a certified firefighter with the Hoover Volunteer Fire Department for

more than 15 years. She was a member of First Baptist Church. She volunteered with the American Red Cross, Tralee Crisis Center and many other organizations.

She was preceded in death by her father, Charles Gowin in 2013.

Survivors include two sons, Ricky Spiller and wife Cindy of Midland, and Jonathan Olson of Pampa; her mother, Rose Ann Gowin of Pampa; two grandchildren, Jaqueline Spiller and Colton Spiller; two sisters, Tamilan Dallas and husband Alan of Pampa, and Teresa Dodd of Lubbock; her brother, Charles "Bubba" Gowin of Pampa; four nieces, Alisha Dallas, Addena Dallas, Mecca Dodd and Arin Dallas; three nephews, Christopher Gowin, Braden Gowin and Dakota Gowin and girlfriend Kasey Spears; one great-niece, Payton Gowin; and four great-nephews: Daxton Dallas, Azdyn Dallas, Conner Gowin and Ryan Likes.

The family wants to extend a special thank you to Rhonda Van Hagan, Kitty O'Carre and Raelynn Koenig for their love and care of Tanita.

Memorials may be offered to the Hoover Volunteer Fire Department, P.O. Box 820, Pampa, Texas 79066-0820.

The family will receive friends from 6 to 8 p.m. Tuesday, Dec. 9, 2014, at Carmichael-Whitley Funeral Home.

Sign the online guest register at [www.carmichael-whitley.com](http://www.carmichael-whitley.com).

HERBS • VITAMINS • WEIGHT LOSS  
ENERGY • WOMEN'S & MEN'S NEEDS

# Herbs Etc.

- Powerful Protein Supplements
- Aromatherapy & Supplies
- Fat Burners, Carb Blockers
- Probiotics
- Natural Appetite Suppressants
- Nature's Sunshine Products
- Weight Loss Plans & Support
- Weekly Specials

109 W Kingsmill . Pampa  
(806) 665.4883

[www.panhandlesunshine.com](http://www.panhandlesunshine.com)

**Give the family a softer seat for the game!**



We can make the floor the best seat in the house!

**One STOP Flooring** | 1533 N. Hobart  
(806) 665-0995

GOD BLESS! Mon-Fri 9am - 5pm • Sat 10am - 1pm

[www.thepampanews.com](http://www.thepampanews.com)

**Come Check Out Our Great Deals!**

**50% OFF**  
select items

**T-SHIRTS & MORE**  
111 W. KINGSMILL • 806-665-3036

add some **Sparkle** this Christmas!

**One Carat Total Weight of Diamonds**  
Your Choice \$1999  
Matching wedding band included!



**Cocoalatté Diamonds**  
Set in Rose Gold \$799  
\$1299





**Infinity Jewelry**  
With Rose Gold Accents

\$799

\$499



**Floating Diamond Solitaires**

1/2 carat of diamonds Princess Cut, Round or Pear Shape Earrings \$1199



**Floating Diamond Pendants**

1/4 carat of diamonds \$599

1/2 carat of diamonds \$999

1 carat of diamonds \$1799



**Pendant**  
1/5 carat of diamonds

\$399  
1/3 ctw - \$599  
1/2 ctw - \$799



**Guardian Angel Floating Diamond in Sterling Silver** \$149



**Heart Pendants**  
With Black, Cocoalatté or Blue Diamonds  
Your Choice \$599

**Sterling Silver Cross Pendants**  
With Black, Cocoalatté or Blue Diamonds  
Your Choice \$399



**Sterling Silver Pendants**  
With Black, Cocoalatté or Blue Diamonds  
Your Choice \$199

**Infinity Pendant**  
Sparkling Diamonds set in Rich Sterling Silver \$149



**Rheams**  
DIAMOND SHOP  
111 N. CUYLER • 665-2831



## Prairie Plains Perspective

# Of anger sandwiches, calm down baskets and gene pooling

They were sitting close to one another on the love seat, hadn't been home very long when Jacy uttered aloud to Daniel his road rage earlier that afternoon had upset her. I and my granddaughter Heather were sitting on the couch, the four of us watching I know not what. Jacy was declaring genuine concern over



**DENNIS PALMITIER**

my son's reaction to an inconsiderate driver who had cut him off in traffic. Where's this going I thought to myself, for like his father before him, and my father before I, Palmitier's have prided ourselves on driving abilities...and like his father before him there was a time I thought and expressed aloud for all to hear that every other driver on the road sans moi, was a complete idiot. I was a salesman, had the world for a territory and possessed an abundantly smug attitude sated

of many years driving the country's highways and byways. I was a model driver, countless speeding tickets, high insurance premiums and driver's education courses over those same years, not withstanding. Yup, that chip resting atop my shoulder qualified me as a número uno driver, everyone else driving the same roads was second string! So folks, where does one of the world's premier drivers choose to live and work? Houston... Since the dawn of the horse-drawn carriage

Houston's traffic is the ne plus ultra of traffic jams! Owing a driver's 'tude' while surrounded by 4-5 million Richard Petty's with every single one including myself attempting to get someplace at the same time is a nerve shattering experience. At the end of the day when in a self induced mood certainly not conducive to marital bliss, I'm completely frazzled coming through the front door and hear "Hi Honey, how was your day?"... What should have been an "I love you" response back came out instead, an invective laced diatribe. Let me just say a wife doesn't like to hear that sort of nonsense...

Climbing the corporate ladder, I accept a management sales position and with it comes a transfer away from Houston's traffic hassles, so where does my company relocate me? Why, San Antonio... With a relo to a city of two million souls that is simply a sophomore traffic nightmare to Houston, I'm right back in the rat race! My driving habits in San Antonio were no different than when in Houston.

Seeking diversion, I do my natural part and grow my family by helping to bring two great sons into the world, two sons that in time will become the next generation of great Palmitier drivers! So there it is Jacy, that Palmitier gene pool is the reason for Daniel's driving 'tude.' He is a victim by his father's device. I know such because his

mother is possibly the worst driver of a car I have ever known. Jacy is now sitting with knees up, her feet tucked under Daniel, looking straight at him, expressing aloud her thoughts about the drive home. Daniel is tap dancing aloud his rational best rebuttal that it was the other driver the cause célèbre for his excessive language, but he is tripping up badly. Jacy is a Masters degreed therapist. She counsels sexually abused children. Admirable endeavor, but back to the issue at hand, which is Jacy's feelings about road rage.

Jacy is describing to Daniel how she interacts with her child clients to aid them down that most difficult road to wellness. When anger starts defining their session she has the child make paper cut outs resembling sandwich makings, then build what she calls an "anger sandwich." Not a better distraction from anger than sandwich assemblage... Another of her anger alleviators is the "calm down basket," an actual basket of objects; Play Dough, bubbles, etc. for the child that when put to use helps to distract away their anger. For his outburst and assault to Jacy's well being, she is asking Daniel to make that anger sandwich, go knead that Play Dough from his calm down basket and work out the road rage issue for their future's sake, that traffic issues will remain and not about to change,

but you can... Older and somewhat the wiser, not on the road as much and not in a hurry anymore has aided immensely my driving well being. As I wrote in last week's essay, this is Pampa, we've no stinking traffic, at least such that will create road rage... I was, all those years ago when behind the wheel, not a very nice person. I know that for a fact because my ex wife, when listing reasons for divorce, item No. 256 stated: He's a mean driver...

Other drivers nonsense grant you, can be an igniter of tension that has in many instances created deadly consequences. I was lucky with my driving 'tude.' Perhaps maturing (somewhat) has helped... Thank you Jacy, thank you for your straight forwardness, your honesty and openness. Wise counsel you are. In regard to that pesky gene, it might take Daniel a few anger sandwiches and calm down baskets for it to fade away, however, he's a quick learner. You'll see.

*Pampa resident Dennis Palmitier is a regular, unpaid contributor to the opinion page on issues that affect Pampa and Gray County. His opinions and viewpoints do not reflect those of The Pampa News or The Pampa News' staff. He can be reached at denpalm1949@yahoo.com. Anyone wishing to respond to Palmitier's viewpoints in the form of a letter to the editor can email Editor John Lee at jlee@thepampanews.com.*



Ruby is on the move again. Next stop, to pick out some cozy carpet for Santa's big feet!

**One STOP Flooring**

1533 N. Hobart • Pampa, TX 79065

Phone: (806) 665-0995  
Hours: Mon-Fri 9am - 5pm • Sat 10am - 1pm

## ACCESSORIES

- Tool Boxes
- Nerf Bars
- Fuel Tanks
- Bullet Spray-in Bedliner
- Ranch Hand Grille Guards

**PRESTIGE**  
AUTOBODY & ACCESSORIES

101 S. HOBART 806-665-3500

**NOW AVAILABLE!**



**PHONE & IPAD SCREEN REPLACEMENTS**

**PC DREAMS**  
Computer Repair Done Right At Affordable Prices  
2100 N. Perryton Pkwy. • 688-7817

THIS AD HAS BEEN SEEN BY OVER 7,000 PEOPLE TODAY

**ADVERTISE HERE GET NOTICED**



THE PAMPA NEWS  
(806)-669-2525

## Christmas Catering Perfectly Done!

Leave the Christmas dinner preparations to us, so you can relax and enjoy the holiday with your family. Come on by and place your holiday party or Christmas Dinner orders with us TODAY!



**For All Your Holiday & Party Catering Needs!**

**RED RIVER STEAKHOUSE**

McLean, Texas  
Exit 141-143 • 101 W. HWY 66  
Open 11am-9pm Tuesday - Saturday  
(806)779-8940



**Gotta Have it?**

Get the financing you need, and get the car you want! Drop by today and find out how affordable your next vehicle can be!

**Pantex**  
Federal Credit Union

807 N. Sumner Pampa, TX  
806-665-4212  
www.pantexfcu.com

Federally Insured by NCUA

HERBS • VITAMINS • WEIGHT LOSS • ENERGY • WOMEN'S & MEN'S NEEDS

**Herbs Etc.**  
Natural Appetite Suppressants  
109 W Kingsmill • Pampa (806) 665.4883  
www.panhandlesunshine.com



# 2014 CHRISTMAS PARADE

PHOTOS BY LINDSEY TOMASCHIK



**SHEPARD'S HOME HEALTH**  
665-0356

- Skilled Nursing
- Therapy
- Certified Aides
- Companions
- House Keeping

Accepting:  
Medicare, Private Pay,  
Insurance

**Shepard's Home Health**  
CROOK NURSING

Serving Happy Clients for 27 Years

2<sup>nd</sup> annual  
**Jolly CHRISTMAS**  
kidz night!

Friday, December 12<sup>th</sup>  
6pm - 9 pm

Tickets are \$5 per family of 4  
(\$1 for each additional family member)

**Fun For Everyone!**

- Gingerbread House Building\* (1 per family)
- Christmas Cookie Decorating\*
- Ornament Painting & Decorating\*
- Family or Kids' Photos
- Hot Dogs, Nachos and Cheese
- Lemonade, Hot Chocolate, Hot Cider
- Bounce House
- Gingerbread Man Decorating\*
- Music
- Prizes and much more!!!

\*Enter these crafts in a contest and win additional prizes

Purchase your tickets today...

**Pampa First Assembly of God**  
500 S. Cuyler Street • Pampa  
806-665-5941

www.pampafirstag.com

**NEW IN STORE**

★ TASTING FRIDAY ★  
DEC. 12TH 4-7 PM

GIFT SETS & GIFT BASKETS  
Available Now

**FULTON'S HARVEST** Apple Pie  
**KAHLUA** Peppermint Mocha  
**SOUTHERN COMFORT** Gingerbread Spice  
**PELIGROSO** Cinnamon

**SHINER** Cheer  
**PATRON** Incedndio

**MIKEY'S LIQUOR STORE**  
1222 Price Rd. ★ 665-9662  
M-S 10am - 9pm

**Joy To The World!**

And, many thanks to you,  
our friends and neighbors.

**National Bank of Commerce**  
An Office of First National Bank Waupaca, WI  
1224 N. Hobart (806) 665-0022

Childress 501 Commerce (940) 937-2514 | Shamrock 305 N. Main (806) 256-2181

Member FDIC

**The Ones to Trust**  
**TRUSTAR REAL ESTATE**

We help you buy or sell your home!

Gary Winton: Realtor®/Office Manager  
806-440-1698  
1716 N. Hobart • (806) 665-4595

Ron Lilley, Broker

**Have an Event?**  
tell us about it!

**Email us** jclee@thepampanews.com

Submissions should be 100 words or less and written in the third person. Please include the title of the event, the date and time, physical address, the admission cost or whether it is a free event and a contact number and/or email address for the public.

**Brown Recluse Spider**

**Great Plains Pest Control**  
www.yourbugman.com  
806-669-2411

Jeanne Swires  
806-662-1926

Great Plains Pest Control - Genuine People - Genuine Care  
Owners - Jay and Debbie Henson

**Pak-A-Burger**

**Taco Tuesday!**

NOW SERVING FRIED PICKLES!

You've tried the rest, Now Taste The Best!

1608 N Hobart, Pampa  
669-2865 • Mon-Sat 11-9  
Drive-up Window



# PANHANDLE PLAINS REALTY

## New Name..... Same Great Service!

**Linda Laycock**  
Broker  
BROKER, GRI  
(806) 662-1312

**Tisha Calhoun**  
Associate  
(806) 440-4153

**Larry Hadley**  
Associate  
(806) 662-2779

516 S. Russell | PanhandlePlainsRealty.com

# Advent Devotionals Tuesday, Dec. 9, to Friday, Dec. 12

### Day 9 — the census decree

The goal of the project wasn't really to count the people. Even though the census involved the counting of the people, that wasn't the objective, nor was it the incentive. So why did Caesar order an organized accounting of the population? MONEY! TAXES!

Things are not much different in today's world. Money is all too often the driving force behind politics, laws, elections, and, sad to say, sometimes even churches.

However, be sure to remember that in spite of the stained motives, it was that Roman census that forced Joseph and Mary to journey to Bethlehem. God used that earthly governmental project to bring about His will

and to fulfill Micah's 700-year-old prophecy.

"But you, Bethlehem Ephrathah, though you are small among the clans of Judah, out of you will come for me one who will be ruler over Israel, whose origins are from of old, from ancient times" (Micah 5:2).

So what is going on in the world you live in that God could be using? Have you submitted yourself and your life to God's will? Have you told God that you want to be a tool in His toolbox? Sometimes God is just waiting for you to volunteer.

Prayer: Holy Father, I don't ask to see Your plans in advance or even to understand them. Your ways are light years beyond my grasp. But like Isaiah,

I do cry out, "Here am I, use me." (Isa. 6:8) I volunteer myself for You and Your plans. Use me as You see fit. Use me like You did the Roman census in the Advent story. If no one even notices, that's fine with me; just as long as You see. Amen.

### Day 10 — the donkey

In 1978 Disney brought to life the story of an invisible Advent character; Small One. I say invisible because he actually isn't mentioned in the biblical account. However, Mary certainly couldn't walk from Nazareth to Bethlehem while nine months pregnant. So it isn't a giant leap to believe that she probably made the journey on a donkey.

This serves as a reminder that sometimes things which are hardly noticeable can be a necessary part of the story. In fact, God seems to specialize in wall-flower people, nobodies, and invisible folks. Over 2,500 people are mentioned in the Bible, yet not even ten percent would be considered by most as important. However, without those other ninety percent most of the big stories in the Bible would never have happened.

God wove part of His Advent tapestry with priceless threads: Baby Jesus, Mary, Joseph, and angels. But most of it was composed of common threads, this donkey being one. What is the point?

Have you ever felt "common," "invisible," "a nobody"? I'll bet you have because at one time or another most everyone has felt that way. So does that make it true? Are you invisible?

No, you are not! That is what the donkey should remind you of. When God is at the helm, everyone and everything plays a necessary part in His plan. And most importantly, He weaves

you into His work of art because He loves you. Will you be a co-operative thread?

Prayer: Awesome God, I find myself all too often wondering why You would even bother with me. But then, You are faithful to remind me that the value You place on me isn't clouded with all of the muck and mire of my life in this fallen world. Your price tag is right, my perception is wrong. Deliver me from my dark perceptions of myself. And may this Advent season prompt me to see everything through "my Father's eyes." Amen.

### Day 11 - distance and elevation

In 2008 a young BBC correspondent, Aleem Maqbool, began a twelve-day re-enactment journey from Nazareth to Bethlehem. His only friend sharing the Advent re-enactment journey was his donkey, Cynthia. Aleem chose the most direct path of the two available routes and still ended up walking almost 100 miles, much of the time up and over mountains and through remote wilderness areas. Sounds tough, huh?

Now consider why Joseph probably didn't choose that route. There were two basic routes from Nazareth to Bethlehem. One was the route Aleem selected, and it surely was the shortest. However, when we consider: (1) the number of mountains that had to be overcome, (2) the numerous remote wilderness areas where danger was a serious concern, (3) the fact that very few Jewish travelers went this way and (4) the aversion Jews had to Samaritans and traveling through Samaritan country, it seems very unlikely that Joseph would have taken his nine-month pregnant wife this way.

The other route (Nazareth to the Jordan River, down to Jericho, and over to Bethlehem) did add at least 40 more miles to the journey, but: (1) it allowed them to travel with many other Jews for companionship and safety, (2) it bypassed most of the mountains, (3) it kept them away from most of the dangerous remote areas and (4) it avoided Samaritan territory. Considering all of these advantages, Mary and Joseph most likely took the longer route—140 miles.

Now figure in the elevation points: Nazareth 1,200 feet; Jericho -1,000 feet (below sea level); Jerusalem 2,450 feet; Bethlehem 2,550 feet. That meant that the 110 miles from Nazareth to Jericho was also 2,200 feet downhill. Then the twenty miles from Jericho through Jerusalem to Bethlehem was over 3,500 feet uphill. Remember, that final twenty miles from Jericho to Bethlehem was at the end of what had already been a grueling 120 mile trip.

Whew! I don't know about you, but learning about these geographical details of their journey causes my appreciation for what Mary and Joseph went through to grow by leaps and bounds. And remember, they both overcame every single one of the obstacles and difficulties that life put in their way just so that the Advent story wouldn't be a fairy tale.

So how are you doing with your obstacles and difficulties? Handling them as well as Mary and Joseph? You can, you know. You can handle your troubles just as well as Mary and Joseph handled theirs. How? By doing the same thing they did; relying on God each day for the needed strength, power,

and guidance.

Prayer: Almighty God, I have made it through most of life's obstacles and difficulties, but not as well as I could have. I have relied on Your strength, but only a little bit. I know that to do better, I have to rely on You more. So Lord, here I am ready to fall into Your arms. I want to rely only on You and Your strength; no more on me and mine. Amen.

### Day 12 - Bethlehem

At the time of the Advent story, Bethlehem was just a tiny town with a population of only about 2,500. During major Jewish festivals and celebrations it served as a kind of extension of the capitol, Jerusalem, since it was only five miles away. Now remember, it wasn't a flat, comfortable five miles. The walk from Jerusalem to Bethlehem was more of a narrow path—a hiking trail if you will.

When they finally entered the town, they found a rural setting that was more famous as a home for shepherders than anything else. Bethlehem was where the money-grubbing priests kept most of the sacrificial sheep they were grooming for sale at the temple. Huge herds grazed in the fields outside Bethlehem and were the number one boost for the local economy.

So what does this all say about Bethlehem? It was hard to get to, very rural, tiny, and smelly. Then why did God pick Bethlehem as His Son's birthplace? You would think that He would select Jerusalem, the kingly city for the King of kings. But not so with God. He picked the town nobody was thinking about, the one that was not on anybody's "must see" list.

Do you sometimes feel around other people as Bethlehem appeared among the cities and towns of Palestine—nothing special, not pretty/handsome, clothes not as nice, living in the run down part of town, poor, lower class and not many friends?

You see, in Jesus' day nobody really dreamed about visiting Bethlehem. But since the Advent, no world traveler would think of visiting that part of the world and not stopping in Bethlehem. The Advent changed it all for that little town. And it can do the same for you too.

You just have to do what Bethlehem did. What was that you ask? Bethlehem cooperated and went along with God's plan. How? It didn't fight the plan. It allowed itself to be used by God. If you haven't already done that, then you can follow Bethlehem's lead right now. Just submit yourself to God and ask Him to take charge. And if you've already done that, then thank God for receiving you into His Kingdom.

Prayer: Father God, all too often I have thought of myself as a human Bethlehem. I've doubted the specialness that You created inside me. I don't want to do that anymore. I thank You for choosing me and I submit myself to Your Lordship. Amen.

## IGLESIA BAUTISTA EMANUEL

### Servicios de Domingo

Escuela Dominical: 10:00am  
-Adoración: 11:00am  
-Servicio de noche: 6:00pm  
Servicio Miércoles: 6:00pm

**¡Jesus Vive!**

Venga ver  
1021 S. Barnes  
665-4330

Pastor  
Willy Jaramillo

## Memory Gardens Of Pampa

23rd St and Price Road

# 806-665-8921

### ATTENTION PROPERTY OWNERS and ALL PAMPA RESIDENTS

NOW THRU DECEMBER 28, 2014  
RECEIVE A **10%** DISCOUNT ON ALL FUNERAL MERCHANDISE (A SAVINGS OF UP TO \$400)

## CASKETS - VAULTS - TENT/CHAPEL USE

## OPENING AND CLOSING OF GRAVES

Freeze the cost on these items at today's cost and eliminate future increases.

Monthly Installment Options Available  
No Interest

**CALL TODAY!!**  
**806-665-8921**  
www.memory-gardens.tripod.com

*'Of all the Gifts of Christmas, surely the joy and wonder on the face of a child is the most beautiful.'*

## The staff of Keyes Pharmacy

would like to thank our friends and customers for your support over the past year and to wish all of you a very Merry Christmas!

923 N. Hobart • 806-669-1202  
Monday - Friday 8:30 a.m. - 6:00 p.m. Saturday 8:30 a.m. - 12:00 p.m.

## HIGH PERFORMANCE

Exterior • Coatings • Glass

CERTIFIED CONTRACTOR  
LIQUID BONDING

### NEW NAME..... SAME OWNER & GREAT SERVICE

- GARAGE DOORS & OPERATORS
- COMMERCIAL
- RESIDENTIAL
- METAL BUILDINGS & CARPORTS
- REPLACEMENT WINDOWS
- ENTRY & PATIO DOORS
- COMMERCIAL
- RESIDENTIAL
- GLASS
- COMMERCIAL
- RESIDENTIAL
- AUTO
- SHOWER & BATH ENCLOSURES

1211 S. PRICE RD | PAMPA, TX 79065  
PH 806.665.8100 | HIGHPERFORMANCEEXTERIORS.COM

## Home FOR THE Holidays

Interim Home Care and Hospice want to help you make the most of your holidays in the comfort of your own home. Let our services help you stay at home and out of the hospital.

— Home Care —

Skilled Nursing • Physical & Occupational Therapy  
Wound Care • Cardiac Care • Telemonitoring  
Alzheimer's and Dementia Care

— Hospice —

Pain & Symptom Management • Social Worker  
Pastoral Care • Respite Care • Volunteers  
Equipment & Supplies

**Interim HEALTH CARE** COMMUNITY HEALTH CARE PROGRAM

HOME CARE AND HOSPICE

2217 PERRYTON PARKWAY, PAMPA, TEXAS  
806-665-1445 • INTERIMHEALTHCARE.COM

## Expect More

From Your Local Furniture Store

Fine Home Furnishings & Appliances for Any Room.

*Cookin' up something good*

## Johnson Home Furnishings

801 W. FRANCIS PAMPA, TX (806)665-3361  
MONDAY-SATURDAY 9AM - 5 PM



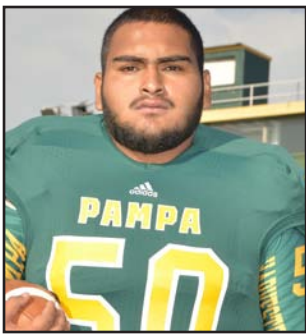
# TEN NAMED TO ALL-DISTRICT FOOTBALL TEAM

## Staff Report

The All-District 1-4A football teams were announced recently. Pampa had five athletes named to the first-team and five to the second-team. Four Pampa guys were named honorable mention. The players are pictured below or to the side.



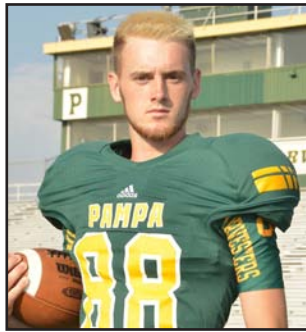
**Ashjen Payne**  
Defensive End  
Second-team



**Omar Tovar**  
Offensive guard  
First-team



**Ty Hooper**  
Quarterback  
First-team



**Alec McClendon**  
WR and Punter  
Honorable Mention



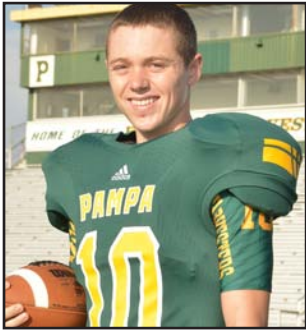
**Shalor Sokolosky**  
Defensive lineman  
First-team



**Aaron Arreola**  
Defensive Back  
Honorable Mention



**Francisco Salazar**  
Linebacker  
Second-team



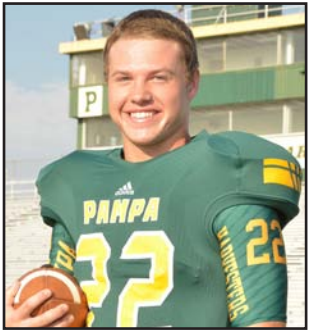
**Bryce Parker**  
Running Back  
First-team



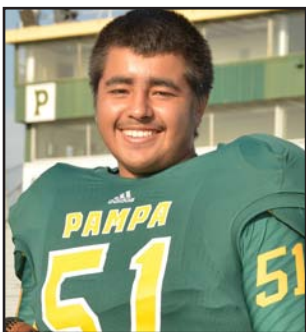
**Brendon Woelfle**  
Wide Receiver  
First-team



**Trevor Turner**  
Kicker  
Honorable Mention



**Colton Thompson**  
Defensive Back  
Second-team



**Cesar Armenta**  
Center  
Second-team

**Send Us Your Church News**

- Events • Special Services
- Charity Drives • Gen. News

jcllee@thepampanews.com  
lktomaschik@thepampanews.com

**Have an Event?**  
tell us about it!

Call us 669-2525 or Email us  
jcllee@thepampanews.com

**Easy's Pop Shop 1&2**  
Easy & Convenient!  
Drive-up Window

**Buy Any Size Fountain Drink & Get One FREE!**

WITH COUPON Expires 11/30/14

719/729 N. Hobart

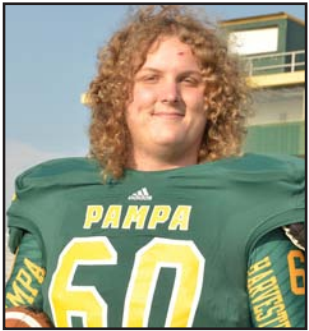


**Zack Gates**  
Tight End  
Second-team

**Merry Christmas**

**Duane Harp, AAMS®**  
Financial Advisor  
1921 N Hobart  
Pampa, TX 79065  
806-665-6753  
www.edwardjones.com

**Edward Jones**  
MAKING SENSE OF INVESTING Member SIPC



**Jake Milligan**  
Offensive Lineman  
Honorable Mention



**Jordan Green**  
Wide Receiver  
Honorable Mention

**NEW ITEM!**

**Spicy Buffalo BONELESS CHICKEN WINGS**  
Try as an appetizer or meal.

Appetizer **\$5.99**

Meal **\$7.99**

**DYERS BBQ**  
HWY 60 W. • PAMPA, TEXAS • (806) 665-4401

**COLD WEATHER IS COMING**

**TRY OUR HOMEMADE CHILI & STEW**

WITH FRESH CORNBREAD

**FRESH HOMEMADE SOUPS & DESSERTS**  
MADE DAILY

**GRANNY'S HOME COOKIN'**

806-669-6237 . 328 Frederic Ave  
Open 7 Days a Week . 5:30am - 9:30pm Smoking Room Available

**Warm Up!**

Quality Ammunition & Dynamite Firestarters

**Black Rock Powder Co.**

Black Rock Powder Co.  
Lexington, Kentucky 40504  
**DYNAMITE**  
Fire Starters

firestarters & heaters

**Frank's Best Hardware**  
401 N Ballard • 665-4995

www.thepampanews.com

**CULBERSON-STOWERS BODY SHOP**  
805 North Hobart Street • 665-1665  
www.culbersonautos.com

**It's All About QUALITY**

We provide high-quality paint and body repair, dent removal and parts replacement. Come on by for your free estimate.

• Windshield & Glass Replacement • Rock Chip Repair • Pinstripe

Out of sorts?

Lucky for you, we're here to help when things pile up!

**HARVESTER CLEANERS**  
200 West 28th, Pampa, Texas | 806.665.2222  
Hours: Mon.-Fri. 7-6 Sat. 9-2  
Delivery to Miami, Canadian, Briscoe, Wheeler & Shamrock



# HARVESTERS PLAY IN MAVERICKS' ARENA



Submitted photos  
Left, head coach Matt Embry poses with the seniors. Above, the team poses for a picture after the game. Below, both teams meet at midcourt following Pampa's 57-41 win. Pampa plays Ran dall tonight as they try to move to 7-0 on the year.



## STACHE YOUR CASH

YOUR LOCALLY OWNED CREDIT UNION.  
OPEN TO THE COMMUNITY OF PAMPA.

**CABOT & NOI**  
EMPLOYEES  
CREDIT UNION

1063 N. Sumner  
Pampa, Texas

NCUA 20040

**Got A Sports Story or Photo?**

Send it to us!  
jclee@thepampanews.com  
or bring it to the paper!

If you don't see it after a week, call us!  
669-2525 ext 209

# WHO WHO WHO

GIFTS FOR EVERYONE YOU KNOW!

**The Garden Owl**  
gift shop

BRANDON'S GREENHOUSE 410 East Foster 669.1911

**BEST OF AMARILLO 2014**

**BEST EYEWEAR**

**BEST OPTOMETRIST**

**B**  
Broome Optical  
Life is worth seeing

806.355.5633  
3408 Olsen Blvd., Amarillo  
BroomeOptical.com

# Trust the Pros

for all your Michelin Tire Needs!

**Happy Holidays!**  
Visit us today to see our full line of Michelin brand tires!

**MICHELIN**

**HUDSON TIRE & SERVICE**  
**HUDSON TIRE PROS**

1800 N. Hobart St.  
Pampa  
**806-665-5302**  
www.HudsonTirePros.com

**HASSLE-FREE TIRE PROS PLEDGE**

Warranties Honored at Over 30,000 Locations Nationwide



# PampaSports

## Watch the Pros

### College Basketball

Villanova v. Illinois.....	ESPN 6 p.m.
Seton Hall at Wichita State.....	ESPN2 6 p.m.
UMKC at Iowa State.....	ESPNU 6 p.m.
IUPUI at Xavier.....	FS1 6 p.m.
South Dakota State at St. Louis.....	FCSC 7 p.m.
Texas A&M at Baylor.....	ESPN2 8 p.m.
Indiana v. Louisville.....	ESPN 8 p.m.
Alcorn State at Iowa.....	ESPNN 8 p.m.
Eastern Michigan at Michigan.....	ESPNU 8 p.m.
South Dakota at Creighton.....	FS1 8 p.m.

### NHL Hockey

Winnipeg Jets at Dallas Stars.....	FSSW 7:30 p.m.
LA Kings at Buffalo Sabres.....	NBCS 6:30 p.m.

### Soccer

Arsenal at Galatasaray.....	FSSW 1:30 p.m.
Basel at Liverpool.....	FS1 1:30 p.m.
Ludogorets Razgrad at Real Madrid.....	FS2 1:30 p.m.

\*Game times and channels are subject to change.\*

## The PAMPA NEWS Sports Briefs

### Girls Basketball

Varsity hosts Randall.....	6 p.m. - TODAY - McNeely
JV hosts Randall.....	7:30 p.m. - TODAY - Cavalier
Freshman hosts Randall.....	4:30 p.m. - TODAY - McNeely
Varsity at White Deer Tournament.....	Dec. 11-13 - White Deer

### Boys Basketball

Varsity hosts Randall.....	7:30 p.m. - TODAY - McNeely
JV hosts Randall.....	6 p.m. - TODAY - Cavalier
Freshman hosts Randall.....	4:30 p.m. - TODAY - Cavalier
Varsity at Panhandle Tournament.....	Dec 11-13 - Panhandle
JV at Ft. Elliott Tournament.....	Dec. 11-13 - Ft. Elliott

### Swimming

Abilene Invitational.....	Dec. 13 - Abilene
---------------------------	-------------------

### Wrestling

Girls at R.L. Turner.....	Dec. 12 - R.L. Turner
Boys at Bushland.....	Dec. 13 - Bushland
JV and JH at Vernon.....	Dec. 13 - Vernon

\*Game times and locations are subject to change. Please refer to the Pampa ISD Athletics Department website for an updated schedule. You can reach it by going to [www.pampaisd.net](http://www.pampaisd.net) and then clicking Athletics Department under the departments tab. \*  
GOOD LUCK TO ALL PAMPA ATHLETICS TEAMS!



## Amarillo Speech, Language and Audiology Services



Our team of compassionate therapists believes in treating the **individual** and the **family**, not just the *disorder*. We believe that improved communication supports improved quality of life. If you or a loved one has symptoms of any of the conditions listed below, talk to your physician about a full speech evaluation.

- Speech Delay
- Feeding Disorders
- Language Delay
- Traumatic Brain Injury
- Learning Disabilities
- Stroke/Aphasia
- Auditory Processing Disorder
- Swallowing Difficulty
- Autism and Asperger's Syndrome
- Impaired Memory
- Hearing Loss
- Voice Disorder
- Aural Rehabilitation for Cochlear Implant
- Head and Neck Cancer

Call today for your appointment. We gladly accept most major insurance, including Texas Medicaid

120 W. Kingsmill, Suite 102  
Pampa, Texas  
806-674-4583

## Chamber Luncheon

The Pampa Chamber of Commerce will be hosting it's monthly luncheon on Tuesday, December 16th, 2014 at Noon. Please RSVP by Monday, December 15th.

Cost is \$10.00

PHS Show Choir will be the Program.

One Stop Flooring will be the Sponsor.



www.pampachamber.com

## Does your bank know that ranching is more than just a business?



At AimBank, our goal is to serve ALL of your banking needs. If you can't say that about your bank, talk to us today about what we can do for you.



Member FDIC

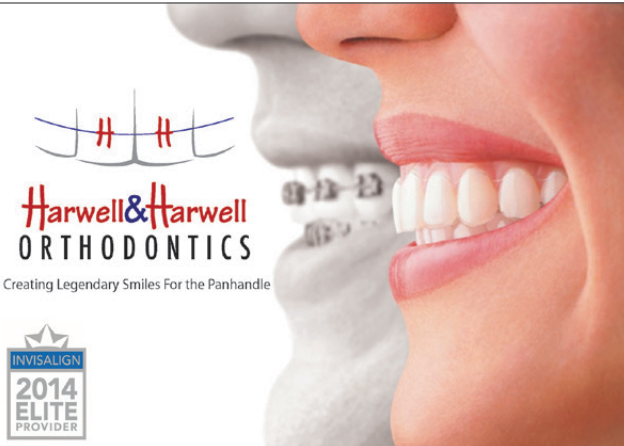
- Pampa, TX 665-3669  
120 W. Kingsmill
  - Miami, TX 868-2771  
100 S. Main
- [www.aimbankonline.com](http://www.aimbankonline.com)

## 24 HOUR SERVICE

Complete Line of Oil Field Supplies  
New Location • Larger Selection of Inventory  
All Major Manufacturers  
Quality Down Hole Pump Repair  
Just opened Goodyear Hydraulic Hose & Fittings Shop

**503 Industrial Blvd. | 1019 W. Alcock**  
**Borger, TX 79007 | Pampa, TX 79065**  
**806-274-2692 | 806-665-0947**

[www.crlpump.com](http://www.crlpump.com)



Harwell & Harwell  
ORTHODONTICS

Creating Legendary Smiles For the Panhandle



## INVISALIGN SPECIAL

In honor of our elite status  
**\$1,000 off**  
**Invisalign Treatment**  
Now through December 15, 2014

**Call to make your appointment today!**

Harwell & Harwell Pampa office  
908 Crest  
Pampa, TX 79065  
806-665-1075  
1-800-7ORTH07

Cannot be combined with any other offer. Discount on full treatment only. Limited to first 30 new patients.

find us on  
**Facebook**

To find Breaking News Briefs, Event Photos, and Video Clips.

[facebook.com/thepampanews](http://facebook.com/thepampanews)



# Total Care Health Welcomes

## Nurse Practitioner Teri Pay, FNP-BC

Teri enjoys educating her patients about their healthcare so that she can work as a team with each individual to get the best possible medical outcomes.

Total Care Health accepts most insurances (including Medicare), as well as, cash pay patients

Nurse Practitioner Pay's office hours are 8 AM to 1 PM & 2 PM to 7 PM Monday through Thursday.

Call (806) 688-CARE (2273) to schedule an appointment.

In a continuing effort to provide the best in multi-disciplinary care, Total Care Health in Pampa is pleased to announce that Nurse Practitioner Teri Pay, FNP-BC has recently joined our practice.

Teri Pay has been a Board-Certified Family Nurse Practitioner for nearly ten years. She enjoys caring for all ages and has in-depth experience caring for the acute and chronically ill.

Nurse Practitioner Pay prides herself in providing "patient-centered" care to help meet each person's individual needs. She is now accepting new patients for acute illness/injury, preventative and wellness care, sports physicals and chronic disease management. Nurse Practitioner Pay is also a Certified Medical Examiner performing DOT physicals.

Located at New Life Wellness Center

**701 N. Price Rd.**

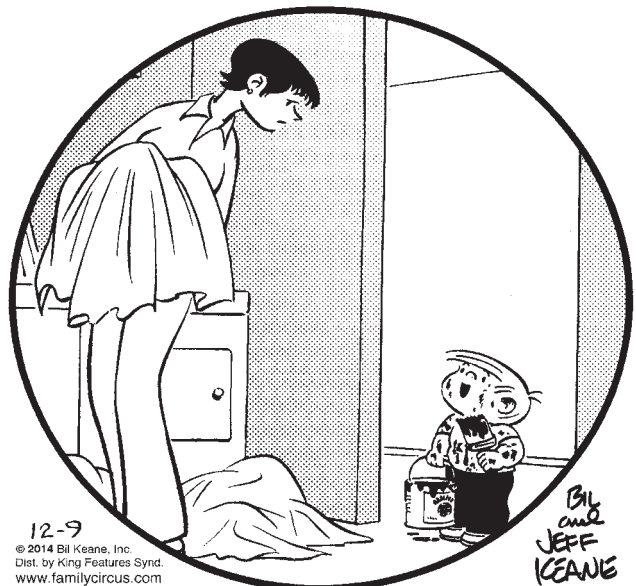
**806.688.CARE (2273)**





# comics PAGE

## THE FAMILY CIRCUS By Bil Keane



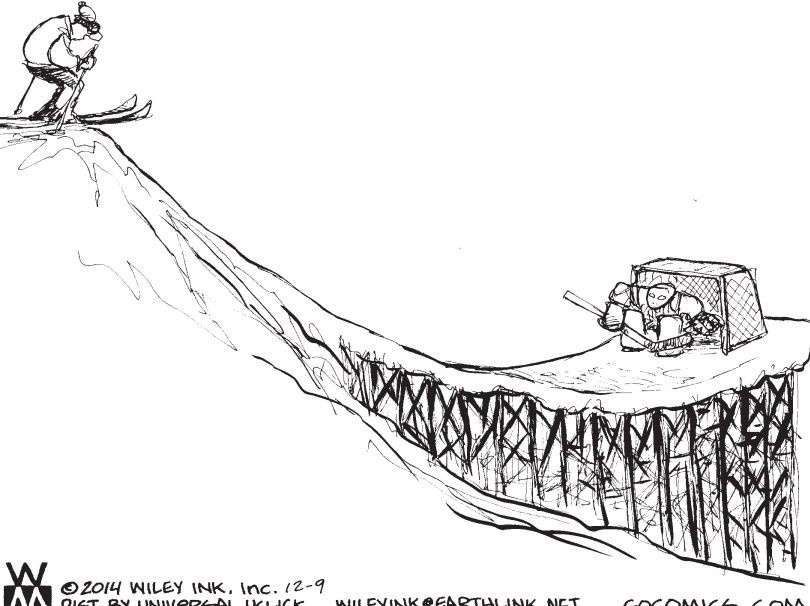
12-9  
© 2014 Bil Keane, Inc.  
Dist. by King Features Synd.  
www.familycircus.com

Bil Keane  
JEFF KEANE

"While I have this out, is there anything YOU need painted?"

### Non Sequitur

BOB ATTEMPTS TO SET A WORLD RECORD FOR THE WORST CROSS-TRAINING IDEA



© 2014 WILEY INK, Inc. 12-9  
DIST. BY UNIVERSAL UCLICK WILEYINK@EARTHLINK.NET GOCOMICS.COM

### Nest Heads



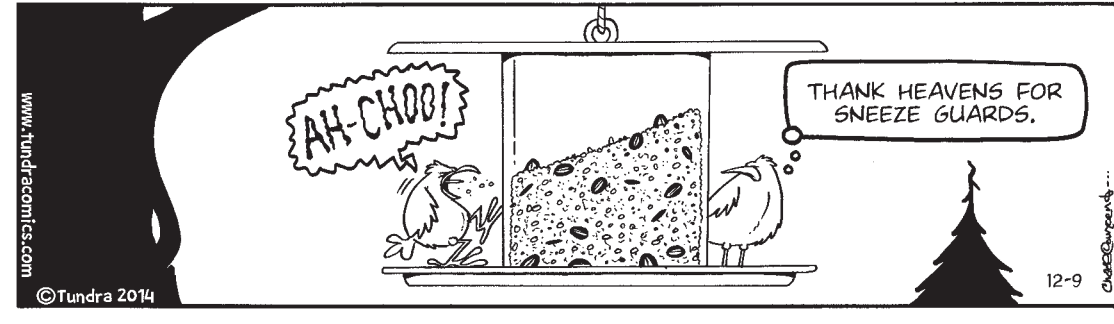
ALLEN 12/9

# daily horoscope

**HAPPY BIRTHDAY** for Wednesday, Dec. 10, 2014:  
This year you open up to more adventure, which allows your creativity to surge. You easily could become known as an "idea person." You always seem to land on your feet, even if you give in to your innate impulsiveness. If you are single, you will have your pick of suitors. Your biggest dilemma will be choosing whom to date. If you are attached, your sweetie might be taken aback at times by your spontaneity. Indulging him or her with tokens of your affection will help. LEO makes a delightful playmate.  
The Stars Show the Kind of Day You'll Have: 5-Dynamic; 4-Positive; 3-Average; 2-So-so; 1-Difficult  
**ARIES** (March 21-April 19)  
★★★★★ A friend could be hot under the collar as of late, particularly today. A vague sense of confusion surrounds a project, yet someone you respect adds clarity. This person is full of ideas; brainstorm with him or her more often. Tonight: Midweek break.  
**TAURUS** (April 20-May 20)  
★★★★★ Venus, your ruling planet, changes signs and helps you see the big picture. Travel could be part of your life in the next few weeks. Do not get yourself into a rigid situation or become involved with an unusually controlling individual. Tonight: Head home early.  
**GEMINI** (May 21-June 20)  
★★★★★ You'll choose the right words and naturally say the right thing. Nevertheless, someone might decide to poke holes in your logic. Be gracious and willing to debate the pros and cons of this person's position. A one-on-one conversation could clear the air. Tonight: Out and about.  
**CANCER** (June 21-July 22)  
★★★★★ Take some time today to do some shopping. You will enjoy yourself, as you're likely to find several special gifts. A difficult friend might have you wondering what is going on with him or her. Listen to what he or she has to share. Tonight: Visit with a loved one.  
**LEO** (July 23-Aug. 22)  
★★★★★ You'll feel great interacting with others. Your attitude is likely to be more caring toward people you might not know well but who play a key role in your daily life. Conversations could go beyond the usual "hello/goodbye" exchange. Tonight: Act as if the world is your oyster.

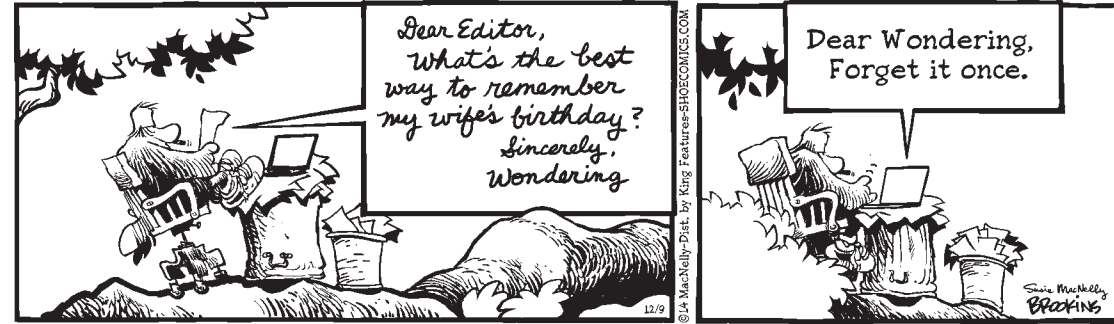
**VIRGO** (Aug. 23-Sept. 22)  
★★★★ Be sensitive to the changes happening around you. You might want to take a nonreactive stance for a few days. Your intuition will be in high gear, so give yourself time to verify these impressions. Take some time to indulge a loved one. Tonight: Get some extra R and R.  
**LIBRA** (Sept. 23-Oct. 22)  
★★★★ You have the ability to create more of what you want. You understand the art of diplomacy and of saying the right thing to build up others' confidence. As a result, you'll make people feel better about themselves. Tonight: Join a friend for some holiday eggnog.  
**SCORPIO** (Oct. 23-Nov. 21)  
★★★★ Take charge of a responsibility, even if it means having to avoid a family member. Your understanding marks your interactions. Someone close to you will admire the way you handle this matter and will let you know in his or her own way. Tonight: Till the wee hours.  
**SAGITTARIUS** (Nov. 22-Dec. 21)  
★★★★ You will want to approach a matter differently, as you suddenly might be able to see the whole issue in a new light. It's possible that you won't be able to convince someone else of the usefulness of your plans. Count on going alone on this path. Tonight: Let your mind wander.  
**CAPRICORN** (Dec. 22-Jan. 19)  
★★★★ You might enjoy being closer to a loved one. A family member or domestic situation could add some stress to your interactions. Worry less, and go forward. You'll be able to handle this matter in a creative way. Time is on your side. Tonight: Make time for a close friend.  
**AQUARIUS** (Jan. 20-Feb. 18)  
★★★★★ You could be unusually assertive, and others might be having a strong reaction. Understand that you are triggering these reactions; they are not occurring from out of the blue. Use caution with funds when your mind is elsewhere. Tonight: Say "yes" to an offer.  
**PISCES** (Feb. 19-March 20)  
★★★★ "All work and no play" could be a difficult goal to accomplish. In fact, it might be impossible to rein in your imagination today. Your effectiveness could be enhanced if you opt to give yourself a healthy break. Tonight: Run some errands on the way home.

### Tundra



© Tundra 2014

### Shoe



### Mother Goose and Grim



### Zits



### Garfield



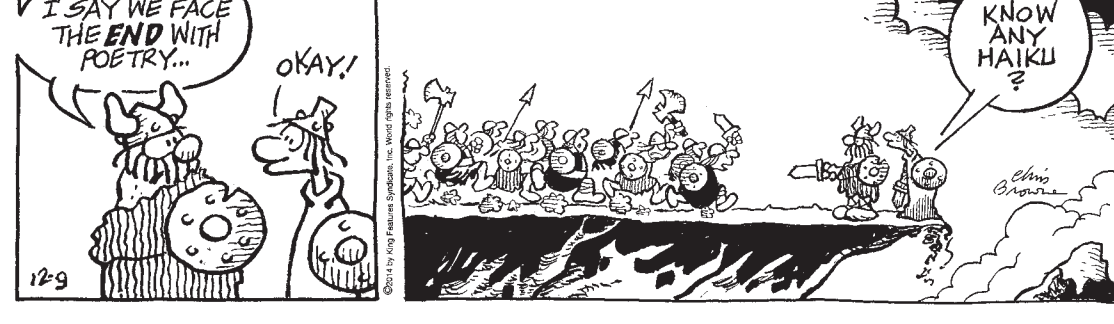
### Beetle Bailey



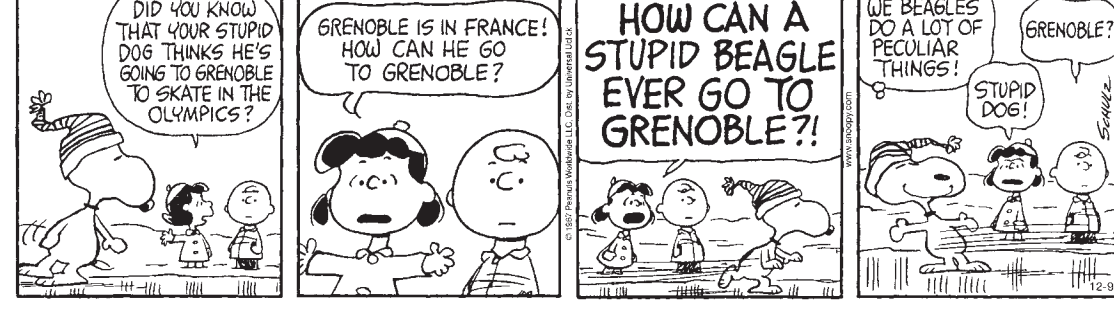
### Marvin



### Hagar The Horrible



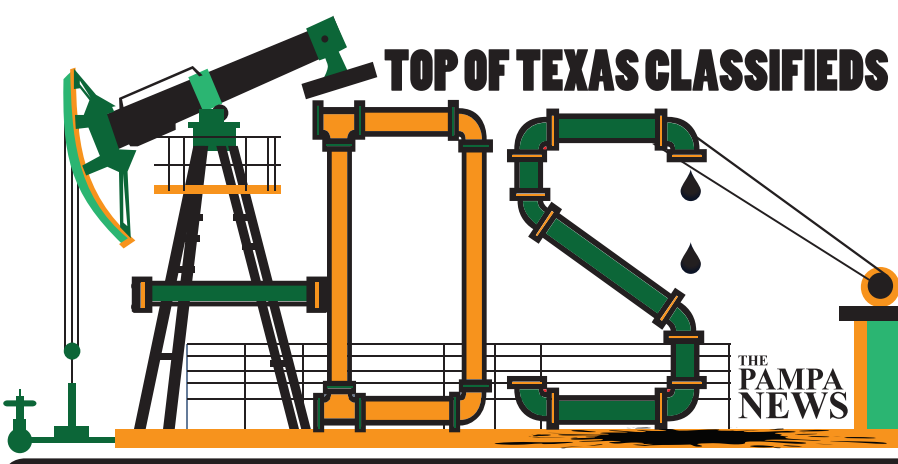
### Peanuts



### Blondie







# TOP OF TEXAS CLASSIFIEDS

THE PAMPA NEWS

ADS For Sale

ADS Jobs

ADS Services

ADS Happy Ads

Call Us today For Details!

Call Us today For Details!

as low as \$69 per month see display

FREE \$3 with photo

Say Happy Birthday to friends for FREE

5 Lines for 7 days \$37.50

7 Lines for 7 days \$47.50

Reaching over 12,000 readers daily • Call Us at (806) 669-2525

### Carpentry

CUSTOM Building & Remodeling: Kitchens, Bathrooms & Additions. Shawn Deaver Construction, 662-2977

OVERHEAD DOOR REPAIR. Kidwell Construction. Call 669-6347, 806-663-0192.

### Carpet Service

NU-WAY CLEANING SERVICE Bob Marx Owner-Operator. Call 665-3541.

### Situations

HOUSEKEEPER-needs houses to clean. Will do office buildings also! Call 806-662-0309.

### Help Wanted

CASHIERS & Wait Staff needed. Apply in person, Dyer's BBQ, Pampa.

CHEMICAL Applicator needed. Good driving record and drug test required. Good benefits. 806-665-4675

CLASS A CDL DRIVER W/ HAZMAT Higher Pay & Better Benefits. Must pass drug test. Apply in person. NO phone calls, please! Triangle Well Service 129 S. Price Rd. Pampa, TX

CNA, LVN or Certified Medical Assistant needed for growing medical practice Please fax resume to (806)665-0537

CULBERSON-STOWERS has an IMMEDIATE OPENING for Porter/Shop Maintenance. Be 21 yrs. or older. Clean driving record and able to pass drug test. \*Heavy Lifting required \*Must be punctual & reliable \*Able to start immediately Come by 805 N. Hobart and ask for Chris Pope

FULL-TIME Pipe Yard Helper needed at Bourland & Leverich Supply Co. Must be dependable & willing to work. Apply 8-5 Mon.-Fri., 11707 Hwy. 152 West, Pampa, TX.

### Help Wanted

**CNAs** 6-2 & 2-10 Shifts \$1000 Sign on Bonus

**LVNs** 2-10 & 10-6 Shifts

**RN WEEKENDS**

JOIN OUR TEAM! Requires TEXAS state license or certification. Competitive rates and full time employees eligible for benefits. EOE. For more info, please call our Administrator 806-665-5746 or apply at: CORONADO HEALTHCARE CENTER 1504 W. Kentucky Ave. Pampa

**Maintenance Tech** needed for a 150 unit Apt. Community Salary DOE Apply 1601 W. Somerville or call 665-7149

**NOTICE** Readers are urged to fully investigate advertisements which require payment in advance for information, services or goods.

PAMPA ISD is accepting applications for Bus Driver . Please apply online www.pampaisd.net or 1233 N. Hobart to pick up application. Pampa ISD is an EOE.

R. CHESTER Trucking needs Hot Shot Drivers. Class A CDL required. Seeking Old School People, NO drug addicts or drunks! Rick 806-595-0613.

**CULBERSON STOWERS Chevy, GMC, Buick and Toyota is seeking CUSTOMER SERVICE ASSOCIATES for our local, family owned dealership. Guaranteed income with great bonus structures! Apply in person to Tim Prauner Dress for interview please NO PHONE CALLS 805 N. Hobart, Pampa**

### Help Wanted

ROBERTS CO. is taking applications for a Road Hand for the Road Dept. CDL required. Excellent Benefit Package. Contact the office for application form or call 868-3721 for details. Roberts County is an Equal Opportunity Employer.

### Miscellaneous

FOR SALE: Double Lawn Crypt in Memory Gardens. Call 806-898-2451

MEMORY Gardens-Garden of Nativity, Section E Lot 59, Spaces 7 & 8 for sale. Negotiable. 806-848-2838.

Need Extra Christmas Cash? Let me buy your junk car or scrap metal. Call me at 806-663-6907.

NEW Queen Mattress Set \$246. All sizes on sale! Red Barn, 1424 S. Barnes, 665-2767

SWAP Shop, 1001 E. Frederic, Reduction Sale!! 40 % Off Everything. Tues. Dec. 9 thru Fri. Open 11-5.

### Feed & Seeds

**HAYGRAZER FOR SALE** Large Round Bales Delivery Available Call 806-278-0383

### Wanted to Buy

NEED Money NOW? We Buy & Sell Houses & pay TOP \$\$\$ Call today! 665-1875

### Unfurnished Apts.

\$350/mo and up. Large 1 bdr. apts. w/ app, are in walking distance to things you need. 665-4274, 881-8518

APTS. Houses Duplexes. K&B Properties. Ref. & dep. req. Lakeview Apts. 665-0995

CAPROCK APTS. 1, 2 and 3 bedrooms with rent starting as low as \$450/mo. Pool and on-site laundry, W/D hookups in all 2 and 3 bdrms. 665-7149.

CLEAN 1 bdr. apt. Stove, refrigerator. All bills paid. Call 886-1674.

### Unfurnished Apts.

Schneider Apartments: Call for special rates. Short term lease. Business people welcome. 665-0415

**TEXAS SIZE APTS.** 1 and 2 bdr. Apts. Largest in Pampa Plus Houses Too! Great Value! 665-1875 or 881-8518

### Furnished Houses

1 bedroom (in my home) for rent. \$200 a month, plus some utilities. Call 806-661-9769

**FULLY FURNISHED Executive Home**, previously rented by oil co. in Pampa. 3 bdr., 2 ba., 2 car gar., 2 liv. areas. C/h/a. \$1800 mo. + utilities. 972-468-6111.

### Unfurnished Houses

2 bedroom, 1 bath house. Utility room. Garage. Fenced yard. Near school. Call 207-0434

2 bedroom, 1 bath, central heat only, tile & wood floors, fenced. \$600 mo. Call Robert 214-801-4005.

**\$395/mo. and up!!** 2 & 3 Bdrm Houses for rent. 665-1875 or 881-8518

PICK up rental list in the Black Box at 125 S. Houston, Pampa.

VARIOUS HOUSES FOR RENT IN PAMPA!! CALL 663-6131

### Business Rent. Prop.

**DOWNTOWN PROPERTIES BUDGET RENTS AVAILABLE NOW!!** Service Station Retail Space Restaurant / Bar (fully equipped) Garage Space 806-665-1875 806-881-8518 806-665-4274

DOWNTOWN office space for rent. Utilities & cleaning service provided. Ample parking 669-6823

OFFICE space for rent. Ask about 3 months free rent. 669-6841

### Homes for Sale

2127 N. Nelson. 3 bdr., 1 ba. New carpet, paint & ceramic tile in kitchen. Travis Sch. Move-in Ready! 570-9924.

4/2/2 newly remodeled open floor plan. 2633 Fir. New hardwood, carpet, paint, texture, granite in kitchen. Remodeled bathrooms. \$200,000. No owner financing. Call for appt. 806-595-0234.

No Owner Finance: 2614 Cherokee, 3/2/2, 2 Living Areas, Numerous updates, \$157,000 Owner/Broker, 806-662-9082, 806-662-9083

TRUSTAR Real Estate for all your complete real estate needs. Show, list, property mgmt. 665-4595

### Trailer Parks

Tumbleweed Acres: storm shelters, fenced, stor. bldg. avail. 665-0079, 886-2230

### Autos

**IDEAL FOR COLLECTORS!** 1979 Pontiac TransAm. White / blue, lrg bird on hood. One owner! 24,500 actual miles. 6.6 L, 403 eng. Auto transmission. All original. Good price \$21,900. Call 806-665-4836.

TRY M&S Auto for all your auto repair needs. Call Ray or Mike, 120 N. Gray, 669-6990.

### PERSONAL CARE ATTENDANTS

Seeking caring and dependable people to work in the homes of elderly and disabled clients. Will assist with preparing meals, shopping, personal care, errands, light housekeeping, and other assigned duties.

We offer flexible day, evening, and weekend shifts. Must be at least 18 yrs of age with a clean criminal background. MUST have reliable transportation. No certifications or prior experience required. Fax Resume referencing Ad # 15557 to (806)747-0491 for an application, Call (866)747-0173

Apply online at [www.gentiva.com/careers](http://www.gentiva.com/careers)

Or apply in-person at 5010 Kenosha Ave #C, Lubbock, TX 79413

**GIRLING HEALTHCARE** E.O.E./M.F.D.V. Gary Winton: Realtor@Office Manager 806-440-1698 1712 N. Hobart • (806) 665-4595 Ron Lilley, Broker

We help you buy or sell your home!

### Legals / Public Notice

Notice is hereby given that a public hearing will be held by the Pampa Economic Development Corporation on December 18, 2014 at 4:00 p.m. at the Pampa EDC office, 107 E. Foster, Pampa, Texas

1. A project to grant \$50,000.00 to Hidden Hills Golf Course for renovation of the sprinkler system and golf course improvements. 2. This notice is published pursuant to the sixty (60) day public notice requirement set forth in Section Type-B (a-1) of the Development Corporation. Kathy Cota Associate Director Pampa EDC P.O. Box 2398 Pampa, Texas 79065 (806)665-0800 kcota@att.net H-32 Dec. 9, 2014

### General Services

CERAMIC tile work, stucco, cement, remodeling, floor, shower, kitchen. Texture, painting, dry wall. Free estimate. New # 440-0239, leave msg, Jesus Baraza.

COX Fence Company. Repair old fence or build new. Free estimates. Call 669-7769

HOUSE cracking? In bricks or walls? Childers Brothers, Inc. 800-299-9563, 806-352-9563.

Ogle Fence Company Free Estimates Repair & New Const. 665-1712

### PUBLIC NOTICE SEALED BID AUCTION

Wed. Dec. 9th 9am-Noon 97 Chevy 1500 03 Dodge Caravan 02 Pontiac Grand AM 02 Honda CDV 85 Toyota Supra 811 Wilks, Pampa, TX 806-440-0121 H-31 Dec. 9, 2014

## HELP WANTED Temporary Work

4 Job Openings – Starting: 02/01/2015 and Ending: 12/01/2015 Operates self-propelled custom harvesting machines, tractors, and other equipment to harvest a variety of grain and oilseed crops. Adjusts speed cutter, blowers and conveyors and height of cutting head, using hand tools. Changes cutting head as appropriate for crop. Drives heavy truck and does infield repairs and maintenance. Requires a regular driver's license. Require three months experience as farm machine operator. The employer, Lindel Farms LLC from Pampa TX, will pay the AEWR of \$10.86/hr. The employer guarantees 3 / 4 of the workdays in the work contract. The work tools, supplies and equipment are provided without cost to the worker, if applicable. Free housing is provided to workers who cannot reasonably return to their permanent residence at the end of the workday. Transportation and subsistence expenses to the worksite will be provided or paid by the employer upon completion of 50% of the work contract or earlier. Workers interested in the job should contact their nearest local State Workforce or send resumes to TWC, Alien Labor Certification Unit, 101 East 15th Street, Room 202T, Austin, TX 78778 and mention job order number: TX6984750

Follow Us On **twitter** @thepampanews

A X Y D L B A A X R  
is L O N G F E L L O W  
One letter stands for another. In this sample, A is used for the three L's, X for the two O's, etc. Single letters, apostrophes, the length and formation of the words are all hints. Each day the code letters are different.  
**12-9 CRYPTOQUOTE**  
V G G F T M P L A P O H F O X L A O P K N F  
G L H A P A F - M F A M Q O L G  
S Q V M F U F H O L N P J V A J J W H V K N F  
Q V X X P A F O O M Q F H F P O P A  
L W H N P U F O . — T . O . N F S P O  
Yesterday's Cryptoquote: I AM WHATEVER YOU SAY I AM; IF I WASN'T, THEN WHY WOULD YOU SAY I AM. — EMINEM

**Herbs Etc.**  
HERBS • VITAMINS • WEIGHT LOSS • ENERGY • WOMEN'S & MEN'S NEEDS  
• Powerful Protein Supplements  
• Aromatherapy & Supplies  
• Fat Burners, Carb Blockers  
• Probiotics  
• Natural Appetite Suppressants  
• Nature's Sunshine Products  
• Weight Loss Plans & Support  
• Weekly Specials  
109 W Kingsmill . Pampa (806) 665.4883 [www.panhandlesunshine.com](http://www.panhandlesunshine.com)  
M-F 10-5:30

**PLEASE BE SURE TO WINTERIZE YOUR PET'S OUTDOOR AREA!** KEEP OUT EXTRA FOOD & FRESH CLEAN WATER AND A SHELTER TO PROTECT FROM WIND & WETNESS



**FOUND**  
"Vixen Jangle"  
Shepherd Female Mix Puppy #16166



**DONATED**  
"Donner Frost"  
Lab Mix Male #16162



**FOUND**  
"Cupid Clause"  
Pyrenees Female #16153



**FOUND**  
"Blitzen Fluff"  
Corgi Mix Male #16104



**FOUND**  
"Dasher Snowden"  
Shepherd Mix Male Puppy #15980



**FOUND**  
"Prancer Star"  
Rat Terrier Male #16106

**Donations needed: Wet & Dry Cat Food, Puppy Chow**

Monetary Donations may be made Online at [www.pampaanimalwelfaresociety.com](http://www.pampaanimalwelfaresociety.com)

Sponsored by: **BOURLAND & LEVERICH**  
an Edgen Group Company



**FOUND**  
"Mr. Tinsel"  
Short Haired Male Kitten #15486



**FOUND**  
"Chris North"  
Short Haired Male Kitten #15472



**DONATED**  
"Comet Sparkle"  
Terrier Male #16044

For more info about these pets or for any other questions, call 806-669-5775.



# CROSSWORD

By THOMAS JOSEPH

- ACROSS**
- 40 Door sign
  - 1 Gambling mecca
  - 6 Construct
  - 11 Sailor's cry
  - 12 Without help
  - 13 Highway division
  - 15 Keats creation
  - 16 Opponent
  - 17 Chop down
  - 18 Election night news
  - 20 Before, to bards
  - 21 Maiden name label
  - 22 Gushing review
  - 23 Convoy trucks
  - 26 Is patient
  - 27 Anticoagulant's target
  - 28 Scary cry
  - 29 Roulette bet
  - 30 Ottoman rulers
  - 34 Historic time
  - 35 Debate side
  - 36 Luau dish
  - 37 Winning stroke in tennis

- DOWN**
- 1 Steam
  - 2 Steer clear of
  - 3 Atmosphere makeup
  - 4 Dray puller
  - 5 Suppresses
  - 6 Is furious
  - 7 Under the weather
  - 8 Approval
  - 9 Rattle
  - 10 Some young football players
  - 14 Memo
  - 19 Mile or meter
  - 22 Mob revolt
  - 23 Predicaments
  - 24 Swanky
  - 25 Victorian virtue
  - 26 Sandwich meat
  - 28 Char
  - 30 Chapel topper
  - 31 Garden pest
  - 32 Gallows sight
  - 33 Locations
  - 38 Salt, to Simone
  - 39 Abel, to Adam

F	L	A	P	S		M	O	O	D	
R	E	N	E	W		O	W	N	E	D
O	V	I	N	E		W	E	A	V	E
S	E	T		E	W	E		T	I	E
T	R	A	C	T	O	R	B	E	A	M
			H	E	N		L	A	T	E
A	D	D	I	N		C	U	R	E	D
T	E	E	N		A	R	R			
B	A	L	A	N	C	E	B	E	A	M
E	L	I		E	T	A		A	G	E
S	E	L	M	A		S	E	G	E	L
T	R	A	I	T		E	V	E	N	T
S	H	O	O			D	A	R	T	S

**Yesterday's answer**

- 10 Some young football players
- 14 Memo
- 19 Mile or meter
- 22 Mob revolt
- 23 Predicaments
- 24 Swanky
- 25 Victorian virtue
- 26 Sandwich meat
- 28 Char
- 30 Chapel topper
- 31 Garden pest
- 32 Gallows sight
- 33 Locations
- 38 Salt, to Simone
- 39 Abel, to Adam

THOMAS CROSSWORD BOOKS 1 AND 2! Send \$4.75 (check/m.o.) for each book to P.O. Box 536475, Orlando, FL 32853-6475

1	2	3	4	5		6	7	8	9	10
11							12			
13						14				
15				16				17		
18			19					20		
			21				22			
23	24	25					26			
27					28					
29				30				31	32	33
34				35				36		
37			38					39		
40							41			
42							43			

12-9



# Dear Abby...

By Pauline & Jeanne Phillips

DEAR ABBY: What are the signs of prescription drug abuse? How would you suggest a young person like me (I am 13) confront a close family member about something like this, especially since I'm not sure?

I found an antidepressant prescribed for my mother. As long as I can remember, she has been a happy and upbeat person, and I have no reason to suspect she's depressed. I'm worried she may be abusing the medication.

I have never felt comfortable asking questions, so it would not be easy for me to ask her. Please help. I now have trouble even speaking to her. Any advice would be appreciated. — WORRIED TEEN IN BOSTON

**DEAR WORRIED TEEN:** Perhaps it will lessen your fears to know that antidepressants are sometimes prescribed not only for depression,

but also to help people with sleep problems and other conditions. You have reached an age when it is important for teens to be able to talk to their parents about any concerns they may have, and you should talk to your mom about this. Please don't procrastinate.

DEAR ABBY: You once wrote that you were allowed to read anything growing up — nothing was taboo. We can all use good advice and be prepared when we encounter difficult situations.

I took that to heart and decided my children should read your column with me instead of my lecturing/instructing them about life. So now they take turns reading the questions aloud. We have a group discussion, and we all give our answers to the questions before we read your answers. If all of our answers are differ-

ent, we have a new discussion.

I love it because of the topics that come up. My children are learning how to reason, and that people from all walks of life (and all ages) have problems and need help. And finally, I love that my children realize that it's OK to ask for help, and they shouldn't worry or feel ashamed to ask in any situation.

Thank you so much, Abby. Your column is a great parenting tool for me and my husband. — MRS. M. IN SAN DIEGO

**DEAR MRS. M.:** Thank you for your kind words. My column may be a useful teaching tool, but you and your husband are using it wisely. While not everyone may agree with everything that's printed in my column, the discussions it often generates are helpful for sharing ideas and clarifying family values. This kind of communication brings families closer together.

DEAR ABBY: My fiance and I recently got engaged, and I was thrilled when he got down on one knee with my great-grandmother's ring. While I love both the ring and the idea that we saved a lot of money we can now put toward our wedding, I can tell he feels awkward when well-wishers congratulate him on having selected such a pretty and expensive ring. What's the best way to respond to these comments and make my fiance feel like he did a great job? — VINTAGE-LOVING BRIDE

**DEAR VLB:** It isn't necessary to discuss the history of the ring with everyone who comments. Because you know your fiance is sensitive about it, just smile and say thank you. \*\*\*\*\*

Dear Abby is written by Abigail Van Buren, also known as Jeanne Phillips, and was founded by her mother, Pauline Phillips. Contact Dear Abby at [www.DearAbby.com](http://www.DearAbby.com) or P.O. Box 69440, Los Angeles, CA 90069. \*\*\*\*\*

For everything you need to know about wedding planning, order "How to Have a Lovely Wedding." Send your name and mailing address, plus check or money order for \$7 (U.S. funds) to: Dear Abby, Wedding Booklet, P.O. Box 447, Mount Morris, IL 61054-0447. (Shipping and handling are included in the price.)

## BANANAGRAMS!

Each of the following seven-letter sets can be rearranged to spell out a common word that starts with O V E or O U T and/or ends with O U S or T O R I.

A O O R R T T

A D O R T U W

B D I O S U U

A E O P R V Y

Yesterday's Answer:

P	R	O	O	F	E	B	P
I	P			I	C	F	O
B	I	C	E				
N							
G							

12-9

# CHECKING THESE VITAL SIGNS CAN SAVE A LIFE.

Drive FRIENDLY. Drive SAFE.



Slow down & watch for detours in work zones. On highways, know the posted speed & drive to road conditions. And always watch for cyclists & pedestrians. Thanks, you're a lifesaver.



# Sudoku

Answer to yesterday's puzzle:

6	3	5	8	4	1	7	9	2
7	4	8	5	9	2	6	1	3
2	1	9	3	6	7	8	5	4
1	7	3	9	2	8	5	4	6
8	6	4	1	3	5	2	7	9
5	9	2	6	7	4	3	8	1
4	2	6	7	8	9	1	3	5
9	5	7	2	1	3	4	6	8
3	8	1	4	5	6	9	2	7

		8						5
	4		2			9	1	
	2			9		6		7
3	7	4				2		
8		2	6			3	4	
		1						
2		7			3	5	9	
4	8			1	2	7		
	5	3						

Level: Beginner

## Discover for yourself why Germania is The Insurance Texans Trust.



### Taylor & Miller Insurance Agency

120 East Browning  
806-669-3062



www.GermaniaInsurance.com



Looking for Home & Acreage? Call for details!

# Deck NEW HOMES This Holiday Season!




**PANHANDLE PLAINS REALTY**  
**516 S. Russell**



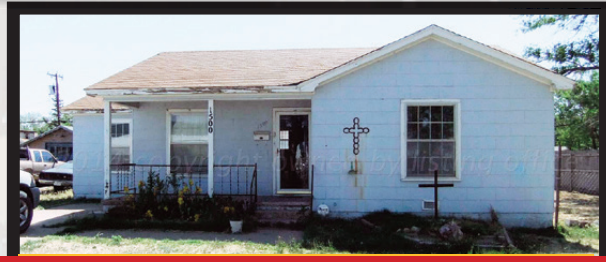
**7 Lister Ave, Borger**  
MLS #14-10166 2 bed - 1.75 bath - 1287 sqft



**111 E 7th St, Lefors**  
MLS #14-9990 2 bed - 1 bath - 1320 sqft



**710 N Main, McLean**  
MLS #12-9415 3 bed - 2 bath - 1610 sqft



**1500 Coffee St, Pampa**  
MLS #14-10052 3 bed - 1 bath - 1409 sqft



**708 Sloan St, Pampa**  
MLS #14-10172 4 bed - 1.75 bath - 1316 sqft



**705 N Somerville St, Pampa**  
MLS #14-10182 3 bed - 1.75 bath - 1124 sqft



**1805 Williston St, Pampa**  
MLS #14-10156 2 bed - 1 bath - 1256 sqft



**#31 4800 LL, Greenbelt**  
MLS #12-9608 2 bed - 1.75 bath - 1618 sqft



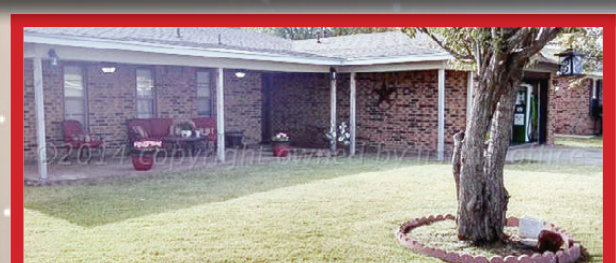
**2108 N Zimmers St, Pampa**  
MLS #14-10144 3 bed - 1.75 bath - 1223 sqft



**513 N Powell St, Pampa**  
MLS #13-9870 3 bed - 1.75 bath - 1917 sqft



**2225 Lea St, Pampa**  
MLS #14-10165 3 bed - 2 bath - 1750 sqft



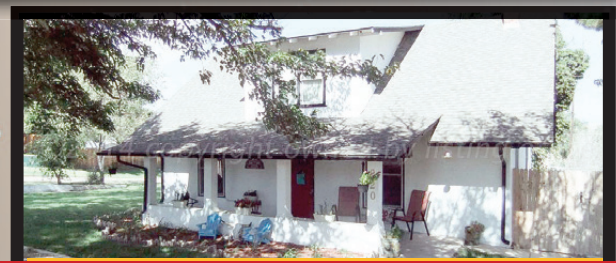
**1031 Sierra Dr, Pampa**  
MLS #14-10209 3 bed - 1.75 bath - 1261 sqft



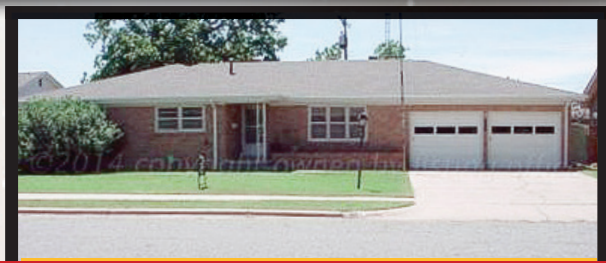
**1901 Chestnut, Pampa**  
MLS #14-10111 3 bed - 1.75 bath - 1580 sqft



**804-806 W Jackson Ave, WD**  
MLS #14-10198 4 bed - 2 bath - 2536 sqft



**220 W Wichita St, Pampa**  
MLS #14-10155 4 bed - 1.75 bath - 1997 sqft



**2541 Christine St, Pampa**  
MLS #14-10152 3 bed - 1.75 bath - 2050 sqft



**1916 Holly Ln, Pampa**  
MLS #14-10137 4 bed - 2 bath - 1848 sqft



**11609 Co Rd E, Pampa**  
MLS #14-10134 3 bed - 1 bath - 1651 sqft



**1625 N Zimmers, Pampa**  
MLS #14-10216 3 bed - 2 bath - 1623 sqft



**2545 Beech Ln, Pampa**  
MLS #14-10217 3 bed - 2 bath - 2816 sqft

## Acreage & Commercial Lots

**441 W Brown St, Pampa**  
MLS #12-9327 1 bath - 24,075 sqft

**612 S Gray St, Pampa**  
MLS #13-9950 2 bath - 39,150 sqft

**203 S Main St, White Deer**  
MLS #12-9561 1 bath - 1,260 sqft

**119 & 121 S Starkweather**  
MLS #14-9994 1 bath - 2268 sqft

**2505 N Perryton, Pampa**  
MLS #14-10097 25,270 sqft

**8601 W Cemetery**  
MLS #14-10017 Acreage

**200 S Main St, McLean**  
MLS #14-10019 Commercial Lots

**Burdett/Arrington Avenue**  
MLS #11-9135 Commercial Lots

**400 S Talley St, White Deer**  
MLS #12-9447 Residential Lots

See All Of Our Listings Online! [PanhandlePlainsRealty.com](http://PanhandlePlainsRealty.com)



**Linda Laycock**  
Broker  
BROKER®, GRI  
(806) 662-1312



**Tisha Calhoun**  
REALTOR®  
(806) 440-4153



**Larry Hadley**  
REALTOR®  
(806) 662-2779





# Advanced Heart Care



**PRMC now has the most advanced cath lab in all of the Texas Panhandle.**

This state of the art technology is used for heart catheterizations, injecting dye into arteries of heart to see if there is blockage keeping blood from getting to the heart, any kind of intervention needed to fix these blockages, to help with installing pacemakers to help with irregular heart rhythms as well as defibrillators and the lab can also be used to take pictures of various body parts.

For more information on the new cath lab and other services Pampa Regional Medical Center provides, call 806-665-3721.

 **PAMPA REGIONAL  
MEDICAL CENTER**

**Bringing Life to Pampa**  
One Medical Plaza  
(806)665-3721 prmc.tx.com