

BAILEY COUNTY JOURNAL

'The Community Of Opportunity-Where Water Makes the Difference'

Foreman Company
Box 68
Menomah, Tex. 79702



Vol. 23 No. 34

10 Pages Today

Published Every Sunday at Muleshoe, Bailey County, Texas 79347

Sunday, August 11, 1985

School Budget Has No Major Increase

Largest County Employer Expects \$5 Million Budget

One of the largest, if not the largest, employer in Bailey County is the Muleshoe Independent School District, consequently, the MISD has a very 'hefty' budget each year. A proposed budget for the school district for the 1985-86 school year is no exception. On Thursday night, a public hearing was conducted at the school administration offices on the proposed budget for the upcoming school year. It was

conducted by the Muleshoe Independent School District Board of Trustees.

Superintendent H. John Fuller had a cover letter to begin the thick budget proposal. According to the superintendent's letter:

"...Utilizing the information on this page and the information on Page 7 (the 1985-86 budget summary), you can see that Muleshoe I.S.D. will be deficit spending for the next two years. However, our revenues available now allows me to predict a reserve of \$442,510 at the beginning of the 1987-88 school year which is approximately the amount Muleshoe needs to begin each school year. The bottom line is quite simple: No tax increase is required to fund the next two years. However, beginning in 1987-88, the district will need to generate approximately \$400,000 in new revenue or reduce expenditures accordingly..."

Page five of the budget summary gives a five year budget comparison, including the proposed, or projected budget, for the 1986-87 school year.

Payroll costs for 1982-83 were \$3,016,724; \$3,005,855 for 1983-84; \$3,577,326 for 1984-85; \$3,920,118 for 1985-86 and \$4,147,288 for 1986-87.

Increased are the figures for Purchased and Contracted Ser-

Cont. Page 6, Col. 1

PreKindergarten Students Sought

For Fall School

Muleshoe ISD Superintendent H. John Fuller announces that Muleshoe ISD will offer a prekindergarten class this 1985-86 school year at Dillman Elementary School if a sufficient number of students are identified and enrolled.

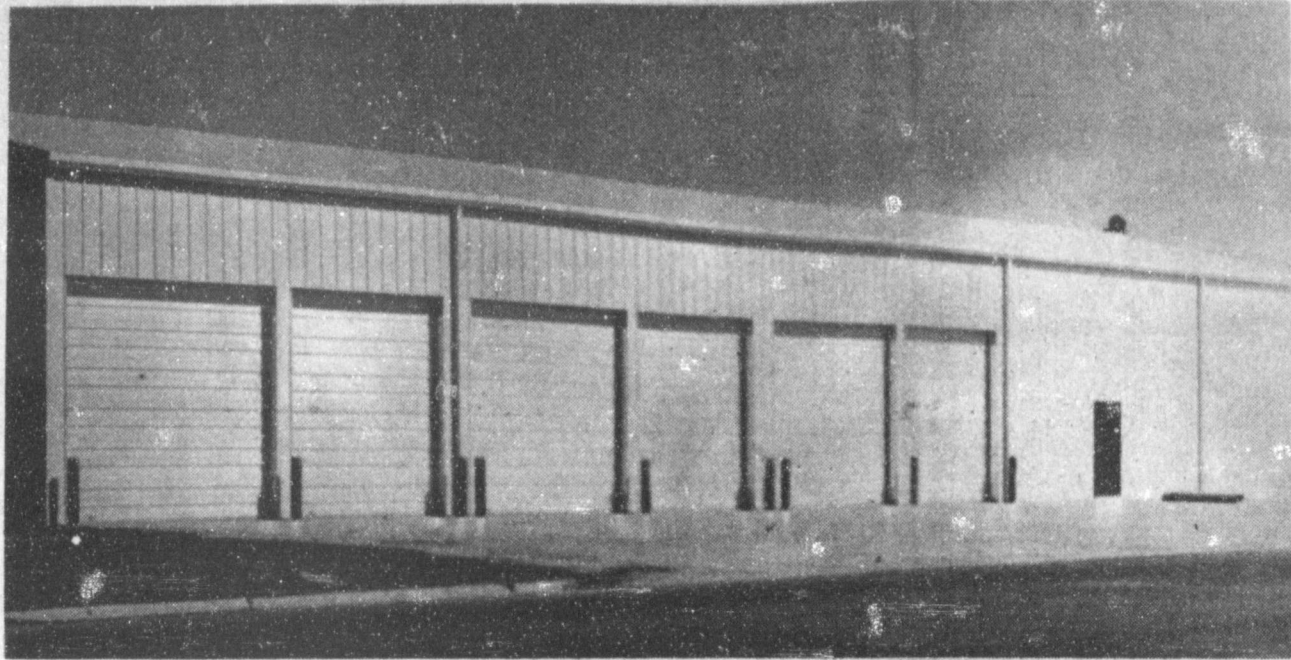
To be eligible for enrollment in a prekindergarten class, a child must be at least four years of age and must be (1) unable to speak and comprehend the English language; or (2) is from a family who is eligible to receive free or reduced price lunches.

The prekindergarten class will operate on a half-day basis from 12:30-3:30 p.m. and parents will be responsible for providing transportation.

A certified elementary teacher will instruct the children in an intensive language development program.

Please contact Mrs. Barbara Finney, principal at Dillman Elementary School if you have a child eligible for the program.

Parents are asked to bring the child's birth certificate and immunization record. Dillman Elementary's telephone number is 272-4313.



MULESHOE FIRE DEPARTMENT BUILDING NEARS COMPLETION--Late last week, inspectors were to decide if the Muleshoe Fire Department building, just off American Blvd. on East Fifth Street, was ready for occupancy. However, several small items needed to be done before the Muleshoe Fire Department could move into their new quarters. It has been named the Earl Ladd Fire Department building. Once completed, the Fire Department members will be conducting virtually all of their functions from the new building.

City, County Receive Latest Mixed Drink Tax Check

State Comptroller Bob Bullock Monday sent checks totaling \$12.3 million to the 221 counties and 422 cities as their share of the state's 12 percent mixed drink tax collected during the second quarter of 1985.

The Texas legislature raised the tax from 10 to 12 percent in 1984.

Bullock said the state collected \$51.3 million in mixed drinks taxes for the second quarter at the increased rate, compared to \$40.9 million collected during second quarter 1984 at the old 10 percent rate.

On total tax revenue of \$7,177.71, Bailey County received a check for \$897.21, while the City of Muleshoe received a check for \$479.17 or reported tax revenues of \$3,833.36.

Cochran County's check was in the amount of \$145.72 on reported tax revenue of \$1,165.75.

For Lamb County, the check was in the amount of \$1,221.59, on their tax revenues reported at \$9,772.74, while the City of

Littlefield received a check for \$819.79 on tax revenues reported to be \$6,558.33.

In this immediate area, Parmer County reported the smallest tax revenue at \$250.56, bringing them the smallest check of the area, at \$31.32.

Texas cities and counties now each receive a 12.5 percent share of the tax collected on mixed drinks sold within their boundaries under the law that legalized the sale of mixed drinks in the state.

Of the total \$51.3 million in state collections, counties received \$6.4 million, up from the \$6.1 million received second quarter in 1984. Cities received \$5.9 million compared to \$5.7 million collected during the same period last year. The state's general revenue fund received the balance.

Bullock said the \$38.9 million was deposited in the state's general revenue fund from second quarter collections compared to \$29.1 million collected at the 10 percent rate for the same period in 1984.

The mixed drink tax is collected by the Alcoholic Beverage Commission and city-county rebates are sent out quarterly by the Comptroller's office.

Muleshoe Campus Will Be Offering College Classes

Three area colleges and Muleshoe High School are offering several adult classes for the fall. All classes will be conducted on the Muleshoe School campus, with registration scheduled August 19-28 in the office of Elizabeth Watson, assistant superintendent of curriculum.

Most classes require a minimum of 15 students in order to have the class in Muleshoe, explained Mrs. Watson.

South Plains College of Levelland will be offering Government 232 (Meets certification requirements for out-of-state teachers); Introduction to Sociology 230 and English 131.

From Wayland Baptist University, the classes are ED5305-Instructional Techniques and English 4306-Teaching English as a Second Language (ESL Endorsement).

EDCI-5318-This course develops a general understanding of the ways small computers can be used in education and ED5321-Advanced Computer programming will both be offered as graduate courses by Texas Tech University.

Local computer classes will be Beginning Computer Training with Bobby Turner and Britt Gregory as instructors.

Georgia Pena will be conducting a local typing class on Typing Skills.

School Board Slates Meeting On Monday Night

Trustees of the Muleshoe Independent School District have a number of items to consider when they meet in regular session at 8 p.m. on Monday, August 12 in the school administration office.

Informational reports will be given on the TASA/TASB convention as well as full financial reports.

Under business items are the following: consider a bid for bank depository for 1985-86; also for 1986-87; bids for fuel and for milk for the 1985-86 school year; approval of recommendations for improvements in the Drug Education Program; approve the 1985-86 school budget; set the 1985-86 tax rate; amend the 1985-86 school calendar and consider a request for a hardship transfer.

Following an executive session. Cont. Page 6, Col. 2

Around Muleshoe

Joyce Holmes, manager of the Bailey County Civic Center, said fall and winter youth skating will be starting up again September 20.

She said sponsors for the skating are needed. Interested groups may check with her at the Civic Center.

Doctors will be conducting athletic physicals for all junior high and high school boys who plan to participate in the athletic programs at the two schools.

The physicals will be for boys from Muleshoe and surrounding area schools, and will be in the Muleshoe High School gym Sunday, August 11, at 1 p.m.

Also, physicals for junior high and high school girls from Muleshoe and the surrounding area, who will be in the athletic programs, will be at 1 p.m. on Sunday, August 18, at the same location.

First day of workout for the football players will be Monday, August 12, and the first day in pads for the players will be Friday, August 16.

Fine Arts Booster Club from the Muleshoe Schools will meet on Tuesday, August 13 at 7 p.m. in the community room of the Muleshoe State Bank.

New officers will be chosen for the 1985-86 school year.

All parents of children involved in speech, band, and art in Junior High and High School are urged to attend this meeting.

Jim Foster and Denise Wilson of Muleshoe, carded a 127 to win the two-day annual Kings and Queens Golf Tournament's Championship Flight at Plainview Country Club.

Denise Wilson had the long drive on 7 Saturday and was closest to the pin on No. 8, while Dee Davidson and Kelly McNeely of Olton won those honors, respectively, on Sunday.

Denise is the daughter of Leon Wilson and Anita Allgood, both of Muleshoe. She is a graduate of Muleshoe High School, and won state competition her senior year. She is attending Texas Tech University and is a member of the golf team at TT.

Marine Lance Cpl. Jesse B. Carrion, son of Salomon and Feliz Carrion of Muleshoe, recently reported for duty with 3rd Marine Aircraft Wing, Marine Corps Helicopter Air Station, Tustin, CA.

A 1982 graduate of Muleshoe High School, he joined the Marine Corps in August 1984.

Muleshoe Singles met Thursday night, Aug. 8 for homemade icecream and games.

The group will meet Thursday night, Aug. 22 at Summit Savings community room and a spokesman for the group stated that any interested single adult is urged to attend.

Refreshments will be served and games played.

GTE Changing Mailing To Nine-Digit Numbers

Most General Telephone customers are seeing their nine digit zip code for the first time on recent telephone statements as the company begins using the U.S. Postal Services "Zip-plus-4" program to reduce postal expenses and expedite delivery.

The expanded zip code has several advantages for high volume users, including a half cent postage discount and a more complete customer address identification that allows sophisticated postal equipment to scan or read the information and direct it to its destination

on a more timely basis.

General Telephone mails over a million customer bills each month and can reduce the impact of the recent increase in postal expenses by taking advantage of the discounts offered for using the additional four digit postal identification and presorting by zip codes.

The company will receive overall discounts of four and one half cents per piece by presorting by zip code and using the additional four digits, which in turn, reduces the amount of handling required by the postal service.

However, even by taking advantage of the discounts, the company's postal expenses continue to rise. The recent two-cent postal increase was partially offset by a penny increase in the presorting discount. An additional half cent will be saved by using the Zip-plus-4 program, leaving the company with a half cent increase in costs, or about \$65,000 annually.

The nine-digit codes give a more precise location of customer mailing addresses. The five digit code used by most individuals allows identification of the state, town and section of town. The first two numbers of the four digit extension identify a delivery sector, which can be several blocks, a group of streets, several office buildings or a small geographic area. The last two digits identify a delivery segment, such as one side of the street, one floor of a building, specific departments in a firm or a group of post office boxes.



TOWN & COUNTRY SIGN GOING UP--Standing out prominently at "The Crossroads" in Muleshoe is a very large, very tall Town & Country Food Store, marking the location of Muleshoe's newest convenience store. Completion of the store is expected in the very near future.



WELCOME TO TEXAS--Signs like this one have recently been erected at the state line all along all U.S. and state highways. The signs, put up by the State Department of Highways and Public Transportation, are to welcome visitors during the state's sesquicentennial celebration next year. The eight by 12 foot signs feature a red, white and blue Texas flag.



RIF DISTRIBUTION--The Muleshoe Texas Migrant Council held their RIF (Reading is Fundamental) Distribution at the Old Park Wednesday, Aug. 7. These activities lead up to the "Book distribution" when the youngster browse through a wide selection of books and chooses a book of their own. The purpose of the program is designed so that reading is both fun and fundamental.

Texas Mental Health Code Seminar Slated

The personal safeguards and the legal complexities of the Texas Mental Health Code will be the topic as physicians, health care professionals, law enforcement officials, and concerned citizens meet Thursday, September 26th, at Charter Plains Hospital in Lubbock. The crowd will be taking part in a one-day seminar entitled "Texas Mental Health Code Update."

The free seminar is aimed at making persons aware of the Texas Mental Health Code which governs the commitment of mentally-ill persons to treatment facilities. In the past session of the Texas Legislature, the Texas Mental Health Code was revised, affecting the commitment process and psychiatric treatment. Those changes, which go into effect this month, restructures the commitment process and the safeguards instituted to protect the rights of the patient.

Harry Deckard, a lawyer for the Texas Department of Mental Health/Mental Retardation (TDMHMR), will be the featured speaker for the seminar. Deckard will address the group on the revisions of the Texas Mental Health Code and how they affect the commitment procedure and treatment. In other sessions, a panel of experts on the psychiatric and substance abuse commitment processes will discuss in detail the Texas Mental Health Code changes.

Members of the panel discussion will include H.G. Whittington, M.D., Medical Director for Charter Plains Hospital;

Lubbock County Judge Rodrick L. Shaw; Douglas Proden, M.D., Medical Director for Lubbock Regional Mental Health/Mental Retardation; Parviz Malek-Ahmadi, M.D. from the Texas Tech University Health Sciences Center Department of Psychiatry; Jack Stovall, Director of Community Programs at Big Spring State Hospital; and Harry Deckard of TDMHMR.

Sponsors of the information-sharing seminar are Charter Plains Hospital, Lubbock Regional MHMR, Center Plains MHMR in Plainview, and the Mental Health Association in Texas. Registration will begin at 9:45 am at Charter Plains Hospital, 801 North Quaker Avenue, September 26. Seminar activities will end at 4:00 pm. There will be no charge for participation in the event or for continuing education credits that will be offered to those attending the conference.

For information on reservations for the free seminar on the Texas Mental Health Code, call Larry M. Barber at 774-5505, ext. 740 or toll-free outside Lubbock at 1-800-692-4606.

GOLDEN GLEAMS

One half of the world must sweat and groan that the other half may dream.

-H.W. Longfellow.

The world is his who can see through its pretension.

-R.W. Emerson.

Fad Diets Can Give Nutrition A Bad Name

Millions of people across the country are looking for a fast and easy way to lose excess weight. And many will turn to the latest fad diet for help.

The American Heart Association urges dieters to adopt healthful eating habits on a permanent basis, instead of impatiently pursuing crash diets in hopes of shedding unwanted pounds in a few days.

Fad diets usually overemphasize one particular food or type of food, according to Williams L. Winters, Jr., M.D., president of the Texas Affiliate of the American Heart Association.

"Fad diets violate the first principle of good nutrition, which is to eat a balanced diet that includes a variety of foods," Winters said. "Those

who are able to stick with a fad diet for more than a few weeks may develop nutritional deficiencies, because no one type of

Sudan Pee Wee

League Comes

To A Close

Pee Wee League came to a close June 28, 1985 with the two Sudan teams, the Astros and the Mets, in the finals at the Amherst tournament.

Emotions were high and stomachs were in knots, of the parents that is. The players seemed to be doing fine.

The first inning is under way--Grant Gatewood and Everst Williams make our first two runs for the Astros. But the Mets battle right back with Joe Smith and Jarrod Fisher making two runs leaving us tied two-two at the top of the second. Russell Peterson is the hitter in the second inning with our only run for the Astros, and again the Mets came back with Lee Ray scoring for them. Still neck and neck the score is three-three, the top of the third inning.

The Astros slump in the third not getting a run, but the Mets Joe Smith and Jarrod Fisher came back with scores making the score five-three Mets in the top of the fourth inning. The Astros get tough now with Grant Gatewood, Ryan Netherland and Russell Peterson all scoring and then hold the Mets scoreless in the bottom half.

The score is now five-six Astros and we are coming down to the wire. Last bat for the Astros and Everst Williams makes our only run. The bottom half of the last inning the Mets are at the top of their line up. But the Astros held them winning the game or was it the National Pennant. Either way they all played their hearts out and both teams are to be commended for a job well done.

Nursing Home

News

by Joy Stancell

Our special thanks to the Hospital and Nursing Home Auxiliary and the Mary Martha Sunday School Class of the First Baptist Church for their generous donations the the Activity Fund. We really appreciate it.

Edity Goucher and Edith Bruns received birthday card greetings from Mr. and Mrs. Earl Peterson.

Tuesday morning Ernest Kerr was visited by two of his granddaughters, Alyson and Sh.

Laverne James came Tuesday afternoon to play Bingo with Ernest Kerr, Fred Peat, B.B. Street, Lois Ethridge, D.J. Gage, Edith Bruns and Margaret Beard. Special guest were Arnold Morris and Joann Sanders.

Thursday morning Clara Jones came to play the piano for our devotional. Bible readings were read by Fred Peat and Lois Ethridge. Special guest were Mr. Cannon and Rita Saure.

B.B. Street was visited by his son, Donald Street, Tuesday.

Thursday afternoon Laverne James and Retta Shipp came to play Skip-Bo with Lois Ethridge and B.B. Street. Ernest Kerr watched closely to make sure the plays were right. J.E. Embry came by to visit and watch.

The Auxiliary brings us juice and coffee several times a week. We enjoy their visit and the refreshments.

Melba Bratcher visited her grandmother, Alva Shofner, Monday afternoon. She was also visited by Mr. and Mrs. J. T. Shofner.

Margaret Beard was visited by Mr. and Mrs. Ralph Glover Tuesday.

Out thanks to Mr. and Mrs. Ralph Glover for the beautiful ivy plants. They look so pretty in the Day Room.

Clara Weaver was visited by Mr. and Mrs. Charles Chassat of Arizona.

Thank you Charles and Nena for the delicious candy for the employees. Also for the nice walker and other useful items.

L.L. Luman, a former resident of Bailey County, visited Lois Ethridge and Edith Bruns Monday.

food contains all the nutrients needed for good health."

After a day or two of eating only grapefruit or rice and water, or whatever the particular fad diet prescribes, most dieters feel sorry for themselves and begin to cheat, returning to their old eating pattern, said Winters.

Because no "superfoods" exist, the emphasis should be on eating moderate amounts from all five food groups, not on consuming large amounts of a few special foods, he said.

The food groups that should be included daily are: 1) vegetables and fruits 2) bread and cereals 3) skimmed milk dairy products 4) lean meat, poultry, fish, dried beans and peas, nuts and eggs (no more than two egg yolks per week) and 5) minimal amounts of fats and oils.

Fad diets also violate a second important principle of good nutrition--eating should be enjoyable.

"Fad diets are so monotonous and boring that it's almost impossible to stay on them for long periods," Winters said. "That's why they are fads. But as soon as an old fad diet becomes unpopular, a new one takes its place."

Unlike a fad diet, a good diet can be eaten for years and helps to maintain desirable body weight as well as good health.

Fad diets fail to provide ways to

keep excess weight off, said Winters.

"Because fad diets require drastic changes in eating patterns, dieters cannot stay on them for long," he said. "Fad dieters are not learning anything about permanently changing their eating patterns. Of course, many dieters do not really want to make long-term changes, so it's not always the diet that fails--often it is the dieter."

Despite what the fad diet books may say, the sensible way to lose weight permanently is to cut down on the quantity of foods--especially the high-calorie extras like desserts, fried foods, sweets and alcoholic beverages--and maintain or increase physical activity. But eating patterns don't change overnight. Winters suggest tackling just one habit at a time and getting used to that change before moving on to the next.

A beginning dieter should start with the easiest changes. For example, he or she can begin to use low-fat milk in place of whole milk, and after adjusting to that change, switch to skim milk.

"Dieters should view their new eating plan as a new way of life, not as a diet to be discarded after a short period of time," Winters said. "A dieter's goals should be a permanent, beneficial, nutritious way of eating."

GOING OUT OF BUSINESS! **SALE**

After 37 Years In Business

Richardson's Store

At Bula, Texas

Is Closing Their Doors with

20-33 1/3 & 50% Off

Storewide

Grocery On Housewares
Drugs Pipe Fittings
Hardware Sewing Notions
Items Bolts

Bailey County Journal (L.P.S. 1948-201)
Established March 31, 1963. Published by Muleshoe Publishing Co., Inc. Every Sunday at 304 W. Second, Box 449, Muleshoe, Texas, 79347. Second Class Postage paid at Muleshoe, Texas 79347.

TA MEMBER 1985
TEXAS PRESS ASSOCIATION

L.R. Hall, President
James Woods, Vice President
Cleta Williams, News
Evelyn Harris, Society
Holly Millsap, Advertising
Lillie Nimo-Circulation, Classified
Sammye Hall, Bookkeeper

SUBSCRIPTIONS:
Muleshoe Journal and Bailey County Journal
Bailey and surrounding counties \$12.95
Elsewhere in Texas \$12.95
Muleshoe Journal and Bailey County Journal
Outside of Texas \$13.95
Yearly by Carrier \$11.50
Advertising rate card on application.

If your old air conditioner goes out

CONSIDER A HEAT PUMP



Bob Bomer
Bomer Electric

Dee Puckett
Southwestern
Geothermal

If your air conditioner goes out this summer, your serviceman may recommend that you replace it with a heat pump. The top heating and cooling contractors in this area agree that a heat pump cools and heats your home quietly, cleanly, efficiently and economically. It works for you year round.

Contact your heat pump dealer . . . or . . .

Call 741-7200 for your free HEAT PUMP BUYER'S GUIDE

(A Lubbock Telephone Number)

A&M FivePoint

Hi-Protein

Dog Food

50 Lb. Bag **\$9.75**

★ Up Coming Auctions ★

August 17, 1985

Large Estate Auction

In Portales

For more information or to schedule an auction call:

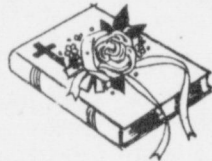
W&J AUCTION SERVICE
James & Butch Priest, Auctioneers
763-7311

A Day to Remember



MRS. KELLY NELSON
(nee Lavern Durr)

STORY PAGE 4



MRS. TODD GREGORY
(nee Roxanne Airhart)

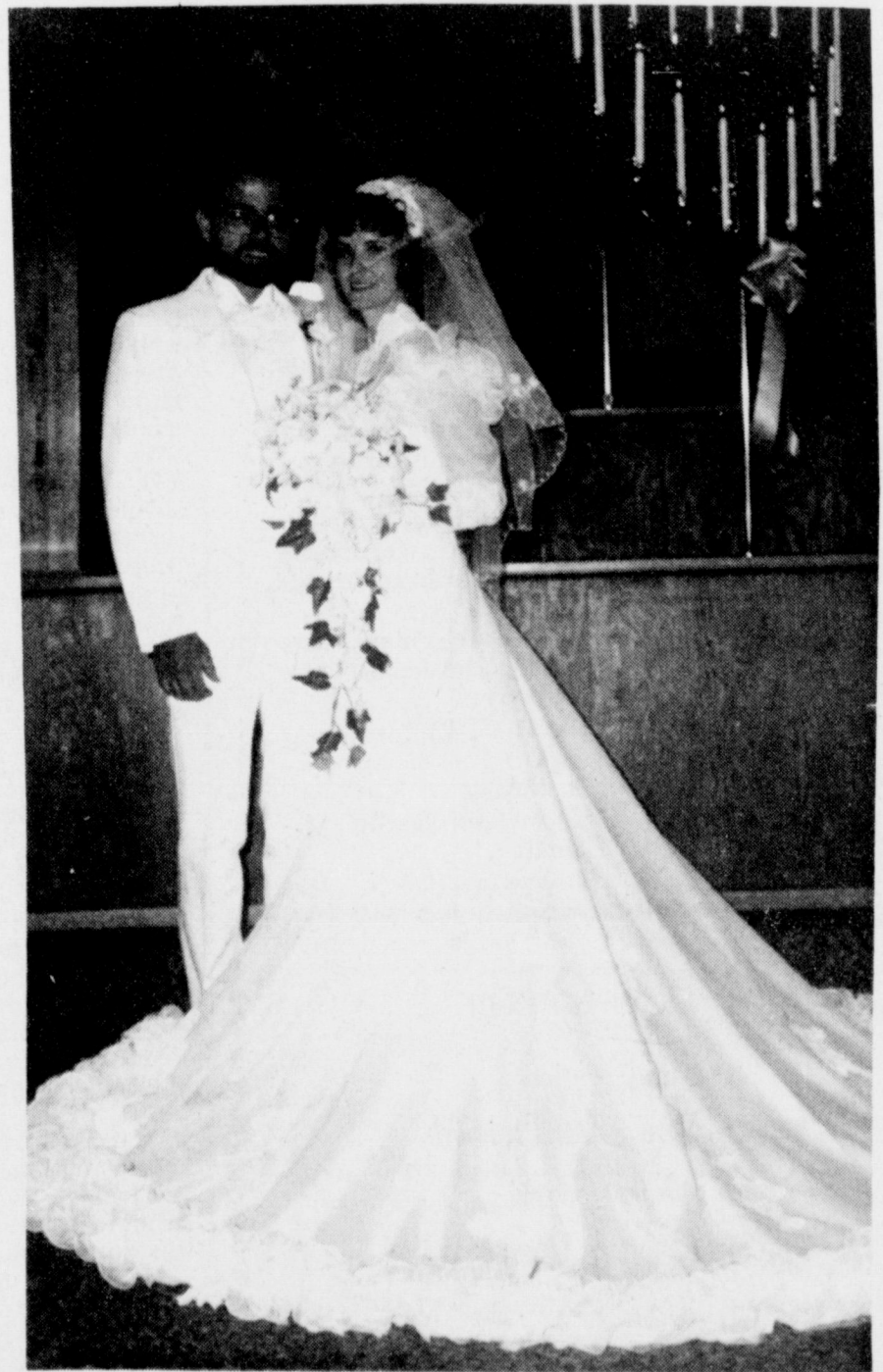
STORY PAGE 5



MR. AND MRS. RANDY JOE WISEMAN
(nee Rebecca Ann Musick)

Photo By Ted Bigham
Photography

STORY PAGE 5



MR. AND MRS. CHARLES HARVEY
(nee Joy LaDene Dudley)

STORY PAGE 4



Double Ring Ceremony Unites Lavern Durr, Nelson

Lavern Durr and Kelly Nelson exchanged wedding vows in a double ring ceremony Friday at the University Church of Christ in Canyon with Rev. David Fristoe of Amarillo officiating.

The bride is the daughter of Betty Carpenter of Muleshoe and Jimmie Carpenter of Electra, and Nelson is the son of Mr. and Mrs. Joe Nelson of Dimmitt.

Wedding music was provided by the Central Express singing group from the Central Church of Christ in Amarillo.

Vows were exchanged before a brass archway decorated with two doves forming a love knot of white tulle net, accented on both sides with florals of the same type carried throughout the setting. Twin seven branch candelabras flanked the archway with a side accent of unity candles. Entry and mothers' pews held lifted brass candelabras with a swaying satin ribbon attached to a fresh bouquet.

Given in marriage by her father, the bride wore a traditional wedding gown of white satin, Venise lace and bridal pearls. The fitted bodice featured a sweetheart neckline and white silk flowers over each shoulder. The bodice was covered with clusters and swirls of pearls. Small covered buttons lined the bodice back. The elbow-length puffy sleeves were complimented with small daisy motifs of Venise lace each centered with a cluster of pearls. The softly gathered skirt featured a wide ruffle joined to

the skirt by a band of Venise lace. It has a gathered train. She wore a silk floral headpiece.

The bride carried a modern bouquet featuring fresh yellow enchantment lilies and freesia, accented with blue corn flowers and fern.

Kristi Bennett of Wildorado served as matron of honor. Bridesmaids were Sharon Burris of Muleshoe, Joie Hutchens of Amarillo, and Karen Nelson of Dimmitt.

They wore royal blue ponges. The floor length dresses featured a stand up ruffle off-the-shoulder neckline, cummerbund waistband, tuxedo back peplum and strait skirts. The attendants carried fresh bouquets of yellow lilies, blue iris and freesia.

Doug Nelson, brother of the groom, served as best man. Groomsmen were Steve Bradley of Clovis, N.M., Gary Brown of Canyon, and Kent Winders of Lazbuddie.

The groom wore a grey bedford tailed tuxedo with a penstriped pant, ascot tie, light grey vest, and a white wing tipped shirt. The groomsmen were attired the same except for short jackets and dark vests.

Candlelighters were Jay and Scott Nelson, both of Dimmitt. Ring bearer was Cody Winders of Lazbuddie.

Flower girls were Heather Durr of Canyon, daughter of the bride, Brandi Hutchens of Amarillo, Amy Andrews of Hereford and Leslie Nelson of Dimmitt. They were adorned with tea length maise yellow off-the-shoulder ruffled dresses. The full skirted dresses were accented with white tights and white woven flower baskets trimmed with picot ribbon and baby's breath.

Ushers were Curtis Carpenter of Muleshoe, Mike Black of Clovis, N.M., Kelly McCall of Olton and Lyndal Hurst of Slaton.

Signatures for the wedding guests were secured by Keila Franks of Amarillo. The table in the church foyer featured a free prom floral with a brass and crystal ink well.

Special guests were the couples' grandparents, Mr. and Mrs. Harold Leavitt of Vega and Mr. and Mrs. H.C. Nelson of Dimmitt.

Following the ceremony a reception was held in the fellowship hall. The bride's table was centered with a tiered wedding cake with fresh floral decorations. The table was covered with a special handmade bridal cloth. Crystal punch bowl and appointments completed the setting. Presiding

BIBLE VERSE

If ye will obey my voice indeed, and keep my covenant, then ye shall be a peculiar treasure unto me above all people; for all the Earth is mine.

1. To whom was the above promise made?
2. Through whom was it given to these people?
3. Where were the children of Israel at this time?
4. Where may this promise be found?

Answers

1. The Children of Israel.
2. Moses.
3. At the foot of Mt. Sinai.
4. Exodus 19:5.

at the table was Ronda Finck of Tulia and Carolyn Kennedy of Canyon.

The groom's table was set with a silver coffee server, crystal trays of finger sandwiches and wedding color chocolate adorned strawberries. Presiding at this table was Shelli Carpenter of Muleshoe.

Members of the house party included: Kay Glover of Olton, Arvis Fleenor of Canyon, Evelyn Glover of Canyon, Odessa Leavitt of Happy and Pat Glover of Canyon.

A Mexican Fiesta supper was served at the church after the Thursday evening rehearsal hosted by the groom's family.

Following a wedding trip to Las Vegas and Elco, Nev., the couple will reside in Canyon.

The bride is a graduate of Muleshoe High School and WTSU. She has taught three years in the Amarillo schools.

Nelson is a graduate of Dimmitt High School and has attended South Plains College in Levelland two years. He is employed by Pro Ag Supply in Dimmitt.

Pre-bridal courtesies included a bridal brunch at Canyon in the home of Terri Nickson; a lingerie shower at Amarillo, in the home of Keila Franks; and a wedding shower at Dimmitt in the home of Gail Bruegal.



MARRIAGE ANNOUNCED--Mr. and Mrs. Gerry Pierce are pleased to announce the marriage of their daughter, Sherri Suzanne to William E. Sterling, son of Eldon Sterling and June and Cliff Durham. Miss Pierce and Sterling were married on Friday, July 26 in Lubbock. The couple reside in Lubbock where Sterling is employed with the C & J Training Stables and the bride is employed by Ken Flagg Homes.

Rebekah Lodge

As the Rebekah's gathered for their meeting on Tuesday, Aug. 6 they were greeted by the smell of hamburgers being grilled by the Noble Grand Ruby Green. After the burgers were consumed she then uncovered home made ice cream and cakes.

The lodge meeting was called to order and the U.S. Flag was presented by Claud Wilemon and the Rebekah flag by Dimple Sims. Opening prayer was given by Renee Rudd, after which routine business was attended to.

Noreen Pearson was installed as musician. It was announced that the Odd Fellows would be honoring Circle Seven on Thursday night and the Rebekah's will be furnishing the meal.

On Tuesday, Aug. 13th the girl that went on the United Nations tour will speak to the group about her trip. This year the delegate was from Friona. All members are urged to attend and hear this young lady tell about her experiences.

This trip is sponsored and paid for by the Rebekahs of District five consisting of Muleshoe, Friona, Dimmitt and Hereford.

Lodge was closed with Happy Birthday being sung to Crispin Green by the 22 members present.

Going to church adds something to living which distinguishes it from surviving.

Double Ring Ceremony Unites Miss Joy Dudley, Harvey

Miss Joy LaDene Dudley became the bride of Charles Stephen Harvey in a candlelight ceremony June 29 at 7:30 p.m. in the Trinity Baptist Church. Bro. Buster Huggins read the double ring vows.

Parents of the couple are Mr. and Mrs. Dale Dudley of Muleshoe, Mrs. Darlene Walker of Lazbuddie and Charles Harvey of Muleshoe.

The church was decorated with a brass arch, adorned with boxwood greenery and lavender satin bows. Heart shaped brass candelabras adorned either side, accented by white and lavender silk bouquets.

Leslie Pittillo of Olton, soloist, sang "You're The Inspiration," "Annie's Song," "The Wedding Song," and "One Hand-One Heart." She was accompanied by Tommie Bratcher, organist, and Laura Wheeler, pianist.

Given in marriage by her father, the bride wore a gown designed by "Mori Lee", featuring a traditional high neckline with long fitted sleeves and natural waistline in white over white taffeta. Appliqued Alencon lace adorned the bodice and sleeves, accented with minuk seed pearls.

To complete the treasured look a ruffle flounce graced the shoulders to compliment the cascading cathedral train. The fingertip veil, with finished edging, was held in place by a Juliet caplet of lace and seed pearls. Small lace roses graced the entire length of the veil.

The bride carried a cascading silk bouquet of white roses, phalaenopsis, orchids, stephanotis, lily of the valley and white miniature carnations accented with white elegance lace and English ivy.

In keeping with the bridal tradition, the bride wore a wedding ring borrowed from her sister, on her right hand; something old was a handkerchief, something new was her wedding attire, and something blue was her garter.

Mrs. Kem Bock of Earth served as matron of honor and Loveta Wilson of Lubbock was bridesmaid. Cara Danner of Arlington, niece of the groom, was flower girl.

Mike Pool of Muleshoe was best man and Wesley Cook of Muleshoe was groomsman.

Candlelighters were Kem

GOLDEN GLEAMS

Cursed be their anger, for it was fierce; and their wrath, for it was cruel.

-Genesis 49:7.

He who curbs his wrath merits forgiveness for his sins.

-Hebrew Proverb.

The tigers of wrath are wiser than the horses of instruction.

-William Blake.

Bock of Earth and Preston Langford of Lazbuddie. Ushers were Kem Bock of Earth and Preston Langford of Lazbuddie.

Following the ceremony, a reception was held in the fellowship hall. Cindy Danner registered the guests and served cake. Mrs. Ken Bock served punch. Serving at the groom's table was Mrs. Ted Eason and Ms. Laura Wheeler.

Following a wedding trip to Manitow Springs, Colorado, the couple are making their home in Muleshoe.

The bride is a graduate of Muleshoe High and attended American Commercial College.

Harvey is a graduate of Muleshoe High School and attended Arlington Baptist University.

Out of town wedding guests include Mary and T.B. Wheeler of Olton, Mr. and Mrs. Larry Danner of Arlington, Mr. and Mrs. Denny Dudley of Seagraves, Celia Morris, grandmother of the groom of Woodward, Okla. and Mr. and Mrs. Benny Moore.

The rehearsal dinner was held at K'Bob's, hosted by the parents of the groom.

For All Your Local News Or Club Activities Call 272-4536 Or Come By The Journal Office

Muleshoe Fitness Center Observes

'Parent Day'

Wednesday, August 7, was "Parent Day" for the tumbling program at Muleshoe Fitness Center.

Parents attending this special workout were entertained by their own children, showing off specific tumbling skills they have mastered during the summer tumbling program. Parents also participated in the stretching and warm-up segment of each class.

Ricki Kelley, tumbling instructor, presented a program on "Tumbling Progression." She stressed the importance of stretching and warm-up before each workout, correct form technique of each individual tumbling skill, body awareness and coordination, how to spot your child through a particular skill, and most important, safety rules in the gym. Also discussed was the new Fall Schedule.

Bringing the program to a close were a few of the advanced students demonstrating "Tumbling Progression" for the parents and other students. Those advanced students participating were Erin and Evan Kelley, Jacie Bruns, Cathy Schacher, and Mia Jennings.

Students and parents attending this special workout were Mr. and Mrs. Lonnie Aurnin, Grady and Christi, Mr. and Mrs. Bruce Hartline and Nicole, Sue, Kala, Jana and Chad Johnson, Jason and Ruth Davis, D'Nae Wilson, Kayla, Kourtnee, Cole, Kristin and Cindy Magby, Shana and Stephanie Foster, Lacy, Jennifer and Debbie Tillman, Heather and Jamie Bunch, Craig Denny and Zachry Burris.

Sharmy Dawn Christian

and

Johnny Dean McDonald

together with their parents

Mr. and Mrs. Troy Christian

and

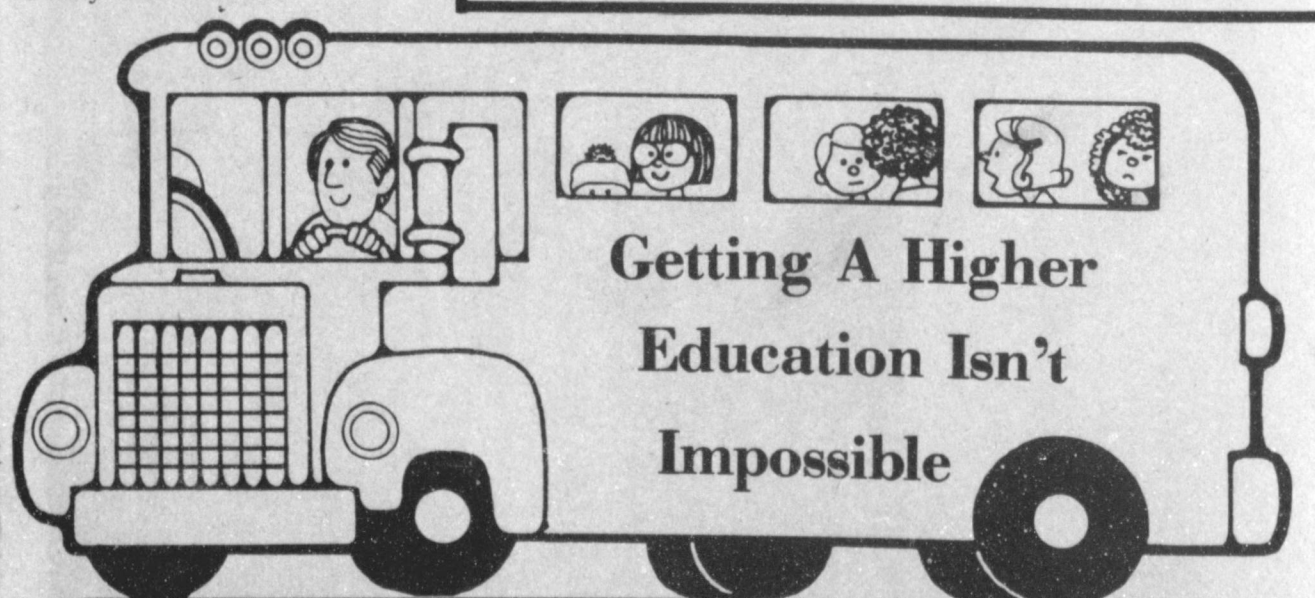
Mr. and Mrs. Don McDonald

invite you to share in the joy of the beginning of their new life together when they exchange marriage vows on Saturday,

the seventeenth of August
Nineteen hundred and eighty-five

at seven-thirty o'clock in the evening

Hamlin Memorial United Methodist Church
Fairwell, Texas



Getting A Higher Education Isn't Impossible

We Can Take Care Of Those Financial Worries, & Help You Achieve That Dream...

How?

With A Student Loan!

- Maximum \$2500 per year
- Flexible
- Low Interest
- Application, Easy & Fast
- Convenient Repayment Terms
- Opportunity Available To All Regardless Of Race, Color, Religion, Sex, Age or Marital Status.

Only At

MULESHOE STATE BANK

MEMBER FDIC

101 West American Blvd.

Phone 806/272-4561

Rebecca Musick, Wiseman United In Marriage

Rebecca Ann Musick became the bride of Randy Joe Wiseman at 6 p.m. May 25 in the 37th Street Church of Christ. Gordon Musick, father of the bride, read the double ring vows.

Parents of the couple are Mr. and Mrs. Gordon Musick of Snyder and Mr. and Mrs. Pudd Wiseman of Sudan.

Accented the altar was a 15 light rainbow candelabrum entwined with greenery and flanked by two nine light candelabrams enhanced with greenery and pink and dusty rose silk flowers.

Musical selections were performed by an acapella choral group composed of members of the 37th Street Church of Christ and Eastside Church of Christ. Steve Fisher served as director.

Members of the group included Kelly Starnes, Aleta Long, Jennifer Goodwin, Barbara Eicke, Donna Pemberton, Janna Tate, Charlie McCormick, Jason West, Van Bransom, Don Osborn and Kevin Tate.

Given in marriage by her father, the bride chose a formal length gown of taffeta overlaid with sheer netting. The bodice was encrusted with Venice lace accented with pearls and featured a scoop neckline. Tiny self covered buttons adorned the back of the gown.

Long sheer sleeves fastened with matching buttons ended in cuffs fashioned of the same type lace with accents of pearls.

The softly gathered skirt swirled into a chapel length train with the hem of the gown

and train adorned with Venice lace.

The fingertip length veil of bridal illusion was softly gathered to a Juliet Capulet fashioned of Venice lace and accented with pearls.

To complete her ensemble, the bride carried a cascading bouquet fashioned of white and dusty rose silk roses nestled in a bed of white satin ribbon. Baby's breath in dusty rose and white complimented the arrangement which was gently secured with dusty rose silk streamers.

Sherry Nixon of Midland, sister of the bride, served as matron of honor. Bridesmaids were: Linda Wiseman of Sudan, sister of the groom, and Tracey Westmoreland of Snyder.

As the couple was leaving the altar, they paused and kissed their mothers.

Sue Menzer and Penny Wolfe served as candle lighters and also registered the guests.

The registry table was covered with a white evelot cloth gathered softly around the table top and secured with pink satin ribbon which was woven through the lace at the edge of the table. A bouquet of small silk flowers in dusty rose and pink nestled in a silver vase flanked the bride's book.

Special guests included: Mr. and Mrs. James Burkett of Dora, N.M.; Mrs. Willie Musick of Clovis, N.M., grandparents of the bride; Mrs. Nell Gentry of Sudan, grandmother of the groom; Mr. and Mrs. Calvin Wiseman of Sudan; Mr. and Mrs. Dale Young of Lubbock, aunt and uncle of the groom; and Mr. and Mrs. Monroe Gates of Melrose, N.M., aunt and uncle of the bride.

Following the ceremony a reception was held in the Family Center of the building. Sue Menger and Penny Wolfe assisted the guests at the bride's table, and Judy Wiseman of Sudan, cousin of the groom, and Marie Withrow of Sudan assisted at the groom's table.

Other members of the household included Mrs. Chuck Wolfe, Mrs. I.E. Martin, Mrs. Charles Anderson, Mrs. George Clark, Mrs. Don Osborn, and Mr. and Mrs. Dale Young.

Sherry Nixon sister of the bride, designed the rice bags.

The couple is currently making their home in Lubbock

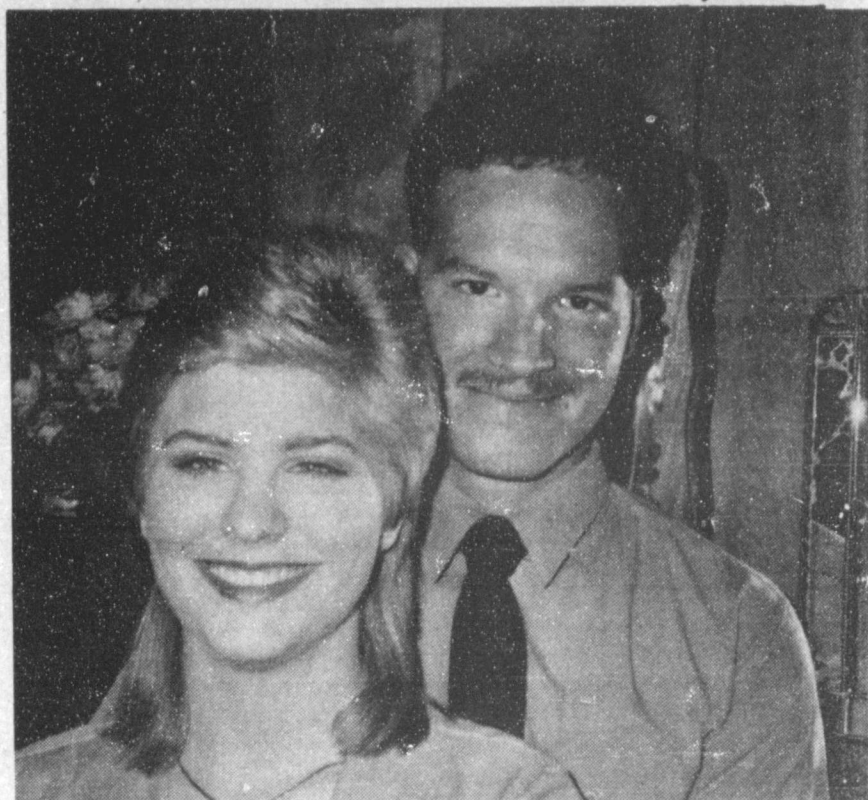
where they are both accounting majors at Lubbock Christian College.

The groom's parents hosted the rehearsal dinner at The Shack. Special guests included members of the wedding party, the choral group and the grandparents.

A bride's luncheon was hosted by Mrs. Chuck Wolfe and

her daughter, Penny, in their home on the day of the wedding. Special guests for that function included the bride, her matron of honor, the bridesmaids, both mothers, grandmothers, sisters and sister-in-law.

On May 11 a shower was held for the honored couple in Sudan in the home of Betty Withrow.



SEPTEMBER DATE SET--Mr. and Mrs. Cleo Webb announces the engagement and approaching marriage of their daughter, Terri to Matthew Borden, son of Mr. and Mrs. Merritt W. Borden of Eugene, Oregon. A September 14 is being planned at the First Baptist Church in Muleshoe. Miss Webb is a graduate of Muleshoe High School and is employed at the Spudnut Shop. Borden is a graduate of Marist High School at Eugene, Oregon and is an airman stationed at Cannon Air Force Base.

Garden Wedding Unites Miss Airhart, Gregory

Miss Roxanne Airhart became the bride of Todd Gregory Saturday, August 3 at 9 p.m. in the garden of Mr. and Mrs. Quinton Airhart at Klondike, Texas. Brother A.E. Burns read the double ring vows.

Parents of the couple are Quinton and Sharon Airhart of Klondike and Claud and Sandy Gregory of Lazbuddie.

Susan Carmichael, cousin of the bride, soloist, sang "My Only Love", "Sunrise Sunset," "Inspiration," "Up Where We Belong," "There Is Love", "That's The Way," "Two Less Lonely People In The World," and "The Wedding Song." She was accompanied by Alfredia Sterling, pianist.

Given in marriage by her father the bride chose a designer gown of shearest white organza. The fitted bodice featured a deep V-neckline with off the shoulder puff sleeves. The sleeves were designed with deminsional embroidered motifs. The embroidered motifs also decorated the back opening which V'd to the waistline. Each motif was embroidered in satin thread.

The full circle skirt was attached to the drop V'd waistline. The embroidered motifs were scattered down the front of the skirt. The extra long flowing chapel train was decorated with the embroidered motifs.

She chose a matching headpiece designed of the embroidered motifs. A large pouf was attached along the back and a

fingertip silk illusion veil fell from the arrangement. Tiny silk embroidered flowers enhanced the veil.

The bride carried an airy cascade bouquet consisting of wild smilax, bells of Ireland, caladrum leaves and English ivy.

Elonna Moore of Welch, sister of the bride, served as matron of honor. Shelby Airhart of Klondike, sister of the bride, was maid of honor, and bridesmaids were Kirsten Evans of Houston, Kimbra Gregory of Lazbuddie, sister of the groom, and Sonnya Airhart of Dallas, cousin of the bride.

The bride's attendants were identically attired in cerise taffeta gowns. The fitted bodice featured ruffle flounces at the shoulder and the back was designed with a sun top opening with a large bow across the opening. The floor length skirts were slightly gathered to a natural waistline cumberbund.

They carried fresh cut arm bouquets of blue iris, tiger lillies, white daisies, agapantha and fushia tressia.

Terry Steinbock of Lazbuddie served as best man. Groomsman were Jeff Groves of Austin and Mickey Powell and David Lust, both of Lubbock, and Lonny Cypert, cousin of the groom, of Lubbock.

Ring bearer was Blake Moore of Welch, nephew of the bride. Ushers were Todd Airhart of Dallas, cousin of the bride; Mike Cypert of Lorenzo, cousin of the groom; and Kody Carson of Dalhart.

Following the ceremony, a

reception was held in the yard of Quinton and Sharon Airhart. Staci Mitchell registered the guests.

The wedding cake was laden with fresh cut blossoms and wild smilax. The flowers were multi-colored and included orchids, daisies, ayapartha and fresh fushia blossoms. The old fashioned layered cake was topped with a Precious Moments figurine.

Following a wedding trip to the New Mexico mountains, the couple will make their home in Lubbock.

The bride graduated from Klondike High School and will receive a Bachelors Degree from Texas Tech University in December in Elementary Education.

Gregory graduated from Lazbuddie High School and received a Bachelors Degree from Texas Tech University in Agricultural Education.

A rehearsal dinner was given by Mr. and Mrs. Claud Gregory at K-Bobs Steak House in Lamesa.

A bridesmaid luncheon was given in the home of Mrs. Vernon Holcomb, aunt of the bride.

FREE
Hearing Test For
Senior Citizens
Livingston Hearing Aid
Center, Inc.
1903-19th St. Lubbock, Tx
806/762-2951

Offers a new concept in helping the hard of hearing. Livingston Hearing Aid Center, Inc. will sponsor FREE an electronic hearing test on Wednesday, August 14, 1985 from 9:30 a.m. to 10:30 a.m. The test will be given at Western Drug in Muleshoe by Richard R. Davila, A.C.A. His professional approach assures you of personal understanding and expert help.



RICHARD R. DAVILA, A.C.A. CERTIFIED HEARING AID AUDIOLOGIST

Most hearing aid specialist sell you the brand of hearing aid they carry. And that brand may not have the model that's exactly right for you.

With Livingston Hearing Aid Center, Inc., 1903 19th St. Lubbock, 762-2951, it's different. We offer a new concept for the hard of hearing by carrying a wide variety of hearing aids from over 12 different manufacturers. We promise to fit you with an aid that answers your problem exactly. And our promise is backed by a 30 day satisfaction guarantee or your money back.

Every one, especially older citizens, should have their hearing tested electronically at least once a year. Many of you may suspect you have trouble hearing and understanding.

Repair service and cleaning will be available to you for your present hearing aid--no matter what brand or where you bought it. The hearing tests are FREE and will take 20 minutes of your time. Please come in and take advantage of this special opportunity.

TOPS Weekly Meeting

TOPS Club chapter No. 34 met at 6:30 p.m. Thursday, August 1 in the meeting room of Bailey County Electric. Clara Lou Jones, leader, called the meeting to order. The TOPS pledge was recited and the fellowship song was sung.

Jewel Peeler, weight recorder, called the roll with seven members present. Rose Sain read the minutes of the previous meeting and they were approved as read. Ruth Clements, treasurer, gave the treasurer's report.

A letter was read from Ruby Jackson on Drivers Safety and she stated that she would send free programs for this organization and any other organization wishing them.

Mrs. Peeler celebrated her birthday and received a gift from the birthday box and one from her secret pal.

The meeting was closed with the singing of the goodnight song.



LATEST ARRIVALS

Michael Layne Murphy

Steve and Ginger Murphy of Lubbock are the proud parents of a son, Michael Layne, born on August 4.

Michael Layne weighed seven pounds and 12 ounces and was 21 inches long. He is the first child for the couple.

Grandparents are J.W. and Gloria Herington of the West Camp Community and Mr. and Mrs. Don Murphy of Lubbock.

Great grandmother is Bet Farrar of Lubbock.

GOLD your own way



\$25
SAVE

on 14K Gold ArtCarved High School Class Rings

ARTCARVED
CLASS RINGS

Now you can save on a great 14K gold class ring backed by ArtCarved's Full Lifetime Warranty. This offer expires November 30, 1985 and is to be used only for the purchase of 14K gold ArtCarved high school class rings.

FREE custom features on 10K and 14K gold ArtCarved high school class rings.

Lindsey Jewelry
BRING THIS AD

Ben Franklin

Better quality for less

2104 W. Amer. Blvd. 272-3855 Muleshoe
Open Mon. - Sat. 8 a.m. - 8 p.m. Sunday 12-5 p.m.

it's School Time sale

5 Subject
Subject Book
180 Sheets
\$1.99

Prices Good
Sunday Aug 11 thru
Saturday Aug 17

Crayolas
16 Count **67¢**
24 Count **88¢**

<p style="text-align: center;">School Organizer Ensembles Trapper Keeper- The Organizer- Data Center \$3.99</p>	<p style="text-align: center;">School Lunch Kits Big Selection Of Popular Characters \$4.77</p>	<p style="text-align: center;">Mead Student Portfolios 8 1/2 x 11 2 Pocket 5 For \$1.00</p>	<p style="text-align: center;">100 Count Theme Book 48¢</p>
<p style="text-align: center;">Mead Speedwrite Steno Notebook 80 Sheets 48¢</p>	<p style="text-align: center;">Kinder Mats Assorted Colors \$3.97 each</p>	<p style="text-align: center;">Mead Typing Paper 200 Sheets 99¢</p>	<p style="text-align: center;">Poly-Vu-Sheet Protectors Pack of 10 \$1.47</p>
<p style="text-align: center;">Number 2 Lead Pencils 12 ct. 88¢</p>	<p style="text-align: center;">Elmer's Glue Stick 6.3 grams 48¢</p>	<p style="text-align: center;">Snoopy & Garfield Plastic Rulers 57¢</p>	<p style="text-align: center;">12 inch Wood Rulers 17¢</p>
<p style="text-align: center;">Sun-Maid California Seedless Raisins 6 Pk 1 1/2 Oz. 88¢</p>	<p style="text-align: center;">Keebler Soft Batch Cookies 12 Oz. \$1.47</p>	<p style="text-align: center;">Helix Student Math Set w/Carrying Case, Protractor, Ruler, Squares, Triangles, Pencils, Compass, Erasers, & Sharpener \$3.97</p>	<p style="text-align: center;">Sunford Rubber Cement 4 Oz. 77¢ School Boxes 57¢ Empire 6 Ct. Erasers 67¢ Care Bear Erasers 17¢ Fun Tak 1 1/2 Oz. Pkg 97¢</p>
<p style="text-align: center;">Mead 3x5 Ruled Or NonRuled Index Cards 100 Ct 48¢</p>	<p style="text-align: center;">We Have The New Coke Cherry Coke & Coca Cola Classic Sprite Free Coke Diet Coke Caffeine Free Coke Diet Sprite 12 Oz. Cans \$1.49</p>	<p style="text-align: center;">Major Accent Markers 47¢</p>	



BICYCLE WINNERS--Friday morning, Chucky Hammitt, left and Bobby Hammitt, right, both of Farwell, were in Muleshoe at Town & Country Foods to receive a bicycle they won collecting \$250 for the Muscular Dystrophy Association. The bicycle was presented by store manager, Sandra Chancy, center. Town & Country is presenting a bicycle to anyone who collects and turns in \$250 to MDA. They are the sons of Mr. and Mrs. Dale Phelps of Farwell and Billy Hammitt of Texico, N.M.

Budget...

Cont. from Page 1
 vices as follows: \$375,825 for 1982-83; \$430,390 for 1983-84; \$424,047 for 1984-85; \$452,823 for 1985-86 and \$457,223 for 1986-87.
 Supplies and materials are shown as the following: \$404,014 for 1982-83; \$379,385 for 1983-84; \$435,819 for 1984-

85; \$476,652 for 1985-86 and \$496,452 for 1986-87.

Other operating expenses show a less drastic increase since 1982-83 when the figure was \$172,230; \$170,055 for 1983-84; \$182,085 for 1984-85; \$199,920 for 1985-86 and \$199,820 (a decrease) for 1986-87.

Capital Outlay (Land, Buildings and Equipment) will show \$100,000 in decreased costs since 1982-83 when the figure was \$584,407; \$244,321 for 1983-84; \$401,154 for 1984-85; \$483,540 for 1985-86 and \$478,640 for 1986-87.

Salaries for teachers and aides in high school for 1984-85 cost \$679,382 and are expected to be \$654,116 for 1985-86. In junior high school, salaries for teachers and aides was \$429,975 in 1984-85 and will be around \$426,430 for 1985-86. Salaries for Educational Computing have been moved to another section of the budget.

Teachers and aides at De-Shazo were paid \$454,610 in 1984-85 and will receive \$488,475 in 1985-86 and at Dillman Elementary, salaries were \$417,390 in 1984-85 and will be \$527,510 in 1985-86.

Other salaries, such as for special education, migrant teachers and aides, insurance program, total \$477,474 for 1984-85 and for 1985-86, is expected to be \$536,550.

Board...

Cont. from Page 1
 sion, the trustees will consider resignations and employment contracts for personnel.

This will be concluded by hearing the superintendent's report on correspondence and school and community events.

Think About It

Fishing is less cruel than hunting. The amateur never has to explain that he thought his companion was a fish.

-Sun, San Francisco.

Did You Know?

From The
 Muleshoe Heritage
 Foundation

DID YOU KNOW??

Bailey County was created on Aug. 2, 1876, and named for a hero of the Alamo, Peter James Bailey who was a young Kentucky lawyer who gave his life defending the Alamo.

Bailey County was one of the 54 counties created from Bexar Territory in 1876.

Bailey Co. was unsettled and undeveloped until ranching came to the area. It was not until 1879 that a law was passed that made this possible. The law appropriated 3,050,000 acres to anyone that would build a new State Capitol. N.L. Norton was appointed commissioner to supervise the survey of the Capitol Reservation which consisted of over 5,000,000 acres lying in Dallam, Hartley, Oldham, Deaf Smith, Parmer, Castro, Lamb, Bailey, Cochran, and Hockley Counties.

The building of the State Capitol in Austin was authorized in 1879 and completed in 1888. For this impressive building, made of granite (Texas) the state did exchange, 3,050,000 acres of land located in the Panhandle. That acreage later became the famous XIT Ranch.

The XIT, which began in the Spring of 1882, changed the West. It spread over 3 million adjoining acres and was the biggest ranch in the cow country of the Old West and probably the largest fenced range in the world! The southern line of the XIT cut across the entire width of Northern Bailey Co... A.G. Boyce took charge of the XIT in 1887 and decided to cross fence the ranch into 7 divisions. The Muleshoe area was included in a part of the seventh, the Springlake section. In the extreme southeast part of the county, Bailey County was included in the Yellowhouse division.

1880-1890 brought the inven-

County Extension

Home News
 By Deana Finck

DEBT FREE-A DO-IT YOURSELF MONEY CONTROL PROGRAM

The Extension Home Economics Advisory Committee will sponsor a Debt Free mail-out series once a week for 6 consecutive weeks, September 9 through October 14. Lessons include:

1) Over Your Head in Debt-early warning signals (when it makes sense to borrow, wrong reasons for using credit).

2) When You Can't Pay Your Bills- managing your debts, other alternatives.

3) How Much Credit Can You Afford? -what is your money income, what do you owe, money you need to live, putting it together, guidelines for setting credit limits.

4) Debt Free By--? -family financial conferences, fair fight rules, before using credit...think it over.

5) Shopping for Credit-truth in lending law, consumer credit sources, types of consumer credit, consumer loans, consumer sales credit, consumer credit cost.

6) Using Credit Cards - managing credit cards, credit card register, safety record, losing cards, billing errors.

Each lesson also includes a do-it-yourself conclusion. If you would be interested in the mail-out series, call the Extension office, or mail in your name and address by September 1st, to County Courthouse, Muleshoe, Texas, 79347, 806-272-4583.

Deana Finck, CEA-He

Regular Session Scheduled For Commissioners

Bailey County Commissioners will meet in regular session at 10 a.m. on Monday, August 12, in the commissioners meeting room at the Bailey County courthouse.

Among items to be considered are the payment of routine county bills; meet with Dr. Jerry Gleason; meet with representatives of the Bailey County Child Welfare Board; consider budget amendment to the FY1985 budget and an order to authorize the county judge to advertise for bids for a new roof for the Bailey County Law Enforcement Center; review the county treasurer's report and departmental reports and miscellaneous items.

tion of barb wire and it benefited the ranchers of the Texas Panhandle.

The first well drilling machine was owned by Co. B.B. Groom of the Diamond F. Ranch in Carson Co. It was brought to the Texas Panhandle in the late 1882.

The settlement of Bailey Co. began with the ranching era and the coming of the rail road. there were scarcely any people in the area in 1890 and 1900...only 4 persons were counted as living in the county in 1900!

A study of the wildlife of Bailey County shows many interesting things about the creatures that lived here during prehistoric times. That examination also makes clear what an amazing creature the buffalo was; and not only that shaggy beast, but the wild free mustang and other interesting prairie creatures have had a definite influence on the development of the plains and Bailey Co.

August 19 is going to be the date when you will hear more about the plans for a Muleshoe Heritage Center where history will be preserved for future generations. Mark August 19, 8:00 pm, Bailey Co. Civic Center on your calendar. We will tell you more later!!!

West Plains Hospital Report

PATIENTS IN WEST PLAINS MEDICAL CENTER

August 6 -George Torres, Muleshoe, Clemmie Ladd, Muleshoe, Oncita Wagnon, Muleshoe, Callie Brown, Muleshoe and Maria Marquez, Farwell.

August 7 -Clemmie Ladd, Muleshoe, Myrtle Lee, Mule-

shoe, Mary Stegemoeller, Muleshoe, Maria Marquez, Farwell and J.W. Hamilton, Olton.

August 8 -Clemmie Ladd, Muleshoe, Myrtle Lee, Muleshoe, Callie Brown, Muleshoe, Maria Marquez, Farwell, Penny Gomez, Friona, Alvis Burge, Muleshoe and J.W. Hamilton, Olton.

It's a good idea to take some time off for recreation, provided you don't take so much time off you overlook your work.

Show A Profit & Irrigation

You Can With A Full Efficient
 Electric Lockwood Pivot
 Try Our Prices!
 5% Interest On Leasing
 Sales & Service

Hi-Plains Irrigation Consultant

Office 293-1580

Nite 293-4786

SCHOOL DISTRICT: Lazbuddie I.S.D.

NOTICE OF CALCULATION OF EFFECTIVE TAX RATE, ESTIMATED UNENCUMBERED FUND BALANCES, AND DEBT SCHEDULE

I, Ronald E. Procter, Chief Appraiser for Lazbuddie I.S.D., in accordance with Sec. 26.04, Property Tax Code, have calculated \$.88122 per \$100 of value as the tax rate which may not be exceeded by more than three percent by the governing body of the Lazbuddie I.S.D. without holding a public hearing as required by the code.

The estimated unencumbered fund balance for Maintenance & Operation fund: \$ 200,000
 The estimated unencumbered fund balance for Interest & Sinking fund: \$ 60,000

The following schedule lists debt obligations that 1985 property taxes will pay: \$85,125 Bonded Indebtedness

[Expand worksheet as necessary to list debt obligations. If the unit needs additional space, refer the reader to the portion of the notice of the effective tax rate for this debt schedule. See examples.]

(Name) Ronald E. Procter, Chief Appraiser
 (Date) 8-7-85

CALCULATIONS USED TO DETERMINE EFFECTIVE TAX RATE

I. DATA

1. 1984 Total tax levy from the 1984 tax roll	\$ 465,403.24
2. 1984 Tax rate (\$.80 M&O and \$.15 I&S)	\$.95 /\$100
3. 1984 Debt service (I&S) levy	\$ 88,426.62
4. 1984 Maintenance and operation (M&O) levy	\$ 376,976.62
5. 1984 M&O taxes on property in territory that has ceased to be a part of unit in 1985	\$ -0-
6. 1984 M&O taxes on property becoming exempt in 1985	\$ 500.18
7. 1984 M&O taxes on taxable value lost because property is appraised at less than market value in 1985	\$ 2111.89
8. 1985 Total taxable value of all property	\$ 49,645,380
9. 1985 Taxable value of new improvements added since Jan. 1, 1984	\$ 70,380
10. 1985 Taxable value of property annexed since Jan. 1, 1984	\$ -0-
11. 1985 Tax levy needed to satisfy debt service (I&S)	\$ 85,125
12. Rate to raise 1984 tax levy due to appraisal roll errors (lost dollars divided by the difference of 1985 taxable values minus over-65 homesteads taxable values)	\$ -0- /\$100
13. Rate to regain taxes lost in 1984 due to appraisal roll errors (lost dollars divided by the difference of 1985 taxable values minus 1985 over-65 homesteads taxable value)	\$ -0- /\$100
14. 1984 M&O taxes used to regain lost 1983 levy	\$ 23,108.87
15. 1985 Taxable value of over-65 homesteads with frozen taxes	\$ 967,520
16. Frozen M&O levy of over-65 homesteads with frozen taxes	\$ 6413.47
17. Frozen I&S levy of over-65 homesteads with frozen taxes	\$ 1504.39
18. Rate to generate reduced state aid or receive maximum equalization allotment (amount of lost aid or additional levy for equalization, divided by 1985 taxable value minus 1985 over-65 homesteads' taxable value, x 100)	

MAINTENANCE AND OPERATION (M&O) TAX RATE

1. (A) 1984 Total tax levy (Data 1)	\$ 465,403.24
(B) Subtract 1984 debt service levy (Data 3)	\$ 88,426.62
(C) Subtract 1984 taxes on property no longer in unit (Data 5)	\$ -0-
(D) Subtract 1984 taxes on exemptions (Data 6)	\$ 500.18
(E) Subtract 1984 taxes on productivity valuation (Data 7)	\$ 2111.89
(F) Subtract frozen M&O levy of over-65 homesteads (Data 16)	\$ 6413.47
(G) Subtract 1984 M&O taxes used to regain lost 1983 levy (Data 14)	\$ 23,108.87
(H) Adjusted 1984 M&O levy	\$ 344,842.21
2. (A) 1985 Total taxable value of all property (Data 8)	\$ 49,645,380
(B) Subtract 1985 value of new improvements (Data 9)	\$ 70,380
(C) Subtract 1985 value of annexed property (Data 10)	\$ -0-
(D) Subtract 1985 value of over-65 homesteads (Data 15)	\$ 967,520
(E) Adjusted 1985 taxable value for M&O	\$ 48,607,480
3. (A) Divide the adjusted 1984 M&O levy (1-H above) by the adjusted 1985 taxable value for M&O (2-E above) (\$344,842.21 ÷ \$48,607,480)	\$.00709442
(B) Multiply by \$100 valuation	× \$100
(C) Effective M&O rate for 1985	\$.70944 /\$100

INTEREST AND SINKING (I&S) TAX RATE

4. (A) 1985 I&S levy needed to satisfy debt (data 11)	\$ 85,125
(B) Subtract frozen I&S levy of over-65 homesteads (Data 17)	\$ 1504.39
(C) Adjusted 1985 I&S levy	\$ 83,620.61
(D) 1985 Total taxable value of all property (Data 8)	\$ 49,645,380
(E) Subtract 1985 value of over-65 homesteads (Data 15)	\$ 967,520
(F) Adjusted 1985 taxable value for I&S	\$ 48,677,860
(G) Divide the adjusted 1985 I&S levy (4-C above) by the adjusted 1985 taxable value for I&S (4-F above) (\$83,620.61 ÷ \$48,677,860)	\$.00171783
(H) Multiply by \$100 valuation	× \$100
(I) Effective I&S rate for 1985	\$.17178 /\$100

APPRAISAL ROLL ERROR RATE

5. (A) Rate to raise 1984 levy due to appraisal errors (Data 12)	\$ -0- /\$100
(B) Add rate to regain taxes lost due to errors (Data 13)	\$ -0- /\$100
(C) Total rate to adjust for appraisal roll errors	\$ -0- /\$100

TOTAL EFFECTIVE TAX RATE FOR 1985

6. (A) Effective M&O rate (3-C above)	\$.70944 /\$100
(B) Add effective I&S rate (4-I above)	\$.17178 /\$100
(C) Add rate to adjust for appraisal roll errors (5-C above)	\$ -0- /\$100
(D) 1985 Effective Tax Rate	\$.88122 /\$100

1985 Effective Tax Rate is the tax rate published as required by Sec. 26.04, Property Tax Code.

STATE AID/EQUALIZATION ENRICHMENT AID RATE

7. Rate to replace reduced state aid or qualify for maximum equalization (Data 18)	\$ NA /\$100
--	--------------

True Value
HARDWARE STORES

HARDWARE VALUE OF THE MONTH

6.99 While Supplies Last
 Resettable Combination Padlock lets you choose the 4-digit sequence. Hardened shackle, brass case. 175-0
 QUANTITIES LIMITED

True Value
HARDWARE STORES

TOOL VALUE OF THE MONTH

10.88 While Supplies Last
 Lopper slices stray branches with Teflon-S™-coated upper blade. Hardwood handles, vinyl grips. 52781
 QUANTITIES LIMITED

Fry & Cox, Inc.
 401 S. 1st 272-4511

Martina Rincon Services Held In Hereford

Funeral services for Martina Rincon, 15, were held at 3 p.m. Thursday, Aug. 8 in San Jose Catholic Church at Hereford with the Rev. Joe Bixenman officiating.

Burial was in West Park Cemetery in Hereford under the

Local Woman's Brother Dies In Gail

Services for Shorty Wilson, 78, of Gail were held at 2 p.m. Thursday Aug. 8 in the Branon Funeral Home Chapel in Lamesa with the Rev. Elmer Ward, pastor of the First Methodist Church in O'Donnell, officiating, assisted by Larry McWilliams of Fort Worth.

Burial was in the O'Donnell Cemetery under the direction of Branon Funeral Home. Wilson died at 10:15 p.m. Tuesday in the Lamesa Nursing Center following a lengthy illness.

A native of Glen Rose, Wilson was born June 30, 1907, and moved to O'Donnell in 1937, from Jayton. He married Judy Wright on Dec. 24, 1954, in Clovis, N.M. He was a member of the First Baptist Church in O'Donnell. He was a retired farmer.

Survivors include his wife, Judy; a son, Wayne of Lubbock; three daughters, Mozelle Vestal of O'Donnell, Joyce Smith of Gail and Freda Hawkins of Lamesa; five sisters, Nettie Hodges of Seelye, Oriena Boydson of Jayton, Allie Browning of Muleshoe, Ruth Hamilton of Lubbock and Mary Lou Spears of Houston; four brothers, Raymond of Meadow, Vernon of Big Spring, Hubert of Andrews and Troy of Lubbock; 10 grandchildren; and 17 great grandchildren.

Elmer King Services Held At Springlake

Services for Elmer King, 72, of Springlake were held at 2 p.m. Saturday, Aug. 10 in the Springlake Baptist Church with the Rev. Glenn Smith, pastor of the First Baptist Church at Sundown, officiating.

Interment was in Littlefield Memorial Park at Littlefield under the direction of Parsons-Ellis Funeral Home of Earth. King died at 5:12 p.m. Wednesday in the Methodist Hospital in Lubbock.

A native of Franklin County, Alabama, King was born June 7, 1913, and moved to Springlake in 1925, from Fletcher, Okla. He married Bertha King on Sept. 14, 1973, in Amarillo. He was a farmer and a member of the Springlake Baptist Church.

Survivors include his wife, Bertha; one son, Otis King of Springlake; one sister, Mrs. Lillian Mayfield of Plainview;

direction of Rix Funeral Directors of Hereford. Miss Rincon was dead on arrival at West Plains Medical Center at 10:25 p.m. Monday. Muleshoe Justice of the Peace Jack Bates said Miss Rincon sustained a gunshot wound to the chest from a .38 cal. weapon at her home. He is withholding a ruling pending further investigation.

She was a native of Hereford and had live in Muleshoe five years, moving from Hereford. She was a Catholic and a member of the Muleshoe School Band.

Survivors include her parents, Mr. and Mrs. David Rincon of Muleshoe; two brothers David Jr., and Ray Lee of Muleshoe; a sister, Angie of Muleshoe; her

Mary Clark Services Held In Littlefield

Services for Mary Myrtle Clark, 73, of Morton were held at 10:30 a.m. Thursday, Aug. 8 in the Missionary Baptist Church in Littlefield with the Rev. Larry Williams, pastor, officiating, assisted by the Rev. C.L. Carpenter.

Interment was in Littlefield Cemetery. Mrs. Clark died at 2:30 p.m. Tuesday at St. Mary's Hospital in Lubbock.

She was a former resident of Muleshoe.

Survivors include five sons, Smitty of Ruidoso, N.M., Mike of Denver City, Joe of Alford, Doyle Webb and Jimmy Webb, both of Morton; a daughter, Joyce Faye Clark of Duncan, Okla.; two sisters, Ida Jones of Turkey and Tilda Farley of Phoenix, Ariz.; 18 grandchildren; seven great grandchildren; and a great great grandchild.

Mary Wright Former Muleshoe Resident Dies

Funeral services for Mary Lucille Wright, 71, of Georgetown will be held at 2 p.m. today, Sunday, Aug. 11 in Ellis Funeral Home Chapel of the Chimes with the Rev. Jimmy Nunn, pastor of the Earth United Methodist Church, officiating.

Burial will be in Muleshoe Cemetery under the direction of Ellis Funeral Home. Mrs. Wright died at 4:05 p.m. Thursday in Georgetown Hospital.

Born April 16, 1914, in Waurika, Okla., Mrs. Wright was raised in Muleshoe and lived here until 1950, moving to Littlefield. She moved to Georgetown in 1981 from Littlefield. She was a bookkeeper at Arms Chevrolet Co. in Littlefield and a Methodist.

Survivors include a son, Charles Wright of Dallas; two daughters, Mrs. Joan Thompson of Georgetown and Linda Merrifield of Scottsdale, Ariz.; three sisters, Anna Bearden of Lubbock, Bobby Myers of Mesa, Ariz. and Waunita Paul; two brothers, Fred Long of Riverside, Calif. and Sam Long of Dallas; seven grandchildren; and seven great grandchildren.

grandparents, Mr. and Mrs. Santos Rincon of Hereford, Juan Delgado of Florida and Ascension Delgado of Hart, Mich.; and her great grandparents, Mr. and Mrs. Willie Rodriguez of Lubbock.

Henry Infant Graveside Services Held In Phillipines

Graveside services for John Glen Henry, infant son of Belinda and Bob Henry, was held Monday, Aug. 5 in Babyland at Clark Air Force Base Cemetery in Manila, Phillipines.

He was born Aug. 1 at Clark Air Force Base.

Survivors include his parents, Bob and Belinda Henry of Clark Air Force Base; grandparents, Mrs. Pat Nickles and Mrs. Marcia Henry, both of Muleshoe; and one brother, Beau of the home.

At the beginning of love and at its end the lovers are embarrassed to be left alone.

-Jean De La Bruyere.

Griselda Bustillos Funeral Services Held Friday

Funeral services for Griselda Bustillos, two year old daughter of Mr. and Mrs. Ramon Bustillos, were held at 2 p.m. Friday, Aug. 9 in the Immaculate Conception Catholic Church with Father Ralph Zinser, pastor of the Sacred Heart Catholic Church of Clovis, N.M., officiating.

Interment was in Bailey County Memorial Park under the direction of Ellis Funeral Home. Griselda died at 8:20 p.m. Tuesday in West Plains Medical Center.

She was born Oct. 15, 1982, at Muleshoe and was a member of the Immaculate Conception Catholic Church.

Survivors in addition to her parents include grandparents, Mr. and Mrs. Gilbert Castorena and Mr. and Mrs. Ernest Bustillos, all of Muleshoe; and a brother, John Paul Bustillos of Muleshoe.



LUCILA LOPEZ, LVN
Wise
It is a wise man who can be thrifty without being stingy; who can be generous without being wasteful.
-Grit.

Angels Of Mercy Of West Plains Medical Center

Lucila Lopez LVN, or "Lucy" as she likes to be called, graduated from Plains Memorial Hospital School of Nursing in Dimmitt, Texas in 1976. She lives with her husband and family in Sudan and commutes 20 miles every day to work. When asked what brought her into the nursing profession, Lucy replied, "I enjoy working with people. There are small rewards in making sick people well again. I work at West Plains because the nursing staff works together as a team. At West Plains Medical Center they let a nurse work as a "nurse" in every sense of the word."

Fina Station 1108 W. Amer. Blvd

Is Now Under
New Management
They Offer Full Service
Fix Flats, Change Oil & Wash Cars.
Next Door To K-Bobs

ANNOUNCEMENT
H & R Block is offering a Basic Income Tax Course starting September 5th. There will be a choice of morning or evening classes held at the H & R Block office at 224 W. 2nd St.
The twelve week course is taught by experienced personnel and certificates are awarded to all graduates. While thousands of job opportunities are available, graduates are under no obligation to accept employment with H & R BLOCK.
Registration forms, brochures and a schedule of classes may be obtained by contacting the H & R BLOCK office at 224 W. 2nd 272-3332.

True Value HARDWARE STORES
Your local independently owned True Value® Hardware Store has national chain-buying power.
Stop in and pick up your FREE copy of our Carnival of Values circular

'85 Carnival of Values

<p>First Alert READY-LITE 23.99 First Alert® Ready-Lite™ Rechargeable Light lasts 2½ hrs. on one charge. With adjustable beam width and direction. RL-101H</p>	<p>GREEN TRUMB 39.88 4-Cu. Ft. Wheelbarrow has seamless steel tray, hardwood handles, full curl rim and a rugged axle assembly. H42WB</p>	<p>18.88 6-Ft. Derby Wood Stepladder is sturdily constructed and features side spreader locking device and handy pail shelf. 390</p>	<p>Master MECHANIC 49.99 57-Pc. 3/8-In. Drive Socket Set has both SAE and metric sockets, ratchets, universal, extensions, spinner, metal box, more. 3857</p>
<p>WeatherAll 10.98 Gallon WeatherAll Latex Flat Finish puts years between painting jobs. For primed wood, more. 26 colors, black and white. HFX</p>	<p>True Value 8.88 32-Gal. Trash Can is constructed of tough polyethylene. Withstands abuse, harsh weather, temperature extremes. BM3RD</p>	<p>Master MECHANIC 4.49 5-Pc. Screwdriver Set incl. 3 slotted and 2 Phillips screwdrivers. Each is durable tool steel with easy-grip handle. MMT55</p>	<p>Red Devil 1.88 Lifetime® Silicone Caulk gives a long-lasting, flexible seal that won't crack, shrink, Water-resistant. White or clear. 10.3 oz. 0856/66</p>
<p>SEVRES 99¢ 11 Oz. Net Wt. Spray Enamel helps give you a professional-looking paint job. Quick-drying glossy finish, available in black and white. SVS</p>	<p>TRU-GUARD 1.44 Combination Padlock offers 3-number combination w/smooth dialing that's easy to read. Hardened steel shackle. 317-14-8X</p>	<p>RAYOVAC 2.00 Your choice Heavy-Duty Batteries for a variety of needs. Choose 8-pk. of AA size, or 6-pk. of C or D sizes and stock up! SAA-8/4C-6/6D-6</p>	<p>True Value 99¢ Your choice Trash Bags of super-tough plastic to resist breaking. Choose 20-pk. 32-qt., 7-pk. 33-gal. or TVH24W20/TL7/S10</p>

Mon. - Sat. 8:00 - 6:00

Fry & Cox, Inc.

401 S. 1st. 272-4511

LARGE PIZZA, MEDIUM PRICE!

The next time you're at a Pizza Hut® restaurant, enjoy a large pizza for the price of a medium with the same number of toppings. Choose your favorite, including Pizza Hut® Pan Pizza, and any toppings on the menu. It's our way of saying we like seeing you. Bring some friends or family so we can hear them say "Ooohh," "Aaahh" and "Mmmm" too.

Also includes Priazzos
Large for the price of medium!

Order any large pizza and pay the price of a medium size pizza with the same number of toppings. Hurry because this offer expires soon. One coupon per party per visit at participating Pizza Hut® restaurants.

Your Home Taste
Pizza Hut
1412 W. Amer. Muleshoe

Please present coupon when ordering. Not valid in combination with any other offer. 1-20-85
cash redemption value. © 1985 Pizza Hut, Inc. Good only through

Courthouse News

MARRIAGE LICENSE
 Ruben Medina Nunez and Irma Rodriguez, Lubbock
 Gilbert Baca and Regina Beatrice Bevers, Clovis, N.M.
 Melton Earl Calfy and Linda Teresa Chavez, Friona
 Dennis William Demaree and Mary Elaine Legate, San Juan

WARRANTY DEEDS
 J.T. Montgomery and wife, Alice Faye Montgomery to Donald W. Jones and wife, Debra K. Jones--All of Lot (3), Block (10), Warren Addition Number (2) to the Town of Muleshoe, Bailey County, Texas.

Jacqueline E. Bradley to Alton M. Bradley and wife, Lind Joan Bradley--The (W.40 A) of the (S/2) of he (SW/4) of Section 30, Block Y, WD&FW Johnson Subdivision, Bailey County, Texas.

Alton M. Bradley and wife, Lind Joan Bradley to Jacqueline E. Bradley--My undivided 1/2 interest of 67.75 acres of land out of the West 80 acres out of the (NE/4) of Section Number (22), Block Y, WD&FW Johnson Subdivision Number (2), in Bailey County, Texas.

COUNTY COURT ORDER DISCHARGING DEFENDANT FROM PROBATION

Roberto Flores, Howard Ray Manasco, Rosa Elena Alarcon, Leonel R. Quiroga and Robert Gonzalez.

Nicacio Leroy Hurtado, DWI, \$250 Fine, 2 Years Probation
 Charla Renee Pace, DWI (Second Offense), \$440 Fine, 15 Days Jail

Sammy Anguiano Gonzales, Jr. DWI, \$250 Fine, 2 Years Probation.

Jackie Speed, Speeding, \$48.00 and Court Cost.

DISTRICT COURT
 Shannon Gayle Millsap and Curtis Wayne Millsap, DV
 Shook Tire Company VS Don McDaniel and Jeannie McDaniel, \$5,521.00 Default Judgment

Connie Elaine Murphy and Lee Edward Murphy, DV
 Theodore Villalobos and Patricia Villalobos, DV
 Reynolds and Young, Inc. VS Darrell Kennemer, Motion To Dismiss

Bailey County Appraisal District, ET AL ET AL VS Jim Claunch Ind. and DBA

Jim Claunch and Sons and DBA Claunch Gin Company ET AL Order of Partial Dismissal

NEW VEHICLES
 Carl W. Stewart Co., Inc., 1985 Jeep Jp, Robert D. Green, Inc. and Lou Ann Hillhouse, 1985 Olds 2dr, Robert D. Green, Inc.

BIBLE VERSE



Stand thou still a while, that I may show thee the word of God.

1. Who made the above request?
2. To whom was he speaking?
3. On what occasion?
4. Where may this verse be found?

Answers to Bible Verse

1. The Prophet Samuel.
2. To Saul.
3. Just prior to his anointment by Samuel and his proclamation as first King of the children of Israel.
4. 1 Samuel 9:27b.

17. Seed & Feed

BIRDWELL CATTLE
 Co. Coyote Lake, We are buying wheat & barley 806-946-3321. b15-23t-tfc

Round-up applications cotton, soybeans, maize, lay-out, tipe-wick mounted on highboy 30 inch or 40 inch rows. Call Roy O'Brian 265-3247. o17-26s-tfc

18. Legal Notice

LAZBUDDIE I.S.D. is accepting bids for a walk in freezer to be built in. Specifications can be obtained at the Lazbuddie I.S.D. administration office, or by calling 806-965-2156. The deadline for submitting bids is at noon on August 23, 1985. L18-32s-2tc

15. Misc.

ABANDONED: Female, white German Shepherd puppy -- will give away to good home -- 946-3676. (Approximately 5 mo. old) 15-32t-2tp-

CLOVIS FLEE MARKET Open every Sat. and Sunday, Corner of Prince and Brady. g15-32t-1mc

17. Seed & Feed

WANT TO HARVEST Corn, Beans, Milo, Sunflowers. Will cut and haul corn 40C per CWT milo-35C. 8820 John Deere combines 40-38-30 inch rows. Happy, Texas 806-488-2252 or 2460. s17-29s-1mc

Energas Names Dennis Gillmore As Board Member

Charles K. Vaughan, Chairman and President of Energas Company (OTC), today announced the selection of Dennis S. Gillmore, Senior Vice President, to fill the vacancy on its Board of Directors created by the retirement of William N. Lampe, Senior Vice President, General Counsel and Director on July 31, 1985. Don E. James, Assistant Vice President, has assumed the additional responsibilities of General Counsel.

Gillmore joined the company in November, 1984. He has 13 years experience in the natural gas industry. Prior to joining Energas, he was President of Gillmore Consulting, Inc. of Houston. He was previously a Senior Vice President with H. Zinder & Associates of Washington, D.C. and had been associated with Kansas-Nebraska Gas Company, Inc. and Arkansas Louisiana Gas Company.

James has been associated with National Gypsum Company in Dallas and was a briefing attorney with the Court of Civil Appeals in Amarillo. He has served as an attorney with Pioneer Corporation and was a vice president of Pioneer Nuclear, Inc. prior to joining Energas in October, 1983 as Director of Regulatory Affairs. He was named Assistant Vice President and Assistant General Counsel in January, 1984. James is a member of the American Bar Association, Texas Bar Association and the Amarillo Bar Association.

Energas is an independent natural gas distribution company serving over 280,000 customers in West Texas.

It is better to be alone than in ill company. -Stefano Guazzo.

Ellis Funeral Home
 Pre-Need Funeral Plans
 Supervised By Texas Department of Banking
 Price Frozen At Time Of Purchase

Follow The Cord
 Parents concerned about where their teenager is might try following the telephone extension cord.
 -Tribune, Des Moines.

Middle Age?
 Middle age is that period in a man's life when he'll do anything to feel better except give up what's hurting him.
 -Bulletin, Great Lakes.

Dr. Paul W. Meriwether
 Announces The Opening Of His Office
 For The Practice Of
Orthopaedics & Surgery Of The Hand
 By Appointment

Office Hours: 8:30 a.m. - 5:00 p.m.
 Edgemere Medical Bldg.
 Plainview, Texas

Phone: 293-2631
 2606 Yonkers

SCHOOLS SALE

Sale Prices Effective August 11th - 17th, 1985

Clovis	Portales	Muleshoe
2600 Mabry 762-7717	1601 S. Ave D. 356-8543	1302 W. American Blvd. 272-5571

OPEN 7 DAYS A WEEK
 Mon. - Sat. 7:30 a.m. - 7:30 p.m. Sun. 12:30 - 5:00

A&M
 Wrangler Student Jean
12.99

Sturdy, durable stitched fabrics. Bar tacked or rivited at all points of strain. Rugged rust resistant zipper. 100% cotton. Pre-shrunk. 14% oz. No. 410SNVR.

Wrangler
 Slim Fit Straight Leg
13.99

5 Pocket, Straight Leg Jean. 100% Cotton Heavyweight Indigo Denim. Sizes 27-28. Shrinkage Controlled.
 38" Inseam **\$14.99**

Pro Rodeo Cowboys
 ... inspired them, so Wrangler Pro-Rodeo competition jeans must be tough, comfortable and easy to care for. Count on it. Look for the 'W' on the pocket -- it's the sign of quality.

4.00 OFF
 Each Pair

SHOP A&M FOR BIG SAVINGS

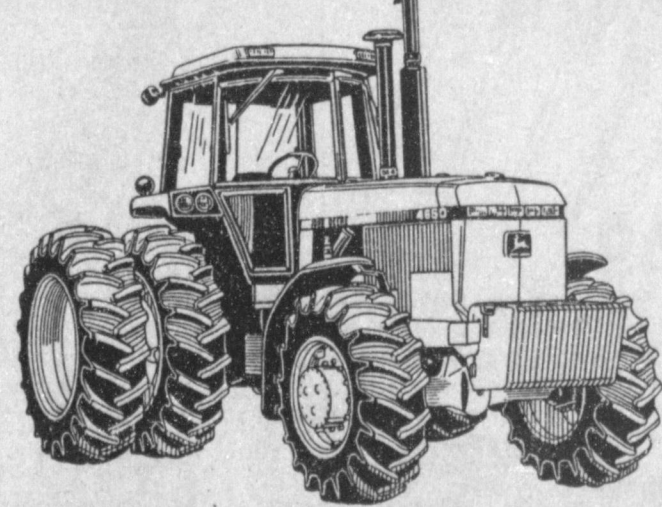
Select Group of Wrangler
Shirts \$3.00 Off
SALE STARTS TODAY
 Use Our Convenient Layaway Plan

Wrangler pro rodeo

3.00 OFF
 Any Lady Wrangler Jean

Lady Wrangler in two styles for junior and misses. Junior sizes 1-15 and Miss 6-20 in denim and New Horizon styles. Full fit styles in sizes 6-20.

165-HP 4650 TRACTOR



SN9129

HAVE YOU CONSIDERED A LEASE PURCHASE OPTION?

\$9723.18 PER YEAR FOR THIS JOHN DEERE 4650 MFWD with NO advance Payment!

Looking to trade up for more productivity? Consider using your trade-in equity to further reduce the already low cost of a John Deere Lease. Right now we can put this John Deere 4650 MFWD in your field...and your lease payments could be \$9723.18 per year; or your cost could be even lower, depending upon the value of your trade-in. And your first payment is not due until Feb. 1, 1986.

Dent-Rempe

1516 W. Amer. Blvd.

806-272-4296

Muleshoe, Texas



*Based on a 60-month lease with no advance payments. Trade-in equity estimated at 30% of selling price. Subject to approved credit. Prices & lease rates subject to change without notice.

Wrangler PRESENTS

BUY ANY 3, GET 1... FREE!

HERE'S HOW

- 1 BUY any three Wrangler jeans or pants
- 2 MAIL this form and proofs of purchase
- 3 RECEIVE Certificate for free Wrangler jean or pant

LIVE IT TO THE LIMIT!

Wrangler FREE JEAN MAIL-IN FORM

BUY ANY 3, GET 1... FREE!

MAIL TO: Wrangler Offer, P.O. Box 2261, Maple Plain, MN 55393

Enclose proof of purchase from any three pairs of Wrangler Jeans or pants (shorts, fleece, and skirts not included) and your original cash register receipt dated between 7/14/85 and 10/12/85. Receipt must indicate store name and the Wrangler prices must be circled.

Within six to eight weeks of receipt, Wrangler brand will send you a gift certificate good through 12/31/85 for any pair of Wrangler jeans or pants in stock at the store identified on this form.

IMPORTANT: You must pay sales taxes on the free jean or pant when you pick it up at the store. Limitation: One gift certificate per form, four gift certificates per person, family group or address. Offer void outside USA and where prohibited by law. You assume the risk of loss or delayed mail.

OFFER EXPIRES OCTOBER 12, 1985

NAME _____
 ADDRESS _____
 CITY _____ STATE _____
 ZIP _____ (PHONE) _____
 (Zip code must be included)

A&M 17.99

Bailey County Journal

Classified

Call 272-4536

CLASSIFIED RATES
1st Insertion
Per Word\$15
Minimum Charge.... \$2.30
2nd Insertion
Per Word\$13
Minimum Charge.... \$2.00

CLASSIFIED DISPLAY RATES
\$1.70
per column inch

BLIND AD RATES
50% more

DEADLINES
12 Noon Tues.
for Thursday paper
12 Noon Fri.
for Sunday paper

WE RESERVE THE RIGHT TO CLASSIFY, REVISE, OR REFLECT ANY AD. NOT RESPONSIBLE FOR ANY ERROR AFTER AD HAS RUN ONCE.

1. Personals

EXCELLENT IN-COME FOR HOME ASSEMBLY WORK FOR INFO CALL 504-646-0315 EXT. C-2109.
1-32s-4tp
ATTENTION: POTATO FARMERS want to buy potatoes at your farm bulk loaded on our semi-trucks. Contact Colorado Potato Co., Trinidad Colorado 303-846-4404.
1-28s-8tc

FURNITURE Upholstering & repairs. Burrows Upholstery Shop 209 W. 2nd Phone 272-4255 Home Phone 272-5722.
b1-41t-tfc

HOME REPAIRS F.M. Saldana Construction Licensed and bonded plumber. Specialized in cement, carpenter work, remodeling, painting, acoustical ceilings.
272-4955.
s1-16s-tfc

NEED YARDWORK? Call 272-3789 or 272-3380 Jerry Bob Graves & Sergio Gonzalez.
a1-25s-tfc

HELTON'S Roofing and Exterior Painting, Mobil Home Roofs our speciality. Also the best in Ag. products. Call Jerry Helton 272-3836, 915 Gum, Muleshoe, Tx.
h1-8t-tfc

DEMONSTRATE Toys and Gifts. No Collecting, Delivering or Cash Investment! Free Kit! CALL DONNA (806) 293-9128.
1-31s-4tp

LICENSED DAY CARE 18 mos. and older. Openings for fall. Call Diane Allison 272-3304.
a1-30s-tfc

1. Personals

DAVIS COMMERCIAL PUMPING SERVICE
Cess pools, Grease pits, Dipping vats, Mud pits, Septic Tanks.
"If it's part liquid and not over 20 foot deep we'll try to drain it."
806-272-4673
806-272-3467
Muleshoe, Texas
1-25s-stfc

CONCERNED About Someone's Drinking? HELP IS AVAILABLE through Al-Anon Call 227-2350 or 965-2870 or Call 227-2350 or come to visit Tuesday nights, 8:30 p.m. or Saturday mornings at 10:30 a.m. at 1116 W. American Blv., Muleshoe.

GOVERNMENT JOBS \$16,040 - \$59,230/yr. Now Hiring. Call 805-687-6000 Ext. R-6226 for current federal list.
3-32t-8tpts
HELP WANTED: Full time year around farm worker. Call 965-2259 daytime or 272-3257 after 6.
t3-28t-tfc

WHITT-REID REAL ESTATE...INSURANCE BUILT ON INTERGRITY...SERVICE H.C. REID BROKER
Phone 272-3611
201 Main

Just listed 3-2-1 dishwasher, garbage disposal, hood fan, drapes, fenced back yard. 25H-19

Are You Looking for a very nice house that has everything, 3-2-2 brick and in the county - \$160,000.00. H100-1

3-2-1 Brick central heat, tile & carpet floors, fenced back yard. 50H-8

3-1/4 Brick huge den, closets, fireplace, utility room, dishwasher Range-oven disposal, bar, carpet, drapes, central heat, ceiling fan, storage building. 50H-9

2-1-1 Carport sunken living room, central heat, range oven, compactor, fireplace, concrete patio w/ B.B.Q. grill off fireplace outside, 2 extra heavy storm doors. 25H-18

Roy Whitt-home phone 272-3058
Thursie Reid-home phone 272-5318
Lucille Harp-home phone 272-4693

WE TRY HARDER

1. Personals

MARY KAY COSMETICS in stock. Free facials. 272-3865 Josie Flowers.
f1-22t-tfc

OPENINGS FOR preschool children. Good Christian home. Registered. References available. 272-5822.
t1-32s-4tsc

OPEN YOUR OWN beautiful Children's Store. Infant to Pre-Teen. Nationally known brands *Health Tex * Don-moor *Lee, *Levi, *Chic, *Buster Brown, *Izod, *Her Majesty *Nannette *Feltman and many more. Furniture-accessories and toys by Gerber and Nod-A-Way. \$14,900.00 to \$17,900.00 includes beginning inventory - training-furniture-grand opening promotions and round trip air fare for one. Call today. We can have your store opened in 15 days. Prestige Fashions 501-329-8327.
1-32s-1tpts

3. Help Wanted

TOWN & COUNTY FOOD STORES

Career opportunities available now with this rapidly growing convenience food store operation. Applications are being accepted now for Store Manager, Asst. Manager, full time and part time clerk positions, experience a plus but not required. Benefits include above average starting salaries, paid vacations, sick leave, group insurance and performance based bonus plan. Apply at the Town & County Food Store at 1900 W. American, in Muleshoe.
t3-27s-tfc

4. Houses For Rent

RUIDOSO CHALET 4 bedroom for rent by day, weekend, or weekly. Call 505-257-2622 or 915-943-4261. Owner Dr. Albertson.

3. Help Wanted

J.B. SUDDERTH REALTY INC.
Drawer 887
Farwell, TX 79325
Ph. 806-481-3288

181 acres, one 6 in and one 8 in well, valley sprinkler, west of Progress on highway. Owner financing available.

472 acres, four wells with electric motors, two late model valley low-pressure sprinklers. Wheat crop included. Priced at \$650 per acre. Owner will finance.

177 acres with zimmatic sprinkler near Lazbuddie. Good water area. Priced at 875 per acre. Owner says sell.

320 acres irrigated E of Farwell on hwy with circle sprinkler 2-8 in. wells approx. 200 ft of water lays nearly perfect.

155 acres irrigated with circle sprinkler, excellent water area, North East of Muleshoe

320 a, 3-8 in wells, circle sprinkler, 3 mi SE Clays Corner

158 a, 3 good wells, circle sprinkler, elevator and new office building on highway. Progress area.

HENRY REALTY
111 W. Ave. B
Muleshoe, Texas
272-4581

JUST COMPLETED 3 bedroom, 2 bath, large living room, kitchen & dining. Excellent condition, near high school. Priced to sell.

320 ACRES with large beautiful 3 Bedroom, 3 bath, 3 car garage, spacious gameroom, central heating and air, underground sprinkler for yard 30'x50' shop for building. 5 wells.

80 ACRES with 6" well and 8" well, under ground pipe owner financing available. 7 miles west of Muleshoe.

38 ACRES West of Muleshoe, 6 Inch Well, Sideroll, All Wheat.

ONE ACRE sites for Home Construction. 3 Miles East of Muleshoe on HWY. 3 lots remain.

COMPLETELY remodeled 2 Bedroom home. Ideal first home, must see to appreciate. Nice location with F.H.A. loan.

APARTMENT complex, mobile home park, vacant land for expansion. Terms available.

150 ACRES with 6 inch well and 4 inch well. On highway close to Muleshoe. Underground line connects both wells.

COUNTRY living, close to town. A 3-Bedroom, 2-bath, large den with fireplace, central Air/heat, located on one-acre tract. Carpet through-out, many built-in appliances in kitchen. TV-Cable. See to appreciate.
8-23t-tfc

5. Apts. For Rent

FOR RENT: 1 large bedroom apt. Call 965-2188 or 272-4754 after 6:00 p.m.
s5-32t-tfc

8. Real Estate For Sale

FOR SALE: 12X60 Brookwood Mobile Home. For more information call Jessie at 272-5574 days or 272-4622 evenings.
r8-32s-4tc

FOR SALE or Rent 3 Bedroom 903 W. 8th Muleshoe call 806-285-2757. Olton, Tx.
b8-25t-tfc

NEW 14x56 2 bedroom, 1 bath close out prices. Perfect for lake or mountain retreat. Ask for Shelby 763-5319 collect.
a8-29t-3tcts

8. Real Estate For Sale

MOBILE HOME For Sale 12'x60' 1969 Model located at Alamo Trailer Park Space 92 in Levelland, near Levelland High School and South Plains College Asking 6,500 806-925-5442.
r8-32s-2tc

FOR SALE BY OWNER: 3 bdrm, 3 bath brick home, large fenced yard-lots of storage and storm cellar. Call for appointment 272-3592 located 1810 W. Ave. C.
d8-7t-tfc

BACK TO COLLEGE special. Why rent when you can own low down, low payments with free delivery & set up. Call Alvin collect 806-765-7556.
m8-32s-4tcts

3. Help Wanted

3. Help Wanted

3. Help Wanted

8. Real Estate For Sale

CLOSE OUT on 85 model 14x70 2 plus 2 low down easy financing payments of only \$233 a month for 180 months at 15.2% APR Call Alvin collect 806-765-7556.
m8-32s-4tcts

REPOSESSED 14 & 16 wide mobile homes from \$99 to \$500 down. Delivery included. 6 month free lot rent. Call 1-800-792-0032.
m8-25t-tfcts

GREAT FAMILY STARTER! New 2 Bedroom 1 Bath Lancer Mobile Home Free 1st year insurance Free delivery & set up. \$825 total down with payments of \$220 per month for 180 months. 15% APR Call Jean Marshall 1-800-792-0032 after 8:00 pm (806) 792-9315.
m8-32s-4tcts

8. Real Estate For Sale

Smallwood Real Estate 232 Main 272-4838

3 Bdr., 2 bath, storage, stucko, fully carpeted, 30's.

3 Bdr., 2 bath, fireplace, 2 car garage, Brick, lots of extras.

Nice 1 bedroom. Nice carpet, fenced yard. Ideal for retired couple or single. Terms available to qualified party.

8. Real Estate For Sale

9. Automobiles For Sale

1980 Model Ford F250 heavy duty-C-6 automatic transmission, 400 CI engine, heavy duty rear axle, new radial tires, and a service body. Runs on propane or gasoline. Call after 8:00 p.m. 925-6485.
p9-24t-tfc

1978 Mercury Cougar XR7 Loaded. Excellent condition. See at 919 Ivy or call 272-4131 after 5:00 p.m. p9-23t-tfc

8. Real Estate For Sale

JIMMIE CRAWFORD - Real Estate & Ins. 1725 W Ave E Muleshoe, Texas Phone 272-3666

KREBBS Real Estate and Appraisals 272-3191

3. Help Wanted

3. Help Wanted

3. Help Wanted

8. Real Estate For Sale

BINGHAM & NIEMAN REALTY
116 E. Ave. C
272-5285***272-5286

COUNTRY LIVING HOMES

4-2 1/2-2 Brick home on approx. 10 acres, built-ins, fireplace, approx. 30' x 50' insulated shop bldg., 10' satellite dish, orchard, sprinkler system, small barn. \$90,500...

3-1-1 home on 1 acre, close to town, nice workshop-storage bldg. & attached shed. \$30's....

3-2-2 Brick on 2 acres, built-ins, fenced yard, fireplace, on pavement, close to town. \$50's!!!!

RICHLAND HILLS

PRICE REDUCED-3-2-2 Brick, Cent. A&H, built-ins, fireplace, fenced yard. \$50's!!!!

4-2 1/2-2 Brick, Cent. A&H, built-ins, fireplace, study, basement, fenced yard, & more. \$60!!!!

REDUCED PRICE-3-1 1/2-2 carport, Brick, Cent. A&H, built-ins, gas log fireplace, fenced yard. \$48,000!!!!

3-1 1/4-1 Brick, Cent. A&H, built-ins, fenced yard, Judg. A Good Buy....

3-3-1 carport Brick, Cent. A&H, built-ins, fireplace, nice large den with built-in bar & gun cabinets, loads of storage, large utility, covered patio, gas grill, & storage bldgs.!!!!

2-1-1 Brick, Cent. heat, storm windows & doors, new roof, built-ins, fenced yard & more. \$40's!!!!

3-1/4-2 Brick, Cent. heat, Evap. air, built-ins, nice earth tone carpets, new vinyl flooring, fenced yard, & lots more!!!! \$60's

COUNTRY CLUB

PRICED REDUCED 3-1 1/2-2 Brick, Cent. A&H, built-ins, nice.

LENAU ADD.

3-1 1/4-1 home, built-ins, fireplace, Evap. air, enclosed patio, comb. workshop-storage, fenced yard, plus other extras!!!!

3-1-1 home, corner lot, Cent. heat, Evap. air, fenced yard. \$30's....

3-1 1/4-1 carport home, nice carpet, fenced yard, neat. \$30's!!!!

JUST LISTED-Nice 2-1-1 home, wall furnace, evap. air, storm windows & doors, utility, fenced yard & storage bldg. \$30's!!!!

JUST LISTED-Very nice 3-2-2 carport home, Cent. A&H, fireplace, nice carpets, large rooms, loads of storage, fenced yard, & lots more!!!!

"WE APPRECIATE YOUR BUSINESS"
GEORGE NIEMAN, BROKER
DIANNE NIEMAN, BROKER

8. Real Estate For Sale

11. For Sale Or Trade

FARM EQUIPMENT 1460 IHC Combine with platform. Excellent condition 429,500 Ph 1-800-835-1020.
11k-32t-2tc

FOR SALE: Green Beans, Cucumbers, later Blackeyed Peas and Okra. Call 965-2696 or 965-2761.
11g-32t-4tp

FOR SALE Two cemetery lots in Bailey Co. Memorial Park Call 915-388-4635 or write to C.M. King Box 244 Kingsland, Tx 78639.
k11-23t-tfc

FOR SALE: 9 yr old Gelding horse. Gentle, good riding horse. Call 965-2694.
p11-32t-2tc

8. Real Estate For Sale

11. For Sale Or Trade

FOR SALE: Panasonic Stereo with 8 track, turntable, AM/FM Radio & 2 speakers 272-3535.
11-32s-2tp

FOR SALE - 21 piece encyclopedia set. Includes: 21 piece Lexicon Universal Encyclopedia, Medical and Health set, Life Cycle Library, Child Horizons set, 8 piece Childrens Classics, Outdoors Encyclopedia, Funk and Wagnalls Dictionary, Home and Auto Repair Set. \$1500.00 value. Price negotiable 272-4356

8. Real Estate For Sale

CARPORTS & AWNINGS
On Sale thru August at a 25% Discount.
806-293-1720 Days
293-7665 Nites
p11-31s-tfcts

15. Misc.

15. Misc.

SHOP AROUND FOR THE BEST PRICE THEN SEE OUR PRICES 60% OFF 14K GOLD&DIAMONDS EVERY DAY

BI-WIZE HEALTH MART
902 Main 247-3010
b15-23s-tfc

11. For Sale Or Trade

2-1-1 Brick, Cent. A&H, built-ins, fireplace, Comb. den-office, fenced yard with 2 nice pecan trees, corner lot!!!!

2-1-1 HOME, Cent. heat, DW, utility, storm windows, well insulated, fenced yard. \$20's!!!!

HIGH SCHOOL AREA

JUST LISTED-3-1 1/4 home, Cent. heat, Evap. air, utility, covered patio, & more \$30's!!!!

3-1 3/4 home on corner lot, built-ins, new Geothermal A&H system, fenced yard, storage bldg. \$50's!!!!

3-2-1 Brick, Cent. heat, approx. 5 years old, evap. air, water conditioner, very nice home. \$40's!!!!

*3-1-1 home, corner lot, Cent. heat, Evap. air, fenced yard. \$30's....

3-1-1 Brick, Cent. heat, built-ins, utility, well insulated, storm windows & doors, fenced yard, water softener, storage bldg. \$30's!!!!

3-1 1/4-1 Brick, Cent. A&H, built-ins, fenced yard. \$40's....

3-1 1/4-1 detached garage home, built-ins, fenced yard. \$30's!!!!

3-1 home, nice carpets, large rooms, built-ins, fenced yard, insulated workshop-Storage Bldg. \$20's....

3-1 1/4-1 home, corner lot, Cent. A&H, 1800+ sq. ft. of lv. area, sprinkler sys., & also has a nice 2 room & bath rental unit. \$40's!!!!

JUST LISTED-SMALL EQUITY & ASSUME 14' x 80' Mobile Home-3 bdrm., 2 bath, built-ins very nice....

BUILDING ON 2 LOTS, approx. 2350 sq. ft., paved parking....

2-1 home on 20 acres, 20 hp. sub. pump, domestic well, large barn & corrals, 1/4 mile sprinkler pipe, & more. \$42,500....

Sale or Lease nice brick office bldg. Approx 4,000 sq. ft. Very nice offices and reception area, central A. H, paved parking.

3-2 Mobile Home and lot, built-ins, fenced yard, storage bldgs. & More. \$13,000!!!!

NEEDMORE - Good Labor of land, 2 elec. wells with hi-pressure line for sprinkler system, some minerals. Priced to Sell....

We have numerous farms, commercial property, & lots listed. Contact us for details on these and other listings.

2ND BIG WEEK!!!

Bell Ringing Savings

Finer Quality Foods at Lower Prices



SHURFRESH ASSTD. FLAVORS

ICE CREAM

\$1.29



1/2 GAL. SQ. CTN.

32 OZ. PLUS DEPOSIT

COCA-COLA

\$2.19



6 BTL. CTN.

PILGRIM'S PRIDE PAN READY CUT-UP FRYERS	LB.	69¢
PILGRIM'S PRIDE SPLIT BREASTS	LB.	\$1.29
PILGRIM'S PRIDE THIGHS OR DRUMSTICKS	LB.	99¢
SHURFRESH HICKORY SMOKED SLICED BACON	1 LB. PKG.	\$1.49
EXTRA LEAN GUAR. 81% LEAN CHUCK QUALITY GROUND BEEF	LB.	\$1.48
SHURFRESH FULLY COOKED BONELESS 93% FAT FREE HALF HAMS	LB.	\$2.19
SHURFRESH QUALITY MEAT FRANKS	12 OZ. PKG.	79¢
SHURFRESH QUALITY MEAT BOLOGNA	12 OZ. PKG.	89¢
SHURFRESH SMOKED WAFER THIN SLICED MEATS	2.5 OZ. PKG.	39¢
SHURFRESH WHOLE HOG REG. OR HOT PORK SAUSAGE	1 LB. ROLL	\$1.49
SHURFRESH WHOLE HOG REG. OR HOT PORK SAUSAGE	2 LB. ROLL	\$2.97
SHURFRESH GRADE A 4-6 LB. BAKING HENS	LB.	69¢

WHOLE FRYERS

49¢



SPECIALS FROM THE GROCERY DEPARTMENT

EVAPORATED CARNATION MILK	2 LB. BARS	89¢
PETER PAN SMOOTH OR CRUNCHY PEANUT BUTTER	18 OZ. JAR	\$1.59
DEL MONTE TOMATO CATSUP	32 OZ. BTL.	99¢
SHURFRESH SALTINE CRACKERS	2 1 LB. BOXES	\$1.00
FREE RUNNING OR IODIZED SHURFINE SALT	26 OZ. BOX	29¢
SHURFINE VEGETABLE OIL	24 OZ. BTL.	99¢
SHURFINE TEA BAGS	48 CT. BOX	99¢
INSTANT TEA NESTEA	3 OZ. JAR	\$2.59
SWEETENED CONDENSED MILK EAGLE BRAND	14 OZ. CAN	\$1.25
HUNT'S ASSTD. VARIETIES PUDDING SNACK PACK	4 CT.	\$1.19
SHURFINE APPLESAUCE	25 OZ. JAR	69¢
SHURFINE AU-GRATIN OR SCALLOPED POTATOES	5 1/2 OZ. PKG.	69¢
DISPOSABLE BIC SHAVERS	5 CT. PKG.	69¢
SYLVANIA INSIDE FROST 60-75-100 WATT LIGHT BULBS	2 CT. PKG.	\$1.19
SYLVANIA SOFT WHITE 60-75-100 WATT LIGHT BULBS	2 CT. PKG.	\$1.19

CONTADINA TOMATO SAUCE	4 8 OZ. CANS	89¢
SHURFINE STRAWBERRY PRESERVES	18 OZ. JAR	\$1.29
STUFFED THROWN MANZ. DURKEE OLIVES	13 OZ. JAR	\$1.59
SHURFINE FRESH PAK CUCUMBER CHIPS	16 OZ. JAR	79¢
SHURFINE SWEET RELISH	8 OZ. JAR	69¢
FRENCH'S LOONEY TUNE BOTTLE SQUEEZE MUSTARD	16 OZ. BTL.	79¢
SHURFINE CAKE CUP ICE CREAM CONES	12 CT. PKG.	39¢
HERSHEY KISSES/MINI./REESE'S PEANUT BUTTER CUPS CANDIES	14 OZ. PKG.	\$2.59
DELSEY WHT/ASSTD./PRINTS BATH TISSUE	4 ROLL PKG.	99¢
WHITE OR EARTHTONES PAPER HI-DRI TOWELS	2 JUMBO ROLLS	\$1.00
SHURFINE LIQUID BLEACH	5 GAL. JUG	69¢
ASSORTED OR WHITE FACIAL KLEENEX TISSUE	175 CT. BOX	79¢

15" OFF LABEL CARESS SOAP WITH FABRIC SOFTENER	2 BAR PKG.	\$1.29
GIANT FAB	48 OZ. BOX	\$1.59
25" OFF LABEL LIQUID PALMOLIVE	22 OZ. BTL.	\$1.19
SHURFINE AUTO. DISHWASHER DETERGENT	50 OZ. BOX	\$1.49
POWDERED AJAX CLEANSER	3 14 OZ. CANS	89¢
SHURFINE CONCENTRATED FABRIC SOFTENER	64 OZ. BTL.	\$1.19
SHURFINE WATER SOFTENER PELLETS	40 LB. BAG	\$2.99
SHURFINE CHUNK STYLE DRY DOG FOOD	25 LB. BAG	\$3.49
SHURFINE COFFEE FILTERS	100 CT. BOX	39¢
DISPOSABLE BIC LIGHTERS	EACH	69¢

Stop and Save for Back-to-School

NOTEBOOK 10 1/2" x 8"	200 CT. PKG.	59¢
FILLER PAPER		79¢
HERLITZ 3-SUBJECT RULED THEME BOOK	EACH	79¢
BIG CHIEF	EACH	79¢
BLACK OR BLUE BIC PENS	10 CT. PKG.	99¢
WITH 3 BRADS POCKET FOLERS	3 CT. PKG.	99¢
YELLOW OR ASSORTED COLORS SCHOOL PENCILS	8 CT. PKG.	59¢
WHITE OR SCHOOL ELMER'S GLUE	4 OZ. BTL.	59¢
CRAYOLA CRAYONS	16 CT. PKG.	89¢
SHURFRESH QUARTERS MARGARINE	2 16 OZ. PKGS.	89¢
SHURFINE FROZEN ORANGE JUICE	12 OZ. CAN	88¢

SHURFRESH BM/COUNTRY STYLE BISCUITS	6 8 OZ. CANS	\$1.00
SHURFRESH IND. SLI. AMERICAN CHEESE FOOD	16 OZ. PKG.	\$1.59
KRAFT HALFMOON LONGHORN COLBY/CHEDDAR CHEESE	10 OZ. PKG.	\$1.69
SUNNYFRESH EX. LARGE EGGS	18 CT. CTN.	99¢
SHURFRESH BUTTERMILK	1/2 GAL. CTN.	99¢
ASSORTED FLAVORS BORDEN SHERBET	1/2 GAL. CTN.	\$1.29
BORDEN'S NUTTY BUDDY	6 CT. PKG.	89¢
BORDEN'S ASSORTED FLAVORS FRUIT DRINKS	1 GAL. CTN.	99¢
BORDEN'S HI-PRO MILK	1/2 GAL. CTN.	99¢

GRANULATED SHURFINE SUGAR

\$1.39

5 LB. BAG

ALL GRINDS VAC PAC SHURFINE COFFEE

\$1.89

1 LB. CAN

THOMPSON SEEDLESS GRAPES	3 LB.	89¢
CENTRAL AMERICAN BANANAS	3 LB.	49¢
CALIFORNIA SANTA ROSA FRESH PLUMS	LB.	49¢
FRESH CRISP CELLO CARROTS	2 1 LB. PKGS.	49¢
LONG GREEN SLICER CUCUMBERS	LB.	25¢
LARGE THICK WALL BELL PEPPERS	LB.	49¢
U.S. NO. 1 RUSSET POTATOES	10 LB. BAG	89¢

SHURFINE WITH LOCK TOP SANDWICH BAGS	3 80 CT. BOXES	\$1.00
SHURFINE ALUMINUM FOIL	2 12 x 25 ROLLS	\$1.00
SHURFRESH REG. W/AVEE/BBQ POTATO CHIPS	7 PKG.	68¢
SHURFINE MACARONI & CHEESE DINNERS	5 7 1/2 OZ. PKGS.	\$1.00
SHURFINE IN TOMATO SAUCE PORK & BEANS	4 16 OZ. CANS	\$1.00



PRICES EFFECTIVE AUGUST 12 THRU 17, 1985 WE RESERVE THE RIGHT TO LIMIT