

The Memphis Democrat

12 PAGES This Week

Hall County Herald, Established May 3, 1890, Absorbed by Purchase August, 1928

VOLUME LXXV *** NWN SERVICE *** MEMPHIS, HALL COUNTY, TEXAS THURSDAY AFTERNOON, January 13, 1966 *** TEN CENTS *** Number 35

Hall County Bank Assets Soar To Record High, \$15.5 Million

Hall County went into 1966 with the best financial record in its history, according to figures released by the four county banks this week. The totals were taken from statements of condition being published this week, and are compared to those released a year ago.

At the close of business on Dec. 31, 1965, the assets of the four county banks combined to a total of \$15,551,052.34, which was \$1,944,303.35 above the figure of a year ago.

Approximately the same trend was seen in the total deposits figure at the close of 1965 which totaled \$14,188,509.79. This is \$1,907,164.09 over the Dec. 31, 1964 figure, a remarkable two-million-dollar jump in a 12-month period.

Also higher than last year's figure was the loans and discounts total of the four banks, which is \$6,581,851.14. This is \$839,442.32 above the 1964 end-of-year figure.

The record high was predicted all year as each of the four statements of condition issued by the county banks surpassed that of 1964. With the selling of the 1965

Comments

Autumn weather keeps lingering on and on—even winter isn't trying to bring on coolness that may help to do away with 1965's pest eggs. Perhaps Old Man Winter is on the way. Farmers are in the kind of weather needed to finish gathering cotton. Another thing wanted by farmers and ranchers is moisture that will make wheat grow for pasture and bring in money when the grain is sold.

On every side there is so much to inspire gladness of life; the love of men, the beauties of nature, the sweetness of friendship, the joy of service. Every day is the dawn of golden opportunity and every night a purple benediction of rest and peace. We should go forward with blithe hearts, happy in the consciousness of living here and now.

President Johnson, in his speech Wednesday evening, touched on many phases of America and the world, and in the final analysis, if all are brought to pass, we would have a utopia instead. There is a war going on, half the people of the world are starving. Has the mad rush for gold, the strife of competition, the hurry and hustle of the automobile and all its accompaniments kept men from their towering heights of great citizenship?

Men who have blazed new paths for civilization have always been precedent breakers. It is ever the man who believes in his own ideas; who can think and act without a crowd to back him; who is not afraid to stand alone; who is bold, original, resourceful; who has the courage to go where others have never gone, to do what others have never done, that accomplishes things that leaves his mark on time.

American parents and homes should be prepared to train, mould and inspire the youth for the leadership now open to them in this exciting world of ours. Really, in this world needs are intellectual, spiritual, moral, social and away with selfishness. We dole out our millions for relief when they are starving, but the world wants is to feel America is living the life of humanity it professes.

Is it not the highest type of courage and patriotism for each and every American to make every most of his life as an individual citizen? The leavening power of such a life is incalculable. Are you willing to do this? (Continued on Page 12)

Citizens Urged To Pay Poll Tax

Citizens of Hall County were urged this week to pay their annual poll tax before the Jan. 31st deadline. The tax is being passed because only one-fourth of the expected number has made the purchase.

Melissa Anderson, Hall County Tax Assessor-Collector, said that about 500 poll tax receipts have been issued. "During the past few years we normally issue 2,000 receipts," she said. "I am afraid that some don't know that there are only 18 months in which to make poll tax payments and if they don't have

it, the end of the year total was expected to be the highest on record.

Not all of the 1965 cotton has been sold as yet, so the Dec. 31, 1965 figure will continue to climb as farmers complete the harvesting and marketing of the crop.

Funeral Services For Mrs. Brock Held Here Today

Funeral services for Mrs. H. B. Brock, long-time county resident, were conducted at 2 p. m. today (Thursday) from the Spicer Funeral Home Chapel. Rev. David Hamblin, pastor of the First Methodist Church, officiated.

Interment was in Fairview Cemetery with arrangements under the direction of Spicer Funeral Home.

The former Margaret Elizabeth Greaser, Mrs. Brock was born Nov. 11, 1881 in Lowell, Ark. She was united in marriage to H. B. Brock Sept. 1898. (Continued on Page 12)

Harvest Of '65 Crop Is Now Nearing End

The harvesting of the 1965 cotton crop is near its end, a telephone survey of the 14 county ginners revealed this morning.

The harvest total rose to 55,533 bales, the survey revealed. There are just about 750 bales remaining, county ginners estimated.

Many ginning reports stated the harvesting in their areas was complete or so near to being complete that only a few bales remain. Other points have a few hundred bales left to be gathered.

The ideal weather this past week allowed 5,000 bales to be gathered.

K. E. Voelkel of the Memphis Cotton Classing Office stated that the 23,000 samples classed during the week ending Friday, Jan. 7, was the second largest weekly figure this season and brought the total classed to 150,000. This compared with 143,000 as of the same date a year ago. It is estimated that about 75 to 80 per cent of the expected Eastern Panhandle production has been classed thus far.

Based on samples classed last week, White grades represented 27 per cent of the classing. Light Spotted and Spotted grades made up 61 per cent and 12 per cent, respectively. The leading grades were: Strict Low Middling White, 7 per cent; Middling Light Spotted, 23 per cent; Strict Low Middling Light Spotted, 32 per cent; Low Middling Light Spotted, 6 per cent; Middling Spotted, 6 per cent; and Strict Low Middling Spotted, 5 per cent.

With increased harvesting, there was also an increase in cotton reduced in grade because of Bark. Six per cent of the cotton classed last week was reduced because of Bark compared with 3 per cent the previous week.

Staple length was considerably shorter. The predominant length

Bloodmobile To Visit Here Friday Morning

A Bloodmobile from the Southwest Blood Bank in Amarillo will be in Memphis from 9 a. m. to 12 noon tomorrow (Friday) at the Community Center for the purpose of receiving blood for a Memphis blood pool.

As of this morning, Gene Hamill, one of the Memphis men who has been working on the project, said that 66 persons have signed up to give blood tomorrow.

The project to get a bloodmobile to Memphis was started by three Memphis Lions but not as a Lions Club project, Hamill said. A. L. Gailley, Pete Shankle and Hamill have been working several months to organize the program.

Anyone interested in giving blood should go to the Community Center tomorrow between the hours of 9 a. m. and 12 noon.

Memphis School Trustees Plan Contract Negotiations Tonight

School Census Is Being Taken

The annual school census in the four Hall County School Districts is in the process of being taken this month and school officials urge all parents who have children between school ages to cooperate in the annual census.

The census is required by state law and is designed to record information on every school age child within the respective school districts, and detailed information on children who would be as old as six years by September 1, 1966, and who would not have reached their 18th birthday by that date.

The census provides an accounting base for state aid to school districts, and as such, it is most important that every youngster in the encompassing age bracket be counted.

Census takers in all four districts would appreciate parents who have pre-school age children starting to school next September in the first grade to contact them as schools have no records of these children to check on and sometimes they are overlooked in the census.

Mrs. Bill Combs is the census enumerator for the Memphis Independent School District and can be reached at Box 192 or by calling 259-2381.

Mrs. Loran Denton is taking the school census at Turkey and she can be contacted at Box 397.

Supt. of Schools JoEd Cuppell at Box M, Estelline, is taking the

Mrs. L. W. Stanford Dies Unexpectedly At Home Monday

Mrs. L. W. Stanford, 63, former teacher and the wife of a long-time Memphis druggist, died unexpectedly at her home Monday morning. Her death came as a shock to her many friends throughout this area.

A native Texan, the former Jewell Jones was born August 18, 1902 in Henrietta. She came to Memphis in 1925 to teach in the Memphis Public Schools, and it was while she was living here that she met and married Landon William Stanford on June 12, 1927. The couple was married in Henrietta.

Mrs. Stanford continued to teach for approximately three years after her marriage. She had a keen interest in the community throughout the more than 40 years she had lived here and had helped to promote many worthwhile projects. She was especially interested in the persons with whom she came in contact and possessed a gracious and warm personality which won for her many friends.

She was a member of the First Methodist Church.

Funeral services were held at 3 p. m. Tuesday afternoon in the First Methodist Church with the Rev. David Hamblin, pastor, and Tom Posey, minister of the First Christian Church, officiating.

Burial was in Fairview Cemetery with services under the direction of Spicer Funeral Home.

Survivors include her husband, L. W. Stanford; one daughter, Mrs. Douglas Shelton of Ashtola; two sisters, Mrs. Ed Kennedy of Lubbock and Mrs. John Gladden of Spring; and two grandsons, Stan and Ken Shelton of Ashtola. (Continued on Page 12)

Members of the Memphis School Board and representatives of Floyd W. Richards, Contractors, of Amarillo, will meet tonight at 7:30 p. m. to try and negotiate a contract for the construction and remodeling of the school buildings of the local district.

Seven bids were opened at 4 p. m. yesterday in the High School auditorium before about 50 contractors, sub-contractors and interested individuals.

Bidders listed a base bid, and bids on three alternates which were considered by the school board, and the firm of Floyd W. Richards was considered by the board to be the low bidder after alternates number one and two were taken off the base bid.

Superintendent of Schools Shannon Doss said the board will meet tonight with the prospective contractor after his firm has had time to figure on some changes in the original plans and specifications.

"The board decided to omit from the original plans the dressing rooms and shower facilities from Austin and Travis Elementary buildings and to make certain other remodeling changes to get the contract figure lower than what was bid," Supt. Doss said.

"When the final figure is satisfactory, we will let the contract to Floyd W. Richards," Doss said.

School Board President Lawrence Kennon said that all of the bidders' figures were above what the district is able to spend because some of the money will have to go for furnishing and equipment, especially in the new High School building.

The Richards base bid was \$898,287.00 with alternate one listed at \$37,500, alternate two at \$22,200, and alternate three at

\$4,000. When alternates one and two were removed from the base bid, it left a total of \$838,587.00 which is about \$500.00 below the second lowest figure submitted by Panhandle Eng. and Contra.

Supt. Doss said the board is primarily interested in building the new High School building, adding four rooms onto Travis, and constructing a new cafeteria for Austin. After this, the board will see to what extent the remodeling can be done on Austin and the old High School, etc.

President Kennon said that the board asked for a base bid on everything they wanted done, and if this figure exceeded funds available, they would have to cut out some things.

Since the final contract is still in the negotiation stage, a complete list of the construction to be done is not available at this time.

Methodist Church Passes Resolution To Build Facilities

The First Methodist Church voted Sunday morning by a seven to one margin approval of a resolution to commit the church to raise \$100,000.

When this amount is raised, the church will construct entirely new facilities, the resolution stated.

A building committee to oversee this work was also named Sunday and includes: Tommie Potts, chairman; Ed Foxhall, vice chairman; Mrs. M. G. Tarver, secretary; and members, Mrs. Edd Hutcherson, John Fowler, Clint

(Continued on Page 12)

Baldwin Is Elected Chamber President

The Memphis Chamber of Commerce began the process of reorganizing for 1966 with the election of new directors and officers this week.

At the noon meeting Monday at the DeVille Restaurant, President Warren Driver announced the results of the directors election held last week.

Driver said the four men elected directors with three-year terms on the chamber board are M. C. Allen, Jr., Jack B. Boone, Bill Combs and Jack I. Davis.

After this, the directors elect-

ed a new slate of officers headed by the election of Byron Baldwin as president. Wayne Goodrum was re-elected vice president and J. W. Coppedge was named board secretary.

The new directors and officers will take office at the annual chamber of commerce banquet to be held next month.

President Driver explained to the directors at the meeting Monday that three dates have been selected for the annual banquet. Driver said the banquet will be held Feb. 7, Feb. 18 or Feb. 21, depending on which date the speaker selects.

"As soon as we know which date we will notify everyone, and organize our banquet committee," Driver said.

Final Rites For Minnie Mitchell Held Thursday

Funeral services for Mrs. L. C. Mitchell, 73, of 113 E. Main, were held at 4 p. m. today (Thursday) in the Memphis Church of Christ with Tom Anderson, minister, officiating.

Interment was in Fairview Cemetery under the direction of Spicer Funeral Home.

Minnie Lee Mitchell, a resident of Hall County since 1908, died Wednesday morning in Hall County Hospital. She was born in Little River County, Ark.

On Feb. 26, 1946, she was married to Labe Mitchell in Chaires and they moved to Memphis.

Surviving are her husband, a sister, Mrs. Maude Chalmers of Mankins, and brothers, James C. Bowman of Memphis and D. Clarence Bowman of Lubbock. Nephews served as pallbearers.



TOP STEERS—Pictured above are Sam Houston (left) and Carl Houston (right) holding the two top steers shown in the Hall County 4-H FFA Livestock Show here Saturday. Sam showed the Grand Champion steer, while his brother, Carl, showed the Reserve Champion animal. Carl also received the cattle showmanship award. Both attend Memphis High School.

J. CLAUDE WELLS HERSHEY COMBS
 Owners and Publishers
 (Hall County Herald absorbed by purchase August 7, 1928)

Member of
 TEXAS PRESS ASSOCIATION
 — and —
 PANHANDLE PRESS ASSOCIATION

Entered at the post office at Memphis, Tenn., as second-class matter, under act of March 3, 1879.

Subscription Rate:
 Inside Hall, DeWitt, Collierville and Oldham Counties, per year—
\$4.00

Subscription Rate:
 Outside Hall, DeWitt, Collierville, and Oldham Counties, per year—
\$5.00

NOTICE—Any erroneous reflections upon the character, standing or reputation of any person, firm or corporation which may appear in the columns of The Memphis Democrat will be corrected gladly upon its being brought to the attention of the publishers.

Postmaster: Send Form 3579 to Memphis Democrat, Box 192, Memphis, Texas 79245

EDITORIAL

Inventory Time Again!

Now is the time of year when most business institutions have taken inventory of their merchandise, listing each item, number of the item, unit price and the total worth of everything.

And, during inventory time, it is usually seen that many stop to take stock of items needed, which ones have sold the best, which particular shelf is still loaded with unsold items, etc. Naturally, all have compulsion to look back over the past year and view oneself as objectively as possible, to try and see ourselves as others see us.

We, as publishers and staff of a county seat weekly newspaper, published in Memphis, Texas, believe that this is a good time to restate our purpose, our beliefs, and put into words what we are trying to accomplish.

We believe in the freedom of the press. We are grateful for it. We will defend it when we feel it is being suppressed as we will defend the freedom of speech, free worship, freedom to assemble.

We believe too, that in return for that freedom we owe an obligation. An obligation of service to our communities and area. We strive to bring as complete, as accurate, and as unbiased a report of the news of our area, as possible.

Obviously, we are to try to keep this business of publishing a newspaper in the black, so to speak. We are to support good causes and to serve our communities by announcing various activities. We are to assist local business institutions in selling their products . . . and we also have the right and responsibility to editorialize, to express our own opinions on controversial questions whenever needed.

At the same time, we will not deny you, as individuals, the right to public expression of your own views. We have encouraged letters to the editor in the past and do so again with the only stipulation that they be signed by the writer.

We are indebted to our advertisers. A newspaper always appreciates its advertisers regardless of whether we sometimes fail to express this appreciation.

The Democrat is a private company, operated for private profit. But it is a public news medium and as such we continually hope that it merits, and will continue to merit, your confidence and your trust.

Sky Spies

This is a fast moving world we live in, and many have been the technological changes in the past five years, for example. Even so, we were surprised to learn that modern science has come to the aid of the farmer in a new scientific breakthrough that will help him grow better crops and check disease in a manner never before known.

Two miles high, the airplane raced over a field of wheat. Looking down, a special spying eye detected the beginning of a serious crop disease, two weeks sooner than a human expert could have spotted the trouble on the ground. Steps to control the disease were taken that much earlier.

This is one example of a new, expanding kind of spying to pry out valuable earth secrets—how crops and forests are faring, where hidden minerals or oil may lie, to fight fires, to clues to coming changes in climate and weather, to learn what man by his actions is doing to his own planet.

Earth scientists call this "remote sensing" of the environment. It is aided now by a whole family of new sensing devices developed largely for military uses and now being taken off the secret list.

The spying eye over the wheat field was an infra-red device which detects heat waves. A darker image from part of the field marked the beginning of black stem rust disease.

Combined use of infra-red and ultraviolet devices, radar, regular and color photography and other means is capable of telling one kind of vegetation from another, how healthy the vegetation is, and even why it is becoming sick.

These devices can pick up information to help predict weeks, months or years in advance what a yield will be in crops or orchards or timberland, the experts say.

These new devices are going to be used more and more, and probably by corporation farmers who can afford to use them.

We are approaching the day when our land will produce more and more under new scientific advances, and the farmer will get more and more into push button operation.

There's one problem the new sensing devices haven't worked out yet, but probably the solution will come. Suppose they fly over a field of wheat and find mosaic disease. The machine relays this information, tells what to do about it and when.

But just where does the money come from to make use of this marvelous advice?

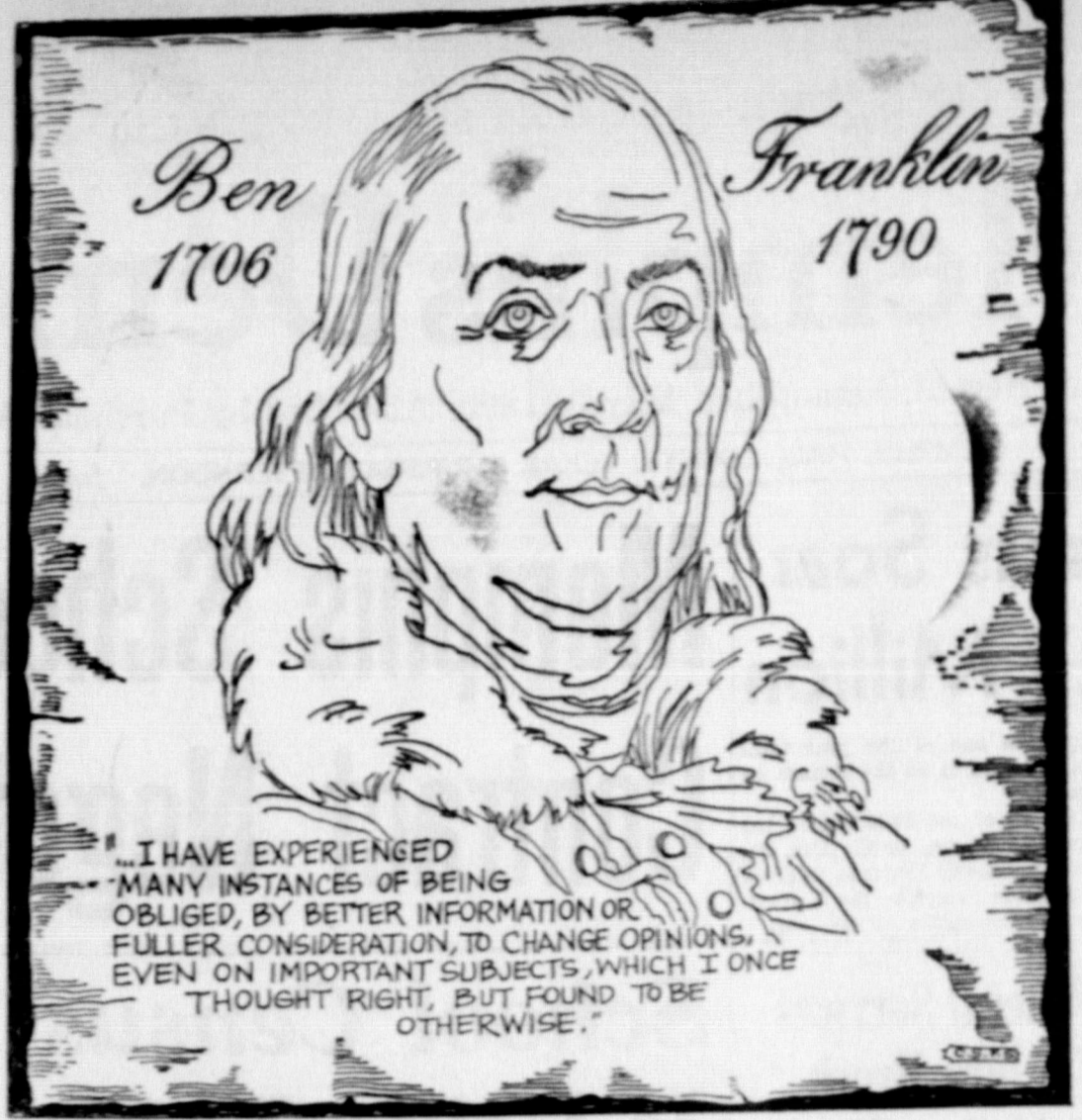
—The Ochiltree County Herald

MOVED

To the South Side of
 The Memphis Hotel Building
 415A Main Street

Dr. Jack L. Rose

Optometrist



ACROSS THE DESK

What Other Editors Say

Crowding The Campuses

Business booms may come and go but there is one boom that seems sure to continue unchecked. That is the one in higher education.

Figures just released by the United States Office of Education make clear the steady uptrend in college enrollments. Last fall's college registrant numbered nearly six million, or some 12 per cent more than in 1964, which in turn was 10 per cent above 1963. That's the way it has been going—up, up, up, with still more to come.

It is not hard to find reasons for the constant increase. Industry and the various services are making a college degree a must for more and more of their jobs. Many high school seniors are steered toward college by the financial appeal: "You can't afford NOT to go to college." The average college graduate they are told, earns \$150,000 more in his working years than the average high school graduate.

Also pulling students toward the campus are the many scholarships and loans—federal, state, private—which now enable the sons and daughters of poor families to work for degrees. A third and most important cause is that these are just more people—more high school graduates—than there ever were before.

The situation calls for most serious thought. The existing educational system cannot indefinitely absorb all comers. Most good private institutions have set limits to their growth. State universities are adding buildings and opening branches but there are bounds to the number of students they can house and supervise properly. Junior "home town" two-year colleges are a help, but many of these local institutions are not equipped or staffed for true liberal arts teaching.

Perhaps some pressure can be taken off the colleges if a distinction is made between students seeking a liberal education and those whose real aim is only training for a job which demands a degree. The latter might better be taught by the employing group which can provide instructors with practical experience. But ingenious new programs are needed if all who are eager for education are to get it in the years ahead.—Christian Science Monitor.

For Golf Addicts

Golfers who take the game seriously (and what golfer doesn't) are always on the lookout for tips and advice to help them improve

Interested in Building A Home Under

FHA?

Can get best deal right now while Contractors are in Town.

For Information See

J. A. ODOM, Jr.

At Big "O" Restaurant
 259-3191 or 259-2179

So, in their interest, we present this:

Never touch a lawn mower. Whirling blades and flying grass are upsetting to the golfer's nervous system. Vibration of the handle may ruin your "feel" for the clubs.

Same way with snow shoveling. Even with a power snow thrower, the serious golfer is taking a chance when he gets out in freezing weather doing this type of work. Golfing muscles can be put badly out of tone by shoveling snow.

In other seasons, golfers should avoid personal contact with hoses, rakes, sickles, etc. This type of swing used for these tools is foreign to golf, and may throw the golfer out of his rhythm.

Never lift furniture, boxes or other heavy objects. This is very hard on golf muscles.

Keep strictly away from soapy water as used for dishes or clothes. This will wither the hands and cause the golfer to lose his grip.

Don't walk to the grocery store over hard pavement or sidewalks. This type of walking destroys the springy step and the type of "golfer's feel" that is developed on well turfed fairways.

Spend evenings relaxing on the divan, or as weather permits, in a hammock. If the sound of banging dishes in the kitchen disturbs your concentration, turn up the volume on the TV.

Read a good detective story before retiring. Murder is soothing to contemplate after a day of golf.—Liberty Vindicator.

CARD OF THANKS

I wish to take this means of expressing my sincere thanks to each and everyone who was so concerned during the time of my illness. It is my desire to extend my deepest gratitude to the Hospital staff, Dr. Stevenson, Bro. Jorgensen and Bro. Gaston. Thank you so much for the beautiful flowers, gifts, cards, and many visits.

May God bless each of you.
 Mrs. Ima Hartsell

30 YEARS AGO

Jan. 9-Jan. 10, 1936

Mrs. E. H. Boone is leaving tomorrow for Clinton, Okla., to make her home with her son, R. W. Boone. She has been here with her daughter, Mrs. N. A. Hightower, for several months. . . .

Mrs. E. A. Thomas and son, Ralph, went to Vernon yesterday, where they will join Mr. Thomas and go from there to Denton where they will attend the 89th birthday celebration of Mr. Thomas' father. . . .

Mr. and Mrs. Hobart Moffitt of Hedley spent Sunday in Memphis with Mrs. Moffitt's parents, Mr. and Mrs. C. W. Crawford. . . .

Mr. and Mrs. E. M. Ewen visited their son, John at the Ewen Farm near Estelline yesterday. . . .

Mrs. Kittie Gammage, Mr. and Mrs. Wendell Gammage and Mrs. W. E. Gammage returned yesterday from Anson where they visited with Mrs. H. F. Stephens for several days. Mrs. Stephens is known in Memphis as Mrs. Frank Shaw. . . .

20 YEARS AGO

Jan. 10, 1946

New hopes arose in Memphis this week for a nearby oil. The Humble Oil Company commenced work on the east and east of Memphis in Co. . . .

Funeral services were held Friday afternoon at 3 o'clock at the First Baptist Church in Memphis for Mrs. Hattenback, pioneer in Memphis and active in the local Baptist Church. . . .

A family reunion of the family, some members of which live in Memphis, was held at home of Mr. and Mrs. T. L. Vera December 23 and was the first time that all children had ever been together. . . .

Ernest R. McMurry, congressman's mate second-class in U. S. Navy, arrived Monday on a 30-day leave in the home of his parents, Mr. and Mrs. Ed. McMurry. He is stationed in California. . . .

Mrs. E. E. Koeniger of this city visited her parents, Mrs. Capp Orcutt of Memphis over the weekend. . . .

W. M. (Bill) Kilpatrick, U. S. Navy, who is stationed at Sasebo, Japan, was promoted fireman 2 c to fireman 1 Dec. 1. He is the son of Mrs. W. M. Kilpatrick of this city. . . .

10 YEARS AGO

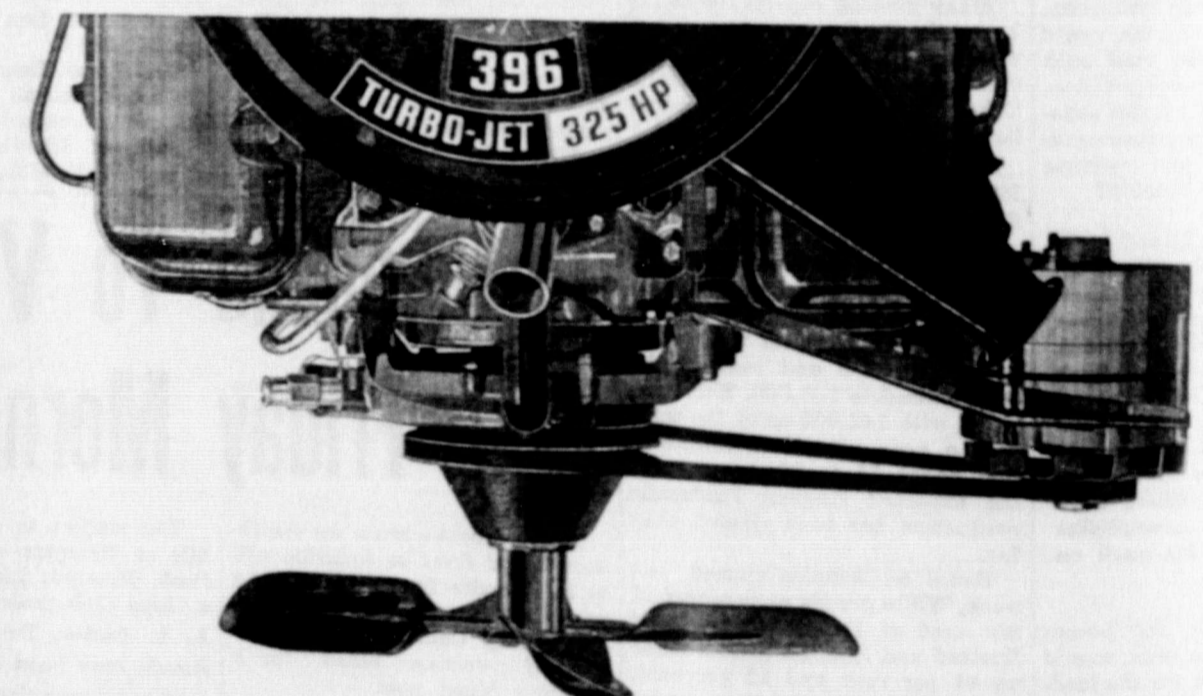
Jan. 12, 1956

R. A. Massey announced this week that he was holding a house celebration Saturday, 14, to celebrate the ninth business year and the move to a new location at 410 Main. . . .

Miss Bettye Claude Hightower, senior, will represent the belt F. F. A. District at the meeting in Amarillo in April. . . .

Two brothers and two members of a pioneer family, celebrated New Year together in Clarendon. Celebrants were J. P. Montgomery Sr., of Lakeview, and W. L. Montgomery of Clarendon, Shreveport brothers; Mrs. Vera Reed of Plainview, 71. . . .

The boys and girls teams of Samnorwood High School led the top honors last year at the annual Caprock Tournament here, against Nolan Potest, coach of the squads. . . .



Loafer.

PERFORMANCE THE CHEVROLET WAY

It's our Turbo-Jet 396: the V8 strong enough to run your Chevrolet and its automatic transmission, power steering, air conditioning, power windows, AM/FM Multiplex Stereo radio. And more. Without even breathing hard.

Reason is, a Turbo-Jet V8 breathes deeper. Breathes freer. Delivers more usable power whenever you need it—like for safer passing. Works more efficiently. Where the smaller engine hurries, a Turbo-Jet V8 just loafs along. You try it, at your Chevrolet dealer's. And nowhere else.

We offer two Turbo-Jet 896 V8s for '66. You can order 325 hp in any Chevrolet; 325 or 360 hp in a Chevelle SS 396. There's also a 427-cu.-in. Turbo-Jet (up to 425 hp) available in Chevrolets and Corvettes.



All kinds of cars, all in one place . . . at your Chevrolet dealer's Chevrolet · Chevelle · Chevy II · Corvair · Corvette

WARD MOTOR CO., INC.

7TH. & MAIN STREETS

MEMPHIS TEXAS 79245

PHONE 357

1913 Study Club Elects Officers At Meeting Wed.

The 1913 Study Club met Wednesday afternoon, January 5, in the home of Mrs. Herschel Combs, 613 South Seventh, for a program on Conservation.

Mrs. M. G. Tarver, president, presided during the business session at which time officers were elected for the 1966-67 club year.

Mrs. T. M. Harrison, chairman of the nominating committee, submitted the following slate of officers who were unanimously elected by the club:

Mrs. Herschel Combs, president; Mrs. O. L. Helm, first vice president; Miss Neville Wrenn, recording secretary; Mrs. Ed Hutcherson, treasurer; Mrs. Bob Hutcherson, secretary; Mrs. Ed Hutcherson, treasurer; Mrs. Mrs. T. L. Byron Baldwin, parliamentarian; Mrs. F. W. Foxhall, press reporter and press book custodian.

An interesting program was presented by Miss Neville Wrenn, who spoke on "Arid Lands" and Monday night.

Bob Hutcherson, who talked on "Water's Strange Ways."

Interesting reports were brought by several departmental counselors, including a report by Mrs. Mrs. Ed M. Jones on the conservation project now underway by the St. Louis and Donley Water Control and Improvement District No. 1.

During the social hour, pie and coffee was served by Mrs. Combs to the following members and one guest, Mrs. Kermit Voekel, and Mrs. Mrs. Byron Baldwin, Virginia Crowder, W. C. Davis, L. G. Deberry, T. J. Dunbar, F. W. Foxhall, R. S. Greene, T. M. Harrison, L. L. Helm, Bob Hutcherson, Mrs. Jones, Joe Montgomery, Mrs. Roberts, M. G. Tarver, Miss Neville Wrenn and Mrs. Wray Wrenn.

Mr. and Mrs. Louis Ashford and Mrs. Terrell Boggs and Tiny Seagraves during the weekend.

Henry Ashford and Peggy. Mrs. Verne also visited Sunday in the home of Mr. and Mrs. Ken Nelson and family and with Mr. and Mrs. C. Sanders and family in Denver, Colorado.

Given in marriage by her father, the bride wore a winter white street-length sheath dress trimmed with pearl white buttons and fluffs of wool on the long sleeve cuffs and around the neckline. She carried a bouquet of white flowers atop a white Bible.

Miss Ginger Martin, sister of the bride, was maid of honor. She wore a red taffeta dress accented with a corsage of white carnations.

Terry Smith of Lubbock attended the ceremony. Mr. and Mrs. Smith were hosts at a reception immediately following the ceremony. The bride's table was laid with a white crocheted cloth, made by W. Hamilton's mother at the age of 90. The cloth was laid over red felt and centered with Mr. and Mrs. Santa and an arrangement of poinsettias.

For a wedding trip to Raton, N. M., and points of interest in Colorado, the bride chose for travel her wedding dress accented with



1966 JANUARY JUBILEE QUEEN—Miss Carolyn Thompson is pictured above holding the bouquet of red roses she was presented Saturday night after being crowned "1966 January Jubilee" Queen. A member of the senior class, Miss Thompson is the daughter of Mr. and Mrs. Billy Thompson. Other queen candidates and their escorts, pictured from left to right, are Miss Judy Bruce escorted by Chuck Jennings, sophomores; the Queen Miss Thompson and her escort Danny Peters, seniors; Miss Linda Gaston and her escort Danny Clark, juniors; and Miss Vee Latimer and escort Jimmy Grice, freshmen. An annual event, the Jubilee was held in the high school auditorium.

WTSU Students Marry In Pretty Holiday Wedding In Silvertown

Miss Brenda Joyce Martin became the bride of Jerry Bob Smith, son of Mr. and Mrs. Josh Smith of Turkey, in a pretty home ceremony performed December 23 in the home of the bride's parents, Mr. and Mrs. Farris Martin in Silvertown.

Rev. Carl Nunn, pastor of the First Methodist Church in Silvertown, read the double ring ceremony before a white flocked Christmas tree trimmed with red balls which stood seven-feet tall and was flanked by candelabra holding lighted tapers. Poinsettia arrangements were used throughout the home.

Mrs. Bill Edwards, pianist, played a medley of Christmas songs, requested by the bride and a medley of love songs. She also played the traditional wedding marches for the processional and recessional.

Given in marriage by her father, the bride wore a winter white

red gloves and purse. The newlyweds are now at home in Canyon, 2709 27th St., where they are both students at West Texas State University. Mrs. Smith is majoring in secretarial science while the bridegroom is a senior majoring in business administration and minoring in law.

CARD OF THANKS
Words cannot adequately express our deep appreciation for the many kind and sympathetic acts that come to us at the time of our recent bereavement.

Mr. and Mrs. J. M. Baker of Hedley
Mrs. Hubert Jones and family

Mrs. D. L. C. Kinard returned home Saturday after spending about two weeks in Abilene visiting with her sons, Cearley R. Kinard and Dwight Kinard and families.

Mrs. Myrtle Hammons has returned home after spending a week in Ft. Worth visiting with her sister, Mrs. W. R. Couch.

Thirteen Present For Meeting Of Parnell Club

The Parnell Club met January 5 with thirteen members present. The club was opened with "The Lord's Prayer", led by Dorothea Braidfoot. The devotional was given by Cordye Hood.

After each member answered roll call with "A Greeting Hint," the minutes of the previous meeting were read by the secretary, Leona Burk. Fourteen sick visits were made.

The president, Gussie Mothershed, then dismissed the club. Members present were Anna Bell Boney, Dorothea Braidfoot, Nell Burk, Leona Burk, Lucile Cope, Myrtle Dunn, Cordye Hood, Irene Hood, Lena Hill, Clessie Joutet, Bessie Lathram.

First telegraph cables between Dover and Calais used iron wire conductors.

Gamma Kappa Chapter Meets Saturday In Roy L. Guthrie Home In Memphis

The January meeting of the Gamma Kappa Chapter of Delta Kappa Gamma met in the home of Roy L. Guthrie in Memphis at 2 o'clock on Saturday afternoon, January 8. The meeting was called to order by the president, Miss Inez Blankenship. After a short short business session, Mrs. Homer Tribble, first vice-president, introduced Mrs. Eual Robinson, program leader, who, in discussing the top, "Age and Creativity", stated that creativity is not a matter of age, that each period of life has its specific type of contribution to make. She presented the first guest speaker, Miss Vikie Hines of Childress. Miss Hines, interested particularly in creativity in the area of costume designing and interior decorating, talked enthusiastically about her projects: mechanical drawing, home making, journalism, and art. She showed drawings, decorations made of are paper, smoked pillows, and a suit—all of which she had constructed.

Mrs. Gertrude Watkins remarked that among all people who had influenced her life Mrs. Charlie Boyd stood high.

Mrs. Boyd, typifying creativity for older people, read several of her own poems which have been published in national anthologies. Mrs. Boyd said that she began writing serious poetry after her first grandchild was born. She defined poetry as "the music of the soul." Mrs. Boyd writes a poem each year for her Christmas greetings.

Mrs. Ray Toft, also of Childress, who said after her busy years of early marriage that she found herself a little "empty-handed" upon her son's entering school, showed pictures which she has done in water colors, oils, and crayons. She declared that one does not take art to become great; that he takes it for stimulation and expression. She and her husband have made many friends, have traveled extensively, and have renewed their zest in living through this vivacious hobby. She thinks that two of the greatest developments are a good sense of humor and the ability to accept criticism.

Mrs. Irene Kirby used the book "Age and Achievement" by Harvey C. Lehman for the base of her remarks about creativity. She found that in chemistry and mathematics young people excel, but

in astronomy and philosophy older people lead. Mrs. Robinson, in closing the panel consideration, noted that teachers, who mold and direct young people into worthwhile channels where they will increase their talents, and accept their opportunities, and improve their performances, are among the key creators in human activity.

Members attending the meeting included: Mrs. Marjorie Bain, Turkey; Miss Edgar May Mongole, Mrs. Velma Weaver, Clarendon; Mrs. Myrtle Hill, Miss Maudie Coffee, Wellington; Mrs. Carrie Belle King, Mrs. Brunetta Morris, Miss Zady Belle Walker, Miss Ethel Hillhouse, Miss Margaret McElreath, Mrs. Reba Stroehle, Miss Alma Bruce, and Miss Esta McElreath of Memphis. Miss Wilma McLean of Clarendon and Mrs. Henry Foster of Memphis were welcomed guests.

Estelle Barber Entertains Sewing Club

The home of Mrs. Estelle Barber was the scene of the meeting of the Friendly Sewing Circle which met January 11 at 2 p. m.

The opening prayer was led by Mrs. Katherine Hook. Estelle Barber presided over the business session during which the minutes of the last meeting were read. The treasurer also gave the year's report. The club then voted to give \$10 to the March of Dimes and \$10 to the Heart Fund.

The following officers were also elected: President, Mrs. Larry Simpson; vice president, Mrs. Lina Young; secretary, Florene Yarbrough; treasurer, Eula Moreland; Estelle Barber, reporter.

The rest of the meeting was spent in quilting for the hostess. Delicious refreshments were served to the following: Mmes. Alla Boswell, Eula Moreland, Lina Young, Katherine Hook, Florene Yarbrough, Jean Lamb, Etta Jones, Larry Simpson, Julia Smith and the hostess, Estelle Barber.

The next meeting will be in the home of Eula Moreland on January 25 at 2 p. m.

Sheffield silver plate first was made in 1743.

SPECIAL NOTICE

TO ALL INTERESTED CITIZENS

Pay Your Poll Tax

Elections vitally important to all citizens of Hall County will be held during 1966. Among them will be: School Trustee Elections, City Council Elections, First and Second Primaries, the General Election, and any special election which might be held.

Due to the publicity given the court case of Texas Poll Tax Law, many persons feel that they should not pay their Poll Tax. At present, most authorities are advising citizens to go ahead and get Poll Taxes. Then they will be eligible to cast ballots in all elections.

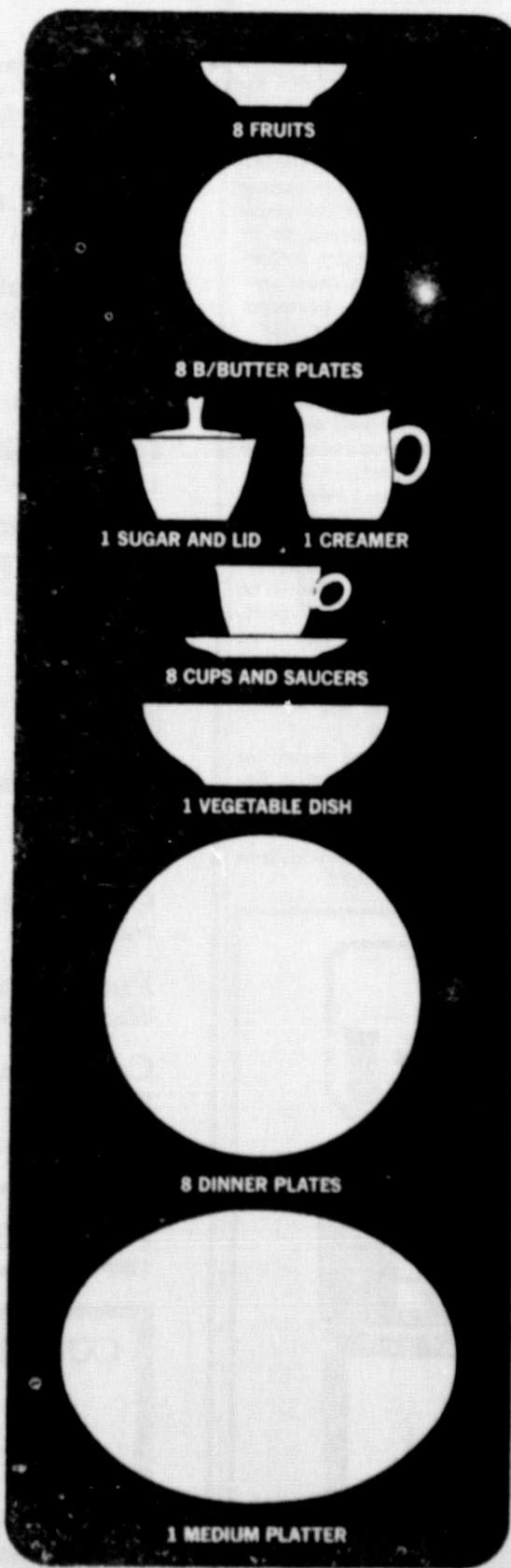
PAY YOUR POLL TAX BEFORE THE DEADLINE
JANUARY 31st

TO TURKEY AREA RESIDENTS:

Poll Tax Receipts are available in Turkey at Ferguson Insurance Agency, and may be paid to Loetta Ferguson.

Melissa Anderson

Tax Assessor-Collector of Hall County



NOW
DURING WHITE SALE
SEASON
BUY
Franciscan
whitestone ware

priced so low
it's a big sale value...

45 pc. service for 8
pure white CLOUD NINE

\$29⁹⁵ OPEN STOCK VALUE \$52.60

Strong, authentic Earthenware body • Completely oven and dishwasher safe • Detergents never dim its color and lustre • Choose from many accessories • Add individual pieces any time.

Decorated patterns also available:
\$39.95—45 pc. service for 8

PARSONS-LOCKHART PHARMACY

Tom Bean Presented With Plaque By Hall County Farm Bureau Committee

Tom Bean, president of the Hall County Farm Bureau, was presented with a plaque by the Hall County Farm Bureau Committee...



Four Games Are Played In Dist. A-B Friday

Four games were played in the A-B district on Friday. The games were between the following teams...

Gayrock Trail Riders To Meet Tuesday, Jan. 13

The Gayrock Trail Riders will meet on Tuesday, January 13, at 7:30 p.m. at the... location.

IS OUR BUSINESS
CAMPBELL
Insurance Agency
4175 Main St.

Parting-Winner Vindicates Her Plead In Waco Races

Parting-Winner, a champion racehorse, vindicated her owner's plea in the Waco races...

Woman's Society Meets In Home Of Mrs. M. N. Orr

The Woman's Society of the Methodist Church met in the home of Mrs. M. N. Orr on Friday...

RECEIVED FROM THE DISTRICT

RECEIVED FROM THE DISTRICT... [Detailed list of names and amounts]

Mixed Bowling League To Be Organized Friday

A mixed bowling league will be organized on Friday at the... location.

Jack I. Davis' Father Dies In Houston

Jack I. Davis' father, Mr. J. I. Davis, died in Houston on Friday...

New Arrivals

Various clothing items and prices listed under the 'New Arrivals' section.

Optical Club Of Estelene Meets Monday, Jan. 11

Optical Club of Estelene meets on Monday, January 11, at 7:30 p.m. at the... location.

Penneys STOREWIDE CLEARANCE

- FOR MEN**
- Felt Hats ~~orig. 1.00~~ Now 1.00
- Woolen Suits ~~orig. 12.00~~ Now 12.00
- Laminated Jackets ~~orig. 12.00~~ Now 12.00
- Cardigan Sweaters ~~orig. 1.00~~ Now 1.00
- Polo Shirts ~~orig. 1.00~~ Now 1.00
- Flannel P. J. ~~orig. 1.00~~ Now 1.00
- Luggage ~~orig. 3.00~~ Now 3.00

THERMAL UNDERWEAR

- Long Sleeve
- Short Length Drawers

AMAZING BUY \$1 each

- FOR WOMEN**
- Arklelets ~~orig. 25.00~~ Now 25.00
- Woolen Handbags ~~orig. 1.00~~ Now 1.00
- Quilted Lounging P. J. ~~orig. 3.00~~ Now 3.00
- 2-Pc. Sportswear ~~orig. 4.00~~ Now 4.00
- Bouffant Slips ~~orig. 1.00~~ Now 1.00
- Quilted Robes ~~orig. 7.77~~ Now 7.77

BETTER DRESSES

Reduced
Orig. 6.98 to 14.98
NOW \$1 TO \$8

- FOR BOYS**
- Cardigan Sweaters ~~orig. 7.98~~ Now 4.99
- Fur Trim Caps ~~orig. 1.00~~ Now 88c
- Cardigan Sweaters ~~orig. 2.99~~ Now 2.99
- Flannel P. J. ~~orig. 2.50~~ Now 2.88
- Flannel Shirts ~~orig. 1.00~~ Now 88c

CORDUROY WESTERN JEANS

- Authentic Western Styling
- Rugged All Cotton

AMAZING BUY \$1.99

SHOP PENNEYS
Mon. thru Fri.—8:30 to 5:30
Saturday—8:30 to 7:30

- FOR GIRLS**
- Arklelets ~~orig. 1.00~~ Now 1.00
- Tights ~~orig. 1.00~~ Now 1.00
- Flannel P. J. ~~orig. 2.00~~ Now 2.00
- Laminated Jackets ~~orig. 10.00~~ Now 10.00

COTTON DRESS JAWBROKEE

All New Dress Sizes 7-14

3 \$4

SHOE SALES

Limited Quantity and Broken Sizes

- Women's Shoes ~~orig. 7.00~~ Now 7.00
- Boys Boots ~~orig. 6.00~~ Now 6.00
- Men's Dress Shoes ~~orig. 8.00~~ Now 8.00
- Boys Dress Shoes ~~orig. 4.00~~ Now 4.00

TENNIS SHOES

Orig. 3.99
NOW \$1.88

- FOR THE HOME**
- Braided Rug Runner ~~orig. 2.44~~ Now 2.44
- Electric Blanket ~~orig. 14.50~~ Now 14.50

COLORED SHEETS

Orig. 2.39
NOW \$1.77

- SEWING SAVINGS**
- Cream Puff ~~orig. 1.49~~ Now 1.49
- Print Cream Puff ~~orig. 1.98~~ Now 1.98
- Hand Screen Print ~~orig. 98c~~ Now 98c
- Regulated Cotton ~~orig. 88c~~ Now 88c
- Suede Cloth ~~orig. 1.49~~ Now 1.49
- Gingham Check ~~orig. 88c~~ Now 88c

SAIL CLOTH POPLIN

- 36" Wide
- 100% Cotton

58c yd.

REMEMBER
CHARGE IT
AT PENNEYS

Penneys ANNUAL JANUARY White Goods Event!

All Penney's famous sheets REDUCED!

NATION-WIDE long-weaving, finished 123 count, WHITE 1.49 twin 72"x108" flat or Elasta-fit Sanforized bottom sheet. full 81"x108" flat or Elasta-fit Sanforized bot. 1.68 pillow cases 42"x30" 2 for 81c	PENCALE fine combed cotton percales. 126 count, WHITE 1.81 twin 72"x108" flat or Elasta-fit Sanforized bottom sheet. full 81"x108" flat or Elasta-fit Sanforized bot. 2.03 pillow cases 42"x38 1/2 2/99c * Bleached and finished
--	---

Rebekah Lodge Installs New Officers Monday

Mrs. Emma Stevens was installed as Noble Grand of Rebekah Lodge in an impressive ceremony Monday evening in the Lodge Hall.

Mrs. Edith Spivey of Clarendon, District Deputy President, served as installing officer. She was assisted by Meses. Mary Bell DeBord, Tressie Hughes, Rosa Bingham, Lucille Sweeney, Inez Skinner, Bertha Clark, Emma Davis and Orpha Sweeney, all of Clarendon, and Ora Ritchie of Memphis.

Other officers installed to serve with Mrs. Stevens were Elsie Bray, Vice Grand; Estelle Barber, recording secretary; Marguerite Smith, treasurer; Edna Morrill, financial secretary; Florence Yarbrough, warden; Louise Snider, conductor; Eula Moreland, color bearer; Cholo Rogers, chaplain; Zora Young, musician; Abbie Kennon, inside guardian; Una Vay Neighbors, outside guardian; Jerry Foster, right support to L. G.; Florence Paschell, left support to L. G.; Linnie Kennedy, left support to V. G.; Lettie Gersch, right support to V. G.

A delicious salad supper was enjoyed by 30 members and visitors.

Marking Your Deer

A deer hunter often is faced with the job of getting his kill back to camp before nightfall. Usually this occurs when hunting quite some distance from camp.

It is much better not to try to lug the kill in after dark. Leave it where it lies. But protect the carcass from being molested by predators by tying your bandana around an antler prong.

Human scent on the hanky will keep away other wild animals.



RESERVE CHAMPION—Shown above with his Reserve Champion barrow is Gayland Bragg of Estelina. Bragg's animal placed second in his class behind Fowler's grand champion in the heavy weight Hampshire class. He received the rosette shown above, a trophy and cash awards.

Hooser Attends Funeral Service For Aunt Monday

W. B. Hooser was in Childress Monday to attend funeral services for an aunt, Mrs. Myrtle Ballard, 73. Interment was in Childress Cemetery.

Mrs. Ballard had lived in the Delwin Community, near Paducah, for the past 23 years. She is survived by two daughters and three children and great-grandchildren. A number of grandchildren.

Bag For 22's

Two objections to .22's is the way the box disintegrates in your pocket and the difficulty one has in returning unfired loads to box. There seem to be twice as many cartridges to put back than you took out.

Eliminate both these nuisances by emptying the entire box of cartridges into a zippered tobacco pouch.

Such a container is pocket-size, spillproof and waterproof.

Income Tax Q. And A. Column

This column of questions and answers on federal tax matters is provided by the local office of the U. S. Internal Revenue Service and is published as a public service to taxpayers. The column answers questions most frequently asked by taxpayers.

Q—I'm just starting a business. What should I know about Federal taxes?

A—The Revenue Service has available a "Mr. Businessman's Kit" which can be obtained from any local IRS office. The IRS also has a publication called "Tax Guide for Small Business," which should be extremely helpful to you. It may be obtained at a cost of 50¢ from IRS offices.

Q—If I sell my house now when will I have to pay taxes on any profits?

A—Ordinarily, profits should be reported in your return filed for the tax year of the sale, using Form 2119, unless you intend to buy and occupy a new home within one year, or 1½ years if you build. If you replace it, you might be able to defer paying taxes on the gain.

Taxpayers who are 65 years of age before the sale of their principal residence may be able to take advantage of the special provisions in the law allowing an exclusion for all or part of the gain on home sales by those 65 and over. IRS Document No. 5017, which gives more detailed information on this subject, may be obtained free by writing to your District Director of Internal Revenue.

If you are required to report your gain, and if no more than 30 per cent of the selling price is received in the year of the sale, you

can report on the installment basis. Under this method you report each year a percentage of the profit as you collect it. IRS Document No. 5108 contains more information about installment sales.

Q—If I write a check in 1965 but it is not cashed until 1966, what tax year should it be reported in?

A—If you are making a charitable donation, for instance, by check, then you may take the deduction for the year you write it. However, if a check is issued to you and it is income, it should be reported in the year it is received even though you do not cash it right away.

Q—I'm scheduled for a cash bonus this Christmas. Will it be taxable?

A—Yes it will be taxable and your employer will withhold income taxes on it.

Q—I'm going overseas to teach the first of the year. What do I do about my 1965 income tax return?

A—If you are a calendar year taxpayer, and are traveling or residing abroad on April 15, you are given an automatic extension until June 15 to file your returns and declarations of estimated tax. However, you must pay interest at the rate of 6 per cent per annum on any tax which is unpaid during this two month period.

Before you leave to go overseas, be sure to pick up a copy of IRS Publication No. 54, "Tax Guide for U. S. Citizens Abroad." It is available at IRS offices at no charge.

Memphis Tax Q. And A. Column

Q—Will I have to report the profit as you collect it. IRS Document No. 5108 contains more information about installment sales.

Q—If I write a check in 1965 but it is not cashed until 1966, what tax year should it be reported in?

A—If you are making a charitable donation, for instance, by check, then you may take the deduction for the year you write it. However, if a check is issued to you and it is income, it should be reported in the year it is received even though you do not cash it right away.

Q—I'm scheduled for a cash bonus this Christmas. Will it be taxable?

A—Yes it will be taxable and your employer will withhold income taxes on it.

Q—I'm going overseas to teach the first of the year. What do I do about my 1965 income tax return?

A—If you are a calendar year taxpayer, and are traveling or residing abroad on April 15, you are given an automatic extension until June 15 to file your returns and declarations of estimated tax. However, you must pay interest at the rate of 6 per cent per annum on any tax which is unpaid during this two month period.

Before you leave to go overseas, be sure to pick up a copy of IRS Publication No. 54, "Tax Guide for U. S. Citizens Abroad." It is available at IRS offices at no charge.

can report on the installment basis. Under this method you report each year a percentage of the profit as you collect it. IRS Document No. 5108 contains more information about installment sales.

Q—If I write a check in 1965 but it is not cashed until 1966, what tax year should it be reported in?

A—If you are making a charitable donation, for instance, by check, then you may take the deduction for the year you write it. However, if a check is issued to you and it is income, it should be reported in the year it is received even though you do not cash it right away.

Q—I'm scheduled for a cash bonus this Christmas. Will it be taxable?

A—Yes it will be taxable and your employer will withhold income taxes on it.

Q—I'm going overseas to teach the first of the year. What do I do about my 1965 income tax return?

A—If you are a calendar year taxpayer, and are traveling or residing abroad on April 15, you are given an automatic extension until June 15 to file your returns and declarations of estimated tax. However, you must pay interest at the rate of 6 per cent per annum on any tax which is unpaid during this two month period.

Before you leave to go overseas, be sure to pick up a copy of IRS Publication No. 54, "Tax Guide for U. S. Citizens Abroad." It is available at IRS offices at no charge.

Diggs, Jameson Enter Animals In Stock Show

Mark Jameson of Estelina and Jimmy Diggs of Estelina will enter three lambs in the Junior class in competition at the 1966 Southwestern Exposition and Fat Stock Show, Jan. 28 through Feb. 6, it was announced by the show this week.

Diggs will enter one lamb while Jameson will enter two lambs. W. R. Watt, Fort Worth Stock Show president and manager, expects the final list of 1966 livestock entries to top the 1965 record of over 11,000.

Clyde F. Milam Is Reported To Be Improved

Clyde F. Milam, who is a patient in St. Anthony's Hospital in Amarillo where he recently underwent surgery, is improved this week, his daughter, Mrs. Frank M. Toner, said Tuesday.

Mrs. Toner, who lives in California, is staying in Amarillo with her father and came to Memphis Tuesday to visit her mother. Mrs. Milam, who has been in ill health for several months, is also reported to be doing nicely at this time.

Grover Cleveland was a bachelor when inaugurated President but married in the White House.

Salt And Pepper Straws

For camping conveniences and space-saving purposes, make individual dual salt and pepper shakers by filling ordinary soda-pop straws.

Pinch one end of straw closed, pour in salt or pepper, then pinch other end closed. Place one strawful of each condiment beside each plate.

COOL

Panhandle Hereford Breeders Association's

50th ANNIVERSARY SHOW

AM.M.A. STOCK SHOW

JANUARY 22-26

FREE SHOWS

Quarter Horses, Live Stock, Rabbits, Plus 4-H And F.F.A. Club Shows and Sales

FREE ADMISSION TO GROUNDS—FREE PARKING

RODEO PERFORMANCES

Jan. 22: 2&8 PM Jan. 23: 2 PM Jan. 24&25: 8 PM

HEREFORD AUCTION

1 P.M. WEDNESDAY, JAN. 26th
Will Place Sale Cattle, 1 P.M., Monday, Jan. 24

102 LOTS TO BE AUCTIONED

33 SINGLE BULLS - 10 SINGLE FEMALES

11 PENS 3 BULLS - 5 PENS 5 BULLS

FOR STOCK SHOW CATALOG, WRITE
Rex Baxter, Manager, P. O. Box 1087, Amarillo

FOR HEREFORD SALE CATALOG, WRITE
W. M. Gouldy, Secretary-Manager
P. O. Box 586, Amarillo, Texas

LEROY BORN, FOLLETT, TEXAS
PRESIDENT, P. H. B. A.

TROY N. KINDER, CHATANOOGA, OKLA.
VICE PRESIDENT, P. H. B. A.

BORDEN'S MELLORINE

3 1/2 Gal. **1.00**

MAMA'S COOKIES
4 — 29c Pkgs.
1.00

DEL MONTE Pineapple-Grapefruit DRINK
3—46 Oz. Cans
89¢

WHITE SWAN COFFEE
1 Lb. Can
69¢

WHITE SWAN SHORTENING
3 Lb. Can
65¢

WHITE SWAN PLUM JAM
18 Oz. Jar
3 for 89¢

DOVE LIQUID Giant Size
49¢

ELLIS TAMALES No. 2 1/2 Can
2 for 69¢

U.S. No. 1 White POTATOES
10 Lb. Bag
59¢

DELICIOUS APPLES Lb.
19¢

GRAPEFRUIT RUBY RED 2 for 19¢

TALL KORN BACON
2 Lb. Pkg.
1.59

U.S.D.A. GRADE A FRYERS
Lb.
29¢

CUDAHY'S HAM
Boneless — Lb.
98¢

PATIO FROZEN ENCHILADA DINNERS
12 Oz. Package
39¢

Super Save Market
8th & Noel Sts. Phone 259-2014
DOUBLE BUCCANEER STAMPS WEDNESDAY WITH \$2.50 PURCHASE OR MORE

Abilene Cattlemen Club Presents Debutantes During Holiday Season

The Abilene Cattlemen Club will present its debutantes during the holiday season. The debutantes will be presented at a special dinner at the Hotel Abilene on January 10. The debutantes are Misses...

Wynne Wesley Cats Meets in Pine Home

The Wynne Wesley Cats met in their home in Pine on January 8. The meeting was held in the living room and was attended by...

Carl Severts Bring Program At Tennis PTA Tues.

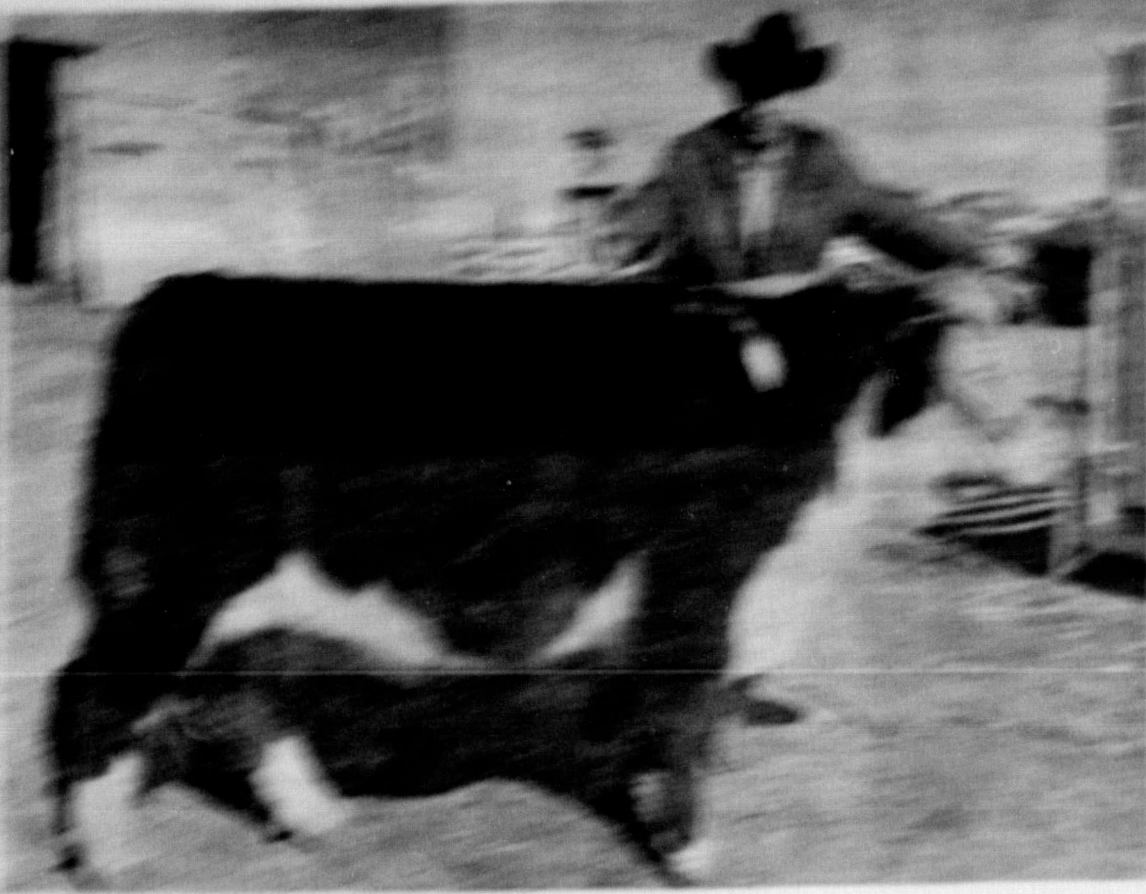
Carl Severts will bring a program to the Tennis PTA meeting on Tuesday. The program will be held at the tennis club and will feature...

Florida School To Dona Reed To Clyde P. Wilson

Florida School is to be named in honor of Dona Reed and Clyde P. Wilson. The school is to be built in the town of...

Turkey PTA Sends Packages To War Men

The Turkey PTA has sent packages to war men. The packages contain food, clothing, and other necessities. The PTA members were...



GRANDS CHAMPION HORSE... (Caption text is partially obscured and difficult to read)

Culture Club Elects Officers In Meeting Jan. 5

The Culture Club held a meeting on January 5 and elected officers. The officers elected were...

Mrs. John Howell Retires After 14 Years With Co.

Mrs. John Howell has retired after 14 years with the company. She has been a dedicated employee and has...

Mrs. Harrison's Mother Dies In Syracuse Week

Mrs. Harrison's mother died in Syracuse during the week. The death was sudden and unexpected.

Mrs. J. ...
L...
D...
T...

Girl Scout Dist. Advisor Meets With Leaders

The Girl Scout District Advisor met with the leaders. The meeting was held at the district office and was attended by...

5%

CURRENT ANNUAL DIVIDEND

Save with the

**Turkey Federal
Credit Union**

Funds earn from the list of the most
if received by the 5th

**GEORGE'S
BELL SERVER**

Key Case 28.9
For office

Key Case 23.9
For office

Key Case 25.0
For office

**Common Sense
Insures Your...
TRIP**

Just Passing A Day Will Protect
You While You're Traveling

Real Estate Office located upstairs
in Whiskey Building

Ward's Building
AGENCY

INSURANCE - LOANS
MORTGAGE - REAL ESTATE
HALL COUNTY BATH BLDG.
MARIETTA, TEXAS

HOMESOWNERS' PACKAGE PLAN

**Antiquing
Demonstration**

Featuring MARTIN SENOUR'S
Provincial Color Glaze

Monday, Jan. 17

A Factory Representative will be in our store next Monday, and will conduct 3 sessions at the following times:

10 A. M. — 1:30 P. M. — 4 P. M.

You are invited to attend any or all these Antiquing Demonstrations.

FREE PRIZES

LADIES SUNBEAM HAIR DRYER

will be given away to some person who attends. Also, one Antiquing Set will be given away at each session.

**DIXON'S
TV & Appliance**

903 Noel Street

**What's the
best 5-letter
word for
fertilizer?**

N I P A K

And for wheat — NIPAK 45.

Get better wheat crops and earn bigger profits. Topdress your wheat with Nipak 45 right now — for greater yield and higher protein. Nipak 45 — 45% nitrogen fertilizer from Urea — gives you one-third more nitrogen per pound than any other form of solid nitrogen fertilizer — which enables you to handle less fertilizer and cover more ground in less time. Nipak 45 is uniformly prilled, too. It flows easily, won't clog — or corrode your equipment. Nipak 45 dissolves in the soil moisture and moves quickly to the root zone where it stays put until your crops need it. So for more grow power, ask your local Nipak dealer about Nipak 45. He can help you plan a complete fertilizer program because he can provide a complete fertilizer service.

**NIPAK
FERTILIZER**

Houston, Shields, Salem, Fowler Are Top Winners In County Livestock Show Sat.

By BILL COMBS

The ideal weather Saturday was the chief topic of conversation at the 29th Annual 4-H, FFA Livestock Show held in the show barn Saturday morning and afternoon.

The reason for the pleasure expressed over the fine weather was because for the past many years, the Hall County show has been held in either rain, snow, sleet, or about every kind of bad weather Mother Nature could come up with.

Among the top awards given at the show each year is the showmanship award. This year Bob Wood of Estelline received the wine showmanship award and Carl Houston, an old veteran of the show, received the cattle showmanship award.

Judging in the swine contest of underway promptly at 9 a. m. with Walker Todd of Quannah serving as judge.

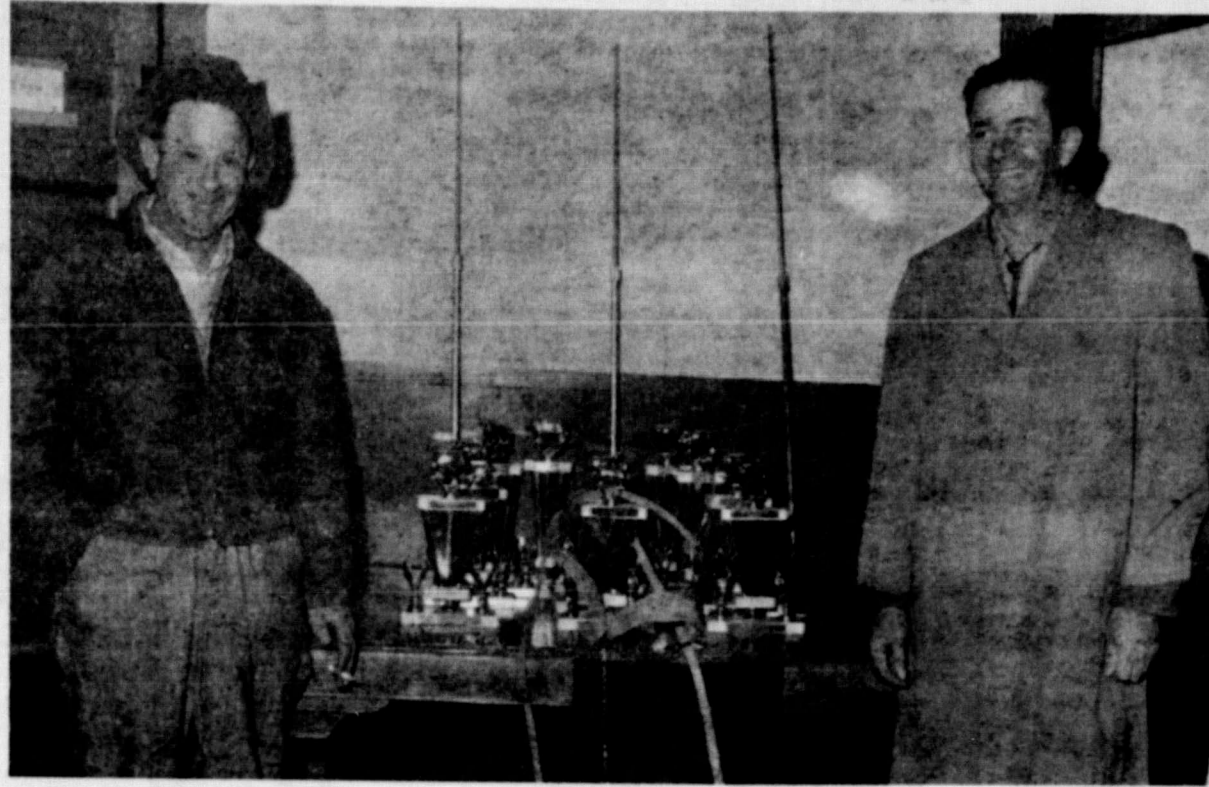
Laddie Fowler of Estelline received the grand champion rosette in the barrow division. Gayland Bragg of Estelline received the reserve champion barrow award.

In the gilt division, the grand champion awards went to Turkey's Jim Salem with Jay Hudlow of Estelline receiving the reserve champion honors.

Jim Diggs of Estelline and Sam Knox of Estelline were the top two winners in the sheep classes.

Showing the grand champion steer of the show was Sam Houston of Memphis, with his brother, Carl, showing the reserve champion steer.

The grand champion female is shown by R. O. Shields of Estelline and Mark Jameson of Estelline.



AWARDS PRESENTED—Pictured above are the trophies presented to Hall County boys at the annual 4-H, FFA Livestock Show last Saturday. To the left is pictured Lowell Houston of Caprock Angus Farm and on the right is Elmont Branigan of Branigan Jewellery. They provided the trophies for the show. Also are three showman sticks and a halter presented to the top winners and showmanship winners of the show by the Rolling Plains Production Credit Assn., Billy R. Jones, local manager.

Estelline showed the the reserve champion female.

Barrow Division
Mixed Breed Barrows: 1. Bob Wood; 2. Jay Hudlow; 3. Roy Shields; 4. Gaylon Bragg; 5. Bob Wood.
Spotted Poland China: 1. Don Proffitt; 2. Kirby Hatley; 3. Norman Miller.

Duroc Barrows: 1. Randy Collins; 2. Randy Collins; 3. Jimmy Fowler; 4. Randy Collins; 5. Bob Collins; 6. Bob Collins; 7. Raymond Jones; 8. Tim Salem.
Berkshire Barrows: 1. Mike Hughs; 2. Lewis Travino; 3. Jimmy Adeock; 4. Roy Shields; 5. Cecil Wright.

Light Weight Hampshire Barrows: 1. Lewis Trevino; 2. Danny Longbine; 3. Danny Longbine; 4. Cecil Wright; 5. Jimmy Fowler; 6. Mickey Nabers; 7. Richard Gilbreth; 8. Mike Hughs; 9. Ledell Yeates.
Heavy Weight Hampshire Barrows: 1. Laddie Fowler; 2. Gaylon Bragg; 3. Bob Wood; 4. Jay Hudlow; 5. Jerry Anderson; 6. Sam Bruce; 7. Sam Bruce; 8. Bob Word.

Gilt Division
Duroc and Berkshire Gilts: 1.

Tim Salem; 2. Tim Salem; 3. Randy Collins; 4. Bob Tribble; 5. Willie Walker.
Spotted Poland China: 1. Richard Gilbreth; 2. Richard Gilbreth; 3, 4 and 5, David Fuston.
Hampshire Gilts: 1. Jay Hudlow; 2. Laddie Fowler; 3. Rocky Moore; 4. Gaylon Clark; 5. Danny Longbine; 6. Danny Steptoe; 7. Danny Clark; 8. Kenneth Fleek.

Cross Breed Gilts: 1. Tony Pate; 2. Tommy Bell; 3. Tommy Bell; 4. Tony Pate; 5. Jerry Dugger.
Sheep Division
Southdown: 1, 2, 3, and 4, Jim Diggs.
Other Breeds: 1. Lynn Knox; 2. Lynn Knox; 3. Kay Miller; 4. Lynn Knox; 5. Lynn Knox; 6. Kay Miller; 7. Lanny Crow; 8. Lanny Crow.
Cattle Division
Bull show: 1. R. G. Shields. Light weight steers (850 lbs. and under): 1. Sam Houston; 2. Mark Jameson; 3. Carl Houston; 4. Paul J. Smith. Heavy weight steers (851 lbs. and over): 1. Carl Houston; 2. Sam Houston; 3. Mark Jameson. Group of two steers: 1. Carl

T. W. Bain Of Hedley Dies Fri., Services Sunday

T. W. (Tommy) Bain, 62, a lifelong resident of Hedley, died Friday night in Groom Hospital, where he had been a patient three months.

A farmer, Mr. Bain was a member of the First Baptist Church and the Hedley Masonic Lodge. He was born Nov. 15, 1902.

Funeral services were held Sunday, Jan. 9, at 2:30 p. m. in the First Baptist Church in Hedley. Rev. Bob Estes, pastor, officiated.

Interment was in Rowe Cemetery in Hedley under the direction of Spicer Funeral Home.

Surviving are his wife, Edith; sisters, Mrs. Royce Hall of Hedley and Mrs. A. B. Carnes of Dumas, and brothers, George of Sunray, Claude of Borger, Clyde of Wasco, Calif., Kenneth of Seaside, Calif., and Carl of Copus, Tex.



SOUTHDOWN—Pictured above is Jim Diggs of Estelline, who showed the top Southdown sheep in the Hall County Livestock show Saturday. Pictured with Jim is FFA Sponsor Tom Seay of Estelline holding the trophy.

Lakeview Farmers To Meet Monday

The Lakeview Young and Adult farmers will meet at 7:30 p. m. Monday, Jan. 17 in the Lakeview High School Bldg. It was announced this week.

The program will be brought by Norman W. Brints, Area Farm Management Specialist, who will speak concerning tax regulations. Refreshments will be served and the public is invited to attend.

Mr. and Mrs. Gerald Hickey visited in Amarillo over the weekend with their son and family, Mr. and Mrs. Jerry Hickey and Robin.

Funeral Mass For Lupe Corona Read Wed., Jan. 12

Funeral mass for Lupe Corona, 55, resident of Estelline since 1941, were read at 10 a. m. Wednesday at the Memphis Sacred Heart Catholic Church by Father John Magana, priest.

Burial was in the Estelline Cemetery under the direction of Spicer Funeral Home in Memphis.

Mr. Corona was born in Mexico City and was a retired farmer. He was married in 1933 to Miss Nick Andrews at Dickens.

Survivors include his wife; a daughter, Miss Virginia Corona of the home; sons, Joe and Jess of Amarillo and Paul of San Bruno, Calif., and two grandchildren.

Repairing Waders

When your fishing waders become worn and cracked, try covering worn spots and cracks with tire paint. This type of paint won't crack and it's pliable. Your waders so treated will serve you for several more seasons.

Houston; 2. Sam Houston; 3. Mark Jameson.

Group of three steers: 1. Carl Houston.
Senior heifer calf: 1. Mark Gentry.

Junior heifer calf: 1. Mark Jameson; 2. Ted Jones; 3. R. G. Shields.
Junior Yearling heifer: 1. R. G. Shields.

WHY WAIT UNTIL SUMMER To Duct Air Conditioners INTO EACH ROOM OF YOUR HOME!

Call for free estimate
Ballew Plumbing
Phone 259-3565

Olds 88 Swing Fever is mighty hard to resist!

A good thing always is.

Got that can't-wait-for-spring, can't-wait-for-that-new-car feeling? Welcome to the club! Olds 88 Swing Fever is catching up with just about everybody, and they're loving every minute of it. But the best part is the cure—as easy as taking a swinging new Jetstar, Dynamic or Delta 88! There's one priced right for you. See your Olds Dealer for a Rocket Rx today. Then watch your fever go down as your fun goes up. Happy convalescence! LOOK TO OLDS FOR THE NEW!

OLDS 88 SWING FEVER
IS SWEEPING THE COUNTRY!

OLDsmobile
STEP OUT FRONT IN '66
... in a Rocket Action Car!

WARD MOTOR CO. Inc., MEMPHIS, TEXAS

YOUR Pharmacist SPEAKS

By BILL LOCKHART

Galen, born in Asia Minor in 131 A. D., was an early and potent name in medicine and his influence was felt until the 17th Century. In fact, it is quite possible that even today pharmacopoeias are still not totally free of some of the compounds of vegetable simples, or galenicals, attributable to Galen.

One result of Galen's teachings was the Galenical system of therapeutics which called for use of several thousand drugs. It wasn't uncommon for a single prescription to call for a hundred or more drugs.

We aren't particularly thrilled by single prescriptions calling for a multiplicity of drugs, but you can be sure that they will receive our meticulous personal attention. Seriously, for a complete prescription service depend on PARSONS-LOCKHART PHARMACY, 115 South 6th Street, Memphis... Phone 259-3541... Complete line of cosmetics... Elizabeth Arden, Revlon, DuBarry, Chanel, Christian Dior, Dorothy Gray... Candy—Russell Stover, Pangburn's... Crutches and canes for rent or sale... A WALGREEN AGENCY... S&H Green Stamps, Buccaneer, Pride.

THIS WEEK'S HOUSEHOLD HINT: Eyebrow tweezers are handy to untie badly knotted shoe laces.

Baldwin's January Sale Starts Jan. 13th 20% off

on items Listed Below

GIRLS COATS
Sizes 6 months to 6X

2 - 6x
GIRLS CAR COATS AND JACKETS

Girls
SWEATERS & SKIRTS

Large Selection
GIRLS DRESSES
Size 2 to 14

REDUCED NYLON HOSE
With Seams
4 Pair 1.00

Large Group
BOYS JEANS
Broken Sizes
1.00 Pair

One Table Of
Odds & Ends
Reduced to Clear

Boys
JACKETS AND SWEATERS

Women's
SWEATERS
Priced from 7.95 to 24.95

Entire Stock
LAMPS and PICTURES

REDUCED Women's Elastic Leg BRIEFS
5 Pair 1.00

GIRLS QUILTED ROBES 7-14

If you need Drapes for your home. Come See Our New Sample Line. We have complete Drapery Service

Owners: Les & Allene Sims

Turkey News

Mrs. W. T. Williams has returned to her home after an extended visit at Berryville, Ark., with her son, Marvin Williams and family.

Mrs. Viola Tarver has returned home after being a patient in the Hall County Hospital.

Mrs. Billy Joe Mullin has returned home after being a patient in the Hall County Hospital.

Mrs. Billy Joe Mullin underwent surgery at the Hall County Hospital Tuesday of this week.

Mrs. Billy Lyles underwent surgery at the Groom Memorial Hospital Tuesday of this week.

Ellis Currie returned to the Stanley Hospital at Matador as a patient Sunday.

Mr. and Mrs. Leland Pinkerton and family of Floydada visited in Turkey Sunday with Mrs. Vera Pinkerton and Billy Joe.

Mr. and Mrs. J. T. Mullin were in Dallas over the weekend.

Mr. and Mrs. Doc Williams were accompanied to Lubbock by Belinda Majors of Turkey and Bridgett Williams of Lockney for the weekend.

Mrs. Woodrow Mullin left for an extended visit in California with her mother, Mrs. McGlothlin.

Mr. and Mrs. Leo Mullin visited in Plainview Sunday with Mr. and Mrs. Charles Bates and family.

Mr. and Mrs. Lawrence Hedrick were in Lubbock and also

visited her brother, Ray Johnson, a patient in the Levelland Hospital over the weekend.

Mrs. Ollie Meacham is a patient in the Plainview Hospital with a heart condition.

Mrs. Bill Farley accompanied Mr. and Mrs. Wayne Whittington on a trip to San Diego, Calif. They visited Mrs. J. E. Faulkner, and Mr. and Mrs. Huehn Faulkner. The Whittingtons drove on to San Francisco for a visit with his relatives. They returned by Phoenix, Ariz., for a visit with Mr. and Mrs. R. L. Brumett.

Mr. and Mrs. Truman Turner have recently moved to Terrell, Okla., where Truman will be employed on a ranch.

Mrs. Fred Neal is visiting in Amarillo with her son, Mr. and Mrs. Buddy Neal and family. Mrs. Buddy Neal recently underwent major surgery.

Mr. and Mrs. Lonnie Payne and family recently moved to Grapevine, Tex.

Mr. and Mrs. Wilburn Hamner of Houston are visiting Mr. and Mrs. Charles Hamner and Mrs. C. H. Hamner of Quitaque. Other visitors Sunday were the Bob Morris family of Tullia, a sister of the Hamner men.

Keep Possessions Safe
Small objects sometimes are lost overboard in rowboats, or other small craft, during rough weather.

Keep such valuables safe by screwing, or nailing, the metal top of a wide-mouth mason jar to the underside of a boat seat. Then place your keepsakes inside the jar and screw it to the top that you fastened under seat.

Not only will your valuables be out of the weather but they'll also be off the floor, partially hidden and out of harms way.

Development of the telegraph created a demand for wire in long pieces and led to the invention of new wire-making machinery in 1862.



GRAND CHAMPION GILT—Pictured above is Tim Salem of Turkey whose animal walked away with the top gilt prizes at the Hall County 4-H, FFA Livestock Show here Saturday. Salem's trophy he won is pictured in the hands of a friend in the background.

YOUR COUNTY AGENT SAYS

Trees, shrubs and flowers face problems from the elements just as do humans and among them is winter protection. The amount of protection needed depends on the natural hardiness of plants, severity of climate and exposure, explains County Agent W. B. Hooser.

Winter injury to plants is usually attributable to two factors, severe cold or loss of moisture from shoots and branches. Extreme cold will cause twigs, stems and roots to freeze, prompting cell tissues to break down.

Excessive loss of moisture, which causes winter killing, is due largely to the effect of strong, drying winds during periods of brilliant winter sunshine, says Hooser.

Evaporation of moisture from twigs, branches, canes and leaves (in the case of evergreens) continue at a slow rate through the winter. To supply this moisture,

plant roots must continue to absorb water.

When evaporation is rapidly accelerated by prolonged periods of winter wind and sunshine, plant roots are unable to supply moisture fast enough. Branches and canes become withered and, if this condition is sufficiently aggravated, it often results in dying back of a large portion of the plant or in its death.

Therefore, one of the most important preparation for winter, says Hooser is to see that the soil is adequately supplied with moisture. If rainfall has been light during the summer, the ground should be soaked before freezing weather sets in.

Many trees and shrubs may be saved from winter injury if this protection is given. Protection against extreme cold.

To protect half hardy shrubs and newly planted shrubs, a wind screen can be constructed from snow fence, burlap or commercially prepared straw mats, or loose leaves and straw may be thrown around the base of the plant if it is held in place with some twigs so the wind will not destroy the protection.

Cyclone, Cyclonettes Defeated In Wellington Tourney Consolation Finals

The Memphis Cyclone and Cyclonettes were defeated in the Consolation finals of the Wellington Invitational Basketball tournament and two of the Memphis cagers were named on the all-tournament squads.

Mike Pounds and Janie Watson were selected all-tournament team members and received individual trophies for the efforts in the tournament.

The Cyclone drew the tough Altus team in the first game, and to compound their problems they had a cold day, hitting 10 out of 60 shots. "We were as cold against Altus as a team can be," Coach Miller said.

Altus won the game 61 to 28 after leading at half time 24 to 14. Cunningham scored 20 for Altus while Tony Pounds had 9 points for Memphis.

In the second round, the Cyclone came back hot and defeated Dodson 76 to 45. Mike Pounds scored 29 points for Memphis while Dodson's Foster scored 23 points.

In the consolation finals, the Cyclone led the Hedley Owls the

entire game until the last period and ended up on the short end of a 57 to 53 score.

Jerry Moss scored 15 points for Memphis while Holland of Hedley had 16 points.

"We led as much as 10 points several times in the game but when Hedley came out in a full-court press in the final period we made several bad mistakes which cost us," Miller said.

The Memphis girls lost their first game to Wellington A team by a 65 to 23 score. Wellington's Wade scored 20 points while Janie

Watson scored 11 for Memphis. The Memphis girls won the second game by a one-point victory over Wellington B team to 30 in an exciting contest.

Janie Watson scored 26 points for the Cyclonette to lead the team to the season's first victory while Holton of Wellington scored 13 points.

In the consolation finals, Memphis and Quail battled it out. Quail took home the trophy by a 26 to 17 victory.

Bonnie Vick led Memphis scoring with 7 points while Quail's Campbell scored 12.

The Memphis and Quail played to a 17 to 16 third quarter score with Quail holding the point edge.

BECKHAM TRUCK & TRACTOR

Is Now an Authorized INSPECTION STATION

For Motor Vehicles

Bring your cars and trucks here for the new 1966 Inspection Stickers



Kids have more taste buds than grown-ups do!

It takes a fresher, better milk to please your child than it does to please you. The Borden Company has known this since you were a child. That's why every bottle of Borden's you buy has been tested 23 times. Tested for freshness. Tested for flavor. Tested to please the taste of children.

Borden's is the milk for children!



INCOME TAX SERVICE

20 years experience

Reasonable Rates

DAY or NIGHT

Clyde Shepherd

821 Brice

Phone 259-2537

We Are Ready And Anxious To Serve You With . . .



- POTTED PLANTS FOR THE FRIEND IN THE HOSPITAL
- WEDDING DECORATIONS
- FUNERAL PIECES
- ALL KINDS CUT FLOWERS
- HOLIDAY FLOWERS AND DECORATIONS

RITCHIE FLORIST

Delivery Service

320 Noel 259-2070 Nights & Holidays Memphis

CUT YOUR FOOD COSTS
WITH THESE EXCEPTIONAL VALUES!

PINEAPPLE-GRAPEFRUIT JUICE Del Monte 46 Oz. Cans **2 for 89¢**

CATSUP Del Monte 20 Oz. Bottles **2 for 49¢**

COFFEE White Swan 1 Lb. Can **67¢**

PEACHES Del Monte No. 2 1/2 Can **25¢**

MILK White Swan Large Cans **8 for 1.00**

WHITE SWAN **SHORTENING**
3 Lb. Can **69¢**

GRADE "A" LARGE **EGGS**
Per Doz. **49¢**

ARMOUR'S **TREET**
12 Oz. Can **49¢ ea.**

TIDE
Giant Size . . **69¢**

VEGETABLES & FRUITS

COLO. RED McCLURE **SPUDS**
20 Lb. Bag . **79¢**

ROMAN BEAUTY **APPLES**
4 Lb. Celo Bag **39¢**

SUNKIST **LEMONS**
ea. **4¢**

BUDGET MEAT BUYS

ROUND STEAK **85¢**
Per Pound

LOIN STEAK **79¢**
Per Pound

BACON **1.49**
2 Lb. Pkg.

FRYERS **29¢**
Per Pound

CURED HAM **95¢**
Sliced—Per Pound

BOLOGNA **45¢**
All Meats—Per Pound

Goodnight Grocery

1419 West Noel Street—On Lakeview Highway



CLASS WINNER—Pictured above is Lynn Knox of Estelline along with his FFA Sponsor Tom Seay (holding the trophy) and his prize winning sheep. Lynn's animal won first in his class (mixed breeds) at the 4-H, FFA Livestock show here Saturday.

J. E. Gruetzner Name dChildress Named Childress

Appointment of Joel E. Gruetzner as district manager of Lone Star Gas Company's Childress District of Distribution has been announced by L. B. Huley, vice president of the company's General Division of Distribution.

Mr. Gruetzner replaces H. E. Lawson, transferred to Frederick, Oklahoma, as district manager. The changes become effective January 1.

Mr. Gruetzner will supervise natural gas distribution to some 6,000 residential, commercial and industrial customers in the Childress district, composed of Childress, Wellington, Memphis,

Lakeview, Dodson, and Kirkland. The new Childress manager joined Lone Star as utility man at Waco in 1947. He became local manager at Mart in 1963 and local manager at Colorado City in 1964.

A native Bruceville, Mr. Gruetzner attended Bruceville-Eddy High School and "Four-C" Business College in Waco. He has been active in both civic and community affairs in Colorado City, including the Chamber of Commerce, Lions Club and United Fund.

Mr. Gruetzner is a member of the First Baptist Church. He is married to the former Odessa Mosley of Elkhart.

Mr. and Mrs. Ronald Davidson and daughter, Diane, of Lubbock visited with Mr. and Mrs. R. C. Lemons over the weekend.

Mr. and Mrs. Wayne Loury and Tanya spent Christmas holidays in the home of his parents, Mr. and Mrs. John Loury.

Dates Given For Social Security Rep. Visits Here

The Amarillo district office of Social Security Administration recently that Billye Brackeen of the Amarillo office will be in Memphis from 9:45 to 12 each morning three Wednesday mornings each month.

She is expected to be in Memphis on January 19 and 26, February 2, 9, and 16, and on March 2, 16, and 30.

She will meet citizens at the American Legion Hall in Memphis to conduct any business relating to social security.

H. S. Geldon, District Manager, also announced: "We also are pleased to provide social security programs for meetings of civic clubs, womens groups, farm groups, veterans organizations, etc. There is no charge for this service."

People who went South for the winter last year really found it.

Hospital News

Patients

Iona Longbine, Myrtle Reeves, Ollie J. Blevins, Kate Crawford, Ludie J. Palmer, W. L. Nabers, Rose Vaughn, Jennie Grimsley, Doris J. Gibson, Zula M. Arnold, Jim Roark, Maryle Mabry, Jimmie Mullins, Juddie Chappell, Mable Bridges, Mary Sahagun, Cyde Grimsley, Tilda Shepherd, Pearl Pierce, Katherine Lemons, Nora Diaz, Billie Bohannan, Charles Rae Campbell, Martha Richardson, Della Roberts, Juanita Sanchez.

Dismissals

Ima Hartsell, Lydia Latimer, Burnie McIntush, Ann Richards, Viola Tarver, Erlean Trapp, Ed Wilson, Charlie Wines, Lanora Wood, Danny Needham, O. B. Rampsy, Ozella Clark, Kelly Cochran, Wayne Hutcherson, Bell Jones, Viola Jouett, Minnie Mitchell, Mildred Mothershed, Violet M. Paschall, Kedron Stephens, Kathy Beck, Helene Ballew, Russell Hondron, E. F. Lemons, T. T. Loard, Buster McQueen, Gwenn Patman, Alice Alejos, Wayne Wolfe, J. D. Skaggs, D. A. Collins.

At today's prices women's hats are no longer a laughing matter.

DR. JACK L. ROSE
OPTOMETRIST
Contact Lenses
Closed Saturday Afternoons
415A Main Phone 259-2216

State And County Democratic Leaders Issue Appeal For Payment Of Poll Tax

State Democratic Party officials are most concerned that Texas voters are under a false impression that they no longer have to pay their poll tax in order to be able to vote in the 1966 elections according to Will D. Davis, chairman of the State Democratic Executive Committee.

"Nothing could be further from the truth," Davis said. "A poll tax receipt or a valid certificate of exemption is still the only 'legal tender' acceptable as an admission ticket into the voting booths in Texas."

The three federal judges who will decide the U. S. Department of Justice law suit to abolish the poll tax in Texas as a requirement for voting also have admonished Texans that they had better pay the \$1.75 poll tax levy before the January 31st deadline if they desire to vote this year according to Oren Jones, Democratic County Chairman for Hall County. Jones said that the judges have indicated that no final decision is probable for several months.

Payment of poll taxes for federal elections is no longer required, but poll tax payments for state and local elections are still necessary. All statewide officials, the Governor, the Lieutenant Governor, the Attorney General, the Justices of the Supreme Court, one of the three judges of the State Court of Criminal Appeals, the State Comptroller, the State Treasurer, the Agriculture Commissioner, the Land Commissioner and one of the three members of the Railroad Commission are to be elected in 1966. In addition to these offices, due to the redistricting accomplished by the 59th Texas Legislature, all seats in the Texas Senate and House of Representatives will be up for election during the primaries and general election of 1966. In addition to these statewide and district offices, many other district and county offices must be filled this year.

Failure to pay the poll tax before the January 31st deadline will disfranchise any voter from participating in the election of state, district and county officials. Partial qualification as a voter is possible through the obtaining of a "Poll Tax Not Paid" certificate, with which the holder

Income Tax Service

am now devoting full time to handling income tax reports.

G. L. Thompson
14 N. 8th Phone 259-2157

Purely Pleasurable...
this world of flameless electric living!

Warm, clean, flameless electric home heating is the choice of the young married set — so healthful for baby, so kind to the interior of your home. Thanks to WTU's low 1¢ winter heating rate, living better electrically in a REDALLION HOME is inexpensive, too.

Ask your building contractor or 3TU about the low operational cost of total electric living.

West Texas Utilities Company

BEEF UP YOUR MENUS!

HOLLY SUGAR
10 Lbs. 99¢

BORDEN'S MELLORINE
1/2 Gal.
3 for 1.00

CHUCK
Beef Roast
lb. 45¢

<p>FLEMING Coffee</p>	<p>LB. CAN 73¢</p>	<p>U.S.D.A. Fryers</p>	<p>LB. 29¢</p>
<p>GOOD VALUE OLEO</p>	<p>3 LBS. 65¢</p>	<p>GOOD VALUE - SLICED BACON</p>	<p>2 LB. PKG. 1.65</p>
<p>DEL MONTE Catsup</p>	<p>20 Oz. Bottle 2 FOR 55¢</p>	<p>FRESH GROUND Beef</p>	<p>LB. 45¢</p>
<p>Del Monte, PINEAPPLE-GRAPEFRUIT DRINK</p>	<p>46 Oz. Can 3 FOR 1.00</p>	<p>GOOD VALUE Shortening</p>	<p>3 LB. CAN 69¢</p>

<p>T I D E GIANT SIZE 69¢</p>	<p>FRESH TOMATOES Lb. 19¢</p>	<p>TV BISCUITS 6 Cans 45¢</p>
<p>RED POTATOES 20 LB. BAG 69¢</p>	<p>CALIFORNIA NAVELS ORANGES Lb. 12¢</p>	<p>DEL MONTE TOMATO JUICE 46 Oz. Can 3 FOR 89¢</p>
	<p>GOLDEN RIPE BANANAS Lb. 11¢</p>	<p>DEL MONTE CUT GREEN BEANS 303 Can 2 FOR 49¢</p>
	<p>TEXAS CARROTS Celo Pkg. 3 FOR 29¢</p>	<p>DEL MONTE PEAS 303 Can 3 FOR 69¢</p>

We Reserve The Right To Limit Quantity—Double S&H Green Stamps Wed. With \$2.50 Purchase or More

Vallance Food Stores

Robert L. Montgomery Is Guest Speaker Wednesday At Atalantean Club Meet

Robert L. Montgomery, local attorney who opened a law office in the Odum's Clinic Building this past summer, was guest speaker at the Atalantean Club Wednesday afternoon, Jan. 5.

The meeting was held in the home of Mrs. W. R. Scott with Mrs. Milton Beasley, Jr., vice president, presiding in the absence of the president, Mrs. Robert Sexauer.

The invocation was given by Mrs. Roy Jewell after which members stood and gave the pledge to the United States flag.

Mrs. L. C. Martin introduced Mr. Montgomery. In making the introduction, Mrs. Martin said that he was a graduate of Baylor Law School and received the annual Southwestern Legal Foundation Fellowship for a year's specialized study in Federal Income Tax matters at Southern Methodist University. He received his license to practice in 1953. He has served as an officer in the U. S. Air Force.

Before coming to Memphis, Mr. Montgomery was associated as law partner in two law firms, Tullia and Midland and served as special county judge in both communities.

Mr. Montgomery discussed recent federal and state legislation



ROBERT MONTGOMERY

Baskerville Home Is Scene For UDC Luncheon

The home of Emma Baskerville was the scene of Lee and Jackson Luncheon of the United Daughters of the Confederacy Tuesday, Jan. 11, at 12:30 p. m. Mrs. T. J. Hampton assisted with the hostess duties.

Following the luncheon, the group held the U. D. C. ritual and pledge to the flag.

Mrs. R. E. Clark then discussed "He Belongs to the Nation." This was the biography of Robert E. Lee.

Those attending the luncheon were Mmes. Herlie Moreman, T. J. Hampton, Bray Cook, Sybil Gurley, J. A. Odum, Nat Bradley, R. E. Clark, Emma Baskerville and L. G. DeBerry.

The next meeting will be in the home of Sybil Gurley.

and court decisions affecting federal income tax, federal estate taxes and state inheritance taxes. He emphasized the need for tax planning throughout the year and the need for a properly drawn will and estate planning to lessen the impact of federal estate and state inheritance taxes. He also gave a resume of some of the most important legislation passed by the Texas Legislature during its last session.

As a project for the past month, each member brought canned food for the Christmas Stocking which was given to two deserving families during the holidays.

Delicious refreshments were served to the following members: Mmes. Bryan Adams, Earl Allen, Milton Beasley, Jr., K. B. Chick, W. C. Dickey, Bob Douthit, H. B. Estes, Henry Foster, Robert Hanvey, Jr., N. A. Hightower, Roy Jewell, Claud Johnson, L. C. Martin, Robert Montgomery, Robert Spicer, Glynn Thompson, Morris Davis and hostess, Mrs. Scott.

The next meeting will be the 38th Anniversary breakfast at the home of Mrs. Robert Sexauer on January 29 at 9:30 a. m.

Mr. and Mrs. J. C. Ashcraft and daughter, Fern, of Clarendon visited Sunday in the home of his sister and her husband, Mr. and Mrs. Tom Scoggins.

Cat are color blind.

Beta Club Of Estelline To Have Salad Supper

The Estelline Beta Club will sponsor a Salad Supper Tuesday, Jan. 18 beginning at 5:30 p. m. in the Estelline School Cafeteria. The supper will be held before the Lakeview-Estelline basketball game which begins at 7 p. m., Rosalinda Rodriguez, reporter, announced this week.

The menu will consist of a meat salad, a vegetable salad, a fruit salad, rolls, and iced tea.

Admission will be 75c for an adult plate and 50c for a child's plate, she continued.

Everyone is cordially invited to attend and to stay for the basketball game.

Phyllis Dale Is Hostess To Gleaners SS Class

The Gleaners Sunday School Class met Monday, Jan. 10, at 7:30 p. m. with Phyllis Dale as hostess. Ruth Jones served as co-hostess.

Jo Barbee, president, called the meeting to order. The group was then led in prayer by Betty Rose. During the business meeting, plans were discussed to entertain the husbands with a dinner and a "42" party on Feb. 7.

Refreshments were served by the hostesses to the following: Charlene Douthit, Jo Barbee, Jo Carmen, Deane Bradshaw, Norma Lebow, Betty Rose, Louise Jones and the teacher, Louise Howell.

The next regular meeting will be in the home of Bess Yarborough.

Visiting with Mr. and Mrs. B. H. Hayes and Mrs. Bess Crump over the weekend were Mr. and Mrs. Bud Crump and family of Bovina.

Mrs. John Dennis and Dink visited in Lubbock with Mrs. Margie Howard and Estelle Guthrie. Mrs. Dennis stayed for an extended visit.

For COLDS take 666

Charter No. 12835

REPORT OF CONDITION OF THE FIRST NATIONAL BANK OF LAKEVIEW

of the State of Texas, at the close of business on December 31, 1965.

Published in response to call made by Comptroller of the Currency, under Section 5211, U. S. Revised Statutes.

ASSETS	
Cash, balances with other banks, and cash items in process of collection	\$302,430.34
United States Government obligations, direct and guaranteed	110,000.00
Loans and discounts	517,643.70
Fixed assets	601.00
Other assets	2,250.00
TOTAL ASSETS	\$932,925.04

LIABILITIES	
Demand deposits of individuals, partnerships, and corporations	\$511,427.80
Time and savings deposits of individuals, partnerships, and corporations	235,077.87
Deposits of United States Government	3,996.35
Deposits of States and political subdivisions	78,473.25
TOTAL DEPOSITS	\$828,975.27
(a) Total demand deposits	560,147.40
(b) Total time & sav. dep.	268,827.87
TOTAL LIABILITIES	\$828,975.27

CAPITAL ACCOUNTS	
Preferred stock—total par value 100.00	25,000.00
No. shares outstanding 250	
Surplus	50,000.00
Undivided profits	28,949.77
TOTAL CAPITAL ACCOUNTS	103,949.77

TOTAL LIABILITIES AND CAPITAL ACCOUNTS	\$932,925.04
---	---------------------

MEMORANDA	
Average of total deposits for the 15 calendar days ending with call date	\$749,617.00
Average of total loans for the 15 calendar days ending with call date	\$432,746.00

I, Inez Skinner, Cashier, of the above named bank do hereby declare that this report of condition is true and correct to the best of my knowledge and belief.

INEZ SKINNER, CASHIER

We, the undersigned directors attest the correctness of this report of condition and declare that it has been examined by us and to the best of our knowledge and belief is true and correct.

Directors

B. E. Davenport, J. O. Adams, Jr., R. C. Clements

Charter No. 6107

REPORT OF CONDITION OF THE FIRST NATIONAL BANK

of Memphis in the State of Texas, at the close of business on December 31, 1965. Published in response to call made by Comptroller of the Currency, under section 5211, U. S. Revised Statutes.

ASSETS	
Cash, balances with other banks, and cash items in process of collection	\$1,345,500.28
United States Government obligations, direct and guaranteed	1,658,103.46
Obligations of States and political subdivisions	1,860,396.92
Securities of Federal agencies and corporations not guaranteed by U. S.	1,149,500.00
Loans and discounts	2,611,513.10
Fixed assets	53,141.45
Other assets	16,201.55
TOTAL ASSETS	\$8,694,356.76

LIABILITIES	
Demand deposits of individuals, partnerships, and corporations	\$4,066,148.72
Time and savings deposits of individuals, partnerships and corporations	3,313,211.09
Deposits of United States Government	44,911.59
Deposits of States and political subdivisions	544,675.97
Deposits of commercial banks	39,936.95
Certified and officers' checks, etc.	92,861.94
TOTAL DEPOSITS	\$8,101,746.26
(a) Total demand deposits	\$4,663,535.17
(b) Total time & sav. dep.	\$3,438,211.09
Other liabilities	20,000.00
TOTAL LIABILITIES	\$8,121,746.26

CAPITAL ACCOUNTS	
Common stock—total par value	100,000.00
No. shares authorized	4,000
No. shares outstanding	4,000
Surplus	150,000.00
Undivided profits	310,960.50
Reserves	11,650.00
TOTAL CAPITAL ACCOUNTS	572,610.50

TOTAL LIABILITIES AND CAPITAL ACCOUNTS	\$8,694,356.76
---	-----------------------

MEMORANDA	
Average of total deposits for the 15 calendar days ending with call date	\$7,803,365.86
Average of total loans for the 15 calendar days ending with call date	\$2,584,549.19

Loans as shown above are after deduction of valuation reserves of 76,166.31

I, T. H. Deaver, Jr., Cashier of the above-named bank do hereby declare that this report of condition is true and correct to the best of my knowledge and belief.

T. H. DEAVER, JR.

We, the undersigned directors attest the correctness of this report of condition and declare that it has been examined by us and to the best of our knowledge and belief is true and correct.

O. L. Helm, Ben Parks, O. V. Alexander, Directors

REPORT OF CONDITION OF PEOPLES STATE BANK

of Turkey in the State of Texas at the close of business December 31, 1965

ASSETS	
Cash, balances with other banks, and cash items in process of collection	\$367,111.11
United States Government obligations, direct and guaranteed	149,911.11
Obligations of States and political subdivisions	22,000.00
Other loans and discounts	667,000.00
Bank premises, furniture and fixtures, and other assets representing bank premises	11,000.00
Other assets	2,500.00
TOTAL ASSETS	\$1,220,000.00

LIABILITIES	
Demand deposits of individuals, partnerships, and corporations	\$ 85,000.00
Time and savings deposits of individuals, partnerships, and corporations	87,500.00
Deposits of United States Government	1,000.00
Deposits of States and political subdivisions	81,000.00
Certified and officers' checks, etc.	2,000.00
TOTAL DEPOSITS	\$1,031,512.22
(a) Total demand deposits	944,012.22
(b) Total time & sav. dep.	87,500.00
TOTAL LIABILITIES	\$1,031,512.22

CAPITAL ACCOUNTS	
Capital: (a) Common stock, total par value \$100.00	\$ 50,000.00
Surplus	50,000.00
Undivided profits	88,000.00
TOTAL CAPITAL ACCOUNTS	188,000.00
TOTAL LIABILITIES AND CAPITAL ACCOUNTS	\$1,220,000.00

TOTAL LIABILITIES AND CAPITAL ACCOUNTS	\$1,220,000.00
---	-----------------------

MEMORANDA	
Average of total deposits for the 15 calendar days ending with call date	31,000.00
Average of total loans for the 15 calendar days ending with call date	10,000.00

I, Allene Young, of the above-named bank, do hereby swear that this report of condition is true and correct to the best of my knowledge and belief.

ALLENE YOUNG

CORRECT—ATTEST: Harry Barnhill, Elmer Lacy, Roy Fuston, Directors

STATE OF TEXAS, County of Hall, ss: Sworn to and subscribed before me this 10th day of 1966, and I hereby certify that I am not an officer of this bank.

(Seal) Eugene Ferguson, Notary

My commission expires June 1, 1967

BIGGER BETTER Food Buys! DELSEY 4 Roll Pkg. 49c

CRISCO 3 Lbs. 79c
DEL MONTE PEARS, No. 2 1/2 Can 49c
JELL-O, 2 Pkgs. 19c

COFFEE Lb. 79c
BETTY CROCKER CAKE MIXES, 3 Pkgs. 1.00
OUR DARLING CORN, 2—303 Cans 39c

MARYLAND CLUB or FOLGER'S GOLD MEDAL FLOUR 5 Lb. Bag .. 59c
DEL MONTE PEAS, 303 Can 25c

SHURFINE FRESH FROZEN ORANGE JUICE 6—6 Oz. or 3—12 Oz. 89c
SHURFRESH BISCUITS 6 cans 49c
SHURFRESH OLEO 2 lbs. 45c

PRODUCE COLORADO ROME APPLES, Lb. ... 14c
SUNKIST ORANGES, Lb. 17 1/2c
CARROTS, 2 Bags 19c

FRESH MEXICO TOMATOES, Lb. ... 29c
U. S. NO. 1 RUSSET POTATOES, 10 Lbs. .. 59c
MARKET HAMBURGER, Lb. 49c
BEEF RIBS, Pound 45c

HOME MADE CHILL, Pound ... 69c
ALL BRANDS — ALL MEAT FRANKS, Lb. Pkg. 59c
HOT BARBECUE, Lb. .. 69c

Double Buccaneer Stamps Tuesdays — \$2.50 Purchase or Over

MEMPHIS GROCERY
ORVILLE GOODPASTURE 120 NORTH 10TH
HERB CURRY PHONE 259-3581

Report From Washington

By WALTER ROGERS
Representative, 18th
Congressional District



Congress will have reconvened by the time you receive this newsletter. Fresh from visits with constituents in home Districts and States, Members of the House and Senate foresee another vigorous Session, one that will be marked by historic controversies over fiscal management as Congress and the Administration seek a proper balance between defense and domestic expenditures. A few months ago it appeared that this second Session of the 89th Congress might be able to concentrate, as a principal task, on seeking corrections in programs enacted in past sessions and which need to be improved. However, the priority of Congressional attention has shifted to problems associated with the war in Viet Nam.

With one exception, my committee assignments will be the same as they were during the first Session of this Congress. The new responsibility was imposed by my appointment as Chairman of a special House subcommittee to investigate the recent electrical power "blackout" in the North-western United States and other such power failures occurring elsewhere in the Country. The subcommittee held meetings in December to plan the investigation and to receive testimony from the chairman and members of the Federal Power Commission following their initial study.

I feel that our sub-committee's assignment is one of the most important projects of this Congress. It is vital to national security as to the health and well-being of residents of all sections of the country that the cause of these power failures be determined

with certainty and that steps be taken to see that they can not happen again. The last phase of our subcommittee's work may be to shape legislation to accomplish this goal.

I will again in this Session preside as Chairman of the Subcommittee on Communications and Power, one of the five subcommittees of the House Committee on Interstate and Foreign Commerce. The subcommittee has initial House jurisdiction over legislation affecting interstate and foreign communications, including the nation's radio and television industry and telephone and telegraph systems; petroleum and natural gas, including the interstate oil compact; interstate electric power; and the U. S. Weather Bureau. A problem of continuing interest before the Communications and Power Subcommittee is the extent and nature of regulation that should properly be applied to community antenna television (CATV) systems. Hearings begun in the first Session of this Congress will be resumed this year.

Again this year I will serve as chairman of the Subcommittee on Irrigation and Reclamation, one of the six subcommittees of the House Committee on Interior and Insular Affairs, and the subcommittee which during my tenure of service has shaped such important legislation to the Texas Panhandle as that providing for the Canadian River Dam and Aqueduct and the recreation development at Lake Meredith. The jurisdiction of the Subcommittee includes multiple purpose development of the Nation's water resources and related policies; the saline water program; water



TOP BARROW—Pictured above is Laddie Fowler of Estelline who showed the Grand Champion barrow at the Hall County show last Saturday. The barrow won first in his class in heavy weight Hampshires.

rights; and interstate compacts relating to apportionment of irrigation waters.

I will also be serving this year on the newly formed Public Land Law Review Commission, a 19-member body composed of Members of the House and Senate and citizens appointed by the President. The Commission was established by Act of Congress to study Federal laws and policies affecting our vast public land holdings and to determine policies for the future that will insure wise utilization and development.

I'm looking forward to the challenges and work of the year ahead.

Those who visited recently in the home of Mr. and Mrs. J. N. Helm, Sr., of Newlin were Mrs. Irene Balkley of Perryton; Capt. and Mrs. Jack Helm and children and Mark Sheidemyer, all of Clinton, Sherman, Okla.; Bobby Helm and son, Terry, of Pampa; Mr. and Mrs. M. C. Spencer of Memphis and Mr. and Mrs. Roscoe Monroe of Ardmore, Okla.

There are almost 12,000 caves known in the United States.

Jan. 31 Deadline For Filing V. A. Benefit Cards

Hubert Dennis, Hall County Veterans Service Officer, announced today that all persons receiving Veterans Administration disability or death pension benefits must complete and return the annual income questionnaire card prior to January 31, 1966.

Mr. Dennis stated that all such persons received the annual questionnaire card with their pension checks on or about December 1, 1965. On these cards, the claimants should report to the Veterans Administration, their total annual income for the calendar year of 1965 and the total income they expect to receive during the calendar year of 1966. From the information shown on these cards, the Veterans Administration determines the amount of pension benefits a person is entitled to receive.

If the reports are not returned by January 31, 1966, it will be necessary for the Veterans Administration to demand the return of all benefits paid to the person during 1965.

Anyone desiring assistance in completing the annual income report may contact the Veterans County Service Officer, located at 121 North 15th St., Memphis, Texas.

The County Service Officer also announced today that beginning in January, 1966, the Veterans Administration will use ZIP Codes on all mail. Veterans and their dependents who correspond with the Veterans Administration should be sure that their own ZIP Code is shown in their return mailing address. The use of ZIP Codes will help both the Veterans Administration and the Post Office in handling all mail to and from veterans.

Last year payments in the county amounted to over \$89,000, Mr. Dennis stated.

Registered Cattle News

B. J. Land & Cattle Co., Estelline, Texas, has reported the sale of one registered horned Hereford bull to W. B. Davidson & Sons, Estelline, Texas.

Tomie M. Potts, Memphis, Texas, has reported the sale of three registered horned Hereford bulls to the following Texas breeders: two bulls to J. T. McKehee, Jr., Goodnight, and one bull to John C. Knorpp, Clarendon.

Bradley Ranch Sells Registered Angus Bull
Bradley Ranch, Memphis, recently sold an Aberdeen-Angus bull to Marvin Klinker, Iowa Park, Texas.

Mrs. Mona Robertson of Memphis and Mrs. and Mrs. Elmer Watson of Lakeview were Sunday afternoon visitors in the home of Mr. and Mrs. Tom Scoggins.

Mrs. Ann Mae Ridder and Raymond Mitchell of Amarillo visited Sunday afternoon with Mr. and Mrs. Tom Scoggins.

BRICE

Mr. and Mrs. O. A. Burgess and daughter of Petersburg visited here Thursday with his uncle and aunt, Mr. and Mrs. Loyd Burgess.

Mrs. Everett Paschell returned home Friday from the Memphis Hospital and is reported to be much improved.

Doug Burgess and daughter, Laquita, were Lubbock visitors Monday.

Mr. and Mrs. G. W. Slemon visited the past week at Vernon with John Minarik, who is ill.

Mr. and Mrs. Mike Murff and children of Amarillo visited here Sunday with his parents, the C. V. Murffs.

The Starr Johnsons had their children home Sunday. They are Mr. and Mrs. Buck Johnson and Buzzy and their daughter, Mrs. Gale French and Mr. French and baby, all of Dumas, D. S. Johnson and children, Liz, Jauna, Bub and Sydney of Memphis and Mr. and Mrs. We are sorry to lose the C. A. Hightowers and the Elmer Vines from this community. The Hightowers moved the past week to Memphis and the Vines have moved to Clarendon. Mr. and Mrs. Gene Hamill and children of Memphis have moved to the Hightower home. We are very glad to have them here.

Mrs. Lee Holland of Clarendon.

Mr. and Mrs. Glynn Churchman of Clarendon visited here Sunday with his sister, Mr. and Mrs. Zack Salmon.

Mrs. J. C. Johnson and Mrs. Ken Fincher were Amarillo visitors Wednesday.

Mr. and Mrs. Cleo Elrod of Memphis visited here Sunday with their daughter, Mr. and Mrs. Earl Thomas.

Sandy McQueen Named 1st Chair At All-Region

Six members of the Memphis Cyclone Band went to All-Region try-outs for the All-State band last Saturday, Jan. 8.

Making the trip were David Douthit, Nancy Simpson, Randy Driver, Lewis Foxhall, Cathy Dale and Sandy McQueen.

Band Director Darle Phillips announced that Sandy McQueen was selected first chair, All-Region, and will advance to the Area Tryouts in Lubbock on Jan. 22. Only one trombonist will be selected at Area to be a member of the All-State Band.

Randy Driver was picked first alternate at the All-Region try-outs, Director Phillips said.

Kermit Voekels Attend Mickey Services In Austin

Mr. and Mrs. Kermit Voekel were in Austin over the past weekend to attend funeral services for Samuel Waite Mickey. Services were held at 11 a. m. Saturday morning at the Presbyterian Seminary Chapel in Austin with the Rev. James Wharton, son-in-law of the deceased, officiating.

Mr. Mickey was the father of Bob Mickey of Dallas, who is married to the former Anita Voekel, daughter of Mr. and Mrs. Voekel. Other than his son and daughter, Mr. Mickey is survived by his wife.

MRS BAIRD'S



Stays Fresh Longer

COATS CHIROPRACTIC CLINIC
Complete Chiropractic Health Service
DR. J. R. COATS, D. C.
507 12th Street Northwest
Next to Coats Grocery
Childress WE7-4431

Those who visited recently in the home of Mr. and Mrs. J. N. Helm, Sr., of Newlin were Mrs. Irene Balkley of Perryton; Capt. and Mrs. Jack Helm and children and Mark Sheidemyer, all of Clinton, Sherman, Okla.; Bobby Helm and son, Terry, of Pampa; Mr. and Mrs. M. C. Spencer of Memphis and Mr. and Mrs. Roscoe Monroe of Ardmore, Okla.

Brother Of L. O. Dennis Dies In Okla.
Funeral services for Andrew Dennis, brother of L. O. Dennis, were held in Hollis, Okla., in the Coley Funeral Chapel Sunday at 3:30 p. m.
Mr. Dennis passed away in Hollis at 6:30 Saturday. He had lived in Hollis for about 40 years.
Those attending the services from Memphis were L. O. Dennis and his son, W. C. Dennis.

<p>Morton Old Kentucky Recipe FROZEN</p> <p>Pecan Pies 39¢</p>	<p>Morton Frozen DONUTS Dozen 29c</p>	<p>Lipton Instant TEA 6 Oz. 98c</p>	<p>Morton Frozen ENCHILADA DINNER 3 for 1.00</p>	<p>Crisco NEW! UNSATURATED 3 lbs. 79¢</p>	<p>America's Favorite Shortening 79¢</p>
<p>Gladiola ENRICHED FLOUR</p> <p>5 Lb. 49¢</p>	<p>FAB CLEAN CLEAR THROUGH That's a FAB Wash</p> <p>Giant Size 63¢</p>	<p>Spaghetti & Meat Balls Austex 4 for 1.00</p>	<p>PY-O-MY 10 for 1.00</p> <p>Cake Mix Instant Potatoes Chili-Beans Macaroni - Meat</p>	<p>Holly Sugar 10 LBS. 98¢</p>	
<p>TOMATOES Pkg. 23¢</p>	<p>CREAMY RICH IN FLAVOR Good For Health</p>	<p>STEAK SIRLOIN Lb. 75¢</p>	<p>FRANKS 12 Oz. Pkg. 49¢</p>	<p>FRESH FRYERS Lb. 29¢</p>	
<p>GOLDEN BANANAS 9¢</p>	<p>Carrots 9¢ One Pound Bag, Each</p>	<p>Davis & Scott SUPER MARKET CORNER NOEL & 12th STREETS Lakeview Highway</p>	<p>FRANKS 12 Oz. Pkg. 49¢</p>	<p>Tall Korn Lb. 79¢</p>	

WE RESERVE THE RIGHT TO LIMIT QUANTITIES DOUBLE STAMPS EVERY WED.



RESERVE CHAMP GILT—Jay Hudlow of Estelline shown above was mighty proud Saturday when his gilt won reserve champion at the Hall County Livestock Show, as were all the winners. Jay's Hampshire gilt also won first in its class.

Charley Chambless To Give Up Coaching Duties

The Memphis School Board Monday night took action on a motion which in effect released Head Coach Charley Chambless from his coaching duties and made him a full-time Junior High Principal and Administrative Assistant.

This action came a month earlier than the normal time the board acts on the head coach's contract and Superintendent of Schools Shannon Doss said the board took the action so they could begin accepting applications for a head football coach and athletic director.

Mr. Chambless has been serving the school in two capacities, head football coach and junior high principal. He stated Tuesday that he and his family will continue to reside in Memphis and he will continue as Junior High Principal.

Supt. Doss said the board will consider all applications received for the head football coach-athletic director position and asked that all who are interested to contact his office.

Coach Chambless served three seasons as head coach of the Cyclone coming to Memphis in 1963. Next season the Cyclone

will move up into Class AA.

The School Board also extended the contract of Supt. Doss another year or until July 1, 1969.

Supt. Doss reported to the board on the progress made under Title 1 of the Elementary and Secondary Education Act of 1965.

"We need to hire five teachers by Monday and so far, none have definitely signed up," he said. The school is seeking five remedial reading teachers. These teachers will take a one-week training course before classes start.

Mr. Doss said that he would appreciate any help he could receive to try and find these needed teachers on such a short notice.

Mrs. L. W. Stanford

(Continued from Page 1)

Pall bearers were Dr. O. R. Goodall, Wendell Harrison, R. C. Lemons, O. L. Helm, Mills Roberts, Mack Tarver, Allen Dunbar, Gayle Greene and A. L. Gailey.

Harvest

(Continued from Page 1)

and maturity) were much lower than the previous week with 30 per cent of the cotton classed in the range 3.6-4.8, which carried a 14-point or 70 cents a bale premium. Last week 45 per cent of the cotton classed fell in this desirable range. Other readings were: 2.6 and below, 5 per cent; 2.7-2.9, 20 per cent; 3.0-3.2, 25 per cent; and 3.3-3.5, 20 per cent.

Comments

(Continued from Page 1)

build a great life for yourself?

A happy disposition is worth more to its possessor than all the gold mines in the world. If you haven't come into the world with one, try to acquire it. Whatever happens, just make up your mind that you will not add to the gloom and unhappiness already in the world by going about with a long, gloomy face, but will scatter laughter and sunshine wherever you go. In this way you will do more good than any multimillionaire could do with all his money. You will be happy yourself, and you will make others happy. You will treble your chances of success and popularity, for everyone loves and admires the cheerful, sunny soul.

Boren Theatres

Phone 259-3121

Tower Drive-In

Thurs.-Fri.-Sat., January 13-14-15
"THE BEDFORD INCIDENT"
starring
Richard Widmark and
Sidney Poitier

Sun.-Mon.-Tues.-Wed., Jan. 16-19
"THE COLLECTORS"
Academy Award Nominees:
Best Actress—Samantha Eggar
Best Actor—Terence Stamp
(in color)

out of this world savings



annual sale
one week only
January 15 thru January 22

	reg.	pair	6 pairs
reinforced sheer	1.50	1.25	7.50
micro-mesh	1.50	1.25	7.50
sheer heel demi-toe	1.65	1.35	8.10
run guard cottee	1.65	1.35	8.10
stretch sheer	1.65	1.35	8.10
textures	1.95	1.65	9.90

Greene Dry Goods Co.

Quitauque Boys, Estelline Girls Lead Dist. 9-B

The two favorite teams are still going strong in District 9-B with the Estelline girls and the Quitauque boys in the undefeated ranks in district action.

Tuesday night, the Estelline girls scored a decisive victory over the Quitauque girls, 64 to 34. Jane Helm scored 28 points for the Bearettes. Sherry Stark had 23 for Quitauque.

Quitauque is possibly the second strongest team in the district so the victory for Estelline was most important.

In the boys game, the Quitauque boys ran up an 81 to 24 score against the Bears of Estelline. Jimmy Adcock scored 7 points for Estelline and Stephens had 15 for Quitauque.

The two Lakeview teams won games from Flomot Tuesday night in Lakeview gymnasium. The boys won by a 66 to 52 score while the girls staged a last quarter rally to win by a 43 to 39 score.

Kirby Hatley led the Lakeview boys scoring with 22 points while Flomot's George Calvert had 24 points.

In the girl's game, Landa Berry and Tonda Hatley each scored 15 points for Lakeview while Flo-

mot's Debby Barham had 18 points.

Matador teams dealt Turkey teams two defeats Tuesday night. The Matador girls scored a 40 to 30 victory while Turkey lost the boys game 78 to 59 to Matador.

Turkey's Karen Arnold had 14 points in the girls game while Matador's Ruby Storey scored 19 points. Pete Richardson scored 33 points for Matador to be their high point man and Turkey's Harvey Case score 27 for the losers.

Games Scheduled

Friday Night: Lakeview travels to Quitauque; Estelline travels to Turkey.

Tuesday night: Lakeview travels to Estelline; Turkey plays host to Flomot.

Methodist Church

(Continued from Page 1)

Srygley, Ben Parks, Shannon Doss and Harold Smith.

Rev. David Hamblin will also serve as a member of the committee as he does on all church committees, it was announced.

Political Announcements

The Memphis Democrat is authorized to announce the following as candidates for public office, subject to the action of the Democratic primary in May.

For State Representative, 82nd District:
W. S. (Bill) HEATLY

For County and District Clerk:
RUBY GOODNIGHT

For County Judge:
E. (Gip) McMURRY

For County Treasurer:
LUCILE WRIGHT

For County Superintendent:
TOPS GILREATH

For Commission, Prec. 2:
H. W. (Shorty) SPEARS
Z. C. (Zeb) SANDERS

For Commissioner, Prec. 4:
W. F. (Pat) BRITTAIN

For Justice of the Peace, Precinct No. 1:
JACK B. BOONE

For Justice of the Peace, Precinct No. 4:
CURTIS O. TUNNELL

WANTED

CLASSIFIED INFORMATION RATES

Display rate, run of paper 75c
Classified Display rate 80c
Minimum charge 75c
Per word first insertion 5c
Following consecutive insertions 3c

After want ad is taken and set in type, it must be paid for even if cancelled before paper is issued. The Democrat frequently gets results before paper is published by personal contact with customers, especially in FOR RENT and LOST and FOUND cases.

For Sale

FOR SALE: Four room house and lots at 819 Cleveland. Mrs. R. D. Hall, Lakeview. 36-tfc

FOR SALE: Used stoves, refrigerators, air conditioners, washers. Smith Auto. 1-tfc

FOR SALE: 1965 Chevrolet Pickup. Loaded including V-8 automatic transmission and factory air. 1800 miles. Phone 259-2806. 13-tfc

FOR LEASE: Fina service station hwy. 287 east. Now open and doing business, gasoline and Fina manufactured products put in on open discount, small operating capital required and a good credit rating. For more information go by the station or call Bob Martin collect, MO 3-2752, Quana. 25-tfc

FOR SALE, or trade on land: Dry Goods business, Hedley, Texas. Day phone 856-2161, night phone 556-3081. 27-tfc

FOR SALE: Good hegar bundles. Phaeton Alexander, 259-3014. 32-tfc

FOR SALE: Fred Howard's home and two lots in Lakeview. Contact Dorothy Higgins, 2408 Rosewood, Pampa, Texas, MO 5-3569. 33-4p

FOR SALE: 1950 model TO-20 Ferguson tractor; good rubber. Lee M. Robertson, Lakeview, phone 867-2941. 34-2p

FOR SALE: 1958 Chevrolet pickup, extra clean. See T. J. Spry, Jr., 720 S. 5th Street or Tindall Gin. 35-tfc

320 ACRES, all under cultivation, good allotments. West of Ash-tola, Armstrong County, \$250 cash per acre. Inquire Tenie A. Masterson Estate, Hedley, Texas. Box 115. Phone 856-3761. 35-tfc

FOR SALE: 3-bedroom and bath house at 1310 N. 18th. Two blocks from Postex, 2 blocks from clinic, 2 blocks from new school ground. Weldon Gable, Rt. 2, Lakeview. 35-3p

FOR SALE: New cabin on Lake Kemp. Modern with carpets, large closet, and built-in cabinet. Partly furnished. One three-room cabin. Semi-modern, large closet, built-in cabinet, partly furnished. Both with lake-front views. Terms. Phone 259-3103. 35-2c

Memphis Teams Lose District Opener Tuesday

The two Memphis cager teams took it on the nose Tuesday night in the opening game of District 2-A action and the favored Cyclone was downed by the Canadian Wildcats.

In the girls contest, the Canadian team won the game 40 to 18. Canadian's Mary Jo Forder scored 16 points and Cynthia Evans made 10 for Memphis.

In the boys game, a cold night from the free throw line and a rattled offense in the fourth period cost the Cyclone a 62 to 56 defeat.

The lead changed hands numerous times during the game but the Wildcats came on strong in the last period to win the contest.

Bob Hext was the game's high scorer from Canadian with 25 points while Memphis' Kenneth

Carnish scored 13 points to lead the local lads.

The biggest upset in the district was White Deer's 47 to 46 victory over the Clarendon boys.

Memphis travels to Clarendon tomorrow night and will play host to White Deer in the Memphis gymnasium next Tuesday.

Jack B. Boone To Head County March Of Dimes

"I believe there is nothing more important than making sure every baby born in this county has the best chance to develop into a normal, healthy person.

"That's why I'm working to see that we have a successful drive here this January," declared Mr. Jack B. Boone as he accepted the Hall County chairmanship of the 1966 March of Dimes campaign to fight birth defects.

Boone said the drive begins this week and will continue until Feb.

Funeral Services

(Continued From Page 1)

The couple moved to Hall County in 1912 and farmed in the Ester community until 1930 when they moved to Memphis.

Mrs. Brock was a member of the First Methodist Church.

Pall bearers were E. E. Rets, Bill D. Hart, J. M. Jr., J. B. Byars, Sam Jackson and Earl Bloxon.

Surviving is one son, Burton Brock of the U. S. Force in Puerto Rico.

Antiquing Made EASY

Martin Senour's Provincial Color Glass 18 beautiful colors

Dixon TV & Appliances

FOR SALE: Our Home, 3-bedroom, 2 baths and den. 1010 N. 17th St. Call 259-2500. 31-tfc

FOR SALE: Nice six-room house. Corner lot 520 N. 16th. See L. C. Martin at First State Bank. 33-tfc

FOR SALE: Well established business in Memphis. Choice location with a good future. Answer in care of Memphis Democrat, P. O. Box 192. 31-5c

For Rent

FOR RENT: Furnished two-bedroom apartment. Call 867-2831 or 867-2441. R. C. Clements, Lakeview. 35-tfc

Apartment for rent. 421 N. 12th. Phone 259-2286 or 259-3094. 35-tfc

FOR RENT: Unfurnished two-bedroom apartment. Contact W. M. Davis. Phone 259-2353. 34-tfc

FOR RENT: Small furnished apartment. Ideal for one person. Close in. Main Apartments, 821 Main St. Phone 259-2800. 33-tfc

BRICK BUILDING for rent or sale; residential lots, some sold but bargains left. J. D. Webster. 3214 Rusk St., Amarillo, Texas. 29-tfc

FOR RENT: Office space in new (clinic) portion of Odom Building. 721 Main. 27-tfc

FOR RENT — Kitchenettes and rooms, by day or week, Alhambra Courts. 13-tfc

FOR RENT: Nice garage apartment, furnished, couple or one person. 1420 Brice Ph. 259-2048. 31-tfc

FOR RENT: Bedroom with private bath and entrance, large clothes closet. Kitchen privileges. Call 289-2125 daytime or 259-3024 nights. 35-tfc

FOR RENT: AVAILABLE SOON — Attractive downstairs garage apartment. 1420 Brice St. Phone 259-2048.

Let me do your blacksmithing and welding. C. T. Snowdon, 1801 Noel St. Phone 259-3197. 34-tfc

NOTICE: Carl's Pawn Shop is now open at Carl's Grocery on North Boykin Drive. 14-tfc

SANITONE — First in dry cleaning. Lusk Cleaners, Memphis and Turkey. 25-tfc

AUTHORIZED sales, service — Singer machines, vacuum cleaners, typewriters, record players, televisions. Catalog Merchandise. Call 259-3040. 35-tfc

VENETIAN blinds repaired, new tapes and cord—furniture repairing—sewing machine repairing and parts. Rehels Furniture Repair Shop, 808 Cleveland St. 29-tfc

PLUMBING SERVICE: C. M. Wilson. Telephone 259-2370 (not listed in directory). 1916 Grundy, Memphis, Texas. 14-tfc

A. H. MOORE & SON, Water Well and Irrigation Contractors: acidizing and cleaning wells. Phone 874 3596, Clarendon, P. O. Box 254. 38-tfc

HAVE farmed Mrs. Biffie Bowder's land for 17 years. Due to her death and sale of land, need to rent land for 1966. C. H. Davidson, 303 N. 12th. Phone 259-2744. 16-tfc

CARPETS a fright! Make them a beautiful sight with Blue Lustre. Rent electric shampooer \$1. Thompson Bros. Co. 35-1c

Trewax Clear Paste is slip-resistant and will not discolor your floors. Thompson Bros. Co. 35-1c

FOR Building remodeling, Repairing, House Leveling, call S. E. Lane, 259-2506. 35-tfc

SPECIAL NOICES

For lots or houses in the new Johnson-Weatherly Addition to the City of Hedley see Clifford Johnson. 30-tfc

KIRBY SALES & SERVICE
Dale Hunt, representative
105 N. 9th St. Phone 259-3200
Memphis, Texas 37-tfc

Snider Insurance Agency
All Types Of Insurance
Phone 259-2414
106 North 8th Street 27-7p

HOME FOR SALE
1703 Peachtree Street
CALL 259-2802
For Appointment
K. D. NABERS 34-tfc

FOR SALE

Three irrigation farms with 6 and 8" wells.

Cafe at Lakeview.

5-room house in Lakeview.

427 acres on pavement at Estelline, will give possession.

Several houses (any price) in Memphis.

7 1/4 acres, edge of city limits on Lakeview Highway.

I will buy your hens

Call
Robert A. Wells, Lakeview, Texas 34-tfc

Memphis Lodge 729 AF&AM
Called Meeting
7:30 P. M.
Friday, Jan. 14, 1966
Work in Fellowcraft Degree
All members urged to attend

MONUMENTS
AT FACTORY PRICES
WILLIS-PELLOW BROS.
GRANITE QUARRY
GRANITE. OKLA.
Phone KE9-2184 Collect tfe

RADIATORS
Cleaned, Repaired and Recored
One day service on majority of makes
We maintain a representative stock of cores for cars, pickups and tractors
Rice's Radiator and Tire Service
SI RICE
10th & Main 259-2165 tfe

Free Removal Of Dead Stock
DAVID PYLE
Memphis Lockers
Phone 259-2915
Amarillo Rendering Co. 25-tfc

FOR SEPTIC TANK or CESS POOL PUMP SERVICE
Call
TRAVIS BOLDEN
117 East Main 28-tfc

TYPEWRITER AND ADDING MACHINE REPAIR
Phone 259-2441. Memphis
Have several used typewriters and adding machines for sale
ROY M. HORN
Typewriter Repair Service
Wellington, Texas 16-tfc

Tresbar Quarterhorse and Stud Service
Robert A. Wells
Lakeview, Texas 35-tfc

Wanted

WANTED TO BUY: Feeders and hogs. H. R. Yarbrough, 259-2904.

Nationally Organized Texas Oil Company offers annual opportunity to qualify per getters under 60. Know your tractors and machinery. Sales experience not necessary. We train if hired. Draw a claim when qualified. Make a late model car. This is a permanent position offering an opportunity to those with ability. Also have positions available to those willing to travel. Practical per week away from home. Personal interview with headquarters, address and phone number to Tom Sheffield, Field Manager, Dept. 1E 24, P. O. Box 392, Dallas, Texas.

GOOD INCOME

For reliable man or woman service customers in Memphis or part time. No investment. Write C. R. Ruble, Dept. O, Box No. 2447, Memphis, Tennessee 38102.

Lost

LOST: Dark-rimmed woman's focal. Return to Democrat office or phone Sarah Kilgore. 25-tfc

SPICER FUNERAL HOME
Ambulance Service
PHONE 259-3333

MR. FARMER RANCHER
Do You Need Credit? If so, how much?

10.00
100.00
1,000.00
10,000.00
100,000.00
500,000.00
or
1 MILLION

- We specialize in loans to fit your needs.
- No dollar limit in loans.
- Reasonable cost - simple interest for money is on books.
- Quick credit decisions by experienced personnel.
- Why bother with financing when you have the best?
- Bring all your credit to

Rolling Plains Production Credit Association

Offices in:
Stamford
Haskell - Munday - Muskogee
Spur - Anson - Muskogee
Paducah - Wellington