

The Memphis Democrat

Hall County Herald, Established May 3, 1890, Absorbed by Purchase August, 1928



WEATHER SUMMARY

Weathermen's promises of a Christmas did not materialize. A front brought cold, icy winds today and promises of tomorrow. Residents here hope to drizzling rain which will ease cars, this morning.

TIME LXXXIV

Avalon Features

MEMPHIS, HALL COUNTY, TEXAS, THURSDAY AFTERNOON, DEC. 26, 1974

15c (Inc. 1c sales tax)

NUMBER 34

The Chamber Corner

Jim Edd Wines

It is good to see so many relatives and friends visiting here during the holidays; we hope that you have enjoyed a Merry Christmas and best wishes to all for a New Year.

Looking back over the year and doing some reminiscing is a most eventful and productive year to mind. Your Chamber of Commerce has just experienced its most successful year to date in growth and development. The involvement of Memphis businessmen and several local citizens have reinvested directly in the community over \$16,000 for the work of the Memphis Chamber. The 1974 Chamber Commerce budget far exceeded other annual budgets of the organization.

The primary program this past year has been the promotion of community and cotton to the public. Our campaign of "The Cotton Country" with its posters led us to the annual Chamber of Commerce banquet dedicated to the cotton industry of Hall County with the participation of Cotton Inc., speaker for the event. The design of an emblem for this in correlation to our slogan was drawn and approved. This emblem for Memphis and Hall County now appears with our slogan in many areas.

The course, 1974 will long be remembered as the starting of Chamber's miniature cotton bale to promote our community. We plan to continue the little cotton bale theme to encourage citizens to help us in Memphis through the distribution of the miniature bales in the future.

The past year can also be remembered for the community emblem slogan appearing on welcome mats, postal meter marks, bumper stickers and many other articles of advertisement.

More than community promotion, the Chamber also sponsored

the "Operation Car Crush" to help in cleaning up our area of junk autos, a planter box campaign for the town square shopping area, beard growing contest in conjunction with the Hall County Picnic and the 3rd Annual Cotton Ball National Enduro.

Plans for a renovation and application for a matching grant of \$40,000 for our City Park was completed and state highway signs advertising our city park and Heritage Hall were also obtained. Our weekly column in "The Memphis Democrat" also was changed under a new design and title.

Around the community, we have experienced a hail storm that created an instant "shingle rush" during the summer months, new trash collection system for the city and a new fire truck bought by funds from the community.

Several Chamber of Commerce members who received honors this year were: Bill Leslie, finalist for the FTD Florist of the Year Award; Mike Branigan, Lion's Club's Citizen of the Year and Outstanding Young Man of America Award; and Lacy Montgomery, "Pork All-American."

The Chamber of Commerce will meet Monday, January 13, in the DeVillie Motel for the first meeting of the year. New directors will be sworn in and election of the 1975 Chamber of Commerce officers will take place. 1975 will be another year of activity with the Hall County Bicentennial Program already in action. Goals for the new Chamber of Commerce of Memphis will be planned and announced in January.

1974 has been a good year and I want to thank the Chamber of Commerce members for the opportunity of serving you and the entire community as your Chamber of Commerce manager. I am looking forward to the new year and the challenge that 1975 will offer as the manager of your Chamber of Commerce.

Jim Edd
Happy New Year!



HONORED — Pictured above, Henry Gregory of SCS, congratulates David W. Seitz, right, who was presented a Certificate of Merit, signed by State Conservationist Edward E. Thomas for "exceeding all of assigned goals for 1974 in a commendable manner." A cash award also accompanied the Certificate. Mr. Seitz has been with SCS for nine years, with over four of these in the Memphis Work Unit.

Rotary Club College Day Set For Tuesday

The Memphis Rotary Club is inviting all students who attend colleges or universities to be their guests at the Annual College Day program at 12 noon, Tuesday, Dec. 31, in the Memphis Community Center.

President Bill Wood of the club said the invitation is also extended to college friends of area college students who might be visiting here over the holidays, and husbands or wives of our college students.

The Club each year hosts the College students at a luncheon on the first Tuesday following Christmas, with 30 to 50 students in attendance each year.

A special program has been arranged for by a committee of which Thomas Clayton is chairman, with the First United Methodist Church Music and Youth Director Jerry Lane bringing the program.

Invitations have been mailed out to those students whose names appear on a current list of the club, but often a few are overlooked in the mail out, but students should not feel they must have a written invitation in order to attend.

The program each year gives the college students an opportunity to get together, enjoy a good meal, and program, and it gives the Rotary Club the opportunity to honor the college students, who will be tomorrow's future leaders.

Inflation Does Raise Value of Local People

NEW YORK, Dec. 13 — What price Hall County residents? What is the current market value of the average local resident as far as the chemicals in his body are concerned?

Whether he realizes it or not, the cash value of the calcium, potassium and other goodies in his system has reached an all-time high.

It is up 60 percent from what it was a mere five years ago and 570 percent over what it was in 1936.

These holdings cannot be really considered liquid assets. Converting them into cash would no doubt present their owner with a somewhat difficult problem.

The report on the chemical worth of humans comes from Dr. Donald T. Forman, a professor of biochemistry at Northwestern University.

On the basis of his findings, it appears that the average Hall County resident harbors within his system an assortment of inorganic chemicals that are worth a cool \$5.60 in today's market.

The same substances, identical in quality and quantity, would have brought no more than \$3.50 in 1969, he says. Inflation is to blame.

Going back still further, to 1936, the price then would have been only 98 cents, according to Dr. Forman.

At the present time, the population of Hall County as a whole contains chemicals that would bring some \$30,800 if liberated.

As for the content of the adult body in percentage terms, he states that it consists of oxygen, 65 percent, carbon, 18 percent, hydrogen, 10 percent, nitrogen, 3 percent, calcium, 1 1/2 percent, in-cluding small amounts of gold and silver.

Ben Hillhouse, Longtime Resident Dies; Rites Fri.

Funeral services for S. B. "Ben" Hillhouse, 91, will be held at 2 p.m. Friday, Dec. 27, in the First Christian Church with Rev. Wilburn Coffman, pastor of the First Christian Church, officiating.

Burial will be in Fairview Cemetery under the direction of Spicer Funeral Home.

Mr. Hillhouse passed away Wednesday, Dec. 25, in Hall County Hospital.

He was born July 2, 1883, at Anderson, S. C., and was united in marriage to American Whitmore May 1, 1904 at Bonanza, Ark. She preceded him in death in 1966.

A retired farmer, Mr. Hillhouse was a member of the First Christian Church. He had been a resident of Hall County since 1936. Survivors include: seven daughters, Miss Ethel Hillhouse and Mrs. Lorene Evans, both of Memphis, Mrs. Daphne Stokes of Lubbock, Mrs. Mattie Kitchens of Amarillo, Mrs. Juanita Scott of Cooper, Mrs. Dorothy Winslow of Ridley Park, Pa., and Mrs. Hassel Lashun of Massillon, Ohio; one daughter-in-law, Mrs. Ed Hillhouse of Paris; eight grandchildren and five great-grandchildren.

Pall bearers will be Jimmy Lindsey, Glenn Monzingo, Cleve Smith, Terry Monzingo, Cleve Evans and W. C. Hight.

Honorary pall bearers will be Cleatus Hansard, Mac Tarver, L. A. Stilwell, Roscoe Ellerd, J. J. McDaniel, R. G. Patrick, Ben Parks, J. M. Ferrel, Omer Hill, Charlie Williams, Exie Sweatt, Mark Spencer, W. D. Young, Brown Smith, Ward Gurley, Clint Strygler, John Fowler, Ed Hutcherson, Dalton Floyd, Mack Foeter, M. E. McNally, Jr., Truett Stoval and Jim Hansard.

Cotton Harvest Reaches 33,723-Bale Figure

Memphis Cager Teams Capture Consolation At Shamrock Tour.

The Memphis basketball teams both won consolation trophies in the Shamrock basketball tournament last Saturday.

Both teams lost games to White Deer teams in the opening rounds of the tournament.

The Memphis girls won a 59 to 49 victory over the Quail girls in the consolation finals. Mickey Henderson scored 26 points to lead the Cyclonettes.

The local girls had to come from a 34 to 32 deficit in the first half, but a good third quarter

gave Memphis a 46 to 37 edge going into the final period of play.

Memphis boys defeated Allison to win the consolation in the boys bracket of the tournament. James Beck was the leading scorer with 29 points. Memphis lead all the way, 17 to 12, 32 to 25, 53 to 33 at the end of the respective quarter marks.

To advance to the consolation finals, the Memphis girls defeated Shamrock girls and the Memphis boys won a squeaker from the Wheeler boys.

The girls defeated Shamrock 54 to 39 after controlling the game all the way. Henderson scored 31 points for the Cyclonettes.

The Cyclone had to come from behind in the second half to capture a 53 to 51 victory over Wheeler.

The game was a real thriller, as Memphis trailed 7 to 14 and 20 to 26 in the first two quarters of play. Then, in the third period, the Cyclone out scored Wheeler 17 to 10 in the period to hold a 37-36 edge, and the final stanza was a see-saw battle which Memphis finally won by two points.

Scoring for Memphis was more balanced in this game, with Beck the leading scorer with 16 points. Last Thursday night, Memphis boys lost an overtime game with White Deer, 63 to 62, in a real cliff hanger.

The regulation game ended with the score tied 60 - 60, and the Bucks out scored the Cyclone 3 to 2 in the three-minute overtime.

The Cyclone jumped out to a 51 to 57 third quarter edge, but saw their lead melt away in the final quarter. James Beck had 34 points for the Cyclone to be the leading scorer.

White Deer's girls took a 62 to 59 victory over the Cyclonettes in the opening round, in a close, hard fought contest. Mickey Henderson scored 35 points for the Cyclonettes and was the game's leading scorer.

The next games for Memphis teams are district games in Cyclone Gym Friday night, Jan. 3 against McLean teams with the junior varsity game beginning at 5 p.m.

The 1974 cotton harvest was halted today by drizzling rain which froze into ice spots, and cold, damp weather, but not before area farmers harvested 9,818 bales since last Thursday, bringing the season's ginning total to 33,723 bales.

The cold spell is expected to continue for a day or two so harvesting want resume until early next week unless warming and drying conditions set in earlier than expected.

The past week has seen harvesting at its peak, as about 10,000 bales harvested in a seven day period is near maximum harvesting for this county. This indicates that all areas still have cotton to be gathered. Some individual farmers have completed harvest, however.

Classing Report
Cotton harvest gained momentum over the Memphis area last week, according to W. E. Cain, in Charge of the USDA, Agricultural Marketing Service Office. "Harvest was slowed one day due to high winds but quickly resumed as skies cleared," said Cain.

The Memphis, Texas Office classed 16,750 samples that week to bring the season total to 47,250. This compares to 113,150 on the same date a year ago.

The predominant grade was grade 41 with 50 percent followed by grade 42 with 27 percent, and grade 51 with 12 percent.

The predominant length this week was staple 31 with 42 percent followed by staple 32 with 38 percent, and staple 30 with nine percent.

Micronaire readings showed 36 percent in the desirable range of 3.5 to 4.9, 11 percent 3.3 to 3.4, 22 percent 3.0 to 3.2, and 31 percent 2.9 and below.

Pressley tests showed 95 percent tested 75,000 psi or higher. The average for the week was 83,000 psi.

Cotton market activity over the Memphis area increased slightly. Offerings by growers increased also, but amounts sold were not much higher than in previous weeks. Market prices were weak and continued a downward trend this week. Prices on most qualities averaged one to two cents per pound lower than last week's quotations. Prices for grades 41, 42 and 32; staples 31 and 32 ranged from 28.50 to 32.00 per pound. This was for grades 3.5 to 4.9 mike range.

The average price paid for cottonseed at the gin was \$125.00 per ton.

Rites Held Sat. For W. J. Rogers, Oregon Resident

Funeral services for William J. (Tapp) Rogers of Portland, Ore., 66, were held at 10:30 a.m. Saturday, Dec. 21, in the First Baptist Church Chapel with the Rev. C. H. Murphy, pastor, officiating.

Burial was in the Newlin Cemetery under the direction of Spicer Funeral Home. Graveside rites were conducted by members of the Simmons-Noel Post of the American Legion here.

Mr. Rogers was born April 4, 1908, in Tillman County, Okla., and lived in Hall County from 1917 until 1942 when he entered the service. He had resided in Portland since 1945 and passed away there Monday, Dec. 16. Mr. Rogers was a veteran of World War II.

He is survived by one brother, Jesse R. Rogers of Sunnyvale, Calif.; and three sisters, Mrs. Thelma Tucker of Vernon, Mrs. Ruth Caskey of Pasadena and Mrs. Alma Hemphill of Memphis.

Pall bearers were A. J. Rushing, John Alex Rowell, Henry Crow, Wyman Davis, O. B. Hoover and Bill Kilpatrick.

Nettie Foster Dies Here Monday; Burial At Hedley

Mrs. Nettie L. Foster, 85, passed away at her residence at 1403 N. 16th St. here in Memphis Monday, Dec. 23.

Funeral services were held at 3 p.m. Tuesday, Dec. 24, at Travis Baptist Church with the Rev. Wilburn Coffman, pastor, and Minister Tom Posey of the First Christian Church officiating. Burial was in Rowe Cemetery at Hedley under the direction of Spicer Funeral Home.

Nettie Youngblood was born Oct. 31, 1889, in Louisville, Miss. She was united in marriage to George Taylor Foster on Feb. 14, 1906, at Louisville. They lived in Donley County in the Giles Community for 34 years, moving there in 1923 and moved to Memphis in 1964.

She was a member of the Travis Baptist Church and the T. E. L. Sunday School Class.

Survivors include: two daughters, Mrs. Mary Sue Stotts of Memphis and Mrs. H. R. Greer of Childress; three sons, Milton E. Foster of Laverne, Okla., and H. M. and J. D., both of Amarillo; one daughter-in-law, Mrs. Audrey Foster of Memphis; one sister, Mrs. J. K. Miller of Eupora, Miss.; 7 grandchildren and 8 great-grandchildren.

Pall bearers were James Jeffers, Frank Murray, Roy Rea, Cubby Miller, Walter Johnson and A. E. Ranson.



CERTIFICATE OF MERIT — Royce Frisbie, Conservation Technician, (right) accepts congratulations from Henry Gregory, after he was presented a Certificate of Merit and cash award from United States Department of Agriculture at an Awards Banquet in Pampa, Saturday, Dec. 14. The honor comes from Frisbie having given an outstanding performance during 1974 in planning and applying engineering and other conservation measures. Mr. Frisbie is a long-time employ of SCS with most of his years working in Hall County.

1975 Bicentennial Committee Approves Designs On 'Bob Wills Series' Coins

Denton, Hall County Bicentennial Committee chairman, announced that the designs for the 1975 Bicentennial coin for Texas have been approved. The designs were presented by Mildred Stephens, W. R. Tops Gilbreath, Nick Long, Ed Edd Wines, all of Memphis, and Jim Majors of Vardy and Jim Fowler of Johnny and Don Crocker of Tulsa.

The 1975 coin will be named "Bob Wills Series" of Hall County and be in the design of a drawing of Bob Wills and Jan (Hedlow) Bell, former Esteline. The opposite side of the coin will be of the Commerce emblem of Texas with a cotton star denoting the geographical location of Hall County. The designs of the coin are "Home of the Cotton Capital of Texas" and "Cotton Capital of Texas 1975". All coins will be numbered and are available in gold, silver, and bronze. Coin sets of 4, 3 and 2 are also available in plaques and gold with the inscription "First Medal of Bob Wills" and "Hall County, Texas, 1975". The commemorative coins will be on sale to the very near future in Memphis and Turkey. The program will be sponsored by the Memphis Chamber of Commerce and funds from the Chamber and Bob Wills Foundation of Turkey, Texas.

The number of the coins will be 75 four coin sets, 200 two coin sets, 200 two coin sets, 125 silver

Paul Bullock Is Hospitalized With Head Injuries

An investigation by Hall County Sheriff's Department and City Police into the circumstances surrounding the injuries to Paul Bullock is continuing.

Bullock, suffering with severe head injuries was rushed to Hall County Hospital Friday morning after he was found several blocks from his home in a shed on the Mona Robertson property.

His condition has been reported as very serious.

A resident of the Memphis Housing Authority Apartments for the Elderly, Bullock was discovered missing from his apartment early Friday morning. There was blood on the floor, the mattress had been thrown from the bed, and things in disarray.

Bullock, a night worker for local service stations for several years, had been on duty the night before his disappearance.

So far, local law enforcement officers have not been able to find Bullock's glasses or billfold.

Law enforcement officers are investigating the situation for Bullock's injuries indicate he had been beaten.

The Memphis Democrat

Published on Thursday of each week at 617 Main Street, Memphis, Texas by **MRS. HERSCHEL A. COMBS** Publisher **BILL COMBS** Editor
(Hall County Herald absorbed by purchase August 7, 1928)

Subscription Rate: In Hall, Donley, Coalingworth and Childress Counties, per year — \$6.00

Member of TEXAS PRESS ASSOCIATION and PANHANDLE PRESS ASSOCIATION

Entered at the post office at Memphis, Texas, as second-class matter under Act of March 3, 1879. Second Class Postage paid at Memphis, Texas. Telephone 259-2441

NOTICE — Any erroneous reflections upon the character, standing or reputation of any person, firm or corporation which may appear in the columns of The Memphis Democrat will be corrected gladly upon its being brought to the attention of the publisher.

Postmaster: Send Form 3579 to Memphis Democrat: Box 190, Memphis, 79245

EDITORIAL

The Year's End

With 1974 finale fast approaching, and 1975 just a few days away, people's minds are generally filled with thoughts of tomorrow. What does the future really hold for us?

Specifically, for this area, the question is, "What is the future of agriculture?" . . . since most of the income of Hall County comes from agricultural activities.

According to a national news magazine: "Agriculture, in 1975, will remain one of the brightest spots in an economy that has been fading fast. But farming—and related lines of business—will slip below this year's prosperous levels. So say Government's top experts."

At a mid-December conference of the U. S. Department of Agriculture, on the farm outlook, some predictions were made that bear repeating.

1. The year 1975 will be another 12 months of all-out production effort in agriculture.
2. Net farm income will end up in the range of 24 to 27 billion dollars—rather good, historically. This year's level is expected to be about 27 billion, a comedown from the record high of 32.2 billion in 1973.
3. Crop growers will continue to fare better than livestock raisers.
4. Need for farm machinery, especially heavy equipment, will be strong. But retail demand will moderate because of shrinking profits of farmers.
5. Energy supplies, except for natural gas, will be ample but more costly.
6. Availability of trucks and rail cars for hauling farm goods will improve.

Harvest acreage in 1975 could be 12 to 16 million higher than this year's 328.5 million acres with about 66 per cent of the increase expected in corn and other feed grains. The world demand for grain is expected to be strong and farmers will be trying to meet these strong demands by increased yields of corn and other grains.

Cotton acreage probably will decline somewhat. Cattlemen, beset by shortages and high costs of feed, will trim their herds. That implies a significant rise in beef supplies, perhaps lower prices.

The hog producers will raise fewer little pigs. There will be less pork through 1975. Also, fewer broilers, turkeys and eggs. Grocery prices are expected to continue to rise at an annual rate of 15 per cent in the first half of 1975, then tend to level off.

These predictions are based on normal weather for the United States and the belief that recession will continue to deepen through mid-1975. With unemployment rising, consumer incomes deteriorating.

The typical family's buying power is seen staying close to present levels. Thus, consumers will continue to shell out a relatively large part of after-tax income for food and fuel.

Food has been the second-fastest-rising item in the family budget over the past six years. The first: taxes. The government again next year will be taking a bigger bite out of many people's paychecks for Social Security taxes.

The report seems to indicate that during the recession, agriculture will fair better than most of the U. S. economy. That's about the only encouraging prediction about 1975 we've had.

We would wish everyone a Happy New Year and good luck in 1975. It just doesn't seem appropriate somehow, to wish for a "prosperous" new year.

DR. JACK L. ROSE
OPTOMETRIST
—Contact Lenses—
Closed Saturday Afternoons

415-A Main Phone 259-2216

after you see your doctor . . .



bring your prescription to
Lockhart PHARMACY
MEMPHIS PH. 259-3541

1975 Cardui Calendars and Almanacs Available!

ACROSS the DESK

What Other Editors Say

CAN A COUNTRY GO BANKRUPT?

Can a country go bankrupt? The answer to that question depends on what you mean by "bankrupt."

As members of the world economy, countries earn money by exporting their products and spend money to buy imports. The relationship between these two figures—outgo and income—is called the balance of trade.

Money also flows into and out of a country in the form of private investment, loans, and government aid, including military expenditures. When this flow of money is added to the balance of trade, the combined figure is called the balance of payments.

When a country finds that it must spend more for imports than it is able to earn from its exports (or aid or investments), then it does what you or I might do under similar circumstances: It borrows to cover the difference. The loans may come from private sources, but they are more likely to come from other governments.

If a country seems unable or unwilling to correct a chronic balance of payments deficit, eventually it will exhaust its international credit. At that point, the country could be considered bankrupt.

However, unlike a bankrupt business, a bankrupt country does not sell off its assets to pay its creditors. It devalues its currency. That is, its money becomes worth less in terms of the money of other countries.

After devaluation, a country's exports become cheaper for other countries to buy. Conversely, imports become more expensive for citizens of the devaluing country. The effect—obviously—is to boost exports and reduce imports, to get the country back into a position of living within its income.

What happens inside the bankrupt country? First, the citizens have to get along with fewer imports, because they now cost more to buy. Second, more of the country's productive resources are channeled into making exports. The shift of resources to export markets is likely to create shortages on the domestic market which, in turn, will tend to raise domestic prices.

"Bankrupt" is much too strong a term to use for an economy as strong as that of the U. S. But we have devalued our currency, and we have experienced the two effects I've mentioned: Imports cost more now, and our exports are more attractive to foreigners, who buy more from us, which leaves less for us, which raises prices here. Food is an excellent example.

Foxhall Motor Co.

We Replace **AUTO GLASS**

while you wait!
or while you do your shopping.
Every job guaranteed



us \$20.1 billion in the first 10 months of this year, compared to \$7.8 billion for all of 1973. That's why President Ford wants us to cut down on our use of petroleum products. It's also why we must develop the fuel resources we have within the U. S.

Otherwise, we will face continuing devaluation of the dollar, with resulting higher prices for nearly everything.

Our balance of trade problems are small in comparison to those of countries with smaller economies and greater dependence on Arab oil, however. Italy for example, is currently being carried by emergency loans from other western nations. No one knows how long that can continue, and no one dares stop, since the collapse of one major Western economy could trigger a chain of related disasters.

—Arch Booth, U. S. C of C.

NOTICE . . . FARMERS

Cotton crop is short

And price is low

We will use Price-whip

To help make the Mare go.

TOMIE POTTS - COTTON

5th. St. @ Hwy. 287

bus. ph. 259-2895 res. 259-2561

30-6c



A 32-page brochure that enables you to estimate precisely how much your personal belongings are worth!

Believe it or not—some people underestimate the worth of their household furniture, fixtures and appliances by as much as 50%! And the result is that they underinsure them by that much or more!

Now, without cost or obligation, you can send for the 32-page brochure entitled HOUSEHOLD INVENTORY. It is a room-by-room guide through your house that enables you to determine the precise value of your property.

Just complete the coupon below and mail it today. We'll be happy to send you your free copy by return mail.



(Ph. 259-3531) - 105-A S. 6th

Please send me a copy of the HOUSEHOLD INVENTORY brochure. I understand there is no cost or obligation on my part.

Name _____
Address _____
City _____ State _____ Zip _____

Memories

From The Democrat Files

30 YEARS AGO
December 28, 1944

Two snows in three days set a record for this season. Hominy snow, sleet and rain Tuesday gave the ground an icy coating, which practically disappeared Wednesday morning.

Among piano students of Mrs. L. B. Madden who entertained their parents with an annual Christmas program Friday were Jan Monzingo, Nancy Brewer, Donna Webb, Betty Ann Goodall, Barbara Brewer, Diane Mcnaman, Sue Ann Roberts, Louise Rogers, Dorothy Hutcherson, Robert Clark and Don Monzingo.

Pvt. and Mrs. Herman Vallance and daughter of St. Joseph, Mo., came Friday for a visit here with his parents, Mr. and Mrs. John Vallance.

Cpl. W. H. Goodnight of Camp Howze visited here during the Christmas holidays with his mother, Mrs. W. H. Goodnight.

Showing at the Palace—"Lights of Old Santa Fe" starring Roy Rogers and Gabby Hayes; "And Now Tomorrow" starring Alan Ladd and Loretta Young; Tuesday only at the Roxey at Lakeview 12c and 25c, "King of the Circus."

Dear Santa, I am a boy nine years old, I am in the fourth grade in Miss McCraw's room. Please bring me a ring, a football and a gun. I have a little sister four years old. She wants you to bring her a doll, a stove and a chair. Remember all the soldiers who are fighting this war. Yours truly, Gus Orcutt.

20 YEARS AGO
December 30, 1954

County officials who will take office are: Mrs. Isabell Cypert, dist. clerk; Mrs. Ruby Goodnight, county clerk; Travis Davis, county judge; Mrs. Hester Bownds, county treasurer; Geo. Blewer of Lakeview Prec. 2 Comm.; Leon Lane of Turkey, Comm. Prec. 4; J. S. Grimes, justice of the peace of Prec. 1; Guy O. Smith of Turkey, justice of the peace of Prec. 4; Bill Baten, sheriff; Olin Cooper, tax assessor - collector; Bill Teague, county attorney; Edwin Hutcherson, Comm. Prec. 1; Clinton Richburg of Estelline, Comm. Prec. 3; Jack Peabody of Memp-

County officials who will take office are: Mrs. Isabell Cypert, dist. clerk; Mrs. Ruby Goodnight, county clerk; Travis Davis, county judge; Mrs. Hester Bownds, county treasurer; Geo. Blewer of Lakeview Prec. 2 Comm.; Leon Lane of Turkey, Comm. Prec. 4; J. S. Grimes, justice of the peace of Prec. 1; Guy O. Smith of Turkey, justice of the peace of Prec. 4; Bill Baten, sheriff; Olin Cooper, tax assessor - collector; Bill Teague, county attorney; Edwin Hutcherson, Comm. Prec. 1; Clinton Richburg of Estelline, Comm. Prec. 3; Jack Peabody of Memp-

County officials who will take office are: Mrs. Isabell Cypert, dist. clerk; Mrs. Ruby Goodnight, county clerk; Travis Davis, county judge; Mrs. Hester Bownds, county treasurer; Geo. Blewer of Lakeview Prec. 2 Comm.; Leon Lane of Turkey, Comm. Prec. 4; J. S. Grimes, justice of the peace of Prec. 1; Guy O. Smith of Turkey, justice of the peace of Prec. 4; Bill Baten, sheriff; Olin Cooper, tax assessor - collector; Bill Teague, county attorney; Edwin Hutcherson, Comm. Prec. 1; Clinton Richburg of Estelline, Comm. Prec. 3; Jack Peabody of Memp-

County officials who will take office are: Mrs. Isabell Cypert, dist. clerk; Mrs. Ruby Goodnight, county clerk; Travis Davis, county judge; Mrs. Hester Bownds, county treasurer; Geo. Blewer of Lakeview Prec. 2 Comm.; Leon Lane of Turkey, Comm. Prec. 4; J. S. Grimes, justice of the peace of Prec. 1; Guy O. Smith of Turkey, justice of the peace of Prec. 4; Bill Baten, sheriff; Olin Cooper, tax assessor - collector; Bill Teague, county attorney; Edwin Hutcherson, Comm. Prec. 1; Clinton Richburg of Estelline, Comm. Prec. 3; Jack Peabody of Memp-

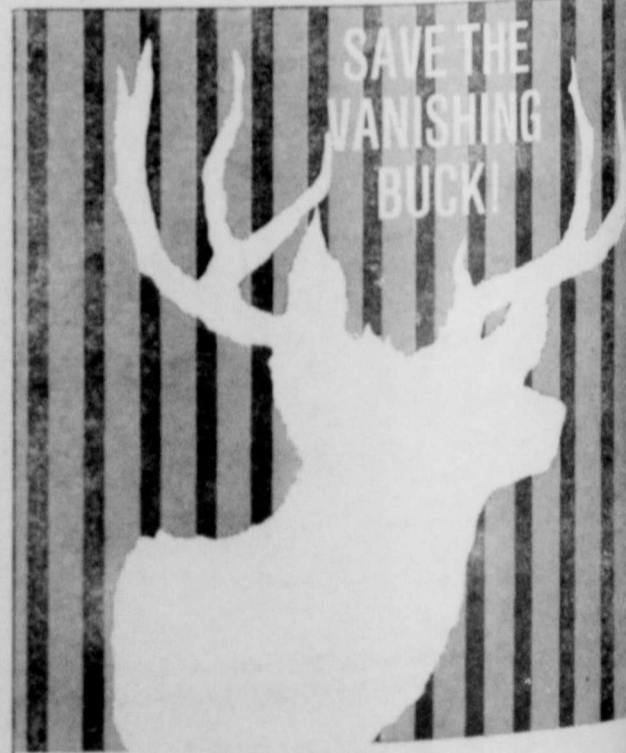
NOTICE

Since this is the season of the year for colds and illness, now is the time to see me for your hospitalization insurance.

Hospitalization Insurance for every need. Includes those on Medicare who need a supplement.

Also Cancer Insurance with life-time coverage.

Gordon S. Gilliam



Here today, gone tomorrow—that's the vanishing buck. Unless you give him the right environment where he can survive and grow—safe from extinction. We're conservationists in more ways than one. That's why we recommend our Savings Plan as the best of all possible environments for your money's insured safety and growth.

A good bank has more Answers than Questions!



First State Bank
Memphis, Texas



**It's A Bitter Pill To Swallow
BUT HERE'S THE LOW DOWN**
It nearly breaks our hearts to see our huge stocks of Quality Merchandise GO ON SALE at the ridiculously low prices you see advertised here! But our SURPLUS STOCK MUST BE SOLD in the shortest possible time! WE'RE CAUGHT WITH TOO MUCH MERCHANDISE AND SOMETHING DRASTIC MUST BE DONE, and the only way out is to CUT PRICES TO THE VERY BONE—Forget ALL COSTS and PROFITS—

SURPLUS STOCK

LIQUIDATION SALE!

STORE HOURS
8 a.m. To 6 p.m.

OVER \$100,000.00 STOCK
Drastically Reduced

FREE
HERE'S YOUR INVITATION
TO WIN A BEAUTIFUL PRIZE

WANTED!
FIFTY WOMEN TO JOIN GRAND
PRIZE CAMPAIGN CREATED BY
OUR ADVERTISING
AGENCY — JUST TO
HELP ADVERTISE THIS
SALE.

HERE IS FUN —
FASCINATION — EVERY
CONTESTANT RECEIVES FULL,
FAIR OPPORTUNITY TO
WIN

These Beautiful Prizes Given

1. Color T. V.
2. Grand Father Clock
3. Waltham 10 Diamond 17 51 Watch
4. Deluxe 24 kt. Gold Flatware Chest
5. 4 Slice Toaster
6. Rotisseri Broiler
7. 21 pc. Stainless Steel Cutlry
8. Broiler Oven
9. 7 Speed Blender
10. 9 Cup Coffee Maker

Prizes Will Be Awarded — Jan. 25, 1975

Bring this Coupon to Our Store Today!

Name _____
Address _____
Phone _____

JUNIOR DRESSES
(One Group)

Values To \$75.00 — \$20.00

MENS SHOES

Famous Makers — Asst. Styles
Values To \$30.00 — \$9.95

LIQUIDATORS! / PRICE CUTTING PENCIL
Speaks VICIOUSLY Repeatedly DAY AFTER DAY Instantly UNTIL ALL ONE-
IN MANY CASES
1/2 PRICE
And much LESS

EVERY ITEM IN STORE SALE PRICED

MEN'S SLACKS

Flare-legs, Knits and Blends

(Large Group)

1/2 PRICE

LADIES PANT SUITS

Values To \$100.00
\$32.50

Men's Western Shirts

Values To \$17.00
\$8.49

All Boy's Shirts

Sizes 8 To 16
Values To \$7.00
99c

Ladies Blouses

(Large Group)
Values To \$20.00
\$6.99

Large Group Men's Suits Sport Coats

1/2 PRICE

JOHN'S

Men's & Ladies Clothing

Clarendon, Texas



BRIDE TO BE—Mr. and Mrs. Lee Waddill announce the engagement and approaching marriage of their daughter, Rhonda to Tim Rieken son of Mr. and Mrs. Don Rieken of Hedley, Texas. The wedding will take place on Feb. 8, 1975.

Mr. and Mrs. Adrian Combs Visiting Christmas day in the and Kent and Kevin of Carbon. home of Mrs. Herschel Combs dale, Ill. arrived Christmas eve were her mother, Mrs. L. A. Die- to visit during the holidays with key of Wellington and sister and their daughter, Debra Combs, and family, Mr. and Mrs. J. E. Nor- mother and grandmother, Mrs. man and daughter, Kathy of Herchel Combs. Hooker, Okla.

Public Notice

LEGAL NOTICE

School bus for sale. Sealed Bids will be received in the office of Superintendent of School, Turkey - Quitaque Independent School District, on or before January 13, 1975.

For 1962 36 passenger Chevrolet Chassis school bus in fair condition.

Bids will be opened at 8:00 p.m. on January 13, 1975. This equipment may be seen at the Valley School. Send bids to Wilburn Leeper, Supt. of Schools, Box 397 Turkey, Texas 79261. 33-2c

Hospital News

Patients

Janet Bridges, John Collins, D. A. Collins, Eulalia Coker, Paul Bullock, Sue Shields, Velma Collins, Edward C. Moore, Charlene Randell, Pearilee McWhorter, Maudie Williams, Irene Bradley, Vera Gunstream, Joe B. Wood, Marcia Duke, Lesinee Abram, Alvada Pierce, Fred Collins, Florence Duren, Frank Goffinet, Samie Sloan, Emma Kinard, David V. Sasser.

Dismissed

John Thones, John Bass, Jon Collins, Rita Gibson, Ruben Torrs, Wilma Mangum, Connie Havens and baby girl, Christina Agu- ualar, Mark White, Velma Shankle, Venita Morgan and baby boy, Janie Hughs and baby boy, Connie Murdock and baby girl, Lenuel Jenkins, LaNelle Weddel, Dixie Williams, B. E. Davenport, Alvin Minatrea, Don Kinnaman, Juanita Larned, Dissy White, Unis Coldiron, L. W. Stanford.

Visiting in the home of Mrs. Sam Jackson during the holidays were Mr. and Mrs. Gherald Hor- rell, Steve, Vickie and Kent of Amarillo and Mr. and Mrs. Rich- ard Hale, Mitzi and Melissa and Bud Taylor of Floydada; also, Mrs. Albert Dixon of Sunnett and Miss Sandy McMurry of Am- arillo.



Mr. and Mrs. Frank Dumbo- ski, Jr. of Ft. Worth are the par- ents of a son born Dec. 18. He has been named Douglas Frank and weighed 6 pounds, 4 ounces. Maternal grandparents are Mr. and Mrs. Nathan Hughes of New- lin.

Mr. and Mrs. James R. Mor- gan of Wellington announce the birth of a son on Dec. 17. Weigh- ing 6 pounds, 14 1/2 ounces, he has been named Scotty Allen.

Mr. and Mrs. Bobby Gene Havens of Clarendon announce the arrival of a daughter on Dec. 19. She has been named Bobbie Jean and weighed 5 pounds, 12 1/2 ounces.

Brice News

Mr. and Mrs. George Pope of Flomot and Mr. and Mrs. Britton Veto and son David of Amar- illo were dinner guests in the home of Mrs. Annie Hamilton and Inez McCraw on Sunday.

Mrs. G. E. Nelson came home last Monday from the hospital at Childress and is spending a few days with her daughter, Mr. and Mrs. O. B. Hoover.

Mrs. Hubert Wells of Quanah and Mrs. Annie Hamilton were dinner guests of Mrs. Wells' daughter, Mr. and Mrs. Thomas Tippett and family of Newlin, on Monday of last week.

Mr. and Mrs. Roddy Waites and Kimberly of Junction spent the past week with her parents, Mr. and Mrs. Wyman Davis.

Mr. and Mrs. Lonnie Earl Max- well of Clarendon are the parents of a son, Kenneth Earl, born Dec. 23. He weighed 8 pounds, 8 ounces.

LOCALS

Mrs. Emma Lee Nabers had Christmas supper Saturday night and dinner on Sunday for her children. Those attending were Mr. and Mrs. Raymond Martin and children Pernina, Ray Nell and Kenny of Memphis; Mr. and Mrs. Jake Hancock and children, Phillip, Kay and Donna of Lake- view; Mr. and Mrs. Butch Adcock and children, Brandi and Blair, of Hedley; Mr. and Mrs. Dwaine Floyd and children, Quint, Mich- elle and Mischi of Memphis; and a grandson and wife, Mr. and Mrs. Mike Nabers and children, Shannon and Stacy of Bovina.

Dr. and Mrs. A. J. Welch and Carolyn and Diane and Mr. and Mrs. Brian Caudle left today (Thursday) for their home in Austin after spending the Christ- mas holidays here with their mother Mrs. Herschel Combs and other relatives.

Judge Montgo Appointed To Panhandle Com

District Judge Robert B. gonyery has been appointed to the Panhandle Area Represent- the Commission on Judicial power and Resource Alloc

The Commission, comp- eleven Judges from all the State, was appointed Chairman of the Judicial of the State Bar of Texas pose is to study such as redistricting and realign- Judicial Districts, selection and compensation of Jud- ministrative procedures and staffing.

Any proposed legisla- ing from the study will sented to the Legislature

Office Supplies At The D

BYLOW FOOD STORE

MRS. TUCKERS 3 LB. CAN

Shortening 1.69

RANCH STYLE, 300 Can 2 FOR

Blackeyed Peas 49c

CLOVERLAKE 1/2 GAL.

Buttermilk 69c

SUNNY JIM 18 OZ. JAR

Peanut Butter 69c

HI - HO 16 OZ. PKG.

Crackers 69c

DEL MONTE 6 1/2 OZ. CAN

Chunk Tuna 49c

DEL MONTE, 303 Can 2 FOR

Spinach 49c



1/2 Gal. **1.19**

SAMMY PRIDE SLICED AMERICAN 12 OZ. PKG.

Cheese 79c

WHITE SWAN 1/2 GAL.

Fabric Softner 59c

LAMBRECHT 13 OZ. PKG.

PIZZAS 69c

WISHING WELL WINNERS
LUCILLE HUTCHISON
BECKY CARSON
AILEEN HOLT

We've got **MEATY SAVINGS**

ROUND STEAK 1.09

Pork Chop Lb. 89c

Spare Ribs 69c

CHUCK ROAST 69c Lb



WRIGHTS BACON 2 LB. PKG. **2.19**



12 OZ. PKG. **69c**

Ground Beef 69c

PRODUCE

COLO. RUSSET 10 LB. SAC **Potatoes 69c**

TEXAS 5 LB. SAC **Oranges 59c**

WASHINGTON DELICIOUS 3 LB. SAC **Apples 69c**



**YOUR SAVINGS
ADD UP FAST
AT THE**

**Memphis Office
Vernon Savings & Loan Assn.**

* Deposits Insured up to \$40,000 per Account by Federal Savings And Loan Insurance Corp.



PAYING:

5 1/4% Regular Pass Book Savings \$5 Minimum
A Year Compounded Daily For An Effective Annun Yield Of 5.31%

5.75%
A YEAR COMPOUNDED DAILY FOR AN EFFECTIVE ANNUAL YIELD OF
5.92%
6 Months, \$1,000 Minimum

6.75%
A YEAR COMPOUNDED DAILY FOR AN EFFECTIVE ANNUAL YIELD OF
6.98%
30 Months, \$1,000.00 Minimum

6.50%
A YEAR COMPOUNDED DAILY FOR AN EFFECTIVE ANNUAL YIELD OF
6.72%
(1 or 2 Years \$1,000.00 Minimum)

7.50%
A YEAR COMPOUNDED DAILY FOR AN EFFECTIVE ANNUAL YIELD OF
7.79%
4 Years, \$1,000.00 Minimum

7.75%
A YEAR COMPOUNDED DAILY FOR AN EFFECTIVE ANNUAL YIELD OF
8.06%
(6 Years, 1,000.00 Minimum) (Effective 12-23-74)

7 1/4% 6 Year Certificate \$1,000 Minimum
(Effective 12-23-74)

-Savings In By The 10th Earn From The First-

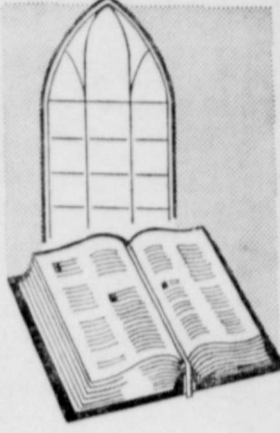
Phone 259-3384

119 S. 6th St.

Memphis, Texas

Faith Is Strength

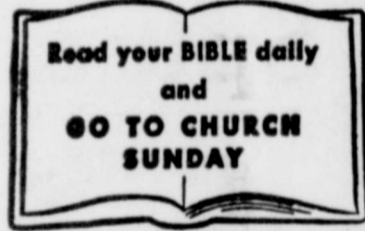
"Put on the whole armor of God, that you may be able to stand against the wiles of the devil."
-Ephesians 6:11



If we believe in God, and are faithful to our beliefs, then we can find the strength and courage to meet adversity and to accept the challenges of modern day living.

If we believe in the goodness of God, it becomes easier for us to recognize goodness in our fellow man. If we have faith, and strength through faith, we are often presented with the opportunity to be of service to God and to our fellow man and each time we extend a helping hand our faith-and our strength-is multiplied.

He restoreth your soul....Worship together this week



- Baptist Church**
Estelline
9:45 a. m. — Sunday School
10:45 a. m. — Morning Worship Ser.
11:00 a. m. — Training Union
7:00 p. m. — Evening Worship Ser.
Wed., 7:30 p. m. — Mid-Week Service
W. M. U.
- Baptist Church**
Brice
9:45 a. m. — Sunday School
10:45 a. m. — Morning Worship
11:00 a. m. — Training Union
7:00 p. m. — Evening Worship
Wed., 7:30 p. m. — Mid-Week Service
- West Side Church of Christ**
Estelline
9:45 a. m. — Morning Worship
7:00 p. m. — Evening Worship
- Jehovah's Witnesses**
Memphis
10 a. m. — Bible Lecture
11 a. m. — Watchtower Study
7 p. m. — Bible Study
7:30 p. m. — Ministry School
8:30 p. m. — Service Meeting
Presiding Minister:
Stanley Sherrod
- Assembly of God Church**
Memphis
9:45 a. m. — Sunday School
10:45 a. m. — Worship Service
11:00 a. m. — Christ Ambassadors
7:00 p. m. — Evening Service
W. L. Sanders, minister
- Church of Christ**
Memphis
9:45 a. m. — Bible Study
10:45 a. m. — Morning Worship Ser.
11:00 p. m. — Evening Worship
Wed., 7:30 p. m. — Bible Study
8:30 a. m. — Ladies Bible Study
Art Smith, Minister
- Baptist Church**
Newlin
9:45 a. m. — Sunday School
10:45 a. m. — Morning Worship
L. J. Crawford, minister
- Church of Christ**
Lakeview
9:45 a. m. — Bible Study
10:45 a. m. — Morning Worship Ser.
11:00 p. m. — Evening Worship Ser.
Wed., 7:30 p. m. — Bible Study
Larry Pasley, Minister
- East Side Church of Christ**
Estelline
9:45 a. m. — Bible Study
10:45 a. m. — Morning Worship Ser.
11:00 p. m. — Evening Worship
Wed., 7 p. m. — Bible Study
Steve Stewart
J. D. Rothwell, Minister
- Baptist Church**
Lakeview
9:45 a. m. — Sunday School
10:45 a. m. — Morning Worship
11:00 p. m. — Training Union
7:00 p. m. — Evening Worship
Wed., 7 p. m. — Mid-Week Service
Rev. Bill Curry
- Assembly of God**
Estelline
9:45 a. m. — Sunday School
10:45 a. m. — Evening Service
11:00 p. m. — Bible Study
Wed., 7 p. m. — Bible Study
Rev. E. G. Johnson, pastor

- First Christian Church**
Memphis
9:45 a. m. — Sunday School
10:45 a. m. — Morning Worship Ser.
6:00 p. m. — Youth Meeting
7:00 p. m. — Evening Worship Ser.
Wed., 7:30 p. m. — Mid-Week Ser.
Tom Posey, minister
- Travis Baptist Church**
Memphis
9:45 a. m. — Sunday School
11:00 a. m. — Morning Worship
6:30 p. m. — Training Union
7:30 p. m. — Evening Worship
Wed., 7 p. m. — Teachers Meeting
Wed., 7:30 p. m. — Mid-Week Ser.
Wilburn Coffman, pastor
- Church of God**
Memphis
9:45 a. m. — Sunday School
11:00 a. m. — Morning Worship
7:00 p. m. — Evening Worship
Jerry Martin
- First Baptist Church**
Memphis
9:45 a. m. — Sunday School
11:00 a. m. — Morning Worship Ser.
6:00 p. m. — Training Union
7:00 p. m. — Evening Worship Ser.
Wed., 7:30 p. m. — Mid-Week Ser.
C. H. Murphy, Minister
- Methodist Church**
Lakeview
10:00 a. m. — Sunday School
10:55 a. m. — Morning Worship Ser.
MYF 7:00 p. m. — Wed. Evening
6:00 p. m. — Evening Worship
WCS 7:00 p. m. 1st & 3rd Thur.
John M. Dorn, Pastor
- Presbyterian Church**
Memphis
11:00 a. m. — Morning Worship
7:30 p. m. Tues. — Study Group
7:30 p. m. 2nd & 4th
Wed. — Mizpah Guild Meets
Owen McGarity, pastor
- Sacred Heart Catholic Church**
Memphis
10:30 a. m. — Sunday Mass
Rev. Ladislaus Wolko, S. Th. B.,
Ph. M.
Monday: Religious Instruction
for the Children at 4:30 p. m.
- United Pentecostal Church**
Memphis
11:00 a. m. — Morning Worship
10:00 a. m. — Sunday School
7:00 p. m. — Sunday Evening
7:00 p. m. — Tuesday Evening
Rev. Gordon Pace
- Methodist Churches**
Estelline
10:00 a. m. — Sunday School
11:00 a. m. — Morning Worship Ser.
5:00 p. m. — Evening Worship Ser.
Tell
9:30 a. m. — Morning Worship Ser.
10:30 a. m. — Sunday School
6:15 p. m. — Evening worship Ser.
- First United Methodist Church**
Memphis
9:45 a. m. — Sunday School
11:00 a. m. — Morning Worship
5:00 p. m. — MYF
6:00 p. m. — Evening Worship
Tommy E. Nelson, pastor

These Memphis Business Firms Make This Page Possible in the Interest of a Christian Community . . . With the Hope That More People Will Go To Church Regularly

- | | | | |
|-------------------------|----------------------------------|--|---------------------------|
| Greene Dry Goods Co. | Nell and Jim Beeson | O. R. "Doc" Saye
Mobil Products Consignee | Dairy Queen of Memphis |
| Ferrel's | Donny and Fran's Place | Fowlers Drug | Simpson's Men & Boys Wear |
| Memphis Tire and Supply | Kinard-Gailey Agency | First State Bank | Campbell Insurance Agency |
| Dunbar and Dunbar | Clent's Barber Shop | Memphis Lumber Company | Cablecom-General, Inc. |
| Brown Auto Supply | Dr. Jack L. Rose | Lockhart Pharmacy | Ann's Shoppe |
| Bruce Bros. Mobil | Smith's Auto Store | 287 Restaurant | Caprock Translator System |
| Foxhall Motor Company | Patrick Chemical Company | First National Bank | Hall County Farm Supply |
| Branigan Jewelry | Hall County Electric Co-Op., Inc | Spicer Funeral Home | Ward Motor Company |
| Williams Oil & Gas Co. | | | The Lady Fair |

Blue Bonnet Club Enjoys Christmas Dinner and Party in Brewer Home

The Blue Bonnet Club met December 13 in the beautiful home of Mrs. Johnnie Brewer. The house was decorated throughout in Christmas colors and decorations from all parts of the U. S. that they had bought on their tours.

Blue Bonnet Club Meets In Regular Session

The Blue Bonnet Club met December 6 in the Big O Restaurant with Winnie Johnson as hostess.

The coffee hour was enjoyed by all and then the minutes of the previous meeting were read and approved.

A lovely refreshment plate of chicken sandwiches, date muffins, banana bread, olives, pickles and potato chips was served to the following members:

Husie Lindsey, Christine Hays, Addie Patton, Sallie Reeves, Amanda Simpson, Lessie Salmon, Mary Lenoir, Nat Scott, Osie Scott, Winnie Brewer and Nettie Adams.

CARD OF THANKS

Words can never express the "Thanks" that we feel are adequate for all the love, prayers, visits, cards, food, flowers and memorials that were bestowed upon our loved one and her memory. Though the months were long, you never forget us. For this we will be ever grateful. A special thank you for Dr. Goodall and the entire Hospital Staff for their devoted care and concern for the entire family. We're also thankful to Bro. Coffman and Bro. Niles for the heartwarming services which we will always cherish in our memories. May God bestow His richest blessings on each of you.

A. E. Ward
Mr. and Mrs. Tommy Foster and family
Mr. and Mrs. James Davis and family
Albert Ward, Jr.
Mr. and Mrs. R. D. Follis and Angela
Mr. and Mrs. Don Shultz and family
Mr. and Mrs. Oscar Maddox, Jr.

The Christmas tree was beautifully decorated and underneath the branches were the gifts which were exchanged by members. Of special interest were the three wise men made by Ima Lawrence clothed in velvet, decorated with braid and sequins of all colors.

A delicious turkey dinner with all the trimmings was enjoyed after which the group exchanged gifts.

Those present were Mary Lenoir, Sallie Reeves, Osie Scott, Nat Scott, Iva Smith, Ima Lawrence, Husie Lindsey, Winnie Johnson, Grace Manzingo, Christine Hays, Lessie Salmon, Addie Patton, Amanda Simpson, Nettie Adams and hostess, Mrs. Brewer.

Perry Brothers Employees Enjoy Holiday Party

Employees of Perry Brothers No. 74 and their families enjoyed a Christmas party on Thursday evening, Dec. 12.

Following a chicken dinner at Big O Restaurant, the party progressed to the home of Mrs. Margaret Snowden for a social hour and the exchange of gifts.

Those attending were Store manager and Mrs. Dale Lawrence and Timmy and Jimmy, Mr. and Mrs. Loyd Sargent, Mr. and Mrs. Ira Davis, Mrs. Florence Smith, Mrs. Bess Dunn and Phylis, Miss Karen Bass, Robbie Galloway and Mrs. Snowden.

Leonard Lusk Cleans Suit Sold In 1936

Believe it or not . . . but Lusk Cleaners had a man's suit brought in to be cleaned last week that Mr. Lusk sold to a Quitaque man in 1936. The suit is 38 years old. Mr. Lusk said the suit was in perfect condition and actually styled as men's suits are today. The owner of the suit is a cowboy and has only worn the suit for special dress-up occasions.

The suit still fits perfectly with the exception of the vest which needed to be let out a wee bit, Mr. Lusk said.

Culture Club Meets On December 11

The home of Mrs. Janette Irons was the meeting place Wednesday afternoon, December 11, 1974, for the annual Christmas program of The Woman's Culture Club.

Mrs. Ward Gurley, president, dispensed with the business meeting, and the program Chairman, Mrs. Robert Moss, introduced the program, "Woman's Place in Christianity." Miss Alma Bruce gave the invocation.

As Christmas songs were playing softly in the background. Mrs. Frank Ellis, assisted by Mrs. Robert Moss, Miss Jackie Culbert, and Miss Nancy Hillery, discussed "The Women in the Life of Our Lord." Begging with the quotation ". . . God sent forth His Son, made of a woman . . ." Gal. 4:4. Mrs. Ellis said, "It is astounding what women meant to Jesus."

The line of women in the life of Christ discussed were: Ruth, Elizabeth, Mary, Mary of Bethany, sister of Martha, Martha, Woman at the Well, and Mary Magdalene.

The program was closed with prayer by Mrs. R. E. Clark. Gifts were exchanged from a beautifully decorated Christmas tree with Sherman Irons acting as Santa Clause.

Members present were Mmes: R. E. Clark, Frank Ellis, Ward Gurley, Jim Lange, Robert Moss, Advin Pyeatt, L. A. Stilwell, Misses attending were Esta McElrath, Nancy Hillery, Jackie Culbert, Sybil Gurley, Alma Bruce, and hostess Mrs. Jeanette Irons, Sherman Irons, and Welley Irons.

Hall County Rates 10th In Rye Production

AUSTIN — Hall County was the state's tenth leading rye producing county for the 1973-74 growing season, according to Agriculture Commissioner John C. White.

Hall County farmers accounted for 5,700 of the state's 200,000 bushels of rye.

Attend The Church of Your Choice This Sunday.

Services Held Dec. 17 For Mrs. Henderson

Services for Mrs. W. H. Henderson, 86 year old Floydada resident, conducted Thursday, Dec. 19 at 11 a.m. in the First United Methodist Church.

Mrs. Henderson died at approximately 9:30 on the morning of December 17, in Central Plains Hospital in Plainview after suffering an apparent heart attack. She was admitted to the hospital earlier that morning from the Heritage Home in Plainview where she had been a patient since July 27. Mrs. Henderson suffered a broken hip in a fall in June.

Born Belva Solomon July 15, 1888, she and W. H. Henderson were married in Amarillo October 21, 1931. She had been a resident of Floyd County since 1918 and was a member of the First United Methodist Church and Order of the Eastern Star. Mrs. Henderson's husband was in the real estate business before his death December 6, 1949.

Survivors include two sisters, Mrs. Lizzie Trussell of Ft. Worth, and Mrs. Ida Hutcherson of Memphis; a brother, Frank Solomon of Shamrock and a sister-in-law, Mrs. Helen Solomon of Floydada.

Mrs. John McCauley Auxiliary President, Thanks Ladies

Mrs. John McCauley, president of the Auxiliary of the American Legion, gave her thanks to the Auxiliary women who had a part in helping get the gift boxes ready to go to the Veterans Administration Hospital gift shop in Amarillo.

"I appreciate everything that anyone did to help me," Mrs. McCauley said. She also thanked Mrs. Mary Stotts for the pillow cases she contributed.

Merrels Move To Anson

Former residents moved to Anson last week where Mr. Merrell is local manager of West Texas Utilities Co.

Merrell joined WTU in 1959 as a serviceman trainee in the Memphis Local Office. He was transferred to Clarendon one year later as a serviceman. He was transferred three years later to Miles and promoted to local working manager in August, 1973. After 15 months in Miles has been promoted to local manager in Anson.

Before coming to work for the Company, Merrell was employed by Farmers Butane Co-op in Lakeview and General telephone Co. in Guymon, Oklahoma.

Merrell was born in Memphis but grew up in Estelline. He attended school in Estelline, graduating from Estelline High School in 1963. He went on to attend Clarendon Junior College. He is the son of Mr. and Mrs. Alvin (Dude) Merrell of Estelline.

Mrs. Merrell is the former Joan Davis of Memphis. They were married in Memphis in 1967 and are the parents of one son. They are members of the Church of Christ. He served on numerous committees in the Miles Lions Club and also served on the Miles Volunteer Fire Department.

Charles E. Moore Is Recipient of Bachelor Of Science Degree

Charles E. Moore of Estelline was among 160 seniors who were graduated from Tarleton State University at Stephenville on Sunday, Dec. 15, during Commencement Exercises held in Wisdom Gymnasium.

Moore was the recipient of a Bachelor of Science degree in agricultural education. He is the son of Mr. and Mrs. Kenneth C. Moore of Estelline.

Office Supplies At The Democrat

Band Activities Well Attended On Sunday

More than 260 persons attended the annual band dinner on Sunday noon at the Community center, Mrs. Elmont Branigan, president of the Band Mother's Club announced Monday.

"We want to thank band parents for bringing the delicious food and also thank all those who came and ate dinner with us," Mrs. Branigan said.

Funds from the dinner will be used to send the Cyclone Band to the Six Flags Band festival in the spring.

On Sunday afternoon at 3 p.m. the three Memphis bands, Beginners, Junior High and MHS band, presented the annual Christmas concert, under the direction of Miss Carol Blain, band instructor.

Miss Debbie Combs, member of the MHS Senior Class, served as announcer.

The musical program was thoroughly enjoyed by a large audience. Adding special effects were colored lights and large cut-out snow-flakes in silver, red and gold.

Mrs. Ivie Marie Kathka of Santa Maria, Calif., has returned home after visiting for the past two weeks with her father, U. W. Coldiron, who has been a patient in Hall County Hospital and with her brother, Garland Coldiron and family.

CARE
FOR THOSE YOU LOVE
Cousins Home, Inc
520 North 18th St.
Phone 259-2767
Memphis, Texas

Oliver Fellow Enjoys Christmas Meeting Dec.

The Oliver Fellow First United Methodist Church in the home of Peggy 7:30 p.m. on December 14 following a salad for Christmas, and the joyed meeting around the tree.

Yette Miller, group leader, presided over a short business meeting. Peggy Becker presented the Call to Prayer and the church. She also read of officers of United Women in the local church coming year.

Nell Messer, Oliver program chairman, and Mrs. W. D. Young who program for the evening the story, "Unwedded Esther Barker. It was might-have been a story Joseph told the twelve Jesus the events surrounding birth and explained why never used the cradle had made for him before born. After reading the Mrs. Young led the group.

Following the program enjoyed delicious refreshments prepared by the group.

Guests present were Young, Marian Downum, Orcutt and Barbara. Members present were Yeller, Nell Messer, Beverly Dora McQueen, Beverly Emma Lou Sprull and others.

CAMPBELL
Insurance
Ph. 259-3531

Jackie & Jackie Ray Blum---Owners

Store Hours: Weekdays 7 a. m. to 9 p. m. Sundays 12 noon to 7 p. m.

INTRODUCING
A New Addition
To Our Grocery Store
Featuring —
Kitchen Utensils
Kitchen Ware
Toys, Etc.



COUNTY FRESH		MEATS	
Rolls	2 FOR 79c	Ground Beef	69c
RANCH STYE, 303 Can	2 FOR	Chuck Roast	69c
Black Eye Peas	49c	Bar-B-Que	1.30
BORDEN'S	1/2 GAL.	FREEZER WRAPPED MEAT FOR YOUR DEEP FREEZE	
Ice Cream	1.19	PRODUCE	
WOLF	300 CAN	Bananas	Lb. 10c
Chili	69c	Lettuce	Lb. 23c
MOUNTAIN PASS	2 FOR	FRESH Cranberries	33c
Tomato Sauce	35c	Oranges	Lb. 19c
PENT HOUSE	2 1/2 CAN		
Peaches	55c		
BORDEN'S	1/2 PINT		
Whipping Cream	43c		
DROMEDARY DATES	39c		

Youth Choir Of First Baptist Church Presents

A Musical That Shares The Gospel

State

Composed by Cam Florida

December 29, 1974 - 7:00 p. m.

Memphis City Gro. WE GIVE BUCCANEER STAMPS DOUBLE STAMPS ON WEDNESDAY

HAPPY NEW YEAR

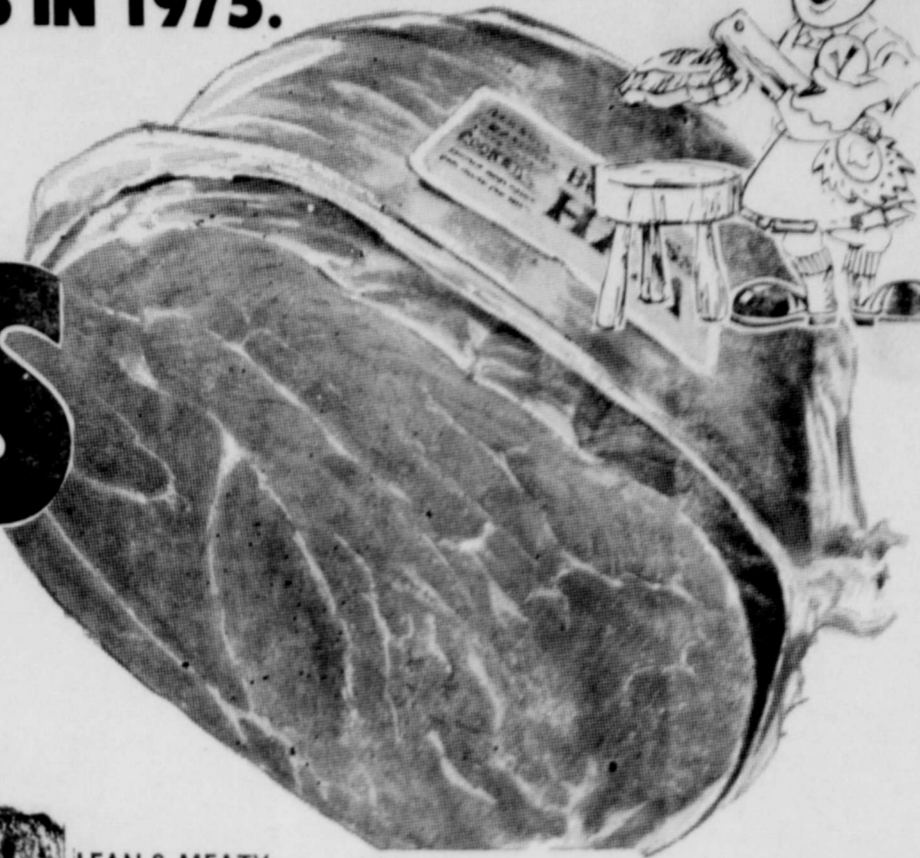
THIS YEAR RESOLVE TO SHOP OUR THRIFTWAY STORES FOR GREATER SAVINGS IN 1975.



CHICKEN OF THE SEA LIGHT
CHUNK TUNA
49¢
FLAT CAN

WILSON TENDERMADE
BONELESS

HAMS
FULLY COOKED
HALF OR WHOLE
\$ **1.89**



5¢ OFF LABEL DETERGENT

WIDE \$1.59

LIQUID DETERGENT
BOY \$1.59

DETERGENT
WASH \$5.89

YOUR CHOICE HEAD AND SHOULDERS SHAMPOO

99¢

GILLETTE TRAC II RAZOR BLADES \$1.79

WALKA-ELTZER 59¢

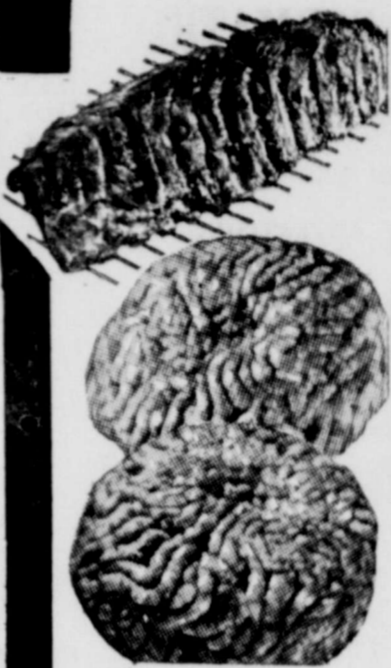
SHURFINE GRAIN SPIRIN 49¢

Traditional Treats

- SHURFINE FRESH SHELLED Peas BLACKKEYE NO. 300 CAN 19¢
- BRUCE'S Cut Yams NO. 3 SQUAT CAN 2 89¢
- SHURFINE TURNIP Greens 15 OZ. CAN 19¢
- CASSEROLE Pinto Beans 2 LB. PKG. 79¢
- Egg Nog QT. CTN. 79¢
- CANADA DRY Ginger Ale 28 OZ. BTL. 39¢
- SHURFRESH-REG. OR DIP Potato Chips TWIN PKG. 69¢
- HAWAIIAN RED Punch 46 OZ. CAN 59¢



REGULAR ONLY ASSORTED CANNED
SHASTA POP
81¢
12 OZ. CANS



- LEAN & MEATY Spare Ribs LB. 89¢
- EXTRA LEAN FRESH Ground Beef LB. 59¢
- DRY SALT Pork Jowls LB. 49¢
- CHUCK ROAST LB. 69¢

- EXTRA LEAN Pork Steak LB. 79¢
- OSCAR MAYER Little Smokies 12 OZ. PKG. \$1.19
- GLOVERS Hot Links LB. 79¢

- CLAUSSEN'S KOSHER Pickles QT. BTL. 89¢
- SHURFRESH PIMIENTO CHEESE Spread 7 1/2 OZ. CUP 69¢
- SHURFRESH JALAPENO CHEESE Spread 7 1/2 OZ. CUP 69¢

Dairy Specials

- KRAFT CRACKER BARREL COLD PACK SHARP Spread CHEDDAR 8 OZ. PKG. 69¢
- PARKAY SOFT Margarine 2 8 OZ. TUBS 88¢
- KRAFT TWIN PACK AMERICAN SINGLE Slices ONE LB. PKG. \$1.29

50¢ VALUABLE COUPON 50¢
FOLGER'S MOUNTAIN GROWN COFFEE 3 LB. CAN \$2.99
WITH THIS COUPON VOID AFTER DEC. 31, 1974 THRIFTWAY FOOD STORES
50¢ THRIFTWAY 50¢

RUSSET ALL PURPOSE 10 LB. BAG 59¢
Potatoes
TEXAS 5 LB. POLY BAG 59¢
Oranges
RUBY RED Grapefruit LB. 15¢



GREEN Onions LARGE TIE BUNCH 13¢
CALIFORNIA Avocados LARGE EACH 19¢

MUSTARD TURNIPS COLLARDS Greens BUNCH 25¢

- Frozen Foods
- MORTON FROZEN MEAT Pot Pies 3 8 OZ. PKGS. 89¢
 - SHURFINE FROZEN Fish Sticks 8 OZ. PKG. 59¢
 - BANQUET FROZEN Fruit Pies 20 OZ. PKG. 65¢



SHURFRESH GRADE "A"
LARGE EGGS
73¢
DOZ.

- FOLGER'S INSTANT CRYSTALS COFFEE 6 OZ. JAR \$1.39
ROXEY DRY DOG FOOD 5 LB. BAG 99¢

DAVIS & SCOTT
THRIFTWAY
SPECIALS GOOD DEC. 26-31, 1974

Folgers coffee
MOUNTAIN GROWN
FOLGER'S COFFEE
3 \$2.99
LB. CAN WITH COUPON



B. B. Shots

BYRON BALDWIN

Paul Crume's recent comment about the old time practice of making women's underdrawers out of discarded flour sacks has produced an astonishing discovery. Evidently everybody who has risen to high estate in the world in the last 50 years once wore flour sack underwear. I can remember when the washing was boiled in the big cast iron pot and after rinsed through 2 or 3 waters to get the lye soap out of the clothes. They were wrung by hand to get most of the water out of them and then hung out to dry with the wind giving the clothes a good drying out. When you passed by the clothes lines, you would see several signs printed on "the home-made underwear that was made from 100 lb. empty flour sacks. Some of the signs I can remember were "Pride of the West", "American Beauty", "Bewleys Best", "Belle of Waco", "Pride of Ardmore" and many other brands that I do not remember. Some of the flour mills put out patterns with their 100 pound sacks of flour. If we had to depend on these large sacks today, we would come up short on underwear as I imagine it has been 40 years since 100 pound sack flour was sold. We do not even have tobacco sacks to make Bikinis.

A lot of things are missing on store shelves that several years ago had a large volume of sales. For instance, cob pipes used to be displayed on racks in baskets and other ways. I do not think you can buy a cob pipe in Memphis today. I found out the reason we are short on cob pipes is that the nation has been planting corn that had more grain and less cob. Missouri had quite a reputation for good corn cob pipes. Now they have come out with another kind of seed which will be called Missouri 14 corn and will make a larger cob. There were a lot of uses for cobs 50 years ago.

From Earl's Pearls: Gloria Swanson, now 75 and one of the Geritol Generation, says she is despaired of reading movie scripts. "They want these young girls to do and say things I can't approve," Miss Swanson was introduced as "The Biggest Star there ever was for the longest time"; gladly she added, "I am sorry, I am a square."

A quote: "The definition of middle-age depends on who's doing the defining."

We received a card and letter from Mrs. Jet Fore the past week of loved ones had been answered in Jet's case. After 6 months flat on his back, bedfast after breaking his hip, he had walked the day before writing the card. We are very fortunate in living in an area where there are very few labor troubles. The only complaints I have heard of were from the wives of operators of stores and their only complaint was that they were over-worked and under-paid. This is no problem as they will have another year to solve differences without calling a special meeting while they are so busy.

A quote: "Sloppy White mentioned his aunt who's the sentimental type — "She even cries when a magazine subscription expires."

Mr. and Mrs. Frank Toner of San Leandro, Calif., were visitors in Hall County Heritage Hall the past week. They first met each other when Katherine Francis Milam was attending T. C. U. and Frank was stationed in Fort Worth in the Air Corps. They were

married in 1945. I found out one reason Mrs. Toner shows so much interest in our Heritage Hall. She is Festival General Chairman and member of San Leandro Historical Cultural Advisory Commission. I was very much surprised by Katherine Francis when she presented me with an award plaque for outstanding volunteer service from the San Leandro 1974 Festival of the Arts which was Sept. 28-29. This was signed by Katherine and Harold L. Fate, President of the San Leandro Art Ass'n. I was very happy over receiving this award and I wondered what I did to deserve it. She explained that I did give their Festival of Arts publicity last summer when I mentioned it in this column. The City of Leandro was incorporated in 1872. I was informed that where they had orchards, vineyards and fields, this city area has turned to industry. Another reason Katherine likes Heritage Hall—This is her home town.

Some more news from some of our former Hall County residents. Dr. Evelyn Milam, daughter of Mr. and Mrs. John K. Milam, was inaugurated Nov. 23, 1974, as the 9th president of Cotty College at Nevada, Mo. The college is a P. E. O. sisterhood, organized over 100 years ago. John and Bessie (Harper) Milam of Sudan and Dr. and Mrs. Ples Harper made a fly-trip to Nevada for this event. It was an outstanding day for John as this all happened the same day as her father's birthday. Dr. Ples Harper will be remembered by many of you who attended Memphis schools with him. He has now retired after serving many years as a professor at West Texas State University. Mrs. Jno. Milam will be remembered by old schoolmates as Bessie Harper, sister of Dr. Ples Harper.

I had a short visit the past week with Mrs. A. J. Parker and her sister of Clarendon. Mrs. Parker was having a new experience, as she was in a local store shopping from the customer's side. She and her brother Thomas sold their store in Clarendon. I think it had been about 50 years in December when she was not on the selling side of the counter.

Mrs. Henry Scott had as her guests in Heritage Hall the past week, her daughter, Gloria, Mrs. Gene Tension of Arlington, and Mrs. Robert (Gloria) Tension of Duncanville. Robert married a girl with the same given name as his mother. I guess he had been singing that old song "I want a girl just like the one that married dear old dad." Tana Battle of Corpus Christi was another guest of Mrs. Scott's. Tana is the daughter of Mr. and Mrs. Jack Battle of Rockport. Her mother is the former Florence Scott and her dad is the grandson of the late Mr. and Mrs. Jake Masterson of Hedley. Jack worked for Sears for several years and was transferred to different places. The different cities where Tana attended school were: Dallas.

Movie House

Showtime 8:00 P. M.

December 26, 27 and 28
Lucille Ball in
"Mame"

The grandest musical of them all
Sun. and Mon. Dec. 29 and 30
"Huckleberry Finn"

Tuesday, December 31
"Los Cacos"

Wed. and Thurs., Jan. 1 and 2
"The Great Gatsby"

Starring
Robert Redford & Mina Farrow

Beginning Friday January 3
"Journey Back To Oz"

LOYD ELLIOTT

Your **EXXON** Dealer

Wants, needs and appreciates your business!
Corner Main & Boykin Drive

FIREWORKS STORE

Open 10:00 a. m. Each Day
Dec. 20 Thru Jan. 1
Shop with us and get in out of the cold to select your fireworks.

BESS YARBROUGH

West Edge of Memphis on Lakeview Highway 256

Carlsbad, N. M., Wichita Falls, San Antonio, Austin at State University and now at Delmar College in Corpus Christi. Gene and Gloria reported that the Tension family was having its Christmas reunion this year Dec. 26 at Ballinger. There are 5 boys and 1 girl in this family and all will be present except 1 boy who is doing mission work in Portugal. Clifton, a former pastor of the First Baptist Church here, has been pastor for 13 years in Monroe, La.

We are living in the days of a lot of "gimmicks". I was in one place of business where they had a canary bird singing. I could hear it sing but could not see it. Afterward Hattie Dem pointed it out to me, but I did time he canary singing and noticed it was singing when a customer came in at the door and when the cash register would ring. I met Hattie Dem a little later in the day at the grocery store buying about 10 boxes of water cookies, Cheese Crisps and other dainties which I thought she was buying for the canary. But not so, she was buying them for a tide-over meal for everyone working to keep them happy while wrapping more packages. I guess that is casting bread on the water.

After living in Hall County about 70 years, I thought the Orms would decide to locate here, but not so. Milton moved to Wellington several months ago, and last Thursday, his sister, (Ethel Orr) Mrs. Arthur Gidden, moved to Amarillo. Our best wishes to them in their new home. Andy Womack has also moved to Amarillo. His new address is as following: Francis Hospital, 1009 Clyde, Amarillo 79106.

Other visitors in Heritage Hall were Beth Carter and Boss Noles of Clarendon. Ross worked on ranches and worked in rodeos for about a quarter century, but he says the bucking horses got a little rough for him. Mrs. Ina Mackey had as her guest in Heritage Hall, her grandson, Douglas Elrod of Paris. Mr. and Mrs. J. F. Neal were visitors in Heritage Hall the past Saturday and just happened to have pictures of their first and only grandchild, Julie Rene Bryant of Amarillo, daughter of Mr. and Mrs. James R. Bryant. The photographs of this youngster were taken from 15 minutes after she arrived and for a week long. This is the first great-grandchild of Mrs. Clyde Milam.

Christmas is a special time for love and fellowship with good will toward all men, but it seems

in this area, we have so many heartaches, tragedies and sorrow to cast a shadow on what Christmas means in honoring our Lord.

Delphian Club Xmas Meeting Held December 17

The Delphian Club's Christmas meeting was held December 17 in the home of Mrs. Warren Mitchell. Hostesses included Mrs. John Deaver, II, Mrs. Clyde Smith and Mrs. Gaylen Arloia.

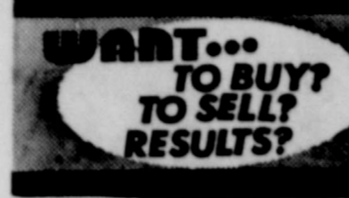
Mrs. John W. Crane opened the program with a Christmas meditation entitled "Lift up your hearts." After refreshments had been served, Mrs. Mildred Stephens reviewed the book "Two

From Galilee" by Holmes. This book is a description of the lives of Mary and Jesus and the birth of Jesus and the Biblical account of Members concluded with a cookie and recipe. Those present were: Mrs. Davis, W. C. Dickey, Ben Moss, Wayne Swain, Yarbrough, Jack Boone, Deaver, Smith, Crane and hens.

Mrs. Albert Gerlach and Mrs. Holmes Pomeroy visitors in their home Sunday, Rev. and Mrs. Jack of Dallas.

LOST

LOST — Woman's Billfold return to 613 N. 10th.



CLASSIFIED AD INFORMATION

RATES ON CLASSIFIED AND LEGAL NOTICES

ADVERTISING

Display in Classified Section, per col. in _____ 98c
Minimum Charge _____ 1.05
Per word, first insertion _____ 7c
Per word, following consecutive insertions _____ 5c

For Sale

FOR SALE—One bedroom house with garage. Located on S. 10th. \$6,500. Contact The Memphis Country Club board of directors or Gordon Maddox. 12-tfc

FOR SALE Modern 3-bedroom brick home on Palo Duro Dr. Choice building lots, well located, for sale, also. A Womack, two-bedroom home, For Sale. Ben Parks Co. of Dallas Byron Baldwin, Salesman 31-tfc

FOR SALE: Two bedroom house \$1,400 sq. ft., corner lot, fence yard, Central Air and heat, garage. Call 259-3575. 29-tfc

FOR SALE: My home 1421 Main, two large bedrooms, large living room, dining room, kitchen, new carpet. Fenced backyard and large storage house. Call 792-6638, Lubbock. 30-tfc

FOR SALE—Bass guitar, and large amplifier, good shape, Mark Bradshaw. 259-2742 30-tfc

FOR SALE or RENT — Drug store building at Hedley, also building formerly Hazel's Beauty Shop. Call 856-2531. 33-3p

1970 Chevrolet Pickup, 29,000 miles, A-condition, new tires, tool box, clean. Gordon D. Maddox, 269-2012, 259-3374. 33-tfc

FOR SALE — No. 1 steel boxcars, Dick Barnes, 405-688-2648, Hollis, Okla. 33-4c

FOR SALE — John Deere 282 Stripper, and 4010 Tractor, in good condition. Five Cotton Trailers, Goodwin Bray, Clarendon, Texas 874-2201. 33-2c

FOR SALE — Large mobile home, arge city lot, all appliances; also Three - Bedroom Home, large corner lot, full paneled, full carpet, fireplace, double car garage. Call 259-3468 after 5 p.m. 33-3c

FOR SALE — or RENT — Three bedroom, bath and ½ mobile home. Call 259-3429. 33-tfc

ASSORTED heavy duty electric motors for sale. Call 259-2232. 34-2p

FOR SALE or TRADE—50' x 60' two-bay shop building; previous owner had plenty business. Will take pick-up, car or livestock in trade. Call 856-2161. 34-2p

OPENING ALL NEW RADIO SHACK

Stereos, CB, Taper Audios, Kits, Parts
Messer Electric (Old Depot Bldg.)
Phone 259-3329 23-tfc

FOR SALE: Nice two bedroom house on S. 5th Street, immediate possession; E. H. Stanford home, 503 N. 14th. Ben Parks Co. Dallas, Texas, Byron Baldwin Salesman. 7-tfc

FOR SALE—45 Allis Chalmers tractor, 4-row equipment. Contact Jackie Blum. 8-tfc

FOR SALE: Stanton 4-bottom Mold board plow, like new. Call 817-585-4473, Bill Simpson, Northfield. 24-tfc

FOR SALE—1973 Monte Carlo, loaded, clean, low mileage. Call Ross Gentry 259-3149 28-tfc

FOR SALE — 1964 International Scout — 4 wheel drive. Contact J. R. Mitchell. 33-4c

FOR SALE — Used regular size slate pool table and complete set of balls. \$350.00. Memphis Country Club 269-2169. 33-2c

FOR SALE — 1967 four-door Dodge Polara, loaded; Double Barrel 12 Gauge Shotgun. Also, 3-Bedroom House, bath and 3/4 living room, kitchen and dining room, den, carpeted, Call Gordon W. Maddox, 259-3197. 33-2c

Moore's Nursery

Closing Out All Novelty Items

1/2 PRICE

3 Weeks Only

1609 West Noel

32-3c

EL SOMBRERO CAFE

U. S. 287 West

Specializing in Mexican Food

Open 6 a. m. to 2 a. m.

Daily Mexican Lunches \$1.75

Catering Service
Orders To Go
We Deliver

Mr & Mrs. Noe Aleman
Phone: 259-3486 43-tfc

If you have land that needs clean up call Buck! Have all kinds of equipment; breaking plows, Hoemes, disk Plows
Contact BUCK LEMONS 259-2238
Also have equipment to handle wheat ground. 16-tfc

THE TREASURE HOUSE

Home of Fine Arts, Oils Acrylic Paint and China. Will carry gift items. And Frames
315 N. Boykin Dr.
PEARL WECKAR 51-tfc

Special Notices

SEPTIC TANK or Cess Pool pump service. Contact Travis Bolden or Phone 259-2985. 7-tfc

FOR YOUR painting supplies, see Memphis Glass and Supply. Complete line of J. B. Paints. 49-tfc

FROM Wall to Wall no soil at all, on carpets cleaned with Blue Lustre. Rent electric shampooer \$1. (Thompson Bros.) 34-1c

SOUP'S on, the rug that is, so clean the spot with Blue Lustre. Rent electric shampoer \$1. (Perry Bros.) 34-1c

PRE-FINISHED paneling and matching trim. Memphis Glass & Supply. 49-tfc

LIKE CORRESPONDENCE little white lady below age 59. Matrimony the subject, Write 1802 Independence, Plainview, Texas 79072. 33-3p

REDEEM your Gold Bond Stamps at Thompson Bros Co. 21-tfc

DOUGHNUTS

Cooked Fresh Daily
Serving: Hamburgers, Sandwiches, Chili or Stew at Lunch
Coffee and Soft Drinks
OPEN 7 a. m. — 3 p. m.
Corner Noel - 5th
Charles Cowart 28-tfc

Greenway
Dirt Construction
Danny L. Greenway
experienced in all types of dirt construction.
1109 Arlington St.
Call 417-2333
Wellington, Texas 26-tfc

MONUMENTS
AT FACTORY PRICES
WILLIS — PELLOW BROS.
GRANITE QUARRY
GRANITE, OKLA.
Phone 532-2184 Collect tfc

NEED
CHAIN LINK FENCING
WE ALSO INSTALL

BACME FENCE & IRON CO.
(Old Depot Bldg.)
102 Boykin Dr. Ph: 259-2742 26-tfc

ARCHER'S REDI-MIX

Concrete

Contact Norman

Archer or Call

259-2682

1-tfc

JAMES CANIDA

Only Authorized Kirby Dealer
Sales & Repair
S. 16th St., off Lakeview Hwy.
MEMPHIS, TEXAS 13-tfc

LUSK CLEANERS

Now Has Ladies' Ready-To-Wear Laundry Service
Vacuum Cleaners Sales and Service
And

our newest addition is
Portable Carpet Hot Water Extraction Machine
(Rent this machine and Clean your own Carpet . . .
You will be delighted with the results!) 26-tfc

HAS YOUR septic tank or cesspool shown any signs of sluggishness? Has there been any odor back-up slow drain-off, bubbling in the toilet bowl, or overflow in the drainage field? If so, we recommend that you first use FA-11 to restore your system to normal. Thompson Bros Co. 2-tfc

120 day automatic Bowl Cleaner removes rust, lime, minerals; deodorizes and sanitizes toilet bowls; prolongs life of fittings and fixtures. \$2.95. Thompson Bros. Co. 22-tfc

For Rent

Rooms for rent. By day or week. Alhambra Courts. 10-tfc

FOR RENT Terrace Apt., furnished, one bedroom, clean and neat. \$96.00 a month, \$25.00 deposit required. Phone 259-2433 or A. E. Sanders Real Estate, Arlington, Texas. 30-tfc

FOR RENT — 5 Room and bath Residence, good location, paved street, garage, storm windows and good condition. Call 259-3595 day; night 259-2057. 32-tfc

APARTMENT — For rent. Call 259-3166. 33-4c

See Us For Your
Whirlpool — Kitchen Aid
Sales and Service
DIXON'S
120 S. 5th St. Phone 259-2445 38-tfc

SPICER
FUNERAL HOME
PHONE 259-3535

SHOP & SWAP
Clothes-New & Used-Men's & Women's
We Buy & Sell Used Furniture
Antiques
Extra Good Costume Jewelry
Odds & Ends
New Items Every Day
Come Out & Browse
Highway 287 North 29-tfc

REX'S STEEL BUILDINGS

Hay barns, carpports, shops Etc.
Call Collect 806-293-3081
Plainview, Texas 36-tfc

STAHL
Sheet Metal
Heating, Air Conditioning
Refrigeration and Roofing
Residential & Commercial
OTTO STAHL
Phone 259-3018
We Are Now Open
619 Main 5-tfc

La-Z-Boy
Berkline
Master Craft
Flex Steel
MEMPHIS UPHOLSTERY
7th & Brice — Pho. 259-2026
Night Pho. 259-3079
Free Delivery 48-tfc

WEDDING CATERING
CREATIVE WEDDING SPECIALIST
PHOTOGRAPHY OF DISTINCTION
Pictures for any occasion
WILLIAMS STUDIO SINCE 1964
STUDIO at 620 Menden (806) 259-3235

Wanted

WANT TO BUY — Good right piano. Clyde McMurry 3386.

30% DISCOUNT Through Dec. 31 Grain Storage Bin 5,000 Bushel thru 127,000 Bushel Call collect 316-872-2222
Disney Construction, Scott City, Kansas (Steel Prices Will Go After Jan. 1)

Rubber Stamp
Made-To-Order
The Memphis Democrat

Leslie's Flowers

Your FTD Extra Tender Florist Serving Memphis, Lakeview Estelline, Hedley with guaranteed quality, service for over 25 years. Let us help you with all your floral needs.
Wilma Bette
710 Bradford 259-38

KNAPP SHOES

Call Roy Richardson 259-2765
503 S. 7th Street
Memphis, Texas

FOR CUSHIONED COMFORT

AMERICAN POST CONTROL CO.
Ray Leatherwood, owner
Box 513
888-2432 937-30
Memphis, Tex. Children's Complete Pest Control bonded, Insured, State

BOOT AND SHOE REPAIR

Leave at 102 South
JL'S WESTERN WAREHOUSE
For
DOCK'S SHOE SHOP
Childress, Texas

TYPEWRITER & ADDING MACHINE REPAIR

Have several used typewriters and adding machines for sale.
ROY M. HORN
Typewriter Repair Service
Wellington, Texas 79

FRED COLLIER

is bonded and Licensed to
SPRAY TREES AND TREES
Satisfaction Guaranteed
510 North 11th St.