



25¢

# the Kinney Cavalryman

USPS 100-610

Vol. 7 NUMBER 38

SEPTEMBER 19, 1980

BRACKETTVILLE, TEXAS

## WELCOME NEW DOC

### Headliners

#### BOWNS TO SPEAK

The Kinney County Farm Bureau has scheduled it's annual meeting for Tuesday, September 30, at 6:30 pm. at the High School Auditorium, according to Kinney County Farm Bureau President Jimmy Bader.

The Guest Speaker will be Bill Bowns, from the Texas Farm Bureau State Affairs Office, who specializes in property taxes and legislation pertaining to. He will speak on property taxes in general and the duties of the New Tax Appraisal Board, appraisal office, and Chief Appraiser in particular. His talk will begin at 7:30 after the business session of the KCFB and will be open to the public. President Jimmy Bader says there will be a question and answer session after the talk and feels it is an excellent opportunity for the general public to become better informed about the present tax situation. Everyone is cordially invited to attend and refreshments will be served after the meeting.

\*\*\*\*\*

#### KINNEY COUNTY 4-H CLUB MEMBERS TO SELECT SHOW LAMBS

All Kinney County 4-H members who plan on exhibiting 4-H show lambs at next year's stock show will need to meet Saturday, September 20, at 9:00 am at Pat Rose's Ranch Headquarters at Brackettville.

Lambs will be picked as in years past by each 4-H'er drawing a number and selecting one lamb at a time in numerical order.

Anyone interested in joining the 4-H Club can come by the County Extension Office and fill out the enrollment form. The Texas Agricultural Extension Service conducts programs in the following subject areas:

Livestock Production, Crop Production, 4-H & Youth Work, Gardening, Lawns&Ornamentals, Horticulture, Food and Nutrition, Clothing, Housing and Home Furnishings, Consumer Education, Health and Safety, Family Stability.

Educational programs conducted by the Texas Agricultural Extension Service serve people of all ages regardless of socio-economic level, race, color, sex, religion, or national origin.

\*\*\*\*\*



DR. EDUARDO VINUESA WILL BEGIN HIS PRACTICE OF FAMILY MEDICINE IN BRACKETTVILLE ON MONDAY, AT THE CLINIC. Pictured with the doctor is his wife, Helen. The Doctor, his wife and 15-year-old daughter are now residing in Brackettville.

A welcoming ceremony is planned for the doctor and his family at the clinic Monday morning at 8:30 a.m. Let's all show up and greet the doctor and his family!!

### CABLE CO.

EDITOR'S NOTE:

THE FOLLOWING IS REPRINTED WITH THE PERMISSION FROM THE SAN ANTONIO LIGHT... It is interesting to note that Rock Radio, Inc. is offering three times the number of channels for only 45¢ more per month than we are paying. Also, no installation fee to new customers and they are only requesting 250 initial customers. VERY INTERESTING.....

## Castroville Council Postpones Action on Cable TV System

By BOBBI SCHOTT  
Light Correspondent

CASTROVILLE — City Council has delayed action on cable TV after meeting with a representative of Rock Radio Inc., which had proposed establishing a system in Castroville.

Larry Tschirhart explained his company's plan to provide 12 channels at a cost of \$8.95 per month, plus \$6 for HBO. He noted there would be free installation if the customer asks to be connected within

the first 30 days after the system is operable. Otherwise, cost would be \$17.50 per installation.

He explained it would be from six to nine months before his company could begin installation, and 250 homeowners would need to sign.

Tschirhart specified there would be no cost to the city, and the city would receive a flat rate or percentage rate for renting utility poles to Rock Radio Inc. and a 3 percent franchise payment.

The council declined to act on the proposal, pending study by the city attorney and the need to investigate several other companies and what they have to offer.

Meanwhile, at the September council meeting, it was reported the cost for poles and lights (labor not included) along U.S. 90 within the city limits would be \$28,500. This is part of a highway beautification plan being studied by Castroville Chamber of Commerce in the wake of widening of U.S. 90. The chamber had requested the cost figure.

# the Kinney Cavalryman

USPS 100-610

P.O. DRAWER CQ  
Brackettville, Texas 78832

512/563-2696

Judy Loos.....Publisher  
Geo. Loos.....Editor  
Geo. Loos.....Manager  
Betty Tidwell.....Contrib. Editor  
Lillie Mae Dimery.....Contrib. Editor

\*\*\*\*\*

Published every Friday. Entered by  
Second Class Mail at Brackettville  
Texas 78832.

\*\*\*\*\*

Any Erroneous reflection upon the  
character or standing of any person  
of firm appearing in this paper will  
be gladly corrected upon being called  
to the attention of the management  
and to the article in question.

\*\*\*\*\*

MEMBER OF THE TEXAS PRESS  
ASSOCIATION

\*\*\*\*\*

SUBSCRIPTION RATES:

\$12.00-----Out-of-County  
\$11.00-----In-Kinney-County

\*\*\*\*\*

LOOSISM:

"Truth is rarely pure and  
never simple." Oscar Wilde

\*\*\*\*\*

## —headliners—

### KINNEY COUNTY HISTORICAL SOCIETY PRESENTS PROGRAM

An interesting program on the Kinney County "Black Seminoles, Past and Present", will be presented by Willie Warrior and/or Charles Wilson at the September 27th meeting of the Fort Clark Historical Society of Kinney County. The monthly meeting will be at 1:30 p.m. upstairs in the members lounge of the Los Moras Inn, Fort Clark Springs. The public is invited.

### BRACKETTVILLE PTA

The Brackettville PTA held their first meeting of the 1980-81 school year on September 9.

The new officers were installed by Tulisha Wardlaw at the beginning of the meeting. They are:  
James Javens----President  
Sylvia Meyer----Vice President  
Ernestine Talamantez--2nd V-Pres.  
Martha Hensley-----3rd V-Pres.  
Vangie Reyes---Secretary  
Nancy Frerich--Treasurer

Mr Charles Koch presented Gaylene Frerich with the 1980 PTA Life membership award for years of dedicated work for PTA.

The next meeting will be Oct. 14 at 3:15pm in the H.E. Cottage. Plans will be made for the School Halloween carnival.

The GFWC-New World Study Club INVITES ALL RESIDENTS OF THE COMMUNITY to come, hear and ask questions at an open meeting which will feature "Foster Homes for the Elderly" and our local Senior Citizens Program, Monday evening, the 22nd from 6:30 p.m.---8:30 p.m. at the Kinney County Public Library building. (the Women's Club Building).

Mrs. Judy Hill, from the Human Resources office in Del Rio, will give a 30 minute slide presentation about "Foster Homes for the Elderly," Mr. Bill Bretzke, from the Community Council of Southwest Texas in Uvalde, and Diane Avilla, Director of our local Senior Citizens Center, will present the objectives and projections of our local program.

Questions from the audience are encouraged.

Bring a friend and we'll see you there--because we CARE!!!

\*\*\*\*\*



# Letters to the Editor

To The Editor and Taxpayers of Brackettville:

As a Taxpayer, I can not condone the action taken by our City Council, as reported in the Sept. 12th Issue of the "CAVALRYMAN", of voting to use City revenues to pay their dues in Civic Organizations.

In these inflationary times, I am certain we have all sacrificed some favorites luxury in order to pay the necessities such as taxes. Are you willing that your tax dollars be used in this manner? I, for one, am not!

/s/ Mrs. Joan H. Breaux

\*\*\*\*\*

# First Savings pays you the most for your savings.

### Treasury Rate Certificate

2½-year \$100 Minimum  
Annual Yield Annual Rate  
11.436 11.125

Effective September 18 thru September 24

The offered rate changes bi-monthly and is determined by the U.S. Treasury. Once this type certificate is issued the rate does not change over the term of the certificate. Substantial penalty for early withdrawal of certificates.

### Money Market Certificate

26-week \$10,000 Minimum  
Annual Yield  
11.963

Based on annual rate of

11.300

Effective September 18 thru October 1, 1980

Effective annual yield based on reinvestment of principal and interest at maturity. Federal regulations prohibit the compounding of interest and require a substantial penalty for early withdrawal. Rate is subject to change at renewal.

#### Main Office

Uvalde: 400 North Getty Street 278-7191

#### Branch Offices

Eagle Pass: 370 Monroe 773-9494

Carrizo Springs: 301 Pena Street 876-5261

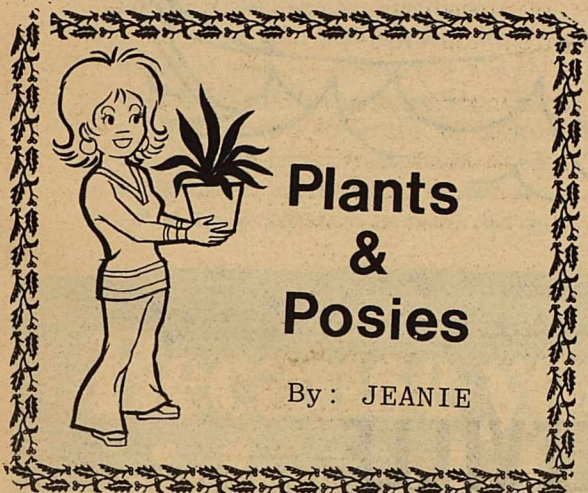
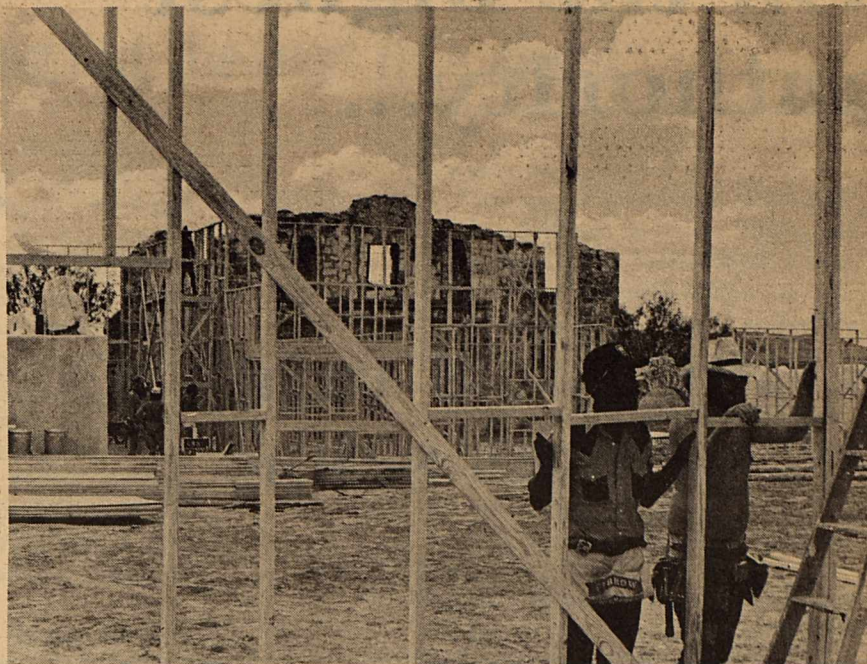
Leakey: Corner of Market & W.4th 232-6631

Hondo: 609 19th Street 426-4325



# FIRST SAVINGS AND LOAN ASSOCIATION

# Welcome MARBLE ARCH PRODUCTION and ITC FILMS on their preparation of 'BARBAROSA'



## Plants & Posies

By: JEANIE

### SAINT PAULIA--African Violets

African Violets are prized for their abundant and colorful flower and are very popular house plants. They have shallow root systems, round and hairy leaves and fleshy leafstalks,

The flower stalks grow from the leaf axils. Each stalk branches and produces flowers. The flowers are single, but new hybrids have been developed with double flowers. Flowers colors are in numerous shades of blue, purple, pink and red. Pollen sacs are in the center of the flower.

Provide your African Violet with bright light year-round, do not subject to direct daylight sun. They grow well in fluorescent lighting, if placed close to the tubes.

\*\*\*\*\*

## Kinney County LIBRARY

Dear K.C.,

Censorship of the Library collection goes against the grain of the very nature of our society. Democratic societies have constant tension between freedom of the individual and the necessity of limitations to protect those rights. The library is a case in point. In defense of the freedom to read, the following attitude is plausible. People do not need to be protected from evil by an self appointed group because people are not utterly corrupted by any reading experience. The reader must make moral choices for himself. We must not by censoring deny him his basic human right to

make his own mistakes. Broadening our horizons is not only a matter of going always onward and upward but also includes the experience of sinking downward and backward. These regressions are a normal part of life, and the human right to err, to slip, to sin, stumble --and to recover oneself must be insisted upon. And the limitation? We must tread carefully and ask ourselves what limitations are really necessary to protect our rights (or to protect us from ourselves).

The Kinney County Library has new paperbacks ready for circulation now. Included is Texas, a sequel in the Ross series and Vision by David Wilkerson (Author of Switch Blade). This book is a Christian prophecy foretelling of things to come. Come in and see what else we have new in paperback for you.

Yours,  
Friend of the Library  
Marie Bixby

Letters expressing the readers' views are welcome.

\*\*\*\*\*

### WHEELS FOR LIFE BIKE RIDE LIGHTS CHILDHOOD CANCER

Bike-A-Thon chairman, Sandy Herman and Karen Crowder, today asked Brackettville residents to participate in the St. Jude Children's Research Hospital "Wheels for-Life" Bike-A-Thon, October 4. Volunteer workers and riders are needed for the Bike-A-Thon to raise funds for the world-famous research center and its battle against childhood cancer and other catastrophic childhood diseases.

Karen said this year's ride is being dedicated to Terry, a leukemia patient at St. Jude. "By riding for Terry, we'll really be helping all stricken children since research is the only way these illnesses can be conquered," Sandy said.

"We're looking for people who will contribute some of their time and energy to help children live. We will also need bikerider since they are the ones who can make this bike-A-Thon successful!"

In the bike-a-thon, riders enlist sponsors WHO DONATE A SUM FOR EACH MILE COMPLETED. Riders who raise \$25 will receive a St. Jude T-Shirt, and those

raising \$75 will receive a backpack said Sandy Herman. "We also have prizes for other riders." Sponsor forms will be available soon.

Interested persons who would like to help can contact Sandy Herman, Box 271, Brackettville, or Karen Crowder 563-2958.

St. Jude Hospital was founded by entertainer Danny Thomas, and operates primarily from public contributions.

\*\*\*\*\*

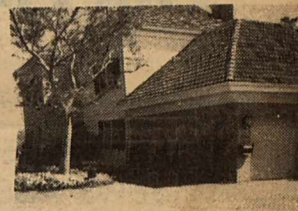
## NEWS For Homebuyers

Population growth and inflation have combined to skyrocket the cost of real estate in recent years: the cost of a new home has more than doubled over the past six years. Land is more valuable and construction costs are higher than ever.

It's hard to believe that only 120 years ago a homesteader could own 160 acres of land after five years of occupancy and cultivation. By the turn of the century the cost for a new home had reached \$4,500. And 90 percent of that cost was for construction. Quite a difference from today.

Now, the average price of a new home is \$75,000, while the portion spent on land has risen from ten to 25 percent of the total cost.

The 1980's will probably see more than 16 million



new households formed, creating unprecedented demand for housing. For example, in Hawaii, where land is already scarce, Oceanic Properties, the real estate subsidiary of Castle & Cooke, Inc., reports that the median price of a home is already over \$120,000.

Castle & Cooke predicts that by the turn of the next century, we'll have to share the land and use the space we have more efficiently in all of the 50 states.

## BURGER & SHAKE

563-2027

# OPEN

# 10<sub>am</sub> -- 9<sub>pm</sub>

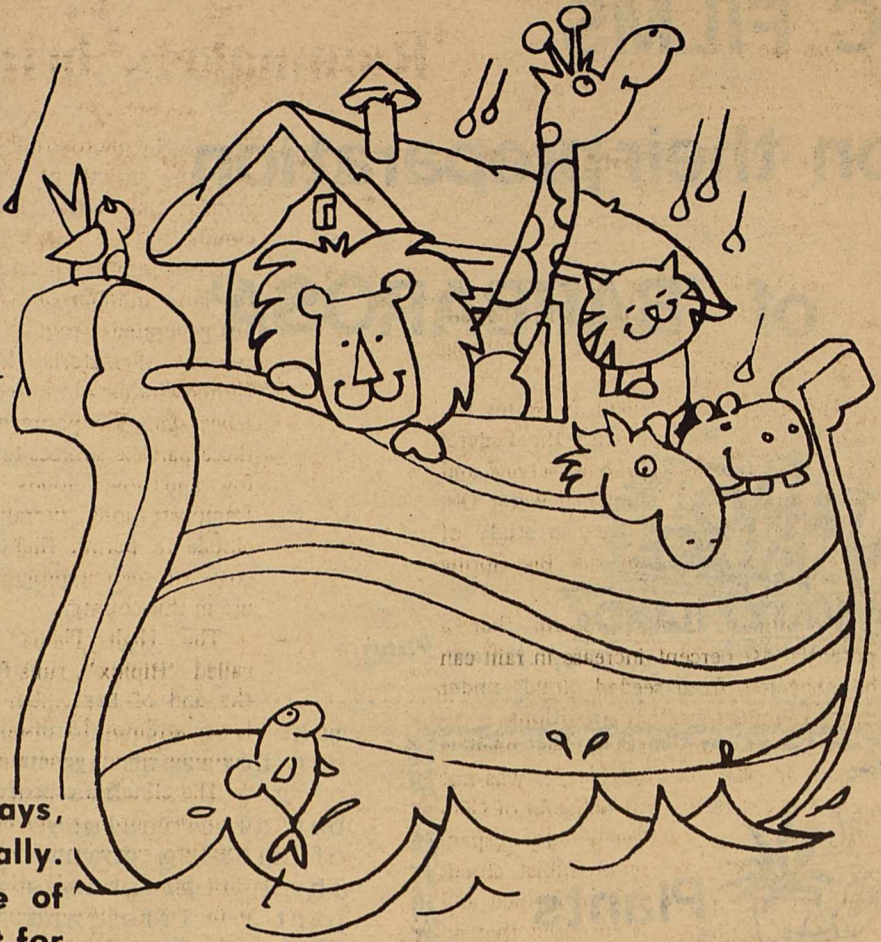
## DAILY

HOME GAME NIGHTS OPEN LATER

BOB BAUMANN, MANAGER

# On the highest authority...

## saving for a rainy day makes sense



Building an arc worked in Noah's Time, but nowadays, you'll need a good nest egg to stay afloat financially. Our savings plan offers high interest and a measure of security in a financial emergency. We think our's is right for you. Find out.

## THE FIRST STATE BANK OF BRACKETTVILLE

FDIC 563-2451

### TEXAS SHEEP & GOAT RAISERS ASSOCIATION

Fall is just around the corner the season for beautiful wool/mohair fashions. Why not win some valuable prizes while adding a lovely and practical addition to your wardrobe. Make It Yourself

With Wool competition is gearing up for the annual fashion and sewing contest. State Director, Mrs. E.S. (Jean) Herring of Junction, has announced plans for nine district contest in November at various locations. The State Contest will be held at Kerrville Inn of the Hills, Dec. 6 and the national finals will be in San Antonio, Jan. 25-28, 1981.

Make It Yourself With Wool is primarily a wool/mohair promotion and is sponsored by the American Sheep Producers Council, Texas Sheep and Goat Raiser's Association, Woman's Auxiliary to the Texas Sheep and Goat Raiser's and through donations from interested friends of the sheep and goat industry. The purpose is to focus attention on the beauty and versatility of wool; and or mohair to encourage use of these incomparable fabrics of yarn in sewing, knitting or crocheting fashionable garments; to offer young experts the opportunity to compete for valuable prizes and win recognition for their sewing skills.

More than a sewing, knitting or crocheting contest, it is a fashion competition. Judges look for coordination of fabric to the pattern, poise and presentation, suitability of the garment to the contestant's age and way of life as well as skill in construction.

Open to all American citizens regardless of race, creed or sex the contest is broken into the following age categories; Pre-Teen (10-13), Junior (14-16), Senior (17-24), Adult (24). Pre-Teens compete only at district level; Junior, Adult and Senior district winners advanced to state competition, and national finals include Juniors and Senior. District contest locations, dates and district directors include: District 1-Lubbock, Mrs. Wayne Timmons, Nov. 22, 1980; District 2-Fort Worth, Mrs. Joe Jackson, Nov. 22, 1980; District 3-4, San Angelo, Mrs. Dawson Coleman, Nov. 15, 1980; District 5-6-Kerrville Mrs. Jack Thorn, Jr., Nov. 8, 1980; District 7-Nacogdoches, Ms. Gloria Durr, Nov. 22, 1980; District 8-Ms. Linda Young, Nov. 5, 1980. District 9-Boerne, Mrs. Maurice Hensley, Nov. 8, 1980.

Information and entry blanks can be obtained at fabric stores, county extension offices or by writing State Director Jean Herring, Rte. 5, Box 16, Menard, Tx. 76859. Phone Junction, Tx (915) 446-2066, or by contacting National Director, Mrs. Jean Patterson, Box 93, Huston, Idaho. 83630.

\*\*\*\*\*



Both the Scots and the Japanese, in ancient times, believed that tortoise-shell cats could foretell storms.

### That's Motherhood!

ATTITUDES • FORECASTS • LITTLE - KNOWN FACTS

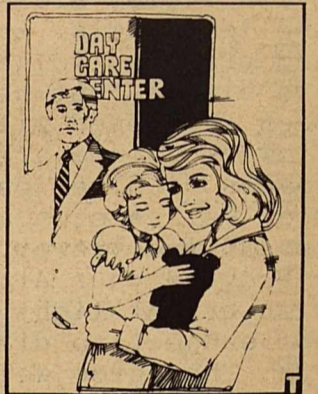
"Bureaucrats take heed," warns Dr. Maria Piers, founder and former dean of the Erickson Institute. "As the labor force rapidly swells with career women, working mothers and single parents, the majority's hue and cry for community-wide, standardized quality child care programs must be heard."

Quality child care is tough to find and define, claims Piers. It continues to be "a source of parental concern and aggravation." Dr. Piers, a member of the Kentucky Fried Chicken Time Out Institute, feels the "extended family (relatives, grandmother, aunt) is the ideal child care situation when a mother or father cannot be present round the clock." However, says Piers, "this concept is becoming less and less feasible as our lifestyles become more integrated and multi-faceted."

The Kentucky Fried Chicken Time Out Institute, founded in 1977, was formed to explore the changing role of today's women and the problems and concerns they face as lifestyle patterns shift. Mothering and its ramifications are the institute's areas of study this year.

Piers sees the lack of quality, structured care systems as a result of "myopic government thinking."

There are a number of qualified child care institutions springing up across the country, however. If the waiting lists are not too long and the expense isn't too steep, Piers feels these centers are especially beneficial



to children over 3 who "need more stimulation and educational activities unlike the younger child who basically requires simple custodial care."

Structured child care centers are somewhat difficult to assess without on-site inspections and possibly systematic trial and error eliminations... "a process that can be unsettling for both the parent and the child," says Piers. She suggests looking for sanitary conditions first. "Are rooms well aired? Is outdoor play encouraged? How are meals prepared, served and presented?"

As in the home, discipline must be allowed and freely utilized although "excessive and unending punishment such as isolation or corporal punishment has no place in child care," Piers says.

"Caretaker attachment is inevitable, claims Piers. "Parents don't need to feel threatened by it. The attachment is simply a child's display of love and trust and a reflection upon quality care."

## Doing something about the weather

### 'Rainmakers' bring out the best in a cloud

By MIKE McCULLOUGH  
Staff Services Assistant  
Texas Aeronautics Commission

Everybody in Texas talks about the weather. Now Texans, along with the federal government, are doing something about it.

The Texas Department of Water Resources in partnership with the Federal Water and Power Resources Service and the Colorado River Municipal Water District is completing a five-year study of aerial cloud seeding in the Big Spring area.

Preliminary results indicate that a potential 10 percent increase in rain can be expected from seeded clouds under normal summer weather conditions.

Although rain making has been a dream of man for centuries, it was not until 1946 that Vincent Schaefer of General Electric Labs succeeded. By dispensing dry ice into a cold, moist cloud, additional ice crystals were formed and fell as snow. Scientists surmised that an

increase in microscopic particles encouraged the growth of ice crystals in cold clouds and water droplets in warm clouds.

Silver iodine was later adopted due to the large number of particles that could be generated from a relatively small amount of material. In the 1950s, the United States Air Force, France and the Soviet Union experimented with both of these particle sources to disperse morning fog and low clouds around airports. Demonstrations literally cut holes in clouds to permit flight operations. The costs of such a program has limited its use in this country.

The High Plains summer project, called "Hiplox", runs from early May to the end of September in Big Spring. It is an attempt to discover how summer cumulus clouds generate rain.

The clouds are penetrated by a sensor-equipped aircraft which measures air temperature, wind speed and direction, moisture content and other meteorological data. This information is analyzed by

Texas Tech University researchers and is used, in part, to determine the nature of seedable clouds.

Advanced radar owned by the Federal Water and Power Resources Service and operated by Texas Tech, combined with satellite data, is used to find suitable clouds. When clouds are located, the aircraft, which also is equipped with a silver iodine dispenser, is dispatched. The aircraft flies over and through the clouds, releasing predetermined amounts of particles at specific altitudes. The results are documented and analyzed.

The Colorado River Municipal Water District owns the seeding aircraft—a Piper Navajo—and provides the crew. The water district has been seeding clouds in the Big Spring area since 1970.

Although their objective is to recharge lakes and deep wells for municipal use, dryland farmers may receive benefits as well. Crop production in the area has been up since 1970. Department of Water Resources estimates show that a 10 percent increase in rain in the 14 county target area would increase the value of agricultural output by \$4 million per year and boost personal income in the area by \$2 million. With research expenses subtracted, the cloud seeding operation costs between \$250,000 and \$300,000 per year—an excellent return on investment.

Despite the tremendous potential good which may come from weather modification, problems remain. Even proponents of cloud seeding admit that it is, at best, an inexact science. There is insufficient evidence that seeding alone actually produces rain. Successful seeding operations usually occur in areas where some potential for rain already exists.

Opposition to seeding often arises when the program is too successful. Farmers and ranchers adjacent to a target area often feel that seeding deprives them of potential rain. There is evidence that seeding operations may have even decreased rain in some areas.

Poorly conceived projects managed by unqualified individuals could create a real hazard to life and property. The Texas Legislature addressed this problem in 1977 by passing a weather modification law.

Its two basic requirements are that each project must employ a meteorologist licensed by the Department of Water Resources and that each project must be issued a permit by the department. The permit requires that the project be advertised in the target area and that hearings on the matter be held. If sufficient local opposition evolves, an election to approve or reject a project may be conducted. Under this law, the local citizens have the final say on weather modification in their area.



The Mickey Mouse Phone. ©  
© Walt Disney Productions  
Housing produced by American Telecommunications Corp.

Because you're  
picky, pick  
Mickey.


A certain kind of person shops for quality *first*. And if something's a little unusual, a little different, so much the better. If that's you, then it's time you discovered your Bell Business Office.

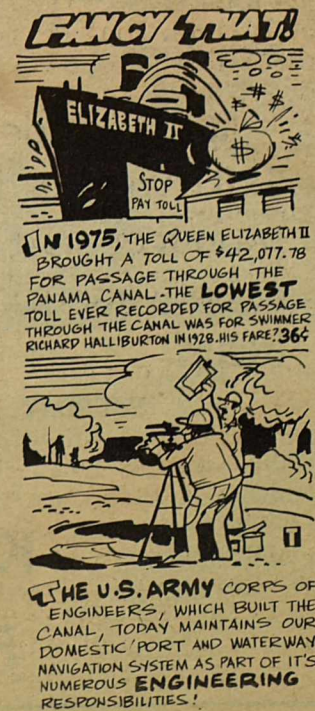
We've got phones in all styles; antique, ultramodern, warmly nostalgic. Phones that help make your life easier. From a simple extension, to one that'll dial the number for you.

But even more important, at Southwestern Bell you'll get genuine Bell. That means the working parts remain phone company property, so you can be sure they'll work. Or we'll fix them free. It's a level of quality—and service—you've come to expect from Southwestern Bell.

So when it comes to phones, come to your Bell Business Office. Because although you love Mickey Mouse... why waste your time with mickey-mouse details?

**Southwestern Bell. We talk your style.**

 Southwestern Bell



### New Booklet On Merchandising Tips Is Inflation-Fighter For Business

"Merchandising for Profit, a Guide for More Business" is a new eight-page tabloid publication that can help every businessman reap more profit in this inflation-ravaged age.

The booklet is a storehouse of tips and advice on "getting the most of what you've got" and there's dollars and cents suggestions on merchandising, advertising, motivating employees, handling credit, housekeeping, and the section on meeting and beating competition could mean the difference between profit and loss.

Another tip worth dollars suggests taking advantage of the local newspaper's professional art services and

layout expertise which can give any business, an extra edge in putting the best foot forward in advertising and promotion.

"Fantastic" is the way Lyndell Williams, Executive Director the Texas Press Association, describes the tabloid.

As Emerson said, "This time, like all times, is a very good one if we but know what to do with it."

All in all, the little tabloid rounds up a lot of good advice for every business, large or small.

Copies are available for \$1 from Merchandising, P.O. Box 29, Eastland, Texas 76448. (\$5 will bring 10 copies for distribution to employees).

## Chick Kazen

Actions of two government departments have drawn criticism on the House floor this week, and I anticipate Congressional action to clarify the law. One is methods used by the Department of Labor in enforcing the Farm Labor Contractors Registration Act. The second concerns the Department of Energy's policy on announcing notices of probable violations of its regulations.

The problem on farm labor contractors centers on determinations of definitions in the law. The law was drafted to protect migrant workers against abuses sometimes occurring in their hir-

ing, transportation, housing and working conditions. Two problems have developed. The federal government has ruled that all farm workers are to be considered migrants, even though they work year-round at the same farm or ranch. Then the government went on to rule that all employers of farm help are subject to regulations that include fingerprinting, annual registration, disclosure of crew chiefs' pay and other requirements designed to apply to itinerant "crew leaders".

I think Congress will act soon to clarify and re-define which farm labor contractors are meant to be covered.

#### ENERGY DEPARTMENT WATCHED

We are also looking into a practice whereby the Department of energy puts out press releases on notices of possible violations of its regulations. The Texas Oil Marketers Association has complained. It does not object to intensive audits of gasoline dealers to make sure they observe the law, but contend the press notices amount to penalties before violations have been determined to exist.

The Association, which is composed of petroleum wholesalers in Texas, says that the system may cause honest businessman who makes a mistake to be denounced as a law violator, before there has been a complete investigation. I think the Oil Marketers have a reasonable point. The present system means honest businessmen can suffer unwarranted damage to their reputations.

#### AID SMALL BUSINESS

We completed Congressional action last week on the Small Business Regulatory Flexibility Act, saying in effect to federal regulatory agencies that they should consider the problems of small business in demanding compliance with regulations. Among the cases that came to our attention were filling station operator who put in 600 hours filling out federal paperwork, a butcher who put a grated floor in his shop at the insistence of one federal agency and a month later was told by another agency that the grating was illegal, and an Idaho businessman who paid a \$500 fine rather than fill out a federal form 63 feet long.

Our new bill sharply reduces reporting demands on small business that do not have the attorneys, accountants or analysts that staff big firms. Our nations 13 million small businesses represent 97 percent of all firms, account for half of all private employment, and steadily make significant inventions to advance our technology. They are the backbone of our economy and as such deserve consideration.

#### SEE TAX ADJUSTMENTS

We had some good news last week when Charles Schultze, Chairman of the President's Council of Economic Advisors, and James McIntyre, Budget Bureau Director testified on Capitol Hill. They said the President would propose tax credits for the additional social security taxes due to take effect in January.

I oppose legislation for the higher levies, feeling it would reduce the takehome pay of workers and increase prices as employers added their higher taxes to the price of their goods or services. The proposed tax credits would tend to ease those burdens.

I also welcomed the estimates of these two experts who testified that our recession was ending sooner than expected. If their predictions are correct, it is good news for our country.

\*\*\*\*\*

## It's decision time in Farm Bureau!

In Farm Bureau, members are encouraged to take part in all three major phases of the organization...

**Education**—through publications, seminars, meetings.

**Decision**—through policy development process.

**Action**—through legislative activities.

It's now decision time. . .when policies for 1981 will be decided. If you are an agricultural producer in Farm Bureau, please attend your county annual convention and let your voice be heard.

TUESDAY, SEPTEMBER 30, 1980; 6:30 pm;  
HIGH SCHOOL AUDITORIUM

**KINNEY COUNTY  
FARM BUREAU**

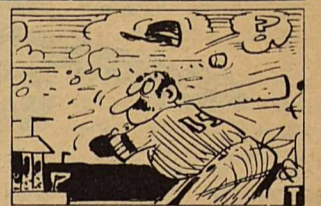


### GOOD NEWS about GOOD SPORTS

By Lynn Swann  
National Director  
Hi-C® Good Sports

"Babe" Didrikson Zaharias, possibly the greatest woman athlete of this century, was a champion in track and baseball as well as golf. She toured the country with a professional barnstorming baseball team — composed only of men — and played only against men. She could throw a ball almost 300 feet on a straight line.

Proving once again that a handicap need not keep a person from succeeding in sports, Hugh Daily, who hurled for the Cleveland Nationals, pitched a no-hit, no-run game in 1883 against Philadelphia. One of baseball history's most unusual pitchers, he had only one arm, having lost his left hand and forearm years before in an explosion. He became the second man to strike out 19 batters in a nine-inning game — a major league record since equaled



but never surpassed.  
Tradition was born on April 14, 1910 — opening day of the baseball season in Washington, D.C. President William H. Taft threw out the first ball. Ever since that time, presidents, mayors and assorted public officials have been tossing the first ball of the season in cities across the land.

For answers to your questions about sports feats and records, look on the backs of specially marked Hi-C labels or write to me, Lynn Swann, arm, having lost his left hand and forearm years before in an explosion. He became the second man to strike out 19 batters in a nine-inning game — a major league record since equaled

"Hi-C" is a registered trademark of The Coca-Cola Company. "Good Sports" is a trademark of The Coca-Cola Company.

# THE LONGHORN

## TRY OUR SUNDAY BUFFET

THE LONGHORN  
RESTAURANT, MOTEL & LOUNGE

563-2767

3 Miles West of  
BRACKETTVILLE, TEXAS

Your Host TRAVIS & LANETTE WILSON

## AirSho to Feature Vintage Aircraft

### HONDO AIRSHO

HONDO--The excitement of a county fair will combine with the thrill of the daring AirSho in Hondo on the weekend of September 20-21 to offer area residents plenty of entertainment.

This will mark the first official Medina County Fair since 1932 and from the schedule of events it looks like a shing-ding both days at Hondo City Park. It will kick off at 10 am September 20 with a giant parade through downtown Hondo.

The AirSho will be presented by the famed Confederate Air Force and its thrilling flying feats will begin at 2 pm on Sunday, September 21 at Hondo Airbase.

AirSho admission prices will be \$10 per person over six years of age at the gate, but advance tickets are on sale through Sept. 20 for \$5 per person. In San Antonio they are on sale at all Sears, Joskes and Montgomery Ward Stores.

They are also on sale at all Gill Savings office at San Antonio Hondo, Castroville, Devine, Lytle Pearsall and Cotulla.

Airbase gates will open at 10 am and approximately 60 WWII vintage aircraft will be on static display until show time. Other attractions, plus food and refreshments, will include the 149 AD Band, Ronnie Mason picking and singing, Boogie Allen and Helotes, two shows by the South Texas Airborne Squadron with radio controlled aircraft and a C-130 from the famed 433rd TAW Alamo Wing at Kelly will demonstrate a cargo drop and short field landing.

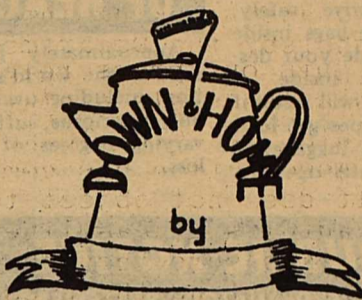
Meanwhile over at the City Park those attending the Medina County Fair will enjoy armadillo races, bluegrass music, mariachi music, square dancing, Arabian dancing, a chili cook, and the usual livestock and home arts

judging and an art show and sale. Some unique events people will enjoy include a homemade wine judging, a corn shucking contest, cow chip tossing, horseshoe and washer pitching. The kids will love the carnival and the opportunity to ride a helicopter and a hot air balloon.

Cowboy horse races will be run Saturday and the finals on Sunday with a \$600 saddle going to the winner. Fiddlers will compete for \$600 in prizes at the fiddlers contest.

There will be plenty of food with the Hondo Young Farmers serving a barbecue plate at noon and evening on Saturday and noon on Sunday.

\*\*\*\*\*



### BOILED SPICED SHRIMP

Wash Fresh Shrimp, have large pot boiling water with 1 cup celery, leaves, 1½ teaspoon whole black peppers, teaspoon salt, ½ cup onion chopped, few white peppers, ½ lemon. Drop shrimp shell and all into boiling water, bring to boil and boil 3-5 minutes or until pink--Serve on large platter..... every one peel his own....

### COCKTAIL SAUCE

Make as much or as little as you want, Tomato Sauce, garlic mashed prepared horseradish, worcestershire sauce, pinch salt, lemon juice, mix all together that morning put in refrigerator until ready to use....

\*\*\*\*\*

IF EGGS ARE BOILED IN SALTED WATER THE SHELLS WILL PEEL EASILY.

\*\*\*\*\*

### TEXAS ANIMAL HEALTH COMMISSION

Livestock producers in this area need to check their animals closely for possible screwworm infestations, Dr. John Holcombe, executive director, Texas Animal Health Commission, Austin, said today.

"A confirmed screwworm case was found in Kinney County near Brackettville about two weeks ago. If there are additional screwworm there, this is the time they will be hatching," Dr. Holcombe said.

If you think it is too much of a bother to check for screwworms in your cattle, consider the chore of Joe Bloodworth of Del Rio, staff member of the Texas Animal Health Commission.

Bloodworth checks screwworm fly traps on a 200-mile stretch

of the Rio Grande River. The traps are on 15 ranches, Each trap is baited and tied in a tree to intercept the route of flies. Trapped flies are inspected to make sure no native screwworm flies go unreported.

Bloodworth makes his run twice a week over some of the roughest terrain in Texas. He empties each

trap separately and also uses a microscope to detect any possible native screwworm fly.

"It is a time-consuming job, but it is important as a part of the program to keep a close watch on screwworms," Bloodworth explained.

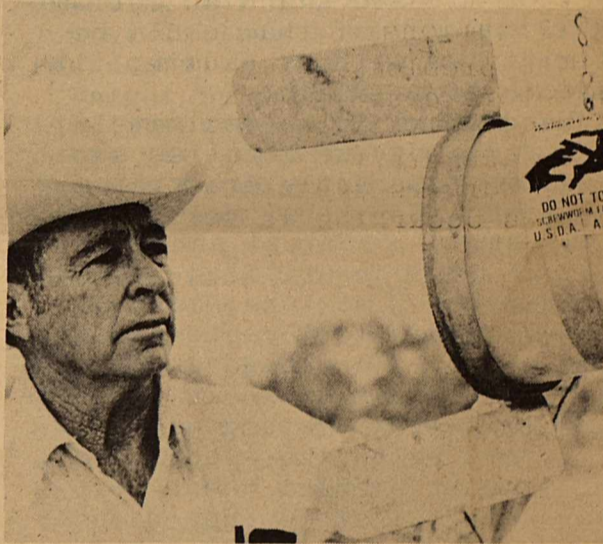
Additional elements of the plan include distributing sterile screwworm flies over 5,600 square miles in the vicinity of the Kinney County case. Del Rio Flying Service is air-dropping the flies at the rate of 1,700 per square mile weekly; drops are made four days a week.

In addition, three federal and two state livestock inspectors are conducting a screwworm survey in the area of the case. Nine inspectors working for the Mexico-U.S. Screwworm Commission are also involved.

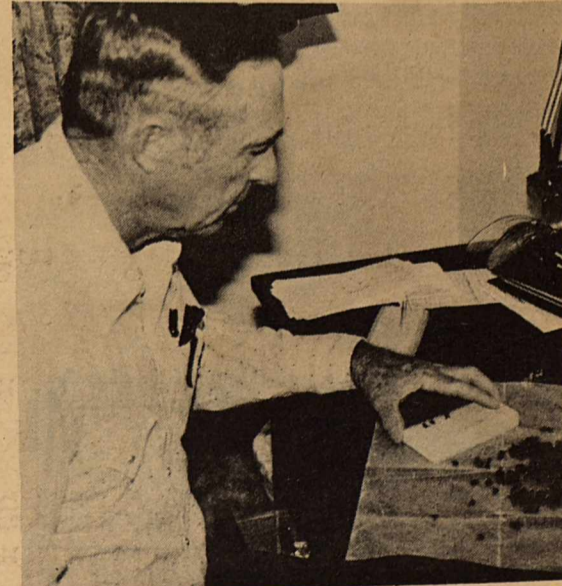
If you find an infected wound on an animal, get a sample of the larvae and mail it in postage-free mailing kits to the laboratory at Mission. The kits are available at the County Agent's Offices, veterinarians, or Animal Health Commission area offices. "Treat wounds on animals to prevent screwworm infestations," Dr. Holcombe said.

Producer cooperative is the key in keeping this area screwworm free," Dr. Holcombe said.

\*\*\*\*\*



Joe Bloodworth, Del Rio, Texas Animal Health Commission, prepares a fly trap for use in keeping a close watch on possible screwworm outbreaks in this area. Bloodworth checks traps along a 200-mile stretch of the Rio Grande River.



After emptying the fly trap, Joe Bloodworth, Texas Animal Health Commission, Del Rio, separates the flies caught: he is looking for a native or wild screwworm. The recent finding of a screwworm in this area has resulted in authorities asking all livestock producers to be on the watch for screwworms.

**PRICKLYPEAR IS MAJOR BRUSH PROBLEM IN EDWARDS PLATEAU, A & M STUDY SHOWS**

UVALDE--Pricklypear infestation is rapidly becoming a major brush on Texas rangelands, according to a study released by Texas A&M University range specialists recently.

Pricklypear was found to occupy about 25.5 million acres (28 percent) of rangelands within the state. The infestation ranged from a low one percent in the Trans-Pecos to 54 percent in the Edwards Plateau, where much denser stands were also reported.

Fifty-six East Texas counties were not included in the survey because of the low degree of infestation encountered there.

Wildlife, the specialists found, derived food and cover benefit from pear in 35 percent of Texas counties compared to 27 percent for livestock. In live-stock production, pricklypear was used for food in 94 percent of the counties with winter feeding a distant second. More South Texas producers reportedly use pricklypear for wildlife and livestock production than do producers in any other region.

The specialists maintain the 88 percent of pricklypear could be eliminated with no adverse effect on livestock and an estimated 73 percent of that could be eliminated without causing ill effects to wildlife.

Landowners in approximately 37 percent of the counties surveyed are currently practicing some sort of control measure with a variety of chemical and mechanical methods utilized. A Picloram-2,4,5-T mixture was the preferred chemical control measure employed and hand grubbing was listed most often as the primary mechanical method used.

According to the study, the pricklypear problem doesn't appear critical statewide. However, it is much more severe in the Edward's Plateau and Cross Timbers regions. Nearly 50 percent of Edwards Plateau producers have reported livestock health problems due to pricklypear infections, almost four times the magnitude of other regions. Bowel compaction among sheep is the main problem encountered.

Continued research, the specialists surmise, is needed to find more cost-effective control practices and to develop alternative means for utilizing pricklypear as a feed source.

\*\*\*\*\*



An ancient Roman law forbade worshippers to enter the temple of Cybele after eating garlic.



A house with small doors and windows is more energy-efficient than a structure with large window and door areas.

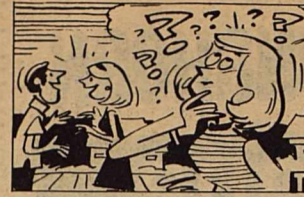
**TIPS ON TRIPS**  
Samsonite's Traveler Advisory Service



With thousands of people traveling by air each year, it's no wonder that occasionally luggage gets lost or misdirected. A few simple safeguards will help assure that your bags arrive safely.

- Label your bags inside and out. Include your destination-address inside. A quicker reunion will result if your baggage does get lost.
- Lock your luggage to prevent accidental opening.

- Remove old baggage tags before starting out.
- Check the destination code on your baggage claim check before your bags go down the conveyor belt.
- Check a dependable luggage style such as Samsonite's Silhouette II. The durable hardside cases abound with travel-ease features like interior-exterior identification and cart-wheels for easy handling.
- Lastly, check in early at the airport. In a last minute rush, you may make the plane, but your luggage may not.



One out of every 20 people has a hearing problem—fortunately most can be helped.

People who find themselves straining to hear in conversation or often asking others to repeat things may be experiencing the early signs of hearing loss.

A hearing impairment is especially important to children, whose symptoms include a short attention span, limited vocabulary and difficulty in learning to speak. Frequently, however, hearing loss takes place so gradually the individual doesn't sense the problem.

Experts say the sooner hearing problems are diagnosed, the easier the rem-

edy. According to statistics, the majority of people who suffer from uncorrected hearing loss can be helped either medically, surgically, through amplification or therapy.

If you suspect you or someone you know has a hearing problem, see your physician or hearing aid specialist promptly.

For free information on hearing loss and its solutions, write to Siemens Hearing Instruments, 685 Liberty Ave., Union, N.J. 07083.



**NEWS OF HEALTH**

Approximately five percent of the world's population, including over 17 million Americans, suffers from varying degrees of hearing loss.

**PUBLIC NOTICE**  
BRIEF EXPLANATORY STATEMENTS OF PROPOSED CONSTITUTIONAL AMENDMENTS  
GENERAL ELECTION  
NOVEMBER 4, 1980

**PROPOSITION NO. 1 ON THE BALLOT**

Senate Joint Resolution 35 proposes a constitutional amendment that would authorize the Legislature to permit banks to establish and operate unmanned teller machines within the county or city where the banks are located and to share the use of teller machines on a basis consistent with anti-trust laws, if it finds such operation will serve the convenience of the public. The Legislature has already passed enabling legislation (H.B. 1510) for this proposed amendment.

The proposed amendment will appear on the ballot as follows: "The constitutional amendment permitting the legislature to authorize banks to use unmanned teller machines within the county or the city of their domicile on a shared basis to serve the public convenience."

**PROPOSITION NO. 2 ON THE BALLOT**

House Joint Resolution 97 proposes a constitutional amendment that would grant the State and the accused the right to an interlocutory appeal from the following trial court rulings in criminal cases: pretrial rulings on the constitutionality of a statute; on a motion to quash, dismiss, or set aside an indictment; and on a motion to suppress evidence.

The proposed amendment will appear on the ballot as follows: "The constitutional amendment authorizing appeal of certain pretrial rulings of a trial court in a criminal case by either the state or the accused."

**PROPOSITION NO. 3 ON THE BALLOT**

House Joint Resolution 98 proposes a constitutional amendment that would require a single appraisal of all property subject to ad valorem taxation and would provide for a single board of equalization within each county. The con-

stitutional requirement that the county commissioners court sit as a board of equalization would be eliminated, and elected officials of the county or governing body of the taxing unit would be prohibited from serving as members of the board of equalization.

The proposed amendment will appear on the ballot as follows: "The constitutional amendment requiring a single appraisal and a single board of equalization within each county for ad valorem tax purposes."

**PROPOSITION NO. 4 ON THE BALLOT**

Senate Joint Resolution 18 proposes a constitutional amendment that would allow the Legislature to authorize the conduct of bingo games by certain specified groups for charitable purposes, subject to the limitations that operation of the games must be approved in local option elections and that all proceeds must be spent in Texas.

The proposed amendment will appear on the ballot as follows: "The constitutional amendment to authorize bingo games on a local option election basis if the games are conducted by a church, synagogue, religious society, volunteer fire department, nonprofit veterans organization, fraternal organization, or nonprofit organization supporting medical research or treatment programs and if the proceeds are to be spent in Texas for charitable purposes of the organizations."

**PROPOSITION NO. 5 ON THE BALLOT**

House Joint Resolution 86 proposes a constitutional amendment that would allow the Legislature to authorize the Governor to exercise fiscal control over the expenditure of certain appropriated funds, subject to any conditions and limitations provided by law and subject to the ap-

proval of a budget execution committee that would be composed of the Governor, Lieutenant Governor, Speaker of the House of Representatives, Chairman and Vice-chairman of the Senate Finance Committee, and Chairman and Vice-chairman of the Committee on Appropriations of the House of Representatives.

The proposed amendment will appear on the ballot as follows:

"The constitutional amendment to grant the governor power to exercise fiscal control over the expenditure of appropriated funds as provided by law."

**PROPOSITION NO. 6 ON THE BALLOT**

Senate Joint Resolution 8 proposes a constitutional amendment that would allow the Governor who appointed a previously confirmed official to remove that official from office subject to the advice and consent of the Senate; and if the Legislature is not in session, to call a special session of the Senate which may last no longer than 2 days for consideration of the removal.

The proposed amendment will appear on the ballot as follows: "The constitutional amendment to authorize the governor to remove appointed officers with the advice and consent of the senate."

**PROPOSITION NO. 7 ON THE BALLOT**

House Joint Resolution 121 proposes a constitutional amendment that would authorize counties with a population of 5000 or less to construct and maintain private roads if they impose a reasonable charge for the work. The Legislature by general law may limit this authority. Revenue received from private road work may be used only for the construction, including right-of-way acquisition, or maintenance of public roads.

The proposed amendment will appear on the ballot as follows:

"The constitutional amendment authorizing counties with a population of 5000 or less to perform private road work."

**PROPOSITION NO. 8 ON THE BALLOT**

Senate Joint Resolution 36 proposes a constitution-

al amendment that would change the jurisdiction and authority of the State's appellate courts. The amendment would change the name of the Courts of Civil Appeals to Courts of Appeal and provide that these courts have intermediate appellate jurisdiction over both criminal and civil cases. The amendment would change titles for the Associate Justices of the Supreme Court to Justices and would require members of the Supreme Court to be attorneys licensed in this state while holding office.

The proposed amendment will appear on the ballot as follows:

"The constitutional amendment to change the name of the Courts of Civil Appeals and the names and qualifications of the justices of the Supreme Court and to prescribe the jurisdiction and authority of the appellate courts."

**PROPOSITION NO. 9 ON THE BALLOT**

House Joint Resolution 54 proposes a constitutional amendment which defines separate property owned by either spouse as all property, both real and personal, of a spouse owned or claimed before marriage, and that acquired afterward by gift, devise or descent. Persons about to marry and spouses, without the intent to defraud pre-existing creditors, may by written instrument from time to time partition between themselves all or part of their property. Spouses may exchange a community interest in property owned or to be acquired for a community interest in other community property. The amendment would allow spouses to agree in writing that income or property arising from any separate property is to be separate property rather than as community property as it would be in the absence of an agreement. The amendment proposes that a gift from one spouse to another is presumed to include all income or property deriving from such gift.

The proposed amendment will appear on the ballot as follows:

"The constitutional amendment allowing spouses to agree that income or property arising from separate property is to be separate property."



# swtjc

Enrollment figures for the fall of 1980 released Friday at South west Texas Junior College indicate an increase higher than national and state trends in college enrollments.

With some minor adjustments still to be made, SWTJC enrollment has reach 2260, a total that represents a ten percent increase over the 2078 total last fall. The September 8 edition of The Chronicle of Higher Education reports that enrollments throughout the nation will show only a 1.1% increase.

"As a general rule, we have been showing a ten percent increase

every year over the last five years, with a few exceptions, and that is very gratifying when national trends are considered," said SWTJC Dean of Admissions-Registrar John Allen Davis.

"Fall semester enrollments are usually lower than spring, but this fall's figure is an all time high for SWTJC," he added.

SWTJC enrollment also fares well when compared with college enrollments in Texas. The Dallas County Community College District, the largest community college system in the state, only showed a five percent increase this year.

The breakdown of enrollment at the various areas served by SWTJC is as follows: Uvalde Day, 994; Uvalde night, 289; Del Rio, 494; Eagle Pass, 309; Crystal City,

Carrizo Springs and Asherton, 137; Dilley, 37.

## TAX ASSESSOR COURSE SLATED

The Second course of an eight course series leading to certification as a tax assessor will begin at Southwest Texas Junior College on Tuesday, September 23, at 7:00 pm.

Registration and the first class meeting for the course, entitled "Basic Assessment Practice" will be in Room 3 of the Miller Building on the SWTJC campus. The cost of the course is \$40.00 per student for 18 clock hours.

The class, which is approved by the Texas Association of Assessment Officers, will meet every Tuesday and Thursday from 7:00 to 10:00 pm through October 9. It will be taught by Juanita Maples, Tax Assessor for the Kerrville Independent School District.

Students completing the eight course series will receive Certified Tax Assessor (C.T.A.) certification.

For further information, contact Jerald Underwood, Dean of Special Services, SWTJC, 512/278-4401, Ext. 285.

\*\*\*\*\*

Beginning Tuesday, September 23, at 3:30 pm, Phi Theta Kappa National Honorary Scholastic Fraternity will sponsor a class in drafting for Southwest Texas Junior College students and area residents.

Taught by Bahmann "Moe" Madjallal, the non-credit course will cover the fundamentals of drafting for students interested in engineering and architecture. Madjallal has been a draftsman for fourteen years.

"There is a sizeable need for people with drafting skills in Southwest Texas," Madjallal said. "It is a great way to pick up extra money or to insure that construction jobs on your home or business are properly planned.

"The course will also prepare students for engineering or drafting degree programs at colleges and universities," he added.

Madjallal's extensive experience in the filed also includes teaching drafting for five years in a technical school, teaching this same course in the spring of 1980 at SWTJC, drawing the plans to remodel the snack bar at the college, and designing the SWTJC Del Rio Center and the chandeliers in the student center.

The Class will meet on Tuesday, beginning September 23, in lecture room number two in the Garner Science Building, from 3:30 to 6:00 pm, through May 8. Cost for the course will be \$15.00 with a nominal charge for supplies; students will register at the first class meeting.

For further information, contact Madjallal at 278-6912 or 278-4401, Ext. 234.

\*\*\*\*\*

Junior colleges are not normally considered competitive with four year universities, particularly on the national level. The American Chemical Society chapter at Southwest Texas Junior College, however, is not normal.

Ed Heath, Instructor of Chemistry and ACS sponsor at SWTJC, recently received a letter from Mr.

## AVISO PUBLICO

### Breves Declaraciones Explicativas De Las ENMIENDAS CONSTITUCIONALES PROPUESTAS ELECCION GENERAL 4 DE NOVIEMBRE DE 1980

#### PROPOSICION NO. 1 EN LA BOLETA

Resolución Conjunta #35 del Senado propone una enmienda constitucional que autorice a la Legislatura permitir a los bancos establecer y operar máquinas registradoras automáticas (teller machines) dentro del condado o ciudad en donde están los bancos compartiendo el uso de las máquinas registradoras de acuerdo con las leyes antimonopolistas, si acaso esta operación resulta conveniente para el público. La Legislatura ya aprobó la autorización de esta legislación (H.B. 1510) para la proposición de esta enmienda.

La enmienda propuesta aparecerá en la boleta como sigue: "La enmienda constitucional permite a la Legislatura autorizar que los bancos usen máquinas registradoras automáticas (teller machines) dentro del condado o ciudad de su domicilio en un plan de cooperación para conveniencia pública."

#### PROPOSICION NO. 2 EN LA BOLETA

Resolución Conjunta #97 de la Cámara propone una enmienda constitucional que conceda al Estado y al acusado el derecho de una apelación interlocutoria en los siguientes fallos de la corte en causas criminales: los fallos antes del juicio sobre la constitucionalidad de una ley; sobre la petición para anular, destituir, o desecher una acusación; y sobre una petición para suprimir la evidencia.

La enmienda propuesta aparecerá en la boleta como sigue: "La enmienda constitucional autoriza la apelación de ciertos fallos antes del juicio de una corte en una causa criminal por el Estado o por el acusado."

#### PROPOSICION NO. 3 EN LA BOLETA

Resolución Conjunta #98 de la Cámara propone una enmienda constitucional que requiera una evaluación de todos los bienes sujetos a los impuestos de ad valorem y proveerá únicamente una junta para

revisar avalúos dentro de cada condado. El requisito constitucional de que la corte de comisionados del condado sea la junta de avalúos será eliminado, y a los oficiales electos del condado o de la comisión directiva de la unidad fiscal se les prohibirá servir como miembros de la junta de revisión de avalúos.

La enmienda propuesta aparecerá en la boleta como sigue: "La enmienda constitucional requiere solamente una evaluación y una junta para revisión de avalúos en cada condado para determinar los impuestos de ad valorem."

#### PROPOSICION NO. 4 EN LA BOLETA

Resolución Conjunta #18 del Senado propone una enmienda constitucional permitiendo a la Legislatura el autorizar juegos de bingo por grupos con propósitos caritativos solamente sujetos a las limitaciones de que la operación de los juegos tiene que ser aprobada en elecciones de opción local, y que todas las ganancias tengan que ser usadas en Texas.

La enmienda propuesta aparecerá en la boleta como sigue: "La enmienda constitucional autoriza los juegos de bingo bajo elecciones de opción local si los juegos son dirigidos por, ya sea, una iglesia, una sinagoga, una asociación religiosa, un servicio voluntario de hombres, una sociedad no lucrativa de veteranos, una organización fraternal, o una sociedad no lucrativa que apoya la investigación médica o programas de tratamiento médico y si las ganancias son usadas en Texas para los propósitos caritativos de las organizaciones."

#### PROPOSICION NO. 5 EN LA BOLETA

Resolución Conjunta #86 de la Cámara propone una enmienda constitucional que permite a la Legislatura autorizar al Gobernador para que ejerza control fiscal de los gastos de ciertos fondos financieros previamente asignados, sujeto a las condiciones y

limitaciones proveídas por la ley y sujeto a la aprobación de un comité ejecutivo del presupuesto que constará del Gobernador, Gobernador Teniente, Presidente de la Cámara de Representantes, Presidente y Vice-presidente del Comité de Finanzas del Senado, y Presidente y Vice-presidente del Comité de Asignaciones Fiscales de la Cámara de Representantes.

La enmienda propuesta aparecerá en la boleta como sigue: "La enmienda constitucional concede al Gobernador el poder para ejercer control fiscal de los gastos de los fondos asignados según la ley."

#### PROPOSICION NO. 6 EN LA BOLETA

Resolución Conjunta #8 del Senado propone una enmienda constitucional que permita al Gobernador remover a un oficial de su cargo aunque este haya sido previamente nombrado por el Gobernador y confirmado por el Senado. El remover al oficial será únicamente bajo el consentimiento del Senado, y si la Legislatura no está en sesión, se convocará una sesión extraordinaria del Senado, la cual no durará más de dos días, para considerar la eliminación del oficial en caso.

La enmienda propuesta aparecerá en la boleta como sigue: "La enmienda constitucional autoriza que el Gobernador remueva a los oficiales nombrados bajo consejo y consentimiento del Senado."

#### PROPOSICION NO. 7 EN LA BOLETA

Resolución Conjunta #121 de la Cámara propone una enmienda constitucional que autorice a los condados con una población de 5000 o menos, que construyan y mantengan caminos privados cobrando razonablemente por el trabajo. Por ley, la Legislatura puede limitar esta autoridad. Los ingresos recibidos por trabajo en caminos privados se pueden usar solamente para construcción, para adquisición de derecho de paso, o para el mantenimiento de caminos públicos.

La enmienda propuesta aparecerá en la boleta como sigue: "La enmienda constitucional autoriza que los condados de 5000 o menos trabajen en caminos privados."

#### PROPOSICION NO. 8 EN LA BOLETA

Resolución Conjunta #36

del Senado propone una enmienda constitucional que cambie la jurisdicción y autoridad de las cortes de apelación del Estado. La enmienda cambiará el nombre de Cortes de Apelaciones Civiles a, Cortes de Apelación, dando a estas cortes jurisdicción de apelación sobre casos criminales y civiles. La enmienda cambiará el título de los Jueces Asociados de la Corte Suprema a, Jueces, y requerirá que los miembros de la Corte Suprema sean abogados con licencia del estado de Texas mientras permanezcan en el puesto.

La enmienda propuesta aparecerá en la boleta como sigue: "La enmienda constitucional que cambia el nombre de Cortes de Apelaciones Civiles y el nombre y requisito de los Jueces de la Corte Suprema y dicta la jurisdicción y autoridad de las cortes de apelación."

#### PROPOSICION NO. 9 EN LA BOLETA

Resolución Conjunta #54 de la Cámara propone una enmienda constitucional que define la propiedad que posee cualquiera de los cónyuges como separada, incluyendo las dos clases—de bienes raíces y los bienes inmuebles—los tales fueron propiedad de alguno de los cónyuges antes del matrimonio o fueron adquiridos después como un regalo, ya sea un legado de bienes raíces, o de descendencia. Las parejas que están por casarse o los que ya están casados, y sin la intención de defraudar a sus acreedores preexistentes, pueden repartirse de vez en cuando, entre si y por escrito, toda o parte de su propiedad. Pueden también intercambiar un interés común en bienes poseídos o que van a poseer por un interés común en la comunidad de bienes. La enmienda permitirá a los cónyuges convenir por escrito que los ingresos o bienes derivados de cualquier propiedad particular seguirá siendo propiedad particular en lugar de ser comunidad de bienes como sería si no existiera este convenio por escrito. La enmienda propone que el regalo de un cónyuge a otro se supone que incluye todos los ingresos y bienes derivados de tal regalo.

La enmienda propuesta aparecerá en la boleta como sigue: "La enmienda constitucional permite a los cónyuges el consentir que los ingresos o los bienes que se deriven de los bienes particulares permanecerán como bienes particulares."

I. Dwaine Eubanks, Chairman of the Council Committee on Chemical Education of the ACS, informing him that the SWTJC chapter had been placed in the top 7% of the society's chapters on the national level. ACS has chapters on such prestigious campuses as Harvard, Berkeley, UT-Austin and virtually every other major university in the nation.

Mr. Edward wrote, "Each year the council committee on Chemical Education of the American Chemical Society...selects for special recognition those chapters that have completed excellent records during the year. Out of the total of 743 chapters, fifty-one were considered to be commendable for the 1979-80 academic year.

"I am pleased to inform you that the ACS Student Affiliate Chapter at your institution is among a select group of commendable chapters. The students of the chapter and you, their advisor, can be proud of this accomplishment."

When the numerous quality activities of the SWTJC chapter of ACS are considered, it is not surprising that it received this honor. Each year the society sponsors a chemistry seminar for area high school students. Nationally recognized speakers are featured for both the high school teachers and students. Last year, the featured speakers were former U.S. Air Force Colonel Jud Ashmore who spoke on weather forecasting and pollution and has had professional experience in Arizona, Maine, Illinois, Labrador, the Greenland Icecap, Korea, Japan, and the Strategic Air Command of Omaha, Nebraska, and Dr. Benjamin Plummer, Dean of the College

of Chemistry at Trinity University. The ACS chapter at SWTJC also received an Innovative Program Grant last year to conduct a survey of Southwest Texas farmers concerning their use of pheromone for insect control. The study created two new classes at SWTJC as thirty-four students worked in a Technical Writing Group and a Data Processing Group to conduct the evaluate the survey. A seminar for area farmers concluded the grant activities.

National accolades have almost become a way of life for the SWTJC ACS chapter. Again, last year, they were the subject of a feature article in the ACS news letter published in Washington D.C.

Most of the ACS activities at SWTJC are scheduled for the spring semester this year. They hope to even more extensively involve area high school students in chemistry in seminars and hands-on demonstrations and instruction. For further information, contact Ed Heath at 278-4401, Ext. 224.



## AMERICA THE BOUNTIFUL

### GOOD THINGS FROM TREES

It's not a tall story to say the U.S. is the number one producer of a certain type of oil—it's the tall oil story.

Tall oil is a by-product of papermaking. It comes from the pine wood used to make a particular type of pulp for paper and paper products. The Swedes, who first recovered it, named it "Tallolja" meaning pine oil. When production was started in this country, the name was modified to "tall oil" to distinguish it from a product already well-known here as "pine oil" that has a different chemical composition.

The United States leads the world in the production and use of tall oil. We create some \$200 million worth of this product every year. We use it in a variety of ways. Chemicals made from tall oil are used to make protective coatings, soaps and shampoos, detergent, rubber, paint, varnish, ink and lacquer, waxes, polishes, adhesives and agricultural products. It's used in the mining industry to separate one metal from another in ore and it's used in the pharmaceutical industry to make medicines, such as cortisone. Tall oil even helps improve our stock of crude oil, since it can be used to get more oil out of an oil well.



As part of the paper-making process, an oil is produced that can prove pretty useful.

U.S. production of tall oil came into prominence in World War II because so many of our other oils were channeled into the war effort.

Today, tall oil's major advantage over other types of oil is that it has not been affected by agricultural conditions or a changing economy. Tall oil comes from Southern pines which grow abundantly in east Texas and across the deep south into the Carolinas.

Starting this year, production levels of intermediate chemicals from tall oil will be improved by a 35,000 metric-ton-a-year distillation plant put up by Georgia-Pacific in Arkansas. The plant will make fatty acids, rosin acids and other chemicals, and will utilize a process that increases the yield of these chemicals without

boosting normal energy requirements.

Basically, tall oil is produced from raw wood. The wood is reduced to chips which are then digested under heat and pressure with a mixture of sodium hydroxide and sodium sulfide. This causes the rosin and fatty acid soaps in the wood to separate out. They are skimmed off and reacted with sulfuric acid to convert them into free rosin and fatty acids. The mixture settles and the impurities are separated out. Then the tall oil is washed with hot water and allowed to settle before it's drawn off and stored.

The tall oil this process produces would seem to settle a tall order of turning an abundant resource into useful products for America.

CHRISTMAS CARDS ARRIVED...

CHRISTMAS TAGS, PAPER, POST CARDS.....

NEW CANDLES....

TOYS.....

NEW GLASSWARE

STILL A FEW ITEMS ON SALE....

**OLD FORT GIFT SHOP**

563-2885

## NEWS OF HEALTH

### ASTHMA

An estimated one to two percent of all Americans suffer from asthma. Asthma is a disorder of the bronchial tubes which carry air from the windpipe into the lungs. During an asthma attack, these tubes become constricted and the individual has difficulty breathing.

Asthma is much more frequent among children than adults; more frequent in boys than girls. Fortunately, however, it is usual for attacks to become less frequent and severe during middle and late adolescence, and then disappear.

About 50 percent of children who are asthmatic will be symptom-free in adulthood. Only about five to ten percent will continue to have severe disability from the condition as adults. This will be more likely if the asthma began in infancy in conjunction with eczema.

Often, even those not completely symptom-free after adolescence will experience only occasional mild attacks at infrequent intervals—although sometimes severe attacks may recur years or decades later.

A new medicine that's been successful in the treatment, relief and control of the distressing symptoms of asthma (and emphysema and bronchitis) has recently become available here. Phyllocontin Tablets, developed in England, have been



Most children who suffer from asthma will outgrow it. introduced to the United States by the Purdue Frederick Company, an international pharmaceutical research firm. The tablets, available by prescription, should usually be taken at least twice daily and can provide round-the-clock relief.

Most frequently, asthma attacks result from allergic factors; however, they may also be caused by nervous or psychological factors, physical exertion or respiratory infection.

## Sweet-Sour Brisket For Rosh Hashanah

Fall brings several important holidays. On Rosh Hashanah Jewish families across the country will be observing the High Holy Days for a ten-day period beginning on September 11 and ending with Yom Kippur on September 20. This is a perfect time to utilize fall vegetables and flowers—both as table decorations and recipe ingredients—and to play up the autumnal color scheme of orange, gold and brown.

Food is always an important part of any holiday celebration and Rosh Hashanah is no exception. There are few food restrictions during this season and Jewish cooks take pride in serving a festive meal on the eve of Rosh Hashanah. After the evening service at the synagogue Jewish tables are festive and special foods are the order of the day.

Suggested here is Sweet-Sour Brisket with cabbage, a delicious meat and vegetable dish suitable for your Rosh Hashanah table. The beef brisket is simmered with tomatoes, cabbage and onions and served with a honey/lemon sauce. The recipe uses Planters 100 percent pure Peanut Oil, which is favored by Jewish cooks for its light, delicate flavor. Planters Peanut Oil is the traditional kosher salad and cooking oil.

**SWEET-SOUR BRISKET WITH CABBAGE**  
Makes 6 to 8 servings



- 2-1/2 to 3 pounds beef brisket
- 1-1/4 cups water
- 4 large tomatoes, sliced
- 4 cups shredded cabbage
- 1 cup chopped onion
- 1/4 cup Planters Peanut Oil
- 2 teaspoons salt
- 1/4 teaspoon pepper
- 2 tablespoons honey
- 1 tablespoon lemon juice
- 1/4 cup flour

Bring to a boil. Cover, reduce heat and simmer 1 hour.

Meanwhile, saute cabbage and onions in peanut oil until lightly browned. Stir in salt and pepper. Add to meat. Simmer, partially covered, until meat is tender, 1 to 1-1/2 hours.

Remove meat and slice across grain; keep warm. Stir honey and lemon juice into sauce. Blend together flour and remaining 1/4 cup water. Stir into sauce and Dutch oven. Add 1 cup cook, stirring, until slightly thickened. Serve over meat.

CHIEF CLERK RALPH WAYNER CLEARED

AUSTIN--State Comptroller Bob Bullock Tuesday issued the following statement after a Travis County grand jury cleared former Chief Clerk Ralph Wayne of alleged wrongdoing while a state employee: "I was treated fairly by the grand jury, fairly be District Attorney Ronnie Earle with fairness and justice. I feel very strongly that Ralph Wayne gave more to the state in the way of leadership and management than the supposed benefits his detractors alleged he took."

Triumphant Firsts  
Make Great Pictures



From the first word, to the first stop, to the first fish, a small child's life is a steady progression of achievements that flash by with incredible speed.

There is little time to savor each wonderful event as it happens. When you capture the moment in a picture, however, you not only can savor it at your leisure, but you can share it as well. A picture of the triumphant youngster with fresh-caught fish will be cherished by his or her grandparents as a description in a letter never could be.

And of course the child can have a great time showing a print to friends. Fishing is by no means the only situation in which this is true. Triumphs and firsts can occur in almost any situation that makes

a child shout "Hey, look at me!"

Getting these pictures requires, first, that you be there with your camera. Modern technology has made cameras so sophisticated that the camera can almost, but not quite, take it from there. The new Kodak Ektralite cameras, for example, have built-in electronic Sensalite flash that turns itself on (and off) as needed, so that you can just aim and shoot whatever the lighting conditions.

The content of the picture, however, is still up to you. You have to choose the angle, watch the background, and pick the exact moment to take the picture. It is your perceptive eye that determines whether the result will be yet another triumph.

Seafood Through the Ages

Seafood, a good nutrient source, has been a diet staple for those who live near water for longer than many people realize. Primitive man waited patiently with club or spear to snare his fish. Later on, man developed nets for a more efficient catch. Highly perishable, fresh fish was either consumed immediately or preserved, usually by drying or smoking.

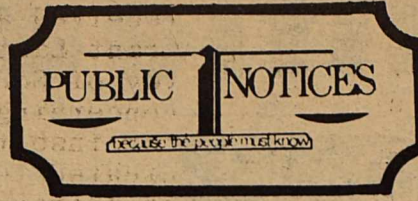
Then man took to the open water in boats of all kinds in search of seafood. Larger catches greatly enhanced the popularity of seafood along coastal areas.

In the early 1900's canning became an effective way to preserve seafood. Then people living away from shore were able to include seafood regularly in their diet.

Today's seafood industry utilizes the most advanced technology. Sonar is commonly used to track schools of fish, and many of today's newer tuna boats launch helicopters from their decks to scout for fish. Modern technology is also using satellites. They track weather conditions ... provide ship-to-shore communications ... create navigational guides ... generate infrared maps which indicate warm water currents where fish



tend to populate. A great deal of tomorrow can be seen in the seafood industry of today. Castle & Cooke, Inc., the most diversified seafood producer and processor in the United States, selling primarily under the Bumble Bee® and Royal Alaskan® brand names, recently told investors they are already using stringently located on-shore facilities and floating "factory" ships. These vessels clean and process the catch on board, drastically cutting processing time and sealing in freshness. Seafood operations ashore have also benefited from technology. "Flash freezing" and "shrink pack" these mean that fresh, frozen fish can be enjoyed practically anywhere in the country.



City of Brackettville  
Brackettville, Texas

Notice is hereby given that the City of Brackettville will accept applications for the position of Chief of Police thru October 31, 1980.

Applicants should be prepared to present resumes, job histories, and criminal background clearance. Applications may be picked up at the City Hall Monday thru Friday from 8 a.m. to 5 p.m.

/s/ Tim Ward  
City Manager

\*\*\*\*\*

ORDER RECESSING BOARD OF EQUALIZATION

BE IT REMEMBERED, that the Board of Equalization in and for Brackett Independent School District, Kinney County, Texas, having been regularly convened and being in session on this the 17th day of September, a.d., 1980. the following order was, upon motion of Mr. Smallwood, duly seconded by Mr. Long, unanimously carried and adopted, to-wit:

There being no further business now necessary to be transacted by said Board of Equalization, it is ordered that said Board do now recess until 9 o'clock A.M., the 24th day of September, A.D. 1980, at which time said Board of Equalization will further resume the transaction of such business as many then come before it.

DONE BY THE ORDER OF THE BOARD OF EQUALIZATION OF Brackett Independent School District, Kinney County, Texas at Brackettville Texas this 17th day of September, A.D., 1980.

/s/ H.R. Smallwood  
Chairman of  
Board of Equalization

ENERGY UPDATE

CITIZENS ADVOCATE DOMESTIC ENERGY DEVELOPMENT

More than 800 concerned citizens met in Chicago in late June to call for the accelerated development of American energy resources. The occasion was the Second National Conference on Energy Advocacy, sponsored by some 90 energy advocacy groups, technical societies, labor unions, minority groups and scientific organizations.

The main goal of the participants, according to Conference Chairman Joseph Swidler, was "to ensure the safety of our country, its political freedom, and the soundness of its economy, by the development of adequate and secure sources of energy."

Speakers at the conference included Alaska Governor Jay Hammond, NAACP Chairman Margaret Bush Wilson, AFL-CIO President Lane Kirkland, U.S. Rep. Mike McCormack of Washington State, Dr. Edward Teller, and William Tucker, contributing editor of Harper's magazine.

Hammond stressed the need for balancing energy development with environmental protection, saying that "if we don't have ra-

tional energy development today, we may have irrational energy development tomorrow."

Mrs. Wilson emphasized the need for the U.S. to "reduce its need for increasing supplies of foreign oil by creating or expanding more alternative energy sources here at home."

In the final session of the conference, the participants issued a Policy Statement which said in part:

"This country is so unprepared and exposed that an extended oil embargo would not only devastate its economy and cause the gravest political risks, but would also make it vulnerable to foreign military and political aggression. It is essential that this country pursue a course which will free it from dependence on OPEC oil sources in the shortest possible time."

The solution, the statement said, is a national energy program that includes "the accelerated development of all commercially feasible domestic energy resources, including coal, natural and synthetic gas, and nuclear energy." In terms of priority, "coal and nuclear must be our principal reliance at least for the next two decades."



Oil burners should be checked for their Combustion Efficiency rating since an improvement of about ten points may save you ten percent on your oil bill.

insurance buyer's helper

BARGAINS IN AUTO INSURANCE

If you are interested in cutting the costs of operating an automobile, one area to zero in on is your insurance coverage.

With some 150 million vehicles on the road being involved in some 18 million accidents a year, insurance is a very important aspect of your automobile concerns. Cost cutting should be carefully balanced against the coverage you need.

A review of your present policy is the first step, advises the Direct Marketing Insurance Council (DMIC), a national association of insurance companies that offer consumers insurance products by mail as well as support insurance agent sales through direct marketing.

Does your present policy reflect your particular circumstances—where you live, the car you drive, its age, who drives it, how it is used, your accident record, your personal habits, how many cars you are insuring, safety features on your car, the amount of deductibles you are willing to assume? These are factors that determine premiums.

Can you write a better policy for less money? You can find out, says DMIC, by requesting quotes from the many insurance companies that tell you about themselves through mailings to your home and through advertisements in your news-

papers and magazines. They want a chance at your insurance business and will gladly quote you their premium prices on the information you supply. These quotes carry no obligation to buy and are invaluable to you as you shop around.



Make sure you cover your basic needs. You will need insurance that pays for injuries or damage to others that your automobile causes, for injuries to you or your passengers, for damage to your car.

You should be keenly aware of your liability, collision and medical payments coverages. In the light of today's medical costs and jury awards, DMIC advises that you don't skimp. Additional coverage on top of the minimum required adds proportionately little to the premiums.

Look carefully at your deductible clauses and insure only against losses you can't afford to pay yourself. The higher the deductible, the lower the premium rate. Know what you need and investigate thoroughly what is available. That leads to bargains in auto insurance.

# classified ads

TUESDAY 12:00 NOON DEADLINE  
All Classifieds--15¢ per word  
minimum insertion \$2.00 per issue.  
NO CARD OF THANKS OR CLASSIFIEDS  
WILL BE TAKEN OVER THE PHONE.....

## KINNEY COUNTY LAND CO

(512)563-2446

50 to 100 ACRES close to Brackett  
with financing available.

\*\*\*\*\*

Small 2 bdrm HOUSE in Brackett,  
a good rental.

\*\*\*\*\*

2½ ACRES adjection to Brackett,  
utilities available.

\*\*\*\*\*

340 ACRES Northeast of Brackett,  
excellent fencing, good wells,  
storage tanks, TERMS.

\*\*\*\*\*

Re-Sale Fort Clark Springs  
Memberships.

\*\*\*\*\*

\*\*\*\*\*  
MASON SHOES--guaranteed, latest  
styles, mens and ladies, highest  
quality, go 1st class, reason-  
able prices.

Call: 563-2993.

\*\*\*\*\*

WELDING...BY A PROFESSIONAL WELDER  
Goose-neck hook-up installed, cat-  
tle trailers, dump trucks, flat  
dumps, lift gates, most any kind  
of welding-electric or gas--  
DC Portable, ranch work.

DAVE'S GARAGE, Brackettville  
563-2716

\*\*\*\*\*

FOR SALE.....

Fort Clark Springs Membership  
\$4,200. 1/512/729-2391.

\*\*\*\*\*

1973 FORD SUPER VAN.....  
partially customized, carpet  
and paneling, power steering  
and brakes, air conditioning,  
V-8, automatic, Call: after 5  
563-2005.

\* \*\*\*\*\*

FOR SALE.....

Tiller--\$450; Compost Tumbler--  
\$150; Spreader--\$50; Shreader--  
\$200; Reel Lawn Mower--\$150;  
Call--563-2125.

\*\*\*\*\*

\*\*\*\*\*

SAGEBRUSH SHOPPE II.....

Blooming plants; cut flowers;  
Dried arrangements made to order;  
Baskets; Dish Gardens. 563-2735.  
Owners: Don and Jean Hood.

\*\*\*\*\*

HOUSE FOR SALE.....

By Owner on Veltman Street, two  
blocks from school, owner fin-  
ancing available. 563-2462

\*\*\*\*\*

\*\*\*\*\*

LOTS FOR SALE.....

Veltman' addition, located between  
Fourth and Fifth Street, owner  
financing available. 563-2462.

\*\*\*\*\*

\*\*\*\*\*

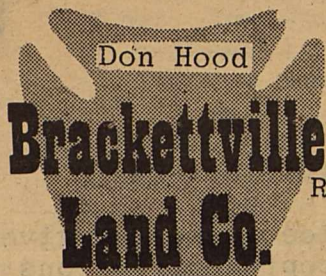
FOR RENT.....

3 bdrm home, all kitchen appli-  
ances there(range, refrigerator,  
dishwasher) rest of house is  
unfinished. Call:563-2212 after 5.

\*\*\*\*\*

GOOD USED TIRES, \$12 to \$15 each,  
13-14-15 inch. DAVE'S GARAGE.  
563-2716.

\*\*\*\*\*



Jean  
Hood

Rose Mary  
Slubar

(512) 563-2125

Wanda Schwandner

Hilltop--2.88 ACRES

\*\*\*\*\*

Exclusive Lots--North Brackett

\*\*\*\*\*

Large Wood Frame House

\*\*\*\*\*

Fort Clark Springs Memberships  
Resales

\*\*\*\*\*



## Thom McAn

AIR STEP---JOX

Shoes For Everyone

In The Family

Lavillita Center

Del Rio

## Wines & Liquors

### JIM'S LIQUORS

Across from Border Credit Union

611 East Gibbs  
Del Rio

Clark & Pierce  
Phone: 775-0822

## CAVALRYMAN MAIL SUBSCRIPTIONS

MAIL TO:

The Kinney CAVALRYMAN  
P.O.Box 735  
Brackettville, Texas 78832

Please enter my one-year sub-  
scription to the CAVALRYMAN.  
Check or Money Order enclosed--  
\$12.00--Out-Of-County, \$11.00  
In-County (NO BILLINGS)

NAME \_\_\_\_\_

ADDRESS \_\_\_\_\_

CITY \_\_\_\_\_

STATE \_\_\_\_\_

ZIP \_\_\_\_\_

Please print or type.

### BRACKETTVILLE DRY CLEANERS

#### UNIFORM RENTAL & LEATHER CARE

563-2193

We also do Laundry, and clean  
drapes, Quilts, Blankets,  
Band and Cheerleader uniforms,  
SATISFACTION GUARANTEED

NEW LOCATION:

ACROSS FROM BANK AND JAIL.

BUDDY & BOOTS LOVE, OWNERS

"Only the bold get to the  
top."  
Publius Syrus

## ROADRUNNER ENGERY, INC

BUTANE

PROPANE



GAS



Dual - Fuel  
Carburetion  
Systems

ANN&CROCKETT (1Bk N of 90) 563 2630

## Woodson & Sons Welding Service

### 563-2555

ANY TYPE OF WELDING  
AND FABRICATION!!

REDA

RED JACKET

AERMOTOR

## HINDS WELL SERVICE

ALL TYPES WATER SYSTEMS  
COMPLETE LINE OF SUBMERGIBLES AND WELL SUPPLIES

Richard Hinds

108 Tomahawk  
DEL RIO, TEXAS 78840

775-1328  
775-9551

### Church of Christ

Sunday School 9:30 a.m.  
Worship 10:30 a.m.  
Bible Study (Sunday) 6:00 p.m.  
Bible Study (Wednesday) 7:00 p.m.

### Brackettville United Methodist Church

Sunday School (Children) 9:45 a.m.  
Sunday School (Adult) 9:45 a.m.  
Morning Worship 11:00 a.m.

BARRY COX  
Pastor

### ST ANDREWS EPISCOPAL

Sunday Service 8:15 a.m.

MILTON BROWN  
Rector