



25¢

the Kinney Cavalryman

USPS 100-610

Vol. 7 NUMBER 42

October 17, 1980

BRACKETTVILLE, TEXAS

BARBAROSA

—headliners—

Fort Clark Community Council and the Brackettville Chamber of Commerce are working together in preparing a float for the Grand International Parade in Del Rio on Saturday, October 18th. This year's theme is "Music The Language of Friendship."

This float is a joint venture between the Fort Clark and Brackettville organizations. Ms. Ardrey stated that she is so glad this was made possible by the help of many volunteers. Jim W. Bader is loaning the group the truck and Louis Starzel will be driving in the parade.

Starting time of the Parade is 2:00 p.m. in Ciudad Acuna and ending in Del Rio.

Kinney County Clinic's new hours are as follows: 9:00 a.m.---5:00pm Monday--Wednesday--Friday. Call for an appointment: 563-2434 or in case of an emergency, after hours or weekends call: 563-2493.

FORT CLARK HISTORICAL SOCIETY

The next meeting of the Fort Clark Historical Society will be held on Saturday, October 25, at 10:00 a.m. It will be held at the Member's Lounge upstairs over Las Moras Inn. George Wyrick, who was stationed at Fort Clark from 1930 until 1941 will talk on "Fort Clark--The Way It Was." Everyone is cordially invited to attend.

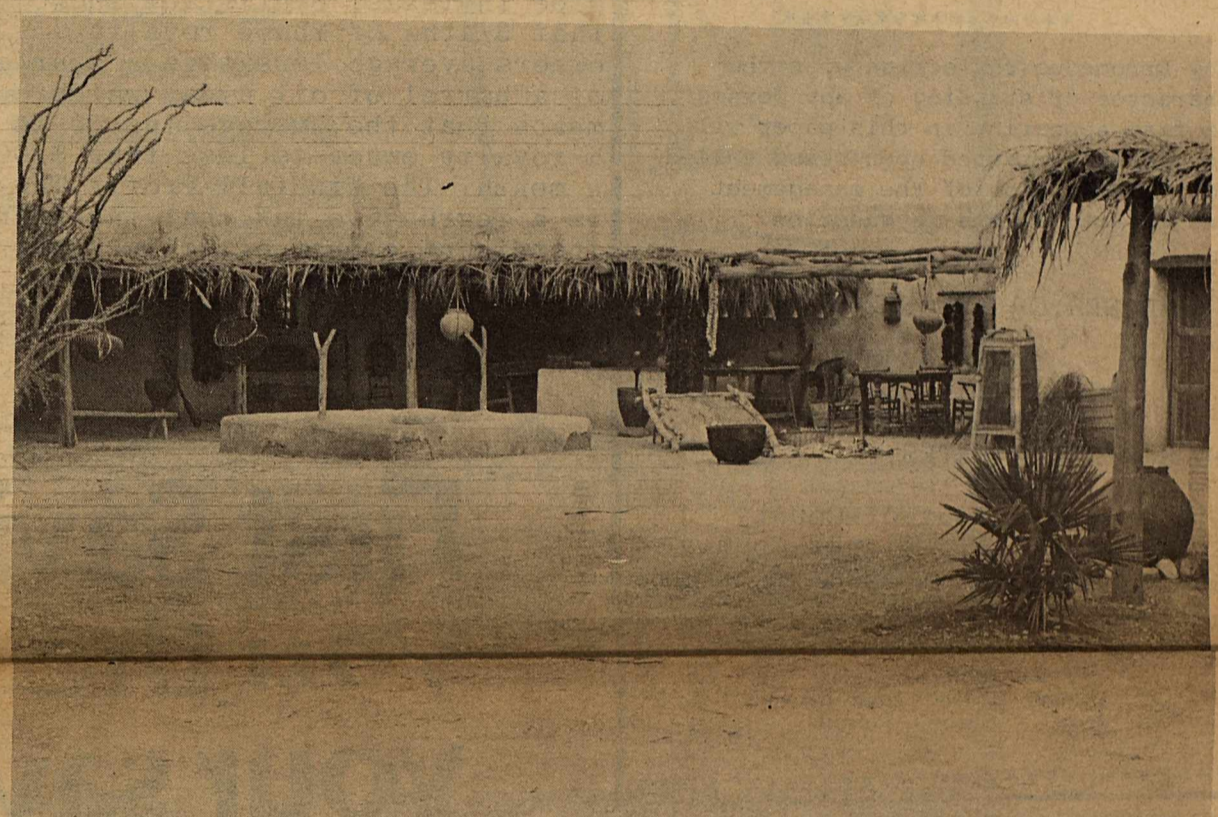
SMALL BUSINESS ADMINISTRATION

The Small Business Administration is reminding farmers, ranchers, and people in agricultural related business who might be eligible for an SBA disaster assistance loan under declaration #1821 that the deadline for filing these loans is at the close of the business day on October 22, 1980. Declaration #1821 covers Kinney County for the Drought 7/1/79--4/1/80 and the Freeze of 3/1/80.

More information can be obtained by calling toll free: 1-800-252-9726.

RE-ORGANIZATION OF RED CROSS CHAPTER IN KINNEY COUNTY

A meeting to elect new officers for the forth-coming year was held by the Kinney County Chapter of the Red Cross. The following



A huge new Movie set has been constructed at Alamo Village, in front of the old Alamo for the filming of the movie Barbarosa which started here this week. The movie is being filmed near Presidio, Fredricksburg and Alamo Village and stars Country-Western singer and entertainer Willie Nelson.

officers were elected: Chairman-David Luna; Vice-Chairman-Mary SanMiguel; Treasurer-Carlotta DeLaRosa; and Secretary-Diane Garza Avila. Also elected were: Representative for Military Families-Mary V. Flores; First Aid Chairman-RoseMary Slubar; and Publicity Chairman-Frenchy Breaux.

Your support is needed for our local chapter. Anyone interested in joining please get in touch with one of the above-mentioned people or call 563-2598.

BRACKETT SCHOOL RECEIVES GRANT

Dallas--Grants totaling \$3,772,235 have been awarded to 109 recipient in the State of Texas under the U.S. Department of Energy's (DOE) "Grant Programs For Schools and Hospitals and Buildings Owned by Units of Local Government and Public Care Institutions", it was announced today by Curtis E. Carlson, Jr., Acting Regional Representative for DOE in Dallas.

Under the programs authorized by Title III of the National Engery Conservation Policy Act of 1978, DOE is making grants to eligible instituions which have ap-

plied in accordance with a statewide plan developed by the Texas Energy and Natural Resources Advisory Council.

The grants are awarded either for technical assistance in identifying and analyzing the effectiveness and payback periods of various measures to reduce energy consumption, or for installation of energy conservation measures in grantee facilities.

Normally, funds granted under the programs must be matched 50/50 with non-federal funds. However, where severe financial hardship can be demonstrated the federal share may be increased to a maximum of 90 percent.

Brackettville Independent School District Junior High School will receive \$1,910.00



The atlas got it's name from the Greek mythological figure who supports the world when this figure was used as a decoration in an early atlas, probably that of the Flemish geographer Gerhardus Mercator.

the Kinney Cavalryman

USPS 100-610

P.O. DRAWER CQ
Brackettville, Texas 78832

512/563-2696

Judy Loos.....Publisher
Geo. Loos.....Editor
Geo. Loos.....Manager
Betty Tidwell.....Contrib. Editor
Lillie Mae Dimery.....Contrib. Editor

Published every Friday. Entered by
Second Class Mail at Brackettville
Texas 78832.

Any Erroneous reflection upon the
character or standing of any person
of firm appearing in this paper will
be gladly corrected upon being called
to the attention of the management
and to the article in question.

MEMBER OF THE TEXAS PRESS

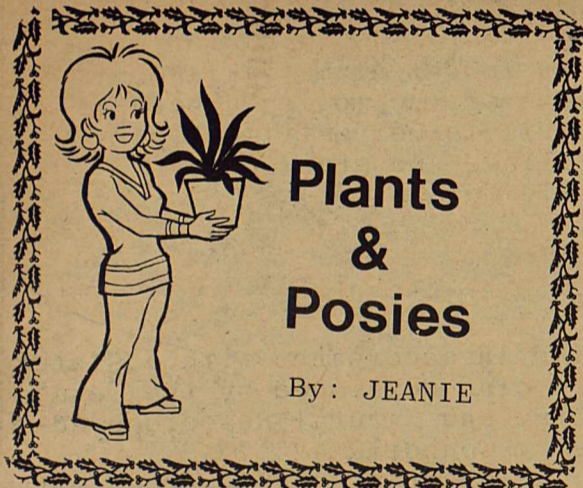
ASSOCIATION

SUBSCRIPTION RATES:

\$12.00-----Out-of-County
\$11.00-----In-Kinney-County

LOOSISM:

"He who looks for a mule
without a fault goes on
foot." Spanish Proverb



DIEFFENBACHIA

This easily grown group of plants
are native to Central and South
America. The plants have thick,
sturdy, moody stems and ornamental
leaves. It is a very hardy plant,
and as it matures will produce
plantlets at the base of the stem.

The nickname for a dieffenbachia
is "dumbcane" from the acrid
juices of the plant.

Your dieffenbachia will do best
in filtered or diffused sunlight.
It can tolerate high temperatures
with adequate ventilation. Do not
over water!! Drench thoroughly,
then let the soil become moderate-
ly dry before drench-watering a-
gain. Feed lightly with standard
house plant fertilizer once a
month according to label direction.

Many different varieties are
available, all have the same care
requirements. D.amoena, heavy

green and white foliage; bonmanii
chartreuse mottled foliage, picta
barraquiniana with bright green
leaves spotted with white, splend
ens with velvety green foliage
and small white dots and compacta
a tighter leaf pattern of compact
growth.

WINDFALL PROFITS TAX

Attorney General Mark White today
sent President Carter a telegram
urging him to consider an impor-
tant problem which needs immediate
attention. White said that the
Windfall Profit Tax which was in-
tended to be a tax upon the major
producers of oil has instead fallen
heavily on the small royalty owner
There are estimated to be two mil-
lion royalty owners in the United
States nearly 700,00 of them re-
side in Texas. Statistics show
that 3/4ths of these royalty
owners average less than a quarter
of a barrel of oil a day which
means that the average income to
a royalty owner is less than \$200
a month. The Windfall Profit Tax
is a regressive tax that takes an
inordinant amount of dollars out
of the pocket of the small land
owner, the "Mom and Dad" farm
operation.

And Retired Persons on
Social Security. White pointed
cut that this is not a regional
issue but one of importance and
national impact. Although 1/3 of
these royaltyowners live in Texas,
another 1/3 live in Pennsylvania,
new York, Ohio, Indiana, Michigan,
Illinois, Kentucky and Arkansas.
The other 1/3 live in California,
Louisiana, Oklahoma, Kansas, and
New Mexico.

Exemption of Royalty owners
will not materially or adversely
impact plans to utilize the pro-
ceeds of the Windfall profit tax
but will enable persons with a
small inependent income to exist
without further reliance on Federal
assistance.



In 1860 Abraham Lincoln became the first winning
Presidential candidate of the Republican Party.

First Savings pays you the most for your savings.

Treasury Rate Certificate

2 1/2-year \$100 Minimum
Annual Yield Annual Rate
12.243 11.550

Effective: October 16 thru 29th
The offered rate changes bi-monthly and is determined by the U.S. Treasury.
Once this type certificate is issued the rate does not change over the term of
the certificate. Substantial penalty for early withdrawal of certificates.

Money Market Certificate

26-week \$10,000 Minimum
Annual Yield
11.865

Based on annual rate of
11.531

Effective: October 16 thru 22nd
Effective annual yield based on reinvestment of principal and interest at
maturity. Federal regulations prohibit the compounding of interest and re-
quire a substantial penalty for early withdrawal. Rate is subject to change at
renewal.

Main Office

Uvalde: 400 North Getty Street 278-7191

Branch Offices

Eagle Pass: 370 Monroe 773-9494

Carrizo Springs: 301 Pena Street 876-5261

Leakey: Corner of Market & W.4th 232-6631

Hondo: 609 19th Street 426-4325



PORTABLE BUILDING SALE!

3 DAYS ONLY
ACRES OF PORTABLE BUILDINGS
7' X 8' TO 12' X 40'

10% TO 30% OFF

BUY DIRECT FROM FACTORY
NEW • USED • DAMAGED & FACTORY SECONDS

- FULLY ERECTED OR KIT FORM
- ASK ABOUT OUR NEW ECONOMY BUILDING
- NO FOUNDATION NECESSARY
- ALL WOOD FRAME CONSTRUCTION
- MANY SIZES, USES, COLORS

BUILDINGS FROM \$199

EASY TO OWN

60 TO 90 DAY ACCOUNTS
BANK RATE FINANCING

RENT WITH OPTION TO PURCHASE

SAVE \$75.00 TO \$1000.00

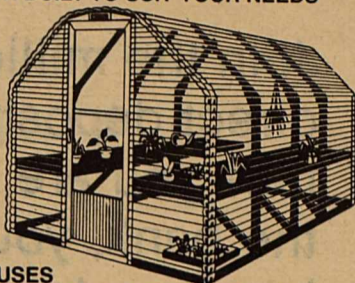
WRITTEN WARRANTY ON ALL NEW BUILDINGS

FREE DELIVERY



HOBBY, WORKSHOP OR GUEST HOUSE
... STANDARD OR BUILT TO SUIT YOUR NEEDS

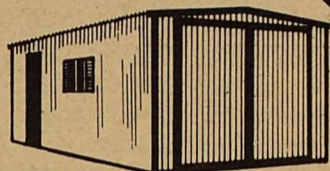
FRIDAY
SATURDAY
SUNDAY
OCTOBER 24, 25, 26



GREENHOUSES
8 X 12, 8 X 16 OR CUSTOM BUILT

- Benches
- Storm-screen door
- Fan & ventilation system
- Treated wood
- Proper light transmission
- Maintenance-free

BARN
LARGE & SMALL



GARAGES

- MAINTENANCE FREE
- IMMEDIATE DELIVERY
- HEAVY DUTY FLOORS

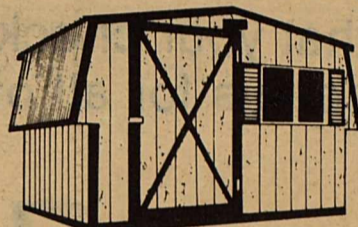
DOUBLE OR OVERHEAD DOORS AVAILABLE

OPEN RAIN OR SHINE

LOOK! RELOCATABLE WIDE-SPAN STEEL BUILDINGS, TOO!

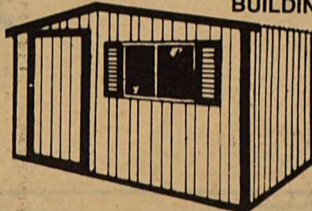


Morgan Builds Quality and We Guarantee it!

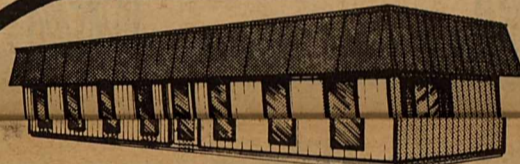


OFFICES • CABINS • COTTAGES

LAWN BUILDINGS



ALUMINUM, STEEL, HARDBOARD OR WOOD SIDINGS



CLINICS • CLASSROOMS • CHURCHES • RETAIL STORES
200 TO 20,000 SQ. FT. AND UP IN MODULAR CONSTRUCTION

2111 Ave. F
PO Box 1487
Del Rio

775-7402

Open 8am til dark

WE WILL CUSTOM DESIGN AN OFFICE TO SUIT YOUR NEEDS AT TREMENDOUS SAVINGS!

Morgan
BUILDING SYSTEMS, INC.

PROCEEDS DONATED

On the last Saturday of each Month the Burger & Shake will donate 10% of it's gross sales to a Civic Organization of the Community. The first will be to the Band Boosters with the following month to the Tiger Boosters, announced, Bob Baumann, Manager of the Burger & Shake.



Florida's name comes from the Spanish meaning "feast of flowers."

PITTSBURGH PAINTS WALLHIDE® LATEX FLAT WALL PAINT



with the exclusive patented **Microflo Process®**

- Stains, spots and normal household dirt clean up easily
- Excellent covering power in most colors
- Rich flat sheen
- Over 700 "new" colors to choose from
- Glides on smoothly and easily
- Thick, rich consistency
- Soap and water clean-up

9.95 gal.

White and standard colors. Custom-mixed colors slightly higher.

10% discount on case lots

New shipment of **Case XX Knives**

&

BURGER & SHAKE

563-2027

OPEN
10 am -- 9 pm
DAILY

HOME GAME NIGHTS OPEN LATER

BOB BAUMANN, MANAGER

DIRECT DEPOSIT

Join the millions who are getting out of line with direct deposit of your social security check. Any time you are away from home or cannot come to the bank, your check is automatically deposited in your checking or savings account. Normally you will receive a receipt of deposit on the day that your check is suppose to arrive. Stop in and see us for all of the details.

**THE
First STATE BANK**
COMPLETE BANKING SERVICES
BRACKETTVILLE, TEXAS

FDIC 563-2451

Soil Conservation

RANCHERS V/S the BOSS

She's a hard ole gal. She is hard to live with and impossible to live without. You can cuss her. You can plead with her, but you won't beat her. She has her own set of rules and you got to play by 'em. Nobody has beat her yet... She's the boss... No, not your wife--Mother Nature.

Successful ranchers, especially good range managers have a lot respect for Ma Nature. Maybe more respect than for their wife with a skillet in her hand. They keep her laws or at least bend them only occasionally. When talking about ranching and range management she has only 4 major rules.

1. IF WE KEEP DOWN THE SHOOT WE KILL THE ROOT! Green leaves are actually food producers. The roots get their food from the leaves. In the Spring, Summer and Fall the leaves are actively converting sun light into food and storing it in their root systems. If the leaves are grazed off once, the forage plant usually has enough food reserve in the root system to put out new leaves. However, if this happens repeatedly during the growing season, we starve the root, shorten it and reduce its ability to reach and extract moisture and nutrients. (SIDE NOTE: OFTEN WE CREATE WHAT RESEMBLES A MAN MADE DROUTH...THE RAINS MAY HAVE NOT FELL LIKE THEY SHOULD, BUT THEIR STILL IS USUALLY A LITTLE MOISTURE LEFT IN THE SOIL...UNFORTUNATELY OUR STARVED, SHORTENED ROOT SYSTEMS CAN'T EXTRACT IT.) Forage

plants need to produce food for themselves so they can produce grazing for livestock. If we don't allow a plant to grow enough leaf to produce for themselves we eventually graze them out.

2. NATURE ABHORS A VACUUM. Nature doesn't like empty space. What this means, on rangeland is that if one kind of forage plant is "grazed out", another kind of plant takes its place. This is why when the palatable, high producing kinds of grasses are "grazed out", they are replaced with short low-producing kinds of grasses. When the short low producing grasses are "grazed out" they are replaced by weeds, woody and spiny plants and extremely low producing grasses. Of course, there is one more step down from this and that is that empty space which nature abhors...bare ground. THIS WHOLE SEQUENCE OF EVENTS IS EXACTLY WHAT HAS HAPPENED IN PARTS OF KINNEY COUNTY OVER A PERIOD OF TIME.

3. NATURE IS ALWAYS TRYING TO PUT BACK THE KIND OF VEGETATION SHE HAD ON A PIECE OF GROUND IN THE FIRST PLACE. In rule 2 we just described how some rather underirable plants had come to dominate the rangeland. Rule 3 simply tells us that nature is somewhat forgiving and will try to put back the desirable plants that have been "grazed out" if given half a chance. This may mean just resting a pasture occasionally.

4. THE PRINCIPLE FACTOR LIMITING GROWTH IN RANGELAND CLIMATES IS SOIL MOISTURE. This may seem like a statement of the obvious. Either it rains or it doesn't and there ain't much you can do about that. Well, that's true but we can store in the soil, more of the rainfall we do get.

We know that a lot of our rainfall simply runs off because the soil is bare, crusted and sealed over. We know that a good vegetative cover allows more moisture to soak in the soil.

We also know that once in the soil, moisture pretty well stays there until taken up by the root systems of plants. Very little moisture eveaporates or is removed from the soil by any other way except by plant use.

Its one of the little ironies of nature, that the man with the bare rangeland, who could use the rain the worst, receives the least benefit from the rain when it does come. There are at least two reasons for this phenomenon. The first reason we just stated, a lot of rain just runs off the sealed over soil. For the second reason we can get a hint from rule 1. The few plants that are remaining on the bare looking reangeland have been grazed "Hard" Their root systems are straved, reduced and incapable of taking up much of the available moisture The ol' country just doesn't respond and it takes that second or third slow, soaking rain before we see results...sound familiar.

LIMERICK
By: Jo Breaux

There was a man from Texas
Who gladly paid high taxes
For kids need to learn
To help them to earn
But came a decree that aliens go
free and
his taxes were more taxing-believe
you me.

PUBLISHER'S COPY

CONSOLIDATED REPORT OF CONDITION (Including Domestic Subsidiaries)

LEGAL TITLE OF BANK

FIRST STATE BANK

Table with 4 columns: CITY, COUNTY, STATE, ZIP CODE. Values: BRACKETTVILLE, KINNEY, TEXAS, 78832. Below: STATE BANK NO. 128, FEDERAL RESERVE DIST. NO. 11, CLOSE OF BUSINESS DATE September 30, 1980.

ASSETS and LIABILITIES table with columns for Mil., Thou., and line numbers 1-37. Includes items like Cash and due from banks, U.S. Treasury securities, Total loans, Demand deposits, etc.

NOTE: This report must be signed by an authorized officer and attested by not less than three directors other than the officer signing the report.

I, the undersigned officer, do hereby declare that this Report of Condition (including the supporting schedules) has been prepared in conformance with the instructions and is true to the best of my knowledge and belief

Table with 3 columns: SIGNATURE OF OFFICER AUTHORIZED TO SIGN REPORT, AREA CODE/TELEPHONE NO., DATE SIGNED. Includes signature of Laura Latham.

NAME AND TITLE OF OFFICER AUTHORIZED TO SIGN REPORT: LAURA LATHAM, ASSISTANT CASHIER. We the undersigned directors, attest the correctness of this Report of Condition...

Table with 3 columns: SIGNATURE OF DIRECTOR. Includes signatures of David Winters, Vera B. Spaulding, and Donald J. Georgeant.

(MAKE MARK FOR NOTARY'S SEAL)

State of Texas, Sworn to and subscribed before me this 10th day of October, 1980. My commission expires May 1, 1981. Notary Public. [Signature]

THE NATIONAL LIFE AND ACCIDENT INSURANCE COMPANY
NATIONAL LIFE CENTER
NASHVILLE, TENNESSEE 37250

G. W. MAHAN, CLU
SECOND VICE PRESIDENT
MANAGER, GULF COAST REGION

October 1, 1980

S. R. BROWN
REGIONAL ADMINISTRATIVE MANAGER

Mr. Cleo Kelley, Manager
San Angelo

"Texas Sales Master" Lapel Pin

Dear Mr. Kelley:

We are enclosing with this letter one lapel pin which was given for the recent sales contest for the two weeks introduction of the Graded Benefit Policy.

According to our records, the winner in your District was:

Conrado Galindo

Please extend our congratulations to this agent for a job well done.

Kindest regards,

G. W. Mahan, CLU

CAVALRYMAN MAIL
SUBSCRIPTIONS

MAIL TO:

The Kinney CAVALRYMAN
P.O. Box 735
Brackettville, Texas 78832

Please enter my one-year subscription to the CAVALRYMAN. Check or Money Order enclosed--\$12.00--Out-Of-County, \$11.00 In-County (NO BILLINGS)

NAME _____

ADDRESS _____

CITY _____

STATE _____

ZIP _____

Please print or type.

Kinney County
LIBRARY

Dear K.C.,

Here it is folks! ---The rules for our contest. Write a short essay (150-200 words) on The Best Halloween Ever. There are three divisions: 1. Up to the 6th grade; 2. 7th Grade Up; 3. Adults. Winner will be picked from each division. The essay must be turned in to the library (in the Slot will be fine) no later than Friday, October 24th, so that the judges will have time to read, judge and pick the winning essays in time for them to appear in this column the following week. Winners will be eligible to choose a new book of their choice from the collection that the library has just for this purpose. Good Luck!

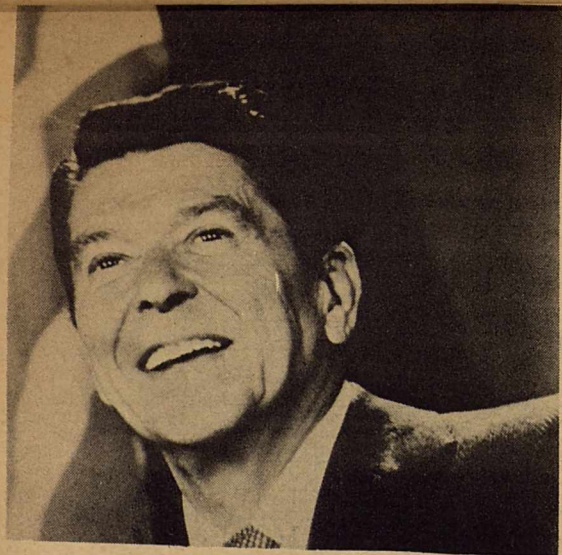
Lisanne A Young Model, by Betsy Cameron and Diana Lewis Jewell is about a not so typical ninth-grader who lives the life young girls dream about. She is a successful photographer's model for the prestigious Ford Agency in New York. You've seen her in TV commercials and in major magazines.

150 photos, almost half in full color, show the hour-by-hour, day-by-day details of how she lives and worked, you see the making up-and learn her beauty hints and routines. You see her on the set and on location. You make the rounds with her calls, fittings, tryouts and bookings. And Lisanne herself tells you how she got started, reveals all the professional tricks she has learned in her modeling career, and shares the information you need if you want to become a model yourself.

Come in and see what else we have for you.

Yours
Friend of the Library
Marie Bixby

Ronald Reagan & George Bush
They'll do what's right.
For Texas.
For America.



A crushing burden of inflation.

In 1976, Carter promised to "cut inflation to 4% by 1980." To reduce government's size. To eliminate federal control over our lives.

But under Carter, Texans have suffered double-digit inflation. The Consumer Price Index has risen over 41% since Carter became President. That means that you've lost ground economically unless your family's income has increased by that same 41%.

There's more. The highest interest rates since the Civil War. The largest peacetime tax increase in history, proposed and signed into law by Carter. Today, the average family pays \$1,150 more a year in taxes than when Carter took office. This, despite Carter's pledge he would "never increase taxes for the working people of this country."

Broken promises.

In a letter to then-Governor Briscoe, Candidate Carter promised an energy policy that would decontrol oil and gas. President Carter broke that promise.

Pol. Ad. paid for by; James T. Shahan, Brackettville.

For the first time in history, the federal government now dictates what Texas does with its natural gas used in Texas.

Carter imposed a "windfall profits tax" that will cost Texas consumers over \$130 billion.

Carter declared the "moral equivalent of war" on America's energy crisis. His answer? A new \$12 billion bureaucracy called the Department of Energy. The same Department that only a few months ago presided over gasoline allocations. Allocations that forced Texans to wait hours for gasoline produced in their own state.

A threat to peace.

Incompetent in world affairs, Jimmy Carter has undermined America's national security.

By slashing President Ford's projected military budgets by \$38 billion. By cancelling production of the B-1 bomber. Delaying the cruise missile.

By stalling the M-X missile, the Trident submarine, and the neutron weapon. By cutting the Navy's shipbuilding program in half. By delaying critical military pay raises for three years.

The result: a decline in America's military strength, relative to the Soviet Union. Which has encouraged Soviet aggression, the real threat to world peace.

The time is now.

To provide for peace through strength. With defense policies that restore American credibility.

The time is now. For Texas to regain control of its own destiny. To restore its influence in Washington. To get a fair shake. From a President who will do what's right for Texas and America.

The time is now.
REAGAN & BUSH

THE LONGHORN

TRY OUR SUNDAY BUFFET

THE LONGHORN
RESTAURANT, MOTEL & LOUNGE

563-2767

3 Miles West of
BRACKETTVILLE, TEXAS

Your Host TRAVIS & LANETTE WILSON



TOASTED PUMPKIN SEEDS

HAVE READY:

- 1 large pumpkin
- Real Butter or Margarine (melted)
- Salt

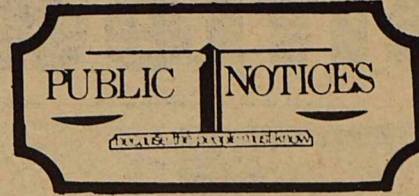
YOU'LL NEED:

- Sharp knife; spoon; colander;
- paper towels; cookie sheet; pot-holder; longhandled spoon; serving bowl

Have Mom or Dad help you cut the top off the pumpkin, Scoop out the pulp and seeds from the inside. Then, with your fingers, separate the seeds from the pulp and put them in the colander. Rinse the seeds under cold water and dry them on paper towels. Heat oven to 400 degrees, when the seeds are dry, spread them on the cookie sheet. Put in the oven and watch them very closely so that the seed toast but do not burn. Stir frequently. It will probably take about 30 minutes to toast, but check so that the seeds for Crispness after 15-20 minutes. Put warm seeds in a bowl and toss with a little melted butter and salt.

Just between us: Save the large pumpkin shell you scooped out for a jack-o-lantern to decorate your party table. Ask Mom and Dad to help with the carving.

This was taken from the new cookbook: Special Dishes For Special Days--A Cookbook For Children
It also has Witches' Brew and Pumpkin Bread.



NOTICE OF ELECTION (AVISO DE ELECCION)

TO THE REGISTERED VOTERS OF THE COUNTY OF KINNEY, TEXAS:
(A los Votantes Registrados de Condado de)

Notice is hereby given that the polling places listed below will be open from 7:00 a.m. to 7:00 p.m.,
TUESDAY, NOVEMBER 4, 1980

for voting in the GENERAL ELECTION to elect President and Vice President, Members of Congress, Members of the Legislature, State, District, County and Precinct Officers and submitting nine proposed Constitutional Amendments.

(Notifiquese por la presente que los sitios de votacion indicados abajo se abriran desde las 7:00 A.M. hasta las 7:00 P.M.,

MARTES EL 4 de NOVIEMBRE DE 1980

para votar en la ELECCION GENERAL con el proposito de llenar los cargos de Presidente y Vice Presidente, Miembros del Congreso, Miembros de las Legislatura, oficiales del Estado, el Distrito, el Condado y los Precintos, y de someter nueve Enmiendas propuestas a la Constitucion.

/s/ Albert Postell
County Judge

LOCATIONS OF POLLING PLACES: (Direcciones de los sitios de votacion)

- ABSENTEE VOTING-----County Clerk's Office, Courthouse
PRECINCT NO.1 -----Kinney County Clinic Building
PRECINCT NO.2 -----Brackettville High School Auditorium
PRECINCT NO.3 -----Baptist Church Annex
PRECINCT NO.4 -----Welfare Office Building

LIST OF WRITE -IN CANDIDATES (Lista De Candidatos Autorizados Para Recibir Votos Por Escrito)

Name (Nombre)	Office Sought (Puesto Oficial Solicitado)
Raymond F. Aguilar	County Commissioner, Precinct #3
Tim Ward	County Commissioner, Precinct #3
Tully Shahan	County Attorney

/s/ Judge Albert Postell
October 14, 1980

RICHARD DALE SMITH IN HALL OF FAME

From Aberdeen, Scotland; Atlanta, Ga; Wyckoff, N.J.; and points throughout Texas the first former Tarleton State University athletes to be inducted into the TSU Athletic Hall Of Fame will gather Saturday, Oct. 18 on the Tarleton campus.

One of those being inducted will be Richard Dale Smith of Gatesville, Brackettville. Awards will be presented posthumously to several former athletes, Jess "Ironhead" Davis, Roy Hudspeth, and J.D. McMahon, Jr. Davis, formerly of Fort Worth, will be represented by his wife and his son, Bob. Hudspeth, from Seldon, will be represented by his sons, Tommy and Bill, and McMahon will be represented by his sons, Brain and Todd.

The inductees will ride in the homecoming parade at 9:30 a.m Saturday and will be recognized at the Distinguished Alumni Luncheon. Formal induction into the hall of fame will be by Tarleton president Dr. W.O. Trogon at halftime of the Tarleton-McMurry game. The inductees will be honored with a reception in the Health and Physical Education building following the football game.

BOB BULLOCK

AUSTIN--State Comptroller Bob Bullock Wednesday warned that Texas smokers who try to stretch their tobacco dollars by purchasing mail order cigarettes may end up getting burned.

Bullock said advertisements have appeared in Texas recently offering mail order cigarettes and that the tobacco products do not carry the state's tax stamp.

"Cigarette bargains can go up in smoke quicker than a cheap cigar in a hurricane if the tobacco taxes aren't paid," Bullock said.

He said purchasers are required to pay his office \$1.85 a carton on cigarettes they order from out-of-state and may be liable for a \$1.85 a carton penalty if the tax is not immediately reported.

Two firms have been advertising cigarettes for \$4.75 a carton, but that price does not include the \$1.85 a carton tax, he said.

Federal law requires out-of-state firms to provide the Comptroller's office with a list of Texas residents who purchase cigarettes outside the state.

State law makes possession of more than 10,000 untaxed cigarettes---50 cartons---a felony.

classified ads

TUESDAY 12:00 NOON DEADLINE
All Classifieds--15¢ per word
minimum insertion \$2.00 per issue.
NO CARD OF THANKS OR CLASSIFIEDS
WILL BE TAKEN OVER THE PHONE.....

**KINNEY COUNTY
LAND CO.**
(512)563-2446

21 ACRES close to Brackett, Hwy 90 Frontage, ideal for home or commercial venture.

Large 2 bedroom home, sleeping porch, 5 out-buildings on almost 1/2 ACRE of land. \$26,500.

Lovely Residential Lots in North Brackettville.

3bedroom, 2 bath home in Brackett central air and heat; carport; fenced back yard. ONLY \$40,000.

MASON SHOES--guaranteed, latest styles, mens and ladies, highest quality, go 1st class, reasonable prices.
Call: 563-2993.

1973 FORD SUPER VAN..... partially customized, carpet and paneling, power steering and brakes, air conditioning, V-8, automatic, Call: after 5 563-2005.

HOUSE FOR SALE..... By Owner on Veltman Street, two blocks from school, owner financing available. 563-2462

LOTS FOR SALE..... Veltman Addition, located between Fourth and Fifth Street, owner financing available. 563-2462.

GARAGE SALE..... October 18 and October 19, 9-6 E. Thomas, Baby furniture, dishwasher, cash register, refrigerator tank, truck body, cement, and more. Call 563-2471.

LAWNMOWER REPAIRED. Contact D. Montoya, Project #20, Brown Street.
* *****

GOOD USED TIRES, \$12 to \$15 each, 13-14-15 inch. DAVE'S GARAGE. 563-2716.

SAGEBRUSH SHOPPE II
Fresh Flowers, Plants, Dried Flowers, Owned and Operated by Don and Jeannie Hood, 563-2735. WE WIRE FLOWERS!!

JOIN
4H

HUNTING LEASE WANTED..... 3000 to 5000 acres, good pasture, 6-8 men, 3 to 5 days during season. preferably North of Brackett Call: 512/223-4594.

Don Hood
**Brackettville
Land Co.**
Jean Hood Wanda Schwandner
512/563-2125

12X50 Mobile Home *****
3 Bedroom, two bath mobile home on three choice lots, Fort Clark Many improvements. *****
2 bedroom 1 1/2 bath, mobile home corner lot, Fort Clark *****
DEER HUNTERS---Day Leasing!!

CURVETTES..... All steel curvettes available at factory direct prices. Immediate delivery. Examples of over-stocked prices: 40X60-\$5996.00; 50X80-\$8989.00; 50X90-\$9874.00; 50X150-\$13,783.00. Big doors included. Limited supply for slantwalls/straightwalls also available. Dealership inquiries welcome.) (Call: GORDON toll-free(800)525-9926

STEEL BUILDING SALE Overstocked on certain sizes. Will sell for dealer cost. Available Slantwalls 48X16X50--\$5,992. 48X16X75--\$7,994; 48X16X100--\$9,881; 50X16X100--\$11,993. All buildings include 24X14 double sliding doors. These prices limited to amount in stock. Call JIM--PERMANENT BUILDING SYSTEMS, INC. Toll free 800-525-9926.



Thom McAn
AIR STEP---JOX

Shoes For Everyone
In The Family
Lavillita Center
Del Rio

Wines & Liquors
JIM'S LIQUORS
Across from Border Credit Union
611 East Gibbs Del Rio Clark & Pierce Phone: 775-0822

BRACKETTVILLE DRY CLEANERS
UNIFORM RENTAL & LEATHER CARE
563-2193
All Leather, Seude and Furs
Cleaned Royaltone Method For
"1/2 PRICE DURING OCTOBER"
SATISFACTION GUARANTEED
NEW LOCATION:
ACROSS FROM BANK AND JAIL.
BUDDY & BOOTS LOVE, OWNERS
T.L.C.... Tender Loving Care
for your Suede, Leather, Fur
Garments cleaned with the
ROYALTONE PROCESS.

REDA RED JACKET AERMOTOR
HINDS WELL SERVICE
ALL TYPES WATER SYSTEMS
COMPLETE LINE OF SUBMURGIBLES AND WELL SUPPLIES
Richard Hinds
108 Tomahawk DEL RIO, TEXAS 78840 775-1328 775-9551

**Woodson & Sons
Welding Service**
563-2555
ANY TYPE OF WELDING
AND FABRICATION!!

LOWEST PRICES!!!!!!
Schubach Liquors
Across from Fort Clark
entrance, next to Exxon
Station.....
563-2322

Church of Christ
Sunday School 9:30 a.m.
Worship 10:30 a.m.
Bible Study (Sunday) 6:00 p.m.
Bible Study (Wednesday) 7:00 p.m.

**Brackettville
United Methodist Church**
Sunday School (Children) 9:45 a.m.
Sunday School (Adult) 9:45 a.m.
Morning Worship 10:45 a.m.
BARRY COX
Pastor
ST ANDREWS EPISCOPAL
Sunday Service 8:15 a.m.
MILTON BROWN
Rector