

TEXAS PRESS ASSOCIATION  
AWARD WINNER  
1977

25¢

# the Kinney Cavalry

Alamo Village  
Box 528  
City  
7

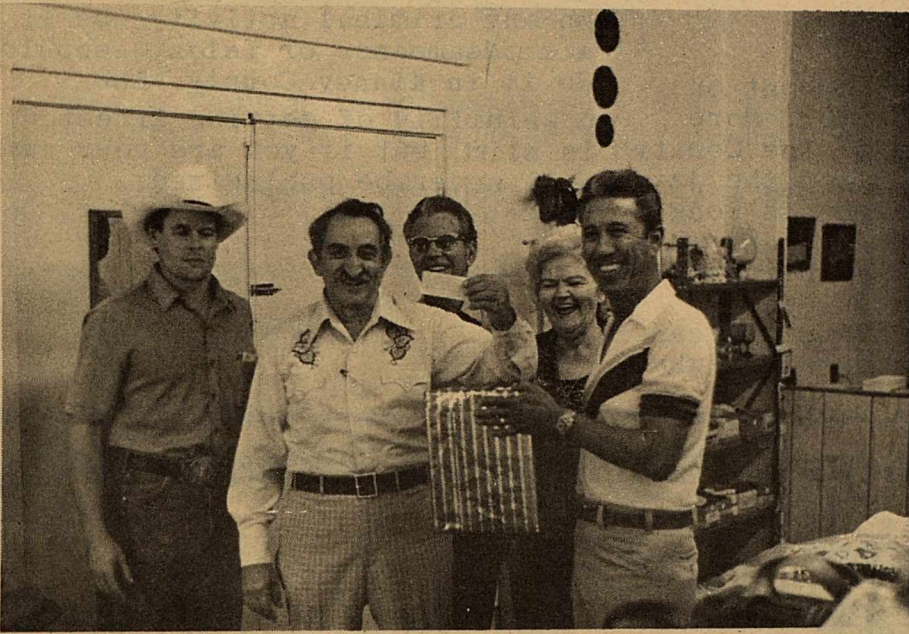
USPS 100-610

NUMBER 25

June 26, 1981

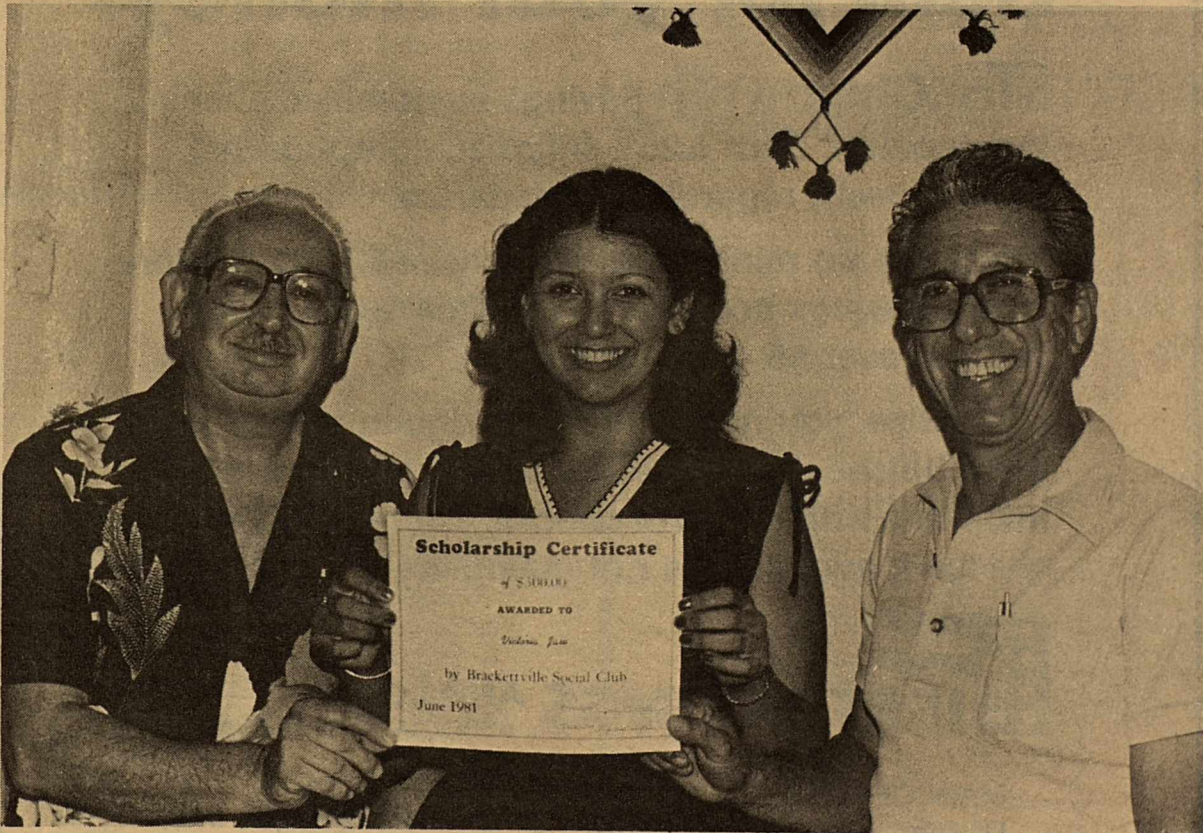
BRACKETTVILLE, TEXAS

## NEW BUSINESSES OPEN



BARKERS GIFT AND THRIFT SHOP celebrated their Grand Opening by having a drawing for three beautiful prizes, that were drawn by local members of the Chamber of Commerce. Pictured (L to R) Zack Davis, Frank Finamore, Willie A. Barker, Marie Barker and Alfred Pena.

MINIMAX CHANGING OWNERSHIP... Chuy Munoz, long-time owner and founder of Chuy's Minimax proudly presents the keys to new owners effective July 1st. Cordelia Menedeke and Lucille Fuentes. After July 1st the name of the business will be C & L's Minimax.



### SOCIAL CLUB AWARDS SCHOLARSHIP

On February 15, 1981, the Brackett Social Club met and discussed the possibility of awarding a \$300 scholarship to some worthy High School graduate. We started a drive by raffling off a \$100.00 bill, and in that way, we were able to come up with the required cash to award the scholarship certificate.

The young graduate that all of the Club decided on was Miss Victoria Jaso, daughter of Mr and Mrs Ernest Jaso. Miss Jaso plans to attend Del Mar College in Corpus Christi, where she plans to major in Music.

The scholarship certificate worth \$300. was presented to Miss Jaso at a dinner at the Gateway Cafe on June 21, at 7:30 p.m. by President Chuy Munoz.

\*\*\*\*\*

### AMERICAN CANCER SOCIETY NEW OFFICERS

On June 22, the American Cancer Society held it's officers election with the following taking office:

President: Louis Starzel  
Vice-President: Don Packer  
Secretary: Miss Charles Wilson  
Treasurer: Emma Swain

Officers are planning a "Hot Dog & Hamburger Picnic" in mid-August for recruiting of membership. This will be for membership and their invited guests only, according to President Starzel.

## Headliners

### HISTORICAL SOCIETY MEETING

The Fort Clark Springs Historical Society general meeting will meet June 27th at 10:00 a.m. at the "Town Hall". Dr. Robert Drummond will talk about his "Six Months with the 2nd Cavalry at Fort Clark in 1943. Dr. Drummond is a professor of Geography at Indiana State University. He holds the rank of Lt. Col. in the retired reserve.

\*\*\*\*\*

### BURGER AND SHAKE SUPPORTS LITTLE LEAGUE

Burger & Shake is giving FREE ice cream cones to all participating Little League Members as they have in the past.

The Burger & Shake Management whole heartily supports the Little League programs.

\*\*\*\*



# the Kinney Cavalryman

USPS 100-610

P.O. DRAWER CQ  
Brackettville, Texas 78832

512/563-2696

Judy Loos.....Publisher  
Geo. Loos.....Editor  
Geo. Loos.....Business Manager  
Sandy Herman.....Contrib. Editor  
RoseMary Slubar.....Contrib. Editor  
Jean Hood.....Contrib. Editor  
Sammy Smith.....Contrib. Editor

\*\*\*\*\*

Published every Friday. Entered by  
Second Class Mail at Brackettville,  
Texas 78832.

\*\*\*\*\*

Any erroneous reflection upon the  
character or standing of any person  
or firm appearing in this paper will  
be gladly corrected upon being called  
to the attention of the management  
and to the article in question.

\*\*\*\*\*

MEMBER OF THE TEXAS PRESS  
ASSOCIATION

\*\*\*\*\*

SUBSCRIPTION RATES:

\$12.00 .....Out-of-County  
\$11.00 .....In-Kinney County



**Plants  
&  
Posies**  
By:  
Jeannie and Sammy

SETCREASEA (Commelinaclae)

The genus Setcreasea has recently been re-defined, and some plants previously included are now assigned to Callisia S. purpurea (Purple Heart), the only species grown indoors, is a trailer with lance-shaped leaves 4-6 inches long and 1 inch wide. Leaves and stems are all a rich violet purple, small, three-petaled, bright magenta pink flowers are produced in leaf axils in summer. Blind flowering stems. (those that do not grow beyond the leaf axils that produced the flowers) should be cut off every year when flowering ceases. Setcreaseas are attractive growing either singly in a 3 or 4 inch pot or grouped together in a larger pot or hanging basket.

## Letters to the Editor

TO THE SHERIFF OFFICE OF  
KINNEY COUNTY

I for one would like to say "Thanks", for the 24-hours answering service--what pleases me most have a business is the patrol from 12-8 .

THANKS again for caring about us citizens in Kinney County.

Thelma Sharp

\*\*\*\*\*

Dear Sir:

First, I'd like to comment on Sheriff Bailey's letter. More Power to you Sheriff! The County can use the income from the jail and the 24-hour patrol is long overdue. I can't understand why there would be any rumblings from our Honorable Commissioners' Court. Maybe the CAVALRYMAN can find out who is opposed and why,

and will so inform the electorate. Secondly, I'd like to ask why the most newsworthy event in Kinney County in years has not made your pages? I'm referring to the "incident" at the Fort Clark Springs Airport two weeks ago.

Your masthead says, "Member of the Texas Press Association." I think that carries an obligation. What about the people's rights to know? Rumors are flying around like you wouldn't believe, and the tales get bigger and better as they go. Come on George, give us the facts and put the rumors to rest.

Thirdly, and last, I'd like to recommend that anyone intent on any criminal activity--be it a misdemeanor or felony--should do it in Kinney County, The possibility of getting arrested is slim, but if you are your name will never be publicized.

Sincerely,  
/s/ Tom Powell

\*\*\*\*\*

## FIRST SAVINGS gives you a better deal for your money:

FirstChek - - First Savings customized checking account. Earn 5.25% interest, compounded continuously, regardless of balance.

There are no minimums if you have \$2,000 or more in any savings account or certificates here or if you are over 65 years of age.

Otherwise, you need only to maintain a \$500 minimum balance with check safekeeping, or a \$750 minimum with return of checks. There is a \$3 service charge if minimum is not maintained.



**FIRST SAVINGS AND LOAN**  
ASSOCIATION OF UVALDE



MAIN OFFICES:  
Uvalde:  
400 North Getty St.  
278-7191

BRANCH OFFICES:  
Eagle Pass: 371 Monroe - 773-9494  
Carrizo Springs: 301 Pena St. - 876-5261  
Leakey: Corner of Market & 4th - 232-6631  
Hondo: 609 19th St. - 426-4325

### Money Market Certificate

26-week \$10,000 Minimum  
Annual Yield Based on annual rate of  
14.695 14.189  
Effective June 23---June 29

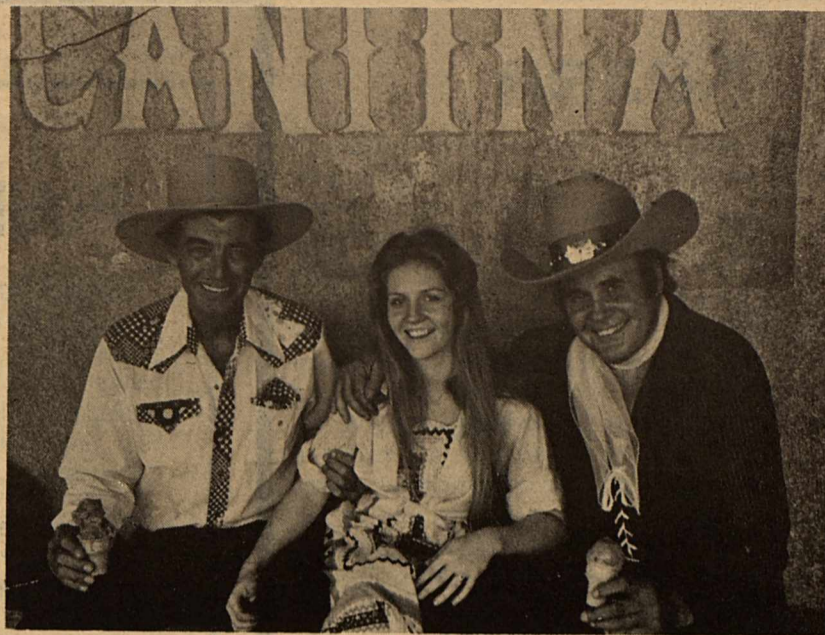
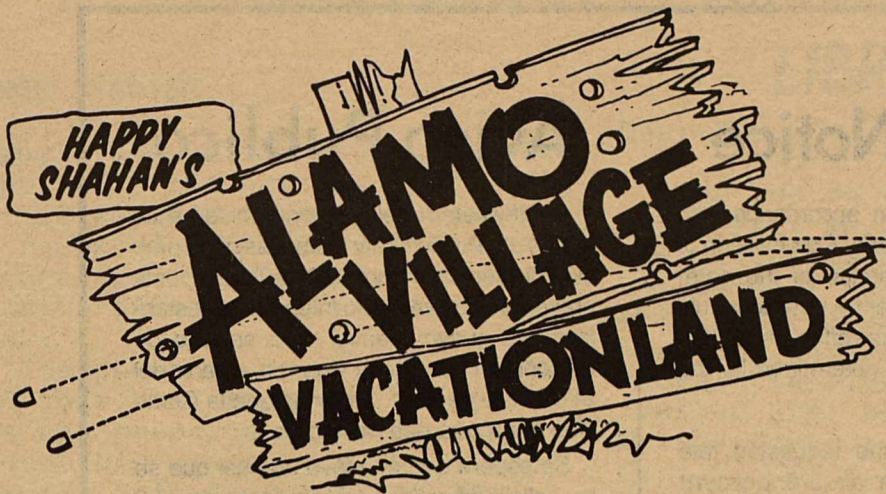
Effective annual yield based on reinvestment of principal and interest at maturity. Federal regulations prohibit the compounding of interest and require a substantial penalty for early withdrawal. Rate is subject to change at renewal.

### Treasury Rate Certificate

2 1/2-year \$100 Minimum  
Annual Yield Annual Rate  
12.749 12.000  
Effective June 23---July 6

The offered rate changes bi-monthly and is determined by the U.S. Treasury. Once this type certificate is issued the rate does not change over the term of the certificate. Substantial penalty for early withdrawal of certificates.





WHERE STARS ARE BORN AND QUITE FREQUENTLY MEET. Rory Calhoun, K.K. and Sunset Carson.

**BRACKETTVILLE TEXAS**

Season Passes for Kinney County Residents are available for \$20.00! Enjoy the fun and frolic at Alamo Village all summer long for only \$20.00.

Shows start Memorial Weekend and go thru Labor Day.  
Open May 1 ----Closed September 30

Hours: 9:00 a.m. --- 6:00 p.m thru MAY  
9:00 a.m. --- 8:00 p.m. thru LABOR DAY

**V.I.P. BARBEQUE**

A benefit barbeque for the Kinney County Public Library will be held June 30 at 7:00 p.m. at the Fort Clark Springs swim park. Donations are \$25 a ticket, all tax deductible.)

Our immediate need is to raise \$3500, a donation of any amount will be helpful.

Alton Pagel has donated his time as superintendent of construction. The amount of \$3500 will pay the salary of the site foreman.

Many challenges to Brackettville businessmen have been made. John Myers challenged 6 ranchers to donate \$500 and he would give \$500.

The barbeque will feature a door prize---draft beer---and the "Three of Us" dance band.

Lets all pitch in and help the library.

**ENERGY SAVING WAYS**

**With Automatic Washers**

Using efficient laundering techniques can be one of the most effective ways to save energy in the laundry room, say home economists from Whirlpool Corporation.



Use your washer to capacity, they advise, but don't overload. Clothes must be able to move and flex freely during the washing period for best cleaning and least fabric damage.

Pre-treating clothes and sorting them by color, fabric and weight, as well as separating the "lint-givers" from the "lint-receivers" are important steps to ensure that clothes come clean the first time and don't need to be rewashed.

For small loads, be sure to select the correct water level so that you don't end up wasting extra water (and energy) that's really not needed.

*June tenth Celebration*

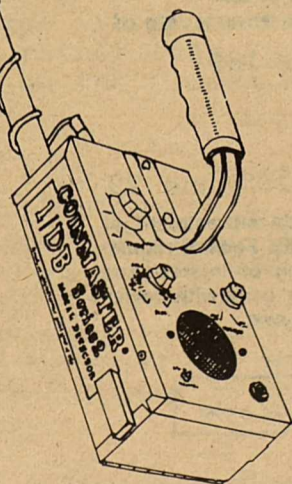


*Continued Page 6*



**GO HUNTING**  
With A White's!

IT HAS BEEN ESTIMATED THAT SEVERAL MILLION PEOPLE HAVE TAKEN TO THIS SPORT AND THE AVERAGE USER WILL FIND A DOLLAR AN HOUR FACE VALUE IN COINS.



**RUSSELL HARDWARE**  
506 E. Gibbs 775-3502

**STATEMENT OF INTENT TO CHANGE RATES**

General Telephone Company of the Southwest, in accordance with the Rules of the Public Utility Commission of Texas, hereby gives notice of the Company's intent to implement a new schedule of rates in Texas effective October 1, 1981.

On April 28, 1981, the Public Utility Commission of Texas issued its order in Docket 3690, creating a separate Docket 3861 to consider the impact and effect of the accounting changes ordered by the Federal Communications Commission (CC Docket 79-105).

The Federal Communications Commission has changed the method of accounting for inside wiring costs associated with the one-time station connection, move, or change activity. The new rate schedule will increase the Company's gross annual revenue derived from local service by no more than three percent.

The schedule of rates and charges is available for inspection at each Company business office in the State of Texas.



General Telephone

**BURGER & SHAKE**

**563-2027**

**OPEN**

**11:00 AM — 9:30 PM**

**DAILY**

WATCH FOR OUR WARM WEATHER SPECIAL TREATS.....

KATHY BAUMANN, Manager



## Kazen

I returned last week from the twenty-first Mexico-United States Interparliamentary Conference in Manzanillo, Mexico, with new hope for expanded cooperation between our two countries.

I served on the Economic Committee of the Conference and participated in discussions on important topics including trade relations, energy sources, tourism, and the border economy. Our sessions and those of the Political and Social Committee held great significance this year because they served as a follow-up to the meetings in Washington between President Lopez Portillo and President Reagan, which ended just three days before we met in Mexico.

President Lopez Portillo set the mood of friendship for our Conference when he spoke in the most complimentary terms of his reception in Washington. WE recognize there are problems between any two large neighbors, but we also understand the need to work in an atmosphere of open, honest discussion to settle differences. I am pleased to report that this was the tone of our meetings.

There is no question that Mexico is now ranked among the world leaders--and we as geographical neighbors must do all we can on both sides of the border to achieve closer ties. From an economic standpoint, Mexico is our third-largest customer and as such deserves our attention, our respect and our friendship.

The Conference proved to me that there is a will to cooperate. Hopefully, it will lead to agreements on such subjects as fishing rights, commerce and tourism. I expect continued cooperation in the future as both countries recognize it is in our mutual interest.

### RECONCILIATION UPDATE

Congress is learning that it is neither simple nor always popular to pinpoint cuts in the federal budget. As an example, the House Education and Labor Committee, under orders to meet the new budget levels, recently voted to eliminate all federal impact aid which helps school districts offset the cost of educating children of federal employees. The current level of funding is more than \$800 million, and elimination would have a serious effect on any area with a high number of military personnel.

I was pleased to see that the Committee last week decided to restore at least some of the impact aid, about \$400 million, but this was at the expense of other programs whose sponsors may be heard from before this process is over. The final fate of impact aid may not be known for several months.

There are hundreds of similar cases under the new budget guidelines. Despite headaches and problems, the 15 legislative committees in the House who were asked to cut more than \$35 billion from existing law have not only met the instructions, they have exceeded those instructions with \$37.5 billion in reductions to begin in October.

## Public Notice

Southwestern Bell, in accordance with the rules of the Public Utility Commission of Texas, hereby gives notice of the company's intent to implement a new schedule of telephone rates in Texas effective July 21, 1981, unless otherwise determined by the Commission.

It is expected that the requested rate schedule will furnish a 15.8 percent increase in the company's intrastate revenues.

A complete copy of the new rate schedule is on file with the Public Utility Commission at Austin, Texas, and with each affected municipality served by Southwestern Bell, and is available for inspection in each of the company's public business offices in Texas.

### Notice to Customers of Other Telephone Companies

The filing includes, but is not limited to, proposals to increase rates for interexchange private line and foreign exchange (FX) service. Changes in such rates would also affect customers of other telephone companies because such companies provide interexchange private line and foreign exchange service in accordance with rates specified in Southwestern Bell's tariffs.

## Aviso Público

Southwestern Bell, en conformidad a las reglas del Public Utility Commission (Comisión de Servicios Públicos) de Texas, por la presente hace saber su intención de establecer un nuevo arancel para servicio de teléfono en Texas con vigencia a partir del 21 de Julio de 1981, a menos que la Comisión haga otra determinación.

Se espera que el nuevo arancel que se ha solicitado rendirá un aumento de 15.8 por ciento en los ingresos intraestatales de la compañía.

Una copia completa del nuevo arancel se ha archivado en las oficinas del Public Utility Commission en Austin, Texas, al igual que en cada municipalidad afectada y servida por Southwestern Bell, y cada una de las oficinas de la compañía para negocios con el público en Texas tiene una copia para lectura pública.

### Aviso a los Clientes de Otras Compañías de Teléfono

El registro incluye, pero no se limita a, propuestas para aumentar las tarifas para servicio de línea privada entre centrales telefónicas (interexchange private line) y servicio de central telefónica extranjera (foreign exchange FX). Cambios en dichas tarifas de servicio también afectarían a clientes de otras compañías de teléfono porque dichas compañías proveen los servicios ya mencionados en conformidad a tarifas especificadas por Southwestern Bell.



Southwestern Bell

Budget Committee Chairman Jim Jones of Oklahoma has said the only thing that could slow down the reconciliation timetable is if David Stockman and his Office of Management and Budget attempt to dictate details of the policy and legislative decisions being

made in Congress. OMB must learn that it cannot have it both ways --insisting on a major reduction in the federal budget and then complaining when the individuals cuts are made.

\*\*\*\*

## MONEY MARKET CERTIFICATE

26-week \$10,000 Minimum	
Annual Yield	Based on annual rate of
14.695	14.189

Effective June 23---June 29

Effective annual yield based on reinvestment of principal and interest at maturity. Federal regulations prohibit the compounding of interest and require a substantial penalty for early withdrawal. Rate is subject to change at renewal.

FDIC

Your Savings Insured to \$100,000

# THE FIRST STATE BANK OF BRACKETTVILLE



# Soil Conservation

# Kinney County LIBRARY

## RANGE SEEDING

I guess one of the most disgusting experience ranchers in this part of the world have to put up with, is repeated failures in seeding reangeland. It's tricky and expensive and no one guarantee success.

I suppose we have all seen it. One year, ol' ranchers "A" goes out and prepares his soil, and plants his grass seed just the way the Soil Conservation man, or some other well known-know-it-all, says to do it, and for the rest of the year he doesn't get enough rain to settle the dust. How much grass does he get up--Nada! So next year his neighbor to the south of him, Rancher "B", goes out and does everything "wrong" and throws out some grass seed his brother-in-law cut off his place (his brother-in-law said he didn't know what kind of grass it was, but that it looked pretty good) and of course, to make the story complete, it rains 2 inches every week end for next two months just right after he seeded the grass. That summer Ranchers "B" ask Rancher "A" if he would like to pasture some heifers on his newly seeded pastureland.

When you get down to it, doing it right merely increases the chances of getting a good stand of grass, but it will usually mean the difference in getting a "stand" or not getting a "stand" of grass. Things like the above do happen, and th's just the way she goes I guess. However, I thought I would list some of the more common things that can at least socntribute to a seeding failure, beside the lack of H<sub>2</sub>O.

1) LACK OF ADEQUATE SEEDBED PREPARATION....The soil should be heavily disturbed and broken up. After its worked it should be firmed up by some heavy roller device. On large range seedings, my favorite peice of heavy equipment is a roller chopper. The roller chopper is a large water filled drum with fins or blades, attached to it.

2) CRUSTED SEEDBED.....All of our soil in this part of the world will crust once it gets a rain on it. Hard crusted soil just doesn't make an ideal seedbed, so try to get the seed on it before it rains. If you're seeding large acreage its best to seed as you go rather than risk getting a rain on the plowed soil and crusting it.

3) BURYING THE SEED.....Remember now you're not planting corn. This is little ol' seed is about the size of a pen head and it doesn't have the ability to come up through much soil. A quarter to a half inch is plenty deep. If the soil has been roller chopped; no covering is necessary.

4)BAD SEED.....The seed should always be tested to determine the

Dear K.C.,

The red on the library labor fund chart is soaring as is the red on the thermometer. We are nearly half way from our goal with more contributions coming in every day. Some of the most recent contributors not yet thanked are: Wella Pearson, Sylvia Simpson, Iola Jones, Al Costly, Claud & Anne Owens, Curt & Vicki Shattuck, Neva & Wayne Pierce, Jan & Lee Russell, Ben Nelson, Susan Cavitt, Joan Ellner, Dot Burrow, Troy Williams, Emery Wiersma and the Las Moras Lodge #444.

The VIP Bar-B-Que will be congregated around the Ft. Clark pool area, Tuesday, 7 p.m., June 30th. This affair has been plan-

ned as an incentive for contributions of \$25 and over; however contributions in any amount are appreciated and needed to help meet our goal of \$3,500. for the labor fund to pay a site foreman.

Don Crowder's band and singer Dee Jordan are contributing entertainment and music for dancing after the Bar-B-Que.

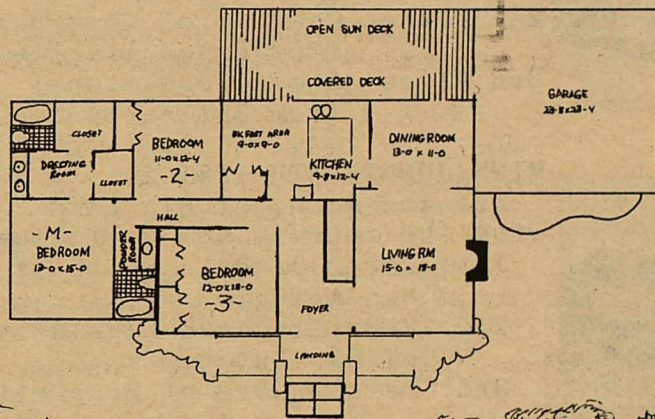
The Summer Reading Program has been in full swing this week with the wall of the library fairly bulging with young bodies enjoying the Monster theme with films, arts and crafts; a fuller account of the program will be reported next week.

Yours truly,  
Friedns of the Library  
by: Marie Bixby  
\*\*\*\*\*

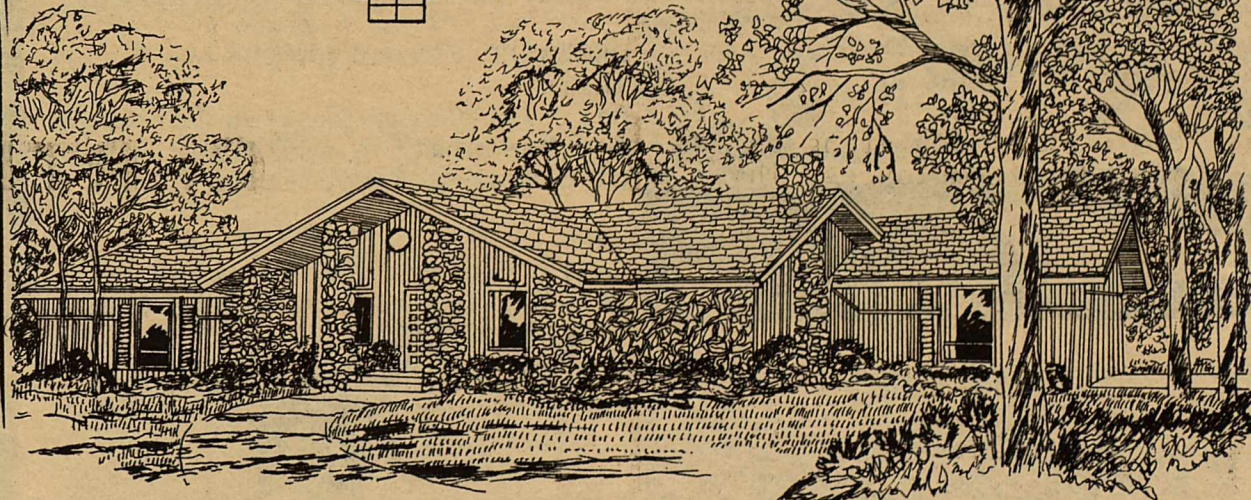
OFFERED BY

## FINAMORE & ASSOCIATES REALTY

- \* Living Area Covers 1,769 Square Feet
- \* Dining Room Has Sliding Doors To A Deck And Steps That Go Down To The Sunken Living Room With Fireplace.
- \* U-Shap Kitchen Includes Build-In Desk; Adjacent Breakfast Area With Laundry Alcove Also Opens To The Deck.
- \* Master Bedroom Has Dressing Area, Seperate Bath and Two Walk In Closets.
- \* Price: UNDER \$61,000.00



Phone: (512) 563-2111



CONTRACTOR  
S & L CONSTRUCTION COMPANY  
LARRY BURRESS

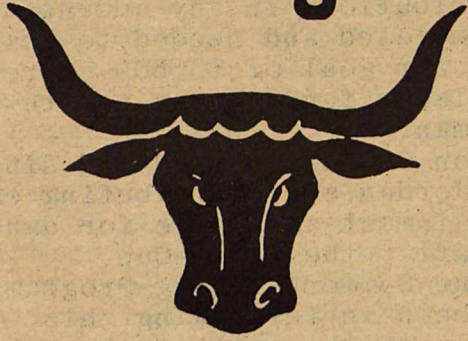
- \* WITH: Energy Saver Package and Custom-Engineered Central Heat & Air.

Finamore & Associates Realty, reserves the right to changs pricing without notice

Cont. Page 7, Col 1



# The Longhorn



563-2767

3 Miles West of  
BRACKETTVILLE, TEXAS

HOME OF THE WORLD FAMOUS

"LONGHORN CHICKEN FRIED STEAK"

"Bragged on From Paris to Tokyo"

## SUNDAY BUFFET

**THE LONGHORN**  
RESTAURANT, MOTEL & LOUNGE

Your Host **TRAVIS & LANETTE WILSON**

## Thank You

TO YOU---OUR VALUED CUSTOMER:

Through the years we have served you, we have seen many changes in the retail grocery business. We have see our business grow from a humble beginning to a modern up-to-date Super Market. This has been accomplished by always giving you, our customer, the highest quality merchandise at the lowest possible price.

We want to let you know that we have sold our business to Ms. Cordelia Mendeke and Ms. Lucille Fuentes. We want to take this opportunity to urge you to keep trading here. I am sure that the new owners will be looking forward with pleasure to serve you as we have in the past.

Thank you for your business.

We remain Sincerely,

Mr and Mrs Jesus Munoz  
CHUY'S MINIMAX and  
Employees  
\*\*\*\*\*

## Juneteenth

Juneteenth Celebration was held in Brackettville last Friday with a parade to start the many activities to happen that day.

The following were the award winners:

### PARADE---

- 1st Place: Hill Country Seminoles from Kerrville
- 2nd Place: Chamber of Commerce from Brackettville
- 3rd Place: Seminole Nation from San Antonio.

### MISS JUNETEENTH 1981 is

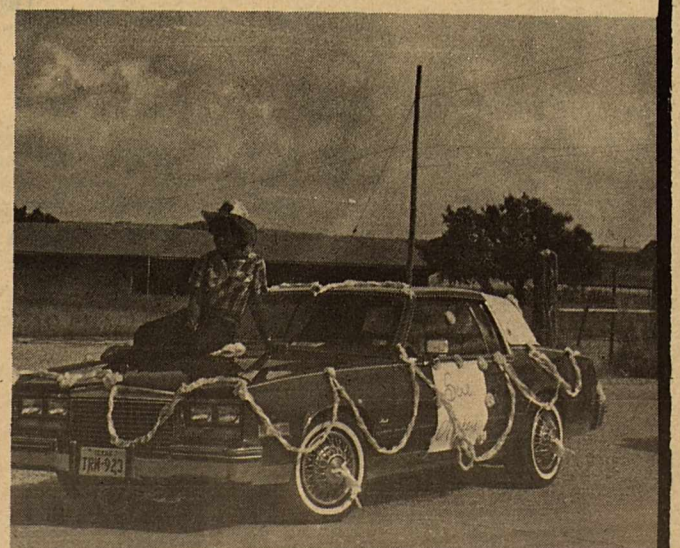
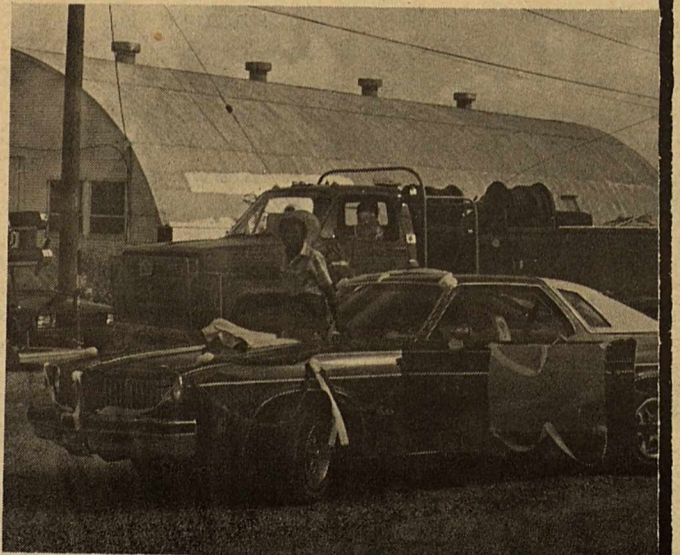
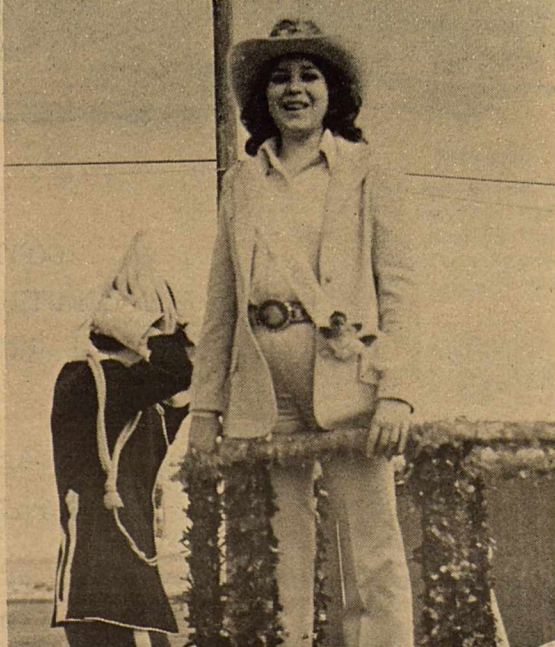
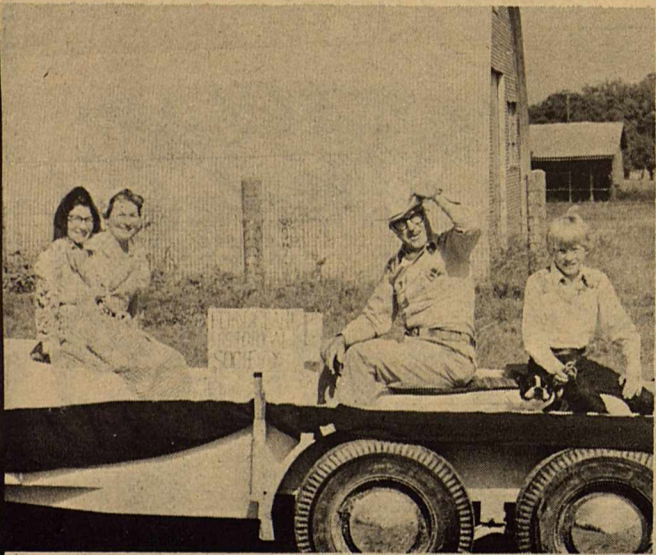
Sue Ann Askey of Big Lake with the runners ups as follow:

- 1st: Karen Janette Smith of San Antonio
- 2nd: LaBretta Jean Egelston of San Antonio
- 3rd: Teresa Ward of Brackett

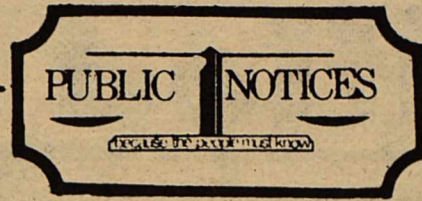
### DECEASED FAMILY AWARDS---

1st:  
Sgt. 1st Class Carlton Perryman for Restoration and Organization of Cemetery Association.

2nd:  
Della Watson for outstanding service for work with the Cemetery Association.







# KINNEY COUNTY CONCRETE INDUSTRIES INC.

CONCRETE IN SMALL OR LARGE QUANTITIES

MASONRY SAND

SMALL AND LARGE GRAVEL

CRUSHED BRICK

## 563-2405

(Hwy 90 West, Brackettville)

### Soil Conservation

percent of Pure Lives Seed. It you don't know the percent of Pure Lives Seed there is no way you can put out the recommended rate. Which brings up a good point-make sure you know what is the recommended seeding rate for the particular grass your seeding.

5) ADAPTED SEED.....A lot that East Texas Stuff looks good but it doesn't do too swift out here. You may want to consider a mixture, instead of just one primary grass. Also it's helpful to include a "Filler" grass in the mixture such as Sorghum alnum. This is a short-lived perennial grass that will usually "faded" out in a couple years-so naturally you don't want to seed it by itself..

CITY OF BRACKETTVILLE  
BRACKETTVILLE, TEXAS 78832

The City of Brackettville is now accepting bids on Trash Pickup Service.

The City has the right to refuse any or all bids.

/s/ Leonard Luna  
City Manager

\*\*\*\*\*

NOTICE TO ALL PERSONS HAVING CLAIMS AGAINST THE ESTATE OF ESTEBAN T. PENA, DECEASED

Notice is hereby given that original Letters Testamentary for the Estate of ESTEBAN T. PENA, were issued on June 23, 1981, in Cause No. 718 pending in the County Court of Kinney County, Texas, to:

OFELIA T. CADENA

The residence of such Executrix is Kinney County, Texas. The post office address is:

Post Office Box 401  
Brackettville, Texas 78832

All persons having claims against this Estate which is currently being administered are required to present them within the time and in the manner prescribed by law.

Dated the 23 day of June, 1981.

/s/ Tully Shahan  
Attorney for the Estate

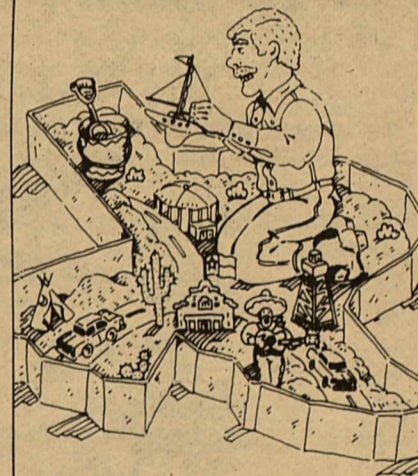
\*\*\*\*\*

6) SEEDING DATE.....Don't wait until June to seed. A lot of folks want to wait and see if its going to rain. February is wonderful month to seed most of our warm season grasses. The seed will just lay there until the soil moisture and temperature is right. Hopefully the grass will have a full Spring of growing to established its root system before the scorching summer months arrive, which would wilt young seedlings that were planted at a later date.

Well, there's a lot of ands, ifs and buts to seeding grass, so if there is any way we can help please contact the Soil Conservation Service.

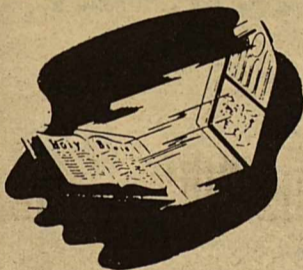
\*\*\*\*\*

### Go play in your own backyard.



This year, take more of a vacation and less of a trip. Live the Texas legend. Right here at home!

A message from the Texas Tourist Agency and this publication.



## CHURCH

### Church of Christ

Sunday School 9:30 a.m.  
Worship 10:30 a.m.  
Bible Study (Sunday) 6:00 p.m.  
Study (Wed.) 7:00 p.m.

### Brackettville United Methodist Church

Sunday School (Children) 9:45 a.m.  
Sunday School (Adult) 9:45 a.m.  
Morning Worship 11:00 a.m.

BARRY COX  
Pastor

### ST ANDREWS EPISCOPAL

Church Services 6:00 p.m.  
REV. EDWARD P. BUSH



The Liberty Bell cracked in 1835 while tolling the death of Chief Justice John Marshall.

### HINDS WELL SERVICE

ALL MAKES & MODELS OF SUBMERSIBLES AND WELL SUPPLIES  
119 WILDWOOD

Richard Hinds  
108 Tomahawk  
DEL RIO, TEXAS 78840

775-1328  
775-9551

## Dave's Garage & Towing Service

portable welding  
expert mechanic

"Your car is a major investment don't trust it to an Amateur--- bring it to the PROFESSIONAL!"

## 563-2987



# classified ads

TUESDAY 12:00 NOON DEADLINE  
All Classifieds--15¢ per word  
minimum insertion \$2.00 per issue  
NO CARD OF THANKS OR CLASSIFIEDS  
WILL BE TAKEN OVER THE PHONE.....

## KINNEY COUNTY LAND CO. (512)563-2446

Old House on 2 beautiful Lots  
on Spring Street.  
\*\*\*\*\*

3 Bedroom home on 2½ well located  
Lots, chain link fence.  
\*\*\*\*\*

Commercial Lot, 69 X 110' on  
Spring Street, Excellent location.  
\*\*\*\*\*

Lovely 3 bedroom, 2 bath, brick  
home in North Brackett, chain  
link fence and storage buildings.  
\*\*\*\*\*

DON  
HOOD

## Brackettville Land Co.

JEAN  
HOOD

512/563-2125

6 PRIME LOTS  
IN NORTH BRACKETTVILLE  
\*\*\*\*\*

LARGE DEER LEASES AVAILABLE  
\*\*\*\*\*

ONE YEAR OLD BEAUTIFUL BRICK  
HOME, CLOSE TO SCHOOL, EXTRA NICE  
\*\*\*\*\*

## BRACKETTVILLE DRY CLEANERS

across from the Bank & Jail

New Hours:

9:45 to 12:45  
1:15 to 4:15 Monday thru Friday

Cleaning of Leather, Suede, Fur  
Available  
\*\*\*\*\*

LET US BE YOUR FULL SERVICE CLEANERS  
\*\*\*\*\*

TWO DAY SERVICE AVAILABLE  
ON CLEANING & LAUNDRY

SATISFACTION GUARANTEED  
\*\*\*\*\*

Buddy and Boots Love

Owners & Supervisers of Cleaning

### FOR SALE-ARTICLES

\*\*\*\*\*  
MASON SHOES & BOOTS.....

Guaranteed, latest styles, mens  
and ladies highest quality, go  
First Class, reasonable prices.  
Call: Robertson--563-2993.

\*\*\*\*\*  
VANN'S SEAFOOD TRUCK in Brackett  
every other Wednesday, 10am-1pm  
at Exxon Station. has full-line  
of seafood.

\*\*\*\*\*  
SAGEBRUSH SHOPPE II....  
Hanging baskets, ferns, dish  
gardens, ivy's, etc. in range  
of sizes and prices. 563-2735.

\*\*\*\*\*  
SISTER TERESA, Palm & Card Reader  
Are you suffering sick, need help?  
She advises in all affairs of  
life, such as business and marri-  
age. Open Seven Days A Week,  
8 a.m. to 10 p.m., located at  
Hwy 90 East, 2812 E. Main, Uvalde  
Texas, 278-1409.

\*\*\*\*\*  
HANDYMAN!!!!!!

For Carpenter, Plumbing and some  
Tree work. Call: Harry 563-2225  
from 9 a.m. --5 p.m.

\*\*\*\*\*



The highest point in the U.S. is Mount  
McKinley in Alaska-20,320 feet high.

## Star View SATELLITE Systems

# SATELLITE TELEVISION

Represented By:

George Loos, Jr.

P.O. Box CQ

Brackettville, Texas 78832

563-2696

CHC COMMUNICATIONS



## POINTERS PARENTS FOR

You can help your chil-  
dren keep their good eye-  
sight by making them aware  
of a few simple safety facts.

Teach them the dangers of  
scissors, sticks, broken glass,  
BB guns, fireworks, bats,  
and balls, bows and arrows.



For a free pamphlet on  
children's eye safety, send a  
stamped, self-addressed,  
business-size envelope to  
your state Society to Pre-  
vent Blindness or to the  
National Society to Prevent  
Blindness, 79 Madison  
Avenue, New York, N.Y.  
10016.

## BUSINESS DIRECTORY

For Area Ambulance District  
Assistance

563-2757

MANY NEW ITEMS IN STORE!!  
(We also have GIFT CERTIFICATES)  
\*\*\*\*

## Old Fort Gift Shop

HWY 90 EAST 563-2885

Tuesday --- Friday 9-5

Saturday--- 9-4 Sunday 10-4

Compare Our Prices.....

## The JUG STORE

Liquor & Wine-Mixes

(NEXT TO B&S GROCERY)

563-2081

LOWEST PRICES!!!!!!

## Schubach Liquors

Across from Fort Clark  
entrance, next to EXXON  
station.....

563-2322

## Barker's Gift & Thrift Shop

"Across from the Bank"  
Something for Everyone.

A new experience in Shopping!!

Friday and Saturday  
break a balloon for up  
to 20% off....

## DEL RIO OFFICE SUPPLY DELIVERS!

EQUIPMENT, FURNITURE, OFFICE  
SUPPLIES, EVERY THURSDAY DELIVERY  
TO BRACKETTVILLE.

CALL COLLECT:

775-1566

## Thom McAn

AIR STEP JOX

Shoes for Everyone  
in the family!!

LaVillita Center  
DEL RIO